

Tishomingo County News

The Vidette & Belmont News

\$5.00 Per Year Locally In Advance.
\$7.00 Per Year Outside Trade Area

OFFICIAL LEGAL NEWSPAPERS OF TISHOMINGO COUNTY

The one Newspaper in the World most interested in this Area

NINETY-FOURTH YEAR

SECOND CLASS POSTAGE PAID AT IUKA, MISSISSIPPI 38852

IUKA, TISHOMINGO COUNTY, MISSISSIPPI

THURSDAY, OCTOBER 13, 1977 NO. 16

THE NEWS IN BRIEF

CLUB MEETING

Iuka Booster Club will meet Monday night, October 17, 7:30 P.M. in the High School.

CLUB TO MEET

The North Iuka Methodist Church will meet at Pleasant Hill Thursday night, October 13, 1977. The ladies of the church will serve supper at 7:00 P.M. and the program will follow with Dr. King in the evening. Dr. King will be showing a film of his recent trip to Bangladesh. Ladies are invited.

DAMPEER TO MAKE PRESENTATION OF

A presentation of South-Iuka Baptist mission work in Brazil will be presented in the Iuka Baptist Church auditorium Friday night by Charles Dampeier, pastor of the Iuka Baptist Church. The presentation will begin at seven o'clock. Dampeier spent seven weeks in Brazil on a preaching tour. Ladies are welcome.

AT MT. PLEASANT

Services at Mt. Pleasant will begin Sunday, October 16, and continue through October 21. The church is just off Highway 30 in Burnsville. There will be a different service each night. Jeff Cook and congregation invites everyone to attend.

PEL SINGING

There will be a gospel singing at Snowdown Methodist Church Friday night, October 14, 7:00 o'clock, with the Landmark Quartet from New York.

PERSONS IS CORDIALLY INVITED

Christmas PARADE PLANS FOR HIGHWAY

Tishomingo Christmas parade will be December 5, 1977. Anyone liking information please call 438-7268.

PEL SINGING AT HUBBARD

There will be a gospel singing at Hubbard Salem Church Saturday night, October 15, 7:00 o'clock. The Parkers Chapel Quartet from Baldwin, Miss. will be featured singers.

Martin and the congregation invites each and everyone to come and hear some singing and receive a gift from the Lord.

THE MT. ZION BAPTIST

Church in Dennis, Ms. The singing will begin at 7:30 P.M. Saturday night, October 15. The church is from Iuka and the featured singers. Everyone is invited to come.

HOUSE

House will be held at home of Royce Howie Saturday, October 16, between 2:30 P.M. and 4:00 P.M. All friends and relatives are invited to attend at the house in Tishomingo.

SCOUTS

Scouts pack meeting will be held Saturday night, October 17, at the home of Mrs. Webb, new members, den mothers, and all friends please come at 7:00 P.M. at the Youth Center. Scout Master, Bill Moore, and Assistant Cub Master, Nell

Nuclear Plant To Provide Ample Energy For Area

Construction is scheduled to begin in early 1978 on the \$1.9 billion TVA Yellow Creek Nuclear Plant. Officials reported that the first TVA generating plant in the state is scheduled for completion in 1986. The two-unit plant to be located in Tishomingo County, will produce a generating capacity of such that the output will be able to provide all the power consumed in this same geographical area.

Standing strongly behind this project, and fully endorsing it, the Mississippi Engineering Society (MES) feels that all reasonable environmental requirements are being met for the construction and operation of the Yellow Creek plant.

According to MES, the nuclear power facility will save customers over \$100 million each year. It is reported that the original cost of this project (\$1.9 billion) will pay for itself in savings in 19 years at the present day fuel cost figures. It has also been stated that the risks involved with nuclear power are much smaller than those involved with any other types.

The safety record of the nuclear power field is phenomenal. No member of the public has ever been killed or exposed to any radiological dosage over established criteria due to the operation of power reactors. Two facts are responsible for this: 1. Rigid engineering standards have been established to protect the

public and preserve the environment. 2. A review process involving each facet of society representing every pertinent discipline is used. This assures that adequate consideration of all appropriate factors are considered. Comprehensive review and monitoring goes on continuously during construction and after operation begins. With all of this, the safety of the public and the environment is first and power generation second. Without added nuclear power capacity, our ability to improve the economy must be reduced and with it any hope of improving our quality of life. In addition, the Mississippi Engineering Society would encourage everyone to inform himself in greater detail about the necessity, usefulness, safety and economy of the nuclear generating operation. Literature on this is available from your Congressman and Senators, from TVA or any other utility company, and from the new Department of Energy.

Anniversary

On Sunday, October 16, Mr. and Mrs. R. C. Blakney will be celebrating their 25th wedding anniversary. All friends and relatives are invited to come by and have refreshments with them between the hours of 2:00 p.m. and 4:00 p.m. at their home in Burnsville. No invitations are being sent.



1978 MISS TEENAGE MEMPHIS—Dee Anna Dexter, 17, 1978 Miss Teenage Memphis, receives a congratulatory kiss from her parents, Mr. and Mrs. James Robert (Bobby) Dexter, 8259 South-

haven Circle in Southaven. Miss Dexter won the title over 11 other finalists Saturday night at White Station High School. She is the granddaughter of Mrs. Helen Bryant and Mrs. Lorine Dexter of Iuka.

Granddaughter Of Local Residents Crowned 1978 Miss Teen Memphis

Dee Anna Dexter, lovely granddaughter of Mrs. Helen Bryant and Mrs. Lorine Dexter of Iuka, was crowned 1978 Miss Teen Memphis in competition Saturday night, October 8, at the White Station High School in Memphis.

The Southaven High School senior won her title which brought with it a \$500 college scholarship and several other prizes over 11 other finalists.

Her father, James R. Dexter of Southaven, said he was just as surprised as his daughter when she won. "After listening to her all week, I didn't think she was going to win. We're real proud of her," he said.

Her mother, Mrs. Linda Dexter, said was equally ex-

cited. Nancy Jarratt, Memphis contest co-ordinator said contestants are judged on poise, appearance and expression, scholastic achievement, and talent. Dee Anna presented a fashion show to demonstrate her talent. She said she wants to attend the University of Mississippi or a specialized fashion college and major in fashion merchandising.

She is involved in a number of Southaven High activities, including the student council, yearbook and cheerleading. She was also voted the school's "most beautiful" girl. Dee Anna will travel to Dallas in November to compete with 54 other girls in the Miss Teen America Contest.

Funeral Services Held For William J. Pyle



WILLIAM JACKSON PYLE
1911-1977

On Friday, October 7, 1977, with the death of William J. Pyle, the Iuka area lost one of its most valued, respected and best known citizens. Mr. Pyle's life was a model of service to his fellowman which he rendered through his church and various civic and business organizations. He was especially dedicated to the promotion of opportunities for the youth of the area and readily accepted leadership of any challenge in that direction. His foremost interest was his church in which he worked tirelessly and held with distinction through the years virtually every office. He was church school superintendent for ten years, chairman of the memorial committee, long-time member of the administrative board, conference delegate and held for many years until his death, the office of church lay leader.

Mr. Pyle retired in 1976 after 41 years as insuror and owner of Pyle and Pyle Insurance Agency. The firm was established in 1895 by Mr. Pyle's grandfather, Capt. C.J. Hyatt.

He was a past-president of the Iuka Rotary Club. He served for 25 years as president of the board of directors of Tishomingo County Electric Power Association. He was a director of North Mississippi Industrial Development Association, an organization dedicated to procurement of industry for North Mississippi.

Mr. Pyle helped organize Iuka's first Chamber of Commerce and served most of the time as executive secretary.

During one period of several years when the organization ceased to function, he continued to work alone, doing what he could to promote his community.

He served for a long period of time as the local representative of the University of Mississippi alumni association.

William J. Pyle was born in Iuka on June 29, 1911, the youngest of eight children of Mr. and Mrs. J. A. E. Pyle. He was educated in the Iuka school system and graduated from the University of Mississippi. In November, 1935, he married Elizabeth Holder, and a son, William J. Pyle, Jr., was born. Billy in 1957 preceded his father in death.

Mr. Pyle will be long remembered for his complete dedication to his church, Iuka Methodist; to the betterment of his community; for his rich sense of humor; and his unflinching zest for living.

Funeral services were conducted Saturday, October 8, at 4:00 p.m. at the Iuka United Methodist Church with the Rev. Charles Potts officiating. Burial was in Oak Grove Cemetery. Members of the Iuka Rotary Club served as active and honorary pallbearers.

He is survived by his wife; three sisters, Mrs. Ida Lee McDuffie, Mrs. Virginia Richardson, and Mrs. Mamie Hyatt Bozeman of Pensacola; and a brother, Calvin Pyle of West Point.

HARVEST FESTIVAL

Burnsville High School will have their annual Harvest Festival on Saturday, October 29th. The festival will feature a rummage sale with proceeds going to the installation of central heat and air in the Burnsville School.

Any glassware that can be contributed will be greatly appreciated. It is needed by October 26. Call 427-8454 or 427-8871 if you have any objects to contribute. It will be picked up.

The Iuka High School PTA will meet Monday night, October 17, at 7:00 P.M. in the school cafeteria.



HOMEcoming QUEEN—Miss Brenda Blakney, 16 year old daughter of Mr. and Mrs. R. C. Blakney, of Burnsville, was crowned the 1977 Homecoming Queen at Burnsville High School during pre-game activities Friday night, October 7. Miss Blakney was escorted by

Mitchell Osborn, 18, son of Mr. and Mrs. Billy Joe Osborn. The queen was chosen from three young ladies representing the Senior Class by the student body to reign as homecoming queen. Brenda was crowned by last year's queen, Miss Brenda Ledbetter.



ASCS OFFICIALS VISIT ACP FARM—Jim Carson, Tishomingo County farmer, Eddie A. Gresham, Tishomingo County ASCS Committee Chairman; Roy Davis, committee

vice-chairman; Elmer A. South, committee member; and Henry L. Knox, County executive director of ASCS, visited with Jim Carson Monday on the farm he is operating on

Mill Creek Road in Iuka. They are examining fescue and dallis grass, used for grazing and hay. This farm receives assistance through the Agricultural Conservation Program.

COUNTY FARMER TAKES ADVANTAGE OF ACP

Farmers throughout Tishomingo County needing aid for conservation are urged to consider applying for the Agricultural Conservation Program with the local ASCS office. The program which is entirely voluntary, was designed to help meet the conservation problems of all land owners in the county. The Federally funded cost-sharing program offers rates between 50% and 75% of the cost of carrying out needed conservation practices that farmers would not perform without this assistance.

A good example of the benefits gained from ACP in Tishomingo County is seen in the outstanding farm land of Jim Carson of Iuka. Mr. Carson owns and operates approximately 500 acres consisting of farrow to finish with approximately 600 swine, approximately 225 head of cattle consisting of black angus and hereford, and works 40 acres of soybeans and 20 acres of corn.

James R. (Jim) Carson was born and reared in Tishomingo County, the son of Mrs. Gladys Carson and the late Reuben Carson. He attended Central Elementary School, Iuka High School, Northeast Mississippi Junior College, and graduated in 1964 with a B.S. Degree in Agriculture from Mississippi State University. He married the former Margaret Smith of Booneville. She graduated from MSCW in 1965 with a Degree in Home Economics and is now employed at the Tishomingo County Voc-Tech. They have three children, Beth, age 11, Rebecca, age 9, and Joey, age 7. The Carson family are members of the Church of Jesus Christ of Latter Day Saints. Jim is an active member in the Tishomingo County Farm Bureau, President of the Tishomingo County Cattlemen's Association, Member Tishomingo County Pork Producers Association, Chairman FFA Committee, Soil Conservation Commissioner, and president of Tennessee Valley and Mississippi Association of Resource Management Farm Families.

Mr. Carson had this to say concerning the importance of ACP to him: ACP is an important financial aid to me in helping carry out conservation practices that I could not afford without the cost-share program. The pasture program part of ACP has been the most important in my operation. Because cattle prices have been very de-

pressed, this has been of much assistance to me. I have also built a hog lagoon four years ago through the ACP that has been of much benefit to me. ACP helps a farmer to do practices immediately that have a long lasting effect that he ordinarily could not afford to do without the cost share program.

Jim Carson is a good example of a farmer who has farmed in Tishomingo County for many years. Eddie A. Gresham, Chairman of the Tishomingo County Agricultural Stabilization and Conservation Service states that the Agricultural Conservation Program (ACP) has been an asset to farmers in Tishomingo County over the years. Mr. Gresham states that the basic purpose of the ACP is to improve the quality of life for all people by preventing or abating environmental pollution, providing the maximum public benefit, and conserving the land and related natural resources so as to assure their continuing ability to produce the food and fiber necessary for the maintenance of a strong, healthy people and economy, and provide for wildlife, open space, landscape, beauty, and

outdoor recreational opportunities.

The Tishomingo County Development Group selected the following practices for the county for 1977: Planting trees; improving a stand of forest trees; diversion; sediment, chemical or water runoff control measures; permanent vegetative cover; improvement of an established vegetative cover; constructing of ponds; construction of flat V-ditches as a part of a permanent farm drainage system.

The ACP is aimed at making sure the public tax dollar is buying needed conservation beyond that which the farmer would accomplish with his own resources.

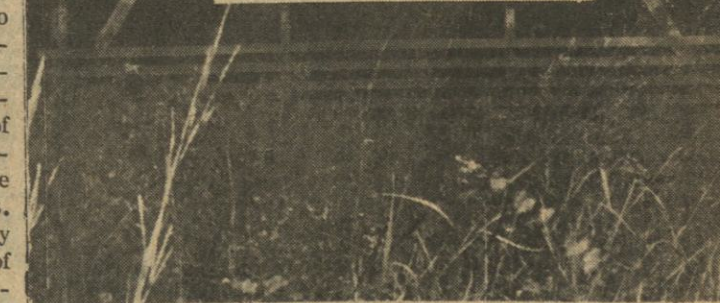
Applicants for all ASCS programs will be given equal consideration without regard to race, color, sex, creed or national origin.

Henry L. Knox, County Executive Director of the ASCS, is urging all farmers who are not participating in this program to come by the ASCS office on Eastport Street in Iuka to further discuss with him the benefits and particulars of the program.



GATEWAY TO TENN.-TOM. WATERWAY
IUKA
In the midst of the WORLD'S FINEST
HUNTING & FISHING

IUKA CHAMBER OF COMMERCE



WELCOME TO IUKA — The Iuka Chamber of Commerce has recently erected four signs in Iuka similar to the one above to welcome travelers to our city. This particular one is located on Highway 25 South of Iuka with others located at

the intersection of Highway 72 and 25 and on Highway 72 East of Iuka. The fitting words, "Gateway to Tenn-Tom Waterway IUKA in the midst of the world's finest hunting and fishing" will be seen and remembered by all who travel through the area.

TISHOMINGO COUNTY NEWS

VIDETTE and BELMONT NEWS

PHONE 423-2211

Published Every Thursday at 120 West Front Street,
Iuka, Mississippi

JOHN H. BIGGS

PUBLISHER & EDITOR



Miss Nellie Horton's

HOME

ECONOMIST'S

NOTES

TREATMENT FOR MACHINES
THAT SKIP STITCHES

Many sewing machines in Tishomingo County that skip stitches may not need to be replaced. Skipped stitches could be caused by the type of fabric being sewed.

Of the man-made fibers now in use, many react differently to sewing, and skipped stitches frequently occur. Skipped stitches may be traced to lint, improper needles, the type of

thread used or to something the seamstress is doing.

Be sure the machine is free of lint. Today's fabrics shed lint which collects fast. A sewing machine lint brush is a good investment; you need to clean lint from the needle, bobbin and tension areas, both before and during sewing.

Using a needle of the wrong size for the fabric being stitched or one that is slightly bent, burred or blunt will also

cause skipped stitches. Sewing machine needles come in many sizes and have ball point or sharp pointed ends. Use the right needle for the job.

Sewing machines will sometimes skip stitches because of thread that is the wrong type or size, or because the machine is incorrectly threaded. Fabrics with man-made fibers react best to thread made of the same materials.

If, after checking for lint and the right needles and thread, the machine is still skipping stitches, examine your operation of the machine.

Sewing over pins, operating the machine at fast or uneven speeds or improper feeding of the fabric can also cause miss-stitching. Test-stitch the fabric being used. Solve the problem before starting to sew.

shoulders with a cosmetic cape or towel. Perfumes and cologne should be applied where it doesn't come in direct contact with clothing, such as behind ears and wrists. Be sure deodorant is dry before you dress.

Stained washable garments should be washed as soon as possible with a bleach safe for the fabric. Pretreat with a paste made of detergent mixed with water.

ROAST BEEF CASSEROLE
1/2 cup cubed cooked potatoes
3 tablespoons butter
3 tablespoons chopped onion
1 teaspoon salt
6 tablespoons flour
1 can beef noodle soup
1 1/2 cup milk
1 cup chopped roast beef
1/2 cup grated cheese

Combine all ingredients except cheese in a greased casserole. Bake at 350 degrees for 30 minutes. Top with cheese. Bake until cheese is melted. Yield: 6 servings.

GROOMING AIDS
CAN STAIN CLOTHING

To avoid staining clothing, be careful when you apply hair spray, deodorants and perfumes. If you spray your hair after dressing, cover your

COUNTY
AGENT'S
NOTES

By
Percie B. Stricklen
MSU
Extension
Service



OVERSEEDING RYEGRASS

Bermuda, dallis and bahia grass pastures will soon be dormant and can be overseeded with rye grass to furnish grazing next spring. The existing forage should be grazed closely or clipped for hay by the middle of October. Then, disk in one direction and broadcast 40 pounds of rye grass per acre. Apply the equivalent of 200 pounds of ammonium nitrate per acre at planting.

Disking will not damage the permanent grass and the nitrogen applied will help the grazing next spring.

No grazing can be expected from rye grass before January. However, three-fourths of an acre per cow should provide more than adequate grazing from February until late May. You may be able to harvest about one ton of hay per acre next May from the rye grass if it is not grazed closely next May.

STILL TIME TO PLANT

With normal weather conditions, farmers still have time to plant wheat and rye grass and have grazing by late November. The seeding rate is 90 pounds of wheat and 30 pounds of rye grass per acre.

Broadcast seed on a well-prepared seedbed and harrow or cultipack following seeding. Apply mixed fertilizer according to soil test recommendations or apply the equivalent of 200 pounds of ammonium nitrate per acre.

DOVE AND TURKEY FEED

Sportsmen who planted browntop millet spaced over several weeks will want to continue to strip row or disk fields. Planting wheat in the strips exhausted of millet will attract doves. If you maintain these strips until next summer, the mature grain will hold birds for the beginning of

next season.

Winter grasses and clover make excellent plantings for turkey. Wheat or rye grass overseeded by clover three to six weeks later will furnish supplemental food during the winter and spring. These fields will also provide good summer range for turkeys. The adult birds will forage for grain and insects and young poults will eat the insects for much needed protein.

ASC Farm
News

By: Henry L. Knox,
County Executive Director

cotton report required
Tishomingo's County Cotton farmers will be required to report 1977 cotton production to the county ASCS Office.

Henry L. Knox, Tishomingo County ASCS Executive Director, says that the actual production of cotton on each farm in 1977 will be used to set up payment yield under the 1978 cotton program. "Each person who is growing cotton in 1977 should plan now to keep complete, accurate records of the amount of cotton he or she produces on each farm and turn in the records to the Tishomingo County ASCS Office after harvest is completed," said Knox.

The 1977 cotton production can be substantiated with sales invoices, warehouse receipts, or gin tickets. Records used to substitute production shall identify farm of production. The 1978 payment yield cannot be determined for cotton farms until the 1977 production records are turned into the county office. If no records county office. If no production evidence is furnished for 1977, the production will be considered as zero (0), Knox

LEGAL NOTICES

ADVERTISEMENT FOR BIDS

Project Number EDA 04-51-26597

Tishomingo County

Separate sealed bids for Surfacing of County Roads for Tishomingo County, Mississippi will be received by Board of Supervisors of Tishomingo County at the office of Board of Supervisors, Tishomingo County Courthouse until 10 o'clock A.M. D.S.T. Tuesday, October 25, 1977, and then at said office publicly opened and read aloud.

The Information for Bidders, Form of Bid, Form of Contract, Plans, Specifications, and Forms of Bid Bond, Performance and Payment Bond, and other contract documents may be examined at the following: G. & E. Engineers-Surveyors, 603 A Elm Shopping Center, Iuka, Mississippi 38852.

Copies may be obtained at the office of G. & E. Engineers-Surveyors, located at 603 A Elm Shopping Center upon payment of \$25.00 for each set.

Any unsuccessful bidder, upon returning such set promptly and in good condition, will be refunded his payment, and any non-bidder upon so returning such a set will be refunded \$10.00.

The owner reserves the right to waive any informalities or to reject any or all bids.

Each bidder must deposit with his bid, security in the amount, form and subject to the conditions provided in the Information for Bidders.

Attention of bidders is particularly called to the requirements as to conditions of employment to be observed and minimum wage rates to be paid under the contract.

No bidder may withdraw his bid within 30 days after the actual date of the opening thereof.

NOTE: The bidder must spend 10% of the entire grant from minority sources and furnish certification of such to the grantee.

September 28, 1977.

M. R. Whitehead, President

Tishomingo County Board of Supervisors

O-6-13-20-c.

in service.
Any teenager interested in working with a small group of 9 to 10 year olds can be a 4-H teen leader. For more information, visit or call your County Extension Office.

Of Interest to Women

September 26 was a second red letter day. The members of the Mineral Springs Homemakers Club had 100% of its members present for the meeting, which was held at the Iuka Library at noon.

Gail Smith called the meeting to order with the thought of the month. Emogene Cummings read a thought provoking devotional. Eula Rhodes read the minutes of the previous meeting.

The club won third place on points at the fair and received a red ribbon for the booth. The club and members individually won over \$60.00, because of exhibits, etc. at the fair. (The members are already thinking of ways to do better next year!)

The president appointed the present officers to be the club's nominating committee for next year's officers.

Focus topic was on energy. Members learned that as homemakers, they must determine to a large extent how

much utility bills will be and that they can cut the cost of them by conserving energy and teaching the other members of the family to do likewise.

Cathy Presley presented some interesting information to the members of the club. She gave a program on fall and winter fashion with a demonstration on some of the different ways to wear scarves, which are once again going to be very popular.

Ernestine Bullard won the useful door prize.

Cathy Presley served each member a piece of delicious pie. Shirley Calton will be hostess to the next club meeting.

The Handicraft Club met at the home of Dorothy Gilly on September 20. There were 11 persons present: Mae Hudson, Mary Smith, Annie Gray, Jewel Glover, Peggy Bonds, Mary Cutshall, Edith Smith, Mattie Beard, Janie Sanders, Ellis Tilliman and Dorothy Gilly.

It was suggested that we have a Christmas bazaar and each person make four items or more for the bazaar.

It was voted to have the bazaar November 18 - 19. The location will be disclosed at the next meeting.

The meeting was adjourned and all had a delicious

dinner, after Mary Bond announced the arrival of a beautiful baby girl born at the Iuka Hospital on September 22. The little lady weighed 4 1/2 ozs., and has been named Christy Lea.

Next month's meeting will be held at Peggy Bonds' home. Yo'all come and bring a dish.

Birth

Mr. and Mrs. Bobby Bond, away of Iuka, are pleased to announce the arrival of a beautiful baby girl born at the Iuka Hospital on September 22. The little lady weighed 4 1/2 ozs., and has been named Christy Lea.

Christy Lea was born at home by a brother, Bobby Bond, and a sister, Susan Bond. Maternal grandparents are Mr. and Mrs. T. J. Bond of Decaturville, Tennessee. Paternal grandparents are Mr. and Mrs. J. L. Greenaway, of Decaturville, Tennessee.

Slow drip

A hot water faucet dripping one drop per second wastes 2,500 gallons of water a year. If you have an old water heater, that's a lot of over 600 kilowatts of electricity.

THE HOTTEST THING IN
FIREPLACES THIS YEAR!
HOT AIR ANDIRONS

100% More Heat With 50% Less Wood
Full 2 Year Guarantee Rated Fan

TRY ONE TODAY!

FAIRLESS HARDWARE

TISHOMINGO & IUKA

438-6608 - 423-9256

FOR ABOUT THE COST
OF A BUCKET OF BAIT,
YOU CAN TELL A
10 MINUTE FISH STORY.
BY LONG DISTANCE.

You can tell all kinds of tales to your old fishing buddy a thousand miles away. Just dial the 1st way and talk for ten minutes for only \$2.44 plus tax. Any evening Sunday through Friday between 5 PM and 11 PM. These evening rates are lower than rates for long distance calls dialed during weekdays.

Call often. To keep in touch with the ones that got away.

Low One-Plus rates do not apply to Zero-Plus dialed long distance calls. Low One-Plus rates do apply to station-to-station calls you dial yourself, talk to anyone who answers and bill to the telephone you are using, and on station-to-station calls placed with an operator where long distance dialing facilities are not available. Low One-Plus rates do not apply to operator-assisted calls such as person-to-person, coin, credit card, collect, and on calls charged to another number, including special billing numbers.

South Central Bell

Long distance.
What else is so nice for the price?

LEGAL NOTICES

STATE OF MISSISSIPPI
OFFICE OF SECRETARY OF STATE
JACKSON
CERTIFICATE OF INCORPORATION
OF

BELMONT AUTO PARTS, INC.

The undersigned, as Secretary of State of the State of Mississippi, hereby certifies that duplicate originals of Articles of Incorporation for the above named corporation duly signed and verified pursuant to the provisions of the Mississippi Business Corporation Act, have been received in this office and are found to conform to law.

ACCORDINGLY the undersigned, as such Secretary of State, and by virtue of the authority vested in him by law, hereby issues this CERTIFICATE OF INCORPORATION, and attaches hereto a duplicate original of the Articles of Incorporation.

Given under my hand and Seal of
Office, this 3rd day of October,
1977.

HEBER LADNER
SECRETARY OF STATE

ARTICLES OF INCORPORATION
OF

BELMONT AUTO PARTS, INC.

We, the undersigned, natural persons of the age of twenty-one years or more, acting as incorporators of a corporation under the Mississippi Business Corporation Act, adopt the following Articles of Incorporation for such corporation:

FIRST: The name of the corporation is Belmont Auto Parts, Inc.

SECOND: The period of duration is ninety-nine (99) years.

THIRD: The specific purpose or purposes for which the corporation is organized stated in general terms are:

To buy and sell, at wholesale and retail, automobile, truck, tractor and farm implement parts and accessories; to rebuild and repair automobiles, trucks, tractors and other farm implements of all kinds and description; and to do such other things as may be necessary and incidental to the carrying on of such business, including the buying and owning of the necessary tools and equipment for said business, and the buying, leasing, holding, selling, incumbering and conveying the real estate necessary or proper in connection with such business.

To engage in the business of purchasing, acquiring, owning, leasing, selling, transferring, incumbering, generally dealing in, repairing, renovating, and servicing of all types of new and used automobiles, trucks, farm implements and other motor vehicles, and the parts and accessories used in connection therewith, and the purchasing, acquiring, owning, selling, and generally dealing in all types of supplies for all types of motor vehicles.

FOURTH: The aggregate number of shares which the corporation shall have authority to issue is One Thousand (1,000) of the par value of One Dollar (\$1.00) each.

The preferences, limitations and relative rights in respect of the shares of each class and the variations in the relative rights and preferences as between series of any preferred or special class in series are as follows: None.

FIFTH: The corporation will not commence business until consideration of the value of at least \$1,000 has been received for the issuance of shares.

SIXTH: Provisions granting to stockholders the preemptive right to acquire additional or treasury shares of the corporation are: None.

SEVENTH: The post office address of its initial registered office is P. O. Box 178, Main Street, Belmont, Mississippi 38827, and the name of its initial registered agent at such address is Paul R. Mayo.

EIGHTH: The number of directors constituting the initial board of directors of the corporation, which must be not less than three (3) is three (3), and the names and addresses of the persons who are to serve as directors until the first annual meeting of shareholders, or until their successors are elected and shall qualify, are:

Paul R. Mayo Route 1, New Site, Miss. 38825
Wayne White P. O. Box 503, Belmont, Miss. 38827
Homer J. Cody P. O. Box 26, Red Bay, Ala. 35582

NINTH: The name and post office address of each incorporator is:

Paul R. Mayo Route 1, New Site, Miss. 38825
Homer J. Cody P. O. Box 26, Red Bay, Ala. 35582

Dated September 19, 1977

PAUL R. MAYO
HOMER J. CODY
INCORPORATORS

ACKNOWLEDGMENT

STATE OF MISSISSIPPI
COUNTY OF TISHOMINGO

This day personally appeared before me, the undersigned authority, Paul R. Mayo and Homer J. Cody, incorporators of the corporation known as Belmont Auto Parts, Inc., who acknowledged that they signed and executed the above and foregoing Articles of Incorporation as their act and deed on this the 28th day of September, 1977.

PEGGY MONTGOMERY
NOTARY PUBLIC

My Commission Expires April 26, 1981

O-13-c.



Mr. & Mrs. Solen Harwell Celebrate Anniversary

A reception was held Sunday, August 28, 1977, in honor of the 50th Wedding Anniversary of Mr. and Mrs. Solen Harwell of Cherokee, Ala. The open house was held in the home of their son, Sammie Harwell, of Cherokee.



PRECISION PAINTS

GLIDEWELL BROS.
Paint & Decorator Supply
72 East of Burnsville 427-9248

\$8.95

"50 Years Ago."
The event was attended by many friends and relatives from, in and around Cherokee and Iuka. Mrs. Harwell's mother, Mrs. J. N. Tull, who is 94, was among the guests. Acting as hosts and hostesses for the event were the Harwells' three sons and their wives. Their families included Hugh and Mildred Harwell of Farmington Hills, Michigan, their sons, Hugh, Jr., Arthur, Charles, daughters - in - law, Terry and Linda, and the only great grandchild, Amy Lynn, daughter of Charles and Linda Harwell; Sammie and Janice Harwell, and their children, Michael and Michele; and Bruce and Ann Harwell, of Iuka, with their children, Chad and Nicole.

The Harwells received many nice gifts including gold watches with appropriate engraving from their three sons.

Named Instructor

Dr. Ben Kitchens, of Iuka, is among 95 Mississippi physicians from 62 towns and cities named clinical instructors in family medicine for the University of Mississippi School of Medicine.

Dr. Norman C. Nelson, Medical Center vice chancellor and medical school dean, announced the appointments following approval of the Board of Trustees, State Institutions of Higher Learning.

All of the clinical instructors serve as preceptors for the UMC Department of Family Medicine and have medical students working with them at some time during the school year. UMC juniors are required to spend three weeks in training with a local physician. Seniors may elect to do an additional four-week preceptorship to expand their knowledge and skills in family practice.

The clinical instructors in family medicine have all served as UMC preceptors for at least one year and have fulfilled other qualifications for the faculty appointment. They attend Medical Center preceptor workshops, accept at least one student as a member of their health care team, and complete a minimum 50 hours of continuing medical education each year.



INVESTITURE SERVICE — September 29, 1977 at 7 p.m. was the date and time for the Investiture Service held for the first year Brownie Troop #48. The Investiture was held at the Iuka Community Center with approximately 50 friends and family members present. After the 14 little Brownies were capped and pinned and the promise was said, everyone enjoyed refreshments of punch and cake. The cake was a two-tier chocolate, decorated with orange trim and adorned with tiny miniature Brownies. The Brownies and leaders wish to thank everyone for their presence at such an important event, and also their sponsors: Milt and Shirley Burton, of

Owl & Pennies; Edgar Wadkins, of Wadkins SuperMarket; Scottie Skinner, of The Second Shop; Billy and Betty Enlow, of Busby Grocery; Carl Booker, agent for Lamar Life Insurance; and David Yarbrough, agent for Liberty National Insurance. Girls and leaders are shown from left to right: Mrs. Carole Yarbrough, assistant leader, Tracy Yarbrough, Tina Weathers, Shana Walker, Risa Wadkins, Janetta Stennett, Amy Skinner, Beth Ann Schillings, Kimberly Rushing, Leigh Ann McKissick, Ginger Horton, Sonni Gross, Cindy Enlow, Carla Booker, Mrs. Terri Booker, leader. (Also invested was Beth Booker, not shown).

Photo by Swimmer

Midway 4-H Club September News

Midway 4-H members have been very active in 4-H activities during the past month of September.

On September 5, everyone met at the County Fairgrounds to put up the booth. The theme was: "Farming is the Backbone of America . . . and 4-H". The members were very proud when they received a blue ribbon and a \$15.00 check on this booth. From the club there were 15 blue ribbons, 8 red ribbons, one white ribbon, and two trophies won. They were glad so many members participated in exhibiting the things they had made and

also their crops and animals.

On Friday night of the fair, the club worked in the 4-H concession stand. Fair week was a great time.

On September 19, Monday evening at 5:00 p.m., Lyman Jr. Hill, the president, called to order the regular monthly meeting. Jeff Helton led in the Pledge of Allegiance and the 4-H Pledge. Mary Ann Aldridge led in singing, after which Junior McKee read from Ephesians 6:1-6. Everyone repeated the Lord's Prayer together. The secretary, Louise McKee, then called the roll and read the minutes of the

last meeting, which were approved as read.

Signs had come, so everyone got one per family to put in their yard. These signs will let you know who are 4-H members.

Everyone then told about the ribbons they had won at the fair.

On the educational part of the program Lyman Jr. Hill

Pine Lane 4-H News

The Pine Lane 4-H Club would like to salute "National 4-H Club Week." The 1977 theme is "Freedom to Be."

We have five active members in our club, but we feel the time has come for us to grow. During this "National 4-H Club Week" we would like to enroll five new members. If you are interested and in elementary school contact Bobby Coker.

Thursday, September 29, we attended Junior Council meeting at Mr. Charles Swimmer's office. We want to thank Mr. Swimmer for showing us so many new and interesting things about photography. We challenge other 4-H members to attend the Junior Council meetings.

We give special thanks to Mr. Berlon Durham of Conalco for serving as our guide Friday, September 30. We learned many new things that can be done with aluminum. These are just a few of the many things that make being an active 4-H member so much fun. Won't you consider joining us soon?

SPECIAL

Winterize Your Car

\$9.95

includes antifreeze and back flush of radiator

CHECK ALL COOLING SYSTEM PARTS

RAY'S GULF

HWY 25 SOUTH IN IUKA

"SERVICE IS MY BUSINESS"

RAY BELUE OWNER AND OPERATOR WOULD APPRECIATE YOUR BUSINESS



KAY DISCOUNT FOODS			
DOWNTOWN IUKA. NONE SOLD TO DEALERS			
QUANTITY RIGHTS RESERVED PRICES GOOD ONE FULL WEEK FROM DATE			
GROUND BEEF	3 LB. PKG. OR LARGER	LB.	48¢
CHOPS	FRESH PORK 1ST. CUT	LB.	89¢
ROAST	FRESH BEEF CHUCK BLADE	LB.	69¢
FRYERS	FAMILY STYLE MIXED PARTS	LB.	49¢
CRACKERS	SUNSHINE KRISPY	LB. BOX	49¢
EGGS	SMALL	2 DOZ.	79¢
CREAMER	HYDE PARK NON-DAIRY COFFEE	BIG 16 oz.	79¢
SYRUP	HYDE PARK PANCAKE	24 oz.	69¢
PICKLES	PARAMONT WHOLE SWEET	QUART	89¢
CAT FOOD	KAL-KAN	4 6 oz. CANS	\$1.00
MAYONNAISE	HYDE PARK	QUART	99¢
TOILET TISSUE	CHARMIN BATHROOM	ROLL PKG.	79¢
DOG FOOD	TOWN AND COUNTRY	25 LB.	\$2.99

Harvest of VALUES

FOR YOUR SHOPPING CONVENIENCE WE WILL BE OPEN ALL DAY THURSDAY THRU CHRISTMAS

SALE STRATS THUR. OCT. 13

NEW SHIPMENT FALL

Fall SWEATERS
Ladies

New Shipment
Turtle Necks, Cowl Necks, Bulky Wrap & Hooded Sweaters.
All First Quality.

20% OFF
This Weekend.

BLOUSES

MANY PLAIDS & FLANNELS TO WEAR WITH KAKI

Regular \$5.99 to \$6.99 Sizes 5 to 44

\$1.00 OFF

COATS

All First Quality

New Shipment Leather Look Vinyl
Sizes 8 to 16 Values to \$60.00
Short Length Long Length

\$15.95 \$25.95

DENIM JEANS

Speical Group Liberty, Maverick, & Male Jeans, Also Kaki

Size 5 to 18.

30% OFF
This Weekend

Buster Brown Darnette

This Weekend.

20% OFF

Mix & Match
Shirts, Pants, Hooded Sweat Shirts, Socks



The Second Shoppe Iuka, Miss.

BE AN EARLY CHRISTMAS SHOPPER...

LAYAWAY NOW

master charge THE INTERBANK CARD

BANKAMERICARD VISA

PLACE A CLASSIFIED AD QUICKLY...EASILY...JUST PHONE

423
3666

CLASSIFIEDS
FIRST INSERTION: \$2.00
MINIMUM CHARGE: \$2.00
SUBSEQUENT INSERTIONS: \$2.00
MINIMUM OF 30 WORDS
OVER 30 WORDS 5¢ PER WORD

**CARD OF THANKS
AND MEMORIALS**
3¢ PER WORD
PHONE 423-3666

FOR SALE

CARS FOR SALE—1972 Chev. Station Wagon, priced for \$900. 1973 Pontiac for \$950. Ph. 423-3567. O-13-c

LOT FOR SALE—One mile out Eastport Road. Water, electricity, septic tank, T.V. tower, nice for house or trailer. Phone 423-9926 after 6:30 p.m. O-6-tfn-c.

WE SERVICE AND SELL Norge appliances and Fedders Air Conditioners. Earl Daugherty Refrigeration Sales & Service. Phone 423-9207. M-4-tfn-c.

FOR SALE—1967 Chevrolet pickup - automatic with air. Call 423-9770. O-6-13-c.

FOR SALE—Antique wash stand. Excellent condition. Call 423-5998. O-13-c

LAND FOR SALE—40 acres. 20 acres pine forest, 20 acres bottom - farm land, fish pond - 2 springs - 1 creek. If interested phone T.C. Ables at 454-7341. O-13-20-

FOR SALE—1974 Oldsmobile Delta 88, 4 door sedan, excellent condition, good tires, air, power, AM stereo radio-tape player, low mileage, one owner. Call Paul Weekley - Office 423-6186; home - 423-6748. A-25-tfn-c.

FOR SALE—Electric Hotpoint Range. Ph. 423-9865. O-13-c

FOR SALE—28 1/2 acres land, 2 miles south of Iuka on old and new Hwy. 25. Paved road frontage. Good for a subdivision. Call Florence, Ala. - 205-766-4750. O-6-13-c.

CLARK'S FIBERGLASS PANEL CO.
Route 1, Box 404
Fulton, Miss. 38843
Fiberglass weatherproof Panels
New shipments weekly. All colors and thicknesses. Use for building greenhouses, barns, garages, toolsheds, shops, patios, porches, and mobile home underpinning. 10¢ - 15¢ - & 25¢ Per Sq. Ft. Six days 7:30 till 6:00 p.m. Located on Hwy. 78 just east of scales at Intersection of Hwy. 25 North, Fulton, Miss. Bus. Ph. 601-862-2021 Res. Ph. 601-862-2203

RUMMAGE SALE

Saturday, Oct. 15
Youth Center
Mineral Springs Park
9:00 A.M. TO 5:00 P.M.

OUTDOOR ADVERTISING

EVERY HOUR! EVERY DAY! ALWAYS SELLING!

Commercial Signs-Painted Bulletins
Poster Panels-Plastic Letters

Tri-Cities Poster Adv. Co.

2ND & RALEIGH AVE. - PHONE 383-8331 SHEFFIELD

MOORE'S BODY SHOP and WRECKER SERVICE
24 HOUR WRECKER SERVICE
DAY PHONE 423-5130
NIGHTS-WEEKENDS
HOLIDAYS
423-5244
EXPERT BODY REPAIR

FOR RENT

FOR RENT—3 bedroom brick, near Iuka. Call Edith Crawford at 423-9220. O-13-tfn-c

FOR RENT—2 Bedroom trailer. Couple Only. Phone 423-6684. O-13-c

FOR RENT—5 room house with fireplace. \$150.00 month. Located one mile west of Burnsville. Call Ann Hubbard. 423-9704. Available Nov. 15th. O-13-tfn-c

FOR RENT—Mobile home space. Phone 423-9322. O-13-20-28-N-2-c

FOR RENT—Furnished Apartment. Couple Only. J. R. Long, 423-3656. O-13-tfn-c

FOR RENT—Large Trailer in Golden. Couple Only. J.R. Long, 423-3656. O-13-tfn-c

SITUATIONS WANTED

FEMALE HELP WANTED—Coleman's Bar-B-Q. South's Largest Chain. Opening shift or closing shift. No experience needed - will train. Part time or full time. Excellent opportunity. Call 423-9942. A-11-tfn-c.

WANTED—Children for child care facility. Three miles south of Tishomingo. Ages six weeks to school age. Hot lunch provided. Contact Fay Robinson at 438-7348. Sit at night by appointment only. S-29-tfn-c.

WASH WINDOWS, mow yards, rake leaves, pile brush, and do other odd jobs. Contact James or Paul Wahlstrom. Phone 423-6065. O-6-13-p.

WOULD LIKE TO KEEP small children in my home in Paden. About 1/4 mile from Irwin B. Schraube. Call 438-7386. S-29-O-6-13-p.

REAL ESTATE

3 bd, 2 bath, brick home, carpeted, central heat and air, den, large eat-in kitchen, large separate living room, double garage with blacktop drive on 2 ac. west of Belmont, \$36,000. Additional 2 ac. - \$2,000.

3 bd, 1-1/2 bath, new brick, carpeted, central heat and air, wood heater available, extremely well constructed, 1.9 ac. west of Iuka, \$35,000.

UNDER CONSTRUCTION - 3 bd, 2 bath, brick, carpeted, central heat and air, f/p, large living area with partitioned kitchen, in new subdivision west of Iuka, \$39,500.

3 bd, 1-1/2 bath, brick, city gas central heat and air, large den with f/p, inside Iuka, \$27,500.

3 bd, 1 bath, concrete block and frame home on 1-1/4 ac. overlooking Bear Creek, \$20,000.

REDUCED from \$55,950 to \$47,950, 1890 sq. ft. 2 story, 4 bd, 2 bath, fully carpeted, brick and frame house, central heat and air, 19' x 22' den with f/p, Mill St.

2 bd, furnished, frame cabin, screened porch, garage, on creek at Coleman Park, \$6,000.

Many other listings. - \$\$\$ - Homes, resort properties, commercial.

We sell life and health insurance.

P. O. BEARD,
REALTOR-APPRAISER
NANCY BEARD,
REALTOR ASSOCIATE
OFFICE 423-5253
HOME 423-5251
"SINCE 1964 - IUKA'S OLDEST REALTORS"

WORK AT HOME in spare time. Earn \$250.00 per 1000 stuffing envelopes. Send 25¢ plus stamped, self-addressed envelope to: Terry Lane Enterprises, P. O. Box 289, Hobart, Indiana 46342. O-6-13-20-27-c.

HELP WANTED — Chuck Wagon. Shift 11 a.m. until 5 p.m. Kitchen help. O-6-13-c.

FOR RENT — House trailers in Burnsville - water and sewerage furnished. See James E. Timbes, Burnsville. Call 427-8778. O-31-tfn-c.

FOR RENT — Apartment, couple only. Phone 423-6454. S-29-O-6-13-c.

CASABELLA TRAILER PARK Beautiful, spacious lots, water and sewage furnished, 10 miles north of Iuka on Coleman Park Rd. Also, trailer for rent. Call 423-6207. S-15-22-29-O-6-13-20-p.

GARAGE SALE

YARD SALE—Saturday from 9:00 'til 5:00, if not raining. If raining, sale will be held following Saturday. Several families. Lots of miscellaneous items. Some new merchandise. 3B Don Crest Apartments, North Pearl Street, Iuka. O-13-c

YARD SALE—Saturday, Oct. 15, 8:00 A.M. 'til 4:00 P.M. Home of Cecil Hutcheson in Tishomingo. All size clothes, quilt tops, material, quilt scraps, potted plants, and large selection of miscellaneous items. O-13-p

BASEMENT SALE—First time basement sale on Martha Lane-home of Kay Perkins. Several families represented. Good variety of items. Saturday, October 15, 8:00 A.M. - 5:00 P.M. O-13-c

CARPORT SALE—Saturday at the home of Ruby Timbes 102 Pickwick Circle. From 8 o'clock until 5 o'clock. O-13-c

REAL ESTATE
Several 5 acre, wooded building lots, City water, 3 mi. north of Iuka City Limits.

7 acres, building sites, 4 miles south of Iuka City Limits, \$500.00 per ac.

27-1/2 acres, west of Belmont, \$300.00 per ac.

11 acres, beautiful building sites with small lake, 3 miles south of Iuka City Limits. \$910.00 per acre.

HOMES

Reduced to sell - 3 br., brick, 1-1/2 baths, carpet, living room, spacious den/kit., attractive lot, in subdivision, east of Iuka. \$24,995.

4 BR brick, Pinewood Subdivision, Cent. H/A, carpet, plus many other extra and desirable features. \$36,000.

New 3BR brick, Battleground Heights, built for comfort, convenience, and energy saving. \$42,500.

2 acres and a 3 br. brick house with 2 baths, LR, kit/din, den, inside laundry, lots of closets, carport storage room, east of Iuka, reduced to \$34,000.

Near downtown Iuka, 3 br., frame house, with carpet, patio, carport, outside storage building, large lot, \$15,000.

2 br., frame house, 1 mile off Hwy. 25, 10 miles north of Iuka, unusually good buy at \$8,000.

INVESTMENT PROPERTY
3 choice investment properties with maximum returns.

CONSOLIDATED REALTY AND INSURANCE
OFFICE - 423-6948
ED GREGORY - BROKER
ED GREGORY, JR. - 423-5300
GRACE LONG - 423-6584
BETH DAVIS - 423-9543
GLENDA MILLIGAN 423-9722

YARD SALE—Saturday, Oct. 15, 9:00 A.M. 'til 5:00 P.M. Under the big oak tree in front of Cotton Gin. All kinds of good junk. O-13-c

YARD SALE—Five families. Friday and Saturday, Oct. 14 and 15, 9 'til 5. Two miles from North Cross Roads on 365 Highway. O-13-p

YARD SALE — At the Kuntz Store at Paden. Friday and Saturday. If you are a junkaholic, we have something for you. O-13-c

MISCELLANEOUS

MOBILE HOME SERVICE — Tie downs - underpinning, Kool Seal, roofs, parts, releveling, mobile home moving. Call 423-3258 day or night. S-1-8-15-22-29-O-6-13-20-27-p.

REWARD — In effort to test the effectiveness of this type of advertising, we are offering Singer 301 for \$65.00 or the new Electra SX3000 with computer-like programming for buttonholes, blind stitches, etc. With this ad \$199.00, without this ad \$495.95. Phone 423-5683. S-15-tfn-c.

CUSTOM LIME & FERTILIZER spreading - also backhoe work. See or call Charles Jones at 423-5896 after 5:00 p.m. M-17-tfn-c.

TRUCKING SERVICE — Crushed stone, gravel, fill dirt, sand - Free estimates. Call Howard Whitaker at 423-6767. M-20-tfn-c.

CONCRETE WORK — Porches, patios, sidewalks, driveways, house slabs, etc. Tim Bivins - Call 423-9782. S-30-tfn-c.

INSULATION
CELLULOSE - FIBERGLASS
THE ENERGY SAVERS
728-4479
LEAMON L. SANDERS
TRI-COUNTY INSULATION CO.
103 FRANKS STREET
BOONEVILLE, MS. 38829

FOR RENT — Apartments, Duplexes and Town Houses. Call 423-9063. M-13-tfn-c.

FOR THE BEST CONTROL IN PEST CONTROL CALL GOLD BOND
423-5703

IUKA REALTY CO

3 br., 2 bath with full dry basement on nice lot on Martha Lane. Central heat and air, fireplace. Pay equity and assume loan.

3 br., frame on 1 1/2 acre lot. An excellent buy at the asking price of \$25,000. You can just about stand in back yard and fish in a large creek. Plenty of fruit trees and garden space.

3 br., block and frame home on Yellow Creek (only about 400 ft. to water). Partially furnished, with air conditioners, fireplace, and a shop building for the handy man, or could be converted into an apartment.

80 acres just outside city limits. Will join new Hwy. 72 when built. Owner says sell for \$60,000 with \$20,000 down and will finance for 10 years at 8%.

IUKA REALTY CO.
Bryce Kitchens - Broker.
423-6967

OWL & PENNIES FAMILY RESTAURANT is now accepting reservations for season parties. Full use of facilities. Private parties. Catering service for groups up to 500. Call 423-9029. A-18 - D-29-c.

FOR QUICK personal loans see Nelson Finance on Highway 25 South in Iuka. Phone 423-6900. M-5-tfn-c.

NOTICE — All land belonging to Estate of Ernest Ezzell on Cedar Creek is posted to hunting and trespassing.

BERLIN MCRAE
S-29-O-6-13-p.

HOUSES AND LOTS FOR SALE — Will build with your plans or mine. No down payment if you qualify. Come out or call Bart Smith, N. Pearl Street, phone 423-6708. D-9-tfn-c.

ORNAMENTAL IRON
CHAIN LINK FENCES
FREEDOM CONTRACTORS
COMMERCIAL AND RESIDENTIAL
FREE ESTIMATES
IUKA, MISS
PHONE 423-3155

Steam Carpet Cleaning
JIM'S CLEANING SERVICE
PHONE 427-8219

WANTED: TIMBER TO BUY

Hiwassee Land Co., of Iuka, Miss., needs to buy timber in this area, preferably within 30 to 35 miles of Iuka. We need pine mostly but will also buy tracts with both pine and hardwood. If you have timber to sell, please contact us either by letter, phone, or personal contact.

Our mailing address is: P. O. Drawer L, Iuka, Miss. 38852. Our phone number is 423-6186. J-27-tfn-c.

THE UNIFORM SHOP

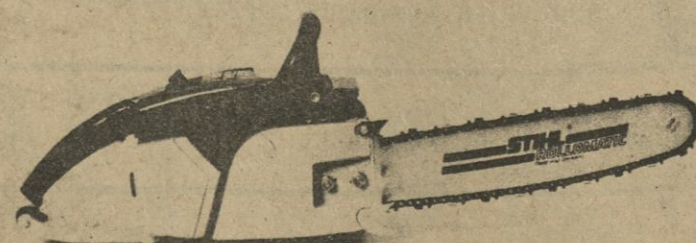
Corinth, Miss.
HAS MOVED

COME IN TO SEE US AT OUR NEW LOCATION
618 WALDON STREET
(Across from Court House)

COME IN AND SEE OUR \$28.99 PANTS ON SALE FOR \$19.99. Sizes 4 to 24 1/2

BRING THIS AD AND GET 15% OFF ON ANYTHING IN STORE!

STIHL 031 AV



light in weight, comfortable and really simple in design

The most respected name in chain saws. See it now at:



NELSON

Marine & Hardware

Highway 25 S. IUKA

Phone 423-6444

FINE IMPORTED
Lovelace
BY CROWN VICTORIA

THIS WEEK'S FEATURE:

CUPS 79¢
each with each \$3.00 purchase



FREE 300 EXTRA QUALITY STAMPS

Everybody Wins at

NELSON'S SUPERMARKET

A \$2.50 purchase at a NELSON'S entitles you to one Quality Star. Each time you purchase an additional \$2.50 you get another Quality Star. (No Stars given on Tobaccos - Beer - Milk or Milk Products). Stick your Quality Stars in the spaces marked "Quality Star" on this card. When all Quality Star spaces have been filled, take your card to NELSON'S and you will receive 300 Quality Stamps for your filled card. New cards are available in NELSON'S. Play as many times as you like while the promotion is in progress. NELSON'S reserve the right to discontinue Quality Star Cover Cards at any time by announcement to our customers. If you are caught with an unfilled card, NELSON'S will redeem on the basis of 10 Quality Stamps for each Quality Star on the unfilled card.



THIS AD GOOD THRU OCTOBER 19, 1977

PORK CHOPS		LB.	\$1.39	COUNTRY STYLE RIBS		LB.	\$1.09
BEEF		FRESH GROUND		69¢		SHORTENING	
		3 LB. OR MORE		LB.		3 LB. CAN	
						\$1.19	
ROAST		LB.	99¢	BRYAN SAUSAGE		LB.	\$1.19
BACON		LB.	\$1.19	FUN BUDDIES FRANKS		12 OZ. PKG.	59¢
PORK		QUARTER LOIN CHOPS		99¢		TIDE	
		LB.				59¢	
PEANUT BUTTER		18 OZ.	69¢	EVAPORATED PET MILK		13 OZ.	3/\$1
DRESSING		16 OZ.	79¢	RAGU Spaghetti Sauce		32 OZ.	\$1.19
PORK		CENTER CUT CHOPS		\$1.29		FISH STICKS	
		LB.				3	
						\$1	
FRUIT COCKTAIL		17 OZ.	3/\$1	ALLEN'S TOMATOES		17 OZ.	3/\$1
PEPPERS		17 OZ.	3/\$1	HYDE PARK GOLDEN YAMS		17 OZ.	3/\$1
						79¢	
						OLEO	
						3	
						\$1	
TEA BAGS		24 CT.	\$1.59	HAMBURGER HELPERS		6 OZ.	49¢
SPAGHETTI		12 OZ.	3/\$1	BETTY CROCKER BROWNIE MIX		15 1/2 OZ.	69¢
KRAFT		MAYONNAISE WITH \$10.00 ADDED PURCHASE		59¢		APPLES	
		32 OZ. EXCLUDING DOG FOOD AND TOBACCO				39¢	

50 EXTRA QUALITY STAMPS

WITH COUPON AND PURCHASE OF 16 OZ. BOX OF KEEBLER TOWN HOUSE CRACKERS 79¢

EXPIRES 10-19-77

100 EXTRA QUALITY STAMPS

WITH COUPON AND PURCHASE OF 2 PAIR OF LEGS PANTY HOSE \$1.49 REG. 99¢

EXPIRES 10-19-77

50 EXTRAS QUALITY STAMPS

WITH COUPON AND PURCHASE OF ONE 22 OZ. BOTTLE IVORY DISH DETERGENT 89¢

EXPIRES 10-19-77

200 EXTRA QUALITY STAMPS

WITH THIS COUPON AND \$10.00 ADDITIONAL PURCHASES EXCLUDING TOBACCO AND DOG FOOD

EXPIRES 10-19-77

OBITUARIES

Mrs. Winnie Bullock

Mrs. Winnie Frances Bullock, age 79, passed away Thursday, October 6, at Riley's Oak Hill Manor, North Little Rock, Ark.

Formerly of Iuka, Mrs. Bullock was a resident of Pulaski County, Ark. She was the widow of David Bullock and was born on December 10, 1897 in Iuka. She was a member of the Gospel Assembly Church. Funeral services were held at Owens Funeral Home Chapel, North Little Rock, Saturday, October 8, at 10 a.m. with the Rev. W. E. Tucker officiating. Interment was in Crossroads Cemetery, Iuka, at 3:30 p.m. Saturday with Owens Funeral Home in charge.

Survivors include three daughters, Mrs. Della Demorse, of Sheffield, Ala., Mrs. Frankie Wilson, of North Little Rock, Mrs. Willie Jagers, of Brandon, Fla.; one son, James Bullock, of Suerrri, Ark.; 13 grandchildren; and six great-grandchildren.

Mrs. Ethel McGauhy

Mrs. Ethel McGauhy, 84, died Saturday night, October 8, at Tishomingo County Hospital. She was a Pentecostal.

Services were held at 2 p.m. Monday at the Fairview Church of God with burial in the church cemetery. Bernard Nunley officiated with McMillan Funeral Home in charge.

Survivors include two daughters, Mrs. Mamie Nix, Mrs. Edith Hendrix, both of Booneville; five sons, Vester McGauhy, Burnsville, William

Rev. Tim Dunnaway from Cleveland, Tenn., will be ministering at the Amazing Grace Tabernacle, Hwy. 25 No., next to Four Star Building Supply Co., Friday night, thru Sunday night, October 14, 15, & 16., beginning at 7:30 P.M. nightly.

Special Singing nightly, featuring the Choate Sisters Trio, Saturday night, and the Faulkner Family from Corinth on Sunday night.

Dynamic Ministering of the word, and Prayer for the sick in each service. Come! expecting a miracle in your life. Bro. & Sister Rodgers, pastor, and congregation extend a cordial invitation to everyone to attend these services.

Drs. Hora & Hora, Optometrists
Office Hours:
Wed., Thur., Fri., 9 a.m.-5 p.m.
(Next to Super D Drugs)
Iuka, Miss.

CUTSHALL FUNERAL HOME

— REPRESENTING —
CORINTH MUTUAL BURIAL ASSOCIATION

ALCORN COUNTY BENEFIT ASSOCIATION

MISSISSIPPI FUNERAL ASSOCIATION

LIBERTY NATIONAL LIFE & BURIAL INSURANCE CO.

SOME BURIAL POLICIES CAN BE PAID OUT IN 15 YEARS

CUTSHALL FUNERAL HOME

phone 423-5222
IUKA, MISS.



phone 423-5222
IUKA, MISS.

phone 423-5222
IUKA, MISS.

Self, both of Red Bay, Mrs. Stella Gray, Iuka; and three grandchildren.

T. R. Felker

Thomas R. Felker, 68, died at 7:30 p.m. Tuesday, October 4, in Santa Cruz, Calif., in a traffic accident.

Funeral services were held at 2 p.m. Sunday in Palestine Church with burial in the church cemetery. McMillan Funeral Home was in charge.

Survivors include two daughters, Mrs. Jimmie D. Morgan, Ashland, Ore., Mrs. Brenda Schonke, Fairfield, Calif.; one son, Joe C. Felker, Fairfield; one brother, Charlie Felker, Grenada; three sisters, Mrs. Ernestine Russell, of Corinth, Mrs. Mattie Bell Strickland, Iuka, Mrs. Mary Nell Crowell, Tishomingo; seven grandchildren.

Sherman Medley

Sherman J. Medley, 71, a resident of Route 4, Greenville, Ala., died Sunday, September 25, in Stabler Hospital.

Funeral services were held at 4 p.m. Tuesday, September 27, from the Chapel of Jones Funeral Home, with the Rev. Ralph H. Mullins and the Rev. Jerton Griffin officiating. Burial was in Gravel Hill Cemetery, with Jones Funeral Home in charge.

Survivors include his wife, Mrs. Annie Mae Turner Medley, of Greenville; one daughter, Mrs. Bernice Barrett, Louisville, Ky.; three sons, Bill Medley, Jim Medley and Mike Medley, all of Florida; two brothers, Carl Medley, of Iuka, and Raymond Medley, of Knoxville, Tenn.; nine grandchildren; three great-grandchildren.

Mrs. Tina Riddle

Mrs. Tina South Riddle, 76, died Monday, October 10, at Northeast Mississippi Hospital. She was the widow of R. B. Riddle and a member of the Forked Oak Missionary Baptist Church.

Funeral services were held at 3 p.m. October 11, at McMillan Funeral Home chapel, with burial in New Hope Cemetery. The Rev. Marlin Bulard and the Rev. Excal Burleson officiated.

Mrs. Riddle is survived by her daughters, Mrs. Horace McCombs, Booneville, Mrs. Leamon Sanders, Booneville, Mrs. Floyd Brown, Upland, Ind., and Mrs. Katie Hardison, Germantown, Tenn.; her sisters, Mrs. Verlon Claunch, Red Banks, Mrs. Grace Claunch, Iuka, Mrs. Gladys Pardue, Dennis, and Mrs. Oma Slack, Paden; her brother, Leonard South, Paden; nine grandchildren and ten great grandchildren.

Miss Jana Sanders

Miss Jana Dell Sanders, 17, Verona, died Friday night in a car accident on Highway 78 East in Skyline.

Miss Sanders was a senior at Shannon High School and a member of the Marion First Baptist Church.

Funeral services were held Sunday, October 9, at the McGrath-Rasberry Funeral Home chapel with the Rev. Glen Brown and the Rev. Harold Robinson officiating. Burial was in Lee Memorial Park.

Survivors include her parents, Mr. and Mrs. James L. Sanders, Verona; three brothers, Joseph Allen and Timothy Loyd Sanders both of Verona, Thomas Murphy, Memphis; her grandparents, Mrs. Hazel Lamb, Memphis, Mrs. Stella Cauthen, Verona, James Allen Sanders, Iuka.

Marion McGahee

Marion Henry McGahee, 93, died Sunday at the Tishomingo County Hospital in Iuka.

Funeral services for Mr. McGahee a Baptist, were Tuesday, October 9, at 10 a.m. in the Coleman Funeral Home Chapel in Corinth, with burial in the Little Flock Cemetery of Tishomingo County.

The Rev. Clifford Rhinehart officiated.

Mr. McGahee had no survivors.

Mrs. Virginia Adams

IUKA, Miss. — Mrs. Virginia "Doll" Adams, 73, died Monday at the Baptist Hospital in Memphis.

She was a Methodist. Funeral services were at 2 p.m. Wednesday at



ALWAYS BUSY—Although confined to Red Bay Nursing Home, Mrs. Onie (Whitfield) Malone, 78, has pieced 20 quilt tops like this one in 12 months. A good friend gave her the pieces for all the quilt tops. The pieces were all cut at a plant. Mrs. Malone is the

wife of the late Arthur C. Malone of Russellville, Ala. She has pieced many, many more tops before these. She has been in the Red Bay Nursing Home for almost five years. She is a native of Burnsville, Miss.

Camp Ground Methodist with the Rev. Earl Cooper officiating. Burial will be in Oak Grove Cemetery.

Survivors include her husband, Paul Adams, Iuka; one son, Paul Adams Jr., Houma, La.; one sister, Mrs. Ed Thorn, Iuka; one half-brother, J. M. Busby, Memphis; two grandchildren.

District, Golden. Covered in this year's Tishomingo County Community Fund budget are Cystic Fibrosis, Multiple Sclerosis, 4-H Club, Girls Scouts, Boy Scouts, County Emergency Relief, Red Cross, Mental Health Evaluation, and Kidney Foundation. Everyone is urged to give your full support in the final three days of the drive.

Newspapers are the third largest employer among U.S. manufacturers behind only the automotive and steel industries. Last year, 382,700 persons were employed by all newspapers and 124,600 were women.

Thank You

I would like to express my sincere appreciation to my friends and loved ones for all your acts of kindness during my illness. A special thanks for your prayers, cards, letters, flowers, and fruitbaskets. It is a blessing to have friends and to know that people care. May God bless each of you.

Dewey Lewis

Community Fund Drive

The 1977 Tishomingo County Community Fund Drive, with a goal of \$20 thousand is in full swing with the drive scheduled to be completed Sunday. According to drive chairman, Billy Rainey, if you have not been contacted by a volunteer workman this year, you can still participate by contacting your district leader or by mailing your contribution to him. District leaders are: Dr. Jim Perkins, 1st District, P. O. Box 364, Iuka; Lucian Epperson, 2nd District, Route 1, Burnsville; Danny Wilbanks, 3rd District, Route 2, Box 29B, Iuka; Austin Hester, 4th District, P. O. Box 97, Tishomingo; and O. E. Bostick, 5th

Let us update your health insurance

Inflation may have made your health insurance obsolete. Let us update you with up-to-date Mutual of Omaha plans

GARY L. CHITTON
Nelson C. Vestal Agency
Northeast District Office
L. M. Peek, Dist. Mgr.
P. O. Box 652
Booneville, Miss.
Phone 728-5718

REPRESENTING
Mutual of Omaha
People you can count on...
Life Insurance Affiliate: United of Omaha
MUTUAL OF OMAHA INSURANCE COMPANY
HOME OFFICE: OMAHA, NEBRASKA

Rushing Rexall Drug Co PRESENTS Tishomingo County Hospital List

Mary Blakney Bessie Sparks Carlton Phifer Veima Nunley Ida Monroe D. C. Daugherty Emma Thomas Esil South Annie Clark Mittie Hamm Charles Kent Adele Kent Annie Kiddy Edna Lambert Melvie Loylace Jo Ann Mitchell Charlie Malone Lester Moore Tommy Marlar Jewel Nixon James Odom Lillie Potts James Presley Clarence Rast Melvie Robinson Charles Simmons Opal Slack Audie South Ossie Wallace	Bro. J. L. Burcham Rosie Spoon Virginia Adams Rosa Harris John McManus Frank Ross Alma McKinney Millard Mansell Ada Davis Mary Davis Gwen Enlow Jim Evans William Fooshee Irene Gross Annie Hill Mattie Hill Dolly Wellington Altha Wingo Laney McNeil Ruth McClain Thurman Braddock William Thorne Reva Gist Saran Swader Joe Thompson Mae Voyles Mary Wilemon
--	---

IUKA BAPTIST CHURCH

105 West Eastport Street
Iuka, Mississippi 38862



Sunday, October 16, 1977
11:00 A.M.
"Hell Fire and Damnation"
Luke 16:19-31
7:00 P.M.

Slide Presentation of Brazil Trip

Morning and Evening Services Broadcast over WTIB-FM

ATTEND THE CHURCH OF YOUR CHOICE EACH SUNDAY



BAPTIST

IUKA BAPTIST CHURCH

Charles Dampeier - Pastor

BELMONT FIRST

Jack Maroon - Pastor

CALVARY BAPTIST

Thomas Ozburn - Pastor

MT. MORIAH BAPTIST

Bill Rakestraw - Pastor

CENTRAL BAPTIST

W. L. Oaks - Pastor

MT. VERNON BAPTIST

Perry Murphy - Pastor

TISHOMINGO BAPTIST

Eugene Tennison - Pastor

BURGESS CREEK FREEWILL

Danny Short - Pastor

BURNSVILLE FIRST BAPTIST

Dave Smith - Pastor

NEW PROSPECT BAPTIST

Gary Gardner - Pastor

OLDHAM

Cris Burrows - Pastor

PADEN

Pat Howard - Pastor

FIRST BAPTIST CHURCH

O. H. Moore - Pastor

EASTPORT

G. D. Jones - Pastor

NEW SALEM BAPTIST

E. P. Baldwin - Pastor

UNITY BAPTIST CHURCH

Raymond White - Pastor

RED BUD

John Stovall - Pastor

ROWLAND MILLS

Frankie Smith - Pastor

HARMONY HILL

Billy Paul Feltman - Pastor

MT. JOY

James E. Holt - Pastor

CALVARY MISSIONARY

Fallon Mason - Pastor

SOUTH CROSSROADS

Bob Wieler - Pastor

BETHEL MISSIONARY

Herbert Hardwick - Pastor

McNATT FORD SALES

PHONE 423-2561
IUKA, MS

BROWN INSURANCE AGENCY

PHONE 423-5921 IUKA, MS

FRANKS DAIRY

PATRONIZE YOUR LOCAL DAIRY
IUKA, MS

RUSHING REXALL DRUGS

PHONE 423-2731
IUKA, MS

THRIFTY FOOD MARKET

JOHNNY AND MARIE SMITH
101 FRONT ST.
IUKA, MS

FIRST AMERICAN NAT'L BANK

IUKA-BURNSVILLE

GOLDEN-CORINTH

1st CITIZEN LOANS

PHONE 423-5248
HIGHWAY 72 EAST
IUKA, MS

CURTIS BROS. DRUGS

IUKA, MS

FARM BUREAU INS.

423-6151

IUKA, MS

CUTSHALL FUNERAL HOME

423-5222
IUKA, MS

HONEYCUTT CHEVROLET

423-2511
IUKA, MISS.

IUKA GUARANTY BANK

"STRAIGHT AHEAD THROUGH THE YEARS"

Tishomingo County News

COMPLETE SELECTION OF OFFICE SUPPLIES
FAST SERVICE ON COMMERCIAL PRINTING

Phone 423-2211 or 423-2221



UP — And ready for cheering season are these cheerleaders, who could easily be the Glamour models. Re- they're the Iuka High School cheerleaders for the 1977-78 season. From left, are: Lori

Iuka High Honor Students

Iuka High School Principal Jay McKinney, today re- named the names of the honor students for the first grading period at Iuka High School:

7th Grade
All A's: Jimmy Curtis, Jeff McKinney, Mike Puckett, Martin Wright, Sharee Goode, Kim Monro, Leigh Robinson, Janell Smith, Theila Thomas, Tommy Wilemon, and Sarah Walker.

8th Grade
All A's: Ladye Long, Darryl Long and Tina Taylor, A's and B's: Sherry Moore, Alice Robertson, Trudi Trudeau, Leslie Whitlock, Ruth Beard,

SUFFERING NEEDLESSLY TRY 'CHIROPRACTIC' THE COMMON COLD

Colds probably cause the greatest drain on the man- and the wealth of the nation than all other diseases of man.

It is estimated that 5000,000,000 colds occur each year. Financially, the elimination of the common cold would benefit the nation by billions every year. It might even be enough to balance the budget and make a down payment on the national debt.

Chiropactic has not found a 'sure cure' for a bad cold, but it makes it unnecessary for the human race to suffer the aches and pains and discomforts of the cold.

Colds attack when the human body is operating below peak efficiency. Excretory organs do not function properly, and poisons accumulate in the system. Resistance is lowered and congestion occurs in nose, throat or bronchial tubes. A 'bad cold' is the results.

Chiropactors, through regular check-ups and gentle adjustments keep the body 'in tune' and the nervous system operating smoothly to supply vital nerve energy to all organs of the body. The result--the body has the strength to fight off the unsolved mystery of the cold.

Presented in public interest for better health by Miss- sippi Society of Chiropactors, District 1.

Owl & Pennies

FAMILY RESTAURANT

is now accepting reservations for Season Parties

*FULL USE OF ALL FACILITIES AFTER HOURS

*WE SPECIALIZE IN ENTREES OF TURKEY & HAM

*WE ACCOMMODATE 25-60

*PRIVATE PARTIES

*CATERING SERVICE AVAILABLE FOR GROUPS UP TO 500

Shirley & Milt Burton
Phone 423-9029

Deneen Blackman, Tammy Clark, Sarah Hodge, Cassandra Jackson, Lisa Ann James, Pam Johnson, Katie Ramsey, Randy Watkins, Billy Allen, Damv Bean, Lisa Bryant, Melody Floyd, Debra Kay, Crickett McDaniel, Jill Rushing, Tammy Whitehead, Lee Ann Kay, and Thomas Walker.

9th Grade

All A's: Malcolm Brown, Tacey Clark, Pam Cleveland, Lorrie Dean, Lisa Enlow, Ginger Grisham, Pam McBee, Starla Phillips, and Regina Stovall. All A's and B's: Melissa Allred, Dee Anna Bean, Connie Bonds, Joy Burleson, Kim Carpenter, Kristy Carson, Johnny Coker, Kenny Draper, Skippy Gann, Anthony Gray, Lisa Hamm, John Hannon, Aubrey Harwell, Donald Holland, Daria Jones, Tammy Jourdan, Joel Lewis, Dennis Medley, Sandy Mitchell, Sonia Moss, Pam Page, Robert Pittman, John Rutherford, Tim Sanders, Gus Sims, Phillip South, Suzanne Thornton, Lee Underwood, Frank Walker, Donny Wilkins, and Jo Ellen Wynn.

10th Grade

All A's: Laurie Curtis, Sabrina Dean, Nancy Grisham, Tracy Moore, Denise Morton, and Connie Ozmert. All A's and B's: Stephanie Akers, Elizabeth Barnes, Paul Blackman, Becky Curtis, Pam Daily, Bob- by Dooley, Lee Ann Lovelace, Allen Lyles, Lisa Paden, David Rice, Joan Whitlock, Myron Wingo, and Kim Marlar.

11th Grade

All A's: Lori Curtis and Monroe Wright. A's and B's: Frank Brinkley, Lori Brown, Raymond Buse, Scotty Casa- bella, Wanda Clingan, Kaye Coker, Regina Cooper, Cindy Dampier, Teddy Davis, Kylie Goss, Mike Hannon, Jerry Hud- son, Raymond Jourdan, Tony Mann, Curt Robinson, Leigh Segars, Rebecca Sheffield, San- dra South, and Kerry Williams.

12th Grade

All A's: Morris Byram, Jana Cole, Tammie Mann, and Stanley Helton. A's and B's: Allen Barnett, Lanny Cleve- land, Clark Godwin, Cindy Grisham, Sandra Hall, Bert Hill, Bill Kimberly, Lisa Lam- bert, Reda McMahan, Susan Marshall, Deborah Page, Tim Pittman, Franky Puckett, Vin- cent Speece, Theresa Strick-



Something Old

How many of you that read this article think you are hav- ing a tough time because your washing machine is broken:

Well, great-grandma, grand- ma, and even you of my age, and I haven't always had that annoyance. The old zinc tubs and black wash pots never had a lot of moving parts to get out of whack. If a leg got broken on any one (usually had two black pots - one for white clothes and one for colored clothes) of the pots a brick- bat or a wagon thimble could patch it up.

Would the young couple of today know what to do if they received these instructions? Here is a clipping of an old Kentucky wash-day "recipe" for washing clothes.

1. Build a fire in the back yard to heat kettle of rain water.

2. Set tubs so smoke won't blow in your eyes if wind is pert.

3. Shave one hole cake of soap in bilin water.

4. Sort things. Make three piles, 1 pile white, 1 pile cul- lard, 1 pile work britches and rugs.

5. Rub dirty spots on rub- board, scrub hard, then bile. Rub cullard but don't bile just rench. The over-alls can be beaten with a battling-stick.

6. Take clothes out of kettle with broom-stickhandle. Rinch in two tubs of water. Have

bluing in the last water to make the white clothes whiter.
7. Make starch for some things from flour stirred in cold water until smooth. Thin down with bilin water.
8. Hang clothes on garden fence to dry.
9. Pore rench water in flower bed.
10. Scrub kitchen and back- porch with the hot soapy water.
11. Turn rubs upside down after washing.
12. Empty pots by turning down so water can run out. (If winter, pot of water might freeze and burst pot).
13. Go put on clean dress, smooth your hair, set and rest and rock a spell and count your blessings.

Blessings? Why sure! peo- ple way back then thought they had blessings - Imagine! MY COMMENT - They were happier than most folks of the modern age. Ask your great-grand- mother about it.

Mis-spelled words are like they spelled then. From what we are told now - about child- ren not being able to spell - even graduating and entering college and not knowing how to read - a little bit of mis- spelled words copied from an article over 50 years old, isn't too bad.

LEGAL NOTICES

NOTICE TO CREDITORS
ANCILLARY ESTATE OF
F. ROSCOE WEBBER, III,
DECEASED

Letters Testamentary for the ancillary administration of the estate of F. Roscoe Webber,

III, having been issued by the Chancery Court of Tishomingo County, Mississippi, on the 20th day of April, 1977, to Vila B. Webber and Samuel S. Dennis, III, as Executors of the ancillary administration of the estate of F. Roscoe Webber, III, deceased, in Cause No. 7703, in said Court, notice is hereby given to all persons having claims against the estate of said F. Roscoe Webber, III, to have the same probated and registered by the Clerk of the Chancery Court of Tishomingo County, Mississippi, within

ninety (90) days from the date of the first publication hereof, and that failure to probate and register said claims within said ninety (90) day period will for- ever bar the same.

This, the 1st day of Septem- ber, 1977.

VILAB. WEBBER
AND
SAMUEL S. DENNIS, III,
EXECUTORS

By: Charles S. Tindall, III
Attorney for Executors of the Ancillary Estate of F. Roscoe Webber, III, Deceased

S-22-29-O-6-13-c.

Skylark

DRIVE IN
THEATRE

NOW SHOWING

A long time ago in a galaxy far, far away...

STAR WARS

Stereophonic Sound
DOLBY SYSTEM

Form 64p (State) (3-76)

PUBLISHER'S COPY

State Bank No. 85-422

Consolidated Report of Condition of "Iuka Guaranty Bank"
of Iuka in the State of Mississippi and Domestic Subsidiaries at the close of business on September 30, 1977

BALANCE SHEET				ASSETS		Sch.	Item	Col.			Mil.	Thou.	
1.	Cash and due from banks	C	7								1	534	1
2.	U.S. Treasury securities	B	1	E							3	044	2
3.	Obligations of other U.S. Government agencies and corporations	B	2	E							4	817	3
4.	Obligations of States and political subdivisions	B	3	E							4	200	4
5.	Other bonds, notes, and debentures	B	4	E									5
6.	Corporate stock												6
7.	Trading account securities											700	7
8.	Federal funds sold and securities purchased under agreements to resell	D	4						7	406			8
9.	a. Loans, Total (excluding unearned income)	A	10							0			9a
	b. Less: Reserve for possible loan losses												b
	c. Loans, Net									7	406		c
10.	Direct lease financing												10
11.	Bank premises, furniture and fixtures, and other assets representing bank premises										564		11
12.	Real estate owned other than bank premises										2		12
13.	Investments in unconsolidated subsidiaries and associated companies												13
14.	Customers' liability to this bank on acceptances outstanding												14
15.	Other assets	G	7								18		15
16.	TOTAL ASSETS (sum of items 1 thru 15)										22	285	16
				LIABILITIES		Sch.	Item	Col.			Mil.	Thou.	
17.	Demand deposits of individuals, partnerships, and corporations	F	1f	A						7	030		17
18.	Time and savings deposits of individuals, partnerships, and corporations	F	1f	B+C						12	882		18
19.	Deposits of United States Government	F	2	A+B+C							23		19
20.	Deposits of States and political subdivisions	F	3	A+B+C							714		20
21.	Deposits of foreign governments and official institutions	F	4	A+B+C									21
22.	Deposits of commercial banks	F	5+6	A+B+C							46		22
23.	Certified and officers' checks	F	7	A							66		23
24.	TOTAL DEPOSITS (sum of items 17 thru 23)										20	761	24
	a. Total demand deposits	F	8	A						7	293		a
	b. Total time and savings deposits	F	8	B+C						13	468		b
25.	Federal funds purchased and securities sold under agreements to repurchase	E	4										25
26.	Other liabilities for borrowed money												26
27.	Mortgage indebtedness												27
28.	Acceptances executed by or for account of this bank and outstanding												28
29.	Other liabilities	H	9										29
30.	TOTAL LIABILITIES (excluding subordinated notes and debentures)										20	761	30
31.	Subordinated notes and debentures												31
				EQUITY CAPITAL									
32.	Preferred stock	a.	No. shares outstanding										32
33.	Common stock	a.	No. shares authorized										33
		b.	No. shares outstanding										34
34.	Surplus										1	150	35
35.	Undivided profits										224		36
36.	Reserve for contingencies and other capital reserves												37
37.	TOTAL EQUITY CAPITAL (sum of items 32 thru 36)										1	524	38
38.	TOTAL LIABILITIES AND EQUITY CAPITAL (sum of items 30, 31, and 37)										22	285	

MEMORANDA

1.	Average for 15 or 30 calendar days ending with call date:	1	579	1a
a.	Cash and due from banks (corresponds to item 1 above)	1	630	b
b.	Federal funds sold and securities purchased under agreements to resell (corresponds to item 8 above)	7	378	c
c.	Total loans (corresponds to item 9a above)		535	d
d.	Time deposits of \$100,000 or more (corresponds to Memoranda items 3a plus 3b below)	21	105	e
e.	Total deposits (corresponds to item 24 above)			f
f.	Federal funds purchased and securities sold under agreements to repurchase (corresponds to item 25 above)			g
g.	Other liabilities for borrowed money (corresponds to item 26 above)			2
2.	Standby letters of credit outstanding			
3.	Time deposits of \$100,000 or more:		535	3a
a.	Time certificates of deposit in denominations of \$100,000 or more			b
b.	Other time deposits in amounts of \$100,000 or more			

I, Richard A. McRee, President, of the above-named bank, do solemnly (SWEAR) (AFFIRM) that this report of condition is true and correct, to the best of my knowledge and belief.

Correct-Attest: *Richard A. McRee* } Directors.
R. A. McRee

State of Mississippi, County of Tishomingo, ss:
Sworn to and subscribed before me this 5th day of October, 1977,
and I hereby certify that I am not an officer or director of this bank.
My commission expires July 21, 1979. *Sana R. Odum*, Notary Public.

(MAKE MARK FOR NOTARY'S SEAL)

WADKINS

SUPERMARKET

HIGHWAY 25 N

IUKA, MS.

YOU GET 1 POINT WITH EACH DOLLAR PURCHASE
GET MORE FOR YOUR MONEY!

YOU'LL ALWAYS FIND LOW COMPETITIVE PRICES, PLUS
WADKINS POINTS FOR EVEN MORE VALUE.

WE RESERVE THE RIGHT TO LIMIT
QUANTITIES—NONE SOLD TO DEALERS.

BEST

BARGAINS FOR FALL

FOOD STAMPS

Gladly Accepted

SOUTHERN BELLE
BACON
1 LB. PACK
\$1.19

GOLD MEDAL

FLOUR

(TOBACCO EXCLUDED)

limit 1



5 LB. BAG

WITH \$7.50 PURCHASE

29¢

FROZEN SUNFRESH

STRAWBERRIES

10 OZ. BOXES

3/\$1.00

SPAM SPREAD

3 OZ. CANS

3/88¢

SUNSHINE

CRACKERS



1 LB. BOX

39¢

SOUTHERN BELLE

WIENERS

12 oz. PACK

69¢

ROYAL CREAM FILLED

CAKES

CREAM FILLED OATMEAL, RASIN, Devils Food

BOX OF 10

61¢

TASTER CHOICE

COFFEE



4 OZ. JAR
LIMIT -ONE

\$2.79

HORMEL

15 OZ. CAN

CHILI WITH BEANS



2/\$1.00

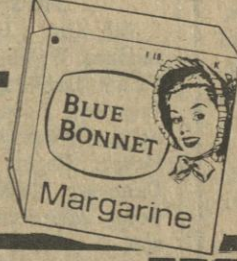
CASCADE

35 OZ. BOX

99¢

BLUE BONNET

MARGARINE



1 lb.
4 Stick
Boxes

2/89¢

EAGLE BRAND

MILK

14 OZ. CAN

69¢

GIANT SIZE

TIDE

49 OZ.
LIMIT -ONE

\$1.19

DINTY MOORE

BEEF STEW

24 OZ. CAN

85¢

WEEKLY

PRODUCE

SPECIALS

RED

GRAPES



LB.

49¢

SUNKIST FRESH

LEMON



DOZ.

59¢

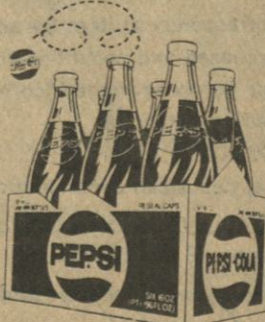
SWEET FRESH

POTATOES

4 LB.

89¢

PEPSI COLA



WITH \$7.50 PURCHASE

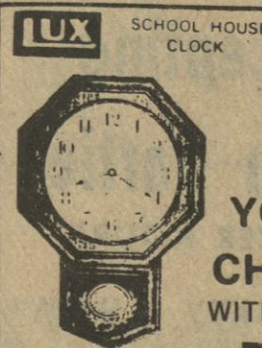
(Tobacco Excluded)

6 PACK

Plus Deposit
limit 1

98¢

32 OZ. BOTTLES



Terrific Offer!

LUX

PENDULUM WALL CLOCK

YOUR CHOICE **\$12.99**
WITH \$75.00 IN MERCHANDISE

WADKINS
SUPERMARKET

HIGHWAY 25 N

IUKA, MS.



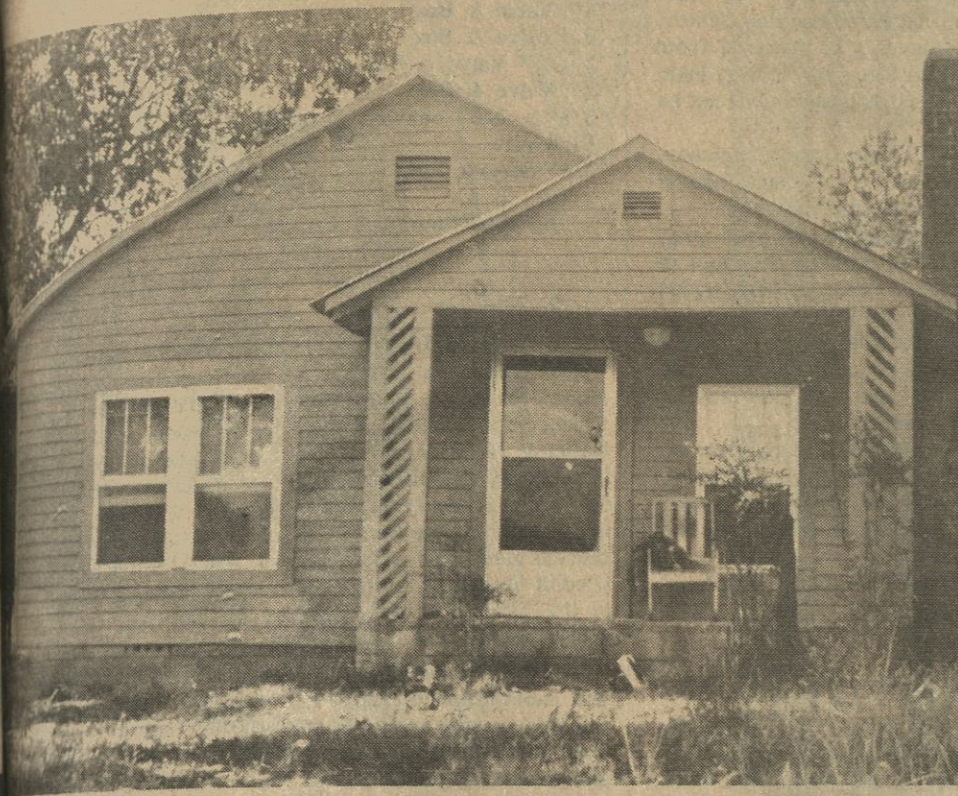
SUN. 1-7 MON. - FRI. 8:30 - 7 SAT. 8:00 - 7:30

GLIDEWELL BROTHERS CAN HELP IMPROVE YOUR HOME

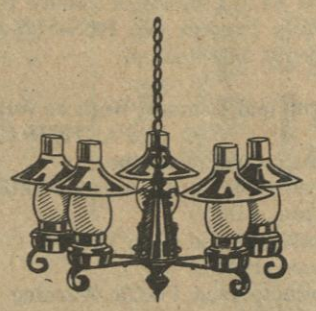


NEW FACE ON HOUSE—This home in the Leedy Community had a complete facelift with

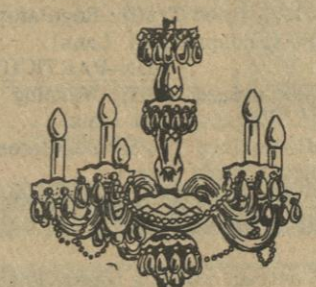
the fine paints from Glidewell Paint Supply. The finished work in a new bright color is shown below.



SUPER COLORS
FOR INTERIORS AND EXTERIORS
ALL COLORS AVAILABLE IN LATEX FLAT FINISH & ACRYLIC GLOSS FINISH



Starlight
Fixtures



Glidewell Brothers Paint Supply and Decorative Center located on Highway 72 east of Burnsville, offers area residents a complete supply of paints, wallpapers, light fixtures, and hardware to help beautify any room of their house.

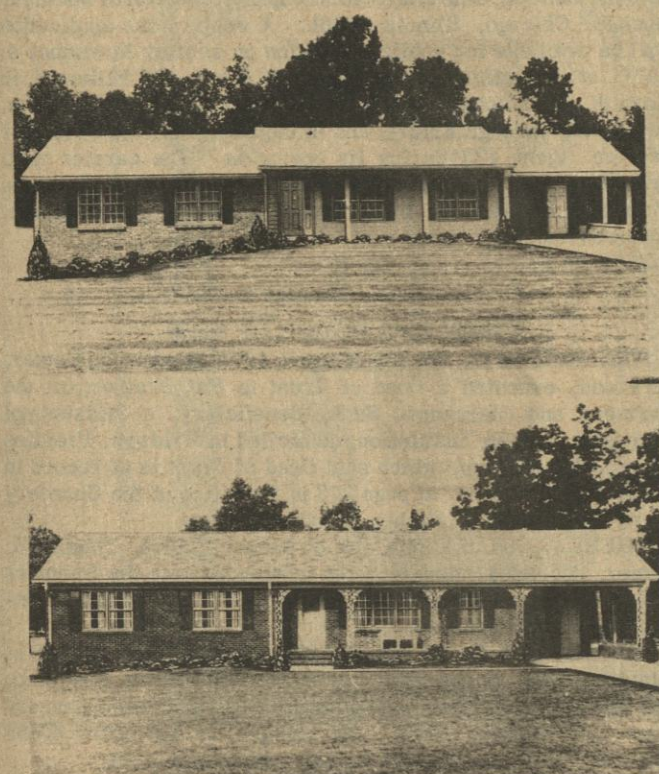
Started in March of this year, the business is owned and operated by Gerald and Joe Glidewell. They offer both painting and fixing supplies and contracting services in building and painting.

Glidewell Brothers Paint Center specializes in a large selection of paints, including 10 year outside and inside, by Precision; a variety of paint brushes; cabinet hardware by Ajax; unique designs in bathroom fixtures; and mixing 1500 different colors of paint.

For all your painting and decorating needs come by Glidewell Brothers Paint Supply six days a week, 7 'til 5 each day. Call 427-9248 for free estimates on painting.

PRECISION
GUARANTEED
Ten-year
EXTERIOR ACRYLIC

We contract construction



Super Easy Wallcovering



GLIDEWELL BROS.
PANT SUPPLY
&
DECORATING CENTER

Hwy. 72 West Burnsville, Miss.

Wide Selection Of Paint
We Have an Excellent
Variety Of Lighting Fixtures

ROGERS
PARTS
NO STORES TO BETTER SERVE YOU!
202 West Eastport-luka
905 Florence Rd.-Savannah

RADIATOR REPAIR
Complete Line of
Exhaust Systems
INSTALLATION AVAILABLE

TENDER, LOVING CARE
Over the years we have furnished the money that has enabled hundreds of families to own a home of their own. As time rolls by and a house becomes too small or too large, we have helped them again with the changeover. No matter what your needs in a home may be, it will pay you to check with us first on the financing. You'll be glad that you did.

Tri-States Savings & Loans Assn.
MEMBER FSLIC
Second St.-Belmont 202 Eastport-luka

**Southern
Air Comfort**
PHONE 427-8238
Highway 72 East of Burnsville

**HEATING &
AIR CONDITIONING
PLUMBING & ELECTRICAL**

**THE
ANYTIME
GIFT**

★ 14K GOLD
★ GENUINE DIAMOND

MOORE'S JEWELRY
Downtown luka, Miss.
Lay-Away Now For Christmas

DINE & DANCE TO THE MUSIC OF
WIZARD
(Formerly Magnolia)
EVERY WEEK-TUESDAY-SATURDAY 8-12 P.M.

**GIOVANNIO'S
GARDENS**
6 Cruise St.
Corinth, Miss.

STERCHI'S
LOCATED 1639 HWY. 72 E.
FURNISHING SOUTHERN HOMES
SINCE 1888

Phone 286-9941 Corinth, Miss

**THE CHRISTIAN
INSTITUTE**
412 Waldron St. Corinth, Miss.

We Have a Wide Slection Of
Musical Instruments, Books,
Bibles, Reference Materials

Bring In This Ad For Free Gift

**THE COUNTRY SQUIRE
RESTAURANT**
Hwy. 72 West luka, Miss.

Come See
Mr. & Mrs. Jimmy Norman
For The Best Fish & Steak
In The Area.
Try Our Salad Bar

**OMELET
SHOPPE**
Quality AND Service . . . 24 Hours A Day

Hwy. 72 West Corinth, Miss.
Across from Holiday Inn

**BREAKFAST
SHORT ORDERS
GOOD STEAKS**

**IUKA
SMALL ENGINE REPAIR**
HWY.72, East luka, Miss.

We Repair All Types of
—Small Engines—

We Stock Chain Saws
and Wood Heaters

**TOWN & COUNTRY
FURNITURE COMPANY**
Two Location
Hwy. 25 South
423-5660
Fulton St. Down Town luka
423-6809

Complete Home Furnishings
Free Delivery & Set Up
Easy Terms
Free Decorating Assistance

Paul Morris, Betty Bailly, Merl Helton,
Lonnie Bridges

**KAY'S SOUTHLAND
SERVICE STATION**
Hwy. 72 West luka, Miss.

Open 7 Days A Week

Full Service Station
We Appreciate Your
Continued Patronage.

Notice

LEGAL NOTICE NOTICE TO CONTRACTORS

Sealed bids will be received by the State Highway Commission, Jackson, Mississippi, until 10:00 o'clock A.M. Tuesday, October 25, 1977; Construction of Grading, Drainage, Culverts, Base, Asphalt Pavement, Navigation Lighting, Bridges and Erosion Control on 1.547 Miles

of U. S. Highway No. 72 between Burnsville and Iuka in Tishomingo County, known as Federal Aid Project No. CEP-007-1 (17)/76-0007-01-017-10. COMPLETION DATE: September 14, 1979.

Certified check, cashier's check or bid bond for five percent (5%) of bid must accompany each proposal. Proposal and detailed information may be secured from the Office Engineer. John R. Tabb, Director O-13-c.

BID NOTICE

Sealed bids will be received by the Tishomingo County Hospital for certain hereinbelow described equipment at the office of the Hospital Administrator, Tishomingo County Hospital, Iuka, Mississippi, until 11:00 a.m. CST on October 31, 1977, at which time and place all bids then received will be publicly read aloud.

The equipment sought to be purchased consists of one Gastro-intestinal Fiberscope 8.6 mm diameter, two biopsy forceps, carrying case and accessories.

Light source for above described equipment and one camera to be operated in conjunction with the above described equipment.

One package of one dozen film.

Film strip adapter with 16 mm film guide.

A more detailed description of the specifications on the equipment sought to be purchased hereby may be obtained from the office of the Hospital Administrator, Tishomingo County Hospital, 1410 West Quitman Street, Iuka, Mississippi at any time during the hours of 8:00 a.m. to 4:00 p.m. Monday through Friday.

All bids shall be sealed and shall be identified on the outside of the envelope, "Tishomingo County Hospital Bid, October 31, 1977". All such bids shall be filed in the Office of the Administrator of the above mentioned hospital on or before the above mentioned date. No bidder shall withdraw his bid within 30 calendar days after the actual date of the bid opening. Any and all bidders may attend or be represented at the opening of the bids.

The Board of Trustees of the Tishomingo County Hospital reserves the right to waive any informalities in any bids received and further reserves the right to reject any and all bids received.

All bids shall be taken under advisement after the same have been opened and read aloud and in the event all such bids are not rejected, the Board of Trustees of the Tishomingo County Hospital shall award a contract on the basis of the lowest and best bid which reflects the quality contemplated in the specifications at the next meeting of the said Board of Trustees which will be held on the evening of November 15, 1977. R. E. Lambert, Administrator O-6-13-20-27-c.

IN THE CHANCERY COURT OF TISHOMINGO COUNTY, MISS. VACATION TERM, 1977 IN THE MATTER OF THE LAST WILL AND TESTAMENT OF MRS. VIOLA R. RICKETTS, DECEASED

NOTICE TO CREDITORS

NO. 7808

Letters Testamentary upon the Estate of Mrs. Viola R. Ricketts, deceased, having been granted to the undersigned, Lloyd McBride, on the 27th day of September, 1977, by the Chancery Court of Tishomingo County, Mississippi, notice is hereby given to all persons having claims against said Estate to present the same to the Clerk of said Court for probate and registration, according to law, within ninety (90) days from this date, or they will be forever barred.

This the 27th day of September, 1977. LLOYD MCBRIDE, EXECUTOR S-29-0-6-13-c.

NO. AB-43 (Sub. No. 44) NOTICE OF INTENT TO ABANDON OR DISCONTINUE SERVICE

Illinois Central Gulf Railroad Company hereby gives notice that on or before November 4, 1977, it intends to file with the Interstate Commerce Commission, Washington, D. C. 20423, an application for a certificate of public convenience and necessity permitting the abandonment of a line of railroad known as the Birmingham District (portion), extending from railroad milepost 17.0 near Holts Spur, Mississippi, to milepost 26.0 near Paden, Mississippi, a distance of 9.0 miles, in Tishomingo County, Mississippi. The only station on the line to be abandoned is Holcut, Mississippi at milepost 20.2.

The reason for the proposed abandonment is to relocate a portion of track to accommodate the Tennessee-Tombigbee Waterway navigation project of the U. S. Army Corps of Engineers. Illinois Central Gulf will file a separate application to acquire the new line being constructed by the Corps of Engineers. The line to be abandoned will be operated until the new line is available for use so that operations over Illinois Central Gulf's Jackson, Tennessee-Birmingham, Alabama main line will not be interrupted.

This line of railroad has appeared on the system diagram map since April 28, 1977.

The interest of railroad employees will be protected by The Oregon Short Line Conditions (354 ICC 76 (1977) subject to such modifications as may be prescribed in that proceeding on further consideration.

Any interested person, in response to this notice, is entitled to take either of the following actions:

1. File with the Interstate Commerce Commission written comments containing:

(a) Exact name and address of the commenting party;

(b) Brief statement of interest in the abandonment or discontinuance proceeding;

(c) Specific statement or position and summary of evidence with regard to any or all of the following:

(1) Intent to offer financial assistance;

(2) Environmental impact;

(3) Impact on rural and community development;

(4) Suitability of the properties for other public purposes; and

(5) Recommended provisions for protection of the interests of employees.

Written comments will be considered by the Commission in all proceedings in developing conditions and in determining whether to conduct an investigation on its own motion. In the event an investigation is conducted, then the commenting party may participate in the proceeding as its interests may appear.

2. File with the Interstate Commerce Commission a petition requesting that the application and proposed abandonment be investigated.

The petition to investigate shall be in the form of a verified statement, and at minimum, contain:

(a) Identification of petitioner including its name, address, and business;

(b) Statement of petitioner's interest in the abandonment proceeding; whether petitioner uses the involved service; and if it does not, information with respect to the group or public interest it represents;

(c) Specific reason(s) for requesting the institution of an investigation, including information with respect to petitioner's reliance on the involved service, with allegations of fact supported by an affidavit of personal knowledge of the facts;

(d) Any rebuttal of information or material submitted by applicant; and

(e) Request for oral hearing and reasons therefor if desired.

Upon receipt of a petition to investigate, the Commission shall determine the extent of the investigation to be instituted. Those parties filing petitions to investigate should be prepared to participate actively in either oral hearings or via the submission of additional material in the form of verified statements. Parties seeking information concerning the filing of petitions should refer to 49 CFR 1121.36.

Petitions to investigate and written comments should indicate the proceeding designation No. AB-43 (Sub. No. 44) and should be filed with the Interstate Commerce Commission, Washington, D. C. 20423, no later than December 5, 1977. Interested persons may file either a written comment or a petition to investigate with the Commission to become a party to this abandonment proceeding. A copy of each petition to investigate or written comment shall be served upon Richard M. Kamowski, Attorney, Illinois Central Gulf Railroad Company, 233 North Michigan Avenue, Chicago, Illinois 60601. Replies to comments or petitions, the latter shall be in the form of a verified statement, shall be filed with the Commission no later than December 15, 1977, and shall be served on all commenting parties and petitioners. The original and two copies of all petitions, comments and replies shall be filed with the Commission together with a certificate of service.

In the event a petition to investigate prepared in accordance with the above instructions is filed, then the Commission will conduct an investigation of the abandonment. Written comments filed with the Commission will be considered by the Commission in all proceedings in developing conditions and in determining whether the Commission should conduct an investigation on its own motion in the event no petition to investigate is filed. Additionally, if an investigation is conducted the parties filing comments may participate in the investigation as their interests may appear.

Persons desiring further information concerning abandonment procedures may contact the Interstate Commerce Commission's Section of Finance, Office of Proceedings or refer to the full abandonment and discontinuance regulations at 49 CFR 1121. Persons desiring information concerning financial assistance for the continued operation or acquisition of the involved line should contact the Commission's Rail Services Planning Office. The carrier's representative to whom inquiries may be made is Richard M. Kamowski, Attorney, Illinois Central Gulf Railroad Company, 233 North Michigan Avenue, Chicago, Illinois 60601. A copy of the application will be available for public inspection on or after November 4, 1977, at the office of the Freight Agent, 213 Fillmore, in Corinth, Mississippi, 38834 between 8:00 a.m. and 5:00 p.m. on Monday through Friday, and in the automobile of Customer Service Agent #23 during its operation. The carrier shall furnish a copy of the application to any interested person proposing to file a written comment or petition to investigate, upon request. O-6-13-20-c.

TRUSTEE'S NOTICE OF SALE

WHEREAS, on the 7th day of April, 1972, Thomas H. Comer, deceased, executed a Deed of Trust to Pat Prather, for the Farmers and Merchants Bank, Beneficiary, a Mississippi chartered banking institution, domiciled in Baldwin, Prentiss County, Mississippi, which said Deed of Trust is of record in Trust Deed Book 65, at page 273 in the office of the Chancery Clerk of Tishomingo County, Mississippi; and

WHEREAS, on the 26th day of January, 1974, Thomas H. Comer, deceased, died with the indebtedness to the Farmers and Merchants Bank secured by said Deed of Trust still remaining unpaid; and

WHEREAS, on September 13, 1974, a Petition for Letters of Administration in the Estate of Thomas H. Comer, deceased, was filed of record in Cause Number 10,761 of the Chancery Court of Prentiss County, Mississippi, in the office of the Chancery Clerk of Prentiss County, Mississippi; and

WHEREAS, on September 13, 1974, Letters of Administration were issued to Thomas H. Comer, Jr., to administer the interstate Estate of Thomas H. Comer, Sr., deceased in said styled and numbered cause; and

WHEREAS, Thomas H. Comer, Thomas H. Comer, deceased, and Thomas H. Comer, Sr., deceased, as referred to herein, are one and the same person; and

WHEREAS, on the 18th day of July, 1974, Thomas H. Comer, Jr., in his capacity as Administrator of the Estate of Thomas H. Comer, Sr., deceased, renewed said indebtedness secured by said Deed of Trust by execution of a Note and a Deed of Trust in the name of "Thomas H. Comer, Sr., Estate," to Pat Prather, Trustee for the said Farmers Bank, Beneficiary, which Deed of Trust is of record in Trust Deed Book 72, page 74, in the office of the Chancery Clerk of Tishomingo County, Mississippi; and

WHEREAS, a Trustee's Notice of Sale of the real property secured by said indebtedness was published on April 14, 21 and 28, 1977, but was not completed; and

WHEREAS, a Trustee's Notice of Sale of the real property secured by said indebtedness was published on May 12, 19, 26 and June 2, 1977, and said sale was not had; and

WHEREAS, on September 16, 1977, the Farmers and Merchants Bank, Beneficiary of said Deeds of Trust, terminated the Trusteeship of Pat Prather and substituted therefor, John A. Hatcher, by virtue of an Appointment of Substituted Trustee recorded on September 22, 1977, at 8:30 o'clock A.M. in Deed Book B89, pages 631-632 in the office of the Chancery Clerk of Tishomingo County, Mississippi; and

WHEREAS, default has been made in the performance of the conditions and stipulations as set out in the said Deeds of Trust, and said Substituted Trustee has been requested and directed by the said Farmers and Merchants Bank, the legal holder of the indebtedness secured and described by said Deeds of Trust, to reoffer for sale and to sell at public sale and outcry to the highest and best bidder for cash, between the hours of eleven (11:00) o'clock A.M. and four (4:00) o'clock P.M. in front of the main front door of the Courthouse in Iuka, Tishomingo County, Mississippi, on Friday, October 21, 1977, the same land and property described in said Deeds of Trust, being more particularly described hereinafter.

NOW, THEREFORE, notice is hereby given that I, John A. Hatcher, Substituted Trustee, by virtue of the authority conferred upon me in said Deeds of Trust, and said Appointment of Substituted Trustee, will reoffer for sale and will sell at public sale and outcry to the highest and best bidder for cash, between the hours of eleven (11:00) o'clock A.M. and four (4:00) o'clock P.M., in front of the main front door of the Courthouse in Iuka, Tishomingo County, Mississippi, on Friday, October 21, 1977, the same land and property described in said Deeds of Trust, lying and being situated in Tishomingo County, Mississippi, more particularly described as follows, to-wit:

Southeast Quarter of Section 3, Township 2, Range 10 East, except 20.8 acres, more or less, heretofore deeded to the United States of America described in Deed Book B-25, page 589-590, and except 10 acres heretofore deeded to J. W. Graham as described in Deed Book P-29, page 505, Deed Book P-30, page 504, later deeded to Thomas H. Comer and Mrs. Josephine Holliday, and except two acres deeded to W. L. Blakeney and described in Deed Book P-33, page 29, Office of the Chancery Clerk of Tishomingo County, Mississippi, leaving in this conveyance 128 acres, more or less. It is the intention of the grantor to convey all of the property now owned in the above Southeast Quarter of Section 3, Township 2, Range 10 East.

A one-half (1/2) undivided interest in said property.

Title to said property is believed to be good, but I will convey such title as is vested in me as Substituted Trustee.

WITNESS MY SIGNATURE, this 26th day of September, 1977.

JOHN A. HATCHER
SUBSTITUTED TRUSTEE

S-29-0-6-13-20-c.

DIVISION OF STATE AID ROAD CONSTRUCTION

Mississippi State Highway Department
Tishomingo County Board of Supervisors
SECTION 900

NOTICE TO CONTRACTORS

Sealed bids will be received by the Board of Supervisors of Tishomingo County at Iuka, Mississippi, until Tuesday, October 25, 1977 at 2 P.M. and thereafter publicly opened for construction PAVEMENT MARKING, STRIPING and SIGNING 81.561 miles of county roads known as Federal Highway Safety Project No. PMS-SRS-RS;000S-(071)B, in Tishomingo County, Mississippi:

Principal Items of Work as follows:

PARTICIPATING ITEMS	ITEMS	
Detail Traffic Stripe	1,054.0	L.F.
Traffic Stripe (Continuous Yellow) (Code FDTY)	300.180	L.F.
Traffic Stripe (Skip Yellow) (Code FDTY)	65.201	Mile
Reflectorized Traffic Warning Sign (Encapsulated Lens)	26	Each
Reflectorized Traffic Regulatory Sign (Encapsulated Lens)	37	Each
NON-PARTICIPATING ITEMS		
Reflectorized Traffic Warning Sign (Encapsulated Lens)	56	Each
Reflectorized Traffic Regulatory Sign (Encapsulated Lens)	67	Each
Reflectorized Advance Warning Sign (Encapsulated Lens)	2	Each

Contract working time: 30 days

The award, if made, will be made to the lowest qualified bidder on the basis of the published quantities.

Plans and Specifications are on file in the office of the Chancery Clerk, Tishomingo County, Mississippi, the office of the State Aid Engineer, Jackson, Mississippi, and the office of the County Engineer, Donald Eubank, Elm Shopping Center, Iuka, Mississippi 38852. Proposals may be secured from Donald Eubank, County Engineer, Elm Shopping Center, Iuka, Mississippi 38852, upon payment of \$15.00 which will not be refunded.

Plans may be secured from Donald Eubank, County Engineer.

The attention of bidders is directed to the State and Federal Laws governing selection of and employment of labor.

Minimum wage rates for this project have been pre-determined by the Secretary of the Department of Labor in accordance with the requirements of Federal Regulations governing the expenditures of Federal Aid Highway funds and are set out in the Labor Regulations contained in the proposal.

Certified check or bid bond for five (5%) percent of the total bid made payable to Tishomingo County and the State of Mississippi must accompany the proposal.

Bidders are hereby notified that any proposal accompanied by letters qualifying in any manner, the conditions under which the proposal is tendered will be considered an irregular bid, and such proposals will not be considered in making the award.

M. R. Whitehead, President
Board of Supervisors of
Tishomingo County.

S-29-0-6-13-c.

TRUSTEE'S NOTICE OF SALE

WHEREAS, on the 29th day of March, 1968, Thomas H. Comer executed a Deed of Trust to J. Barry Finch, Trustee, for the use and benefit of Iuka Guaranty Bank, which said Deed of Trust is now of record in the office of the Chancery Clerk of Tishomingo County, Mississippi, at Iuka, Mississippi, in Trust Deed Book 55, at page 77; and

WHEREAS, on March 29, 1969, March 29, 1970, March 29, 1971, March 29, 1972, and March 29, 1973, the said Thomas H. Comer renewed said indebtedness secured by said Deed of Trust by execution of renewal Promissory Notes on said respective dates aforesaid; and

WHEREAS, default having been made in the payment of the indebtedness secured by said Deed of Trust and the holder of the Note and Deed of Trust having requested the undersigned Trustee so to do, I will on the 21st day of October, 1977, offer for sale at public outcry and sell during legal hours, being between the hours of 11:00 A.M. and 4:00 P.M. at the main front door of the County Court House of Tishomingo County at Iuka, Mississippi, for cash to the highest and best bidder, the following described land and property situated in Tishomingo County, Mississippi, to-wit:

SE 1/4 of Section 3, Township 2, Range 10 East, except 20.8 acres heretofore deeded to United States of America described in Deed Book 25, page 589-590 and two acres heretofore deeded to W. L. Blakeney described in Deed Book P-33, page 29, Office of Chancery Clerk of Tishomingo County, Mississippi.

A one-half undivided interest in said property.

I will convey only such title as is vested in me as Trustee, WITNESS my signature, this 27th day of September, 1977.

J. BARRY FINCH,
TRUSTEE

S-29-0-6-13-20-C.

ADVERTISEMENT FOR BIDS

Project #04-51-26856
Location #MS-5070-0
Iuka Special Municipal Separate School District
Iuka, Mississippi

Separate sealed bids for Renovation and Alterations to Existing Auditorium Building for Iuka Special Municipal Separate School District, Iuka, Mississippi, will be received by Dr. Jerry C. Stone, Superintendent, at the office of Dr. Jerry C. Stone, Superintendent, Iuka Special Municipal Separate School District, 507 W. Quitman, Iuka, Mississippi, until 4:00 o'clock p.m. D.S.T., October 27, 1977, and then at said office publicly opened and read aloud.

The Information for Bidders, Form of Bid, Form of Contract, Plans, Specifications, and Forms of Bid Bond, Performance and Payment Bond, and other contract documents may be examined at the following: F. W. Dodge Plans Room, Memphis, Tennessee; F. W. Dodge Plans Room, Jackson, Mississippi; George A. Thomason, Architect, Memphis, Tennessee.

Copies may be obtained at the office of George A. Thomason, Architect, located at 44 N. Second Street, Memphis, Tennessee 38103 upon payment of \$75.00 for each set.

Any unsuccessful bidder, upon returning such set promptly and in good condition, will be refunded his payment, and any non-bidder upon so returning such a set will be refunded \$50.00.

The owner reserves the right to waive any informalities or to reject any or all bids.

Each bidder must deposit with his bid, security in the amount, form and subject to the conditions provided in the Information for Bidders.

Attention of bidders is particularly called to the requirements as to conditions of employment to be observed and minimum wage rates to be paid under the contract.

No bidder may withdraw his bid within 30 days after the actual date of the opening thereof.

Attention of bidders is also particularly called to the requirements that the bidder must agree to expend at least ten percent of the contract, if awarded, for bona fide minority business enterprises. This minority business must be subcontractors or material suppliers. Evidence must be submitted with bid or bid will be considered conditional and will not be accepted.

Dr. Jerry C. Stone
Superintendent
Iuka Special Municipal
Separate School District
507 W. Quitman
Iuka, Mississippi

O-6-13-20-c.

LEGAL NOTICE

ADVERTISEMENT FOR BIDS

MIDWAY - PLEASANT HILL WATER ASSOCIATION, INC. (hereinafter referred to as the OWNER), TISHOMINGO COUNTY, MISSISSIPPI

Separate sealed bids for the construction of water system improvements will be received by the Midway-Pleasant Hill Water Association, Inc., at the office of the Farmers Home Administration, Iuka, Mississippi, until 2:00 P.M., October 21, 1977, and then at said office publicly opened and read aloud.

The contract documents, consisting of Advertisement for Bids, Information for Bidders, bid, bid bond, agreement of general conditions, payment bond, performance bond, notice of award, notice to proceed, change order, drawings, specifications and addenda, may be examined at the County Supervisors Office of the Farmers Home Administration, Iuka, Mississippi, at the office of T. O. Mabry, Jr., P. O. Box 88, Okolona, Ms. 38860.

Copies of the Contract Documents may be obtained at the office of T. O. Mabry, Jr., P. O. Box 47, Okolona, Ms. 38860, upon payment of \$25.00 per set - \$10 of which will be refunded.

The approximate quantities of work are as follows:

Water Distribution System consisting of:	
6" Water Line	3,440 Lin. Ft.
4" Water Line	13,500 Lin. Ft.
3" Water Line	5,000 Lin. Ft.
2 1/2" Water Line	15,210 Lin. Ft.
2" Water Line	3,200 Lin. Ft.
8" Casing	96 Lin. Ft.
3" Casing	80 Lin. Ft.
2" Casing	320 Lin. Ft.
4" Valve & Box	3 Each
3" Valve & Box	1 Each
2 1/2" Valve & Box	5 Each
2" Valve & Box	2 Each
5/8" x 3/4" Service Assemblies	46 Each
Blow-offs	5 Each
3/4" Service Pipe	2,300 Lin. Ft.

This the 27th day of September 1977.
Clifford Cox, President
Midway-Pleasant Hill Water Assoc., Inc.

S-29-0-6-13-c.

SUBSTITUTED TRUSTEE'S NOTICE OF SALE

WHEREAS, on October 14, 1975, Arland Murry Prather, signed, executed, and delivered a Deed of Trust to J. Barry Finch, as Trustee, for the use and benefit of First American National Bank, formerly the First National Bank of Iuka, a beneficiary therein, under the terms of which the hereinabove described property was conveyed to said Trustee to secure the payment to the Beneficiary of a certain indebtedness therein mentioned and described, which Deed of Trust is now filed of record in Trust Deed Book 76 at pages 113 et seq., of the records of the Office of the Chancery Clerk of Tishomingo County, Mississippi; and

WHEREAS, said Deed of Trust authorized the appointment and substitution of another trustee in the place and stead of the said trustee named in said Deed of Trust and First American National Bank, as authorized to so do, has appointed as substituted the undersigned, Walter P. Jones, III, as Substituted Trustee therein in the place of J. Barry Finch, by instrument dated September 9, 1977, and now filed of record in the office of the Chancery Clerk of Tishomingo County, Mississippi, in Deed Book B-89 at pages 552 and 553; and

WHEREAS, default having been made in the repayment of the indebtedness secured by said Deed of Trust, the Beneficiary in said Deed of Trust has directed the undersigned, as substituted Trustee, to execute the same by sale of the property therein described in accordance with the terms and provisions of said Deed of Trust;

NOW THEREFORE, notice is hereby given that I, Walter P. Jones, III, the undersigned Substituted Trustee, will, within the legal hours on the 14th day of October, 1977, at the Main Front Door of the Tishomingo County Courthouse at Iuka, Tishomingo County, Mississippi, offer for sale and sell to the highest bidder for cash an undivided one-third (1/3) interest in and to the following described property situated in Tishomingo County, State of Mississippi, to-wit:

Part of the NE 1/4 of Section 19, Township 3 South, Range 11 East, described as beginning at the Northeast corner of said quarter section and run thence West along the North boundary line thereof 851 feet, more or less, to the East right-of-way line of the Eastport Road; thence run South 88 degrees 40 minutes West along the East side of said road 286.1 feet to an iron pin on the South side of a ditch and at the Point of Beginning: Thence run in an Easterly and Southerly direction 6 feet, more or less, along the South and West sides of a ditch as follows: South 49 degrees, 37 minutes, 15 seconds East 262.29 feet; thence South 74 degrees, 51 minutes, 15 seconds East 233.69 feet; thence North 83 degrees, 00 minutes, 13 seconds East 127 feet; thence North 85 degrees, 31 minutes, 27 seconds East 214.04 feet; thence South 22 degrees, 29 minutes, 29 seconds East 185.32 feet; thence South 2 degrees, 35 minutes, 14 seconds East 104.74 feet; thence North 33 degrees, 13 minutes, 08 seconds East 204.19 feet; thence South 25 degrees, 16 minutes, 00 seconds East 107.61 feet; thence South 18 degrees 58 minutes, 57 seconds East 302.00 feet to a wire fence; thence South 83 degrees, 42 minutes, 15 seconds West 497.47 feet along a wire fence; thence North 10 degrees, 10 minutes, 17 seconds West 367.95 feet along the fence to an iron pin; thence North 16 degrees, 02 minutes, 15 seconds East 210.28 feet to an iron pin; thence North 10 degrees, 12 minutes, 15 seconds West 355.87 feet to an iron pin; thence South 6 degrees, 02 minutes, 31 seconds East 208.69 feet to an iron pin; thence 78 degrees, 17 minutes, 15 seconds West 448.11 feet along a wire fence to an iron pin; thence North 10 degrees, 10 minutes East 30 feet to an iron pin; thence North 80 degrees, 20 minutes, 30 seconds East 206.53 feet to an iron pin on the East side of the Eastport Road; thence in a Northeasterly direction with the meanderings of the East right-of-way line of the Eastport Road, thence North 29 degrees, 09 minutes, 54 seconds East 486.51 feet; thence North 45 degrees, 22 minutes, 26 seconds East 302.00 feet; thence North 58 degrees, 35 minutes, 40 seconds East 399.02 feet; thence North 50 degrees, 12 minutes, 55 seconds East 86.96 feet to the point of beginning, containing 20.8 acres, more or less.

The hereinabove described property will be conveyed subject to all prior liens, claims, defects of title, encumbrances and restrictive covenants, if any, including, but not limited to, liens for current taxes not yet due and payable; and I will convey only such title as is vested in me as Substituted Trustee.

WITNESS MY SIGNATURE, this the 20th day of September, 1977.

WALTER P. JONES, III
SUBSTITUTED TRUSTEE

STATE OF MISSISSIPPI COUNTY OF TISHOMINGO

CERTIFICATE OF POSTING

I, ROBERT D. SIMS, Clerk of the Chancery Court of Tishomingo County, State of Mississippi, do hereby certify that the official seal of my office that I have this date posted at the office of the Chancery Clerk of Tishomingo County and correct copy of the above and foregoing Substituted Trustee's Notice of Sale on the bulletin board maintained at the Tishomingo County Courthouse for such purposes.

WITNESS MY HAND AND OFFICIAL SEAL OF OFFICE, this the 20th day of September, 1977.

ROBERT D. SIMS,
CHANCERY CLERK,
TISHOMINGO COUNTY, MISSISSIPPI

S-22-29-0-6-13-c.

THE ORIGINAL BON AMI CLEANERS!

CLEANING POWDER 99

Reg. 79¢

59¢

Takes a shine to almost any surface... and it hasn't scratched yet.

CLEANING CAKE

Reg. 99¢

79¢

The handy cleaner for home, shop, outdoors. Mirrors, windows, etc.

WRAP-ON FIBER GLASS INSULATION

Reg. 1.98

159

ONLY 100

Best in Value! Perfect insulation for hot or cold water pipes. Prevents freezing in cold snaps. Conserves heat. Covers 17' of 1/2" pipe.

WRAP-ON AUTOMATIC ELECTRIC HEAT TAPE

Reg. 8.59

644

6' TAPE

For No-freeze Water Pipe Protection! Pilot glows when thermostat (set at 38°) has turned tape on. 2' cold leads with plug.

HOME VALUE DAYS

SALE

BUY NOW! ENERGY SAVERS!

DENNIS DUO-DECOR VINYL DOOR WEATHERSTRIP SET

Reg. 6.29

4.99

1-piece extrusion with rigid channels to trap air, pliable curl to seal against door and stop. 2 pieces 7' long, 1 piece 3' long with nails.

DENNIS DRAFT-SEAL WEATHERSTRIP

Reg. 95¢

69¢

17' Lgth.

Foam cushion with pressure sensitive adhesive backing. Requires no cement 3/16" x 3/8" x 17'.

17' Spring Bronze DOOR KIT

Reg. 2.99

244

Adequate for 3' x 7' Doors. Seals out drafts, dirt, dust, cold air... saves fuel. A permanent weather-strip equally serviceable for windows.

DENNIS 36" Triple Flanged DOOR BOTTOM

Reg. 2.15

169

3' gold anodized aluminum and vinyl sweep provides barrier against drafts, dust, moisture and insects. Screws included.

Warp's Easy-On STORM WINDOW KIT

Sale Price **55¢**

Includes 36" x 72" plastic sheet, 18' fibre moulding, enough nails for job. Easy to tack on.

Warp's EASY-ON-STORM DOOR KIT

Sale Price **59¢**

Easy to tack on. Includes 36" x 84" plastic sheet, 21' fibre moulding, nails.

WARP'S CARRY HOME COVERALL CLEAR PLASTIC SHEETING

Reg. 5.98

449

Hundreds of uses... emergency closure, concrete curing, drop cloth, etc. 10' x 25' x 4 mil.

DAP 33 GLAZING COMPOUND

20% SAVINGS!

1/2 PT. **59¢**

1.14 Pt. 1.98
Qt. 6.36
Gal.

Permanently Elastic. Knives on easily for airtight, watertight seal around windows in wood or metal sash. Can be painted over immediately.

ORGILL WHITE CAULKING COMPOUND

76¢ Value

49¢

Leakproof cartridges. Flexible plastic spout. Made of finest waterproof oils and fibers.

DAP Kwik-Seal

Reg. 1.79

139

TUB & TILE CAULK

Gives watertight seal. Dries fast, stays flexible. Easy cleanup. 6 oz. size.

ORGILL LATEX CAULK

Reg. 1.19

Sale Price **97¢**

Use with any paint... Won't stain or bleed thru. Stays flexible longer. Fits any standard gun. 11 oz. cartridge.

ARNO MASKING TAPE

60 Yard Roll

3/4" Size

Reg. 75¢

57¢

Waterproof... meets all specifications. For sealing duct work, wrapping pipe and packages. Silver polyethylene back.

Red Devil 1 1/2" FLEXIBLE PUTTY KNIFE

Reg. 1.49

Now Only **117**

Steel blade with solvent resistant handle. Rugged quality construction.

Red Devil PUSH PULL RAZOR BLADE SCRAPER

Reg. 75¢

39¢

Save 36¢ With Coupon

A push of the button and the blade retracts and locks. Sturdy steel construction. Comes with one single edged blade.

GET MORE FOR YOUR MONEY... USE THESE VALUABLE COUPONS!

THOMAS PAINT ROLLER SET

Reg. 2.68

SAVE 1.39

129

2 To A Customer With Coupon

General Electric CLEAR SILICONE CAULK & SEAL

Reg. 5.29

325

The very best! Bonds metal, wood and glass. Airtight, waterproof and permanent. Won't crack, chip or peel.

12-oz.

SAVE 2.04

Limited Supply 2 To A Customer With Coupon

FALL HOME VALUE DAYS

SALE

GREAT SAVINGS

... prices you've been waiting for!

SALE STARTS TODAY! ENDS A WEEK FROM SATURDAY!

Win one of 12 HOLIDAYS for 2 IN BRITAIN AND EUROPE

or one of more than 1000 other prizes in the Fall "HOME VALUE DAYS" SWEEPSTAKES

INCLUDES \$300 spending money, continental breakfasts, departure from U.S. airports served by British Airways.

DEALER STAMP

STAY 2 WEEKS

in deluxe Hilton Hotels... fly British airways, the airline that takes good care of you.

LONDON HILTON
AMSTERDAM HILTON
BRUSSELS HILTON
STRATFORD-upon-Avon HILTON

THIS IS YOUR ENTRY FORM

Enter now! Nothing to buy, Nothing to write.

NAME _____
ADDRESS _____
CITY _____
STATE _____ ZIP _____

VALUABLE COUPON

11 QT. PAIL

Reg. 1.69

88¢

SAVE 81¢ With Coupon

Great for big indoor and outdoor cleanup jobs. High-impact plastic. No rust, no clatter. Avocado color.

NELSON MARINE & HARDWARE

Highway 25 South Phone 423-6484

Iuka, Mississippi

Advertising Supplement To The Vidette, Iuka, Miss. 0-396

BUY NOW and SAVE

Miami-Carey Surface Mounted BATHROOM CABINET

Reg. 11.95

799

1 Sale Price

All steel construction. Mirror enclosed in enamel frame. 2 shelves. 12" x 17" x 4" over-all size.

Save with Arvin Heavy Duty UTILITY HEATER

Reg. 34.95

2797

Sale Price

- Instant fan-forced heat, 1250, 1500 watts.
- Black heat nickel chrome elements.
- Heavy duty ceramic supports.
- High temperature cord and plug.
- Safety tip-over switch.
- 14 1/2" h, 10" w, 6 1/2" d. Desert Tan.

Dainty Maid Single Burner PORTABLE RANGE

Reg. 6.49

488

Gives continuous heat. Vented on both sides. 600 watts. Cord attached. 8"x8"x4".

Safe, Convenient Automatic PORTABLE HEATER

Reg. 23.95

1888

- Instant fan-forced 1320 watts.
- Wide angle bright reflector.
- Cool fold down wire handle.
- High temperature cord and plug.
- Tip-over safety switch. 12 1/2" h, 13 1/4" w, 6" d. Desert Tan.

VALUABLE COUPON

AMER-glas AIR FILTERS

Highly effective for cleaning air of dust, dirt, lint and pollen. Buy now and save.

Values To 99¢

59¢

- 14x25x1
- 20x25x1
- 16x20x1
- 20x20x1
- 16x25x1

SUPPLY IS LIMITED BUY NOW AND SAVE!

IT'S HAPPENING NOW! COME FOR THE SAVINGS!

6 Lustraware
24 GALLON TRASH CONTAINER
Regularly 14.99
888
SUPER SAVINGS!
Rust-proof, dent-proof, sun-proof. Rugged construction. Easily cleaned. Locks securely. Finest quality.

Special
8
No. 1 RURAL MAIL BOX
Heavy gauge steel, finished in aluminum bronze with red enameled signal flag. Government approved.
Reg. 5.58
488
Wrought Iron MAIL BOX POST
Reg. 8.13
699
Sturdy 3-point support. Decorative double scroll styling. 1½" O.D. 5' posts in wrought iron black enamel.

7 Lustraware
44-QUART FLIP-TOP BASKET
Reg. 6.79
488
Great Value
Fits flush to the wall. Holds standard grocery bags. Won't retain odors and is break resistant. Avocado color. 10x14½x22".

"NUTMASTER" NUT CRACKER
Regularly 3.95
319
Unique 4-position spacer adjusts to any nut size. Cracks any kind of nut, from almonds to pecans with ease and speed.

MIRRO MATIC
10 4-QUART POP 'N SERVE
Regularly 19.95
Sale Price
1488
Butters as it pops! Unbreakable cover doubles as serving bowl. Heat-proof base with Teflon II coated aluminum interior.

MIRRO MATIC
11 4-QUART PRESSURE PAN
Reg. 19.95
1588
Speed cooks meat to juicy tenderness in one-third the time. Preserves garden-fresh goodness of vegetables.

CHICAGO SPECIALTY
PULSATING SHOWER
Formerly 14.95
Sale Price
888
"The Clean Machine" A full power, adjustable shower with pulsator, regular or combination pulsator spray. Convenient side lever changes water action.

KING OF DRAIN CLEANERS
85 DRAIN KLEENERS
Fast acting, odorless, dissolves hair, liquefies grease. Harmless to porcelain, septic tanks.
LIQUID Reg. 1.42
CRYSTALS Reg. 1.19
Qt. 109 12 Oz. Size **89¢**

FIBRE GLASS KLEENER
86 For Shower & Tub
Keeps your tub & shower as new as the day you bought it! Cleans fibre glass, tubs, boats, awnings, wood-work, walls, plastics, ceramics.
Regularly 2.56
Sale Price
179

PLUMBING SPECIALS FOR ALL YOUR NEEDS!

KIRKILL HYDRO-THRUST FORCE CUP
5 Times the power impact of conventional cups. Adjusts to any size basin or sink.
Reg. 3.35
SALE PRICE
227

KIRKILL CLOSET AUGER
During Sale
Cleans stopped toilets fast. Eliminates costly service calls. Effective, convenient . . . no dangerous chemicals.
Reg. 5.13
344

TOILET TANK REPAIR KIT
Regularly 14.06
999
Includes all essential parts . . . ball-cock, flapper, float, trip lever, float rod and refill tube . . . plus instructions.

KIRKILL FIT-ALL TUB STOPPER
Regularly 65¢
45¢
Fits drains 1½" to 2". Heavy duty. Durable white rubber.

KIRKILL STAINLESS STEEL BASKET SINK STRAINER
Regularly 2.13
133
High quality stainless, rust proof and corrosion proof.

KIRKILL NEOPRENE FAUCET WASHERS
Reg. 80¢ Box of 20
59¢
First aid for your faucets. Assorted popular size neoprene washers and 4 brass screws. Beveled or flat.

White Molded Seamless CLOSET SEAT
Reg. 6.19
Sale Price
499
Rigid rugged, polyethylene molded hinge . . . cannot corrode, break, rust or mildew. Soft lustrous white porcelain-like finish.

Rockwell LAVATORY FAUCET CENTERSET
Reg. 20.50
SAVE 4.81
1569
Attractive crystal handles complements any decor. Drilled for, but less, pop-up drain, with button covering. Fits 4" centers.

Rockwell Kitchen SINK FAUCET
Reg. 17.69
Save 4.70
1299
Smart and functional chrome finish. Housing type deck. Fits 8" centers. Easy-to-follow installation guide included.

ARAB SPRAYS!

12 FOGGATOR INSECT SPRAY
Reg. 3.99
329
New One Shot Bug Killing Method. Not just a spray — but an automatic fogger. Penetrates cracks, crevices . . . kills by contact and vapor action. For roaches, waterbugs, spiders, silverfish, etc.

13 Arab ROACH & ANT SPRAY
Reg. 4.49
366
• 32 Oz. size with sprayer •
Kills roaches and other indoor insects. Leaves a residual chemical to control stragglers. Odorless, will not stain.

FOR A MOUSE AND RAT-FREE HOME!

D-CON 15 MOUSE-PRUFE
Reg. 58¢ 2 Oz. size
49¢
Efficient, clean, ready to use. Handy automatic feed, especially for mice.

D-CON 16 READY-MIX
Reg. 2.25
198
Kills rats and mice . . . and it's ready to use. Fully guaranteed by manufacturer.
Economical 16 Oz. Size

STANLEY DRAPERY HARDWARE!

18 STANLEY CURTAIN ROD
Reg. 99¢ Super Buy
66¢
Heavy gauge steel. Extends 28" to 48". 2½" projection. Threading thimble and mounting hardware included.

19 STANLEY "Drapette" TRAVERSE ROD
Reg. 4.69 Special Offer
279
For wall or ceiling installation. Front-load, snap-on mounting bracket. Rectangular track. Center close. Extends 28" to 48". 3" projection.

17 SUPER GLUE
Reg. 1.98
149
Super fast, super strong. drop holds a ton. Clean. Made of cyanoacrylate.

20 AIR CONDITIONER COVER
Reg. 2.25
• One size fits all •
1 - Piece construction. Gives rust-proof, off-season protection. Eliminates cold drafts. Adjustable, easy to put on . . . always a snug fit.
199

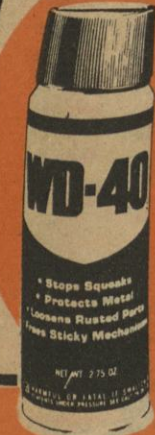
PEERLESS 3-PIECE FIRESET
Reg. 22.50
1649
Sale Price
Poker, shovel and broom in black velvet finish stand.

PEERLESS FOLDING FIRESCREEN
Regularly 26.90
Sale Price!
1988
Velvet black finish. Brass handle and knobs. 30" high, 30" center panel, 13" side panels.

BERNZOMATIC All Purpose FIRE EXTINGUISHER
Regularly 7.88
619
At last . . . a low priced home owner's answer to every type fire. Capable of extinguishing wood, paper and fabric fires as well as flammable liquids and electric fires. U. L. listed. Instant action quick release mounting bracket.

Stop Squeaks

One Quick Spray Does It!



Reg. 2.15
12 oz. Can **155**
Protects Metal
Loosens Rusted
Parts

Carol Cable 8' Battery BOOSTER CABLES



Reg. 4.55 **388**
Sale Price
All copper cables with coated vinyl insulation. For easy and fast starting of stalled vehicles... 6 or 12 volt batteries.

WEATHER-RITE ALL-PURPOSE DUFFLE BAG



Reg. 8.99 **699**
Quick zipper closure, heavy duty cotton duck, strong 21"x36" size, web handles.

SAVINGS TO FIT ANY BUDGET! SHOP NOW!

EVEREADY ALL AMERICAN ELECTRIC LANTERN



Less Battery Reg. 5.99 **499**
Light weight powerful searchlight with unbreakable lens, bulb protector and non-tarnishing reflector. Easy grip handle, weatherproof switch. 6-Volt Lantern battery...

EVEREADY commander 2-CELL FLASHLIGHT



Reg. 1.89 **149**
With Batteries
Heavy duty chrome plated case, sturdy safety glow lens ring, positive switch. Great value!

EVEREADY Heavy Duty Premium Lantern Battery



Reg. 3.19 **229**
Delivers up to 70% more service
Guaranteed against damage in any device
Rugged high impact plastic case
Very finest quality and value

STERNO PORTABLE COOKING KIT



Reg. 6.65 **519**
For campers, hikers, backpackers. Convenient for picnics, boating, emergencies.
* Single Burner, Stove
* Four 7-oz. cans
Sterno canned heat fuel.

SCHRADE 3-Bladed POCKET KNIFE



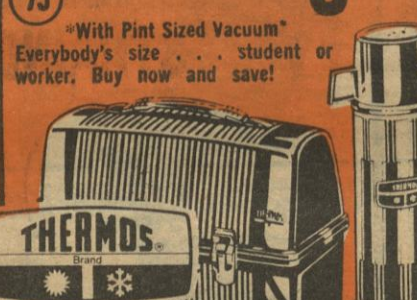
Reg. 10.00 **659**
For This Sale
Hand glazed clip, sheepfoot and spey blades. Genuine stagion handles. 3-5/16" closed.

THERMOS Quart Size VACUUM BOTTLE



Reg. 5.50 **349**
Family size. Holds hot or cold all day. Plastic screw-on cap with handle.

Polypropylene LUNCH KIT



Reg. 7.15 **529**
With Pint Sized Vacuum
Everybody's size... student or worker. Buy now and save!

WELLS LAMONT JERSEY WORK GLOVES



Reg. 95c **89¢**
Sale Price
Comfortable 100% cotton jersey gloves knit wrist. Men's size.

Green Thumb THE NATIONALLY RECOGNIZED BRAND



Reg. 7.60 **649**
Strongest Lawn Rake Made 24 times securely anchored and fastened in re-inforced steel head. Ends rounded and bent 4 1/2" ash handle.

Columbian PRUNING SHEARS



Reg. 3.50 **269**
For Fast Efficient Pruning
Adjustable blade tension. Tempered full polished blades 9" overall.

Columbian 22" LOPPING SHEARS



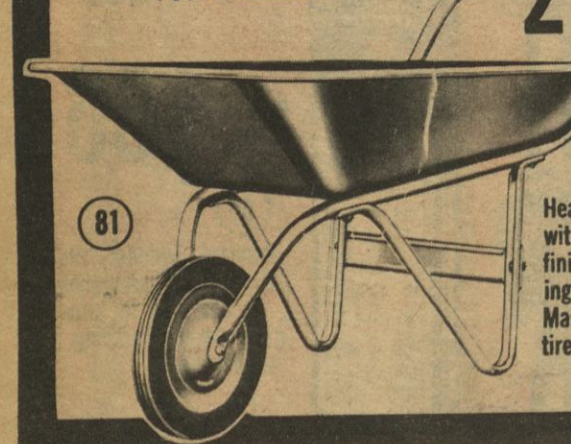
Reg. 8.40 **629**
TREE OR VINE PATTERN
Forged tempered steel 22" blade and and hook... easy to operate... and powerful.

Green Thumb THE NATIONALLY RECOGNIZED BRAND



Reg. 2.78 **239**
20 self-cleaning tines. Won't wad leaves or injure grass. 18 1/2" head, 48" handle.

RADIO HOME OWNER'S 3 1/2 CU. FT. WHEELBARROW



Reg. 23.15 **2088**
Heavy gauge steel tray with turquoise blue finish. Graphite bearings. Never need oiling. Massive puncture-proof tire.

WEBSTER HANDIBAG LAWN & LEAF BAG



Reg. 1.29 **99¢**
Pkg. of 5
33" x 48" Size
Heavy gauge plastic with extra length tie-twists closures. 6 bushel capacity. Great value!

Plastic Bag Caddy & Hand Truck



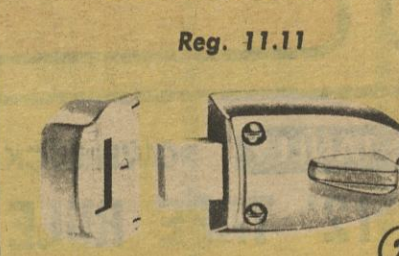
Reg. 16.59 **1344**
Hold plastic bag when collecting grass clippings, refuse, etc. A handy 2-wheel truck when used on "its own". Useful in yard, basement, garage, school or office. 30-gallon size bag included.

Down-To-Dusk SECURITY YARD LIGHT



Reg. 55.25 **3988**
Less Energy, more light
Dusk to Dawn Lighting... light goes on when sun goes down, off when sun comes up, leaving house guarded.
A complete unit... 175 watt mercury vapor lamp, photocell and hardware.

YALE Single Cylinder DEADLOCK



Reg. 11.11 **977**
Operates by key from outside and knob inside. With rim and flat strikes. For doors 1" to 2 1/2" thick. Dull brass finish.

INTERMATIC SUPERCOP 24 HOUR AUTOMATIC VARIABLE TIMER



Reg. 8.95 **777**
Invest in Protection
Discourages burglars.
Creates true lived-in appearance whenever you're away.
Turns lights, radios, etc., on and off at different times every day.



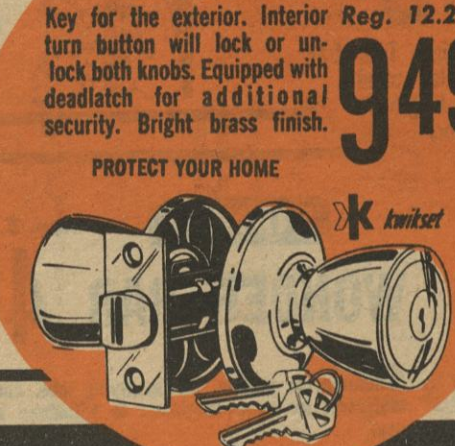
Terrific Value
KWIKSET FIRE ALARM
It may save your life! Senses and alerts you to a fire in your home at the very first stage... before there is noticeable smoke or flame. Easily installed. Battery operated.

Master ARMORLOCK



Reg. 5.95 Sale Price **469**
High-powered answer to rip-off artists. Armor is too thick to fit jaws of most bolt cutters. Revolving guard and case-hardened steel shackle resist hacksaws.

Kwikset ENTRY LOCKSET



Key for the exterior. Interior turn button will lock or unlock both knobs. Equipped with deadlatch for additional security. Bright brass finish.
Reg. 12.20 **949**
PROTECT YOUR HOME

RAYWALL RA-STAT WALL THERMOSTAT



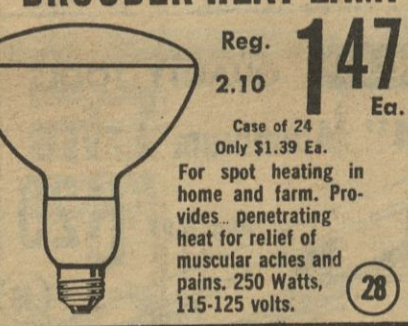
Reg. 7.90 **549**
Replace that old electric heat thermostat with a new wall unit for more efficient control and less energy waste. 125/240 volt, single circuit. Eliminates radio & TV interference.

VACO CRIMPING TOOL & BOLT SLICER



Reg. 8.95 **644**
Versatile all-purpose tool... strips or cuts wire from 10 to 22 gauge, crimps insulated and non-insulated terminals. Cuts 6 sizes of bolts without damaging threads.

NORELCO INFRARED BROODER HEAT LAMP



Reg. 2.10 **147**
Case of 24 Only \$1.39 Ea.
For spot heating in home and farm. Provides penetrating heat for relief of muscular aches and pains. 250 Watts, 115-125 volts.

SELF LOCKING HASP LOCK



Reg. 6.00 **439**
It's 4 1/2" of hasp and lock that stay fastened to your door and frame. Quarter turn locks it, key unlocks it.

kindergard SAFETY LATCHES



Reg. 2.29 **177**
Pkg. of 3
For cabinets and drawers... helpful protection against children getting into places that might cause them harm.

THE BRAND YOU CAN TRUST ALWAYS DEPENDABLE



EAGLE All Vinyl TRIPLE EXTENSION CORDS
Double Wipe Contacts. UL Listed. White or Brown
30% Savings
6' - 49c
9' - 57c
12' - 67c



EAGLE TOUCH-A-MATIC NIGHT LITE
Reg. 1.05 **77¢**
Soft adjustable glow to light the way in halls, bedrooms. Perfect for child's room or near phone. Shade rotates 360°. Assorted colors. U.L. Listed.



EAGLE AUTOMATIC CLOSET LIGHT
Reg. 2.75 **219**
Sale Price
★ Open door - light goes on. Close door... light goes off ★
Saves electricity. Installs easily. For closets, cabinets, utility rooms, basements, garages. For hinged or sliding doors.

EAGLE Old Fashioned DESK LAMP



Reg. 7.95 **644**
Not a reproduction... but the original flexible gooseneck reading lamp manufactured by Eagle for over 43 years. Heavy cast iron base, large reflector, turn knob socket. A fine lamp, a great value.

EAGLE Mood Magic DIAL-A-LITE DIMMER



Reg. 4.95 **444**
Single Pole
3-Way Reg. 8.95 6.88
Full wave control from dark to full bright. Push knob for OFF or ON. Turn to change light level. For incandescent lamps up to 600 watts, 120 v. ac.

VALUABLE COUPON "OK" GLASS PLUG FUSES



Reg. 95c **69¢**
15, 20 or 30 Amp
SAVE 26c
Box of 5 With Coupon
Limit 2 Boxes Additional 77c
2 Boxes To A Customer With Coupon Supply Limited

Creslite
48" SHOP LITE
 Reg. 20.65
 *Ideal for over Work Bench
 *For Garage, Laundry or Utility Room



38

Homak MFG. CO. INC.
19" STEEL TOOL BOX
 Sale Price
 Reg. 15.33
1099



39

Big hip roof design. Tote tray has non-tilt tubular handle, socket divider. Full length hinge and protector.

B-D Black & Decker
Standard Single Height WORKMATE
 For This Sale
6499

* All-purpose Work Center, Giant Vise and Sawhorse - All In One*

Set it anywhere . . . garage, home or workshop. Folds flat for storage. Convenient tool box for holding small tools and accessories. Vise holds materials up to 12" wide.



40

B-D Black & Decker
 VALUE-PLUS
3/8" VARIABLE SPEED DRILL
 Sale Price
2199

* Pick the Speed to Suit the Job


Handles bigger, tougher jobs with ease. Use as a drill or screwdriver. 1/3 HP; capacity steel 3/4", hardwood 3/4"; 0 to 1200 RPM. Double reduction gears, ball-thrust bearings. Double insulated.



41

B-D Black & Decker
7 1/4" CIRCULAR SAW
 Priced Competitively
2999

Two handle surfaces for steady positive control. Bevel and depth adjustments quickly and easily made. 1-1/3 HP, 5300 RPM Cutting depth 90° 2-7/16", 45° 1-7/8". Double insulated, needs no grounding. Combination blade included.



42

Do it with **SKIL**.
SKILSAW Two Speed JIG SAW KIT
 Now Only
2499 (43)
 34.24 Value

- 1/4 HP burnout protected motor.
- Low speed 2300, high 3500 strokes per minute
- Cuts 1 1/2" soft wood, 1 hardwood, 3/4" aluminum, 1/2" mild steel.
- Double insulated. Supplied with 5 blades.



43

Weller All-purpose SOLDERING GUN
 Reg. 15.50
 SALE PRICE
1164

Pull trigger . . . heat and work light come on instantly. Finger-tip selection of high or low heat. Compact, balanced pistol grip design. 100/140 watts. "Soldering Tips" booklet included



44

SK 12 PIECE SOCKET SET
 REGULARLY 27.98
2098

3/8" DRIVE STARTER

Perfect for auto maintenance, lawn and garden equipment. Includes 8 sockets 3/16" thru 3/4" ratchet, spark plug socket, plus extensions.



45

Disston "Rancher" 26" CROSSCUT HANDSAW
 8 or 10 pt.
 Reg. 10.49
749

The built-to-take-it saw for the frequent user . . . a truly premium handsaw. Taper ground, polished and bevel filed.



46

STANLEY Reg. 5.55
WONDER BAR
466

Contoured for pulling, lifting, prying jobs. Forged tool steel for extra toughness to withstand hard use.



48

STANLEY POWERLOCK 12' TAPE RULE
 Reg. 7.78
 Sale Price
699

Positive lock on 3/4" lifeguard yellow blade prevents creeping. Sturdy belt clip on back of case.



50

Lufkin "RED END" 6' FOLDING RULE
 (52)
 The craftsman's choice . . . best for home carpentry. Epoxy coated Precision slide extends 6" for accurate inside reading.
 Reg. 6.80
489



52


S-K 5-PIECE COMBINATION WRENCH SET
 Takes on jobs from motorcycles to power mowers. In vinyl pouch.
 (54)
 If Purchased separately 18.28
959



54

DALTON Spee-Dee Sawhorse Brackets
 Reg. 2.21
166

Easily assembled. Grips legs and rails securely. Rust resistant . . . fabricated for strength.



56

DURALL MITRE BOX
 (57)
 Reg. 3.68
209

Hard rock maple, one 90°, two 45° mitres. Precision cut, rabbeted and joined. Takes the guessing out of sawing.



57

New Estwing MINI-SAW
 Reg. 2.50
197

Cuts where other saws cannot reach. Cuts flush, saws curves. Uses standard hack saw blades, even broken pieces.



47

STANLEY QUALITY TOOLS 24" Aluminum LEVEL
 Reg. 6.99
629

Quality for cost-conscious Two "360" tough acrylic cat's eye vials . . . one plumb, one level. Extra strong.



49

LUFKIN 100' YELLOW TAPE
 Reg. 9.00
 Sale Price
679

High in quality . . . economical in price. Nylon winding for fingertip ease. Black numerals on yellow background.



51

PLUMB® 16 oz. NAIL HAMMER
 (53)
 Non-breakable fiber-glass handles . . . stronger than steel and guaranteed not to break. Molded cushion grips absorb shock, reduce fatigue.
 Reg. 10.49
829



53

"Super Swinger" HAMMER or HATCHET
 Holder
 Reg. 2.55
189

Swivel metal loop keeps tool from falling out and allows easy draw from any position. Top grain leather.



55

YOU WON'T WANT TO MISS THESE SPECIAL VALUES, DURING OUR FALL HOME VALUE DAYS SALE!

FULLER GREAT PLIER SAVINGS
 Values To 5.29
369

YOUR CHOICE

- 6 1/2" Long Nose Pliers
- 7" Linesmen Pliers
- 6" Diagonal Pliers

Heat treated jaws, vinyl hand grips, ground and polished to a satin finish. Buy now and save.



58

FULLER COMBINATION PLIERS
 Reg. 1.29
88¢

41c Savings

Hot drop forged, knurled handles, precision milled jaws.



59

CRESCENT 8" WRENCH ADJUSTABLE
 (60)
 Reg. 6.60
484

The world famous Crescent wrench. Hex shaped jaws give solid grip. Chromium plated steel.



60

A Best Buy

BLUE BIRD 12" TINNERS
 (61)
 Reg. 7.47
569

Straight pattern for powerful snipping action. Hollow ground and polished blades. Blue lacquered handles.



61

SUPERIOR 9-Piece Hex Key WRENCH SET
 Sale Price
119

Long arm hex keys in most popular sizes. In snap-open pouch.



62

SUPERIOR TUBING CUTTER
 (63)
 Reg. 5.07
389

Cuts all metal tubing & conduit . . . 1/8" to 1-1/8". Hardened rolls, retractable reamer blade.



63

ARROW Household Staple Gun Tacker
 Reg. 9.00
649

Junior size for light utility use. Ideal for numerous home tacking chores. Easy to operate. Handle lock. Takes 1/4 & 5/16" staples.



64

Turner Tornado Propane Fuel
 Reg. 2.15
166

Standard cylinder fits all torch assemblies . . . use also for propane operated camping appliances.



65



MORE

EXCITING FOOD VALUES



TISHOMINGO, MS
STORE HOURS:
OPEN 8:00 A.M.
CLOSE 6:00 P.M.

WE RESERVE THE RIGHT TO LIMIT QUANTITY
NONE SOLD TO DEALERS
\$20.00 PURCHASE REQUIRED TO REDEEM ALL
\$10.00 PURCHASE ITEMS!
THIS AD GOOD THRU 10-18-77

SOUTHERN BELLE
FRANKS

12 oz. **69¢**

RIB STEAK

lb. **\$1.19**

SOUTHERN BELLE
BACON

SLICED SLAB

lb. **89¢**

CLUB STEAK

lb. **\$1.29**

GROUND BEEF

3 lbs. or More

lb. **79¢**

TISSUE

Charmin
4 Roll Pkg.



69¢

HYDE PARK
CHEESE SINGLES

12 oz. **99¢**

ENGLISH MOUNTAIN CUT
BEANS

17 oz. **5/\$1.00**

BISCUITS

Hyde Park
with coupon
\$10.00 purch.
10ct. 6pk.



29¢

BAGS

LUZIANNE RED LABEL

1 lb. **\$2.59**

POTTED MEAT

3 oz. **5/\$1.00**

PEAS

LeSueur
Early June
17 oz.



39¢

HEILY
VIENNA SAUSAGE

4 oz. **3/\$1.00**

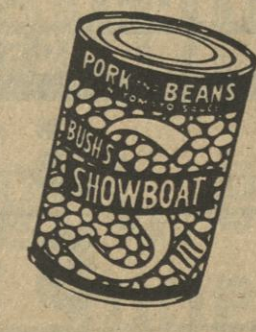
RICE

RICELAND TENDER GRAIN

25¢

BEANS

Showboat
Pork &
Beans



5 4 1/2 oz. Cans \$1

MAYONNAISE

Hyde Park
32 oz.



89¢

STONE SOAP

Bath Size **3/\$1.00**

BAGS

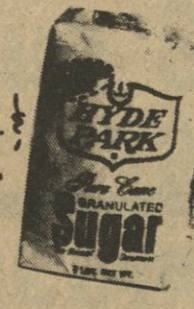
HEFTY SUPER KITCHEN

W/C (15-5)

10 ct. **79¢**

SUGAR

Hyde Park
with coupon
\$10.00 purch.
5-lb.



29¢

SPAGHETTI

SHOWBOAT

14 oz.

4/89¢

PALMOLIVE LIQUID

22 oz. **79¢**

NORTH CAROLINA FEY
APPLES

RED DELICIOUS
3 LB. BAG

59¢

GRAPES

LB. **59¢**

IDAHO WHITE
ONIONS

2 LB. BAG

39¢

EGGS

DOZ. **49¢**

Bestway

Present this coupon for

HYDE PARK

SUGAR 29¢

5 lbs.

W/C & \$10.00 PURCHASE

EXPIRES 10-18-77

SAVE

Bestway

HYDE PARK

10 ct.

BISCUITS 29¢

W/C 8/6s & \$10.00 PURCHASE

EXPIRES 10-18-77

SAVE

Bestway

HEFTY SUPER KITCHEN

BAG 4/89¢

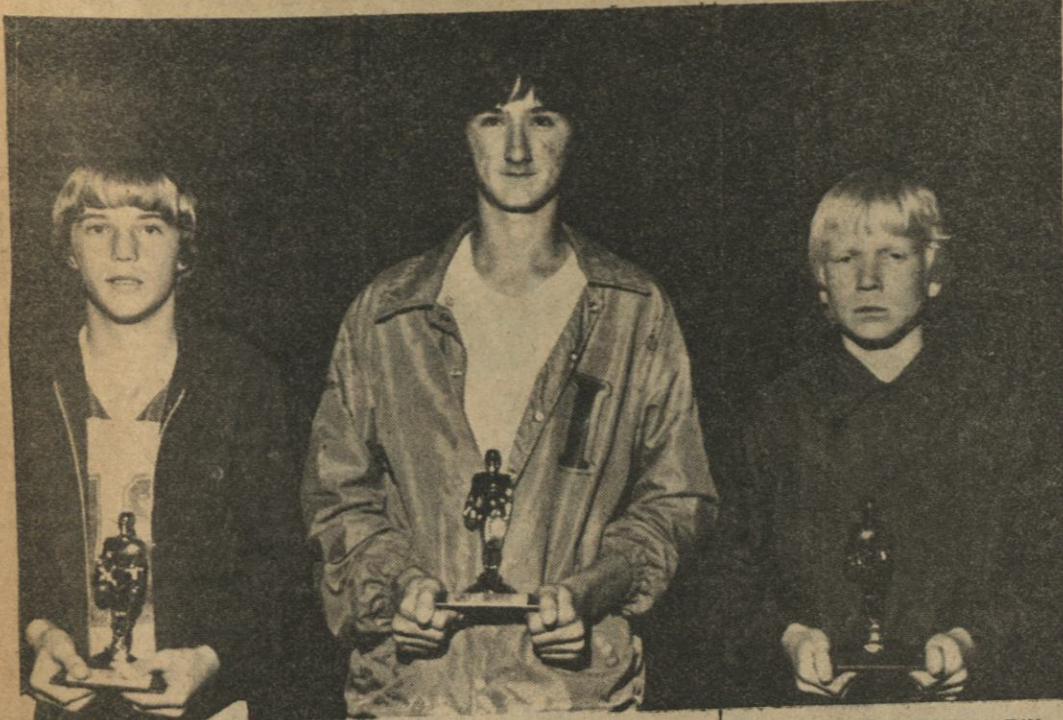
W/C (15-5) 10 CT.

EXPIRES 10-18-77

SAVE

POWER AT YOUR FINGERTIPS - ALL TOP QUALITY BRANDS!

Weller All-purpose



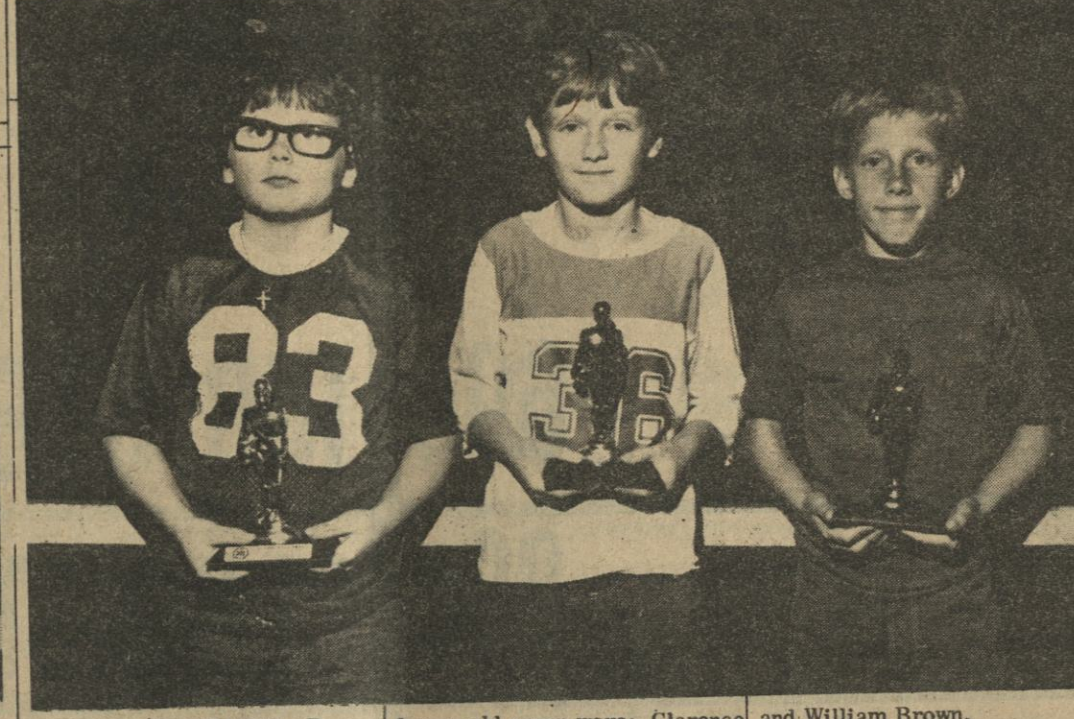
13 YEAR OLD WINNERS—Punt, Pass and Kick contest were, from left, Darryl Long, Keith Wimberly, and Billy Allen. Photo by C. Swimmer



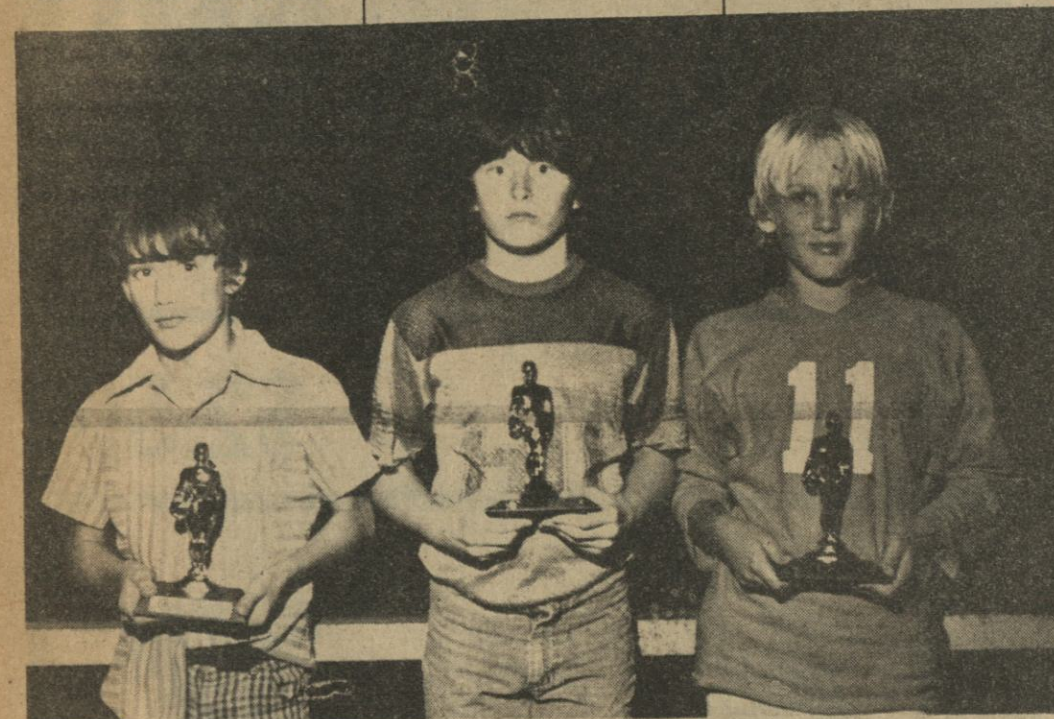
10 YEAR OLD WINNERS—Punt, Pass and Kick competition were: from left, Tommy Lee Pace, Rodney Robinson, Dean, Greg Higginbottom, and Bob Beard. Photo by C. Swimmer



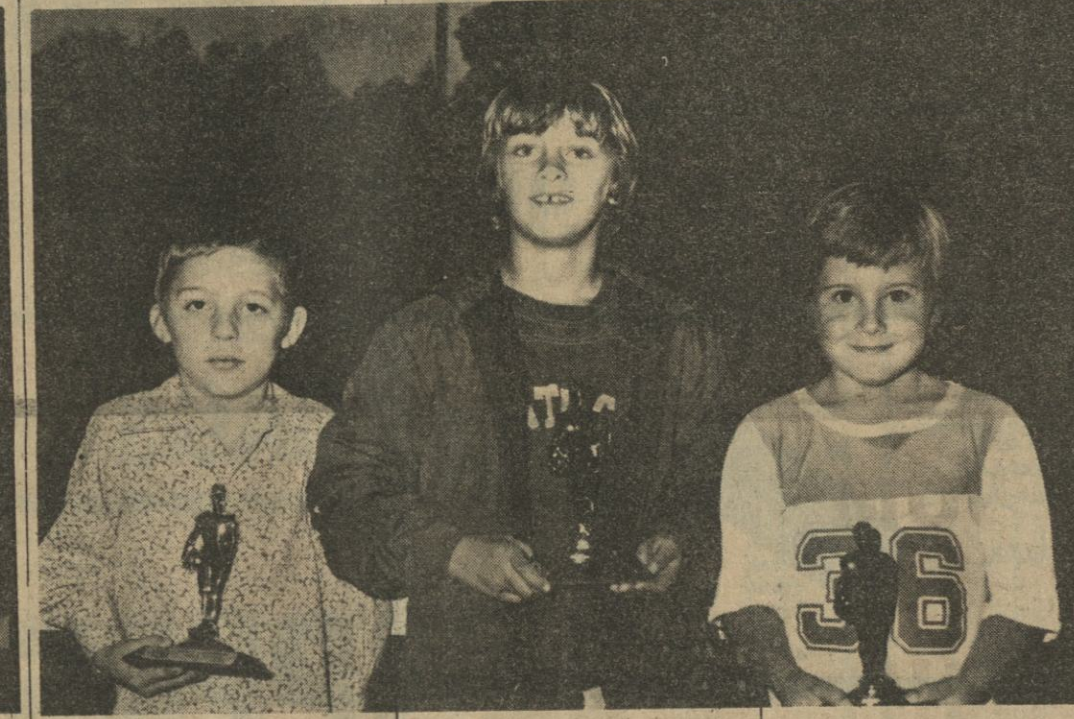
PUNT, PASS AND KICK—Punt, Pass and Kick winners in the 12 year old group were, from left, John Trudeau, Jimmy Curtis, and Michael Chaffin. Photo by C. Swimmer



PUNT, PASS AND KICK—Punt, pass and kick winners in the 9 year old group were: Clarence Lee Pace, Rodney Robinson, and William Brown. Photo by C. Swimmer



11 YEAR OLD WINNERS—Punt, Pass and Kick contest were, from left, Del Reno, Gregory Walker, and Steven Quinn. Photo by C. Swimmer



PUNT, PASS AND KICK—Punt, pass, and kick winners in the 8 year old group were: left to right, Larry Carden, David Robertson and Jim Ramsey. Photo by C. Swimmer

Punt, Pass & Kick Brings Good Turnout

Fifty-six youngsters, ages 8 - 13, competed in the 1977 annual Punt, Pass and Kick Contest held Sunday, October 9, at the Iuka Football Field. The event was sponsored by McNatt Ford Company and was conducted by the Iuka Jaycees. Participants were scored on both distance and accuracy in punting, passing, and place-kicking a football with the top three individuals in each age group receiving awards. The following individuals were winners in their respective age group: David Robertson, age 8, son of Mr. and Mrs. F. Adie Robertson; Rodney Robinson, age 9, son of Mr. and Mrs. Charles D. Robinson; Greg Higginbottom, age 10, son of Mr. and Mrs. H. E. Higginbottom; Gregory Quinn, age 11, son of Mr. and Mrs. Larry N. Quinn; Jimmy Curtis, age 12, son of Mr. and Mrs. Ray Curtis; and Keith Wimberly, age 13, son of Mr. and Mrs. G. L. Wimberly. These winners will now advance to the Zone competition to be held Saturday, October 15, 2:00 P.M., at the Corinth High School Football stadium.

All contestants with their respective total score are listed below:

AGE 8	
David Robertson	127
Larry Carden	70
Jim Ramsey	62
Kenny Carson	61
Rush Sweeney	57
AGE 9	
Rodney Robinson	125
Clarence Lee Pace	102
William Brown	92
Glenn Stephens	85
Todd Davis	84
Frankie Rice	70
AGE 10	
Greg Higginbottom	167

Tommy Dean	163
Bob Beard	149
Chuck Holly	144
Tommy Osborn	135
Matthew Walker	133
Henry Brown	125
Scott McClain	121
Mitchell Wright	108
Steve Toth	107
Craig Carson	99
Ron Watkins	97
Jody Reno	92

AGE 11	
Gregory Quinn	154
Del Reno	153
Steven Walker	141
Tristan Holt	132
Keith Carson	124
Jeff Lyles	122
Steven Young	118
Wesley McGill	114
Alonzo Burgess	93
Robin Strawbridge	63

AGE 12	
Jimmy Curtis	177-1/2
John Trudeau	175-1/2
Michael Chaffin	156
Anthony Higginbottom	155
Randy Ramsey	144
Martin Wright	133
Chipper Marlin	131-1/2
Tina Keele	121-1/2
David Brown	117
Randy Watkins	85

AGE 13	
Keith Wimberly	293-1/2
Darryl Long	216-1/2
Billy Allen	214
Joey Hobbs	208
Gary Clark	194
Danny Bean	168
Trudy Trudeau	118
Bradley Lemon	115-1/2
Donny Davis	109
Patty Wallin	102-1/2
Alice Robertson	39-1/2
Becky Vandiver	26-1/2

WE ARE NOW PAYING THE HIGHEST INTEREST RATES AVAILABLE ON FEDERALLY INSURED SAVINGS

TYPE OF ACCOUNT	MINIMUM BALANCE	INTEREST RATE
PASSBOOK ACCOUNT	No Minimum	5 1/4 %
90 DAY CERTIFICATE OF DEPOSIT	No Minimum	5 3/4 %
1 YEAR CERTIFICATE OF DEPOSIT	\$1,000.00	6 1/2 %
30 MONTH CERTIFICATE OF DEPOSIT	\$1,000.00	6 3/4 %
4 YEAR CERTIFICATE OF DEPOSIT	\$1,000.00	7 1/2 %

INTEREST COMPOUNDED OR PAID QUARTERLY

"A SUBSTANTIAL INTEREST PENALTY IS REQUIRED FOR EARLY WITHDRAWAL OF CERTIFICATES"

MEMBER
FSLIC
Federal Savings & Loan Insurance Corp.
Your Savings Insured to \$40,000

TRI-STATE SAVINGS & LOAN ASSOCIATION

IUKA-BELMONT

SUMMONS FOR NON-RESIDENT DEFENDANT THE STATE OF MISSISSIPPI
TO: Franklin Wood
Post Office Box 3385
Huntsville, Ala. 35810
You are summoned to appear before the Chancery Court of the County of Tishomingo in said State on the 10th day of November, A.D., 1977, at 9:30 o'clock A.M. at the Tishomingo County Courthouse in Iuka, Mississippi, to defend the suit No. 7807 in said Court of Sam Earl Gray and wife, Jo Ann Gray, wherein you are one of the defendants.
THIS, the 4th day of October, 1977.

ROBERT D. SIMS,
Chancery Clerk,
Tishomingo County, Miss.
By: Glendyl Bolton
O-6-13-20-c.

Scores Seventh

Dr. Jerry Clay Stone announced the results of the wide Pupil Assessment Program. The Iuka Special Principal Separate School students scored seventh wide in the fifth grade, fifth grade students were in Language Mechanics, Spelling. They were fourth in Math Concepts and sixth in Math Computation. Overall, the Iuka fifth grade was seventh out of the two hundred school districts in the state.
Dr. Stone congratulated fifth grade instructors: Jourdan, Katie Mae Grisham, and Alma Ruth Daugherty for the outstanding achievement of their students.

HAM SHOOT

Saturday, October

HAMS GIVEN AS PRIZES
EVERYONE WELCOME

MOVING TO STILL TARGETS

YELLOW CREEK SHOOTING RANGE

6 Miles North Of Iuka
on Hwy. 25 South

INCOME TAX FRANCHISE AVAILABLE

H & R Block is looking for a responsible individual capable of operating a volume tax business. Prior knowledge, while helpful, is not necessary. The Block franchise is compatible with most other service-oriented businesses. We furnish:

• TRAINING • SUPPLIES
ADVERTISING

H&R BLOCK

THE INCOME TAX PEOPLE

TO: H&R BLOCK 519 S. Gloster Street
Tupelo, Miss. 38801

Please send me your brochure outlining the H & R Block Franchise Program. I understand there is no obligation on my part.

Name _____

Address _____

City/State/Zip Code _____

Telephone No. _____

CLIP AND MAIL TODAY

AND THAT'S
THE HIGHEST
RATE WE ARE
PERMITTED
TO PAY BY LAW
---WHY SETTLE
FOR LESS?



WINDING COURT AT BELMONT - The 1977 Homecoming Court at Burnsville School was presented Tuesday night at the Mustang football game. Members of the court are, from left, Cummings, son of Mr.

and Mrs. James Ray Cummings, escorting Freshman maid, Angie Jourdan, daughter of Herschell and Louise Jourdan; Tracy Carroll, son of Mr. and Mrs. James Austin, escorting Junior maid, Barbara Glidewell, daughter of Mr. and Mrs. Willis Glidewell; Elbert

Spoon, son of Mr. and Mrs. Raymond Spoon, escorting Senior maid, Deborah Dodson, daughter of Mr. and Mrs. Jerry Whitfield; Mitchell Osborn, escorting Queen Brenda Blakney; Terry White, son of Mr. and Mrs. Berlin White, escorting Senior maid, Rejeana Cummings, daughter of Mr. and Mrs. John Cummings; and DeWayne Emerson, son of Mr. and Mrs. James Emerson, escorting Sophomore maid, Beth Pearson, daughter of Rev. and Mrs. Billy Pearson.

Hubbard Salem

Everyone did or should have enjoyed the message from the Lord, delivered by Bro. Earl Martin, Sunday morning. Visiting Mr. and Mrs. Lester Williams and attending the services Sunday morning was Mr. and Mrs. Bill Osborn of Detroit, Michigan. Glad to have them with us. Hope they have a safe trip back home. Also visiting the Williams for Sunday dinner was Mr. and Mrs. James Williams and son of Iuka and Mr. and Mrs. Clarence Williams of Booneville. Bro. James E. Daniel was the visiting preacher for Sunday

night service. We enjoyed having him, also his wife and children. We were also glad to have at Sunday night service, Mr. and Mrs. Fred Martin, and Mr. and Mrs. Charles Lambert and children from Unity Church. Come back to see us soon. Mr. and Mrs. Carl Huffman attended services at Fairview Sunday afternoon, also the singing at Harmony Friday night. The Jones Family and the Harmoniers did some real good singing and was enjoyed very much.

The Parkers Chapel Quartet of Baldwin will be at Hubbard Salem Saturday night, October 15, at 7 P.M. for a gospel singing. Everyone is invited to come and be with us. It isn't very often you hear good news, it is a joy to know that Charles Bullard did the preaching at Harmony last Sunday morning. Our prayers are with you, Charles. So very glad that Walter Jones was feeling better at last report, hope he continues to improve. Thought: Luke 6: 46, Why call Me Lord and do not the things which I say?

"Never injure a friend, even in jest." Cicero



LONG PROMOTED—George A. Long, son of Mr. Calvin Long and the late Mrs. Eddie Mae Long of Iuka, has been promoted to Sergeant (E5) in the U. S. Army. George entered the Army in January, 1975, and is now stationed in Korea. He is a 1974 graduate of Iuka High School.

Mt. Gilead Pastor Resigns

On September 25, 1977, I submitted my resignation to Mt. Gilead Missionary Baptist Church. I feel that it is God's will that I move to Des Arc, Arkansas to work with the Lakeside Missionary Baptist Church. I have been pastor of Mt. Gilead for 4 1/2 years. The fellowship has been very good and the church has grown spiritually as well as in number. I want to thank the people of Mt. Gilead Community and the surrounding area for your hospitality and support. I have enjoyed living in this area more than any place I have lived and worked. The church is presently in a building program, which will prove to be an asset to Mt. Gilead and the community. I know that Mt. Gilead will continue to go forward for the cause of Christ. I pray God's richest blessings on this fine church and the people of this area.

Billy L. Pearson, Sr.
Pastor
Mt. Gilead Missionary Baptist Church

PERSONAL

Mrs. Tersie McCoy is now

residing in the Aletha Lodge Nursing Home in Booneville. She would appreciate hearing from her friends.

"Congress shall make no law respecting an establishment of religion or prohibiting the free exercise thereof; or abridging the freedom of speech or of the press."
— 1st Amendment, U.S. Constitution

Adult Typing Classes

Registration for an adult course in typing will be held at Iuka High School library Tuesday, October 18, at 6:30. The course will include basic typing skills necessary for secretarial or home use. Registration fee will be \$15.00 for a 35 hour course. Enrollment will be limited to eighteen adults. For more information, contact Iuka High School.

Specials for Fall!

1976 Chev. Pickup 4 Wheel Drive, auto	1974 PINTO
1973 Chev. Truck 1 Ton State Bed	1974 Gran Torino
1975 MUSTANG II	1969 DODGE loaded
1975 Ranchero GT Loaded	1972 IMPALA 4 door
1973 CHEVROLET Custom Deluxe loaded	1976 TORINO 4 door, loaded
1976 GRANADA 4 door	1977 Ford Pickup Long Wheel Base

6-1977 CARS GOING AT DISCOUNT PRICES
GOOD SELECTION 1978 CARS & TRUCKS

CHECK OUR LOW RATES

• DAY • WEEK • MONTH



RENT-A-CAR

McNATT FORD SALES

HIGHWAY 25 S PHONE 423-2561
IUKA, MISS.

New disability income plan has money back feature!

This different kind of health insurance helps protect you against the possible loss of your paycheck when a covered sickness or accident keeps you from working. Then, if you keep your coverage in force to age 65, you're assured of a full refund of premiums less any benefit payments you've received. Get the full facts on this important new protection by calling me today.

GARY L. CHITOM
Nelson C. Vestal Agency
Northeast District Office
L. M. Peek, Dist. Mgr.
P. O. Box 652
Booneville, Miss.
Phone 728-5718

Mutual of Omaha
People you can count on...
Life Insurance Affiliate:
United of Omaha

THE IUKA SHIRT COMPANY IS NOW TAKING APPLICATIONS TO MAKE THEIR HOLIDAY SEASON GOODS AND THEIR SPRING LINE WHICH WILL MEAN CONTINUOUS WORK FOR THE WINTER MONTHS AHEAD.

This is clean, light, easy work to handle. Good supervision to work for and all around good working conditions.

Blue Cross and Blue Shield and Life Insurance available.

Holiday and Vacation Pay

Apply at

THE IUKA SHIRT COMPANY
805 NORTH MILL STREET
IUKA, MISSISSIPPI

A GOOD PLACE TO WORK
AN EQUAL OPPORTUNITY EMPLOYER

FALL SALE

TOWN & COUNTRY FURNITURE COMPANY

BOTH LOCATIONS:

HWY 25 SOUTH & FULTON STREET DOWNTOWN IUKA

SALE 10% - 50% ON EVERYTHING IN STOCK!

MAN-SIZE

RECLINER
\$69.95

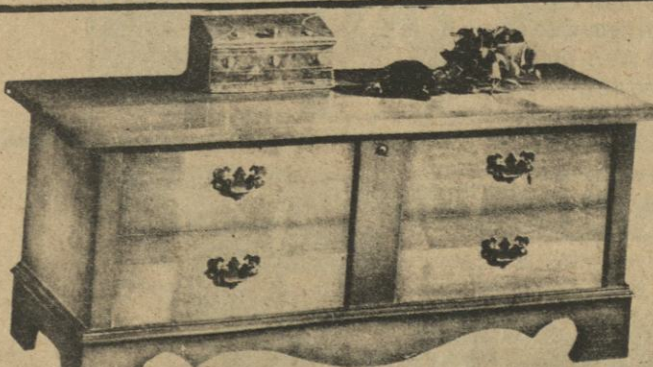
Swivel Rocker
\$69.95

2 PIECE EARLY AMERICAN
LIVING ROOM SUITE
HERCULON COVER **\$299.95**

SPRING AIR BEDDING
TWIN SIZE PER SET **\$88.00**

Bedroom Suite 3 PIECE **\$198.00**

ROLL TOP DESK
\$98.00



MAPLE OR OAK FINISH
Lane 'Love Chest' Reg. \$149.95
HOPE CHEST \$119.95

HURRY FOR BEST SELECTION

COME TO OUR HARVEST OF BARGAINS



KKI WORKSHOP LAKE TIAK O'KHATA-----

The Kappa Kappa Iota Fall Workshop was held at Lake Tiaik O'Khata, Louisville, Miss., September 24, 1977.

Mrs. Warren Cutcliff, state president, presided. A very enjoyable program was presented to a large group representing many conclaves. After a delicious luncheon was served the following groups met individually and worked on problems at hand: local presidents, public relations, pressbooks, empathy, and extension of the order. Work was done on a new choral

group, also. The following people attended the workshop from Theta Conclave: on the extreme left in the picture (leaning on the bannister) Marie Edwards, Tishomingo; on extreme right, standing, Effie Lois Greene, Tishomingo; second from right, Reba Harris, guest, Belmont; third from right, Mary Williams, Burnsville.

Job Service Information

The unemployment rate for Tishomingo County continued to

decrease according to Charles Smith, Manager of the Corinth Area of the Mississippi State Employment Service. At mid-August, the rate of unemployment for Tishomingo County was estimated to be 4.8 percent of the civilian labor force, or 421 individuals. This reflected a drop of six-tenths of a percent from the July estimate and a 1.9 percent drop from the same period one year ago. Smith continued that the civilian labor force for the county declined to 8,760 persons, a decrease of 150 from last month and 230 from the same period one year ago. The number of individuals employed also rose to 8,340, a slight decrease of 80 over last month's estimate but an increase of 50 over the estimate for August 1976. Manufacturing employment figures indicated drops from the July estimate and the August 1976 estimate, while the nonmanufacturing employment category boasted gains from these two periods.

Smith also stated that an estimated 41,800 persons were in the Corinth Area's labor force at mid-August. The Corinth Area consists of Alcorn, Prentiss, Tippah, and Tishomingo counties. This number reflected a loss of 80 from July, but a sizeable gain of 1,100 from August 1976. This slight decrease from last month was caused by more students leaving the ranks of the unemployed, while the substantial gains for the year were attributable to new economic growth. The number of individuals unemployed in the area, estimated to be 2,380, was down nine-tenths of a percent from last month and 1.4 percent from the estimate of last year. An estimated 39,420 persons were employed at mid-August repre-

sented substantial increases of 340 from last month and 1,620 from last year. These increases were noted in all categories with the exception of Agriculture, which declined slightly. Nonagricultural wage and salaried employment, a combination of manufacturing and nonmanufacturing employment, for the Corinth Area at 28,530, was 250 jobs above the previous month and 790 above the figure for August one year ago.

BIRTH

Bobby Daniel Reynolds II arrived at Coffee Memorial Hospital on August 25, 1977, weight 9 lb. 1 oz.

Proud parents are Mr. and Mrs. Bobby Reynolds of Florence, Al. and proud grandparents are Mr. and Mrs. Buck Reynolds of Burnsville and Mrs. Eunice Osborn of Iuka.

This is the couple's first child.

How to use clothes dryer efficiently

What a convenience an electric dryer is, especially on rainy days and in winter. And yet the electricity it uses only amounts to about four percent of your total kilowatt-hour usage year round. You can, however, save a few dollars each year by making sure you use your clothes dryer wisely.

Have you ever picked up clothes that have been dried too long in the dryer? They're not pleasant to handle. And when you try

to iron them, the wrinkles just won't smooth out.

Overdrying damages fabric and wastes electricity, so experiment with drying times to get just the right degree of dryness. You may find clothes are more easily handled if you take them out of the dryer while they're still the slightest bit damp.

If possible, dry full loads instead of partial ones. Always clean the lint filter after each use to allow free air circulation and protect your machine from undue wear and tear.

If you have a single, delicate item that needs to be dried, try using leftover heat from a large load.

And on nice, warm days dry your clothes outside in the sun and wind for freshness a dryer can't duplicate.

Stop by your power dis-

tributor's office for more information on using your appliances efficiently.



Only the newspaper can follow you wherever you go. When you're away from home, the arrival of your hometown paper is like a visit with a friend.

"You are not born for fame if you do not know the value of time." Vauvenargues

advertisement for bids

Sealed bids will be received by the Tishomingo County School District at the office of the Superintendent, Tishomingo County Courthouse, Iuka, Mississippi on November 1, 1977 at 2:00 PM CDT.

Specifications entitled: Special Education Classrooms Tishomingo County School District Tishomingo, Mississippi

may be obtained from the office of Bouchillon & Harris - Architects, P. A., 4730 North State Street, Jackson, Mississippi 39206, by depositing security in the amount of \$25.00. Plans and specifications may be examined at the place indicated

above and copy of same can be obtained upon posting security indicated, which is refundable to bona fide bidders upon return of said plans and specifications in good condition. Proposals shall be submitted in duplicate only upon the blank proposal forms provided with the specifications and must be accompanied by Proposal Security in the form of Certified Check or acceptable Bid Bond in an amount equal to at least five percent (5%) of the base bid; such security to be forfeited as liquidated damages, not penalty, by any bidder who fails to carry out the terms of the proposal, execute contract and post performance bond in the form and amount within the time specified. The Bid Bond, if used, shall be payable to Tishomingo County School District. Bids on the project must be received on or before the period scheduled for the project and no bid may be withdrawn after the scheduled closing time for a period of thirty (30) days.

All bids submitted in excess of \$25,000.00 by a prime or subcontractor to do any erection, building, construction, repair, maintenance or related work, must comply with Section 27-15-33, Mississippi Code of 1972, by securing a certificate of responsibility from the State Board of Public Contractors. All bids submitted in excess of \$10,000.00 by such contractors to perform contracts enumerated in Section 31-3-21, Mississippi Code of 1972, must secure from the State Tax Commission an annual contractor's license. Where applicable the foregoing certificate number and license number must be indicated on the exterior of the sealed bid envelope before it can be opened.

Each bidder is required to submit with his bid, his commitment utilization of Minority Business Enterprises (MBE) as subcontractors or supplies in the amount of at least \$6,000.00.

The plan must include the name of each proposed MBE, the type of work performed by it, the cost of such work and the total percentage of the contract the bidder will expend in the aggregate for such MBE's. Bids will be considered by the Owner to be responsive only if the bidder includes the foregoing information and assurance in his bid.

Attention of bidders is called to the requirements of the applicable provisions of Federal laws and regulations including Executive Orders with regard to Safety and Health Regulations, Minimum wages, Payments, Payrolls and Basic Records, Apprentices and Trainees, "Anti-Kickback" Provisions and Equal Opportunity.

The Tishomingo County School District as represented by its Board of Education reserves the right to reject any or all bids on any or all projects and to waive informalities.

Tishomingo County School District
By: Alvia J. Blakney, Superintendent

O-13-21-28-c

LEGAL NOTICES

SUBSTITUTED TRUSTEE'S NOTICE OF SALE

WHEREAS, on August 16, 1976, Curtis C. Haley and wife, Helen Haley, executed a Deed of Trust to John H. Fox, III, Trustee, for the benefit of Jim Walter Corporation, which Deed of Trust is recorded in Book 79 at Pages 13-14, in the office of the Chancery Clerk of Tishomingo County, Mississippi;

AND WHEREAS, this Deed of Trust was assigned to Mid-State Homes, Inc. by instrument dated September 15, 1976, and recorded in the office of the Chancery Clerk aforesaid; AND WHEREAS, the owner and holder of the aforesaid Deed of Trust has duly substituted and appointed William S. Guy as Substituted Trustee in the place and stead of the aforesaid original Trustee, by instrument dated September 20, 1977, and recorded in the office of the Chancery Clerk aforesaid;

AND WHEREAS, default having been made in payment of the indebtedness secured by said Deed of Trust, and the holder of the note and Deed of Trust having requested the undersigned Substituted Trustee so to do, I will on the 7th day of November, 1977, offer for sale at public outcry and sell during legal hours between the hours of 11:00 a.m. and 4:00 p.m., at the main front door of the County Courthouse of Tishomingo County, at Iuka, Mississippi, for cash to the highest and best bidder, the following described land and property, situated in Tishomingo County, Mississippi, to-wit:

A part of the Northeast Quarter (1/4) of Section 9, Township 5 South, Range 11 East, Tishomingo County, Mississippi described as follows: beginning at the Southeast corner of the Northeast Quarter (1/4) of Section 9, Township 5 South, Range 11 East, thence run North along the East boundary line of said Quarter Section and a wire fence a distance of

160 feet; thence run West a distance of 297.22 feet, thence run North a distance of 134.5 feet to a point in the center of a gravel road; thence run East a distance of 12 feet to a point on the East side of said gravel road and the true point of beginning, thence run East a distance of 210 feet; thence run North 6 degrees 31 minutes West a distance of 105.68 feet, thence run West a distance of 210 feet to a point on the East side of a gravel road; thence run South 6 degrees 31 minutes East a distance of 105.68 feet along the East side of said gravel road to the point of beginning, containing 0.5 acre.

I will convey only such title as is vested in me as Substituted Trustee.

WITNESS MY SIGNATURE, this 7th day of October, 1977.
WILLIAM S. GUY,
SUBSTITUTED TRUSTEE

O-13-20-27-N-3-c.

The heaviest dog on record was a Saint Bernard in Wisconsin who at age 5 weighed 295 pounds.

FABRIC extravaganza

Friday & Saturday
October 14 & 15
8:00 to 8:00

ALL COTTON FABRIC
ON SALE!

VIP-RUSSELL-CALICO PRINTS

\$1.59

NEW SHIPMENT SUEDE

OVER 60" WIDE-1st QUALITY-ASSTD. COLORS

\$2.98

1st QUALITY ON BOLTS-
POLYESTER KNITS \$1.00
SEVERAL YARDS

POLYESTER INTERLOCK
SOLIDS & ASSTD. COLORS-1st QUALITY
WITH LOOK OF QUANA

\$2.59 to \$2.98

KLOPMAN QUANA

Reg. \$3.98

IDEAL FOR HOLIDAY DRESSES

\$3.49

Hilda's Fabric

FAIRGROUND ROAD

Phone 423-6359-Iuka, Miss.

MIDDLETON FURNITURE & APPLIANCE

Elm Shopping Center
Iuka, Miss.

RECLINERS

\$54.95



ASK ABOUT OUR
CONVENIENT
LAYAWAY
PLAN

YOUR GENERAL ELECTRIC

MAJOR
APPLIANCE
DEALER



PHONE 423-9266

The South is the fastest-growing area in the country.

And Southern Railway is growing right along with it.

Everybody knows the South is the fastest growing area in the U.S. But what you might not know is it's one of the seven fastest-growing areas in the world. One of the biggest reasons is that industry is flocking to the South.

And each time the South grows, we at the Southern Railway grow too.

After all, who do you think carries the raw materials to these new plants? The finished goods to market? In large measure, we do.

And, as the South's population grows, who do you think brings the things these people need? The cars, the carpets, the appliances, the clothing, the sporting goods and the food? Largely, we do.

But, we're not growing just to keep up with the ever-increasing population. We're growing to be prepared for an even bigger South in the future.

According to the federal government, the

railroads will get an increase in freight volume of 143% by 1990. And the railroads share of market will go up by a big 24%.

Will we get the lion's share of these increases when they come? Maybe. But whatever happens, we're getting ready for them by expanding right now. We're putting in a new \$40 million computerized freight classification yard in North Carolina. We're adding to our microwave communications system, which is already the largest in the South. And we're laying two tracks where one used to be enough to handle all the traffic in the area.

So, even though we're growing right along with you, we're also growing ahead of you.

Because when the demand is there, we want to be there, ready to serve.

SOUTHERN

THE RAILWAY SYSTEM THAT GIVES A GREEN LIGHT TO INNOVATIONS

The Southern Railway is one more good reason for living in the South.

Southern Railway System, Washington, D.C. 20013. An equal opportunity employer.



Members of the Iuka Pee Wee Football team in Iuka are, from left to right, Stevie Brown, Mathew Walker, Tom-... Greg Quinn, and... Marsh. Back row, from right, Bob Chaffin, Lomenick, Wesley Mc... Beard, Edward Biz... Balliegh, Larry... Steven Young, and... Morris.

Fire Protection Devices Important In Residences

MISSISSIPPI STATE — Small home appliances commonly include "essentials" like toasters and irons. However, even more important household appliances are fire detectors and fire extin-

guishers.

"A good home fire escape plan plus an early warning device can mean the difference between an escape and death," says Susie Overstreet, health education specialist, Mississippi Cooperative Extension Service. "And using a portable extinguisher before the fire spreads can minimize damage as well as injury," she adds.

Although there have been great recent advances in fire fighting, there has been an even greater growth in fire potential, reports Miss Overstreet.

Common household goods make life easier, but also contribute to fire potential. For example, some chemicals which are used in making foam mattresses and furniture cushions give off thick, uncomfortable, even life-threatening smoke when burning.

Most fires begin between midnight and 6 a.m. when the family is asleep. And most fire victims die of smoke inhalation rather than actual burns, reports Miss Overstreet.

That's why it's so important for families to be prepared for a quick exit in an emergency, she adds. Evacuating everyone before poisonous smoke beclouds thinking and causes loss of consciousness is extremely important. An early warning device thus is essential.

When considering the cost, compare it with an electrical kitchen gadget that may be used occasionally, the specialist suggests. A fire detector protects a household 24 hours a day, 365 days a year.

In selecting a fire extinguisher, the most practical for household uses is a multi-purpose dry chemical one labeled class A B C.

In choosing both fire detectors and extinguishers, select only those with the label of a major independent testing laboratory. Carefully

read the manufacturer's instructions. The effectiveness of these fire protective appliances are only as good as proper installation and maintenance.

"Advance escape planning, installation of early warning devices and portable fire extinguishers go hand-in-hand in protecting families from fire," says Miss Overstreet. "During Oct. 9-15, National Fire Prevention Week, every family should check its home for fire hazards. Now is a good time to prepare for fire," she concludes.



LUCKY WINNER—Wilson Choate of Iuka proudly shows the Lanshire Clock he won at Mc-Natt Ford Saturday, October 11 during the New Car Showing.

Mrs. Enlow Attends Workshop

The annual Mississippi Action for Progress State Workshop at Jackson, Mississippi held September 22, 23 and 24 and was attended by Mrs. Brenda Enlow representing Tishomingo County as a State Policy Council Member, receiving two awards for consistently outstanding workmanship. Representing the Iuka Head Start Center was Mrs. Earlene Grisham, Head Teacher; Mrs. Nelda Jones, Social Service Community Aide; and Mrs. Teresa Cooper, Parent and County Delegate Representative.

The workshop included training sessions on Child Abuse, The Metric System, Adult Basic Education, and Communications. Some of the notable speakers were: Dr. Howard Gunn, Board Member on the Tenn-Tom Waterway; John Jordan, Director of Children, Youth and Family Services, Region IV, of Atlanta, Ga.

The general session panel consisted of Mr. Rims Barber, Project Director, Children's Defense Fund; Moderator Hazel Coleman, M.A.P. Nutrition Director, Facilitator; Honorable Fred Banks, Representative Mississippi State Legislature D-31F; Honorable Douglas Anderson, District 31C, Representative Miss. State Legislature; Honorable Edward Buelow, Jr. (Dist. 31C) Representative, Miss. State Legislature; Honorable J. C. Maloney, Jr., (Dist. 22) Senator, Mississippi State Legislature; Mr. Nehemiah Flowers, Jr., Administrative Assistant to Honorable Thad Cochran, United States Representative.



1977 National Newspaper Week Oct. 9-15

WE'VE LOWERED THE COST OF CARPET CLEANING

NOW RENT RINSE-VAC

CARPET CLEANING SYSTEM AT NEW

LOWER RATES



Do-it-yourself and get professional results

WESTERN AUTO
106 S. Pearl
423-9251
Iuka, Miss.

MANAGER'S PRICE BUSTERS

BEACON BLANKETS



- 72" x 90" Fits Twin or Full Beds
- Acrylic/Polyester Blend with Nylon Binding
- Assorted Colors
- Limit 2

3⁸⁸



MATERIAL 3 CUTS FOR

2⁰⁰

- 1 1/2 Yard Cuts
- Solids and Prints
- Limit 3

MICKEY MOUSE KITCHEN ENSEMBLE



Everything 1st quality with colorful Mickey Mouse design

Velour Towel

- 16" x 26"

99¢

Velour Dish Cloth

- 12" x 12"

49¢

Velour Apron

1⁷⁹

Pot Holder

- 7" x 7"

49¢

Oven Mitt

- 10 in.

99¢

PRESTONE II ANTIFREEZE



- Winter-Summer Protection
- One Gallon Size
- Limit 2

\$2⁹⁵

3 DAY SALE

STP OIL TREATMENT

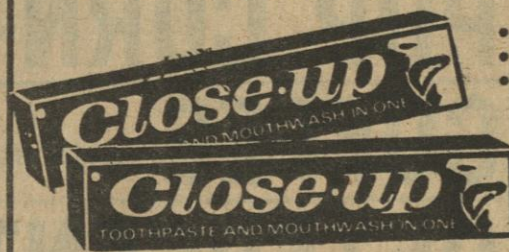


- For Better Performance
- 15 oz. Can
- Limit 2

94¢

Oct. 13 14 15

CLOSE-UP Toothpaste



- 4.8 oz. Tube
- Regular or Mint Flavor
- Limit 2

55¢

Jack Sprat KETCHUP



- 14 oz. Bottle
- Limit 4

4 FOR 1⁰⁰

Reg. 3/1.00

YARD BAGS

- Strong Six Bushel Capacity
- 6 Count Box
- Limit 2

2 FOR 1⁰⁰



PRESTONE BRAKE FLUID



- 12 oz. Can
- Limit 2

77¢

REG. 1.00

FRENCH'S MUSTARD

- 8 oz. Plastic Squeeze Bottle
- Limit 4



4 FOR 1⁰⁰

Reg. 3/1.00

LADIES' SCUFFS

- Choose Blue or Tan with Multi-Woven Vamp
- Sizes 6 to 10

1⁷⁷



FULTON STREET
IUKA, MISSISSIPPI



YOUR KEY TO VALUE

Burton McKee Enterprise

Hwy. 25 South-Phone 423-5200-Iuka, Miss.
(Next to Owl & Pennies Restaurant)

MARTIN SENOUR PAINTS

Floor Covering
WALL PAPER

CARPET
Paneling



THERMO-TILE
POLYSTYRENE FOAM CEILING TILES

Martin-Senour's
Superior Wood Stains

Martin-Senour's
Quick'n Easy™
Enamel

HOURS: MONDAY-SATURDAY 7:00 A.M.-6:00 P.M.



Piggy Wiggly...

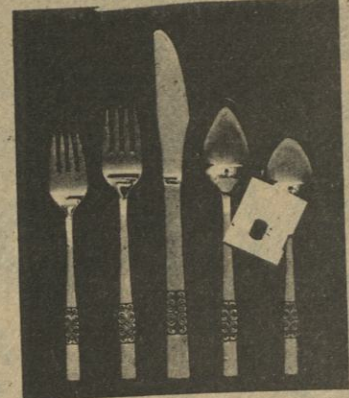
The Store Where Your Dollar Buys More!



MOTHER'S BEST
MEAL
5 lb. Bag **79c**

JENO FROZEN
PIZZA
Sausage, Hamburger, Pepperoni, Cheese or Canadian Bacon
13 1/2 oz. Size **68c**

BUY STAINLESS FLATWARE WITH
BONUS CERTIFICATES
5-PIECE PLACE SETTING FOR ONLY 19c
WITH 18 BONUS CERTIFICATES



YOURS FOR ONLY

CONSISTING OF
TEASPOON, DINNER
FORK, DINNER KNIFE,
SALAD FORK AND
SOUP SPOON

COLLECT YOUR BONUS CERTIFICATES
WHEN YOU SHOP



These accessory pieces are on sale during
the entire program! No purchase require-
ments.

SATIN SWIRL	ROYAL BAROQUE	SATIN SWIRL	ROYAL BAROQUE
6 ICED TEA SPOONS \$2.99		1 CAKE SERVER \$2.99	
1 COLD MEAT FORK \$2.99		1 PIERCED SERVING SPOON \$2.99	
2 TABLE SPOONS		1 SUGAR SPOON	
		1 BUTTER KNIFE	

FRESH PRODUCE

RED WASHED
POTATOES

MISSISSIPPI GROWN U. S. NO. 1
Sweet Potatoes

WESTERN BARTLETT
PEARS

BAKERY
DELIGHTS

LARGE SIZE
COOKIES Chocolate Chip, Sugar, Oatmeal or Peanut Butter Dozen

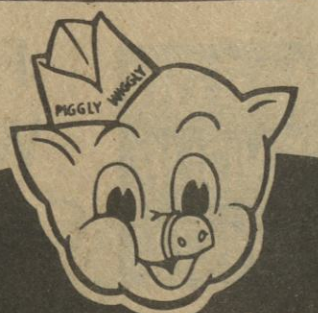
FRESH
Cinnamon Rolls 6 for \$1.00

9" DUTCH
Apple Pies Each \$1.00

STORE HOURS

7:30 a.m. -- 7:00 p.m. -- Mon. thru Thur.
7:30 a.m. -- 8:00 p.m. -- Friday and Sat.

CLOSED SUNDAY



PIGGY WIGGLY

THE AREA'S LARGEST FOOD STORE
LOCATED IN ELM SHOPPING CENTER
Highway 25 South, Iuka, Mississippi
Prices Good Thursday thru Wed., October 13-19
We reserve the right to limit quantities. None sold to date.

PORK CHOPS

Center Cuts

lb.

\$1.28

STEAKS TENDERIZED

lb. **\$1.89**

PORK ROAST LOIN END

lb. **99c**

WIENERS TALMADGE CHICKEN

12 oz. Pkg. **39c**

BOLOGNA TALMADGE CHICKEN

12 oz. Pkg. **39c**

T-BONE STEAKS U. S. CHOICE HEAVY BEEF

lb. **\$1.89**

SIRLOIN STEAKS U. S. CHOICE HEAVY BEEF

lb. **\$1.59**

PORK CHOPS 1st Cuts

lb. **98c**

USDA CHOICE
STEAKS

HEAVY BEEF BONELESS BOTTOM ROUND

\$1.18

PIGGY WIGGLY ROUND TOP

BREAD

4 loaves **\$1.00**

KRAFT MIRACLE 6 STICK

Margarine

2 1 lb. Pkgs. **98c**



PURE VEGETABLE

CHEF WAY OIL

limit 1 with \$10.00 additional purchase

48 oz. Bottle

69c

Macaroni RONCO ELBOW

2 8 oz. Pkgs. **49c**

PIGGY WIGGLY SANDWICH

BREAD

3 24 oz. Loaves **\$1.00**



LESEUR
GREEN PEAS
17 oz. Can **39c**



POP CORN JOLLY TIME WHITE or YELLOW

4 1 lb. Pkgs. **\$1.00**

COFFEE PIGGY WIGGLY

1 lb. Bag **\$2.99**

DETERGENT WISH LIQUID

32 oz. Bottle **\$1.09**

ICE CREAM LOFTIN'S OLD FASHION

1/2 Gal. Tub **\$1.39**

BUSH'S BEST SHREDDED

KRAUT

4 303 Size Cans **99c**

GRADE "A"

Medium

LARGE

Eggs Doz **39c** Doz **49c**

KRAFT AMERICAN SLICED

Individually Wrapped Slices

Cheese

6 oz. Pkg. **59c**

PIGGY WIGGLY ASSORTED JUMBO

TOWELS
3 for **\$1.00**
3 limit please

ARROW DRIED
PINTO BEANS

2 lb. Pkg. **39c**



FLOUR RUBY

5 lb. Bag **48c**

DOG FOOD TRAIL BLAZER

25 lb. Bag **\$2.89**



Black Pepper FRENCH'S GROUND

4 oz. Can **79c**

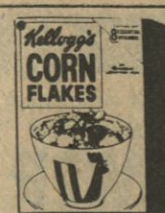
Dishwashing Liquid LUX

32 oz. King Size **99c**

KELLOGG'S

CORN FLAKES

limit 1 please



18 oz. Box

59c



Gatorade LEMON-LIME

2 32 oz. Bottles **88c**

JERGEN'S

LOTION

Regular or Extra Dry

10 oz. Bottle **\$1.09**

Deviled Ham UNDERWOOD ROAST BEEF SPREAD or

4 1/2 oz. Can **59c**

LAY'S RUFFLES OR REGULAR

Potato Chips

Twin Pkg. **59c**

PILLSBURY SWEETMILK or BUTTERMILK

BISCUITS

6 ct. Cans **49c**

BUSH'S PURPLE HULL or BLACK EYE

PEAS

4 300 Size Cans **99c**

Jitney Jungle
The People Pleasers

- Food Club 8 oz. pkg. P&P, Regular or Beef Bologna** **59¢** pkg.
- Food Club 3 oz. pkg. Sliced Ham, Beef, Turkey, Chicken, or Corned Beef** **89¢** 2 pkgs.
- Hot Franks** **\$1.09** lb.
- Bryan Sausage** **\$1.29** lb. HOT OR MILD
- Pork Liver** **49¢** lb.
- Pork Loin Ribs** **\$1.59** lb.
- Wisconsin Mild Cheddar 1 lb. pkg.** **\$1.59** lb.
- Turkey Roast** **\$3.59** ea.
- Turkey Roast** **\$3.19** ea.
- Smoked Sausage** **\$5.49** ea.
- Turkey Parts** **49¢** lb.
- Pork Neck Bones** **39¢** lb.
- Jumbo Bologna** **79¢** lb.
- Food Club Franks** **69¢** pkg.

You Must Be Satisfied...
Double Your Money Back
Guarantee
On USDA Choice Iowa Grain-Fed Heavy Beef

You Must Be Satisfied...
Double Your Money Back Guarantee
On USDA Choice Iowa Grain-Fed Heavy Beef



Whole Rib Eye **\$2.28** lb.

RIB EYE STEAKS: Winners on the charcoal grill or the oven broiler. Slow broiled to a rich brown, Rib Eyes tempt all lovers of good beef. Meaty, flavorful, tender, Rib Eye Steaks -- cut from the heart of the rib -- are steaks you'll be proud to serve.

Boneless Steak & Roast Sale **\$1.38** lb. USDA CHOICE IOWA GRAIN FED HEAVY BEEF

Round Steak
Rump Roast
Sirloin Tip Roast
Top or Bottom Round Roast **1b.**

Market Made 3 Lbs. or More **78¢** lb. FRESH AND LEAN 100% BEEF... QUALITY CONTROLLED

Ground Beef **39¢** lb.

McCarty-State Pride Fryer Leg Quarters **1b.**

Sliced Into Chops
Quarter **\$1.08** lb.
Pork Loin

Supplement To:
Daily Journal
Banner Independent
Tishomingo County News
Pontotoc Progress
New Albany Gazette
Itawamba County Times
Hamilton Journal
Red Bay News
Lamar County Leader
Okolona Messenger
Houston Times Post
Nettleton News
Baldwin News

FAMILY PACK FAMILY FAVORITE
USDA CHOICE IOWA GRAIN FED HEAVY BEEF

Rib Eye Steaks **\$2.38** lb.

12 oz. pkg. HARDWOOD SMOKED Food Club Bacon **89¢** pkg.

BRYAN FAMILY PACK COUNTRY SLICED Slab Sliced Bacon **99¢** lb.

BONELESS USDA CHOICE, IOWA GRAIN FED HEAVY BEEF Shoulder Roast **\$1.08** lb.

BONELESS USDA CHOICE, IOWA GRAIN FED HEAVY BEEF Chuck Roast **98¢** lb.

The Grain-Fed Heavy Beef you find in our market is 'Top o' the Grade' Beef... carefully selected from USDA Choice Beef, the only grade that is available in sufficient quantity to consistently provide the superb quality that we demand. Our beef is chosen on the spot in Iowa by our own team of hard-to-please selectors. And strict quality control continues in our own beef plant, with our inspectors checking every side of beef that arrives. That's why our beef is consistently the highest quality at the lowest possible prices... not just on weekends, but every day. It's the best meat value you'll find in any store.

is Area
D. 17
to raise purchase
Varranty to con-
ute \$250 k. The
and the nounced
uals de-
onymous
without
as con-
entered
nesses
rsonnel
loats in
islands
o parti-
erested
t in the
all 423-
ups are
Lions
e many
, along
others,
den
suppor-
a Ele-
l.
an
will be
omingo
to fill
I. W.
Tisho-
n. Mr.
out of
mingo,
vacant
, (until
ast day
he city
run in
d
nistra-
ombig-
opment
elected
ational
sted at
meet-
e most
re ever
'One of
cussed
ational
y as it
n," he
ue and
vas
water-
barge
ge and
here it
to
to help
better
i Sys-
terway
aid.
s sup-
would
ts per
oper-
aid by
ads,"

Fresh Produce
Nourishing and versatile.



Red Potatoes
10 lb. bag **88¢**
NORTHERN GROWN ALL PURPOSE

COLORADO FANCY MEDIUM 4 lbs. **Yellow Onions.....\$1**

CALIFORNIA TART SIZE 235'S 12 for **Fancy Lemons.....79¢**

NORTHERN GROWN FANCY WAXED **Rutabagas.....19¢**

The apple is America's favorite fruit, and red delicious is America's favorite apple.



EASTERN GROWN CRISP Red Delicious 3 lb. **Apples..bag 79¢**

FRESH TENDER CRISP 2 bunches **Green Parsley.....49¢**

ESCAROLE, ENDIVE, FANCY CRISP GREEN **Romaine.....39¢**

FANCY YOUNG TENDER 2 bunches **Green Onions.....49¢**

U.S. NO. 1 FANCY 3 lbs. for **Tasty Sweet Potatoes....89¢**

Delicatessen



Chicken Dinner Box

1-BREAST
1- THIGH-
1-DRUMSTICK-
3-POTATO LOGS-
2- ROLLS

BARBECUE (BEEF) **Sandwich EACH 49¢**

CHEESE **Burger.....50¢**

1 MEAT, 2 VEGETABLES, 1 BREAD
Hot Take Out Lunch \$1.25

Baked Goods



8 INCH 2 LAYERS
Orange Cake \$2.89

ASSORTED, **Cream Pies.....\$1.39**

BUTTER FLAKE **Rolls.....69¢**

5 LB. BAG
PLAIN OR SELF RAISING
Dixie Lily Flour
39¢
NO COUPON. NO PURCHASE REQUIRED
LIMIT ONE, PLEASE



LOW EVERYDAY PRICE

PRICES GOOD AT BOTH TUPELO JITNEY JUNGLE:
★ 401 E. JEFFERSON,
★ 220 S. INDUSTRIAL DR.
THRU OCT. 19

Jitney Jungle
The People Pleasers

46 OZ.
ROSY RED, ORANGE, GRAPE, VERY BERRY OR LOW SUGAR
Hawaiian Punch
49¢
LOW EVERYDAY PRICE
Compare at 59¢

15½ OZ. FOOD CLUB
Chili With Beans
3 \$1
LOW EVERYDAY PRICE
Compare at 49¢

10½ OZ. CHICKEN NOODLE or MUSHROOM
Food Club Soup 4 for 88¢
LOW EVERYDAY PRICE

32 OZ. JAR
Blue Plate Mayonnaise
89¢
LIMIT ONE, PLEASE
Compare at 1.09

15.5 OZ. ELNA SHORT CUT
Green Beans 4 for \$1
LOW EVERYDAY PRICE

14½ OZ. SHOWBOAT
Pork & Beans
5 \$1
LOW EVERYDAY PRICE
Compare at 2.29

1 LB. BOX
Food Club Saltines 49¢
LOW EVERYDAY PRICE

FOOD CLUB 16 OZ. CAN
Pear Halves
3 \$1
LOW EVERYDAY PRICE
Compare at 49¢

FOOD CLUB 8 OZ. CAN
Tomato Sauce
6 \$1
LOW EVERYDAY PRICE
Compare at 4.79

BIG ROLL BROWNEY
Paper Towels
6" OFF ON LABEL
39¢
NO COUPON, NO PURCHASE REQUIRED LIMIT TWO, PLEASE



look for the **YELLOW TAG** for greater savings!

A YELLOW TAG means you can buy by the WAREHOUSE PAK and save even more! Up and down every aisle you'll find most of your favorite foods marked with YELLOW TAGS. You can serve your family the foods they like most and save extra money at the same time.

LIBBY 16 OZ.
Cut Green Beans
YOU SAVE **\$1.09** WAREHOUSE PACK OF 12 **\$3.05**

GREEN GIANT 17 OZ.
Sweet Peas
YOU SAVE **\$1.31** WAREHOUSE PACK OF 12 **\$3.37**

ITEM	WAREHOUSE PACK OF 12	YOU SAVE
SCHOOL DAY 16 OZ. No. 4 SLEEVE Early Peas	\$2.96	76¢
SCHOOL DAY 16 OZ. Cut Green Beans	\$2.72	76¢
GREEN GIANT 12 OZ. WHOLE KERNEL Niblets Corn	\$3.16	84¢
TRELLIS 17 OZ. EARLY STANDARD June Peas	\$2.26	74¢
DEL MONTE 16 OZ. EARLY GARDEN Sweet Peas	\$3.67	77¢
DEL MONTE 32 OZ. Tomato Juice	\$5.77	\$2.03

2 LB.
Gaylord Grape Jelly
59¢
LOW EVERYDAY PRICE

STARKIST 6½ OZ. CAN
Chunk Tuna
59¢
LOW EVERYDAY PRICE

17 OZ. FOOD CLUB
Fruit Cocktail
3 \$1
LOW EVERYDAY PRICE
Compare at 45¢

16 OZ. CAN GAYLORD
Sweet Peas 4 for \$1
LOW EVERYDAY PRICE

10 LB. BAG LONG GRAIN
Food Club Rice
\$1.99
LOW EVERYDAY PRICE
Compare at 2.49

FOOD CLUB 7½ OZ. DINNER
Macaroni & Cheese
5 \$1
LOW EVERYDAY PRICE
Compare at 2.49

16 OZ. FOOD CLUB
Mixed Vegetables 3 for \$1
LOW EVERYDAY PRICE

PKG. OF 4 ROLLS

Gaylord Bathroom Tissue

49¢

BONUS SPECIAL

NO COUPON, LIMIT ONE, PLEASE
NO PURCHASE REQUIRED

FOOD CLUB GRADE A

Large Eggs

49¢ doz.

BONUS SPECIAL

NO COUPON, NO PURCHASE REQUIRED LIMIT TWO DOZEN, PLEASE

FREEZER SALE

USDA CHOICE WHOLE

Beef Forequarters

150 TO 170 LB. AVG. **68¢ lb.**

USDA CHOICE WHOLE

Beef Hindquarters

140 TO 160 LB. AVG. **98¢ lb.**

CUT & WRAPPED TO YOUR LIKING SUBJECT TO NORMAL CUTTING SHRINK. PLEASE ALLOW THREE DAYS FOR ORDERING & PROCESSING.

...Plus Bonus Specials



REG PRICE 2/.89
BUY 12 FOR 4.04
AND SAVE 1.30
601 327 5931 MAM
HUNT FRUIT COCKTAIL

HUNT 15 OZ. WAREHOUSE PACK OF 12

Pear Halves **\$4.01** YOU SAVE **\$1.15**

HUNT 15 OZ. WAREHOUSE PACK OF 12

Fruit Cocktail **\$4.04** YOU SAVE **\$1.30**

Jitney Jungle

The People Pleasers

the Warehouse Pak

ITEM FOOD CLUB 16 OZ.

Whole Potatoes **\$2.70** **\$1.02**

FOOD CLUB 15 1/2 OZ.

Red Kidney Beans **\$2.75** **\$1.25**

FOOD CLUB 17 OZ. WHOLE KERNEL

Yellow Corn **\$2.70** **\$1.30**

FOOD CLUB 16 OZ.

Mixed Vegetables **\$3.11** **89¢**

FOOD CLUB 16 OZ.

Tomatoes **\$3.57** **43¢**

50 LB. BAG

HUNTERS CHOICE

Dog Food

\$4.99

LOW EVERYDAY PRICE

Compare at \$6.29

BONUS SPECIAL

BATH SIZE BAR GOLD, PINK, AQUA OR WHITE

Dial Soap

4 66¢

for

WITH THIS COUPON GOOD AT JITNEY JUNGLE COUPON GOOD THRU OCT. 19

Compare at \$2.66

WAREHOUSE PAK PRODUCE

100 LB. BAG U.S. NO. 1

Red Potatoes **\$8.95**

50 LB. BAG U.S. NO. 1

Yellow Onions **\$6.50**

50 LB. CRATE U.S. NO. 1

Green Cabbage **\$6.95**

CALIFORNIA BOX 235'S

Fancy Lemons **\$11.95**

CALIFORNIA BOX 36'S

Fancy Celery **\$9.95**

50 LB. SACK

Rutabagas **\$6.95**

BUSHEL

Sweet Potatoes **\$9.95**

50 LB. CRATE

Red Cabbage **\$8.95**

32 OZ.

Food Club Catsup **69¢**

LOW EVERYDAY PRICE

18 1/2 OZ. DUNCAN HINES ASSORTED FLAVORS

Layer Cake Mix **59¢**

LOW EVERYDAY PRICE

5 LB.

Jim Dandy Corn Meal Mix **59¢**

LOW EVERYDAY PRICE

12 OZ. FOOD CLUB

Corned Beef **89¢**

LOW EVERYDAY PRICE

Compare at \$1.19

12 OZ. CAN

Spam **99¢**

LOW EVERYDAY PRICE

Compare at \$1.25

5 LB. BAG PLAIN OR SELF-RISING

Gold Medal Flour **59¢**

LOW EVERYDAY PRICE

Compare at \$1.79

5 LB. BAG

Food Club Sugar **59¢**

BONUS SPECIAL

LIMIT ONE, PLEASE

Compare at \$1.79

GALLON CONTAINER

Topco Bleach **53¢**

LOW EVERYDAY PRICE

10 LB. 11 OZ. 40" OFF ON LABEL

Tide Detergent **\$3.99**

LOW EVERYDAY PRICE

BUY ONE 48 OZ. FOR \$1.69 AND GET ONE 12 OZ. BOTTLE

Joy Liquid **Free**

BONUS SPECIAL

KRAFT 64 OZ. BOTTLE REFRIGERATED

Orange Juice **99¢**

LOW EVERYDAY PRICE

Compare at \$1.09

12 OZ. INDIVIDUALLY WRAPPED SLICE

Food Club Cheese **89¢**

LOW EVERYDAY PRICE

Compare at \$1.19

GAYLORD 5 LB. BAG FROZEN

Crinkle-Cut Potatoes **99¢**

LOW EVERYDAY PRICE

Compare at \$1.49

2 LB. OLE SOUTH FROZEN

APPLE, BLACKBERRY, PEACH, BLUEBERRY, CHERRY OR STRAWBERRY

Cobbler **99¢**

LOW EVERYDAY PRICE

Compare at \$1.59

13.5 OZ. HAMBURGER, SAUSAGE OR PEPPERONI

Fox Deluxe Pizza **59¢**

LOW EVERYDAY PRICE

Compare at \$1.89

Funk & Wagnalls Wildlife Encyclopedia

It's here! A world of facts on the world of living creatures. 22 volumes. More than 2,500 color illustrations.

9¢ \$1.99

with \$3 food purchase

For Vol. 1, each for Vols. 2-22

Top Fresh Bread

TOP FRESH 16 OZ. WHITE

Old Fashion Bread **3 \$1**

PKG. OF 12 BROWN AND SERVE CLOVERLEAF OR PARTY FLAKE

Top Fresh Rolls **3 \$1**

Housewares

REGULAR 59

Roaster, Bake Pan **\$1**

2 for

is Area

D. 17

to raise purchase

Varranty to con- ate \$250 k. The and the nounced uals de-mynous without as con-

entered incesed, rsonnel loats in isbands o parti- rested t in the all 423-

ups are e Lions e many , along others, den support- a Ele- l.

an

will be omingo to fill I. W. Tisho- m. Mr. out of mingo, vacant

, (until ast day he city run in

d nistra- ombig- onment elected ational

ted at meet-

e most re ever "One of cussed ational y as it n," he

ue and vas water- i barge ge and here it to to help better i Sys- terway aid. s sup- would ts per oper- aid by ads,"