

# Tishomingo County News

## The Vidette & Belmont News

OFFICIAL LEGAL NEWSPAPERS OF TISHOMINGO COUNTY

\$5.00 Per Year Locally In Advance

\$7.00 Per Year Outside Trade area

The One Newspaper In The World Most Interested In This Area

NINETY-FOURTH YEAR

SECOND CLASS POSTAGE PAID AT IUKA, MISSISSIPPI 38852 IUKA, TISHOMINGO COUNTY, MISSISSIPPI

THURDAY, FEBRUARY 23, 1978 NO. 35

### Services Held For Former Burnsville Alderwoman



Mamie Rhine, 75, died on February 17, 1978, at her home in Iuka following an illness.

A native of Tishomingo County, Mrs. Rhine was the widow of the late Mr. and Mrs. M. Foote. She lived most of her life in Burnsville where she was active both in church and business affairs. In 1957 she was elected to the Burnsville Board of Aldermen and served 12 years with the all-time record. At one time Mrs. Rhine was employed as a Social Worker in Tishomingo County and also operated a restaurant in the town of Burnsville.

Funeral services were held at 2 p.m. Saturday at the Burnsville Baptist Church where she held membership. Burial was in the Burnsville Cemetery with the Rev. Dave Smith officiating.

Mrs. Rhine was preceded in death by her husbands, William Lester Whitaker, in 1931; and Harry Rhine, Jr., in 1964.

Survivors include a daughter, Mrs. Imogene Davis, of Iuka; a son, Howard Whitaker, of Iuka; a sister, Mrs. Lucille Locke, of Paducah, Kentucky; and five grandchildren, Sharon Davis, Teresa Johnston, Marty Davis, Jeff Whitaker, and Willie Whitaker.

Cutshall Funeral Home was in charge of arrangements.

### The Power Of Prayer

Why should we pray? How should we pray? For what should we pray? These are questions man has asked since the first spoke to him - questions that must be answered! Far too long, prayer has been overlooked as a subject for a definite film study. . . . Now ECRF Films presents the newest release "The Power of Prayer".

"The Power of Prayer" features some of the most well-respected, Christian spokesmen in America; such as, Dr. W. A. Criswell, Dr. John F. Walvoord, Josh and Dottie McDowell, Chaplain Ray and Dr. and Mrs. Howard Hendricks. These men and women will be sharing what the Bible says as to the how and why of prayer. They'll also share their own personal experiences of the times of victory, frustration and confusion, so be sure to join us at Fifth St. Baptist Church on February 26, 1978 at 7:00 p.m.



### Notice To Farmers

Farmers are reminded of the American Agriculture Movement meeting at the Tishomingo County Vo-Tech Center Thursday night at 7 p.m. At this meeting final arrangements will be made for the tractorcade which will start at the fairgrounds in Iuka at 10 a.m. Saturday, February 25, and travel to Iuka (Jay Bird Park) to hear talk by visiting members of the movement from other parts of the country.

We encourage all farmers and supporters of Tishomingo and surrounding counties of Mississippi, Alabama and Tennessee to participate and drive a farm vehicle in the tractorcade.

### Farm & Home Program

An educational program for Tishomingo County residents will be held Tuesday, Feb. 28, at the County Fairgrounds. Specialists will be presenting useful information in the areas of Energy Conservation, Appliance Efficiency, Economic Outlook and Home Gardening. There will also be a discussion on future recreational activities planned for Tishomingo County.

The Annual Farm and Home Day Program is for the entire family and is open to the public. Each family is asked to bring a covered dish for the Pot Luck Lunch to be served at noon.

Plan now to attend this day of education and fellowship with your neighbors.

### Need Help With Your Sewing?

Do you need help with your sewing? Or would you like to learn to sew? I would like some response from you to tell me of your clothing interest.

Sewing classes that are being planned are:

1. Beginning Sewing, 4 sessions;
2. Basic Sewing, 4 sessions;
3. Advanced Sewing, 4 sessions;
4. Sewing On Men's Wear, 4 sessions;
5. Fitting and Alterations, 2 sessions;
6. Sewing on Nylon, 3 sessions;
7. Making a Blazer, 3 sessions;
8. Making a T-shirt and Shirt Jacket, 3 sessions.

NOTE: You must have Basic Sewing before taking Advanced Sewing, Sewing on Men's Wear, Fitting and Alterations, Sewing on Nylon, Making a Blazer, and Making a T-shirt and Shirt Jacket.

Classes are being planned for morning, afternoon, and night. The night classes are reserved for homemakers employed outside the home. Classes will be conducted in Iuka, Belmont, Golden, Tishomingo, and Burnsville if twelve people will attend. There will be \$1.00 registration fee for each class.

To pre-register write to Nellie R. Horton, Extension Home Economist, P. O. Box H, Iuka, Miss. 38852, or call at 423-3616.

### To Meet

The Tishomingo County Shrine Club will meet at the Tishomingo State Park Thursday, February 23, at 7 p.m. Nobles and their ladies are urged to be present.

Officers for 1978 will be installed.



### Miss Long Named Alternate In Pageant

Ladye Love Long was selected First Alternate in the Dutchess Talent Division, Imperial Miss America Pageant at the Astro World Hotel, Houston, Texas, August 8 - 12, 1977. More than 400 girls, from Maine to Florida, competed in the week long event.

Ladye, a vocalist, represented Tennessee in the Pageant; having won the Tennessee State Division Title in Covington, Tennessee, July 23, 1977. She had previously won the First Place Talent Trophy in the Miss Liberty of Mid-America Pageant, in Memphis, in July, 1977.

She also won the second place trophy in the variety division of Talent Night Spectacular, in Memphis, May 24, 1977. This event included talent from Tennessee, Arkansas and Mississippi and was by invitation from the Mid-South Fair Association. She won First Place in the 1976 Mid-South Fair Preliminaries in Memphis, and she has many trophies won in various other Mississippi and Tennessee contests. She has sung at many events by request and recently appeared on the Al Lester Show, W.O.W.L., Florence, Alabama.

Last summer, Ladye was employed by Rainbow Records, Inc., to sing the part of Maria in a Walt Disney type production, "Mr. Snow", recorded at Ardent Studios and Audio Dimensions Studios, in Memphis. Music was arranged by Ernie Bernhardt, well known Memphis orchestra leader, and the Tanner Singers furnished backup vocals.

Ladye is shown with some of her trophies, including her most recent win at State Technical Institute, Memphis, Feb. 12, 1978. She won her division and also the grand slam talent trophy of the Tennessee Talented Teens, Valentine Pageant and Talent Show over all divisions and all ages through 20 years. She has been invited to perform as a guest singer at the Tennessee State Imperial Miss Pageant to be held in Nashville this summer. She will also perform at the Imperial Miss Preliminary Pageant at Northeast Mississippi Junior College, Booneville, Mississippi, this Saturday, February 25, 1978.

Ladye is 13 years of age; the daughter of Mr. and Mrs. J. R. Long, Iuka, Mississippi. Her grandparents are Mr. and Mrs. C. W. Long, of Golden; and the late Mr. and Mrs. C. W. Gilmer, of Red Bay. A special recognition and thanks go to Wendell Vaughn, a fine young pianist of Golden, who accompanied Ladye in Houston, Texas.

### NOTICE

The City of Iuka will hold a special election on April 11, 1978, to fill the unexpired term of Iuka Board of Aldermen, E. N. Allen. Mr. Allen passed away on February 10.

According to City Attorney, Barry Finch, the election has been set for the second Tuesday in April with a runoff (if necessary) one week later on April 18.

Qualification procedures will be the same as a regular city election. Complete details of the election and qualifications will be printed in next week's issue.

### Tree Farms Needed

Mississippi timberland owners who would like to become certified Tree Farmers are urged to act now, says Jim Burnham, Laurel, chairman of Mississippi Forestry Association's Tree Farm Committee.

Currently, Mississippi has slightly more than 4700 Tree Farms, more than any other state in the nation. These farms total approximately 3,875,000 forested acres. This indicates that a large number of small landowners are included in the program, says Burnham.

Owners must apply for Tree Farm status, and allow a qualified forester to inspect their lands. Minimum area is 10 acres. The owner must have demonstrated the desire and ability to manage his woodlands for the growth and harvesting of repeated crops of forest products.

A national program of American Forest Institute, the Tree Farm program in Mississippi is administered by Mississippi Forestry Association, 620 North State Street, Jackson. Tree Farm applications may be mailed to MFA or to a local county Tree Farm chairman.

Mr. Paul Weekley is Tree Farm chairman for Tishomingo County.

## TCEPA URGES USAGE CUTBACK

Customers of Tishomingo County Electric Power Association are urged to drastically cut back their electrical use in an announcement today by David Graham, Manager. Graham said that the United Mine Workers' strike is shrinking TVA's coal stockpiles and is threatening the region's power supply in coming weeks.

"Stockpiles of coal at all but two of TVA's plants are critically low, totaling 1.86 million tons," Graham said. "TVA expects those stockpiles to reach the emergency level of one million tons about March 1. TVA's plan calls for mandatory allocations of power when that happens, and we are working with them now to finalize implementation of that plan for Tishomingo County Electric Power Association customers if necessary."

Graham also said TVA was concerned about the delay in restarting coal deliveries once an agreement is reached in the strike. "Ratification of the contract and starting production take time," he said. "We are asking for full cooperation from all our customers -- residential, commercial, and industrial," said Manager Graham. "The reduced electrical use must continue until further notice."

Graham explained that the Tishomingo County Electric Power Association has been promoting energy conservation continually, especially during the periods of capacity shortages and tight power supplies in the last two winters when it was necessary to cut down peak loads. "But this is not a capacity shortage we are facing -- it is a long-run fuel shortage that will require more stringent and lasting actions than just turning off a light or turning down a thermostat for a day or two," Graham said. "We should use only essential appliances and other electrical equipment and only when absolutely necessary."

TVA and Tishomingo County Electric Power Association have both implemented a severe internal curtailment of their electrical use at all their facilities and have continued it throughout the winter's power supply emergencies. These efforts will be intensified as much as possible. Tishomingo County Electric Power Association residential customers are advised to concentrate on heating, hot water, major appliances, and outdoor lighting in curtailing their use.

For example, Graham said that heating thermostats should be kept no higher than 65 degrees and lower if possible. "A setting of 65 degrees will save 18 percent more electricity than 68 degrees will, and thermostats set at 60 degrees will save 44 percent more electricity than a 68-degree setting," he said.

"These temperatures may require a change of dress and life style," Graham said; "but the inconvenience and discomfort is necessary to protect essential electric service."

Tishomingo County Electric Power Association will announce other guidelines for commercial and industrial customers as well as additional ideas for residential users.

Manager Graham said that Tishomingo County Electric Power Association and TVA will keep electric customers informed of the situation through further reports.

## TVA Completes Environmental Review For Proposed Plant

TVA has completed its environmental review of the proposed Yellow Creek Nuclear Plant in Northeast Mississippi, and submitted a final statement on the project's environmental impact to the Environmental Protection Agency.

TVA said the plant as now designed can be constructed and operated without significant risk to the health and safety of the public. The agency said its projections indicate generating capacity from the Yellow Creek plant will be needed, in addition to other plants now under construction, to keep the region's power supply in step with power demands.

The final statement includes comments by agencies and members of the public following review of the draft environmental statement issued in May 1977. The Nuclear Regulatory Commission issued its final environmental statement on the Yellow Creek project in November 1977.

The proposed Yellow Creek project would consist of two pressurized water reactors, each having a nameplate generating capacity of 1,375,000 kilowatts of electricity. The two units are scheduled to begin commercial operation in 1985 and 1986, respectively. A limited work authorization permitting the commencement of site preparation and excavation activities was issued by the Nuclear Regulatory Commission on February 9. The site is on the east shore of the Yellow Creek embayment of Pickwick Lake, about 8 miles north of Iuka, Miss. The present cost estimate for the project is \$2.15 billion.

Fourteen Federal agencies reviewed the earlier draft environmental statement as part of preparing the final statement. They were the Advisory Council on Historical Preservation; Appalachian Regional Commission; Energy Research and Development Administration; Council on Environmental Quality; Environmental Protection Agency; Federal Power Commission; Department of Agriculture; Federal Energy Administration; Department of Commerce; Department of the Army; Department of Health, Education, and Welfare; Department of Housing and Urban Development; Department of the Interior; and Department of Transportation.

Five state and local agencies reviewed the draft environmental statement, including the Office of the Governor of Mississippi; Federal State Programs, State of Mississippi; Office of Federal and Urban Affairs.

### TO MEET

Midway RCDC meeting will be held Monday night, February 27, at 6:30 at the Midway School Building.

Mrs. Strickland will present a program on gardening, and Jerry Stevens will have the devotionals.

Everyone is invited to attend.

Tennessee; Alabama Development Office; and Northeast Mississippi Planning and Development District. The final environmental statement may be obtained by writing the TVA Information Office, 400 Commerce Avenue, Knoxville, Tennessee 37902. The statement will be available for inspection at the Northeast Regional Library.

### SINGING

There will be a gospel singing at Mt. Moriah Baptist Church Saturday night, Feb. 25, beginning at 7:00. The Revelations, from Iuka, will be the guest singers, along with class singing.

Everyone is invited to attend.



ANOTHER SNOWY DAY — These youngsters were caught by our camera early Tuesday morning taking advantage of the holiday and trying hard to create a snowman in the blinding flurry. Shown are LeAnne Belue, Jeff Houston, James Barrett, Stacy Houston, Luther Davis and Mike Barrett. The county was covered with a white

blanket as some three inches fell on Monday night, February 20, and throughout the day Tuesday. Strangely enough, in our February 20, 1975 issue, we pictured a little girl in a beautiful bed of blooming buttercups. How much more will we endure before Spring arrives!



**TISHOMINGO COUNTY NEWS**

VIDETTE and BELMONT NEWS

PHONE 423-2211

Published Every Thursday at 120 West Front Street,  
Iuka, Mississippi

JOHN H. BIGGS

PUBLISHER &amp; EDITOR



Miss Nellie Horton's

HOME  
ECONOMIST'S  
NOTES**TISH. COUNTY HOMEMAKERS  
CAN SAVE ENERGY  
IN THE KITCHEN**

"If we don't stop using energy as if it were going out of style, it may." We hear this and other similar warnings often. How much can we do and are we willing to do to conserve energy in our homes?

Preliminary findings from research sponsored by the National Bureau of Standards and the Federal Energy Administration illustrate that the homemaker or cook can make a big difference in the amount of energy needed to prepare meals. In this study, cooks prepare 21 meals from a standard menu for seven days. When the cooks were compared on a meal-by-meal basis, the energy consumption differences were more than 50 percent for the same range and the same meal. Energy consumption can be reduced by learning to use the range and other kitchen appliances more efficiently.

Check your energy knowledge by answering true or false to this energy quiz.

1. — Always preheat your oven for at least 15 minutes.
2. — You should never turn your dishwasher off before all cycles are completed.
3. — Keep your freezer filled to capacity for most efficient operation.
4. — Although using hot water in your food waste disposer takes more energy, it eases strain on the motor and helps the disposer grind waste more efficiently.
5. — The refrigerator is the most expensive home appliance to use — after the heating and cooling system.

6. — A frost free refrigerator uses more electricity than a manual defrost model.

Answers to energy quiz.

1. FALSE. Gas and electric ranges are designed to preheat in 10 minutes. Many foods may be placed in the oven without preheating. These include roasts and casseroles.
2. FALSE. Turning the dishwasher to "off" just before the drying cycle saves at least half the power consumed in a normal cycle. In hot weather, this reduction of heat will ease the air conditioner load.
3. TRUE. Frozen food can retain cold much better than air, so the freezer uses less energy than if it is nearly empty. But, allow for air circulation in the freezer.
4. FALSE. Always use cold water in the food waste disposer. Cold water costs less, and disposer mechanisms work most effectively with cold water.
5. FALSE. The water heater is second in consumption (about 15 percent) of the total family utility bill; whether it is oil, gas or electric.
6. TRUE. Depending on the size, use, number of openings or whether it has an "energy saver" device, the frost free will use 25 to 60 percent more energy than a manual defrost model.

**CHILI**

- 1 lb. ground meat
- 1 medium onion
- 1 garlic button
- 2 cups water
- 1 1/2 teaspoon chili powder
- 1 1/2 teaspoon salt
- 1 can pinto beans (ranch style)

Brown meat in 1 tablespoon fat. Chop onion and garlic and add to brown meat. Add the

chili powder, salt, beans and water. Cook for 30 minutes and serve.

**COUNTY  
AGENT'S  
NOTES**By  
Percie B. Stricklen  
MSU  
Extension  
Service**COTTON WEED CONTROL**

The following article was recently released by Dr. George Mullendore, Cotton Specialist:

Today after 20 years of use, some have not yet recognized that herbicides can and do hurt cotton.

Sure, herbicides followed insecticides as chemicals to help in cotton production. In the good old days, a little more insecticide did not hurt anything but your pocketbook.

That is no longer true for most insecticides, and has never been true for herbicides. Essentially all herbicides in use in cotton weed control today can and do injure cotton.

Preplant incorporated herbicides available today vary in their toxicity to cotton. Most were applied to the 1977 crop, or will be applied in a manner now that lessens the chance for cotton injury.

Some states do not recommend application of preplant incorporated materials prior to bed formation. Mississippi does not now, and never has recommended application and incorporation prior to bedding on light, sand, low organic matter soils.

Preemergence herbicides -- Cotoran or Lanex, Karmex or Dynex, Bladex, Zorfall, Deslun, Etc. - all can injure cotton.

Some injury from selected materials in this group is more apparent than from others. We get injury many times from the materials and never recognize it.

Postemergence herbicides, too, have caused injury that many apparently have not recognized. Injury may not be visible to the eye, even though it has occurred.

We need to first establish in our minds that herbicides can hurt as well as help; then use them as best we can to

assist in weed control.

There are some things we can do to lessen the chances for injury. One would be to use the right rate. New evidence is being uncovered daily to show the rate needed for a particular soil type, etc.

Organic matter and clay content are the two most important factors. We have at least one material that says do not use on soils with an organic matter content of less than 1 percent. We will have others.

Do you know what the organic matter content is on your soils? Calibration is a must. We can not guess. Tips wear, and unless equipment is recalibrated often you will be applying more and more each acre.

Proper nozzles, proper adjusted, will affect results, good or bad.

Good agitation in tanks is a must. Some herbicides are powders and are applied as suspensions. They must be suspended uniformly.

If we in the rainbelt could predict the weather, we could do a better job. Climatic conditions affect herbicide results tremendously. We cannot change the weather, but maybe we can learn more about it, get more and better updated weather information and use it better.



The world is so full of interesting things outside of ones vocation that if you have enthusiasm for your life's work you can also have enthusiasm for many things.

I learned long ago that the great secret of human happiness is this: Never suffer your

energies to stagnate. I thoroughly disagree with the old adage of, "Too many irons in the fire."

I like to think of every one as being mentally alert, and having "many irons in the fire."

We can't all be famous statesmen or scientists like Sir Winston Churchill and Albert Einstein were, but there is a lesson to be learned from these mental giants. They remained interesting because they were interested in everything going on around them, even in advanced years.

Much of our learning can be beneficial as long as one lives, yet it is important to be prepared for unexpected developments.

So, we must learn how to live wisely, building our life daily on a solid foundation. This will include self-discipline, congenial friendships and the act of getting along with people.

Learn well some vocation as a means of meeting expenses and enlarging life's connections. One should be an authority in some field. Develop skills that make you needed and wanted.

Also, when you retire, or should you become handicapped so you can't follow your customary line of work you will need something to fall back upon for economic security and your own pleasure.

Therefore, develop other interests, skills or hobbies which may be called into use if necessary. Otherwise, your life in later years may seem more of a punishment than a reward.

Now for a bit of relaxation and fun -

The answers to each must end with the word ICE. The definitions are:

1. Keeper of law and order — ?
2. First thought of the shop — ?
3. An object consisting of two jaws tightened by a screw — ?
4. Cause of ladies fainting — ?
5. Meaning double — ?
6. A possession of gamblers — ?
7. Something we all like to be — ?
8. Remedy for colds — ?
9. Food for China — ?
10. Dishonorable fear — ?

ANSWERS  
10. Cowardice  
7. Nice  
8. Polite  
9. Dice  
1. Police  
2. Price  
3. Vice  
4. Ice  
5. Twice  
6. Dice  
7. Nice  
8. Polite  
9. Dice  
1. Police  
2. Price  
3. Vice

**Mississippi  
AG-EXPO**

Congressman Jamie Whitten, chairman of the House subcommittee on agriculture appropriations, will be the keynote speaker for a farmer's banquet which will be held in conjunction with Mississippi's "Ag-Expo/78" February 24-25 at the Tupelo Fairgrounds.

The banquet will take place at the Natchez Trace Hall of Fame beginning at 7 p.m. on Friday evening, February 24. Mississippi Agriculture Commissioner Jim Buck Ross will introduce Congressman Whitten.

Farmers and agri-business related merchandisers are expected in Tupelo for the EXPO and program officials report numerous inquiries for exhibit and display space. More than 75 companies have already reserved space for the 2-day event which is being coordinated by the Big 10 Development Foundation.

Foundation chairman Ernie Joyner of Tupelo said, "Exhibit halls for the EXPO will open at 9 a.m. on February 24 and remain open until 5 p.m., hours for viewing the exhibits on the 25th will be from 10 a.m. until 1 p.m."

One of the highlights of EXPO is expected to be an open sale of used farm machinery on the 25th beginning at 10 a.m. The sale is a total consignment sale limited to farm equipment and related items with consignment taking place February 23-24 between 10 a.m. and 5 p.m.

In addition to the auction and banquet, many demonstrations, seminars and displays will be on view throughout the 2 day run of EXPO. Officials are working on a balanced program which will provide all members of the family with things to do during the weekend.

Joyner added, "We are really delighted to have a person the caliber of Jamie Whitten here for our program and his leadership from the national level on matters pertaining to agriculture makes it quite appropriate."

The Mississippi First District Congressman was the recipient Wednesday of the National Rural Electric Cooperative Association's Distinguished Service Award which is presented periodically to individuals for service to the country.

Franklin D. Roosevelt, Sam Rayburn, Harry Truman and Hubert Humphrey are included as past recipients of the award. Additional information about EXPO and the farmer's banquet may be obtained by contacting the Community Development Foundation in Tupelo.

**PERSONALS**

Recent visitors in the home of Mr. and Mrs. J. B. (Tobuck) King were Frank King and Bruce Anderson, of Santa Anna, Calif.; and Mr. and Mrs. Lucian King, Mandy and Stacy, of Houston, Miss.

It has been estimated that 103 million Americans swim.

**TAX REFUND****BORROW ON YOURS TODAY****45 DAY AND****INSTALLMENT LOANS****HOURS****7:30 - 6:30 MON. - FRI.****SAT. 7:30 - 1:00****DON PACE****1st CITIZEN LOANS****HWY 72 EAST IN IUKA****New disability income  
plan has money  
back feature!**

This different kind of health insurance helps protect you against the possible loss of your paycheck when a covered sickness or accident keeps you from working. Then, if you keep your coverage in force to age 65, you're assured of a full refund of premiums less any benefit payments you've received.

Get the full facts on this important new protection by calling me today.

GARY L. CHITTON  
Nelson C. Vestal Agency  
Northeast District Office  
L. M. Peek, Dist. Mgr.  
P. O. Box 652  
Booneville, Miss.  
Phone 728-5718

**Mutual of Omaha**  
People you can count on...  
Life Insurance Affiliate:  
United of Omaha

**LEGAL NOTICES****TRUSTEE'S NOTICE OF SALE**

WHEREAS, on the 28th day of January, 1978, the undersigned, J. Barry Finch, Trustee, executed a Deed of Trust to J. Barry Finch, Trustee, for the benefit of J. Barry Finch, Trustee, which said Deed of Trust is of record in the Official Chancery Clerk of Tishomingo County, Mississippi, in Book 76, at page 594, of the records of said county; and

WHEREAS, default having been made in the payment of the Note and Deed of Trust having requested the undersigned Trustee to do so, I will on the 3rd day of March, 1978, between the hours of 11 o'clock A.M. and 4 o'clock P.M., at the main front door of the County Court House of Tishomingo County, Mississippi, for cash to the highest bidder, the following land and property lying and being in Tishomingo County, Mississippi, and more particularly described as follows, to-wit:-

Beginning at the northeast corner of the NE 1/4 of Section 32, Township 2 South, Range 10 East, Tishomingo County, Mississippi; thence run S. 88 degrees 25' 54" W. 100 feet to a point on the south right-of-way line of the 14 degrees 16' E. 210 feet; thence N. 89 degrees 16' 54" W. 100 feet to a ditch; thence N. 14 degrees 16' W. 210 feet south right-of-way line of a State Aid Road; thence degrees 57' E. 210 feet to the point of beginning.

The within described sale will be made subject to a Deed of Trust executed by Hurlshel Leon Davis and Patricia S. Davis, to Farmers Home Administration, June 22, 1973, and recorded in Book 70, page 38, of the records of said State and County.

I will convey only such title as is vested in me as Trustee. WITNESS my signature, this 7th day of February, 1978.  
J. BARRY FINCH, TRUSTEE

F-9-16-23-M-2-c.

**NOTICE OF EXECUTOR'S SALE OF LAND  
IN RE: THE LAST WILL AND TESTAMENT  
OF DEWEY O. SKINNER, DECEASED**

By virtue of the provisions of a Decree of the Court of Tishomingo County, Mississippi, rendered on the 26th day of January, 1978, the undersigned, J. Barry Finch, Trustee, executor of the Last Will and Testament of Dewey O. Skinner, deceased, will on Friday the 24th day of February, 1978, at 10 o'clock A.M., at the main front door of the County Court House at Iuka, Mississippi, and within legal hours, being between the hours of 11 A.M. and 4 o'clock P.M., expose for sale and sell to the best bidder for cash the following described land situated in Tishomingo County, Mississippi, to-wit:-

The N 1/2 of the NW 1/4 of Section 22, Township 2 South, Range 10 East.

ALSO: One (1) acre, more or less, in the southwest corner of the N 1/2 of the NE 1/4 of Section 22, Township 2 South, Range 10 East, and more particularly described as follows: Commencing at the southwest corner of the N 1/2 of the NE 1/4 of said section and running east to a bluff; thence north with an old fence row to the west boundary line of the 1/4; thence south to the point of beginning, being 34 acres, more or less.

ALSO: Part of the E 1/2 of the NE 1/4 of Section 21, Township 2 South, Range 10 East, described as beginning at the east corner of said quarter section and running thence the east line to the first ditch and to the point of beginning; thence in a southwesterly direction with the line of said ditch to the north and south line dividing the E 1/2 and the W 1/2 of the said E 1/2 of said quarter section south on said dividing line to the south line of the quarter section; thence east on said south line to the southeast corner of said quarter section; thence north to the point of beginning, containing 34 acres, more or less.

The said land will be sold pursuant to the provisions of the Last Will and Testament of the said Dewey O. Skinner, and the title is believed to be good, but I will convey only such title as is vested in me as executor.

/s/ Fletcher Oaks  
EXECUTOR OF THE LAST WILL AND TESTAMENT OF DEWEY O. SKINNER

F-2-9-16-23-c.

**TRUSTEE'S NOTICE OF SALE**

WHEREAS, on July 30, 1974, Carrol E. Sanders, Trustee, executed a certain Deed of Trust to Richard E. Sanders, Trustee, for the use and benefit of Associates Capital Corporation which Deed of Trust is of record in the Official Chancery Clerk of Tishomingo County at Iuka, Mississippi, in Deed of Trust Book 73 at Pages 102 et seq.; and

WHEREAS, said Deed of Trust was assigned to J. Barry Finch, Trustee, by instrument dated November 21, 1977, and recorded in said Chancery Clerk's office in Deed Book B-90 at page 453 et seq.; and

WHEREAS, as said Bobby F. King, et al have substituted the undersigned J. Barry Finch as Trustee in place and stead of Richard Sanders by instrument dated November 28, 1977 and spread upon the records in said Chancery Clerk's office in Deed Book B-90 at pages 742 et seq.; and

WHEREAS, default having been made in the payment of the conditions of said Deed of Trust and the entire debt thereby having been declared to be due and payable by the undersigned Trustee to execute said Deed of Trust, I will on the 3rd day of March, 1978, at 11 o'clock A.M., at the front door of the County Court House of Tishomingo County, Mississippi, to the highest and best bidder for cash the following described property situated and being in Tishomingo County, Mississippi, to-wit:-

Part of Block 25 of Terry's Survey of the Town of Tishomingo, Mississippi described as beginning at the Southwest corner of said Block and run thence North 12 degrees 45 minutes East along the West boundary line of said Block 125 feet to a point of beginning hereof; thence run South 77 degrees 16 minutes East parallel with the South boundary of said Block 160 feet; thence run North 12 degrees, 45 minutes East along the West boundary of said Block 91.2 feet to a point of beginning hereof; thence run South 77 degrees, 16 minutes West with the South right-of-way line of Highway No. 72; thence run North 12 degrees, 45 minutes West with the South right-of-way line of Highway No. 72; thence run South 77 degrees, 16 minutes West with the South right-of-way line of Highway No. 72; thence run North 12 degrees, 45 minutes East along the West boundary of said Block 113 feet to the Point of Beginning.

In said sale I will convey only such title as is vested in me as Substituted Trustee.

WITNESS MY SIGNATURE, this the 13 day of February, 1978.

J. BARRY FINCH  
Substituted Trustee

F-16-23-M-2-9-c.

**FOR ABOUT THE COST  
OF BAKING A CAKE,  
YOU CAN SHARE A  
10 MINUTE SLICE OF LIFE.  
BY LONG DISTANCE.**



You can share a lot of sweet memories with someone a thousand miles away. Just dial the 1+ way and talk for ten minutes for only \$2.44 plus tax. Any evening Sunday through Friday between 5 PM and 11 PM. These evening rates are lower than rates for long distance calls dialed during weekdays.

Call often. And add a little frosting to a friendship.

Low One-Plus rates do not apply to Zero-Plus dialed long distance calls. Low One-Plus rates do apply to station-to-station calls you dial yourself, talk to anyone who answers and bill to the telephone you are using, and on station-to-station calls placed with an operator where long distance dialing facilities are not available. Low One-Plus rates do not apply to operator-assisted calls such as person-to-person, coin, credit card, collect, and on calls charged to another number, including special billing numbers.

**South Central Bell**

Long distance.  
What else is so nice for the price?





please contact the County ASC Office.

## Dennis Homemakers

The Dennis Homemakers Club met for their regular monthly meeting on Tuesday, February 14, in the home of Velma Young with Ople Tidwell as co-hostess.

Wynell Young, president, called the meeting to order with the thought, "One Way to Break a Bad Habit is to Drop It." The song, "There Shall Be Showers of Blessings," was led by Rachel Goza. Vera Young led the devotional. The secretary read the minutes of the January meeting, and Dot Sartain gave the focus topic on "Women and Credit." Demonstration on Clothing and Economy was given. A health report was given by Jettie Boggs. The club project is to buy dishes for the Sunnybrook Children's Home. Pat Stephens won the door prize, and Bingo was played for recreation. There were sixteen members present. Two welcome visitors were Ople Tidwell and Eula Harrison. Also present was little Jeremy Goza.

## Bethel Homemakers

The Bethel Homemakers met Thursday February 9, at 7:00 p.m. in the home of Judy Walker. This was the January meeting which had been postponed due to bad weather. President Ocean Kenaum called the meeting to order.

Devotional was led by Judy Walker. The song "Lily of the Valley" was led by Ocean Kenaum. Mrs. Virgie Whitehurst gave our safety tip. New business was discussed. A regular meeting night was decided on. Yearbooks were filled out. 4-H Assistance will be the club project for the year. Club goals and 100% membership, along with dress revue were discussed. The meeting was adjourned. Recreation was a demonstration on macrame tying. Refreshments were served. We are very glad to have Mrs. Juanita Crawford as a new member. Those present not before mentioned were Lola Vandiver and Joan Strickland.

"Marriage make two one—but which one?" Anonymous

H. W. Beecher



Mr. and Mrs. Robert F. Grisham, of Iuka, are the proud parents of a baby boy born on February 15, 1978, at 9:30 a.m. at the Colbert County Hospital, Sheffield, Ala.

The little lad arrived weighing 5 pounds 6 ounces and has been named Seth Freeman.

He was welcomed home by a brother, Robert Joshua, age 3.

Joyful grandparents are Mr. and Mrs. V.W. Grisham and Mr. and Mrs. Joseph Bellaula all of Iuka.

## Burnsville Library News

CHRISTY is a novel based on the life of the author's mother, Christy, who at 19 in 1912 joined the interdenominational mission in Cutter Gap, Ky. The transition from a genteel home to rugged life in the Kentucky backwoods is major, but Christy meets in with courage and enthusiasm. In her first year of teaching in a makeshift school she learns much about herself, and even more about the feuding, primitive, clannish folk she ministers to. Publisher's Weekly. Christy is a novel by Catherine Marshall.

CIMMARRON by Edna Ferber is a novel of Oklahoma. Oklahoma, from the run of 1889, through pioneer days, problems of bad-men, and Indians and discovery of oil, down to its sophisticated present, is the ever-changing background which makes an epic of the story of Yancey Cravat, dreamer, windmill-titter, adventurer and gun-man, and Sabra, his wife, descendant of languid Southern genteel folk but with enough spirit to be a pioneer woman, foster feminism in the woman in Osage and to serve as congresswoman from Oklahoma.

Valentine's Day was a special day at the library last week. The Burnsville Day Care Center children came to the library for a party and a film festival.

"A library is not a luxury, but one of the necessities of life."

## ATTENTION

IUKA FEED & FARM SUPPLY IS NOW YOUR BRIGGS PAINT DEALER FOR THIS AREA

COMPLETE LINE OF FERTILIZER, SEED, & CHEMICALS.

IUKA FEED & FARM SUPPLY

FULTON ST.

IUKA, MISS.

# Announcing

## Moved to NEW LOCATION

107 Front Street  
Next Door to Sears

WATCH FOR

# Grand Opening

NEXT WEEK!

ASSORTED GROUP 66¢

ASSORTED  
**COTTON**  
**50¢**

**CORDUROY**  
Regular Price \$3.49  
**\$1.98**  
YARD

**SHIRT FLANNEL**  
**88¢**

**PRINTS**  
**99¢**  
ONE GROUP  
REG. \$1.98.

**DOUBLE KNIT**  
**\$1.49**  
60 INCH  
REG. \$2.98

**WINTER FABRICS**  
**1/2** PRICE

# Bee's fabrics

106 EASTPORT STREET  
IUKA

## ASC Farm News

ASC FARM NEWS  
By: Henry L. Knox  
County Executive Director

and sorghum will be announced later, Knox said.

### 1978 ACP PROGRAM:

Tishomingo County farmers are reminded that applications for cost-sharing under the 1978 Agricultural Conservation Program (ACP) are being taken at the county office. ACP is a cost-share program designed to assist farmers in solving conservation problems by installing conservation practices that would not otherwise be carried out. If you are interested in this program,

entry of 1977-crop corn

**SAVE \$80.00**

**SPECIAL LIMITED-TIME OFFER**

MODEL LDE 5750  
**\$199.95**  
Reg. \$279.95



**Whirlpool 3-TEMP DRYER**

With COOL-DOWN CARE for Permanent Press and Knit fabrics

- TUMBLE PRESS® control helps remove storage wrinkles from Permanent Press garments • Extra-large lint screen
- Automatic door shut-off • Large 5.9 cu. ft. drying drum • Bac-Pak Laundry Information Center • Famous Whirlpool quality. • Custom Dry Control.

White Only

**GANN BROS. FURNITURE & APPLIANCE**  
HIGHWAY 72—BURNSVILLE, MISS.



# BUYING? LOOK AT THE CLASSIFIED ADS

**CLASSIFIEDS**

FIRST INSERTION: \$2.00  
MINIMUM CHARGE: \$2.00  
SUBSEQUENT INSERTIONS: \$2.00  
MINIMUM OF 30 WORDS  
OVER 30 WORDS 5¢ PER WORD

**CARD OF THANKS  
AND MEMORIALS**

3¢ PER WORD  
PHONE 423-3666

## FOR SALE

**HAY FOR SALE** — \$1.75 per bale. Call 423-3543. F-9-tfn-c.

**FOR SALE** — 12 x 70 3 bedroom 1-1/2 baths. Extra clean. \$5,350.00. Complete set up and delivery included. Lemmond Mobile Homes, across from the fairgrounds in Muscle Shoals City, AL. Call 383-1049. O-13-tfn-c.

**FOR SALE** — 1975 light tan Plymouth Gran Fury Station Wagon with PS, AC, and PB. Can be seen at 1207 Phillips Street, Corinth, Miss. or call 287-2070. F-16-23-M-2-c.

**FOR SALE** — Three bedroom house, bath, large kitchen, living room, extra large family room, located in Burnsville. This home was remodeled last summer. Priced at \$23,000. Call Harvey Pendergrast at 427-8419. Hand & Pendergrast, Inc. F-2-tfn-c.

**FOR SALE** — Four bedroom house and lot located approximately 2 1/2 miles off Hwy. 30 outside of Tishomingo, Ms. Easy terms available. For more information call Johnny Jones collect at 601-566-7223. F-16-tfn-c.

**HAY FOR SALE** — Call 423-3470 after 5:00 p.m. call 423-5354. F-16-tfn-c.

**HOUSE FOR SALE** — Five room house and furniture, 13 sq. rods of land, circle drive, small garden spot, located on Hwy. 30 near Booneville, \$11,000. Phone 728-4372. F-23-M-2-c.

**FOR SALE** — 12 x 45, 2 bedroom mobile home, excellent condition. Includes steps, blocks, pole and meter base. Registered and taxes paid for 1978. Call 423-5668 after 6:00 p.m. - all day week-ends. F-16-23-p.

**LEFT ON LAY-AWAY** — Brand new Singer Zig-Zag Sewing Machine. Sew straight, zig-zag, monograms, appliques, makes button holes. with front drop-in bobbin. Pay off lay-away. Balance of only \$72.60, or arrange \$7.20 monthly payments. Come by or call Bee's Fabrics, Iuka, Miss. - 423-5683. D-29-tfn-c.

**FRAME HOUSE FOR SALE** — to be moved. Located on Mackey Creek Rd. 3 bedrooms, living room, kitchen and bath. F-23-M-2-c.

**FOR SALE** — Two LP Gas Heaters and one Warm Morning Coal Heater. Phone 423-9316. F-16-23-c.

**DRAPERIES** — Custom made to your specifications. For free estimates without obligation call Midge at 423-3507 or Connie at 423-9635. F-16-23-p.

**FOR SALE BY OWNER** — 3 bedroom brick, 2 baths, fireplace, 20 x 20 broken tile den, separate living room and dining room, marble entrance, central heat and air, 7 acres with barn, low 40's. Very good location. Call 462-7352. F-23-M-2-p.

**HOUSE FOR SALE BY OWNER** 2 bedroom frame, redecorated inside, carpet throughout, \$11,000.00. 306 North Rowena Street, phone 423-6181. F-23-M-2-p.

**HOUSE TRAILER FOR SALE** 3 room addition, can be moved, located at Iuka Airport - \$2,000. See Elbert Watts, Jr. F-23-M-2-p.

**FOR SALE** — Beautiful Victorian home overlooking Mineral Springs Park on one acre lot. Priced to sell by owner. Can be seen by appointment. Call after 5 p.m. 423-5741, Iuka. F-23-tfn-c.

**FOR SALE** — 72 acres, more or less, 3 bedroom rock home, 1 bath, large barn and other out buildings. All utilities available, stock pond, fencing, about 20 acres in cultivation, flowing creek. Located on Old Highway 25 near Bethlehem Baptist Church, Tishomingo, Miss. Interested parties should call C. L. Puckett - days (601) 982-8145 - nights (601) 362-5565, or write to P. O. Box 16284, Jackson, Ms. 39206. F-23-M-2-9-c.

**LOSE UGLY FAT** — Start losing weight today or money back. MONADEX is a tiny tablet and easy to take. MONADEX will help curb your desire for excess food. Eat less - weigh less. Contains no dangerous drugs and will not make you nervous. No strenuous exercise. Change your life... start today. MONADEX cost \$3.25 for a 20 day supply. Large economy size is \$5.50. Also try AQUATABS: they work gently to help you lose water-bloat. AQUATABS - a "water pill" that works - \$3.00. Both guaranteed and sold by: CURTIS BROS. DRUG STORE 619 HIGHWAY 25 SOUTH MAIL ORDERS FILLED F-23-M-2-p.

**FOR SALE** — Brick home on 2 acres with large front porch, carport and full basement. Two baths, 2 bedrooms finished with 3 bedrooms in basement not finished, central heat and air, shop building 8' x 24' with side shed, fruit trees, vineyard and garden. \$40,000.00. Located on Hwy. 25 North just outside city limits. Call 423-6510 after 5 p.m. F-23-A-27-p.

**Blown In** **LICENSED INSULATION**  
APPLICATOR  
**ATTIC & WALLS**  
**STORM WINDOWS**  
728-4479  
**LEAMON L. SANDERS**  
TRI-COUNTY INSULATION CO.  
103 FRANKS STREET  
BOONEVILLE, MS. 38829

**LOSE WEIGHT SAFELY!** Take NEW B-SLIM diet plan and Aquavap "water pills". Gatlin's Pharmacy, Tishomingo. F-23-M-2-9-16-23-p.

**FOR SALE** — 230 Farmall Tractor with breaking plow, disk and cultivator. Phone 423-3116. F-23-M-2-p.

**FOR SALE** — 1973 model Dat-sun pick-up with camper, automatic transmission, good condition, 43,000 miles, \$1,500. See or call R. L. Dill after 5:00 p.m. 423-6391. F-23-M-2-c.

## MISCELLANEOUS

**FOR COMPLETESHEETROCK SERVICE** call Tommy Wright at 427-8889. Fast, efficient, work guaranteed, free estimates. F-16-tfn-c.

**SERVICES** — Need your income tax filled out? Phone 423-5877. Sara Comer. F-9-16-23-M-2-p.

**NOTICE** — I will not be responsible for any debts other than my own. HURSHEL LEON DAVIS F-9-16-23-p.

**WORK AT HOME** in spare time. Possible earnings of \$250 a week stuffing envelopes. Send 25¢ plus stamped, self-addressed envelope for more information. American Sales, P. O. Box 760, Palm Harbor, Florida 33663. D-1-8-15-22-p-tfn.

**TIME IS DRAWING NEAR** to have your lawn mowed. Call now and we will come and give you an estimate. We also do other odd jobs. Contact: James or Paul Wahlstrom. Phone 423-6065. F-16-23-p.

**LOST** — Beagle Jip with collar - no name plate. Phone 423-6732. F-16-23-c.

**LAND POSTED** — All land belonging to Noonan Cooper, located in Burnsville, is posted against hunting and no trespassing.

**GUONITH COOPER** F-9-16-23-p.

**CLARK'S PLUMBING AND ELECTRICAL SERVICE** — We repair washing machines, dryers, pumps, etc. We also light gas heaters. See or call Melvin or Jerry Clark at 423-9234, Iuka, Miss. O-6-tfn-c.

**HELP WANTED** — Waitress - 11 a.m. - 7 p.m. shift. Apply at Chuck Wagon. J-12-tfn-c.

**CUSTOM LIME & FERTILIZER** spreading - also backhoe work. See or call Charles Jones at 423-5896 after 5:00 p.m. M-17-tfn-c.

**SELL WORLD BOOK AND CHILD CRAFT.** Call Nelda N. Dalton or write R-7, District Manager, Corinth, Miss. 286-6144. O-27-F- c. (L-137)

**P. O. BEARD AGENCY**  
**SINCE 1964**  
**REALTOR®**

P. O. BEARD - REALTOR, APPRAISER  
REGISTERED FORESTER  
NANCY BEARD - REALTOR ASSOCIATE  
OFFICE - 423-5253  
HOME - 423-5251

4 bd., 2 full bath, 2-1/2 bath, brick home, large den with Ashley heater, paneled, partially carpeted, central heat and air, 2500 sq. ft. heated area, patio, 25' x 40' metal storage shed, 3 acres, plus or minus, asphalt drive, Hwy. 365 inside Burnsville city limits, \$60,000.

4 bd., 1 bath, frame home, all major appliances, city gas, central heat - central air, warm comfortable older home, large lot, across from school, \$27,000.

1811 sq. ft. frame home, extremely well built, 3 bd., 2 bath, partially carpeted, living room with fireplace, den, major appliances, gas central heat, central air, patio and gas grill, boat storage, additional garden lot, overlooking Yellow Creek with easy access, \$36,000.

3 bd., 1 1/2 bath, brick, carpeted, wood heater, central heat and air, on 1.9 ac. west of town. Reduced to \$32,000 from \$40,000.

Compact, 2 bd., 1 bath, frame, exceptionally good floor plan, carpeted, central air, wall heaters, stove, dishwasher, and refrigerator included, 1 ac. lot, west of Burnsville, \$18,500.

MANY OTHER LISTINGS  
CALL FOR FREE INFORMATION  
ON BUYING OR SELLING

**FOR RENT** — Double wide, furnished trailer, located just off Coleman Park Road. Call 423-3336. J-5-tfn-c.

**FOR RENT** — 20, 2 bedroom mobile homes furnished available now, 1/4 mile from Tennessee River Pulp & Paper. 2 - 2 bedroom cabins, furnished, located at Pickwick Dam. Furnished housing and mobile homes in Savannah. Contact Thelma Crofts at 925-5516, 925-5551, 925-5331, 689-3040, or 689-3464. Crofts Realty Property, Mobile Home Park, Counce, Tenn. D-29-tfn-c.

**FOR RENT** — House trailers in Burnsville - water and sewerage furnished. See James E. Timbes, Burnsville. Call 427-8778. O-31-tfn-c.

**FOR RENT** — Small unfurnished, 2 bedroom house. Couple only. Call 423-3656 and ask for J. R. Long. J-26-tfn-c.

**FOR RENT** — Duplex on North Fulton. Call 423-9315. D-15-tfn-c.

**WANTED** — A nice responsible woman to live in a good home, can drive, good pay. For more information call 423-6409. J-19-tfn-c.

**FOR QUICK personal loans** see Nelson Finance on Highway 25 South in Iuka. Phone 423-6900. M-5-tfn-c.

**ATTENTION MOTHERS!** I keep children in my home from 6:30 a.m. till 4:30 p.m. If interested call 423-5782 or see Imogene Barnes, West Ash Street. Age 15 months to 4 years. F-23-M-2-9-16-p.

**Consolidated Real Estate**

Charming, 2 bedroom, frame home in an excellent neighborhood, near downtown Iuka. Perfect for a couple or a single person. \$21,600.

Reduced to \$34,000.00! NEW 3 bedroom home, cedar exterior, central heat and air, fully carpeted, deck, large lot.

**NEW LISTING** in Belmont - large, comfortable home on corner lot near high school, high shop or recreation area, partially furnished.

**NEW home** in Battleground Heights, 3 bedroom, fireplace, many extras - \$42,500.00.

Waterview cabin at Eastport, completely furnished, greatroom with fireplace, screened porch - \$18,000.00.

Cayce Springs Subdivision - choice cedar and stone exterior home on beautiful wooded lot, large greatroom with beams, fireplace, city water, sewage, paved streets - \$45,000.00.

Exquisite, one-year old waterfront home, tri-level, beautifully decorated, boat-lift, pier - \$55,000.00.

3 bedroom, brick home on 2 acres near Iuka, 2 baths, fireplace - \$40,500.00.

Burnsville - 2 bedroom, brick home, 1 1/2 baths, fireplace, lovely setting - \$26,500.00.

House or trailer lot near Iuka, septic tank, electricity, patio, driveway - \$3,500.00.

Prime acreage on Hwy. 25 N.

North Crossroads - 3 bedroom, kitchen, den - 4 acres - \$26,600.00.

2 bedroom, waterview home near State Line, vaulted ceiling, screened porch - \$30,000.00.

Many other properties available - Residential, Resort, Commercial & Investment.

**CONSOLIDATED REALTY AND INSURANCE**

OFFICE - 423-6948  
ED GREGORY - BROKER  
ED GREGORY, JR. - 423-5300  
GRACE LONG - 423-6584  
BETH DAVIS - 423-9543  
GLENDA MILLIGAN 423-9722

**WANTED** — Someone to dig my catfish pone. Call 423-9269 after 5 p.m. F-23-c.

**NOTICE** — I will not be responsible for any debts other than my own. RONNIE HUBBARD F-23-M-2-9-p.

**WILL DO BABY SITTING** in my home. Call 423-5744. F-23-M-2-c.

**FAULKNER PLUMBING AND ELECTRIC** — All work guaranteed, reasonable rates. Call 427-9300, Burnsville. F-23-M-2-9-p.

**"HOMEWORKERS WANTED IN THIS AREA:** men, women, students. No experience necessary; stuffing and addressing envelopes (Commission Mailers). Earn sparetime money at home. \$100.00 weekly possible! SEND \$1.25 (refundable) and a long, stamped, addressed envelope for details; PPS-219, 323 Franklin #804, Chicago 60606" F-23-M-2-9-p.

**CASABELLA TRAILER PARK** Beautiful, spacious lots, water and sewerage furnished, 10 miles north of Iuka on Coleman Park Rd. Also, trailer for rent. Call 423-6207. D-15-tfn-c.

**IUKA REALTY CO.**

3 br., 1 bath, frame on 1 acre lot 1 mile west of Iuka on 72 Hwy.

12' x 65' 3 bedroom, 1 1/2 baths, extra clean. \$5,795.

12' x 61' 2 bedroom, '73 model, mint condition. \$4,850.

12' x 56' 2 bedroom total electric, clean. \$3,995.

12' x 55' 2 bedroom, clean. \$3,850.

12' x 50' 2 bedroom, total electric. \$3,575.

Many other homes to choose from. Financing available. Payments as low as \$85.00 per month.

**LEMMOND MOBILE HOMES** Across from Fairgrounds in MUSCLE SHOALS CITY, AL. CALL 383-1049 F-23-M-2-c.

**HOUSES AND LOTS FOR SALE** — Will build with your plans or mine. No down payment if you qualify. Come out or call Bart Smith, N. Pearl Street, phone 423-6708. D-9-tfn-c.

7 acres in city limits of Burnsville with older home that could be restored.

Lots 72 and 73 in Battleground Heights Sub. 210 ft. frontage on road. If you like trees this is the lot for your future home.

3 br., 2 bath, brick on lot with 190 ft. frontage on 24 South. House needs some repair. This is a choice commercial lot.

SAVE high closing cost on this deluxe 3 br., 2 bath home on Martha Lane by assuming payments. This house has a full dry basement with roughed in bath. Shown by appointment only.

3 br., 1 1/2 bath, only about 4 min. to Nuclear Plant site. The price on this house is right.

**IUKA REALTY COMPANY** HIGHWAY 72 WEST OFFICE PHONE - 423-6967

**IUKA REALTY CO.** Bryce Kitchens - Realtor 423-6967

## FOR RENT

**FOR RENT** — Two bedroom mobile home, utilities furnished, 1/4 mile south at Yellow Creek Port on Hwy. 25. Call 423-5038 after 5 p.m. Bill or Mae Host. J-19-tfn-c.

**FOR RENT** — Mobile home located 1 mile east of Burnsville. Call 427-9383. F-9-tfn-c.

**FOR RENT** — Furnished, 2 bedroom trailer. Phone 423-3326. F-23-c.

**HOUSE FOR RENT** — 3 bedrooms, kitchen, living and dining room. In city limits. Call 423-9254 or see Bliss Hamm. F-9-16-p.

## USED MOBILE HOME WINTER CLEARANCE SALE

12' x 65' 3 bedroom, 1 1/2 baths, extra clean. \$5,795.

12' x 61' 2 bedroom, '73 model, mint condition. \$4,850.

12' x 56' 2 bedroom total electric, clean. \$3,995.

12' x 55' 2 bedroom, clean. \$3,850.

12' x 50' 2 bedroom, total electric. \$3,575.

Many other homes to choose from. Financing available. Payments as low as \$85.00 per month.

**LEMMOND MOBILE HOMES** Across from Fairgrounds in MUSCLE SHOALS CITY, AL. CALL 383-1049 F-23-M-2-c.

**HOUSES AND LOTS FOR SALE** — Will build with your plans or mine. No down payment if you qualify. Come out or call Bart Smith, N. Pearl Street, phone 423-6708. D-9-tfn-c.

7 acres in city limits of Burnsville with older home that could be restored.

Lots 72 and 73 in Battleground Heights Sub. 210 ft. frontage on road. If you like trees this is the lot for your future home.

3 br., 2 bath, brick on lot with 190 ft. frontage on 24 South. House needs some repair. This is a choice commercial lot.

SAVE high closing cost on this deluxe 3 br., 2 bath home on Martha Lane by assuming payments. This house has a full dry basement with roughed in bath. Shown by appointment only.

3 br., 1 1/2 bath, only about 4 min. to Nuclear Plant site. The price on this house is right.

**IUKA REALTY COMPANY** HIGHWAY 72 WEST OFFICE PHONE - 423-6967

**IUKA REALTY CO.** Bryce Kitchens - Realtor 423-6967

3 bedroom, brick home on 2 acres near Iuka, 2 baths, fireplace - \$40,500.00.

Burnsville - 2 bedroom, brick home, 1 1/2 baths, fireplace, lovely setting - \$26,500.00.

House or trailer lot near Iuka, septic tank, electricity, patio, driveway - \$3,500.00.

Prime acreage on Hwy. 25 N.

North Crossroads - 3 bedroom, kitchen, den - 4 acres - \$26,600.00.

2 bedroom, waterview home near State Line, vaulted ceiling, screened porch - \$30,000.00.

Many other properties available - Residential, Resort, Commercial & Investment.

**CONSOLIDATED REALTY AND INSURANCE**

OFFICE - 423-6948  
ED GREGORY - BROKER  
ED GREGORY, JR. - 423-5300  
GRACE LONG - 423-6584  
BETH DAVIS - 423-9543  
GLENDA MILLIGAN 423-9722

## INSULATION

Will save you money on your heating bill

Call 454-3383 Day or Night

TVA Approved Philip Williams, Owner

**Williams Pest Control & Insulation Co.**  
Belmont, Miss.

PHONE RIENZI (601) 462-5609

**PRINCE STEEL AND LUMBER CO., INC.**

"WE STOCK ALL SIZES"

HIGHWAY 365 ROUTE 2 HAROLD PRINCE TISHOMINGO, MS 38873

**MOORE'S BODY SHOP and WRECKER SERVICE**  
24 HOUR WRECKER SERVICE  
DAY PHONE 423-5130  
NIGHTS-WEEKENDS  
HOLIDAYS  
423-5244  
EXPERT BODY REPAIR

## PAINTS

**PRECISION**

## WALLPAPER

LARGEST SELECTION IN TISHOMINGO (WALLPAPER TO ORDER) (24 HR. SERVICE)

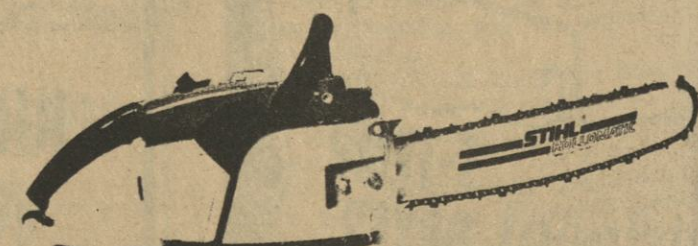
Inside Paint Ten Year Outside Paint 15 HUNDRED CUSTOM COLOR TO MIX

LIGHT FIXTURES, MIRRORS, CABINET HARDWARE

**GLIDEWELL BROS. Paint & Decorator Supply**  
Hwy. 72 East of Burnsville 427-6700

**Steam Carpet Cleaning**  
**JIM'S CLEANING SERVICE**  
PHONE 427-8219

## STIHL 031 AV



light in weight, comfortable and really simple in design

The most respected name in chain saws.

See it now at:



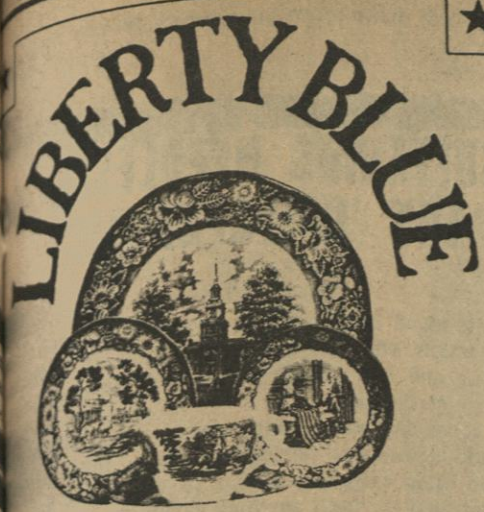
**NELSON**

**Marine & Hardware**

Highway 25 S. IUKA

Phone 423-6967





★ Dinnerware  
Made in  
Staffordshire,  
England  
This week's feature  
**BREAD &  
BUTTER**  
ONLY **69¢**

ONE FEATURE ITEM WITH EACH \$3.00 PURCHASE!

NONE SOLD TO DEALERS

WE RESERVE THE RIGHT  
TO LIMIT QUANTITIES



**A FULL SERVICE STORE GIVING OUR  
CUSTOMERS POLITE FRIENDLY SERVICE  
AT COMPETITIVE PRICES PLUS QUALITY  
STAMPS !!**

THIS AD GOOD THRU MARCH 1, 1978

**FREE  
300 EXTRA  
QUALITY STAMPS**

★ ★ ★  
**Everybody Wins at  
Nelson's**

A \$2.50 purchase at NELSON'S entitles you to one Quality Star. Each time you purchase an additional \$2.50 you get another Quality Star. (No Stars given on Tobaccos — Beer — Milk or Milk Products). Stick your Quality Stars in the spaces marked "Quality Star" on this card. When all Quality Star spaces have been filled, take your card to NELSON'S and you will receive 300 Quality Stamps for your filled card. New cards are available in NELSON'S. Play as many times as you like while the promotion is in progress. NELSON'S reserves the right to discontinue Quality Star Cover Cards at any time by announcement to our customers. If you are caught with an unfilled card, you will redeem on the basis of 10 Quality Stamps for each Quality Star on the unfilled card.

**BACON**

LB.

**\$1.19**

SHORTENING

**CHEFWAY**

WITH \$10.00 PURCHASE

LIMIT ONE 3 LB. CAN

**88¢**

**SAUSAGE**

LB. **\$1.19**

**HOOP CHEESE**

LB. **\$1.59**

**FACIAL TISSUE**

125 CT.

**59¢**

BETTY CROCKER DINNERS 7 1/4 OZ.

**MAC 'N' CHEESE**

5 **\$1.00**

**PORK LIVER**

LB. **69¢**

**CHICKEN LIVERS**

8 OZ. **49¢**

**PEARS**

29 OZ.

**58¢**

**TUNA**

STARKIST 6 1/2 OZ. CHUNK

**58¢**

**ROAST**

LB.

**99¢**

**KETCHUP**

32 OZ. JAR

**68¢**

**LOGNA**

12 OZ. **89¢**

**PORK ROAST**

LB. **\$1.19**

**VIENNA SAUSAGE**

3 **\$1**

**FLOUR**

5 LB. BAG **68¢**

**CHILI CON CARNE**

LB. **\$1.19**

**FISH STICKS**

8 OZ. **59¢**

**MILK**

14 OZ. **69¢**

**GRAPEFRUIT JUICE**

46 OZ. **59¢**

**FRANKS**

12 OZ.

**59¢**

**TISSUE**

CHARMIN 4 ROLLS

LIMIT ONE

**68¢**

**SALMON**

16 OZ. **\$1.49**

**SYRUP**

32 OZ. GLASS

**\$1.19**

**POTTED MEAT**

3 OZ. 5 **\$1.00**

**VELVEETA**

32 OZ. **\$1.99**

**GRAPE JELLY**

18 OZ. **49¢**

**PANCAKE MIX**

32 OZ. BOX **79¢**

**TOPPING**

9 OZ. AREO CAN **49¢**

**JUICE**

64 OZ. **99¢**

**KRAFT**

MAYONNAISE

LIMIT ONE 32 OZ.

**98¢**

**POTATOES**

FROZEN 5 LB. BAG

**89¢**

**SOAP**

BATH SIZE 4 **\$1.00**

**TOWELS**

2 **79¢**

**ICE CREAM**

1/2 GAL. **\$1.29**

**COFFEE**

8 OZ. REG **\$5.49**

**BEANS**

17 OZ. 3 **\$1.00**

**DETERGENT**

32 OZ. **89¢**

**TOMATO SAUCE**

8 OZ. 6 **\$1**

**FABRIC SOFTENER**

33 OZ. **89¢**

**CORN**

17 OZ. GOLDEN WHOLE KERNEL OR CREAM STYLE

**4/\$1**

**BANANA**

**4 LBS. FOR \$1**

**TOMATOES**

LB. **39¢**

**ONIONS**

5 LB. BAG **39¢**

**LEMONS**

DOZ. **79¢**

**ORANGES**

3 LB. BAG **99¢**

**100 EXTRA  
QUALITY STAMPS**

WITH COUPON AND PURCHASE  
OF 6 OZ. BAG PLANTERS  
PECAN HALVES

EXPIRES 3-1-78

**100 EXTRA  
QUALITY STAMPS**

WITH COUPON AND PURCHASE  
OF 9 OZ. PLANTERS TWIN POTATO CHIPS

EXPIRES 3-1-78

**100 EXTRA  
QUALITY STAMPS**

WITH COUPON AND PURCHASE  
OF 2 PKGS. PET RITZ PIE  
SHELLS 10 OZ. 9 IN.

EXPIRES 3-1-78

**100 EXTRA  
QUALITY STAMPS**

WITH COUPON AND PURCHASE  
OF PKG. OF NESTLE'S HOT  
COCOA MIX, 12 OZ. SIZE

EXPIRES 3-1-78



## OBITUARIES

### Bessie L. Sparks

Mrs. Bessie L. Sparks, age 76, died Friday, February 17, at the Baptist Hospital in Memphis.

She was a member of the Pentecostal Church.

Funeral services were held at 2 p.m. Sunday at Cutshall Funeral Home Chapel with Rev. F. E. Williamson and Rev. Charles Potts officiating. Burial was in Oak Grove Cemetery.

Survivors are one daughter, Mrs. Sybil Edmondson, of Iuka; and two sisters, Mrs. Mable Cummings, of Burnsville, and Mrs. Mattie Beard, of Iuka.

### Pharr Infant

Marie Joyce Pharr, the infant daughter of Mr. and Mrs. Rayburn Pharr, died Tuesday, February 14 at the West Suburban Hospital in Melrose Park, Ill.

Services were held on Wednesday, February 15, at the Deaton Funeral Home Chapel with burial in Lindsey Cemetery. Rev. Wells officiated.

Survivors other than her parents, include two sisters, Melissa Pharr and Regina Pharr, both of the home; one brother, Johnny Pharr, of the home; her grandparents, Mrs. Rose McCaughy, of Wooddale, Ill., Mr. and Mrs. Houston Pharr, of Dennis.

### Dewell Lee Grimes

Mr. Dewell Lee Grimes, 78, died Monday, February 6, 1978, at the Baton Rouge General Hospital. He was a Baptist, a native of Tishomingo County, Mississippi, and a resident of Baton Rouge, La. He was a retired ironworker.

Services were held Wednesday, February 8, at 2 p.m. at the chapel of Welch Funeral Home. Rev. Charles Roe and Dr. Mack Stewart officiated. Burial was in Greenoaks Memorial Park.

Mr. Grimes is survived by his wife, Mrs. Nell Perry Grimes; one daughter, Mrs. Perrylene Parnacher, Baton Rouge; four sisters, Mrs. Artie Timbes, Paden, Mrs. Attie Lou

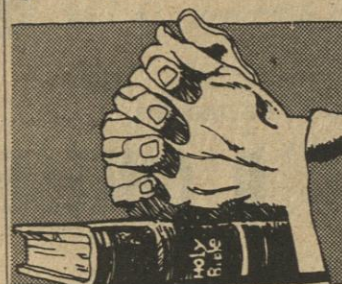
Frederick, Iuka, Mrs. Hattie Mae Crawford and Mrs. Mary Byram, Corinth; four brothers, Elmer Grimes, Corinth, Vard Grimes, Tishomingo, Vernon Grimes, Tucson, Ariz., and Lloyd Grimes, Corinth; three grandchildren, Buster, Lynn and Dino Tranacher, Baton Rouge.

### Jessie M. Millstead

Miss Jessie M. Millstead, 90, of Dennis, died early Sunday, February 19, at her residence.

She was a member of the Baptist Church. Services were held at 2 p.m. Monday at Deaton Funeral Home Chapel with burial in Moore Cemetery. Rev. Albert Hamilton officiated.

Survivors include a sister, Mrs. Maggie South, Dennis; one nephew, one great-niece, one great nephew, four great great nieces, one great great nephew, and one great great great nephew.



## The Bible Speaks

BY: REX BUFORD

### "LESSON FROM THE GULLS"

Some time ago in the Reader's Digest, there was a short article about some sea gulls that were starving to death in St. Augustine. They were not starving because of a scarcity, but because they had forgotten how to fish. For years they depended on the shrimp fleet operating out of the harbor, to toss them scraps from the nets. When the shrimp fleet moved to Key West, they began to starve. They had lost their natural ability to fish because they had not been using

it. This is a rule of nature. If you do not use what you have, it will be taken from you. This is the lesson in the parable of the talents. The servant who did not use the one talent had it taken from him. (Matt. 25:14-30).

For example, it is a natural thing for man to worship God. Man was created to look to his creator. If this natural desire is not exercised, however, it will be taken away. Satan will provide enough scraps to allure you and ease your conscience. But, as with these gulls, there will be a day of reckoning, when the scraps of this world are taken away.

Satan will find many excuses to keep you away from Bible study, but you need that hour. Your soul will be much smaller without it. Satan will find many excuses to keep you from praying, from giving thanks, from reading the Bible in your home. He is feeding you the scraps! Take a lesson from the gulls.

If you are interested in knowing more about the Bible, we would be happy to send you a Bible correspondence course, or to show you five colorful films designed to give you an overall view of the Bible. Simply address your request to: "The Bible Speaks" P. O. Box 323 Iuka, Ms. 38852

### CARD OF THANKS

We sincerely appreciate every kindness shown us during our recent bereavement. God bless each of you.

THE FAMILY OF MRS. BESSIE SPARKS Sybil & Strut Edmondson Mr. & Mrs. W. D. (Boots) Foote Mrs. Mabel Cummings Mrs. Mattie Beard

### CARD OF THANKS

I wish to express my sincere thanks to all who remembered me with cards, flowers, visits and calls during my recent stay in the hospital. Also the doctors and nurses who cared for me and got me back on the road to recovery. Again, my thanks to all. MARION McDONALD

### CARD OF THANKS

We would like to express our sincere appreciation to our friends and loved ones for your kindness shown us during the death of our loved one. THE FAMILY OF ZETH R. HILL, SR.

### CARD OF THANKS

We would like to express our most sincere thanks to all those who helped us while our mother was in the hospital. Especially to the hospital staff, to those who sat up with her, to those who brought food, and to all those who remembered us in prayer and with cards and visits.

All these combined to make things easier for us. THE CHILDREN OF MARY BOOTHE (JOHNNY BOOTHE)

The cash register was invented in 1879 by James J. Ritty.

## Learn to read meter and budget power use

Today's prices mean we have to budget our money more strictly than ever.

If you're wasting electricity, you may find a substantial part of your paycheck going for monthly electric bills, more than you can really afford to pay.

TVA's specialists say that one solution to this dilemma is to learn to read your electric meter. This one practice will make you aware of how much electricity you're using and what activities and conditions cause you to use more.

Read your meter and record the reading every day at first, noticing what happens to your kilowatt-hour usage on hot days when your air conditioner really has to work hard, or on days when you use a lot of hot water for washing, or do lots of cooking or baking.

Before long you're bound to get interested in year-round energy saving items and habits like adequate insulation for your home, caulking and weatherstripping for your windows and outside doors, and setting thermostats to conserve energy. You'll find that sometimes a reasonable investment can reap years of energy savings in the future.

For help in designing your personal energy budget, stop by your power distributor's office. Ask about the free home energy surveys offered as part of the TVA Home Insulation Program. Pick up free booklets too on how to read your electric meter and on

ways to save electricity at home.

## Circle Meets

February 16, 1978, the Ann Judson Circle met in the home of Mrs. Dee Massey with Mrs. Marion Dampeer as co-hostess. The meeting opened with prayer calendar led by Elizabeth Beard. Prayer by Elizabeth Beard. Program Chairman, Elizabeth Beard, introduced the program by giving information and history of the Indians. Elizabeth Beard gave information on the Cherokee Indians, Frank E. Drake, the Seminole Indians; Marion Dampeer, the Choctaw Indians; Ruby Gaye Gist, the Alabama Indians; Clela Gann, the Western Indians. Business session was presided over by director, Edith Byrom.

Thank you note was read from Mr. and Mrs. Larry Wilson. Sick people were discussed and cards were sent to them.

100th anniversary celebration for Mississippi WMU was discussed. Book Study announced for Monday night, Feb. 20, at Iuka Baptist Church.

Those present included: Elizabeth Beard, Ruby Gaye Gist, Zelma Allen, Marion Dampeer, Rubye Campbell, Quay Brown, Edith Byrom, Frank E. Drake, Lela Clark, Oza Hamilton, Clela Gann, Quay Rushing and Dee Massey.

## Betterton Retires

Clarence B. Betterton, Jr., county agent in Chickasaw County, is retiring from the Mississippi Cooperative Extension Service Jan. 31 after more than 26 years of service.

Betterton, who has served as county agent since 1958, has also worked in Tishomingo County as assistant county agent and in Tippah County as associate county agent. He is a native of Calhoun City.

Betterton, who earned bachelor's and master's degrees in agricultural education at Mississippi State University, helped provide leadership for a course designed to help train newly elected city officials in Chickasaw County.

While in Tippah County, Betterton received a United States Department of Agriculture unit award for superior service. In 1962, the National Association of Agricultural Agents presented him with a certificate of distinguished service.

Before he joined the Extension Service in 1951, Betterton taught in the Brooksville Public School.

ST. JAMES CATHOLIC CHURCH 1101 GLOSTER STREET CORINTH, MISS. 287-1385 MASSES Saturday 8:00 a.m. - 5:30 p.m. Sunday 8:00 a.m. - 10:30 a.m. Weekdays 8:00 a.m. D-1-77 - D-1-78-p.

"A wise man will make more opportunity than he finds." Francis Bacon

## SUFFERING NEEDLESSLY TRY 'CHIROPRACTIC'

SLIPPED DISC It doesn't sound like anything very serious. Just a little hurt anything and it'll probably slip back into place the time the urge strikes it.

But the aches and pains which accompany the slipped disc are the long and drawn-out periods of agony which cripple and the too-often crippling effects of the slipped disc. The statement that it "isn't anything serious".

The disc is one of the soft cushion-like segments separates the vertebrae and the spine. It serves as a bearing and shock absorber for the vertebrae. When it slips, something else has to give, and nerve pressure on the affected area is the immediate result.

Chiropractors are students of the spine and the nervous system. It is their business to locate and correct the nerve system; make simple, gentle adjustments to the nerve system and to the body. With the removal, nature cures.

The paralyzing effects of the slipped disc respond naturally to competent chiropractic adjustment. Presented in public interest for better health. Mississippi Society of Chiropractors, District I.

## CHURCH DIRECTORY



### BAPTIST

IUKA BAPTIST CHURCH Charles Dampeer BELMONT FIRST Jack Maroon CALVARY BAPTIST Thomas Ozbirn MT. MORIAH BAPTIST Bill Rakestraw CENTRAL BAPTIST W. L. Oaks MT. VERNON BAPTIST Perry Murphy TISHOMINGO BAPTIST Eugene Tennison BURGESS CREEK FREEWILL Danny Short BURNSVILLE FIRST BAPTIST Dave Smith NEW PROSPECT BAPTIST Gary Gardner OLDHAM Cris Burrows PADEN Pat Howard FIRST BAPTIST CHURCH O. H. Moore EASTPORT G. D. Jones NEW SALEM BAPTIST E. P. Baldwin UNITY BAPTIST Raymond White RED BUD John Stovall ROWLAND MILLS Frankie Smith HARMONY HILL Billy Paul Feltman MT. JOY James E. Holt CALVARY MISSIONARY Felton Mason SOUTH CROSSROADS Ron Harris BETHEL MISSIONARY Monty Aydelott

### MT. GILEAD

Nicky Barnett TEMPLE Mavous Phifer MT. ZION Jerry Mitchell FIFTH STREET Frank Whitaker OLD PLEASANT HILL FREEWILL

### NEW LEBANON

Mike Mutchler ANTIOCH FREEWILL Curtis Briley POPLAR SPRINGS John T. Prince HIGHLAND Joe McIntire BETHLEHEM Jerry Stephens YELLOW CREEK Stanley Magill DENNIS FIRST Wilbur Tessenier FIRST FREEWILL Dallas Jack Jones NEW LIBERTY Talmadge White

### METHODIST

IUKA UNITED Charles L. Potts MT. EVERGREEN Charles L. Potts CAMP GROUND HARMONY PATRICK ROCKY SPRINGS Earl S. Cooper BURNSVILLE SNOWDOWN PLEASANT HILL SPRING HILL Robert McCoy BOGGS CHAPEL PARADISE SALEM TISHOMINGO Charles Simmons GOLDEN CHAPEL OLD BETHEL Danny Rowland BELMONT Grady Bailey MT. PLEASANT Grady Bailey HUBBARD SALEM Earl Martin ALLSBORO UNITED Randy Burbank

### JONES CHAPEL CMC

Kenneth Carter MARGERUM METHODIST Randy Burbanks

### CHURCHES OF CHRIST

IUKA CHURCH OF CHRIST Rex Buford BURNSVILLE J. T. Smith BEREIA Grady Miller TISHOMINGO Joe Cooke Van Dyke SECOND STREET BELMONT, MISS. Don Nix PLEASANT GROVE John Hardwick LIBERTY Wayne M. Mitchell MAIN ST. Tim Gentle

### PENTECOST

BURNSVILLE FIRST Richard W. Forsythe IUKA GOSPEL CHAPEL Jack Lewis FIRST UNITED Frank Williamson BURNSVILLE TABERNACLE W. E. Sharp CHRISTIAN FELLOWSHIP S. A. Bonds CHRIST GOSPEL Richard H. Carter Jacinto, Miss. IUKA CHURCH OF GOD Frank Samples

### Nondenominational

Amazing Grace Tabernacle Bro. & Sis. R. G. MT. ZION Olen Morton NORTH CROSSROADS COMMUNITY CHURCH Allen Osborn PRESBYTERIAN ALLSBORO CUMBERLAND J. B. Burns, Jr. BETHANY L. K. Foster

Drs. Hora & Hora, Optometrists Office Hours: Wed., Thur., Fri., 9 a.m.-5 p.m. (Next to Super D Drugs) Iuka, Miss.

## CUTSHALL FUNERAL HOME

— REPRESENTING — CORINTH MUTUAL BURIAL ASSOCIATION

ALCORN COUNTY

BENEFIT ASSOCIATION

MISSISSIPPI FUNERAL ASSOCIATION

LIBERTY NATIONAL LIFE & BURIAL INSURANCE CO.

SOME BURIAL POLICIES CAN BE PAID OUT IN 15 YEARS

CUTSHALL FUNERAL HOME phone 423-5222 IUKA, MISS.



## PLASTIC EYE MIRACLE Ronald Coyne

The Man To Whom God Has Given Vision With Or Without A Plastic Eye

Ronald Coyne, as a 7-year-old child in Oklahoma, lost his right eye due to an accident. Ten months later at a salvation-healing revival God gave him vision. For many years he has had continuous vision where there is no eyeball. You are invited to see and hear this 20th Century Miracle and testimony. Do not fail to attend when this crusade comes to your area. "Jesus Christ the same yesterday, today, and forever" Hebrews 13:8

### AMAZING GRACE TABERNACLE

On Hwy 25 N. Crossroads (Next To 4-Star Bldg. Supply.)

SPECIAL SINGING Feb. 26th, 1978 Iuka, Ms. 7:30pm

The Public is invited to attend this crusade. Evangelist Ronald Coyne will also offer prayer for the sick.

IUKA BAPTIST CHURCH

105 West Eastport Street Iuka, Mississippi 38852



Sunday, February 26, 1978

11:00 A.M.

Message by Pastor

7:00 P.M.

Message by Pastor

Morning and Evening Services Broadcast over WTIB-FM

## McNATT FORD SALES

PHONE 423-2561 IUKA, MS

## BROWN INSURANCE AGENCY

PHONE 423-5921 IUKA, MS

## BURTON-MCKEE ENTERPRISES OWL & PENNIES RESTAURANT

IUKA, MS

## RUSHING REXALL DRUGS

PHONE 423-2731 IUKA, MS

## THRIFTY FOOD MARKET

JOHNNY AND MARIE SMITH IUKA, MS

## 1st CITIZEN LOANS

PHONE 423-5248 HIGHWAY 72 EAST IUKA, MS

## CURTIS BROS. DRUGS

IUKA, MS

## CUTSHALL FUNERAL HOME

423-5222 IUKA, MS

## HONEYCUTT CHEVROLET

423-2511 IUKA, MISS.

## FIRST AMERICAN NAT'L BANK

IUKA-BURNSVILLE GOLDEN-CROSS

## FARM BUREAU

423-6111 IUKA, MS

## IUKA GUARANTEE BANK

"STRAIGHT THROUGH THE





**CELEBRATION**  
Smiling faces, cake, punch, and of course the goodie bags were made February 14 day at Timber Hills. Harmony Homemakers planned a special Valentine's day for the students of Timber Hills. Mrs. Nedra Walker, president; Mrs. Vada Kay, members of the Harmony Homemakers Club; Helen Newby, Ruth Ann Ellsworth and Nelda Newcomb. The Timber Hills Program is funded by Title XX of the State Department of Public Welfare.

cake she baked was greatly enjoyed. Miss Nellie Horton, Extension Home Economist, was present for the occasion. Pictured left to right: Sue Hubbard, student; Mrs. Louise Sanderson; Mrs. Nedra Walker, president; Mrs. Vada Kay, members of the Harmony Homemakers Club; Helen Newby, Ruth Ann Ellsworth and Nelda Newcomb. The Timber Hills Program is funded by Title XX of the State Department of Public Welfare.

daughter, Miss Villa Mae Ledgewood of Iuka, visited on Saturday in the home of Mr. and Mrs. Bill Johnson. J.C. and Mary Dell Baggett of Kossuth recently visited her aunt, Mrs. Olen Nixon. Sunday dinner guest of Mrs. Thelma Gray were as follows: Rev. Frank Smith and wife, Dorothy of Iuka, Mr. and Mrs. Guy Watkins and Anison Gray. Willard Whitfield was carried Sunday to Tishomingo County hospital for treatment and tests.

We want to express our sympathy to the family of Mrs. Mamie Rhine of Burnsville in her death on Friday. Funeral was at Burnsville cemetery. Mrs. Jessie Ross of Mobile, Ala. spent the week end with her sister, Mrs. Louise Whitfield. Mrs. Bertha Taylor and Mrs. Lorene Owens of Corinth attended worship service at Rowland Mills church Sunday. Mrs. Taylor stayed for a few days with her cousin, Mrs. Leona Ellis. Mr. and Mrs. L.O. Stidham Mr. and Mrs. Junior Calton and children and Mr. and Mrs. James Ray McCoy and children visited Sunday at Hamilton, Al. Mr. Stidham's sister, Mrs. Judy Williams, who is very ill.

Essays due in March. After the spelling bee, the group enjoyed a Valentine party. Everyone brought refreshments and played the favorite current records and tapes. Other members present were: Jeff Gillis, Monica and Anita Tucker, and Pam and Tam Bolton. We would like to thank Mr. Kelly Bolton for coming to the January 9th meeting and giving a good "pep" talk on reaching goals. We also made out club program plan for the next six months. The second meeting in January was on the 30th.

Five people from the club attended the Clothing Workshop held February 9. On Feb. 16th, some of the members attended the County Council meeting. This was a very informative meeting and the club would like to say "well done" to the organizers.

Mrs. Ava Hill certainly deserves a big thanks! We appreciate the time she has given to the club. She helped out at the Christmas party, the program planning meeting, and the spelling bee and Valentine party. The group is trying to get her to let them call her a leader. She really doesn't know how much we think of her.

The two leaders, Mrs. Joy Tucker and Mrs. Helen McKee are also working hard and the group appreciates them very much. Also the parents for being behind the 4-H's. It takes everyone to have a successful 4-H Club. If anyone is interested in 4-H Club work, please let us know. We can certainly use everyone.

### East Tishomingo

The East Tishomingo All Girls 4-H Club met at Linda Starkey's home on January 28, to go skating. The group had lunch at McDonald's and had lots of fun skating.

The club met at Linda's to have a Valentine party and a 4-H Club meeting. The girls gave out Valentine cards. Sondra Malone led the devotional, Tasha Dawson had the 4-H pledge, Sharon Page had the America pledge, and Teresa Harris lead the group in some songs. Toni Starkey read a Valentine poem.

The next meeting will be on March 1, at Sharon Page's house.

## IUKA LIBRARY NEWS

The Iuka Public Library has received several nice gifts recently. The Iuka Guaranty Bank presented Mr. Marshall Hollis, Scout Master, with a new set of Boy Scout Books. These books have been placed in the public library for the convenience of the Scouts.

The Twenty Year Service Club of the Tishomingo Shoe Company has presented the library with two very nice books in honor of former executives of the company. Yazoo is in honor of Sanders James was written by Harriet DeCell and Jo Anne Prichard with an introduction by Willie Morris. It is an in-depth survey of Yazoo County in Mississippi from the earliest written records through the most recent conversations. It is amply illustrated with maps, charts, and photographs. There are sections devoted to architecture, riverboats, politics, the Civil War and reconstruction. History of the Motor Car in honor of Brandon Edmondson was written by Marco Matteucci. This book tells the whole story of the car from the first experiments with steam right through to the stream-lined supercars of today. The text was carefully researched and is authoritative yet it is not over-technical. There are over 700 superb illustrations of which 485 are in full color.

Two books have been received from Mrs. G.K. Nixon and children in memory of Mrs. Plume Oaks Williams. Forever Island by Patrick D. Smith and The Summer Before the Dark by Doris Lessing are novels that were selected from the Extension Homemaker's Reading List to pay tribute to the memory of this friend. In addition to the books listed above the following new books are available from the Iuka Public Library:

**FICTION:**  
The Second Deadly Sin by Lawrence Sanders, The Simarillion by John R. Tolkien, Dynasty by Robert S. Elegant, Eroica by Mara Rostov, The Druid Path by Marah E. Ryan.

**NON-FICTION:**  
Cancer by Thomas H. Corbett, 1978 World Almanac and Book of Facts, Ask Beth; You can't Ask Your Mother by Elizabeth C. Windship.

There are also many new paperbacks on the shelves to select from for your reading pleasure.

**A Different Matter**  
Said the visitor to the office manager. "That new clerk of yours seems a hard worker." "Yes, sighed the manager. "That's why we're letting him go." "What--for working hard?" "No--for seeming to."

Words are funny but so are the people who use them.

## GOSSIP (Did You Know?)

### Holts Spur

Sympathy goes to the family of Mr. James Dexter who died Friday in his home hospital at Taylor. He was the son of the late Mrs. Ellis and Mrs. Leanne Ellis of this community. He was born and reared in this community. On his 60th birthday he celebrated the hospital with a party and then suffered a heart attack. He is survived by his wife, Mary Evelyn, 3 children, his mother, Mrs. Lora Ellis

of Burnsville, two other sisters, Mrs. Augusta Jones of Texas and Mrs. Evelyn Camper of California.

The wedding of Miss Gogge Lynn Vanderford and Doyle Holland took place at the home of his parents, Mr. and Mrs. Fayette Holland, on Saturday night, February 18. They are residing in the home owned by Mrs. Jennie Hatcher, near Milton Vanderford's.

Floyd Norris was a guest at a birthday supper February 18 for Harvey Davis which was given by his wife at their home. Mrs. Vernon Ledgewood and

Mrs. Bertha Taylor and Mrs. Lorene Owens of Corinth attended worship service at Rowland Mills church Sunday. Mrs. Taylor stayed for a few days with her cousin, Mrs. Leona Ellis.

Mr. and Mrs. L.O. Stidham Mr. and Mrs. Junior Calton and children and Mr. and Mrs. James Ray McCoy and children visited Sunday at Hamilton, Al. Mr. Stidham's sister, Mrs. Judy Williams, who is very ill.

Sunday, February 12, dinner

to the home of his mother because that city was iced over. He flew to Florida and spent two nights with some friends. In the meantime Sammie and her four children ran out of oil to heat the house. They built a big fire and the oil company brought oil around noon. It cost the Gills \$50.00 to get the snow plow to clean the driveway. Two weeks before that it cost them \$35.00 for the same job. The children missed three days of school. On February 13, they had a small 3 inch snow and she shoveled it herself in 2 1/2 hours. Mrs. Gill is Robert Sim's sister who was reared here, and married a boy from Birmingham while she was working there.

Mr. and Mrs. L.O. Stidham Mr. and Mrs. Junior Calton and children and Mr. and Mrs. James Ray McCoy and children visited Sunday at Hamilton, Al. Mr. Stidham's sister, Mrs. Judy Williams, who is very ill.

### 4-H Club

The Midway 4-H Club met on Monday evening, February 13, for a spelling bee and Valentine party. President Lyman Hill, Jr. called the meeting to order at 5:00 p.m. Steve Hodge and Ronnie Henderson led the pledges. Monica Tucker and Mary Ann Aldridge led the group in singing. Richie Rast and Mary Ann Aldridge led in the devotion.

The club had the spelling bee. Everyone present participated. The winners in the 9-11 age group were: 1st Tim Belue; 2nd Richie Rast, 3rd Sharon Hodge; 12-14 age group: 1st Mary Ann Aldridge, 2nd Lyman Hill, Jr., 3rd Junior McKee; 15-19 age group: Louise McKee and Gary McNutt. These winners were awarded a small prize. They are looking forward to the County 4-H Spelling Bee on February 21. Most members are also working on their Bee

Let us update your health insurance

Inflation may have made your health insurance obsolete. Let us update you with up-to-date Mutual of Omaha plans.

GARY L. CHITTON  
Nelson C. Vestal Agency  
Northeast District Office  
L. M. Peek, Dist. Mgr.  
P. O. Box 652  
Booneville, Miss.  
Phone 728-5718

REPRESENTING  
**Mutual of Omaha**  
People you can count on...  
Life Insurance Affiliate: United of Omaha  
MUTUAL OF OMAHA INSURANCE COMPANY  
HOME OFFICE: OMAHA, NEBRASKA

## TOP BUYS

ON TIP-TOP CARS  
LAST YEAR FOR BIG LTD's!  
SPECIAL THRU FEBRUARY ON THE LTD's

1977 LTD 2 DOOR HARDTOP DEMONSTRATOR GOING AT A REDUCED PRICE	
1972 Pontiac Catalina 2 door	1974 Courier Pickup
1973 DODGE 4 door	1973 TOYOTA PICKUP
1973 CHEV. PICKUP	1974 PINTO
1973 OLDS CUTLASS 4 door	1973 LTD 2 door hardtop
1972 MONTE CARLO	1973 CHEV. TRUCK 1 ton
1972 DODGE CHARGER	1972 IMPALA 4 door
1972 Plymouth	1975 CHEV. PICKUP 1 1/2 TON
1971 OLDS 4 door	1975 Ranger Pickup loaded
1974 FORD PICKUP 1 1/2 ton	1974 NOVA 2 door 6 cyl. auto.
1974 Gran Torino hardtop	1973 T-BIRD
1971 Ford Truck F250	1975 RANCHERO
1975 LTD 2 door hardtop	1974 Courier Pickup

Good selection of Thunderbird, Granada, Fairmont, Mustang, Pinto, Fiesta, Courier and 1/2 ton Pickups

**McNATT FORD SALES**  
HIGHWAY 25 SOUTH PHONE 423-3681 IUKA, MISS.

## ELECTRIC FENCERS & REPAIRS

W.H. FAIRLESS HARDWARE

IUKA 423-9256 TISHOMINGO 438-6608

CERTIFICATES OF DEPOSIT  
**7 3/4%**  
PER ANNUM

6 YEARS \$1,000 MINIMUM

IF YOU'RE LOOKING FOR AN INVESTMENT OPPORTUNITY WITH HIGH INTEREST & INSURED SAVINGS SEE TRI-STATE SAVINGS & LOAN... SOON.

4 Years	7 1/2%	\$1,000 Min.
2 1/2 Years	6 3/4%	\$1,000 Min.
1 Year	6 1/2%	\$1,000 Min.
90 Days	5 3/4%	\$100 Min.

Substantial interest penalty required for premature withdrawal.

BY investing \$5,000 or more in a C.D., you qualify for our Monthly income check. Interest compounded quarterly on All Accounts.

MEMBER  
**FSLIC**  
Federal Savings & Loan Insurance Corp.

Your Savings Insured to \$40,000

## TRI-STATE SAVINGS & LOAN ASSOCIATION

IUKA PHONE 423-3186  
BELMONT 454-3313



# WADKINS

## SUPERMARKET

HIGHWAY 25 N

IUKA, MS

YOU GET 1 POINT WITH EACH DOLLAR PURCHASE  
**GET MORE FOR YOUR MONEY!**

YOU'LL ALWAYS FIND LOW COMPETITIVE PRICES, PLUS  
WADKINS POINTS FOR EVEN MORE VALUE.

WE RESERVE THE RIGHT TO LIMIT  
QUANTITIES - NONE SOLD TO DEALERS



# BEST FOODS FOR LESS!

SOUTHERN BELLE

**BACON**

1 LB. PACK **\$1.39**

REELFOOT OLD FASHION SLICED  
**BOLOGNA**

LB. **99¢**

HORMEL

**VIENNAS**

5 OZ. CANS **3/\$1.00**



LIQUID JOY  
22 OZ. BOTTLES  
**69¢**

# ORANGE DRINK



LIMIT 3  
QT. BOTTLE

**3\$**

JERGENS  
**SOAP**

BATH SIZE

**5/\$1.00**

ROSEDALE SWEET  
**PEAS**

17 OZ. CANS

**4/95¢**

**PEPSI**



6 PACK

32 OZ. BOTTLES

**\$1.29**

PLUS DEPOSIT

SWEETHEART  
**FABRIC SOFTNER**

GAL. JUG

**99¢**

TERRI  
**TOWELS**

JUMBO ROLL **63¢**



MEALTIME  
**DOG FOOD**

5 LB. BAG

**99¢**

LIPTON  
**TEA BAGS**

48 CT.

**\$1.25**

# COFFEE



LIMIT 1

**\$4.49**

JELLO VANILLA, CHOCOLATE, BUTTER PECAN, BANANA, LEMON  
**INSTANT PUDDING & PIE FILLING**

3 3/4 OZ. BOXES

**3/79¢**

TROPICANA PURE

**ORANGE JUICE**

1/2 GAL.

**\$1.25**

LAYS

**POTATOE CHIPS**

TWIN PACK

**79¢**



SUN FRESH FROZEN

**STRAWBERRIES**

10 OZ. CARTON

**3/\$1.00**

RAGU

**SPAGHETTI SAUCE**

WITH MEAT

15 1/2 OZ. JAR

**59¢**



HAPPY VALE

**TOMATOES**

28 OZ. CAN

**49¢**

PARKAY

**MARGARINE**

SQUEEZE BOTTLE

**69¢**

# CRISCO

LIMIT 1

3 LB. CAN

**\$1.69**

# Fresh Produce Values

PINK

**GRAPEFRUIT**

5 LB. BAG

**89¢**



RED

**POTATOES**

10 LB. BAG

**77¢**

YELLOW DELICIOUS

**APPLES**

LB.

**39¢**

National

Silver

Company

START A BEAUTIFUL DINING TRADITION WITH  
LUXURY STAINLESS

now only **\$9.95**

Our Luxury Stainless brings charm to your table with graceful classic design. Of solid stainless so easy to care for. One piece serrated edge Knives. 100% Dishwasher Safe. 24 PC. SERVICE FOR 4. Includes 8 Teaspoons, 4 Soup Spoons, 4 Dinner Knives, 4 Dinner Forks, 4 Salad Forks. RETAIL VALUE \$14.95

GET THIS FINE TABLEWARE WITH PURCHASES AT WADKINS ASK FOR FULL DETAILS AT THE CHECK STAND.



**NEW STORE HOURS**  
**SUN. 1 - 6 MON. - FRI. 8:30 - 6:00 SAT. 8:30 - 6:30**



# 1978 Youth Conservation Corps

Applications for Mississippi's 1978 Youth Conservation Corps are being finalized and positions are available at the High School from Mrs. Jourdan for interested

Youth Conservation Corps is designed to provide the nation's youth a chance to take an active part in improving the quality of our nation's environment. It is a well planned, work-learn experience for young people 15 through 18 years of age.

Camps are co-educational and youth 15 through 18 years of age in the state are eligible to participate in the program. Only those youth who live in the local commuting area are considered for the non-residential camps. The residential camps will be open to youth statewide.

There will be twenty-four camps in Mississippi this summer. They are operated by federal, state, and local agencies. Three of the camps are residential, meaning the enrollees remain in the camp for the entire 8-week period. The others are non-residential, meaning the enrollees are recruited from the local commuting area and will be at Camp Harbinger, housed at the Perkins Campus of Gulf Coast College. There are 28 enrollees; Chickasaw

Camp, housed at Jones County Junior College in Ellisville - 35 enrollees; and Choctaw Camp at Philadelphia with 50 enrollees. Youth living in any place in Mississippi are eligible to apply for these camps.

Non-residential camps will be established at various locations throughout the state. The Department of the Interior will have six camps with 115 enrollees. They will be: Natchez Wildlife Refuge at Brooksville-20 enrollees; Yazoo Wildlife Refuge at Hollandale-18 enrollees; Natchez Trace Parkway with 21 enrollees at Tupelo, and 12 at Ridgeland; and Gulf Islands National Seashore Park at Ocean Springs-40 enrollees.

Upon approval of a federal grant application, the State of Mississippi will host six camps with 15 enrollees in each camp. They will be located at Holmes County State Park, Durant; Paul B. Johnson State Park, Hattiesburg; Percy Quin State Park, McComb; Tishomingo State Park, Tupelo; and Winter-ville Mounds Historic Site, Greenville. The City of Jackson will operate a camp with 60 enrollees; the City of Natchez will have 13 enrollees; and the City of Vicksburg will have a camp with 12 enrollees. The U. S. Forest Service will operate six non-residential camps with 213 enrollees. The



**ENGLISH TEA PARTY** — As part of their study of the sixteenth century, English Literature students at Northeast Mississippi Junior College made and served typical English food at a party held in the

Eula Dees Memorial Library. From left to right are: Neil Hudson, Iuka; Kathy Dillard, Baldwyn; Charlene Coltharp, New Albany; Meda Box, Baldwyn; and Cathy Lindley, Booneville. Special guests were

Northeast faculty members and administration who were served plum cake, English matrimonials, scones, sausage cake, "olde-time" tea cakes, and wassail.

ple eat in public may have little or no bearing on their total food intake.

"Overweight people may have different eating habits in the privacy of their own homes," he pointed out.

Also, if obese people do not eat more than thinner people in public, Dr. Meyers believes this could mean other factors play a more dominant role than previously suspected.

Genetics, metabolism and weight in infancy are examples of possible factors in an individual's weight. Activity is another.

"In observations of activity levels, we had a very great difference. The obese were far less active than their thinner counterparts," said Dr. Meyers. "An individual's weight is a very simple equation of 'calories in' versus 'calories out.' In other words, if you consume 2,000 calories a day and only burn off 1,500 calories, you'll have a 500 calorie surplus a day or about one pound per week. So, activity increase which burns off the surplus will, in turn, bring weight reduction."

Meyers recommends moderate activities, such as walking instead of riding short distances in an auto, climbing stairs instead of riding elevators. He cautions against violent exercise and "crash" diets.

"Repeated loss and gain can be more harmful than being overweight."

Weight loss and activity are the focus of Meyers' present research at MSU utilizing area volunteers.

If such studies prove successful, Meyers' research contribution may not only help add years to a lot of lives, but take a lot of weight off minds, as well as bodies. For the second stage of his research, Dr. Meyers is interested in volunteers from the Mid-South area who would like to participate in these studies. Inquiries should be addressed to: Dr. Andrew W. Meyers, Department of Psychology, Memphis State University, Memphis, TN 38152.

"As knowledge increases, wonder deepens." Charles Morgan

**Free booklet**  
Planning to buy a home this spring? Stop by your power distributor's office for a free copy of *Energy-Wise Home Buying*.

**Wanted To Buy Standing Pine Timber**  
If you have Pulpwood or Sawtimber for sale contact:  
**Westvaco Corp.**  
P.O. Box 1085  
Tupelo, Ms. 38801  
or call 844-1746  
Saltillo-869-2717  
Dennis-454-7430  
At night call 844-7833



**CARL BOOKER**  
Route 4-Iuka, Ms.  
Qualifying as a Lamar Life "All Star" requires a high level of excellence in earned commissions, persistency and number of policies sold. Lamar Life salutes All Star members for this special achievement.  
**Lamar Life Insurance Company**  
Jackson, Mississippi  
Since 1906

camps will be located at Meadville-24 enrollees; Gloster - 36 enrollees; Raleigh - 36 enrollees; Forest-36 enrollees; Holly Springs - 36 enrollees; and Ackerman - 45 enrollees.

Applications must be mailed to reach Washington, D. C. by March 17. Applications are available at all schools, both public and private; local employment offices; and the local offices of the Department of the Interior and the U. S. Forest Service. Youth who are unable to obtain applications from the above sources may get one from the U. S. Forest Service, P. O. Box 1291, Jackson, MS 39205 or by calling 969-4391.

Applications may be obtained from Jill Jourdan at the Iuka High School.

Enrollees will be selected on a random basis by a computer at the Washington office of YCC.

**LETTERS TO THE EDITOR**

Dear Editor:  
Sometimes I have the distinct feeling that there's a dead cat on the line - somewhere! I'm sure this feeling manifests itself in many other people, when for no apparent reason their power bills double in

one month! Possibly, these seemingly outrageous bills are the result of one of the so-called "estimated" periods, wherein, the meter is not actually read. My bill doubled for January period; and on my word of honor, it was impossible to have used any more electricity than we used in December! We used no more hot water, not as much cooking, no more heat than usual, and certainly no more lighting than common - yet my bill was almost 50% larger than its EVER been! I'd sure like to know some answers, and I'll bet there's many more folks - who are going to find those answers - one way or another!  
**REX L. TUCKIER**

## New Hope For The 'Hefty'

Why are overweight Americans overweight? Why do some put on pounds while others do not?

In an age where fast food is faddish and most of it fatty, those who over-indulge suffer the consequences. And, one consequence is that obese Americans have a 10-year shorter lifespan than those of average weight.

Dr. Andrew Meyers, assistant professor of behavior psychology at Memphis State University, first began his efforts to shed new light on the causes of obesity a few years ago while conducting research with Dr. Albert Stunkard at the University of Pennsylvania.

Fat people were assumed to be fat because they "ate faster, took bigger bites and chewed their food less," so Meyers' and Stunkard's staff of researchers set out to find if there was an "obese eating style." What they found topped a number of "basic assumptions that have gone unchallenged for years."

More than five thousand subjects were observed in food operations ranging from ice cream stands to fast food franchises, cafeterias, racetrack stand eateries and full restaurants.

The research results indicated no consistent pattern of obese subjects choosing more food than non-obese subjects.

Also revealed was the fact that overweight Americans do not eat more pizzas, hot dogs, ice cream or other such foods in restaurants than their slightly plump counterparts. Nor do they chew their food faster, take larger forkfuls or

sip more drinks than thinner people observed in the same restaurants.

To test whether obese people choose restaurants which dish out higher calorie food, the researchers studied restaurants with smorgasbord buffets some nights and traditional family-style meals other nights.

The staff members, who ate smorgasbord while observing unsuspecting customers, found the proportion of overweight people to the general restaurant population more than doubled on smorgasbord nights.

"At meals where customers were served at their tables," said Meyers, "obese people made up 9 percent of the restaurant population, and on smorgasbord nights they constituted 23 percent of the customers."

The findings of this study were presented in 1977 by Dr. Meyers at the American Psychological Association meeting in San Francisco.

Since joining the MSU faculty two years ago, Meyers' research has been aimed at exploring other possible explanations for obesity. What peo-

ple eat in public may have little or no bearing on their total food intake.

To test whether obese people choose restaurants which dish out higher calorie food, the researchers studied restaurants with smorgasbord buffets some nights and traditional family-style meals other nights.

The staff members, who ate smorgasbord while observing unsuspecting customers, found the proportion of overweight people to the general restaurant population more than doubled on smorgasbord nights.

"At meals where customers were served at their tables," said Meyers, "obese people made up 9 percent of the restaurant population, and on smorgasbord nights they constituted 23 percent of the customers."

The findings of this study were presented in 1977 by Dr. Meyers at the American Psychological Association meeting in San Francisco.

Since joining the MSU faculty two years ago, Meyers' research has been aimed at exploring other possible explanations for obesity. What peo-

### Words of Appreciation

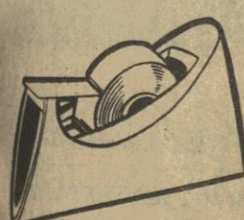
We would like to take this opportunity to thank each and everyone who helped us in any way during the illness and death of our father, grandfather and husband, **E. N. Allen, Sr.** For all the expressions of sympathy, the food, cards and floral tributes we will never be able to thank you enough. Especially do we thank you for your prayers. We know that without God we would not have been able to get by. We also thank each of you for your cards and telephone calls while **E. N.** was in the hospital. A special thanks to **Bro. Stanley Magill, Dot Phillips and Janice Bolue** for making the service so meaningful and comforting.

God bless each and everyone of you.  
**Mrs. E. N. Allen, Jr.**  
**Mrs. John Lyles and Family**  
**Mrs. Ray Curtis and Family**  
**Elliott Allen, Jr. and Family**

## COMPLETE LINE OF OFFICE SUPPLIES

*Wilson Jones*  
*Bookkeeping Forms*

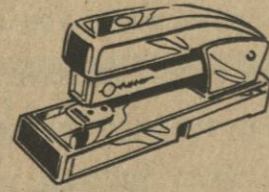
We Print All Size Forms  
Letterhead & Envelopes



SCOTCH BRAND TAPE  
CARBON PAPER  
LEGAL PADS  
MIMEO PAPER



MASKING TAPE

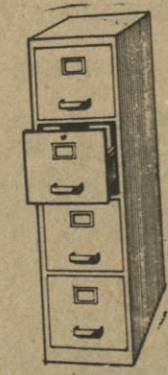


STAPLES & STAPLERS

### OFFICE SUPPLIES



FILE FOLDERS



FILE CABINETS  
(ALL SIZES)



ALL BRAND NAME  
PENS & PENCILS



DESK CALENDAR  
CALENDAR REFILLS

**TISHOMINGO COUNTY NEWS**  
120 WEST FRONT ST. IUKA, MISS.  
PHONE 423-3666 -423-3667

"We do more than just fill out tax forms. We can help save you money."



Henry W. Block  
People don't come to H&R Block just to have their tax forms filled out. They come because Block can help them save money. We dig for every honest deduction and credit. That's Reason No. 1 why H&R Block should do your taxes.

**H&R BLOCK**  
THE INCOME TAX PEOPLE

# TIMBES TIRE SERVICE

Hwy. 72 Burnsville Ms. 427 - 8778

**WE HAVE 1500 OR MORE GOOD USED TIRES GOING AT \$10.00 EACH**

**IF YOU ARE HAVING A BALANCING PROBLEM LET US FIX IT WITH OUR COMPUTER BALANCER.**

**L78x15  
4 PLY POLYESTER  
\$25.95**  
(BLEM.)

**E78x14  
4 PLY POLYESTER  
\$22.95**  
(BLEM.)

**We are doing complete front-end repair and alignment.**

**MOUNTING & Balancing FREE!**





OUTSTANDING CITIZEN nominees, left to right: Mickey Wingo, Billy Rainey, Dr. Ben Kitchens, Beth Beard, Tammie

Mann, Tracey Gist, and Tim Pittman. Not pictured, Robbie Grisham.



BOBBY RICHARDSON, Northern District Highway Commissioner; Lloyd Murrah, Iuka Jaycee President; Richard Barrett, guest speaker; Tammie Mann, Outstanding Teenager Award winner; and Billy Rainey, Outstanding Young Man Award winner. The group is shown left to right.

## Annual Jaycee Merchants Banquet

Approximately sixty merchants, Jaycees, wives, and guests attended the Iuka Jay-

cees' Merchant's Appreciation Awards Banquet held Friday night at the Iuka Youth Center.

immediately following the meal, prepared by the Jaycee wives, Lloyd Murrah, Iuka Jaycee President, made several Jaycee award presentations.

Sandra Patrick, Edna Murrah and Bonnie Moore were presented Appreciation Awards from the Iuka Jaycees for their help on several Jaycee projects during the year. Murrah also presented Spark Plug awards to Paul Morris, George Yow, and Dale Moore; Passing Jaycees On awards from U. S. Jaycee President Bob Rushton to Paul Morris, Lloyd Murrah, George Yow and Dale Moore; Outstanding Director of the Mississippi Jaycees for November to George Yow; and Outstanding Iuka Jaycee of the Quarter awards to Dale Moore for first quarter and to George Yow for second quarter of the Jaycee year.

George Yow, Outstanding Teenager Chairman, recognized Tim Pittman, Tracy Gist, Beth Beard, and Tammie Mann as nominees for the award, which was presented to Tammie Mann for her outstanding achievements in 1977. Paul May recognized Dr. Ben Kitchens, Robbie Grisham, Mickey Wingo, and Billy Rainey as the nominees for the Outstanding Young Man award, which was presented to Billy Rainey for his contributions to his community in 1977.

Following the awards pro-



JAYCEE AWARD WINNERS - Left to right: Lloyd Murrah, Passing Jaycees On award from U. S. Jaycee President; Paul Morris, Spark Plug and Passing Jaycees On; Dale Moore, Spark Plug, Passing Jaycees On and Outstanding Iuka Jaycee first quarter; and George Yow, Spark Plug, Passing Jaycees On, Outstanding Iuka Jaycee Second Quarter and Outstanding Region Director of Mississippi for November.

gram, Bobby Richardson, Northern District Highway Commissioner, entertained the crowd with his guitar picking and singing. Richard Barrett, introduced as a likely candidate for Governor in 1979, made the keynote address to the group to conclude the program.

## Burnsville Homemakers

The Burnsville Homemakers Club met Wednesday at 1:30, February 15, in the lovely home of Mrs. Ann Strickland, in Iuka. The president, Mrs. Georgia Mae Smith, presided over the meeting. She read the thought for the month: One Way to Break a Bad Habit is to Drop It. The group sang "Higher Ground". Mrs. Dorothy Strickland gave the devotion, reading from I Timothy 4:16. The subject was "Tend the Fire." Mrs. Bertha Johnson worded the prayer.

The roll call was answered by each one telling her favorite fruit. There were no minutes recorded for December due to the fact that was the Christmas party. During the business session the year books were filled out. The meeting in March is to be at the home of Mrs. Ruby Adams.

The focus topic on Women and Credit was given by Mrs. Dorothy Strickland. She said: 1. Every woman needs to establish her own identity in the credit world; 2. Every woman needs to be familiar with laws protecting her credit rights; 3. Laws provide equality - women have the same credit rights as men; and 4. What to do in case you are refused credit.

Mrs. Thelma Gray gave the demonstration on how to plan color for your wardrobe.

Mrs. Dorothy Strickland and Mrs. Ruby Adams won the prizes in recreation. Mrs. Thelma James, visitor, won the door prize.

Delicious refreshments were served by the hostess to the following present: Mrs. Bertha Johnson, Mrs. Georgia Mae Smith, Mrs. Bessie Dickinson, Mrs. Ruby Adams, Mrs. Dorothy Strickland and Mrs. Thelma Gray.

## BIRTH

Mr. and Mrs. Michael Holt, of Cherokee, Ala., Route 2, wish to announce the birth of their son. He was born at Colbert County Hospital in Sheffield, Ala., Saturday, Feb. 18, at 10:41 p.m. He weighed 7 lbs. 2 oz., and was 20 3/4 inches long. He has been named Michael Brian Holt.

Proud grandparents are Mr. and Mrs. Winford Puckett, of Iuka; and Mr. and Mrs. James E. Holt, of Cherokee, Ala.

## Men In Service

Corporal Arlon W. Ivey, son of Mrs. A. L. Ivey, Belmont, recently participated in "Empire Glacier 78," an annual joint readiness exercise at Ft. Drum, N. Y.

The exercise is meant to teach the soldier, from Commander to Private, how to cope

with and survive in a cold weather environment.

Regularly stationed at Ft. Campbell, Ky., Col. Ivey's unit made extensive preparations in order to cope with the near arctic conditions at Ft. Drum.

Cpl. Ivey, a team leader with the 502nd Infantry, entered the Army in June 1975.

He is a 1973 graduate of Belmont High School.

## Follow rules for safe kite flying

How many kites have you seen entangled in power lines? The two seem to have a magnetic attraction for each other. And that's what makes kite flying, in-

nocent as it seems, a dangerous sport unless you follow a few safety rules.

First, choose a wide, open field or clearing far away from power lines. But even here, small children should not be allowed to fly kites unsupervised. Make sure you or another adult ac-

companies the children enforce the safety rules. Never fly or let children fly kites that contain materials with string containing tinseled or wire materials will conduct electricity; so for safety, sure your kite and string are made of such materials as cotton, twine, wood, paper or plastic. Never fly or let children fly kites in damp or rainy weather. Lightning might strike the kite and run down the string, which will conduct electricity almost as well as wire.

If, despite your efforts, the kite you or child is flying gets into power lines or is next to power lines, consider it lost. Never the string or climb on the kite. You could be trocuted.

Enjoy the brisk winds with your child avoid the possibility of tragedy by following rules for kite flying.

Make full use of portable kitchen appliances for preparing small light meals. Portable appliances will use less than your range.

## OUTDOOR ADVERTISING

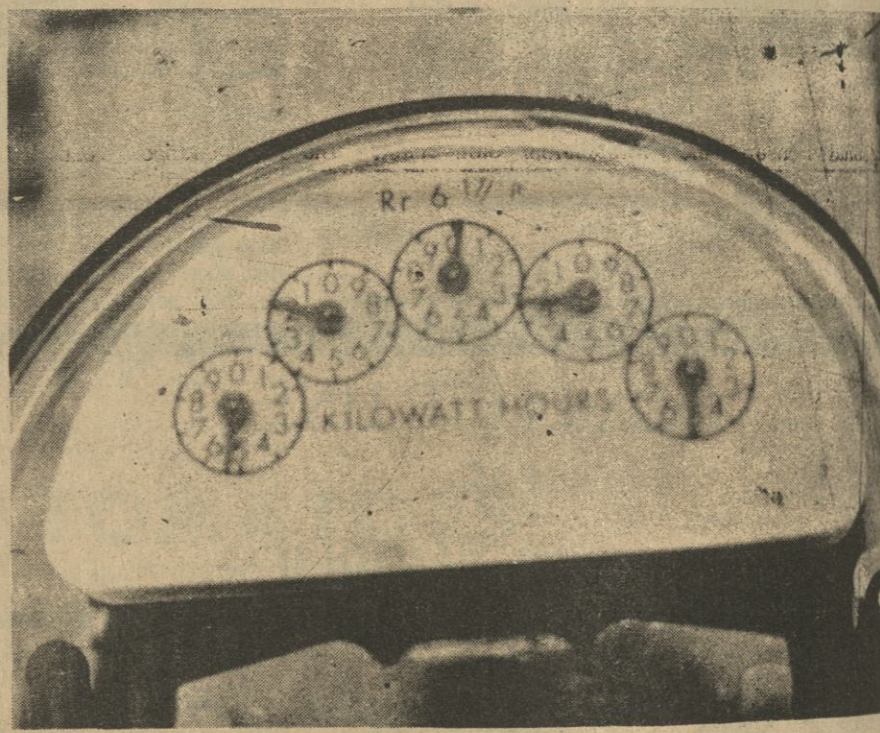
EVERY HOUR! EVERY DAY! ALWAYS SELLING!

Commercial Signs-Painted Bulletin Poster Panels-Plastic Letters

Tri-Cities Poster Adv. Co.

2ND & RALEIGH AVE. - PHONE 383-8331 SHEFFER

# READ YOUR METER



PLEASE LEARN HOW TO READ YOUR METER! IF YOU WILL LEARN HOW TO READ YOUR METER, YOU WILL BE ABLE TO DETERMINE HOW MANY KILOWATT HOURS YOU USE, DAY, OR WEEK, OR MONTH YOU USE. READ THE METER AND SUBTRACT PREVIOUS READING FROM THE PRESENT READING AND YOU WILL KNOW HOW MANY KILOWATT HOURS YOU ARE USING. SOME METERS HAVE FOUR DIALS AND SOME HAVE FIVE - WE HAVE A FIVE DIAL METER PICTURED ABOVE. THERE ARE RULES TO FOLLOW IN READING A METER.

1. READ THE DIAL FROM LEFT TO RIGHT AND WRITE DOWN THE SMALL NUMBER THE BLACK HAND IS IN BETWEEN.
  2. SOMETIMES YOU MAY HAVE TROUBLE IN DETERMINING WHICH TWO NUMBERS THE BLACK HAND IS BETWEEN. LOOK TO THE DIAL IMMEDIATELY TO YOUR RIGHT - IF THE BLACK HAND IS ON THE 1 SIDE OF 0, THEN IT HAS PASSED 0. IF IT IS ON THE 9 SIDE OF 0, THEN IT HAS NOT REACHED THAT NUMBER.
- READING THE METER ABOVE, ON THE FIRST DIAL THE BLACK HAND IS BETWEEN 5 AND 6, READS 5 - THE SECOND DIAL THE BLACK HAND APPEARS TO BE BETWEEN 2 AND 3, BUT LOOKING AT THE DIAL IMMEDIATELY TO YOUR RIGHT, YOU CAN EASILY SEE THAT THE BLACK HAND IS ON THE 1 SIDE OF 0, THEREFORE, IT WOULD BE BETWEEN 2 & 3, READS 2. THE THIRD DIAL IS BETWEEN 0 & 1, READS 0. THE FOURTH DIAL IS BETWEEN 2 & 3, AND READS 2. THE LAST DIAL IS BETWEEN 5 & 6, AND READS 5. THE METER READS 52025.

# TISHOMINGO COUNTY ELECTRIC POWER ASSOCIATION



## GLIDWELL BROS. PAINT & DECORATIONS

Highway 72 East of Burnsville

Paint MUST GO Before March 1

Aluminum Mobile Home Coating \$1.50 PER GALLON

Latex Block Filler \$3.95

\$4.25



Light Fixtures

25% OFF (OUR COST)



\$2.79

Silicone Masonry Water Repellent \$5.00

Wallpaper Paper Paste 1/2 price



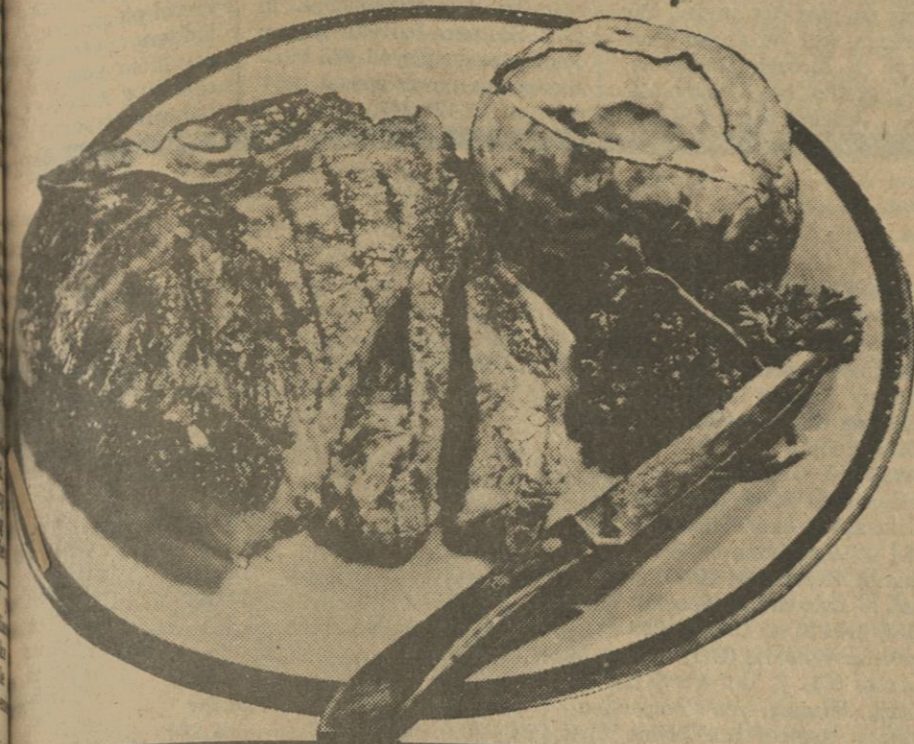
Quantity  
Rights Reserved!  
None Sold  
To Dealers!



Save a bundle in this BIG

**BEEF SALE!**

More PROOF...the Better Buys are at...



WE ACCEPT



FOOD STAMP COUPONS

**STEAKS**

SIRLOIN OR T-BONE

LB.

**\$1.69**

**NECK BONES**

FRESH PORK

LB.

**59c**

**PORK LIVER**

LB.

**49c**

**SAUSAGE**

SOUTHERN BELLE

LB.

**\$1.39**



**OLEO**

Kraft Parkay Maxicap  
with \$1.00 coupon and purchase

(12+5) 16 oz.

**19c**

**TOWELS**

ASSORTED WC & \$10.00 PUR.

Brawny  
with coupon &  
\$1.00 purch.



Jumbo Roll

**9c**

**CHEESE**

SPREAD SINGLE

12 OZ.

**89c**

**PIZZA**

HYDE PARK

13 OZ.

**69c**

**PEACHES**

Rosedale  
Halves or Slices  
29 oz.

**49c**

**MAYONNAISE**

32 OZ.

**99c**

**MARGARINE**

16 OZ.

**69c**

**LUX**

Liquid  
Detergent

32 OZ.

**99c**

**CATSUP**

DEL MONTE

32 OZ.

**69c**

**-1 SAUCE**

W.C. (10+5)

10 OZ.

**99c**

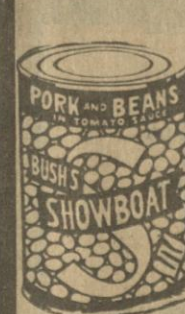
**TUNA**



Hyde Park  
Light Meat  
Chunk

6 1/2 OZ.

**59c**



**SWEET PEAS**

17 OZ.

**3/89c**

**PORK & BEANS**

14 1/2 OZ.

**4/\$1.00**

**SEASONED BEANS**

16 OZ.

**3/\$1.00**

**BISCUITS**

10 CT.

**3/99c**

**OIL**



Wesson  
38 oz.

**\$1.39**

**Soft'n Pretty PRINTS**

**LIQUID BLEACH**

128 OZ.

**59c**



**TISSUE**

4 ROLLS

**69c**

**PRODUCE SPECIALS**

**POTATOES**

10 LB. BAG

**99c**

**COLLARDS**

3 BCHS.

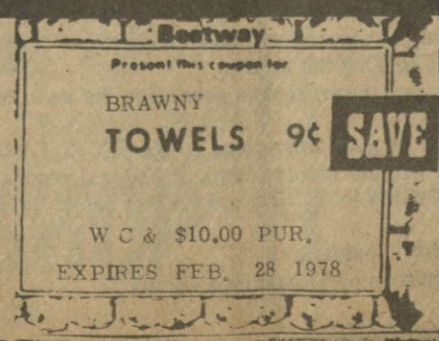
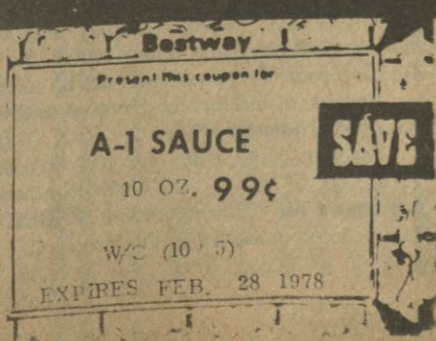
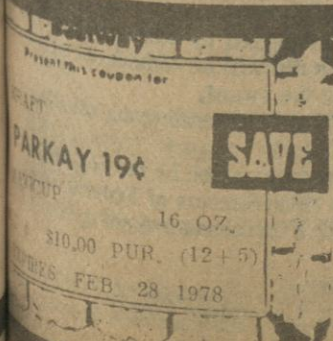
**\$1.00**

**APPLES**

WASHINGTON CANADIAN FANCY  
GOLDEN DEL. APPLES

LB.

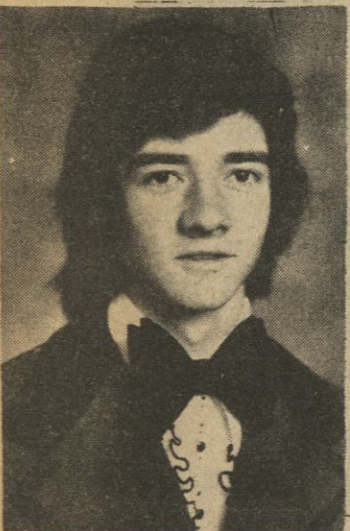
**39c**







A LOSING BATTLE — P. L. Sweeney, of Iuka, was out early Tuesday morning trying to clear the drive to his business from the deepening snow. Unfortunately, snow was falling faster than he could sweep. Some areas of the county reported up to four inches before the heavy precipitation stopped around noon.



MICHAEL WAYNE ELLIOT, son of Mr. and Mrs. Donald Elliot, of Sheffield, Ala., and grandson of Mrs. W. G. (Flodie) Robinson, of Iuka, has been selected as Employer of the Month and of the Year at Burger King in Muscle Shoals, Ala., where he is employed part-time. Michael won \$150.00. He is a junior at The University of Alabama, majoring in engineering.

### LEGAL

#### NOTICE TO BIDDERS

The Board of Trustees of the Iuka Special Municipal Separate School District will, at the office of the Superintendent of said district and until 4:00 p.m. February 24, 1978, receive sealed bids for Distributive Education Display Equipment to be used for the remainder of the 1977-78 School Session. Specifications are on file in the Office of the Superintendent.

On the above date the bids will be opened and read. After consideration, the Board will make awards to the lowest and best bidders but reserves the right to reject any and all bids.

Board of Trustees  
Iuka Special Municipal  
Separate School District

By: Dr. Jerry Clay Stone  
Executive Secretary

F-16-23-c.

## RUSHING REXALL DRUG CO PRESENTS Tishomingo County Hospital List

Lou Ella Henry	Angie Aldridge	John Spoon
Gladys Hill	Lorine Adcock	Brenda Scott
William Holland	Franklin Alsop	Sylvia Voyles
Ronnie Hubbard	Debbie Brewer	Turner Watkins
Maxine Isbell	Sue Barnes	Roger Walker
Eston Johnson	Netta Ballard	Willard Whitfield
Helen Louise Jourdan	Evie Boatner	Hattie White
Gladys Johnson	Austin Borden	Altha Wingo
Annie Kiddy	Julia Braddock	Shirley Watson
Gordon Kilpatrick	Charlie Bullard	James Wheeler
Onace Ledbetter	Michael Brown	Sarah Young
John Lovelace	Wacon Burns	Patsy Young
Joseph Lovelace	Glen Campbell	Carol Clay
Mary Lovelace	Herbert Carson	Hiram Lambert
Mildred Medford	Walter Crabb	Pauline Taylor
Mary McCleskey	Ethel Crowe	George Cooksey
W. C. Maness	Ruby Carson	Clara Sanders
James Moore	Dora Crum	Shirley Whited
Thelma Ponders	Lavernie Choate	George McDaniel
Lester Pruitt	Josie Cooper	Calvin Burleson
Chris Potts	Walter Comans	E. A. Kimberly
Minnie Rudd	Clara Dean	Edsel McNutt
Edna Mae Rhodes	Rachel Dunn	Frank Ross
Lorenzo Robinson	Thomas Downs	Alma McKinney
Walter Ras	Bonnie Epps	Willie Belle Bonds
Connie Ring	Ruth Ellsworth	Mattie Davis
Bill Robinson	Paskel Phifer	Carlton Phifer
Martha Strickland	Rosie Floyd	Velma Nunley
Elmer Strickland	Vivian Flanagan	Ida Monroe
Audie South	Cora Frederick	D. C. Daugherty
Lillian Skinner	Miriam Gross	Emma Thomas
Thomas B. Sanders	Carolyn Hall	Esil South
Diana Stevens	L. D. Huggins	

# FUEL CHARGE TO INCREASE

Monthly charges for TVA power will go up by 69 cents per thousand kilowatt-hours in March, reversing a decline this month and leaving fuel-based charges at about the same levels as in January, TVA said.

The increase results from a rise last month in power system costs for fuel and purchased power, mainly as a result of greater use of oil-burning peaking turbines and power purchases to meet the heavy power demands produced by unusually cold weather.

If temperatures follow a normal moderating trend from that long cold spell in January and early February, electric heating customers in most cases still will have a reduction in

power bills next month because of less extreme heating requirements, TVA said. This is likely to be more than enough to offset the increased charges.

The fuel charge does not apply to the first 500 kilowatt-hours of monthly home use. For a home using 1,000 kilowatt-hours of electricity, the March bill under the most typical local residential rate in the TVA region will be \$26.70, up from \$26.36 in February. The charges have been in about that same range since last summer, but are higher than they were a year ago when the comparable bill was \$23.60.

The national average electric bill for 1,000 kilowatt-hours of home use is about \$41,

based on the most recent Government survey and rate trends nationally.

The bill for 1,000 kilowatt-hours is only a representative example to show the trend in charges. Rate schedules vary locally, and there are large variations in power use among individual homes, with electrically heated homes often using several thousand kilowatt-hours in a winter month.

## Attention Senior Citizens

The Lucy Rowe Study Club, of Iuka, urges all senior citi-

### DIVISION OF STATE AID ROAD CONSTRUCTION MISSISSIPPI STATE HIGHWAY DEPARTMENT TISHOMINGO COUNTY BOARD OF SUPERVISORS SECTION 900 - NOTICE TO CONTRACTORS

Sealed bids will be received by the Board of Supervisors of Tishomingo County at Iuka, Mississippi, until 10:00 o'clock A.M. daylight saving time March 21, 1978, and thereafter publicly opened for construction of Grade, Drain, Box Bridge, Base, and Double Bituminous Surface Treatment on 1.474 miles of County Road known as Appalachian Access Highway Project No. APL 9950 (1) B West Paden Access Road in Tishomingo County, Mississippi.

Principal Items of Work as Follows:

Mobilization	L. S.	L. S.
Clearing and Grubbing	L.S.	L. S.
Removal of Bridge (Sta. 80 + 84)	L. S.	L. S.
Unclassified Excavation (FM)	1,650	Cu. Yd.
Unclassified Excavation (PM)	128,228	Cu. Yd.
Haul of Excavation (FM)	1,650	Sta. Yd.
Haul of Excavation (PM)	281,574	Sta. Yd.
Haul of Excavation (SPECIAL) (PM)	22,315	Unit
BASE AND SURFACE ITEMS		
Granular Material (Clay Gravel Base Course)	15,885	Cu. Yd.
(Cl. 3, Gp. "B") (LVM)	19,938	Sq. Yd.
Mixing, Shaping and Compaction	6,978	Gal.
Cutback Asphalt for Prime Coat (MC-70) or Emulsified Asphalt for Prime Coat (EA-1 or EA-P)		
Asphalt Cement for Surface Treatment (AC-5)	13,656	Gal.
Cover Aggregate (Size No. 5)	351	Cu. Yd.
Seal Aggregate (Size No. 7)	189	Cu. Yd.
Portland Cement Concrete Paved Ditch (Class "C" Concrete)	25.16	Cu. Yd.
PIPE CULVERT ALTERNATES		
Alt. I		
15" Reinforced Concrete Pipe Culvert (SS)	36	L. F.
18" Reinforced Concrete Pipe Culvert (SS)	340	L. F.
24" Reinforced Concrete Pipe Culvert (SS)	114	L. F.
36" Reinforced Concrete Pipe Culvert (SS)	168	L. F.
66" Reinforced Concrete Pipe Culvert (SS)	84	L. F.
18" Reinforced Concrete Pipe Culvert Extra Strength	144	L. F.
24" Reinforced Concrete Pipe Culvert Extra Strength	184	L. F.
18" Reinforced Concrete Pipe Flared End Section	4	Each
24" Reinforced Concrete Pipe Flared End Section	2	Each
36" Reinforced Concrete Pipe Flared End Section	4	Each
66" Reinforced Concrete Pipe Flared End Section	2	Each
Class "B" Structural Concrete	0.73	Cu. Yd.
Alt. II		
15" Bituminous Coated Paved Invert Corr. Metal Pipe Culvert (16 Gauge)	36	L. F.
18" Bituminous Coated Paved Invert Corr. Metal Pipe Culvert (16 Gauge)	484	L. F.
24" Bituminous Coated Paved Invert Corr. Metal Pipe Culvert (16 Gauge)	298	L. F.
36" Bituminous Coated Paved Invert Corr. Metal Pipe Culvert (14 Gauge)	168	L. F.
66" Bituminous Coated Paved Invert Corr. Metal Pipe Culvert (10 Gauge)	84	L. F.
Alt. III		
15" Vitrified Clay Pipe Culvert	36	L. F.
18" Vitrified Clay Pipe Culvert	500	L. F.
24" Vitrified Clay Pipe Culvert	306	L. F.
36" Bituminous Coated Paved Invert Corr. Alum. Alloy Pipe Culvert (14 Gauge)	168	L. F.
66" Bituminous Coated Paved Invert Corr. Alum. Alloy Pipe Culvert (10 Gauge)	84	L. F.
36" Bit. Coated Paved Invert Corr. Alum. Pipe Flared End Section (14 Gauge)	4	Each
66" Bit. Coated Paved Invert Corr. Alum. Pipe Flared End Section (10 Gauge)	2	Each
Right-Of-Way Markers (Type I)	34	Each
Traffic Stripe (Continuous Yellow) (Code TY or FDTY)	1,000	L. F.
Traffic Stripe (Skip Yellow) (Code TY or FDTY)	1,473	L. F.
Detail Traffic Stripe	72	L. F.
Reflectorized Traffic Warning Sign (Encapsulated Lens)	9	Each
Reflectorized Traffic Regulatory Sign (Encapsulated Lens)	2	Each
EROSION CONTROL ITEMS		
Ground Preparation (Type II)	86,533	S. Y.
Agricultural Limestone	35.76	Ton
Combination Fertilizer (13-13-13)	8.94	Ton
Super Phosphate	8.94	Ton
Seeding, Fescue (KY-31)	17.88	Acre
Seeding (Mixture No. 3) (Seeding)	17.88	Acre
Mulch, Vegetative Material	35.76	Tons
Mulch, Asphalt Emulsion	5,364	Gal.
Solid Sod	1,855	S. Y.
BOX BRIDGE ITEMS		
Class "BB" Box Bridge Concrete	357.25	Cu. Yd.
Reinforcement	62,608	Lbs.
Dry Rip Rap, Class I	60	Tons

Contract Time: 150 Working Days		
The award, if made, will be made to the lowest qualified bidder on the basis of the published quantities.		
Plans and Specifications are on file in the office of the Chancery Clerk, Tishomingo County, Mississippi, the office of the State Aid Engineer, Jackson, Mississippi, and the office of the County Engineer, Donald Eubank, Elm Shopping Center, Iuka, Mississippi 38852. Proposals may be secured from Donald Eubank, County Engineer, Elm Shopping Center, Iuka, Mississippi 38852, upon payment of \$15.00 which will not be refunded.		
Plans may be secured from Donald Eubank, County Engineer.		
Certified Check or Bid Bond for five (5%) percent of the total bid made payable to Tishomingo County and the State of Mississippi must accompany the Proposal.		
Bidders are hereby notified that any Proposal accompanied by letters qualifying in any manner, the conditions under which the proposal is tendered will be considered an irregular bid, and such Proposals will not be considered in making the award.		
Attention of bidders is directed to the State and Federal laws governing the selection of and the employment of labor.		
Minimum wage rates for this Project have been pre-determined by the SECRETARY OF THE DEPARTMENT OF LABOR in accordance with the requirements of Federal regulations governing the expenditures of FEDERAL AID HIGHWAY FUNDS and are set out in the labor regulations contained in the Proposal.		
M. R. Whitehead, President Board of Supervisors of Tishomingo County		

F-23-M-2-9-c.

zens to enter The Northeast Mississippi Art Association contest for senior citizens.

The paintings will be classified in three categories: (1) oil or acrylic; (2) water color and (3) ink, pencil, pastel or charcoal. Each contestant will be allowed one entry and pictures must be framed and ready for hanging. Contestants must be 62 years of age or older and reside in the Northeast Mississippi area. Paintings should have been completed within the past five years. The paintings will be shown from March 1 through March 30, 1978, at the Lee County Library. Judging will be March

20, 1978. The pictures to be entered in the contest are to be brought to the Lee County Library on Monday, Feb. 27, and picked up on Friday, March 31st.

## Railway Taxes

Southern Railway Company has announced payment of ad valorem taxes totaling \$62,882 to Tishomingo County, Miss. Southern operates 217 miles of railroad in Mississippi. In 1976, Southern Railway System companies employed 483 Mississippians on an annual payroll of \$7,121,247, and paid

to the state and local jurisdictions total \$671,944. Purchases and payments by Southern in 1976.

Be cautious when you're around outside this spring, painting up, or whatever, especially caution metal pipes, poles, ladders, etc. result in your touching a power being electrocuted.

### DIVISION OF STATE AID ROAD CONSTRUCTION MISSISSIPPI STATE HIGHWAY DEPARTMENT TISHOMINGO COUNTY BOARD OF SUPERVISORS SECTION 900 - NOTICE TO CONTRACTORS

Sealed bids will be received by the Board of Supervisors of Tishomingo County at Iuka, Mississippi, until 10:00 o'clock A.M. daylight saving time March 21, 1978.

And thereafter publicly opened for construction of Grain, Drain, Bridge, Base and Bituminous Surface Treatment on 1.612 miles of County road known as Appalachian Access Highway Project No. APL 9948 (1) B Bay Springs Road in Tishomingo County, Mississippi.

Principal Items of Work as follows:

Mobilization	Lump Sum
Clearing & Grubbing	Lump Sum
Unclassified Excavation (FM)	1780
Unclassified Excavation (PM)	38,978
Haul of Excavation (FM)	2,750
Haul of Excavation (PM)	159,160
Haul of Excavation (Special) (PM)	25,197
BASE AND SURFACE ITEMS	
Granular Material (Clay Gravel, Base Course) (Cl. 3, Gp. "B") (LVM)	18,219
Mixing, Shaping, and Compaction	22,744
Cutback Asphalt for Prime Coat (MC-70)	7,960
Asphalt Cement for Surface Treatment (AC-5)	15,569
Cover Aggregate (Size No. 5)	400
Seal Aggregate (Size No. 7)	215
Portland Cement Concrete Paved Ditch (Class "C" Concrete)	26
PIPE CULVERT ALTERNATES	
Alt. I	
15" Reinforced Concrete Pipe Culvert (SS)	152
18" Reinforced Concrete Pipe Culvert (SS)	242
24" Reinforced Concrete Pipe Culvert (SS)	48
30" Reinforced Concrete Pipe Culvert (SS)	112
48" Reinforced Concrete Pipe Culvert (SS)	128
60" Reinforced Concrete Pipe Culvert (SS)	48
18" Reinforced Concrete Pipe Flared End Section	4
24" Reinforced Concrete Pipe Flared End Section	2
30" Reinforced Concrete Pipe Flared End Section	4
48" Reinforced Concrete Pipe Flared End Section	4
60" Reinforced Concrete Pipe Flared End Section	2
Alt. II	
15" Bituminous Coated Paved Invert Corr. Metal Pipe Culvert (16 Gauge)	152
18" Bituminous Coated Paved Invert Corr. Metal Pipe Culvert (16 Gauge)	242
24" Bituminous Coated Paved Invert Corr. Metal Pipe Culvert (16 Gauge)	48
30" Bituminous Coated Paved Invert Corr. Metal Pipe Culvert (14 Gauge)	112
48" Bituminous Coated Paved Invert Corr. Metal Pipe Culvert (12 Gauge)	128
60" Bituminous Coated Paved Invert Corr. Metal Pipe Culvert (10 Gauge)	48
18" Bituminous Coated Paved Invert Corr. Metal Pipe Flared End Section (16 Gauge)	4
24" Bituminous Coated Paved Invert Corr. Metal Pipe Flared End Section (16 Gauge)	2
30" Bituminous Coated Paved Invert Corr. Metal Pipe Flared End Section (14 Gauge)	4
48" Bituminous Coated Paved Invert Corr. Metal Pipe Flared End Section (12 Gauge)	4
60" Bituminous Coated Paved Invert Corr. Metal Pipe Flared End Section (10 Gauge)	2
Alt. III	
15" Vitrified Clay Pipe Culvert	152
18" Vitrified Clay Pipe Culvert	258
24" Vitrified Clay Pipe Culvert	56
30" Vitrified Clay Pipe Culvert	128
48" Bituminous Coated Paved Invert Corr. Alum. Alloy Pipe Culvert (12 Gauge)	128
60" Bituminous Coated Paved Invert Corr. Alum. Alloy Pipe Culvert (10 Gauge)	48
48" Bit. Coated Paved Invert Corr. Alum. Pipe Flared End Section (12 Gauge)	4
60" Bit. Coated Paved Invert Corr. Alum. Pipe Flared End Section (10 Gauge)	2
Guard Rail (M-30) (Complete In Place)	200
Right-Of-Way Markers (Type I)	42
Detailed Traffic Stripe	72
Traffic Stripe (Continuous Yellow) (Code TY or FDTY)	3600
Traffic Stripe (Skip Yellow) (Code TY or FDTY)	1,478
Reflectorized Traffic Warning Sign (Encapsulated Lens)	10
Reflectorized Traffic Regulatory Sign (Encapsulated Lens)	2
Reflectorized Traffic Hazard Sign (Encapsulated Lens)	4
EROSION CONTROL ITEMS	
Ground Preparation (Type II)	63,791
Agricultural Limestone	26.36
Combination Fertilizer (13-13-13)	6.59
Super Phosphate	13.18
Seeding, Fescue (KY-31)	12.00
Seeding, Mixture No. 3, (Seeding)	12.00
Mulch, Vegetative Material	24.00
Mulch, Asphalt Emulsion	3,600.0
Solid Sod	5,634.0
BRIDGE ITEMS	
Removal of Bridge	L.S.
Test Pile (10" BP 42)	2
Steel Piling (10" BP 42)	1,670.0
Class "B" Bridge Concrete Reinforcement	254.45
40" Prestressed Concrete Beam	43,528
Structural Steel	1,113.0
Concrete Railing	704
Dry Rip Rap, Class I	560.0
Contract Time:	100.0

The award, if made, will be made to the lowest qualified bidder on the basis of the published quantities.

Plans and Specifications are on file in the office of the Chancery Clerk, Tishomingo County, Mississippi, the office of the State Aid Engineer, Jackson, Mississippi, and the office of the County Engineer, Donald Eubank, Elm Shopping Center, Iuka, Mississippi 38852. Proposals may be secured from Donald Eubank, County Engineer, Elm Shopping Center, Iuka, Mississippi 38852, upon payment of \$15.00 which will not be refunded.

Plans may be secured from Donald Eubank, County Engineer.

Certified Check or Bid Bond for five (5%) percent of the total bid made payable to Tishomingo County and the State of Mississippi must accompany the Proposal.

Bidders are hereby notified that any Proposal accompanied by letters qualifying in any manner the condition under which the Proposal is tendered will be considered an irregular bid, and such Proposals will not be considered in making the award.

Attention of bidders is directed to the State and Federal laws governing the selection of and the employment of labor.

Minimum wage rates for this Project have been pre-determined by the SECRETARY OF THE DEPARTMENT OF LABOR in accordance with the requirements of Federal regulations governing the expenditures of FEDERAL AID HIGHWAY FUNDS and are set out in the labor regulations contained in the Proposal.

M. R. Whitehead, President  
Board of Supervisors of Tishomingo County

F-23-M-2-9-c.



# Winter--It's Not All Bad

South farmers have not many breaks from Mother Nature in the past months, with the deep freeze for the pre-winter. However, for the winter and agriculturalists, the current siege of snow and ice is good side -- it keeps many insects.

State University. A 16-year veteran of the MSU faculty, Dr. Smith specializes in entomology, or the study of insects, and has done extensive research into the life cycles of Mid-South insects such as the corn borer and soybean looper which are responsible for considerable crop damage in this area.



Peach Crunch Custard is a dessert as nutritious as it is delicious. A golden custard of protein-rich eggs and milk with a simple fruit dish into something really special.

## DESSERTS CAN BE BOTH DELICIOUS AND NUTRITIOUS!

For a good, long look at the family's eating habits, today's renewed emphasis on nutrition, many dietitians are discovering that some changes are needed in menu planning. In addition to the complete menu, be sure to evaluate the foods and desserts your family consumes, too. Although the items are supplements to the main dish, they should contribute nutrients to the diet--not just "empty" calories. One tasty but nutritious dessert suggestion is Peach Crunch Custard.

tards can be prepared ahead of time and refrigerated until serving.

You couldn't ask for more in a dessert. Baked, as in Peach Crunch Custard, or stirred, custards are an ideal way to help insure that your family receives necessary nutrients throughout the day.

- Peach Crunch Custard**
- 2 1/2 cup all-purpose flour
  - 1/2 teaspoon salt
  - 1/4 cup sugar
  - 1/4 cup butter
  - 1 can (3 1/2 oz.) flaked coconut (about 1 1/2 cups)
  - 1 can (1 lb. 13 oz.) sliced peaches, drained
  - 1 tablespoon sugar
  - 1 teaspoon pumpkin pie spice
  - 5 eggs, slightly beaten
  - 2 1/2 cups milk, scalded

Combine flour, salt and 1/4 cup sugar. Cut in butter until mixture resembles coarse crumbs. Press flour mixture onto bottom of 9-inch square baking pan. Bake in preheated 400° F. oven 15 minutes or until golden brown. Reduce heat to 375° F. Sprinkle base with coconut; arrange peach slices in pan. Combine remaining sugar with pumpkin pie spice; sprinkle over peaches. Combine eggs with milk; beat just until blended. Pour over peaches. Bake in 375° F. oven 35-40 minutes or until knife inserted halfway between center and edge comes out clean. Serve warm. Makes 9 servings.

from the EGG KITCHEN  
AMERICAN EGG BOARD  
205 Touhy Ave.  
Park Ridge, Ill. 60068

experiencing now, the insects are caught unprepared."

Comparing the insect body with an automobile motor, Dr. Smith explained, "We must add anti-freeze to our radiators to keep the water from freezing. Insects on the other hand have glycol, a chemical similar to anti-freeze, already in their body fluids. In order for the glycol to help prevent freezing, they must reduce the amount of water retained in their tissues, which happens as the weather turns cooler."

Dr. Smith pointed out that "during the fall, insects begin to lose their body water and enter a state called 'diapause' or hibernation. When temperatures change rapidly, they cannot lose the water fast enough, so they die."

Fluctuating weather can mean a smaller insect population and less insect damage to farm crops, Dr. Smith believes.

"When we have extreme cold and then a warming trend, insects begin to pick up their activity and take water back into their bodies," he explained. "The fastest and surest way to significantly reduce the number of insects attacking crops is to have successive periods of warming and rapid freezing."

According to Professor Smith, insects are the most persistent and adaptable of all species. He illustrated this point by discussing an experiment conducted on the MSU campus.

"We took a spider accustomed to room temperature and put it in a refrigerator. After it had adapted to the lower temperature through water loss, we then placed it in the freezer," Dr. Smith said that the spider remained frozen for about four months, then the animal was again placed in the refrigerator where it thawed and began absorbing water once again. When it was finally returned to room temperature, it sprang back to life.

Much of Dr. Smith's research is geared toward reducing the insect's impact on man's food supply. He is currently conducting studies with grain companies on President's Island in Memphis to try to reduce insect damage to grain shipped there in railroad boxcars. Insect infestation of storage bins, boxcars and barges causes significant loss each year to farmers, shippers and food processors.

The MSU biologist is also researching the local tick population to determine the possibility of an outbreak of Rocky Mountain Spotted Fever, a disease carried by the common dog tick. In addition, he is studying the interacting of fertilizer and systematic poisons on greenhouse insects.

## Iuka Route 2 News

Mrs. Nellie Davis celebrated her 87th birthday on Sunday, Feb. 19, at the home of her daughter, Mrs. Dorothy Hayes. Those in attendance were: Mr. and Mrs. Elan Davis, Mr. and Mrs. Dick Davis and family, Mr. and Mrs. Lowell Wynn, all of Iuka, and the Sammie Harwell family, of Cherokee.

The U. M. W. of Harmony Church met on Thursday night, Feb. 16, at 6:00 at the home of Mrs. Marshall Daniel. Mrs. Jimmy Daniel was co-hostess. There were 12 members present. Mrs. Nita Goss presented a very interesting program on the book of Acts.

Mr. Clyde Cresap, age 57, of Mynard, Ark., was killed when a tractor he was driving overturned when he was pulling a neighbor's car out of a snow drift on January 16. He was a nephew of the late C. S. Cresap, of Route 2.

Mrs. Brenda Maxwell gave her sister, Mrs. James Goss,



VALENTINE PARTY -- The Burnsville Library recently hosted a Valentine Party for the Burnsville Day Care Center. Each child was given a Walt Disney Valentine, served cookies and punch and entertained with three children's films. Attending the party were: David Armendariz, Ja-

mie Monroe, Shane Honeycutt, Travis Luttrell, Jamey Honeycutt, Douglas Denington, Randy Voyles, Rayna Pittman, Kristy Luttrell, Mary Southward, Craig Woodruff, Cathy Moore, Lisa Mann, Rhonda Lovelace, Toni Rice, Eva Mitchell, Crystal Davis, Cynthia Barnes, and teacher Rhonda Helton.

and family a surprise housewarming Friday night, Feb. 17. They have recently moved into their new home. The Goss family received a nice assortment of useful and beautiful gifts. Over 40 people attended.

Mr. and Mrs. Robert Parks, of Memphis, visited with Miss Mabel Dean and Mrs. L. N. Dean on Monday.

Mr. and Mrs. Harmon Masengill, of Tishomingo, and Mr. and Mrs. John Masengill and Mrs. Virginia Morris and Lora and Robin Glover were dinner guests on Sunday of the Jimmy Daniel family.

## Teens Plan To Make It In Job World

If there's a dearth of jobs available for recent college graduates these days, the nation's outstanding teens either don't know about it or they aren't too concerned.

According to a national survey of 23,900 high school juniors and seniors listed in "Who's Who Among American High School Students," a majority of the top teens expect to be earning more than \$20,000 a year by the time they are 30. Obviously, they anticipate getting a job right out of college.

Three out of four teens polled have a definite career goal in mind and 74% indicate their high school curriculum has adequately prepared them for college and/or a job. How they selected that career, however, is a mystery since 77% say their high school career guidance program is merely satisfactory or poor.

Routine is how more than half of the teens describe their high school experience in general. Almost all (95%) have had anywhere from one to 10 poorly qualified teachers and 59% believe high school teachers should be tested periodically for competence by an objective source outside the school.

Although two-thirds of these kids note they had relevant subjects in high school, if they could plan a well balanced curriculum, it would be back to the basics.

Some 86% regard reading, writing and arithmetic as essential to a good education and almost three-quarters feel that high school students should be required to pass a reading and writing exam before they are allowed to graduate.

While sciences and vocation-

wood on TVA lands can contact the nearest TVA Division of Property and Services district office to obtain a free permit. Firewood cutting also is permitted at TVA's Land Between The Lakes in west Kentucky and Tennessee.

TVA personnel at district offices will give directions to specific areas where firewood may be harvested. Only designated cull, dead or fallen trees are to be taken, and there is generally a limit to the amount of firewood which may be cut. No wood may be cut for resale.

TVA also has made special provisions this winter to provide firewood to low-income families. Trees marked by TVA's Morristown, Tennessee, district office have been cut by public service agencies in Hamblen and Sevier Counties for distribution to needy families. Some 150 low-income families in three west Tennessee counties also have received free firewood through TVA's Paris office.

Individuals wishing to cut firewood on TVA lands may obtain information by calling the following offices: Morristown, Tenn. (615) 586-8400; Athens, Tennessee (615) 745-1783; Paris, Tennessee (901) 642-2041; Florence, Alabama (205) 383-4631; and Land Between The Lakes (502) 924-5602.

## Deception When Buying Insulation

When buying insulation, many consumers are deceived, cautions Robert Mayo, agricultural engineer with the Mississippi Cooperative Extension Service.

"The two most common deceptions include claims about a product's flammability and claims about the product's thermal resistance," explains Mayo. "The Federal Trade Commission (FTC) is looking into insulation frauds. Complaints may be filed in area FTC offices listed in telephone directories under U. S. Government."

Observe the following precautions when buying

insulation and other weatherproofing:

Buy only fire-resistant insulation.

Do not buy home insulation from door-to-door salesmen. Instead, comparison shop for price, product and company. Included in insulation materials are cellulose, fiberglass, blown-in fiberglass, mineral wools and others. To determine which is most suited for your particular need, study the properties of each.

Be skeptical of advertising including energy-saving claims. Compare potential savings' information for different types of work.

If buying cellulose, keep records on the amount bought and used. An accurate bag count before contracting work will insure warrant protection. Count empty bags when the job is completed,

suggests the specialist. Then you know if you received the amount of cellulose you paid for.

When contracting, make sure the product and work are warranted and that the contractor can financially stand behind his warranty.

Check with local building officials for an inspection. This provides added protection.

## TELEVISION FIRES

Television sets cause up to 10,000 fires annually, estimate Mississippi Cooperative Extension Service safety specialists. Placing sets too close to a wall, radiator or piece of furniture, or setting containers of liquid on the set may cause fires.

"He that wants money, means and content is without three good friends," Shakespeare

## OWN A NEW HOME FOR ONLY \$92.45 PER MONTH

PATRICK HOME CENTER HAS MADE A SPECIAL PURCHASE ON SEVERAL 1978 2 B.R., 1 BATH HOMES. WE ARE PASSING THE SAVINGS ON TO YOU.

12 X 50 ATLANTIC	PRICE	\$6,467.00
	TAX	323.25
	CASH PRICE	\$6,790.00
DOWN PAYMENT		850.00

BALANCE TO FINANCE, INCLUDING 12 MO. INSURANCE AND FILING FEE EQUALS \$6,135.00, INTEREST \$4,959.00. TOTAL OF PAYMENTS \$11,094.00. DEFERRED PAY. PRICE \$11,944.00 A.P.R. 13.10%. 120 PAYMENTS.

## COMPLETELY FURNISHED, SET-UP WITH ANCHORS COMPLETE....

"Area's Most Complete Home Center"

Modular Homes

Mobile Homes

Furniture

Appliances

Builder

Developer

1107 So. Cass  
601-287-2966  
Corinth, MS.  
South

Hwy. 45 No.  
601-287-2407  
Corinth, MS.  
North

# KAY DISCOUNT FOODS

DOWNTOWN IUKA  
NONE SOLD TO DEALERS

QUANTITY RIGHTS RESERVED  
PRICES GOOD ONE FULL WEEK!  
FROM DATE

Unhappy With The Beef You Have Been Buying?  
WE SELL ONLY U.S.D.A. GRADED CHOICE BEEF  
(We DO NOT "Mix-In" Sub Standard Bee)  
GUARANTEED TENDER

Or Your Money Cheerfully Refunded

TRY OUR "T"-BONES, RIB EYES, SIRLOINS, ROAST OR ANY CUT YOU LIKE- ALL ARE VERY REASONABLY PRICED.

Cecil Johnson is on duty Monday, Wednesday and Friday for special cuts of your choice.

Kay-Way Foods- The Beef People

## JOB-HUNTING BLUES GOT YOU DOWN?

Then cheer up. The United States Air Force has more than 140 different jobs available, any one of which you may qualify for. Along with these jobs goes some of the finest technical schools in the nation. Plus, the Air Force offers you a chance to earn an associate degree through the Community College of the Air Force...and excellent salary...valuable on-the-job experience...worldwide assignments...30 days of paid vacation a year...medical care...dental care...and much more.

It's one of the best cures for today's job-hunting blues. Call today for information  
Tsgt Johnson / 842-1840  
AIR FORCE  
A great way of life.

Thursday, Friday & Saturday only  
PRE-EASTER SALE  
10% OFF

ON ALL LADIES & CHILDRENS DRESSES  
Assorted Pastels and Styles  
USE OUR LAY-A-WAY OR CHARGE PLAN

KENWIN SHOP  
Downtown Iuka