

# Tishomingo County News

## The Vidette & Belmont News

\$5.00 Per Year Locally In Advance  
\$7.00 Per Year Outside Trade Area

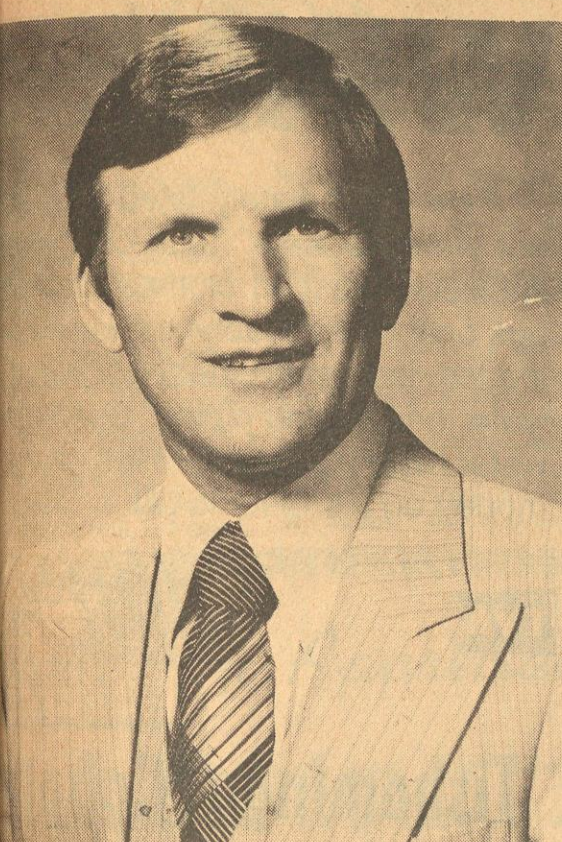
The One Newspaper In The World  
Most Interested In This Area

OFFICIAL LEGAL NEWSPAPERS OF TISHOMINGO COUNTY

PATRONIZE THE NEWS ADVERTISER  
THEY SEND A VALUABLE MESSAGE  
TO YOU EACH WEEK !

SEVENTY-FIFTH YEAR IUKA, TISHOMINGO COUNTY, MISSISSIPPI THURSDAY, DECEMBER 28, 1978 NO. 27

# A Happy New Year For All



### Wayne Martin Promoted by Champion Papers

The promotion of Wayne Martin to woodyard foreman was recently announced by William C. Ward, vice president, operations manager of Champion Paper's Courtland Mill. Champion Papers is a major business of Champion International Corporation. Martin joined the Courtland Mill in 1970, prior to

start-up, as a crane operator in the woodyard area of the pulp manufacturing department. Prior to his recent promotion he had been serving as a crew leader in the woodyard. He is a native of Paducah, and is married to the former Margie Kirk. He and Margie have two children, Nathan and Trina. They make their home in Killen, Alabama.

### Corps Opens Bids On Tenn-Tom Rail Bridge

Kiewit Sons' Co., Cleveland, Ohio was the parent low bidder for construction of a high level road bridge across the Tennessee River. Tombigbee Waterway, with a bid of \$76,962.

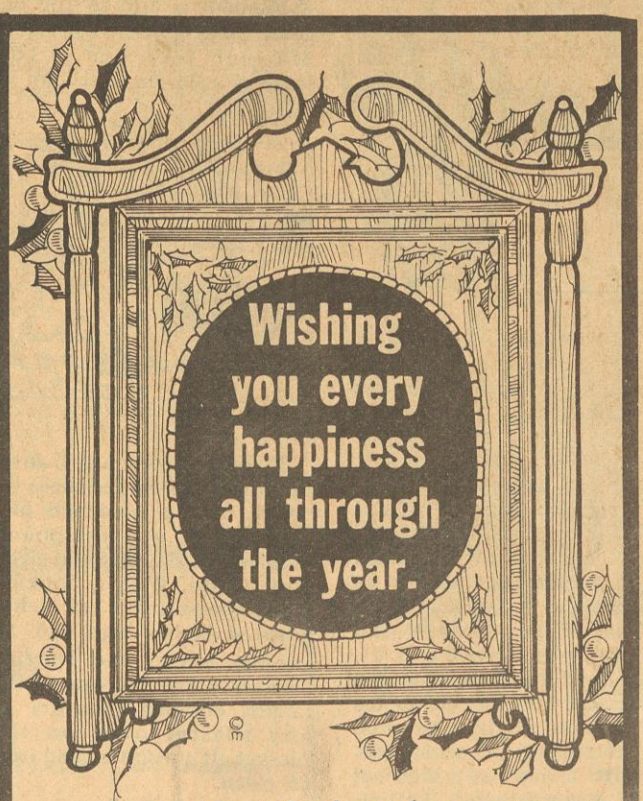
the northernmost 40 miles, which entails cutting through the divide between the Tennessee and Tombigbee basins and constructing the high-lift Bay Springs Lock and Dam.

### Special Day At First Methodist

Even bids submitted to Nashville District of U. S. Army Corps of Engineers ranged upward more than \$11.8 million. Government estimate is \$9,394,600. Kiewit's will be reviewed by Nashville District. Round acceptable, a contract will be awarded in near future. The work is part of the waterway construction which requires relocation of the Illinois Central Gulf Railroad, just north of Iuka, Miss. This contract is for building a main span 465 feet long; plate-girder approaches of various lengths; excavation of approximately 60,000 cubic yards from waterway bed; placing estimated 6,700 cubic yards of concrete in piers and abutments; and putting railroad track on the bridge. The successful bidder has 1,080 calendar days in which to finish work being told to proceed. Kiewit currently has a contract for excavation of miles of waterway channel downstream of the ICG bridge site. The contract, \$29 million, is over percent complete. Construction of the 232-foot waterway is under construction of the Nashville Mobile districts of the Corps. The Nashville District is responsible for

On Sunday, December 31, at 4:00 p.m. a special day has been declared Brother Calvin Hodges Day. One of the senior ushers, Bro. Hodges is a true doorkeeper. No matter how cold or hot, how early or late, Bro. Hodges is at his post! You know it's good to remember, but it's better to show you love them and appreciate what they have done and are doing, and this is what Rev. Lewis, pastor, is asking all members and friends to come out and do. Remember, obedience is better than sacrifice. Bro. Hodges is the son of the late Mr. and Mrs. Mose Hodges, of Iuka.

**NOTICE**  
There will be a New Years Eve service at Rowland Mills Baptist Church on Sunday night, December 31, beginning at 7:30 p.m. The special singers will be The Revelations, The Parker Chapel Quartet, and The Templeaires. Bro. Frank Smith, pastor, will preach at 9:00 p.m.

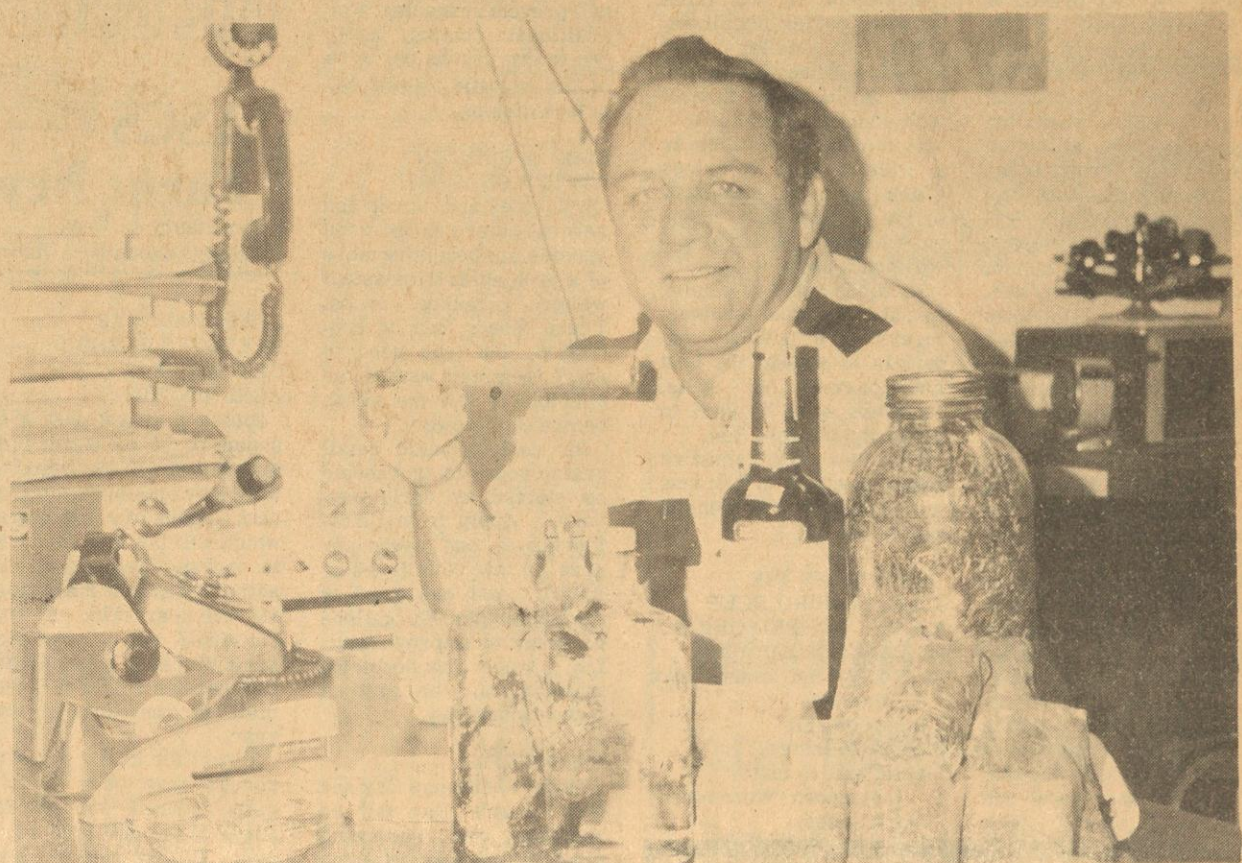


May the happiness  
of the holidays remain  
in our hearts through all  
the New Year . . . to  
brighten our lives with  
true comfort and joy.  
May the New Year be a  
precious jewel . . . one  
that sparkles all year  
through. With facets  
of happiness that are  
cut true and bright.

### Lower Phone Bills Announced By South Central Bell

There will be one cheerful item on your post-Christmas flood of bills and tax returns. Your telephone bill will probably be lower, according to Bob Bartley, South Central Bell Manager. On January 1, the federal excise tax on telephone service drops from a four percent rate to three percent. This is a further step in the gradual phase-out of the tax. The tax rate has been reduced by one percentage point each year since 1972, and will cease to apply after 1981. Congress first imposed the excise tax on telephone service on a limited basis during World War I. Although repealed after the war, the tax was reinstated during the depression and has continued since that time. During the 1940's and

1950's, the excise tax rate was as high as 15 percent on local service and 25 percent on long distance charges. In the mid-50's the rate was set at ten percent for most local and long distance charges. The tax began its one percent per year reduction in 1973. Bartley estimated that the one percent excise tax reduction will save Mississippi telephone customers as much as \$3 million during 1979. **Singing** Iuka Fifth Street Baptist Church will have their annual singing on Saturday night, December 30, beginning at 7:00 p.m. Special singers will be The Celestial Quartet, of Tusculumbia, Ala., and the Fifth Street Quartet. Everyone is invited.



**CONTRABAND** -- A Tishomingo County Sheriff's Deputy, Bobby James, is shown with some much sought after merchandise.

Hauled into the sheriff's office was four pounds of marijuana, dynamite, and several decanters of uncontrolled alcoholic beverages (wildcat whiskey). James, along with Sheriff Dawson, confiscated the illegal goods on Monday, December 18. The officer reported that

the property was discovered buried on a plot of land south of Tishomingo. He said no arrests had been made but the case is still under investigation.

### Revised Class Schedule Announced For The Iuka School District

During the first semester, the Iuka Special Municipal Separate School District has been concerned with the school bus routes north of Iuka. Due to the tremendous amount of construction and related activities concerned with the Tenn-Tom Waterway and the nuclear project, the flow of traffic on Hwy. 25 and J. P. Coleman Road has increased in metropolitan proportions. The safety of the children that ride our buses and who commute home is a prime concern. Therefore, the school schedule is being revised for the second semester in an attempt to allow these young people to return home before most

of the workers are off the job. The Mississippi Highway Patrol, Sheriff's Department, City Police and TVA has been most helpful in this problem. However, the flow of traffic warrants this adjustment in our schedule. No class time will be lost and the curriculum will not be reduced. Parents are encouraged to make note of the new schedule and to make any suggestions concerning the safety of our children. New schedule to begin on January 4 is as follows:

**Afternoon Schedule:**  
High School - Eliminate afternoon break;  
Elementary School - Eliminate mid-day break.  
**School Dismissed:**  
High School - 2:30 p.m.;  
Elementary School -

2:20 p.m.  
Buses will continue to load at the elementary school first and then proceed to the high school. It is anticipated that the students will be home from school approximately 20 minutes earlier.

### TVA Contracts Awarded

The Tennessee Valley Authority recently awarded two contracts pertaining to work in the Tishomingo County area. The information was released Dec. 21, by TVA's Knoxville office. Cogenel, Inc., of New York, N.Y., was awarded a contract for 550-kv power circuit breakers for the equipment manufactured in

Villeurbanne, France, and Holyoke, Mass., for Yellow Creek Nuclear Plant, at a cost of \$3,253,328. Also awarded was a \$1,012,500 contract to Clyde Owen Sand and Gravel, Inc., of Shiloh, Tenn., and a \$2,860,000 contract to Hoover, Inc., Iuka, Miss. Both were for aggregate for concrete for Pickwick Landing Lock project.



**TOMMY WILEMON**, of the Hubbard Salem 4-H Club, is shown here being presented a check for

\$15.00 for being a district winner and a \$5.00 check for his record book. Both checks were presented at

the 4-H banquet. He also received an award medal in plant pathology. Mr. Percie Stricklen, County

Agent for Tishomingo County, is shown presenting him with the checks.



# TISHOMINGO COUNTY NEWS

## VIDETTE and BELMONT NEWS

### PHONE 423-3666

(SECD 631680)

John H. Biggs . . . . . Editor & Publisher

Published Thursday by The Tishomingo County News, Inc. Serving the people of Tishomingo and adjoining counties for more than 95 years. Publication office 120 West Front Street, P. O. Drawer E, Iuka, Mississippi. Entered at the Post Office as mail matter of the Second Class. Second Class postage paid at Iuka, Mississippi. Zip Code 38852. Post Master send address changes to The Tishomingo County News, P. O. Drawer E, Iuka, Mississippi 38852.

Mail Rates Tishomingo & Adjoining Counties  
\$5.00 Per Year

Other Areas  
\$7.00 Per Year

#### CARE OF DURABLE PRESS SHEETS

East of care probably is the motivating factor for buying durable press sheets.

Performance is reflected in proper care. Many sheets are permanently care labeled. Proper amounts of detergent and ample rinsing will help prevent a dingy appearance. While most durable press sheets are engineered for dryer drying, they will produce fewer wrinkles when line dried than the all-cotton sheet. Overdrying, overloading and allowing clothes to remain in the dryer after it has stopped produce a wrinkled fabric. Muslin durable press sheets produce a smoother fabric than percale durable press sheets.

Problems related to the addition of polyester in the durable press sheet include pilling, oil staining and clamminess. Pilling (the small balls of fiber that adhere to the fabric) appears to be a greater problem with the muslin sheet because of the larger yarns. Individuals with oily hair may have to change pillowcases often to retain the desired appearance. The addition of polyester, a non-absorbent fiber, reduces the sheet's absorbency level and produces a clammy feel.

These factors vary with individual sensitivity and are more important to some than others.

The durable press sheet means long wear life, good appearance and ease of care.

#### CHOOSING COOKING UTENSILS

Aluminum is the most popular cooking utensil material, but stainless steel is gaining, and there has been an increase in cast iron utensils purchased.

Aluminum is available in a wide range of prices which makes it attractive to the homemaker. Much bake ware is aluminum and will continue to be.

Stainless steel is gaining in sales because manufacturers are adding materials to spread the heat and prevent hot spots. Stainless steel is easy to clean and durable, too.

The new gray nonstick finish lives up to its name and makes cooking utensils easier to use.

**HAMBURGER PIE**  
1 LB. GROUND BEEF  
1 CUP CHOPPED ONION  
1/4 TABLESPOONS OIL  
1 (No. 2) can tomato juice  
or tomatoes  
1 teaspoon salt  
Pepper to taste  
Garlic salt to taste  
1 tablespoon Worcester-shire sauce

1 (6 oz.) can tomato paste

Brown ground beef, onions in oil. Add remainder of ingredients and bring to a boil. Pour in oblong pan or 1 1/2 quart casserole dish. Cover with pastry topping over hot filling. Turn edge under and seal. Make 5 slits near center and bake 30-35 minutes in a pre-heated oven 425 degrees.

## COUNTY AGENT'S NOTES

By  
Barrie B. Stricklen

#### CONTROL WILD GARLIC:

If you occasionally grow wheat in rotation with soybeans, it may be a good idea to begin with wild garlic control program on idle soybean land this winter. Wild garlic is not a problem in soybeans, but this weed will infest wheat to the extent that the grain may have to be sold as animal feed.

For garlic control on soybean lands, disk fields once or twice in the winter. This will uproot the garlic and prevent reseeding. For additional control, apply one to two pounds per acre of low volatile ester 2,4-D before disking.

#### STOP WEEDS IN WINTER GRAZING:

Wild mustard, turnip and several other related weed species are becoming more of a problem in Mississippi winter grazing crops. These weeds can be controlled, but you need to start treatment as soon as possible to kill the weeds before they flower.

On early planted small grain crops, control should be started by early January. Apply from three-fourths to one pound per acre of low volatile ester 2,4-D. Add one quart of surfactant per 100 gallons of spray to improve wetting. Apply the herbicide mixture on the earliest warm, sunny day.

#### FARMWEEK:

Since Christmas Day and New Year's Day fall on Mondays, no Farmweek program will be shown on those dates.

On January 8, Farmweek will highlight the beef cattle situation in Mississippi. Farmweek reporter Mike Windham and Extension Marketing Specialist John Wilson will discuss beef cattle prices and the outlook for 1979.

Farmweek can be seen each Monday evening at 7:30 and Tuesday mornings at 7 on your local Mississippi Educational Television Network station.

#### CHECK STORED SOYBEAN SEED:

Seed soybeans stored in metal bins need to be checked periodically during the winter. Big changes in temperature are likely this time of year and can damage seed in storage. These temperature changes can cause air movement in grain bins and result in moisture migrations, which can damage the beans.

To prevent this type of seed damage, provide adequate aeration during periods of big temperature changes.

\*\*\* In countries where an afternoon siesta is part of the daily routine, avoid going to sleep immediately after a heavy meal. Nothing adds weight so speedily as a two-hour siesta after a big luncheon.



**VOCATIONAL ADVISORY COMMITTEE AT NEMJC** - The quarterly meeting of the Vocational Advisory Committee for the Northeast Mississippi Junior College was conducted in the new William L. Waller Technical Center on campus.

Those attending from Tishomingo County were (l-r) Jimmy Byram, Donald Cowell, and Larry Bonds. These people are representatives from businesses and industries in the five county service area of the junior college.

## THE GOOD EARTH

### ASCS Farm News

By: Henry L. Knox,  
County Executive Director

#### CENSUS BUREAU PREPARES FOR 1978 CENSUS OF AGRICULTURE:

Final preparations are underway at the Bureau of the Census, U. S. Department of Commerce, for the next Census of Agriculture which will begin in January to canvass farm and ranch activities across the Nation for calendar 1978. Every household which conducts agricultural operations will receive its form in the mail at the turn of the year.

Report forms for the 1978 census have been drastically reduced from the 22 pages of the last farm census. In this census, 21st in a series that started in 1840, most farm and ranch operators will receive a four-page form in the mail, while some will receive a five-page version.

On the report form, each farmer or rancher will need answer only questions that apply to his or her operation. The form is arranged so that individual questions or sections dealing with crops and livestock not produced can be skipped.

The overall time required by farmers to complete the form has been reduced an estimated one-third.

In developing the report forms, the Census Bureau obtained the advice of farmers, representatives of farm suppliers, agricultural universities, Congress, and State and Federal program agencies. Two tests of the census form were conducted to determine that the questions were easily understood so farmers and ranchers could accurately provide the information requested.

The new farm census has been advanced one year to put it into phase with the five-year cycle of censuses of retail and wholesale business, industry and manufactures starting in 1982. After that, the farm censuses will be held for years ending in 2 and 7.

The 1978 Census of Agriculture will be conducted as follows:

o -- All respondents will be asked: the amount of farm acreage by type of ownership; land use; acreage, production, and sales of crops; inventory, number sold, and sales value of livestock and poultry; and selected characteristics of farm operators and farm management.

o -- About 20 percent of farmers and ranchers will receive an additional page seeking information on: value of land and buildings; selected production expenses; selected farm equipment; hired farm labor; fertilizer and pesticide use; grain storage capacity; and petroleum fuel usage and storage capacity.

These data will be summarized and published for each of the over 3,000 counties which have agricultural operations, for each State, for regions and the entire Nation.

o -- Additional data for States or the Nation will be obtained in follow-up sample surveys of farms early in 1980. Subjects being considered for these surveys include the following:

Horticultural specialties; farm finance; structural studies of corporations and partnerships; ownership and control of farms by financial institutions or foreign interests; on-farm irrigation; energy use; and chemicals and fertilizers.

Completed forms should be mailed back as soon as possible in January in the confidential, postage-paid envelopes provided. Estimates are acceptable and should be reported in the absence of firm records.

Recipients of census report forms are asked not to discard them. Follow-up mailings costing additional public funds in postage will be required until all forms are received. Despite careful screening of the mailing lists used, some persons not engaged in agricultural activities in 1978 will receive report forms. Those persons

should return the form with that fact noted, so that additional mailings can be avoided.

Response to the census is required by law (Title 13, United States Code). By the same law, information furnished on report forms is kept confidential and even other government agencies cannot obtain or use the report made by any farmer or rancher. The law also provides that copies retained by the operator are immune from legal process.

## FACTS & FIGURES

Convert a low-calorie healthful drink like tomato juice into a real treat. Combine 3/4 cup juice, 1/4 cup beef bouillon, 3/4 teaspoon horseradish, add a lemon slice for garnish, and serve chilled.

Now that the metric system is coming to America, you might want to learn some conversions to make your cooking easier. One cup equals 250 milliliters. A slow oven of 250 to 300 degrees Fahrenheit is 120 to 150 degrees Centigrade. A 9x5x2 3/4-inch loaf pan is the same as a 23 cm. x 13 cm. x 7 cm. pan.



A new cooking appliance can toast up to six slices of bread, bake a nine-inch pie, broil eight quarter-pound burgers or six medium-sized pork chops. With a cooking cavity measuring 9 1/2 inches deep, 4 inches high and 12 inches wide, the Norelco Toaster Range has one of the largest cooking interiors of any toaster oven on the market. It's also fast and easy to clean.

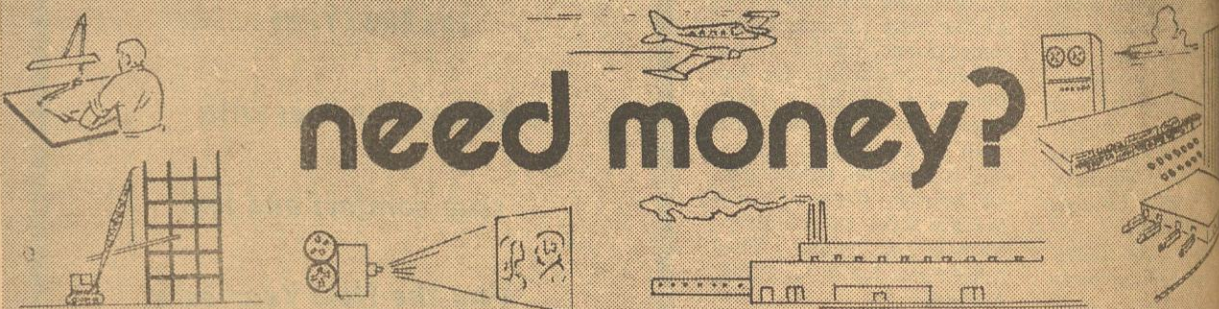
That king of eaters, Diamond Jim Brady, had a gallon of orange juice for breakfast, followed by hominy, eggs, corn bread, muffins, flapjacks, chops, fried potatoes and a steak. And that was just the beginning of his day.

# THE WINNER

He immediately fixed all leaky hot water faucets. Took only showers. Washed clothes and dishes only when machines were full. Insulated exterior of electric water heater and piping. Used cold water when possible. He's saved money on his electric bill.



## Tishomingo County Electric Power Association



## need money?

#### WHO DOESN'T NEED MONEY?

Ever heard that old cliché? Unfortunately, the people that really need money don't have the money to secure a loan of the type they need, nor do they know where to go to get that much needed financing.

#### FINDING MONEY — THAT'S OUR BUSINESS

Worldwide Finance Exchange have the sources and we will share them with you for only pennies each. You can finance almost any venture, expand your business, or lease now and purchase later for as little as one dollar, buy that piece of real estate you've had your eye on, or just secure financing for whatever you have in mind, even that new idea you have. Our sources are proven and have the money available now.

LISTED BELOW ARE JUST A FEW MAJOR FIELDS MONEY IS AVAILABLE FOR

#### REAL ESTATE

NEED CAPITAL FOR FIRST AND SECOND MORTGAGES, SALE LEASE-BACKS, REFINANCING OR JOINT VENTURES AND PARTNERSHIPS?

Names and address of over 200 firms that will loan or invest in: warehouses, apartments, shopping centers, office buildings, recreation facilities, mobile home parks, nursing homes, hospitals and agricultural.

#### VENTURE CAPITAL

NEED CAPITAL FOR A NEW BUSINESS OR EXPANSION OF YOUR PRESENT BUSINESS IN CONSTRUCTION, TECHNOLOGY, MOVIES, MANUFACTURING, OIL & GAS AND OTHER ENERGY RELATED PROJECTS.



#### BUSINESS EXPANSION

NEED WORKING CAPITAL FOR EXPANSION OF YOUR PRESENT BUSINESS?

Names and address of over 100 firms that will loan you capital on: equipment, inventories, account receivables, factoring, time sales contracts, and Redis counting.

#### LEASING

NEED CAPITAL FOR EQUIPMENT, MACHINERY, OFFICE FURNITURE, COMPUTERS?

Names and addresses of 400 firms that will buy your equipment for you and lease it to you with the option to buy for as little as one dollar at the end of lease term.

#### HELPING YOU SECURE FINANCING IS OUR BUSINESS TOO.

We'll share our sources with you for less than 5¢ each. Not only will we give you their names, addresses, and telephone numbers; we'll include the person to contact. We will even introduce you personally if you need it. You have to do is fill in the coupon below and mail it today, we'll do the rest. Hurry! Our lenders already have over 50 billion dollars on their books.

Worldwide Finance Exchange  
Box 2952  
Tulsa, Oklahoma 74101

CLIP AND MAIL TODAY

Please send the lists I have indicated:

☐ Leasing — \$25.00 ☐ Venture Capital — \$25.00 ☐ Business expansion — \$25.00  
☐ Real Estate — \$25.00 ☐ Any 2 — \$40.00 ☐ Any 3 — \$52.00 ☐ All 4 — \$60.00

Enclosed cash, check or money order to cover above, or charge to my Visa MasterCard

Account No. \_\_\_\_\_ Expiration date \_\_\_\_\_

Interbank No. \_\_\_\_\_ (MasterCharge only)

Name \_\_\_\_\_

Address \_\_\_\_\_

City \_\_\_\_\_ State \_\_\_\_\_ Zip code \_\_\_\_\_

## CUSTOM BUILT KITCHEN CABINETS

VANITIES—BOOKCASES &

FORMICA TOPS

CALL FOR FREE ESTIMATES

ROBERT BUCHANAN JR.  
438-7364

## DEATON & SON DIESEL & MACHINE SHOP

LOCATED 1 1/2 MILE WEST OF TISHOMINGO OFF OLD HWY 30

FOR ALL REPAIRS ON HEAVY EQUIPMENT COME BY OR CALL

R. D. OR KEITH DEATON  
AT  
438-7290 OR 438-7335

WE APPRECIATE YOUR BUSINESS

# New Shipment FIBERGLASS INSULATION

Sizes  
3 1/2" x 15 1/2" — 3 1/2" x 23 1/2"

Insulate your home now---

## W.H. FAIRLESS HARDWARE

IUKA 423-9256 TISHOMINGO 438-6608





Mrs. Bobby Mathis, of Memphis.

Members of the wedding party included Miss Gina Bishop, maid of honor, half-sister of the groom, who was escorted by Mike Carpenter, bestman; Miss Janette Moxley, bridesmaid, sister of the groom, escorted by Danny Martin, groomsmen; flowergirl, Miss Samantha Moxley, sister of the bride, escorted by Mr. Steve Bishop, cousin of the groom.

The bride, given in marriage by her grandfather, wore a gown of silk and carried a bouquet of red roses.

Guests were registered by Miss Robin Ginn, of Belmont, and Miss Beth Borden, of Iuka.

Immediately following the ceremony, a reception was held in the dining hall of the church.



THE CAST from "The Grandest Christmas" presented December 17th, at New Lebanon Freewill Baptist Church want to thank the approximately 160 people who attended their Christmas program.

Letitia McAnally and Tommy Wilemon. Outstanding senior members were Melody Floyd and Jim Trickey.

Tommy Wilemon received a check for \$15 for being first place winner at district contests on plant pathology. He also was presented a \$5 check for his record book and a project medal on plant pathology.

Miss. in the afternoon.

Jan and Dutch Porterfield, of Memphis, spent the holidays with her parents, Mr. and Mrs. J. C. Potts.

Recent visitors in the Bill Johnson home were Mr. and Mrs. Jim L. Castleberry, of Booneville, Mr. and Mrs. Edward Bain and family, of Cairo, and Mr. and Mrs. Ray Ross, of Leedy.

George Stidham returned home December 16, after staying in hospitals for 59 days. He is around on his crutches.

Frank Ross wishes to thank all who sent cards, brought gifts and the ones who visited him. Dec. 25 has a two-fold meaning for him: First, the birth of Jesus, and second, he and Hattie Whitfield were married in 1904.

Mr. and Mrs. Leander Kennedy had visitors during the holidays as follows: Mr. and Mrs. Earl Trulove, of Red Bay; Mr. and Mrs. Walter Buchanan and Mr. and Mrs. Warren Buchanan, all of Meridian; Mr. and Mrs. O. L. Robinson, of Memphis; Mrs. Willie Mae Robinson, of Iuka; and Mr. and Mrs. Lester Adams.

Larry and Patsy McMillan and their three sons, of Houston, Texas, and Mrs. Peggy Milligan and family, of Florida, spent Christmas with their parents, Mr. and Mrs. M. L.

Hatcher.

Miss Janie Whitfield remains a patient in the Tishomingo County Hospital.

## FACTS & FIGURES

The term Siamese twins stems from Chang and Eng Bunker. The brothers, joined by a band of cartilage at the chest, were born in Siam, now Thailand. At age 32, they married sisters and fathered 10 and 12 children, respectively.



For joining together rubber, plastics, metals, hardwoods and ceramics, it's helpful to have a strong product like Eastman 910 adhesive. Just one drop and fingertip pressure forms a bond capable of holding up to 5,000 pounds.

## Men In Service

Spec. 4 Andrew M. Turbville, son of James M. Turbville, Rt. 3, Cherokee, Ala., recently was presented the Air Assault Badge upon graduation from the Air Assault School at Fort Campbell, Ky.

Trainees learned to rapidly and safely exit a helicopter from a variety of difficult situations. Whether descending into tree tops or lowering themselves or injured soldiers down sheer drops, the graduates are highly proficient.

The specialist entered the Army in January 1976. He is a 1973 graduate of Cherokee Vocational High School.

## McKinney Home Scene Of Faculty Supper

The faculty of Iuka High School enjoyed a covered dish supper recently in the home of Mr. and Mrs. Jay McKinney.

The Christmas theme was carried out throughout the spacious living - dining room area. A small table adorned with candles and Christmas greenery held the punch bowl, nuts and cheese ball. The buffet table was centered with a calico Christmas tree and brass candlesticks. Calico wreaths were used over the fireplace and at other vantage points in the room. Individual dining tables were accented with Christ-

mas candles.

Those attending were Mr. and Mrs. James Bates, Mr. and Mrs. Johnny Bolen, Mr. and Mrs. Richard Bowen, Mr. and Mrs. Cliff Daniel, Mr. and Mrs. Ed Gregory, Mr. and Mrs. Steve Jackson, Mr. and Mrs. D. O. Jordan, III, Mr. and Mrs. Bobby Lowrey, Miss Jan Pittman and Mr. Scottie James, Mr. and Mrs. Dwight Smith, Mr. and Mrs. Brison Mann, and Mr. and Mrs. Jerry Harrelson. Special guests were Superintendent and Mrs. Jerry Stone and Elementary Principal and Mrs. Charles Evans.

## Foster Grandparents Honored Recently

Seventeen of 52 foster grandparents, who "light up the lives" of mentally disabled children, received special awards at a recognition day dinner in O'Grien School in Illinois.

The dinner was co-sponsored by REAL Services of St. Joseph County, which administers the Foster Grandparents Program, in cooperation with the Northern Indiana State Hospital and Developmental Disabilities Center, Logan Center, Riverside Nursing Home, O'Brien School, and Home Start Program operated by the Council for the Retarded at St. Patrick's School.

The awards presented by E. D. Barth, program director, were in recognition of longevity of service. Six-year awards went to Joe Chavis, Julia Coffey, Nora Fleming and Hattie

Larry, daughter of the late Mr. and Mrs. Henry Leonard, of Iuka.

Entertainment for the dinner included community singing led by Jesse Dickson, music by the Grey Tots band, a marionette show, and a song by the children.

Candles, cut from cardboard and colored by the children were given to each of the foster grandparents.

Foster grandparents with less than five years service were given certificates of appreciation.

## Hubbard Salem 4-H Club

Hubbard Salem 4-H Club met Dec. 8th, and made fruit baskets for the elderly as Christmas presents.

Seven members attended the 4-H banquet. Outstanding junior members were

Betty Wilemon, Shirley McAnally and Mr. and Mrs. Pete Trickey received one year leadership pins.

The club is moving along on the project, community pride. Thus far, a cemetery in the community has been cleaned, a check for \$25 was presented to the Tishomingo County Community Fund, and fruit baskets were made for the elderly of the community.

The club has been very active in other affairs this year. A hunter safety program was held, a very successful Halloween carnival, and a booth at the fair showing that we are having to adapt to the changes taking place in the community (mainly the Yellow Creek Nuclear Plant).

It is hoped that the remainder of the year will see even more activity in helping the community and the club.

## Holts Spur News

Fatie Nagle received a card from Gov. Cliff Finch congratulating him on his 88th birthday.

Mrs. Bula Watkins and Mrs. Thelma Gray attended the wedding of Miss Marilyn Sims and Mr. Earl McAnally at the Tishomingo Baptist Church on

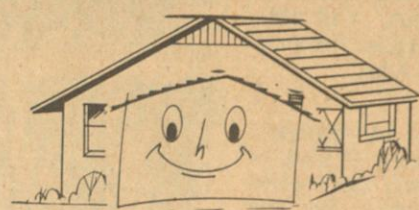
December 16. The couple is living near Belmont.

Elder and Mrs. Franky Smith were Sunday, Dec. 17, dinner guests of Mr. and Mrs. Virgil Rhodes.

Mrs. Minnie Stricklin had all her children home for Christmas dinner on Dec. 24th.

Mr. and Mrs. Ray Potts and Suzanne had Christmas dinner with Mr. and Mrs. Guy Watkins, then they visited relatives in Ripley,

## HAPPY NEW YEAR



And to put a smile on your face, increase your Real Estate value-have your home or office painted. Performed by a Craftsman and Country Club specialist.

Guaranteed Quality.

Call

423.6944

Att. Mr. Holmes

## In Appreciation

We truly thank you, our many friends, for every consideration and act of kindness extended to us since the recent loss of our daughter and sister, Julianna "Julia" Gilmer Long.

We are especially thankful for our Church and the many fine and thoughtful friends representing all the Churches of our area.

Without friends, we are nothing. Phillipians 1:3

Mr. & Mrs. Julian R. Long.  
Jon and Ladye Love

Mr. & Mrs. John R. Nont

## All Fall And Winter Merchandise

**1/4 OFF**

**Sale**

DAISY'S

Iuka, Miss.

## AFTER CHRISTMAS

**Sale**

**1/2 PRICE**

1 table Boys Jeans, Knit Shirts and Girls Sportswear & Dresses

**40% Off**

Boys & Girls Coats

ALL SALES CASH & FINAL

ENTIRE STOCK NOT INCLUDED

**KIDDIE LAND**

Elm Shopping Center  
in Iuka

Sale starts  
December 28



# BUYING? LOOK AT THE CLASSIFIED ADS

PHONE 423-3666

CLASSIFIED ADS - \$2.50 PER WEEK FOR 30 WORDS. AFTER THE FIRST 30 WORDS 5¢ EXTRA PER WORD. \$1.00 EXTRA WITH BORDER. CARD OF THANKS AND IN MEMORIAM - 5¢ PER WORD.

CLASSIFIED ADS, CARDS OF THANKS AND IN MEMORIAM MUST BE PAID IN ADVANCE.  
50¢ SERVICE CHARGE WILL BE ADDED TO ANY MONTHLY BILL TOTALING LESS THAN \$5.00.

PHONE 423-3666

## -ERRORS-

SHOULD BE REPORTED IMMEDIATELY AS THE NEWS CAN BE RESPONSIBLE ONLY FOR THE FIRST INCORRECT INSERTION IN ANY ADVERTISEMENT. THE NEWS CANNOT BE LIABLE FOR ERROR IN ANY ADVERTISEMENT TO A GREATER EXTENT THAN THE COST OF THE SPACE OCCUPIED BY THE ITEMS IN THE ADVERTISEMENT.

## FOR SALE

FOR SALE — Ashley Heaters. See or call Mr. or Mrs. Lester Adams, Route 3, Sardis Church Road, Call 423-6104. A-3-tfn-c.

LOTS FOR SALE — From 1 to 50, with terms to suit. Also, trailer lots for rent with utilities. Close in — Call or see Bart Smith - 423-3749. Also, house for rent — same address. J-6-tfn-c.

HOUSE FOR SALE — Two bedroom house, two miles west of Dennis on 2 1/2 acres of land. Has community water, phone, and large front yard. Priced to sell — \$10,000. Call 454-7273 before 8 p.m. Property owned by Ed Allen. N-16-tfn-c.

FOR SALE BY OWNER — Approximately 1/2 acre of land on Hwy. 25, 3 miles north of Iuka. See Lee Roy Nunley. D-28-J-4-11-p.

FOR SALE — Used two bedroom house trailer. Call 423-9789. O-26-tfn-c.

LITTLE CREEK MOTEL & APARTMENTS 702 SOUTH MAIN ST. Rooms with kitchenettes. Phone 423-5782. J-22-tfn-c.

FOR SALE — 1972 Skyline, 12 x 60, two bedroom mobile home. Call 423-5190. D-21-28-p.

QUAILS FOR SALE — Young and fat! Dressed or alive! Contact A. L. Cutshall at 423-5186. O-5-tfn-c.

FOR SALE — House and 4 acres of land, located west side of Indian Creek. Approximately 1/2 mile from water. See Jim Robinson or call 286-6000 in Corinth. N-9-tfn-c.

HELP SAVE ENERGY COST by insulating your home. Custom made doors, windows, awnings, gutters, aluminum siding, replacement windows. Horace Ray Shook, Route 1, Cherokee, Ala. 35616. Call today (205) 360-2187. N-23-tfn-c.

NOW OPEN - THE DENIM SHOP - Airport Road, Iuka, Miss. 423-3317. Located next-door to Herman Nunley. Denim jeans - sizes 26" - 42" (various lengths). Boy's jeans, denim and Western shirts (assorted sizes and colors). D-28-c.

FOR SALE - Boat lift for 24' or 28' pontoon. Can be used for a boat as well. D-28-p.

BENSON BUILDERS changes buyers into investors. S-28-tfn-c.

J. P. COLEMAN STATE PARK RESTAURANT - Open from 11:00 a.m. - 8:00 p.m., Wednesday thru Sunday - Offering full menu service. Banquet room available. D-7-14-21-28-c.

**RAPID FENCE CO.**  
CHAIN LINK SPECIALIST  
COMMERCIAL AND  
RESIDENTIAL  
FREE ESTIMATE  
PHONE 427-8823

**MOORE'S**  
**BODY SHOP and**  
**WRECKER SERVICE**  
**24 HOUR WRECKER SERVICE**  
DAY PHONE 423-5130  
NIGHTS-WEEKENDS - HOLIDAYS  
423-5244  
**EXPERT BODY REPAIR**



**NEED  
APPLIANCE  
REPAIR?  
CALL**

**Gann Bros.**  
**Furniture & Appliance**  
**427-9506**

WE HAVE TWO FULL TIME SERVICE  
MEN FOR QUICKER AND MORE  
EFFICIENT SERVICE

"The Business That  
Quality And Service Has Built"

FOR SALE — Newly re-decorated cabin. 1100 sq. ft., 2 bedrooms, 1 bath, kitchen and 25 x 15 great-room, large stone fireplace. Located on 3/4 ac. tree studded lot with large stone patio. Excellent investment. Just off water on paved road. \$20,000. Call 423-9715 or 423-5660. O-26-tfn-c.

HOUSE AND ONE ACRE LAND FOR SALE — 3 bedroom, brick house with one acre land, double carport, 2 full baths, fireplace, all built-in appliances, central heat and air, 2100 sq. ft., 16 x 30 storage shop. See or call Wayne Hamm at 423-9251 or after 6 p.m. call 423-9005 - \$55,000.00. N-30-tfn-c.

## For Rent

RHODES MOBILE HOME PARK, Counce, Tenn. Two and three bedroom units-monthly and weekly rates-\$50.00 and up. Utilities furnished. Call 601-287-6146, 901-689-3040 or 901-925-5516. O-19-tfn-c.

APARTMENTS FOR RENT 2 bedroom apartment and one 1 bedroom apartment for rent. Also, commercial type building for sale, rent or lease. Call 427-8294. D-7-14-21-28-p.

FOR RENT - 2 bedroom, furnished house in Iuka. Call 423-3566 for details. Can be shown Friday, Dec. 29, or Saturday, Dec. 30. D-28-J-4-c.

FOR RENT — Working Men! Two trailers - one unfurnished house. Call 423-3656. N-9-tfn-c.

**P. O. BEARD AGENCY**  
**SINCE 1964**  
**Welcome**  
**Newcomers**

Will entertain ALL Offers - 2424 sq. ft. heated area, New, 4 bd, 2 bath, rock and cedar house, large den with fireplace, you select carpet colors, central heat and air, 1 ac. on Hwy. 365 about 6 miles south of Burnsville. Been asking \$47,500.

Handy? Finish off this 2 bd, frame home or cabin on lot at Coleman Park. Municipal water available. \$10,500.

Good small family home. 2 or 3 bd., 1 year old, frame home, electric wall heaters and air conditioning, but has good wood heater, 1/2 ac. lot, \$23,000. Adjoining 1/2 ac with fenced pen, utility room, shed, septic tank, etc. for \$4250 additional, Old Hwy. 365 S of Burnsville.

3 bd, 1 1/2 bath, carpeted, brick house, wall heaters and wall air conditioner, 1/2 ac. on Hwy. 72 E of Burnsville, \$27,000.

Work at the Nuclear Plant? Live on the blacktop 1/2 mile from work and the water at Coleman Park, 3 bd, 1 1/2 bath, rock house, carpeted, large living room with fireplace, central heat and air, 3 yrs. old, \$39,500.

2 bd, furnished mobile home, large screened porch, small lot near Yellow Creek, \$9,500.

Live on the water with a permanent home. 3 yr. old, fully furnished, frame home, 2 bd, fireplace, central heat and air, ac. lot on canal leading to Bear Creek, dock in front of house, \$27,500. Pontoon available for \$2000 additional.

Paneled, 2 bd, frame home on lot off Turnpike Mt. Rd., \$8,000.

Recently remodeled, redecorated, 2 bd, frame home near water near Yellow Creek Port, \$18,900.

Bargain for the handy man - 1888 sq. ft., 4 bd, 2 bath, brick home, large living room, large den, on ac. on blacktop Hwy. 364. Needs cleanup, paint-up, fixup, but is basically in good shape. Only \$32,500.

Golden - 1862 sq. ft. plus 612 unfinished, but heated, basement, 3 bd, 3 bath, large living-dining room, big utility room, 21' x 16' den with fireplace, 28' x 30' garage for 2 cars and junk, on 2 ac. on blacktop, only \$68,500.

Investment property or ideal home-office combination-Duplex (upper-lower) 3 bd, 1 bath, 1r, eatin kitchen on upper level, 2 bd, living room-dining room with fireplace, bath, concrete block and rock facing, tile floors, 100' x 250' lot, city water, sewer, Hwy. 72 opposite school, 2408 sq. ft. heated area, \$52,500.

Large, wooded, house lot overlooking Yellow Creek, \$3,000.

125 ac. timber and crop land including some good bottom land with branch, good house site with well, N. of Shady Grove Church, \$400 per ac. or \$50,000.

P. O. BEARD - REALTOR, APPRAISER  
REGISTERED FORESTER  
NANCY BEARD - REALTOR ASSOCIATE  
DANNY BULLARD - SALESMAN  
OFFICE - 423-5253  
423-5251 OR 462-7397  
MANY OTHER LISTINGS  
CALL FOR FREE INFORMATION  
ON BUYING OR SELLING

FOR RENT - 2 bedroom apartment - \$140.00 per month. Small deposit required. Available immediately. Call 423-5227 before 5 p.m. and 423-6704 after 5 p.m. D-28-tfn-c.

ROLLING HILLS ESTATE New 2 and 3 BR, furnished, double-wide mobile homes, 24 x 40 with central heat and air, total electric, water furnished, four miles from Ala-Miss line on Hwy. 72 East, Ala. side approximately 20 miles from Yellow Creek. \$235.00 month, \$100.00 security deposit. Call 205-383-6585. D-28-J-4-11-18-p.

TWO 2 bedroom apartments - furnished, one 2 bedroom trailer, one 1 bedroom trailer. Phone no. (601) 239-2741, apts. at North Crossroads, trailers at Yellow Creek Port. See or call Bill Mason for appointment at Michie, Tn. Call above number. D-28-J-4-11-18-c.

## Attention Investors

EARN 10% on your money, AAA secured by Tishomingo County Real Estate. See Ed Gregory at Consolidated for details.

Country home, on 3 1/2 acres, on paved road with city water. 4 BR., brick, 2 baths, has full basement. Needs a little paint. Reduced from \$37,250 to \$36,500.00.

Waterfront! Furnished, 2 BR., 1 1/2 baths, like new. Reduced from \$45,000 to \$39,900. BARGAIN!

\$42,000.00 - 3 BR., 2 bath, fireplace, central heat and air, double garage, \$300.00 down - \$331.72 per month.)

\$34,500, 3 BR., 2 baths, carpet, central heat and air, Burnsville.

\$49,000.00 - 4 BR., sunken greatroom, ALLEXTRAS, covered patio, in city limits.

\$52,500.00 - Large 3 BR., brick, on 10 beautiful acres.

TIGHT MONEY? NOT AT CONSOLIDATED!

2 acres off Harmony Road. Excellent building lot. \$3,125.00.

1/2 ACRE - 1/2 acre lot off A - \$500.00 down - \$500.00 per month.)

1 acre building lot on Hwy. 72 East in city limits.

1 acre - Waterview Lots - (\$700.00 down - \$63.75 per month - No closing cost).

CONSOLIDATED REALTY 711 Elm Shopping Center Ed Gregory BROKER Office 423-6948 & 423-6946 Ed Gregory 423-5300 Billy Godwin 423-6959 Ed Gregory, Jr. 423-3772 Glenda Milligan 423-9722

**WANTED  
TO BUY  
STANDING  
TIMBER**

**WESTVACO  
CORP.**

**CONTACT:  
J. E. (Eddie)  
Woodruff  
Office  
454-7430**

**After 5 p.m.  
Home 423-6315**

APARTMENT FOR RENT - 1 bedroom - Couple or 1 person only. Call 423-6454. D-21-28-c.

## MISCELLANEOUS

ADDRESSERS WANTED IMMEDIATELY! Work at home - no experience necessary - excellent pay. Write American Service, 8350 Park Lane, Suite 127, Dallas, TX 75231. D-28-J-4-11-18-p.

BABY SITTING in my home in Coleman Park area. Mrs. Clay Davis. Call 423-9708. D-7-14-21-28-p.

HELP WANTED — Unique Christian business opportunity. Place racks of Christian products in retail outlets in North Mississippi. Grow spiritually and financially. Write or call Storehouse, 1812 Woodward Ave., Muscle Shoals, Ala. 35660, Phone 205-381-7922. D-21-28-J-4-c.

FURS — For top prices sell directly to DUKE PECO & FUR CO. West Point, Miss. (601) 494-6767. Before selling, contact us. D-7-14-21-28-c.

SONNY'S PAWN SHOP, Windsor Inn Motel Office, Hwy. 45 South, Corinth, Ms. Phone 287-1485, S-28-tfn-c.

**IUKA  
REALTY CO**  
**R**  
**REALTOR**

Neat 2 B.R., frame home in excellent repair, located near downtown Belmont - \$17,500.

NEW LISTING - 3 B.R., frame home, freshly painted inside, on large lot with garden spot and fruit trees. Owner will finance - \$21,500.

Perfect home for the family that likes plenty of space. 3 B.R., 2 baths, large den, 2 barns on five acres. Good location. Must See - \$58,300.

Reduced to \$39,500 from \$42,500 - 3 B.R., 2 bath, brick home featuring greatroom with fireplace. Located south of Iuka on two beautiful acres.

Well-maintained, 2 B.R., cabin at Eastport with fireplace in greatroom - \$28,500.

Built to F.H.A. specifications. This 3 B.R. home is energy-efficient and waiting for an owner. Only \$29,900.

FINANCING AVAILABLE

IUKA REALTY Office 706 Hwy. 25 North Phone 423-5500 Bryce Kitchens - Broker Bobbie Curtis 423-6177 Jackie Bryant 423-6758 Betty Compton 423-9166

CHILDREN'S DAY---Every Tuesday, 10 a.m.-6 p.m., No appointment necessary. Photography by Charles, 709 Eastport, Iuka, phone 423-3359. A-20-tfn-c.

TEST AD: In order to test the effectiveness of this advertisement, we are offering a new Singer Model 247 Sewing Machine that sews straight, zig-zags, monograms, appliques and makes button holes for \$77.00, or the Electra Model 5X3000 free arm, regular \$499.95 for only \$199.95. Call 601-423-5683 for a free home demonstration or come by Bee's Fabrics, Front St., Iuka, M-18-77.

BOOKKEEPING - TAXES Simply and personally com-

puterized to your needs - Reasonable Data-Flow, Inc. Call 794-0249 - Collect. D-7-14-21-28-P.

SPECIAL: 3 pc. set - love seat, and chair - 4 pc. antron velvet living room suit - \$399.00, dining room 5 pc. all table, 4 chairs and bench - \$169. Bedroom 3-piece dresser, chest and (queen or regular) - \$199. Mon., Thurs., Fri., Sat. 9 - 5 Sun. 1 - 6

COME SEE US AT CROSS COUNTRY FURNITURE Located at intersection Hwy. 365 and 25 at Crossroads, N-9-tfn-c.

**The LONG Company**  
**Real Estate**  
**1415 Hwy. 25 South**  
**Iuka, MS 38852**  
**423-5555**

Wonder how to make everything fit together smoothly? Selling your house, buying another, finding a down payment, financing, or transferring? Our Company is experienced in putting it together quickly.

NEW LISTING - This is a dream home! See a quality home owned by perfectionists. Formal living and dining rooms, den with fireplace, eat-in kitchen, 4 B.R.s, 3 baths, d. garage w. storage and wash bench, choice neighborhood - \$58,000.00.

Tired of looking at ordinary 3 BR houses? See an extraordinary, 3 BR brick, with huge greatroom, fireplace, oversized bedrooms, excellent location, look no more! - only \$53,900.00.

NEW LISTING - NEW, rustic brick and cedar, BR, 2 full baths, large wooded lot, Hwy. 25 N. - \$47,500.00.

Space at an affordable price, 4 BR, stone home, 2 baths, conveniently located inside Iuka city limits - \$45,000.00.

Cape Cod home in Cayce Springs Subd., 4 BR, beautifully decorated - \$49,000.00.

Luxury living you can easily afford in this NEW BR brick home in Cayce Springs Subd., inside city limits - \$43,500.00.

Proudly entertain your friends in this 4 BR, bath brick home with large formal living room, lovely wooded lot, inside city limits - \$45,000.00.

Belmont, mid-30's, like new, 3 BR, brick, 2 bath, greatroom, excellent floor plan.

3 BR stone family home with covered patio on lot inside Iuka city limits - \$29,500.00.

3 BR, half brick home with huge den, massive fireplace, tv tower, on secluded 3/4 acre lot - Belmont at \$22,750.00.

NEW, 3 BR brick home south of Iuka, 100 percent financing if you qualify.

20 acres - off Airport Rd. - \$600. per acre.

35 acres - off Eastport Rd. - \$750. per acre.

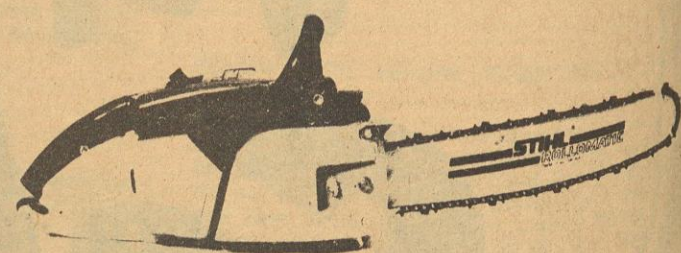
40 acres - beautiful acreage, perfect for subdivision or small farm.

41 acres - Indian Creek Rd. - \$600. per acre.

50 acres - rolling, wooded land, 2 1/2 miles from Iuka.

THE LONG COMPANY  
OFFICE - 423-5555  
BROKER - GRACE LONG - 423-6584  
SALES AGENT - BETH DAVIS - 423-6584

**STIHL 031 AV**



light in weight, comfortable  
and really simple in design

The most respected name in chain saws. See it now at:



**NELSON**

**Marine & Hardware**  
Highway 25 S. IUKA Phone 423-6315



# FREE 300 EXTRA QUALITY STAMPS

When this Card is Filled You Get 300 Extra Free Quality Stamps  
**EVERYBODY WINS AT NELSON'S**

A \$2.50 purchase at a Quality Star. Each time you purchase an additional \$2.50 you get another Quality Star. (No Stars given on Tobaccos — Beer — Milk or Milk Products).  
 Stick your Quality Stars in the spaces marked "Quality Star" on this card.  
 When all Quality Star spaces have been filled, take your card to NELSON'S and you will receive 300 Quality Stamps for your filled card.  
 New cards are available in NELSON'S Play as many times as you like while the promotion is in progress.  
 NELSON'S reserves the right to discontinue Quality Star Cover Cards at any time by announcement to our customers. If you are caught with an unfilled card, you will receive on the basis of 10 Quality Stamps for each Quality Star on the unfilled card.

QUANTITY RIGHTS RESERVED  
 NONE SOLD TO DEALERS

# NELSON'S

Iuka, Miss.



**Ring in '79**  
**WITH THESE FOOD SAVINGS**

AD GOOD THRU JAN. 3 1979

**Open**  
**9 a.m. 'til 6 p.m.**  
**New Year's Day**

## PORK Specials

**BLACKEYED PEAS** 19¢  
 LB. BAG

**FLOUR** 19¢  
 GOLD MEDAL 5 LB. BAG with \$15.00 purchase excluding tobacco & dog food  
 LIMIT ONE

**SHORTENING** \$1.19  
 CHEF-WAY 3 LB. CAN  
 LIMIT ONE

**COOKIES** 9¢  
 MOUNTAIN MAN 5 CT.

**TOWELS** 3 for \$1  
 HI-DRY PAPER SINGLE ROLL

**PEPSI COLA** 79¢  
 2 LITER SIZE

**CRACKERS** 49¢  
 LIMIT ONE LB. BOX

**SNACKS** 69¢  
 Planter's cheese curls, cheese balls, Planter's twin potato chips, corn chips

**HAM** 89¢  
 TURKEY & CHICKEN 6 3/4 OZ.

**PIZZA** \$1.99  
 TOTINA FROZEN CLASSIC 20 OZ.

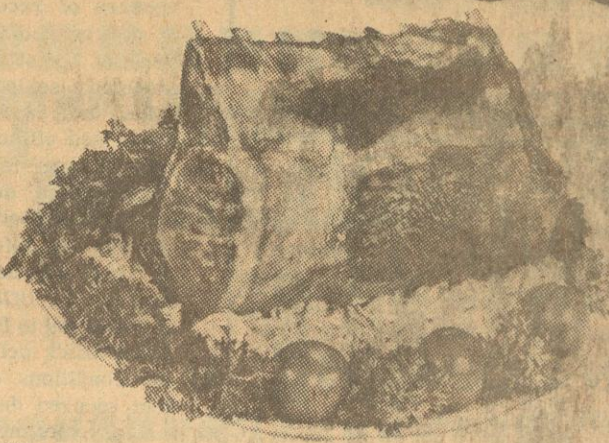
**SYRUP** 2 for 79¢  
 20 OZ.

**POTATOES** 49¢  
 2 LB. BAG

**PEACHES** 49¢  
 HALVES OR SLICED 29 OZ.

**MAYONNAISE** 78¢  
 BLUE PLATE QUART JAR  
 LIMIT ONE

**HOG JOWL** 39¢  
 FRESH LB.



**PORK ROAST** \$1.19  
 FRESH PORK LOIN

**PORK LIVER** 59¢  
 FRESH PORK LB.

**NECK BONES** 49¢  
 COUNTRY STYLE LB.

**RIBS** \$1.29  
 BRYAN LB.

**CANNED HAMS** \$5.99  
 3 LB. CAN

**PORK CHOPS** \$1.39  
 1/4 PORK LOIN LB.

**FISH STICKS** 59¢  
 FISHER BOY 8 OZ.

**PORK CHOPS** \$1.59  
 CENTER CUT LB.

**PORK CHOPS** \$1.69  
 THIN CUT LB.

## FREE 300 QUALITY STAMPS

WITH \$10.00 PURCHASE EXCLUDING TOBACCO & DOG FOOD  
 LIMIT ONE PER FAMILY

**CATSUP** 79¢  
 DEL MONTE 32 OZ. BOTTLE

**COMET** 39¢  
 LIQUID 14 OZ. PLASTIC BOTTLE

**BLACK PEPPER** 99¢  
 SAUERS 16 OZ. CAN

**LEMON JUICE** 99¢  
 BORDEN'S REALEMON 32 OZ.

**GRITS** 2 for 69¢  
 QUAKER QUICK 24 OZ. BOX

**FLOUR** \$1.89  
 DIXIE LILY 10 LB. CLOTH BAG

**GREEN BEANS** 3 for \$1  
 BUSH'S 15 1/2 OZ.

**ZEST SOAP** 89¢  
 7 3/4 OZ. SUPER SIZE 3 BAR BUNDLE

**POTTED MEAT** 4 for \$1  
 BRYAN'S 3 OZ.

**CAT FOOD** 4 for \$1  
 TABBY 13 1/2 OZ. CANS

**MAC & CHEESE** 4 for \$1  
 BETTY CROCKER 7 1/4 OZ.

**PINTO BEANS** \$1.19  
 HYDE PARK 4 LB. BAG

### PRODUCE

**CABBAGE** 12¢  
 FRESH GREEN U.S. NO. 1 LB.

**APPLES** 39¢  
 GOLDEN OR RED DELICIOUS 88' size LB.

**ONIONS** 49¢  
 YELLOW 3 LB. BAG

**RUTABAGAS** 15¢  
 CANADIAN WAXED LB.

**BANANAS** 4 for \$1  
 DEL MONTE BRAND

**CARROTS** 2 for 49¢  
 I.B. CELLO BAG

**COUPON**

100 EXTRA QUALITY STAMPS  
 WITH COUPON AND PURCHASE OF 10 LB. BAG FRESH RED POTATOES  
 EXPIRES 1-3-79

**COUPON**

100 EXTRA QUALITY STAMPS  
 WITH COUPON AND PURCHASE OF 2 CUPS OF MRS. WEAVERS SALAD  
 EXPIRES 1-3-79

**COUPON**

100 EXTRA QUALITY STAMPS  
 WITH COUPON AND PURCHASE OF 15 OZ. BOTTLE OF PINE-SOL CLEANER  
 EXPIRES 1-3-79

**COUPON**

100 EXTRA QUALITY STAMPS  
 WITH COUPON AND PURCHASE OF 96 OZ. SIZE STA-PUF FABRIC SOFTENER  
 EXPIRES 1-3-79



## Notice

**NEED HEAVY DUTY OPERATORS,** also laborers. Good wages with benefits. Apply in person at Miss. Stone Products, Iuka, Ms. 0-26-tfn-c.

**NOTICE** — All lands belonging to W. P. Weathers, Sr., W. P. Weathers, Jr., James A. Weathers, Delyla Byram, John D. Murphy, is posted against all hunting and trespassing. D-21-28-J-4-p.

### NON-RESIDENT SUMMONS

TO:  
Ray Goff  
533 Christie Street  
Dyersburg, Tenn. 38024

You are hereby summoned to appear before the Chancery Court of Tishomingo County, Mississippi, on the 15th day of January, 1979, at 10:00 A.M. at the Tishomingo County Court-house in the City of Iuka, Mississippi, in Cause No.

120 being a matter pending in the Chancery Court of Tishomingo County, Mississippi, wherein you are a respondent, to show cause, if any you can, why the relief sought in the Petition filed in the said cause should not be granted.

This the 22nd day of December, 1978.  
ROBERT D. SIMS,  
Chancery Clerk of  
Tishomingo County, Miss.  
D-28-J-4-ll-c.

### NOTICE TO CREDITORS

Letters Testamentary having been granted on the 18th day of December, 1978, by the Chancery Court of Tishomingo County, Mississippi, to the undersigned upon the estate of Mrs. Sallie Davis Glenn, deceased, notice is hereby given to all persons having claims against said estate to present the same to the Clerk of said Court for probate and registration, according to law, within ninety (90) days from this date, or they will be forever barred.

This 18th day of December, 1978.  
BRICE STRICKLEN,  
EXECUTOR  
D-21-28-J-4-c.

### PUBLIC NOTICE

All Lands owned by the State of Mississippi which are under the custodial responsibility of the Yellow Creek State Inland Port Authority, including the Railroad Right-of-Way from the point where the Yellow Creek Port Spur leaves the Corinth and Counce line in Sharp's Bottom to the Yellow Creek Port, are hereby posted against hunting and trespassing, except by written permission of the Yellow Creek Port Authority.

Permits may be obtained at the Yellow Creek Port Authority Office during regular office hours.  
D-21-28-J-4-c.

### PUBLIC NOTICE

SERVICES FOR PERSONS UNABLE TO PAY THEREFOR AT TISHOMINGO COUNTY HOSPITAL, IUKA, MISSISSIPPI

The Mississippi Commission on Hospital Care has established the sum of \$49,671 as the level of uncompensated Services to be made available by the Tishomingo County Hospital in Iuka, Mississippi, in the period beginning 10-1-78 and ending 9-30-79. This determination has been made pursuant to the requirements of the regulations of the Public Health Service, U. S. Department of Health, Education and Welfare, (42 CFR Section 53.111) and the applicable provisions of the Mississippi Medical Facilities Construction Plan.

"Uncompensated Services" means services available in the facility which are made available to persons unable to pay therefor without charge or at a charge which is less than the reasonable cost of services. The level of such services is measured by the difference between the amount paid by such persons for the services and the reasonable cost thereof. The hospital services to be made available to eligible applicants are those which the hospital has been licensed to render.

The level set out above meets the presumptive

### PERSONALS

Confidential divorce and child custody investigation. Call 1-601-736-8265 A & A Detective-Recovery Co. N-16-tfn-c.

compliance guideline of the federal regulations and is 3 percent of annual operating costs after first deducting reimbursement for Medicare and Medicaid patients.

Copies of the criteria used for identifying persons unable to pay for services may be obtained from Tishomingo County Hospital, or from the Mississippi Commission on Hospital Care, 408 Woolfolk Building, Jackson, Mississippi 39205.

The records and documents which are the basis for the establishment of the above level of Uncompensated Services are available for public inspection at the Mississippi Commission on Hospital Care, 408 Woolfolk Building, Jackson, Mississippi, between the hours of 9:00 A.M. and 4:00 P.M., on regular business days.

By order of the Board of Trustees of Tishomingo County Hospital,  
R. E. Lambert,  
Administrator

D-28-c.

## Frostbite Is Hazard

An ever present winter hazard in North America is frostbite.

Frostbite is, naturally, more of a problem in the northern states, but even in much of the South there are occasional nights cold enough to nip unprotected noses and cheeks.

Frostbite can be very painful, resulting in amputations, and can leave the victim hypersensitive to cold for the rest of his or her life.

In some ways the damage of frostbite is similar to a burn. First degree frostbite, like sunburn, is an injury to the surface skin. It is likely to attack ears, toes, fingers, cheeks or nose. Second degree frostbite produced blisters, as in second degree burns. In third degree frostbite the damage is deep and much of the frozen part may be lost.



The American Medical Association points out that prevention is the best protection against frostbite.

Prevention means being properly dressed in warm clothing, waterproof shoes, and heavy, dry socks, with good covering for head and ears. Keep clothing dry from both outside moisture and from perspiration, and avoid tight clothing or garters that may restrict circulation.

Motorists traveling across country in subfreezing weather are advised to have heavy clothing and shoes in the car, in the event of a breakdown and a necessary hike for help.

First signs of frostbite are a "pins and needles" prickly feeling, and then numbness. The affected part will turn white or grey and later red.

First aid possibilities are limited. Thawing of the tissue as soon as possible is the first consideration. This can best be accomplished by getting indoors into a warm room. Use warm water, not too hot. Treat the frozen part gently and do not rub or massage it. The old technique of rubbing snow or ice water on the frozen spot does more harm than good, by delaying thawing.

December, 1978

Frank Chappell  
Science News Editor  
AMA

## Weed Control

MISSISSIPPI STATE — December and January are considered the holiday season of the year, but these months also compose the season for weed control in small grains and ryegrass.

"Wild mustard, wild turnip and several other related species of weeds are probably the earliest weeds that become apparent. These pests are becoming more of a problem

in our winter grazing crops and to an extent in our grain crops," says Dr. Wayne Houston, weed scientist, Mississippi Cooperative Extension Service.

"These plants are very competitive with small grain crops," continues Dr. Houston. "For example, one mustard plant requires twice as much nitrogen and phosphorus, four times as much potassium and four times as much water as a well-developed oat plant. It also competes for sunlight. Very few small grains or ryegrass plants will grow under the broad leaves of a wild mustard plant."

This group of related weeds can be controlled, but control programs often need to be started much earlier than the current practice within the state. Once wild mustard plants begin flowering, control with herbicides is difficult. Applications of herbicides

must be made in December or January to be effective, stresses the scientist.

A few precautions are necessary when applying herbicides to small grains. No applications should be made

until germination is complete and the plants have reached a four-leaf stage of growth. If plants have passed the seedling stage and stands are established, applications of herbicides can begin. Such applications can be made until the plants begin to joint.

Applications should be made on a warm, sunny day. Therefore, producers should take the first opportunity to apply herbicides, since such days are limited.

Wild mustard can be controlled easily with the low volatile ester of 2,4-D. Apply 1.5 pints per acre in enough water to obtain coverage, recommends Dr. Houston. A surfactant may be needed to improve wetting.

"Do not expect to get rid of mustard in one year," emphasizes the scientist. "The many hard seed in this group of plants require several years to control. Try to prevent plants from flowering and going to seed. If one plant goes to seed, in several years an area can have a spot completely covered with wild mustard," he concludes.

## THROUGHOUT OUR NATION'S HISTORY THE CITIZEN-SOLDIER WAS THERE.

For over 200 years, the citizen-soldier has been trained and ready, to keep our nation free. This tradition continues today, among the men and women who serve part-time in the Army Reserve. If you'd like a place in history, contact your nearest Army Reserve unit today. We're in the White Pages of the phone book under U.S. Government.



## LEGAL NOTICES

### SUBSTITUTED TRUSTEE'S NOTICE OF SALE

WHEREAS, on September 22, 1973, Tri-State Auto Sales, Inc., Danny K. Lambert and Diane Glidewell Lambert executed a certain Deed of Trust to J. Barry Finch, Trustee for the use and benefit of First National Bank of Iuka (Corporate predecessor to the First American National Bank of Iuka - Mississippi) of record in the office of the Chancery Clerk of Tishomingo County at Iuka, Mississippi in Trust Deed Book 70 - pages 494 et seq.; and

WHEREAS, as said First American National Bank has heretofore substituted the undersigned Douglas C. Wynn as Trustee in the place and stead of J. Barry Finch, by instrument dated October 26, 1978, as appears of record in said Chancery Clerk's office in Deed of Trust Book B-94 at pages 645, et seq.; and

WHEREAS, by Judgment and Order entered by the United States District Court for the Northern District of Mississippi, Eastern Division in Docket NO. EC 77-105-K et al, Consolidated, styled "First American National Bank of Iuka, Mississippi v. Danny K. Lambert, et al" on December 18, 1978, a certified copy of which appears of record in Deed Book B-95 at pages 128 et seq. in said Chancery Clerk's office, the aforesaid Deed of Trust was reformed and found to have been executed, sealed and delivered by Tri-State Auto Sales, Inc., a Mississippi corporation, by its duly authorized officers Danny K. Lambert and Diane Glidewell Lambert in their capacities as its duly authorized officers; the descriptions of the fourth and fifth tracts described therein were amended as set forth therein; the reformation and amendment of said Deed of Trust was declared to be effective of its date, September 21, 1973; and the undersigned was ordered and directed to foreclose the same; and

WHEREAS, default having been made in the terms and conditions of said Deed of Trust and the entire debt secured thereby having been declared to be due and payable in accordance with the terms thereof, pursuant to the terms thereof and the Order of the Court aforesaid, First American National Bank of Iuka, Mississippi, the owner and holder of the indebtedness secured thereby having requested the undersigned Trustee to execute said Trust and to sell said lands or property in accordance with the terms of said Deed of Trust, for the purpose of paying all sums due thereunder, together with the expenses of sale, attorneys and trustees fees;

NOW, THEREFORE, I, Douglas C. Wynn, Substituted Trustee, in said Deed of Trust, will on January 22, 1979, offer for sale at public auction for cash to the highest bidder and sell, within the legal hours, between 11:00 o'clock A.M. and 4:00 o'clock P.M. at the front door of the County Courthouse of Tishomingo County, Mississippi, to the highest and best bidder for cash, the following described property situated and located in Tishomingo County, Mississippi, to-wit:

"(Tract 4). Part of the South Half of the Northeast Quarter of Section 23, Township 3, Range 10 East described as beginning at the point of intersection of the West Line of said Section with the South Right-of-Way Line of Lee Highway (Highway 72) and run thence south on said West Line 180 feet; thence run East parallel with the North Line of said South Half of said Quarter 80 feet; thence run North parallel with the West Line 180 feet more or less to the South right-of-way line of said highway; thence run West along said right-of-way 80 feet to the point of beginning.

"(Tract 5). Part of the South Half of the Northeast Quarter of Section 23, Township 3, Range 10 East, Tishomingo County, Mississippi described as beginning at the point of intersection of the West Line of said Quarter with the South right-of-way line of Lee Highway (Highway 72) and run thence easterly with the South right-of-way line of said highway a distance of 80 feet more or less to a point which is the point of beginning of the tract conveyed herein; run thence in an easterly direction with the South right-of-way line of said highway a distance of 10 feet; thence run in a southerly direction 90 feet to a point 20 feet east of the East Line of the C. L. Woodley Tract of land described by Deed recorded in Book P-31 at page 540 of the land records of Tishomingo County, Mississippi, measured parallel to said highway and from this point run thence westerly parallel to said highway a distance of 20 feet to the East Line of the C. L. Woodley Tract; thence run Northerly with the East side of the C. L. Woodley Tract 90 feet more or less to the point of beginning."

The aforesaid Deed of Trust is junior and subordinate to the lien of that certain Deed of Trust from Tri-State Auto Sales, Inc. to J. Barry Finch, Trustee for the use and benefit of Tri-State Savings and Loan Association, Iuka, Mississippi filed for record June 15, 1973 and recorded in Trust Deed Book 69 at pages 582 et seq. of said records and in said sale I will convey only such title as is vested in me as Substituted Trustee for First American National Bank of Iuka, Mississippi under its junior and subordinate Deed of Trust described above, and said sale shall be subject to the lien of the aforesaid Deed of Trust in favor of Tri-State Savings & Loan Association.

WITNESS MY SIGNATURE, this the 20 day of December, 1978.

D-28-J-4-11-18-c. DOUGLAS C. WYNN

### NOTICE TO CREDITORS

Notice is given that letters testamentary have been on this day granted the undersigned Bobby E. Voyles and Lillie Mae McEwen on the Estate of T. E. Voyles, deceased, by the Chancery Court of Tishomingo County, Mississippi, and all persons having claims against said estate are required to have the same probated and registered by the clerk of said court within ninety (90) days after the date of the first publication of this Notice or the same shall be forever barred.

WITNESS my signature this 16th day of December, 1978.  
Bobby E. Voyles  
Lillie Mae McEwen  
JOINT ADMINISTRATOR-ADMINISTRATRIX  
C.T.A. OF THE WILL AND OF THE ESTATE OF  
T. E. VOYLES, DECEASED.  
D-21-28-J-4-c.

## Public Notice

### LEGAL NOTICE AND INVITATION FOR BIDS

The Tishomingo Housing Corporation, City of Tishomingo, Tishomingo County, Mississippi, will receive bids until 1:00 o'clock p.m., Central Time, on the 5th day of January, 1979, at the Office of the Mayor, City of Tishomingo, Mississippi at which time the place the bids will be publicly opened and read, and the furnishing of all labor, materials, equipment, and services for construction of the following project:

### TISHOMINGO APARTMENTS

Plans and specifications are on file at the office of E AND S Associates, 407 Taylor St., P. O. Box 880 (Phone - 601-287-5234), Corinth, Mississippi 38806.

Copies of the documents may be obtained from the Architect upon deposit of \$75.00 for each set, to be refunded upon return of each complete set in good condition within 7 days after opening of bids, except the bidder to whom the contract is awarded and except that \$25.00 to cover cost of reproduction will be deducted for each set in excess of one from an awarded bidder and for each for a non-bidder or a late bidder.

Proposals must be accompanied by a Bid Bond or Certified Check in the amount of at least five percent (5%) of the base bid, all in accordance with the General Conditions or Modifications thereof bound with the specifications.

Performance and payment bonds in the full amount of the Contract will be required for Contract Security. No bid may be withdrawn for a period of thirty days after the opening of the bids without the consent of the Tishomingo Housing Authority.

The Contract will be awarded to the lowest acceptable bidder, except that the Owner reserves the right to waive any informalities or to reject any and all bids.  
TISHOMINGO HOUSING AUTHORITY  
City of Tishomingo  
Tishomingo County, Mississippi  
D-21-28-J-4-c.

### SHAREHOLDER RESOLUTION OF MISSISSIPPI STONE CO., INC.

Pursuant to Section 79-3-283 of the 1972 Mississippi Code Annotated, we, the undersigned, constituting all of the shareholders of Mississippi Stone Co., Inc., hereby ratify and adopt the following resolution:

BE IT RESOLVED, That the name of the corporation shall be changed from "Mississippi Stone Co., Inc." to "MSC, Inc."

Dated this, the 1st day of December, 1978,  
JOHN OWEN  
WILLIAM N. GRIFFIN  
MARYE OWEN

### ACCOUNTING MACHINE SPECIFICATIONS

The Board of Education of Tishomingo County, Mississippi will on Friday, December 29, 1978, at 1:00 p.m. at the office of the County Superintendent of Education in Iuka, Mississippi, receive bids for the purchase of:

One accounting computer, style L 9948-200/400 or equal, with necessary programming for complete Budgetary accounting, automatic data retrieval and report writing, complete Payroll accounting, check writing, ledger posting, department and grand totals, automatic report and W-2 preparation.

System is to provide dual continuous forms having twenty four program select keys, magnetic tape cassette station for program loading, a one hundred and one character per second printer, magnetic memory read/write capability and an automatic ledger reader.  
D-14-21-28-c.

NOTICE TO DEALERS TO FURNISH TISHOMINGO COUNTY AND THE ROAD DISTRICTS THEREOF THE FOLLOWING SUPPLIES, AND TO BANKS FOR THE KEEPING OF COUNTY FUNDS AS A COUNTY DEPOSITORY, FOR THE PERIOD BEGINNING JANUARY 1, 1979, AND ENDING JANUARY 1, 1980.

Notice is hereby given by the Board of Supervisors of Tishomingo County, Mississippi, that it will, at 10:00 A.M. on Tuesday, January 2, 1979, receive bids from dealers for general office supplies, janitorial supplies, road and bridge maintenance materials and supplies, and for machinery upkeep, and will receive bids from banks for the keeping of County funds as a County depository, under Section 27, 1972 Mississippi Code, 1972, as may be amended, for a 12-month period beginning January 1, 1979, and ending January 1, 1980. Said bids to be filed with the Clerk of the Board of Supervisors of said State and County at the Chancery Clerk's Office, Tishomingo County Courthouse, Iuka, Mississippi, until the aforesaid date and date, and, under the statute, all bids shall be awarded to the lowest responsible bidder. The Board of Supervisors reserves the right to reject any and all bids.

THIS the 6th day of December, 1978.

/s/ ROBERT D. SIMS,  
CLERK OF THE  
BOARD OF SUPERVISORS,  
TISHOMINGO COUNTY, MISSISSIPPI

D-14-21-28-c.

NOTICE OF LETTING OF LEASE AGREEMENT FOR THE KEEPING OF THE COUNTY REST HOME OF TISHOMINGO COUNTY, MISSISSIPPI, FOR THE YEAR OF 1979.

Notice is hereby given that the Board of Supervisors of Tishomingo County, Mississippi, will, at the office of the Clerk of the Board of Supervisors, on the 5th day of January, 1979, during legal hours, receive bids for the leasing of the County Rest Home of Tishomingo County, Mississippi, to a keeper of the County Rest Home for said County, for the year 1979. The bidder to furnish good, warm food, good, comfortable clothing, tobacco, and all other necessities for the comfort of said inmates. The County will furnish the home, together with the furniture, beds and bedding that they now own in the home, together with local utility bills for lights, pump and cooking stove, and necessary phone, together with necessary medicine and medical attention for inmates of Tishomingo County, Mississippi. The County will pay for the casket of any inmate or inmate of Tishomingo County that may die during said year, and the County shall furnish the fuel necessary for said home, and the contractor, or lessee, shall furnish all other necessities. The successful bidder shall be required to furnish a surety bond, to be approved by said Board, in the sum of \$1,000, for the faithful performance of said contract or lease agreement.

The Board reserves the right to reject any and all bids.  
THIS the 6th day of December, 1978.  
/s/ ROBERT D. SIMS,  
CLERK OF THE  
BOARD OF SUPERVISORS,  
TISHOMINGO COUNTY, MISSISSIPPI  
D-14-21-28-c.





# HAPPY NEW YEAR! CELEBRATE 1979 SAVINGS AT PIGGLY WIGGLY



LOCATED IN ELM SHOPPING CENTER  
**FARM FRESH PRODUCE**

FRESH CARROTS	2 LB. BAG	39¢
WISCONSIN RUSSETT POTATOES	10 LB. BAG	99¢
FLORIDA WHITE OR PINK GRAPEFRUIT	5 LB. BAG	69¢



**FAMILY SIZE**

## WESSON OIL

**\$1.29**

48-OZ. BTL.

LIMIT ONE WITH 10.00 ADDITIONAL PURCHASE

**FOLGERS ALL GRINDS COFFEE**

**\$1.79**

LB. CAN

**COOKIES**

**69¢**

2 LITER PLASTIC BTL.

**LIQUID PALMOLIVE**

**\$1.69**

48-OZ. BTL.

**SPIC & SPAN CLEANSER**

**59¢**

10-OZ. BOX

**FRESH GREEN CABBAGE**

**8¢**

LB.

**CANADIAN WAXED RUTABAGAS**

**10¢**

LB.

**FRESH BOSTON BUTT PORK ROAST**

**\$1.09**

LB.

**DRY PINTO BEANS**

2 LB. BAG **29¢**

LIMIT TWO PLEASE

**MRS. WEAVERS PIMENTO SPREAD**

14-OZ. CUP **\$1.19**

**NORMEL MARKET SLICED BACON**

LB. **99¢**

**THE FRIENDLIEST STORE IN TOWN**

**GLAD TRASH BAGS**

10-CT. PKG. **99¢**

**DRY TONIC, GINGER ALE, CLUB SODA, WINK, COLLINS MIX CANADA DRY**

PLUS DEPOSIT 2 33.8-OZ. BTL. **78¢**

**PIGGLY WIGGLY SNACK CRACKERS**

11-OZ. BOX **49¢**

**PLANTERS CHEESE BALLS & CURLS OR CORN CHIPS**

5-OZ. CAN **69¢**

**ARROW BLACK-EYE PEAS**

LB. BAG **29¢**

**PUREX BLEACH**

2 1/2 GAL. JUG **\$1.00**

**SOLIDS**

## OLEO

**3 98¢**

LBS.

USDA CHOICE QTR. SLICED PORK CHOPS	LB.	<b>\$1.19</b>
USDA CHOICE BONELESS CHUCK ROAST	LB.	<b>\$1.29</b>
TOP BUY ENDS & PIECES BACON	3 LB. BOX	<b>\$1.49</b>
PIGGLY WIGGLY WHOLE HOG SAUSAGE	HOT OR MILD LB.	<b>\$1.29</b>
BRYAN ALL MEAT SLICED BOLOGNA	12-OZ. PKG. MEAT OR BEEF	<b>99¢</b>
OSCAR MAYER MEAT OR BEEF FRANKS OR WIENERS	LB.	<b>\$1.29</b>

**FRESH FROZEN PORK JOWLS**

**43¢**

LB.

**SMOKED PORK WHOLE PIECE JOWLS**

LB. **69¢**

**PIGGLY WIGGLY MAYONNAISE**

**89¢**

QT. JAR

FLEISCHMANS EGG BEATERS	16-OZ. PKG.	<b>99¢</b>
McKENNIE BLACK EYE PEAS	16-OZ. PKG.	<b>69¢</b>
LIQUID PEPTO BISMOL	8-OZ. BTL.	<b>\$1.29</b>
CAPSULE CONTAC	10-CT. PKG.	<b>\$1.29</b>

**LIQUID MYLANTA**

**\$1.89**

12-OZ. BTL.

**COLD POWER DETERGENT**

**\$1.19**

48-OZ. BOX



## OBITUARIES

### Mrs. Sallie Ward

Mrs. Sallie Ward, 80, of Tishomingo, died Tuesday morning, December 26, at the North Mississippi Medical Center.

She was a member of Bethany Presbyterian Church.

Services were held at 2 p.m. Wednesday at Deaton Funeral Home Chapel in Tishomingo. Burial was in Tishomingo Cemetery with Rev. Dale Blackman and Rev. Forrester officiating.

Survivors include her husband, Andy Ward, of Tishomingo; two sons, Bevin Ward, of Tishomingo, Edward Wayne Ward, of Opelousas, La.; three sisters, Mrs. Mary Hopkins, of Dennis, Mrs. Eula Carr and Mrs. Elizabeth Monroe, Both of Tishomingo; a brother, Marcus Flurry, of Sheffield, Ala.; six grandchildren and five great-grandchildren.

### Mrs. Nolar Robinson

Mrs. Nolar Robinson, 83, died Saturday, December 23, at Magnolia Hospital.

She was a Methodist. Services were held Monday at Cutshall Funeral Home Chapel with Leo Heytens and Robert Byars officiating. Burial was in Mt. Gilead Cemetery.

Survivors include four daughters, Mrs. Onnie Mae Frazee, of Tuscon, Ari., Mrs. Mattie Marlar, of Oak Ridge, Tenn., Mrs. Grace Floyd, of Houston, Mrs. Emily McNair, of Corinth; three sons, John Robinson, of Concord, Calif., Lee Robinson, of Burnsville, Alfred D. Robinson, of Iuka; nine brothers, Doc Newcomb, of Bradenton, Fla., Johnny,

Lee, Jim, J. E. and Cecil Newcomb, all of Corinth, Clarence, Benny and Herman Newcomb, all of Gary, Ind.; four sisters, Mrs. Mae Mitchell, Mrs. Lula Sailor and Mrs. Margie Clark, all of Corinth, Mrs. Hazel Ross, of Louisiana; 21 grandchildren and one great-great-grandchild.

### Mrs. Mary Ann Mayhall

Mrs. Mary Ann Mayhall, 95, died at her home on Route 1, Smithville, on Sunday afternoon, Dec. 24.

She was a member of the Colbert Heights Baptist Church. Services were held at 2 p.m. Tuesday in Senter Funeral Home Chapel with burial in the Ridge Cemetery. Rev. William E. Adkinson officiated.

Survivors include two sons, Charlie Mayhall, of Florence, Ala., and Solen Mayhall, of Belmont; three daughters, Mrs. Lena Collier, of Tusculumbia, Ala., Mrs. Lester Thayer, of West Point, and Mrs. Earl Swindle, of Smithville; one sister, Mrs. Effie Pruitt, of Dennis; 12 grandchildren, 33 great-grandchildren and 10 great-great grandchildren.

### Mrs. Esther Merrill

Services were held on Sunday, December 24, for Mrs. Esther Merrill, 79, who died Saturday morning at the Northeast Mississippi Hospital.

Services were held at the Forked Oak Baptist Church with burial in the church cemetery. The Rev. Horace McCombs, officiated.

Survivors are her husband, P. O. Merrill; three daughters, Mrs. Charles

McCoy and Mrs. Travis McCoy, both of Booneville, Mrs. Alvin Lambert, of Iuka; two sons, Bob Merrill, of Jackson, George Merrill, of Pine City, Minn.; two sisters, Mrs. Sara Tankersley and Mrs. Claranda Moore, both of Corinth; two brothers, Charles Spears, of Florida, Vernon Spears, of Illinois; 13 grandchildren and eight great-grandchildren.

### S. J. Bobo

Samuel Jourdan Bobo, 83, died Saturday, December 23, at Tishomingo County Hospital.

He was a retired farmer, a Baptist and a World War I veteran.

Services were held Sunday at the Cutshall Funeral Home chapel with Clifford Rinehart and Tommy Leatherwood officiating. Burial was in Liberty Hill Cemetery.

Survivors include four daughters, Mrs. Helen Higginbottom, of Lexington, Mrs. Evelyn Rinehart, of Rienzi, Mrs. Betty Wood, of Chicago, Mrs. Willa Woodruff, of Corinth; three sons, Rufus Bobo, of Burnsville, Harold Bobo, of Jackson, Billy Bobo, of Alexandria, Va.; two sisters, Mrs. Nina McClesky, of Burnsville, Mrs. Etta Partain, of Birmingham; a brother, John Bobo, of Burnsville; 14 grandchildren and nine great-grandchildren.

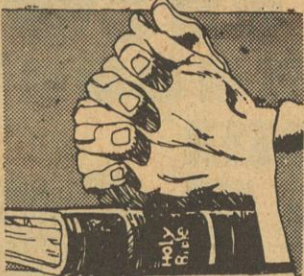
### Dewey Patterson

Dewey Patterson, 78, of Belmont, died Sunday night, December 24, at the Red Bay Hospital.

He was a member of the Belmont First United Methodist Church and a retired gin owner.

Services were held at 2 p.m. Tuesday at the Deaton Funeral Home chapel with burial in the Belmont City Cemetery. Rev. Grady Bailey officiated.

Survivors include his wife, Mrs. Myrtle Patterson, of Belmont; a sister, Mrs. Hallie Yarber, of Belmont; several nieces and nephews.



## The Bible Speaks

REX BUFORD

HOLY BIBLE  
Down through the ages

there have been people who hated the Bible. In the Bible itself there is the story of a king who so hated the Word of God that he both cut and burned God's book (Jeremiah 36:1-23). In later centuries, some men have paid with their lives for hatred which others had for the Bible. Even today there are those who hate the Bible. They hate it, as men did of old, because of its condemnation of sin and because of its demand that men humbly submit themselves to the will of God.

Others have been indifferent to the Bible. There are those today who say that the Bible was of value to the people of the first century but that it is a "back number" so far as we of the twentieth century are concerned. They contend that the Bible was written to meet situations which prevailed in the first century but that times have now changed so much that what the Bible has to say is not relevant to the problems which men of the twentieth century face day by day.

But there are others who love the Bible and believe with all their hearts that the Bible is the inspired Word of God (II Peter 1:20-21). Such people believe that even though times have changed from the first century, the Bible has the same power to save souls that it did in the first century (Romans 1:16) and is just as relevant to the problems of life as it was in the first century. They believe that it furnishes man completely unto every good work (II Tim. 3:16-17).

They heartily disagree with the view that the Bible is a "back number," and maintain the view that it provides man with God's

answer to the profound questions of human life because it is the one and only authoritative and all-sufficient guide in all things that pertain to salvation and godly living.

If you would like to be enrolled in a free Home Bible Correspondence Course or would like to study the Bible with someone in the privacy of your

## "A Thought For The New Year"

May we start the New Year, with a feeling of good cheer.

Forgive someone who has done you wrong, then you will stand tall and strong.

Don't carry a grudge, hatred, or strife, for these will only mess up your life.

Always lend a helping hand, to everyone when ever you can.

Help someone along the way, who has wandered and gone astray.

Let us have strength, honor and love, and give us each day what we have need of.

Guide, guard and direct us each day, is our prayer in Christ we pray.  
BY: BETTY BAILEY



## PEACE ON EARTH!

May you and your loved ones have a safe and joyous Holiday Season, a healthy and prosperous New Year!

Like a good neighbor, State Farm is there.



James L. Broughton  
104 Front St.  
Iuka, Miss.  
Ph. 423-5931



STATE FARM INSURANCE COMPANIES  
Home Offices: Bloomington, Illinois

## SUFFERING NEEDLESSLY TRY 'CHIROPRACTIC'

### THE SPINE

Why it is called the "backbone" is pretty hard to understand. Maybe it's because no one ever stopped to consider that a solid bone doesn't often get around to bending in all sorts of directions like the human spine.

Actually, there are 24 moveable segments, or vertebrae, in the "backbone", or spine. Between each segment is a soft cushion called a disc. The disc serves as a ball bearing and shock absorber for the vertebrae.

Inside the spine is a tube which contains the spinal cord, the lifeline of the nervous system. The spinal cord runs from the brain through the spinal column. Between the vertebrae are pairs of nerve trunks leading from the spinal cord and carrying millions of nerve fibres to the various parts of the body.

Displacement of any of the vertebrae or the discs of the spine impinges delicate nerve fibres, and vital organs served by the nerves can be affected. Disease is the result.

The spinal column, the spinal cord and the nervous system are the areas in which the chiropractor is scientifically trained. He locates the impingements and, by gentle adjustments, removes the offending pressures and restores the vital flow of nerve energy to the affected areas. Nature's healing from within restores the feeling of health and well-being.

Presented in public interest for better health by the Mississippi Society of Chiropractors, District I.

## RUSHING REXALL DRUG CO. PRESENTS

## Tishomingo County Hospital List

John W. Bonds  
Simon Bobo  
Pearl Barnett  
Hezekiah Burcham  
Catherine Crocker  
Mollie Curtis  
Josie Cooper  
Sarah Choate  
Dora Crum  
Ruth Crabb  
Raymond Clark  
Vickie Corsbie  
Marie Crowe  
Vicki Dicus  
Debbie Davis  
Katie Edmondson  
Ollie Flurry  
Cora Frederick  
Irene Hollins  
Hazel Hopkins  
Robert Isbell  
John Jones  
Gladys Lomenick  
James T. Lindsey  
Tommy Marlar  
Lester Moore  
Blanche Pounders  
Barbara Phillips  
Karl Ragan  
Nana Struder

Lola South  
Rachel Tucker  
Jimmy Voyles  
Genettie Wadkins  
Hattie White  
Altha Wingo  
Janie Whitfield  
Blanche Watson  
Gertrude Counce  
Elsie Butler  
Beulah Province  
Evelyn White  
Lillian Nash  
Jerry Beck  
Gertrude Massey  
Shirley Glass  
Dwayne Coker  
Luther Gildwell  
Hugh Clayton Burcham  
Edsel McNutt  
Frank Ross  
Alma McKinney  
Willie Belle Bonds  
Mattie Davis  
Walter Rast  
Carlton Phifer  
Velma Nunley  
Ida Monroe  
D. C. Daugherty  
Pete Thornton  
Eslie South

## ATTENTION

J. L. THOMPSON, LICENSED  
HEARING AID SPECIALIST, WITH  
TUPELO HEARING AID CENTER,  
DISTRIBUTOR OF ZENITH  
HEARING AIDS, WILL BE

AVAILABLE ON WEDNESDAY,  
JAN. 6 FROM 1:00 P.M. UNTIL  
4:00 P.M. TO CONSULT WITH  
YOU ABOUT YOUR HEARING.

COME IN FOR A FREE HEARING  
TEST-THERE IS NO OBLIGATION.

**Curtis Bros. Drugs**  
619 Hwy. 25 South  
Phone 423-3676  
Iuka, Ms.

## CUTSHALL FUNERAL HOME

REPRESENTING  
CORINTH MUTUAL BURIAL  
ASSOCIATION

ALCORN COUNTY  
BENEFIT ASSOCIATION

MISSISSIPPI FUNERAL  
ASSOCIATION

LIBERTY NATIONAL  
LIFE & BURIAL  
INSURANCE CO.

SOME BURIAL  
POLICIES  
CAN BE PAID  
OUT

IN 15 YEARS  
**CUTSHALL  
FUNERAL HOME**

phone 423-5222  
IUKA, MISS.



### BAPTIST

IUKA BAPTIST CHURCH

Charles Dampier

BELMONT FIRST

Jack Maroon

CALVARY BAPTIST

Thomas Ozburn

MT. MORIAH BAPTIST

Ben Thornton

CENTRAL BAPTIST

W. L. Oaks

MT. VERNON BAPTIST

Perry Murphy

TISHOMINGO BAPTIST

Eugene Tennison

BURGESS CREEK FREEWILL

Danny Short

BURNSVILLE FIRST BAPTIST

Dave Smith

NEW PROSPECT BAPTIST

Bro. J. A. Blount

OLDHAM

Cris Burrows

PADEN

Pat Howard

FIRST BAPTIST CHURCH

O. H. Moore

EASTPORT

G. D. Jones

NEW SALEM BAPTIST

E. P. Baldwin

UNITY BAPTIST

Raymond White

RED BUD

John Stovall

ROWLAND MILLS

Frankie Smith

HARMONY HILL

Billy Paul Feltman

MT. JOY

James E. Holt

CALVARY MISSIONARY

Felton Mason

SOUTH CROSSROADS

Ron Harris

BETHEL MISSIONARY

Monty Aydelott

### MT. GILEAD

Earl Lewallen - Pastor

TEMPLE

Mavous Phifer

MT. ZION BAPTIST

Stanley Caston - Pastor

FIFTH STREET BAPTIST

Butch Brown - Pastor

OLD PLEASANT HILL

Earline Cummings - Pastor

NEW LEBANON

Terry L. Booker

ANTIOCH FREEWILL

Glenn Jones - Pastor

POPLAR SPRINGS

John T. Prince

HIGHLAND BAPTIST

Cecil Stepp - Pastor

BETHLEHEM

Jerry Stephens

YELLOW CREEK

Stanley Magill

BENNIS FIRST

Wilbur Tessermer

FIRST FREEWILL

Dallas Jack Jones

NEW LIBERTY BAPTIST

Raybon Richardson

### Nondenominational

Amazing Grace

Tabernacle

Bro. & Sis. R. G. Rodgers

MT. ZION

Denvil Keele - Pastor

NORTH CROSSROADS

COMMUNITY CHURCH

Allen Osborn

**McNATT  
FORD SALES**

PHONE 423-3681  
IUKA, MISS.

**Town & Country  
Furniture Co.**

TWO LOCATIONS  
DOWNTOWN IUKA  
AND  
HIGHWAY 25 SOUTH

**FARM  
BUREAU INS.**  
IUKA, MISS.

**BROWNS INS.  
AGENCY**  
IUKA, MISS.

**FIRST AMERICAN  
NAT'L BANK**  
IUKA, -BURNSVILLE  
GOLDEN -CORINTH

**CUTSHALL  
FUNERAL  
HOME**  
IUKA, MISS. 423-5222

**CARPETS  
UNLIMITED**  
NEXT DOOR TO  
OWL & PENNIES

**1st CITIZEN  
LOANS**  
PHONE 423-5248  
HWY. 72 EAST  
IUKA, MISS.

**HONEYCUTT  
CHEVROLET**  
PHONE 423-3622  
IUKA, MISS.

**RUSHING  
REXALL DRUG**  
PHONE 423-5248  
IUKA, MISS.

**CURTIS BROS.  
DRUGS**  
IUKA, MS

**IUKA  
GUARANTEE**  
STRAIGHT AHEAD  
THROUGH THE

### CHURCHES OF CHRIST

MAUD CHURCH OF CHRIST  
B. Cunningham - Minister

IUKA CHURCH OF CHRIST

Rex Buford

BURNSVILLE

J. T. Smith

BEREA

Steve Puckett

TISHOMINGO

Steve Rogers - Minister

SECOND STREET

BELMONT, MISS.

Don Nix

PLEASANT GROVE

John Hardwick

LIBERTY

Wayne M. Mitchell

MAIN ST.

Tim Gentle

PENTECOSTAL

BURNSVILLE FIRST UNITED

Richard W. Forsythe

IUKA GOSPEL CHAPEL

Jack Lewis

FIRST UNITED

Frank Williamson

BURNSVILLE TABERNACLE

W. E. Sharp

CHRISTIAN FELLOWSHIP

S. A. Bonds

CHRIST GOSPEL

Richard H. Carter

Jacinto, Miss.

IUKA CHURCH OF GOD

Frank Samples

PRESBYTERIAN

ALLSBORO CUMBERLAND

J. B. Burns, Jr.

BETHANY

L. K. Foster

PLAIN OAK

PLAIN OAK

PLAIN OAK

PLAIN OAK

PLAIN OAK

PLAIN OAK

PLAIN OAK

PLAIN OAK

PLAIN OAK

PLAIN OAK

PLAIN OAK

PLAIN OAK

PLAIN OAK

PLAIN OAK

PLAIN OAK

PLAIN OAK

PLAIN OAK

PLAIN OAK

PLAIN OAK





# MERRY MOPPETS



# MERRY MOPPETS

CHRISTMAS" said in a very special at Iuka Elementary Christmas party by Sandra, 1st grade; Mar-

garet Grisham, 2nd grade; and Susan Benard, 2nd grade. They staged their version of the "Chipmunk Christmas Song" for the children and adults who attended.

On Nov. 1, 1977, President Carter signed amendments to the Fair Labor Standards Act establishing uniform minimum wage rates for all covered workers -- \$2.65 an hour effective this past Jan. 1, increasing annually to \$2.90, \$3.10 and \$3.35 an hour by Jan. 1, 1981.

The Wage and Hour Division, a part of the Labor Department's Employment Standards Administration, is responsible for administering and enforcing the FLSA (which sets minimum wage, overtime pay, child labor and equal pay standards). The Atlanta region includes Alabama, Florida, Georgia, Kentucky, Mississippi, North Carolina, South Carolina, and Tennessee.

Under the 1977 FLSA amendments, the percentage of tip credit which can be applied toward the minimum wage for tipped employees will be reduced to 45 percent effective Jan. 1, 1979 and 40 percent effective Jan. 1, 1980.

Another change resulting from these amendments is the repeal of the partial overtime exemption for employees of hotels, motels and restaurants. Beginning Jan. 1, 1979, these employees will be due overtime premiums pay after 40 hours in the work week.

Maid and custodial employees of hotels and motels have been on the 40-hour week since May 1, 1977.

SPREADING CHEER -- Iuka Elementary School teachers, from left, Diane McClung, 1st grade; Becky Jones, 1st grade; and Fredda Christian, 2nd grade, performed to "All I Want For Christmas Is My Two Front Teeth" at the school Christmas party held on Wednesday, Dec. 13. The Moppet act gave merriment to both young and old.

during fiscal 1978, the Labor Department found that more than 160,243 workers protected by federal wage and hour laws were illegally underpaid by almost \$25,068,313. Violations of the minimum wage and overtime provisions of the FLSA accounted for the bulk of underpayments.

Wage and Hour Division offices are located throughout the region and are listed in most telephone directories under U. S. Government, Department of Labor, Employment Standards Administration.

## January Weather

Mississippi's weather through mid-January will have below median precipitation and near normal temperatures over most of the state, according to the National Weather Service Outlook distributed by the Mississippi Cooperative Extension Service.

Temperatures in the southwest may average slightly above normal, add agrometeorologists at the Environmental Studies Service Center, who prepare the agricultural forecasts. Precipitation is usually distributed evenly over the state at this time of year, from a little more than four inches in the north to a little less than five inches in the south.

Low temperatures will be commonly in the low- to

mid-30s in the north and in the 35 to 40 degree range in the south. Some ice and snow may be expected, especially in the northern counties, say the weather experts.

Farmers should be able to complete harvesting and land preparation during the

next four weeks. Pastures will grow well, especially in the south, and should provide some grazing. Winter stress on herds should rarely be severe, but calves will need to be protected in cold, wet weather.

Poultrymen will use the usual amount of feed for this time of the year, say agrometeorologists. Frontal passages should be frequent, with rapid temperature drops often following fronts. Managers should pay special attention to local forecasts and poultry weather advisories on commercial radio stations and the weather radio.

home and said a group would come sing for us. On December 19, about twenty came and sang. They came from Dennis, Tishomingo, Corinth, Iuka, home communities and joining communities. The singing was wonderful. We enjoyed it so much. We can't find words to tell them how much we appreciate it. They gave us the gospel in songs.

Well, the year 1978 is about ended and we were discussing how wonderful our neighbors have been. They are always ready to help us in every way. The nights are never too dark and the days too cold they are always ready to help. There are some who help so much by just visiting Oscar. He is in very poor health and their visits mean so much to him.

We pray God will bless you.

ALTA MARS

## PERSONALS

### TO OUR FRIENDS:

My brother, Oscar Strickland, and sister, Lillie Mae Wright, and I want to wish you a happy new year. May you be blessed throughout the year with joy, peace and health. We appreciate the nice Christmas cards. Eventhough some of our friends are far away in Louisiana, Texas, Indiana, Idaho and several towns in Alabama, they didn't forget us.

Some few days ago, Harold Phifer came to our

## LOST

LOST -- Large, male, brown, German Shepherd. Answers to name of "Sarge". Lost in Fairgrounds Community. Call 423-3470. Reward being offered. D-28-p.

## 2.90 Minimum To Take Effect

Approximately one million workers in the South will be eligible for raise on January 1, when the federal minimum wage rises to \$2.90

per hour, according to Mr. Richard Robinette, assistant regional administrator for the Wage and Hour Division, U. S. Department of Labor, Atlanta.

Dr. Glenn Bennett of Tishomingo

announces relocation of practice of medicine to Baldwyn, Mississippi

association with Dr. Vernon Chase effective January 2, 1979.

for patient consultation call 438-6956.

It has been a pleasure to live in Tishomingo and serve you in this area.

I can help you in the future, please call on me.

## GRAND OLE OPKY STARS

APPEARING AT JAY'S PLACE 2 MILES SOUTH OF BELMONT, MS.

TOMMY COLLINS DEC. 9

LINDA YOUNG DEC. 16

LOUISE MANDRELL DEC. 31

FARRON YOUNG JAN. 19, 1979

Starts Tuesday, Jan. 2

Up to

1/2 off

Contemporary

Ms.

505 Hwy 25 S., Iuka

9:30 A.M. - 5:30 P.M.

THIS AD GOOD THRU 1-3-79

# Sunflower Stores

TISHOMINGO

OPEN 7 DAYS A WEEK

STORE HRS. MON.-SAT. 8-6

OPEN NEW YEAR'S EVE SUN. 12:30-5:00

OPEN NEW YEAR DAY 10:00 - 5:00

QUANTITY RIGHTS RESERVED NONE SOLD TO DEALERS

Pan Trout 5 lb box \$3.38

Beef Bologna lb \$1.08

Sliced Bacon LB. \$1.28

ICE MILK 1/2 GAL. 79c

CORN MEAL 5 LB. BAG 89c

LOUR 5 LB. BAG 69c

DISCUITS 6 8 OZ. CANS \$1

LESSON OIL 48 OZ. JUG \$1.89

Pork & Beans

Great Northern Beans

avy Beans

into Beans



"Savory Aged" Heavy Beef

# Round Steak

ARMOUR

Bone-in

# \$1.48

What's New Years Without

# HOG JOWLS

AND BLACK EYED PEAS?

# Smoked Jowl

OR FRESH

# 58c



GEORGIAN

ZESTA SALTINES

# TISSUE

4 ROLL PKG. 69c

# CRACKERS

10c

LIMIT 1 WITH \$10.00 PURCHASE



# Cokes

10c

LIMIT 1 WITH \$10.00 PURCHASE



# Towels

10c

LIMIT 1 WITH \$10.00 PURCHASE

# Blackeye Peas

15 oz. cans

# 4/\$1



# Red Potatoes

U.S. NO. 1 10 LB. BAG

# 99c

Chiquita

# Bananas 4 lbs \$1.00





IUKA NATIONAL GUARD would like to thank it's members, T.V.A. Yellow Creek employees, merchants, and individuals who contributed to the Christmas Basket Drive.

## Spring Semester Registration At MSU

Registration for 1979 spring semester at Mississippi State University will be held at Humphrey Coliseum Jan. 8 - 9, 1979. Regular registration closes at 4:30 p.m. Jan. 9. Late registration procedures will begin Jan. 10 in the Registrar's Office in 112 Allen Hall. All preregistered students must pick up registration packets before the close of registration Jan. 10. Students who did not participate in advance registration will register on Tuesday, Jan. 9, in the

coliseum. Registration schedules, listed in the spring semester catalog, will be available at the coliseum. Candidates for degrees to be received May 11, 1979, should file applications for graduation during registration. Feb. 19 is the last day to apply for a degree for the spring semester. Residence halls will open at 1 p.m., Saturday, Jan. 6.

The first co-educational college was Oberlin in Ohio which awarded a degree to a woman in 1841.

## Dr. Gray Attended Conference

Dr. Phillip Gray, of Iuka, was among those attending the 22nd annual continuing education conference for optometrists held recently at The University of Mississippi.

The four-day program was sponsored by the Mississippi Optometric Association and coordinated by The University of Mississippi Division of Continuing Education.

## CARD OF THANKS

We wish to thank all the people from Burgess Creek and South Crossroads Church, and Bro. J. B. Burns for the nice baskets of fruit; and especially Perry Murphy and the Mount Vernon Church for the 3 boxes of groceries. May God bless each and every one is our prayer. Margaret & Dayton Robinson

## Card Of Thanks

We wish to thank all of our friends and relatives for their kindness shown us in our sorrow at the passing away of our husband and daddy, Mr. Edgar D. Keele. We thank each one for the nice food, the beautiful flowers, money and for each kind word of love. Thanks to Bro. Harper and Bro. White for the wonderful service and comfort, the singers for the beautiful singing, the pallbearers and the Shackelford Funeral Home for their nice service. May God bless each one of you is our prayer. MRS. EDGAR D. KEELE AND FAMILY

## Bro. Brown Attended Seminar

Dudley Brown, of Iuka, attended a University of Mississippi Medical Center seminar which focused on counseling and fostering better emotional health in the community. The seminar was designed for community clergy church officials and interested health professionals. Sponsors were the University Hospital Department of Pastoral Services and the UMC Division of Continuing Health Professional Education. Dr. James L. Travis, University Hospital chaplain, coordinated the workshop. Guest speakers were Dr. John R. Claypool, pastor of Northminister Baptist in Jackson, and Dr. Raymond F. Harvey, pastor of Greenwood Missionary Baptist at Tuskegee Institute in Alabama.

The world's oldest living things are bristlecone pines in California, estimated to be 4,600 years old.



DORTHEY COMPTON has joined the real estate sales staff of Hand & Pendergrast, Inc., of Corinth. Mrs. Compton, of Iuka, joined the firm earlier this year as a secretary and recently graduated from

the real estate GRI course one. She received her real estate license in November, and is an active member of the Burnsville Pentecostal Church. Mrs. Compton and her husband, Jackie, have a four-year-old son, Eric.

## IHS Juniors To Appear In America's Names & Faces

Amy Brinkley, Laurie Lynn Curtis, and Sabrina Dean, juniors at Iuka High School, have been chosen for their names to appear in AMERICA'S NAMES AND FACES. This is a literary effort to gather and publish a summary of the outstanding achievements of America's citizens, those whose accomplishments distinguish them from their contemporaries. Individuals are selected on the basis of their con-

tributions to business, community, athletics or education which reflect a true dedication of purpose and an enduring positive influence in their various areas of endeavor.

## Library Scene For Party

Theta Conclave of Kappa Kappa Iota met December 18, in the Belmont Library. The occasion was the annual Christmas party.

Mrs. Grady Bailey gave the devotional reading and spoke briefly on the adult's viewpoint toward Christmas. After each member had named her favorite Christmas carol, several songs were sung.

The hostesses, Lois Norton and Leighvelia Bostick, presided at a colorful buffet table and served the following members: Lois Bostick, Marie Edwards, Ruth Fulton, Effie Lois Greene, Arah Ivy, Jean Lambert, Jewel Nixon, Havis Short, Mary Williams, Ruthel Comer and Jenny Bailey.

## VA News

Q: Can a service-disabled veteran receiving compensation get additional payment for a spouse in need of aid and attendance?

A: In lieu of the additional compensation a disabled veteran rated 30 percent or more is entitled to receive for a spouse, the veteran

TISHOMINGO COUNTY NEWS-THE VIDETTE-BELMONT

Leonardo da Vinci worked with his left hand.

## Toni's Treasures

HIGHWAY 25 NORTH IN IUKA (ACROSS FROM MILLIGAN'S READY MIX)

WELCOMED SANTA WITH A TRUCK LOAD OF ANTIQUES AND GOOD USED FURNITURE CHINA CABINETS - OAK DRESSERS - OAK TABLES & CHAIRS, OAK HI BOY, 1890 DRESSER AND OAK ROCKER JUST TO MENTION A FEW

SORRY WE HAVE BEEN CLOSED AT TIMES AS WE WERE ON BUYING TRIPS,

NOW OPEN FROM 10:00 A.M. UNTIL 6:00 P.M. TUESDAY THRU SATURDAY, CLOSED ON SUNDAY AND MONDAY.

STOP BY AND LOOK--WE HAVE LOTS OF TREASURES! WE BUY, SELL AND TRADE.

PHONE 423-9703

Van & Toni VanLuvender

## YEAR-END Clearance Sale

NEW & USED CARS & TRUCKS

2-1978 LTD 2 DR. H.T. 1978 GRANAD 4 DOOR

2-1977 T-BIRDS

1977 LTD 4 DOOR 1976 PINTO

1975 MAVERICK 4 DOOR

1975 DATSUN PICKUP

1974 MAVERICK 4 DOOR

1973 PONTAIC 4 DOOR 1972 IMPAL 4 DOOR

1974 MUSTANG 4 DOOR 1971 IMPAL 4 DOOR

1973 IMPALA 2 DOOR 1972 PLYMOUT STATION WAGON

GOOD SELECTION OF '78 CARS & TRUCKS

McNATT FORD SALES

HIGHWAY 25 SO.-PHONE 423-3681-IUKA, MS.

## Roger's Auto Parts & Auto Service Center

PHONE 423-6811

202 West Eastport Street in Iuka

## ENGINE TUNE-UP

AMERICAN 6 CYLINDER

\$24.95

AMERICAN 8 CYLINDER

\$29.95

INCLUDES: AIR FILTER, GAS FILTER, SPARK PLUGS, HEAVY DUTY VENTILATED POINTS, HEAVY DUTY CONDENSER, ADJUST CARBURETOR, ADJUST ENGINE TIME.

PARTS AND LABOR INCLUDED

## DISC BRAKES

BRAKE PADS, WHEEL SEALS, ROTORS TURNED, WHEEL BEARINGS PACKED

\$37.95

WE ALSO HAVE COMPLETE BRAKE SERVICE DRUMS AND ROTORS TURNED

COMPLETE MUFFLER SHOP CUSTOM EXHAUST WORK

## NO MONEY DOWN

Country Boy Eddie

ON YOUR LOT



That's right, neighbors! And, there's no closing costs, either. My friends at Alabama Family Homes will build this A Frame or any of 11 models on your lot. Completely finished in only a few short weeks. They've got instant financing, too. Get the information from your nearby office today!

No Money Down - No Closing Costs - \$19,630 to \$26,975 Full Price

Mail this coupon to:  
Alabama Family Homes  
P.O. Box 2642  
Muscle Shoals, AL 35660

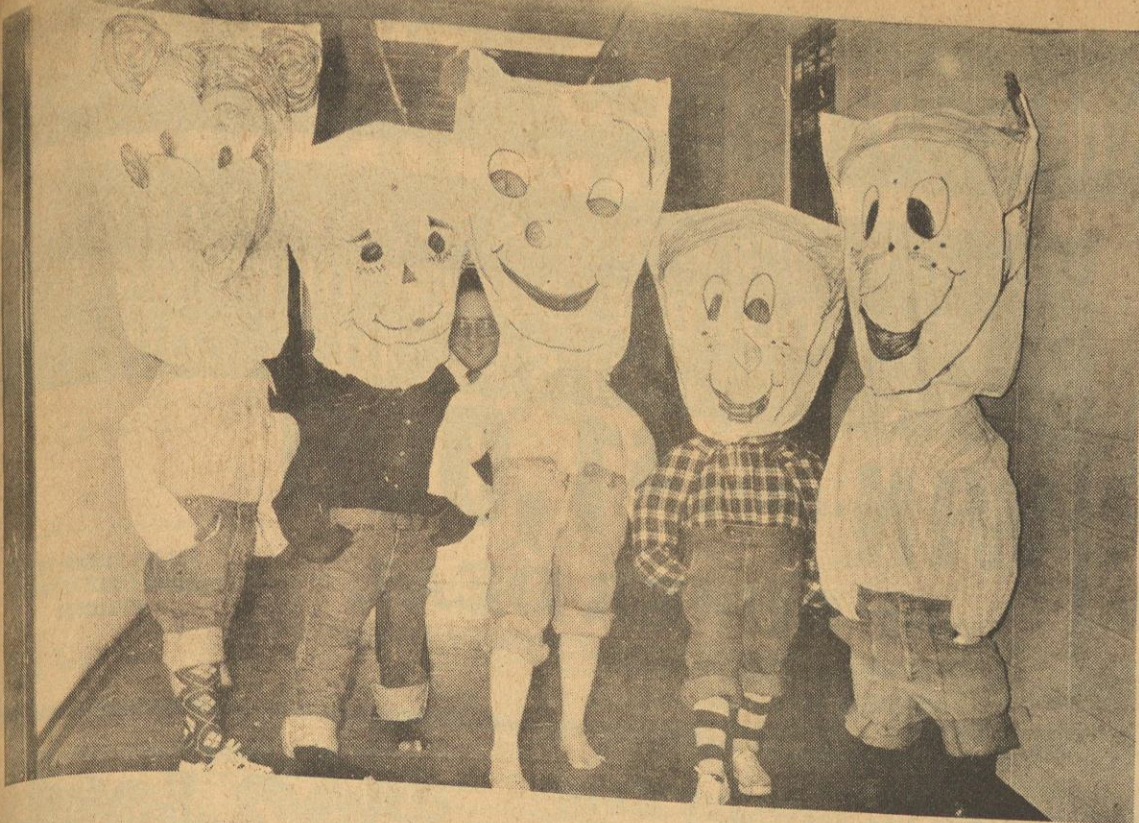
Or Call Us Collect:

Albertville - 878-7922  
Cullman - 739-3941  
Birmingham - 424-1198  
Huntsville - 837-9090  
Oxford - 831-8640  
Jasper - 221-3495  
Muscle Shoals - 381-7301  
Tuscaloosa - 339-8585

Name.....  
Address.....  
City.....  
State..... Zip Code..... Phone.....







- Santa has a point...
- Take it from Santa...



JOIN OUR  
1979  
CHRISTMAS  
CLUB,  
AND WE'LL  
INCREASE

YOUR CHRISTMAS SPIRIT

BY

5 1/4 %

TRI-STATE  
SAVINGS & LOAN  
ASSOCIATION

Iuka — Belmont



MONEY MARKET  
CERTIFICATE

10,000 Minimum (6 month certificate)  
Thru December 27, 1978

9.53 %

Substantial penalty required for early withdrawal

TRI-STATE SAVINGS  
& LOAN  
ASSOCIATION

Iuka Phone 423-3186  
Belmont Phone 454-3313



OR TREAT! — Not Mr. Charles Evans (principal), principal of Elementary School, believe his eyes at

the annual school Christmas party, when five of his most talented teachers danced to "Short People". The first and second grade

instructors performed before the entire school assembly delighting all present. The dancers are from left: Margaret Grisham, Fredda Christian, Di-

ane McClung, Becky Jones and Jeanne Stone. Earlene Belue and Pam Byram helped in the production of the clever stunt.

## Social Security Travel Schedule

Corinth Social Security Office is open daily 8:30 to 5:00 p.m. to residents of Alcorn, Tishomingo

and Tishomingo. The Social Security bureau can be conducted by phone. The number in Tishomingo is 287-5241. Most of Tishomingo and Tishomingo Counties may use the Social Security Office in Corinth being charged for a distance call by using "foreign" numbers; Tishomingo - 837-3018; Tishomingo - 423-6042. For some reason you conduct your business phone or come to Corinth office, you may

meet a Social Security Representative at the following places: Iuka, 9 a.m., Courthouse, each Monday; Ripley, 9 a.m., Courthouse, each Wednesday.

### 1979 CHANGES:

Beginning January 1, 1979, the maximum amount of earnings in a year that county for social security purposes will increase to \$22,900 - up from this year's maximum of \$17,700.

Also, in 1979, the maximum amount that a beneficiary can earn and still get all his social security checks will increase from \$2,840.00 to \$3,480.00 annually for people under age 65. For those who are

age 65 or over in 1979 the earnings limit will be \$4,500.00.

Starting January 1, 1979, the Medicare hospital insurance deductible will be \$160.00. The 1978 deductible is \$144.00.

NOTE: The Corinth Social Security Office will be closed on National Holidays and no trips will be made on these days.

## TDO Receives Grant

The Northeast Mississippi Timber Development Organization has received approval of a \$20,600 grant from the Appalachian Regional Commission. The Northeast Mississippi Timber Development Organization (TDO) is a non-profit cooperative of

private forest landowners in Prentiss, Tishomingo, Alcorn, Benton, Tippah and Marshall Counties. It offers site preparation and timber sales assistance to its members.

The TDO has had a lack of manpower since it was chartered in 1973. The \$20,600 grant will be used to employ a forest technician to enable it to provide its services to more forest landowners.

Anyone interested in joining the Northeast Mississippi Timber Development Organization in order to take advantages of its services is urged to contact Stanley Hurt at 728-6835.

## Singing Cancelled

In cooperation with other local Watchnight Services, there will be no Fifth Sunday Night Singing Dec. 31st at New Lebanon Free-will Baptist Church.



Mr. and Mrs. Billy Alton Lambert, Michael and Candance are proud to announce the arrival of a very special bundle of joy during the Christmas Season. A son was born into the family at 10:05 p.m. on Tuesday, Dec. 12, weighing 7 lbs. 5 ozs. He has been named Richard Alton. Maternal grandparents are Mr. and Mrs. Lewis Ferrell, of Tishomingo; paternal grandparent is Mrs. Victoria Lambert, of Iuka.

## SPECIAL MONEY SAVING OFFER

Be Our Guest

This Coupon Worth \$1.75 cost  
pay only... \$1.00  
8 x 10

Living Color Portrait Of A Individual Or Family.  
Only One Coupon Per Family.  
Bring This Coupon With You

STEP LADDER  
ELM SHOPPING CENTER

THUR. 1/4/79  
10 to 1 & 2 to 5:30

SALE

1 1/3 OFF

with the exception of foundation garments and accessories

ALL SALES CASH & FINAL

THE STEP LADDER  
OPEN 6 FULL DAYS A WEEK



## DOUBLE "SUPER DEAL" GAME PIECES THIS WEEK

Floral Expressions  
Hearthside Stoneware

Featured This Week:

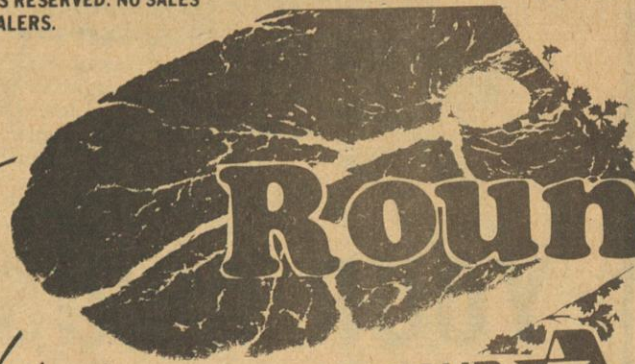
SAUCER

Plenty  
in Stock!

each

59¢

With each \$5.00 additional purchase. No limit.

CLOSED NEW YEARS DAY  
OPEN NEW YEARS EVESunflower  
Stores  
IUKA, MISS.PRICES GOOD THURSDAY DEC. 28, 1978  
THRU WEDNESDAY JAN. 3, 1979RIGHTS RESERVED. NO SALES  
TO DEALERS.DOUBLE YOUR CHANCES TO WIN UP TO \$1,000  
FREE DOUBLE SUPER DEAL GAME  
PIECES THRU SAT. DEC. 30th

WIN UP TO \$1,000

playing SUPER DEAL

PICK UP YOUR FREE GAME PIECES TODAY & START PLAYING SUPER  
DEAL AT SUNFLOWER.PLEASE REDEEM YOUR  
WINNING CARDS AS SOON AS  
POSSIBLE!

JENO'S Pepperoni/Cheese, Sausage/Cheese, Shrimp/Cheese,  
Cheeseburger 6 oz. pkgs. 69¢

LIPTON  
Onion Soup Mix 2 1/2 oz. pkgs. 59¢

SHASTA  
Mixers 3 33.8 oz. bottles \$1.00

DAISY FOAM-9 oz. size  
Hot Cups 2 24 ct. pkgs. \$1.00

PLANTER'S  
Mixed Nuts 12 oz. size \$1.59

PLANTER'S Dry Roasted  
Peanuts 16 oz. size \$1.39

PLANTER'S Twin Pak  
Potato Chips 8 oz. size 69¢

PLANTER'S CHEESEBALLS, PRETZELS, TACO CHIPS,  
TORTILLA CHIPS, CORN CHIPS  
SNACKS CHEESE CURLS 66¢

3-MINUTE White or Yellow  
Popcorn 2 16 oz. pkgs. 59¢

"Savory Aged" Heavy Beef  
Round Steak

ARMOUR

Bone-in

\$1.48

SUNFLOWER'S SAVORY AGED BEEF  
Boneless Round Steak lb. \$1.68

SUNFLOWER'S SAVORY AGED BEEF Boneless  
Top Round Steak lb. \$1.88

SUNFLOWER'S SAVORY AGED BEEF  
Boneless Roast Round or Rump lb. \$1.78

Bryan Pampered Country  
Sausage

\$1.58

ARMOUR'S Fully Cooked  
Boneless Half Hams lb. \$2.68

ARMOUR'S  
Sliced Bacon 12 oz. pkg. \$1.18

ARMOUR'S Chunk  
Beef Bologna lb. \$1.08

ARMOUR'S Sliced Reg. or Beef Bol. Liver Cheese Sausage P&P  
Luncheon Meats 6 oz. pkg. 68¢

OSCAR MAYER  
Sliced Bacon lb. \$1.98

OSCAR MAYER Little  
Smokie Links 12 oz. pkg. \$1.68

HAPPY HOMES Brand  
68¢ Corn Dogs

HAPPY HOMES Brand  
Steak Fingers 12 oz. pkg. \$1.98

ARMOUR'S Cloverbloom  
Red Rind Cheese lb. \$1.68

What's New Years Without  
HOG JOWLS  
AND BLACK EYED PEAS?Smoked Jowls  
1 lb. 58¢

BRYAN'S  
Juicy Jumbo Franks

HILSHIRE Country  
Smoked Sausage

OCEAN FRESH  
Pan Trout 5 lb. box

ARMOUR'S Spiced  
Luncheon Meat 2 lb. can

OSCAR MAYER  
Wiener & Beef Franks

OSCAR MAYER Round Beef Square  
Variety Packs lb. \$1.48

OSCAR MAYER Little  
Breakfast Links 12 oz. pkg. \$1.38

OSCAR MAYER  
Braunswieger 8 oz. chub \$1.78

Returnable  
Quart  
Cokes  
32 oz. bottles

6/\$1.39

LIMIT 6 BOTTLES  
WITH OTHER  
PURCHASES.Bush's  
Blackeye  
Peas  
15 oz. cans

4/\$1

CHARMIN  
TISSUE  
4 ROLL PACK LIMIT 1

79¢

Hunt's  
Ketchup  
32 oz. bot.

79¢

Pillsbury  
Plain or Self-Rising  
Flour  
5-lb. bag

69¢

GOLDEN FLAKE  
Potato  
Chips 99¢ bag

79¢

LIPTON  
Tea Bags 48 ct. box \$1.19

GOLD WHITE AQUA  
Dial Soap 3 5 oz. bars \$1.00

COFFEE CREAMER  
Coffee Mate 16 oz. jar \$1.29

AMERICAN Whole  
Dill Pickles 16 oz. jar 59¢

KRAFT Pure  
Orange Juice half gallon \$1.29

SALLY'S Ind. Wrap, Amer.  
Cheese Slices 12 oz. pkg. \$1.19

SALLY'S Sweetmilk or Buttermilk  
Biscuits 6 8 oz. cans \$1.00

FOX DELUXE  
PIZZA CHEESE, PEPPERONI  
SAUSAGE & BEEF 13 1/2 oz. 79¢

Martha White  
Meal 5 lb. bag 89¢

Health &amp; Beauty

RAY-O-VAC "D" SIZE

Batteries

TWIN  
PAK 49¢CHATEAU  
Coffee Filters 100 ct. 49¢POLAROID  
SX 70 Film each \$6.1725 COUNT  
Alka Seltzer 79¢

RED  
Hawaiian Punch 46 oz. can 59¢

MRS. BUTTERWORTH'S  
Syrup 36 oz. bottle \$1.49

FAMOUS  
Clorox Bleach gallon jug 79¢

WESSON OIL

SALLY'S Frozen

Blackeye  
Peas

16 oz. pkg. 69¢

DEODORANT SOAP

Safeguard

2 oz. bar 53¢

DOWNY

Fabric Softener

33 oz. \$1.09

FABRIC SOFTENER SHEETS

Bounce

20 ct. box \$1.09

NABISCO-YOUR CHOICE

Snack Packs

8 oz. 79¢

DETERGENT

Giant Tide

49 oz. box \$1.39

Sealtest Dips

8 oz. 5¢ off

BORDENS

Ice Milk

1/2 gallon 85¢

NABISCO

Snack Crackers

9 oz. 79¢

\$1.89

BUSH'S Brand

Pork &amp; Beans

Great Northern Beans

Navy Beans

Pinto Beans

GEORGIAN

Tissue

4 roll pkg. 69¢

CORONET

Napkins

180 ct. pkg. 59¢

WELCH'S Strawberry

Preserves

18 oz. jar 79¢

WELCH'S Grape

Jelly or Jam

3-lb. jar \$1.19

BUSH'S

10 OZ. CANS

KRAUT 5/\$1.00

4/\$1

U.S. No. 1 Red

Potatoes

\$1.49

20 lb. bag

GREEN

Cabbage

lb. 19¢

CRISP 1-lb. pkgs.

Carrots

2/49¢

Chiquita

Bananas

FRESH  
Grapefruit 6/89¢

SWEET

Potatoes lb. 29¢

TANGERINES DOZ. 39¢

OR 3 DOZ. \$1.00

YELLOW

Onions

LARGE FLA.

Avocados

\$1.00

4 lbs.