

Tishomingo County News

The Vidette & Belmont News

OFFICIAL LEGAL NEWSPAPERS OF TISHOMINGO COUNTY

IUKA, TISHOMINGO COUNTY, MISSISSIPPI

\$5.00 Per Year Locally In Advance

\$7.00 Per Year Outside Trade Area

The One Newspaper In The World
Most Interested In This Area

THURSDAY, JANUARY 4, 1979 NO. 28



TENN - TOM WATERWAY MOVES RAPIDLY TOWARDS COMPLETION

Construction of the Tenn-Tom Waterway continues to move rapidly toward completion, with approximately one-third of the total estimated cost of the project now under contract.

The past year has also seen the 232-mile waterway gain distinction as a national model project according to Kentucky Governor Julian Carroll, outgoing chairman of the Tennessee-Tombigbee Waterway Authority. The Tennessee-Tombigbee is a national showcase of how public works investments can achieve social and economic goals, Carroll said.

As America's newest navigable river, the Tennessee-Tombigbee will connect the Tennessee River with the Tombigbee-Black Warrior system, which is already navigable to the Gulf of Mexico via the Port of Mobile. The new waterway, paralleling the borders of Mississippi and Alabama, will provide the connecting link to over 16,000 miles of inland waterway in middle America.

"By about this time next year, the lower 100 miles of the Tenn-Tom Waterway will be open to limited navigation," according to Carroll. "This means the Tenn-Tom will then be navigable from just south of Columbus, Mississippi to Demopolis, Alabama."

The Tennessee-Tombigbee Waterway Authority, headquartered in Columbus, Miss., is a five-state compact composed of the states of Alabama, Florida, Kentucky, Mississippi and Tennessee, formed to promote development of the Tenn-Tom Waterway.

Congress continued its support for Tennessee-Tombigbee by approving \$156 million for work in fiscal year 1979, making the total Congressional appropriation for construction to date \$603,950,000.

As 1978 draws to a close, the amount of work under contract or completed on the waterway totals over \$488 million, of which approximately \$84 million is completed. By next summer, work on the waterway is expected to approach the \$1 billion mark, with eight of the ten locks and dams under construction or completed.

The past year saw the opening of one completed lock and dam at Gainesville, Ala. Two others, (at Aliceville, Ala. and Columbus, Miss.) will be completed in the coming year and a fourth at Aberdeen, Miss. is about half completed. Additionally, three other locks are under construction. Of the remaining three still to be placed under contract, the largest, the Bay Springs Lock and Dam, will be let to contract in early 1979. Bay Springs Lock and Dam, located near the north end of the project, is the largest on the waterway with a lift of 84 feet.

A major portion of the project is located in the Divide Cut segment in northeast Mississippi. It is here that much of the work remains to be done, as an estimated 150 million cubic yards of materials must be excavated from the high divide separating the Tennessee and Tombigbee River basins.

In the 30-mile stretch of the Divide, located in Tishomingo County, Miss., \$166 million is already under contract or completed. During the coming year, over \$332 million in contracts will be awarded in this Divide Cut section, with one single contract expected to exceed \$200 million. By spring, 94 percent of the work in the Divide will be under contract.

In conjunction with construction of the Tennessee-Tombigbee the states of Alabama and Mississippi are relocating a number of roads, utilities lines and major bridges. In Alabama, one of its three new bridges across the waterway is open to traffic, with a second under construction. The third bridge will be constructed during 1979. In Mississippi, two of its ten bridges are complete; two more are under construction and the remaining six bridges are scheduled to go to contract during 1979. The total cost of bridges in Mississippi and Alabama is expected to exceed \$140 million.

Over 3,000 workers are employed in jobs related to construction of this massive water resource project. Average wages paid construction workers on the project are between \$12,000 to \$15,000 annually. A strong, workable affirmative action program instituted on the Tennessee-Tombigbee has resulted in meaningful employment for many minorities and other disadvantaged persons. Unprecedented policies and procedures have been implemented to promote local employment, minority hiring and utilization of small businesses, including minorities, in construction of the waterway. Additionally, some construction work is being set aside for small businesses, with all major contracts including provisions that certain percentages of the work be subcontracted to minority firms.

Because of this tremendously successful program, the Tenn-Tom Waterway has been selected as a model program in the federal government. At the request of President Carter, an affirmative action guideline book, based on the Tenn-Tom program, will be compiled by the U. S. Army Corps of Engineers for use in guiding other federal programs and projects across the nation.

Congressman Tom Beville of Alabama, chairman of the Public Works Subcommittee of the House Appropriations Committee, said recently that jobs and personal income from construction of the waterway is bringing untold benefits and hope to people in one of the most economically deprived areas of the country. Beville said he believes it is much better for these workers to be employed on waterway construction at averages from \$12,000 to \$15,000 annually rather than getting \$7,000 to \$8,000 for doing nothing.

To ensure that the economic gains made during construction of the waterway continue after it is completed, a waterway corridor study is underway to assist the entire region in preparing to take full advantage of the impending growth. Additional research and studies involving identification of industrial sites, port development, manpower training and other economic growth-related factors are in progress.

Support for the \$1.6 billion waterway continues to grow as its potential benefits become more widely known, according to the chairman of the Tennessee-Tombigbee Authority. Total projected benefits now exceed \$100 million annually, including transportation, recreation, and area redevelopment, Carroll said.

These benefits do not include the anticipated new and expanded industry which is already beginning to locate along the waterway. Each year, Congress examines public works projects during appropriations hearings. Stennis stressed economic justification of the Tenn-Tom based on the success of other federally financed waterways. He said he does not know of any major water project that has failed to pay off far above expectation.

Approximately \$2 billion in industrial expansion has been recorded along the waterway corridor since construction began in 1972. Projections call for 135,000 new jobs along the waterway impact area by the year 2000.

Another benefit is the enhancement of land values as a result of the waterway. In Alabama and Mississippi, hundreds of acres of non-productive land have long lain idle, Tennessee-Tombigbee officials said. Stimulated by the waterway, land values are increasing as idle land is converted to more productive agricultural, industrial and commercial uses, it was pointed out.

Mississippi Senator John C. Stennis, 30 year veteran member of the Public Works Appropriations Subcommittee, said that he is confident that President Carter's new budget will include full funding for the Tenn-Tom -- marking the third time in two years that the President has approved the waterway.

Each year, Congress examines public works projects during appropriations hearings. Stennis stressed economic justification of the Tenn-Tom based on the success of other federally financed waterways. He said he does not know of any major water project that has failed to pay off far above expectation.

Burnsville To Host Tourney

Coach Mike Hailey, of Burnsville, states that county teams will be seeing plenty of court action as the Burnsville Invitational Tournament opens tonight (Thursday) at the Burnsville Gymnasium. The first game gets underway at 5:30 for a

three game series. Admission has been set at \$1.50 for adults and \$1.00 for students.

Officials for the games are Jerry Harrelson and Lynn Wood.

A bracket of the three night tournament is given:

BURNSVILLE INVITATIONAL TOURNAMENT (JAN. 4, 5, & 6)

VARSITY BOYS

Belmont	
Red Bay	Fri. 7:00
Burnsville	Sat. 8:30
Waterloo	Thurs. 8:30
Iuka	Fri. 8:30

GIRLS

Burnsville	
Waterloo	Thur. 7:00
Iuka	Sat. 7:00
Red Bay	Fri. 5:30

B TEAM

Burnsville	
Iuka	Thur. 5:30
Red Bay	Sat. 5:30

JAMES H. BISHOP, Commander of VFW Post 4978, of Iuka, is shown presenting checks to four students from Iuka High School who were chosen winners in the annual Voice of Democracy Script Writing Contest. Honored for their outstanding essay presentations were, from left: Tammy Moss, 3rd place winner, \$10 recipient; Jo Ellen Wynn, runner-up to 3rd place; Ken Moore, 1st place winner, \$25 recipient; and Becky Curtis, 2nd place winner, \$15 recipient. Mrs. Lynn

Daniel, school sponsor for the Voice of Democracy Contest, was also present for the presentations. She reported that some 142 10th and 11th grade students participated in the local competition. Judging was based on content and delivery of the student's paper.

Richard Dobbs, a 33-year-old Vietnam veteran, has qualified to run for the office of Sheriff of Tishomingo County in this year's elections. Dobbs attended Atlanta Tech in Atlanta, Ga., where he completed Management and Personnel Management. He attended Northeast Mississippi Junior College at Booneville for two years. He has lived in Iuka for the past five and one-half years and has proven experience as

Richard Dobbs Qualifies For Tishomingo County Sheriff

Tishomingo County Deputy Sheriff. He is presently employed as a policeman for the City of Iuka, and is married to the former Peggy Yarber, of Belmont. In a statement to the people of Tishomingo County, Mr. Dobbs states, "My goal is to provide for the citizens of Tishomingo County good, effective, fair law enforcement and wage an effective program against the lawlessness which happens and will happen in our

county during the next four years. I ask all the citizens to take a good look at me - size me up and join with me to provide the best possible program for all of us. Feel free to contact me now and advise me of your wants and needs for better law enforcement in the city as well as the county. If I can help, I will. I would like to wish all Tishomingo Countians a Happy New Year, this year and for the four years to follow."

January term of Tishomingo County Circuit Court will convene on Monday morning, January 8, 1979, at 8:30 o'clock. Judge Neal Biggers will be presiding. The court docket for the one week session is as follows: Jan. 8 - St. vs. Johnson, Probation Revocation; Larry J. Smith vs. Steve Grisham D/B/A Grisham Auto Sales, Replevin; Byram Ford, Inc. vs. Raymond Newell; St. vs. Ramp-ley, Feazell & Bray; St. vs. Melissa Pamela Park. Jan. 9 - Phillips & Buttorff Corporation vs. Pete Trickey D/B/A Iuka Hardware; I. Schied Inc. vs. Bell Company, Inc. Jan. 10 - Duddy's, Inc. D/B/A Duddy's of Florida vs. Houston Moore D/B/A Moore's Trucking. Jan. 11 - St. vs. Pounders; St. vs. Gilley; St. vs. McLarty; St. vs. Ram-pley, Feazell & Bray; St. vs. Lambert; St. vs. White-head; St. vs. Dilworth. Jan. 12 - St. vs. James Marshall Powell; St. vs. Herman Watkins; St. vs. Floyd Whit-aker; St. vs. Melissa Pem-ela Park; St. vs. Glen A. Williams.

Court Convenes Monday- Jurors Named For One-Week

Jurors named for this term of court are:

Fred Franklin, J. F. McClung, Carol D. Wanner, Jerrell D. Bates, Luther Lindsey, Mary Neil Sexton, Mrs. Rosaline Bingham, Howard McKee, Eunice Clin- gan, Steve Alexander, Mary Ann Gortney, Bart Curtis, D. L. Parsons, Elvie Nell Brown, Gertrude Mann, Tommy Crowell, James T. Turner, Christine Vander- ford, Shirley A. Whited,

Claude Mortin, Mavis L. Pardue, Dwayne Perry, Dorris L. Blunt, Bonnie Young, Ricky Neal Timbes, Rejetta Strickland, Howard W. Rose Jr., Danny L. Sanders, Donald C. Maxwell, Donald M. Faulkner, De-ores Gasaway, Evonne O'-al, R. J. Mapes, Danette W. Yarber, Kathy Stanphill, Margie Orr, Geraldine Rushing, Lucille James, Barbara O. Parker, George C. Killingsworth, Gwin Young, Robert C. Dean, Zora Lee Hill, Ray Hall, Betty Sue Gattis, Benny McKinney;

Herman Durham, Carl S. Huffman, Marita Lynn Thorne, Mary Pierce, James A. Jackson, Travis Thacker,

Howie Assigned As Special Investigator

Jerry Howie, who joined the Mississippi Highway Safety Patrol in 1972, has been assigned to the New Albany District as a special Investigator with the Identification Bureau of the MHSP. He assumes his new duties immediately leaving the position of Director of the Public Relations Bureau for the Department of Public Safety, prior to which, he was Director of the Governor's Security.

In July and August of 1977, Investigator Howie attended a two-month seminar at the British Academy of Forensic Science (Scotland Yard) in London, England. He has attended seminars conducted by the Federal Bureau

of Investigation on auto theft, burglary, and safe-cracking.

When he first graduated from the Mississippi Law Enforcement Officer's Training Academy in 1972, Howie was stationed in Batesville as a Patrolman. Before joining the Mississippi Highway Safety Patrol, he was a Deputy Sheriff in Alcorn County from 1965 until 1967, after which he served as a member of the Booneville Police Department until 1970.

Howie is a graduate of Tishomingo High School and attended Northeast Junior College in Booneville. He is the son of Mr. and Mrs. Vester Howie, of Route 1, Iuka.

Water Grant

The Farmers Home Administration has approved a loan of \$10,000 and a grant of \$28,800 for the purpose of domestic water for the Midway - Pleasant Hill Water Association, Inc. Mark Hazard, State Director, announced the loan-grant to Clifford Cox, president of the water system of Route 1, Iuka.

Funds will be used to re-route a water line at Hwy. 72-25 Bypass. Part of the line is on Highway right-of-way, and the remainder on private property. The lines on private property will be moved at the expense of the Highway Department. This system will serve 362 water subscribers. Mississippi State will participate by providing a \$32,300 toward the project.

The loan terms will be 40 years at 5 percent. Previous loans for the Midway - Pleasant Hill Water Association since 1967 total \$285,500 and a grant of \$41,500.

TISHOMINGO COUNTY NEWS

VIDETTE and BELMONT NEWS

PHONE 423-3666

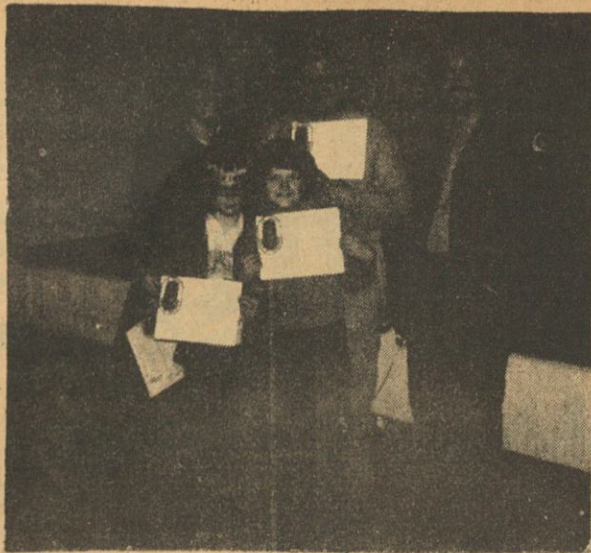
(SECD 631680)

John H. Biggs Editor & Publisher

Published Thursday by The Tishomingo County News, Inc. Serving the people of Tishomingo and adjoining counties for more than 95 years. Publication office 120 West Front Street, P. O. Drawer E, Iuka, Mississippi. Entered at the Post Office as mail matter of the Second Class. Second Class postage paid at Iuka, Mississippi. Zip Code 38852. Post Master send address changes to The Tishomingo County News, P. O. Drawer E, Iuka, Mississippi 38852.

Mail Rates Tishomingo & Adjoining Counties
\$5.00 Per Year

Other Areas
\$7.00 Per Year



MIDWAY 4-H CLUB HOLDS PROGRAM — The Midway 4-H Club has just finished a five-course Junior Ranger Program. The Junior Ranger Program is sponsored by the U. S. Department of the Army, Corps of Engineers. The instructor for these classes was Mr. Phil Anglin. The five units of study were: (1) The Corps of Engineers Ranger, (2) Environmental Protection, (3) Wildlife Management, (4) Forest Management, and (5) Water Resources. These

courses consisted of films and other activities. On Saturday, November 18, the club went on a tour of the Tombigbee Waterway. They were joined by the Pine Lane Club. At the last meeting, four members were presented beautiful Junior Ranger patches and certificates. They were: Benji Luttrell, Junior McKee, Jeff Helton and Louise McKee. The club would like to say "thank you" to Mr. Phil Anglin and the Army Corps of Engineers.



MIDWAY named Most Outstanding 4-H Club — At the Tishomingo County 4-H Achievement Banquet held recently, the Midway 4-H Club received first place honors being named the 1978 Most Outstanding 4-H Club in Tishomingo County. The club received a \$50 check and the county plaque for a year. On the state level, the club won a plaque and a check for \$56.86 in the Sweepstakes Awards Pro-

gram. This award is sponsored by the South Central Bell Telephone and Telegraph Company. Midway was also presented a certificate for winning first place in the Community Pride Program in Tishomingo County. These honors were awarded on the basis of the club record books filled out by the secretary. This is the second year in a row for Midway to be named the Most Outstanding Club.

Squirrels In The



ATTIC

Why not. With a heat loss from your living area into the attic, the squirrels can stay warmer than you. Insulate now and save the heat for yourself. Why make unwelcomed guests comfortable?



**Tishomingo County
Electric Power
Association**



Miss Nellie Horton's

HOME

ECONOMIST'S
NOTES

EAT FRUIT DAILY

Fruit plays an important part in your diet. Citrus fruits, now in season, apples, bananas and a variety of canned or frozen fruits offer lots of choice. If you don't eat fruit regularly, you miss some important vitamins and minerals. You also miss the fiber fruit supplies.

Most fresh, raw unswetened fruits contain fewer than 100 calories per serving. This makes fruit especially helpful if you're trying to keep the calories down after the round of holiday eating. Remember, frozen fruits and those canned in heavy syrup are considerably higher in calories than fresh products, and they cost more.

To get essential vitamins and minerals, nutritionists recommend four servings of fruit and vegetables each day. A serving of fruit

might include an apple, a banana, a peach or a pear. Also considered as a fruit serving are two or three apricots, figs or plums or a half cup of fruit and its liquid.

Eat daily one serving of fruit rich in vitamin C. The foods rich in vitamin C include oranges, grapefruit, satsumas and foods fortified with vitamin C, all now plentiful.

When buying fresh fruit, buy only the amount you can use in a short time. Look for fresh looking fruit, heavy for its size, with no noticeable signs of decay. Store fresh fruit in plastic bags in the refrigerator; it may shrivel if kept long at room temperature.

Be sure to wash fresh fruits thoroughly, whether serving them raw or cooked.

wash berries in a colander under gently running cold water. Trim away small bruises and injured

SAVING TIPS

Decide how much money you want to save and when you want to reach your goal. Commit yourself in writing to a definite objective. A good target is 5-15 percent of your takehome pay.

Reach your goal more quickly. Save dimes, quarters or pennies daily. When you make the last installment payment on an item, deposit this amount regularly in your savings. Save money gifts. Put your raise in savings. Cut out one luxury a day and add to your savings.

Since December 1, 1973, all E bonds mature in five years at six percent compounded every six months. If you have a payroll savings plan, you might want to increase your allotment.

You can't go broke when you are saving money. Invest in yourself.

YEAST MUFFINS

1 package yeast
2 cup lukewarm water
3/4 cup melted shortening
1/4 cup sugar
1 egg, beaten
4 cups self-rising flour

Dissolve yeast in warm water. Add all other ingredients and mix well. Pour into greased muffin pans 1/2 full of batter. Bake at 425 degrees for 20 minutes. Batter can be kept in refrigerator for several days. Makes 24 muffins.

ASCS

Farm News

By: Henry L. Knox,
County Executive Director

1978 PROGRAM

PAYMENTS:
Before January 31 of each year, the Data Systems Field Office of ASCS prepares form ASCS-182, Report of Payments to Producers, made to farmers in 1978 and mails them directly to farmers. The Internal Revenue Service (IRS) code requires USDA to report payments, (other than loan

NEW FARM CENSUS

FORM REDUCED IN SIZE:

Farmers and ranchers will find that the 1978 Census of Agriculture report form has fewer questions and is more easily understood than the form used in 1974. "That assurance comes from the Bureau of the Census, which will mail out the 21st Census of Agriculture forms in late December," Elmer A. South, Chairperson of the Tishomingo County Agricultural Stabilization and Conservation Committee, said. The new report forms will consist of four or five pages - a dramatic reduction from the 22 pages of the last farm census. According to South, the Commerce Department devoted more than two years of research to the development of the census of agriculture forms, and hosted a major conference for farm, private industry and government representatives to discuss the forthcoming census. More than twenty meetings were held with farmers, farm groups and data users around the country to get suggestions for the 1978 census. South said that the Census Advisory committee on Agriculture provided many recommendations for eliminating questions and simplifying others. "Two national experimental tests were conducted involving more than 14,000 farms to test the overall practicality and clarity of the forms... and clarity of the forms." Census officials also visited more than 1,000 farms to discuss the instruction sheet, the form itself, the problems completing it and to get farmers' recommendations. The ASC official said that steps have been taken to resolve many of the problems and that the cooperative effort should result in a better census.

Essay

Winners Announced

The Mississippi Lung Association today announced the winners of the 2nd annual statewide essay contest on "Smoking and Health".

In making the announcement, Donald M. Dana, Jr., of Long Beach, president of the Christmas Seal voluntary health organization, stated that the essay contest was open to all Mississippi eighth and tenth grade students for the purpose of promoting interest in pul-

INSULATION

Will save you
money on your
heating bill



Call
454-3383
Day or Night

TVA Approved
Philip Williams, Owner

**Williams Pest Control
& Insulation Co.
Belmont, Miss.**

New Shipment FIBERGLASS INSULATION

Sizes

3 1/2" x 15 1/2" — 3 1/2" x 23 1/2"

Insulate
your home now---

W.H. FAIRLESS HARDWARE

IUKA 423-9256

TISHOMINGO 438-6608

**The Iuka Shirt Company Is Now Taking
Applications For Sewing Machine Operators**

**Generous Piece Work Rates, Good
Working Conditions, Holiday Pay, Vacation
Pay, Life And Hospital Insurance.**

**All Around Good Working Conditions,
With No Ups And Downs In Employment.**

**Apply At The Iuka Shirt Company,
A Good Place To Work.**

**IUKA SHIRT COMPANY
805 NORTH MILL STREET
IUKA, MS.**



BAGS DEER — Johnny Ledbetter, of Iuka, killed this 7 point buck weighing 200 pounds on December 31, while hunting near the Eastport Tower. With Johnny is his nephew, Virgil Led-

better, Jr., son of Mr. and Mrs. Varnell Ledbetter. Virgil was also proud of his uncle, Clyde, who killed an 8 point buck on New Year's Day near the same spot.



BECKY IS TWO — Becky Swimmer, daughter of Mr. and Mrs. Charles Swimmer, was two years old December 26. With her while she ate her cake were her sister,

Terri; her grandparents, Mr. and Mrs. Tate Presley, of Iuka, and Mr. and Mrs. Jerry Swimmer, formerly of Iuka, now in Ripley, Miss.

Adult Basketball

January 4 at Iuka
6:30 p.m.
National Guard
Belmont Jaycees
7:30 p.m.
Armstrong Chrysler
Burnsville Merchants
8:30 p.m.
Sunflower
County Merchants

January 11 at Burnsville
6:30 p.m.
Genesco (women)
Burnsville (women)
7:30 p.m.
Sunflower
Corps of Engineers and
Contractors
8:30 p.m.
Burnsville Merchants
County Merchants



BRIAN GENE BLACK was one year old on December 28th. He celebrated with a party at his home. His parents are Mr. and Mrs. Gene Black, of Iuka. Grandparents are Mr. and Mrs. Joe Black, of Iuka, and Mr. and Mrs. B. C. Plaxco, of Russellville, Ala. Brian has one sister, Misty Renee, age 3.



TO CELEBRATE — Pamela Dawn Inlow will celebrate her first birthday Monday, January 8. She is the daughter of Ricky and Gail Inlow, of Route 1, Burnsville. Proud grandparents are Mr. and Mrs. John Hollander, of Iuka; and Mr. and Mrs. E.C. Inlow, of Glen. Great-grandparents are Mr. and Mrs. Garvin Lambert, of Tishomingo; and Estelle Inlow, of Glen.

NOTICE

The VFW Post 4978 and Ladies Auxiliary will hold their monthly meeting on Friday, January 5, at 7 p.m. All veterans are welcome to attend the meeting.

Revised Class Schedule For The Iuka School District

Beginning today, classes will be dismissed early at Iuka Elementary School and Iuka High School. The safety of the children that ride buses and who commute home has been a major concern due to the tremendous flow of traffic each afternoon.

No loss of class time or reduction in curriculum will take place. The new schedule is as follows:

Morning Schedule: Iuka High - Eliminate home room period; Elementary School: Same as first semester.	Elementary School - Eliminate mid-day break.
Afternoon Schedule: High School - Eliminate afternoon break;	School Dismissed: High School - 2:30 p.m.; Elementary School - 2:20 p.m.

According to the Department of Agriculture, Americans eat more bananas than any other fruit.

JANUARY Clearance Sale ON GOOD USED CARS

2-1978 NEW FAIRMONTS 2 DOOR 6 CYL. 4 DR. 4 CYL	
2-1978 GRANADAS DEMO.	1977 MUSTANG COBRA
3-1978 LTD'S 2 DR. H.T.	2-1977 T-BIRDS
1975 DATSUN PICKUP	1975 LTD LANDAU 4 DR.
1976 DODGE SUPER CAB LOW MILEAGE	1977 LTD 4 DR.
1975 GRANADA 4 DR.	1975 MAVERICK 4 DR.
1975 MUSTANG - 2	2-1976 PINTOS
1974 MERCURY BROUGHM LOADED	1974 MUSTANG

McNATT FORD SALES

HIGHWAY 25 SO.-PHONE 423-3681-IUKA, MS.

Births

Mr. and Mrs. Richard O. Clark, of Iuka, proudly announce the arrival of Richard Nathaniel Clark, 7 lbs. 8 1/2 ozs., on December 26, 1978, at the Baptist Hospital in Memphis, Tenn.

Maternal grandparents are Mr. and Mrs. Millard Kent; and paternal grandparents are Mrs. Rosemary Clark and the late J. O. Clark, all of Iuka.

DIXIE MISS BEAUTY PAGEANT & TALENT REVUE

January 13, 1978

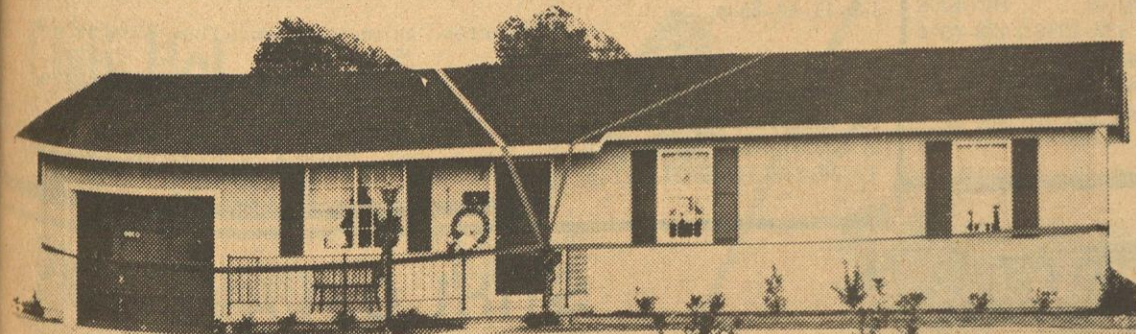
Savannah High School
Savannah, Tenn.

Contest offers 4 Age Divisions
3-6, 7-9, 10-12, 13-17.
Contestants will be judged on
Poise, Beauty and Personality.

FOR ENTRY FORM CALL
901/363-9730 or
901/365-9409



NO MONEY DOWN



Builds this 3 bedroom home on your lot!
And, what better way to start the New Year!

Neighbors, I can tell you from my own experience, there's really nothing like the great feeling you get when you own your own home. My friends at Alabama Family Homes will build this or any of 11 other homes completely finished, inside & out, in only a few weeks. They've got instant mortgage financing, too. Make your New Year's resolution to move into your own home, then call your nearby office for complete information.

No Closing Costs — \$19,630 to \$26,975 Full Price

Or Call Us Collect:
Alberville 878-7922
Birmingham 739-3941
Cullman 424-1198
Huntsville 837-9090
Oxford 831-8640
Jasper 221-3495
Muscle Shoals 381-7301
Tuscaloosa 339-8585



Mail this coupon to:
Alabama Family Homes
P.O. Box 2642
Muscle Shoals, AL 35660

Name..... City.....
Address..... Phone.....
State..... Zip Code.....

The Second Shoppe's WINTER Clearance SALE

Sale Starts
Thursday, January 4

UP TO 1/2 OR MORE ON MOST
MERCHANDISE!
ENTIRE STOCK NOT INCLUDED

LADIES STRAIGHT LEG & FLARE

JEANS

DENIM & KAKI

SIZES 3/4 to 17/18
VALUES TO \$18.95 **\$10.00**

LADIES 1st QUALITY ALL PURPOSE

COATS

SIZES 7 to 16
REGULAR \$44.95

\$29.95

ENTIRE STOCK LADIES LONG SLEEVE

BLOUSES

SIZES 5 to 44
REGULAR \$5.99

3/\$11.00 OR \$3.99 EACH

BOYS & GIRLS WINTER

COATS

SIZES 4 to 14
REGULAR PRICE \$14.95

\$6.00

ENTIRE STOCK LADIES

SWEATERS

ALL 1st QUALITY
SIZES S, M, L

1/2 off

LADIES MATCHING PANTS, VEST & JACKET

Coordinates

ALL 1st QUALITY
REGULAR PRICE \$13.95 EACH

\$5.00

LADIES

DRESSES

SIZES 10 to 20 1/2
PRICED \$8.95 to \$22.95

\$6.00 ALL 1st QUALITY

ENTIRE STOCK BUSTER BROWN DARNETTE
PANTS, TOPS, JACKETS, SOCKS

1/2 off

Robe & Gown Sets

REGULAR \$8.99

1/2 off

BUYING? LOOK AT THE CLASSIFIED ADS

PHONE 423-3666

CLASSIFIED ADS - \$2.50 PER WEEK FOR 30 WORDS. AFTER THE FIRST 30 WORDS 5¢ EXTRA PER WORD. \$1.00 EXTRA WITH BORDER. CARD OF THANKS AND IN MEMORIAM - 5¢ PER WORD.

CLASSIFIED ADS, CARDS OF THANKS AND IN MEMORIAM MUST BE PAID IN ADVANCE.

50¢ SERVICE CHARGE WILL BE ADDED TO ANY MONTHLY BILL TOTALING LESS THAN \$5.00.

PHONE 423-3666

-ERRORS-

SHOULD BE REPORTED IMMEDIATELY AS THE NEWS CAN BE RESPONSIBLE ONLY FOR THE FIRST INCORRECT INSERTION IN ANY ADVERTISEMENT. THE NEWS CANNOT BE LIABLE FOR ERROR IN ANY ADVERTISEMENT TO A GREATER EXTENT THAN THE COST OF THE SPACE OCCUPIED BY THE ITEMS IN THE ADVERTISEMENT.

FOR SALE

FOR SALE — Ashley Heaters. See or call Mr. or Mrs. Lester Adams, Route 3, Sardis Church Road, Call 423-6104. A-3-tfn-c.

LOTS FOR SALE — From 1 to 50, with terms to suit. Also, trailer lots for rent with utilities. Close in - Call or see Bart Smith - 423-3749. Also, house for rent - same address. J-6-tfn-c.

HOUSE FOR SALE — Two bedroom house, two miles west of Dennis on 2 1/2 acres of land. Has community water, phone, and large front yard. Priced to sell - \$10,000. Call 454-7273 before 8 p.m. Property owned by Ed Allen. N-16-tfn-c.

FOR SALE BY OWNER - Approximately 1/2 acre of land on Hwy. 25, 3 miles north of Iuka. See Lee Roy Nunley. D-28-J-4-11-p.

FOR SALE — Used two bedroom house trailer. Call 423-9789. O-26-tfn-c.

LITTLE CREEK MOTEL & APARTMENTS 702 SOUTH MAIN ST. Rooms with kitchenettes. Phone 423-5782. J-22-tfn-c.

FOR SALE — 12 x 60 house trailer, furnished - \$4,650. Call 423-6129. O-19-p-tfn-c.

QUAILS FOR SALE — Young and fat! Dressed or alive! Contact A. L. Cutshall at 423-5186. O-5-tfn-c.

FOR SALE — House and 4 acres of land, located west side of Indian Creek. Approximately 1/2 mile from water. See Jim Robinson or call 286-6000 in Corinth. N-9-tfn-c.

HELP SAVE ENERGY COST by insulating your home. Custom made doors, windows, awnings, gutters, aluminum siding, replacement windows. Horace Ray Shook, Route 1, Cherokee, Ala. 35616. Call today (205) 360-2187. N-23-tfn-c.

FOR SALE — 2 bedroom, brick house with double enclosed garage on corner lot in City of Iuka. Large lot, two blocks from radio station. Phone 423-9063. J-4-11-c.

FOR SALE — 40 acres, 4 miles from Iuka, 1/4 mile road frontage. Call 423-9765 or 423-9103. J-4-11-c.

BENSON BUILDERS changes buyers into investors. S-28-tfn-c.

LOW ENERGY HOMES — R-30 insulation value, will custom build or from more than 100 floor plans. 83/4% financing available on existing homes. 31 miles from Iuka near Florence, Ala. Murphy Properties, Inc., Florence, Ala. Call 205-766-5619. D-21 - J-22-c.

FOR SALE — Completely furnished, 2 bedroom mobile home on two lots, near lake at Yellow Creek. Call 423-6540 after 5:00 p.m. weekdays. N-30-tfn-c.

FOR SALE — Newly re-decorated cabin. 1100 sq. ft., 2 bedrooms, 1 bath, kitchen and 25 x 15 great-room, large stone fireplace. Located on 3/4 ac. tree studded lot with large stone patio. Excellent investment. Just off water on paved road. \$20,000. Call 423-9715 or 423-5660. O-26-tfn-c.

HOUSE AND ONE ACRE LAND FOR SALE — 3 bedroom, brick house with one acre land, double carport, 2 full baths, fireplace, all built-in appliances, central heat and air, 2100 sq. ft., 16 x 30 storage shop. See or call Wayne Hamm at 423-9251 or after 6 p.m. call 423-9005 - \$55,000.00. N-30-tfn-c.

LAY-AWAY NOW FOR CHRISTMAS New Singer zig-zag sewing machine with front drop-in bobbin. Sews st., zig-zags, makes buttonholes, monograms and appliques. Reg. \$119.95 - Now only \$77.00. Go by Bee's Fabric Shop or call 423-5683. O-19-tfn-c.

Iuka Realty Co.

706 Hwy. 25 N.

Iuka, Miss.

BRYCE KITCHENS - REALTOR

OFFICE - 422-5500
BOBBIE CURTIS - 423-6177
JACKIE BRYANT - 423-6758
BETTY COMPTON - 423-9166

NEW LISTING: 3 B.R., brick home - 3 years old - located on Westwood Circle. Good buy at \$25,000.

GOOD LOCATION, lots of extras on this one - Large country home on 5 acres. \$58,300.

ONLY \$17,500 for this well-maintained, perfectly located 2 B.R. home in Belmont.

NEW: 3 B.R., 2 bath, brick home in Burnsville. Over 1800 sq. ft. of heated area. \$39,000.

Built to F.H.A. Specifications. This new 3 B.R., brick home is energy efficient and waiting for an owner. ONLY \$29,900.

NEAT, 4-level cedar and brick featuring 3 B.R., 2 baths, greatroom on beautiful wooded lot. \$47,500.

2 B.R. frame cabin at Eastport. Well maintained with beautiful fireplace in greatroom. Completely furnished and owner financing available. \$26,500.

NEAT, ATTRACTIVE 3 B.R. home at Goat Island. Located on large lot. Owner will finance. \$21,500.

CALL US for your Real Estate needs. We specialize in both Residential and Commercial Properties.

FINANCING AVAILABLE



P. O. BEARD AGENCY
SINCE 1964
Welcome
Newcomers

Coleman Park! New, 2 br., unfinished, 28' x 24' frame cabin on 6/10 ac. lot, \$10,500 as is. Municipal water available. Perfect for the handy man.

Good Buy! (Don't look - there isn't a sign) 2 or 3 bd., 1 year old frame house, paneled and carpeted on 1/2 ac. lot. Includes woodburning heater. \$23,000. Extra 1/2 acre with fenced pen, utility room, shed, septic tank for \$4250 additional. Old Hwy. 365 S. of Burnsville.

3 br., brick home, carpeted, 3 yrs. old, nice. On 1/2 ac. Hwy. 72 E. of Burnsville, \$27,000.

Belmont - 3 br., brick home, hardwood floors, well-kept, on 3/4 ac. lot in town. City sewer and water within walking distance of school, \$24,000.

Like new! Remodeled 2 br., frame home on large lot near Yellow Creek Port, \$18,900.

Invest! Excellent rental property near Iuka H.S. Two story duplex with 5 br. and a kitchen and bath on each level. Large lot, \$52,500.

Large building lot overlooking Yellow Creek. Compare at \$3,000.

125 ac. working farm. Combination timber and cropland with running water N. of Burnsville, \$400 per acre or \$50,000.

See! This large, new, 2424 sq. ft., 4 bd., 2 bath, rock and cedar home, large den with fireplace, on 1.10 ac. lot on Hwy. 365 S. of Burnsville. Central heat and air, select your carpet and light fixtures, \$47,500. Will entertain offers.

Lake Access! 2 br., home furnished, central heat and air on approximately 1 ac. lot. Lot has a frontage on a canal leading into Bear Creek at Alabama. \$27,500 or \$29,500 with pontoon boat.

P. O. BEARD - REALTOR, APPRAISER
REGISTERED FORESTER
NANCY BEARD - REALTOR ASSOCIATE
DANNY BULLARD - SALESMAN
OFFICE - 423-5253
423-5251 OR 462-7397
MANY OTHER LISTINGS
CALL FOR FREE INFORMATION
ON BUYING OR SELLING

FOR RENT - 2 bedroom apartment - \$140.00 per month. Small deposit required. Available immediately. Call 423-5227 before 5 p.m. and 423-6704 after 5 p.m. D-28-tfn-c.

ROLLING HILLS ESTATE New 2 and 3 BR, furnished, double-wide mobile homes, 24 x 40 with central heat and air, total electric, water furnished, four miles from Ala-Miss line on Hwy. 72 East, Ala. side approximately 20 miles from Yellow Creek. \$235.00 month, \$100.00 security deposit. Call 205-383-6585. D-28-J-4-11-18-p.

TWO 2 bedroom apartments - furnished, one 2 bedroom trailer, one 1 bedroom trailer. Phone no. (601) 239-2741, apts. at North Crossroads, trailers at Yellow Creek Port. See or call Bill Mason for appointment at Michie, Tn. Call above number. D-28-J-4-11-18-c.

Attention Investors

EARN 10% on your money, AAA secured by Tishomingo County Real Estate. See Ed Gregory at Consolidated for details.



Country home, on 3 1/2 acres, on paved road with city water. 4 BR., brick, 2 baths, has full basement. Needs a little paint. Reduced from \$37,250 to \$36,500.00.

Waterfront! Furnished, 2 BR., 1 1/2 baths, like new. Reduced from \$45,000 to \$39,900. BARGAIN!

\$49,000.00 - 4 BR., sunken greatroom, ALL EXTRAS, covered patio, in city limits.

\$52,500.00 - Large 3 BR., brick, on 10 beautiful acres. ALMOST NEW.

TIGHT MONEY? NOT AT CONSOLIDATED!

2 acres off Harmony Road. Excellent building lot. \$3,425.00.

1 acre building lot on Hwy. 72 East in city limits.

1 acre - Waterview Lots - (\$700.00 down - \$63.75 per month - No closing cost).

7 acres Old Hwy. 25 South. Reduced to \$5,500.

CONSOLIDATED REALTY 711 Elm Shopping Center Ed Gregory BROKER

Office 423-6948 & 423-6946 Ed Gregory 423-5300 Billy Godwin 423-6959 Ed Gregory, Jr. 423-3772 Glenda Milligan 423-9722

SPINET-CONSOLE PIANO FOR SALE WANTED: Responsible party to take over Spinet Piano. Easy terms. Can be seen locally. Write: Credit Manager, P. O. Box 207, Carlyle, IL 62231. J-4-11-c.

FOR SALE — 1969 Olds 88, 4-door. Good tires, good condition, new tag and sticker, automatic, P.S., and P.B. \$495.00 or make an offer. Call 423-3077. J-4-p.

For Rent

FOR RENT - 2 bedroom, furnished house in Iuka. Call 423-3566 for details. Can be shown Friday, Dec. 29, or Saturday, Dec. 30. D-28-J-4-c.

FOR RENT — Working Men! Two trailers - one unfurnished house. Call 423-3566. N-9-tfn-c.

RHODES MOBILE HOME PARK, Counce, Tenn. Two and three bedroom units - monthly and weekly rates - \$50.00 and up. Utilities furnished. Call 601-287-6146, 901-689-3040 or 901-925-5516. O-19-tfn-c.

APARTMENTS FOR RENT 2 bedroom apartment and one 1 bedroom apartment for rent. Also, commercial type building for sale, rent or lease. Call 427-8294. J-4-11-18-25-p.

FOR RENT — Furnished, 2 bedroom trailer. Inside Burnsville City Limits. Call 427-9355. J-4-c.

FOR RENT — Small, two bedroom house, fully furnished. Also, trailer, inside Iuka City Limits. Phone 423-5782. J-4-p.

HOUSE TRAILER FOR RENT — James E. Timbes, Jr., Burnsville. Phone 427-8778. J-4-tfn-c.

MISCELLANEOUS

ADDRESSERS WANTED IMMEDIATELY! Work at home - no experience necessary - excellent pay. Write American Service, 8350 Park Lane, Suite 127, Dallas, TX 75231. D-28-J-4-11-18-p.

HELP WANTED — Unique Christian business opportunity. Place racks of Christian products in retail outlets in North Mississippi. Grow spiritually and financially. Write or call Storehouse, 1812 Woodward Ave., Muscle Shoals, Ala. 35660. Phone 205-381-7922. D-21-28-J-4-c.

SONNY'S PAWN SHOP, Windsor Inn Motel Office, Hwy. 45 South, Corinth, Ms. Phone 287-1485. S-28-tfn-c.

SEPTIC TANK SERVICE — Addition field lines, water and sewer hook-up. Call H. R. Brown at 427-8294 in Burnsville. J-4-11-18-25-p.

WANTED — Commercial Appeal Sunday only carrier for Iuka area. Approximately \$30.00 profit weekly. Call 1-800-233-7444. J-4-11-p.

CHILDREN'S DAY---Every Tuesday, 10 a.m.-6 p.m., No appointment necessary. Photography by Charles, 709 Eastport, Iuka, phone 423-3359. A-20-tfn-c.

TEST AD: In order to test the effectiveness of this advertisement, we are offering a new Singer Model 247 Sewing Machine that sews straight, zig-zags, monograms, appliques and makes button holes for \$77.00, or the Electra Model 5X3000 free arm, regular \$499.95 for only \$199.95. Call 601-423-5683 for a free home demonstration or come by Bee's Fabrics, Front St., Iuka. M-18-

NOTICE— I am not responsible for any debts other than my own. GODOFREDO B. MORA J-4-11-18-p.

The LONG Company Real Estate

1415 Hwy. 25 South
Iuka, MS 38852
423-5555

Excellent starter home! Below Market Value - half brick, carpeted, massive fireplace, tv tower, Hwy. 72 West, only - \$22,750.00.

Terms available, New, 3 BR brick, large living room, 2 mi. south of Iuka - \$29,900.00.

Quiet new subdivision, New, 3 BR, 2 baths, great with fireplace, large master bedroom with walk-in closet, \$43,500.00.

Spacious, convenient to school, 4 BR, 2 baths, kitchen, lots of storage space - \$45,000.00.

Beautifully decorated, 4 BR, brick, 2 baths, formal custom drapes, paved drive-way, inside Iuka City Limits, \$45,000.00.

If you have children, you'll love this 4 BR, brick with GIGANTIC play area. It has 3 baths, formal and dining, eat-in kitchen, family room w. fireplace, custom drapes - UNDERPRICED at \$58,000.00.

Well arranged floor space, New, 3 BR, cedar, 2 baths, greatroom, Hwy. 25 North - \$47,500.00.

Large lot and covered patio are just two of the features of this 3 BR, stone home. It also has appliance kitchen and is inside Iuka city limits. Priced at only \$29,500.00.

Ideal location! 3 BR, brick, 2 baths, extremely well landscaped lot, near downtown Belmont - \$34,900.00.

Investment property! 2 BR, fully furnished, large patio, screened porch, near water at Eastport - \$24,900.00.

NEW LISTING - 3 acres, just outside city limits, Iuka - \$5,000.00.

48 acres - Development property - State Line - \$12,500.00.

50 acres - 2 miles north of Iuka - Great potential - \$12,500.00.

40 acres - off Eastport Rd., 1/2 mile road frontage - \$12,500.00.

10 acres - off Airport Rd. - 4 miles east of Iuka. - \$12,500.00.

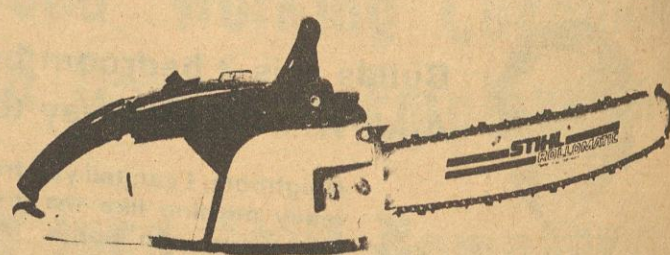
41 acres - Indian Creek Rd., wooded, creek. - \$12,500.00.

50 acres - rolling, wooded - Friendship Rd. - \$12,500.00.

120 acres - adjacent to Tenn., Tom, Waterway. - \$12,500.00.

THE LONG COMPANY
OFFICE - 423-5555
BROKER - GRACE LONG - 423-6584
SALES AGENT - BETH DAVIS - 423-6584

STIHL 031 AV



light in weight, comfortable and really simple in design

The most respected name in chain saws. See it now at:



NELSON

Marine & Hardware
Highway 25 S. IUKA Phone 423-6141



NEED
APPLIANCE
REPAIR?
CALL

Gann Bros.
Furniture & Appliance
427-9506

WE HAVE TWO FULL TIME SERVICE MEN FOR QUICKER AND MORE

EFFICIENT SERVICE

"The Business That
Quality And Service Has Built"

FREE
300 EXTRA
QUALITY STAMPS

When this Card is Filled You Get
300 Extra Free Quality Stamps
QUALITY STAR COVER CARD
Everybody Wins at
Nelson's

Each time you purchase an additional \$2.50 you receive one Quality Star. (No Stars given on Tobacco, Milk or Milk Products). Stick your Quality Star in the spaces marked "Quality Star" on this card. When all Quality Star spaces have been filled, your card to Nelson's and you will receive 300 Quality Stamps for your filled card. New cards are available in Nelson's. Play as many times as you like while the promotion is in progress. Nelson's reserve the right to discontinue Quality Star Cover Cards at any time by announcement to our customers. If you are not a member of Nelson's, you may obtain one by filling out an unfilled card, Nelson's will redeem on the basis of 10 Quality Stamps for each Quality Star on the unfilled card.

PRODUCE

CANADIAN WAXED
BRUTABAGAS LB. 15¢
FANCY RED OR GOLDEN DELICIOUS
APPLES 88'S SIZE LB. 39¢
FLORIDA
ORANGES 5 LB. BAG 99¢
LEMONS DOZ. 79¢
235 SIZE
MONTA BRAND
BANANAS 4 LBS. \$1

14 1/2 OZ. 3 for \$1
TOMATOES
9 IN. 2 SHELLS ONE PAN
PIE SHELLS 4 for \$1

MIX or MATCH

BUSH'S SALE

Butter Beans
Chili Hot Beans
Navy Beans 15 oz
Pinto Beans
Baby Butter Beans

MIX or MATCH

SHOWBOAT
Spaghetti 15 OZ.
SHOWBOAT
Chopped Kraut 10 OZ.
SHOWBOAT
Pork & Beans 9 OZ.
BUSH'S BUSH'S WHITE OR
Golden Hominy

NELSON'S
Iuka, Miss.

PRICES GOOD THRU JAN. 10, 1979
QUANTITY RIGHTS RESERVED
NONE SOLD TO DEALERS



January FOOD SAVINGS

PURNELL'S PRIDE WHOLE

Fryers

49¢

Chicken Livers 8 OZ. 49¢

REELFOOT
FRANKS 12 OZ. 89¢

PORK LIVER LB. 59¢

BOLOGNA

REELFOOT JUMBO

LB.

99¢

REELFOOT
BACON 12 OZ. \$1.19

REELFOOT
CHILI LB. \$1.39

REELFOOT
WHOLE PICNICS LB. 99¢

SAUSAGE

CORN VALLEY

LB.

99¢



MIX or MATCH
CAMPBELL'S SOUP



Cream of Mushroom
Cream of Chicken
Chicken Noodle

Vegetarian Vegetable
Vegetable - Tomato

5 / \$1

HYDE PARK
BISCUITS 10 CT. 6 PACK 79¢

HYDE PARK BATHROOM
TISSUE 4 ROLL PKG. 64¢

HI-RISE
FLOUR 25 LB. BAG \$3.19

CORN FLAKES

KELLOGG'S
LIMIT ONE

18 OZ. 68¢

COKE

6 PACK CARTON LIMIT ONE
PLUS DEPOSIT

6 \$1.29

FURNITURE WAX
PLEDGE REG OR LEMON 9 1/2 OZ. 99¢

BLUE BONNET
MARGARINE LB. QTRS. 2 for 89¢

HYDE PARK
POPCORN 2 LB. BAG 49¢

ZESTA
CRACKERS LB. BOX 53¢

JEFFY
CAKE MIX 10 OZ. 5 for \$1

RICELAND
RICE EXTRA LONG GRAIN 3 LB. BAG 89¢

HYDE PARK
PINTO BEANS 4 LB. BAG \$1.19

REELFOOT
PURE LARD 4 LB. CARTON \$1.69

NORTHERN
NAPKINS 140 CT. PKG. 49¢

DETERGENT
PUREX 72 OZ. KING SIZE \$1.69

BLEACH

PUREX

GAL.

29¢

WITH \$10.00 PURCHASE EXCLUDING
DOG FOOD AND TOBACCO LIMIT ONE

<p>COUPON</p> <p>100 EXTRA QUALITY STAMPS WITH COUPON AND PURCHASE 2 PAIR OF NO NONSENSE PANTY HOSE EXPIRES 1-10-79</p>	<p>COUPON</p> <p>100 EXTRA QUALITY STAMPS WITH COUPON AND PURCHASE WITH COUPON AND PURCHASE GALLON OF PRESTONE ANTI-FREEZE EXPIRES 1-10-79</p>	<p>COUPON</p> <p>100 EXTRA QUALITY STAMPS WITH COUPON AND PURCHASE 12 OZ. BAG NESTLES CHOCOLATE MOISSELS EXPIRES 1-10-79</p>	<p>COUPON</p> <p>100 EXTRA QUALITY STAMPS WITH COUPON AND PURCHASE 12 OZ. BOLLTE BLACKBURN WAFFLE SYRUP EXPIRES 1-10-79</p>
--	---	---	--

Notice

NEED HEAVY DUTY OPERATORS, also laborers. Good wages with benefits. Apply in person at Miss. Stone Products, Iuka, Ms. O-26-tfn-c.

NOTICE — All lands belonging to W. P. Weathers, Sr., W. P. Weathers, Jr., James A. Weathers, Delyla Byram, John D. Murphy, is posted against all hunting and trespassing. D-21-28-J-4-p.

NON-RESIDENT SUMMONS

TO:
Ray Goff
533 Christie Street
Dyersburg, Tenn. 38024

You are hereby summoned to appear before the Chancery Court of Tishomingo County, Mississippi, on the 15th day of January, 1979, at 10:00 A.M., at the Tishomingo County Courthouse in the City of Iuka, Mississippi, in Cause No. 120 being a matter pending in the Chancery Court of Tishomingo County, Mississippi, wherein you are a respondent, to show cause, if any you can, why the relief sought in the Petition filed in the said cause should not be granted.

This the 22nd day of December, 1978.

ROBERT D. SIMS,
Chancery Clerk of
Tishomingo County, Miss.
D-28-J-4-ll-c.

NOTICE TO CREDITORS

Letters Testamentary having been granted on the 18th day of December, 1978, by the Chancery Court of Tishomingo County, Mississippi, to the undersigned upon the estate of Mrs. Sallie Davis Glenn, deceased, notice is hereby given to all persons having claims against said estate to present the same to the Clerk of said Court for probate and registration, according to law, within ninety (90) days from this date, or they will be forever barred.

This 18th day of December, 1978.

BRICE STRICKLEN,
EXECUTOR
D-21-28-J-4-c.

PUBLIC NOTICE

All Lands owned by the State of Mississippi which are under the custodial responsibility of the Yellow Creek State Inland Port Authority, including the Railroad Right-of-Way from the point where the Yellow Creek Port Spur leaves the Corinth and Counce line in Sharp's Bottom to the Yellow Creek Port, are hereby posted against hunting and trespassing, except by written permission of the Yellow Creek Port Authority.

Permits may be obtained at the Yellow Creek Port Authority Office during regular office hours. D-21-28-J-4-c.

ADMINISTRATOR'S
NOTICE TO CREDITORS
OF EDWARD FAY BURNS,
DECEASED

Letters of Administration having been granted on the 2nd day of January, 1979, by the Chancery Court of Tishomingo County, Mississippi, to the undersigned upon the estate of Edward Fay Burns, deceased, notice is hereby given to all persons having claims against said estate to present the same to the Clerk of said Court for probate and registration, according to law, within ninety (90) days from this date, or they will be forever barred.

This the 2nd day of January, 1979.

VA News

Q — I am the widow of a veteran of World War II and the Korean War. My husband never used the government home loan benefit provided for such veterans. Am I entitled to this loan?

A — You are only if your husband died as a result of a service-connected disability incurred during his World War II or Korean service, and you are presently unmarried. The fact that your husband may or may not have obtained a GI loan would not affect your entitlement to this benefit. Contact the VA regional office or veterans service organization in your area for specific information.

PERSONALS
Confidential divorce and child custody investigation. Call 1-601-736-8265 A & A Detective-Recovery Co. N-16-tfn-c.

As Seen From Here

By: Theodore Smith

I would guess that I have done more studying and reading about Section 208 than most of the people in the state -- and that includes most of those advocating Section 208 for Alcorn, Tishomingo and Prentiss Counties. Some of the people who are so vigorous in their support of this operation wouldn't know a Section 208 if they met it in the road. The only thing they see is the possibility of getting \$200,000. of federal funds to use in the development of "plans."

Section 208 is a part of the Federal Public Law 92-500, titled Federal Water Pollution Control Act. The real purpose of the act was to clean up the streams and lakes and make water purer throughout the nation. The Congress no doubt had their eyes on the polluted streams like the Potomac in Washington, D. C., the Hudson River in New York, the ship canal in Houston, Texas, and other similar industrial areas.

I doubt if anyone in Washington was very seriously concerned about the pollution of Yellow Creek, Tuscumbia and Hatchie Rivers. I also doubt if these streams have any more pollution than they had fifty years ago.

I have reservations about the operation of the 208 by local officials. As I stated above I have read everything I can find about the program and still I must confess that I am no expert. I have, however, learned enough to be very skeptical of the program.

This is a big country and not another country or area in the nation has asked to be designated as the 208 agency. Can it be true that we in this area are the only people in the nation who have found a good thing? Why doesn't Tupelo, Meridian, Vicksburg, Natchez, Tipton, Tishomingo and other areas seek to be designated as 208 agencies?

This great "gold mine in the sky" has been available to our area and other areas of the nation since 1972 and no one sought the "goodies" until after the election of 1975.

If neither the local authorities nor the state assume this awesome responsibility then the federal authorities must perform the 208 functions. If local authorities are the 208 agencies they must provide 25 percent of the planning funds or about \$75,000. in our case. To implement the plans, such as building of sewage treatment plants, the local area must provide 25 percent of the building cost. If sewage treatment plants in our area would cost \$8,000,000. then the local area would be required to raise their share or \$2,000,000.

I notice the Alcorn County Board of Supervisors are not even able to come up with their share of \$38,000. to develop a garbage landfill. If that be the case then how can they come up with \$75,000. in matching funds and two million dollars to build the facilities?

One should not think that local people can be more lenient on local industry and cities than would be the state or federal authorities. The rules and guidelines are identical and must be enforced regardless of who may be the "policeman."

The local plan will require sewage treatment facilities for industrial plants which we propose to be located in the areas around Yellow Creek Port. If the local people make the plans, then the local people would be required to reject industrial plants until the sewage treatment facilities are completed. Such would not necessarily be the case if done by the state.

It must be emphasized that the plan must be approved by the federal authorities and the local group agrees to carry out the plan. This plan you can be sure will not lay in some office to gather dust. I fear it will be used to beat us over the head for years to come.

I think the local authorities can see nothing but \$200,000. of federal funds and they are about to catch a bear by the tail and will wish a thousand times they could figure out a way to turn it loose.

We seem prone to chase a rainbow then it blows up in our face as soon as we complete the hot pursuit. We chased Sterling Homex with great enthusiasm and we need to take a look at the results. We chased "Mini-City" and you only need to take a look at the place to hang your head in shame.

If the idea is good, then perhaps we should not be selfish and we ought to ask Tipton, Benton and Marshall to "feast" at our table. Let's include all six counties in the Northeast Planning and Development District at them do it.

The plan, regardless of who develops, must show the present and intended use of every inch of land in all three counties. It must also show the point and non-point of every source of possible contamination of water. I don't want someone, and certainly not my neighbors, telling me that I can't divert pasture land to cultivated land; or woodlands to cultivated lands; or that I can't dig a ditch in a low place -- all of this on my own private property.

There is an alternative. If the local authorities do not assume this burden then the state may do so. If the state does not assume the burden then the federal government will do the job. If the federal government does the job then they will be so busy in the industrial polluted areas of the nation that they won't bother us. If, however, we wish to build sewage treatment plants the federal matching ratio of 75 percent is and will still be available to us.

As a matter of fact, for the past four years the matching ratio for rural and industrial sewage treatment facilities was available to us on a 90 percent federal matching ratio and we did absolutely nothing about it. Lee County built sewage lines all over the area and only 10 cents in the dollar was raised by that county. Where were our "far sighted" leaders at that time? Now that the "90 percent" days are over and we are in the "75 percent" days they begin to holler for these federal dollars.

No legislation is required to have this area designated as a 208 area. My purpose now, as always, is to keep the people I represent informed. I think it would be wise for everyone to give this proposition serious thought before it is too late.

RAPID FENCE CO.
CHAIN LINK SPECIALIST
COMMERCIAL AND
RESIDENTIAL
FREE ESTIMATE
PHONE 427-8823

Steam Carpet Cleaning
JIM'S CLEANING SERVICE
PHONE 427-8219

Dailey's Body Shop
And
Wrecker Service
Burnsville
Expert Body Work

Day 427-9234
Night 427-8449
Hwy. 72 24 Hr. Service

AMA Symbol Gains Usage

Fifteen years ago the American Medical Association announced a universal symbol which tells anyone rendering emergency care to a person who is unconscious or otherwise unable to communicate that its wearer has a physical condition requiring special attention.

In the intervening years the symbol has gained world-wide acceptance. It has been widely disseminated throughout the United States, and, through the World Medical Association, has been distributed throughout the world.

The symbol may be displayed on a wristlet, an anklet, a medallion around the neck or elsewhere. It is a sign that there are vital medical facts on a personal health information card in the bearer's purse or wallet, or on an alerting device.

The symbol is a hexagon-shaped emblem containing a six-pointed figure



ure and a staff with a snake entwined about it — the staff of Aesculapius, the insignia of the medical profession.

It is used by many individuals. Diabetic coma, for instance, sometimes makes its victims appear intoxicated, and treatment may be dangerously delayed. The symbol also is used to indicate allergies to antibiotics, such as penicillin.

The need for certain medicines must be known. Heart patients taking drugs to prevent blood clots may bleed profusely if injured unless they receive special care. Epileptics could be saved much trouble and unnecessary hospitalization if they carried a card indicating they may have seizures.

The American Medical Association recommends that everyone have a card, such as the AMA emergency medical identification card, to show who they are, where they live, whom to call if they become ill or injured, the name of their doctor, and when they were immunized, particularly against tetanus, or lockjaw. On this card should be noted any special problems that need immediate attention in an emergency or could cause an emergency.

Some people's problems are so serious that it is absolutely essential for the first aider to know about them in an emergency. A durable signal device made of plastic should be worn by such people, preferably about the neck or on the wrist or ankle.

May, 1978

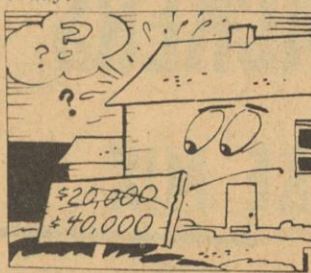
Frank Chappell
Science News Editor
AMA

Understanding Your Insurance

Homeowner Coverage—Why It's Rising

If you own a house and insure it properly against damage or loss, the chances are that your premiums have risen steadily over the years. Mostly, that's the work of inflation.

The main idea of homeowners insurance is to protect you with enough coverage in money to rebuild your home on its present site. But costs of construction and related labor have been soaring for years. A house bought for \$20,000 in 1960 could well be worth twice as much today.



RIISING COSTS—A house bought for \$20,000 in 1960 could cost twice as much to replace today.

Mindful of increases in market value—and concerned for homeowners who may not realize how much their assets have grown—insurance companies such as The Travelers have long urged their customers to review home coverage regularly. Most U.S. homeowners policies, by the way, require that the house be insured for at least 80 percent of what it would cost to rebuild it.

The cost of insuring the contents of your home is also rising. Partly, this reflects inflation. But the rising incidence of burglary is also an important factor in the increase. It's estimated that an average of 6.2 household burglaries occurred every minute in this country in 1975—compared with 2.2 every minute in 1965.

It's certainly true that

crime doesn't pay for the harassed citizen who must bear a higher premium because the shared risk runs higher.

Don't Overload

Most everything can and does go into an electric clothes dryer—all at once. Yet overloading lengthens drying time, which increases energy use.

Ask Now

Ask your power distributor for a free home energy

survey. Let an energy advisor find ways for you to cut energy waste and loss in your home.

Stopgap

A cold draft slipping under the door is uncomfortable and costly. Until you stop the heat loss properly with weatherstripping, stuff an old rug against the crack.

The Chinese poet Lu-Yu published the first book about tea in 780 A.D.

Public Notices

SUBSTITUTED TRUSTEE'S NOTICE OF SALE

WHEREAS, on September 22, 1973, Tri-State Auto Sales, Inc., Danny K. Lambert and Diane Glidewell executed a certain Deed of Trust to J. Barry Finch, Trustee for the use and benefit of First National Bank of Iuka (corporate predecessor to the First American National Bank of Iuka—Mississippi) of record in the office of the Chancery Clerk of Tishomingo County at Iuka, Mississippi in Trust Deed Book 70—pages 494 et seq.; and

WHEREAS, as said First American National Bank has heretofore substituted the undersigned Douglas C. Wynn as Trustee in the place and stead of J. Barry Finch, by instrument dated October 26, 1978, as appears of record in said Chancery Clerk's office in Deed of Trust Book B-94 at pages 645, et seq.; and

WHEREAS, by Judgment and Order entered by the United States District Court for the Northern District of Mississippi, Eastern Division in Docket NO. EC 77-105-K et al, Consolidated, styled "First American National Bank of Iuka, Mississippi v. Danny K. Lambert, et al" on December 18, 1978, a certified copy of which appears of record in Deed Book B-95 at pages 128 et seq. in said Chancery Clerk's office, the aforesaid Deed of Trust was reformed and found to have been executed, sealed and delivered by Tri-State Auto Sales, Inc., a Mississippi corporation, by its duly authorized officers Danny K. Lambert and Diane Glidewell Lambert in their capacities as its duly authorized officers; the descriptions of the fourth and fifth tracts described therein were amended as set forth therein; the reformation and amendment of said Deed of Trust was declared to be effective of its date, September 21, 1973; and the undersigned was ordered and directed to foreclose the same; and

WHEREAS, default having been made in the terms and conditions of said Deed of Trust and the entire debt secured thereby having been declared to be due and payable in accordance with the terms thereof, pursuant to the terms thereof and the Order of the Court aforesaid, First American National Bank of Iuka, Mississippi, the owner and holder of the indebtedness secured thereby having requested the undersigned Trustee to execute said Trust and to sell said lands or property in accordance with the terms of said Deed of Trust, for the purpose of paying all sums due thereunder, together with the expenses of sale, attorneys and trustees fees:

NOW, THEREFORE, I, Douglas C. Wynn, Substituted Trustee, in said Deed of Trust, will on January 22, 1979, offer for sale at public auction for cash to the highest bidder and sell, within the legal hours, between 11:00 o'clock A.M. and 4:00 o'clock P.M., at the front door of the County Courthouse of Tishomingo County, Mississippi, to the highest and best bidder for cash, the following described property situated and located in Tishomingo County, Mississippi, to-wit:

"(Tract 4). Part of the South Half of the Northeast Quarter of Section 23, Township 3, Range 10 East described as beginning at the point of intersection of the West Line of said Section with the South Right-of-Way Line of Lee Highway (Highway 72) and run thence south on said West Line 180 feet; thence run East parallel with the North Line of said South Half of said Quarter 80 feet; thence run North parallel with the West Line 180 feet more or less to the South right-of-way line of said highway; thence run West along said right-of-way 80 feet to the point of beginning."

"(Tract 5). Part of the South Half of the Northeast Quarter of Section 23, Township 3, Range 10 East, Tishomingo County, Mississippi described as beginning at the point of intersection of the West Line of said Quarter with the South right-of-way line of Lee Highway (Highway 72) and run thence easterly with the South right-of-way line of said highway a distance of 80 feet more or less to a point which is the point of beginning of the tract conveyed herein; run thence in an easterly direction with the South right-of-way line of said highway a distance of 10 feet; thence run in a southerly direction 90 feet to a point 20 feet east of the East Line of the C. L. Woodley Tract of land described by Deed recorded in Book P-31 at page 540 of the land records of Tishomingo County, Mississippi, measured parallel to said highway and from this point run thence westerly parallel to said highway a distance of 20 feet to the East Line of the C. L. Woodley Tract; thence run Northerly with the East side of the C. L. Woodley Tract 90 feet more or less to the point of beginning."

"(Tract 6). Part of the South Half of the Northeast Quarter of Section 23, Township 3, Range 10 East, Tishomingo County, Mississippi described as beginning at the point of intersection of the West Line of said Quarter with the South right-of-way line of Lee Highway (Highway 72) and run thence easterly with the South right-of-way line of said highway a distance of 80 feet more or less to a point which is the point of beginning of the tract conveyed herein; run thence in an easterly direction with the South right-of-way line of said highway a distance of 10 feet; thence run in a southerly direction 90 feet to a point 20 feet east of the East Line of the C. L. Woodley Tract of land described by Deed recorded in Book P-31 at page 540 of the land records of Tishomingo County, Mississippi, measured parallel to said highway and from this point run thence westerly parallel to said highway a distance of 20 feet to the East Line of the C. L. Woodley Tract; thence run Northerly with the East side of the C. L. Woodley Tract 90 feet more or less to the point of beginning."

The aforesaid Deed of Trust is junior and subordinate to the lien of that certain Deed of Trust from Tri-State Auto Sales, Inc. to J. Barry Finch, Trustee for the use and benefit of Tri-State Savings and Loan Association, Iuka, Mississippi filed for record June 15, 1973 and recorded in Trust Deed Book 69 at pages 582 et seq. of said records and in said sale I will convey only such title as is vested in me as Substituted Trustee for First American National Bank of Iuka, Mississippi under its junior and subordinate Deed of Trust described above, and said sale shall be subject to the lien of the aforesaid Deed of Trust in favor of Tri-State Savings & Loan Association.

WITNESS MY SIGNATURE, this the 20 day of December, 1978.

D-28-J-4-11-18-c.

NOTICE TO CREDITORS

Notice is given that letters testamentary have been on this day granted the undersigned Bobby E. Voyles and Lillie Mae McEwen on the Estate of T. E. Voyles, deceased, by the Chancery Court of Tishomingo County, Mississippi, and all persons having claims against said estate are required to have the same probated and registered by the clerk of said court within ninety (90) days after the date of the first publication of this Notice or the same shall be forever barred.

WITNESS our signature this the 16th day of December, 1978.

D-21-28-J-4-c.

Bobby E. Voyles
Lillie Mae McEwen
JOINT ADMINISTRATOR-ADMINISTRATRIX
C.T.A. OF THE WILL AND OF THE ESTATE OF
T. E. VOYLES, DECEASED.

LEGAL NOTICES

LEGAL NOTICE AND INVITATION FOR BIDS

The Tishomingo Housing Corporation, City of Tishomingo, Tishomingo County, Mississippi, will receive bids until 1:00 o'clock p.m., Central Time, on the 5th day of January, 1979, at the Office of the Mayor, City of Tishomingo, Mississippi at which time and place the bids will be publicly opened and read, for the furnishing of all labor, materials, equipment, and services for construction of the following project:

TISHOMINGO APARTMENTS

Plans and specifications are on file at the office of E. AND S. Associates, 407 Taylor St., P. O. Box 877 (Phone - 601-287-5234), Corinth, Mississippi 38840.

Copies of the documents may be obtained from the Architect upon deposit of \$75.00 for each set, to be refunded upon return of each complete set in good condition within 7 days after opening of bids, except that \$25.00 to cover cost of reproduction will be deducted for each set in excess of one from an actual bidder and for each for a non-bidder or material supplier.

Proposals must be accompanied by a Bid Bond or Certified Check in the amount of at least five percent (5%) of the base bid, all in accordance with the General Conditions or Modifications thereof bound with the specifications.

Performance and payment bonds in the full amount of the Contract will be required for Contract Security. No bid may be withdrawn for a period of thirty days after the opening of the bids without the consent of the Tishomingo Housing Authority.

The Contract will be awarded to the lowest acceptable bidder, except that the Owner reserves the right to waive any informalities or to reject any and all bids.

TISHOMINGO HOUSING AUTHORITY
City of Tishomingo
Tishomingo County, Mississippi

D-21-28-J-4-c.

WE HAVE A 45 DAY TAX REFUND LOAN

VERY INEXPENSIVE
CALL
DON PACE
TODAY



1st CITIZEN LOANS
423-5248 464-3464
IUKA Hwy. 72 BELMONT Hwy. 2

FREE ESTIMATES
*BLOWN CELLULOSE
*FIBERGLASS
*FIRE REPELLENT
*RHODENT REPELLENT
*TVA APPROVED

JOHNSON INSULATION CO.
HAROLD JOHNSON
Owner-Operator
** GUARANTEED WORK **

CLARK'S FIBERGLAS PANEL CO.

Route 1, Box 404, Fulton, Miss. 38869

FIBERGLAS WEATHERPROOF PANELS
New shipments weekly. All Colors, lengths, thicknesses. Use for building greenhouses, barns, garages, toolsheds, shops, patios, porches, and mobile home underpinning.

10' - 15' - & 25' Per Sq. Ft.

Six Days 7:30 Till 6:00 P. M.

Located On Hwy. 78 Just East of Scales

at Intersection of Hwy. 25 North

Fulton, Mississippi

Bus. Ph. 601-862-2021 Res. Ph. 601-862-1118

MOORE'S

BODY SHOP and

WRECKER SERVICE

24 HOUR WRECKER SERVICE

DAY PHONE 423-5130

NIGHTS-WEEKENDS-HOLIDAYS

423-5244

EXPERT BODY REPAIR

DEATON & SON

DIESEL & MACHINE SHOP

LOCATED 1 1/2 MILE WEST OF

TISHOMINGO OFF OLD HWY

FOR ALL REPAIRS ON HEAVY

EQUIPMENT COME BY OR CALL

R. D. OR KEITH DEATON

AT

438-7290 OR 438-7335

WE APPRECIATE YOUR BUSINESS

PIGGY WIGGLY

The Original SELF SERVICE

LOCATED IN ELM SHOPPING CENTER

Shop PIGGLY WIGGLY

QTY. RIGHTS RESERVED
NONE SOLD TO DEALERS
PRICES GOOD
JAN. 4-JAN. 10



STORE HOURS:
MONDAY THRU
THURS. 7:30 AM
TILL 7:00 PM
FRI-SAT. 7:30 AM
8:00 PM
CLOSED SUN.

Taste-temptin' Foods!

COLLINSWOOD DEEP CHILL USDA GRADE "A"

FRYERS



WHOLE

43^c

LB.

TIDE

DETERGENT



49-OZ. BOX

LIMIT ONE WITH 10.00 ADD. PURCHASE

99^c

BREAST

LB. **99^c**

RUBY S. RISING

CORN MEAL 5^c

LB. BAG

SMOKED TENDERIZED

HAMS 99^c

LB.

FLORIDA ORANGES
FRESH YELLOW ONIONS

5 LB. BAG **79^c**
3 LB. BAG **39^c**

EASTERN RED OR GOLD DELICIOUS APPLES
SWEET POTATOES

3 LB. BAG **69^c**
LB. **19^c**

BRYAN 12 OZ. PKG. **BACON \$1.09**

BRYAN 12 OZ. PKG. **BOLOGNA 99^c**

BRYAN 12 OZ. PKG. **WIENERS 99^c**

BRYAN JUICY JUMBO **FRANKS LB. PKG. \$1.29**

BRYAN LB. PKG. **SAUSAGE \$1.39**

BRYAN SMOKED **SAUSAGE PER LB. \$1.59**

FLORIDA 125 COUNT **ORANGES DOZ. 49^c**

POT -O- HOLDS \$150.00 THIS WEEK

LIQUID **DAWN 79^c**

BONANZA **DOG FOOD \$2.79**

25 LB. BAG



SPRAY FANTASTIC 16-OZ. BTL. **69^c**
BLEACH CLOROX II 40-OZ. BOX **99^c**

BATH SOAP DIAL 2-BAR PKG. **69^c**
PIGGY WIGGLY FABRIC SOFTENER GAL. BTL. **79^c**
ADAMS UNSWEETENED GRAPEFRUIT JUICE 48-OZ. CAN **59^c**
PIGGY WIGGLY S. RISE MIX CORN MEAL 5 LB. BAG **68^c**
PIGGY WIGGLY S. RISE FLOUR 5 LB. BAG **68^c**



CHARMIN

TISSUES

4-ROLL PKG. **79^c**

SUPREME 5 LB. BAG

SUGAR FREE

WITH PURCHASE OF 4 6/E LIGHT BULBS



PIGGY WIGGLY FROZEN **ORANGE JUICE 3 \$1.00**



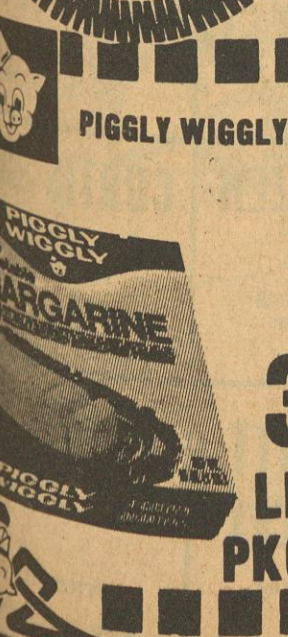
PIGGY WIGGLY SM OR BM **BISCUITS 6 79^c**

OLEO 99^c

3 LB. PKGS.



Maalox Plus
ANTI-GAS/ANTACID
A PLEASANT CHANGE OF TASTE
12-OZ. **\$1.39**
Maalox
SUSPENSION
Number one selling antacid
Not Chalky
Pleasant Tasting
12-OZ. **\$1.39**





THE TEMPLEAIRS entertained at the 4-H Banquet on December 11. Shown, left to right, are: Mary Ann Skinner, Sonia Glidewell, and Karen Skinner.

OBITUARIES

Mrs. Sally Hall

Mrs. Sally Viola Cunningham Hall, 84, died Wednesday, December 27, at the Northeast Mississippi Hospital.

She was a Methodist. Services were held at 1 p.m. Friday at Siloam Methodist Church with Bro. Johnny Duvall officiating. Burial was in the church cemetery with E. E. Salts and Son Funeral Home in charge.

Survivors include a daughter, Mrs. Geraldine Isbell, of Booneville; two sons, Arzoe Hall, of Booneville, Robert B. Hall, of Iuka; seven grandchildren and six great-grandchildren.

Mrs. Hattie White

Mrs. Hattie Mae White, 79, died Sunday, December 31, at Tishomingo County Hospital in Iuka.

The widow of Columbus E. White, she was a member of the Church of Christ.

St. James Catholic Church
1101 Gloster Street
Corinth, Miss.
287-1385
Masses
Saturday 8:00a.m.-5:30p.m.
Sunday 8:30 & 10:30 a.m.
Weekdays 8:00 a.m.

The Bible Speaks

BY: REX BUFORD

JUST A LITTLE CONTAMINATION

One day a mother was scraping vegetables for a salad as her daughter came in to ask permission to go

CARD OF THANKS

I would like to thank our many friends and neighbors for the donations for flowers given following the death of my father, George Brannum. I would also like to give a special thanks to Rev. and Mrs. Frank E. Williamson for traveling so far to attend the funeral and praying such a comforting prayer.

May God bless each and every one of you.

Bill Brannum & Family

Card Of Thanks

We wish to express our thanks to our many friends and relatives for every act of kindness and sympathy shown us during our bereavement of our loving wife and mother, Sally Adair Ward.

May God richly bless each of you.

The Andy Ward Family

NOTICE

JANUARY BIBLE STUDY AT IUKA BAPTIST

The Iuka Baptist Church will have January Bible Study January 7-10. Classes will be provided for all age groups.

The adults will be led by Dr. P. A. Michael, who is pastor of First Baptist Church, Brookhaven, Ms. The Sunday night session will begin at 6:00 and Dr. Michael will preach in the 7:00 worship service. The week-night sessions will begin nightly at 7:00.

TISHOMINGO P.T.A. TO MEET JAN. 8

The Tishomingo P.T.A. will meet Monday night, Jan. 8, at 7:00 p.m. in the school cafeteria. A representative from N.E.M.J.C. will speak on the services offered by the Continuing Education and Community Development.

Please make your plans to attend.

GOSPEL SINGING AT BURGESS CREEK

There will be a gospel singing at Burgess Creek Church on Saturday night, January 6, beginning at 7 p.m.

The Jones Family, of Iuka, will be the special singers.

Everyone is invited.

SINGING AT BANNER COMMUNITY CENTER

There will be a singing at Banner Community Center on Friday night, January 5, beginning at 7 p.m.

Featured singers will be The Parker Chapel Quartet and The Glory Road Singers.

Everyone is invited.

Card Of Thanks

To all the people who showed so much kindness during the loss of our loved one, to friends and relatives and especially to the emergency room staff, also to the doctors, Dr. Segars, Dr. Moss and Dr. Draper, Cutshall Funeral Home and all employees of Tishomingo County Hospital.

Shelia & Brandi Moore
Mr. & Mrs. Lester Moore and family
Mr. & Mrs. Ricky Green

"Money makes a man laugh."
John Selden

CUTSHALL FUNERAL HOME

REPRESENTING CORINTH MUTUAL BURIAL ASSOCIATION

ALCORN COUNTY BENEFIT ASSOCIATION

MISSISSIPPI FUNERAL ASSOCIATION

LIBERTY NATIONAL LIFE & BURIAL INSURANCE CO.

SOME BURIAL POLICIES CAN BE PAID OUT IN 15 YEARS

CUTSHALL FUNERAL HOME

phone 423-5222 IUKA, MISS.



PADEN O.E.S. TO MEET FRIDAY NIGHT

Paden O.E.S. Chapter #351 will meet Friday night, January 5, at 7:30 p.m. All members are urged to be present, and those who have not paid their dues to please pay as soon as possible.

Joyous New Year

Another year I enter, It's history unknown, Oh, how my feet would tremble, To tread its paths alone.

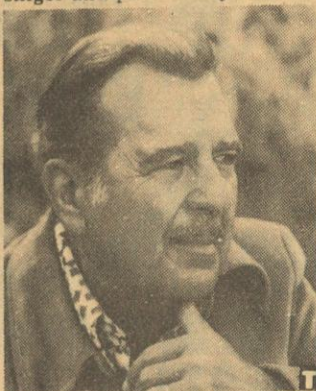
But God has given His promise, I know I shall be blessed, For He is always with me, And He will give me rest.

Give your all to Christ in 1979. He gave His all for you.

ALMA

FAMOUS FARMER

A farm background has often been the precursor to fame for many celebrities, but few have kept up an interest in agriculture throughout their lives. One outstanding exception has been Tennessee Ernie Ford, noted country and gospel singer and personality.



"Ole Ern," as he is known to millions, grew up working

on a truck farm in the Great Smoky Mountains of Tennessee. It was a hard life but one that filled his early years with experiences common to folks from Maine to California. Plowing, hoeing, calving and harvesting was a routine followed annually, and though the tools have changed since then, the work hasn't, he says.

Ernie still has his hand in agriculture. He is a spokesman for Stauffer Chemical Company and over the last decade, has been closely

associated with Eagle Banner Ranches, operating as many as six cattle ranches from Missouri west to Oregon. The old pea-picker can be found in the fall bulldozing, tagging, castrating and branding along with the other buckaroos in the beef business.

"I've been interested in farming since my childhood back in Tennessee," Ford comments, "and today, that interest in agriculture is just as strong. The American farmer is the backbone of this country. The association with the land is a fundamental

principle of the American system, and I'm proud to be part of it."

SECOND SEMESTER DAY CARE & KINDERGARTEN

3, 4 & 5 Year Old IUKA BAPTIST CHURCH

423-5246

WE LOVE CHILDREN

CHURCH DIRECTORY

BAPTIST

IUKA BAPTIST CHURCH
Charles Dampier
BELMONT FIRST
Jack Maroon
CALVARY BAPTIST
Thomas Ozbirn
MT. MORIAH BAPTIST
Ben Thornton
CENTRAL BAPTIST
W. L. Oaks
MT. VERNON BAPTIST
Perry Murphy
TISHOMINGO BAPTIST
Eugene Tennison
BURGESS CREEK FREEWILL
Danny Short
BURNSVILLE FIRST BAPTIST
Dave Smith
NEW PROSPECT BAPTIST
Bro. J. A. Blount
OLDHAM
Cris Burrows
PADEN
Pat Howard
FIRST BAPTIST CHURCH
O. H. Moore
EASTPORT
G. D. Jones
NEW SALEM BAPTIST
E. P. Baldwin
UNITY BAPTIST
Raymond White
RED BUD
John Stovall
ROWLAND MILLS
Frankie Smith
HARMONY HILL
Billy Paul Feltman
MT. JOY
James E. Holt
CALVARY MISSIONARY
Felton Mason
SOUTH CROSSROADS
Ron Harris
BETHEL MISSIONARY
Monty Aydelott

MT. GILEAD
Earl Lewallen - Pastor
TEMPLE
Mavous Phifer
MT. ZION BAPTIST
Stanley Caston - Pastor
FIFTH STREET BAPTIST
Butch Brown - Pastor
OLD PLEASANT HILL
Earline Cummings - Pastor

NEW LEBANON
Terry L. Booker
ANTIOCH FREEWILL
Glenn Jones - Pastor
POPLAR SPRINGS
John T. Prince
HIGHLAND BAPTIST
Cecil Stepp - Pastor
BETHLEHEM
Jerry Stephens
YELLOW CREEK
Stanley Magill
DENNIS FIRST
Wilbur Tesson
FIRST FREEWILL
Dallas Jack Jones
NEW LIBERTY BAPTIST
Raybon Richardson

Nondenominational

Amazing Grace
Tabernacle
Bro. & Sis. R. G. Rodgers
MT. ZION
Dennis Keele - Pastor
NORTH CROSSROADS
COMMUNITY CHURCH
Allen Osborn

METHODIST

IUKA UNITED
Dudley Brown
MT. EVERGREEN
Dudley Brown
CAMP GROUND
HARMONY
PATRICK
ROCKY SPRINGS
Earl S. Cooper
BURNSVILLE
SNOWDOWN
PLEASANT HILL
SPRING HILL
Rowland Hyde - Pastor
BOGGS CHAPEL
PARADISE
SALEM
TISHOMINGO
Del Blackman - Pastor
GOLDEN CHAPEL
OLD BETHEL
Danny Rowland
BELMONT
Grady Bailey
MT. PLEASANT
Grady Bailey
HUBBARD SALEM
Earl Martin
ALLSBORO UNITED
Randy Burbank
JONES CHAPEL
Eddie Jumper - Pastor
MARGERUM METHODIST
Randy Burbanks

CHURCHES OF CHRIST

MAUD CHURCH OF CHRIST
B. Cunningham - Minister

IUKA CHURCH OF CHRIST
Rex Buford
BURNSVILLE
J. T. Smith
BEREA
Steve Puckett
TISHOMINGO
Steve Rogers - Minister
SECOND STREET
BELMONT, MISS.
Don Nix
PLEASANT GROVE
John Hardwick
LIBERTY
Wayne M. Mitchell
MAIN ST.
Tim Gentle

PENTECOSTAL

BURNSVILLE FIRST UNITED
Richard W. Forsythe
IUKA GOSPEL CHAPEL
Jack Lewis
FIRST UNITED
Frank Williamson
BURNSVILLE TABERNACLE
W. E. Sharp
CHRISTIAN FELLOWSHIP
S. A. Bonds
CHRIST GOSPEL
Richard H. Carter
Jacinto, Miss.
IUKA CHURCH OF GOD
Frank Samples

PRESBYTERIAN

ALLSBORO CUMBERLAND
J. B. Burns, Jr.
BETHANY
L. K. Foster

McNATT FORD SALES

PHONE 423-3681 IUKA, MISS.

BROWNS INS. AGENCY

IUKA, MISS.

CARPETS UNLIMITED

NEXT DOOR TO OWL & PENNIES

Town & Country Furniture Co.

TWO LOCATIONS DOWNTOWN IUKA AND HIGHWAY 25 SOUTH

FIRST AMERICAN NAT'L BANK

IUKA, -BURNSVILLE GOLDEN -CORINTH

1st CITIZEN LOANS

PHONE 423-5248 HWY. 72 EAST IUKA, MISS.

FARM BUREAU INS.

IUKA, MISS.

CUTSHALL FUNERAL HOME

IUKA, MISS. 423-5222

HONEYCUTT CHEVROLET

PHONE 423-3622

IUKA, MISS.

RUSHING REXALL DRUGS

PHONE 423-5248 IUKA, MISS.

CURTIS BROS. DRUGS

IUKA, MS

IUKA GUARANTY

STRAIGHT THROUGH THE



Miss Regina Smith
To Wed Peter Capp

Wedding plans for Regina Smith, daughter of Mr. and Mrs. Dock Smith, Jr., 2115-2nd St., Winthrop Harbor, Ill., and Peter C. Capp, son of Mr. and Mrs. William Capp, of 2724 Eshelwood Ave., Zion, Ill., have been announced. The ceremony will take place February 3, 1979, at the Christian Catholic Church.

The bride-elect, a 1977 graduate of Zion-Benton High School, is employed at the Zion State Bank and Trust Co. Her fiancé, a 1972 graduate of ZBTHS, is a partner in Capp & English Builders. They plan to live in Zion. Regina is the granddaughter of Mrs. Dock Smith and the late Mr. Smith, of Iuka.



TONI STARKEY, of the East Tishomingo 4-H Club, was chosen Tishomingo's most outstanding Junior 4-H member at the annual 4-H Achievement Banquet. Mr. Percie Stricklen presented Toni with a check for \$7.50 in project record book, an award medal in pet care and training, a radio for outstanding club member, a calculator for being a county winner. Her club received a check for \$20 from South Central Bell, placing third in Community Pride Record Book.

To Celebrate

Mrs. Mary Jane Seago will celebrate her 90th birthday on Sunday, Jan. 7, with open house for all her relatives, friends and neighbors between 2:00 and 4:00 o'clock p.m. at her home.

Exercise Classes

Ladies Exercise Classes at the National Guard Armory will begin on Monday, January 8, at 6:00 p.m. For more information, contact Corrie Carson at 423-5207.

Calorie Counters

MISSISSIPPI STATE — One of the brightest notes at fruit counters now is large mounds of golden grapefruit.

Heavy with juice, today's grapefruit are so sweet and flavorful you will never need to add sugar or any other embellishment to have something truly delightful to the taste, says Ann Rushing, marketing specialist, Mississippi Cooperative Extension Service.

"Calorie-watchers and calorie-seekers all can enjoy grapefruit," continues the specialist. "Watchers are aware that one-half medium grapefruit contains about 40 calories; seekers know that it is important to make each calorie count. The natural sugar of grapefruit is a ready source

of energy. Valuable amounts of vitamin C and other important nutrients are also found in the fruit."

Grapefruit are available throughout the year. From January through April is the peak period when the eating quality of grapefruit is at its best. Supplies are also the

heaviest and prices the lowest.

Select grapefruit that are firm and heavy for their size; heaviness indicates a large amount of juice. Choose thin-skinned fruit with no soft spots. Don't hesitate to buy grapefruit with russet patches; many people feel this indicates the best flavor.

All grapefruit are fully mature when they are shipped, so do not assume that a green color indicates immaturity. Skin color is not a good guide for ripeness.

As in all citrus, a grapefruit tree has blossoms, immature fruit and ripe fruit on it all at the same time. In the spring, extra chlorophyll produced for new bloom may tinge the already ripened fruit

with green coloring. This natural process is called "re-greening" and in no way affects the quality, explains Mrs. Rushing.

Weight-watchers — whether they want to gain weight, lose weight or keep their established weight — will find grapefruit an excellent treat, not a treatment.

Peachy Keen Nog

(2 servings)

For patio or poolside, Peachy Keen Nog is a delicious take-along. Make it with fresh or frozen peaches for a quick and nutritious thirst quencher.

1 1/2 cups vanilla or peach ice cream
2 fresh peaches, peeled and pitted
or 1 package (10 oz.) frozen peach slices, thawed
2 eggs

Combine all ingredients in blender container. Cover. Blend at medium speed until smooth, about 15 seconds. Serve immediately.

TIMBES TIRE SERVICE

Hwy. 72 Burnsville Ms. 427 - 8778

H 78x15 4 Ply Polyester
White Wall \$32.95

Includes All Tax, Mounting
and Balancing

WHITE SPOKE WHEELS
4 - \$79.95

Yarbrough-Nunley Engagement Told

Mr. and Mrs. Raymond Yarbrough, of Tishomingo, announce the engagement of their daughter, Janet, to Tommy Nunley, son of Mrs. Maudie Nunley and the late Mr. Furnie Nunley, of Iuka, Miss.

Grandparents of the bride-elect are Mr. and Mrs. L. R. Yarbrough and Mrs. Mary Gray and the late Mr. Marshall Gray, all of Tishomingo.

Grandparents of the prospective groom are the late Mr. and Mrs. John Nunley and the late Mr. and Mrs. Robert Kent, all of Iuka. Miss Yarbrough is a 1973 graduate of Tishomingo

High School and the Northeast Mississippi Junior College with a degree in data processing. She is presently employed at the Tishomingo State Park.

Mr. Nunley is a 1973 graduate of Tishomingo High School and attended the Northeast Mississippi Junior College. He is presently self-employed.

The wedding will be solemnized January 13, at 6 p.m. at the Tishomingo State Park Lodge. A reception will follow at the lodge dining room.

All friends and relatives of the couple are cordially invited to attend.

JANUARY

fashion clearance

starts
Friday morning
at 9:00

1/2
PRICE
SALE



*All Sales Cash
*All Sales Final
*No Exchanges
*No Returns
*No Refunds

HOURS:
9 A.M.
TO
5 P.M.

Daisy's
House of Fashions
Iuka, Miss.

ANNUAL JANUARY MEN'S WEAR SALE

ENTIRE STOCK

Men's Suits & Sport Coats

Men's Sweaters

Knit Shirts

Winter Jackets

All Purpose Coats

20% off

LARGE GROUP
Men's Dress Shoes
Freeman-Rand-Dexter
ONE GROUP
Men's Slacks

30% off

1/2 PRICE

ONE GROUP
Men's Sport Coats

Men's Suits

1 Group Men's
Arrow & Career Club
Dress Shirts
Values To \$18.00

\$7.38

GRISHAM'S
MEN'S WEAR
Downtown Iuka



ANTHONY LEE HIGGIN, BOTTOM, of the Mt. Gilead 4-H Club, is shown receiving an award for gardening from Mr. Percle Stricklen,

Tishomingo County Agent. He also received a radio for the Most Outstanding Junior Boy.

SWCD Annual Report For Fiscal Year 1978

The Tishomingo County Soil and Water Conservation District is composed of approximately 288,640 acres. There are 1550 operating units in the district with a total of approximately 163,000 acres of farmland. The remaining 125,640 acres are in towns, roads, parks, industrial areas, nuclear plant site, and the Tennessee-Tombigbee Waterway lands.

The commissioners of your district are responsible for planning and implementing conservation programs and activities in Tishomingo County. The Commissioners who served the Tishomingo County Soil Conservation District for the 1978 year were: W. R. Wimlish, Chairman; Ray Davis, Secretary; Jim Carson, Eddie Gresham and Freeman Floyd.

One of the principal objectives of the district was to promote conservation

education in our public schools. This was achieved to a degree by the completion of an outdoor classroom and nature trail at the Iuka Elementary School. This trail and classroom was constructed as a joint effort by the TVA Youth Conservation Corps and the Tishomingo County SWCD. The District also has two teachers attend the environmental workshop held at the Tupelo Branch of the University of Mississippi.

The Tishomingo County SWCD Commissioners gave support to the State and National Association of Conservation Districts by paying their state and national dues. The commissioners also attended the meetings and supported the programs of the state committees.

The Tishomingo County SWCD Commissioners assisted in the preparation of a county roadside erosion control plan. This plan has

been submitted to the RC&D committee for review and possible funding.

In May of this past year, the district sponsored a public meeting to review the 208 water quality act. The public was asked to comment on the draft following the meeting.

The district commissioners carried on an active information and education program for 1978. The district participated in Tree Planting Week with 4,000 pine seedlings being planted by school students. The district also held a membership drive for 1978 with 15 associate memberships and five affiliate memberships. Soil Stewardship Week was recognized by the district with 1,000 leaflets distributed to churches throughout the county. A weekly radio program on conservation was presented for the district and news articles on various conservation activities were published periodically throughout the year. A forage and pasture crop seminar was sponsored by the district with approximately 60 people attending.

We feel that 1978 was a successful year for the district, but 1979 can be even a better year. To improve our effectiveness as a conservation district we felt we needed to establish some objectives for 1979. They are as follows:

1. Promote land treatment measures that will reduce sediment and erosion damage from cropland and other sediment producing areas.
2. Promote conservation education in public schools.
3. Carry out good information programs on conservation activities through radio, newspaper, field days, and seminars.
4. Revise the long-range objectives based on the conservation needs of the county.

The Tishomingo County SWCD Commissioners would like to thank the following people: the Tishomingo County Board of Supervisors for their financial backing of the district, local firms and co-

operators for their support by joining the district, the local radio station and county newspapers who gave public service time to report activities and to call attention to technical assistance available, and to the local county agricultural agencies who helped the district carry out the 1978 conservation program.

Iuka Route 2 News

Tommy Morris left on Monday for Ft. Lauderdale, Fla. where he attends school.

Mr. and Mrs. Hershel Cresap, of Sardis, Miss., spent Christmas with his mother, Mrs. C. S. Cresap. Visiting with Mrs. Lowery Dean and Miss Mable Dean on Christmas Day were: Mr. and Mrs. Robert Park and Lloyd, of Memphis; Mr. and Mrs. Harold Davis and family, of Memphis; and Mr. and Mrs. Robert Lane and Mrs. Dorothy Hayes, of Melrose, La.

Mr. and Mrs. Tom Hayes and daughter, Tracy, of Arab, Ala., visited during Christmas with his mother, Mrs. Dorothy Hayes, and family.

Visiting with Mr. and Mrs. Alfred Bonds during Christmas were their children,

Mr. and Mrs. Dennis Smith, of Birmingham; Mr. and Mrs. Wilburn Bonds and girls, of Guys, Tenn.; Franklin and Frankie Bonds, of Memphis; and the Joe Bonds family, of Burnsville.

All of the 31 members of the Marshall Daniel family were together at the family home on Christmas Eve.

Mr. and Mrs. Ken Saucier and children, of Jackson, and the Dean Pierce family, of Corinth, were at home during Christmas with their parents, Mr. and Mrs. Ledgie Grisham.

France extended the vote to women in 1944.

Thanks

The persons of Local 206 would like to take this opportunity to say thanks to Consolidated Aluminum Corp. for their generous of a turkey they received for Thanksgiving. They also received for Christmas.

I BUY SILVER COINS

I PAY 2 1/2 TIMES FACE VALUE FOR Dimes, Quarters and Halves, Dated 1964 AND EARLIER. I ALSO BUY HALF DOLLARS DATED 1965 TO 1970 AND OTHER RARE COINS.

Phone 423-3077

Two New Certificates of Deposit are now being offered by Tri-State Savings & Loan!

(1.) MoneyMarket Certificate
Short, 26-week maturity with high yield!

Call or come in for current High Rate!
***\$10,000 minimum required**

(2.) 8% Certificate
Only \$1,000 minimum required!

● 8-year maturity
● Earn 8% interest compounded or paid quarterly

FEATURES OF OTHER PLANS AT TRI-STATE SAVINGS & LOAN:

7 3/4%
6-Year Certificate
Interest compounded or paid quarterly
\$1,000 minimum balance

6 3/4%
3-Year Certificate
Interest compounded or paid quarterly
\$1,000 minimum balance

REGULAR SAVINGS:
5 3/4%
90 Day Certificate
Interest compounded or paid quarterly
Minimum Balance \$100.00

7 1/2%
4-Year Certificate
Interest compounded or paid quarterly
\$1,000 minimum balance

6 1/2%
1-Year Certificate
Interest compounded or paid quarterly
\$1,000 minimum balance

5 1/4%
Daily Passbook
INTEREST COMPOUNDED DAILY

*Substantial interest penalty required for early withdrawal. All interest rates conform to FSLIC regulations.



TRI-STATE SAVINGS & LOAN ASSOCIATION

Iuka Phone 423-3186
Belmont Phone 454-3313



ALL COATS 50% OFF

ALSO 25% TO 40% OFF IN ALL DEPARTMENTS.

LADIES DRESSES, CHILDWEAR, HANDBAGS, SPORTSWEAR & UNDERWEAR DEPARTMENTS.

SHOP AND SAVE AT KENWIN'S TODAY.
USE OUR CHARGE PLAN.

KENWIN SHOP

123 Front St. Iuka, Ms.



HIGGINBOTTOM, of
t. Gilead 4-H Club,
shown receiving an
award for gardening from
Mr. Percie Stricklen,
Tishomingo County Agent,
at the 4-H Achievement
Banquet.



EN — The top ten
s in the Voice of De-
y Script Writing
t held recently at Iuka
chool were, front row,
ft: Jo Ellen Wynn,
n Ray, and Karen Jo-
ack row: Pam Cleave-
en Moore, Annaclair
Brown, Robert Dexter and
Lynn Goss. Not shown are
Becky Curtis and Tammy
Moss. The Voice of Demo-
cracy Contest is sponsored
by the Veterans of Foreign
Wars (VFW) throughout the
United States. Ken Moore,
the local first place win-
ner, will advance to the
district competition.



Sauce originally meant salted
food.

Ms. Pharr Writes Poem

A University of Missis-
sippi student from Belmont
is one of more than 25 con-
tributors to "Images"
magazine, a literary publi-
cation at Ole Miss.
Renelda Pharr, a graduate
student in English at Ole
Miss, wrote the poem
"Cropduster."
"Images" features poet-
ry, short stories, artwork,
and essays and is published
twice yearly by UM students.

Birth

Mr. and Mrs. Tommy G.
Grisham, of North Cross-
roads, are the proud par-
ents of a baby girl born
Wednesday, December 27,
at 8 a.m. at Coffee Mem-
orial Hospital. The little
lady arrived weighing 8
lbs. 7 ozs., and has been
named La Dana Lea. She
was welcomed home by her
sister, Stacy Yolanda, age
2.
Proud grandparents are
Mr. and Mrs. Donald Crabb
and Mr. and Mrs. Jack
Grisham, of Iuka.
Great grandparents are
Mr. and Mrs. L. F. Nunley
and Mr. and Mrs. Walter
Lee Crabb, all of Iuka.

FORCED SALE

WE LOST OUR
BUILDING
NO PLACE TO
MOVE

EVERYTHING MUST SELL
NOW!

BARGAINS ON ALL MERCHANDISE

TELEVISION-STEREOS-ANTENNAS
FURNITURE, NEW & USED
BEDDING-LAMPS-TABLES-DINETTES
C B RADIOS-SCANNERS-GUITARS
FIDDLES-BANJOS
MUSICAL ACCESSORIES

--BIG DISCOUNTS--
Building to be torn down!

AUSTON CURTIS FURNITURE

HIGHWAY 25 SOUTH--- IUKA, MISS.

Sunflower Stores

go mini-pricing

TISHOMINGO

PRICES GOOD THRU WED. JAN. 10, 1979

OPEN 7 DAYS A WEEK

STORE HRS.
MON.-SAT. 8-6 SUN. 12:30-5:00



U.S.D.A.
INSP.

1lb.

Whole Fryers 44¢



CUP

59¢

With each '5¢ purchase. No Limit.

Your Choice of Three
Exquisite Patterns
• Summer Time • Spring Time
• Foliage Time

Featured This Week:

Tenn. Pride Country Sausage

HOT OR MILD

\$1.38

1-lb.
pkg.

2-lb. pkg.... \$2.78

WE
ACCEPT
FOOD
STAMPS

MEANS LOW PR

Blue Bonnet

Oleo

Qtrs.

1-lb. pkgs.

3/\$1

LIMIT 3 WITH \$10.00 PURCHASE

ARMOUR'S BANNER

Smoked Sausage

LB. \$1.08

OCEAN FRESH

Flounder Fillets

LB. 98¢

ARMOUR

Sliced Bacon

12 OZ. PKG. \$1.18

Fryer Breast

LB. 98¢

FAMILY PACK

FRYERS

LB. 49¢

ARMOUR'S

Hot Dogs

12 OZ. PKG. 98¢

Boneless

Chuck Roast 1lb. \$1.28

Fresh Produce

NO 1 RED
POTATOES 10 LB. BAG 99¢

FLORIDA PINK

GRAPEFRUIT EACH 10¢

FLORIDA

RANGES DOZ. 59¢

APPLES 3 lb. bag 69¢

SH GREEN

BABAGE LB. 19¢

Mayonnaise

32 oz.
jar

47¢

LIMIT 1 WITH \$15.00 PUR.

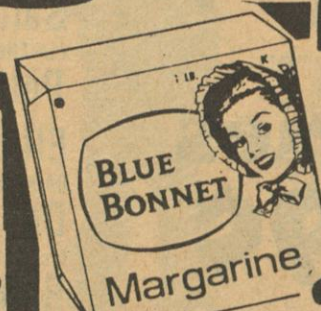


Crisco Shortening

3-lb. can

99¢

LIMIT 1 WITH \$15.00 PURCHASE



BLUE
BONNET
Margarine

LSBURY
OUR 5 LB. BAG 69¢

COKEs 2 LITER 79¢

32 OZ. BOTTLES PLUS DEPOSIT

R.C. Cola 6/\$1.69

SALLY IND. WRAPPED
CHEESE 12 OZ. 99¢

COUNTRY BOY

CORN 16 OZ. CANS 4/\$1

GEORGIAN
Tissue 4 ROLL 69¢

MAXWELL HOUSE LIMIT ONE

Coffee LB. BAG \$1.99

HI DRI
Towels ROLL 39¢

HENDERSON

Sugar LIMIT 1 5 LB. BAG 99¢

JIM DANDY PLAIN OR SELF-RISING
Corn Meal 5 LB. BAG 89¢

BREAST OF CHICKEN

TUNA 6 1/2 OZ. CAN 69¢

Sunflower Stores

IUKA, MISS.

PRICES GOOD THURS. JAN. 4 THRU WED. JAN. 10.
QUANTITY RIGHTS RESERVED. NO SALES TO DEALERS.

go mini-pricing

Family Pak



U.S.D.A. INSP.

- 4 - WINGS
- 2 - GIBLETS
- 2 - BACKS
- 3 - BREAST HALVES
- 3 - THIGHS
- 3 - DRUMSTICKS

Fryers 39¢ lb.

- ARMOUR'S Sliced Cooked Salami 12 oz. pkg. \$1.18
- ARMOUR'S Reg. or Beef Sliced Bologna 12 oz. pkg. \$1.18
- ARMOUR'S Sliced Cooked Ham 4 oz. pkg. \$1.08
- ARMOUR'S Sliced Chopped Ham 4 oz. pkg. 78¢

- U.S.D.A. INSP. Fryer Breast lb. 98¢
- ARMOUR'S Smoked Pork Loin Chops lb. \$1.88
- ARMOUR'S Sliced Bacon 12 oz. pkg. \$1.18

- ARMOUR Chicken Fry Steaks lb. \$1.38
- BACON Ends & Pieces 3-lb. box \$1.98
- OCEAN FRESH Flounder Fillets lb. 98¢

Floral Expressions

Heartside Stoneware

Your Choice of Three Exquisite Patterns
• Summer Time • Spring Time • Foliage Time

Featured This Week:

CUP 59¢

With each \$5 purchase. No Limit.



Savory Aged Boneless Chuck Steak \$1.48 lb.

- ARMOUR'S Hot Dogs 12 oz. pkg. 98¢
- ARMOUR'S Chunk Beef Bologna lb. \$1.18

Boneless Chuck Roast \$1.28 lb.

- SAVORY AGED Boneless Cube Beef Steak lb. \$1.98
- ARMOUR'S BANNER Smoked Sausage lb. \$1.08
- PLANTATION Turkey Drumsticks or Necks lb. 58¢
- SAVORY AGED Boneless Shoulder Swiss Steak lb. \$1.58
- HAPPY HOMES Brand Corn Dogs lb. \$1.48
- ARMOUR Sliced Luncheon Meats 6 oz. pkg. 78¢

Tenn. Pride Country Sausage

HOT OR MILD

\$1.38

1-lb. pkg.

2-lb. pkg. \$2.78

Quarterloin Pork Chops

ARMOUR'S VERIBEST

\$1.38

1-lb.

Kraft Mayonnaise 99¢

32 oz. jar

LIMIT-1 WITH \$10.00 PURCHASE



BORDENS Ice Cream

\$1.19

1/2 gal.

Campbell's Chicken Noodle or Vegetable Soup

4/99¢

10 3/4 oz. cans

Blue Bonnet Oleo Qtrs.

2/88¢

1-lb. pkgs.

Crisco Shortening

\$1.39

3-lb. can

LIMIT-1 WITH \$10.00 PURCHASE

SALLY'S-6 oz. cans Tomato Paste

4/\$1

DELI SPECIAL

SNACK BOX 2 PIECES OF CHICKEN 1 ROLL 1 POTOTOE LOG 79¢

FAMILY BOX 1 WHOLE FRIED CHICKEN 8 POTOTOE LOGS 8 ROLLS \$2.98

YOUR CHOICE WHITE OR DARK MEAT

10¢ on 1 BOUNCE any size 29 count \$1.09	10¢ on 1 BIZ any size 25 OZ. \$1.35	10¢ on 1 ZEST any size 5 1/2 oz. bar 2/87¢	10¢ on 1 MR. CLEAN any size 15 oz 79¢
--	-------------------------------------	--	---------------------------------------

SALLY'S Frozen Baby Limas 16 oz. can 79¢

KELLOGG'S Corn Flakes 18 oz. box 6/79¢

TEXSUN UNSWT Grapefruit Juice 6 oz. cans 4/79¢

Sally's 8 oz. size Oleo Patties 4/79¢

King Size or Sandwich Sally's Bread 3/\$1

Trellis Peas 17 oz. cans 3/79¢

SHOWBOAT Pork & Beans 14 oz. cans 3/79¢

BRYANS Potted Meat 3 oz. cans 4/79¢

BRYANS Vienna Sausage 5 oz. cans 3/\$1

Flavorite Beef, Chicken, Turkey Pot Pies 8 oz. 3/89¢

Flavorite frozen, 8-ear Cob Corn 89¢

Potato Chips Lay's Reg. 89¢ 2/\$1.39

7 1/2 oz. pkg.

Health & Beauty

10 COUNT

Contac \$1.17

8 OZ.

Pepto-Bismol \$1.09

RAY-O-VAC "C" or "D"

Batteries 49¢

Twin Pak

DERBY-13 1/2 oz. jar Tamales 59¢

SALLY'S-100 count Tea Bags \$1.49

DIXIE BELLE Saltines 16 oz. box 2/99¢

ELF-FROZEN Crinkle Cut Potatoes 5 lb. bag \$1.19

Elf Bleach half gallon 39¢

RAINBO Hamburger Dill Slices 16 oz. jar 59¢

MCCORMICK Ground Black Pepper 4 oz. can 89¢

Potatoes 79¢

10 lb. bag

U.S. No. 1 Red

WE ACCEPT FOOD STAMPS

Fresh Green Cabbage 10¢ lb.

WASH X-FCY RED Del. Apples 49¢ lb.	WASH X-FCY GOLD Del. Apples 49¢ lb.
CANADIAN Rutabagas 15¢ lb.	FLORIDA PINK Grapefruit 15¢ lb.
U.S. NO. 1 Yellow Onions 15¢ lb.	FRESH CELLO Red Radishes 15¢ lb.

Sally's Ind. Wrap. Amer. Cheese Slices 12 oz. pkg. 99¢

Premium Saltines 1-lb. box 58¢

Charmin Tissue 4-roll pkg. YEL. BLUE, WHITE, PK. GR 78¢