





**B & J SUPERMARKET**

HWY. 365 SOUTH BURNSVILLE, MISS.

WE RESERVE THE  
RIGHT TO LIMIT  
QUANTITIES  
WE GIVE QUALITY  
STAMPSWE SLICE, CUT, AND FREEZER WRAP  
MEAT FOR THE PUBLIC
**STORE HOURS**  
 SUN. THRU THU  
 8:30 - 8:30  
 FRI. & SAT.  
 8:30 - 9:00

AD EXPIRES AUG. 4th

ARROWHEAD

**FRANKS**

12 OZ. PKG.

**69¢**OSCAR MAYER  
Weiners

12 OZ. \$1.29

ARMOUR

**Ham**\$4.99 WITHOUT COUPON  
20¢ CHARGE FOR SLICING3 LB. CANNED  
WITH COUPON BELOW**\$4.49**

CHICKASAW

**Bacon**1 LB. **89¢**

BRYAN

**Sausage**HOT OR MILD  
PAMPERED1 LB. **\$1.39**

U.S.D.A. CHOICE ROUND

**STEAK**BONELESS  
\$1.89 LB.**\$1.79**

U.S.D.A. CHOICE

Cube Steak

LB. **\$2.39**

COUNTRY STYLE PORK

Backbone

LB. **\$1.19**

PORK LOIN

Roast

LB. **\$1.19**

REELFOOT RAG

Bologna

LB. **89¢**

MRS. WEAVERS

Pimento Spread

SAVE 40¢ 14 OZ. **\$1.59**

HYDE PARK CUT

Sweet Potatoes

LARGE  
29 OZ. CAN **59¢**HYDE PARK GREAT NORTHERN  
Beans16 OZ. **4/\$1.00**

hyde park fresh blackeye

Peas

16 OZ. **3/89¢**

HYDE PARK

**PORK & BEANS**

16 OZ. CANS

**4/\$1.00**

BAMA

Fruit Drinks

10 OZ. BOTTLES **5/\$1.00**

RED LABEL KARO WHITE

Syrups

16 OZ. **69¢**

PLOCHMAN'S SQUEEZE

Mustard

10 1/2 OZ. **3/\$1.00**

ALLEN GREEN

Limas

14 1/2 OZ. **3/\$1.00**

HYDE PARK HAMBURGER DILL

Pickles

16 OZ. **2/\$1.00**

HYDE PARK

Peanut Butter

18 OZ. **99¢**

HYDE PARK GRAPE

Jelly

16 OZ. **59¢**

LUCKY LEAF APPLE

Juice

32 OZ. **69¢****MARGARINE**

1 LB. TWIN BOWL

**39¢**BONUS BUY  
1 BUY PER \$15.00 PUR.

BAMA

**MAYONNAISE**

EAGLE BRAND CONDENSED

Milk

14 OZ. **99¢**

KRAFT MACARONI

Dinners

14 1/2 OZ. **69¢**

BIG COUNTRY

Biscuits

5 CT. **3/79¢**

BOOTH BREADED FANTAIL

Shrimp

10 OZ. **\$2.49**

FREEZER QUEEN ENTREE

Dinners

2 LB. **\$1.29**
**\$1.00**  
 QUART JAR  
 WESSON  
 Oil  
 LARGE  
 48 OZ. BOTTLE  
**\$2.29**

RETURNABLE SOFT

**DRINKS**

PLUS DEPOSIT

32 OZ.

**6/\$2.09**

CHARMIN

**TISSUE**

4-ROLL PKG.

**99¢**

TOWN &amp; COUNTRY

Dog Ration

25 LB. **\$3.19**

Pepsi Products

16 OZ.  
DISPOSABLE**6/\$1.79**

SHOWBOAT

Spaghetti or Rings

300 size **3/79¢**

borden'S

Cheese Singles

12 OZ. **\$1.29**

KRAFT RED RIND OR COLBY

Cheese

1 LB. **\$1.89**

KELLY'S PORK

Barbeque

10 1/2 OZ. **99¢**

PUREX

Bleach

GALLON SIZE **79¢**

Crisco

3 LB. CAN

**\$2.09**

TOTINA

Pizzas

CLASSIC  
COMBINATION

20 OZ.

**\$2.19**

FAULTLESS SPRAY

Starch

15 OZ. **69¢**

TENDER VITTLES

Catfood

LARGE 18 OZ. BOX

**99¢**

Glad Wrap

LARGE  
200 FT. ROLL **69¢**

DELTA ASSORTED

Napkins

120 CT. **2/\$1.00**

Tide

LARGE FAMILY SIZE **\$4.99**

CALIFORNIA

Nectarines

LB. **69¢**

YELLOW

Onions

3 LB. BAG **49¢**

Rutabagas

LB. **19¢**

ICE BERG

Lettuce

HEAD **49¢**

HEINZ

**BABY FOODS****5/\$1.00**

JOY DISHWASHING LIQUID

**DETERGENT**

22 OZ.

**89¢****50¢ off**

ARMOUR 3 lb.

Canned

HAM

COUPON EXPIRES 8-4-80

B &amp; J COUPON



## TISHOMINGO COUNTY NEWS

### VIDETTE and BELMONT NEWS

Phone 423-3666

(SECD 631680)

John H. Biggs, Editor & Publisher

Published Thursday by The Tishomingo County News, Inc. Serving the people of Tishomingo and adjoining counties for more than 95 years. Publication office 120 West Front Street, P. O. Drawer E, Iuka, Mississippi. Entered at the Post Office as mail matter of the Second Class. Second Class postage paid at Iuka, Mississippi. Zip Code 38852. Post Master send address changes to The Tishomingo County News, P. O. Drawer E, Iuka, Mississippi 38852.

Mail Rates Tishomingo & Adjoining Counties  
\$6.00 Per Year

Other Areas  
\$8.00 Per Year



### Chatting With Your Home Economist

By: Nellie Horton

#### Credit Cards

Choose your credit options carefully during the next several weeks. It is up to you to read your mail from creditors and to make a decision you want to live with. Decide which credit cards to continue using (old or new credit system) and which cards you want to delete. Read the fine print and act according to your needs.

#### Beat The Heat

Want to beat the summer heat? If your house is air conditioned, shade windows from direct sun. Blinds and draperies that are light-colored and opaque can reduce heat gain through windows by as much as 50 percent. Close them whenever the sunlight hits the window.

Awnings, shutters, overhangs and even trees can reduce heat gain from the sun by as much as 80 percent.

Add insulation in the attic and insulate air conditioning

ducts. Reduce heat gain from the attic by reducing attic temperatures with better ventilation.

Reduce heat created inside the house:

Turn off heat-creating appliances when not in use or use these appliances less.

Do the heat-producing activities in the cooler morning or evening hours.

#### Keeping Cool

Want to beat the summer heat without air conditioning? Then insulate, ventilate and take advantage of nature.

Invite cool night air into your home and close up the house in the morning.

When ventilating, draw air from the coolest side of the house. Expel warm air from the upper parts of the house either into the attic or through windows lowered at the top.

Keep heat from the sun outside; draw blinds and draperies of windows exposed to direct sunlight.

### County Agent's Notes

By: Percie Stricklen

#### Are Your Hogs Comfortable In Your Farrowing Houses?

Extension Swine Specialist Dr. Jim Shannon says you need to keep air circulating in farrowing houses, especially during extremely hot weather. Dr. Shannon says use sprinklers and fans to cool your hogs. Springs, sprinklers or a nearby wallow provide relief for hogs on dry lot or pasture. Be sure to provide plenty of shade and water to keep your hogs cool this summer.

#### Timber Harvest

If you own timberland, don't neglect the most important phase in the life of your timber. Extension Forestry Leader Dr. Robert Parker says the most important management practice is Timber Harvest. You can prevent loss of profits and damage to trees not being harvested by making careful plans for the harvesting operation. Mark the trees you plan to cut and know the market price of your timber. Advertise and seek bids on timber and have a written contract with the harvester.

#### Herbicide Poisoning To Livestock

If you use herbicides to kill weeds around your farm, keep them away from livestock. Extension Veterinarian Dr. Ashby Green says many animals are poisoned by herbicides each year in Mississippi. Materials that contain arsenic cause most herbicide-related cattle deaths. The herbicide

closed during the day as long as practical.

Reduce heat-producing activities as much as possible. Use exhaust fans. Use fans to provide the most comfortable air movement.

Prevent the sun from heating up the walls of the house with shade trees and vines. Exhaust the heat from the attic to reduce attic temperatures.

Mississippi State University does not discriminate on grounds of race, color, religion, national origin, sex, age or handicap.

#### Cheese-Pimento Sandwich Spread

1 tbsp. sugar  
1 tbsp. flour  
1 tbsp. butter or margarine  
3 tbsp. vinegar  
½ cup cream or whole milk  
1 egg, well beaten  
½ tsp. salt  
½ lb. processed American cheese, cut in cubes  
2 hard cooked eggs, grated  
1 small can pimientos, drained and chopped  
1 tbsp. grated onion, optional

Mix sugar, flour, butter, vinegar, milk, egg and salt in top of double boiler. Stir well and cook until thick. Mixture will curdle, but will not be harmed. Stir in cheese, eggs, pimientos, and onion. Yield: Enough for 12 sandwiches.

M-S-M-A contains arsenic and is a particular threat to livestock. Dr. Green explains that M-S-M-A is a good taste to cattle and may be especially tempting to cattle not on a good mineral supplement feed. Avoid loss of animals to herbicide poisoning by following label directions for proper use and disposal of herbicides and containers.

#### Pesticide Poisoning

Prevent pesticide poisonings by wearing protective clothing. Extension Farm Specialist Dannie Reed says chemicals used in farming operations can enter your body through the skin, lungs, or mouth. To prevent this, wear long-sleeved shirts, long pants, unlined rubber or plastic gloves, shoes and a waterproof hat when handling pesticides. If you become nauseated or dizzy after using chemicals, check with your doctor or local hospital to see if you have been chemically contaminated.

### ASCS Farm News

By: Henry L. Knox, County Director

#### Disaster Appraisals

The recent drought situation has made much of the corn acreage in the county almost worthless for grain. Producers are now faced with the question of whether or not to cue the corn early for silage or let the crop mature and harvest for grain. Our office cannot advise you as to what action you should take relative to drought-stunted crops. However, we do want to inform you of the program provisions to follow in order that you may receive disaster benefits. An application for disaster benefits must be filed if the corn is to be harvested as silage and the potential grain production appraised by a representative of the county office before the crop is cut. If you destroy or harvest the crop for silage before it is appraised, you will lose all program benefits. If you plan to leave the corn standing until harvest, you do

not need to do anything at this time. When the crop is harvested, you will need to have an accurate weight and the production from each farm stored separately. An application for disaster benefits would need to be filed for each farm and the production from each farm measured separately. If you have any questions concerning disaster program benefits, please call the Tishomingo County ASCS Office at 423-5036.

#### ASCS Extends Livestock Feeding Period

To enable more farmers to participate in the Emergency Feed Program, the Agricultural Stabilization and Conservation Service recently authorized a new option for determining whether a farmer is eligible for the program. "We will consider a livestock feeding period which begins from the date of application and ends with the crop year," Elmer South, Chairperson of the Tishomingo County ASC Committee, said. The agency will also consider both the feed a farmer has on hand and the estimated production for the remainder of the year. Previously, the county ASC committee determined that the program's feeding period ended when additional feed normally became available to the farmer.

South said the new option will allow the producer to reserve some of the farm's production for winter feed and use purchased feed to meet current needs. He explained that the regular requirement sometimes caused a hardship for farmers. The Emergency Feed Program authorizes ASCS to reimburse livestock owners a portion of the cost of feed purchased when a natural disaster has reduced the amount of feed normally produced on the farm. Payments are made at the rate of 50 percent of the cost of feed purchased not to exceed two cents per pound of feed grain equivalent. The applicant must buy feed in larger than normal quantities. The ASCS official said the program helps preserve

livestock and prevents widespread selling or destroying of herds due to natural disasters.

### 4-H News

By: Tommy G. Purvis

#### 4-H's Follow Water Safety Rules

Nearly half of all drowning deaths in a recent year involved young people between the ages of 5 and 24.

Of a total of 8,700 drownings, 1,600 occurred among 5 to 14 year olds and 2,600 among 15 to 24 year olds. These National Safety Council figures include all drownings in boating accidents and those resulting from swimming, playing in the water or falling in.

Accident statistics like these point up the need for increased water safety training for young people. This need is being met in the national 4-H safety program, which enrolls nearly 374,000 boys and girls in safety projects and activities supervised by the Cooperative Extension Service.

4-H members learn the importance of becoming good swimmers, swimming in approved and supervised areas, learning first aid, taking courses in small craft handling, observing boating regulations and wearing personal flotation devices.

Although safety during recreation gets more emphasis during summer months, 4-H activities revolve around safety for all seasons and in all locations. On the farm, in the home, on the highway, 4-H'ers learn by doing that accidents and injuries can be reduced, hazards identified and corrected,

and safety skills practiced throughout the year. Young people can also help educate their families, classmates and communities to the need for year-round accident prevention.

4-H members who excel in safety projects and activities are eligible for awards donated by General Motors and arranged by the National 4-H Council.

General Motors offers \$1,000 college scholarships to eight national safety winners, an expense-paid trip to National 4-H Congress to one winner in each state and

medals of honor to H'ers in each county. For more information, contact your 4-H office.

### —Personal—

Dr. and Mrs. W. A. and Mrs. L. A. Carter visited with Mr. and Mrs. Harmon McGill, Sr. over the weekend. The Carters were recently with Mr. and Mrs. Woodrow McGill, Jr. Traugher, Trey and Mrs. Mary Springfield, Tenn.

## INSULATION

Will save you money on your cooling bill

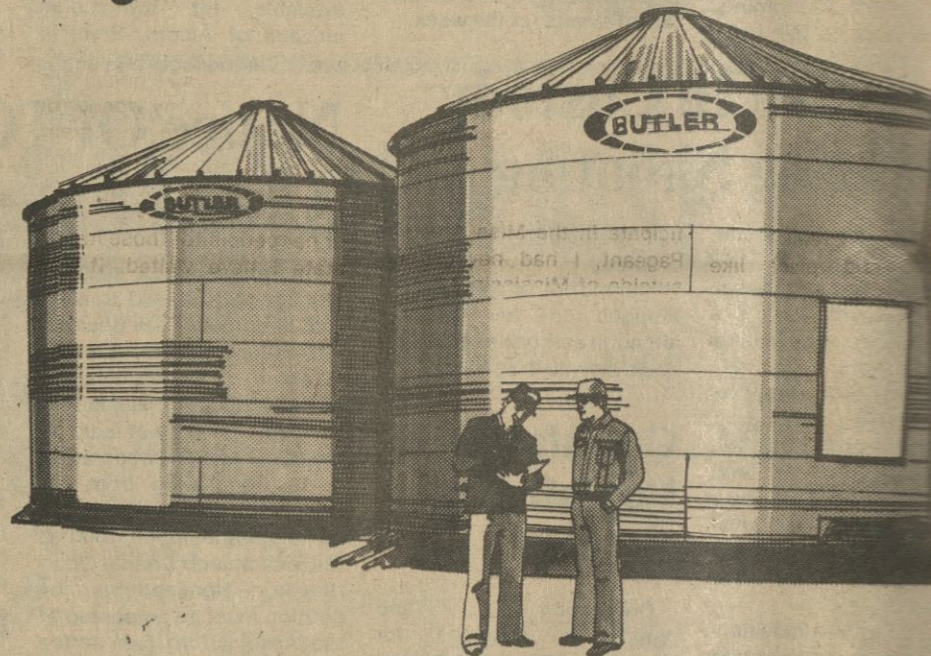


Call 454-3383 Day or Night

TVA Approved Philip Williams, Inc.

Williams Pest Control & Insulation Co. Belmont, Miss.

## Don't buy until you see the best.



## Grain Bins by Butler

If you think all grain bins are alike, you're in for a pleasant surprise when we show you a Grain Bin by Butler.

You'll see how Butler engineering has designed in protection for your grain... safe from weather and rodents. You'll see why there are more Grain Bins by Butler on American farms than any other brand.

You can choose from a complete line of sizes and capacities to meet your needs.

Don't buy any grain bin until you see the best. Grain Bins by Butler.



Redmont Farm Service, Inc.

P. O. Drawer 250 • Red Bay, Alabama 35582

PHONE (205) 356-4266 (205) 356-9089

JOHN C. BULLEN, JR. PRESIDENT

## Get the paint that beats the Weatherbeater.



Save big on the house paint that out- weathers Sears Weatherbeater! 94 out of 100 homeowners said Olympic Overcoat looked better longer when independent researchers asked them to compare weathered samples of both brands. Overcoat not only lasts extra long, but goes on extra smooth, hides extra well and cleans up extra fast in just soap and water.

\*Red and white samples weathered for two years.

On Sale

## W. H. FAIRLESS HARDWARE

OPEN ALL DAY THURSDAYS

IUKA-423-9256

TISH-438-660

# A TWO TIMER



For each unit of energy, the electric heat pump will provide about two units of heat. It can cut your electric heating bill in half.

Sound good? Then ask us about TVA's Heat Pump Financing Plan. It makes the electric heat pump look even better.



## Tishomingo County Electric Power Association

## Phoenix Fireplace Insert SALE



ANSI-UL 737 & UL 1482 Standards of Safety

If you want more than just heating efficiency, look into a Phoenix.

- Looks like a fireplace, heats like a furnace
- Fits virtually any fireplace - any type door
- Constructed with heavy 3/16" steel plate
- High CFM blower for maximum heat extraction
- 22" wide firebox, lined with kiln firebrick
- Heat resistant glass with safety screen
- Fast, easy do-it-yourself installation

Tri-State Insulation & Windows

103 Frank Street

Booneville, MS 38829

A Full Service Insulator

Leamon L. Sanders, Owner

Phone-728-4479 or 462-5063





lot to be proud of, and it is not necessary to leave home, as I have, to realize that our state is truly a great one. We should forever be thankful that God has so richly blessed us with a beautiful state in which to live, and most of all that He has given us an environment in which we can enjoy Christian growth and fellowship so abundantly.

We should always say, God bless America, and God bless Mississippi!

### Birth

Mr. and Mrs. Paul Whitlock, of Tishomingo, are proud to announce the birth of their daughter, Amy Rhodalee, born July 21, 1980, at Northeast Mississippi Hospital in Booneville. Amy weighed 6 lbs. 14 ozs.

Amy was welcomed home

by her sister, Kimberly Brook, who is 5 years old.

Grandparents are Mr. and Mrs. Dwight T. Kennedy, of Tishomingo; and Mr. and Mrs. Hezzie Whitlock, of Iuka. Great-grandmother is Mrs. D.J. Neal, of Tishomingo.

### Personal

Marion Hawkins and daughter, Betsy, of Houston, Tx., have returned home after visiting several days with Marion's parents, Mr. and Mrs. W.C. Moser.

Mrs. Janette Pike and girls, Julie and Jill, recently visited her mother, Mrs. Lela Clark. After relaxing from the all day bus ride from Asheville, N.C., they and Mrs. Clark traveled to Aberdeen and spent a week there with Patsy and Billy Pace, Missy, Tim, Cindy and Wilson Pace. Another

week in Iuka and they returned toward home. Dr. Pike met them in Chattanooga and they spent a night at the Chattanooga Choo-Choo Motel; spent Saturday visiting interesting places and then

THURSDAY, AUGUST 7, 1980 PAGE 3

on to their home in Asheville.

### New Arrival

Mr. and Mrs. Odell Carlisle are happy to announce the

arrival of a baby girl. She weighed 9 lbs. 9 ozs., and has been named Shelly Renee.

Shelly was welcomed home by a sister, Sherry, and a brother, Chris.

Dr. Richey H. Bullard

PODIATRIST-FOOT SPECIALIST

ANNOUNCES THE OPENING OF HIS OFFICE

FOR THE PRACTICE OF PODIATRIC MEDICINE AND SURGERY AT

MEDICAL ARTS BUILDING

236 KAKI STREET

IUKA, MISSISSIPPI 38852

OFFICE HOURS  
BY APPOINTMENT

TELEPHONE  
601-423-3232

### Workshop.....

Members from Northeast Mississippi learned current conservation practices in lectures and on field trips at a University of Mississippi Delta Regional Campus

workshop. Among participants were (from left) Bobby F. Bigham, Iuka High School; Barbara Hammock, Tishomingo High School; Shirley Harrison, Belmont Elementary School; and

Wallace Henry, Soil Conservation Service district conservationist. The workshop was sponsored by the University in cooperation with area soil and water conservation districts.



Cheryl Prewitt, Miss America 1980

### To America With Love

By Cheryl Prewitt  
There is no place like home. That old saying has hit the road as your America last September. As I have traveled from end of this great nation the other, 'home' has me even more precious. Before traveling to Atlantic New Jersey, to par-

ticipate in the Miss America Pageant, I had never been outside of Mississippi for an extended period. Furthermore, I had never had an opportunity to travel outside of the South.

The change was dramatic. For the first time in my life, I was separated from my family and friends. Also for the first time, I realized how much

they really mean to me.

However, I developed a new appreciation for more than just family and friends. I began thinking about the old familiar surroundings I had grown up with -- the pine trees, the churches, the schools, the lakes and streams, the pastures. More than anything else, my thoughts centered on the people -- all of those who make up the Mississippi I love so dearly.

Now as I travel -- seven days a week, 30,000 miles a month -- my love and appreciation for 'home' grows deeper and deeper. I am so grateful for the memories -- the training I received, the nurturing, the opportunities. I am firmly convinced that no other environment could have prepared me better for the duties I now face as Miss America.

Naturally, I have come into contact with many wonderful people and visited many great parts of our nation since becoming Miss America. Still, I would not trade Mississippi or her people for those in any state I have visited. It will always be a point of great pride with me that it was Mississippi I was representing when I won the Miss American crown. Telling people all across our country about my home state is one of the greatest pleasures I have had as Miss America.

We Mississippians have a

# TO THE CITIZENS OF IUKA:

At the June 4, 1980 Board meeting, the Board of Aldermen unanimously agreed to borrow \$150,000.00 through a Bond Issue, to continue our Street Paving Program that was started last year.

For some unknown reason the self appointed Concerned Citizens Committee protested our doing this, this year, by getting enough people to sign a petition against our borrowing this money, thereby forcing us to have an election on this issue.

Last summer the streets were paved by all the Committee member's homes, except one. There was no protest or petition filed at that time. WHY NOW?

The repayment of the Bonds will be done without any additional taxation to anyone. The Bonds will be retired from monies received from the increase in our Sales Tax Revenues.

August 12th - NEXT TUESDAY - will be election day for this very important issue. Don't any of you be misinformed again. Go to City Hall and vote for this Bond Issue, so that we can continue our badly needed street improvement program and help eliminate our rough, broken and pothole filled streets.

Mayor George W. Cutshall, Sr.

## Final Summer Clearance

# SIDEWALK SALE

All Sales Cash & Final

We also invite you to come in and see our new fall lines

## The Step Ladder

Elm Shopping Center, Iuka



# SHOP COMPARE

# WANT ADS ARE YOUR BEST BUY!

CLASSIFIED ADS - \$2.50 PER WEEK FOR 30 WORDS. AFTER THE FIRST 30 WORDS 5¢ EXTRA PER WORD. \$1.00 EXTRA WITH BORDER. CARD OF THANKS AND IN MEMORIAM - 5¢ PER WORD. CLASSIFIED ADS, CARDS OF THANKS AND IN MEMORIAM MUST BE PAID IN ADVANCE. 50¢ SERVICE CHARGE WILL BE ADDED TO ANY MONTHLY BILL TOTALING LESS THAN \$5.00.

PHONE 423-3666

## - ERRORS -

SHOULD BE REPORTED IMMEDIATELY AS THE NEWS CAN BE RESPONSIBLE ONLY FOR THE FIRST INCORRECT INSERTION IN ANY ADVERTISEMENT. THE NEWS CANNOT BE LIABLE FOR ERROR IN ANY ADVERTISEMENT TO A GREATER EXTENT THAN THE COST OF THE SPACE OCCUPIED BY THE ITEMS IN THE ADVERTISEMENT.

**LOTS FOR SALE** - From 1 to 50, with terms to suit. Also, trailer lots for rent with utilities. Close in - Call or see Bart Smith at 423-3749. J-10-tfn-c.

**FOR SALE** - 1969 Venus mobile home, 10 x 45, 2 bedroom, partially furnished. Air conditioner, carpeted. Can be seen at Pounders Barber Shop. Call 423-9985. A-7-14-p.

**FOR SALE** - Refrigerator - 8 x 28 camper trailer, and air conditioner. If interested phone 423-3310. A-7-c.

**FOR SALE** - 78 acres of cut-over timberland, 4 miles south of Iuka. \$275.00 per acre. Call 601-844-7833 after 6 p.m. A-7-14-21-c.

**NEW HOME FOR SALE** - 3 bd., brick, near Belmont School. Farmers Home financing available. Phone: day - 454-3456; night - 454-7687 or 454-3367. J-25-tfn-c.

**FOR SALE** - 2 bedroom trailer with 2 acres of land, 6 miles south of Burnsville near Leedy. Call 427-8777. J-31-tfn-c.

**HOUSE FOR SALE** in Paden across street from Masonic Hall. Four bedrooms, living room, dining room, kitchen and two baths. Large lot. Call 438-6472. J-31-A-7-p.

**WE BUY** used mobile home wheels. Lemmond Mobile Homes, Hwy. 43 S., Muscle Shoals, Ala. Phone 383-1049. J-24-31-A-7-14-21-28-c.

**DALE'S MOTORCYCLE PARTS AND ACCESSORIES** - Hwy. 25 South of Iuka. For all your motorcycle needs see Dale Edmondson or phone 423-6699. M-8-tfn-c.

**WANTED TO BUY** - Old class rings, wedding bands, coins, etc. Sonny's Pawn Shop at the intersection of Hwy. 45 & 72 in Corinth, Ms. Phone 287-8600 or 287-1485. N-1-tfn-c.

**LOT FOR SALE** - Near Mt. Joy area off Pleasant Hill Road near Mt. Joy Church. Call 813-367-3983. A-7-14-c.

**NEW METAL CULVERTS** (Slight Damage) 1 - 96" x 20' length, \$1053.90; 1 - 72" x 20' length, 733.40; 1 - 66" x 20' length, 640.00; 1 - 54" x 20' length, 555.60; 1 - 48" x 24' length, 470.40; 4 - 42" x 10' length, 211.90 ea.; 1 - 21" x 10' length, 90.50. Call day or night - (901) 687-3770, Claiborne Wells, Milledgeville, Tn. Prompt Free Delivery. J-31-A-7-c.

**FOR SALE** - Brass bed, king size complete with firm orthopedic mattress set. Never used. Still in carton. Cost over \$700.00 - must sell. \$285 cash. Call Tupelo 844-5793. J-31-A-7-14-21-c.

**FOR SALE** - Couch, 2 chairs, bed, table, 2 dressers. Call 423-3310. J-31-A-7-c.

**HOUSE FOR SALE** - New 3 bd., 1 1/2 baths, greatroom and carport, carpeted throughout. Near Red Bay, Ala. in Banner Community in Itawamba County. Price negotiable. For more information call collect 205-381-7301. J-10-tfn-c.

**BACK TO SCHOOL SALE** - At Diane's Jean Shop, Hwy. 25 South at Midway. All summer slacks, shirts and blouses have been reduced 25% to 50%. We also have received a shipment of Levi jeans. Sale will begin Thursday, August 7, thru Saturday, August 9. Everyone invited. Hours - 8 a.m. - 6 p.m. A-7-p.

**MOBILE HOME MOVING** - Local or Long Distance. Tie Downs, Kool Seal, Bonded and Insured. Call day or night 601-423-3258. A-7-S-25-p.

**NOTICE** All land belonging to Ed Sanders on Mill Creek Road is hereby posted against all hunting and trespassing. 9311. A-7-14-21-p.

**NOTICE** - I, Gene F. Black, will not be responsible for any debts other than my own. Gene F. Black J-24-31-A-7-p.

**Merle Norman Cosmetics** - Merle Norman Cosmetic Studio, 621 Elm Shopping Center, phone 423-9855, Iuka, Ms. F-7-tfn-c.

**Beautiful setting for this 3 BR, brick with 2 baths in excellent condition on 2 acres - Pleasant Hill Road - Reduced to \$49,500.00.**

**NEW LISTING** - Near Bay Springs - Charming brick, ranch style home with 3 BR, 2 baths, greatroom - 6 months old, on acre lot - \$42,500.00.

**On 25 South, large and liveable brick home with formal living, large den with fireplace, 3 BR, 2 baths, full basement on large lot - \$53,000.00.**

**East of Iuka - 3 BR, frame home on 9/10 acre - Approximately 1200 square feet heated area - Only \$29,000.00.**

**LAND** Approximately 80 level acres west of Iuka - \$450. per acre.

**12 gorgeous wooded acres near Coleman Park - \$18,750.00.**

**WOODALL MOUNTAIN ESTATES** - Now selling on or off lake lots - Call for prices.

**Commercial lot - 250' x 90' - Great Location - \$25,000.00.**

**RESORT** Nice waterfront cabin plus dock, pontoon and fishing boats. Furnished and ready to enjoy - Only \$55,000.00.

**Waterfront cabin at Eastport with dock - \$40,000.00.**

**Secluded cabin with fantastic view of Bear Creek - Full - \$25,000.00.**

**CALL US for Full Real Estate Service** Appraisals - Rentals - Sales Office 423-6948 Bobbie Curtis, Realtor 423-6177 B.T. Curtis 423-6177

**HOUSE FOR SALE** - 3 bd. bath, living room, den kitchen, brick home. Heater Wood (dry). Piano for sale - Travis N. Holman - phone 438-6442. Call nights after 8 p.m., Tishomingo, Ms. J-24-31-A-7-p.

**WANTED TO BUY** - Used and antique furniture and glassware. We buy just about anything. Cleaning your house or attic out, give us a call. Capleman's Antiques. Phone 423-9962 - Nights 423-5640. J-12-tfn-c.

**CHILDREN'S DAY** - Every Tuesday, 10 a.m. - 6 p.m., no appointment necessary. Photography by Charles, 709 Eastport, Iuka, phone 423-3359. A-20-tfn-c.

**BE YOUR OWN BOSS** - Buy fresh flowers and you are in business at Buds and Blossoms. All fixtures and stock only \$7,850.00 - Call Consolidated Realty - 423-6948. J-31-c.

**NOTICE** - I will not be responsible for any debts other than my own. John David Boothe J-31-A-7-14-p.

**FASHION FLAIR BEAUTY SALON** - 621 Elm Shopping Center, Iuka, Miss. 423-5709. Stylists: Sue Sanders, Joyce Park, Emogene Nagle, Vickie McGee. Open 6 days a week - Appointments not always necessary. F-7-tfn-c.

**HELP SAVE ENERGY COST** by insulating your home with custom-made windows and doors, blown insulation and insulation underneath floors. T.V.A. approved. Awnings, gutters, aluminum siding, replacement windows. Horace Ray Shook, Route 1, Cherokee, Ala. 35616. Call collect (205) 360-2187. J-26-tfn-c.

**WORLD FAMOUS HEALER**, Mother Mary, is not insane, has God given powers to heal by the hand of God. See and you shall find. Knock, you will be answered. Give God a chance. Don't deny the power of God. No matter what is your problem, she can help you to overcome it. Write to Mother Mary, Box 701, Rockford, Ill. 61105. Include one dollar and she will pray for you. J-17-24-31-A-7-p.

**FOR FREE BIBLE CORRESPONDENCE COURSE** write: Rural Box Holder, Route 1, Box 83-C, Burnsville, Ms. 38833, or call 427-8232. J-31-tfn-c.

**BACKHOE, BULLDOZER & DUMP TRUCK WORK** - Call Buster Ramsey at 423-9262.

**CHRISTIAN HOUSEWIFE** will baby sit in her home. Call any time 423-3860. A-7-c.

**NEED MONEY? SEE SONNY!** We lend money on anything of value, such as diamonds, radios, C.B.'s, stereos, etc. Emergency Loans. Sonny's Pawn Shop at intersection of Hwy. 45 & 72 in Corinth. Call 287-8600 or 287-1485. M-13-tfn-c.

**DOZER WORK** - Specializing in ponds. Call 728-5189. J-31-A-7-p.

**SPECIAL ON CONTINUOUS ALUMINUM GUTTERS** in 6 different colors. Aluminum siding and vinyl siding. Free Estimates. Call collect 205-381-5142. J-17-24-31-A-7-c.

**FOR RENT** - 3 bedroom mobile home. Phone Bart Smith at 423-3749. M-15-tfn-c.

**FOR RENT** - 3 bedroom furnished trailer located in Tishomingo. Call 438-6821. J-24-31-c.

**HOUSE FOR RENT** - 2 bedroom, brick, carpeted, no pets, Hwy. 25 N. Call 423-5276. A-7-tfn-c.

**APARTMENT FOR RENT** - Call Reuben Grisham at 423-3484. A-7-tfn-c.

**FOR RENT** - Ideal for working men - 3 trailers, two at Nuclear Plant. Call 423-3656 or 423-9101. J-17-tfn-c.

**FOR RENT OR LEASE** - Comfortable 3 bedroom home, modern kitchen, excellent condition. Belmont area. Favorable terms for long-term lease. Call 454-9222 or call collect 314-839-4786. J-17-tfn-c.

**INTERESTED IN A CAREER IN MANAGEMENT?** If you are ambitious and looking for a future, we want you! We're a young and expanding fast food company. We have opportunities in pizza, chicken and hamburger. Starting salary \$12,000 to \$20,000 per year, depending on experience. Call 453-6601 or send resume to Jackie's International, P.O. Box 1163, Greenwood, Ms. 38930. J-7-14-21-c.

**FOR SALE** - St. Helen's Volcanic Ash. Call or see Billy Godwin at 423-6959. J-10-tfn-chg

**CARPOT SALE** - Saturday, August 9, 8 a.m. - until, at the home of Ruby Timbes, 102 Pickwick Circle. Coffee table and end tables, curtains and bedspreads, clothes of all sizes and miscellaneous items. A-7-c.

**YARD SALE** - August 9, 9 a.m. - until, 2 or more families. Lots of good, useful items and will have fresh honey. 608 S. Main St. in front of Old Cotton Gin. A-7-c.

**ANTIQUE ESTATE SALE** Tishomingo, Ms., Saturday, August 9, 9 a.m. Turn east at First Bank - 4 blocks. Estate of Mrs. Kizzie Ward. Lots of antique furniture, collectibles and depression glass. Lunch available. A-7-c.

**FLEA MARKET & RUMMAGE SALE** - Saturday, August 9, from 8 a.m. until 5 p.m. in the old post office building in Tishomingo, Ms. A-7-c.

**YARD SALE** - Friday and Saturday, August 8 and 9, from 9 a.m. until 5 p.m. 2 families. Apt. 3B, Don Crest Apartments. A-7-c.

**CARPOT SALE** - Friday and Saturday, August 8 and 9, starting at 8:30 a.m. until 5 p.m. Friday, 8:30 a.m. until noon Saturday. Home of Ernest Sanders. There will be signs beginning at Oldham Road, off Snowdown or Hwy. 72 East. Household items, summer and winter clothes of all sizes, flower arrangements, plants and bric-a-brac. Several families included in this sale. A-7-c.

**CARPOT SALE** - At Hill's Store at Midway on Saturday, Aug. 9, beginning at 8 a.m. Ladies, girls and boys clothing, some tall sizes, coats and some furniture. A-7-c.

**YARD SALE** - Saturday, August 9, home of Edgar Hannon on Fulton St. in Iuka. Starts at 9 a.m. - until. Miscellaneous items. A-7-c.

**Job Opening** Northeast Mississippi Community Action Agency, an Equal Opportunity Employer has two (2) openings for the position of Apprentice Carpenter. These positions are available in Prentiss and Alcorn Counties. Qualifications: Applicant

**Job Opening** The Northeast Mississippi Planning and Development District has an opening for a secretary. This position requires a school diploma and a knowledge of general clerical duties. For the full details of this position, please call the District Office in Tishomingo, Mississippi. Salary negotiable. A-7-14-c.

**State of Mississippi** To: William R. White, Address Unknown

You are summoned to appear before the Chancery Court of the County of Tishomingo, in said State, on the second Monday of October, A.D. 1980, to answer the Suit No. 8517, in the Court of Dorothy M. M. wherein you are defendant. This 28th day of July, 1980. /s/ Robert D. Chancery

J-31-A-7-14-c.

**Licensed Broker or Licensed Salesman**

**Can You Sell?** You'll like your own business with us, right here right now. And NO franchise charge. Sales volume, commission up to 72% to you! National Company, established in 1900, largest in its field. Advertising, all signs, supplies, etc. Free literature. Instruction given for development - from \$1,000. Success. Nationwide. Financing brings Buyers Everywhere. Can you? You must have initiative, excellent character (bonded), sales ability, be financially responsible. Truly, this is a great opportunity for man, woman or team that can take on the challenge of a lifetime. Information available. Strout Realty, Inc. Plaza Towers Springfield, MO 65801 A-7-14-c.

**SEWING MACHINE** Like new free sewing machine with straight monogram appliques makes buttonholes has stretch stitch. New Price \$179.95. PAY BAL OF ONLY \$67. WEEKS SEWING CENTER Your authorized Sewing & Needle Dealer 305 S-CASS 287-1000 Corinth, Mississippi

**Stihl Chain** THE STIHL 028WB. THE PROFESSIONAL SAW FOR HOMEOWNERS. This is the best engineered chain saw ever made for the homeowner who's serious about cutting. A high-performance mid-size saw with all the design integrity of the biggest professional saws in the world. And Stihl makes those, too. TAKE ONE HOME. WE SERVICE THE BEST...STIHL.

**NELSON Marine & Hardware** Highway 25 S. Iuka Phone 423-648

**NEED APPLIANCE REPAIR? CALL**

**Gann Bros. Furniture & Appliance** 427-9506

WE HAVE TWO FULL TIME SERVICE MEN FOR QUICKER AND MORE EFFICIENT SERVICE

"The Business That Quality And Service Has Built"

**Whirlpool** TECH-CARE HOME PRODUCTS SERVICE

**NEED APPLIANCE REPAIR? CALL**

**Gann Bros. Furniture & Appliance** 427-9506

WE HAVE TWO FULL TIME SERVICE MEN FOR QUICKER AND MORE EFFICIENT SERVICE

"The Business That Quality And Service Has Built"

**Whirlpool** TECH-CARE HOME PRODUCTS SERVICE

**NEED APPLIANCE REPAIR? CALL**

**Gann Bros. Furniture & Appliance** 427-9506

WE HAVE TWO FULL TIME SERVICE MEN FOR QUICKER AND MORE EFFICIENT SERVICE

"The Business That Quality And Service Has Built"

**Whirlpool** TECH-CARE HOME PRODUCTS SERVICE

**NEED APPLIANCE REPAIR? CALL**

**Gann Bros. Furniture & Appliance** 427-9506

WE HAVE TWO FULL TIME SERVICE MEN FOR QUICKER AND MORE EFFICIENT SERVICE

"The Business That Quality And Service Has Built"

**Whirlpool** TECH-CARE HOME PRODUCTS SERVICE

**NEED APPLIANCE REPAIR? CALL**

**Gann Bros. Furniture & Appliance** 427-9506

WE HAVE TWO FULL TIME SERVICE MEN FOR QUICKER AND MORE EFFICIENT SERVICE

"The Business That Quality And Service Has Built"

**Whirlpool** TECH-CARE HOME PRODUCTS SERVICE



# SHOP COMPARE

# WANT ADS ARE YOUR BEST BUY!

## Division of State Aid Road Construction

### Mississippi State Highway Department Tishomingo County Board of Supervisors Section 900

#### Notice To Contractors

Sealed bids will be received by the Board of Supervisors of Tishomingo County at Iuka, Mississippi, until 10:00 A.M., C.D.S.T., August 14, 1980, and thereafter publicly opened for construction of Grade, Drain, Bridge, Box Bridge, Gravel Base, and D.B.S.T. on 3.098 miles of County Highway known as the Walker Switch Road and designated as Appalachian Access Highway Proj. No. APL-0982(3)B, Tishomingo County, Mississippi

#### Principal Items of Work As Follows:

|                                   |         |           |
|-----------------------------------|---------|-----------|
| Mobilization                      | L.S.    | L.S.      |
| Clearing and Grubbing             | L.S.    | L.S.      |
| Borrow Excavation (A.H.) (F.M.E.) | 204,028 | Cu.Yd.    |
| Unclassified Excavation (PM)      | 168,835 | Cu.Yd.    |
| Haul of Excavation (Special) (PM) | 12,586  | Cu.Yd.    |
|                                   |         | H.M. Unit |

#### Base and Surface Items

|   |          |        |
|---|----------|--------|
| Granular Material   |          |        |
| (Clay Gravel, Base Course)  | 39,076   | Cu.Yd. |
| (CL 3, GP "B") (LVM)  |          |        |
| Mixing, Shaping, Compaction                                       | 50,290   | Sq.Yd. |
| Cutback Asphalt for Prime Coat (MC-70)                            | 17,602   | Gal.   |
| or Emulsified Asphalt for Prime Coat                              |          |        |
| (EA-1 or EA-P)  |          |        |
| Asphalt Cement for Surface  |          |        |
| Treatment (AC-5)  | 35,025   | Gal.   |
| Cover Aggregate (Size No. 5)                                      | 899      | Cu.Yd. |
| Seal Aggregate (Size No. 7)                                       | 484      | Cu.Yd. |
| Class "B" Structural Concrete                                     | 261.01   | Cu.Yd. |
| Reinforcing Steel   | 36,730.0 | Lbs.   |
| Guard Rail (M-S) (Complete in Place)                              | 350      | L.F.   |
| Maintenance of Traffic  | L.S.     |        |
| Additional Construction Signs (Six dollars and no cents) (\$6.00) | 0.00     | Sq.Ft. |
| Portland Cement Concrete Paved Ditch                              | 139.57   | Cu.Yd. |
| (Class "C" Conc.  |          |        |
| Dry Rip Rap, Class I  | 510      | Tons   |

#### Alternate I

|  |       |      |
|--|-------|------|
| Pipe Culvert Alternates                                      |       |      |
| 15" Reinforced Concrete Pipe Culvert (S.S.)                  | 225.0 | L.F. |
| 18" Reinforced Concrete Pipe Culvert (S.S.)                  | 225.0 | L.F. |
| 24" Reinforced Concrete Pipe Culvert (S.S.)                  | 570.0 | L.F. |
| 30" Reinforced Concrete Pipe Culvert (S.S.)                  | 105.0 | L.F. |
| 42" Reinforced Concrete Pipe Culvert (S.S.)                  | 52.5  | L.F. |
| 48" Reinforced Concrete Pipe Culvert (S.S.)                  | 67.5  | L.F. |
| 54" Reinforced Concrete Pipe Culvert (S.S.)                  | 142.5 | L.F. |
| 60" Reinforced Concrete Pipe Culvert (S.S.)                  | 195.0 | L.F. |
| 18" Reinforced Concrete Pipe Culvert (E.S.)                  | 112.5 | L.F. |
| 24" Reinforced Concrete Pipe Culvert (Super Strength) (CL.5) | 217.5 | L.F. |
| 24" Reinforced Concrete Pipe Culvert (E.S.)                  | 270.0 | L.F. |
| 36" Reinforced Concrete Pipe Culvert (E.S.)                  | 127.5 | L.F. |
| 42" Reinforced Concrete Pipe Culvert (E.S.)                  | 187.5 | L.F. |
| 54" Reinforced Concrete Pipe Culvert (E.S.)                  | 180.0 | L.F. |
| 18" Reinforced Concrete Pipe Flared End Section              | 2     | Each |
| 24" Reinforced Concrete Pipe Flared End Section              | 18    | Each |
| 30" Reinforced Concrete Pipe Flared End Section              | 2     | Each |
| 36" Reinforced Concrete Pipe Flared End Section              | 2     | Each |
| 42" Reinforced Concrete Pipe Flared End Section              | 4     | Each |
| 48" Reinforced Concrete Pipe Flared End Section              | 2     | Each |
| 54" Reinforced Concrete Pipe Flared End Section              | 6     | Each |
| 60" Reinforced Concrete Pipe Flared End Section              | 4     | Each |

#### Alternate II

|   |         |      |
|---|---------|------|
| 15" Bituminous Coated Paved Invert Corr. Metal Pipe Culvert (16 Gauge)            | 225.0   | L.F. |
| 18" Bituminous Coated Paved Invert Corr. Metal Pipe Culvert (16 Gauge)            | 337.5   | L.F. |
| 24" Bituminous Coated Paved Invert Corr. Metal Pipe Culvert (16 Gauge)            | 1,057.5 | L.F. |
| 30" Bituminous Coated Paved Invert Corr. Metal Pipe Culvert (14 Gauge)            | 105.0   | L.F. |
| 36" Bituminous Coated Paved Invert Corr. Metal Pipe Culvert (14 Gauge)            | 127.5   | L.F. |
| 42" Bituminous Coated Paved Invert Corr. Metal Pipe Culvert (12 Gauge)            | 240.0   | L.F. |
| 48" Bituminous Coated Paved Invert Corr. Metal Pipe Culvert (12 Gauge)            | 67.5    | L.F. |
| 54" Bituminous Coated Paved Invert Corr. Metal Pipe Culvert (12 Gauge)            | 322.5   | L.F. |
| 60" Bituminous Coated Paved Invert Corr. Metal Pipe Culvert (10 Gauge)            | 195.0   | L.F. |
| 18" Bituminous Coated Paved Invert Corr. Metal Pipe Flared End Section (16 Gauge) | 2       | Each |
| 24" Bituminous Coated Paved Invert Corr. Metal Pipe Flared End Section (16 Gauge) | 18      | Each |
| 30" Bituminous Coated Paved Invert Corr. Metal Pipe Flared End Section (14 Gauge) | 2       | Each |
| 36" Bituminous Coated Paved Invert Corr. Metal Pipe Flared End Section (14 Gauge) | 2       | Each |
| 42" Bituminous Coated Paved Invert Corr. Metal Pipe Flared End Section (12 Gauge) | 4       | Each |
| 48" Bituminous Coated Paved Invert Corr. Metal Pipe Flared End Section (12 Gauge) | 2       | Each |
| 54" Bituminous Coated Paved Invert Corr. Metal Pipe Flared End Section (12 Gauge) | 6       | Each |
| 60" Bituminous Coated Paved Invert Corr. Metal Pipe Flared End Section (10 Gauge) | 4       | Each |

#### Alternate III

|  |       |      |
|--|-------|------|
| 15" Vitrified Clay Pipe Culvert  | 225.0 | L.F. |
| 18" Vitrified Clay Pipe Culvert  | 225.0 | L.F. |
| 24" Vitrified Clay Pipe Culvert  | 668.0 | L.F. |
| 30" Vitrified Clay Pipe Culvert  | 105.0 | L.F. |
| 18" Bituminous Coated Paved Invert Corr. Aluminum Alloy Pipe Culvert (16 Gauge)      | 112.5 | L.F. |
| 24" Bituminous Coated Paved Invert Corr. Aluminum Alloy Pipe Culvert (12 Gauge)      | 487.5 | L.F. |
| 36" Bituminous Coated Paved Invert Corr. Aluminum Alloy Pipe Culvert (14 Gauge)      | 127.5 | L.F. |
| 42" Bituminous Coated Paved Invert Corr. Aluminum Alloy Pipe Culvert (12 Gauge)      | 240.0 | L.F. |
| 48" Bituminous Coated Paved Invert Corr. Aluminum Alloy Pipe Culvert (12 Gauge)      | 67.5  | L.F. |
| 54" Bituminous Coated Paved Invert Corr. Aluminum Alloy Pipe Culvert (12 Gauge)      | 322.5 | L.F. |
| 60" Bituminous Coated Paved Invert Corr. Aluminum Alloy Pipe Culvert (10 Gauge)      | 195.0 | L.F. |
| 36" Bituminous Coated Paved Invert Corr. Aluminum Pipe Flared End Section (14 Gauge) | 2     | Each |
| 42" Bituminous Coated Paved Invert Corr. Aluminum Pipe Flared End Section (12 Gauge) | 4     | Each |
| 48" Bituminous Coated Paved Invert Corr. Aluminum Pipe Flared End Section (12 Gauge) | 2     | Each |
| 54" Bituminous Coated Paved Invert Corr. Aluminum Pipe Flared End Section (12 Gauge) | 6     | Each |
| 60" Bituminous Coated Paved Invert Corr. Aluminum Pipe Flared End Section (10 Gauge) | 4     | Each |

|   |        |      |
|---|--------|------|
| Right-of-Way Markers (Type I)                             | 62     | Each |
| Detail Traffic Stripe                                     | 1,224  | L.F. |
| Traffic Stripe (Continuous Yellow)                        |        |      |
| (Code TY or FDTY)   | 16,700 | L.F. |
| Traffic Stripe (Skip Yellow) (Code TY or FDTY)            | 2,073  | Each |
| ReflectORIZED Traffic Warning Sign (Encapsulated Lens)    | 12.0   | Each |
| ReflectORIZED Traffic Regulatory Sign (Encapsulated Lens) | 6.0    | Each |
| ReflectORIZED Traffic Hazard Sign (Encapsulated Lens)     | 4.0    | Each |
| ReflectORIZED Advance Warning Sign (Encapsulated Lens)    | 2.0    | Each |

#### Erosion Control Items

|                                  |          |       |
|----------------------------------|----------|-------|
| Agricultural Limestone           | 64.32    | Ton   |
| Commercial Fertilizer (13-13-13) | 32.16    | Ton   |
| Seeding                          | 32.16    | Acres |
| Mulch, Vegetative Material       | 64.32    | Ton   |
| Mulch, Asphalt Emulsion          | 9,649.0  | Gal.  |
| Solid Sodding                    | 12,993.0 | S.Y.  |

#### Bridge Items

|   |          |        |
|---|----------|--------|
| Test Pile (10" BP 42)                   | 2.0      | Each   |
| Steel piling (10" BP 42)                | 1,200.0  | L.F.   |
| Class "B" Bridge Concrete Reinforcement | 184.44   | Cu.Yd. |
| 40 Ft. Prestressed Concrete Beam        | 45,673.0 | Lbs.   |
| Structural Steel                        | 795.0    | L.F.   |
| Concrete Railing                        | 744.0    | Lbs.   |
| Dry Rip Rap, Class I                    | 400.0    | L.F.   |
| Class "BB" Box Bridge Concrete          | 100.0    | Ton    |
|   | 104.90   | Cu.Yd. |

#### Contract Time 300 Working Days

The award, if made, will be made to the lowest qualified bidder on the basis of the published quantities.

Plans and Specifications are on file in the office of the Chancery Clerk, Tishomingo County, Mississippi, the office of the State Aid Engineer, Jackson, Mississippi, and the office of the County Engineer, Donald Eubank, P.O. Box 418, Iuka, Mississippi 38852. Proposals may be secured from Donald Eubank, County Engineer, P.O. Box 418, Iuka, Mississippi, 38852, upon payment of \$15.00 which will not be refunded.

Plans may be secured from Donald Eubank, County Engineer.

Certified Check or Bid Bond for five (5%) percent of the total bid made payable to Tishomingo County and the State of Mississippi must accompany the Proposal.

Bidders are hereby notified that any Proposal accompanied by letters qualifying in any manner, the conditions under which the Proposal is tendered will be considered an irregular bid, and such Proposals will not be considered in making the award.

Attention of bidders is directed to the State and Federal laws governing the selection of and the employment of labor.

Minimum wage rates for the Project have been pre-determined by the Secretary of the Department of Labor in accordance with the requirements of Federal regulations governing the expenditures of Federal Aid Highway Funds and are set out in the labor regulations contained in the Proposal.

Leon Cook, President

Board of Supervisors of Tishomingo County

J-24-31-A-7-c.

## Non-Resident Summons

To: Mrs. Vernice Allen  
Post Office Box 595  
Spring City, Tenn. 37381

You are hereby summoned to appear before the Chancery Court of Tishomingo County, Mississippi, on the 13th day of October, 1980 at 10:00 A.M. at the Tishomingo County Courthouse in the City of Iuka, Mississippi, in Cause No. 8510, the cause styled Robert E. Allen v. Vernice Allen in the Chancery Court of Tishomingo County, Mississippi wherein you are named as defendant; this being a Bill of Complaint for Divorce.

This the 23rd day of July, 1980.

Robert D. Sims,  
Chancery Clerk of  
Tishomingo County, Miss.  
J-31-A-7-14-c.

## State of Mississippi County of Tishomingo Notice To Creditors

The undersigned, having been appointed Administrator of the estate of Kizzie Burns Enlow, deceased, by the Chancery Court of Tishomingo County, Mississippi, in Cause No. 8505 upon the docket of said Court, on this 18th day of July, 1980, does hereby give notice to all persons having any claim against said estate to have the same probated and registered by the Clerk of the Chancery Court of Tishomingo County, Mississippi, within ninety (90) days next, and failure to probate and register for this period will bar the said claim.

Witness My Signature, on this the 18th day of July, 1980.

/s/ Herman E. Enlow,  
Administrator

Richard O. Clark  
Attorney At Law  
P.O. Box 319  
Iuka, Miss. 38852  
Solicitor for Estate of  
Kizzie Burns Enlow  
J-24-31-A-7-c.

## Hearing On Proposed Use Of Revenue Sharing

The County of Tishomingo will hold a public hearing at the Tishomingo County Courthouse, Iuka, Ms., on the 22nd day of August at 10:00 A.M. for the purpose of obtaining written and oral comment from the public on the proposed uses of Revenue Sharing Funds in the upcoming budget for Fiscal Year 1980-81.

All interested citizens' groups, senior citizens and senior citizen organizations are encouraged to attend the hearing. Persons attending the hearing shall have the right to provide written and oral comments and suggestions regarding possible uses of Revenue Sharing Funds.

Amount of unappropriated revenue sharing funds in the local trust fund: \$105,000.00

Amount of revenue sharing funds expected to be received during the upcoming fiscal year: \$274,000.00. A-7-c.

## Substituted Trustee's Notice of Sale

Whereas, on April 12, 1975, Martha Woods and husband, John Woods, executed a Deed of Trust to Cecil L. Summers, Trustee, for the benefit of Mrs. Evelyn Pounders, which said Deed of Trust is now of record in the Office of the Chancery Clerk of Tishomingo County, Mississippi, at Iuka, Mississippi, in Book 90, page 51, of the records of Deeds of Trust of said County; and

Whereas, Mrs. Evelyn Pounders, as owner & holder of the said Deed of Trust and the indebtedness secured thereby, has exercised her option to appoint J. Barry Finch, as Substituted Trustee in the place and stead of Cecil L. Summers, which instrument of substitution was executed on the 14th day of

July, 1980, and is now of record in the aforesaid Chancery Clerk's Office in Book B-100 at page 719; and

Whereas, default having been made in the payment of the indebtedness secured by said Deed of Trust and the holder of the Note and Deed of Trust having requested the undersigned Substituted Trustee so to do, I will on the 29th day of August, 1980, offer for sale at public outcry and sell during legal hours, being between the hours of 11:00 a.m. and 4:00 p.m. at the Main Front Door of the County Courthouse of Tishomingo County, at Iuka, Mississippi, for cash to the highest and best bidder, the following described land and property lying and being situated in Tishomingo County, Mississippi, being more particularly described as follows, to-wit:

Part of the NE 1/4 of Section 24, Township 3 South, Range 10 East, described as follows: Beginning at the southwest corner of said quarter section and run east on the south boundary line of said quarter section 1297 feet; thence run north a distance of 251 feet to a stake for the true point of beginning; thence continue north 65 feet to an iron stake; thence run east 120 feet to an iron stake; thence run south 65 feet to a stake; thence run west 120 feet to the true point of beginning, containing 1/4 acre, more or less.

I will convey only such title as is vested in me as Substituted Trustee.

Witness My Signature, on this the 4th day of August, 1980.

J. Barry Finch,  
Substituted Trustee

A-7-14-21-28-c.

## State of Mississippi County of Tishomingo Notice to Creditors

The undersigned, having been appointed Administrator of the estate of Albert Enlow, deceased, by the Chancery Court of Tishomingo County, Mississippi, in Cause No. 8529 upon the docket of said Court, on this 5th day of August, 1980, does hereby give notice to all persons having any claim against said estate to have the same probated and registered by the Clerk of the Chancery Court of Tishomingo County, Mississippi, within ninety (90) days next, and failure to probate and register for this period will bar the said claim.

Witness my signature, on this the 5th day of August, 1980.

Jewel Palmer,  
Administratrix

Richard O. Clark  
Attorney At Law  
Post Office Box 319  
Iuka, Miss. 38852  
(601) 423-5227  
Solicitor For Estate Of  
Albert Enlow  
A-7-14-21-c.

## Foreclosure Notice

Whereas, on the 19th day of May, 1980, Wayne McAnally executed a Deed of Trust under the terms of which the hereinafter described real property was conveyed to Harold S. Jackson, Trustee, to secure the payment to Robert T. Hill, Monroe V. Hill and Charlotte Taylor of an indebtedness therein described, which Deed of Trust is recorded in the records of Tishomingo County, Mississippi, in the office of the Chancery Clerk thereof at Iuka, Mississippi, in Trust Deed Book 96, at pages 301-304; and

Whereas, default having been made in the performance of the conditions and obligations of the said Deed of Trust, and holders hereby have declared the entire indebtedness secured thereby due and payable and have requested the undersigned to sell said lands as provided by the said Deed of Trust.

Therefore, the undersigned

will between the hours of 11:00 A.M. and 4:00 P.M. on the 25th day of August, 1980, at the front door or the East door of the Tishomingo County Courthouse, in Iuka, Mississippi, offer for sale and will sell at public outcry to the highest bidder for cash the following described real property being located in Tishomingo County, State of Mississippi, and being more particularly described as follows, to-wit:

Part of the SW 1/4 of the SE 1/4 of Section 4, Township 2 South, Range 10 East, described as beginning at the intersection of the North line of the said SW 1/4 of the SE 1/4 with the newly located Mississippi State Highway No. 25 easterly right-of-way and being on the J.G. Lowenthal fence line; thence run in a southeasterly direction with the said right-of-way of Mississippi State Highway No. 25, 266 feet to a stake at the Northwest corner of the G.E. Davis tract of land; thence run in an easterly direction with the G.E. Davis northerly line 154 feet to a stake; thence run in a northerly direction parallel with New Mississippi State Highway No. 25, 267 feet more or less, to the South line of the J.G. Lowenthal tract and to an intersection with a fence thereof; thence run South 86 degrees 40 minutes West 154 feet along said fence line to the point of beginning.

The undersigned Trustee will convey only such title as is vested in him as Trustee.

Harold S. Jackson,  
Trustee

J-31-A-7-14-21-c.

## Notice of Promissory Note Sale \$160,000

Tishomingo County  
School District  
By  
Board of Supervisors of  
Tishomingo County, Ms.

Sealed proposals will be received by the Board of Supervisors of Tishomingo County, Mississippi, (hereinafter referred to as the "County"), at the office of the Chancery Court Clerk at the Courthouse in the City of Iuka, Mississippi, until the hour of 10:00 a.m. on the 18th day of August, 1980, at which time said bids will be publicly opened for the purchase, at not less than par and accrued interest to the date of delivery of the issue of \$160,000 principal amount Promissory Note, by the Board of Supervisors of said State and County, on behalf of the Tishomingo County School District.

The Promissory Note will be dated September 1, 1980, will be of the denomination of \$160,000, and will bear interest at the rates specified in the accepted bid, the principal and interest to be paid in equal annual installments to principal and interest on July 1, 1981, July 1, 1982, July 1, 1983, July 1, 1984, and July 1, 1985. Both principal of and interest on the Promissory Note will be payable at a place to be designated by the purchaser, subject to the approval of the Board of Supervisors.

The Promissory Note shall not bear a greater overall maximum interest rate to maturity than 8% per annum.

The Promissory Note will be executed and delivered by the Board of Supervisors of Tishomingo County, Mississippi, and will be repaid from a tax levy upon the taxable property in said

School District.

Proposals to purchase the aforesaid Promissory Note should be addressed to Honorable Robert D. Sims, Clerk, Board of Supervisors, Courthouse, Iuka, Mississippi 38852, and should be plainly marked "Proposal to Purchase \$160,000 Tishomingo County School District Promissory Note," and should be filed with the Clerk of said Board on or prior to the date and hour hereinabove named.

Each bid must be accompanied by a cashier's check, certified check, or exchange, issued or certified by a bank located in the State of Mississippi, payable to Tishomingo County, Mississippi, in the amount of \$3,200 as a guarantee that the bidder will carry out his contract and purchase the Promissory Note, if his bid be accepted. If the successful bidder fails to purchase the Promissory Note, pursuant to his bid and contract, the amount of such good faith check will be retained by the County and covered into the proper fund as liquidated damages for such failure.

The Board of Supervisors reserves the right to reject any and all bids submitted.

If the County does not receive a bid resulting in an average interest rate to maturity of 8% per annum, or less, the County reserves the right to sell obligations in a like principal amount at a private sale.

Delivery of the Promissory Note will be made to the purchaser within sixty (60) days after the date of the sale of the Promissory Note, at a place to be designated by the purchaser, without cost to the purchaser.

It is the opinion of counsel for the Board of Supervisors that the interest on the Promissory Note will be exempt from Federal and State of Mississippi Income Taxes, under existing statutes as presently interpreted and construed.

By order of the Board of Supervisors of Tishomingo County, Mississippi, this the 25th day of July, 1980.

/s/ Robert D. Sims,  
Clerk,  
Board of Supervisors  
Tishomingo County, Miss.  
A-7-14-c.

## Mineral Springs Park Project

We want to express our thanks to Mr. Jimmy Murphy, of The Gold Bond Exterminators, who came and donated his service and material and sprayed the log cabin for termites free of charge. You may note that our project is going nicely and everything we promised looks as if it will be completed.

Once again, thanks to each club, bank, business people, citizens and any labor that was donated, and especially Gold Bond Exterminators, as the cabin needed it so badly.

Respectfully,  
George V. Page,  
Project Chairman

## Food Stamps

The United States Department of Agriculture and the Social Security Administration have made arrangements that will enable certain people to apply for food stamps through social security offices. This service is intended to make it easier for these people to obtain food stamp assistance.

Those who may apply for food stamps through the social security office are:

- Households in which all household members (those who live and eat together) are applying for supplemental security income (SSI); or

- Households in which all household members receive SSI (the gold check).

Households which prefer to do so may still apply for food stamps through the local food stamp or welfare office instead of at the social security office.

Persons who have questions about this change or would like more information may call the food stamp hotline at 1-800-682-5283, or contact the local food stamp or social security office.

## MOORE'S BODY SHOP & WRECKER SERVICE

24 Hour Wrecker Service

DAY PHONE 423-5130

NIGHT- WEEKENDS-  
HOLIDAYS  
423-5244

EXPERT BODY REPAIR

## R. D. Grubb & Sons Roofing & Remodeling

Reasonable Rates

Free Estimate

Phone Rusty Grubb  
601-438-7445  
Tishomingo, Miss.

## Re: Purchase of Crawler Tractor For the Fourth District

Tishomingo County, Ms.

Came in the matter of the purchase of a crawler tractor for the Fourth District, Tishomingo County, Mississippi as described below, Whereas, under the law it is necessary for the intention of the Board of Supervisors to advertise substantially in the following form, wit:

## Notice To Equipment Dealers

The Board of Supervisors of Tishomingo County, Mississippi will on Friday, August 8, 1980 Ten o'clock A.M. at the office of the Clerk of the Board of Supervisors in the Town of Iuka, Mississippi receive bids for the purchase of:

(1) new or used crawler tractor equipped with straight loader and tilt, R. O. P. S. canopy, engine enclosures, rear screen, and sealed and lubricated undercarriage, machine to weigh a minimum of 6,000 lbs. or larger, and be powered by at least a 630 cubic inch diesel engine, or larger, that generates a minimum of 25 flywheel horsepower, or larger. Transmission to be a planetary powershift with 3 forward and 3 reverse speeds.



**Nelson**  
super  
market

AD EXPIRES 8-13-80

SLICED SLAB

# BACON

REEL FOOT JUMBO ALL MEAT

## BOLOGNA

LB.

99¢



\$

LARGE PK.

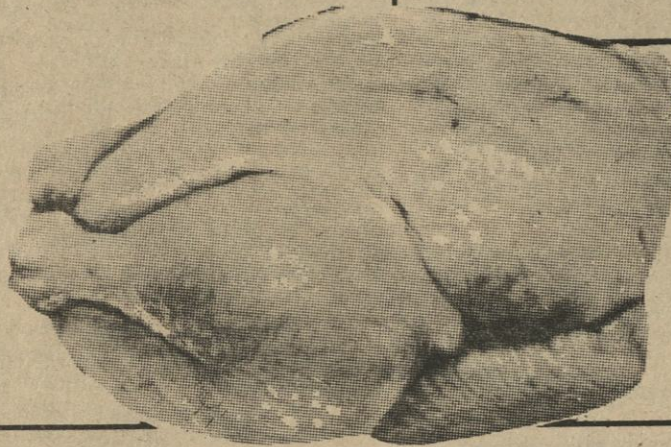
1 09



FOOD STAMPS WELCOME

PURNELL PRIDE WHOLE

# FRYERS



LB.

59¢



KING COTTON SLICED

## BACON

1 LB. PK.

\$ 1.19

KING COTTON JUMBO

## WIENERS

16 OZ. PKG.

\$1.29

KING COTTON

## SAUSAGE

1 LB. ROLE

LB. \$1.29

WE'RE  
DOING  
OUR BEST  
TO KEEP  
YOUR  
COST OF  
LIVING  
DOWN!

FRESH

## CHICKEN LIVERS

8 OZ. PK.

49¢

U.S. CHOICE

## Club Steak

LB.

\$2.99



WE  
Welcome  
FOOD  
STAMPS



FRESHNESS AND QUALITY THAT ASSURE  
YOU BIGGER RETURNS FROM YOUR MONEY

U.S. NO. 1 GREEN

# CABBAGE

LB.

19

CALIFORNIA LARGE SIZE

## Nectarines

LB.

59¢

LATE SANTA ROSA

## Plums

LB.

59¢

SUNKIST 235 SIZE

## Lemons

6 FOR

69¢

NEW MILD YELLOW

# ONIONS

3 LB. BAG

49



ALWAYS  
FRESH!  
ALWAYS  
CRISP!



**Nelson**  
**super**  
**market**

QUANTITY RIGHTS RESERVED

KLEENEX JUMBO ROLL

# TOWELS

## 2 - \$1.00



SWIFT'S  
**Potted Meat**  
3 OZ. CAN  
**4 FOR \$1.00**

VLASIC BARELL CURED DILL

**Pickles**  
46 OZ. JAR  
**99¢**

MR. P FROZEN BY JENOS

**PIZZA 69¢**



HI-C OR HAWAIIAN PUNCH

**Fruit Drink**  
46 OZ. CAN  
**69¢**

DE PARK

**hoestring Potatoes**  
1 1/2 OZ.  
**5 FOR \$1.00**

MORTON HOUSE

**Oven-Baked Beans**  
**2 FOR 79¢**

ELSEY

**TISSUE**



4-ROLL PACK

**79¢**

KRAFT MACARONI AND CHEESE

**Dinners**  
7 1/4 OZ.  
**3-\$1.00**



AVOR-ICE

**reeze Pops**  
18 BAR PKG.

**99¢**

KEEBLER

**Vanilla Wafers**

12 OZ. BOX

**69¢**

DE PARK FROZEN

**range Juice**  
12 OZ. CAN

**69¢**

TWIN PET

**Dog Food**

15 OZ. CAN

**4 FOR \$1.00**

FAMILY SIZE 171 OZ.

**TIDE DETERGENT \$4.99**

RISCO

**SHORTENING**



LIMIT ONE

3 LB. CAN

**\$1.99**

RYAN

**Vienna Sausage**

5 OZ. CAN

**3 FOR \$1.00**

WISHBONE 1000 ISLAND)

**Dressing**

8 OZ. JAR

**69¢**

KRAFT SQUEEZE BOTTLE

**Mustard**

8 OZ. BOTTLE

**3 for \$1.00**

NESTEA

**Instant Tea**

3 OZ. JAR

**\$1.99**

MINUTE MAID PINK LEMONADE OR FRUIT PUNCH

**DRINKS**

64 OZ. CARTON

**89¢**

|  |   |  |  |
|--|---|--|--|
| <b>COUPON</b><br>100 FREE QUALITY STAMPS<br>25 LB. BAG HI RISE SELF-RISING<br><b>Flour</b><br>AD EXPIRES 8-13-80 | <b>COUPON</b><br>100 FREE QUALITY STAMPS<br>10 LB. BAG HYDE PARK<br><b>Charcoal</b><br>AD EXPIRES 8-13-80 | <b>COUPON</b><br>100 EXTRA QUALITY STAMPS<br>32 OZ. BOTTLE LIBBY'S<br><b>Ketchup</b><br>AD EXPIRES 8-13-80 | <b>COUPON</b><br>100 FREE QUALITY STAMPS<br>12 OZ. LOVE MY CARPET<br><b>Carpet Cleaner</b><br>AD EXPIRES 8-13-80 |
|--|---|--|--|



## OBITUARIES

### Gilbert Fowler

Gilbert Carroll Fowler, 77, died Wednesday night, July 30, at the Baptist Hospital in Memphis, Tenn. He was a retired farmer and a member of the Christian Church.

Services were at 3 p.m. Friday at Oak Hill Christian Church in Corinth with Rev. Paul White officiating. Burial was in the church cemetery with Coleman Funeral Home Midtown in charge of arrangements.

Survivors include his wife, Mrs. Ella McMeans Fowler, of Iuka; and two sisters, Mrs. Nellie Brewer and Mrs. Mildred Gardner, both of Corinth.

### M.C. Reno

Marshall Clyde Reno, 87, died Sunday morning, August 3, at Northeast Mississippi Hospital, Booneville. Funeral services were at 4 p.m. Monday at McMillan Funeral Home with burial in Lindsey Cemetery, Tishomingo County.

He was a Methodist and a retired farmer.

Survivors include one son, Clarence Ray Reno, of Booneville; three daughters, Miss Reba Reno and Mrs. Ollie Higginbottom, both of Iuka; one brother, Luther Reno, of Tishomingo; four grandchildren; four great-grandchildren.

### Paul Fugett

Paul Fugett, 48, of Dennis, died Tuesday, July 29, in Ben-ton, Ill. He was a merchant.

Services were at 1 p.m.

Saturday at Deaton Funeral Home Chapel with Reverends Jerry George and Stanley Caston officiating. Burial was in Dennis Memorial Gardens.

Survivors include his wife, Mrs. Margie Fugett, of Dennis; two daughters, Mrs. Carolyn Eaton and Miss Janie Fugett, both of Dennis; his mother, Mrs. Estelle Fugett, of Belmont; four sisters, Mrs. Darlene Todd, of Iuka, Mrs. Jolene Wright, of Lebanon, Tenn., Mrs. Sue Moore, of Wellington, Mich., and Mrs. Judy Koch, of Washington, D.C.; three brothers, Myles Fugett and Anthony Fugett, both of Burnsville, and Charles Fugett, of Chicago, Ill.; and two grandchildren.

### The Bible Speaks

By: Rex Buford

#### Patience

"Wait on the Lord; be of good courage, and he shall strengthen thine heart: wait, I say, on the Lord."

(Psalm 27:14)

Even the most religious must admit to a measure of impatience! Man, like the family pet, impatiently paws at his dish, spilling half his ration, while his master attempts to provide his needs. Impatience is clear in children's chatter:

"When will it be Saturday?" "How many days 'til Christmas?"

"How many more miles to grandmother's house?"

"What is the next town?"

In this respect, we never seem to "put away childish things." As adults we become restless and irritable if the mail is five minutes late . . . if

we must wait for a traffic light . . . if dinner is not on schedule . . . if departure is delayed thirty seconds by another member of the family.

At times we even become impatient with God. We decide the interval is too great between our prayer and its answer, or between our work and its result.

Patience is not easily learned. Someone has observed, "There is something harder than believing . . . that's waiting!" Every person knows this truth who has kept vigil at the bedside of a critically ill child . . . or patiently prayed for the return of a wayward child.

Patiently pursuing that which is gradual is more difficult than accepting immediate results. But we dare not despair. Like those apostolic fishermen, we may have "toiled all night and taken nothing" (Luke 5:5). But the moment may be near when God is ready to bless our labor with success.

"I wait for the Lord, my soul doth wait, and in his word do I hope."

(Psalm 130:5)

If you would like to be enrolled in a free Home Bible Correspondence Course or study the Bible with someone in the privacy of your home please write or call:

**The Bible Speaks**  
P.O. Box 323  
Iuka, Miss. 38852  
423-6891

### Pentecostal Church News

There's a correct way to get into the church of the Lord Jesus Christ. You are born into this church. The Bible plainly declares that "ye must be born again." In the Book of Acts it was asked what must we do to be saved? Acts 2:38 answers that quite plainly with three steps: 1 - Repentance; 2 - Baptism in the name of Jesus Christ; 3 - Receive the gift of the Holy Ghost. Three distinct, separate and necessary acts. When this is accomplished one is in "The Church" and will remain a part of "The Church" as long as he lives a Holy dedicated life. "The Church" is the body of Christ and signing a book, shaking the pastor's hand, or just a desire to turn over a new leaf will not get the job done. Hell will be full of those type people. Be not deceived. It's a matter of Heaven or hell. This life will soon pass. Will it be worth it for you to go sit with a dead congregation that has lost all of the spirit of God they ever felt, trying to pretend you're saved and then die lost. If you are in doubt about your future destination, make certain. Try an old fashioned experience at an old fashioned altar. Give Jesus a chance. He will make

things right.

First United Pentecostal Church, 608 N. Main St., Iuka. Sunday School, 10 a.m.; Sunday worship 11:15 a.m. and 7:00 p.m.; Wednesday Bible Study, 7:15 p.m.

**Dial 423-3581 for daily Bible reading. If you have a need for prayer, free literature, or a Home Bible Study Course sent to you in the mail or taught in your home, leave your name, phone number, and address along with your particular need after the Bible reading.**

Sponsored by the First United Pentecostal Church.

### Message For Meditation

By: Terry L. Booker, Pastor  
New Lebanon Church  
Be More Understanding

"Give therefore thy servant an understanding heart to judge thy people, that I may discern between good and bad" - (I Kings 3:9). This was Solomon's request to the Lord God. Oh, that this would be our simple request to the Lord for our lives today. There are so many conflicts and opinions as to the situations in life that somehow we have forgotten what the word "understanding" really means. It doesn't mean compromise but simply an awareness with a motivation to act to resolve any differences. When we think we really do have problems, all we need to do is to take an examination of those around us to see whether we are justified in our plight. How do we take examination in order that we may be more understanding?

Look With Compassion. Matthew 9:36 - "When he saw the multitudes, he was moved with compassion on them." Christ looked with compassion. He saw the sin, suffering, and sorrow of mankind. We must see the needs of others, too. Having compassion on the less fortunate and concern for the lost increases our understanding. I John 3:17 - "But whose hath this world's good, and seeth his brother have need, and shutteth up his bowels of compassion from him, how swelleth the love of God in him?"

Listen With Concer. Isaiah 65:24 - "And while they are yet speaking, I will hear." The Lord listens with concern. He hears the cries of the poor, the lonely, the ill, the tem-

#### Catholic Services

##### In Iuka

Held at Episcopal Church  
Eastport & Fulton Streets  
Sunday 11:30 a.m.  
Saturday 6:30 p.m.  
(Summer Schedule)  
Father George Pinger, S.C.J.  
728-3393

## CUTSHALL FUNERAL HOME

Representing  
Corinth Mutual  
Burial Association  
Alcorn County  
Benefit  
Association  
Mississippi  
Funeral  
Association  
Liberty National  
Life & Burial  
Insurance Co.

SOME BURIAL  
POLICIES CAN BE  
PAID OUT IN 15  
YEARS

## CUTSHALL FUNERAL HOME

PHONE 423-5222  
IUKA, MISS.

pted, and the sinful. He cares and understands. We, too, must listen with concern, never turning a deaf ear to the cries of others. Listening increases our understanding. James 1:19 - "Wherefore, my beloved brethren, let every man be swift to hear, slow to speak, slow to wrath."

Lift With Cheerfulness. Mark 9:27 - "Jesus took him by the hand, and lifted him up; and he arose." Jesus didn't stop with seeing and hearing the needs of others. He lifted burdens, healed the sick, and forgave the sinful. When we cheerfully help the burdens of others, pray for the needy, and ungrudgingly pay our tithes and offerings into the church to meet its needs, we find joy and satisfaction. I Thessalonians 5:14-15 - "Now we exhort you, brethren, warn them that are unruly, comfort the feeble-minded, support the weak, be patient toward all men. See that none render evil for evil unto any man; but ever follow that which is good, both among yourselves, and to all men."

Love With Christ-Likeness. I John 4:11 - "Beloved, if God so loved us, we ought also to love one another." Love is the world's greatest need. Christ brings fulfillment for that need. John 15:12-14 - "This is my commandment, That ye love one another, as I have

loved you. Greater love hath no man this, that a man lay down his life for his friends. Ye are my friends, if ye do whatsoever I command you." When we look with compassion listen with concern, and lift with cheerfulness, we are enabled to love with Christ-likeness.

### Words of Appreciation

We would like to thank our friends and neighbors for being so kind to us during the death of our father, Thomas B. Hester.

Thanks for the food, flowers, cards and calls, for every kind word that was spoken.

Thanks to Rex Buford for the kind words, also Cutshall Funeral Home for their wonderful service.

May God bless each and every one of you.

Mr. & Mrs. Thomas Hester  
Mr. & Mrs. Lyman Hester  
Mr. & Mrs. Lester Dexter

### Card of Thanks

We wish to take this opportunity to thank everyone for the flowers, cards, calls and prayers at the death of our loved one. Every deed of kin-

dness was greatly appreciated and will long be remembered by us.

The family of  
Mammie Forrester

### Card of Thanks

We would like to thank all of our friends and neighbors for their kindness and help during our time of need. For the prayers, food and beautiful flowers. A special thanks to Rev. Jerry George, Rev. Stanley Caston and to Deaton Funeral Home.

The family of  
Paul Fugitt

### Words Of Appreciation

Mr. and Mrs. Floyd Brown and family wish to express our sincere gratitude to the following people whose prompt actions were instrumental in saving our daughter, Belinda's, life after a motorcycle accident on Snowroad Road on July 19th. To Mr. and Mrs. William Owens, who arrived on the scene promptly and started first aid measures to restore breathing, to the Bolton family and to Mr. and Mrs. Charles Lambert for their assistance, and to

DR. PHILLIP H. GRAY  
OPTOMETRIST

ANNOUNCES THE RELOCATION OF HIS OFFICE

TO

105 SOUTH FULTON STREET  
(ACROSS FROM IUKA GUARANTY BANK, FORMERLY DR. GOYER'S OFFICE)  
IUKA, MS 38852

TELEPHONE  
423-3785

## COME TO CHURCH

### Baptist

IUKA BAPTIST CHURCH  
Charles Dampier  
BELMONT FIRST  
Jack Maroon  
CALVARY BAPTIST  
Thomas Ozbirn  
MT. MORIAH BAPTIST  
Ben Thornton  
CENTRAL BAPTIST  
W. L. Oaks  
MT. VERNON BAPTIST  
Perry Murphy  
TISHOMINGO BAPTIST  
Bill Langley  
BURGESS CREEK  
FREEWILL  
Danny Short  
BURNSVILLE FIRST  
Dave Smith  
NEW PROSPECT  
J. A. Blount  
OLDHAM  
Chris Burrows  
PADEN  
Pat Howard  
FIRST BAPTIST  
O. H. Moore  
SHORT CREEK BAPTIST  
G.D. Jones, Pastor  
NEW SALEM  
Joe Moyers  
UNITY BAPTIST  
Freeda Wilson  
RED BUD  
John Stovall  
ROWLAND MILLS  
Frankie Smith  
HARMONY HILL  
Billy Paul Feltman  
MT. JOY  
James E. Holt  
CALVARY MISSIONARY  
Mike Fennel  
SOUTH CROSSROADS  
Harold Holly  
Providence Missionary  
Earl Martin, Pastor  
BETHEL MISSIONARY  
Felton Mason

### Methodist

MT. GILEAD  
Earl Lewallen  
TEMPLE  
Mavous Phifer  
MT. ZION  
R.C. & Dorothy Wigginton  
FIFTH STREET  
Bill Hobson  
OLD PLEASANT HILL  
Jearl Grisham  
NEW LEBANON  
Terry L. Booker  
ANTIOCH FREEWILL  
Glenn Jones  
POPLAR SPRINGS  
Russel Clouse  
HIGHLAND  
Cecil Stepp  
BETHLEHEM BAPTIST  
George D. Credille  
YELLOW CREEK  
Stanley Magill  
DENNIS FIRST  
Wilbur Tessener  
FIRST FREEWILL  
Dallas Jack Jones  
NEW LIBERTY  
Raybon Richardson

### Churches of Christ

MAUD CHURCH OF CHRIST  
B. Cunningham  
IUKA CHURCH OF CHRIST  
Rex Buford  
BURNSVILLE  
BEREA CHURCH OF CHRIST  
Burt Isom  
TISHOMINGO  
BELMONT SECOND STREET  
Jimmy Gross  
PLEASANT GROVE  
John Hardwick  
LIBERTY  
Wayne M. Mitchell  
MAIN STREET  
Tim Gentle

### Catholic

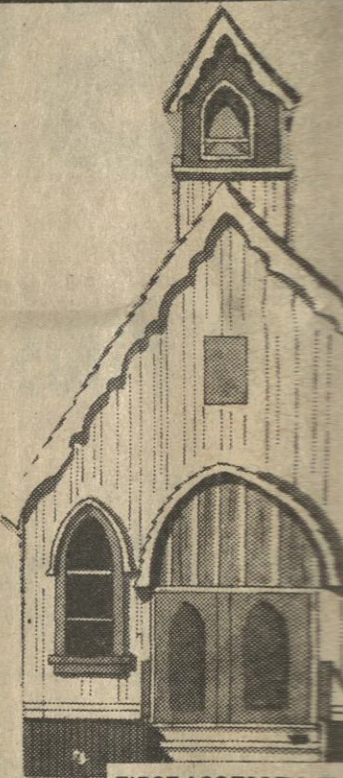
Rev. Kenneth Stoll, S.C.J.  
Rev. George Pinger, S.C.J.

### United Pentecostal

IUKA UNITED  
Dudley Brown  
MT. EVERGREEN  
Dudley Brown  
CAMP GROUND  
HARMONY  
PATRICK  
ROCKY SPRINGS  
Paul Linton  
BURNSVILLE  
SNOWDOWN  
PLEASANT HILL  
SPRING HILL  
William Strange  
BOGGS CHAPEL  
PARADISE  
SALEM  
TISHOMINGO  
Del Blackman  
GOLDEN CHAPEL  
OLD BETHEL  
Dan Young, Pastor  
BELMONT  
MT. PLEASANT  
Doc Jeter  
HUBBARD SALEM  
Mike Hopkins, Pastor  
JONES CHAPEL  
Eddie Jumper  
ALLSBORO UNITED  
MARGERUM UNITED  
RIVERTON UNITED  
Stephen R. Boggan

### Nondenominational

AMAZING GRACE  
TABERNACLE  
Bro. & Sis. R. G. Rodgers  
Mt. Zion  
R.C. & Dorothy Wigginton  
NORTH CROSSROADS  
COMMUNITY  
Allen Osborn



FIRST ASSEMBLY OF  
Rev. Allen Hapner

### United Pentecostal

BURNSVILLE FIRST  
Richard W. Fors  
IUKA FIRST UNITED  
Frank E. Williams  
Pentecostal  
IUKA GOSPEL CHURCH  
Larry Riley - Pastor  
B'VILLE TABERNACLE  
W. E. Sharp  
CHRIST GOSPEL  
Richard H. Carter  
Jacinto, Miss.  
IUKA CHURCH OF CHRIST  
Charles Moore  
Grissom Chapel  
Free Pentecost  
Ricky Bingham - Pastor  
Presbyterian  
ALLSBORO CUMBERLAND  
J. B. Burns, Jr.  
BETHANY  
L. K. Foster

## Carpet Cleaned

Any living room and hall

**\$19.95**

Commercial Residential Carpet Guard Colorizing Water Damage

Call for appointment **423-9035**

Dan. Martin-Owner  
**Shiloh Carpet Cleaning Co.**

## RUSHING REXALL DRUG CO. PRESENTS Tishomingo County Hospital List

Melisa Allred  
Willie Belle Bonds  
Nora Bonds  
Cleo Brothers  
Bernice Braddock  
Donnie Bray  
Wearth Bruton  
Shirley Bass  
James Bratton  
Dora Crum  
Ellison Coln  
Mollie Curtis  
Berlin Curtis  
Jopp Castleberry  
Willie Carter  
Shirley Dexter  
Mary Foulke  
William Floyd  
Tommy Gilliam  
Emitt Gray  
Ethel Greene  
Marvin Grimes  
Stella Hudson  
James Harris  
Ruby Hester  
Hazel Handley  
Billy Johnson  
Brenda Johnson  
Gene Kimberley  
Wendell Lambert  
Roy Long  
John Lambert  
Gertrude Massey  
Lela Moore  
Charles Martindale  
Terry Phifer  
James Phillips

Joe H. Pace  
Edra Rhodes  
Annie Shoffner  
Shirley Smith  
Charlie Stricklin  
Wilburn Stuart  
Ruth Stafford  
Mamie Smith  
Maston Turner  
Bobby Voyles  
Toman Wythe, Jr.  
Ruby Waters  
Arthur Waddell  
Clidie Berryman  
Helen Wanner  
Edna Wallace  
Brenda Hubbard  
Ravill South  
Mikey Shea  
Bobbie Crum  
William Young  
Gertrude Counce  
Laura Hickman  
Carolyn Hutcheson  
Alma Richardson  
James Sappington  
Edsel McNutt  
Frank Ross  
Cara Frederick  
Mattie Davis  
Walter Rast  
Carlton Phifer  
Velma Nunley  
Ida Monroe  
D.C. Daugherty  
Pete Thornton  
Esil South

**Brown Insurance Agency**  
Iuka, Miss.

**Carpets Unlimited**  
Next Door to  
Circus Burger

**Rushing Rexall Drugs**  
Phone 423-362  
Iuka, Miss.

**McNatt Ford Sales**  
Phone 423-3681  
Iuka, Miss.

**Town & Country Furniture**  
Downtown & Hwy. 25 So.

**First American National Bank**  
Iuka-Golden  
Burnsville

**1st Citizens Loans**  
Phone 423-5248  
Iuka, Miss.

**Curtis B. Drugs**  
Phone 423-362  
Iuka, Miss.

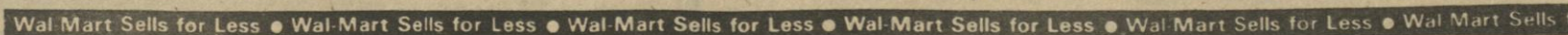
**Farm Bureau Insurance**  
Phone 423-6151  
Iuka, Miss.

**Cutshall Funeral Home**  
Phone 423-5222  
Iuka, Miss.

**Honeycutt Chevrolet**  
Phone 423-3622  
Iuka, Miss.

**Iuka Guaranty Bank**  
"Straight Ahead Through the Years"









**Return To School** — Jim Cawby (far right) briefs high school counselors from Tishomingo County prior to their tour of the Yellow Creek Nuclear Power Plant construction site. The tour climaxed an 80 hour course in "Recruitment, Selection and Guidance of Individuals for the Heavy Construction Industry", which was offered

cooperatively by Northeast Junior College, the University of Mississippi and TVA. Visiting the site were (l-r) W.R. Wimbish, Linda Smith, and Cawby.

work, which were overshadowed by the telephone's creation, can still be applied today in the 1980's. Bell said, "Know which work you want to do and go after it. The young man who gets ahead must decide for himself what he wishes to do. From his own tastes, his own enthusiasm, he must get the motive and the inspiration which are to start him on his way to a successful life."

Jim Pruitt and Delaner Alexander never met Bell during his lifetime but have followed those words of wisdom to their present jobs. Pruitt, 31, and Alexander, 46, are employed at the Tennessee Valley Authority's Yellow Creek Nuclear Plant located north of here. Pruitt is "the rookie" and Alexander "the old pro." Both are ironworkers. Pruitt has been in the TVA ironworker apprenticeship program for one year, whereas, Alexander has been a journeyman for 13 years.

Pruitt and Alexander are among 300 ironworkers and 2,300 trades and labor personnel at the plant which is nearing 15 percent completion. Pruitt is a native of Dothan, Alabama, who currently resides in Tusculumbia, Alabama, with his wife, Jane. Before entering the crafts in May 1978, he served as a clerk in the warehouse here. Then he got his big break by accepting an ironworker apprenticeship.

"My primary reason in coming to work with TVA was to get into the apprenticeship program," noted Pruitt, the father of one son. "A good friend of mine is an ironworker and he told me Yellow Creek would be a good opportunity to gain experience in almost all phases of ironwork."

"I worked construction in high school and college, primarily getting some rigging experience and totting some rebars (steel)," remarked Pruitt, a 5 foot 11 inch, 180 pounder with sandy colored hair and thick moustache. Pruitt's wife is employed at Reynolds Aluminum in Sheffield.

Pruitt graduated from Troy State University in 1971 with a bachelor's degree in

business administration. He is currently one-third of the way toward a master's degree in the same field, and according to Pruitt, "can always fall back on my education if construction work slows down." He explained that Yellow Creek is good experience for him and "TVA has as good an apprenticeship program as there is anywhere in the country." Pruitt adds that he is happy making a decent living, but he knows he'll never be rich.

Alexander, the father of three sons ages 25, 22 and 16, is a native of Colbert County, Alabama (Leighton) and currently resides at North Crossroads, a few miles from the plant.

"Being an ironworker is a good trade," says the soft-spoken Alexander. He is frequently seen in the unit 1 turbine building area smoking a pipe while directing the activities of his men. Pruitt is under the supervision of Mark Peters, another foreman who shares a crew shack with Alexander.

"A lot of my friends were ironworkers," remarks Alexander who is beginning to show his years of experience through his salt-and-pepper hair. "Ironworkers have a well diversified trade; there is something for everybody," he mentions.

"Men can handle rods, perform structural steel erections, weld, rig, and work in the shop."

"Alexander's journeys have taken him to Browns Ferry Nuclear Plant in 1969, Watts Bar Nuclear Plant in 1975, Hartsville Nuclear Plant in 1977, and here. He took a foreman's position here after two weeks. In addition, he worked on the New Orleans Superdome for H.H. Robinson Company."

He feels that quality control and quality assurance requirements are good because the plant needs to be built properly.

Additionally, Pruitt says that having skilled workers is a definite asset. "I'd advise my son to learn a trade and then go to college," Pruitt remarked. "It is healthier to get out and do physical work, and I believe a person will live longer. My wife says I have more energy when I get home."

"I wish I'd had a trade opportunity like this available when I got out of high school. My decision here was based on making a decent income and having less headaches by not going home to worry about paperwork the next day," added Pruitt. "I also enjoy working with my hands as well as my head."

Pruitt doesn't like getting

up so early but has found that work is still work. He lacks one year acquiring journeyman status.

"We have people working here who are ministers, teachers, etc.," Pruitt commented. "Many persons working here have college degrees, such as business, education, physical education, and other fields."

Pruitt also worked for General Foods and Hutchins Brokerage Company before coming here.

Pruitt and Alexander agree that "there are a lot of good people here and the personnel all get along well." Alexander adds that upper management is good as a whole and tries to solve all problems reasonably. He says his four men are "as good as you can find anywhere." Alexander's crew is also responsible for tower crane erection in the powerhouse area.

"There has to be a future for nuclear power," says Pruitt. "If we need power and must have it, it needs to be as safe as possible."

When asked his feelings about being associated with the construction of a plant with so much controversy, Pruitt related, "If I don't work here, they (TVA) will get somebody else to do it."

Alexander possibly said it

best. "If you want to do your job and do it right, you can do it anywhere."

"Time is a great physician," Benjamin Disraeli

According to the society, the optimum of birdbath water is less than 10 inches. Less it difficult for birds to bathe, more frighten

**SURPRISE BIRTHDAY PARTY FOR MR. BOB HOBSO**  
6:00 p.m., August  
luka Family Clinic  
302 Kaki  
All Friends Invite



JIM PRUITT



DELANER ALEXANDER

## News From YCNP

Alexander Graham Bell was known primarily for his invention of the telephone. However, his ideas about

## WORK SHOE HEADQUARTERS

FOR RUGGED SAFETY  
RED WINGS BUILT FOR  
ON-THE-JOB COMFORT

Black leather oxford with cushion crepe sole. Sizes 7-12 C-E #2201

Brown cowhide 6" with cushion insole. Waterproofed. Sizes 5-16 A-EEE #2224

8" oil-tanned logger-style boot. Sizes 7-12 B-EE #2289

9" Pecos pull-on with Neoprene cord sole and heel. Sizes 5-14 B-EEE #966



SIZES 5-16, A-EEE  
\*Not all sizes in all widths

You've earned your Wings! Safety Red Wings

Joe's Shoes

Ph. 286-8064  
206 S. Fillmore, Corinth, MS

Safety Boots for Men & Women

Black leather oxford with cushion insole. Sizes 6-13 A-EEE #2235

Oil-tanned 6" with a Urethane sole to resist oil. Sizes 7-13 B-EE #2220

Oil-tanned 8" with cushion crepe wedge sole. Sizes 6 1/2-13 B-EE #2248

12" western style Pecos pull-on. Waterproofed. Sizes 5-15 A-EEE #2255

**20¢ OFF**

when you buy any variety King Cotton chunk-style luncheon meats

Mr. Grocer: King Cotton will redeem this coupon for 20¢ plus 5¢ handling when submitted as part payment for one package of King Cotton chunk-style luncheon meats. Any other use constitutes fraud. Invoices proving purchase of sufficient stock to cover coupons must be furnished upon request. Any sales tax must be paid by consumer. Void if taxed, prohibited or restricted, or where presented by an outside agency or broker. Cash value 1/20th of 1¢. Limit one coupon per person. One package of product per coupon. Buring Food Group representative will redeem coupons at store level or mail coupons to Buring Food Group, 1837 Harbor Ave., P.O. Box 13039, Memphis, TN 38113. OFFER EXPIRES 10-31-80.



store coupon

**15¢ OFF**

when you buy King Cotton bacon

Mr. Grocer: King Cotton will redeem this coupon for 15¢ plus 5¢ handling when submitted as part payment for one package of King Cotton bacon. Any other use constitutes fraud. Invoices proving purchase of sufficient stock to cover coupons must be furnished upon request. Any sales tax must be paid by consumer. Void if taxed, prohibited or restricted, or where presented by an outside agency or broker. Cash value 1/20th of 1¢. Limit one coupon per person. One package of product per coupon. Buring Food Group representative will redeem coupons at store level or mail coupons to Buring Food Group, 1837 Harbor Ave., P.O. Box 13039, Memphis, TN 38113. OFFER EXPIRES 10-31-80.



store coupon

**10¢ OFF**

when you buy King Cotton hot dogs

Mr. Grocer: King Cotton will redeem this coupon for 10¢ plus 5¢ handling when submitted as part payment for one package of King Cotton hot dogs. Any other use constitutes fraud. Invoices proving purchase of sufficient stock to cover coupons must be furnished upon request. Any sales tax must be paid by consumer. Void if taxed, prohibited or restricted, or where presented by an outside agency or broker. Cash value 1/20th of 1¢. Limit one coupon per person. One package of product per coupon. Buring Food Group representative will redeem coupons at store level or mail coupons to Buring Food Group, 1837 Harbor Ave., P.O. Box 13039, Memphis, TN 38113. OFFER EXPIRES 10-31-80.



store coupon

**15¢ OFF**

when you buy King Cotton 12 or 16 oz. pure pork sausage

Mr. Grocer: King Cotton will redeem this coupon for 15¢ plus 5¢ handling when submitted as part payment for one package of King Cotton pure pork sausage 12 oz. or 16 oz. Any other use constitutes fraud. Invoices proving purchase of sufficient stock to cover coupons must be furnished upon request. Any sales tax must be paid by consumer. Void if taxed, prohibited or restricted, or where presented by an outside agency or broker. Cash value 1/20th of 1¢. Limit one coupon per person. One package of product per coupon. Buring Food Group representative will redeem coupons at store level or mail coupons to Buring Food Group, 1837 Harbor Ave., P.O. Box 13039, Memphis, TN 38113. OFFER EXPIRES 10-31-80.



store coupon

**15¢ OFF**

when you buy King Cotton big 8 franks

Mr. Grocer: King Cotton will redeem this coupon for 15¢ plus 5¢ handling when submitted as part payment for one package of King Cotton big 8 franks. Any other use constitutes fraud. Invoices proving purchase of sufficient stock to cover coupons must be furnished upon request. Any sales tax must be paid by consumer. Void if taxed, prohibited or restricted, or where presented by an outside agency or broker. Cash value 1/20th of 1¢. Limit one coupon per person. One package of product per coupon. Buring Food Group representative will redeem coupons at store level or mail coupons to Buring Food Group, 1837 Harbor Ave., P.O. Box 13039, Memphis, TN 38113. OFFER EXPIRES 10-31-80.



store coupon

**10¢ OFF**

when you buy King Cotton corn dogs

Mr. Grocer: King Cotton will redeem this coupon for 10¢ plus 5¢ handling when submitted as part payment for one package of King Cotton corn dogs. Any other use constitutes fraud. Invoices proving purchase of sufficient stock to cover coupons must be furnished upon request. Any sales tax must be paid by consumer. Void if taxed, prohibited or restricted, or where presented by an outside agency or broker. Cash value 1/20th of 1¢. Limit one coupon per person. One package of product per coupon. Buring Food Group representative will redeem coupons at store level or mail coupons to Buring Food Group, 1837 Harbor Ave., P.O. Box 13039, Memphis, TN 38113. OFFER EXPIRES 10-31-80.



store coupon

**15¢ OFF**

when you buy any variety King Cotton 8 oz. lunch meats

Mr. Grocer: King Cotton will redeem this coupon for 15¢ plus 5¢ handling when submitted as part payment for one package of King Cotton 8 oz. lunch meats. Any other use constitutes fraud. Invoices proving purchase of sufficient stock to cover coupons must be furnished upon request. Any sales tax must be paid by consumer. Void if taxed, prohibited or restricted, or where presented by an outside agency or broker. Cash value 1/20th of 1¢. Limit one coupon per person. One package of product per coupon. Buring Food Group representative will redeem coupons at store level or mail coupons to Buring Food Group, 1837 Harbor Ave., P.O. Box 13039, Memphis, TN 38113. OFFER EXPIRES 10-31-80.



store coupon





**Winners** — — —  
During the awards they  
were at the close of the  
or and Senior High  
Basketball Camp,

sponsored by the Athletic  
Department at Northeast  
Junior College, are, (l-r)  
Stephanie Hawkins, Sports-  
manship Award, Monroe

County; Laurel Dunlap, Best  
Free Throw Award, Union  
County; and Sherry Phillips,  
one-on-one Award, Tishomingo County. These

girls were among 85 par-  
ticipants who attended the  
week-long camp held earlier  
this summer.

## Fletcher Nunley Reunion Held

The Fletcher Nunley family  
held their reunion Sunday,  
27, 1980, at the Eastport  
Baptist Church Fellowship.  
Mr. Nunley, who will be  
65 years old October 8, is the  
father of five sons and seven  
daughters. He has 16 grand-  
sons, 14 granddaughters, 10  
great-grandsons, 13 great-  
granddaughters, one great-  
great-grandson, and four  
great-great-granddaughters.  
A corsage of white carnations  
was presented to  
Fletcher (Rena) Nunley  
her grandson-in-law, Gary  
er, of Cicero, Ill.

Approximately 75 people  
attended the reunion. Those  
present were: Mr. and Mrs.  
er Nunley and Olean, of  
Tishomingo; Mr. and Mrs.  
ter Nunley and Betty, of  
Mantachie; Mr. and Mrs. Dex-

ter Nunley, Jr. and Angie, of  
Mantachie; Mr. and Mrs. Jim  
Moran and Tommy, of Man-  
tachie; Audrea Foster, of  
Mantachie; Teresa Nunley, of  
Marietta; Mr. and Mrs. Elton  
Nunley and Dolan, Theresa  
and Gina Ivy, of Tishomingo;  
Mr. L.C. Nunley and Charlot-  
te, Mr. and Mrs. Larry Nunley,  
Amanda and Larry Lee, Mr.  
and Mrs. Terry Booker,  
Stephanie and Eric, Mr. and  
Mrs. A.J. Nunley, Mr. and Mrs.  
Donald Crabb and Quincey,  
Mrs. Annette Grisham, Mr.  
and Mrs. Donnie Crabb and  
Sonya, Mr. and Mrs. Danny  
Dexter and Derek, Mr. and  
Mrs. Ferlon Brumley and  
Christina, Mr. and Mrs. J.E.  
Woodruff and Patti, Mr. H.L.  
(Trail) Nunley, Mr. and Mrs.  
Jerry South and Jeremy, Mr.  
and Mrs. Tommy Blackard

and Renata, Roger Carter, Mr.  
and Mrs. Herbert South,  
Paulette and Phillip, all of  
Iuka; Pamela South, of Stark-  
ville; Mr. and Mrs. Bobby  
Davis and Sandra, Mr. and  
Mrs. Gary Butler, Neisha and  
Tina, all of Cicero, Ill.; Mr. and  
Mrs. Paulie Nunley and  
Jason, Mr. and Mrs. Donald  
Joe Holt and Joey, of Iuka.

The children of Fletcher  
and Rena Nunley would like  
to take this opportunity to say  
"Thanks" to the greatest  
Mom and Dad in the world.

## Midway RCDC

The Midway Community  
Rural Development Club met  
July 28, at 7:30 p.m. The club  
president, Edward Wynn,  
called the meeting to order.

A welcomed visitor, Peter  
Short, gave the devotion.

The program was on Vo-  
Tech Education in the county  
with guest speaker, Bobby  
Wimbish, Counselor at the

Tishomingo County Vo-Tech  
Center. Mr. Wimbish showed  
slides and made an infor-  
mative and interesting  
narration on the various  
classes of work, club and  
social activities being carried  
out at the center.

After the program the club  
called a special meeting for  
August 4, at 7:30 p.m. The  
purpose for this meeting is to  
make plans for the  
Tishomingo County Fair.

The group was happy to  
have Mr. Tommy Purvis,  
County Extension 4-H Leader,  
and Mr. Percie Stricklen,  
Tishomingo County Agent,  
and other visitors present.

Mrs. Ava Hill, leader for the  
month of July, served

**ATHLETE'S FOOT  
HOW TO TREAT IT—**  
Apply quick-drying T-4-L. Feel  
it take hold to check itch, burning  
in MINUTES. In 3 to 5 days, in-  
fected skin sloughs off. Watch  
HEALTHY skin replace it! If not  
delighted IN ONE HOUR, your 79c  
back at any drug counter. NOW at  
Curtis Bros. Drug

refreshments at the con-  
clusion of the program.

The August meeting will be  
a picnic. The date and place  
to meet has not been  
decided.

## Eastport

Glad to report that Joseph  
Booker is doing better since  
his surgery last Friday,  
August 1, at Baptist Hospital  
in Memphis. He is the son of  
Mr. and Mrs. Jerry Booker, of  
Eastport. Also, another son,  
Brian Booker, will have ear  
surgery this week in Mem-  
phis.

Mr. and Mrs. Sid Robinson,  
Mr. and Mrs. Frankie Luttrell  
and Robert traveled to  
Pascagoula, Miss. for the ball  
game this weekend.

Mr. and Mrs. Jimmy  
Booker, of Tusculum, and  
Lisa Booker spent Sunday in  
Memphis visiting Joseph  
Booker. They also visited with  
Stanley Dexter.

Everyone enjoyed the  
Booker family reunion Sun-  
day with fellowship and good  
food. The first time all of  
some families had been  
together in ten years. Hope  
we can all be together for  
another reunion.

## Tishomingo Library News

By: Lonette Southward

It's hard to believe summer  
will soon be over and school  
will be starting again. Each  
year the summers seem to  
get shorter, and I know its  
because we enjoy the  
children coming to the  
library. We have gotten some  
new books for beginners thru  
the 3rd and 4th grade, so if  
you children would like to  
"brush up" on your reading  
before school starts, I believe  
you would have fun reading  
these books.

Some of the new adult  
books we have received  
recently are: Man, Woman,  
and Child, by Erich Segal; The  
Cradle Will Fall, by Mary  
Higgins Clark; The Iron  
Facade, by Catherine Mar-  
chant; Solo, by Jack Higgins;  
Sins of the Fathers, by Susan  
Howatch; Helen and Teacher,  
by Joseph P. Lash; Bloody  
Buna, by Mayo; Two Thieves

and a Puma, by John Reece;  
The Executioner, by Norman  
Mailer; Killers Trail, by Giles  
A. Lutz; and several new  
paperbacks.

Everyone is invited to use  
the library Monday thru  
Friday, 11 a.m. to 5 p.m.

## Early Files

By: R. Moyers

August 5, 1943

Tishomingo County Elec-  
tion Returns Unavailable read  
the headlines of the August 5,  
1943. Press unable to get  
complete returns up to press  
time, it continued; Marlar out  
in front for Sheriff --- Jordan,  
second.

The Vidette stressed the  
patriotic duty of folk to shop  
in those stores which had  
enlisted 100% in the battle to  
keep that cost of living down  
in wartime.

News of Our Men and  
Women in Uniform listed the  
following names: Sgt. Roy  
Williams, S/Sgt. Prentiss L.  
Oaks, Cpl. Dossie M. Morris,  
Pvt. Claude E. Foote, Pvt.

James A. Dixon, Pvt. Ben-  
jamin Walker, Seaman Donald  
Waco Parsons, 3/C Petty Of-  
ficer William Harris Monroe,  
Pvt. James Nixon, Cpl. Evan  
Clay Woodruff, Sgt. George  
C. Allen, Pfc. Hershel L.  
Blackard, Lieut. Roy Morton  
Chase, Sgt. Ben D. Gurley,  
Sgt. Wilmer H. Hamilton, W.  
Roy Dexter, Charles  
Shackelford, M/Sgt. W.H.  
Grisham, T/Sgt. Freeman  
Lambert.

Mr. and Mrs. Clayton Par-  
nell left for Oliver Springs,  
Tenn. where he was em-  
ployed.

Misses Joyce and Virginia  
Daniels had as their visitors  
Misses Martha Mae and  
Margaret Daniels.

Newsprint paper on which  
newspapers were printed was  
to be raised \$4.00 per ton.

The Sunday School lesson  
for the week was "God Shows  
His People the Way," Exodus  
13:17-22; 15:17-22.

Clear rain water makes the  
best cooling fluid for the auto  
or tractor radiator in the  
summer, since it does not  
form scale in the radiator  
tubes as hard water does.

From the classifieds: Lost -

One ten dollar bill between  
Jourdan's Drug Store and  
Theatre. Reward for return.

Mrs. Berry Lee Martin  
visited in Chattanooga, Tenn.  
Fowler S. Aldridge died at  
the home of his daughter.

James Henry Donahue, age  
75, died at his home in Iuka.

Among the stars enter-  
taining at the Majestic  
Theatre were: Gene Autry,  
Smiley Burnette, Bing  
Crosby, Bob Hope, Buck  
Jones and Tim McCoy.

## Receive Degrees

Three students of The  
Tishomingo County News  
circulation area were among  
648 candidates for degrees  
for the summer semester at  
Ole Miss. Of these 305 were  
candidates for advanced  
degrees, including 238  
masters, 32 doctoral, 26 juris  
doctor, and 9 specialists  
degrees.

From Golden: Sammie Lee  
Pounds, Master of Arts.

From Iuka: Teresa Diane  
Boothe, Master of Education;  
James Omer Nelsin II, Juris  
Doctor.

# \$500 REWARD

For information leading to the return of the 9 guns  
stolen from my home, Tuesday, July 29.

## Clayton "Pete" Hobbs

423-3230



Valuable  
Coupon  
Offer

# TRI-STATE FEED

Iuka, MS.



Valuable  
Coupon  
Offer

Highway 25 North Phone 423-6826

Announcing: A New Dog, Cat and  
Floating Catfish Food.

**NEW!**

**NEW!!**

**FUZZY'S CHUNK  
DOG FOOD**

Tasty 'N Meaty Flavor  
21% Protein

**NEW!!**

**FLOATING CATFISH  
FOOD**

32% PROTEIN

**FUZZY'S**

**DOG FOOD PELLETS**

25% PROTEIN

—Our well known brand, we've carried for  
years.

**CHATHAM**

**CAT FOOD**

30% HIGH PROTEIN

A blend of meat, shrimp and fish flavors.

☆ CLIP THIS VALUABLE COUPON AND  
BRING IN FOR YOUR PURCHASE ☆

# 50¢ OFF

Coupon good for cents off on our  
New Dog Food, Catfish Food, Cat Food, and our regular Dog Food.

Limit 2 Coupons

Offer Expires Aug. 23, 1980

# 30 Month Certificate

\$500<sup>00</sup> Minimum.

# Now Paying 9.70%

Rate Good Thru August 20th  
A substantial interest penalty  
is required for early withdrawal.

# 6 Month Money Market Now Paying

# 9.117%

\$10,000 Minimum.

Rate good thru  
August 13, 1980

a substantial interest  
penalty is required for  
early withdrawal.

MEMBER  
**FSLIC**  
Federal Savings & Loan Insurance Corp.

Your Savings Insured to \$100,000

# Tri-State

SAVINGS & LOAN  
ASSOCIATION Iuka & Belmont





AD EXPIRES AUGUST 7, 1980  
WE RESERVE THE RIGHT TO LIMIT QUANTITIES. NO SALES TO DEALERS.

REELFOOT

**Franks**

1 LB. PACK **99¢**

SUNSHINE RATION

**DOG FOOD**



**COKE**

6 PACK 32 OZ. BOTTLES  
PLUS DEPOSIT

**DR. PEPPER** REG. OR SUGAR FREE **98¢**  
2 LITER PLASTIC BTL.

VAN-CAMP

**PORK & BEANS** 16 OZ. CANS **3 for \$1.00**

MURRY

**COOKIES** ASST. FLAVORS **3 for \$1.00**  
5 1/2 OZ. PACKS

**Mix & Match  
Elf Sale**

**Great Northern Cream Corn Beans**  
**Pinto Beans**  
**Cut Green Beans** **Whole Kernel Corn**  
15-16 oz. cans

**WHOLE POTATOES**



USDA Inspected!  
**Fryer Leg Quarters**

Family Pak **5.50**  
lb.

USDA Inspected

**\$3.59**

**CRISCO**

25 LB. BAG



DELMONTE

**CATSUP**

**\$1.69**

FLAVORITE

**TEA BAGS**

100 CT. BOX

**\$1.47**

DETERGENT

**JOY LIQUID**

22 OZ. BTL.

**99¢**

CAMBELLS CREAM OF MUSHROOM

**SOUP**

10 3/4 OZ. CANS

**3 for 99¢**

LAUNDRY DETERGENT

**ERA**

16 OZ. BTL.

**2 for 88¢**

DELTA

**TOWELS**

JUMBO ROLLS

**2 for 89¢**

DOVE

**SOAP**

4.75 OZ. BARS

**2 for 89¢**

FRANCO-AMERICAN

**SPAGHETTI OS**

14 3/4 OZ. CANS

**3 for \$1.00**

LILY FRENCH CANE

**CUPS**

9 OZ. SIZE.

**\$1.25**

SALLY'S ALL FLAVORS

**ICE CREAM**

1/2 GAL.

**\$1.19**

CAMBELLS

**V 8 JUICE**

46 OZ. CAN

**88¢**

FLAVORITE CHOCOLATE

U.S.D.A. CHOICE

**CLUB STEAKS**

LB. **\$2.69**

**CHICKEN LIVERS**

1/2 LB. CUP **49¢**

SLICED

**SLAB BACON**

lb. **\$1.19**

SUNNYLAND

**BOLOGNA**

LB. **\$1.39**

**SAUSAGE**

1 LB. ROLL **99¢**

Reelfoot

**BACON**

12 OZ. PACK **99¢**

SALLY'S HOT DOG OR HAMBURGER

**BUNS**

8 CT. PACKS **3 for \$1.19**

BETTY CROCKER ALL FLAVORS EXCEPT AN ANGEL FOOD

**CAKE MIX**

18 1/2 OZ. BOX **69¢**

SIERRA BLANCA

**STRAWBERRIES**

FROZEN **3 for \$1.00**  
10 OZ. BOXES

FLEISHMANS CORN OIL

**MARGARINE**

1 LB. BOX **79¢**

**The FRESH COMMITMENT**

Double Your Money Back...  
**GUARANTEE!**  
It is our commitment to provide you with the finest fresh fruits and vegetables. If you are not completely satisfied with your purchase, we will refund the price of your purchase. That's our commitment. The FRESH COMMITMENT.



Sugar Sweet **Cantaloupes** each **59¢**

Fresh Southern

**Peaches** lb. **39¢**

FRESH CRISP

**Celery** bunch **39¢**

Carrots **3 for \$1.00**

California Pink Grapefruit

SWEET

**Yellow Corn**

**7 for \$1.00**



## TVA's Long-Term Power Supply Outlook Reviewed

For the past several weeks, the Tennessee Valley Authority's Power Planning staff has been intensively reviewing TVA's long-term power supply outlook. The staff's projections raise questions about the current construction schedule for the 10 nuclear generating units TVA expects to complete by the end of this decade.

When TVA ordered the units now under construction, loads were estimated to grow at 7 percent per year. More recent forecasts projected growth in the demand for electricity in the rest of this century at an average of 3-4 percent annually. The latest analysis reveals that the best estimate of future growth is now down to 2-2½ percent annually.

TVA has already deferred four of the 14 units under construction in recognition of the reduced demand. Based on this lower growth forecast, an argument could be made for the deferral of additional units. But, several factors must be considered in making such a decision, including:

1. While there would be some short-term savings from additional deferrals, there would be no long-term savings on deferring additional units because of inflation and the inefficiencies of closing down a construction job. However, there is a limit to what the current ratepayer can absorb in financing a large construction program for future needs. This concern for the

current ratepayer was recognized last year when the TVA Board decided to defer four nuclear units.

2. TVA is planning discussions with other utilities, particularly those that rely on oil-fired turbines, to see if attractive interchange arrangements can be made for TVA's ratepayers. TVA would even consider restarting one or more of the units deferred last year if negotiations for the interchange of power prove successful. Such arrangements would, of course, be made only if they resulted in benefits to TVA customers.

3. TVA must recognize that this region's economy could defy the forecasters and grow faster than projected. TVA intends to do everything it can to promote quality economic growth. Such growth could be seriously impaired if a shortage of generating capacity were to develop in the future.

4. TVA's experience this summer demonstrated conclusively that loads are very weather sensitive and TVA must have adequate capacity to meet loads during extreme heat or cold. Without sizeable reserves TVA customers would have suffered burnouts this summer.

TVA's construction program is costly and will account for sizeable portions of rate increases for the next 3-5 years. Almost a third of the anticipated fall increase of about 20 percent will go toward interest costs on plants now under construction. Yet construction

program is essential to jobs and prosperity in the Tennessee Valley in the years ahead. The job is to promote jobs and prosperity, and not risk economic stagnation and blackouts.

In light of these considerations and in view of TVA's commitment to the future economic growth of this region, the staff does not recommend any change in the construction schedule. The power supply situation will continue to be analyzed, and if new facts come to light, they will be brought to the Board's attention.

### Revival At S. Crossroads

South Crossroads Baptist Church will be in revival services beginning Sunday, August 10, through August

15, with services nightly at 7 p.m.

Bro. J.A. Blunt, of the New Prospect Baptist Church, will be the evangelist.

Pastor Harold Holley and congregation invite everyone to attend.

### Revival At Mt. Pleasant

Mt. Pleasant United Methodist Church revival will begin Sunday, August 10, and continue through Wednesday, August 13. Services will begin at 7 p.m. - Sunday, 9 a.m., Mr. Kirk Van Blaircom; Sunday night, Rev. Doc Jeter, special singing, Belmont Church; Monday night, Rev. Del Blackman, special singing, Tishomingo Church; Tuesday night, Rev. Dan Young, special singing, Den- nis, Golden and Old Bethel

Churches; Wednesday night, Rev. Doc Jeter, special music will be Belmont, Golden and Tishomingo Churches.

The pastor and congregation invite everyone to attend.

Mt. Pleasant Church is located 5 miles west of Tishomingo State Park entrance off Hwy. 25 from Kathy's Korner.

### Revival and Homecoming at Eastport

Homecoming will be at Eastport Baptist Church on Sunday, August 10, with preaching service in the morning by Bro. Joe Weaver, of Glen, Miss. Lunch will be served at noon at the church with singing in the afternoon. Everyone is invited to at-

tend the homecoming and enjoy good singing and fellowship.

Eastport has called a new pastor, Bro. Joe Weaver, of Glen, Miss.

Revival services will begin Sunday night at 7 p.m. and at 7:30 Monday night through Friday night. Bro. T.E. Nethery, of Corinth, will be the speaker for each service.

The pastor and congregation invite everyone to come out and join in all of these services.

### Notice! NEMJC Players

Coach Ward, of the Northeast Mississippi Junior College, announced Tuesday that he would be issuing football equipment starting Thursday and Friday of this

week and Monday and Tuesday of next week. Football players can come by anytime during the day to pick up their gear. Practice will begin August 17.

### Linton Reunion

The twenty fourth annual Linton reunion will be held Saturday and Sunday, August 9 and 10, at the Tishomingo State Park. Fun begins Saturday evening at 5 and continues through Sunday, with lunch being served at noon.

All family members are urged to attend. Remember, this is your reunion.

FOR SALE — 2 bedroom brick, electric heat, chain link fence in back, extra lot, out buildings, 408 North Adams. Call 423-6932. A-7-14-c.



Eric Is Five

Eric Christopher Bonds, son of Mr. and Mrs. Aaron Bonds, celebrated his 5th birthday July 8th, with a party in the Spring Park. Several little friends of Eric attended to make it a very special day. After the children had played on the big slide and other equipment, Eric opened his many gifts. "Big Bird" birthday cake, Kool Aid, and ice cream was served to the following: Candy Clarkson, Amanda Lambert, Hollie Milligan, Julie and Rebecca Tanner, Jon Riley, Casey and Sam Bolen, Carrie Hardwick, Paula and Pamela Wigginton, son, Jonathan and Jamie Stuart, and his big sister, Natalie. Also present were Mrs. Sandra Skinner, Mrs. B. Matham, Mrs. Joe Stuart, Mrs. Kirk Milligan and Mrs. Rick Ray. Eric is the grandson of Mr. and Mrs. Wilson Roate, Mrs. Ruth Bonds and the late Mr. Joe Bonds, all of Iuka.



Surprise Welcome Party

On her arrival from Houston, Texas, Stacia Hunt, granddaughter of Mr. and Mrs. Wilford Hunt, of Tishomingo, was greeted by many friends and relatives. The guests for the big "surprise" party included: Mr. and Mrs. Adron Hunt, Mr. and Mrs. Earl Garner, Scott and Dorene, Mr. and Mrs. Gary Wiley, Carla, Mark and Christina, Treanna McClung and son, John, Mr. and Mrs. Herman Holman, Camille and Anne Young. The "Holly Hobbie" theme was carried out with the napkins, plates and cups. Also included in decorations were blue and white paper streamers and balloons "galore"! Refreshments served were cake, which was a beautiful Barbie Doll", nuts, mints and punch. Stacia will be staying with her grandparents three weeks and then will be joined by her parents, Stella and Faye Hunt.

## SALE ON ALL SEIKO

Digital Watches



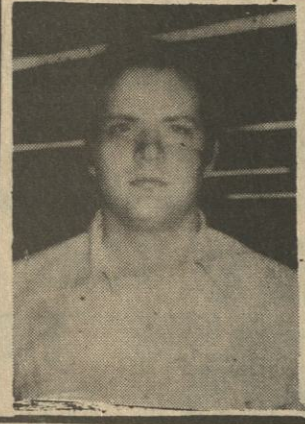
30% off

Heritage Jewelers

Elm Shopping Center - Iuka, Miss.

# Q-MART GET AQUAINTED SALE

Q-MART IUKA



Come By And Meet Duane Garner  
Q-Mart's New Manager ...He Has Slashed Prices Just For You....

Pepsi 2 Liter Bottle 89¢

## Fried Chicken

ALL BAGS & BOXES

(snack packs) (dinners)

1/2 OFF  
REGULAR PRICE

Lay's Chips 79¢

Grade A Small

Eggs 49¢

Milk \$2.19

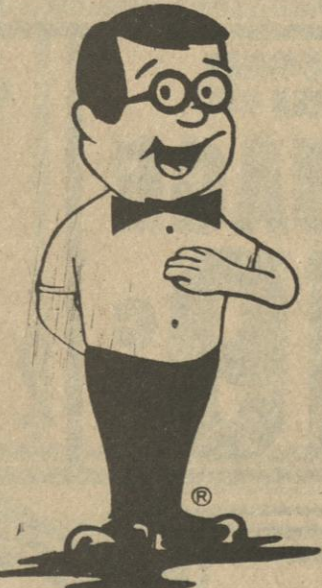
Gallon

SALE BEGINS THURSDAY ENDS SUNDAY

MR. Q SAYS  
SAVE TIME AND GAS - SHOP Q-MART

AD EFFECTIVE Q-MART IUKA ONLY  
AUGUST 7 - AUGUST 10

WE RESERVE RIGHTS TO LIMIT QUANTITIES



FINAL

SUMMER CLEARANCE

Sale Starts Friday

ALL SALES CASH - ALL SALES FINAL

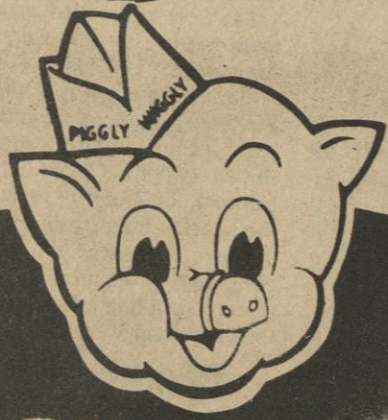
ONE RACK \$2.00 ONE RACK \$5.00

ONE RACK \$10 ONE RACK 1/2 price

Daisy's

Downtown Iuka





**PIGGLY WIGGLY**

# GOOD OLD SUMMER TIME

**ELM SHOPPING CENTER  
IUKA, MS**

QUANTITY RIGHTS RESERVED  
PRICES GOOD THURS., AUG. 7 TO WED., AUG. 13, 1980

SMOKED

**PORK CHOPS**  
**\$1.69**  
LB.  
CENTER CUT



USDA CHOICE BEEF  
BONELESS CHUCK

**STEAK**  
**\$1.99**  
LB.

SELECTO SLICED  
**LUNCH MEATS**

LIVER, P & P, OLIVE,  
SPICED LUNCHEON

8 OZ. PKG.

**\$1.00**  
FOR 3

**HOLLY FARMS USDA  
GRADE A WHOLE  
FRYERS**

**49<sup>c</sup>**  
LB.  
USDA  
A  
GRADE

SELECTO VACUM PACKED SLICED

**SLAB BACON**

LB. **99<sup>c</sup>**

DOMESTIC

**RABBIT**

LB. **\$1.89**

PURE BEEF

**STEAKS**

LB. **\$1.99**

FRESH FROZEN PERCH

**FILLETS**

LB. **\$1.49**

FRESH FROZEN SLICED BEEF

**LIVER**

LB. **99<sup>c</sup>**

SELECTO  
SLICED MEAT

**BOLOGNA**

12-OZ.  
PKG.

**99<sup>c</sup>**

OUR TOP BUY  
ENDS & PIECES

**BACON**

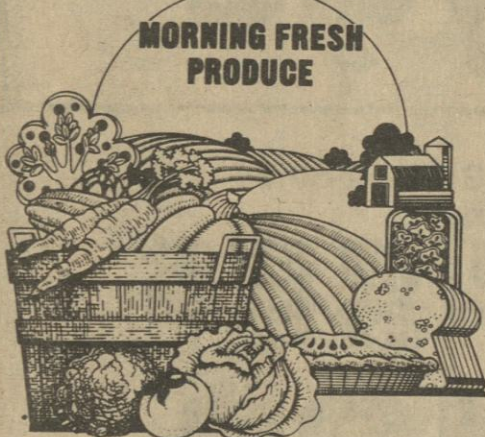
3  
LB.  
BOX

**\$1.59**

SELECTO  
BONELESS HALF

**HAM**

**\$1.69**  
LB.



MORNING FRESH  
PRODUCE

Piggly Wiggly offers  
you produce that is  
peak of the season  
fresh. We take pride in  
bringing you the  
freshest produce in  
town. That is why we  
call it Morning Fresh!

**R.C. COLA**

2 LITER  
BTL.

**89<sup>c</sup>**

U.S. NO. 1 WHITE RUSSET

**POTATOES**

10 LB.  
BAG

**\$1.49**

FRESH TANGY  
FLORIDA

**LIMES**

**69<sup>c</sup>**  
DOZ.

MORNING FRESH  
GEORGIA

**PEACHES**

**39<sup>c</sup>**  
LB.

MORNING FRESH  
GREEN

**CABBAGE**

**19<sup>c</sup>**  
LB.

FRESH CRISP

**LETTUCE**

LARGE HEADS

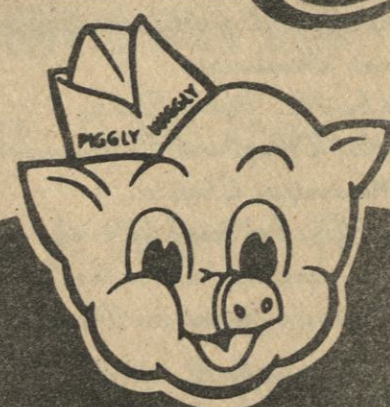
**\$1.00**  
2 for

MORNING FRESH  
CRISP

**CARROTS**

**29<sup>c</sup>**  
1-LB.  
PKG.





**PIGGLY WIGGLY**

# SAVINGS

SUNFLOWER  
SELF-RISING

**CORN MEAL** **99<sup>c</sup>**  
5 LB. BAG

**FOOD STAMPS WELCOME HERE**

EVERFRESH GLAZED

**DONUTS** 12-OZ. BOX **99<sup>c</sup>**

STOKLEY CUT

**GREEN BEANS** 3 17-OZ. CANS **\$1<sup>00</sup>**

VAN CAMP

**PORK & BEANS** 3 16-OZ. CANS **\$1<sup>00</sup>**

VAN CAMP E-Z OPEN BEANEE

**WEENEES** 2 8-OZ. CANS **88<sup>c</sup>**

**FREE 15 FOOT CANOE**

REGISTER FREE EACH TIME YOU SHOP PIGGLY WIGGLY IUKA FOR A 15 FOOT COLEMAN FIBERGLASS CANOE. DRAWING TO BE HELD 4:00 AUG. 9. MUST BE PRESENT TO WIN.

GRAND PRIX  
FROZEN

**POTATOES**  
2 **\$1<sup>00</sup>**  
2-LB. BAGS

PIGGLY WIGGLY

**MAYONNAISE**

QT. JAR

**89<sup>c</sup>**



42-OZ.  
CAN

**99<sup>c</sup>**

**GOLDEN BEST  
ALL PURPOSE  
SHORTENING**

AURORA  
ASSORTED BATH

**TISSUE**



4-ROLL  
PKG.

**89<sup>c</sup>**

SKINNER SHORT CUT

**MACARONI**

8-OZ. PKG. **39<sup>c</sup>**

SUNSHINE SUGAR

**WAFERS**

12-OZ. PKG. **88<sup>c</sup>**

A & W

**ROOT BEER**

2-LITER BTL. **88<sup>c</sup>**

PIGGLY WIGGLY  
FROZEN ORANGE

**JUICE**  
**58<sup>c</sup>**  
12-OZ. CAN

FREEZER QUEEN FROZEN

**ENTREES**

2-LB. PKG. **\$1<sup>59</sup>**

COZY KITTEN CAT

**FOOD**

4 15-OZ. CANS **\$1<sup>00</sup>**

FRESH FROM OUR BAKERY **\$2<sup>99</sup>**  
COCONUT CAKES 8 IN. 2-LAYER  
REG. \$4.49

**FRESH FROM OUR BAKERY**

CHOCOLATE CHIP, SUGAR,  
AND OATMEAL COOKIES  
DOZ.

**59<sup>c</sup>**

REGULAR 99<sup>c</sup>

MERICO  
BUTTER FLAVORED

**BISCUITS**

5 **\$1<sup>00</sup>**  
5-CT. CANS

STOKLEY CREAM  
STYLE OR WHOLE KERNEL CORN

**CORN**

3 **\$1<sup>00</sup>**  
17-OZ. CANS

GILLETTE  
TRAC II RAZOR

**BLADES**

**\$1<sup>29</sup>**  
5-CT. PKG.

SINE-AID  
SINUS RELIEF

**TABLETS**

**\$1<sup>88</sup>**  
24-CT. BTL.

DEODORANT  
SPRAY RIGHT

**GUARD**

**\$1<sup>29</sup>**  
3-OZ. CAN



*Associated Minority Contractors of America*  
*announces the opening of its Rural Development Office*  
*in West Point, Mississippi*  
*The office is headed by Ms. Wilma Falls,*  
*Regional Rural Development Officer and Chairwoman*  
*for the AMC Mississippi Chapter.*  
*This office has been established in response to the*  
*Associated Minority Contractors' role in the*  
*White House Rural Development Initiatives Program.*

FOR FURTHER INFORMATION CONTACT:  
Ms. Wilma Falls  
P. O. Box 1222  
818 Hill Street  
West Point, Ms. 39773  
Telephone (601) 494-3821

### Opening Of Regional Office

The Associated Minority Contractors of America is proud to announce the opening of its Rural Development Office in West Point, Mississippi. The Association of Minority Contractors of America is a National Trade Association dedicated to helping develop and sustain the minority contractors industry.

The office is headed by Mrs. Wilma Falls, Regional Rural Development Officer and Chairwoman of AMC's Mississippi Chapter. Mrs. Falls has had experience in rural economic development activities throughout the South. She is actively involved in a number of organization dedicated to minority business development with responsibility for coordination, outreach, fund raising and political interaction. She has been very active in the Minority Peoples Council on the Tenn-Tom Waterway in terms of organizing and policy input regarding minority participation in the Tenn-Tom Waterway Project area.

The office has been established in response to the Associated Minority Contractors role in the White House Rural Development Initiatives Program. The intent of the program is to insure that project area residents reap the economic and employment benefits associated with large federal construction projects. AMC is responsible for

helping to maximize construction related employment and training opportunities of minority women and economically disadvantaged persons.

The program encompasses five demonstration areas. Primary attention will be directed toward the Tennessee Tombigbee Waterway Project. The other demonstration projects are: The Red River in Louisiana; The Mt. Tolman/Creston in the Creston Mine and Power Station in Washington; The TVA Project in Tennessee and the McGee Creek Reservoir in Oklahoma. AMS's Rural Development Office is located at 818 Hill Street in West Point, Mississippi 39773. Telephone (601) 494-3821.

### Gospel Singing

South Crossroads Baptist Church will have a singing on Saturday night, August 9, at 7 p.m.

Featured singers will be The Gospel Editions, from Tishomingo.

Everyone is welcome.

### Outside Singing

The Tishomingo Pentecostal Church will sponsor an outside singing on Saturday night, August 9, beginning at 7:30 p.m.

Featured groups will be The Harmoniers, The Tishomingo Choir, and The Hill Family, from Booneville. The church will sell hamburgers, hot dogs, snowballs and drinks.

### Singing At Old Central

The public is invited to a gospel singing at Old Central School on Friday night, August 8, at 7:00.

Featured singers will be The Sparks Family, of Belmont; and The Parker's Chapel Quartet, of Marietta.

### State Park Activities

Canoe races and a bluegrass music concert are scheduled at Tishomingo State Park Saturday, August 9.

The fun gets started in the morning with canoe races along Bear Creek. The course is eight miles long and last year's winning time was 65 minutes. There are several contestants who believe that time can be beaten this year. Canoeists can use their own canoes or use one provided by the park.

Trophies will be awarded to the first three place winners in the single and mixed classes.

Registration will open at 9 a.m. and the races will start at 10 a.m. The registration fee is \$5.

At 8 p.m. a bluegrass music concert will be held with Crawpatch from Memphis the headline attraction. In addition to Crawpatch local bands will also perform.

Gary Ramsey, park manager, said he expects a big turnout for the canoe races and hopes everyone will spend the day in the park and enjoy the musical entertainment at 8.

## Coordinating Efforts Help Elderly, Poor And Handicapped

In most communities there is an agency or there are a number of agencies whose purpose is to aid the poor and elderly people of that community. One such Agency is the Northeast Mississippi Community Action Agency, Inc., directed by Nolen U. Embry. The Agency serves Alcorn, Prentiss and Tishomingo Counties.

A unique program implemented by NMCAA, Inc. is the Energy Crisis Intervention Program whereas firewood is being stockpiled to be delivered this winter to the eligible elderly, handicapped, poor and near poor families and individuals.

The Corps of Engineers is responsible for constructing the Tennessee-Tombigbee Waterway and is providing NMCAA, Inc. with surplus timber. County supervisors have made their trucks available to haul the firewood to the stockpiles. The firewood will be delivered this winter to the needy in crisis situations. Labor is being provided by the Satellite Prison in Corinth.

The purpose of the Wood Project is to assist low-income households, dependent on firewood, who experience large increases in energy costs; and/or households, dependent on firewood, which face a life or health threatening condition caused by winter heating and/or cooking emergencies.

Applications for assistance will be taken at the following community Action Agency Community Centers: Alcorn County, Corinth City Hall, telephone 287-5546; Prentiss County, Prentiss County Court House, telephone 728-8141; Tishomingo County, Tishomingo County Court House, telephone 423-3842.

A recipient of the firewood must have a family income below the 1980 Community Services Administration Poverty Income Guideline which begins at \$3,790 for a non-farm family and \$3,250 for a farm family of one person.

The highest allowable income eligible for the program is for a family of six non-farmers at \$9,890 and farmers earning \$8,400. A sliding scale is used for those between the two figures. For family units with more than 6 members, add \$1,220 for each additional member in a non-farm family and \$1,030 for each additional member in a farm family. A farm residence is defined as any dwelling on a place of 10 acres or more with \$50 or more annual sales of farm products raised there; or any place less than 10 acres having product sales of \$250 or more.

According to Mrs. Bobbie George, Program Coordinator, to avoid delays in processing applications, please bring proof of household income at the time of application. Some acceptable proofs of income are: Social Security and/or Veteran's Administration Award letters; Social Security and/or Veteran's Administration Direct Deposit slip; copies of U.S. Treasury checks; AFDC or Food Stamp statement of income verification; W-2 Forms; Employer's Statement of income; statement of Unemployment benefits from Employment Security Commission.

### Degree Awarded At Ole Miss

James Omer Nelson II, of Iuka, is among 26 candidates for law degrees to be presented August 10, during graduation ceremonies at The University of Mississippi. The ceremonies will be held at 10 a.m. in the School of Education Auditorium on campus.

The Hon. Frank Everett Jr., of Jackson, will be the guest speaker and the Hon. Anthony T. Farese of the 18th Chancery Clerk will admit students to the State Bar. The

Hon. Robert Womac, Clerk of the Mississippi Supreme Court, will admit students to practice in the State Supreme Court and the Hon. Norman Gillespie, Clerk of the Federal Court for the Northern District, will admit graduates to practice before the District Court.

### South-Lindsey Reunion

The South-Lindsey

Reunion will be held at the Youth Center in Mineral Springs Park on Saturday, August 9, about 10:00 a.m.

All relatives and friends are asked to be present. Lunch will be served at the noon hour.

### Reception To Honor Walkers

Mr. and Mrs. Herbert H.

Walker are to celebrate Golden Wedding Anniversary. A reception is being held at their home, 101 Snowdown Road on day, August 16, from 4:00 p.m.

All friends and relatives of the family are invited to celebrate the occasion.

The greatest reliable reported for a monkey, 46 years for a male baboon named "Ge."

## BACK TO SCHOOL



### For Boys

- Jeans
- Tube Socks
- Knit & Western Shirts
- Belts
- Football Jerseys
- Jackets

### For Girls

- Mix & Match Sportswear
- Coats-Knit & Velour
- Wriggles Jeans
- Tops
- Sweaters
- Dresses
- Belts
- Purses

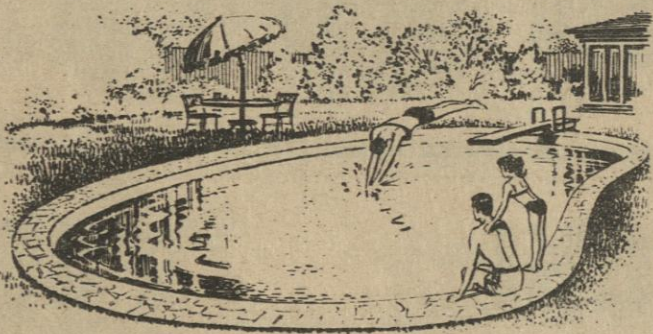
## SIDEWALK SALE

COME TO THE SIDEWALK SALE  
Saturday, August 9,  
from 9 a.m. 'til 5 p.m.  
Good Buys in Summer Wear

# KIDDIE LAND

Elm Shopping Center  
OPEN 6 DAYS A WEEK

## Sunshine Pools and Patios



are now building inground vinyl swimming pools by Helder

Call For Free Estimate

Immediate Service

4005 Hatch Blvd.  
Sheffield, Ala.

Phone 205-381-8306 or 205-381-8307

## Timbes Boot Store

Highway 72

Burnsville, Miss.

### Lay-A-Way Your Boots Now

\$10.00 will hold them until Christmas

600 Pair to choose from

Open Sundays

8:00 a.m. - 5:00 p.m.

THIS COUPON GOOD FOR  
\$5.00 off  
ANY PAIR OF BOOTS  
EXPIRES 8-17-80  
TIMBES BOOT STORE  
Burnsville, Miss.

### SEE & SKATE WITH

## Vicki Caneer

### National Roller Disco Champ

FRIDAY, AUGUST 15th

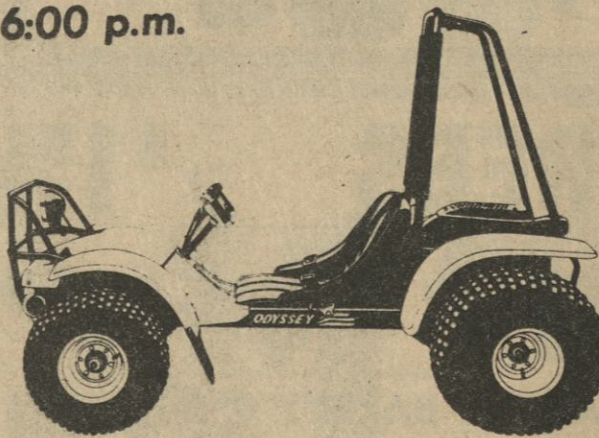
(RIDE)

## Dune-Buggy Track

## Honda Odyssey

Tue-Thur-Fri-Sat-Sun

6:00 p.m.



## FUNLAND

### SKATE CENTER

2 Miles South  
On Hwy. 423-914  
Iuka, Miss.

Friday, August 8th  
FLASHLIGHT NIGHT Bring your flashlight

| Thursday   | Friday   | Saturday   |
|--|--|--|
| 7-10 p.m.<br><b>SPECIAL</b><br>\$3.00<br>Adm. Per Family | 7-9:30 p.m.<br>9:30-11:30<br>1 Session<br>\$3.00<br>Both Sessions \$4.00 | 7-9:30 p.m.<br>9:30-11:30<br>1 Session<br>\$3.00<br>Both Sessions \$4.00 |

| Sunday                           | Monday                       | Tuesday  | Wednesday                    | Thursday   | Friday   | Saturday  |
|----------------------------------|------------------------------|--|------------------------------|--|--|---|
| 10<br>8-10:30 p.m.<br>Adm \$2.00 | 11<br>CALL FOR PRIVATE PARTY | 12<br>7-10 p.m.<br><b>Ladies Honored</b><br>\$1.00<br>Gents \$2.00 | 13<br>CALL FOR PRIVATE PARTY | 14<br>7-10 p.m.<br><b>SPECIAL</b><br>\$3.00<br>Adm. Per Family | 15<br>Special 7-11:30<br>Roller Disco Champ<br>Vicki Caneer \$4.00 | 16<br>7-9:30 p.m.<br>9:30-11:30<br>1 Session \$3.00<br>Both Sessions \$4.00 |

50¢ Rental For Skates On Admission Charges

## Fun Time At Funland



# A. Tucker Furniture & Appl

Main Street--Tishomingo, MS Is Closing Their 90 Day Sale Aug. 8 Through 16. Only 8 More Days Left Of Their

90 Day Sale. We Want To Thank You Our Customers For Making This Sale A Successful One. In Our Appreciation We Are

Marking All Our Appl. At 10% Above Cost & Freight During This Closing Sale. Furniture At 20% Plus Freight.

Don't Miss This Big Sale!

Only 8 Days Left

Model EHT171SK

No-Frost Refrigerator-Freezer Mark I Model EHT201MM

Model EHT141PK

Model EHT191MK

Model EHH060F Chest Freezer

Model EHH090F Compact Freezer

Model EHH150F

No-Frost Freezer

Model RFM7800

2 Col. Size Line Art

Whirlpool Home Appliance

AN ENERGY-WISE  
Whirlpool Home Appliance

30" Electric Range

Whirlpool 30" Electric Range

Model LHA 4000 Family-size capacity

Model LHC 4900

Shop & Save  
10% On All Appliances Plus Freight  
20% Above Cost On All Furniture Plus Freight.

Whirlpool 30" Electric Range

Whirlpool 30" Electric Range

Free-standing TRASH MASHER Compactor Model SHC-8500

Model SHF-5800

Whirlpool Home Appliance

Whirlpool Home Appliance

RCA CLEARANCE COUNTDOWN

Open At 9:00 Close At 5:00

## SALE

This Includes Our 5 Warehouses

In Tishomingo

Phone

438-6408.

For The Next 8 Days

SAVE BIG ON "THE GREEN"  
ON QUALITY  
**Whirlpool** HOME APPLIANCES

# SALE







Smallwood, 60, who is an assistant construction

Currently, "Dag's" day-to-day large unloading activities are on schedule. Through July 1, the pressurizer and one steam generator were offloaded and taken to the temporary storage areas. His recent workweeks have consisted of seven days and up to 15 hours per day over the past three weeks. Prior to arrival of the barge shipment, he supervised erection of the Sampson 1,200-ton jacking frame, testing of the frame, assembly of the crawler transporter, and the 112-wheel French trailer. All unloading operations and tests are also under inspection by the Yellow Creek Quality Assurance staff and Quality Control-Materials Services group. The latter staff oversees testing procedures and documents all work to satisfy the Nuclear Regulatory Commission (NRC).

Unlike stereotyped construction personnel who often are vociferous and hard-

For example, Smallwood's money-saving ideas have resulted in a reduction of approximately \$30,000 in the current barge unloading operation and over \$100,000 annually in the method of transporting concrete buckets around the project.

His father, Billy D. Hubbard, lives in Burnsville.

H.B. No. 894: Provides for the creation of local and regional railroad authorities to deal with the problem of railroad abandonment in Mississippi. A single county, or counties and

## In Service

In addition to providing aircrews with realistic training, Global Shield 80 provided training experience for support personnel, including ground and missile crews.

**HOPE** (Helping Others in Personal Emergencies), a crisis telephone counseling service, is provided by Timber Hills Mental Health Services. From 8:00 until 4:45, Monday



## REPORT TO MISSISSIPPIANS



These new plants will help assure the Valley's continued growth. I am especially proud of the Yellow Creek plant near Auka which will certainly play a vital role in meeting future energy needs in the region. TVA's decision to go ahead with construction of that plant and the others on schedule demonstrates the Authority's continued commitment to provide ample energy supplies for the TVA region.

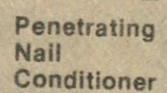
A black and white portrait of a man with dark hair, wearing a dark suit jacket, a white shirt, and a dark tie. He is looking directly at the camera with a slight smile. The background is a textured, mottled grey.

**Like a good neighbor,  
State Farm is there.**

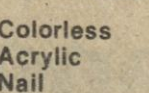
STATE FARM FIRE AND CASUALTY COMPANY  
Home Office: Bloomington, Illinois

Wal-Mart has low prices every day on famous Cover girl Cosmetics, plus these super bargains.

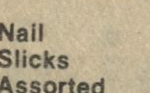
# Cover Girl Specials!



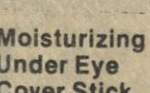
**86¢**



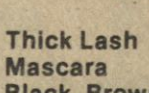
Strengthened  
**86¢**



Shades  
**78¢**



**124**



**137**



**Assorted  
Shades**  
**T 53**



Assorted  
Shades  
**153**



**Powder  
Assorted  
T 53**

**WAL-MART'S ADVERTISED MERCHANDISE POLICY**  
It is our intention to have every advertised item in stock, however, if due to any unforeseen reason, an advertised item is not available for purchase, Wal-Mart will issue a Rain Check on request, for the merchandise to be purchased at the sale price whenever available, or will sell you a similar item at a comparable reduction in price. We reserve the right to limit quantities.

Sale Date: Aug. 7-9  
Store Hours: 9-9 Mon-Sat  
Location: Hwy. 25 So. Iuka





**Three Graduates** —  
Three graduates from the Tishomingo County Constructors group are shown above. The graduates are Mike Burns, Rhonda McLaugh, Bobby Mitchell, Sonja Warn, Larry Stewart, Guyton, Rose Page, James Bland, and Bart Brown, John T.

**4 GOOD REASONS**  
to see your good neighbor agent  
**AR • HOME • LIFE • HEALTH**

**Donnie Brown**  
117 Eastport St. Iuka, MS  
Office 423-5931  
Home 423-5532

Like a good neighbor,  
State Farm is there.

**STATE FARM INSURANCE COMPANIES**  
Home Offices: Bloomington, Illinois

**STATE FARM INSURANCE**

**Shoe Mart**

**Back To School Special**

**Men's and Boys JOGGERS**

**\$13.98**

Our Reg. \$19.98

**Converse Starfire Joggers**  
On Sale For ONE WEEK ONLY

**SHOE MART**

Elm Shopping Center Iuka 423-5948

Algeria, Tunisia and Libya, by Lawson; Chess For You, by Fenton; Invitation To Music, by Siegmeister; The Art of the Comic Strip, by Glubok; Lost City of the Incas, by Roberts; The Warm-Blooded Dinosaurs, by May; The President's Cabinet and How It Grew, by Parker; About Liters, by Gillette; Can Invertebrates Learn?, by Ford; Crystal Music, by David.

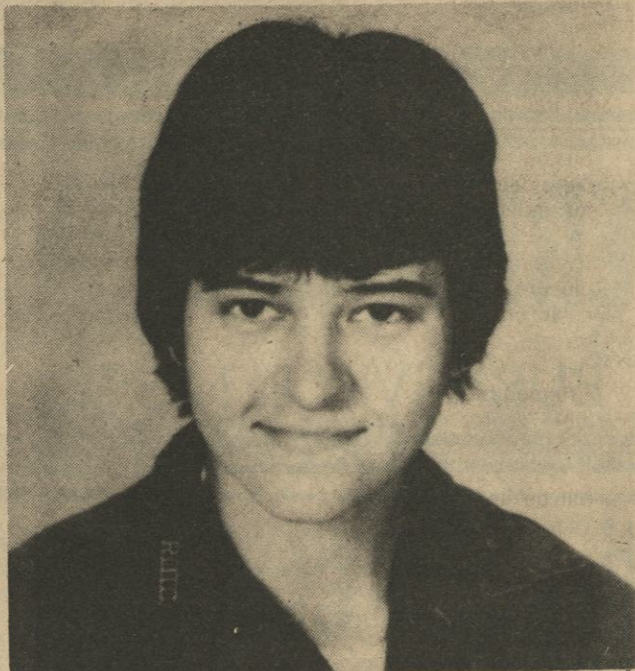
## Southern Pine Beetle

The southern pine beetle (SPB) is native to the southern United States and is the most serious insect pest of southern pines. Each year large numbers of pine trees are killed due to the activity of this insect. Mild weather conditions this past winter and extreme dry summer conditions favor a future increase in SPB population in the south. Presently SPB are active and causing timber losses in Tishomingo County.

The SPB is a small reddish-brown or black beetle approximately 1/8 inch long. Adult beetles attack weakened trees by boring through the bark and construct S-shaped egg galleries in the inner bark where they lay eggs. Small larvae hatch from the eggs and feed in the cambium region. The construction of egg galleries and feeding of larvae girdle the tree and need moisture and nutrient supplies. In addition, wood-staining fungi invade the trees and hasten their death.

The SPB typically kill pines in groups ranging in size from a few trees to stands of several acres in size. In the spring and summer pine needles turn yellow in the crown after the tree has been attacked, and finally the entire tree turns a reddish-brown. Upon close examination of dead and dying trees, you may find reddish-brown particles of boring dust in the bark crevices and at the tree base. Small light yellow to reddish-brown pitch tubes may be seen on the bark of the tree. To determine if a dying tree is being attacked by the SPB, remove a section of bark. Examine the inner surface of the bark for the typical, winding, S-shaped egg galleries; these S-shaped galleries are a good indication that the SPB is attacking the tree.

The best way to avoid beetle loss is to prevent successful attack. Beetles are attracted to trees weakened by littleleaf disease, lightning strikes, wind damage, wild-



**Cadet Lynn Goss**, daughter of Mr. and Mrs. Rex M. Goss, 501 N. Main, Iuka, recently completed training in fundamental military skills at the Army ROTC basic camp at Fort Knox, Ky. The basic camp is designed to give junior college graduates and college sophomores who have not taken ROTC courses the chance to enter the program. The camp also qualifies high school

graduates for the ROTC program at any one of the nation's six military junior colleges. During the encampment, cadets received training in basic rifle marksmanship, military drill and ceremonies, communications and individual and small unit tactics. A 1979 graduate of Iuka High School, the cadet is a student at Northeast Mississippi Junior College, Booneville.

fire, poor harvesting practices, overmature trees and low soil fertility. Most cases in Tishomingo County are found in overmature shortleaf stands with littleleaf disease growing on poor soil types. The Mississippi Forestry Commission presently recommends two types of control for SPB. 1. Removal of infested trees by salvage. This method allows the landowner to recover a portion of his investment while at the same time removing active beetles from his property. 2. Cut and Leave. The cutting of infested trees and leaving them on the ground has been shown to be an effective method of control during the warm summer months. This method should be used on infested trees which are unmerchantable or inaccessible. In either control a 40-70 foot buffer strip of green trees surrounding actively infested trees should be cut to reduce the possibility of breakouts. Landowners in Tishomingo County are urged to inspect

their pine stands frequently. For assistance in identification of SPB infestation and information concerning salvage or treatment, contact your County Forester, Brendix Glasgow, at the Tishomingo County Courthouse or phone 423-9070.

## LETTER TO THE EDITOR

As mayor of the City of Iuka, I want to urge each and everyone of the citizens of Iuka and Tishomingo County to please cooperate with the U.S. Census Bureau in their effort to obtain an accurate and true count of the population of our city and county. As most of you are aware, our State and Federal Aid money appropriated to our area is largely determined by the census count. Also, the number of State and Federal Representatives and Senators for our area is determined by the population

THURSDAY, AUGUST 7, 1980 PAGE 19  
count of the Census Bureau. You can see it is very important that we get a correct count and that is the reason I'm asking you to please cooperate with the Census Bureau employees. Every employee of the Census Bureau will have a badge identifying them as legitimate employees that have sworn to keep all information confidential.  
George W. Cutshall, Sr., Mayor, City of Iuka, MS.

**TEXAS STYLE BARBECUED BEEF**  
5 pounds (about) brisket of beef  
1-3/4 cups (18 oz. bottle) all-purpose barbecue sauce, any flavor  
2 medium onions, thinly sliced  
1 clove garlic, crushed  
1 teaspoon chili powder  
Place meat in shallow pan. Combine remaining ingredients and pour over meat. Cover and bake at 325° for about 4 hours, or until tender, basting occasionally. Remove cover and bake 30 minutes longer, basting occasionally to glaze meat. Skim off excess fat from drippings; thicken, if desired, and serve as a sauce. Makes 8 to 10 servings.



**perm it with foam**  
for care-free summer hair  
Summer's the time for fun, not fussing. And we've got a fabulous new perm that lets you relax about summer hair-care. It's exciting Zotos Texture Foam and the big news is foam. It's time-released perming for gentleness. It's full of rich organic conditioners for silken feel. And, best of all, you can choose curls, waves, or just plenty of body...our expert stylists can give you any look you want. Call today for an appointment.  
*Shear Design*  
423-9869  
JUDY RYAN, HAIR STYLIST  
on Highway 25 S. of Iuka at Midway

**Final Summer Clearance and SIDEWALK SALE!**

Sale starts Thursday, August 7th

|  |   |
|--|---|
| ONE RACK LADIES<br><b>SHORTS</b><br>TERRY, POLY/COTTON, SATIN<br>ALL 1st QUALITY VALUES TO \$6.99<br><b>\$1.50</b>                       | ENTIRE STOCK<br><b>Buster Brown Darnette</b><br>SHORTS, TOPS, TANK TOPS<br><b>\$1.50</b>                        |
| ENTIRE STOCK LADIES<br><b>Gowns &amp; Pajamas</b><br>REGULAR \$5.99<br><b>\$2.50</b>   | BACK TO SCHOOL BOYS AND GIRLS<br><b>Long Sleeve Shirts</b><br>and Corduroy Pants<br>SIZES 1-14<br><b>\$1.50</b> |
| ONE RACK LADIES<br><b>SWIM SUITS</b><br>ALL 1st QUALITY<br>SOME PRICED TO \$14.95<br><b>\$2.00</b>                                       | ONE RACK LADIES<br><b>Short Sleeve Blouses</b><br>SIZES 5 to 18<br>REGULAR \$4.99<br><b>\$2.00</b>              |
| ONE TABLE<br><b>Odds &amp; Ends</b><br>ONE OF A KIND, ETC.<br>VALUES TO \$9.95<br>ALL 1st QUALITY<br>WHILE THEY LAST...<br><b>\$1.50</b> | ONE RACK LADIES<br><b>Dress Pants, Tops &amp; Jackets</b><br>PRE-TICKETED TO \$9.95<br><b>\$3.00</b>            |

**THE SECOND SHOPPE**  
USE YOUR MASTER CHARGE, VISA OR LAY-AWAY  
611 Elm Shopping Center--Iuka, Mississippi



# B & J SUPERMARKET

HWY. 365 SOUTH BURNSVILLE, MISS.

WE RESERVE THE  
RIGHT TO LIMIT  
QUANTITIES  
WE GIVE QUALITY  
STAMPS

AD EXPIRES AUG. 11th

WE SLICE, CUT, AND FREEZER WRAP  
MEAT FOR THE PUBLIC



STORE HOURS  
SUN. THRU THU  
8:30 - 8:30  
FRI. & SAT.  
8:30 - 9:00

U.S.D.A. CHOICE  
**SIRLOIN STEAK**  
LB.  
**\$2.79**

U.S.D.A. CHOICE  
**Ground Chuck** LB. **\$1.79**  
CARNATION  
**Slender Bars** 8-PACK **\$1.49**  
U.S.D.A. CHOICE  
**T-Bone Steak** LB. **\$2.99**  
B & J'S HOMEMADE  
**Sausage** 2 LB. OR MORE LB. **89¢**

FRESH  
**GROUND BEEF**  
3 LB. OR MORE  
2 LB. \$1.49  
1 LB. \$1.69  
**\$1.29**

COUNTRY STYLE SLAB  
**Bacon**  
SLICED LB. 99¢  
BY THE PIECE LB. **89¢**

**Chicken Livers** 8 OZ. **39¢**

SALTED  
**Fatback** SLICED 59¢ LB. LB. **49¢**

ARMOUR  
**Smoked Ham** 12 OZ. SLICED **\$1.99**

HYDE PARK  
**Instant Tea** **\$1.59**

BUSH'S GREAT NORTHERN  
**Beans** 16 OZ. **3/79¢**

HYDE PARK LIGHT CHUNK  
**Tuna** 6 1/2 OZ. **89¢**

PRIDE OF ILL. SWEET  
**Peas** 17 OZ. **3/\$1.00**

BUSH'S BABY BUTTER BEANS  
**Butter Beans** 3/89¢

HYDE PARK  
**Plate** PLASTIC 9-INCH COMPARTMENT 12 **69¢**

**MARGARINE**

MIRACLE

6-STICK

**59¢**

**TEA BAGS**

48 CT.

**49¢**

QUICKICK PRE-SWEETENED MIX  
**Thirst Quencher**

LEMON-LIME OR ORANGE  
**3/\$1.00**

OPEN PIT  
**Barbeque Sauce**

18 OZ. **69¢**

PLANTER'S  
**Pretzel Twists**

8 OZ. CANISTER **59¢**

BUSH'S CHOPPED  
**Kraut**

10 OZ. **4/89¢**

HYDE PARK  
**Mayonnaise**

QUART JAR **\$1.09**

HYDE PARK STRAINED  
**Honey**

8 OZ. **59¢**

MARTHA WHITE  
**Potatoes**

AUGRATIN OR SCALLOPED **59¢**

BROCK  
**Candy**

ORANGE SLICED 1 1/2 LB. BAG **89¢**



DAWN DISH LIQUID  
**DETERGENT**  
22 OZ.  
**49¢**

KRAFT LO-CAL FRENCH OR REG.  
**Dressing**

8 OZ. **59¢**

HYDE PARK CAN  
**Coconut**

3 1/2 OZ. **2/\$1.00**

CARNATION  
**Breakfast Bars**

6-PACK **\$1.09**

THANK YOU CAN  
**Blueberries**

**2/\$1.00**

GREEN GAINT FROZEN  
**Lasagna**

9 OZ. **99¢**

DINTY MOORE  
**Vegetable Stew**

24 OZ. **79¢**

MARTHA WHITE SELF-RISING  
**FLOUR**

(LIMIT ONE)

5 LB. BAG

**89¢**

WHITE CLOUD BATH  
**TISSUE**

4-ROLL

**99¢**

GORTON'S CRUNCHY  
**Fish Filet**

12 OZ. **\$1.59**

HORMEL  
**Viennas**

5 OZ. CANS **2/79¢**

VELVEETA  
**Cheese**

1 LB. BOX **\$1.49**

GLADE SOLID  
**Air Fresheners**

6 OZ. **2/89¢**

RAGU  
**Spaghetti Sauce**

15 1/2 OZ. **69¢**

KELLY'S  
**Lunch Meat**

7 OZ. CAN **69¢**

SUPER SUDS LAUNDRY  
**Detergent**

16 OZ. **2/\$1.00**

GAINT  
**Cascade**

35 OZ. **\$1.19**

CHEER LAUNDRY  
**Detergent**

49 OZ. **\$1.59**

FRANCO-AMERICAN  
CHEESE  
**Ravioli**  
14 3/4 OZ. CANS  
**59¢**

RAY-O-VAC  
**Batteries**  
C OR D CELL  
**4/99¢**

MR. P'S (FROZEN)

**PIZZAS**

**69¢**

**PRODUCE**

FRESH ARKANSAS  
**Peaches** 3 LB. FOR **\$1.00**

RED OR YELLOW MEATED  
**Watermellons** **\$1.99**

california  
**Celery** stalk **39¢**

no. 1 ALA. RED  
**Potatoes** 10 LB. **\$1.89**

GREEN  
**Cabbage** LB. **19¢**

SUNKIST  
**Lemons** 10 FOR **89¢**

EATWELL TALL  
**MACKEREL**

15 OZ. CANS

**2/\$1.00**

HYDE PARK CAN  
**DOGFOOD**

15 OZ.

**6/\$1.00**