

Tishomingo County News

The Vidette & Belmont News

Patronize The News
Advertisers!
They Send A Valuable
Message To You Each
Week!

OFFICIAL LEGAL NEWSPAPERS OF TISHOMINGO COUNTY
The One Newspaper In The World Most Interested In This Area

IUKA, TISHOMINGO COUNTY, MISSISSIPPI

Thursday, November 20, 1980 No. 22

NINETY-SEVENTH YEAR

Miss Starla Phillips Named Iuka High Most Beautiful



Ladye Love Long and Mike Thomas, 1979 winners, were on hand to crown their successors. Pictured are the winners, along with the alternates, of the 1980 revue, left to right: 3rd alternate, Jimmy James, son of Mr. and Mrs. Buddy James; 3rd alternate, Rhonda Dillard, daughter of

Mr. and Mrs. Hilton Dillard; 1st alternate, Bobby Flynt, son of Mrs. Mary Flynt; 1st alternate, Kristy Carson, daughter of Mr. and Mrs. Donnie Carson; Chris Brown, Most Handsome, son of Mr. and Mrs. Clarence Brown; Starla Phillips, Most Beautiful, daughter of Mr. and

Mrs. Boyd Phillips; 2nd alternate, Joel Lewis, son of Mr. and Mrs. Charles Lewis; 2nd alternate, Gail Wallace, daughter of Mr. and Mrs. Billy Wallace; 4th alternate, Timmy Anglin, son of Mr. and Mrs. Lawayne Anglin; and 4th alternate, Pam McBee, daughter of Mrs. Sue King McBee.

Press Deadline

All news items to be published in The Tishomingo County News Thanksgiving edition should be submitted to The News Office on Friday, November 21, between the hours of 8 a.m. and 5 p.m. and no later than 12 noon Monday, November 24. In order for the staff of The Tishomingo County News to enjoy the Thanksgiving Holiday with their family, the paper will be published and delivered one day early for the Thanksgiving week.

We, at The County News, take this opportunity to wish a most blessed Thanksgiving to all and remind our readers to take time to consider the many things for which we have to be thankful.

The Tishomingo County News Office will be closed on Thursday, November 27, in observance of Thanksgiving. Other businesses, factories and schools informing The News of holiday closings are:

First American Bank, Iuka Guaranty Bank, U.S. Post Office, Piggly Wiggly, Sunflower, Nelson's Super-

market, Tri-State Savings and Loan, First Citizen's Loans, and First Citizens National Bank, Tishomingo branch will be closed on Thanksgiving Day, November 27.

Iuka Schools will dismiss on Wednesday, November 26, at 11:30 a.m. and resume classes on Monday morning, December 1. According to a spokesman in the County Superintendent's Office, the County Schools will dismiss classes at noon on Wednesday and resume classes on Monday, December 1.

Factories announcing

holiday closing are Consolidated Aluminum Corp. closing at midnight on November 26, and resuming operations at 12:01 a.m. Monday, December 1.

The Tishomingo Shoe Company will observe Thanksgiving by closing at 3:45 p.m. on Friday, November 21, and resuming operations on Monday, December 1, at 7:00 a.m.

Ripley Industries, Inc. will observe the holiday by closing on November 27 and 28.

Blue Bell, Inc., Belmont, reports closing at 3:45 p.m. on Wednesday, November 26, and resuming plant operations on Monday, December 1, at 7:00 a.m. The Benchmark Industries, Inc., Burnsville, will be closed on Thanksgiving Day, November 27, and resuming normal hours on Friday.

All county offices, including the Welfare Office in the Tishomingo County Courthouse, will close at 5:00 p.m. on Wednesday, November 26, and reopen on Monday, December 1, at 8:00 a.m. However, the Employment Security Commission will be closed Thanksgiving Day, November 27, only, and resume normal business hours on Friday, November 28, according to a spokesman for that office.

Thanksgiving Closings Set For Next Week

New Blood Pressure Station Now Open

The Tishomingo County Chapter of the Red Cross has two new volunteers who are offering a valuable service to Iuka. Mrs. Babe Cosby and Mrs. Nell Lackey have begun spending one day each week taking blood pressures as a service to the community. Each Wednesday, the two will visit the Iuka Youth Center from 11 a.m. to 12 noon and check blood pressures for those who come each day for a hot meal and fellowship with other senior citizens. The service is not limited to senior citizens and anyone who comes may have a free blood pressure check.

The blood pressure station is still going strong in Belmont - led by the able talent of Ozema Goodwin. The Belmont station is open each Wednesday, also, from 11 a.m. to 2 p.m. at the Belmont City Hall.

A special thanks to all of the volunteers who helped make the bloodmobile visit to the Yellow Creek Nuclear Plant such a success. The drive was the best yet, with improved organization and cooperation with the TVA personnel. No long lines formed and no one complained as the twenty-six volunteers plus many Red Cross person-

nel and several TVA nurses worked to help blood donors move through the lines quickly. The second day of the drive twenty-eight volunteers worked, many for their second full day of volunteer work. A total of 559 units of blood were collected during the drive. A salute to all donors and volunteers!

Remember to give generously to the Community Fund Drive - nearly all of the Red Cross support comes through this organization.

Man Injured In Fall From Watertower

A 25 year old Memphis man was injured in a fall from the Iuka Water Tower on the afternoon of November 12.

According to Iuka Chief of Police Jack Rye, Sammy Ray Scruggs, an employee of the Industrial Tank Service, of Memphis, was injured when he fell approximately 80 feet from the Iuka Water Tower. The tower was being painted by employees of the Memphis firm.

Scruggs hung between some braces on the structure about 15 feet from the ground breaking his fall, according to Chief Rye. Two employees of the Memphis firm rescued Mr. Scruggs by using an extension ladder to reach him. He was taken to the Tishomingo County Hospital and transferred to St. Francis Hospital in Memphis. He sustained deep bruises on his side, hip and leg, a broken arm and several of his teeth were knocked out, Mr. Rye said.

sustained deep bruises on his side, hip and leg, a broken arm and several of his teeth were knocked out, Mr. Rye said.

Spaghetti Supper

The Young Adult Sunday School Class of Pleasant Hill Methodist Church is sponsoring a spaghetti supper in the church fellowship hall Friday, December 5, from 6 p.m. to 8 p.m. Adult tickets are \$2.50 and student tickets are \$1.50. Proceeds will go to the Youth Fellowship group of the church for their selected charities and projects. Tickets will be on sale through November 29, and may be purchased from church members or at The Clothes Cottage on Pleasant Hill Road.

Chieftains Named To All Conference Team

At a Monday night meeting the members of the Tishomingo Conference held on Iuka High School campus, members of the Chieftain football team were named All-Conference. Lance Berry, quarterback for the Chieftains, Jimmy James, halfback, and both selected as All-Conference players. Both Berry and James are seniors at Iuka High School.

Harvest Supper

The Midway RCDC will meet at the Community Center on November 24, at 6:30 p.m. for the annual harvest supper.

Cheese Sale

The Iuka High School Band will start its annual cheese sale on Friday, November 21. You may obtain cheese from any band member or by calling the Iuka Band Hall at 423-5240 or Peggy Ray at 423-6148.

Christmas Parade Plans Underway

The Iuka Christmas Parade will be held this year on December 1. The theme of the parade will be "Touch a Life With Hope". Again this year, the parade will be sponsored by the Iuka Lions Club.

All individuals, clubs, businesses, and churches are encouraged to participate. You may register your entry by calling Milt Burton at 423-5200, Don Cowell at 423-3692,

or Gerry Norman at 423-3913. All entries are to pre-register so that they can be assigned a position in the parade route. There will be a nominal entry fee for commercial entries, but all non-profit entries will be free.

Assistance is available for help on your float. Call Paul Enlow, Neil Schilling, Scotty Skinner, Joe Hussey or Charlie Dean for help.

Mark your calendar to see Santa Claus on December 1.

Belmont Christmas Parade

Plans for the 1980 Belmont Christmas Parade are underway. The Belmont Merchants Association announces Tuesday, December 2, 6:30 p.m. as the date and time for this event.

Anyone interested in entering a float or a group to participate in the parade is urged to call 454-7568.

Youth Revival At Iuka Baptist

The Iuka Baptist Church will have a Youth Led Revival November 21-23. Services will be nightly at 7:00 and Sunday morning services will be at 11:00.

Butch Tanner, student at Union University in Jackson, Tennessee, will preach. Mr. Tanner surrendered to preach at the age of 15. He obtained the rank of Eagle Scout.

Glenda Jones, Minister of Music at Iuka Baptist Church, will direct the music.

The Revival is community-wide and all age groups are expected to participate. The young people have been leading in revival preparation.

LET'S GET GOING!
ONLY 29
SHOPPING DAYS 'TIL CHRISTMAS

THANKSGIVING SERVICES

Iuka Baptist Church

The annual Community-Wide Thanksgiving Service will be held in the Iuka Baptist Church Wednesday night, November 26, at 7:00. A number of churches will participate, including the Iuka United Methodist Church, as well as the North and South Circuits.

Also participating will be the Fifth Street and Iuka Baptist Churches.

The music will be under the direction of Glenda Jones, and William Strange will bring the message.

A special offering will be received for the "Good Neighbors of Iuka". This offering is used to help needed transits. Bill Moore is the treasurer of the "Good Neighbors" program.

Burnsville Community

The second annual Burnsville Community Thanksgiving Service will be held in the Harmony Hill Baptist Church at 7:00 p.m. on Wednesday, November 26. Bro. Dave Smith, Pastor of the First Baptist Church, of Burnsville, will be the speaker.

Refreshments will be served following the service, and the public is invited to attend.

Homemade Stew Supper

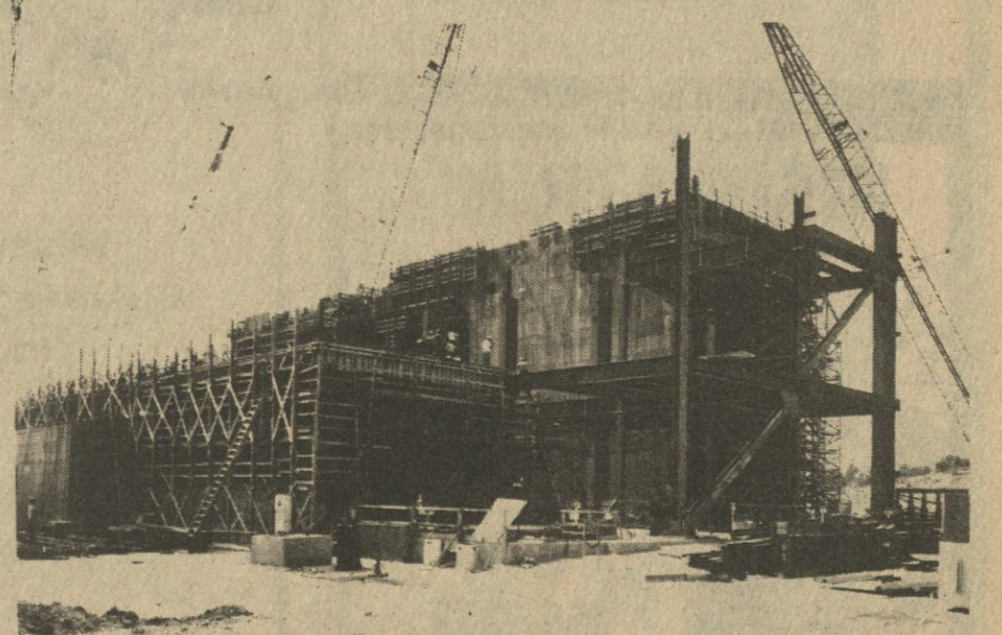
Homemade stew will be served by the ladies of the Tishomingo United Methodist Church on Friday, November 21, beginning at 11 a.m. in the Eastern Star Hall. Stew, bread, drink and dessert will be served for \$2.50. Homebaked items and homemade items will be on sale for Christmas gifts.

Special Invitation

This is a special invitation to you to come and join in the Thanksgiving services at Eastport Baptist Church Wednesday night, November 26, at 7 p.m.

Special Bible reading and special music will be presented with refreshments following the services.

Hope to see each and everyone of you there.



At Yellow Creek

Structural steel erection began last month for the Yellow Creek Nuclear Plant's unit 1 turbine building. From base to roof level, the steel will rise to a height of 155 feet for the five-floor structure. To

date, 239 of 2,953 tons of structural steel have been erected while concrete placement totals over 34,000 cubic yards for the building. When completed, the building will contain the steam-driven turbine, generator equipment, and ac-

cessories for electrical power generation. Steam is piped from the steam generators in the reactor building through the main steam valve vault and tunnel into the turbine building. Overall work for the building is 33 percent complete.

IHS Beauty Revue

A breath-taking review of Iuka High School's annual beauty revue was held on November 19 in Howard Auditorium.

Chieftains Named To

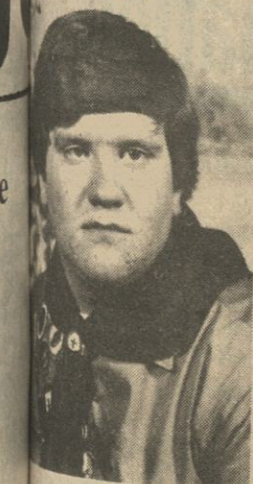
All Conference Team

At a Monday night meeting the members of the Tishomingo Conference held on Iuka High School campus, members of the Chieftain football team were named All-Conference. Lance Berry, quarterback for the Chieftains, Jimmy James, halfback, and both selected as All-Conference players. Both Berry and James are seniors at Iuka High School.

Cheese Sale

The Iuka High School Band will start its annual cheese sale on Friday, November 21. You may obtain cheese from any band member or by calling the Iuka Band Hall at 423-5240 or Peggy Ray at 423-6148.

Chris Evans Named Outstanding Student



Chris Evans, son of Mr. and Mrs. Charles Evans, has been named at Iuka High School as the outstanding student in the Iuka Youth Foundation competition. The purpose of the Foundation is to select a group of high school sophomores with demonstrated leadership abilities together with a group of distinguished leaders in business, industry, education, science and government and let the two

Foundation has conducted an annual all-expense paid International Leadership Seminar for outstanding high school sophomores. In 1981, the week-long International Seminar will be held July 4-11, in Dallas. The specific objectives of the HOBY Foundation are to: (1) Seek out, recognize and reward leadership potential of high school sophomores, (2) Encourage and assist members of the group in their quest for self-identification and self-development, (3) Interface these potential leaders with recognized leaders of today through intense but informal give-and-take "rap sessions," covering a variety of current subjects.

Chris was chosen by a School Selection Committee to represent IHS this spring in the State Leadership Seminar. Two participants will then be chosen from each State Seminar to represent Mississippi at the July International Seminar.

Chris is very active at IHS in the Coed V Club, the band, and the Boy Scouts.

B & J

Supermarket

Hwy. 365

South In

Burnsville

AD EXPIRES 11-17-80

WE RESERVE THE RIGHT TO LIMIT QUANTITIES

WE GIVE QUALITY STAMPS

WE SLICE, CUT, AND FREEZER WRAP MEAT FOR THE PUBLIC

STORE HOURS:

SUN. THRU THURS.

8:30 - 8:30

FRI. & SAT.

8:30 - 9:00

BRYANS TENDERIZED 18-22 lb. average

DRY HAM

Shank Portion

Lb. **\$1.29**

Butt Portion

Lb. **\$1.49**

Whole Lb.

\$1.19

REELFOOT (reg.)

Wieners

12 oz. **\$1.09**

FLAVORITE

Bacon

1 LB. VACUUM PACK **99¢**

REELFOOT SMOKED

Picnic Hams

LB. **99¢**

HYDE PARK

Bologna

12 oz. **99¢**

FRESH SALTED

Fatback

59¢

U.S.D.A. CHOICE

ROUND STEAK

BONELESS

LB. **\$1.99**

LB.

\$1.79



Produce

U.S. NO. 1

Red Potatoes

10 LB. BAG **\$1.69**

RED OR GOLDEN DELICIOUS

Apples

3 LB. BAG **69¢**

Tomatoes

LB. **39¢**

FLORIDA

Oranges

5 LB. BAG **\$1.19**

U.S. NO. 1

Russet Potatoes

5 LB. BAG **\$1.19**

BLUE BONNET

MARGARINE

BONUS BUY
(1 BUY PER \$15.00 PURCHASE)

4 STICK 16 oz.

HORMEL

Potted Meat

4/89¢

HYDE PARK

Purple Hull Peas

16 oz. **3/89¢**

BORDENS REG. ROUND

Ice Cream

1/2 Gallon

\$1.69

BABY FOODS

HEINZ REG.

5/\$1.00

PRINGLES

Potato Chips

TWIN PACK **\$1.09**

HYDE PARK HEAVY DUTY

Aluminum Foil

37 1/2 ft. **79¢**

JOB SQUAD PAPER

Paper Towels

JUMBO ROLL

79¢

TISSUE

BONUS BUY (1 BUY PER \$15.00 PURCHASE)
SAV SUM BATH

4 ROLL PKG.

29

BUSH'S

Pinto Beans

15 oz. cans **3/89¢**

LITTLE FRISHIES

Catfood

22 oz. **69¢**

RONCO

Spaghetti

1 LB.

59¢

RICHTEX

VEGETABLE OIL

48 oz.

\$1.39

WELCH'S RED OR WHITE

Grape Juice

24 oz. **89¢**

DISH LIQUID

Palmolive

22 oz. **89¢**

KRAFT CHILLED

Grapefruit or Orange Juice

1/2 gallon

\$1.19

KELLOGG'S

RICE KRISPIES

LARGE 13 oz. box

99¢

FURNITURE POLISH

Pledge

7 oz. **\$1.09**

FABRIC SOFTENER

Bounce

40 sheet **\$1.69**

SUNFLOWER SELF RISING

Meal

5 lb. bag **\$1.09**

GEBART

Plain Chili

15 oz.

79¢

BAKERS SOUTHERN STYLE CAN

Coconut

4 oz.

69¢

CHILI

GEBHART WITH BEANS

15 oz.

59¢

NABISCO

Crackers

SALTED OR UNSALTED

1 LB. PREMIUM

69¢

VLASSIC SWEET BUTTER CHIPS

Pickles

16 oz. **69¢**

LUCKS GIANT

Limas with Pork

17 oz. **2/79¢**

FISHERBOY

Fish Sticks

2 lb. box **\$1.89**

SQUINCER

Punch or Lemonade

QUART JARS

2/\$1.00

EVERCRISP

Ice Cream Cups

24 count

59¢

COKE



DISPOSABLE BOTTLE

2 LITER

99¢

TISHOMINGO COUNTY NEWS

VIDETTE and BELMONT NEWS

Phone 423-3666

(SECD 631680)

John H. Biggs, Editor & Publisher

Published Thursday by The Tishomingo County News, Inc. Serving the people of Tishomingo and adjoining counties for more than 95 years. Publication office 120 West Front Street, P. O. Drawer E, Iuka, Mississippi. Entered at the Post Office as mail matter of the Second Class. Second Class postage paid at Iuka, Mississippi. Zip Code 38852. Post Master send address changes to The Tishomingo County News, P. O. Drawer E, Iuka, Mississippi 38852.

Mail Rates Tishomingo & Adjoining Counties
\$6.00 Per Year

Other Areas
\$8.00 Per Year



Chatting With Your Home Economist

By: Nellie Horton

Holiday Food Safety

Be careful that the culinary delights you create during the holiday season are safe to eat.

Careful food handling is important now because food is served in large quantities from busy kitchens. Those conditions could lead to food poisoning.

Here are some tips for the holiday:

-- When planning buffets and other meals, decide how many people you can serve safely. Table space and serving areas are important considerations. So is the amount of refrigeration space available to store food. Letting food sit out increases the chance of food poisoning. Keep buffet servings small and replenish them as needed directly from the refrigerator or stove. Never keep perishable food at room temperature for more than two hours.

-- Be sure to keep food either hot or cold -- and clean.

Cooking food thoroughly destroys some germs but they can spread to food again once it has cooled. The danger zone for bacterial growth on food is between 40 and 140° F. Room temperature is perfect for germ growth. Keep a thermometer in the refrigerator to make sure foods are kept below 40 degrees F. It is not always possible to tell by taste, looks or odor if food is safe. Meat, poultry and dairy products left at room temperature too long allow germs to grow to dangerous numbers.

-- Certain holiday foods deserve extra attention. Germs thrive in foods such as cold meat cuts, turkey, stuffing, potato salad, chicken salad, ham salad, cream pies and egg nog. Keep your hands and utensils clean when preparing these foods and refrigerate them as soon as you prepare them.

-- Wash your hands and kitchen utensils with soap and hot water after handling one

food and before working with another. Always wash your cutting board and utensils thoroughly after using them for cooked meat or poultry before using them for raw meat and poultry and vice-versa.

-- The safest way to cook a turkey stuffing is separately from the bird. Germs love the ingredients in stuffing and thrive in the warm, moist interior of a turkey. If you do stuff your turkey, take these safety precautions. Make the stuffing in advance, refrigerate it separately from the bird and stuff the bird just before cooking it. Cook the interior of the stuffing to an internal temperature of 165 degrees F. or higher. Use a meat thermometer to make sure the heat has penetrated the stuffing.

-- Thaw foods in the refrigerator. When frozen meats and poultry are thawed outside the refrigerator, the meat's outer surfaces are exposed too long at temperatures that allow germs to grow. You can thaw a large turkey outside the refrigerator by putting the bird in a water-tight package under cold running water. Or, place the bird in a closed double paper bag overnight at room temperature. This method insulates the bird against temperatures that are too warm and prevents uneven thawing. Cook promptly after thawing.

-- Place hot dishes prepared ahead of time in the refrigerator quickly after cooking. Reheat them thoroughly before serving. Refrigerate cold dishes immediately after preparation.

-- Roast, steaks, chops, and liquid dairy products may be bought up to five days before using, as long as they are kept well refrigerated. Ground meat and poultry should be bought no more than two days ahead of using and kept refrigerated as well. Freeze fresh meat or poultry immediately if you plan to keep them longer.

Food borne illness can cause diarrhea, vomiting, stomach cramps and other unpleasant symptoms that can last for several hours or even days.

Peanutty Pumpkin Pie

Filling:
1/4 cup peanut butter, smooth or crunchy
2 eggs, slightly beaten
16 oz. can solid pack pumpkin
3/4 cup sugar
1/2 teaspoon salt
1 teaspoon cinnamon
1/2 teaspoon ginger
1/4 teaspoon ground cloves
13 oz. can evaporated milk

Pastry:
1/4 cup peanut butter, smooth or crunchy
1/4 cup shortening
1 cup flour
1/2 teaspoon salt
About 1 tbsp. water

For filling, combine peanut butter, eggs and pumpkin. Add sugar, salt and spices. Blend in milk. For pastry, blend peanut butter and shortening. Cut into flour and salt until mixture resembles coarse meal. Add water and pat together to form a ball. Roll out and press into a 9-inch pie pan. Fold excess dough under to fit rim of pie pan. Flute edge. Pour filling into pastry. Bake in preheated 425° F.

oven for 15 minutes. Reduce oven temperature to 360° F. and continue baking 40 to 45 minutes or until knife inserted in center comes out clean. Cool.

County Agent's Notes

By: Percie B. Stricklen
Crop Residues
For Forage

The short supply of hay this winter will cause many producers to use frosted grass, field gleanings and crop residues as much as possible. If crop residue, such as soybean stubble in large round bales, is stored without shelter, you might plan to feed it before using grass hay. Grass will "thatch off" better and keep longer in large round bales than will the soybean stubble.

Since some areas will contain frosted grass usable by livestock, an electric fence may be the best alternative for using field gleanings.

Feed Shortage Info

The Mississippi Department of Agriculture and Commerce has established a hay service to help farmers who have excesses and shortages of hay. Information can be obtained by writing, P.O. Box 5307, Fondren Station, Jackson, MS 39216, or calling (601) 961-4066.

If you foresee a feed shortage this winter, check with County Extension Office about ways to extend and balance your winter feed program.

Fall Tillage

High fuel costs and renewed emphasis on soil conservation are causing us to look closely at how we manage our soybean land. On sloping, erosive hill soils, perform little or no tillage after harvest. Any tillage done in these situations should be minimal and should leave the land rough and open to soak up winter rain.

Likewise, the heavy clay soils need little or no fall tillage unless perennial weeds such as johnsongrass, bermuda grass or vines are severe problems. On soils with a definite hardpan, deep tillage with chisels or subsoil plows in the fall to break up the compacted zone is recommended. Heavy clays do not need this treatment.

Eliminate Mice & Rats

Cool weather often drives mice and rats into buildings. Extension Encomologist Dr. Ted Brook says you can eliminate these pests by using baits that contain anticoagulants. These materials break down a mouse's tissue and cause it to bleed to death internally. To be effective, small amounts of anticoagulants must be eaten for three or four consecutive days. Check bait stations daily and refill with anticoagulants. When using these materials, follow label directions and keep them out of the reach of children and house pets.

Moisture Problems In Grain Bins

Mississippi farmers who store corn and soybeans may have moisture problems in

their grain bins this fall. Extension Agricultural Engineer Lee Miller says there is a tendency for grain-filled bins to sweat on the inside. This occurs when the temperature inside the bin is 15 degrees or more above the outside temperature. Miller recommends aerating the soybeans when the outside temperature is ten degrees or more below the temperature of the grain in the bin.

To lower the moisture of the grain, operate fans when the relative humidity of the outside air is 65 percent or lower. Operating fans on a cool, clear day is ideal for removing moisture. The fans must run several hours to change the temperature throughout the stored beans.

Conservation Notes

By: Bobby Manley

Mississippi has only one native species of deer: the whitetail. This is the same deer that is native to most of the Eastern United States. Bucks in Wisconsin may weigh up to 300 pounds, in Florida as little as 70 pounds. The average Mississippi buck will weigh from 160 to 190 pounds. When alarmed the deer's tail becomes erect exposing the white underside, hence the name whitetail. In the winter they are a sleek gray color and well protected from the cold by an insulated coat of long, coarse bristles. As the weather warms, this sheds giving him a cool coat of short reddish hair during the summer.

Deer are ruminants, that is, they have a four compartment stomach. Like cows, they feed and later chew their cud. They feed on a wide variety of vegetation chiefly in the form of tender shoots, twigs, leaves, mast and fruits. "Browse" is the term used for the twigs, leaves, etc., eaten so deer are often referred to as a browsing animal. This browse makes up the bulk of their diet. The key to the condition of a deer herd is the available food supply during the harsh winter months. An over abundance of summer food will not substitute for an inadequate winter food supply.

Some forest browse plants of importance in Mississippi are beautyberry, trumpet creeper, flowering dogwood, yellow poplar, honeysuckle, sassafras, greenbriers, and maple.

Acorns are of tremendous importance in their fall and winter diet. Among the fruits taken are crab apples, grapes, muscadines, persimmons, and pears. Planted crops such as soybeans, corn, oats, wheat, ryegrass, clovers, and vetch rate high on their food preference list.

If you would like more information on this or any other matter concerning conservation, come by the Soil Conservation Service Office in Iuka.

4-H News

By: Tommy G. Purvis
4-H Youth Agent
Try Candid Camera
Approach To Liven
Personal Pictures

If the snapshots in your family album tend to look like

Grant Wood's wellknown painting, "American Gothic" - meaning people stiffly posed and staring straight ahead - you might want to try a more candid approach to your photography.

Candid pictures feature people being themselves, behaving as if the photographer were not there. To take good candid, young 4-H photographers suggest you avoid using flash and work with fast films and available light instead.

A telephoto lens lets you "move" closer to subjects without disturbing them and calling undue attention to yourself. Or, you can ask subjects to pretend you're not there, then focus and wait for just the right moment to press the shutter release.

The more candid pictures you take, the better your results are likely to be, according to boys and girls in the 4-H photography program. Conducted by the Cooperative Extension Service and supported by Eastman Kodak Company, the program encourages young people to take and use pictures as a record of events and ideas. 4-H members learn-by-doing to appreciate photography as an art, a science and a communications tool.

"Camera bugs" who would like more information about 4-H photography may contact the Extension Office.

Letter To The Editor

Dear Editor:

There seems to be a growing animosity in the City of Iuka for the Chicago Bridge and Iron people, because they do not wish to buy Mississippi tags. This will be an attempt to explain why.

You see, the men who work for Chicago Bridge and Iron are transient workers, who work all over the southeast. It is not only people from Alabama, who belong to this union, but people from all the southeastern states, including Mississippi people, who travel from state to state and job to job. They are subject to be transferred any day to a different job location in any given state.

These men have homes in their respective home states that they maintain plus the expense of living away from their home.

It is not that these men do not wish to buy Mississippi tags, it is much more involved. Such as, homestead exemption, title change on vehicle, licenses change, insurance change, and the list could go on and on. Considering the fact you could be transferred any day, this just doesn't sound very feasible.

Maybe you people could relate to this example: say you had a relative in another state critically ill. You went to stay with them until they were well again, thinking it wouldn't be for long. Time goes on, a month goes by, then two months, then four. The police stop you and tell you you must buy a tag because you have been there over 30 days. Sure when you explained you were a resident of another state just there temporarily he would, more than likely, let you go, but that does not alter the fact that the law is black and white, no exceptions, you have 30 days in which to purchase a tag of that state.

I agree this may be a little melodramatic, but it brings across the point that you can

Tishomingo County News - Vidette - Belmont News

stay somewhere temporarily. Even the Attorney General of Mississippi said: in his opinion we would not have to buy the tags. Nevertheless, the people of Iuka think otherwise.

We have paid state tax, sales tax, gasoline tax, ad valorem tax, and I don't see how you can feel that we have not paid our fair share while in your state.

You have a nice town and some nice people who live

here. I am just as anxious to live over this tag situation so, I shall leave town and say you be welcome in my CAROLINA.

Persons

Louise Cox and Saturday night sister, Ann Barnes.

Small Loans For Early

Christmas Shopping

- (1) 30 Day Loans
- (2) 6 Month Loans
- (3) 9 Month Loans

Don Pace
423-5248

First Citizen Loans

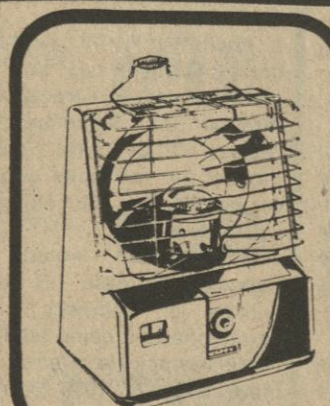
Iuka

IT YOUR LI



So, don't risk it foolishly careful when installing a television or CB antenna. Contact with an overhead line can cause injury or death. Be safe.

Tishomingo County Electric Power Association



Aladdin HAPPY II portable kerosene heater 9,440 BTU's per hour with highly directional heat control. Broad base, low center of gravity protects against tipping. Attractive, woodgrain front panel accented by almond-color side panels. Dimensions: 14" x 19" x 23".



Aladdin YOUNG II portable kerosene heater 7,700 BTU's per hour. Automatic lighting. Durable baked enamel finish. Automatic shutoff if tipped over. Compact size, easy carrying handle. Dimensions: 16" x 19 3/4" x 11 1/4".

W. H. FAIRLESS HARDWARE
OPEN ALL DAY THURSDAYS
IUKA-423-9256 TISH-438-6666

INSULATION

Will save you
money on your
heating bill

Call
454-3383
Day or Night

TVA Approved
Philip Williams, Owner

**Williams Pest Control
& Insulation Co.**
Belmont, Miss.



Mississippi Business Activity Index

October Economic Indicators

Activity	October 1980	Year to date
Newly organized Mississippi corporations	282	2,669
Foreign corporations newly qualified to do business in the state	86	763
Commercial financing statements filed (securing business debts)	3,505	35,023
Mutual fund companies and businesses whose securities were qualified and renewed to be sold in Mississippi	94	715
Securities Brokers and Agents qualified and renewed	111	1,302
Notaries Public registered	437	3,728
Services of process handled	346	2,443
Gubernatorial appointments processed	56	675

A Monthly Service of Your Secretary of State, Edwin Lloyd Pittman



Ed Pittman
Secretary of State

Featuring



Mrs. Mary Cresap, of Iuka, Route 2, surrounded by things that tell the story of

her life. Pictures, her Bible, which remains open, a 3-star pendant, a brooch at the neck

of her dress that belonged to her mother, and an Angel Food cake she baked.

Mrs. Mary Cresap

Young people are truly an asset. Their lively and spirited characteristics are the envy of all of us, but the gentleness, strength and wisdom of a senior citizen comforts, guides and molds us who

know them.

One such senior citizen is Mrs. Mary Cresap, better known as Mama Cresap, of Route 2, Iuka. She is a small lady in stature, but a giant in wisdom, strength, faith and

courage. Mama Cresap was born 82 years ago, the daughter of the late O.C. and Minnie Ray, of Corinth, Mississippi. She is one of five children, four girls and one boy. The brother is now deceased.

Mrs. Cresap says that the most important thing that ever happened in her life, all 82 years, happened when she was nearly ten years old. She says, "I trusted Jesus and was baptized." That has been the source of her strength and happy life.

The young Ray family lived in Corinth for the first ten years of Mama Cresap's life. It was there she began her schooling, attending the city school, which was somewhat different from the country school that was in her future.

While living in Corinth, she had a very thrilling experience. A millionaire from Corinth

went to London, England, she recalled, and brought back a car, a red car, two seated with a top that rolled back. He treated all the six children in the neighborhood to a ride. "At 6 years old," she said, "it was a thrill and a scare." "I don't know who was the most afraid, the children or the horses."

When Mama Cresap was nearly ten years old the family moved from Corinth to Pickwick.

At nearly seventeen years of age, on May 25, 1915, Miss Mary Ray became the bride of a handsome and successful Pickwick farmer, Charles Sanders Cresap. Mr. Cresap's farm was located on the banks of the Tennessee River where the dam is now situated. When they married that May young Cresap had ten acres of corn almost ready to eat, Mrs. Cresap said, and a cotton crop chopped out and nearly ready to bloom.

World War I came and brought with it difficulties. Food was scarce and virtually unavailable except for what folk raised. Remembered Mama Cresap. Families could only get enough flour to have once a week, cornmeal was used to furnish the families their bread and molasses replaced sugar. Mrs. Cresap's brother served in World War I.

The Cresap family grew. While they lived at Pickwick two children were born, and then the family moved to a place owned by Mr. Cresap's brother near to what would become the Cresap homeplace, and a short time later they did move to a farm located in the Bethel Methodist Church Community.

"When we moved here 60 years ago with two babies," Mama Cresap said, "this was all pine woods and the three room plank house set in a hollow surrounded by woods." "The rooms were big rooms and the house was so cold that first winter," she recalled, "that I took the diapers I thought I'd need for the night and put them under my pillow to keep my babies warmer when I changed them."

In the summer there was no lawn to mow, Mrs. Cresap said, and she kept the yard

swept clean with a brush broom.

Time went on and the Cresaps worked hard, their lives centering around their church, which was Bethel Methodist Church. They were very dedicated and faithful members and found this a very necessary and vital part of living. Two more children were born to this commendable couple, Mrs. Cresap's time was taken up caring for her family - she canned about 800 jars of fruit, vegetables, meat, etc. each year. "I made all the soap we used for everything until I was 50 years old," she explained.

Mr. and Mrs. Cresap provided the first bus, a homemade bus, that carried the children in the community to Central School. The Cresaps constructed the bus from a truck by putting a flat on it and building the bus with windows and seats in it. Mr. Cresap drove a school bus for several years, even after the buses were furnished, along with his farming.

Time rolled on and the world was faced with World War II. By this time the three Cresap sons were old enough to be involved. "Those were trying times," Mama Cresap sadly recalled, "but my faith in God and my prayer life kept me going." All three sons served in Military Service at the same time, and Mama Cresap still has a pendant hanging on her wall with three stars on it. The pendant she said was because she was a three-star mother, she had three sons in Military Service at the same time. During World War II shortages came again, and Mrs. Cresap told about making cheese using this recipe.

Cheese From Cow's Milk

1/4 coloring tablet in 1/2 cup water; 2 gallon clabber milk; 1 cup butter; 1 teaspoon soda; 2 teaspoon salt; 1 pint sour cream. Heat clabber to lukewarm to separate curds from whey. Drip in muslin bag and squeeze to remove whey. Mix clabber with butter, soda, salt, stirring well as you place over heat in double boiler. When it begins to melt add coloring and cook 40 minutes to one hour, stirring. Pour in mold.

Mama Cresap saved grease

as did many other housewives to be given in war efforts as well as giving their aluminum pans to assist in building airplanes.

In 1941 the Cresaps finished building a new home from lumber off their land. In the same year they received the "Plant To Prosper" award. A plaque given through the County Agent's Office for the most improvements on a farm. The couple were presented the award in Memphis where they enjoyed supper and stayed in the Peabody Hotel. This was Mama Cresap's first trip to Memphis.

On January 26, 1973, sadness came to the Cresap family and to the community. Mr. Cresap passed away after several years of poor health, leaving Miss Mary to make a life for herself after about 58 years of marriage. Being the kind of person she is, Mama Cresap drew strength from her Maker and Redeemer and continued to be the same pillar of strength she had always been. Mrs. Cresap placed a book of the Cresap History in the Iuka Library in memory of her husband.

Today, at 82 years, she does not wear glasses, nor does she close her Bible. It stays open, on her table and she reads it often. She watched a limited amount of television, reads, and writes letters. She sews and crochets, but very little now as the result of a fall. She excels in baking Angel Food cakes and is famous for them. Her cakes have gone to Nashville, Memphis, Georgia, and Florida, and are especially enjoyed by her sons, Charles, Jr., of Albany, Ga.; William (W.E.), of Route 2, Iuka; Herschel, of Sardis Dam; and daughter, Jennie Ray Cresap Morris; 14 grandchildren; and 18 great-grandchildren.

As I left her home I knew for certain that my life had been made richer and I'd been extremely blessed to drink deeply from such a wealth of wisdom as Mrs. Mary Cresap.

Mama Cresap's Angel Food Cake

1 pint egg whites
1 pint plain flour
Almost 1 1/2 pints sugar
About 1/2 tsp. each almond

and vanilla flavoring
3 level tsp. cream of tartar
Have all ingredients at room temperature. Rinse beaters and mixing bowl in very hot water to warm them. Beat egg whites and cream of tartar and one cup sugar (of the 1 1/2 pints) until they form and hold very stiff peaks. Sift flour and remaining sugar several times and sift over egg white mixture folding in and add flavorings. Do not stir. Bake in an ungreased tube pan at 300 to 350° for about 45 minutes, depending on stove. Turn upside and cool completely. Run knife around edges of cooled cake and remove from pan.

James Moore, Jr., Cpl. Sam Dubois, Pict. J.C. Douglas, Sgt. N. Leon Phillips, Petty Officer Henry Moore, Petty Officer 3/C Billy Pace, Cpl. Leon Deaton, Pvt. James H. Bishop, Capt. Hubert T. Nagle.

The household hints offered a solution for water spots on polished furniture. To remove the spot rub lightly with turpentine applied on a soft cloth. Wipe dry and re wax.

Rub salt inside a fowl before adding stuffing for better seasoning.

For grapejuice frosting: Put 3 tablespoons grape juice into a pint bowl. Stir in 1 to 1 1/2 cups confectioners sugar until mixture is thick enough to spread on cake.

Jim Crouse, a deacon of the Oldham Baptist Church, passed away on Oct. 31, 1943.

Miss Betty Ruth Jourdan spent the weekend in Corinth as guest of Miss Watsy Summers.

The Majestic Theatre featured "Follow the Band", "Dixie", "Wild Horse Stampede", and "Mister Big".

The Sunday School Lesson for the week was "The Sanctity of the Home" from Exodus 20:14, Matthew 5:27-30, and Mark 10:2-12.

Early Files

By: R. Moyers

November 11, 1943

S/Sgt. Robert L. Solomon, son of Mr. and Mrs. W.M. Solomon, of Route 1, was reported lost in action, according to a message received by his parents.

Thirty registrants were examined at Iuka on November 10, 1943.

Names of Our Men and Women in Uniform: Wilbur D. Bickerstaff, Apprentice Seaman Willie Avis White, Mrs. Jewell Bennett Lambert, Mrs. Jewell Bennett, Aviation Cadet Weldon M. Hanks,

Mr. and Mrs. Gerald Thomas
Mr. and Mrs. Jim Thomas
request the pleasure of your company
at the
Fiftieth Wedding Anniversary
of the marriage of their parents,
Mr. and Mrs. Charles R. Thomas
on Sunday, the Thirtieth of November
One Thousand Nine Hundred and Eighty
two until five o'clock
at the home of Charles Thomas

All friends & relatives are invited

**Marlar's
Steak & Fish House**
Old Hwy. 25 at North Crossroads

NOW OPEN

Featuring Fresh Pond Raised Catfish,
Charcoal Broiled Steaks, Oysters, Shrimp
Homemade Rolls on Friday & Saturday nights

Closed Sunday, Monday, & Tuesday Nights
Open Wednesday - Saturday 5:00 - 10:00
Phone 423-9992

**ENJOY THE LOOK OF
FASHIONABLE CHAIN
AT TREMENDOUS SAVINGS!!**

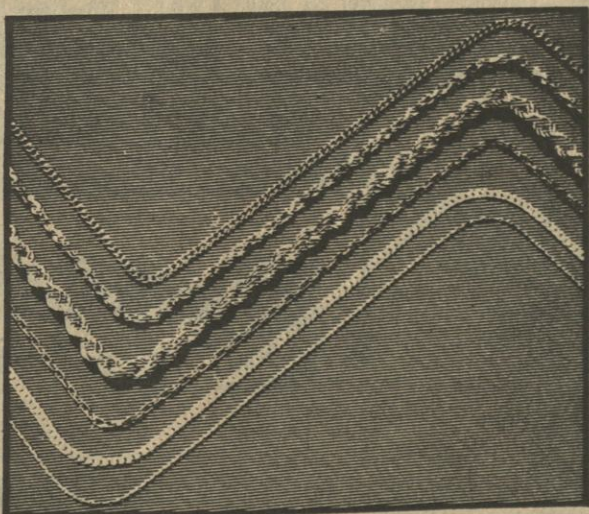
Choose from our beautiful collection of 14kt overlay, gold-filled and Sterling Silver in various lengths and styles.

Example
of savings

15" **15⁹⁹**
Reg. 1997

18" **18⁹⁹**
Reg. 2597

24" **24⁹⁹**
Reg. 2897

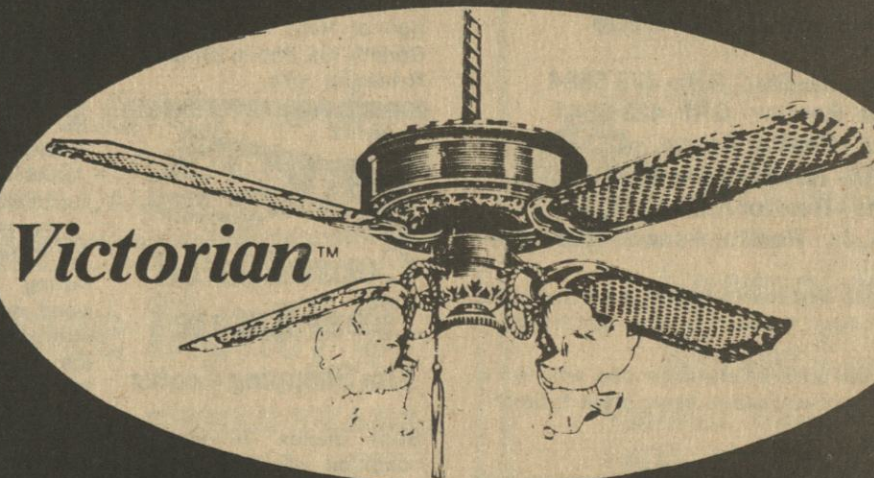


At these great prices-
why not buy now for Christmas?

WAL-MART

FINE JEWELRY DEPARTMENT

The Fans For All Seasons



**ALL CASABLANCA FANS HAVE
THESE STANDARD FEATURES**

- Reverse Air Flow
- Built in Variable Speed Control
- All Metal Housing
- All Wooden Blades
- All Mounting Hardware Included
- Five Year Warranty

SUMMER ENERGY SAVINGS

Set your thermostat at 78 to 80 — maintain a comfort level of between 70 to 72

WINTER ENERGY SAVINGS

Increases heating efficiency by eliminating stratification of hot air on your ceiling — maintains a more comfortable living area

FALL AND SPRING

Turn off your thermostat — A ceiling fan is all that is needed for comfort

REVERSE AIR FLOW

Our reverse feature on our fans improves conditions with or without air conditioning by circulating air both downward and outward

LOW ENERGY CONSUMPTION

All Casablanca Fans use the equivalent energy of a 100 watt light bulb running at full speed

VARIABLE SPEED CONTROL

Built-in speed control with range from 20 RPM to 210 RPM

CASABLANCA
FAN COMPANY
The World's Most Beautiful Fans. UL

Shoals **HOUSE OF** *Lighting*

HOURS:
MONDAY-SATURDAY
8:00 A.M.-5:30 P.M.

383-1437

2308 WOODWARD AVE
MUSCLE SHOALS

BUY, SELL, TRADE OR RENT THROUGH THE CLASSIFIED ADS

Classified Ads - \$2.50 per week for 30 words. After the first 30 words, 5¢ extra per word. \$1.00 extra with border.
Card of Thanks and In Memorium - 5¢ per word.
Classified Ads, Cards of Thanks and In Memoriums must be paid in advance.
50¢ service charge will be added to any monthly bill totaling less than \$5.00.

Phone 423-3666

—ERRORS—

Should be reported immediately as The News can be responsible only for the first incorrect insertion in any advertisement. The News cannot be liable for error in any advertisement to a greater extent than the cost of the space occupied by the items in the advertisement.

FOR SALE

HOME FOR SALE — Brick and cedar, 3 BR, 1½ baths, carpet, fireplace, dishwasher, oven, range, carport and patio on 100 x 200 lot on the Patterson Chapel Road near Golden, Ms. \$36,000. 90% financing available. Contact: Tri-State Savings & Loan - Belmont 454-3313; Iuka 423-3186. S-25-tfn-c.

FOR SALE BY OWNER — Approximately 3½ acres of land, 4 miles east of Iuka on Airport Road. Has some timber, good spring water, plenty of road frontage. \$5,000.00. See Lee Roy Nunley, Airport Road. O-16-D-1-c.

FOR SALE — Two, 3 bedroom frame houses on 1½ acres land. One house new. Small orchard. Priced to sell. Call 423-9247. N-20-27-D-4-p.

FOR SALE — 3 bedroom house, 1½ acres, carport. Located between Burnsville and Iuka. Good price. Call 423-9151. N-20-27-c.

FOR SALE — Three hand crocheted afghans. Will make nice Christmas gifts. Call 423-3498. N-20-c.

FOR SALE — Large waterfront cabin near Iuka on paved road. Call - night, 423-9170; or day, 423-6788. O-16-tfn-c.

FOR SALE — 1976 Buick Century - AC, PS, V-6, yellow. \$1995. phone 423-5640. 1973 Chevrolet Caprice Classic - brown w/ltan top, AC, PS, V8, \$850 - both in good condition. Can see at Cappelman's Antiques, Hwy. 26 N. Phone 423-9962. N-6-13-20-27-c.

FOR SALE — 2 bedroom block house, 1 acre of land, 2 miles south of Iuka on paved road. Priced for quick sale. Call 901-632-4759. O-30-tfn-c.

LOT FOR SALE — 2½ acres in Burnsville. Beautiful house site with plenty of room for garden. \$6500.00 with \$3000.00 down - balance over 3 years at 12% interest. Call 423-5217. O-16-tfn-c.

FOR SALE — Two lots and/or 37 ½ acres timberland, north of Tishomingo on Martin Blund Road. Call 360-2421 - days. N-6-tfn-c.

LARRY'S MOBILE HOME PARTS AND SERVICE
Storm doors and windows, tie downs, Koal Seal trailer parts, mobile home moving. Call 423-3258 day or night. O-16-tfn-c.

FOR SALE — Portable loading chute. Call 423-3474. O-30-tfn-c.

FOR SALE — Honda CB750; CB450; Phone 423-3474. O-30-tfn-c.

FOR SALE BY OWNER — 5 room house newly decorated with outside workshop. Situated on 1 ¾ acres, five miles from Iuka on blacktop road. Call after 6 p.m. 423-6813. N-6-13-20-p.

FOR SALE — Coastal Bermuda Hay. Orville McNutt at Midway. Call 423-6431. N-7-tfn-c.

FOR SALE — Brass bed (king size) complete with firm or therapeutic mattress set, never used, still in carton. Cost over \$700.00. Must sell - \$285.00. Call 844-5793 in Tupelo. N-13-20-27-D-4-c.

HOUSES FOR SALE — New and old with 1 to 2 acres of land. Owner financing with low down payment. Phone 423-9322. N-13-20-27-c.

FOR SALE — Beautiful, 2 year old, all-cedar home, 1½ baths, 3 bedrooms, extra large family room and kitchen, carport, utility, fireplace, heat pump, central, 1¾ acres. Coleman Park Subdivision. Call 423-9101 or 423-3946. N-13-20-p.

FOR SALE — New, spacious home, 2 bedrooms, 1½ baths, beautiful stone fireplace, heat pump, central, 800 sq. ft. storage, plus cedar deck on front (8 x 20), carport and utility, 2½ wooded acres, lots of dogwood. Coleman Park Subdivision. Call 423-9101 or 423-3946. N-13-20-p.

WANTED TO BUY — Old class rings, wedding bands, coins, etc. Sonny's Pawn Shop at the intersection of Hwy. 45 and 72 in Corinth, Ms. Phone 287-8094. N-1-tfn-c.

Consolidated Real Estate
Elm Shopping Center

Brick duplex in excellent condition on 5th St. Very liveable for two small families - \$35,000.00.

3 BR, 1 bath, frame home on acre lot with nice screened porch, storage building - wood burning stove - \$24,000.00.

3 BR, 1½ bath brick home on acre lot - \$35,000.00.

3 BR frame home with 1220 square feet living space - 6.5 acres - \$29,500.00.

3 BR, 2 bath on Robin Lane - large utility room, greatroom, double garage, central heat/air - \$44,000.00.

4 BR frame home on 3 acres on 365 South - \$22,000.00.

2 BR furnished cabin at Mill Creek - \$20,000.00.

2 BR cabin at Eastport - \$17,000.00.

80 acres of land - \$375.00 per acre.

3 BR, 2 bath, brick home on Pleasant Hill Road - \$49,500.00.

Waterfront cabin on Bear Creek - Completely furnished - \$55,000.00.

5 acres on paved road - \$7,000.00.

Beautiful building lots at Woodall Mountain Estate - \$4,000.00 up.

CALL US FOR

Full Real Estate Service
Appraisals - Rentals - Sales
Office 423-6948

Bobbie Curtis, Realtor 423-6177
B.T. Curtis 423-6177

O'POSSUM DOG FOR SALE
Call Mrs. Lynda E. Kay at 423-6298. N-20-p.

MISCELLANEOUS

LOST — Small black dog off Coleman Park Road. Part Poodle and ?? gray on head, wearing black flea collar, name, Snappy. Call Mark Akers at 423-5321. N-20-p.

BABY SITTER AVAILABLE — Baby sit in my home. Hours 6 a.m. to 6 p.m. Reasonable rates. Any age. Belmont - call 454-9658. N-20-c.

NEED MONEY & SEE SONNY!
We lend money on anything of value, such as diamonds, radios, C.B.'s, stereos, etc. Emergency Loans. Sonny's Pawn Shop at intersection of Hwy. 45 and 72 in Corinth. Call 287-8094. M-13-tfn-c.

MATHIS PLUMBING & ELECTRICAL — Phone 423-5589, day or night. No job too big or too small. Boysie Mathis. O-2-tfn-c.

TREE SERVICE — Trees trimmed and removed. Phone 423-3474. O-30-tfn-c.

CHILDREN'S DAY — Every Tuesday, 10 a.m. - 6 p.m., no appointment necessary. Photography by Charles, 709 Eastport, Iuka, phone 423-3359. A-20-tfn-c.

TONI'S TREASURES
209 W. Eastport St.
Iuka, Miss. 38852
Antiques, new and used furniture, Open 10 a.m. - 5:30 p.m. Daily - Closed Sunday and Monday. Buy, sell and trade. Call 423-9703 or 423-5698. S-4-tfn-c.

HELP SAVE ENERGY COST
by insulating your home with custom-made windows and doors, blown insulation and insulation underneath floors. T.V.A. approved. Awnings, gutters, aluminum siding, replacement windows. Horace Ray Shook, Route 1, Cherokee, Ala. 35616. Call collect (205) 360-2187. J-26-tfn-c.

FASHION FLAIR BEAUTY SALON — 621 Elm Shopping Center, Iuka, Miss. 423-5709. Stylists: Sue Sanders, Joyce Park, Emogene Nagle, Vickie McGee. Open 6 days a week - Appointments not always necessary. F-7-tfn-c.

ELLISON BROTHERS CHIMNEY SWEEPS
Having trouble with your wood stove? Your fireplace dirty and need cleaning? Give the professionals a call - 901-925-8432. N-6-D-25-c.

WANTED TO BUY — Used and antique furniture and glassware. We buy just about anything. Cleaning your house or attic out, give us a call. Cappelman's Antiques. Phone 423-9962 - Nights 423-5640. J-12-tfn-c.

FOR SALE — In Tishomingo - Remodeled, 3 bedroom, 2 bath, formal dining and living rooms, den and double carport. New paint, carpet, storm windows and insulation. Call for appointment 454-7802. O-16-tfn-c.

P. O. BEARD AGENCY

SINCE 1964
400 WEST EASTPORT ST.

New Listing on 3 bd, 1 bath, Tishomingo stone and brick home, fully furnished, off water, but with water space and 24' x 32' boathouse. Resort or year round - \$49,500.

New Listing on 3 bd, 2 bath, brick home, carpeted, central h/ac, f/p in greatroom, two lots, 12' x 12' storage bldg, in new sub. adjoining city limits, \$59,900.

Water view resort and permanent home at TN state line - 3 bd, 2 bath, frame home with large porch, \$36,000.

Commercial bldg. in downtown Iuka - 2 story totaling 8,463 s.f., \$43,500.

Fully set up wooded mobile home lot including septic tank, water, slab - near Yellow Creek Port, \$3,500.

PHONE 423-5253

P.O. Beard - Realtor, Appraiser, Registered Forester
Nancy Beard - Realtor Associate
Phone 423-5251

Many Other Listings
Call For Free Information On Buying Or Selling

LISTEN TO THE BIBLE STANDARD
On FM 106 at 11:30 a.m. each Saturday. O-16 - N-20-p.

FOR RENT

FOR RENT — Furnished, two bedroom cottage located in Burnsville. Call 427-9243. N-6-tfn-c.

HOUSE TRAILER FOR RENT — James E. Timbes, Jr., Burnsville. Phone 427-8778. S-25-tfn-c.

FOR RENT — Large unfurnished house. Also, 2 bedroom unfurnished apartment and small furnished trailer. Call 423-3656. N-20-tfn-c.

FOR RENT — Large furnished house 10 miles east of Iuka in Alabama, 3 miles from mini bus route. 4 bedrooms, 2 full ceramic baths, large living room, den, dining room, kitchen, fireplace, carpet throughout. Call 423-6186 days or 423-6748 after 5 p.m. N-20-tfn-c.

FOR RENT — Located in Pine Dale Subdivision. 2 bd. mobile home - furnished. \$200 monthly or \$50 weekly, plus utilities. References needed. Couple preferred or one child o.k. See Terri Lucius or phone Garlean Lucius at 423-9128. N-20-c.

FOR RENT — Two bedroom mobile home - furnished - \$50.00 weekly or \$200.00 a month, plus utilities. Call 423-9128. N-20-p.

WANT TO RENT — Responsible family wanting to rent nice 3 bedroom home in Belmont or Red Bay area. Will be in area for 2 to 3 years. Please call 454-9525. N-20-tfn-c.

FOR RENT — 3 bd. house, well insulated, country location. Call 423-9892 days or 423-6348 at night. N-13-20-27-c.

FOR RENT — 3 bedroom mobile home. Phone Bart Smith at 423-3749. M-15-tfn-c.

HOUSE FOR RENT — 2 bedroom brick, carpet throughout, no pets allowed. Hwy. 25 N. Phone 423-5276. N-6-tfn-c.

Yard Sale

YARD SALE — Saturday at 8 a.m. located at Dellus Helton residence on Hwy. 25 N. Odds and ends and some clothes. If raining will be cancelled. N-20-p.

GARAGE SALE — Saturday, November 22, 9 a.m. - 3 p.m. Aaron Bonds residence on Cosby Drive, north on Hwy. 25. Several families included. If raining, postponed til the following Saturday. N-20-p.

Legal Notice

The Northeast Mississippi Planning and Development District proposes to apply to the Urban Mass Transpor-

APPLIANCE REPAIR

24 hour service. Call Peak View Enterprises at 423-3736 for honest and dependable service. N-13-tfn-c.

tation Administration for the purchase of three (3) twelve (12) passenger vans to be used in Prentiss County Programs for the elderly and handicapped. N-20-c.

Notice Of Proposed Safer-Off System Project No. SOS-0071(6)B Old Holloway School Road Tishomingo County

The Tishomingo County Board of Supervisors proposes to improve a section of the Old Holloway School Road in Tishomingo County. This proposed construction project consists of 0.2 miles of Grading, Drainage, Base, Bridge and D.B.S.T. and will be administered as a Federal Aid Project under the State Aid Road Program. The route, along which this project is to be constructed, begins at an intersection with U.S. Highway 72 in the N.E. ¼ of Sec. 4T3S, R9E and extends northerly for 1.7 miles, thence N.E. for 1.1 miles to end at an intersection with the Chaney Creek Road in the SW ¼, Sec. 22, T2S, R9E. The project site is located along the alignment of existing road in the S.W. ¼ of Sec. 22, T2S, R9E, beginning at junction with Chaney Creek Road and extending southwesterly for approximately 0.2 miles.

All interested persons are hereby advised that "Categorical Exclusion" Environmental Assessment has been concurred in by the Federal Highway Administration and is on file at the Offices of the State Aid Engineer in the Providence Capitol Centre, 200 E. Pascagoula, P.O. Box 1850 in Jackson, Mississippi 39205.

A "Location and Design Study Report" has been prepared by the County Engineer, Mr. Donald Eubank, of Booneville, Mississippi, and a copy of same submitted to the State Aid Engineer for his review. At a later date, a Notice will be published in this newspaper setting out the action taken as a result of his review.

All interested persons desiring a public hearing on the location and design of the project must write to both the Tishomingo County Board of Supervisors, c/o the Chancery Clerk at his office in the County Courthouse in Iuka, Mississippi, and to the State Aid Engineer at his office previously noted on or before December 4, 1980 setting forth the reason for desiring such a hearing.

In the event a request for a public hearing is received, a further Notice will be published specifying the date, time and place of the hearing.

WILLIAM P. STEVENSON, STATE AID ENGINEER
DIVISION OF STATE AID ROAD CONSTRUCTION
MISSISSIPPI STATE HIGHWAY DEPARTMENT
N-13-20-c.

CITATION

THE PEOPLE OF THE STATE OF NEW YORK BY THE GRACE OF GOD FREE AND INDEPENDENT

TO: DONALD L. KIRKLAND
Tishomingo, Mississippi
38873

A Petition having been filed by DAVID M. DALTON, who is domiciled at the Town of Arcadia, Wayne County, New York.

YOU ARE HEREBY CITED TO SHOW CAUSE before the Surrogate's Court Wayne County Courthouse, Village of Lyons, County of Wayne, State of New York on Tuesday, December 23, 1980 at 10:00 o'clock in the forenoon, why an Order

allowing the adoption of ELIZABETH SHANNON HEALY KIRKLAND by DAVID M. DALTON pursuant to a Petition praying for the adoption together with an Agreement to Adopt, the said ELIZABETH SHANNON HEALY KIRKLAND by DAVID M. DALTON, both such documents having been filed herein, should not be made.

PLEASE TAKE FURTHER NOTICE that you are not obliged to appear in person and that if you fail to appear it will be assumed that you do not object to the relief requested, and that you have the right to have an attorney at law appear for you.

Dated, Attested and Sealed:
October 24, 1980
/s/ J.M. Comella,
Surrogate Clerk,
County of Wayne,
State of New York
JOHN A. R. WALSH, P.C.
Attorneys at Law
Attorney for the Petitioner
David M. Dalton
2012 Ridge Road, Box 500
Ontario, New York 14519
N-6-13-20-27-p.

Notice of Submission of Community Development Block Grant Preapplication

The Town of Burnsville has submitted a Small Cities Community Development Block Grant Preapplication to the U.S. Department of Housing and Urban Development in Jackson. Copies of the preapplication are available for public inspection during normal business hours.

Persons wishing to object to approval of the preapplication by HUD should make their objections known to the Jackson Area HUD Office. Objections will only be considered on the following grounds:

(A) The description of needs and objectives is plainly inconsistent with available facts and data.

LEASING OIL & GAS RIGHTS

Call Collect 205-758-0462 or write

P. O. Box 100
Tuscaloosa, AL 36688



Gann Brothers Furniture & Appliance

427-9506

WE HAVE TWO FULL TIME MEN FOR QUICKER AND MORE EFFICIENT SERVICE

"The Business That Quality And Service Has Built"

WE SELL THE WORLD'S LARGEST SELLING CHAIN SAW.



Model 015L Model 020AVP Model 031AV with Quickstop

Stihl didn't get to be the world's largest selling chain saw with a product that needs more service than it gives.

But if your Stihl saw ever needs a tune-up, or maybe a spark plug, or just a once-over, the best factory trained service

men in the business are here to help. Come by and see the world's finest chain saw. Or come by for repairs on all the others.

FACTORY TRAINED MECHANICS WE SERVICE THE BEST ... STIHL

NELSON Marine & Hardware
Highway 25 S. Iuka
Phone 423-3666

Job #1096-79.1
Advertisement
For Bids

General Contractors are invited to submit bids for furnishing and installing resilient floor covering at the 26 units of the Iuka Housing Authority. Bids will be received at the Management Office on Oak Grove Court of the Housing Authority of the Town of Iuka, Mississippi, until 2:00 p.m., December 2, 1980, at which time they will be publicly opened and read. Specifications may be obtained from McREE DARDAMAN JONES, LTD., Architecture / Engineering, Grenada, MS.
N-613-20-c

All of the above are non-residents of the State of

Unknown Parties, Defendant
No. 861

AUCTION

**Household Contents
Miss Willie Hiatt Home**

504 West Eastport Street
Iuka, Mississippi

Kitchen Items - Bedroom Suites - Lamps
Living Room Furniture - Antiques

10:00 a.m.
Saturday, Nov. 22

(later date if rained out)
FOR MORE INFORMATION CALL 423-5246

- Administrative Office Supplies
- Dietary Supplies
- Electrocardiography Supplies
- Emergency Room Supplies
- Housekeeping Supplies
- Inhalation Therapy Supplies
- I.V. Solutions
- Laundry Supplies
- Linens
- Medical Records Supplies
- Medical and Surgical Supplies
- Delivery Room Supplies
- ▼ Anesthesia Supplies
- Laboratory Supplies
- Maintenance Supplies
- Operating Room Supplies
- Nursing Service Supplies
- Radioisotope Supplies
- Radiology Supplies
- Pharmacy Supplies
- Physical Therapy Supplies

The back wages were due as a result of employers' failure to comply with the minimum-wage and overtime pay provisions of the Fair

May God bless all of you.
MAURINE WALDEN

8'4" EXIT WINDOW 7'3" 2'5" 9'1" 7'6"

BEDROOM BATH KITCHEN DINING AREA

MASTER BEDROOM BEDROOM LIVING ROOM

11'6" EXIT WINDOW 8" 13'3"



- SHINGLE ROOF
- WOOD EXT. SIDING
- CUSTOM FRONT EXT. DOOR WITH WINDOW & ALUMINUM STORM DOOR.
- CARPET IN LIVING ROOM & DINING ROOM W/DOUBLE PAD.
- G.E. DOUBLE DOOR NO-FROST REFRIGERATOR.
- 2 OR 3 BR. OPTION WITH W/1 BATH
- ONE YEAR LIMITED WARRANTY.

SPECIAL HOME \$14,600
SERIES PRICE....

WITH A MODEST DOWN PAYMENT

The staff at Patrick Home Center can help arrange financing of your new home. Your monthly payment will be buying your home instead of accumulating rent receipts. You'll have tax benefits also, because interest you pay on your home loan is tax deductible at income tax time.

Your new home from Patrick's will come with a written limited warranty, and our goal is "To provide for you the greatest housing value for dollar invested" — an affordable better way of living.

We have a
complete stock
of excellent
USED
MOBILE HOMES
PRICED
TO MOVE

Financing Available
FHA-VA
SAVING & LOAN &
LOCAL BANKS

Hwy. 45 N
287-2407

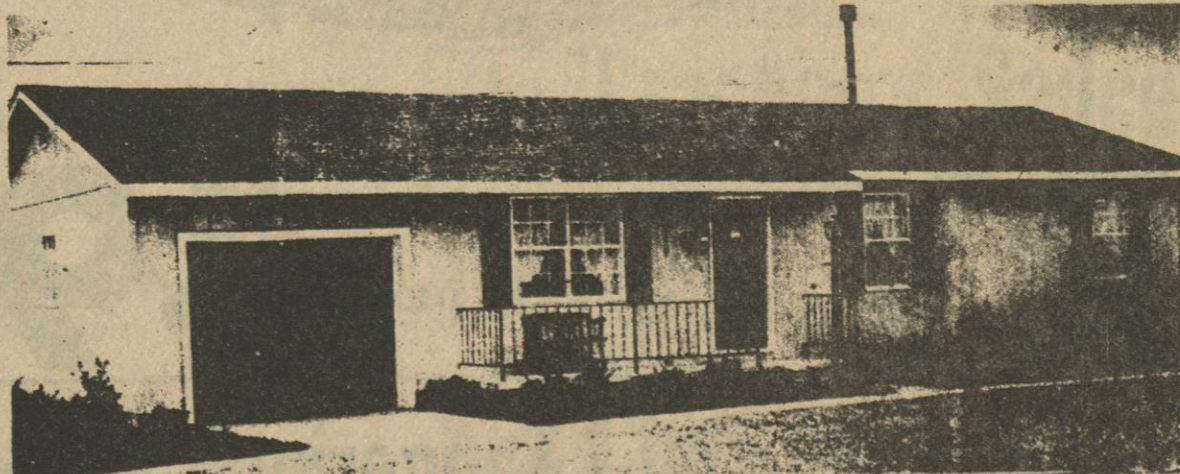
Patrick
HOME
CENTER
CORINTH

1107 S. Cass
287-2966

LICENSED, BONDED AND REASONABLE
24 hour expert service--14 years experience
all work guaranteed

OWNER AND OPERATOR
Boysie Mathis
Rt. 4 Iuka, MS 38852

100% FINISHED—Don't go through the headaches and expense of trying to do the finish work yourself. Pick your carpet, paint and roof colors. Plenty of insulation. 15 year financing. Pick from more than 12 models. Wood siding.



**LET US BUILD THIS 3
BEDROOM 1½ BATH HOUSE**

**NOT A SHELL - NOT A PRE-FAB - NOT
A MOBILE HOME.**

**HOUSES START
AT \$23,650
381-7301**

Call Collect Now

OR MAIL THIS COUPON TO: P.O. BOX 35660
MUSCLE SHOALS, AL 35660

NAME _____

ADDRESS _____

CITY _____ STATE _____ ZIP _____

PH. NO. _____

OWN PROPERTY
BUYING PROP. _____

**Quality Materials
Supplied By:**



Nelson super market

AD EXPIRES 11-26-80
QUANTITY RIGHTS RESERVED

HAPPY HOMES
CORN DOGS

18 OZ. PKG.
\$1.59

REELFOOT JUMBO
BOLOGNA

LB. **\$1.19**



BRYAN PURE PORK
SAUSAGE

LB. **\$1.59**



CALIFORNIA PASCHAL

CELERY

Potatoes U.S. NO. 1 RUSSETT

5 LB. BAG **\$1.19**

Onions MILD YELLOW

3 LB. BAG **69¢**

Tangerines FLORIDA ZIPPER SKIN

DOZEN **59¢**

APPLE

EX FANCY RED OR GOLDEN

LB. **39¢**



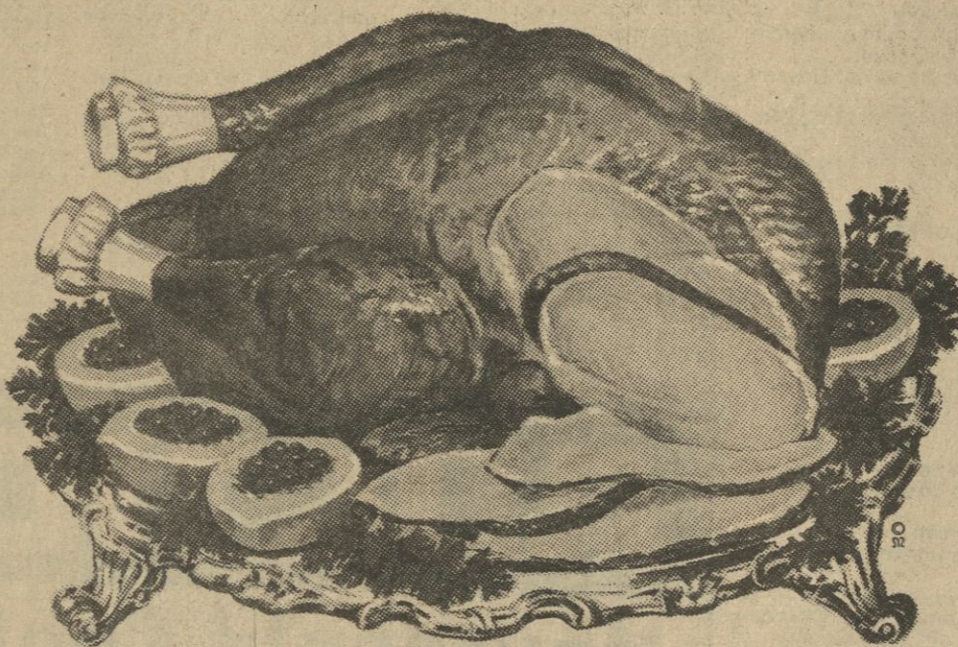
Specials

FOR A
FESTIVE THANKSGIVING DINNER



SWIFTS PREMIUM BUTTER BALL

Turkey



10-12 LB. AVG.

LB. **99¢**

FRESH
Oysters

12 OZ. JAR **\$1.99**

CENTER CUT
Pork Chops

LB. **\$1.79**

SUNNYLAND
Picnic Hams

5-9 LB. AVG. LB. **\$1.99**

PURNELL PRIDE
Chicken Livers

1 LB. CUP **\$1.99**

HAM

ARMOUR STAR CANNED



3 LB. CAN

\$5.79

ALWAYS
FRESH!
ALWAYS
CRISP!

Nelson super market

AD EXPIRES 11-26-80

Happy Thanksgiving Food Savings

50-DRI
TOWELS

JUMBO ROLL

39¢

CHEF-WAY

OIL

48 OZ. BOTTLE

\$1.69



HYDE PARK TWIN
PIE SHELLS

9 INCH

2 FOR 99¢

SUNFLOWER SELF RISING

FLOUR

5 LB. BAG

79¢

29 OZ. CAN

59¢

17 OZ. CAN

3 FOR \$1.00

17 OZ. CAN

3 FOR \$1.00

LUX

DISH DETERGENT



22 OZ. BOTTLE

89¢

PILLSBURY CHOCOLATE CHIP

Cookies

16 OZ. PKG.

\$1.19

CAMPBELLS CREAM OF MUSHROOM

Soup

10 3/4 OZ. CAN

3 for 99¢

Margarine

1 LB. QTRS.

59¢

Dog Food

25 LB. BAG

\$3.39

EMPRESS MANDARIAN

Oranges

11 OZ. CAN

65¢

GOLDEN GRAIN MACARONI & CHEDDAR

Dinners

7 1/4 OZ.

3 FOR 89¢

Chili with Beans

15 1/2 OZ. CAN

69¢

KRAFT VELVEETA

Cheese

2 LB. BOX

\$2.99

Detergent

GIANT SIZE

\$1.19

PRIDE OF ILLINOIS GOLDEN WHOLE KERNEL

Corn

17 OZ. CAN

3 for \$1.00

PEACHES

HAPPY VALE

29 OZ. CAN

69¢

Pepsi-Cola

AND RELATED PRODUCTS

2 LITER BOTTLE

99¢

Aluminum Foil

25 FT. ROLL

2 FOR 99¢

Cake Mix

69¢

OCEAN SPRAY JELLIED

Cranberry Sauce

16 OZ. CAN

2 FOR 99¢

CAMPBELLS TOMATO

Soup

10 3/4 OZ. CAN

4 for \$1.00

SWEET SUE

Chicken Broth

13 1/2 OZ. CAN

3 FOR 89¢

COUPON

100 FREE QUALITY STAMPS

12 OZ. BOX NESTLES

HOT COCOA MIX

EXPIRES 11-26-80

COUPON

100 FREE QUALITY STAMPS

36 OZ. BOTTLE LOG CABIN

SYRUP

EXPIRES 11-26-80

COUPON

100 EXTRA QUALITY STAMPS

4.6 OZ. CLOSE UP

TOOTHPASTE

EXPIRES 11-26-80

COUPON

100 FREE QUALITY STAMPS

THROAT LOZENGES

SUCRETS

EXPIRES 11-26-80



Bro. Rex Buford
Former minister of the Iuka Church of Christ was honored at a recent luncheon hosted by the Ladies Bible Class. Shown, back row, left to right: Jeanette Enlow, Bro. Rex Buford, Alma Tapp, Kathy Williams,

Donna McAnally, Kathy Reynolds, Maxine Wade, Lydia Bell Parsons, Darea Enlow, Nellie Taylor, Mrs. Ware, Danette Enlow. Back row, left to right: Jeanette Enlow, Bro. Rex Buford, Alma Tapp, Kathy Williams, Donna McAnally, Kathy Reynolds, Maxine Wade, Lydia Bell Parsons, Darea Enlow, Nellie Taylor, Mrs. Ware, Danette Enlow.

with Rev. Billy Murphy and Rev. Jeff Cook officiating. Burial was in Allen Line Cemetery.

He is survived by his wife, Mrs. Inez O'Neal, of Belmont; two sisters, Mrs. Mildred Beavers, of Mow Bank, Texas, and Mrs. Maglene Lewis, of New Site; five brothers, Emmitt O'Neal, of Burton, Tommy O'Neal, of Red Bay, Ala., Jimmy O'Neal, of New York, Larry O'Neal, of Belmont, and Harold Ivy, of Tampa, Fla.

FAITH in this power will cause us to escape the corruption and lust that infest the world, and to share in the very being of God. (II Peter 1:3-11).

I am constantly amazed by the simplicity of the formula: Give up on understanding, and accept God's teaching as an act of faith. Because of that faith, seek goodness, knowledge of God's will and a loving disposition, and Lo, and Behold! We will come to share in the being of God and understand all things!

Is that a miracle? I dare say it is the miracle of miracles! It is the Spirit of God at work in the heart of man. (Col. 5:22, 6:10). It is a majestic miracle available, through faith, to all! (Acts 2:37-39).

These words are faithful and true. The grace of the Lord Jesus Christ be with you all.

If you would like to be enrolled in a free Home Bible Correspondence Course or study the Bible with someone in the privacy of your home, please write or call: The Bible Speaks P.O. Box 323 Iuka, Miss. 38852 423-6891

Message For Meditation

By: Terry L. Booker, Pastor, New Lebanon Church Personal Inventory

Romans 14:10-12 - "... for we shall all stand before the judgment seat of Christ. For it is written, As I live saith the Lord, every knee shall bow to me, and every tongue shall confess to God. So then every one of us shall give account of himself to God." 2 Corinthians 13:5 - "Examine yourselves, whether ye be in the faith; prove your own selves." In these two passages we see two exhortations that

suggest personal inventory. Did you ever stop to consider that "I" is the most important letter in the alphabet. It is the person you see in the mirror. It is the person responsible for your every action. There is also something else we should see about "I".

"I" IS THE CENTER OF SIN. Sin is the transgression of God's law. Sin is that which defiles the man. Mark 7:20 - "And he said, That which cometh out of the man, that defileth the man. For from within, out of the heart of men, proceed evil thoughts, adulteries, fornications, murders, thefts, covetousness, wickedness, deceit, lasciviousness, an evil eye, blasphemy, pride, foolishness: all these evil things come within, and defile the man." Sin separates from God - Isaiah 59:2. Sin hinders prayer - Psalms 66:18. Sin excludes from Heaven - I Corinthians 6:9. However, sin is forgivable - Ephesians 1:6 - "To the praise of the glory of his grace, wherein he hath made us accepted in the beloved. In whom we have redemption through his blood, the forgiveness of sins, according to the riches of his grace; wherein he hath abounded toward us in all wisdom and prudence." The blood of Christ takes "I" out of sin.

"I" IS THE CENTER OF PRIDE. Luke 18:10 - "Two men went up into the temple to pray; the one a Pharisee, and the other a publican. The Pharisee stood and prayed

thus with himself God I thank thee, that I am not as other men are, extortioners, unjust, adulterers, or even as this publican. I fast twice in the week, I give tithes of all that I possess. And the publican, standing afar off, would not lift up so much as his eyes unto heaven, but smote upon his breast, saying, God be merciful to me a sinner. I tell you this man went down to his house justified rather than the other: for every one that exalteth himself shall be abased; and he that humbleth himself shall be exalted."

The Pharisee's greatest sin was pride - "I". Proverbs 16:18 - "Pride goeth before destruction and an haughty spirit before a fall." Pride destroys humility and builds a wall between you and God.

"I" IS THE CENTER OF SAVIOUR. To be in Christ is

to know the joy of salvation. In him is our faith and hope. In Him is our comfort and strength. Acts 4:12 - "Neither is there salvation in any other: for there is none other name under heaven given among men whereby we must be saved." Romans 10:9 - "If thou shalt confess with thy mouth the Lord Jesus, and shalt believe in thine heart that God hath raised him from the dead, thou shalt be saved. For with the heart man believeth unto righteousness; and with the mouth confession is made unto salvation. Romans 10:13 - "For whosoever shall call upon the name of the Lord shall be saved." I John 4:12-15 - "No man hath seen God at any time. If we love one another, God dwelleth in us, and his love is perfected in us. Hereby know we that we dwell in him, and he in us, because he hath given us of

Sale at HILDA'S FABRIC

On The Fairground Road South of Iuka, Miss.

BEAUTIFUL COLORS IN 100% COTTON

Velveteen SALE NOW YD. \$7.98

REG. \$8.98 & \$9.98 YD

Wool Plaids & Solids

REG. \$6.98 NOW YD. **\$5.98**

REG. \$5.98 NOW YD. **\$4.98**

MANY OTHER BARGAINS

COME BY & SEE

WE HAVE CORDUROY GABARDINE

Ponda NOW YD \$3.29

100% POLYESTER (just a few left)

Quilt-Batting REG. ROLL \$2.35

64 in. wide **Stretch Velour YD \$6.98**

IN BEAUTIFUL COLORS

Terry Cloth \$2.98

Boucle Good Colors yd. \$3.98

OBITUARIES

Miss Alice Harrison

Miss Alice Harrison, 96, died at 2 p.m. Saturday, November 15, at Leflore County Hospital in Greenwood after an extended illness. She was a member of East Prentiss Baptist Church for more than 60 years.

Services were held at 2 p.m. Monday, November 17, at Deaton Funeral Home Chapel in Belmont with Rev. Albert Hamilton officiating. Burial was in Joel Cemetery.

She is survived by several nieces and nephews.

Mrs. Betty J. Patrick

Mrs. Betty Jean Patrick, 37, died Thursday, November 13, at Shoals Hospital in Sheffield, Ala. after a brief illness. She was a member of the Methodist Church.

Services were at 1 p.m. Saturday, November 15, at Cutshall Funeral Home Chapel with Rev. Earl Cooper officiating. Burial was in Patrick Cemetery.

Survivors include her husband, William E. Patrick, of Iuka; a daughter, Mrs. Cindy Ann Timbes, of Iuka; a son, William Darryl Patrick, of Iuka; her mother, Mrs. Matilda Daugherty, of Chicago, Ill.; and a sister, Mrs. Sharon Knafelz, of Hardwood Hts., Ill.

C.C. Coker

Connie Corbett Coker, 72, died Friday morning, November 14, at North Mississippi Medical Center after an extended illness. A graduate of Mississippi State University, he retired after 35 years as a school teacher. He taught in Tishomingo, Prentiss and Alcorn Counties and retired from Alcorn Central High School. He was a member of the Baptist Church.

Services were at 1 p.m. Sunday, November 16, at Coleman Funeral Home Mid-town Chapel with Rev. Olen Burcham, Rev. Clifford Rinehart and Rev. Cecil Woodruff officiating. Burial was in Antioch Cemetery.

Survivors include his wife, Mrs. Grace Searcy Coker, of Corinth; three sons, Donald J. Coker, of Southaven, Barry D. Coker, of Cordova, and Jerry T. Coker, of Fort Walton Beach, Fla.; two sisters, Mrs. Maude Timmons, of Memphis, Tenn., and Mrs. Ida Smith, of Adamsville, Tenn.; a brother, Kelly Coker, of Iuka; and seven grandchildren.

J.D. O'Neal

J.D. O'Neal, 32, died at 3:30 a.m. Thursday, November 13, at Red Bay Hospital. He was a public worker and a veteran of the Vietnam War.

Services were at 2 p.m. Saturday, November 15, at Deaton Funeral Home Chapel

The Bible Speaks

By: Rex Buford
The Mystery
Of Godliness

"Great is the mystery of Godliness" says Paul to Timothy. (I Tim. 3:16). In so saying, he tells much about the difficulty of understanding some things. His point was made in more detail in his first letter to the Corinthians. He seems to clearly say that our carnal reality makes it impossible for us to fully comprehend the intangible things of the spirit, which are the only external realities. (I Cor. 13:12 and 13).

Accepting this limitation on one's ability to know and understand may well be at the heart of the many scriptural teachings on the goodness of humility; because it makes clear that we have only one real option for living, and that is the "walk by faith, not by sight." II Cor. 5:17. We must believe that the Lord will provide the direction that we need.

Peter believed this without reservation. He promises that the power of God has bestowed upon us everything that makes for life, true religion and an understanding of Jesus. Even more marvelous is the promise that

CUTSHALL FUNERAL HOME

Representing
Corinth Mutual
Burial Association

Mississippi
Funeral
Association

Liberty National
Life & Burial
Insurance Co.

SOME BURIAL
POLICIES CAN BE
PAID OUT IN 15
YEARS

CUTSHALL FUNERAL HOME

PHONE 423-5222
IUKA, MISS.

COME TO CHURCH

Baptist

IUKA BAPTIST CHURCH
Charles Dampier
BELMONT FIRST

Jack Maroon
CALVARY BAPTIST
Thomas Ozbirn
MT. MORIAH BAPTIST
Ben Thornton
CENTRAL BAPTIST
W. L. Oaks
MT. VERNON BAPTIST
Perry Murphy
TISHOMINGO BAPTIST
Bill Langley

BURGESS CREEK
Lenarse Stricklen - Pastor
BURNSVILLE FIRST
Dave Smith
NEW PROSPECT
J. A. Blount
OLDHAM
Chris Burrows
PADEN

Pat Howard
FIRST BAPTIST
O. H. Moore
EASTPORT
Bro. Joe Weaver
NEW SALEM
Joe Moyers
UNITY BAPTIST
Freeda Wilson
RED BUD
John Stovall
ROWLAND MILLS
Frankie Smith
HARMONY HILL
Billy Paul Feltman
MT. JOY BAPTIST
Crawford Retherford, Pastor
CALVARY MISSIONARY
Mike Fennel
SOUTH CROSSROADS
Harold Holly
Providence Missionary
Earl Martin, Pastor
BETHEL BAPTIST
Billy Quinn - Pastor

MT. GILEAD
Earl Lewallen
TEMPLE
Mavous Phifer
MT. ZION

FIFTH STREET
Bill Hobson
OLD PLEASANT HILL
Jearrl Grisham
NEW LEBANON
Terry L. Booker
ANTIOCH FREEWILL
Glenn Jones
POPLAR SPRINGS
Russel Clouse
HIGHLAND
Cecil Stepp
BETHLEHEM BAPTIST
George D. Credille
YELLOW CREEK
Stanley Magill
DENNIS FIRST
Wilbur Tessener
FIRST FREEWILL
Dallas Jack Jones
NEW LIBERTY
Raybon Richardson
SHORT CREEK BAPTIST
G.D. Jones, Pastor

Churches of Christ

MAUD CHURCH OF CHRIST
B. Cunningham
IUKA CHURCH OF CHRIST
Rex Buford
BEREA CHURCH OF CHRIST
Burt Isom
TISHOMINGO
BELMONT SECOND STREET
Jimmy Gross
PLEASANT GROVE
John Hardwick
LIBERTY
Wayne M. Mitchell
MAIN STREET
Tim Gentile
BURNSVILLE
J.T. Smith, Minister

Catholic

Rev. George Finger, S.C.J.

Methodist

IUKA UNITED

Dudley Brown
MT. EVERGREEN
Dudley Brown
CAMP GROUND
HARMONY
PATRICK
ROCKY SPRINGS
Paul Linton
BURNSVILLE
SNOWDOWN
PLEASANT HILL
SPRING HILL
William Strange
BOGGS CHAPEL
PARADISE
SALEM
TISHOMINGO
Del Blackman
GOLDEN CHAPEL
OLD BETHEL
Dan Young, Pastor
BELMONT
MT. PLEASANT
Doc Jeter
HUBBARD SALEM
Mike Hopkins, Pastor

JONES CHAPEL

Eddie Jumper
ALLSBORO UNITED
MARGERUM UNITED
RIVERTON UNITED
Mr. Ronnie Green

Christian Fellowship Center

Bro. S.A. Bonds, Pastor

Nondenominational

AMAZING GRACE
TABERNACLE
Bro. & Sis. R. G. Rodgers
Mt. Zion
R.C. & Dorothy Wigginton
NORTH CROSSROADS
COMMUNITY
Allen Osborn

RUSHING REXALL DRUG CO. PRESENTS Tishomingo County Hospital List

Lillie Arnold
James Broadway
Nellie Bugg
George Briggs
Hazel Bowling
Ruby Blakney
Theoda Brown
Nora Bonds
John Clark
Annie Bess Clark
Dora Crum
Frances Campbell
Clois Curtis
Avanell Cooper
Clyde Davis
Herbert Dillingham
Katie Duke
Noel Epperson
Elizabeth Garrison
Katherine Hardin
Stella Hollins
Madie Hutcheson
Minnie Haynie
Stella Hudson
William Hill
Becky Hardwick
Lester Hargrove
Janet Ham
Olene Jackson
Ruble Keith
Inez Lewis
Bernice Lewis
Doyle Mock
Milton Price
Monroe Phillips
Waco Parsons
Imogene Price

Martha Roach
Tulon Rast
Daniel Skelton
Diane Studdard
Thelma Simpson
John Thompson
Loomis Twitty
Fronie Watts
Bobby Watson
Ruby Waters
Martha Watley
Nancy Whitaker
Robert Henderson
Linda Plaxico
Lillie Isom
Wardie Martin
Grace Waldrep
Ada Robbins
Penny Ross
Mildred Smith
Arie Holcomb
Janice Wamsley
Linda Smith
Lula Bell Stricklen
Mary Curtis
Edsel McNutt
Frank Ross
Cara Frederick
Effie Hobbs
Mattie Davis
Cleo Brothers
Carlton Phifer
Velma Nunley
Ida Monroe
D.C. Daugherty
Pete Thornton
Esil South

Tishomingo County News - Vidette - Belmont

Historians believe marriage between in the Americas occurred in 1800 Anne Burrage Laydon in

IUKA BAPTIST CHURCH
105 West East
Iuka, Miss.

Charles Dampier

November

11:00 A.M.

Revis

7:00 P.M.

Revis

Morning

Services

Over

Commit

First

United

BURNSVILLE

Richard W. Fors

IUKA FIRST UN

Frank E. Williams

Pentecost

IUKA GOSPEL

Larry Riley, Past

B'VILLE TABER

W. E. Sharp

CHRIST GOSPEL

Richard H. Carter

Jacinto, Miss.

IUKA CHURCH

Charles Moore

GRISOM CHAPEL

Free Pentecost

Ricky Bingham

Presbyter

ALLSBORO CUM

J. B. Burns, Jr.

BETHANY L. A.



KI Annual Fall Workshop

On September 27, 1980, the annual Fall Workshop of the Kappa Iota sorority was held at Lake Tiak in Louisville, Mississippi. Fourteen contingents were represented with nine members in attendance. Special guest for the evening was Mrs. Betsy National President, Kappa Kappa Iota. Miss Cook, an elementary school teacher, living in Atlanta, Ga. The following program began at ten o'clock: Welcome - Effie Lois Greene, State President, Theta; Introduction of Tellie Knight, Delta, Past National President; Guest Speaker - W. Cook, National President, Atlanta.

After a ten minute question and answer period led by the National President, Miss Cook, reports of the National Convention, Baton Rouge, were given by Imogene Harmon, Iota, Joy Anderson, Delta, and Carol Daniels, Delta.

reports of committees followed the program. Group pictures were made prior to lunch, which was served at 12:15 p.m.

The following Kappas attended from Theta, Tishomingo County: Lois Bostick, Marie Edwards, Mu State Treasurer; Mary Williams, Lois Norton, Leighella Bostick, Havis Short, Mu State Scholarship Chairman; and Effie Lois Greene.

Holts Spur

Our sympathy is extended to the family of Mr. Connie Coker, of Jacinto, who was buried Sunday afternoon at Antioch Cemetery near Corinth. He taught school at Rowland Mills for a number of years. J.S. Sims, of this community, attended the funeral.

Sunday afternoon visitors of Mrs. Iness Pollard and Mrs. Bertha Frye were Bud Hutcheson and wife, Reba Howard Hutcheson, of Oklahoma City, Okla., Mrs. Estell Taylor, of Booneville, and Mrs. Ruby Johnson and Sharon and Miss Esther

Castleberry.

Katie and Travis Strickland, of Corinth, called Sunday on her mother, Mrs. Jimmie Bobo.

Mrs. Ocie Kennedy was able to attend worship services Sunday morning at Rowland Mills. This was the first time in approximately two months that she had been permitted to go on account of a broken arm.

The Jim Edward Miller family is moving into a house near his parents, Mr. and Mrs. Rex Miller.

Mrs. Louis Carey visited Friday Mrs. Lou Coker, Noel Epperson and Frank Ross in Tishomingo County Hospital.

The new nursing home, which is called Pickwick Manor, 230 Kaki St., Iuka, will be open for patients the first week in December.

Jewel and Terry Whitfield, of Corinth, visited Sunday his mother, Mrs. Nellie Honeycutt, and the Bill Johnsons.

Mrs. Hestine Sims and Mrs. Thelma Gray made a business trip to Florence November 4.

Mr. and Mrs. Aaron Vanderford, of Jackson, Miss., are here for two days visiting their son, Milton Vanderford, and their daughter, Mrs. Fay Hendrix.

Elder and Mrs. Franky Smith attended Saturday the mission meeting at Centerville Baptist Church near Mantachie. Elder Smith can

be heard on WELO Tupelo each Sunday morning at 7:00. Rowland Mills Church had one addition to the church November 9.

Recent visitors of Mr. and Mrs. C.J. Arnold were her brothers, Mr. and Mrs. Cleston Epperson, of Whitehaven, Ms., and Mr. and Mrs. Jesse Epperson, of Haleyville, Ala.

Mrs. Jessie Ross, of Mobile, Ala., and Mrs. Sula Kilcrease, of Memphis, spent a few days with their sister, Mr. and Mrs. Willard Whitfield. They attended church at Rowland Mills on Sunday morning. Other visitors in the Whitfield home were: Mr. and Mrs. Charlie Harris, Mr. and Mrs. Guston Harris, Mr. and Mrs. Marvin Harris, all of Corinth, Earline Crenshaw, Ann Wilkins, and Peggy Bain, all of Memphis, Kerry and Josie Trim, of Glen, Ms.

Mrs. Thelma Gray called on Mrs. Ida Carter and Mrs. Sylvia Orrick Wednesday afternoon. Mrs. Carter is a bed patient after having a stroke.

Harmony Homemakers

The lovely home of Nedra Walker was the setting for the Harmony Homemaker's Club on November 17, 1980.

The meeting was called to order by the president,

Margie Davis. Thought for the month was, "Two can't live as cheaply as one unless it's a dog and a flea."

Song used was "My Country 'Tis Of Thee".

Devotional was each one telling something they had to be thankful for. Prayer worded by Delma Dean.

Article on cranberries read by Margie Davis.

Nedra Walker gave a report from Leader Training meeting she attended; Tips on Timber Hills Program and Drug Abuse.

Focus Topic on "Adding Years To Your Life", given by Glenda Johnson.

Recreation was two guessing games won by Dugdar Daniel and Joyce Robertson. Mystery gift won by Louise Sanderson. Door prize won by Dorothy Hayes.

Members present other than the above mentioned were: Marquita Greenaway, Ludie Miller, Mabel Dean, Vada Kay and Sara Hayes.

Alice Carlisle was special guest.

Meeting adjourned with December meeting to be with Joyce Robertson.

Delicious refreshments served by the hostess.

Your Social Security

If You Work After You Retire

"How much can I earn and still receive social security retirement checks?" This question is asked by many people now retired who wish to return to work and by others who will soon apply for benefits.

The answer depends partly on your age. If you are under 65, you can earn up to \$3,720 in 1980 (\$4,080 in 1981) and receive all benefits due. If you are 65 through 71, the annual exempt amount is \$5,000 for 1980 and \$5,500 for 1981. And if you are 72 or older (70 starting in 1982), there is no limit on how much you can earn.

If you earn substantially more than the annual exempt

amount, you still may be able to receive some benefits. The basic rule is that \$1 for benefits is withheld for each \$2 you earn above the exempt amount.

In addition, there's a special rule that may help you. It can be applied only once and during the first year your earnings exceed the annual exempt amount and you do little or no work in some months. You can receive a full benefit for any month your wages are not more than the monthly limit or, if you are self-employed, any month you spend little or no time with your business. The 1980 monthly limit is \$417 for people 65 or over and \$310 for people under 65. The 1981 limits are \$458 and \$340.00. More information on this is available at any social security office.

Generally, only gross

wages and net earnings from self-employment count against social security benefits. Income from savings, investments, pensions, and most other sources are not considered earnings.

If you now receive retirement benefits and think your total 1980 earnings may be higher than estimated earlier, contact your social security office right away. In this way, an adjustment can be made in your benefits to avoid a possible overpayment.

After the end of any year in which your earnings exceed the annual exempt limit, you must complete an annual report of earnings. The report for 1980 is due April 15, 1981.

For more information on how earnings affect social security checks, ask any social security office for

leaflet 10069, If You Work After You Retire. The phone number in Corinth is 287 5241. Most residents of Tishomingo County can call the office in Corinth at no charge by dialing 837-3018 or 423-6042.

Words of Appreciation

We wish to take this means to express our appreciation to all friends and relatives for every act of kindness and expression of sympathy extended to us in the loss of our father.

Also, our thanks to the Tishomingo County Hospital Emergency Room Staff and Cutshall Funeral Home.

THE FAMILY OF EARL W. BARNES

Sparkling

Christmas Ideas

from

MOORE'S JEWELERS

Lay-Away now for best selection

REDMONT GRAIN, INC.

Northwest Alabama's Most Modern Grain Buying Station Is

NOW OPEN

No other Grain Buying Facility offers as many services to area farmers ... as Redmont Grain.

Have your truck unloaded and back on the road in ten minutes or less.

The completely enclosed scale and pit area provides better all weather operations.

The complete electronic weighing and testing gives more accurate weight of your grain.

Redmont Grain, Inc. will store your grain for you if you don't want to sell now.

Market Teletype for your convenience.

No waiting in line for hours to get unloaded while your combine is idle in the field. Have less idle time and more money making time.

STOP BY OR CALL TODAY

REDMONT GRAIN, INC.

in Red Bay, Ala.

Phone 356-9089

YOUTH LED

REVIVAL

FRIDAY - SUNDAY
NOVEMBER 21-22-23
SERVICES NIGHTLY AT 7:00
SUNDAY MORNING SERVICE
AT 11:00



Butch Tanner
EVANGELIST



Glenda Jones
MUSIC DIRECTOR

IUKA BAPTIST CHURCH

CHARLES DAMPEER, PASTOR

NURSERY PROVIDED EACH SERVICE



Isom Family Gathers In Iuka For Dinner

Games of tennis and softball; the happy laughter of small children on the park slides and swings, warm greetings from relatives seldom seen and meeting new family additions, all described the gathering of the children of Mrs. Lillie Paysinger Isom, of Corinth, and the late Byrd Bryant Isom, their children and grandchildren. The date for the 1980 occasion was October 18th, at the Youth Center in Iuka Mineral Springs Park with the crowd of 69 spilling out into the park area for a late afternoon of fun and visiting.

The family tree, drawn by Lisa Lambert, was of much interest, also, her color chart tree designating a color for each family group matching the color the names were written in on the name tags. Pictures from the previous gatherings were displayed on the walls and were of great interest to everyone and depicted

the growth of the family and changes.

Although several of the family groups were unable to be present, it was a great pleasure to have the youngest great-grandson there for the first time, the son of Mr. and Mrs. David Pulse, of Louisville, Ky., little Clint Pulse, born September 9, 1979.

Little Autumn Thompson, born July 15, 1980, daughter of Mr. and Mrs. Gary Thompson, of Jackson, Tenn., proved to be the youngest present and the first great-grandchild of Mrs. Lillie Isom. This first child of the fifth generation was very special this day and pictures were taken to record the five generation group.

Mrs. Rex Carlisle, granddaughter of Mrs. Isom, from Mishawaka, Ind., traveled furthest to be with the family group and received special recognition.

Group pictures were made

and afterwards tables spread with the "cooks delight" food proved to be a highlight of the afternoon and a quiet time for all to gather together and enjoy good food and conversation.

Those attending included the following: Mrs. Lillie Isom, Mrs. Mildred W. Isom, Mrs. Ruby K. Isom, Mr. and Mrs. Frank Isom, Louis and Glen, Mr. Howard Isom, Mr. and Mrs. Bill Switzer, Kim, Sally, Stacy and Carrie, all from Corinth; Mr. and Mrs. Burt Isom, from Burnsville; Mr. and Mrs. Paul Isom, from Memphis, Tenn.; Mr. and Mrs. Royce Isom, Mrs. Phil Baker, Beth and Andrea, from Florence, Ala.; Miss Lisa Lambert, from Muscle Shoals, Ala.; Mr. and Mrs. R.E. Lambert and Robert, from Iuka; Mr. and Mrs. Ruble Yopp, Richard, Rebekah, Mrs. Kathryn Yopp, Mr. and Mrs. Jim Maxwell, Tonia and Jason, Mr. and Mrs. Dennis Webster, all from Middleton, Tenn.; Mrs. Helen Carlisle, Mishawaka, Ind.; Mr. and Mrs. Leon Isom, Mr. and Mrs. Gary Smith, Mrs. Billy Smith, Rita and Randy, Mrs. Larry Hughes, Donna and Keith, all from Pocatong, Tenn.; Mr. and Mrs. Gary Shannon, Martin, Tenn.; Mr. and Mrs. Joel Pierce, Deneen and Cerenia, from Scotts Hill, Tenn.; Mrs. Gary Thompson and Clint, from Louisville, Ky.; Mr. and Mrs. Leon Isom, Jr., Jimmy and Jannie, from Bolivar, Tenn.; Mr. and Mrs. Gary Thompson and Autumn, from Jackson, Tenn.; Mr. and Mrs. Ike Roland, Jackson, Tenn.; Mrs. Isom's sister and her husband, Mr. and Mrs. Clifford Roland, from Henderson, Tenn.

Cherokee. Louise sends her thanks to Mary Pearl for a wonderful dinner.

Personal

Dinner guests of Mr. and Mrs. Garlin Adams Saturday,

November 8, were Mr. and Mrs. Cody Lambert, of Memphis; and on Sunday, November 9, Keith Lambert and Pam Albright, of Memphis; and on

20th Century Club Met In Curtis Home

The club met in the lovely home of Joy Curtis on October 23, 1980.

Evelyn Nixon, corresponding secretary, opened the meeting. The minutes were read and approved and the roll called. Treasurer Martha Lee Bauer gave the treasurer's report. She reminded members to pick up their Benson's fruit cakes to sell for \$5.25 during the holiday season.

A new policy has been adopted in the glasses for the needy program. A limit of \$20.00 was put on frames, only clear lenses can be ordered and a letter of authorization from the club will have to be brought to the

opticians.

Program chairman Willa Dean Thorne had as her guest speaker Home Economist Nellie Horton. Her subject was Consumer Concerns. She taught us how to read the new energyguide labels that are now on all appliances. The program was well presented and informative.

The hostess served a delicious dessert plate, Margaret King won the white elephant.

Other members attending were newly elected member, Quay Moser, newly elected associate member, Theresa South, Sue McBee, Jewell Kitchens, Jewel Pruitt, Joy Kitchens and Nancy Beard.

Birthday Dinner

Mrs. Mary Pearl Champion honored her husband, Doc, and Mrs. Louise Cox with a birthday dinner Sunday, November 16.

Those present to help celebrate the birthdays were Mrs. Mattie Faye Mann and Dorothy Faye Wallace, of

Tishomingo County News - Vidette - Belmont

Wednesday, November 12, Mr. and Mrs. John Sibole, of Selmer, Tn.

HOPE

HOPE (Helping Others in Personal Emergencies), a crisis telephone counseling

service, is providing Hills Mental Health From 8 until 4:30 through Friday 3332. After hours weekends, phone toll-free. "Necessity does courage."

STARLITE

Drive In Theatre Belmont 454
SHOW STARTS 6:45
FRI-SAT-SUN

Cheech and Chong's Next Movie
A UNIVERSAL PICTURE

PLUS

Chuck Barris THE CONG SHOW MOVIE
A UNIVERSAL PICTURE

FARM FRESH!

from **KING COTTON**

King Cotton hickory-smoked Bacon

King Cotton whole hog Pork Sausage

Farm Fresh and Full of Flavor...

... Bacon smoked in our own Southern smokehouses and lean, whole hog pork sausage made from an old farm recipe.

You get fresh flavor and leanness at a down-home savings!

15¢ OFF on your next purchase of King Cotton Whole Hog Pork Sausage patties • links • 12 and 16-oz. roll



15¢ OFF on your next purchase of King Cotton Bacon

Mr. Grocer: King Cotton will redeem this coupon for 15¢ plus 5¢ handling when submitted as part payment for King Cotton pork sausage patties, links, or 12 or 16-oz. roll. Any other use constitutes fraud. Invoices proving purchase of sufficient stock to cover coupons must be furnished upon request. Any sales tax must be paid by consumer. Void if taxed, prohibited or restricted, or where presented by an outside agency or broker. Cash value 1/20 of 1¢. Limit one coupon per person, one package of product per coupon. Mail coupons to: Buring Food Group, Inc., P.O. Box 8820, Newport Beach, CA 92660.

Offer Expires 2-28-81

IM021180

Mr. Grocer: King Cotton will redeem this coupon for 15¢ plus 5¢ handling when submitted as part payment for King Cotton Bacon. Any other use constitutes fraud. Invoices proving purchase of sufficient stock to cover coupons must be furnished upon request. Any sales tax must be paid by consumer. Void if taxed, prohibited or restricted, or where presented by an outside agency or broker. Cash value 1/20 of 1¢. Limit one coupon per person, one package of product per coupon. Mail coupons to: Buring Food Group, Inc., P.O. Box 8820, Newport Beach, CA 92660.

IM021180

Offer Expires 2-28-81

WONLEND SKATE CENTER

2 Miles South on Hwy. 25, Iuka, Ms

Tuesday, November 25

WIN A TURKEY

THURS: FAMILY SPECIAL 7-9:30 p.m. \$3.00 Adm.

BABYSITTER SPECIAL!!!



PRE Ages 6-12 for \$2.00 adm.

7-11:30 p.m. - Reg. \$3.00 adm.

SAT: Reg. 2-4:30 p.m. session & lessons \$2.00 adm.

ONE FULL SESSION 7-11:30 p.m. \$3.00 adm.

SUN: Reg. 2-4:30 p.m. session \$2.00 adm.

Reg. 8-10:00 p.m. session After Church

TUES: Reg. 7-9:30 \$2.00 adm.

MON. & WED: Private Party Rates 423-9142



Certificates
Members of the Hunter Commission were presented certificates of achievement for their outstanding performance in the class, presented by the 4-H Club and the Belmont County Game and Fish Commission.

Latest News
Becky R. - "Let that mongoloid mess with me."
Clay S. - Where's your box?
DeeAnna B. - We should have...

What is One
... is the son of Judy Smith, of Burnsville. He celebrated his birthday on November 14, 1980. Those who helped celebrate were Grandma Elliott, Grandpa Smith, Aunts Tracey and Corinne, Uncle Jim, Corinne, Grand Smith, Uncle Bill, and also Shelia and Jeremia received nice gifts.

Barbara Holland and Kristy Carson
Everybody!
Football season is under way and it promises to be a year for the Chief. Both the girls and boys are really working hard. This week we are in the Burnsville Tournament, which started Wednesday and will last through Friday night.

Barbara & Kristy
The Beta Club sponsored an annual beauty review last night. Stacia Phillips and Chris Brown were chosen Beautiful and Most Beautiful. Kristy Carson and Flynn were first alternate, Gail Wallace and Joel were 2nd alternates; Rhonda and Jimmy James, alternates; and Pam McLeod and Timmy Anglin, 4th alternates. Besides having a regular contest, they inducted winners from the 1950's to the 1980's. While the girls were deciding, entertainment was provided by...

News From The Freshmen
By: Pam Clark
Hey! We're back with more news and well-known secrets. The freshman class is...

Solomon's Butcher Shop
We do custom cutting and wrapping for freezers
PRICES
Beef & Pork 15¢ per lb.
Steer, any size \$15.00

THIS WEEK'S SPECIALS
Prices good Nov. 20 - Nov. 26
HONEYFOOT FULLY COOKED
Boneless Ham LB. \$1.89
Smoked Jowl LB. 69¢
Smoked Country Ham LB. \$1.49
Smoked Country Ham LB. \$1.99
Side of Beef (FREEZER READY) LB. \$1.39

Open Tuesday thru Saturday
Phone 423-5073
713 E. Eastport
6:30 a.m. - 5:30 p.m.

Lanny J. - So she finally said no.
Mechell R. - Do you have your drivers license?
Until next week,
PAM

Lunch Menus

Burnsville, Belmont, & Tishomingo
Nov. 24 - 26

Monday
Barbecue
Cole slaw
Tater tots
Pears

Tuesday
Turkey & Dressing
Cranberry sauce
English peas
Fruit delight
Buttered rolls
Chocolate pie

Wednesday
Cheeseburger
Lettuce and tomato
Tater tots
Pork and beans
Peaches

More than Meat
Cattle supply more than delicious beef to eat, points out the National Live Stock and Meat Board. They are also the source of many valuable by-products including medicines such as hormones and insulin, leather for shoes and luggage, bone china, fats for soap and nitrogen fertilizers.

Roy's T.V.
Special of the Week

\$728.00
RCA 25" diagonal ColorTrak featuring ChanneLock electronic tuning with Keyboard Control
Roy's T.V. Sales & Service-Iuka, Miss 423-5755
"We sell the Best & Service THE REST"

WAL-MART
DEER HUNTERS
SUPER SAVINGS
Sale

Sale Dates: November 20, 21, & 22
Store Hours: 9:00 a.m. till 9:00 p.m. Mon. - Sat.
Location: Iuka, Miss.
FREE
For Our Deer Hunters!
Coffee - Doughnuts & Sandwich Fixins!
We Have Hunting License
We will open at 3:00 a.m. Saturday, Nov. 22. Come by and pick up your last minute items and fix your own sandwich! Free Orange Vest with purchase of \$10.00 or more, sporting goods.

Remington
Save up to 16.88 on Remington Automatic Shotgun, Plain Barrel or With Vent Rib
•Automatically adjusts to power of shell being fired
•Wood is protected-DuPont RK-W Finish
Plain Barrel \$218.00
Vent Rib \$249

Remington
Save 20.00 on Remington 30-06 Automatic Rifle
•Barrel length 22" •Overall length 42"
•5-shot capacity
•Reg. 249.96
229.96

Winchester
Save on Winchester 30-30 Lever Action Rifle
•Rear sight & hooded front sight
\$119

Federal Shells
30-30 150 or 170 Grain **5.88**
30-06 150 or 180 Grain **6.96**
•20 Cartridges per box
•Precision made to insure accuracy
•Jacket designed to provide good initial penetration & controlled expansion

Insulated Coveralls
•50% Dacron Poly, 50% Rayon
•Water repellent
•Green color
•2 Zipper chest pockets
\$25.00

Super Value WD-40 Spray
•9 Ounce can
•Stops squeaks, protects metal, loosens rusted parts
99¢

Super X Buckshot
12 ga.00 **\$1.96**
Slugs 12 ga. **\$1.96**
Super X Buckshot 20 ga. No. 3 **\$2.25**
Slugs 20 ga. **\$1.96**

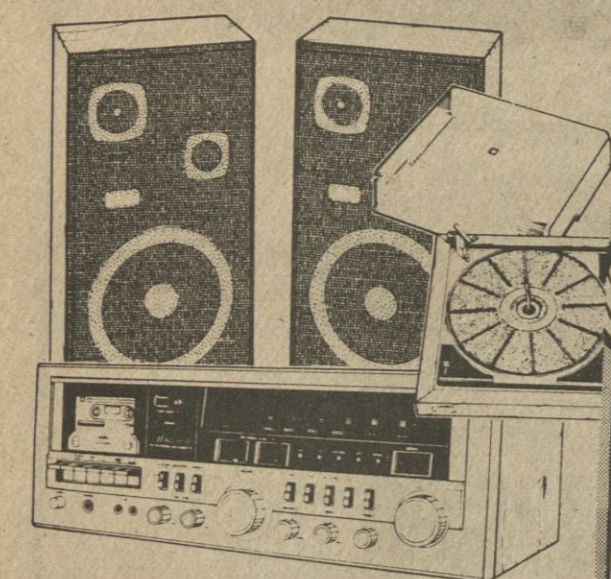
Old Timer Pocket Knife
No. 340T
•3-5/16" overall length
•Finest high carbon steel
\$6.96

Ray-O-Vac Weatherproof 6 Volt Lantern
•Unbreakable
•4 floats
•Includes 6 volt battery
\$3.00

Aladdin-Thermos
•Quart and pint size
•Rust proof
\$2.00

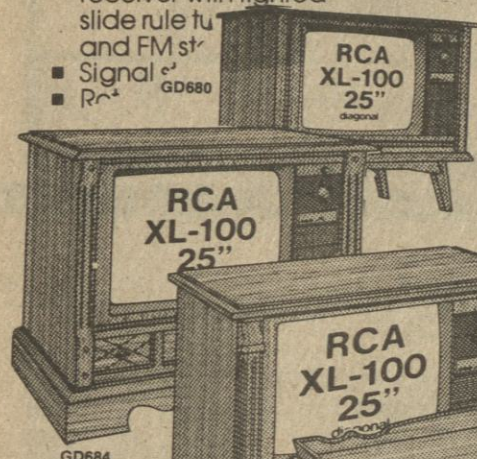
WAL-MART
VISA master charge
WAL-MART'S ADVERTISED MERCHANDISE POLICY
It is our intention to have every advertised item in stock, however, if due to any unforeseen reason, an advertised item is not available for purchase, Wal-Mart will issue a Rain Check on request, for the merchandise to be purchased at the sale price whenever available, or will sell you a similar item at a comparable reduction in price. We reserve the right to limit quantities.
Wal-Mart really does sell for less - EVERY DAY!

Component Stereo System with Full-Feature Stereo Cassette Recorder



Monterecti Receiver

- AM/FM-FM stereo receiver with lighted slide rule tuner and FM stereo signal.
- Model GD680

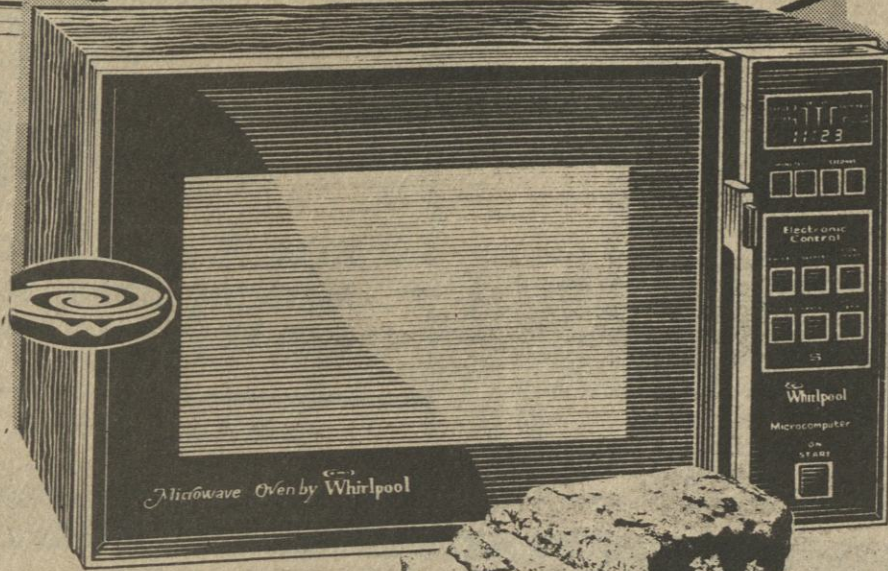


Your choice of five RCA XL-100 color consoles—with all these deluxe features

- RCA SignalLock electronic tuning with convenient single-knob VHF/UHF channel selection.
- RCA's energy-efficient XtendedLife chassis designed for long life and low power consumption—uses less energy on average than a 100-watt bulb.
- Automatic color control and flesh-tone correction.

Prices start at \$900.00 Model GD680

SAVE • SAVE • SAVE HOLIDAY SPECIAL



Model RJM7700

Whirlpool

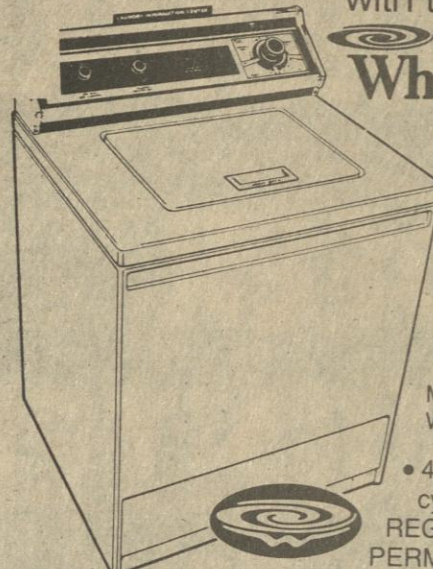
**microwave
ovens**

Leftovers may become one of your favorite meals.

Here's an outstanding blend of fine engineering and functional design that can help you serve up leftovers as fast as they were the first time around. The Micro-computer pushbutton control lets you program a series of cooking functions simply by pressing appropriate buttons; solid-state COOK POWER control provides choice of 10 different power levels; choice of 2 cook cycles plus defrost; Balanced Wave Cooking system provides all-around cooking performance.

**BEAT
INFLATION
TO THE
PUNCH!**

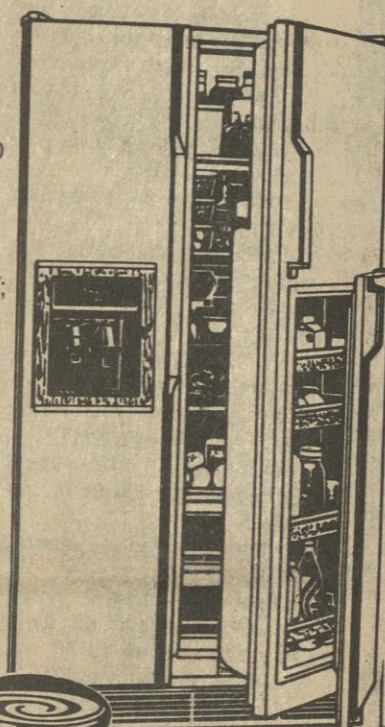
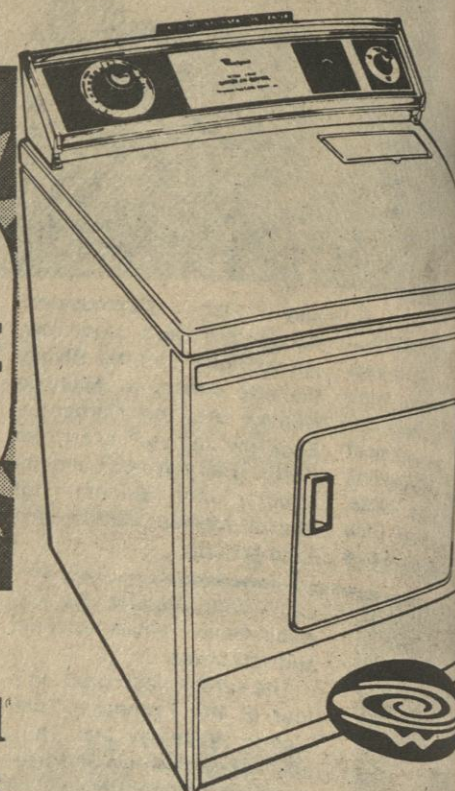
with this
Whirlpool
Automatic
Washer



Model LHA 5300
Washer

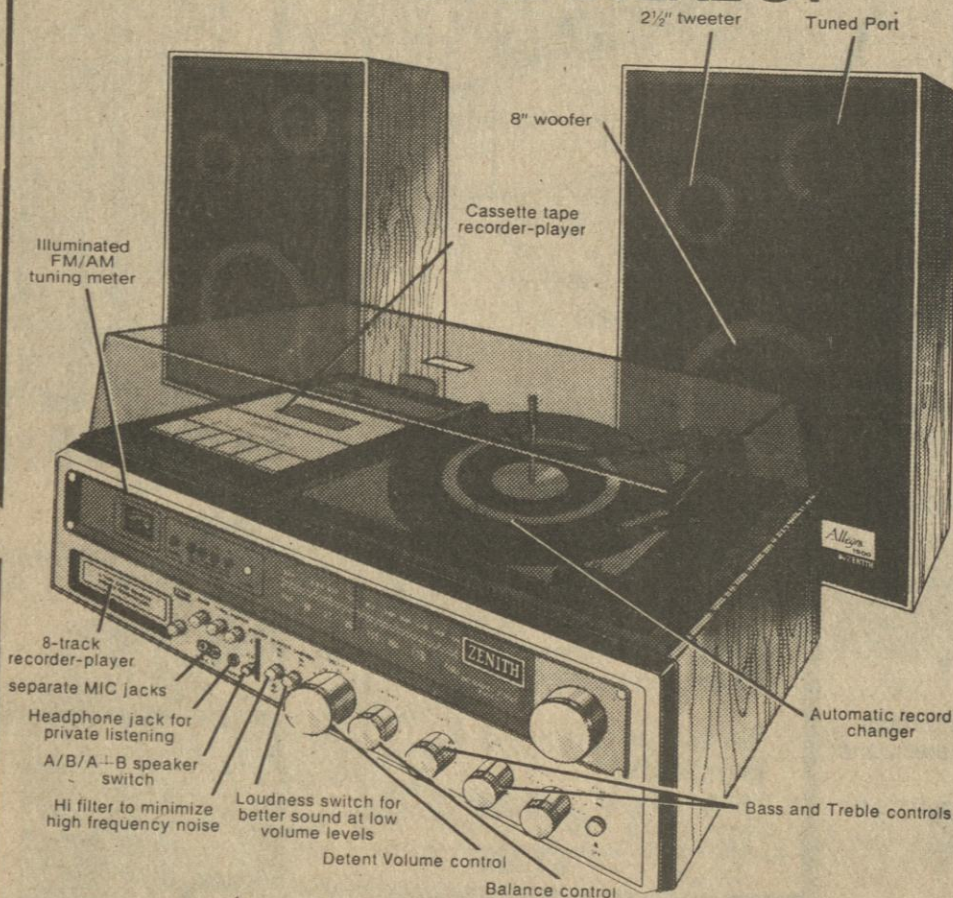
- 4 automatic cycles: REGULAR/HEAVY; PERMANENT PRESS; SOAK; and Energy-Saving SHORT

- Cool-down care for Permanent Press fabrics
- Super SURGILATOR agitator
- Energy-saving Water Temp Selector with 3 wash/rinse combinations
- Family-size load capacity



Model EHD2

Receiver. Turntable. 2 Tape Decks. Speakers. ALL-IN-ONE STEREO!



1981 ZENITH INTEGRATED STEREO SYSTEMS

Model IS4041, shown above with Allegro 1500 Speakers, is just one of the new Zenith Integrated Stereo Systems with the features you're looking for! With 5 watts min. RMS power per channel, from 100 to 15,000 Hz into 8 ohms with 1% or less total harmonic distortion. Cabinets of simulated wood, grained Walnut finish.

SUPERB PICTURE... DEPENDABILITY...and MORE! NEW 1981 ZENITH SYSTEM 3— 25" COLOR TV



THE MARGATE • M2522E
Transitional styled console. Full base. Casters. Wood and simulated wood products in Antique Oak finish. Audio Output Jack.

SYSTEM 3 TRI-FOCUS PICTURE TUBE The sharpest Zenith picture ever!

- NEW PRP CIRCUIT—25% more sharpness. 25% greater detail... for the finest Zenith picture ever!
- CABLE-READY—105 VHF/UHF/CATV Channel Capability, with CATV Switch (35 in CATV mode)!
- EVG—ELECTRONIC VIDEO GUARD TUNING
- KEYBOARD TOUCH COMMAND CHANNEL SELECTION
- ELECTRONIC POWER SENTRY

FOR GREATER SATISFACTION CHOOSE ZENITH!

PRIZES TO BE GIVEN AWAY DECEMBER AT 4 P.M.

- | | |
|--------------------------------|-----------------------|
| 1st Prize 19" Black & White TV | 4th Electric Blanket |
| 2nd FM/AM Radio | 5th Cookware Set |
| 3rd Mr. Coffee Maker | NO PURCHASE NECESSARY |

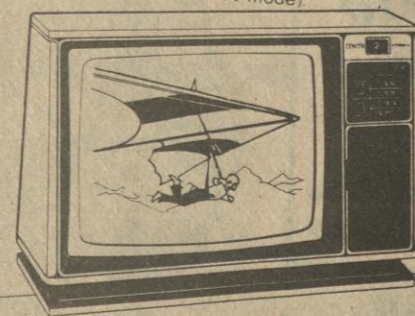
YOU HAVE TO BE PRESENT TO WIN

Superb Picture... Dependability...and MORE!

NOW 1981 ZENITH

SYSTEM 3— THE BEST AND MORE!

- NEW PRP CIRCUIT—25% greater detail, 25% more sharpness... the finest Zenith picture ever.
- ELECTRONIC TUNING—direct, positive, signal reception... no need for fine-tuning channels.
- VHF/UHF/CATV CHANNEL SELECTION—convenient Touch-Command with control panel keyboard
- CABLE-READY—105 VHF/UHF/CATV channel capability, with CATV switch (35 in CATV mode)



19" COMPACT TV

The DURHAM • M1960X
For today's life-style! Beautiful finished decorator-compact cabinet in Bermuda Shell White with Black pedestal base and brushed Aluminum color trim.

SYSTEM 3

- TRI-FOCUS PICTURE TUBE The sharpest Zenith picture ever!
- TRIPLE-PLUS CHASSIS Designed to be the most reliable Zenith ever!
- COLOR SENTRY For the best Zenith picture ever!

- Electronic Power Sentry Voltage Regulator
- Picture Control
- Phase-Lock Loop AFC Tuning
- Audio Output Jack
- LED Channel Display
- Provision for CATV/MATV Antenna Connection

ZENITH/The quality goes in before the name goes on®

J. A. Tucker Furniture & Appliance

Main St.

Tishomingo Ms.



Special Study

The Family Life Class of the Burnsville High School has recently completed a study on Child Abuse. The class was in conjunction with the Mississippi Shelter for Children in Corinth. The

Corinth office officially opened April 20, 1980, and has assisted twenty-seven clients since that date. The funding for the Shelter comes from two sources. Seventy-five percent from the Mississippi State Department of Public Welfare and twenty-

five percent from the Mississippi Council on Children. Pictured, standing, left to right: Mrs. Angie McAnally, Instructor for the Family Life Class at Burnsville; Jane Goggans, Director for the Northeast Mississippi Emergency

Shelter for Children; and Joy Pittman, Social Worker for the Shelter for Children. Representing the students in the Family Life Class are, class members, left to right: Tanya Woodruff, Shelia Hendrix, Tammy Phifer, Pam Timbes, and Delane South.

Birthday Celebration

On Sunday, November 16, the Linton clan gathered at the home of Kirby and Irene Shields to celebrate the 89th birthday of Mrs. Ina Linton. Ina is the only living daughter of Julius and Belle Linton. Beautiful yellow chrysanthemums were presented to Aunt Ina from the Linton family reunion. The birthday cake was baked and decorated by Gaylon Cummings, granddaughter of Mrs. Linton.

drick and Linda Linton and family, Johnnie Randolph, Mary Johnson and children, Johnny and Teresa Stanford and children, Gene and Lynn Barrett and daughter, Arvilla Wilson and Micah, Lawrence Lambert, Rev. and Mrs. Al Hapner and Jeff, Tim, Becky and Shane Steele, Gaylon Cummings and daughter, Bill and Pat Crawford, Laura Frederick and Ann Jourdan.

Letter To The Editor

Dear Editor:

It is time the members of the 624 local started thinking about their future. It is also time to consider what the 624 is doing for you. There are quite a number of members that are not satisfied with what they have received.

Do you realize that the union takes 95¢ an hour of

your money. For what! All we receive is a little hospitalization insurance. Our retirement isn't near enough to live on.

We receive no representation from our local. Union contract agreements are sidestepped every day for the benefit of everybody except us. We have fellow brothers out of work while outsiders continue to take our jobs. We are not even allowed to vote in our own union. Which is our most important communication with the union in solving our problems.

It is time, my fellow brothers and friends, to take a long look at our Local 624. It is time for change. It is time to rid ourselves of the 624 and vote in a new local that will work for us. One that will represent us the way they should. Look out for our interests instead of the companies. It only takes 51% of your support to achieve this. Isn't it time we did something about our problems, instead of talking about them. Think about it, we need your SUPPORT.

If we feel your support, we shall continue with this endeavor with more information later.

GFWC 20th Century Club

The club met in the lovely home of Martha Lee Bauer on November 7, 1980. The meeting was called to order by the President Myra Rainey. The minutes were read and approved and the roll called. The treasurer's report was

given.

Program Chairman Edna Earl Tapp had as her subject Community Education. She gave a comprehensive list of the educational opportunities in this area not only in formal education, but in trade skills and hobbies. She also encouraged all club members to write the national television networks either approving or censuring programs they have seen or watch regularly.

Names were drawn for the Christmas party.

The hostess served a delicious dessert plate.

Other members attending were Evelyn Nixon, Maxine Wade, Willa Dean Thorne, Arrabelle Jourdan, Nancy Beard, Jewell Kitchens, Nancy Daugherty, Theresa South, Sue McBee, Zenobia Oaks, Quay Moser and Margaret King.

Reaches Milestone

The Federal Land Bank of New Orleans recently celebrated reaching a milestone of \$2 billion in loans outstanding to 34,795 borrowers in Alabama, Mississippi, and Louisiana, according to Rickey L. Haynes, Vice President, of the Federal Land Bank Association (FLBA) of Tupelo (Corinth Branch).

"This major accomplishment demonstrates the Federal Land Bank's commitment to improve the income and well-being of farmers and rural residents by providing constructive long term credit during good times and bad," Haynes said. "The

FLBA of Tupelo has done its part to help the Land Bank reach its \$2 billion mark by loaning \$9 million in new money since the beginning of 1980."

Chartered on March 8, 1917, to make long term real estate loans to farmers and ranchers in the three-state area, the Federal Land Bank was established through the Federal Farm Loan Act of 1916 and was originally capitalized by the federal government. However, all federal "seed" money was repaid by 1947 and today the bank is totally owned by its member-borrowers through the Federal Land Bank Associations.

"We are not lending \$2 billion of government money," Haynes said. "The majority of our loan funds are obtained through the sale of securities to investors in the nation's money markets. Our associations put millions of these dollars in circulation in the three-states each year through the use of 43 local depository banks."

The Federal Land Bank is part of the nationwide Farm Credit System and presently makes the services long term farm, part-time farm and rural home loans in Alabama, Mississippi, and Louisiana. Land Bank loans range from five to forty years and must be secured by a first lien on real estate.

"The Federal Land Bank has made an effort to keep pace with the changes in agricultural and rural living," Haynes said. "We recognize the importance of moving forward and staying ahead of the needs of industry that is responsible for meeting the most basic requirements of our nation and most of the world."

The Federal Land Bank Association of Tupelo makes and services long term loans in Alcorn, prentiss, Tishomingo, and Tippah counties.

Thanksgiving Treat

"Over the river and through the woods to Grandmother's house we go." That's a traditional refrain associated with the coming holiday, Thanksgiving.

And, just as in years past,

pumpkins will play an important part in the festivities this year.

The pumpkin, much like corn or maize, is an American tradition. Settlers to the New World found this vegetable and learned to use it to its best advantage. With plentiful supplies arriving in the fall months, pumpkins were a natural to grace Thanksgiving tables. Pumpkin pie was the crowning glory to a delicious

meal.

"This year you can savor a part of the past and incorporate it with up-to-date menus by using pumpkin in a different way," says Ann Rushing, Mississippi Cooperative Extension Service marketing specialist. "Pumpkin, while not quite as versatile as the sweet potato, blends nicely into many breads and dessert recipes." For a gathering of friends,

such as a brunch or dinner, or for a party where finger foods are featured, fresh pumpkin muffins are a good choice. If the fresh pumpkin is not available, use canned pumpkin. To place the muffins in the finger food category, bake them in the tiny muffin tins often used with Christmas fruitcakes, she suggests.

"Self-control is at the root of all virtues." Samuel Smiles

No School. Let's Skate!
Friday, November 28, 1980

2-4:30 - \$1.50 admission - 50 cents skate rental

Celebrate the School Holiday at Skateworld
Fun, games, food -

Call your friends and meet them at Skateworld

SKATEWORLD WILL BE CLOSED THANKSGIVING DAY

Thanksgiving Week-end is full of Skating
Join us Friday afternoon

2-4:30

Friday Night 7-11:30

Saturday Morning 10-12:30

Beginners of all ages

Skaters 12 years old and under

Saturday afternoon 2-4:30

Shoppers Delight

Saturday Night 7-11:30

Sunday afternoon 2-4:30



Skateworld specializes in Birthday Parties and Private parties of all kinds - Call 423-5814 or 423-5676 for details

SKATEWORLD, Inc

423-5814 Call anytime for information

Hwy. 25 North

Iuka, Mississippi

LANDSCAPING SPECIALIST

Professional Service From
"Planning to Planting"
Trees - Shrubs - Grass

FREE ESTIMATES

**McBride's
Garden Center**

Hwy. 25 No. Iuka

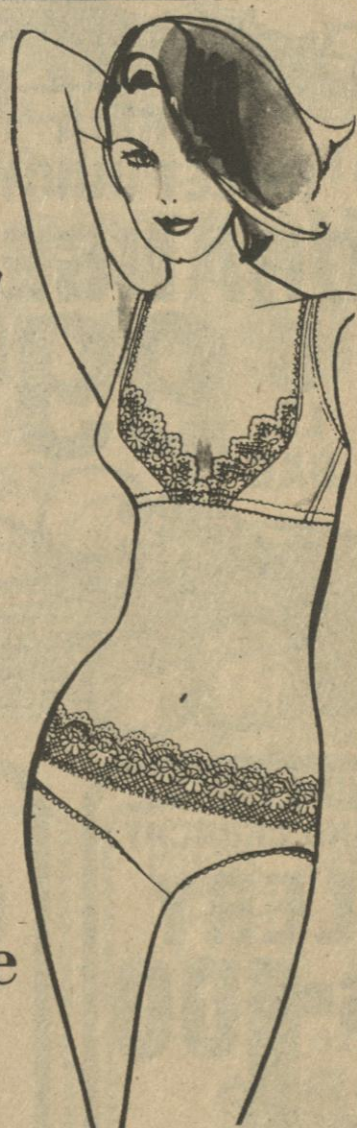
423-5451

Overstocked
DRASTIC PRICE REDUCTIONS!

Select Styles
Playtex Undergarments

1/2

price

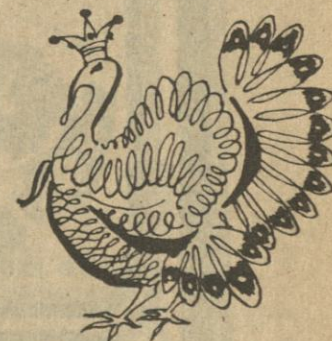


Daisy's

DOWNTOWN IUKA

Town & Country Furniture Co.'s

**HOLIDAY SALE
Continues**



SAVE 10 - 40% on entire stock

WALL HUGGER

Recliners

\$127⁰⁰

"LANE"

Hope Chest

\$147⁰⁰

Student Desk

ONLY **\$87⁰⁰**

3 PC. EARLY AMERICAN

Living Room Suite

\$477⁰⁰

"JAMISON" & SPRING AIR

Bedding

REDUCED \$50.00

\$120⁰⁰ PER SET

7 PC.

Dinettes

\$187⁰⁰

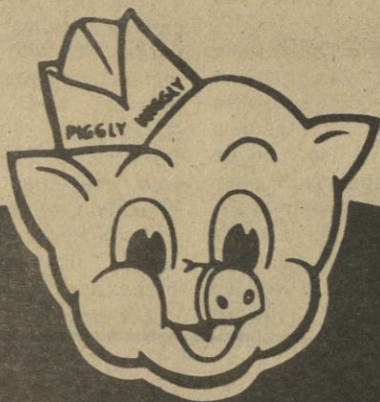
3 PC. OAK

Bedroom Suite

\$378⁰⁰

Gun Cabinets \$30 - \$60 off

LAY-A-WAY NOW FOR CHRISTMAS -- FREE DELIVERY & EASY TERMS



PIGGLY WIGGLY OF IUKA

**ELM SHOPPING CENTER
IUKA, MS**

QUANTITY RIGHTS RESERVED
PRICES GOOD THURS., NOV. 20 THRU WED., NOV. 26, 1980.

**BRYAN MEAT
WIENERS**

12-OZ.
PKG.

88¢

ARMOUR STAR LEAN

CANNED HAM

3 LB. CAN

\$5.99

MR. TURKEY USDA GRADE 'A' FRESH

TURKEY

10-14
LBS. AVG.

LB.

99¢

FRESH GULF STANDARD

OYSTERS

12-OZ.
CAN

\$1.99

RICH'S TURKEY

BREAST

LB.

\$1.79

**MORRELL
BUTT PORTION**

HAM

\$1.09
LB. WATER
ADDED

**JOHN MORRELL
FULLY COOKED CANNED**

HAM

3 \$5.19
LB. HAM

**ARMOUR FULLY
COOKED CANNED**

PICNICS

3 \$4.99
LB. HAM



MORRELL SHANK PORTION

**SMOKED
HAM**

WATER ADDED

LB.

89¢

FRESH FROZEN BAKING

HENS

59¢

**MORNING FRESH
PRODUCE**



CORRAL BAY SHREDDED
COCONUT

7-OZ.
CUP

69¢

DROMEDARY PITTED OR CHOPPED

DATES

8-OZ.
PKG.

99¢

DROMEDARY PITTED OR CHOPPED

DATES

LB.

\$1.69

**FLORIDA
SWEET JUICY
ORANGES**

5 LB.
BAG

99¢

**MORNING FRESH
SWEET**

POTATOES

4 \$1.00
LBS.

**MORNING FRESH
CRISP AND CRUNCHY**

CELERY

3 \$1.00

STALKS

**CALIFORNIA
RED**

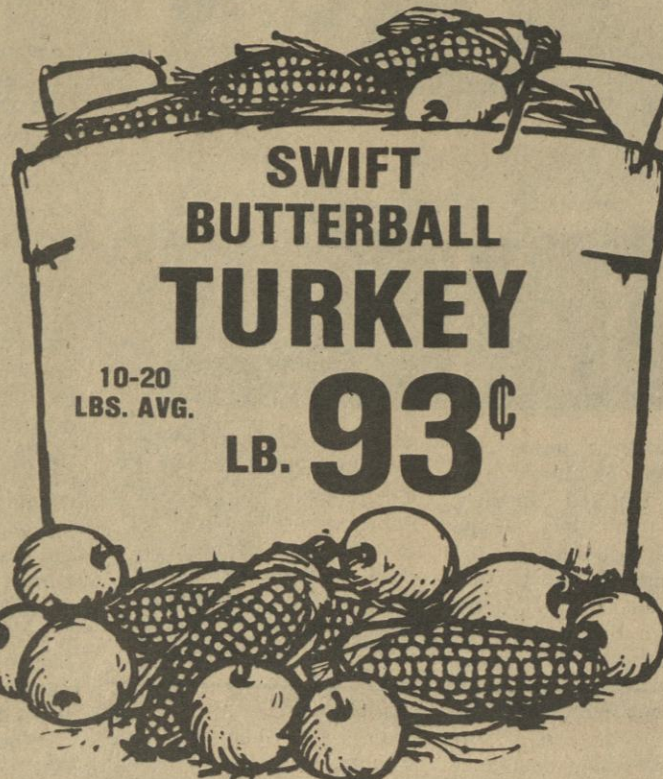
GRAPES

59¢
LB.

**FRESH
FULL OF MILK
COCONUTS**

2 98¢
FOR

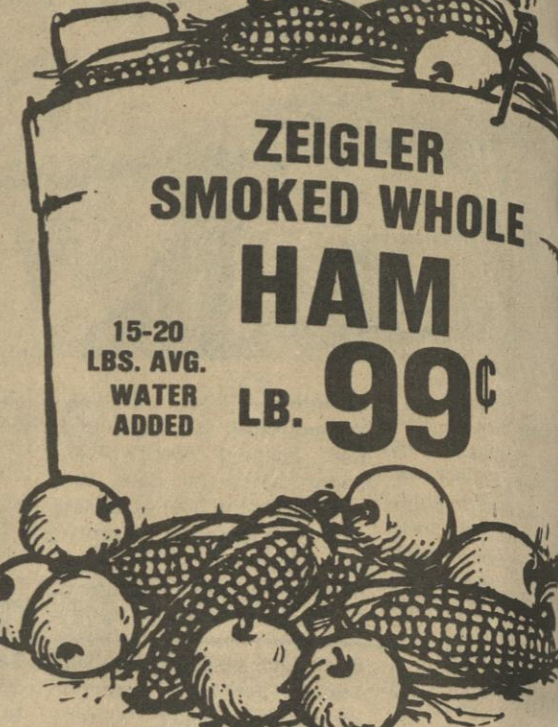
**SOMETHING TO BE
THANKFUL FOR...
AND MORE!**



**SWIFT
BUTTERBALL
TURKEY**

10-20
LBS. AVG.

LB. 93¢



**ZEIGLER
SMOKED WHOLE
HAM**

15-20
LBS. AVG.
WATER
ADDED

LB. 99¢

AREAS BEST SELECTION

- LIL BUTTERBALL
- BUTTERBALL TURKEY BREAST
- DUCKS
- GEESE
- SMOKED TURKEYS
- SMOKED TURKEY BREAST
- TURKEY ROAST
- BONELESS TURKEYS

BRYAN'S SLICED

BOLOGNA

12-OZ.
PKG.

**SMOKED BUTT HALF
HAM**

LB.



PIGGLY WIGGLY SELF BASTING YOUNG

TURKEYS

16-22 LBS. AVG.
SELF BASTING
WITH POP-UP
TIMER

LIMITED QUANTITIES
AVAILABLE

LB.

69¢



**GOLD MEDAL
PLAIN OR SELF RISING
FLOUR**
5 78¢
LB. BAG

SWEET SUE CHICKEN
BROTH 3 13/4-OZ. CANS **98¢**
PIGGLY WIGGLY MACARONI & CHEESE
DINNER 4 7/4-OZ. BOXES **98¢**
ALL FLAVORS
JELLO 3 3-OZ. PKGS. **98¢**
NORTHERN ASSORTED
NAPKINS 140-CT. PKG. **78¢**

PIGGLY WIGGLY
FOIL 37 1/2 SQ. FT. ROLL **78¢**
EDWARDS FROZEN PECAN
PIE 32-OZ. PIE **\$2.88**
EDWARDS FROZEN APPLE
PIE 38-OZ. PIE **\$2.88**
WINTERGARDEN FROZEN
COCONUT 2 6-OZ. PKGS. **98¢**



**GOLDEN BEST
TEA BAGS**
100-CT. PKG. 98¢

**LESUEUR
GREEN PEAS**
2 17-OZ. CANS 88¢

FRENCH'S IMITATION VANILLA
EXTRACT 2-OZ. BTL. **68¢**
DOLE SLICED
PINEAPPLE 2 15/4-OZ. CANS **\$1.00**
PHILADELPHIA
CREAM CHEESE 8-OZ. PKG. **79¢**
BAKERS ANGEL FLAKE
COCONUT 14-OZ. BAG **\$1.28**
PIGGLY WIGGLY SWEET OR BUTTERMILK
BISCUITS 4 10-CT. CANS **68¢**
PIGGLY WIGGLY FROZEN
WHIP TOPPING 8-OZ. BOWL **58¢**
KRAFT JET PUFFED
MARSHMALLOWS 2 10-OZ. PKGS. **\$1.00**
VLASIC SWEET SALAD
CUBES 16-OZ. JAR **78¢**
PILLSBURY CRESCENT DINNER
ROLLS 8-OZ. CAN **88¢**

**PET EVAPORATED
MILK**
2 13-OZ. CANS 78¢



**PIGGLY WIGGLY PLAIN OR IODIZED
SALT**
26-OZ. BOX 8¢



**HART'S
BROWN & SERVE DINNER
ROLLS**
3 12-CT. PKGS. 88¢

**PIGGLY WIGGLY FROZEN
PIE SHELLS**
2 2-CT. PKGS. 88¢



**MAXWELL HOUSE
INSTANT
COFFEE**
10-OZ. JAR \$3.99



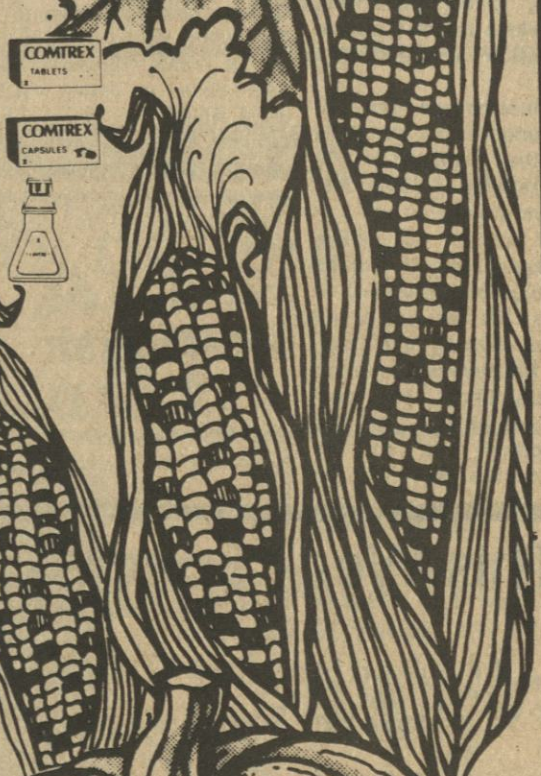
**MAXWELL HOUSE
ALL GRINDS
COFFEE**
1-LB. CAN \$2.49

**GOLDEN BEST
SHORTENING**
42-OZ. CAN 69¢ LIMIT ONE WITH \$15 PURCHASE

**PIGGLY WIGGLY
OLEO**
3 1-LB. PKGS. \$1.00 LIMIT THREE PLEASE

**CRISCO PURE VEGETABLE
SHORTENING**
3 LB. CAN \$1.99

**COLD TABLETS
COMTrex** 24-CT. PKG. **\$1.59**
**COLD CAPSULES
COMTrex** 16-CT. PKG. **\$1.59**
**COLD LIQUID
COMTrex** 6-OZ. BTL. **\$1.99**



Pepto-Bismol
12-OZ. BTL. \$1.89

**PIGGLY WIGGLY
CRANBERRY
SAUCE**
16-OZ. CAN 38¢ LIMIT TWO PLEASE

**SPRITE, TAB OR
COCA COLA**
2 LITER BTL. 89¢

**SPRITE, TAB OR
COCA COLA**
6 PAK 32 OZ. BTL. \$1.89

**BORDEN'S
ASSORTED FLAVORS
ICE CREAM**
5 QT. BUCKET \$3.99



Genealogy Workshop
A Genealogy Workshop was held at the Iuka Public Library on Wednesday, November 12. The workshop was sponsored

by the Iuka Library and the Northeast Mississippi Historical and Genealogical Society, from Tupelo, Miss. Twenty-eight people attended

the all day workshop. Prior to the activities a tea was hosted by the Lucy Rowe Club. Pictured, standing, left to right: Margory Stafford,

Tupelo; Effie Green, Byrd G. Moore and Martice C. Collins, Tupelo. Seated, left to right: Louise McKee, Wanda Walker, Bethany Claunch and Linda Bonds.



Shane Is Four

Shane Steele celebrated his 4th birthday on October 30th. Shane's daddy and mommy are Tim and Becky Steele. Maternal grandmother is Dorothy Yount, of Fulton, Miss.; and paternal grandmother is Ann Jourdan, of Iuka.

Pentecostal Church News

The Cross

Thousands of sermons have focused upon the event and meaning of the cross and still its full wonder is not exhausted, nor has its story become tedious or tiring to those who have experienced its power.

Positioned against the background of man's rebellion against God and His fall from sin, the cross is not merely the symbol of a martyr, nor does its magnetism lie in the paths of injustice done to an innocent man.

Rather its appeal reaches to the deep root of man's problem, to his sinfulness, and provides the only means of salvation acceptable to God.

We must never forget that the grounds of our salvation lie in the meaning of the cross. As vital as some doctrines are to the plan and purpose of God for our redemption, apart from the cross they would be ineffective to save us. We are not saved from our sins by the Incarnation, the sinless perfection of Jesus Christ, His matchless teaching, or His resurrection; but we are saved by His death on the

cross. It is His shed blood that cleanses us from sin (I John 1:7).

First Pentecostal Church, 608 Main St., Iuka. Sunday School, 10 a.m.; Sunday Worship, 11:15 a.m. and 7:00 p.m.; Wednesday Bible Study, 7:15 p.m.

Dial a Bible Reading
423-3581

Permits May Be Required

Federal permits may be required before landowners or others may build structures such as docks and boat moorings or dispose of fill material into the Tennessee-Tombigbee Waterway, according to the Mobile District of the Army Corps of Engineers.

Col. Robert H. Ryan, head of the Mobile District, recently issued a public notice which said a Department of the Army permit "must be obtained for structures or work in or affecting the waterway and discharge of dredge or fill material" into it.

A structure was defined as "any pier, wharf, dolphin, weir, boom, breakwater, bulkhead, revetment, riprap and jetty." It went on to include "permanently moored vessels, pilings, aids to navigation or any other permanent or semi-permanent obstacle or obstruction."

Corps officials said the permits are required by Federal Laws which the Corps enforce pertaining to waterways. The laws carry penalties for not obtaining a permit when one is required.

The Corps said persons wishing to build on the waterway should contact the Mobile or Nashville District Offices first to determine if the work would require a permit. It said that there have been cases on other waterways where individuals who did not obtain a necessary permit were required to remove the structure, restore the area, and, in some cases, fined.

Singing At Mt. Moriah

The regular gospel singing will be at Mt. Moriah Baptist Church Saturday night, November 22, beginning at 7 p.m.

charge, if you should be sick.

You may be given clothing to wear or money to buy clothing. You will usually eat all your meals in the center cafeteria with your friends at no charge.

Job Corps also pays you while you are at the center. You will get paid \$20 every 15 days for the first two months, less taxes. After you have been in Job Corps for two months, you will get about \$30 every 15 days, less taxes. After you have been in Job Corps for six months, the Job Corps will put aside \$75 a month as a readjustment allowance for you when you leave Job Corps and go to that first job. After six months, it will jump to \$100 a month.

Job Corps offers a variety of training programs for both men and women, at over 100 centers. The training that is offered includes automotive trades, carpentry, bricklaying, plumbing, electrical trades, welding, nursing, clerical, secretarial, food services, and many more.

While in Job Corps you can also earn your high school equivalency diploma. Like any good program, Job Corps has rules and regulations. They are there to help you get the education and training you will need to get and keep a job. The rules are not hard to follow.

To find out more about this training opportunity and how it could benefit you, contact the Job Corps Screener at your nearest office of the Mississippi State Job Service.

Brazil nuts grow in clusters of from 14 to 28.



Ginger Is One

Little Miss Ginger Gayle Sparks, daughter of Phillip and Tammy Sparks, celebrated her first birthday on November 11. Ginger's grandparents are Mr. and Mrs. Jerry Ware, of Tishomingo; and Mr. and Mrs. Jesse Sparks, of Belmont.

Buying Cookware Door-To-Door

If you find yourself facing a door-to-door or party-plan cookware salesperson, remember a few pointers for your protection.

Shop around, says Frances Fortenberry, Mississippi Cooperative Extension Service housing and equipment specialist. Some cookware is overpriced, and cookware of equal quality can be bought for much less in a local store. Compare quality and cost before you buy.

Be critical of the salesperson's wares. Does the set include pots and pans you will use rarely? If so, don't waste

Tishomingo County News - Vidette - Belmont

money and storage space on them. Do you really want a set of cookware from only one material? No single material is ideal for all cooking, but an unscrupulous salesperson might try to convince you that it is.

"If you invest in an overpriced set of cookware, you won't have enough money left to buy additional cookware constructed of different materials for the usual variety of cooking," she points out. "Beware of gimmicks designed to convince you that any cookware is unsurpassed in quality or safety."

"Don't give in to high-pressure sales techniques. If you sign a contract and decide not to buy the product, remember that there

Pre-Thanksgiving

SALE

AT THE

Martha Rae Shoppe

Downtown Iuka

Starts Friday, Nov. 21st



ELM SHOPPING CENTER
IUKA, MS

TAKE ADVANTAGE OF OUR FABULOUS GLASSWARE OFFER...

A GREAT PRICE, AND AN EVEN BETTER VALUE!

Now you can build a beautiful collection of contemporary glassware through our convenient, low cost plan. Durable, long-lasting and dishwasher-safe, it's perfect for everyday use. Yet Diamond Point is also versatile enough to complement any decor. A good value made even better through our exclusive offer!



FEATURED
ITEMS
ONLY

59¢

With each \$5.00 purchase

Since this same beautiful glassware sells in retail and department stores at much greater prices, our offer is a real value! Collect a service for eight, twelve, or more, economically and conveniently. Add the matching accessory items which are also available to complete your collection.

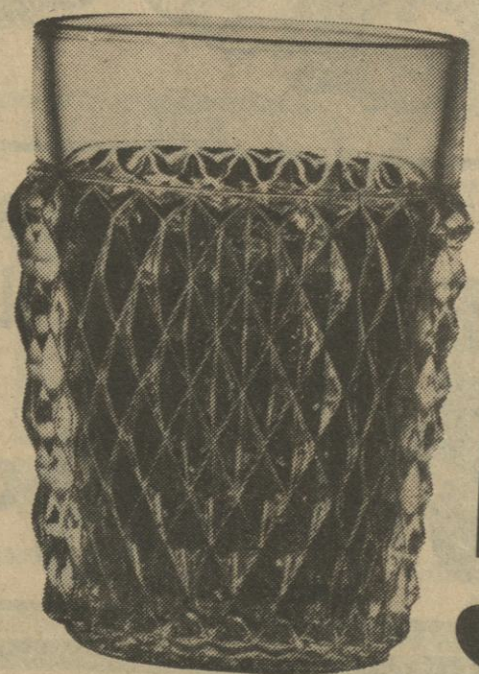
DIAMOND POINT®

A PRODUCT OF

GLASSWARE  Indiana Glass
A Lancaster Colony Company

ON SALE THIS WEEK:

BEVERAGE
GLASS



ONLY 59¢

With each \$5.00 purchase

1st 5th 9th WEEKS

"This Week Special"

All Bulova Accutron Quartz
Now On Sale At
30% Off

All Wylers & Speidel Watches Are
1/2 Price

So Come In Now & Take Advantage
Of These Great Prices. While You're
Here Why Not Use Our Fine
Layaway Plan.

Heritage Jewelers

Elm Shopping Center
Iuka, MS 423-3245



Wolfe - Edmondson
Vows Exchanged

Mr. and Mrs. W.A. York, of Texas, proudly announce the marriage of their daughter, Carla York Wolfe, to John D. Edmondson, son of Mrs. Montez D. Bloodworth and the late Paul M. Edmondson, of Iuka, Mississippi. The wedding ceremony was held on Saturday, November 1, 1980, at the home of S/Sgt. and Mrs. Wiley R. Osborne. The bride was given in marriage by the Reverend Wayne Taylor of the First Baptist Church conducting the simple, but impressive, ceremony. Charles E. (Chuck) Kay, nephew of the groom, served as best man. Mrs. Diana Osborne was the matron of honor.

A reception was held immediately after the ceremony for the family and close friends of the couple attending the service. The table featured a white wedding cake with yellow accents and a pair of handmade crystal goblets engraved with the couple's names. The goblets were used to make the initial toast to the newlyweds. Yellow, white and orange flowers provided color to the table and throughout the home. Out-of-town guests in-

FLAKY FOLDOVERS USE AMERICA'S FAVORITE FRUIT



"An apple a day" has been popular advice for more than 100 years, and this crisp, delicious fruit is still America's favorite.

Flaky Apple Foldovers are an excellent way to savor the tart, tangy goodness of the season's fresh apples. The flaky turnovers are good warm or cool, so you can serve them for dessert, then enjoy any leftovers as snacks. Using refrigerated biscuit dough for the crust makes them especially easy to make.

Calorie counters will also be delighted to learn that this apple treat has only 167 calories, less than half the number for a piece of regular apple pie.

FLAKY APPLE FOLDOVERS

- 10-oz. can Hungry Jack refrigerated flaky biscuits
- 2/3 cup sugar
- 3/4 teaspoon cinnamon
- 1/4 teaspoon nutmeg
- 1 1/4 cups finely chopped, peeled apples
- 1/4 cup margarine or butter, melted

Heat oven to 375° F. Separate dough into 10 biscuits. Roll each to a 4-inch circle. In small bowl, combine sugar, cinnamon and nutmeg. Spoon about 2 tablespoons apples onto center of each flattened biscuit. Spoon 1 teaspoon sugar mixture over apples.

Fold dough in half over filling; press edges with fork to seal. Dip both sides of each in margarine, then in remaining sugar mixture. Place in ungreased 15x10-inch jelly roll pan or 13x9-inch pan.

Bake at 375° F. for 15 to 20 minutes or until golden brown. Remove from pan to cool. Serve warm or cool. 10 turnovers.

Boots Unlimited

Hwy. 25 North In Iuka



WE
NOW
HAVE

**Red Wings
Boots**

IN STOCK

cluded Mrs. Frank L. Bloodworth, mother of the groom, of Kissimmee, Fla.; Mr. and Mrs. Jack A. Wallace, of Cherokee, Ala.; and Mrs. Charles H. Kay and LeAnne Kay, of Iuka, Mississippi.

The couple will live in Midwest City, Oklahoma, while both are serving in the United States Air Force at Tinker AFB, in Oklahoma City, Okla.

After a brief wedding trip, the couple will be at home at 1431 N. Midwest Blvd., Apt. 267, Midwest City, Oklahoma.

**Iuka
Route 2**

Mr. and Mrs. Payton Norman, of Como, Ms., Mr. and Mrs. Tip Hales, Darnell, La., Mr. and Mrs. Jim Wood, Gulfport, Mr. and Mrs. Jimmy Tigner, Memphis, and Mr. and Mrs. Robert Bugg, of Iuka, spent last weekend at the old homeplace of the late Mr. and Mrs. Charlie Grisham.

Mr. and Mrs. Wendell Anglin and Mrs. James L. Broughton have recently visited with Mr. and Mrs. Gerald Stewart, of Louisville,

Ms. Mr. and Mrs. Alfred Bonds and Mrs. Amy Hale spent last week with Mrs. Margaret Bonds and family, of Stonewall, Ms.

Eugene Miller, of Chicago, is visiting with his mother, Mrs. Ludie Miller.

Mrs. Virginia Morris, Jeanette and Jay Glover were in Memphis last Monday.

Mrs. Delma Dean, Gladys Davis, Mabel Dean, Annette Tucker, and Dudgar Daniel enjoyed the day in the home of Mr. and Mrs. Harvey Davis last Tuesday. The ladies quilted and visited. Others of the community attending were Mrs. Letha Taylor, Ruby Adams, and Annie Mae Norris.

**Job
Service
Info**

One of each eight citizens is a military veteran, according to Charles Smith, Corinth Area Manager of the Mississippi State Employment Service. At the present time, Mississippi has

243,000 veterans and 63,000 of these are Vietnam Era veterans. The mean age of all veterans is 47.2 years. One in ten veterans have some type of disability. One-half of these have a Veterans Administration service connected disability rated at 20 percent or less. Thirteen and one-half percent (13.5%) are rated 70 percent disabled, and Mississippi has the highest degree of disabled veterans.

Veterans spend over \$252 million annually in Mississippi, of which one-half is veterans pensions and compensation paid to disabled veterans. The Veterans Administration has spent 3 million dollars helping veterans find jobs. Limited physical capabilities of veterans cause some employers to have some prejudice against disabled veterans and Vietnam veterans were having difficulty finding jobs, the Department of Labor created a Disabled Veterans Outreach Program staffed by disabled veterans qualified to assist jobless veterans. The results have been an increase of 17

percent in employment of disabled veterans in the first year of the program. Smith also stated that Marion A. Blunt is the Disabled Veteran Interviewer in the Corinth Office of the Mississippi State Employment Service, and urges all disabled veterans to contact him for the services available. Employers are also urged to contact Mr. Blunt about any job vacancies they might have that might be filled with these qualified veterans.

Meaty Gift Idea

Looking for a holiday gift for that hard-to-buy-for person on your list? Sure to be appreciated will be a gift of frozen beef roasts or steaks, suggests the National Live Stock and Meat Board. Carefully selected beef cuts should be wrapped and frozen, then gift wrapped and delivered with a "Keep Frozen Until Christmas" label prominently displayed. Ideal for gift giving are prestigious steaks such as rib eye, top loin, Porterhouse, T-bone and tenderloin. Roasts that will be especially gratefully received include rib, rib eye, top round and tenderloin.

Country Cottage Flowers

presents
**Christmas
Open House**
with their **GRAND OPENING**

Sat. Nov. 22 and Sun. afternoon
Nov. 23, 1 p.m. to 5 p.m.
SANTA will be present Sunday
to visit with the children
Refreshments and Door Prizes
to be given away

You're invited to come by and
browse for your Christmas
gifts and ideas

To place orders:

423-9384

or 423-5062

HI-LO

We reserve the right to limit quantities

BOY'S TWILL AND DENIM JEANS
Assorted Colors
Sizes 4/7
\$5.97 Value
Sale \$3⁵⁷

JUNIOR WOOL BLEND PLAID SKIRTS
Assorted Colors
Sizes 5/15
\$18 Value
Sale 7⁷⁷

Monterey BLANKETS
72"x90" Champagne
\$6.97 Value
Sale \$3⁰⁰

BRAWNY PAPER TOWELS
89¢ Value
Sale 2/\$1

40 Oz. PINE SOL
\$2.89 Value
Sale \$1⁹⁷

16 OZ. DOW OVEN CLEANER
\$1.59 Value
Sale \$1⁰⁷

TUFF STUFF FOAM CLEANER
\$1.87 Value
Sale \$1²⁰

Reynolds Wrap HEAVY DUTY
37 1/2 SQ. FT. HEAVY DUTY
\$1.09 Value
Sale 67¢

12 Oz. MYLANTA Effective Antacid/Anti-Gas
\$2.39 Value
Sale \$1⁵⁷

DELUXE WOODEN BREAD BOX
\$39.95 Value
Sale \$16⁹⁷

24" WOOD AND GLASS SMOKER STANDS
\$18.95 Value
Sale \$8⁹⁷

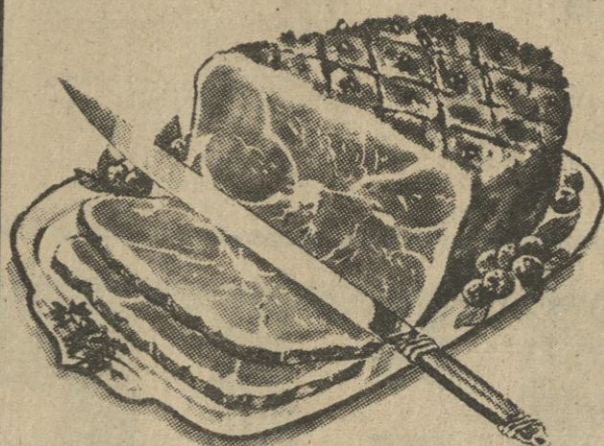
TODDLER SLEEPERS
FROM SPENCER'S
Sizes 1-4
\$4.99 Value
Sale 2²⁷

Elm Shopping Center, Iuka Sale good through Nov. 22

BRYAN

CANNED HAM \$5.99

3 LB. CAN



SWIFT BUTTERBALL

Turkeys LB. \$1.00

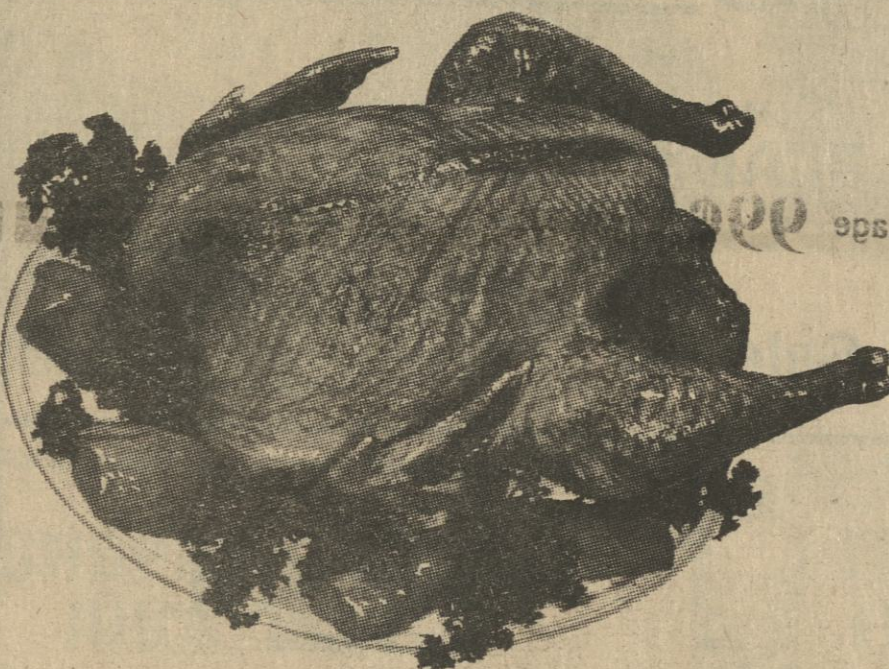
ARROWHEAD

Franks 12 oz. 89¢

Baking Hens LB. 69¢

MEDALLIN HEN

Turkeys



14 oz. Cello Package
LB. **79¢**

GOLD BAND

Turkey Breasts 4-6 LB. AVERAGE LB. \$1.39

TASTY

Chicken Livers 1 LB. 89¢

RUDYS WHOLE HOG

Sausage LB. \$1.49

Streak-O-Lean

(SLICED \$1.19 LB.)

LB. 99¢

ARMOUR GOLDEN STAR BONELESS

Turkeys LB. \$1.69

HYDE PARK

BONUS BUY (1 BUY PER \$15.00 PURCHASE)

ALUMINUM FOIL



12 inch by 25 ft.

9¢

B & J

Supermarket

Hwy. 365

South In

Burnsville

AD EXPIRES 11-27-80

WE RESERVE THE
RIGHT TO LIMIT
QUANTITIES
WE GIVE QUALITY
STAMPS

STORE HOURS:
SUN. THRU THURS.
8:30 - 8:30
FRI. & SAT.
8:30 - 9:00

WE SLICE, CUT, AND FREEZER WRAP
MEAT FOR THE PUBLIC

**WE WILL BE OPEN
THANKSGIVING DAY**

8:30 to 6:00 p.m.



Produce

U.S. NO. 1

Red Potatoes



10 LB. BAG

\$1.59

Bananas

3 lb. 89¢

FRESH

Cranberries



1 LB. PKG. **69¢**

Sweet Potatoes



3 lb. \$1.00

Celery



STALK

49¢

B & J Supermarket

**Hwy. 365
South In
Burnsville**

AD EXPIRES 11-27-80

A TASTY SELECTION OF FESTIVE FOODS for Your Thanksgiving Menu

HYDE PARK SELF RISING

FLOUR

(1 BUY PER \$15.00 PURCHASE)

5 LB. BAG

49¢

DINTY MOORE
Beef Stew

24 oz. can

\$1.29



HORMEL WITH BEANS
Chili

7 1/2 oz. cans

2/89¢

CYCLE 1

Dogfood

14 oz. cans

3/\$1.00



BLUE BONNET SOFT WHIPPED BOWL

MARGARINE

1 LB.

69¢

HEINZ HAMBURGER

Dill Slices



16 oz.

69¢

HYDE PARK

Coconut

14 oz. Cello Package

99¢

HERIT

Choc-O-Morsels

12 oz.

89¢

SOFT DRINKS

(YOUR CHOICE)

32 oz. RETURNABLE

6/\$2.09

PLUS DEPOSIT

EBHART JUMBO

Tamales

30 oz. cans

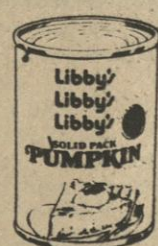
79¢

HYDE PARK

Popcorn

2 LB. BAGS

2/\$1.00



16 oz. cans

2/89¢

LIBBYS

Pumpkin

SWEET SUE

Dressing with Chicken

15 oz.

2/\$1.00



PINEAPPLE

EMPRESS (3 kinds) Large 20 oz. cans

59¢

CARNATION
Evaporated Milk



13 oz. cans

2/\$1.00

LUCKS WITH PORK

Pinto Beans

17 oz.

2/79¢

SAC-O-CORN

Cobbettes

8 pack

79¢

HYDE PARK

Garbage Bags

4 GALLON

79¢

CRISCO OIL



48 oz.

\$2.19

KRAFT
Parmesan Cheese



3 oz.

69¢

HYDE PARK TEXAS STYLE

Biscuits

10 ct.

3/\$1.00

HYDE PARK

Cheese Singles

1 LB.

\$1.69

CHARMIN FAMILY PACK

Tissue



6 ROLLS

\$1.49

DIXIE MAID

Rolls

(BROWN & SERVE)

3/\$1.00

HYDE PARK AUTOMATIC
Dish Detergent

50 oz. box

99¢

AJAX

LAUNDRY DETERGENT

49 oz. box

\$1.39

HUNTS HALVES OR SLICES

Peaches

15 oz.

2/\$1.00

BUSH'S CUT

Green Beans

15 oz.

3/\$1.00

LUCKY LEAF

Apple Juice



32 oz.

69¢

PET RITZ DEEP DISH

Pie Shells

2 COUNT

69¢

ORE IDA

Crispers



20 oz. bag

79¢

LUCKY LEAF CHERRY

Pie Filling

22 oz.

99¢

CHIPS AHOY

Cookies

LARGE 19 oz. bag

\$1.39

HYDE PARK WHOLE OR JELLIED

Cranberry Sauce

16 oz.

2/99¢

ROSEDALE

SWEET PEAS

17 oz. cans

3/99¢



Happy Birthday To Carrie and Amanda Cain

Carrie celebrated her 4th birthday on September 23, and was given a Winnie-the-Pooh party. Amanda celebrated her first birthday on November 7, and was given a Hansel and Gretel party. Parents are Donnie and Gale Cain, of Iuka. Grandparents are Mr. and Mrs. Clinton Wadkins, of Iuka; and Marilyn Cain and the late Warren Cain, of Cherokee.

organization has a strong and growing membership and is affiliated with the National Association of Farmer-Elected Committeemen. The purpose of the State and National organizations is to promote the well being of the American farmer with particular emphasis on sound and workable Federal farm programs.

In discussing the upcoming annual MAFEC meeting, Miller emphasized the uniqueness of this farm-oriented organization. He pointed out that this is the only organization in the country comprised solely of farmers who on the one hand have been recipients of Federal farm programs, and on the other hand, have been administrators of these programs.



ASCS Farm News

By: Henry L. Knox,
County Executive Director
ASCS Seeks
Cotton Comments

Cotton producers and other interested persons still have time to comment on 1981 cotton programs administered by the Agricultural Stabilization and Conservation Service. Program provisions yet to be determined include the loan level and payment rate, for extra long staple cotton, the loan rate for upland cotton, and whether a seed cotton loan program should be offered. "Comments on these provisions must be received in our Washington office by October 28 to be considered," Elmer A. South, Chairperson of the Tishomingo County ASC Committee, said. Additional comments are invited on the upland cotton program concerning whether there should be a set-aside or acreage diversion for 1981, the appropriate target level and the national program acreage. The deadline for these comments is December 2. South said farmers who favor a set-aside or acreage diversion program should state the amount they recommend. Other program determinations include whether there should be a limitation on upland cotton planted acreage if a set-aside is in effect, the voluntary reduction from 1980 cotton acreage required to guarantee target price protection on total 1981 planted acreage, the national program acreage and allocation factor, and whether farmers should comply with the normal crop acreage to be eligible for loans and payments. Persons interested in submitting comments should write to the Director, Production Adjustment Division, Room 3630 South Building, ASCS-USDA, Washington, D.C. 20013.

Annual Meeting of Mississippi Association of Farmer-Elected Committeemen

The 1980 annual meeting of the Mississippi Association of Farmer-Elected Committeemen will be held on Friday, December 5, 1980. The meeting will be held at the Coliseum Ramada Inn in Jackson.

Bobby Miller, who is a Carroll County farmer and president of the association, said that Governor William F. Winter will be the featured speaker for this year's meeting. Miller went on to say that the Mississippi Association of Farmer-Elected Committeemen, which is known as MAFEC, is an organization comprised of present and former farmer-elected ASC committeemen. According to the president, the Mississippi

One of the pleasures of my childhood was the time we would go chestnut hunting. The great native chestnut trees that flourished so widely in this country up until 50 years ago have vanished, victims of the world's greatest forest tragedies.

And with them went the sport of chestnutting.

In an era with which many of us can identify, there was no finer sport than to go hunting for chestnuts on a crisp fall day when frost had opened the big prickly burrs and spread their bright brown fruit among the fallen leaves.

Sometimes the searching among the leaves for the chestnuts was a game of competition to see who could find the most or the largest one.

Some of the ones found we ate right then, but most were carried home a flour sack to be boiled, roasted or mashed.

The only reminders of those days are a few relics of the once beautiful trees. Some are dead and ghost-like. Some have new sprouts for a few years before yielding to the ravages of the oriental blight that eliminated the American chestnut tree.

Did you ever hear of chestnut orchards? I read where there were regular chestnut orchards in the mountains of North Carolina. When there was such a thickly grown chestnut orchard on one's land he cultivated it as we do peach, apple, etc. I saw a room which was completely lined with the prettiest wood called "worm eaten chestnut". Also, a table and shelves for dishes. This is the most beautiful wood, but you could not find it anymore.

Once, when I went to the top of a mountain in North Carolina after the snow had fallen - vendors were selling hot roasted chestnuts.

Did you know it had other uses besides the nuts and lumber? It was used in the tanning industry. The bark from these trees was used in making tannin.

We think the blight that struck the native chestnut was introduced into the United States on planting stock from the Orient.

It was first detected in 1904, and it spread like wildfire, into all parts of the country. In 35 years the American chestnut became the victim of one of the world's forest tragedies.

I have often wondered how a lone tree out on the hillside of a few acres of land in North Mississippi could have "caught this terrible blight" but it did and there are no more wild chestnut trees and chestnut hunting, once one of childhood's greatest

pleasures, exists only in memory.

Burnsville Homemakers

The Burnsville Homemakers Club met Wednesday, November 12, at 1:30 at the home of Mrs. Georgia Mae Smith with Mrs. Wilma Gilliland as co-hostess. Mrs. Eleanor Richardson, president, presided over the meeting and read the thought for the month: Two can't live as cheaply as one unless it is a flea and his dog.

The group sang "Showers of Blessings". The devotional

was given by Mrs. Ilene Graham. She had each one to tell what she was thankful for since it is so near Thanksgiving. She read from Psalm 106 and other scriptures. She based her talk on giving thanks. The roll was called and minutes read by the secretary, Mrs. Thelma Gray. She reported that the roll had been revised and county council dues paid for 1981.

Plans were made for the December meeting and a party was planned in January for the ones who go to Timber Hills in Iuka.

Mrs. Richardson gave an interesting talk on lamps. She

told of the history of lamps. Many well-wrought terra cotta lamps have been found in long-buried cities in Mesopotamia in some dating to 7000 or 8000 B.C. Lamps, which came with the Puritans on the Mayflower, were called "Betty Lamps". Of Dutch origin, they were made first of iron, then of tin or brass. Glass chimneys were used on lamps in 1784. Until about 1845, lamps burned animal fats, whale, fish and vegetable oils. Kerosene, safe and cheap, came into general use about 1860.

At the close of her talk she let the ladies guess how many butter beans were in

the beautiful new lamp that she had brought. Mrs. Ilene Graham's guess was the closest - more than 600. She was given the lamp as a prize. Bingo was played until everyone won a prize. A door prize was given.

Delicious refreshments were served those present as follows: Mesdames Bessie Dickinson, Wilma Gilliland, Ilene Graham, Thelma Gray, Eleanor Richardson, Georgia Mae Smith, Ann Strickland, Dorothy Strickland, and one visitor, Mrs. Margarite Simmons, of Corinth.

The December meeting will be a Christmas party with an exchange of gifts. Secret pals

Tishomingo County News - Vidette - Belmont

will be revealed also, all at the home of Mrs. Georgia Mae Smith.

Nylon stockings first went on sale in America on October 25, 1940.

Our President's Seal upon a blue background, a large white corner, was adopted in 1916 by President Wilson.

SHRIMP

Fresh Jumbo Gulfcoast Shrimp
Lobster

Friday, Saturday, & Sunday
Intersection Hwy. 72 & 25 - Iuka, MS
423-5597

LIFE COMPANIES LIFE, HEALTH AND ACCIDENT COMPANIES HEALTH AND ACCIDENT COMPANIES

Synopsis of the Annual Statement of

THE CHESAPEAKE LIFE INSURANCE COMPANY

(Full Corporate Name)

527 St. Paul Street

Baltimore

Md.

21202

Mail Address

State

Zip Code

on the 31st day of December 1979 made to the Commissioner of Insurance of the State of Mississippi.

ASSETS

Bonds	\$ 39,303,565
Stocks	1,151,577
Mortgage Loans on Real Estate	4,177,518
Real Estate	959,531
Policy Loans and Notes	5,453,084
Cash and Bank Deposits	191,064
Uncollected and Deferred Premiums	2081,264
Other Assets	2,531,520
TOTAL ASSETS	\$ 55,849,232

LIABILITIES, SURPLUS AND OTHER FUNDS

Policy Reserves	\$ 46,795,997
Policy and Contracts Claims	566,569
Other Policy and Contracts Liabilities	1,251,630
Accrued Expenses and Taxes	338,000
All Other Liabilities	2,387,314
TOTAL LIABILITIES	\$ 51,339,510
Special Surplus Funds	--
Capital Paid-up	1,459,299
Unassigned Surplus	3,050,422
*Surplus as regards Policyholders	\$ 4,509,721
TOTAL (Line 31, Page 3)	\$ 55,849,232
TOTAL INCREASE IN LEDGER ASSETS (Line 15, Page 13)	\$ 17,095,176
TOTAL DECREASE IN LEDGER ASSETS (Line 38, Page 13)	\$ 14,818,410

PRESIDENT Victor L. Rosenberg

SECRETARY Robert H. Katz

General Agent for Service-Insurance Commissioner of Mississippi

I hereby certify that the above is a true and correct abstract of the statement of the above named company filed with the Department of Insurance of the State of Mississippi, showing the condition of said company on the 31st day of December 1979.

George Dale
COMMISSIONER OF INSURANCE

*Includes Paid-In and Contributed Surplus

LIFE COMPANIES LIFE, HEALTH AND ACCIDENT COMPANIES HEALTH AND ACCIDENT COMPANIES

Synopsis of the Annual Statement of

Chrysler Life Insurance Company

(Full Corporate Name)

900 Tower Drive

Troy

Michigan

48098

Mail Address

State

Zip Code

on the 31st day of December 1979 made to the Commissioner of Insurance of the State of Mississippi.

ASSETS

Bonds	\$ 43,139,601
Stocks	7,331,805
Mortgage Loans on Real Estate	
Real Estate	
Policy Loans and Notes	
Cash and Bank Deposits	290,389
Uncollected and Deferred Premiums	2,069,006
Other Assets	803,458
TOTAL ASSETS	\$ 53,634,259

LIABILITIES, SURPLUS AND OTHER FUNDS

Policy Reserves	\$ 34,949,746
Policy and Contracts Claims	6,833,573
Other Policy and Contracts Liabilities	
Accrued Expenses and Taxes	2,039,563
All Other Liabilities	460,174
TOTAL LIABILITIES	\$ 44,283,056
Special Surplus Funds	\$
Capital Paid-up	1,500,000
Unassigned Surplus	7,851,203
*Surplus as regards Policyholders	\$ 9,351,203
TOTAL (Line 31, Page 3)	\$ 53,634,259
TOTAL INCREASE IN LEDGER ASSETS (Line 15, Page 13)	\$ 32,803,713
TOTAL DECREASE IN LEDGER ASSETS (Line 38, Page 13)	\$ 25,191,640

PRESIDENT Gordon E. Areen

SECRETARY Robert A. Link

General Agent for Service-Insurance Commissioner of Mississippi

I hereby certify that the above is a true and correct abstract of the statement of the above named company filed with the Department of Insurance of the State of Mississippi, showing the condition of said company on the 31st day of December 1979.

George Dale
COMMISSIONER OF INSURANCE

*Includes Paid-In and Contributed Surplus

LIFE COMPANIES LIFE, HEALTH AND ACCIDENT COMPANIES HEALTH AND ACCIDENT COMPANIES

Synopsis of the Annual Statement of

Chicago Metropolitan Mutual Assurance Company

(Full Corporate Name)

4455 Dr. Martin Luther King Jr. Drive

Chicago, Illinois

60653

Mail Address

State

Zip Code

on the 31st day of December 1979 made to the Commissioner of Insurance of the State of Mississippi.

ASSETS

Bonds	\$ 21,679,000
Stocks	691,178
Mortgage Loans on Real Estate	8,614,340
Real Estate	1,282,380
Policy Loans and Notes	742,000
Cash and Bank Deposits	1,885,800
Uncollected and Deferred Premiums	2,419,340
Other Assets	1,709,720
TOTAL ASSETS	\$ 38,113,658

LIABILITIES, SURPLUS AND OTHER FUNDS

Policy Reserves	\$ 30,450,000
Policy and Contracts Claims	2,588,600
Other Policy and Contracts Liabilities	1,234,340
Accrued Expenses and Taxes	262,310
All Other Liabilities	1,342,808
TOTAL LIABILITIES	\$ 35,877,058
Special Surplus Funds	\$
Capital Paid-up	
Unassigned Surplus	3,147,600
*Surplus as regards Policyholders	\$ 3,147,600
TOTAL (Line 31, Page 3)	\$ 38,113,658
TOTAL INCREASE IN LEDGER ASSETS (Line 15, Page 13)	\$
TOTAL DECREASE IN LEDGER ASSETS (Line 38, Page 13)	\$

PRESIDENT Anderson M. Schweich

Assistant Secretary Henry P. Hervey

General Agent for Service-Insurance Commissioner of Mississippi

I hereby certify that the above is a true and correct abstract of the statement of the above named company filed with the Department of Insurance of the State of Mississippi, showing the condition of said company on the 31st day of December 1979.

George Dale
COMMISSIONER OF INSURANCE

*Includes Paid-In and Contributed Surplus

LIFE COMPANIES LIFE, HEALTH AND ACCIDENT COMPANIES HEALTH AND ACCIDENT COMPANIES

Synopsis of the Annual Statement of

The Citadel Life Insurance Company

(Full Corporate Name)

P. O. Box 31488, Charlotte

N.C.

28231

Mail Address

State

Zip Code

on the 31st day of December 1979 made to the Commissioner of Insurance of the State of Mississippi.

ASSETS

Bonds	\$ 58,457,022
Stocks	3,480,664
Mortgage Loans on Real Estate	16,577
Real Estate	1,479,999
Policy Loans and Notes	4,208,450
Cash and Bank Deposits	193,316
Uncollected and Deferred Premiums	2,196,764
Other Assets	1,653,997
TOTAL ASSETS	\$ 70,585,789

LIABILITIES, SURPLUS AND OTHER FUNDS

Policy Reserves	\$ 53,002,511
Policy and Contracts Claims	1,665,162
Other Policy and Contracts Liabilities	765,222
Accrued Expenses and Taxes	1,653,061
All Other Liabilities	551,712
TOTAL LIABILITIES	\$ 57,597,672
Special Surplus Funds	\$
Capital Paid-up	1,100,000
Unassigned Surplus	12,949,121
*Surplus as regards Policyholders	\$ 14,049,121
TOTAL (Line 31, Page 3)	\$ 70,585,789
TOTAL INCREASE IN LEDGER ASSETS (Line 15, Page 13)	\$
TOTAL DECREASE IN LEDGER ASSETS (Line 38, Page 13)	\$

PRESIDENT Peter J. Spellman

SECRETARY Vernon C. Smith

General Agent for Service-Insurance Commissioner of Mississippi

I hereby certify that the above is a true and correct abstract of the statement of the above named company filed with the Department of Insurance of the State of Mississippi, showing the condition of said company on the 31st day of December 1979.

George Dale
COMMISSIONER OF INSURANCE

*Includes Paid-In and Contributed Surplus

4 GOOD REASONS to see your good neighbor agent CAR • HOME • LIFE • HEALTH



Donnie Brown
117 Eastport St. Iuka, MS
Office 423-5931
Home 423-5532

Like a good neighbor,
State Farm is there.



STATE FARM INSURANCE COMPANIES
Home Office: Bloomington, Illinois

TOWN AND COUNTRY REVIEW

Copyright 1980

by Connie Logan Advertising Company, Inc.,
Oklahoma City, Oklahoma
T M Reg. U.S. Patent Office, Washington, DC

Don Crowell AMC - Jeep, Inc.

Don Crowell AMC - Jeep, Inc., is located at 1501 East 2nd in Sheffield, Ala. - phone 383-4445. This well known dealer is your headquarters for all of the new models of AMC's and Jeeps. Don Crowell, AMC-Jeep, Inc. is the leading dealer for AMC - Jeep in the southeast. Stop in and see the new '81 models and they are leaders in sales, service and parts. They are open 6 days a week from 7:30 a.m. to 5:00 p.m. Service 5 days a week, and parts 5 day's a week, and open until 12:00 noon on Saturdays. They have a staff of factory trained mechanics and the latest equipment. They can keep your new AMC - Jeep running perfectly for many years. In this Town and Country Review, we suggest you stop in soon and look over their new models. Also, see their wide selection of used Jeeps with thousands of unused miles of service.

Bank of Red Bay

We are proud to list Bank of Red Bay among the business leaders in this review. MONEY PROBLEMS ARE A SPECIALTY at this fine banking institution and they will be glad to help you in any way they can. Citizens of the area know they can depend on this bank. In this review, we highly recommend this bank to all our readers and suggest that you open your checking and savings accounts there soon. They are a member F.D.I.C. Saving is no different to any other GOOD HABIT and assures you of security. Many young people are like their parents before them, opening accounts at this bank with the future in mind. You, too, will enjoy doing business with the Bank of Red Bay, located in Red Bay - phone 356-4445, branches in Redmont - phone 356-4450 and Vina - phone 356-4251.

Redmont Farm Service, Inc.

This firm is located in Red Bay, Ala., and is well established as one of the leading businesses of its kind. Phone 205-356-4266 and they will gladly quote prices for you. They are this area's authorized dealer for Butler - Agri Buildings and erection of grain storage bins, drying equipment, and farm buildings of any size. These buildings feature rigid frame, colored panels, galvanized ribbed panels, or plain, standard sizes or custom, steel roof of masonry walls. Since this company has been in business, a spirit of satisfaction has prevailed in every transaction. Their reputation of fair dealings and quality construction has placed them among the leaders throughout this area. We in this review issue highly recommend them upon the work they are doing in this section and we suggest to our readers that you contact this firm whenever you are in need of steel buildings.

Horn Lumber Company

In the business over 38 years. Timber raisers in the area know Horn Lumber Co. in Golden, located on Route 1, Hwy. 25 South - phone 585-3212, provides an excellent market for timber and pay top local market prices. This firm maintains a planned forestry service, advising the grower how to plant timber to gain the best yield and offering you expert advice. They are interested in the conservation of our timber resources. In this modern plant, timber is processed in an expert manner for distribution to lumber dealers throughout the country. We commend this firm for the part they are playing in the growth and development of this entire section and highly recommend them to our readers.

American Medical Co.

American Medical Co. is located at 606 South Court in Florence, Ala. - phone 766-9800. They specialize in sales, rentals and repairs of hospital equipment including hospital beds, wheel-chairs, commodes, patient lifts, porches lifts, stairway elevators and other home and hospital supplies. Ask this firm about their rental-purchase plan. A business such as the American Medical Co. is essential to the entire area. Their fair and honest business policies have rightfully merited the confidence and patronage of the people of this community. A fine spirit of cooperation is always in every transaction and we wish to recommend them to all our readers. In this Review we take pleasure in pointing out the proficient manner in which they have played and are playing their part in forwarding the development and progress of the community.

Alcorn County Co-Op

(James Tyson, Manager)

There is an old saying "If you want a thing done right, do it yourself" and this is why farmer co-operatives were originated. No one is in a better position to know the farmer's and rancher's needs more or better than the farmer or rancher, himself. Farmers' Co-Ops are operated BY THE FARMER, FOR THE FARMER. Alcorn County Co-Op in Corinth at 330 Highway 72 East - phone 286-6686, is a progressive concern geared to meet ever-changing conditions. The manager sees that feed, seed, petroleum products and many varied farm supplies are available in the quantities needed, and at the time needed. This co-op keeps abreast of market conditions constantly and reduces the gap between farmer and consumer. Residents of this area are grateful to this concern for the wonderful, outstanding service they perform. We in this Review salute this co-op for its great contribution to the welfare of our area.

B & J Super Market

B & J Super Market, located on Hwy. 365 S. in Burnsville - phone 427-9286, can save you ladies money on food costs and give you quality food products in exchange. They have a choice selection of government inspected and graded meat assuring you of high quality eating at a low cost. Fresh coffee and popular brand canned goods are featured here, giving you a variety of dishes for any meal. Fresh shipments of fruit insure you of a delicious salad or dessert. This store specializes in a wide selection of fresh fruits, vegetables, as well as frozen foods, delightful the year around. You can shop at this friendly store where fresh quality foods are coupled with cheerful service to make your grocery shopping a pleasure, not a chore. Become a regular customer and count your savings!

Gann Bros. Furniture & Appliance

(The Business That Quality & Service Has Built)
QUALITY FURNITURE AT REASONABLE PRICES is a paramount feature at this progressive firm located on Highway 72 West in Burnsville - phone 427-9506. They feature a complete line of home furniture, name brand appliances, such as RCA, Whirlpool, Hotpoint sales and service, and they carry a complete line of the G.A.F. floor covering to create any desired interior regardless of how your taste may run. You will also find here an extensive line of lamps, wall fixtures, and many other items of quality. Shop here and save, terms available to suit your budget. We compliment the management of this firm upon the high quality of their merchandise and their fair prices. They also repair all major brands.

Southern Industrial Laundry

Southern Industrial Laundry, located at 805 N. Hook, Tusculum, Ala. - phone 205-383-4491. This firm offers a complete rental service on all industrial uniforms, work clothes, tender covers, shop towels and linen supply. Why make an investment in uniforms when there is such a firm as this to serve you? There is no maintenance cost and you can be supplied with individually fitted uniforms in a choice of colors with your authorized emblem. This firm has been serving the surrounding area for years and their many satisfied customers will attest to the fine service they have received. We in this Town and Country Review highly recommend this firm to all our readers who are in need of this service.

Belmont Ace Hardware

Belmont Ace Hardware is located on Main Street in Belmont - phone 454-7568. You will find merchandise of every description at this modern store. Their line of hardware supplies is complete at all times and they can be depended upon to give you quality merchandise. See this dealer the next time you need hardware and let him quote his reasonable prices to you. They feature paints, tools, plumbing and electrical supplies, sporting goods, lawn and garden and hardware of all types. If you have not visited them lately, stop in and let the courteous and accommodating employees help you with your hardware needs. In this Review we take pleasure in referring all our readers to this reliable concern.

Coca Cola Bottling Works of Corinth

Bottlers of Coca-Cola, this distributor is well known in this area, at 601 Washington in Corinth. Call them for delivery of these fine beverages - phone 287-1433. Through the most efficient use of proper equipment and efficient deliveries, this company makes these drinks possible to us for all occasions. You can buy them at your grocer or at the corner store with assurance that they have been bottled under the most sanitary conditions. These beverages are thirst quenchers and make party snacks taste better. We commend this outstanding distributor and suggest that you go to your favorite dealer today and buy a case or a carton of these delightful beverages.

Williams & Sons Processing Plant

Williams & Sons Processing Plant is located in Vina, Ala. - phone 205-356-2787. This is the place you can buy your meat by the quarter, half, or whole and save many dollars. They cut and process all meats for home freezers. They also do custom butchering and curing. They have the latest in modern equipment and years of experience to give you the best possible service. They will butcher your meat so that you will get the most out of your hog or beef. The owner wishes to invite our readers to stop in any time and to also express his appreciation for your past patronage and ask that they be allowed to serve you in the future.

C & P Auto Supply

C & P Auto Supply is located on Main Street in Belmont - phone 454-3415, your NAPA Jobber. This firm means ECONOMY to the automobile owner of today. They have everything in the way of automobile parts, which means a saving to the people of this area as their prices are the lowest. This economy is made possible because of the large amount of business they transact and they pass the savings on to their customers. We are pleased to give this public spirited and progressive concern mention in this Review issue and to say that whenever you are in need of automobile parts, you will find them at this firm. You can be assured of a SQUARE DEAL at all times and quality parts with every purchase.

The Female Response To Jogging

The latest estimate reveals that there are 30 million joggers in the United States, and several million of these are women of all ages. Women respond to jogging in much the same way as men. Men and women are, after all, biologically more similar than dissimilar, but there are some differences between the sexes. Women are less equipped for endurance running for a number of reasons, not all of which are biological. Until recent years, our culture has not offered any encouragement for women to pursue strenuous exercise primarily because it was unladylike. But as women strove for equality in all phases of life, they began participating in fitness and sports activities in unprecedented numbers. At this point no one is quite sure about the potential aerobic (endurance) capacity of women, because they have not had the opportunity to participate for a long enough period of time. However, there are some physical drawbacks which mitigate against high level endurance activities for women. When compared to the average man, the average woman has less blood volume, less hemoglobin, a smaller heart, smaller cardiac output, less lung volume, and more body fat. These factors result in an aerobic capacity which is 15 to 20 percent less than men. Just a few short years ago, women were not allowed to

Senator Thad Cochran

SPECIAL REPORT:

Historic Election



The results of the recent Presidential and Congressional elections are significant, both politically and historically for our country. Many observers believe it is the most dramatic philosophical shift in our nation's direction since the Franklin Delano Roosevelt landslide of 1932, which ushered in the New Deal era. History, and how the new leadership in Washington handles its opportunities, will determine that. But first, let us examine the results of the 1980 election and put these facts into perspective. Governor Reagan's election as the 40th President meant that Jimmy Carter was the first incumbent Democratic President defeated for reelection since Grover Cleveland lost to Benjamin Harrison in 1888, nearly a century ago. Another stunning occurrence was the election of 16 new Republican senators, giving the GOP control of the Senate next January for the first time in over a quarter of a century. The 1980 elections ended the longest one-party dominance of the U.S. Senate in our history. On the House side of Capitol Hill, Republicans gained a total of 33 seats, leaving the Democratic majority with their narrowest margin of control since 1956. Several prominent House leaders and committee chairman were defeated in the Republican landslide. But the greatest impact

from the 1980 elections is expected to be felt not at the White House or in the House of Representatives but right here in the United States Senate. The 12-seat net gain by the Republican party was the biggest turnover since the Democrats won 15 in the 1958 election. Another interesting comparison is that not since 1860 have the Democrats lost more seats in the Senate. Thirteen incumbent Senators were defeated this year, and coupled with five others who voluntarily retired, the freshman class of 18 means nearly one-fifth of our body will be newcomers. All 15 standing committees of the Senate, as well as select or special committees, will have Republican chairmen for the first time since 1954. Most of these new GOP chairmen are more conservative, more toward the mainstream of thinking in this country than some of those now commanding these important leadership positions. Our neighbor from the state of Tennessee, Senator Howard Baker, will probably be the new Majority Leader in charge of winning a consensus for the legislation and programs of the new administration. There will be some real challenges facing those of us returning in January for the 97th Congress. Serious problems confront our nation, at home and abroad, both economically and militarily.

The people of America have indicated through their vote at the polls that they want decisive, responsible leadership from the White House and Congress in addressing these problems. Inflation, unemployment, the readiness of our national defense, respect for America by friends and adversaries, the burden of government regulation, and waste and inefficiency in many federal programs - all these are issues the American people want handled in an effective manner. From the standpoint of our own state of Mississippi, I might note that our Congressional delegation returns intact, although there very likely will be changes in some of our committee assignments and other leadership positions. We will, I assure you, continue to work as a team in behalf of the best interests of our state as well as the larger national interest. I am convinced that given the proper leadership, the American people will respond favorably and overcome many of the difficulties which now confront the nation. Governor Reagan and the new Congress have been given a mandate to take positive and responsible action to achieve this goal. With sensible cooperation and the proper spirit, I believe we can make great progress in moving our country forward.

compete in foot races which were longer than a mile. This is still true in the Olympic Games. The rationale for this was that the longer distances would be physically harmful due to the fact that women were not "built" for strenuous activity. We now know differently, and the myopic view of the Olympic Committee is outdated. Women are successfully running marathon races (26 miles, 385 yards) as well as ultra-marathons (30, 40, 50, 52.5 and 100 mile races). In 1979 the New York marathon attracted more than 1100 women participants. This year's Boston marathon had more than 500 women who met the qualifying standards. The record for men in the marathon is 2:08:33, for women is 2:27:33. The men's record was established a few years ago. In contrast, the women's record is broken every year. Just how fast can women cover the distance? Will a woman ever win a major marathon? The next few years will be very interesting. There is already some opinion indicating that women are better equipped to run the ultra-marathons due to a more efficient cooling system and a greater supply of fat for energy. Once again, the next few years will be very revealing.

Gifts Needed

As the Christmas season draws near, miraculously there seems to come a change in men's hearts. A spirit of warmth, love, and good will toward fellow men prevails, and people react in a way that is not evident at any other time of the year. At the Mississippi State Hospital, volunteers and staff members work together to make this season happy and joyous for the patients. Through the Volunteer Services Department, citizens are given the opportunity to remember and share with friends through the "Every patient a gift project." On Christmas morning every patient receives a beautifully wrapped package, made possible through the kindness of people throughout the State. Almost any gift, especially those in plastic containers, is acceptable. Some suggestions are as follows: cigarettes, candy, cookies, hairbrushes, cosmetics (all kinds for both men and

women), scarves, lingerie, house slippers, raincoats, sweaters, and purses. Remember, the patients like pretty things, too. Please do not send used articles. Do not wrap gifts, as volunteers do this. We request that all packages be sent before December 15 so that they may be appropriately selected and wrapped before Christmas. Packages may be mailed to: Volunteer Services Dept. Mississippi State Hospital Post Office Box 75

Whitfield, MS 39193

CORN-CUCUMBER RELISH

1 cup cider vinegar
1/2 cup granulated sugar
2 teaspoons salt
1 teaspoon ground turmeric
1 teaspoon mustard seed
1 (10-ounce) package frozen cut corn or 4 ears fresh corn, husked-silk removed and kernels cut from ears
1 small cucumber, thinly sliced

3/4 cup sliced onion
1 (4-ounce) jar Dromedary diced pimientos, drained
In medium saucepan, bring vinegar, sugar, salt, turmeric and mustard seed to a boil. Add corn, cucumber and onion and bring to a second boil. Reduce heat; cover and simmer 10 minutes. Stir in pimientos. Makes about 1 quart.
Bad spots can sometimes be removed from pewter by rubbing them with grade 00 steelwool dipped in olive oil.

LIFE COMPANIES LIFE, HEALTH AND ACCIDENT COMPANIES HEALTH AND ACCIDENT COMPANIES Synopsis of the Annual Statement of

Citizens Insurance Company of America (Full Corporate Name)	
P. O. Box 1547, Austin, Texas 78767	State Zip Code
on the 31st day of December 1979 made to the Commissioner of Insurance of the State of Mississippi.	
ASSETS	
Bonds	\$ 8,399,087
Stocks	2,695,215
Mortgage Loans on Real Estate	2,561,864
Real Estate	-0-
Policy Loans and Notes	2,426,782
Cash and Bank Deposits	933,383
Uncollected and Deferred Premiums	1,000,532
Other Assets	437,440
TOTAL ASSETS	\$ 18,454,303
LIABILITIES, SURPLUS AND OTHER FUNDS	
Policy Reserves	\$ 14,471,014
Policy and Contracts Claims	167,695
Other Policy and Contracts Liabilities	822,229
Accrued Expenses and Taxes	53,509
All Other Liabilities	618,323
TOTAL LIABILITIES	\$ 16,132,770
Special Surplus Funds	\$ 8,037
Capital Paid-up	772,225
Unassigned Surplus	1,541,268
*Surplus as regards Policyholders	\$ 2,321,533
TOTAL (Line 31, Page 3)	\$ 18,454,303
TOTAL INCREASE IN LEDGER ASSETS (Line 15, Page 13)	\$ 5,822,195
TOTAL DECREASE IN LEDGER ASSETS (Line 38, Page 13)	\$ 4,910,800

PRESIDENT T. Raby Dollar
General Agent for Service-Insurance Commissioner of Mississippi
SECRETARY Dorothy W. McCall

I hereby certify that the above is a true and correct abstract of the statement of the above named company filed with the Department of Insurance of the State of Mississippi, showing the condition of said company on the 31st day of December 1979.

COMMISSIONER OF INSURANCE

*Includes Paid-In and Contributed Surplus



Management Training
Mr. Leon Ashmore, (left) Fred's Regional Manager is

proud to announce that Doug Green (right) has completed the Fred's Management

Training Program. Green is Assistant Manager in the Fred's in Iuka.

Completes Training

Doug Green, Assistant Manager at Fred's in Iuka, has completed the Fred's Management Training Program. The training program consists of three major seminars: course work, evaluations, plus on the job training. Major areas of study include: Store Operations, Management, and Merchandising. The training is conducted at Baddour, Inc. in Memphis. Baddour's is the wholesale supplier to the over 250 Fred's Discount Stores located in 11 states.

Doug entered the training program at the Fred's in Russellville, Alabama, as manager-trainee. In just 3 months he was promoted to associate manager in Corinth, Mississippi. But advancement continued and Doug made assistant manager in Iuka where he has been for about a year. The assistant's managers duties include all phases of store operations. The Fred's in Iuka has nearly 20,000 square feet and 20 employees.

Doug is originally from Russellville, Alabama. He graduated from high school in the spring of 1978 and entered the training program there.

Doug's wife, Charlotte, is also from Russellville, Alabama. They belong to the Weeks Street Church of Christ in Corinth. The Greens enjoy the out-of-doors,

especially bike riding. "We are really enjoying living in Iuka and helping the friendly people at our local Fred's," said Doug. Everyone is invited to come and congratulate Doug at Fred's. Fred's is opened Monday - Saturday, but closed on Sunday because that day is worth more than the dollar.

Iuka Lodge To Meet

December 6, 1980, will be the regular stated meeting of Iuka Lodge #94, and officers will be elected for 1981. The Lodge voted to raise dues (for a limited time of two or three years until the building fund is paid). Contact Secretary by mail or in person before this meeting.

Christmas Open House

Country Cottage Flowers will have Christmas Open House and their Grand Opening on Saturday, November 22, and Sunday afternoon, November 23, from 1:00-5:00 p.m.

Refreshments will be served, door prizes given away, and best of all Santa will be present to delight everyone.

Everyone is invited to go by Country Cottage Flowers and browse for Christmas gifts and ideas.

To place orders, call 423-9384 or 423-5062.

Notice

Anyone having missed the opportunity to sign the petition going around to have the location of the Post Office remain where it is may sign a copy at The Tishomingo County News Office. This does not mean "The Tishomingo County News is sponsoring this petition - only that some people who would like to sign and have not read the petition may have the equal opportunity to do so.

Preaching At Little Flock

Elder Joe Holder, of California, will preach at Little Flock Primitive Baptist Church the fourth Sunday morning in November. Elder Larry Wise will preach the Fifth Sunday morning in November.

The church is located four miles south of Burnsville just off Highway 365.

Visitors are welcome.

Singing At Mt. Gilead

Singing to be held Tuesday, November 25, beginning at 7 p.m. at Mt. Gilead Baptist Church.

Featured singers will be The Templeaires, from Burnsville; and The Laymen, from Iuka. All other singers are welcome.

Everyone has a cordial invitation to attend.

Area Deer Hunters Await November 22

Mississippi's first gun season on deer will open Saturday, Nov. 22, and extend through Dec. 1, in at least a portion of all the state's 82 counties. An estimated 200,000 hunters will enjoy the long-awaited season, according to the Mississippi Department of Wildlife Conservation.

During the first of the state's three gun seasons on deer, hunters may use dogs to run deer in most regions of the state but still hunting only is permitted in all or parts of some counties. The hunting season digest or the conservation officers should be consulted for this information, according to a Department spokesman. Other season dates are: Dec. 13-26 (no dogs); and Dec. 27 - Jan. 15 (with dogs in certain counties).

"There are restrictions about where hunters can and cannot run dogs in certain counties," commented law enforcement chief Philip Strong. "Hunters should check carefully about where to hunt and where to turn their dogs out."

Last year state deer hunters harvested approximately 90,000 white-tailed deer across Mississippi. Nearly eight percent of this total, or

6,504 deer were taken on the 28 public wildlife management areas. Figures by the Department indicate that the best season last year for deer hunters was the December - January period.

"The success last year was very good, and if weather conditions permit, hunting should be even better this year, in view of our expanding deer herd," wildlife coordinator Edsel Chiburn explained. Biologists estimate the state's deer herd now at just over 600,000 animals.

The bag limit on deer is one adult buck per day with no season limit. The MDWC defines a legal adult buck as one with visible antlers, of hardened, boney material having, broken naturally through the skin.

Deer hunters are reminded that they must wear in full view a hunter orange hat, cap or vest during any open gun season on deer. In addition, agency law enforcement officials are reminding hunters it is unlawful to trespass on the posted lands of others without written permission of the landowners.

Shooting hours for deer hunting are one-half hour before sunrise until one-half hour after sunset.

Quail Hunting Begins Nov. 27

Thursday, Nov. 27 may be Thanksgiving Day for thousands of Mississippians, but it will be quail day for many state hunters. The bobwhite season opens then

Singing At Palestine

The regular monthly singing at Palestine Community Church will be Saturday night, November 22, beginning at 7 p.m.

The featured singers will be The Stafford Gospel Singers, from Memphis, Tenn.; and The Singing Marlar Family, from Burnsville.

Bro. J.H. Mock and the congregation invite everyone to attend.



Every 1,000 parts sea water contain 35 parts salt.

JACKPOT Now Holds

\$200⁰⁰

No Winner Last Week

MARTHA WHITE

FLOUR

5 LB. BAG

LIMIT ONE

79¢



Sunflower
FOOD STORES

Highway 25 North
Iuka, Mississippi

\$1,054.29 above the August figure of \$44,366.00.

A breakdown of figures for September and corresponding figures for August, according to data released in the monthly issues of Mississippi Municipalities, are: Belmont - September, \$8,707.58, August, \$10,126.29; Burnsville - September, \$3,684.98, August, \$3,729.36; Golden - September, \$3,022.44, August, \$630.50; Iuka - September, \$27,012.02, August, \$27,271.38; Paden - September, \$55.84, August, \$60.17; Tishomingo - September, \$2,937.43, August - \$2,548.30.

LEGAL

Notice of Submission of Community Development Block Grant Preapplication

Tishomingo County has submitted a Small Cities Community Development Block Grant Preapplication to the U.S. Department of Housing and Urban Development in Jackson. Copies of

the preapplication are available for review during business hours. Persons wishing to make their comments known to the County should submit them to the County Clerk's Office. The County Clerk's Office is located in the County Administration Building, Room 200. The deadline for submission of comments is November 20, 1980. (A) The County Clerk's Office is located in the County Administration Building, Room 200. (B) The County Clerk's Office is located in the County Administration Building, Room 200. (C) The County Clerk's Office is located in the County Administration Building, Room 200. (D) The County Clerk's Office is located in the County Administration Building, Room 200.

County Sales Tax Up

An increase in county sales tax was seen in September, 1980, over August, 1980, with municipalities taking in a total of \$45,420.29, in sales tax collections for the month of September. This figure is

To The People of Tishomingo County

Dear Friends:

I greatly appreciate the support I received in the recent election. I especially wish to thank those who worked so hard to bring this victory about. You have been mighty good to me and I have always tried to represent your best interests.

Working together, we have made tremendous progress and have seen great development throughout the County. I hope to continue this.

In the new Congress, we will face many problems. Because of your support, I hold a key position in the House of Representatives, where appropriations and projects originate, from which to work toward solving these problems.

If I can ever be of service, I hope you will call on me.

Sincerely your friend,

Jamie Whitten
Jamie L. Whitten, M.C.

COLEMAN'S BAR-B-Q
"South's Finest & South's Largest"
Highway 25 & 72 West Intersections
Business Hours: 6:00 a.m. until 10:00 p.m.
FRIDAY AND SATURDAY: 6:00 a.m. - 12:00 p.m.

THANKSGIVING SPECIAL

DELICIOUS HOMEMADE

Chili 12 oz. Bowl W/Crackers **\$1.19**

FREE 1 LB. COUNTRY Ham & Bits
FOR HOME USE SEASONING
WITH EACH 6 PACK BAR-B-Q **\$5.95**

OLE FRANKS SLICED COUNTRY

Bacon 50¢ off EACH PA

FREE Fried Pie
PEACH OR APPLE
WITH "RIBS" OR BAR-B-Q PLATE

Bar-B-Q
Meat BY THE LB. **LB. \$3.89**

FULLY COOKED

Whole
Shoulder **\$22.75**

DRIVE THRU SPECIAL
Only - Tues, Wed, & Thurs

FULL COOKED MEAL

Fried Chicken Snack Lunch or **\$1.89**
Country Fried Steak Lunch

With Hot Cream Potatoes, Cut Green Beans, Meat & Corn Bread

WEDNESDAY, NOV. 26TH, THANKSGIVING EVE. WE WILL CLOSE AT 10:00 P.M.
CLOSED THANKSGIVING DAY

Jeans 'N Tops

Featuring Men & Women's Wear
Located on Hwy. 25 North
Next to Sunflower in Iuka

SALE
Sale Nov. 17-29

Flannel Shirts 1 or 2 POCKET **2/\$11.00**

Body Binds REG. \$14.00 **\$9.98**

Painter Pants REG. \$12.95 **\$9.98**

Rumble Seats LADIES REG. \$19.95 **\$14.98**

Velour Tops REG. \$14.95 **\$12.98**

Men & Women Boots

Cowboy **\$34.98**

Work Boot **\$24.98**

Oxford Blouses **\$12.95**

Wranglers **\$14.95 to \$15.95**

Pre-Washed Levis **\$19.98**

Western Denim Shirts **\$12.95 to \$14.00**

Ladies Straights & Super Straights

\$24.98

Mix & Match Mens Denim Suits

COME ON OUT AND SEE OUR CHRISTMAS LINE UP.

USE OUR LAYAWAY.

STOP

READ-CUT OUT-SAVE

When You Have APPLIANCE Problems

CALL:

Peak View Enterprises
423-3736

24 Hour Emergency Service At No Extra Charge

SAVE **25%** ON

Labor only with this coupon



Middle School Honor Roll

Mr. Bobby Bigham, Principal, Iuka Middle School, Iuka, Miss., announces the honor roll for the second six weeks grading period.

7th Grade

All A's: Rodney Robinson, Christy Tice, William Brown, Noel Hunt, Amanda Davis, Todd Davis, Tracy Milligan, and Carol Reynolds.

A's and B's: Yolonda Brumley, Shelaine James, Yvette James, Patrice Johnson, Frankie Rice, Mary Sims, Andrea Young, Donna Holland, Carol Akers, Rebecca Carson, Kirk Dill, Jennifer Davis, Robin Gann, Tamara Grisham, Chris Prather, Alison Shackelford, Jamie Whitt.

8th Grade

All A's: Jimmy Bradley, Glenn Brown, Tracy Marsh, Michelle Nunley, Trina Strom, Matthew Walker, Tommy Dean, Dionne Rone, Steven Walker.

A's and B's: James Butler, Anissa Lambert, Tracy May, Ronnie Ledbetter, Patricia Davis, Terri Lambert, Karen Jones, Gail Hathcoat, Jan Jones, Billy Ludlam, Chuck

Holly, Paulette Amerson, Tina Barnett, Jonathan Carpenter, Craig Carson, Ginger Ham, Glenn Hodge, Jeff Lyles, Jim Meade, James Puckett, Michelle Robinson, Todd Ryan, Sharon Sanders, Mitchell Wright, Billy Stenson, James Brewer, Henry Brown, Loretta Bivins, Davis Robertson, Anna White.

Bulldog Growls

Hi! It's getting closer to the holidays and everyone is getting the Holiday Spirit, especially since we are planning on getting out of school at noon Wednesday.

The seniors have had several guidance counselors to come and visit. Last week the ones from NEMJC and Ole Miss came. We also planned to have our group picture made last Friday, but it had to be rescheduled because of rain.

THS is proud of their Dogs and "Bulldogettes". The Bulldog football team won over Smithville in the last game of the season. Also, the girl's basketball team won over Iuka girls in a pre-season game. We're planning on having a great basketball

Couple of the Week: Angie Flurry and Tracy Holman.

"Celebration" by Kool and the Gang.

Movie of the Week: "Private Eyes" starring Don Knotts.

Song of the Week:

NEW NAME - NEW OWNER
The Chuck Wagon Restaurant is now

Betty's Kitchen

New owners: Roy, Betty and Lisa James
New Hours: 5 a.m. till 7 p.m. Monday thru Thurs.
Friday & Saturday 5 a.m. to 11 p.m., Closed Sunday

We invite you to come out and eat with us.

We now have Salad Bar, Homemade Pies, All Beef Burgers, Roast Beef, Delicious Smoked Ham & Cheese Submarine Sandwiches. Rib eye Steak Sandwiches.

Plate lunches Monday, Tuesday, Wednesday, & Friday
Pond raised catfish, shrimp and other dinners. New Pizza Burger Sandwich.

You may eat inside are all orders may be prepared to go

Highway 25 North - Iuka

Employer Of The

the Cooperative Department of High School spotlights Mrs. Milt Burton, Circus Burgers, and their employee, Sylvia from Iuka High School the Cooperative Program. Milt and Mrs. Burton are the owners of Circus Burgers Carpets Unlimited. They operated Circus Burgers about seven years and Sylvia has been with them about five and a half years. They com-

mutated from their home in Corinth in the earlier years before moving to Iuka. Mr. Burton was born in Greenville, S.C., and Mrs. Burton was born in Houston, Texas. They are the parents of fourteen year old Stephen Young, who is in the eighth grade. They attend Iuka Methodist Church. Sylvia is the seventeen year old daughter of Mr. and Mrs. Harry Cagle, of Route 3. She is a senior at Iuka High School and is a member of Iuka Church of Christ. She is an Iuka High School Cooperative student and is a member of the Distributive Education Clubs

Leigh Ann Winters, Jo Ellen Wynn.

Honor Roll

Mr. McKinney, Principal, Iuka High School, announces the honor roll for the 2nd six weeks as follows:

9th Grade
A's: Carol Humber, Meade.

B's: Sonya Blythe, Carson, Keith Carson, Coker, Luther Davis, Drinnen, Kathy Gist, Hapner, Kathy Jones, Lee, George Marsh, Comment, Kathy Poindexter, Cindy Quillen, Michelle Taylor, Missy Taylor, Larry Sherri Weekley.

10th Grade
A's: Carl Brown, Fred Kelle, Kelly Gist, Felicia Debra Scruggs, D.D. Walker, Sarah Walker.

B's: Leith Arnold, Askev, Kevin Cagle, Degraw, Dana Dexter, Holt, Lexie Lawson, Lovett, Brenda Mcnally, Mellonie Murrah, Rice, Leith Ann Simons, Shawn Sims, David Simons, Tommy Wilemon, Williams, Barbara Wilemon.

11th Grade
A's: Tammy Clark, Lee Kay, Ladye Long, Katie Long.

B's: Ruth Beard, Bivins, Toni Cliff, Teresa Long, Melody Floyd, Tammy Long, Sarah Hodge, Angie Jones, Rhonda Long, Debra Kay, Dwayne Long, Kim Lilley, Darryl Long, Kerry Meredith, Clay Long, Tina Taylor, Randy Long.

12th Grade
A's: Pam Aldridge, Anna Bean, Malcolm Long, Joy Burleson, Pam Long, Lorrie Dean, Pam Long, Sandy Mitchell, Anna Stovall.

B's: Melissa Allred, Betty Barnett, Julia Buse, Bryant, Sylvia Cagle, Carpenter, Kristy Carson, Coker, Allison Crane, Dexter, Sharon Hathaway, Tammie Jourdan, Denney, Kevin Monroe, Moore, Pam page, Phillips, Deborah Putnam, Carolyn Ray, Dennice Ray, Tammy Scruggs, Strachan, Kenneth Strachan, Donnie Wilkins.



Hi, Everybody:

Here I am again with more smoke signals from Iuka Middle School.

Last Tuesday, November 11, the Iuka Middle School had their beauty revue. Susan Bagley, an eighth grader, was crowned most beautiful for the 1980-81 year. First alternate was Robin Gann; second alternate, Tamara Grisham; third alternate, Mary Wigginton; and fourth alternate, Amy Jones. Chuck Holly, an eighth grader, was crowned most handsome. First alternate was Craig Carson; second alternate, Tommy Pruitt; third alternate, Keith Carson; and fourth alternate, Tommy Dean.

Thursday, November 20, the eighth grade is going on a field trip to Florence, Ala. to see the movie "Huckleberry Finn". We are all looking forward to a great time.

This week I interviewed one of our new teachers. Her name is Mrs. Nancy Brown, our seventh grade math teacher. She is married to Donnie H. Brown, of Iuka. They have two children, Amy, age 8, and Rebecca, age 5. They moved to Iuka this fall from Oxford, MS where she taught school. She is from Morton, MS, and attended college before she married at Mississippi State. After she married, she attended college at University of Mississippi and graduated there. We are glad to have Mrs. Brown on our faculty.

Snooper

Robin G. - Look at him.
Karen J. - You've got him hypnotized.
Tracy M. - Doctor's son.
Tracy Milligan - I ought to kill you.

VALUABLE COUPON

Madame Christina
Spiritual Reader and Advisor

She will tell you your past, present and future. Help you in all the problems you have, and tell you whatever is in your mind. Can call your friends and your enemies by their names. She will tell you all about your life and will read you like an open book. Let her help you on all your domestic problems.

Box 701, Rockford, Ill. 61105
Complete Reading
With Coupon\$5.00



Box 701, Rockford, Ill. 61105

Complete Reading

With Coupon\$5.00

Box 701, Rockford, Ill. 61105

Complete Reading

With Coupon\$5.00

Box 701, Rockford, Ill. 61105

Complete Reading

With Coupon\$5.00

Box 701, Rockford, Ill. 61105

Complete Reading

With Coupon\$5.00

Box 701, Rockford, Ill. 61105

Complete Reading

With Coupon\$5.00

Box 701, Rockford, Ill. 61105

Complete Reading

With Coupon\$5.00

Box 701, Rockford, Ill. 61105

Complete Reading

With Coupon\$5.00

Box 701, Rockford, Ill. 61105

Complete Reading

With Coupon\$5.00

Box 701, Rockford, Ill. 61105

Complete Reading

With Coupon\$5.00

Box 701, Rockford, Ill. 61105

Complete Reading

With Coupon\$5.00

Box 701, Rockford, Ill. 61105

Complete Reading

With Coupon\$5.00

Box 701, Rockford, Ill. 61105

Complete Reading

With Coupon\$5.00

Box 701, Rockford, Ill. 61105

Complete Reading

With Coupon\$5.00

Box 701, Rockford, Ill. 61105

Complete Reading

With Coupon\$5.00

Box 701, Rockford, Ill. 61105

Complete Reading

With Coupon\$5.00

Box 701, Rockford, Ill. 61105

Complete Reading

With Coupon\$5.00

Box 701, Rockford, Ill. 61105

Complete Reading

With Coupon\$5.00

Box 701, Rockford, Ill. 61105

Complete Reading

With Coupon\$5.00

Box 701, Rockford, Ill. 61105

Complete Reading

With Coupon\$5.00

Box 701, Rockford, Ill. 61105

Complete Reading

With Coupon\$5.00

Box 701, Rockford, Ill. 61105

Complete Reading

With Coupon\$5.00

Box 701, Rockford, Ill. 61105

Complete Reading

With Coupon\$5.00

Box 701, Rockford, Ill. 61105

Complete Reading

With Coupon\$5.00

Box 701, Rockford, Ill. 61105

Complete Reading

With Coupon\$5.00

Box 701, Rockford, Ill. 61105

Complete Reading

With Coupon\$5.00

Box 701, Rockford, Ill. 61105

Complete Reading

With Coupon\$5.00

Box 701, Rockford, Ill. 61105

Complete Reading

With Coupon\$5.00

Box 701, Rockford, Ill. 61105

Complete Reading

With Coupon\$5.00

Box 701, Rockford, Ill. 61105

Complete Reading

With Coupon\$5.00

Box 701, Rockford, Ill. 61105

Complete Reading

With Coupon\$5.00

Box 701, Rockford, Ill. 61105

Complete Reading

With Coupon\$5.00

Box 701, Rockford, Ill. 61105

Complete Reading

With Coupon\$5.00

Box 701, Rockford, Ill. 61105

Complete Reading

With Coupon\$5.00

Box 701, Rockford, Ill. 61105

Complete Reading

With Coupon\$5.00

Box 701, Rockford, Ill. 61105

Complete Reading

With Coupon\$5.00

Box 701, Rockford, Ill. 61105

Complete Reading

With Coupon\$5.00

Box 701, Rockford, Ill. 61105

Complete Reading

With Coupon\$5.00

Box 701, Rockford, Ill. 61105

Complete Reading

With Coupon\$5.00

Box 701, Rockford, Ill. 61105

Complete Reading

With Coupon\$5.00

Box 701, Rockford, Ill. 61105

Complete Reading

With Coupon\$5.00

Box 701, Rockford, Ill. 61105

Complete Reading

With Coupon\$5.00

Box 701, Rockford, Ill. 61105

Complete Reading

With Coupon\$5.00

Box 701, Rockford, Ill. 61105

Complete Reading

With Coupon\$5.00

Box 701, Rockford, Ill. 61105

Complete Reading

With Coupon\$5.00

Box 701, Rockford, Ill. 61105

Complete Reading

With Coupon\$5.00

Box 701, Rockford, Ill. 61105

Complete Reading

With Coupon\$5.00

Box 701, Rockford, Ill. 61105

Complete Reading

With Coupon\$5.00

Box 701, Rockford, Ill. 61105

Complete Reading

With Coupon\$5.00

Box 701, Rockford, Ill. 61105

Complete Reading

With Coupon\$5.00

Box 701, Rockford, Ill. 61105

Complete Reading

With Coupon\$5.00

Box 701, Rockford, Ill. 61105

Complete Reading

With Coupon\$5.00

Box 701, Rockford, Ill. 61105

Complete Reading

With Coupon\$5.00

Box 701, Rockford, Ill. 61105

Complete Reading

With Coupon\$5.00

Box 701, Rockford, Ill. 61105

Complete Reading

With Coupon\$5.00

Box 701, Rockford, Ill. 61105

Complete Reading

With Coupon\$5.00

Box 701, Rockford, Ill. 61105

Complete Reading

With Coupon\$5.00

Box 701, Rockford, Ill. 61105

Complete Reading

With Coupon\$5.00

Box 701, Rockford, Ill. 61105

Complete Reading

With Coupon\$5.00

Box 701, Rockford, Ill. 61105

Complete Reading

With Coupon\$5.00

Box 701, Rockford, Ill. 61105

Complete Reading

With Coupon\$5.00

Box 701, Rockford, Ill. 61105

Complete Reading



Local Floral Designers Attend School

Seventeen designers from Mississippi, Tennessee, Alabama and Arkansas attended the Frankie Shelton Advanced Design School October 31, thru November 3, at the Ramada Inn in Tupelo.

Ms. The instructors, Mrs. Frankie Shelton, A.A.F., A.I.F.C., P.F.C.H., owners and operators of the Shelton School of Floral Design in Houston, Texas, since 1967. Mr. Ralph Null, Instructor at Mississippi State University, illustrated correct ways of

design as well as exotic and oriental, also funeral arrangements, wedding and holiday designs were learned. Pictured, left to right: Mrs. Waurene Helfin, of Fulton Florist, Fulton, Ms., Mrs. Terri Booker, Country Cottage

Flowers, Iuka, Mrs. Geneva Walker, also of Country Cottage Flowers, Mrs. Frankie Shelton, instructor, Mrs. Bonnie Montgomery, Montgomery Florist, Belmont. Back row: Mr. Ralph Null, instructor, Mr. Milford Browder, of Browder's Florist, Corinth.

Royal N. Gober Named Director

Royal N. Gober, a Tishomingo County native, has been named Director of the Mississippi Employment Security Commission's Employment Service Division, according to MESC Executive Director O.H. Simmons. The Employment Service (Job Service), which has approximately 1,150 employees statewide, provides job placement services through 39 Center and Placement offices and 54 Rural Employment and Training sites across the state.

Gober is the son of Mrs. Rachael Floyd Gober, of Florence, Ala., and the late George Newton Gober, of Iuka, a one-time state representative and county supervisor. Gober has one brother and one sister who live in the Iuka area - Claudius

Gober and Mrs. Jewel Bullard. He is married to the former Judy Carroll of Shiloh, Tennessee, and the couple has two children and five grandchildren.

Gober is a graduate of Iuka High School and Mississippi State University. He served with the Army's 42nd Infantry "Rainbow" Division in Europe during World War II, earning a Bronze Star for service beyond the call of duty.

He began his career with the MESC in 1946 as an Employment Interviewer in the Corinth office. Since then, Gober has served as Veterans Employment Representative, Field Representative, Assistant Farm Placement Representative, Manager of Job Service offices in Brookhaven and Grenada, and is active in the Exchange Club.



ROYAL N. GOBER

SHOP TISHOMINGO TO QUALIFY FOR PRIZES WORTH OVER \$1,000.00

Beginning November 15th, Merchants in Tishomingo will begin issuing tickets to their customers to be used in drawings beginning November 29th, with consecutive Saturday drawings on December 6th, 13th, and 20th. The time for all drawings will be 4:00 p.m. near the Tishomingo City Hall.

Prizes for the first four drawings include:
A \$100.00 Savings Bond
A \$25.00 Gift Certificate from Win-Way Discount Center
A Weekend's lodging at any State Park in Mississippi (Prior to May 31, 1981)

A special drawing will be held on Christmas Eve.

Prizes for this drawing include:
a \$200.00 Savings Bond
A \$25.00 Gift Certificate from Win-Way Discount Center
A Kelvinator Microwave Oven from J. A. Tucker Furniture Co.

To be eligible to win, you must be present to win and at least 15 years of age.

All ticket stubs will be destroyed after each drawing, which will give participants a better chance to win.

Participating Merchants Include:

J.W. Belue's Grocery - Paden
Brenda's Beauty & Shoe Shop - Tishomingo
City Auto Parts - Tishomingo
Ray Denson Refrigeration - Tishomingo
Wall's Dixie Gas Station - Hwy. 25 N.
Fairless Hardware - Tishomingo
First Bank - Tishomingo
Gatlin's Pharmacy - Tishomingo
Gray's Gulf - Tishomingo
Helen's Fabric Shop - Tishomingo
Harber's Used Cars - Tishomingo
Hopkin's Standard Station - Tishomingo
Kathy's Korner - Hwy. 25 S. Tishomingo
Kream Kastle - Tishomingo
McRae's Grocery - Tishomingo
Wigginton's Pioneer Gas Station - Hwy. 25 S.

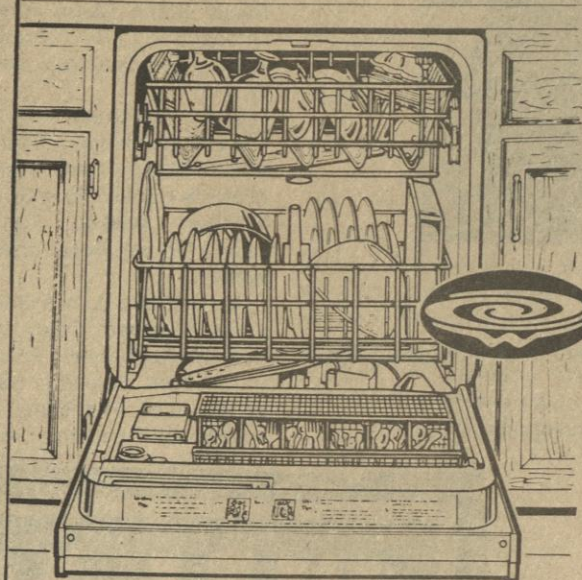
Reno's Grocery - Hwy. 30 East
Sunflower Grocery - Tishomingo
Tishomingo Grain Co. - Tishomingo
Tishomingo Laundry - Tishomingo
Tishomingo Tire Store - Hwy. 25 South
Trimm Auto Parts - Tishomingo
J.A. Tucker Furniture Co. - Tishomingo
Win-Way Discount Center - Tishomingo

Other Sponsors Include:
Tishomingo Car Wash - Tishomingo
Mid-South Telephone Co. - Tishomingo
Deaton Funeral Home - Tishomingo
Mayor Carlos Ingram
Tishomingo State Park

SPONSORED BY THE TISHOMINGO CHAMBER OF COMMERCE

What's a Great Christmas Gift for the Whole Family?

Whirlpool Undercounter Dishwasher



4 AUTOMATIC CYCLES

HITEMP WASHING OPTION

ENERGY-SAVING AIR DRY OPTION

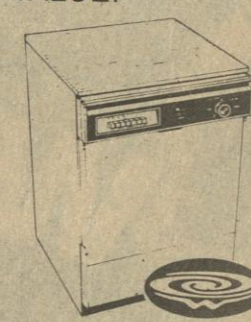
SPECIAL POTS & PANS CYCLE

Here's an outstanding dishwasher value that's right in and take command of messy clean-up.

- 9 cycles/options including 4 automatic cycles: NORMAL HEAVY, NORMAL LIGHT, POTS & PANS, and RINSE-HOLD
- The special POTS & PANS cycle makes short work of tall orders like baked-on grease
- HiTemp Washing option heats the water to 140° if your central water heater is drained
- Exclusive In-The-Door Silverware Basket creates interior loading space
- Plus Much, Much More!

SAVE \$70

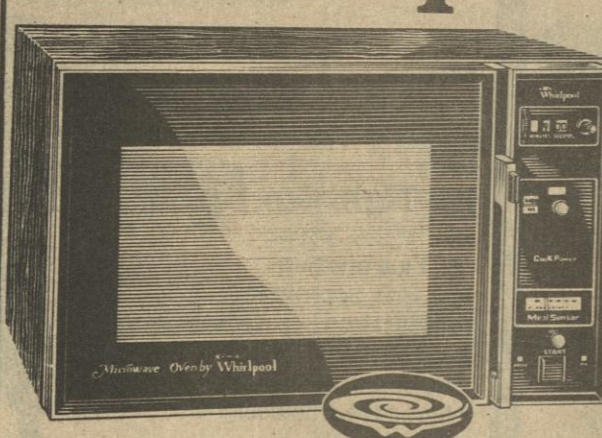
DON'T OVERLOOK THIS WHIRLPOOL CONVERTIBLE/PORTABLE DISHWASHER VALUE!



SAVE \$70

- 9 cycles/options including 4 automatic cycles: NORMAL HEAVY, NORMAL LIGHT, POTS & PANS, RINSE-HOLD
- Energy-Saving Air Dry option
- HiTemp Washing option
- Exclusive In-The-Door Silverware Basket
- Plus Much, Much More!

Whirlpool



Model RJM7500

- Digital MEALTIMER* control provides up to 60 minutes of continuous cooking or defrosting time
- COOK POWER variable power control
- MEAL SENSOR* temperature probe
- Separate defrost setting
- Balanced Wave Cooking System
- Sealed-in ceramic shelf
- Convenient defrost guide
- Panoramic see-through oven door
- End-of-cooking signal
- 1.3 cu. ft. oven capacity, 14% larger than previous Whirlpool microwave ovens
- MICRO MENUS* cookbook
- Free cooking school available
- Whirlpool microwave ovens offer many installation options; ask for details

SAVE \$70

Whirlpool

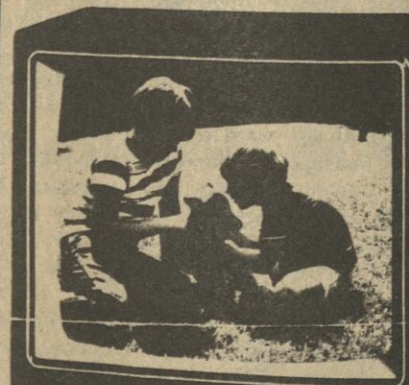


SAVE \$70

Free-standing TRASH MASHER* Compactor Model SHC 8500

- Compacts a whole week's worth of normal household trash for an average family of four - enough to fill three or four 20-gallon cans - into a single portable bag.
- Touch-toe drawer opener provides convenient, "no-hands" disposal of trash.
- Start/stop switch key and restart light for "fail-safe" operation.
- Air freshener control for your favorite solid air freshener helps eliminate any trash odor... features sliding panel to regulate freshener action.
- Drop-down side on drawer permits easy, convenient slid-out removal of

- loaded bag.
- Lever-action lock helps assure positive latching of drawer's drop-down side.
- Bag storage compartment provides handy, hidden storage for a full supply of compactor bags.
- Includes four tough, disposable 3-ply bags that are designed to take punishment.
- Convenient bag caddy helps make bag removal a breeze, carrying easy.
- Luxury 6-color panel-pack enables you to coordinate compactor color with your kitchen decor.
- Permanent Use & Care label provides reference to all important operating instructions.
- Leveling legs increase stability, help compensate for uneven floors.
- Sound insulated.
- Rich vinyl wood-look worktop.



Model FER440 Value priced and value packed... all standard Roommate features, plus 100% solid state UHF tuners with lighted channel indicators, auto fine tuning, and a 5" oval speaker. Average consumption is only 69 watts. Antennas included. Handsome cabinet features a walnut-grain durable plastic. H-17 1/2", W-25 1/2", D-19 1/2".

FREE

Come by Gann Brothers and for a 19" RCA Color Television Mattress and Foundation to be away Tuesday, Dec. 23rd.

Gann Brothers Furniture & Appliance

"The business that quality & service has built"

Hwy. 72 West

Burnsville, MS

427-9506