

# Tishomingo County News

\$6.00 Per Year Locally  
In Advance

\$8.00 Per Year Outside  
Trade Area

## The Vidette & Belmont News

OFFICIAL LEGAL NEWSPAPERS OF TISHOMINGO COUNTY  
The One Newspaper In The World Most Interested In This Area

Patronize The News  
Advertisers!  
They Send A Valuable  
Message To You Each  
Week

NINETY-SEVENTH YEAR

IUKA, TISHOMINGO COUNTY, MISSISSIPPI

Thursday, January 1, 1981 No. 28

# HAPPY NEW YEAR

## A Glimpse Of 1980 In The New's Headlines

When dawn comes on Thursday, January 1, the year 1980 will be history. The New Year of 1981 will be watched out before us in three hundred sixty-five packages of twenty-four hours each. How we use these hours is up to the individual, and while we consider our resolutions for the future, a glance at '80 as recorded in the issues of the Tishomingo County News seems appropriate.

### January

Little Leah Kathryn Bates, seven month old daughter of Mr. and Mrs. James Bates wished everyone a Happy New Year by permitting her picture to appear on the front page of the first Tishomingo County News newspaper for the New Year.

Ted Day, Manager of First Bank in Tishomingo, was promoted to vice president.

The body of James C. Butler, of Huntington, Tn., was found in Indian Creek. Mr. Butler, George Alfred and Gary Walker, all of Iuka, were arrested on the charges of murder, car theft and robbery in connection with the incident.

New county officers were sworn into their office in a ceremony on January 7, 1980.

Rev. Guy Culver was called Director of Associational Missions for the Tishomingo/Alcorn Baptist Association.

The U.S. Postal Service had awarded a contract to build and lease a new main post office at Burnsville.

Tommy Purvis accepted the position of 4-H Youth Agent for Tishomingo County.

Fred's Discount Store of Iuka celebrated their move to a new and larger location with a Grand Opening.

Two county brothers were held on charges of aggravated assault and murder resulting in the death of an Alabama man and injury of another.

Seven county seniors were signed by NEMJC to play football for the 1980-81 season.

A 9,100 square foot training facility was under construction at Yellow Creek Nuclear Plant.

Australian Exchange Student makes home with Iuka families.

The FHA apartments for the elderly, located behind the Iuka Post Office, were nearing completion with expected occupancy to be February 1.

State Line Marina fire left bathhouses and boats destroyed at Greenwater Marina.

### February

Worst Ice Storm Since 1951 Cripples Area. \$100,000 figure given for power line damage.

Nancy Grisham and Paul Blackman named as Chief and Miss Iuka High School.

Fire damages Burnsville gym and halts the Burnsville/Alcorn Central game.

John T. Castleberry, Jr. promoted at Iuka Guaranty Bank.

Sheriff Apprehends Man After Five Month Search. Danny Joe Clingan was apprehended after search.

City of Iuka Adopts Parade and Roadblock Ordinance.

Billy Credille appointed new postmaster at

### Tishomingo:

Iuka's Mayor and Board of Aldermen announced a price hike for garbage service in order to purchase new garbage truck.

State Officials to Visit County during Northeast Focus 80 Event.

Two Iuka High School students signed athletic scholarships with NEMJC.

### March

The first weekend in March brought a generous sprinkling of ice and dusting of snow.

Yellow Creek Nuclear Plant announced plans to begin new phase of construction.

South Central Bell Asks for Rate Hike In State.

United Methodist Proclaim the World Evangelism Event on March 23 through March 27.

Public Meeting To Discuss Proposed Zoning For City of Iuka was held on March 25.

Rain-slick Coleman Park Road scene of an accident involving a rock truck and tank truck.

Fire crash on U.S. 72 claimed the lives of Ed Gregory, Jr. and Karrey M. Parrish.

Iuka citizens strongly voiced opposition on a proposed zoning ordinance for the city.

### April

Aldermen to let citizens decide on Iuka zoning.

National Library Week was observed in the county.

Construction began on the new Tishomingo County Hospital Emergency Room.

Coleman Barbeque of Iuka opened for business.

### May

Iuka and County Schools

plan graduation exercises for 1980 seniors.

Moore's Jewelry Store was hit with double robberies.

Construction began on the new Medical Arts Building at Tishomingo County Hospital.

Construction began at the site of the new nursing home in Iuka.

Joy Jones, former Iuka youth, was killed in a one-vehicle crash.

Miss Sabrina Dean served as a page in the Mississippi State Senate.

Mrs. Mildred Ramsey Earns ART Certification Title.

Mrs. Katie Mae Ramsey Grisham retired after 34 years of teaching in the Iuka area.

### June

Seven Iuka Businesses Hit By Shoplifting Escapade.

Light Turnout In Tuesday's Election.

Audie Osborn and Hurbert R. Robinson were named Star Student and Star Teacher at the Burnsville High School.

Mrs. Trimm retired after 42 years of teaching in the Tishomingo County Schools.

Rebecca Lynn Tigner was killed and five others injured in a one-vehicle crash at the State Line.

TVA Plant at Yellow Creek received a shipment of Nuclear hardware weighing 2,283 pounds by barge from Chattanooga.

### July

Tammy Clark, 15 year old daughter of Mr. and Mrs. Stanton Clark, won the Drum Major Try-Outs at the close of the Heart of Dixie Half-time Camp.

Because of the heat wave, Mississippians were suffering. Electric customers were urged to curtail use of power.

Registration began on Monday, July 21, for the Selective Service.

### August

The lives of three county residents were claimed. Three year old Dennis Wayne Lambert, Mrs. Mamie Louise Forrester and Lloyd Earl Walker.

The Iuka Dixie Youth League All Stars won the District Championship at Iuka.

The 28th Annual County Fair opened in Iuka.

### September

President Carter opened campaign in Tusculum. Iuka Marching Band performs in Presidential Parade.

Iuka Board passes Zoning Ordinance 4-1.

School enrollment was slightly down in the county.

### October

Floating technique used to move vessel at Yellow Creek.

High Schools prepare for Homecomings.

### November

Reagan-Bush Chosen To Lead Nation.

Iuka Board To Take Bids on Renovation For New City Hall.

Miss Starla Phillips Named Iuka High School Most Beautiful For 1980.

Mark Turbeville, 16-year-old sophomore, accidentally killed.

### December

Pickwick Manor Nursing Home To Open December 8.

Master Builders of Corinth Awarded Contract By Iuka Aldermen For Renovation Work.

Arson fires destroy barns, hay and vacant houses.

Air ambulance to assist Tishomingo County.

Mrs. Mary Bostick, 105 year old Tishomingo County citizen, dies.

## New Years Eve Services

### New Salem Baptist

The New Salem Baptist Church will celebrate the New Years Holiday with a special New Years Eve service on Wednesday evening, December 31, beginning at 7 p.m. The Pastor, Joe Moyers, and the congregation invite you to attend.

### Hubbard Salem

The Hubbard Salem Church invites you to attend their New Years Eve service beginning at 6:30 p.m. on Wednesday, December 31.

### Iuka Baptist

The Iuka Baptist Church will host a Youth Watchnight on Wednesday evening beginning at 10 p.m. with a time of recreation. A meal will be served followed by a Christian film. The worship service is scheduled to begin at 11:45 p.m.

## Bid Of Iuka Dentist Accepted In Sale Of Old Iuka City Hall

In a special December 26 meeting of the Iuka Mayor, George W. Cutshall, and Board of Aldermen, sealed bids for the sale of the old City Hall were opened. The highest bidder for the Municipal property was Dr. H. Paul Kellum, an Iuka Dentist.

The bid from Dr. Kellum was the highest of the four bids received and was accepted by the Mayor and Board of Aldermen, a spokesman for City Hall said.

Master Builders of Corinth, owned by Iuka native, Paul Bonds, has begun renovation of the old Paul Edmondson Grocery, purchased by the City in November, which will house the new City Hall. Work on the building, located between the First American Bank and Southern Railway tracks, is expected to reach completion in the spring. The

plans call for the structure of 6,336 square feet to house the City Government Offices, the Iuka Police and Fire Department, and will contain an 81-seat auditorium, having a raised stage area to be used for board and town meetings.

The Board agreed to vacate the old City Hall as soon as the new City Hall is complete. Revenue received from the sale of the old City Hall will be applied to the cost of renovating the future City Hall, the spokesman said.

Dr. Kellum told The Tishomingo County News

that he will coordinate moving his practice with the move of City Government to their new location. His offices, he says, will occupy the part of the building now occupied by the City Offices, and he plans to renovate the portion now used by the Iuka Fire Department for additional office space.

Dr. Kellum, an Arkansas native, was educated in Memphis, Tennessee. He expresses a positive attitude toward Iuka's future and says he is happy with his practice here.

## Dennis Woman Killed In Car-Pedestrian Accident

A one car accident claimed the life of a Dennis woman last Saturday evening as she was crossing Highway 25 North of Tishomingo, according to Mississippi Highway Patrolman Bill Bingham.

Mrs. Ona Carrithers, 75, of Dennis was killed about 6 p.m. Saturday between the Midway Community and Tishomingo. No charges have been filed against the driver of the car, William T. Hooper, 41, of Tishomingo, Patrolman Bingham said.

Services were at 2 p.m. Monday at Deaton Funeral Home Chapel with Rev. C.R. Rinehart, Rev. Cleston Bar-

nett and Rev. Cecil Woodruff officiating. Burial was in New Bethel Cemetery.

Survivors include two daughters, Mrs. Colleen Eaton, of Dennis, and Mrs. Bessie McClune, of Winthrop Harbor, Ill.; three sons, R.B. Credille, of Saint John, Ind., Herman Credille, of Hammond, Ind., and Cline Credille, of Dennis; three half-brothers, Odus Brown, of Belmont, Adis Brown, of Red Bay, Ala., and James Brown, of Dennis; two step-brothers, Carl Brown, of Belmont, and Archie Brown, of Florida; 12 grandchildren; and three great-grandchildren.

## Early Morning Walking Results In Accident

An Iuka couple was injured and one hospitalized when they were struck by an automobile near their home early Tuesday morning, Iuka Chief of Police, Jack Rye, reported.

The accident occurred at 6:20 a.m. as the couple, Mr. and Mrs. James Wilson, of 602 Graham Street, Iuka, were walking to work at the Shoe Factory after their car failed

to start. The driver of the car, Pamela Malone, of Route 1, Iuka, was meeting a north-bound car in the curve of the street when the lights from the oncoming car blinded her and she failed to see the Wilsons until just before the car she was driving struck them, according to Chief Rye, and the impact knocked the couple into the ditch.

They were both taken to Tishomingo County Hospital where Mrs. Wilson was admitted with a fracture to the right leg, authorities said. Mr. Wilson was treated and released.

Chief Rye and Officer Herman Boyd investigated the accident.

## Tish. Chamber of Commerce To Continue Drawings

The Tishomingo Chamber of Commerce felt that the drawings that were held during the latter part of November and all of December were so successful that they have elected to continue the drawings beginning in February of 1981.

Under their new program, to become known as "First Saturday", beginning on February 7, 1981, a drawing will be held on the "First Saturday" of each month.

Participating merchants will continue giving tickets when purchases are made in their stores. Tickets to be used in the February 7th drawing will include all tickets issued since December 24, 1980.

Prizes to be awarded on each "First Saturday" will include: Grand Prize, a \$200.00 Savings Bond; Two second prizes, A \$100.00 Savings Bond; two third prizes, a \$50.00 Savings Bond.

A total of \$500.00 worth of Savings Bond will be given each "First Saturday".

As in the other drawings, you must be present to win and must be at least 15 years of age and have a Social Security Number.

The time for the drawings will be at 3 p.m. the "First Saturday" of each month.

## Holiday Closings

In observance of New Year's Day, January 1, the following businesses report their closings:

First American Bank, Iuka Guaranty Bank, Tri-State Savings & Loan, First Citizens Loans, Inc., Iuka Library, Burnsville Public Library, Iuka City Hall, Tishomingo County Welfare Office, Tishomingo County Health Department, Benchmark Industries, Inc., and the United States Post Office will all be closed on Thursday, January 1. Conalco, Inc. will close Wednesday, December 31, at midnight and reopen Sunday, January 4, at midnight. The County Offices, located in the Tishomingo County Courthouse, will be closed on January 1 and 2, and reopen for business on Saturday morning, January 3.

The Tishomingo County News Office will observe the holiday by closing Wednesday at noon and reopening on Friday morning, January 2, and The Staff takes this opportunity to wish a new year filled with health and happiness to our readers.

START THE NEW YEAR RIGHT  
DRIVE CAREFULLY



### receives Diploma

Die D. Marlar, the 26-year-old son of Mr. and Mrs. E.C. Marlar, of Iuka, receives his diploma from Governor William F. Winter during graduation ceremonies recently at the Mississippi Law Enforcement Officers' Training Academy. Marlar, who was assigned to patrol in the Rolling Fork area, was one of 42 cadets to become sworn officers of the Mississippi Highway Safety Patrol after 14 weeks of training. The newly appointed officer attended Central

Texas College, Killeen, Texas, and is a veteran of the U.S. Army. He and his wife, the former Judy F. Selman, daughter of Mr. and Mrs. Pete B. Selman, of Iuka, are the parents of six-year old Robbie D. Marlar.

Marlar, who was assigned to patrol in the Rolling Fork area, was one of 42 cadets to become sworn officers of the Mississippi Highway Safety Patrol after 14 weeks of training. The newly appointed officer attended Central



## TISHOMINGO COUNTY NEWS

### VIDETTE and BELMONT NEWS

Phone 423-3666

(SECD 631680)

John H. Biggs, Editor & Publisher

Published Thursday by The Tishomingo County News, Inc. Serving the people of Tishomingo and adjoining counties for more than 95 years. Publication office 120 West Front Street, P. O. Drawer E, Iuka, Mississippi. Entered at the Post Office as mail matter of the Second Class. Second Class postage paid at Iuka, Mississippi. Zip Code 38852. Post Master send address changes to The Tishomingo County News, P. O. Drawer E, Iuka, Mississippi 38852.

Mail Rates Tishomingo & Adjoining Counties  
\$6.00 Per Year

Other Areas  
\$8.00 Per Year



## Chatting With Your Home Economist

By: Nellie Horton

### Family Living Outlook 1981

1. What is the general economic outlook?

Growth is expected to be sluggish the first half of 1981 with movement toward growth in the last two quarters. Unemployment probably will increase to 8 percent early 1981 and decline to 7.6 percent by the end of 1981.

Defense and business incentive should encourage industrial investments and improve productivity. Over supplies of money will produce high interest rates. If we take a positive attitude, the economy becomes more stable and the financial market makes adjustments to monetary policy and bank deregulations.

Mortgage rates could range from 10.5 to 13.5 percent in 1981.

If wage hikes are moderate and there are no further large oil price increases, inflation could drop to 9.5 percent in 1981 instead of the 12 percent.

inflation of 1980.

2. What can we expect in housing?

The housing industry is expected to make a slight recovery. Multi-family units and condominiums will increase because of more one-person households and one-parent households.

An increase in the trend toward smaller houses is anticipated. Mortgage rates may fluctuate. The consumer needs to look carefully at the kinds of available mortgages - variable, renegotiable, shared equity and the fixed 30 - 40 year mortgages. Comparison shopping will let the buyer know the advantages and disadvantages of each.

3. How is the food outlook for 1981?

Inflation will be reflected in food prices. Food prices are expected to rise from 10 to 15 percent on an average of about 12.2 percent. This does not mean the consumer will spend 10 percent or more because consumers will be

flexible in buying. They will respond to the changes of relative prices. Food marketing costs, energy costs and raw sugar prices will determine more than 60 percent of the cost factor. In December 1979, the Consumer Price Index for the urban areas showed the cost of food at 17.7 percent of the consumer expenditures. The three major food price components are the farm market value, the farm to retail spread, and the cost of food not produced on domestic farms which includes fish and imported food. The major source of food price inflation in 1981 will come from meat, poultry and egg prices.

4. What can we expect in the clothing market?

The estimate for clothing expenditures for 1980 is about \$473 per person based on preliminary figures for the first three quarters of the year. This amount exceeded 1979 spending by \$23, but 94 percent of this increase is attributed to the higher prices, not increased buying. Clothing purchases have declined since the end of 1979. More items are purchased and chosen for quality. This trend is expected to continue for several years.

The 1981 clothing can be described as classic, traditional and investments for clothing values based on needs. Consumer shopping patterns may indicate shopping done in stores near place of work during lunch hour, neighborhood centers, downtown stores and mail catalogs.

### Tuna-Rice Casserole

1/2 cup butter  
2 tbsp. chopped onion  
1/2 cup minced green pepper  
1 lb. mushrooms, sliced (5 cups)  
1/2 tsp. celery salt  
1/8 tsp. paprika  
3/8 tsp. pepper  
3/4 tsp. Worcestershire  
2 cups milk  
1 can (10 1/2 oz.) condensed cream of mushroom soup  
3 cups tuna, rinsed & flaked  
3 cups cooked rice  
6 tbsp. chopped pimiento  
1 tbsp. lemon juice  
2 tbsp. sherry wine  
1/2 cup toasted, slivered, blanched almonds

Melt butter in large saucepan; add onion, green pepper and mushrooms and cook until soft; add seasonings and mix; add remaining ingredients except nuts and mix. Put mixture into a 2 1/2 quart casserole. Sprinkle with nuts. Bake, uncovered, in a preheated 375° F. oven about 1/2 hour. Yield: 8 servings.

Mississippi State University does not discriminate on grounds of race, color, religion, national origin, sex, age, or handicap.



### 4-H Goes International

Tishomingo County 4-Hers were provided the rare opportunity of having Rotary Exchange Student Arthur Scriven from Australia speak

at the 1980 Achievement Banquet. Arthur (left) presented a Horse project medal to Jeff Helton of the Midway 4-H Club.

Mississippi State University does not discriminate on grounds of race, color, religion, national origin, sex, age, or handicap.

## 4-H News

By: Tommy G. Purvis

### A New Year For Opportunities

Once again we look back to the year that has just passed and look with anticipation into the coming one. The past year has been a very rewarding one for myself as I've come to know many new personalities and see them develop through 4-H Club activities. The amount of development was limited only by the 4-Hers themselves as they chose what level to achieve. 4-H opportunities are unlimited and the coming year is no exception.

Already preparations are being made for the Northeast Livestock Show and judging contests which will be in Tupelo February 2-4. Several clubs are preparing for a community Fund Drive in addition to other local club projects. County contests will soon begin in addition to district and state competition in all the 4-H projects. The opportunity is there. You must only reach out!

Many thanks to all the 4-H members, volunteer leaders, Jr. Council, and Advisory Council members for your support in our program's success. With your help 1981 will be even better. "Happy 4-H New Year" from the Tishomingo County 4-H Staff - Tommy Purvis and Sue Dill.

## Early Files

By: R. Moyers  
December 30, 1943

Nineteen hundred and forty-three was about to become history. War had torn the country, separated families and cast a sadness over the holiday season. But true to their character, Tishomingo Countians were determined to make the best of the situation that surrounded them. They were indeed making every sacrifice possible to assist in war efforts, keeping in touch as much as possible with their boys and keeping the holidays at home as bright as possible.

Pvt. J.C. Long, Jr., who was at Camp Gruber, had had his wife and daughter to visit him. James Oliver White had won an early promotion in the Navy. Cpl. Riley J. Furness had completed the Flexible Aerial Gunnery Course in Texas. A.B. Haines received his rating as Petty Officer 1/c. Pvt. Berry L. Pruitt was attending the Anti-Aircraft Artillery School. Samuel T. Wilson had received a promotion, S/Sgt. James L. Starkey, Jr. was at Camp Adair, Oregon. Chief Petty Officer Henry Moore spent Christmas in Iuka, Lt.

## Tishomingo County News - Vidette - Belmont News

Col. Claude Clayton spent Christmas with Mrs. Clayton and their small daughter. Gene Hubbard was home on furlough. Seaman First Class Olen Beard was home on furlough. Sgt. James P. Lewis and Sgt. R.L. Norris spent the weekend with Sgt. Lewis' parents. Pvt. Cecil Whitfield spent Christmas Day with his parents. Pfc. Kelus McCoy spent Christmas at home with his wife and children. Pvt. Talmadge O. Whitfield was stationed at Camp Barkley, Texas.

Mrs. C.L. Pace, Jr. gave a farewell party for her husband, C.L. Pace, Jr., Sheriff and Tax Collector for Tishomingo County. Sheriff Pace was leaving to go into services of the government, a branch of the Navy, having volunteered.

Jenkins William Byram, aged 71, passed away at his home.

The household hints said instead of picking your fingers pulling out sandburs.

hold your sock or other clothes over a pan of water and pull off the burrs with a regular hair comb.

A \$1.00 reward was offered to the finder of a lost Buick hub cap.

Mrs. Martha Howard Lambert, 73, died at the home of her daughter, James Wesley Warhurst, 73, died at his home. Mrs. Sallie May Adkins, 42, passed away at the Sheffield Hospital, and Mrs. Daisy Borden, 53, also passed away at the Sheffield Hospital.

The Sunday School lesson for the week was "Jesus Begins His Ministry" from Mark 1:9-22.

## In Service

Private Danny L. Rutledge, son of Curtis Rutledge, of Route 1, Dennis, has graduated as an Armor Crewman at the U.S. Army Armor School, Fort Knox, Ky. The training was conducted under the One Year Unit Training program, which combines basic combat training with advanced individual training into one 13-week period.

## Personals

John, Mitzi and Megan Norris, of Jackson, Miss., spent Christmas with Mr. and Mrs. Cecil Phifer.

Stacy, Allen and Eason Riley, of Memphis, Tenn., spent Christmas with Mr. and Mrs. Eugene Riley and Jon.

John, Sandra and Stormont, of Little Rock, Ark., spent last weekend with Mr. and Mrs. Eugene Riley and friends in Iuka.

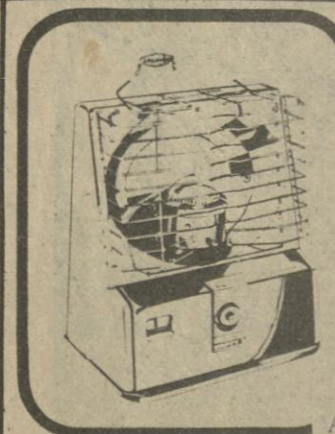
# REVERSE THE SEASONS



Get an electric heat pump. When the season is hot, it cools. When the season is cold, it warms. And the heat pump does it very economically.

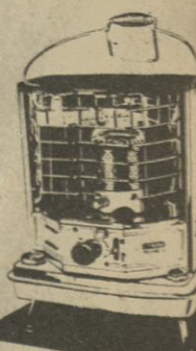
TVA

## Tishomingo County Electric Power Association



**Aladdin HAPPY II**  
portable kerosene heater  
9,440 BTU's per hour with highly directional heat control. Broad base, low center of gravity protects against tipping. Attractive, woodgrain front panel accented by almond-color side panels. Dimensions: 14" x 19" x 23".

**Aladdin YOUNG II**  
portable kerosene heater  
7,700 BTU's per hour. Automatic lighting. Durable baked enamel finish. Automatic shutoff if tipped over. Compact size, easy carrying handle. Dimensions: 16" x 19 3/4" x 11 1/4".



## W. H. FAIRLESS HARDWARE

OPEN ALL DAY THURSDAYS

IUKA-423-9256

TISH.-438-6608

## Iuka Feed & Farm Supply

Your Tishomingo County Farm Bureau Dealership

COMPLETE LINE OF GARDEN SEEDS AND CHEMICALS  
FERTILIZER, FIELD SEEDS  
CUSTOM LIME AND FERTILIZER SPREADING  
HAULING AND BACKHOE WORK  
TIRES, GARDEN TILLERS,  
LAWN MOWERS, PLOWS,  
DISC BLADES AND  
PURINIA FEEDS

## INSULATION

Will save you money on your heating bill

Call  
454-3383  
Day or Night

TVA Approved  
Philip Williams, Owner

Williams Pest Control & Insulation Co.  
Belmont, Miss.

## John C. Stennis

REPORT TO MISSISSIPPIANS



There has been a lot of talk about a tax cut lately, and it is certainly evident that American citizens and businesses need relief from high taxes. However, we must not neglect the need to balance any reduction in taxes with a determined, systematic and continuous effort to reduce or eliminate unnecessary and wasteful government spending.

The tax reduction bill should be carefully designed to improve productivity, encourage investment, ease the pain of inflation and create long-term permanent jobs. Any tax cut enacted must be aimed at helping to rebuild the economy of the country without further fanning the fires of inflation.

It is very easy for an elected official to vote for a tax cut, but it is often very difficult to vote to cut government spending. Therefore, I advocate a cut in spending at the same time or before a cut in taxes. We should attack the difficult part of the problem first.

Any tax cut should treat both business and individual taxpayers fairly and equitably. Specific and favorable consideration should be given low and middle-income taxpayers, and the tax cut should be designed to offset the increase in Social Security taxes which will take place in January. The tax cut should also provide relief from the increase in income tax brackets which result from inflation without any increase in the taxpayer's real income.

The tax cut should be designed to increase the incentives for the individual taxpayer to work, to save, and to invest. An example of such an incentive is the new tax exemption on income from interest on savings and stock dividends. Under a special two-year provision, an individual may exempt up to \$200 per year earned from interest and/or dividends from taxes each year, while a married couple filing a joint income tax return may exempt up to \$400. I am advocating that we increase and make permanent that provision.

Above all, we must not forget or neglect the need to cut government spending while we are cutting taxes. When a tax reduction bill comes up, I will vote for it if there is also a reduction in unnecessary expenditure, dollar for dollar. We should do the hard part first, that is reduce the expenditures and then do the easy part last, that is vote for a tax reduction.





### Nunley - Graham Vows Spoken December 14th

December 14 marked the wedding day of Cathye Jean Nunley and Steven Allen Graham. The ceremony took place in the River Room at the Wheeler Lodge near Gadsden, Ala. The bride was escorted by Rev. Harold V. Comer and the groom by Rev. Harold V. Comer. The vows were spoken at 2 p.m.

The bride is the daughter of Mr. and Mrs. Oliver Paul Nunley, of Memphis, Tenn.; and the granddaughter of the late Oliver and Nora Nunley, of Iuka; and Mrs. Alice Wilemon and the late Admiral Dewey Wilemon of the Coleman Park Community.

The bridegroom is the son of Mr. and Mrs. Hubert Graham, of Rodgersville, Ala.

The bride was given in marriage by her father. She wore a gown fashioned of candlelight satin with beaded peau d'ange lace along with Elizabethan neckline and long sheer sleeves with lace over ruffle cuffs. The demibell skirt that swept to a court train at the back, was accented with tiers of lace ending in a lace bordered flounce at the hemline. She wore an elbow-length veil of silk illusion, bordered with lace motifs. The bride carried a bouquet of silk pink and burgundy roses with baby's breath.

Mrs. Teresa Bell attended her sister as matron of honor. Miss Renate Nunley, also sister of the bride, attended as maid of honor. Mr. Mark Varnell served as best man. After a reception at Joe Wheeler Lodge, the bridal couple left for a wedding trip to Gatlinburg, Tenn.

The newlyweds will reside in Florence, Ala.

Washington, D.C.'s park system covers more than 6,000 acres.

### Tenn. River Employees Honored

Fifty-seven employees of Tennessee River Pulp & Paper Company were honored recently for their years of loyal service to the Company at a banquet at Pickwick Landing State Park Inn. During the presentation of awards, an additional 21 employees were recognized for completing 20 years; 12 for 15 years; and 25 for ten years of service.

The presentation of service pins to this group brings the total to over 50 percent of the Counce mill employees who have ten or more years of service with the Company.

### Your Social Security People Have Responsibility To Report

People who receive social security benefits have the important responsibility to report events to the Social Security Administration that could affect payment of those benefits.

Failure to report could mean that a needed check might not arrive on time, or it could result in an overpayment a person can ill afford to repay.

Things everyone needs to report are:

Change of mailing address, even if the person's checks are deposited directly into a checking or savings account.

Earnings of more than the 1980 annual limit -- \$5,000 for people 65 and over; and \$3,720 for people under 65.

If the person goes outside the U.S. for 30 days or more.

If the person works outside the U.S.

Things disabled people must report:

Any improvement in condition.

Any work.

Receipt of, or change in the amount of workers' compensation.

Things dependents or survivors must report:

Divorce or annulment.

Marriage.

Adoption of child.

Child leaves care of wife, husband, widow, or widower.

Child nearing 18 if full-time student.

Someone should report for the beneficiary if:

A person is unable to manage funds.

A person getting benefits dies.

More information about these events can be obtained by contacting any Social Security Office. The number in Corinth is 287-5241. Most residents of Tippah and Tishomingo counties can call the office in Corinth at no charge by dialing 837-3018 or 423-6042 respectively.



### Receives Briefing

Linda Kay Smith, left, vocational counselor with the Iuka Public Schools, receives briefing on "Riverside", a

national historic landmark and home of the Commanding General at Fort Benning, Ga. Smith accompanied a group of educators from

Mississippi, Tennessee and Arkansas on a tour of Fort Benning, sponsored by the U.S. Army Jackson District Recruiting Command.

### Ms. Smith Enjoys Ft. Benning Tour

By gaining first hand knowledge of how an Army Post operates, Linda Kay Smith, vocational counselor with the Iuka Public Schools, feels she is better prepared to counsel high school students about the range of opportunities available to them in the U.S. Army. Miss Smith, along with educators from parts of Tennessee, Arkansas and Mississippi, recently participated in a tour of Fort Benning Ga., sponsored by the U.S. Army Jackson District Recruiting Command, Jackson, Mississippi.

With one group of educators traveling from Memphis and a second from Jackson, the two met in Atlanta to continue the journey to Fort Benning. After an initial briefing at the Infantry Center, Fort Benning, the group toured

the parachute maintenance branch where they learned how parachute damage is repaired, observed an Airborne 5000 (parachute jump) demonstration, observed soldiers being trained to destroy tanks, rifle marksmanship training and missile training.

A highlight of the tour was the opportunity for active participation. Each educator took the pilot's seat in a simulator helicopter and "flew" through adverse conditions including thunderstorms and fire. Even an inexperienced novice had a chance to practice and correct his rifle marksmanship. The M60 tank ride also proved to be quite an adventure.

Tours of the National Infantry Museum and "Riverside", a national historic landmark

and home of the Commanding General of Fort Benning, culminated the tour.

"The trip was educational and rewarding; I enjoyed all of it," one principal reflected. All agreed that the hospitality extended by Fort Benning was tops.

### Breakfast Starts Day Off Right

Kids who eat breakfast average 21 percent higher reading scores than kids who don't. They have a 66 percent longer attention span, a healthier and more alert alert in the classroom.

Grownups, too, should start the day with nutritious food, says Ann O. Rushing, Mississippi Cooperative Extension Service marketing specialist. By the breakfast time, many of us have gone as long as 10 hours or more without food. If we miss breakfast, we start the day with a decided disadvantage. How do you develop the

good breakfast habit? Start by loading the breakfast table with ready-to-eat nutritious foods you know your family is bound to like: a pitcher of fruit juice, a jar of peanut butter and some honey along with whole grain bread or muffins. Add a glass of milk and you have a balanced meal.

Peanut butter is 26 percent protein and is high in niacin and other B vitamins. Honey and peanut butter always make breakfast more inviting, she adds.

### GUESS WHAT YOU CAN EAT ON THE NEW 1981 WEIGHT WATCHERS FOOD PLANS!

	YES	NO
White Wine	<input type="checkbox"/>	<input type="checkbox"/>
Peanut Butter	<input type="checkbox"/>	<input type="checkbox"/>
Raisins	<input type="checkbox"/>	<input type="checkbox"/>
Sweet Potatoes	<input type="checkbox"/>	<input type="checkbox"/>
Popcorn	<input type="checkbox"/>	<input type="checkbox"/>
Red Wine	<input type="checkbox"/>	<input type="checkbox"/>
Honey	<input type="checkbox"/>	<input type="checkbox"/>

On the new 1981 Weight Watchers food plans you're taught to eat them all--within limits of course--and still lose weight. Join a Weight Watchers class near you and find out about our new food plans and complete program for taking off the pounds, deliciously!

IUKA  
YOUTH CENTER  
Mineral Springs Park  
Tuesdays 6:30 P.M.  
Toll-free 1-800-222-7694

**WEIGHT WATCHERS**  
The most successful weight loss program in the world.  
© Weight Watchers Int'l Inc.  
WBI, owner of The Weight Watchers trademark.

### The Third Circuit Court

#### District Bar

cordially invites you to attend the ceremonies of Installation of

Armist E. Hawkins

as

Associate Justice

of

The Supreme Court of Mississippi

at

2:30 P.M. January 5, 1981

Chickasaw County Courtroom

Houston, Mississippi

and reception afterwards

# JANUARY CLEARANCE

Fall & Winter Merchandise

# 1/2

off

Closed  
Wednesday  
Dec. 31

## Daisy's

DOWNTOWN  
IUKA

Sale starts  
Friday, Jan. 2 at  
9:00 a.m.

All sales final

Winter Robes

# 1/4 off

Grisham's  
Mid-Winter

# CLEARANCE SALE

ALL SALES FINAL

ENTIRE STOCK

## Men's Suits 30-50% off

1 GROUP

## Men's Shoes 30% off

1 GROUP LONG SLEEVE

## Dress Shirts VALUES TO \$16

# \$7.88

1 GROUP

## Knit & Sport Shirts

# 1/2 price

ONE GROUP

## Dress Slacks & SOME JEANS

# 1/2 price

ENTIRE STOCK MEN'S

## Knit Shirts

# 20% off

MEN'S WINTER

## Jackets & Sweaters

# 30% off

ENTIRE STOCK

## Curlee Suits

# 1/2 price

# GRISHAM'S

Downtown Iuka







## Conservation Notes

By: Bobby Manley

Soil is not permanent. Under many conditions it is very unstable. Water or wind moving across bare ground usually carries some soil away. It may be moved hundreds of miles or only a few feet, but eventually large amounts of soil will be removed from any unprotected or misused area.

Where land is cultivated or left bare, a fast kind of erosion takes place. This is called accelerated erosion. When land is cultivated there is no dense growth of plants to protect the soil, and erosion also damages grasslands that have been overgrazed or mismanaged. And it damages woodlands that are misused. This accelerated erosion is what we commonly call soil erosion.

Erosion has damaged, or ruined for practical use, hundreds of millions of acres of once productive land all over the world. In some places, such as North Africa, the Near East, and parts of China, erosion has damaged so much of the land that formerly rich agricultural areas are now like deserts. Erosion also has taken a terrific toll from formerly rich lands in the United States.

Local farmers can take a few steps in helping prevent soil erosion. These steps include terracing sloping cropland, crop residue management, contour farming, diversions, and cover crops on cropland. Minimum grazing heights on pastureland, applying the correct amount of lime and fertilizer, and practice a system of controlled grazing to utilize forage as much as possible.

If you would like more information on this or any other matter dealing with conservation, don't hesitate to contact the Soil Conservation Service Office in Iuka.

## LEGAL

### Notice To Creditors

Notice is given that Letters of Administration have been on this day granted to the undersigned administratrix of the estate of Fred A. Hodge, Jr., deceased, by the Chancery Court of Tishomingo County, Mississippi, and all persons having claims against said estate are required to have the same probated and registered by the clerk of said court within ninety (90) days after the date of the first publication of this notice or the same shall be forever barred.

WITNESS MY SIGNATURE, this 11 day of December, 1980, JEANELLE HODGE BLEVINS ADMINISTRATRIX

NOTICE OF LETTING OF LEASE AGREEMENT FOR KEEPING THE COUNTY REST HOME OF TISHOMINGO COUNTY, MISSISSIPPI, FOR THE YEAR OF 1981.

Notice is hereby given that the Board of Supervisors of Tishomingo County, Mississippi, will, at the office of the Clerk of the Board of Supervisors, on the 5th day of January, 1981, during legal hours, receive sealed bids for the leasing of the County Rest Home for said County, for the year 1981, said bidder to furnish good, warm food, good, comfortable clothing, tobacco, and all other necessities for the comfort of said inmates. The County will furnish the home, together with the furniture, beds and bedding that they now own in the home, together with the electric bill for lights, pump and cooking stove, and local telephone, together with necessary medicine and medical attention for inmates of Tishomingo County, and the County will pay for the casket of any inmate, or inmates, of Tishomingo County.

ty, that may die during said term, and the County shall furnish the fuel necessary to heat said home, and the contractor, or lessee, shall furnish all other necessities. The successful bidder will be required to furnish a surety bond, to be approved by said Board, in the sum of \$1,000, for the faithful performance of said contract or lease agreement.

The Board reserves the right to reject any and all bids.

This the 15th day of December, 1980.

ROBERT D. SIMS, CLERK OF THE BOARD OF SUPERVISORS, TISHOMINGO COUNTY, MISSISSIPPI

D-18-25-J-1-c.

### Non-Resident Summons

State of Mississippi

To: Joan Hodge Ardinger, whose post office and street address is: Joan Hodge Ardinger R. Rt. No. 1 Lansdowne, Ontario, Canada KOE 160

Hoyt Reid Hodge, whose post office and street address is: Hoyt Reid Hodge Box 397 Covington, Tennessee 38019 Jo Ann Hodge, whose post office and street address is: Jo Ann Hodge Route #3, Box 70 Clinton, Tennessee 37716

James Harold Hodge, whose post office and street address is: James Harold Hodge Route #3, Box 70 Clinton, Tennessee 37716 Resa Ann Hodge, whose post office and street address is: Resa Ann Hodge Route #3 Clinton, Tennessee 37716

You are hereby summoned to appear before the Chancery Court of the County of Tishomingo in said state on the third Monday of February, 1981, to defend the Suit No. 8636 in said court of Jeanelle Hodge Blevins, Complainant vs. Joan Hodge Ardinger, et al, wherein you are a defendant.

This 11 day of December, 1980.

ROBERT SIMS, CHANCERY COURT CLERK TISHOMINGO COUNTY, MISSISSIPPI

D-18-25-J-1-c.

### State of Mississippi County of Tishomingo Non-Resident Notice

To: Vance Edwin Damran Post Office and Street address unknown

You are hereby summoned to appear before the Chancery Court of Tishomingo County, Mississippi, on the 16 day of February, A.D., 1981, at the Courthouse in Iuka, Mississippi to defend the suit filed against you, styled DORTHY FAYE DAMRAN V. VANCE EDWIN DAMRAN, Cause Number 8633, wherein you are the Defendant.

THIS, the 9 day of December, A.D., 1980.

ROBERT D. SIMS, CHANCERY CLERK TISHOMINGO COUNTY, MISSISSIPPI

D-18-25-J-1-c.

NOTICE TO DEALERS TO FURNISH TISHOMINGO COUNTY AND THE ROAD DISTRICTS THEREOF THE FOLLOWING SUPPLIES, AND TO BANKS FOR THE KEEPING OF COUNTY FUNDS AS A COUNTY DEPOSITORY, FOR THE PERIOD BEGINNING JANUARY 1, 1981, AND ENDING JANUARY 1, 1982.

Notice is hereby given by the Board of Supervisors of Tishomingo County, Mississippi, that it will, until 10:00 A.M. on Monday, January 5, 1981, receive bids from dealers for general office supplies, janitorial supplies, road and bridge maintenance materials and supplies, and for machinery upkeep, and will also receive bids from banks for the keeping of County funds as a County depository, under Sec. 27-105-305, Mississippi Code, 1972, as may be amended, for the 12 month period

beginning January 1, 1981 and ending January 1, 1982. Said bids to be filed with the Clerk of the Board of Supervisors of said State and County at the Chancery Clerk's Office, Tishomingo County Courthouse, Iuka, Mississippi, until the aforesaid time and date, and under the statute, all bids shall be awarded to the lowest responsible bidder. The Board of Supervisors reserves the right to reject any and all bids.

This the 15th day of December, 1980.

ROBERT D. SIMS, CLERK OF THE BOARD OF SUPERVISORS, TISHOMINGO COUNTY, MISSISSIPPI

D-18-25-J-1-c.

### Notice To Creditors

Letters Testamentary having been granted on the 15th day of December, 1980, by the Chancery Court of Tishomingo County, Mississippi, to the undersigned upon the estate of Ernest Edward Hudson, Sr., deceased, notice is hereby given to all persons having claims against said estate to present the same to the Clerk of said Court for probate and registration, according to law, within ninety (90) days from this date, or they will be forever barred.

This 15th day of December, 1980.

LAVIONA HUDSON, EXECUTRIX

D-18-25-J-1-c.

## TVA Accepting Comments

TVA is accepting public comments on a proposed policy intended to encourage development of cogeneration and small power production facilities in the TVA region.

The policy, interim program, and guidelines being proposed would set up the arrangements under which TVA and the municipal and cooperative distributors of TVA power would buy power from small generating plants operated by industries and individuals. The arrangements would also provide for the operation of the plants by these distributors.

Such plants might involve cogeneration -- the use of steam from industrial plants and municipal waste-burning facilities to generate electricity -- or small power production facilities using renewable resources such as wind, solar, water power, waste, or biomass.

TVA already has an experimental cogeneration program under which the agency buys excess power generated by industries that have their own generating facilities. The Public Utility Regulatory Policies Act of 1978 requires utilities to encourage cogeneration and small power production facilities to conserve energy and reduce the use of fossil fuels.

Copies of the proposed policy, interim program, and guidelines can be obtained by writing the TVA Citizen Action Office, 400 Commerce Avenue, Knoxville, Tennessee 37209, or by calling the toll-free Citizen Action Line. The number is 1-800-362-9250 (Tennessee) or 1-800-251-9242 (Valley States outside Tennessee).

Written comments must be received by 5 p.m. (EST), January 23, 1981, and should be addressed to Presiding Officer, Dispersed Power Production Hearing, Tennessee Valley Authority, 840 Power Building, Market Street, Chattanooga, Tennessee 37401.

Oral comments will also be taken on January 19, 1981, in the Provident Life and Accident Insurance Building, Room 151, Fountain Square, Chattanooga, beginning at 9:30 a.m. (EST). Any person who wishes to offer comments during this session should write or call the Citizen Action Office.

A notice of the proposals and the comment period was

published in the Federal Register on Wednesday, December 3, 1980. After reviewing the public comments, the TVA Board of Directors will make its final determinations on the policy, interim program, and guidelines.

## Save Time By Freezing Sandwiches

Peanut butter is the country's favorite sandwich and one of the safest foods you can pack for your child's school lunch.

"Not every food is ideal because school lunches may be left at room temperature for several hours," says Ann O. Rushing, Mississippi Cooperative Extension Service marketing specialist. Bacteria multiply rapidly in meats, fish, poultry, milk, cream and eggs when the only protection is an unrefrigerated brown bag or lunch box.

When using perishable foods, make sandwiches the night before and either refrigerate them or put them in the freezer. Pack them at breakfast and they'll thaw in time for lunch, she adds.

Not every food is suitable for freezing. Lettuce and other greens will become tough. Tomatoes, jams and jellies soak into the bread during thawing. But fillings of meat, poultry, fish and cheese freeze well.

While the peanut butter

sandwich needn't be frozen for safety's sake, it does freeze well. If you want to

make sandwiches combining peanut butter with meat or cheese, freezing is the answer.

## NOW BUYING GOLD & SILVER

Paying Top CASH on the spot for ...

- \* GOLD & Silver Coins
- \* Silverware (in piece or a whole set)
- \* Class Rings
- \* Dental Gold
- \* Wedding Bands
- \* Anything Marked "Sterling"
- \* Tie Pins
- \* Bracelets
- \* Necklaces
- \* Eyeglass Frames

## FREE TESTING AND APPRAISAL

- If it is made of gold or silver, we'll buy it!

- \* Condition does not matter - Even if it's stomped flat, we'll buy it!
- \* Ladies Welcome - We have a lady on duty at all times.
- \* All transactions always private and confidential!

## DEBO'S

LOCATED AT

Room No. 1 - SANDS MOTEL

In IUKA

On Hwy. 72 Just a little way west of the Hospital

\*\*\*Sell us your Gold & Silver NOW!

## The Northeast Mississippi Junior College EVENING COLLEGE BULLETIN SPRING TERM, 1981

REGISTRATION DATE (For All Centers): January 5, 1981

TIME: 6:30 p.m.

FEES: \$25.00 per semester hour, plus a \$10.00 registration fee

CLASSES BEGIN: January 12, 1981

CLASS LENGTH: 6:30 p.m. until 9:30 p.m.

SPRING HOLIDAYS: March 9-13, 1981

SEMESTER ENDS: May 6, 1981

CAMPUS CENTER: Patterson Hall, Northeast Campus

COURSE NO.	TITLE OF COURSE	DAY
ENG 1113	English Composition I	Mon.
ENG 1123	English Composition II	Mon.
LEN 1313	Survey of Law Enforcement	Mon.
EDP 1124	Introduction to RPG II Programming	Mon. & Wed.
EDP 2124	Introduction to COBOL Programming	Mon. & Thur.
HIS 2223	U. S. History II	Tues.
EDP 1113	Introduction to Data Processing	Tues.
BIO 2924	Microbiology	Tues. & Thur.
MAT 1313	College Algebra	Thurs.
CHE 1313	Principles of Chemistry	TBA
CHE 1311	Principles of Chemistry Laboratory	TBA

YELLOW CREEK CENTER: Yellow Creek Training Center

COURSE NO.	TITLE OF COURSE	DAY
BAD 2513	Principles of Management	Mon.
MAT 1313	College Algebra	Tues.

RIPLEY CENTER: Ripley High School

COURSE NO.	TITLE OF COURSE	DAY
MAT 1313	College Algebra	Mon.
ENG 1113	English Composition I	Tues.
EPY 2513	Child Psychology	Tues.
HIS 2213	U. S. History I	Thurs.

NEW ALBANY CENTER: New Albany Vo-Tech Center

COURSE NO.	TITLE OF COURSE	DAY
MAT 1313	College Algebra	Mon.
HIS 2213	U. S. History I	Tues.
ENG 1113	English Composition I	Thurs.

TISHOMINGO CENTER: Tishomingo County Vo-Tech Center

COURSE NO.	TITLE OF COURSE	DAY
HIS 2213	U. S. History I	Mon.
MAT 1313	College Algebra	Tues.
ENG 1123	English Composition II	Thurs.

CORINTH CENTER: Corinth High School

COURSE NO.	TITLE OF COURSE	DAY
EPY 2523	Adolescent Psychology	Mon.
SOC 2143	Marriage and Family	Mon.
ACC 1223	Principles of Accounting	Tues.
HIS 2213	U. S. History I	Thurs.
ENG 1123	English Composition II	Thurs.

## WITHDRAWALS

A student who officially withdraws after enrollment in a semester may obtain a refund in accordance with the following:

TUITION: Through First Week	60%
Through Second Week	40%
Through Third Week	20%
Through Fourth Week	0%

## NON DISCRIMINATION

The Northeast Mississippi Junior College does not discriminate on the basis of race, color, sex, age, national origin, or physical handicap.

## GENERAL INFORMATION

Course day and time are subject to change. Hobby and short term courses are available upon request. For additional information regarding academic evening college courses, please contact Dr. Eugene Doran at The Northeast Mississippi Junior College by calling 728-7751 or toll free 1-728-7759



### gun Winner

Annual shotgun and \$100 bill by the Lions Club December 24th, was a success. Thanks to who participated, and to who did not win - "Bet-

ter luck, next time!" The lucky winner of the Remington 1100 shotgun was Jack Odum, of Rileys Trucking Co. Pictured receiving the gun is Mr. Odum (left) and Lion Don Cowell, of Conalco.



### Visitor Wins \$100

from Indiana, Mr. Ar-Gretillat, who was here relatives, Cecil, Clarence Farmer" Brown, was the winner of the \$100.00 bill.

Said Mr. Gretillat, "Thanks to the Lions of Iuka for a wonderful Christmas present!" Mr. Gretillat (left), being presented the \$100.00 bill by Lion Neil Schilling, of the U.S. Corps of Engineers.

### Congressman Whitten

Congressman Jamie Whit-ted in Washington last week that apparently some of the press completely misun-derstood what happened in Conference on his Cong-ress Resolution to keep government in business. Resolution No. 637 did not provide for a salary raise. The Senate Con-ference insisted on the salary which applied to both House and Senate. When, in Conference, a majority of the House agreed to lift the objection, I took exception and disagreed with the

amendment in the report," said Congressman Whitten.

"I did not agree with the salary raise or the Senate add-ons. The Senate, by approving the Conference Report, had retained their provisions and removed them from reconsideration. In view of this, we refused further Conference of H.J. Res. 637.

"We when passed and sent to the Senate my second Resolution, H.J. Res. 644 which eliminated the Senate add-ons and restored the cap on ceiling on salaries - which is what I first introduced in H.J. Res. 637.

"The point is that what we ended up with, no Senate add-ons and no increase in salary is what I started with in both H.J. Res. 637 and H.J. Res. 644 - what I voted for and what won out when we passed H.J. Res. 644.

**MOORE'S BODY SHOP & WRECKER SERVICE**  
24 Hour Wrecker Service  
DAY PHONE 423-5130  
NIGHT - WEEKENDS - HOLIDAYS  
423-5244  
EXPERT BODY REPAIR

**Dailey's Body Shop and Wrecker Service**  
BURNSVILLE, MISSISSIPPI  
PHONE  
Day 427-9234  
Night 427-8449  
Expert Body Work - 24 Hr. Service  
Burnsville

**Mathis Plumbing & Electrical**  
In Iuka & Surrounding Area  
423-5589  
LICENSED, BONDED AND REASONABLE  
24 hour expert service--14 years experience  
all work guaranteed  
OWNER AND OPERATOR  
Boysie Mathis  
Rt. 4 Iuka, MS 38852

**SEWING MACHINES**  
Like new free arm sewing machine sews straight monograms, appliques makes button holes has stretch stitch.  
New Price \$179.95.  
PAY BAL. \$67.40  
OF ONLY  
**WEEKS SEWING CENTER**  
Your authorized Singer & New Home Dealer.  
305 S-CASS 287-2345  
Corinth, Mississippi

**MIKE'S BODY SHOP**  
Old Hwy. 25 in Crossroads  
See or call Mike Brown for free estimates  
423-3147





AD EXPIRES 1-7-80

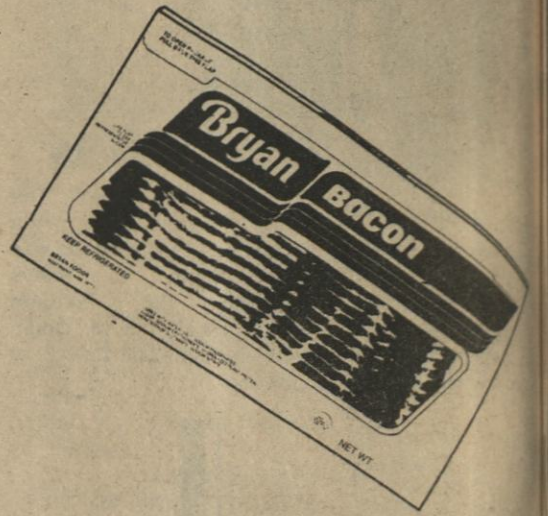
**MEAT MAKES THE MEAL!**

BRYAN FLAVORITE

**BACON**

12 OZ. PKG.

**79¢**



U.S.D.A. CHOICE BONELESS BEEF

**Chuck Roast**

LB.

**\$1.79**

SUITOR

**Sausage**

1 LB.

**\$1.29**

2 1/2 LB.

**\$2.99**

U.S. CHOICE

**ROUND STEAKS**

BRYAN

**BOLOGNA**

U.S.D.A. CHOICE

**Rib Eye Steak**

LEAN

**Ground Chuck**

PRUNELL PRIDE

**Chicken Livers**

BONELESS

**Stew Beef**



LB. **\$1.99**

12 OZ. PKG.

**\$1.19**

LB.

**\$4.99**

LB.

**\$1.99**

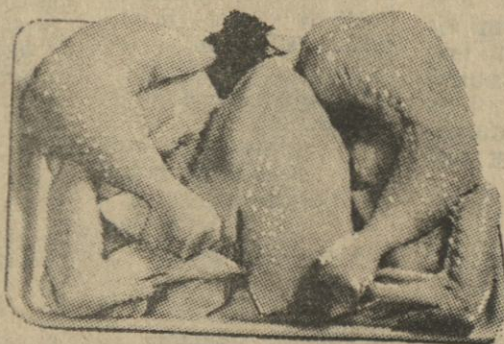
**\$1.99**

LB.

**\$1.99**

PURNELL PRIDE FRYER

**DRUMSTICKS AND THIGHS**



LB.

**99¢**

*for Better*

**PRODUCE**

*Shop and Save Here...*

**LETTUCE**

ICEBERG



HEAD

**49¢**

**Celery**

CALIFORNIA PASCAL STALK

**39¢**

**Cabbage**

GREEN

LB.

**19¢**

**Apples**

WASHINGTON EX-FANCY GOLDEN

LB.

**ORANGES**

FLORIDA



5 LB. BAG

**99¢**



# Nelson super market

AD EXPIRES 1-7-80  
QUANTITY RIGHTS RESERVED

# January Food Specials

**Beef Stew** 15 OZ. CAN **79¢**

**Mustard** 10½ OZ. BTL. **2 FOR 89¢**

**Orange Juice** 12 OZ. CAN **89¢**

**Crackers** 1 LB. BOX **69¢**

**Popcorn** 15¼ OZ. BAG **3 FOR 99¢**

**Soup** 2¼ OZ. BOX **69¢**

**Card** 4 LB. CARTON **\$1.69**

**Mapkins** 69¢

**Maxi-Pads** 12 CNT. BOX **\$1.19**

MARTHA WHITE  
**FLOUR**  
5 LB. BAG  
**79¢**

HYDE PARK BUTTERMILK AND HOMESTYLE  
**BISCUITS**  
6 PK.  
**99¢**

CHICKEN 'O' SEA  
**TUNA**  
6½ OZ. CAN  
**89¢**

BORDENS AMERICAN  
**CHEESE SINGLES**  
12 OZ. PKG.  
**\$1.39**

KLEENEX FACIAL  
**Tissue**  
KRAFT VELVEETA  
**Cheese**  
NESTLES HOT  
**Cocoa Mix**  
TERI DISPOSABLE  
**Towels**

200 CNT. BOX **69¢**

2 LB. CARTON **\$3.39**

12 OZ. **99¢**

SINGLE ROLL **59¢**

15½ OZ. CAN **4 FOR 99¢**

BUSH'S BEST GOLDEN  
**Hominy**  
EAGLE BRAND CONDENSED  
**Milk**  
COLONIAL CONFECTIONER  
**Sugar**

14 OZ. CAN **99¢**

16 OZ. BOX **69¢**

29 OZ. CAN **69¢**

ROSEDALE  
**Peach Halves**  
KRAFT  
**Cheese 'N' Crackers**

¾ OZ. **5 FOR \$1.00**

GOLDEN GRAIN  
**Macaroni & Cheddar**

7¼ OZ. BOX **3 FOR 89¢**

HUNT'S  
**KETCHUP**  
32 OZ. BTL. **89¢**

SOFT 'N' PRETTY BATHROOM  
**TISSUE**  
4-ROLL PACK **89¢**

COUPON	COUPON	COUPON	COUPON
100 FREE QUALITY STAMPS	100 FREE QUALITY STAMPS	100 FREE QUALITY STAMPS	100 EXTRA QUALITY STAMPS
GLADE 10 COUNT Trash Bags	DETERGENT 32 OZ. Dawn	REG. FLAVOR 5 OZ. Crest Toothpaste	WONDRA SKIN CONDITIONING 6 OZ. Btl. Lotion
AD EXPIRES 1-7-80	AD EXPIRES 1-7-80	AD EXPIRES 1-7-80	AD EXPIRES 1-7-80



## OBITUARIES

### Mrs. Ethel A. Boyd

Mrs. Ethel Adean Boyd, 56, died at 11:05 p.m. Friday, December 26, at Red Bay Hospital in Red Bay, Ala. after an extended illness. She was a factory worker and a member of Golden Central Baptist Church.

Services were held at 2 p.m. Sunday, December 28, at Deaton Funeral Home Chapel with Rev. Albert Hamilton and Rev. Pat Howard officiating. Burial was in Belmont Memorial Gardens.

She is survived by a daughter, Mrs. Betty Holmark, of Belmont; her mother, Mrs. Willie Byram, of Belmont; two sisters, Mrs. Faye Pruitt, of Belmont, and Mrs. Johnnie Dick, of Rome, Ga.; three half-sisters, Mrs. Dazie Cantrell, of Corinth, Mrs. Emily Ozbirn, of Dennis, and Mrs. Nannie Boyd, of Belmont; a brother, Kelsie Clark, of San Diego, Calif.; and a grandson.

### Mrs. Georgia W. Wilson

Mrs. Georgia W. Wilson, 79, died at 3:30 a.m. Sunday, December 28, at Red Bay Hospital in Red Bay, Ala., after an extended illness. She was a homemaker and a member of the Mount Gilead Church of Christ.

Services were held at 11 a.m. Tuesday, December 30, at Senter Funeral Home Chapel with Minister R.C. Byram and Minister J.A. Thornton officiating. Burial was in Mount Gilead Cemetery.

Survivors include her husband, W.E. Wilson, of Golden; two sons, Ray Wilson, of Winthrop Harbor, Ill., and Elmo Wilson, of Racine, Wis.; six daughters, Mrs. Mavineen Brandt of Oak Ridge, N.J., Mrs. Eunice Reed, of Fulton, Mrs. Mary Hall, of Zion, Ill., Mrs. Zola Basham and Mrs. Sula Maxcy, both of Kenosha, Wis., and Mrs. Syble Bentley, of Belmont; three sisters, Mrs. Colethia Prestridge, of Amory, Mrs. Lou Barrett, of Golden, and Mrs. Jewell Campbell, of Arkansas; four brothers, Jim Wood, of Red Bay, Ala., Sam Wood, of Alamo, Tenn., Charlie Wood, of Golden, and Brown Wood, of Douglas, Ga.; 26 grandchildren; and 16 great-grandchildren.

### Mrs. Mary S. Morris

Mrs. Mary Seaton Morris, 75, died Tuesday, December

23, at the Baptist Hospital in Memphis, Tenn. after an extended illness. She lived in Corinth for several years, before moving to Memphis, Tenn. She was a member of the Church of Christ.

Services were held at 2 p.m. Thursday, December 25, at Pleasant Grove Church of Christ with Minister A.C. Carpenter officiating. Burial was in the church cemetery with Cutshall Funeral Home in charge of arrangements.

Survivors include her husband, Andrew Morris, of Memphis, Tenn.; five daughters, Mrs. Lorene Lynch and Mrs. Donna Drewry, both of Memphis, Tenn., Mrs. Nelodene Snyder, of Milford, N.J., Mrs. Faye Smith, of Denver, Colo., and Mrs. Sue Archer, of Byhalia; six sons, Alton Morris, of Woodland Park, Colo., Herschel Morris and Roy Morris, both of Memphis, Tenn., Billy Morris, of Millington, Tenn., and Jimmy Morris and Bobby Morris, both of Middleton, Tenn.; two sisters, Mrs. Ester Compton, of Burnsville, and Mrs. Rhonda Green, of Jackson, Tenn.; two brothers, Homer Seaton, of Iuka, and John D. Seaton, of Walls; 21 grandchildren; and five great-grandchildren.

### J.W. Lovelace

Joseph Woodrow Lovelace, 63, died at 7:50 a.m. Monday at Tishomingo County Hospital. He was a security guard and a member of Old Union Baptist Church.

Services were at 2 p.m. at Old Union Baptist Church with Rev. Freeda Wilson and Rev. Albert Hamilton officiating. Burial was in the church cemetery with Deaton Funeral Home in charge of arrangements.

Survivors include his wife, Mrs. Purvis Lovelace, of Iuka; a daughter, Mrs. Sandra Roberts, of Joliet, Ill.; two stepdaughters, Mrs. Garlene Lucas, of Iuka, and Mrs. Linda McCollum, of Chicago, Ill.; three sons, Jackie Lovelace, of Joliet, Ill., Macky Lovelace, of Cherokee, Ala., and Gary Lovelace, of Iuka; a stepson, Joe Stewart, of Rockford, Ill.; four sisters, Mrs. Mattie Lomenick and Mrs. Mary Rinks, both of Iuka, Mrs. Ruby Gurley, of Fort Richey, Ala., and Mrs. Nina Gresham, of Belmont; two brothers, Robert Lovelace, of Westmont, Ill., and Raymond Lovelace, of Belmont; 24 grandchildren and two great-grandchildren.

### H.R. Watson

Hamp R. Watson, 54, died Sunday night, December 28, at the Veterans Hospital in Memphis, Tenn., after an ex-

tended illness. He was a retired employee of TVA and a veteran of World War II.

Services were at 2 p.m. Tuesday at Snowdown Methodist Church with Rev. Paul Sanders and Rev. William Strange officiating. Burial was in the church cemetery with Cutshall Funeral Home in charge of arrangements.

He is survived by his wife, Mrs. Billie Watson, of Iuka; five sisters, Mrs. Hudie Brown, of Iuka, Mrs. Allie Wassel, of Sarasota, Fla., Mrs. Lima Jean Achard, of Elma, N.Y., Mrs. Ruth Mancada and Mrs. Josephine Parris, both of El Paso, Texas.

### Pentecostal Church News

#### Genesis

Perhaps no other book in the Bible has been such an object of scornful attack by skeptics and atheists as Genesis. This is particularly true of the story of creation, but it also extends to the record of the fall of Adam, the flood of Noah, and the tower of Babel; in fact, critics often claim that the entire book of Genesis is nothing more than myths, legends, and parables. Skeptics and atheists realize that if they destroy the authenticity of the Genesis record the entire Bible will be vulnerable. However, in spite of all that skeptics and atheists have done to discredit and destroy this first book, it remains untouched. Materialistic and humanistic theories have neither conquered its truth nor negated its message.

As any real Christian could ask - If there was no God to inspire the writing of Genesis, then who is this living within my soul?

You are invited to attend church at The First United Pentecostal Church, 608 N. Main St., Iuka. Sunday School, 10 a.m.; Sunday Worship, 11:15 a.m. and 7 p.m.; Wednesday Bible Study, 7:15 p.m.

Dial 423-3581 for Daily Bible Reading and Message. If you have a need, leave your request after the dial tone.

### Words of Appreciation

The family of Cager Hill takes this opportunity to express our deepest appreciation and gratitude to our many friends and relatives for the kindness and generosity shown us during the loss of our father and grandfather. A special thanks to Dr. Kelly Segars, Tishomingo County Hospital, Cutshall Funeral Home, Rev. Raymond Buchanan, Rev. J.A. Blunt, Milton Scruggs and singers.

Thanks to everyone for the food, offerings, flowers, and

most of all your love and prayers.

May God bless each of you.  
Helen, Kay & Jeff Rogers  
Shirley, Jim & Mike Williams  
Sharon & Edith Orth

### Card of Thanks

We want to express our thanks to everyone who came, called, brought food and flowers or expressed sympathy in any way during the passing of our loved one, Vera O. Taylor. Also, a special thanks to Elders Woodruff and Barnett and Cutshall Funeral Home for kindness and words of comfort in our time of sorrow.

Era Mae Owens - Sister  
DeEtta Southward - Niece

### Your Social Security

#### SSI Protection Improved

The protection for disabled people who receive supplemental security income (SSI) payments and receive pay in sheltered workshop has been improved by a new law, Jerry Myatt, Social Security District Manager in Corinth, said recently. Under the old law, the pay a person received in a sheltered workshop was treated as "unearned" income in some instances and "earned" income in others when determining eligibility for SSI and the payment amount. Starting October 1980, the pay was considered earned income in all cases. This is an advantage in that the first \$65 a month of earned income does not count against benefits, and only half of the remainder above \$65 counts. With unearned income, all but the first \$20 counts against the SSI payment.

Under the old law, a part of a parent's income and assets was counted in determining whether a blind or disabled child under 18, or up to 21 if in school, was eligible for SSI payments and how much the benefit should be. Beginning October 1980, a parent's income and assets count only until a child reaches 18, regardless of whether he or she is in school.

More information about the changes made in the SSI

#### Catholic Services In Iuka

Held at Episcopal Church  
Eastport & Fulton Streets  
Sunday 11:30 a.m.  
Religious Instruction For Young People  
Grades 1 thru 12  
Sunday 10:15 a.m.  
Father George Pinger, S.C.J.  
423-9358 or 728-3393

## CUTSHALL FUNERAL HOME

Representing  
Corinth Mutual  
Burial Association

Mississippi  
Funeral  
Association

Liberty National  
Life & Burial  
Insurance Co.

SOME BURIAL  
POLICIES CAN BE  
PAID OUT IN 15  
YEARS

## CUTSHALL FUNERAL HOME

PHONE 423-5222  
IUKA, MISS.

program can be obtained at the Corinth Social Security Office. A free leaflet explaining the changes is more detailed and is available. The phone number in Corinth is 287-5241. Most residents of Tippah and Tishomingo Counties can call the office in Corinth at no charge by dialing 837-3018 or 423-6042 respectively.

### Maintaining Your Mental Health

#### "How Can Just Talking Help?"

Someone who is deeply enmeshed in a personal problem often asks: How can talking to a professional counselor help me? I know what I need. I need more money, or a better husband, or a long vacation. A counselor can't help me to get any or all of these things, so what's the use?

Actually a person with a problem (or with a whole series of problems, which is more usual) may not be able to judge at all what is the cause for all that unhappiness. By himself, he can look at his troubles from only one angle: his own. Often the events of his childhood and youth that have shaped his feelings or attitudes or the ones which have caused his problems in the first place. They also make it impossible for him to look at what's happening in the present either realistically or objectively.

There's the man who has always felt that failure was an unforgivable sin. He can't allow himself to fail at anything. He may even regard as failure something that everyone else would consider a huge success. Until, with the help of a counselor he finds out that he is really expecting the impossible from himself, he won't be able to stop driving himself beyond all reasonable limits.

There's the woman who

was always expected to be the best little girl on the block. Her room had to be immaculately clean, her dress perfectly pressed, and as one such young lady once put it: "When I lost a library book, I felt I wasn't going to heaven." When this "perfect" little girl grows up, she will probably find that she cannot meet her own standards, particularly with three small children, two dogs, and a husband who was not the best little boy on the block. A counselor can help her to see what she reasonably can expect of herself, to understand that by most standards she's not a slob, but a perfectly fine housekeeper and mother.

What's more the man who feels he's a failure or the woman who feels she's a slob may, because of a sense of guilt, provoke punishment from those around them. Af-

ter all, when they were children, and they did something "bad" they were punished. The man may provoke his boss or the wife her husband, without realizing they are doing this. If they can't persuade someone to punish them, they may punish themselves. The man may get ulcers or the woman may fall down the cellar stairs, because she "forgot" to turn on the light.

Family counselors know that people often follow patterns of behavior all their lives, without even knowing that the pattern exists.

What constitutes a success in life and what constitutes a failure is never as simple as the TV ads would make one believe. And what's more a change of advertised brands will rarely cause a revolution in one's life. Counseling might.

For information about ser-



One day I asked my father for money for a kite. "If you want a kite," he said, "make one."

Being of Italian extraction, we had some spaghetti boxes in our home. Using the wood of the box, and the proper paper, I made a kite; with my grandmother's apron for the tail.

The boys said, "You'll never fly it!"

"I will," came the reply; "Saturday morning at 10 o'clock."

Everybody and his dog came to see if the spaghetti box would fly. And fly it did!

While it was flying it seemed to say, "Give me

freedom, and I'll go so high. Don't hold me back."

Suddenly the cord broke. The kite didn't go higher, it came lower. Instead of freedom it found fetters. There was my kite, badly broken, never to fly again.

Some have said, "I want to cut loose from God and the Bible. I want to be free to do as I please." Suddenly, when tempted, their cord was broken. Down they have gone to disastrous defeat.

Want freedom! Let Christ hold the cord of your life. The Bible says, "If the Son shall make you free, you shall be free indeed."

## COME TO CHURCH

### Baptist

IUKA BAPTIST CHURCH  
Charles Dampier  
BELMONT FIRST

Jack Maroon  
CALVARY BAPTIST  
Thomas Ozbirn  
MT. MORIAH BAPTIST  
Ben Thornton  
CENTRAL BAPTIST  
W. L. Oaks  
MT. VERNON BAPTIST  
Perry Murphy  
TISHOMINGO BAPTIST  
Bill Langley

BURGESS CREEK  
Lenore Stricklen - Pastor  
BURNSVILLE FIRST  
Dave Smith  
NEW PROSPECT  
J. A. Blount  
OLDHAM  
Chris Burrows  
PADEN  
Pat Howard  
FIRST BAPTIST  
O. H. Moore  
EASTPORT  
Bro. Joe Weaver  
NEW SALEM  
Joe Moyers  
UNITY BAPTIST  
Freeda Wilson  
RED BUD  
John Stovall  
ROWLAND MILLS  
Frankie Smith  
HARMONY HILL  
Billy Paul Feltman  
MT. JOY BAPTIST  
Crawford Retherford, Pastor  
CALVARY MISSIONARY  
Mike Fennel  
SOUTH CROSSROADS  
Harold Holly  
Providence Missionary  
Earl Martin, Pastor  
BETHEL BAPTIST  
Billy Quinn - Pastor

MAUD CHURCH OF CHRIST  
B. Cunningham  
IUKA CHURCH OF CHRIST  
Rex Buford  
BEREA CHURCH OF CHRIST  
Burt Isom  
TISHOMINGO  
Donald Rhodes - Minister  
BELMONT SECOND STREET  
Jimmy Gross  
PLEASANT GROVE  
John Hardwick  
LIBERTY  
Wayne M. Mitchell  
MAIN STREET  
Tim Gentle  
BURNSVILLE  
J.T. Smith, Minister

McNatt  
Ford  
Sales  
Phone 423-3681  
Iuka, Miss.

Town & Country  
Furniture  
Downtown & Hwy. 25 So.

Farm  
Bureau  
Insurance  
Phone 423-6151  
Iuka, Miss.

Cutshall  
Funeral  
Home  
Phone 423-5222  
Iuka, Miss.

Honeycutt  
Chevrolet  
Phone 423-3622  
Iuka, Miss.

### Catholic

Rev. George Pinger, S.C.J.  
MAYNUT PHIFER  
MT. ZION

FIFTH STREET  
Bill Hobson  
OLD PLEASANT HILL  
Jearri Grisham  
NEW LEBANON  
Terry L. Booker  
ANTIOCH FREEWILL  
Glenn Jones  
POPLAR SPRINGS  
Russel Clouse  
HIGHLAND  
Cecil Stepp  
BETHLEHEM BAPTIST  
George D. Credille  
YELLOW CREEK  
Stanley Magill  
DENNIS FIRST  
Wilbur Tessener  
FIRST FREEWILL  
Dallas Jack Jones  
NEW LIBERTY  
Raybon Richardson  
SHORT CREEK BAPTIST  
G.D. Jones, Pastor

CHURCHES OF CHRIST  
MAUD CHURCH OF CHRIST  
B. Cunningham  
IUKA CHURCH OF CHRIST  
Rex Buford  
BEREA CHURCH OF CHRIST  
Burt Isom  
TISHOMINGO  
Donald Rhodes - Minister  
BELMONT SECOND STREET  
Jimmy Gross  
PLEASANT GROVE  
John Hardwick  
LIBERTY  
Wayne M. Mitchell  
MAIN STREET  
Tim Gentle  
BURNSVILLE  
J.T. Smith, Minister

McNatt  
Ford  
Sales  
Phone 423-3681  
Iuka, Miss.

Town & Country  
Furniture  
Downtown & Hwy. 25 So.

Farm  
Bureau  
Insurance  
Phone 423-6151  
Iuka, Miss.

Cutshall  
Funeral  
Home  
Phone 423-5222  
Iuka, Miss.

Honeycutt  
Chevrolet  
Phone 423-3622  
Iuka, Miss.

### Methodist

TUKA UNITED  
Dudley Brown  
MT. EVERGREEN  
Dudley Brown  
CAMP GROUND  
HARMONY  
PATRICK  
ROCKY SPRINGS  
Paul Linton  
BURNSVILLE  
SNOWDOWN  
PLEASANT HILL  
SPRING HILL  
William Strange  
BOGGS CHAPEL  
PARADISE  
SALEM  
TISHOMINGO  
Del Blackman  
GOLDEN CHAPEL  
OLD BETHEL  
Dan Young, Pastor  
BELMONT  
MT. PLEASANT  
Doc Jeter  
HUBBARD SALEM  
Mike Hopkins, Pastor

JONES CHAPEL  
Eddie Jumper  
ALLSBORO UNITED  
MARGERUM UNITED  
RIVERTON UNITED  
Mr. Ronnie Green  
Christian Fellowship Center  
Bro. S.A. Bonds, Pastor

MAUD CHURCH OF CHRIST  
B. Cunningham  
IUKA CHURCH OF CHRIST  
Rex Buford  
BEREA CHURCH OF CHRIST  
Burt Isom  
TISHOMINGO  
Donald Rhodes - Minister  
BELMONT SECOND STREET  
Jimmy Gross  
PLEASANT GROVE  
John Hardwick  
LIBERTY  
Wayne M. Mitchell  
MAIN STREET  
Tim Gentle  
BURNSVILLE  
J.T. Smith, Minister

McNatt  
Ford  
Sales  
Phone 423-3681  
Iuka, Miss.

Town & Country  
Furniture  
Downtown & Hwy. 25 So.

Farm  
Bureau  
Insurance  
Phone 423-6151  
Iuka, Miss.

Cutshall  
Funeral  
Home  
Phone 423-5222  
Iuka, Miss.

Honeycutt  
Chevrolet  
Phone 423-3622  
Iuka, Miss.



FIRST ASSEMBLY OF GOD  
Rev. Allen Hapner

United Pentecostals  
BURNSVILLE FIRST  
Richard W. Forsythe  
IUKA FIRST UNITED  
Frank E. Williamson  
Pentecostal  
IUKA GOSPEL CHAPEL  
Larry Riley - Pastor  
B'VILLE TABERNACLE  
W. E. Sharp  
CHRIST GOSPEL  
Richard H. Carter  
Jacinto, Miss.  
IUKA CHURCH OF CHRIST  
Charles Moore

MAUD CHURCH OF CHRIST  
B. Cunningham  
IUKA CHURCH OF CHRIST  
Rex Buford  
BEREA CHURCH OF CHRIST  
Burt Isom  
TISHOMINGO  
Donald Rhodes - Minister  
BELMONT SECOND STREET  
Jimmy Gross  
PLEASANT GROVE  
John Hardwick  
LIBERTY  
Wayne M. Mitchell  
MAIN STREET  
Tim Gentle  
BURNSVILLE  
J.T. Smith, Minister

McNatt  
Ford  
Sales  
Phone 423-3681  
Iuka, Miss.

Town & Country  
Furniture  
Downtown & Hwy. 25 So.

Farm  
Bureau  
Insurance  
Phone 423-6151  
Iuka, Miss.

Cutshall  
Funeral  
Home  
Phone 423-5222  
Iuka, Miss.

Honeycutt  
Chevrolet  
Phone 423-3622  
Iuka, Miss.





Posey - Carson

## To Repeat Vows January 18th

Mr. and Mrs. Charles E. Posey, of Belmont, announce the forthcoming marriage of

their daughter, Cynthia Annette, to Martin F. Carson, son of Mr. and Mrs. Billie M.

Carson, of Taylorsville, Miss.

Grandparents of the bride-elect are the late Mr. and Mrs. C.E. Malone, of Belmont; and the late Mr. and Mrs. Bill Posey, of Padon.

Grandparents of the prospective bride-groom are the late Mr. and Mrs. M.N. Carson, of Covehatter; and the late Mr. and Mrs. J.F. Briscoe, of Jackson.

Miss Posey is a graduate of Belmont High School, Northeast Mississippi Junior College, and The University of Mississippi Medical Center, School of Nursing in Jackson, Miss. She is presently employed at The University Medical Center on the Neurology Newssurgery Unit.

Mr. Carson is a graduate of Taylorsville High School and Mississippi State University. He is presently employed by the Sperry-Vickers Corporation in Jackson.

The wedding will be at the Second Street Church of Christ in Belmont on January 18, 1981, at 2:00 p.m.

Friends and relatives of the couple are invited to attend the wedding and the reception to follow in the fellowship hall.

### Personal

Dr. and Mrs. Lloyd Stormont and Amanda, of Louisville, Ky., spent the Christmas Holidays in Iuka and Belmont with Mrs. Myrtle Stormont and Mrs. Arad Ivy, and other relatives and friends.

Mrs. Juanita Patterson, of Pontotoc, spent Christmas with Mrs. Nettie Hale Williams.



### New Arrival

Mr. and Mrs. John Norris, of Jackson, Mississippi, announce the arrival of a daughter, Megan Earline, born on November 23, 1980, at 5:54 a.m. at Woman's Hospital, Jackson.

Grandparents are Mr. and Mrs. Jimmie Ramsey, of Jackson; and Mr. and Mrs. Cecil Phifer, of Iuka. Great-grandparents are Mrs. Corrie Crews and Mrs. Myrtle Mae Parham, both of Iuka.

## FUNLAND SKATE CENTER

2 Miles South on Hwy. 25, Iuka, Ms

WED: 10:00 p.m. - 1:00 a.m.

### New Years Skate Party Special

Leave the old year behind and roll the new year in.

\$3.00 per person or \$5.00 per couple

THURS: Family Special

7 - 9:30 p.m. \$3.00 adm.

FRI: Honor Tishomingo County Bands

Skating 7:00 to 9:30 p.m. Dancing 9:00 to 12:00 p.m.

\$2.00 adm. each session

SAT: Reg. 2-4:30 p.m. session \$2.00 adm.

ONE FULL SESSION 7-11:30 p.m. \$3.00 adm.

SUN: Reg. 2-4:30 p.m. session \$2.00 adm.

TUES: Reg. 7-9:30 \$2.00 adm.

MON.. & WED.: Private Party Rates 423-9142

# WAL-MART

## 1981

# New Year Sale

1981 might be just around the bend with higher prices & interest rates. But Wal-Mart still offers you low discount prices every day! Plus, even greater savings on these sale items!

THURSDAY ONLY  
JANUARY 1, 1981

Open 9:00 till 6:00  
Mon. thru Sat.

Highway 25 So. Iuka



Viva  
Towels

Limit 4

Reg. 71¢

2/\$1.00

Delta  
Bathroom  
Tissue



6 roll pkg.

Reg. 1.34

Limit 1

88¢



Lux

Dishwashing

22 Oz. Bottle

Reg. 1.12

88¢



Agree  
Condition

12 oz. Reg. 1.48

\$1.12

Vaseline  
Intensive  
Care Lotion

24 oz.

Reg. 3.16

\$2.78



STP  
Gas Treatment

12 oz.

Reg. 1.07

75¢



Photo  
Developing  
Specials

Developing & Printing  
Color Print Film  
(C-41 process only)

12 exp. roll.....	1.77
20 exp. roll.....	2.77
24 exp. roll.....	3.47
36 exp. roll.....	4.27

Processing

20 Exposure slides, Regular 8 or  
Super 8mm movies.

97¢

(Limit 1 Roll with coupon - Offer expires 1-3-81)

Fast-as-a  
Flash PHOTO CENTER



ALL SEASON  
WINTER-SUMMER

Windshield  
Wash

Reg. 86¢

68¢



Quaker  
State  
Deluxe  
Motor Oil

66¢

Limit 5

Reg. 97¢



WAL-MART'S ADVERTISED MERCHANDISE POLICY! It is our intention to have every advertised item in stock, however, if due to any unforeseen reason, an advertised item is not available for purchase, Wal-Mart will issue a Rain Check on request for the merchandise to be purchased at the sale price whenever available, or will sell you a similar item at a comparable reduction in price. We reserve the right to limit quantities.



SAVE OUR REGISTER TAPES AND  
**SAVE ON G.E. APPLIANCES**

JUST FOR ENJOYING OUR SPECIAL LOW PRICES & SAVING OUR SPECIAL CASH REGISTER TAPES!

**2-Slice Toaster \$2.99**  
only WITH \$700 IN REGISTER TAPES  
**\$7.99**  
only WITH \$300 IN REGISTER TAPES

SAVE FOR THE APPLIANCE OF YOUR CHOICE!		
APPLIANCE	CASH & TAPES	CASH & TAPES
AM PORTABLE RADIO	99¢ - \$4.00	3.99 - \$20.00
HEATING PAD	99¢ - \$4.00	3.99 - \$20.00
CAN OPENER	1.99 - \$4.00	6.99 - \$20.00
DIGITAL ALARM CLOCK	99¢ - \$4.00	5.99 - \$20.00
PORTABLE MIXER	1.99 - \$4.00	6.99 - \$20.00
AM/FM RADIO	1.99 - \$4.00	6.99 - \$20.00
STEAM IRON	1.99 - \$4.00	7.99 - \$20.00
2 SLICE TOASTER	2.99 - \$4.00	7.99 - \$20.00
COMPACT 1200 GO DRYER	2.99 - \$4.00	8.99 - \$20.00
AM/FM CLOCK RADIO	2.99 - \$4.00	12.99 - \$20.00
TOASTER-OVEN	9.99 - \$10.00	19.99 - \$20.00

**Sunflower FOOD STORES**

Hwy. 25 North  
Luuka, Mississippi

PRICES good Friday, Jan. 2 thru Wed. Jan 7. WE RESERVE THE RIGHT TO LIMIT QUANTITIES. NO SALES TO DEALERS.

**Closed New Years Day**

**You're Gonna Be Surprised**

By Sunflower's

**FIRST-OF-THE-YEAR SAVINGS!**

**SMOKED Pork Chops \$1.79 LB.**

**SALLY'S Sliced Bacon 12 oz. pkg. \$1.29**

**SALLY'S FRANKS 12 OZ. PACK \$1.09**

**CENTER CUT Pork Chops lb. \$1.59**

**U.S.D.A. CHOICE Round Steak \$1.89 LB.**

**BRYAN PAMPERED Sausage \$1.59 LB.**

**FIRST CUT Pork Chops \$1.29 LB.**

**ARMOUR BEEF PATTIES 5 LB. BOX \$6.19**

**BRYAN SLICED BOLOGNA 12 OZ. PACK \$1.29**

**BONELESS LOIN STEAK LB. \$1.59**

**Richtex Shortening 42 oz. can \$1.29**

**Sally's Grade "A" Medium Eggs one dozen 2/\$1**

**Banquet Frozen T.V. Dinners Assorted Varieties each 69¢**

**Soft 'N Pretty Tissue 4-roll pkg. 89¢**

**Sally's Frozen Orange Juice 6 oz. cans 3/\$1**

**Elf Tomatoes 16 oz. cans 3/\$1**

**RED KIDNEY or PINTO Elf Beans 15 oz. cans 3/\$1**

**ELF BRAND Blackeye Peas 16 oz. cans 3/\$1**

**ELF Whole White Potatoes 16 oz. cans 3/\$1**

**ELF BRAND Cut Green Beans 16 oz. cans 3/\$1**

**FLEISCHMANN'S Corn Oil Margarine 1-lb. pkg. 79¢**

**ARMOUR'S Beef Stew 24 oz. can \$1.29**

**ARMOUR'S Corned Beef Hash 15 oz. can 89¢**

**Laundry Detergent Super Suds 40 oz. box \$1.19**

**FOLGER'S All Grinds Coffee 1-lb. can \$2.59**

**LUCKY LEAF APPLE JUICE 32 oz. bottle 69¢**

**LIQUID DETERGENT WISK 1/2 Gallon (64 oz.) Bottle \$3.39**

**ERA 16 oz. Bottles 2 for 88¢**

**DISH LIQUID PALMOLIVE 22 oz. Bottle 99¢**

**Fruit Pies Apple or Peach 20 oz. each 69¢**

**the FRESH COMMITMENT Sweet Potatoes 5 lb. \$1**

**PINK Grapefruit 5/99¢**

**Fresh, Crisp Bell Pepper 4/99¢**

**Red Delicious Apples 3-lb. bag 75¢**

**Florida Oranges 5-lb. bag \$1.19**

**Double Your Money Back GUARANTEE**

**USDA FOOD STAMPS WELCOMED**



# Featuring



Mr. & Mrs. Fletcher Nunley

Fletcher Nunley, of Highway 72 East, luka, has seen almost a century of old years slip into history and new years begin.

On October 8, 1890, Mr. Nunley was born, one of six children, to the late John Austin and Meridian (Murphy) Nunley, of the Asphalt Mine Community in West Colbert County, Alabama.

After Mr. Fletcher was about two years old, the family moved to Mississippi, locating about nine miles southeast of luka near relatives. Members of the Nunley family, by this time, had been long time residents of Tishomingo County, settling as early as 1836. The Nunley name is listed in the history of Old Tishomingo County as being some of the early settlers. Ancestors of the Nunley fought in the Civil War, including his grandfather and uncles.

Some of the earliest memories of Mr. Fletcher are trips he made to luka driving a team of oxen pulling a wagon loaded with lumber. He said the wagons would be parked under a row of shade trees, which were behind the Spring Hotel. The grocery store was owned and operated by Bob and Charlie McKnight.

During his young years, Mr. Fletcher helped his father farm and he remembers some severe winters with ice and snow staying for three weeks.

Providence was his school, and in order to attend he walked two miles. He has fond memories of the old blue back speller and reader. "Along about the third grade geography was added," Mr. Fletcher said. He excelled in arithmetic and has used this skill for many, many years while working at a sawmill as well as estimating lumber.

While reminiscing about

the past, Mr. Nunley remarked that "Back in the 90s most transportation was with oxen." Very few horses were in this part of the country, he said, and they were used to work crops and for an occasional ride. At fourteen years old Mr. Nunley was employed at a sawmill and he walked about three miles a day to get to work.

At nineteen he made his first trip away from home by accompanying an uncle to West Tennessee about eight miles north of Middleton. They made the journey in a covered wagon and he can still describe, in detail, the covering over the wagon. They camped along the way, but bad weather slowed their travel and the trip took about four or five days. The two stayed in West Tennessee and raised a crop on twenty acres they rented. Two acres, Mr. Nunley said, were in red

clover for hay, two in corn and the rest in cotton. In the fall they returned to luka where Mr. Nunley continued to farm and sawmill.

In the early 1920s he decided to visit a sister and her husband in Hattiesburg. At this time cars were beginning to be seen, and the talented Fletcher Nunley seemed to have a knack toward mechanic work. In Hattiesburg he opened a garage, blacksmith shop and filling station where he stayed in business for two years. It was during this time that he met and married Miss Rena Smith, a native of Hattiesburg area. Miss Smith had grown up and was attending high school near Hattiesburg at the time she became acquainted with the young mechanic.

A short time after their wedding, the Nunley couple moved to luka. Mr. Nunley farmed and worked at sawmilling. The couple purchased 80 acres of land and built a home. While her husband provided a living from their land, Mrs. Nunley began her life of housekeeping. Her duties, like other homemakers of that day, included making soap and canning large quantities of fruit and vegetables as well as meat. She sewed and helped out in the fields. The family began to grow and the parents continued to work and provide the very best life possible. For a short time the family lived in Russellville, Ala.

The family then moved back to Mississippi near luka and the depression years surrounded everyone with difficult times.

Time went on and as he was able, Mr. Fletcher began to purchase land, joining his when it was for sale. Over the years his farm increased to 204 acres in size. The family had a kerosene refrigerator and a gas burning washing machine.

Other memories in the life of Mr. Fletcher are carrying the first switch ties to build the ICC Railroad track to Tishomingo at the time when the area was almost a wilderness. His own farm where he had a grist mill, sorghum mill, shop for repairing equipment and he also worked on cars and wagons. In addition he was one of the trustees at the Old Providence School.

The Nunley children attended school at Providence, the same school that their father had attended, and two of the children were taught by the same teacher that had taught their father. Other schools educating the Nunleys were Allsboro, Ala., Holcut, Midway, Snowdown and luka.

In the early 60s, the Nunleys owned and operated Nunley's Grocery and Service Station where they were assisted by their son and remained in business for about eight years before renting the business to someone else.

Time continued to move forward, and the Nunley children, eleven of them, grew up and began to move away to their own homes, leaving Mr. Fletcher and Miss Rena with only two people in the Nunley home -- until holidays and get-togethers where the number can easily climb to more than 50.

The Nunleys have had a happy life. There has also been some sadness. One of their daughters was killed in an automobile accident, and two of their grandchildren are deceased. About two and one-half years ago a transfer truck driver lost control of his truck and demolished the Nunley home. The couple escaped injury and moved to their present home on Hwy. 72 East.

The lovely couple celebrated their 56th year of marriage on November 16. They are a very remarkable couple and a joy to visit. Their children are very proud of them, and one daughter sums up the feelings of the children very well when she said, "When we need advice we all come to Mama and Daddy."

Mrs. Nunley is oldest living member attending Providence Baptist Church where she still plays the piano and is the church clerk. She has in the past taught Sunday School for about 25 years. Her hobbies include crocheting and

sewing (she still makes her own clothes, including coats.) She enjoys working with flowers, especially roses. Miss Rena is an excellent cook, to which the whole family can testify.

Mr. Nunley spends his time in his shop at home and does beautiful woodwork. He also reads extensively.

The couple's children are: L.C. Nunley, A.J. Nunley, Opal Nunley Crabb, Latrell (Trell) Nunley, Lois Nunley Woodruff, Burndeen Nunley Blackard, Lela Nunley South, Paul Nunley, and Tina Nunley Holt, all of luka; Elberta Nunley Davis, of Cicero, Ill., and Christine Nunley Brumley, who passed away in 1970. There are twenty-six grandchildren living and two grandchildren deceased and fourteen great-grandchildren.

Mrs. Nunley shared two of her favorite recipes with us:

#### CHICKEN & RICE

Cook a whole cut-up chicken (hen is best) until tender, adding salt to taste. Remove chicken from broth. Using broth cook rice (amount desired) adding pepper to taste. Mrs. Nunley brings rice and broth to a boil, reduces heat to low, covers and does not stir. If rice becomes too dry, small amounts of hot water may be added. Place boiled chicken in oven to brown or place in pan with small amount of chicken sprinkling with flour. When chicken is browned, she makes a gravy using the pan drippings.

#### ORANGE SLICE CAKE

1 cup margarine  
2 cups sugar  
4 eggs  
3 1/2 cups self-rising flour  
1/2 cup buttermilk  
1 can flake coconut  
1 lb. dates (cut up)  
2 cups chopped pecans  
1 T. grated orange peel  
Mix all ingredients and bake in greased, floured tube pan for 3-3 1/2 hours at 225°.

## Fad Diets Can Be Dangerous

In this country, fad dieting is the most common method used to lose weight.

"Because people want to lose weight quickly, they'll follow these diets for a while," says Eleanor Coats, Mississippi Cooperative Extension Service food and nutrition specialist. "Many of the diets suggest you can eat all you want of certain foods and still not gain weight. Because calorie expenditure must exceed intake, this is possible only if activity and exercise are increased."

Most fad diets are variations of the immensely popular low carbohydrate diet. All you must do, the diet books say, is stick to all you want of protein and fats -- such as eggs, meat and cheese -- and stay away from carbohydrates such as bread, potatoes and sweets. This high fat diet satisfies the appetite, and people actually consume less food.

A low carbohydrate diet induces ketosis, an increased production of ketones that collect in the urine. When ketones flood the system in excess quantity, they suppress appetite.

"The dieter is no longer stuffing down the calories he thought he wanted, and he loses weight. But he or she may end up paying a high price in general health," she said.

Hundreds of men and women have been hospitalized from the side effects of such dieting patterns. Health problems directly linked to low carbohydrate diets are fatigue, apathy, dehydration, calcium depletion, kidney problems and threatening elevations of

blood lipids associated with heart disease. The full impact may not become apparent until years later.

"We are in the age of caloric anxiety," she says. "The anxiety stems from the conflict between thin standards of beauty and desirability and our fat standard of living. Between 25 and 45 percent of our population is obese. On the average, fat constitutes 40 to 45 percent of the total daily calories of an individual. It should be 30 to 35 percent."

"At the same time, we're more sedentary than ever. For every hiker, jogger and tennis player working off excess calories, there are 20 soft bodies behind a dining table or in front of a TV set. It is no wonder that we worry about our weight."

The public continues to opt for fads and gimmicks that do little good and can do

much harm. Warnings have been issued by the American Medical Association's Council on Foods and Nutrition, and the sale of the ketogenic diets lags a little. But, soon, sales pick up again. Diet books remain at the top of the list of best sellers.

"Most of us, unless there are deep-seated problems or extreme obesity, should be able to shape up on our own without diet books that play Russian roulette with our metabolism," she says. "All one really needs is a balanced, nutritious, low-calorie diet. Eat normal foods from the Daily Food Guide, but less of them. On such a meal pattern of 1,000 to 1,200 calories a day, the average chubby American will lose between two and two-and-a-half pounds a week and learn something about healthful eating in the process."

## 2 for 1 Sale

Buy a 25" Philco Color TV  
or  
A Philco Cabinet Model Stereo  
or  
A Living Room Suite  
and get a  
**FREE**

12" Philco Black & White TV

Friday & Saturday Only  
9:00 a.m. - 5:00 p.m.

Cross Country Furniture

Phone 423-9161

Hwy. 25 North at North Crossroads

## Tri-State Savings & Loan Association

Announcing the

# NOW

CHECKING Account

(Negotiable order of Withdrawal)  
Available January 1, 1981

is an Interest Bearing Checking Account  
It pays 5 1/4 % Interest Compounded daily.

# NOW

Checking is Free with a \$400 minimum balance. There will be a \$4.00 per month Service Charge under \$400.00  
No interest will be paid once the Balance drops below \$100.00.

# NOW

With a \$1000 Balance you will be eligible to receive free money orders, free notary and copies.

If you maintain \$5000\*\* in savings, there will be no charge regardless of your NOW Balance.

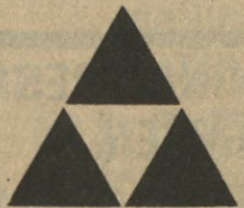
Remember  
NOW CHECKING is  
available January 1, 1981  
at either office of

**Tri-State**  
SAVINGS & LOAN  
ASSOCIATION

202 East Eastport St  
luka, Mississippi  
Phone (601) 423-3186



Box 118  
Belmont, Mississippi  
Phone (601) 454-3313



**1/2 price**  
**CLEARANCE**  
**Sale**  
All sales cash & final  
Entire Stock not included

Sportswear

Dresses

Jeans & Tops

Girl's & Boy's Coats

Boy's Knit Shirts

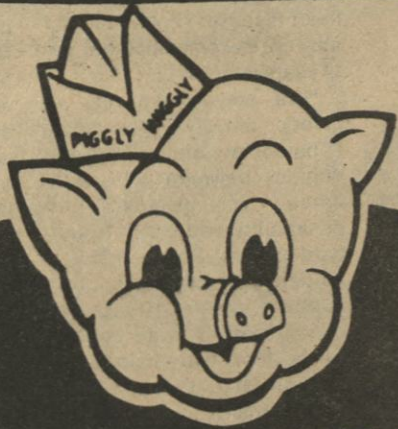
Dress Shirts

Sweaters

**Kiddie Land**

Elm Shopping Center





**PIGGLY WIGGLY  
OF IUKA**

**ELM SHOPPING CENTER  
IUKA, MS.**

QUANTITY RIGHTS RESERVED  
PRICES GOOD THURS., JAN. 1 THRU WED., JAN. 7, 1981.

**HAPPY NEW YEAR  
SPECIALS**



US CHOICE BONE-IN  
FULL-CUT ROUND

**STEAK**

**\$1.78**  
LB.

USDA CHOICE BONELESS RUMP

**ROAST**

**\$2.38**  
LB.

USDA CHOICE TENDERIZED

**STEAK**

**\$2.88**  
LB.



USDA  
CHOICE

SELECTO SLICED  
**LUNCHMEATS**

6 OZ. BBQ.

6 OZ.  
HAM & CHEESE

**69¢**

US CHOICE  
FULL-CUT ROUND

**STEAK**

**\$1.88**

BONELESS

LB.

USDA  
CHOICE



SELECTO SLICED

**LUNCHMEAT**

LIVER, SPICED LUNCHEON, OLIVE,  
SALAMI, P&P, PIZZA,  
BOLOGNA, BEEF BOLOGNA

**2 \$1.00**  
FOR

HOLLY FARM'S  
GRADE 'A' FRYING CHICKEN

**LIVERS**

**58¢**  
LB.



best MEATS in town

at Piggly Wiggly

BRYAN'S

PAMPERED PORK

**SAUSAGE**

**\$1.48**

LB.



MAMMOTH AGED

**HOOP  
CHEESE**

**\$2.19**

LB.



USDA CHOICE  
SIRLOIN TIP

**ROAST**

**\$2.38**

LB.

BONELESS



BRYAN'S SLICED MEAT  
**BOLOGNA**



**\$1.18**

12-OZ.  
PKG.

BRYAN'S MEAT

**WIENERS**

12-OZ. **\$1.18**  
PKG.

BRYAN'S SMOKY HOLLOW SMOKED

**SAUSAGE**

LB. **\$1.88**



BRYAN'S  
SLICED

**BACON**

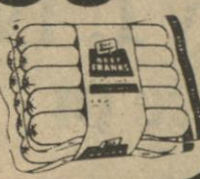
1-LB.  
PKG.

**\$1.18**

OSCAR MAYER  
WIENERS OR  
**FRANKS**

**\$1.58**

1-LB.  
PKG.



LAND O'FROST  
THIN SLICED LUNCH  
**MEATS**



**2.98¢**  
2.5-OZ.  
PKGS.

CELEBRITY  
IMPORTED SLICED  
**HAM**

**\$1.78**

8-OZ.  
PKG.



HOLLY FARMS  
FRESH FRYER  
**BACKS**

**29¢**  
LB.

NORTHWEST  
ANJOU  
**PEARS**

**39¢**  
LB.

MORNING FRESH  
GREEN  
**CABBAGE**

**19¢**  
LB.

ALL PURPOSE  
RED  
**POTATOES**

**10¢**  
LB.  
BAG

RED OR GOLD  
DELICIOUS  
**APPLES**

**3 59¢**  
LB.  
BAG

FLORIDA  
SWEET & JUICY  
**ORANGES**

**5 89¢**  
LB.  
BAG

MORNING FRESH  
SALAD  
**TOMATOES**

**79¢**  
TRAY





NON-RETURNABLE  
2-LITER BOTTLE  
**COKE**

**2 99<sup>c</sup>**  
LTR.  
BTL.

**1981 VALUES**

OCEAN SPRAY CRANBERRY  
**JUICE** 48-OZ. BTL. **\$1 39**  
UNDERWOOD DEVILED  
**HAM** 4 1/2-OZ. CAN **68<sup>c</sup>**  
UNDERWOOD CHICKEN  
**SPREAD** 4 1/4-OZ. CAN **68<sup>c</sup>**  
VLASIC HAMBURGER DILL  
**CHIPS** 32-OZ. JAR **99<sup>c</sup>**  
GELATIN  
**JELLO®** 3 3-OZ. BOXES **88<sup>c</sup>**  
NESCAFE INSTANT  
**COFFEE** 10-OZ. JAR **\$3 99**



PILLSBURY  
PLAIN OR SELF RISING

**FLOUR**

**5 79<sup>c</sup>**  
LB.  
BAG



GOLDEN BEST  
ALL PURPOSE

**SHORTENING**

42-OZ. CAN



LIMIT ONE WITH \$10 ADDITIONAL PURCHASE

**89<sup>c</sup>**

**PIGGY WIGGLY  
OF IUKA**



we are pleased to accept  
**U.S.D.A. FOOD STAMP  
COUPONS**

SUNFLOWER  
SELF-RISING MIX

**CORN MEAL**

5 LB. BAG

**89<sup>c</sup>**

PIGGY WIGGLY  
SWEET OR BUTTERMILK

4 10-CT. CANS

**BISCUITS 68<sup>c</sup>****1981 VALUES**

ARGO SLICED  
**PEACHES** 29-OZ. CAN **69<sup>c</sup>**  
STOKELY CREAM STYLE  
**CORN** 2 17-OZ. CANS **88<sup>c</sup>**  
STOKELY WHOLE KERNEL  
**CORN** 2 17-OZ. CANS **88<sup>c</sup>**  
FRENCH'S CHILI  
**MIX** 1 1/4-OZ. PKG. **43<sup>c</sup>**  
SUNSHINE HI HO  
**CRACKERS** 12-OZ. PKG. **79<sup>c</sup>**  
ANTI-FREEZE  
**PRESTONE-2** GAL. BTL. **\$4 59**



FOLGER'S  
ALL GRINDS  
**COFFEE**

1-LB. BAG

**\$2 39**

RUBY SELF-RISING  
**FLOUR**

25 LB. BAG

**\$5 49****1981 VALUES**

BLUE BONNET QUARTERS OLEO  
**MARGARINE** 1-LB. PKG. **58<sup>c</sup>**  
BRYAN'S VIENNA  
**SAUSAGE** 2 5-OZ. CANS **88<sup>c</sup>**  
SEVEN SEAS SALAD  
**DRESSING** 8-OZ. BTL. **59<sup>c</sup>**  
GLOVE KID PEANUT  
**BUTTER** 40-OZ. JAR **\$2 99**  
BAMA GRAPE  
**JAM** 48-OZ. JAR **\$1 99**  
RAINBOW HAMBURGER DILL  
**SLICES** 16-OZ. JAR **59<sup>c</sup>**

KLEENEX  
HUGGIES

**DIAPERS**

12-CT. BOX

**\$2 29**• OVERNIGHT  
• TODDLER

LAUNDRY  
DETERGENT  
**TIDE**

84-OZ. BOX

**\$2 49**

KITCHEN KRAFT  
PURPLE HULL

**PEAS**4 **\$1 00**

15 1/2-OZ. CANS

KITCHEN KRAFT  
FRESH TINY FIELD

**PEAS**4 **\$1 00**

15 1/2-OZ. CANS

KITCHEN KRAFT  
BLACK EYE WITH SNAPS

**PEAS**4 **\$1 00**

15 1/2-OZ. CANS

KITCHEN KRAFT  
BLACK EYE

**PEAS**4 **\$1 00**

15 1/2-OZ. CANS

PIGGY WIGGLY  
MACARONI & CHEESE

**DINNER**3 **89<sup>c</sup>**

7 1/4-OZ. BOXES

A GREAT BUY  
CHAMP

**DOG FOOD**25 **\$3 29**

LB. BAG

LYSOL  
DEODORIZING

**CLEANER**28-OZ. BTL. **99<sup>c</sup>**

LYSOL  
BASIN-TUB-TILE

**CLEANER**17-OZ. CAN **99<sup>c</sup>**

FAMILY  
MOUTHWASH

**LISTERINE**18-OZ. BTL. **\$1 49**

SCHICK  
SUPER-2

**BLADES**5-CT. PKG. **\$1 29**





## Dooley - Key Make February Plans

Mr. and Mrs. Robert Q. Dooley announce the engagement of their daughter, Betty Jo, to Dennis C. Key, son of Mr. and Mrs. Harold Key, of Fort Smith, Arkansas.

The ceremony will take place February 7, 1981, at 3:00 p.m. in Roebuck Chapel at the First Methodist Church of Fort Smith, Arkansas.

## Holts Spur

We extend our deepest sympathy to the families of Mr. Lilburn Owens and Mr. John Bobo. They were both buried at Little Flock cemetery.

Mr. and Mrs. Virgil Rhodes and sons, Tim and Jamie, visited Christmas with Virgil's mother, Violet, and Ed Tallman and other relatives in Hartselle, Ala. Others were Ruth and Walter James, Melvin Clayton, and Geraldine and Clifton Truss. Mrs. Mamie Sharp, of Paden, was Saturday night guest of her granddaughter, Mr. and Mrs. Mike Smith, and Shana. The Smiths live in the house known as the Frank Ross house.

Holiday visitors of Misses Janie and Reathel Whitfield were: Mrs. Wilma Gilliland, of Burnsville; Ronnie Gilliland, of Houston, Texas; Dr. Kamm and wife, Sue, of Shreveport, La.; Mrs. Mary Ann Tomlinson and family, of Meridian, Miss.; Larry and Ginger Wilmoth and Junior and Alfred Pruitt, of Burnsville.

Leander Kennedy was carried in an ambulance December 25, to Tishomingo

home for Christmas except Coleman, Jr., who had to work.

Mr. and Mrs. M.L. Hatcher had their children home for Christmas. Peggy and Bobby Milligan and daughter, Micki Jo, from Florida, came and Patsy and Larry McMillan and sons, Nicky, Randy and Roddy (twins), of Houston, Texas.

Sorry to learn that Miss Maudie Nagle, formerly of this community, fell and broke a hip. She is a patient in a Huntsville, Ala. hospital.

Recent visitors of Frank Ross were Rebon Wilson, Mrs. Louise Carey, Mrs. Bula Watkins, Mrs. Martha Vanderford, Edwin and Carolyn and Mrs. Thelma Gray.

All of Mrs. Ester Skinner's children visited here during the holidays.

The Ray Potts family, Mr. and Mrs. Pearl Roten, Don Roten and family, of Ripley, Miss., had Christmas dinner with Mrs. Lily Mae Potts, of Iuka.

Charles Whitfield, wife and daughter, of Michigan, are spending a week with his parents, Mr. and Mrs. Willard Whitfield, Mrs. Lucille Hare, of Altitude, had Sunday dinner with them.

Marilyn and Earl McAnally are here for the holidays visiting their parents, Mr. and Mrs. J.L. Sims and the McAnallys. Earl is attending a Methodist seminary and will not go back until the first of February.

Sunday dinner guest of Mr. and Mrs. Jack Gray, of Booneville, was Mrs. Bula Watkins.

Milton Vanderford is suffering with a back injury.

Mrs. Leona Ellis is visiting with her sister, Mrs. Leatha Hendrix, of Corinth.

Mrs. Thelma Gray recently called on Mrs. C.K. Nixon and daughters, in Iuka. She also visited Mrs. Ida Carter, who is a bed patient.

## First Bank Announces Promotions

Guy Mitchell, Jr., Chairman of the Board of Directors of First Bank, has announced several promotions involving upper-level management positions.

Gene Berbette has been elevated to Chief Executive Officer and Chairman of the Corporation. Lewis Whitfield has been named President. Dick Guyton and Bobby Wilson have been promoted to the position of Executive Vice President. Mitchell will continue to serve as Chairman of the Board.

Whitfield will manage the Administrative Division which



## Camera Donated

Miss Cindy Boothe, Social Director at Pickwick Manor Nursing Home, accepts a Polaroid camera, donated by

Wal-Mart and presented by Mr. Jack Thomas, Manager. The camera will be used to capture many special occasions and memories for the

residents of Pickwick Manor. Left to right: Faye Whitaker, Department Manager of Electronics; Cindy Boothe, Pickwick Manor; and Jack Thomas, Manager.

includes Community Banks, Marketing and Planning, Personnel, and Trust. Guyton, as senior loan officer, will continue to manage the Loan Division. Wilson, as senior operations officer, will continue to manage the Operations and Control Division. These three division managers report to Berbette, and these four comprise First Bank's Management Committee.

Gene Berbette has 20 years of banking experience. He joined First Bank in 1966 as Vice President after working as a bank examiner and as an officer in the Grenada banking system. In 1968, he was named Executive Vice President, and in 1972, he was promoted to President. Berbette has served as president of the Kiwanis Club, president of Lee United Neighbors, and chairman of the board of the North Mississippi Medical Center. He has served on the boards of directors for the Salvation Army, Tupelo Country Club, Community Development Foundation, and Community Relations Association. Berbette is a 1959 graduate of Louisiana State University.

Lewis Whitfield joined First Bank in 1973 after serving as administrative manager to U.S. Senator Lloyd Bentsen. He has served as president of the Tupelo Rotary Club, president of the Lee County Chapter of the MSU Alumni Association, treasurer of the Tupelo Symphony, and is treasurer-elect of the Mississippi Economic Council. He is serving as a member of the board of the Lee County Library and Community Development Foundation. Whitfield earned B.S. and M.B.A. degrees from Mississippi State University. He also is a graduate of the LSU School of Banking of the South.

Dick Guyton joined First Bank in 1972 after serving seven years as an officer for a Meridian bank. In 1976, he was promoted to Senior Vice President. He has served as president of the Lee United Neighbors and president of the Tupelo Lions Club. In addition, he has been an advisory board member of the Salvation Army. Guyton received a B.B.A. degree in Banking and Finance from the University of Mississippi in 1963. He is also a graduate of the School of Banking of the South at LSU.

Bobby Wilson was employed by First Bank in 1967. He has served as Internal Auditor and became Senior Vice President and Cashier in 1976. Wilson has served as president of the local chapter of the National Association of Accountants, president of the Exchange Club, and president of the Tupelo Chapter of the American Institute of Banking. He earned a B.B.A. degree in Accounting from Ole Miss in 1965.

## Mississippi's Junior College Enrollment

For the first time in the fifty-eight year history of Mississippi's public junior colleges enrollments exceeded 50,000. Official

enrollment figures taken at the end of the sixth week of the fall semester reveal that 50,015 individuals were enrolled in various instructional programs. This number exceeds the 1979 figure by 2,087 or 4.35 percent.

The greatest increase occurred in enrollment of full-time students, which increased 10.4% over last year - from 23,929 to 26,424. There was an increase in full-time enrollment in all except two junior colleges. Increases by category were academic or university - transfer - 6.4%; technical - 15.5%; and vocational - 14.5%. The academic curricula continued to account for over half of both full-time (52%) and part-time (60%) regular enrollments.

Enrollment of women exceeded that of men, 54 percent to 46 percent. In the technical curricula which includes the associate degree nursing programs, women outnumbered male students

68 percent to 32 percent. However, in the vocational programs, much of which is trade and industry skill training, the ratio was reversed, with enrollment of men accounting for 68 percent to 32 percent for women.

Seventy-two percent of the students are classified as freshmen or first year students. The vocational category consisted of many one-year training programs and first year students accounted for 87 percent of this enrollment. Non-residents of Mississippi accounted for only three percent of the enrollment as the public junior colleges continued to serve principally those people within the junior college geographic districts.

A headcount summary by school district is shown below:

Coahoma	1,721
Copiah-Lincoln	2,194
East Central	854
East Mississippi	1,595
Hinds	8,659

## Tishomingo County News - Violette - Belmont News

Holmes	1,395
Itawamba	4,085
Jones	2,634
Meridian	3,675
Mississippi Delta	2,572
Mississippi Gulf Coast	9,535
Northeast	2,314
Northwest	3,861
Pearl River	2,308
Southwest	1,242
Utica	1,371
TOTAL	50,015

Other category includes CETA/Manpower contracts, Adult Basic education and high school diploma preparatory, secondary students in vocational centers, industry training, and special interest courses.

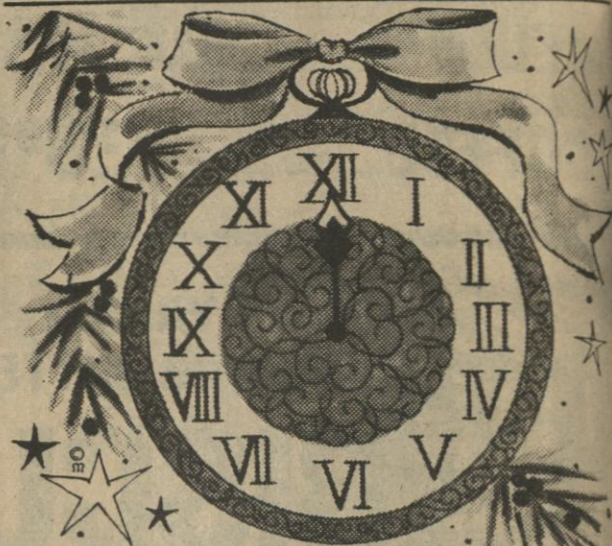
school districts," Holladay said, "with each district receiving approximately \$190 per child served." Checks for the first quarter were mailed in the first week of December, he said.

Dr. Walter Moore, who heads the Special Education Section of the State Department of Education, indicated that many districts have already obligated amounts equivalent to the first quarter sum. Superintendents will request additional reimbursements as they make subsequent expenditures.

With the continuing growth of special education services and with the increases in numbers of severely or multiply handicapped children being served, Moore explained, federal funds are vital supplements to state Minimum Program support for special education.

## Grant For Handicapped Children

Mississippi has received a grant of \$9,331,896.00 under P.L. 94-142 for education of handicapped children. Dr. Charles E. Holladay, state superintendent of education, announced. Expenditures under this grant are allowable from July 1, 1980, through September 30, 1981. "Most of this money is distributed to



## Time for New Year Wishes

Time to greet our good friends... time to thank all you wonderful people for your kind, loyal patronage.

## New Orleans Fried Chicken

Larry & Brenda Hudson  
& Employees

## HAPPY NEW YEAR

from

## Iuka Guaranty Bank

offering the new

## STRAIGHT AHEAD NOW ACCOUNT

contact any member of our staff for details

Our 69th year of providing uninterrupted Commercial Bank Services to the surrounding trade area

Member FDIC

Each depositor insured to \$100,000.00



## THREE NATURAL COLOR PORTRAITS

From Three Separate Sitzings  
1-11 X 14  
and  
2-8 X 10  
only \$2.00 including Tax  
and Handling

This pays for all Three Sitzings

No Extra Charge for Groups  
up to the number the photographer can handle.

- No extra charge for groups up to the number the photographer can handle.
- Only one Family Group.
- Limit: One special offer per person and one per family every 90 days.
- All Ages.
- Children must be accompanied by a parent.
- Cannot be used with any other advertising offers.
- NO PETS, WITH OR WITHOUT A PERSON.

Sitting to be 3 to 4 months apart. You will be notified by card 1 week to 10 days ahead as to time, date, and place for each of the above sittings.

## KIDDIE LAND

Iuka, Mississippi  
Monday, January 5, 1981  
Hours: 10 a.m. - 5 p.m.  
Tuesday, January 6, 1981  
Hours: 10 a.m. - 5 p.m.  
Wednesday, January 7, 1981  
Hours: 10 a.m. - 5 p.m.

## IUKA MOTEL

Iuka, Mississippi  
Thursday, January 8, 1981  
Hours: 1 p.m. - 8 p.m.

*olan mills*  
THE NATION'S STUDIO

We use Kodak paper for a good look



**WAL-MART**

Sale Date:  
Sale good Dec. 31 thru Jan. 3, 1981  
9:00 till 8:00, Monday thru Saturday  
Hwy. 25 South in IUka

# After Christmas Clearance Sale



Fantastic Savings On Fall and Winter Merchandise Now thru Saturday!

## clearance



Blouses, Jeans, Pants & Dresses

**\$200 up**



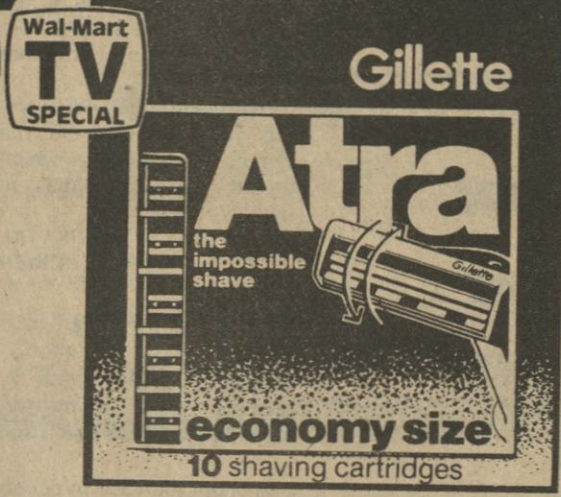
Super Value  
Wal-Mart Oil Filters  
Sizes to fit most American cars, light trucks & some imports

**2 FOR \$3**



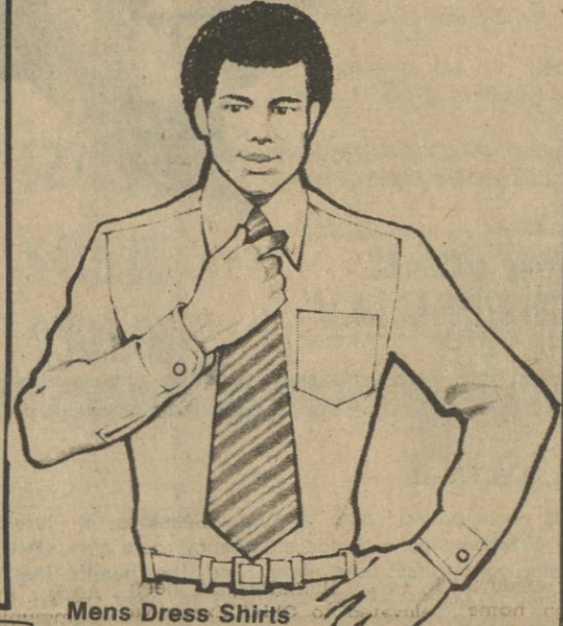
Pine Sol  
• 28 Ounce  
• Disinfectant cleaner  
• Limit 2

**148**



Gillette  
Atra Cartridges  
• 10 Cartridges

**197** Limit 2



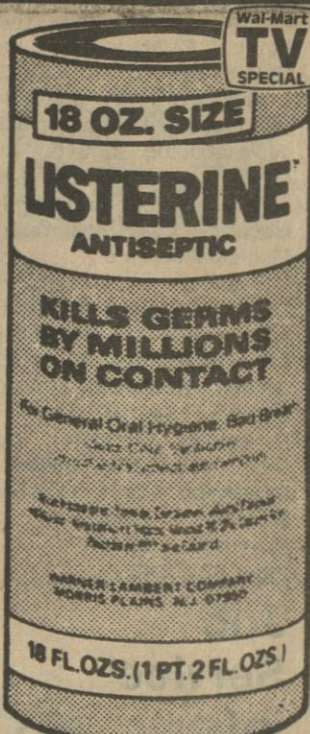
Mens Dress Shirts  
• Long sleeves  
• Poly/cotton blends  
• Sizes 14 1/2-17

Reg. 6.77  
**\$5.00**



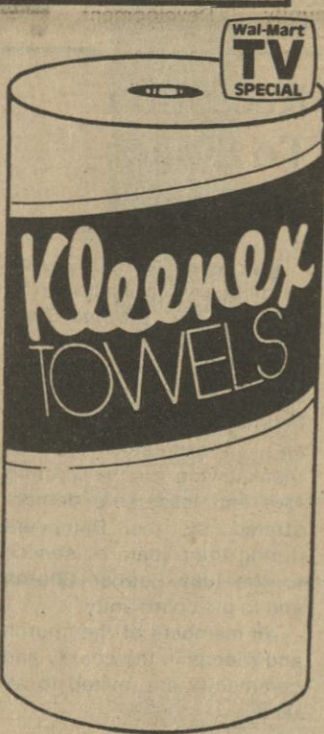
Boy's Corduroy Jeans

Reg. 14.94  
**\$12.00**



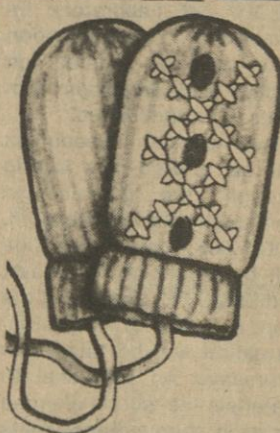
Listerine Antiseptic  
• 18 Ounce  
• Limit 2

**128**



Kleenex Towels  
• 100, 2-Ply towels  
• 83 Square feet  
• Assorted colors

**54¢** Limit 2



Infants Mittens  
• 100% acrylic

**\$1.00**



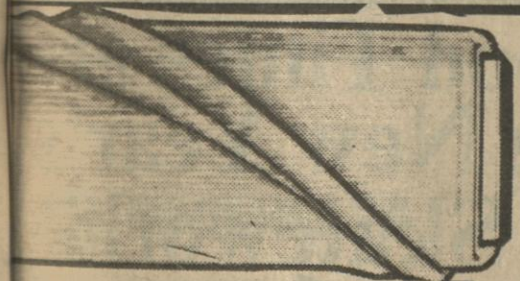
Childrens Mittens  
• 100% acrylic

**\$1.50**



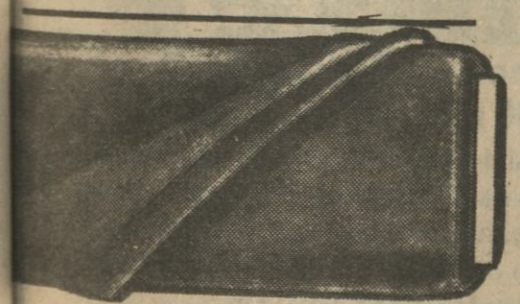
Mens Split Leather Gloves  
• Ranch suede

**\$7.00**



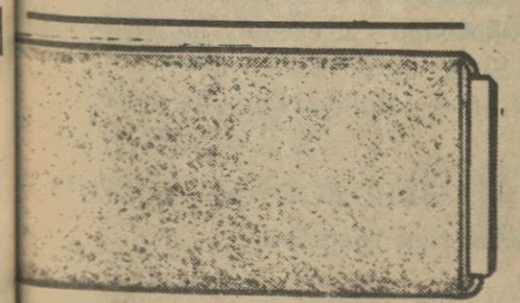
Dress & Blouse Prints

45" 1.37 & 1.57 Yd. **50¢**



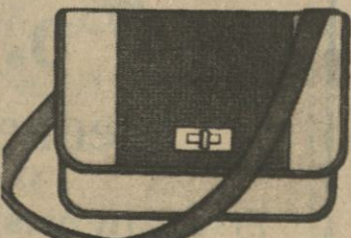
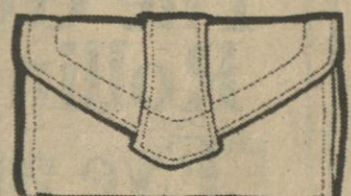
Cotton Twill

Reg. 1.97 Asst'd Colors Yd. **\$1.00**



Polyester Prints

Reg. 1.88 Yd. **\$1.27**



Assorted Ladies Purses  
Canvas and Vinyl

**\$5.00**

Values to 8.93

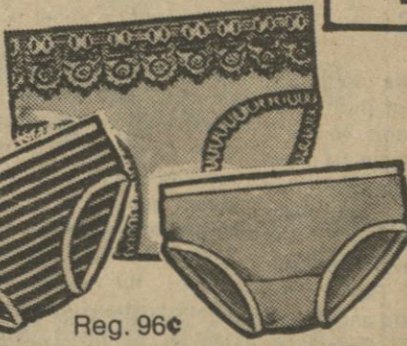


Girl's Thermal Tops & Bottoms

**\$2.00** Each

Ladies Bikini Panties

**2/\$1.00**



Reg. 96¢



KNEE-HIGHS  
Reg. 38¢  
**5 FOR \$1.00**



**CLEARANCE**  
**\$5, 6, 10, 12, 15**

**2 Pc. CRIB COMFORTER & PILLOW SET**

#2018

Reg. 6.84



**\$5.00**

**WAL-MART**



WAL-MART'S ADVERTISED MERCHANDISE POLICY! It is our intention to have every advertised item in stock, however, if due to any unforeseen reason, an advertised item is not available for purchase, Wal-mart will issue a Rain Check on request, for the merchandise to be purchased at the sale price whenever available, or will sell you a similar item at a comparable reduction in price. We reserve the right to limit quantities.





**20 Years of Service**  
Mrs. Maggie Williams was honored in a recent Awards

Ceremony at the Fred's Store for completion of 20 years of service with Fred's. In

recognition, she received a 20 year pin and certificate. Pictured, left to right: Toney Mobley, Manager of the Iuka

Store; Stewart Vail, a Fred's owner; Mrs. Maggie Williams; and Bobby Herndon, Supervisor for Fred's Store.



**Iuka Nurses Attend UMC Seminar**

Barbara Massengill (left) and Lynette Morris were among

RNs and LPNs participating in a University of Mississippi School of Nursing continuing education seminar on critical

care nursing. Sessions included emergency room nursing care, and the health team approach to head in-

juries. Sponsors were the UMC School of Nursing and the Medical Center Division of Continuing Health Professional Education.

Psychology and LSCI 525 Selection of Media for Young Adults.

EDPY 545 Laboratory: Interpersonal Communication Skills will be offered on Fridays and Saturdays with times to be announced.

Two special telecourses will be offered this spring through the Appalachian Community Service Network. EDUC 555 Coping with Kids will be taught on Tuesdays, and EDUC 555 Loosening the Grip: A Survey of Alcohol Information will be taught on Thursdays. An additional \$5 materials fee will be charged for each course. Fact sheets describing these courses in detail will be available at registration.

For additional information call the Division of Continuing Education at The University of Mississippi, 232-7282, or Northeast Mississippi Junior College, 728-7751.

## NOTICE

**To The Tax Payers of The Town of Burnsville:**

The tax books are now open. You have until January 30th to pay your taxes. All taxes not paid by January 30th, will have a late charge added.

TOWN OF BURNVILLE  
A.T. MARLAR, JR.,  
MAYOR

J-1-8-15-c.

## Gann Bros. Announces Winners

Gann Brothers Furniture and Appliance, of Burnsville, take this opportunity to thank everyone that came by their store and registered for prizes that were given away on December 23.

Woodrow Davis was the winner of an RCA color television. Howard and Peggy Scarbrough, of Burnsville, were also winners. They are now enjoying a set of Value Bedding by National Mattress.

Gann Brothers Furniture and Appliance, of Burnsville, invites everyone to watch The Tishomingo County News for their next big sale.

## Reception To Honor Dampeers

The Iuka Baptist Church will host a reception honoring Bro. and Mrs. Charles Dampeer on Sunday, January 11, from the hours of 2:00 until 4:00 p.m. in the Church Fellowship Hall. This time is an expression of thanksgiving for the untiring love and leadership demonstrated by the Dampeers during their years of service to the Iuka Baptist Church and to the community.

All members of the church and friends in the county and community are invited to attend.

## November Business Activity

Ed Pittman, Secretary of State, released the following information about local business activity for the month of November, 1980, with the Secretary of State's Office.

Mr. Pittman reported that there were 39 documents filed from Tishomingo County giving notice that a creditor has a security interest in property of debtor.

According to Mr. Pittman, one Tishomingo County resident received his Notary Public Commission during November.

The total number of votes cast in Mississippi during the November presidential election was 892,023. This record number of voters represents 60% of the total number of registered voters in the state. When questioned about the large voter turnout, Mr. Pittman said that it was evidence of the great interest Mississippians have in maintaining excellence in government and that the citizens of this state are to be commended for their good citizenship.



## Cecil Sumners, Author Of The Governors Of Mississippi

The lives and leadership of the more than ninety men who have served as chief executive of the Magnolia State are documented in THE GOVERNORS OF MISSISSIPPI, the fifth volume in Pelican Publishing Company's Governors of the States series.

Author Cecil L. Sumners, who served for twelve years as a Mississippi state senator, traces the evolution of modern-day Mississippi through the programs, policies, and acts of the men who have headed the state. Beginning with the region's first governor -- Pierre le Moyne, Sieur d'Iberville, the founder of Mississippi -- Sumners records the leadership under the reigns of the French, the British, the Spanish, the territorial government, and finally the modern

state. Rogues, visionaries, figureheads, and sometimes statesmen -- they are all included in this collection of brief biographies of the state's chief executives.

Included among the governors are:

William Lewis Sharkey, who fought in the Battle of New Orleans at age seventeen and later opposed both secession and the confederacy.

Theodore Bilbo, known as "the Stormy Petrel of Mississippi Politics," twice governor and perhaps the most colorful political figure in the state's history.

Dennis Murphree, twice governor and three times lieutenant governor; and

Hugh White and Mike Conner, credited with developing the present-day financial foundation of the state.

## Tuckier Announces For Alderman

To the voters of Iuka:

I take this opportunity to announce my candidacy for the post of City Alderman, to finish out the term of the late Floyd Curtis. As most of you know, I was fortunate enough to serve four years as Alderman - 1973-1977, and during my tenure my motto was, "If I CAN help you, I will - and if I can't help you, I'll tell you so, and WHY". This promise still holds good, and I firmly believe that the will of the citizens of Iuka should take precedence in any matter that comes up.

I earnestly solicit your vote, and your influence in the coming election, which should be sometime in January, 1981.

THANK YOU.  
REX L. TUCKIER

## Increase In Sales Tax Collections

A slight increase in county sales tax collections was seen in November, 1980, over October, 1980, with municipalities taking in a total of \$42,395.51 for the month of November. This figure is \$2,243.11 above the October figure of \$40,152.40.

A breakdown of figures for the month of October and corresponding figures for November, according to data released in the monthly issues of Mississippi Municipalities, are:

Belmont	November, \$9,365.60, October, \$8,177.50;
Burnsville	November, \$3,617.50, October, \$3,437.55;
Golden	November, \$469.90, October, \$481.40;
Iuka	November, \$26,359.44, October, \$25,159.68;
Paden	November, \$45.34, October, \$117.87;
Tishomingo	November, \$2,537.73, October, \$2,778.40.

## Job Service Info

Mississippi's unemployment rate rose to 7.1 percent in November, an increase of four-tenths of a percentage point compared to October's 6.7 percent jobless rate, according to Mississippi Employment Security Commission Executive Director O.H. Simmons. Last year's November unemployment rate was 5.3 percent.

The 7.1 percent unemployment rate for the state was the same as the national rate for November. MESC figures showed 72,600 unemployed and 949,900 employed out of a civilian labor force of 1,022,500. The initial Unemployment Insurance claims totaled 14,555 for November.

The counties having the highest unemployment rates were Alcorn, with a rate of 13.6 percent; Noxubee and Jefferson, each with a rate of 11.9 percent; and Jeff Davis, with a rate of 11.6 percent. Issaquena, Rankin, Oktibbeha, and Lafayette counties had the lowest jobless rates for November. Issaquena had a rate of 3.4 percent, Rankin and Oktibbeha each had a rate of 4.1 percent, and Lafayette had an unemployment rate of 4.2 percent.

Fifty-nine of the state's 82 counties showed an increase in their unemployment rates for November, while 18 reported decreases. The jobless rate in five counties remained the same.

bill is not acceptable, the Medicare carrier will return the form to the person and an extensive delay in payment may result.

To be acceptable, a bill for services must include: A complete description of each service or supply received, the date each service or supply was received, the place each service or supply was received, the charge for each service or supply, the name of the doctor or supplier, who provided each service or supply, the person's name and complete health insurance number exactly as shown on the person's Medicare card, if possible, the diagnosis.

A bill which just shows "For professional services rendered" or "Balance forward" is not acceptable.

More information about filing Medicare claims can be obtained at the Corinth social security office. The people there will be glad to answer questions about itemized bills as well as about the Request for Medicare Payment form. The phone number in Corinth is 287-5241. Most residents of Tishomingo and Tishomingo Counties can call the office in Corinth at no charge by dialing 837-3018 or 423-6042 respectively.

## Greet Your Holiday Guests With Pretty Table Settings

One of the most effective ways to greet your holiday guests is to plan a table set-

ting so decorative and inviting that it sets the pace for the pleasure of dining with friends.

Coordination is one of the secrets of good decoration, says Sarah Fountain, Mississippi Cooperative Extension Service home furnishings specialist.

"A table setting is like a still life, combining colors of fruit or flowers with decorative objects like glass, candles and accessories," she says. "The cloth is the background, the dining area is the frame."

Your table settings express your taste, individuality and personality. They can be varied as your moods or moods. With taste and coordination, there is no limit to the decorative combinations you can achieve. Take a look at the little treasures you have collected or received. Use them with imagination and they will add sparkle to your table.

Mix old silver with Choose bright napkins contrast with tablecloth place mats. Create your tablecloth from a length of printed linen. Combine turned and plain dinnerware. Design a centerpiece and a treasured small antique flowering plant.

Experiment with color your flowers and accessories and see how color changes your table. Soon you are creating still lifes every each one different, adding to the zest of a meal the hospitality of your home.

## Health News Back Injuries

Thousands of working men know what Chiropractic can do for back injuries. They know that when other methods fail to give them relief, Chiropractic was successful.

It is important for employees, compensation insurance carriers and the public in general to recognize this fact. Actual studies have been made of injured workers cared for by different systems of therapy. Chiropractic brings the worker through with less cost to the insurance company, less cost for insurance coverage to the employee as well as less interruption in the production line.

Several large industrial firms are now employing chiropractors on a full time basis to care for their workers.

To the chiropractor, the spine represents the key as it were that locks up and unlocks the inherent powers of nature.

One of a series of articles published in the public to explain and illustrate the practice of scientific Chiropractic.

Dr. J.R. Sanchez  
Highway 25 North - Telephone (601)423-  
P.O. Box 366  
Iuka, Mississippi 38852



## The Good Times are Rolling New Year's Eve at Skateworld 7 p.m. to 1 a.m.

Wednesday, December 31

\$3.50 per person \$5.50 per couple

Free party hats, noise makers, party favors to first 100 people who come in

\$20.00 in cash to the 150th person who enters

6 month free pass to the 200th person who enters

Free pair of skates to be given away at Midnight

\$5.00 in quarters to the highest score of the night on Space Invaders and Gualaxian

## CONTESTS - DISCO BREAK

Mr. and Miss 1981 Skateworld Contest

Fun, Food, Fellowship -- all evening 7 p.m. - 1 a.m.

Gus Sims Skate-A-Like Contest

Balloon Games -- Balloon burst for prizes

JOIN US AT SKATEWORLD FOR NEW YEARS EVE

Passes will not be honored on New Years Eve Skateworld will be open

Thursday 2 - 4:30

Thursday night 7 - 9:30

Friday 2 - 4:30

Friday night 7 - 11:30

Saturday 10

Saturday

Sat. night 7

Sunday 10

## SKATEWORLD

423-5814 Call anytime for information

Hwy. 25 North

Iuka, Mississ

## Boots Unlimited

Hwy. 25 North In Iuka



All Western Hats

1/2 price

LEVI Jeans

\$14.95







# B & J

## Supermarket

**Hwy. 365**  
**South In**  
**Burnsville**

AD EXPIRES JAN. 5th, 1981

WE SLICE, CUT, AND FREEZER WRAP MEAT FOR THE PUBLIC

## ROUND STEAKS

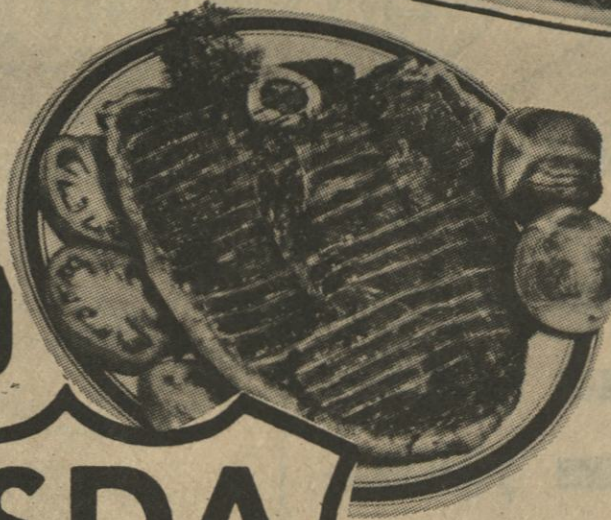
U.S.D.A. CHOICE

BONE IN

LB. **\$1.69**

BONELESS

LB. **\$1.89**



U.S.D.A. CHOICE BONELESS

## CHUCK ROASTS

LB. **\$1.39**

## MAXWELL HOUSE COFFEE

1 LB. BAGS

**\$2.49**



PUREX

## BLEACH

(BONUS BUY - 1 BUY PER \$15.00 PUR.)

GALLON SIZE

**39¢**

REELFOOT Franks

REELFOOT Bacon

BRYAN Sausage

BRYAN Bologna

TASTY Chicken Livers

FRESH GROUND Cracklins

SMOKY HOLLOW Smoked Sausage

12 OZ. REGULAR 99¢

12 OZ. VACUUM PACK \$1.00

1 LB. HOT OR MILD \$1.49

12 OZ. REGULAR \$1.19

1 LB. CUP 99¢

LB. 89¢

1 LB. REG. OR BEEF \$1.00

## PUREX

LAUNDRY DETERGENT

LARGE 9 LB. 3 OZ.

**\$3.79**

BUSH'S Navy Beans 15 OZ. CANS **3/79¢**

BLUE BONNET Margarine 6 STICK WHIPPED **69¢**

DEL MONTE Prune Juice 32 OZ. **79¢**

Wesson Oil LARGE 48 OZ. **\$2.39**

CHILI MAN Chili WITH MEAT LARGE 20 OZ. CAN **99¢**

LUCKS GIANT Limas W/Pork 17 OZ. **2/79¢**

SUNSHINE Dog Ration 25 LB. **\$3.99**

BUSH'S Pinto Beans 15 OZ. CANS **3/99¢**

SUNFLOWER Meal SELF RISING 5 LB. BAG **\$1.09**

BRYAN Lunch Meat 12 OZ. CAN **\$1.19**

ALLEN CUT Green Beans 17 OZ. **3/\$1.00**

HYDE PARK Pot Pies **4/89¢**

VAN CAMPS Beanie Weenie OR CHILEE WENIE **2/89¢**

MERICO TEXAS BUTTER'N Biscuits **4/89¢**

DEL MONTE

## CATSUP

32 OZ.

**59¢**



(BONUS BUY - 1 BUY PER \$15.00 PURCHASE)

BAMA

## MAYONNAISE

32 OZ.

**\$1.29**



MARTHA WHITE SELF RISING

## FLOUR

5 LB. BAG

**89¢**



## Produce



DEL MONTE Bananas **4 LB. \$1**

WASHINGTON RED OR YELLOW DELICIOUS Apples **LB. 39¢**

Yellow Onions **3 LB. BAG 79¢**

Green Cabbage **LB. 19¢**

CANADIAN WAXED Rutabagas **21¢**

Befresh TOILET DEODORANT **69¢**

FOR NO WAX FLOORS Brite **LARGE 27 OZ. \$1.99**

Liquid Shout **22 OZ. \$1.29**

HYDE PARK Bathroom Tissue **4 ROLL PKG. 79¢**

HYDE PARK Cinnamon Rolls **9 1/2 OZ. CANS 59¢**

FREEZER QUEEN Boil In Bag Dinners **5 OZ. 3/\$1.00**

KRAFT Macaroni & Cheese Dinners **7 1/4 OZ. 3/\$1.00**

DISH LIQUID

## DERMASSAGE

22 OZ. **89¢**