

# Tishomingo County News

\$6.00 Per Year Locally  
In Advance  
\$8.00 Per Year  
Outside Trace Area

## The Vidette & Belmont News

OFFICIAL LEGAL NEWSPAPERS OF TISHOMINGO COUNTY  
The One Newspaper In The World Most Interested In This Area

Patronize The News  
Advertisers!  
They Send A Valuable  
Message To You  
Each Week

NINETY—EIGHTH YEAR

IUKA, TISHOMINGO COUNTY, MISSISSIPPI

Thursday, January 14, 1982 No. 30

## COLD WAVE LEAVES TVA BUYING POWER

## Public Response Vital To Plant Continuation

### Yellow Creek Plant Could Answer Need Of Valley

An article which appeared in The Tupelo Daily Journal on Tuesday, January 12, was quoted as saying the cold wave put the power system did not convince him the agency needs the electricity that the nuclear reactors needed for deferrals could still be able to meet its needs even though two TVA's operating reactors are out of service.

Contrary to Dean's statements, a TVA bulletin issued at 11:00 a.m. Tuesday, January 12, revealed at 8 a.m. Tuesday, TVA was buying about 2,600 megawatts of power from neighbors -- 1,200 megawatts from the Southern Company south of the TVA region, 1,000 megawatts from American Electric Power in the Ohio Valley, 1,000 megawatts from the Southern Illinois/Big Rivers Power Pool and 240 megawatts from Cincinnati and Electric Company for own use.

In addition, TVA was buying 500 megawatts from American Electric and selling it to Middle South Utilities, Inc., owners of Mississippi Power and Light Company, Arkansas Power and Light Company and Louisiana Power and Light Company which was short of

capacity.

In light of these heavy purchases of power from other regions, consumers wonder why these plant deferrals are being considered.

Dean is quoted as saying, "By the way the numbers look we don't need them now."

Dean was referring to three nuclear reactors a new staff report says could be deferred with no noticeable loss of power to 2.8 million consumers.

Dean and Directors David Freeman and Richard Freeman are to decide next month whether to halt construction on the Yellow Creek Nuclear Plant here, and the Hartsville facility in middle Tennessee.

For now the directors are accepting public comment on the possible deferrals until January 29. A recommendation on whether to apply the brakes further to the nation's largest nuclear construction program could come at a February 3 board meeting in Knoxville.

The staff report said consumers could save \$8.2 billion if the construction is halted, but some congressmen say the reactors should be completed so the region will have an ample supply of electricity and attract industry.

Rep. Jamie Whitten, D-Miss., accused TVA of trying to retard economic growth. He said last week he believed

the TVA board was leaning toward deferring the facilities.

Whitten, chairman of the House Appropriations Committee, said he might ask the committee to intervene and persuade TVA to finish the facilities, where \$2.1 billion has already been spent.

But Dean said the staff report takes economic growth into account when it says the three reactors are not needed.

Jack Delong, Director of Power System Operations, said "We believe we will be able to meet peaks with continued help of our consumers -- residential, commercial and industrial."

Delong said his power dispatchers calculated the cutbacks by consumers had saved TVA about 325 megawatts of capacity during the system peak at 8 a.m. Monday.

Consumers are being asked to continue trying to use as little electric power as possible, especially from 7 to 11 a.m. and from 3 to 7 p.m., until the cold wave is over. Weather forecasters are predicting warmer weather by Thursday.

Two all-time peak records were set Monday on the TVA power system. A new all-time net system peak was set at 8 a.m. Monday at 22,500 megawatts and a new total

system peak was set at 9 a.m., an hour later, at 24,155 megawatts.

Monday's new records replace records set in January 1978.

Delong said TVA will attempt to buy sufficient power from either the American Electric Power System in the Ohio Valley States or from the Southern Company in Alabama and Georgia to cover the shortfall. "We expect to be able to do that," he said.

He said that slim margin is not enough to operate reliably and TVA will be purchasing imported power from neighboring systems, probably from AEP and SC, but in smaller amounts than on Monday.

Meanwhile, snow and icing conditions continue!

An important determining factor of the Tennessee Valley Authority's decision on whether to defer construction at Yellow Creek Nuclear Plant will be the public's response.

"They can write to TVA, or call in on the toll-free citizens action line. We're saying 'give us your opinion' urged Chuck Howell, TVA District Administrator.

TVA released a study Thursday outlining construction options for three nuclear reactors, including one at Yellow Creek near Iuka and two at Hartsville, east of Nashville, Tenn.

"It's a very complex situation. They (TVA board) are not going to make this decision in a vacuum," the administrator said. The options listed in the study are:

- Continue construction on

these nuclear units and reduce coal-fired generation or retire existing coal-fired plants as surplus develops.

- Defer construction of the three units and maintain the flexibility to rest art construction or replace with coal-fired capacity (if high load growth occurs) or defer construction indefinitely (if low load growth occurs).
- Continue construction of the units and, if possible, develop arrangements to exchange power with other utilities for the period when TVA would have excess capacity.

The study estimated completion of the three units will cost \$8.2 billion, including interest on borrowed capital.

"We've got to look at it from all angles. Can we afford to borrow that additional money and then the socio-economic impact," Howell

noted.

He added that Neil Davis, Project Coordinator at Yellow Creek, will compile an analysis of the economic effects on Tishomingo County and the surrounding area if construction were halted.

"We want to understand that impact. We are sending 2,000 copies of this study across the valley," Howell said. Also, the views of area public officials and citizens will be needed to determine the impact a deferral at Yellow Creek could have to the economy, he continued.

"TVA is interested in Tishomingo County. A lot of money has gone in through our mitigation funds. But industrial development has not come along as expected," he pointed out.

But if construction at Yellow Creek is halted, Howell said TVA will not

abandon its efforts of economic growth in the area.

"We are going to do everything we can to help in industrial development," Howell said. He added Gov. William Winter, in a December meeting with TVA officials, asked that the agency have a more prominent role in industrial development in the area around Yellow Creek.

The TVA study said the agency is interested in finding an exchange agreement with another utility for the surplus power supply the three units would produce if finished. However, the study pointed out there has been no successful exchange agreement which would offer adequate financial commitments to protect the TVA rate payers.

The study said with the uncertainty about national oil and gas supplies another alternative would be for the federal government to create a strategic electricity reserve. The completion of the projects that have been started in Tennessee Valley would offer a logical source of supply, it added.

While the study mentioned an option of replacing the nuclear power sites with coal-fired capacity, Howell said he has seen no indication that this option would apply to Yellow Creek. However, he said that doesn't mean Yellow Creek would be ruled out.

The administrator stressed that environmental effects of a coal-fired facility on the area must be carefully studied before such a project could be initiated.

Also, a forecast of peak power demands, even with economic growth in the TVA region, shows power needs will fall short of any gains in the economy, the study said.

Deferral of construction at Yellow Creek would leave an estimated 2,000 workers unemployed. The three member TVA board is scheduled to meet February 3 and announce a decision within 10 days after that date.

### Notice TVA Customers

Anyone interested in voicing their opinion on continued construction of the Yellow Creek Nuclear Plant may call the TVA Citizen Action Office toll-free. In Tennessee, 1-800-362-9250; other states, 1-800-251-9242.

## 16 Cases Slated For Circuit Court

The January term of Tishomingo County Circuit Court will convene Monday morning, January 18, 1982, with sixteen cases to be called the second week.

The official case docket lists the following:

FIRST DAY: James Bennett, John T. King, and Joey Ledlow.

SECOND DAY: Larry Harris, Terrell Burns, Billy J. Brown, Gary E. Poole, Randy Grover, Ronald Newell.

THIRD DAY: J.T. Kay, Michael Stacy, Jackie Casabella, Evelyn Winona Smith and Barbara Evon Hall.

FOURTH DAY: Ricky Mathis, Condry-Cochran, Luther Rice, Jr.

The jury list for the second week of Circuit Court is as follows:

Leon Barrett, Ruthie Conoway, Rockne Caston,

Mary E. Harwell, Autry T. Miller, Frances Campbell, Nellie S. Leonard, Bob Tackett, Jr., Jesse Jowers, Terry Bray, Jeff Belue, Mildred White, Lester Whirley, Lurrell P. Smith, Lula K. Horne, Gladys Davis, Jerry Gray, Mary Sue Wright, George Biggs, Logan A. Whitten, Billy D. Dean, Charlie Cummings, Paul Pyle, Mrs. Charles Milligan, Ralph H. Campbell, Elizabeth Weaver, Kathy Jourdan, Ella Mae Osborn, Della Ann Lambert, Steven Osborn, Brenda L. Ledbetter, Henry Watson, J.W. Green, L.L. Potts, Elizabeth E. Arnold, Donnie R. Amerson, Toni Webb, Evelyn Brumley, Billy J. Brewster, Peggy Daniel, Beryl Williams, Brenda King, Steven K. Hubbard, Lila Pearson, Johnnie M. Hamm, Mrs. James Armstrong, Roy Vanderford,

Myrl L. Helton, Mrs. Ted L. Walker, L.C. Wilkins, Dale Vandiver, Betty A. Davis, Pam Cutshall, James C. Rast;

Lester Ray Dexter, Dale Curtis, Terry Dale Parsons, Barbara Simpson, Mozelle Linton, Estene Reynolds, Carolyn Marlar, Joyce Felman, Linda Quinn, Sandra Rutledge, Patsy Fowler, Kathy Wyatt, Gloria Brewer, Bertha Ann Green, Anthony Carver, Carol Smith, Arthur Mitchell, Pamela Warren, Judy Marlar, Linda Butler, Frankie G. Goodloe, Terry Bray, Kerry L. Milligan, Mrs. Cleston Scruggs, Marjorie McKinney, Wayne W. Hendrix, Clara Faye Jones, Edward H. Davis, Vernia Stricklen, Matilda Seay, Eddie Ray Marsh, William D. Roberts, Bobby D. McKee, Minnie Ruth Utley, Wilford Brown, Gayle Salyer.

### Miss Carol Holman Most Beautiful At Tishomingo High School



Miss Carol Holman, a senior at Tishomingo High School was crowned Most Beautiful in the annual beauty review held Monday night, December 14, at the school auditorium. Carol is the lovely daughter of

Travis Norman Holman; and the granddaughter of Mrs. Maybell Page, of Tishomingo. Carol plans to attend college at Northeast Mississippi Junior College next year. There were about 26 contestants in the review.

### Iuka To Host County Junior High Tourney

The annual Tishomingo County Junior High Tournament is to be held Thursday and Friday, January 14 and 15, at Iuka High School.

Admission Thursday afternoon will be .50 per student and \$1.00 per adult. Admission Thursday and Friday night will be \$1.00 per person.

Tishomingo	8:00 Thursday	9th Grade Boys
Belmont	8:00 Friday	
Burnsville		
Tishomingo	6:45 Thursday	9th Grade Girls
Burnsville	6:45 Friday	
Belmont		
Iuka	1:00 Thursday	7 & 8 th Grade Boys
Tishomingo	5:30 Friday	
Belmont	5:30 Thursday	
Burnsville		
Iuka	11:45 Thursday	7 & 8 th Grade Girls
Burnsville		



Aftermath of Fire — The home of Mr. and Mrs. Dale Hayes, on the corner of Martha Lane and Thomas in Iuka, was completely destroyed by fire early Monday morning, January 11. According to Iuka Fire Chief, Floyd Whitaker, Night

Fireman Danny McVay received the call around 12:30 a.m. and arrived minutes later to find flames completely out of control. The Hayes family, Dale, Kay and their two children, Tracy and Melissa, were aroused from their sleep by smoke alarms and

narrowly escaped from the blazing structure. All of their personal belongings were destroyed with only a few items pulled from the house by Mr. Hayes and volunteers. Dale Hayes suffered burns to his hands and face and was treated at the Tishomingo County Hospital and

released. Chief Whitaker commended volunteers for fighting the fire in freezing temperatures for some three hours. Several water hoses froze during the attempt to save the home as the thermometer reached 0 degrees with a minus 30 wind chill factor.



# TISHOMINGO COUNTY NEWS VIDETTE and BELMONT NEWS

Phone 423-3666

(SECD 631680)

John H. Biggs, Editor & Publisher

Published Thursday by The Tishomingo County News, Inc. Serving the people of Tishomingo and adjoining counties for more than 95 years. Publication office 120 West Front Street, P. O. Drawer E, Iuka, Mississippi. Entered at the Post Office as mail matter of the Second Class. Second Class postage paid at Iuka, Mississippi. Zip Code 38852. Post Master send address changes to The Tishomingo County News, P. O. Drawer E, Iuka, Mississippi 38852.

Mail Rates Tishomingo and Adjoining Counties  
\$6.00 Per Year

Other Areas  
\$8.00 Per Year

## EMERGENCY PHONE NUMBERS

SHERIFF DEPARTMENT.....	423-6185
TISHOMINGO COUNTY HOSPITAL.....	423-6051
AMBULANCE SERVICE.....	423-5766
POLICE DEPARTMENTS	
BELMONT.....	454-3381
BURNSVILLE.....	427-9526
IUKA.....	423-6340
TISHOMINGO.....	438-6302
FIRE DEPARTMENTS	
BELMONT.....	454-3311
BURNSVILLE.....	427-8844
DISTRICT I VOLUNTEER.....	423-6515
GOLDEN.....	454-9645
IUKA.....	423-5011
TISHOMINGO.....	438-6650
MISSISSIPPI HOT LINE FOR CHILD ABUSE	
1-800-222-8000	
DRUG AND ALCOHOL ABUSE	
423-3332	

## Chatting With Your Home Economist

By: Nellie R. Horton,  
Extension Home Economist

### Records Tell The Story

The most important business in the world may be your home family business. Documents and important papers need to be organized to operate your home and family business efficiently. Records are necessary to plan and compare your record of spending.

money goes. The plan of spending can stretch the family dollars 15 percent. Family records enable you to know your net worth. Records will help you to achieve short-term, intermediate-term and long-term goals. Records provide proof for tax returns and tax audits. Records provide protection in crises situations for example death, theft, fire, etc. It's up to you to plan and keep a set of flexible family records that meet your needs and enable you to maximize your resources so you can achieve your goals.

### Comparing Food Processors

You know where your If you are considering



4-H HONOR CLUB-- Horace and Eleanor Richardson have been recently inducted into

the Mississippi 4-H Honor Club. This award was based on their outstanding con-

tributions to the Tishomingo County 4-H program and their work as leaders of the Rainbow 4-H Club.

buying a food processor and are concerned about which one to buy, go shopping. Look at all the available models. Read about their differences.

Are you buying a processor to prepare larger quantities of food? If so, one that processes the food into a separate bowl is worth considering. The bowl in which the processing is done has a limited capacity.

Most models will do light to medium processes successfully. The heavier jobs, such as chopping meat, may be too tough for some of the less expensive models.

Think about how you will use a processor and learn as much as you can about it before investing your money.

### Chicken Casserole

- 1 boiled chicken
- 1 large pkg. egg noodles
- 1 can pimiento chopped
- 1 can cream chicken soup
- 1 box sour cream
- Salt & Pepper to taste

Boil chicken. Remove from broth. Cook noodles until tender in chicken broth. Chop the chicken, add to the noodles, sour cream, chopped pimiento and chicken soup. Put in baking dish. Cook for about 20 minutes at 350°.

## County Agents Notes

By Percie B. Stricklen  
County Agent

### 1981 IN REVIEW

1981 was a year of mixed ending for Tishomingo County farmers, bringing encouragement for some but disappointment to others. Another dry year and low prices dealt a double blow to many growers. Those fortunate enough to have high yields fared better, but for some, 1981 was another frustrating experience.

The value of farm production in Tishomingo County was about \$10 million in 1981, up from \$8 million in 1980. Statewide, the total value of farm production reached \$2.99 billion, just short of the \$3 billion mark set by the Mississippi Cooperative Extension Service for 1983.

Forestry was the leading income producer for the county in 1981, with a value of \$3 million. Soybeans, the second leading income producer, added \$2 million. Corn, hogs, cattle, horticulture and other miscellaneous crops brought an additional \$4 million to

### Tishomingo County.

Both cotton and soybean yields increased over 1980, although prices for both commodities were lower than the year before. The county's 19,000 acre soybean crop averaged 22 bushels an acre. Cotton averaged 500 pounds of lint an acre on 500 acres.

While some farmers in the county made some money last year, they certainly did not recover from the last two extremely lean years. As usual, inflation hit farmers hard. They must buy their production inputs at retail prices and sell their products at wholesale. A lot of us like to complain about slightly higher food prices, but we all know that higher prices are better than the alternative -- a food shortage. Like the rest of us, farmers need a profit to

### stay in business.

The Mississippi Cooperative Extension Service, in its III by '83 program, has a goal of increasing the value of farm production in the state to \$3 billion by 1983. The projected agricultural income in Tishomingo County for 1983 is about \$13 million. I know we can reach and even pass this goal if farmers will use the recommendations from Extension and follow good management practices.

After a disappointing year like many of our farmers have had, it may seem simple enough to say that better times are around the corner. But with a few breaks, 1982 really can be better. With lower U. S. agricultural production, better prices, some relief from the weather, and a little luck, we may be

## LEFTOVER HOLIDAY HAM MAKES TASTY MAIN DISH PIE



It's the holiday season, and that means a full calendar of entertaining. And after the party, there will probably be a refrigerator full of leftovers. For an imaginative way to serve that last bit of leftover ham, try this delicious Ham-Broccoli and Potato Bake. Easy, attractive and tasty, it's sure to become a family favorite around the holidays and throughout the year.

### HAM-BROCCOLI AND POTATO BAKE

- 1 package Betty Crocker scalloped potatoes
- 4 cups boiling water
- 1 teaspoon salt
- 1 tablespoon margarine or butter, melted
- 1 egg, slightly beaten
- 1 1/2 cups diced fully cooked smoked ham
- 1 package (10 ounces) frozen chopped broccoli, thawed and drained
- 1 cup shredded Swiss cheese (about 4 ounces)
- 2 eggs, slightly beaten
- 1/4 cup finely chopped onion
- 2 tablespoons margarine or butter
- 1 cup milk
- 1/4 teaspoon dry mustard

Heat oven to 375°. Grease pie plate, 9x1 1/4 inches. Cover potatoes with boiling water in 2 1/2-quart bowl; stir in salt. Let stand uncovered 15 minutes; drain thoroughly. Toss potatoes with melted margarine and 1 egg. Press potato mixture against bottom and side of pie plate. Bake 10 minutes.

Mix ham, broccoli, 1/2 cup of the cheese, 2 eggs and the onion. Heat 2 tablespoons margarine in 2-quart saucepan until melted. Stir in Sauce Mix, milk and mustard. Heat to boiling over medium heat, stirring constantly. Boil and stir 1 minute. Fold into ham mixture; spoon into potato shell. Bake uncovered 30 minutes; sprinkle with remaining cheese. Bake until cheese is melted, about 5 minutes longer. Let stand 5 minutes before serving. 6 servings.

High Altitude Directions (3500 to 6500 feet): Heat oven to 400°.

## Reduce current taxes while setting aside retirement money...

now just about everyone can  
with State Farm's Individual Retirement Annuity

Donnie  
Brown

117 Eastport St.

Office 423-5931

Home 423-5532

Thanks to the new tax law, you're probably now eligible for State Farm's Individual Retirement Annuity (IRA). Even if you're already covered by a retirement plan, you can set aside a portion of your earned income now for future enjoyment...free from current income tax. For details call

State Farm  
Life Insurance Company  
Home Office - Bloomington, Illinois



able to look back at this same time next year in a more pleasant perspective.

## Conservation Notes

By: Bobby Manley

We Mississippians have been spoiled by an abundance of trees. We are trying to find a compromise between nature's will and our own. We take no more than can be replenished, one eye always on the future, and the rewards are aesthetic, as well as tangible.

Trees are generally quite able to fend for themselves. There is nothing urgent about managing a woodlot. Most woodland owners spend much more time contemplating the work needed than performing it. The woodlots are tailored to fit the owners' needs and personalities without regeneration. They let the timber companies plant hybrid seed and control weeds with herbicides. However, the small, part-time woodland owner, who has more opportunities for his land, generally does little more than improve what nature planted.

The rare stands of climax forest consist of the old, mature trees which are slowly being replaced by their own species. The climax forest for most of North Mississippi would be the oak-hickory forest types. Pine is an intermediate species prior to the

Tishomingo County News - Vidette - Belmont

climax forest. The first tree to raise in an abandoned field or cut-over woodlot are the pioneer trees, species that vary according to climate and site. Generally, they are fast growing, shortlived, and least desirable for fuel or timber. However, they provide enough shade, moisture and forest litter for the next generation of trees longer lived and larger. This in turn, nature another generation, until many, many years or so a balance is restored. Woodlot management consist of learning how to shape their process, how to bend it to our needs, assist it in some way and retard it in others. This can also be achieved by thinning, pruning, cutting, releasing, and harvesting.

The first step to managing a woodland is to evaluate what is already there, and then to decide what you want there in the future. This is not a simple decision. The more you understand and appreciate a woodlot, the more difficult it is to direct it toward a single use, such as income or recreation.

No matter how supremely sure a woodland owner you may be, if the decision was made without the consultation of a government or private forester, you are more likely to go wrong. Even if your goal is simply to sit in the shade, a forester's advice is a bargain, given the cost of educating yourself. A forester can study soil maps, topography, and exposure and tell you which trees are

best suited to the site. A glance at a forester's map of what stage of regeneration the woods are in. A can estimate living wood per acre, the rate, and the sustainability that can be expected. A forester can suggest harvesting techniques, for your pulpwood, firewood, and position access roads as how to make a habitat improvement.

One cup of uncooked noodles makes about three quarters of cooked noodles.

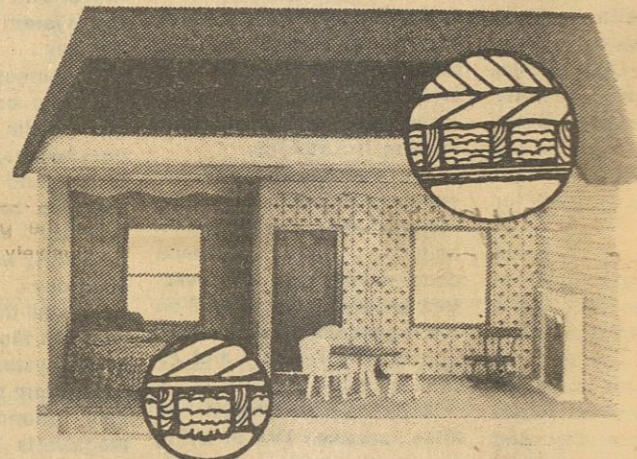
COOKIE TIME  
COOKIE TIME  
GIRL SCOUT  
COOKIE TIME



Girl Scout Cookies  
For The Great American Cookie

Don't forget to order. If you, please phone (PHONE NUMBER)

# Don't Hesitate To Insulate!



Compared to a home with no insulation, one that is fully weatherized and insulated can reduce heating costs by half. An insulated home is a good investment and can mean substantial savings on your electric bill.

Ask us for free booklets on insulating and weatherizing your home.

423-3646



Tishomingo County  
Electric Power Assoc.

# ABSOLUTE AUCTION

COLBERT COUNTY - ALLSBORO, AL.

By order of the Circuit Court  
Selling for division of heirs of the Twitty Estate  
203 ACRES

FRIDAY - JANUARY 22 - 11:00 A.M.

Rain or Shine - Under The King Tent

Tract 1 - 131 Acres. Approximately 40 ac. good creek bottom land.

Tract 2 - 46 Acres. Good timber.

Tract 3 - 18 Acres. Old home place. Good timber, paved road frontage.

Tract 4 - 4 Acres. Paved road frontage. Beautiful homesites, public water.

Tract 5 - 4 Acres. Old home place, some timber, paved road frontage, public water.

YOUR PRICE IS OUR PRICE!!!

location; Allsboro, AL 5 mi. South of US 72 on Colbert Cty Rd 1.

WATCH FOR AUCTION SIGNS.

PRE-SALE INSPECTION - SUNDAY, JANUARY 17, 2 - 4 P.M.



J.P. KING  
AUCTION  
COMPANY

Phone (205) 546-5217  
1411 Rainbow Drive  
Gadsden, Alabama 35902

TERMS: 10% down on sale

Balance on closing in 30 days

Title policy

available on request

AGENTS WILL BE ON TRACT

# WE RENT

- \* STEAM CARPET CLEANERS
- \* CARPET SHAMPOOERS
- \* STAPLE GUNS
- \* CHIMNEY BRUSHES

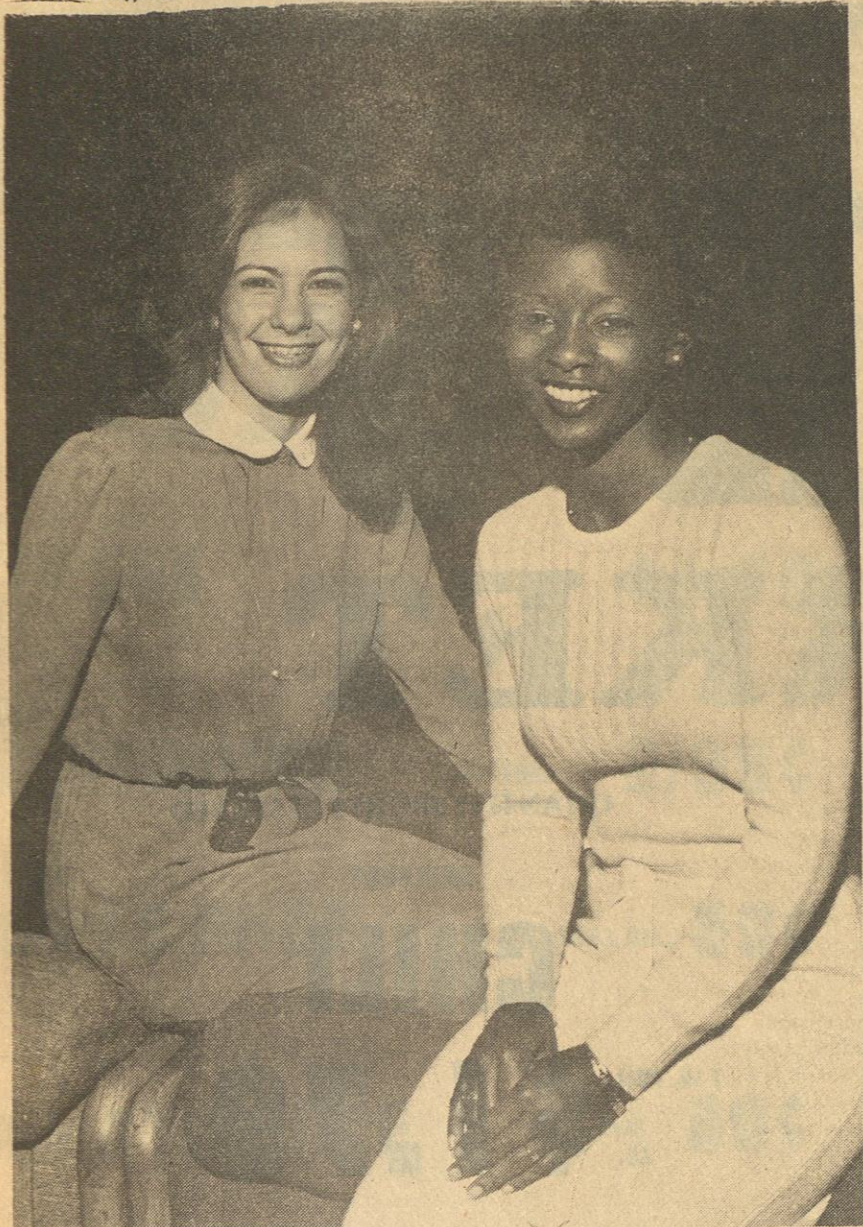
W. H. FAIRLESS HARDWARE

OPEN ALL DAY THURSDAYS

IUKA - 423-9256

TISHOMINGO - 438-6608





**Local Girls Vie For Title**  
Two lovelies from Tishomingo County will vie for the title of Most Beautiful at Northeast Junior College

Tuesday, January 26, at 7:30 p.m. in Seth Pounds Auditorium. Selected during the preliminaries are Tina Davis (left) of Belmont and

Faye Mitchell of Iuka. Elizabeth Ward, the reigning Miss America and special guest for the pageant, will crown the winner.

for information on how to order Girl Scout Cookies -- a great American tradition that's just been made even better.

## Early Files

By: E. Phillips

December 13, 1945

Aaron Dean and James Fred Nixon have received their discharges and are at home.

Mr. and Mrs. Jim Belue, Clyne Prentiss and Julia Belue, Earle, Ark., have visited here recently.

Mr. and Mrs. Hubert Gray, Mr. and Mrs. Clarence Paden and Mr. and Mrs. Juston Belue are the happy parents of new babies.

Mr. and Mrs. C.L. Trim, Mr. and Mrs. John Trim and Rilla visited in Humboldt, Tenn., during the weekend.

Mr. and Mrs. Lum McAnally and Ronny and Mrs. W.N. Nash were shopping in Corinth last week.

Little Miss Betty Anne Rowe entertained some of her little friends with a birthday party Sunday afternoon at the home of her grandparents, Rev. and Mrs. W.L. Whitener.

Mr. Tom Southward, Ophelia and Bill Southward have arrived home for the holidays from California.

Mr. Leonard Dawson has recently sold his service station to Bill McClung.

Gene Nettles, State College, spent the weekend in Tishomingo.

**IUKA HIGH SCHOOL HONOR ROLL:** 4th grade, Nan Allen, Robert Edwin Harwell; 5th grade, Talmadge Roane; 6th grade, Shirley Moser, Lila Gurley and Robert Boothe; 7th grade, Frances Edmondson; 8th grade, Julia Rhodes; 9th grade, Jackie Roane; 10th grade, none; 11th grade, Norma Fay Smith; 12th grade, Omega Gober, Willie Ann Johnston, Lola Mae Grissom.

Pvt. Joe C. Goss is now a Private First Class, and is in Riro, Japan. He and Lloyd Crouse, son of Mrs. Pearl Crouse, have met. S. Sgt. James A. Goss and Pfc. Johnnie J. Goss have received their discharges. They are sons of Mr. and Mrs. John Goss. Joe is the husband of Mrs. Rutha Pearl Goss, Route 5, Iuka.

Sgt. Hubert McDougal, who is now on Okinawa, writes his wife of Corinth, that he is now eligible for discharge and is waiting for transportation home.

Pvt. James C. Ledgewood, of Keesler Field, Miss., is now spending an emergency furlough with his parents, Mr. and Mrs. C.C. Ledgewood, Route 4, due to the illness of his mother.

Pvt. William Edward Thorn has returned to his camp at Pueblo, Colo., after spending a furlough with his wife and children, Mrs. Jewel Thorn, Tishomingo, Route 1.

Cpl. James L. Woodall, son of Mr. and Mrs. J.W. Woodall, has recently been promoted to Sergeant. He is now stationed at Manila.

Mr. Vester Pruitt came in Sunday from overseas. Mr. and Mrs. L.E. Skinner, Mrs. Lula McNutt, and Vera visited Mr. and Mrs. Henry Umphres at Fulton last Sunday.

Born to Mr. and Mrs. Will McKee December 10th, a girl.

Mr. Gather Patterson is home with his wife and mother.

## Lunch Menus At Iuka Schools

January 18-22, 1982

### MONDAY

Hot dog  
Potato chips  
Baked beans  
Cole slaw  
Strawberry shortcake

### TUESDAY

Chicken fried steak  
Rice/gravy  
Green beans  
Rolls  
Pear salad

### WEDNESDAY

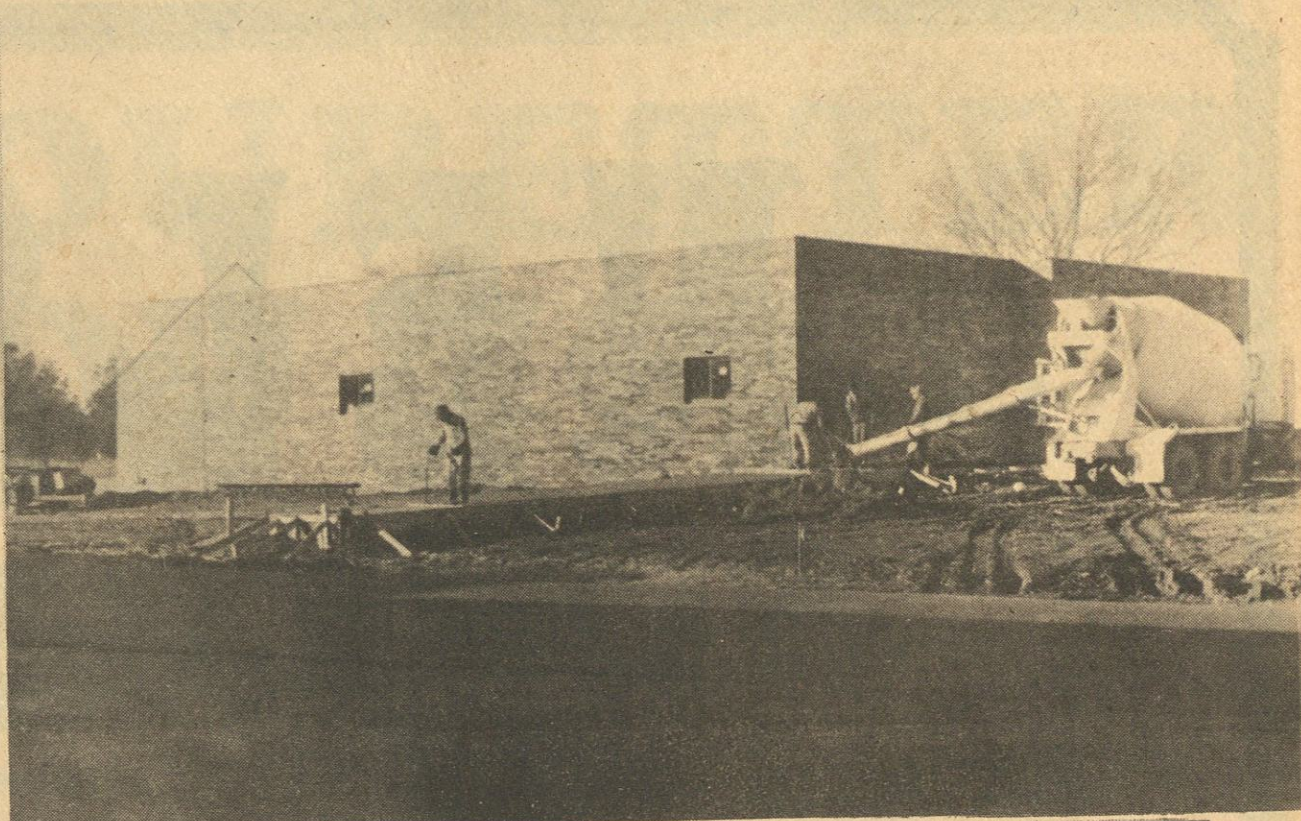
Pizza  
Tossed salad  
French fries  
Chocolate cake

### THURSDAY

Turkey & Dressing  
Giblet Gravy  
Candied yams  
English peas  
Cranberry sauce  
Rolls  
Fruit

### FRIDAY

Hot ham & cheese on bun  
Lettuce and tomato  
French fries  
Corn on cob  
Cinnamon roll



## NEW POSTAL FACILITIES

The new Post Office is now under construction and Iuka Postmaster Ray Curtis told the news that they are hoping to open the new facility around April 1. The new structure is designed to offer 4,440 square feet of interior floor space. It is located on a 32,978 square foot site at the south west corner of the Eastport and Wilmuth Streets intersection. Plans for the new post office were designed to eliminate overcrowding and to handle anticipated growth in postal traffic, noted Mr. Curtis. Mr. Curtis told the news that \$37,950 will be a yearly rent paid by the Postal Service for the land and postal facilities, which is being erected by Dr. Ben E. Kitchens. Construction of the new post office called for it to be financed by private funds. Bidders must furnish leased space for postal purposes at a specified rental and for a basic lease term of 15 years, with separate and consecutive renewal options for five years.



Some people say the opal retains in its depths the rainbow tints of long-dead forest fires.

# DENTURES

1 DAY SERVICE

COMPLETE  
SETS

\$180

\$250

\$320



## CHEROKEE DENTURE CLINIC

Michael E. Ford, D.M.D.

Located across from the Post Office in Cherokee, Alabama, 17 miles W. of Muscle Shoals on Hwy. 73 or (only 2 miles off Natchez Trace).



1-Day Service  
On Partial  
& Repairs

359-6444

Appointments  
Preferred...  
Closed Wed.

Now serving commercial & residential

## Superior Professional Cleaning Service

208 W. 5th Street  
IUKA, MISSISSIPPI 38852

Window Cleaning  
Office Cleaning

BOBBY ANDERSON 601-423-5488  
601-423-9738

"Your Business Deserves ... Superior Service"

# great cars! great deals

1980 Walkthrough Van F350 One Ton	1979 Ranger Long W/base F250
1978 Mustang II	1981 Escort Wagon Demo
1981 T-Bird Demo	1977 Pinto Wagon
1979 LTD	1979 Dodge Pickup
1980 Pinto 4 door	1979 Fairmont 2 door

## A few 1981 T-Birds & LTDs

## Good Selection of All 1982 Models

# McNATT FORD SALES

Hwy. 25 South in Iuka

# Funland Skate Center

2 Miles South, Hwy. 25, Iuka, Miss.

THURS: Skate for \$1.00 7 - 9:30 p.m.

FRI.: \*Live Band\*

## "Riverboat"

9:30 - 12

adm. \$3.00

Reg. Session 7 - 9

Adm. \$2.00

SAT.: Double Session

## Skate Contest

for 0 - 8 years  
9 - 12 boys & girls  
13 & above boys & girls  
7 - 9 p.m. 1 session \$2.00  
9 - 11 p.m. 2 sessions \$3.00

SUN: 2 - 4:30 p.m. adm. \$2.00

TUES.: 12 years & under adm. \$1.00  
reg. adm. \$2.00 7 - 9:30 p.m.





# NELSON'S SUPERMARKET

IUKA MS.

AD GOOD JAN. 14-20TH

QUANTITY RIGHTS RESERVED

SOUTHERN BELL  
ALL MEAT

**WIENERS**

12 OZ. PAK **99¢**

SOUTHERN BELL DIXIE BRAND  
SMOKED

**SAUSAGE**

**\$1.29** LB.

PURNELL OLD FOLKS

**SAUSAGE**

**\$1.49** LB.

U.S. CHOICE BONELESS

**CHUCK ROAST**

**\$1.69** LB.

MARSHALL DURBIN

**CHICKEN**

**THIGHS**

LB. **99¢**

TEXAS RUBY RED

**GRAPEFRUIT**

5 LB. BAG **99¢**

FLORIDA

**ORANGES**

5 LB. BAG **\$1.19**

WASH. EX-FANCY GOLDEN

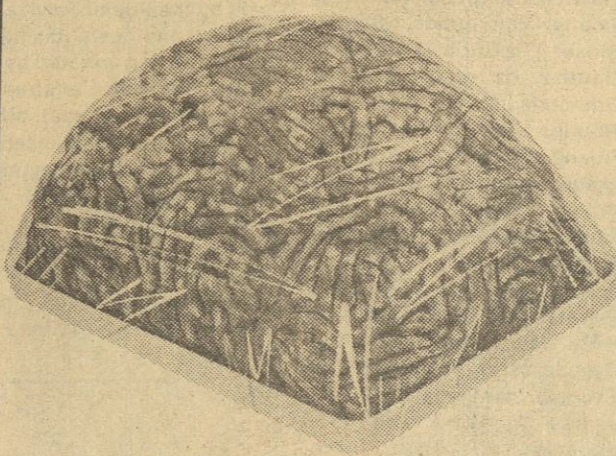
**APPLES**

LB. **45¢**

**GROUND**

**BEEF**

LARGE PAK **\$1.09** LB.



SOUTHERN BELL  
WHOLE HOG

**SAUSAGE**

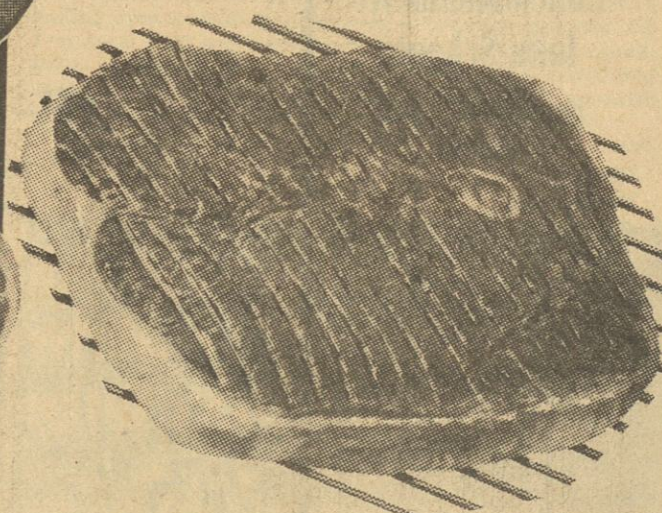
**\$1.49** LB.

U.S. CHOICE FULL TRIM

**ROUND**

**STEAK**

**\$1.99** LB.



GREEN

**CABBAGE**

LB. **10¢**

REELFOOT

**CHILI**

1 LB. ROLL  
LB. **\$1.79**

PURNELL OR MARSHALL DURBIN

**CHICKEN LIVERS**

LB. CUP **99¢**

MARSHALL DURBIN  
CHICKEN

**DRUMSTICKS**

LB. **99¢**

KERY OR REELFOOT JUMBO

**BOLOGNA**

LB. **\$1.19**

YELLOW

**ONIONS**

3 LB. BAG **89¢**

CELLO

**CARROTS**

3 LB. FOR **\$1.00**



WASHINGTON D'ANJOU

**PEARS**

LB. **49¢**





# SERVING YOU BETTER SAVING YOU MORE

**KRAFT VELVEETA  
CHEESE** 1 LB. CNT. **\$1.79**

**PARKAY  
MARGARINE** 1 LB. QTRS. **2/99¢**

**TREE TOP  
APPLE JUICE** 32 OZ. BTL. **89¢**

**CAMPBELL'S  
TOMATO JUICE** 48 OZ. CAN **89¢**

**BUSH'S BEST GREAT  
NORTHERN BEANS** 15 OZ. CAN **3/\$1.00**

**BUSH'S BEST  
PINTO BEANS** 16 OZ. CAN **3/\$1.00**

**BUSH'S BEST  
NAVY BEANS** 15 OZ. CAN **3/\$1.00**

**BUSH'S BEST  
SPINACH** 15 OZ. CAN **3/\$1.00**

**KIFFY POP  
POP CORN** 5 OZ. **75¢**

**EAST TEXAS FAIR GREEN  
LIMA BEANS** 15 OZ. CAN **3/\$1.00**

**MERICO TEXAS STYLE  
BISCUITS**

10 CNT. CANS **4/\$1.00**

**EVAPORATED  
PET MILK**

13 OZ. CAN **2/89¢**



**JOB SQUAD PAPER  
TOWELS**

JUMBO ROLL **69¢**



MARTHA WHITE SELF-RISING CORN

**MEAL**

5 LB. BAG

**99¢**



LAUNDRY DETERGENT

**TIDE**

GAINT SIZE

**\$1.49**



SUNFLOWER SELF-RISING

**FLOUR**

5 LB. BAG

**89¢**



PURE VEGETABLE OIL

**CRISCO**

48 OZ. BTL.

**\$1.79**

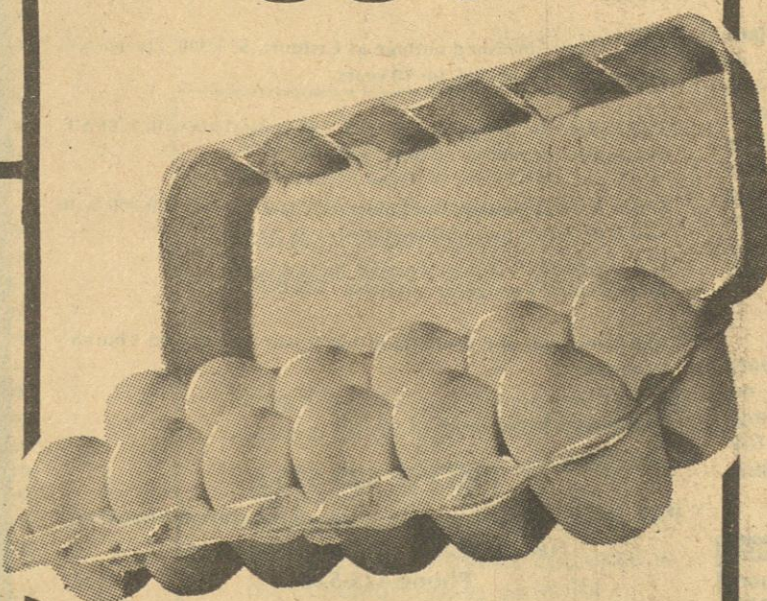
COLINSWOOD

LARGE GRADE 'A'

**EGGS**

**65¢**

ONE DOZ.



**PINE GLEAM  
CLEANSER**

16 OZ. BTL. **59¢**

**TRAILBLAZER  
DOG FOOD**

25 LB. BAG **\$3.29**

**NESTLES HOT  
COCOA MIX** W/MARSHMALLOWS

12 CNT. BOX **\$1.49**

**THORTONS GLAZED  
DOUGHNUTS**

12 CNT. BOX **99¢**

**DISH DETERGENT  
IVORY** SAVE 36¢

32 OZ. BTL. **\$1.59**

**NABISCO PREMIUM SALTINE  
CRACKERS**

16 OZ. BOX **69¢**



**HAMBURGER HELPER**

ASST. FLVRS. **89¢**

**VLASSIC  
SAURKRAUT**

32 OZ. BTL. **79¢**

**BRYAN  
VIENNA SAUSAGE**

5 OZ. CAN **2/89¢**

**ROYAL  
GELATIN**

ASST. FLVRS. **4/\$1.00**

PLAIN LABEL

SELF-RISING

**FLOUR**

5 LB. BAG

**79¢**

MINUTE MAID FROZEN

**ORANGE  
JUICE**

16 OZ. CAN **\$1.09**



KRAFT 100% PURE

**ORANGE  
JUICE**

64 OZ. BTL. **\$1.29**





# BUY, SELL, TRADE OR RENT THROUGH THE CLASSIFIED ADS

## Classified Ads

\$2.50 per week for 30 words. After the first 30 words, 5¢ extra per word. \$1.00 extra with border  
Card of Thanks and In Memorium - 5¢ per word  
Classified Ads, Cards of Thanks and In Memoriums must be paid in advance  
50¢ service charge will be added to any monthly bill totaling less than \$5.00

Phone 423-3666

### ERRORS

Should be reported immediately as The News can be responsible only for the first incorrect insertion in any advertisement. The News cannot be liable for error in any advertisement to a greater extent than the cost of the space occupied by the items in the advertisement.

### \$88.00

That's right - only \$88.00 for a new Singer Zig Zag Sewing Machine. Sews straight, zig zags, monograms, makes button holes and appliques. Free lay-a-way. Come by! See & Sew Fabrics, 101 Fulton St., Iuka, or phone 423-6031 for an appointment.  
O-8-tfn-c.

**NEW 1982 MOBILE HOME**  
12 x 60 all electric, storm windows and door, heavy insulated, carpeted, nice wood kitchen cabinets, fully furnished - the home looks good - delivered, set up and tied down for only \$8,995.00. Better hurry, sale ends soon. Open 1 to 5 Sunday, Clayton Mobile Homes, Hwy. 64 E. Savannah, Tenn. 901-925-1060  
J-7-14-chg

**USED MOBILE HOMES**  
All homes have been reconditioned. Prices starting at \$3,995.00 while they last. Both electric and gas models - Open 1 to 5 Sunday. Clayton Mobile Homes, Hwy. 64 E. Savannah, Tenn. 901-925-1060  
J-7-14-chg

**FOR SALE John Deere tractor**  
model G. Call 423-6543. May be seen at Parts Mart in Iuka. Best offer.  
J-7-14-21-chg

**TRUCKERS Liability and Phys.** Damage coverage at reasonable rates. Both long-haul and local trucks. Financing available. David Yarbrough Insurance. Call 423-9757. Home Phone 423-9646.  
D-10-tfn-c.

**FOR SALE - 1973 Yamaha**  
360 Trail Bike - Very Good Condition. Priced to sell. See Ernest Bullard or call 423-6839 after 5:00 p.m.  
J-14-tfn.

**HAY FOR SALE - See Rufus**  
Bobo near Leedy, Miss. or call 427-8274 after 4 p.m.  
D-24-31-J-7-14-c.

**WANTED TO BUY - Quality**  
Stamp Books. Sonny's Pawn Shop, Inc., Corinth, Miss.  
D-17-EOW-TFN-c.

**DISCOUNT INTERIORS -**  
Hwy. 45 South, 2 1/2 miles south of Biggersville. Open 6 days per week. A sale every day on light fixtures, fluorescents, ceiling fans, vinyl and ceramic tile, parquet and plank flooring, carpeting and oriental style rugs, bath vanities, storm doors and decorative items. We offer decorator assistance. Installation and carpet cleaning by professionals. Call 462-7104.  
N-5-tfn-c.

**BROWNIE'S DOCKSIDE CAFE** on the Tennessee River - Breakfast, sandwiches, luncheon special, supper, spaghetti, charcoal ribeye steaks, catfish, seafood, salad boat. Come as you are. Hwy. 25 North of Iuka at the Tennessee State Line. (Coleman Marina - Green Water Marina).  
N-5-tfn-c.

**FOR SALE OR RENT - 2**  
bedroom cabin overlooking Yellow Creek. 1 1/2 baths, \$25,000 or \$220.00 per month. Phone 901-465-3955 day or 901-465-8191 nights.  
D-17-tfn-c.

**SURPLUS JEEPS, CARS & TRUCKS** available. Many sell for under \$200. Call 312-742-1143 Ext. 9230-A for information on how to purchase.  
D-10-24-J-7-21-p.

**FOR SALE Excellent rabbit**  
hunting beagles. 3 - 8 months old \$45.00 each, firm! 1 - 5 year old, \$80.00. 423-6543.  
J-7-14-21-chg

**FOR SALE OR RENT - 2 or 3**  
bedroom mobile home with supplement rent. Phone Bart Smith at 423-3749.  
J-14-tfn-c.

**FOR SALE- 3 bedroom new**  
brick home at North Crossroads. Two full baths and covered patio. Call 423-9357.  
J-14-21-28-F-4-chg

**HAY FOR SALE- Cured**  
without rain, Reuben Grisham, day phone 423-3484 and night phone 423-5088.  
J-7-tfn-chg

**LARRY'S MOBILE HOME SERVICE - Local and Long**  
Distance. Bonded and Insured. Anchoring and Blocking, Kool Seal, Under Pinning. Call anytime 423-3258.  
J-23-tfn-c.

**FOR SALE - Walter L. Rast**  
old homeplace - house and two acres of land on Hwy. 25 North inside city limits. Call 423-5979 Monday thru Friday, 7 a.m. to 5 p.m.  
J-14-pd

**REPOSSESSED SIGN! NO**  
DOWN PAYMENT! Take Over Payments of \$59.50 Per Month. 4' x 8' Flashing Arrow Sign. Complete w/New Bulbs & Letters. Cutoff Signs. Toll Free 1-800-551-3070. Ask About REPO.  
J-14-pd

**SPECIAL**  
Used 12 x 65, 2 bdrm. total electric, furnished with new furniture and appliances. \$6,995.00. Prince Mobile Homes, Woodward Ave. Muscle Shoals, across from Shoneys. 383-2394.  
J-7-14-chg

**USED MOBILE HOME SALE**  
12 x 70 2 bdrm 2 bath \$5995.00  
14 x 54 2 bdrm extra sharp \$6995  
12 x 60 3 bdrm furnished \$5400  
12 x 48 1 bdrm furnished \$3995  
12 x 65 3 bdrm electric \$5995  
Prince Mobile Homes, Woodward Ave. Muscle Shoals, across from Shoneys 383-2394  
J-7-14-chg

**Mill Direct Shipment**  
JUST ARRIVED!  
Kitchen prints, \$3.65 sq. yd.; Hi-Lo Shag Carpet, \$4.45 sq. yd.; Commercial Indoor-Outdoor carpet, \$2.50 sq. yd.; wallpaper - in-stock - up to 70% off; vinyl inlaid, 6 ft., 9 ft., 12 ft., 14 ft. widths, \$1.95 yd. up; 4 free rolls wallpaper with each room of carpet or vinyl purchased; carpet pad, .95 yd.  
CARPETS UNLIMITED  
502 HWY. 25 SOUTH  
IUKA, MISSISSIPPI  
CALL 423-5200  
D-17-31-J-14-28-F-11-25-c.

**MOBILE HOME FOR**  
SALE-a used 2 bedroom, 1 bath, Frontier, \$4,495.00 this includes delivery, set up with blocks furnished and anchor furnished. Phone 287-2407 or 287-2966.  
**Miscellaneous**

**HELP WANTED**  
Information of ALASKAN and OVERSEAS Jobs. \$20,000 to \$50,000 per year possible. Call 602-998-0426. Dept. 4949.  
J-14-21-pd

**INCOME TAX RETURNS -**  
Prepared by convenient appointment from 9 a.m. to 9 p.m. Annice Cutler at the old P.O. Building, Main Street, Tishomingo. Call 438-6601.  
J-14-tfn-c.

**HELP WANTED**  
Information on ALASKAN AND OVERSEAS employment. Excellent income potential. Call (312) 741-9780 Extension 2022.  
J-14-21-28-F-4-pd

**STAIN GLASS windows, lamps,**  
sun catchers. Also oil paintings, portraits, etc. Special orders or show room. Supplies and classes (cutting and leading) available. Monday - Saturday 10 a.m. to 6 p.m. Southern Arts, 1812 North Parkway, 3rd building from Shiloh Road, Corinth. 287-9287.  
J-7-14-21-28-chg

**CHILDREN'S DAY - Every**  
Thursday, 10 a.m. - 6 p.m., no appointment necessary. Photography by Charles, 709 Eastport, Iuka. Phone 423-3359.  
A-20-tfn-c.

**BOZY'S SEWING & VACUUM**  
REPAIRS - Opening January 1st, 8 a.m. until 2 p.m. FREE ESTIMATES. All work guaranteed. Fifteen years experience. Hwy. 25 North, Iuka, Miss.  
D-21-17-14-21-pd

**WANTED TO BUY**  
USED FURNITURE & ANTIQUE FURNITURE  
Also, glassware. We buy just about anything. Cleaning your house or attic out, give us a call. Capleman's Antiques. Phone 423-9962 - nights, 423-5640 or 423-6836.  
J-12-tfn-c.

**NOTICE**  
All land belonging to Joy and Marvin Seibert, of the Midway Community is posted against all hunting and trespassing.  
Joy Seibert  
J-14-21-28-pd

**For Rent**  
**HOUSE FOR RENT - 3**  
bedrooms, 1 1/2 baths, living room and kitchen, on Hwy. 25 South at Tishomingo. Call 438-7373 after 5 p.m.  
J-14-21-c.

**WANT TO RENT - 400 - 600**  
acres of cultivated land in Alcorn or Tishomingo County. Will pay cash or crop rent. Call Murry Stone collect at 427-9033, Burnsville, Miss. 38833.  
J-14-21-p.

**NOTICE -**  
We will not be responsible for any complete orders on photographs left in our studio for more than 30 days. Photography By Charles.  
D-31-J-28-c.

**FOR RENT - Flashing Arrow**  
Signs. \$50.00 plus tax. Call 728-5460 or 728-5674 in Booneville.  
M-21-tfn-c.

**SMALL CABIN FOR RENT -**  
located downtown Iuka, utilities furnished. Call 427-9015.  
J-7-tfn-chg

**JOB OPENING**  
Teacher's aid at Burnsville

**Dailey's**  
**Body Shop and**  
**Wrecker Service**  
BURNSVILLE, MISSISSIPPI  
PHONE  
Day 427-9234  
Night 427-8449  
Expert Body Work - 24 Hour Service  
Burnsville

**P. O. BEARD AGENCY**  
**SINCE 1964**  
**400 WEST**  
**EASTPORT ST.**  
REALTOR

3 BR, 2 bath, brick, H & AC, fireplace, fenced yard, well landscaped, \$48,750, \$15,000 equity and assume loan.

2 BR cottage, Coleman Park Road, \$45,000 with \$10,000 down, owner financing on balance.

Waterfront lot, Haines S.D. \$15,000.

Waterfront lot, Eastport, \$20,000.

3 BR, 1 bath dwelling with 1.7 acre lot on Fairground Road, \$15,000.

80 acres timberland in Prentiss County, \$350/acre.

3 BR, 2 bath brick, very attractive, Jones Subdivision, \$37,500.

Mobile home ready to move - \$7,000.

5 acres near Dennis with community water - near Natchez Trace - \$5,800.

2 BR, 1 bath furnished cottage at Eastport, \$15,900. Owner will finance \$10,000 at 13% for 10 years.

3 BR, 2 bath, brick dwelling in Iuka, FIP, central h/a with 1706 S.F. living area and double carport - \$42,500.

Older frame residence suitable for 2 apartments, \$20,000 with owner financing for qualified buyer.

Brick Duplex. Very good condition - \$30,000.

162 acres farm and timberland tract near Mt. Gilead Church - \$300/acre.

2 BR mobile home, large lot, \$7,000.

PHONE 423-5253

P.O. Beard - Realtor, Appraiser, Registered Forester

Nancy Beard - Realtor Associate

Phone 423-5251

Many Other Listings

Call For Free Information On Buying Or Selling

Head Start Center. Minimum qualifications for the job are (1.) at least 1 year experience at working with pre school age children, high school graduate, with one year of College Training, with an emphasis in early childhood education, must be willing to acquire additional training toward CDA certification (2.) Must enjoy working with children. (3.) Must be able to understand the purposes and philosophy of Head Start. (4.) Preferably a resident of the target area community. (5.) Must have successfully engaged in training efforts. Equal opportunity employer. Come by Burnsville Center for applications or call 427-8883. Applications will be taken until January 15.  
J-7-14-chg

**JUST ARRIVED NEW SHIP-**  
MENT OF CARPET-Carpets heavy plush reg. \$16.99 now \$7.99 to \$9.99; Carpet selected group of plush now \$4.99; Carpet cutlooms and shag now \$3.99; Vinyl reg. \$4.59 now \$2.99 to \$3.99 a yard; Vinyl reg. \$3.99 a yard now \$3.49 a yard; Oriental rugs 9x12 now only \$99.95; Ceiling Fans 36 inches to 52 inches now \$104.95 to \$219.00; Light fixtures 1/2 of suggested retail price; Bath vanities 4 foot with marble top \$119.95; Bath wall cabinets pine, oaks and birch \$19.95 to \$44.95.  
OUTLET HOME SUPPLY Hwy. 72 East Corinth, Ms. 287-7503.

**STATE OF MISSISSIPPI**  
**COUNTY OF TISHOMINGO**  
**NOTICE TO CREDITORS**  
The undersigned having been appointed Administrator of the estate of John Raymond Lovelace, deceased, by the Chancery Court of Tishomingo County, Mississippi, in Cause No.

8935, upon the docket of said Court, on this the 23rd day of December, 1981, does hereby give notice to all persons having any claim against said estate to have the same probated and registered by the Clerk of the Chancery Court of Tishomingo County, Mississippi, within 90 days next, and failure to probate and register for this period will bar the said claim.

**WITNESS MY SIGNATURE,**  
on this the 23rd day of December, 1981.  
John R. Curtis Lovelace, Jr.,  
Administrator

Richard O. Clark, Solicitor of  
Record For The Estate of  
John Raymond Lovelace,  
Deceased

D-31-J-7-14-c.

**STATE OF MISSISSIPPI**  
**TO:**  
RODNEY D. TUTOR,  
995 Whitehaven Lane,  
Memphis, Tennessee 38116  
You are summoned to appear before the Chancery Court of the County of Tishomingo, in said State, on the third Monday of February, 1982, to defend Suit No. 8945, in said Court, of Bonnie R. Tutor, wherein you are defendant.

This 11th day of January, 1982.  
ROBERT D. SIMS,  
CHANCERY CLERK

J-14-21-28-c.  
**CHANCERY COURT**  
**SUMMONS FOR**  
**PUBLICATION**

**THE STATE OF**  
**MISSISSIPPI**  
**CAUSE NO. 8941**

**TO:** GARLAND W. BEAUCHAMP, who is an adult non-resident citizen of the State of Mississippi, whose last known post office and street address was P. O. Box 164, IRVINGTON, KENTUCKY.  
YOU are commanded to appear before the Chancery Court of the County of Tishomingo, in said State, on the 15th day of February, 1982, at 10:00 o'clock A.M. to defend the suit in said Court of Complaint For Divorce in Cause No. 8941, wherein you are a Defendant.  
This the 8 day of January, 1982.  
Robert D. Sims  
Chancery Clerk  
J-14-21-28-F-4-chg

**THE STATE OF MISSISSIPPI**  
**TO:**  
CECILE DAVIS,  
Route No. 1,  
Cherokee, Alabama 35616

You are summoned to appear before the Chancery Court of the County of Tishomingo, in said State, on the third Monday of February, 1982, to defend the suit No.

**INCOME**  
**TAX**  
**CHESTER CALLAHAN**  
1040A  
Short Form  
**\$6**  
Across from Roger's LP Gas  
802 Hwy. 25 North in Iuka

8934, in said Court, of Charles Green, wherein you are defendant.  
This 23rd day of December, 1981.

/S/ ROBERT D. SIMS,  
CHANCERY CLERK  
D-31-J-7-14-c.

**IN THE CHANCERY COURT OF**  
**TISHOMINGO COUNTY, MISS.**  
**In The Matter Of The Adop-**  
**tion Of A Child To Be Named**  
**In The Petition, Larry N. Long**  
**and Wife Alicetina Long,**  
**PETITIONERS:**  
Cause No. 155  
**CHANCERY SUMMONS**  
The State of Mississippi  
To: Walter L. Sorrell I  
You are summoned to appear before the Court of Chancery, Tishomingo Coun-

ty, in said state on 15, 1982, at 10:00 A.M. at the Courthouse in Iuka, said state, to do suit No. 155, Petition for Adoption wherein Respondent.  
This the 28th day of December 1982.

Edward Long, Jr.,  
Attorney for Petitioner  
D-31-J-7-14-c.

\*\*\*\*\*  
**UPHOLSTERING**  
Quality fabrics from. Free pick-up and delivery, all work guaranteed. Furniture and drapery. Wallace E. Anglin, South. Call 423-5282.  
A-20-tfn-c.

**NOW RENTING**  
**BURNSVILLE APARTMENTS**  
**FOR THE ELDERLY**  
1 & 2 Bedroom Units  
APPLY AT  
BURNSVILLE CITY HALL  
427-9526

**\$500.00 REWARD**  
For information leading to the arrest and conviction of person or persons responsible for the theft of my 1978 Ford Dump Truck, blue cab with black body. Stolen Dec. 12 at Cook Asphalt Plant, Hwy. 25 South of Iuka. If you have information phone 901-549-9271.  
Gerald W. W.

**MOORE'S**  
**BODY SHOP &**  
**WRECKER SERVICE**  
24 Hour Wrecker Service  
DAY PHONE 423-5131  
NIGHT - WEEKENDS  
HOLIDAYS  
423-5244  
EXPERT BODY REPAIR

**APPLIAN**  
**REPA**

**Gann Brothers**  
**Furniture &**  
**Appliance**  
427-9506

**WE HAVE TWO FULL TIME SERVICE**  
**MEN FOR QUICKER AND MORE**  
**EFFICIENT SERVICE**  
"The Business That Quality And Service Has"

**THE STIHL 028WB.**  
**THE PROFESSIONAL SAW FOR**  
**HOMEOWNERS.**

**TAKE ONE HOME.**

**STIHL**  
The World's Largest Selling Chainsaw

**NELSON**  
**MARINE & HARDWARE**  
HIGHWAY 25 SOUTH IN IUKA  
423-64

**THE**  
**Long Davis**  
**COMPANY**  
**REAL ESTATE**  
423-5555

1415 Highway 25 South  
Iuka, Mississippi 38852

Grace Long, Realtor - GRI - 423-6584  
Beth Davis, Realtor - GRI - 423-9543  
Dianne Ables - Realtor Assoc. - 423-5262  
Frankie McGill - Realtor Assoc. - 423-9270

**NEW LISTING - Renovated farm house**  
with 3 Br's, super-insulation, country kitchen, den with F.P., with one acre - \$41,500; with 2 acres and barn - \$45,500; with 10 wooded acres and barn - \$49,500.00.

Refreshing and relaxing year-round lake view home with 3 Br's, family room with flue, inside laundry room, large shop. Oversized lot. \$38,500.00.

Beautiful home, fine area. Easy to assume 10% financing with payments of \$366 mo. Formal living and dining, eat-in kitchen, den. \$49,500.00.

Reduced! Rustic contemporary home with 3 Br's, 2 1/2 baths, 2 lots, pool. Low down payment, 13% financing available. \$55,000.00.

Country elegance! 3 Br. home with 12% owner financing. Impressive foyer, living room, den, country kitchen, wood-burning heater, energy efficient. 11 1/4 acres planted in seedlings. \$65,000.00.

You will appreciate the quality and layout of this 3 BR, 2 bath home in a prestige area. FP, deck, excellent financing package - \$56,000.00.

Striking traditional home in immaculate condition. Great room plan w. spacious rooms, deck, Flexible financing - \$44,000.00.

Below market price! 3 BRs, FP, shop, across the road from lake - \$35,000.00.

See this for starters - 2 BR frame, 1 bath, 1 acre, Tishomingo - \$15,900.00.

4 acres, homestead - \$3,000.00.

14 acres, homestead prepared, wooded acreage - \$13,000.00.



# Legal Notice

**NOTICE**  
I am not responsible for  
debts other than my own,  
January 7, 1982.  
Jerry L. Brumley  
4-21-pd

## TRUSTEE'S NOTICE OF SALE

WHEREAS, on April 3,  
Larry H. Davis and wife,  
K. Davis, executed a  
Deed of Trust to J. Barry Fin-  
ch, Trustee, for the benefit of  
State Savings & Loan  
Association, which said Deed  
is now on record in  
Office of the Chancery  
of Tishomingo County,  
Mississippi, at Iuka,  
Mississippi, in Book 95, page  
451, of the records of  
Trust of said Coun-

ty, MISSISSIPPI, for cash  
the highest and best bidder  
following described  
property situated in  
Tishomingo County,  
Mississippi, more particularly  
described as follows, to-wit:

Part of the SW 1/4 of Section  
35, Township 6 South, Range  
10 East, described as begin-  
ning at the southwest corner  
of said quarter section and  
run thence N. 00° 40' E. along  
a wire fence 672.92 feet to a  
point on the south edge of  
the pavement of Moore's Mill  
Road; thence run S. 85° 35' E.  
250.33 feet; thence run N. 82°  
58' E. 538.2 feet; thence run  
S. 84° 33' E. 521.84 feet; thence  
run S. 12° 00' E. 126.91 feet to  
an existing iron pin on the  
east side of Willow Lynn  
Road and this is the point of  
beginning hereof; thence run  
S. 87° 12' E. 155.0 feet; thence  
run S. 1° 34' E. 90.0 feet;  
thence run N. 87° 56' W.  
154.86 feet to the east side of  
said road; thence run N. 1° 34'  
W. 92.0 feet to the point of  
beginning, containing 0.32 of  
an acre.

I will convey only such title  
as is vested in me as Trustee.

WITNESS my signature,  
this 16th day of December,  
1981.

J. BARRY FINCH,  
TRUSTEE

D-24-31-J-7-14-c.

## STATE OF MISSISSIPPI COUNTY OF TISHOMINGO

### FORECLOSURE NOTICE

WHEREAS, on the 1st day  
of October, 1978, Lee Barlow  
executed a Deed of Trust under  
the terms of which the hereinafter described real  
property was conveyed to  
Harold S. Jackson, as  
Trustee, to secure the  
payment to Fayette C.  
Williams, Sr., and Billy B.  
Gann of an indebtedness  
therein described, which  
Deed of Trust is recorded in  
the office of the Chancery  
Clerk of Tishomingo County,  
Mississippi, in Trust Deed  
Book 87, at pages 214-217;  
and

WHEREAS, default has  
been made in the perform-  
ance of the conditions of the  
said Deed of Trust and the  
holders thereof have declared  
the entire indebtedness  
secured thereby due and  
payable and have requested  
the undersigned to sell the  
said real property as provided  
by the said Deed of Trust.

THEREFORE, the under-  
signed will, between the  
hours of 11:00 o'clock in the  
forenoon and 4:00 o'clock in  
the afternoon, on the 1st day  
of February, 1982, at the East  
front door of the  
Tishomingo County Cour-  
thouse in Iuka, Mississippi,  
offer for sale and will sale at  
public outcry to the highest  
bidder for cash the following  
described real property  
located in Tishomingo Coun-  
ty, Mississippi, being more  
particularly described as  
follows, to-wit:

Lot No. 24, ROLLING HILLS  
SUBDIVISION, located in  
Tishomingo County,  
Mississippi, and being more  
particularly described as  
follows, to-wit: A part of the  
NW 1/4 of Section 13, Town-  
ship 2 South, Range 10 East,  
of Tishomingo County,  
Mississippi, described as  
follows: Beginning at the  
Northeast Corner of the  
NW 1/4 of said Section, thence  
run South 4 degrees 10  
minutes 32 seconds East

1403.71 feet; thence run  
South 89 degrees 24 minutes  
28 seconds East 554 feet;  
thence run North 160 feet;  
thence run North 55 degrees  
37 minutes 28 seconds East  
90 feet; thence run North 150  
feet; thence run North 89  
degrees 24 minutes 28  
seconds East 88.6 feet; then-  
ce run North 4 degrees 07  
minutes 30 seconds West  
265.19 feet; thence run North  
89 degrees 59 minutes 27  
seconds East 154.86 feet to  
the true point of beginning;

thence run South 89 degrees  
59 minutes 27 seconds West  
154.86 feet; thence run North  
150 feet; thence run North 89  
degrees 59 minutes 27  
seconds East 154.86 feet to  
the true point of beginning;  
thence run North 89 degrees  
59 minutes 27 seconds West  
154.86 feet; thence run North  
150 feet; thence run North 89  
degrees 59 minutes 27  
seconds East 154.86 feet to  
the true point of beginning;  
thence run North 89 degrees  
59 minutes 27 seconds West  
154.86 feet; thence run North  
150 feet; thence run North 89  
degrees 59 minutes 27  
seconds East 154.86 feet to  
the true point of beginning;

thence run South 89 degrees  
59 minutes 27 seconds West  
154.86 feet; thence run North  
150 feet; thence run North 89  
degrees 59 minutes 27  
seconds East 154.86 feet to  
the true point of beginning;  
thence run North 89 degrees  
59 minutes 27 seconds West  
154.86 feet; thence run North  
150 feet; thence run North 89  
degrees 59 minutes 27  
seconds East 154.86 feet to  
the true point of beginning;

thence run South 89 degrees  
59 minutes 27 seconds West  
154.86 feet; thence run North  
150 feet; thence run North 89  
degrees 59 minutes 27  
seconds East 154.86 feet to  
the true point of beginning;  
thence run North 89 degrees  
59 minutes 27 seconds West  
154.86 feet; thence run North  
150 feet; thence run North 89  
degrees 59 minutes 27  
seconds East 154.86 feet to  
the true point of beginning;

thence run South 89 degrees  
59 minutes 27 seconds West  
154.86 feet; thence run North  
150 feet; thence run North 89  
degrees 59 minutes 27  
seconds East 154.86 feet to  
the true point of beginning;  
thence run North 89 degrees  
59 minutes 27 seconds West  
154.86 feet; thence run North  
150 feet; thence run North 89  
degrees 59 minutes 27  
seconds East 154.86 feet to  
the true point of beginning;

thence run South 89 degrees  
59 minutes 27 seconds West  
154.86 feet; thence run North  
150 feet; thence run North 89  
degrees 59 minutes 27  
seconds East 154.86 feet to  
the true point of beginning;  
thence run North 89 degrees  
59 minutes 27 seconds West  
154.86 feet; thence run North  
150 feet; thence run North 89  
degrees 59 minutes 27  
seconds East 154.86 feet to  
the true point of beginning;

thence run South 89 degrees  
59 minutes 27 seconds West  
154.86 feet; thence run North  
150 feet; thence run North 89  
degrees 59 minutes 27  
seconds East 154.86 feet to  
the true point of beginning;  
thence run North 89 degrees  
59 minutes 27 seconds West  
154.86 feet; thence run North  
150 feet; thence run North 89  
degrees 59 minutes 27  
seconds East 154.86 feet to  
the true point of beginning;

thence run South 89 degrees  
59 minutes 27 seconds West  
154.86 feet; thence run North  
150 feet; thence run North 89  
degrees 59 minutes 27  
seconds East 154.86 feet to  
the true point of beginning;  
thence run North 89 degrees  
59 minutes 27 seconds West  
154.86 feet; thence run North  
150 feet; thence run North 89  
degrees 59 minutes 27  
seconds East 154.86 feet to  
the true point of beginning;

thence run South 89 degrees  
59 minutes 27 seconds West  
154.86 feet; thence run North  
150 feet; thence run North 89  
degrees 59 minutes 27  
seconds East 154.86 feet to  
the true point of beginning;  
thence run North 89 degrees  
59 minutes 27 seconds West  
154.86 feet; thence run North  
150 feet; thence run North 89  
degrees 59 minutes 27  
seconds East 154.86 feet to  
the true point of beginning;

thence run South 89 degrees  
59 minutes 27 seconds West  
154.86 feet; thence run North  
150 feet; thence run North 89  
degrees 59 minutes 27  
seconds East 154.86 feet to  
the true point of beginning;  
thence run North 89 degrees  
59 minutes 27 seconds West  
154.86 feet; thence run North  
150 feet; thence run North 89  
degrees 59 minutes 27  
seconds East 154.86 feet to  
the true point of beginning;

thence run South 89 degrees  
59 minutes 27 seconds West  
154.86 feet; thence run North  
150 feet; thence run North 89  
degrees 59 minutes 27  
seconds East 154.86 feet to  
the true point of beginning;  
thence run North 89 degrees  
59 minutes 27 seconds West  
154.86 feet; thence run North  
150 feet; thence run North 89  
degrees 59 minutes 27  
seconds East 154.86 feet to  
the true point of beginning;

thence run South 89 degrees  
59 minutes 27 seconds West  
154.86 feet; thence run North  
150 feet; thence run North 89  
degrees 59 minutes 27  
seconds East 154.86 feet to  
the true point of beginning;  
thence run North 89 degrees  
59 minutes 27 seconds West  
154.86 feet; thence run North  
150 feet; thence run North 89  
degrees 59 minutes 27  
seconds East 154.86 feet to  
the true point of beginning;

thence run South 89 degrees  
59 minutes 27 seconds West  
154.86 feet; thence run North  
150 feet; thence run North 89  
degrees 59 minutes 27  
seconds East 154.86 feet to  
the true point of beginning;  
thence run North 89 degrees  
59 minutes 27 seconds West  
154.86 feet; thence run North  
150 feet; thence run North 89  
degrees 59 minutes 27  
seconds East 154.86 feet to  
the true point of beginning;

thence run South 89 degrees  
59 minutes 27 seconds West  
154.86 feet; thence run North  
150 feet; thence run North 89  
degrees 59 minutes 27  
seconds East 154.86 feet to  
the true point of beginning;  
thence run North 89 degrees  
59 minutes 27 seconds West  
154.86 feet; thence run North  
150 feet; thence run North 89  
degrees 59 minutes 27  
seconds East 154.86 feet to  
the true point of beginning;

thence run South 89 degrees  
59 minutes 27 seconds West  
154.86 feet; thence run North  
150 feet; thence run North 89  
degrees 59 minutes 27  
seconds East 154.86 feet to  
the true point of beginning;  
thence run North 89 degrees  
59 minutes 27 seconds West  
154.86 feet; thence run North  
150 feet; thence run North 89  
degrees 59 minutes 27  
seconds East 154.86 feet to  
the true point of beginning;

thence run South 89 degrees  
59 minutes 27 seconds West  
154.86 feet; thence run North  
150 feet; thence run North 89  
degrees 59 minutes 27  
seconds East 154.86 feet to  
the true point of beginning;  
thence run North 89 degrees  
59 minutes 27 seconds West  
154.86 feet; thence run North  
150 feet; thence run North 89  
degrees 59 minutes 27  
seconds East 154.86 feet to  
the true point of beginning;

thence run South 89 degrees  
59 minutes 27 seconds West  
154.86 feet; thence run North  
150 feet; thence run North 89  
degrees 59 minutes 27  
seconds East 154.86 feet to  
the true point of beginning;  
thence run North 89 degrees  
59 minutes 27 seconds West  
154.86 feet; thence run North  
150 feet; thence run North 89  
degrees 59 minutes 27  
seconds East 154.86 feet to  
the true point of beginning;

thence run South 89 degrees  
59 minutes 27 seconds West  
154.86 feet; thence run North  
150 feet; thence run North 89  
degrees 59 minutes 27  
seconds East 154.86 feet to  
the true point of beginning;  
thence run North 89 degrees  
59 minutes 27 seconds West  
154.86 feet; thence run North  
150 feet; thence run North 89  
degrees 59 minutes 27  
seconds East 154.86 feet to  
the true point of beginning;

thence run South 89 degrees  
59 minutes 27 seconds West  
154.86 feet; thence run North  
150 feet; thence run North 89  
degrees 59 minutes 27  
seconds East 154.86 feet to  
the true point of beginning;  
thence run North 89 degrees  
59 minutes 27 seconds West  
154.86 feet; thence run North  
150 feet; thence run North 89  
degrees 59 minutes 27  
seconds East 154.86 feet to  
the true point of beginning;

thence run South 89 degrees  
59 minutes 27 seconds West  
154.86 feet; thence run North  
150 feet; thence run North 89  
degrees 59 minutes 27  
seconds East 154.86 feet to  
the true point of beginning;  
thence run North 89 degrees  
59 minutes 27 seconds West  
154.86 feet; thence run North  
150 feet; thence run North 89  
degrees 59 minutes 27  
seconds East 154.86 feet to  
the true point of beginning;

thence run South 89 degrees  
59 minutes 27 seconds West  
154.86 feet; thence run North  
150 feet; thence run North 89  
degrees 59 minutes 27  
seconds East 154.86 feet to  
the true point of beginning;  
thence run North 89 degrees  
59 minutes 27 seconds West  
154.86 feet; thence run North  
150 feet; thence run North 89  
degrees 59 minutes 27  
seconds East 154.86 feet to  
the true point of beginning;

thence run South 89 degrees  
59 minutes 27 seconds West  
154.86 feet; thence run North  
150 feet; thence run North 89  
degrees 59 minutes 27  
seconds East 154.86 feet to  
the true point of beginning;  
thence run North 89 degrees  
59 minutes 27 seconds West  
154.86 feet; thence run North  
150 feet; thence run North 89  
degrees 59 minutes 27  
seconds East 154.86 feet to  
the true point of beginning;

thence run South 89 degrees  
59 minutes 27 seconds West  
154.86 feet; thence run North  
150 feet; thence run North 89  
degrees 59 minutes 27  
seconds East 154.86 feet to  
the true point of beginning;  
thence run North 89 degrees  
59 minutes 27 seconds West  
154.86 feet; thence run North  
150 feet; thence run North 89  
degrees 59 minutes 27  
seconds East 154.86 feet to  
the true point of beginning;

thence run South 89 degrees  
59 minutes 27 seconds West  
154.86 feet; thence run North  
150 feet; thence run North 89  
degrees 59 minutes 27  
seconds East 154.86 feet to  
the true point of beginning;  
thence run North 89 degrees  
59 minutes 27 seconds West  
154.86 feet; thence run North  
150 feet; thence run North 89  
degrees 59 minutes 27  
seconds East 154.86 feet to  
the true point of beginning;

thence run South 89 degrees  
59 minutes 27 seconds West  
154.86 feet; thence run North  
150 feet; thence run North 89  
degrees 59 minutes 27  
seconds East 154.86 feet to  
the true point of beginning;  
thence run North 89 degrees  
59 minutes 27 seconds West  
154.86 feet; thence run North  
150 feet; thence run North 89  
degrees 59 minutes 27  
seconds East 154.86 feet to  
the true point of beginning;

thence run South 89 degrees  
59 minutes 27 seconds West  
154.86 feet; thence run North  
150 feet; thence run North 89  
degrees 59 minutes 27  
seconds East 154.86 feet to  
the true point of beginning;  
thence run North 89 degrees  
59 minutes 27 seconds West  
154.86 feet; thence run North  
150 feet; thence run North 89  
degrees 59 minutes 27  
seconds East 154.86 feet to  
the true point of beginning;

thence run South 89 degrees  
59 minutes 27 seconds West  
154.86 feet; thence run North  
150 feet; thence run North 89  
degrees 59 minutes 27  
seconds East 154.86 feet to  
the true point of beginning;  
thence run North 89 degrees  
59 minutes 27 seconds West  
154.86 feet; thence run North  
150 feet; thence run North 89  
degrees 59 minutes 27  
seconds East 154.86 feet to  
the true point of beginning;

thence run South 89 degrees  
59 minutes 27 seconds West  
154.86 feet; thence run North  
150 feet; thence run North 89  
degrees 59 minutes 27  
seconds East 154.86 feet to  
the true point of beginning;  
thence run North 89 degrees  
59 minutes 27 seconds West  
154.86 feet; thence run North  
150 feet; thence run North 89  
degrees 59 minutes 27  
seconds East 154.86 feet to  
the true point of beginning;

thence run South 89 degrees  
59 minutes 27 seconds West  
154.86 feet; thence run North  
150 feet; thence run North 89  
degrees 59 minutes 27  
seconds East 112 feet; then-  
ce run in a southeasterly  
direction along a circular arc  
51.31 feet to a point that is  
North 4 degrees 10 minutes  
32 seconds West 118.97 feet  
from the point of beginning;  
thence run South 4 degrees  
10 minutes 32 seconds East  
118.97 feet to the point of  
beginning. Containing 0.50  
acre.

The undersigned will con-  
vey only such title as is  
vested in him as Trustee.

HAROLD S. JACKSON,  
TRUSTEE

HAROLD S. JACKSON  
ATTORNEY AT LAW  
POST OFFICE BOX 273  
IUKA, MISSISSIPPI 38852  
(601) 423-5227

J-7-14-21-28-chg

## STATEMENT OF INTENT TO DISSOLVE L. P. ALLEN ENTERPRISES, INC., BY ACT OF THE CORPORATION

Pursuant to the provisions  
of Section 84 of the  
Mississippi Business Cor-  
poration Act, the undersigned  
corporation submits the  
following statement of intent  
to dissolve the corporation by  
act of the corporation.

FIRST: The name of the  
corporation is L. P. Allen En-  
terprises, Inc.

SECOND: The names and  
respective addresses of its  
officers are L. P. Allen,  
President and Treasurer, 103  
East Washington Street,  
Belmont, Mississippi 38827;  
Robert J. Allen, Vice  
President, 103 East  
Washington Street, Belmont,  
Mississippi 38827; and Roy P.  
Allen, Jr., Secretary, 103 East  
Washington Street, Belmont,  
Mississippi 38827.

THIRD: The names and  
respective addresses of its  
directors are L. P. Allen, 103  
East Washington Street,  
Belmont, Mississippi 38827;  
Robert J. Allen, 103 East  
Washington Street, Belmont,  
Mississippi 38827; and Roy P.  
Allen, Jr., 103 East  
Washington Street, Belmont,  
Mississippi 38827.

FOURTH: The following  
resolution to dissolve the  
corporation was adopted by  
the shareholders of the cor-  
poration on December 29,  
1981.

RESOLVED, that the cor-  
poration be liquidated and  
dissolved by act of the cor-  
poration pursuant to Section  
84 of the Mississippi  
Business Corporation Act, ef-  
fective as of December 31,  
1981.

RESOLVED FURTHER, that  
the officers of the cor-  
poration be authorized and  
directed to execute the ap-  
propriate documents trans-  
ferring all of the cor-  
poration's assets to the sole  
Shareholder in complete  
liquidation of the corporation.

RESOLVED FURTHER, that  
the corporation file the ap-  
propriate documents to ef-  
fect the liquidation and  
dissolution of the corporation  
in accordance with this  
resolution, including, but not  
limited to, a statement of in-  
tent to dissolve the cor-  
poration and articles of  
dissolution.

RESOLVED FURTHER, that  
the officers of the cor-  
poration be authorized and  
directed to execute such  
other documents as may be  
reasonable necessary to  
carry out the liquidation and  
dissolution of the corporation  
in accordance with the terms  
of this resolution.

RESOLVED FURTHER, that  
the officers of the cor-  
poration be authorized and  
directed to execute the  
necessary documents and  
obtain approval from the In-  
ternal Revenue Service to  
terminate the Profit Sharing  
and Money Purchase Pension  
Plans of the corporation ef-  
fective December 31, 1981.

FIFTH: The number of  
shares of the corporation  
outstanding at the time of  
such adoption was One  
Thousand (1,000) and the  
number of shares entitled to  
vote thereon was One  
Thousand (1,000).

SIXTH: The number of  
shares voted for such  
resolution was One Thousand  
(1,000) and the number of  
shares voted against such  
resolution was none.

SEVENTH: The number of  
shares of each class entitled  
to vote thereon as a class  
voted for and against such  
resolution, respectively, was:  
All shares of each class voted  
for the resolution; none voted  
against.

DATED, this 29th day of  
December, 1981.

L. P. ALLEN ENTERPRISES,  
INC.

By: L. P. Allen, President

By: Roy P. Allen, Secretary  
STATE OF MISSISSIPPI  
COUNTY OF TISHOMINGO  
Public do hereby certify that  
on this the 29th day of  
December, 1981, personally  
appeared before me, L. P.  
Allen, who, being by me first  
duly sworn, declares that he  
is the President of L. P. Allen  
Enterprises, Inc., that he  
executed the foregoing  
document as President of the  
corporation, and that the  
statements as contained  
therein are true.

Laura Stormont  
NOTARY PUBLIC  
My Commission Expires:  
12-14-84

J-14-chg

## PUBLICATION AFFIDAVIT

TO: James D. McDeavitt, Jr., a  
non-resident of the State of  
Mississippi, and who is not to  
be found therein after diligent  
search and inquiry personally  
made by complainant, and  
whose present place of  
residence and whose street  
address is 3804 Anderson  
Road, Gibsonsia, Pennsylvania  
15044, and whose post office  
box is unknown to com-  
plainant after diligent search  
and inquiry personally made  
by complainant to ascertain  
such.

You are summoned to ap-  
pear before the Honorable  
Fred P. Wright, the Judge of  
the Chancery Court of the  
County of Tishomingo, State  
of Mississippi, on the 15th  
day of February, A.D., 1982, at  
10:00 A.M., at the Tishomingo  
County Courthouse in the  
City of Iuka, Mississippi, to

defend Cause No. 8856 in  
said court of Gail W. Mc-  
Deavitt, wherein you are the  
named defendant.

This the 8 day of January,  
1982.

Robert D. Sims  
Chancery Clerk

J-14-21-28-chg

## State Treasurer Issued Report

State Treasurer Bill Cole  
has issued a report announ-  
cing a return of nearly \$19  
million to the general fund in  
interest from investments by  
his office for the first six  
months of fiscal year 1982.

"Between July 1 and  
December 31, we have  
received from investments  
\$18,890,805 in income. This is  
a significant increase over  
the same period last year  
when the income was  
\$13,962,301," Cole said.

"The adoption  
of legislation increasing the rate  
we can obtain on public funds  
by one half percent last  
session and the greater use  
of repurchase agreements to  
insure maximum investment  
of funds on an overnight  
basis has been the major con-  
tributor to this increase."

The State Treasurer stated  
that "these figures are en-  
couraging". In 1981 the total  
for the year amounted to \$30  
million, and we are only some  
\$11 million short of that  
record with six months left in  
the fiscal year."

"Although it is certainly  
possible to surpass the  
estimate for this year it is

premature to make that con-  
clusion. The decrease in in-  
terest rates on investments  
recently and the state cash  
flow crunch decreasing  
available funds for invest-  
ment will work to affect the  
income over the next six  
months."

"We are hopeful that we  
can surpass the estimate  
which would help the current  
budget situation and it is our  
desire and commitment to  
strive to maximize the invest-  
ment of public funds to in-  
sure the best return  
possible."

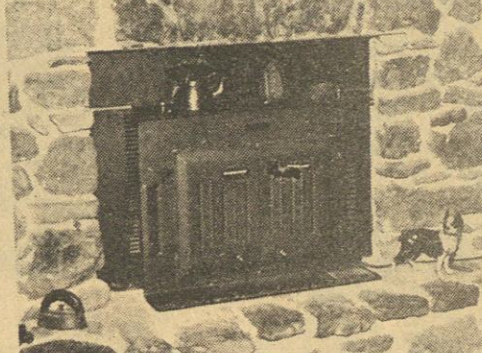
## 4-H Chicks Available

Poultry Chain orders are  
due January 22, 1982. Anyone  
interested in ordering free  
baby chicks should call 423-  
3616 or come by the Exten-  
sion Office. Remember, your  
parents must agree on your  
receiving the chicks and be  
willing to sign the Poultry  
Chain Agreement. This year  
you may order the straight  
run or pullets only. Also three  
different breeds are available.  
4-H'ers who do not wish to  
participate in the chain may  
buy their chicks at the special  
4-H club rate if the chicks are  
to be shown at the County  
Fair.

## H&R BLOCK

THE INCOME TAX PEOPLE  
1415 Hwy 25 South  
(Under New Management)  
423-5556

## BLACK BART THE MOST WANTED STOVE IN AMERICA



**BUILT TO GET THE MOST  
OUT OF WOOD OR COAL**  
Will heat up to 3,000 Sq. Ft.

A FREE STANDING HEATER  
**\$480<sup>00</sup>**

OR FIREPLACE INSERT

BASE PRICE

**\$466<sup>00</sup>**  
Plus Tax

Fire Screen &  
Installation Optional



381-9643

**BLACK BART**  
of Muscle Shoals  
610 Waverly Ave.  
Just behind McDonalds on Woodward Ave.  
Muscle Shoals, AL



Five-Year Warranty on stove  
and blower.  
Tested to the current stan-  
dard UL 1482 by Arnold  
Greene Testing Laboratories.  
Inc. B.O.C.A. approved.



## Are You Having Trouble Understanding Normal Conversation? Hearing Aid Expert to Visit CORINTH

Have your hearing electronically tested by a factory trained Hearing Aid Specialist,  
these tests can answer important questions about your hearing.

**NEWEST DEVELOPMENT IN HEARING AIDS**  
*The Aid that Uses No Batteries.*

*The aid specially built for your loss  
fits your ear and your ear alone.  
Dehumidifies itself overnight.  
No cords used for charging.*





#### Clothing Donated

Maxine Wade and Sue McBee sort new articles of clothing bought by members of the GFWC Iuka 20th Century Club. These articles of

clothing are being donated to the Mississippi School for the Deaf in Jackson. All women's clubs, who are members of the Mississippi Federation of Women's Clubs, support this school with various projects throughout the year.

### Your Social Security

#### Social Security Tax Up For 1982

The Social Security tax rate and the amount of annual earnings on which Social Security taxes are paid - the wage base - will both increase as of January 1, 1982. The increases will mean increases in payroll deductions ranging from \$3.77 to less than 10 cents a week.

The 1981 tax rate of 6.65 percent each for employees and employers will rise to 6.70 percent. On self-employment income, the tax rate will go to 9.35 percent, up from 9.36 percent. The wage base will increase from \$29,700 to \$32,400.

An estimated 9 million workers will earn the taxable maximum of \$32,400 or more in 1982 - about 7.6 percent of the 118.5 million workers who will pay into the Social Security system. Employees earning at or above the taxable maximum will pay total Social Security taxes of \$2,170.80, up from \$1,975.05, an increase of \$195.75 a year or about \$3.77 a week.

In other examples of the Social Security taxes at various earnings levels, employees making \$20,000 a year will pay \$1,340, up from \$1,330, an increase of \$10 a year or about 19 cents a week. Those earning \$10,000 will pay total taxes of \$670, up from \$665, an increase of \$5 or less than 10 cents a week.

Self-employed persons earning the taxable maximum of \$32,400 will pay total taxes of \$3,029.40 up from \$2,762.10, an increase of \$267.30 or \$5.14 a week. Those earning \$20,000 will pay total taxes of \$1,870, up from \$1,860, an increase of \$10 or about 19 cents a week. Those with annual self-employment income of \$10,000 will pay taxes of \$935, up from \$930, an increase of

#### Snyder Named Chairman

Northern District Public Service Commissioner, D.W. Snyder, of Eupora, has been named Chairman of the National Association of Regulatory Utility Commissioners' committee on gas, the organization's president announced Monday. The committee was established in 1963 and has undertaken a number of projects dealing with the regulation of natural gas. Snyder, who began his tenure with the state PSC in 1964, has served as president of the Southeastern Association of Regulatory Utility Commissioners. He was vice-chairman of the national regulatory group's committee on gas before taking over as chairman.

For the past four years, he has served as a member of the Gas Research Institute located in Chicago. This organization is charged with the research and development of natural gas from different sources such as coal gasification.

The Leaning Tower of Pisa has tipped an additional foot in the last century.

# WAL-MART

Hwy. 25 South in Iuka  
Open 9 till 9  
Ad good 1-14-82 thru 1-16-82

# January Clearance Sale

**Don't miss these super low prices storewide during our January Clearance Sale!**

**MENS COATS, JACKETS & VESTS**  
NOW UP TO **30% OFF**

**duraflame FIRE LOGS**  
3 HOUR  
REG. 1.66 NOW **96¢**

**Rawlings C118**  
Reg. 12.96  
**9.96**  
Rawlings Football  
•Standard eight-lace construction  
•Official size

**COLECO Merry-Go-Round**  
•8" x 16" x 25" handle  
•Twirling merry-go-round for 2 dolls (not included)  
•Music plays  
•No. 9185  
Reg. 14.78  
**8.00**

LADIES WEAR		
Ladies Boot Length & asst. values up to 44.88		Now 22.00
Ladies Vest Jackets & asst. values up to 33.88		Now 29.00
Jr. Denim Jeans sizes 3 to 13 reg. 10.94		Now 7.00
Ladies Night Shirts asst. reg. 5.96		Now 4.00
Ladies Bikini Panties reg. 9.64		Now 6.86
LOUNGE WEAR		
Ladies Robes values up to 15.96		Now 12.00
Ladies Borg Robes reg. 24.86		Now 19.00
GIRLS WEAR		
Girls Boot Length Coats values up to 36.88		Now 25.00
BABIES WEAR		
Babies Zipper Blanket machine wash reg. 7.46		Now 6.00
Toddler Nite Shirts asst. values up to 5.42		Now 4.00
BOYSWEAR		
Boys Nylon Coats asst. values up to 26.88		Now 21.00
Boys Western Shirts sizes 5 - 16 asst. colors & styles values up to 8.46		Now 6.00
SPORTING GOODS		
Leather Boot Canadian Split reg. 22.66		Now 18.00
Cold Weather Boots reg. 16.44		Now 14.00
Gun Cases		Now up to 40% off
Gun Cabinets reg. 109.00		Now 88.00
HARDWEAR		
Fireplace Tools Brass & Black Heavy Cast reg. 19.96		Now 12.00
Log Roller by Fyreling reg. 15.88		Now 10.00
HEALTH & BEAUTY AIDS		
Aqua Velva delux travel kit reg. 6.67		Now 5.25
Aqua Velva after shave gift collection reg. 4.14		Now 3.30
MENS WEAR		
Knit Shirts Men's short sleeves asst. values up to 11.97		Now 8.00
DOMESTICS		
Mattress Pad Polypride quilted reg. 7.36 (twin size only)		Now 6.00
TOYS		
Doll House Town & Country reg. 19.93		Now 16.00
Table and Chair Set Reg. 23.78		Now 19.00
Yummy Walker Doll reg. 11.86		Now 9.00
25 Key Piano by Jaymar reg. 29.44		Now 20.00
ELECTRONICS		
Party Time Camera reg. 17.44		Now 10.00
Triumph Guitar No. FG-96-0 reg. 46.46		Now 35.00

## Super Specials

**Leather Boots** Canadian Split reg. 22.66 Now **18.00**

**Pines Plane** battery powered ages 2-7 reg. 78.87 Now **40.00**

**Fireplace Screens** Delux Glass by Pyro-Master asst. sizes reg. 88.00 Now **56.00**

**Toddler & Infant Coats** asst. Values up to 14.88 Now **9.00**  
Values up to 18.88 Now **11.00**

**Humdi-Kleen Humidifier**  
•2 Gallon capacity  
•Dual air flow design •No. 460  
**17.96**

## FURNITURE SALE

EVERYDAY LOW PRICES

3 Piece Living Room Set

# \$309.95

and up

**Starlite Discount Furniture**

Hwy. 72
Burnsville

427-9515

## SUPER COUPON SPECIALS

**VALUABLE COUPON**

**Ogilvie Precisely Right Body & Styling Wave**  
•Professional-type formula with its own condition heat  
•Waves evenly in minutes  
**2.97**  
Limit 1 Expires 1-16-82

**VALUABLE COUPON**

**Centrum 100 Count Plus 30 Free**  
•High potency multi-vitamin/mineral formula  
**6.96**  
Limit 1 Expires 1-16-82

**VALUABLE COUPON**

**Ecotrin 100 Count**  
•Safely relieves pain and inflammation, protects against stomach upset  
**2.42**  
Limit 1 Expires 1-16-82

# WAL-MART

ADVERTISING POLICY — It is our intention to have all merchandise in this ad in stock during the sale dates. However, since most merchandise is overstocks and seasonal left-overs, and because many items are in limited supply we will not issue rain checks for this sale. If you are dissatisfied with any merchandise we will gladly exchange it or give you a refund. Shop early while selections are best.





### Century Club Sponsor- Scoliosis Screening

are underway to con-  
the previously announ-  
Scoliosis Screening of  
students, grades 7-9.  
Scoliosis is a curving of the  
backbone, which can lead to  
serious health problems if

left undetected at an early  
age. Two teams of trained  
health professionals will  
conduct this screening  
January 21. The parents will  
be receiving a permission let-  
ter regarding this screening  
soon. This Scoliosis  
Screening is a project of the

20th Century Club of Iuka,  
and is being supported by the  
Mississippi Federation of  
Women's Clubs. Pictured  
above are Mrs. Sue McBee,  
20th Century Club represen-  
tative; Mr. Jay McKinney,  
Principal of Iuka High School;  
and Mrs. Teresa South, 20th  
Century Club representative.

### B. King Donates Record Collection

blues star B.B. King has  
donated his entire personal  
record collection, including  
more than 7,000 rare and critically  
claimed recordings, to the  
Center for the Study of  
Southern Culture at the  
University of Mississippi.  
King's collection includes  
78 rpm phonograph  
records, long-playing albums  
and 45 rpm recordings, said  
William Ferris, director of  
the Ole Miss center. More  
than half of the records are

blues, including a number of  
hard to obtain items and  
recordings by many of the  
world's top blues performers.

"All of the great blues ar-  
tists -- Muddy Waters,  
Howling Wolf, 'Blind Lemon'  
Jefferson, Bobby Bland,  
Furry Lewis and many others  
-- are in this collection," Dr.  
Ferris said. "The blues sec-  
tion is particularly strong in  
the post-World War II era.  
Over half of the LPs, for  
example, are now out of print  
and there are a number of rare  
overseas pressings by impor-  
tant blues performers.

"The collection also in-  
cludes excellent jazz and

gospel recordings, in addition  
to some country and rock and  
roll records," he continued.  
"This represents a lifetime of  
record collecting by B.B., and  
is an invaluable gift to the  
University. The collection of-  
fers a unique perspective for  
understanding the musical  
influences on one of this  
country's greatest perfor-  
mers. It also is a first step  
towards the establishment  
here at the University of a  
major teaching and research  
archive on Afro-American  
culture.

"We're very pleased to  
have such prestigious and  
important collection here at  
the University," Dr. Ferris  
said. "B.B. King was born in  
Mississippi and most of the  
music represented in this  
collection originated in the  
South. It's appropriate then  
that this collection should be  
housed here, in B.B.'s home  
state in the heart of the  
South."

King donated the records  
in support of a three-year  
Challenge Grant from the  
National Endowment for the  
Humanities (NEH). Dr. Ferris  
said. The grant, awarded to  
the Southern culture center,  
is designed to raise \$1.2  
million to strengthen the  
Southern Studies resources  
of the University's John Davis  
Williams Library.

Under the terms of the  
Challenge Grant, King's  
record collection will count  
as part of the \$900,000 in  
matching funds which the

University must raise to  
receive the full \$300,000 NEH  
grant. Dr. Ferris said the  
Collection will be appraised  
to determine its monetary  
value. More than \$75,000 has  
already been raised in sup-  
port of the grant.

### New Arrival

Mr. and Mrs. Tim Pittman  
would like to announce the  
birth of a daughter, Candace  
Lynn, born December 22, at  
4:50 p.m., weighing 6 lbs. 8  
ozs. Candace was born in  
Helen Keller Memorial  
Hospital, Sheffield, Ala.

Grandparents are Mr. and  
Mrs. Billy W. Broyles and Mr.  
and Mrs. Ray Pittman.

Candace's great-  
grandfather is Mr. Luther Lin-  
dsey.

### North Crossroads 4-H Club News

North Crossroads 4-H Club  
met December 31, 1981, with  
six members present. Allison  
Robbins opened the meeting  
and Darren Lynch presented  
the devotional. Mrs. Pardue  
conducted a tour of the  
Yellow Creek Nuclear Plant.

During 1982, the club plans  
to conduct CPR training and  
adopt a grandparent and an  
indoor field day event com-  
petition for 4-H Clubs.

Darren Lynch,  
Club Reporter

### Booker T. Washington Club Met

Members of the Booker T.  
Washington Club had their  
holiday dinner in the home of  
Mrs. Lavada Johnson. The  
traditional turkey with trim-  
mings was served. Gifts were  
exchanged among members  
and guests.

Members present were  
Mrs. Eddie Dillworth, Mrs.  
Hattie Alexander, Mrs.  
Onedia Lasley, Mrs. Laura  
Hamilton, Mrs. Emma Mit-  
chell, and Mrs. Lavada John-  
son.

### Who's Who At Iuka High

On Wednesday, January  
20, 1982, Who's Who selec-  
tions at IHS will be revealed.  
The program will be at 1:00 in  
Howard Auditorium.

At this time, those studen-  
ts named to the Hall of Fame  
will also be revealed. The Hall  
of Fame members are selec-  
ted by the faculty on the  
basis of academic ability,  
leadership qualities, and ex-  
tra curricular activities.

The highlight of the  
program will be the revealing  
of Chief and Miss IHS. Chief  
and Miss IHS are selected by  
the student body from the top  
five boys and girls with the  
highest academic averages.  
Those students in com-  
petition for Chief and Miss  
IHS this year include, in  
alphabetical order: Billy  
Allen, son of Mr. and Mrs.  
Ellett Allen, Jr.; Danny Bean,  
son of Mr. and Mrs. DeWitt  
Bean; Darryl Long, son of Mr.  
and Mrs. Fred Long; Ricky  
Marlar, son of Mr. and Mrs.  
Earl Marlar; and Randy  
Wadkins, son of Mr. and Mrs.  
Mack Lloyd Wadkins; Tammy  
Clark, daughter of Mr. and  
Mrs. Stanton Clark; LeAnne  
Kay, daughter of Mr. and Mrs.  
Charles Kay; Kerry Meredith,  
daughter of Mr. and Mrs. Er-  
nest Meredith; Katie Ramsey,  
daughter of Mr. and Mrs. W.D.  
(Buster) Ramsey; and Tina  
Taylor, daughter of Mr. and  
Mrs. Red Taylor.

All parents of students in-  
volved and friends of IHS are  
invited to attend the  
ceremonies at 1:00 on Wed-  
nesday, January 20, in  
Howard Auditorium.

### Winter Stresses Governmental Belt Tightening

In a speech to a joint  
session of the Mississippi  
Legislature this week Gov-  
ernor William Winter stressed  
the need for continued  
governmental belt tightening  
and greater efficiency in the  
operation of State Govern-  
ment. Winter also called for  
the establishment of a trust  
fund, financed by an increase  
in the oil and gas severance  
tax, to improve public  
education and economic  
development.

Winter, a longtime  
proponent of governmental  
consolidation and  
streamlining, noted that  
"your state government is  
operating leaner, slimmer and

more efficiently now than it  
was when we began this ad-  
ministration two years ago.  
We have worked hard to  
eliminate waste, inefficiency  
and mismanagement with the  
result that we are now  
operating state government  
with fewer departments and  
with 2,000 fewer employees  
than we had in comparable  
positions two years ago."

Winter commented that in  
an effort to make government  
more frugal and insure and  
most efficient use of tax-  
payers' dollars, "we have  
streamlined the budget  
process and we have reduced  
expenditures by some \$60  
million below what the 1981  
Legislature authorized." The  
governor told the assembly of  
legislators that he would veto  
any bills that threatened the  
fiscal integrity of the state.

Winter devoted the bulk of  
his speech for a call for the  
establishment of an  
economic development and  
education trust fund. He  
called the trust fund his  
highest priority. "It could  
enable us to make significant  
economic and educational  
advances that would make us  
the envy of our sister states,"  
Winter said. The revenues  
from the trust fund would be  
used for job creation, the  
establishment of a statewide  
kindergarten system, a more  
effective system of  
vocational and technical  
training, improved teacher  
training, library en-  
hancement, and many other  
needs in the state. "A  
collateral benefit of a per-  
manent trust fund, according  
to Winter, "could be a triple A  
rating on our bonds with  
resulting lower interest rates.  
It would also be a source of  
substantial new domestic  
capital."

### Households Here Included In Nationwide Census Survey On Employment

Local representatives of  
the Bureau of the Census will  
conduct a survey of em-  
ployment in this area during  
the work week of January 18  
through 22, 1982, John E.  
Reeder, Director of the  
Bureau's Regional Office in  
Dallas, announced today.

The survey is conducted  
for the U.S. Department of  
Labor in a scientifically  
designed sample of ap-

proximately 71,000  
households throughout the  
United States. Employment  
and unemployment statistics  
based on results of this sur-  
vey are used to provide a con-  
tinuing measure of the  
economic health of the  
Nation.

For example, in November  
the survey indicated that of  
the 107.0 million men and  
women in the civilian labor  
force, 98.0 million were em-  
ployed. The jobless rate was  
8.4 percent, up from 8.0 per-  
cent in October and 7.5 per-

cent in September.

Information supplied by  
people participating in the  
survey is kept strictly con-  
fidential by law and the  
results are used only to com-  
pile statistical totals.

### Iuka High School Basketball

Iuka High School's basket-  
ball game vs. Waterloo, Ala.  
was cancelled Tuesday,  
January 12, because of  
weather conditions, and is  
rescheduled for Thursday,

January 21. The game will be  
played at Waterloo, and will  
begin at 6:30 p.m.

### Midway Volunteer Fire Department To Meet Jan. 18

The Midway Volunteer Fire  
Department will meet on  
Monday, January 18, at 7:00  
p.m. at the Carter Head Start  
Building.

Everyone in the area is  
asked to attend.

## Saturday Mornings the Good Times Roll at Skateworld

Saturday's 10 - 12:30  
Beginners of all ages and skaters under 12

Let the Skateworld staff play with and help your child  
learn to skate.

Balance games, skill games, and fun games stressed.

### Free Doughnuts & Coffee For Parents

Admission \$1.50 skate rental 50 cents

Thursday nights are Family Nights at Skateworld  
The entire family skates for \$3.00 free skate rental  
Thursdays 7 - 9:30

Question of the Week -- R. L. what's this I hear about you  
and snowcones? You'd better stop it, those Tishomingo girls  
mean business.

Skateworld -- Sandra & Scotty Skinner, owners.

## SKATEWORLD

423-5814 Call anytime for information

Hwy. 25 North----Iuka, Mississippi

## Gigantic Reduction Sale

Suede Hats  
**REDUCED**

Belts  
**REDUCED**

Felt Hats  
**REDUCED**

## EVERY BOOT IN STORE REDUCED

Hat Bands  
**REDUCED**

Dan Post  
Dingo  
Acme  
Texas

Western Shirts  
**REDUCED**

Ladies & Mens  
Jeans Lee & Levis  
**REDUCED**

New Shipment  
Red Wing  
**REDUCED**

## Boots Unlimited

Hwy. 25 North in Iuka

### The Second Shoppe's

## Winter CLEARANCE Sale

Gowns  
Robes  
Corduroy Jeans  
Purses  
Jackets

**1/2**  
off sale

Entire Stock Not Included

Sweaters  
Blazers  
Skirts  
Ladies Blouses  
Pants

LADIES LEVI JEANS	1st quality	\$17.95
LADIES LEE JEANS	1st quality	\$21.95
LADIES CHIC JEANS	1st quality	\$21.95
LADIES CALVIN KLEIN JEANS	1st quality	\$24.95

Buster Brown Darnettes Entire stock \$1.50 each

Get your sweaters, shirts, jeans, etc. monogramed while you are  
here. No waiting.

Shirts \$1.50 for 3 initials - Sweaters \$2.50 for 3 initials

All Sales Final

611 Elm Shopping Center

Iuka, Miss.





#### Completes LPN Program

Annette Lowrey (left), of Midway, is congratulated by nursing instructor Frances Fields following the recent commencement ceremonies

for licensed practical nursing students at Northeast Junior College. Annette was one of 12 students who successfully completed the prescribed curriculum of lecture courses and clinical experience.

#### Energy Answers

**Q.** Is it true that you won't save energy by turning down your thermostat at night because it takes so much energy to warm the building in the morning?

**A.** No. Setting the thermostat back for several hours at a stretch each day during the heating season -- up, during the cooling season -- will, in a centrally heated and cooled building, save energy. Depending on your geographical location, the amount of energy you can save will range from 9 to 15 percent of what you used before adopting this energy-conserving habit.

You can accomplish temperature setback and setup by adjusting the thermostat manually at the proper times or by installing a device that makes the adjustments automatically. The manual technique, of course, requires no special equipment, but it does demand a greater degree of time and attention than many people are willing to put forth day in and day out. An automatic control device, on the other hand, involves some initial investment, but this outlay is more than repaid in dependability and energy savings.

**Q.** What can I do to keep my hot water heater from wasting fuel?

**A. 1.** Once or twice a year, drain a bucket of water from the bottom of the heater tank. This will let out any sediment that has collected there. The sediment insulates the water in the tank from the burner's flame or electrode -- that wastes energy.

**2.** Insulate your water heater tank. This will reduce greatly the amount of fuel the heater uses when you are not using any hot water but when

the heater must still keep the water hot. To insulate the heater, use 3 inch batts or blankets with a paper or foil facing and duct tape. For a more finished looking job, use duct insulating blankets. Some water heater insulating kits are sold at home improvement centers.

**NOTE:** With oil or gas heaters, do not insulate the top or bottom of the heater. At the top, you may interfere with the draft of the heater's flue. At the bottom, you may cut off air to flame. Insulate only the sides.

**3.** Don't set the temperature of your water heater any higher than you need to. Your heater burns fuel to keep your water hot when you're not using it. The higher you set it, the more it burns. If you've got a dishwasher, 140 degrees is high enough. If not, 120 degrees is plenty. Depending on the kind of fuel you use, this simple set-back will save you from \$5 to \$45 a year.

**Q.** Before I begin using my fireplace, can you give me any suggestions as to how I may be able to save fuel?

**A.** Close the damper when the fireplace is not in use. (Be sure the fire is completely out before you do this.) Leaving the damper open wastes a lot of heat. If your fireplace doesn't have a damper, stuff a newspaper a little way up the flue. Pull the paper down and use it to start the next fire. Don't build a roaring fire. Big fires waste fuel because the heat goes up the chimney before you can use it. Burn wood and coals slowly. If you don't have an outside source of air for your fireplace, you can put a vent in your floor to feed air to the fire. A vent will reduce the amount of air which is drawn across the room from cracks around windows and doors.

**Q.** Before the weather gets

cold, tell me what I can do to save on heating energy and heating cost.

**A.** Lower thermostats to 68 degrees during the day and 60 degrees at night. If these settings reduce the temperature an average of 6 degrees, heating costs should run about 15 percent less. Consider the advantages of a clock thermostat which will turn the heat down automatically at a regular hour before you retire and turn it up just before you wake.

Have your furnace service once a year, preferably each fall. Adjustment could mean saving 10 percent in family fuel consumption. Clean or replace the filter in forced-air heating systems every month. Dust or vacuum radiator surfaces frequently. Keep draperies and shades open in sunny windows; close them at night. For comfort in cooler indoor temperatures, use the best insulation of all -- warm clothing.

**Q.** Are there any devices that can be placed on my thermostat for automatic control of my heating/cooling system?

**A.** Yes. Two types of automatic controls are on the market. One works with a conventional thermostat. The other requires replacing the existing thermostat.

**Converter Setback Device:** This control converts any existing thermostat to a timed device. Several variations are available. One is a two-component system in which a temperature control

is mounted below the existing thermostat and is connected by wires to a separate timer unit plugged into a wall outlet. If the wire carry low voltage current, they can be concealed in the wall, it desired. One hundred ten volt power cords cannot be so concealed. Another is a single-unit device that is attached to the wall below the thermostat and is either plugged into a nearby wall outlet or operated by self-contained batteries.

**Replacement Setback Device:** This control replaces the conventional thermostat entirely and generally is wired to the building's electrical system and heating/cooling system. Several are available, but this device is more expensive to buy and costly to install, since it usually requires the additional wiring in existing walls. Its main advantage is that, because all wires hidden, it looks neater.

Automatic setback devices are sold in many hardware and department stores and building material outlets. In general, converter devices sell for less than replacement types and can be installed by a do-it-yourselfer. Most converters retail for less than \$40 whereas the initial cost plus the cost of installing a replacement unit may range from \$75 to more than \$100, depending on the model and extent of installation labor required.

**Q.** What would be the advantage of installing an insulation retrofit kit on my water heater?

**A.** The use of the kit may save you from \$5 to \$20 a year on your utility bill and will repay your initial investment (under \$20) in energy savings within 15 months for electric water heaters and within three and one-half years for gas water heaters. A retrofit kit can be used safely on electric water heaters and gas water heaters when installation instructions are followed carefully. It will outlast the water heater tank and can be reused on a new one. With the one and one-half inches of additional insulation, heat loss can be cut by about 400 kilowatt-hours a year for electric water heaters and by about 3,600 cubic feet a year for gas water heaters.

For more information, or to get an answer to YOUR energy question, contact the toll free Governor's Service Line, 1-800-222-7622, the Mississippi Energy Extension Center, (601)325-3152 or questions may be mailed to the Energy Center, P.O. Box 5406, Mississippi State, Ms. 39762.

#### Thanks From Rutledge Salem

We want to express our sincere thanks to everyone, who made donations toward the work being done in Salem Church.

A special thanks to Mrs. Mon Moser and her nephew for the beautiful job of laying the carpet.

We also now have two

ceiling fans for the church.

We want to thank each of the following people for their generous donations: Carrie Yarber, Tulon McKee, Bessie McKee, Nettie McKee, Ollie Nell McKee, Mary Lou McKee, Clara Underwood, Arlie McBee, Debbie Blackard, Lorine Blackard, Mr. and Mrs. Marvin Rast, Lloyd Florman, Mr. and Mrs. Aaron Bonds, Ruth Bonds, Mr. Goldsmith, Mr. and Mrs. John Rutherford, Mr. and Mrs. Stacy Cox, Orle Starkey, Miyon Cohen, the Blissit family, Carrie Williams, Ver-

Tishomingo County News - Vidette - Belmont News

non Pate, Taylor Luttrell, Mrs. James S. Underwood, George R. Rutledge, Wanda George and W.R. Rutledge.

We are still in need of more funds to finance the completion of work. If you would like to make a donation to Rutledge Salem Church Project, please send to Mrs. Nettie McKee, Route 1, Iuka, Miss. 38852. All donations and help will be greatly appreciated.

Thanks again, and may God bless each of you.

#### LEGAL NOTICE

The Tishomingo Board of Supervisors, created through the Mississippi Planning Development District passenger van to be used for transportation of handicapped and elderly persons. There would be no petition with any local service or bus service. J-14-chg

#### HEALTH

Does your health insurance plan help protect against large medical expenses from long term illness?

Harold Lomenick  
423-5931

Iuka, Miss.



See me for one that does-State Farm hospital/surgical insurance with catastrophic medical expense rider

Like a good neighbor, State Farm is there.

State Farm Mutual Automobile Insurance Company  
Home Office: Bloomington, Illinois



It takes big dollars to serve business, industry and communities with natural gas, particularly since this fuel is being found further and further away from our traditional markets.

Our commitment to our customers is nowhere better illustrated than by our increased capital spending. In 1980, expenditures totaled \$105 million for new onshore and offshore gas supply facilities, maintenance and reinforcement of the pipeline system, and joint venture gas supply projects.

For 1981, we are spending \$170 million, primarily for gas supply projects and pipeline facilities. While the price of natural gas in the field is increasing, so is the cost of pipelines and other facilities necessary to bring it where it is needed.

#### UNITED GAS PIPE LINE COMPANY

...where the search for new energy never stops



A UNITED ENERGY RESOURCES, INC. COMPANY

## NOTICE

Accepting Applications For Family and Persons Disabled and/or Handicapped

NORTHVIEW APARTMENTS  
JEFFERSON ST.  
BURNSVILLE, MISSISSIPPI

30 Units

CALL TOLL FREE: 1-800-238-6097

Or Write: TALMAK, INC.  
4646 Poplar Ave.,  
Suite 206  
Memphis, Tenn. 38117

ALL APARTMENTS FEATURE:

Forced Air Heat,  
Air Conditioning outlets  
Kitchen Appliances furnished

The amount of rent is based on twenty-five percent (25%) of the adjusted family income.

FOR EXAMPLE:

John Doe	
Current Annual Income	\$2,500.00
5% Deduction	(125.00)
Adjusted Annual Family Income	2,375.00
Monthly Adjusted Family Income	198.00
25% of Monthly Adjusted Income	50.00
Less Utility Allowance	(26.00)
Monthly Rent	24.00

EQUAL HOUSING  
OPPORTUNITY





### Chieftains Honored With Banquet

The 1981-82 Iuka Chieftain football team was honored recently with a banquet at J.P. Coleman State Park by the Athletic Booster's Club. The following Chieftains were recognized for special

achievement: Clay Stone, Best Defensive Lineman; Brad Blythe, Best Offensive Lineman; Donnie Davis, Best Defensive Back; Bobby Degraw, Best Offensive Back; and George Marsh, Most Improved Player. Bobby Degraw and Steve Cutshall were recognized by the team as

being permanent team captains. The cheerleading squad was also recognized by the club for their outstanding service during the season. Pictured above are Bobby Degraw, Steve Cutshall, Brad Blythe, Donnie Davis and Clay Stone.

1/4 cup warm water (105° F.-115° F.)  
1/2 cup dairy sour cream  
1/4 cup milk

**Food Processor Preparation**  
With metal blade in place combine flour, 3 tablespoons margarine, sugar, marjoram, thyme and oregano in bowl; process 5-10 seconds to combine. Dissolve yeast in warm water; pour through feed tube. Add sour cream and begin processing. Pour milk through feed tube in a fast stream until ball forms, about 10-15 seconds. Continue processing for 60 seconds to knead dough.

Carefully remove dough from processor bowl. Shape into a ball and place in a greased bowl, turning to

grease top. Cover; let rise in a warm place, free from draft, until doubled in bulk, about 1 hour.

**Punch dough down.** Divide into 10 pieces and shape each into a ball. Arrange balls in a circle in a greased 6-1/2 cup ring mold. Cover; let rise in a warm place, free from draft, until doubled in bulk, about 1 hour, 10 minutes.

Melt remaining margarine; pour over dough. Bake at 375° F. for 20 to 25 minutes, or until done. Remove from pan and cool on wire rack.

"Fear of misfortune is worse than the misfortune." Hasidic Saying

### Taxpayer Service

Taxpayers in the Tupelo area are advised that the Tupelo office of the Internal Revenue Service located in the Federal Building at Main and Church Streets will provide taxpayer service from 8 a.m. to 4:30 p.m. each Monday beginning January 11.

Assistance will be limited to answering tax questions and group self-help sessions for taxpayers preparing their own returns. The Service will not directly prepare any returns except for physically

handicapped persons who cannot use the self-help method.

When visiting the office for assistance, taxpayers are urged to bring the tax package received in the mail from IRS and to use the pre-addressed label. Taxpayers needing only to ask questions regarding tax matters may call the toll-free telephone number 1-800-241-3868 between 7:15 a.m. and 4:30 p.m. Monday through Friday.

Special forms and publications may be secured by calling toll-free 1-800-241-3860.

### Hire Personnel

Tuesday night, January 5, Iuka Aldermen hired personnel for the Police and Fire Departments.

Mayor John Biggs said an Iuka native, Johnny Nunley, was hired to fill a vacancy on the police force, giving the town six full-time policemen.

Danny McVay was hired as a full-time fireman, giving the town four full-time firemen, along with ten volunteers. Biggs said the new fireman has had two previous years of experience with the department.

### ASCS Farm News

By: Henry L. Knox, County Executive Director

#### Payments Received From ASCS

The Kansas City Office of Agricultural Stabilization and Conservation Service (ASCS) will mail CCC-182, Report of Payments to Producers on or about January 15. This form will show the amount of payments you received during 1981. If you have questions about this form, please contact the county office at 423-5036.

#### New Farm Bill

The new farm bill has become law. It provides that farm bases for program crops, wheat, upland cotton, rice, corn, grain sorghum and barley, be established beginning with the 1982 crop year. The bases will be established based on planted acreage in 1981. Therefore, it becomes very important that an

acreage report be filed for these crops in 1981. If you have not reported 1981 acreage to this office, you have from now until February 5, 1982 to make an acreage report. This could prove very important in years to come, so if you have not filed a program crop acreage report, please do so by February 5.

### School Visits Announced

The Admissions Office at Wood Junior College, Mathiston, has announced its scheduled visits for the month of January.

Representatives from the Admissions Office will be at the Iuka High School on Tuesday, January 19, at 9 a.m. On Tuesday, January 26, they will be at the West Union Attendance Center in Pinola, Miss. at 9 a.m. and the Lowndes County Vocational Complex College Career Day for Lowndes County Public Schools at 8 a.m.

Visits will also be made on Wednesday, January 27, to

S.D. Lee High School in Columbus at 10:35 a.m. and the Caldwell High School in Columbus at 9:15 a.m. and on Thursday, January 28, to Ruleville Central High School in Ruleville at 10 a.m.

People interested in Wood Junior College may talk with one of the representatives at these visits or call the Admissions Office at Wood Junior College, phone 263-5352.

### Poetry Society To Meet

The North Branch of the Mississippi Poetry Society will meet Saturday, January 16, in Anderson Hall on the campus of Northeast Mississippi Junior College, Booneville, with Mrs. Patsy C. Pace, of Aberdeen, presiding. Dr. Emory D. Jones, of Iuka, vice-president and a teacher at Northeast, will serve as host and program chairman.

The guest speaker for the day will be Corinth poet Henry Dalton, who will read from his book PROCESS OF BECOMING. Mr. Dalton is the author of another volume entitled HILL BORN.

Dr. Emory D. Jones will also give a critique of Mississippi writer James Whitehead's book of poetry entitled LOCAL MEN.

Reading and group critique of member's poetry will conclude the program.

About twenty-five writers from the North Mississippi are expected to attend this meeting.

### LABOR-SAVER BREADS

Growth to the convenience food industry is an indication that time and labor-saving meals have considerable appeal for modern cooks. And the sales of small appliances, such as food processors, appear to confirm it. How much time and work new products save is actually up to the user. Savvy cooks may not be tempted to change their ways, but adventurous cooks seem to welcome innovations. One of the recent ones is making yeast bread in a food processor.

Most food processors make a single loaf of bread, which is fine for small households. The accompanying recipe, for Sour Cream Herb Ring is an example of how little effort it takes to prepare distinctive yeast rolls and bread. Today, measuring of ingredients takes more time than mixing and kneading. In less than two minutes of mixing the dough is kneaded and ready to put aside to rise.

Unlike the making of cakes, cookies and casserole dishes that take time to prepare and bake, yeast bread doesn't require constant attention from the cook. Once it's mixed and kneaded, it does its own thing. It can be quickly shaped after one rising so the cook is free to perform other kitchen tasks. The aromatic blend of herb and sour cream flavor makes the following recipe a superb accompaniment for soups and salads and summer meals.

#### HERB SOUR CREAM RING

Makes 1 loaf

2-3/4 cups unsifted flour  
5 tablespoons Fleischmann's® Margarine  
3 tablespoons sugar

1/2 teaspoon dried marjoram leaves

1/4 teaspoon dried thyme leaves

1/4 teaspoons dried oregano leaves

1 package Fleischmann's® Active Dry Yeast

### Remember when you sold Girl Scout Cookies?



It's still important!

Girl Scout Cookies... For The Great American Cookie Jar.



## NOTICE

Accepting Applications for Persons 62 and older and persons disabled and/or handicapped

Pickwick Circle Apartments  
Pickwick Circle  
Iuka, MS

30 Units

CALL TOLL FREE: 1-800-238-6097

Or Write: TALMAK, INC.  
4646 Poplar Ave.,  
Suite 206

Memphis, Tenn. 38117

#### ALL APARTMENTS FEATURE:

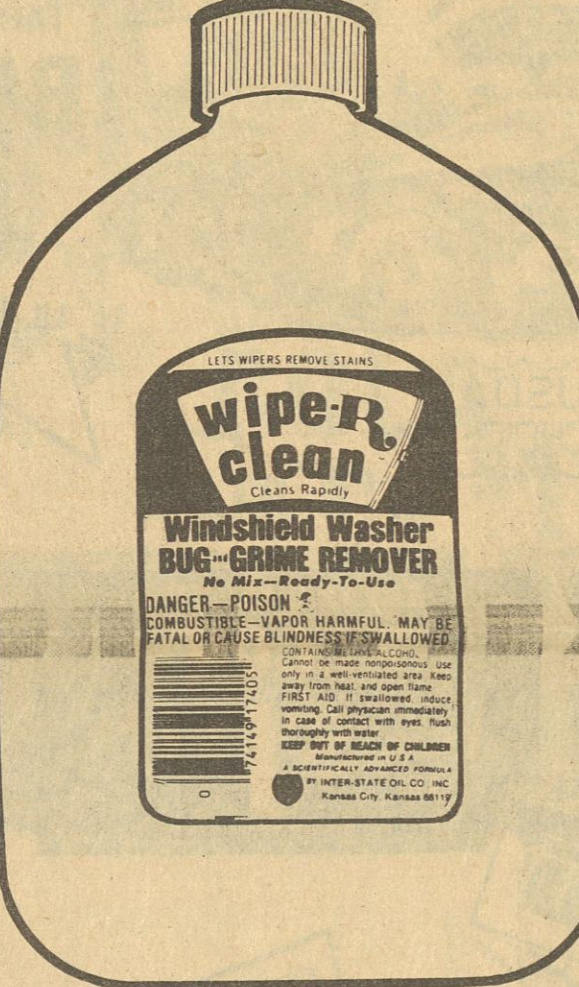
Forced Air Heat,  
Central Air  
Kitchen Appliances furnished

The amount of rent is based on twenty-five percent (25%) of the adjusted family income.

FOR EXAMPLE:

John Doe	
Current Annual Income	\$2,500.00
5% Deduction	(125.00)
Adjusted Annual Family Income	2,375.00
Monthly Adjusted Family Income	198.00
25% of Monthly Adjusted Income	50.00
Less Utility Allowance	(26.00)
Monthly Rent	24.00

### EQUAL HOUSING OPPORTUNITY



78¢  
Gallon

Save 19%  
Window and Windshield Wash/Antifreeze  
•Protects to -25° •Model No. 201/7405  
•Reg. 97¢



#### Super Value RC Fire Extinguisher

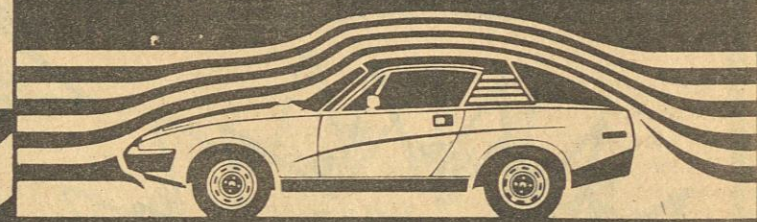
•BC dry chemical extinguisher with dial gauge and heavy duty mount bracket •Model No. 310R

7.88

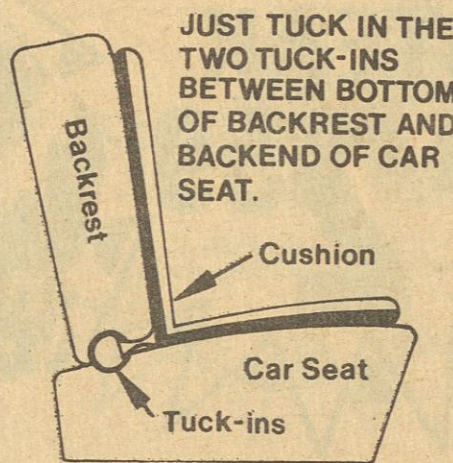


WAL-MART'S ADVERTISED MERCHANDISE POLICY - It is our intention to have every advertised item in stock, however, if due to any unforeseen reason, an advertised item is not available for purchase, Wal-Mart will issue a Rain Check on request, for the merchandise to be purchased at the sale price whenever available, or will sell you a similar item at a comparable reduction in price. We reserve the right to limit quantities.

Wal-Mart Has Lower Prices Every Day On Your Automotive Needs



#### ONE STEP INSTALLATION



### FOUR SEASONS COMFORT CAR CUSHION

Superior Herculon Cover\*Extra Large

Reg. 8.84

"Tuck-ins" \*Comfortable polyfoam fill

Now

7.96

\*Fast Installation



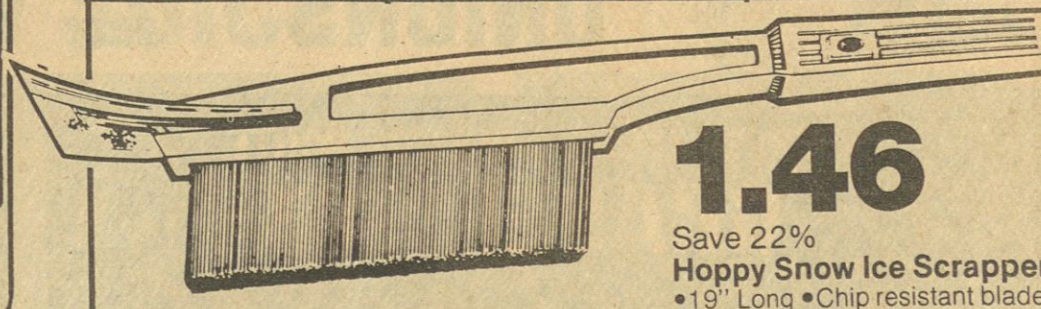
1.24  
Save 20%  
Engine Starting Fluid Spray  
•11.4 Oz. •Reg. 1.56



1.57  
Save 19%  
Prestone Brake Fluid  
•For disc or drum brakes  
•12 Fluid oz. •Reg. 1.96



1.17  
Save 18%  
Gumout Fuel Mix  
•Frees sticky valves  
•Improves compression  
•12 Oz. •Reg. 1.44

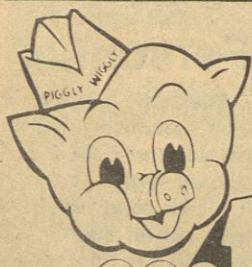


1.46

Save 22%  
Hoppy Snow Ice Scraper  
•19" Long •Chip resistant blade  
•Reg. 1.88

WAL-MART





PIGGLY WIGGLY HAS

**...the MOST  
for YOU!!!**

★ SERVICE ★ VARIETY  
★ CONVENIENCE ★ QUALITY  
★ EVERYDAY LOW PRICES  
★ MONEY SAVINGS SPECIALS

QUANTITY RIGHTS RESERVED. NONE SOLD TO DEALERS.  
PRICES GOOD THURS., JAN. 14 THRU WED., JAN. 20, 1982.



FRESH FRYING CHICKEN  
**THIGHS**

LB. **69¢**

FRESH PORK LOIN

**BACK RIBS**

LB. **\$1.29**

WILLIAMS PURE PORK

**SAUSAGE**

1-LB. PKG. **\$1.39**

LAND O' FROST LUNCH

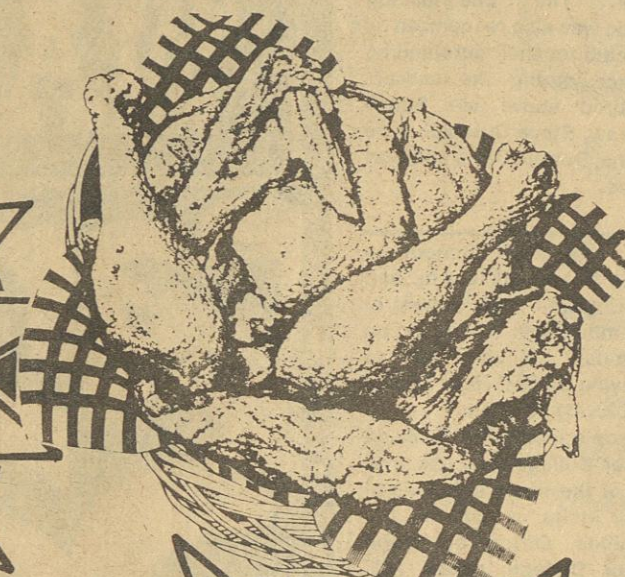
**MEATS**

2 2 1/2-OZ. PKGS. **89¢**

CONAGRA U.S.D.A.  
INSPECTED FRESH FRYER

**LEG QUARTERS**

LB. **39¢**



U.S. CHOICE FULL-CUT SIRLOIN

**STEAK**

LB. **\$2.39**

CONAGRA U.S. INSPECTED FRESH FRYER

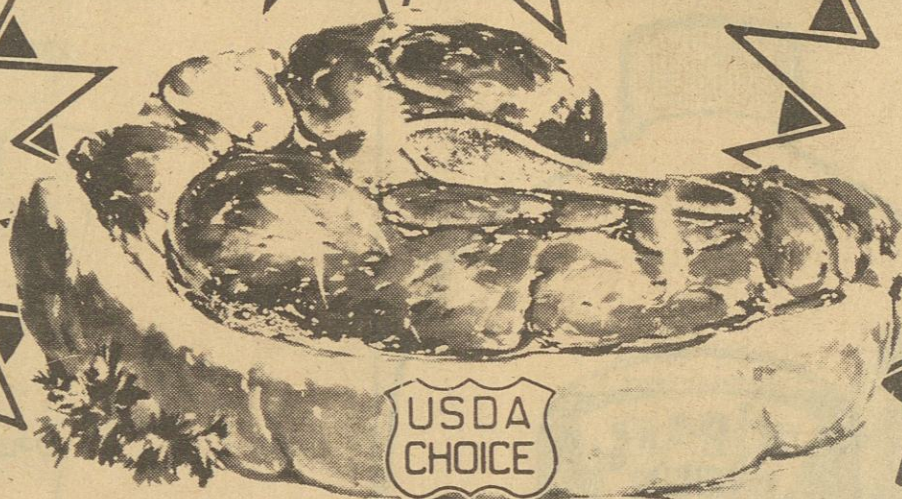
**LIVERS**

LB. **69¢**

U.S.D.A. CHOICE  
WELL TRIMMED T-BONE

**STEAK**

LB. **\$2.59**



CONAGRA INSPECTED  
FRESH SPLIT FRYER

**BREAST**

LB. **99¢**

KING COTTON  
SLICED SLAB FAMILY PACK

**BACON**

5-LB. PKG. **\$4.99**

KING COTTON  
CIRCLE B SMOKED

**SAUSAGE**

LB. **\$1.19**

PIGGLY WIGGLY ASSORTED  
**SALADS**

7 1/2-OZ. CUP **79¢**

KING COTTON  
**WIENERS**

12-OZ. PKG. **99¢**

BRYAN'S SLICED  
**BACON**

12-OZ. PKG. **\$1.19**

SUNNYLAND SLICED  
**BOLOGNA**

1-LB. PKG. **\$1.59**

ARMOUR'S VERIBEST FRESH  
**NECKBONES**

LB. **39¢**

BRYAN'S SMOKED  
SMOKY HOLLOW  
**SAUSAGE**

1-LB. PKG. **\$1.89**



KING COTTON  
SLICED MEAT

**BOLOGNA**

12-OZ. PKG. **99¢**



BRYAN'S  
JUICY JUMBO

**FRANKS**

1-LB. PKG. **\$1.49**



ARMOUR STAR  
BREADED BEEF OR PORK

**PATTIES**

LB. **\$1.69**



FRESH FLORIDA

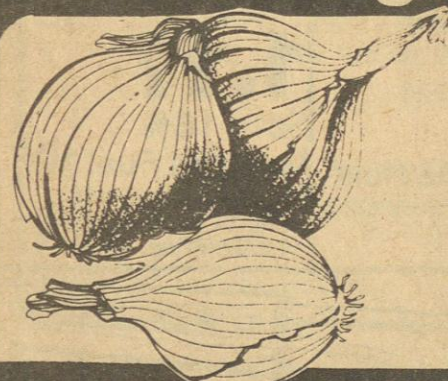
**ORANGES**

5-LB. BAG

**89¢**

**69¢**

**Specials!**



SAVE BIG ON  
ZESTY YELLOW

**ONIONS**

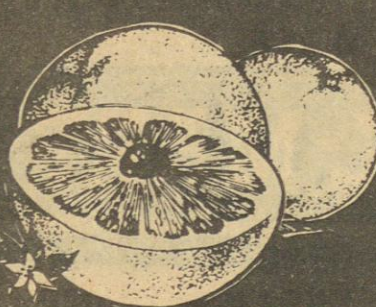
3-LB. BAG

FRESH, CRISPY  
**CARROTS**

1-LB. PKG.

**29¢**

FRESH FLORIDA PINK OR WHITE  
**GRAPEFRUIT**



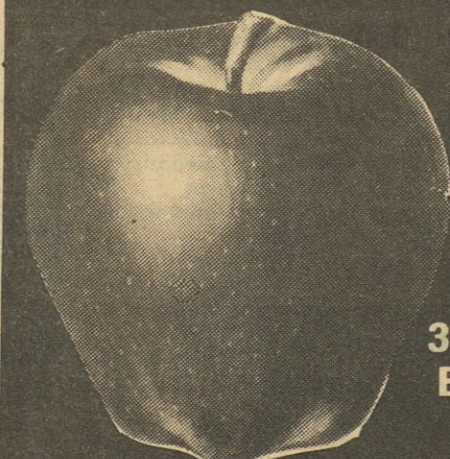
5-LB. BAG

**99¢**

CANADIAN  
WAXED  
**RUTABAGAS**  
POUND

**19¢**

RED OR GOLDEN DELICIOUS  
**APPLES**



3-LB. BAG

**99¢**



DISHWASHING  
LIQUID  
**DAWN**  
22-OZ. BTL.

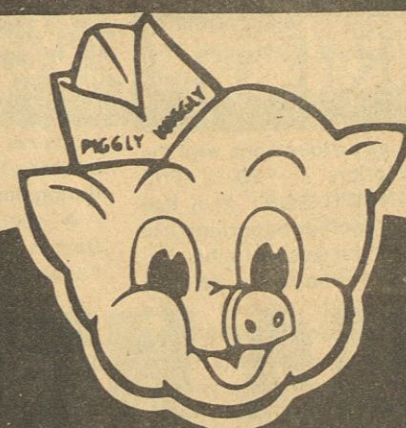
**99¢**

LIQUID  
DETERGENT  
**WISK**  
64-OZ. BTL.

**\$2.99**

PURE  
CHEF-WAY  
**OIL**  
48-OZ. BTL.

**\$1.69**



**PIGGLY WIGGLY**  
OF IUKA

RED OR BLUE LABEL  
**SYRUP**

16-OZ. BTL. **69¢**

WINNER'S MEDIUM EGG  
**NOODLES**

8-OZ. PKG. **59¢**

GRAND AMERICAN WITH MEATBALLS  
**SPAGHETTI**

14 1/4-OZ. CAN **69¢**



SHORTENING  
**CRISCO**  
**\$1.99**

3-LB. CAN

COUPON COUPON COUPON  
BLEACH  
**CLOROX** 1-GAL. JUG **49¢**  
LIMIT ONE WITH \$10 ADDITIONAL PURCHASE  
AND COUPON. GOOD THRU  
AD DATES ONLY.  
**Piggly Wiggly**

SAVE BIG ON!  
LIPTON  
**TEA BAGS**  
**\$1.99**  
100-CT. PKG.

SHOP & SAVE ON  
PIGGLY WIGGLY  
**OLEO**  
**3 \$1.00**  
1-LB. QTRS.

DETERGENT  
**TIDE**

**99¢**

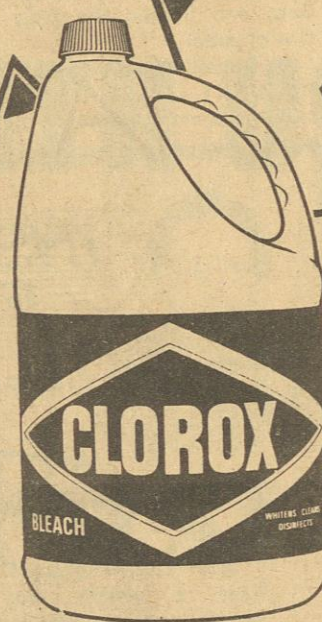
49-OZ. BOX

LIMIT ONE WITH \$15  
ADDITIONAL PURCHASE.



**COCA  
COLA**

2-LTR. BTL. **\$1.19**



BLEACH  
**CLOROX**

**49¢**

1-GAL. JUG

LIMIT ONE WITH \$10  
ADDITIONAL PURCHASE & COUPON.

FABRIC SOFTENER  
**DOWNY**  
**\$2.19**  
64-OZ. BTL.

FABRIC SOFTENER  
**BOUNCE**  
**\$1.09**  
20-CT. PKG.

SUNSWET PRUNE  
**JUICE**  
**\$1.19**  
40-OZ. CAN

KELLY'S WITH BEANS  
**CHILI**  
**69¢**  
15-OZ. CAN

IRISH SPRING  
**SOAP**  
**2 89¢**  
5-OZ. BARS

BATH TISSUE  
**CHARMIN**

**99¢**

4-ROLL PKG.



FREEZER QUEEN  
**ENTREES**

**\$1.49**

2-LB. PKG.

BREAKFAST SPECIAL!  
POST TOASTIES  
**CEREAL**

**99¢**

18-OZ. BOX

JIFFY  
**CORN MUFFIN  
MIX**

**4 \$1.00**

8-OZ. PKGS.

SHAMPOO  
**PERT**

**\$1.39**

7-OZ. BTL.

ROLL-ON  
**SECRET**

**\$1.49**

1.5-OZ. BTL.

PAPER TOWELS  
**BOUNTY**

**69¢**

JUMBO ROLL



SOLID DEODORANT  
**SECRET**

2-OZ. STICK **\$1.79**

DURKEE'S FRENCH FRIED  
**ONIONS**

3-OZ. CAN **69¢**

HEINZ STRAINED BABY  
**JUICE**

29.4-OZ. JAR **99¢**

GOLDEN BEST  
CUT GREEN  
**BEANS**  
16-OZ. CAN

**89¢**



HUNT'S YELLOW  
CLING HALVES  
**PEACHES**  
29-OZ. CAN

**79¢**



HUNT'S  
TOMATO  
**JUICE**  
46-OZ. CAN

**79¢**



REG., MINT OR GEL  
TOOTHPASTE  
**CREST**  
6.4-OZ. TUBE

**\$1.29**



REG., MINT OR GEL  
TOOTHPASTE  
**CREST**  
4.6-OZ. TUBE

**99¢**



# OBITUARIES

## Mrs. Litha Slaughter

Mrs. Litha Slaughter was born to Mr. and Mrs. Charlie Jackson of Iuka, Mississippi on December 19, 1888. In her latter years she resided with her daughter Mamie Gamble in Memphis, Tenn.

Litha was a dedicated and supportive worker in the community of Iuka during her earlier years of life.

Mrs. Slaughter crossed over into eternal life on January 3, 1982.

The following morn her departure: five children, Helen A. Johnson, Mamie Gamble, James L. Slaughter, William H. Slaughter and King S. Slaughter; sixteen grandchildren, and host of great grandchildren and many friends.

Services were held at 1:00 at First Baptist Church on Pike Street in Iuka on Friday, January 8th. Rev. Walter McGaha conducted with burial in the Oak Grove Cemetery.

Britton Funeral Home of Holly Springs was in charge of arrangements.

## Mrs. Cora Bryant

Mrs. Cora Ella Bryant, 79, died Sunday, January 3, at the Woods Memorial Hospital in Etowah, Tenn. She was the widow of John Riley Bryant and was a member of the New Testament Holiness Church.

Services were at the Palestine Baptist Church with burial in the church cemetery. McMillen Funeral Home was in charge of the arrangements.

Survivors include a daughter, Maxine Oaks of Memphis, Tenn.; three sons, Rex Bryant, James Bryant, and Darryl Bryant, all of Memphis, Tenn.; two sisters, Dede Bullard of Booneville and Roxie Anglin of Iuka; three brothers, Allen Hendrix and Chester Hendrix, both of Burnsville, and Thelon Hendrix of Ill.

## ?Unknown God?

In Acts the 17th chapter, Paul had come to Athens to wait for Silas and Timothy, who were returning from Thessalonica to Paul. While in Athens Paul had an opportunity to look around the city viewing its monuments, statues, and ect.. While beholding their marvelous

## Card of Thanks

The William E. Hooper family would like to express

statues he found one with the inscription, "TO THE UNKNOWN GOD." Paul had found another opportunity to preach the Gospel in this particular sermon Paul defends God and makes the "unknown God" - KNOWN!!!

"Ye men of Athens I perceive that in all things you are very religious. For as I passed by I beheld your devotions, and I found an altar with this inscription, TO THE UNKNOWN GOD. Whom ye ignorantly worship, Him declare I unto you.

The God that made the world and all things therein, He is Lord of Heaven and earth, dwelling not in temples made with hands, neither is worshipped with men's hands as though He needed anything, seeing that He gives to all Life, Breath, and All Things; and hath made of one blood all nations of men for to dwell upon the face of this earth, and hath determined the times before appointed, and the bounds of their habitation; that they should seek the Lord, if haply they might feel after Him and find Him, though He be not far from every one of us: For in Him we Live, and Move and have our Being; as certain of your own poets have said, For we are also His offspring.

Forasmuch then as we are the offspring of God, we ought not to think that the Godhead is likened unto silver, or gold, or stone graven by art and man's device. For the times of this ignorance God has winked at; but now commands all men everywhere to repent: because He hath appointed a day, in which He will judge the world in righteousness by that man whom He hath ordained; and hath given assurance unto all men, in that He raised Him from the dead." (Acts 17:22-31).

Seeing that God is omnipotent, omniscient, and etc., will you bow down to Him and become a New Testament Christian - by following all of the precepts given in the New Testament to the letter??? Quit hiding under the guise of ignorance and realize that you must become a New Testament Christian in order to enter heaven. (2 Thess. 1:7-9).

THE UNKNOWN GOD IS NOW KNOWN!!!!

Andy Crocker - minister  
Berea Church of Christ  
Rt. 1, Burnsville, MS  
427-8232 38833

their appreciation to Dr. Flannery and especially the nurses at the Tishomingo County Hospital. They also want to express thankfulness for the kindness and support shown by many friends and relatives during time of sorrow.

A special thanks to Mr. Dayton McRae and Deaton Funeral Home.

## Man Asks God Answers Sin What Are The Chief Sins?

(1) Unbelief: Heb. 3:12 - Take heed, brethren, lest there be in any of you an evil heart of unbelief, in departing from the living God.  
(2) Atheism: Ps. 53:1 - The fool hath said in his heart, There is no God.  
(3) Forgetting God: Hos. 13:6 - Their heart was exalted; therefore have they forgotten Me.

(4) Alienation from God: Eph. 4:18 - Having the understanding darkened, being alienated from the life of God through the ignorance that is in them, because of the blindness of their heart.  
(5) Disobedience to God: Rom. 10:21 - All day long I have stretched forth My hands unto a disobedient and gainsaying people.  
(6) Tempting God: Ps. 78:41 - They turn back and tempted God, and limited the Holy One of Israel.

(7) Rebellion against God: Ps. 107:11 - Because they rebelled against the words of

God, and contemned the counsel of the Most High.  
(8) Blasphemy: Rom. 2:24 - For the name of God is blasphemed among the Gentiles through you, as it is written.

(9) Believing God: Hos. 7:13 - They have spoken lies against Me.  
(10) Dishonoring parents: Prov. 30:17 - The eye that mocketh at his father, and despiseth to obey his mother, the ravens of the valley shall pick it out, and the young eagles shall eat it.

(11) Unchastity: 1 Cor. 10:8 - Neither let us commit fornication.  
(12) Covetousness: Ps. 10:3 - The wicked... blesseth the covetous, whom the Lord abhorreth.  
(13) Evil speaking: Jas. 4:11 - Speak not evil one of another.  
(14) Hatred: 1 John 2:11 - He that hateth his brother is in darkness.

(15) Nagging: Gal. 5:15 - If ye bite and devour one another, take heed that ye be not consumed one of another.  
(16) Revenge: 1 Thes. 5:15 -

## The Church of the Nazarene

is worshipping in Corinth at Foot and Washington Sts. (at the Coke Room)  
Sundays 11:00 a.m.  
Wednesdays 7:00 p.m.  
Dan Minnix is the Pastor  
287-5188



## INSIGHT INTO EYESIGHT

DR. PHILLIP GRAY

OPTOMETRIST

## "INVISIBLE" BIFOCALS

Most bifocal glasses have a visible line separating the two kinds of eye correction. Others have no visible line, just a blending separation that only the wearer can discern. Which is the best kind for you?

Some people feel self-conscious when they first start wearing bifocals. For a long time they've only had one vision problem, such as nearsightedness or farsightedness. But with middle age, many people need help reading because their eye-focusing mechanism is not as efficient as it used to be. So they need

glasses that correct for both problems.

If you don't want the world to know you're wearing bifocals, you can wear the kind that look just like ordinary glasses. The dividing line between the two sets of vision correction is ground down so that it's not noticeable to other people. You'll notice a blurred area where you switch from the upper to the lower part of your lens or vice versa. It's all a matter of personal preference.

In the interest of better vision from the office of:  
DR. PHILLIP GRAY  
105 S. Fulton St., Iuka  
Phone: 423-3785

## CUTSHALL FUNERAL HOME

Representing  
Corinth Mutual  
Burial Association

Mississippi  
Funeral  
Association

Liberty National  
Life & Burial  
Insurance Company

SOME BURIAL POLICIES CAN  
BE PAID OUT IN 15 YEARS

## CUTSHALL FUNERAL HOME

Phone 423-5222  
Iuka, Miss.

See that none render evil for evil unto any man.

(17) Oppression: Prov. 14:13 - He that oppresseth the poor reproacheth his Maker.

(18) Flattery: Ps. 12:2 - With flattering lips and with a double heart do they speak.  
(19) Falsehood: Jer. 9:5 - They will deceive every one his neighbor, and will not speak the truth: they have taught their tongue to speak lies.

(20) Hypocrisy: Matt. 23:28 - Ye also outwardly appear righteous unto men, but within ye are full of hypocrisy.  
(21) Murder: Gen. 4:8 - Cain rose up against Abel his brother, and slew him.  
(22) Misleading others: Prov. 16:29 - A violent man enticeth his neighbor, and leadeth him into the way that is not good.

(23) Stealing: Ps. 119:61 - The wicked have robbed me.  
(24) Pride: Prov. 21:4 - An high look and a proud heart... is sin.

LHMM  
Chester Springs, PA 19425

## Methodist Men To Meet January 14

Iuka Parish Methodist Men's Club will meet Thursday, January 14, at Iuka Methodist Church. Dinner will be served at 7 p.m. Officers will be installed.  
Bro. J.B. Burns, of

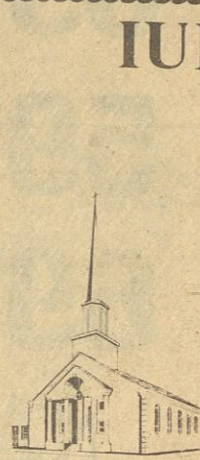
Allsboro, Ala., will be the guest speaker.  
Ladies are invited.

## Singing At Old Pleasant Hill

The regular monthly

## Catholic Services In Iuka

Held at Episcopal Church Eastport & Fulton Streets  
Sunday 11:30 a.m.  
Religious Instruction For Young People  
Grades 1 thru 12  
Sunday 10:15 a.m.  
Rev. Charles Flood, SCJ  
Phone 423-9358  
728-3393 Church - 728-7509 Res.



## IUKA BAPTIST CHURCH

105 West Eastport Street

Sunday, January 17, 1981

11:00 A.M.

"The Temptation of Jesus"

7:00 P.M.

Singspiration

Morning and Evening Services Broadcast Over WTIB-FM 104.9  
Morning services also on A.M. 1270

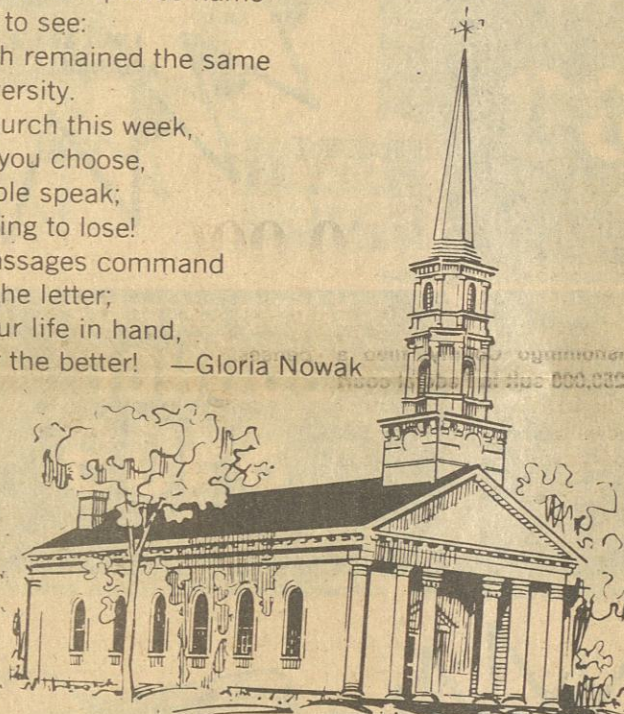


Dr. Kenneth Murphy

# COME TO CHURCH

We all have times when things go wrong, And Fortune's in reverse; Yet we're expected to be strong, Though things could not get worse... A strength of which the Scriptures name Examples plain to see: Like Job, whose faith remained the same Throughout adversity. So why not go to Church this week, Whichever one you choose, And listen to the Bible speak; There's not a thing to lose! Then, what those passages command You'll follow to the letter; And let God take your life in hand, To change it for the better! —Gloria Nowak

APOSTOLIC CHURCH OF LORD JESUS CHRIST  
Wayne Trimm, Pastor



REORGANIZED CHURCH OF JESUS CHRIST OF LATTER DAY SAINTS  
Justice Manning, Red Bay, AL

CATHOLIC  
Rev. Charles J. Flood

METHODIST

IUKA GOSPEL CHAPEL  
Jerry S. Horton  
MT. EVERGREEN  
Jerry S. Horton  
CAMP GROUND  
HARMONY  
PATRICK  
ROCKY SPRINGS  
Paul Lin on  
BURNVILLE  
SNOWDOWN  
PLEASANT HILL  
SPRING HILL  
William Strange  
BOGGS CHAPEL  
PARADISE  
SALEM  
TISHOMINGO  
Del Blackman  
OLD BETHEL UNITED  
GOLDEN CHAPEL  
DENNIS METHODIST  
James T. Smith  
BELMONT  
MT. PLEASANT  
Doc Jeter  
HUBBARD SALEM  
T.E. Davis  
JONES CHAPEL  
Eddie Jumper  
ALLSBOUR UNITED  
MARGERUM UNITED  
RIVERTON UNITED  
Jackie Patterson

FULL GOSPEL  
MISSION LIGHTHOUSE  
Wiley Wingo

PENTECOSTAL  
IUKA GOSPEL CHAPEL  
Larry Riley  
BURNVILLE TABERNACLE  
W. E. Sharp  
CHRIST GOSPEL  
Richard H. Carter, Jacinto, MS  
IUKA CHURCH OF GOD  
Charles Moore  
GRISSOM CHAPEL CHURCH  
CHRISTIAN FELLOWSHIP  
S. A. Bonds

CHURCHES OF CHRIST

MAUD CHURCH OF CHRIST  
James Joyce  
IUKA CHURCH OF CHRIST  
Jerry Westmoreland  
BEREA CHURCH OF CHRIST  
Andy Crocker  
TISHOMINGO  
Donald Rhoads  
BELMONT SECOND STREET  
Jimmy Gross  
PLEASANT GROVE  
John Hardwick  
LIBERTY  
Haskell Sparks  
MAIN STREET  
Wayne Mitchell  
BURNVILLE  
J. T. Smith

UNITED PENTECOSTAL  
BURNVILLE FIRST  
David Huff  
IUKA FIRST UNITED  
Frank E. Williamson

NONDENOMINATIONAL

AMAZING GRACE  
TABERNACLE  
Bro. & Sis. R. G. Rodgers  
MT. ZION  
R. C. & Dorothy Wigginton  
NORTH CROSSROADS  
COMMUNITY  
Allen Osborn  
FIRST ASSEMBLY OF GOD  
Allen Hapner  
IUKA MISSION  
Danny Lovelace, Pastor  
PRESBYTERIAN  
ALLSBOUR CUMBERLAND  
R. Burns, Jr.  
Bt. J.  
L. K. Foster

BAPTIST

AIRPORT MISSION  
Earl Martin  
IUKA BAPTIST CHURCH  
Dr. Kenneth Murphy  
BELMONT FIRST  
Jack Maroon

## RUSHING REXALL DRUG COMPANY

Presents

Tishomingo County

## Hospital List

Bertha Anglin	Curtis Lovelace
Roxie Ables	Terrance Long
Bobby Joe Allen	Hallie Little
Hubert Baswell	J.R. Long
Lucian Bogan, Jr.	Harlie McCalpin
Ethelena Bivins	Jessie McClendon
Frankie Bates	Ada Mae McRae
Jack Barnes	Lester Moore
Mamie Brabo	Elsie McDuffy
Charles Coln	Ruth McDuffy
Dora Crump	Walter Newcomb
Gerald Coker	A.J. Nunley
Mary Counce	Ruble Pruitt
Dewey Caston	Donna Puckett
Bruce Chapman	Stephanie Regan
Shirley Cabler	Alfred Rhodes
Mary Downs	William Rutherford
Beatrice Deaton	Pauline South
Callie Dixon	Lila Sanders
Ethel Durham	Robert Stockwell
Clifford Marlar	Shelby Richardson, Jr.
Mildred Driggers	Maggie Thomas
Lucille Downs	May Vanderford
Roscoe Dillingham	Vera Vinson
Bilbo Gamble	Gloria Whitehead
Tammy Glover	Mattie Wren
Cleo Garrett	Alma Wells
Ola Graham	Ora Lee Williams
Majell George	Wade Wigginton
Brenda Gilchrist	William Whitaker
Clayton Hughes	Julia Yarber
Mittie Houston	Jimmy Boyles
Otha Harris	Thurman Braddock
James Harris	Mattie Woodruff
Elelyn Harris	Janie Emmerson
Dorothy Ingram	Marlin Brown
John Lee Johnson	Lucille Hodum
Lucy Jowers	Clara Carlisle
Jewel Johnson	Teresa Stults
Terri Johnson	David Allen
Ruby Lomenick	Billy Ray Phifer
Inez Lewis	Earl Strickland
Ruth Liles	

McNatt  
Ford Sales  
Phone 423-3681 Iuka, Miss.

Brown  
Insurance  
Agency  
Iuka, Miss.

Carpets  
Unlimited &  
Circus Burger

Rushing  
Rexall  
Drugs  
Phone 423-3629 Iuka, Miss.

Town &  
Country  
Furniture  
Downtown & Hwy. 25 South

First  
American  
National  
Bank  
Iuka-Golden Burnsville

1st  
Citizens  
Loans  
Phone 423-5248 Iuka, Miss.

Curtis  
Brothers  
Drugs  
Phone 423-3676 Iuka, Miss.

Farm  
Bureau  
Insurance  
Phone 423-6151 Iuka, Miss.

Cutshall  
Funeral  
Home  
Phone 423-5222 Iuka, Miss.

Honeycutt  
Chevrolet  
Phone 423-3622 Iuka, Miss.

Iuka  
Guaranty  
Bank  
"Straight Ahead Through The Years"





FRENCH (second from left) explains the details of power construction to the group of power managers.

Pictured from left to right are Ralph Miller, Board Member for Northeast Mississippi EPA, Oxford; W. N. Loveday, General Manager, Northeast

Mississippi Electric Power Association, Oxford; and J. W. Tabb, President, Natchez Trace Electric Power Association, Houston, Miss.

## Power Managers Tour Plant

Approximately 75 Mississippi power managers and board members recently toured the Yellow Creek Nuclear Plant site. The group represented 15 of the 28 Mississippi power districts owned by TVA.

Prior to a "walk-through" tour of the plant, John Hall, TVA's Mississippi District Manager, briefed the visitors on TVA's role in nuclear construction.

Hall emphasized the importance of safety in TVA's nuclear programs, and that the cost of building plants has gone up tremendously.

"We have safety regulations, environmental impact statements, as well as strict regulations that have to be met," he explained.

The managers and board members toured the site in groups over a three-day period.

Carl Hale, Yellow Creek Nuclear Plant construction engineer, and Guy French, instrumentation supervisor, presented slide presentations to the groups. Hale and French also acted as tour guides, along with Charles Reeves and Joe Duck, electrical engineers.

Arrangements can be made for special group tours by contacting Barbara Pardue, Visitor Relations Representative, Yellow Creek Nuclear Plant, Box 2000, Iuka, MS 38852, or by calling 601/423-3300, ext. 330.

## Revival Services At Mt. Zion

Mt. Zion Church, located on Hwy. 365 South of North Crossroads, will be holding revival services Wednesday, Thursday, and Friday, January 13, 14, and 15, beginning at 7:00 p.m. Evangelist, Merrill Keele will hold the services.

Also, Thursday, January 28, at 7:00 p.m. Bro. Mike Shreve will hold a special service at the church.

The public is welcome to attend.

**Council & Leader Meeting**  
The 4-H Junior Council and Adult Leader Meeting will be held January 21 in the Courthouse Conference Room. They will meet to plan for upcoming county contests, educational tours, and the County Fair exhibits and activities.

## Freezing Weather Hits County Hard

County schools were closed Monday, January 11, because of freezing weather, with temperatures dropping to 5 degrees below zero in the Tishomingo County area.

Weathermen were predicting freezing rain, sleet and snow in the area this week, as a winter storm over the Rocky Mountains move near. They are also predicting five weeks of cold weather.

The sub-zero temperatures left many Northeast Mississippians shivering, and wondering if they'll have enough heat to weather the freeze.

Many Tishomingo County residents were left powerless for several hours Sunday morning, January 10th. According to Tishomingo County Electric Power Association Manager Cecil Brown, the out-

was due to the fact that TVA had trouble between Iuka and Burnsville, which made them lose the Iuka substation.

Consumers are being asked to continue trying to use as little electric power as possible, especially from 7 to 11 a.m. and from 3 to 7 p.m., until the cold wave is over. TVA has reduced their own uses of electric power and they have asked all distributors to conserve power.

Two all-time peak records were set Monday on the TVA Power System. A new all-time net system peak was set at 8 a.m. Monday at 22,500 megawatts and a new total system peak was set at 9 a.m., an hour later, at 24,155 megawatts. Monday's new records replace records set in January 1978.

## County Woman Files \$250,000 Suit

Sharon Boyer, of Tishomingo County, filed a \$250,000 suit in Federal court charging heavy equipment moved by contractors on the Tennessee-Tombigbee Waterway damaged a county road, causing her to have an automobile accident.

Sharon Boyer filed the complaint against three out-of-state contractors now in a joint venture as Tenn-Tom Contractors on the waterway.

Ms. Boyer maintains the contractors on April 27, 1979, made an agreement with the Tishomingo County Board of Supervisors to keep the route - Mt. Gilead Road - in good repair.

The contractors are working on the divide cut section of the waterway in Tishomingo County.

Ms. Boyer charges while driving her car along the road in March 1980, she hit a large unavoidable hole extending over most of the traveled width of the road. She swerved to avoid the hole, but lost control of the vehicle and hit a tree.

She maintains the contractors should have known the condition of the road and that they had failed to inspect the route periodically, repair defects or post warning devices.

The suit states Ms. Boyer suffered injuries on her head, face and body including a wrist fracture and spinal injury. She also is asking the court to order defendants to pay her additional money to

compensate for medical expenses.

## NOTICE

Attorney General Bill Allain has announced that members of his staff from the Consumer Protection Division and State/Local Divisions will be headquartered in Iuka on January 19, 1982, 3:00 p.m.

Attorney General Bill Allain has announced that members of his staff from the Consumer Protection Division and State/Local Divisions will be headquartered in Iuka on January 19, 1982, 9 a.m. - 11 a.m., at the Tishomingo County Courthouse to receive complaints on consumer fraud and questions on state and local government.

General Allain is urging all citizens and public officials to use this staff to voice consumer complaints and to ask questions pertaining to State and Local Government.

## Iuka Elementary PTA To Meet

The Iuka Elementary School PTA will meet Thursday, January 21, at 7:00 p.m. in the school cafeteria. Mrs. Gary Krause will present the program, "The Little Red School House". This is a variety show with 35 students participating.

Everyone is encouraged to attend.

MEMORIAL CONTRIBUTIONS TO YOUR HEART ASSOCIATION HELP SUPPORT HEART DISEASE RESEARCH



Your local memorial chairman is:

Mrs. Evelyn Wheeler  
990 South Main  
Iuka, MS 38852

The family of the deceased receives a prompt acknowledgement of your memorial gift. You receive a receipt for your tax-deductible contribution.

## Bible Conference

Calvary Missionary Baptist Church in Burnsville will be holding a Bible Conference, January 14, 15 and 16 at 7:00 each night. Everyone is invited to attend.

Those speaking will be: Thursday, Jan. 14, Bro. Danny Stanford and Bro. Mike Fennell.

Friday, Jan. 15, Bro. Charles Mask and Bro. Leroy Dickenson.

Saturday, Jan. 16, Bro. Wayne Voyles and Bro. Jim Jones.

## Iuka Lodge #94 F&AM

The dues (\$20.00) of Iuka Lodge #94 F & AM are now passed due. Please contact Secretary J.B. Smith, Jr. at Route 5, Box 14, Iuka, Miss. 38852.

## American Legion To Meet

The American Legion will meet Tuesday night, January 19, at 7:00 p.m. at the American Legion Hut.

All members are urged to attend this meeting.

## Square Dance Classes At Tishomingo

Beginner square dance classes will be held at Tishomingo State Park Lodge beginning on January 11 at 7 p.m. and each following Monday night. The first three lessons are free. Late date to join will be February 1. For more information call 386-4961, 454-3540 or 423-9070.

## Classified

HOUSE FOR RENT — 3 Br., located on 365 S. in Burnsville. Call 427-9243. J-14-tfn-c.

FOR RENT — Small furnished house. Ideal for working men or couple. Located in Burnsville. Call 427-9243. J-14-tfn-c.

## Personal

Enjoying New Years Day in the home of Mr. and Mrs. Ed-

ward Hubbard of Iuka were all of Mrs. Hubbard's sisters: Mrs. Ouida Hamm and

Geraldine Mars both of Iuka, Mrs. Edith Vojtek of Burnsville, Miss., and Mrs.

Hildred Inlow of Glen, Miss. All enjoyed the day and a nice lunch.

"Give every man thy ear, but few thy voice." Shakespeare

# OPEN AN INDIVIDUAL RETIREMENT ACCOUNT

## WITH US TODAY



# First American National Bank

Burnsville - Golden - Iuka

## January Sale

ONE RACK

Ladies Blouses

**\$5.00**  
& UNDER

**\$1.00 off**

EACH PAIR OF  
Ladies Pants  
FROM THE SECOND DEPARTMENT

ONE GROUP

Ladies Sweaters

**\$5<sup>39</sup> - \$10<sup>50</sup>**

LADIES

Corduroy Blazers

IN STOCK  
**\$30.00**

LADIES

Oxford Cloth Shirts

WHITE, BLUE, BLACK & GREEN

**\$10.00**

MENS

Corduroy Pants

**\$10.50**

MENS

Thermal Underwear

**\$3.99** EACH

MENS QUILTED LINED

Flannel Jackets

**\$10.00**

ONE GROUP OF MENS

Top Coats

**\$26.00**

MENS

Velour Sweaters

**\$6<sup>99</sup> - \$9<sup>99</sup>**

# The Clothes Gallery

113 Fulton St. Located in Old Reid Building Iuka, Miss. 38852

1957

1982

The Family of  
Mr. and Mrs. Harold E. Taylor, Sr.  
invite you to be present

at their  
Twenty-fifth Wedding Anniversary  
on Saturday, the sixteenth of January  
Nineteen hundred and eighty-two  
from three until five o'clock in the afternoon  
5116 Shadowbrook Trail  
Birmingham, Alabama



# B & J Supermarket Hwy. 365 South In Burnsville

We reserve the  
right to limit  
quantities  
We give quality  
stamps

Store Hours:  
Sun. thru Thurs  
8:30 - 8:30  
Fri. & Sat.  
8:30 - 9:00

We Slice, Cut, and Freezer Wrap Meat for the Public

AD EXPIRES JAN 18TH

REELFOOT

## BACON

REELFOOT

BACON ENDS

CORN VALLEY

SAUSAGE

ARROWHEAD

## FRANKS

U.S.D.A. CHOICE THIN SLICED

BREAKFAST STEAK

FRESH PORK

SHOULDER ROAST

FRESH SLICED

PORK SHOULDER

IRREGULAR SLICED SMOKED

WEINERS

FRESH

## GROUND BEEF

3 LB. OR MORE

LIMIT 3 PACKS

\$1.29

HORMEL HOT & SPICY

TAMALIES

15 OZ.

69¢

BAY BEAUTY PINK

SALMON

TALL CANS

\$1.89

NORTHWOODS WAFFLE & PANCAKE

SYRUP

24 OZ. BOTTLE

79¢

TROPIC ISLE FROZEN

COCONUT

6 OZ.

2/99¢

OIL

MAZOLA

48 OZ.

\$2.59

FIDDLE FADDLE PEANUT & POPCORN

SNACKS

7 OZ. BOX

59¢

SUNFLOWER SELF-RISING

## FLOUR

5 LB. BAG

59¢



LIMIT ONE WITH \$15.00 PURCHASE

HYDE PARK

MACARONI & CHEESE

7 1/4 OZ. BOXES

3/89¢

DISH LIQUID

## IVORY

LARGE 32 OZ.

\$1.39

LAUNDRY DETERGENT

TIDE

49 OZ.

\$1.89

CHEF-BOY-ARDEE MUFFIN

PIZZAS

18 OZ.

89¢

KRAFT GRAPE

JELLY

79¢

HYDE PARK

## CHILI W/

## BEANS

15 OZ.

PLAIN

59¢ 69¢

12 OZ. VACUMN PACK

99¢

REELFOOT

BOLOGNA

1 LB. VAC. PACK

\$1.29

12 OZ.

79¢

LB. \$2.99

LB. \$1.00

LB. \$1.29

LB. 79¢



BE SURE & GET GAME CARD FOR  
OUR SUPERMARKET GROCERY  
GIVE-AWAY WIN UP TO \$1,000.00  
IN GROCERIES

PEAS 4/\$1.00

GENERIC

PINTO BEANS

2 LB. BAG

59¢

RONCO WIDE

EGG NOODLES

12 OZ.

59¢

GREEN GAINT WHOLE IN BUTTER

MUSHROOMS

3 1/2 OZ. CANS

59¢

THANK YOU

TOMATO JUICE

32 OZ. JARS

69¢

HYDE PARK FROZEN

## ORANGE JUICE

LARGE 16 OZ.

89¢



## FLOUR

5 LB. BAG

59¢



LIMIT ONE WITH \$15.00 PURCHASE

HYDE PARK

## SALAD DRESSING

QUART JAR

89¢



LITTLE CROW

POPCORN OIL

12 OZ. BTL.

89¢

DAIRY BOY

CHEESE SINGLES

12 OZ.

\$1.19

BRYAN

BEEF STEW

15 OZ. CANS

79¢

SUPERMAN

PEANUT BUTTER

18 OZ. JAR

\$1.49

FREEZER QUEEN ENTREE

DINNERS

BEEF EXCLUDED

2 LB.

\$1.59

CYCLE I CAN

DOGFOOD

14 OZ.

3/\$1.00

SUNFLOWER SELF-RISING

## MEAL

5 LB. BAG

\$1.09

U.S. NO.1 RED

POTATOES

10 LB. BAG

\$1.09

TEXAS

GRAPEFRUIT

5 LB. BAG

\$1.09

FLORIDA

ORANGES

5 LB. BAG

\$1.19

FRESH GREEN

CABBAGE

LB. 15¢

CANADIAN WAXED

RUTABAGAS

4 LB.

\$1.00



RETURNABLE PEPSI, COKE OR YOUR CHOICE

## DRINKS

32 OZ.

6/\$2.09

PLUS DEPOSIT

MINUTE  
RICE

14 OZ. BOX

\$1.19

BORDEN'S SQUARE

ICE CREAM

1/2 GAL.

\$1.49