

# Tishomingo County News

## The Vidette & Belmont News

OFFICIAL LEGAL NEWSPAPERS OF TISHOMINGO COUNTY  
The One Newspaper In The World Most Interested In This Area

\$7.00 Per Year Locally  
In Advance

\$10.00 Per Year  
Outside Trade Area

Patronize The News  
Advertisers!  
They Send A Valuable  
Message To You  
Each Week

NINETY—EIGHTH YEAR

IUKA, TISHOMINGO COUNTY, MISSISSIPPI

Thursday, February 4, 1982 No. 33

### Mr. & Miss Tishomingo High School



Mr. & Miss Tishomingo High School for the 1981-82

### Services For Iuka Businessman Held In Florida

Peter J. Propsom, 67, passed away January 18, at Memorial Hospital, Sarasota, Florida.

Mr. Propsom was born June 20, 1914, at Kenosha, Wisconsin.

He moved to Iuka in 1972 from Hobart, Indiana, where he had been a general contractor. In Iuka he developed and operated Park Estates Mobile Home Park.

He was a member of the Iuka Chamber of Commerce, the Tishomingo County Development Foundation, and the Mississippi Manufactured Housing Association.

He is survived by his wife, Barbara McKay; three sons, Peter U. III, of Valparaiso, Indiana, Michael Leigh and Joseph William, of Sarasota, Florida; a brother, George; sister, June Propsom Bose; and five grandchildren.

Services were held in Florida.

### New Voter Registration For City of Burnsville

The City of Burnsville will have a new voter registration. If you live in the City of Burnsville and are 18 years of age or over, come by City Hall between 10 o'clock a.m. and 5 o'clock p.m. and register. If you fail to register you WILL NOT be able to vote in any city election.

DO NOT FORGET TO COME AND REGISTER. IF YOU HAVE ANY QUESTIONS ABOUT THE REGISTRATION, CALL CITY HALL.

A.T. MARLAR, JR.,  
MAYOR,  
CITY OF BURNSVILLE

### Young Woman Robbed By Masked Bandits

An Iuka woman was robbed by masked bandits last Thursday afternoon, January 28, at the home of her parents, Mr. and Mrs. Harold Wayne Enlow, on Hwy. 25 South.

Mrs. Angie Deaton reported to The News that she was watching TV when she heard the kitchen door open. She said when she looked around to see who had entered, there were two men standing in the room with stockings over their faces.

The two searched the cabinets in the kitchen, apparently looking for money. Mrs. Deaton said they hit her several times in the face,

knocking her to the floor twice, and also kicked her around.

They bound her with hose and shoved her into a closet, leaving her small baby crying in another room.

As the men left through the basement of the house, Mrs. Deaton reported hearing motorcycles and one of the men saying, "Let's get out of here."

The young victim managed to free herself from the closet and call the operator for help.

No suspects have been apprehended. Mrs. Deaton urges everyone at home to please keep their doors locked.

### Elderly Couple Robbed At Home

An elderly couple, of the Rutledge Salem Community, was robbed last week at their home at approximately 9:30 a.m. Three men, impersonating representatives from the Social Security Office, went to the home and "talked" their way into the confidence of the victims. The men robbed the couple of their savings and fled the scene.

A rash of home burglaries has hit the area in the past week, causing hardships for those victimized. We are urging everyone (young and old) to be extremely cautious in admitting anyone into their

homes, regardless of their pretext. If you are frightened or suspicious of someone, do not hesitate to call one of the following numbers:

Tish. Co. Sheriff 423-6185  
Belmont Police 454-3381  
Burnsville Police 427-9526  
Iuka Police 423-6340  
Tishomingo Police 438-6302

### Adult Valentine Banquet

The Iuka Baptist Church will have their annual Adult Valentine Banquet, Tuesday, February 16, beginning at 6:30 p.m. The banquet will take place at the Country Squire Restaurant, and the special entertainment will be a "Womanless Wedding". The menu consists of fish or steak plates. Tickets are \$6.00 per person.

### —NOTICE—

The Iuka Jaycees will hold their regular meeting, Monday, February 8, at 7:00 p.m. at Circus Burger Restaurant. All Jaycees are urged to attend and bring a friend.



### CF State Skate To Get Rolling

The final preparations for the 1982 Cystic Fibrosis State Skate are being completed at Skate World. Skaters are out collecting donations so they can compete for some great prizes.

Sandra Skinner, Manager of Skate World, says it is still not too late to get involved. "You would be amazed at how many donations you can get in just a few days," said Carla Purvis. If you just bring in \$25.00 or more, you receive a t-shirt and a free small pizza from Pizza Hut. The funds from the Mississippi State Skate will benefit over 200 children and young adults throughout the State. Cystic Fibrosis is a genetic disease which attacks the respiratory and digestive systems. There is

no cure for CF and it kills more children than any other disease except cancer. Sponsor forms can be picked up at Skate World, Iuka Elementary or High Schools, or your area Pizza Hut. Shown above is Stacy Purvis, daughter of Mr. and Mrs. Tommy Purvis; and Charles Evans, Principal of Iuka Elementary School. Any organization, business or individual wishing to make a contribution may do so by sending to Mrs. Tommy Purvis, Route 1, Box 172, Iuka, bring your donation to Skateworld, or bring it by Iuka High School. Contributions may also be given in honor of Stacy Purvis. The goal for this year is \$30,000, and the sponsor is local area Pizza Hut Restaurants. Come out and get involved in the Skate-A-Long, Sunday, February 7th, from 2 p.m. until 5 p.m.

## Stennis Sees Short-Term Hardships For Better Life

Senator John C. Stennis (D-Miss.) said today that recent visits to 70 of Mississippi's 82 counties confirmed that the greatest concern of most Mississippians is uncertainty about the nation's economic future.

"As I traveled from county to county, I found that people are greatly concerned with making ends meet financially," Stennis said. "High interest rates, high prices and huge declines in the housing and automobile industries are causing real hardships on many families in our state."

The Mississippi Senator said the economy will once again be the major issue facing Congress. He expressed optimism about the outlook for legislative action to help restore the nation's economy to a sound economic footing.

"We made a good start last year toward bringing government spending under control," Stennis said. "However,

we have only begun the process of restoring economic stability. Many more difficult decisions will be required this year and over the next few years."

"What we need is a balanced budget. These huge budget deficits bring on intolerable high interest rates, which leads to unemployment."

"In light of the tremendous pressures brought by special interest groups on behalf of very attractive and worthwhile programs, it is virtually impossible to balance the federal budget each year unless this is required by law," Stennis said. "The temptation to spend beyond our means is simply too great. Too many members of Congress cannot withstand the pressure."

Stennis has been a leading advocate of adoption of the constitutional amendment requiring a balanced budget for several years. He is the author of a proposed con-

stitutional amendment which would require that the budget be balanced each year except in time of war or other national emergency.

"It is encouraging to see more and more of my colleagues in the Senate interested in balancing the budget," Stennis said. "I believe we are going to have a sincere effort over the next year toward reducing the federal deficit. I remain confident that we can balance the budget within the next few years."

Stennis said his visits with Mississippians throughout the State revealed that they understand it is going to take time to reverse the trend of growing government spending developed over many years. "People realize that we did not get into this situation overnight and that we cannot expect to get out of it overnight."

The Senator said reductions in government spending unfortunately will cause hardships for some Mississippi-

plans in the short term, but expressed confidence that long-term benefits of a more financially responsible federal government will greatly outweigh temporary disadvantages.

"If everyone will yield a little, this will add up to a lot, and all of us will be better off," he said.

Stennis said the good productivity record of Mississippi workers will also aid the state as factories cut back on employment in the face of the recession. "Several industrial leaders have told me that cutbacks in Mississippi will be among the last made since productivity in Mississippi plants is so good."

"We have a lot to be proud of in Mississippi," he said. "My visits with so many of our state's citizens over the last few weeks renewed my sense of pride in Mississippians and restored my confidence in our ability to meet every challenge in the years ahead."

## December Unemployment Rate Declines In County

According to the most recent figures published by the Mississippi State Employment Service, unemployment in Tishomingo County in December declined six-tenths of a percent. The rate of unemployment in the county was estimated to be 10.2 percent of the civilian labor force, or 1,180 individuals. This compares to 10.8 percent in November and 7.6 percent in December

1980. Charles Smith, Manager of the Employment Service, stated that the civilian labor force rose to 11,590, 110 above the previous estimate but 330 below that of one year ago.

Employment of county residents was estimated to be 10,410, compared to 10,240 last month and 11,020 one year ago.

Employment in establishments in Tishomingo County

had approximately 8,890 employed at mid-December. This compares to 9,070 in November and 8,980 in December 1980. Manufacturing employment was estimated to be 2,680, which was below both comparison periods. Nonmanufacturing employment, estimated to be 6,300, was only slightly below the previous estimate but 650 below that of one year ago.

Smith also noted that em-

ployment in the four-county area of Alcorn, Prentiss, Tippah, and Tishomingo totaled 41,090 at mid-December, up 2,400 from one month ago, but down 140 from one year ago. There were 4,610 unemployed in the area in December, down 2,460 from last month but up 150 from one year ago. The estimated rate of unemployment for December was 10.1 percent of the civilian labor force, compared to 15.3 percent last month and 9.8 percent one year ago. The number of individuals in the civilian labor force was estimated to be 45,700, compared with 45,660 last month and 45,700 in December 1980.

Unemployment for the other counties in the area were estimated as follows: Alcorn - 13.3 percent, Prentiss - 7.7 percent, and Tippah - 7.8 percent.

Manufacturing employment in the four-county area was estimated to be 14,840 at mid-December, which indicated an increase of 1,900 from one month ago and an increase of 370 from one year ago. Nonmanufacturing employment, estimated to be 19,480, dropped 90 from the previous month's figure and 880 from one year ago.

### Valentine Banquet

The 7th, 8th and 9th graders, from Iuka Baptist Church, will serve as hosts for a "Castle of Dreams" Valentine Banquet on Friday, February 12, from 6:30 to 8:30 p.m. This event will be held in the fellowship hall of the church. All young people in these grades are extended an invitation to attend.

Dress will be Sunday wear for boys and long dresses or Sunday wear for girls.

Tickets will be on sale in the church office and in the principal's office for \$2.00. They must be purchased no later than noon, Wednesday, February 10th. No tickets will be sold at the door.

Mark Friday, February 12, on your calendar, and begin making plans to enjoy a royal evening.

## Car-Pedestrian Accident Claims Life Of Iuka Woman

Tishomingo County residents were saddened last week at the tragic death of Mrs. Hazel Parsons Mercer, a native and life-long citizen of the area.

According to Mississippi Highway Patrolman, Ralph Montgomery, the car-pedestrian accident occurred at 11:15 Thursday morning, January 28, as Mrs. Mercer, age 74, was walking across Highway 25 to her mailbox. She apparently attempted to go back across the road and was struck by a northbound vehicle, driven by John McClung, 72, of Route 1, Tishomingo. Patrolman Montgomery added that no charges were filed. The ac-

cident occurred in the Midway Community, approximately 5 miles south of Iuka.

Mrs. Mercer, who was the daughter of the late Will and Julia Callcutt, was loved and respected by all who knew and worked with her. She was very active in women's organizations, the County Fair, and served as Women's Chairperson of the Tishomingo County Farm Bureau. She was also an active member of the Spring Hill Methodist Church in Midway. For many years, Mrs. Mercer worked for Vale and Baddour, the General Dollar Store, and different fabric shops in Iuka. The last few years she devoted to her husband and

to the one hobby she loved most, sewing.

Funeral services were at 4:00 p.m. Friday, January 29, at the Cutshall Funeral Home Chapel with Rev. William Strange and Bro. Clint Wigginton officiating. Burial was in Sardis Cemetery.

Survivors include her husband, B.L. Mercer, of Tishomingo; four daughters, Mrs. Vida Ree Nichols, of Tishomingo, Mrs. Faye Curtis and Mrs. Joy Bitterman, both of Iuka, and Mrs. Gaye Smack, of Hammond, Ind.; three sons, Pete Parsons, Jerry Parsons, and Joe Parsons, all of Iuka; a sister, Mrs. Viola Hardy, of Portland, Oregon; 22 grandchildren; and 14 great-grandchildren.

## Mississippi's Unemployed Rises To 9.3 Percent

Mississippi's unemployment rate rose to 9.3 percent in December, an increase of two-tenths of one percent compared to November's revised jobless rate of 9.1 percent, according to Mississippi Employment Security Commission Executive Director O.H. Simmons. The December 1980 unemployment rate was 7.4 percent.

The 9.3 percent unemployment rate for the state

was higher than the 8.3 percent national rate for December. MESC figures showed 95,300 unemployed and 927,600 employed out of a civilian labor force of 1,022,900. The initial Unemployment Insurance claims totaled 44,061 for December.

The counties having the highest unemployment rates in December were Yalobusha, with a rate of 22.3 percent; Jefferson, with a rate of 19.7 percent; and Sharkey, with an unemployment rate of 18.1

percent. Oktibbeha, Rankin, and Issaquena counties had the lowest jobless rates for December. Oktibbeha had a rate of 4.7 percent, Rankin had a rate of 5.0 percent, and Issaquena had an unemployment rate of 5.2 percent.

Fifty-one of the state's 82 counties showed an increase in their unemployment rates for December, while twenty-seven reported decreases. The jobless rate in four counties remained unchanged.



# TISHOMINGO COUNTY NEWS VIDETTE and BELMONT NEWS

Phone 423-3666

(SECD 631680)

John H. Biggs, Editor & Publisher

Published Thursday by The Tishomingo County News, Inc. Serving the people of Tishomingo and adjoining counties for more than 95 years. Publication office 120 West Front Street, P. O. Drawer E, Iuka, Mississippi. Entered at the Post Office as mail matter of the Second Class. Second Class postage paid at Iuka, Mississippi. Zip Code 38852. Post Master send address changes to The Tishomingo County News, P. O. Drawer E, Iuka, Mississippi 38852.

Mail Rates Tishomingo and Adjoining Counties  
\$7.00 Per Year

Other Areas  
\$10.00 Per Year

## EMERGENCY PHONE NUMBERS

SHERIFF DEPARTMENT.....423-6185  
TISHOMINGO COUNTY HOSPITAL.....423-6051  
AMBULANCE SERVICE.....423-5766  
POLICE DEPARTMENTS

BELMONT.....454-3381  
BURNSVILLE.....427-9526  
IUKA.....423-6340  
TISHOMINGO.....438-6302

FIRE DEPARTMENTS  
BELMONT.....454-3311  
BURNSVILLE.....427-8844  
DISTRICT I VOLUNTEER.....423-6515  
GOLDEN.....454-9845  
IUKA.....423-5011  
TISHOMINGO.....438-6650

MISSISSIPPI HOT LINE FOR CHILD ABUSE  
1-800-222-8000  
DRUG AND ALCOHOL ABUSE  
423-3332

## Chatting With Your Home Economist

By: Nellie R. Horton,  
Extension Home Economist

### Restoring Off-White Wool Garments

Discolored off-white wool garments can look better. An off-white wool sweater in excellent condition except for the discoloration from age can be restored to its original off-white color.

Use cold water detergent (one recommended for wool)

with cool water. Submerge the sweater in the sudsy water and allow to soak 10-15 minutes. Force water through the sweater to help remove the discoloration, but avoid excess agitation.

Remove the sweater and squeeze out water without wringing. Add all-fabric-safe bleach (one-fourth cup) to fresh, cool water and dissolve. Submerge sweater again and soak for 10-15 minutes. Rinse sweater in two waters. Squeeze out excess water and use towel to absorb additional moisture. Place sweater on a flat surface on a dry towel. Smooth and stretch as needed.

All-fabric-safe bleach



Want to lower  
your heating  
bills?

## INSULATE

Call  
454-3383  
Day or Night

TVA Approved Phillip Williams, Owner

**WILLIAMS PEST CONTROL  
& INSULATION CO.**

Belmont, Miss.



## Chancery Clerks Seminar

Area clerks attending the recent Seminar for Chancery Court Clerks in Jackson included (from left) Boone

Shelton, chancery clerk, Ripley; Robert Sims, chancery clerk, Iuka; Brenda Bryant, deputy chancery clerk, Corinth; Phillip Cole,

chancery clerk, Booneville; and Arnold Doom, chancery clerk, New Albany. The two-day seminar was sponsored

by the Mississippi Judicial College, a division of the Court Education Program at The University of Mississippi Law Center.

usually works better in hot water, but it was effective when used on wool in cool water.

## Routine Refrigerator Care

Treat food storage kindly and wisely by keeping the refrigerator clean. Frequent simple attention helps use up leftovers pushed to the back and avoids the need for time-consuming, heavy-duty cleaning.

At least biweekly, remove food from the refrigerator compartment. Turn the appliance off first. Plan menus to use forgotten leftovers. Wipe the interior with warm water and detergent or a baking soda solution. Use two tablespoons of baking soda to one quart of warm water. Rinse with clean water and dry.

Wash shelves and crispers in warm suds at the sink. Suds sponge door gaskets. Discard spoiled or questionable food and replace the rest with the "use now" items up front.

The exteriors of most appliances are easy to maintain by wiping with a sudsy sponge. Then rinse and dry with a soft cloth. To protect the finish, use appliance wax occasionally.

## Turkey Orange Salad Bowl

1-1/2 cups heavy mayonnaise  
2 cups orange segments  
1 cup pineapple tid-bits  
1 cup pecans, coarsely chopped  
1 tbsp. lemon juice  
1/2 cup maraschino cherries, quartered  
1 cup diced apples  
4 cups diced cooked turkey or chicken  
1/2 tsp. curry powder  
1/2 tsp. salt

Combine all ingredients. Cover and refrigerate. Garnish with orange segments and apple wedges.

## County Agent's Notes

By: Percie B. Stricklen,  
County Agent

### Gardens Around The Corner

Garden seed catalogs for

1982 are bulging with new vegetable varieties to try this year. Many new varieties of beans, squash, cucumbers, corn, pepper and melons are listed, just to name a few.

It would be impossible to try all the new varieties, and no one should. You may find it hard to locate seed of some vegetables, because there is no one source for all of them.

Some varieties have certain growth and disease resistance characteristics you may want to consider. Check the mail order seed catalogs and packet racks in nurseries and garden centers to help you decide which of the new varieties you may want to plant.

Remember that caution is the word when considering something new like vegetables. You don't want to end up planting the whole garden to new and untried varieties.

The county Extension office has a list of vegetable varieties recommended for growing in our area. Ask for the Garden Tabloid, Extension Publication 1091.

## State High In Cotton

Only California and Texas were ahead of Mississippi in cotton production in 1981. The state produced 1.57 million bales in 1981. Mississippi also was fourth nationally among 14 cotton producing states in per acre yield, averaging 628 pounds per acre.

## News About Fire Ants

Commissioner of Agriculture Jim Buck Ross has announced that the Mississippi Department of Agriculture and Commerce has applied to the Environmental Protection Agency for the conditional use of insecticide ferriamicide for the control of fire ants.

According to a research team at the Mississippi State Chemical Laboratory at Mississippi State University, ferriamicide is effective in controlling fire ants, which are a serious problem in Tishomingo County and throughout Mississippi. The product is degradable and considered safe.

Commissioner Ross says reports have been made to his office relating to problems with health, livestock, wildlife and reduction in yields of row crops because of the fire ant problem. According to Ross, EPA should be informed of the serious need to control

the pest in Mississippi.

Farmers, homeowners and others interested in expressing to EPA a need to control the fire ant problem may do so by writing Dr. John A. Todhunter, USEPA, Washington, D.C. 29460.

## ASCS Farm News

By: Henry L. Knox,  
County Executive Director

### ASCS Services To Farmers

The Agricultural Stabilization and Conservation Service (ASCS) provides many services to agriculture through administration of farm programs enacted by Congress.

Service to our nation's farmers is the goal of ASCS, Elmer A. South, Chairperson for the Agricultural Stabilization and Conservation Service in Tishomingo County, stated.

Some of the basic farm programs are designed to improve the economic stability of agriculture and help farmers to achieve supply and demand balances, South said. Related programs help maintain an even flow of quality products to market at reasonable price to both producer and consumer. We have programs absolutely basic to improving and protecting soil and water resources, while at the same time helping to keep our water clean, South said, which cost-share with farmers on specified conservation and land use practices.

Throughout Mississippi and in Tishomingo County, most all programs are available for use by farmers. Farmers participating in ASCS administered farm programs are familiar with price support activities and loans, direct purchases and export programs which will aid in maintaining economic stability. Helping to keep an even flow of quality products to market are indemnity payments, emergency and defense programs and incentive payments which are available as needed. The Agricultural Conservation Program and the Forestry Incentives Program provide cost-sharing for improving and protecting our soil and water resources, South said. Many farmers, especially cotton and soybean farmers have used the price support

Tishomingo County News - Vidette - Belmont News

fice.

## Final Date To Report 1981 Crops

Tishomingo County farmers are reminded that February 5, 1982 is the deadline to report 1981 crops. If you have not already reported your 1981 acreages to the county office, you still have time to report cotton, corn, grain sorghum, wheat and oats. (You don't have to report your 1981 soybeans.) If you have questions, please contact the county office.

Abraham Lincoln was clean-shaven until he was 51 years old.

## Dean's List At MSU

The following students have been named dean's scholar at Mississippi State University for the 1981 fall semester. Students included on dean's list equaled or exceeded the academic achievement level attained by the upper 10 percent of college or school while earning a minimum of 12 semester hours of coursework, with incomplete grades or grades lower than A C.

The student included Gary Thomas Walker, Route 1, Tishomingo.

## 45 DAY TAX REFUND LOANS

Get  
Your Tax Refund  
Today  
At

## First Citizen Loans

Iuka  
Hwy. 72 E.  
423-5248

Don

Belmont  
Hwy. 25 N.  
454-3464

Alex

If you are counting on Social Security for a comfortable retirement . . . count again!



The dollars just don't add up!  
Inflation, high interest rates,  
unemployment, government  
deficits, economic uncertainties.  
Can you afford to count on  
Social Security?

SOUTHERN FARM BUREAU LIFE  
INTRODUCES A NEW  
"NO LOAD" FLEXIBLE PREMIUM  
RETIREMENT ANNUITY DESIGNED FOR  
THE IRA AND KEOGH PLAN

Deduct up to \$2,000 to an IRA and up to  
\$15,000 to a Keogh Plan,  
beginning January 1, 1982.

Call your Farm Bureau  
Insurance agent . . . . .

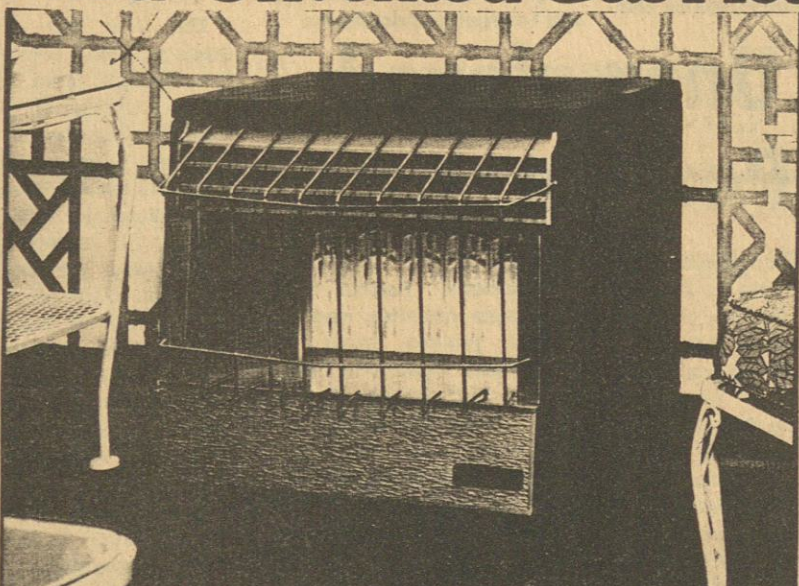
he can give you that  
good feeling of security.

Carlos E. Ginn  
Billy Rainey  
Danny Bullard

Iuka, Miss.

423-6151

## Martin Vented-Unvented Gas Heater



**W. H. FAIRLESS HARDWARE**

OPEN ALL DAY THURSDAYS

IUKA - 423-9256

TISHOMINGO - 438-6608

## Don't let winter catch you napping

As the temperature outside drops you can expect your electric bill to go up. During the cold weather your electric heating system has to work hard to keep you comfortable.



All costs involved in supplying electricity—fuel, construction, interest, materials, labor, taxes, etc.—are increasing. But remember, you pay only for

the electricity you use. So reduce your heating costs by installing adequate insulation and weatherization measures and keeping your thermostat at 68 degrees.

IT'LL  
SAVE  
YOU  
MONEY.  
CONSERVE  
ENERGY.

Tishomingo County Electric  
Power Assn. 423-3648





**T.H.S. Class Reunion** — their five-year class reunion on November 27, 1981, at Tishomingo State Park Lodge. Class members attending were:

first row: Charles Nunley, Greg Ozbirn, Kirby McRae, Dale Medley. Row two, left to right: Jane Burleson Miller, Angela Golden, Onita Howell Welch, Myra Bowman, Linda Bates, Judy Ables Riddle, Ellen Wimbish Green. Third row, left to right: Cathy Adams Nunley, Carole

Starkey, Elizabeth Whitson McGaha, Linda Sue Powell, Pam Crowe, Patsy McRae James, Donna Cain Medley, Becky Crane Fowler, Delwyn Pounders, Robert Alexander. Fourth row, left to right: Billy Page, Eddie Nunley, Ronnie Greene, Bobby Powell, Randy Whitson, James Bennett, Billy McGaha, Tommy Nunley and Richard Butler.

### Mt. Gilead Homemakers

The Mt. Gilead Homemakers held their regular monthly meeting, January 25, 1982, at 7:00 p.m. in the home of Mrs. Kathleen Moore with seven members present.

Mrs. Lona Odom, President, presided at the meeting.

The devotional was given by Mrs. Kathleen Moore on

Appreciation, reading from Ruth 2:13. She read a poem, "Begin The Day With Friendliness", written by Frank Whitney.

Mrs. Lona Odom presented the Focus Topic, "What's Your Score - Up or Down?", relating to stress.

The 1982 meetings were planned. The minutes of the previous meeting were read by Mrs. Kathleen Moore.

Mrs. Lilla Davis gave a financial report on the Mt. Gilead cemetery project.

Two educational reports were given. Mrs. Lona Odom reported on Family Resource and Management. Mrs. Amy Walker reported on Drug Alert - L.S.D.

Secret pals were drawn for

1982.

Refreshments were served by the hostess.

Members present at the meeting were Lona Odom, Kathleen Moore, Amy Walker, Tressie Bonds, Lilla Davis, Imogene Parsons, and Mary Anice Sitton.

### Scholosis Screening A Success

At the Scholosis Screening held Thursday, January 28, there were 54 young people who participated with six referred to their family physicians. The 20th Century Club, of Iuka, voted to have

this screening on an annual basis for the 7th, 8th and 9th grades.

Sue McBee wishes to give a special thank you to the people who helped her conduct the screening: Edna Earl Tapp, Dennie Dee McRee, Yvonne Stephens, Nancy Daugherty and Jay McKinney, Principal.

### Conservation Tip For The Day

You can buy one very efficient piece of solar energy equipment for about \$5. It's called a clothesline. If you'd like to know more about how to save energy, write: Energy In The 80s, 510 George Street, Jackson 39202.

## In Appreciation

Words cannot express the gratitude we feel in our hearts for the many acts of kindness shown us, in our time of great sorrow. Our hearts are heavily burdened at the tragic loss of our wife and mother, Hazel Parsons Mercer.

Her love reached out and touched many lives and gave new direction to so many troubled hearts. We are grateful to God for the time we had with her, and for all the precious memories she left behind.

We want to thank all of our friends and relatives who came, sent flowers, food and prayers; to Bro. William Strange and Bro. Clint Wiginton for their comforting words; to Maxine Cutshall and the employees at Cutshall Funeral Home for the kind and efficient manner in which the services were conducted.

It would be impossible to live with such a loss, if it wasn't for our faith in God's word and the love and kindness of our many friends and relatives.

May God Bless Each of You,

B. L. Mercer

and the families of Hazel & B. L. Mercer:

Pete, Vida, Jaye, Joy, Jerry,

Jaye, Joe, and Jimmy

### Countrywood Bridals

by Cheryl

Come See Our New Collection Of Gowns For Spring And Summer.

Ask About Our Exclusive Re-Sale Consignment Service For Pageant Gowns And Mothers Gowns

9 a.m. - 5 p.m. Monday thru Saturday Evening Appointments Available

Phone 601-287-5012

84 Taylor Street Corinth, Ms. 38834

### 4-H News

By: Tommy G. Purvis, Extension 4-H Youth Agent

#### Community Club Vital To 4-H Program

The community club is the primary method of involving youth in the 4-H youth program in Mississippi. Community clubs offer unique opportunities for the overall development of young people.

The community club provides a young person with the opportunity to belong to

an active group and to develop leadership skills such as speaking, organizing and getting along with others. Youth choose projects and activities of personal interest and work as a group on community action projects.

More than 40 individual projects are offered through 4-H. Community projects are selected by the club, depending on the needs of the community.

The 4-H club also provides an opportunity for adults to work with young people as 4-H leaders. The basic requirements for working with young people are a sincere concern for youth and a desire to see them develop their abilities. The personal rewards for working with youth are always many and lasting.

4-H has something to offer all youth, whether they live in the city or on the farm. Anyone interested in serving as a 4-H leader is invited to visit the local Extension 4-H youth agent or call 423-3616.

### Busy Vo-Techers

Not much has happened since we have come back from vacation. Most of us are still adjusting and getting organized for the new semester. This semester will hold special memories for those who are seniors. This next few months are to be the most exciting months of the senior's school days.

Talk of the Teachers  
Thomas W. - Why do you always want to go to the other building? Is it because of D.E.?

Stevie O. - What's that thing on your head?  
Adam S. - What was that smell?

Deneen B. - Hey, Shorty!  
Denise D. - Do you get embarrassed when someone talks to you?

James C. - Do you like C.U.?

John H. - Makes bookracks for a little bit of sugar!

Wanda A. - I LOVE YOU! (J.B.)

Jeff B. - Sorry for not having it in here before now. (D.B.)

Thought of the Week  
Today there is only one way to wind up with a small fortune, start with a big one.

Couple of the Week  
Grady Hudson and Lori McAnally.

See ya later,  
Dee Blackman

# Clearance Sale

To make room for our new Spring Patterns

We have marked down everything in stock

Dollars off all papers in stock

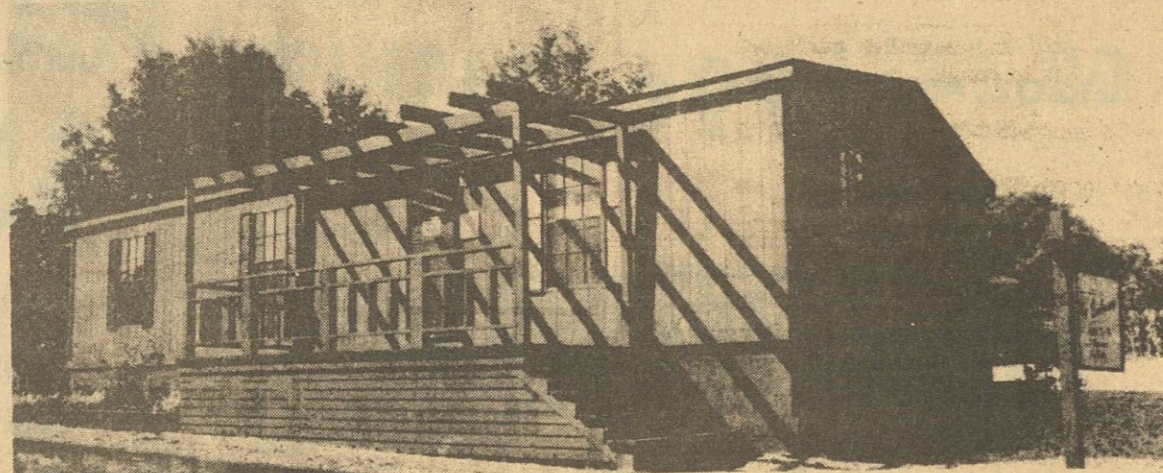
A new addition: Ginnia Fox, Interior Decorator, is now on our staff to assist you and we now do custom drapes and spreads.

## The Wallpaper Village

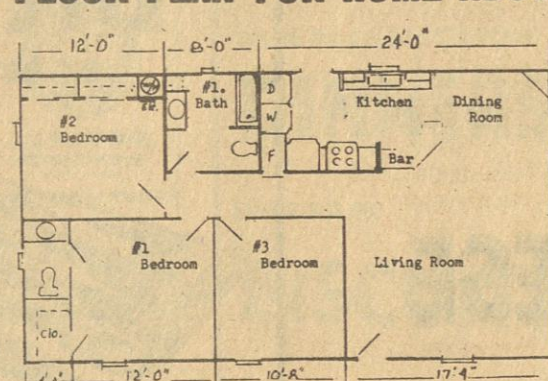
797 So. Gloster in Tupelo

2040-4 Shiloh Rd. in Corinth between Magic Mart & Sunflower  
Visa & Master Charge welcome

## FEBRUARY SUPER SALE INTEREST REDUCED TO 15.99% A.P.R.



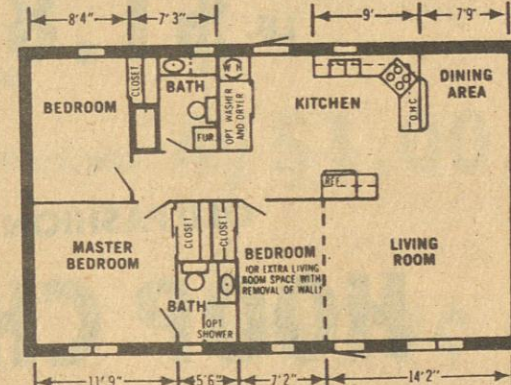
### FLOOR PLAN FOR HOME ABOVE



Atlas 1,056 sq. feet, 3 BR, 1-1/2 bath, wood siding, shingle roof.

**\$18,900.00**

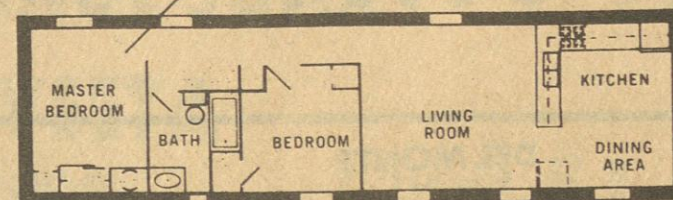
Reg. Price was \$20,890.00



960 sq. ft., 3 BR, wood siding, shingle roof.

**\$15,900.00**

Reg. Price was \$16,936.00



2 BDR Model 111 - 14' x 56' - 728 Sq Ft

2 BR, 1 bath, wood siding.

**\$10,900.00**

Reg. Price was \$11,900.00

SPECIAL FINANCE ARRANGEMENTS have been made to REDUCE your interest rate to just 15.99 percent for this sale only, now thru February 28th which will drastically reduce your monthly payment, and will save you hundreds, even thousands of dollars.

PLUS if you own your own property you may qualify for no down payment financing with approved credit.

HWY. 45 NORTH  
CORINTH  
287-2407

**Patrick**  
HOME CENTER

HWY. 72 EAST  
CORINTH  
287-2966



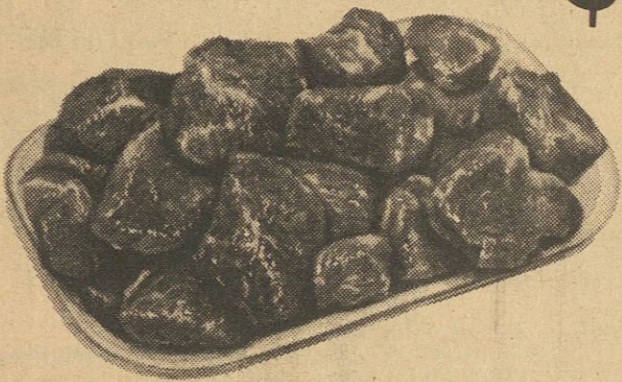
# NELSON'S

## SUPERMARKET

IUKA MS.

AD GOOD THURSDAY, FEB. 4 THRU WED. FEB. 10

U.S. CHOICE LEAN  
**BEEF STEW**  
BONELESS  
LB. **\$1.79**



LEAN  
**GROUND CHUCK**  
ANY SIZE PACK  
LB. **\$1.79**



KREY ALL MEAT  
**WIENERS**  
12 OZ. PACK **99¢**

KREY CARV MASTER  
**BONELESS HAM**  
LB. **\$1.89**

OLD FASHION  
**HOOP CHEESE**  
RED RHINE  
LB. **\$1.99**

GRADE A  
**WHOLE FRYERS**



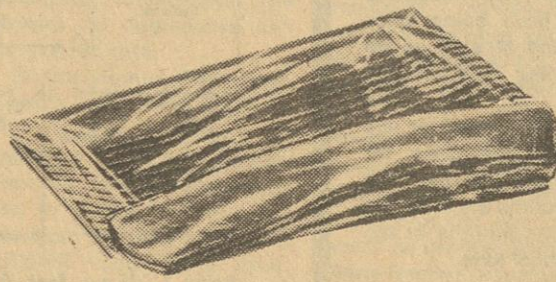
LB. **45¢**



U.S. CHOICE

**RIB EYE STEAK**  
FULL TRIM  
LB. **\$3.99**

FLAVORITE  
**BACON**  
BY BRYAN BRO.



12 OZ. **79¢**

MR. FRITTERS 14 OZ. PACK

**CHICKEN CHUCK WAGON**

VEAL OR BEEF  
PACK **\$1.19**

BURGER MAKER  
**HAMBURGER PATTIES**  
3 LB. **\$4.99**

SOUTHERN BELLE SMOKED  
**SAUSAGE LINKS**  
LB. **\$1.09**

HOME MADE PURE  
**PORK SAUSAGE**  
LB. **\$1.39**

REELFOOT JUMBO  
**BOLOGNA**  
IN PCS.  
LB. **\$1.19**

DEL MONTE  
**BANANAS**  
3 LB. **\$1.00**

**PEARS** LB. **49¢**

**YELLOW ONIONS**  
3 LB. BAG **99¢**

TEXAS SWEET  
**ORANGES** 5 LB. BAG **\$1.59**

TEXAS RUBY RED  
**GRAPEFRUIT** 5 LB. BAG **\$1.59**

RAW IN SHELL  
**PEANUTS** 2 LB. BAG **\$1.59**

SUNKIST  
**LEMONS** 12 FOR **89¢**



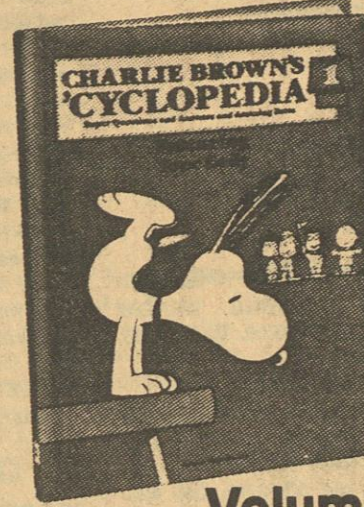
# SERVING YOU BETTER SAVING YOU MORE

AD GOOD THURSDAY, FEB. 4 THRU WED. FEB. 10

QUANTITY RIGHTS RESERVED

## INTRODUCING CHARLIE BROWN'S 'CYCLOPEDIA

Super Questions and Answers and Amazing Facts  
about things kids want to know about.



- Your Body
- All Kinds of Animals from Fish to Frogs
- All Kinds of Animals from Dinosaurs to Elephants • Space Travel
- Cars and Trains and Other Things that Move • Light, Sound and Air
- Boats and Other Things that Float
- Planes and Other Things that Fly
- Machines and How They Work
- Stars and Planets and Plants
- The Earth, Weather and Climate
- People Around the World
- What We Wear • Holidays
- Electricity and Magnetism

Volume 1 only **99¢**  
VOLS. 2-15 ONLY \$2.49

DISHWASHER DETERGENT

**CASCADE**

50 OZ.  
BOX

**\$1.99**

MARTHA WHITE SELF RISING

**FLOUR**

25 LB. BAG

**\$4.79**

GENERAL MILLS NEW

**DONUTZ CEREAL**

12 OZ. BOX

**\$1.49**

VLASIC

**SWEET PICKLES**

22 OZ.  
JAR

**\$1.29**

BRYAN

**BEEF STEW**

24 OZ. CAN

**\$1.49**

MINUTE MAID FROZEN

**ORANGE JUICE**

12 OZ. CAN

**89¢**

HYDE PARK

**POT PIES**

6 OZ. BOX

**4/\$1.00**

BETTY CROCKER SUPER MOIST

**CAKE MIX**

18½ OZ.

**85¢**

REELFOOT 100% PURE

**LARD**

4 LB. CTN.

**\$1.69**

PURE VEGETABLE OIL

**CRISCO**

48 OZ.

BOTTLE

**\$2.19**

TWIN PET

**DOG FOOD**

15½ OZ. CAN

**5/\$1.00**

BETTY CROCKER READY TO SPREAD

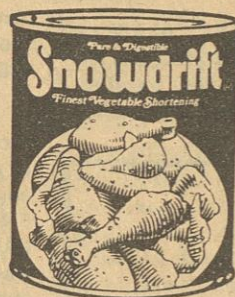
**FROSTING**

16½ OZ. CAN

**\$1.29**

SNOWDRIFT PURE VEGETABLE

**SHORTENING**



3 LB. CAN

**\$1.49**

NORTHERN BATH

**TISSUE**

4 ROLL  
PACK

**99¢**



**NORTHERN**



MARTHA WHITE

**CORN  
MEAL**

5 LB. BAG

**99¢**

GOLD MEDAL SELF RISING

**FLOUR**

5 LB. BAG

**89¢**



MERICO TEXAS STYLE BUTTER

**BISCUITS**

5 COUNT

**6 \$1.00**

GENERAL MILLS

**CHERRIOS**

10 OZ. BOX

**\$1.09**

TONYS RED BARON

**PIZZA**

CHEESE & SAUSAGE  
CHEESE & PEPPERONI

FAMILY SIZE

**\$2.69**

LIQUID DISH DETERGENT

**DAWN**

22 OZ. BOTTLE

**99¢**



**HAMBURGER  
HELPER**

ASST. FLAVORS

**89¢**

LADY BORDEN PREMIUM

1/2 GALLON CARTON

**ICE CREAM**

**\$2.59**



BUSHES BEST

**SPINACH**

15 OZ. CAN

**3/\$1.00**

BUSHES BEST

**GREAT NORTHERN**

**BEANS**

15 OZ. CAN

**3/\$1.00**

HYDE PARK MACARONI & CHEESE

**DINNERS**

7¼ OZ. BOX

**4/\$1.00**

HYDE PARK

**BISCUITS**

4 PACK

**79¢**

OLD SOUTH

**ORANGE JUICE**

64 OZ. CTN.

**99¢**

**VELVEETA  
CHEESE**

1 LB. BOX

**\$1.99**

**TIDE**

LAUNDRY DETERGENT

FAMILY SIZE

**\$5.99**

LIPTON

**TEA  
BAGS**

24 CT. BOX

**\$1.39**

MR. P'S FROZEN

**PIZZAS**

11 OZ. BOX

**69¢**

**AJAX**

LAUNDRY DETERGENT

GIANT SIZE

**\$1.39**

HYDE PARK

**MARGARINE**

1 LB. QTRS.

**3/\$1.00**



# BUY, SELL, TRADE OR RENT THROUGH THE CLASSIFIED ADS

## Classified Ads

\$2.50 per week for 30 words. After the first 30 words, 5¢ extra per word. \$1.00 extra with border  
Card of Thanks and In Memoriam - 5¢ per word  
Classified Ads, Cards of Thanks and In Memoriams must be paid in advance  
50¢ service charge will be added to any monthly bill totaling less than \$5.00

Phone 423-3666

### ERRORS

Should be reported immediately as The News can be responsible only for the first incorrect insertion in any advertisement. The News cannot be liable for error in any advertisement to a greater extent than the cost of the space occupied by the items in the advertisement.

### \$88.00

That's right - only \$88.00 for a new Singer Zig Zag Sewing Machine. Sews straight, zig zags, monograms, makes button holes and appliques. Free lay-a-way. Come by! See & Sew Fabrics, 101 Fulton St., Iuka, or phone 423-6031 for an appointment.  
O-8-tfn-c.

FOR SALE - 1973 Yamaha 360 Trail Bike - Very Good Condition. Priced to sell. See Ernest Bullard or call 423-6839 after 5:00 p.m.  
J-14-tfn.

FOR SALE OR RENT - 2 bedroom cabin overlooking Yellow Creek. 1 1/2 baths, \$25,000 or \$220.00 per month. Phone 901-465-3955 day or 901-465-8191 nights.  
D-17-tfn-c.

FOR SALE OR RENT - 2 or 3 bedroom mobile home with supplement rent. Phone Bart Smith at 423-3749.  
J-14-tfn-c.

HAY FOR SALE - Cured without rain. Reuben Grisham, day phone 423-3484 and night phone 423-5088.  
J-7-tfn-chg

LARRY'S MOBILE HOME SERVICE - Local and Long Distance. Bonded and Insured. Anchoring and Blocking, Kool Seal, Under Pinning. Call anytime 423-3258.  
J-23-tfn-c.

NEW BUILDINGS AT FACTORY - All parts accounted for. All structural steel carries full factory guarantee. Buildings 10,000 square feet to the smallest 1,200 square feet. Must sell immediately. Will sell cheap. Call toll free 1-800-248-0065 or 1-800-248-0321. Ext. 777.  
J-21-F-11-p.

FOR SALE - 2 bedroom, furnished cabin, near water at Yellow Creek - Old Steel Bridge Road. Owner moving - must sell. Call 601-423-3409 after 4 p.m.  
J-28-F-4-p.

HAY FOR SALE - See Rufus Bobo near Leedy, Ms. or call 427-8274 after 4:00 p.m.  
J-28-F-4-c.

FOR SALE - Approximately 55 acres of industrial or residential property just north of town of Tishomingo. Near city water and sewage. Borders Hwy. 25 - \$50,000. Call Bill Nettles at 601-323-5417 or write Route 5, Box 14, Starkville, Ms. 39759.  
J-21-28-F-4-c.

FOR SALE - Approximately 10 acres of residential or industrial property, located north of town of Tishomingo. Borders Hwy. 25 - \$25,000. Call Bill Nettles at 601-323-5417 or write Route 5, Box 14, Starkville, Ms. 39759.  
J-21-28-F-4-c.

NEW FLASHING ARROW SIGN - \$300.00. Call 1-205-233-1549.  
J-28-F-4-p.

FOR SALE - Doberman Pinscher puppies. Black and rust, AKC registered, six weeks old, \$100.00. Call 423-3351.  
J-28-F-4-c.

FOR SALE - 2 bd., brick on 11 acres; 80 acres timberland; 3 bd., 1 1/2 bath on 2 acres; commercial tracts with Hwy. frontage. All in Tishomingo County. Others too! Contact Strout Realty, Corinth - 287-6930. Nights call 287-8771.  
F-4-11-18-c.

HOUSE FOR SALE BY OWNER - 3 bd., good location on Hwy. 25 South, 1 1/2 baths, top quality carpet and vinyl flooring, less than a year old, electric heat and Ashley wood heater. Call 423-3780.  
F-4-11-18-c.

FOR SALE - 1976 Pontiac Lemans, 1 owner, good condition, air, power steering and power brakes, V-8. Price \$1,400.00. Call 423-9761.  
F-4-11-18-c.

FOR SALE - 4.12 acres of land in the South Crossroads area. Beautiful homesite. For more information call between the hours of 5:30 a.m. and 7:00 a.m. or 5:00 p.m. and 10:00 p.m. Also, 1 registered treeing Walker female, 3 years old; 1 Blue Tick male, 3 years old; good Coon dog. MOVING - MUST SELL. Call 427-9892.  
F-4-11-c.

14 WIDE - Bright front kitchen, 2 bedroom starter home. Delivered, set up and tied down for only \$8,995.00 with only 10% down. Open 1:00 to 5:00 Sunday. Clayton Mobile Homes, Hwy. 64 East, Savannah, Tenn. Call 901-925-1060.  
F-4-11-c.

USED MOBILE HOMES - All homes have been reconditioned. Prices starting at \$3,995.00 while they last. Both electric and gas models. Open 1:00 to 5:00 p.m. Sunday. Clayton Mobile Homes, Hwy. 64 East, Savannah, Tenn. Call 901-925-1060.  
F-4-11-c.

Used Mobile Home Sale  
PRINCE MOBILE HOMES  
Hwy. 43, Muscle Shoals, Ala.  
Call (205)383-2394  
12 x 44, 2 bd., furnished, \$3,495.00; 10 x 40, 1 bd., furnished, \$1,995.00; 12 x 60, 3 bd., 1 1/2 baths, \$5,995.00; 12 x 60, 2 bd., furnished, \$5,995.00.  
F-4-11-c.

### \$5,995.00

TIRED OF PAYING RENT? We have a large selection of used 2 and 3 bedroom homes better priced \$5,995.00 and less. Come see what your money will buy. (Financing available.) Prince Mobile Homes, Highway 43, Muscle Shoals, Ala. Call (205)383-2394.  
F-4-11-c.

INCOME TAX SERVICE BY APPOINTMENT  
Call Sara Comer at 423-5877 or 423-9987.  
J-28-F-4-11-18-25-c.

## INCOME TAX

CHESTER CALLAHAN

1040A Short Form

Across from Roger's LP Gas 802 Hwy. 25 North in Iuka

UPHOLSTERING CENTER  
Quality fabrics to choose from. Free pick-up and delivery, all work guaranteed. Furniture and boats. Wallace E. Anglin, Hwy. 25 South. Call 423-3843.  
A-20-tfn-c.

JUST ARRIVED NEW SHIPMENT OF CARPET - heavy plush reg. \$16.99 now \$7.99 to \$9.99; Carpet selected group of plush now \$4.99; Carpet cutloos and shag now \$3.99; Vinyl reg. \$4.59 now \$2.99 to \$3.99 a yard; Vinyl reg. \$3.99 a yard now \$3.49 a yard; Oriental rugs 9x12 now only \$99.95; Ceiling Fans 36 inches to 52 inches now \$104.95 to \$219.00; Light fixtures 1/2 of suggested retail price; Bath vanities 4 foot with marble top \$119.95; Bath wall cabinets pine, oaks and birch \$19.95 to \$44.95.  
OUTLET HOME SUPPLY Hwy. 72 East Corinth, Ms. 287-7503.

### For Rent

FOR RENT - Flashing Arrow Signs. \$50.00 plus tax. Call 728-5460 or 728-5674 in Booneville.  
M-21-tfn-c.

SMALL CABIN FOR RENT - located downtown Iuka, utilities furnished. Call 427-9015.  
J-7-tfn-chg

HOUSE FOR RENT - 3 Br., located on 365 S. in Burnsville. Call 427-9243.  
J-14-tfn-c.

FOR RENT - Small furnished house. Ideal for working men or couple. Located in Burnsville. Call 427-9243.  
J-14-tfn-c.

FOR RENT - Block house, 4 rooms with bath, on 2 acres of land, 3 miles west of Iuka off Hwy. 72 on Hazard Road. \$150.00 per month.  
J-21-tfn-c.

HOUSE FOR RENT OR LEASE (available some time after the first of the year). Comfortable 3 bedroom home, modern kitchen, excellent condition in Belmont area. Available terms for long term lease. Call 314-839-4786.  
J-21-tfn-c.

### Miscellaneous

WE BUY, SELL AND TRADE knives, repair knives and specialize in custom-made belt buckles. Sonny's Pawn Shop, Inc., Corinth, Miss.  
J-28-tfn-c.

WE BUY OLD COINS, wedding bands, class rings or scrap gold of any kind. Sonny's Pawn Shop, Inc., Corinth, Miss.  
J-28-tfn-c.

—NOTICE—  
All land belonging to Tommy A. Haskins on the Rutledge Salem Road is hereby posted against all trespassing.  
J-28-F-4-11-p.  
Information on ALASKAN and OVERSEAS jobs. \$20,000 to \$50,000 per year possible. Call 602-998-0426. Dept. 4949.  
J-28-F-4-p.

## CALL MATHIS PLUMBING AND ELECTRICAL

For any plumbing and electrical need, no job is too small or big. All work guaranteed. 14 years experience.

423-5577

Keep this number handy. We are not listed in the telephone directory as of yet.

## Dailey's Body Shop and Wrecker Service

BURNSVILLE, MISSISSIPPI

PHONE

Day 427-9234

Night 427-8449

Expert Body Work - 24 Hour Service  
Burnsville

## P. O. BEARD AGENCY SINCE 1964



REALTOR

400 WEST

EASTPORT ST.

ALMOST NEW, 5 room, 3 BR, 1 bath brick in Iuka - \$25,000.

3 BR, 2 bath, brick, H & AC, 2 car carport, Jones Subdivision - \$37,500.

Mobile Home to be moved - Reduced to \$5,500.

New 3 BR, 1 bath, brick on corner lot in Belmont, \$32,500.

Commercial property on choice Highway location. \$150,000 with \$75,000 down, owner financing on balance.

Commercial lot, 80 x 210 - \$16,000 with \$4,000 down, balance 4 years at 12%.

162 Acre farm and timberland tract near Mt. Gilead Church - \$300 / Acre.

100 Acre farm with resort potential, \$50,000 cash.

5 Acres west of Dennis near Natchez Trace, \$5,800.

Lots in Pickwick Lake Corporation Subdivision, \$1,000 to \$2,000 each.

PHONE 423-5253

P.O. Beard - Realtor, Appraiser, Registered Forester  
Nancy Beard - Realtor Associate  
Phone 423-5251

Many Other Listings

Call For Free Information On Buying Or Selling

BASIC PHOTOGRAPHY COURSE. Call Photography by Charles at 423-3359.  
J-28-F-4-c.

INCOME TAX RETURNS - Prepared by convenient appointment from 9 a.m. to 9 p.m. Annice Cutler at the old P.O. Building, Main Street, Tishomingo. Call 438-6601.  
J-14-tfn-c.

HELP WANTED  
Information on ALASKAN AND OVERSEAS employment. Excellent income potential. Call (312) 741-9780 Extention 2022.  
J-14-21-28-F-4-pd

CHILDREN'S DAY - Every Thursday, 10 a.m. - 6 p.m., no appointment necessary. Photography by Charles, 709 Eastport, Iuka. Phone 423-3359.  
A-20-tfn-c.

WANTED TO BUY USED FURNITURE & ANTIQUE FURNITURE  
Also, glassware. We buy just about anything. Cleaning your house or attic out, give us a call. Cappleman's Antiques. Phone 423-9962 - nights, 423-5640 or 423-6836.  
J-12-tfn-c.

WANTED TO BUY - Quality Stamp Books. Sonny's Pawn Shop, Inc., Corinth, Miss.  
J-28-tfn-c.

DILL'S TRADING POST  
Located behind Gulf Station I will trade, buy or sell anything.  
F-4-p.

FREE TO A GOOD HOME - 6 week old puppies. Call 423-6001.  
F-4-c.

CERAMIC & QUARRY TILE WORK - Bathrooms, patios, porches. Also, bathroom remodeling. Work reasonable and guaranteed. Free estimates. Corinth, Miss. Call 286-2560 nights. 15 years experience.  
F-4-11-p.

—NOTICE—  
TO WHOM IT MAY CONCERN  
After this date, February 1, 1982, I will not be responsible for ANY debts, incurred by ANY person, other than myself.  
DAVID M. TUCKIER  
F-4-11-18-p.

STATE OF MISSISSIPPI  
COUNTY OF TISHOMINGO  
NOTICE TO CREDITORS

The undersigned, having been appointed executor of the Last Will and Testament of Hazel Parsons Mercer, deceased, by the Chancery Court of Tishomingo County, Mississippi, in Cause Number 8954 upon the docket of said Court, on the 2nd day of February, 1982, hereby gives notice to all persons having any claim against the estate of Hazel Parsons Mercer to have the same probated and registered by the Clerk of the Chancery Court of Tishomingo County, Mississippi, within ninety (90) days, and failure to probate and register for this period will bar the claim.  
This the 2nd day of February, 1982.

JOE PARSONS,  
EXECUTOR

Richard O. Clark,  
Attorney At Law  
Post Office Box 319  
Iuka, MS. 38852  
(601) 423-5227  
F-4-11-18-c.

### Card of Thanks

The family of Gladys G. (Rowen) Ball would like to thank our many friends, relatives and neighbors for the prayers, food, flowers and many kindnesses shown at the loss of our loved one.

William Ball  
Jim Rowen & Family  
Emma L. Davis & Family  
Pat & Jimmy Litherland

### Words of Appreciation

I would like to thank Segars, Dr. Goyer, the staff of the hospital, Bro. Murphy and all of friends and neighbors who helped me during my stay at the hospital. Our thanks to all who visited me, calls, flowers and cards.

Robert Stockwell & Family

## H&R BLOCK

THE INCOME TAX PEOPLE

ANNOUNCING  
OUR NEW LOCATION

Long-Davis, Realtors  
1415 Hwy. 25 South  
Iuka, MS 38852

Open 9:00 a.m. to 5:00 p.m.

Mon. - Sat. or Call

423-5555 or 423-9137

for an appointment

## MOORE'S BODY SHOP & WRECKER SERVICE

24 Hour Wrecker Service

DAY PHONE 423-5130

NIGHT - WEEKENDS -

HOLIDAYS

423-5244

EXPERT BODY REPAIR

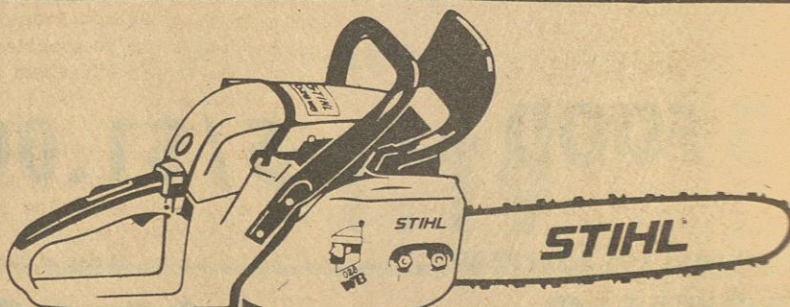


## Gann Brothers Furniture & Appliance

427-9506

WE HAVE TWO FULL TIME SERVICE MEN FOR QUICKER AND MORE EFFICIENT SERVICE

"The Business That Quality And Service Has Built"



THE STIHL 028WB.  
THE PROFESSIONAL SAW FOR HOMEOWNERS.

TAKE ONE HOME.

STIHL

The World's Largest Selling Chain Saw

NELSON  
MARINE & HARDWARE  
HIGHWAY 25 SOUTH IN IUKA 423-6484



## Legal Notice

**RESOLUTION**  
**DECLARING**  
**THE INTENTION OF THE**  
**BOARD OF SUPERVISORS**  
**TISHOMINGO COUNTY,**  
**MISSISSIPPI, TO ISSUE**  
**BONDS OF SAID COUNTY IN**  
**THE MAXIMUM PRINCIPAL**  
**AMOUNT OF ONE HUNDRED**  
**THOUSAND DOLLARS**  
**(\$100,000) TO RAISE MONEY**  
**FOR THE PURPOSE OF**  
**CONSTRUCTING, RECON-**  
**STRUCTING, AND**  
**REPAIRING ROADS, HIGH-**  
**WAYS, AND BRIDGES IN**  
**TISHOMINGO COUNTY, AND DIRECTION**  
**PUBLICATION OF**  
**NOTICE OF SUCH INTEN-**  
**TION.**

WHEREAS, this Board of Supervisors does now find and determine that it has come and is necessary to raise money for the purpose of constructing, reconstructing, and repairing roads, highways, and bridges in Tishomingo County, Mississippi; and

WHEREAS, this Board has made due investigation and now find and determine that the estimated cost of the proposed improvements is One Hundred Thousand Dollars (\$100,000); and

WHEREAS, sufficient funds are not now available in the treasury of said County to provide for the aforesaid expenditures; and

WHEREAS, the Board of Supervisors is authorized by the provisions of §19-9-1, et seq., Mississippi Code of 1972, Annotated, to issue bonds for the aforesaid purpose, provided that such bonds, when added to all bonded indebtedness of said County, shall not exceed Ten Percent (10%) of the assessed valuation of taxable property within said County, according to the last completed assessment for taxation; and

WHEREAS, this Board of Supervisors, having made due investigation, now finds and determines:

That the assessed valuation of taxable property within said County of Tishomingo, appearing on the assessment rolls as established by the last completed assessment for taxation preceding the date of this resolution, is as follows:

Real Estate	\$8,461,300
Personal Property	8,880,694
Motor Vehicles	7,343,102
Public Utilities	2,285,410
Total	26,970,506

That the said County, at this time, has outstanding bonded indebtedness in the amount of Five Hundred Thirty-One Thousand Dollars (\$531,000);

That the amount of bonds now proposed to be issued, when added to the amount of indebtedness outstanding, will not exceed Ten Percent (10%) of the aforesaid assessed valuation; and

WHEREAS, this Board does now further find and determine that it is necessary and in the public interest that bonds of said County be issued as hereinafter set forth:

NOW, THEREFORE, BE IT RESOLVED BY THE BOARD OF SUPERVISORS OF TISHOMINGO COUNTY, MISSISSIPPI, AS FOLLOWS:

SECTION 1. That the Board of Supervisors of Tishomingo County, Mississippi, hereby

declares its intention to issue bonds of said County in the maximum principal amount of One Hundred Thousand Dollars (\$100,000) to raise money for the purpose of constructing, reconstructing, and repairing roads, highways, and bridges in said County.

SECTION 2. That the said bonds in the amount and for the purpose aforesaid shall be issued at a meeting of said Board of Supervisors to be held at 10 o'clock A.M. on Friday, the 12th day of February, 1982, or, at some meeting held subsequent thereto. If Twenty Per Cent (20%), or fifteen Hundred (1,500), whichever is less, of the qualified electors of the County shall file a written protest against the issuance of said bonds, on or before the date aforesaid, then an election on the question of the issuance of said bonds shall be called and held as provided by law. If no such protest be filed, then said bonds shall be issued without an election on the question of the issuance thereof.

SECTION 3. That this resolution shall be published once a week for at least three (3) consecutive weeks in the Tishomingo County News, a newspaper published and of general circulation in Tishomingo County, Mississippi. The first publication of this resolution shall be made not less than twenty-one (21) days prior to the date specified in Section 2 hereof and the last publication shall be made not more than seven (7) days prior to the aforesaid date.

SECTION 4. That the Clerk of this Board shall be and he is hereby directed to procure from the publishers of the aforesaid newspaper the customary Proof of Publication of this resolution and to have the same before this Board at its February 12, 1982, meeting.

Supervisor M.R. Whitehead seconded the motion to adopt the foregoing resolution, and the question being put to a roll-call vote, the result was as follows:

Supervisor Lyonel Wade voted "Aye"; Supervisor Gerald Parsons voted "Aye"; Supervisor A.C. Ryan voted "Aye"; Supervisor M.R. Whitehead voted "Aye"; Supervisor Leon Cook voted "Aye".

The motion having received the affirmative vote of all the members of the Board present, the President declared the motion carried and the resolution adopted, this 13th day of January, 1982.

/s/ LEON COOK,  
 PRESIDENT

/s/ Robert D. Sims,  
 Clerk

J-21-28-F-4-11-c.

Chancery Court

Summons

THE STATE OF MISSISSIPPI

CAUSE NO. 8825

To the defendant, Shirley

McNeil, non-resident of the

State of Mississippi and a

resident of the State of Tennessee having post office address as follows: 4710 Chuck,

Memphis, Tennessee 38118.

You are commanded to appear before the Chancery Court of the County of Tishomingo, in said State, on the 15th day of February, 1982, to defend the suit in said court of Candice H.

Beard, et. al., wherein you are a Defendant.

This the 18th day of January, 1982.

ROBERT D. SIMS, CLERK

BY: Lynn Holt, D.C.

J-21-28-F-4-c.

NOTICE TO CREDITORS

STATE OF MISSISSIPPI

TISHOMINGO COUNTY

CHANCERY COURT

ESTATE OF

HUBERT BONDS,

DECEASED

NO. 8949

NOTICE IS HEREBY GIVEN

to all persons holding claims

against the Estate of Hubert

Bonds, deceased, that Letters

of Administration were granted

to the undersigned Sally Annie (Holt) Rye and

Frances (Rye) Jaudon as Co-

Administratrixes of said

Estate by the Chancery Court

of said County, on the 19th

day of January, 1982, and all

persons holding claims

against said Estate are

hereby notified to have same

probated and registered, ac-

cording to law, by the Chan-

cery Clerk, within 90 DAYS

from the date of this Notice,

otherwise such claim or

claims, not so probated, will

be forever barred.

This the 18th day of

January, A.D. 1982.

Sally Annie (Holt) Rye,

Co-Administratrix

Frances (Rye) Jaudon,

Co-Administratrix

J-21-28-F-4-11-c.

NOTICE TO CREDITORS

Letters Testamentary

having been granted on the

22nd day of January, 1982, by

the Chancery Court of

Tishomingo County,

Mississippi, to the under-

signed upon the estate of

Tressie Ellen McKee,

deceased, notice is hereby

given to all persons having

claims against said estate to

present the same to the Clerk

of said Court for probate and

registration, according to law,

within ninety (90) days from

this date, or they will be

forever barred.

This 22nd day of January,

1982.

Marlene M. Pate, Alsop,

Executrix

J-28-F-4-11-c.

CHANCERY COURT

SUMMONS FOR

PUBLICATION

THE STATE OF

MISSISSIPPI

CAUSE NO. 8941

TO: GARLAND W.

BEAUCHAMP, who is an

adult non-resident citizen of

the State of Mississippi,

whose last known post office

and street address was P. O.

Box 164, IRVINGTON, KEN-

TUCKY.

YOU are commanded to

appear before the Chancery

Court of the County of

Tishomingo, in said State, on

the 15th day of February,

1982, at 10:00 o'clock A.M. to

defend the suit in said Court

of Complaint For Divorce in

Cause No. 8941, wherein you

are a Defendant.

This the 8 day of January,

1982.

Robert D. Sims

Chancery Clerk

J-14-21-28-F-4-chg

STATE OF MISSISSIPPI

COUNTY OF TISHOMINGO

NOTICE TO CREDITORS

The undersigned, having

been appointed executrix of

the Last Will and Testament

and Codicils of Peter Joseph

Propsom, deceased, by the

Chancery Court of

Tishomingo County,

Mississippi, in Cause Number

8953 upon the docket of said

Court, on the 29th day of

January, 1982, hereby gives

notice to all persons having

any claim against the estate

of Peter Joseph Propsom to

have the same probated and

registered by the Clerk of the

Chancery Court of

Tishomingo County,

Mississippi, within ninety (90)

days, and failure to probate

and register for this period

will bar the claim.

This the 29 day of January,

1982.

BARBARA MCKAY PROPSOM,

EXECUTRIX

F-4-11-18-c.

## Legal Notice

IN THE CHANCERY COURT  
 TISHOMINGO COUNTY,  
 IUKA, MISSISSIPPI 38852  
 DOROTHY UNDERWOOD, Plaintiff  
 DOROTHY UNDERWOOD,  
 PLAINTIFF  
 RANDALL LEE UNDERWOOD,  
 DEFENDANT

Case No. 8952

SUMMONS

(Service by Publication:

Residence Unknown)

TO: RANDALL LEE UN-

DERWOOD, whose last

known address was Route 2,

Box 874, Iuka, MS 38852; but

whose present residence and

address is unknown. You

have been made Defendant in

the lawsuit filed in this Court

by Dorothy Underwood,

Plaintiff, whose address is

Route 2, Box 874, Iuka, MS

38852.

The Complaint filed against

you has initiated a civil action

alleging habitual cruel and

inhuman treatment and

seeking a divorce.

You are required to mail or

hand deliver a copy of a writ-

ten Answer either admitting

or denying each allegation to

the Complaint to Joe Ray

Langston, Plaintiff's Attor-

ney, whose address is P.O.

Box 748, Booneville, MS

38829.

YOUR ANSWER MUST BE

MAILED OR DELIVERED NOT

LATER THAN THIRTY DAYS

AFTER THE 18TH DAY OF

FEBRUARY, 1982, WHICH IS

THE DATE OF THE LAST

PUBLICATION OF THIS

SUMMONS. IF YOUR AN-

SWER IS NOT SO MAILED

OR DELIVERED, A

JUDGMENT BY DEFAULT

MAY BE ENTERED AGAINST

YOU FOR THE MONEY OR

OTHER RELIEF DEMANDED

IN THE COMPLAINT.

You must also file the

original of your Answer with

the Clerk of this Court within

a reasonable time afterward.

ROBERT D. SIMS,

CLERK OF COURT

Dated: January 27, 1982

F-4-11-18-c.

## TRUSTEE'S

## NOTICE OF SALE

WHEREAS, on August 21, 1979, Joe J. Warren executed and delivered a deed of trust to William L. Sharp, Trustee for the use and benefit of Bank of Mississippi of Tupelo, Mississippi, which deed of trust is recorded in Trust Deed Book 92, pages 342-343 in the office of the Chancery Clerk of Tishomingo County, Mississippi, reference to which is hereby made; and

WHEREAS, default has been made in the payment of the indebtedness secured by said deed of trust and the said Bank of Mississippi of Tupelo, Mississippi, being the owner and holder of the indebtedness secured by said deed of trust, having requested the undersigned Trustee so to do, I will on the 25th day of February, 1982, offer for sale and will sell during legal hours (11:00 A.M. to 4:00 P.M.) at the East door of the Courthouse of Tishomingo County, at Iuka, Mississippi, to the highest bidder for cash at public outcry the following described property.

Beginning at the northeast corner of the Northwest Quarter of Section 26, Township 4 South, Range 9 East, Tishomingo County, Mississippi, for the true point of beginning; thence run south 68°15' to the north 83° degrees West 557.2 feet along said north right-of-way of said road; thence run South 7° degrees West 250 feet; thence run South 83° degrees East 420 feet; thence run North 7° degrees East 210 feet to the south right-of-way of above mentioned public gravel road; thence run South 83° degrees East 142 feet to the east boundary line of the above mentioned Northwest

## KEROSENE HEATERS

9,000 BTU

Regular \$249.00 - Now on

Sale \$165.00. Bozy's Sewing

- Vac Repairs, Hwy. 25 North.

J-28-F-4-11-p.

Quarter; thence run South 599.15 feet; thence run West 2,640 feet; thence run north 1,320 feet; thence run East 2,640 feet to the point of beginning, containing 78 acres, more or less.

Title to the above property is believed to be good, but I will convey only such title as is vested in me as Trustee.

SIGNED AND POSTED this

4th day of February, 1982.

WILLIAM L. SHARP,

TRUSTEE

F-4-11-18-c.

## Card of Thanks

I would like to thank the Iuka Lions Club for the beautiful gifts I received at Christmas. It was very touching to be remembered during Christmas.

Sincerely,

Susie Waddle

Baby goats are able to climb mountains a few hours after being born.

Robert F. Grisham  
Certified Public Accountant

Would like to announce the opening of his office at 109 Front Street, Iuka.

The office will be open on Mondays, Wednesdays, Fridays, and Saturdays from 9 to 5 during the month of February. For professional assistance in preparation of your 1981 income tax returns, call for an appointment at 423-9001 or come by during office hours.

## HEALTH

Does your health insurance plan help protect against large medical expenses from long term illness?



# Get a \$2000 tax deduction every year and retire like a millionaire.

How your IRA Tax Shelter can grow into a small fortune (or a big one).

Start at this age and contribute the maximum each year until you're 65.	An individual contributing \$2,000 a year could have this amount by age 65.	A couple with one spouse working contributing \$2,250 a year could have this amount by age 65.	A working couple contributing \$4,000 a year could have this amount by age 65.
Age 25	\$1,718,284	\$1,933,070	\$3,436,568
Age 30	\$ 966,926	\$1,087,791	\$1,933,852
Age 35	\$ 540,585	\$ 608,158	\$1,081,170
Age 40	\$ 298,667	\$ 336,001	\$ 597,334
Age 45	\$ 161,397	\$ 181,572	\$ 322,794
Age 50	\$ 83,506	\$ 93,944	\$ 167,012
Age 55	\$ 39,309	\$ 44,222	\$ 78,618
Age 60	\$ 14,230	\$ 16,009	\$ 28,460

Amounts are based on an average of 12% simple interest annually with deposits made on January 1 of each year. This chart is not meant to be a statement of actual interest rates available or guaranteed end financial results.

All you do is stash away up to \$2,000 a year in a First Bank IRA Tax Shelter account.

You can deduct every penny of that money from your Federal income taxes. In a 50% tax bracket, that could save you \$1,000 a year on taxes; \$600 in a 30% bracket. And you'll earn high interest so by the time you retire, you'll have accumulated quite a nest egg.

In fact, if you start putting in \$2,000 a year when you're 29 and you earn an average of 12% a year interest, you'll have somewhere around a million when you retire at 65. For a working couple, it could be two million.

## Almost everybody's eligible for an IRA Tax Shelter.

Thanks to recent changes in federal laws, you can now get an IRA Tax Shelter no matter what other retirement or profit-sharing plans you may have where you work. The only requirement is that you earn the money you contribute to an IRA.

If you and your spouse both work, you can put in up to \$4,000 a year from your joint income. For couples with one spouse working, it's \$2,250. And for individuals, it's \$2,000.

## Even contribute monthly at First Bank.

You can put your money in a 1982 IRA Tax Shelter in one lump sum any time between January 4, 1982, and April 15, 1983. But, of course, the sooner you put your money in, the sooner you start earning the high interest.

Or at First Bank, you can put in a little every month. If you start in January, you only need to contribute \$166 a month for the maximum tax deduction by the end of the year. For working couples, it's \$333 per month. And for couples with one spouse working, it's \$187.

To make it more convenient, we can automatically withdraw your monthly payment from your First Bank checking account.

## Start now for high interest all year.

With the First Bank IRA Tax Shelter, you always earn a competitive interest rate, because the rate is tied to the rate for Money Market CD's, and it will vary quarterly. When interest rates soar—like they did this year—your rate does too. And vice versa. But

no matter what happens, you're assured of earning money market rates. And over the long haul, the tax benefits make it your best investment.

You can begin withdrawing your IRA Tax Shelter money when you're age 59½, and you must start by age 70½. Then you'll pay taxes on the amount you withdraw, but when you retire you'll probably pay taxes at a lesser rate. There is a substantial penalty for withdrawal before age 59½.

Your IRA Tax Shelter money is completely safe because it's invested in 18-month Savings Certificates and it's insured up to \$100,000 by the F.D.I.C.

If you want to cut your taxes. If you want to make sure your retirement is secure. Or if you'd just like to become a millionaire, our IRA Tax Shelter is for you. Call or visit any First Bank location.



Member F.D.I.C.





**Tishomingo Beta Club Members**

Shown above are the new and old members of the Tishomingo High School Beta Club: Janice Bolton, Tam Bolton, Jackie Pugh,

Cheryl Kennedy, Carol Holman, Dana Edmondson, Gail Southward, Cindy Clay, Tim Bridges, Lisa Frederick, Lisa Southward, Patricia Balentine, Mechelle Rast, Anita Tucker, Tom Blivins,

Mechelle Southward, Sharon Page, Mechelle South, Harold Woodruff, Bryan Southward, Loyd Whitehead, Brad Jeffries, Marcia Luttrell, Loretta Ables, Terry Bradford, John

Nunley, Kim Gray, Lori McAnally, Jackie Mann, Leigh Southward, Karen Moore, and Sponsor Mrs. Ruth Dawson.

**20th Century Club Met At Library**

The GFWC 20th Century Club met at the Iuka Public Library on January 28, 1982, with Sue McBee as hostess. President Myra Rainey called the meeting to order. Sue McBee gave out a quiz "How Much Do You Know About Your Heart?" Members answered the quiz and discussed their answers. The roll was called. The treasurer's report was given. Sue McBee and Edna Earl Tapp gave a report of the

Scoliosis Screening. 54 students were examined. Six needed further examination for possible problems. Sue McBee made a motion to have Scoliosis Screening every year. Willadean Thorne seconded the motion and it was passed unanimously.

The MFWC District 3 Convention will meet March 27, at Blue Mountain College at the Student Center. The Iuka Club is responsible for table favors. Evelyn Nixon was appointed chairman of the committee to plan for those.

Nancy Daugherty, International Hospitality Program Leader, had as her guest

speaker Mary Maxwell. She gave an entertaining talk on how she came to America from Belfast, Northern Ireland in 1946, and of her recent visit there.

The hostess served delicious refreshments. Jewell Kitchens won the white elephant.

Members attending, other than those mentioned above, were: Margaret King, Arrabelle Jourdan, Martha Lee Bauer, Nancy Beard, Teresa South, and Joy Kitchens.

Ricky Patterson, Zane Pounds.

A Average: Rebecca Creel, Dianne Deaton, Mark Irvin, Missy Kennedy, Wendy Lowry, Melody Ozbirn, Peggy Padgett, Arthur Parham, Brenda Searcy, Susan Taylor, Lisa Thorn, Teresa Thorn, Bill Tidwell.

B Average: Deborah Armstrong, Brent Bolding, Mitzi Coke, Stephanie Cross, Jennifer Epps, Toni Ginn, Allen Howard, Steven Pounders, Jeff Sartain, Randy Solomon, Vicky Sparks, Todd Witt.

**FRESHMEN**

Principal's List: Donna Credille, Jeffrey Creclle, Glenda Timbs.

A Average: Zane Ford, Cammy Ginn, Christina Henley, Odie Hughes, Angie Payne, Tandy Wilcutt.

B Average: David Credille, Tabitha Eaton, Denise Ginn, Rhonda Loveless, Carol Parrish, Bobby Payne, Janie Poole, Sherry Slayton.

**GRADE 8**

Principal's List: Ritchie Ables, Larena Crum, Connie Ginn, Sonya Ginn, Tracy Holley, Jennifer Horn, Tammy Pardue, Amy Sparks, Tracy Thrasher, Kathie Wells, Kristi Wright.

A Average: Rodney Bates, Paul Boyd, Debra Carter, Terry Evans, Scotty Gasaway, Tim Gray, Lana Millstead, Angie Quillen, Elizabeth Timbs, Andy Williams, Penny Winstead, Jeff Young.

B Average: Janet Clayton, Lynn Collum, Melody Murphy, Tammy Rhodes, Lavonia Rouse, Helen Wallace.

**GRADE 7**

Principal's List: Michelle Armstrong, Rachel Boyd, Brent Conwill, Melody Crane, Randy Credille, Tammy Floyd, Lori Hughes, Mark Nichols, Renee Nunley, Trisha Patterson.

A Average: Karla Alexander, Deanne Armstrong, Michelle Graham, Marty Hall, Lauren McCreary, Mike Moore, Carla Moxley, Carol Pitt, Mike Pounders, Donnie Rogers, Tony Timms.

B Average: Joey Anderson, Rocky Bishop, Melissa Boyd, David Griffin, Maria Hargett, John Henley, Ricky Hopkins, Julia McKee, Steven McKinney, Ginger Segars, Joey Witt.

**Travel-Study Tour Plans Announced**

Final plans for the annual travel-study tour of the British Isles and nine other European countries have been announced by Northeast Junior College.

Departing from Memphis, May 17, the group will travel to England, Scotland, Wales and European countries including Greece, Italy, Austria, Liechtenstein, Switzerland, Germany, Holland, Belgium and France, before they return to the States June 13.

Highlights of the British tour will be Stonehenge, Stratford, Chester, York, Edinburgh, Cambridge, as well as points of interest in London. The 19-day tour of Continental Europe will include the Olympia area in Greece, Pompeii, Capri, Rome, Lucerne, Venice, Frankfurt, Amsterdam and other places.

Tour participants have the option of receiving six hours of college credit for English Literature 2323 - 2333; World Literature 2423 - 2433; or, History 1113 - 1123 (Western Civilization).

For further information, contact Mrs. Mary Robinson at 728-7751, ext. 267 or 728-4415.

**Honor Roll Belmont High**

Third Six Weeks 1981-82

**SENIORS**

Principal's List: Jill Byram, Shari (Sparks) Crum, Cindy Hopkins, Tammy Ivey, Denise Malone, Janie Padgett, Keith Parrish, Reggie Roberts, Trisha Rowland, Wayne Stanfield, Tracy Tidwell, Nancy Waddle, Donna Wiltshire, Edie Woods.

A Average: Nick Alexander, Doug Bennett, Dan Fowler, Robynn Ginn, Paul Gray, Wendell Grubbs, Rocky Hughes, Phyllis James, Mike Montgomery, Teresa Page, Jimmy Pannell, Angie Pounders, Phillip Searcy, Gidget Stephens, Dawn Styles, Terri Yarber.

B Average: Jacqueline Bolton, Joy Carr, Lori Harbin, Lisa Henry, Bill McDonald, Sharon Poole, Rhonda Sparks, Ted Sparks.

**JUNIORS**

Principal's List: Angie Armstrong, Terri Armstrong, Andrea Gray, Cindy Harrison, Jeffery James, Harold Leathers, Keith Lindley, Lisa McKinney, Alicia Ozbirn, Matthew Payne, Jeffery Sparks, Gina Wilemon.

A Average: Danny Ginn, Tony Grubbs, Debbie Hale, Lisa Hopkins, Tony Hopkins, Jon Horn, Darrel Hutcheson, David Paden, Karen Robinson, Barbara Wooten, Yvonne Wooten.

B Average: Suzan Bruton, Michelle Culp, Cindy Lovette, Frances Mitchell, Karen Oswald, Cheryl Owens, Tammy Pharr, Don Rouse, Shelia Stephens, Mark Tidwell.

**SOPHOMORES**

Principal's List: Alesia Lawhorn, Greta Montgomery,

You are cordially invited to the

**Countrywood Bridal Fair**

February 20

1:00 p.m. Holiday Inn of Corinth

Exhibitor Booths Open To Public at 11:00 A.M.

Sponsored by Corinth Garden Club

Countrywood Bridals by Cheryl

Ticket order form: (Please Print)

Countrywood Bridal Fair February 20, 1982 1:00 p.m. Holiday Inn of Corinth \$2.00 each

Name \_\_\_\_\_

Address \_\_\_\_\_

City \_\_\_\_\_ State \_\_\_\_\_ Zip \_\_\_\_\_

Send to: Countrywood Bridals by Cheryl 804 Taylor, Corinth, MS 38834

**Fruit Trees** 5 to 6 Ft.

Apple - Peach - Pear - Plum - Fig - Nectarine

**\$3.49 EACH — 7 for \$19.95**

**Dormant Fruit Tree Spray**

Now is the time to spray your trees!

**Pecan Tree Food - Fruit Tree Fertilizer**

<b>New Bulk Garden Seed</b>	<b>Peat Moss</b>
-----------------------------	------------------

**Shade Trees, Shrubs, Azaleas**

White & Brown 50 lb. bags Close Out **\$1.19**

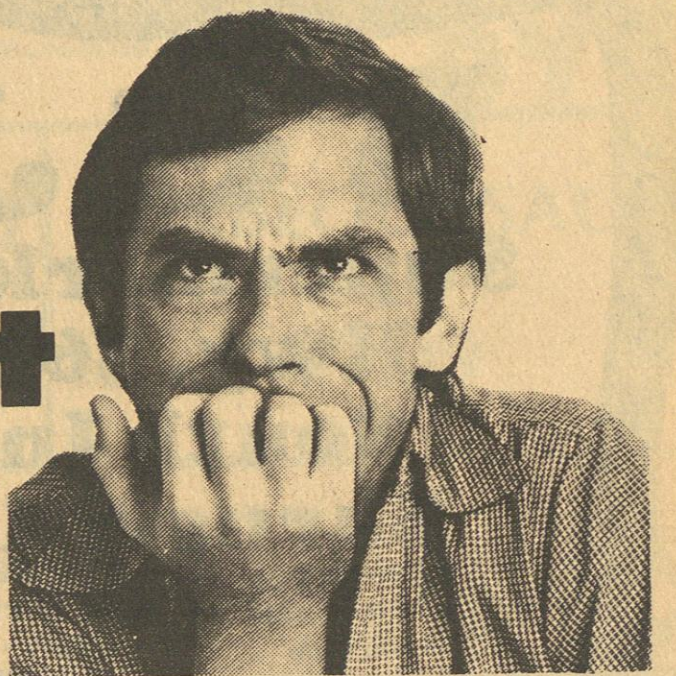
**Landscape Rocks**

---

**McBride's** Garden Center and Greenhouses

Hwy. 25 North in Iuka 423-5451

# High Interest Rates



**16% - 18%**

**Got You Down?**

**Not At Town & Country Furniture Company**

**\* 12 Months Free Financing**

**9 Days Only - Feb. 4th - 13th**

**Make your selection today and pay no interest for One Full Year!**

**Winners of Prizes Last Month**

Wendell Anglin	Color TV
Harold Booth	Lane Chest
Sandy Gaine	Tell City Rocker

**Town & Country Furniture Company**

Highway 25 South and Downtown Iuka



# B & J

## Supermarket

Hwy. 365  
South In

### Burnsville

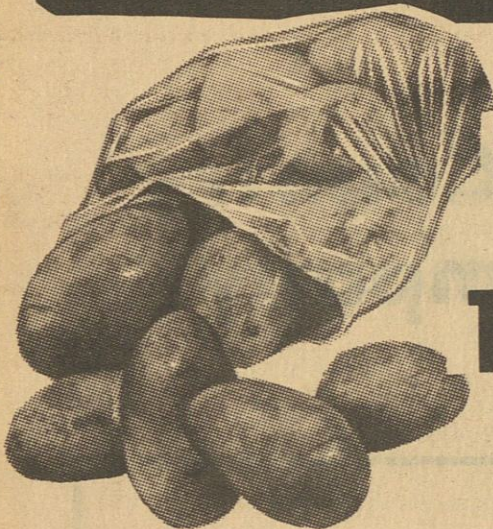
We reserve the  
right to limit  
quantities  
We give quality  
stamps

Store Hours:  
Sun. thru Thurs  
8:30 - 8:30  
Fri. & Sat.  
8:30 - 9:00

We Slice, Cut, and Freezer Wrap Meat for the Public

AD EXPIRES MON. FEB. 8TH NEW AD BEGINS TUESDAY

# PRODUCE



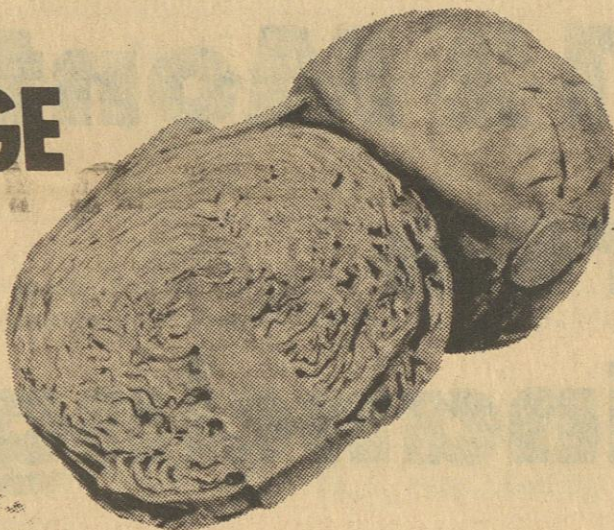
U.S. NO. 1 RED

## POTATOES

10 LB. BAG \$1.19

FRESH GREEN  
**CABBAGE**

LB. 29¢



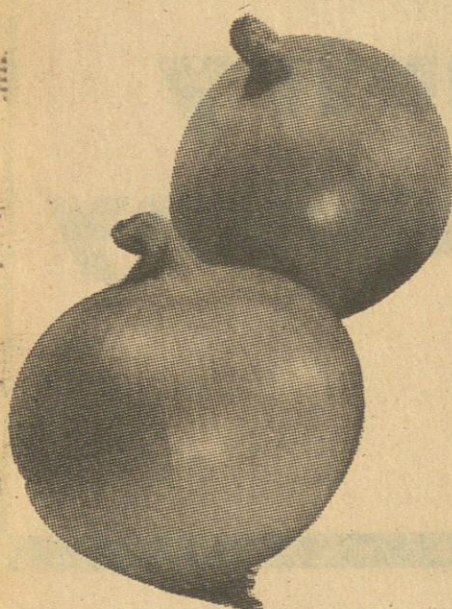
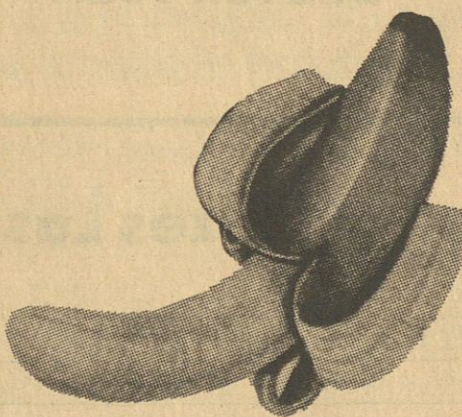
CELLO

## CARROTS

1 LB. PKGS. 2/79¢

## BANANAS

3 LB. \$1.00



YELLOW

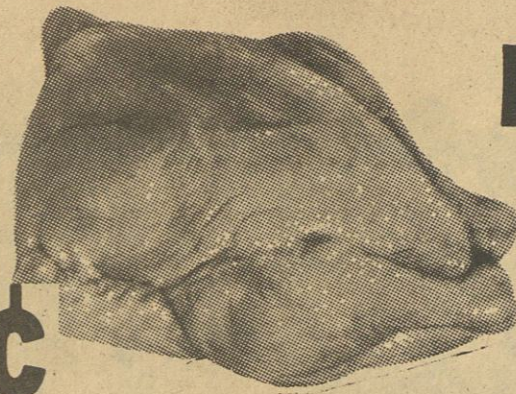
## ONIONS

3 LB. BAG 89¢

MARCHAL DURBIN

## FRYERS

WHOLE 49¢ LB. CUT UP 59¢ LB.



SMOKY HOLLOW SMOKED

## SAUSAGE LINKS



12 OZ. \$1.39

BRYAN

## WIENERS

12 OZ.

99¢



NU-KRISS

## BACON

1 LB.

89¢



U.S.D.A. CHOICE

## T-BONE STEAK

LB.

\$2.19

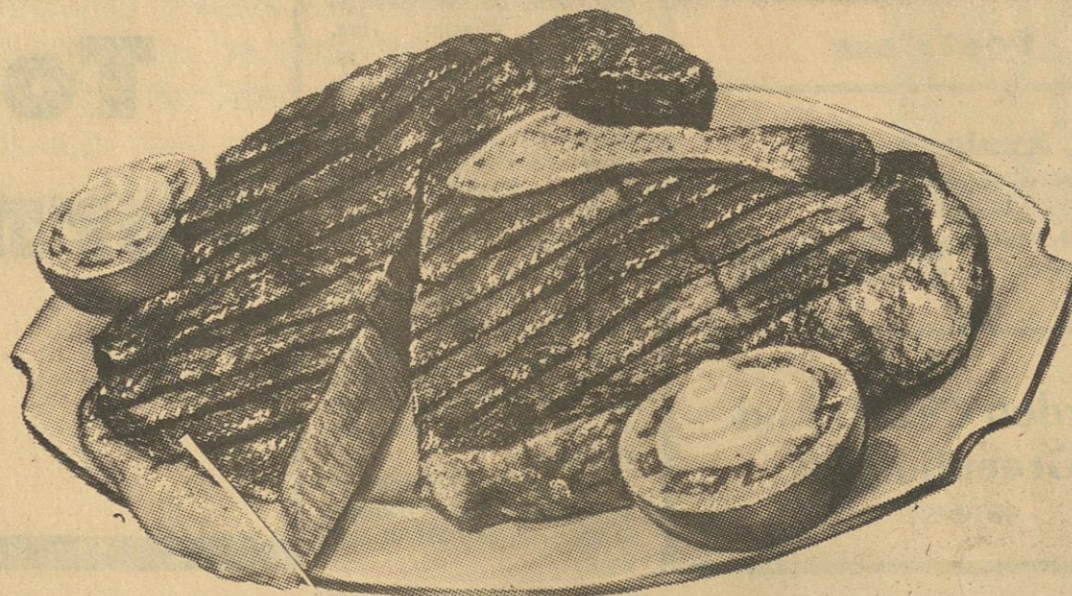


U.S.D.A. CHOICE

## SIRLOIN STEAKS

LB.

\$1.99



BRYAN

## BOLOGNA

12 OZ. VAC. PACK

\$1.19



BRYAN CHUCK

## BOLOGNA

BY THE PIECE

LB.

\$1.29



LAND-O-FROST TURKEY

## HAM NUGGETS

LB.

\$1.89

POND RAISED

## CATFISH STEAKS

LB.

\$1.99

BRYAN

## SAUSAGE

HOT OR MILD

1 LB.

\$1.49





**B & J****Supermarket**  
**Hwy. 365**  
**South In**  
**Burnsville**

AD EXPIRES JAN 5TH 1982

**CRACKERS**

SALTED OR UNSALTED

1 LB.

**69¢**

NABISCO HEY DAY

**COOKIES****\$1.29**

SUPER PREMIUM LADY BORDEN

**ICE CREAM**

1/2 GAL.

**\$2.49**

SWEETHEART PINK

**DISH LIQUID**

22 OZ.

**49¢**

CAMPBELL'S

**PORK & BEANS**

16 OZ.

**2/79¢**

SWIFT

**SNACK LINKS**

5 OZ.

**2/99¢**

SWISS MISS

**COCOA**

8 OZ.

**\$1.49**

HYDE PARK

**TOMATO JUICE**

46 OZ. CANS

**79¢**

CAMPBELL'S CHICKEN NOODLE

**SOUP**

10 3/4 OZ.

**3/99¢****FAB**

LAUNDRY DETERGENT



49 OZ. BOX

**\$1.79**

HYDE PARK

**PIZZAS****79¢**

BUSH'S

**HOMINY**

15 OZ. CANS

**3/79¢**

KRAFT STRAWBERRY

**PRESERVES**

18 OZ.

**79¢**

SHOWBOAT DRY

**BLACKEYE PEAS**

15 OZ.

**4/\$1.00**

TOP'S

**DOG FOOD**

25 LB. BAG

**\$3.29****BLUE BONNET**

4-STICK 16 OZ.

**49¢**

(LIMIT 1 WITH \$15.00 PURCHASE)

MARTHA WHITE SELF-RISING

**FLOUR**

5 LB. BAG

**49¢**

HUNT'S HALVES OR

**PEACH SLICES**

15 OZ. CANS

**2/99¢**

LUXURY

**SPAGHETTI**

12 OZ.

**2/99¢**

DOUBLE LUCK CUT

**GREEN BEANS**

16 OZ.

**3/89¢**

HYDE PARK TWIN

**PIE SHELLS**

2 CT. PKG.

**49¢**

PEPPERIDGE FARM

**CAKES**

PINEAPPLE &amp; STRAWBERRY EXCLUDED

**\$1.49****PUREX**

LIQUID BLEACH

GALLON SIZE

**79¢**

COKE, PEPSI OR YOUR FAVORITE CHOICE

**DRINKS**

2 LITER

**\$1.09**

AUNT JEMIMA ORIGINAL OR BLUEBERRY

**WAFFLES**

10 OZ.

**69¢**

EAST TEXAS OR ALLEN

**GREEN LIMAS**

15 OZ.

**3/99¢**

PANCHO VILLA

**TACO SHELLS**

10 CT. BOX

**2/\$1.00**

NEW GLAD HANDLE-TIE

**KITCHEN BAGS**

10 CT.

**79¢**

WESPAC CRINKLE CUT

**POTATOES**

2 LB.

**79¢**

BUSH GREAT

**NORTHERN BEANS**

15 OZ.

**3/89¢**

KELLY'S

**POTTED MEAT****4/\$1.00**

BUSH'S

**KIDNEY BEANS****3/99¢**

KOZY KITTEN

**CATFOOD**

22 OZ. BOXES

**59¢**

KRAFT LO-CAL

**GRAPE JELLY**

8 1/2 OZ. JAR

**69¢**

TWIN PET

**DOGFOOD**

3 FLAVORS

15 1/2 OZ.

**5 / \$1.00**

MARTHA WHITE SELF-RISING

**MEAL**

5 LB. BAG

**99¢**

HYDE PARK

**GRAPEFRUIT JUICE**

46 OZ.

**79¢**

HUNT'S

**MANWICH SAUCE**

LARGE 27 1/2 OZ. CAN

**\$1.39**

HUNT'S

**TOMATO SAUCE**

LARGE 15 OZ. CAN

**2/99¢**

KRAFT

QUART JAR

**MAYONNAISE****\$1.39**

PILLSBURY

**BUTTER & BISCUITS**

7 1/2 OZ.

**5/\$1.00**

MARTHA WHITE

**SPUD FLAKES OR BIX MIX**

INDIVIDUAL POUCH

**4/\$1.00**

BRYAN

**TAMALIES**

15 OZ. CANS

**59¢**

NEW DONUTZ

**CEREAL**

12 OZ.

**\$1.29**

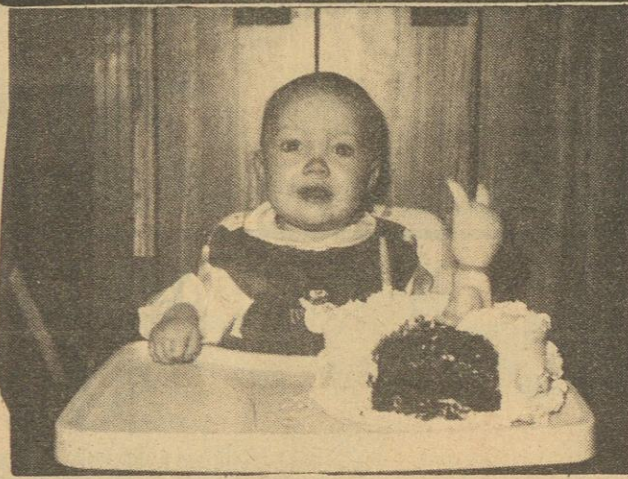




**DECA MAKES PLANS**  
Renee Stormont (right), DECA Secretary; and Pam Marlar (left), DECA Reporter are busy

making plans for National DECA Week, February 8-13. Some of the events planned for the week are: An Appreciation Day for IHS

teachers and a speaker from Northeast Junior College, who will speak to the DECA students on Tuesday, February 9, on DECA.



**1st Birthday Celebration**  
Misty Hall celebrated her first birthday January 3, 1982. Misty is the daughter of Mr. and Mrs. Larry Dean Hall. She is the granddaughter of

Evelyn Parsons and the late Webster Parsons, of Iuka; and Mr. and Mrs. Lewis Hall, of Burnsville. Misty's great-grandmother is Mrs. Carrie Hall, of Burnsville.

### Singing At Mt. Joy

"The Encouragers", a gospel singing group from Florence, Ala., will be featured at the regular monthly singing at Mt. Joy Baptist Church, Saturday night, February 6th. The good ole Southern gospel singing will begin at 7:00 p.m., and everyone is welcome to attend.

### Holy Ghost Revival

A Holy Ghost anointed service, with Bro. R.W. Moore, from Savannah, Tenn., will be held Thursday, Friday and Saturday, February 4, 5 and 6, at 7:00 nightly at the Amazing Grace Tabernacle. The church is located on Hwy. 25 North of Iuka next to Four Star Building Supply.

### DECA Candy Sale Begins

The Iuka High School DECA Chapter members will be selling candy bars the week of February 8-13. They will be selling two kinds of bars, Nestle Milk Chocolate with almonds, and Nestle Crunch with crisped rice.

We ask that you help to support the DECA Club by buying a candy bar. You may contact any DECA member or call Mrs. Jernigan, Sponsor, at 423-9325.

### Promoted To Assistant Vice-President

Elizabeth A. Reynolds has been promoted to Assistant Vice-President of Valley Federal Savings and Loan Association of Alabama. She has previously served as head teller and branch manager. Mrs. Reynolds has received the Certificate of Achievement from the U.S. Savings and Loan Legion. She and her husband, George, live in Sheffield, Ala. Elizabeth is the daughter of Mr. and Mrs. A.V. Ables, of Iuka.

### Singing At Rowland Mills

The regular monthly singing will be at Rowland Mills Church Friday night,

February 5, beginning at 7:00 p.m. The featured singers will be The Commanders, of Walnut, Miss.

### Paden O.E.S. To Meet

The Paden Chapter No. 351 O.E.S. will have their regular monthly meeting on Friday night, February 5th. On Saturday night, February 6, there will be an initiation at 7:00 p.m.

### Gospel Singing

Grissom Chapel will host a gospel singing on Friday night, February 12, beginning at 7:00. The Jenkins Family, of Belmont, will be the featured singers.

Bro. Rex A. McGee and the congregation welcome everyone to attend.

Grissom Chapel is located 5 miles north of Burnsville off Hwy. 365.

### On Exhibit At Iuka Library

Larry Fiske, local artist, has on exhibit in the Iuka Public Library, a beautiful "Water-

color Paintings" display. Also on exhibit is an "Egg Craft" display, which Larry has created from an Ostrich egg and an Emu egg. These exhibits will be in the library from February 1st thru 13th. The public is invited to come by and see Larry's extraordinary talent.

### ACT Preparation Workshop Slated

The Northeast Mississippi Junior College Counseling Center will conduct a workshop on preparation for the ACT Assessment Saturday morning, February 6, from 8:30 until 11:30 a.m. in Patterson Hall on the Northeast Campus. Those students who will be taking the American College Test (ACT) should plan to attend the free workshop. Test format and means to prepare for the ACT will be discussed.

For additional information, interested students should see their high school counselor or contact Donnie Sweeney on the Northeast campus by calling 728-7751 or toll free 1-728-7759, ext. 311.

One pound of uncooked meat will make about two cups of ground meat.

### Suezett's Florist

Hwy. 30 East

would like to take this opportunity to say that the florist is now under the management of a previous operator, Sue Pool, owner, and Jeffie Clark, operator. Welcome to their previous customers as well as the new ones. Come by and see us.

Call day or night  
438-6400 or 438-6637

### BACK PAIN



DR. SANCHEZ

There can be many reasons for back pain. Most often the cause is muscular, slipped disc, pinched nerves, arthritis, or displaced spinal vertebrae. Proper examination to determine the cause of back pain is essential so the right treatment can be administered for the patient's recovery. If back pain is a way of life for you, consult us. We specialize in examination and treatment of these problem cases.

CALL 423-9315  
**SANCHEZ**  
**CHIROPRACTIC CENTER**

Hwy. 25 North

Iuka

### Legal Notice

#### SUBSTITUTED TRUSTEE'S NOTICE OF SALE

WHEREAS, on January 15, 1981, a Land Deed of Trust was executed by Ollie R. Collier and Dorothy M. Collier to Frank A. Riley, Trustee for Bank of Mississippi, which Deed of Trust is recorded in Record Volume 100 at pages 2-5 in the Office of the Chancery Clerk of Tishomingo County, Mississippi; and

WHEREAS, which Deed of Trust and indebtedness secured thereby was assigned to Mississippi Housing Finance Corporation by instrument dated January 16, 1981, and recorded in Book B-103, at page 387 in the Office of the Chancery Clerk of Tishomingo County, Mississippi; and

WHEREAS, James L. Weir was appointed Substituted Trustee by instrument dated January 27, 1982, and recorded in Book B-105 at page 470-471 in the office of the

Tishomingo County, Mississippi; and

WHEREAS, default having been made in the payment of the indebtedness secured by said Deed of Trust and the holder of the Note and Deed of Trust having requested the undersigned Substitute Trustee to do so, I will on the 28th day of February, 1982 offer for sale at public outcry and sell during legal hours, between the hours of 11:00 o'clock a.m., and 4:00 o'clock p.m., at the East Front Door of the County Courthouse in Iuka, Tishomingo County, Mississippi, for cash to the highest and best bidder, the following described property and land lying and being situated in Tishomingo County, Mississippi, being more particularly described as follows - to-wit:

Part of the Southeast Quarter of Section 34, Township 3, Range 11 East, and commence at the Northeast corner of the lot conveyed to Hilman

Smith on the South way of U.S. Highway 15 and thence run North 15 degrees 15 minutes along the South right-of-way of said highway a distance of 100.0 feet to the beginning; thence run 0 degrees 30 minutes distance of 110.0 feet South right-of-way of Highway No. 72; thence South 80 degrees 15 minutes East a distance of 200.0 feet; thence run 0 degrees 30 minutes distance of 110.0 feet South right-of-way of Highway No. 72; thence West along the South right-of-way of said highway a distance of 200.0 feet point of beginning, containing 0.50 acre.

I will convey only as is vested in me as substitute Trustee.

WITNESS MY SIGNATURE this the 30th day of January, 1982.

JAMES L. WEIR  
SUBSTITUTED TRUSTEE  
F-4-11-18-25-c.

## The Second Shoppe's Final Winter Clearance Sale

Sale starts Thursday, Feb. 4th  
Many items up to 75% off!

ENTIRE STOCK OF CREW NECK & V NECK

### Sweaters

ALL 1ST QUALITY  
SIZES SMALL, MED. & LARGE

**\$5.00 EACH**

### Blazers & Skirts

ALL 1ST. QUALITY PRICED TO \$59.95

**60% off**

LADIES CORDUROY

### Pants & Jeans

PRICED TO \$22.95 ALL 1ST. QUALITY

**\$6.00**

LADIES

### Levi, Lee, & Chic Jeans

ALL 1ST. QUALITY

**\$17.95**

LADIES

### Clavin Klein Jeans

**\$24.95**

We do monogramming on sweaters, shirts, and blouses. New heat seal method. No waiting. We will monogram your own garment. \$2.50 for sweaters 3 letters. \$1.50 for shirts 3 letters. 50¢ extra if you bring your own.

611 Elm Shopping Center

Iuka, Miss.

## IUKA SCHOOL SYSTEM CALENDAR OF EVENTS

Sunday	Monday	Tuesday	Wednesday	Thursday	Friday	Saturday
	1 Iuka at Waterloo Athletic Boosters 7:00	2 Tishomingo at Iuka	3	4	5	Iuka Girls vs Ripley at NE
7	8 Board of Trustees 7:00 Band Auxiliary- 7:11	9 DECA	10 CLUB Iuka Boys vs. New Albany at NEMJC	11 CANDY	12 SALE	
14 ST. VALENTINE'S DAY	15 WASHINGTON'S HOLIDAY	16	17	18	19 Northeast Miss. Band Clinic - Movie Elem. School	
21	22 Financial Aid Workshop - 7:00	23 Elem. PTA-7:00	24	25	26	
28						
JANUARY S M T W T F S 3 4 5 6 7 8 9 10 11 12 13 14 15 16 17 18 19 20 21 22 23 24 25 26 27 28 29 30 31						
MARCH S M T W T F S 1 2 3 4 5 6 7 8 9 10 11 12 13 14 15 16 17 18 19 20 21 22 23 24 25 26 27 28 29 30 31						

February 1982

## FINAL CLEARANCE SALE

All ladies & girls coats  
regular & reduced  
price **50% off**  
All reduced Tops --  
Blouses, sweaters,  
t-shirts & skirts **50% off**  
the Sale Price

Use our charge or lay-a-way plan  
Shop & Save at Kenwins

**Kenwin Shop**  
123 Front St. in Iuka

## Rick's Butcher Shop

We do custom cutting and wrapping for freezers

ALL GOOD FEB. 4 THRU FEB. 10

SUITORS COUNTRY  
**HAMS** LB. **\$1.59**

SUITORS COUNTRY  
**HAM SLICES** LB. **\$1.99**

CORN VALLEY  
**SAUSAGE** LB. **99¢**

REELFOOT  
**SLAB BACON** LB. **99¢**

-FREEZER READY  
**BEEF SIDES** LB. **\$1.29**

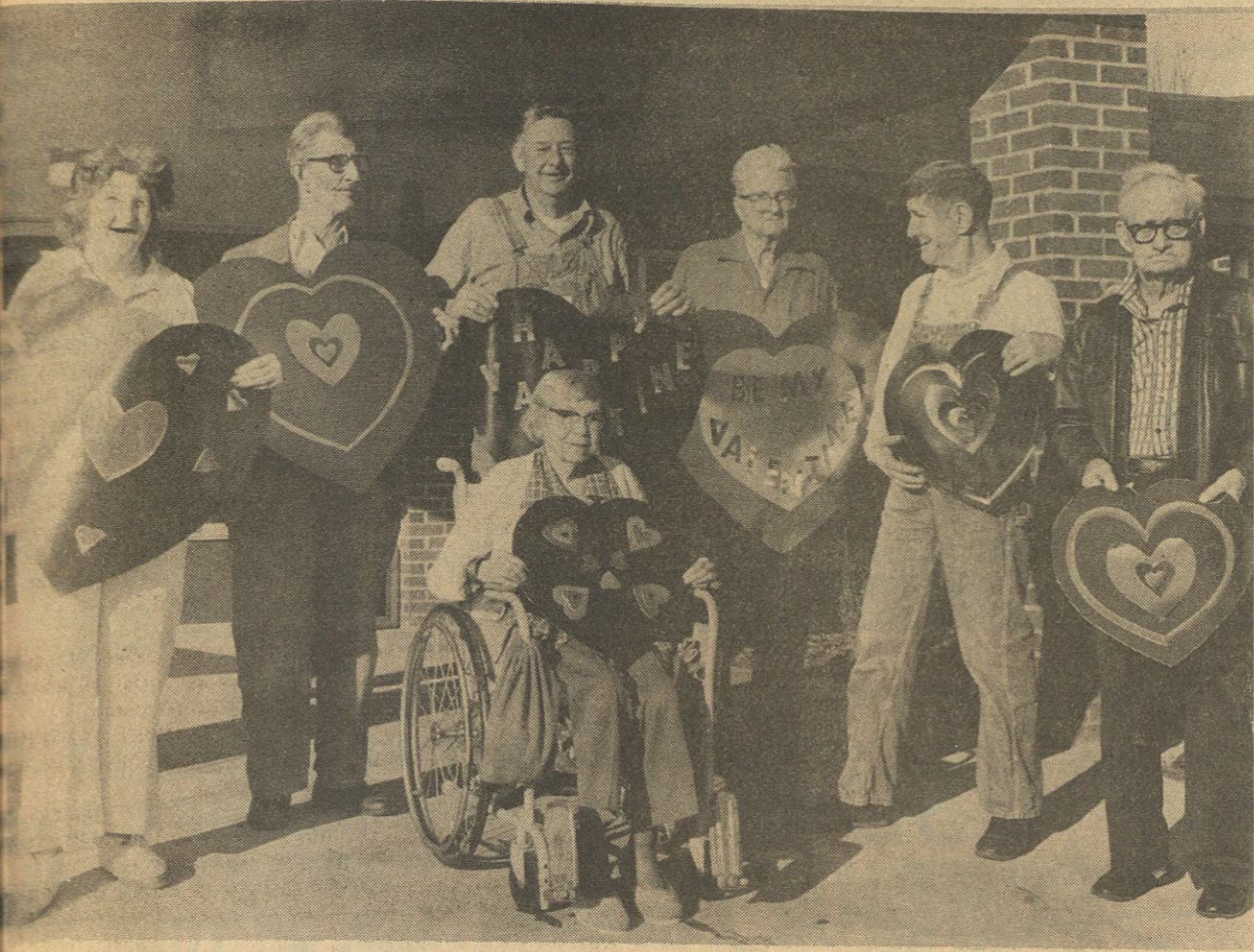
FOOD STAMPS  
WELCOME

Open Tuesday thru Saturday  
8:30 a.m.-5:30 p.m.

713 E. Eastport-Iuka

Phone 423-5073 Anytime





### Valentine Party Planned At Nursing Home

The residents, staff and volunteers have been busily making decorations to prepare for the valentine party. The Conalco, Inc., foil products, donated the paper used in making the

decorations. The residents of Pickwick Manor will be honored with a Valentine party on Friday, February 12, at 2:00. Refreshments will be provided by the nursing home and Miss Ladye Love Long will sing for their entertainment. To add to the excitement of the day, two

residents will be crowned as the "King and Queen of Hearts". All friends and relatives are invited to share in the activities of the day. Shown above is Betty Sue Carlisle, Robert Isbell, Claude Johnson, Dock Curtis, Arlie Dove, Lee Loveless and Ettamae Davis, in front.

### Iuka Elementary Awarded Continuing Accreditation

The Southern Association of Colleges and Schools, through its Commission on Elementary Schools, has awarded continuing accreditation to Iuka Elementary School by action taken during the Association's 86th Annual Meeting in Dallas, Texas December 6-9, 1981.

Through accreditation, school staff and faculty members will benefit by knowing that conditions for teaching in accredited schools meet certain minimum standards and that efforts are continuously made to improve these conditions. Regional standards require adequate facilities and facilities and their effective use.

Citizens are assured of accountability and of value for their tax dollars through the process of standard setting and the regular reevaluation of SACS member institutions. Communities with accredited schools can be confident that

their institutions compare favorably with others in the region. Accredited schools are a "plus" for those who are interested in relocating their families and businesses.

Founded in 1895, the Southern Association of Colleges and Schools is one of six regional accrediting bodies in the United States. More than 11,000 member public and private universities, colleges, junior colleges, occupational institutions, secondary schools, middle schools, and elementary schools enroll approximately five million students.



### Scholarship Recipient

Lorrie Dean, a Northeast Junior College freshman, from Iuka, has been awarded the Gold Bond Exterminators scholarship for 1981-82, according to Ronnie M. Sweeney, chairman of the college scholarship committee. This year, 44 individuals and businesses contributed to the scholarship program, affording financial assistance to some 65 students. Gold Bond Exterminators Incorporated provides \$200 on an annual basis for a scholarship. Lorrie is a pre-nursing major.

### The California Boy's Choir

THE CALIFORNIA BOYS' CHOIR, founded and directed by Douglas Neslund, with Robert H. Rogers, Co-Director, is composed of 26 choirboys ranging in age from 10-15, who are selected from dozens of young Californians in the Choir's Training Program. The famous Concert Choir is a mainstay in the musical life of Southern California, performing regularly with the Los Angeles Philharmonic Orchestra, the Los Angeles Master Chorale, Glendale Symphony and Pasadena Symphony. Visiting organizations often need Choirboys: the Joffrey Ballet, the American Ballet Theater, and the New York City Opera in its fall season at the Dorothy Chandler Pavilion of the Music Center of Los Angeles.

The talents of these youngsters will be very much in evidence on Saturday, February 13, at 8:00 p.m. in the Coliseum Theater when they offer a concert in Corinth, Miss., sponsored by Northeast Mississippi Community Concerts.

The Choir had the good fortune to be located near the heart of the recording industry in Hollywood. This has led to recent sessions with such varied and well-known personalities as Alice Cooper, Bruce Johnston, and the rock group Angel, as well as the 1977 album of Christmas music by the Salvation Army, conducted by Roger Wagner, which was heard on radio around the world during the holiday season. Television beckons occasionally: the Mary Tyler Moore Special, "Mary's Incredible Dream" which was seen nationally on CBS-television in January 1976, for example.

Behind the success of the Choir are several factors: an excellent and dedicated staff, sacrificing and long-suffering parents, and a group of talented and purposeful boys, who spend eleven weeks together in Summer Training Program, away from home except for five weekend visits. In STP a boy learns to concentrate, to budget time, to look after his own individual needs (without mom around to remind!), and to learn the importance of personal development and its place in the growth of an ensemble. Classes are held in music theory, voice, repertoire, stage awareness, imagination, improvisation, recorder, and time is provided for individual instrumental practice.

Swimming is a daily activity, and tennis is a favorite early-morning sport. The goal of the Summer Training Program is to prepare the Choirboys for the concert

season to follow (September-May). Training classes are started for beginning boys in September and again in February, leading toward membership in the Concert and Touring Choirs. The Choirboys are exposed to singing in many languages, learning important cultural and historical aspects of each composition or opera studied, with particular emphasis on current performance practices.

The Choir is now celebrating its Tenth Anniversary. Choir headquarters are in the California State Museum of Science and Industry in Los Angeles, courtesy of William J. McCann, Museum Director.

### Governor's Report

Governor William Winter is pushing legislation to make Mississippi's criminal justice system provide greater security to law abiding citizens while simultaneously making the system more cost effective. Winter is also seeking legislation that would require many criminals to repay the victims of their crimes.

Last summer the governor appointed a 24-member task force to make recommendations on corrections to the

1982 Legislature. The task force, which included legislators, law enforcement officers, judges, prosecutors, and businessmen, made 22 recommendations based on their years of practical experience and a no-nonsense approach to the state's criminal justice system.

Winter's goal in seeking passage of the task force recommendations is to achieve greater crime prevention. The legislation would help achieve a criminal justice system that is affordable and that is more efficient in punishing and rehabilitating persons convicted of crimes.

Among the task force recommendations are proposals for sentencing guidelines, restitution, alternative sanctions, incarceration sites at state and local levels, jail standards and administrative efficiency.

The legislation Governor Winter is backing provides more cost effective measures for dealing with non-violent offenders that would make enforcement more effective while saving money for Mississippi taxpayers. The measures would provide more room at Parchman for incorrigible and violent offenders who pose a real risk to our citizens. Moreover, Governor Winter believes it is high time that offenders reimburse their victims and the proposed legislation

would provide for the implementation of a restitution program.

### The Double B 4-H Club News

The Double B 4-H Club met January 28, at 3:30 p.m. in the home of Mrs. Doris Moody, adult volunteer leader.

Mrs. Moody opened the meeting and the club elected officers. The following is a list of the officers and committees: President, Chris Garner; Vice President, Charles Martin; Secretary, Karen Moody; Treasurer, Katherina Thigpen; Reporter, Shana Walker; Devotion Leader, Natalie Bonds; Recreation Committee: Cindy Moody, Tabitha May, Mason Garner and Wendy Walker; Finance Committee: Shana Martin, Katherina Thigpen; Social Committee: Shana Walker, Natalie Bonds, and Melanie May.

The program was presented by Sue Dill, 4-H Program Assistant, on selecting projects and a set of slides was shown "Order in the Club".

The next meeting will be February 11, at 3:30 p.m. at the home of Doris Moody. The club will be planning this yearly program and other activities.

*The children of  
Mr. and Mrs. Willie A. Timbes  
request the pleasure of your company  
Celebrating their parent's  
Fiftieth Wedding Anniversary  
on Sunday, the seventh of February  
One thousand nine hundred eighty-two  
from two-thirty till four-thirty  
at their home*

## Funland Skate Center

2 Miles South, Hwy. 25, Iuka, Miss.

**Thurs: Bring a roll of Paper Towels**

and Skate for 50¢ 7:00 to 9:30 p.m.

**Fri: 12 and under**

Admission \$2.00 and regular admission \$3.00

7:00 to 11:00 p.m.

**Sat: Couple's Night**

Couple's admission \$4.00 Regular \$3.00

7:00 to 11:00 p.m.

**Sun: Lessons will be taught**

If interested in competing in singles or couples competition. Beginners Lessons also taught. No fee for lessons. Adm. \$2.00 2 - 4:30 p.m.

**Tues: 13 years old & above**

adm. only \$1.00 reg. adm. \$2.00 7 - 9:30 p.m.

**Remember Game Arcade!!**



WE RESERVE THE RIGHTS TO LIMIT QUANTITIES  
SALE GOOD THRU FEBRUARY 6TH

**BRING THE AD, SPARKO WILL HONOR LOCAL  
COMPETITORS CURRENT ADVERTISED PRICES!**



**BAMA  
GRAPE JELLY**

16 OZ. SIZE

COMPARE  
AT  
89¢

**2/\$1.00**

**GIRLS  
EIDERLON PRINT  
BIKINI PANTY**

SIZES 4-14

COMPARE  
AT  
89¢

**2/\$1.00**



**STRONGHEART  
DOGFOOD**

COMPARE AT 29¢

**6/\$1.00**

**SPARKO  
SPRAY DISINFECTANT**

12 OZ. CAN

OUR  
REGULAR  
\$1.17

**\$1.00**



**Lady Pepperell®  
BATH TOWEL ENSEMBLE**

BATH TOWEL **\$2.97**

HAND TOWEL **\$1.97**

WASH CLOTH **\$1.27**

OUR ADVERTISING POLICY

Our firm intention is to have every advertised item in stock. However, if an advertised item is not available for purchase due to any unforeseen reason, Sparko will issue a Rain Check upon request for the merchandise (one item or reasonable family quantity) to be purchased at the sale price within 30 days or we will offer you a comparable item at a comparable reduction in price.

**Elm Shopping Center**

Iuka, Miss.





PIGGLY WIGGLY HAS

**...the MOST  
for YOU!!!**

★ SERVICE ★ VARIETY  
★ CONVENIENCE ★ QUALITY  
★ EVERYDAY LOW PRICES  
★ MONEY SAVINGS SPECIALS

QUANTITY RIGHTS RESERVED. NONE SOLD TO DEALERS.  
PRICES GOOD FEB. 4 THRU FEB. 10, 1982.



FRESH LEAN  
**GROUND BEEF**

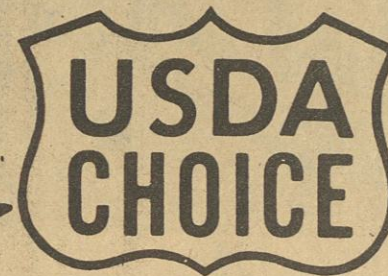


**\$1.09**  
LB.

U.S.D.A. CHOICE  
BONELESS SIRLOIN TIP

**ROAST**

**\$1.99**  
LB.



ALL BEEF SOLD AT  
PIGGLY WIGGLY IS U.S.D.  
CHOICE. YOUR SATISFACTION  
GUARANTEED, OR YOUR MONEY  
BACK!

U.S.D.A. CHOICE  
BONELESS CHUCK

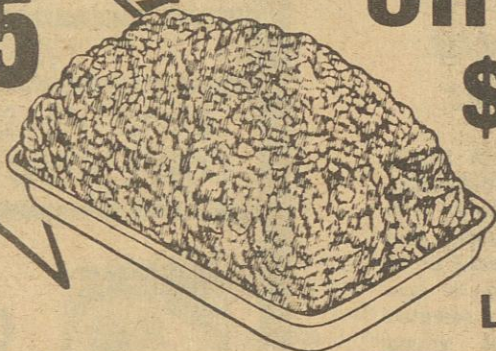
**ROAST**

**\$1.45**  
LB.

FRESH LEAN  
GROUND

**CHUCK**

**\$1.59**  
LB.



U.S.D.A. CHOICE  
T-BONE

**STEAK**

**\$2.79**  
LB.

U.S.D.A. CHOICE  
BONELESS RUMP

**ROAST**

**\$1.99**  
LB.

U.S.D.A. CHOICE  
SIRLOIN TIP

**STEAKS**

**\$2.29**  
LB.

U.S.D.A. CHOICE  
**CHUCK STEAKS**

**\$1.69**  
LB.



U.S. CHOICE BONELESS  
**STEW MEAT**

**\$1.99**  
LB.

U.S.D.A. CHOICE LONDON  
**BROIL STEAK**

**\$1.99**  
LB.



U.S.D.A. CHOICE BONELESS  
**BOSTON ROAST**

**\$1.59**  
LB.



U.S.D.A. CHOICE CHOICE  
**SIRLOIN**

**\$1.99**  
LB.



U.S.D.A. CHOICE  
BONELESS ENGLISH

**ROAST**

**\$1.59**  
LB.

U.S.D.A. CHOICE  
BONELESS EYE OF THE

**ROUND ROAST**

**\$2.99**  
LB.

U.S.D.A. CHOICE  
FULL-CUT SIRLOIN

**STEAK**

**\$2.59**  
LB.

U.S. CHOICE POOR BOY

**FILLETS**

**\$1.99**  
LB.

U.S. CHOICE BONELESS BREAKFAST

**STEAK**

**\$2.99**  
LB.

U.S. CHOICE TOP QUALITY CUBED

**STEAK**

**\$2.29**  
LB.

U.S.D.A.

INSPECTED FRESH FRYER  
**LEG QUARTERS**

**39¢**  
LB.

FRESH HENS LB. 49¢  
SPLIT BREASTS LB. 99¢

HILL GROWN  
SWEET

**POTATOES**

**3 \$1.00**  
LBS.

**Morning Fresh Produce**



CALIFORNIA  
SUNKIST

**TANGERINES** LB.

**39¢**



FRESH MILD  
**YELLOW ONIONS**

3-LB. BAG

**69¢**

FLORIDA FRESH  
LARGE

**TOMATOES**

**69¢**  
PKG.



LARGE FRESH CRISP

**LETTUCE**

**59¢**  
EACH

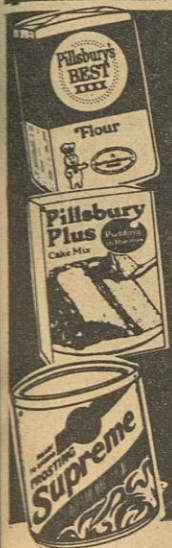
**Specials!**

CRISP AND CRUNCHY  
**CARROTS**

**29¢**  
1-LB. BAG



## PILLSBURY BAKE-OFF



PILLSBURY SELF-RISING

# FLOUR

5-LB.  
BAG

**88¢**

PILLSBURY PLUS

# CAKE MIX

18½-OZ.  
BOX

**79¢**

PILLSBURY READY TO SPREAD

# FROSTING

16-OZ.  
CAN

**\$1 29**



SAVE ON SNOWDRIFT  
**SHORTENING**

**\$1 69**

3-LB.  
CAN

PIGGY WIGGLY  
MACARONI & CHEESE  
**DINNERS**

**4 99¢**

7¼-OZ.  
BOXES



PIGGY WIGGLY  
HOMOGENIZED

# MILK

**\$1 98**

GAL.  
JUG

SAVE  
41¢

BUSHES CHOPPED  
TURNIP, MUSTARD, COLLARD

# GREENS

**3 99¢**

15-OZ.  
CANS

LAUNDRY DETERGENT

# WISK

**\$1 89**

32-OZ.  
BTL.

PIGGY WIGGLY  
DRY PINTO

# BEANS

**59¢**

2-LB.  
BAG



PIGGY WIGGLY  
SELF-RISING CORN

# MEAL

**79¢**

5-LB.  
BAG

FABRIC SOFTENER  
**FINAL TOUCH**

**\$1 99**

64-OZ.  
BTL.

GLAD TRASH  
**BAGS**

**99¢**

10-CT.  
BOX

GLAD KITCHEN  
**BAGS**

**99¢**

15-CT.  
BOX

WHITE RAIN AEROSOL  
**HAIR SPRAY**

**\$1 29**

7.5-OZ.  
CAN

WHITE RAIN NON-AEROSOL  
**HAIR SPRAY**

**\$1 29**

8-OZ.  
BTL.

SAVE ON ARGO  
SLICED

# PEACHES

**69¢**

29-OZ.  
CAN

ARGO SWEET  
**PEAS**

**3 99¢**

17-OZ.  
CANS

JENO'S  
ASSORTED  
**PIZZA**

**89¢**

12-OZ.  
PKG.

ADAMS UNSWEET  
GRAPEFRUIT  
**JUICE**

**79¢**

46-OZ.  
CAN

SUNSHINE  
SUGAR

# WAFERS

**\$1 19**

12-OZ.  
PKG.

ASSORTED PARTY

# PIES

**69¢**

12-OZ.  
PIE

PIGGY WIGGLY  
SWEET OR BUTTERMILK

# BISCUITS

**4 69¢**

10-CT.  
CANS



PIGGY WIGGLY

# POP-UP TARTS

11-OZ.  
PKG. **69¢**

SKINNER'S

# THIN SPAGHETTI

12-OZ.  
PKG. **59¢**

BAMA APPLE OR

# GRAPE JELLY

1-LB.  
JAR **79¢**

HUNT'S WHOLE

# PEELED TOMATOES

28-OZ.  
CAN **89¢**

DUNCAN HINES

# BROWNIE MIX

23-OZ.  
BOX **\$1 39**

SAVE ON MAZOLA  
CORN

# OIL

48-OZ. BTL.

**\$2 59**

SAVE ON LIPTON  
FLOW THRU

# TEA BAGS

100-CT. BOX

**\$1 99**

HOSTESS  
CHOCOLATE CUP

# CAKES

8-CT. PKG.

**\$1 29**

SAVE  
40¢

**SOLIDS**

# OLEO

1-LB. BLOCKS

**3 99¢**

PEPPERIDGE FARMS  
LAYER

# CAKES

17-OZ. PKG.

**\$1 59**



# OBITUARIES

## Miss Christine Hill

Miss Christine Hill, 65, died Thursday morning, January 28, at the North Mississippi Medical Center.

Services were at 10:30 a.m. Saturday, January 30, at the Cutshall Funeral Home Chapel with Rev. Billy Credille and Rev. Raymond Buchanan officiating. Burial was in Bethlehem Cemetery.

Survivors include several nieces.

## Mrs. Lillian Flurry

Mrs. Lillian Flurry, 61, of Tishomingo, died Monday morning, January 25, at the St. Francis Hospital in Memphis, Tenn. She was a homemaker, the president of the Ladies Auxiliary of the American Legion, and a member of the Tishomingo Baptist Church.

Her son, 1st Lt. James Durward Flurry, preceded her in death.

Services were at 2 p.m. Wednesday, January 27, from the Tishomingo Baptist Church with Bro. Bill Langley and Bro. Gene Tension officiating. Burial was in the Tishomingo City Cemetery. Deaton Funeral Home of Tishomingo was in charge of the arrangements.

Survivors include her husband, Durward W. Flurry, of Tishomingo; two daughters, Mrs. Debra McAlister and Mrs. Terri Thornburg, both of Tishomingo; a son, Tech. Sgt. Mike Flurry, of Offutt Air Force Base, Omaha, Neb.; a sister, Mrs. Florence En-triken, of Montgomery, Ala.; a brother, J.B. Houghton, of Wetumka, Ala.; six grandchildren and one step-grandchild.

## Mrs. Mattie C. Chase

Mrs. Mattie C. Chase, 83, died Tuesday, January 26, at the home of her sister in Memphis, Tenn. She was a member of the Springhill Methodist Church.

Services will be at 10:30 a.m. today (Thursday, January 28) from the Cutshall Funeral Home Chapel with Rev. William Strange officiating. Burial will be in the Springhill Cemetery.

Survivors include two sisters, Mrs. J.D. Holder, of Corinth, and Mrs. Inez Martin, of Memphis, Tenn.

## M.D. Curtis

Millard D. Curtis, 85, died Thursday, January 28, at Tishomingo County Hospital. He was a retired TVA em-

ployee, a veteran of World War I, and a Baptist.

Services were at 2:30 p.m. Friday, January 29, at Cutshall Funeral Home Chapel with Rev. Stanley Magill and Rev. Allen Osborne officiating. Burial was in the Community Cemetery.

Survivors include his wife, Mrs. Elsie Curtis, of Iuka; a daughter, Mrs. Louise Whitfield, of Iuka; a son, Buster Curtis, of Corinth; two sisters, Mrs. Ella Davis and Mrs. Esther Robinson, both of Iuka; three brothers, Bart Curtis, Dock Curtis, and Fillmore Curtis, all of Iuka; four grandchildren; and five great-grandchildren.

## Man Asks God Answers Sin

What Are The Effects Of Sin?

(1) As to God: Rom. 2:23 - Thou... through breaking the Law dishonourest God. 2 Sam. 11:27 - The thing that David had done displeased the Lord. Ps. 95:10 - Forty years long was I grieved with this generation. Deut. 1:34 - The Lord heard the voice of your words, and was wroth. Deut. 25:16 - All that do unrighteously are in abomination unto the Lord - Is. 43:24 - Thou hast made Me to serve with thy sins, thou hast wearied Me with thine iniquities.

(2) As to others: 2 Pet. 2:7 - And delivered just Lot, vexed with the filthy conversation of the wicked. Prov. 4:16 - For they sleep not, except they have done mischief; and their sleep is taken away, unless they cause some to fall. LHMH Chester Springs, PA 19425

## On Trial

The courtroom is filled with onlookers to see what the verdict will be, the jury awaits to hear the evidence, the prosecuting attorney glances at you with a mean evil look, your lawyer has planned out every argument so that you will be the winner in the case.

Who is on trial? YOU! You are on trial for being a Christian. Is there enough evidence to convict you? The punishment is physical death and eternal life; or if there is not sufficient evidence to convict you then the judge will permit you to be freed to live a pleasurable physical life ending with eternal damnation.

Here is some of the evidence that the prosecuting attorney will use against you:

1. PREACHING the Gospel to every creature - Mk. 16:15-16.
2. TEACHING lost souls about Jesus and his sacrifice - Mt. 28:18-20.
3. DEFENDING the Gospel,

to whomever attaches it - I Peter 3:15.

4. Taking good CARE of your physical body - I Cor. 6:19-20.

5. Having good Christ-like MORALS - Gal. 5:22.

6. Letting your light SHINE before men that they may glorify God - Mt. 5:16.

7. STUDYING your Bible daily - II Tim. 2:15.

8. PRAYING continually - Rom. 12:15; Lk. 18:1; I Thess. 5:17.

9. Attending EVERY service of the Lord's church - Heb. 10:25.

10. WORSHIPPING God in spirit and in truth - Jn. 4:24.

11. KEEPING every command of Jesus - Jn. 15:14.

Really and truly LOVING God - Mt. 22:37-38.

Will you be convicted, will the jury find you guilty as charged - being a Christian? I pray earnestly that you will be found guilty of being a Christian. If in fact you are proved to be innocent in this trial, then God will find you guilty of hypocrisy or worse when the "great day" comes. If you cannot be convicted of being a Christian, then you will be convicted of being a sinner. Rev. 21:8. God does not allow sinners into His kingdom - Rev. 20:12-15.

ARE YOU GUILTY AS CHARGED OR ARE YOU INNOCENT OF BEING A CHRISTIAN?

Andy Crocker, Minister, Berea Church of Christ Burnsville, Miss.

## LEGAL NOTICE

STATE OF MISSISSIPPI  
OFFICE OF  
SECRETARY OF STATE  
JACKSON  
CERTIFICATE OF  
INCORPORATION OF  
KLEAN KARS, INC.

The undersigned, as Secretary of State of the State of Mississippi, hereby certifies that duplicate originals of Articles of Incorporation duly signed and verified pursuant to the provisions of the Mississippi Business Corporation Act, have been received in this office and are found to conform to law.

ACCORDINGLY the undersigned, as such Secretary of State, and by virtue of the authority vested in him by law, hereby issues this CERTIFICATE OF INCORPORATION, and attaches hereto a duplicate original of the Articles of Incorporation.

Given under my hand and Seal of Office this the 18th day of January, 1982

EDWIN LLOYD PITTMAN,  
SECRETARY OF STATE  
Notice is hereby given that KLEAN KARS, INC. has been organized pursuant to the provisions of the Mississippi Business Corporation Act.

The incorporators are: Tommy Latimer, Route 1, Highway 25, Dennis, Mississippi 38838; and Judy Latimer, Route 1, Highway 25, Dennis, Mississippi 38838.

The Directors constituting the initial Board of Directors

are: Tommy Latimer, Route 1, Highway 25, Dennis, Mississippi 38838; Judy Latimer, Route 1, Highway 25, Dennis, Mississippi 38838; and Gregory D. Keenum, 301a College Street, Booneville, Mississippi 38829.

The specific purposes for which the corporation is organized are:

(1) To engage in the business of buying and selling new and used cars on a wholesale and retail basis. To engage in any activity and with the same powers permitted within the purpose for which corporations may be organized under the Mississippi Business Corporation Act and acts mandatory thereof and supplementary thereto. To carry on any business or exercise any power or part thereof to promote the interest of the corporation acting directly or through a subsidiary or subsidiaries or in association with or as agent or trustee of

other corporations, firms, partnerships, or individuals not contrary to law or otherwise provided by statute which the corporation deems proper or convenient and consistent with the purposes for which the corporation is organized.

Capitalization Requirement-

**Catholic Services In Iuka**  
Held at Episcopal Church Eastport & Fulton Streets  
Sunday 11:30 a.m.  
Religious Instruction For Young People  
Grades 1 thru 12  
Sunday 10:15 a.m.  
Rev. Charles Flood, SCJ  
Phone 423-9358  
728-3393 Church - 728-7509 Res.

Tishomingo County News - Vidette - Belmont

ts: Five Thousand (5,000) shares of the par value of One (\$1.00) Dollar per share.  
KEENUM & KEENUM  
SOLICITORS  
F-4-c.



Cotton growing, inated in India, to Greece by the Great.

**NEW SALEM BAPTIST CHURCH**  
7 Miles North of Iuka off Hwy. 2  
Pastor, Joe Moyers

**SUNDAY SERVICES:**  
10:00 a.m. Adult Sunday School  
Children's Worship  
11:00 a.m. Children's Sunday School  
Adult Worship  
5:00 p.m. Church Training  
Pastor's Bible Class  
6:00 p.m. Evening Worship

## IUKA BAPTIST CHURCH

105 West Eastport Street

Sunday, February 10, 1982

11:00 A.M.

"Jesus Feeds the Multitude"

7:00 P.M.

Youth Led Service

"Equipping for Discipleship"

Morning and Evening Services Broadcast Over WTBF-M 104.9  
Morning services also on A.M. 1270



Dr. Kenneth Murphy

## The Church of the Nazarene

is worshipping in Corinth at Foote and Washington Sts. (at the Coke Room)  
Sundays - 11:00 a.m.  
Wednesday 7:00 p.m.  
Dan Minnix is the Pastor  
287-5188



## COME TO CHURCH

We all have times when things go wrong,  
And Fortune's in reverse;  
Yet we're expected to be strong,  
Though things could not get worse...  
A strength of which the Scriptures name  
Examples plain to see:  
Like Job, whose faith remained the same  
Throughout adversity.  
So why not go to Church this week,  
Whichever one you choose,  
And listen to the Bible speak;  
There's not a thing to lose!  
Then, what those passages command  
You'll follow to the letter;  
And let God take your life in hand,  
To change it for the better! —Gloria Nowak

**CATHOLIC**  
Rev. Charles J. Flood

**METHODIST**

IUKA METHODIST

Jerry S. Horton

MT. EVERGREEN

Jerry S. Horton

CAMP GROUND

HARMONY

PATRICK

ROCKY SPRINGS

Paul Linton

BURNSVILLE

SNOWDOWN

PLEASANT HILL

SPRING HILL

William Strange

BOGGS CHAPEL

PARADISE

SALEM

TISHOMINGO

Del Blackman

OLD BETHEL UNITED

GOLDEN CHAPEL

DENNIS METHODIST

James T. Smith

BELOMONT

MT. PLEASANT

Doc Jeter

HUBBARD SALEM

T.E. Davis

JONES CHAPEL

Eddie Jumper

ALLSBORO UNITED

MARGERUM UNITED

RIVERTON UNITED

Jackie Patterson

FULL GOSPEL

MISSION LIGHTHOUSE

Wiley Wingo

FIRST ASSEMBLY OF GOD

Allen Hapner, Pastor

**PENTECOSTAL**

IUKA GOSPEL CHAPEL

Larry Riley

BURNSVILLE TABERNACLE

W. E. Sharp

CHRIST GOSPEL

Richard H. Carter, Jacinto, MS

IUKA CHURCH OF GOD

Charles Moore

GRISOM CHAPEL CHURCH

CHRISTIAN FELLOWSHIP

S. A. Bonds

**CHURCHES OF CHRIST**

MAUD CHURCH OF CHRIST

James Joyce

IUKA CHURCH OF CHRIST

Jerry Westmoreland

BEREA CHURCH OF CHRIST

Andy Crocker

TISHOMINGO

Donald Rhodes

BELOMONT SECOND STREET

Jimmy Gross

PLEASANT GROVE

John Hardwick

LIBERTY

Haskell Sparks

MAIN STREET

Wayne Mitchell

BURNSVILLE

J. T. Smith

**UNITED PENTECOSTAL**

BURNSVILLE FIRST

David Huff

IUKA FIRST UNITED

Frank E. Williamson

**NONDENOMINATIONAL**

AMAZING GRACE

TABERNACLE

Bro. & Sis. R. G. Rodgers

MT. ZION

R. C. & Dorothy Wigginton

NORTH CROSSROADS

COMMUNITY

Allen Osborn

IUKA MISSION

Danny Lovelace, Pastor

**PRESBYTERIAN**

ALLSBORO CUMBERLAND

J. B. Burns, Jr.

BETHANY

L. K. Foster

**BAPTIST**

AIRPORT MISSION

Earl Martin

IUKA BAPTIST CHURCH

Dr. Kenneth Murphy

BELOMONT FIRST

Jack Maroon

Carters Branch

S. W. Shinault

CALVARY BAPTIST

Thomas Ozborn

MT. MORIAH

Ben Thornton

CENTRAL BAPTIST

W. L. Oaks

MT. VERNON BAPTIST

Perry Murphy

TISHOMINGO BAPTIST

Bill Langley

BURGESS CREEK BAPTIST

Leonard Casabella

BURNSVILLE FIRST

T. E. Nethery

NEW PROSPECT

OLDHAM

Tim Pittman

PADEN

Pat Howard

FIRST BAPTIST

O. H. Moore

EASTPORT

Joe Weaver

NEW SALEM

Joe Moyers

UNITY BAPTIST

Freda Wilson

RED BUD

John Stovall

ROWLAND MILLS

Frankie Smith

HARMONY HILL

Billy Paul Feltman

MT. JOY BAPTIST

Crawford Retherford

CALVARY MISSIONARY

Mike Fennel

SOUTH CROSSROADS

Harold Holly

PROVIDENCE MISSION

Mike Hopkins, Pastor

BETHEL BAPTIST

Billy Quinn

MT. GILEAD

James Hardin

TEMPLE

Mavous Phifer

MT. ZION BAPTIST

Bobby Casteel

FIFTH STREET

Bill Hobson

OLD PLEASANT HILL

Jearl Grisham

NEW LEBANON

Vance Sexton

ANTIOCH FREEWILL

Glenn Jones

POPLAR SPRINGS

Russel Clouse

Highland Baptist

Wayne Tutor

BETHELEHEM

George D. Credille

STANLEY MAGILL

DENNIS FIRST BAPTIST

John Stockton

FIRST





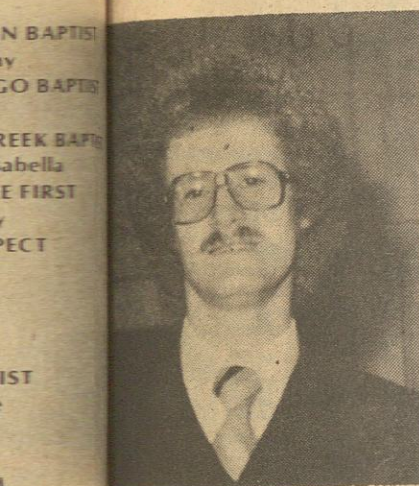
**Has Birthday** — Adam Taylor will celebrate his third birthday Saturday, February 6th. May him enjoy the oc-

casion will be his brother, Craig Anthony Taylor, who was 11 on the 19th of October. The young men are the children of Walter and Kathy Taylor, of Cherokee. Grandparents are Mr. and Mrs. Talmadge Taylor, of Allsboro, Ala.; and Mr. and Mrs. Elmer L. Thompson, of Cherokee.

### Ladies Firearms Program

The next meeting, which is set for Thursday morning, February 4, at 10:00 will meet at the City Hall and travel to the Yellow Creek Nuclear Plant Firing Range to practice use of their firearms - if weather permits.

Firearm trainees are: Carolyn Brown, Jane Gist,



## Revival Iuka Church of God

Hwy. 25 South

**Jan. 31st - Feb. 7th**  
**7:00 nightly**

**Evan. Ronnie Doss of Brownsville, TN**  
Come Experience Holy Ghost Services Nightly

**Pastor: Rev. Cletus Joyner**

## The Good Times ROLL at Skateworld During



## LESSON SESSIONS

**Tuesday nights 7 - 9:30 and**  
**Sunday afternoons 2 - 4:30**

Susan will teach skating skills ranging from beginning skills to competitive skating. No charge for Lessons.

**Thursday Nights are Family Nights**  
**Your entire family admitted for \$3.00**  
**Free Skate Rental**

## Cystic Fibrosis State Skate Sunday, February 7, 1982

Join Skateworld in helping the children in Mississippi who have Cystic Fibrosis - Great prizes, great fun, great service. Give some of your time so others may live.

**Question of the Week -- What great contest is coming to Skateworld?**

Skateworld -- Sandra & Scotty Skinner, owners.

## SKATEWORLD

**423-5814 Call anytime for information**

**Hwy. 25 North-----Iuka, Mississippi**

Mae Brown, Tressie Bonds, Babe Cosby, Betty Swimmer, Zelma Ramsey, Evanel Barnett, Linda Carson, Nell Lackey, Betty Helton, Marie Horne, and Martha Segars.

If interested, come to the meeting and go to the firing range and practice shooting, but you will not receive a certificate.

## Notice Cable Customers

Dear Cablevision Customer: Heritage Cablevision recently completed a major rebuild of the entire Iuka Cablevision system. This tremendous capital investment by Heritage necessitates we increase basic cable service rates to \$9.45 per month effective February 1, 1982. Rising costs incurred by Home Box Office extending their service to 24 hours a day, seven days a week requires we adjust the HBO service rates to \$8.95 per month, also effective February 1, 1982. Heritage Cablevision will make every effort to stabilize further rate increases as long as possible. Your continued patronage is sincerely appreciated.

Thank you,  
William E. "Skip" Pratt,  
General Manager,  
Heritage Cablevision

## School Lunch Menus

**Burnsville, Belmont &  
Tishomingo**  
**February 8-12**

Hamburger, lettuce and tomato, French fries, and dessert each day.

**MONDAY**  
Hot dog or chili dog  
Sweet relish  
French fries  
Baked beans  
Peanut candy

**TUESDAY**  
Meat loaf  
Creamed potatoes  
English peas  
Buttered rolls  
Mixed fruit

**WEDNESDAY**  
Chili with beans  
Toasted cheese sandwich  
Crackers  
Fresh fruit

**THURSDAY**  
Chicken pattie on bun  
Lettuce and tomato  
Potato chips  
Vegetable sticks  
Pineapple upside down cake

**FRIDAY**  
Fish Krispies  
Cole slaw  
French fries  
Corn bread muffin  
Apple crisp

## New Arrival

Ruthie and Jim Bassford, of Memphis, TN, are the proud parents of a baby girl named Erin Ruth. She weighed 8 lbs. 1 oz. and was 20 1/2 inches long. Erin was born in the Methodist Hospital in Memphis, Saturday, January 30, at 7:17 p.m.

Grandparents of the new arrival are Mrs. Rilla Wiley and the late Robert Wiley, of Iuka; and Mr. and Mrs. Wilson Updyke, of Jacksonville, Fla. The great-grandparents are Mrs. Thelma Wiley Pace, of Iuka; and Mr. and Mrs. John Trimm, of Tishomingo.



## Talented Musicians

Tom Mathis, born December 7, 1954, grew up in Corinth, Mississippi. He was a 1972 graduate of Corinth High School and a 1976 graduate of The University of Mississippi. Tom began playing guitar at the age of 9, and by his teenage years was playing in many of the local bands in the North Mississippi area. He has spent the last six years, since college, as a professional singer, song writer, and musician. He is the lead guitarist and pedal steel player in the Broken Dollar Band, a group of his own, which was organized in Memphis, Tennessee.

The group consists of four very talented musicians. They are into most every phase of modern music from Country to Disco. Their versatility probably stems from the backgrounds of the individual musicians.

Tom began his picking career in the blues and later went to Country and Western swing, where he gained popularity in the upper mid-west, while playing in the Iron Horse Band. Here he helped open shows for country entertainers such as Johnny Duncan, Janie Frickie and Cal Smith to name a few.

On the keyboard is Tommy Rook, who is well known in Memphis and the mid-south area for his performance in enumerable rock bands. Tommy later went with the new wave of country music, performing at the largest night clubs in the Memphis, mid-south area such as Herando's Hideaway, where he got some of his style by having Jerry Lee Lewis sit in with their group on several occasions.

Billy Vanzant is doing the work on the bass guitar. Billy spent three years on the road in the "Charlie Feathers Show", one of the hottest rock-a-billy acts in the country. Billy has worked in the back-up band for Claude King splitting shows with Mickey Gilley and Carl Perkins. He has also worked most every club in the Memphis-mid-south area.

On the drums, last but not least, is Tim Coughlan. Tim is the newest addition to the group. Tim has spent most of

his picking years as a studio drummer in Memphis.

These four musicians make up what is known as the Broken Dollar Band. They have served as a back-up band for Ronnie Sessions and several country artists; also opening shows for Del Reeves.

With all these credentials, they have recently signed a recording contract with "Four Winds Productions in Memphis, Tennessee. They have recorded their first single, "California, I Can't Play the Game Your Way", to be released January 1, 1982. They are expecting three singles to be followed with a LP later in the year with Style Wooten as their producer. Tom is supposed to come out with three singles and one LP this year.

We expect nothing but a bright future for this group.

## Menus At Iuka Schools

**February 8-12, 1982**

**MONDAY**  
Fish/tartar sauce  
French fries  
Hushpuppies  
Cole slaw  
Cinnamon roll

**TUESDAY**  
Spaghetti  
Tossed salad  
Rolls  
Peach cobbler

**WEDNESDAY**  
Corn dog  
Baked beans  
Cole slaw  
French fries

**THURSDAY**  
Purple plums  
Baked ham  
Macaroni & cheese  
Green beans  
Rolls  
Peaches

**FRIDAY**  
Bar-B-Q on bun  
Baked beans  
French fries  
Strawberry shortcake

## Weight-Off Wisely

Did you let 5, 10 or more pounds slip on during the "Holiday Season"?

If so, have you heard about Weight-Off-Wisely? Weight-Off-Wisely is a nutritional, educational program where you attend group meetings

for twelve weeks to learn about nutrition and losing weight. People who have attended Weight-Off-Wisely have lost 10, 20, 50, 80, or more pounds.

These are group meetings in Iuka, Belmont and Paden. If you would like to join or have questions - call Nellie R. Horton, Extension Home Economist at 423-3616.

## CORRECTION

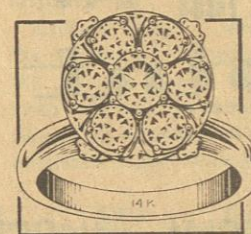
Two of Noel Smith's sisters names were not listed in last week's obituary. They are Mrs. Birtha Harris and Mrs. Mamie Louise Kinnel, both of San Diego, Calif.

Officially, there is no such coin as a penny - to the United States Government and its mints it's legally a "cent."



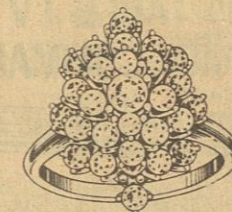
## SALE

We're bringing back prices  
from the  
Good Ole Days



Ladies Clusters

**\$89.95 to  
\$552.00**



Reg. 1,104.00  
**Sale \$883.20**

Many More To Choose From

## Moore's Jewelry

Front St. Iuka, Miss.

## Jeans n Tops

Hwy. 25 North

Iuka, Miss.

## Winter Clearance Sale

Blazers		
1 Rack of Blouses	Denim Shirts	Cord
1/2 Price	1/2 Price	\$28.98
		Wool
		\$29.98
		Velvet
		\$30.98
		Cord Pants
		1/2 Price
		Lee
		\$18.98
		Stretch Lee
		\$21.98
		Pleated Pants
		16.98 each
		\$8.50

**All 1st Quality Merchandise**

**All Sales Cash & Final**  
**Sale Starts February 2 - 13**

## WOODMEN ANNUITIES

- Pay HIGH INTEREST RATES.
- Hold TAX DEFERRED individual retirement savings plan (IRA) CONTRIBUTIONS UP TO \$2,000 annually under the new law.
- All employed individuals are eligible for the expanded (IRA). IN ADDITION TO OTHER RETIREMENT PLANS.
- Provide income AS LONG AS YOU LIVE.

Call today! Your future may depend on it.

Dale Rushing  
Field Representative  
Tishomingo, MS  
438-6449



**WOODMEN OF THE WORLD  
LIFE INSURANCE SOCIETY**  
HOME OFFICE: OMAHA, NEBRASKA  
"The FAMILY FRATERNITY"





**THE SALE**  
YOU'VE BEEN WAITING FOR...

**INVENTORY CLEARANCE**

# J. A. Tucker Furniture & Appl.

**IS HAVING A 3 DAY INVENTORY SALE**

February 5, 6 & 7

ALL GOING AT LOW PRICES

SHOP AND SAVE THIS WEEK END AT J. A. TUCKER'S

OPEN AT 9--CLOSE AT 5  
PHONE 438-6408--tishomingo



**SOLIDLY BUILT DRYER!**

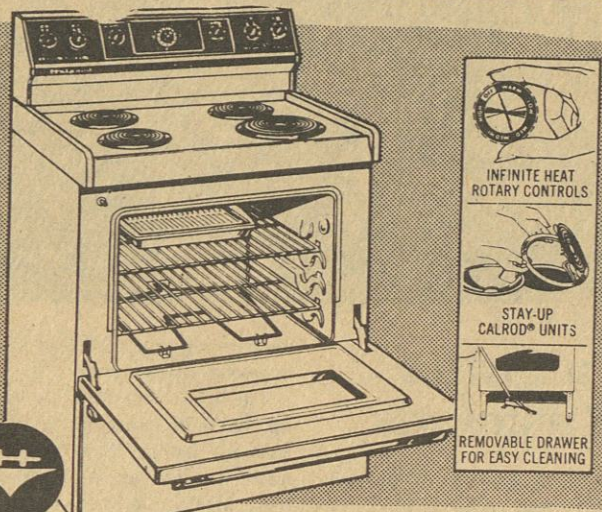
SAVE ON THIS HOTPOINT SPECIAL!

- Timed drying selections —up to 130 minutes.
- 4 Venting options.
- Separate start control.

Model DLB1250A

just \$249<sup>95</sup>

**Hotpoint**



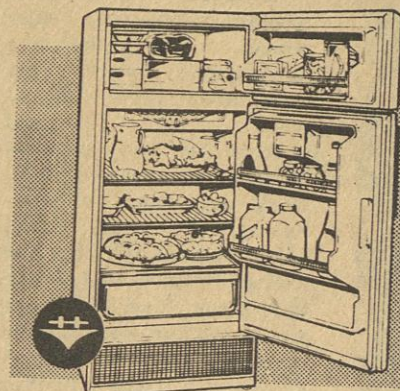
SEE THIS VALUE PACKED OVEN-RANGE!

- Porcelain-enamel-on-steel oven liner
- Lift-off oven door
- Removable trim rings/pans
- Surface unit "on" light
- Clock and 60 minute timer.

Model RB528T

just \$259<sup>95</sup>

**Hotpoint**



**Hotpoint**

- 11.8 Cu. ft. refrigerator-freezer
- Cycle defrost
- Produce crisper
- Egg rack & butter bin
- 2 Easy-Release™ ice trays
- Deep door shelves.

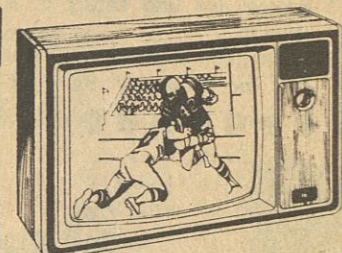
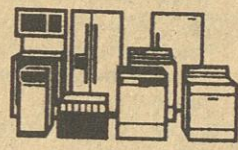
Model CTA12CB

\$699<sup>95</sup>



**RCA ColorTrak 25" diagonal**  
**19" TABLE TV SPECIAL**

**Whirlpool**  
Home Appliances  
Quality. Our way of life

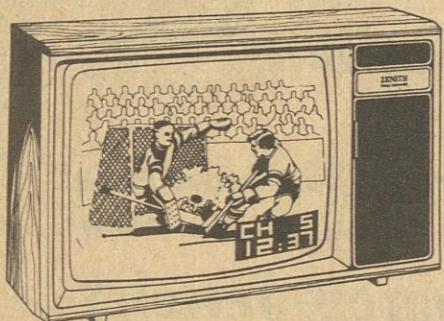


**The LUDLOW • \$1920W**  
Simulated grained American Walnut finish.

SAVE \$40

- Electronic Tuning
- One-Knob 12 and 6 UHF Channel Selector
- VHF/UHF Digital Spotlite Panel

**19" TABLE TV SPECIAL with COMPUTER SPACE COMMAND® 1700 REMOTE CONTROL**



**The GLENSHIRE • SS1925W**  
Simulated grained American Walnut finish.

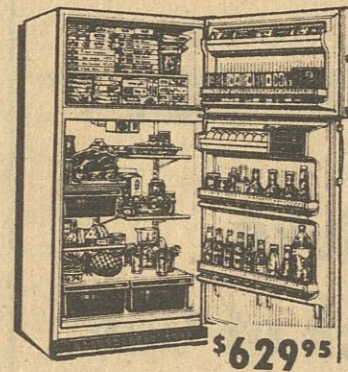
SAVE \$50.00

- Quartz-Controlled Electronic Tuning
- 112 Channel Capability including 42 Cable Channels
- Up/Down Channel Scanning
- On-Screen Channel Number and Time Display



Model TSK170SN

\$489<sup>95</sup>



Model TSK190SN

\$629<sup>95</sup>



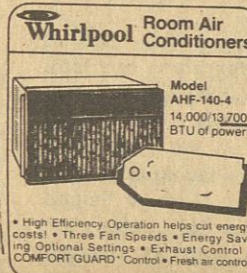
Model EHD191AK

\$695<sup>00</sup>



Model EHD191AK

\$695<sup>00</sup>



Model AHF-140-4

14,000 BTU of power

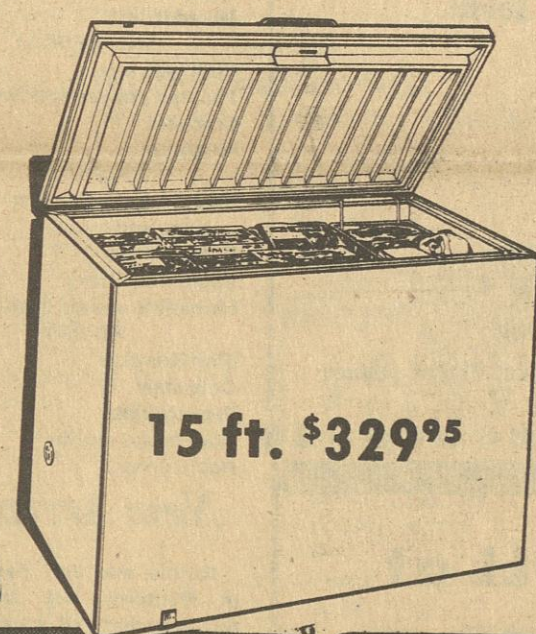
High Efficiency Operation helps cut energy costs! • Three Fan Speeds • Energy Saving Optional Settings • Exhaust Control • COMFORT GUARD™ Control • Fresh air control.



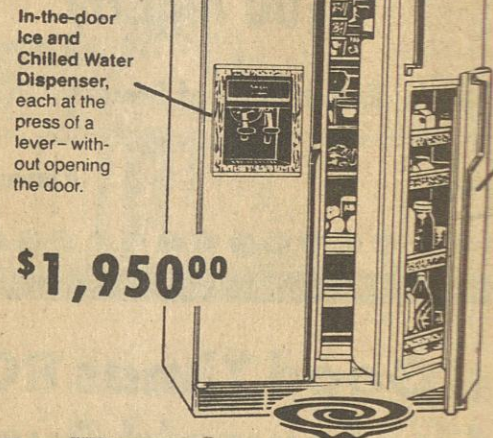
Model RUC30P

featuring Continuous-Cleaning oven

Digital MEALTIMER™ clock with Minute-Minor Timer • Two 8" and two 6" high-speed plug-in surface units • Balanced Cooking System • Lift-up SPILLGUARD™ coating.



15 ft. \$329<sup>95</sup>



\$1,950<sup>00</sup>



\$289<sup>95</sup>



**Whirlpool Refrigerator**

Model EHT141AK  
14.1 cu. ft. Refrigerator/Freezer

\$389<sup>95</sup>

- Space-saving 28" width • No-Frost refrigerator/freezer • Provision for optional ICEMAGIC™ Automatic Ice Maker • Textured Steel Doors • Attractive Gold Trim with Black Accents • Tmk.



**Whirlpool Dryer**

Model LE/LG5750XF  
Special Cool-Down Care!

\$249<sup>95</sup>

- Gas and Electric Models • Cool-Down Care helps prevent wrinkles in Permanent Press • 3 Drying Temps • Large Capacity • Custom Dry Control for Automatic Shut-Off.



**Whirlpool Convertible Dishwasher**

Model SHF 580D  
Easily Converts To Undercounter!

\$329<sup>95</sup>

- 9 Cycles/Options with 4 Automatic Cycles: POTS & PANS, NORMAL HEAVY, NORMAL LIGHT, RINSE-HOLD • HiTemp Washing Option • Exclusive In-The-Door Silverware Basket



**Whirlpool Undercounter Dishwasher**

Model SHU 8004  
Special Pots & Pans Cycle

\$359<sup>95</sup>

- 10 Cycles/Options with 5 Automatic Cycles • HiTemp Washing • Energy-Saving Air Dry option • Exclusive Clean Light • Exclusive In-the-Door Silverware & Cutlery Baskets



**Whirlpool Solid State Dishwasher**

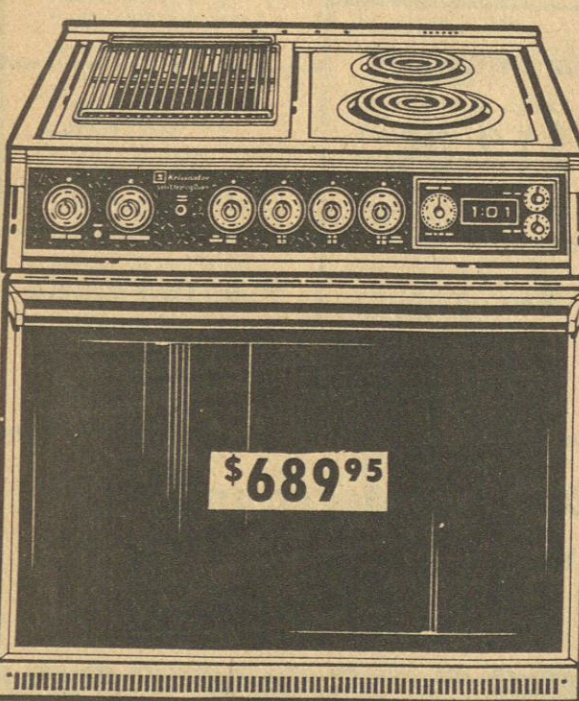
Model SHU 8004  
Special Pots & Pans Cycle

\$349<sup>95</sup>

- 6 Automatic Cycles • Tilt-Out Control • Microcomputer Control System • 6-grammed Delay Wash Option • Digital "Start" Control • "Clean" Light • More

**SALE**

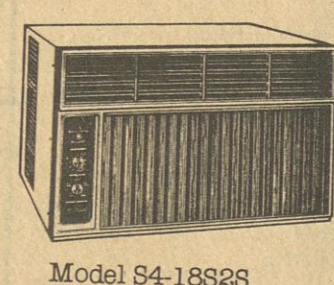
HAVE A THRIFTY NEW YEAR WITH these Special **LOW PRICES** ON QUALITY Whirlpool



\$689<sup>95</sup>



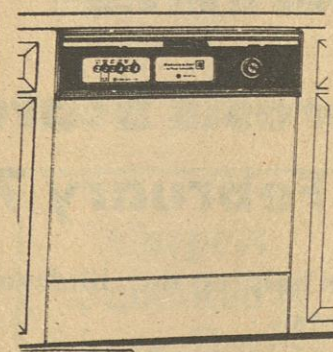
\$459<sup>95</sup>



Model S4-18S2S



\$389<sup>95</sup>



\$319<sup>95</sup>



\$349<sup>95</sup>



\$398<sup>00</sup>



\$369<sup>95</sup>



\$369<sup>95</sup>



\$269<sup>95</sup>

Model DEA/DGAS