

# Tishomingo County News

## The Vidette & Belmont News

OFFICIAL LEGAL NEWSPAPERS OF TISHOMINGO COUNTY  
The One Newspaper In The World Most Interested In This Area

\$8.00 Per Year Locally  
In Advance

\$15.00 Per Year  
Outside Trade Area

Patronize The News  
Advertisers!  
They Send A Valuable  
Message To You  
Each Week

NINETY-NINTH YEAR

IUKA, TISHOMINGO COUNTY, MISSISSIPPI

Thursday, December 30, 1982 No. 28

### November Sales Tax Collections Decline

Tishomingo County sales tax collections for the month of November once again experienced an overall decline over that of the previous month. Although two of the six municipalities showed a slight gain, the remaining four townships recorded substantial decreases.

Merchants from each municipality are responsible for collecting the tax at the point of purchase, and reporting the amount collected to the state. The local governing bodies are returned one percent of the total five percent levied.

Following are listed the six municipalities located in Tishomingo County in-

dicating the amount of taxes collected in November, with the October collections shown in parenthesis. They are: Belmont - \$8,886.04, (\$10,107.30); Burnsville - \$4,361.76, (4,485.73); Golden - \$552.12, (\$602.17); Iuka - \$26,709.01, (\$26,113.41); Paden - \$45.08, (\$81.01); Tishomingo - \$3,195.72, (\$2,796.46).

These figures were published by Mississippi Municipalities, the official publication of the Mississippi Association. Total collections returned to Tishomingo County for November revealed \$43,749.73, as compared to \$44,186.08 in October.

### State Unemployment Rate Drops To 11.9

Mississippi's unemployment rate dropped to 11.9 percent in November, a decrease of four-tenths of one percentage point compared to October's revised jobless rate of 12.3 percent, according to Mississippi Employment Security Commission Executive Director O.H. Simmons. Last year's November unemployment rate was 8.4 percent.

The 11.9 percent unemployment rate for the state was higher than the 10.4 percent national rate for November. MESC figures showed 124,900 unemployed and 925,300 employed out of a civilian labor force of

1,050,200. The initial unemployment insurance claims totaled 27,830.

Seventy-one of the state's 82 counties had unemployment rates of 10.0 percent or higher in November. Of that number, six counties had unemployment rates of 20 percent or higher.

The counties having the highest unemployment rates in November were Stone, with an unemployment rate of 22.2 percent; Tate, with an unemployment rate of 21.9 percent; Winston, with an unemployment rate of 21.4 percent; Walthall, with an unemployment rate of 21.0 percent; Attala, with an unemployment rate of 20.1 percent; and Noxubee, with an unemployment rate of 20.0 percent.

Issaquena, Oktibbeha, and Rankin counties had the lowest jobless rates in November. Issaquena had a rate of 5.3 percent, Oktibbeha had a rate of 6.5 percent, and Rankin had an unemployment rate of 7.3 percent.

Thirty-one counties showed an increase in their unemployment rates from October to November, while fifty one reported decreases.

### New Year's Eve Services

There will be a New Year's all-night service at Old Pleasant Hill Church, located at North Crossroads, on Friday night, beginning at 7:00 p.m. Various speakers and singers will present the programs throughout the night.

Pastor Donald Hutson, and the congregation, extend a cordial invitation to all.

# HAPPY NEW YEAR



Hats Off To '83

As the old year comes to an end, Joshua Freeno gets an early start on the New Year's celebrations by bidding adieu to '82, and looking forward to 365 days filled with promises of many new adventures. The handsome 13-month-old lad

is the son of Robbin and Sherry Freeno, of the Pleasant Hill Community. Proud grandparents include Mr. and Mrs. James F. Shook, of Midway; and Mrs. Vida Nichols, of Tishomingo. Great-grandparents are Mr. and Mrs. Mark McKee, of the Rutledge-Salem Community.

### Watch Night Service At Harmony

There will be a Watch Night Service at Harmony Methodist Church on Friday night, December 31st, at 7:30 p.m.

The Harmonies, and The Mathis Family, along with other singers, will be singing. Everyone is invited to attend.

### Watch Night Services

There will be a Watch Night Service at the Airport Mission Church on Friday night, December 31, from 8:00 to 12:00.

### Watch Night Services At Shady Grove

Watch Night Services will be held at Shady Grove Baptist Church, north of Burnsville, on Friday night, December 31, at 7:00 p.m. until.

There will be singing and preaching services. Bro. Bill Talley and congregation invite everyone to attend.

For more information about the services call 427-9279.

Have a great year!  
May all your wishes  
come true in '83!

### Interdenominational Crusade

An Interdenominational Crusade has been scheduled for January 6, 7 and 8, beginning at 7:00 p.m. nightly at the Iuka High School Auditorium. Leading the crusade will be Mike Shreve, from Cleveland, Tenn.

### Benefit Singing

There will be a benefit singing for Rex Goss at the First Pentecostal Church on Friday night at 7:30.

The church is located at 608 N. Main St., Iuka.

You are invited to come and enjoy the singing and fellowship with us.

## Unemployment Rate Drops In November

Tishomingo County's jobless rate experienced a slight drop at mid-November. According to Charles Smith, Manager of the Mississippi State Employment Service, the rate of unemployment for November was estimated to be 11.1 percent of the civilian labor force, compared to 11.3 percent in October and 9.0 percent in November, 1981. The number of Tishomingo County residents working numbered 11,500, 60 below the previous estimate and 680 below that of one year ago. The civilian labor force was estimated to be 12,940, 100 below the October figure and 450 below that of November, one year ago.

Manufacturing jobs in the county were estimated to be 3,010, compared to 2,970 in October and 2,800 in November, 1981.

Nonmanufacturing jobs numbered 5,000, only 90 below the previous estimate but 2,380 below that of one year ago. This large yearly decline was attributed mainly to Construction and Government.

Smith noted that the civilian labor force for the Corinth Area totaled 46,880 at mid-November. This represents a drop of 620 from the October estimate and 800 below the estimate for November, 1981. The number of employed workers in the four-county area dropped to 40,840 in November. This shows a drop of 540 when compared to October's figure and 160 below that of November, 1981, figure. An estimated 6,040 persons were unemployed at mid-November. This is 80 below the previous estimate and 640

below that of one year ago. The unemployment rate for November remained at 12.9 percent, the same as the October figure. However, the November, 1981, figure was estimated to be 14.0 percent, a decline of 1.1 percent.

There were 14,340 persons employed in manufacturing jobs in the four-county area at mid-November. This is a drop of 120 from the October figure but 1,220 above the estimate for November one year ago. This large decrease over the year was due largely to an increase in the Electrical Machinery group. Non-manufacturing employment numbered 17,690 at mid-November, down 140 from last month and 2,400 below one year ago. This large yearly decline was attributed to several groups with Government being the largest.

## South Central Bell Service To Change

There will be changes January 1, 1983, in the way customers do business with South Central Bell, but most customers won't notice.

"Those customers who don't make changes in their basic service won't see any difference in the way we do business with them, T.H. Bailey, District Manager, said. "But to comply with new Federal regulatory guidelines, we're changing the way we set up new phone service or handle customers' requests for different service arrangements."

Customers with questions

about their individual telephone service or about their bills can get answers by calling their service representative at the number listed in the front of the telephone directory or on the bottom of their telephone bill. Also, repair service will continue to be available on South Central Bell provided telephones or telephone lines.

South Central Bell will no longer supply phones and equipment for new service in homes and businesses once its existing inventory is used up. When that stock is gone, those items will be available

only from other suppliers, including American Bell Inc. (ABI), an AT&T subsidiary set up earlier this year for that purpose.

The Bell PhoneCenter at Jackson Metro Center - along with the name "PhoneCenter" - is being transferred to ABI," Bailey said. "Otherwise, South Central customers will generally find little or no change in services offered by the South Central Bell Service Center - now Bell PhoneCenter. The only difference most customers will notice is the new South Central Bell Service Center exterior identification sign."

He added that some things won't change on January 1.

We'll still be here providing local and long distance service in the same dependable way our customers have come to expect. We'll set up service arrangements for new customers, and we'll maintain them for existing subscribers.

"And while the changes January 1, 1983, will go unnoticed by a great many customers, there'll be more changes a year or so later that will have more impact on the way customers receive telephone service."

Bailey said customers with general questions about changes in the telephone business can call the company's "Let's Talk" center toll-free at 1-800-555-5000.

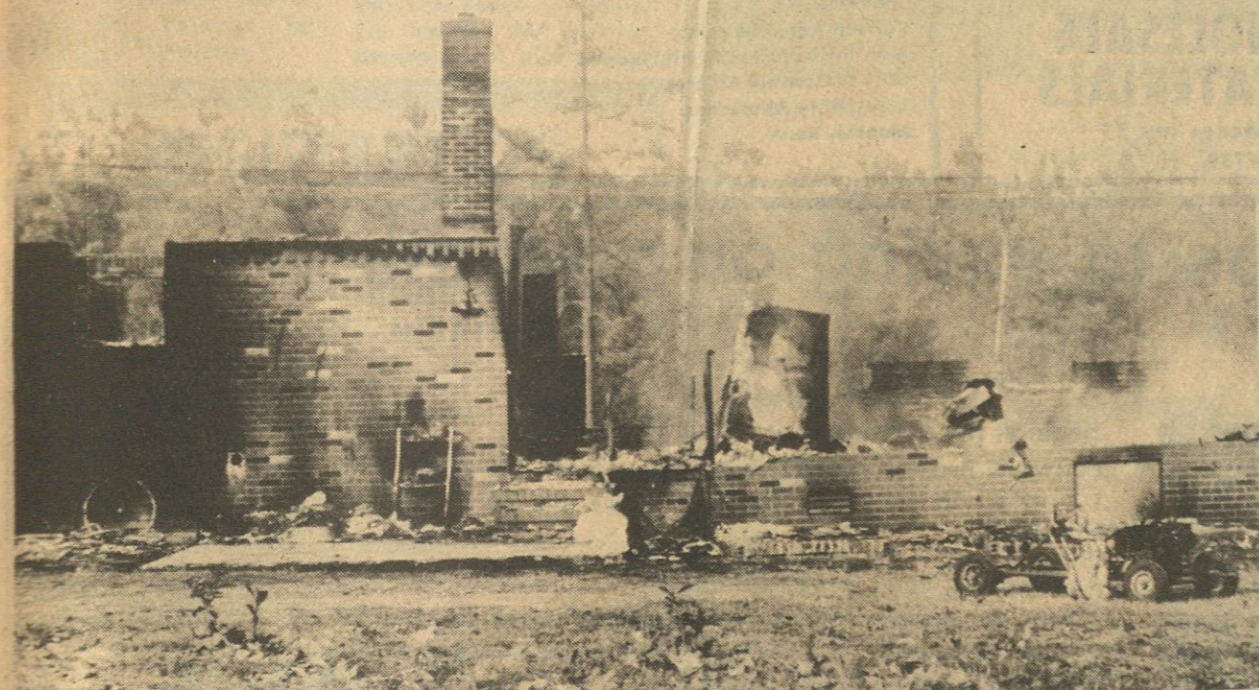
## Phone Service Tax To Increase By 3%

South Central Bell District Manager, T.H. Bailey, announced today that the current 1% Federal Excise Tax on local telephone service will rise to 3% beginning January 1, 1983.

Bailey said that the telephone excise tax increase is part of a package adopted by Congress in August 1982 that boosts taxes by \$98.9 billion over a three-year period. The tax will be 3% through 1983, 1984, and 1985. It then would be abolished, unless Congress acts again. The telephone tax was im-

posed by Congress during World War I as a "temporary" measure. Although repealed briefly after the war, it was reinstituted during the depression and at one time rates were as high as 25 percent on long distance calls and 15 percent on local service.

For nearly 20 years prior to 1972, the excise tax was 10 percent for most local and long distance telephone services. In 1973, and each year thereafter until 1981, the rate was reduced one percentage point as part of a plan to phase it out entirely.



Smoke Lingers Following Pre-Holiday Misfortune

Only outer brick walls, ash, debris and rubble remain of the home devastated by flames in the early morning hours of December 21. The 3-bedroom house belonging to Mrs. Jeanette Dill was located right outside the city limits of Iuka, at the intersection of West Ash Street and Har-

mony Road. The Fire Department received the call at 1:40 a.m., responded and extinguished the flames. A second call was placed to the department at 4:15 a.m. and Fire Chief Whitaker reported that the entire structure was completely engulfed by flames upon arrival. At the time of the first call, the fire was believed to have started

in the vicinity of the Christmas tree. Whitaker reports the second trip found the house a complete loss. Other calls made by the local fire department include: December 25, a fire wasted a cabinet shop and out-building owned by Ernest Jones on Pleasant Hill Road. It is believed that lightning ignited the buildings. On Tuesday, December 28, at 2:40 a.m., the

Department responded to a call involving a cabin fire. The location of this blaze was at the end of Snowdown Road, referred to as Durbin's Ditch. The cabin, belonging to Lamar Rutherford, incurred heavy damage to the bedroom and hall, with heat and smoke damage reported throughout. The heat pump was a possible cause of the fire.



Canoeing Through The Park

Heavy rainfall throughout Northeast Mississippi during the Christmas Holiday weekend irritated a lot of people, while others thought it was fun. Widespread flooding occurred across the state as a result of a steady rain in advance of a stalled

storm system, drenching saturated ground and overflowing bank-full rivers and streams. Local weather buff, L.D. Phifer, reports that the family rain gauge was actively engaged during the rainfall period recording a total amount of ten inches of the wet stuff. The storm's passage through Tishomingo

County prompted scenic Mineral Springs Park, Hwy. 72 East in Iuka, to reveal yet another facet of its natural abilities to provide ideal location for those who enjoy seasonal or unusual adventures. Indian Creek, winding through the city park, was unable to accommodate the extra flow of 'liquid sunshine'

and emptied a good portion of water onto the recreation grounds. Shown salvaging picnic and playground equipment Sunday, December 26, are (left canoe, l-r): Bobby Dooley, Frank Brinkley, Jr., Raymond Jourdan; (right canoe, l-r): Babs Jourdan, Tony Gaines, and Gene Jourdan.

# TISHOMINGO COUNTY NEWS VIDETTE and BELMONT NEWS

Phone 423-3666  
(SECD 631680)

John H. Biggs, Editor & Publisher

Published Thursday by The Tishomingo County News, Inc. Serving the people of Tishomingo and adjoining counties for more than 95 years. Publication office 120 West Front Street, P. O. Drawer E, Iuka, Mississippi. Entered at the Post Office as mail matter of the Second Class. Second Class postage paid at Iuka, Mississippi. Zip Code 38852. Post Master send address changes to The Tishomingo County News, P. O. Drawer E, Iuka, Mississippi 38852.

Mail Rates Tishomingo and Adjoining Counties  
\$8.00 Per Year

Other Areas  
\$15.00 Per Year

## EMERGENCY PHONE NUMBERS

SHERIFF DEPARTMENT.....423-6185  
TISHOMINGO COUNTY HOSPITAL.....423-6051  
AMBULANCE SERVICE.....423-5766

### POLICE DEPARTMENTS

BELMONT.....454-3381  
BURNSVILLE.....427-9526  
IUKA.....423-6340  
TISHOMINGO.....438-6302

### FIRE DEPARTMENTS

BELMONT.....454-3311  
BURNSVILLE.....427-8844  
DISTRICT I VOLUNTEER.....423-6515  
GOLDEN.....454-9645  
IUKA.....423-5011  
TISHOMINGO.....438-6650

MISSISSIPPI HOT LINE FOR CHILD ABUSE  
1-800-222-8000

DRUG AND ALCOHOL ABUSE  
423-3332

## Chatting With Your Home Economist

By: Nellie R. Horton,  
Extension Home Economist

Dear Readers:

This is my last column for 1982, and I would like for you to know how much I have enjoyed visiting with you through this weekly column and that I'm looking forward to working with you in 1983. If you need assistance in any area of Home Economics, please call me, Nellie R. Horton, Tishomingo County Extension Home Economist, at 423-3616, and I will do my best to help you. And now, I'd like to wish you a Happy,

Prosperous 1983.

**Prize Winning Meat Loaf**  
1 1/2 lbs. ground beef  
3/4 cup Quaker Oats (quick or old fashioned)  
1/4 cup chopped onion  
1 1/2 tsp. salt  
1/4 tsp. pepper  
1 cup tomato juice  
1 egg, beaten

Combine all ingredients. Pack firmly into an ungreased (8 1/2 x 4 1/2 x 2 1/2 inch) loaf pan. Bake in preheated moderate oven (350 degrees) about 1 hour and 15 minutes. Let stand for 5 minutes before slicing. Makes 8 servings.

**Chicken Casserole**  
1 chicken, cut up  
1 stick oleo  
1 can cream of mushroom



Want to lower  
your heating  
bills?

## INSULATE

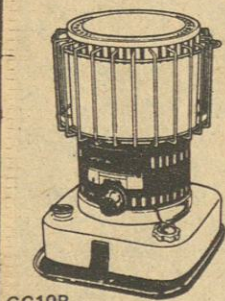
Call  
454-3383  
Day or Night

IVA Approved Phillip Williams, Owner

**WILLIAMS PEST CONTROL  
& INSULATION CO.**

Belmont, Miss.

*Comfort Glow*



GC19B

Comfort Glow Convection models are best used for the gradual warming of large interiors, and usually are placed in the center of a room to provide a large circle of warmth for larger areas.

Visit your Comfort Glow dealer for a free demonstration.



GR9B

Comfort Glow Kerosene portable heaters give you zoned heating capabilities with nearly 100% fuel efficiency. The Reflection models concentrate their heat in one direction, for quick, instant heat when you need it.

**W. H. FAIRLESS HARDWARE**

OPEN ALL DAY THURSDAYS

IUKA 423-9256

TISHOMINGO 438-6608



### Sure To Be Mounted

When it comes to large game hunting, James Wood (right) seems to know the right technique for bringing home the trophies. Wood's knack for hunting has profited him

with yet another 8-point white tail buck. The hunter came by The News Office on Front Street, Monday, December 20, after what he recalled to be about 1 1/2 hours spent in the Piney Flat Community where the kill was made. This

is the second deer for Wood to land this hunting season, and the animal weighed an approximate 150 lbs. The young man shown on the left remains unidentified due to the excitement over the day's adventure.



### 4-H Electric Award

Steven Bobo (left), a member of the Rainbow 4-H Club, received an electric circular saw provided by the

Tishomingo County Electric Power Association. Also attending the presentation was Representative Mack Lloyd Wadkins.

**Soup**  
1 can cream of chicken soup  
1 can onion soup  
1 can water  
1 cup rice or 1 1/2 cups Minute rice

Melt oleo in large casserole dish. Roll pieces of chicken in oleo and place in dish. Fill in between chicken with rice. Mix soups and water together, then gently pour over chicken and rice. Bake one hour and 15 minutes at 350 degrees.

### Easy Baked Chicken

Salt to taste  
1 (2 to 3 lbs.) fryer, cut up  
3/4 cup cream of celery soup  
3/4 cup cream of mushroom soup

Salt chicken to taste. Place pieces, skin-side up, in lightly buttered (9 x 12 inch) dish. Do overlap pieces. Combine soups; brush soup mixture on chicken. Bake at 300 degrees for 45 to 50 minutes. Serves 6.

### Conservation Notes

By: Bobby Manley

Forestry, which is applicable to wooded areas and potential forest lands on farms is generally referred to as farm forestry. Although this is a fairly accurate definition of farm forestry, the

forest lands. They can sometimes be used legitimately on agricultural land (for protection of crops, soil, livestock, or farm buildings) if such use will aid in attaining the goal of better land use and a more successful agriculture. Farm forestry includes the growing of forest trees on farms for (1) wood and other commercial products of the forest, (2) conservation and restoration of wildlife, (3) soil and water conservation, and (4) protection of the farmstead, crops, and livestock; as well as the harvesting, selling, or using of various derived products.

From the foregoing definition and supplemental explanation, it is obvious that farm forestry is a practical enterprise that has as its main goal the improvement of the farm as a family home and the enhancement of the income that can be derived from its operation.

The emphasis in farm forestry differs from that in other branches of forestry in that its objective is to improve the farmer's status through improved land use and more intelligent utilization and marketing of farm-grown forest products. To accomplish this objective forestry must be considered an integrated part of the farm management plan. A single unit of such a comprehensive plan, forestry has as its ultimate goal bringing about

## NO. 2 YELLOW PINE

2x8x10 - \$2.99	2x6x8 - \$2.24	2x6x10 - \$2.40
2x8x12 - \$3.64		2x6x12 - \$3.36
2x8x14 - \$4.28		2x6x14 - \$3.92
2x8x16 - \$4.99		2x6x16 - \$4.48
2x8x18 - \$5.59		2x6x18 - \$5.04
2x8x20 - \$5.99		2x6x20 - \$5.60

<b>No. 1 Shingles</b>	<b>\$18.95</b>
<b>5/8 Decking Plywood</b>	<b>\$6.99</b>
<b>4 x 8 Asphonite Siding</b>	<b>\$7.49</b>
<b>1/2 Plywood Shop Grade</b>	<b>\$6.29</b>
<b>12" x 16" Lap Siding</b>	<b>\$3.79</b>
<b>2 x 4 Economy Studs</b>	<b>99¢</b>
<b>4 x 8 RBB Siding</b>	<b>\$9.89</b>
<b>Exterior Door Units 2/8 x 6/8</b>	<b>\$44.95</b>
<b>Interior Door Units</b>	<b>\$30.95</b>

**BARTON WHOLESALE  
BUILDING MATERIALS**

4 Miles East of Cherokee on Hwy. 72  
205-370-7739

a better agriculture. Therefore, forestry for forestry's sake has no place in agriculture; it must be used as a tool to make the whole farming enterprise more successful.

Contact the Soil Conservation Service Office for assistance in managing your farm forest for the greatest dividend.

## ASCS Farm News

By: Henry L. Knox,  
County Executive Director

**WHEAT** — **FAILED**  
**ACREAGES** — Wheat producers with a wheat base and who have planted wheat for 1983 harvest are reminded that any failed acres of wheat must be reported to the Tishomingo County ASCS Office immediately. A farm visit must be made by the county office before any action can be taken to destroy or graze the affected area. Please let us know if you have this problem. The final planting date for 1983 wheat was November 30, 1982. Please contact the County ASCS Office if you have questions about failed or disaster wheat acres.

**OFFICE CLOSED** — The Tishomingo County ASCS Office will be closed Friday, December 31, 1982, for New Year's Day Holiday.

## Letter To The Editor

Dear Editor:

We are Americans who have made our home in Latin America for seven years. Lately, we are seeing much distorted news about the Americas coming out of the U.S. and would like to set the record straight for County News readers.

When we first moved to Costa Rica, bag, baggage, grandmother, teenagers and pets, we spoke no Spanish and knew little about the country. But, soon, our rural neighbors accepted us and graciously taught us their language, culture, and how a city-bred family could enjoy ranch life in a foreign land. Truly, our delightful adventures there merit a book, at least!

My husband's love for the sea (Pearl Harbor survivor, retired Navy), prompted a further move two years ago, to Colombia's Caribbean Coast. We found a lovely, old

Tishomingo County News - Vidette - Belmont News

coconut plantation on the Pan American Highway near Santa Marta, the oldest (457 years), and most fascinating city in all of the Americas.

Imagine, green palms waving in gentle ocean breezes, blue sea and sky, pounding surf and golden sand and, towering 19,000 feet over all the snow-capped the year 'round, majestic Mount Colombus. We feel we have much... incomparable beauty, fine neighbors, perfect climate, a stable, democratic government and a satisfyingly-low cost of living. Like Colombus, we have discovered a new frontier, with a vast potential and, being human, are driven to tell others about our dream-come-true. If you are interested in the future of the Americas... and the Birds... write us by international air mail (.35 a half-ounce) at Post Office Box 5222, Santa Marta, Colombia. It may take a while, but we promise to answer.

Now, from beautiful Santa Marta, we wish you salud (health), pesetas (wealth), amor (love) and the time to enjoy them all!

JUANITA (MRS. LEWIS)

## Kappa Kappa

The Kappa Kappa met for their Christmas on December 13th at the Dennis Restaurant. A full dinner was served. Excitement prevailed as the gifts were passed. Gifts were to be as good as the ones in the 30's. One lady had a dish towel made from sack. It was lovely. There were gifts of hankies, dyes, cosmetics and others.

When the spirit of Christmas is present, the value, do not matter.

A skywriter travels twenty miles for a word advertisement.

## IUKA INSULATION CO.

"Specializing In Blown Insulation"  
Call For Free Estimate

Lee Everett, Owner Located At Cappleman's Antiques Hwy. 25 North Days 423-9962 Nights 423-9962

## Small Loans For

## Christmas Shopping

- (1) 30 & 45 Day Loans
- (2) 3 Month Loans
- (3) 6 Month Loans

Don  
423-5248  
Iuka

Alex  
454-3464  
Belmont

## 1st Citizen Loans, Inc.



HOURS 8:00 TO 6:00  
SAT. 8:00 TO 1:00

## ACCEPTING APPLICATIONS FOR ELDERLY AND PERSONS DISABLED AND/OR HANDICAPPED

**PICKWICK CIRCLE APARTMENTS**  
**PICKWICK CIRCLE**  
**IUKA, MISSISSIPPI**  
**30 Units**

Call: (601) 427-9049 or 423-5314  
**NORTHVIEW APARTMENTS**  
**RT. 2-92A No. 400**  
**BURNSVILLE, MISSISSIPPI 38833**

**ALL APARTMENTS FEATURE:**  
Central Heat & Air  
Kitchen Appliances Furnished

## EQUAL HOUSING OPPORTUNITY

THE AMOUNT OF RENT IS BASED ON THIRTY PERCENT (30%)  
OF THE ADJUSTED FAMILY INCOME

FOR EXAMPLE:

John Doe  
Current Annual Income  
Monthly Adjusted Family Income  
30% of Monthly Adjusted Income  
Less Utility Allowance  
Monthly Rent

\$2,500.00  
208.00  
62.00  
(25.00)  
\$37.00

## Two steps to saving on your electric bill



### Begin at the thermostat.

For winter heating, set it at 68 degrees or lower. The lower you set it, the less your system has to work, and the less you pay.

### And second, don't forget the filter.

A dirty, clogged filter causes your system to work harder and use more electricity. Check your filter regularly, and clean or replace it when it's dirty.

The biggest energy user in your home is your heating and cooling system. To save the greatest amount on your electric bill, do the energy saving two-step.



**SAVE  
ENERGY,  
SAVE  
MONEY**



Tishomingo County Electric Power Assn.

Phone 423-3666



Miss Carol Annette Holman, daughter of Travis Norman Holman and the late Hilda Page Holman, of Tishomingo; and Jeffrey Hamilton Hayes, son of Mr. and Mrs. Edward C. Hayes, of Cherokee, Alabama, will be married at the Tishomingo Baptist Church, January 2, at 4:00 p.m.

The bride-elect is the granddaughter of May Belle Page and the late George Robert Page. Sr., of Iuka; and the late

The prospective groom is the grandson of Mrs. Lettie M. Hamilton and the late Mr. William Lee Hamilton; and the late Mr. and Mrs. Charlie Hayes, all of Cherokee.

Miss Holman is a 1982 honor graduate of Tishomingo High School. She was a member of the Beta Club, chosen for the Hall of Fame, and named Who's Who Among American High School Students. She is presently attending Northeast Mississippi Junior College where she is working toward an associate degree in



## Courtney Is One

Courtney Lynn Yarbrough, daughter of Mr. and Mrs. Michael Yarbrough, of North Crossroads, celebrated her first birthday on December 8th. She is the granddaughter of Mr. and Mrs. Bill Hodge, of North Crossroads; and Mr. and Mrs. Raymond Yarbrough, of Tishomingo.

Mr. Hayes is a 1981 graduate of Tishomingo High School. He is presently employed with Waldrep's Spur in Cherokee.

The Reverend Eugene Tension, of Booneville, will perform the ceremony.

No formal invitations are being sent, but friends and relatives of the couple are invited to attend the ceremony and remain for the reception in the church fellowship area.

Mississippi's Ninth Annual Tree Planting Week has been scheduled for February 11-18, 1983, according to State Forester Sid Moss, Chairman of the State Tree Planting and Forest Development Committee.

The announced dates reflect a departure from previous Tree Planting Week observance periods. Hereafter the week-long "Celebration of Trees" began a week prior to Mississippi's Official Arbor Day (second Friday in February) and climaxed on Arbor Day. The committee voted to begin the 1983 observance week on Arbor Day and end it on Friday of the following week. The change was made to allow time for maximum public awareness activities and to resolve some troublesome scheduling conflicts for participating agencies and organizations.

James Martin, Rankin County tree farmer-callie man, was re-elected Chairman of the statewide Tree Planting Week effort at the November 18 committee meeting. Soil and Water Conservation Districts will again serve as primary sponsors of the event, with help from the Mississippi Forestry Commission, Soil Conservation Service, U.S. Forest Service, Forest Industry, local Garden Clubs, Scouts, Civic Clubs, county agents, businessmen and others.

Tree Planting Week events vary from county to county but include tree planting ceremonies at hundreds of

schools across the state, in addition to distribution of free tree seedling either donated by local forestry or business interests or purchased by the Conservation Districts and distributed at a designated location in each county. Several counties hold tree planting contests in connection with Tree Planting Week.

Last year nearly 700,000 free trees were distributed. More than 80,000 school children at 484 schools took part. In all more than five and one-half million trees were planted during the week-long event.

Citizens interested in participating in the Tree Planting Week - 1983 observances should watch and listen to the media for specific local plans or contact the County Forester or S.C.S. Office.

A program encouraging Mississippians to support legislation for stronger drunk driver laws is being implemented this week by the Mississippi Insurance Council, according to an announcement by MIC Chairman Bob L. Nolen of Jackson. The program includes a statewide speakers bureau and a series of public service announcements.

As the educational and informational association of the state's property and casualty insurance companies and agents, the Mississippi Insurance Council sponsors programs to encourage legislation and individual actions which will help keep insurance costs down.

The Council is enlisting public support for upcoming legislation that would



## Thomas' New Bike

Thomas Franks' Christmas was made a lot brighter when his step-father's ticket was drawn as the winning ticket for the "Huffy" bicycle, which Circus Burgers gave away on

Christmas Eve. Thomas is the son of Marty and Debra Bonds, of Iuka. He is the grandson of Edgar and Willadean Hannon, of Iuka; and Julie Franks, of Muscle Shoals, Ala. Great-grandmother is Mrs. Pauline Wadkins.

strengthen Mississippi's drunk driver laws, allow stiffer penalties and more uniform punishment for convicted drunk drivers, and close loopholes in existing laws.

The Council's concern over Mississippi's current drunk driver problem is based on a number of alarming facts. From January through July of 1982 more than 60 percent of traffic fatalities on roads patrolled by the Mississippi Highway Patrol were a result of someone drinking and driving. One hundred and thirty-one people died in those accidents involving drinking drivers.

Through November of this year, the Mississippi Highway Patrol issued 9,969 tickets for DUI (driving under the influence) as compared with 6,514 tickets issued through the same period in 1981. This

is more than a 50 percent increase.

Through October of 1982, 1,000 officers from all Mississippi law enforcement agencies administered 36,419 in-towilizer tests with positive readings (blood alcohol content .10 or more) resulting in the issuance of the same number of tickets for DUI. Because of loopholes in Mississippi's laws, only 48 percent of drivers who were issued arrest warrants received dispositions of any kind, with many cases simply being dismissed.

Nationally, more deaths of young people 25 and under are attributed to alcohol, especially involving vehicles, than any other cause including all diseases and illnesses. Alcohol involvement by drivers and pedestrians is responsible for more highway deaths and in-

juries than any other single factor.

Governor William Winter has voiced his support of stronger drunk driver legislation, adding it is time to "drive the drunk driver off the road." Other concerned groups both here in Mississippi and across the nation are rallying behind efforts to stop drunk driving.

Studies show it is the problem drinker that is involved in the majority of drinking driver accidents rather than occasional or social drinkers. One of the most alarming statistics revealed that one out of every ten drivers on the road on weekend evenings is drunk.

Bills in support of stronger drunk driver legislation have already been prefiled for the 1983 session which have the support of the Mississippi Highway Patrol and other organizations seeking stiffer penalties and more uniform punishment for drinking drivers.

"Drunk drivers cost Mississippians dearly, not only in terms of mounting insurance claims that add to the cost of automobile insurance, but in deaths, injuries and misery," Council Chairman Nolen stated. "Public support and involvement in the passage of stronger drunk driver laws would make life safer for everyone who travels on our streets and highways, plus helping keep insurance costs down."

Tuesday night supper guests with Mr. and Mrs. Edward Thorne and Shirley Ann were Mr. and Mrs. Lloyd Crouse, of Iuka.

Early Christmas visitors with Mr. and Mrs. Edward Thorne and Shirley Ann on Thursday night were Mr. and

Mrs. Lloyd Crouse, of Iuka, and Mr. and Mrs. Bobby Wayne Thorne, Stephanie, and LaDonna, of Muscle Shoals, of Golden. Other Christmas Day visitors were Mrs. Opaline Crouse, of Iuka, Mr. and Mrs. John B. Strickland, Mr. and Mrs. Junior

Mr. and Mrs. Edward Thorne and Shirley Ann enjoyed having Mr. and Mrs. Lloyd Crouse as dinner guests on Christmas Day.

Christmas Day dinner guests with Mrs. Beunah Strickland and Eva Mae were Mr. and Mrs. Sam Dickinson.



## CARING FOR YOUR PET

## TRANSPORTING PET IN EMERGENCY

In case of a serious accident or injury to your pet, you'll have to get professional help as soon as possible. Keep your veterinarian's phone number handy, and call ahead to make sure that you and your pet are expected.

Stay calm and take particular care in how you transport your pet. If he is in great pain and shows a reluctance to be touched or moved, you may have to muzzle him for your safety, and his own good. Tape, gauze, a strip of cloth will do in a pinch. Tie it securely around his jaws, but take care not to cover his nostrils. But never muzzle your dog if he's vomiting, gagging, or bleeding from mouth or nose, or seems to be

having difficulty breathing

If possible, try to carry your pet on an improvised stretcher. A board, table leaf, or box will do. If nothing like this is available, try your best to lift him gently and carry him securely against your body, giving him the maximum of support. This will minimize the chances of your pet sustaining further injuries while on his way to treatment.

Brought to you as a  
public service from:

**James F. Perkins**  
**D.V.M.**  
**Hwy. 25 South**  
**Iuka, Miss.**  
**Phone 423-3470**

[illegible]

AD EXPIRES JANUARY 5, 1982

# Nelson super market

AD EXPIRES JANUARY 5, 1982.

Quantity Rights Reserved

**NELSON'S MEANS BETTER MEATS**  
**START YOUR NEW YEAR OUT RIGHT WITH**  
**FRESH-QUALITY- MEATS FROM NELSON'S**  
**SUPERMARKET**

We would like to take this opportunity to say 'THANK YOU' to all our customers for your patronage this past year. We sincerely appreciate your business and we will continue to bring you Low Food Prices with polite, friendly service.

Happy New Year To All.

FRESH PORK



**HOG JOWL** LB. **49¢**

1/4 PORK LOIN


**PORK CHOPS** LB. **\$1.59**



BRYAN FLAVORITE SLICED

**BACON** 12 OZ. **99¢**

FRESH CHICKEN

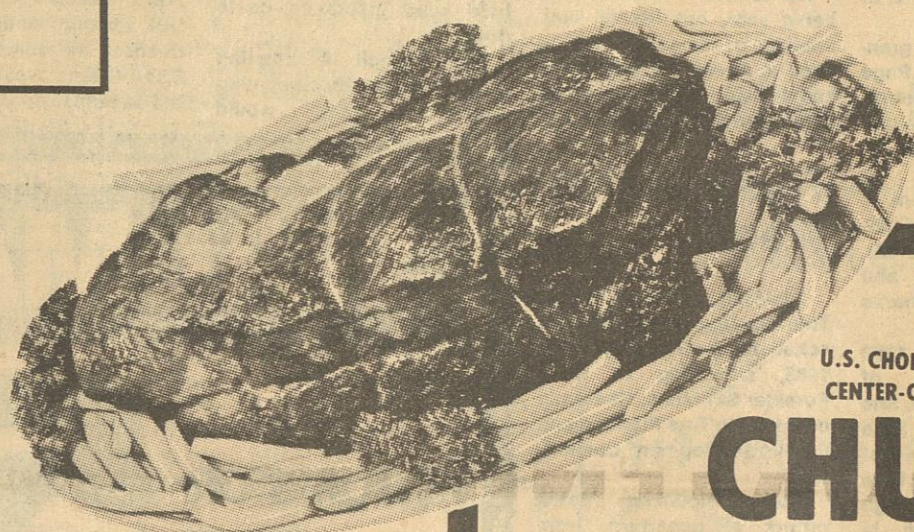


**Livers** LB. **69¢**

BREADED

**Shrimp** BASKET

8 OZ. BOX **\$1.69**



U.S. CHOICE BONELESS CENTER-CUT

**CHUCK ROAST** LB. **\$1.59**

FRESH LEAN



**GROUND BEEF** LARGE PKG. LB. **\$1.19**

FRESH

**Chicken Backs** LB. **29¢**

CENTER CUT SMOKED

**PORK CHOPS** LB. **\$1.99**

**HARVEST FRESH**

## PRODUCE

Quality - Variety - Freshness

HARVEST FRESH FLORIDA

**CELERY** 36 SIZE 4 STALKS **/\$1.00**

HARVEST FRESH FLORIDA RED

**Graperfruits** 40 SIZE 5 **/\$1.00**

HARVEST FRESH GREEN

**Cabbage** LB. **15¢**

HARVEST FRESH CANADIAN WAXED

**Rutabagas** LB. **25¢**

HARVEST FRESH FLORIDA

**Oranges** 5 LB. BAG **\$1.59**

HARVEST FRESH WASHINGTON STATE EXTRA-FANCY

**Apples** RED DELICIOUS 88 SIZE LB. **59¢**

HARVEST FRESH FLORIDA

**Tangerines** 210 SIZE DOZEN **69¢**

HARVEST FRESH FLORIDA

**Tangelos** 80 SIZE **6/89¢**

HARVEST FRESH FLORIDA

**Oranges** 80 SIZE **6/89¢**

HARVEST FRESH FLORIDA RED

**Grapefruit** 5 LB. BAG **\$1.59**

HYDE PARK PURE

**Pork Sausage** LB. **\$1.69**

CENTER CUT

**Pork Chops** LB. **\$1.89**

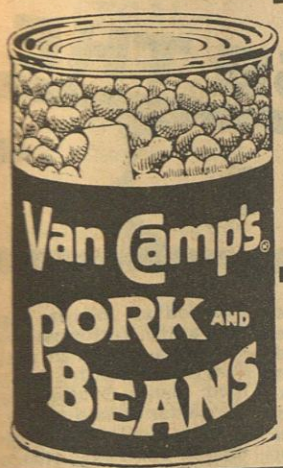
FRESH PORK

**Spare-Ribs** LB. **\$1.49**



REELFOOT

**Hamburger Patties** 2 LB. BOX **\$2.99**



VAN CAMP'S  
**PORK 'N' BEANS**  
16 OZ. **3/\$1.00**

HUNT'S  
**Pear Halves**  
15 OZ. **59¢**

MERIT SALTINE  
**CRACKERS**  
1 LB. BOX **59¢**



WESSON  
**VEGETABLE OIL**  
38 OZ. **\$1.39**



DINTY MOORE  
**Beef Stew**  
24 OZ. **\$1.59**

GARDEN CLUB  
**SALAD DRESSING**  
32 OZ. **69¢**



SPAM  
**LUNCHEON MEAT** 12 OZ. **\$1.49**

HYDE PARK DRY BLACKEYE  
**PEAS**  
1 LB. BAG **19¢**



HUNT'S  
**Manwich Sauce**  
15 1/2 OZ. **99¢**



MARTHA WHITE  
**CORN MEAL**  
5 LB. BAG **79¢**

SAVORY PURE  
**Grape Jelly**  
18 OZ. **69¢**



LYNDEN'S FARMS  
**French Fries**  
2 LB. **69¢**

RICHTEX VEGETABLE  
**SHORTENING**  
42 OZ. CAN **99¢**

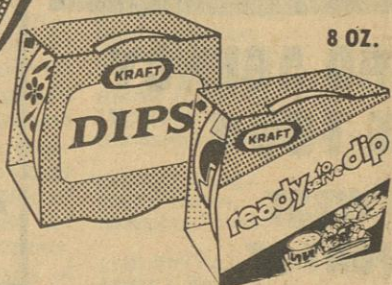
TOP'S  
**DOG FOOD**  
25 LB. **\$2.99**



HYDE PARK  
**Margarine**  
PATTIES  
8 OZ. PKG. **6/\$1.00**

TIDE LAUNDRY  
**DETERGENT**  
FAMILY SIZE  
**\$5.49**

KRAFT  
**Regular Dips**



8 OZ. **2/99¢**  
KRAFT  
**Dips**  
READY TO SERVE 8 OZ. **69¢**

HYDE PARK FROZEN  
**ORANGE JUICE**  
12 OZ. CAN **69¢**

BRYAN'S  
**Chili**

WITH BEANS



15 OZ. **69¢**

HI-RISE SELF-RISING  
**Flour**



25 LB. **\$3.69**

MISS. WISCONSIN

**Sweet Peas**

17 OZ. **3/\$1.00**

SHEDD'S COUNTRY CROCK

**Margarine Spread**

3 LB. BOWL **\$1.79**

COMET

**Cleanser**



14 OZ. **3/\$1.00**

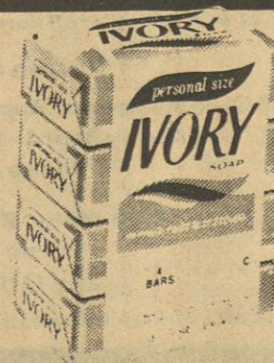
JOY  
**DISH DETERGENT**  
22 OZ. **99¢**

RALSTON -CORN, WHEAT, & RICE.  
**Chex Cereal** **\$1.39**

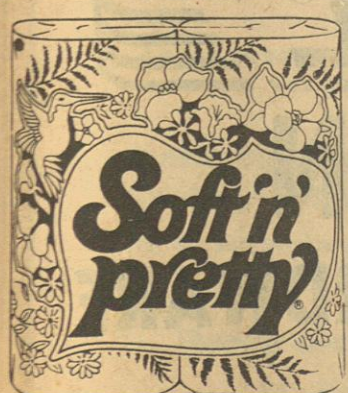
GERBER & HEINZ STRAINED  
**BABY FOOD**  
5/\$1.00



IVORY  
**Bath Soap**  
4 BAR PKG. **89¢**



BAY BEAUTY PINK  
**Salmon** 8 OZ. **99¢**  
ORVILLE REDENBACHER  
**Popcorn** 15 OZ. **99¢**



SOFT 'N' PRETTY  
**BATH TISSUE**  
4 ROLL PKG. **99¢**

COUPON EXPIRES JANUARY 5, 1982.  
This Coupon Good For  
**Double** Quality Stamps  
On All Your Purchases  
ANY DAY OF THE WEEK  
WITH THIS COUPON.  
Limit 1 Per Family  
QUALITY STAMP COVER CARD ENDS WEDNESDAY JANUARY 5, 1982.

# WANT TO SELL...BUY...RENT...HIRE? USE THE CLASSIFIED ADS

## Classified Ads

\$2.50 per week for 30 words. After the first 30 words, 5¢ extra per word. \$1.00 extra with border  
Card of Thanks and In Memorium - 5¢ per word  
Classified Ads, Cards of Thanks and In Memoriums must be paid in advance  
50¢ service charge will be added to any monthly bill totaling less than \$5.00

Phone 423-3666  
ERRORS

Should be reported immediately as The News can be responsible only for the first incorrect insertion in any advertisement. The News cannot be liable for error in any advertisement to a greater extent than the cost of the space occupied by the items in the advertisement.

All display advertising must be in the News office by 12 o'clock noon on Tuesday.

### BRASS BED

King size with firm orthopedic mattress set and frame. New - never used - still in plastic. Cost over \$800.00. Will sell for \$350.00 CASH. Phone 287-5322. D-2-9-16-23-30-c.

**FOR SALE** - Solid Oak bedroom suit, king size (never used), has cannonball bed, triple dresser, mirror, night stand, orthopedic mattress set. Cost over \$1600 - Must sell \$785.00 CASH. Clearing out many storages. Florence (205) 767-5198. D-9.

**DINNERWARE FOR SALE** - Excellent condition - Poppytrail by Metlox. Pepper Tree pattern. 8 each: dinner plate, salad plate, cup, saucer, fruit, soup/cereal; 2 vegetable bowls, 2 platters, covered casserole, gravy, butter dish, salt and pepper, cream and sugar. If interested call Margaret Bullard at 423-6839, Thursday, Friday, Saturday, or Sunday, \$130.00 FIRM! D-9.

**BE A SMARTIE** - And Grab This Super Buy, Before Someone Else Does... NEW 2 B.R. COTTAGE Double-Wide 864 Sq. Ft. (24 x 40) ... Complete With Shingle/Wood ... Storm Windows & Door ... Patio Door Off D.R. ... Delivered, Set Up & Anchored ... Under \$200/Month. Financing Available ... Cash Price \$13,950 ... Patrick Home Center, Corinth (601) 287-2966. D-30-c.

**JEEPS, CARS, TRUCKS** under \$100 available at local gov't sales in your area. Call (refundable) 1-619-569-0241 ext. 4086 for directory on how to purchase. 24 hrs. J-6-13-20-c.

**PIANO FOR SALE**  
WANTED: Responsible party to assume small monthly payments on spinet/console piano. Can be seen locally. Write: (include phone number) Credit Manager, P.O. Box 521, Beckemeyer, IL 62219. D-30-J-6-13-c.

### Quick Clean Cleaners

110 WEST EASTPORT IUKA, MISS. 423-5913  
**NEW BUSINESS HOURS** effective January 1st, 1983 we will be open Monday - Friday, 7 a.m. - 5 p.m. Closed all day Saturday. D-9-16-23-30-c.

**FOR RENT** - 3 bedroom, 2 bath house. Fireplace insert, dishwasher, trash compactor, stove and range. Screened-in back porch, water furnished. \$250.00 per month. If interested call 423-5015. D-9-tfn-c.

**FOR RENT** - 3 bd., brick in Burnsville City Limits. \$200 monthly plus deposit required. Call Harvey Pendergrast Agency, Inc. at 287-3133 or 427-8419. D-23-tfn-c.

**FOR RENT** - 2 bedroom mobile home outside city limits on Snowdown Road. \$125.00 per month. Couple only. Phone 423-5900. D-23-tfn-c.

**APARTMENT FOR RENT** - 2 bedroom, central heat and air, located on Hwy. 365 in Burnsville. Call 427-9243. D-30-c.

**HOUSE FOR RENT** - 3 bd, wood heater, Ashley heater furnished, located in Burnsville. \$140.00 monthly. Call 427-9243. D-30-c.

**MOBILE HOME** - 12 x 60, 2 bd, \$100.00 monthly. Call 427-9243. D-30-c.

**HOUSE FOR RENT** - 2 bd., fully furnished, utilities furnished, also sleeping room furnished. Ready to move in. Call 423-5782. D-23-30-c.

**FOR RENT** - Furnished kitchenette apts., newly decorated, 1 1/2 miles from J. P. Coleman State Park, rent by day, week, or month. Also trailer lots for rent, \$40 monthly, yearly rates for campers. Call 423-6498 or 423-9107. J-1-tfn

**FOR RENT** - Flashing Arrow Signs. \$50.00 plus tax. Call 728-5460 or 728-5674 in Booneville, or in Belmont call 454-7128. M-21-tfn-c.

**FOR RENT** - 2 or 3 bedroom mobile home. Phone Bart Smith at 423-3749. J-8-tfn-c

**AUCTION** - Beginning December 30, every Thursday and Saturday night 6:30 p.m. Hwy. 365, four miles south of Burnsville. Everyone's welcome. D-30-J-6-c.

**NOTICE** - As of today, December 30, 1982, all land belonging to Raymond H. Brumley is hereby posted against all trespassing.

**RAYMOND H. BRUMLEY** D-30-J-6-13-p.

**CRUISE SHIP JOBS!** Great income potential. All occupations. For information call: 602-998-0426 Ext. 251. D-30-J-6-13-20-P.

**TEXAS REFINERY CORP.** offers PLENTY OF MONEY plus cash bonuses, fringe benefits to mature individual in Iuka area. Regardless of experience, write A.D. Sears, Pres., Texas Refinery Corp., Box 711, Fort Worth, Texas 76101. D-30-c.

**LARRY'S MOBILE HOME SERVICE** - Local and long distance moving, Kool Seal, anchors, blocking, leveling. Call Larry at 423-3258 or Terry at 423-3237. O-7-tfn-c.

**MOBILE HOMEOWNERS** - Are you adequately protected by your present insurance coverage. We offer mobile homeowners coverage packaged to fit your needs. Premium financing. David Yarbrough Insurance. 423-9757 or 423-9646. N-4-tfn-c.

**WANTED TO BUY USED FURNITURE & ANTIQUE FURNITURE**  
Also, glassware. We buy just about anything. Cleaning your house or attic out, give us a call. Cappleman's Antiques. Phone 423-9962 nights, 423-5640 or 423-6836. J-12-tfn-c.

**Wanted To Buy Antiques**  
Lamps, cutglass, clocks, toys, collectibles. Fair prices paid. Items accepted on consignment. Lamps rewired and repaired. Phone 423-5698. S-9-tfn-c.

### Substituted Trustee's Notice of Sale

WHEREAS, on April 9, 1981, Johnny Doyle Burns and wife, Margie Burns, executed their certain Deed of Trust for the benefit of The Peoples Bank and Trust Company, Booneville, Mississippi, which Deed of Trust is of record (1) in Trust Deed Book 130, Pages 26-29, Chancery Clerk's Office, Prentiss County, Mississippi, and (2) in Trust Deed Book 100, Pages 747-750, Chancery Clerk's Office, Tishomingo County, Mississippi; and WHEREAS, the owner and holder of the aforesaid Deed of Trust has duly substituted and appointed R. Michael Bolen as Substituted Trustee in the place and stead of the original Trustee, by instrument dated May 26, 1982, and recorded (1) in Trust Deed Book 136, Page 55, Chancery Clerk's Office, Prentiss County, Mississippi, and (2) in Trust Deed Book 8106, Page 348, Chancery Clerk's Office, Tishomingo County, Mississippi; and WHEREAS, default having been made in the terms and conditions of said Deed of

**UPHOLSTERING CENTER**  
Quality fabrics to choose from. Free pick-up and delivery, all work guaranteed. Furniture and boats. Wallace E. Anglin, Hwy. 25 South. Call 423-3843. O-21-tfn-c.

Trust and the entire debt secured thereby having been declared due and payable in accordance with the terms of said Deed of Trust and the legal holder of said Deed of Trust, The Peoples Bank and Trust Company, Booneville, Mississippi, having requested the undersigned Substituted Trustee to execute this trust and sell said land and property in accordance with the terms of said Deed of Trust for the purpose of raising the sums due thereunder, together with attorney's fees, trustee's fees and expenses of said.

NOW, THEREFORE, I, R. Michael Bolen, Substituted Trustee in the said Deed of Trust will on the 21st day of January, 1983, offer for sale at public outcry, and sell within legal hours (being between the hours of 11:00 a.m. and 4:00 p.m.) at the West door of the County Courthouse in the County of Prentiss, Booneville, Mississippi, to the highest and best bidder for cash, the following described property lying and being situated in Prentiss County, Mississippi, and Tishomingo County, Mississippi, to-wit:

**TRACT 1:** Part of the Northwest Quarter of Section 14, Township 5 South, Range 7 East, described as follows: Beginning at the Northwest corner of said Quarter and run South with West boundary of said Quarter 300 feet to a point in the South right-of-way of Mississippi State Highway No. 30; said right-of-way being 80 feet wide; thence in an Easterly direction with the curve of the South side of said right-of-way 880 feet for a point of beginning; thence South 51 degrees East with the South side of right-of-way of said Highway, 100 feet to the West line of the Frank Barton Lot; thence South 35 degrees West with the West line of said Barton lot 150 feet; thence North 51 degrees West 100 feet, thence North 35 degrees East 150 feet to the point of beginning.

**TRACT 2:** Part of the Southeast Quarter of Section 10, Township 5 South, Range 7 East, described as follows: Beginning on the South boundary of said Quarter at a point 903 feet West of the Southeast corner thereof and run West 252 feet, thence North 34 rods and 19 links; thence East 677 feet; thence South 360 feet; thence West

425 feet; thence South 219 27/35 feet to the point of beginning.

**LESS AND EXCEPT:** Part of the Southeast Quarter of Section 10 described as follows: Beginning 70 rods West and 374 feet North of the Southeast corner of said Quarter; run thence South 80 degrees East 361 feet; thence North 320 feet; thence North 80 degrees West 361 feet; thence South 320 feet to the point of beginning.

**ALSO LESS AND EXCEPT:** Part of the Southeast Quarter of Section 10, Township 5 South, Range 7 East, described as follows: Commencing on South boundary of said Quarter at a point 1155 feet West of the Southeast corner of said Quarter; run thence North 150 feet; thence East 60 feet; thence South 150 feet; thence West 60 feet to point of beginning.

**TRACT 3:** Part of the Northeast Quarter of Section 10, Township 5 South, Range 8 East described as follows: Beginning at the Northeast corner of said Quarter and run South on the East boundary 40 rods; thence South 85 degrees 30 minutes West 153 feet to a steel stake; thence South one-half degree West 650 feet for a true point of beginning; thence South one-half degree West 1165 feet; thence South 85 degrees 30 minutes West 534 feet to the center of the Jacinto and Marietta Road; thence North one-half degree East with center of said road 1165 feet; thence North 85 degrees 30 minutes East 534 feet to the true point of beginning.

**SUBJECT TO:** Right of way for public road.

**TRACT 4:** 130 acres in Northwest Quarter of Section 10, Township 5 South, Range 8 East, described as follows: Beginning at Southwest corner of said Quarter and run North to the Booneville and Iuka Public Road, as it now runs thence in an Easterly direction with said road to the East boundary of said Quarter; thence South to the Southeast corner of said Quarter thence West with the South boundary to the point of beginning. Being 130 acres, more or less.

**LESS AND EXCEPT:** 1 acre sold to P.W. Windfield described as follows: Part of the Northwest Quarter of Section 10, Township 5, Range 8 East described as follows: Beginning at the Northeast corner of said Quarter section and run Quarter section and run Quarter section East boundary of said Quarter Section 235 feet to a point in the center of the Booneville and Altitude Road;

thence South of West with the center of said road 2415 feet; thence South 35 feet to a gun barrel in the South right-of-way of said road for a point of beginning; thence South 38 degrees West with South right-of-way of said road 210 feet; thence South 210 feet; thence North 38 degrees East 210 feet; thence North 210 feet to point of beginning.

**LESS AND EXCEPT:** Part of the Northwest Quarter of Section 10, Township 5 South, Range 8 East described as follows: Commencing at the Southeast corner of said Quarter run thence West 618 feet; to the center of the Hare Branch and point of beginning; run thence West 2032 feet to the Southwest corner of said Northwest Quarter; thence North 1117 feet to the center of Old Mississippi State Highway No. 364, 1387 feet to the center of Hare Branch; thence Southeasterly with the center of Hare Branch 2073 feet to point of beginning. Containing 60.3 acres.

**LESS AND EXCEPT:** Part of the Northwest Quarter of Section 10, Township 5 South, Range 8 East described as follows: Beginning at the Southeast corner of said Quarter run thence South 87 degrees West 250 feet to the center of a ditch for a true point of beginning; thence in a Northwesterly direction 2232 feet with the center of said ditch to a point in the South right-of-way of State Highway 364; thence South 82 degrees West with said right-of-way 329 feet to the center of a ditch; thence in a Southeasterly direction with the center of said ditch 2092 feet; thence North 87 degrees East 376 feet to the true point of beginning. Containing 16.25 acres, more or less.

**LESS AND EXCEPT:** Part of the Northwest Quarter of Section 10, Township 5 South, Range 8 East described as follows: Beginning at a point in the center of old Highway 364, 269 feet South and 408 feet West of the Northeast corner of said Quarter; thence South 77 degrees 15 minutes West 250 feet; thence South 29 degrees 30 minutes East 400 feet to an iron stake; thence North 77 degrees 15 minutes East 250 feet to an iron stake; thence North 29 degrees 30 minutes 400 feet to the point of beginning. Containing 2 acres, more or less.

**SUBJECT TO:** Right of way for public road.

**TRACT 5:** Part of the Northeast Quarter of Section 9, Township 7,

Range 9 East, described as follows: Beginning at the Northeast corner of said Quarter Section and run South 4 rods and 33 1/2 rods, thence West 107 feet to a point in the center of a gravel road for a point of beginning; thence West 553 feet; thence North 82 feet; thence East 489 feet to a point in the center of the above mentioned road; thence South 21 degrees East with the center of said road 105 feet to the point of beginning. Containing 1.1 acres.

**TRACT 6:** Lot 9 in Block 6 in the Town of Belmont, Mississippi, according to map of said town on file in the Chancery Clerk's Office, Iuka, Mississippi.

**TRACT 7:** Part of the Southeast Quarter of Section 10, Township 5, Range 7 described as follows: Beginning at the Southeast corner of said Quarter Section and run West with the South boundary thereof 900 feet to the point of beginning; thence North 219.8 feet; thence East 210 feet; thence South 203.8 feet; thence West 162 feet; thence South 16 feet to the South boundary of said Quarter Section; thence West 48 feet to the point of beginning. Containing one acre, more or less.

**TRACT 8:** Part of the Southeast Quarter of Section 10, Township 5, Range 7 described as follows: Commencing on the South boundary of said Quarter at a point 1155 feet West of the Southeast corner of said Quarter; run thence North 150 feet; thence East 60 feet; thence South 150 feet; thence West 60 feet to the point of beginning.

**TRACT 9:** One acre, more or less, of the East one-half of the Southeast Quarter of Section 13, Township 5, Range 7,

bounded as follows: Beginning at the Northwest corner of the East one-half of the Quarter, run North 5 rods; thence Southeast with the center of said road 2 rods for a point of beginning; thence Southeast with road 12 1/2 rods; thence South 12 rods and 16 links, more or less, to North boundary; thence Southeast with the center of said road 12 rods; thence South 12 rods; thence West with line 12 rods; thence South 12 rods more or less, to the point of beginning; being one acre, more or less, and less portion deeded to Mississippi State Highway Commission for a new road right-of-way.

**ALSO:** One acre, more or less, of the East one-half of the Southeast Quarter of Section 10, Township 5, Range 7, bounded as follows: Beginning at the Southwest corner of the East one-half of said Quarter run North 5 rods to a point in the center of a gravel road 39 5/6 rods; thence North 12 rods and 16 links more or less, to said Quarter line for point of beginning; thence West 12 1/2 rods; thence North 17 rods; thence East 12 1/2 rods, more or less, to the South 17 rods to the point of beginning.

I will convey only such as is vested in me as Substituted Trustee.

**WITNESS MY SIGNATURE** on this the 27th day of December, 1982.

**R. MICHAEL BOLEN**  
SUBSTITUTED TRUSTEE  
D-30-J-6-13-20-c.

**NILE R.**  
The longest river in the world is the Nile River - 4,145 miles long.

**Fiberglass Panels**  
For Greenhouses, Patios  
Mobile Home Underpinning  
15 - 20 - 25¢ sq. ft.  
Slaughter House Material  
601-862-2021  
Fulton, MS 38864

**Dailey's**  
Body Shop and  
Wrecker Service

BURNSVILLE, MISSISSIPPI  
PHONE  
Day 427-9234  
Night 427-8449  
Expert Body Work - 24 Hour Service  
Burnsville

**MOORE'S**  
BODY SHOP &  
WRECKER SERVICE  
24 Hour Wrecker Service  
DAY PHONE 423-5130  
NIGHT - WEEKENDS -  
HOLIDAYS  
423-5244  
EXPERT BODY REPAIR

**CHESTER**  
CALLAHAN  
INCOME  
TAX

Across from Rogers L P Gas  
802 Hwy. 25 North, Iuka

**Cappleman's**  
Antiques  
NEW - JUST ARRIVED  
Serta Full Size Mattress Sets

\$124<sup>00</sup>

Hwy. 25 North in Iuka

423-9962

**P. O. BEARD AGENCY**  
SINCE 1964  
400 WEST  
EASTPORT ST.

REALTOR®

New listing on repossessed, 4 bd, 3 1/2 bath, rock home, family room with fireplace, 2.66 ac. west of Dennis, \$47,500. Bank has put property into A-1 shape and will talk financing.

Farmers Home Administration qualified -- new home - you pick floor covering - on corner lot near school in Belmont, 3 bd, 1 bath, \$32,500.

Ideal business location -- 2 bd., concrete block house on 1.4 acres on Hwy. 25 South just south of 72 Bypass, only \$22,500.

Good country home -- 3 bd, 1 bath, frame, two wood heaters, 1 ac. on Gravel Pit Road, \$22,500.

Repossessed, passive solar home at Coleman Park -- 2 bd, 1 bath, large deck, \$25,000.

Reworked 3 bd, 1 bath, frame home, fully carpeted, central h/a/c, large wooded lot on Pleasant Hill Road, just south of city limits, \$25,000.

Repossessed, 3 or 4 bedroom home, 2 full baths, fully carpeted, central h/a/c, in Bart Smith Sub., \$33,000.

2 bd, 1 bath, frame cabin on creek at Coleman Park, property includes 5 boat storage buildings which are rented, \$23,500 for all.

2 bd, 1 bath, frame home close to Mineral Springs Park, \$12,500.

New Listing on 4 bd, completely reworked home at Eastport, large enclosed porch, large lot gently sloping to water, boat house for 3 boats, floating dock, \$90,000.

4 bd, 2 1/2 bath, frame, 2 story home, den with fireplace, large enclosed screened porch, 2 1/2 lots in Independence Square Sub., \$59,500.

1.27 ac. building lot off Harmony Road NW of Iuka, \$4,000.

Phone 423-5253

P.O. Beard-Realtor, Appraiser, Registered Forester  
Nancy Beard - Realtor Associate  
Phone 423-5251

Rilla Wiley, Realtor Associate

Phone 423-5252

Many Other Listings

Call For Free Information On Buying Or Selling

**ASK SANTA FOR A STIHL**  
Reg. \$169.95  
SPECIAL \$139<sup>95</sup>  
**STIHL**  
THE WORLD'S LARGEST SELLING CHAIN SAW  
**NELSON**  
MARINE & HARDWARE  
HIGHWAY 25 SOUTH IN IUKA  
423-6484

**THE Long Davis COMPANY**  
REAL ESTATE  
423-5555

1415 Highway 25 South

Iuka, Mississippi 38852

Grace Long, Realtor-GRI-423-6584  
Beth Davis, Realtor-GRI-423-9543  
Dianne Ables-Realtor Assoc.-423-5262  
Frankie McGill-Realtor Assoc.-423-9270

Contemporary ranch home w. formal living, oversized den w. wood heater, 3 BRs, shop, fenced 5.33 acres. Immaculate! Assume the loan. Owner will consider trade in land. Make an offer!

Begin the new year in this rustic beauty! Greatroom w. FP and built-ins, 3 BRs, enclosed garage. Assumable loan. Priced to sell at \$54,000.

Neat family home located on nice lot w. garden spot. Formal living, kitchen-den, 3 BRs. Excellent buy at \$35,000.

Prestigious brick home w. formal living, den w. FP., 3 BRs, lots of closets, wooded setting. Excellent financing - \$52,000.

This 3 BR brick home offers a spacious greatroom, large master suite, fenced back yard, shop, good neighborhood.

Charming 3 BR family home on quiet corner lot, beautifully decorated. Owners will consider some financing - \$40,000.

3 BR brick in well established neighborhood downtown. D. garage, patio, large lot - \$35,000.

Investment property - Needs some work - 2 BR home on 1.7 acres - Fairgrounds Rd. - \$12,000.

Excellent business location! Large building and paved lot - \$42,000.

Lots, one acre or more, Woodall Acres Subdivision.

1 acre lot - Coleman Park Subdivision - \$3,000.

Appraisals - Rentals

Tishomingo County News - Vidette - Belmont News

LEGAL

In The Circuit Court of Tishomingo County, State of Mississippi

Pickwick Cove Marina, Inc., Plaintiff  
VS.  
William McKinnie and wife, Nancy McKinnie, Defendants

Civil Action, File No. 4093

NON-RESIDENT SUMMONS

TO: William McKinnie and wife, Nancy McKinnie, 6939 Amberly Road, Memphis, Tennessee 38100, adult non-residents of the State of Mississippi, whose last known street address is listed above and whose present post office address is unknown after diligent search and inquiry.

You have been made defendants in the above styled and numbered cause by Pickwick Cove Marina, Inc., whose address is Route 1, Counce, Tennessee 38326. The Complaint filed against you is a civil action in the Circuit Court of Tishomingo County, Mississippi, bearing the above style and cause number, which civil action is a Complaint for services and labor performed by the plaintiff on an open account, together with reasonable attorney fees.

You are required to mail or hand-deliver a copy of a written Answer either admitting or denying the allegations in the Complaint to Harold S. Jackson, Attorney at Law, Post Office Box 414, Iuka, Mississippi 38852, attorney for the plaintiff.

Your Answer must be mailed or hand-delivered not later than thirty (30) days after the 13th day of January, 1983, which is the date of the last publication of this Summons. If your Answer is not so mailed and delivered a judgment by default may be entered against you for the relief demanded in the Complaint.

You must also file the original of your Answer with the Clerk of this Court within a reasonable time after said date.

DATED, this 28th day of December, 1982.

LAMAR RUTHERFORD, CIRCUIT CLERK

D-30-J-6-13-c.

Non-Resident & Unknown Defendants Notice

#8259  
THE STATE OF MISSISSIPPI: COUNTY OF TISHOMINGO

To Dorothy Whitaker, 304 Barton Avenue, Luling, Louisiana 70070.

YOU ARE COMMANDED to appear before the Chancery Court of the County of Tishomingo, in said State, on the Third Monday of February A.D. 1983, to defend the suit in said Court of Tishomingo County, Mississippi wherein you are defendant.

Witness my hand as Clerk, with the seal of said Court hereto affixed, this 22nd day of December A.D. 1982.

ROBERT D. SIMS, CLERK

D-30-J-6-13-c.

NOTICE TO DEALERS TO FURNISH TISHOMINGO COUNTY AND THE ROAD DISTRICTS THEREOF THE FOLLOWING SUPPLIES, AND TO BANKS FOR THE KEEPING OF COUNTY FUNDS AS A COUNTY DEPOSITORY, FOR THE PERIOD BEGINNING JANUARY 1, 1983, AND ENDING JANUARY 1, 1984.

Notice is hereby given by the Board of Supervisors of Tishomingo County, Mississippi, that it will, until 10:00 A.M. on Monday, January 3, 1983, receive bids from dealers for general office supplies, janitorial supplies, road and bridge maintenance materials and supplies, and for machinery

upkeep, and will also receive bids from banks for the keeping of County funds as a County Depository, under Sec. 27-105-305, Mississippi Code, 1972, as may be amended, for the 12 months period beginning January 1, 1983 and ending January 1, 1984. Said bids to be filed with the Clerk of the Board of Supervisors of said State and County at the Chancery Clerk's Office, Tishomingo County Courthouse, Iuka, Mississippi, until the aforesaid time and date, and, under the statute, all bids shall be awarded to the lowest responsible bidder. The Board of Supervisors reserves the right to reject any and all bids.

This the 14th day of December, 1982.

ROBERT D. SIMS, Clerk of the Board of Supervisors Tishomingo County, Mississippi

D-16-23-30-c.

Advertisement For Bids

Valley Grove Water Association  
Dennis, Mississippi  
38838

Sealed bids for the construction of Water System Improvements listed below to serve the Valley Grove Water Association will be received by the Board of Directors at, 10:00 A.M., January 4th, 1983, at Finch & Finch Attorneys, 123 East Eastport St., Iuka, Miss., and then at said office publicly opened and read aloud.

The CONTRACT DOCUMENTS, consisting of Advertisement for Bids, BID, BID BOND, AGREEMENT, GENERAL CONDITIONS, SUPPLEMENTAL GENERAL CONDITIONS, Payment Bonds, Performance Bond, NOTICE OF AWARD, NOTICE TO PROCEED, CHANGE ORDER, DRAWINGS, SPECIFICATIONS, and ADDENDA, may be examined at the office of G & E Engineers, Inc., 600 North College Street, P.O. Box 365, Booneville, Mississippi, 38829, upon payment of \$50.00 per set.

Any Bidder upon so returning the CONTRACT DOCUMENTS will be refunded \$20.00 per set.

The Contracts and approximate quantities are: Division No. 1 - 1 - 40 Gallon Water Storage Reservoir.

Division No. 2 - Water Distribution  
18,300 L.F.-6" PVC Class 160  
25,650 L.F.-4" PVC Class 160  
16,400 L.F.-4" PVC Class 200  
23,100 L.F.-3" PVC Class 160  
16,600 L.F.-2 1/2" PVC Class 160  
7,400 L.F.-2" PVC Class 160  
95 - 3/4" Service Assemblies

Dale Cagle  
President  
Valley Grove Water Association  
C/O Dale Cagle  
Tishomingo, MS.  
D-16-23-30-c.

Advertisement For Bids

Dennis Water Association  
Dennis, Mississippi  
38838

Sealed bids for the construction of Water System Improvements listed below to serve the Dennis Water Association will be received by the Board of Directors at, 10:30 A.M., January 4th, 1983, at Finch & Finch Attorneys, 123 East Eastport St., Iuka,

Miss., and then at said office publicly opened and read aloud.

The CONTRACT DOCUMENTS, consisting of Advertisement for Bids, BID, BID BOND, AGREEMENT, GENERAL CONDITIONS, SUPPLEMENTAL GENERAL CONDITIONS, Payment Bonds, Performance Bond, NOTICE OF AWARD, NOTICE TO PROCEED, CHANGE ORDER, DRAWINGS, SPECIFICATIONS, and ADDENDA, may be examined at the office of G & E Engineers, Inc., 600 North College Street, P.O. Box 365, Booneville, Mississippi, 38829, upon payment of \$50.00 per set.

Copies of the CONTRACT DOCUMENTS may be obtained at the office of G & E Engineers, Inc., 600 North College Street, P.O. Box 365, Booneville, Mississippi, 38829, upon payment of \$50.00 per set.

Any Bidder upon so returning the CONTRACT DOCUMENTS will be refunded \$20.00 per set.

The Contracts and approximate quantities are:

Division No. 1 - 1 - 40,000 Gallon Water Storage Reservoir.

Division No. 2 - Water Distribution.

13,300 L.F. - 4" PVC Class 160  
29,300 L.F.-3" PVC Class 160  
28,250 L.F.-2 1/2" PVC Class 160  
5,640 L.F.-2" PVC Class 160  
53 - 3/4" Service Assemblies

Zeke Harrison, President  
Dennis Water Association  
Dennis, MS.

D-16-23-30-c.

Notice To Creditors

IN RE: ESTATE OF WILLIAM FRANK BROWN, DECEASED

NO. 9174

Letters Testamentary having been granted on the 11th day of December, 1982, by the Chancery Court of Tishomingo County, Mississippi to the undersigned upon the estate of William Frank Brown, deceased, notice is hereby given to all persons having claims against said estate to present the same to the Clerk of the said Court for probate and registration, according to law, within ninety (90) days from this date or they will be forever barred.

This the 11 day of December, 1982.

Luther H. Hudson & Betty Sue Hudson Pittman, Joint Executors

James N. Godwin, Attorney For Executors  
D-16-23-30-c.

SUBSTITUTED TRUSTEE'S NOTICE OF SALE

WHEREAS, James E. Morris et ux Gloria H. Morris, executed a deed of trust to Tom B. Scott, Jr., Trustee for Unifirst Federal Savings and Loan Association, under date of December 30, 1980, recorded in Book 99 at Page 761 of the records in the office of the Chancery Clerk of Tishomingo County, Mississippi, which deed of trust was assigned to Mississippi Housing Finance Corporation by instrument dated March 13, 1981, and recorded in Book B102 at Page 824 of the records of the aforesaid Chancery Clerk, and

WHEREAS, Mississippi Housing Finance Corporation, the legal holder of said deed of trust and the note secured thereby, substituted Tom B. Scott, III as Trustee therein, by instrument dated November 1, 1982, recorded in Book B107 at Page 712 of the records in the office of the Chancery Clerk of Tishomingo County, Mississippi, as authorized by the terms thereof, and

WHEREAS, default having been made in the performance of the conditions and stipulations as set forth by said deed of trust, and having been requested so to do by the legal holder of the indebtedness secured and described by said deed of trust, notice is hereby given that I, Tom B. Scott, III, Substituted Trustee, by virtue of the authority conferred upon me in said deed of trust, will offer for sale and will sell at public sale and outcry to the highest and best bidder for cash, between the hours of 11:00 o'clock A.M. and 4:00 o'clock P.M. at the East door of the County Courthouse of Tishomingo County, on the 14th day of January, 1983, the following described land and property, being the same land and property described in said deed of trust, situated in Tishomingo County, Mississippi, to-wit:

Lot 21 of the Hubbard Branch Subdivision, a subdivision located in the SE 1/4 of Section 33, Township 1, Range 10, in Tishomingo County, Mississippi, according to the

map or plat of the said subdivision on file and of record in Map Book 2, at Page 31, in the Chancery Clerk's Office of Tishomingo County, Mississippi, said property being more particularly described as follows: Part of the SE 1/4 of Section 33, Township 1 South, Range 10 East, more particularly described as commencing at the SE corner of said SE 1/4 at TVA Marker #55, thence on the TVA line North in all 976 feet to the point of beginning hereof; thence South 68 degrees 30 minutes West 139 feet to East Drive; thence North 5 degrees 30 minutes West 87.34 feet, more or less; thence North 72 degrees 30 minutes East 145 feet; thence South 80 feet to the point of beginning. Containing 0.27 acres (27/100) acre, more or less.

Title to said property is believed to be good, but I will convey only such title as is vested in me as Substituted Trustee.

WITNESS my signature, this the 8th day of December, 1982.

TOM B. SCOTT, III  
Substituted Trustee  
D-23-30-J-6-13-c.

STATE OF MISSISSIPPI COUNTY OF TISHOMINGO NOTICE TO CREDITORS

The undersigned having been appointed executor of the Last Will and Testament of James L. Beard, deceased, by the Chancery Court of Tishomingo County, Mississippi, in Cause No. 9183 upon the docket of said Court on the 17 day of December, 1982, hereby gives notice to all persons having any claim against the estate of James L. Beard to have the same probated and registered by the Clerk of the Chancery Court of Tishomingo County, Mississippi, within ninety (90) days, and failure to probate and register for this period will bar the claim.

This the 17 day of December, 1982.

MICHAEL A. BEARD, EXECUTOR

Richard O. Clark  
Attorney At Law  
Post Office Box 319  
Iuka, Mississippi 38852  
(601) 423-5227  
D-23-30-J-6-c.

IN THE CHANCERY COURT OF TISHOMINGO COUNTY, MISSISSIPPI

VACATION TERM, 1982

Virgie Rhodes, ET AL, Complainants  
VS.  
Luther Mack Lindsey & Wife, Hattie Lindsey, ET AL, Defendants

Civil Action, File No. —

NON-RESIDENT SUMMONS

TO: William Thornburg, Robinson Trucklines, 3370 Cazassa Street, Memphis, Tennessee 38116;

Mattie Ethel Arnold, 1461 Exposition, Aurora, Illinois 60504;

Bennie Joe Maxey, 7351 Claiborne Drive, Germantown, TN. 38138;

Odell Dempsey, 1084 McEvers, Memphis, Tennessee;

Lody Bell Galbreath, Route 1, Box 92, Detroit, Alabama 35552

Jimmie Charles Dempsey, Route 1, Box 4, Double Springs, AL. 35552

Bobby Joe Dempsey, Route 1, Haleyville, Ala. 35555;

Jerry Wayne Dempsey, Route 1, Box 4, Double Springs, Ala. 35553;

Lessel Dempsey, Route 1, Box 4, Double Springs, Ala. 35553;

Elizabeth Vickery, c/o Steve Vickery, Route 1, Double Springs, Ala. 35553;

Callie Marie Vickery, c/o Steve Vickery, Route 1, Double Springs, Ala. 35553;

Mary Alice Vickery, c/o Steve Vickery, Route 1, Double Springs, Ala. 35553;

Rebecca Dianne Lewis, Route 1, Haleyville, Ala. 35565;

Vickie Winchester, Route 3, Box 128T, Florence, Ala. 35630;

Lila Jean Lindsey Daniel, Route 2, Cherokee, Ala. 35616;

Gwen Crumby, Wood Village, Lot 185, Tuscaloosa, Ala. 35401;

Billy Dunn, 31 West 687 West Roosevelt Road, West Chicago, Ill. 60185;

Clifford Ray Dunn, 31 West 687 West Roosevelt Road, West Chicago, Ill. 60185;

Buford Dunn, 31 West 687 West Roosevelt Road, West Chicago, Ill. 60185; and

Ronnie Dunn, 31 West 687 West Roosevelt Road, West Chicago, Ill. 60185

The post office box ad-

resses of the above named defendants are unknown after diligent search and inquiry personally made by the complainants.

You have been made a defendant in the above styled litigation by Virgie Rhodes, ET AL, complainants, whose address is Route 3, Iuka, Mississippi 38852.

The Complaint filed against you is a civil action in the Chancery Court of Tishomingo County, Mississippi, bearing the above styled and numbered cause, which civil action is a Complaint for Partition of Real Property requesting the Court to order a public sale of the said real property and apply the proceeds to the respective interests of the parties, as an heir at law of Dora Lindsey, deceased.

You are required to mail or hand-deliver a copy of a written Answer either admitting or denying the allegations in the Complaint to Harold S. Jackson, Attorney at Law, Post Office Box 414, Iuka, Mississippi 38852, the complainants' attorney.

Your Answer must be mailed or hand-delivered not later than thirty (30) days after the day of 6th of January, 1983, which is the date of the last publication of this Summons. If your Answer is not so mailed and delivered a judgment by default may be entered against you for the relief demanded in the Complaint.

You must also file the original of your Answer with the Clerk of this Court within a reasonable time after said date.

DATED, this the 20 day of December, 1982.

ROBERT D. SIMS, CHANCERY CLERK

D-23-30-J-6-c.

Study Into State Aid Road System

Mississippi's State Aid Road System, which was created more than 30 years ago to strengthen the state's economy through improvements in rural roads, should be updated to ensure its operating efficiency, a state business organization says.

The Mississippi Economic Council said that a study it conducted into the State Aid Road System found that parts of the program, established in 1950, should be revised because of changes in Mississippi transportation patterns over the last 30 years.

"It has made a significant contribution to the economic development of Mississippi," the report concluded. "However, like many programs planned and designed for another era, the State Aid System requires review and evaluation to assure that the intent of the system's architects continues to be fulfilled and that principles of quality, fairness, and equity be maintained," it added.

Indianola business owner W.W. Gresham, Jr., directed the work of the study committee. Monticello manufacturing executive Howard Hinesley chairs the Council's Transportation Committee.

The report noted that in its 32-year history, the State Aid Program has been credited with providing "the backbone of Mississippi's highway transportation program, one which links rural-based segments of the economy with the new network of federal and state highways." As of fiscal 1981, the report said that the program had accounted for \$675.76 million in State Aid construction on 5,214 projects covering more than 10,000 miles of roads and bridges.

But because of changes in traffic patterns in rural and urban areas, the MEC recommended that the program undergo a review so that its legislative intent continues to be met. In addition, the MEC recommended that the program's funding formula be changed to reflect changes in traffic activity in Mississippi.

The Council recommended that:

- 1) The designation of roads in the State Aid System continue to conform to the criteria for route selection required by the Legislature.
- 2) State highways which are returned to county jurisdiction by virtue of their replacement by new highway construction be included by legislation in the State Aid System, provided that they meet State Aid criteria.
- 3) The Legislature assign final responsibility for approval of State Aid routes to the State Highway Commission, with the approval based on recommendations from the State Aid engineer

and county officials.

4) The formula for allocation of state funds to the counties for the State Aid System be revised on the following basis: one third in the ratio that the county's rural population bears to the total rural population of all of the counties, one third in the ratio which the area of each county bears to the total area of all counties, and one third in the ratio that the county's maintained road mileage bears to the total county-maintained mileage in all of the counties.

5) At least 50 percent of all state financial aid to counties for road purposes be designated for construction on the State Aid Road System until each county brings all State Aid mileage up to standards.

6) The Legislature examine the State Aid Road System on

a continuing basis, evaluating the need for state assistance for county roads, evaluating the effectiveness of state funds, and assuring distribution of State Aid mileage and revenues among the counties on the bases of equity and need.

Letter To The Editor

Dear Editor:

I suppose several people are wondering at the closing of the County Home. I am too, as I have been unable to pinpoint any other reason than the fact that the number of residents had dwindled to a low of 8 persons. I came by the information, from a reliable source, that the lady who was in charge, had

cleaned the place up, and left it spotless, locked the doors, and placed the remaining 8 residents in other facilities. Evidently, the lady felt that whatever remuneration she received was insufficient to operate the home with any degree of success. As there has been no explanation (to my knowledge) from the Board of Supervisors concerning the closing of the home, it is only surmise on my part that these reasons are the true facts of the matter.

It would seem that the Board of Supervisors, SHOULD inform the public of any change of policy involved in any issue concerning the welfare of indigent and elderly people, who are, or have been, dependent on the continued support of the County Home.

REX L. TUCKIER

John C. Stennis

REPORT TO MISSISSIPPIANS



When the 98th Congress convenes next month, I will be privileged to assume the Democratic leadership position on the Senate Appropriations Committee. This position will enable me to have a more direct impact on government appropriations affecting Mississippi, and will give me a better opportunity to examine the effectiveness of all government spending.

It is the responsibility of the Appropriations Committee to write the 13 annual appropriations bills which fund every agency of the government. As the Democratic leader on that committee, I will be working with the chairman in the early stages of developing those bills, making recommendations and decisions as to what goes in and what stays out.

Obviously, this is a tremendous opportunity to more directly influence the scope and course of government spending. My aim will be to see that government funds are spent wisely. Certainly, improvements can and must be made in this area. The taxpayer has the right to expect that his money be spent in a prudent manner.

Senate rules provide that a Senator can hold the leadership position on only one committee but I will continue to serve as a full-fledged member of the Senate Armed Services Committee. I want to make it clear that this change in committee leadership positions does not lessen my interest or influence in military matters. I will continue to serve as an active member of the Armed Services Committee, and I will retain the Democratic leadership position on the Defense Appropriations Subcommittee which recommends funds for the entire defense establishment.

Basically, this new leadership position enables me to broaden my base of influence here in the Senate with all agencies of the government without giving up my role in military matters. This change will enable me to take a stronger hand in economic policy and programs of special concern, such as education. I accept it as a call to duty to do all I can to improve economic conditions in our state and nation.

HOW TO MAKE MONEY SELLING TO THE GOVERNMENT

(U.S. Government, Prime Contractors and the State of Mississippi) Wednesday, January 19, 1983 and Thursday, January 20, 1983 Mississippi Trade Mart, Jackson, Mississippi



Vice President George Bush

A conference designed to match small businesses interested in selling their goods and services to state and federal government agencies, prime contractors and large corporations. The Speaker for Wednesday's luncheon will be Vice President George Bush.

WOULD YOU LIKE TO MAKE MONEY FROM THE GOVERNMENT?

If so, this conference is for you. The purpose is to stimulate small business growth and activity by making known to small businesses the numerous procurement and technology opportunities available from federal and state governments and their prime contractors.

Opportunities for services, commodities, technical and consulting contracts will be presented. Continuous workshops and films will enable participants to learn more about available government purchases and current business opportunities.

- Conference sponsors include:
- The U.S. Small Business Administration, Jackson District
  - State of Mississippi, Department of Economic Development, Marketing Division
  - Co-Sponsors are:
    - The Mississippi Congressional Delegation
    - The Mississippi Commission of Budget and Accounting
    - Mississippi Planning and Development Districts
    - Mississippi Industrial Development Council
    - Tennessee-Tombigbee Construction Assistance Center
  - Mississippi Municipal Association
  - Mississippi Manufacturers Association
  - Mississippi Economic Council
  - Mississippi Association of Supervisors
  - Delta Council
  - Mississippi Research & Development Center
  - Centre South
  - Mid-Mississippi Development District
  - North Mississippi Industrial Development Association

WHAT CAN YOU LEARN IN TWO DAYS?

- IN JUST TWO DAYS...
- HOW to make sales calls on the nation's largest buyers of goods and services — the U.S. Government.
  - HOW to make personal contact with government procurement officials and with purchasing representatives from national firms.
  - HOW to learn bidding requirements and procedures necessary to receive government contracts.
  - HOW to prepare a bid for a government contract.
  - HOW to find available financing opportunities for small businesses.
  - HOW to find sub-contracting opportunities with large firms that receive government contracts.
  - HOW to keep current on legislation enacted for or affecting small businesses.
  - HOW to sell to state, county and municipal governments.

TICKET INFORMATION

Your one price \$35.00 ticket includes two all day learning seminars and two luncheons. Sorry, no tickets sold to individual seminars or luncheons.

Send the tickets! I'm enclosing a check for \$\_\_\_\_\_ payable to "Selling to the Government Seminar". This covers \_\_\_\_\_ registrations @ \$35.00.

NAME \_\_\_\_\_

COMPANY OR AFFILIATION \_\_\_\_\_

ADDRESS \_\_\_\_\_ CITY \_\_\_\_\_ STATE \_\_\_\_\_ ZIP \_\_\_\_\_

NUMBER WHERE YOU MAY BE REACHED \_\_\_\_\_

NAMES OF ADDITIONAL REGISTRANTS INCLUDED IN THIS PAYMENT \_\_\_\_\_

Registrations are limited. Mail to:

BILL MCGINNIS  
MARKETING DIVISION  
MISSISSIPPI DEPARTMENT OF ECONOMIC DEVELOPMENT  
P.O. BOX 849  
JACKSON, MISSISSIPPI 39205

This ad sponsored by:

New Year Special  
PAINT JOB \$159<sup>95</sup> PLUS TAX  
ALSO  
Body work, windshields, insurance work, free estimates.  
**MIKE'S BODY SHOP**  
North Crossroads Intersection of 365 & 25

**PEAK VIEW ENTERPRISES**  
has been recently franchised as a  
**General Electric/Hotpoint Customer Care® Servicer**  
for warranty service on major home appliances  
Contact:  
**Perry Claunch - Owner**  
Hwy. 25 North - Iuka

# J. A. Tucker Furniture & Appliance

## END OF YEAR STORE-WIDE SALE

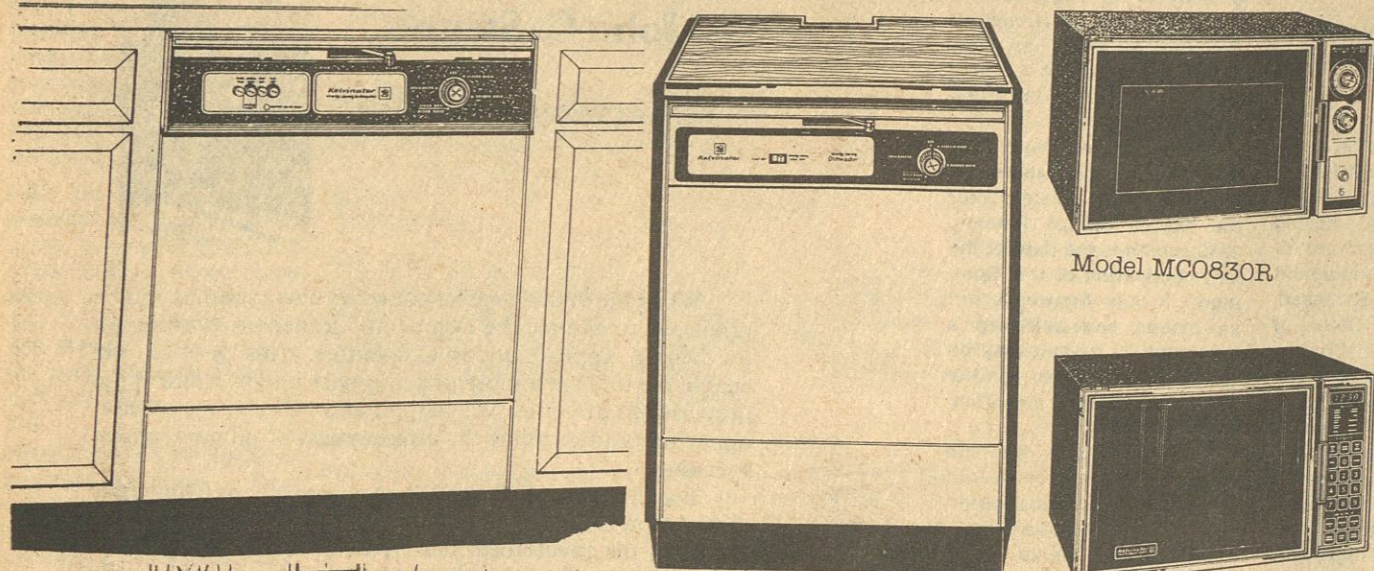


Phone 438-6408

Tishomingo, Mississippi

3 BIG DAYS

December 30, 31 & January 1



During the Holiday Season more than ever, our thoughts turn gratefully to those who have made our business possible. And in this spirit we say, simply but sincerely

Thank You and Best Wishes for the Holiday Season and a Happy New Year



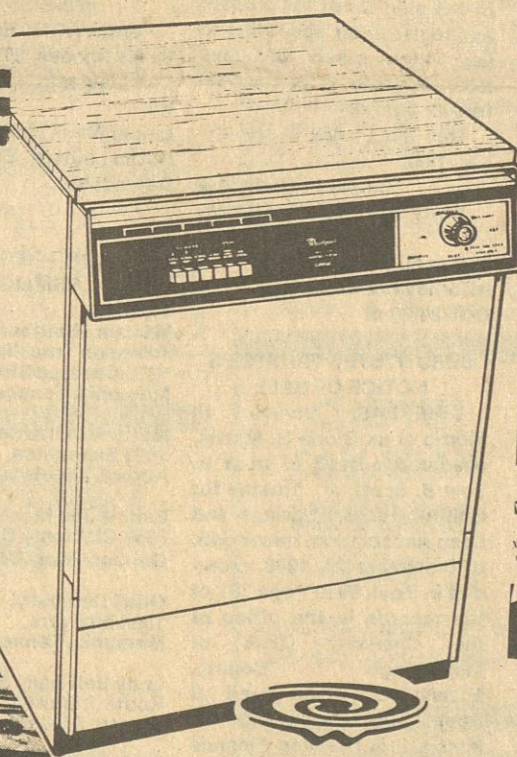
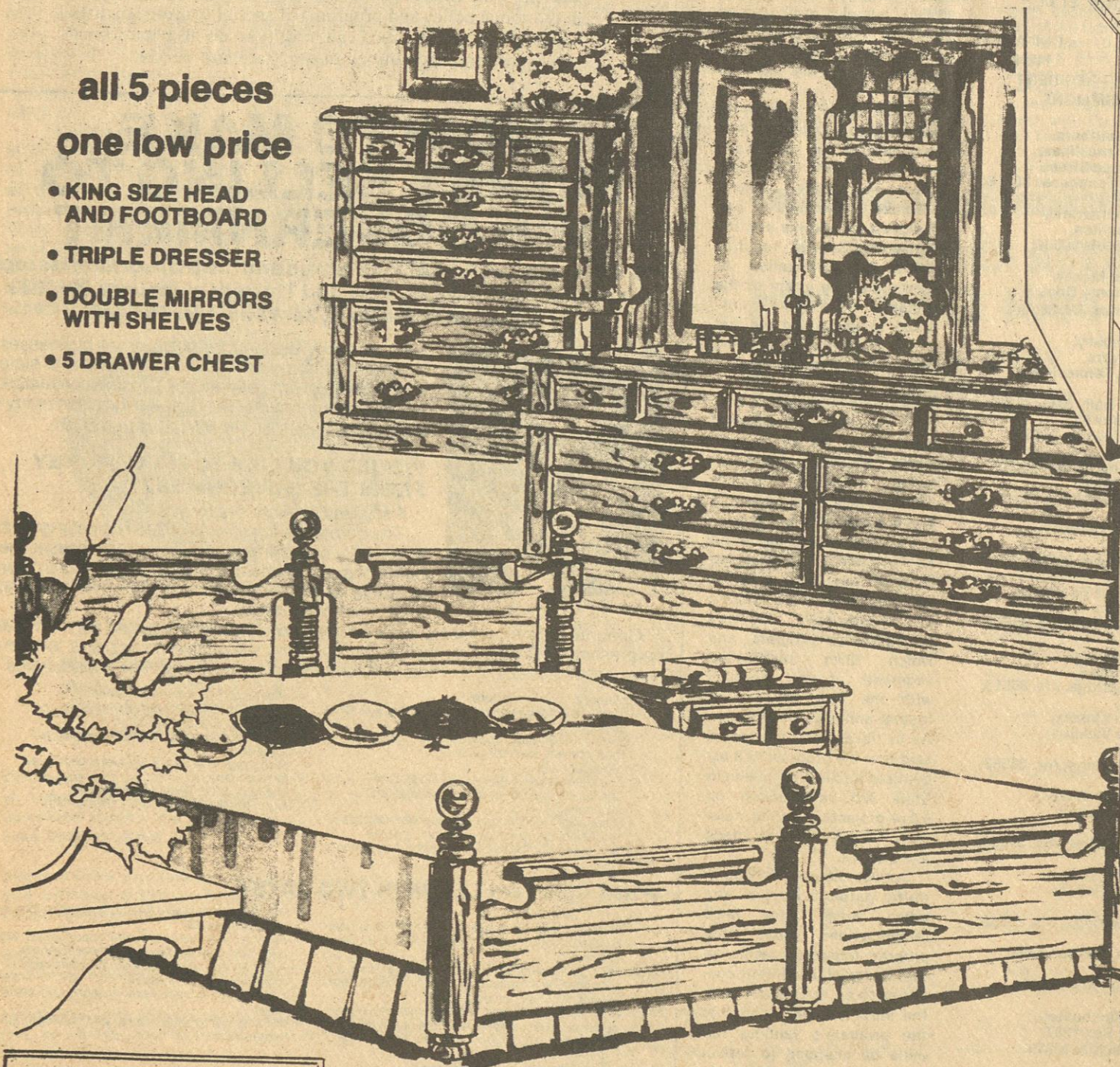
**SHOP  
AND  
SAVE!**

A King Size Oak finish master bedroom  
**WITH A ROYAL WELCOME**

3 DAYS ONLY

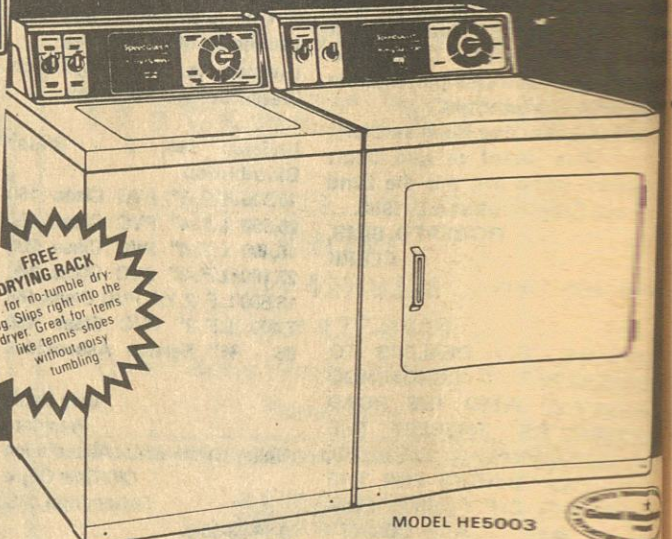
all 5 pieces  
one low price

- KING SIZE HEAD AND FOOTBOARD
- TRIPLE DRESSER
- DOUBLE MIRRORS WITH SHELVES
- 5 DRAWER CHEST



**Speed Queen  
WHITE SALE**

During this Speed Queen White Sale you can get more for your money. Choose any white Speed Queen washer or dryer on sale and pocket the savings. Come in today!



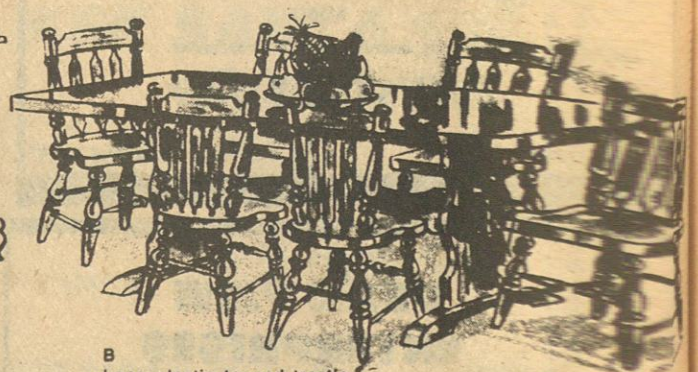
FREE DRYING RACK for no-tumble dry. Slips right into the dryer. Great for items like tennis shoes without noisy tumbling.

*Beautiful* **PLASTIC TOPPED  
ALL WOOD DINING ROOMS**

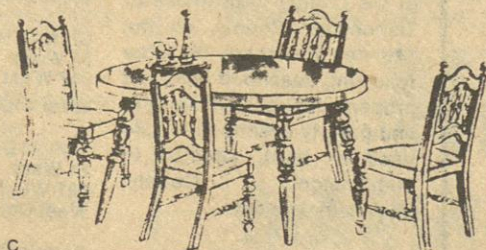
**SOLID PINE OR MAPLE  
FINISHED HARDWOOD**  
*Colonial style*



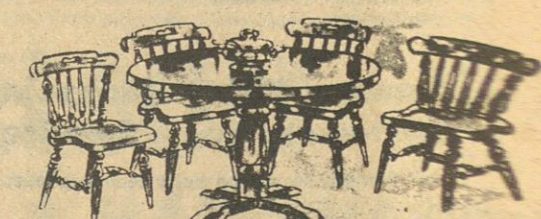
A Large, roomy buffet and hutch with plenty of room for all those cherished possessions.



B Long plastic topped trestle table and 4 arrowback chairs. 5 PIECES. Extra chairs available.



C Cozy little table with high pressure plastic top. 4 matching chairs with beautiful fabric covers. All 5 PIECES.



D Outstanding plastic-topped pedestal table. 4 matching chairs in matching finish. 5 PIECE dining room. Extra chairs available.

This Week Only

**SAVE \$200**

on 5-piece All Wood and Wood Products suite with appealing casual Oak Finish

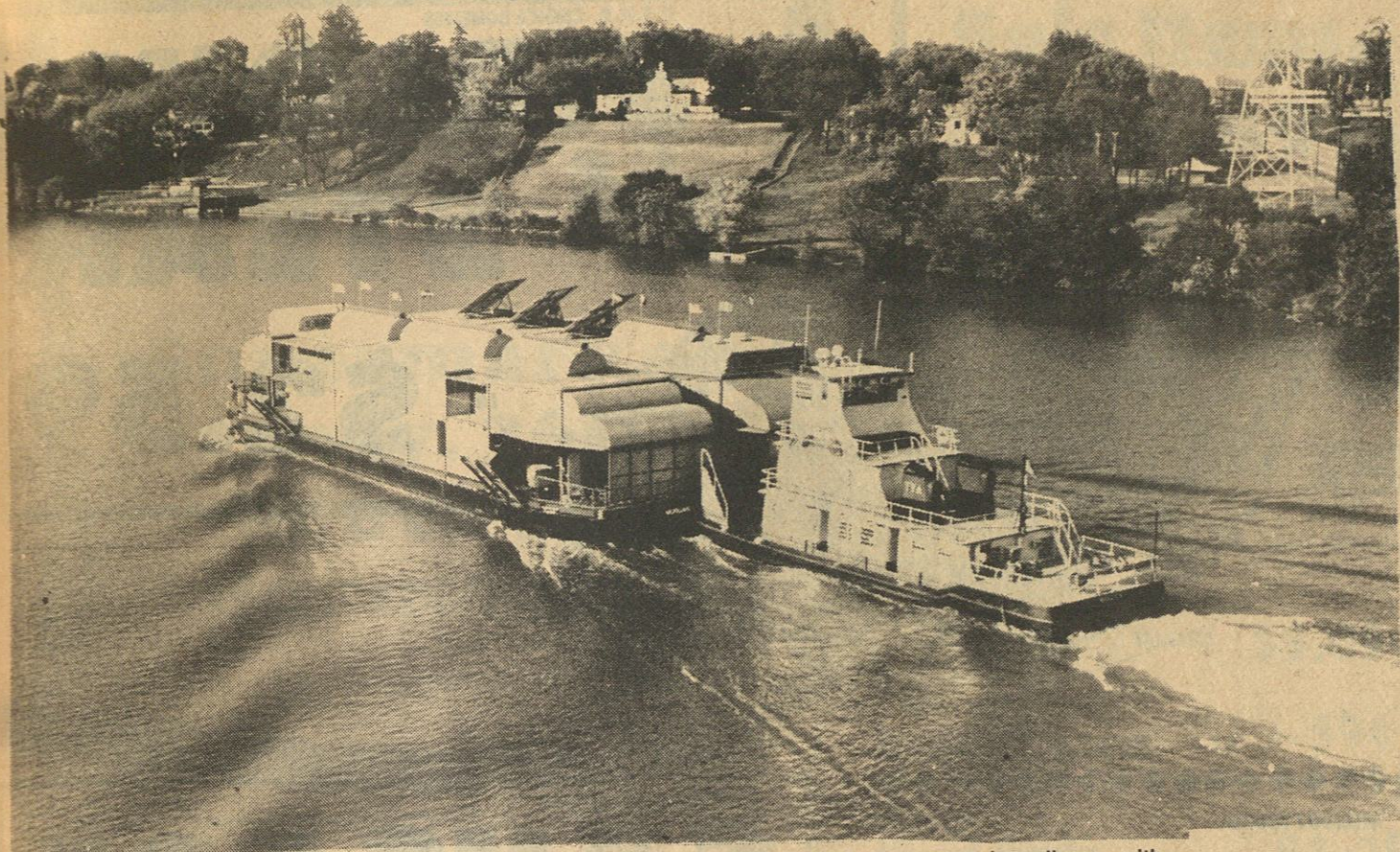
**THIS WEEK ONLY**

Bring the timeless and welcoming beauty of Country Oak into your home. The warm Oak finish gives this all wood and wood products suite such an appealing glow! The solid tops are protected with High Pressure Laminate, the mirrors are plate glass and the fully dust-proofed drawers have wood and metal guides for easy opening.



REGULAR AND QUEEN SIZES  
ALSO AVAILABLE  
Reg. Head & Footboard

Queen Head & Footboard



THE VALLEY ADVENTURE, TVA's colorful floating exhibit, will travel the Tennessee, Cumberland, Ohio, and Mississippi Rivers from April to October in commemoration of the Agency's 50th Anniversary in 1983. The exhibit featured on the two reconditioned barges tell of the 50-year partnership between TVA and the people of the Tennessee Valley. The exhibit hosted more than 1.1 million visitors during the 1982 World's Fair in Knoxville, Tennessee.

### TVA's 50th Anniversary Floating Exhibit

The Valley Adventure, TVA's colorful floating exhibit which hosted more than 1.1 million visitors during the 1982 World's Fair, will be coming to luka as part of TVA's 50th Anniversary celebration in 1983. The exhibit features a variety of unique and animated displays which tell of the 50-year working partnership between TVA and the people to bring a better way of life to the Tennessee Valley. From its April 20 opening in Knoxville, the festive flotilla will travel the length of the Tennessee River to Paducah, Kentucky, up the Cumberland

River to Nashville, then down the Ohio and Mississippi Rivers to its final stop in Memphis in October.

The Valley Adventure will be open free of charge from four to six days at each stop. Local activities and commemorative festivities will coincide with its visit.

"Our exhibit tells both what TVA is today and the programs undertaken with the region's citizens since 1933 to reclaim the land, tame the river, and restore the Valley's economic vitality," said TVA General Manager Bill Willis.

The exhibit rests on two reconstructed barges, which once hauled construction equipment, named "The Morgan" and "The Lillenthal" in honor of TVA's first Board of Directors - Chairman Arthur E. Morgan and Directors Harcourt A. Morgan and David E. Lillenthal. A TVA towboat will tow the display barges and a utility barge to and from mooring sites at Valley communities along the rivers.

Life in the Tennessee Valley a half century ago is recreated on the exhibit. Audio messages and life-size photographs of Depression-era residents tell of the tough living conditions of the early 1930s as an old floor radio broadcasts President Franklin D. Roosevelt's message of hope to a

despondent nation.

From walking through a group of life-size sculptures of the Depression's unemployed in line for jobs at TVA's first construction project, to realizing that photovoltaic cells atop the floating exhibit are generating part of the exhibit's electricity directly from sunlight, visitors get the feel of the past and present challenges facing TVA.

Visitors will be challenged by a computer game that requires them to make quick decisions on meeting daily power demands from hydroelectric, coal, nuclear and gas turbine sources. The computer game compares the cost of electricity produced by the game played with the actual cost of the TVA power system.

The Adventure Theater, a 100-seat, on-board theater, presents a forum for an exciting variety of entertaining and informative programs ranging from clogging demonstrations to home insulation workshops. luka area entertainers will be featured and are welcome to perform at the theater. Those who are interested in performing should contact TVA District Administrator Charles Neil Davis, Post Office Box 1623, Tupelo, Mississippi 38802, telephone number (601) 842-5825.

Captain Nat Phillips, a Mark Twain-type storyteller,

will entertain audiences with animated stories about early life in the Valley.

Local presenters and entertainers are invited to perform at the theater. Additional community activities may be staged adjacent to the barge exhibit.

Other exhibits on the barge include a conservation house filled with many take-home energy saving ideas and a riverboat pilot house where visitors may imagine steering a huge river barge tow down the Tennessee River. Visitors may also navigate miniature boats through a 20-foot flume, complete with working locks, dams, and turbines.

The exhibit showcases a variety of TVA programs such as soil conservation, flood control, navigation, recreation, solar and nuclear energy, forestry, wildlife, and many others to illustrate the ongoing accomplishments of TVA and the people in regional resource development.

TVA retirees and their spouses and other volunteers will be on board to answer visitor questions.

The following is the schedule for the river trip in this area:

Shoals Area, Alabama  
Wilson Dam Boat Ramp (South Side)  
June 24-28  
J.P. Coleman State Park, Ms.  
State Park  
July 20-24

Pickwick State Park, Tn.  
State Park  
July 27 - August 1

Memphis, Tennessee  
Mud Island  
October 12 - 23



Miranda Leigh Linton celebrated her 2nd birthday on December 7th. Miranda is the daughter of Shirley Linton. Those helping Miranda celebrate at her party were: Shane, Ashley, and Becky Steele, Gypsy and Georgia Tucker, Beverly Bullock,

Jackie, Brandy, and Melinda Farris, Aunt Marie Felks, Aunt Nelda Hughes, and Ma-Ma Shirley Felks.

### In Service

Army Pvt. Stephanie

Blevins, daughter of Harold L. and Jeanelle Blevins, of Route 1, luka, has completed basic training at Fort Jackson, S.C. During the training, students received instruction in drill and ceremonies,

weapons, map reading, tactics, military courtesy, military justice, first aid, and Army history and traditions. She is a 1982 graduate of Tishomingo High School.

"Moonlight is sculpture," Nathaniel Hawthorne

## After Christmas Clearance Sale



JOGGING SUITS,  
RABBIT FUR COATS,  
DRESS JACKETS

**1/4 OFF**

**KIDDIE LAND**

Elm Shopping Center

luka, Miss.

Some of the ways to do business with us are changing.

# But we're still as close as your phone.

The telephone industry is changing - reorganizing. That means more options for you. And some changes in the way you do business with us. If you've done business with us lately, you may have gone to one of our retail outlets. Now, if you need help with phone service, call us first.

Call a South Central Bell service representative if you want to:

- order new phone service.
- change your existing service.
- disconnect your service.
- ask a question about your bill.
- exchange or return sets purchased or leased from South Central Bell. (We cannot exchange or take back sets purchased or leased from other suppliers.)

Call South Central Bell's repair service if you have trouble with your service or with a phone set that is leased from South Central Bell. (For service or repair of phone sets that you own - whether they came from South Central Bell or another supplier - you should follow the warranty instructions or other maintenance arrangement made at the time of purchase.)

You'll find the phone numbers for your service representative and repair service in the front of the South Central Bell phone book. When you call us, in many cases we'll be able to complete your business or solve your problem while you're on the phone. In other cases, we may offer to mail equipment or parts to you. Or you may be referred to a phone company service center to complete your transaction. If so, we'll tell you where the nearest one is and when it's open.

Some things won't change. During 1983 South Central Bell will still provide you with dependable local and long distance phone service. We'll continue to be responsible for phones that residence and business customers now lease from us. And we'll continue to lease telephones (and to sell some selected phones) as long as they're available from inventory. (With regulatory approval, we do plan to offer single-line residence and business

customers the option of buying telephones that are now leased from us.)

There'll be more changes in the telephone industry in the coming year or so as South Central Bell and other Bell operating companies are separated from AT&T and reorganized into regional companies. This change in organization, to take place in 1984, will affect significantly how you get and use telecommunications services.

But no matter how things change, South Central Bell is committed to seeing that certain things remain the same. We'll still have good, dependable people and the same goal: providing you with the best, most advanced telephone service at reasonable rates.

We'll keep you informed. But in the meantime, if you have any questions about the changes in the industry or about how to do business with us now, call 1 800 555-5000, toll free, 10 a.m.-11 p.m., Central Time, Monday through Friday. Or write for a free brochure, "Let's Talk About Change."

Let's Talk.

- ☐ Please send me your free booklet: LET'S TALK ABOUT CHANGE.
- ☐ Please have someone call me with information on:
- ☐ Mornings are best ☐ Afternoons are best
- ☐ Residence customer ☐ Business customer

Send to: South Central Bell, P.O. Box 435, Memphis, TN 38101.

Name \_\_\_\_\_  
Address \_\_\_\_\_  
City \_\_\_\_\_  
State \_\_\_\_\_ Zip \_\_\_\_\_  
Telephone (\_\_\_\_) \_\_\_\_\_  
Area Code \_\_\_\_\_

\*Hearing disabled TTY or TDD users please call your Telecommunications Center for Disabled Customers - 1 800 492-3798 (Alabama) 1 800 662-7706 (Louisiana) 1 800 752-0064 (Kentucky) 1 800 342-1657 (Tennessee) 1 948-3671 (Mississippi) toll free

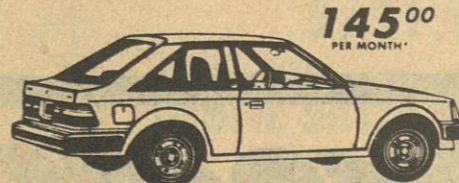
## L-MAL FINANCING

WILL PROVIDE YOU WITH THE LOWEST DOWN AND LOWEST MONTHLY PAYMENT AVAILABLE FROM YOUR MEMPHIS LINCOLN-MERCURY DEALER ASSOCIATION

# \$100 DOWN



**1983 GRAND MARQUIS**



**1983 LYNX**



**1983 MERCURY MARQUIS**



**1983 CAPRI**



**1983 LINCOLN TOWN CAR**

THE BEST SERVICE  
CERTIFIED TECHNICIANS  
IN THE SOUTH WITH

**GATEWAY LINCOLN MERCURY**

4100 JACKSON HIGHWAY

SHEFFIELD, ALA.  
383-0621

5 YEARS OR 60,000 MILES WARRANTY ON ALL FINANCED CARS

\*48 MONTHLY PAYMENTS THRU FINANCING LEASE WITH FORD MOTOR CREDIT CO. EXCLUDES TAX, LICENSE & TITLE FEE WITH QUALIFIED CREDIT

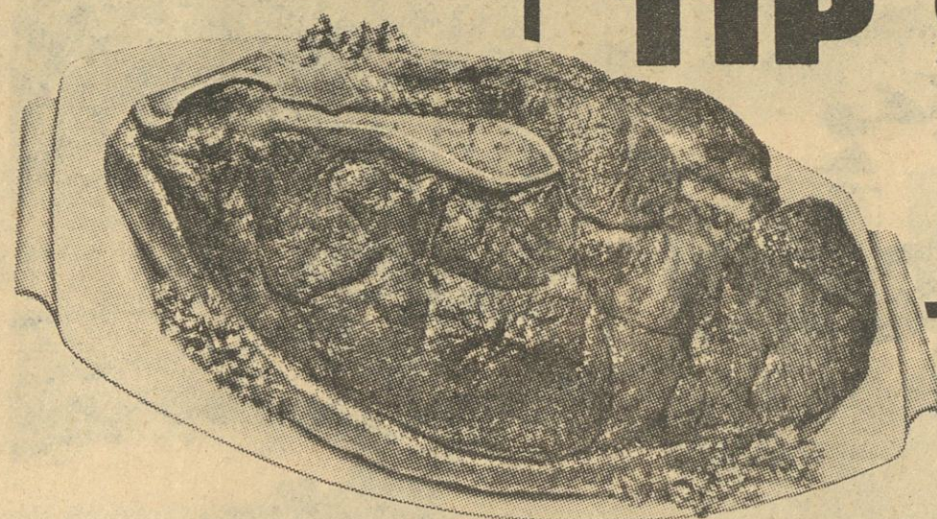


South Central Bell

# B & J

**Supermarket**  
Hwy. 365  
South In  
Burnsville

AD EXPIRES JANUARY 4, 1982.



U.S.D.A. CHOICE BONELESS  
**SIRLOIN  
TIP STEAK**  
LB. **\$2.59**

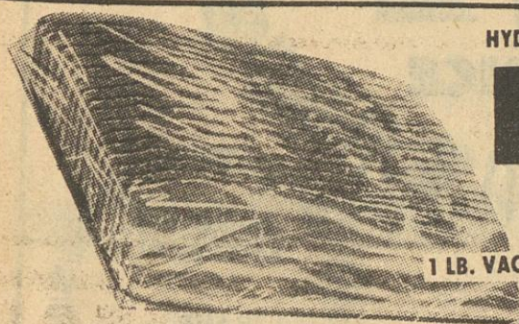
REELFOOT FROZEN

**Pork Brains**

1 LB. **69¢**

HYDE PARK WHOLE HOG

**SAUSAGE**  
HOT OR MILD  
1 LB. **\$1.49**



HYDE PARK

**BACON**  
1 LB. VAC. PACK **\$1.59**

HYDE PARK

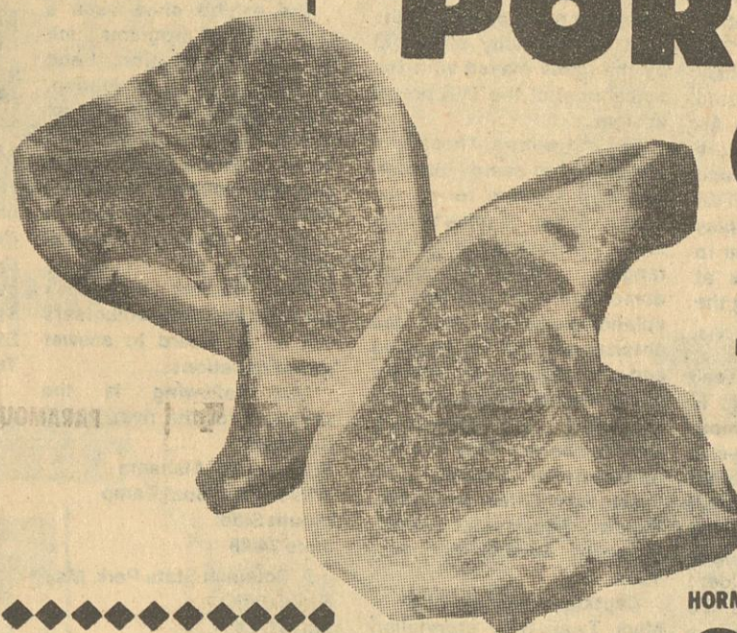
**Bologna**

12 OZ. VAC. PACK **\$1.19**

HYDE PARK

**Wieners**

12 OZ. VAC. PACK **\$1.19**



BRYAN CENTER CUT SMOKED

**PORK  
CHOPS**  
LB. **\$1.99**



SMOKED

**HOG  
JOWL**  
LB. **69¢**

EL DORADO

**Shrimp**

BREADED IN BASKET

8 OZ. **\$1.69**

HORMEL BEEF SUMMER

**Sausage**

11 OZ. STICK **\$1.99**

FRESH PORK

**NECKBONES**  
LB. **39¢**

FRESH MEATY PORK

**Spare-Ribs**

LB. **\$1.29**

CIRCLE B HOT SMOKED

**Sausage**

1 1/2 LB. PKG. **\$2.39**

COUNTRY STYLE

**Pork Backbone**

LB. **\$1.59**

## Produce

U.S. NO. 1 RED

**POTATOES**

10 LB. BAG **\$1.19**



RED OR GOLD DELICIOUS

**Apples**

3 LB. BAG **89¢**

FLORIDA RED

**Grapefruit**

5 LB. BAG **\$1.39**

SUNKIST

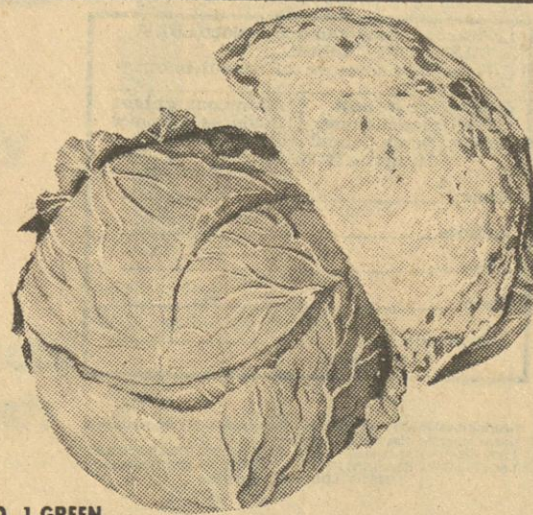
**Lemons**

12 FOR **99¢**

CANADIAN WAXED

**Rutabaas**

4 LB. **\$1.00**



U.S. NO. 1 GREEN

**CABBAGE**

LB. **13¢**

OSCAR MAYER BRAUNSCHEWEGER

**Liver Cheese**

8 OZ. **\$1.19**

OSCAR MAYER

**Cheese**

**Hot Dogs**

1 LB. **\$1.99**

# B & J

**Supermarket**  
Hwy. 365  
South In  
Burnsville

AD EXPIRES JANUARY 4, 1982

GENERIC 2 LITER

## SOFT DRINKS

COLA, ORANGE, RED POP,  
ROOT BEER, GRAPE, LEMON LIME. **69¢**

## Kimberly Clark Truck Load Sale Items.

DELSEY **BATH TISSUE** 89¢ 4 ROLL PKG. 

HI-DRI **TOWELS** 49¢ 



HUGGIES **Diapers** ALL SIZES **\$3.09**

KLEENEX BOUTIQUE **Facial Tissue** 125 CT. **59¢**

NEW FREEDOM **Maxi Pads** 30 CT. **\$3.29**

KLEENEX EXRTA ABSORBENT **Diapers** **\$3.29**

KLEENEX **Facial Tissue** 200 CT. **69¢**

NEW FREEDOM **Maxi Pads** 12 CT. **\$1.29**

LIGHTDAYS OR ANYDAY **Panti-Liners** **\$1.79**

KLEENEX SUPER DRY TODDLER **Diapers** 12 CT. **\$1.89**

BYRON **Beans -N- Barbeque** 16 OZ. **\$1.29**

POPSRITE **Popcorn** YELLOW OR WHITE 1 LB. **3/\$1.00**

SENECA **Grape Juice** 32 OZ. JARS **89¢**

WELCH **Grape Jelly** 2 LB. JAR **99¢**

MARTHA WHITE SELF-RISING **MEAL** 5 LB. **49¢** (WITH \$15.00 PURCHASE) (LIMIT ONE)

BLUE BONNET **MARGARINE** 4 STICK 1 LB. **2/89¢**

DOUBLE Q **TUNA** IN OIL 6 1/2 OZ. **79¢**

HYDE PARK SELF-RISING **FLOUR** 5 LB. BAG **79¢**

HYDE PARK **SALT** 26 OZ. BOXES **2/39¢** PLAIN OR IODIZED

PARAMOUNT HAMBURGER **Dill Pickles** 16 OZ. **79¢**

TRAPPEY'S REGULAR OR JALAPENO **Blackeye Peas** 15 OZ. CANS **3/\$1.00**

PREGO **Spaghetti Sauce** 15 1/2 OZ. JARS **79¢**

HYDE PARK SWEETENED **Grapefruit Juice** 46 OZ. **69¢**

YES HEAVY DUTY LIQUID **Laundry Detergent** QUART BOTTLE **\$1.69**

AUNT JEMIMA COMPLETE **Pancake Mix** 2 LB. BOX **89¢**

IVORY **DISH LIQUID** 22 OZ. **\$1.09**

**PEAS** 4/\$1.00

HYDE PARK DRY **BLACK EYE PEAS** 1 LB. BAGS **3/99¢**

MR. FRITTER BREADED **Orka** 12 OZ. **99¢**

TREE TOP **Apple Juice** 32 OZ. **79¢**

OLD EL PASO **Nachips** 7 1/2 OZ. **89¢**

HYDE PARK **Cold Cups** 100 CT. PKG. **\$1.19**

GREEN GIANT **Corn on Cob** 4 PACK **\$1.19**

HI-C **Fruit Drinks** 46 OZ. CANS **79¢**

FANCY FEAST **Catfood** 3 OZ. CANS **5/\$1.00**

STA PUF PINK **Fabric Softener** 1/2 GALLON **89¢**

COME N GET IT **Puppy Formula** 4 LB. BAG **\$1.89**

POST TOASTIES **CORN FLAKES** 18 OZ. BOX **89¢**

RICHTEX **VEGETABLE OIL** 48 OZ. BOTTLE **\$1.39**

AJAX **DETERGENT** 49 OZ. BOX **\$1.49**

LYNDEN FARM **Shoestring Fries** 20 OZ. **2/89¢**

HYDE PARK **Peanut Butter** 18 OZ. **\$1.09**

## EVERYDAY LOW GENERIC PRICES

12 oz. Can Drinks	5/\$1.00
2 lb. Strained Honey	\$2.25
32 oz. Catsup	97¢
32 oz. Mayonnaise	\$1.05
32 oz. Salad Dressing	87¢
1/2 Gallon Apple Juice	\$1.63
15 oz. Pine Cleaner	47¢
40 CT. Fabric Softener Sheets	\$1.37
32 oz. Dish Liquid	65¢
10 CT. Trash Bags	89¢
100 CT. Paper Plates	73¢
15 oz. Catfood or Dogfood	4/\$1.00
Gallon Bleach	79¢
42 oz. Laundry Detergent	\$1.27
32 oz. Macaroni	95¢
15 oz. Blackeye Peas	31¢
32 oz. Spaghetti	95¢
16 oz. Crackers	57¢
16 oz. Cookies	73¢
24 oz. Pancake Syrup	83¢
22 oz. Coffee Creamer	\$1.29
2 lb. Rice	53¢
4 Roll Bath Tissue	69¢
Paper Towels	49¢



SENATOR JOHN C. STENNIS (D-MISS.) greets Ben Hill, 1983 National Poster Child for the March of Dimes Birth Defects Foundation, at the Capitol in Washington, D.C. Five-year-old Ben is the

youthful symbol of the March of Dimes fight to prevent birth defects, the nation's most serious child health problem. Ben was born with spina bifida (open spine) and had three operations in the first year of his life.

## C.W. McGaha

Rev. Claude Walter McGaha, 66, died Tuesday at the Tishomingo County Hospital. He was a Baptist and a retired employee of TVA.

Services were held Friday, December 24, at the Carter Branch M.B. Church with the Rev. S.W. Shinault and Rev. Lincoln N. Bingham officiating. Burial was at 11 a.m. Monday at the National Cemetery. Lusk Funeral Home was in charge of the arrangements.

Survivors include his wife, Mrs. Inez McGaha, of Tishomingo; a daughter, Laura Kay Brock, of Tishomingo; five sons, Lewis McGaha and George McGahan, both of Tishomingo, Earnest McGaha, of Louisville, Ky., Ronnie McGaha, of Muscle Shoals, Ala., and Walter Nathan McGaha, of Memphis, Tenn.; two sisters, Katherine Conwill, of Pennsylvania, and Dorothy Jean Heard, of Oak Ridge, Tenn.; and 13 grandchildren.

## I. I. Phelps

Irvin Ivo Phelps, 76, died Friday, December 24, at the Baptist Memorial Hospital in Booneville after an extended illness. He was a retired painter.

Services were held Monday, December 27, at the McMillan Funeral Home Chapel with Alex Wayne officiating. Burial was in the Fairview Cemetery.

Survivors include his wife, Mrs. Mary Blackard Phelps, of Booneville; a daughter, Mrs. Rose Marie McKeen, of Yukon, Okla.; a step-daughter, Mrs. Nina Newman, of Dallas, Texas; two sons, Edward Phelps, of Muscatine, Iowa, and Paul Phelps, of Bethesda, Md.; two step-sons, Steve Sims, of Iuka, and David Sims, of Houston, Texas; a brother, Virgil

Phelps, of Davenport, Iowa; 14 grandchildren and seven great-grandchildren.

## J.H. Sample

John Howard Sample, 81, died Friday, December 24, at the Itawamba County Hospital. He was a member of the Mt. Gilead Church of Christ and a retired farmer.

Services were held Sunday, December 26, at the Senter Funeral Home Chapel with R.C. Byram and Mitchell Reed officiating. Burial was in the Mt. Gilead Cemetery.

Survivors include his wife, Mrs. Lela Mae Sample, of Golden; a daughter, Mrs. Pauline Carter, of Golden; a son, Frank Sample, of Biloxi; two sisters, Mrs. Ethel Chamblee, of Fulton, and Mrs. Mamie Moss, of Nettleton; seven grandchildren and 10 great-grandchildren.

## A.L. Rhodes

Alfred Lee Rhodes, 64, died Friday, December 24, at the Tishomingo County Hospital. He was a veteran of World War II and a Baptist.

Services were held Sunday, December 26, at the Mt. Moriah Baptist Church with Ben Thornton officiating. Burial was in the church cemetery. Cutshall Funeral Home was in charge of the arrangements.

Survivors include his wife, Mrs. Edna Mae Rhodes, of Iuka; a daughter, Mrs. Teresa Timmons, of Corinth; a son, Freddie Rhodes, of Iuka; two brothers, Clyde Rhodes and Clifton Rhodes, both of Iuka; and one grandchild.

## James M. Armstrong

James Mathie Armstrong, 77, died Monday, December 20, at the Huntsville Medical Center in Huntsville, Ala. He was a retired farmer and a

member of the New Union Baptist Church.

Services were held Wednesday, December 22, at the New Union Baptist Church with Rev. Coye Marbutt and Rev. Charles Mask officiating. Burial was in the Halltown Cemetery. Dean Deaton Funeral Home was in charge of the arrangements.

Survivors include two daughters, Mrs. Beadie Elkins, of Red Bay, and Mrs. Judy Yvonne Owens, of Kingston, Tenn.; a son, James Keith Armstrong, of Huntsville; two sisters, Mrs. Iva Petree and Mrs. Ruth Garrison, both of Red Bay; a brother, Dayton Armstrong, of Belmont.

## PERSONALS

Visitors of Mr. and Mrs. Cliff Peterson during the

### St. Marys Catholic Church

Eastport & Fulton Streets  
Sunday - 11:30 a.m.  
Wednesday, 7:00 p.m.  
Religious Instruction For Young People  
Grades 1 thru 12  
Sunday 10:15 a.m.  
Rev. Dick Zelonis, SCJ  
Iuka Phone 423-9358  
728-3393 Church - 728-7509 Res.

holidays were their son, Gary Peterson, and family, of Knoxville, Tenn. Miss Merle Peterson and Clarence Peterson, of Glenwood, Minn.

Mr. and Mrs. Ken Saucier and children, of Jackson, Miss., and Mr. and Mrs. Dean Pearce and children, of Corinth, spent Christmas with their parents, Mr. and Mrs. Ledgie Grisham.

Tom and Tracy Hayes, of Arab, Ala., spent the weekend with the Hayes family and Mrs. Nellie Davis.

Mr. and Mrs. Harold Davis, Judy and Byron, of Southaven, Miss.; Mr. and Mrs. Gene Parks and children, of Milan, Tenn.; and Mr. and Mrs. Gene Johnson and Miss Mabel Dean, of Iuka, had din-

ner on Sunday with Mrs. Lowery Dean.

Margaret Ann Tickell, of Oxford, spent the holidays with Rev. and Mrs. Bob Tickell and family.

Kathy Robertson and friend, of Memphis, spent Christmas with her parents, Mr. and Mrs. Hurchel Robertson.

Mr. and Mrs. Oscar Arnold, of North Crossroads, visited with the Edward Arnold family on Sunday.

The Daniel family was all together on Christmas Eve for the meal and gift exchange at the home of Mrs. Marshall Daniel.

Mrs. Marshall Daniel spent Christmas Day with the JIMMY Daniel family in Corinth.

**HAPPY NEW YEAR**



May your New Year be one of health, happiness and peace. Enjoy every moment of it.

## IUKA BAPTIST CHURCH

105 West Eastport Street

Sunday, January 2, 1983

10:55 A.M.

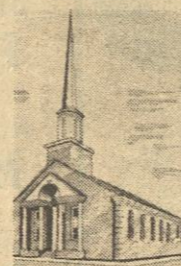
Bro. Walter Ballard to lead

7:00 P.M.

Bro. Walter Ballard to lead

Wednesday, January 5, 1983

One Body - Its Service



Morning and Evening Services Broadcast Over WTBF-FM 104.5  
Morning services also on A.M. 1270



Dr. Kenneth Murphy, Pastor

## Obituaries

### Mrs. Alabama Henry

Mrs. Alabama Henry, 89, of Booneville, died Thursday, December 23, at the Red Bay Hospital. She was a member of the Church of Christ and a homemaker.

Services were held Friday, December 24, at the Deaton Funeral Home Chapel in Belmont with Bro. Beal Coats officiating. Burial was in the Dennis Memorial Garden.

Survivors include four daughters, Mrs. Elvia Dean, of Belmont, Mrs. Elta Coppock, of Russellville, Ala., Mrs. Louis Laughtery, of Booneville, and Mrs. Edith Hutcheson, of Tupelo; four sons, Raymond Henry, of Florence, Ala., Rayford Henry, of Tusculumbia, Ala., O.C. Henry, of Dennis, and Paul Henry, of Quinlan, Texas; a sister, Mrs. Ida Henry, of Muscle Shoals, Ala.; a brother, Sam Coats, of Tusculumbia; 24 grandchildren, 31 great-grandchildren, and one great-great-grandchild.

### Cecil W. Johnson

Cecil William Johnson, 65, died Friday, December 24, at the Itawamba County Hospital. He was a retired timberman, a retired employee of American Motors, and a member of the Salem Baptist Church, and a veteran of World War II.

Services were held Sunday, December 26, at the Salem Baptist Church with Cecil Stepp and Odie Waddle officiating. Burial was in the Sandy Springs Cemetery. Senter Funeral Home was in charge of the arrangements.

Survivors include a son, Conrad Johnson, of Waycross, Ga.; three sisters, Mrs. Lema Deason, Mrs. Letha Taylor, and Mrs. Lura Cleveland, all of Golden; three brothers, Ervin Johnson, of Golden, Dexter John-

son, of Arkansas, and Junior Johnson, of Byhalia; and two grandchildren.

### Mrs. Nettie Barrett

Mrs. Nettie Barrett, 82, of Belmont, died Friday, December 24, at the Red Bay Hospital. She was a homemaker and a member of the New Bethel Baptist Church.

Services were held Sunday, December 26, at the New Bethel Baptist Church with Bro. Jeff Cook and Haskell Sparks officiating. Burial was in the Belmont City Cemetery. Deaton Funeral Home was in charge of the arrangements.

Survivors include a daughter, Mrs. Pearl Jackson, of Belmont; four sons, Charles Barrett, of Hartselle, Ala., O.L. Barrett and Braxton Barrett, both of Belmont, and C.B. Barrett, of Hyden, Ky.; a step-son, Ernie Barrett, of Golden; 15 grandchildren and 11 great-grandchildren.

### J.C. Pounds

James Carlton Pounds, 80, died Tuesday, December 21, at the Red Bay Nursing Home in Red Bay, Ala. He was a retired carpenter and a member of the Liberty Church of Christ.

Services were held Thursday, December 23, at the Liberty Church of Christ with Wayne Mitchell and Sebastian L. Orick officiating. Burial was in the Lindsey Cemetery. Deaton Funeral Home of Belmont was in charge of the arrangements.

Survivors include two daughters, Mrs. Dorothy Sartin and Mrs. Lydia Kemp, both of Dennis; a son, James Pounds, of Belmont; a sister, Mrs. Edna Harrison, of Dennis; a brother, Monroe Pounds, of Red Bay; 12 grandchildren and 11 great-grandchildren.

## SEEDS FROM THE SOWER

By Michael A. Guido, Metter, Georgia



Two boys called on a dentist. One said boldly, "Got a tooth to be pulled. Don't bother about pain-killer. Just yank it out!"

"Where's the tooth?" asked the dentist.

Turning to his friend, he said, "Billy, show him your tooth!"

We are brave about the pains and problems of others, but not of our own. We have always been afraid of the unknown.

If you are afraid of what is going to happen, you have a case of neophobia, the fear of something new.

If you are afraid of growing old, then you are af-

flicted with chronophobia, the fear of time.

If you are afraid of your new job or school, your have hypengyophobia, the fear of responsibility.

If you are afraid of death, you have thanatophobia. This fear bothers most people.

But deliverance from all these fears is found in the Lord Jesus Christ. He is the Lord of life and death.

Hear Him as He says, "Fear thou not; for I am with thee. Be not dismayed; for I am thy God. I will strengthen thee; yea, I will help thee."

## CUTSHALL FUNERAL HOME

Representing  
Corinth Mutual  
Burial Association

Mississippi  
Funeral  
Association

Liberty National  
Life & Burial  
Insurance Company

SOME BURIAL POLICIES CAN  
BE PAID OUT IN 15 YEARS

## CUTSHALL FUNERAL HOME

Phone 423-5222  
Iuka, Miss.

## RUSHING REXALL DRUG COMPANY

Presents

Tishomingo County  
Hospital List

Ada Alred  
Angie Aldridge  
Riley Bennett  
Noah C. Belue  
Lela Brantley  
Jerry Brown  
Ira Burleson  
Dora Crum  
Ider M. Carter  
Samuel Coker  
Effie Cain  
Annie A. Clark  
Lonzo Carson  
Mattie Davis  
Sue Harville  
Aubrey Hargett  
Harold Halvorsen  
Peggy Isbell  
Dorothy Logan  
Leler Louis  
Tracy Miller  
Alma McKinney  
Opal Nash

Thelma Oaks  
Lillie Mae Potts  
Thelma Pounders  
Ruth Pickle  
Jewell Puckett  
Peggy Reporto  
Benjamin F. Ross  
Charles O. Rushing  
Lucian O. Stidham  
Nellie Sue Smith  
Vernie Pearl Stricklen  
Elbert Watts  
Almer Wallace  
Estella Nunley  
Edna Chambers  
Wardie Martin  
Ola Holder  
Charles Edmondson  
Dorothy Lambert  
Pamela Walker  
Lois Thorne  
Fletcher Burruss  
Elsie Curtis

<b>McNATT FORD SALES</b> Phone 423-3681 Iuka, Miss.	<b>BROWN INSURANCE AGENCY</b> Iuka, Miss.	<b>CARPETS UNLIMITED &amp; CIRCUS BURGER</b> Iuka, Miss.	<b>RUSHING REXALL DRUGS</b> Phone 423-3629 Iuka, Miss.
<b>TOWN &amp; COUNTRY FURNITURE</b> Hwy. 25 South in Iuka	<b>FIRST AMERICAN NATIONAL BANK</b> Iuka-Golden-Burnsville-Belmont	<b>1ST CITIZENS LOANS</b> Phone 423-5248 Iuka, Miss.	<b>CURTIS BROTHERS DRUGS</b> Phone 423-3676 Iuka, Miss.
<b>FARM BUREAU INSURANCE</b> Phone 423-6151 Iuka, Miss.	<b>CUTSHALL FUNERAL HOME</b> Phone 423-5222 Iuka, Miss.	<b>HONEYCUTT CHEVROLET</b> Phone 423-3622 Iuka, Miss.	<b>IUKA GUARANTY BANK</b> "Straight Ahead Through The Years"

Tishomingo County News - Vidette - Belmont News



**Stacey & Her Friends** — These youngsters were on hand to welcome Stacey home for Christmas after her three and a half month stay at

University Medical Center in Jackson. Pictured, left to right, are Mary Jane Whitfield, Mitzi Bolton, David Whitfield, Dorian Purvis,

Lydia Purvis, Ginger Bowling, LeAnne Bolton, and Christopher Bowling. Stacey is seated in front.

## Stacey Purvis VS Cystic Fibrosis



**A Gift For Stacey** — Mrs. Becky McNeely is shown presenting Stacey a gift from

the teachers and students at Iuka Elementary School.

Stacey Purvis does not look like a fighter. Her face is sweet and innocent, and she is small for her eleven years. However, she is engaged in a battle with a fierce opponent called Cystic Fibrosis. Stacey has proven to be quite a fighter.

The battle began when she was only 2 days old. Fifty percent of her small intestines had to be removed. The doctors told her parents, Tommy and Carla Purvis, of the Midway Community, that their daughter could possibly have Cystic Fibrosis, an inherited disease that causes lung problems and interferes with the digestive system. Then, at age 3 months, Stacey went to LeBonheur Children's Hospital where she was diagnosed to have the disease.

Stacey grew up like any other child would. The only difference was that she required a special diet and had to take many vitamins. She had no serious medical problems until the age of nine when she began to have lung

trouble. Soon she was taking 19 pills a day and practicing a type of lung therapy three times a day.

Yet, Stacey did not let this discourage her. She kept on living her life the way she wanted. She went to school where she learned and played with the other children and was involved in community activities. The 4-H Club was her primary interest aside from school. This delighted her father, who is the Tishomingo County Extension 4-H Youth Agent. Last summer she went to the 4-H District Contests where she placed third on her visual demonstration entitled "Cystic Fibrosis - The Salty Kiss". She sought to teach others about her disease so that they would understand it.

Today Stacey is a sixth grade student at Iuka Elementary School and is still active in the 4-H Program. Her hobbies include playing Atari, swimming, riding bikes, and watching television.

However, for the past three and a half months, Stacey has not gotten to attend school, work with the 4-H Club, or ride her bicycle. She has been hospitalized at the University Medical Center in Jackson, because of complications associated with Cystic Fibrosis. Her mother put aside her secretarial job to stay with her. Stacey's father and two sisters, Dorian and Lydia, would come to visit on the weekends. The hospital was not like being home, but her outlook was good. Mrs. Purvis commented of her daughter, "She's pretty brave. She did a lot better than I would have."

Stacey gave a shy smile and said that the worst thing about staying in the hospital was "having to get stuck all the time". When asked what the best thing was, she replied, "Getting cards, presents, and money were the best things." She plans to save her money so she can go to Disney World. Mrs. Purvis

expressed her gratitude for the presents, gifts, and the 300 get well cards people had sent to Stacey. She said that the cards helped Stacey to pass the long hours.

Christmas was especially wonderful for Stacey this year, because she got to come home for the Holiday. Some of her young neighbors and friends were on hand for the occasion. They made many posters to welcome Stacey, which they attached to trees along the way to her home. The Tishomingo County Electric Power Association came to hang one huge poster across the road. The efforts of these youngsters made Stacey's homecoming even more special.

While Stacey was home, she still had to stay under the oxygen mask 15 hours a day and take medicine intravenously. Her mother administered the treatment. Yet, somehow or other, it wasn't as bad at home. Mrs. Purvis commented on this saying, "Home has been the best shot in the arm. It helps just getting out of the four walls of a hospital room."

However, Stacey had to return to Jackson soon after Christmas. She, along with many others, hope the doctors will let her return home to stay. In the meantime, she will just keep on fighting like she has always done.

### Point of Law

**Q:** What are a consumer's rights if he buys an item that turns out to be defective?

**A:** When a consumer buys an item from a merchant, such as a storeowner, the law requires that the item be "merchantable." That is, the item must be in workable condition and must not be defective in any material way. If, by chance, the item is defective, the consumer has a few alternatives. He can return the item to the merchant immediately after discovering the problem and



### A Gesture of Welcome

Stacey was heartened to see this welcoming sign upon her

arrival home. Some neighborhood youngsters, with the help of two employees from the Tishomingo County Elec-

tric Power Association, put the banner up. Several posters were also fastened to trees along the roadway.

receive a refund of the purchase price. This alternative is not available if the defect is one that the consumer should have discovered before taking the item home. In addition, the storeowner often has a right to offer to cure the problem by replacing or repairing the item instead of refunding the purchase price.

If the consumer decides to keep the defective item, or if he waited too long to return the item and obtain a refund, he may still have a claim against the storeowner. He is entitled to damages from the storeowner in an amount equal to the difference between the value of the item as it should have been and the value of the item in its defective condition. For example, if

a consumer purchases a food processor for \$300 but because of defects it is only worth \$200, the consumer is entitled to \$100 in damages from the merchant. Again, the merchant retains the right to repair or replace an item rather than paying damages to the consumer.

It is important that the consumer act promptly in returning the defective merchandise and specify the particular problem.

**Q:** How are a consumer's rights affected if he has signed a form or received a paper from the merchant which states that the merchant makes no warranties concerning the item purchased?

**A:** The consumer's rights

are not affected. Mississippi law provides that a merchant cannot remove the warranty of merchantability as discussed above by attempting to disclaim the warranty.

Baseball pitchers can throw curve balls because they put a spin on them. The air velocity is higher on one surface of the ball than on the other. That makes the air pressure different on one side of the ball. That forces it to curve.

The tires on a car grip the road because of friction, which also helps the car go. The frictional push backward causes a reactive forward force, causing the automobile to move forward.

WAL-MART

Ad good Dec. 30 & 31

Hwy. 25 South in Iuka

Open 9 till 9

FOOTBALL

BASKETBALL

SKY DIVER

STREET RACER

SPACE WAR

5.73

ATARI

Each

Atari Cartridges

- Choice of 5 different cartridges
- Street Racer CX2612, Space War CX2604, Basketball CX2624, Sky Diver CX2629, Football CX2625

ATARI GAME ACCESSORIES

IMAGIC

What A Buy! Imagic Video Storage Center

- Holds Atari or Intellivision console
- 15 Atari or 18 Mattel cartridges
- Tinted dust cover
- No. IC5000

\$17

What A Buy! Cassette & Game File

- Holds Atari, Activision or Intellivision game cartridges plus various computer tapes plus cassette tapes
- No. 007-200

\$17

WAL-MART

WAL-MART'S ADVERTISED MERCHANDISE POLICY — It is our intention to have every item in stock. However, if due to any unforeseen reason, an advertised item is not available for purchase, Wal-Mart will issue a Rain Check on request, for the merchandise to be purchased at the sale price whenever available, or will sell you a similar item at a comparable reduction in price. We reserve the right to limit quantities.

If you are counting on Social Security for a comfortable retirement . . . count again!



The dollars just don't add up! Inflation, high interest rates, unemployment, government deficits, economic uncertainties. Can you afford to count on Social Security?

SOUTHERN FARM BUREAU LIFE'S "NO LOAD" FLEXIBLE PREMIUM RETIREMENT ANNUITY IS DESIGNED FOR THE IRA AND KEOGH PLAN

Deduct up to \$2,000 to an IRA and up to \$15,000 to a Keogh Plan!

Call your Farm Bureau Insurance agent . . . . .

he can give you that good feeling of security.

TISHOMINGO COUNTY FARM BUREAU

Carlos E. Ginn

Danny Bullard

Billy Rainey

Iuka, MS

423-6151

[illegible]

*Sunbeam*



**24.93** Twin Size  
Single Control **34.93**

**29.93** Full Size  
Single Control **43.43**

**64.93**

**Everyday Low Price**

**5 Year Warranty Electric Blanket**

- 80% Polyester, 20% acrylic; 100% nylon backing
- Save on heating costs, save energy •Single control controls automatically adjust for room temperature
- Champagne, lt. blue, lt. brown •Machine washable
- Resists matting, shedding and pilling

Analysis: mating, shedding and piling

Candlewicking Originals presents:

# Candlewicking



Kit includes 100% natural cotton muslin and yarn, chart, transfer pen, needle, instructions • Lace, ruffle & stuffing not included

**\$4**

**Candlewicking Pillow Kit**

•Kit includes 100% natural cotton muslin and yarn, chart, transfer pen, needle, instructions •Lace, ruffle & stuffing not included



**2.87**

Save 17%  
**5x7 In. Stitchery**

•Caron's Wallmark and Perle collection fabrics and yarn •All ages •Reg. 3.49

Savings!  
**Annants**  
see from assorted fabrics

**2**

Up To 1.1  
**Clearance**  
•Choo  
to 2.67 yd. •N  
this item

**1.5**

**Hungry Hippos**

• Critters with a knack for munching  
• Hungriest wins  
• No. 2265

Reg. 11.95

**9.50**

**Domination**

Game for 2-4 players  
Ages 10-adult  
Powerful strategy game  
where players struggle  
to gain control of the  
board •No. 4207

**7.00**

**Simon**

• Give your memory  
work-out as you  
repeat Simon's  
increasing sequence  
of colors and sounds  
• No. 4689

**23.00**

Amsonic FM-A  
Battery No. RF

**Photo Coupon**  
Color Print Film\* Developed and Printed

<b>1.76</b>	12 Exp. Roll	<b>3.17</b>	24 Exp. Roll
<b>2.54</b>	15 Exp. Roll	<b>4.27</b>	36 Exp. Roll

\*C-41 Process Only

Coupon Must Accompany Purchase  
Expires Jan. 1, 1983

**WAL-MART**

**ColorMant**  
1 Color Print Film

**ColorMant**  
1 Color Print Film

[illegible]





#### Candace Is One

On December 22, 1982, Candace Lynn Pittman celebrated her first birthday. She shared it with friends and relatives and a Strawberry Shortcake cake, ice cream and Koolaid was served. Candace is the daughter of Rev. and Mrs. Tim Pittman. Her grandparents

are Mr. and Mrs. Billy W. Broyles and Mr. and Mrs. Ray Pittman. Her great-grandfathers are Mr. Luther Lindsey and Mr. G.D. Broyles, of Texas. Candace would like to thank all her friends for coming and sharing in her first birthday and for the many nice gifts.

#### Words of Appreciation

The family of Rebecca Jean Daniel Patterson gratefully acknowledges all acts of kindness shown during the loss of our loved one. Words are inadequate to express our appreciation. Friends are among one's greatest possession ... truly we are blessed. A special thanks to Rev. Bill Hobson, Nellie Horton and Lady Love Long. For all prayers and words of encouragement offered, the food, cards and flowers sent - we thank you.

The Family of  
Rebecca Jean Daniel Patterson

#### 1983 New Year King & Queen Beauty Pageant

On January 8, 1983, Classic Beauty and Talent Systems present the 1983 New Year King and Queen Beauty Pageant and Talent Spectacular at the Baldwin Community Center in Baldwin, Miss. The time set for the event is 12:30 p.m. (beauty) and 3:00 p.m. (talent). Director for the pageant is Annette Mars. There will be nine trophy awards in each division. If weather conditions are bad, (ice or snow) the pageant will be postponed to a later date. Entry form should be filled out in advance if you plan to enter at

the door in order for the pageant to begin on time. Entry fees include: beauty, \$20.00; photogenic, \$5.00; talent, \$15.00. For more information contact Linda at (601) 365-5504, or Annette (601) 393-3156.

#### Ladies Auxiliary To Meet

The Ladies Auxiliary of the Midway Fire Department will meet January 6, 1983, beginning at 1:00 p.m. at the Carter's Headstart Building at Midway.

All ladies in the area are welcome.

#### Area Students Receive Degrees

The fifteenth mid-year commencement at the University of North Alabama was conducted on Friday, December 17, at 7 p.m. in Flowers Hall. There were 300 candidates for graduation with 233 students pursuing Bachelor of Science degrees. Other degrees include 21 Master of Arts, 12 Master of Business Administration, one Master of Science in Biology, two Education Specialist, nine Bachelor of Arts, 14 Bachelor of Science in Nursing, and eight Bachelor of Social Work. Prospective graduates from this area include: Bachelor of Science, Ricky Von Wooten, Belmont; Jeffrey Scott Johnson, Glenn; and Sammy Lee Broughton, Iuka.

#### Personals

Mrs. Zella Parsons enjoyed having a Christmas Eve dinner at her Route 3 home. Her three sons, Waco, O'Dell, and Berville, and their families, along with her daughters, Mrs. Lorena Frederick and Mrs. Betty Farris, and their families, were all present for the family gathering. Most of the grandchildren were able to attend and a good time of fellowship was had by all.

Waco and Lyda Parsons traveled to Hartselle, Ala. during the Christmas Holidays to spend some time with daughter, Barbara

Bishop, and her hubby, Keith. The Bishops have two children, Traci and Brian. Sammy accompanied his parents on the trip, and Lyn with wife, Julia, who now make their home in Hartselle, were present, so the family was complete. Also enjoying the Christmas dinner with the Parsons relatives was Mrs. Renata Buse (mother of Julia) and two sons, Mike and Little Tommy.

Visitors in the home of Mr. and Mrs. Howard Biggs and Larry included their children, relatives and friends. Those present for the annual holiday festivities were: daughter, Linda Stricklen, with husband, Tommy, and children, Kim and Heather, of Valdosta, Ga.; Charles and Joan Biggs, from Memphis, Tenn.; Joe, Katherine and Chad Norman, from Corinth; Gary, Janet and Jeremy Biggs, James and Martha Tension, Alma Ruth and John Dennis Daugherty, Mary and Rayma Biggs, all of Iuka. Dropping by with holiday greetings were neighbors, Mr. and Mrs. Walt Catalina and Dave.

Mr. and Mrs. Lester Pruitt and sons, Mike and Brad, of the Rutledge-Salem Community had the traditional holiday family gathering. Gifts were exchanged and lots of good food consumed during the visits from all their

children. Those visiting in the home of their parents were: Doris and Jimmy Dale Phifer, of Tishomingo; Carl and Peggy Locke, of Selmer, TN; Joe and Becky Pruitt, of New Albany; Donna and Tim Wright, of Tishomingo; Diane and Orville Dawson, of Iuka; Patti and Donnie Crabb, of Iuka; Lisa and Jeff Cutshall, of Iuka; along with all the grandchildren and Mrs. Pruitt's parents, Mr. and Mrs. Millard Page, of Iuka.

Mrs. Jewel Edmondson was host to the Carter Head Start staff on Tuesday night, December 21, for a Christmas party and dinner. There were nine present along with the hostess: Mr. and Mrs. Kenneth Cox, Mr. and Mrs. Thaddeus Keith, Mr. and Mrs. Thomas Walker, Virginia Bennett, and Debra Orick. Each one brought a covered dish and enjoyed the meal and fellowship.

On Friday, December 24, the children of Jewel Edmondson gathered at their mother's home for Christmas. Those helping celebrate were: Ronnie, Von and Kristi, from Southaven, Ms.; Carolyn, H.O. and Bryan Southward, of Iuka; Donnie, Brenda and Shannon Edmondson, from Dennis; Neil, Brenda and Heather Edmondson, from Iuka; and Thomas and Dana Walker, from Iuka. Also attending from Iuka

were Donald, Tilly and Debbie Edmondson, from Iuka. After the Christmas dinner and a period of fellowship, the family visited Mrs. Robert Page and played Santa Claus to her. Mrs. Page is staying with her daughter, Nancy Riggs, while recuperating from a broken hip.

#### Alano (Alcoholics Anonymous) By One With Experience

Some people who have trouble because of alcohol hesitate to come to AA because they just don't know whether or not they are alcoholics. Actually, it doesn't make any difference. The only requirement for AA membership is a desire to stop drinking.

Some problem drinkers think, "I only get drunk once in a while, so I'm not an alcoholic."

Others say, "I only drink beer, so I can't be an alcoholic," or "My friend Joe drinks more than I do. If he's not an alcoholic I can't be one."

But remember this: It isn't how often you drink, why you drink, or how much you drink that determines whether or not you are a problem drinker. It's what happens when you drink that counts.

What happens to a diabetic when he eats sugar?

What happens to an alcoholic when he drinks alcohol?

People who have no drinking problem can control their liquor. They can stop drinking whenever they want to. They can take a few drinks without getting into trouble.

Those who do have a drinking problem cannot guarantee what is going to happen after they take their first drink. They often get into

all kinds of trouble, ranging from missing a day's work to killing somebody in an auto accident.

Other problem drinkers say, "I'm not an alcoholic. I quit drinking for seven months two years ago." They fail to say what happened when they started drinking again. And they fail to realize that alcoholism is a progressive disease. Perhaps this year they couldn't quit drinking for seven days.

Being a diabetic is not a disgrace. Neither is it a disgrace to be an alcoholic. It is a disgrace to be a drunk! The diabetic must not eat sugar. The alcoholic must not think alcohol. It is simple as that.

The diabetic does not hesitate to admit to himself that he has diabetes. The alcoholic usually refuses to admit that he has his disease until he is forced by circumstances to do so. By that time he has probably been in an alcoholic hell for many years.

The alcoholic hesitates to admit his illness because for years alcoholism has been looked upon as a moral weakness or a lack of "will power." He doesn't want to be placed in this category.

The first step in the AA program for living is: "We admitted we were powerless over alcohol, that our lives had become unmanageable."

Once we become honest with ourselves - once we quit kidding ourselves that we can "drink just like anybody else" - we can begin to do something about the problem. But if we bury our heads in the sand and pretend there is no problem, it is always right there staring us in the face when we look up.

No matter where we search, we can find no method to regain control over our drinking, once we have lost it. No medicine has ever been found to cure the disease of

alcoholism. The disease can only be arrested by the complete elimination of alcohol from our lives. In AA we live this 24 hours a day.

If you have a drinking problem and want to control your problem the hard way - all by yourself - wish you lots of luck.

But, if you need help, us. Nearly 400,000 problem drinkers have found the way out of their troubles through the AA program. Try it yourself. You have nothing to lose but your misery!

#### Bacon & Tomato But No Sandwich



#### BACON AND TOMATO RICE

- 5 slices bacon, diced
- 1/2 cup chopped onion
- 2/3 cup chopped green pepper
- 1 clove garlic, minced
- 3 large tomatoes, peeled and cut in eighths
- 3 cups cooked rice
- 1 teaspoon salt
- 1/4 teaspoon ground black pepper

In a large skillet cook bacon until almost crisp. Pour off fat, reserving 2 tablespoons. Add reserved to skillet. Stir in onion, green pepper, and garlic. Cook until vegetables are tender crisp. Add tomatoes, rice, and seasonings. Stir thoroughly. Makes 6 servings.

## CANCER Answerline

AMERICAN CANCER SOCIETY

Question: Is it true that fluorescent light has been found to cause skin cancer?

ANSWERline: A recent Australian study of women office workers did show some association between malignant melanoma and exposure to fluorescent light. The study compared 274 women with melanoma against 549 women without disease. The incidence of melanoma among those who said they worked under fluorescent light was double that of the women who did not. The study was reported in the British medical journal *Lancet*. The investigators said however that "the findings should be interpreted cautiously until further relevant data accumulate."

Question: Is the consumption of alcohol related to cancer?

ANSWERline: Excessive drinking is related to cancers of the mouth, throat, and esophagus. The combination of alcohol consumption and cigarette smoking is associated with especially high rates of esophageal and throat cancer.

Question: Why does a person who has given up cigarette smoking go back to the habit?

ANSWERline: A major reason is doubtless the habit factor. In addition, a psychological need has been established, based on the oral and manual gratification of handling a cigarette, lighting it, putting it between the lips, etc.

Question: What are the chances of being cured of lung cancer?

ANSWERline: About one in 10. Most cases are incurable at the moment of discovery.

Question: Do chest x-rays cause lung cancer?

ANSWERline: No. Diagnostic X-rays, as utilized by physicians today, do not cause lung cancer.

Question: Are there other causes of lung cancer besides cigarette smoke?

ANSWERline: Statistics show radioactivity in certain mines produce lung cancer. Other occupational hazards include hot gases from tar, dust from gas generators, exposure to asbestos, chromates, or nickel. Workers exposed to carcinogens who also smoke have proved more vulnerable to lung cancer.

Question: Are hemorrhoids or piles a sign of cancer?

ANSWERline: No. But hemorrhoids bleed, and bleeding may be a warning signal of cancer. Any bleeding should always be brought to the attention of one's physician.

Question: Can one's attitude toward cancer influence the course of the disease?

ANSWERline: Yes. If one is afraid to know whether he or she has cancer, a trip to the doctor may be delayed until it is too late for proper treatment. Worry can always be a factor in one's health. The best practice is to act promptly whenever one's body signals all is not well by seeing a doctor and having a checkup.

Question: Why is early detection so important?

ANSWERline: Because many cancers are curable when caught before they have metastasized or spread to other parts of the body.



#### INSIGHT INTO EYESIGHT

DR. PHILLIP GRAY

OPTOMETRIST

#### NEW LONG-WEAR CONTACTS

Recently, there has been a breakthrough in the design of soft contacts. These "extended-wear" contacts can be worn continuously for up to two weeks, depending upon the individual. They are about as different from the previous generation of soft contacts as contacts are from spectacles. How do they work?

The key element is oxygen. For a soft contact lens to work most effectively and provide the maximum of comfort, it must allow oxygen to reach the eye. This involves the water content of the lens and a number of oxygen pathways which are provided. These newly designed

lenses absorb considerably more water than earlier models, and thereby can provide superior oxygen transmission. This, in turn, means higher quality vision, superior wearing comfort, and extended lens life.

Is extended-wear for everyone? Because individual eyes vary, only your eye-doctor can determine the type of vision correction that's best for you.

In the interest of better vision from the office of:  
DR. PHILLIP GRAY  
105 S. Fulton St., Iuka  
Phone: 423-3785

## WAL-MART

### Quality Portrait Collection

ONLY 8.86



#### WAL-MART EXCLUSIVE

- 86¢ Deposit
- \$8.86 Total Portrait Collection
- 13 Professional Color Portraits
- 1 - 8x10, 2 - 5x7s and 10 wallets
- \$1.00 for each additional subject in portrait

#### THESE DAYS ONLY:

Thursday, Friday & Saturday  
January 6, 7, & 8  
DAILY: 10 a.m. - 8 p.m.  
HIGHWAY 25 SOUTH, IUKA

## Tri-State Savings & Loan Association

Iuka and Belmont





## Storment Named State President

Sandra Carr Storment, #16 Warwick Drive, Little Rock, Arkansas, has been elected 1983 State President of the Arkansas Chapter, American Society for Training and Development. A.S.T.D. is a national organization with headquarters in Washington, D.C. The society has over 40,000 members nationwide and is active in furthering the development of training and education in private industry, business and government sectors. The duties of president will include all functions on the state level and serving on the Region 7 Council Board, which encompasses a five-state area. She has recently been appointed Region 7 Conference Chair of the Review Site Committee for 1983, to be held in Oklahoma City.

In her four years with A.S.T.D., she has served in many capacities. As well as serving as state treasurer, communications chairman, editor of the society's newspaper, and member of numerous committees, she has represented the chapter at two National Leadership Conferences, 1982 National A.S.T.D. Conference and three Regional Conferences. She most recently represented Arkansas at the National Leadership Conference in Washington, D.C.

Mrs. Storment is associated with Commercial National Bank in Little Rock as Human Resources Manager of the Metropolitan Division. Commercial National is the second largest bank in Little Rock with assets in excess of \$400 million. Storment has been affiliated with banks and savings and loans in a number of capacities for the past 13 years. She is a 1965 graduate of Iuka High School. Other educational credits include studies at Northeast Mississippi Junior College, University of Southern Mississippi, University of Arkansas at Pine Bluff, University of Arkansas at Little Rock and the Institute of Financial Education in which

she holds the Certificate of Achievement Degree. She attended the American Bankers Association Trainers School at the University of Colorado in Boulder, Colorado in April of this year. Her involvement in the community includes serving on the Speakers Bureau of Pulaski County for the American Cancer Society. She volunteers this time to educate the youth on the detection and prevention of this disease.

Mrs. Storment is the wife of John B. Storment, III, who is Assistant Manager with Crawford and Company Insurance Adjusters in Little Rock. The Storments are the parents of a daughter, Shelley, age 10. She is the daughter of Mrs. Joy M. Cooper, of Westmont, Illinois; and daughter-in-law of Mrs. Ruth Storment Hurst, of Rockledge, Florida.

## I.H.S. Class of '63 Plan Reunion

The Iuka High School Class of 1963 will hold their 20th year class reunion on January 1, 1983, at the Commons Building, located at the new elementary school at 6:30 p.m.

We would like to urge all members to be present for this occasion. We would also like to extend a special invitation to those members who were in this class, but did not graduate, regardless of when they quit school or moved.

Anyone having a copy of our class will and prophecy, please bring it. Please bring anything you might have reminiscent of our school days together.

If you would like further information you may contact Mrs. Charles Jones (nee Nina Pruitt), Mrs. Bud Young (nee Marie Bullard), Mrs. Charles Swimmer (nee Charlotte Presley), Mrs. Barbara Price (nee Barbara Curtis), or Mrs. Richard Brown (nee Carolyn Nicholson).

## New Arrival

Mr. and Mrs. Don Anthony Bonds, of Iuka, are proud to announce the arrival of a baby girl, Kayla Donnell Bonds, born November 5, at Helen Keller Memorial Hospital. Kayla weighed 8 lbs. 8 ozs., and measured 21 inches. Kayla Donnell was welcomed home by her older sister, Kristie Donnell.

Grandparents are the late Mr. and Mrs. Henry Lee Bain and Mr. and Mrs. Joe Douglas Bonds, of Burnsville.

Great-grandparents are the late Mr. and Mrs. Clovis Wright and the late Johnny Bain and Mrs. Minnie Belle Haynes, of Jacinto; Mr. Arlie Cummings and the late Ruby Jewel Cummings, of Burnsville; and Mr. and Mrs. Alfred Bonds, of Iuka.

## Rainbow Christmas Party

By: Ralph Brewer

The Rainbow 4-H Club met at their club house on December 24th at one o'clock. Donnie Bobo, the president, opened the meeting. Candy Elledge led the pledge to the U.S. flag, and Lynette Rorie led the pledge to the 4-H flag. Susan Cook led the Lord's Prayer.

A short meeting was conducted. A discussion was made about when and where they would begin plans for the use of the grants they received from Reader's Digest and Community Pride.

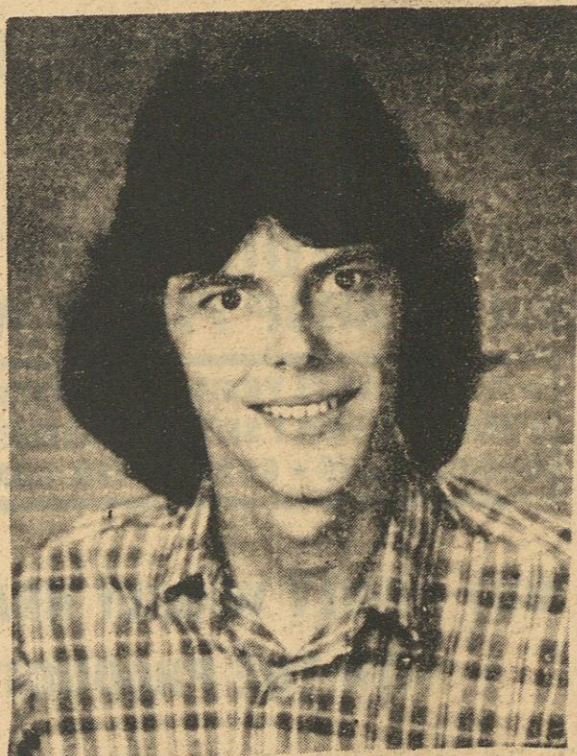
Gifts were exchanged and the club presented to Mr. and Mrs. Richardson, for their years of working with the Rainbows, a plaque of appreciation.

The club members made up boxes of fruit for twelve families of the neighborhood. The club members delivered these.

At the First Baptist Church the Rainbows helped to do the Christmas Program, "The Star of Bethlehem".

The Rainbows won second place in the Christmas Float in the Town of Burnsville.

Before leaving the last meeting of 1982, the club members vowed to do better in 1983.



RICHARD BUTLER was one of five young men of the Muscle Shoals, AL area who recently received national awards in the song writing and publishing field. The five were honored at a luncheon at their alma mater, the University of North Alabama, where they were presented plaques by UNA President Dr. Robert Guillot. Richard Butler

and Kevin Lamb published the hit song "Old Flame" which made the chart for the group ALABAMA. Both are members of the staff of Wishbone Recording Studio in Muscle Shoals, whose owner, Terry Woodford, is instructor of the commercial music course at UNA. Richard is the son of Mr. and Mrs. Gaines Griffin and the late Mr. Carlton Butler, of Tishomingo.

## "Old Flame" Is Hit For Local Men

What do Walt Aldridge, Tommy Brassfield, Terry Skinner, Kevin Lamb, and Richard Butler have in common?

All have received national awards for songwriting and music publishing within the past month, all five write and publish in Muscle Shoals, called by city fathers "the recording capital of the world", and all five are former students of a unique commercial music program offered by the University of North Alabama.

The five recently gathered at their alma mater, the University of North Alabama,

where they received plaques in honor of their national accomplishments from UNA President Dr. Robert Guillot, and took time to visit with former instructors and classmates from the school's commercial music program.

Butler and Lamb published the hit song "Old Flame", which made the charts for the group ALABAMA.

Butler, a native of Tishomingo, attended Tishomingo High School, Northeast Mississippi Junior College and The University of North Alabama. He graduated from UNA in 1981 with a B.S. degree in Commercial Music,

and began full-time employment at Wishbone Recording Studio.

The song "Old Flame", was written by Belmont native, Mac McAnally and Donny Lowery. The song went to number one in Billboard, Cashbox and Record World Country Singles Charts.

"Old Flame" was included on ALABAMA'S "Feels So Right" LP, which has sold over 2 million units.

Mac McAnally's first album for GEFEN RECORDS will be released in the beginning of 1983.

Aldridge and Brassfield are co-authors of the most performed country music song of 1982, "There's No Getting Over Me", which was recorded by Ronnie Milsaps and has remained high on the charts.

Terry Skinner composed two of this year's most per-

formed country songs, "I Just Need You For Tonight", recorded by Billy Crash Craddock, and "Teach Me To Cheat", performed by The Kendalls. Skinner's talents also produced one of the year's top pop hits "Touch Me When We're Dancing".

The first concrete road in the U.S. was laid in Detroit in 1908.

LET'S GO ROLLER SKATING

IT'S A NEW YEAR'S EVE ROLLER SKATING Party

# Skateworld's Biggest Ever New Year's Eve Party

From 7 p.m. to 8 a.m. Tokens  
Admission 7 - 12 \$3.00 8 for \$1.00  
12 to 8 \$2.00 All Night \$4.00

## All Night Session!

Prizes, Games, Breakfast \$1.00  
Balloon Burst for Prizes  
Video High Score for Prizes  
Pac Man Fever

# WELCOME 1983 IN STYLE!

Comment of the Week-Skateworld Skate Team, I love you - The tray's in my chine cabinet with the back showing!

# SKATEWORLD

423-5814 - Call anytime for information  
Hwy. 25 North. .... Iuka, Mississippi

# SPARKO

WE RESERVE THE RIGHT TO LIMIT QUANTITIES. SALE GOOD THROUGH JAN. 1st, 1983  
BRING THE AD, SPARKO WILL HONOR LOCAL COMPETITORS CURRENT ADVERTISED PRICES!

## SPARKO'S ANNUAL AFTER Christmas Clearance

<p><b>BOYS SHIRTS</b> ASSORTED FABRICS STYLES AND COLORS <b>1/3 OFF</b></p>	<p><b>MENS SHIRTS</b> SIZES 14 1/2-17 AND S-M-L-XL ASSORTED FABRICS AND COLORS FLANNELS NOT INCLUDED <b>25% OFF</b></p>	<p><b>PEPSI COLA</b> 2 LITER <b>89¢</b> COMPARE AT \$1.09</p>	<p><b>SELECT GROUP OF TOYS</b> UP TO <b>70% OFF</b></p>
<p><b>GIRLS TOPS</b> ASSORTED STYLES AND FABRICS <b>1/3 OFF</b></p>	<p><b>MENS PAJAMAS</b> S-M-L-XL <b>25% OFF</b></p>	<p><b>LADIES TOP</b> ALL OVER \$6.00 LARGE ASSORTMENT OF STYLES AND SIZES AND FABRICS <b>1/3 OFF</b></p>	<p><b>COATS &amp; CLARK RED HEART KNITTING YARN</b> ASSORTED COLORS <b>89¢</b> COMPARE AT \$1.00</p>
<p><b>LADIES SKIRTS</b> ASSORTED STYLES SWEATER SIZES 4-6x AND 7-14 <b>1/3 OFF</b></p>	<h1>SPARKO STORES OPEN ALL DAY NEW YEAR'S DAY</h1> <p>OUR ADVERTISING POLICY Our firm intention is to have every advertised item in stock. However, if an advertised item is not available for purchase due to any unforeseen reason, Sparko will issue a Rain Check upon request for the merchandise (one item or reasonable family quantity) to be purchased at the sale price within 30 days or we will offer you a comparable item at a comparable reduction in price.</p> <p><b>ELM SHOPPING CENTER IN IUKA</b></p>		

## After Christmas Sale

Prices Good This Week Only

Shingles No. 1 Elk	\$21.95 Square
Shingles (damaged)	\$16.95 Square
Felt Paper No. 1	\$5.95 Roll
Felt Paper (damaged)	\$2.95 Roll
Insulation 3 1/2 x 15 R-11	\$12.95 Roll
PVC Water Pipe	5¢ Foot
Strofoam Insulation 4 x 8 Foil	\$4.79 Each
Presswood 4 x 8	\$2.99 Each
Sheetrock 1/2 x 4 x 12	\$4.59 Each
Plywood 5/8 (excellent)	\$6.79 Each
Plywood 1/2 (damaged)	\$3.95 Each
Masonite Siding 3/8 In. Board & Batting	\$7.49 Each
Door Locks	\$3.99 Each
100 Amp. Switch Box (Gould)	\$39.95
Roof Vents	\$14.95 Each
Fireplace Grates (all sizes)	\$1.99 Each
Tub & Shower Comb. (odd colors)	\$99.99 Each
Showers Only (odd colors)	\$89.99
Inside Door Units	\$29.95
Chip Board 1/2 In. Exterior	\$5.99
Masonite Paneling 1/4 In.	\$5.99
All Lumber	10% Off

New Store Hours Monday-Friday 8-5  
Saturday 8-3

**Outlet Building Supply, Inc.**  
Hwy. 72 East, Corinth, Miss.  
287-6090 or 287-6833

**PIGGLY WIGGLY**

WE ACCEPT  
**U.S.D.A.  
FOOD  
STAMPS**

QUANTITY RIGHTS RESERVED.  
NONE SOLD TO DEALERS.  
PRICES GOOD THURS., DEC. 30  
THRU WED., JAN. 5, 1983.

**MAKE YOUR NEW YEAR'S RESOLUTION  
NOW TO SHOP PIGGLY WIGGLY & SAVE, SAVE, SAVE!**

★ COMPETATIVE PRICES ★ QUALITY ★ SATISFACTION ★ CHEERFUL ATMOS-  
PHERE ★ FRIENDLY SERVICE ★ GARDEN FRESH PRODUCE ★ GUARANTEED U.S.D.A.  
CHOICE MEATS ★ GUARANTEED HOME BAKED COOKIES, PIES, CAKES & BREAD

**BUY PIGGLY WIGGLY BRANDS AND BE SATISFIED  
WITH THE PRODUCTS AND THE SAVINGS!**

**SLICED  
QUARTER LOIN  
PORK  
CHOPS**  
**\$1.39**  
LB.

FRESH SMOKED PORK		
<b>JOWLS</b>	LB.	69¢
COUNTRY STYLE PORK		
<b>BACKBONES</b>	LB.	\$1.49
CENTER CUT		
<b>PORK CHOPS</b>	LB.	\$1.99
BOSTON BUTT PORK		
<b>STEAKS</b>	LB.	\$1.29
ARMOUR STAR PAN SIZE SLICED		
<b>BACON</b>	12-OZ. PKG.	\$1.69
ARMOUR STAR MEAT		
<b>HOTDOGS</b>	12-OZ. PKG.	\$1.19
ARMOUR STAR TURKEY		
<b>HOTDOGS</b>	12-OZ. PKG.	79¢
ARMOUR STAR PORK LINK		
<b>SAUSAGE</b>	8-OZ. PKG.	89¢
FRESH FROZEN PORK		
<b>NECKBONES</b>	LB.	49¢
FRESH FROZEN PORK		
<b>CHITTERLINGS</b>	10-LB. PAIL	\$5.99
OUR TOP BUY ENDS & PIECES		
<b>BACON</b>	3-LB. BOX	\$1.99

OSCAR MAYER BEEF OR MEAT SLICED	8-OZ. PKG.	89¢
<b>BOLOGNA</b>		
U.S. CHOICE BONELESS SIRLOIN TIP	LB.	\$2.19
<b>STEAKS</b>		
PIGGLY WIGGLY WHOLE HOG	1-LB. ROLL	\$1.59
<b>SAUSAGE</b>		
PIGGLY WIGGLY SLICED		
<b>HAM</b>	8-OZ. PKG.	\$1.69
PIGGLY WIGGLY WHOLE HOG SAUSAGE	2-LB. BOX	\$4.39
<b>PATTIES</b>		
PIGGLY WIGGLY CHEESE	7-OZ. CUP	89¢
<b>SALADS</b>		
PIGGLY WIGGLY MEAT	7-OZ. CUP	89¢
<b>SALADS</b>		
LAND O' FROST SLICED LUNCHEON	8-OZ. PKG.	\$1.19
<b>MEAT</b>		
HYGRADE'S BALL PARK MEAT	1-LB. PKG.	\$1.79
<b>FRANKS</b>		
HYGRADE'S BALL PARK BEEF	1-LB. PKG.	\$1.89
<b>FRANKS</b>		
KING COTTON SLICED	12-OZ. PKG.	\$1.49
<b>BACON</b>		

**FRESH LEAN  
GROUND  
BEEF**  
**95¢**  
3-LBS. OR MORE  
LB.

**FRESH FROZEN  
PORK JOWLS**  
**49¢**  
LB.

**U.S.D.A. CHOICE FULL-CUT  
SIRLOIN STEAK**  
**\$2.39**  
LB.

**U.S.D.A. CHOICE BONELESS  
SIRLOIN TIP ROAST**  
**\$1.99**  
LB.

**U.S.D.A. CHOICE BONELESS  
T-BONE STEAKS**  
**\$2.69**  
LB.

**FRESH BOSTON BUTT  
PORK ROAST**  
**\$1.19**  
LB.

**PIGGLY WIGGLY  
COOKING  
OIL** 48-OZ. BTL. **\$1.29**

**PIGGLY WIGGLY PURE  
CANE  
SUGAR** 5-LB. BAG **\$1.49**

**SAVE ON LAY'S  
POTATO  
CHIPS** 1/2-LB. BAG **89¢**

**PIGGLY WIGGLY  
BLEACH** GAL. JUG **69¢**

**PIGGLY WIGGLY  
OLEO** 3 1-LB. QTRS. **99¢**

MT. DEW, DIET PEPSI OR		
<b>PEPSI COLA</b>	6 16-OZ. BTL.	99¢
GOLDEN BEST		
<b>BATH TISSUE</b>	6-ROLL PKG.	99¢
PIGGLY WIGGLY		
<b>LUNCH NAPKINS</b>	140-CT. PKG.	69¢
PIGGLY WIGGLY SPAGHETTI		
<b>SAUCE</b>	32-OZ. JAR	99¢
PIGGLY WIGGLY		
<b>KOSHER DILLS</b>	48-OZ. JAR	\$1.69
PIGGLY WIGGLY FIELD PEAS WITH SNAPS OR		
<b>BLACKEYE PEAS</b>	3 16-OZ. CANS	\$1.00

**PIGGLY WIGGLY  
BLACKEYE  
PEAS**  
**88¢**  
3 1-LB. BAGS

**PIGGLY WIGGLY  
SANDWICH  
BREAD**  
**49¢**  
24-OZ. LOAF

**MADE BY PROCTER & GAMBLE SUMMIT**

**PAPER  
TOWELS** JUMBO ROLL **49¢**

**PIGGLY WIGGLY ALL  
GRINDS  
COFFEE** 1-LB. BAG **\$1.99**

**INTRODUCING  
PEPSI  
FREE** 2-LTR. BTL. **99¢**

**PIGGLY WIGGLY  
CORN MEAL** 25-LB. BAG **\$4.49**

**PIGGLY WIGGLY  
FLOUR** 25-LB. BAG **\$4.49** SELF RISING

PIGGLY WIGGLY WHOLE		
<b>POTATOES</b>	3 16-OZ. CANS	\$1.00
PIGGLY WIGGLY		
<b>SHREDDED KRAUT</b>	3 303 CANS	\$1.00
PIGGLY WIGGLY		
<b>LEAF SPINACH</b>	3 16-OZ. CANS	\$1.00
PIGGLY WIGGLY BUTTERMILK OR SWEET		
<b>BISCUITS</b>	4 10-CT. CANS	69¢
PIGGLY WIGGLY		
<b>CHEESE SINGLES</b>	8-OZ. PKG.	99¢
PIGGLY WIGGLY		
<b>ORANGE JUICE</b>	12-OZ. CAN	79¢

**FLORIDA TANGY  
LIMES**  
**\$1.00**  
10 FOR

<b>FRESH NEW YEARS PRODUCE</b>			
ZESTY YELLOW			
<b>ONIONS</b>	3-LB. BAG	29¢	
NORTHWEST ANJOI			
<b>PEARS</b>	LB.	49¢	
FRESH GREEN			
<b>CABBAGE</b>	LB.	15¢	
U.S. NO. 1 RED			
<b>POTATOES</b>	10-LB. BAG	89¢	
FRESH TURNIP			
<b>ROOTS</b>	3 LBS.	\$1.00	
LIBBY'S FROSTY			
<b>DRINK</b>	2-OZ. PKG.	39¢	
• ORANGE			
• BANANA			
• PINEAPPLE			

**EASTERN  
RED YORK  
APPLES**  
**79¢**  
3-LB. BAG