

Tishomingo County News

The Vidette & Belmont News

\$8.00 Per Year Locally
In Advance
\$15.00 Per Year
Outside Trade Area

OFFICIAL LEGAL NEWSPAPERS OF TISHOMINGO COUNTY
The One Newspaper In The World Most Interested In This Area

Patronize The News
Advertisers!
They Send A Valuable
Message To You

ONE-HUNDREDTH YEAR

IUKA, TISHOMINGO COUNTY, MISSISSIPPI

Thursday, January 5, 1984 No. 29

WELCOME TO 1984!

Belmont Physician's Home Burglarized

A safe containing several valuable papers and an undisclosed amount of money was taken from the Belmont residence of Dr. Jack Senter sometime during New Year's Eve night. Dr. Senter, who was out of town when the burglary occurred, is offering a \$200.00 reward (possibly more) to the person giving information leading to a conviction for the crime.

According to the Tishomingo County Sheriff's Department, burglars gained entry to the home through a carport door and made away with the safe, which was located in a bedroom. Only the safe was taken; other valuable items are reported to have been left untouched.

Dr. Senter's son, Jackie, discovered the theft early Sunday morning when checking the home.

At press-time, Sheriff Bob Payne, in cooperation with the Belmont City Police Department, continues investigation into the case.

Burnsville P.T.L. To Meet Jan. 9th

The regular meeting for the Burnsville Parent/Teacher League is set for Monday, January 9, at 7:00 p.m.

At the previous meeting, the P.T.L. voted to purchase a duplicating machine for the elementary department, venetian blinds for the east side of the building, a food processor for the home economics department, and an atlas for the library. The estimated cost for these items is \$8,000.00.

Our appreciation goes to all the merchants and individuals who donated money and merchandise to make the harvest festival a success, which is our source for this money.

Tishomingo Neighborhood Watch No. 4

There will be a meeting of the Tishomingo Neighborhood Watch #4 on Friday night, January 6, at 6:30 at the Tishomingo Fire Department Building.

All members are urged to attend this meeting.

Special guest will be Sheriff Payne.

Seasonal Discount For Cabins At Miss. State Parks

A special seasonal discount for cabins and motel units at Mississippi State Parks has been announced by the Bureau of Recreation and Parks. On any Sunday through Thursday during the months of January through March, cabins and motel units will be discounted 20% off the published 1984 rates.

Cabins and motel units at the state parks are fully equipped, providing guests with bed and bath linen, and, in all cabins, there is a completely furnished kitchen with utensils and serving dishes. Many cabins have fireplaces, and all cabins and motel units have central heat.

Some of the larger parks have food service. In other parks fast food outlets and restaurants are located nearby.

Aubrey Rozzell, director Bureau of Recreation and Parks, said the discount rates will be especially useful to traveling government employees with limited travel funds, as well as to the general public.

Reservations are not required but highly recommended. Reservations can be made by contacting the park where accommodations are desired.

For a complete list of state parks with cabins and motel units, write Parks, Box 20305, Jackson, MS 39209, or call (601) 961-5014.

CIRCUIT COURT OPENS MONDAY

The January term of the Tishomingo County Circuit Court will convene on Monday, January 9. All court hearings during the first week will concern civil cases.

FIRST DAY: Pre-trials, all

appeal cases.

SECOND DAY: Bobby Steve Thorne Vs. Easco; Ricky D. Wigginton Vs. Service Ins. & Realty; Ms. Farm Bureau Ins. Etal Vs. Steve Deaton.

THIRD DAY: William & Linda Durward Vs. W.H. Jones; Temp & Edith Tullos Vs. Donald & Dorothy Straub; Personal Fin. Corp. Vs. Tony Joe & Becky Parsons.

FOURTH DAY: Bluff City Transportation Vs. Jody &

Eloise Johnson; Orville Crum Vs. Midway-Pleasant Hill Water Assoc.

FIFTH DAY: Riley & Son Planning & Box Co. Vs. David Sparks.

The jury list for the first week of Circuit Court is as follows:

Luenzia Alexander, Janet Yarbrough, Bobby L. Skinner, Ricky Holt, Willis L. Johnson, Sue Ann Luttrell, Thomas B. Curtis, Wanda C. Bonds, Ricky Brooks, Ruby Kennedy, Mrs. Etha Mann, Carolyn Laird, Eva Hall, Herman L. Hendrix, Billy K. Lewis, Nellie Wigginton, Robert C. Scott, Jr., Grady Hudson, Robert Voyles, Linda Cummings, Marilyn Dennis, Brenda Powell, Lisa Paden, Rhonda Bethune, Gerald Yarbough, Marion R. Woodruff, J.W. Hendrix, Ira L. McBee, Avon Foote, Charles Albright, Jr., Brenda Sellers, Larry Embrey, Jean Ozment, Mary Ann Davis, Robbie Ross, Ron Skinner, Mickey Campbell, Juanita Boyd, Jason Farris, Rebecca S. Young, Thomas E. Barnett, Helen C. Timbes, Francis Green, Denise Kirk, Cathryn Underwood, Betty Johnson, Ednis Donaldson, Charlotte Marlin, Harmon Byram, Gene L. Kimberly, Stephen A. Williams, Deborah Harville, Charlotte Harris, Sandra Thomas;

Larry Burcham, Frances McNatt, Lamar Skinner, Wendell Vaughn, James Allison, Danny Gene Goddard, Irene Nunley, Barbara G. Berryman, Billy Gene Henry, Mattie Lou Milam, Roy J. Robinson, Timothy Land, Linda Ponder, Carl E. Lambert, Robert Sheppard, William W. Linn, Mary Lambert, Joe Douglas Bonds, Ritha Strickland, Anita Wanner, Joe R. Clarkson, Linda J. Parker, W.T. Green, Hollis Weathers, Oliver Wayne Tice, Jane McDaniel, James Larry Henry, Eugene Goforth, Harold R. Nash, James W. Carpenter, Susan Barnett, C.E. Taylor, Noonan Cooper, Jimmy Vanderford, Mary A. Ligon, Benny J. Pierce, Emma B. Wallace, Sidney Joe Kay, Ora Nell Farris, William M. Curtis, Mrs. Hoyt Griffin, Sr., Odell Carr, Sandra Puckett, Leland Burks, Archie Berryman and Kenny Phifer.

UNEMPLOYMENT RATE IN COUNTY SHOWS DECLINE

Charles Smith, Manager of the Mississippi State Employment Service, stated today that the rate of unemployment in Tishomingo County continued to decline at mid-month. At mid-November, the rate was estimated to be 18.9 percent of the civilian labor force, or 2,010 individuals. This compares to 19.9 percent in October and 11.2 percent in November, 1982. The county's labor force at 10,650 also experienced losses over the month and year of 250 and 2,050 respectively. The number of Tishomingo County residents employed stood at 8,640, 80 below the previous estimate and 2,640 below the figure for one year ago.

Manufacturing employment in the county registered at 2,560, edging up slightly above the October figure but dropping 500 below that of one year ago. Non-manufacturing employment at 3,500 dipped slightly below the previous estimate and a more substantial 1,140 below the figure for November, 1982.

Smith also noted that the civilian labor force for the four-county area of Alcorn, Prentiss, Tippah, and Tishomingo was estimated to be 45,620 at mid-November, 1,010 below the previous month's estimate and 1,540 below the estimate for one year ago. Estimates in the number employed and unemployed also experienced decreases. Approximately 39,520 area residents were employed at the reporting period, 450 less than in October and 1,830 less than in November, 1982. The number of unemployed persons totaled 6,100, or 13.4 percent of the civilian labor force. One month ago the number of unemployed registered 6,660, or 14.3 percent. However, one year ago, 5,820 were unemployed, representing 12.3 percent of the labor force.

Manufacturing employment in the four-county area, estimated to be 15,650, remained steady over the month but experienced a rise of 1,030 from one year ago, with Electrical Machinery experiencing the largest yearly increase. Nonmanufacturing employment totaled 15,880, compared to 15,940 in October and 17,120 in November, 1982. This large yearly loss was experienced primarily in Wholesale and Retail Trade and Government.

Smith also noted that the civilian labor force for the four-county area of Alcorn, Prentiss, Tippah, and Tishomingo was estimated to be 45,620 at mid-November, 1,010 below the previous month's estimate and 1,540 below the estimate for one year ago. Estimates in the number employed and unemployed also experienced decreases.

Smith also noted that the civilian labor force for the four-county area of Alcorn, Prentiss, Tippah, and Tishomingo was estimated to be 45,620 at mid-November, 1,010 below the previous month's estimate and 1,540 below the estimate for one year ago. Estimates in the number employed and unemployed also experienced decreases.

Smith also noted that the civilian labor force for the four-county area of Alcorn, Prentiss, Tippah, and Tishomingo was estimated to be 45,620 at mid-November, 1,010 below the previous month's estimate and 1,540 below the estimate for one year ago. Estimates in the number employed and unemployed also experienced decreases.

ORDINANCE PASSED BY IUKA ALDERMEN

A new ordinance has been adopted by the Iuka Board of Aldermen that will incorporate a large portion of territory on the northwest boundary of the city limits. Included in this tract of property are the elementary school, the city ball parks, the present industrial park, a HUD housing development, and about twenty-five other residences.

The decision to adopt the ordinance was made at the Board's regular session on Tuesday night, January 3. If

the ordinance is approved, residents in the affected community will be entitled to city police protection, fire protection, garbage pick-up, as well as water, gas, sewage, and industrial services.

This same ordinance was adopted some five years ago but was protested in court. Due to a technicality in the legal proceedings, the case was later reversed.

A complete copy of the ordinance is printed in this week's edition of The News.

Retired Teachers To Meet

The District Meeting for retired teachers will be held at 10:00 a.m. on Wednesday, January 11, at Itawamba Junior College.

Rowland Mills To Sponsor Gospel Singing

The regular monthly singing will be held at Rowland Mills Church on Friday night, January 6, beginning at 7:00.

Special singers will be The Kennedy Family, of Baldwin.

NOTICE

The Iuka Band Auxiliary will meet January 7, at 7:00 p.m. in the Band Hall.

Tish. Volunteer Fire Department

The Tishomingo Volunteer Fire Department is selling chances on a homemade afghan bedspread, to be given away January 14, at the Tishomingo County Tournament at the school gym. Chances are \$1.00 and may be purchased from any member of the Tishomingo Volunteer Fire Department.

Miss Patty Wright Chosen Most Beautiful



T.H.S. Most Beautiful

Miss Patty Wright, a sophomore at Tishomingo High School, was chosen Most Beautiful at the school's annual beauty review, which is sponsored by

the yearbook staff. Mr. Paul Whitlock served as master of ceremonies, and Miss Kimberly Whitlock provided entertainment, accompanied by Miss Tasha Dawson at the piano.



New Year's Baby

The first recorded birth at the Tishomingo County Hospital for 1984 is that of Dendra Carol Watkins. The little lady arrived Sunday morning, January 1, at 11:13 a.m.

weighing 7 lbs. 2½ ozs., and measuring 21 ¼ inches in length. Her parents are Rita Watkins, of Iuka, and Jimmy Ralph Watkins, of Jackson, Miss. Dendra Carol was welcomed home by her big

brother, Dywayne, age 5. Proud grandparents are R.J. Watkins, of Columbus, Miss.; and Bertha Moore, of Jackson, Miss. Era Owens, of Kennedy, Ala., is the baby's only living great-grandmother.

Emergency Farm Loan Applications Being Taken

Applications for emergency farm loans for losses caused by this summer's drought and extremely high temperatures are being accepted at the Farmers Home Administration (FmHA) office located in Iuka, FmHA county supervisor Lawrence G. Kerley said today.

Tishomingo County is one of 48 in Mississippi recently named by Secretary of Agriculture John R. Block as eligible for loans to cover part of actual production losses resulting from the drought. Lawrence Kerley said farmers may be eligible for loans of up to 80 percent of their actual losses, or the operating loan needed to continue in business, or \$500,000, whichever is less. For farmers unable to obtain credit from private commercial lenders, the interest rate on the first \$100,000 borrowed is 5 percent; interest rate is 8 percent on the balance borrowed over that amount. For farmers who can obtain commercial credit but who choose to borrow from FmHA, the interest rate is 13.75 percent.

As a general rule, a farmer

must have suffered at least a 30-percent loss of production to be eligible for an EM emergency loan, Kerley said. Farmers participating in the PIK or federal crop insurance programs will have to figure in proceeds from those programs in determining their loss.

Applications for loans under this emergency designation will be accepted until May 1, 1984, but farmers should apply as soon as possible. Delays in applying could create backlogs in processing and possibly carry over into the new farming season, Kerley said.

FmHA is a credit agency of the U.S. Department of Agriculture. It is authorized to provide disaster emergency loans to recognized farmers who work at and rely on farming for a substantial part of their living. Eligibility is extended to individual farmers who are U.S. citizens, and to farming partnerships, corporations or cooperatives in which U.S. citizens hold a majority interest.

The FmHA office in Iuka is open from 8:00 to 4:30 Monday through Friday.

NEMJC To Again Offer Weekend College Classes

Northeast Mississippi Junior College will again offer classes on Saturdays for area residents who wish to pursue a college education but hold full-time jobs during the week. Registration for the weekend college classes is set for Monday, Jan. 9, at 6:30 p.m. in Patterson Hall.

The classes, which meet from 8:30 a.m. until 11:30 a.m. will begin Saturday, Jan. 14, and continue through Saturday, May 5. Registration fee is \$25.00 per semester hour plus a \$10.00 registration fee.

Course offerings for the upcoming semester include English composition I, child psychology, microbiology, English composition II, anatomy and physiology II, general physics I-A, U.S. history I and introduction to sociology.

For additional information, contact the Office of Continuing at 728-7751, ext. 249.

- BINGO -

The regular monthly Bingo at St. Mary's of Iuka Catholic Church will be Friday, January 6, at 7:00 p.m. There will be fun, refreshments and a big JACKPOT.

Everyone is welcome.

ATTENTION! Iuka City Residents

Mayor John H. Biggs has announced that city natural gas rates will drop approximately 9% in the near future. In a regular session with the Board of Aldermen on Tuesday, January 3, the decision was made to lower the utility rates after the city's supplier lowered its prices.

NOTICE

To All Tishomingo County Memorial Garden Lot Owners

There will be a meeting held on Monday, January 9, 1984, at 7:00 p.m. in the V.F.W. Building, located on Highway 72 East, Iuka, across from the National Guard Building.

The purpose of the meeting is to discuss maintenance of the cemetery, previous purchases of markers, lots and vaults.

EVENING COLLEGE CLASSES TO REGISTER

Northeast Junior College will conduct registration for evening college classes at its Tishomingo center January 9th. Registration will be 6:30 p.m., at the Tishomingo County Vo-Tech Center. Cost is \$25.00 per semester hour, plus a \$10.00 registration fee.

Course offerings for the spring semester include English composition I, U.S. History I, adolescent psychology and English composition II.

In addition to these, the following courses will be offered on the Booneville campus: English composition I,

anatomy and physiology I, microbiology, general chemistry lab II, general chemistry II, college algebra, principles of real estate, English composition II, descriptive geometry, introduction to COBOL, introduction to data processing, introduction to report program generator, principles of chemistry and

principles of chemistry lab. A minimum of eight students must enroll in a particular class to ensure its development.

The classes begin January 16 and continue through the second week of May.

For additional information, contact the Office of Continuing Education at 728-7751, ext. 249.

Bible Study At Eastport Baptist

Eastport Baptist Church will have their January Bible Study beginning January 8, at 6:00 p.m. and continuing Monday and Tuesday night, January 9 & 10, at 7:00 p.m.

Bro. Stanley Magill, of Yellow Creek Baptist Church will be teaching the book of I Corinthians. Terry Ray Booker will be teaching the youth.

Everyone is welcome to attend.

TISHOMINGO COUNTY NEWS VIDETTE and BELMONT NEWS

Phone 423-3666
(SECD 631680)

John H. Biggs, Editor & Publisher

Published Thursday by The Tishomingo County News, Inc. Serving the people of Tishomingo and adjoining counties for more than 95 years. Publication office 120 West Front Street, P. O. Box 70, Iuka, Mississippi. Entered at the Post Office as mail matter of the Second Class. Second Class postage paid at Iuka, Mississippi. Zip Code 38852. Post Master send address changes to The Tishomingo County News, P. O. Box 70, Iuka, Mississippi 38852.

Mail Rates Tishomingo and Adjoining Counties
\$8.00 Per Year
Other Areas
\$15.00 Per Year

EMERGENCY PHONE NUMBERS

Sheriff Department.....	423-6185
Tishomingo County Hospital.....	423-6051
Ambulance Service.....	423-5766
POLICE DEPARTMENTS	
Belmont.....	454-3381
Burnsville.....	427-9526
Iuka.....	423-6340
Tishomingo.....	438-6302
FIRE DEPARTMENTS	
Belmont.....	454-3311
Burnsville.....	427-8844
District 1 Volunteer.....	423-6515
Golden.....	454-9645
Iuka.....	423-5011
Tishomingo.....	438-6650
MISSISSIPPI HOT LINE FOR CHILD ABUSE	
1-800-222-8000	
DRUG AND ALCOHOL ABUSE	
423-3332	

Chatting With Your Home Economist

By: Nellie R. Horton,
Extension Home Economist

Shopping Sense: Sales

Although sales offer you an opportunity to buy items at reduced prices, they also may encourage you to buy things you do not really need. Remember, a bargain is a bargain only if you need and can afford it.

The best way to avoid spending your shopping

dollars foolishly is to shop only when you have a specific item in mind. Avoid shopping to lift your spirits when you are depressed.

When shopping for specific sale items, it is a good idea to bring a copy of the ad with you -- to verify price, model, size or sale dates. An FTC regulation states that stores should have items at the advertised price readily available during the sale period. If they are not, ask for a rain check. This will enable you to purchase the item at the sale price when the stock is replenished. Be sure the merchant indicates on the rain

check its expiration date and the date the merchandise is expected.

The usual types of sales include:

Clearance sales, which are held primarily to remove excess merchandise. They include end-of-the-month, pre- or post-inventory and going-out-of-business clearances. Usually a variety of items are reduced. Stimulation sales, which are held to encourage buying during slack periods. They include reductions on regular merchandise or special purchase items ordered for the sale. Seasonal sales, which are held at the end of the season or sometimes pre-season. They include -- clothing, yard goods, sports equipment, outdoor furniture, gardening equipment, gift items, etc.

Traditional sales, which are normally scheduled for certain times each year -- are frequently held annually or bi-annually. Reductions may be store-wide or cover only certain lines of merchandise -- white goods, furniture, housewares, etc.

The following points may help you to take advantage of sale prices:

Find out the store's return policy for sale merchandise and whether they offer rain checks. Know the original price of sale items, to be sure of a real bargain. Examine merchandise carefully -- checking sizes, colors, styles and the condition of the goods. Try on clothing when possible. Inspect seconds and irregulars carefully. Consider the costs of repairing damaged merchandise. Consider your shopping expenses -- transportation, parking, meals, babysitters -- and the value of your time and energy when shopping for sale items. Follow your normal buying habits to avoid excessive spending on sale merchandise.

Party Rice Salad

- 1 can (8 oz.) pineapple slices or chunks, in pineapple juice
- 1 can (11 oz.) apricot nectar
- 1 package instant or quick cooking rice to make 4 cups cooked rice
- 1/2 cup low-calorie French or Russian dressing
- 1/2 cup mayonnaise
- 1 package (10 oz.) frozen peas, thawed (Do Not Cook)
- 2 cups chopped celery
- 2 cups cooked chicken, turkey, or water-packed canned tuna
- 1 cup coarsely chopped walnuts
- 1 jar (2 oz.) chopped or sliced pimiento, drained

Drain juice from pineapple into measuring cup. Reserve fruit and cut into small pieces. Combine apricot nectar and pineapple juice to equal the amount of water needed to cook the rice (following directions on the package -- but omitting salt). Cook the rice and cool thoroughly.

Mix the low-calorie dressing and mayonnaise. Combine the chilled rice, pineapple pieces, defrosted peas, celery, meat and dressing.

Allow to chill an hour or more to blend flavors. Just before serving, stir in chopped nuts and pimiento. Yield: 10 large entree servings or 16 to 18 side dish servings.

PER SERVING: 342 calories; 15 mg. protein; 18 gm. fat; 32 mg. carbohydrate; 318 mg. potassium; 197 mg. sodium.

Silkworm eggs are so small that 35,000 of them weigh just one ounce.

Cooking Corner

Tips To Help You

A New American Favorite: The 'Impossible' Pie

From time to time, certain recipes sweep the country, appearing in community cookbooks, showing up at potluck suppers and creating enjoyment at the dinner table. The latest culinary sensation is known as the Impossible Pie.

Why impossible? Because this versatile recipe seems to do the impossible...it makes its own crust while it bakes. That's a real boon to home-makers who don't have the time or want the bother of making a crust.

The Impossible Pie originated in the mid-1960s. Passed along by word of mouth and through recipe exchanges, recipes for the custardlike creations soared in popularity. Today, there are recipes for Impossible Pies that are appropriate for everything from main dishes to desserts.

Impossible Pies are made with three basic steps -- blend, pour and bake. An especially delicious variation is the Impossible Chicken Pot Pie. It's a country classic gone modern that's made by simply combining chicken, peas, carrots, mushrooms and onion in a pie plate. Bisquick baking mix, milk and eggs are mixed in the blender and poured into the pie plate; then the whole dish goes into the oven.

It's the modern way to bring old-fashioned flavor back to the dinner table.

IMPOSSIBLE CHICKEN POT PIE
2 cups cut-up cooked chicken

1 1/2 cups frozen peas and carrots, thawed and drained



A favorite across the country...the Impossible Pie...in an old-fashioned chicken version.

- 1/4 cup chopped mushrooms
- 1/4 cup chopped onion
- 1 1/3 cups milk
- 4 eggs
- 3/4 cup Bisquick baking mix
- 1/2 teaspoon salt
- 1/4 teaspoon pepper

Bake until knife inserted in center comes out clean, 30 to 35 minutes. Cool 5 minutes. 6 to 8 servings.

High Altitude Directions (3500 to 6500 feet): Increase bake time to 40 to 45 minutes.

For more impossible pie recipes, write for a free booklet. Send your name, address and zip code to: Impossible Pie Booklet, Box 5402, Department 874, Minneapolis, MN 55460. Offer expires February 29, 1984.

County Agent's Notes

By: Tommy G. Purvis,
Extension County Agent

Fruit Tree Planting

Now is a good time to plant fruit trees. Planting fruit trees during the dormant season which ends this spring gives them a chance to establish themselves before next summer.

The best fruit trees come from healthy, vigorous stock. A weak, stunted tree is expensive regardless of the price because it will grow slowly and develop poorly. Order your trees early and specify a delivery date.

It's best to have the soil ready for planting the same day the trees come from the nursery. If this is not possible, "heel in" the bare-root trees. Put the trees in a shallow trench and cover the roots with soil. Trees will keep for a short period stored this way. But don't allow the roots to dry.

Dig the planting hole big enough for the natural spread of the roots. Loosen the soil in the bottom of the hole. Plant the tree at the same depth it grew before transplanting. Also, keep the roots moist while they're out of the ground.

Anchor the tree with a stake. A good way to stake is using a piece of wire threaded through a section of garden hose to prevent bark damage. Tie the end of the wire

securely to the stake.

Wrap the trunk with burlap or tree wrap paper to reduce evaporation and protect from the sun. Prune about one-third of the branches so the roots will be able to feed the top. When pruning, don't destroy the natural shape of the tree.

Use good quality topsoil to refill the hole. Mulch around the tree using pine straw,

bark or other similar material to protect against freezing. Water frequently and thoroughly during dry periods.

Soybean Day

All soybean producers are invited to the annual Soybean Day which will be held on January 12 at the Greenwood/Leflore County Civic Center in Greenwood.

The meeting will start at

CREOSOTE POLES FOR SALE

CALL 287-2538 UNTIL 5
427-8864 AFTER 5 P.M.

FOWLER'S USED PARTS

is now buying
ALUMINUM CANS

35¢ LB.

ALSO BUYING
COPPER, RADIATORS & ALUMINUM
TIN, STEEL CAST IRON & ALL KINDS OF METAL
CALL 287-2538 for prices.

NEW LOCATION

Dr. John (Jack) Hora

OFFICE OPEN
WED. & THURS.

CALL 423-3580

For Appointment

711 Hwy. 25 So.

Elm Shopping Center

(West of Laundry Mat)
Iuka, MS

1 & 2 BEDROOM APARTMENTS AVAILABLE

Newly Decorated
Central Heat & Air

Laundry Available
Recreation Room

Kitchen Appliances Furnished

PICKWICK CIRCLE APARTMENTS
PICKWICK CIRCLE
IUKA, MISSISSIPPI



Ideal for the elderly & persons disable & or handicapped, also married couples without Children.

Call 423-5314 or 427-9049

THE AMOUNT OF RENT IS BASED ON THIRTY PERCENT (30%)
OF THE ADJUSTED FAMILY INCOME

Tishomingo County News - Vidette - Belmont News

8:30 a.m. with registration and end at 3:45 p.m. Soybean Day has been held at Mississippi State University in the past, but is being held at Greenwood this year so more producers will have a chance to attend.

Soybean Day will be highlighted by a soybean production panel during the morning program and also will include a marketing workshop during the afternoon session.

Successful soybean farmers, representatives of the American Soybean Association, researchers and Extension Specialists will take part in the program. Topics will include irrigation and no-till production, varietal resistance to stem canker and other pests, and soybean oil research with herbicides.

The marketing workshop in the afternoon will highlight marketing strategies farmers should consider in the 1980s.

Soybean Day is sponsored by the Mississippi Soybean Association and the Mississippi Cooperative Extension Service.

Farmweek

On January 9, Farmweek reviews highlights of the annual Tri-State Soybean Forum held January 6 at Monticello, Ark. The program also in-

cludes the latest Agribusiness news, and market reports.

In Service

Marine Pfc. Brian Grisham, son of Mary Brunner, of Independence Square, and Tommy Grisham, of Route 2, Iuka, has completed training at the Marine Recruit Depot, Parris, S.C.

During the 11-week cycle, he learned the basics of battlefield survival, introduced to the typical routine that he will experience during his enlistment, studied the personal and professional standards traditionally exhibited by Marines.

He participated in a physical conditioning program and gained proficiency in a variety of military skills, including aid, rifle marksmanship, close order drill, teamwork and self-discipline were phased throughout training cycle.

It takes two cups of peanuts to yield a cup of peanut butter. Two ounces of peanut butter measure one cup.

WILLIAMS PEST CONTROL & INSULATION COMPANY

Phillip Williams, Owner
Belmont, Miss.

If you'd like to save money by making your home more energy-efficient, call us. We're experts in home weatherization, and our materials meet TVA standards for financing under The Energy Package.



So if you're ready to weatherize your home, ask your power distributor about The Energy Package.

Then call us to do the work.

We are also bonded licensed and experienced to take care of all your pest control needs.

Call 454-3383
Day or Night



INSIGHT INTO EYESIGHT

DR. PHILLIP GRAY

OPTOMETRIST

BIFOCAL OPTIONS

Bifocals are glasses which contain two sets of optical corrections, one at the top and the other at the bottom of the lens. Most commonly this is prescribed for people who are presbyopic (bottom portion is for reading) and who have another optical error that needs correcting (top is for distance viewing).

Bifocals are never absolutely necessary. Some people mistakenly think bifocals will give away their age and prefer having two pairs of glasses which they change every time they go from near to distance vision and back. For most bifocal wearers, this is simply too inconvenient.

There are numerous shapes available in bifocal correction. Some have small areas near the bottom for near correction; others require a relatively large near-correction area. (It's largely a matter of individual needs.) There are also bifocals available with no obvious division between the two portions, and the fact that they are bifocals is virtually undetectable.

In the interest of better vision from the office of:
DR. PHILLIP GRAY
105 S. Fulton St., Iuka
Phone: 423-3785



CASE POCKET KNIVES,
HUNTING KNIVES AND
KITCHEN CUTLERY

20% OFF

W. H. FAIRLESS HARDWARE

OPEN ALL DAY THURSDAYS

IUKA 423-9256

TISHOMINGO 438-6608

Buying a portable heater?

To serve you well, a portable electric heater should have a thermostat, a tip-over switch, and the UL (Underwriters' Laboratories) approval.

Then you should use the heater economically. That is, only when really needed. To run one of these small heaters full blast, full time will skyrocket your electric bill. You'll also want to use it safely by keeping it away from anything that will burn.

To help you buy and use this appliance wisely, see us for a free copy of The Portable Electric Space Heater. It'll help you keep from being burned when all you wanted was a little heat.



Tishomingo County
Electric Power Assoc.

Page - Daniel United In Outdoor Wedding



skirt fell from a peplum effect waistline into a full chapel train and was edged in marching lace. Deborah wore a brimmed hat, decorated with ivory gypsophila, lace and netting. The flowing bouquet of white daisies and beige gypsophila fell down the skirt of the gown and concluded with French love knots. Pamela Denise Page, sister of the bride, stood as maid of honor wearing an ankle length dress of ivory lace over taffeta and carrying a bouquet of peach roses and daisies.

The groom wore a formal ivory tux with tails and an ivory ascot with matching slacks. Larry Pike Daniel, the groom's brother, stood as best man and wore a formal ivory tux with ivory ascot and matching slacks.

Ms. Elesa Phillips and Ms. Brenda Pitt served at the reception, which was held on the back porch of the lodge following the ceremony. A three-tiered peach cake was featured, rimmed with white daisies and topped with white love doves. Peach, green, white and yellow mints and a peach tinted punch were also served.

Ms. Becky Rye attended the register of which approximately 100 guests from many areas signed.

Special Thanks From Pickwick Manor

Pickwick Manor Nursing Home would like to extend much thanks to the following for helping make Christmas a very special occasion to all the nursing home residents: Jerry Hunt, Mrs. Clea Gann, Mrs. Flo Dexter, Luka Discount Drugs, New Bethel Baptist Church, Cora Lee Glenn Circle of Rocky Springs Methodist Church, Tishomingo Baptist Church, Patrick-Harmony Methodist Churches, Mt. Gilead Homemakers Club, Irene McAnally, Geraldine Roberts, Ruth Randall, Laura Hampton, of Corinth, Sue Walker, Otasco, Wal-Mart, Moore's Jewelry, Reuben Grisham, Second Shoppe, Brown's Ladies Apparel, Kenwin, House of Fashion, C & G Grocery, Nelson's Supermarket, Circus Burgers, Carpet's Unlimited, Sweeney's Auto Parts, Lomenick's Chevron Station, Western Auto, Heritage Jewelry, Rushing Drugs, W.H. Fairless Hardware, State Farm Insurance, Photography by Charles, Shoe Tree, John's Auto Parts, Murrah Building Supply, Pleasant Hill General Store, Jones Lumber, Gerald Walker, Donna Walker, Corine Smith, David Elam Oil Co., of Corinth, Daisy Biggs, Esta Bethay, Irma Cranshaw, Debbie South, Sandra Lambert, Imogene Hamilton, Larrine Sims, all family members of

lodge "Loochapola" at the Shomomo State Park was the scene of the October 29, 1983 outdoor wedding of Ms. Deborah Ann Page, daughter of Mr. James Ray Page and Mrs. Barbara Ann Prather; and Mr. Jackie Lynn Daniel, son of Mr. Billy Price Daniel and Mrs. Doris Jean Walker. Billy R. Fell, uncle of the



Arrival weighing 4 lbs. 10 ozs. He is the grandson of the late Alice Mae Hamm Wadkins. Great-grandparents are Mrs. Johnnie Hamm and the late Raymond Hamm; and the late Mr. and Mrs. Pete Wadkins, all of Iuka.

CLEARANCE SALE 30 TO 50% OFF

THURSDAY, FRIDAY & SATURDAY
JANUARY 5, 6, & 7

WOOD'N WAX

718 HWY. 45 SOUTH IN CORINTH
ACROSS FROM CORONA PLAZA

SEMI-ANNUAL SALE

JANUARY

1/2 PRICE SALE

NEW SPRING MERCHANDISE
ARRIVING DAILY

House of Fashions

DOWNTOWN IUKA

residents who brought refreshments, gifts, and helped serve other residents, and all nursing home employees and staff, and everyone else who helped make Christmas such a joyful time. (Any names left out were very unintentional.)

The residents enjoyed the delicious refreshments, a visit from Santa Claus, singing of Christmas Carols, opening of their gifts, and being with their families at the Christmas party on Thursday, December 22. Thanks once again to everyone from all of us at Pickwick Manor Nursing Home. Your thoughtfulness means so much!



There are so many good things to eat already prepared these days that the young cooks of today have never heard of some of the "Old Timey" recipes. For a change or a surprise to your family or even if Grandma is coming, why not take time - it does take more time!

COPIED FROM - "OLD TIMEY RECIPES" collected by Phillips Comer.

APPLE DAPPLE CAKE
Cream 3 eggs, 1 1/2 cups cooking oil, 2 cups sugar. Sift together and fold in: 3 cups flour, 1 teaspoon salt, 1 teaspoon soda, 2 teaspoons vanilla. Blend and add 1 cup chopped pecans, 4 cups peeled, chopped cooking apples. Bake at 350° for about 45 minutes, in a 9x2x13 pan. Leave in pan.

ADD THIS TOPPING: 1 cup brown sugar, 1 stick butter, 1/4 cup milk. Boil 2 1/2 minutes. Pour over of cake. Let cool in pan. Some of the topping will be absorbed.

DANDELION GREENS
They can be used until they bloom. Pick over carefully and wash in several waters. Put in boiling water with a piece of salt pork. Boil 1 hour. Drain well. Add salted boiling water and boil 2 more hours. When well done and tender turn into colander and drain. (From 1890 book entitled "Practical Housekeeping".)
P.S. We usually cook turnip and winter greens with large leaf mustard.

BLUEBERRY TEA CAKES
1/2 cup shortening
2 cups flour
2 teaspoons baking powder
1 cup blueberries
1/4 teaspoon salt
1 cup sugar
3/4 cup milk
1 egg

Stir the shortening to soften. Add flour, which has been sifted with the baking powder, salt and sugar. Mix well. Add milk. Beat vigorously at least 2 minutes. Add egg, beat one minute. Stir in blueberries carefully. Pour into greased 8x8x2 cake pan. Bake in moderate oven 350° for about 50 minutes.

OLD FASHIONED CUSTARD PIE
Heat one quart sweet milk about to boil. Beat in 2 cups sugar, 8 eggs, 2 tablespoons cornstarch. Place mixture in unbaked pie shell. Bake 30 to 40 minutes at 300°.

P.S. I received a letter recently.

In Service

Marine Pvt. Stephen B. Barnett, son of Cynthia and Clinton C. Barnett, of Route 1, Iuka, has completed recruit training at the Marine Corps Recruit Depot, Parris Island, S.C.

During the 11-week training cycle, he learned the basics of battlefield survival. He was introduced to the typical daily routine that he will experience during his enlistment and studied the personal and professional standards traditionally exhibited by Marines.

He participated in an active physical conditioning program and gained proficiency in a variety of military skills, including first aid, rifle marksmanship and close order drill. Teamwork and self-discipline were emphasized throughout the training cycle.

George Custer was the youngest American man ever to make rank of General in the American army—he achieved that by age 23.

GRISHAM'S

SAVE January CLEARANCE!

ONE GROUP

TIES 1/2 PRICE

ONE GROUP

SUITS 1/2 PRICE

ONE LARGE GROUP

SHOES 1/2 PRICE

ONE GROUP HUBBARD & HAGGAR

SLACKS 1/2 PRICE

SUITS & SPORT

COATS

30% OFF

NOT INCLUDING BLAZERS

LEVI FLARE LEG

JEANS

MOST ALL SIZES

\$12⁸⁸

ALL WINTER

JACKETS 30% OFF

ALL

LUGGAGE 1/2 PRICE
(CLOSE OUT)
DRESS BAGS NOT INCLUDED

ALL

SWEATERS 30% OFF

GRISHAM'S MEN'S WEAR

DOWNTOWN IUKA



ALL

SPORT SHIRTS

INCLUDING FLANNEL

30% OFF

ALL PURPOSE

COATS

NOW

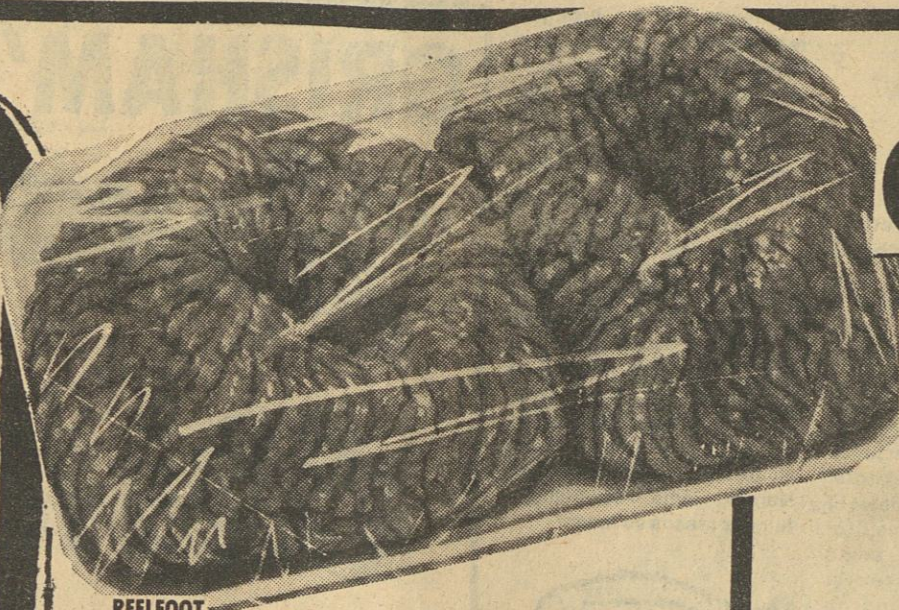
30% OFF

LEVI LEATHER FUR LINED & DENIM FUR LINED

VESTS

NOW

1/2 PRICE



FRESH LEAN
GROUND BEEF
89¢
LARGE PACK LB.

REELFOOT
Beef Patties 2 LB. BOX
\$2.99

SIRLOIN TIP
ROAST
\$1.99
LB.

WHOLE SMOKED
PICNICS
99¢
LB.



BACON
\$1.39
12 OZ.

WEINERS
\$1.19
12 OZ.

BOLOGNA
\$1.19
12 OZ.

PORK CHOPS
\$1.89
FAMILY PACK LB.

SAUSAGE
\$1.99
16 OZ.

JUMBOS
\$1.59
16 OZ.

FRANKS
\$1.59
16 OZ.

QUARTER LOIN
PORK CHOPS
\$1.09
LB.



Sirloin Tip Steaks
\$2.19
FAMILY PACK LB.

OLD FOLKS
SAUSAGE
\$1.39
LB.

CENTER CUT
PORK CHOPS
\$1.59
FAMILY PACK LB.

REELFOOT
Bacon Ends and Pieces 3 LB. BOXES
\$1.69
BREAKFAST
Pork Chops LB.
\$1.69

HYDE PARK
Pimento Spread
\$1.29
13 OZ.

LOIN END
Pork Roast
\$1.19
LB.

WILSON BONELESS
Pork Loins LB.
\$2.29

COUNTRY STYLE
Pork Ribs
\$1.19
LB.

OLD FASHION
Hoop Cheese
\$2.19
LB.

BREADED
Shrimp
\$1.59
8 OZ.

WILSON 93% LEAN
Hams LB.
\$2.49

HARVEST FRESH PRODUCE
QUALITY - VARIETY - FRESHNESS



HARVEST FRESH DEL MONTE
BANANAS
3 / \$1.00
LB.

HARVEST FRESH
Sweet Potatoes LB.
39¢

HARVEST FRESH US NO. 1 RUSSET
Potatoes 5 LB. BAG
99¢

HARVEST FRESH CANADIAN WAXED
Rutabagas LB.
4/\$1.00

HARVEST FRESH YELLOW
Onions 3 LB. PKG.
99¢

HARVEST FRESH CELLO
Carrots 1 LB. PKG.
2/79¢

HARVEST FRESH
Apple Cider 1/2 GALLON
\$1.99

HARVEST FRESH EMPORER
Red Grapes LB.
79¢

HARVEST FRESH
Lemons DOZEN
99¢

HARVEST FRESH WASHINGTON EX FANCY RED OR GOLDEN DELICIOUS
APPLES LB.
49¢

6 PKG. 32 OZ.

COCA COLA
AND RELATED PRODUCTS

\$1.49
PLUS DEPOSIT



BLUE PLATE

RICHTEX VEGETABLE SHORTENING



SHORTENING
\$1.19
42 OZ.

MARTHA WHITE

FLOUR

79¢
5 LB. BAG



MAYONNAISE

\$1.29
32 OZ.

TIDE

LAUNDRY DETERGENT

\$1.79
49 OZ.



LUCKS GREAT

Northern Beans

15 OZ. **2/99¢**

LUCKS GIANT

Lima Beans

15 OZ. **2/99¢**

LUCKS

Pinto Beans

WITH ONIONS 15 OZ. **2/99¢**

NORTHERN BATH

TISSUE

4 ROLL PKG.

89¢



HARDIN'S

BREAD

16 OZ.

3/\$1.00

SCOTT PAPER

TOWELS

JUMBO ROLL

2/\$1.00



HYDE PARK

BISCUITS

SWEET MILK OR BUTTERMILK

59¢
4 PKG.

BANQUET

Pot Pies 8 OZ. **3/\$1.00**



DINTY MOORE

Beef Stew

24 OZ.

\$1.39



SUNFLOUR

Corn Meal

5 LB. BAG

89¢



BAY BEAUTY PINK

Salmon

16 OZ.

\$1.69



POPSRITE YELLOW

Popcorn

16 OZ.

3/\$1.00



WESTPAC FROZEN

Strawberries

16 OZ.

\$1.19

DEL MONTE

CATSUP

32 OZ.

89¢



DOWNY

Fabric Softener

33 OZ.

\$1.29

IVORY LIQUID PUMP

Soap

9 OZ.

79¢

COMET
Cleanser

14 OZ.

3/\$1.00



TASTERS CHOICE FREEZE DRIED

Coffee

8 OZ.

\$4.69



HYDE PARK FROZEN

ORANGE JUICE

12 OZ.

69¢



6 PKG. 32 OZ.

PEPSI COLA

DIET PEPSI

MT. DEW

\$1.49
PLUS DEPOSIT

VLASSIC HAMBURGER

Dill

Chips

32 OZ.

\$1.19



IMPERIAL

MARGARINE

QUARTERS

1 LB.

2/99¢



BORDENS
Pudding Bars

12 CT. PKG.

\$1.69

BORDENS

Ice Cream

1/2 GAL. CARTON

\$1.69

CRYSTAL WEDDING

Oats

16 OZ.

89¢

KRAFT VELVEETA

Cheese Spread

2 LB.

\$3.39



SUNSHINE KRISPY

REGULAR AND UNSALTED 1 LB. BOX

CRACKERS 69¢



CLASSIFIED ADS

THE PLACE TO LOOK

CLASSIFIED ADS

\$2.50 per week for 30 words. After the first 30 words, 5¢ extra per word. \$1.00 extra with border
Card of Thanks and In Memorium - 5¢ per word
Classified Ads, Cards of Thanks and In Memoriums must be paid in advance
50¢ service charge will be added to any monthly bill totaling less than \$5.00

PHONE 423-3666

ERRORS

Should be reported immediately as The News can be responsible only for the first incorrect insertion in any advertisement. The News cannot be liable for error in any advertisement to a greater extent than the cost of the space occupied by the items in the advertisement.
All display advertising must be in the News office by 12 o'clock noon on Tuesday.

AUTOMOBILES FOR RENT — U-Save Auto Rental. We rent for less. Cars, vans, 12 passenger vans, pick-ups. Daily, weekly, monthly. From \$14 per day. 703 Tate Street, Corinth, MS. Call 286-6944. A-11-tfn-c.

FOR SALE — Satellite systems, towers, T.V. antennas, boosters, Channel Master rotors and push up poles. You install or we install. Call 423-5612, Terry Hester; or 423-5750, Jerry Holly. Located across from Coleman Park Road, Hwy. 25 North. D-15-tfn-c.

LARRY'S MOBILE HOME SERVICE — Local and long distance moving, Kool Seal, anchors, blocking, leveling. Call Larry at 423-3258. O-7-tfn-chg

FOR SALE — Commercial Building, 2,400 square feet. Plus 12 x 60 mobile home. Frontage: 185 feet. Located just outside city limits on Hwy. 25 North. Priced to sell. Call 423-9380. J-5-tfn-c.

"AUTOS FOR SALE" — Jeeps, Cars, Trucks \$100, now available in your area. Call 1-(619) 569-0241 for info. 24 hrs. J-5-tfn-19-p.

TRAILER FOR RENT — \$62.50 a week. Utilities furnished. Call 423-6498. J-5-c.

FOR RENT — Unfurnished, 7 room house. Call 423-6630. J-5-12-c.

TEXAS REFINERY CORP., offers PLENTY OF MONEY plus cash bonuses, fringe benefits to mature individual in luka area. Regardless of experience, write A.D. Sears, Pres., Texas Refinery Corp., Box 711, Fort Worth, Texas 76101. J-5-c.

LOST — Men's glasses in brown case in luka. If found please call 423-5621. J-5-c.

ELECTROLYSIS — Permanent Hair Removal. Contact Janet Vanderford at Wood-N-Wax, 718 Hwy. 45 South, Corinth, MS., or phone 286-5440. J-5-12-19-26-c.

RESPONSIBLE PERSON — Wanted to own and operate candy vending route. Pleasant business with high profit items. Can start part time. Age or experience not important. Requires car and \$3788 to \$12452 cash investment. Call 1-800-328-0723. EAGLE INDUSTRIES J-5-p.

FOR SALE — Red Fox jacket - Size 7. Best Offer. Call 423-6949. D-22-29-J-5-12-c.

FOR SALE — One Ford 6 ft. multi-purpose disc harrow. 18" bush & bog type blades. Slightly used. Call 438-6686. D-29-J-5-p.

FOR RENT — Flashing Arrow Signs. \$50.00 plus tax. Call 728-5460 or 728-5674 in Booneville, or in Belmont call 454-7128. M-21-tfn-c.

HOUSE FOR RENT — 2 bd., 1 bath, just outside city limits of luka. Call 423-2033 after 5:30 p.m. N-10-tfn-c.

BUILDING CONTRACTORS WANTED — Opportunities in your area for right person wanting to cash in on our new energy efficient housing concept. Details: Call Mr. Small, 1-800-255-2408, or write: Housing, P.O. Box 8304, Topeka, KS 66608. D-15-22-29-J-5-p.

WANTED TO BUY USED FURNITURE & ANTIQUE FURNITURE — Also, glassware. We buy just about anything. Cleaning your house or attic out, give us a call. Capleman's Antiques. Phone 423-9962 nights, 423-5640 or 423-6836. J-7-tfn-c.

Left On Lay-Away — Left on Christmas lay-away. New Singer Sewing Machine. Sews straight, zig-zags, monograms, appliques, and makes buttonholes. With front drop in bobbin. Pay off lay-away balance of \$92.60 or arrange easy monthly payments. Meeks Sewing Center, 305 Cass St., Corinth. Call 287-1497. F-3-tfn-c.

FOR RENT — Furnished kitchenette apartments, newly decorated, 1 1/2 miles from J.P. Coleman State Park. Rent by day, week or month. Also, trailer lots for rent, \$40 monthly. Yearly rates for campers. Call 423-6498 or 423-9107. J-1-tfn-c.

HOUSE FOR SALE — Two bedroom, single bath, kitchen with separate dining room with pantry. City water, gas or wood heat, double carport, land frontage, 8 1/2 acres, 3 miles north of Tishomingo on Old 25, \$37,500. Call 438-6895 or 423-5136. D-1-tfn-c.

FOR SALE — 1978 Chevy Caprice Estate Station Wagon. Nine passenger, all options, good tires, new battery - \$3,000.00. Call 423-9309 or 423-5676. D-1-tfn-c.

AN OHIO OIL CO. offers high income, plus cash bonuses, benefits to mature person in luka area. Regardless of experience, write M.V. Read, American Lubricants Co., Box 426, Dayton, Ohio 45401. J-12-c.

I'M GORGEOUS — 14 x 80, 3 bedroom, 2 bath mobile home, large island kitchen, separate utility room, newest furniture decor, decorator walls, 2 bars, garden tub, cathedral ceiling with fan. Don't miss this one. Clayton Mobile Homes of Savannah, TN., Hwy. 64 East, or call 901-925-1083. J-5-tfn-c.

5% DOWN — On Selected 2 and 3 bedroom, mobile homes, fully furnished, free delivery and set up. Many floor plans to choose from at Clayton Mobile Homes of Savannah, TN., Hwy. 64 East or call 901-925-1083. J-5-tfn-c.

N.E.M.J.C. TEXTBOOKS — Basic Conversational Spanish, \$15.00; Introduction to Physical Science, \$15.00; The American Federal Government, \$13.00. Call 423-6198. J-5-12-c.

FLEA MARKET every Saturday and Sunday. Hwy. 25, south of Belmont, across from Winfield Manufacturing Co. For further information call 454-3521 or 454-9237. N-24-tfn-c.

In The Chancery Court Of Tishomingo County, Mississippi Vacation Term, 1983

Orie Dee Bridges & Opal M. Strickland, Complainants VS. Ruble E. Bridges, Et Al, Defendants

NO. 9424
NON-RESIDENT SUMMONS TO: Ruble E. Bridges, 1007 Griggs Trailer Park #1, Marion, Illinois 62959;

Bilbo Bridges, 45 Adams, Wilson, Arkansas 72395; Olive Lee Bridges, 34933

Glenwood, Wayne, Michigan 48184;

Larry Bridges, c/o Bonnie Stegall, Route 2, Box DN-8, Tupelo, Mississippi 38801;

Jerry Bridges, 1222 Harbor Drive, Brentwood, Tennessee 37027;

You have been made a defendant in the above styled litigation by complainants, Orie Dee Bridges and Opal M. Strickland, whose addresses are, respectively, P.O. Box 915, Temple, Georgia 30179 and Golden, Mississippi 38847.

The Complaint filed against you is a civil action in the

Chancery Court of Tishomingo County, Mississippi, bearing the above styled and numbered cause, which civil action asks that certain real and personal property belonging to the heirs at law of Mrs. Rena Mae Bridges to be sold and the proceeds divided according to their interests.

You are required to mail or hand-deliver a copy of a written Answer either admitting or denying the allegations in the Complaint to Harold S. Jackson, Attorney at Law, Post Office Box 414, luka, Mississippi 38852, the complainant's attorney.

Your Answer must be mailed or hand-delivered not later than thirty (30) days after the day of January 5, 1984, which is the date of the last publication of this Summons. If your Answer is not so mailed and delivered a judgment by default may be entered against you for the relief demanded in the Complaint.

You must also file the original of your Answer with the Clerk of this Court within a reasonable time afterward. DATED this 19 day of December, 1983.

ROBERT D. SIMS, CHANCERY CLERK D-22-29-J-5-c.

FOR SALE

ONE RESIDENT BUSINESS HOUSE WITH 2 ACRES OF LAND ON HWY. 25 at midway

CALL 423-5708

DE-BUGG AUTOMOTIVE

MT. EVERGREEN ROAD - IUKA

December Special
DISC BRAKE REPAIR

\$29⁹⁵

PLUS TAX

ON MOST DOMESTIC CARS
INCLUDES PARTS & LABOR
ROTORS TURNED & WHEEL BEARING REPLACED EXTRA

PHONE 423-5488

P. O. BEARD AGENCY SINCE 1964



REALTOR®

400 WEST

EASTPORT ST.

You heard it on Channel 9 - The state bond money is here at 10 3/4% for a 30 year mortgage. You only need 5% down unless you are a veteran. In that case, you qualify for a house with nothing down at 10 3/4%.

Also, if you qualify, the Farmers Home Administration will have money after the first of the year. That loan is nothing down and a subsidized payment. There won't be a better time to buy.

THE TRUTH ABOUT THIS 3 bd, brick home is that it was designed for the first time home buyer including the carpeted living area with wood heater, the fenced back yard, the subdivision location, the extremely low amount of money needed to move in, and a monthly P & I payment of \$306.52.

BET YOU CAN'T WAIT FOR YOUR NEXT POWER BILL! This 3 bd, brick is a fuel saver with wood heater (plus two ceiling fans for summer) and wrap around blanket insulation. Financing with Farmer's Home Administration, by assumption, or through state bond money - you tell us how you want it.

SCARLETT O'HARA'S STAIRWAY AND CHANDELIER in a huge, white, frame home overlooking Mineral Springs Park. Been reworked with all modern conveniences like central h/c and best kitchen appliances, but restored to retain old charm. Huge live-in country kitchen, 6 bd, 4 1/2 baths. Reduced to \$77,500.

THE BIGGEST HOUSE FOR YOUR DOLLAR — Newly carpeted, 4 bd, 2 full baths, frame home including central heat and air. A bank repossession makes this a buy at \$33,000.

KIDS DRIVING YOU CRAZY? You need this large, private, master bedroom-bath suite PLUS additional 3 bd and 2 1/2 baths (1/4 bath is for teenager who never gets done with her hair), living-dining-kitchen area with massive, rock fireplace, 2.66 acres (put the kids to work in the garden.) Located west of Dennis, \$42,500 is a steal on bank repossession - Bank financing at 11% for 20 years or will entertain your terms.

A BATHROOM FOR EVERY BEDROOM — In this 3 bd, brick. Large separate living room, cozy, den-kitchen with wood insert in fireplace and easily maintained, landscaped yard inside Belmont. \$48,000 - Seller will help with loan fees.

THE BEST IN COUNTRY LIVING — 10 acres, 2 barns, storage building. Brick home with 3 bd, 2 baths, living room with fireplace, separate dining room, screened porch plus deck, and a bonus basement den and fourth bedroom. All for \$59,500. The best part may be the owner financing with \$5,000 down and the balance at 8%.

Phone 423-5253

P.O. Beard-Realtor, Appraiser, Registered Forester

Nancy Beard - Realtor Associate

Phone 423-5251

Rilla Wiley, Realtor Associate

Phone 423-5252

Don Cowell, Salesman

Phone 423-9349

MANY OTHER LISTINGS

CALL FOR FREE INFORMATION ON BUYING OR SELLING

SPECIALS

1/2 Plywood.....\$3
5/8 Plywood.....\$4
15 lb. Felt.....\$7
30 lb. Felt.....\$8
40 Gal Water Heater.....\$99
White Comode.....\$39
Stainless Steel Sink.....\$19
Roofing Tin.....\$25.00
Masonite Siding.....\$4
2x4x14.....\$1
2x4x8.....\$7
4x8 Wood Siding.....\$9
Shingles 20 year.....\$21
Shingles No. 2.....\$16

BARTON WHOLESALE BUILDING MATERIALS

4 Miles East of Cherokee on Hwy. 72
205-370-7739

Dailey's Body Shop and Wrecker Service

BURNSVILLE, MISSISSIPPI

PHONE

Day 427-9234

Night 427-8449

Expert Body Work - 24 Hour Service
BURNSVILLE



Need Appliance Parts or repair?

CALL GANN BROTHERS
Furniture & Appliance

Sales & Service

427-9506

in Burnsville

MOORE'S BODY SHOP & WRECKER SERVICE

24 Hour Wrecker Service

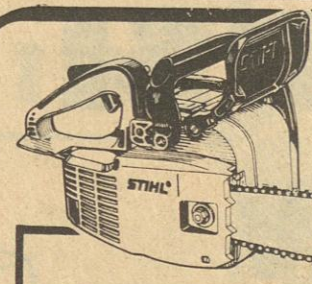
DAY PHONE 423-5130

NIGHT - WEEKENDS

HOLIDAYS

423-5244

EXPERT BODY REPAIR



A Little STIHL Goes a Long Way.

The Stihl 009 is a small chain saw that's big enough on power and performance to take care of all your firewood needs. And since it's a Stihl, you know it will be around for a long time to come.

Regularly \$169⁹⁵

\$149⁹⁵

NELSON

MARINE & HARDWARE

HIGHWAY 25 SOUTH IN IUKA

423-6484



1415 Highway 25 South

Iuka, Mississippi 38852

Grace Long, Realtor-GRI-423-6584

Beth Davis, Realtor-GRI-423-9543

Dianne Ables-Realtor Assoc.-423-5262

BOND MONEY at 10.74% interest is available if you qualify!

This lovely 3 BR stone home has much to offer! Oversized LR, formal dining, jakuzi, pool, 2 BR guest house & 5.33 acres, fenced - \$90,000.

Hide-away - 2 BR cedar in a wooded setting, plush carpets, nice kitchen, 5.5 acres - \$40,000.

Immediate possession - 2 BR frame on 6 acres, Dennis - \$32,000.

Looking For Value? See this 3 BR, like-new home in Briarwood Sub. Corner lot is .9 acre - \$30,000.

Inviting lake-side home, decorated in lovely colors. 3 BRs, formal dining, south of luka - \$55,000.

Sparkling Clean - 3 BR cedar beauty, 2 baths, many extras, including extra lot, 2 storage buildings, south of luka - \$60,000.

Welcome to a peaceful setting - 4 BR cedar, LR, den, on 3 acres, Turnpike Mountain - \$42,000.

Owner is flexible about terms! Newly decorated 3 BR brick, near lake, North of luka - \$30's.

Perfect for entertaining - 3 BR brick w. formal and informal living areas, pool - Pine Lane - \$55,000.

Willing to negotiate! Large 2 BR stone home on 4 acres inside city - \$40's.

Check this one out! Well built, 2 BR mobile home on 20 acres, Mt. Gilead area.

Immaculate home - Large 3 BR brick w. formal LR, den, dining, large kitchen, on 1.5 acres, \$38,500.

Affordable - Nice older home on double lot, close to Mineral Springs Park - \$20,000.

Extra care has been given this home - 4 BR brick w. LR, family room w. FP, covered patio, 1.5 acres - \$47,500.

Own this beauty - 3 BR cypress with vaulted ceiling, custom kitchen, Pearl St. - \$40's.

Special home - 4 BR Cape Cod w. F.P., oversized garage, quiet setting in town - \$65,000.

Choice location - 3 BR brick w. 2 baths, LR, kitchen-den, Martha Lane - \$40's.

Move right into this 3 BR brick on Pleasant Hill Rd. Formal LR, kitchen-den, large lot - \$29,500.

Building Lots - Battleground Heights and Woodall Acres.



Visits Iuka Methodist

Several local youngsters were delighted by an encounter with Santa Claus at the Iuka

United Methodist Church on Tuesday, December 20th. Assisted by Frosty The Snowman (Carol Reynolds) and youth director, Carol

Cobb, the jolly fellow presented toys and candy to the children, making their Christmas a happy one, as evidenced by the smiles of this boy and girl.



ON IS ONE

Jon Franklin Sheppard was one year old on November 25, 1983. Jon celebrated his birthday with three parties. His first party was November 13, Grandma Sheppard's in Iuka, MS. This was a joint celebration for Jon, Grandma Sheppard (Nov. 11); and

Tommy Dale Sheppard (Nov. 14). Those attending were Ellis and Kathleen Sheppard, Tommy, Teresa and Tommy Dale Sheppard, Curtis and Mavaleen Taylor, Howard, Charlotte, Jessica and Ben Dodds, Joe, Debra and Jon Sheppard. The second celebration was November 26, at his home. Those attending were: Debbie Kirk, Dena Crum, Christine Bonds, Nathan Martin, Sandra and Roy Bates, Betty, Cindy and Paul Enlow, Mary, Kerri and Tiffany Bonds, Chris Stevens, and Shirley McAnally. Third celebration was November 27, at Jon's great-grandmother's, Ruth Hobbs. This was also a joint celebration for Jon; Great-Grandmother Hobbs (Nov. 27); and David Lowery (Nov. 25). Those attending were: Joe, Debra and Jon Sheppard, Ruth Hobbs, Billie Holland, Keith and Mike Carden,

Chester Earl, Denise, Steve and David Lowery, Bobby, Linda and Rob Bonds, Penny Tracie, and Candy Ross, Eva Hobbs, Mark, Mary, Marcus, Matt and Daniel Hooker and Earl Hobbs. Jon is the son of Mr. and Mrs. Joe Sheppard. His grandparents are Billie Holland, of Iuka; Mr. and Mrs. Ellis Sheppard, of Burton; and Mr. Leonard (Buck) Carden, of Iuka. Jon's great-grandparents are Ruth Hobbs and the late Wallace Hobbs; and Ola Carden and the late Lum Carden.

Factors Affecting Market Value of Timber

By: Brendix Glasgow, County Forester
(Part One of a Three Part Series)

Most landowners sell timber infrequently, in some cases only once during a lifetime. Because of that limited experience, few landowners feel confident when selling timber. One of the major concerns is knowing whether or not one has received a fair price for his timber.

It is not unusual for adjacent tracts of timber to bring drastically different prices even though they appear similar to the landowner. Many factors affect the stumpage value (value of standing timber), but it is unrealistic to place a dollar value on those factors unless one is talking about a particular tract of timber at a particular point in time. However, some general

comments can be made concerning how each factor raises or lowers the stumpage value in the eyes of the prospective buyer.

The first point a buyer must consider is the suitability of the timber for the final products being manufactured by his firm. Some mills can use only pine, only hardwoods, etc. Others are able to use many different species. A buyer who can use only pine will not put maximum value on any hardwood included in the sale because he will need to turn around and sell that hardwood to another buyer.

Even if the species are suitable, tree size can be very important. All mills have size limitations on wood used as raw material. Pulp mills can generally use smaller diameter trees than sawmills, plywood mills, and treating plants. Trees which are either too small or too large are of no value to a mill unless they can be resold to another manufacturer; if not resold, they cause extra waste disposal expenses.

Tall, large-diameter trees can generally be harvested cheaper per unit volume than short, skinny trees. Loggers thus expect to be paid more for cutting smaller trees. The timber buyer must be concerned with the total delivered price of wood to his mill, including both the logging costs and whatever the landowner is paid for stumpage. Other things being equal, he can afford to pay the landowner more for larger-size trees.

The uniformity of tree size within the sale area can also affect stumpage value, especially if the different sizes are mixed together rather than being located in separate stands. If some of the trees to be cut are too big or too small to be handled efficiently with the logging equipment used on the majority of the sale area, it may be necessary to use two different logging crews. A number of difficulties may arise in that circumstance, including the small-tree crew cutting larger trees than they were supposed to and the large-tree crew damaging the small trees.

Next week in part two of this three part series, we'll discuss how volume, timber quality and several other factors affect the market value of your trees.

If you have any questions on your forest land call 423-9070 or come by the office at the Tishomingo County Courthouse, Highway 25 South.

Foundation Facts

Bill Flynn, Executive Director TCDF

The Tishomingo County Development Foundation has as its primary purpose the promotion of industry growth, which will create jobs for people in Tishomingo County. That effort includes:

1. Start-up of new businesses.
2. Expansion of local businesses.
3. Recruiting of new businesses outside the area.
4. Assisting local businesses in solving problems which might hinder their growth.

The reason for this effort is pretty obvious, but it is not always understood. If it is explained rather simply, you can see the individual who wants and needs a job benefits from having an income from a job. The local businesses benefit because the individual has money to spend for a car, a television set or whatever he or she needs, increasing the businessman's income. With the sale of retail or wholesale goods, taxes are generated and the city, county, state and Federal Governments



Ready For Winter

Maude is ready for anything in her new, red coat made by

her owner, Leon Powers. Riding Maude is Leon's grandson, Bryan.

benefit.

That is a simple statement of what local economic growth is; to be healthy a community has to have growth. A good example would be an automobile dealership which can't sell cars because buyers don't have money to spend. They keep the old car and repair it themselves and eventually the dealer has to go out of business, eliminating the jobs of the mechanics, parts man, secretary and salesman. A healthy local economy should provide jobs and income for its citizens which allows for a number of cars to be bought each year. It is the Tishomingo County Development Foundation's goal to work with businesses to promote their growth by providing financial advice, technical help with site location, information about labor, taxes, utilities, etc.

If you know of a business which wants to expand and needs some help, or a business which is in need of help to get started, contact your Tishomingo County Development Foundation office in the Iuka Courthouse or call 423-9933.

Economic Emergency Loan Program To Be Reinstated by FmHA

The Farmers Home Administration (FmHA) will resume making economic emergency loans by the beginning of the year, according to FmHA County Supervisor, Lawrence G. Kerley.

"Economic emergency loans are designed for farmers who are in a cost-price squeeze or face other financial difficulty beyond their control," Kerley said. In other words, the loans are for a financial emergency rather than a natural disaster such as a drought or flood.

The economic emergency or "EE" Program was in operation from 1978 to 1981. The program expired in 1981 but was later reauthorized by Congress. It is being reopened under an order by the U.S. District Court in Washington, D.C.

"Under the program, loans will be available to farmers who are suffering an economic emergency through no fault of their own. They must show that they have tried unsuccessfully to get a loan from another source before coming to FmHA and that they can repay the loan over a period of time, depending on the use of the funds. The funds can be used to finance 1984 crop production, to refinance delinquent farm and family operating debts and related uses," Kerley said.

The interest rate for direct loans fluctuates with the cost of the government or borrowing money. The interest rates for guaranteed loans, which are made by commercial lenders are backed by the government, are negotiated between the borrower and the lender.

Applications for economic emergency loans will be available at the FmHA county

office located at 105½ Eastport Street, Iuka, Mississippi, telephone number is 423-3626.

Midway R.C.D.C.

The Midway R.C.D.C. met at the Spring Hill Church Educational Building on Monday night, December 19, at 6 o'clock for the annual Christmas Carol Sing.

The Midway 4-H Club was in charge of the program, with 4-H leaders, Mrs. Brenda Whitfield and Mrs. Jane Bolton. Mrs. Whitfield gave an interesting talk on 4-H Club work. After the talk the group sang Christmas carols and other inspirational songs. Christmas refreshments were served at the conclusion of the Carol Sing.

Rev. Rowland Hyde gave the devotional after the refreshments.

THANK YOU

The people of Snowdown Church wish to thank each one who helped in any way to make money for the cemetery fence.

The winners of the quilts were Josie Holland and Irene Gross. The winner of the pajama set was Evon O'Neal.

IRS Phone Numbers Changed in Jackson

Taxpayers in Jackson and Gulfport dialing areas will use the same telephone number as the rest of the state when seeking answers to tax-related questions. The change is effective January 1, 1984, and the new number is 1-800-424-1040. Taxpayer assistance is available by telephone from 7:15 a.m. to 4:15 p.m., Monday through Friday each week.

Experience shows that taxpayers calling the toll-free

number at other than certain peak times have a better chance of getting an open line. The best times to call are:

- 1) 7:15 - 8:00 a.m. or on Thursdays and Fridays.
- 2) The busiest days are Mondays and Tuesdays.
- 3) Traffic is most heavy between the hours of 9:00 - 11:00 a.m. and 1:00 - 3:00 p.m.

Tele-Tax, a 24-hour service whereby taxpayers with push-button telephones can get taped information on 140 different subjects, is available in

Jackson and Gulfport local dialing areas. The Jackson number is 960-4168 and the number for Gulfport is 863-3302. Taxpayers with rotary telephones in the Jackson area can get taped tax information from 8 a.m. to 4:45 p.m., Monday through Friday by calling 960-4808. The Tele-Tax numbers can be called from anywhere in Mississippi, but these numbers are not toll-free.

"A loafer always has the correct time." Kin Hubbard

THE SHOE TREE
AFTER CHRISTMAS

Clearance SALE

on an outstanding group of fall and winter shoes!

BUY 1 PAIR GET 1 PAIR FREE!

THE SHOE TREE

OPEN TUESDAY - SATURDAY 10:00 A.M. - 5:00 P.M.

713 Eastport St.
Iuka, Miss.

THE CHUCKWAGON CAFE

SUNDAY LUNCH

Roast Beef W/Gravy, Mashed Potatoes, English Peas, Harvest Beets, Homemade Rolls, Dessert, Coffee or Tea **\$2.99**

IUKA'S NO. 1 EATING PLACE

Tenn. River Catfish Filets **\$3.99**

W/Trimmings, Coffee or Tea Only

HWY. 25 NORTH IN IUKA

THE SECOND SHOPPE'S WINTER CLEARANCE SALE

SALE STARTS THURSDAY, JANUARY 5TH

Ladies Sweaters

Oxford Button Blouses

Jordache Sweaters

Kids Sweat Shirts

Dress Pants

Sweat Shirts

Sweat Suits

Belts

Gowns

Purses

Hong Ten

Dee Dee

Ladies Skirts

Long Sleeve Blouses

Mens Oxford Shirts

Mens Duckhead Pants

Mens Member's Only Style Jackets

1/2 PRICE SALE

ALL SALES FINAL, NO VISA, OR MASTERCARD ON SALE ITEMS

Entire stock included except Lee, Levi, & Chic

JEANS All 1st quality **\$19.95**

Includes stretch & big sizes

ELM SHOPPING CENTER. IUKA

WEIGHT WATCHERS

TIME TO TIP THE SCALES IN YOUR FAVOR.



So come back to Weight Watchers and get started

on our new Quick Start program. You'll be pleased at the difference in us. And thrilled at the difference in you.

Meeting in Iuka Christian Fellowship Ctr. Tuesdays @ 6:00 PM

FOR NEW MEETING TIMES PLEASE CALL: TOLL-FREE 1-800-222-7694

© Weight Watchers International, Inc. 1984 owner of the Weight Watchers and Quick Start trademarks.

Butler-Moore Office Products is proud to announce our appointment as an **Authorized Sales Agent for Xerox** in **Tishomingo County**

We're pleased to announce that we have been selected as an Authorized Sales Agent for the popular line of Xerox desk top copiers, portable copiers and supplies. Our customers are assured of quality service directly from Xerox.

Call for a free demonstration and see just how much a Xerox copier can do for you.

Butler-Moore Office Products
618 Waldron Corinth
287-2015

Authorized Xerox Sales Agent

XEROX

1984 Corinth Business Review

Wilbanks Wee Con-Du-It Electric

Andrew Wilbanks - Owner

For qualified electrical work of the highest quality, many business men and homeowners in this area call WILBANKS WEE CON-DU-IT ELECTRIC to be assured of a job well done!

Conveniently located on Wheeler Grove Rd. in Corinth, phone 286-6211, this firm has been serving the community for many years now and they're recognized as the "best men for the job!"

They're fully versed in all of the latest building codes of the area. They make sure that their installations are up to the uniform standards set by city, county, state and federal electrical requirements. You're assured of having a perfectly safe, inspected job when the WILBANKS WEE CON-DU-IT ELECTRIC do the work. No wonder many leading home builders specify this reliable firm for their new home wiring and installations.

The editors of this 1984 Corinth Business Review suggest that you contact the best for your next electrical problem.

Chamblee's Discount Carpets

Serving Since 1964 With Prices You Can Afford

Marvin & Vela Chamblee - Owners

Big savings on all types of carpeting. That's what you'll find at CHAMBLEE'S DISCOUNT CARPETS where discount carpet is the name of the game!

This "carpet warehouse" is located on Hwy. 72 East, across the Bypass from WKCU radio station, in Corinth, phone 287-4811, and they feature one of the area's largest and most complete selections of name brand carpeting for every room in your home or office. The choice of many leading builders and interior decorators, this "wholesale to everyone" carpet outlet specializes in quality products from some of the most respected carpet mills in the country. They offer complete service including installation and repairs, too. They feature Congoleum, Armstrong, Amtico Linoleum, Cabincraft and Queen... some of the finest brands.

CHAMBLEE'S DISCOUNT CARPETS CAN save you money on carpets. Their volume buying policies and their remarkably low overhead are the reason for the low prices. Don't buy ANY carpet until you've seen the selection and the unbelievably low prices at this leading carpet discount house.

The authors of this 1984 Corinth Business Review urge all of our readers to check with this leading carpet supplier... first!

Alcorn Bank & Trust

Dennis Upchurch - President - Past 2 Years

Member FDIC

A Full Service Bank

What does doing business with the ALCORN BANK & TRUST mean to you? If you're one of the area's agriculturists, it means having the things you need to begin your season. If you're a business man, it means having the kind of financial backing that you need to get through difficult times. If you're a homeowner, it means being able to achieve financial independence through careful handling of your money.

Financial security doesn't come easily for most of us. We have to save for it and manage our money wisely. In the Corinth area, we have a friend who will help us with all of our money matters and we're talking about the ALCORN BANK & TRUST.

Conveniently located at 304 South Cass in Corinth, phone 287-4484, this reputable firm has been handling the money matters of the local residents for many years and have established themselves as a backbone of the business community.

This bank has always been a major factor in the expansion and development of the businesses and agriculturists of the region and their trust has been rewarded by a strong, growing community that they're proud to be a part of.

With a full range of banking services, this leading bank has been able to give their customers MORE in terms of versatility and ease of financial problems. The writers of this 1984 Corinth Business Review urge ALL of our readers to find out more about this respected bank! And, we join with ALCORN BANK & TRUST'S President, Dennis Upchurch, in wishing all area residents a VERY HAPPY NEW YEAR!

Tri-State McCulloch Sales & Service

You don't have to be a professional logger to use a pro's chain saw. The famous Husqvarna and Pioneer line of dependable hard-workin' saws are the choice of many experienced "lumberjacks" and they're all available at TRI-STATE MCCULLOCH SALES & SERVICE: your chain saw headquarters!

Located on Hwy. 45 South in Biggersville, phone 287-3962, this well known company features a quality Husqvarna and Pioneer saw for everyone. From the smaller models which are perfectly suited to cleaning up around the yard to the big, heavy duty models... there's a Husqvarna or Pioneer that's just right for you!

TRI-STATE MCCULLOCH SALES & SERVICE can also repair most any saw on the market. Their well equipped and well staffed repair department has genuine replacement parts and many handy accessories to make operating your saw a breeze. The writers of this 1984 Corinth Business Review urge all of our readers who know the value of having the proper tool for the job to check with this well known firm for everything they need in famous Husqvarna and Pioneer chain saws and the finest service! We know you'll be glad you did!

Alcorn County Co-Op

Mr. Sanford Whitehurst - Manager

It's a known fact that few institutions in the community have done more to further the development of the agriculture industry than ALCORN COUNTY CO-OP.

Located at 330 Hwy. 72 E. in Corinth, phone 286-6686, the cornerstone of the farming community came about as a result of the local members banding together in an effort to get volume buying power for the "little guy!" Through their service, many farmers are supplied with quality feeds and supplies at much lower prices and been enabled to have a "good year" NEARLY EVERY YEAR!

For feed, seed, ag chemicals, fertilizer, livestock supplies, hardware and most anything else that the farmer or rancher is likely to need, see the ALCORN COUNTY CO-OP first and save!

The writers of this 1984 Corinth Business Review would like to commend this fine organization for their efforts in helping to make Alcorn County a better place to live and to farm!

W.H. Jones Pool Co.

W.H. Jones - Owner

Have you ever wished that you were in a position to own a swimming pool but weren't sure that you could afford such a luxury? Well, having YOUR OWN pool DOESN'T require a fortune anymore! With the modern construction techniques and the standardized plans that W.H. JONES POOL CO. has to offer, you can have the pool of your dreams for a lot less than you think. Phone 423-9671 or stop in at 104 Eastport in Iuka and find out more about the low cost of owning a Polynesian pool this summer!

With a variety of sizes and shapes to choose from, there's a beautiful Polynesian pool that's just right for your home AND your budget. This reliable contractor will take care of everything, from design and installation to arranging budget financing to make your new pool a reality of summer fun! They handle a complete line of pool accessories and services. And, they offer computer water analysis in their lab. Call early and find out about owning a swimming pool THIS SUMMER!

Call 423-9671 for free estimates and talk pools! The editors of this 1984 Better Business Review think you'll enjoy life a lot more with a new Polynesian pool!

Thompson's Bridal Boutique

Linda Wilburn - Manager

There are certain occasions in woman's life when only the very finest will do! When that all-important day draws near, you'll want to look your absolute best. If you haven't guessed yet... we're talking about your wedding, and the area's #1 bridal shop... THOMPSON'S BRIDAL BOUTIQUE!

Located at 1731 Highway 72 East in Corinth, phone 287-6169, you'll be shown gowns in myriad of colors and styles to appeal to every taste! The sizing is such that there is a gown perfectly "fitting" to your figure as well as that all-important occasion!

THOMPSON'S BRIDAL BOUTIQUE offers a unique "bridal planning service" and can arrange sales (or rentals) of, not only the wedding gown, but equally beautiful dresses for the bridesmaids, the mother and, yes... even the flower girl! They also have a complete tuxedo rental service for the groom, best man, and the ushers!

The writers of this 1984 Better Business Review urge all prospective brides who plan to look their very finest on this most important day to see this prominent bridal shop for EVERY LITTLE THING they need!

Kellie Holder Accountant Firm

Do yourself and your business a favor this year and contract the services of KELLIE HOLDER ACCOUNTANT FIRM: One of the area's leading tax consultants. With offices located at 1812 Shiloh Rd. in Corinth, phone 286-9946, this is one tax service which gives just that: SERVICE!

Their staff of skilled experts is constantly studying the new tax laws and scrutinizing all of the problems which are prevalent in both business and personal tax situations. Place your complete trust in their experience and you won't be disappointed. KELLIE HOLDER ACCOUNTANT FIRM will do your quarterly returns as well as your yearly ones and they're always available for consultation on any tax question. The writers of the 1984 Corinth Business Review suggest that you make this recognized firm YOUR personal tax consultant. We don't think you'll have any worries about taxes with this outstanding concern on the job!

Pepsi-Cola Distributors

Whether you're at work at home or somewhere else... there's nothing like an ice cold Pepsi to keep you really refreshed. Pepsi Cola is bottled and distributed exclusively in this area by the PEPSI - COLA DISTRIBUTORS on South Johns Street in Corinth, phone 286-8401.

Cold, delicious Pepsi in bottles, cans or from the fountain is hard to beat most anytime you're thirsty! At the game, on a drive, at a party... most anywhere, it's Pepsi for great taste and lasting refreshment!

This fine distributor can also supply you with vending machines for your office, shop, plant or whatever. They offer some of the fastest service in town and will keep your machines in top shape.

The writers of this 1984 Corinth Business Review would like you to keep this fine distributor in mind when you need soft drinks. They feature world famous Pepsi-Cola and a full line of Canada Dry products.

LEGAL

In The Chancery Court of Tishomingo County, Mississippi

IN THE MATTER OF THE LAST WILL & TESTAMENT OF GRACE HUBBARD, DECEASED

NO. 9445
STATE OF MISSISSIPPI
COUNTY OF TISHOMINGO

The undersigned having been appointed executrix of the Last Will and Testament of Grace Hubbard, deceased, by the Chancery Court of Tishomingo County, Mississippi, in Cause No. 9445 upon the docket of said Court, on the 31st day of December, 1983, hereby gives notice to all persons having any claim against the estate of Grace Hubbard to have the same probated and registered by the Clerk of the Chancery Court of Tishomingo County, Mississippi, within 90 days, and failure to probate and register for this period will bar the claim.

This the 31st day of December, 1983.
BONNIE GORDON,
EXECUTRIX

J-5-12-19-c.

LEGAL ADVERTISEMENT FOR BIDS

Midway-Pleasant Hill Water Association
Iuka, Mississippi 38852

Sealed bids for the construction of a Water Treatment Plant to serve the Midway-Pleasant Hill Water Association will be received by The Board of Directors of the Midway-Pleasant Hill Water Association at 2:00 P.M., CST, January 31, 1984, at 123 East Eastport Street and then at said office publicly opened and read aloud.

The CONTRACT DOCUMENTS, consisting of Advertisement for Bids, Information for Bidders, BID, BID BOND, AGREEMENT, GENERAL CONDITIONS, SUPPLEMENTAL GENERAL CONDITIONS, PAYMENT BOND, PERFORMANCE BOND, NOTICE OF AWARD, NOTICE TO PROCEED, CHANGE ORDER, DRAWINGS, SPECIFICATIONS, and ADDENDA may be examined at the office of G & E Engineers, 600 North College Street, Booneville, Mississippi.

Copies of the CONTRACT DOCUMENTS may be obtained at the office of G & E Engineers, 600 North College Street, Booneville, Mississippi, 38829, upon payment of \$50.00 per set.

Any BIDDER upon so returning the CONTRACT DOCUMENTS will be refunded \$20.00 per set.

Clifford Cox,
President,
Midway-Pleasant Hill Water Association
J-5-12-19-c.

Notice To Equipment Dealers

The Board of Supervisors of Tishomingo County, Mississippi will on Friday, January 6, 1984 at 10:00 A.M. at the office of the Clerk of the Board of Supervisors in the Town of Iuka, Mississippi receive bids for the purchase of a new elevating scraper and a new sanitary landfill compactor. The specifications for this equipment will be on file at the Chancery Clerk's office in the Courthouse. This equipment is for the use and benefit of the Tishomingo County Landfill. The Board reserves the right to reject any and all

bids.

This the 20th day of December, 1983.
D-22-29-J-5-c.

LEGAL NOTICE NOTICE OF SALE

The City of Iuka Mayor and Board of Aldermen will receive sealed bids January 14, 1984, at 10:00 a.m. at the City Hall for the following:

One (1) 1972 Chevrolet truck, red in color, 1 ton, Serial Number - CCE342J144875.

The highest and best bid will be accepted.

The Mayor and Board of Aldermen reserves the right to reject any and all bids.

JOHN H. BIGGS, MAYOR,
CITY OF IUKA
J-5-12-c.

ASCS Farm News

By: Henry L. Knox,
County Executive Director

ASCS URGES WHEAT GROWERS TO CUT PRODUCTION - "Unless participation in the 1984 wheat program is relatively high, we can expect the wheat supply to reach a record level and a further drop in wheat prices," according to Howard R. Bridges, Chairperson of the Tishomingo County ASCS Committee.

Bridges urged wheat growers "to consider seriously the likely outcome of not taking advantage of the safety net provided by the wheat program. To be eligible for loans and target price protection, farmers must sign up and comply with the 30 percent acreage reduction requirement," Bridges said.

"By participating in the program farmers can assure themselves a national average price of \$4.45 per bushel for their 1984 wheat crop. We believe farmers who don't participate can expect to receive prices at or near the 1984 loan level of \$3.30 per bushel," Bridges said, "but, there is no guarantee, no safety net, for the non-participant."

"If farm prices fall to the \$3.30 loan level, wheat program participants can expect to gain about \$7.50 more per acre in net returns than the non-participant, assuming their yields are the same," Bridges said. "For each bushel increase in yield over that on a non-participant, the participant's gain is about \$2.30 per acre. Participants can expect higher yields because they will usually remove their least productive land from production under the 30-percent acreage reduction requirement and put into the Acreage Conservation Reserve."

"U.S. Department of Agriculture analysts expect this year's (June 30, 1984) ending stocks of wheat to be about 1.4 billion bushels. That's down about 8 percent from a year earlier, but still considerably above what is considered to be a desirable level of about 1 billion bushels," Bridges said. "Unless 1984 wheat program participation is as high as 1983 participation (about 60 percent of eligible farms participated), stocks can be expected to increase and exceed the record 1.5 billion bushels set in 1982. This will lead to a decline in wheat prices."

"Producers can reduce their risks by participating in the 1984 program. They can assure themselves of a floor price for their production through use of the price support loan program. They can use the loan program to produce interim income until they actually sell their wheat. Also, producers can further reduce their production risks by participating in the optional 10 to 20 percent land diversion with a payment-in-kind payment equal to 75 percent of their farm's program yield," Bridges said.

Bridges added that Federal Crop Insurance participants can gain increased coverage at no additional cost if they are also participating in the 1984 wheat program.

Heart Healthy Recipe

CHILI CON CARNE

2 tablespoons oil
1/2 cup chopped green pepper
1/2 cup chopped onion
1 pound lean ground beef
2 cups canned tomatoes
1 10 1/2-ounce can tomato soup
1/2 teaspoon paprika
1/2 teaspoon cayenne pepper
1 bay leaf
1 tablespoon chili powder
1 clove garlic, mashed
1 16-ounce can red kidney beans with liquid

Heat oil in a 10-inch skillet, then brown the green pepper, onion and ground beef in the oil, stirring occasionally. Add the tomatoes, tomato soup, paprika, cayenne pepper, bay leaf and chili powder. Cover, simmer over low heat for about 1 hour, stirring occasionally. (Add more water if the mixture becomes too thick.) Then add the garlic and kidney beans with liquid and heat thoroughly.

Yield: 6 servings
Approx. cal/serv.: 345

Heart Healthy Recipes are from the Third Edition of the American Heart Association Cookbook. Copyright © 1973, 1975, 1979 by the American Heart Association, Inc.

American Heart Association
WERE FIGHTING FOR YOUR LIFE

AUCTION

TOP-NOTCH NW ALA. FARMER
SELLING SUPER-SHARP EQUIPMENT

Sat., Jan. 7th, 1984--11:00 A.M.
Cherokee, Alabama

Location: Colbert County Cooperative, Cherokee Branch on Hwy. 72, town of Cherokee. About 20 mi. West of Muscle Shoals, Ala., 13 mi. N. of Red Bay, Ala., 13 mi. East of Iuka, Miss.

Mr. AUTHUR WOODS is reducing his farming operation somewhat and commissioned Yokley & Lundy Auction Co. to sell the tractors and equipment he will not need. Mr. WOODS' equipment is almost all GOOD to EXCELLENT. He has always believed that the most important thing to be on a place is the owner's shadow so he has been right there to closely manage his items and see that every piece of his nice equipment was properly maintained and carefully operated by well qualified drivers. This is an "OPEN HOUSE" Auction. Auctions will be the highly capable and popular Col. LARRY GARNER (Alabama License No. 100) of Pulaski, Tenn. Plenty of good food will be served by Cherokee Fire Department. For sales that are first rate, they are fair and settlements that are fast (same day as usual, unless Yokley & Lundy Auction Co. We mail the circulars on your sale in states, Mexico and Canada and blanket the local area with newspaper radio spots and, if the sale is large enough, TV ad coverage. Our regularing North Alabama is Col. Larry Garner of Pulaski, Tenn. (Tel. 615-1570 or 1345).

JD 4640 w/cab & air, dual 20.8 x 38 R&C, Quadrange, Ch. hitch, w/hyd., 1979 & EXCELLENT!
JD 4430 w/cab & air, 18.4 x 38 R-1, dual-hyd., Quadrange--1978 & EXCELLENT every way.
JD 4020 diesel--Tires 60% & condition GOOD (68).
JD 4520 dsl. w/cab & air--tires & cond. GOOD.
Following tractors are almost sure to be in the sale: Ford diesel 9 (1971), 3000 (1966), 3000 (1975) and 4000 (1967)--all are GOOD to EXCELLENT w/all-weather cabs (NOT A/C)--We believe they'll be there don't guarantee it!
JD 6600 combine w/cab & air, 24.5 x 32 R&C, H/Stat straw chp, Monitor elec. throw-out, 404 eng and has No. 218 Flex-Head--EXCELLENT (1978).
JD 4420 dsl. combine w/cab & air, 23.1 x 26 R&C tires, straw chp spike cyl., 16' Flex-Head--Only 796 hrs. & EXCELLENT (1981).
JD 95-B combine w/cab & blower, 18.4 x 26 R&C, 14' header--Did a job cutting 1983 crops.
JD 19' header & pickup reel w/NEW Hart-Carter cutter bar; fits 95 w/series--EXCELLENT!
M-F410 combine w/cab & blower and 13' header. Edkins 200 bu. grain w/flotation tires--A-1!
IH Loadstar 1600 Bob-Truck (1970 but limited use); 9.00 x 20 tires, trans., new fitted tarp--Super-Nice for its age and ready to roll for! Has good 16 ft. grain bed.
Ford F-600 Bob-Truck w/300 bu. hyd. bed 4-speed.
DeGelman Rock picker with hyd. dump--GOOD.
JD 7100 plateless 8-row Planter w/DDO & markers--Planted only 300 ac and just LIKE NEW!
IH 144 Planter; 8-row w/folding beam--Nice!
Ford 1966 F-600 grain truck w/16 ft. bed--Average.
JD 610 Row Conditioner; hyd. folding beams, 6-row, 19' wide, cult. spray rig & choppers--Exl.
JD No. 85 cult.; 8 rows (30"), spray attachment--Condition & appearance LIKE NEW!
JD 1010 field cult. w/tail harrow; hyd. folding, has spray attachment condition EXCELLENT!
JD 1600 chisel plow; 18', 3 light crops--Like NEW!
(2) S & N 200 gal. aluminum spray tanks w/pumps. Spray Tank, 125 gal. point, w/rack & pump.
S & N 12 row hyd. folding spray boom--GOOD.
Raven front mt. 200 gal. F/Glass tank, rack, pump.
JD 330 hyd. folding 28' disc harrow--EXCELLENT!
NH 9' Hay Cond., Model 461--Condition is GOOD.
Johnson 9-shank Sub-Moisture V-Plow--GOOD.
Herd 3-point seeder & spin-spreader--Real Nice.

JD NO. 500 disc, Good.
Set of JD 8-R roll-fend.
T'way 8-R fold. cult.
B/Wag 6' 3-PT. cutter.
Ford 3-bott. 14" M/Bd.
JD 6 1/2" "AW" Dis.
JD 4-row Rotary Hoe.
3-PT. 2-row cult.
White 13' disc.
JD 11-T chisel plow.
A-C 7 1/2' transp. disc.
Several hyd. cyl.

Anti-Freeze must be in all radiators! Please cooperate with the Plant Pest Control folks--BRING CLEAN EQUIPMENT TO THE SALE!
Terms: Complete payment day of sale. Cash, Cashier's & Certified Check Accepted--others with proper bank letter. If Buyer isn't financially known to us.

Yokley & Lundy AUCTION COMPANY
Marshall Riddick Jr., President
Drue Lundy, Executive Vice-Pres.
Auctioneers:
Col. Larry Garner, Pulaski, Tenn.
Col. Chas. Loeschner, Marvell, Ark.
Box 577-Tel. 601-247-3292 or 1641
Belzoni, Mississippi 39038
To get on our mailing list, write us your complete address.

Words of Appreciation

We, the family of Etta Yow, would like to express our sincere thanks and appreciation to our many friends and relatives for standing by us during the illness and death of our dear loved one.

A special thanks to Drs. O'Brian and Landers, Also the nurses at Coffee Memorial Hospital. For the prayers, visits and phone calls, the flowers and delicious food brought into our homes. Special thanks to Cutshall Funeral Home and Rev. Perry Murphy, The Laymen Quartet, the organist and pallbearers.

1, 2 & 3 BEDROOM APARTMENTS AVAILABLE

Kitchen appliances furnished
Play ground
Laundry available

NORTHVIEW APARTMENTS
ROUTE 2- 92A No. 400
BURNSVILLE, MISSISSIPPI
Call 427-9049 or 423-5314



EQUAL HOUSING OPPORTUNITY

NEW COUNTY OFFICIALS TAKE OFFICES THIS WEEK



COUNTY OFFICIALS FOR THE 1984-88 TERM — Fresh faces mingle in with the more familiar ones in this photograph taken at the

recent swearing-in ceremonies, which were held at the courthouse last Thursday. Pictured above, left to right, are those officials who

hold county-wide offices: returning Circuit Clerk Lamar Rutherford, County Attorney Richard Bowen, County Surveyor Milton C. Guice, returning County School Super-

tendent Alvia J. Blakney, Chancery Clerk Richard Hayden Ables, Sheriff Bob Payne, Coroner and Ranger Dale White, and Tax Assessor and Collector James H. Bishop.



COUNTY SUPERVISORS — Despite the popular belief that supervisors just build roads, these officials are involved in virtually all aspects

of the county's government, economy, and public services. The men pictured above were recently sworn in to the county's five offices of supervisor for the next term

in a ceremony at the courthouse last Thursday. From left: Lyonel "Cotton" Wade, of the First District; Lloyd Yow, of the Third District; and M.R. Whitehead of the Fourth

District; Leon Cook, of the Fifth District; and Gerald Parsons, of the Second District. With the exception of Yow, all were incumbents in last year's elections.



COUNTY CONSTABLES — The newly elected constables, in cooperation with other county law officials, will be responsible for main-

taining law and order in their respective districts over the next four years. They are shown above taking the oath of office at the recent

swearing-in ceremonies held at the courthouse last Thursday. Pictured, from left to right, are: Claude Whitaker, of the Third District; Bobby

James, of the First District; Claude N. Cox, of the Second District; Harmon Davis, of the Fourth District; and Sidney "June Bug" Taylor, of the Fifth District.



PLEDGING TO FULFILL THEIR DUTIES — Circuit Court Judge Neal Biggers administers the oath of office

to J.W. Southward (left) and Robert Arnold (right). Over the next four years, the Justice Court Judges will

seek to settle disputes and set fines and punishments for those who commit misdemeanors. Southward's

jurisdiction covers the south end of the county; Arnold's, the northern end.

January Is Eye Health Care Month In Mississippi

Governor William Winter has proclaimed January as Eye Health Care Month in Mississippi in support of a nationwide effort by ophthalmologists (eye physicians and surgeons) to encourage Americans to take action to reduce the high incidence of unnecessary blindness.

According to William C. Mayfield, M.D., president, Miss. Eye, Ear, Nose & Throat Association, statistics provided by the National Society to Prevent Blindness point up the scope of the problem, and the opportunity to do something about it.

"Nearly 11.5 million persons in the U.S. - one in every 19 - suffer some degree of eye damage," Dr. Mayfield said, "and 47,000 Americans become blind each year."

"The National Society to

Prevent Blindness estimates that 50% of all blindness can be prevented, and we seek the cooperation of all to reach that goal," he said.

The Miss. Eye, Ear, Nose & Throat Association is urging the public to prevent eye injuries at work and play by wearing protective glasses. The association is also stressing public awareness of the need to seek early and accurate diagnosis and treatment by a medical eye specialist (ophthalmologist).

ETV Offers College Credit Courses

The spring semester of college credit courses on Mississippi ETV begins January 21, 1984. Persons interested in registering for any of the courses for college credit should contact the college or university where they would like to earn the credit. Or for additional information, persons may call, toll free, 1-800-922-9698. In

the Jackson area, the number is 982-6280.

In addition to the college credit courses, the popular GED-TV series will be aired again this spring.

"American Government" covers the writing of the Constitution, the complexity of American federalism and the nature of citizenship from the local, state and national perspectives.

"English Composition I" provides instruction in analyzing sentence and paragraph structure, looking up words to check spellings and meanings, limiting the subject for a paper and discriminating between appropriate and inappropriate styles.

"Interaction" presents programs that are designed to assist all school personnel in increasing their understanding and respect for human and cultural similarities and differences in a pluralistic society.

"Mainstreaming the Exceptional Child" is designed to

help regular classroom teachers to prepare for the placement of children with exceptional educational needs into the regular classroom.

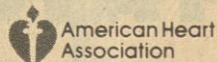
"Making It Count," a computer course, is an introduction to data processing.

The GED-TV series is designed to help persons prepare to take the General Educational Development (GED) test for a High School Equivalency Certificate.

Personal

On Christmas night, Clifton and Virgie Rhodes had the following dinner guests: Autry and Opal Miller, Buddy and Jennifer, Billy Page, Lisa Page, Michael Page, Sheila and Timmy Willington, John and Marsha Juska, Heather Farrie, Tommy Miller, from Sheffield; Clifton Harris, Pam Harris, Rebecca Rhodes, of Jasper; David Cristi, Gail Cristi, Dave Cristi, Tommy Cristi, Jason Rhodes, from Dennis; James Garrett, Barbara Garrett, Jamie Garrett, Michelle Garrett, Dallas Garrett, all of Burnsville; Lloyd Rhodes, Margaret Rhodes, and Ashley Rhodes, of Belmont; Jeff and Sherry Patterson, of Corinth; George and Patty Wallin, of Iuka; and John Wallin, from Columbus Air Force Base.

MEMORIAL CONTRIBUTIONS TO YOUR HEART ASSOCIATION HELP SUPPORT HEART DISEASE RESEARCH



Your local memorial chairman is:

Mrs. Evelyn Wheeler

423-3672

The family of the deceased receives a prompt acknowledgement of your memorial gift. You receive a receipt for your tax-deductible contribution.

Mississippi's 59th Governor To Be Sworn In January 10

Bill Allain will be sworn in as the 59th Governor of the State of Mississippi in ceremonies beginning at 10:30 a.m. Tuesday, January 10, on the south steps of the New Capitol in Jackson.

An Inaugural Celebration will be held at 8 p.m. that night in the Mississippi Coliseum featuring the Lanny Wolfe Trio and jazz ensembles from Alcorn State University, Delta State University, Jackson State University and Mississippi State University.

"We want an Inauguration that is open to every Mississippian who wishes to attend," Gov.-Elect Allain said. "That's why all of our activities will be free and open to the public. We are depending on our supporters throughout the state to help us spread the word that everyone is invited to this Inauguration and Celebration."

The 41st Army Band of the Mississippi Army National Guard under the direction of Warrant Officer George Murphy will begin the events for the noon swearing-in.

Elected officials and platform guests will assemble at 11:20 a.m. and a joint session of the Mississippi Legislature will convene at 11:30 a.m.

Bishop Joseph B. Brunini of the Jackson-Natchez Diocese will bring the invocation and blessing after which the national anthem will be sung by opera singer Lester Senter.

The honorable Neville Patterson, chief justice of the Mississippi Supreme Court, will administer the oath of office to Gov.-Elect Allain at noon. The Bible will be held by the honorable Walter L. Nixon, Jr., chief judge of the United States District Court.

After the inaugural address by Gov. Allain, the benediction will be pronounced by Dr. David Matthews, president of the general Mississippi Baptist State Convention.

The ceremony will be interpreted for the deaf. The New Capitol will be open for tours immediately following the ceremony. Phillip Yeagle's Combo will play in the rotunda.

Immediately following the noon swearing-in, a 21 gun salute will be fired by cannons on Mississippi Street.

The platform guests will be

seated in an area on the steps of the New Capitol with a backdrop of flags that have flown over Mississippi including American, Spanish, French, English, Lone Star (Bonnie Blue), the first Mississippi State Flag, Confederate, first American flag of 1817 and the present Mississippi State Flag.

The Inaugural Celebration will begin at 8 p.m. in the Mississippi Coliseum. Travis Aycock, a popular entertainer from Morton, will emcee the event. Aycock performed at the last state wide rally for Gov.-Elect Allain.

The Lanny Wolfe Trio of Jackson will begin the program with an audiovisual patriotic performance.

The floor of the coliseum will be open for dancing afterwards with music provided by groups from four state schools. Schools and their directors include Alcorn State University's Jazz Ensemble, Dr. Russell D. Thomas, Jr.; Delta State University's "Renaissance," Gene Ayers; Mississippi State University Stage Band, Dr. Kent Sills; and the Jackson State University Stage Band.

The public is invited to

attend both the Inauguration Ceremony at noon and the Inaugural Celebration at 8 p.m. in the Mississippi Coliseum.

POINT OF LAW

(Prepared by the Mississippi State Bar. Some rights may vary from locality to locality. Always consult an attorney when in doubt about your legal rights.)

Q: My husband died recently. We did not have any children. In his will, my husband left one-half of his estate to me, and one-half of his estate to our church. My husband was always a devoutly religious person and I respected his beliefs. Nevertheless, I am old and cannot work, and I need more than one-half of his estate, to live on. Is the church entitled to one-half of my husband's estate? What can I do?

A: No, the church is not entitled to one-half of your husband's estate. Since your husband left you, his wife, as his heir at law, he should not have given more than one-third of his estate to your church. You should contact an attorney, immediately, and

discuss with him the possibility of contesting your husband's will.

Q: A man who said he was with an oil company telephoned me yesterday and offered to pay me \$100.00 if I would sign a quitclaim deed. The man said his company had bought some land my grandfather used to own, but that because of some reason I didn't fully understand, his company wanted me to sign the deed. Should I sign?

A: As a general rule, you should never sign anything like a deed, a contract, or whatever, without first talking to your lawyer. It sounds like there is some problem with the oil company's title to your grandfather's land which the company expects to cure by getting the quitclaim deed from you. However, it would be wise to have your lawyer

talk to the oil company so that you can find out exactly what rights you have in the property. The oil company, if it is a reputable outfit, will understand and respect your wish to confer with your lawyer before making a final decision. If it turns out that the title problem is really a technical matter and the company is offering you a fair price to help them eliminate this defect, your lawyer will then advise you that you may safely give the quitclaim deed.



Car Collides With Bridge

Two brothers remain hospitalized at Eliza Coffee Memorial Hospital as the result of injuries sustained when their 1978 white Datsun 200 SX crashed into a bridge on Hwy. 72 near Mineral Springs Park.

Wesley McGill, age 17, was headed west on the highway when he apparently lost control of the vehicle, slamming into the concrete buttress of the bridge. His younger brother, Jason, age 10, was trapped in the back seat of the car for a fifteen minute period before the Iuka Police Department succeeded in freeing him. The two were transported to the Florence,

Alabama hospital for treatment.

Wesley is reported to have sustained a broken shoulder, injured arm, and cuts and bruises to the face. Jason allegedly suffered a fractured leg and arm and has some forty odd stitches for lacerations. Having already undergone surgery, Jason remains in traction at present.



T.H.S. Lovely Ladies

On December 9, 1983, twenty-eight lovely ladies from Tishomingo High School were in competition for the title of Most Beautiful. Pictured above are the winners,

from left to right: 4th alternate, Cindy Bailey, daughter of Mr. and Mrs. Billy Bailey; 1st alternate, Lauriann Herbert, daughter of Mr. and Mrs. David Herbert; Most Beautiful, Patty Wright,

daughter of Mr. and Mrs. Carlisle Wright; 2nd alternate, Tanya Ware, daughter of Mr. and Mrs. Floyd L. Ware; and 3rd alternate, Lisa Frederick, daughter of Mr. and Mrs. Tommy Fredrick.

B & J

Supermarket

Hwy. 365

South Burnsville

AD EXPIRES TUES. JAN. 10th AT NOON

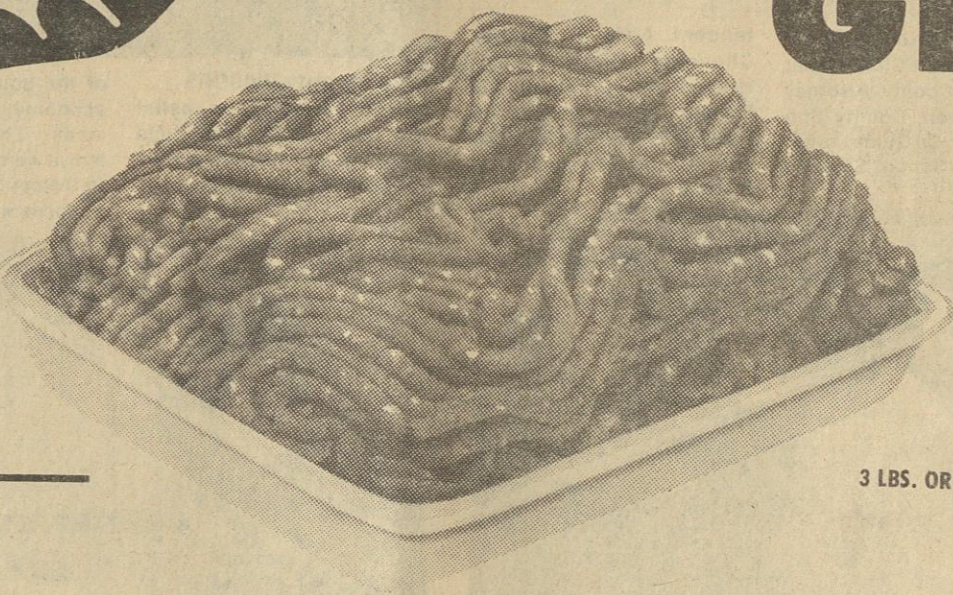
WIN WHAT YOU BUY!

Deposit your register receipt for this week in drawing box before Saturday night!
If your ticket is drawn you win that amount in groceries!

LAST WEEK'S WINNERS: PAT BOBO \$14.67 KATHY MOSS \$8.37 GEORGE BONDS \$18.02
PATRICIA CULWELL \$27.87

JANUARY FOOD SPECIALS

MR. TURKEY
Franks 12 OZ. **79¢**
 HILLSHIRE FARM SMOKED
Polish Sausage LB. **\$1.99**
 BRYAN
Wieners 12 OZ. **\$1.09**



FRESH

GROUND BEEF

99¢

3 LBS. OR MORE LB.

FLAVORITE

BACON

12 OZ. VACUUM PACK

69¢

(BY BRYAN)



U.S.D.A. CHOICE BONELESS

Stew Meat LB. **\$1.79**

U.S.D.A. CHOICE TENDERIZED

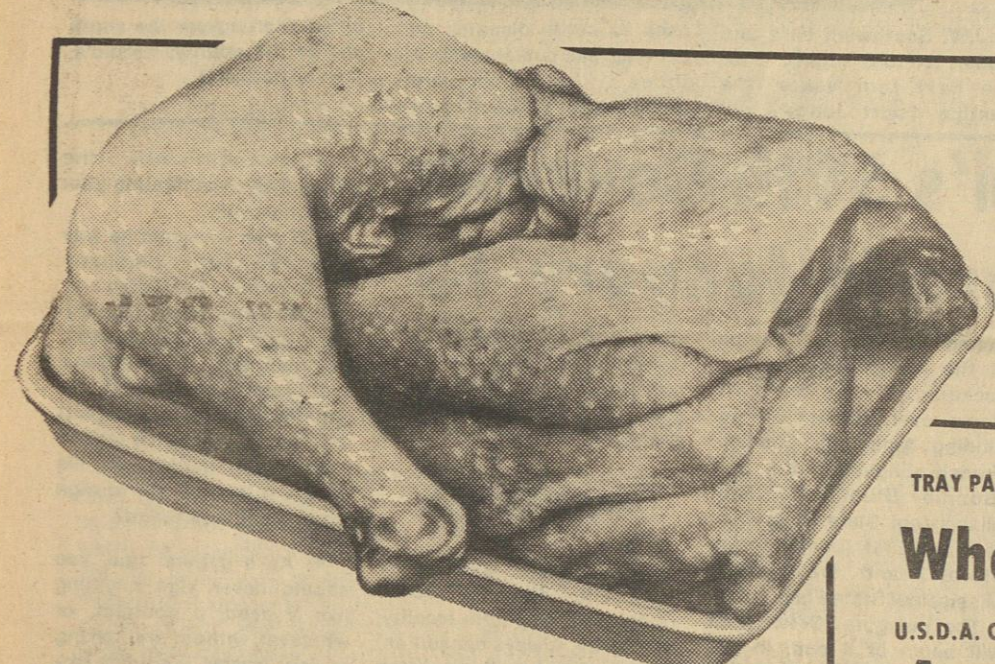
Cube Steak LB. **\$2.49**

U.S.D.A. CHOICE FRESH

Ground Chuck LB. **\$1.59**

U.S.D.A. CHOICE BONELESS

Brisket Roasts LB. **\$1.39**



FRYER
(FAMILY PACK)

LEG QUARTERS

39¢

LB.

HORMEL D SHAPED
Canned Hams 3 LB. **\$5.99**
 HORMEL
Spiced Hams 24 OZ. CANS **\$2.99**

TRAY PACK

Whole Catfish LB. **\$1.99**

U.S.D.A. CHOICE BONELESS

Arm Steak LB. **\$1.79**

32 OZ. CLAUSSEN

Sour Kraut **\$1.29**

TYSON

Chicken Livers 8 OZ. CUPS **3/\$1.00**

4 KINGS BREADED WHITE

Chicken Nuggets LB. **\$1.99**

MR. TURKEY SMOKED

Sliced Breast 6 OZ. **\$1.39**

REELFOOT

Rag Bologna

LB. **\$1.19**

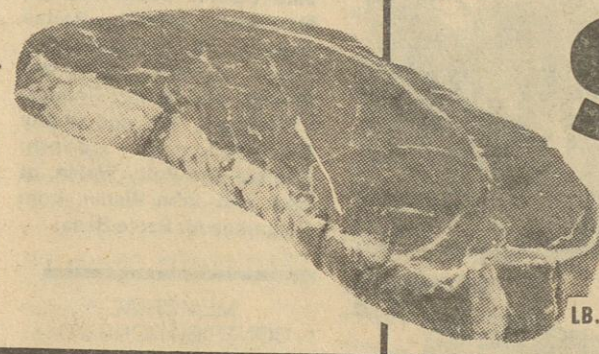
BRYAN PORK

SAUSAGE

HOT OR MILD

1 LB. **\$1.39**

2 LB. **\$2.78**



U.S.D.A. CHOICE BONELESS

CHUCK STEAK

\$1.69

LB.

Produce SPECIALS

JUMBO

Coconuts 2 FOR **99¢**



U.S. NO. 1

RED POTATOES

\$1.39

10 LB. BAG

SUNKISH

Lemons

10 FOR **99¢**



Radishes 3 PACKS **\$1.00**

EMPEROR

RED GRAPES

LB. **69¢**

FLORIDA

Tangeloes

5 FOR **99¢**

CANADIAN WAXED

RUTABAGAS

4 \$1.00

LBS.

Yellow Onions

3 LB. BAG **99¢**

Shomango County News - Vidette - Belmont News

HYDE PARK 6 1/2 OZ.

TUNA 68¢



KELLYS
Spaghetti &
Meatballs

15 OZ. **69¢**

CHEFWAY
Shortening



3 LB. CAN **\$1.99**

SUPERMAN CRUNCHY
Peanut Butter

18 OZ. **\$1.39**

BORDENS COUNTRY STORE

BUTTERMILK

1/2 GALLON

79¢

9-LIVES
Catfood



6 1/2 OZ. **3/99¢**

HYDE PARK SEEDLESS
Raisins

15 OZ. **\$1.29**

KELLYS
Vienna Sausage



2/99¢

ALLEN MEDIUM GREEN

LIMAS

3/\$1.00

16 OZ. CANS

GENERIC EXTRA ABSORBENT DAYTIME
Diapers

48 CT. ECONOMY PACK **\$4.99**

GENERIC
Paper Towels

39¢

TOMATO PASTE

6 OZ. CANS

3/99¢

Dial Soap



REG. SIZE **3/99¢**

BETTY CROCKER TWIN PACK AUGRATIN OR SCALLOPED
Potatoes

\$1.29

NEW KELLOGGS FRUIT-FUL-BRAN
Cereal

13 1/2 OZ. **\$1.29**

BARBARA DEE
Cookies (ASSORTED)

5 OZ. **3/\$1.00**

16 OZ. RETURNABLE

PEPSI OR MT. DEW

(PLUS DEPOSIT)

6/99¢



MISS WINCONSIN
Sweet Peas

17 OZ. **3/\$1.00**

POPSRITE
Popcorn in Oil

9 1/4 OZ. **2/99¢**

WELCHS
Grape Jelly



32 OZ. **\$1.19**

STOUFFERS HAM & CHEESE
Crepes

7 1/2 OZ. **\$1.69**

VLASSIC HAMBURGER
Dill Chips

16 OZ. **69¢**

PLANTERS
Snack
in Canisters



89¢

CHEF BOY AR DEE
Chicken Raviglio
CHICKEN (REG. OR MINI)

15 OZ. **59¢**

Apple Juice



\$1.49

WELCHS CONCORD'N APPLE
Cocktail Juice

32 OZ. **99¢**

RLC
Luncheon Meat

12 OZ. **69¢**

HARDINS

Hamburger
Buns

12 PACK **79¢**

SUNSHINE KRISPY

CRACKERS 69¢

1 LB. BOX SALTED OR UNSALTED

PILLSBURY REFRIGERATED
Cookies

\$1.49

Bisquick



LARGE 40 OZ. BOX **\$1.49**

TEXSUN BRIK-PACK
Orange or
Grapefruit Juice

1 LITER **69¢**

DOUBLE Q CHUNK
Salmon

7 3/4 OZ. **79¢**

GENERIC
Chili WITH BEANS

15 OZ. **59¢**

GOLD MEDAL
Flour

5 LB. **79¢**



PLUS DEPOSIT

COCA COLA 6/\$1.69

DR. PEPPER OR RELATED PRODUCTS



DELMONTE PINEAPPLE-ORANGE
Drinks

46 OZ. **89¢**

HORMEL
Potted Meat



3 OZ. **4/\$1.00**

ORTEGA
Taco Sauce (HOT OR MILD)

8 OZ. **69¢**

PARKAY
Light Spread



2 LB. **99¢**

BLUE PLATE
Mayonnaise

QT. **\$1.29**

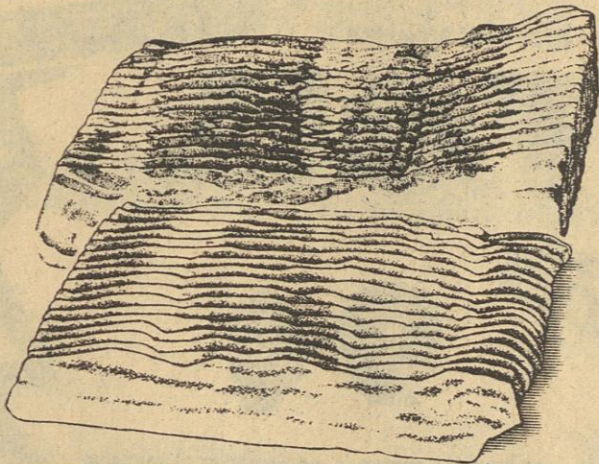
5 OZ. FREEZER QUEEN COOK IN BAG
Dinners



2/89¢



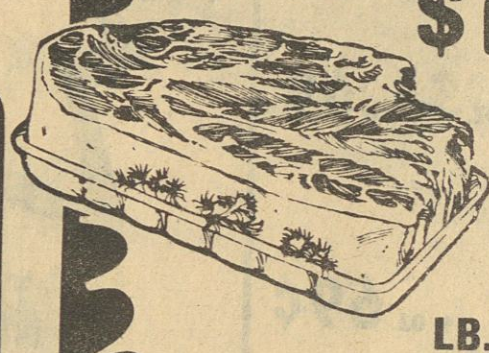
PIGGLY WIGGLY



MARKET SLICED
**SLAB
BACON**

99^c

LB.



U.S.D.A. CHOICE BEEF
BONELESS CENTER CUT

CHUCK ROAST

\$1³⁹

LB.

USDA
CHOICE



**GROUND
CHUCK**

\$1⁴⁹

LB.



COUNTRY BEST PURE
**PORK
SAUSAGE**

99^c

1-LB.
ROLL

U.S. CHOICE BONELESS
STEW MEAT

\$1⁹⁹

LB.



PIGGLY WIGGLY
CORN DOGS

\$1⁵⁹

6-CT.
PKG.



BREADED CHICKEN FINGER
TENDERS

\$2⁹⁹

LB.



FRESH FROZEN MAWS,
EARS & FEET

29^c

LB.

IBP FRESH FROZEN
**PORK
NECKBONES**

19^c

LB.

U.S.D.A. CHOICE
BEEF BONELESS
ENGLISH OR SHOULDER

ROAST

\$1⁴⁹

LB.

U.S.D.A. CHOICE
BEEF BONELESS
CENTER CUT

CHUCK STEAKS

\$1⁶⁹

LB.

SISSLIN SWEET

**SLICED
BACON**

\$1³⁹

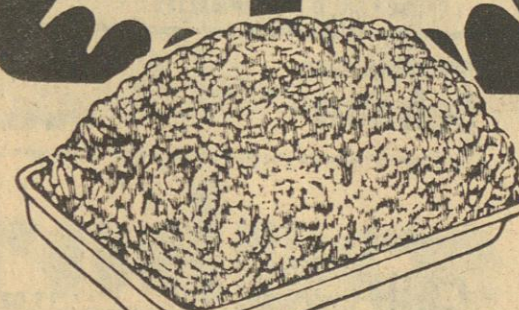
1-LB.
PKG.

HYGRADE'S BALLPARK

**MEAT
FRANKS**

\$1⁵⁹

1-LB.
PKG.



Morning Fresh Produce



**RED
GRAPES**

59^c

LB.

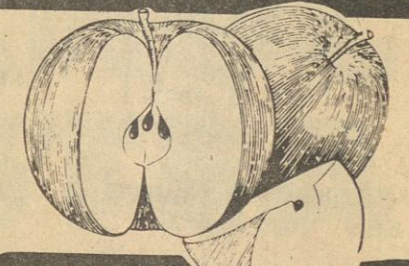


MORNING FRESH CRISP

LETTUCE

59^c

EACH



RED OR GOLDEN
DELICIOUS
APPLES

79^c

3-LB.
BAG

GROUND FRESH SEVERAL
TIMES DAILY

GROUND BEEF

\$1⁰⁹

LB.



CANADIAN WAXED
RUTABAGAS

\$1⁰⁰

4
LBS.



YELLOW
ONIONS

79^c

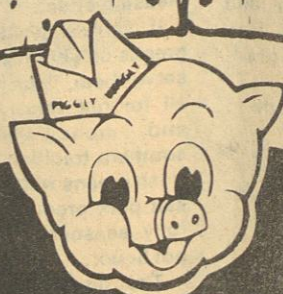
3-LB.
BAG



RUSSET
POTATOES

\$1⁰⁰

3
LBS.



QUANTITY RIGHTS RESERVED.
NONE SOLD TO DEALERS.
PRICES GOOD THURS., JAN. 5
THRU WED., JAN. 11, 1984.

PIGGY WIGGLY



the GREAT January Markdown!

REFRESHING
**PEPSI
COLA**
2-LTR. BTL.

89¢



SUNFLOWER
**CORN
MEAL**
5-LB. BAG

69¢

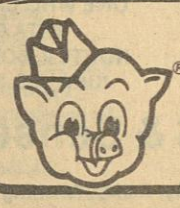
FRENCH'S ASST. CASSEROLE
POTATOES

5½-OZ.
BOX **69¢**



FRENCH'S
CHILI MIX

2 1/8-OZ.
PKGS. **\$1.00**



CASTLEBERRY'S
BBQ PORK

10-OZ.
CAN **79¢**



SKINNER'S THIN
SPAGHETTI

3 7-OZ. **\$1.00**
PKGS.

GOLDEN BEST
SHORTENING
42-OZ. CAN

89¢



LIQUID BLEACH
CLOROX
GALLON JUG

69¢



GOLDEN BEST
**MACARONI &
CHEESE**
7¼-OZ. BOXES

\$1.00
4 FOR

**TOTINO'S
PIZZA**
13-OZ. BOX

99¢



PINE CONE
TOMATOES 3 16-OZ. CANS **\$1.00**
DUNCAN HINES
CAKE MIX 19-OZ. BOX **79¢**
PURINA BONUS BAG
DOG CHOW 30-LB. BAG **\$7.99**
PURINA
CAT CHOW 12-LB. BAG **\$5.89**
LIGHT & LIVELY
COTTAGE CHEESE 12-OZ. CUP **69¢**
HUGGIES TODDLER
DIAPERS 12-CT. BOX **\$2.99**

HAPPY KIDS KOSHER
DILL PICKLES 32-OZ. JAR **\$1.49**
MINUTE
RICE 14-OZ. SIZE **\$1.29**
BUSH'S SHREDDED
KRAUT 4 10-OZ. CANS **\$1.00**
ZESTA
CRACKERS 1-LB. BOX **79¢**
PIGGY WIGGLY CHICKEN
NOODLE SOUP 3 10½-OZ. CANS **\$1.00**
PIGGY WIGGLY
VANILLA WAFERS 12-OZ. BOX **59¢**

FROZEN
FRENCH FRIED
POTATOES
2-LB. PKGS.

\$1.00
2 FOR



BUSH'S
PINTO BEANS

3
15-OZ.
CANS

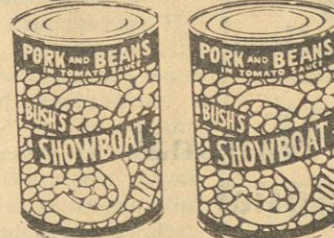
89¢



BUSH'S GREAT
NORTHERN BEANS

3
15-OZ.
CANS

89¢



SHOWBOAT
PORK N' BEANS

3
14½-OZ.
CANS

89¢



LUZIANNE INSTANT
COFFEE

6-OZ.
JAR

\$1.29

Obituaries

Mrs. Sarah Etta Yow

Mrs. Sarah Etta Yow, 90, died Friday night at Coffee Memorial Hospital in Florence, Ala. She was a homemaker.

Services were held Monday at Cutshall Funeral Home with Rev. Perry Murphy officiating. Burial was in New Prospect Cemetery.

Survivors include six daughters, Mrs. Willard Philbin, of Iuka, Mrs. Lois McKee, of Iuka, Miss Roxie Yow, of Iuka, Mrs. Dimple Simone, of Chicago, Mrs. Billie Hester, of Niceville, Fla., and Mrs. Betty Strickland, of Collierville, Tenn.; two sons, James E. Yow and Lloyd Yow, both of Iuka; two sisters, Mrs. Ola McKee, of Cherokee, Ala., and Mrs. Dovie Turner, of Memphis, Tenn.; a brother, Jourdan Wood, of Iuka; 15 grandchildren, 19 great-grandchildren and four great-great-grandchildren.

Mrs. Martha Yarber

Mrs. Martha Yarber, 93, died Tuesday, December 27, at the Red Bay Nursing Home in Red Bay, Ala. She was a homemaker and a member of the Belmont First Baptist Church.

Services were at 10:30 a.m. Wednesday, December 28, at the Deaton Funeral Home Chapel in Belmont with Rev. Jack Maroon officiating. Burial was in the Belmont City Cemetery.

Survivors include three daughters, Mrs. Bernell Ledbetter, of Belmont, Mrs. Elna Shackelford and Mrs. Eunice Pace, both of Florence, Ala.; a sister, Mrs. Mabel Shelton, of Chattanooga, Tenn.; a brother, Alvie Shook, of Corinth; five grandchildren and 10 great-grandchildren.

Mrs. Nora Jane Bonds

Mrs. Nora Jane Bonds, 80, died Thursday, December 29, at the North Mississippi Medical Center. She was a member of the Patrick United Methodist Church.

Services were held Saturday at Cutshall Funeral Home Chapel with Rev. Stanley Magill officiating. Burial was in Patrick Cemetery.

Survivors include two daughters, Mrs. Alice Belue, of Michigan City, Ind., and Mrs. Mattie Sue Floyd, of Iuka; four sons, J.W. Bonds, Toy Bonds, Jr., Arville Bonds and Carl Bonds, all of Iuka; 25 grandchildren and 27 great-grandchildren.

Mrs. Jimmie L. Borden

Mrs. Jimmie Leonard Borden, 80, died Friday, December 30, at her residence in Memphis, Tenn. She was a member of the non-denominational church.

Services were held Sunday at Cutshall Funeral Home Chapel with Rev. Mickey Wingo officiating. Burial was in Oak Grove Cemetery.

Survivors include three sons, J.B. Borden, of Memphis, Dallas Borden, Jr., of Eads, Tenn., and Leroy Borden, of Bartlett, Tenn.; seven grandchildren and one great-grandchild.

Miss Maudie Nagle

Miss Maudie Nagle, 88, died Monday, December 26, at the Pickwick Manor Nursing Home. She was a homemaker.

Services were at 1 p.m. Wednesday, December 28, at the Deaton Funeral Home Chapel in Tishomingo with Rev. Clinton Barnett officiating. Burial was in Joel Cemetery.

Survivors include a brother, Fatie Nagle.

Mrs. Maudie H. Gray

Mrs. Maudie Hubbard Gray, 81, died Tuesday, December 27, at the Tishomingo County Hospital after an extended illness. She was the widow of Henry Gray and a member of the Shady Grove Baptist Church.

Services were held Thursday at McPeters Funeral Home Chapel with Rev. Travis Smith officiating. Burial was in the Hopewell Cemetery in Corinth.

Survivors include six stepsons, Wren Gray, Howard Gray, and D.A. Gray, all of Corinth, Wilmer Gray and Hubert Gray, both of Glenn, and Ralph Gray, of Burnsville; a step-daughter, Mrs. Retha Wilkins, of Burnsville; several step-grandchildren and step-great-grandchildren.

Francis Bennett

Francis "Bud" Bennett, 78, died Sunday, January 1, at the Red Bay Hospital in Red Bay, Ala. He was a retired farmer and a member of the Red Bud Baptist Church.

Services were held Tuesday at the Deaton Funeral Home Chapel in Belmont with Revs. Jack Maroon and Billy Senter of-

ficiating. Burial was in Belmont Cemetery.

Survivors include his wife, Mrs. Essie Bennett, of Dennis; seven daughters, Mrs. Bea Bostick, of Golden, Mrs. JoAnn Gray, of Golden, Mrs. Bessie Leathers, of Houston, Texas, Mrs. Rachel Lotz, of Kenosha, Wisc., Mrs. Reba Harris, of Sheffield, Ala., Mrs. Evonne Nichols, of New Albany, Miss Rita Bennett, of Dennis; three sons, J.W. Bennett and Keith Bennett, both of Dennis, and Bryson Bennett, of Waukegan, Ill.; three sisters, Mrs. Nan Ivy, of Belmont, Mrs. Earlene Reeves, of Golden, and Mrs. Inez Ramey, of Mantachie; a brother, Bill Bennett, of Fulton; 22 grandchildren and nine great-grandchildren.

M.R. Nixon

Minor R. Nixon, 70, died Sunday, January 1, at the Tishomingo County Hospital. He was a retired officer of the Iuka Guaranty Bank and a member of the Iuka United Methodist Church.

Services were held Tuesday at the Iuka United Methodist Church with Revs. Jack Williams and Jerry Horton officiating. Burial was in Oak Grove Cemetery. Cutshall Funeral Home was in charge of the arrangements.

Survivors include a daughter, Mrs. Ann Kay, of Tupelo; a son, Douglas Nixon, of Huntsville, Ala.; three grandchildren.

Audie B. Marlar, Sr.

Audie Benjamin Marlar, Sr., 67, died Sunday, January 1, at the Magnolia Hospital. He was a retired employee of the Mississippi Highway Patrol and Mississippi State Tax Commission. He was one of the founders and helped to build the Harmony Hill Baptist Church in Burnsville. He was a member of the Tate Street Baptist Church in Corinth, where he was assistant Sunday School teacher. He was an active member of the Corinth Gideon's Camp, a member of the Burnsville Masonic Lodge, the York Rite Bodies, a Shriner, and a member of the Mississippi and Tennessee Peace Officer's Association. He was a veteran of World War II and past member of the Corinth Lions Club.

Services were held Tuesday at the Harmony Hill Baptist Church with the Revs. Mike Burczynski, Grant Clar, and Billy Thomas Feltman officiating. Burial was in the church cemetery. McPeters Funeral Home was in charge of the arrangements.

Survivors include his wife, Mrs. Jane H. Marlar, of Corinth; three daughters, Mrs. Kim Marlar York and Miss Cherry Marlar, both of Corinth, and Mrs. Annette M. Couch, of Germantown, Tenn.; a son, A.B. Marlar, Jr., of Memphis, Tenn.; his parents, Mr. and Mrs. Kim Marlar, of Burnsville; a sister, Mrs. Creek-

more Wright, of Corinth; two brothers, Floyd Marlar and Alvin Marlar, both of Burnsville; and four grandchildren.

Memorials may be made to the Gideon's Society.

ONE WHO CARES

Dear Nita,

I feel like I am going crazy. My sister was killed, and I can't seem to get rid of the terrible grief that grips my heart. I am deeply depressed, and I hold bitterness in my heart even though I am supposed to be a Christian.

In Pain, K.A.D.

Dear K.A.D.,

I truly feel for you, and I am deeply sorry this happened to you. It is not wrong to have grief and sorrow. The Bible doesn't say, "Sorrow not"; but it says, "Sorrow not as others who have no hope". (I Thess. 4:13)

Seek God's great comfort; seek the comfort of friends. Most of all try to keep yourself interested in the needs and problems of others. God has blessings in store for those who consider other people. You see God had our own interest at heart when He told us to bear one another's burdens because it is the best medicine I know, especially for grief, or problems.

I am not sure I understand what you mean by your bitterness, but I instantly thought of my own brother, who was killed at 21 years old. I carried bitterness and hatred for years as a non-Christian until God forgave me for all my sins, and His precious love touched me, and melted my heart. I have forgiven and actually love the people who took my brother's life. Only the power of Jesus can do this. Believe me, with Jesus it is possible.

NITA

I would love the opportunity to talk to anyone about Jesus and what He can do for you. Please send your questions or comments to:

ONE WHO CARES
NITA GOSS
ROUTE 2, BOX 470
IUKA, MS. 38852

\$ & Sense

By: Ann O. Rushing
Marketing Specialist
Mississippi Cooperative
Extension Service

Greens are a very common item here and are found in most every food store year round, either frozen, canned or fresh.

Local producers do an excellent job of supplying our markets with greens except for a few months out of the year. During extremely hot and freezing weather, local supplies are short and are supplemented by those from other areas.

Greens are especially nice for a change during the rounds of rich holiday foods. Cook them plain or add fresh turnips for even better taste. Fresh turnips add to canned

greens will give a more pleasing effect.

If you've decided to put greens on your menu, plan to serve them, "pot liquor" and all for full value -- nutrition and money wise. The southern tradition of cooking fresh greens with bacon fat or salt pork produces a delightfully seasoned liquid called pot liquor.

The liquid left from the cooked greens has many of the food nutrients dissolved in it and makes an excellent soup, or you can use it to add flavor to most any other dish.

In addition to turnip greens you may choose mustard, spinach or collards. All of these grow well in Southern home gardens and are readily available during the fall and winter months.

Nutritionally, greens are high in vitamins A and C, as well as the important

minerals calcium and iron.

When buying or selecting garden or market greens, look for crisp clean leaves with good deep green color. Always remember, the fresher the better. Avoid excessive amounts of grit or dirt.

Avoid those that are tough or fibrous and those with yellowish leaves or brown tips. Avoid greens that have soft mushy spots on the leaves, stems or roots. Inspect closely for insect damage.

Greens may be sold in bunches or prepackaged bags. Prepackaged greens may cost a few cents more than bulk forms, but you should consider the added convenience of a trimmed, washed and easy-to-store

Tishomingo County News - Vidette - Belmont News

product in making your choice.

Remember: that even prepackaged, washed greens should be washed thoroughly before cooking or serving. Never soak greens but wash gently in plenty of water and lift them out of the water to free them of grit or dirt.

To preserve the quality of the greens, it is necessary that you store them properly after purchase and that they've been properly cared for from field to market. Good storage requires cold moist conditions. For best results, store greens in a crisper or a plastic bag with ventilating holes at a temperature of near 32 degrees as possible without freezing.

Warm temperatures cause

rapid deterioration, loss

nutrients and a change

dark green color

yellowish or brownish

Buy only the amount

you can use within a few

because tender greens

keep well. A pound of

greens will cook down

about four servings, and

there are some variations

To save nutritive

when cooking greens, co

steam in a small amou

water until just tender

water remaining on

greens after washing

usually sufficient to

them.

For a change o

during the holidays,

greens, pot liquor, corn

a meat and beverage

you're really in for a treat

IUKA BAPTIST CHURCH

105 West Eastport Street

SUNDAY SERVICES

Sunday School 9:45 a.m.

Worship Service 10:55 a.m.

Church Training 6:00 p.m.

Worship Service 7:00 p.m.

WEDNESDAY SERVICE

Mid-Week Prayer Meeting 7:00 p.m.

Morning and Evening Services Broadcast Over WTIB-FM 104.9
Morning services also on A.M. 1270



COME TO CHURCH

We all have times when things go wrong,
And Fortune's in reverse;
Yet we're expected to be strong,
Though things could not get worse...
A strength of which the Scriptures name
Examples plain to see:
Like Job, whose faith remained the same
Throughout adversity.
So why not go to Church this week,
Whichever one you choose,
And listen to the Bible speak;
There's not a thing to lose!
Then, what those passages command
You'll follow to the letter;
And let God take your life in hand,
To change it for the better! —Gloria Nowak

UNITED METHODIST PATRICK HARMONY BURNVILLE Del Blackman IUKA METHODIST Jerry S. Horton MT. EVERGREEN CAMPGROUND ROCKY SPRINGS Bob Tickell SNOWDOWN PLEASANT HILL SPRING HILL James E. McKeithen OLD BETHEL GOLDEN CHAPEL Glenn Grammer	GRISCOM CHAPEL Edward Thigpen CHRISTIAN FELLOWSHIP S.A. Bonds CHURCHES OF CHRIST MAUD CHURCH OF CHRIST James Joyce IUKA CHURCH OF CHRIST Perry Taylor BEREIA CHURCH OF CHRIST Jimmy Ferguson TISHOMINGO Donald Rhodes BELMONT SECOND STREET Jimmy Gross PLEASANT GROVE Ronald Adams LIBERTY Haskell Sparks MAIN STREET Wayne Mitchell BURNVILLE J.T. Smith	IUKA BAPTIST Bobby Burgess, Pastor BELMONT FIRST Jack Maroon HUBBARD SALEM BAPTIST Charles D. Lambert CARTERS BRANCH S.W. Shinnault CALVARY BAPTIST Thomas Ozburn MT. MORIAH Ben Thornton GOLDEN CENTRAL BAPTIST Ralph Culp MT. VERNON BAPTIST Perry Murphy TISHOMINGO BAPTIST Bobby Bostick - Pastor BURGESS CREEK Eulon Pruett BURNVILLE FIRST Claude M. Prince NEW PROSPECT Eugene Walden OLDHAM Tim Pittman PADEN Pat Howard FIRST BAPTIST O.H. Moore EASTPORT Phil Dawson NEW SALEM Joe Mayers UNITY BAPTIST CHURCH T.E. Davis RED BUD John Stovall ROWLAND MILLS Frankie Smith	CALVARY MISSIONARY Jim Jones SOUTH CROSSROADS Harold Holly PROVIDENCE BAPTIST Clyde Vinson BETHEL MISSIONARY Bobby Elliott MT. GILEAD James Hardin TEMPLE Mavous Phifer MT. ZION BAPTIST Bobby Casteel FIFTH STREET Bill Hobson OLD PLEASANT HILL Donald Hudson NEW LEBANON FREEWILL Gerald Taylor ANTIOCH FREEWILL Glenn Jones POPLAR SPRINGS Russel Clouse HIGHLAND BAPTIST J. A. Blunt BETHLEHEM George D. Credille YELLOW CREEK Stanley Magill DENNIS FIRST BAPTIST John Stockton FIRST FREEWILL BAPTIST Leonard Casabella - Pastor NEW LIBERTY BAPTIST T.E. Nethery SHORT CREEK G.D. Jones WALKER MISSIONARY Little Flock Primitive Baptist Elders Roger Browning & Herman Clair Southwood Baptist Bro. Neil Moore
SALEM BOGGES CHAPEL PARADISE TISHOMINGO Paul York DENNIS BELMONT Gerald Chaffin	REORGANIZED CHURCH OF JESUS CHRIST OF LATTER DAY SAINTS Justice Manning, Red Bay, AL. UNITED PENTECOSTAL BURNVILLE FIRST David Huff IUKA FIRST UNITED Frank E. Williamson NONDENOMINATIONAL AMAZING GRACE TABERNACLE Bro. & Sis. R.G. Rodgers MT. ZION R.C. & Dorothy Wigginton NORTH CI CROSSROADS COMMUNITY Travis Shea IUKA MISSION Danny Lovelace	PRESBYTERIAN ALLSBORO CUMBERLAND J.B. Burns, Jr. BETHANY L.K. Foster	BAPTIST ST. PETER'S BAPTIST Parvin Neloms AIRPORT MISSION Earl Martin

RUSHING REXALL DRUG COMPANY

Presents

Tishomingo County

Hospital List

Christo Anderson
Eula Aldridge
Alfred Paul Bain
Diana Mary Booker
Lural Marie Banks
Samantha Diane Borden
Lillian Bostick
Noah Belue
Earl M. Bascomb
Addie Mason Crider
Mollie Elizabeth Curtis
Virginia Crum
Jessie Carlisle
Edith Crowe
Ellison Coln
Eddie Cain
Larry Wayne Campbell
Rosie Lee Curtis
Delores Faye Dyson
Mary E. Downs
Edith Dickinson
Onnie Eugene Dickinson
Angela Deaton
Boss Evetts
Beverly Lynn Franks
William S. Fooshee
Mattie Grisham
Mandy J. Hardy
Harold J. Halvorsen
Minnie P. Haynie
Dee Floyd Hollins
Kermit Pearson Harp
Janice N. Hardwick
Jessie Estelle Inlow
Hazel Maxine Isbell
Cynthia Isbell
Betty Linda Jourdan
Charles Johnson
Anthony Keller

General Sherman Loveless
Joshua Lambert
Charles McCaig
Clay McKee
Arthur Lee Mitchell
Lorene Miller
James Edward Moss
Thelma Oaks
Kathryn Porterfield
Martha Faye Poindexter
Ellen A. Risener
Charles E. Rickard
Alma Richardson
Willie Mae Robinson
Shelby Richardson
Ruth Jewel South
Gary Tigner
Maston Turner
Robert Tackett
Letha Thrasher
Milton W. Vanderford
Regina Wigginton
Jourdan W. Wood
Katie K. Wardlow
Ossie Lee Wallace
Janie Whitfield
Elaine Wynn
Charles Worley
Rethal Whitfield
Eula Mae Bullard
Essie Mae Conaway
Johnnie O. Hudson
James Branson
Rita Watkins
Fannie J. Nix
Brenda Wilmeth
Teresa Powers
Lillie Scott
Beatrice Hall
Johnny McVay
Stella Pannell

CUTSHALL FUNERAL HOME

Representing
Corinth Mutual
Burial Association

Mississippi
Funeral
Association

Liberty National
Life & Burial
Insurance Company

SOME BURIAL POLICIES CAN
BE PAID OUT IN 15 YEARS

CUTSHALL FUNERAL HOME

Phone 423-5222
Iuka, Miss.

McNATT FORD SALES

Phone 423-3681 Iuka, Miss.

TOWN & COUNTRY FURNITURE

Hwy. 25 South in Iuka

FARM BUREAU INSURANCE

Phone 423-6151 Iuka, Miss.

BROWN INSURANCE AGENCY

Iuka, Miss.

FIRST AMERICAN NATIONAL BANK

Iuka-Golden-Burnsville-Belmont

CUTSHALL FUNERAL HOME

Phone 423-5222 Iuka, Miss.

CARPETS UNLIMITED & CIRCUS BURGER

Iuka, Miss.

STATE FARM INSURANCE

117 Eastport St. Iuka

HONEYCUTT CHEVROLET

Phone 423-3622 Iuka, Miss.

RUSHING REXALL DRUGS

Phone 423-3629 Iuka, Miss.

CURTIS BROTHERS DRUGS

Phone 423-3676 Iuka, Miss.

IUKA GUARANTY BANK

"Straight Ahead Through The Year"

What's YOUR Blood Pressure?

What's YOUR Blood Pressure? A chart showing blood pressure ranges and their corresponding health risks.

What's YOUR Blood Pressure? A chart showing blood pressure ranges and their corresponding health risks.

What's YOUR Blood Pressure? A chart showing blood pressure ranges and their corresponding health risks.

What's YOUR Blood Pressure? A chart showing blood pressure ranges and their corresponding health risks.

What's YOUR Blood Pressure? A chart showing blood pressure ranges and their corresponding health risks.

What's YOUR Blood Pressure? A chart showing blood pressure ranges and their corresponding health risks.

What's YOUR Blood Pressure? A chart showing blood pressure ranges and their corresponding health risks.

What's YOUR Blood Pressure? A chart showing blood pressure ranges and their corresponding health risks.

What's YOUR Blood Pressure? A chart showing blood pressure ranges and their corresponding health risks.

What's YOUR Blood Pressure? A chart showing blood pressure ranges and their corresponding health risks.

What's YOUR Blood Pressure? A chart showing blood pressure ranges and their corresponding health risks.

What's YOUR Blood Pressure? A chart showing blood pressure ranges and their corresponding health risks.

What's YOUR Blood Pressure? A chart showing blood pressure ranges and their corresponding health risks.

What's YOUR Blood Pressure? A chart showing blood pressure ranges and their corresponding health risks.

What's YOUR Blood Pressure? A chart showing blood pressure ranges and their corresponding health risks.

What's YOUR Blood Pressure? A chart showing blood pressure ranges and their corresponding health risks.

What's YOUR Blood Pressure? A chart showing blood pressure ranges and their corresponding health risks.

What's YOUR Blood Pressure? A chart showing blood pressure ranges and their corresponding health risks.

What's YOUR Blood Pressure? A chart showing blood pressure ranges and their corresponding health risks.

What's YOUR Blood Pressure? A chart showing blood pressure ranges and their corresponding health risks.

What's YOUR Blood Pressure? A chart showing blood pressure ranges and their corresponding health risks.

What's YOUR Blood Pressure? A chart showing blood pressure ranges and their corresponding health risks.

What's YOUR Blood Pressure? A chart showing blood pressure ranges and their corresponding health risks.

What's YOUR Blood Pressure? A chart showing blood pressure ranges and their corresponding health risks.

What's YOUR Blood Pressure? A chart showing blood pressure ranges and their corresponding health risks.

What's YOUR Blood Pressure? A chart showing blood pressure ranges and their corresponding health risks.

What's YOUR Blood Pressure? A chart showing blood pressure ranges and their corresponding health risks.

What's YOUR Blood Pressure? A chart showing blood pressure ranges and their corresponding health risks.

What's YOUR Blood Pressure? A chart showing blood pressure ranges and their corresponding health risks.

What's YOUR Blood Pressure? A chart showing blood pressure ranges and their corresponding health risks.

What's YOUR Blood Pressure? A chart showing blood pressure ranges and their corresponding health risks.

What's YOUR Blood Pressure? A chart showing blood pressure ranges and their corresponding health risks.

What's YOUR Blood Pressure? A chart showing blood pressure ranges and their corresponding health risks.

What's YOUR Blood Pressure? A chart showing blood pressure ranges and their corresponding health risks.

What's YOUR Blood Pressure? A chart showing blood pressure ranges and their corresponding health risks.

What's YOUR Blood Pressure? A chart showing blood pressure ranges and their corresponding health risks.

What's YOUR Blood Pressure? A chart showing blood pressure ranges and their corresponding health risks.

What's YOUR Blood Pressure? A chart showing blood pressure ranges and their corresponding health risks.

What's YOUR Blood Pressure? A chart showing blood pressure ranges and their corresponding health risks.

What's YOUR Blood Pressure? A chart showing blood pressure ranges and their corresponding health risks.

What's YOUR Blood Pressure? A chart showing blood pressure ranges and their corresponding health risks.

What's YOUR Blood Pressure? A chart showing blood pressure ranges and their corresponding health risks.

What's YOUR Blood Pressure? A chart showing blood pressure ranges and their corresponding health risks.

What's YOUR Blood Pressure? A chart showing blood pressure ranges and their corresponding health risks.

What's YOUR Blood Pressure? A chart showing blood pressure ranges and their corresponding health risks.

luka. Recognizing that hypertension is a prevalent undetected illness, the management decided to provide a free blood pressure measuring service during all store hours. Commented an employee of the new policy,

"It is our hope that this service will alert persons with elevated pressure to seek medical attention. We also feel that the potential exists to help motivate hypertensives to stay on whatever treatment plan their doctors

have prescribed." VITA-STAT is a fully automatic, computer programmed instrument, which provides reliability, consistency, and economy. However, it gives no opinions regarding diagnosis or prognosis.

Foundation Facts

Bill Flynn,
Executive Director, TCDF

A question asked by many people after hearing the title, "Tishomingo County Development Foundation, is what does it do?" An examination to take an inquiry from an individual who has started a small business selling antiques and maintenance chemicals and wants to know how he can expand his business. He needs a permanent building, some painting equipment, a bottle filler and capper, as well as a cartoning machine, but does not have the money to buy these things.

He would be willing to borrow the money but doesn't think that he could afford to pay the current interest rates. Expanding to provide new jobs is worthwhile so the State and Federal Governments have financing programs which the Tishomingo County Development Foundation is familiar with and can help the small businessman apply for. This case a small business administration loan or industrial bond issue may be available to finance both equipment and building. These methods of financing would have lower interest rates and more reasonable paybacks in many cases.

If you have any questions concerning how to start-up a new business or how to expand your present business, call the Tishomingo County Development Foundation Office at 423-9933.

Miss. Qualifies For Alcohol Traffic Safety Incentive Grant of \$646,055

Gov. William Winter has been notified by the U.S. Department of Transportation that Mississippi qualifies for a \$646,055 Alcohol Traffic Safety Incentive Grant. Legislation signed by President Reagan on Oct. 25 gave new highway safety funds to states that adopt and implement stricter laws and more comprehensive

programs against drunk driving, according to Governor Winter.

"Mississippi accepted the challenge to take a strong stand against drunk driving when the 1983 Legislature passed the amended Implied Consent Law which became effective on July 1," said Roy Thigpen, the governor's representative for highway safety. "Under the new law, drunk drivers in Mississippi will face at least a 90-day license suspension, a fine of no less than \$200 and possible jail confinement. The Department of Transportation was particularly pleased to note that the new law imposed an additional assessment of \$10 on each person convicted of drunk driving to be credited to a special fund to help defray costs of Mississippi's alcohol traffic safety program."

In a letter to Governor Winter, Diane K. Steed, Department of Transportation administrator-designate, said "the citizens of Mississippi will be safer because of the action that you, your task force (Governor's Task Force on Drunk Driving), the state Legislature and your Governor's Highway Safety Program have taken in addressing this serious problem."

Thigpen said that, when Mississippi receives the grant, "the funds will be carefully allocated to gain the most impact for every dollar spent in getting drunk drivers off our state's streets and highways."

Drunk driving is the most serious of Mississippi's highway safety problems, according to the Governor's Highway Safety Program. Approximately 62 percent of all highway fatalities are related to drunk driving, and GHSP estimates that, in 1982, at least 365 Mississippians were killed in accidents involving drunk drivers.

Report From Secretary of State

Edwin Lloyd Pittman, Secretary of State, has released to this newspaper the following information about business activity from this locality with the Secretary of State's Office for

this month. Secretary Pittman reported that there were 21 documents filed from the County giving notice that a creditor has a security interest in property of the debtor. During the same period, 3 new business corporations located in the county were chartered.

In addition, the Secretary of State reports that 4 out of state defendants were served through the Secretary of State's Office with court process for law suits which originated in this County. Secretary Pittman reported that 2 Notaries Public were registered.

USA Teen Miss

A contestant is being sought to represent luka in the official Miss. State Preliminary of the U.S.A. Teen Miss Scholarship Pageant to be held in the ballroom of the Holiday Inn-North in Jackson on Sunday, March 11th.

To qualify as a contestant, the Teen Miss must be between the ages of 13 and 18 (inclusive) as of the July 4th National Finals, a USA citizen and of a charismatic (leadership quality) personality.

The newly crowned luka Teen Miss will compete with other area finalists in communications, evening gown and interview competitions for the state title and crown of Miss. Teen Miss, plus a \$1,000 cash scholarship award. Each of the ten semi-finalists will receive a complete, self-study modeling course.

Applications may be obtained by sending a self-addressed, stamped envelope to: Miss. Teen Miss Applications, 31 Mill Plain Rd., Danbury, Conn. 06810 or by calling the national headquarters at 203/748-6682.

School Lunch Menus

Belmont, Burnsville & Tishomingo
January 9-13
MONDAY

Barbecue
Cole slaw
French fries
Cookies
Peaches

TUESDAY

Tacos/cheese
Lettuce & tomato
Skin on potatoes
Corn on the cob
Dill spears
Fruit cup

WEDNESDAY

Fried chicken
Green beans
Creamed potatoes
Buttered rolls
Sliced pineapple

THURSDAY

Ham shanks
Pinto beans
Cabbage & carrot slaw
Corn bread muffin
Banana pudding

FRIDAY

Beef stew
Toasted cheese or peanut butter & jelly sand.
Crackers
Peach cobbler

NOTICE

The Midway 3rd District Volunteer Fire Department will be having their monthly meeting on January 10, at 7:00 p.m. at the Fire Department. Those persons interested in becoming volunteer firemen during the day are urged to attend. The yearly fee is \$10.00. All donations are accepted.

In case of fire call the Sheriff's Department at 423-6185.

Everyone is invited.

A potato peeler can be used to cut cheese into strips for salads and other garnishing.

Health-Wise

Heart Disease—
Are You a Candidate?
Allan R. Magie, Ph.D., M.P.H.

There's really no magic formula to use to determine whether you are going to develop heart disease. But there are certain factors that increase your chances. And the more of these risk factors you have, the greater your risk of developing chest pain (angina), stroke, heart attack, or heart failure.

All that's necessary to predict if you are at greater risk of coronary heart disease (CHD to health scientists) is to examine your life style and your body's early warning signals, especially those that you can alter. Some risk factors that predispose one to early heart disease can't be changed—for example, your age, sex, and family history. But you can do something about other risk factors, even those that may have been inherited.

Some people have to be even more careful than others, especially if there's a family history of premature heart disease or diabetes. It would be much easier if we could choose our parents! However, the most comforting fact about heart disease is that you alone may be able to prevent and control it. Examine these four major risk factors to determine where you fit in. Then decide what changes you need to make.

1. **Smoking.** It should come as no surprise that this heads the list. According to the American Heart Association, the evidence linking cigarette smoking to CHD is substantial. It accelerates many of the body changes leading to heart disease and is especially damaging to those with other risk factors. Those who give up the habit reduce their risk to half of those persons who continue smoking.



JUNIORS ON THE 1983-84 IUKA CHIEFTAIN TEAM ARE, front row, left to right: David

Murphy and Tommy Dean; back row, left to right, Chris Kay, Porter Johnson and Steven Walker. The Chiefs are

preparing for action in the Tishomingo County Tournament to be played at Tishomingo next week.

Evening Vocational Programs At NEMJC

Registration and first class meeting for the 1984 spring term will be Monday, January 16, between 6:00 and 8:00 p.m. in Dean Hall on the Nor-

theast Mississippi Junior College Campus.

Students who register for classes for which Continuing Education Units (CEU) will be granted must pay a \$10.00 registration fee (Non-refundable).

An additional fee shall be charged for on-campus classes based on the hours the classes meet. These fees shall be computed as follows: Classes 50 contact hours and over, \$40.00; classes less than 50 contact hours, \$80 per hour.

Classes offered include: air conditioning, automatic transmission repair, color coding, electronic devices II, electricity for electronics, forest inventory, and machine shop tool and diemaking.



The first U.S. satellite, Explorer I, was launched Jan. 31, 1958; it remained in orbit until March 31, 1970.

FALL & WINTER CLEARANCE

sale

FEATURING LADIES DRESSES, SPORTSWEAR, LINGERIE, BAGS, CHILDRENS WEAR & QUEEN SIZES

KENWIN SHOP

FRONT STREET IN IUKA

OPEN NOW

JERRY'S OUTLET

LOCATED ON HWY. 25 N. NEXT TO SANDER'S SPUR

CLOTHING FOR THE ENTIRE FAMILY INCLUDING LARGE & TALL SIZES

OPEN THURSDAY & FRIDAY 5 P.M. - 8 P.M.

SATURDAY 9 - 5

SHOP US FOR SAVINGS ON NAME BRANDS

STOREWIDE CLEARANCE

SUITS & SPORT COATS 30% OFF

ENTIRE STOCK DRESS PANTS 25% OFF

SWEATERS 25 to 50% OFF

LONG SLEEVE SPORT SHIRTS 25% OFF

LIGHTWEIGHT JACKETS 20% OFF

BIG AND TALL SHIRTS LONG SLEEVE 25% OFF

COME TO THE SOURCE.....

SHANKY'S MEN'S WEAR

HWY. 25 SOUTH - ELM SHOPPING CENTER 9-5:30.....423-5544

B.R.I.T.'S

ELM SHOPPING CENTER - IUKA

QUICKLY EARNING A REPUTATION AS ONE OF THE AREA'S FINEST RESTAURANTS!

IF YOU ARE NOT TOTALLY PLEASED WE'LL TREAT YOU TO A DINNER AT THE NEXT BEST RESTAURANT IN TOWN

SPECIAL FRIDAY NIGHT BUFFET

FEATURING

A VARIETY OF FRESH SEAFOOD, CHARBROILED SIRLOIN STEAK, CATFISH, POULTRY AND A WIDE ASSORTMENT OF VEGETABLES AND SALADS FROM WHICH TO CHOOSE.

ALL YOU CAN EAT PLUS DRINK & DESSERT

UNDER \$5.00

*Produced by the Health-Temperance Department of the General Conference of Seventh-day Adventists as a community service.

LEGAL ORDINANCE

AN ORDINANCE OF THE CITY OF IUKA, MISSISSIPPI, EXTENDING THE CORPORATE BOUNDARIES OF SAID CITY DESCRIBING THE TERRITORY TO BE ADDED, AND THE CORPORATE BOUNDARY AS ENLARGED: A GENERAL DESCRIPTION OF THE IMPROVEMENTS TO BE MADE IN THE ANNEXED TERRITORY, AND THE MUNICIPAL SERVICES TO BE PROVIDED THEREIN.

BE IT ORDAINED by the Board of Aldermen and Mayor of the City of Iuka, Mississippi, in a regular meeting held on the 3rd day of January, 1984, at 7:00 p.m.

SECTION 1: That the boundaries of the City of Iuka be and they are hereby extended and enlarged so as to annex the following territory:

CITY OF IUKA

PROPOSED ANNEXATION

Beginning at a point on the East line of the Southeast Quarter of Section 14, Township 3, Range 10 East, Tishomingo County, Mississippi, where said East line intersects the North right-of-way line of Southern Railroad, said point being North 1,200 feet, more or less, from the Southeast corner of the Southeast Quarter of said Section 14, thence run in a Northwest direction along the North right-of-way line of Southern Railroad 1,500 feet, more or less, to the East side of a gravel road; thence run in a Northerly direction along the East side of said gravel road 400 feet, more or less, to a point on the East side of said gravel road and on the South side of Harmony Road, thence run in a Northerly direction across Harmony Road to the intersection of the East side of Harmony Road with the North side of West Ash Street; thence run in a Northwest direction along the East side of Harmony Road 600 feet, more or less, to the South side of Whitehouse Road; thence run in a Northerly direction along the South side of Whitehouse Road, 800 feet, more or less, to a point that is South 1,367.87 feet South of, and 927.61 feet West of the Northeast corner of the Northeast Quarter of Section 14, Township 3, Range 10 East; thence run North 27 degrees 25.82 minutes 52 seconds West 255.82 feet; thence run South 62 degrees 54 minutes 56 seconds West 210.29 feet; thence run North 0 degrees 26 minutes 34 seconds West 1,294.23 feet to the North line of the Northeast Quarter of Section 14, Township 3, Range 10 East; thence run East along said North line 1,218.57 feet to the Northeast corner of the Northeast Quarter of Section 14, Township 3, Range 10 East; thence run North along the East line of the Southwest 1/4 of Section 12, Township 3, Range 10 a distance of 1,804 feet; thence run North 86 degrees 45 minutes East to a point in the East line of said Southwest 1/4 that is 821 feet South of the Northeast corner of said Southwest 1/4; thence run South along the East line of said Southwest 1/4 219 feet to the Southeast corner of said Southwest 1/4; thence run South with the East line of the Northwest 1/4 of Section 13, Township 3, Range 10 a distance of 1,119 feet to a point in the present North line of the Iuka corporate boundary; thence run South 81 degrees East with the boundary of the Town of Iuka 3,609 feet, more or less, to a point in the East right-of-way line of the Red Sulphur Springs Road, said point being in the Southwest 1/4 of the Northwest 1/4 of Section 18, Township 3, Range 11; thence run in a Northerly direction with the meanderings of the said East right-of-way line of said road to a point where said East right-of-way line intersects the North line of said Northwest 1/4 of Section 18, Township 3,

follows:

Beginning at the Northwest corner of the Northeast Quarter (1/4) of Section 23, Township 3, Range 10 and run thence North 86 degrees East with the North line of said Northeast 1/4 to the Northeast corner of said Northeast 1/4; thence run North 4 degrees West with the East line of the Southeast 1/4 of Section 14, Township 3, Range 10, to a point on the East line of the Southeast Quarter of Section 14, Township 3, Range 10 East, where said East line intersects the North right-of-way line of Southern Railroad, said point being North 1,200 feet, more or less, from the Southeast corner of the Southeast Quarter of said Section 14; thence run in a Northerly direction along the North right-of-way of Southern Railroad 1,500 feet, more or less, to the East side of a gravel road; thence run in a Northerly direction along the East side of said gravel road 400 feet, more or less, to a point on the East side of said gravel road and on the South side of Harmony Road; thence run in a Northerly direction across Harmony Road to the intersection of the East side of Harmony Road with the North side of West Ash Street; thence run in a Northwest direction along the East side of Harmony Road 600 feet, more or less, to the South side of Whitehouse Road; thence run in a Northerly direction along the South side of Whitehouse Road, 800 feet, more or less, to a point that is South 1,367.87 feet South of, and 927.61 feet West of the Northeast corner of the Northeast Quarter of Section 14, Township 3, Range 10 East; thence run North 27 degrees 25.82 minutes 52 seconds West 255.82 feet; thence run South 62 degrees 54 minutes 56 seconds West 210.29 feet; thence run North 0 degrees 26 minutes 34 seconds West 1,294.23 feet to the North line of the Northeast Quarter of Section 14, Township 3, Range 10 East; thence run East along said North line 1,218.57 feet to the Northeast corner of the Northeast Quarter of Section 14, Township 3, Range 10 East; thence run North along the East line of the Southwest 1/4 of Section 12, Township 3, Range 10 a distance of 1,804 feet; thence run North 86 degrees 45 minutes East to a point in the East line of said Southwest 1/4 that is 821 feet South of the Northeast corner of said Southwest 1/4; thence run South along the East line of said Southwest 1/4 219 feet to the Southeast corner of said Southwest 1/4; thence run South with the East line of the Northwest 1/4 of Section 13, Township 3, Range 10 a distance of 1,119 feet to a point in the present North line of the Iuka corporate boundary; thence run South 81 degrees East with the boundary of the Town of Iuka 3,609 feet, more or less, to a point in the East right-of-way line of the Red Sulphur Springs Road, said point being in the Southwest 1/4 of the Northwest 1/4 of Section 18, Township 3, Range 11; thence run in a Northerly direction with the meanderings of the said East right-of-way line of said road to a point where said East right-of-way line intersects the North line of said Northwest 1/4 of Section 18, Township 3,

Range 11; thence run East with the North line of said Northwest 1/4 1,196 feet; more or less to the Northeast corner of said Northwest 1/4; thence run South with the East line of said Northwest 1/4 2,363 feet, more or less, to a point in the North boundary line of the Town of Iuka; thence run South 81 degrees East with the North corporate boundary of said town 1,232 feet, more or less, to a point in the North line of the Southeast 1/4 of Section 18, Township 3, Range 11; thence run East along the North line of said Southeast 1/4 to the Northeast corner of said Southeast 1/4; thence run South with the East line of said Southeast 1/4 and the East line of the Northeast 1/4 of Section 19, Township 3, Range 11 to the Southeast corner of said Southeast 1/4 of Section 19, Township 3, Range 11; thence run West with the South line of said Southeast 1/4 and the Southwest 1/4 of Section 19, Township 3, Range 11 and the South line of the Southeast 1/4 and the Southwest 1/4 of Section 24, Township 3, Range 10 to the Southwest corner of said Southwest 1/4 of Section 24, Township 3, Range 10; thence run North with the West line of said Southwest 1/4 to the Northwest corner of said Southwest 1/4 of Section 24, Township 3, Range 10; thence continue North on the West line of the Northwest 1/4 of Section 24, Township 3, Range 10 to a point in the said West line where same is intersected by the line between the North half and the South half of said Northwest 1/4; thence run West along the South line of the North half of the Northwest 1/4 of Section 23, Township 3, Range 10 to a point where the same intersects the West line of said Northwest 1/4; thence run North with the West line of said Northwest 1/4 to the Northwest corner of said Northwest 1/4 and the point of beginning.

SECTION 3: All of the above described annexed territory will be improved in like manner, in the same classification, and to the same extent as the existing corporate territory, including water and sewer lines constructed and construction of a public housing development, and said improvements within the annexed territory have been completed.

SECTION 4: Police protection, fire protection, garbage pickup, water, gas and sewage and industrial services rendered by the City of Iuka to the present corporate territory shall be rendered to the annexed territory from and after the date on which this ordinance becomes effective; and any and all subsequent municipal services will be provided to the annexed territory at the same time and on the same basis as rendered to the present corporate territory. It is the intention of the City to include property adjoining the present industrial park, all of the property comprising the Iuka Elementary School and 2 city ball fields and youth center property on which a HUD housing development is located and other residential property in the area.

SECTION 5: The Mayor and Clerk of the City of Iuka be and are hereby authorized, empowered and directed to file a petition in the Chancery Court of Tishomingo County,

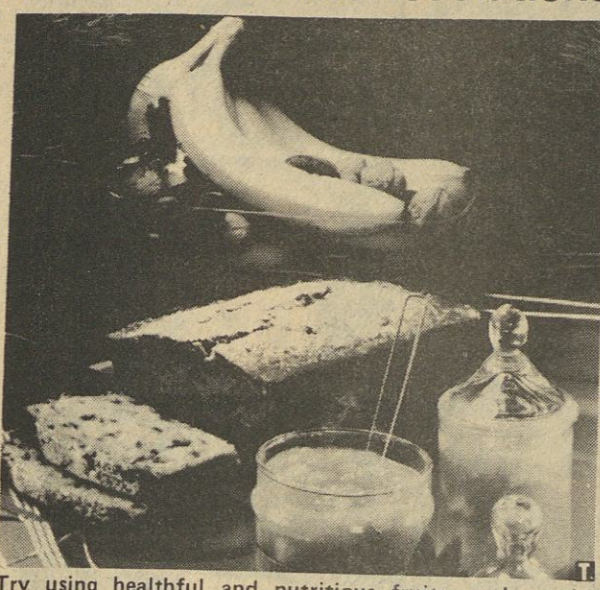
Make These New Year's Nutrition Resolutions

If eating better for better health is among your New Year's Resolutions, here are some tips to help you on your way:

• Breakfast is considered the most important meal of the day by many health-care professionals—so don't skip it. Include fresh fruits rich in vitamins, and breads that supply carbohydrates for energy. Milk, eggs or meat at breakfast mean protein.

• Start adding low-calorie, healthful ingredients to meals and desserts. Fresh fruits, such as the banana, are tasty and nutritious. There are only about 100 calories in an average size banana, and they're 99.8 percent fat free. Banana calories are not empty—they contribute many essential nutrients on a weight-conscious regimen, including Vitamin A, thiamine, niacin, riboflavin, Vitamin B₆ and Vitamin C. They're also low in sodium and high in potassium.

Bananas are easy to eat, easy to use in every meal of the day and all the snacks in between. Here's just one of the nutritious and delicious treats you can whip up for a holiday treat: Cranberry Banana Bread, with its seasonal bright red color and added fiber, brings a healthful plus to good cheer in the New Year.



Try using healthful and nutritious fruits, such as the banana, in your meals this coming year.

CRANBERRY BANANA BREAD

1/2 cup soft butter or margarine
1 cup sugar
2 eggs
2 cups sifted all-purpose flour
1 teaspoon baking soda
1/4 teaspoon salt
1 tablespoon lemon juice
1 cup mashed ripe bananas (3 medium)
1 cup chopped cranberries

In large bowl, cream but-

ter and sugar. Beat eggs one at a time, beating well after each addition. Sift together flour, baking soda and salt; blend into creamed mixture with lemon juice and bananas. Stir in cranberries. Turn into a greased 9x5x3-inch loaf pan. Bake in 350°F oven 1 hour, or until cake tester inserted in center comes out clean. Cool 10 minutes, turn out of pan and cool completely. Before serving, sift confectioners' sugar over top of loaf, if desired.
YIELD: 1 loaf.

Mississippi, in accordance with Section 11, Chapter 491, General Laws of Mississippi, 1950, Mississippi Code Ann., Section 21-1-29 (1972), and to do all other acts necessary or desirable to cause the above described property to be annexed to the City of Iuka.

SECTION 6: The public good and welfare demanding that this ordinance become final and that proceedings be instituted in the Chancery Court of Tishomingo County, Mississippi, as rapidly as possible, this ordinance shall take effect and be in force from and after its adoption.

SECTION 7: If any section, paragraph, or provision of this ordinance shall be held invalid, the invalidity of such section, paragraph, or provision shall not affect any other provision of this ordinance.

JOHN H. BIGGS,
MAYOR

ATTEST:
JOYCE BRUMLEY,
CITY CLERK
J-5-C.

Some Taxpayers To Receive Different Tax Packages

Approximately 875,000 taxpayers in Mississippi will receive their federal income tax packages within the next two weeks, the Internal Revenue Service says. Many may be surprised to find that they are receiving a different package from that of years passed.

Due to the addition of lines for the Child and Dependent Care Credit and for the Individual Retirement Account to the "short form" 1040A, about 1.5 million taxpayers nationwide who in the past have filed "long form" 1040's simply to claim one or both of these items will now be able to claim them on the 1040A.

In order to encourage these taxpayers to use the easier Form 1040A, IRS performed a computer search of its records to determine which tax package recipients filed 1040's simply to claim these items. These taxpayers will receive "short form" tax packages which contain both the Form 1040A and the new Form 1040EZ.

Conversely, "short form" package recipients who find they need to file Form 1040 to claim other deductions or credits can find instructions on the inside back cover of their tax packages on how to order a special "1040 Kit." This "Kit" contains a wide variety of forms and schedules, also listed with the instructions, which are designed to meet the needs of taxpayers changing from Form 1040A to Form 1040.

Other taxpayers may need to file forms different from those they receive, due to a change in their tax status. These individuals can pick up forms and tax schedules at most local IRS offices and also at many post offices and banks. Reproducible forms are also available at many libraries and can be photocopied for a small fee. Forms can also be obtained by using the order blank in the tax package, IRS points out.

The tax package received in the mail has a pre-addressed, peel-off label and return envelope which taxpayers should use. The label and envelope help to speed up the processing of the return, decrease the chance of errors, and often produce a refund faster, according to Sylvia Wren, Director of the Jackson District of the IRS.

Taxpayers who have their

returns completed by professional tax return preparers should furnish their tax packages to the preparers. If there is an error on the label, such as the name or address, the correction can be made right on the label.

The tax package contains the complete instructions that the taxpayer needs to complete the form in the package. If additional information is needed on credits, exemptions, deductions, or income, the IRS has more than 90 free publications on a wide range of subjects. These publications can be requested by using the order form in the tax package or by calling or writing the IRS.

Involvement By Victims of Drunk Driving

Greater involvement by victims of drunk driving was predicted recently by Roy Thigpen, director of the Governor's Office of Criminal Justice Planning, as he spoke at the Mississippi Alcohol Safety Education Program's annual meeting in Jackson.

"Within the next 10 years," Thigpen said, "I believe that judges will be aided in understanding the impact of the crime via victim impact statements (VIS). These statements, I believe, will be written by the victims or survivors in the victims' families. When a judge looks only on the surface, it's not easy to understand the seriousness of drunk driving, but the VIS will give the judge facts such as a family being forced to apply for welfare because of the breadwinner being killed by a drunk driver or a person never being able to walk again because of an accident involving a drunk driver."

"It should be the responsibility of the prosecutor to obtain and submit VIS to the courts," he said, "and citizen activist groups will demand that this happen."

Thigpen also predicted that states "will get together and develop strategies to reduce drunk driving. I believe we'll be seeing a good drunk driver control system that will deter drunk driving across the nation."

"I also believe that we'll see the combining of some city and county police agencies to have one unit covering a city and county," he said. "I feel certain that more law enforcement agencies will work together in attacking drunk driving in a coordinated manner. It's likely that law enforcement officers from several states, and nationally, will be meeting to take a look at what's working and what's not working."

Thigpen predicted that more electronic law enforcement will be employed and that patrol cars will be equipped with computers to file reports.

Noting that "judges have been blamed for being lenient," he said that "I believe we'll see more judges who are professionally educated to understand the alcohol-related crash problem

DEALERS WANTED
Sell a complete Satellite System for only \$1,599. From the nation's #1 supplier, SATELITE AMERICA.
PROTECTED DEALERSHIPS AVAILABLE
Call Wayne Gaines 601-227-1820 Ext. 110



healthy breads

SWEET POTATO BREAD

SWEET POTATO BREAD
7 to 7 1/2 cups unsifted white flour
1 1/2 cups unsifted whole wheat flour
1 tablespoon sugar
1 1/2 teaspoons salt
2 packages Fleischmann's Active Dry Yeast
1/4 cup (1/2 stick) margarine, softened
2 cups very warm water (120°-130°F)
1 1/2 cups mashed cooked sweet potatoes
1/4 cup toasted sesame seed
1 egg white
1 tablespoon water

Combine 5 1/2 cups white flour and whole flour.

In a large bowl, thoroughly mix 2 1/3 cups flour, sugar, salt and yeast. Add margarine. Gradually add very warm water to dry ingredients and beat 2 minutes at medium speed of electric mixer, scraping bowl occasionally. Add sweet potatoes and 1/2 cup flour. Beat at high speed 2 minutes scraping bowl occasionally. Stir in remaining flour mixture and enough additional white flour to make a soft dough. Turn out on floured board; knead until smooth and elastic, about 10 minutes. Place in a greased bowl, turning to grease Cover; let rise in a warm place, free from draft, until doubled in bulk, about 1 hour.

Punch down dough; turn out on lightly floured surface and knead in 3 tablespoons toasted sesame seed. Dough in half. Roll each half into a 14x9-inch rectangle. Shape into loaves. Place in 2 greased 9x5x3-inch loaf pans. Cover; let rise in warm place, free from draft, until doubled in bulk, about 1 hour.

Mix egg white and 1 tablespoon water and brush tops of loaves. Sprinkle with remaining toasted sesame seed. Bake at 375°F for 35 to 40 minutes, or until loaves are done. Remove from pans and place on wire racks to cool.

JANUARY CLEARANCE SALE

THIS THURSDAY, FRIDAY, & SATURDAY,
OPEN UNTIL 9:00 P.M. FRIDAY NIGHT

OUR BIGGEST SALE OF THE YEAR

New Pianos. from \$1199.00

New Baldwin Pianos. from \$1,395.00

Martin Sigma or Yamaha Guitars. \$160.00 (including case) Reg. \$249.50

Peavey Electric Guitars. from \$175.00

Gibson Les Paul Guitars. 40% OFF

Peavey Guitar Amps. from \$79.00

Peavey Bass Amps. from \$179.00

Half Price On All Crate Amps

Half Price On Fender Bass Amps

Ludwig Drum Sets. from \$1,095.00

Tama Drum Sets. from \$850.00

Used Drum Sets. from \$199.00

BIG DISCOUNTS ON ALL PEAVEY, SHURE

& SONY MICROPHONES

All Martin Guitar Strings. . . . \$3.00 per set (Values to \$9.95)

All Brands of Wood Drumsticks. . . . \$4.00 (Values to \$8.95 PER PAIR)

20% OFF

ALL CLARINET & SAXOPHONE REEDS

ALL MAGNAVOX TELEVISIONS

COST PLUS \$10.00

Portable Keyboards. from \$120.00

FORBES PIANO COMPANY

918 FLORENCE BLVD. FLORENCE, ALA. 35032

ALSO DOWNTOWN DECATUR. PHONE 766-3511



OFFICE OF THE SECRETARY OF STATE
401 Mississippi Street, Jackson, Mississippi



Ed Pittman
Secretary of State

Mississippi Business Activity Index

November Economic Indicators

	Nov. 1982	Jan. to Nov. 1982	Nov. 1983	Jan. to Nov. 1983
Newly organized Mississippi corporations.....	208	2,609	217	2,836
Foreign corporations newly qualified to do business in the state.....	80	992	83	1,008
Commercial financing statements filed (securing business debts).....	5,753	49,853	6,181	75,016
Mutual fund companies and businesses whose securities were qualified and renewed to be sold in Mississippi.....	104	1,298	124	1,402
Securities Brokers, Investment Advisors, and Agents qualified and renewed.....	134	3,603	300	5,867
Notaries Public registered.....	320	4,142	326	4,479
Service of Process handled.....	247	2,677	321	3,104
Gubernatorial appointments processed.....	2	210	6	245

A Monthly Service of Your Secretary of State, Edwin Lloyd Pittman

IUKA INSULATION COMPANY

Energy efficiency is more important today than ever. We specialize in all your weatherization needs including blown insulation and storm windows. All of our materials are TVA approved under The Energy Package.



Call today for an in home inspection and estimate, then call us to have your work done in a professional and prompt manner.

LEE EVERITT, OWNER
HWY. 25 NORTH, IUKA, MS
DAY 423-9962 NIGHT 423-6836

Tune to Cable
CHANNEL 4

Heritage
CABLEVISION
DISCOVER CABLE... FOR SPORTS