

Tishomingo County News

The Vidette & Belmont News

OFFICIAL LEGAL NEWSPAPERS OF TISHOMINGO COUNTY
The One Newspaper in The World Most Interested In This Area

Patronize The News
Advertisers!
They Send A Valuable
Message To You

Thursday, January 12, 1984 No. 30

ONE-HUNDRETH YEAR

IUKA, TISHOMINGO COUNTY, MISSISSIPPI

NEW COUNTY SHERIFF AND STAFF



New Sheriff's Deputies and Department Staff

Sheriff Bob Payne, who assumed office duties last Monday, January 2, has

selected his deputies and staff members for the next four years. Pictured, from left to right, are: Sheriff Payne; Chief Deputy Mike Kemp, of

Belmont; Pat Smith, of Burnsville, who is a dispatcher; Deputy Wheeler Carson, of Iuka; Sammie McVay, of Iuka, who is a dispatcher; Deputy

Ricky Cornelson, of Iuka; James Blakney, of Burnsville, who is a dispatcher; and Deputy Henry Holcomb, of Belmont.

WINFIELD TO OPEN PLANT IN B'VILLE

Bill Martin, vice-president of Winfield Manufacturing Company, Inc., issued a press release on January 6, announcing the firm's plans to locate a factory in Burnsville. This move would compensate for the economic wounds caused when another factory, Benchmark Industries, burned early last April, leaving 411 people jobless.

The news release stated that the proposed plant would begin manufacturing tents sometime in March. Although final plans are incomplete, Winfield expects to start interviewing job applicants during February.

The factory will be housed in the county-owned industrial facility that was

recently rebuilt to replace the Benchmark structure. Winfield held a lease (that still continues) on the building at the time of the fire. The company has opted to sublease to Benchmark Industries, which is no longer in business.

Presently, Winfield employs about 30 people at the facility for warehousing and shipping purposes. Officials made the decision to commence manufacturing operations after selling a plant in Corinth.

County politicians, businessmen, and economic councils were delighted with the announcement. Commented Bill Flynn, who is director of the Tishomingo County Development Foundation, "We, the T.C.D.F., the county,

and city, are very pleased to hear the news that Winfield will locate a factory in the building. They're one of the county's largest and oldest major employers." Winfield already operates a garment plant in Belmont.

Flynn also said that the new factory would have a "major impact" on the local economy, possibly putting several hundred people back to work in a county where the unemployment rate stands at 18.9%, according to November statistics from the Mississippi Employment Security Commission.

However, he stated that the company, which is currently moving equipment into the building, has not specified the required number of

workers. "Employment would be available to anyone who is interested in a job," Flynn said. "No promises have been made."

He went on to mention county government plans for encouraging Winfield's efforts to begin operations. Gerald Parsons, President of the Board of Supervisors, will apparently introduce a resolution at their next meeting offering full cooperation and support to Winfield for its new project in Burnsville. This resolution is also expected to be approved by the county's municipalities since all will benefit from the new industry.

COUNTY TOURNAMENT BEGINS TONIGHT

The 1984 county tournament begins tonight at 7:00 p.m. in the Tishomingo High School Gym. Tonight's competition will be followed by more sports action on Friday night with the final and deciding games scheduled for Saturday night. Admission will be \$1.00 for students and \$2.00 for adults, except on Saturday night when the fee is \$2.00 for everyone. This annual event has traditionally generated much excitement among fans of the county's four high schools: Belmont, Burnsville, Iuka, and Tishomingo. With the added excitement spurring them on, local teams have in years past hustled for their best performances of the season. The bracket below shows when all boys and girls teams are slated for action.

Last year the Belmont Cardinals walked off with both the A-team boys' and girls' trophies. This year they return to the tournament sporting the best records.

The girls' team, which captured the 1983 state championship, boasts of 16 wins with only 2 losses. The boys are only one win behind with a record of 15-3. Both teams

are coached by Malcolm Kuykendall.

Season statistics for the Burnsville Mustangs are not so favorable. The A-team boys have a record of 2-12, and the girls have a record of 1-13. However, Coach David Childers said that his teams were better than their records indicate. He looks forward to the county tournament, which will give the Burnsville teams a chance to prove themselves.

The Iuka Chieftains enter the tournament with a total of four wins and ten losses. The girls' team, coached by Jerry Harrelson, also has four wins but only six losses. The boys are now under the direction of Benny McClung since Larry Johnson resigned from his coaching position to enter private business.

The Tishomingo Bulldog teams, together with the school's student body, are hosting this year's tournament. The boys have captured five wins and been out-dueled eight times. The girls have almost the same record with four victories and eight defeats.

All readers are urged to attend the tournament and support their favorite teams.

Vocational Classes Offered At NEMJC

Night classes will begin meeting January 16 on the Northeast Mississippi Junior College campus as part of NEMJC's Continuing Education schedule for the spring semester.

Classes in air conditioning, automatic transmission repair, color coding, Electronic Devices II, electricity for electronics, forest inventory and machine shop-tool and die-making are being offered in 6 p.m. classes in Dean Hall.

Those taking the air conditioning class will attempt to develop an understanding for servicing air conditioning and gain a basic knowledge of schematics. In automatic transmission repair, students will learn new and current techniques in the field of automatic transmission development and repair.

Color coding is a four-session class of two hours each, giving the student instruction in color analysis, color selection for hair and makeup and practical applications of each.

Electronic Devices II offers instruction in operational amplifiers, timer, differential amplifiers, clippers, waveshapers and synchronization. The course is designed for those who have completed Electronic

Devices I. In electricity for electronics, fundamentals for alternating and direct current are examined, as well as proper use of hand tools and associated test equipment.

For those interested in forestry production, forest inventory includes volume estimation of standing trees, map reading, legal applications and volume computation.

In machine shop-tool and die-making, students will receive orientation and practice on basic lathes, mills, drill presses, surface grinders, punch press and shaper.

For information on registration and fees, contact Jimmy Crane at 728-7751, ext. 299, for Quitman Wigginton at ext. 207.

NOTICE

Iuka Tax Payers

The City of Iuka Tax Books are now open. All 1983 city taxes will be delinquent February 1, 1984. Interest and damages will be charged to all delinquent taxes.

JOYCE BRUMLEY,
TAX COLLECTOR

Eastern Star To Meet January 17

Iuka Chapter #126 O.E.S. will have their regular monthly meeting on Tuesday night, January 17, at 7:30 p.m. All members are urged to attend.

Gospel Singing

There will be a gospel singing at Grissom Chapel on Friday night, January 13, at 7:00 p.m.

The featured singers will be The Sparks Family of Belmont. Bro. Edward Thigpen and congregation invite everyone to attend.

Men's Club To Meet

The Methodist Men's Club of the Iuka Parish will meet Thursday, January 12, at Spring Hill U.M.C.

The fellowship meal will be at 7:00 p.m. Rev. Bob Welch will be the speaker.

CIRCUIT COURT TO ENTER SECOND WEEK

Eight criminal cases are to be argued in the second week of circuit court at the Tishomingo County Courthouse.

FIRST DAY: State of Miss. Vs Bobby Voyles; State of Miss. Vs Billy Phifer.

SECOND DAY: State of Miss. Vs George Coleman; State of Miss. Vs George Coleman; State of Miss. Vs I.W. Harber.

THIRD DAY: State of Miss. Vs David Hannon.

FOURTH DAY: State of Miss. Vs James Cruse; State of Miss. Vs Byrd.

The list of prospective

Chainsaws Stolen From Jerry's Small Engine Repair

Jerry's Small Engine Repair was burglarized of four new chainsaws last Thursday evening, January 5th. The owner of the Iuka business, which is located on Quitman Street across from the Old Courthouse, estimates the value of the four stolen Jonsered chainsaws at \$2,100.00.

Police Chief Joel Holliman said that the burglary occurred sometime between 8 p.m. and 8:45 p.m. Owner Jerry Comer and a customer had left the store during this time period to run an errand. Comer had bolted the door's two locks, but the burglars still gained access to the store's merchandise by using bolt cutters, Holliman said. When Comer returned to the business, he saw that the door was ajar and promptly called the police.

Commented Comer of the crime, "Somebody had to be watching us. When we left, they knew when to get them (the chainsaws). We weren't gone any longer than forty-five minutes."

The Iuka Police Department is continuing investigation into the case.

NOTICE

(Second Meeting)

TO ALL TISH. COUNTY MEMORIAL GARDEN LOT OWNERS:

There will be a meeting held on Tuesday, January 17, 1984, at 7:00 p.m. in the Iuka City Hall.

Please bring all legal proof of ownership of plots, markers and vaults. Also, lot number, block number, and section number of any relative who already is buried in Memorial Garden at Iuka.

For further information call or contact Donald Brumley at 423-3566.

jurors for the second week of court action is as follows:

Odell Bowling, Dianne Whitt, Brenda Day, Shirley Thorne, Johnnie Nixon, Jewel Starkey, Laura B. Booker, Oneice Smith, Barbara Lambert, Nellie K. Rutherford, Jane E. Dean, Nelson Walker, Tommy Odum, Mary J. James, Lorena Oaks, Celeste Scruggs, John D. Massengill, Charles Edmondson, Jr., Sherry Ramsey, Mrs. Leon Phillips, Della Hale, Mike Robinson, Tommy W. Ligon, Karen Garner, Lloyd McBride, Lucille Briggs, Christine Jimmar, Cecil Terry Dexter, Carlton Tucker, Mary Helen Gaines, Mrs. Charles R. Curtis, Lena Ashcraft, Roxie Yow, Charles A. Poole, Mrs. Carl Medley, Nelda Cutshall, Mike McRee, Ginger Grisham, Wilber Parrish, Tommy Nunley, Dorothy Belue, Corrie Carson, Cortez Blunt, Merle LeBlanc, Mrs. L.D. Phifer, Juanita Crawford, Star Mae Williams, Jerry Holley, Sally Wilson, Carol Jean Russell, James W. Melvin, Sandra Skinner, Mavis L. Pardue, Clovis Crane, Joyce Akers, Raymond Morris, Anthony Page, Billy Godwin, Mary Brock, Floyd Whited, Oney M. Wigginton, Paul Whitlock, Mat-

tie Beard, Lynn Ludlam, Robert Allen Wright, Dora Faye Tucker, Billy E. Enlow, Mildred Culp, Lonette Southward, Herbert Thomas, Jr., Bobby Powell, Mrs. Alvis Murrah, Mrs. E.C. Holtford, Charles Bates, Galon Pardue, Jerry Booker, Tommy Powell, Cindy Frederick, Ruth Wynn, Ollie W. Gist, Billy P. Daniel, Jimmy Brumley, Gladys Linton, David Wright, David Hale, Melissa Brock, Sherman Walden, Richard Worsham, Annette Mars, Helen D. Nelson, Jean Starkey, James Larry Hall, Nadine C. Lovelace, Ricky Brown, Dorothy S. Gober, Mrs. Claude McAnally, Diane Brewster, Jimmy Smith, Charles Hardwick, Billy Joe Mann, Bobby C. Fancher, Betty Lou Bailey, J.F. McClung, John David Murphy, Debbie

Woodruff, David Rhodes; Vernon H. Claunch, Mary Hallmark, Susie Arnett, Lane Nunley, James E. Burns, Tim Wright, Teresa G. Stormont, Anna Mae Shadburn, Paul Greene, James L. Byram, Lloyd G. Thacker, Jeffrey Kennedy, Tim Gray, Brenda Wingo, Myra Barnes, Stanley Rogers, Eddie Lee Durham, Allen Adams, J.B. King, Mary Price, Audie C. Carter, Eva Shook, Nell Wheeler, Larry Martin, Mrs. George Vandiver, James R. Walker, Charles O. Starkey, Richard Lovelace, Tamera Richardson, Tommy J. Coke, Mrs. Delmer Bullard, Donna L. Walker, Steve Hendrix, Dennis R. Shea, Jr., Howard Stanford, William Whitaker, Jr., Twyn Shepard, Prindle Morgan, Penny Timbes, James E. Sanders, Mary Jo DeGraw, and Pat Yarbber.

BELMONT MR. QUIK SCENE OF ROBBERY

Mr. Quik, in Belmont, located on Highway 25, was the scene of an armed robbery at 5:20 a.m. Monday morning, January 9th.

A man, disguised by a yellow ski mask, walked into the convenience store from the direction of a city side street, pulled out what is believed to be a snubnose .22 pistol, and instructed the business' manager and an employee to empty the cash register and put the money in a brown paper bag. According to Mayor Earl Alexander, he then backed down the same side street leaving

Belmont City Police baffled about his get-away car or whereabouts.

Manager Frankie Barnett and employee Joyce Rich were the only people in the store at the time of the robbery. Barnett stated that he did not know the amount of money taken. The Tishomingo County Sheriff's Department reports that the robber is alleged to have also taken a number of credit cards.

The suspect is described as weighing in the 135 to 140 pound range and being between 5' 5" to 5' 6" tall.

At press-time, the case is still under investigation by city, county and state authorities.

Iuka Jr./Sr. High P.T.A. Meets Tonight

The Iuka Junior/Senior High School P.T.A. will meet tonight at 7:00 p.m. in the school cafeteria.

All parents, teachers and friends of the school are urged to attend this important meeting.

Iuka Elementary PTA To Meet

The Iuka Elementary PTA will meet on Thursday, January 19, at 7:00 p.m. in the Commons Building.

Mitzi Blaylock, P.E. Instructor, along with grades 1 & 2 and 5 & 6, will have charge of the program. First and second grades will demonstrate skills in the area of tumbling, while the fifth and sixth grades will demonstrate their skills in ball handling. Please support your PTA.

Old Friendship To Sponsor Gospel Singing

Old Friendship Church, Highway 4 near Bay Springs Lock and Dam, will be the scene of a gospel singing on Saturday night at 7:00 p.m.

Featured singers will be The Gospel Travelers, of Belmont; The Gospel Bluegrass Sound, from Red Bay, Ala.; and The Crossroads Quartet, from Marietta. Everyone is welcome.

ATTENTION! Burnsville Lions

There will be a meeting on Monday, January 16, at 7:00 p.m. at the Pourhouse Restaurant. All Lions Club members are urged to attend.

BOYS	
BELMONT	
Thurs. 8:30	
BURNSVILLE	
TISHOMINGO	Sat. 8:30
Fri. 8:30	
IUKA	
GIRLS	
BELMONT	
Fri. 7:00	
BURNSVILLE	
IUKA	Sat. 7:00
Thurs. 7:00	
TISHOMINGO	
BOYS B-TEAM	
BURNSVILLE	
Sat. 5:30	
IUKA	

TISHOMINGO COUNTY NEWS VIDETTE and BELMONT NEWS

Phone 423-3666

(SECD 631680)

John H. Biggs, Editor & Publisher

Published Thursday by The Tishomingo County News, Inc. Serving the people of Tishomingo and adjoining counties for more than 95 years. Publication office 120 West Front Street, P. O. Box 70, Iuka, Mississippi. Entered at the Post Office as mail matter of the Second Class, Second Class postage paid at Iuka, Mississippi. Zip Code 38852. Post Master send address changes to The Tishomingo County News, P. O. Box 70, Iuka, Mississippi 38852.

Mail Rates Tishomingo and Adjoining Counties

\$8.00 Per Year

Other Areas

\$15.00 Per Year

EMERGENCY PHONE NUMBERS

Sheriff Department..... 423-6185
Tishomingo County Hospital..... 423-6051
Ambulance Service..... 423-5766

POLICE DEPARTMENTS

Belmont..... 454-3381
Burnsville..... 427-9526
Iuka..... 423-6340
Tishomingo..... 438-6302

FIRE DEPARTMENTS

Blemont..... 454-3311
Burnsville..... 427-8844
District 1 Volunteer..... 423-6515
Golden..... 454-9645
Iuka..... 423-5011
Tishomingo..... 438-6650

MISSISSIPPI HOT LINE FOR CHILD ABUSE
1-800-222-8000
DRUG AND ALCOHOL ABUSE
423-3332

FOR YOUR BENEFIT

Tommy Purvis
Extension County Agent



REPLENISH WOOD PILES CAUTIOUSLY

The 1983 December was the coldest in 20 years for most Tishomingo Counties and January promises to be colder. Those of you with fireplaces or woodburning stoves may need to replenish your supply of firewood.

Although this seems simple, you should be especially careful handling a chainsaw and other woodcutting equipment.

Chainsaws are the most common power tool for cutting firewood, and have a high potential for causing severe injury. They require more care and caution in their use than other tools.

Even brief contact with a running saw can do great in-

jury to a hand, arm or leg.

All woodsmen should use personal protective equipment, especially a hard hat, safety shoes, eye protection and a good pair of gloves. When operating noisy equipment, ear plugs can protect hearing.

Though misuse of tools is the most common cause of woodlot injury, minor injuries can also be painful.

Strained backs, bruises and twisted ankles can all be direct results of lifting, loading and stacking wood. Avoid the discomfort of injuries caused by replenishing the woodpile and enjoy a warm winter by the fire pain-free.

MILK DIVERSION PROGRAM
January 31 is the deadline

Winter Portrait Presented

Governor William Winter's commissioned portrait was presented Wednesday afternoon in the unveiling ceremonies held at the state capitol.

Following the ceremony the portrait was placed on display in the Hall of Governors, where it will remain. It has been hanging in the

for dairy producers in Tishomingo County to submit a plan to the County Agricultural Stabilization and Conservation Service Office to participate in the milk paid diversion program.

The plan must include an estimate of the portion of the reduction to be achieved through increased slaughter of dairy cows, including the number of dairy cows to be sold for slaughter during each month of the contract.

Producers must establish a milk base that will be based on the producer's 1982 marketings of milk for commercial use or the average of marketings for calendar years 1981 and 1982, whichever the producer chooses.

To be eligible participants must have been actively engaged in milk production on Nov. 29, 1983, and have an established milk base.

The producer also must have provided a milk reduction plan and offered to enter into a USDA milk diversion contract by January 31, 1984.

For more information or help in forming a plan to suit your needs, contact the Extension office.

FARMWEEK

To stay on top of state and national events in agriculture and agribusiness in 1984, watch Farmweek each Monday at 7:30 p.m. on Mississippi Educational Television. Farmweek is a cooperative effort of the Mississippi Cooperative Extension Service and Mississippi ETV. Tune in Jan. 16 for the latest in agribusiness news.

Chatting With Your Home Economist

Governor's Mansion since September, when Clarksdalian Marshall Bouldin III completed it.

Bouldin began work on the portrait last January, photographing and filming the Governor, preparing sketches and researching the background of the portrait.

The state's first lady stands in the background, along with former Clarksdalian Herman Glazier, Chief Administrative Assistant to the Governor, and Jason Bouldin, the artist's son.

Governor Winter's portrait

is the third Mississippi Governor's portrait Bouldin has completed. Previously, Bouldin painted Governor John Bell Williams in 1971 and Governor Dennis Murphree in the early sixties.

Other notables who have posed for Bouldin are U.S. Senator John Stennis, Julie and Tricia Nixon, U.S. Senator Sam Irving, House of Representatives Speaker Walter Sillers, former House Speaker John Junkin and former Secretary of State Heber Ladner.

present in varying amounts and kinds according to the meat, vegetable, cheese and other foods that are included in the casserole.

Casseroles also add variety to family meals. Serving a variety of foods is one of the best ways to assure a well balanced diet.

Another characteristic that makes casseroles so popular with most homemakers is that they will fit anywhere in to the family meal.

They can be served as a main dish, bread, vegetable, fruit and vegetable, or as a meal in themselves. A casserole can be served hot or cold depending on the type of ingredients used and the occasion when it is served. A nice one-dish meal might be made up of a casserole, bread, beverage and dessert.

A casserole containing a meat or some other protein rich ingredient can be used as the main dish in a meal. At other times a casserole may be considered one of the vegetables. There is even a casserole bread which would

certainly add interest at mealtimes.

When looking for something different to prepare for a meal, an attractive casserole dish may be just the thing that would give variety, flavor, texture and appearance to family meals. Most casseroles are easily prepared and can make interesting use of leftover meats and vegetables.

Christmas Broccoli

1/2 cup butter or margarine
1 tablespoon lemon juice
Sprinkle black pepper
6 large stuffed olives, sliced
2 (10 oz.) packages frozen broccoli, cooked
Seasoning salt

Melt butter in a saucepan. Add lemon juice, pepper and olives. Heat thoroughly, but do not boil. Cook broccoli according to package directions, drain and arrange in a heated serving dish. Sprinkle lightly with seasoning salt, then pour sauce over all. Makes 6 to 7 servings.

4-H NEWS

By: Lloyd Weatherly,
Extension 4-H Youth Agent

4-H Activities

The new year has come and there are many exciting activities that are happening in our 4-H Program. This time of the year begins a busy period for 4-H activities including shows, contests, and project work.

Congratulations goes to the Rainbow Club, the North Crossroads Club and the Holts Spur Club for receiving Community Pride Grants. These grants range from one hundred dollars to two hundred fifty dollars and cover such projects as community improvements.

A primary aspect of 4-H is its focus on livestock and dairy animals. 4-H members are able to be involved in projects involving raising beef, swine, sheep, and dairy animals. These projects provide youth with a responsibility and enable them to learn the tasks involved in the production of a good market animal or dairy cow.

Youth who do not have the facilities to raise an animal are also able to become familiar with livestock and dairy cows by means of participating in judging teams. By being on a judging team, a participant is able to develop his observation skills, oral skills, and reasoning skills.

Judging livestock involves two actions. First, you must place each animal in a class, and second, you must be able to defend that placing.

Oral reasons are your explanation of why you placed a class as you did. Anyone can guess at a class placing. Good livestock judges must be able to explain logically their reasons for placing a class. Oral reasons should be brief, with emphasis on the main points in the class. Your reasons should be accurate, interesting, sincere, and presented in a pleasant and confident manner. Being honest and accurate are most

Tishomingo County News - Vidette - Belmont News

important when giving reasons.

Generally, the individual or team that delivers the best set of reasons will win the contest. Reason scores can count 50 points for each set, the same as the placing score for each class. Giving good sets of oral reasons is the secret in winning contests. You could place a class backwards and still make a good score on reasons. So back up your placing with clear, accurate, and convincing reasons. Be persistent. Study and practice your reasons thoroughly before giving them to the judge.

Judging teams are organized from our 4-H members in Tishomingo County. We are able to help train members. Some of these members have never raised or possibly seen the animals that they want to judge. In our training sessions, we use slides, video tapes, and live animals. The teams travel to Starkville for further training by the livestock and dairy specialists at Mississippi State.

The Northeast District Livestock Show will be held January 30-February 1. Junior and senior 4-H members will be able to exhibit livestock and dairy animals at this show. Junior members will be able to participate in judging contests. Senior members will judge at the Round-Up in Jackson the following week. The areas of livestock

exhibiting and provide many opportunities for 4-H members and youth in the area knowledge, responsibility and reasoning. We youth in 4-H to participate these activities.

RAINBOW II 4-H CLUB

Miss Dolly's Birthday
By: Ciji Timbes

On January 5, 1984, at the Rainbow II 4-H Club at their headquarters, a short business meeting got ready to have a party for Mrs. Dolly Owens who was 99 years old. Owens is still active and helps with the cooking and other chores. She remembers many things that have happened in Burnsville.

Vena Rushing, president led the group to Miss Dolly's home. When she opened the door, Vena presented with the cake and everyone sang "Happy Birthday to You". She was delighted and gave a member a big hug.

The cake was special made, and was decorated with pink roses and had the inscription "Happy Birthday Mrs. Dolly".

Miss Dolly received a birthday cake, but the Rainbow got a new and loving friend.

WILLIAMS PEST CONTROL & INSULATION COMPANY

Phillip Williams, Owner
Belmont, Miss.

If you'd like to save money by making your home more energy-efficient, call us. We're experts in home weatherization, and our materials meet TVA standards for financing under The Energy Package™.



So if you're ready to weatherize your home, ask your power distributor about The Energy Package™.

Then call us to do the work.

We are also bonded licensed and experienced to take care of all your pest control needs.

Call 454-3383
Day or Night

FULL OF HOT AIR



Trapped attic heat can radiate down into your home, causing the air conditioner to work more than necessary. Solution? Insulate your attic and give it adequate ventilation so summer heat can't build up.

We'll check your attic and the rest of your home for energy saving opportunities. No charge. We'll even finance the recommended conservation measures at no interest, through TVA's Home Insulation Program. Call us to schedule a visit to your home.



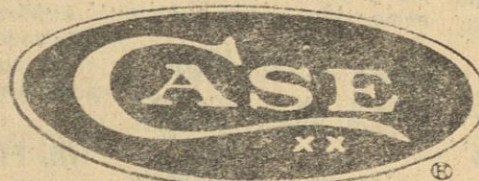
Tishomingo County
Electric Power Assoc.

Get \$200 cash in Miami, Florida.

You can get instant cash anytime, almost anywhere. Our First Aid Stations are plugged into the Money Belt and PLUS networks of money machines all across the country. If you're out of town and need cash fast, call the toll-free PLUS number to find out where you can get First Aid.

PLUS NETWORK 1-800-843-7587

Member FDIC.



CASE POCKET KNIVES,
HUNTING KNIVES AND
KITCHEN CUTLERY

20% OFF

W. H. FAIRLESS HARDWARE

OPEN ALL DAY THURSDAYS

IUKA 423-9256

TISHOMINGO 438-6608

1, 2 & 3 BEDROOM APARTMENTS AVAILABLE

Kitchen appliances furnished
Play ground
Laundry available

NORTHVIEW APARTMENTS
ROUTE 2- 92A No. 400
BURNSVILLE, MISSISSIPPI
Call 427-9049 or 423-5314



EQUAL HOUSING
OPPORTUNITY

A black and white photograph of three women standing outdoors. The woman on the left is older, with short, light-colored hair, wearing a light-colored dress with a dark floral pattern. The woman in the middle is wearing a dark, short-sleeved top and a skirt with horizontal stripes. The woman on the right is wearing a dark, long-sleeved dress and is holding a baby wrapped in a light-colored cloth. They are standing in front of some foliage.

fall that united four generations of a family. Pictured above, from left to right, are: Grandmother Bessie Whitley, of Iuka; daughter, Estell Harwell, of Memphis; granddaughter, Nancy Rogers, of Washington, D.C.; and great-grandson, Dustin Garrett Rogers.

This past December we informed you through this paper that the committee you appointed met with Mr. David Moore of the C & E Engineers and Mr. Hutcheson, a representative of the F.H.A. office in Booneville, at which time we refused to accept the new \$11.50 base rate for 2,000 gallons of water, which had just recently been put into effect. After a lengthy discussion, we were asked by Mr. Moore to give the F.H.A. a base rate we thought the Association members would accept and the F.H.A. would restudy the system and our offer would be considered

As most of our members know, we have had three (3) base rates these past years up until now. \$6.00 base rate for 3,000 gallons for the oldest members, \$7.50 base rate for the next group added, and \$8.50 base rate for 3,000 gallons for the last group. We, the committee, agreed to accept a \$2.00 increase for 3,000 gallons above each old base rate and we would let the F.H.A. set the cost per thousand gallons all over the 3,000 gallons we use. To illustrate the old \$6.00 base rate would be \$8.00 for 3,000 gallons. The old \$7.50 base rate would be \$9.50 for 3,000 gallons, and the old \$8.50 base rate would be \$10.50 for 3,000 gallons.

As most of our members know, we have had three (3) base rates these past years up until now. \$6.00 base rate for 3,000 gallons for the oldest members, \$7.50 base rate for the next group added, and \$8.50 base rate for 3,000 gallons for the last group. We, the committee, agreed to accept a \$2.00 increase for 3,000 gallons above each old base rate and we would let the F.H.A. set the cost per thousand gallons all over the 3,000 gallons we use. To illustrate the old \$6.00 base rate would be \$8.00 for 3,000 gallons. The old \$7.50 base rate would be \$9.50 for 3,000 gallons, and the old \$8.50 base rate would be \$10.50 for 3,000 gallons.

by the adult leader Mrs. Gail Kennedy. She spoke to the club concerning upcoming events and assisted in planning a Christmas party.

The meeting adjourned at 8:30 p.m.

Missey Hall Club Reports

A black and white portrait of a young girl with light-colored hair, smiling. She is wearing a light-colored top. The photo is framed by a thick black border.

OTASCO

ELM SHOPPING CENTER - IUKA, MS

Spring Savings Sale

7 Spools For **\$1**

Save 20%

Save 20%
Wal-Mart Thread
• 100% Polyester • 200 Yard spools • Assorted colors plus black and white
• Reg. 18¢ each spool

[illegible]

EZY Read

2.97 Yard

Arnel® is a trademark of Celanese Corporation
Fortrel® is a trademark of Fiber Industries, Inc., a
subsidiary of Celanese Corporation

1.64 Yard

2.36 Yard

Fortrel® is a trademark of Fiber Industries, Inc., a subsidiary of Celanese Corporation.

2.97 Yard

2.36 Yard

1.93 Yard

4 Yards **\$1**
For

OPEN 9 - 8
AD GOOD JAN. 12-14

WAL-MART'S ADVERTISED MERCHANDISE POLICY — It is our intention to have every advertised item in stock. However, if due to any unforeseen reason, an advertised item is not available for purchase, Wal-Mart will issue a Rain Check on request for the merchandise to be purchased at the sale price whenever available, or will sell you a similar item at a comparable reduction in price. We reserve the right to limit quantities. Limitations void in New Mexico.

VISA

MasterCard

WAL-MART

2 FOR \$1

MARTIN

Nelson super market

AD EXPIRES JAN. 18, 1984

Quantity Rights Reserved

SHOULDER

ROAST

LB. **\$1.39**



BRYAN CANNED

HAMS

3 LB. **\$5.99**

FRESH

Ground Chuck

LB. **\$1.59**

BONELESS SHOULDER

Steak FAMILY PACK

\$1.59

BONELESS

Beef Stew

LB. **\$1.59**

FARMERS PRIDE SLICED SLAB

BACON

LB. **99¢**



CHUCK BONELESS

STEAK

FAMILY PACK

LB.

\$1.49

BUTT PORTION

Smoked Ham

LB.

\$1.19

SMOKED

Ham

SHANK PORTION

LB. **\$1.09**



CHICKEN

LEG

QUARTERS

FAMILY PACK

lb. **39¢**

CENTER CUT BONELESS CHUCK

ROAST

\$1.29

LB.

HARVEST FRESH

PRODUCE

QUALITY - VARIETY - FRESHNESS

LAND O FROST

Turkey Ham

LB. **\$1.79**

MR. FRITTER

Patties

14 OZ.

\$1.19

HYDE PARK SLICED
Meats

2.5 OZ.

2/89¢

BREADED

Chicken Nuggets

FAMILY PACK

LB. **\$1.89**

WHOLE SMOKED

HAMS

LB. **99¢**



BRYAN SMOKY HOLLOW CLASSIC

HAMS

LB. **\$2.99**

BRYAN

CORN DOGS

18 OZ. **\$1.99**

BRYAN SMOKY HOLLOW

SAUSAGE

REG. BEEF & CHEESE

1 LB. **\$1.99**

HARVEST FRESH U.S. NO 1

Russet Potatoes

5 LB. BAG **99¢**

HARVEST FRESH MISSISSIPPI

Sweet Potatoes

LB. **39¢**

HARVEST FRESH PURPLE TOP

Turnips

LB. **39¢**

HARVEST FRESH

Carrots

2 LB. BAG. **79¢**

HARVEST FRESH CANADIAN WAXED

Rutabagas

4 LB. **\$1.00**

HARVEST FRESH U.S. NO. 1 MEDIUM

Yellow Onion

3 LB. BAG **99¢**

HARVEST FRESH DEL MONTE

BANANAS

3 LB.

\$1.00

HARVEST FRESH WASHINGTON STATE FANCY D ANJOU

Pears

LB. **59¢**

HARVEST FRESH FANCY SUNKIST

Lemons

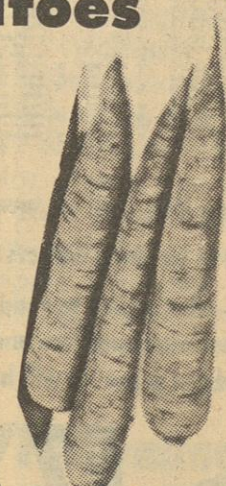
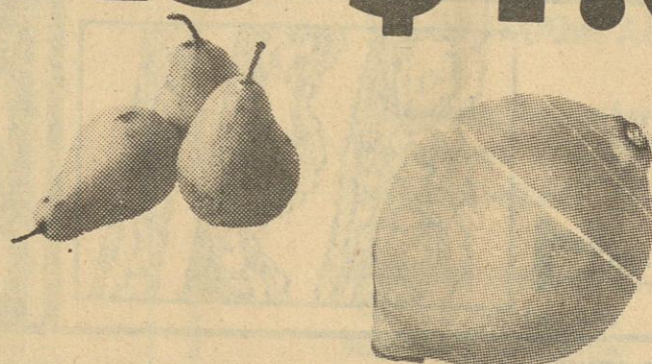
DOZEN **99¢**

HARVEST FRESH

BROCCOLI

BUNCH

99¢



PILLSBURY

BISCUITS

SWEETMILK OR BUTTERMILK

5 CT. CAN

6/\$1.00

KRAFT AMERICAN

**CHEESE
SINGLES**

16 OZ.

\$1.99

SHASTA

ColasALL FLAVORS
12 OZ. CAN**4/\$1.00**

MARTHA WHITE

Corn Meal

5 LB. BAG

89¢

PETER PAN

Peanut Butter18 OZ. **\$1.39**

FIRESIDE SALTINE

CRACKERS2
FOR

16 OZ.

\$1.00

HYDE PARK

Tater Tots

2 LB. BAG

89¢

KRAFT PARKAY LIGHT SPREAD

Margarine

2 LB. BOWL

99¢

KRAFT PURE

Orange Juice

64 OZ.

\$1.69

HARDINS 16 OZ.

Bread**3/\$1.00**

TUBBY JR. FROZEN

Coconut

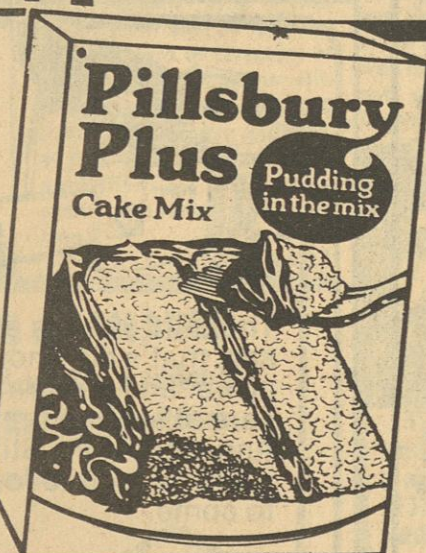
6 OZ.

2/99¢

PILLSBURY LAYER

**CAKE
MIX**

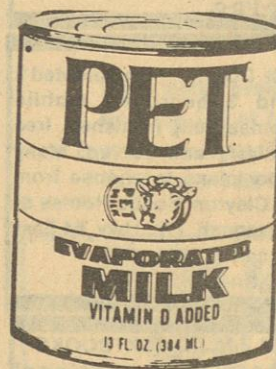
18½ OZ.

79¢

PET EVAPORATED

MILK

13 OZ.

2/99¢

GOLDEN FLAKE

**CORN
CHIPS**

BUY ONE GET ONE FREE

8 OZ.

MUSSELMAN

Apple Juice 64 OZ. **\$1.59**

PRINGLES

Potato Chips

ASSTD. FLAVORS

99¢

LIPTON ONION

Soup Mix

2 PKG.

79¢

POST TOASTIES

Corn Flakes

18 OZ.

99¢

HYDE PARK

**Cranberry
Sauce****2/99¢**

HYDE PARK LIQUID

BLEACH

GAL.

69¢

SUNFLOUR

FLOUR

5 LB. BAG

79¢

HEINZ STRAINED

**BABY
FOOD**

4½ OZ.

5/\$1.00

DOLE CHUNK

Pineapple

15 OZ.

2/79¢

HYDE PARK DRY BLACK EYE

Peas

16 OZ.

2/89¢

DEL MONTE

Pineapple Juice

46 OZ.

\$1.19

FRENCH IDAHO SPUD

Potatoes

16 OZ.

99¢

CHEFWAY VEGETABLE

SHORTENING**\$1.79**

3 LB.



HELLMANS

MAYONNAISE**\$1.49**

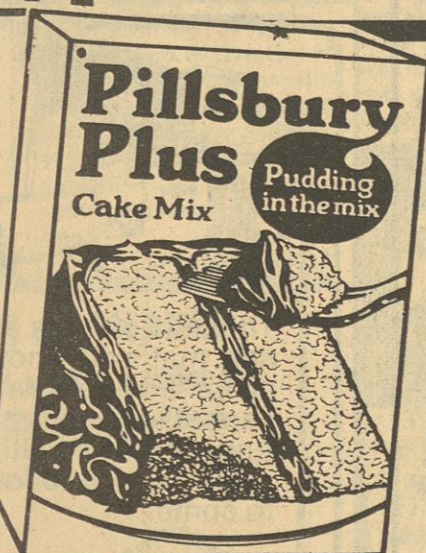
32 OZ.



PILLSBURY LAYER

**CAKE
MIX**

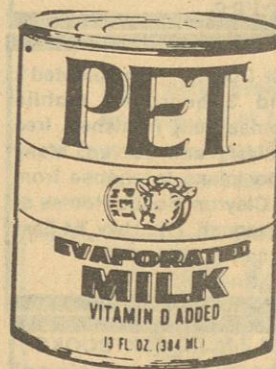
18½ OZ.

79¢

PET EVAPORATED

MILK

13 OZ.

2/99¢

GOLDEN FLAKE

**CORN
CHIPS**

BUY ONE GET ONE FREE

8 OZ.

32 OZ. 6 PCK

DIET PEPSI OR MT. DEW

**PEPSI
COLA****\$1.49**

PLUS DEPOSIT

32 OZ. 6 PK.

AND RELATED PRODUCTS

**COCA
COLA****\$1.49**

PLUS DEPOSIT



CLASSIFIED ADS

THE PLACE TO LOOK

CLASSIFIED ADS

\$2.50 per week for 30 words. After the first 30 words, 5¢ extra per word. \$1.00 extra with border.
Card of Thanks and In Memoriam - 5¢ per word
Classified Ads, Cards of Thanks and In Memoriams must be paid in advance
50¢ service charge will be added to any monthly bill totaling less than \$5.00.

PHONE 423-3666

ERRORS

Should be reported immediately as The News can be responsible only for the first incorrect insertion in any advertisement. The News cannot be liable for error in any advertisement to a greater extent than the cost of the space occupied by the items in the advertisement.
All display advertising must be in the News office by 12 o'clock noon on Tuesday.

AUTOMOBILES FOR RENT — U-Save Auto Rental. We rent for less. Cars, vans, 12 passenger vans, pick-ups. Daily, weekly, monthly. From \$14 per day. 703 Tate Street, Corinth, MS. Call 286-6944. A-11-tfn-c.

FOR SALE — Satellite systems, towers, T.V. antennas, boosters, Channel Master rotors and push up poles. You install or we install. Call 423-5612, Terry Hester; or 423-5750, Jerry Holly. Located across from Coleman Park Road, Hwy. 25 North. D-15-tfn-c.

LARRY'S MOBILE HOME SERVICE — Local and long distance moving, Kool Seal, anchors, blocking, leveling. Call Larry at 423-3258. O-7-tfn-chg

"AUTOS FOR SALE" — Jeeps, Cars, Trucks \$100, now available in your area. Call 1-(619) 569-0241 for info. 24 hrs. J-5-12-19-n

FOR SALE — Red Fox jacket - Size 7. Best Offer. Call 423-6949. D-22-29-J-5-12-c.

AN OHIO OIL CO. offers high income, plus cash bonuses, benefits to mature person in Iuka area. Regardless of experience, write M.V. Read, American Lubricants Co., Box 426, Dayton, Ohio 45401. J-12-c.

FOR RENT — 2 bedroom house, Coleman Park Road. \$125.00 per month. Call 423-6703 after 5 p.m. S-15-tfn-c.

FOR RENT — Unfurnished, 7 room house. Call 423-6630. J-5-12-c.

WANTED TO BUY USED FURNITURE & ANTIQUE FURNITURE — Also, glassware. We buy just about anything. Cleaning your house or attic out, give us a call. Capleman's Antiques. Phone 423-9962 nights, 423-5640 or 423-6836. J-7-tfn-c.

FOR RENT — Flashing Arrow Signs. \$50.00 plus tax. Call 728-5460 or 728-5674 in Booneville, or in Belmont call 454-7128. M-21-tfn-c.

HOUSE FOR RENT — 2 bd., 1 bath, just outside city limits of Iuka. Call 423-2033 after 5:30 p.m. N-10-tfn-c.

FOR RENT — Furnished kitchenette apartments, newly decorated, 1 1/2 miles from J.P. Coleman State Park. Rent by day, week or month. Also, trailer lots for rent, \$40 monthly. Yearly rates for campers. Call 423-6498 or 423-9107. J-1-tfn-c.

HOUSE FOR SALE — Two bedroom, single bath, kitchen with separate dining room with pantry. City water, gas or wood heat, double carport, land frontage, 8 1/2 acres, 3 miles north of Tishomingo on Old 25, \$37,500. Call 438-6895 or 423-5136. D-1-tfn-c.

ELECTROLYSIS — Permanent Hair Removal. Contact Janet Vanderford at Wood-N-Wax, 718 Hwy. 45 South, Corinth, MS., or phone 286-5440. J-5-12-19-26-c.

FOR SALE — 1978 Chevy Caprice Estate Station Wagon. Nine passenger, all options, good tires, new battery - \$3,000.00. Call 423-9309 or 423-5676. D-1-tfn-c.

LAND FOR SALE BY OWNER — 290 beautiful wooded acres. Located in Tishomingo County, all in one block with section lined boundary markers, near Mackey Creek. Joined on one side by Nat-chez Trace Parkway, on other side by Corps of Engineers. Only \$125,000.00. Call Elmer Meeks in Corinth. Day 287-1497 or 287-2345. After 5:30 p.m. call 287-1949. J-12-tfn-c.

REPOSSESSED SINGER TOUCH & SEW in walnut cabinet. Sold new for over \$400.00. Balance only \$110.00 or arrange \$10.00 monthly payments. Meeks' Sewing Center, Corinth. Phone 287-1497. J-12-tfn-c.

FOR RENT — One bedroom furnished cottage, \$80.00 per month. Hwy. 365 South of Burnsville. Call 427-9243. J-12-tfn-c.

FOR RENT — 3 bedroom mobile home - \$100.00 per month. Located on Hwy. 365 south of Burnsville. Phone 427-9243. J-12-tfn-c.

FOR SALE — Commercial building, 2,400 square feet, plus 12 x 60 mobile home. Frontage: 185 feet. Located just outside city limits on Hwy. 25 North. Priced to sell. Call 423-9388. J-12-c.

IT'S A "GIANT OF A SALE" this weekend at the Trade Center Flea Market and Crafts Show! Giant savings on every item and giant values and selection from the many dealers. The Trade Center Flea Market and Crafts Show is the largest indoor Trade Day in North Mississippi! Don't miss it! Corner of Cass and Cruise Streets in Downtown Corinth this Friday and Saturday. 287-4860. J-12-c.

FOR SALE — Commercial Building, 2,400 square feet. Plus 12 x 60 mobile home. Frontage: 185 feet. Located just outside city limits on Hwy. 25 North. Priced to sell. Call 423-9388. J-12-tfn-c.

WHO IS THIS DYNAMIC GOSPEL SINGER NAMED BOBBY THORNE? For further information call 438-6455. J-12-19-p.

I'M GORGEOUS — 14 x 80, 3 bedroom, 2 bath mobile home, large island kitchen, separate utility room, newest furniture decor, decorator walls, 2 bars, garden tub, cathedral ceiling with fan. Don't miss this one. Clayton Mobile Homes of Savannah, TN., Hwy. 64 East, or call 901-925-1083. J-5-tfn-c.

5% DOWN — On Selected 2 and 3 bedroom, mobile homes, fully furnished, free delivery and set up. Many floor plans to choose from at Clayton Mobile Homes of Savannah, TN., Hwy. 64 East or call 901-925-1083. J-5-tfn-c.

N.E.M.J.C. TEXTBOOKS Basic Conversational Spanish, \$15.00; Introduction to Physical Science, \$15.00; The American Federal Government, \$13.00. Call 423-6198. J-5-12-c.

FLEA MARKET every Saturday and Sunday. Hwy. 25, south of Belmont, across from Winfield Manufacturing Co. For further information call 454-3521 or 454-9237. N-24-tfn-c.

GROUPS — CLUBS — CHURCHES: For a fund-raiser why not publish a cookbook? Walter's, Route 4, Waseca, MN 56093. J-12-c.

FOR RENT — 1 bedroom apartment, North Crossroads, Iuka. References required. Call 423-3932 or 423-3474. J-12-tfn-c.

FOR SALE — Aloe Vera by Sasco. Total skin and body care. Products available immediately. Call your Sasco Distributor at 423-3932 or 423-3474. J-12-tfn-c.

FOR SALE — House in Burnsville, near school. 3 bedrooms, 1 1/2 baths. Call 427-9832. J-12-19-p.

FOR SALE — Kimball Piano, 2 years old, like new. Call 423-5061. J-12-19-26-F-2-c.

LEGAL NOTICE NOTICE OF SALE

The City of Iuka Mayor and Board of Aldermen will receive sealed bids January 14, 1984, at 10:00 a.m. at the City Hall for the following:

One (1) 1972 Chevrolet truck, red in color, 1 ton, Serial Number - CCE342J144875.

The highest and best bid will be accepted.

The Mayor and Board of Aldermen reserves the right to reject any and all bids.
JOHN H. BIGGS, MAYOR,
CITY OF IUKA

J-5-12-c.

Trustee's Notice of Sale

WHEREAS, on November 16, 1982, J.L. Miller executed a Deed of Trust to J. Barry Finch, Trustee, for the benefit of Tri-State Savings & Loan Association, which said Deed of Trust is now on record in the Office of the Chancery

J-12-19-26-F-2-c.

"Trifles make perfection, and perfection is no trifle."
Michelangelo

FOR SALE - SHOE REPAIR SHOP

INCLUDING ALL EQUIPMENT NECESSARY TO DO COMPLETE REPAIR WORK ON ALL KINDS OF SHOES

Equipment includes:
1 Automatic sander with attachments; 1 Model G Landis Stitcher, with motor; 1 Landis 5-in-1 machine, Model 25; 1 small electric motor (extra); 1 glue press with 2 sets lasts; 1 Landis finisher; 1 Landis sander (4 parts); 1 Landis brush, wax and burnisher assembly, all with fan and electric motor; 1 Adler patch machine, with electric motor; 2 last stands; 17 shoe lasts; 1 cash register; 1 cold drink box (Pepsi); 1 G. E. air conditioner; assortment of small tools; 2 1/2 pairs shoe stretchers; and 1 electric clock.

FOR FURTHER INFORMATION, CALL GENE HOLTSFORD AT 423-6006

P. O. BEARD AGENCY

SINCE 1964

400 WEST

EASTPORT ST.

REALTOR®

The following ads are just a small selection from the current 129 listings we have. If you don't see what you want here, just drop by or give us a call and let us know what you want. We will be happy to work with you to find the right home, at the right price, on the right terms.

Reduced from \$25,000 to \$16,000 -- nice 2 bd, 1 bath, frame home with a 19' x 20' shop building. One acre land on the Whitehouse Road north of Iuka.

New Listing -- Just move in this completely furnished 2 bd, frame home with large, open, living area, screened porch, 3 acres, located 10 miles north of Iuka, only \$30,000.

New listing on 4 bd, 1 1/2 bath, aluminum siding and brick home on Aberdeen Street -- close to town-city water, sewer, blacktop street, only \$27,500.

Well arranged, smaller home close to town -- 3 bd, 1 bath, separate dining room, central heat/ac, storage building, Meadowbrook Circle, \$30,000.

Good terms on repossession -- 3 bd, 1 bath, concrete block home with large patio, 1 1/4 ac., gorgeous view of Bear Creek, \$37,000.

New Listing on frame home near Coleman Park -- located on 2 1/2 acres at the end of road for privacy, 2 bd, 1 bath, furnished, \$25,000.

Nice, brick home, 2 bd, large eat-in kitchen, on 1/2 acre lot near Tm-Ton Waterway on Hwy. 72. Especially nice for retirement or starter home. \$22,500.

From this front yard you can see from Burnsville to the nuclear plant -- large, 4 bd, 2 bath, brick, oversized kitchen with flue, separate living room plus interior utility room, carpeted, central h/a.c., double lot, \$45,000 -- This is a repossession, and the bank will talk terms and price.

Phone 423-5253

P.O. Beard-Realtor, Appraiser, Registered Forester

Nancy Beard - Realtor Associate

Phone 423-5251

Rilla Wiley, Realtor Associate

Phone 423-5252

Don Cowell, Salesman

Phone 423-9349

MANY OTHER LISTINGS

CALL FOR FREE INFORMATION ON BUYING OR SELLING

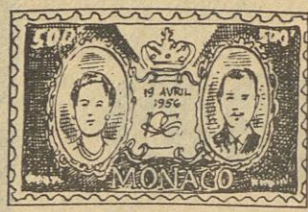
Clerk of Tishomingo County, Mississippi, at Iuka, Mississippi, in Book 107, page 255-258, of the records of Deeds of Trust of said County; and

WHEREAS, default having been made in the payment of the indebtedness secured by said Deed of Trust and the holder of the Note and Deed of Trust having requested the undersigned Trustee so to do, I will on the 3rd day of February, 1984, offer for sale at public outcry and sell during legal hours, being between the hours of 11 o'clock A.M. and 4 o'clock P.M. at the main front door of the Tishomingo County Courthouse in Iuka, Tishomingo County, Mississippi, for cash to the highest and best bidder the following described property situated in Tishomingo County, Mississippi, more particularly described as follows, to-wit:

Part of the SW 1/4 of Section 18, Township 3 South, Range 11 East, more particularly described as beginning at the point on the north side of Fourth Street where the east side of Vine Street, or Fulton Street, intersects the same and run thence north with the east side of Vine Street, or Fulton Street, 121 feet to the point of beginning of the land being conveyed; thence from this beginning point run north with the East side of Vine, or Fulton Street, 100 feet to a stake; thence run S. 83° E. 127 feet to a stake; thence run S. 10° W. 100 feet to a stake; thence run west 127 feet to the point of beginning.

I will convey only such title as is vested in me as Trustee. WITNESS MY SIGNATURE, this 6th day of January, 1984, J. BARRY FINCH, TRUSTEE

J-12-19-26-F-2-c.



Grace Kelly was the first movie actress to appear on a postage stamp. She and Prince Rainier of Monaco, her husband, were featured on one in 1956 in commemoration of their marriage.

Discount Builders Supply

Phone 287-4419
Hwy. 72 West,
Across From Ramada Inn,
Corinth, Miss.

This Week's Specials

Shingles (celotex), sq. \$17.95; Shingles #2, sq. \$14.95; Roll roofing, 90 lb., \$8.95; 1/2 x 12" x 16" Masonite (smooth), \$4.56; 1/2 x 4 x 7 Masonite siding, \$7.95; 1/2 x 4 x 8 Decking, \$6.95; 5/8 x 4 x 8 Decking, \$7.95; 3/4 x 4 x 8, \$9.95; 5/8 Presswood, \$4.69; 1/4 Chipboard, \$4.95; 1/2 Chipboard, \$6.99; Paneling - good selection, \$5.95, \$6.95, \$7.95; 1/2 x 4 x 8 Blackboard, \$3.99; Fiberglass Tub/Shower Combo., \$149.95; Dome Top Tub/Shower Combo., \$249.95; Commodes 'A' Grade, \$44.95; 40 gal. water heater, round, double element, \$119.95; 32 x 21 stainless steel sinks (double bowl), \$29.95; 100 AMP switch box, \$49.95; 200 AMP switch box, \$79.95; 12-2 with ground romax, \$24.95 box. J-12-c.

BUY OF THE MONTH

— 3 bedroom, 2 bath, double wide, mobile home, wood-burning fireplace, built-in dishwasher, stereo, frost-free refrigerator, cathedral ceiling with fan, delivered and set up for only \$21,995.00. Clayton Mobile Homes of Savannah, TN., Hwy. 64 East or call 901-925-1083. J-5-tfn-c.

WHY RENT?

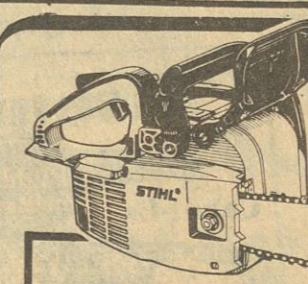
New 2 bedroom mobile home, large front kitchen, plenty of cabinet space, plywood floor, no wax tiles, decorator walls, and more for only \$139.00 monthly. Clayton Mobile Homes of Savannah, TN., Hwy. 64 East or call 901-925-1083. J-5-tfn-c.

EXCELLENT INVESTMENT

— 230' on Industrial Drive across from the Iuka Industrial Park. Has a small block rental house with out-building on a 1/2 acre lot - \$23,500.00. Phone 423-5217. N-17-tfn-c.

UPHOLSTERING CENTER

Quality fabrics to choose from. Free pick-up and delivery, all work guaranteed. Furniture and boats. Wallace E. Anglin, Hwy. 25 South. Call 423-3843. O-21-tfn-c.



The Stihl 009 is a small chain saw that's big enough on power and performance to take care of all your firewood needs. And since it's a Stihl, you know it will be around for a long time to come.

Regularly \$169⁹⁵

\$149⁹⁵

NELSON

MARINE & HARDWARE

HIGHWAY 25 SOUTH IN IUKA

423-6484

Storm Doors.....

Interior Doors.....

Exterior Doors.....

Interior Door Units.....

Exterior Door Units.....

Roof Roofing.....

Roofing Tin.....

No. 2 Shingles.....

1/2 Plywood.....

5/8 Plywood.....

5/8 Presswood.....

2x6x8.....

2x4x8.....

RB & B Siding.....

Felt 30 lb.....

7/16 Waffle Board.....

Caulking.....

BARTON WHOLESALE

BUILDING MATERIALS

4 Miles East of Cherokee on Hwy. 72

205-370-7739

Dailey's

Body Shop and

Wrecker Service

BURNSVILLE, MISSISSIPPI

PHONE

Day 427-9234

Night 427-8449

Expert Body Work - 24 Hour Service

BURNSVILLE

Whirlpool

Whirlpool

Need Appliance Parts or repair

CALL

GANN

BROTHERS

Furniture & Appliance

Sales & Service

427-9506

in Burnsville

MOORE'S

BODY SHOP &

WRECKER SERVICE

24 Hour Wrecker Service

DAY PHONE 423-5130

NIGHT - WEEKENDS

HOLIDAYS

423-5244

EXPERT BODY REPAIR



Four-Point Buck Downed On Road

A photograph, taken just after the kill, Preston (left) and son, Lester (right), show off the

theast Miss. Expo '84 March 22-23

County Agent Tommy Purcell said this week that plans already underway for the Southeast Mississippi Ag Expo to be held March 22-23 at the Natchez Trace Inn in

Planning committees have been working for several weeks in preparation for this Ag Expo, which is expected to be greatly expanded.

County Agents with the Mississippi Cooperative Extension Service are working with several sponsoring organizations to expand this Ag Expo program of

In addition to the usual display of exhibits by agriculture suppliers, Ag Expo '84 will include a full program of educational seminars, a performance test sale, and the annual

With Awards Program. Educational programs have been scheduled on the following topics: beef production, milk production, and no-till, soybean production, management and marketing, and the fruit production, andamentals and house plan-

Each county can recommend up to 12 youth with excellent representation from the youth program areas. Youth are eligible for Ag Expo recognition if they have been recommended by a County

Advisory Committee for Extension in either 4-H, or FHA. Priority should be given to youth who have received district, state or national recognition.

Exhibits at the Ag Expo '84 festivities will include computers, mobile computer Extension Home Economics, family information, home and family features, management, Extension horticulture displays.

The Northeast Mississippi performance bull sale and other sale will be highlights

four-point buck they shot last Wednesday on Cagle Road. The two men were waiting in a clump of underbrush with three lethal bullets in their guns when their redbone hound flushed the deer out of

of the event. Committees are continuing to plan for Ag Expo '84 in the hopes of making this year's event the biggest and most informative ever.

Arranging a cheese board? Keep mild and strongly flavored cheeses apart, separating with fruit, vegetables, crackers, leaves or other garnishes. A fresh sprig of thyme near a strong cheese can be used to absorb its aroma.

LEGAL State of Mississippi County of Tishomingo FORECLOSURE NOTICE

WHEREAS, on the 26th day of September, 1983, Vita Walls Johnson, executed a Deed of Trust under the terms of which the hereinafter described real property was conveyed to W.L. Sharp, as Trustee, to secure the payment to First Citizen Loans, Inc., of Iuka, Mississippi of an indebtedness therein described, which Deed of Trust is recorded in Trust Deed Book 110, pages 819-820, of the records of Tishomingo County, Mississippi; and

WHEREAS, as First Citizen Loans, Inc., of Iuka, Mississippi, has heretofore substituted the undersigned, Richard O. Clark, as Trustee in the place and stead of W.L. Sharp by instrument dated the 6th day of January, 1984, which instrument is of record in the office of the Chancery Clerk of Tishomingo County, Mississippi, in Deed Book B-112, at page 191-192, and

WHEREAS, default has been made in the performance and conditions of the said Deed of Trust, and the holder thereof has declared the entire indebtedness secured thereby due and has requested the undersigned to sell said lands as provided by the said Deed of Trust.

NOW, THEREFORE, the undersigned will, between the hours of 11:00 A.M. and 4:00 P.M., on the 3rd day of February, 1984, at the East front door of the Tishomingo County Courthouse in Iuka, Mississippi, offer for sale and

the woods. When asked to give less successful hunters a tip, Preston replied, "There ain't much a man can do deer hunting. You just got to wait on the deer to make his appearance."

will sell at public outcry to the highest bidder for cash the following described real property located in Tishomingo County, Mississippi, to-wit:

Part of the NE 1/4 of Section 22, Township 3, Range 10 East, described as beginning at the point on the North right-of-way line of Lee Highway where the gravel road leading from said highway North to the old J.C. Linton residence intersects with said highway, run thence in an easterly direction along the North right-of-way line of Highway No. 72 a distance of 420 feet, then this point is the beginning point of this land conveyed by this deed; run thence North parallel to the East line of the plat formerly conveyed to Tommie Crawford and wife, Edith Crawford, a distance of 355 feet; thence an easterly direction 210 feet; thence South parallel to the first line 355 feet to the North right-of-way line of Highway No. 72; thence westerly direction along North right-of-way line 210 feet to the point of beginning. Containing 1 1/2 acres, more or less.

LESS AND EXCEPT: Part of the NE 1/4 of Section 22, Township 3, Range 10 East, described as beginning at the point on the North right-of-way line of Lee Highway where the gravel road leading from said highway North to the Old J.C. Linton residence intersects said highway and run thence in an easterly direction along the North right-of-way line of said highway a distance of 525 feet to the point of beginning hereof; thence run North parallel to the East line of the plat formerly conveyed to Tommie Crawford and wife a distance of 355 feet; thence run in an easterly direction 105 feet; thence run South parallel to the first line 355 feet to the North right-of-way line of Highway No. 72; thence westerly direction along North right-of-way line 105 feet to the point of beginning. Containing 2 1/2 of an acre, more or less.

The undersigned will convey only such title as is vested in him as Trustee.

RICHARD O. CLARK
ATTORNEY AT LAW
POST OFFICE BOX 319
IUKA, MISSISSIPPI 38852
(601) 423-5227
J-12-19-26-F-2-c.

**ADVERTISEMENT
FOR BIDS**
Midway-Pleasant Hill
Water Association
Iuka, Mississippi 38852

Sealed bids for the construction of a Water Treatment Plant to serve the Midway-Pleasant Hill Water Association will be received by The Board of Directors of the Midway-Pleasant Hill Water Association at 2:00 P.M., CST, January 31, 1984, at 123 East Eastport Street and then at said office publicly opened and read aloud.

The CONTRACT

DOCUMENTS, consisting of Advertisement for Bids, Information for Bidders, BID, BID BOND, AGREEMENT, GENERAL CONDITIONS, SUPPLEMENTAL GENERAL CONDITIONS, PAYMENT BOND, PERFORMANCE BOND, NOTICE OF AWARD, NOTICE TO PROCEED, CHANGE ORDER, DRAWINGS, SPECIFICATIONS, and ADDENDA may be examined at the office of G & E Engineers, 600 North College Street, Booneville, Mississippi.

Copies of the CONTRACT DOCUMENTS may be obtained at the office of G & E Engineers, 600 North College Street, Booneville, Mississippi, 38829, upon payment of \$50.00 per set.

Any BIDDER upon so returning the CONTRACT DOCUMENTS will be refunded \$20.00 per set.

Clifford Cox,
President,
Midway-Pleasant Hill
Water Association
J-5-12-19-c.

In The Chancery Court of Tishomingo County, Mississippi

IN THE MATTER OF THE
LAST WILL & TESTAMENT
OF GRACE HUBBARD,
DECEASED

NO. 9445
STATE OF MISSISSIPPI
COUNTY OF TISHOMINGO

The undersigned having been appointed executrix of the Last Will and Testament of Grace Hubbard, deceased, by the Chancery Court of Tishomingo County, Mississippi, in Cause No. 9445 upon the docket of said Court, on the 31st day of December, 1983, hereby gives notice to all persons having any claim against the estate of Grace Hubbard to have the same probated and registered by the Clerk of the Chancery Court of Tishomingo County, Mississippi, within 90 days, and failure to probate and register for this period will bar the claim.

This the 31st day of
December, 1983.
BONNIE GORDON,
EXECUTRIX
J-5-12-19-c.

TIMBERLINE

By: Brendix Glasgow,
County Forester

Factors Affecting Market Value of Timber

(Part 2 of a 3 Part Series)

Volume per acre is an important characteristic to a timber buyer because IT IS MORE ECONOMICAL TO HARVEST A WELL-STOCKED STAND THAN ONE IN WHICH THE TREES ARE SCATTERED. Total volume included in the sale is also very important because the time spent moving from one tract of timber to another is nonproductive time for the logger; he would prefer to cut larger tracts of timber and minimize his downtime for moving. As a result, loggers insist on being paid more per unit volume to cut a small volume of timber than to cut a large volume. And, having committed himself to paying more for the logging cost, the buyer has no choice but to offer a lower stumpage price in order to keep his total delivered price in line.

Timber quality can be a critical factor affecting stumpage prices. Solid wood products such as lumber and poles must be made from relatively straight trees with few knots, or the final product quality will be inferior. Straightness is easily observed in standing trees, and the number and size of knots can be estimated fairly well by observing the number and diameter of branches. Defects such as fire scars,

disease cankers, and hollow boles also reduce the stumpage value. Hidden defects are more common and more difficult to detect in hardwoods than in pines, and as a result BUYERS TEND TO BE VERY CONSERVATIVE WHEN APPRAISING HARDWOODS. Tree age and the width of the growth rings are commonly assumed to affect wood quality; consequently, young trees which have grown very rapidly are the same size.

Landowners probably do not consider access to the timber as being a major problem but the logger's equipment is much larger than the owner's personal truck. Narrow, winding roads through timber which is not included in the sale area do not provide good access for a typical logging crew. Often such roads must be widened by the logger in order to remove the timber which has been sold. In many cases, roads which are wide enough are not able to hold up under heavy loads of wood and must be constantly repaired by the logger. And, of course, the landowner will expect the roads to be serviceable when the logging operation is completed. Thus a tract of timber which is readily accessible via all-weather roads is more valuable than a similar tract which will require substantial road work by the logger.

Another factor closely related to access is the actual ground conditions in the woods. Given a choice, buyers would prefer to purchase timber located on well-drained, level or gently sloping tracts with numerous rocks and thick brush. Wet tracts can only be logged during dry weather. That can make it difficult to meet time limitations in the timber sale contract if seasonal dry weather does not occur when expected. Steep slopes, gullies, thick brush, and rocks can not only slow production but lead to equipment damage and personal injuries.

The existence of any of the above unfavorable conditions will cause the buyer to try to get a longer-term cutting contract with the landowner, especially if the timber is being paid for with a lump sum in advance. If he is unable to get as long a lease as he would like, the stumpage price offered will be lowered somewhat to cover the risk of not being able to finish the logging on time. Ordinarily the buyer will want at least 12 months to cut upland timber, and over 24 months to cut swap timber, when it is purchased in a lump sum fashion.

Next week we'll conclude this series with a discussion of some additional factors that affect the market value of your timber.

POINT OF LAW

(Prepared by the Mississippi State Bar. Some legal rights may vary from locality to locality. Always consult an attorney when in doubt about your rights.)

Q: Several years ago I opened a small gift shop in my hometown. Business was good for a while but now I am in financial trouble. I do not want to declare personal bankruptcy if I can keep from it. Can I declare bankruptcy on the business only?

A: If your business is a sole proprietorship, you are personally liable for all debts of the business, and therefore, you cannot avoid personal bankruptcy. If, however, your business is incorporated, you may declare bankruptcy on the business without declaring personal bankruptcy.

Q: There is a company which owes my company money and they are declaring bankruptcy. Is there any way I can get my money back? Do I

need to get on a list?

A: If you have a claim secured with collateral, you will either get the return of the collateral or your money back at least the extent of the value of the collateral. If you have an unsecured claim, it will be dependent on the type of bankruptcy which is filed. You will be notified of the bankruptcy by communication from the bankruptcy trustee, or the debtor in possession as listed on the notice from the bankruptcy court. You may be required to file a proof of claim to collect your money.

Fewer Mississippians Died In Automobile Crashes In 1983

Twelve fewer people died as a result of automobile crashes in Mississippi during 1983 than in 1982, the Mississippi Highway Patrol reported.

Year end traffic death statistics show county roads were the most dangerous for Mississippi motorists during 1983 than were city streets or state and federal highways.

Figures supplied by the Statistical Branch of the Mississippi Highway Patrol show fatal traffic accidents occurring on county roads increased by 45 percent. In 1983, 224 people were killed on county roads compared to 154 in 1982.

The Mississippi Highway Patrol effected a nine percent fatality reduction on highways under its jurisdiction during 1983.

Overall 716 people were killed in traffic deaths during 1983 compared to 728 for 1982.

The Highway Patrol recorded 350 deaths that occurred on state and federal highways in 1983 which is 34 fewer deaths on those roads and highways than took place in 1982.

A 25 percent decrease in traffic deaths was recorded for city streets with 142 fatalities for 1983 and 190 for 1982.

MPSC Grants South Central Bell Rehearing Request

South Central Bell announced today that the Mississippi Public Service Commission has granted the company's request for a rehearing and temporary stay of a December 21, 1983 Commission order. That order would have granted to AT&T Communications a certificate to provide intrastate intraLATA WATS and 800 telecommunications services in Mississippi.

"The Commission's order, as it stood, would have deprived South Central Bell of all of its present Mississippi WATS customers resulting in a net revenue loss of approximately \$8,000,000 to our company," said J.N. McGowen, vice president for operations in Mississippi.

"We are glad that the Commission is going to rehear and reconsider its December order," McGowen said.

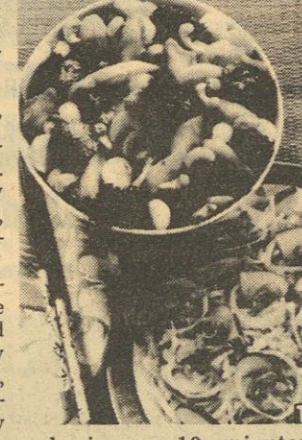
Recipes in a Nutshell

Nuts Improve Vegetable Variety and Flavor

Many of us remember vegetables as being tasteless and overcooked foods we ate for nutrition, but rarely flavor. But this is changing.

For instance, Sweet N' Sour Slaw is one zesty variation of traditional coleslaw. Made with Planters Dry Roasted Unsalted Cashews, cabbage and apple, it is seasoned in a light sauce.

Oriental cooking has always inspired vegetable preparation. Broccoli and carrots taste distinctly unique when stir-fried in oil, garlic and ginger, and sprinkled with Planters Dry Roasted Unsalted Cashews. Try both recipes for a new taste experience that is low in sodium, too.



and simmer 10 minutes. Add apple slices; cover and cook 5 additional minutes. Just before serving, stir in cashews and parsley.

SWEET N' SOUR SLAW

Makes 6 servings

- 2 tablespoons margarine
- 6 cups coarsely shredded cabbage
- 1 medium onion, sliced
- 1/4 cup cider vinegar
- 2 tablespoons light brown sugar
- 2 teaspoons prepared spicy mustard
- 1 medium apple, cored and sliced
- 1/2 cup Planters Dry Roasted Unsalted Cashews
- 2 tablespoons chopped parsley

ORIENTAL CASHEW VEGETABLES

Makes 6 to 8 servings

- 1/4 cup Planters Peanut Oil
- 2 cloves garlic, crushed
- 1 1/2 teaspoons ground ginger
- 1 bunch broccoli, coarsely chopped
- 2 cups diagonally sliced carrots
- 1 (8-ounce) can water chestnuts, drained
- 1/2 cup Planters Dry Roasted Unsalted Cashews

In medium skillet, over medium heat, melt margarine; saute cabbage and onion 3 to 5 minutes. Stir in vinegar, brown sugar and mustard. Reduce heat; cover

In large skillet or wok, heat peanut oil over medium high heat, stir in garlic and ginger. Stir-fry broccoli and chestnuts and cashews; cook 1 minute more.

Get \$200 cash in Memphis, Tennessee.

You can get instant cash anytime, almost anywhere. Our First Aid Stations are plugged into the Money Belt and PLUS networks of money machines all across the country. If you're out of town and need cash fast, call the toll-free PLUS number to find out where you can get First Aid.



PLUS NETWORK 1-800-843-7587

Member FDIC.

Member FDIC.

Member FDIC.

Member FDIC.

Member FDIC.

Member FDIC.

Member FDIC.

Member FDIC.

Member FDIC.

Member FDIC.

Member FDIC.

Member FDIC.

Member FDIC.

Member FDIC.

Member FDIC.

Member FDIC.

Member FDIC.

Member FDIC.

Member FDIC.

Member FDIC.

Member FDIC.

Member FDIC.

Member FDIC.

Member FDIC.

Member FDIC.

Member FDIC.

Member FDIC.

Member FDIC.

Member FDIC.

Member FDIC.

Member FDIC.

Member FDIC.

Member FDIC.

Member FDIC.

Member FDIC.

Member FDIC.

Member FDIC.

Member FDIC.

Member FDIC.

Member FDIC.

Member FDIC.

Member FDIC.

Member FDIC.

Member FDIC.

Member FDIC.

Member FDIC.

Member FDIC.

Member FDIC.

Member FDIC.

CREOSOTE POLES FOR SALE

CALL 287-2538 UNTIL 5
427-8864 AFTER 5 P.M.

1 & 2 BEDROOM APARTMENTS AVAILABLE

Newly Decorated
Central Heat & Air

Kitchen Appliances Furnished

PICKWICK CIRCLE APARTMENTS

PICKWICK CIRCLE

IUKA, MISSISSIPPI

Ideal for the elderly & persons disable & or handicapped, also married couples without Children.

Call 423-5314 or 427-9049

THE AMOUNT OF RENT IS BASED ON THIRTY PERCENT (30%)

OF THE ADJUSTED FAMILY INCOME



EQUAL HOUSING
OPPORTUNITY

At H&R Block we guarantee our work.

With this year's changes in the tax laws and forms, you have more chances of making a mistake. And that could mean an IRS audit. If H&R Block prepares your taxes and you're audited, we go with you at no added cost. Not as your legal representative, but to explain how your taxes were prepared. If we make a mistake and you owe additional tax, you pay only the tax. We pay the penalty and interest.

H&R BLOCK
The new tax laws.
This year's number one reason to go to H&R Block.

1415 Hwy. 25 South - Iuka

Open 9 AM-6 PM Weekdays, 9-5 Sat.

PHONE 423-9137

APPOINTMENTS AVAILABLE

BONDS CONSTRUCTION

"STORM WINDOWS"
"INSULATION"
"GENERAL REPAIR"

Grant money available to the elderly on fixed incomes up to \$5,700 FREE.

Up to \$8,100 at 1% APR available to people under 62 on fixed incomes.

Payments as low as \$15 monthly.

Need a new 3 BR House, with payments as low as \$106.00 monthly?

BOND MONEY AVAILABLE FOR NEW HOMES IN OUR AREA LOW INTEREST RATES

ALL WORK GUARANTEED

CALL NOW

423-5102

Sunflower

FOOD STORES

Change To Sunflower...And
Pocket
The Change!

5 WAYS TO SAVE...

- Advertised Specials
- Everyday Low Prices
- Surprise Buys
- Store Brands
- Generic Brands



QUANTITY RIGHTS RESERVED. NO SALES TO DEALERS.
AD GOOD THURS. JAN. 12 THRU WED. JAN. 18

Armour Hickory Smoked
SLAB BACON
89¢
Whole Only
lb.

BONELESS Stew Meat	LB.	\$1.89
ARMOUR CHICKEN Fried Steak	LB.	\$1.19
ARMOUR HICKORY SMOKED Pork Chops	LB.	\$2.19
FRESH Pork Neckbones	LB.	29¢
RATH SLICED Bacon	12 OZ. PKG.	\$1.29
RATH Hot Dogs	12 OZ. PKG.	99¢
REELFOOT Bacon Ends & Pieces	3 LB. BOX	\$1.99
RATH Summer Sausage	12 OZ.	\$1.69

Fresh Ground
BEEF
98
3 LB. PKG.
OR
LARGER
lb.

BONELESS Sirloin Tip Roast	WHOLE ONLY	LB.	\$1.99
BONELESS Sirloin Tip Roast	3-6 LB. AVG.	LB.	\$2.29
BONELESS Sirloin Tip Steak		LB.	\$2.39

Bryan's Hickory's Smoked
SMOKED HAMS
Shank Portion
..
lb. **99¢**

MELLOWSWEET BONELESS Ham		LB.	\$1.49
RYAN HICKORY Smoked Hams	BUTT PORTION	LB.	\$1.19
REELFOOT FULLY COOKED BONELESS Half Hams	2-3 LB. AVG.	LB.	\$2.99

REELFOOT SLICED Picnics	LB.	\$1.09
REELFOOT SLICED Smoked Ham	12 OZ. PKG.	\$1.99
ARMOUR RED RIND Cheese	LB.	\$2.59

ARMOUR Pork Patties	LB.	\$1.19
FRESH SLICED Pork Liver	LB.	69¢
WILLIAMS COUNTRY Sausage Patties	12 OZ. PKG.	\$1.19
WILLIAMS Sausage & Biscuits	9 1/2 OZ. BOX	\$1.39
BRYAN Smoked Sausage	LB.	\$1.89
MARIA ROSA Italian Sausage	LB.	\$2.19
ARMOUR Canned Hams	3 LB. CAN	\$5.99
ARMOUR Pork Sausage	12 OZ. PACK	69¢
ARMOUR Turkey Bologna	12 OZ. PKGS.	99¢
QUALITY PLUS SLICED Bologna & Salami	12 OZ. PKG.	99¢



Heavy Duty Detergent
ERA
32 oz. bottle
\$1.69

Campbell's
SOUP
Chicken Noodle 10 3/4 oz. cans
3/\$1

Bounty
TOWELS
lg. roll
Asst. **69¢**
LIMIT-2 WITH OTHER PURCHASES

Detergent
TIDE
49 oz. box
\$1.39
LIMIT-1 WITH COUPON & \$15.00 ADDITIONAL PURCHASE

Flav-O-Rite Lt. Chunk
TUNA
6 1/2 oz. can
Water or Oil Packed
75¢

MR. CLEAN LIQUID Cleaner	15 oz.	99¢
DAWN Dish Liquid	32 oz.	\$1.79

RAGU SPAGHETTI Sauce	Reg. or Home-Garden 32 oz.	\$1.59
JIF Creamy or Crunchy Peanut Butter	18 oz.	\$1.59

TEXSUN PINK Grapefruit Juice	46 oz.	79¢
CARNATION Evap. Milk	13 oz.	59¢

RICHTEX Shortening	42 oz.	\$1.39
HEINZ STRAINED Baby Food	4.5 oz.	4/\$1

Del Monte Cut
GREEN BEANS
16 oz. can **49¢**

Puff's Facial
TISSUE
Asst. 175 ct. box **69¢**

Sweet Sue BBQ
CHICKEN
10 1/2 oz. **89¢**

DAIRY
HARVEST MOON Mild
Ched. Cheese . 8 oz. **\$1.09**
KRAFT SHREDDED Mozz.
Cheese 8 oz. **\$1.29**
KRAFT IND. WRAP
Velveeta Slices 12 oz. **\$1.59**
WEIGHT WATCHERS
Cheese Slices 10 oz. **\$1.29**
Pillsbury Big Country
BISCUITS
Buttery or Buttermilk 12 oz. **39¢**

Frozen
MORTON ASST.
Dinners 11 oz. **79¢**
JENO'S
Snack Tray . 7 1/4 oz. **\$1.29**
SEAFOOD KITCHEN
Fish Sticks . 32 oz. **\$1.89**
SALLY'S Conc.
Orange Juice 16 oz. **\$1.09**
GENERIC FRENCH FRIED
Potatoes 80 oz. **\$1.39**
SALLY'S MIXED
Vegetables 16 oz. **89¢**
FLAV-O-RITE Whipped
Topping 8 oz. **59¢**

Reynold's Wrap	25 ft.	59¢
Bold Detergent	49 oz.	\$2.09
Elf Golden Corn	WK or CS 16 oz.	2/79¢
Elf Pork N Beans	15 oz.	3/\$1
Chateau Bleach	64 oz.	59¢
Apple Pie Filling	Flavorite 21 oz.	98¢
MARTHA WHITE Asst.		
Muffin Mix	7 oz. pouches	3/\$1
ELF CHUNK Dog Food	25-lb. bag	\$3.79
Sandwich Bags	Chateau 150 ct.	69¢
Cornbread Mix	Cotton Pickin 6 oz.	4/\$1
Flav. Beef Stew	24 oz.	\$1.29
Flavorite Mushrooms	Stems & Pieces 4 oz.	59¢

PRODUCE THAT YOU KNOW IS FRESH
Chiquita Golden Ripe
BANANAS 3 lbs. **89¢**
US NO. 1 Red
Potatoes 5-lb. bag **79¢**
U.S. NO. 1 RUSSET
Potatoes 5 LB. BAG **89¢**
California Minneola
TANGELOS . 3-lb. bag **\$1.29**
US NO. 1 YELLOW ONIONS lb. **39¢**
Sally's Rice 2-lb. bag 59¢
Sally's Tomato Paste 6 oz. 3/\$1
CALIFORNIA Red Emperor
Grapes lb. **89¢**
FLORIDA JUMBO
Avocados 2/\$1
Wash. Ex-Fcy. Red Del.
APPLES 138's lb. **59¢**
Sally's Whole Tomatoes 16 oz. 2/\$1
Sally's Veg. Oil 48 oz. \$2.39

PLAIN LABELS

Iced Tea Mix	32 oz.	\$1.19
Medium Rice	2-lb. bag	53¢
Corn C.S. or W.K.	17 oz.	43¢
Peach Preserves	32 oz.	\$1.19
Tomato Sauce	15 oz.	53¢
Egg Noodles	16 oz.	65¢
Apple Juice	32 oz.	76¢
Elbo Macaroni	32 oz.	89¢
Pink Liquid Dish Det.	32 oz.	59¢
Trash Bags	20 ct.	\$1.19
Pine Oil	28 oz.	79¢
Bath Tissue	6-rolls.	\$1.19
Coffee Creamer	22 oz.	\$1.19
Plastic Wrap	200 ft.	89¢
Liquid Bleach	gal.	77¢

Folger's Instant
COFFEE
8 oz. **\$3.19**



Keebler
COOKIES
Oatmeal Creme
Chipotle Grasshopper
12.5- 13 oz. **83¢**



VALUABLE COUPON
WITH THIS COUPON & \$15.00 ADD. PURCHASE
DETERGENT
Tide 49 oz. **\$1.39**
LIMIT-1 COUPON
EXPIRES 1-14-84



Nabisco Premium
SALTINES
16 oz. **89¢**



Post Cereal
SUGAR CRISP
18 oz. **\$1.59**





VOLUNTEER FIREMEN — Members of the North Crossroads Volunteer Fire Department are, kneeling, left to right: Red Blakney, Mike Reynolds, Raymond Bray, Chester Bray, Jackie Woods,

Brian Harrison and Ronald Bray. Standing, left to right: George Harrison, Stanley Edmondson, Gary Lambert, Terry Lambert, Ron Seaton, Ricky Dill, Ernest Dill, and Donnie Lambert, Chief. Not

pictured are: Lynn Dill, Michael Parrish, Charles Cummings, James Woods, Leonard Woods, Dale Curtis, Danny Hudson, Andy Edge, Danny Lunch and Glen McDuffy.



LADIES AUXILIARY — Members of the North Crossroads Volunteer Fire Department Ladies Auxiliary, left to right: Sherry Lambert,

Rhonda Lambert, Donna Reynolds, Debbie Seaton and Nola Dill. Not pictured are: Ona Lambert, Sue Dill, Bon-

nie Dill, Donna Dill, Brenda Curtis, Delores Blakney, Linda Cummings, Otha Lambert and Dorothy Harris.



ment also includes a Ladies Auxiliary, which is responsible for several successful fund-raising projects, including bake sales, fish and stew suppers, road blocks, etc. These ladies also assist the firemen at the fires by doing whatever is needed.

The ladies meet every second Thursday night at 7:00 p.m. at the department, and the men meet every 2nd and 4th Monday nights at 7:00 p.m. at the department.

Everyone in the Crossroads Community is welcome to attend these meetings and to become involved in the North Crossroads Volunteer Fire Department.

In case of fire call the Sheriff's Department at 423-6185.

ASCS Farm News

By: Henry L. Knox,
County Executive Director

Farm Program Signup Begins January 16

"We will begin accepting applications for the 1984 farm programs on January 16th," Howard R. Bridges, Chairman of the Tishomingo County ASCS Committee said. The 1984 acreage reduction programs were announced last August for wheat and during the fall for corn, grain sorghum, barley, oats, cotton and rice.

Bridges said to be eligible for loans and target price protection farmers must sign up and comply with the acreage reduction program requirements.

To emphasize the conservation aspects of the 1984 programs, land removed from production will be put into an acreage conservation reserve (ACR). "We encourage farmers to place their more erosive land into the ACR while continuing to balance supply with demand."

For reducing their wheat acres by 30 percent of their base, farmers will be eligible for target price protection at \$4.45 per bushel, price support loans at \$3.30 per bushel and the option to reduce their acreage an additional 10 to 20 percent for a payment-in-kind at 75 percent of their program yield, according to Bridges.

Farmers who reduce their feed grain acreage by 10 percent of their base will receive federal target prices of \$3.03 per bushel for corn, \$2.88 for grain sorghum, \$2.60 for barley and \$1.60 a bushel for oats. They also will be eligible for loan rates of \$2.55 a bushel for corn, \$2.42 for sorghum, \$2.08 for barley and \$1.31 per bushel for oats.

The upland cotton program offers farmers a target price of 81 cents per pound and a loan rate of 55 cents per pound for reducing their cotton acres by 25 percent of their base. Farmers who reduce their extra long staple cotton acres by 10 percent of their base will be eligible for target price protection of 99 cents per pound and loans of 82.50 cents per pound. "The 1984 crop of extra long staple cotton will be the first covered by new farm legislation, making the program similar to the upland cotton program," Bridges said.

For reducing their rice acres by 25 percent, farmers will be eligible for target price protection of \$11.90 per hundredweight and a national loan rate of \$8.00 per hundredweight.

The ASCS official said participation in the acreage reduction programs is a way in which farmers can control over-supply situations. "The programs also will provide a degree of insurance for farmers against price fluctuations and adverse weather conditions."

Contracts signed by program participants will be considered binding and will provide for liquidated



Happy Birthday, Ma Tigner

Laura "Ma" Tigner, a lifelong resident of Tishomingo County, celebrated her 91st birthday on Tuesday, January

3rd. She is the mother of Nancy Whitaker, of Iuka; Claudie Alexander, of Memphis; Herman Tigner, of Iuka; J.M. Tigner, of Iuka; and Fernon Tigner, of Fayetteville, N.C.

damages for failure to comply with program requirements. The sign-up period ends February 24th.

Conservation Sign-Up

January 16 through 27 has been set for the sign-up for conservation programs. This includes the Agricultural Conservation Program (ACP), Long Term Agreements (LTA) and the Forestry Incentive Program (FIP). Any request for cost-sharing for practices to be completed this year should be made at this time. Late-filed FIP requests will not be accepted after the sign-up. Therefore, if you are interested in the FIP, you need to sign-up now. Please check with the county office for details on these programs.

Iuka Route 2

Miss Sarah Hayes spent a recent weekend with her brother, Tom Hayes, and family in Arab, Ala. Tracy Hayes, who has been visiting here since Christmas, returned home with her.

Mr. and Mrs. Bobby Goodson, of Florida, were welcomed visitors at Harmony Church on Sunday night, January 1st.

The Gerald Wallace family, of Cherokee, were supper guests of Mr. and Mrs. Hershel Robinson on New Year's night.

The Steven Hurst family returned last week from a visit with relatives in Minnesota.

Mr. Clarence Peterson, of Rockwood, Minn., is visiting with Mr. and Mrs. Cliff Peterson.

The Jimmy Daniel family, of Corinth, visited last Saturday with his mother and other relatives.

Edward Sanderson was carried to Veteran's Hospital in Memphis last Monday.

Annette Tucker, Joyce Robertson, Mrs. Marshal Daniel, of Iuka, and Mrs. Linda Wallace, of Cherokee, visited with Mrs. Lela Moore, who is in ECM Hospital in Florence, Ala., last Friday.

State Democratic Committee Outlines Delegate Selection Process

Since 1984 is a presidential election year, Tishomingo County Democrats are reminded of the Mississippi Delegate Selection Plan for

participant in the delegate selection process must be a Democratic voter who has publicly declared his/her party preference and has that preference publicly recorded. (3) Each participant who desires to be a delegate to the National Convention must file by 5 p.m. on Saturday, March 17, 1984, a Declaration of Candidacy for the delegate or alternate position being sought. Declaration of Candidacy forms are available from the State Party office. (4) Each participant must state a presidential preference or indicate unpledged status in

the Declaration of Candidacy. For further information about the delegate selection process for the 1984 Democratic National Convention, write the Mississippi Democratic Party, P.O. Box 1583, Jackson, MS 39205, or call (601) 989-2913.



Gladys Gooding played for the New York Rangers, New York Knicks and Brooklyn Dodgers in a single season — as organist.

Clearance

sale!

save 1/2

on an outstanding group of fall and winter shoes!

ONE TABLE LADIES SHOES

\$5.00 PAIR

THE SHOE TREE

OPEN TUESDAY - SATURDAY 10:00 A.M. - 5:00 P.M.

713 Eastport St.
Iuka, Miss.

WEIGHT WATCHERS

TIME TO TIP THE SCALES IN YOUR FAVOR.



So come back to Weight Watchers and get started

on our new Quick Start program. You'll be pleased at the difference in us. And thrilled at the difference in you.

Meeting in Iuka Youth Center
Tuesdays 6:00 p.m.

FOR NEW MEETING TIMES PLEASE CALL:
TOLL-FREE 1-800-222-7694

FIRE DEPT. VEHICLES — North Crossroads Volunteer Fire Department vehicles include a one ton, 1983, 250 gallon mini pumper, and a 1979 two ton truck with 1200 gallon tank.

Volunteer Fire Dept. Reaches Goal

The North Crossroads Volunteer Fire Department would like to sincerely thank the general public for the many donations and support of the fire department. Much has been accomplished because of this interest.

The fire department has purchased 15 complete uniforms at \$269.00 each. Each of the 24 members have beepers. The department now has two vehicles, a 1979 two ton truck, which holds 1200 gallons of water, and a 1983 one ton mini pumper, which holds 250 gallons of water.

The Volunteer Fire Depar-

C's Ceramics, Crafts and Creations

is entering the New Year with a Sale of

1/4 TO 1/2 OFF

On Finished Ceramic Gifts

1/2 OFF A SELECTION OF BOOKS

SALE ON PAINTS, DECALS, & GREENWARE

Ask Charlene about Free Ceramics!

CLASSES ON MONDAY, TUESDAY, AND THURSDAY NIGHTS TO LEARN TO MAKE YOUR OWN GIFTS IN 1984

SHOP HOURS:

MONDAY, TUESDAY, THURSDAY 5 P.M. - 8 P.M.
SATURDAY 12 - 4 P.M.

LOCATED ON HARMONY ROAD - ONE MILE OFF HWY. 25 NORTH

THE CHUCKWAGON CAFE

SUNDAY LUNCH

Chicken & Dressing, Green Beans,
Corn Pudding, Fruit Salad,
Homemade Rolls, **\$2.99**
Dessert

IUKA'S NO. 1 EATING PLACE

HWY. 25 NORTH IN IUKA

Butler-Moore Office Products

is proud to announce our appointment as an Authorized Sales Agent for Xerox in Tishomingo County

We're pleased to announce that we have been selected as an Authorized Sales Agent for the popular line of Xerox desk top copiers, portable copiers and supplies. Our customers are assured of quality service directly from Xerox.

Call for a free demonstration and see just how much a Xerox copier can do for you.

Butler-Moore Office Products
618 Waldron Corinth
287-2015

Authorized
Xerox Sales
Agent

XEROX

B & J Supermarket

Hwy. 365
South
Burnsville

AD EXPIRES TUESDAY NOON 1-17-84

ANOTHER AD BEGINS TUE. AFTERNOON

WIN WHAT YOU BUY!

FOUR WEEKLY WINNERS

Deposit your register receipt for this week in drawing box before Saturday night!

If your ticket is drawn you win that amount in groceries!

LAST WEEK'S WINNERS: HELEN ELLIOT \$10.82 NELLA BRUMLEY \$9.35 ELMER LAMBERT \$6.11
DONNA BLAKNEY \$8.43

USDA CHOICE BONELESS

ROUND STEAK

LB.

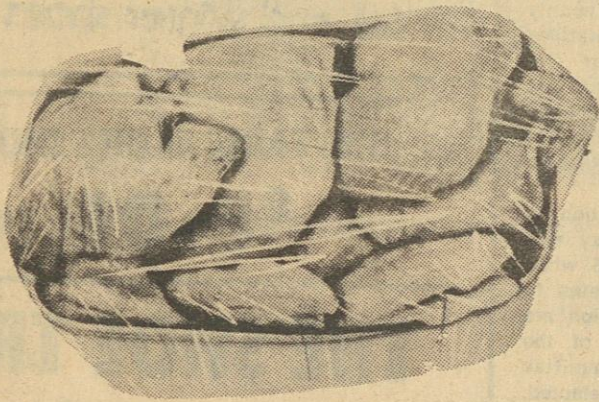
\$1.89

FRESH FRYER

MIXED PARTS

LB.

59¢



FRESH SPLIT FRYER

Breast

LB.

\$1.29

FRESH FRYER FAMILY PACK

Thighs

LB.

79¢

LBP QUARTER POUNDER

Beef Patties

2 LB. BOX

\$2.99

JOHN MORRELL 1 LB.

Cheese
Franks

\$1.29

JOHN MORRELL MEAT

Hot Dogs

12 OZ.

99¢



THIN SLICED

Breakfast
Steaks

LB.

\$2.99

FOUR KINGS WHITE

Chicken
Nuggets

LB.

\$1.99

HYDE PARK 12 OZ. VAC. PACK

Bologna

REG. OR THICK
SLICED

99¢

KING COTTON

Corn Dogs

18 OZ. PKG.

\$1.69

HYDE PARK 12 OZ. BEEF

Bologna

\$1.19

JOHN MORRELL PORK

SAUSAGE



LB.

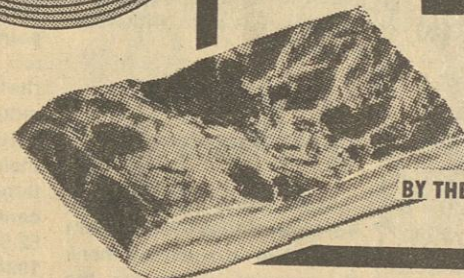
89¢

COUNTRY STYLE SLAB

BACON

RIND ON

89¢



BY THE PIECE LB.

TRAY PACK WHOLE
Catfish

LB.

\$1.99

FROZEN CRAB FLAVORED

Seafood Sticks

12 OZ.

\$1.99

JOHN MORRELL GOLDEN SMOKED CAN

HAMS

3 LB.

\$4.99



MRS. WEAVERS NACHO 8 OZ.

Cheese Dip

\$1.19

MRS. WEAVERS 8 OZ. FRENCH

Onion Dip

2/\$1.00

USDA CHOICE BONELESS ROUND

ROAST \$1.79

LB.

tempting produce

BANANAS

3/\$1.00



LIBBYS SUPER PK.

SLAW MIX

49¢

CARA MIA MARINATED

MUSHROOMS

4 OZ.

2/99¢

WASHINGTON STATE DANJOU

PEARS

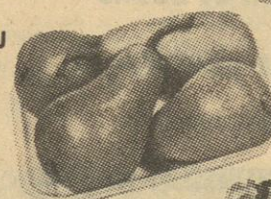
LB.

59¢

CANADIAN WAXED

RUTABAGAS

4/\$1.00



RED DELICIOUS GOLD DELICIOUS GRANNY SMITH

APPLES

RED ROME BAKING

LB.

49¢

LETTUCE

59¢

POPSRITE WHITE OR YELLOW

POPCORN**3 / \$1.00**BRYAN
Chili

15 OZ. WITH BEANS

REG. OR HOT **69¢**PLAIN **89¢**

HYDE PARK PINTO OR GREAT NORTHERN

BEANS

15 OZ.

4 / \$1.00

HYDE PARK 4 PACK. BUTTERMILK OR SWEETMILK

BISCUITS**59¢**

TRAILBLAZER

DOG RATION

OR CHUNKS

25 LB. BAG

\$3.99

HUNTS

**Fruit
Cocktail**

15 OZ. CAN

69¢

KRAFT 1/2 GAL

**Orange
Juice****\$1.59**

32 OZ. PLUS DEPOSIT

**PEPSI
DIET PEPSI OR
MT. DEW****6 / \$1.69****Soup Starters**

6 1/2 OZ. BOXES

99¢RONCO ELBOW
Macaroni

8 OZ.

3 / \$1.00

LUZIANNE INSTANT

COFFEE

LARGE 10 OZ. JAR

\$2.99KRAFT SPIRAL
Macaroni

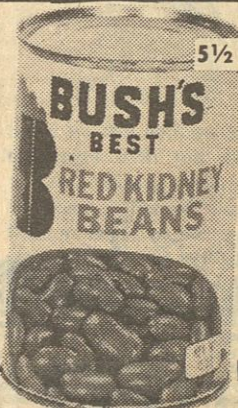
5 1/2 OZ. BOX

3 / \$1.00GENERIC
Beef Stew

24 OZ. CAN

\$1.19BUSH KIDNEY
Beans

16 OZ.

3 / 99¢**ICE
CREAM**

HALF GAL. SQUARE

\$1.69

WESPAC

Broccoli WITH CHEESE

10 LB. BAG

59¢

WAGON MASTER

Pork and Beans

15 OZ. CANS

3 / 99¢

ARMOUR TREET

12 OZ.

Luncheon Meat**\$1.19**

HUNTS

**TOMATO
SAUCE**

8 OZ. CANS

4 / \$1.00CRYSTAL WEDDING
Oats

KELLOGGS STRAWBERRY

Rice Krispies

14 OZ.

89¢**\$1.59**

KRAFT TWIN CUP WHIPPED

MARGARINE

16 OZ.

69¢

AJAX

Cleanser 14 OZ.**2 / 79¢**

HYDE PARK TALL

Kitchen Bags**89¢**

FISHERBOY

Fish Sticks

LB. PKG.

99¢**TIDE**

49 OZ. LAUNDRY DETERGENT

\$1.69

LIMIT 2 OR \$1.89



EATWELL

Mackerel

TALL CANS

59¢

BANQUET

Chicken Nuggets

12 OZ.

\$2.19

STICKS, PATTIES, OR WINGLETS

SUNFLOUR SELF RISE CORN

MEAL

5 LB. BAG

79¢

LIMIT ONE OR 89¢



WELCHS WHITE SPARKLING

**Grape
Juice**

25 OZ.

\$1.99

DOMINO POWDERED

Sugar

16 OZ. WHITE

LIGHT BROWN OR DARK BROWN

59¢

SUNFLOUR SELF RISE

FLOUR

5 LB. BAG

79¢

KRAFT 12 OZ.

**Cheese
Singles****\$1.49**

HYDE PARK

CATSUP

QUART

99¢

KRAFT BACON AND TOMATO

Dressing

8 OZ.

69¢

ORE IDA

Tater Tots REG. OR ONION 2 LB. BAG**\$1.29**

WESPAC SLICED

Strawberries

10 OZ.

59¢

PEPPERIDGE FARM

Cakes

PINEAPPLE, STRAWBERRY EXCLUDED

17 OZ.

\$1.59**COCA COLA**

OR RELATED PRODUCTS

PLUS DEPOSIT

DR. PEPPER**6 / \$1.69**

Elton Nichols

Elton Nichols, 80, died Saturday, January 7, at the St. Francis Hospital in Memphis, Tenn. He was a retired farmer and a Baptist.

Services were held Monday, January 9, at the Burgess Creek Baptist Church with Rev. Jerry House officiating. Burial was in the church cemetery. Cutshall Funeral Home was in charge of the arrangements.

Survivors include his wife, Mrs. Alma Nichols, of Iuka; two daughters, Mrs. Della Studdard and Mrs. Marie Wright, both of Burnsville; two step-sons, Ken Holt, of Iuka, and Ray Holt, of Morrow, Ga.; two sisters, Miss Maxine Nichols, of Hodges, Ala., and Mrs. Ethel Huffman, of Iuka; five half-brothers, Olan Nichols, of Tishomingo, Clovis Nichols, of Hodges, Nash Nichols, of Greenville, Webster Hindman, of Counce, Tenn., Wesley Hindman, of Alton, Ill.; seven half-sisters, Opal Pugh, of Greenville, Helen Nixon, Evelyn Bane, and Inez Nichols, all of Water Valley, Edith Perry, of Counce, Beulah Smith and Beatrice Wood, both of Booneville; four grandchildren, nine step-grandchildren, six great-grandchildren, and four step-great-grandchildren.

ONE WHO CARES

Dear Nita,
Many years ago I was saved. During these years I got away from being a Christian, and I have failed my Lord. I know people are praying for me, and I feel that God is dealing with me, but I cannot find peace. I have cried and cried, and prayed for God to forgive me, and to accept me, but I don't believe He has forgiven me.

UNFORGIVEN

Dear Unforgiven,
Your last sentence is the key to your whole problem -- (you don't believe). Satan has you bound into not believing the words of Jesus (I John 1:9). I would first like to talk about the word BELIEVE. You must believe Christ to do what He says in His word. Place trust wherever it says believe in the Bible, and it will help you to understand. For instance - Trust Christ to forgive you - Trust Christ to control your life. He will see

IN MEMORY OF MOTHER, LOIS THORNE

I know our Mother is at rest, Although we hated to give her up, But the Lord knows best.

She always met you with a smile Instead of a frown, That is the reason the Lord has given her a crown.

No lovelier or kinder Mother You will find, Than that darling Mother of mine.

If we walk in her way, We will never go astray, She's gone on to pave the way, And she'll be looking for us on that glad day.
HOSEA, JOLENE, ELOISE

RUSHING REXALL DRUG COMPANY

Presents

Tishomingo County Hospital List

Christo Anderson	Hiram Lee Lambert
Effie Mae Brown	Myrtle Jane McKee
Mamie Brabo	Sharon Myer
Noah Belue	William Robert Morgan
Earl M. Bascomb	Wardie Martin
Shirley C. Bray	Kathyren R. Moss
Virginia Crum	Renner McNair
Bobby Cosby	Shelby Nobles
Ider Carter	Thelma Oaks
Mollie E. Curtis	Marvin Parsons
Sarah E. Croy	Iness Leora Pollard
George F. Crowe	Lou Vertie Roberts
Onnie Eugene Dickinson	Charles E. Rickard
Katherine Davis	Dale Rushing
William W. Deaton	Hazel Robinson
Shelby Ross Engle	Margaret L. Siemowski
Nancy George	Oris Earline Segars
Margaret Griggs	William Thompson
Mollie Gann	Mary Lucille Thomason
Adrienne Marie Hurley	Edna Inez Woodruff
John Howard	Grady Walden
Dee Floyd Hollins	Charles Worley
Mandy J. Hardy	Grady Waldrep, Jr.
James D. Harris	James A. Barnes
Adron Hunt	Pinkey Dever
Ina Ingram	Eula Aldridge
Harold Isbell	Elaine Wynn
Charles Johnson	Pauline Simpson
Lindsey Jones	Mildred I. Scott
Louise Jourdan	Orbun M. Cain
Ruby Adelle Kent	Ruth A. McKnight
Lela Lambert	Sherra Jean Wilkins
Dorothy Logan	Jackie Milligan

that all things will work together for your good (Romans 8:28).

The simple step to becoming a Christian and being saved is Trust or Faith. If you don't believe Christ will forgive you and save you then He can't. James 1:6 - "But let him ask in faith, nothing wavering."

God put the offer of salvation in so simple a way that the whole world could grasp it. Everyone can believe. A lame man might not be able to visit the sick, but he can believe. A blind man is unable to do many things, but he can believe. A deaf man can believe. Even a dying man can believe. Salvation has been placed within the reach of all, the young and the old, the foolish and the brilliant, the rich and the poor, the high and the low. All may have it if they truly believe. Of course this means that you are no exception. I John 5:1 - "Whoever believeth that Jesus is the Christ is born of God."

IN JESUS NAME,

NITA

Please send your questions or comments to:

ONE WHO CARES

NITA GOSS

ROUTE 2, BOX 470

IUKA, MS. 38852

Card of Thanks

Words are inadequate to express our appreciation for the many acts of kindness shown to us during the loss of our loved one, Mary L. Brunson.

For the prayers, visits, words of sympathy, food, cards and flowers, we are so grateful.

May God bless each of you.
JUNE & DAYTON PRUITT

\$ & Sense

By: Ann O. Rushing, Extension Marketing Specialist

As the bell tolls and another New Year rolls in, many resolutions have been percolating for a few hours or days. In most households the two areas of extensive trimming will be the waistlines and food budgets. These two reductions do complement each other in some respects.

Exercise a few words of caution in waistline reduction. If an extensive diet is

desired, be sure to check with a physician before carrying out plans. On the other hand, if the resolution calls for a "hold the line" on the waistline, or reduce from five to ten pounds, a few guidelines will be helpful.

Calories do count in the "weighing game." They are units of heat energy that can be stored in the form of adipose (fat) tissue when they are in excess of your body's energy needs.

By reducing the calorie intake of 500 calories below the normal daily intake over a period of seven days, you can subtract 3,500 calories a week. This number of calories is equivalent to the loss of one pound of body fat. When 35,000 calories are deleted from the food intake there is an anticipated ten pound loss of body weight.

Budget a "calorie expense account." Check daily meals to see that the basic four food groups are included. Especially include protein rich foods such as milk, cheese, meat, poultry, fish and eggs.

If people "nibble" between meals, be cautious in choosing foods for snack time. Crisp raw vegetables, like celery, radishes and carrots are wise choices because they contain few calories. Strips of lean meat are good, too. But remember to keep a record of "extras" and eat a good breakfast to avoid fatigue at work and temptation to overeat at noon.

Emphasize foods that are low in calories but high in important nutrients. Food may be naturally low in calories or may be processed in some way to reduce its calorie value.

The dietary food departments in our supermarkets have grown in variety and volume. The items in these departments are usually low-calorie, low-sodium, sugar

restricted or allergy foods. It is important to read the labels to know the food values as well as calorie value.

Consider cost, calories, and quality when meal planning and shop for food. Since special dietary foods generally are produced and packed in smaller quantities that increase production and handling costs, they are higher in retail prices. Figure out whether the calories saved in low-calorie dietary food are worth the extra cents spent. Low-calorie foods, not in the dietary food department, may be good buys.

Some of the dietary products show little calorie difference from their non-dietetic counterparts. Examples are dietetic tomato juice, bread and many canned vegetables.

Pay more attention to the lean meats, vegetables and fruits, lower in calorie content.

It is strongly pointed out, that a hunger strike is not recommended to achieve a weight reduction. By eating smaller portions of all foods, cutting down on fat fried foods, eliminating whipped cream and rich desserts and reducing the amount of oil dressings, the number of calories will diminish.

A key to the calorie dilemma is fats. Oils and cream have more heat energy units than do carbohydrates and proteins of the same size. When selecting foods, choose lean meats, eggs, fish and poultry. Vegetables and fruits have the lowest amount of fat content per food group. For desserts try the fruit type.

This is a good month to include fruit desserts since orange juice, oranges and all citrus fruits are in plentiful supply now. By planning your meals around the foods in good supply people not only save some cents, but calories as well.

Choose a sensible, well-

balanced diet and stay with it. Fad diets and gimmicks may allow weight loss but when a return to old eating habits comes, so does the weight return.

HEALTH Do's and Don'ts

This information is taken from one of a series of Medication Education (ME) booklets developed by Roche Laboratories, a division of Hoffmann-La Roche Inc., a major health care company. These booklets have been prepared to help you use your medications to your best advantage.

If you're taking a diuretic medicine, which acts upon the kidney to increase the output of urine, here are some important reminders:

- DO set up a medication schedule that's convenient for you and take your diuretic at the same time every day.

- DO weigh yourself daily and keep a written record to show your doctor at each visit.

- DO tell your doctor if you are scheduled for any regular or dental surgery in which general anesthesia will be used while taking diuretic medicine.

- DO check with your doctor or pharmacist before taking any other medication—prescription or non-prescription.

- DON'T stop taking your medication because you feel better, without first talking to your doctor.

FULL COVERAGE

I have an insurance policy Written in the blood of the Lamb, Sealed by the cross of Jesus Redeemable wherever I am.

The company will never go bankrupt. It is bonded in God's promise true. It will keep every word of its contract Exactly as it says it will do.

I don't have to die to collect it. No premium do I have to pay. All I do is keep God's promise - And walk in His holy way.

No collector will ever come calling. It was paid for on Calvary's tree, It insures me for living and dying And for all of eternity.

AUTHOR UNKNOWN

IUKA BAPTIST CHURCH

105 West Eastport Street

SUNDAY SERVICES

Sunday School 9:45 a.m.

Worship Service 10:55 a.m.

Church Training 6:00 p.m.

Worship Service 7:00 p.m.

WEDNESDAY SERVICE

Mid-Week Prayer Meeting 7:00 p.m.

Morning and Evening Services Broadcast Over WTIB-FM 104.9
Morning services also on A.M. 1270



St. Marys Catholic Church
Eastport & Fulton Streets
Sunday - 11:30 a.m.
Wednesday, 7:00 p.m.
Religious Instruction For Young People
Grades 1 thru 12
Sunday 10:15 a.m.
Rev. Dick Zelonis, S.C.J.
Iuka Phone 423-9358
728-3393 Church - 728-7509 Res.

COME TO CHURCH

We all have times when things go wrong, And Fortune's in reverse;
Yet we're expected to be strong, Though things could not get worse...
A strength of which the Scriptures name Examples plain to see:
Like Job, whose faith remained the same Throughout adversity.
So why not go to Church this week, Whichever one you choose,
And listen to the Bible speak; There's not a thing to lose!
Then, what those passages command You'll follow to the letter;
And let God take your life in hand, To change it for the better! —Gloria Nowak

UNITED METHODIST

PATRICK HARMONY
BURNSVILLE
Del Blackman
IUKA METHODIST
Jerry S. Horton
MT. EVERGREEN
CAMPGROUND
ROCKY SPRINGS
Bob Tickell
SNOWDOWN
PLEASANT HILL
SPRING HILL
James E. McKeithen
OLD BETHEL
GOLDEN CHAPEL
Glenn Grammer

SALEM
BOGGS CHAPEL
PARADISE
TISHOMINGO
Paul York
DENNIS
BELMONT
Gerald Chaffin

JONES CHAPEL
Henry Danson
ALLSBORO UNITED
MARGERUM UNITED
RIVERTON UNITED
Jackie Patterson

FULL GOSPEL
MISSION LIGHTHOUSE
Wiley Wingo
FIRST ASSEMBLY OF GOD
Allen Hapner
NONDENOMINATIONAL
FAIRVIEW BIBLE CHURCH
Mike Hopkins
PENTECOSTAL
IUKA GOSPEL CHAPEL
Larry Riley
BURNSVILLE TABERNACLE
W.E. Sharp
CHRIST GOSPEL
Richard H. Carter, Jacinto, MS.
IUKA CHURCH OF GOD
Cleatus Joyner

GRISMOND CHAPEL Edward Thigpen
CHRISTIAN FELLOWSHIP
S.A. Bonds

CHURCHES OF CHRIST

MAUD CHURCH OF CHRIST
James Joyce
IUKA CHURCH OF CHRIST
Perry Taylor
BEREA CHURCH OF CHRIST
Jimmy Ferguson
TISHOMINGO
Donald Rhodes
BELMONT SECOND STREET
Charles D. Lambert
CARTERS BRANCH
S.W. Shinnault
CALVARY BAPTIST
Thomas Ozburn
MT. MORIAH
Ben Thornton
GOLDEN CENTRAL BAPTIST
Ralph Culp
MT. VERNON BAPTIST
Perry Murphy
TISHOMINGO BAPTIST
Randy Bostick - Pastor
BURGESS CREEK
Eulon Pruitt
BURNSVILLE FIRST
Claude M. Prince
NEW PROSPECT
Eugene Walden
OLDHAM
Tim Pittman
PADEN
Pat Howard
FIRST BAPTIST
O.H. Moore
EASTPORT
Phil Dawson
NEW SALEM
Joe Moyers
UNITY BAPTIST CHURCH
T. E. Davis
RED BUD
John Stovall
ROWLAND MILLS
Frankie Smith

APOSTOLIC CHURCH OF LORD JESUS CHRIST

Wayne Trimm

REORGANIZED CHURCH OF JESUS CHRIST OF LATTER DAY SAINTS

Justice Manning, Red Bay, AL.

UNITED PENTECOSTAL

BURNSVILLE FIRST

David Huff

IUKA FIRST UNITED

Frank E. Williamson

NONDENOMINATIONAL

AMAZING GRACE TABERNACLE

Bro. & Sis. R.G. Rodgers

MT. ZION

R.C. & Dorothy Wigginton

NORTH CROSSROADS COMMUNITY

Travis Shea

IUKA MISSION

Danny Lovelace

PRESBYTERIAN

ALLSBORO CUMBERLAND

J.B. Burns, Jr.

BETHANY

L.K. Foster

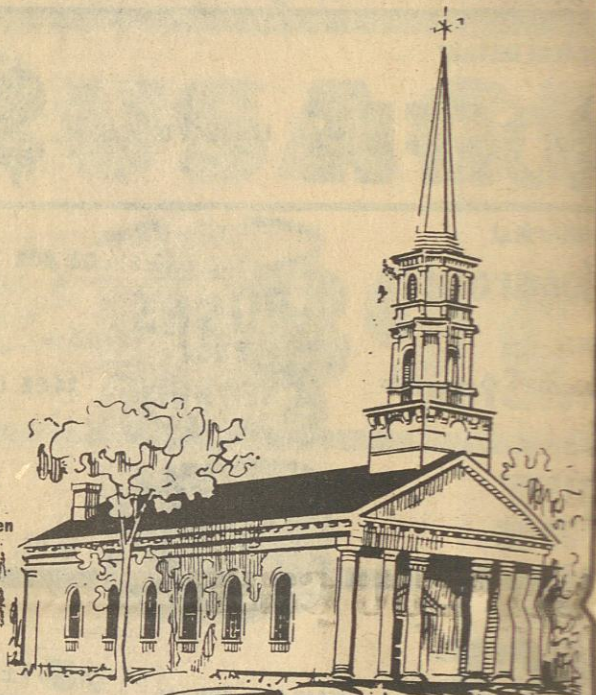
BAPTIST

ST. PETER'S BAPTIST

Parvin Neloms

AIRPORT MISSION

Earl Martin



IUKA BAPTIST

Bobby Burress, Pastor

BELMONT FIRST

Jack Maroon

HUBBARD SALEM BAPTIST

Charles D. Lambert

CARTERS BRANCH

S.W. Shinnault

CALVARY BAPTIST

Thomas Ozburn

MT. MORIAH

Ben Thornton

GOLDEN CENTRAL BAPTIST

Ralph Culp

MT. VERNON BAPTIST

Perry Murphy

TISHOMINGO BAPTIST

Randy Bostick - Pastor

BURGESS CREEK

Eulon Pruitt

BURNSVILLE FIRST

Claude M. Prince

NEW PROSPECT

Eugene Walden

OLDHAM

Tim Pittman

PADEN

Pat Howard

FIRST BAPTIST

O.H. Moore

EASTPORT

Phil Dawson

NEW SALEM

Joe Moyers

UNITY BAPTIST CHURCH

T. E. Davis

RED BUD

John Stovall

ROWLAND MILLS

Frankie Smith

HARMONY HILL

Billy Paul Felman

MT. JOY BAPTIST

Crawford Retherford

CALVARY MISSIONARY

Jim Jones

SOUTH CROSSROADS

Harold Holly

PROVIDENCE BAPTIST

Clyde Vinson

BETHEL MISSIONARY

Bobby Elliott

MT. GILEAD

James Hardin

TEMPLE

Movous Phifer

MT. ZION BAPTIST

Bobby Casteel

FIFTH STREET

Bill Hobson

OLD PLEASANT HILL

Donald Hudson

NEW LEBANON FREEWILL

Gerald Taylor

ANTIOCH FREEWILL

Glenn Jones

POPLAR SPRINGS

Russell Couse

HIGHLAND BAPTIST

J. A. Blunt

BETHELEH

George D. Credille

YELLOW CREEK

Stanley Magill

DENNIS FIRST BAPTIST

John Stockton

FIRST FREEWILL BAPTIST

Leonard Casabella - Pastor

NEW LIBERTY BAPTIST

T.E. Nethery

SHORT CREEK

G.D. Jones

WALKER MISSIONARY

Little Flock Primitive Baptist

Elders Roger Browning & Herman Clark

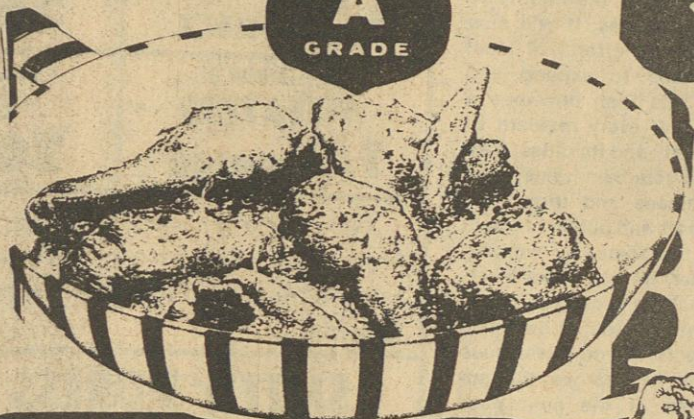
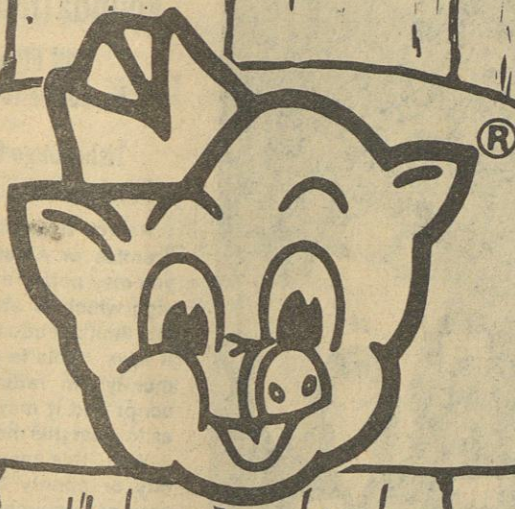
Southwood Baptist

Bro. Neil Moore

CATHOLIC

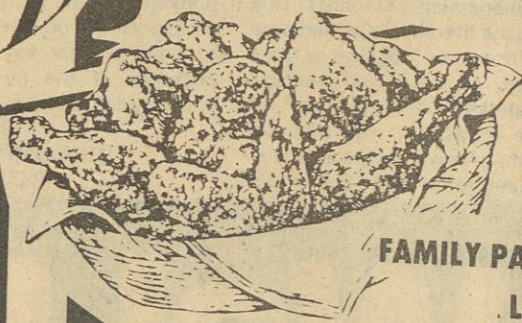
Rev. Dick Zelonis, s.c.j.

McNATT FORD SALES Phone 423-3681 Iuka, Miss.	BROWN INSURANCE AGENCY Iuka, Miss.	CARPETS UNLIMITED & CIRCUS BURGER Iuka, Miss.	RUSHING REXALL DRUGS Phone 423-36
--	--	---	---



U.S.D.A. GRADE A WHOLE CUT UP

FRYERS



FAMILY PACK
LB.

59^c

BRYAN ALL MEAT

WIENERS

12 OZ. PKG.

89^c



BRYAN'S FLAVORITE

BACON

12 OZ. PKG.

89^c

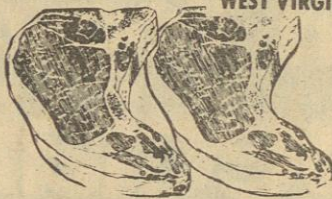
U.S. CHOICE BEEF FULL CUT BONE IN

ROUND STEAK

\$1.89

LB.

WEST VIRGINIA SLICED CENTER CUT SMOKED



PORK CHOPS

\$1.99

LB.

U.S. CHOICE BEEF BONELESS MADE FROM THE ROUND

TENDERIZED STEAK

\$2.99

LB.

U.S. CHOICE BONELESS BEEF EXTRA LEAN

BREAKFAST STEAK

\$3.39

LB.

U.S.D.A. GRADE A PICK OF THE CHICK

FRYER PARTS

3 THIGHS 3 DRUMSTICKS 3 BREASTS



LB.

99^c

PIGGLY WIGGLY ALL MEAT

BOLOGNA

12 OZ. PKG.

99^c

U.S. CHOICE BONELESS BEEF

ROUND STEAK

\$1.99

LB.

PIGGLY WIGGLY WHOLE HOG

SAUSAGE

\$1.39

LB. ROLL

U.S. CHOICE BONELESS BEEF RUMP OR

SIRLOIN TIP ROAST

\$2.29

LB.

WEST VIRGINIA SLICED

COOKED HAM

10 OZ. PKG.

\$1.59

HORMEL PORK

CHITTERLINGS

\$2.39

2 LB. PAIL

Morning Fresh Produce

FIRM SWEET RED DELICIOUS

APPLES

3 LB. BAG

89^c

FRESH MELLOW GOLDEN DELICIOUS

APPLES

3 LB. BAG

89^c

GOLDEN RIPE



BANANAS

3 79^c

LBS.

U.S. NO. 1 CRISP

CARROTS

3

1 LB. PKGS.

\$1.00

FRESH CRISP

CELERY

STALK

39^c

SWEET POTATOES

MISSISSIPPI DRYED

3 99^c

LBS.

CANADIAN

RUTABAGAS

3

LBS.

89^c



PIGGLY WIGGLY

QUANTITY RIGHTS RESERVED.
NONE SOLD TO DEALERS.
PRICES GOOD THURS., JAN. 12
THRU WED., JAN. 18, 1984.

WE ACCEPT
U.S.D.A.
FOOD
STAMPS



FRESH WONDER
COUNTRY STYLE
BREAD
16-OZ. LOAVES

3/89¢



PEPSI FREE, DIET PEPSI,
MT. DEW, 7-UP OR
PEPSI COLA
2-LTR. BTL.

79¢

GOLDEN BEST BATHROOM
TISSUE
6-ROLL
PKG. **99¢**

PILLSBURY SELF-RISING
FLOUR
5-LB.
BAG **79¢**

GOLDEN BEST
TEA BAGS
100-CT.
PKG. **99¢**

GOLDEN BEST APPLE OR GRAPE
JELLY
2-LB.
JAR **99¢**

DR. PEPPER, SPRITE,
TAB OR
COCA COLA
32-OZ. BTL.

\$1.29
6 FOR PLUS DEPOSIT

PIGGLY WIGGLY
ORANGE
JUICE
64-OZ. CTN.

89¢

VACUUM PACKED
FOLGERS FLAKED
COFFEE
13-OZ. BAG

\$1.59

GREEN GIANT CUT
OR FRENCH GREEN
BEANS
16-OZ. CANS **89¢**

UNCLE BEN'S
CONVERTED
RICE
2-LB. SIZE **\$1.69**

DELMONTE
FANCY SWEET
PEAS
17-OZ. CAN **59¢**

STAR PURE
CHOCOLATE
CHIPS
12-OZ. PKG. **99¢**

SKINNER'S THIN SPAGHETTI	3 7-OZ. PKGS.	\$1.00	PIGGLY WIGGLY ENGLISH MUFFINS	6-CT. PKG.	59¢
PRINGLES POTATO CHIPS	7 1/4-OZ. SIZE	99¢	PIGGLY WIGGLY CHOPPED FROZEN BROCCOLI	10-OZ. PKG.	39¢
LIPTON ONION SOUP MIX	EACH PKG.	79¢	PIGGLY WIGGLY FROZEN CUT CORN	10-OZ. PKG.	39¢
ZESTA SALTINE CRACKERS	1-LB. BOX	89¢	PIGGLY WIGGLY FROZEN CHOPPED TURNIP GREENS	10-OZ. PKG.	39¢
TOWNHOUSE CRACKERS	1-LB. BOX	\$1.29	BANQUET T.V. DINNERS	11-OZ. PKG.	89¢
BRYAN'S CHILI W/ BEANS	15-OZ. CAN	69¢	BANQUET GOLDEN FRIED CHICKEN	18-OZ. PKG.	\$1.89
SAVE ON RED CHERRIES	10-OZ. JAR	89¢	BANQUET HOT BITES CHICKEN NUGGETS	12-OZ. PKG.	\$1.89
PIGGLY WIGGLY UNSWEETENED GRAPEFRUIT JUICE	46-OZ. CAN	69¢	IVORY BATH SOAP	4 BARS	79¢
PIGGLY WIGGLY UNSWEETENED PINK GRAPEFRUIT JUICE	46-OZ. CAN	69¢	RINSO LAUNDRY DETERGENT	42-OZ. BOX	\$1.09
PIGGLY WIGGLY SLICED AMERICAN CHEESE	8-OZ. PKG.	99¢	COMET CLEANSER	3 14-OZ. CANS	\$1.00

CREAMY SMOOTH
PIGGLY WIGGLY
MAY'NAISE
QT. JAR

\$1.19



ALL FLAVORS PIGGLY WIGGLY
ICE MILK
HALF GAL. **99¢**

ALL FLAVORS PIGGLY WIGGLY
ICE CREAM
HALF GAL. **\$1.49**

KIDS FAVORITE! JIF
PEANUT BUTTER
18-OZ. JAR **\$1.39**

SAVE BIG! SNOWDRIFT
SHORTENING
3-LB. CAN

\$1.99





THE IUKA CHIEFS will be participating in the Tishomingo County Tournament this Friday night. The Chiefs will meet the Tishomingo Bulldogs at 8:30 at Tishomingo. Members of the Chiefs team who will be seeing action are

SOPHOMORES
Principal's List: Sonya Ginn, Mickey Tate, Kathie Wells.
Honor List: Ritchie Ables, Anthony Boyd, Terry Evans, Connie Ginn, Tracy Holley, Jennifer Horn, Elizabeth Timbs, Kristi Wright, Jeff Young.
Merit List: Dimple Daniel, Angie Quillen.

FRESHMEN
Honor List: Karla Alexander, Cyndi Armstrong, Rachel Boyd, Melody Crane, Marty Hall, Renee Nunley, Trisha Patterson, Donnie Rogers.

GRADE 8
Principal's List: Jennifer Bannister, Tim Bell, Stephanie Bostick, Julie Cook, Karissa Deaton, Christy Garner, Joey Hall, Camille Higginbottom, Andy Moore, Peggy Moore, Connie Payne, Jeff Shook, Valerie Whitehead, Cindy Witt, Jeneen Young.

GRADE 9
Principal's List: Benita Banks, Kevin Barker, Amanda Collums, Tanya Holley, Laurie Howard, Chris Long, Carissa Lundy, Clint Odom, Vance Ramsey, Dana Roberts, Patricia Searcy, Chris Stanphill, Deanne Stepp, Jan Woolen.

GRADE 10
Principal's List: Martha Boyd, Matthew Haney, Brad Kuykendall, Lisa Pounders.

GRADE 11
Honor List: Steven Ables, Kim Allen, Marcia Boyd, Bryant Cashion, Jennifer Collums, Kay Davis, Gina Fennell, Michelle Garner, Michael George, Jeff Leathers, Matthew Sparks, Sarah Sparks, Becky Storment.

GRADE 12
Principal's List: Randy Burton, Randy Credille.

GRADE 13
Principal's List: Steven Ables, Kim Allen, Marcia Boyd, Bryant Cashion, Jennifer Collums, Kay Davis, Gina Fennell, Michelle Garner, Michael George, Jeff Leathers, Matthew Sparks, Sarah Sparks, Becky Storment.

GRADE 14
Principal's List: Steven Ables, Kim Allen, Marcia Boyd, Bryant Cashion, Jennifer Collums, Kay Davis, Gina Fennell, Michelle Garner, Michael George, Jeff Leathers, Matthew Sparks, Sarah Sparks, Becky Storment.

GRADE 15
Principal's List: Steven Ables, Kim Allen, Marcia Boyd, Bryant Cashion, Jennifer Collums, Kay Davis, Gina Fennell, Michelle Garner, Michael George, Jeff Leathers, Matthew Sparks, Sarah Sparks, Becky Storment.

GRADE 16
Principal's List: Steven Ables, Kim Allen, Marcia Boyd, Bryant Cashion, Jennifer Collums, Kay Davis, Gina Fennell, Michelle Garner, Michael George, Jeff Leathers, Matthew Sparks, Sarah Sparks, Becky Storment.

GRADE 17
Principal's List: Steven Ables, Kim Allen, Marcia Boyd, Bryant Cashion, Jennifer Collums, Kay Davis, Gina Fennell, Michelle Garner, Michael George, Jeff Leathers, Matthew Sparks, Sarah Sparks, Becky Storment.

GRADE 18
Principal's List: Steven Ables, Kim Allen, Marcia Boyd, Bryant Cashion, Jennifer Collums, Kay Davis, Gina Fennell, Michelle Garner, Michael George, Jeff Leathers, Matthew Sparks, Sarah Sparks, Becky Storment.

GRADE 19
Principal's List: Steven Ables, Kim Allen, Marcia Boyd, Bryant Cashion, Jennifer Collums, Kay Davis, Gina Fennell, Michelle Garner, Michael George, Jeff Leathers, Matthew Sparks, Sarah Sparks, Becky Storment.

GRADE 20
Principal's List: Steven Ables, Kim Allen, Marcia Boyd, Bryant Cashion, Jennifer Collums, Kay Davis, Gina Fennell, Michelle Garner, Michael George, Jeff Leathers, Matthew Sparks, Sarah Sparks, Becky Storment.

GRADE 21
Principal's List: Steven Ables, Kim Allen, Marcia Boyd, Bryant Cashion, Jennifer Collums, Kay Davis, Gina Fennell, Michelle Garner, Michael George, Jeff Leathers, Matthew Sparks, Sarah Sparks, Becky Storment.

GRADE 22
Principal's List: Steven Ables, Kim Allen, Marcia Boyd, Bryant Cashion, Jennifer Collums, Kay Davis, Gina Fennell, Michelle Garner, Michael George, Jeff Leathers, Matthew Sparks, Sarah Sparks, Becky Storment.

GRADE 23
Principal's List: Steven Ables, Kim Allen, Marcia Boyd, Bryant Cashion, Jennifer Collums, Kay Davis, Gina Fennell, Michelle Garner, Michael George, Jeff Leathers, Matthew Sparks, Sarah Sparks, Becky Storment.

GRADE 24
Principal's List: Steven Ables, Kim Allen, Marcia Boyd, Bryant Cashion, Jennifer Collums, Kay Davis, Gina Fennell, Michelle Garner, Michael George, Jeff Leathers, Matthew Sparks, Sarah Sparks, Becky Storment.

GRADE 25
Principal's List: Steven Ables, Kim Allen, Marcia Boyd, Bryant Cashion, Jennifer Collums, Kay Davis, Gina Fennell, Michelle Garner, Michael George, Jeff Leathers, Matthew Sparks, Sarah Sparks, Becky Storment.

GRADE 26
Principal's List: Steven Ables, Kim Allen, Marcia Boyd, Bryant Cashion, Jennifer Collums, Kay Davis, Gina Fennell, Michelle Garner, Michael George, Jeff Leathers, Matthew Sparks, Sarah Sparks, Becky Storment.

GRADE 27
Principal's List: Steven Ables, Kim Allen, Marcia Boyd, Bryant Cashion, Jennifer Collums, Kay Davis, Gina Fennell, Michelle Garner, Michael George, Jeff Leathers, Matthew Sparks, Sarah Sparks, Becky Storment.

GRADE 28
Principal's List: Steven Ables, Kim Allen, Marcia Boyd, Bryant Cashion, Jennifer Collums, Kay Davis, Gina Fennell, Michelle Garner, Michael George, Jeff Leathers, Matthew Sparks, Sarah Sparks, Becky Storment.

GRADE 29
Principal's List: Steven Ables, Kim Allen, Marcia Boyd, Bryant Cashion, Jennifer Collums, Kay Davis, Gina Fennell, Michelle Garner, Michael George, Jeff Leathers, Matthew Sparks, Sarah Sparks, Becky Storment.

GRADE 30
Principal's List: Steven Ables, Kim Allen, Marcia Boyd, Bryant Cashion, Jennifer Collums, Kay Davis, Gina Fennell, Michelle Garner, Michael George, Jeff Leathers, Matthew Sparks, Sarah Sparks, Becky Storment.

GRADE 31
Principal's List: Steven Ables, Kim Allen, Marcia Boyd, Bryant Cashion, Jennifer Collums, Kay Davis, Gina Fennell, Michelle Garner, Michael George, Jeff Leathers, Matthew Sparks, Sarah Sparks, Becky Storment.

GRADE 32
Principal's List: Steven Ables, Kim Allen, Marcia Boyd, Bryant Cashion, Jennifer Collums, Kay Davis, Gina Fennell, Michelle Garner, Michael George, Jeff Leathers, Matthew Sparks, Sarah Sparks, Becky Storment.

GRADE 33
Principal's List: Steven Ables, Kim Allen, Marcia Boyd, Bryant Cashion, Jennifer Collums, Kay Davis, Gina Fennell, Michelle Garner, Michael George, Jeff Leathers, Matthew Sparks, Sarah Sparks, Becky Storment.

GRADE 34
Principal's List: Steven Ables, Kim Allen, Marcia Boyd, Bryant Cashion, Jennifer Collums, Kay Davis, Gina Fennell, Michelle Garner, Michael George, Jeff Leathers, Matthew Sparks, Sarah Sparks, Becky Storment.

GRADE 35
Principal's List: Steven Ables, Kim Allen, Marcia Boyd, Bryant Cashion, Jennifer Collums, Kay Davis, Gina Fennell, Michelle Garner, Michael George, Jeff Leathers, Matthew Sparks, Sarah Sparks, Becky Storment.

GRADE 36
Principal's List: Steven Ables, Kim Allen, Marcia Boyd, Bryant Cashion, Jennifer Collums, Kay Davis, Gina Fennell, Michelle Garner, Michael George, Jeff Leathers, Matthew Sparks, Sarah Sparks, Becky Storment.

GRADE 37
Principal's List: Steven Ables, Kim Allen, Marcia Boyd, Bryant Cashion, Jennifer Collums, Kay Davis, Gina Fennell, Michelle Garner, Michael George, Jeff Leathers, Matthew Sparks, Sarah Sparks, Becky Storment.

GRADE 38
Principal's List: Steven Ables, Kim Allen, Marcia Boyd, Bryant Cashion, Jennifer Collums, Kay Davis, Gina Fennell, Michelle Garner, Michael George, Jeff Leathers, Matthew Sparks, Sarah Sparks, Becky Storment.

GRADE 39
Principal's List: Steven Ables, Kim Allen, Marcia Boyd, Bryant Cashion, Jennifer Collums, Kay Davis, Gina Fennell, Michelle Garner, Michael George, Jeff Leathers, Matthew Sparks, Sarah Sparks, Becky Storment.

GRADE 40
Principal's List: Steven Ables, Kim Allen, Marcia Boyd, Bryant Cashion, Jennifer Collums, Kay Davis, Gina Fennell, Michelle Garner, Michael George, Jeff Leathers, Matthew Sparks, Sarah Sparks, Becky Storment.

GRADE 41
Principal's List: Steven Ables, Kim Allen, Marcia Boyd, Bryant Cashion, Jennifer Collums, Kay Davis, Gina Fennell, Michelle Garner, Michael George, Jeff Leathers, Matthew Sparks, Sarah Sparks, Becky Storment.

GRADE 42
Principal's List: Steven Ables, Kim Allen, Marcia Boyd, Bryant Cashion, Jennifer Collums, Kay Davis, Gina Fennell, Michelle Garner, Michael George, Jeff Leathers, Matthew Sparks, Sarah Sparks, Becky Storment.

GRADE 43
Principal's List: Steven Ables, Kim Allen, Marcia Boyd, Bryant Cashion, Jennifer Collums, Kay Davis, Gina Fennell, Michelle Garner, Michael George, Jeff Leathers, Matthew Sparks, Sarah Sparks, Becky Storment.

GRADE 44
Principal's List: Steven Ables, Kim Allen, Marcia Boyd, Bryant Cashion, Jennifer Collums, Kay Davis, Gina Fennell, Michelle Garner, Michael George, Jeff Leathers, Matthew Sparks, Sarah Sparks, Becky Storment.

GRADE 45
Principal's List: Steven Ables, Kim Allen, Marcia Boyd, Bryant Cashion, Jennifer Collums, Kay Davis, Gina Fennell, Michelle Garner, Michael George, Jeff Leathers, Matthew Sparks, Sarah Sparks, Becky Storment.

GRADE 46
Principal's List: Steven Ables, Kim Allen, Marcia Boyd, Bryant Cashion, Jennifer Collums, Kay Davis, Gina Fennell, Michelle Garner, Michael George, Jeff Leathers, Matthew Sparks, Sarah Sparks, Becky Storment.

GRADE 47
Principal's List: Steven Ables, Kim Allen, Marcia Boyd, Bryant Cashion, Jennifer Collums, Kay Davis, Gina Fennell, Michelle Garner, Michael George, Jeff Leathers, Matthew Sparks, Sarah Sparks, Becky Storment.

originally filed and all but a small amount of data that has subsequently been requested by the Commission and others are being made public. However, we are asking the courts to restrict that small amount of data to the Commission's use only because it could only benefit our competitors if made public," he added.

On December 22, 1983, the Commission granted a protective order that instructed the company to mark the documents "private" or "confidential" and provided that they would be kept confidential and not be made part of the public record.

On December 30, 1983, the Mississippi Publishers Corporation requested access to the documents, citing the Mississippi Public Records Act of 1983. Mississippi Publishers renewed its demand for access to the documents on January 3.

The Commission cancelled its protective order on January 3, and on January 4 notified South Central Bell that it would release the documents to Mississippi Publishers Corporation unless South Central Bell obtained a court order protecting the documents as confidential.

"We are not asking for any more consideration than any other competitive business would under these circumstances," said McGowan.

"We believe the court should rule on the confidentiality of these documents before they are released," McGowan said. "If they are released before a ruling, the damage is done even if the court later agrees with us," he added.

McGowan said the company is operating in a unique situation because part of its business is regulated and part is competitive.

"There are private vendors who compete with us for long distance service and vendors who sell equipment that directly competes with some of our central office services," he said.

"We have invested a tremendous amount of money to provide telephone service in Mississippi," McGowan said. "When we lose sales revenues to competitors, we lose revenues critical to the support of our investment," he added.

McGowan concluded, "We are furnishing the information that the Commission has requested to carry out its regulatory function as mandated by the Mississippi

Legislature. However, we must protect our ability to sell and compete so that we can continue to operate our business soundly and to provide good service."

Evening Vocational Programs At NEMJC

Registration and first class meeting for the 1984 spring term will be Monday, January 16, between 6:00 and 8:00 p.m. in Dean Hall on the Northeast Mississippi Junior College Campus.

Students who register for classes for which Continuing Education Units (CEU) will be granted must pay a \$10.00 registration fee (Non-refundable).

An additional fee shall be charged for on-campus

classes based on the hours the classes meet. These fees shall be computed as follows: Classes 50 contact hours and over, \$40.00; classes less than 50 contact hours, \$8.00 per hour.

Classes offered include: air conditioning, automatic transmission repair, color coding, electronic devices II, electricity for electronics, forest inventory, and machine shop-tool and die making.

CREOLE SEAFOOD SAUCE

Makes 4 servings
1 pound fish fillets
1/2 cup chopped onion
1/2 cup chopped green pepper
1 clove garlic, minced
1/4 cup Fleischmann's® Light Corn Oil Spread

1 (16-ounce) can tomatoes
2 tablespoons juice
1 teaspoon basil
1/4 teaspoon ground pepper
4 drops liquid hot pepper seasoning
Green pepper garnish, optional
Arrange fillets in 2-quart shallow baking dish. In medium saucepan, heat oil, sauté green pepper and Fleischmann's® Light Corn Oil Spread until tomatoes are soft. Add onion, garlic, and pepper. Simmer 10 minutes. Pour sauce over fish. Bake at 350° for 20 to 25 minutes until fish flakes easily with a fork. If desired, garnish with green pepper rings.

Herbal formula is natural approach to clear skin

More than 80 percent of our teen population, as well as thousands of adults, suffer from acne. This problem occurs at certain times — under stressful situations or at puberty, for example — when overactive oil glands produce excess oil that clogs pores, causing inflammation and providing an ideal environment for acne bacteria to thrive.



Although acne can't be prevented, measures can be taken to keep it under control when it first appears. One new, very effective way to help this condition is with a natural herbal formula that contains no chemicals or petroleum derivatives. "Nature's Answer" Acne Cream uses homeopathic herbs as active ingredients in a water-based cream, eliminating any side effects and allergic reactions.

Here are some helpful hints for acne sufferers:

- Be aware that oily substances such as cold creams and greasy hair conditioners add to excess oil already on the skin and could cause an acne flare-up.
- Watch your emotions.

HERBS HAVE BEEN PROVEN to be effective in controlling problems of acne. "Nature's Answer" Acne Cream is formulated with homeopathic herbs to heal blemishes and dissolve excess oil.

The body may react to stress by increasing oil production.

- Herbs have been used as medicinal aids for thousands of years. Use a natural herbal formula such as "Nature's Answer" Acne Cream to effectively control acne without harmful chemicals.
- Be fastidious about personal hygiene and eat foods that seem to aggravate your skin problem.
- Eat a balanced diet and get enough sleep. Your skin will reflect good habits!

Part of a series of messages from South Central Bell.

Where do I get local phone service?

On January 1, 1984, South Central Bell and other local Bell telephone companies were separated from AT&T.

But as part of a holding company called BellSouth, we're still your phone company. And divestiture will have little immediate effect on your basic local home or office phone service. In fact, you can choose to keep your service just as it is.

South Central Bell still provides local telephone service for your home and your business. Call on us to order new phone service, to transfer existing service, to add new lines, or to order new sets and equipment.

How to get special services.

South Central Bell still offers convenient services such as Touch-Tone dialing, Call Waiting, Call Forwarding, Speed Calling and Three-Way Calling (available in some areas).

And new services (available in some areas) such as Prestige™ Service that gives expanded calling capabilities to business and residence customers with more than one line. And ESSX Service that uses advanced electronic switching service technology to give businesses PBX features.

Options let you keep costs down.

One change you've probably heard about is that local rates will

go up. Competition and deregulation in the telecommunications industry mean an end to local service subsidies from long distance and other competitive services. That means local phone rates must increase to reflect more of the true costs of providing local service.

Local Measured Service options (available to homes and businesses in many areas) can help keep local service charges down. Local Measured Service is especially attractive to people who don't use the phone a lot to make local calls and for people who can't, or don't wish to, pay for Premium Flat Rate Service.

Coping with change.

We're doing everything we can to see that the changes brought about by divestiture and increased competition are as easy for you as possible. And nothing will affect the high quality of service you've come to expect from us.

If you have questions or want more information, return the coupon below. Or call on us at the Bell Answer Center, toll free, 1 800 555-5000, 8 a.m. till 8 p.m. CST, Monday through Friday.

We're still your phone company.

CALL ON US. Send to: Bell Answer Center, P.O. Box 34040, Louisville, KY 40232

Information please! I'd like to know more about changes in my telephone service.

Name: _____

Address: _____

City: _____

State: _____ Zip: _____

Telephone: (_____) _____

South Central Bell
A Bellsouth Company



SOPHOMORE CHIEFTAINETTES preparing for action in the Tishomingo County Tournament this week are, front row, left to right: Amy Jones and Michelle Henley; back row: Yolanda Rutland, Carol Reynolds and Donna Holland. The Chieftainettes will meet the girls from Tishomingo at 7:00 on Thursday night. This year the county tournament is being played at Tishomingo.



Tishomingo Girls' Basketball Team

These young ladies compose the 1983-84 Bulldog basketball team. Having already put many hours of practice and game experience behind them, they are looking forward to the county tournament, which will be held at their school this year. The Lady Bulldogs, as host team, would like to extend a cordial welcome to their opponents and all local residents. Top row, left to right: Mary Jo Starkey, Teena Harris, Christi Melvin and Michelle Southward. Bottom row, left to right: Amy McClung, Robyn Gray and Debra Hodges. Not pictured is Patty Wright.

Health Care Homekeeping Program At NEMJC

Representatives from Mississippi and Alabama health care facilities recently participated in a program sponsored by Northeast Mississippi Junior College and the State Department of Education designed to provide them with instruction in professional housekeeping.



CARING FOR YOUR PET

CARING FOR THE TINY GUYS

Gerbils, guinea pigs, hamsters, and mice can all make lovely pets. They are friendly, lovable, and not very demanding. Still, there are measures you must take to make sure they stay healthy and happy.

A balanced diet is important. Also, make sure to have a supply of fresh water available to your small pet at all times. A proper habitat is important. If you keep your pet's cage clean, dry, and warm — about 70° and free of drafts — he is unlikely to become ill.

It's up to you to detect any signs of ill health, should they appear. A healthy pet should seem active and alert at feeding time. His ears should be held erect, and his eyes should be bright. If he looks tired,

IUKA ANIMAL CLINIC
James F. Perkins, D.V.M.
Hwy. 25 South Iuka, Miss.
Phone 423-3470

Belmont High Honor Roll

Third Six Weeks 1983-84

SENIORS
Principal's List: Brent Bolding, Mark Irvin, Alesia Lawhorn, Greta Montgomery, Melody Ozburn, Peggy Padgett, Greg Wigginton.

HONOR LIST: Debbie Armstrong, Joyce Byram, Clay Clement, Mitzi Coke, Gary Credille, Diane Deaton, Billy Hopkins, Allen Howard, Tim Mahan, John Morrow, Ricky Patterson, Steven Pounders, Zane Pounds, Jeff Sartain, Shane Sparks, Susan Taylor, Lisa Thorn, Angie Tigner, Carla Vaughn, Joel Wells, Robert Yarber.

JUNIORS
Merit List: Vonda Pruitt.
Honor List: Lori Bell, Leigh

FRESHMEN
Principal's List: Jennifer Bannister, Tim Bell, Stephanie Bostick, Julie Cook, Karissa Deaton, Christy Garner, Joey Hall, Camille Higginbottom, Andy Moore, Peggy Moore, Connie Payne, Jeff Shook, Valerie Whitehead, Cindy Witt, Jeneen Young.

SOPHOMORES
Principal's List: Sonya Ginn, Mickey Tate, Kathie Wells.

HONOR LIST: Ritchie Ables, Anthony Boyd, Terry Evans, Connie Ginn, Tracy Holley, Jennifer Horn, Elizabeth Timbs, Kristi Wright, Jeff Young.

MERIT LIST: Dimple Daniel, Angie Quillen.

FRESHMEN
Honor List: Karla Alexander, Cyndi Armstrong, Rachel Boyd, Melody Crane, Marty Hall, Renee Nunley, Trisha Patterson, Donnie Rogers.

GRADE 8
Principal's List: Jennifer Bannister, Tim Bell, Stephanie Bostick, Julie Cook, Karissa Deaton, Christy Garner, Joey Hall, Camille Higginbottom, Andy Moore, Peggy Moore, Connie Payne, Jeff Shook, Valerie Whitehead, Cindy Witt, Jeneen Young.

GRADE 9
Principal's List: Benita Banks, Kevin Barker, Amanda Collums, Tanya Holley, Laurie Howard, Chris Long, Carissa Lundy, Clint Odom, Vance Ramsey, Dana Roberts, Patricia Searcy, Chris Stanphill, Deanne Stepp, Jan Woolen.

GRADE 10
Principal's List: Steven Ables, Kim Allen, Marcia Boyd, Bryant Cashion, Jennifer Collums, Kay Davis, Gina Fennell, Michelle Garner, Michael George, Jeff Leathers, Matthew Sparks, Sarah Sparks, Becky Storment.

GRADE 11
Principal's List: Steven Ables, Kim Allen, Marcia Boyd, Bryant Cashion, Jennifer Collums, Kay Davis, Gina Fennell, Michelle Garner, Michael George, Jeff Leathers, Matthew Sparks, Sarah Sparks, Becky Storment.

GRADE 12
Principal's List: Steven Ables, Kim Allen, Marcia Boyd, Bryant Cashion, Jennifer Collums, Kay Davis, Gina Fennell, Michelle Garner, Michael George, Jeff Leathers, Matthew Sparks, Sarah Sparks, Becky Storment.

GRADE 13
Principal's List: Steven Ables, Kim Allen, Marcia Boyd, Bryant Cashion, Jennifer Collums, Kay Davis, Gina Fennell, Michelle Garner, Michael George, Jeff Leathers, Matthew Sparks, Sarah Sparks, Becky Storment.

GRADE 14
Principal's List: Steven Ables, Kim Allen, Marcia Boyd, Bryant Cashion, Jennifer Collums, Kay Davis, Gina Fennell, Michelle Garner, Michael George, Jeff Leathers, Matthew Sparks, Sarah Sparks, Becky Storment.

GRADE 15
Principal's List: Steven Ables, Kim Allen, Marcia Boyd, Bryant Cashion, Jennifer Collums, Kay Davis, Gina Fennell, Michelle Garner, Michael George, Jeff Leathers, Matthew Sparks, Sarah Sparks, Becky Storment.

GRADE 16
Principal's List: Steven Ables, Kim Allen, Marcia Boyd, Bryant Cashion, Jennifer Collums, Kay Davis, Gina Fennell, Michelle Garner, Michael George, Jeff Leathers, Matthew Sparks, Sarah Sparks, Becky Storment.

GRADE 17
Principal's List: Steven Ables, Kim Allen, Marcia Boyd, Bryant Cashion, Jennifer Collums, Kay Davis, Gina Fennell, Michelle Garner, Michael George, Jeff Leathers, Matthew Sparks, Sarah Sparks, Becky Storment.

GRADE 18
Principal's List: Steven Ables, Kim Allen, Marcia Boyd, Bryant Cashion, Jennifer Collums, Kay Davis, Gina Fennell, Michelle Garner, Michael George, Jeff Leathers, Matthew Sparks, Sarah Sparks, Becky Storment.

GRADE 19
Principal's List: Steven Ables, Kim Allen, Marcia Boyd, Bryant Cashion, Jennifer Collums, Kay Davis, Gina Fennell, Michelle Garner, Michael George, Jeff Leathers, Matthew Sparks, Sarah Sparks, Becky Storment.

GRADE 20
Principal's List: Steven Ables, Kim Allen, Marcia Boyd, Bryant Cashion, Jennifer Collums, Kay Davis, Gina Fennell, Michelle Garner, Michael George, Jeff Leathers, Matthew Sparks, Sarah Sparks, Becky Storment.

GRADE 21
Principal's List: Steven Ables, Kim Allen, Marcia Boyd, Bryant Cashion, Jennifer Collums, Kay Davis, Gina Fennell, Michelle Garner, Michael George, Jeff Leathers, Matthew Sparks, Sarah Sparks, Becky Storment.

GRADE 22
Principal's List: Steven Ables, Kim Allen, Marcia Boyd, Bryant Cashion, Jennifer Collums, Kay Davis, Gina Fennell, Michelle Garner, Michael George, Jeff Leathers, Matthew Sparks, Sarah Sparks, Becky Storment.

GRADE 23
Principal's List: Steven Ables, Kim Allen, Marcia Boyd, Bryant Cashion, Jennifer Collums, Kay Davis, Gina Fennell, Michelle Garner, Michael George, Jeff Leathers, Matthew Sparks, Sarah Sparks, Becky Storment.

GRADE 24
Principal's List: Steven Ables, Kim Allen, Marcia Boyd, Bryant Cashion, Jennifer Collums, Kay Davis, Gina Fennell, Michelle Garner, Michael George, Jeff Leathers, Matthew Sparks, Sarah Sparks, Becky Storment.

GRADE 25
Principal's List: Steven Ables, Kim Allen, Marcia Boyd, Bryant Cashion, Jennifer Collums, Kay Davis, Gina Fennell, Michelle Garner, Michael George, Jeff Leathers, Matthew Sparks, Sarah Sparks, Becky Storment.

GRADE 26
Principal's List: Steven Ables, Kim Allen, Marcia Boyd, Bryant Cashion, Jennifer Collums, Kay Davis, Gina Fennell, Michelle Garner, Michael George, Jeff Leathers, Matthew Sparks, Sarah Sparks, Becky Storment.

GRADE 27
Principal's List: Steven Ables, Kim Allen, Marcia Boyd, Bryant Cashion, Jennifer Collums, Kay Davis, Gina Fennell, Michelle Garner, Michael George, Jeff Leathers, Matthew Sparks, Sarah Sparks, Becky Storment.

GRADE 28
Principal's List: Steven Ables, Kim Allen, Marcia Boyd, Bryant Cashion, Jennifer Collums, Kay Davis, Gina Fennell, Michelle Garner, Michael George, Jeff Leathers, Matthew Sparks, Sarah Sparks, Becky Storment.

GRADE 29
Principal's List: Steven Ables, Kim Allen, Marcia Boyd, Bryant Cashion, Jennifer Collums, Kay Davis, Gina Fennell, Michelle Garner, Michael George, Jeff Leathers, Matthew Sparks, Sarah Sparks, Becky Storment.

GRADE 30
Principal's List: Steven Ables, Kim Allen, Marcia Boyd, Bryant Cashion, Jennifer Collums, Kay Davis, Gina Fennell, Michelle Garner, Michael George, Jeff Leathers, Matthew Sparks, Sarah Sparks, Becky Storment.

GRADE 31
Principal's List: Steven Ables, Kim Allen, Marcia Boyd, Bryant Cashion, Jennifer Collums, Kay Davis, Gina Fennell, Michelle Garner, Michael George, Jeff Leathers, Matthew Sparks, Sarah Sparks, Becky Storment.

GRADE 32
Principal's List: Steven Ables, Kim Allen, Marcia Boyd, Bryant Cashion, Jennifer Collums, Kay Davis, Gina Fennell, Michelle Garner, Michael George, Jeff Leathers, Matthew Sparks, Sarah Sparks, Becky Storment.

GRADE 33
Principal's List: Steven Ables, Kim Allen, Marcia Boyd, Bryant Cashion, Jennifer Collums, Kay Davis, Gina Fennell, Michelle Garner, Michael George, Jeff Leathers, Matthew Sparks, Sarah Sparks, Becky Storment.

GRADE 34
Principal's List: Steven Ables, Kim Allen, Marcia Boyd, Bryant Cashion, Jennifer Collums, Kay Davis, Gina Fennell, Michelle Garner, Michael George, Jeff Leathers, Matthew Sparks, Sarah Sparks, Becky Storment.

GRADE 35
Principal's List: Steven Ables, Kim Allen, Marcia Boyd, Bryant Cashion, Jennifer Collums, Kay Davis, Gina Fennell, Michelle Garner, Michael George, Jeff Leathers, Matthew Sparks, Sarah Sparks, Becky Storment.

GRADE 36
Principal's List: Steven Ables, Kim Allen, Marcia Boyd, Bryant Cashion, Jennifer Collums, Kay Davis, Gina Fennell, Michelle Garner, Michael George, Jeff Leathers, Matthew



Goats on a Yoke

Eddie Morris (left), of Route 2, is training his pet goats (Bill and Jill) to work with a yoke as his brother, Robert (right), lends a helping hand. The hand-crafted yoke that the hill goats are learning on

is a family heirloom more than one-hundred years old. The property of Eddie's grandfather, Millard Morris, it was originally designed for use with miniature hill goats such as these. Bill and Jill are about ten months old and

close to their adult size. Eddie and Robert attend Burnsville School and are the sons of Mr. and Mrs. Bobby R. Morris. Their grandparents are Mr. and Mrs. Millard Morris and Mr. and Mrs. Will Cresap.



Happy Birthday

Mrs. Mary J. Seago celebrated her 95th birthday on Sunday, January 8, with the following family and friends: Mrs. Polly Orsborn, Mrs. Esther Lindsey, Mrs. Audell Seago, Mrs. Pearl Gist, Mr. Kenneth Gist, Mr. and Mrs. Palmer Rhodes, Mr. Albert Rhodes, Mrs. Syble Orner, Mrs. Lyda Parsons, Hugh, Cathy, Jamie and Amanda Presley, Mrs. Amy Walker, Mr. and Mrs. Garner Woodruff, Tommy, Cathy, Lisa and Jeffrey Frederick, Mrs. Lyla Robertson, Bro. and Mrs. Eugene Waldon, Mrs. Anthem Seago, Mrs. Francis Seago, Mr. and Mrs. Elam Davis, Miss Debbie Thorne, Mr. and Mrs. Olen Nunnley, Mrs. Lloyd Hannon, Mr. and Mrs. Robert A. Wright, Mrs. Celeste Wright, Mrs. Jewel Watkins, Mrs. Ocene Kenau, Tommy, Carla, Dorian and Lydia Purvis, Miss Cleo Moore, Mr. and Mrs. D.F. Frederick, Mr. and Mrs.

Wallace Anglin, Mrs. Lora McNeil, Lynn, Bonnie and Melanie Dill, Mrs. Lorene Bingham, Bro. and Mrs. Tate Presley, Mrs. Joe Lindsey, Mr. Larry Seago, Mr. Jimmy Seago, Mrs. Grace Phillips, Mr. and Mrs. Will Cresap, and Mr. and Mrs. Ollie Gist, all of Iuka; Mr. Buford Holder, Lexington, Miss.; Mrs. Francis Feltman, Miss Toni Denise Rice, Don, Debbie, Dannie and Dusty Shackleford, Burnsville; Mrs. Patsy Inlow, Tishomingo; Bro. and Mrs. Jim Jones, Burnsville; Ben, Cindy and Jennifer Seago, Pickwick, Tenn.; and Mr. and Mrs. William Barnett, Booneville. Mrs. Seago reads the daily paper, her Bible, Sunday School Book, The Tishomingo County News, and watches some soap operas for pass-time. She credits her long life to honoring her father and mother, her faith in God and love for Him. She received flowers, phone calls, cards, gifts and had a wonderful day.

federalism," or shared government, Mississippi has been a recognized leader in many fields. Mississippi was the first to initiate a state-local government industrial development partnership with its "Balance Agriculture With Industry" program. Mississippi had one of the earliest junior college systems, an effective state and local government effort. Now the time has come to go back to the lab. There needs to be a reexamination of the relationship between the state and local governments in Mississippi. Local governments need more freedom to move, to plan, and to finance. The roles of the state and the local governments in education need reevaluation—state restrictions on bonding programs seem too restrictive.

And, state and local governments may want to reexamine the structure of economic development and training programs. The year 1984 is a good year for Mississippi to go back to the lab, to chart its state-local governmental course for the final years of the century.

Marijuana In Mississippi

Record numbers of homegrown marijuana plants were destroyed in Mississippi in 1983, but law officers maintain private citizens must play a greater role in future efforts to eradicate the illegal crop. More than 60,000 marijuana plants, valued at \$58.9

million, were located and destroyed in 1983 under the Marijuana Eradication Program, established by Gov. William Winter in June.

The previous record, set in 1982, was 43,000 plants with an estimated street value of \$31.3 million.

A report on the program said 966 separate plots were destroyed compared to 68 plots the previous year. There were 128 arrests in 1983 compared to 64 in 1982, the report said.

"Although we are pleased that the first year of the Domestic Marijuana Eradication Program was successful, we know Mississippi still has a long way to go before the program is developed as fully as it should be," said Sidney B. Berry, who was named by Winter to coordinate the program.

"Marijuana eradication is a key element in the total war against crime associated with illicit drugs in this state," Berry added.

"It is obvious that marijuana manufacturers are planting smaller crops in an effort to hide them," Berry said.

"This trend can be expected to continue in the coming years and that means private citizens must assist law enforcement officers in locating and reporting marijuana fields."

Berry, who has served as Mississippi's commissioner of public safety for the past four years, predicted the 1984 eradication program could be "significantly more effective" than the 1983 program

Keep your feet comfortable during winter weather

Winter's on its way again, and with it comes special problems for feet: dry, flaky skin; rough calluses; and lack of exercise when bundled up inside boots.

To keep feet going smoothly, the foot care experts at Dr. Scholl's suggest these tips for winter foot grooming.

Winter Pedicure Pointers

- Periodically, add smoothing foot bath granules to warm water for a refreshing foot soak that will stimulate skin and soften hard, roughened areas.

- Work up a rich lather with a soap bar and a foot beauty stone. Scrub heels, soles, and any other place where dry skin appears. The foot beauty stone also helps check calluses, which may build up with the wear and rub of sturdy shoes and heavy boots.

- Always clean between toes where bacteria can grow and cause flakiness or even painful athlete's foot.

- Dry feet thoroughly after cleansing, especially between toes.

- Smooth creamy lotion from heel to toe and on up the leg, to help keep skin soft.

- Trim toenails straight across, never in a curve.

- Use an emery board to smooth rough edges that can catch on nylons.

- Push cuticles back and clean under toenails with an orangewood stick and cotton.

- Polish off the pedicure with a coat of the latest nail enamel.

- When polish is dry, massage feet with fingers to stimulate the skin and blood circulation. Cradle feet in hands, and use thumbs to massage the toes, tops and soles of feet.

Boot Basics

Good winter foot care doesn't stop with a pedicure! Be sure feet are comfortable inside winter footwear, too.

- Buy for comfort and function: Look for boots with insulated lining and insulated soles, good craftsmanship, non-slip corrugated soles and good fit—but leave fashion for better weather. To make sure the boots fit well, give them a test walk in the store while you wear the socks, insoles or other inserts you'll walk in.

- Drier feet help keep feet warmer inside boots. As feet perspire, the wetness condenses and cools, making feet feel clammy. Sprinkle or spray foot powder on feet and inside shoes or boots, so feet will

stay drier. Slip moisture-absorbing insoles inside boots, too.

- High-heeled fashion boots cause problems for feet: The steep angle from heel to toe puts extra pressure on toes and balls of feet. This fatiguing pressure, coupled with the foot's sliding action at each step, can produce calluses or blisters on the ball or toes. For protection, pad the metatarsal area with a half insole that adheres to the shoe.

- Calluses can also be a problem during winter months, as feet go from barefoot to boots that can bind, pinch or rub. To help prevent calluses, keep feet dry so that they will glide, not rub, inside shoes. Scrub hardened areas on feet before the callus builds up. Most importantly, choose comfortable footwear.

- Insulate boots with cold-absorbing insoles. Wear two pairs of socks: soft acrylic next to skin and loose-fitting wool socks that cushion feet against the boot.

- Feet cooped up inside winter footwear have little chance to flex, bend and "breathe." At home, shed boots or shoes, massage feet with fingers and walk barefoot often to keep feet strong and well-exercised.

Making It Isn't Easy

Sir:

This is addressed to all Americans who complain about our wages. I quote from the September issue of *Carmen's*, a labor publication.

"This fellow starts out his day early, having set his alarm clock (made in Japan) for 6 a.m. While his coffee pot (made in Japan) is perking, he puts his hair dryer (made in Taiwan) to work and shaves his face with his electric razor (made in Taiwan). He puts on a dress shirt (made in Taiwan) and designer jeans (made in Hong Kong) with a neat pair of tennis shoes (made in Korea).

"After cooking up some breakfast, in his new electric skillet (made in Japan), he sits down to figure out how much he can spend this day on his calculator (made in Mexico). After setting his watch (made in Hong Kong) to the radio (made in Japan), he goes out, gets in his car (made in Japan) and goes looking for a good-paying American job.

"At the end of a disgusting day, this man decides to relax for a while. He puts on a pair of sandals (made in Hong Kong), pours himself a glass of wine (made in France), and turns on his TV (made in Japan), all this time trying to figure out why he can't find a good-paying American job."

AEROBICS

SIGN UP NOW!

BEGINNING TUESDAY,

JANUARY 17

Session will be held on Tuesday and

Thursday 5:30 - 6:30 at Skateworld

Classes will be instructed by Becky Curtis.

FOR MORE INFORMATION CALL:

423-6316

Courtney LeAnn Stanford
Mary and Terry Stanford are about to announce the birth of their daughter, Courtney LeAnn Stanford. The little lady arrived on December 8, 1983, at Helen Keller Memorial Hospital. She weighed in at 9 lbs. 1 oz. Her grandparents are Mr. and Mrs. Clarence W. Stanford and Mr. and Mrs. Billy Joe Luttrell, all of Iuka.

Dr. Kamal Aly Hassan M.D.

Diplomat American Board Of Ob.-Gyn.
Fellow American College Of Ob.-Gyn.

Announces the Opening of His Office
for the Practice of
Obstetrics and Gynecology

Suite 238—Medical Arts Bldg.
Kaki St.—Iuka, Ms.
Tel. 423-6130

Valentine Promises

Give the Valentine's Day gift that says you really care. An ArtCarved promise ring uniquely styled to be personalized** or just to be beautiful. In 10K gold with genuine diamonds. Prices start at \$90.00.

FREE Ring Pouch With Every Purchase*

ARTCARVED
EXPRESSION JEWELRY

The Promise Ring Collection

MOORE'S JEWELRY
104 B. Front St. Iuka, MS 38852 (601) 423-5901

HERITAGE JEWELERS
Elm Shopping Center Iuka, MS 38852 (601) 423-3245

* Offer expires February 15, 1984. Offer good while supplies last.
** Custom personalized rings require 4 weeks for delivery.
© 1984 ArtCarved Class Rings, Inc.

used the "Jaws of Life" equipment at the Alabama State Line on Highway 72," someone said to me this past week. Before the passengers could be transported, they had to be cut out of the wreck.

"If" is a big word, for we still have some to go before we can get this equipment. Of our \$10,255.00 goal, we have now been given a total of \$4,800.89. This means that we are only \$5,454.11 short of our goal, and \$326.61 short of being half way home. PRAISE THE LORD!

Have you and your family given to this cause? Has your business helped raise funds that will help to save lives? How about your church? Many have sent in their gifts, but we still have some to go. Let us give to the "Jaws of Life", so that our county will have the needed rescue equipment to free those who are trapped in a prison of twisted metal after an auto accident.

We thank those who have given this past week: Mr. and Mrs. Charlie Sheffield; Tishomingo County Community Fund and Mrs. C.C. Cook (Birmingham, Ala.). Thank you for giving for all of those in Tishomingo County.

Make your gift out to "Jaws of Life", and send it to P.O. Box 271, Iuka, 38852, or, if you would like, you may bring your gift to the Iuka City Hall or the office of this newspaper.

Thank you for your support!

Laboratories of Federalism

Over the course of the nation's history, states traditionally have been recognized as "laboratories of federalism." That is, the states have been the arenas in which new services, new structures, and new organizations of government have been tried. Those innovative ideas which worked have been passed on to other states, to the federal government, and even to local governments. Those which failed have been duly recorded and placed on the shelf. As a "laboratory of

IUKA INSULATION COMPANY

-STORM WINDOWS-

Energy efficient and attractive looks make storm windows a smart buy. Call today for more information. All of our materials are TVA approved under The Energy Package.

HWY. 25 N. 423-9962 NIGHT 423-6836

DE-BUGG AUTOMOTIVE

MT. EVERGREEN ROAD - IUKA

TUNE UP BRAKE - TRANSMISSION

ON MOST DOMESTIC CARS
INCLUDES PARTS & LABOR
ROTORS TURNED & WHEEL BEARING REPLACED EXTRA

PHONE 423-5488

B.R.I.T.'S

ELM SHOPPING CENTER - IUKA
QUICKLY EARNING A REPUTATION AS
ONE OF THE AREA'S FINEST RESTAURANTS!

SPECIAL FRIDAY NIGHT BUFFET

FEATURING
A VARIETY OF FRESH SEAFOOD, BRITS FAMOUS ROAST BEEF, CATFISH, POULTRY AND A WIDE ASSORTMENT OF VEGETABLES AND SALADS FROM WHICH TO CHOOSE. ALL YOU CAN EAT PLUS DRINK & DESSERT
AGAIN THIS WEEK OUR LOW INTRODUCTORY PRICE

UNDER \$5.00

SATURDAY NIGHT BUFFET

FEATURING
B-B-Q RIBS
FROG LEGS
CATFISH
CREOLE SHRIMP
UNDER \$6.50

