

Happy New Year

Tishomingo County News

The Vidette & Belmont News

\$8.00 Per Year Locally
In Advance
\$15.00 Per Year
Outside Trade Area

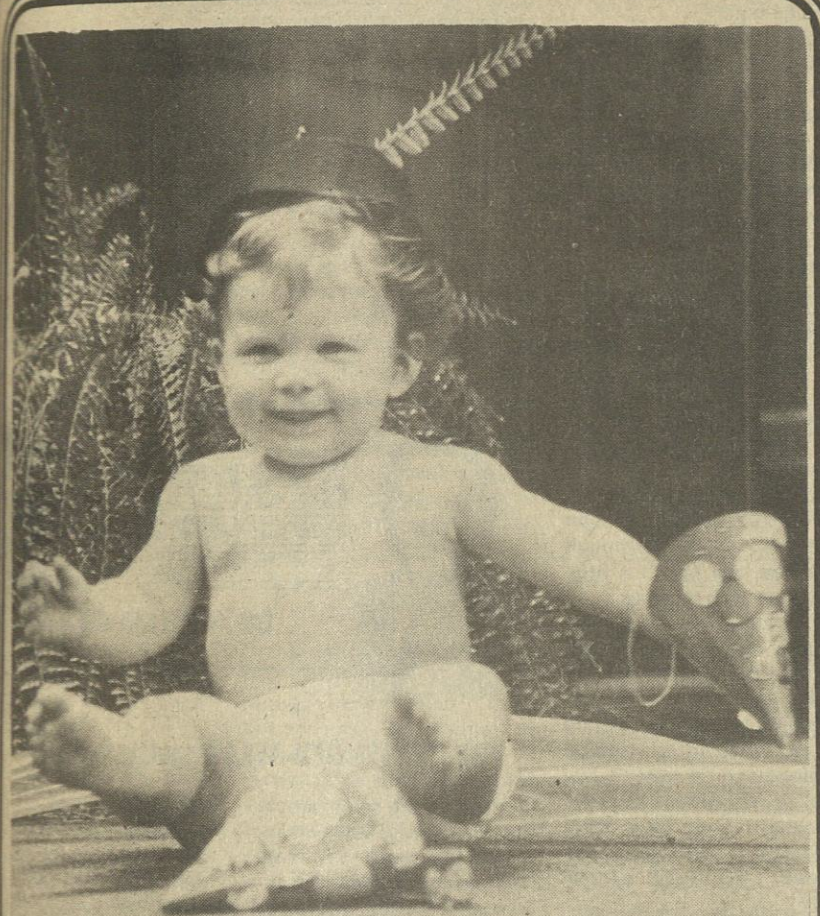
OFFICIAL LEGAL NEWSPAPERS OF TISHOMINGO COUNTY
The One Newspaper In The World Most Interested In This Area

Patronize The News
Advertisers!
They Send A Valuable
Message To You

HUNDRED AND ONE YEARS

IUKA, TISHOMINGO COUNTY, MISSISSIPPI

Thursday, December 27, 1984 No. 28



1st New Year Celebration

As the old year comes to an end, John Andrew Butler appears to be getting an early start on the New Year's Eve celebrations. Andy will ring out the old year and say goodbye to '84 by ringing in 1985 in his own special way. He is looking forward to 365 adventure filled days. The handsome 11-month-old lad is the son of Mr. and Mrs.

Johnny Butler, of Iuka. Proud grandparents include Mr. and Mrs. Curtis Butler, of Iuka; and Mr. and Mrs. Adolph Brawner, of Corinth. Great-grandparents are Mr. Alonzo Carson and Mrs. Elsie Butler, both of Iuka. Andy, along with the staff and management of The Tishomingo County News wish for everyone a safe, happy and prosperous New Year!

HAPPY NEW YEAR!

Here's hoping the coming year will be filled with joy for you!

Second Beating Suspect Arrested

The second suspect wanted in connection with a December 15 beating episode was arrested in Iuka late last week, according to Sheriff Bob Payne.

Jessie Ledbetter, of Iuka, described to be in his late 20's, was charged with aggravated assault of Warren Robertson, 22, also of Iuka.

Another Iuka man, Kelly Lambert, was arrested earlier last week and charged with aggravated assault in the same incident.

The sheriff said both men waived preliminary hearings and are presently awaiting action of the Grand Jury, which is set for the second week in January. Both Ledbetter and Lambert were released under \$10,000 property bonds each, he said.

The beating incident reportedly took place at a weekend party on Indian Creek, northeast of Iuka. Testimony given to the sheriff from witnesses at the scene, revealed that Robertson was attacked from behind, knocked down, beaten and kicked violently about the face and head.

It is still unknown what initiated the attack on Robertson.

A member of the Robertson family said Warren was taken by friends to Tishomingo County Hospital around 9:30 p.m. that night and later transferred to a Memphis hospital, where he underwent extensive facial bone repair surgery around the eye area. It was said that the victim is still experiencing vision problems and will return to the Memphis doctors Friday.

Monday, Ad Deadline

All ads and news items should be brought in or reach The News Office no later than Monday, December 31, in order to appear in the next edition. The Tishomingo County News office will be open 8 a.m. - 5 p.m. Friday, December 28; and also on Monday, December 31. The office will close Tuesday, January 1, in observance of New Year's Day.

Iuka Tax Books Open

The City of Iuka Tax Books are now open, according to Joyce Brumley, City Clerk. All 1984 city taxes will be delinquent February 1, 1985. Penalties will be charged on all delinquent taxes following the deadline.

Watchnight Services

There will be a Watchnight Service at Mt. Moriah Baptist Church, December 31st, from 8 p.m. until midnight. There will be singing and preaching. Everyone is invited to attend.

There will be a Watch Night Service at the First Assembly of God Church, located on Eastport Street, across from the Radio Station in downtown Iuka, on Monday night, December 31, beginning at 9:00.

There will be special singing with the featured groups being The Messiah's Messengers and The Choate Sister's Trio.

Pastor, Allen Hapner, and the entire congregation extend a warm welcome to everyone to attend.

Have a great New Year but please drive safely.

TENN-TOM WATERWAY YEAR END ACCOUNT

February 1, 1985 marks the end of one era and the beginning of another. On that date the Tennessee-Tombigbee Waterway opens for thru traffic. Under the direction of the U.S. Army Corps of Engineers, construction of the waterway began in December, 1972 and after 13 years, the Tenn-Tom is ready for business, offering the potential for enormous savings in time, money, energy and resources.

Bill Allain, Governor of Mississippi, stated that one of our main possibilities for economic gain is the Tennessee-Tombigbee Waterway. I pledge to pursue full development of the waterway in participation of the formal dedication and opening. Mississippi has already invested \$200 million into this project, which holds the promise of more jobs for north-east Mississippi.

The Tennessee-Tombigbee Waterway, a 234 mile navigational artery between the upper Mississippi, Ohio and Tennessee Rivers and the Gulf of Mexico with its east-west Gulf Intracoastal Waterway, and deepwater ports, will connect 16,000 miles of navigable waters providing a firstclass national transportation system for mid-America.

SAVINGS... The average savings in transportation costs to shippers during the next 50 years are expected to surpass \$130 million dollars annually. The reasons...

...tows using the waterway have a shorter route to and from the gulf. For example, from Knoxville, Tn to Mobile, Al via Tenn-Tom you save 882 miles; from Pittsburgh, Pa to Birmingham, Al a 833 mile savings and from Chicago, Il to Pensacola, Fl 245 miles are saved. Shipping goods on the new waterway gets the product to its destination in less time and at a lower cost. Shippers can save an average of \$3.80 per ton over other modes during 1985-86. And, the slack water system and the shorter route translates into over 9 million gallons of fuel saved annually.

COMMODITIES TO MOVE... Major commodities to move over the new shipping lane will be COAL — the Tenn-Tom services an area that contains some 100 billion tons of coal reserves. GRAIN — with the projected increase in livestock and poultry producers in the

region, large amounts of feed grains are expected to be transported to the area via Tenn-Tom. FOREST PRODUCTS — the Tenn-Tom region is a major domestic producer of softwoods, hardwoods and by-products, primarily woodchips and pulpwood in making paper products. In addition, other types of cost effective barge shipments include: CHEMICALS, METALLIC ORES, PETROLEUM, NON-METALLIC MINERALS, AGGREGATE AND STEEL.

PORTS... To keep pace with the industrial growth and shipping demands for the new river, port facilities and cargo handling installations have been established along the waterway and many of the connecting systems. Renovation and expansion is underway at Mobile, Gulfport, Pascagoula and Pensacola with ready access to the Port of New Orleans. Shippers on the Tenn-Tom will have a gateway to all the major shipping lines that serve the gulf coast and the world.

INDUSTRY NEEDS... The waterway region has what industry seeks - natural resources, abundant energy and water, a protected environment and moderate climate, an adequate intermodal transportation network, education from secondary schooling to advanced technical training and a labor force backed by a strong work ethic.

Another aspect contributing to the quality of life along its path is the recreational impact. Thousands of acres of water and natural woodlands for boating, fishing, camping, hiking and related activities. Pleasure craft can move safely between other river systems of inland America and the Gulf.

NAVIGATIONAL CHARTS... Official navigation charts of the waterway may be obtained from: District Engineer, U.S. Army Corps of Engineers, Mobile, P.O. Box 2288, Mobile, AL 36628; Cost \$14.95 made payable to FAO, Corps of Engineers, Mobile and should accompany the request.

NEW COUNCIL FORMED... In an effort to involve all interests in the waterway, the Tennessee-Tombigbee Waterway Development Authority has established a Tennessee-Tombigbee Waterway Development Council (TT-

WDC). The Council will consist of representatives from the private sector, states, counties, and local governments, as well as other waterway interests. It will address issues and problems, and consider opportunities related to the development of the Tenn-Tom and its impacted area. An organizational meeting of the TTWDC will be held in Columbus, MS January 15, 1985. Annual membership dues are \$100. Information about the Council or how to become a member of this important organization may be obtained by contacting the Tennessee-Tombigbee Waterway Development Council, Post Office Drawer 671, Columbus, MS 39703; 601/328-3286.

DEVELOPMENT OPPORTUNITIES CONFERENCE... 435 people from 20 states registered for the Second Development Opportunities Conference in the fall, this year meeting in Paducah, Ky. The conference was scheduled by popular demand following a highly successful 1983 Development Opportunities Conference, in Mobile, Al. With the waterway opening for business February, 1985, the Authority is addressing pertinent issues and needs faced in its development, according to Donald Waldon, administrator of the 5 state compact. Nationally recognized authorities in the fields of water transportation, economic and community development, recreation and tourism, and export trade participated in the day and half seminar.

FORESTRY PRODUCTS EXPORT SEMINAR... Recognizing the potential for the exporting of forest products over Tenn-Tom, two seminars were held during the year. A one day Forestry Products Export Seminar in Mobile, Al May 22 sponsored by the Authority, and a two day woodmarketing meeting in Tupelo, October 25-26 sponsored by the Governor's Office of Appalachian Development, Tennessee Valley Authority and the Tennessee-Tombigbee Waterway Development Authority.

Studies indicate that one of the most immediate impacts of the Tenn-Tom may be the increased export of forestry products from the waterway region. The area produces much of the nation's marketable timber

resources. These forests will be needed to supply the world demand for forest products which is expected to double by the year 2000. The waterway offers a unique opportunity for capitalizing on this export potential. For every one million dollars in goods sold overseas, 30-40 new jobs are created at home.

NEW LEADERSHIP FOR '85... Kentucky Governor Martha Layne Collins was named Chairperson of the Authority. Governor Collins will take the helm January, 1985 succeeding Alabama Governor George C. Wallace. Z.C. Enix, a Murray, Ky businessman, was elected Vice-Chairman following Fuller Kimbrell of Tuscaloosa, Al. Bennie Turner, a West Point, Ms attorney was named Treasurer.

MARKETING FILM READY... A 6 minute 16mm (video, 8 loop) film on marketing the waterway is available to the public free of charge. To view the film, or for additional information, contact Tennessee-Tombigbee Waterway Development Authority, P.O. Drawer 671, Columbus, MS 39703; 601/328-3286. The film is a Spottswood Studios, Mobile, Al production.

WILL TENN-TOM HELP YOU?... The Tennessee-Tombigbee Waterway Development Authority will answer your questions about this and other concerns: Free to you are maps/charts; ports/terminals; navigation facts; mileage savings; rates; towing services; regulations; general information; commodities; exports-imports; recreation and tourism; economic development corridor study data. Direct your inquiries to Tennessee-Tombigbee Waterway Development Authority, P.O. Drawer 671, Columbus, MS 39703; 601/328-3286.

JUNE 1, 1985 DEDICATION OF THE WATERWAY... June 1, 1985 will be the official dedication of the waterway at the Columbus, Ms lock and dam site. The President has been invited as the honored guest, along with past Presidents, present and past Members of Congress, trade ambassadors, Governors past and present, and a legion of civic and political leaders contiguous to the waterway.

So each community will be involved, satellite ceremonies in conjunction with a boat flotilla will begin several days in advance of June 1 at points from Paducah, Ky, Gunterville, Al and Mobile, Al, converging on the Dedication Site for a flotilla watch and ceremony Friday, May 31. Each area will feature its Congressional delegation, and those who have worked long and hard to see this project to fruition.

A two day festival on the site will feature the theme 'past, present and future' with entertainment, arts and crafts, demonstrations, historical displays and re-enactments, ports and industry showcases, food and fun.

The afternoon of June 1, the official celebration will continue as the participants move to Mobile, Al, the southern gateway to the Tenn-Tom. A parade and banquet in honor of the visiting dignitaries is planned for late that day.

UNEMPLOYMENT RATE IN COUNTY REACHES 22.6 %

The rate of unemployment in Tishomingo County climbed to 22.6 percent at mid-November. This compares to 18.5 percent in October and 20.1 percent in November, 1983. Charles Smith, Manager of the Mississippi State Employment Service, stated that the total number of unemployed rose to 2,360, 510 above the previous estimate and 360 above the estimate for one year ago. The civilian labor force at 10,420, experienced an increase of 400 from the October figure and 480 from the estimate for November, one year ago. The number of Tishomingo County residents employed was estimated to be 8,060, 110

below the previous estimate but 120 above that of one year ago. This large increase in the number unemployed was due primarily to temporary layoffs in the county.

Manufacturing employment in the county registered 2,500, relatively the same as the October figure and 60 above the estimate for November, one year ago. Non-manufacturing employment was estimated to be 2,960, only slightly below the previous estimate and 100 below the figure for one year ago.

Smith continued that in the six-county area of Alcorn, Benton, Marshall, Prentiss, Tippah, and Tishomingo the

overall civilian labor force rose to 65,460. The number of people unemployed climbed to 12,770, or 19.5 percent of the civilian labor force. The number of area residents employed stood at 52,690, which represents decreases from one month ago and one year ago.

Manufacturing jobs dropped to 16,010, compared to 16,950 in October and 18,180 in November, 1983. Monthly the yearly comparisons reveal the largest decline in the Electrical Machinery group. Nonmanufacturing employment at 21,460 experienced only a minimum gain of 20 from one month ago, while a yearly increase of 430 was noted.

TISHOMINGO COUNTY NEWS VIDETTE and BELMONT NEWS

Phone 423-3666

(SECD 631680)

John H. Biggs, Editor & Publisher

Published Thursday by The Tishomingo County News, Inc. Serving the people of Tishomingo and adjoining counties for more than 95 years. Publication office 120 West Front Street, P. O. Box 70, Iuka, Mississippi. Entered at the Post Office as mail matter of the Second Class. Second Class postage paid at Iuka, Mississippi. Zip Code 38852. Post Master send address changes to The Tishomingo County News, P. O. Box 70, Iuka, Mississippi 38852.

Mail Rates Tishomingo and Adjoining Counties

\$8.00 Per Year
Other Areas
\$15.00 Per Year

EMERGENCY PHONE NUMBERS

Sheriff Department..... 423-6185
Tishomingo County Hospital..... 423-6051
Ambulance Service..... 423-5766

POLICE DEPARTMENTS

Belmont..... 454-3381
Burnsville..... 427-9526
Iuka..... 423-6340
Tishomingo..... 438-6302

FIRE DEPARTMENTS

North Crossroads Vol. Fire Department..... 423-6185
Belmont..... 454-3311
Burnsville..... 427-8844
District Volunteer..... 423-6515
Golden..... 454-9645
Iuka..... 423-5011
Tishomingo..... 438-6650

MISSISSIPPI HOT LINE FOR CHILD ABUSE

1-800-222-8000
DRUG AND ALCOHOL ABUSE
423-3332

FOR YOUR BENEFIT

Tommy Purvis
Extension County Agent



Lime Important On Grain Crops

So much has been said and written about applying lime on legumes that we sometimes forget how important it is on wheat, grain sorghum and corn.

While the weather thus far in Tishomingo County has not been good for applying lime, lime needs to be applied this winter to allow time for the chemical reactions to take place by spring planting.

Lime supplies calcium, an essential element, as well as raises the soil pH, which makes other nutrients available for the plants to use. A soil pH of 5.6 to 6.2 is high enough to produce top yields on most grain crops.

Dolomitic lime supplies magnesium, another important plant growth element. Magnesium deficiency on corn, for example, can occur where corn is grown for

silage or where yields are high. Adding one ton of dolomitic limestone every six years should correct this problem.

Using too much lime can cause zinc deficiency in corn. At a pH of near 7.0 or higher, zinc is "tied up." So, using a fertilizer that contains zinc is advisable if soil zinc levels are marginal and lime is applied.

Grain sorghum is particularly sensitive to low pH. A pH of 5.6 or higher is necessary to reach top yields. A lower pH of 5.3 to 5.4 reduces yields 12 to 15 percent, while a pH of 4.8 to 4.9 reduces yields 60 to 65 percent. At lower pH sorghum may die in the seedling stage.

Soil testing is the only way to know for sure if your soil is at the desired pH level. Our office has the information and materials you need to take a soil test and determine

Gardening for 1985

Gardening may be the most distant thing from your mind now, but January starts a new gardening year. All gardeners will want to know what's new for 1985.

The All-America Selection for 1985 is Sunburst summer scallop squash. You may be familiar with the white scallop of pattypan squash. Sunburst has bright yellow fruit with dark-green blossoms and stem ends. Seed should be available for planting in the spring of 1985.

There are many other new vegetable varieties in the new seed catalogs. If you want to try them, look for disease resistance, and plant only a small part of your garden to new varieties.

Several new vegetable varieties looked good in 1984. The Extension office has a list of these for you to consider this year.

Our office also has a copy of the Extension Garden Tabloid. This gives you a wealth of information to make your 1985 gardening year a more successful one.

Chatting With Your Home Economist

By: Nellie R. Horton,
Extension Home Economist

Do You Need Help In Converting A Standard Recipe For Microwave Cooking?

Many conventional recipes can be converted for microwave cooking with few changes in addition to a shortened cooking time.

The most reliable way to convert a standard recipe is to find a microwave recipe with similar ingredients, or to look for microwave cooking instructions for the main ingredients of your recipe.

Use the container, cooking techniques, power level, and time recommended in the microwave recipe to convert your conventional recipe.

Watch the food carefully, and check for doneness after the minimum time. If longer cooking is needed, add more time in small amounts. Be sure to allow standing time for foods which require it.

If a similar recipe is not available, follow these steps:

1. Check for any special instructions for the main ingredient. For example, if the conventional recipe says to cook ground beef until lightly browned, cook in the microwave until slightly pink in the center.

2. Reduce the liquid by about one-half or add more thickening since there is less evaporation in the microwave. Sometimes the liquid may be omitted.

3. Use less seasoning. Usually one-half the seasoning will do. You can



JOEY CARSON, son of Mr. and Mrs. Jim Carson, received the award for outstanding junior 4-H'er at the 4-H Achievement Banquet. The award is based on outstanding 4-H project work. Joey's main project is swine. Mr. Gerald Glidewell is shown presenting the award on behalf of the 4-H Advisory Council.



PATRICE JOHNSON, daughter of Mr. and Mrs. Billy Johnson, recently received the award for outstanding senior 4-H'er. Mr. Gerald Glidewell presented the award at the 4-H Achievement Banquet. Patrice's main project is conservation of natural resources. Her outstanding 4-H project recently won her a trip to National 4-H Congress.

adjust to taste after cooking.

4. Any cooking oil or fats may be reduced or may not be needed at all. Fats tend to attract microwaves away from the food and may cause food to cook longer. Remove any excess grease when possible.

5. It may be desirable to precook hamburger or other meats first and then drain them. This avoids excess fat as well as the overcooking of other foods in the recipe.

6. Reduce the cooking time to about:

-one-fourth for High (100%)

-one-third for Medium-High (70%)

-One-half for medium (50%)

-Three-fourths for low (30%)

7. Some stirring or rearranging of food may be necessary during cooking. Stir occasionally if the conventional recipe calls for constant stirring.

8. Add delicate or quick-cooking ingredients, like seafood and cheese, toward the end of microwaving to avoid toughening them.

Some recipes, such as

cakes, candies, meat loaves, or main dish casseroles may need only a power level and time conversion but no changes in ingredients.

Whenever converting a recipe, record all changes for future use.

Creamy Rice & Cheese Bake

2 eggs, beaten
1 cup half-and-half (cream & milk)
3 cups cooked rice
1/2 teaspoon salt
1/2 teaspoon onion powder
1/2 tsp. powdered mustard
1/4 tsp. ground black pepper
Dash ground red pepper
1 cup grated Swiss or Cheddar cheese
2 tbsp. chopped parsley

Combine all ingredients; mix well. Turn into a buttered 8x8x2-inch baking dish. Bake at 350 degrees for 20 minutes or until firm near center. Do not overcook.

MICROWAVE INSTRUCTIONS: Use only 3/4 cup milk. Combine all ingredients in a shallow 2 quart micro-proof baking dish. Cook on HIGH (maximum power) 3 minutes. Stir, bringing mixture at outer edges to center. Cook 3 to 4 minutes on HIGH. Makes 6 servings.

ASCS Farm News

By: Henry L. Knox,
County Executive Director

USDA Official Foresees Change In Agriculture's Future

In the opening session of

Prescriptions for Peace of Mind:



Happiness does not depend upon what happens outside you, but what happens inside you.

CURTIS DRUG CO.

Elm Shopping Center
619 Hwy. 25 South
Iuka, Miss. 38852
PHONE 423-3676
Monday - Saturday 8 am-6:30 pm
Sunday 9 am-4 pm

the U.S. Department of Agriculture's Annual Outlook Conference, December 3-5, board chairman James R. Donald told conferees to expect significant changes in agriculture in the future.

"Many changes have occurred during the course of the Agriculture and Food Act of 1981, and significant change is expected in the years ahead." Changes in agriculture have been brought about by ties to the general economy at home and abroad and links to agriculture and developments abroad.

U.S. agriculture has undergone significant production and marketing adjustments in the past year in response to greatly reduced crop output. Mr. Donald said the season ahead appears to be one of further adjustment, due to large commodity supplies and slow demand growth. "In 1984/85, farmers responded to higher prices and crop acreage went up more than one-tenth from the previous year's level. Growing conditions improved and the average yield also is up more than one-tenth."

U.S. exports may increase slightly, he said, but record crops abroad and the relatively strong U.S. dollar will moderate export gains. Crop prices are likely to remain under pressure from large global supplies. Meat supplies are expected to remain large, although a little below 1984, and livestock prices should average higher.

"Larger crop marketings and higher livestock prices may lead to higher cash receipts for farmers in 1985," Mr. Donald said. Continued moderate increases in inflation should hold down the rate of increase in production expenses next year, although expenses may be up a little more than cash receipts.

"The years ahead are likely to see agriculture more closely tied to other sectors of the economy around the world and become even more closely linked to agricultural developments in other countries. It is within this environment that new farm legislation will be considered," the USDA official said.

OFFICE CLOSED — This office will be closed Tuesday, January 1, 1985, for New Year's Holiday. The office will be open January 2, at 8:30 a.m.

Tishomingo Tax Books Are Open

Tax books are now open in the Town of Tishomingo, and will remain open for taxes to be paid until February 1st. The office is open Monday through Thursday, 8:30 a.m. to 4:00 p.m. and Friday 9:30 a.m. to 5:00 p.m.

Elizabeth Blackwell was the first American woman to become a doctor, in 1849.

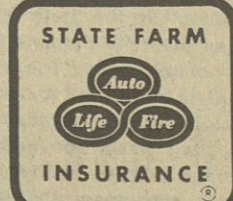
"I back the family insurance I sell with good neighbor service. Call me."



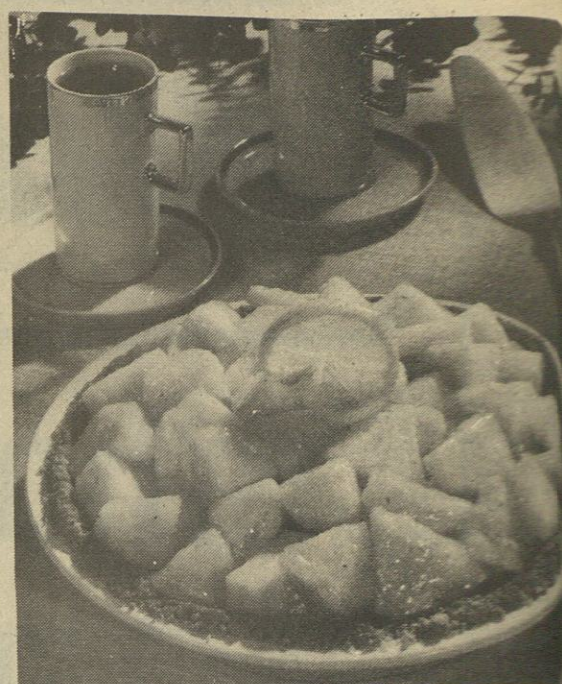
Harold Lomenick

117 Eastport St.
423-5931

Like a good neighbor,
State Farm is there.



State Farm Insurance Companies
Home Offices: Bloomington, Illinois



FRESH PINEAPPLE PIE

1 large Dole® Fresh Pineapple 1/2 teaspoon nutmeg
1/2 cup sugar 1 1/2 cups water
2 tablespoons cornstarch 3 drops yellow food
1 teaspoon freshly grated lemon peel Nut Crust

Twist crown from pineapple. Cut pineapple into quarters, remove fruit from shells. Core and cut pineapple into chunks. Combine sugar, cornstarch, lemon peel and pineapple in a large saucepan. Stir in water and food color. Cook constantly, until sauce is clear and thickened. Remove heat. Add pineapple chunks. Cool. Spoon fruit into pie pan. Pour sauce evenly over fruit. Cover. Chill overnight. Serves 8.

NUT CRUST

1 1/2 cups vanilla wafer crumbs 1 tablespoon sugar
3/4 cup toasted ground walnuts 5 tablespoons butter

Combine all ingredients. Press in bottom and up sides of 9-inch pie plate. Bake in 400° F oven 8 minutes. Cool.

*To make crumbs, add vanilla wafers, a few at a time, to a blender and whirl.

Become a fresh pineapple expert—write for your own Fresh Pineapple Guide to Dole Guide, P.O. Box 7758, San Francisco, CA 94120.



INSIGHT INTO EYESIGHT

DR. PHILLIP GRAY
OPTOMETRIST

THE "EXTENDED-WEAR" ADVANTAGE

There are some people who express initial skepticism about the new "extended-wear" contacts.

Also, because they can stay in the eye longer, they do not have to be cleaned as often. One does not remove contact lenses to clean them; one cleans them because one has had to remove them. A soft contact lens that remains in place for the eye is simply not exposed to most contaminants.

How can they be worn so long without discomfort? How do they stay clean during all that time? The answers to these two questions are related. Because of the water content of these new lenses, they are able to transmit substantially more oxygen to the eye. The eye can "breathe" more normally. This

allows them to be worn comfortably longer.

Also, because they can stay in the eye longer, they do not have to be cleaned as often. One does not remove contact lenses to clean them; one cleans them because one has had to remove them. A soft contact lens that remains in place for the eye is simply not exposed to most contaminants.

In the interest of better vision from the office of:

DR. PHILLIP GRAY
105 S. Fulton St., Iuka
Phone 423-3785

WILLIAMS PEST CONTROL & INSULATION COMPANY

Phillip Williams, Owner
Belmont, Miss.

If you'd like to save money by making your home more energy-efficient, call us. We're experts in home weatherization, and our materials meet TVA standards for financing under The Energy Package™.



So if you're ready to weatherize your home, ask your power distributor about The Energy Package™.

Then call us to do the work.

We are also bonded licensed and experienced to take care of all your pest control needs.

Call 454-3388
Day or Night

We make it work

If you're like most people, you probably don't spend much time thinking about electricity.

But we do, because bringing you electricity is our business. You can count on us to continue providing reliable electric power to your home 24 hours a day - in all kinds of weather. We make it work.

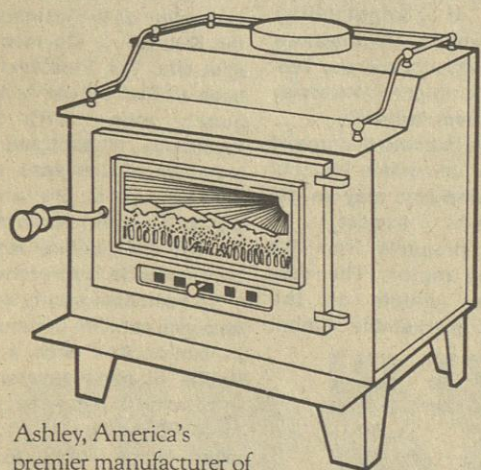
Electricity serves you best when you use it efficiently. By saving waste, you'll enjoy the benefits of using electricity and save money, too. It works!

Tishomingo County
Electric Power Assoc.



ELECTRICITY
Get the most for your money

Ashley improves on tradition.



Ashley, America's premier manufacturer of wood- and coal-burning heaters and circulators, has taken the functional step-stove design and raised it to new heights of performance and beauty! A single, decorative glass door (optional) showcases the flames while maintaining the energy-saving advantages of airtight performance. Brass trim along the top edges completes a charming picture.

- Two cooking surfaces permit whole-meal emergency cooking.
- Standard heat shield allows unit to be installed 24" from combustible materials.
- Optional two-speed blower enhances heat distribution.
- Optional glass door insert replaces decorative cast-iron panel in the cast-iron door.



Reduce fuel bills with an

ASHLEY
THERMOSTATICALLY CONTROLLED
WOODBURNING HEATER



Users report fuel savings
of 50 to 75 per cent!

Canada: "Our fuel bill has been cut at least in half." Tennessee: "My Ashley gives more heat, far less fuel, with heated rooms every morning." Massachusetts: "My heating cost is now nil." Canada: "We are now using less than one-third of the wood we used before." Enjoy dependable, automatic heat from inexpensive, readily available firewood (any kind). Install an Ashley and save!

W. H. FAIRLESS HARDWARE CO.

IUKA & TISHOMINGO



Mr. and Mrs. John Edward Wallin

Wallin - Mason Wedding Held August 11th

Laci Ann Mason, of Collins, became the bride of John Edward Wallin, of Columbus, at an afternoon ceremony held Saturday, August 11, at the Presbyterian Church of Rev. Steven A. Jakes officiating.

Parents of the couple are Mr. and Mrs. Richard B. Mason, of Collins, and Mrs. Laci Ann Wallin, of Iuka, and Mr. and Mrs. John Wallin, of Iuka, Tennessee.

Wedding music was provided by Marty Hennis, pianist, Miss Diane Silver, vocalist, and Mrs. Gwen Crouse, soloist.

The bride, given in marriage by her father, wore a gown of white taffeta and lace. The groom wore a tuxedo with a white shirt and a white bow tie. The bride carried a bouquet of white flowers and wore a white veil. The wedding cake was decorated with white flowers and greenery.

Friday night visitors of Mr. and Mrs. Edward Thorne and Shirley Ann were Mr. and Mrs. Gary McNutt and Stephanie and Miss Eva Mae Strickland.

Early Christmas supper guests of Mr. and Mrs. Edward Thorne and Shirley Ann on Sunday night were Mr. and Mrs. Bobby Wayne Thorn, Stephanie, and LaDonna, of Florence, Ala. with her daughter and family, Mr. and Mrs. Bobby Wayne Thorn, Stephanie and LaDonna.

bridesmaids. The attendants wore gowns identical to that of the maid of honor, fashioned in marigot blue. All wore matching hair wreaths of flowers.

Vikki Mason, sister of the bride, was flower girl. She wore a formal gown of white taffeta, which featured a lace V-neckline and flounce at the hem.

A reception followed the ceremony at the Educational Building of the church.

Following intermediate assignments to Holloman AFB, New Mexico, and Davis-Monthan AFB, Arizona, the couple will reside at RAF Bentwaters, United Kingdom, where the groom is assigned to the 81st Tactical Fighter Wing.

When you see someone who projects a good image, ask yourself why? What makes that 4-H'er so special? Make a list of the things you would like to change about yourself so you too can project a good image.

Your aim should be to look the best you can. It doesn't take a lot of money, but it does take time and effort. Remember, when representing 4-H, think about how others see you and make sure you are communicating the image you want others to have about you and 4-H.

meetings with the club members and also a great number of visitors who have asked questions concerning the by-laws and regulations of the club. At each meeting - the game and fish commission have been present to answer any and all questions any person so desired to ask. They also informed the club of the state laws concerning hunting and fishing. The vows we have vowed to hold.

We invite all land owners in the area, who are interested in game conservation and who are willing to work for the club, to attend the meetings.

The purpose of this club is to preserve the local game and promote a higher standard of sportsmanship in hunting and fishing.

If you have any questions or comments, please attend the next meeting on January 18, 1985, at the Midway Fire Department at 6:30 p.m., or contact Bobby Wimbush, Randle Jourdan or Jerry Busby.

you are giving others about yourself and 4-H?

We have all been told not to judge people by the way they look, but appearance does indeed affect the way we think about someone. As a matter of fact, 50 percent of the impressions you make is influenced by your nonverbal image.

Image has been defined as a visual representation or a mental picture. Impression is an influence or effect on your feelings or senses. Visual impressions are important because when others meet you for the first time, they form opinions about you from them. When you stand up to represent 4-H, you make an impression even before you deliver your message.

Your clothing, smile, hair, make-up, and cleanliness all are part of the way you look, and people form opinions about you from these things. Even the way you talk, walk, sit, and stand affect what people think. In other words your image is the TOTAL YOU. Each of us starts with the same potential. It is what you do with it that counts.

Learn about your current image by collecting impressions of other 4-H'ers you see. Then try to see yourself as others see you. Decide on the kind of image you are presenting as a 4-H'er. Is it the image you want to project? If it is, good for you. But if it is not, you can begin to make some changes.

nounced today the University is accepting enrollment applications for the spring semester which begins on January 14.

Orientation for beginning freshmen and new transfer students will begin January 14, at 8:30 a.m., in Rooms 422 and 423, Education-Nursing Building. Registration will be held in Collier Library, January 14-16, with a special evening registration on January 16, 2:30-6:00 p.m.

Although applications for the spring semester are still being accepted, all students applying for admission after December 28 will be assessed an additional late registration fee and will be required to go through late registration in Collier Library on January 17 or in Norton Auditorium on January 21-23.

In addition to regular classes, UNA will continue to offer an expanded schedule of late afternoon and evening classes at both the undergraduate and graduate level. Keith pointed out these classes are designed to accommodate persons who work a full daytime schedule but wish to continue their program of studies.

Applications for enrollment and class schedules for the spring semester may be obtained from the Office of Admissions, Room 126, Bibb Graves Hall.

Persons wishing to enroll for the spring term should complete the application process as soon as possible, Keith said.

assessed an additional late registration fee and will be required to go through late registration in Collier Library on January 17 or in Norton Auditorium on January 21-23.

In addition to regular classes, UNA will continue to offer an expanded schedule of late afternoon and evening classes at both the undergraduate and graduate level. Keith pointed out these classes are designed to accommodate persons who work a full daytime schedule but wish to continue their program of studies.

Applications for enrollment and class schedules for the spring semester may be obtained from the Office of Admissions, Room 126, Bibb Graves Hall.

Persons wishing to enroll for the spring term should complete the application process as soon as possible, Keith said.

spring semester may be obtained from the Office of Admissions, Room 126, Bibb Graves Hall.

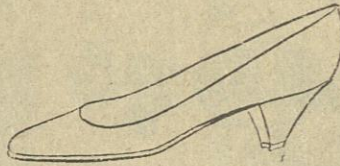
Persons wishing to enroll for the spring term should complete the application process as soon as possible, Keith said.

NOTICE

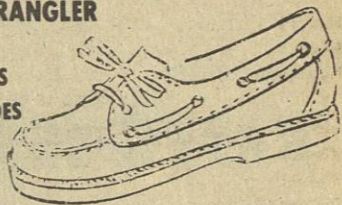
If you are a registered nurse and interested in forming a local chapter of the Mississippi Nurses Association, please attend the meeting, which will be held Wednesday, January 3, 7:00 p.m. in the South Dining Room of Tishomingo County Hospital.

AFTER-SALE Christmas

CONNIE - HUSH PUPPIES - EASY STREET - D'ORO
CHARM STEP - JARMAN - WRANGLER



HUNDREDS OF PAIRS
OF FALL & WINTER SHOES



BUY 1 PAIR

AT OUR REGULAR LOW PRICE

GET 1 PAIR

OF EQUAL OR LESSER VALUE

FREE

THE SHOE TREE

713 E. EASTPORT
423-1774

TUESDAY - SATURDAY
10:00 A.M. - 5:00 P.M.

Personals

Last week visitors of Eva Mae Strickland and Stephanie McNutt were Miss Linda Zuber and Mrs. Opaline Crouse.

Miss Eva Mae Strickland and Mr. and Mrs. Edward Thorne and Shirley Ann visited on Thursday night with Mr. and Mrs. Gary McNutt and Stephanie and Miss Eva Mae Strickland.

Friday night visitors of Mr. and Mrs. Edward Thorne and Shirley Ann were Mr. and Mrs. Gary McNutt and Stephanie and Miss Eva Mae Strickland.

Early Christmas supper guests of Mr. and Mrs. Edward Thorne and Shirley Ann on Sunday night were Mr. and Mrs. Bobby Wayne Thorn, Stephanie, and LaDonna, of Florence, Ala. with her daughter and family, Mr. and Mrs. Bobby Wayne Thorn, Stephanie and LaDonna.

Miss Eva Mae Strickland, of Tishomingo.

Christmas Eve visitors of Eva Mae Strickland were Mr. and Mrs. Sam Dickinson, of Golden, Mr. John B. Strickland and Larry, and Mr. and Mrs. Edward Thorne and Shirley Ann, of Tishomingo.

Christmas dinner guests of Mr. and Mrs. John B. Strickland were Mr. and Mrs. Junior Strickland, David, Michelle and Michael, Mr. and Mrs. Larry Strickland and Katie Marie, Mrs. Katie Epps and Jerry Ward, and Miss Eva Mae Strickland.

Christmas supper guests of Mr. and Mrs. Lloyd Crouse and Mr. and Mrs. Edward Thorne and Shirley Ann and Miss Eva Mae Strickland. Mr. Benny Walker was also a Christmas Day guest.

Mrs. Helen Harris spent the Christmas Holidays in Florence, Ala. with her daughter and family, Mr. and Mrs. Bobby Wayne Thorn, Stephanie and LaDonna.

meetings with the club members and also a great number of visitors who have asked questions concerning the by-laws and regulations of the club. At each meeting - the game and fish commission have been present to answer any and all questions any person so desired to ask. They also informed the club of the state laws concerning hunting and fishing. The vows we have vowed to hold.

We invite all land owners in the area, who are interested in game conservation and who are willing to work for the club, to attend the meetings.

The purpose of this club is to preserve the local game and promote a higher standard of sportsmanship in hunting and fishing.

If you have any questions or comments, please attend the next meeting on January 18, 1985, at the Midway Fire Department at 6:30 p.m., or contact Bobby Wimbush, Randle Jourdan or Jerry Busby.

UNA Accepting Spring Semester Applications

University of North
Alabama director of admission Dr. Edwin Keith announced today the University is accepting enrollment applications for the spring semester which begins on January 14.

M'Lady's Closet

607 Childs St.
601-287-9865

Corinth, Miss.
9:30-5:30

NOTICE Queen Size 14 1/2 - 32 1/2, 16-54

"Merry Christmas"
WEEKLY SPECIALS

Tombigbee Hunting Club

The present officials and members of the Tombigbee Hunting Club were pleased to announce the enthusiasm of the local land owners and the residents of this area for their support of the Hunting Club, which is located north of Hwy. 364 (Midway to Holcut) and west of Hwy. 25.

We have had a number of

4-H Notes

By: Sherry Smith,
Extension 4-H Youth Agent

Your 4-H Image

What is your image saying about 4-H? Are you presenting a good image that you can be proud of? Have you thought about the message

The Bride's
Choice
American
Stemware
Crystal



Bride
Missy Taylor
Groom
Allen Lyles
The Cozy
Corner
Gift Shoppe
at
Rushing Drug Co.

After Christmas Sale

1 1/2

PRICE
OFF

ENTIRE STOCK NOT INCLUDED

ALL SALES CASH & FINAL

KIDDIE LAND

ELM SHOPPING CENTER IN IUKA

Four very good reasons to buy a new Ford before January 1.

1. GREAT DEALS ON EVERY FORD QUALITY CAR AND TRUCK IN STOCK.

1984 is almost over...and we're offering great deals on everything. Thunderbirds, Rangers, Tempos, Escorts, tough full-sized pickups and more. All priced to move. So hurry, it's your last chance this year.

2. YOU MAY BE ABLE TO CLAIM YOUR AUTOMOTIVE PURCHASE'S SALES TAX AS A DEDUCTION ON YOUR 1984 INCOME TAX RETURN.*

This is your last chance this year to make a purchase that could save you money on your 1984 income taxes. If you itemize deductions, your sales tax on a new Ford car or truck could qualify as a deduction on your 1984 tax return. But only if you buy before January 1.

3. SAVE WITH INVESTMENT TAX CREDITS.*

If you're in business for yourself and you use your Ford car or truck for business purposes, you may be eligible for investment tax credit. Consult with your tax advisor for further details. But, again, you can only get these tax savings on this year's income tax return if you get your Ford before January 1, 1985.

4. YOU'D LOOK GOOD IN A NEW FORD. WHY NOT TREAT YOURSELF?

Why not do something nice for yourself this season? A brand new car or truck would be a great way to start the new year right. Picture yourself in a new Ford. So, wait no longer. Get down to your Ford Dealer before January 1, while the dealing's great.

*See your tax consultant for eligibility and details concerning your personal taxes.

Hurry, see your Ford Dealer before January 1, 1985.



McNATT FORD, INC.

HWY. 25 SOUTH IN IUKA, MS

Nelson Supermarket

AD GOOD THRU JANUARY 2, 1985
Quantity Not Reserved

FRESH CHICKEN

THIGHS LB. **49¢**



FRESH CHICKEN

DRUMSTICKS LB. **69¢**

BRYAN ALL MEAT

WIENERS 12 OZ. PKG. **\$1.19**



BRYAN

SAUSAGE HOT OR MILD LB. **\$1.69**



BRYAN SAUSAGE

PATTIES 12 OZ. PKG. **\$1.49**



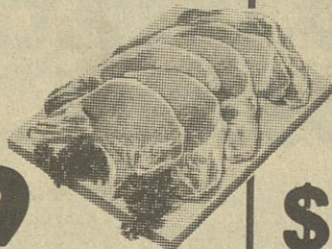
BRYAN SLICED

BACON 12 OZ. PKG. **\$1.49**



BRYAN SMOKED

PORK CHOPS LB. **\$1.99**



BREADED

CHICKEN NUGGETS LB. **\$2.19**

FAMILY PACK

FRESH GROUND

BEEF

FAMILY PACK

LB. **89¢**



FRESH

HOG JOWL

LB. **49¢**

good eatin' for the new year

Hog Jowls

...and black-eyed peas...

FRESH CHICKEN

LEG QUARTERS

10 LB. BOX

LB. **35¢**

BRYAN WHOLE

SMOKED HAM

\$1.19

LB.



SMOKED

HOG JOWL

LB. **79¢**

BREADED

SHRIMP

8 OZ. BOX **\$1.79**

RENOS

PIZZA

PKG. OR 2 **\$4.99**

KING COTTON

COOKED HAM

12 OZ. PKG. **\$2.79**



RIVERVIEW

BOLOGNA

LB. **99¢**



FRESH CHICKEN

LIVERS

LB. **59¢**

BRYAN ALL MEAT

BOLOGNA

12 OZ. PKG. **\$1.19**



REELFOOT

HAMBURGER STEAKS

LB. **\$1.69**

FAMILY PACK

TATER STICKS

LB. **89¢**

SMOKED HAM

SHANK

PORTION LB. **\$1.29**



SMOKED HAM

BUTT

PORTION LB. **\$1.29**

RED YORK

APPLES

\$1.19

3 LB. BAG

U.S. NO. 1 RUSSET

POTATOES

\$1.39

10 LB. BAG

PRODUCE SPECIALS

CANADIAN WAXED

RUTABAGAS 4 LB. BAG **\$1.00**

CALIFORNIA

CARROTS 1 LB. PKG. **2/69¢**

MILD

YELLOW ONIONS 3 LB. BAG **69¢**

DEL MONTE GOLDEN RIPE

BANANAS 3 LB. **\$1.00**

RAW IN SHELL

PEANUTS 2 LB. BAG **\$1.79**

FLORIDA CRISP

CELERY STALK **29¢**

EMPEROR

RED GRAPES LB. **89¢**

WASHINGTON D'ARJOU

PEARS LB. **59¢**



**NELSON'S SUPERMARKET & IT'S EMPLOYEES WISH YOU A
HAPPY NEW YEAR.**

HAPPY NEW YEAR!

SAVE ON SUNSHINE CHUNKS

**DOG
FOOD**

\$6⁹⁹

50 LB.



AUNT JEMIMA

**CORN
MEAL**

79¢

5 LB.



JOAN OF ARC DRY

**BLACKEYE
PEAS**

15 OZ. CAN

4/\$1⁰⁰



CHEER

**LAUNDRY
DETERGENT**

\$1⁵⁹

49 OZ.

LIPTON

**TEA
BAGS**

FAMILY SIZE

\$1⁶⁹

24 CT.



SAVE WITH THESE NEW YEARS SPECIALS

HYDE PARK DRY

**BLACKEYE
PEAS**

4/\$1⁰⁰

1 LB. BAG

HYDE PARK

TUNA

IN WATER

6 1/2 OZ.

59¢



CHEF WAY VEGETABLE

SHORTENING

\$1⁹⁹

3 LB. CAN

FROZEN FOODS

TOTINO

PIZZAS

99¢



BRYAN

**VIENNA
SAUSAGE**

5 OZ.

2/99¢

BRYAN

**CHILI
WITH BEANS**

15 OZ.

69¢

KLEENEX "NEW" SOFTIQUE

**FACIAL
TISSUES**

150 CT.

79¢

CHEF BOY-AR-DEE

BEEFARONI

15 OZ.

79¢

HERSHEYS BONUS BOTTLE

SYRUP

28 OZ.

\$1.19

ARMOUR

**BEEF
STEW**

24 OZ.

\$1.29

COFFEE MATE BONUS PACK

**COFFEE
CREAMER**

25 1/2 OZ.

\$2.59

CHEF-BOY-AR-DEE

MEATBALLS

15 OZ.

79¢

DAIRY SPECIALS

KRAFT AMERICAN

**CHEESE
SINGLES**

\$1⁹⁹

16 OZ. PKG.

IMPERIAL

MARGARINE

1 LB. PKG.

55¢

SEALTEST FRENCH

**ONION
DIP**

8 OZ.

69¢

SHEDDS SPREAD

MARGARINE

3 LB. BOWL

\$1.69

CARNATION HOT

**COCOA
MIX**

12 CT.

\$1.19

HUNTS

**TOMATO
PASTE**

6 OZ.

3/\$1⁰⁰

GENERIC

**PEACH
HALVES**

69¢

29 OZ.

LAYS RUFFLES

**POTATO
CHIPS**

HALF POUNDER

99¢

RONCO

SPAGHETTI



4/\$1⁰⁰

7 OZ.

HUNTS

**TOMATO
SAUCE**

8 OZ.

4/\$1⁰⁰



CLASSIFIED ADS *get action*

CLASSIFIED ADS

\$2.50 per week for 30 words. After the first 30 words, 5¢ extra per word. \$1.00 extra with border
Card of Thanks and In Memoriam - 5¢ per word
Classified Ads, Cards of Thanks and In Memoriams must be paid in advance
50¢ service charge will be added to any monthly bill totaling less than \$5.00

PHONE 423-3666

ERRORS

Should be reported immediately as The News can be responsible only for the first incorrect insertion in any advertisement. The News cannot be liable for error in any advertisement to a greater extent than the cost of the space occupied by the items in the advertisement.
All display advertising must be in the News office by 12 o'clock noon on Tuesday.

FOR SALE — Church building, located on the corner of Mill St. and Eastport St. Call 423-9194.
O-25-tfn-c.
FOR SALE — Owner wants to retire! Store, including stock and fixtures, 4 BR living quarters and 7 lots. Located in Dennis across from Post Office. Contact Cecil Davis.
N-8-tfn-c.

FOR SALE — Rebuilt Electrolux & Kirby vacuum cleaners. I will also buy your old cleaners or repair them for you. I also have shampooers for the Electrolux & Kirby cleaners. 27 years of experience. Call 423-5854 or 728-3493.
D-6-13-20-27-c.

LARRY'S MOBILE HOME SERVICE — Local and long distance moving, Kool Seal, anchors, blocking, leveling. Call Larry at 423-3258.
O-7-tfn-chg

AUTOMOBILES FOR SALE — Buy here, pay here, credit is no problem. McKinney Used Cars, 703 Tate St., Corinth - 286-6944.
M-1-tfn-c.

FOR RENT — House on Pleasant Hill Road, formerly C.M. Chase property. Please call 1-901-398-2413 at night only.
D-20-27-c.

KEEP ABREAST with in-county events — Subscribe to The Tishomingo County News TODAY!
N-15-tfn-c.

FOR SALE — 85 acre farm; 18 acres open, balance in marketable timber; finished, partially furnished live-in basement, house can be built on top to suite, 2 block and 1 metal out-buildings with attached sheds, 1 designed as modern kennel, fruit and nut trees, paved road - \$60,600. Call 423-5217.
M-10-tfn-c.

FOR SALE — 99 acres of land located east of Midway. All under fence. Call (205) 356-4856.
A-16-tfn-c.

WANTED TO BUY USED FURNITURE & ANTIQUE FURNITURE Also, glassware. We buy just about anything. Cleaning your house or attic out, give us a call. Capleman's Antiques. Phone 423-9962 nights, 423-5640 or 423-6836.
J-7-tfn-c.

FOR RENT — Flashing Arrow Signs. \$50.00 plus tax. Call 728-5460 or 728-5674 in Booneville, or in Belmont call 454-7128.
M-21-tfn-c.

\$200.00 DOWN \$25.00 WEEKLY
1972 Opel Wagon - \$595.00
1972 Monte Carlo - \$495.00
1971 Chrysler Newport - \$595.00
NO INTEREST FINANCING
NO CREDIT CHECK
DIXIELAND MOTORS
CHEROKEE, ALA.
PHONE 360-2721
O-25-tfn-c.

REPOSESSED
Singer Zig-Zag machine. This machine sews straight, zig-zags, makes buttonholes and fancy stitches all without attachments. Just dial it. Pay balance of \$58.60 or arrange monthly payments of only \$10.00 per month. Come by Meeks Sewing Center, 305 South Cass, or for free home demonstration without obligation call 287-1497.
J-28-tfn-c.

PHARR'S SATELITE SYSTEMS — Quality systems at reasonable prices, Belmont, Ms. 601-454-7628. Open 8 - 6, six days a week.
N-1-tfn-c.

20 CARS FOR SALE* UNDER \$995.00 *\$300.00 DOWN
\$25.00 Weekly - No Interest! BUY HERE — PAY HERE
We don't want your credit history - we want your money!
360-2721
--Dixieland Motors--
Cherokee
O-11-tfn-c.

FOR SALE — 2 BD, brick house and 2 1/2 acres, more or less, \$21,500. Located south of Bethlehem Baptist Church on Old Hwy. 25 North of Tishomingo. Phone 438-6895 or 423-5136.
N-22-tfn-c.

FOR SALE — House, shop, storage building, 50' tower comp. w/ant., rotor, booster, 10 acres land. Located in Harmony Community, west of luka. Shown by appointment. Call Tommy Tucker at 423-9784.
D-20-27-c.
HOUSE FOR RENT — Route 1, Box 12-K, Pleasant Hill Road, luka, 3 BR, 1 1/2 baths, electric heat, double carport - \$375.00 per month. Security deposit required. Call 423-5126 or (201) 853-9484, Birmingham, Ala.
D-13-20-27-J-3-p.

UPHOLSTERING CENTER
Quality fabrics to choose from. Free pick-up and delivery, all work guaranteed. Furniture and boats. Wallace E. Anglin, Hwy. 25 South. Call 423-3843.
O-21-tfn-c.

OWNER FINANCING — Small down payment - 2 BR cabin. Yellow Creek Port Road - \$14,000.00.

70' x 115' lot near Pickwick Lake. \$1,500.00. Small down payment. Owner finance balance.

3 BR brick, corner of 5th & Mill. Central H/A, 8' x 10' storage building, extra lot available. Owner financing with small down payment.

STROUT REALTY
715 Taylor Street
Corinth, MS - 287-6930
Kathy Mincy.....286-3852
Nona Burns.....287-8922
N-29-

HERITAGE CABLEVISION
Watch for the new Cablevision Channels coming to the luka viewing area in January, 1985. Heritage Cablevision.
D-6-tfn-c.

GIVE A NEW CLAYTON MOBILE HOME FOR CHRISTMAS and be remembered for many Christmases to come! Free microwave with purchase of any new home during December. All new 1985 models available for immediate delivery. Financing available. One out of five Tennesseans purchased a Clayton Mobile Home last year. Look us over and see why!! Clayton Mobile Home Factory Outlet, Highway 64 East, Savannah, Tenn. Phone 901-925-1083. Open Monday through Saturday, 9 a.m. - 5 p.m. and Sunday 12 noon until 5 p.m.
D-6-tfn-c.

REPOSESSED Singer Zig-Zag machine. Makes button holes, monograms, appliques and more. Pay off balance of \$49 or make small payments. Call or come by BROOKS SEWING & VACUUM CENTER, Hwy. 72 and Fulton Drive in Corinth, MS. Phone 287-6270.
D-6-tfn-c.

DO YOU WANT TO MAKE MONEY? Needs select sales people for International Nutritional. All counties and states open. Full or part-time. Call collect Bill or Sue 601-566-7288 or 566-7871.
N-8-tfn-c.

FOR SALE — 10 acres of land with house, barn and catfish pond, which is well-stocked. Located 2 1/2 miles south of luka on Hwy. 25. Call 423-9536.
D-20-27-J-3-p.

—NOTICE—
As of today, December 27, 1984, I will not be responsible for any debts other than my own.

DONNIE HAMMOCK
D-27-J-3-10-p.
TRIM OFF POUNDS with GoBese Grapefruit Extra Strength Capsules and E-Vap Tablets. Rushing Drug, Downtown luka.
D-27-J-3-10-17-p.

GOVERNMENT JOBS. \$15,000 - \$50,000/yr. possible. All occupations. How to Find. Call 805-687-6000, Ext. R-9999.
D-27-J-3-p.

TEXAS REFINERY CORP. needs mature person in luka area. Regardless of experience, write A.D. Sears, Box 711, Fort Worth, TX 76101.
D-27-c.

AIRLINES NOW HIRING. Reservationists, stewards and ground crew positions available. Call 1-(619)-569-6315 for details. 24 hrs.
D-27-J-3-10-p.

EXPERT BODY REPAIR

WINDSHIELDS REPLACED
COMPLETE PAINT JOBS

24 HOUR WRECKER SERVICE
DAY PHONE 423-3622
NIGHTS 423-5845

MARLIN-MOORE CHEVROLET, INC.

104 HWY. 25 NORTH.....IUKA, MS

P. O. BEARD AGENCY

SINCE 1964

R

REALTOR®

400 WEST
EASTPORT ST.

Now that the rush and excitement of Christmas is over, let's think about 1985. Are you going to save up twelve more useless rent receipts next year or would you rather put that hard earned money into equity in your own home? We have something in almost anyone's price range - from \$12,000 to \$140,000 in the city limits, and from \$17,500 to \$85,000 out in the country. Ask one of our salespeople to show you what we've got in our inventory of affordable housing.

Colonial 2-story home in Independence Square, 3 BD, 2 1/2 baths, den w/fireplace on almost one acre lot. Assumable loan with 17 years remaining. \$5,000 equity puts you in this beautiful home at \$49,000.

This 3 BD, one bath, VA repo just reduced to only \$28,000, with almost nothing down if you have a good credit report. All brick in Tucker Subdivision with wood burning stove, as well as wall heaters and fully fenced rear yard for the children. An excellent way to get started in home ownership.

Three BD, 2 bath, brick on Martha Lane. Needs a loving owner. Currently rented and can be yours for only \$37,500, or make us a reasonable offer.

Let the two rental apartments on this two acres in North Crossroads pay for the separate small home on the property. A real smart way to start building equity with a realistic price of \$39,500 being asked.

10 plus acres with garden plot and fruit trees on Rutledge-Salem Rd. 5 BD, 2 bath, rock home with vaulted living room ceiling and spacious kitchen/dining area. All this and a woodworking shop inside for dad. Only \$68,900.

Phone 423-5253

P.O. Beard-Realtor, Appraiser, Registered Forester
Nancy Beard - Realtor Associate

Phone 423-5251

Rilla Wiley, Realtor-GRI

Phone 423-5252

Don Cowell, Salesman

Phone 423-9349

MANY OTHER LISTINGS

CALL FOR FREE INFORMATION ON BUYING OR SELLING

FOR QUICK SALE — Owner will finance, small down payment, small monthly payments, or make a cash offer. 2 BD block house with 2 acres land, located approximately 3 miles west of luka on Hazard Road. Has community water and paved road. Call 423-5555 or 1-588-6952.
D-27-J-3-10-17-p.

FOR RENT — Furnished kitchenette apartments - \$50 weekly - \$50 deposit - utilities furnished. Also, trailer for rent - Camper hook-ups - day, week or monthly rates. Also trailer lots. Call 601-423-6498.
D-27-J-3-c.

FOR RENT — Large 4 bedroom, 2 bath house, located on 1 1/2 acres, den, large back porch, heat pump, utility house, garden, good neighborhood. References and deposit required. \$275.00 per month. Phone 1-728-5120.
Booneville.
D-20-tfn-c.

—LEGAL NOTICE—

NOTICE TO BIDDERS

The Boards of Trustees of the Alcorn County Schools, luka Separate Schools, Tishomingo County Schools, North Tippah Schools, and The South Tippah Schools otherwise known as Crossroads Consortium will receive bids in the office of the Superintendent of Education of The Tishomingo County Schools, Tishomingo County Courthouse, luka, Mississippi, until 10:00 a.m. on Monday, January 14, 1985, for the purchase of food, paper and cleaning supplies for the cafeterias. Details and specifications may be obtained from the office of the Food Service Supervisor for Alcorn County Schools, Oakland Education Center, Route 8, Box 409, Corinth. Phone calls not accepted. Conference required before specifications are received. The Boards of Trustees of all

school districts reserve the rights to reject any and or all bids and waive informalities.

BOARD OF TRUSTEES
IUKA SPECIAL
MUNICIPAL SEPARATE
SCHOOL DISTRICT
By: Dr. Jerry Clay Stone,
Executive Secretary
D-20-27-c.

—LEGAL NOTICE—

IN THE CHANCERY COURT OF TISHOMINGO COUNTY, MISSISSIPPI
CHARLES CRANE, ET AL, PLAINTIFFS
VS.
JUDY CRANE MOSES, DEFENDANT

NO. 9689
TO: JUDY CRANE MOSES, address unknown, but who is believed to reside in Red Bay, Alabama.

You have been made the defendant in the above-styled Cause by the complaint of Charles Crane, et al, a resident of Tishomingo County, Mississippi. The complaint is filed to reform the Warranty Deed therein described. You are required to mail or hand deliver a copy of a written answer either admitting or denying the allegations of the complaint to J. Barry Finch, Attorney, P.O. Box 299, luka, Mississippi 38852, the plaintiff's attorney.

Your answer must be mailed or hand delivered not later than thirty (30) days after the 3rd day of January, 1985, which is the date of the last publication of this summons. If your answer is not so mailed and delivered, a judgment by default may be entered against you for the relief demanded in the complaint.

You must also file the

CLAYTON MOBILE HOMES
The number 1 selling mobile home seller in the State of Tennessee, invites you to shop our Factory Outlet in Savannah, Tenn. If we don't have it on the floor, we will order it for you from one of our 7 Tennessee factories. Factory tours also available during the week on request. Buy em where we build em. Clayton Mobile Home Factory Outlet, Savannah, Tenn., Hwy. 64 East. Phone 901-925-1083. Open daily, Saturday 9-5, and Sunday 12-5.
O-25-tfn-c.

PUBLIC SALE NOTICE UNCLAIMED SCHOOL ORDERS

Due to school budget cuts, NECCHI Education Department is releasing to the public a limited number of 1984 HEAVY DUTY Special School Sewing Machines with built-in utility and decorative stitches and sews on all fabrics: Levis, canvas, nylon, upholstery, stretch, silk, even sews on leather! These machines MUST BE SOLD. They are NEW with a 25 year warranty - Designed for the extremes encountered in classroom use, yet simple enough for beginners! Sales are limited to present stock in K.C. Warehouse. Regular \$429.00 - NOW ONLY \$198.00 - FULL PRICE! Carter Fabric, behind Big Star, Hwy. 30 East, Booneville, MS. 728-2485.
D-13-20-27-p.

original of your answer with the Clerk of this Court within a reasonable time afterward. Dated this 18th day of December, 1984.
/s/ HAYDEN ABLES,
CHANCERY CLERK
D-20-27-J-3-c.

—LEGAL NOTICE—

IN THE CHANCERY COURT OF TISHOMINGO COUNTY, MISSISSIPPI
NO. 9693
IN RE: VALIDATION OF \$44,000 PROMISSORY NOTE, IUKA SPECIAL MUNICIPAL SEPARATE SCHOOL DISTRICT, TISHOMINGO COUNTY, MISSISSIPPI, DATED NOVEMBER 1, 1984. STATE OF MISSISSIPPI COUNTY OF TISHOMINGO
NOTICE TO TAXPAYERS
To the taxpayers of the luka Special Municipal Separate School District, Tishomingo County, Mississippi
You are hereby notified that the matter of the above validation of the above described bonds will be heard

on the 7th day of January, 1985 at 10:00 o'clock in the Chancery Court of Tishomingo County at the Courtroom in Tishomingo, Mississippi, at which time and date objections, if any, may be filed.
By order of the Clerk of this Court this 21st day of December, 1984.

HAYDEN ABLES
CHANCERY CLERK
TISHOMINGO COUNTY, MISSISSIPPI

D-27-c.

Calamity Jane, the folk hero, was a dozen times.

SOUTH'S BODY SHOP
Has now added used cars to part of their service. Large selection. Located 2 miles west of Midway on Hwy. 354 N.
423-5423.

Dailey's Body Shop and Wrecker Service

BURNSVILLE, MISSISSIPPI

PHONE

Day 427-9234

Night 427-8449

Expert Body Work - 24 Hour Service
BURNSVILLE

MOORE'S BODY SHOP & WRECKER SERVICE

24 Hour Wrecker Service

DAY PHONE 423-5130

NIGHT - WEEKENDS

HOLIDAYS

423-5244

EXPERT BODY REPAIR



Need Appliance Parts or repairs

CALL

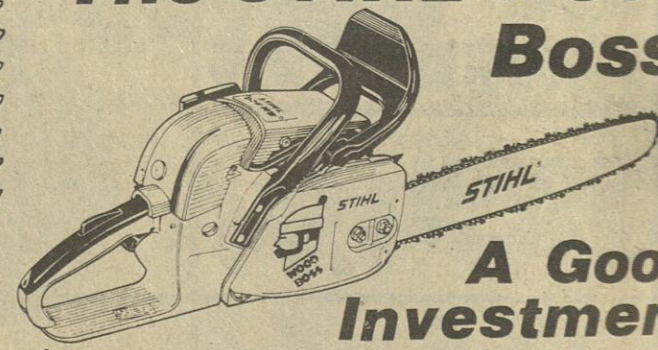
GANN BROTHERS

Furniture & Appliances

Sales & Service

COME BY OUR SERVICE DEPARTMENT AND
SEE JACKIE BRIDGES FOR FAST EFFICIENT SERVICE.
427-9506 IN BURNSVILLE

The STIHL® Wood Boss



A Good Investment

STIHL® \$299⁹⁵
THE WORLD'S LARGEST SELLING CHAIN SAW

NELSON'S

MARINE & HARDWARE

HIGHWAY 25 SOUTH IN IUKA

423-4

THE Long Davis COMPANY REAL ESTATE 423-5555

1415 Highway 25 South
luka, Mississippi 38852
Grace Long, Realtor-GRI-423-6584
Beth Davis, Realtor-GRI-423-9543
Dianne Ables-Realtor Assoc.-423-5262

HAPPY NEW YEAR

Great for entertaining & family living. Den with built-ins & FP, formal dining, 4 BRs, beautiful lot - \$59,500.00.

Country home in immaculate condition. Spacious living area w. brick FP & hearth, 2 large BRs, eat-in kitchen - \$35,500.00.

Tishomingo - 3 BR family home w. FP, country kitchen, large rooms - \$35,000.00.

Beautifully-maintained 3 BR home w. formal living, oversized den w. flue. Convenient in-town location - \$45,000.00.

Furnished, double-wide trailer w. 3 BRs, double carport, on 1.7 acres, near N. Crossroads - \$26,600.00.

Farmer's Home candidates - Well-maintained 3 BR brick. Looks like new! \$35,000.00.

Owners transferred - Need quick sale on this beautiful tri-level executive home. 3 BRs, 2 1/2 baths, wet bar, pool - \$65,000.00.

Just redecorated - looks like new! 3 BR brick, 2 baths, den, large kitchen, formal LR, 1.7 acres, Snowdown Rd. - \$42,500.00.

Pretty country style home with large greatroom, FP, 4 BRs, 2 baths, deck, fenced back yard - \$45,000.00.

Tastefully decorated brick & cedar with spacious open den & dining. 3 BRs, 2 baths, front porch. Independence Square - \$41,500.00.

Owner wants offer on this 3 BR brick home close to school. Big corner lot - \$36,000.00.

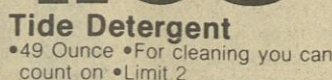
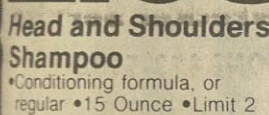
Owner is moving & is anxious to sell this lovely 4 BR brick home on 1.5 acres. Greatroom with FP, 2 baths, large covered back porch - \$47,500.00.

Farmer's Home possibility - 3 BR brick with LR, brick wall flue, o/s storage, 2 acres, partially fenced - \$33,000.00.

150 acres, paved road frontage - \$450.00 per acre.

RENTALS — APPRAISALS

**Don't
Miss These
Clearance
Specials!**



Boxed Belt Sets	
Reg. 3.00.....	2.50
hand Bags	
Reg. 3.00-9.63.....	2.50 - 9.00
Ladies & Girls Rainwear	
Reg. 4.96-5.96.....	4.00 - 5.00
Walls Coeralls	
Reg. 44.96 & 39.96.....	34.00 & 30.00
Mens Midi Velour Robes	
Reg. 17.88.....	14.00 & 15.00
Mississippi Ball Caps	
Reg. 3.94.....	3.00
Mens Corduroy Jeans	
Reg. 14.94 & 12.88.....	12.00 & 10.00
Boys Flannel Shirts	
4.96 & 4.23.....	4.00
Boys Knit Shirts	
Reg. 8.00 & 3.00.....	6.00 & 2.00
Boys Sweaters	
12.84 & 9.96.....	10.00 & 8.00
Boys Jogging Suits	
13.00 & 11.00.....	10.00
Leg Warmers	
Reg. 2.94.....	2.50
Girls Jogging Suits	
Reg. 23.96-12.96.....	18.00 - 10.00
Girls Corduroy Blazers	
Reg. 19.94.....	15.00
Girls Gloves & Headwear	
4.48-1.88.....	3.50 - 1.50

REELFOOT SLICED
BOLOGNA
12 OZ. PKG.
\$1.19



FRESH
FRYER BREASTS
LB.
\$1.29

BRYAN PAMPERED
SAUSAGE
1 LB. ROLL
\$1.69



BRYAN
CORN DOGS
18 OZ. PACK
\$1.59

FRESH
CHICKEN LIVERS
LB.
49¢

Sunflower
FOOD STORES

Sunflower Wishes You A....
HAPPY NEW YEAR
OPEN NEW YEARS DAY

QUANTITY RIGHTS RESERVED.
NO SALES TO DEALERS.

AD GOOD FRI. DEC. 28 THRU WED. JAN. 2

EXCLUSIVE OFFER!
SPECIAL LAY-A-WAY OFFER ON THE PLACE SETTING
OR ACCESSORY SET OF YOUR CHOICE!

Sunflower
THE SAVANNAH
DESIGNER COLLECTION
Fine Porcelain China
BEGIN SAVING FOR A COMPLETE COLLECTION TODAY!
• Two Beautiful Patterns To Choose From
• Six Conveniently Grouped Sets
• Durable, Stain Resistant
• Complete Line Of Matching Accessories
• Fully Vitrified
• Handcrafted In Japan
LAY-A-WAY CERTIFICATES ONLY
59¢ EACH
With each \$3.00 purchase.
See Store Display For Complete Details.

Fresh
GROUND BEEF
3-lbs. or more
LIMITED
lb.
89¢



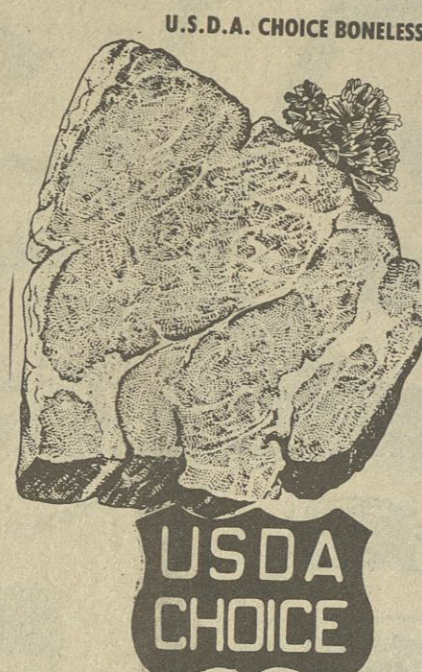
FRESH
HOG JOWL
LB.
59¢

KREY
FRANKS 12 OZ. PKG. **99¢**

KREY SLICED
BACON 1 LB. PACK **\$1.39**

KREY SLICED
BACON 12 OZ. PACK **\$1.19**

ARMOUR
SLAB BACON LB.
99¢
1/2 OR WHOLE SLAB



U.S.D.A. CHOICE BONELESS
CHUCK ROAST
lb.
\$1.29

U.S.D.A. CHOICE
CHUCK STEAK LB. **\$1.49**
U.S.D.A. CHOICE
LONDON BROIL STEAK LB. **\$1.59**

FRESH PORK
SPARERIBS LB. **\$1.49**

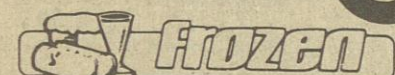
Fox Deluxe
PIZZAS
10 oz. box
Ass't.
79¢

Flav-O-Rite Blackeyed
PEAS
16 oz. pkg.
FREE
LIMIT-1 WITH COUPON & \$10.00 ADD. PURCHASE

Star-Kist
TUNA
6 1/2 oz. can
Water or Oil Packed
59¢
LIMIT-3 WITH OTHER PURCHASES

Campbell's
SOUP
10 3/4 oz. can
Cream of Mushroom
37¢

Tropicana Orange
JUICE
64 oz. glass
\$1.79



McKENZIE Blackeyed
Peas 16 oz. **89¢**
COLES Mini Garlic
Bread 8 oz. **79¢**
POPSICLE ICE CREAM
Sandwich 6-pak **99¢**
GORTON Crunchy
Fish Sticks 8 oz. **\$1.09**

PETER PAN Sm. or Cr.
Peanut Butter 12 oz. **\$1.19**
RAINBO Hamburger
Dills 16 oz. **79¢**
BUSH'S Blackeyed
Peas 15 oz. **3/89¢**

Keebler
KRUNCH TWISTS
Cheddar Cheese, Nacho
Cheese or Potato Toasted Corn
8 oz. **99¢**

Ell White Paper
PLATES
9-inch
100 ct. **89¢**

Folger's Instant
COFFEE
8 oz. **\$3.99**



HARVEST MOON Sharp Cheddar
Cheese 12 oz. **\$1.89**
KRAFT ASSORTED
Dips 8 oz. **49¢**
AZTECA FLOUR
Tortillas 11 oz. **49¢**
SEALTEST
Sour Cream 8 oz. **59¢**

Apple Juice Flav-O-Rite 32 oz. **79¢**
Sally's Sweet Peas 16 oz. **2/\$1**
Fruit Cocktail Sally's 17 oz. **69¢**
Dried Peaches Flav-O-Rite 8 oz. **\$1.49**
Sally's Prune Juice 32 oz. **98¢**

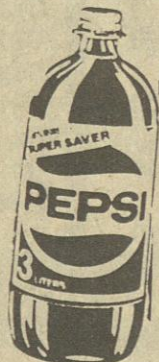
MARTHA WHITE CORN
Muffin Mix 7 1/2 oz. **4/\$1**
ORVILLE REDENBACHER
Popcorn Oil 12 oz. **\$1.39**
SALLY'S
Tea Bags 100 CT. **\$1.79**

ORVILLE REDENBACHER
Popcorn 30 oz. **\$2.19**
HEFTY CINCH SAK
Trash Bags 10 CT. BOX **\$1.69**
Tide FAMILY SIZE (10 LB. 11 OZ.) **\$6.59**

LAUNDRY DETERGENT
Purex 42 oz. **\$1.09**
FLAV-O-RITE
Corn Oil 24 oz. **\$1.39**
MARTHA WHITE
Corn Meal 5-lb. bag **98¢**

Sally's Catsup 32 oz. **99¢**
Hamburger Dills Flav-O-Rite 32 oz. **99¢**
Coffee Filters Chateau 200 ct. **89¢**
Ray-O-Vac Batteries C or D - 8 per AA - 8 per **\$1.19**
Sylvania Magic Cube each **\$1.19**
Sylvania Flip Flash each **\$1.19**
Sylvania Flash Bar each **\$1.19**

PEPSI COLA
LIMIT 3
3 LITER BOTTLE
99¢



TRAIL BLAZER CHUNKS OR RATION
DOG FOOD
LIMIT 2
25 LB. BAG
\$2.99

FOLGERS
COFFEE
1 LB. BAG
\$2.39

PRODUCE THAT YOU KNOW IS FRESH

U.S. No. 1
RED POTATOES 10 LB. BAG **89¢**

US NO. 1 YELLOW
Onions lb. **29¢**
FLORIDA
Avocados 3/\$1

SNO-WHITE
Cauliflower head **\$1.29**
FRESH GREEN
Broccoli bunch **89¢**

California
LEMONS 2-lb. bag **99¢**
Juicy Pink
GRAPEFRUIT 5-lb. bag **\$1.69**
Fresh Green
CABBAGE lb. **19¢**

KRAFT
Grape Jelly 2 LB. JAR **\$1.19**

SUNLIGHT AUTO
Dish Wash 50 OZ. BOX **\$1.89**

Ronco Wide
NOODLES
5 oz. bag **29¢**



Chateau Bath
TISSUE
4-roll pkg. **98¢**

VALUABLE COUPON
WITH THIS COUPON & \$10.00 ADDITIONAL PURCHASE
FLAV-O-RITE 16 OZ.
Blackeyed Peas FREE
LIMIT-1 COUPON
EXPIRES 12-29-84

Hunt's Tomato
SAUCE
15 oz. can **49¢**



Sally's
GREEN BEANS
Cut or Sliced 16 oz. **39¢**



Student Inducted Into Nursing Honor Society — Robbin Jones, of Iuka, has been induct-

ed into the University of Mississippi School of Nursing Honor Society. Selection is based on superior achievement, leadership and

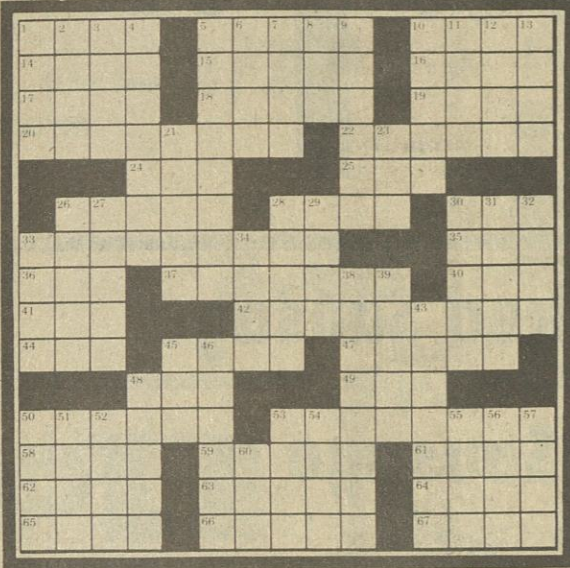
professionalism in nursing. Pictured with her are, inductees Kellye Phillips, of Crystal Springs, left; Robbin Jones, of Raleigh, and Jennifer

Redd, of Wesson, from second right. Miss Mann is the daughter of Mrs. Joyce Aldridge, of Iuka.

ROSE PARADE - ROSE BOWL PUZZLE

by Trude Michel Jaffe

1. Symbol for January 1 in Pasadena, since 1890
2. Sandy areas on a golf course
3. Engrossed, as a spectator at the Rose Parade
4. Rivals of the Rockies
5. Saree wearer
6. Food for the kitty?
7. Fence feature
8. Mountain range in Utah
9. Vegetable sometimes used in float decorating
10. New Year's Day city in the news
11. Venetian red flowers worn in Rose Parade
12. Abbr. for Rose Bowl athletic preparation
13. Switch positions
14. Homonym of there
15. This will hold the football tight during the Rose Bowl game
16. How the crowd would cheer if the Rose Bowl were played in Madrid
17. With 42 across, theme for the 1985 Rose Parade
18. Spill the beans
19. Swiss river to the Rhine
20. Dallas and Stevens
21. Part of gear for horses in Rose Parade
22. Direction of Rose Parade line of march at one point
23. More of 33 across
24. "Miserables": Victor Hugo
25. Unusual abbr. for housewife in Rose Parade
26. Money in Thailand
27. The UN: Fr. abbr.
28. Writer Santha Rama
29. Floats, bands, equestrians and VIP cars
30. The name of the game in New Year's Day in the Rose Bowl
31. A lily to trim a float
32. Mount for a Parade question: Latin
33. Baseball brothers
34. Composer of "Rule Britannia"
35. Doctor's helper
36. Film of Rose Parade
37. Rose Bowl Kick-off luncheon time
38. Plural of NaCl



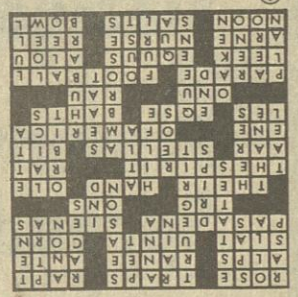
67. With 1 Across, the place to be on New Year's Day
DOWN
1. Word before berry
2. Pot for a Spanish stew
3. Places bruised football players head for after Rose Bowl
4. Tournament House in Pasadena formerly part of
5. Courage, as on the Rose Bowl gridiron
6. Spoiler on New Year's Day in Pasadena
7. _____ and the King of Siam
8. Teacher's favorite
9. Holiday _____ when Rose Parade/Rose Bowl take place
10. Tournament of Roses events until 1916
11. Presently
12. Abbr. for organization behind Rose Parade and Rose Bowl
13. Big and Pac
21. Nerds of yesterday
23. Home of the Big Ten Fightin' Hoosiers: abbr.
26. Title for Macbeth
27. Roll call replies at Parade line-up
28. Help, in Hamburg
29. Trial lawyers group
30. Ride for Sally?
31. Non-clerical people
32. Miss Kett of the comics
33. Weight unit of Asia

TCDF has had a membership drive to raise funds necessary to pay the staff to operate the office. During 1983, the membership drive netted approximately \$11,000.00, and during 1984, the drive netted only \$12,000.00. Now, let's take a look at Corinth and Alcorn County. They don't even have an Executive Director yet, and over a recent sixty day period, they were able to raise over \$300,000.00 in memberships and pledges to open an office and hire an Executive Director. I know that Tishomingo County doesn't have the industry nor the population that Alcorn County has, and until the TCDF can get the kind of financial backing they need, the county will never have the prosperity equal to the potential. Comparing the counties further, Alcorn County is the only area with higher unemployment than Tishomingo County. Alcorn County, by raising over \$300,000.00 have decided to try and do something about their unemployment problem. They raised \$300,000.00 in sixty days, and Tishomingo County was only able to raise \$12,000.00 in one year; quite a contrast.

Another critical factor facing the TCDF is that for the past two and one half years, TVA has been paying 50% of the expenses of operating the TCDF office. In early 1985, the TVA funding will cease to exist. Where will the TCDF find this \$25,000.00 per year in the future? Hopefully, from you, the concerned citizens and business people of Tishomingo County. That is, if you want a change in our county. That is, if you don't want your children and grandchildren to have to leave the county to support their families.

Isn't it about time that you, the concerned citizens of the county, realized that without your support, Tishomingo County will not progress to its potential.

Please send your Tax Deductible Membership checks to: Tishomingo County Development Foundation.



What Lies In The Future For Tishomingo County?

With the completion of the Tennessee-Tombigbee Waterway, Tishomingo County has the greatest potential of any county in Mississippi, or even the tri-state area of Tennessee, Alabama & Mississippi. But, will we take advantage of this potential? The attitude of most of the Tishomingo Countians has been, "That sounds good" or "It's all for that!", but it seems that Tishomingo Countians

want someone, other than themselves, to be the "do-ers". Well, maybe that's ok to have that attitude, but the residents must be willing to support the "do-ers" both with financial and political support; that is if the residents of Tishomingo County really want better jobs and a better way of life for their children and grandchildren. If we want a better way of life, especially for our future generations, it's time we realized that the day of the Federal Government taking care of everyone has come to a close.

There is an organization in Tishomingo County that is

trying to be the "do-er" for the County. This organization is the Tishomingo County Development Foundation (TCDF). The TCDF has been a leading force in creating many new jobs in the county for the past two years. Over 150 new jobs were created during 1983-84, mainly through the use of the TVA Mitigation Loan Funds. Another 300 jobs will be created during 1985; Dixie Sportswear and Peninsula Steel. And, the TCDF is currently working with prospects that could create another 300-400 jobs during 1985-86.

For the past two years, the

P.O. Box 275, Iuka, MS 38852 or call 601-423-9933.

LOOKING BACK

In the December 30, 1943 edition of THE VIDETTE, we found the following items of interest:

Mr. and Mrs. Eugene Campbell, Miss Norene Mars, Mrs. Ruth Lomenick, and Mr. and Mrs. Walter Haines and son, Johnnie, all of Memphis, visited homelinks at Snowdown during Christmas.

Mrs. Floyd Curtis has gone to be with her husband in Camp Wolters, Texas. She will be there until he is moved from that camp.

Miss Eloise and Buddie Lomenick spent Christmas with their father and mother, Mr. and Mrs. Floyd Lomenick, in Memphis.

Miss Rayma Biggs and brother, Johnny, visited Mrs. Julia Mars and daughter, Irene, Sunday and Sunday night.

Mrs. Twila Osborn and baby, of Adele, Ga., visited her sister, Mrs. C.C. Cook, last week.

Mr. and Mrs. Jim Timbes, of Sheffield, Ala., spent Christmas with Mrs. Jennie Waters, Mrs. Timbes' mother.

Mrs. Ruth Martin and daughter, Diane, were visiting Mr. and Mrs. Sherrill Kelley, in Okolona, last week.

The people of Snowdown were shocked to learn of the death of Mrs. D.H. Atkins last Saturday. Mrs. Atkins came here about 25 years ago from Camden, Tenn. The body was carried back there for burial.

Mrs. Daisy Borden's death, which came on Monday of this week, also came as a shock, since she was only ill since Saturday morning.

Mrs. Emogene Thompson, of Tusculum, Ala., spent the weekend with her mother and father, Mr. and Mrs. Eugene Thorne.

James Oliver White, 18, son of Mr. and Mrs. Victor White, of Burnsville, has won an early promotion in the Navy as a result of his past civilian training.

Cpl. Riley J. Furniss, of Iuka, has completed the Flexible Aerial Gunnery Course at the Gunnery School, Laredo Army Air Field, Laredo, Texas.

Pvt. Berry L. Pruitt, son of Mrs. W.C. Pruitt, of Iuka, is now attending the Anti-Aircraft Artillery School, at Camp Davis, N.C.

Samuel T. Wilson, of Iuka, has just received his promotion to Corporal Technician, at Camp Edwards, Miss.

Chief Petty Officer Henry Moore spent Christmas in Iuka with Mrs. Moore and her family. Mrs. Moore, who has been with him in Gulfport, is remaining in Iuka for a while.

David L. Daily, of U.S. Navy, was home for the past week, visiting his parents, Mr. and Mrs. Monroe Daily, and friends.

Mr. and Mrs. Frank Herten and Mr. and Mrs. Clifford Belue spent Christmas with Mrs. Jennie McCoy.

Miss Ilene Parson spent Christmas night with Miss Bonnie Whitfield.

Mrs. Edith McCoy spent Sunday with Mr. and Mrs.

Sam Whitfield.

Mrs. Rebon Wilson spent Sunday with her father, Mr. Wess Parsons.

Mr. Troy Parson is spending Christmas holidays at home. He is employed at Hazlehurst, Miss.

Mr. and Mrs. W.R. Jourdan and son, Gene, of Knoxville, Tenn., Mrs. R.L. Williams and Mr. and Mrs. Virgil Farris, of Corinth, were guests of Mr. and Mrs. P.J. Williams on Christmas Day.

Mr. and Mrs. Omer Bullen and daughter, Martha Ree, spent Christmas Day with Mr. and Mrs. Sam Allen.

Mr. Owen Phifer, who is employed in Knoxville, Tenn., spent the holidays here with his family.

Mr. and Mrs. Sam Allen had as their guests during Christmas their children, Martha Frances left for New York on Monday.

Mr. Millard Kent, who is employed in Mobile, Ala., spent the weekend here with his family.

Mr. Joe Frank Lewis, who is employed at Evansville, Ind., spent the weekend here with his parents, Mr. and Mrs. J.A. Lewis.

Mr. William A. Sargent, who has been employed at the Hy-Tone Cleaners at Portland, Oregon, returned home for a visit with his mother, Mrs. Locke Sargent.

Mr. and Mrs. W.R. Jourdan and son, Gene, of Knoxville, Tenn., spent the Christmas Holidays with relatives in Iuka.

The Andy Scruggs had as their guests for the Christmas Holidays Mr. and Mrs. Doyle Brown and Doyle, Jr., of West Point, Miss. Mr. Brown is in the Enlisted Reserves.

Iuka Route 2

Visitors with Mrs. L.N. Dean for the Christmas Holidays were: Mr. and Mrs. Robert Lane and Kay, of Melrose, La.; Mr. and Mrs. Harold Davis and Byron, of Memphis, Tenn.; Mr. and Mrs. Brian Clark, of Shreveport, La.; and Mr. and Mrs. Mike Malenkey and baby, of Dallas, Texas.

Mr. and Mrs. Gary Peterson and boys, of Knoxville, Tenn., spent Christmas with his parents, Mr. and Mrs. Cliff Peterson.

Mr. and Mrs. Clarence Peters, Brenda and Ronny, of Rochester, Mn., are visiting the Stephen Hurst family.

Mr. and Mrs. Tom Hayes and Tracey, of Arab, Ala., spent Christmas with his mother, Mrs. Dorothy Hayes, and family.

Mr. and Mrs. Roger Myatt, of Columbia, Miss., have been visiting her parents, Mr. and Mrs. Ralph Tucker.

Ms. Kathy Robertson, of Memphis, spent a few days with her parents, Mr. and Mrs. Herchel Robertson, and the Jerry Barnes family.

Mr. and Mrs. Holbert Hill and son, of Little Rock, Ark., were visitors of her mother, Mrs. Nellie South, and the Edmond Puckett family over the weekend.

Mike Puckett spent the holidays at home. He attends Ole Miss.



\$100.00 WINNER — Mrs. Sandra Skinner, of Iuka, was the winner of a \$100.00 gift certificate given away December 24, at The Shoe

Tree. Shown above is Mrs. Skinner (left) receiving the certificate from Earl and Donna Solomon, owners of The Shoe Tree.

IN SERVICE

Airman Mark A. Ragan, grandson of Mr. and Mrs. E.R. Stoddard, of Route 5, Iuka, has graduated from Air Force basic training at Lackland Air Force Base, Texas.

During the six weeks of training the airman studied the Air Force mission, organization and customs and received special training in human relations.

In addition, airmen who complete basic training earn credits toward an associate degree through the Community College of the Air Force.

He is a 1984 graduate of San Bernardino High School, Calif.

UM Cheerleaders To Compete In Ford Cheerleading Championship

The University of Mississippi varsity cheerleaders will compete in the Ford College Cheerleading Championship in Hawaii on January 2.

The championship competition will be broadcast by NBC television at 8 p.m. that night.

The Ole Miss squad was selected as one of 10 collegiate cheering squads for the competition after 150

squads from around the country were judged. The 14-member UM squad earned the expense-paid trip after judging at the Universal Cheerleaders Association headquarters in Memphis. Ford Motor Company and UCA sponsor the Hawaiian competition.

Other schools in the championship are University of Alabama, University of Arkansas, University of Kentucky, University of Pittsburgh, North Carolina State University, Ohio State University, Pennsylvania State University, University of Utah and University of Wyoming.

TVA Updates Popular Brochure

One of TVA's most popular brochures, RECREATION ON TVA LAKES: THE GREAT LAKES OF THE SOUTH, has been updated and reprinted.

The brochure shows locations of public and commercial docks and marinas around TVA lakes, and gives fishing, hunting, camping, and hiking information.

For a free copy, write Information Services, Division of Land and Economic Resources, 601 West Summit Hill Drive, Knoxville, Tennessee 37902.

Ben Johnson, the English dramatist, was buried standing up, in Westminster Abbey in London.



REWARD OFFERED (NO QUESTIONS ASKED)

LOST...Red Cocker Spaniel, answers to the name of Penny. She is a house pet and in need of medical attention. If you have any information please call Karen at 423-3245 from 9 til 5:30 p.m. or 423-1704 after 5:30 p.m. REWARD OFFERED.

Going Out Of Business

SALE

LAST WEEK! DOORS WILL CLOSE 12-31-84

60% OFF

ENTIRE STOCK

PRICES YOU CAN'T AFFORD TO MISS!
EVERYTHING MUST GO!

THE CLOTHES GALLERY

DOWNTOWN IUKA

THE CHUCKWAGON CAFE

SUNDAY LUNCH

IUKA'S NO. 1 EATING PLACE

Roast Pork, Creamed Potatoes,
Blackeye Peas, Cole Slaw, Homemade Bread,
Coffee or Tea

\$3.25

EAT NEW YEARS LUNCH WITH US

Wishing each and everyone the very best for the
New Year from The Chuckwagon Cafe

Happy Holidays

EAT IN OR TAKE OUT - 423-9833
HWY. 25 NORTH IN IUKA

When you're sick or hurt, you deserve some old-fashioned personal attention...

WE NOW HAVE A MEDICARE SUPPLEMENT POLICY FOR YOU
ASK US ABOUT IT.

Call: **DONNIE BROWN** Off.: 423-5931
Agent Res.: 423-5532

117 Eastport Street
Iuka, Mississippi
38852

Like a good neighbor,
State Farm is there.

Personal Health Insurance
The State Farm way!

STATE FARM
INSURANCE

State Farm Mutual Automobile Insurance Company

TRADE DAYS!

SAVINGS UP TO 50% OFF

YOUR PURCHASES AT

JW's SPORTING GOODS

THAT'S RIGHT, YOU CAN BRING ITEMS INTO
JW's SPORTING GOODS AND TRADE FOR
FUNNY MONEY GOOD UP TO 50% OF
PURCHASE PRICE.

WE WILL TRADE FOR ALMOST ANYTHING: UNWANTED CHRISTMAS
PRESENTS, OLD CLOTHES, SHOES, GUNS, KNIVES, GLASSWARE, TOYS,
TIES AND MANY OTHER ITEMS.

SATURDAY ONLY, DEC. 29, 1984

JW'S SPORTING GOODS

(601) 423-5537

ACROSS STREET FROM
GUARANTY BANK

103 South Fulton • Iuka, MS 38852 •

B & J Supermarket

Hwy. 365
South
Burnsville

AD EXPIRES JAN. 1, 1985
WE RESERVE RIGHTS TO LIMIT QUANTITIES.

WIN WHAT YOU BUY

NO SALES TO DEALERS

DEPOSIT YOUR REGISTER RECEIPT FOR
THIS WEEK IN DRAWING BOX BEFORE
SATURDAY NIGHT! IF YOUR TICKET IS
DRAWN YOU WIN THAT AMOUNT IN
GROCERIES!

WINNERS
Vowary Strickland, Burnsville
\$73.59
Phillis White, Burnsville
\$28.07
Janette Marule, Corinth
\$20.54
Elesha Dailey, Burnsville
\$14.86
Wilma Gilliland, Burnsville
\$28.07

FRESH
GROUND BEEF
(FAMILY PACK)
95¢
(LIMITED)
LB.



BRYAN PORK
SAUSAGE
\$1.49
1 LB. HOT OR MILD



U.S.D.A. CHOICE
Ground Chuck
LB. **\$1.59**

BRYAN JUICE JUMBO BEEF OR HOT DINNER
Franks
1 LB. **\$1.69**

KING COTTON
Wieners
12 OZ. **99¢**

JOHN MORRELL GERMAN BRAND
Wieners
1 LB. **\$1.59**

FRYER
Leg quarters
LB. **49¢**

SMOKY HOLLOW
Smoked Sausage
1 LB. **\$1.99**

SWIFTS BROWN-N-SERVE
Link Sausage ORIGINAL OR BEEF
8 OZ. **\$1.29**

BRYAN SMOKED
Pork Chops
LB. **\$1.99**



REELFOOT
Chunk Bologna
(BY THE PIECE)
LB. **\$1.19**

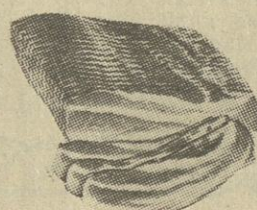
FRESH MEATY PORK
Spare Ribs
LB. **\$1.39**

SWIFT
Sizzlean
12 OZ. **\$1.59**

MRS. WEAVERS
Pimento Spread
13 OZ. **\$1.69**

U.S.D.A. CHOICE BONELESS
Stew Beef
LB. **\$1.79**

FARMHOUSE
BACON
12 OZ. **69¢**
VACUUM PACK



FARMERS PRIDE SLICED (FAMILY PACK)
Slab Bacon
LB. **\$1.29**

REELFOOT BY THE PIECE (SLICED 99¢ LB.)
Smoked Hog Jowl
LB. **79¢**

BONELESS PORK
Tenderloin
LB. **\$2.49**

FRESH
HOG JOWL
BY THE PIECE
LB. **49¢**
(SLICED 69¢ LB.)

N.M.M.M. PRODUCE

CANADIAN WAXED
Rutabagas
4/\$1.00

CELLO CALIFORNIA
Carrots
1 LB. PKG. **3/\$1.00**



GREEN
CABBAGE
LB. **15¢**

EMPEROR
Red Grapes
LB. **79¢**

WASHINGTON D'ANJOU
Pears
LB. **59¢**



MAYONNAISE SHORTENING

QUART JAR

99¢

(WITH COUPON BELOW & \$15.00 PURCHASE)

42 OZ. CAN

\$1.48PIONEER BUTTERMILK
Baking Mix18 OZ. **69¢**BARBARA DEE
Cookies15 OZ. BAGS **99¢**SUNMAID SEEDLESS
Raisins15 OZ. **79¢**

KRAFT 16 OZ.

1000 Island

LIQUID BUY 16 OZ. GET 8 OZ.

FREEHYDE PARK FRENCH ONION OR JALAPENO
Dips8 OZ. **3/\$1.00**DEL MONTE PINEAPPLE-ORANGE OR PINEAPPLE-GRAPEFRUIT JUICE
Drink46 OZ. **88¢**LIBBY'S
Sauerkraut16 OZ. CANS **2/79¢**SUNSHINE
Dog Chunks25 LB. **\$3.88**SUNFLOUR SELF RISE
FLOUR
78¢RAINBOW
Hamburger Dills16 OZ. **58¢**PILLSBURY MILK
Break Bars9 OZ. **\$1.39**BUSH SHELLY
Beans15 OZ. CANS **2/79¢**SPEAS FARM
APPLE JUICE
\$1.19
1/2 GALLONLIBBY'S
Viennas5 OZ. **2/88¢**MORTON HOUSE
Beef Stew24 OZ. CAN **\$1.19**BETTY CROCKER
Hash Browns5 1/2 OZ. BOXES **69¢**RONCO WIDE
Egg Noodles12 OZ. BAGS **59¢**HYDE PARK
ICE CREAM
\$1.39
1/2 GALLONHILLS
Pork Brains5 OZ. CANS **2/99¢**BIG COUNTRY
Biscuits6 OZ. CANS **3/89¢**NESTLE 100%
Instant Tea2 OZ. **99¢**CHEF BOYARDEE SPAGHETTI AND
Meatballs15 OZ. **69¢**HYDE PARK FRESH
BLACKEYES
4/\$1.00
15 OZ. CANSHYDE PARK DRY
Blackeyes1 LB. BAGS **2/88¢**DINTY MOORE
Roast Beef & Gravy12 OZ. CANS **\$1.29**SEARCH LITE
Pink Salmon7 1/4 OZ. CANS **88¢**PAC MAN MACARONI & CHEESE
Dinners7 1/4 OZ. **2/88¢**

POPSRITE YELLOW

Popcorn4 LB. BAG **\$1.39**

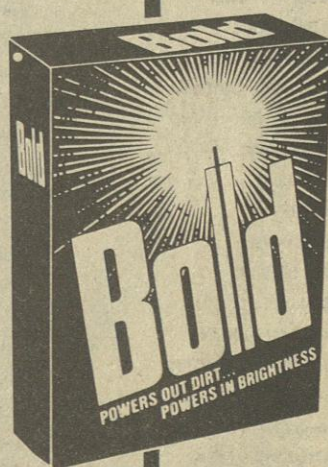
ROTEL TOMATOES & GREEN

Chilies10 OZ. **2/99¢**

SCOTT

TowelsWITH FREE ADAPTER
2 ROLLS **\$1.00**

CHEF BOYARDEE

Chili Mac15 OZ. CANS **69¢**LAUNDRY DETERGENT
BOLD
\$1.89
49 OZ. BOX (LIMIT ONE PLEASE)HYDE PARK
Potato ChipsREG. OR WAVY
8 OZ. **79¢**HYDE PARK
Corn ChipsREG. OR NACHO
8 OZ. **59¢**PEPSI DIET PEPSI OR MT. DEW
Pepsi32 OZ. \$2.49
\$1.19Coca Cola
98¢32 OZ. \$2.99
1/2 LITER \$1.49
3 LITER \$1.79CORN QUISTOS
Snackmasters8 OZ. BAGS **99¢**RICHTEX
CORN OIL OR VEGETABLE OIL
\$1.99
48 OZ.FOX DELUXE
PIZZAS
59¢
10 OZ. (LIMITED)

BALLARD SWEETMILK

Biscuits4 PACK **79¢**

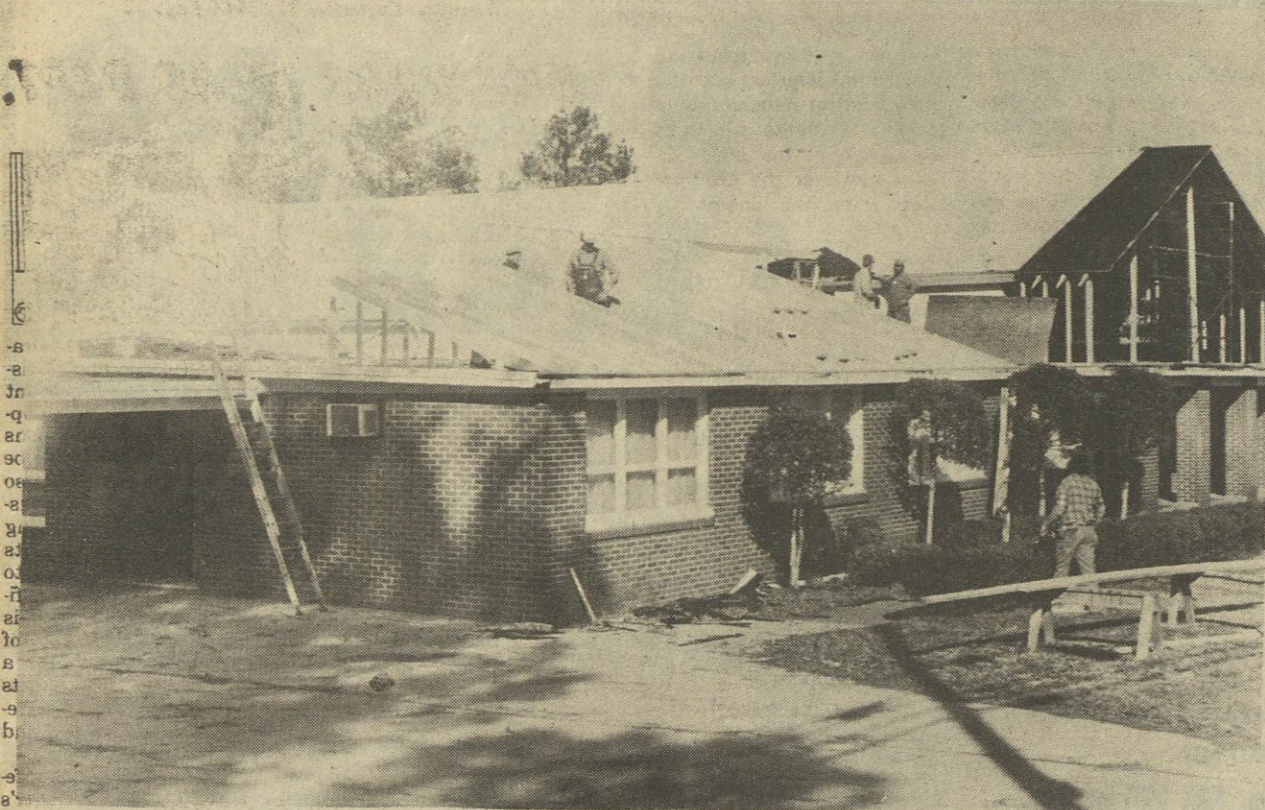
HYDE PARK TOASTER

Pastries11 1/2 OZ. **69¢**

HORMEL

ChiliWITH BEANS
LARGE 25 OZ. CANS **\$1.19**

COUPON	COUPON	COUPON
B & J COUPON	EXPIRES JAN 1, 1985	
KRAFT		
MAYONNAISE		
32 OZ. 99¢		
WITH \$15.00 ADDITIONAL PURCHASE		
COUPON	COUPON	COUPON



New Roof For Church Building
The Iuka Church of Christ building on U.S. 25 South is presently undergoing major renovations. Employees of Harold Oswald's Construction

Company, of Dennis, were on the job early Wednesday morning, taking advantage of the beautiful mild weather following Christmas Day. Oswald said his crew began work on the project last week and with weather permitting

the entire roof should be reconstructed in about two more weeks. Leakage problems, possibly resulting from the original flat tar roof, are hoped to be eliminated by the new gabled shingled roof.

According to Cotton Wade, one of the church's most prominent members, this building was constructed on this site in 1963, with the first worship services being conducted in December of that year.

and his entire congregation cordially invite each and everyone to attend, as this is expected to be the biggest and best singing this year!

POINT OF LAW

(Prepared by the Mississippi State Bar. Some rights may vary from locality to locality. Always consult an attorney when in doubt about your legal rights.)
Q: I have been married for five years. I have two children, ages four and two. My husband beats me a couple of times a week. He tells me that if I leave he will get my children. I've never worked and I don't have any money. My parents are dead and I have no other family. I want to get out, but what can I do?
A: There are seven

domestic violence shelters in the State of Mississippi which provide safe temporary shelter, food, clothing, counseling and legal, medical and psychological advocacy. To get custody of your children, your husband would have to prove that you are an unfit mother. The shelters and their phone numbers are: Domestic Abuse Family Shelter, Laurel, MS - 428-8821; Gulf Coast Women's Center, Biloxi, MS - 435-1968; Safe, Inc., Tupelo, MS - 844-9546; Domestic Violence Project, Inc., Oxford, MS - 234-8744; Catholic Charities, Jackson, MS - 355-8634; Care Lodge, Meridian, MS - 693-2892; and, Safe Haven, Columbus, MS - 328-0200 or 327-2121.
A: Yes. In your will you can devise the home to your son for the period of his lifetime, with a provision that upon his death the remainder will go to your granddaughter. If you do this then, even if your son sells his interest in the house, when he dies the ownership automatically goes to your granddaughter.
"Patience is bitter, but its fruit is sweet."
French Proverb

The warmest sea is the Red Sea. Minor. Its average temperature is 95 degrees.

Southwood Baptist Church
Hwy. 72 By-Pass
Between Pleasant Hill and Iuka
SERVICES:
Sunday School, 10:00 a.m.
Church, 11:00 a.m.
Training, 5:00 p.m.
6:00 p.m.
BRO. JAMES "BUTCH" TANNER
"Serve the Lord with gladness."
J-14-fn-c.

IUKA BAPTIST CHURCH

105 West Eastport Street

SUNDAY SERVICES

Sunday School 9:45 a.m.
Worship Service 10:55 a.m.
Church Training 6:00 p.m.
Worship Service 7:00 p.m.

WEDNESDAY SERVICE

Mid-Week Prayer Meeting 7:00 p.m.

Morning and Evening Services Broadcast Over WTIB-FM 104.9
Morning services also on A.M. 1270

Obituaries

Mrs. Katherine Davis

Mrs. Katherine Davis, 58, died Sunday at the St. Francis Hospital in Memphis, Tenn. Services will be at 1 p.m. Friday, December 28, at the Jones Chapel C.M.E. Church with Rev. Henry Diamond officiating. Burial will be in Shady Grove Cemetery. Lusk Funeral Home is in charge of the arrangements.

Survivors include three daughters, Teresa Long, of Iuka, Linda Pritchard, of Cherokee, Ala., and Wanda Davis, of Iuka; five sons, Johnny Wilson, of Michigan City, Ind., Donald Davis, Calvin Davis, Joseph Seay and Dennis Davis, all of Iuka; three sisters, Mary Clay and Emma Dilworth, both of Iuka; and Jeanette Carroll, of Sheffield, Ala.; six brothers, James Seay, Calvin Seay, Arthur Seay, all of Iuka, and Jack Seay, of Memphis, Tenn.; Charles Seay, of Michigan City, Ind., and Tony Willis, of Memphis; 12 grandchildren and one great-grandchild.

Blessings on the New Year.

Henry Elton Wright

Henry Elton Wright, 90, died Wednesday, December 19, at the Shelby County Health Center in Memphis, Tenn. He was a retired barber and a Baptist.

Services were at 2 p.m. Friday, December 21, at Paden Baptist Church with Revs. Pat Howard and John Henry Mock officiating. Burial was in Palestine Cemetery. McMillan Funeral Home was in charge of the arrangements.

Survivors include a daughter, Mrs. Ivy Mae Tenyson, of Memphis; a son, Charles Tulon Wright, of Memphis; a sister, Mrs. Emma Mock, of Corinth; seven grandchildren and eight great-grandchildren.

Clarence E. Switcher

Clarence E. Switcher, 69, died Saturday at Magnolia Hospital in Corinth after an extended illness. He was a member of Christ United Methodist Church, a Mason, belonged to the Eastern Star, and Scottish Rite.

Services were held at 2:30

p.m. Sunday at McPeters Funeral Chapel with Rev. Pat Ludlam and Minister Kilby Smith officiating. Burial was in Forrest Memorial Park.

Survivors include his wife, Mattie Jobe Switcher, of Corinth; two daughters, Mrs. Marcell Michael, of Bracefull, Ill., and Mrs. Elaine Hollingsworth, of Tupelo; a son, Edward C. Switcher, of Iuka; a brother, J.R. Switcher, of Corinth; three sisters, Mrs. Katie V. Ross and Mrs. Beatrice Overton, both of Corinth, Mae Henry Taylor, of

Memphis, Tenn.; and two grandchildren.

Gospel Singing At 5th Street Baptist

The regular fifth Saturday night singing at Fifth Street Baptist Church in Iuka will be held Saturday night, December 29, beginning at 7:00.

The Jerichos, of Florence, Ala.; and The Fifth Street Laymen will be the featured singers.

Bro. Bill Hobson, Pastor,

SEEDS FROM THE SOWER

By Michael A. Guido, Metter, Georgia

The Chinese word for "tomorrow" is composed of two words, "bright day." All of our tomorrows can be bright days if we do as did David who said in Psalm 31, "In You, O Lord, I put my trust."

He trusted in the Lord to guard him. He said, "You are my rock and my fortress." Whom the Lord saves, He shelters. Nothing and no one can touch His children without His permission, and then only for our good. He makes all things not only operate, but cooperate for our good.

He trusted in the Lord to guide him. He said, "For Your name's sake, guide me." The Lord knows our nature, and He knows the future. He has a purpose

for each of us such as no one else has. With the Father above us controlling all things, the Saviour beside us directing our footsteps, and the Spirit within us impressing us inwardly, He will guide us in right paths.

He trusted in the Lord to gird him. He said, "You are my strength." His love wants the best for us, His wisdom knows the best for us, and His power does the best for us. Our strength will be the strength of omnipotence when He is our strength. Through Him we can do all things!

To be guarded, guided and girded by the Lord one must be governed by Him. Are you?

New Year 1985

FREE HEARING TEST



If You Hear But Don't Understand See
J. L. Thompson

Licensed Hearing Aid Specialist of the
Tupelo Hearing Aid Center
at
CURTIS DRUG STORE
from
1:00 p.m. to 4:00 p.m.
WEDNESDAY, JANUARY 2
Batteries and Service for All Makes and Models
Call now for an appointment 423-3676, perhaps we can help.

RUSHING REXALL DRUG COMPANY

Presents

THE TISHOMINGO COUNTY HOSPITAL LIST

Alma Blakney
Edward Harvey Compton
Charlotte Cooksey
Willie E. Coman
Mollie Clark
Mattie Letra Dean
Mable Ruth Dean
Annie B. Davis
Jannie Davis
Allen House
James Hammock
Gary Hester
Helen Long

James E. Luster
Carolyn McVay
Forrest Morgan
Larry D. Nunley
Miran Norman
Velon Pruitt
Ray Rhodes
Thedford Terry
Margaret Waddell
Emma Wilson
Mildred Virginia Wallace
Willie Wilbanks
Edith Byrom
Mary Barksdale
Fannie Hubbard

CUTSHALL FUNERAL HOME

Representing
Corinth Mutual
Burial Association

Mississippi
Funeral
Association

Liberty National
Life & Burial
Insurance Company

SOME BURIAL POLICIES CAN
BE PAID OUT IN 15 YEARS

CUTSHALL FUNERAL HOME

PHONE 423-5222
IUKA, MISSISSIPPI

Attend Services



BAPTIST

ST. PETER'S BAPTIST
Parvin Neloms
AIRPORT MISSION
Perry Murphy
IUKA BAPTIST
Dr. Julian West
BELMONT FIRST
Jack Maroon
HUBBARD SALEM
Charles D. Lambert
CARTERS BRANCH
S. W. Shinnault
CALVARY BAPTIST
Thomas Ozbirn
MT. MORIAH
Ben Thornton
GOLDEN CENTRAL BAPTIST
Ralph Culp
MT. VERNON BAPTIST
Author Hardin
TISHOMINGO BAPTIST
Randy Bostick
BURGESS CREEK
Eulon Prueitt
BURNSVILLE FIRST
Claude M. Prince
NEW PROSPECT
Eugene Walden
OLDHAM
Charles Wooten
PADEN
Pat Howard
FIRST BAPTIST
O. H. Moore
EASTPORT
Phil Dawson
NEW SALEM
Ted Vafeas
UNITY BAPTIST
Troy Harrison
RED BUD
John Stovall
ROWLAND MILLS
Frankie Smith

HARMONY HILL
Billy Paul Feltman
MT. JOY
Crawford Retherford
JACKSON CAMP
Mavous Phifer
IUKA MAGNOLIA MISSIONARY
Walter Selman
CALVARY MISSIONARY
Jim Jones
SOUTH CROSSROADS
Harold Holly
PROVIDENCE BAPTIST
Clyde Vinson
BETHEL MISSIONARY
Bobby Elliott
MT. GILEAD
James Hardin
TEMPLE
Rickey Johnson
MT. ZION BAPTIST
Bobby Casteel
FIFTH STREET
Paul York
DENNIS
BELMONT
Gerald Chaffin
JONES CHAPEL
Henry Dainson
ALLSBORO UNITED
MARGERUM UNITED
Bro. Berry Reding
RIVERTON UNITED
Jackie Patterson

UNITED METHODIST

PATRICK
HARMONY
BURNSVILLE
Del Blackman
IUKA METHODIST
Frank D. Burton
MT. EVERGREEN
CAMPGROUND
ROCKY SPRINGS
John Garrett
SNOWDOWN
PLEASANT HILL
SPRING HILL
James E. McKeithen
OLD BETHEL
GOLDEN CHAPEL
Glenn Grammer
SALEM
BOGGS CHAPEL
PARADISE
TISHOMINGO
Paul York
DENNIS
BELMONT
Gerald Chaffin
JONES CHAPEL
Henry Dainson
ALLSBORO UNITED
MARGERUM UNITED
Bro. Berry Reding
RIVERTON UNITED
Jackie Patterson

CHURCHES OF CHRIST

MAUD CHURCH OF CHRIST
James Joyce
IUKA CHURCH OF CHRIST
Perry Taylor
BEREA CHURCH OF CHRIST
Jimmy Ferguson
TISHOMINGO
Donald Rhodes
BELMONT SECOND STREET
John Williams
PLEASANT GROVE
Ronald Adams
LIBERTY
Haskell Sparks
MAIN STREET
Wayne Mitchell
BURNSVILLE
J. T. Smith

APOSTOLIC CHURCH

LORD JESUS CHRIST
Wayne Trimm
REORGANIZED CHURCH
JESUS CHRIST OF
LATTER DAY SAINTS
Justice Manning, Red Bay, La.
UNITED PENTECOSTAL
BURNSVILLE FIRST
Jimmy Rich
IUKA FIRST UNITED
Frank E. Williamson
Nondenominational
AMAZING GRACE TABERNACLE
Bro. & Sis. R. G. Rodgers
MT. ZION
R. C. & Dorothy Wigginton
NORTH CROSSROADS COMMUNITY
Travis Sheo
IUKA MISSION
Danny Lovelace
PRESBYTERIAN
ALLSBORO CUMBERLAND
J. B. Burns, Jr.
BETHANY
L. K. Foster

CATHOLIC

Rev. Dick Zelonis, S.J.
FULL GOSPEL
MISSION LIGHTHOUSE
Wiley Wingo
FIRST ASSEMBLY OF GOD
Allen Hapner
JAMES CHAPEL
CHURCH OF GOD IN CHRIST
Elder Robert Yarbro
IUKA CHURCH OF GOD
J. B. Paradise

NONDENOMINATIONAL

FAIRVIEW BIBLE CHURCH
Mike Hopkins
PENTECOSTAL
IUKA GOSPEL CHAPEL
Larry Riley
BURNSVILLE TABERNACLE
W. E. Sharp
CHRIST GOSPEL
Richard H. Carter, Jr.
GRISSEM CHAPEL

CHRISTIAN FELLOWSHIP
S. A. Bonds

McNATT FORD SALES

PHONE 423-3681
IUKA, MISS.

BROWN INSURANCE AGENCY

IUKA, MISS.

CARPETS UNLIMITED & CIRCUS BURGER

IUKA, MISS.

RUSHING REXALL DRUGS

PHONE 423-3676
IUKA, MISS.

TOWN & COUNTRY FURNITURE

HY. 25 SOUTH IN IUKA

FIRST AMERICAN NATIONAL BANK

Iuka, Golden, Belmont, Burnsville

STATE FARM INSURANCE

117 EASTPORT ST.,
IUKA

CURTIS BROTHERS DRUGS

PHONE 423-3676
IUKA, MISS.

FARM BUREAU INSURANCE

PHONE 423-6151 IUKA, MISS.

CUTSHALL FUNERAL HOME

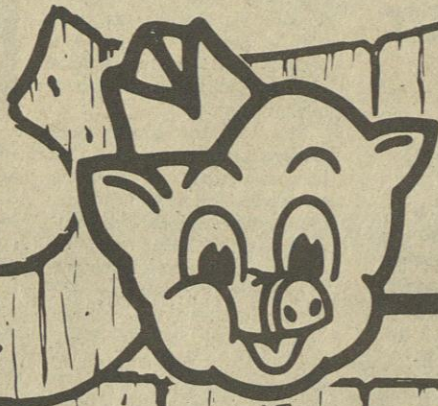
PHONE 423-5222 IUKA, MISS.

MARLIN-MOORE CHEV. INC.

104 HWY. 25 NO.
IUKA, MS 423-3622

IUKA GUARANTY BANK

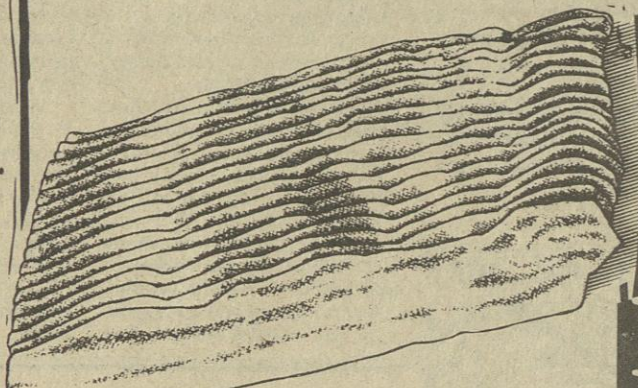
"Straight Ahead Through"



piggly wiggly

ELM SHOPPING CTR. IUKA, MS.

USDA
CHOICE



MARKET SLICED
**SLAB
BACON**
\$1.19
LB.

FRESH FROZEN
HOG JOWL
39¢
LB.



U.S.D.A. GRADE A SPLIT FRYER
BREAST
\$1.19
LB.

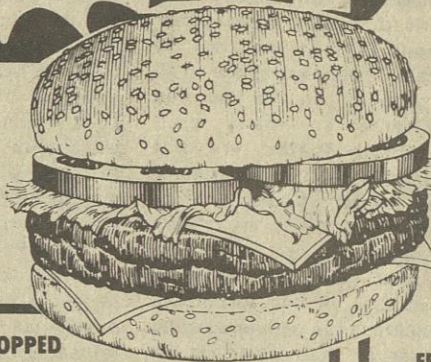


BRYAN FARM HOUSE
BACON
88¢
12 OZ.

BRYAN MEAT OR BEEF
BOLOGNA
\$1.28
12-OZ. PKG.

FRESH LEAN CHOPPED
SIRLOIN
\$1.99
LB.

FRESH LEAN
GROUND CHUCK
\$1.59
LB.



MADE-FROM-THE-ROUND
**TENDERIZED
STEAK**
\$2.49
LB.

GUARANTEED FRESH PORK
**SPARE
RIBS**
\$1.69
LB.

U.S. CHOICE BOTTOM
**ROUND
ROAST**
\$1.79
LB.

U.S. CHOICE BOTTOM
**ROUND
STEAK**
\$1.89
LB.



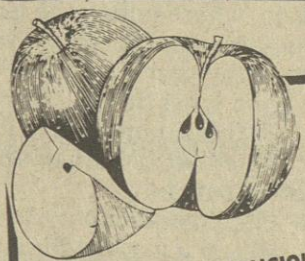
BRYAN ALL MEAT
WIENERS
\$1.29
12 OZ.

BRYAN PAMPERED
**PORK
SAUSAGE**
\$1.59
LB.



BRYAN SMOKED
SAUSAGE
\$2.19
LB.

BRYAN SMOKED
**PORK
CHOPS**
\$1.99
LB.



RED OR GOLDEN DELICIOUS
APPLES
3 LB. BAG
99¢

PRODUCE *Specials!*

WHITE
POTATOES
\$1.29
10 LB. BAG

SWEET
**YELLOW
ONIONS**
59¢
3 LB. BAG

CALIFORNIA NAVEL
ORANGES
6 FOR 99¢

RUTABAGAS
4.99¢
LBS.

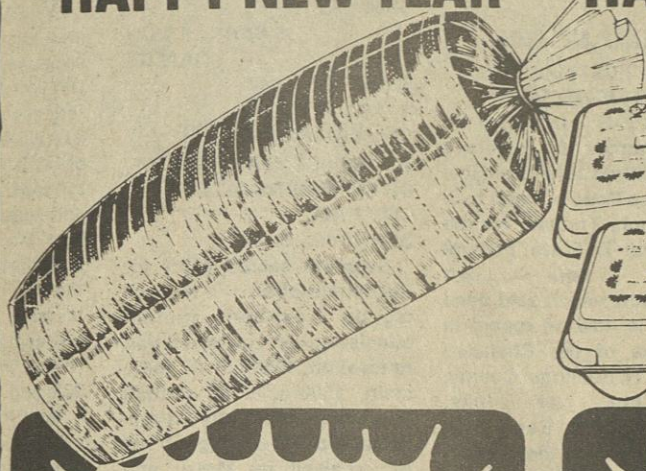
RADISHES
3 6 OZ. PKGS. 69¢

CARROTS
29¢
1 LB. BAG

QUANTITY RIGHTS RESERVED.
NONE SOLD TO DEALERS.
PRICES GOOD DEC. 27
THRU JAN. 2, 1985.

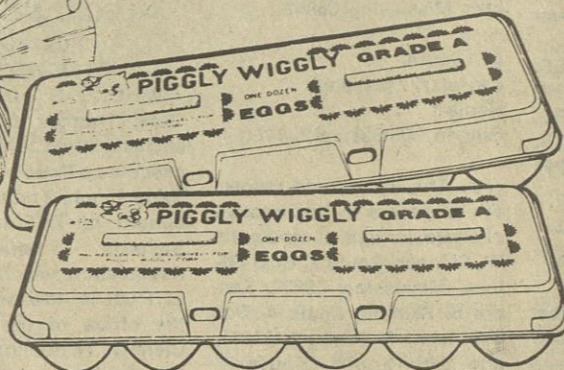


HAPPY NEW YEAR HAPPY NEW YEAR HAPPY NEW YEAR HAPPY NEW YEAR



WONDER
COUNTRY STYLE
BREAD

3 **99¢**
16-OZ.
LOAVES



PIGGLY WIGGLY
GRADE 'A' LARGE
EGGS

DOZ. **59¢**



SUNFLOWER
SELF-RISING
MEAL

5-LB.
BAG **79¢**



PIGGLY WIGGLY
BLACKEYE
PEAS

3 **99¢**
1-LB.
BAGS

PIGGLY WIGGLY SALTINE
CRACKERS

2 **99¢**
1-LB.
BOXES



HI-DRI PAPER
TOWELS

2 **99¢**
JUMBO
ROLLS



RINSO OR AJAX LAUNDRY
DETERGENT

42-OZ.
BOX **99¢**



BUSH'S FRESH BLACKEYE
PEAS

3 **89¢**
16-OZ.
CANS

CREAMY
BLUE PLATE
MAY'NAISE

\$1.39
32-OZ.
JAR

PINK BEAUTY
PINK
SALMON

\$1.59
15½-OZ.
CAN

RELATED PRODUCTS OF
REFRESHING
PEPSI COLA

\$1.09
3-LTR.
BTL.

PIGGLY WIGGLY
BISCUITS

6 **\$1.00**
5-CT.
CANS

KRAFT AMERICAN CHEESE

SINGLES
\$1.49
12-OZ.
PKG.

DELMONTE GOLDEN
CREAM OR KERNAL
CORN

2 **89¢**
17-OZ.
CANS

SAVE ON OSAGE
SLICED
PEACHES

3 **\$1.00**
16-OZ.
CANS

SMOOTH AND CRUNCHY
JIF PEANUT
BUTTER

28-OZ.
JAR **\$2.29**

GENTLE DISHWASHING
LIQUID
PALMOLIVE

22-OZ.
BTL. **99¢**

SAVE ON BAMA
APPLE OR GRAPE
JELLY

2-LB.
JAR **\$1.29**

KLEENEX BOUTIQUE
FACIAL
TISSUE

100-CT.
BOX **69¢**

SAVE ON BRYAN'S
WITH BEANS
CHILI

15-OZ.
CAN **69¢**

HEAVY DUTY LAUNDRY
DETERGENT
WISK

32-OZ.
BTL. **\$1.59**

KEEBLER
SOFT BATCH
COOKIES

EACH
BAG **\$1.29**

SAVE ON GENTLE
IVORY
SOAP

4 **89¢**
3½-OZ.
BARS

GOLDEN BEST
SHOESTRING
POTATOES

20-OZ.
BAG **49¢**

FLORIDA GOLD 100% PURE VALENCIA

ORANGE JUICE
64-OZ.
CTN. **\$1.29**

7-UP OR CANADA DRY
GINGER ALE

2 LITER
BOTTLE **89¢**



ASSORTED PLANTERS
SNACKERS
EACH
CAN **99¢**

ALLEN'S GREEN 3 **99¢**
16-OZ.
CANS
DELMONTE CUT GREEN 2 **89¢**
16-OZ.
CANS
BEANS



EATWELL
MACKEREL
15-OZ.
CAN **59¢**

—LEGAL NOTICE— SUBSTITUTE TRUSTEE'S SALE NOTICE

WHEREAS, on December 20, 1979, Charles Glenn Armstrong and Mary Ruth Armstrong executed and delivered a deed of trust to Thomas D. Keenum, Sr., as trustee, for the use and benefit of The Peoples Bank and Trust Company, Booneville, Mississippi, which deed of trust is recorded in Book 124, at page 238, records of Prentiss County, Mississippi, in the office of the Chancery Clerk of said county; and

WHEREAS, The Peoples Bank and Trust Company subsequently assigned said deed of trust to the Small Business Administration, an agency of the United States of America, by assignment dated December 11, 1981, with said assignment being recorded in the office of the Chancery Clerk of Prentiss County, Mississippi, in Book 148, at page 73; and

WHEREAS, under the terms of the said deed of trust, the holder of the indebtedness was authorized and empowered to nominate and appoint a successor trustee, and pursuant to the power and authority aforesaid, Small Business Administration, the current holder and owner, did nominate and appoint Dennis W. Voge, Tupelo, Mississippi, as trustee in the place and stead of Thomas D. Keenum, Sr., to execute the trust contained in the aforesaid trust instrument with each and every right and power vested in the trustee as named and the same without limitation, which said substitution of trustee instrument was dated October 22, 1984, and recorded in Substitution in Trustee Book 1, at page 14, of the real estate trust deed records in the office of the Chancery Clerk of Prentiss County, Mississippi; and

WHEREAS, default has been made in the indebtedness secured by said deed of trust which default continues, and the Small Business Administration, the legal holder of the note secured by said deed of trust, having requested the undersigned to sell the property described hereinafter for the purposes of satisfying the indebtedness and costs of sale.

NOW, THEREFORE, notice is hereby given that I, the undersigned substitute trustee, will on the 8th day of January, 1985, at the west front door of the Prentiss County Courthouse, Booneville, Mississippi, within the legal hours, offer for sale, at public outcry, to the highest bidder for cash, the following described property in Prentiss County, Mississippi, to-wit:

The Northwest part of the Southeast Quarter of Section 19, Township 4, Range 3, bounded as follows: Beginning at the Northwest corner of said Quarter running East 120 rods; thence South 30 rods; thence Southwest to a point 40 rods South of the point of beginning on the West boundary of said Quarter; thence North 40 rods on the said West boundary line to the point of beginning. Containing 30 acres, more or less.

ALSO: The South part of the Northeast Quarter of Section 19, Township 4, Range 3, bounded as follows: Beginning at the Southeast corner running North 35 rods; thence West 45 rods; thence North 12 rods; thence West 28 rods; thence South 12 rods; thence West 87 rods to the West line of said Quarter section; thence South 35 rods to the Southwest corner of said Quarter; thence East with South boundary of said Quarter 160 rods, more or less, to point of beginning; EXCEPT, 7 acres, more or less, deeded to C.E. Woodruff and recorded in Deed Book 51, Page 483, and 3 acres sold to Arlie C. Woodruff and recorded in Deed Book 61, Page 404. Containing 27 acres, more or less.

The above premises are no part of the grantors homestead.

LESS AND EXCEPT: 1 acre, more or less, deeded to Harold W. Armstrong.

Such title will be conveyed as is vested in me as substitute trustee of the aforesaid.

This, the 21st day of November, 1984.
DENNIS W. VOGUE,
Substitute Trustee
108 North Broadway
P.O. Box 29
Tupelo, Miss. 38802-0029
(601) 842-4231
D-13-20-27-J-3-c.

—LEGAL NOTICE— TRUSTEE'S NOTICE OF SALE

WHEREAS, on January 29, 1983, Curtis C. Haley and Helen H. Haley, executed a Deed of Trust to Stewart Robison, Trustee for the benefit of Jim Walter Homes, Inc., which Deed of Trust is

recorded in Book 108 at Page 137-138, in the office of the Chancery Clerk of Tishomingo County, Mississippi;
AND WHEREAS, default having been made in payment of the indebtedness secured by said Deed of Trust, and the holder of the note and Deed of Trust having requested the undersigned Trustee so to do, I will on the 31st day of December, 1984, offer for sale at public outcry and sell during legal hours between the hours of 11:00 A.M. and 4:00 P.M., at the main front door of the County Courthouse of Tishomingo County, at Iuka, Mississippi, for cash to the highest and best bidder, the following described land and property, situated in Tishomingo County, Mississippi, to-wit:

A part of the NE 1/4 of Section 9, Township 5 South, Range 11 East, Tishomingo County, Mississippi, described as follows: Beginning at the Southeast Corner of the NE 1/4 of Section 9, Township 5 South, Range 11 East, thence run North along the East boundary line of said 1/4 section and a wire fence a distance of 160 feet; thence run West a distance of 297.22 feet; thence run North a distance of 134.5 feet to a point in the center of a gravel road; thence run East a distance of 12 feet to a point on the East side of said gravel road and the true point of beginning; thence run East a distance of 210 feet; thence run North 6 degrees 31 minutes West a distance of 105.68 feet; thence run West a distance of 210 feet to a point on the East side of a gravel road; thence run South 6 degrees 31 minutes East a distance of 105.68 feet along the East side of said gravel road to the point of beginning, containing 0.5 acre.

I will convey only such title as is vested in me as Trustee.

WITNESS MY SIGNATURE, this, the 30th day of November, 1984.

STEWART ROBISON,
TRUSTEE

D-6-13-20-27-c.

—LEGAL NOTICE— REQUEST FOR PROPOSAL TO PROVIDE ENGINEERING SERVICES

The City of Burnsville seeks engineering services for Community Development Block Grant Project 5-99-233-CA-01 and EPA Grant C280600-02.

Professional engineering firms are invited to submit a proposal, to be received not later than 7:00 p.m. on January 15, 1985, to the Mayor & Board of Aldermen at Burnsville, MS.

The contract will be awarded to the responsible offeror whose proposal is within the competitive range and determined to be most advantageous to the City.

The project includes the following activities: construction of a sewer lagoon and renovation of pumping station.

The contractor shall perform all the necessary engineering services to properly carry out the activities in the project, in accordance with state and U.S. prescribed rules, regulations, and state law. Such services will include obtaining and evaluating bids, and inspection of contracted work in progress.

Proposals should include the following:

- 1) Qualifications of each staff member to be assigned to the project.
- 2) Experience - Information regarding the experience of the firm in federally assisted construction projects, including:
 - a. type of federal program
 - b. type of project activities undertaken
 - c. experience with programs financed by state and/or local governments.
- 3) Capacity for Performance - Identify the number and titles of staff which will be available to provide services.
- 4) Offeror's understanding of work to be performed - Evaluation will be made based on offeror's description of proposed services as compared to services described in this request and based on the reasonableness of time estimates for performance of work.

Contract negotiations will be initiated with the responsible offeror whose proposal is determined to be most advantageous to the City, based on the above selection criteria. In addition to reaching a fair and reasonable price for the required work, the objective of negotiations will be to reach an agreement on the provisions of the proposed contract, including scope and extent of work and other essential requirements.

City of Burnsville reserves the right to negotiate with more than one offeror and also to cancel all proceedings and begin a new process of soliciting proposals.

If additional information is

needed, or if there are questions regarding the above, contact

A.T. MARLAR, MAYOR
CITY HALL
BURNSVILLE, MS 38833
D-13-20-27-c.

—LEGAL NOTICE— FORECLOSURE NOTICE

WHEREAS, on the 25th day of October, 1979, W.M. (Hoss) Henson executed a Deed of Trust under the terms of which the hereinafter described real property was conveyed to Cecil L. Sumners as trustee to secure the payment to W. Inc., a Tennessee corporation, of an indebtedness therein described, which Deed of Trust is recorded in Trust Deed Book 94, at page 128, of the records of Tishomingo County, Mississippi; and

WHEREAS, W. Inc., has heretofore substituted the undersigned Harold S. Jackson as trustee in the place and stead of Cecil L. Sumners by instrument dated the 14th day of December, 1984, which instrument is of record in the office of the Chancery Clerk of Tishomingo County, Mississippi, in Deed Book B-114, at pages 244-245; and

WHEREAS, default has been made in the performance of the conditions of the said Deed of Trust and the holder thereof has declared the entire indebtedness secured thereby due and payable and has requested the undersigned to sell said lands as provided by the said Deed of Trust.

THEREFORE, the undersigned will between the hours of 11:00 A.M. and 4:00 P.M. on the 11th day of January, 1985, at the East front door of the Tishomingo County Courthouse in Iuka, Mississippi, offer for sale and will sell at public outcry to the highest bidder for cash the following described real property situated in Tishomingo County, Mississippi, being more particularly described as follows, to-wit:

Lots Numbered 26, 29, 30, 34, 38, 39, 41, 42, 47, 49, 50, 54, 59, 60, 66, 68 and 69 of the PICKWICK SUMMIT ESTATES SUBDIVISION UNIT I according to the map and plat of said Subdivision filed in Map Book 2, page 67, of the records of maps of Tishomingo County, Mississippi, filed in the Chancery Clerk's office of said Tishomingo County, Mississippi.

SUBJECT TO all of the restrictions, provisions and conditions contained in the Agreement to Protective Covenants and Restrictions for Pickwick Summit Estates Unit I Subdivision recorded in Deed Book B-77, page 219, et seq., of the records of Tishomingo County, Mississippi, filed in the Chancery Clerk's office of said Tishomingo County, Mississippi.

AND SUBJECT TO all of the easement rights, covenants, agreements, reservations and privileges contained and described in the deed from the United States of America by the TVA to P.M. Harbert recorded in Deed Book B-29, page 433, et seq., and the deed from W. Poe Maddox, Administrator with the Will annexed of the Estate of P.M. Harbert, deceased, to George Calvin Taylor recorded in Deed Book B-46, page 593, et seq., of the deed records of Tishomingo County, Mississippi, filed in the Chancery Clerk's office of said Tishomingo County, Mississippi, and all such easement rights, covenants, agreements, reservations and privileges contained in said two deeds are made a part hereof by reference as though written herein in full.

The undersigned will convey only such title as is vested in him as substitute trustee.

HAROLD S. JACKSON,
SUBSTITUTE TRUSTEE
ATTORNEY AT LAW
POST OFFICE BOX 414
IUKA, MISSISSIPPI 38852
(601) 423-5227
D-20-27-J-3-c.

—LEGAL NOTICE— NOTICE TO DEALERS TO FURNISH TISHOMINGO COUNTY AND THE ROAD DISTRICTS THEREOF THE FOLLOWING SUPPLIES, AND TO BANKS FOR THE KEEPING OF COUNTY FUNDS AS A COUNTY DEPOSITORY, FOR THE PERIOD BEGINNING JANUARY 7, 1985, AND ENDING JANUARY 6, 1986.

Notice is hereby given by the Board of Supervisors of Tishomingo County, Mississippi, that it will, until 10:00 A.M. on Monday, January 7, 1985, receive bids from dealers for general office supplies, janitorial supplies, road and bridge maintenance materials and supplies, and for machinery upkeep, and will also receive bids from banks for the keeping of County funds as a County Depository, under Sec. 27-105-305, Mississippi Code, 1972, as may be amended, for the 12 months period beginning January 7, 1985 and ending January 6, 1986. Said Bids to be filed with the Clerk of the Board of Supervisors of said State and County at the Chancery Clerk's Office, Tishomingo County Courthouse, Iuka, Mississippi, until the aforesaid time and date, and under the statute, all bids shall be awarded to the lowest responsible bidder. The Board of Supervisors reserves the right to reject any and all bids.

This 4th day of December, 1984.

HAYDEN ABLES,
CLERK OF THE
BOARD OF SUPERVISORS,
TISHOMINGO COUNTY,
MISSISSIPPI

D-13-20-27-c.

from dealers for general office supplies, janitorial supplies, road and bridge maintenance materials and supplies, and for machinery upkeep, and will also receive bids from banks for the keeping of County funds as a County Depository, under Sec. 27-105-305, Mississippi Code, 1972, as may be amended, for the 12 months period beginning January 7, 1985 and ending January 6, 1986. Said Bids to be filed with the Clerk of the Board of Supervisors of said State and County at the Chancery Clerk's Office, Tishomingo County Courthouse, Iuka, Mississippi, until the aforesaid time and date, and under the statute, all bids shall be awarded to the lowest responsible bidder. The Board of Supervisors reserves the right to reject any and all bids.

This 4th day of December, 1984.

HAYDEN ABLES,
CLERK OF THE
BOARD OF SUPERVISORS,
TISHOMINGO COUNTY,
MISSISSIPPI

D-13-20-27-c.

—LEGAL NOTICE— SUBSTITUTE TRUSTEE'S SALE NOTICE

WHEREAS, on December 20, 1979, Armstrong-Chrysler Dodge, Inc., executed and delivered a deed of trust to Thomas D. Keenum, Sr., as trustee, for the use and benefit of The Peoples Bank and Trust Company, Booneville, Mississippi, which deed of trust is recorded in Book 94, at page 149, records of Tishomingo County, Mississippi, in the office of the Chancery Clerk of said county; and

WHEREAS, The Peoples Bank and Trust Company subsequently assigned said deed of trust to the Small Business Administration, an agency of the United States of America, by assignment dated December 11, 1981, with said assignment being recorded in the office of the Chancery Clerk of Tishomingo County, Mississippi, in Book B114, at page 3; and

WHEREAS, under the terms of the said deed of trust, the holder of the indebtedness was authorized and empowered to nominate and appoint a successor trustee, and pursuant to the power and authority aforesaid, Small Business Administration, the current holder and owner, did nominate and appoint Dennis W. Voge, Tupelo, Mississippi, as trustee in the place and stead of Thomas D. Keenum Sr., to execute the trust contained in the aforesaid trust instrument with each and every right and power vested in the trustee as named and the same without limitation, which said substitution of trustee instrument was dated October 22, 1984, and recorded in General Substitution of Trustee Book 1, at page 27, of the real estate trust deed records in the office of the Chancery Clerk of Tishomingo County, Mississippi; and

WHEREAS, default has been made in the indebtedness secured by said deed of trust which default continues, and the Small Business Administration, the legal holder of the note secured by said deed of trust, having requested the undersigned to sell the property described hereinafter for the purposes of satisfying the indebtedness and costs of sale.

NOW, THEREFORE, notice is hereby given that I, the undersigned substitute trustee, will on the 8th day of January, 1985, at the east front door of the Tishomingo County Courthouse, Iuka, Mississippi, within the legal hours, offer for sale, at public outcry, to the highest bidder for cash, the following described property in Tishomingo County, Mississippi, to-wit:

Part of the Southeast Quarter of Section 35, Township 3 South, Range 10 East, described as beginning at the Northwest corner of said Quarter section and run thence East on the North boundary thereof 81 feet to the East right-of-way line of Mississippi State Highway No. 25 for the point of beginning; thence run East 317 feet; thence run South 0 degrees 12 minutes West and passing an iron pipe on the South side of the road, but in all, 220 feet to an iron pipe; thence South 8 degrees 10 minutes East 205 feet to the fence corner; thence with the fence line West 456 feet to iron pipe on the said East right-of-way line of Mississippi State Highway No. 25; thence with said right-of-way North 14 degrees 47 minutes East 431 feet to the point of beginning.

Containing 3.63 acres, more or less.

Such title will be conveyed as is vested in me as substitute trustee of the

aforesaid.

This, the 21st day of November, 1984.

DENNIS W. VOGUE,
Substitute Trustee
108 North Broadway
P.O. Box 29
Tupelo, Miss. 38802-0029
(601) 842-4231
D-13-20-27-J-3-c.

—LEGAL NOTICE— STATEMENT OF INTENT TO DISSOLVE

(a) The Name of the Corporation is: SKATEWORLD, INC.

(b) The names and respective addresses of the Officers of SKATEWORLD, INC., are:

Scotty W. Skinner, President
Route 4, Box 946
Iuka, Mississippi 38852

Sandra S. Skinner,
Vice-President
Route 4, Box 946
Iuka, Mississippi 38852

Lila South,
Secretary-Treasurer
Route 1
Golden, Mississippi 38847

(c) The names and respective addresses of the Directors of Skateworld, Inc., are Scotty W. Skinner, Route 4, Box 946, Iuka, Mississippi 38852; Sandra S. Skinner, Route 4, Box 496, Iuka, Mississippi 38852; and Lila South, Route 1, Golden, Mississippi 38847.

(d) An executed copy of the original Consent of All the Shareholders of Skateworld, Inc., dated the 21st day of December, 1984, is attached hereto as Exhibit "A". The pertinent part of said written consent of Exhibit "A" reads as follows: "We, the undersigned, Scotty W. Skinner, Sandra S. Skinner and Lila South, being all the shareholders of Skateworld, Inc., do hereby give our consent to the voluntary dissolution of said corporation".

(e) The written consent of all the shareholders of Skateworld, Inc., has been signed by all of the said shareholders. Further, that in 30 days from the date of the execution of this intent to dissolve, the same shall be published one time in the Tishomingo County News, in Iuka, Mississippi.

WITNESS OUR SIGNATURES, in duplicate originals on this the 21st day of December, 1984.

SCOTTY W. SKINNER,
PRESIDENT

LILA SOUTH,
SECRETARY—TREASURER

STATE OF MISSISSIPPI COUNTY OF TISHOMINGO PERSONALLY APPEARED BEFORE ME, the undersigned authority in and for said State and County, the within named SCOTTY W. SKINNER, President, and LILA SOUTH, Secretary- Treasurer, who after being by me duly sworn states on oath that they are the President and Secretary-Treasurer, respectively of Skateworld, Inc., and that the foregoing Statement of Intent to Dissolve is true and correct.

SCOTTY W. SKINNER,
PRESIDENT

LILA SOUTH,
SECRETARY—TREASURER

SWORN TO AND SUB-
SCRIBED BEFORE ME, on
this the 21st day of Decem-
ber, 1984.

BONNIE W. DILL,
NOTARY PUBLIC

My Commission Expires:
April 14, 1987

CONSENT OF ALL
SHAREHOLDERS OF
SKATEWORLD, INC.,
A MISSISSIPPI
CORPORATION
TO BE VOLUNTARILY
DISSOLVED

WE, the undersigned,
SCOTTY W. SKINNER, SAN-
DRA S. SKINNER AND LILA
SOUTH, being all the
shareholders of
SKATEWORLD, INC., hereby
give our consent to voluntary
dissolution of said Corporation.

WITNESS OUR
SIGNATURES, as all the
shareholders of
SKATEWORLD, INC., a
Mississippi Corporation, this
the 21st day of December,
1984.

SCOTTY SKINNER,
SHAREHOLDER

SANDRA S. SKINNER,
SHAREHOLDER

LILA SOUTH,
SHAREHOLDER

D-27-c.

—LEGAL NOTICE—

The Boards of Trustees of the Alcorn County Schools, the Iuka Separate Schools, The Tishomingo County Schools, The North Tippah Schools, and The South Tippah Schools, otherwise known as Crossroads Consortium, will receive bids in the Office of the Superintendent of Education of the Tishomingo County Schools,

Tishomingo County Courthouse, Iuka, Ms., until 10:00 A.M. on Monday, January 14, 1985, for the purchase of Food, Paper, and Cleaning Supplies for the Cafeterias.

Details and Specifications may be obtained from the Office of the Food Service Supervisor for Alcorn County Schools, Oakland Education Center, Rt. 8, Box 409, Corinth, Ms. Phone calls not accepted. Conference required before specifications are received. The Boards of Trustees of all School Districts reserve the right to reject any and/or all bids, and waive informalities.

JERRY MOSS, CHAIRMAN
TISHOMINGO COUNTY
SCHOOL BOARD

D-27-J-3-c.

—LEGAL NOTICE— TRUSTEE'S NOTICE OF SALE

WHEREAS, on April 7, 1984, Thomas D. Lovelace and wife, Myra Jean Lovelace, executed a Deed of Trust to J. Barry Finch, Trustee, for the benefit of Tri-State Federal Savings and Loan Association, which said Deed of Trust is now on record in the office of the Chancery Clerk of Tishomingo County, Mississippi, at Iuka, Mississippi, in Book 113, page 237-240, of the records of Deeds of Trusts of said County; and

WHEREAS, default having been made in the payment of the indebtedness secured by said Deed of Trust and the holder of the Note and Deed of Trust having requested the undersigned Trustee so to do, I will on the 4th day of January, 1985, offer for sale at public outcry and sell during legal hours, being between the hours of 11 o'clock A.M. and 4:00 P.M. at the East Front Door of the Tishomingo County Courthouse at Iuka, Tishomingo County, Mississippi, for cash to the highest and best bidder the following described property situated in Tishomingo County, Mississippi, more particularly described as follows, to-wit:

Part of the NE 1/4 of Section 30, Township 2, Range 10 East, being described as follows: Beginning at a point where the west boundary of a public gravel road crosses the south boundary of the NE 1/4 of said Section 30, thence run in a northwesterly direction 225 yards along Junior Lambert's north line to an iron stake in the center of an old road; thence North 70 degrees along Thomas Davis' east line to an iron stake; thence south 225 yards to the public

road known as the Rufus Curtis Road; thence 70 yards south along the west side of said road to the point of beginning.

ALSO: Beginning at the same stake as described in the above tract where the west boundary of a public gravel road crosses the south line of the NE 1/4 of Section 30, thence run West along the south boundary of the said quarter section 72 yards; thence run in a northerly direction 25 1/2 yards to a tree; thence run in a southeasterly direction to the point of beginning.

The above two tracts contain 3.40 acres, more or less. The above described lands being in the SW 1/4 of the NE 1/4 of Section 30, Township 2, Range 10 East.

I will convey only such title as is vested in me as Trustee.

WITNESS MY SIGNATURE, this 11th day of December, 1984.

J. BARRY FINCH,
TRUSTEE

D-13-20-27-J-3-c.

—LEGAL NOTICE— ADVERTISEMENT FOR BIDS CITY OF BURNSVILLE CITY HALL BURNSVILLE, MS

Separate sealed BIDS for the construction of a two-cell lagoon treatment system consisting of pump station renovation, 1800 L.F. 8" force main, 1500 L.F. 10" outfall line, inlet and outlet structures, and two-cell lagoon will be received by Mayor and Board of Aldermen at the office of Burnsville City Hall until 7:00 P.M. local time February 20, 1985, and then at said office publicly opened and read aloud.

The CONTRACT DOCUMENTS may be examined at the following locations: Burnsville City Hall, Burnsville, MS.

Copies of the CONTRACT DOCUMENTS may be obtained at the office of Eubank & Moore Engineers, Inc., located at 1204 N. 2nd St., Booneville, MS upon payment of \$50.00 for each set.

Any BIDDER upon returning the CONTRACT DOCUMENTS within 14 days after BID opening and in good condition, will be refunded his payment, and any non-bidder upon so returning the CONTRACT DOCUMENTS will be refunded \$25.00.

Any contract or contracts awarded under this invitation for bids are expected to be funded in part by a grant from the U.S. Environmental Protection Agency. Neither the United States nor any of its departments, agencies or employees is or will be a party to this invitation for bids or any resulting contract. This procurement will be subject

to regulations contained in CFR 35.936, 35.937, 35.938, 35.939.

DECEMBER 13, 1984.
A.T. MARLAR,
CITY OF BURNSVILLE
D-13-20-J-10-17-24-c.

—LEGAL NOTICE— SUBSTITUTED TRUSTEE'S NOTICE OF SALE

WHEREAS, on January 29, 1979, Rowland Henson, June Hyde, executor of Trust to Eugene H. Jr., Trustee, for the Prince Steel and Company, Inc., executed a Deed of Trust to record in the office of the Chancery Clerk of Tishomingo County, Mississippi, in Book 290, of the records of Trust of said County; and

WHEREAS, the Prince Steel and Company, Inc., as owner and holder of Deed of Trust and the indebtedness secured thereby exercised its option point J. Barry Finch, Trustee, for the Prince Steel and Company, Inc., executed a Deed of Trust to record in the office of the Chancery Clerk of Tishomingo County, Mississippi, in Book 232; and

WHEREAS, default having been made in the payment of the indebtedness secured by said Deed of Trust and the holder of the Note and Deed of Trust having requested the undersigned Trustee so to do, I will on the 11th day of January, 1985, offer for sale at public outcry and sell during legal hours, being between the hours of 11 o'clock A.M. and 4:00 P.M. at the East Front Door of the Tishomingo County Courthouse at Iuka, Tishomingo County, Mississippi, for cash to the highest and best bidder the following described property lying and situated in Tishomingo County, Mississippi, being more particularly described as follows, to-wit:

Lot No. 46, Columns Subdivision - Addition in the SE 1/4 of Section 19, Township 2, Range 10 East, Tishomingo County, Mississippi, according to plat of said subdivision recorded in the land records of said County in Map Book 65.

I will convey only such title as is vested in me as substituted Trustee.

Witness my signature, this 17th day of December, 1984.

J. BARRY FINCH,
SUBSTITUTED TRUSTEE

D-20-27-J-3-10-c.

1, 2 & 3 BEDROOM APARTMENTS AVAILABLE

Kitchen appliances furnished
Play ground
Laundry available

NORTHVIEW APARTMENTS
ROUTE 2- 92A No. 400
BURNSVILLE, MISSISSIPPI
Call 427-9049 or 423-5314

APPLICATIONS NOW BEING ACCEPTED

1, 2, & 3 BEDROOM APARTMENTS

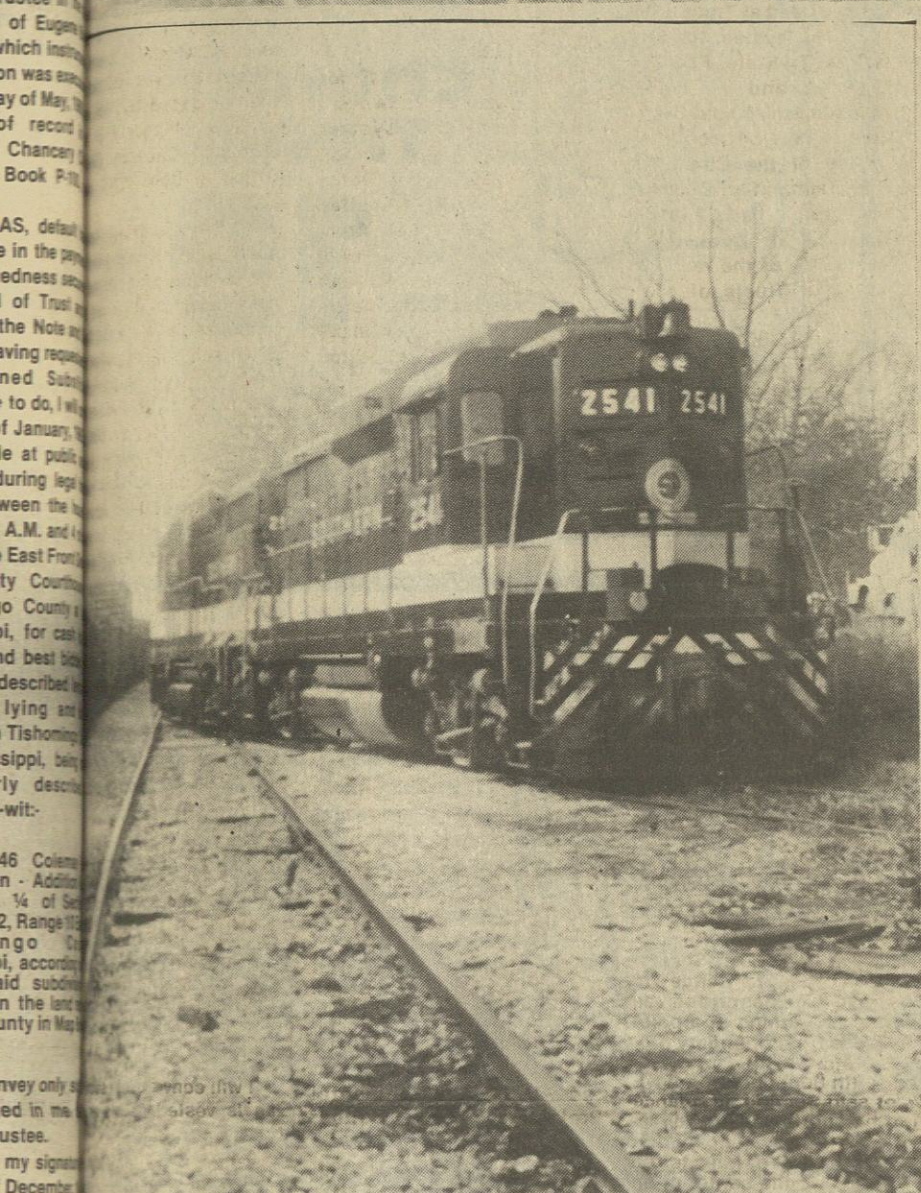
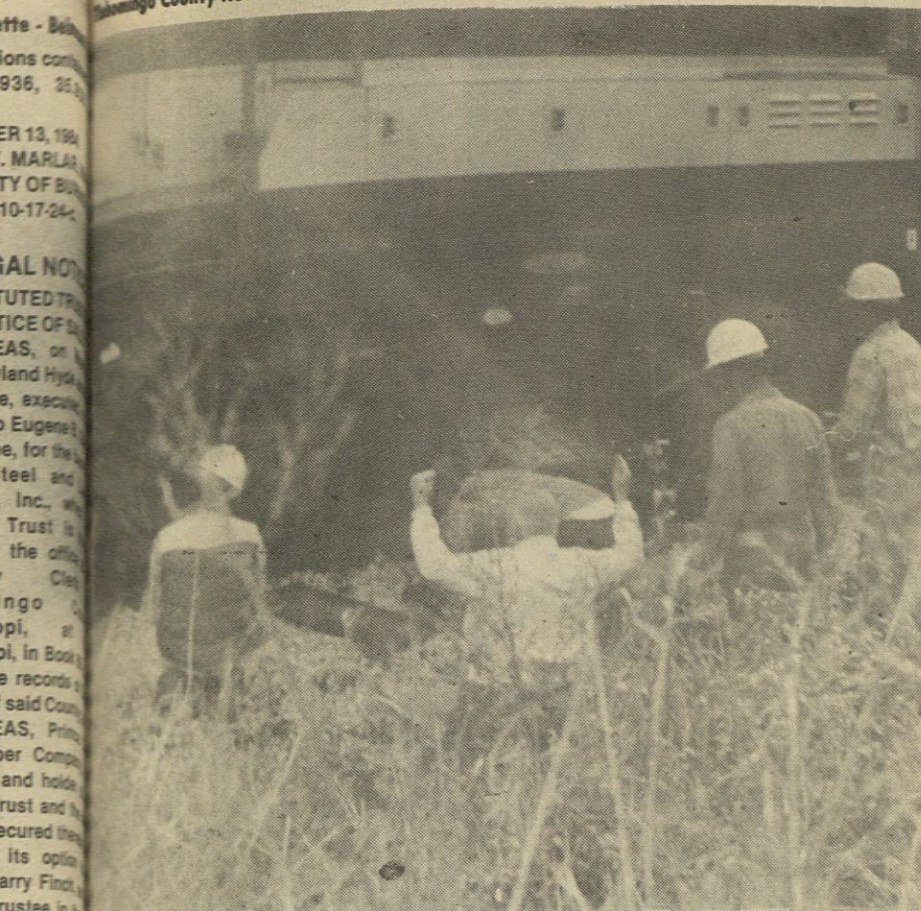
KITCHEN APPLIANCES FURNISHED
RENTAL ASSISTANCE AVAILABLE

1000 N. PEARL ST. IUKA, MS

MONDAY - FRIDAY 9-12 A.M.

1 & 2 BEDROOM APARTMENTS AVAILABLE

Newly Decorated
Central Heat & Air



Derailed Locomotive
A double engine locomotive, which derailed at the Pearl Street Crossing in Iuka on Wednesday. The crew worked an approximate 2½ hours on the mishap, which was termed to be "a common occurrence that happens all the time," by a railroad spokesman.

Personals

Nichols worked very hard to make Christmas 1984 a successful family affair. On Wednesday night, December 23, the Tishomingo State Park came alive as family members began gathering, enjoying delicious food and the children's cheer. The children were all delighted when much to their surprise, in walked Claus with gifts for all the children and lots of laughter and fun for everyone. Those who enjoyed a bountiful meal and fellowship. Those present were: Haston and Katrina; Katrina and Daniel Akers; and Buster Akers, all of Tishomingo; Joe, Denise and Eve Parkey; Mary Wigginton, Robin, and Josh Freeno;

Hilton and Jane Chastain, all of Iuka; Bill, Marcia, Mark and Jason Hoover, of Corinth; and Danny, Lanella, Amanda and Brandon Young, of Paden. Everyone had a great time!

The family of Mr. and Mrs. Lester Pruitt, of Iuka, gathered at the VFW Hut in Iuka to open gifts and eat their annual Christmas dinner. They met on Christmas Eve and many nice gifts were exchanged and a delicious meal was served and enjoyed. Mr. and Mrs. Pruitt were proud to have all their children home for Christmas and look forward to next year's meeting.

Those attending included: Mr. and Mrs. Lester Pruitt and son, Brad, of Iuka; Mr. and Mrs. Jimmy Phifer and children, Tammy and Terry, and grandson, Daniel, of Iuka;

Mr. and Mrs. Carl Locke, of Selmer; Diane Dawson and sons, Tracy and Jeremy, of Iuka; Mr. and Mrs. Joe Pruitt and sons, Jamie and Joey, of New Albany; Mr. and Mrs. Donnie Crabb, Sonia and Dustin, of Iuka; Mike Pruitt, of Iuka; Lisa Cutshall and daughter, Brandy, of Iuka; Donna and Tim Wright, of Tishomingo; and Cathy Barnes and daughter, Amy, also of Iuka.

Dizziness

So you feel dizzy. But you can't quite describe exactly how you feel.

Dizziness is tricky. It not only confuses the patient, but many times, it can also confuse the doctor if the terms used to describe it are not

precise.

And yet, a clear definition of what the patient is experiencing can be of critical importance in accurately diagnosing the cause, says Dr. O. Thomas Feagin, head of Ochsner Clinic's prospective medicine department.

That's why Dr. Feagin uses what's called a "Dizziness Simulation Battery" -- a special test consisting of a series of maneuvers that will allow the patient to experience each type of dizziness, so that he can recognize the type that most nearly resembles his own symptoms. "This is done as part of the general physical examination and helps both the patient and the doctor determine exactly what the dizzy feeling consists of so we can progress to seeking the cause," he points out.

Dr. Feagin says there are four basic types of dizziness. Each of them indicate a different diagnosis and treatment.

1. Vertigo is the illusion that either you are spinning around or the room is spinning around you. Usually, this type of dizziness indicates problem in the inner ear where fluid-filled semicircular canals detect head movements and govern equilibrium. Or it may also indicate that there is something wrong with the communication between the

inner ear's balance-sensing mechanism and the brain.

2. Faintness is the feeling that you are about to lose consciousness. This may indicate that the brain is receiving too little blood because of low blood pressure or a heart rate that is too high or too low.

3. Unsteadiness is the feeling that your sense of balance is not working properly and you feel as if you may fall down. This may indicate abnormalities in the area of the brain responsible for coordination or other neurological problems. In elderly people, a sensory deficit, such as partial loss of sight or hearing and some nerve loss in the legs, can cause this type of dizziness.

4. Wooziness is a sort of lightheadedness, and may indicate that the source is psychological. Anxiety and depression, which causes the patient to hyperventilate, can sometimes cause this kind of dizziness, Dr. Feagin explains.

Because pinning the type of dizziness down is so important, Dr. Feagin puts the patient through a series of eight dizziness inducing maneuvers during the office visit. First, he takes the blood pressure, both lying down and standing up. Then he makes the patient grunt heavily in what is called the "Valsalva maneuver."

He also stimulates the carotid sinus by pressing forcefully on the artery in the neck. The patient must also breathe in and out fast for three minutes, thus hyperventilating. The patient must sit up and turn the head quickly from side to side several times. He is also spun around in a rotating chair for about 20 seconds. Yet another maneuver consists of sitting on the examination table, then suddenly lying back flat with the head over the end of the table. This is done three times, once looking left, then right, then straight ahead.

"These procedures are simple. They only take a little extra time during an office examination. But they help the patient clarify what his symptoms really are and the doctor can then determine whether more extensive testing is necessary or how the condition may best be treated," Dr. Feagin states.

New Year... Fresh Start.
A wish for happiness from the heart.

Inmate Labor Program Underway

Northern District Highway Commissioner Zack Stewart announced that the new inmate labor program is getting underway on January 2, 1985, utilizing a five-man crew under the supervision of the Mississippi State Highway Department.

This program, which Commissioner Stewart pushed, will allow non-violent and first offender prisoners to work with the Department in maintaining the state's highway right-of-ways. Work assigned to inmates will be normal duties as assigned to regular employees. The work will be limited to hand labor or hand tools. The work day will consist of the normal eight hours.

"We are very pleased that this program is now underway," Commissioner Stewart pointed out. "It will not only benefit the people involved, but it will also help beautify the state's highway right-of-ways."

This program was established through an agreement with the Mississippi State Highway Department and the Mississippi Department of Corrections. It will be implemented in Northeast Mississippi and several counties are involved. The program initially will utilize inmates from the community work center in Corinth. This effort is the first of its type in the state and it has been tabbed as a pilot program.

It's Time For Better Use of Tax Dollars

Just as legislative committees are closing out months of examination of the state's tax structure, concluding, as expected, that the state is still in a fiscal crunch comes word from the state Auditor about expenses at the local level.

In a written communication within recent days, state Auditor Ray Mabus has reported the Auditor's crackdown on the use of public office for private benefit has resulted in a savings of at least \$20 million at the local government level thus far this year. Mr. Mabus was referring specifically to his instruction to county supervisors that they could no longer gravel private drives at public ex-

pense.

Think about what could have been done for all citizens of Mississippi in recent years if that \$20 million had been put to proper use. How much education, how much vocational training, how many miles of streets and roads, how many health care facilities could we have purchased at the rate of \$20 million per year?

There is still more work to be done. County unit road systems will save at least \$27 million per according to a study by the Mississippi Economic Council, and there are other efficiencies which could be introduced to local and state government.

Mississippi tax payers are justified in demanding better use of tax dollars before taxes are increased.

How Long Should Your Baby Be On Formula?

As your infant gets older, you may hear a lot about when and why your baby should be drinking plain cow's milk. Although friends and relatives may mean well,

they may not be aware of your baby's special nutritional needs - needs that are not met with plain cow's milk during your baby's important first year.

* Cow's milk lacks iron. Babies need iron to build red blood cells.

* Cow's milk isn't balanced nutrition. Cow's milk has too much protein, sodium, potassium and chloride. It's hard for your baby's system to handle these.

* Lowfat or skim milk do not provide the essential fats for normal growth.

* The untreated protein in cow's milk may be hard for some young babies to digest.

So keep your baby on formula until his first birthday.

Happy New Year!

Pharmacy & Your Health

RUSHING DRUG COMPANY

102 FRONT STREET-IUKA
PHONE 423-3629

JET-LAG RELIEF

The effects that result when one moves quickly from one time zone to another ("jet-lag") include an inability to fall asleep, reduced daytime alertness, and changes in mood. The same types of problems can occur with changes in one's work schedule—for example, working nights instead of days or vice versa.

Two medicines that were thought to be helpful in reducing the problems with jet-lag were studied with a report appearing in a recent issue of *Science*. In this study, the bedtimes of several individuals were shifted 12 hours for three 24-hour periods. One group of individuals received the prescription sleep aid *flurazepam*, which lasts several hours in the body. Another group received *triazolam*, which has a much shorter duration of action. And a third group was given a capsule with no active ingredient (*placebo*).

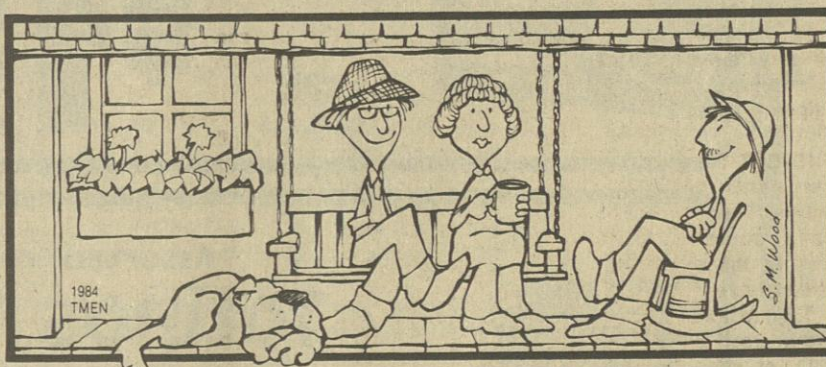
Persons receiving the *placebo* experienced difficulty sleeping while the other two groups had almost normal sleep patterns. The group receiving the short-acting drug *triazolam* appeared to be most alert following sleep.

Most of us need no medicines when changing time zones or work schedules. For those who have severe problems, however, a sedative might be suggested by their physicians.

© S & S 1984

Doing MORE...With LESS!

by the staff of
THE MOTHER EARTH NEWS
THE MOTHER EARTH NEWS is a registered trademark of THE MOTHER EARTH NEWS, Inc.



DOWN-HOME COUNTRY LORE

Readers of THE MOTHER EARTH NEWS frequently send us their personal, practical down-home solutions to the frustrating little problems of everyday life. We'd like to share a selection of these helpful hints with you.

"Next time you lose the drain plug in your kitchen sink," says Everett Schisler of Rio, Illinois, "just put a little water in a plastic sandwich bag and tie the container shut. Such an improvised sink stopper, complete with its own handle, will plug your basin or tub just fine."

Jean Obrist from Fairbanks, Alaska, has come up with a practical application for using soda-can pull tabs: "When you use paraffin on jelly jars," Jean says, "stick in one of those little tabs with the curly tongue embedded in the wax and the ring end poking out. Then when the paraffin hardens, you can simply pull the ring, and the wax comes out in one nice piece."

When your garden is giving you loads of broccoli, beans, and corn, you might follow the advice of Sharon Griggs from Dowagiac, Michigan. She freezes large quantities of produce, but uses only a few store-bought containers. This clever lady takes the solidly frozen blocks out of the plastic freezer boxes and stores all the "cubes" of one kind together in big plastic bags. She can then reuse the expensive containers again and again.

If you find that cutting plump kernels of corn off the cob is a slippery task, take a tip from Aylene Lawson of Ore City, Texas. Simply stand each shucked ear in the hole of a stem cake pan while you work. The opening will hold the cob securely, the pan will catch all the kernels, and in no time your corn-cutting chore will be done, with no mess or waste.

Here's the can't-be-beat, absolutely easiest way to can grape juice, sent by Suzanne Mullins of Charlottesville, Virginia. Measure two cups of whole, stemmed grapes into a sterilized quart jar, add one cup of sugar (more or less to taste), fill the container with boiling water, and process it for 10 minutes in a water-bath canner. Six weeks later, strain out the liquid, dilute this concentrate by half with water, and you'll have nearly two quarts of ready-to-drink grape juice!

If you're trying to load some pigs on the truck to take to market, Emily Bunn of Winchester, Ohio, knows an easy way. She simply sets her vehicle and ramp in place early in the morning before the sun rises, turns on the light in the truck's cab, and stands back. The pigs climb all over each other to get to the bright area.

Here are some inexpensive natural cosmetics suggested by Amy and Tom Walinski of Berlin, Maryland: Castile soap serves as shampoo, body soap, and dentifrice. Olive oil makes an excellent skin and hair conditioner and can be scented as you like. Rubbing alcohol and baking soda both make effective body deodorants.

When you've finally canned, eaten, and frozen more green beans than you think you'll ever be able to use, take some advice from Catherine Klug of Coggon, Iowa: Ignore the darn plants. Just leave the last rows alone until the first frost. Then pick, shell, and dry the seeds inside those overgrown pods. These beans can be used in hearty winter soups to take the place of store-bought navy beans.

Here's the best-tasting, easiest cream cheese that Linda Donaldson of East Islip, New York, says she's ever made: Put one cup of plain homemade yogurt into a muslin bag and hang it above a bowl overnight. Your white, creamy-textured, low-fat cream cheese will be ready for breakfast. (Substitute the nutritious whey for the liquid in your next batch of bread.)

For FREE additional information on country lore and on THE MOTHER EARTH NEWS magazine, send your name and address and ask for Reprint No. 1412: "Dear Mother." Write to Doing MORE...With LESS!, 105 Stoney Mountain Road, Hendersonville, NC 28791, or in care of this paper. Copyright 1984 THE MOTHER EARTH NEWS, Inc.

YOU RECEIVE INSTANT SERVICE AT OUR NOON BUFFET

ALL YOU CAN EAT"
PIZZA, SPAGHETTI & SALAD
MONDAY - FRIDAY 11-2
SUNDAY 12-2

TUESDAY NIGHT 6:30 - 8:30

HWY. 25 NORTH IN IUKA
423-6074

DINE IN OR TAKE OUT

HALF PRICE BUFFET
BUY ONE BUFFET AT REGULAR PRICE AND GET THE SECOND ONE FOR HALF PRICE
*Expires Jan. 3, 1985
*Not valid with other offers
*Present coupon P114

Pizza out it's Pizza Inn.

Pizza inn.

FREE PIZZA
BUY ONE PIZZA, GET THE NEXT SMALLER SIZE, EQUAL NUMBER OF INGREDIENTS, FREE
*Expires Jan. 3, 1985
*Not valid with other offers
*Present coupon P101

For pizza out it's Pizza Inn.

Pizza inn.

FOR SCHOOL AGED CHILDREN, TOO!

WAL-MART

\$5 OFF

A limited time offer on the portrait deal of a lifetime.

2-8x10s, 3-5x7s, 15 wallets
20 portraits for just \$7.95 WITH COUPON (Reg. \$12.95)

COUPON

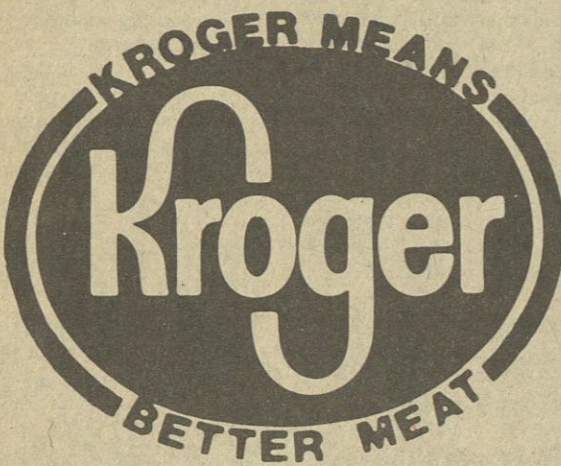
\$5 OFF

Present this coupon to our photographer with 95¢ deposit on your portrait collection. One coupon per family. Not valid with any other offer. \$1 sitting fee for each additional subject in same portrait. Satisfaction always or your money refunded. Offer valid only on dates and at locations listed.

WEDNESDAY, JANUARY 2 THRU SATURDAY, JANUARY 5
DAILY: 10 A.M. - 8 P.M.
HIGHWAY 25 SOUTH, IUKA

WAL-MART

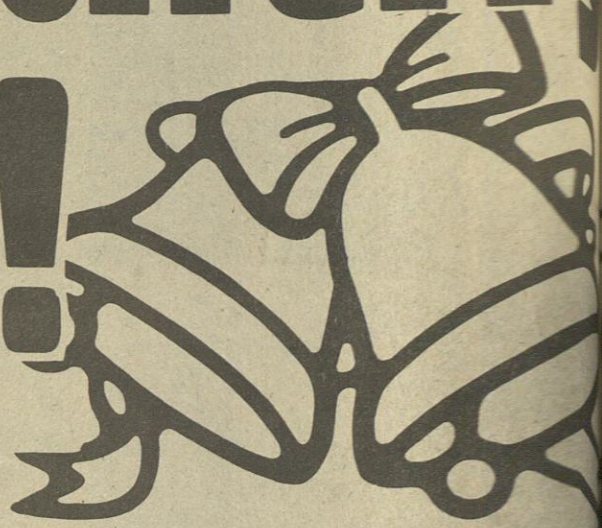
Happy and Healthy New Year!



Items and prices in this ad effective Dec. 26th thru Jan. 1st at your Kroger in:

CORINTH, MISS.

None sold to dealers. Limit right reserved. Copyright 1985. The Kroger Co.



Fine For BBQ! Oscar Mayer Pork

Medium Spare Ribs
pound

99¢

NEW YEAR'S SPECIAL! Fresh Hog Jowls

lb. **59¢**

KROGER COUPON

Mountain Grown

Folger's Coffee

\$1.59

1 lb. can

with this coupon and \$10.00 purchase, excluding items prohibited by law and in addition to the cost of coupon merchandise. Subject to applicable taxes. Limit one can. Expires Jan. 1, 1985.

SAVE 90¢

KROGER COUPON

Charmin Tissue

19¢

4 ROLL PKG.

with this coupon and \$10.00 purchase, excluding items prohibited by law and in addition to the cost of coupon merchandise. Subject to applicable taxes. Limit one pack. Expires Jan. 1, 1985.

SAVE \$1.00

U.S.D.A. Grade 'A' Holly Farms Family Pak Mixed Parts of

Frying Chicken
pound

39¢

LOOK FOR THE SCISSORS

Hunt's

Tomato Juice

89¢

46 oz. can

U.S.D.A. GRADE A LARGE

Kroger Eggs
dozen

59¢

FRESH GRIND U.S.D.A. CHOICE

Ground Beef

98¢

3 LB. PKG.
pound

Assorted Flavors

Kroger Sherbet

\$1.25

½ gal. ctn.

Lay's Brand

Ruffles Potato Chips

\$1.09

7½ oz. bag

U.S.D.A. Choice Grain Fed Boneless Chuck

Shoulder Pot Roast
pound

\$1.38

U.S.D.A. Choice Sliced Lamb Shoulder Roast

lb. **\$1.09**

Assorted Frozen

Totino's Pizza

99¢

10.3 oz. pkg.

Cost Cutter

White Bread

3 \$1.00

18 oz. loaves

Sunkist Seedless 113 Size

Navel Oranges
each

19¢

(BAG OF 10)

California Broccoli

Bunch **99¢**

Buy one Mr. Turkey 8 ounce package

Bologna or Salami
or a one lb. package of Mr. Turkey

Turkey Franks

(8 oz. pkg. Bologna or Salami or 1 lb. pkg. Franks)

FREE!

Kroger Dry

Blackeye Peas

89¢

2 16 oz. bags

Bush's Fresh Blackeye Peas

3 15 oz. cans **\$1.00**

Mild Medium

Yellow Onions

69¢

3 lb. bag

U.S. No. 1 All Purpose Wisconsin

Russet Potatoes

15 lb. bag **\$1.00**

ADVERTISED ITEM POLICY-Each of these items is required to be readily available in each Kroger store, except as specifically noted in this ad. If we do run out of an advertised item, we will offer you your choice of a comparable item, when available, or a raincheck which will entitle you to purchase the advertised item at the advertised price within 30 days. Only one vendor coupon will be accepted per item.