

Tishomingo County News

\$8.00 Per Year Locally
In Advance
\$15.00 Per Year
Outside Trade Area

The Vidette & Belmont News

OFFICIAL LEGAL NEWSPAPERS OF TISHOMINGO COUNTY
The One Newspaper In The World Most Interested In This Area

Patronize The News
Advertisers!
They Send A Valuable
Message To You

ONE HUNDRED AND ONE YEARS

IUKA, TISHOMINGO COUNTY, MISSISSIPPI

Thursday, February 7, 1985 No. 34

STOLEN ITEMS RECOVERED



Items Recovered —
Items were recovered recently from a Margerum, resident, Carroll Threet. Tishomingo County Sheriff Mike Kemp, with the assistance of Tishomingo

County Auxiliary Deputy, Edgar Lambert, apprehended an Iuka man last Wednesday, January 30th, who had stolen items, which included a drill, weed-eater, film projector, grinder and three tires from, from the Alabama resident.

The man, whose name is being withheld by request of the Tishomingo County Sheriff's Department, will be extradited back to Colbert County, Ala., where he will stand trial.

NEED FOR ADDITIONAL FUNDS FOR STATE'S ROADS & BRIDGES

James Snowden

Mississippi is not spending enough money to maintain its roads and bridges. This is a fact that is painfully obvious to nearly everyone who rides in a motor vehicle in our state.

This fact is also the finding of a recent study by The Road Information Program (TRIP), a nonprofit highway research and information agency headquartered in Washington, D.C.

TRIP's evaluation of Mississippi's roads and bridges concluded that 77 percent of the main paved roads in the state and 64 percent of our bridges need to be repaired or replaced. That's more than three-fourths of the main roads and nearly two-thirds of the bridges that are in bad shape.

As a member of TRIP's board of directors, I know the report is factual, accurate and based on the most available data from the Mississippi State Highway Department and the Federal Highway Administration. As head of a Hattiesburg building firm, I know first-hand that TRIP's report is like it is on Mississippi roads.

The problem is that we let our roads and bridges deteriorate to this level of disrepair and neglect. Too often we have excused ourselves for letting this happen by saying that we wasn't enough money for all this road work.

We said we'd wait until next year or sometime in the future when we found the money. Those years of postponement now have left Mississippi with a real problem. We have put off for so long that we are now jeopardizing our state's roads and bridge repairs unless we take some action.

Mississippi's future depends on jobs, economic growth and a positive climate for expanding and developing business in the state. Jobs and growth won't come to Mississippi if we don't offer something up

front as an incentive for businesses to locate here, and stay and grow here.

Right now, business executives see Mississippi roads that are cracked and rutted and dotted with potholes. They see Mississippi bridges with deteriorating decks and with signs posting the bridges for weight limits that are reduced below the weight limits allowed on the roads leading to them.

So what do these business executives do? Well, they look next door at Alabama or Louisiana or elsewhere in the South. And if their business depends heavily on transportation, they just may find the view on the other side of our state border looks more attractive to them. As a result, they leave Mississippi taking with them their business, their jobs and their economic activity. In turn, this leaves Mississippi without the economic growth we so desperately need.

Last year, state, county and city road agencies spent \$471 million on road and bridge repairs. According to TRIP's report, that is \$311.5 million less than what Mississippi needs to be spending each year to bring all deficient roads and bridges up to accepted standards within the next eight years.

In addition, an average of \$50 million in motor fuel sales tax money will no longer be annually earmarked or diverted for highway department use after June 30, 1985. This means Mississippi's roads will fall even further behind unless this earmarking is renewed quickly by the state legislature.

Yet this average annual \$50 million sales tax diversion will only continue the holding action we have attempted to maintain over the last few years. It will not provide the additional funding we need to catch up on the years of neglect and delay that have left our roads and bridges in such deplorable shape.

Mississippi needs to look ahead and to plan for the future. To do that, we must take steps to provide the

money to get yesterday's postponed road and bridge work done tomorrow. If we wait for too many more tomorrows, it will be too late.

For further information, contact: James Snowden, TRIP Board Member (601) 268-2691 OR Michael Sheward, TRIP Eastern Manager (202) 466-7080

November Sales Tax Collections

November, 1984, city sales tax collections made within the county and reported to the Tax Commission totaled \$49,465.44. The final figure was up \$6,820.62 over the 1983 collection for November.

Collections for the six municipalities in Tishomingo for November, 1984, were: Belmont, \$19,807.57; Burnsville, \$6,142.66; Golden, \$521.26; Iuka, \$29,775.30; Paden, \$6.52; and Tishomingo, \$3,212.13.

The City Sales Tax Collections contained in this report are based on taxes collected by merchants during October and reported to the Tax Commission in November.

Burnsville Head Start Beauty Revue

Burnsville Head Start parents are planning a beauty revue for Saturday night, February 16, at 6:30 in the high school auditorium. Admission will be \$1.00 for all.

The parents are also accepting donations on a 14 pound hoop of cheese at \$.50 each and a ceiling fan at \$1 each, to be given away the night of the beauty revue.

All proceeds will be used to help buy needed items for the center.

Please support your Head Start Center!

★ AMERICAN ★

HEART MONTH

Date For Talent Show Nears

Many area musicians are preparing for the Country Music Entertainment and Talent Show that is to be held on February 16, 1985, at the Iuka High School Auditorium. The show will begin at 7:00 p.m., and there will be a \$2.00 admission charge, except for children under 12 who will be admitted free.

The show will include a warm-up performance by Larry Cassabella and The Country Fox Band and a lineup of twenty-nine entrants.

For more information concerning the event, please contact Larry or Jackie Casabella at 423-6498.

Valentine Pageant Rescheduled

The Valentine Queens and Kings Pageant has been rescheduled for Sunday, February 10, at 1:30 p.m. in the Iuka High School Auditorium.

Age divisions are: girls 0-23 months, 2 years, 3 years, 4-5 years, 6-7 years, 8-9 years, 10-12 years, 13-14 years, and 15 years and up. Boys age divisions are: 0-2 years and 3 years and up.

For more information phone 728-3292, or anyone can register at the door.

A talent contest will also be held immediately following the pageant.

NOTICE

The City of Iuka tax books will be open until February 15, according to Joyce Brumiey, City Clerk. The initial deadline was February 1, 1985; however, due to the hazardous driving conditions, the deadline has been extended and no penalty will be charged if taxes are paid by the fifteenth.

Revival Services At Asphalt Rock

Revival services will begin at Asphalt Rock Baptist Church, located in Cherokee, Ala., Sunday, February 10, at 11:00 a.m., and continue thru Friday night, February 15.

Nightly services will begin at 7 p.m. with special features each evening.

Theo Waldrep, from Trenity, Alabama, will be the guest speaker.

Bro. Tommy Bradford invites everyone to attend.

Tree Planting Week

February 11-15

By: George Rowland

The Tishomingo County Soil and Water Conservation District, along with other agricultural agencies in the county, will sponsor Tree Planting Week during the week of February 11-15. Tree Planting Week has been an annual event since 1975 to encourage landowners to plant trees and to help recognize the importance of trees in our society. Tishomingo County is blessed with land that is suited for growing trees. Approximately 169,000 of our county's acres is in woodland. But, there are many more acres in the county that need to be planted or improved.

Special thanks to Tennessee River Pulp and Paper, Westvaco Timber Company and Hiwassee Land Company who have donated trees to be given away during this week.

The activities to take place during this week will include: Feb. 13-14 - Trees will be given away to 4th, 5th and 6th grade school children.

February 14-15 - Trees will be made available for the public at various locations throughout the county. These locations are: Cooperative Extension Office, Tishomingo County Vo-Tech Center, Soil Conservation Service Office.

ICE AND SNOW BLANKET AREA

Tishomingo County,

already wet with rain, was glazed over last Thursday night with a thick sheet of ice, which was deepened by a day of sleet. This was soon covered with a blanket of snow, measuring from eight to ten inches in depth.

The rain, which began last week, was converted into sleet and freezing rain, as yet another polar air mass swept through the South. The sleet then changed into a massive snowfall, dropping enough snow over the area to make it resemble one of the Northern

states.

Almost all traffic flow over the U.S. Highways and county roads ceased this past weekend before the county road crews were able to grade the roads. The road crews were out as soon as possible, working hard to make at least some of the area roads accessible. Most of the county's back roads were virtually impassable, and area residents were urged to travel only in the event of an emergency. The ice and snow packed roads were made even more hazardous following another

night of misty rain, which fell the first of the week.

According to Kevin Booker, a spokesman for Moore's Body Shop and Wrecker Service, there has been a tremendous increase in wrecker calls since Thursday night. "We have had an increase of about 75%," Booker said, "we had two wreckers out much of the time. It seems like we can't get anything done in the shop because of the wrecker calls." Booker also commented that most of their calls have come from eighteen

wheelers and other big trucks that could not make it up "State Line Hill". "We haven't had any serious wrecks," Booker said, "but we have been working night and day trying to help people out of ditches and help big trucks."

James Dailey, owner of Dailey's Body Shop and Wrecker Service, Burnsville, stated that his wrecker calls have practically tripled because of the weather conditions. "We have had numerous calls from big trucks that have pulled off the road and stalled," Dailey declared. He, too, commented that he had had many calls at night, as well as during the daytime hours.

Another wrecker service in Burnsville, Weathers' Service Station and Wrecker Service, reported having many more calls during the past few days. They believe they had more calls after the rain Monday night than before, on the average.

Tishomingo County Sheriff's Office Dispatcher, Pat Smith, remarked that there have been no major traffic accidents reported to their office as a result of road conditions as of this time. She said there had been very few accidents reported and they were only "fender benders".

The Iuka City Police Department also reported no serious accidents as a result of the weather and also no fires.

Because of hazardous traveling conditions, many residents were unable to travel to get groceries and other much needed supplies, such as medicine. The Iuka Police Department, along with Third District Constable, Floyd Whitaker, and the Iuka Fire Department worked many tiresome hours delivering these items to residents, especially the elderly. They also assisted in helping people get to their jobs and gave assistance to many stranded motorists.

All schools in the area were dismissed Friday and remain closed at press-time. "It has been impossible for buses to run with the conditions of the highways, much less the back roads," school officials said.

According to a spokesman from the emergency room at Tishomingo County Hospital, there have been several patients who have come into the emergency room with broken bones, resulting from falls due to ice and snow. They also reported that many people have had severe bruises and contusions, resulting from falls on the snow and ice.

The hospital spokesman also reported that there have been no reports of frostbite or hypothermia as of this time. However, they do warn everyone to stay indoors and out of the extreme cold as much as possible, stressing that if you must be out, take precautions and wrap up with several layers of clothing. It is also important to let someone know that you are going out, where you are going, and approximately how long you plan to be gone.

What does the future hold in the way of weather? This is debatable, with some meteorologists calling for more of the same and others calling for warmer temperatures and clear skies - only time will tell!

Burnsville PTL To Meet Feb. 11

Burnsville PTL will meet Monday night, February 11, at 6:30 in the school cafeteria.

Teacher appreciation will be postponed until a later date.

All parents and teachers are urged to be present.



Cowboy Snowman — Grant, Chris (kneeling), and baby sister, Heather Taylor, children of Bro. and Mrs.

Perry Taylor, found that the snow Monday was just the right consistency for building this "Cowboy" Snowman.

The children were assisted by their father, Bro. Perry Taylor, who is the pastor of Iuka Church of Christ.



Clean-Up Begins

Damage to Cutshall Funeral Home Chapel was extensive when the metal awning, surrounding three sides of the structure, gave way under the heavy weight of ice and snow Friday evening. A

neighbor reported hearing the crash and immediately notified a funeral home employee. A portion of the roof dropped onto a parked hearse, causing severe damage to the vehicle. A local wrecker service began clean-up early Saturday morning. Gary Bur-

cham and Edward Hubbard, shown, worked in freezing temperatures to clean the debris. Several other businesses in Iuka suffered damage, including Sears, downtown Iuka, and The Kream Kastle, Hwy. 25 North.

TISHOMINGO COUNTY NEWS VIDETTE and BELMONT NEWS

Phone 423-3666

(SECD 631680)

John H. Biggs, Editor & Publisher

Published Thursday by The Tishomingo County News, Inc. Serving the people of Tishomingo and adjoining counties for more than 95 years. Publication office 120 West Front Street, P. O. Box 70, Iuka, Mississippi. Entered at the Post Office as mail matter of the Second Class, Second Class postage paid at Iuka, Mississippi. Zip Code 38852. Post Master send address changes to The Tishomingo County News, P. O. Box 70, Iuka, Mississippi 38852.

Mail Rates Tishomingo and Adjoining Counties
\$8.00 Per Year
Other Areas
\$15.00 Per Year

EMERGENCY PHONE NUMBERS

Sheriff Department.....	423-6185
Tishomingo County Hospital.....	423-6051
Ambulance Service.....	423-5766
POLICE DEPARTMENTS	
Belmont.....	454-3381
Burnsville.....	427-9526
Iuka.....	423-6340
Tishomingo.....	438-6302
FIRE DEPARTMENTS	
North Crossroads Vol. Fire Department.....	423-6185
Belmont.....	454-3311
Burnsville.....	427-8844
District 1 Volunteer.....	423-6515
Golden.....	454-9645
Iuka.....	423-5011
Tishomingo.....	438-6650

MISSISSIPPI HOT LINE FOR CHILD ABUSE
1-800-222-8000

DRUG AND ALCOHOL ABUSE
423-3332

FOR YOUR BENEFIT

Tommy Purvis
Extension County Agent



The recent snow, ice, and freezing weather has brought our attention to the damage which has been caused. Jim Perry, Extension Landscape Specialist, recently sent some material that should be useful to you.

Repairing Ice-Damaged Trees

The ice now plaguing most areas of the state has damaged many evergreen trees, particularly pines and cedars. Prompt treatment of injured trees will help reduce chances of losing the tree.

Broken limbs and stripped bark expose wood which allows disease and decay organisms to enter the tree. Decay is a potential problem which can weaken and shorten tree life.

When surveying the damage, be aware of the power lines. Be certain that power lines are now down or resting in the tree. If wires are down or branches drooping on the wires, notify your electric company immediately. Never touch the tree or try to correct the trouble yourself. The electric company has



4-H'ERS WELCOME BARGE Many Tishomingo County 4-H'ers were able to welcome the first barge to travel the Tenn-Tom Waterway. To assist in the Bay Springs

Lock and Dam welcome, 4-H'ers released balloons as the barge passed through. Several other 4-H'ers and adult leaders participated but were not present for picture.



4-H LIVESTOCK JUDGES Pictured above are the Tishomingo County 4-H livestock judges. They are: Bryan Curtis, Kevin Lovelace, Jeff Carson, Tammie McGee, Nancy South and Holly Williams. The members par-

ticipated in the District Livestock Judging Contest January 25 in Tupelo. Sheep team members, consisting of Tammie, Nancy and Holly, received second place. The contest consisted of judging two classes of animals and giving one set of oral reasons.

emergency crews who are specialists in repairing downed lines in this type of dangerous situation.

Be careful. Tree pruning is dangerous work when done high in the tree or with improper equipment. When in doubt, call in a professional. A licensed arborist is especially beneficial when property or human safety may be jeopardized.

Be cautious of drooping limbs which are laden with heavy ice. A gentle tug could be "the straw that breaks the camel's back." Falling limbs are unpredictable and dangerous to bystanders. Once the power company has secured electrical service, homeowners should wait until the ice has melted and fallen off the landscape tree to clean up and make repairs.

There are basically two types of tree damage caused by ice storms. The first is limb breakage which leaves part of the limb remaining as a stub on the trunk or major lateral branches. The second is stripped bark caused by heavy limbs not breaking clean and thus stripping the bark from the trunk.

Stubs should be removed. Saw them off at the point where they join the trunk or a lateral branch. By removing the stubs flush with the trunk, the wound can easily be painted with wound dressing to promote healing. If not removed, stubs will rot all the way back into the adjoining branch or trunk, causing heartwood decay.

Trunk wounds caused by ripped bark should also be painted with a tree wound dressing. Dangling pieces of bark which remain on the

trunk can be pushed back to the trunk and nailed in place with tiny finishing nails. Often the tissue will knit together but chances are very slim if the bark has been exposed to cold, drying wind prior to replacement.

Local nursery and garden centers have a variety of tree wound dressing. If you need treat only two or three wounds, perhaps one spray will be sufficient. However, if numerous trees need to be treated, it is most economical to buy a large container of wound dressing.

Most wound dressings are asphalt-based paint or paste. Canned wound paints can be applied with a common paint brush. Paste dressings can be applied with a brush or a spatula commonly used for applying sheetrock mud, glues, or roofing tars.

Regardless of which type of dressing, be sure to use a generous application which will thoroughly coat and cover the wounded area. Dressings applied by aerosol spray will usually be quite thin. At least two or three applications are necessary to achieve good coverage. Allow two to three minutes between each application.

If you would like further information on pruning, call the Extension office at 423-3616.

4-H News

By: Sherry Smith,
Extension 4-H Youth Agent

Teaching Children Basic Principles of Borrowing

Credit is a complicated idea for children. "Buying

now" is easy to understand; "paying later" is more difficult.

Adults need to decide when and if borrowing is appropriate for a child. Simple examples of credit, such as an advance on a child's allowance, may be useful as first experiences. Later on, more expensive items with longer payback periods and interest charges may provide opportunities for learning credit management.

Parents can teach children basic principles of borrowing by providing learning experiences at various stages of their growth and development. For example, although young children may not understand the concept of borrowing money, they can be taught to borrow a book or toy from another child and to return it promptly.

School age children may ask to borrow against their allowances. This provides an opportunity for parents to teach children that it costs extra money to borrow, and that the amount borrowed plus interest may be paid from their future allowances. Parents may also borrow from their children to reinforce this learning experience.

Teenagers may experience emergencies and situations when allowances may not cover the cost of their needs. If money is borrowed from the family, plans for payment should be on a business-like basis. Borrowing experiences are positive when teenagers recognize that borrowing is often necessary for expensive items, that the cost of borrowing differs between lenders, and that borrowing commits future income.

The 4-H consumer education project also provides learning experiences to teach children about credit. For more information concerning the program, contact the Tishomingo County Extension Service.

Chatting With Your Home Economist

By Nellie R. Horton,
Extension Home Economist

How To Clean Winter Wearables

Cleaning sweaters and sweater dresses does take time, but it's not complicated. First button all buttons and zip all zippers. Then turn the garment inside out.

Soak the garment in a basin filled with cool water and a cold water wash, such as a dishwashing liquid. For large or bulky sweaters, you may want to use the bathtub instead of the basin.

Squeeze suds through the sweater being careful not to rub or agitate it. Rinse thoroughly.

Roll the sweater in a towel to absorb excess water. Do not squeeze or wring water out of the sweater.

Dry the sweater flat, away from the sun and heat unless the label indicates it is safe to tumble dry. If drying flat, separate the layers by placing a dry towel inside the sweater. This will speed up the drying process.

To wash down coats, set the washer on a gentle cycle, and fill it with cool water and one-fourth cup of cold water wash. Let the washer agitate for about one minute, then add the down garment making sure snaps are fastened. Push the garment down into the water forcing out air bubbles.

When the wash cycle is over, remove the garment

Baking Ideas That Take The Cake

FROM THE KITCHENS OF BETTY CROCKER

Looking for a recipe for a celestial chocolate cake? Try the heavenly Triple Chocolate Cake with an angel food base and chocolate fluff frosting with chocolate triangles.

This is just one of 100 easy-to-follow cake and cake decorating recipes ranging from simple applesauce cupcakes and a Peppermint Whipped Cream Cake to an elaborate chocolate tiered wedding cake. All are featured in the new "Betty Crocker's Cake Decorating with Cake Recipes for Every Occasion" from Random House. Priced at \$13.95, it is available at book and department stores.

Here's that recipe to delight chocolate lovers:

TRIPLE CHOCOLATE CAKE

Chocolate Angel Food Cake (below)
Chocolate Fluff (below)
Chocolate Triangles (below) or dark chocolate-covered thin mints

Bake Chocolate Angel Food Cake as directed. Remove cake from pan. Split cake to make 3 layers. Fill each layer with 1 cup Chocolate Fluff; frost cake with remaining frosting. Decorate with chocolate triangles. Refrigerate any remaining cake. 12 to 16 servings.

Chocolate Angel Food Cake

1-1/2 cups powdered sugar
3/4 cup cake flour
1/4 cup cocoa
1-1/2 cups egg whites (about 12)

from the machine. Place it in the dryer with two clean bath towels and one clean pair of tennis shoes. Dry for 1 1/2 hours on a gentle or delicate heat setting. Remove the garment and hang it on a rust-proof hanger until it completely dries.

Wash fake furs in the washing machine on a gentle cycle. Fill the washer with cool water and one-fourth cup cold water wash. Agitate for one minute. Button all buttons and then submerge the garment completely.

After the wash cycle is over, remove the garment and dry it for one-half hour on a medium setting. Remove the garment and hang it on a rustproof hanger until it completely dries.

Wash mittens and gloves according to the procedure outlined on the care label. To dry, stand clean empty jars on their open ends. Pull the mittens or gloves over the jar bottoms and place in a warm spot to dry.

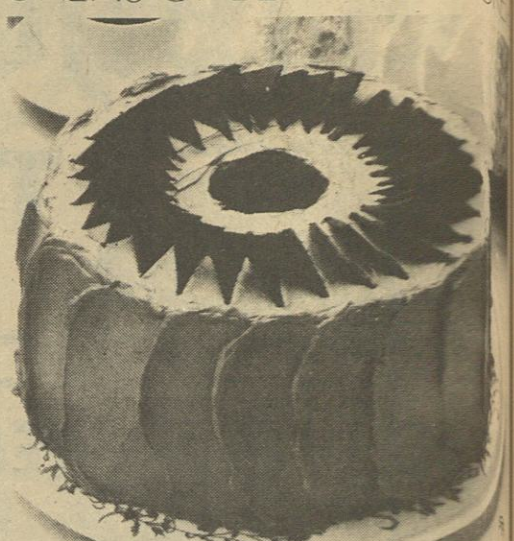
Launder corduroy items according to the procedure recommended on the care label. Dry corduroy garments slowly after washing.

To eliminate lint buildup on corduroy, use a clothes brush to remove the lint before the garment is bone dry. Also, drying corduroy items by themselves will cut down on lint buildup.

Orange Salad

1 package (3 oz.) orange flavored gelatin
1/2 envelope unflavored gelatin (1-1/4 teaspoons)
1 cup boiling water
1 cup plus 2 tablespoons cold water
1 teaspoon grated orange peel
1/4 cup orange juice
1 tablespoon lemon juice
1 tablespoon dairy sour cream
1 tablespoon chopped walnuts
1 medium orange, peeled, cut into small bite-sized pieces, drained

Combine orange gelatin and unflavored gelatin; thoroughly dissolve in boiling water. Add cold water, grated peel, orange and lemon juice. Chill 3/4 cup of mixture until thick and syrupy; whip in sour cream until blended, then stir in nuts. Divide into six individual molds or custard cups, using about 2 tablespoons for each. Chill



Triple Chocolate Cake can be a triply sweet treat.

1-1/4 teaspoons cream of tartar
1 cup granulated sugar
1/4 teaspoon salt
1-1/2 teaspoons vanilla

Heat oven to 375°. Mix powdered sugar, flour and cocoa. Beat egg whites and cream of tartar in large bowl on medium speed until foamy. Beat in granulated sugar on high speed, 2 tablespoons at a time; continue beating until stiff and glossy. Add salt and vanilla with the last addition of sugar. Do not underbeat.

Sprinkle flour mixture, 1/4 cup at a time, over meringue, folding in just until flour mixture disappears. Push batter into ungreased tube pan, 10 x 4 inches. Cut gently through the batter with a metal spatula.

Bake until cracks feel dry and top springs back when

touched lightly. 30 to 35 minutes. Invert pan on a proof funnel; let cake cool. Cake is cold.

Chocolate Fluff

3 cups chilled whipping cream
1-1/2 cups powdered sugar
3/4 cup cocoa
1/4 teaspoon salt

Beat all ingredients in chilled bowl until stiff.

Chocolate Triangles

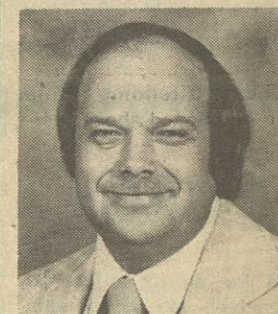
Heat 1 bar (1/2 lb.) sweet cooking chocolate over low heat until melted. Spread over outside of square pan, 8 x 8 inches. Refrigerate until firm; bring to room temperature. Cut into squares diagonally. Separate halves for triangles. Refrigerate until ready to use.

1/2-cup servings.
1 cup serving is 1/2 cup.

The first railroad in Iuka had wooden tracks.

BORROW ON YOUR INCOME TAX REFUND

\$50, \$100, \$150, \$200, \$250, \$300, \$350, \$400, \$500



CALL
CARL BOOKER

1st
C

1st CITIZEN LOANS, INC.
214 E. Quitman — Iuka, Mis. 38852
601-423-5248

WILLIAMS PEST CONTROL & INSULATION COMPANY

Phillip Williams, Owner
Belmont, Miss.

If you'd like to save money by making your home more energy-efficient, call us. We're experts in home weatherization, and our materials meet TVA standards for financing under "The Energy Package™".



So if you're ready to weatherize your home, ask your power distributor about "The Energy Package™".

Then call us to do the work.

We are also bonded licensed and experienced to take care of all your pest control needs.

Call 454-3388
Day or Night

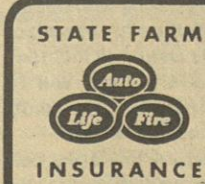
"I back the family insurance I sell with good neighbor service. Call me."



Harold Lomenick

117 Eastport St.
423-5931

Like a good neighbor,
State Farm is there.



State Farm Insurance Companies
Home Offices: Bloomington, Illinois



INSIGHT INTO EYESIGHT

DR. PHILLIP GRAY
OPTOMETRIST

IF INFANT SQUINTS

Parents are frequently concerned that their young children are "squinting". The word itself has two meanings: looking out through partially closed eyes, as when the sun is in our faces; and looking with eyes set obliquely or crossed. It is this last meaning to which they most often refer, crossed-eyes (medically known as strabismus).

In a new baby, focusing ability is limited -- if present at all -- and the eyes tend to swivel around all over the place. This is why a tiny baby will sometimes produce the most disturbing squint. However, as long as this is a temporary thing, it is no cause for concern. As

the baby develops, he or she will gradually learn to move both eyes in harmony.

On the other hand, if it is consistent or persists past the age of six months or so, an optometric assessment would be advisable. The condition itself can be treated either by the use of special glasses and exercises or, in some cases, by surgery to correct the controlling muscles.

In the interest of
better vision from the
office of:

DR. PHILLIP GRAY
105 S. Fulton St., Iuka
Phone 423-3785

3-day
sale



Reg. 35.99

25.88

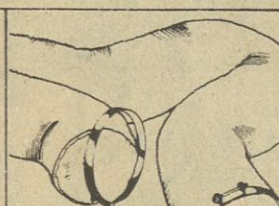
6 Foot Wooden Stepladder. Strong & sturdy. Dowel braced back legs. Fully rodded steps.



Reg. 4.99

2.97

Heat Saver Dryer Vent directs heat back into the home.



Reg. 5.59

3.37

4' x 8' Vinyl Dryer Duct with two clamps. Flameproof.



Reg. 8.49

4.97

17' x 29' Floor Mat. Vinyl base. 21' x 36'.



Reg. .99

.67

Switch Plate & Wall Outlet. Weatherstrip Package. Package of 16.

Sale ends Saturday

FAIRLESS
HARDWARE

IUKA & TISHOMINGO

Florence, Alabama Church Scene Of Brown - Moore Wedding Ceremony



pearls held her waltz length train of silk illusion and was enhanced by a blusher.

Ms. Susie Peck, of Florence, Alabama, served as maid of honor, and Ms. Donna Durham, of Florence, served as matron of honor. Attending as bridesmaid was Lisa Brown, aunt of the bride, of Iron City, Tennessee.

William A. Moore served his son as best man. Groomsmen were John Cleveland, of Sheffield, and Wade Mullin, of Tuscaloosa. Alan Jones, cousin of the bride, of Killen, Alabama, and Charlie Irons, of Florence, were ushers.

Following a reception in the church parlor, the couple left for a wedding trip to Gatlinburg, Tennessee.

They will make their home in Fort Benning, Columbus, Georgia.

Looking Back

These bits of information were taken from The Vidette on January 25, 1945:

Fred A. Hodge, Jr., A.S., who is stationed at Great Lakes, Ill., is home on a nine day leave. He is the son of Mr. and Mrs. Fred Hodge, of Route 1.

Pvt. and Mrs. Leonard Ray announce the birth of their son, Terry Wayne, born January 10, at the McRae Hospital, Corinth. Ray is serving with Gen. Patton's 3rd Army somewhere in Germany.

Sgt. William H. McDougal writes his father, Mr. W.O. McDougal, of Tishomingo, Route 1, that he is now somewhere in the Hawaiian Islands. Sgt. McDougal has been overseas for the last five months.

Sgt. William C. Rhodes writes his aunt, Mrs. Sam Rhodes, that he is now somewhere in France. He also stated that he had received two copies of The Vidette.

Sgt. Edward McRae, who was wounded in New Guinea about six months ago, is now back in the states and is expected home soon. He is the son of Mr. and Mrs. John T. McRae, of Tishomingo.

Cpl. Johnny C. McVay, son of Mr. and Mrs. Kay McVay, of Iuka, is expected home soon. Cpl. McVay has been overseas for the last twenty-four months in the American Theater of Operations.

Cpl. John B. Strickland, who is with Gen. Patton's 3rd Army, writes his mother, Mrs. Grady Strickland, that he is receiving The Vidette now and enjoys reading them very much. Cpl. Strickland has been overseas for the last five months.

Pvt. Russell Bonds, who has been in the Welch Convalescent Hospital at Daytona Beach, Fla., is now at home for a few days. He is the son of Mr. and Mrs. R.E. Bonds, of Paden.

Mrs. Sam Rhodes has just received a letter from her son, Sgt. Howard L. Rhodes, that states he spent Christmas in Belgium and New Years in Luxembourg. Sgt. Rhodes is with the Third Army.

Hubert Beard, First Class Petty Officer, U.S. Navy, from San Diego, Calif., is now home on a thirty day leave. He has been in the Hawaiian Islands, and will report to Providence, R.I., at the end of his leave. He is the son of Mr. and Mrs. Luther Beard, of Iuka.

Mrs. E.F. Barnette received word that her nephew, Charles D. Craddock, has been wounded in France and is now in England in a hospital.

Mrs. Barnette has also had a recent letter from her son, Ted. He is also in France and reports they are having a tough time over there.

Mr. and Mrs. W.T. Gurley, Route 1, Tishomingo, have received a message that their son, T. Sgt. Ben D. Gurley, was reported missing in action in the European area since December 25, 1944. Sgt.

Gurley had only been overseas since the latter part of November.

Mr. Tom J. Murphy, of Iuka, Route 1, received a letter from his son, Sgt. William T. Murphy, on Friday of last week stating that he was back in the States.

Mrs. Wiley Mosely Robinson, of Memphis, was the guest of Mrs. Whit Dean last weekend.

Mrs. Elizabeth Brabo returned Monday from Wichita Falls, Texas, after spending three weeks with her husband, Pfc. Bertie E. Brabo, at Sheppard Field.

Mrs. Julia C. Underwood, of Iuka, was the guest of her sister, Mrs. Maggie C. Gray, of Dennis, last weekend.

Mrs. Herschel Blackard and son have returned home after being with her husband, Cpl. Herschel Blackard, for some time. Cpl. Blackard is stationed in Greenville, S.C.

Miss Virginia Underwood and Mrs. J.C. Underwood, both who are employed at Selma, Ala., were the guests of Virginia's parents, of Route 1, last weekend.

Mr. Willard Hendrix was home on furlough last weekend. He is stationed in the Navy.

Mr. and Mrs. Grover Hardy, of Tishomingo, visited her father, Mr. C.G. Stephens, last week.

Mrs. J.F. Frye, of Lake Cormorant, Miss., spent last week with her father and sister, returning to her home on Saturday.

Mr. and Mrs. W.D. Underwood were the dinner guests of the Browning family last Sunday.

Mr. and Mrs. Bill Johnson, of Cairo Community, spent last Sunday night with Mr. and Mrs. John Pollard.

Kroger Stores Celebrated National Meat Week

Kroger Food Stores in this area celebrated the 80th Anniversary of the combining of meats and groceries under one roof during National Meat Week, which was January 27 to February 2.

Kroger joined others in the meat industry in the second annual celebration of

National Meat Week. The observance was sponsored by the American Meat Institute, its member companies, and related industry organizations to highlight meat's important role in the diet.

Back around the turn of the century, grocery stores sold groceries and meat markets sold meat, and ne'er did the twain meet. But Barney Kroger believed that homemakers deserved the convenience of buying fresh meat and groceries at one location -- so he became the first grocer in the country to also sell fresh meat, a revolutionary step in food merchandising.

Meats began to be sold routinely along with groceries, and the modern one-stop-shopping supermarket with its array of 200 kinds and cuts of fresh meat had its genesis. And that doesn't count the broad assortment of sausages, poultry and seafood that make up a modern meat department.

As was the case 80 years ago when Barney Kroger was the first to combine meats and groceries under one roof, supermarkets today respond to consumer research in what and how they offer meats to the shopper.

Kroger, which interviews more than 200,000 consumers every year as to what they want in a supermarket, finds that one out of every five shoppers thinks first of the quality and price of meat when deciding where to shop. For Kroger, that adds up to 400,000 customers a day who put meat first on their shopping list. And the value of meat sales running at an annual rate of excess of \$2 billion.

What are some of the ways in which Kroger has succeeded by responding to consumer research?

--Sometimes it's a simple convenience, or a style that families prefer. In Texas, for example, shoppers asked for bacon-wrapped tenderloin steaks, ready for the broiler. Throughout Kroger area, sales of deli meats tripled when Kroger began shaving the meat instead of slicing it.

--Wider variety. Several years ago, Kroger research highlighted an emerging market for veal and lamb -- a market that has continued to

grow and broaden.

--Service. More and more Kroger stores contain service meat shops which provide personalized custom-cutting service. While meat cutters at any of the company's stores will provide basic cooking information, as well as special cuts and sizes on request (routinely including slicing of hams, grinding meat, or boning of chicken breasts for free, but also including fancy cuts, even a crown roast), these custom counters provide the old-time friendliness of a meat cutter on the scene.

--Changing consumer preferences. More than two-thirds of beef sales now are represented by boneless cuts, up from one-half just two years ago.

Many changes are coming too from meat producers -- for example, the fat content of pork has been reduced from 14% of the hog in the early 1950's to 6% today, while retaining flavor and tenderness and the many nutrient qualities of pork.

Another note of good cheer for consumers: the meat price outlook is favorable. Although beef and pork supplies in the first quarter of 1985 are expected to be slightly below last year, prices are holding steady. Later in 1985, the low price of feed grains is expected to encourage farmers to increase production, particularly of hogs and chickens -- adding up to favorable meat prices for the consumer.

Lunch Menus

Tish. County Schools

February 11-15

MONDAY

Steak sandwich
Lettuce & tomato
Shoe string potatoes
Dill spears
Carrot sticks
Applesauce cake
Milk

TUESDAY

Corn dogs
Mixed vegetables
Natural cut potatoes
Coleslaw
Blueberry muffins
Milk

WEDNESDAY

Lasagna
Green salad
French Bread
Sliced pineapple
Milk

THURSDAY

Fried chicken
Whole kernel corn
Blackeyed peas
Buttered rolls
Jello
Milk

FRIDAY

Beef stew
Choice of sandwich
Crackers
Peach halves
Milk

Happy Valentine's Day
From
School Food Service
Staff

New Arrival

Debra Faye Brown, daughter of Mr. and Mrs. Joe Brown, of Florence, Alabama, became the bride of Roger Andrew Moore, of Sheffield, Alabama, on Saturday, January 26, 1985, at 8:24 p.m. at the First United Methodist Church of Florence. Dr. Allen Montgomery officiated at the ceremony.

Saturday, January 26, 1985.

The bride is the granddaughter of Mr. and Mrs. C.L. Jones, of Florence; Mrs. Hudie Brown, of Iuka, and the late Robert L. Brown.

Given in marriage by her father, the bride wore a white dress of Nottingham lace over taffeta that featured a scalloped V neckline and puffed, ruffled sleeves. The full skirt was highlighted by row upon row of tiers and flounces, outlined in satin ribbon and flowed into a cathedral length train. Her bouquet was of orchids, daisies and roses attached to the white Bible her mother carried on her wedding day.

Her picture hat of lace and joining hands and singing, "Bless Be The Tie That Binds". Dorothy Hayes closed the meeting with prayer. The next meeting will be in the home of Mrs. Glenda Johnson.

Genealogy Seminar

North Carolina Genealogy will be the subject of a seminar on March 9, 1985 at the Greenwood-Leflore Civic Center between the hours of 9:30 a.m. and 4:00 p.m. Mrs. Stahle Linn, of Salisbury, N.C., a certified and registered genealogist, past President of the N.C. Genealogical Society and a founding member of the NCGS. A former editor of the NCGS Journal, Mrs. Linn is the author of 15 genealogical books; several of these books have won awards from genealogical societies.

Mrs. Linn has been a major speaker at the National Genealogical Society Conference in the States and at the National Archives, at Samford University and at many workshops across the country. She is also a member of a number of hereditary societies.

To attend this seminar please send a registration fee of \$10 (\$12.50 after Feb. 28) to the Greenwood-Leflore Public Library, 405 W. Washington, Greenwood, MS 38930. A catered lunch will be available for \$5.50; reservations for lunch must be made before Feb. 28.

Harmony

Homemakers

Meeting

The Harmony Homemakers met on January 29, in the home of Delma Dean. Dorothy Dean, President, called the meeting to order and read the thought for the month. "Eyes are where they are for looking ahead". Vada Kay read the "Council Collect" by Mrs. Russell C. Tolbert. Delma Dean led in prayer. Marquita Greenaway gave the focus topic on "Taking Financial Inventory". A reading was given on Care of the Feet and What Apples Can Do For You. The secretary gave the financial report on "Money Spent & Money On Hand". Business was filling out year books. Pamphlets were handed out on "Funeral Shopping Made Easier". Quay Rushing was winner of the door prize.

One new member was added to the roll, Opal Dean.

Those attending, other than mentioned above, were: Dugdar Daniel, Margie Davis, Lois Tucker, Nedra Walker, Joyce Robertson, Ora Cresap, and Glenda Johnson.

The meeting adjourned by singing.

Flower Specials

ROSES, CARNATIONS, ALL KINDS OF CUT FLOWERS, WE HAVE VALENTINE CONTAINERS, CERAMIC HEART & ROSE BOXES, WE ALSO HAVE BALLOONS

IUKA FLORIST

423-9208

THE GREATEST SWEATER SALE THAT EVER CAME TO THIS AREA!



100'S TO CHOOSE FROM... \$8
ANGORA, SILK, WOOL AND ACRYLIC BLENDS
VALUES TO \$32.00

THE SECOND SHOPPE

611 ELM SHOPPING CENTER -- IUKA, MISS.



EEL SKIN WALLETS FOR HIM THIS VALENTINES DAY
REG. \$27.00
REDUCED \$24.00
Ken Moore
(601) 423-2269

FULL SIZE FORD CROWN VICTORIA



Compared to the Oldsmobile Regency 98 and Buick Electra, the only down-sized feature is the price.

\$3,597 LESS THAN OLDS 98*

\$3,256 LESS THAN BUICK ELECTRA*

PLUS BIGGER OUTSIDE--BIGGER INSIDE A V-8 ENGINE, STANDARD!

OTHER FEATURES

- Electronic fuel injection
- Automatic Overdrive transmission
- Quad halogen headlamps
- Cloth seating surfaces
- 16 oz. luxury cut-pile carpeting
- Stereo radio with 4 speakers

*Based on a comparison of manufacturers' suggested retail price of base vehicles, title, taxes and destination charges not included. *Based on EPA Interior Volume Index.

See your Ford Dealer now.



McNATT FORD, INC.

HWY. 25 SOUTH, IUKA, MISSISSIPPI

NO PRICE INCREASES AT YOUR FORD DEALER

Nelson super market

AD EXPIRES FEBURARY 13, 1985

Quantity Always Reserved



BRYAN ALL — MEAT SLICED
BOLOGNA
12 OZ. **\$1.19**

SUITORS SLICED
BACON



LB. **\$1.49**

FRESH
**CHICKEN
LIVERS**

LB. **59¢**

HYDE PARK
WIENERS

12 OZ. **\$1.19**

BREADED CHICKEN BREAST

TENDERLOINS

12 OZ. **\$2.79**



HYDE PARK WHOLE HOG

SAUSAGE

\$1.39
LB.

U.S. CHOICE BONELESS SHOULDER

**SHOULDER
ROAST** LB. **\$1.39**

BONELESS

**SHOULDER
STEAK** FAMILY PACK
LB. **\$1.59**

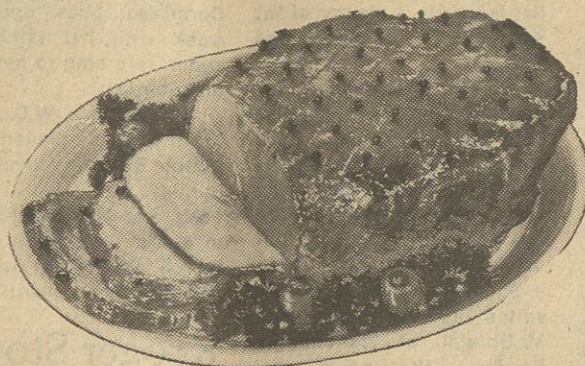
BONELESS

**BEEF
STEW** LB. **\$1.59**



FRESH

**GROUND
CHUCK** LB. **\$1.49**



HYDE PARK

**CANNED
HAMS**

3 LB. **\$4.99**

BREADED

SHRIMP

8 OZ. BOX **\$1.79**

FAMILY PACK

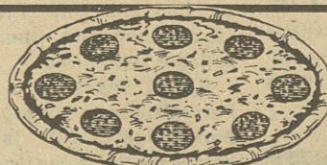
**TATER
STICKS**

LB. **89¢**

RENO'S SAUSAGE

PIZZA

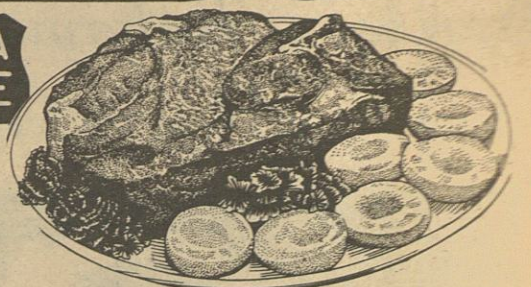
EACH **\$1.49**



WHOLE SMOKED

PICNICS

LB. **99¢**



U.S. CHOICE BONELESS

**CHUCK
ROAST**
LB. **\$1.29**

CHUCK TENDER

STEAKS

LB. **\$1.99**



REELFOOT

**HAMBURGER
STEAKS**



LB. **\$1.59**

FAMILY PACK

**LEG
QUARTERS** LB. **45¢**

FRESH

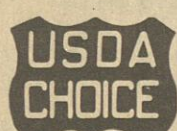
**CHICKEN
THIGHS** LB. **49¢**

FRESH

DRUMSTICKS
LB. **69¢**

FAMILY PACK

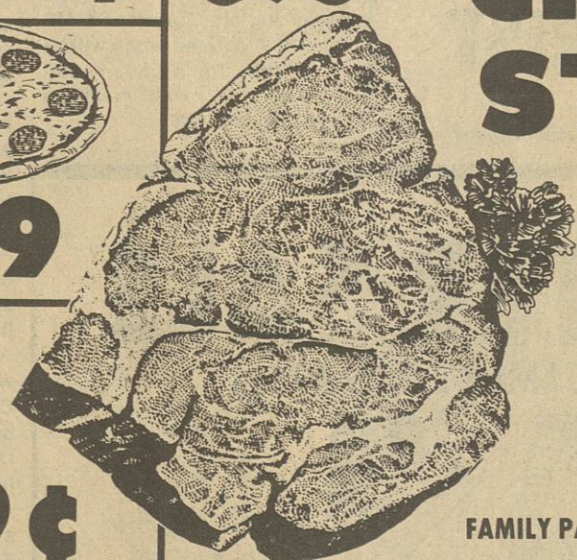
**CHICKEN
NUGGETS** LB. **\$2.39**



U.S. CHOICE BONELESS

**CHUCK
STEAK**

\$1.49



FAMILY PACK LB.

PRODUCE SPECIALS

WASHINGTON EX-FANCY RED AND GOLDEN

APPLES
LB. **59¢**

RED DELICIOUS, GOLDEN DELICIOUS, & RED YORK

APPLES
3 LB. BAG **99¢**



IMPORTED FROM CHILE

**RED
PLUMS** LB. **99¢**

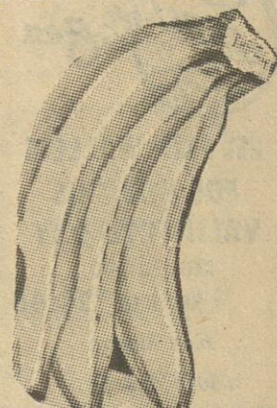
PEARS LB. **59¢**

FLORIDA CRISP

CELERY STALK **25¢**

U.S. NO. 1

**RED
POTATOES**
10 LB. BAG **99¢**



DELMONTE GOLDEN RIPE

BANANAS 3 LBS. **\$1.00**

MEDIUM
**YELLOW
ONIONS**

3 LB. BAG **59¢**

CANADIAN WAXED

RUTABAGAS 4 LBS. **\$1.00**

RUSSET

POTATOES 90 CT. SIZE
LB. **29¢**



HOT BUYS FOR COLD WEATHER



<p>AUNT JEMIMA</p> <p>CORN MEAL</p> <p>5 LB. 89^c</p> 	<p>HYDE PARK PURE CONE</p> <p>SUGAR</p> <p>LIMIT 1</p> <p>79^c</p> <p>WITH \$15.00 ADD. PURCHASE EXCLUDING TOBACCO & DOG FOOD</p> 	<p>LIPTON</p> <p>TEA BAGS</p> <p>100 CT. \$2.39</p> 	<p>SOFT N PRETTY</p> <p>BATH TISSUE</p> <p>4 ROLL PKG. 99^c</p>
<p>JIF</p> <p>PEANUT BUTTER</p> <p>22 OZ. \$1.69</p> 	<p>BONUS JAR</p>	<p>KRAFT REAL</p> <p>MAYONNAISE</p> <p>32 OZ. \$1.69</p> 	
<p>PURINA BONUS BAG</p> <p>DOG CHOW</p> <p>30 LB. BAG \$7.99</p> 	<p>SHOP AND SAVE AT NELSON'S</p> <p>DUNCAN HINES</p> <p>SOFT COOKIES</p> <p>12 OZ. BAG \$1.49</p>	<p>MARTHA WHITE</p> <p>FLOUR</p> <p>5 LB. 69^c</p> 	<p>AMERICA'S FAVORITE TIDE</p> <p>LAUNDRY DETERGENT</p> <p>49 OZ. \$1.89</p> 
<p>TEXSON UNSWEETENED PINK GRAPEFRUIT</p> <p>JUICE</p> <p>46 OZ. 99^c</p>	<p>COCA-COLA</p>	<p>COCA-COLA</p>	<p>NESTLES POWDER CHOCOLATE</p> <p>QUICK</p> <p>32 OZ. \$2.99</p> 
<p>FRENCH'S WORCESTERSHIRE</p> <p>SAUCE</p> <p>13 OZ. 99^c</p>	<p>DR. PEPPER & RELATED PRODUCTS</p> <p>3 LITER</p> <p>\$1.19</p> 	<p>DR. PEPPER & RELATED PRODUCTS</p> <p>6 PKG. 1/2 LITER</p> <p>99^c</p> 	<p>NESTLES QUICK CHOCOLATE</p> <p>SYRUP</p> <p>22 OZ. \$1.39</p>
<p>CLASSIC PICKLES BREAD 'N'</p> <p>BUTTER</p> <p>24 OZ. \$1.19</p>		<p>PLUS DEPOSIT</p>	<p>EQUAL</p> <p>SWEETNER</p> <p>50 CT. \$1.79</p>
<p>ONION</p> <p>SOUP MIX</p> <p>2 CT. PKG. 89^c</p>	<p>ADAMS FROZEN</p> <p>ORANGE JUICE</p> <p>12 OZ. CAN 99^c</p> 	<p>EAGLE BRAND</p> <p>CONDENSED MILK</p> <p>14 OZ. \$1.19</p> 	<p>KLEENEX SOFTIQUE</p> <p>FACIAL TISSUES</p> <p>225 CT. \$1.19</p>
<p>WHEATEN RAINBOW BRITE</p> <p>CEREAL</p> <p>11 OZ. \$1.79</p>			<p>WISK HEAVY DUTY LIQUID</p> <p>DETERGENT</p> <p>32 OZ. \$1.49</p>
<p>GENERAL MILLS</p> <p>FRUIT BARS</p> <p>4.8 OZ. \$1.69</p>			<p>JIFFY POP BUTTERED</p> <p>POPCORN</p> <p>5 OZ. 69^c</p>
<p>TOVE TOP</p> <p>STUFFING</p> <p>7 OZ. 89^c</p>			<p>KRAFT VELVEETA CHEESE</p> <p>SPREAD</p> <p>2 LB. \$3.99</p>
<p>WISCONSIN CHICKEN</p> <p>BREAST & CHUNKS</p> <p>12 OZ. \$2.49</p>			<p>SEALTST LIGHT N LIVELY</p> <p>COTTAGE CHEESE</p> <p>24 OZ. \$1.59</p>
<p>FREEZER QUEEN</p> <p>FROZEN ENTREES</p> <p>EXCEPT BEEF</p> <p>\$1.69</p> <p>2 LB.</p> 	<p>BUSH'S BEST</p> <p>GOLDEN HOMINY</p> <p>15 OZ. 4/\$1.00</p> 	<p>SEALTST</p> <p>SOUR CREAM</p> <p>8 OZ. 2/99^c</p> 	<p>BLUE BONNET</p> <p>MARGARINE</p> <p>QUARTERS</p> <p>1 LB. PKG. 59^c</p> 
<p>MAXWELL HOUSE</p> <p>COFFEE</p> <p>1 LB. BAG \$2.19</p> 		<p>SEALTST LIGHT N LIVELY</p> <p>YOGURT</p> <p>6 OZ. CUP 3/99^c</p> 	

CLASSIFIED ADS get action

CLASSIFIED ADS

\$2.50 per week for 30 words. After the first 30 words, 5¢ extra per word. \$1.00 extra with border
Card of Thanks and In Memoriam - 5¢ per word
Classified Ads, Cards of Thanks and In Memoriams must be paid in advance
50¢ service charge will be added to any monthly bill totaling less than \$5.00

PHONE 423-3666

ERRORS

Should be reported immediately as The News can be responsible only for the first incorrect insertion in any advertisement. The News cannot be liable for error in any advertisement to a greater extent than the cost of the space occupied by the items in the advertisement.
All display advertising must be in the News office by 12 o'clock noon on Tuesday.

SPRUCE UP THE BATHROOM... It cost very little when you select a beautiful oak or birch vanity with marble top from our large selection. Prices start as low as \$29.95. See Kathryn Smith at Smith's Discount Interiors, Hwy. 72 East, next to OK Tires. 286-6430. J-10-tfn-c.

FOR SALE BY OWNER — 3 BD, 1½ bath on 22 acres. Full basement, 2 FP w/inserts, built-in kitchen, double carport, 3480 Sq. Ft. Many other features - \$69,000. Phone 423-5827. J-17-24-31-F-7-p.

LARRY'S MOBILE HOME SERVICE - Local and long distance moving, Kool Seal, anchors, blocking, leveling. Call Larry at 423-3258. O-7-tfn-chg

AUTOMOBILES FOR SALE — Buy here, pay here, credit is no problem. McKinney Used Cars, 703 Tate St., Corinth - 286-6944. M-1-tfn-c.

FOR SALE — House, Barber Shop, storage building, 50 ft. tower comp. want, rotor, booster, 10 acres land. Located in Harmony Community, west of Iuka. Shown by appointment. Call Tommy Tucker at 423-9784. J-10-tfn-c.

FOR RENT — Flashing Arrow Signs. \$50.00 plus tax. Call 728-5460 or 728-5674 in Booneville, or in Belmont call 454-7128. M-21-tfn-c.

FOR SALE — 3 BD, 2 bath home located on 3 acre lot on blacktop road in the City of Belmont, MS. Good interest rate available if buyer qualifies. Call 286-5872 Monday - Friday, 8 a.m. - 4:30 p.m. J-31-M-21-c.

FOR SALE — 85 acre farm; 18 acres open, balance in marketable timber; finished, partially furnished live-in basement, house can be built on top to suite, 2 block and 1 metal out-buildings with attached sheds, 1 designed as modern kennel, fruit and nut trees, paved road - \$60,600. Call 423-5217. M-10-tfn-c.

FOR SALE — 99 acres of land located east of Midway. All under fence. Call (205) 356-4856. A-16-tfn-c.

WANTED TO BUY USED FURNITURE & ANTIQUE FURNITURE Also, glassware. We buy just about anything. Cleaning your house or attic out, give us a call. Capleman's Antiques. Phone 423-9962 nights, 423-5640 or 423-6836. J-7-tfn-c.

BRIGHTEN YOUR HOME... With light fixtures from our selections. All are prices at ½ of the suggested retail price. See Kathryn Smith at Smith's Discount Interiors, Hwy. 72 East next to OK Tires. 286-6430. J-10-tfn-c.

GOOD SELECTION — BEST PRICES... On top quality carpets and vinyl floor covering. Carpet prices are slashed for our "Get Acquainted" Sale. Free estimates and expert installation. See Kathryn Smith at Smith's Interiors, Hwy. 72 East next to OK Tires. 286-6430. J-10-tfn-c.

ANTIQUE FLEA MARKET to be held February 15, 16 & 17, in Corinth. Dealer Booth Information 287-5112. J-31-F-7-14-c.
FOR SALE OR RENT with option to buy - 3 BD house in Coleman Park Subdivision. Call 462-7612. J-3-tfn-c.

TRIM OFF POUNDS with GoBese Grapefruit Extra Strength Capsules and E-Vap Tablets. Rushing Drugs, Downdown Iuka. J-31-F-7-14-21-28-p.

FOR RENT — 2 BD apartment located on 365 Highway South in Burnsville. Call 427-8725 or 423-9246. J-3-tfn-c.

PUBLIC SALE NOTICE
Unclaimed School Orders Due to school budget cuts, Necchi Education Department is releasing to the public a limited number of new 1984 heavy duty sewing machines with built-in utility and decorative stitches - Sews on all fabrics - even leather. Regular \$429.00 - Now Only \$198. Carter Fabrics, Booneville, MS. 728-2485, Hwy. 30 East, behind Big Star.
J-31-A-25-p.

FREE — Double mats with all pictures - needlework framing. Until February 28th. Mrs. Joe Weaver, Glen, MS. Phone 287-8771. ½ mile west of Glen P.O., north at Dillingham's Store, ¼ mile. J-31-F-7-14-21-c.

FINANCING AVAILABLE... On anything and everything for your home. Payments will always be extremely low and you will purchase products from our store at truly discount prices. Over 25 years experience. See Kathryn Smith at Smith's Discount Interiors, Hwy. 72 East, next to OK Tires. 286-6430. J-10-tfn-c.

FOR SALE — Love Seat Hide-A-Bed. Good condition. If interested call 423-9867 after 1:00. J-24-tfn-c.

WANT NEW KITCHEN CABINETS? See Kathryn Smith and she will help you plan your kitchen layout and offer you custom-built factory cabinets at about ½ the price you would expect to pay. Smith's Discount Interiors, Hwy. 72 East, next to OK Tires - 286-6430. J-10-tfn-c.

IT'S "SECOND SATURDAY WEEKEND" at the Trade Center! Free Groceries. Free Valentine Candy. Over 50 dealers with wholesale produce, discount groceries and the biggest and best selection of Valentine gifts ever! All day Friday and Saturday at the Trade Center, Corinth's most unique shopping mall. Corner of Cass and Cruise. 287-4860. F-7-c.

FOR SALE — AKC Registered German Shepherd Puppies. Black with tan. Call 423-3802. F-7-14-c.

NEW & REBUILT VACUUM CLEANERS — \$25.00 & Up. Choose from Kirby, Electrolux, Eureka, Hoover & others. We repair all makes & models of vacuum cleaners. Our rates are low and our work is guaranteed. Brooks Sewing & Vacuum Center. 307 Hwy. 72, Corinth, MS. 287-6270. F-7-tfn-c.

INCOME TAX
CHESTER CALLAHAN
287-7112
SPECIAL
\$6 1040A
Short Form
Across from Gardner's
2001 Hwy. 72 E., Corinth

UPHOLSTERING CENTER
Quality fabrics to chose from. Free pick-up and delivery, all work guaranteed. Furniture and boats. Wallace E. Anglin, Hwy. 25 South. Call 423-3843. O-21-tfn-c.

FOR RENT — Nice, 3 BR, 2 bath house - \$200.00 per month. Located on Rutledge Salem Road. Call 423-9586 or 423-5779. F-7-c.

—NOTICE—
I will no longer be responsible for any debts other than my own as of February 7, 1985.
ANTHONY MEDLEY
F-7-14-21-p.

GOVERNMENT JOBS.
\$15,000 - \$50,000/yr possible. All occupations. Call 8-805-687-6000 Ext. R-5131 to find out how.
F-7-14-21-28-p.

DIAMOND JEWELRY
We are offering a wide selection of diamond jewelry at drastically reduced prices. These pieces of diamond jewelry are manufacturer's close-outs. This is a great time to get in on early Christmas savings for next year. You can't afford not to see these items if you have considered buying any diamond jewelry. Heritage Jewelry, 617 Elm Shopping Center, Iuka, MS. F-7-c.

SLIM & TRIM NUTRITIONAL PROGRAM with natural herbs. Effective weight loss of 10-29 pounds per month. The herbs naturally curb the appetite and naturally cleanse the system. Supplies all day nutrients. 100% satisfaction guaranteed, 100% natural and nutritional. Phone 423-6675. F-7-c.

MUST SELL — REDUCED BELOW ESTIMATED — 2 BR, block house with 2 acres of land. Owner will carry contract, small down, small monthly at 10%. Located approximately 3 miles west of Iuka on Hazard Road. Has community water and paved road. Call 423-5555 or 1-588-6952. J-31-F-7-14-21-p.

FOR RENT — 2 BD, 1 bath house in country, off Coleman Park Road - \$125.00 per month. Call 423-6703 after 5:00 p.m. J-3-tfn-c.

DOORS MAKE A ROOM... And you can see one of the largest and best selections at our new store. All types of exterior and interior units. We build our own and you purchase at wholesale. See Kathryn Smith at Smith's Discount Interiors, Hwy. 72 East next to OK Tires. 286-6430. J-10-tfn-c.

EXPERT BODY REPAIR

WINDSHIELDS REPLACED
COMPLETE PAINT JOBS

24 HOUR WRECKER SERVICE
DAY PHONE 423-3622
NIGHTS 423-1057

MARLIN-MOORE CHEVROLET, INC.

104 HWY. 25 NORTH.....IUKA, MS

P. O. BEARD AGENCY
SINCE 1964



400 WEST
EASTPORT ST.

Energy saving 2 story colonial on almost 1 acre. 3 BR, 2½ baths, den w/fireplace. Only \$5000. down buys this beautiful Independence Square home. Listed at \$49,000.

On Snowdown Rd. This 3 BR, 2 bath, brick on 1.6 acres is an exceptional buy. Living room w/bay window, spacious kitchen-den combination. Only \$40,000.

Great family place in this modernized older home in city limits. Large family room with wood stove for economy. Three BR, 2 baths. Excellent location, and only \$45,000.

Stone, 2 BR, 1½ baths, on Hwy. 25 North - in city - \$32,500. Additional acreage available if desired.

Phone 423-5253
P.O. Beard-Realtor, Appraiser, Registered Forester
Nancy Beard - Realtor Associate
Phone 423-5251
Rilla Wiley, Realtor-GRI
Phone 423-5252
Don Cowell, Salesman
Phone 423-9349

MANY OTHER LISTINGS
CALL FOR FREE INFORMATION ON BUYING OR SELLING

FOR RENT — 3 BD mobile home located on 365 Hwy. in Burnsville. \$95.00 per month. Call 427-8725 or 423-9246. J-3-tfn-c.

WANT TO RENT OR BUY — Two short pageant dresses - size 18 months, 24 months or 1 Toddler. Also, size 6X or 7. Call 205-356-4310 after 5 p.m. F-7-c.

—LEGAL NOTICE—
IN THE CHANCERY COURT OF TISHOMINGO COUNTY, MISSISSIPPI
VACATION TERM, 1985
IN THE MATTER OF THE LAST WILL AND TESTAMENT OF JAMES ODELL YARBROUGH, DECEASED
NO. 9719
NOTICE TO CREDITORS

The undersigned having been appointed the executor of the estate of James Odell Yarbrough, deceased, by the Chancery Court of Tishomingo County, Mississippi in Cause No. 9719 on the docket of said Court, on the 31st day of January, 1985, hereby gives notice to all persons having any claim against the said estate to have the same probated and registered by the Clerk of the Chancery Court of Tishomingo County, Mississippi, within ninety (90) days, and failure to probate and register for this period will bar the said claim.

WITNESS MY HAND AND SIGNATURE, on this the 31st day of January, 1985.
DAVID A. YARBROUGH, EXECUTOR

HAROLD S. JACKSON
ATTORNEY AT LAW
POST OFFICE BOX 414
IUKA, MISS. 38852
(601) 423-5227
F-7-14-21-c.

—LEGAL NOTICE—
EXECUTOR'S NOTICE TO CREDITORS OF MARION CLARICE McDONALD

Letters Testamentary having been granted on the 17th day of January, 1985, by the Chancery Court of Tishomingo County, Mississippi, to the undersigned upon the estate of Marion Clarice McDonald,

NEW 2 BR, mobile home, delivered and set up on your lot - \$8995.00. Clayton Mobile Home Factory Outlet, Hwy. 64 East, Savannah, TN (901) 925-1083. Open Monday through Saturday, 9 a.m. - 5 p.m., and Sunday 12 noon until 5 p.m. J-17-tfn-c.

deceased, notice is hereby given to all persons having claims against said estate to present the same to the Clerk of said Court for probate and registration according to law within 90 days from this date, or they will be forever barred. This 17th day of January, 1985.

/S/ R.E. (GENE) JOURDAN, EXECUTOR
J-24-31-F-7-c.

Free Tax Assistance To Community Groups

Free income tax assistance is available to groups of taxpayers at convenient times and locations in the community, the Internal Revenue Service announced.

Known as Outreach, this group assistance program is designed to help taxpayers prepare their own returns, according to District Director Sylvia Wren.

Outreach offers group self-help assistance sessions, where an IRS assistant leads a group of taxpayers through the return line-by-line. Outreach also offers tax information seminars, highlighting recent changes in the tax law, followed by a question and answer session.

Locations where Outreach group assistance is offered can be obtained by calling toll-free 1-800-424-1040.

ONE ONLY
Double wide mobile home for the price of a single wide. 3 BR, 2 full bath, microwave and ceiling fan. Delivered and set up for \$15,500. Clayton Mobile Home Factory Outlet, Hwy. 64 East, Savannah, TN. Phone (901) 925-1083. Open Monday through Saturday, 9 a.m. - 5 p.m., and Sunday 12 noon until 5 p.m. J-17-tfn-c.

HERITAGE CABLEVISION
Watch for the new Cablevision Channels coming to the Iuka viewing area in January, 1985. Heritage Cablevision. D-6-tfn-c.

SOUTH'S BODY SHOP
Has now added used cars as part of their service to the public. Large selection. Located 2 miles west of Midway on Hwy. 364. Phone 423-5423.

CLAYTON MOBILE HOMES
The number 1 selling mobile home seller in the State of Tennessee, invites you to shop our Factory Outlet in Savannah, Tenn. If we don't have it on the floor, we will order it for you from one of our 7 Tennessee factories. Factory tours also available during the week on request. Buy em where we build em. Clayton Mobile Home Factory Outlet, Savannah, Tenn., Hwy. 64 East. Phone 901-925-1083. Open daily, Saturday 9-5, and Sunday 12-5. O-25-tfn-c.

The average daily issue of the Congressional Record contains more than four million words — about equivalent to 100 novels — yet it's printed and published overnight.

Having Us Prepare Your Tax Return Could Mean a Bigger Tax Refund For You

WALK-INS OR APPOINTMENTS
423-9137

1415 HWY. 25 SOUTH

H&R BLOCK
THE INCOME TAX PEOPLE

Dailey's Body Shop and Wrecker Service

BURNSVILLE, MISSISSIPPI

PHONE

Day 427-9234

Night 427-8449

Expert Body Work - 24 Hour Service
BURNSVILLE

MOORE'S BODY SHOP & WRECKER SERVICE

24 Hour Wrecker Service

DAY PHONE 423-5130

NIGHT - WEEKENDS

HOLIDAYS

423-5244

EXPERT BODY REPAIR



Need Appliance Parts or repair

CALL

GANN BROTHERS
Furniture & Appliance
Sales & Service

COME BY OUR SERVICE DEPARTMENT AND

SEE JACKIE BRIDGES FOR FAST EFFICIENT SERVICE.

427-9506 IN BURNSVILLE

The **STIHL** Wood Boss



STIHL \$299.95
THE WORLD'S LARGEST SELLING CHAIN SAW

NELSON'S
MARINE & HARDWARE

HIGHWAY 25 SOUTH IN IUKA

423-44

THE
Long Davis
COMPANY
REAL ESTATE
423-3555

1415 Highway 25 South
Iuka, Mississippi 38852
Grace Long, Realtor-GRI-423-6584
Beth Davis, Realtor-GRI-423-9543
Dianne Ables-Realtor Assoc.-423-5262

Drastically reduced! Remodeled 3 BR home in quiet country setting - Only \$22,000.00.

BELMONT — Neat brick home with greatroom plan, 3 BRs, nice neighborhood.

Beautiful family home in perfect neighborhood. It offers 4 BRs, living area w. FP & built-ins, formal dining w. parquet. \$55,900.00.

Home-buyer's dream - Move-in condition, great 3 level floor plan, pool - \$65,000.00.

Belmont - Great for beginners - Living area w. FP, 2 BRs, pool, great area - \$32,000.00.

What a beautiful home! 2 BR cedar w. spacious living area & FP, lovely country kitchen - \$35,500.00.

Need a tax break? Ask about this duplex w. great income potential. Good area - \$27,500.00.

Three BR brick in the 20's! Neat greatroom plan, wallpaper, patio - \$27,500.00.

Enjoy quiet country living in this 3 BR brick with spacious family room, FP, new carpets - Indian Creek Rd. - \$35,000.00.

Close to school - 3 BR brick, large bath, patio, oversized corner lot - \$35,000.00.

Extra nice cedar home at the end of a quiet street, spacious rooms, deck, fenced back yard - \$45,000.00.

Convenient to shopping - 3 BR brick & cedar, 2 baths, large living-dining area, corner lot - \$41,500.00.

Great family home with large country kitchen, formal living room, den, new paint & floor coverings, 1.7 acres, Snowdown Rd. - \$39,900.00.

100 acres - Harmony Rd. \$425. per ac.

RENTALS — APPRAISALS



Spring Hand — snow ceased on Monday, it was far from disappearing as these luka

residents found. Ken Moore (standing) and Myra Barnes (right) assisted Camille Chaffin (seated), who found that

the snow was also very "slick"!

JOB OPENINGS LABOR SURVEY

NATIONAL SUPPLIER OF MEN'S AND WOMEN'S CLOTHING WILL BE TAKING A LABOR SURVEY AT THE BURNSVILLE CITY HALL FROM 9 A.M. - 5:00 P.M. ON FRIDAY, FEBRUARY 8, 1985.

NO EXPERIENCE DESIRED
TRAINING SUPERVISORS AND MECHANICS

AVERAGE WAGE - \$4.00/HOUR PLUS INCENTIVE
EMPLOYEE HOSPITAL INSURANCE PAID

PAID HOLIDAYS
WEEK VACATION/1 YEAR
STEADY EMPLOYMENT

SPONSORED BY T.C.D.F. AND WORKER
SOURCE CENTER.

Flu Hits State

The flu-like illness reported from throughout Mississippi appears to be influenza virus Type A (H3N2). State Epidemiologist Ed Thompson announced.

The Centers for Disease Control analyzed throat swab specimens from 14 patients last week, and 12 showed the Type A (H3N2) virus. Further tests showed the specimen "are cross-reactive with the A(H3N2) component included in this year's flu vaccine, indicating that the vaccine should confer protection against this strain," Dr. Thompson said.

Physicians statewide have reported large numbers of patients with flu-like symptoms: fever, sore throat, cough, myalgia (muscle aches), weakness, and malaise. Several school systems have experienced

outbreaks, with several hundred students absent on a given day in some localities.

"Although immunization against influenza is most effective if obtained before the flu season begins, persons in the high risk groups for serious consequences from the flu may still benefit from immunization," Dr. Thompson said. People with chronic respiratory illness and those over 65 are considered high risk.

"The vaccine takes about two weeks to produce immunity," he said, "so anyone immunized now should be aware that he may still get the flu if exposed in the first two or three weeks after the flu shot."

Immunization with the flu vaccine is the best protection, but a new antiviral drug available on doctor's orders can often prevent influenza if given promptly after exposure to the flu. Unimmunized persons in the high risk group who are exposed to flu should contact their physician promptly to discuss this possible preventive treatment. If the physician prescribes this drug, treatment must begin in the first day or two of illness to be effective.

Dr. Thompson cautions parents about giving aspirin to children with influenza. In children with influenza, aspirin has been associated with the development of Reye's Syndrome, a rare but serious disorder that affects the liver and brain and can be fatal. He recommended consulting with the family physician since any child with fever may be coming down with flu. Then, for fever and aches, the child may be treated with acetaminophen, available over the counter under the trade name Tylenol, Datril, or others.

ASCS Farm News

By: Henry L. Knox,
County Executive Director

WHEAT CROP RANKED THIRD — The 1984 wheat crop totaled 2.60 billion bushels, the third largest on record and 7 percent over 1983's production, according to USDA's December crop production report. The 66.9-million-acre harvest is 9 percent above the previous year's level. Last year's generally favorable weather conditions produced above-average wheat yields of 38.8 bushels per acre, only six tenths of a bushel under the all time high 39.4 bushels an acre established in 1983. Howard R. Bridges, Chairperson of the Tishomingo County ASC Committee, said wheat growers in Mississippi contributed 25,080,000 bushels to the 1984 wheat crop. To produce the crop, Mississippi farmers harvested 660,000 acres of wheat, averaging 38.0 bushels an acre. In 1983, farmers harvested 600,000 wheat acres and produced a 34.0 bushel crop. Wheat yields averaged 37 bushels per acre. "Price support loans will be available on 1984 wheat until March 31st," Bridges said. The large crop put wheat supplies at a record high, according to USDA, just under 4 billion bushels. However, forecasts for a rise in wheat exports and continued heavy domestic use of wheat will likely result in ending wheat stocks remaining relatively unchanged. Because current supplies are large relative to use, Bridges said wheat

growers may want to consider the wheat acreage reduction program to help reduce carryover stocks to reasonable levels and strengthen farm prices. "For reducing their wheat acres by 30 percent in 1985, we offer wheat growers target price protection at \$4.38 per bushel, national average price support loans at \$3.30 per bushel, and land diversion payments at \$2.70 per bushel," the ASCS official said. Farmers have until March 1, to apply for the 1985 wheat acreage reduction and land diversion program. Check with the Tishomingo County ASCS Office for details.

Tree Planting Week

February 8-14

Will Highlight Value of Trees

When you listen to trees they only whisper, but foresters and other tree conscious people around the State are talking out loud these days about how much trees and timber growing have increased in importance to the State's economy and environment in recent years.

According to the most recent Severance Tax Report (1983) timber was ranked as the second most economically important crop in Mississippi, trailing only cotton. The 1984 Severance Tax figures are not yet available, but timber is likely to remain ranked very high.

And now here comes Mississippi's eleventh annual statewide observance of Tree Planting Week (February 8-14) to point out not only the economic benefits of trees, but also how important they are to our environment, both in rural and urban settings.

In announcing the official dates of "Tree Planting Week in Mississippi 1985" State Forester Robert S. (Sid) Moss has asked that Magnolia Staters reflect on how trees and forests effect each of us as individuals, and to participate in local events planned to honor forestry's contribution to our lives.

Hundreds of tree planting ceremonies conducted by schools, garden clubs and other civic groups are planned for the upcoming special week of observance, according to Moss. He said individual homeowners are invited to take part in a personal way by planting a flowering tree or shrub in their yard for beauty and shade. "Arbor Day on

February 8, (always the second Friday in February) would be an excellent day to do this," the State Forester suggests.

Tree Planting Week is again being sponsored by County Soil Conservation Districts with the cooperation of local garden clubs, agricultural agencies and other civic organizations. As last year, every county in the State is expected to form a Tree Planting Week Committee which will be distributing thousands of free tree seedlings at designated places during the week-long observance. Watch this newspaper and listen for radio and television announcements for more detailed information on plans for Tree Planting Week in this area.

Since 1975, when the first statewide Tree Planting Week observance was held, over nine million trees have been planted by school children alone. An average of about 400 schools and over 75,000 school children across the State are now participating in the statewide event each year.

UNA Offers Band Scholarships

The University of North Alabama music department is preparing for auditions and accepting applications for band scholarships.

Edd Jones, director of bands, said the UNA scholarship offerings range from quarter to full band scholarships.

The recipients are not required to major in music. The awarding of a scholarship and the amount given is

based on the audition and the high school band director's recommendation, Jones said.

Each member of the "Pride of Dixie" marching band has some form of scholarship.

Potential band musicians should contact Jones for tryout information and audition dates.

However, dates have been set for auditions in the UNA band room for Lionettes, majorettes and the flag corps.

Majorette auditions will be Wednesday, March 27, at 6:30 p.m.

Tryouts for the Lionette precision dance line will be Thursday, April 4, at 6:30 p.m.

Drum major auditions will be Saturday, April 20, at 10 a.m. Flag corps auditions will be at 2 p.m. the same day.

For additional information about those auditions, again contact Jones at (205) 766-4100, Ext. 362.

The Problem of The Privilege Tax

Privilege taxes charged to businesses and professional firms are, largely, designed to provide a method of registering and licensing businesses in the local community. Privilege taxes are paid on an annual basis to the municipality or to the county.

But there is an inequity in the privilege tax system and the Mississippi Economic Council has called upon the Legislature to correct the unfairness in the present legislative session.

State statute sets out the privilege tax fees to be paid by the various businesses, with the fee ranging from a low of ten dollars per year for professional firms to as much as one hundred dollars for various other businesses. But, for wholesale and retail business owners, the privilege tax is based on inventory and the inventory is assessed at true value. By statute, privilege taxes on a wholesale or retail business can reach as high as \$1850.

The State Auditor has found that some local governments have been failing to collect the privilege tax and these governments have been notified that they are in violation of the statute.

The Economic Council believes that the state must maintain a tax system which is fair to all taxpayers and it believes it must maintain a system which encourages business expansion.

Correction of the inequity in the privilege tax will help to assure fairness in taxation and will encourage business expansion.

Planning a Wedding,
a Birthday or Any Special Occasion?

Beautiful, delicious
cakes come from us!

We decorate to order!

PHONE 287-8959

7 YEARS EXPERIENCE

REASONABLE PRICES



Words of Appreciation

We would like to express our sincere thanks and appreciation to our many friends and relatives for the prayers, visits, flowers, food, phone calls, and each act of kindness shown to us during the illness and loss of our loved one. In times like these we realize just what it means to have such wonderful friends.

A special thank you to the staff of The Segars Clinic and the staff of Tishomingo County Hospital for all they did for our loved one, to Bro. Perry Murphy and Bro. Arthur Hardin for the kind words spoken, to the Mt. Vernon singers for the beautiful singing, and to the staff of Deaton Funeral Home for the beautiful service.

May God Bless Each of You.

The Adair Hunt Family

Mr. Businessman

WE'VE GOT SOME GOOD NEWS FOR YOU.

TAKE THIS TEST

YES NO

☐ ☐ I would like someone to pay for training our new employees.

☐ ☐ I would like to get tax credit for hiring new people.

☐ ☐ I would like to get financial help to pay some of the costs of upgrading or re-training the workers we already have.

We got some good news for you and it won't cost you a cent. No red tape. No hassels. No obligation. Just give us a call.

CALL TOLL FREE 1-800-334-4478

PRIVATE INDUSTRY COUNCIL

Prescriptions
for Peace
of Mind:



Quitters never win. Winners never quit.

CURTIS DRUG CO.

Elm Shopping Center
619 Hwy. 25 South
Iuka, Miss. 38852
PHONE 423-3676

Monday - Saturday 8 am-6:30 pm
Sunday 9 am-4 pm

NOTICE

TO OUR VALUED CUSTOMERS

Please take notice that effective January 25, 1985, Mr. Wayne Newton, formerly our office machine salesman and service representative, is no longer associated with Ripley Printing or the Copy Center. We will honor no contracts for sales or service entered after that date. If you have any questions as to your present service, please feel free to call me at any time.

We will continue to sell and service office machines and will honor without question any previous contracts entered into with Mr. Newton. We have a complete service department with factory trained service technicians on Sharp Copy Machines and welcome your continued support and patronage.

Ripley
Printing
Company



219 NORTH MAIN STREET
RIPLEY, MISSISSIPPI 38663

1-800-468-1265

(Toll Free call from anywhere in Mississippi)

SHARP COPY MACHINES
PANOLY COPY MACHINES
IBM TYPEWRITERS
SIERRA JUKI TYPEWRITERS
VICTOR CALCULATORS
SHARP CALCULATORS
RC ALLEN CASH REGISTERS
RC ALLEN CALCULATORS
LATHAM TIME CLOCKS
PAYMASTER CHECK WRITERS
QUALITY PRINTING
OFFICE SUPPLIES
NEW AND USED OFFICE FURNITURE
NEW AND USED OFFICE MACHINES

Thank you,

James R. Neal

JAMES R. NEAL

The Copy Center

Ripley Printing Co.



TELEPHONE
(601) 837-3330

—LEGAL NOTICE—

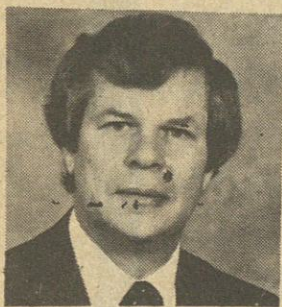
IN THE CHANCERY COURT
TISHOMINGO COUNTY,
IUKA, MS. 38852Arthur Lee Jasper,
Plaintiff
V.
Leatrice Jasper,
Defendant

Case No. 9713

SUMMONS

(Service by Publication:
Residence Unknown)TO: Leatrice Jasper, whose
last known address was P.O.
Box 110, Gould, Arkansas
71643; but whose present
residence and address is
unknown. You have been
made Defendant in the
lawsuit filed in this Court by
Arthur Lee Jasper, Plaintiff,
whose address is 502 West
3rd Street, Iuka, MS 38852.The Complaint filed against
you has initiated a civil action
alleging habitual cruel and
inhuman treatment, adultery
and irreconcilable differ-
ences and seeking a divorce.You are required to mail or
hand deliver a copy of a writ-
ten Answer either admitting
or denying each allegation in
the Complaint to North
Mississippi Rural Legal Ser-
vices, Plaintiff's Attorney,
whose address is P.O. Box
1173, Tupelo, MS 38802.YOUR ANSWER MUST BE
MAILED OR DELIVERED NOT
LATER THAN THIRTY DAYS
AFTER THE 14TH DAY OF
FEBRUARY, 1985, WHICH IS
THE DATE OF THE LAST
PUBLICATION OF THIS
SUMMONS. IF YOUR AN-
SWER IS NOT SO MAILED
OR DELIVERED, A
JUDGMENT BY DEFAULT
MAY BE ENTERED AGAINST
YOU FOR THE MONEY OR
OTHER RELIEF DEMANDED
IN THE COMPLAINT.You must also file the
original of your Answer with
the Clerk of this Court within
a reasonable time afterward.HAYDEN ABLES,
CLERK OF COURTDated: 1-23-85
J-31-F-7-14-c.

—LEGAL NOTICE—

ADVERTISEMENT
FOR BIDSSealed bids will be received
by the Tishomingo County
Board of Supervisors, the
Board of Supervisors Room,
Tishomingo County Court
House, Iuka, Mississippi, un-
til 10:00 A.M., February 15,
1985 for Air Compressor
Equipment at the Peninsula
Steel Products and Equip-
ment Company, Yellow Creek
Industrial Park.Bids shall be sealed in an
envelope and plainly marked
on the outside of envelope:
"Bid For Air Compressor
Equipment". Bids shall be
deposited with or mailed to
the Office of the Chancery
Clerk, Tishomingo County,
P.O. Box 398, Iuka, MS 38852,
in order that they might be
received prior to the hour and
date set out above.Specifications may be ob-
tained from the Office of the
Engineers, Cook Coggin
Engineers, Inc., 703
Crossover Road, P.O. Box
1526, Tupelo, MS 38802. It is
not the intent of the
specifications to limit the
bidding to any make or
manufacturer or equipment.DOWN PAYMENTS
OR
MONEY TO BUY

DON PACE

AUTOMOBILES
CAMPER
BOATS
HOMES
LAND**1st CITIZEN LOANS, INC.**
214 E. Quitman — Iuka, Mis. 3885
601-423-52481, 2, & 3 BEDROOM
APARTMENTSKITCHEN APPLIANCES FURNISHED
RENTAL ASSISTANCE AVAILABLE

IUKA APARTMENTS

1000 N. PEARL ST. IUKA, MS

MONDAY - FRIDAY 9-12 A.M.

to-wit:

TRACT NO. 4: A part of the SE
¼ of Section 18, Township 6
South, Range 10 East,
Tishomingo County,
Mississippi, described as
follows: Beginning at the
southeast corner of the SE ¼
of Section 18, Township 6
South, Range 10 East, thence
run S. 89° 38' 43" W. 32.75
feet to a trace marker; thence
run N. 1° 22' 11" E. 1134.29
feet; thence run N. 1° 06' 40"
E. 551.64 feet; thence run east
21.21 feet; thence run N. 0°
25' 55" E. 624.08 feet to the
center of a gravel road; then-
ce run S. 65° 59' 31" W. along
the center of a gravel road
180.66 feet to the true point of
beginning; thence run S. 65°
59' 31" W. 56.28 feet; thence
run S. 37° 11' 43" W. 70.67
feet; thence run N. 49° 34' 41"
W. along a ditch 319.61 feet;
thence run S. 87° 48' 48" W.
along a ditch 226.98 feet;
thence run S. 79° 25' 31" W.
along a ditch 194.75 feet and
leaving said ditch at this
point; thence run S. 17° 50'
28" W. 464.15 feet; thence run
south 150.0 feet to the center
of a gravel road; thence run N.
50° 31' 35" W. along said road
420.85 feet; thence run N. 86°
15' 59" W. along center of
said road 315.19 feet; thence
run S. 72° 30' 31" W. 371.66
feet to a point on the north
side of said gravel road and
also being on a wire fence;
thence run N. 6° 06' 08" E.
716.91 feet; thence run N. 2°
06' 22" W. 821.83 feet;
thence run N. 66° 24' 45" E.
547.17 feet; thence run N. 38°
38' 31" W. 270.01 feet; thence
run N. 88° 42' 49" E. 339.97
feet; thence run S. 25° 36' 54"
E. 784.62 feet to a point in the
center of a ditch; thence run
in a southerly direction along
the center of said ditch as
follows: thence run S. 5° 54'
07" E. 326.86 feet; thence run
S. 0° 48' 51" E. 142.02 feet;
thence run S. 5° 39' 08" E.
367.14 feet; thence run S. 34°
25' 25" E. 126.90 feet; thence
run S. 13° 24' 05" E. 58.17 feet
to the point of beginning,
containing 46.81 acres.I will convey only such title
as is vested in me as Trustee.RICHARD O. CLARK,
ATTORNEY AT LAW
POST OFFICE BOX 319
IUKA, MISSISSIPPI 38852
(601) 423-5227

J-17-24-31-F-7-c.

—LEGAL NOTICE—

TRUSTEE'S

NOTICE OF SALE

WHEREAS, on August 5,
1981, James L. Skinner and
wife, Shirley A. Skinner,
executed a Deed of Trust to J.
Barry Finch, Trustee, for the
benefit of Tri-State Savings &
Loan Association, which said
Deed of Trust is now on
record in the office of the
Chancery Clerk of
Tishomingo County,
Mississippi, at Iuka,
Mississippi, in Trust Deed
Book 102, page 285-288, of
the records of Deeds of Trust
of said County; andWHEREAS, default having
been made in the payment of
the indebtedness secured by
said Deed of Trust and the
holder of the Note and Deed
of Trust having requested the
undersigned Trustee so to do,
I will on the 22nd day of
February, 1985, offer for sale
during legal hours, being
between the hours of 11
o'clock A.M. and 4 o'clock
P.M. at the East Front Door of
the Tishomingo County Cour-
thouse at Iuka, Tishomingo
County, Mississippi, for cash
to the highest and best bidder
the following described prop-
erty situated in
Tishomingo County,
Mississippi, more particularly
described as follows, to-wit:A part of the SW ¼ of Section
7, Township 3 South, Range
11 East, Tishomingo County,
Mississippi, more particularly
described as follows: Begin-
ning at the intersection of the
north boundary line of the
said SW ¼ with the east
right-of-way line of a gravel
road; thence run south along
the east right-of-way line of
said gravel road 643 feet and
said point being 234.2 feet
south of a wire fence; this
being the true point of begin-
ning; thence run east 290.4
feet; thence run south 175
feet; thence run east 290.4
feet; thence run south 175
feet; thence run west 290.4
feet to the east side of a
gravel road; thence run north
along the east side of said
road 175 feet to the point of
beginning, containing 1.17
acres.The above described land
will be sold subject to a first
Deed of Trust to The Federal
Land Bank of New Orleans.I will convey only such title
as is vested in me as Trustee.WITNESS MY SIGNATURE,
this 29th day of January,
1985./S/ J. BARRY FINCH,
TRUSTEE

J-31-F-7-14-21-c.

—LEGAL NOTICE—

SUBSTITUTED TRUSTEE'S

NOTICE OF SALE

WHEREAS, on May 28,
1976, Thomas H. Martin and
wife, Wilma J. Martin,
executed a Deed of Trust to
Richard O. Clark, Trustee, for
the benefit of Tri-State
Savings & Loan Association
which said Deed of Trust is
now on record in the office of
the Chancery Clerk of
Tishomingo County,
Mississippi, at Iuka,
Mississippi, in Book 78, at
pages 30-32, of the records of
Deeds of Trust of said County;
andWHEREAS, Tri-State
Savings & Loan Association,
as owner and holder of the
said Deed of Trust and the in-
debtedness secured thereby,
has exercised its option to
appoint J. Barry Finch, as
Substituted Trustee in the
place and stead of Richard O.
Clark, which instrument ofsubstitution was executed on
the 22nd day of January,
1985, and is now on record in
the aforesaid Chancery
Clerk's office in Book B-114,
at page 481; andWHEREAS, default having
been made in the payment of
the indebtedness secured by
said Deed of Trust and the
holder of the Note and Deed
of Trust having requested the
undersigned Substituted
Trustee so to do, I will on the22nd day of February, 1985,
offer for sale at public outcry
and sell during legal hours,
being between the hours of
11 o'clock A.M. and 4 o'clock
P.M. at the East Front Door of
the Tishomingo County Cour-
thouse at Iuka, Mississippi,
for cash to the highest and
best bidder, the following
described land and property
lying and being situated in
Tishomingo County,
Mississippi, to-wit:Part of Blocks 50, 55, and 56,
of Terry's Survey of the Town
of Iuka, Mississippi,
described as follows: Begin-
ning at the southeast corner
of the NW ¼ of Section 19,
Township 3 South, Range 11
East, Tishomingo County,
Mississippi, thence run north
565.0 feet; thence run N. 75°
50' W. 569.51 feet to the true
point of beginning; thence
run N. 75° 50' W. 112.62 feet;
thence run S. 15° 01' W. 247.1
feet to the north side of Pike
Street; thence run
southeasterly along the north
side of said street 118.05 feet;
thence run N. 15° 18' E. 288.6
feet to the point of beginning,
containing 0.69 acre.I will convey only such title
as is vested in me as Sub-
stituted Trustee.WITNESS MY SIGNATURE,
this 25th day of January,
1985.J. BARRY FINCH,
TRUSTEE

J-31-F-7-14-21-c.

—LEGAL NOTICE—

NOTICE OF SALE

WHEREAS, the United
States of America, acting by
and through the Farmers
Home Administration, United
States Department of
Agriculture, is the owner and
holder of the following real
estate deed(s) of trust,
securing an indebtedness
therein mentioned and
covering certain real estate
hereinafter described located
in Tishomingo County,
Mississippi, said deed(s) of
trust being duly recorded in
the office of the Chancery
Clerk in and for said County
and State:GRANTOR(S)
Curtis E. Blair, Jr. and
Cynthia R. Blair
DATE EXECUTED
August 17, 1981
TRUST DEED BOOK
102
PAGE(S)
417-420WHEREAS, default has oc-
curred in the payment of the
indebtedness secured by said
deed(s) of trust, and the
United States of America, as
Beneficiary, has authorized
and instructed me as Sub-
stitute Trustee, to foreclose
said deed(s) of trust by ad-
vertisement and sale at public
auction in accordance with
the statutes made and
provided therefor.THEREFORE, notice is
hereby given that pursuant to
the power of sale contained
in said deed(s) of trust and in
accordance with the statutes
made and provided therefor,
and said deed(s) of trust will
be foreclosed and the prop-
erty covered thereby and
hereinafter described will be
sold at public auction to the
highest bidder for cash at the
front door of the county cour-
thouse in the town of Iuka,
Mississippi, in the aforesaid
County at 11:00 A.M., on
February 25, 1985, to satisfy
the indebtedness now due
under and secured by said
deed(s) of trust.The premises to be sold are
described as:Situated in the City of Iuka,
County of Tishomingo, State
of Mississippi, to-wit:Lot No. 51 of Battleground
Heights Subdivision, in the
City of Iuka, Tishomingo
County, Mississippi, said
subdivision being located in
the Northeast Quarter of Sec-
tion 24, Township 3 South,
Range 11 East, according to
the map or plat thereof on file
in Plat Book 2, Page 80
(revised plat), a reference to
which said map or plat is
hereby made in aid of and as
a part of this description.Said land is subject to the
covenants, restrictions and
conditions contained in the
Protective Covenants of Bat-
tleground Heights Sub-
division, recorded in the Of-
fice of the Chancery Clerk of
Tishomingo County,
Mississippi, in Deed Book B-
47, Page 92.BILLY D. MCCLURE,
Substitute Trustee
Duly authorized to act in the
premises by instrument dated
June 11, 1984, and recorded
in Book 1, Page 11-12, of the
records of the aforesaid
County and State.
January 31, 1985
Date
J-31-F-7-14-21-c.Most scientists now agree
that the earth came into
being 7 to 15 billion years
ago.

—LEGAL NOTICE—

IN THE CHANCERY COURT
TISHOMINGO COUNTY
IUKA, MS. 38852TO: NINA CASEY &
NORMAN CLINGAN
219 VALLEY STREET
AURORA, ILLINOIS

RE: Cause #9617

You will please take notice
that on the 29th day of
August, 1984, a petition, in
writing, was filed by William
Munroe Clingan seeking Let-
ters of Administration on the
estate of Hosea Lynn Clinga,
deceased. If you have any ob-
jection to this Petition, you
may in writing, notify the at-
torney for the Plaintiff whose
name and address is: Stanley
E. Munsey, P.O. Box 496,
Tuscumbia, AL. 35674, and
the Clerk of the Chancery
Court, Tishomingo County,
MS. Your answer must be
mailed or delivered not later
than thirty days after the 14th
day of February, 1985, which
is the date of the last
publication of this summons.HAYDEN ABLES,
CHANCERY CLERK
J-31-F-7-14-c.

—LEGAL NOTICE—

NOTICE OF SALE

WHEREAS, the United
States of America, acting by
and through the Farmers
Home Administration, United
States Department of
Agriculture, is the owner and
holder of the following real
estate deed(s) of trust,
securing an indebtedness
therein mentioned and
covering certain real estate
hereinafter described located
in Tishomingo County,
Mississippi, said deed(s) of
trust being duly recorded in
the office of the Chancery
Clerk in and for said County
and State:GRANTOR(S)
Jerry W. McAnally
a/k/a Wayne McAnally
DATE EXECUTED
July 1, 1978
TRUST DEED BOOK
85
PAGE(S)
698-701GRANTOR(S)
Mary C. Martz
DATE EXECUTED
October 15, 1982
TRUST DEED BOOK
106
PAGE(S)
716-719The indebtedness secured
by the Deed of Trust dated
July 1, 1978 and executed by
Jerry W. McAnally a/k/a
Wayne McAnally was
assumed by Mary C. Martz
with Assumption Agreement
dated October 15, 1982.WHEREAS, default has oc-
curred in the payment of the
indebtedness secured by said
deed(s) of trust, and the
United States of America, as
Beneficiary, has authorized
and instructed me as Sub-
stitute Trustee, to foreclose
said deed(s) of trust by ad-
vertisement and sale at public
auction in accordance with
the statutes made and
provided therefor.THEREFORE, notice is
hereby given that pursuant to
the power of sale contained
in said deed(s) of trust and in
accordance with the statutes
made and provided therefor,
the said deed(s) of trust will
be foreclosed and the prop-
erty covered thereby and
hereinafter described will be

1, 2 & 3 BEDROOM APARTMENTS AVAILABLE

Kitchen appliances furnished
Play ground
Laundry availableNORTHVIEW APARTMENTS
ROUTE 2- 92A No. 400
BURNSVILLE, MISSISSIPPI
Call 427-9049 or 423-5314

APPLICATIONS NOW BEING ACCEPTED

1 & 2 BEDROOM APARTMENTS AVAILABLE

Newly Decorated
Central Heat & AirLaundry Available
Recreation Room

APPLICATIONS NOW BEING ACCEPTED

Kitchen Appliances Furnished

PICKWICK CIRCLE APARTMENTS

PICKWICK CIRCLE

IUKA, MISSISSIPPI

Ideal for the elderly & persons disable & or handicapped, also
married couples without Children.

Call 423-5314 or 427-9049

THE AMOUNT OF RENT IS BASED ON THIRTY PERCENT (30%)
OF THE ADJUSTED FAMILY INCOME

Tishomingo County News - Vidette - Belmont

condition of the

landlord was aware
condition of the
says he is not responsible
because I signed a lease
in our lease agreement
effect that he would
liable for any injury
as a result of his
is he responsible?A. The stairway
the two floors is a
one as it is used by
tenants to access the
attic. A landlord has
to keep common
reasonable safe and
for damages for a
perform the duty
provision that you
your lease is known
culpatory clause
situation the clause
against public policy
dior cannot immunize
self against damages
by his negligence
has a duty to maintain
common area.Remember? That
turn smell of a baked
dessert in the oven. That
just as sticky good as
you were a kid.BAKED APPLE
DELUXE1 can (8-1/4 oz.) Dole
Crushed Pineapple
in Syrup
6 large baking apples
1/4 cup chopped
1/2 cup dark brown
sugar, packed
1 teaspoon ground
cinnamon

Drain pineapple, reser-

ing all syrup. Core ap-

ples; combine pineapple
nuts; spoon into ap-

ples. Add enough wa-

ter to reserved syrup
make 1/2 cup liquid.

In brown sugar and co-

mon until sugar disap-

Pour over apples in ba-

king dish. Bake in 350°

en 50 to 60 minutes. Sa-

uce over apples while

baking. Serve with
cream, if desired. Make
servings.

For more delicious ap-

ple recipes, write to:

BA84, Dole, P.O. Box
San Francisco, CA 94122

Courtesy Dole, Castle & Cook



The man who stole the

Mona Lisa from the Lou-

vre Museum in Paris

vined his jury that he

done it as an act of

riotism—to return to

Italy—and was sentenced

to just over one year in

prison.

GRAY'S

ELECTRICAL & APPLIANCE REPAIR

CALL DAY OR NIGHT FOR DEPENDABLE SERVICE

ON ANY ELECTRICAL PROBLEMS OR HOUSEHOLD

APPLIANCE PROBLEMS SUCH AS:

AIR CONDITIONER RANGES DRYERS

FREEZERS OVENS DISHWASHERS

REFRIGERATORS HOT WATER HEATERS

STOVES WASHERS

CALL 423-6829

IUKA, MISSISSIPPI

Something Old

By Lela T. Clark

If you remember when - you qualify as an old-timer!

1. When horses wore ice cleats on their shoes.
2. The favorite resort in winter of many a man was the country store with its pot-bellied stove and whittler's circle. Every man carried his favorite knife, and young son's dreamed of the day when they could have their own.
3. Boys wore corduroy knickers and long heavy black ribbed stockings. Some wore overalls.
4. Boys made skis out of barrel staves and every boy's dream was to own a Red Flexible Flyer Sled.
5. Both men and women wore long handle underwear

all winter.

6. A traveler's gear included a wool laprobe as well as ear muffs and facinators.
7. Grandmothers spent winter nights by the fire knitting mittens and socks and wool toboggans.
8. Folks didn't have to worry about power outages (shortages).
9. Folks did all their cooking on wood-burning stoves except long winter evenings when they all gathered around the fireplace and roasted sweet potatoes in the hot ashes and roasting apples in the flames and popping popcorn.
10. All the "ice cream" that was known was snowcream flavored with vanilla.
11. Folks prepared for snow and ice cold by having plenty of firewood and food in the pantry, both kinds of

- potatoes, turnips, and other foods stored in the cellar and plenty of meats in the smokehouse.
12. Many types of sculpture was engaged in during the day as snow became to where it would stick together.
13. Every car owner after cars were owned by the wealthiest country people, especially farmers, carried a set of chains in their trunk.
14. Boys and girls did their ice skating on the soles of the shoes they wore all the time, and usually ended up on their backs.
15. Machine jackets were all the rage for men and boys.
16. Winter was the season for candy pulling, quilting bees, corn shuckings and barn dances.
17. Folks ran the risk of breaking their arms while trying to crank their Model T

Fords.

18. Oil lamps and candles lighted the house.
19. Irons heated before the fire and hot water bottles were the electric blankets of their day.
20. Small town boys and girls met in winter at the drug store to drink cups of piping hot chocolate.

REMEMBER?

Scholars At MSU

The following students have been named President's and Dean's Scholars at Mississippi State University for the 1984 fall semester. Students included on the President's List have maintained a 3.80 or better, grade-point average, based on a 4.0

grading scale while completing at least 12 semester hours of coursework, with no incomplete grades or grades lower than a C.

PRESIDENT'S LIST
Judy Lynn Ware, Box 422, Tishomingo; Patricia C. Cleveland, Route 1, Box 191, Golden; and Joel Thomas Horn, Route 1, Box 410, Golden.

DEAN'S SCHOLAR
Robert Wade Wimbish, Route 1, Box 142-A, Iuka.



The largest clams in the world weigh close to 500 pounds!

Letter To The Editor

Editor:
I found this old letter in a book belonging to my great-grandfather, Jeddy Skinner, who was a Baptist preacher in the area at that time. He lived in Iuka in the New Community and died in

It seems to be about the organization of the Baptist Association in north Shomingo County in April 1891. I thought the Baptists might find it interesting, so I am sharing it with you for Tishomingo County

MRS. J.A. COKER

Hamburg, Tenn.
Feb. 16, 1891
Dear Friend and Brother,
I will send you the program for the 5 Sunday meeting in Tishomingo commencing on Friday before. We want to have a new association and don't fail to come we want to have an interesting meeting of it - We wish all the brethren we can get to be present will you please notify the Norman Bro. Gilbert and Whitaker as I Don't know where they are and others if you know of any - Be Sure to come and tell others also We want to have a new House

daring downhill run on their sled. Robert Lambert (seated), son of Mrs. Martha Lambert and the late Bob Lambert, and his friend, Brian Bullard (standing), son of Mr. and Mrs. Gary Bullard, were

accompanied by two friendly canines, Champ and O.J., who also seemed to enjoy the snow. Many residents have commented that this was the deepest snow we've had since the early sixties.

by that time -

Your Bro in Christ

J M Hoover

We the Committee Draft a Constitution for the fifth Sunday or union meeting embracing the Territory Bounded as follows beginning at Corinth Miss thence East with the NCRR to the Bear Creek association hence North to the Tennessee River hence down the river to Savannah Hence South to Corinth Miss the object of said meeting shall be to advance the Kingdom of our Lord and Savior Jesus Christ - Constitution Said meeting shall be composed of members of Missionary Baptist Churches in good order and standing Sent by the churches or nirted (?) by the Body when organized Said Meeting shall elect a moderator and clerk who shall hold there office till the next meeting is organized The apilation of Brother shall be used as in all Deliberative Bodies

Program of the fifth Sunday meeting to meet (at) the Harmony Baptist Church Hardin County Tennessee on Friday night before the fifth Sunday in March 1891

Subjects

1. is the will of man Con-sulted in his salvation by
2. is Baptism assential to Salvation

J M Hoover

(I can't tell if this is I or J M Hoover)

3. is faith the gift of God or the act of the creature

Bro D Etheridge

5. the best Method to Build up the Churches

R.T. Jennings

6. is Denominational Com-munion Scriptural

Bro Gilbert

7. the Best Method for Defraing Church expenses

J.L. Jones

8. has a sinner the rite to pay b f taylor

9. are the Missionary Baptist following the Apostolic practice

J Skinner

10. Sunday School

Bro Rousey

11. Quaries (Queries?)

Committee

J. Jennings

J.M. Hoover

B G Greer

(Notice the old form of writing without punctuation or paragraphs most of the time, and quaint spelling while capital letters are omitted or used in unexpected places.)



Before it can obtain enough food to gain an ounce of body weight, a sponge must filter a ton of water.

DUE TO LAST WEEK-END'S WINTER STORM, TOWN & COUNTRY HAS EXTENDED THEIR BEDDING SALE THROUGH THIS SATURDAY, FEBRUARY 9th SAVE UP TO 40%

THER-A-PEDIC BEDDING MARKDOWN SALE

SERTA

SAVE 20% to 40% ON AWARD-WINNING LUXURY BEDDING

ALL FIRMNESSES!

ALL SIZES!

INNERSPRING

FREE DELIVERY & SET-UP!

winner of the FURNITURE U.S.A. DESIGN AWARD

LUXURY QUILTED FIRM INNERSPRING MATTRESS

Sleep deep, in luxurious comfort. Features tensile-tempered steel innerspring construction and deluxe comfortized padding. New high fashion, lavishly quilted decorator styled fabric.

Only \$89

Twin size, mattress or boxspring

ALL ON SALE!

SAVE UP TO \$400!

COMPLETE SETS - SUPER LOW PRICES

TWIN SIZE	\$98 ⁰⁰
FULL SIZE	\$168 ⁰⁰
QUEEN SIZE	\$218 ⁰⁰

"SERTA-PEDIC" 15 YEAR WARRANTY LUXURIUS PREMIUM BEDDING

TWIN SIZE	\$189 Reg. '320
FULL SIZE	\$269 Reg. '450
QUEEN SIZE	\$339 Reg. '550
KING SIZE	\$499 Reg. '750

TOWN & COUNTRY FURNITURE COMPANY

EASY TERMS - 30, 60, 90 DAYS SAME AS CASH

407 HWY. 25 SOUTH, IUKA, MS

PHONE 423-5660

CLOSE OUT ON ALL 1984's

- 1 - 1984 Escort 1 - 1984 LTD
- 1 - 1984 T-Bird GOING AT BIG DISCOUNTS

-- PRICED TO SELL --

- 1984 4-Door Lincoln Town Car
- 1980 4-Door Lincoln Town Car
- 1983 4-Door Crown Victoria
- 1983 LTD 4 Door
- 1979 Z-28 Chevy
- 1979 LTD 2 Door
- 1983 Ranger X-L Pickup LWB
- 1980 Pickup SWB
- 1978 Malibu 2 Door Chevy
- 1978 LTD 2 Door
- 1977 T-Bird
- 1985 Crown Victoria Loaded



SPECIAL

1974 MAVERICK

1971 LTD 4-Door

\$250⁰⁰

\$350⁰⁰

McNATT FORD, INC.

IUKA, MS. PHONE 423-3681

B & J

Supermarket

**Hwy. 365
South
Burnsville**

AD EXPIRES FEB. 12th
WE RESERVE RIGHTS TO LIMIT QUANTITIES.

WIN WHAT YOU BUY

NO SALES TO DEALERS

**DEPOSIT YOUR REGISTER RECEIPT FOR
THIS WEEK IN DRAWING BOX BEFORE
SATURDAY NIGHT! IF YOUR TICKET IS
DRAWN YOU WIN THAT AMOUNT IN
GROCERIES!**

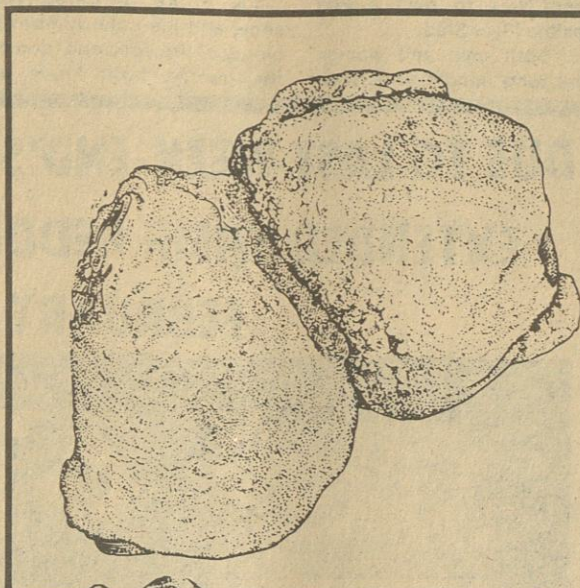
WINNERS	
Sylvia Voyles.....	\$125
	Burnsville
Tom Davidson.....	\$50
	Burnsville
Shirley Price.....	\$30
	Burnsville
Shannon Fields.....	\$10
	Burnsville
Liz Wright.....	\$5
	Burnsville

HYDE PARK
Canned Hams 3 LB. CAN **\$5.69**

SWIFT BROWN & SERVE ORIGINAL HOT, MILD, OR SAGE
Sausage 12 OZ. **\$1.69**

FRESH MEATY PORK
Spare Ribs LB. **\$1.39**

1/4 LOIN SLICED
Pork Chops LB. **\$1.49**



FRESH FRYER

THIGHS

(WITH BACK PORTION)

FAMILY PACK LB.

58^c



FRESH FRYER

Drumsticks

(FAMILY PACK)

LB.

68^c

GRADE A

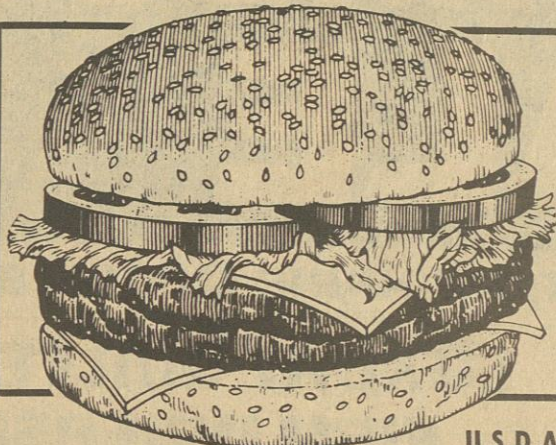
Ducklings

LB.

99^c

FRESH LEAN
Ground Chuck

\$1.49



FRESH LEAN

GROUND BEEF

3 LB. OR MORE

(LIMITED) (FAMILY PACK)

LB.

99^c

MR. TURKEY 12 OZ.
Franks **89¢**

BRYAN 12 OZ. VACUUM PACK
Bologna REG., HOT, THICK OR BEEF **\$1.19**

KING COTTON TRAY PACK SLICED
Slab Bacon LB. **\$1.59**

KING COTTONS FARMERS PRIDE SLICED FAMILY PACK
Slab Bacon LB. **\$1.39**

U.S.D.A. CHOICE WHOLE

Rib Eye Loins

SLICED FREE

\$3.29

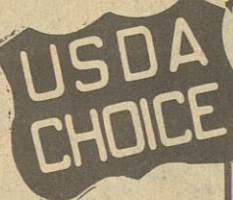
LB.

U.S.D.A. CHOICE

Rib Eye Steaks

LB.

\$3.99



U.S.D.A. CHOICE BEEF

SHORT RIBS

\$1.39

LB.

SMOKEY HOLLOW

Cocktail Smokies

1 LB.

\$2.99

BRYAN

BACON ENDS



3 LB.

\$2.39

KING COTTON

WIENERS

12 OZ.

99^c



HORMEL 4 OZ. RED PEPPER OR GLAZED HAM OR

Ham & Cheese

\$1.09

FRESH PORK

Cracklins

LB.

\$1.29

VIRGINIA CAPE INDIVIDUAL FROZEN

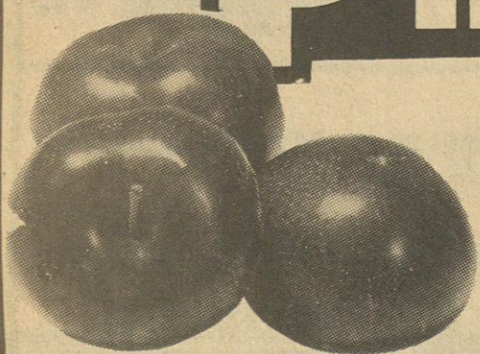
Red Snapper

2 LB. BOX

\$6.79

N.M.M.N.

PRODUCE



CHILIE

Red Plums

LB. **99¢**

JUMBO

Coconuts

2/99¢

MEXICAN

Yellow Squash

LB. **69¢**

U.S. NO. 1 BLUE GOOSE Russet

Potatoes

10 LB. BAG

\$1.59

DOLE BRAND CALIFORNIA

Navel Oranges

6 FOR \$1.39

FLORIDA

Celery

3

STALKS

\$1.00



Dr. Pepper 6/\$1.29
12 OZ. CANS

3 LITER DISPOSABLE
COCA COLA
OR RELATED PRODUCTS
\$1.19

DIET PEPSI OR MT. DEW
PEPSI
2 LITER
78¢



GLAD
Trash Bags

10 CT. 30 GALLON
\$1.09

BROCK MALTED
Milk Balls

10 OZ.
\$1.19

GENERIC
Peach Halves

29 OZ.
88¢

BAMA
MAYONNAISE



QUART JAR

\$1.28

DISH LIQUID

Ivory

22 OZ. BOTTLE

\$1.09

MRS. BUTTERSWORTH

Syrup

24 OZ. BOTTLE

\$1.59

SHOWBOAT 14 OZ. CANS

Spaghetti

3/89¢

KRAFT DELUXE MACARONI

Dinners

14 OZ.

99¢

REGENCY MICROWAVE
Pancakes 19 OZ. **\$1.09**

BOY-AR-DEE
Beef-A-Roni 15 OZ. CANS **69¢**

SMEL TENDER CHUNK WHITE & DARK
Chicken 6 1/2 OZ. CANS **99¢**

MOORE
Beef Stew LARGE 40 OZ. CANS **\$2.19**

10 OZ. COLBY LONGHORN
Cheese **\$1.49**

Reynolds Wrap 12 INCH BY 25 FT. ROLLS **58¢**

AMERICAN HINES
Cookie Mixes 4 FLAVORS **\$1.29**

AMERICAN SINGLES
Cheese 12 OZ. **\$1.49**

CRACKER WITH ONIONS
Hash Browns 5 1/2 OZ. BOX **79¢**

Touch-O-Butter 3 LB. **\$1.88**

Potted Meat 3 OZ. **4/\$1.00**

MARTHA WHITE SELF RISE OR PLAIN
FLOUR
5 LB.
39¢
WITH COUPON BELOW
& \$15.00 PURCHASE



DR. LANE RUBBING

Alcohol

16 OZ.

2/98¢

MISS BRECK AEROSOL

Hair Spray

(4 HOLDS)

\$1.19

MCCORMICK SEASONING MIX

Chili

REG., HOT, OR MILD

2/ 1 1/2 OZ.

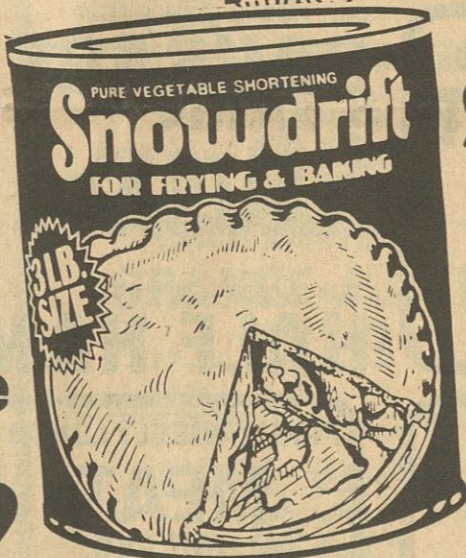
79¢

REG. OR LEMON SCENT

Cascade

35 OZ.

\$1.49



SNOWDRIFT

SHORTENING

\$1.98

3 LB. CAN

LAUNDRY DETERGENT

PUNCH
99¢
42 OZ. BOX



PURINA
Dog Chow

30 LB. BAG **\$7.88**

TEXSUN PINK
Grapefruit Juice

46 OZ. CANS **98¢**

NEW BUSH'S DELUXE
Pork & Beans

16 OZ. **3/\$1.00**

ORE IDA
Cheddar Browns

24 OZ. **\$1.29**

HUNTS ITALIAN STYLE
Tomato Paste

6 OZ. CANS **3/\$1.00**



SWEET SUE
Ham & Dumplings 15 OZ. **59¢**

Brunswick Stew 15 OZ. SWEET SUE **59¢**

BAMA 16 OZ. STRAWBERRY
Preserves

\$1.09

BAMA 16 OZ. PEACH
Preserves

89¢

TRAPPEYS WITH BACON OR JALAPENOS

Blackeyes

15 OZ. **2/79¢**

BIG COUNTRY
Biscuits

6 OZ. **3/89¢**

MERIT FRENCH FRY
Potatoes

2 LB. BAG **69¢**



TREE TOP 1/2 GALLON

Apple Juice **\$1.49**

HUNTS WHOLE

Tomatoes

28 OZ. CANS **79¢**

SEARCHLITE PINK
SALMON
79¢
7 1/2 OZ. CANS

COUPON COUPON COUPON

B & J COUPON WITH \$15.00 ADDITIONAL PURCHASE

MARTHA WHITE
FLOUR
5 LB. **39¢**
EXPIRES 2-12-85

COUPON COUPON COUPON

Lowest Meat Prices in Town



U.S.D.A. CHOICE BONELESS CENTER CUT
CHUCK ROAST
\$ **1.39** LB.

U.S.D.A. INSPECTED SPLIT
FRYER BREAST LB. **99¢**

ARMOUR STAR SLICED
BACON
12-OZ. PKG.
\$1.39

FRESH LEAN GROUND
CHUCK
LB. **\$1.49**

ARMOUR STAR CHICKEN FRIED BEEF
PATTIES LB. **\$1.39**

U.S. CHOICE BONELESS CENTER CUT CHUCK
STEAKS LB. **\$1.69**

SWIFT PREMIUM BROWN N' SERVE
SAUSAGE 8-OZ. PKG. **\$1.19**

SWIFT PREMIUM BROWN N' SERVE
SAUSAGE 12-OZ. ROLL **\$1.89**

BRYAN SMOKY HOLLOW SMOKED
SAUSAGE LB. **\$2.19**

BRYAN SMOKY HOLLOW CLASSIC
HALF HAM LB. **\$2.89**

ARMOUR hot dogs
ARMOUR hot dogs
ARMOUR STAR MEAT
HOT DOGS
12-OZ. PKG. **99¢**

U.S. CHOICE BONELESS SHOULDER
ROAST
LB. **\$1.59**

U.S. CHOICE BONELESS
STEW MEAT
LB. **\$1.99**

BRYAN BONELESS
CANNED HAM
3-LB. CAN **\$6.99**

BRYAN SLICED
BOLOGNA
12-OZ. PKG. **\$1.29**

PIGGLY WIGGLY LUNCH
MEAT
12-OZ. PKG. **\$1.39**

BRYAN
CORN DOGS
18-OZ. PKG. **\$1.79**

SWIFT PREMIUM BUTTERBALL
TURKEY
6-9 LB. AVG. LB. **\$1.39**

SWIFT PREMIUM
SIZZLEAN
12-OZ. PKG. **\$1.59**

Fresh PRODUCE Daily!

GARDEN FRESH
RUSSET POTATOES
10-LB. BAG **\$1.29**

YELLOW ONIONS 3-LB. BAG **59¢**
CRISP GREEN
CABBAGE
LB. **33¢**

CALIFORNIA NAVEL
ORANGES
8 FOR **99¢**

RED OR GOLD DELICIOUS
APPLES LB. **69¢**
PINK OR WHITE
GRAPEFRUIT 3 FOR **89¢**
TENDER FRESH
BROCCOLI BUNCH **99¢**

SNOWWHITE
CAULIFLOWER HEAD **\$1.29**
RED RIPE
TOMATOES LB. **59¢**
SAVORY
MUSHROOMS 8-OZ. PKG. **99¢**



piggly wiggly

**You Don't Have To
Hunt For Specials At
Piggly Wiggly!**



QUANTITY RIGHTS RESERVED. NONE SOLD TO DEALERS. PRICES GOOD FEB. 7 THRU FEB. 13, 1985.

MAXWELL HOUSE COFFEE \$2¹⁹ 1-LB. BAG	PIGGLY WIGGLY SUGAR 99^c 5-LB. BAG	GOLD MEDAL ENRICHED FLOUR 79^c 5-LB. BAG	ENJOY REFRESHING COCA COLA 2-LTR. BTL. 89^c
---	--	--	---

GROCERY SPECIALS

BETTY CROCKER CAKE MIX 18-OZ. BOX 79^c BETTY CROCKER ASSORTED FROSTING 16-OZ. CAN \$1²⁹ PIGGLY WIGGLY TODDLER FITTED DIAPERS 40-CT. BOX \$5⁴⁹ PIGGLY WIGGLY MEDIUM FITTED DIAPERS 36-CT. BOX \$4⁴⁹	SEE OUR COLOR CIRCULAR FOR MORE MONEY SAVING BARGAINS!
--	---

GROCERY SPECIALS

ASSORTED HI-C FRUIT DRINK 3-CT. PKG. 69^c ASSORTED HI-C FRUIT DRINK 46-OZ. CAN 79^c BETTY CROCKER POTATO CASSEROLES 5½-OZ. BOX 89^c DR. BOY-AR-DEE'S WITH MEATBALLS ABC'S & 123'S 15-OZ. CAN 79^c WITH MEATBALLS PAC MAN 15-OZ. CAN 79^c RICH HEINZ 57 SAUCE 10½-OZ. BTL. \$1⁹⁹	ASSORTED WISHBONE DRESSING 16-OZ. BTL. \$1⁶⁹ PETER PAN PEANUT BUTTER 28-OZ. JAR \$2⁴⁹ CARNATION HOT COCOA 12-CT. BOX \$1³⁹ POST RAISIN BRAN CEREAL 20-OZ. BOX \$1⁹⁹ ORVILLE REDENBACHER POPCORN 15-OZ. JAR \$1⁰⁹ ASSORTED PLANTER'S SNACKS 7½-OZ. CAN \$1⁰⁹
---	--

DAIRY & FROZEN

BLUE BONNET LIGHT SPREAD 3-LB. BOWL \$1⁶⁹	FLEISCHMANN'S CORN OIL MARGARINE 1-LB. QTRS. 99^c	MINUTE MAID FROZEN ORANGE JUICE 12-OZ. CAN \$1²⁹	BIRDSEYE NON-DAIRY COOL WHIP 8-OZ. BOWL 89^c	SENECA FROZEN 100% GRAPE JUICE 12-OZ. CAN 89^c	SENECA FROZEN APPLE JUICE 12-OZ. CAN 79^c	BANQUET CHICKEN STICKS OR PATTIES 12-OZ. PKG. \$2⁵⁹
---	--	--	---	---	--	---

Blue Bonnet
Margarine

BLUE BONNET
MARGARINE
1-LB. QTRS. **59^c**

Minute Maid
100% PURE ORANGE JUICE
64-OZ. CTN. **\$1⁴⁹**

DEL MONTE FRUIT COCKTAIL 16-OZ. CAN 79^c	DEL MONTE HALVES OR SLICED PEACHES 16-OZ. CAN 79^c	DEL MONTE HALVES PEARS 16-OZ. CAN 79^c
---	---	---

HUNT'S TOMATO SAUCE 15-OZ. CANS 2 \$1⁰⁰	HUNT'S TOMATO PASTE 6-OZ. CANS 3 \$1⁰⁰	EQUAL SWEETENER 50-CT. BOX \$1⁸⁹
---	--	--

STRONG SCOTT PAPER TOWELS 69^c JUMBO ROLL	RICH HEINZ TOMATO KETCHUP \$1¹⁹ 32-OZ. BTL.	OR WATER PACKED STARKIST TUNA 69^c 6½-OZ. CAN	LIPTON FLO-THRU TEA BAGS \$2⁴⁹ 100-CT. BOX
---	--	---	---

Obituaries

Mrs. Vivian B. Skinner

Mrs. Vivian Bishop Skinner, 85, died Wednesday, January 30, at the Baptist Hospital in Memphis, Tenn. She was a member of the Bellevue Baptist Church in Memphis.

Services were Friday, February 1, at Cutshall Funeral Home Chapel with Rev. Bobby Burress and Dr. Julian West officiating. Burial was in Bishop Cemetery.

Survivors include two daughters, Mrs. Dilva Massey, of Iuka, and Mrs. Lois Woodley, of Gulfport; a son, Milam Skinner, of Memphis; two grandchildren and three great-grandchildren.

Mrs. Bertha E. Crum

Mrs. Bertha E. Crum, 84, died Thursday, January 31, at her residence. She was a member of the New Bethel Baptist Church.

Services were at 2 p.m. Saturday at the New Bethel Baptist Church with Revs. Jeff Cook and Charles Green officiating. Burial was in the church cemetery. Deaton Funeral Home was in charge of the arrangements.

Survivors include a son, Raymond Crum, of Golden; two grandchildren and three great-grandchildren.

Mrs. Peggy Sue Harris

Mrs. Peggy Sue Harris, 45, died Wednesday, January 30, at the North Mississippi Medical Center.

Services were at 1:30 Friday at the McPeters Funeral Home Chapel with Rev. Kara Blackard officiating. Burial was in Forrest Memorial Park

Cemetery.

Survivors include her husband, Terry Neal Harris, of Corinth; seven sons, Lynn Harris, Jimmy Harris, Terry Harris, Nick Harris, Kenneth Harris, all of Corinth; five brothers, Tommy Joe Gammill, of Corinth, James Earl Gammill, of Burnsville, Kenneth Rogers, all of Chicago, Ill., Billy Wade Rogers, of Tupelo; six sisters, Mrs. Audrey Garrett, Mrs. Ruth Robbins, Mrs. Laverne Falline, Mrs. Carolyn McClung, all of Corinth, and Mrs. Barbara Walker, of Burnsville, Mrs. Beatrice Kelder, of Chicago; and her step-mother, Minnie Bell Gammill, of Corinth; 13 grandchildren.

Charley Howard Biggs

Charley Howard Biggs, 64, died Wednesday night, January 30, at the Tishomingo County Hospital. He was a member and deacon of the New Salem Baptist Church, a veteran of World War II, and an employee of Conalco Aluminum Co. He had planned to retire in March.

Services were at 1 p.m. Friday at Cutshall Funeral Home Chapel with Rev. Ted Vafeas officiating. Burial was in Oak Grove Cemetery.

Survivors include his wife, Mrs. Euna Mae Biggs, of Iuka; three daughters, Mrs. Linda Stricklen, of Valdosta, Ga., Mrs. Catherine Norman, of Tupelo, Mrs. Martha Tenneyson, of Iuka; three sons, Charles Lee Biggs, of Memphis, Tenn., Gary Biggs and Larry Biggs, both of Iuka; three sisters, Miss Rayma Biggs, Miss Mary Louise Biggs and Mrs. Alma Ruth Daugherty, all of Iuka; two brothers, Jesse Biggs and Johnny Biggs, both of Iuka; and five grandchildren.

Jessie T. Borden

Jessie Tilfered Borden, 81, died Tuesday, January 29, at the North Mississippi Medical Center. He was a former employee of the City of Iuka, a retired plumber, and a Pentecostal.

Services were Wednesday, January 30, at Cutshall Funeral Home Chapel with Revs. F.E. Williamson and Claude Prince officiating. Burial was in Oak Grove Cemetery.

Survivors include his wife, Mrs. Mattie Borden, of Iuka; three daughters, Lyla Borden and Barbara Johnson, both of Burnsville; three sons, James T. Borden, Floyd B. Borden, and Billy J. Borden, all of Iuka; four sisters, Jewel Morgan, of Michie, Tenn., Flaudy Collum, of Counce, Tenn., Lorene Smith, of Tusculum, Ala., and Rosie Lamb, of Clarksdale; a brother, Talmadge Borden, of Counce; 14 grandchildren and six great-grandchildren.

Wilford Thorne

Wilford Thorne, 60, died Wednesday, January 30, at the North Mississippi Medical Center. He was a retired farmer and a sawmill.

Services were at 1 p.m. Friday at the Deaton Funeral Home Chapel in Red Bay with Rev. Charlie Estes officiating. Burial was in the Old Line Cemetery.

Survivors include his wife, Mrs. Ozie Thorne, of Hodges; three daughters, Mrs. Joyce Sadd, of Cleveland, Ohio, Jean Kirk and Sandra Strickland, both of Hodges; two brothers, Chester Thorne, of Cherokee, Ala., and James Thorne, of Battle Creek, Mich.; two half-brothers, Lester Thorne, of Cherokee, Ala., and Leonard Thorne, of Belmont; nine grandchildren and one great-grandchild.

Lafayette "Billy" Davis

Lafayette "Billy" Davis, 74, died Wednesday, January 30, at the residence of his daughter in Madison, Ala. He was a retired businessman and a member of the New Providence Primitive Baptist Church.

Services were at 11 a.m. Saturday at Deaton Funeral Home Chapel in Belmont with Rev. Clinton Barnett officiating. Burial was in the Lindsey Cemetery.

Survivors include his wife, Mrs. Iva Davis, of Dennis; a daughter, Mrs. Martha Galloway, of Madison, Ala.; a son, William "Bill" Davis, of Houston, Texas; two brothers, Cecil Davis, of Dennis, and Noel Davis, of Pascagoula; and six grandchildren.

Mrs. Dorothy Mae Grissom

Mrs. Dorothy Mae Ledlow Grissom, 60, passed away Tuesday, January 29, at the Tishomingo County Hospital.

Services were held Thursday, January 31, at 1 p.m. at the Antioch Freewill Baptist Church in Burnsville, with Rev. Glen Jones officiating. Burial was in Prospect Cemetery, McNairy County, Tenn.

Survivors include her husband, Kelsie M. Grissom; three daughters, Mrs. Dorothy Sue Blakney and Mrs. Doris Jean Gray, both of Burnsville, and Mrs. Betty Lou O'Connor, Cicero, Ill.; one son, Bobby Ray Grissom, Bolingbrook, Ill.; one brother, Willie Ledlow, Michie, Tenn.; two half-brothers, Roscoe Hite, Michie, Tenn., and Odell Ledlow, Red Bay, Ala.; and 16 grandchildren.

J.C. (Red) Hayes

J.C. (Red) Hayes, 61, died Saturday, February 2, at the Helen Keller Memorial Hospital in Sheffield, Ala. He was a superintendent at the Yellow Creek Nuclear Plant, a veteran of World War II and a Mason.

Funeral services were held at 10:00 Monday at Cutshall Funeral Home Chapel with Revs. Barry Redding and Clyde Vinson officiating. Burial was in Oak Grove Cemetery.

Survivors include his wife, Nancy Hayes, of Margerum; a daughter, Gloria Stolsworth, of Margerum; three sisters, Elizabeth Marks and Katherine Mainz, of Oconomowoc, Wisc., and Totsy Feldschneider, of Hartford, Wisc.; one brother, Paul Hayes, of Cherokee, Ala.; and one granddaughter, Jenny.

Gaye Montez Henderson

Miss Gaye Montez Henderson, 55, died Saturday, February 2, at Tishomingo County Hospital. Funeral services were held Monday at South Crossroads Baptist Church with Rev. Raymond Buchanan officiating. Burial was in the church cemetery.

She is survived by her mother, Mary Henderson, of Tishomingo; and a brother, Sonny Henderson, also of Tishomingo.

Card of Thanks

We, the family of Mr. Joe Allen Adams, would like to express to you, our many friends, our heartfelt gratitude for your love and compassion shown us in our time of deep sorrow. For your prayers and your gifts of love, which words are not suf-

ficient to repay, we would like to thank you. Special thanks to Bro. and Sister Jackie Dean for their faithful service in the Lord to assist us in our time of need, and to each and every family in the community and others for your love gifts, for both food and flowers. Thank you to the nurses of I.C.U. Tishomingo County Hospital and the management and staff of Cutshall Funeral Home. We extend our thanks for their helpful assistance and their love and care.

God bless each and every one of you.
JOE ALLEN ADAMS FAMILY

Card of Thanks

We would like to express our sincere thanks and appreciation to our friends for the prayers, visits, flowers, food, phone calls, and every act of kindness shown during the illness and death of our loved one, Ethel Stormont.

A special thanks to Dr. Segars, the nurses at Tishomingo County Hospital, Bro. W.T. Dexter and Bro. John Sovay for the comforting words. Also, to the singers and Cutshall Funeral Home.

THE FAMILY OF
ETHEL STORMONT

Card of Thanks

We, the family of George Briggs, would like to express to you, our many friends in the community and others, our heartfelt gratitude for your love and compassion shown us in our time of sorrow. For your prayers, gifts of love, food, flowers and other thoughtful deeds.

Many thanks to Dr. Al Flannery and the management and staff of Tishomingo County Hospital and the staff of Grayson Funeral Home. These favors shall never be

forgotten.
God bless each and every one of you.
THE FAMILY OF
GEORGE BRIGGS

WATER facts & figures

One of the greatest bargains in history is drinking water. On average, Americans pay \$1.03 for 1,000 gallons delivered 24 hours a day to their homes and places of business.

A healthy family of four only needs to consume about 700 gallons a year, which is a little more than two quarts a day per person, reports the

Tishomingo County News - Vidette - Belmont
American Water Works Association. The typical can family, however, more than 90,000 gallons a year.

Southwood Baptist Church
Hwy. 72 By-Pass
Between Pleasant Hill and Burnsville
SERVICES
Sunday School, 10:00 a.m.
Church, 11:00 a.m.
Training, 5:00 p.m.
6:00 p.m.
BRO. JAMES "BUTCH" GRISOM
"Serve the Lord with gladness."
J-14-tfn-c.

IUKA BAPTIST CHURCH

105 West Eastport Street

DR. JULIAN WEST, Pastor

SUNDAY SERVICES

Sunday School 9:45 a.m.
Worship Service 10:55 a.m.
Church Training 6:00 p.m.
Worship Service 7:00 p.m.

WEDNESDAY SERVICE

Mid-Week Prayer Meeting 7:00 p.m.



Morning and Evening Services Broadcast Over WTIB-FM 104.9
Morning services also on A.M. 1270

Attend Services



BAPTIST

ST. PETER'S BAPTIST

Parvin Neloms

AIRPORT MISSION

Perry Murphy

IUKA BAPTIST

Dr. Julian West

BELMONT FIRST

Jack Maroon

HUBBARD SALEM

Charles D. Lambert

CARTERS BRANCH

S. W. Shinault

CALVARY BAPTIST

Thomas Ozburn

MT. MORIAH

Ben Thornton

GOLDEN CENTRAL BAPTIST

Ralph Culp

MT. VERNON BAPTIST

Author Hardin

TISHOMINGO BAPTIST

Randy Bostick

BURGESS CREEK

Eulan Pruett

BURNSVILLE FIRST

Claude M. Prince

NEW PROSPECT

Eugene Walden

OLDHAM

Charles Wooten

PADEN

Pat Howard

FIRST BAPTIST

O. H. Moore

EASTPORT

Phil Dawson

NEW SALEM

Ted Vafeas

UNITY BAPTIST

Troy Harrison

RED BUD

John Stovall

ROWLAND MILLS

Frankie Smith

HARMONY HILL

Billy Paul Feltman

MT. JOY

Crawford Retherford

JACKSON CAMP

Mavous Phifer

IUKA MAGNOLIA MISSIONARY

Walter Selman

CALVARY MISSIONARY

Jim Jones

SOUTH CROSSROADS

Harold Holly

PROVIDENCE BAPTIST

Clyde Vinson

BETHEL MISSIONARY

Bobby Elliott

MT. GILEAD

James Hardin

TEMPLE

Rickey Johnson

MT. ZION BAPTIST

Bobby Casteel

FIFTH STREET

Bill Hobson

OLD PLEASANT HILL

Donald Hudson

NEW LEBANON FREWILL

Gerald Taylor

ANTIOCH FREWILL

Glenn Jones

POPLAR SPRINGS

Russel Clouse

HIGHLAND

J. A. Blunt

BETHLEHEM

George D. Credille

YELLOW CREEK

Stanley Magill

DENNIS FIRST BAPTIST

John Stockton

FIRST FREWILL

J. T. Prince

NEW LIBERTY

T. E. Nethery

SHORT CREEK

G. D. Jones

WALKER MISSIONARY

Liberty

LITTLE FLOCK PRIMITIVE

Elders Roger Browning & Herman Clark

SOUTHWOOD BAPTIST

James (Butch) Tanner

UNITED METHODIST

PATRICK

HARMONY

BURNSVILLE

Del Blackman

IUKA METHODIST

Frank D. Burton

MT. EVERGREEN

CAMPGROUND

ROCKY SPRINGS

John Garrott

SNOWDOWN

PLEASANT HILL

SPRING HILL

James E. McKeithen

OLD BETHEL

GOLDEN CHAPEL

Glenn Grammer

SALEM

BOGGS CHAPEL

PARADISE

TISHOMINGO

Paul York

DENNIS

BELMONT

Gerald Chaffin

JONES CHAPEL

Henry Dainson

ALLSBORO UNITED

MARGERUM UNITED

Bro. Berry Reddig

RIVERTON UNITED

Jackie Patterson

CHURCHES OF CHRIST

MAUD CHURCH OF CHRIST

James Joyce

IUKA CHURCH OF CHRIST

Perry Taylor

BEREA CHURCH OF CHRIST

Jimmy Ferguson

TISHOMINGO

Donald Rhodes

BELMONT SECOND STREET

John Williams

PLEASANT GROVE

Ronald Adams

LIBERTY

Haskell Sparks

MAIN STREET

Wayne Mitchell

BURNSVILLE

J. T. Smith

APOSTOLIC CHURCH

LORD JESUS CHRIST

Wayne Trimm

REORGANIZED CHURCH

JESUS CHRIST OF

LATTER DAY SAINTS

Justice Manning, Red Bay, Ala.

UNITED PENTECOSTAL

BURNSVILLE FIRST

Jimmy Rich

IUKA FIRST UNITED

Frank E. Williamson

NONDENOMINATIONAL

AMAZING GRACE TABERNACLE

Bro. & Sis. R. G. Rodgers

MT. ZION

R. C. & Dorothy Wigginton

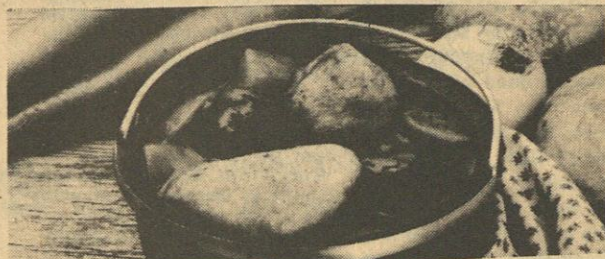
NORTH CROSSROADS COMMUNITY

Travis Shea

GRACE BIBLE CHURCH

Danny Lovel

HOMEMADE MEATBALL STEW IS WARM AND SATISFYING



HEARTY MEATBALL STEW AND DUMPLINGS

- 1 lb. ground beef
- 1 egg
- 1/4 cup chopped onion
- 1/2 teaspoon salt
- 1/4 teaspoon pepper
- 1/4 teaspoon garlic powder
- 1 beef bouillon cube
- 1 1/2 cups boiling water
- 10 3/4-oz. can condensed tomato soup
- 3 carrots, cut into 1/2-inch pieces
- 2 medium potatoes, cut into 1/2-inch pieces
- 1 medium onion, sliced
- 1/4 teaspoon thyme
- 1/8 teaspoon garlic powder
- 7.5-oz. can Pillsbury Refrigerated Biscuits
- Paprika

In medium bowl, combine ground beef, egg, onion, salt, pepper and 1/4 teaspoon garlic powder; mix well. Shape into 1 1/2-inch balls. In Dutch oven, brown meatballs; drain. Dissolve bouillon in boiling water. Add water, soup, vegetables, thyme and remaining 1/8 teaspoon garlic powder to meatballs; stir gently. Cover and bring to a boil; reduce heat and simmer 15 minutes.

Separate dough into 10 biscuits; cut each biscuit in half. Place biscuit halves on hot stew mixture. Sprinkle with paprika. Simmer *uncovered* for 10 minutes; cover and simmer 15 to 20 minutes longer. 5 to 6 servings.

TIP: Three cups frozen stew vegetables can be substituted for carrots, potatoes and onion. Reduce initial simmer time to 5 minutes.

SATELLITE TELEVISION SYSTEM HOLLOWAY TV SPECIAL:

\$1,599

plus tax Complete

UNIDEN - Manufacturers of famous Bearcat Scanners

Complete System Includes,

1. UNIDEN RECEIVER, featuring defeat tuning, channel scan, skew control, variable audio, signal strength meter, polarity switch with indicator, auto polarity, AFC, AGC
2. 9' SPUN ALUMINUM DISH, for virtually maintenance free depend ability. Parabolic design for crisp, clear pictures. Type used by military for communications purposes with polar mount for superb satellite tracking ability.
3. 100" LNA for noise free pictures
4. PROFESSIONAL INSTALLATION with 1 month free service calls. 1 year guarantee on all components.

COME BY TODAY FOR DEMONSTRATION

FINANCING AVAILABLE

FREE SITE INSPECTION

HOLLOWAY TV

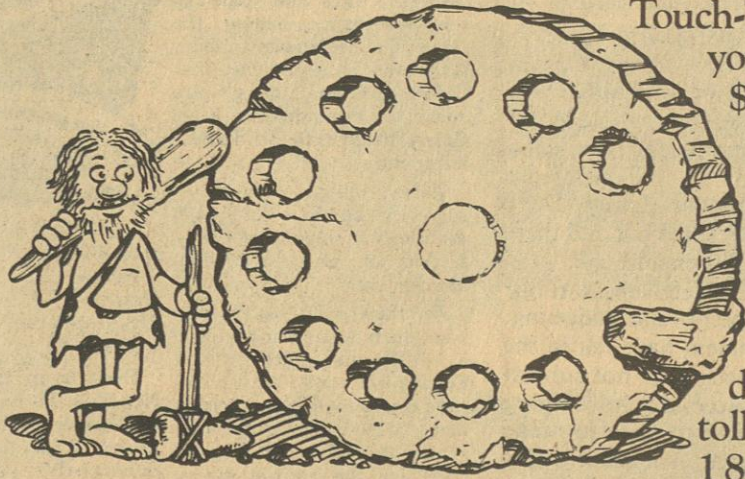
HWY. 72 WEST, JUST PAST SANDS MOTEL 423-2066

A good idea for its time. But isn't it time you have Touch-Tone?

SCB Touch-Tone service can put you in touch with a whole new world of possibilities.

Telephone banking, electronic shopping, and information services directly through your phone without adapters. All you need is at least one true tone-dialing Touch-Tone phone.*

Get fast, convenient SCB Touch-Tone service for your home for only \$1.50 a month. And save the Touch-Tone connection charge by ordering before February 28th. For details, call on us toll free at 1 800 233-1776, ext. 3.



FREE Touch-Tone Connection! Order by February 28 and save \$23.50.

South Central Bell
A BELL SOUTH Company

* Also make sure the set has a polarity guard (most new ones do). In some areas Touch-Tone sets without polarity guards won't work with special services such as telephone banking. Rates subject to change. Business rate is \$3.00 per month. Businesses save \$27.50 connection charge by ordering before February 28 (call 1 800 633-6272). Services mentioned available in most areas. Limited capacity in some areas. Customers who have never had Touch-Tone service also save a \$6.00 one-time premium charge. This charge does not apply to customers who have had Touch-Tone service before.

© 1984 South Central Bell

Services For Mary Catherine Cleveland

Mary Catherine Cleveland, 30, died Monday, February 4, at Senter-Ratliff Clinic. Services were held at 2 p.m. Tuesday at Deaton Funeral Home Chapel in Belmont with Bro. Jack Maroon officiating. Burial was in Belmont City Cemetery.

Survivors include her parents, Mr. and Mrs. Arnold Cleveland, of Belmont; a sister, Mrs. Linda Reed, of Belmont; three brothers, David Cleveland, of Tupelo, Ronald Cleveland and Donald Cleveland, both of Belmont; her grandmother, Mrs. Ida Cleveland, of Belmont.

Legislative Report

By: Senator Irb Benjamin

Most of the first month of the 1985 Legislative Session was taken up by committees considering proposed bills. We have only two short weeks left for the full Senate to vote on general legislation which has been passed by the committees. When that deadline passes, we will focus our attention on considering bills passed by the House of Representatives.

We did pass several bills last week with perhaps the most far-reaching being authorizing home rule for municipalities and counties. Current law prohibits municipal and county governing bodies from taking action which is not specifically authorized by state law. This has meant that a city board, for example, has had to get a state law passed in order to pay the owner of a private vehicle for damages done to it by a city vehicle in an accident. Home rule would enable cities or counties to take any actions not specifically prohibited by state law or the state constitution with the exception of levying taxes or issuing bonds. Authorization for these two actions must come from the Legislature. Those favoring home rule say that it would not only make city and county government operations more efficient, but would free up the Legislature from the time normally spent considering local bills.

During the debate on home rule for counties, an amendment was proposed to require any county accepting home rule to change from the district or beat system of operation to a unit system under the control of a county engineer. The amendment was defeated. Other bills passed by the Senate would (1) establish procedures in teacher dismissal cases to require that cause for dismissal be shown and (2) allow counties to provide group insurance for constables.

Last week the House of Representatives passed a bill to allow the people of Tunica and Jackson Counties to vote on allowing pari-mutuel betting at horse racing tracks in their counties. The bill will now be considered in a Senate committee and, if passed, will come up for a vote by the full Senate. The following is a list of several bills which are being considered in the various Senate committees:

--a bill to provide that the State College Board shall not remove or limit any university's educational research or support program without publication and demonstration of the necessity of such.

--bills to allow the use of radar speed detection equipment by municipal law enforcement officers within municipal corporate limits on state or federal highways on which the average daily traffic count exceeds 15,000 and by sheriffs and deputies on county roads.

--a bill to create a State Export Development Authority to encourage the expansion of exports of manufactured goods and services to foreign purchasers.

--bills to regulate dance studios and health spas.

--a bill to require the Secretary of State to maintain a complete roster of qualified electors within the state by county and to maintain pollbooks.

--a bill to establish the State Comprehensive Health Association to provide a source of health insurance for those persons who might not otherwise be able to obtain insurance.

--Several bills deal with victims of crime. One provides

will be held at Northeast Mississippi Junior College. Admission will be \$2.00 for both students and adults.

The District 1, Class 3A Tournament will be held February 8th through February 16th. The tourney

District 1 Class 3A
NEM Jr. College
Feb. 8th through Feb. 16th

Mon 7:15	Alcorn Central
Sat 6:00	Yazoo
Thurs 8:00	Yazoo
Fri 7:15	Yazoo
Tues 6:00	Shannon
Sat 8:30	Houston
Tues 8:30	Yazoo
Sat 8:30	Yazoo
Fri 8:00	Yazoo
Sat 8:00	Yazoo
Mon 6:00	Yazoo
Thurs 6:30	Yazoo
Fri 6:00	Yazoo
Tues 7:15	Yazoo
Sat 7:00	Yazoo
Wed 6:30	Yazoo
Sat 7:15	Yazoo
Fri 6:30	Yazoo
Fri 8:30	Yazoo
Mon 8:30	Yazoo
Admission: Students and Adults \$2.00	

Using Federal Form

When taxpayers file their income tax returns each year, they can choose from three different forms depending upon their circumstances, the Internal Revenue Service says. Single taxpayers without any dependents, who do not use their deductions, and whose taxable income of less than \$50,000 a year is from wages, salaries, tips, and interest income of not over \$400, may be able to use the Form 1040EZ.

any tax credits, may be able to use the Form 1040EZ. When filing a Form 1040EZ, a taxpayer can claim the charitable contribution for non-itemizers up to a maximum deduction of \$75. However, taxpayers who claim extra exemptions for being age 65 or older, or for blindness, and those with divided income, cannot use the Form 1040EZ.

Taxpayers who cannot use the Form 1040EZ because they have income from dividends or unemployment compensation, in addition to wages, salaries, and tips, or whose interest income exceeds \$400, may be able to use the Form 1040A. When using the Form 1040A, taxpayers can also claim the credit for child and dependent care expenses, and partial credit for political contributions, and the earned income credit and take a deduction for payments to an IRA, the deduction for a married couple when both work, and the partial deduction for charitable contributions.

Of course, some taxpayers may not be able to use a Form 1040EZ or Form 1040A because of the amount or kind of income received, their filing status, the need to file certain additional forms and/or schedules, or the need to pay other taxes that can only be shown on a Form 1040. In addition, taxpayers may choose the Form 1040 because they want to claim itemized deductions, adjustments to income, or credits that cannot be taken when using the form 1040EZ or Form 1040A.

Taxpayers generally receive the tax package which meets the needs of the form they filed in the previous year. Additional forms and schedules are available from local IRS offices and in many local banks and post offices. Many libraries also carry copies of reproducible tax forms.

Singing At Old Pleasant Hill

There will be a singing at Old Pleasant Hill Church, located at North Crossroads, Saturday night, February 9, beginning at 7 p.m. The featured singers will be The Gospel Travelers, from Belmont; The Marlar Family, from Burnsville, and others.

Bro. Hudson and the congregation invite each of you to attend.

LAYAWAY

FEBRUARY 1 - FEBRUARY 9

NO DOWN PAYMENT OR SERVICE CHARGE ON LAY-A-WAYS OF UP TO \$50.00 SPRING MERCHANDISE!

25% OFF

ALL JEWELRY
ADDITIONAL REDUCTIONS ON SALE MERCHANDISE

NEW SPRING MERCHANDISE
ARRIVING DAILY

KENWIN SHOP

USE OUR CHARGE OR LAY-A-WAY PLAN

WHY WAIT?

YOU GET INSTANT SERVICE AT PIZZA INN'S NOON BUFFET

PIZZA, SPAGHETTI, SALAD

MONDAY - FRIDAY
11 A.M. - 2 P.M.

TUESDAY 6:00 - 8:30

COUPON

FREE PIZZA

BUY ONE PIZZA, GET NEXT SMALLER SIZE, EQUAL NUMBER OF INGREDIENTS

FREE

COUPON GOOD FEB. 7 - 13

NOT VALID WITH OTHER OFFERS P101

PRESENT COUPON For pizza out it's Pizza Inn.

Pizza inn

HWY. 25 NORTH, IUKA

COUPON

\$2.50 or \$1.50 OFF

RECEIVE \$2.50 OFF REGULAR PRICE OF ANY LARGE PIZZA, OR \$1.50 OFF REGULAR PRICE OF ANY MEDIUM PIZZA.

COUPON GOOD FEB. 7-13 PRESENT COUPON

NOT VALID WITH OTHER OFFERS P104

PRESENT COUPON For pizza out it's Pizza Inn.

Pizza inn

423-6074

—LEGAL NOTICE— SUBSTITUTE TRUSTEE'S SALE NOTICE

WHEREAS, on September 21, 1978, Houston Moore and Dorothy Moore, executed and delivered a deed of trust to Thomas D. Keenum, as trustee, for the use and benefit of Bank of Red Bay, which deed of trust is recorded in Book 87, at page 15, records of Tishomingo County, Mississippi, in the office of the Chancery Clerk of said county; and

WHEREAS, Bank of Red Bay subsequently assigned said deed of trust to the Small Business Administration, an agency of the United States of America, by assignment dated June 18, 1982, with record assigned being recorded in the office of the Chancery Clerk of Tishomingo County, Mississippi, in Book B106, at page 590; and

WHEREAS, under the terms of the said deed of trust, the holder of the indebtedness was authorized and empowered to nominate and appoint a successor trustee, and pursuant to the power and authority aforesaid, Small Business Administration, the current holder and owner, did nominate and appoint Dennis W. Voge, Tupelo, Mississippi, as trustee in the place and stead of Thomas D. Keenum, to execute the trust contained in the aforesaid trust instrument with each and every right and power vested in the trustee as named and the same without limitation, which said substitution of trustee instrument was dated December 18, 1984, and recorded in Substitution of Trustee Book 1, at page 29, of the real estate trust deed records in the office of the Chancery Clerk of Tishomingo County, Mississippi; and

WHEREAS, default has been made in the indebtedness secured by said deed of trust which default continues, and the Small Business Administration, the legal holder of the note secured by said deed of trust, having requested the undersigned to sell the property described hereinafter for the purposes of satisfying the indebtedness and costs of sale.

NOW, THEREFORE, notice is hereby given that I, the undersigned substitute trustee, will on the 19th day of February, 1985, at the east front door of the Tishomingo County Courthouse, Mississippi, within the legal hours, offer for sale, at public outcry, to the highest bidder for cash, the following described property in Tishomingo County, Mississippi, to-wit:

TRACT #1: Part of the NE¼ of Section 2, Township 7, Range 10 East, described as beginning at the southwest corner of said quarter and run thence east on the south boundary thereof 660 feet to a concrete marker; thence N. 9 degrees W. with a wire fence

685 feet; thence N. 78 degrees East 199 feet; thence S. 9 degrees East 40 ft. thence N. 75 degrees East with the South side of Woodmont Street 125 feet to a steel stake for the point of beginning; thence S. 9 degrees East 130 feet to a stake; thence North 75 degrees East 125 feet to a steel stake; thence North 9 degrees West 130 feet to the south side of Woodmont Street; thence South 75 degrees West with the south side of said street 125 feet to the point of beginning.

ALSO: Part of the NE¼ of Section 2, Township 7 South, Range 10 East, described as beginning at the southwest corner of said quarter section and run thence east 660 feet to a concrete marker; thence east 170 feet to the east side of the Circle Drive Road; thence North with the east side of said road 551 feet to the point of beginning; thence north with the east side of said road 130 feet to the side of Woodmont Road; thence N. 75 degrees East with the South side of said road 125 feet to a stake; thence S. 5 degrees East 130 feet to a stake; thence S. 75 degrees W. 125 feet to the point of beginning.

ALSO: Part of the NE¼ of Section 2, Township 7 South, Range 10 East, described as beginning at the southwest corner of said quarter section and run thence east 660 feet to a concrete marker; thence east 170 feet to the east side of the Circle Drive Road; thence North with the east side of said road 421 feet to the north side of Pinehurst Road; thence N. 75 degrees East 125 feet to the point of beginning; thence North 5 degrees W. 130 feet to a stake; thence North 75 degrees East 125 feet to a stake; thence South 5 degrees East 130 feet to the North side of said road; thence S. 75 degrees West 125 feet to the point of beginning.

TRACT #2: Part of the SW¼ of Section 35, Township 6, Range 10 East, described as follows: Beginning at a point on the east boundary line of said SW¼ of Section 35, Township 6, Range 10 East, that is 24 rods south of the northeast corner of said quarter section and said point located 1 foot north on a straight line of a big oak tree, which said big oak tree is on the west side of a road that runs through said land, from this beginning point run thence west, passing 1 foot north of above mentioned big oak tree, 20 rods; thence run south 13-14/72 rods; thence run east 20 rods to the east boundary of said SW¼; thence run north with the east line of said quarter 13-14/72 rods to the point of beginning, containing 1.6 acres, more or less, and said lands being subject to a public road that runs through the above described land.

Such title will be conveyed as is vested in me as substitute trustee of the aforesaid.

This, the 8th day of January, 1985.

DENNIS W. VOGUE,
Substitute Trustee
108 North Broadway
P.O. Box 29
Tupelo, Miss. 38802-0029
(601) 842-4231

J-24-31-F-7-14-c.

The Himalayan range in Asia has hundreds of peaks over 20,000 feet and 30 over 24,000 feet.

John C. Stennis

REPORT TO MISSISSIPPIANS



Our national security is necessarily a high priority which must never be taken lightly. We are the strongest nation in the world militarily, and we cannot afford to give up this position. The Soviets and other nations are continuing to build up their military, and it would be tragic for the United States to let others gain military superiority.

With that thought in mind, it is equally important that we consider the serious consequences of the huge federal budget deficits which are threatening our economic security. There is a close relationship between the two, since nearly 30 percent of our 1985 budget is for national defense.

In a recent meeting with Secretary of Defense Caspar Weinberger, I stressed the importance of searching every portion of the budget, including defense, for possible reductions. We cannot just exempt defense outright from cuts, but I am confident that we can find ways to save on defense spending which will not weaken our national security. There are programs which can probably be stretched out and there are instances of waste which can be eliminated.

We must strive for efficiency and effectiveness in our defense spending and in every other aspect of our budgeting. Too many departments in our government have felt in the past that they had a virtual 'blank check' and not subject to careful scrutiny. If we are to be successful in bringing our budget under control, we are going to have to make some tough decisions and cut unnecessary spending where we can.

The apparent success of recent meetings between U.S. and Soviet representatives leading to resumption of arms control negotiations is truly encouraging. A verifiable arms limitation agreement would not only be good for peace in the world but could mean a real savings in our national defense budget. It is senseless for both of our nations to continue to build more and more expensive weapons systems, yet without a firm agreement on verifiable arms control, neither side can afford to let up.

I will continue to urge the President to earnestly seek an effective arms control agreement as we also look for meaningful ways in which defense spending can be reduced. I have always been a strong supporter of national defense and I am not lessening my stand one inch. But I will also insist on close scrutiny of every aspect of our budget to assure that the taxpayer's dollar is spent wisely.

SENSITIVE PARENTING

Guilt, Misconceptions, Fear Children Face Problems In Accepting Death Loss

By Norine Barnes
Child Development Specialist
Mississippi Cooperative Extension Service

Death of a close friend or relative is a painful human experience. No person can be protected from this pain, but people, including children, can be helped to live with it and learn from the experience.

It is important to remember that the death of a relative is an important family crisis. Children are acutely aware of emotional stress in adults. Infants and toddlers know and react to adult feelings without any understanding of the cause of the stress. Their efforts to empathize or their distress at the change in adult behavior should be recognized, understood and appreciated.

After children reach the stage in which they can form attachments to particular people, they can and do experience a sense of loss upon the death of someone close to them. Preschoolers, ages three to six, have some understanding though vague of the concept of death. Generally, it's considered temporary like sleep and the child believes that the person will return.

Children from six to 10 are able to understand the finality of death and may realize that they too can die. It is also during these years that many children begin to hide their feelings and become less willing to talk about emotional problems.

After the age of 10 many children can understand the reality of death and are ready for explanations about the physical and biological processes. From the adolescent years until late middle age, death is usually connected with old age and considered a long way off and not something to be concerned about yet.

While age is an important factor to consider, parents also can be guided by the child's past experiences with death. Has the child already experienced a death in the family? Has the child lost a

family pet? How aware is the child of the concept of death in nursery rhymes? Has the child expressed his or her thoughts about death as portrayed on television?

When parents know how much their child understands about death and how he or she feels about it, it will be easier for them to decide how much and in what ways to include their children.

Some common problems children develop in relation to death are:

— They may feel guilty that they caused the death. Either they have wished something bad would happen to the dead person or they have done something for which they feel they are being punished.

— When no explanation of the death or the funeral is made to them, children may form misconceptions that can last for years.

It is difficult for children to understand that words can have more than one meaning. This is the cause of problems children encounter where adults use substitute words for dead. A child who has been told the Grandpa is "just sleeping" may fear to go to sleep. From other euphemisms children may develop fears of God, trips or journeys or simply of being too tired.

A basic fear in all children is abandonment. When a parent dies, children must have thoughtful explanations of the causes of death and reassurances that the remaining parent will be there to care for the child.

Children can be helped during the crisis of death and in the grieving period afterward. Being assured that they are loved and encouraged to express their thoughts and feelings, being told the truth in simple answers in stages, and seeing and hearing about the grief and pain felt by adults are all helpful approaches.

Matters of Health

Alzheimer's Disease

My grandmother sometimes has difficulty remembering names. This upsets her, because she fears that she may have Alzheimer's disease. What are the symptoms of Alzheimer's disease?

Forgetfulness commonly encountered in the elderly may differ from the common memory problems seen in Alzheimer's disease. Although age does seem to be a factor in the disease, memory disorders of the illness differ from the more common absent-mindedness or forgetfulness of aging.

As people grow older, certain changes take place in their cognitive style, and the way they learn new material. While their reservoir of knowledge continues to increase, their flexibility and rate of processing information may slow down. As a result, they become more forgetful with age.

Depression, which is very common in older people, also affects memory. When anyone is depressed, he or she is not as quick and sharp as at other times. Frequently occurring depression in the elderly may aggravate their problem of forgetfulness.

Contrary to absent-min-

dedness or forgetfulness, Alzheimer's disease is a neurological disorder. The major changes in the patient with this disease are cognitive and intellectual, and the symptoms are reflected in five major areas, including attention, memory, language, visual and spatial disorders, and behavior.

*ATTENTION. A person with Alzheimer's disease may have difficulty focusing attention on a particular conversation or event. Conversely, the same individual may not be able to shift his attention appropriately. The inability of the individual to manipulate and focus attention results in an impairment of general problem solving.

*MEMORY. Another symptom of Alzheimer's disease is loss of memory. A person may pay attention, yet not be able to remember an event or conversation. This symptom is reflected in the inability of patients to learn new information and to retrieve things from the past.

*LANGUAGE. The sequence of language change may be variable. The problem lies in both language production and comprehension. The patient may first find it difficult to think of the right words to use during the course of a conversation. Then, when asked, he may have difficulty naming objects, and will substitute the wrong name for an item. The person eventually will be using the wrong words during the course of a conversation, as his ability to comprehend language continues to decline.

*VISUAL SPATIAL DISORDERS. Some patients with Alzheimer's disease suffer spatial disorganization. They lose a sense of where they are geographically. They may become lost and have difficulty with various kinds of situations, even in figuring their way around their own home.

*BEHAVIOR. Frequently, behavioral changes parallel with other symptoms of Alzheimer's disease. For example, a patient who is impulsive and easily distracted may behave even more impulsively. The patient may become depressed as a reaction to not functioning well, and his problems also may result in paranoia.

A patient with Alzheimer's disease may have problems in any of these areas and the symptoms may progress at different rates. In general, according to many researchers, young patients tend to have more language problems than patients over the age of 65. Many medications may be useful in helping patients to

function better, although none can yet reverse the progressive intellectual decline. In addition, there is a major effort being made to learn more about Alzheimer's disease. The federal government is investing money in intensive, integrated and collaborative studies. Several national research centers are being funded. Most cities now have Alzheimer's disease programs or support groups and there is good reason to be optimistic that patients can be helped.

"HELP WANTED"
AIRLINES NOW HIRING.
Reservationists, stewards,
desserts and ground crew
positions available. Call 1-
619-569-0241 for details. 24
hrs.
F-7-14-21-p.

QUALITY PRINTING • • • NEW AND USED OFFICE FURNITURE • • • OFFICE SUPPLIES • • •

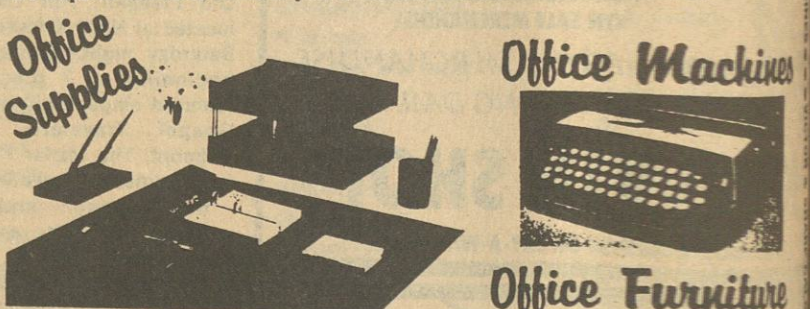
BURNSVILLE PRINTING COMPANY

Iuka
Printing
Company



PHONE
423-1383

Burnsville Printing Co. has moved to 101 Fulton Street (corner of Fulton Street and East Eastport) in Iuka, Mississippi. We made this move to better serve our customers. Thank all of you who supported us at Burnsville Printing Co., and we hope to continue to serve you at IUKA PRINTING COMPANY.



Quality Printing
at Reasonable Prices

WE WANT YOUR BUSINESS
WE NEED YOUR BUSINESS

Office Machine Repair

IBM Typewriters
R. C. Allen Cash Registers
Paymaster Check Writers
Latham Time Clocks
Sharp Calculators
Victor Calculators

IUKA PRINTING CO.

COME TO SEE US!! 101 Fulton St.
Or call us at: (601) 423-1383

QUALITY PRINTING • • • NEW AND USED OFFICE FURNITURE • • • OFFICE SUPPLIES • • •

Newman Speaks Of Longtime Friend

House Speaker C.B. (Bud) Newman issued the following statement on the death of his longtime friend, A.C. (Butch) Lambert:

"Butch Lambert was a man, all man, a good, strong man, the kind you could talk to. You could lay it out to Butch Lambert and he understood. You did not question his reasoning. It was solid. Butch was one in a lifetime -- no, several lifetimes.

Butch Lambert was one of Mississippi's greatest statesmen, an outstanding legislative leader with the complete confidence and deep respect of his colleagues. He became

Chairman of the Tax Commission during a period of reorganization and his vision resulted in the creation of a large agency with many responsibilities. He was able to organize and complete a game plan for the

After he left the Legislature and assumed duties as a Commissioner, Butch continued to visit us at the Capitol. His advice and counsel will be missed.

Butch Lambert was a personal friend. He was totally unselfish and dedicated to those who were good and decent people of this state who loved.

He dealt with the illness the same way he dealt with all other matters -- straightforward manner, courage and dignity.

Butch was 100 percent family oriented. He loved his wife, Ida, his children and grandchildren. He played straight furrow.

We are proud to have been associated with Butch Lambert and to have had the opportunity to work with him. Everybody loved and respected Butch Lambert.

Third District Constable Arrest Report For January

According to Constable Whitaker, 3rd District, the following arrests were made during the month of January: Reckless Driving, 1; Under Influence of Alcohol, 2; Possession of Controlled Substance, 1; Passing Double Yellow Line, 1; Warrants, 33; Summons, 1; Possession of Beer, 1.

"Some folks are too good to be up to any good."

SMITH'S CONSTRUCTION

WE SPECIALIZE IN HOME BUILDING,
REMODELING, WATER DAMAGE &
CABINET MAKING

15 Years Experience

CALL CHARLES SMITH

427-8886

TUNA TWOSOME FOR LENT

Lent has long been an important time in the Christian church. The word "Lent" is derived from the Old English word "lencten" meaning "springtime."

Originally a 36-day period of fasting, 4 days were added to the observance during the reign of Charlemagne, about A.D. 800. It is thought that these additional days were added as a reminder that Jesus Christ fasted in the wilderness for 40 days.

Today, many religions observe the period with special devotions or religious services, fasting or abstaining from amusements.

For those who abstain from meat during the period, tuna is a delicious alternative. Economical and convenient, tuna can be used to make many tasty dishes. These two casseroles are flavorful suggestions for the Lenten dinner table. So delicious, they will probably be served year-round.

Tuna Oven Omelet

1 package Tuna Helper mix for creamy noodles 'n tuna
2 cups hot water
1 cup milk
1 can (6 1/2 ounces) tuna, drained
1/4 cup finely chopped onion
2 tablespoons chopped green pepper
1/2 teaspoon salt



4 eggs, well beaten
4 or 5 drops red pepper sauce
Paprika
Green pepper rings, if desired

Heat oven to 375°. Heat Noodles, Sauce Mix, water and milk to boiling in 3-quart saucepan, stirring constantly; remove from heat. Stir in tuna, onion, chopped green pepper, salt, eggs and pepper sauce. Pour into ungreased square baking dish, 8x8x2 inches; spread evenly to edges. Sprinkle with paprika. Bake uncovered 25 minutes. Top with green pepper rings; Bake 5 minutes longer. 5 servings.

High Altitude Directions (3500 to 6500 feet): Increase hot water to 2 1/4 cups and first bake time to 30 minutes.

Tuna-Vegetable Skillet Dinner (shown)

1 package Tuna Helper mix for noodles, cheese sauce 'n tuna
3 2/3 cups hot water
1 can (6 1/2 ounces) tuna, drained
1 can (12 ounces) whole kernel corn with sweet peppers
1 package (9 ounces) frozen Italian green beans or cut green beans
9 or 10 drops red pepper sauce, if desired

Mix all ingredients in 12-inch skillet. Heat to boiling, stirring constantly; reduce heat. Cover and simmer, stirring occasionally, 15 to 20 minutes. Uncover and cook to desired consistency. 5 or 6 servings.

High Altitude Directions (3500 to 6500 feet): Increase hot water to 4 cups and simmer time to 20 to 25 minutes.

Tuna Helper® is a registered trademark of General Mills, Inc.