

Tishomingo County News

\$8.00 Per Year Locally
In Advance
\$15.00 Per Year
Outside Trade Area

The Vidette & Belmont News

OFFICIAL LEGAL NEWSPAPERS OF TISHOMINGO COUNTY
The One Newspaper In The World Most Interested In This Area

Patronize The News
Advertisers!
They Send A Valuable
Message To You

ONE HUNDRED AND TWO YEARS

IUKA, TISHOMINGO COUNTY, MISSISSIPPI

THURSDAY, JANUARY 23, 1986 NO. 32

SHERIFF RELEASES REPORT ON MURDERS

Five murders currently remain under investigation in Tishomingo County; three of which occurred in early 1984, 2 years ago, Webb and Jewell Johnson and Wilbur Booth, the remaining two, Varnell Ledbetter and W.D. Crawford, happened the latter part of 1985.

In an effort to update our readers on the progress which is being made concerning the solving of these crimes, we contacted Sheriff

Bob Payne and the following report is based on an interview with him.

There is still nothing new to report in the investigation into the January 1984 murders of Iuka residents Webb and Jewell Johnson. The elderly Johnsons were found shot to death in their home on January 28, 1984.

According to Tishomingo County Sheriff Bob Payne, the task force assigned to the

case met recently, but there have been no further developments; however, they plan to question K.D. Sanders concerning the Johnson murders when he is apprehended. Sanders is wanted for the December 29, 1985, murder of his grandfather W.D. Crawford and wounding of his grandmother. Sanders was said to have been living in this area at the time of the Johnson murders.

Investigation into the February 1984 beating death of Wilbur B. "Bill" Booth of Burnsville, continues by the task force, but there have been no new developments in this case as well, according to Sheriff Payne. Sanders allegedly was acquainted with Booth also, and was seen

talking with him in a store, thus he will be questioned concerning this occurrence. According to Sheriff Payne there are similarities between the Booth and Crawford murders. Finger prints taken at the Booth scene will be compared to those of Sanders.

In the September 1985, shooting death of Virgil Varnell Ledbetter enough evidence has been collected to take the case before the grand jury when they meet in April, stated Payne, declining to comment on whether an indictment was expected.

Officials are still baffled as to the whereabouts of K.D. Sanders sought for the December 29, murder of his grandfather, W.D. Crawford and the attempted murder of his grandmother.

Sheriff Payne told The News that he is keeping in close contact with family members. Sanders has two sisters living in Los Angeles, both houses have been under surveillance. Both sisters said that they have gotten threats previously and that they are scared. The Los Angeles Police Department and the L.A. Sheriff's Department are trying to assist local officials. His mother, Jannie Hadley has not heard from him, but she told the sheriff "he's coming back here, he always does" indicating Tishomingo County. Jerry Sanders, the boy's father, of Louisville, Kentucky, says that he has not seen or heard from K.D. in 6 or 8 months. He had called him then asking for money to be wired to him in Texas. He stated that lately he had been getting strange phone calls at 1 or 2 a.m. and nobody would say anything.

Locally the authorities have checked all the cabins in the area of the Crawford residence and staked out the Crawford mailbox where Sanders receives a monthly check. Authorities questioned friends and acquaintances. A man living in a secluded place of Highway 25 North told the authorities that K.D. had asked him if he could stay with him several weeks prior to the murder. With the mans permission a through search of the premises was made, but failed to turn up any clues.

A Dyersburg, Tennessee, woman claimed to have sat across from a man fitting Sanders description on a bus, and according to her he got off the bus when she did at Dyersburg, Payne said.

Sheriff Payne said that the car Sanders was driving was located in Memphis, and it did not appear that he had tried to hide the car. Payne said he believed that K.D. wanted the authorities to find the car. The back seat had been taken out of the car and the keys, the house keys, and a knife had been placed in back of the seat.

A description of Sanders has been placed on the N.C.I.C. machine, and local, state, and national authorities are on the alert as the manhunt continues.

ONE ARRESTED IN HOME BURGLARIES

A Lee County man, Michael Wayne Threadgill, 36, of Verona, has been arrested by authorities in connection with numerous break-ins and burglaries of homes in Tishomingo and surrounding counties, according to a report given by Sheriff Bob Payne. Stolen items taken from two residences in Belmont last week have been recovered and returned to their owners, it was said.

In Tishomingo County, Threadgill faces charges of breaking and entering at the W.B. Deaton home in Belmont, and burglary charges of the Harold Epps residence, also of Belmont. Both events were reported to have occurred January 14.

The sheriff said Threadgill has admitted to ten other recent break-ins including those in Tishomingo, and naming Itawamba and Monroe

counties where he said Threadgill also faces charges.

Sheriff Payne has worked with Monroe County Sheriff, Frank "Pat" Patterson, in the investigation.

Among items returned to the Belmont residents were listed an assortment of ladies jewelry, a microwave oven, one .12 gauge shotgun, a .22 caliber rifle, one .16 gauge shotgun, and two chainsaws.

The arraignment date for Threadgill has not been set, Payne said.

November Sales Tax Collections

November 1985, city sales tax collections made within the county and reported to the Tax Commission totaled \$48,412.87. Collections for the six municipalities in Tishomingo for November were Belmont \$9,619.18, Burnsville \$5,507.02, Golden \$847.95, Iuka \$29,062.19, Paden \$38.29, and Tishomingo \$3,338.24.

The City Sales Tax Collections contained in this report are based on taxes collected by merchants during October and reported to the Tax Commission in November.

Benefit Singing At First Free Will Baptist Church

There will be a benefit singing for Charles Bullard on January 25, at 7:00 p.m. at the First Free Will Baptist Church located on Pleasant Hill Road. Featured singers will be the Harmonizers and the Lay Men from Iuka.

The pastor, Bro. J.T. Prince, along with the congregation, extends a cordial invitation to everyone to attend this singing and participate in this worthy cause. Let's obey the commandment Jesus gave when He admonished us to love one another as He has loved us.

Parents Without Partners

Due to the positive response shown earlier, another organizational meeting of Parents Without Partners will be held at the Chamber of Commerce building in Corinth, Monday, February 3rd, at 7 p.m.

If you're a single parent bringing up children alone or having to live apart from them, Parents Without Partners is an organization to help you manage money, balance a career with family and social life, help each other solve mutual problems and further their children's development into healthy young adults.

If you're widowed, divorced, separated, or never married, P-W-P can serve as an extended family...by learning together, showing interest in others, filling social needs, getting involved, and working for better laws.

For more information call locally 423-6059 and ask for Billy.

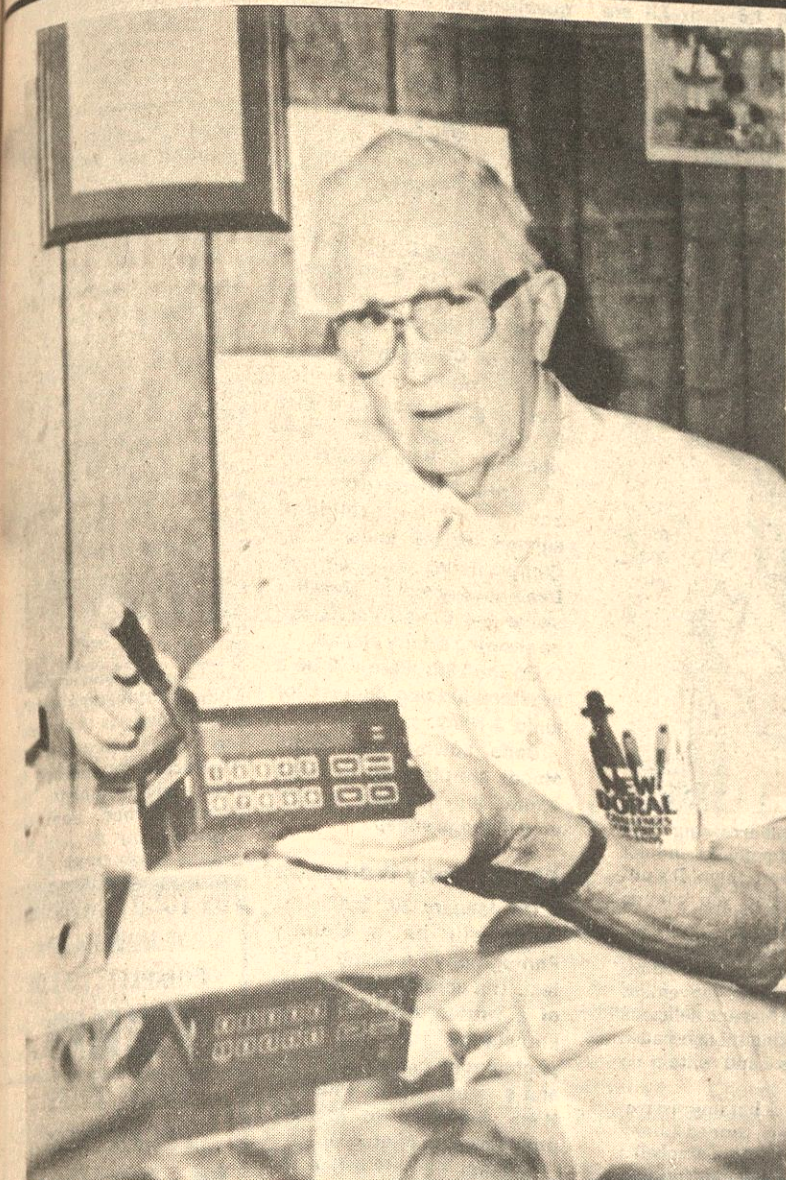
One Arrested On Rape Charges

One suspect has been arrested by Tishomingo County officials in connection with the October '85 rape of a 19-year-old Dennis woman; however, per request of the Sheriff's Office, both the names of the accused and the accuser are being withheld.

According to a spokesman at the jail, the defendant has been released on a \$10,000 bond following positive identification which was made by the victim. He is now awaiting a preliminary hearing.

\$1,000.00 Reward Offered

A \$1,000 reward is being offered for any information leading to the arrest and the conviction of subject or subjects involved in the arson of the 1975 Timberjack Skidder belonging to Charles Ray Hill. All information will be strictly confidential. Please contact Charles Ray Hill at 438-6411, Chief Mike Kemp at 423-6185 or Fire Marshall Mike Ivey at 359-1061.



WILLIAM T. RAY RETIRES FROM CONALCO PLANT

On January 31, 1986, the Iuka laminating plant will lose one of its most treasured employees-William T. Ray, who will retire after 19 years of continuous service. Troy, as everyone calls him, started working at the Iuka plant on January 3, 1967, as an hourly maintenance electrician, reporting to the then Plant Manager, Don Fiske.

In August, 1967, Troy was promoted to the salaried position of Maintenance Supervisor. In 1968, he was promoted to the position of Plant Engineer, a position he has held since that time.

Troy is responsible for all maintenance on all machinery and equipment in the Iuka plant, supervising 5 maintenance employees. The plant operates 24 hours a day, 7 days a week, so it is imperative that Troy is kept advised of the condition of all machines at all times.

Some of the equipment he has responsibility for include: 4 laminators, 3 slitters, 1 sheeter, 1 cutter, 9 material handling trucks, shop equipment, and the building in general. A typical day in the

life of Troy at the plant might go like this: be met at the door by a plant foreman who needs, among other things, a roller for a machine cut, a change-over on a machine, one of the fork trucks down, slitter knives need to be set, and parts need to be ordered for a laminator-all this before he gets his coat off and a cup of coffee in his hand! After all this is taken care of, Troy may be paged to the office to meet with a salesman, for a meeting with other staff members, for a fire inspection, etc. Troy's 8 hour day has countless times turned into 12 to 15 to 24 hour days when he has been called back to the plant for his expertise on a difficult problem.

Not only has Troy taken care of all the mechanical problems on the job, he could always be counted on to help any employee after hours on any problem they might have with lawn mowers, lamps, car motors, and anything else that had to be repaired. Troy always fixed it or thought of a way to improve it. All this with a smile and a joke!

Before Iuka was lucky

enough to hire Troy, he served 20 years in the U.S. Army, being stationed in North Africa, India, Burma, China, Germany and Korea. He retired from the Army in October, 1965. He worked at ITT, Corinth, for a year before joining our gang at Iuka.

After retirement, Troy and his wife, Peggy, a native of Knoxville, Tennessee, plan to travel a little, maybe put in a small appliance repair shop, hunt, fish, and garden. Also, Troy will be found at home with a full coffeepot on the stove, playing with his 1-year old granddaughter, Cori, the apple of his eye!

Notice

The February 1st deadline for paying real and personal taxes in the City of Iuka is fast approaching. Tax payers are urged to pay on time in order to avoid penalties.

JOYCE BRUMLEY
City Clerk and
Tax Collector

IHS Royalty To Be Honored

On Friday, January 24, 1986, the identities of Chief and Miss Iuka High School will be revealed in an assembly program that will be held at 1:00 p.m. in Howard Auditorium. At this same time Senior Who's Who, Senior Superlatives, and Hall of Fame winners will also be announced. Class favorites will be recognized.

Chief and Miss IHS will be elected from the five girls and the five boys who have maintained the highest academic averages during their high school careers. Students in grades nine through twelve then vote to select Chief and Miss Iuka High School.

Who's Who choices are nominated and selected by senior class members.

Hall of Fame members are chosen by the IHS faculty. Academic achievement, leadership ability, extracurricular activities, and athletic ability are considered in making these selections. Those who receive the greatest number of votes will be inducted into the IHS Hall of Fame.

The administration, faculty, and students at IHS invite any interested persons to attend the ceremonies at 1:00 p.m. on Friday, January 24, 1986, in Howard Auditorium.

Shrine Club To Meet

Tishomingo County Shrine Club will meet Thursday, January 23, at the Dennis Restaurant at 7 p.m.

All members are urged to attend this important meeting.

Notice

The 4th District Neighborhood Watch will meet Thursday night, January 23, at 7 p.m., at the 4th District Fire Station.

STATE UNEMPLOYMENT CLIMBS TO 10 PERCENT

The jobless rate for Mississippi climbed to 10.0 percent in December, up from 9.5 percent revised rate of November's, according to Mississippi Employment Security Commission Executive Director, Cohen Robertson. The December 1984 unemployment rate stood at 10.3 percent, indicating an annual decline of three-tenths of a percentage point. The 10.0 unemployment rate in December remained higher than the 6.7 percent unadjusted rate for the nation.

MESC figures showed 112,300 unemployed and 1,007,000 employed persons in a total labor force of 1,119,300. Total employment was down some 12,400 from

Eastport Baptist Church Singing

Eastport Baptist Church will host a congregational singing, Sunday, January 26, beginning at 1:30 p.m.

Everyone is cordially invited to attend. All singers and piano players have a special invitation.

VOLUNTEERS NEEDED AT PICKWICK MANOR



Pickwick Manor Volunteer Program

Pickwick Manor is expanding its Volunteer Program. Marie

Floyd, Volunteer Director, (right) and June Pruitt, Assistant Volunteer Director, extend a personal invitation to you to become involved in

this program and add more meaning to your life. Anyone who is interested may call 423-6154 or 423-5399.

TISHOMINGO COUNTY NEWS VIDETTE and BELMONT NEWS

Phone 423-3666

(SECD 631680)

John H. Biggs, Editor & Publisher

Published Thursday by The Tishomingo County News, Inc. Serving the people of Tishomingo and adjoining counties for more than 95 years. Publication office 120 West Front Street, P. O. Box 70, Iuka, Mississippi. Entered at the Post Office as mail matter of the Second Class. Second Class postage paid at Iuka, Mississippi. Zip Code 38852. Post Master send address changes to The Tishomingo County News, P. O. Box 70, Iuka, Mississippi 38852.

Mail Rates Tishomingo and Adjoining Counties
\$8.00 Per Year
Other Areas
\$15.00 Per Year

EMERGENCY PHONE NUMBERS

Sheriff Department.....	423-6185
Tishomingo County Hospital.....	423-6051
Ambulance Service.....	423-5766
POLICE DEPARTMENTS	
Belmont.....	454-3381
Burnsville.....	427-9526
Iuka.....	423-6340
Tishomingo.....	438-6302
FIRE DEPARTMENTS	
District 1, Coleman Park.....	423-6185
District 2, N. Crossroads.....	423-6185
District 3, Midway.....	423-6185
District 4, Tishomingo.....	423-6185
District 5, Belmont.....	423-6185
Iuka.....	423-5011
Miss. Forestry Service, Woodall Tower.....	423-5951
MISSISSIPPI HOT LINE FOR CHILD ABUSE	
1-800-222-8000	
DRUG AND ALCOHOL ABUSE	
423-3332	

Chatting With Your Home Economist

By: Nellie R. Horton,
Extension Home Economist

Making A Spending Plan

Most families have occasionally wished they could wave a magic wand and have enough money to solve their financial problems. But having more money doesn't necessarily solve the problem.

Planning is the key word. Planning can make the difference between whether or not you can provide enough food for your family, make the next house or rent payment and still buy Christmas presents for your children. A carefully developed spending plan can be your guide to better financial health.

The first step in making a spending plan is to add up how much money will be coming in during the year. Include net (after deductions) salary or wages, Social Security, pensions, assistance payments, business income, rent, alimony or child support (if dependable), interest from savings and dividends from stocks.

The next step is to decide

how income will be spent during the year. First, figure fixed expenses. Every family has some expenses that are more or less fixed - expenses that have to be paid in specific amounts and at specific times, or expenses to which you have committed yourself.

Then figure flexible expenses. These day-to-day expenses change frequently and are often hardest to account for without keeping records.

If you have kept records of spending, it will be much easier to estimate your fixed and flexible expenses. If not, look through your check stubs, receipts and other records to see how you spent last year. This should give you a fairly accurate guideline for estimating future expenses.

Finally, balance your plan. Compare expected spendable income with planned expenses for the year. Remember, your income and expenses may not balance every month; but it is important that they balance over the length of the plan.

Juicy Meat Loaf

- 1 1/2 lb. ground beef
- 3/4 c. oats, uncooked
- 2 eggs, beaten
- 1/4 c. chopped onion
- 2 t. salt
- 1/4 t. pepper
- 1 c. tomato juice

Combine all ingredients and

4-H'ers Visit Nursing Home

The North Crossroads 4-H Club members visited the Nursing Home during the Christmas Holidays. Mem-

bers who attended were: Tim, Tom and Greg Rutledge, Sabrina Prather, Brandy Bray, Mark Hinton. Back row: LaDonna Terry, James

Monroe, Heith Whitaker and Lori Rutledge. They sang Christmas carols and gave each patient a Christmas card with candy.

pack firmly into loaf pan. Bake in moderate oven 350 degrees for 1 hour. Let stand 5 minutes before slicing.

Extension Homemakers Clubs And You

Extension Homemakers Clubs in Tishomingo County are continually changing in order to meet the needs of all members and keep up with our changing times.

Sixty years ago, Home Demonstration Clubs, now known as Extension Homemakers Clubs, were organized to teach homemakers how to can food, cook, sew, garden, and make mattresses. Over the past sixty years, much progress has been made by homemakers.

Modern Extension Homemakers Clubs are designed to meet the needs of their members. There are still a few people who think you need to know how to sew, cook, and can in order to become a member of an Extension Homemakers Club. Not true-Today's Extension Homemakers Club members receive up-to-date information on buymanishp skills in buying clothing, food and nutrition, home furnishings, housing, management, safety, family life, energy conservation, and many other areas of Home Economics.

Nellie R. Horton, Extension Home Economist, states that Extension Homemakers Club members in Tishomingo County strive to promote a better way of life for all through fellowship, continuing education, service; to provide guidance in our homes and communities for the uniting of people to make the world a better place in which to live.

Extension Homemakers Clubs today are designed for the busy homemaker. The educational phase of the meeting should be conducted in one hour; also, fellowship periods are encouraged. The meeting is designed so that a busy homemaker can attend and feel free to leave in one hour.

There are several different kinds of Extension

Homemakers Clubs today: the traditional club (with officers), "Lunch and Learn Club", Young Homemakers Club, Special Interest Club (example: Quilting Club, Sewing Club, Stitching Club, etc.), Senior Citizen Club, and others.

Miss Horton states that the Tishomingo County Extension Homemakers Council and the Extension Home Economist are making an effort to organize new clubs in 1986. According to Miss Horton, an Extension Homemakers Club can be organized with as many as eight members.

If you have questions regarding Extension Homemakers Clubs (the largest woman's organization in the world), or if you need additional information concerning Homemakers Clubs, would like to help organize a group, or become a member, call her at 423-3616.

The Tishomingo County Extension Homemakers Club members live in the present, dream of the future, but learn eternal truths from the past. With enthusiasm let's make this year of golden opportunities very special-join an Extension Homemakers Club today!

First Bank Stock Split

First Bank Capital Corporation, the holding company for First Citizens National Bank, announced today that its board of directors voted to recommend a four-for-one stock split to its shareholders. This issue will be considered at the corporation's annual meeting on April 17, 1986. This action rescinds the board's previous decision to recommend a three-for-one stock split which was announced on November 20, 1985.

"Courage is knowing what not to fear." Plato

Our cancer insurance costs so little, yet can mean so much

We think you'll be surprised at how little it costs to supplement your regular health insurance coverage with Mutual of Omaha cancer insurance. And, many people need supplemental coverage, because the cost of cancer treatment can run into many thousands of dollars. Early diagnosis and treatment, and the money to pay for it are so important.

Call us today for complete information on Mutual of Omaha's reasonably priced cancer protection.

BEN BURNS
423-1750

NELSON C. VESTAL
AGENCY

Mutual of Omaha

People you can count on...
Life Insurance Affiliate
United of Omaha

MLM1637

TH+ COUNTY HOSPITAL

Give The "Gift Of Life" Donate Blood

The Tishomingo County Hospital will be sponsoring a community-wide Blood Drive on Thursday, January 30th, 1986, from 1-6 p.m. All are urged and welcome to donate blood to United Blood Services at this time. The Blood

Drive will be held at The National Guard Armory.

Blood Donor qualifications are as follows: (1) Age: 17-65 years. (2) Weight: 110 pounds or over. (3) Donation frequency: 8 weeks between donations. (4) Medical history: You may not donate with certain medical problems; however, these questions will be asked at the time of donation. (5) For your information: (a) It is recommended that you eat a meal

before donating. (b) You will be asked for your social security number for identification purposes.

Only if you're willing to give blood can there be an availability of blood for those who need it.

Please Give the "GIFT OF LIFE" Donate Blood. It may be your OWN LIFE that is saved!!

4-H News

By: Sherry C. Smith,
Extension 4-H Youth Agent

4-H Happenings

Several 4-H'ers in our county are busy this month preparing for the Northeast District Livestock show which will be held January 27-29. Four 4-H'ers from our county will be exhibiting animals at the show. Joey Carson, Rebecca Carson, and Dena Lowery will be showing swine and Dorian Purvis will be showing a dairy animal.

On the 28th there will be a livestock judging contest for junior 4-H'ers.

Dena Lowery and Cyndi Moody are planning to judge swine. Holly Williams is planning to judge sheep.

Photography Workshop

On January 30, 3:30 p.m., there will be a County Photography Judging Contest. The contest will consist of a written test based on knowledge of the 4-H photography project manuals and a visual test in which 4-H'ers will have to identify problems with photographs. Contact the 4-H office for more information on this contest.

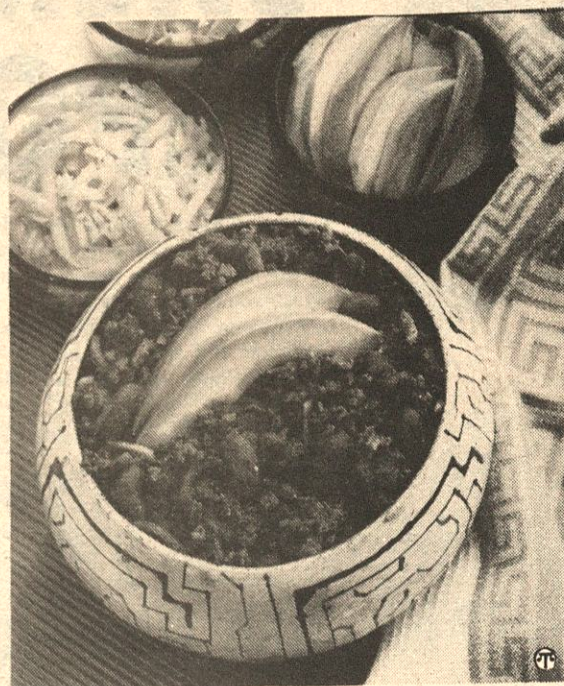
4-H Modeling Squad
Twenty-eight 4-H'ers at-

tended the recent organizational meeting for a 4-H Modeling Squad tryout. The 4-H'ers will attend a series of workshops preparing them for a Fashion Show in which modeling squad members will be selected.

Workshops such as skin care, hair care, modeling techniques, manners, etc. will be offered. If you have experience in any of these areas and would be interested in having a workshop please contact me at the 4-H office.

That troublesome garden pest known as the dandelion was brought to America from Europe by the early colonists. The name comes from the French *dent de lion* and means lion's tooth.

FOR YOUR CONVENIENCE
WE NOW HAVE A COMPLETE LINE OF FEED
FRUIT TREES
PECAN TREES
McBRIDE'S GARDEN CENTER
HWY. 25 N. - IUKA



Nothing is more embarrassing than unexpected guests dropping-in and not having anything to serve them. It's undoubtedly one headache you can do without.

Having Campbell's Quality Soup and Recipe Mixes on hand can help eliminate that worry. They not only make quick and convenient soups but they can also be the special touch in fast and delicious recipes. And hosts need not worry about serving them because they're made with only the finest ingredients and contain no preservatives, artificial flavors or MSG.

Chili Beef Soup is just one recipe that is quick but impressive. It blends household staples such as ground beef, canned kidney beans and tomatoes, chili powder and garlic with Campbell's Onion Mushroom Soup and Recipe Mix into a delightful dish that will surprise unexpected guests. And it takes only minutes to prepare!

- | | |
|---|--|
| CHILI BEEF SOUP | |
| 1 pound ground beef | 3/4 cup water |
| 1 large clove garlic, minced | 1 can (about 16 ounces) kidney beans |
| 1 to 2 tablespoons chili powder | 1 can (about 15 ounces) tomatoes, cut up |
| 1 pouch Campbell's Onion Mushroom Soup and Recipe Mix | Sliced avocado |
| | Shredded Cheddar cheese |
- In 3-quart saucepan over medium heat, cook beef with garlic and chili powder until browned, stirring to break up meat. Pour off fat.
 - Stir in soup mix, water, kidney beans and tomatoes. Heat to boiling. Reduce heat to low; cover and simmer 20 minutes, stirring occasionally. Garnish with avocado and cheese. Makes 5 cups or 5 servings.



To make candles burn more slowly and evenly, place them in the freezer several hours before using.

WILLIAMS PEST CONTROL & INSULATION COMPANY

Phillip Williams, Owner
Belmont, Miss.

If you'd like to save money by making your home more energy-efficient, call us. We're experts in home weatherization, and our materials meet TVA standards for financing under The Energy Package™.

So if you're ready to weatherize your home, ask your power distributor about The Energy Package™. Then call us to do the work.

We are also bonded licensed and experienced to take care of all your pest control needs.

Call 454-3383
Day or Night

New Coronavirus Vaccine Available

We all remember the scare canine parvovirus gave us a few years back. The disease swept through the dog population in 1978 at epidemic levels. Fortunately, effective parvo vaccines and regular immunization have helped control the disease.

But there is another disease, similar to parvovirus, that is causing concern. The disease, commonly called canine coronavirus, has seemingly been on the increase since the parvo outbreak subsided. Canine coronavirus is highly contagious and is second only to parvo as the leading cause of viral diarrhea in dogs.

Coronavirus infection spreads through contact with infected feces or by shoes, sticks, furniture and other objects. The disease causes severe inflammation of the intestine and vomiting is usually one of the first symptoms. Other symptoms include diarrhea, loss of appetite and depression. Coronavirus infection is usually most severe in puppies.

Coronavirus and parvovirus are two separate diseases although both diseases can occur in

the same dog at the same time. Symptoms produced by coronavirus and parvovirus are similar and the two can easily be confused. Vaccination against one does not protect against the other.

Cases of coronavirus have been seen in as many as 1 out of 4 family owned pets. An even higher incidence has been seen in kennel dogs where the disease can spread very rapidly.

Effective vaccines are available for both coronavirus and parvovirus and it's important to have your dog vaccinated against both diseases. For the most complete protection against viral diarrhea, check with your veterinarian about vaccinating against parvovirus and coronavirus today.

Brought to you as a public service from:

IUKA

ANIMAL CLINIC

James F. Perkins,
D.V.M.

Hwy. 25 South
Iuka, Miss.
Phone 423-3470

A bargain you don't have to shop for

Electricity is still a good value - and we make sure it's there whenever you need it. We deliver electricity to your home 24 hours a day - and with it comes the comfort and convenience you expect.

To get the greatest possible value from electricity, use it efficiently. By avoiding waste, you'll save on your electric bills without giving up comfort or convenience. Now that's a bargain!

**Tishomingo County Electric
Power Assoc.**
The people who bring you electricity



ELECTRICITY.
Get the most
for your money.

HWI special
JANUARY MANAGER'S reg. 3.99
1.49
flashlight
2 "D" cell
801 895/740

HWI special
40th Anniversary JANUARY of the month
silicone household glue & seal 310 212 405 191 regular retail value of \$4.98 for 2 tubes
1.97
or silicone bathroom caulk & seal
FREE TUBE
FREE TUBE
FREE TUBE

FAIRLESS HARDWARE

TISHOMINGO 438-6608. IUKA 423-9256

"Open All Day Thursday"



Johnson - Joseph Vows Planned For April 5th

Mr. and Mrs. Robert B. Johnson of Springdale, Arkansas, announce the engagement and approaching marriage of their daughter, Robin Kay of Dallas, Texas to Thomas Reid Joseph, also of Dallas, son of Mr. and Mrs. Tom R. Joseph of Hamilton, Texas.

Robin is the granddaughter of Mrs. Miles Holt and the late John L. Stafford of Springdale, Arkansas; and the late Dr. E.R. Johnson and Mrs. E.R. Johnson of Ft. Worth, Texas.

After graduating from Springdale High School in 1979, she attended the University of Arkansas where

she was a member of Kappa Kappa Gamma Sorority. She graduated in 1983 and received a Bachelor of Science in Dental Hygiene. She is now employed as dental hygienist to Dr. D.E. Dobbs, D.D.S. Dallas, Texas.

Mr. Joseph is the grandson of Mr. C.B. Reid and the late Pansy Reid, of Iuka; and Mrs. Elizabeth Joseph and the late Mr. Tom R. Joseph, of Corpus Christi, Texas.

He is a 1983 graduate of Texas A & M University and received his Bachelor of Science in Agricultural Economics. He was a member of Texas A & M Corps of Cadets and Head Yell Leader

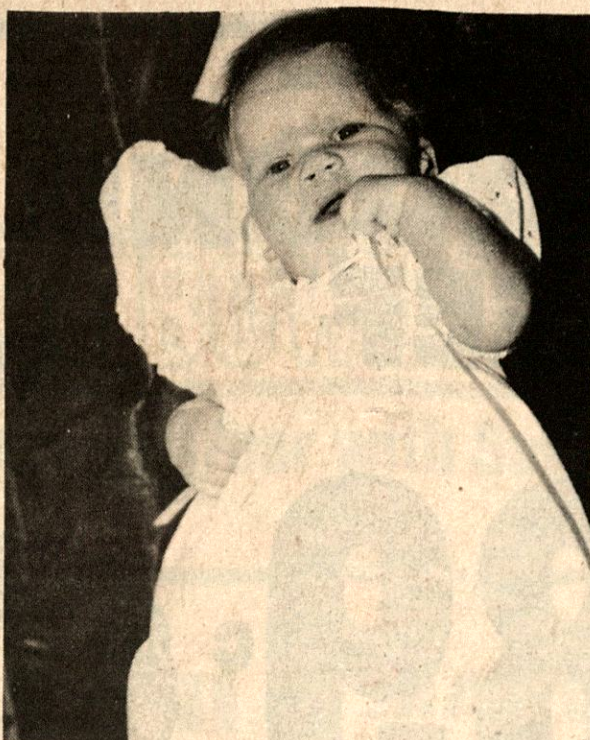
'82-'83. He is presently employed in commercial real estate with The Garrett Company of Dallas, Texas.

Wedding vows will be exchanged Saturday, April 5, 1986, at 6 o'clock in the evening at the First United Methodist Church in Springdale, Arkansas.

Tishomingo News

Mr. and Mrs. Robert Dean enjoyed Saturday lunch with her sister Mrs. Oma Goddard at Belmont.

Virgil Beam of Matachie



Alexandra Theresa Hudson Is Christened

On October 26th, Neil and Cindy Hudson had their daughter Christened, Alexandra Theresa Hudson. Alex was Christened at the Little Chapel on the hill, U.S. Naval Station Roosevelt Roads, Ceiba, Puerto Rico. Father Marshal, the Naval chaplain, performed the Sacrament. Alex's godparents are Rene and Cathy Fortin of Tuscaloosa, Alabama, and Inge Johnson of Tusculumbia, AL. Alex's namesake is Teresa Lomenick. Alex was born in Puerto Rico on August 14th, at the U.S. Naval Hospital, Roosevelt Roads. She has one older brother, Jacob. Alex is the gran-

daughter of J.E. and Mae Hudson of Iuka, and Don and Juanita Wolfard of Sheffield. Her great-grandparents are the late Mr. and Mrs. Mitt Hudson of Iuka; Mr. Jess Romine and the late Myrtle Romine of Florence; Mrs. E.C. Decker of Nornan, OK and the late Noah E. Wolfard of Encampment, WY; Mrs. Mattie Lomenick and the late Robert Lomenick of Iuka. After the christening, a party was held in honor of Alex at her home in Ceiba. Neil, Cindy, Jacob, and Alex were joined by a few close friends and neighbors in their celebration. Everyone enjoyed a delicious buffet of country ham, hot rolls, a selection of vegetables and cheeses as well as champagne.

spent Thursday with Mr. and Mrs. Harold Blunt and Ms. Cleo Owens, Mr. Blunt and Mr. Bean are retirees of the State Highway Department.

Paul (Bo) Morgan and Martha Lee Halmack of Sheffield visited his sister, Mrs. Gladys Bickerstaff and Sis on Saturday.

Sunday luncheon guest of Mrs. Wynona Byram in Iuka were Mr. and Mrs. Morris Byram of Little Rock, Mrs. Geraldine Byram and Mrs. E.T. Gilley.

Dr. and Mrs. Glenn Bennett, Bradley and Lindsay of Baldwin were weekend visitors of Mrs. Lois Norton.

Carolyn Morris of Burdsville spent Sunday with her

grandmother, Mrs. Mary Palmer.

L.C. and Carolyn McDougal of Memphis spent Thursday night with Mr. and Mrs. John Trimm.

Mr. and Mrs. Lloyd Gene Tucker and grandsons, Lloyd and Corey Alan visited Mrs. Clarice Tennison on Saturday.

Visitors over the weekend of Mr. and Mrs. Woodrow Black and Mrs. Clara Ray were Mr. and Mrs. Dan Haygood, Forrest City, Ark. Mr. and Mrs. L.M. Holley, Sheffield, Al; Mr. and Mrs. Hubert Day, Bro Chester Harrison, Mr. and Mrs. Gilbert Sartain, Mrs. Bea Stephens, Mrs. Inez Sappington, Mrs.

Geraldine Byram, Clayton Short and Cladron Parker.

On Monday night Canrad and Mary Nell Kriger of Sheffield visited Mr. and Mrs. Paul Whitlock and Amy and surprised Phyllis with a birthday party dinner. They had prepared wonderful food with all the courses including the delicious birthday cake.

Mr. and Mrs. Tommy Hackett and Lindsay of Columbia, Tn. were home with her parents, Mr. and Mrs. Tommy Ray Fuller, over the weekend. Tammie and Lindsay are staying on this week for an extended visit.

Mrs. Louise Barnett is taking turns staying with her mother, Mrs. Laura Jones, in the Tishomingo County Hospital.

J.H. Clifton and Lewis Ferrell remain at the North Mississippi Medical Center in Tupelo. Mr. Ferrell is reported to be a little improved. His room is number 580.

Mrs. Ruby Haines is still critically ill at the Baptist Memorial Hospital in Memphis.

Mrs. Loris Long had eye surgery in Memphis last week. She is at the home of her son, Edward Youn Long in Memphis.

Deepest sympathy is extended to the family of R.C. Dally.

Welcome to Tishomingo, Dr. Stephen Butler!!



"Sweet 16"

Happy Birthday,
Natalie
We Love You,
Dad, Mom & Eric

Holcut-Cairo Homemakers Club

Our club met on January 16, 1986, for our January meeting. We had nine members present, and our officers and chairman were selected for the coming year.

We feel this will be a very busy year for our club. We made plans to do many things this year, one of these include working toward a building in or near where the old Holcut School location was. This building would serve as a Community Center, a voting precinct and a place where our young people could participate in various sports. We, also plan to have demonstrations regarding cooking, flower arrangements, hand work and landscaping this year.

Local Student On FHC Presidents List

Michelle Robinson, daughter of Mr. and Mrs. L.T. Robinson, 805 West Qultman, Iuka, has been placed on the President's List at Freed-Hardeman College for the 1985 fall term.

She is a freshman majoring in teaching mathematics at the college.

To be eligible for the President's List, a full-time student must earn a 3.30 or above grade point average. This is based on a 4.0 scale.

Freed-Hardeman, located in Henderson, Tennessee, offers baccalaureate degrees in forty areas.

WINTER CLEARANCE

ADDITIONAL

**20%
OFF**

IN ALL
SPORTSWEAR &
WINTER
LINGERIE
DEPARTMENTS
20% off



REGULAR PRICE LADIES DRESSES

Shop & Save at
Kenwin's Low-Low Prices

CASH, LAY-AWAY OR CHARGE

KENWIN

DOWNTOWN IUKA

Fashion Flair Family Haircutters & Fitness Center

621 Elm shopping Center - 423-5709

Are pleased to announce the association of Pat Rogers to our staff.

Pat is a graduate of Ray's University of Styling.

We also want to introduce to you our newly equipped Fitness Center. We now have Nautilus & Soloflex to better serve you. Call today.

OPEN DAILY FOR BOTH MEN & WOMEN 8:00 - 5:00
NIGHT SESSIONS, MONDAY - THURSDAY
Women - 5:00 - 6:30
Men 6:30 - 8:00

Janie Atkins, Owner & Operator

Sue Sanders, Operator. Pat Rogers, Operator



NEW ORLEANS
FAMOUS
FRIED
CHICKEN

NEW ORLEANS FAMOUS FRIED CHICKEN Announces

THE MANAGER'S FIRST ANNIVERSARY PRICE ROLL-BACK

1983 PRICES ON THE FOLLOWING DINNERS

NEW ORLEANS
FAMOUS
FRIED
CHICKEN

	OLD PRICE	NEW PRICE
BASIN STREET	\$2.89	\$2.49
2 Pieces of Krispy White Meat Potatoes & Gravy Homestyle Biscuit		
RAMPART	\$2.89	\$2.59
2 Pieces of Krispy Dark Meat Potatoes & Gravy Creamy Cole Slaw & Homestyle Biscuit		
ROYAL	\$3.29	\$2.79
2 Pieces of Krispy Dark Meat Tasty Baked Beans Hot Buttered Ear of Corn and Homestyle Biscuit		
BOUBON STREET	\$3.69	\$3.29
Krispy Fried Leg, Thigh and Wing Potatoes & Gravy Hot Buttered Ear of Corn and Homestyle Biscuit		
MARDIGRAS	\$3.79	\$3.29
Krispy Fried Leg, Thigh and Wing French Fries Creamy Cole Slaw and Homestyle Biscuit ALL WHITE MEAT EXTRA		

**LOWER
PRICES
MEAN
HIGHER
VALUE
FOR YOUR
DOLLAR**

NEW MENU ITEMS

Breaded fillet of fish, french fries, cole slaw, hushpuppies	\$2.49
FISH DINNER	\$2.49
TACO SALAD	\$1.69
ROAST BEEF SANDWICH	\$1.99
BACON CHEESEBURGER	

NEW ORLEANS
FAMOUS
FRIED
CHICKEN

**HWY. 72 & 25 SOUTH
423-2376
CALL IN ORDERS WELCOME**

NEW ORLEANS
FAMOUS
FRIED
CHICKEN

Nelson's Supermarket

Quality foods at lowest prices

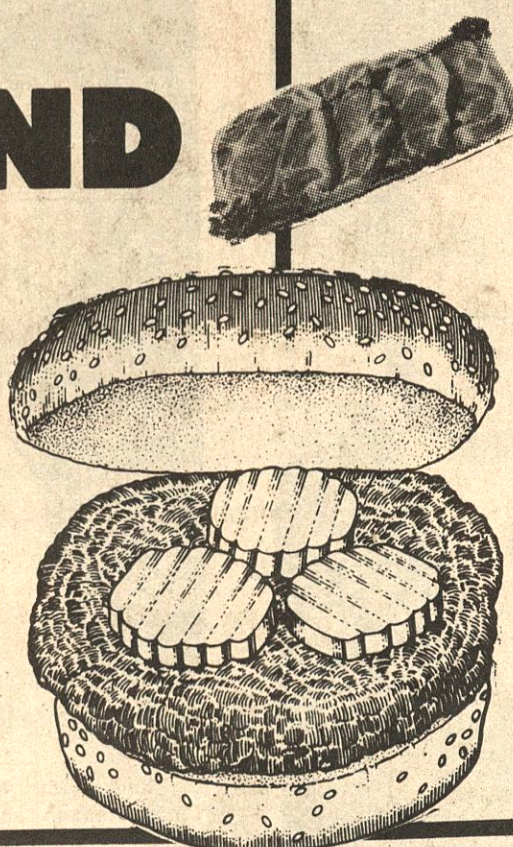
QUANTITY RIGHTS RESERVED

AD EXPIRES JAN. 29, 1986

FRESH FAMILY PACK

GROUND BEEF

LB. **89^c**



FAMILY PACK SLICED

PORK CHOPS

LB. **89^c**

FARMERS PRIDE SLICED SLAB

BACON

LB.

99^c



GOLDKIST FRESH JUMBO PACK SPLIT

CHICKEN BREAST

LB. **\$1.19**

BRYAN SLICED

BOLOGNA

REG., HOT, THICK & BEEF

\$1.19

12 OZ. PKG.



ZEIGLERS MEAT

WIENERS

12 OZ. PKG.

99^c



ZEIGLERS SLICED

BACON

12 OZ. PKG.

99^c



ZEIGLERS PORK

SAUSAGE

\$1.19

16 OZ.

ZEIGLERS

SLICED HAM

12 OZ. PKG.

\$2.59



ZEIGLER'S ALL VARIETIES

RUDYS FARM

SAUSAGE LINKS

12 OZ. PKG.

\$1.69

ZEIGLERS SLICED

BOLOGNA

12 OZ. PKG.

99^c



REELFOOT RAG

BOLOGNA

2 LB. STICK

\$2.99

RUDYS FARM

SAUSAGE & BISCUIT

8 1/2 OZ. PKG.

\$1.69

BRYAN EXTRA LEAN PORK

SAUSAGE

16 OZ. PKG.

\$1.69



BRYAN TRADITIONAL

BONELESS HAMS

LB.

\$2.39



4 KINGS BREADED

CHICKEN NUGGETS

LB.

\$2.19

BRYAN SMOKED

PORK CHOPS

LB.

\$1.99



Bryan

SMOKY HOLLOW TRADITIONAL

SMOKED SAUSAGE

16 OZ. PKG.

\$2.19



SMOKY HOLLOW

SMOKED SAUSAGE

ALL VARIETIES

16 OZ. PKG.

\$2.19



SMOKY HOLLOW

COCKTAIL SMOKIES

16 OZ. PKG.

\$2.79



SWIFT BROWN & SERVE

LINKS

8 OZ. PKG.

\$1.19

Swift

BUDGET KUTTER

BEEF PATTIES

5 LB. BOX

\$4.99

WILSON CHICKEN

FRANKS

12 OZ. PKG.

89^c



FRESH CHICKEN

CHICKEN LIVERS

LB.

89^c

SIRLOIN

TIP ROASTS

LB. **\$2.39**

SIRLOIN

TIP STEAKS

LB. **\$2.49**

BREADED

SHRIMP

8 OZ. BOX **\$1.79**

COUNTRY CURED

HAMS

LB. **\$1.69**

M.M.M. PRODUCE

YELLOW ONIONS

3 LB. BAG **59^c**

CELLO PACK RED

RADISHES

6 OZ. PKG.

3/\$1.00

FLORIDA CRISP CELERY

STALK

59^c

ST. CLAIR COLE

SLAW MIX

1 LB. PKG.

89^c

CALIFORNIA

TANGERINES

3 LB. BAG

\$1.99

MONTEREY

MUSHROOMS

8 OZ. PKG.

99^c

FIRM GREEN CABBAGE

LB. **29^c**

RED OR GOLDEN DELICIOUS

APPLES

3 LB. BAG **\$1.19**

FRESH YELLOW

SQUASH

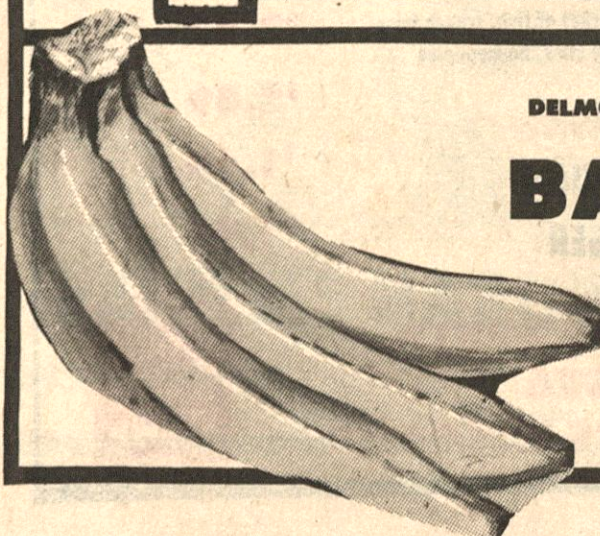
LB. **69^c**

DELMONTE GOLDEN RIPE

BANANAS

4 LBS. FOR

\$1.00





SUPER BOWL XX TRAVAGANZA

Kick Off the New Year with Savings from KRAFT



KRISPY REGULAR & UNSALTED CRACKERS 79¢ 1 LB. BOX	KRAFT MACARONI & CHEESE 2 FOR 89¢ 7 1/4 OZ.	KRAFT MAYONNIASE \$1.49 32 OZ.	CARNATION EVAPORATED MILK 2 FOR 89¢ 12 OZ.
AUNT JEMIMA BUTTERMILK CORN MEAL 79¢ 5 LB.	KRAFT THOUSAND ISLAND DRESSING \$1.39 16 OZ.	KRAFT MIRACLE WHIP SALAD DRESSING \$1.69 32 OZ.	VOGUE BATH TISSUE 69¢ 4 ROLL PKG.
PILLSBURY BISCUITS 89¢ 4 PKG.	KRAFT VELVEETA CHEESE SPREAD \$3.39 2 LB.	KRAFT PHILADELPHIA CREAM CHEESE 89¢ 8 OZ.	KRAFT ORANGE JUICE \$1.79 64 OZ.
KRAFT CROCKER BARREL CHEESE LOGS \$2.39 10 OZ.	KRAFT PREMIUM DIPS 89¢ 8 OZ.	HYDE PARK TEXAS BUTTERED BISCUITS \$1.00 3 FOR 10 CT. CANS	KRAFT WHIPPED CUP PARKAY MARGARINE 99¢ LB.
HYDE PARK HOT DOG & HAMBURGER BUNS 89¢ 2 FOR 8 CT. PKG.	KRAFT VELVEETA CHEESE SPREAD \$3.39 2 LB.	FREEZER QUEEN ENTREES \$1.69 2 LB.	3 LITER PEPSI COLA \$1.29
PRIDE OF ILLINOIS GOLDEN CREAM CORN 3/99¢ 17 OZ.	PRIDE OF ILLINOIS GOLDEN WHOLE KERNEL CORN 3/99¢ 17 OZ.	CHEF-READY FRENCH FRIES FREE 2 LB. BAG	BUSH'S SHOWBOAT PORK N BEANS 3/99¢ 15 OZ.
HYDE PARK JELLIED CRANBERRY SAUCE 2/89¢ 15 OZ.	TRAILBLAZER RATION & CHUNKS DOG FOOD \$2.69 20 LB. BAG	HYDE PARK ICE CREAM \$1.49 1/2 GALLON	KELLY'S VIENNA SAUSAGE 2/89¢ 5 OZ.
BUSH'S BEST GREAT NORTHERN BEANS 3/\$1.00 15 OZ.			HUNTS PEACH HALVES 99¢ 29 OZ.
BUSH'S BEST PINTO BEANS 3/\$1.00 15 OZ.			HUNTS PEACH SLICES 99¢ 29 OZ.
AUNT JEMIMA BUTTERED SYRUP 49¢ 6 OZ.			HUNTS TOMATO SAUCE 2/99¢ 15 OZ.

NELSON'S SUPERMARKET COUPON 100 FREE QUALITY STAMPS WITH COUPON & PURCHASE OF 38 OZ. WESSON VEGETABLE OIL EXPIRES 1-29-86	NELSON'S SUPERMARKET COUPON 100 FREE QUALITY STAMPS WITH COUPON & PURCHASE 5 LB. BAG MARTHA WHITE MEAL EXPIRES 1-29-86	NELSON'S SUPERMARKET COUPON 100 FREE QUALITY STAMPS WITH COUPON & PURCHASE OF 4 LB. CARTON REELFOOT LARD EXPIRES 1-29-86	NELSON'S SUPERMARKET COUPON 100 FREE QUALITY STAMPS WITH COUPON & PURCHASE OF 24 CT. FAMILY SIZE LIPTON TEA BAGS EXPIRES 1-29-86	NELSON'S SUPERMARKET COUPON 100 FREE QUALITY STAMPS WITH COUPON & PURCHASE OF 32 OZ. BOTTLE HYDE PARK CATSUP EXPIRES 1-29-86
---	--	--	--	--



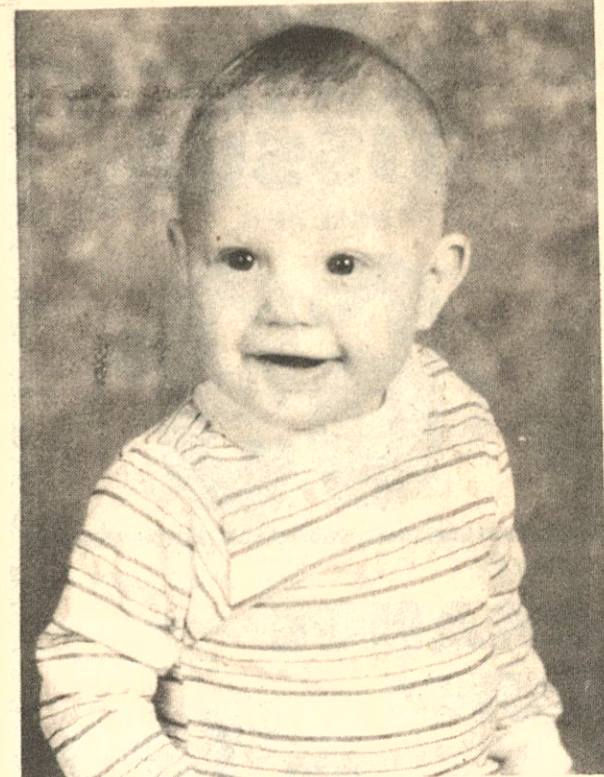
Trash Burning Damages Store

Wind got into the trash fire which was burning behind Handy Sandy Convenience Store last Friday, and carried

the flames to the building, said Iuka Fire Chief Danny McVay. Some fire damage was evident to the structure with smoke damage throughout. Area residents

are urged to use extreme caution when burning trash and especially be careful while burning off garden spots. Several recent grass fires have gotten out of hand

resulting in the loss of out-buildings and posing very dangerous threats to homeowners. Volunteers at the scene of the fire included (far right), Howard "Tad" Adcock and Bobby Adcock.



Happy Birthday!
Daniel Austin Carr was one year old on January 10, 1986. He is the son of Danny and Joyce Carr. His grandparents

HOMESICK?
Drafty Walls? High Utilities? Constant Painting? Tired Wood? Solve All Your Problems FAST! Aluminum, Vinyl or Steel Siding Double-Insulated-No Maintenance MADISON EXTERIORS, CORINTH Free Estimates-Volume Deals-We Will Beat Any Offer, Any Price, With Same Brand Material, Iuka Reference Available, Call Toll Free 24 Hours 1-800-231-4741. Call now for free insulation. D-12-tfn-chg.

are Odell and Vernell Carr of Tishomingo and George Lee and Clara Sue Brimingham of Booneville. His great grandmothers are Mrs. Tranny Floyd of Burnsville, Mrs. Eula Carr of Tishomingo and Mrs. Bertha Hutchenson of Red Bay, Al. Austin was honored with many guests and lots of wonderful gifts at his birthday party.

When To See The Doctor

(Presented as a public service by the Mississippi State Medical Association and this newspaper.)

All of us are now and then faced with a quick decision:

should we, or shouldn't we see the doctor?

The Mississippi State Medical Association lists several points for consideration as a general guide to help you decide whether medical aid should be sought at once:

*When your complaint or symptoms are too severe to be endured, such as abdominal pain common to a gallbladder attack or appendicitis or kidney colic, or sudden chest pains. Immediate relief of pain is the purpose of getting the patient to the doctor without delay.

*When an apparently minor symptom persists for more than a few days or a week, and does not appear to be due to some easily identified cause. A nose bleed from a sharp blow is one thing; a nose that bleeds constantly or frequently for no apparent reason is quite a different matter.

*When the symptom returns repeatedly for no readily apparent cause. Digestive disturbances due to overindulgence are one thing; constant digestive distress despite great care and moderation in eating is another.

*When in doubt, it is safer to call the doctor than to take a chance.

Many accidents around the home or yard cause bruises and scratches and minor sprains that can be successfully treated at home. But some accidents require fast medical attention.

If the accident victim is unconscious, get help fast. Also, when bleeding is severe or cannot be controlled; when the victim is groggy or con-

fused; when there are signs of shock, such as pale, cold skin, sweating and weak pulse.

Breathlessness or intense thirst after the accident require medical attention. If there is a possible broken bone, seek help. Get help, also, for severe pain, signs of poisoning, serious burns, persistent vomiting, blurred vision.

Iuka Route 2

Mr. and Mrs. Nolan Oldham, Mr. and Mrs. Wallace Romine, Mrs. Ollie McMurry of Rogersville, Alabama, spent Tuesday with Mr. and Mrs. Raymond Burney.

Mrs. Cleo Martin, Mrs. Ruby Maxwell, Mrs. Lela Moore and Ella Jean Moore visited on Saturday afternoon with Mrs. Marshall Daniel.

Mr. and Mrs. Marty Davis have recently moved into our community. We give them a hearty welcome.

Mr. and Mrs. Jimmy Grisham and boys of Vicksburg, MS, were visiting with Ms. Effie and Jeffie Grisham during the weekend.

Mrs. Rosa Bonds spent several days recently with her son, Joe Bonds and family in Burnsville.

Mrs. Margie Davis is spending some time in Memphis to be with her brother, Osteen Smith who is a patient at the Baptist Hospital.

\$ & Sense

By: Ann O. Rushing

Fresh grapes are an age-old snack food, dating back to ancient Greek and Roman times. They have stood the test of time, though, for grapes are still a favorite fresh snack today.

Sweet and juicy grapes are great for between-meal snacking, any time of the day. Because of their convenient "packaging," grapes also make handy portable snacks.

Tucked into a backpack or picnic basket, bunches of grapes are on-the-spot instant refreshment during an active day. There's no chopping or peeling, and they already come bite size. From the frosty-green Thompson seedless to the festive red Emperor, grapes make the perfect natural snack.

Perhaps, best of all, succulent grapes are a satisfying snack food, especially for dieters. Grapes are naturally sweet, refreshingly juicy, and a whole cupful contains a moderate 100 calories. Grapes supply necessary fiber and water, which in turn, causes a "full" sensation. They are also low in sodium, making them a good choice for many convalescent and restricted diets.

The bountiful grape has

traveled on a journey older than recorded history. Preserved grape seeds, found among remains of the Bronze Age and Egyptian mosaics describing grape growing around 2440 B.C., are good clues that grapes played a role in the life of early man. Grapes were prized in the Golden Age of Greece, and the Roman God Bacchus is that Empire's testimony to the royal grape.

When the Vikings landed in North America, they found an abundance of native grapes. The new land was even christened Vineland, in honor of the huge grape vines growing in natural profusion. Superior European varieties were later introduced to the eastern United States by English settlers but the new vines quickly proved susceptible to harsh climate and diseases.

The European vines flourished and Spanish Mission Fathers introduced grape vines throughout California, and by 1860, the commercial grape growing venture in California was well underway. California produces more than 91 percent of the nation's supply of table grapes.

There are currently, 14 major table grape varieties that are shipped from California vineyards to markets throughout the United States and Canada as well as Japan, the South Pacific, Europe and Central America.

Grapevines in California are propagated primarily by cuttings although buds or grafts are also used. Rows of uniformly spaced vines, supported by trellises or stakes, sport leaves and flowers. Later, either the flowers or the newly-formed immature clusters are thinned to allow for more selective growth of the grapes.

When the berries reach their peak, the clusters are individually cut. The grapes are then carefully packed in the fields and quickly cooled to avoid deterioration. To insure topnotch quality the clusters are inspected and graded to meet exacting standards. The packed grapes are then ready for market.

When purchasing grapes, be choosy. Table grapes are ripe and ready to eat when shipped to market. Look for bunches with well-colored, plump berries firmly attached to green pliable stems. Avoid soft or wrinkled grapes and those with bleached areas around the stem end.

The perfect grape is true to its varietal color. Green grapes are sweetest and best flavored when they are yellow-green in color; red varieties when all of the berries are predominantly red; and the blue-black varieties when grapes have a full, rich color.

After purchase, store fresh grapes in the refrigerator where they will stay fresh for several days. Just before serving, wash grape clusters under a gentle spray of water and drain or pat dry. Table grapes are best when served slightly chilled to enhance the flavor and texture.

Grapes are available in at least one color nearly all year -- the fresh, young greens of spring, the sweet mellow reds of summer, the flaming reds and autumn greens, and the blue-blacks of fall, available through the holidays.

New grape varieties will become increasingly available within the next few years as vines mature. These include red seedless grapes for late summer and early fall.

Mississippi Gets The Lead Out

Because of requirements imposed by the U.S. Fish and Wildlife Service, the Mississippi Commission on Wildlife Conservation has established a statewide non-toxic (steel) shot zone for waterfowl hunting beginning in the 87-88 season. This action came in response to recent Federal regulations designed to alleviate the estimated loss of two million waterfowl to lead poisoning. The U.S. Fish and Wildlife Service will begin to implement steel shot



Congratulations!

Fionnuala Flannery, winner of the high point trophy, in the 6 and under division, at the

Golden Triangle Invitational swim meet held at the MUW in Columbus. Fionnuala is the daughter of Dr. and Mrs. Al Flannery of Iuka.

regulations according to county harvest estimates. High kill counties would be converted to steel shot in 1987 and all counties would be affected by 1991. The phase-in plan would create a situation where non-toxic counties would be scattered among lead shot counties. This would create strife and confusion among hunters and hinder shotshell manufacturers and retailers from making non-toxic shot available to sportsmen in sufficient quantity and at a reasonable price. The decision to convert to non-toxic shot statewide is the only means to comply with Federal regulations and avoid high shot shell prices and five years of confusing non-toxic zoning regulations.

Lead poisoning results from birds swallowing spent shotgun pellets while feeding in fields and on marsh bottoms. Shooting non-toxic shot is the only alternative acceptable to the U.S. Fish and Wildlife Service.

Governor Proclaims Maternal And Child Health Month

Governor Bill Allain has proclaimed January as Maternal and Child Health Month in Mississippi.

The action is in conjunction with a national celebration to commemorate the 50th anniversary of enactment of Title V of the Social Security Act for Maternal and Child Health and Crippled Children's Programs.

Allain said that "the infant mortality rate in Mississippi has declined, but it continues

to remain the third highest in the nation. Health professionals and citizens of Mississippi have as a priority the continued decrease in infant mortality rates."

There were 14.4 deaths for every 1,000 live births in 1984, according to the Mississippi Department of Health.

"Approximately three times the number of babies who die live with permanently handicapping conditions, and much of this could be prevented with proper prenatal care," said Nellie Hutchison, director of the Commission for Children and Youth, Governor's Office of Federal-State Programs. "Beyond the human suffering, it costs the state an estimated \$700,000 to provide a lifetime of care for one severely handicapped child. The average cost in Mississippi for a baby's stay in intensive care is \$24,000. From both humanitarian and economic points of view, prenatal care is a wise investment."

Mississippi's new

Medical

Categorically Needy component, which became effective last July 1 and provides access to Medicaid for married women who are poor and pregnant and for their children, is a step to alleviate the problem. Prior to this component, women were required to be unmarried and children to be in single-parent families to receive Medicaid assistance under the Aid to Dependent Children program.

The Governor's Service Line serves as a contact for information on the Medicaid component and other maternal and child health subjects. Last year, the Service Line handled 3,272 information requests on maternal and child health care.

Persons with questions on this or any other subject related to state government and services may contact the Service Line at 354-4540 or 354-4542 in the Jackson area or the toll-free number, 1-800-222-7622.

Narcotics News

Q. What are the effects of smoking "pot" for a long time, like over 15 years?

(L.B. Clinton, MS) A. There are numerous, more than 7,000, published medical and scientific studies documenting the damage that marijuana does to the body's various systems.


HEART-Marijuana use increases the heart rate as much as 50% and can cause chest pains and very low blood pressure in people with heart problems.

LUNGS-Repeated inhalation of smoke into the lungs causes inflammation and affects its pulmonary functions. One study on long-term use found that smoking five marijuana joints a week was more harmful than almost six packs of cigarettes a week.

IMMUNE SYSTEM-Some studies suggest that heavy marijuana smoking affects the white cell formation hindering the body's ability to fight infection.

Did you know that not one study gives marijuana a clean bill of health?

FRUIT TREES
PECAN TREES
SEED POTATOES,
ONION SETS,
GARDEN SEEDS,
SHRUBBERY, &
HOUSE PLANTS



JAY'S GREENERY
1 1/2 MILES NORTH OF BELMONT ON HWY. 25

USED CAR SAVINGS

- 1984 Buick Century, 4 door, low miles, like new.
- 1985 Lincoln Town Car, 4 door.
- 1984 Ranger Pick-up, w/air.
- 1984 Continental, 4 door.
- 1983 Buick LaSabre, custom, 4 door.
- 1983 T-Bird.
- 1982 F-100 Ford Pick-up.
- 1982 Buick, 2 door.
- 1984 Bronco. loaded.
- 1981 Oldsmobile Regency.
- 1981 Phoenix Pontiac, 4 door.
- 1980 Citation.
- 1984 Ranger LWB 4 Wheel Drive.
- 3-1985 Crown Victorias --Price Reduced Drastically

7.9% FINANCING

ON ESCORTS, TEMPOS, T-BIRDS, RANGER PICK-UPS, F-150 PICK-UPS, & 2 WHEEL DRIVES

McNATT FORD, INC.

IUKA, MS. PHONE 423-3681

DE BUGG

TRANSMISSION

MT. EVERGREEN ROAD - IUKA

OPEN MONDAY - SATURDAY NOON PHONE 423-5488

MEMBER OF AUTOMATIC TRANSMISSION REBUILDERS ASSOCIATION ALL TRANSMISSIONS BUILT TO ATRA STANDARDS!

EQUIPPED TO DO ALL OVER DRIVES & FRONT WHEEL

DRIVES INCLUDING FRONT WHEEL DRIVE U-JOINTS & BOOTS.

GOODYEAR RADIAL SALE
Don't miss these sale prices on one of Goodyear's most popular steel belted radials!
Sale Ends Saturday, Feb. 1

Whitewall Size	SALE PRICE No trade needed	Whitewall Size	SALE PRICE No trade needed
P185/80R13	\$42.70	P205/75R15	\$54.70
P185/75R14	\$45.50	P215/75R15	\$57.55
P195/75R14	\$49.50	P225/75R15	\$59.40
P205/75R14	\$53.80	P235/75R15	\$63.10

ALL SEASON RADIALS!
\$29.95
P155/80R13 Whitewall No trade needed

Tiempo Radial
Flexible sidewalls deliver a smooth, comfortable ride.
Steel belted radial construction delivers strength, tread wear and fuel efficiency.
Tread designed to dissipate heat for tire durability.

SAVE ON THESE POPULAR GOODYEAR TIRES

Size	Last Range C No trade needed	SALE PRICE No trade needed
200-48L		\$44.10
200-48L		\$46.90
200-15L		\$51.60
650-10T1		\$52.55
750-16T1		\$59.95
750-16T1		\$72.75
750-16T1		\$77.10

FOR LIGHT TRUCKS

Rib Hi-Miler \$435
650-10T1 Last Range C No trade needed

Arriva Radial \$55.20
P175/80R13 No trade needed
P185/65R14 No trade needed
P215/75R14 No trade needed

Traction Sure Grip \$5160
750-15 Last Range C No trade needed

Size	Last Range C No trade needed	SALE PRICE No trade needed
750-15		\$58.15
750-15		\$65.65

FOR LIGHT TRUCKS

LIFETIME TIRE & AUTO SERVICE PROTECTION PLAN
Computer wheel balancing, wheel alignment, and road hazard protection good for the tread life of your Goodyear auto tires.

WESTERN AUTO
DOWNTOWN IUKA

Sunflower

FOOD STORES

HWY. 25 NORTH IN IUKA
AD GOOD JAN. 23 - JAN. 29
QUANTITY RIGHTS RESERVED
NONE SOLD TO DEALERS

ARMOUR PORK SAUSAGE

12 OZ. PACK

79¢

ARMOUR CANNED HAM

3 LB.

\$5.99

ARMOUR BEEF OR REG. JUMBO FRANKS

LB.

\$1.49

ARMOUR OR SALLYS SLICED BACON

12 OZ. PKG.

\$1.39

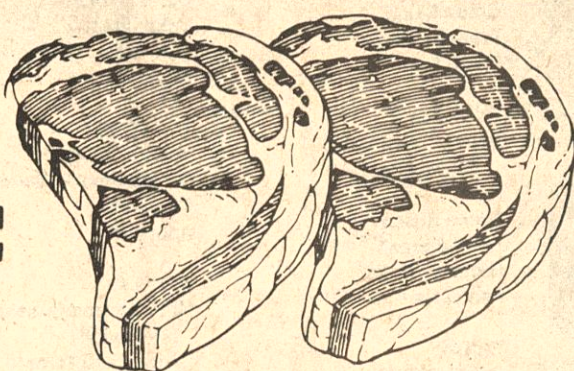
**2nd
Big
Week
of Our.....**

FRESH

Fryer Leg Quarters

lb.

39¢



REELFOOT SLICED

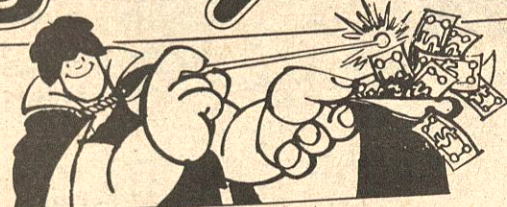
BOLOGNA

12 OZ. PACK

99¢



Add a **Magic Touch** of SAVINGS!



Take Home Great Values During This Very Special Event.

SAVORY AGED WHOLE

RIB EYE LOINS

\$3.39

(SLICED FREE)

SMOKED
Pork Chops

LB. **\$2.29**

KREY
Franks

12 OZ. PACK **99¢**

FRESH FRYER

Chicken Livers

LB. **49¢**

FLAVORITE SLICED WAFFER MEATS

2 1/2 OZ. PKG.

39¢

NO. 1 SLICED
Slab Bacon

LB. **\$1.19**

BRYAN EXTRA LEAN
Sausage

LB. **\$1.79**



SAVORY AGED FULLY TRIMMED
Ribeye Steaks

LB. **\$3.89**

FRESH PORK BOSTON
Butt Roast

LB. **\$1.29**

Green Giant
Vegetables
Beans, Corn or Peas
12-17 oz. cans
2/89¢

Flav-O-Rite
Sugar
5-lb. bag
59¢
LIMIT-1 WITH \$15.00 ADD. PURCH.

Kraft Mac. & Cheese
Dinners
7 1/4 oz.
2/89¢

Pillsbury
Flour
Plain, Self-Rising or Bread
5-lb. bag
69¢
LIMIT-1 WITH OTHER PURCHASES

DIET PEPSI OR MT. DEW
Pepsi
3 Liter
\$1.29

FROZEN

MINUTE MAID ORANGE Juice 6 oz. **59¢**
PILLSBURY ASST. Strudel 11.5 oz. **\$1.19**

PATIO ASST. Burritos 5 oz. **2/\$1**
BOOTH BREADED FANTAIL Shrimp 10 oz. **\$2.99**
FISHERBOY BREADED Fish Sticks 8 oz. **59¢**

dairy

KRAFT TOUCH OF Butter 16 oz. **59¢**
KRAFT IND. WRAP. AMER. Cheese Slices 12 oz. **\$1.59**

KRAFT SALAD Dressing Asst. 16 oz. **\$1.29**
KRAFT BBQ ASST. Sauce 18 oz. **\$1.09**
KRAFT APPLE OR GRAPE Jelly 32 oz. **\$1.09**

KRAFT Miracle Whip 32 oz. **\$1.69**
HEINZ Ketchup 32 oz. **\$1.29**
HEINZ 57 Sauce 10 oz. **\$1.89**

Totino's
Pizzas
Asst. 9.6-11.4 oz. **99¢**

Green Giant 1/2 Case Sale
Vegetables
Beans, Corn or Peas
12 cans **\$5.29**

Blue Bonnet
Margarine
16 oz. pkg. **59¢**

Tom's Potato
Chips
Plain, Rippled, BBQ or Sour Cream
bag **99¢**

American Whole
Dills
32 oz. **\$1.09**

GREEN GIANT Cob Corn 4 ct. **\$1.19**
GREEN GIANT Broccoli in Butter or Cheese 10 oz. **99¢**
CHICKEN CHOW MEIN OR SPAGHETTI Lean Cuisine In Meat Sauce 11.25-11.5 oz. **\$1.49**
RAGU SPAGHETTI Sauce Asst. 32 oz. **\$1.69**

MORTON Pot Pies Beef, Chicken or Turkey 8 oz. **3/\$1**
PILLSBURY BIG COUNTRY Biscuits Asst. 5 ct. **3/\$1**
MINUTE MAID ORANGE Juice Reg. or Country Style 64 oz. ctn. **\$1.39**
CONTADINA TOMATO Sauce 8 oz. **3/79¢**

HARVEST MOON MILD CHEDDAR Cheese 8 oz. **\$1.09**
KRAFT ORANGE Juice 64 oz. glass **\$1.99**
HUNGRY JACK Flaky Biscuits Reg. or BM 10 ct. **59¢**
CONTADINA TOMATO Paste 6 oz. **3/99¢**

GREEN GIANT Whole or Sliced Mushrooms 4 1/2 oz. **98¢**
GREEN GIANT Whole Asparagus 15 oz. **\$1.69**
LUCKY LEAF APPLE Juice 48 oz. **\$1.19**
CHEF-BOY-AR-DEE BEEF Ravioli 15 oz. **79¢**
CHEF-BOY-AR-DEE Pizza Mix 16 1/2-16 3/4 oz. **\$1.69**
HUNGRY JACK INSTANT Potatoes 16 oz. **\$1.09**

DEL MONTE Fruit 16-17 oz. **79¢**
DEL MONTE JUICE PACK Pineapple Asst. 15 1/2 oz. **59¢**
BRYAN PLAIN Chili 15 oz. **89¢**
BRYAN Chili W/Beans 15 oz. **79¢**
BLUE PLATE Mayonnaise 32 oz. **\$1.49**
MAHATMA Rice 2-lb. bag **69¢**

HUNGRY JACK COMPLETE Pancakes Reg. or BM 32 oz. **\$1.19**

HEALTH & BEAUTY AIDS

Act Dental Rinse 12 oz. **\$1.99**
Dental Floss Johnsons 50 yds. **87¢**
Co Tylenol 24 ct. tablets 20 ct. capsules **\$2.89**
Tylenol Childs Chewable 30 ct. **\$1.99**
Tylenol Extra Strength 60 ct. **\$3.59**
Colgate Pump Reg. or Gel 4.5 oz. **\$1.37**
Gillette Foamy Asst. 11 oz. **\$1.87**
Flex Shampoo Asst. 15 oz. **\$1.79**
Flex Conditioner Asst. 15 oz. **\$1.79**
Vicks Nyquil 6 oz. **\$2.99**
Vicks Formula 44D 4 oz. **\$2.29**

FOLGER'S INSTANT Coffee 8 oz. **\$3.98**
Eagle Brand Milk 14 oz. **\$1.39**
Richtex Shortening 42 oz. **\$1.09**
Gravy Train Dog Food 25 lb. **\$8.49**
Pops-Rite Popcorn 2-lb. pkg. **79¢**
Delta Towels 1g. rolls **2/\$1**
Delta Tissue 4-roll pkg. **89¢**
Glad Trash Bags 10 ct. **\$1.19**
Garbage Bags Glad 15 ct. **98¢**
Tough Act Bathroom Cleaner 17 oz. **\$1.69**
Dawn Liquid 32 oz. **\$1.89**
Cascade 35 oz. **\$1.79**
Luv's Diapers Conv. Pack 32-64 ct. **\$9.69**

PILLSBURY RTS Frosting Asst. 16 oz. **\$1.29**
Coffee-Mate 22 oz. **\$2.49**
Chefway Shortening 48 oz. **\$1.89**
Chefway Oil 48 oz. **\$1.99**
Hershey's Kisses or Miniature 14 oz. **\$2.39**
Reese's Miniatures 14 oz. **\$2.39**
Chinet Plates Compartments 15 ct. **\$1.39**
Chinet Plates 10 1/2 inch 15 ct. **\$1.39**
Lysol Spray Reg. or Scent II 12 oz. **\$2.39**
Lysol Cleaner 28 oz. **\$1.89**
Purex Bleach gal. **89¢**
Toss-N-Soft 40 ct. **\$1.69**
Pine-Sol 15 oz. **\$1.09**

Kraft
Mustard
25 oz. **79¢**

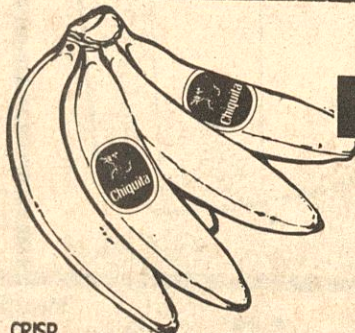
Martha White
Corn Meal
Plain or Self-Rising 5-lb. bag **89¢**

Breast O' Chicken
Tuna
Oil or Water Packed 6.5 oz. **79¢**

Fancy Red Del., York or Winesap Apples 3-lb. bag **99¢**

Pink Grapefruit 5-lb. bag **\$1.59**

PRODUCE THAT YOU KNOW IS FRESH!



Chiquita Golden Ripe

Bananas
3 lbs. \$1

CRISP Carrots 2-lb. pkg. **59¢**
SNO-WHITE Cauliflower head **\$1.29**

FRESH GREEN BELL Peppers **3/99¢**
CHILIAN Nectarines lb. **99¢**

U.S. NO. 1

RED POTATOES 8 LB. BAG **77¢**



Cole - Vanderford Announces Wedding

Mr. and Mrs. James Larry Cole of Booneville, announce the forthcoming marriage of their daughter Shirley Rehnea Cole to Travis Wayne Vanderford of Burnsville. Grandparents of the bride are Mr. and Mrs. L.C. Cole of Booneville and Mr. and Mrs. John Farr of Burnsville.



Happy Birthday!
Grant Jordan Gatlin celebrated his 3rd birthday with a party at McDonald's in Booneville on Saturday, January 11. Those attending were Blake and Linda Southward, Lindsay and Tammie Haskins, David and Ivan Cain,

New Hours At
C's Ceramics, Crafts & Creations
(FOR CLASSES ONLY) THURSDAY, 5 P.M. - 8 P.M.
1/4 OFF
GREENWARE
SALE ON PAINTS & FINISHED PRODUCTS
Bring a Friend & Join in the Fun!
423-3087
LOCATED ON HARMONY ROAD - IUKA

New Location
Merle Norman
Cosmetics
Merle Norman Cosmetics is now located at 410, Hwy. 25 North in Iuka (the old Boots Unlimited Building).
Now Open Hairport
A FAMILY HAIR CARE CENTER SPECIALIZING IN ALL HAIR CARE!
We welcome our friends and former customers to visit us at our new location, 410 Hwy. 25 North in Iuka.
FAY WHITEHEAD BROMLEY... TAMMY WHITEHEAD
JOYCE PARK... VICKIE BROWN
CALL FOR AN APPOINTMENT 423-9855
WALK-INS ARE WELCOME!

Parker Hannifin in Booneville. Bro. Melvin Laster will officiate the double-ring ceremony in Burnsville at Grissom Chapel Pentecostal Church beginning at 6:00 p.m., February 21, 1986. No invitations are being sent, but all friends and relatives are invited to attend. The couple will reside in Booneville.

Birth Announcement

Mr. and Mrs. Mark Greene of Booneville are proud to announce the birth of their son, Matthew Cory, born January 2, 1986, at the North Mississippi Medical Center in Tupelo. Matthew was born at 1:45 weighing 7 lbs. 15 ozs. and measured 20 1/2 inches long. Grandparents are Mr. and Mrs. Quitman Wigginton of Booneville, Harold Greene of Paden and Betty Greene of Tishomingo. Great-grandparents are Mr. and Mrs. S.B. Wilson of Tishomingo, Mr. and Mrs. R.C. Martin and Mr. and Mrs. W.C. Greene all of Paden.

Twentieth Century Club News

Twentieth Century Club members enjoyed their first meeting of the New Year, January 9, 1986, in the lovely home of their hostess, Mrs. Zenobia Oaks. Mrs. Willadean Thorne called the meeting to order and led the members in the Pledge of Allegiance to the Flag. Mrs. Bobby Sue Finch read the minutes and called the roll. The treasurer's report was given by Mrs. Oaks. During the business meeting the members held a group discussion on the busy schedule of the Club for the new year. After the meeting, the hostess served delicious refreshments to club members: Mrs. Maxine Wade, Mrs. Fredda Sanderson, Mrs. Willadean Thorne, Mrs. Joy Kitchens, Mrs. Mildred Thorne, Mrs. Jewel Kitchens, Mrs. Bobby Sue Finch, and Mrs. Nancy Daugherty.

Otasco, Owners Win 2 Trips

Cecil and Mackie Gann of the local Otasco Store just returned from the annual merchandising show in Tulsa, OK, where they were surprised with the announcing of a trip to Hawaii in March. They had already been informed of a trip to Nassau in January. These trips were based on total purchases on overall store departments and highest percent of increase in sales on air conditioners. Otasco has over 600 dealer stores and several hundred company owned stores, so this was quite an honor for Cecil and Mackie to win these trips out of so many stores. A Banquet was held on Sunday night for the presentation of the Achievement Awards, where approximately 1300 attended. The names of the winners of the trips were announced and flashed on a large screen. Cecil and Mackie would like to take this opportunity to thank their many, many customers for making this possible. As they have said time and time again WE DO appreciate your Business.

Rainbow I Report

By: Sonya Magill
The Rainbow I 4-H Club met for a regular meeting on January 16, 1986 at 3:00 p.m. The pledge to the U.S. Flag was led by Sonya Magill and the 4-H pledge by Lisa Inlow. Devotion and prayer by Donnie Bobo. Songs by Betsy Barnes.

Sonya Magill gave a speech on Personal Development. She will give a demonstration on the next meeting. Thanks are in order for the help given to the Rainbow Clubs during 1985. They are: Dr. J.R. Sanchez for testing members for Scoliosis, Mrs. Mildred Clauch for ceramics for our art, the City of Burnsville for power in Rainbow Park, Mrs. Maxine Lambert for cash contribution, Mr. Horace Millard Marlar for donation of the building for making photos. Donations for yard sales were: Bertha Newcomb, David Newcomb, Linda McCorkle, Mildred Lambert, and Mary Williams. For help in 4-H gardens: Mr. and Mrs. Donnel Timbes, Mr. and Mrs. Carpenter and Mrs. Lucian Epperson. For the parents who supported all members with transportation. To our leaders for all their help and devotion in all endeavors. All members have made pledges to do even more for our community in 1986. The meeting adjourned to allow members to go for cattle judging.

Looking Back

Looking back twenty years to the Thursday, January 17, 1946, edition of The Vidette the following item was found that may be of interest to the readers. The War Department Bureau of Public Relations has announced that prisoners of war would be withdrawn from military work by the last of March, 1946, and that all the enemy prisoners would be shipped out of the United States by the end of next April. This will accomplish a recommendation of the 1945 national convention of the American Legion adopted in Chicago, demanding enforcement of Article 75 of the

Geneva Convention, which calls for the return of prisoners of war to our own countries without exemptions for their future stay or readmission.

The War Department release said there was "considerable pressure for retention of prisoners of war in this as a source of labor," but pointed out there are now 1,800,000 persons drawing unemployment compensation.

Mt. Gilead Homemakers

The Mt. Gilead Homemakers met Tuesday night in the home of Mrs. Tressie Bonds for the regular monthly meeting. Mrs. Tressie Bonds, president, called the meeting to order and gave the thought for the month: Each new day is an opportunity to start all over again...to cleanse our minds and hearts anew and to clarify our vision, and let us not clutter up today with the leftovers of other days. Mrs. Lilla Davis gave the devotional, reading verses

from Matthew 6. Club goals were reviewed and plans for 1986 were made. Minutes were read by Mrs. Kathleen Moore. Mrs. Lilla Davis gave a financial report on Clubs Cemetery project. Members planned ways of caring for and financing the care of the Mt. Gilead cemetery. The club adopted a shut-in friend in the community to help during 1986. Mrs. Tressie Bonds told all the upcoming events for January. Refreshments were served by the hostess. Members present not mentioned above were Mrs. Amy Walker, Mrs. Mary Anice Sitton, Mrs. Eloise Hendrix, and Mrs. Elaine Timbes.

Benefit Singing At Mt. Vernon Church

There will be a benefit singing at Mt. Vernon Church on January 24, at 7:00 p.m. for Sue McKee who has had kidney surgery. The singers will be the Harmonizers from Iuka, and The Pruitt Family from Tishomingo.



Happy First Birthday!

Tamara Brienne Hale celebrated her first birthday on Thursday, January 16. At the party given in her honor a Care Bear cake was served, also potato chips, and Pepsi. Attending her party was her

parents, David and Myra Hale and several of her friends. She is the granddaughter of Nadine Bowman of Iuka and Harold Dean Bowman of Georgia, and L.G. and Betty Hale of Dennis. She has two great-grandmothers, Nola Enlow of Iuka and Ollie Hale of Dennis.

FINAL MARKDOWN!
Everything must go to make room for Spring Merchandise!
LOW, LOW PRICES
FRIDAY, JANUARY 24 AND SATURDAY, JANUARY 25
HOUSE OF FASHIONS
DOWNTOWN IUKA

Come see the new Dodge Boy in town.



Dan Moore, Bill Royal, Jeral Nunley & Jimmy Marlin of

MARLIN-MOORE DODGE

Come join the celebration! We're open for business and looking to become the big dealer around here. You'll be very welcomed!

MARLIN-MOORE CHRYSLER - PLYMOUTH - DODGE
104 HWY. 25 NORTH IN IUKA

Dodge Boys have more fun

THIS WEEK'S WINNERS

Roberta Raney - Iuka 62.49
 Danny Lovelace - Burnsville 48.73
 Edna Osborn - Burnsville 25.59
 Beulah Blakney - Glen 18.45
 William G. Cash - Burnsville 16.83

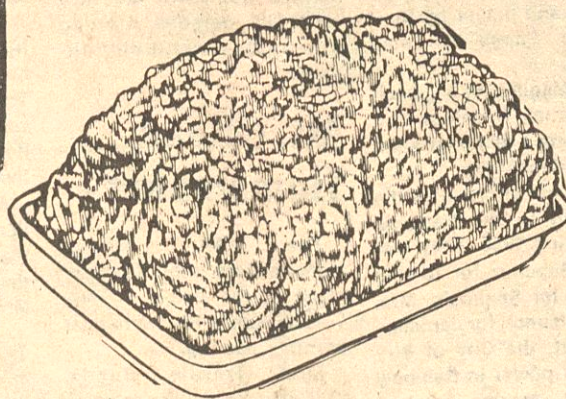
WIN WHAT YOU BUY!

DEPOSIT YOUR REGISTER RECEIPT IN DRAWING BOX BEFORE SATURDAY NIGHT! IF YOUR TICKET IS DRAWN, YOU WIN THAT AMOUNT IN GROCERIES FREE!

B & J
Supermarket

Hwy. 365
South
Burnsville

AD EXPIRES JANUARY 28, 1986.
 WE RESERVE RIGHTS TO LIMIT QUANTITIES.



FRESH
GROUND BEEF
 FAMILY PACK
\$1¹⁹
 LB.

BRYAN TENDERIZED

HAMS

18-22 LB. AVG.



99^c
 LB.

GRADE A

Whole Fryers

TWO IN BAG

LB. **48¢**

GOLD KIST YOUNG & TENDER

Whole Fryer

LB. **59¢**

GRADE A CUT UP

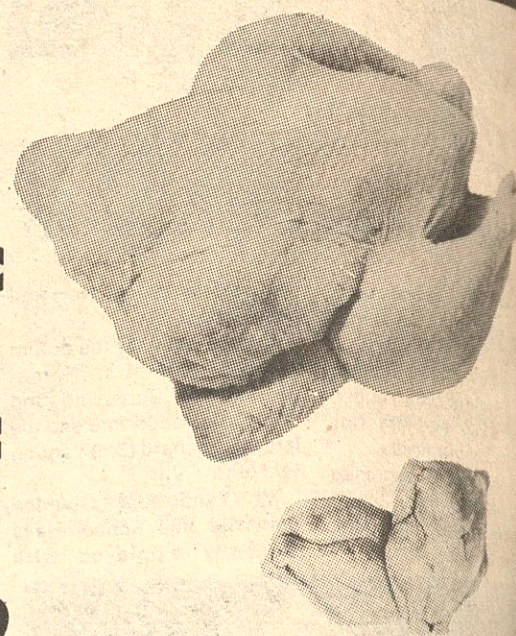
Fryers

LB. **68¢**

FRESH LARGE FROZEN

Shrimp

LB. **\$3.99**



B&J HOMEMADE

Sausage

LB. **\$1.29**

FRESH USDA CHOICE

2 LB. OR MORE

Ground Chuck

LB. **\$1.59**

HYDE PARK REG. & THICK 12 OZ.

Bologna

LB. **\$1.19**

ZEIGLER REG.

Bologna



12 OZ. **99¢**

MR. TURKEY

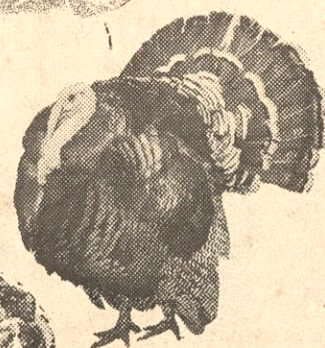
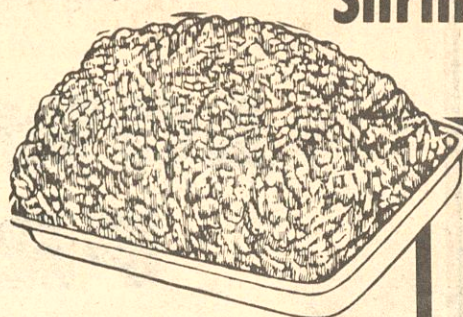
Turkey Franks

12 OZ. **69¢**

USDA CHOICE FRESH

Beef Ribs

\$1.29 LB.



KING COTTON MEAT

WIENERS

99^c
 12 OZ.



SWIFT BEEF & REG. SIZZLEAN

BACON

\$1⁵⁹

12 OZ.



FRESH BONE - IN

Stew Beef

LB. **99¢**

RUDY FARMS

Sausage Patties

3 LB. BOX **\$5.99**

HORMEL SLICED

Pepperoni

\$1.29

REELFOOT CHUNK

Bologna

LB. **\$1.29**

FARMER PRIDE FAMILY PACK

Bacon

LB. **99¢**

ZEIGLER VIRGINIA FINEST

Baked Hams



LB. **\$2.59**

BRYAN TRADITIONAL

Half Hams

LB. **\$2.19**

LOUIS RICH 1/4 BBQ BREAST OF

Turkey

LB. **\$2.99**

KNEIP PAN READY FULLY SEASONED CORN BEEF

Brisket

LB. **\$1.69**

SELECT FRESH

Oysters

12 OZ. **\$2.79**

PRODUCE SPECIALS

TENDER CROCKNECK

Squash

LB. **69¢**

REGENCY BANANA

Pie Filling

89¢

GARYS ROASTED

Peanuts

20 OZ. **\$1.99**

CELLO RED

Radishes

6 OZ. 4 PK. **\$1.00**

FRESH DELMONTE

BANANAS

\$1.00

4 LBS.



FRESH CHILIEAN RED

PLUMS

\$1.29
 LB.

ST. CLAIRS

Cole Slaw

LB. **89¢**

TOTINA FROZEN



PIZZAS


99¢

TEXTIZE GLASS PLUS
Window Cleaner 22 OZ. \$1.29

WELCH SQUEEZE
Preserves 22 OZ. \$1.59

PET EVAPORATED
Milk TALL 20 OZ. CANS 78¢

ARMOUR TREET
Lunch Meat 12 OZ. CANS \$1.19



GAIN



LAUNDRY DETERGENT

\$1.39

42 OZ. BOX

SOLO 9 INCH PLASTIC
Plates 15 COUNT 88¢

EATWELL JACK
MACKEREL 15 OZ. CANS 59¢

HEINZ INSTANT
Baby Foods 2/\$1.00

KELLYS
Sloppy Joe 15 OZ. CANS 88¢

BAY BEAUTY
Pink Salmon 7½ OZ. CANS 99¢

CRISCO SHORTENING OR
Oil 48 OZ. \$1.89

WITH COUPON & \$15.00 PURCHASE

PREMIUM SALTED OR UNSALTED



CRACKERS

88¢


1 LB.

HYDE PARK
Tomato Soup 10½ OZ. CANS 4/\$1.00

SUNFLOWER SELF - RISE
Corn Meal 17 OZ. CANS 2/79¢

SCHOOL DAY
Sweet Peas 8 OZ. 3/\$1.00

RONCO ELBOW
Macaroni





2 LITER DISPOSABLE
R.C. COLA 12 OZ. CANS 6/\$1.99 88¢

DIET RITE OR NEHI

2 LITER
COCA COLA 32 OZ. RETURNABLE 6/\$2.99 \$1.09

OR RELATED PRODUCTS



KRAFT

SUPER BOWL XXTRAVAGANZA

Kick Off the New Year with Savings from KRAFT

KRAFT COLD PACK Cheese Logs 10 OZ. \$1.79	KRAFT PARKAY LIGHT Light Spread 3 LB. BOWL \$1.59
KRAFT COLD PACK Cheese Balls 7 OZ. \$1.49	KRAFT Velveeta Cheese 2 LB. \$3.49
KRAFT NACHO REGULAR OR JALAPENO Cheese Sauce 9 OZ. \$1.29	KRAFT LIQUID 1,000 REG. OR LO - CAL Island Dressing 8 OZ. 79¢
KRAFT MILD AMERICAN Spaghetti Dinner 2/\$1.00	KRAFT MAC. & CHEESE 7¼ OZ. Cheese Dinners 2/88¢
KRAFT Mayyonnaise 32 OZ. \$1.59	KRAFT WITH MEAT SAUCE 19½ OZ. Spaghetti Dinner \$1.39

KLEENEX TODDLER SUPER DRY

DIAPERS

\$2.39

12 CT. BOX



PINESOL LIQUID
Cleaner 15 OZ. BOTTLES 99¢

BUSH FRESH BLACK EYE OR PURPLE
Peas 15 OZ. CANS 3/89¢

ARMOUR
Chili WITH BEANS PLAIN 89¢ 15 OZ. CANS 69¢

BRYAN HOT
Viennas 5 OZ. 2/99¢

BRYAN HOT
Potted Meat 3 OZ. CANS 4/\$1.00





GALA

PAPER TOWELS

59¢



JUMBO ROLLS



CRISCO
Dill Pickles 24 OZ. \$1.19

PRIDE OF ILLINOIS CUT
Green Beans 17 OZ. CANS 3/\$1.00

GREEN GIANT
Niblet Corn 12 OZ. VAC. PACK CANS 2/88¢

MARTHA WHITE SELF - RISE

FLOUR

79¢


5 LB. BAG



3 LITER
Pepsi Cola \$1.49

3 LITER
Dr. Pepper \$1.59

DIET OR REGULAR



CLIP THIS COUPON

B & J COUPON EXPIRES 1-28-86

CRISCO

SHORTENING OR OIL

\$1.89

48 OZ.

WITH \$15.00 ADDITIONAL PURCHASE



"The Dream Of Dr. Martin Luther King, Jr. For America" — The Jones Chapel C.M.E. Church presented "The Dream Of Dr. Martin Luther

King Jr. For America" Saturday, January 18, at 1:00 p.m. The event was sponsored by the Tishomingo County Branch N.A.A.C.P. Pictured

(left to right): Rev. Larry Hawkins, guest speaker; Sister Carole Hawkins, Mrs. Annie Dillworth, Secretary; Mrs. Laura Hampton,

President of the Tishomingo County N.A.A.C.P.; Charles Dilworth, Mrs. Johnson, and Mr. Andrew Jackson. New members are urged to join.

Robert Cloud Daily

Mr. Robert Cloud Daily, 90, died Wednesday, January 15, 1986, at Tishomingo County Hospital. He was a retired farmer, a deacon at Forest Grove Baptist Church and a World War I veteran.

Services were Friday, January 17, at Forest Grove Baptist Church with the Rev. Raymond Buchanan officiating. Burial was in Forest Grove Cemetery. Deaton Funeral Home was in charge of the arrangements.

Survivors include his wife, Etta Daily of Tishomingo; one daughter, Verda Parrish of Tishomingo; two sons, Coy Daily of Iuka and T.M. Daily of Tishomingo; two brothers, Claude Daily and Dewey Daily, both of Russellville, Ala.; 10 grandchildren, 17 great-grandchildren, one great-great-grandchild.

Card Of Thanks

I wish to thank all our friends for the visits, calls by telephone, flowers, food, and honor paid my husband, A.D. Wilson at his death. Please forgive if I have overlooked anyone.

LEOLA WILSON

Words Of Appreciation

The families of Robert Cloud and Etta Daily would like to express our heartfelt thanks for every kindness shown to us during the

hospital stay of Etta Daily and the hospital stay and death of Robert Cloud Daily.

Your prayers, visits, calls, cards, flowers, and food were greatly appreciated.

Special thanks to the Iuka Hospital, Drs. Segars and Draper, each orderly who was so helpful and the nurses that responded to their every need. To Rev. Raymond Buchanan for his comforting words, the Posey Brothers, Olen and Madue Monroe for the special music and Deaton Funeral Home for their every effort toward a beautiful service.

You are all special people to us. May God Bless each of you.

ETTA DAILY
T.M. & BEATRICE DAILY
COY & MARTHA DAILY
DAN & VERDA PARRISH

Card Of Thanks

The family of Gessie Dexter wishes to acknowledge their heartfelt appreciation for all the kindnesses shown during the illness and death of their loved one. A special thanks to Cutshall Funeral Home Directors and the staff at Helen Keller Memorial Hospital.

M.J. DEXTER

Higher Dividend Payout For Veterans

The Veterans Administration has announced that 22,114 Mississippi veterans who have kept their GI insurance policies in force will share a record high annual dividend distribution in 1986 totaling \$6,160,000. Jackson VA Regional Of-

fice Director Samuel J. Maraman said the higher dividend payout is due to lower death rates among policyholders and high interest earnings on the insurance funds' investments. Nationwide, policyholders will receive dividends of \$905 million, \$106.2 million more than the \$798.8 million paid out in 1985.

Each policyholder will receive the 1986 dividend in the month of the anniversary date of the individual policy. No application is necessary. Although there are several methods of payment, most policyholders prefer a dividend check.

Government life insurance has been issued through various periods starting January 1, 1919, through May 2, 1966, to veterans of World War I and II and the Korean Conflict. The only VA-administered program now

open to new issues is Service Disabled Veterans Insurance. It is available, without dividends, to veterans with service on or after April 25, 1951, who have a service connected disability.

During 1986, the 394 holders of United States Government Life Insurance (USGLI) will receive an average dividend of \$272 out of a total distribution of \$107,000. These policies were issued mainly during World War I.

Some 19,283 World War II veterans who kept their National Service Life Insurance (NSLI) in force will receive an average \$285 dividend. The total dividend distribution on these policies is \$5,504,000.

The new Veterans Special Life Insurance (VSLI) will pay out a total of \$449,000 in dividends to 1,695 policyholders, for an average

dividend of \$200.

The Veterans Reopened Insurance (VRI) program will pay \$210,000 in dividends to 742 policyholders averaging from \$243 to \$504 depending on the policy issued. In addition to the regular dividend, termination dividends will be paid to VRI policyholders whose policies terminate in 1986 due to death, maturity, or cash surrender.

Dividends for individuals covered under each program will differ according to age, plan selected, and length of time the policy has been in force.

If assistance is desired, veterans may contact the Jackson VA Regional Office between the hours of 7:30 and 4:30 p.m., Monday through Friday. The statewide toll-free number is 1-800-682-5270. If you live in the Meridian area, call 693-6166; in the Gulfport/Biloxi area, call 432-5996. The number in the Jackson area is 965-4873.

Information Available Through Service Line

Individuals who are new in Mississippi, persons who recently have moved to a new location in the state or others may obtain state income tax forms or state tax information from the Governor's Service Line.

These services, provided in

cooperation with the State Tax Commission, may be obtained by contacting the Service Line at 354-4540 or 354-4542 in the Jackson area. Callers from other areas of the state may use the toll-free number, 1-800-222-7622.

Service Line counselors will provide answers to basic tax questions and, if desired, refer callers to volunteer tax preparation services.

Every year, the Governor's Service Line serves more than 700 Mississippians in the tax assistance program, according to Checky Herrington, director of program information, Governor's Office of Federal-State Programs.

"If the Service Line counselor is not able to immediately answer a question," Herrington said, "this person will consult with the Tax Commission and call the individual back."

"Tax forms for 1985 are basically the same as for 1984 with the exception that persons due a refund may designate that all or some of the refund be contributed to the Wildlife Heritage Program to aid in wildlife conservation," he said.

"In addition to tax assistance," Herrington said, "the Service Line provides information in areas such as education, legislation, em-

Tishomingo County News - Vidette - Belmont News

ployment, training, social services, economic development, licensing, tourism, finance, health, insurance, prison-related matters and energy assistance.

Southwood Baptist Church
Hwy. 72 By-Pass
Between Pleasant Hill & 25 S.
SERVICES:
Sunday School, 10:00 a.m.
Church, 11:00 a.m.; Church Training, 5:00 p.m.; Church, 6:00 p.m.
"Serve the Lord with gladness" Psalm 100:2
J-14-1fn-c.

IUKA BAPTIST CHURCH

105 West Eastport Street

DR. JUBIAN WEST, PASTOR

SUNDAY SERVICES

Sunday School 9:45 a.m.

Worship Service 10:55 a.m.

Church Training 6:00 p.m.

Worship Service 7:00 p.m.

WEDNESDAY SERVICE

Mid-Week Prayer Meeting 7:00 p.m.



Morning and Evening Services Broadcast Over WTIB-FM 104.9

Morning services also on A.M. 1270

Come Worship With Us



BAPTIST

ST. PETER BAPTIST
Rev. William E. Carter
AIRPORT MISSION
Perry Murphy
IUKA BAPTIST
Dr. Julian West
BELMONT FIRST
Jack Maroon
HUBBARD SALEM
Allen Osborn
CARTERS BRANCH
S. W. Shinnault
CALVARY BAPTIST
Thomas Ozbirn
MT. MORIAH
Ben Thornton
GOLDEN CENTRAL BAPTIST
Rolph Culp
MT. VERNON BAPTIST
Author Hardin
TISHOMINGO BAPTIST
Chester Harrison
BURGESS CREEK
Tommy Wright
BURNVILLE FIRST
Claude M. Prince
NEW PROSPECT
Eugene Walden
OLDHAM
Charles Wooten
PADEN
Pat Howard
FIRST BAPTIST
William Vance
EASTPORT
Phil Dawson
NEW SALEM
Ted Vafeas
UNITY BAPTIST
Troy Harrison
RED BUD
John Stovall
ROWLAND MILLS
Frankie Smith
HARMONY HILL
Billy Paul Feltman

MT. JOY

Crawford Retherford
JACKSON CAMP
Mavous Phifer
IUKA MAGNOLIA MISSIONARY
Walter Selman
CALVARY MISSIONARY
Jim Jones
SOUTH CROSSROADS
Harold Holly
PROVIDENCE BAPTIST
R. C. Scott
BETHEL MISSIONARY
David Gregg
MT. GILEAD
James Hardin
TEMPLE Rickey Johnson
MT. ZION BAPTIST
Bro. Gerald Grisham
FIFTH STREET
Bill Hobson
OLD PLEASANT HILL
Mike Hopkins
NEW LEBANON FREEWILL
Gerald Taylor
ANTIOCH FREEWILL
Glenn Jones
POPLAR SPRINGS
Frank Fagan
HIGHLAND
J. A. Blunt
BETHLEHEM
George D. Credille
YELLOW CREEK
Stanley Magill
DENNIS FIRST BAPTIST
John Stockton
FIRST FREEWILL
J. T. Prince
NEW LIBERTY
T. E. Nothery
SHORT CREEK
G. D. Jones
WALKER MISSIONARY
LITTLE FLOCK PRIMITIVE
Elders Roger Browning & Herman Clark
SOUTHWOOD BAPTIST
E. P. Baldwin

UNITED METHODIST

PATRICK
HARMONY
BURNVILLE
Del Blackman
IUKA METHODIST
Frank D. Burton
MT. EVERGREEN
CAMPGROUND
ROCKY SPRINGS
John Garrett
SNOWDOWN
PLEASANT HILL
SPRING HILL
Shelby Mainers
OLD BETHEL
GOLDEN CHAPEL
Glenn Grammer
SALEM
BOGGS CHAPEL
PARADISE
TISHOMINGO
Paul York
DENNIS
BELMONT
Gerald Chaffin
JONES CHAPEL
Rossvell Irons
ALLSBORO UNITED
MARGERUM UNITED
Bro. Ted Brisson
RIVERTON UNITED
Bro. Ted Brisson

APOSTOLIC CHURCH

OF JESUS CHRIST
Kenneth White

REORGANIZED CHURCH OF JESUS
CHRIST OF LATTER DAY SAINTS
Justice Manning, Red Bay, AL

UNITED PENTECOSTAL

BURNVILLE FIRST
Jimmy Rich
IUKA FIRST UNITED
Frank E. Williamson

NONDENOMINATIONAL

AMAZING GRACE TABERNACLE
Bro. & Sis R. G. Rodgers
MT. ZION
R. C. & Dorothy Wigginton
NORTH CROSSROADS COMMUNITY
Travis Shea
GRACE BIBLE CHURCH
Danny Lovelace

PRESBYTERIAN

ALLSBORO CUMBERLAND
J. B. Burns, Jr.
BETHANY
L. K. Foster

CATHOLIC

Rev. Dick Zelonis, s.c.i.

FULL GOSPEL

MISSION LIGHTHOUSE
Wiley Wingo
FIRST ASSEMBLY OF GOD
Allen Hapner
JAMES CHAPEL
CHURCH OF GOD IN CHRIST
Elder Robert Yarbro
IUKA CHURCH OF GOD
J. B. Paradise

NONDENOMINATIONAL

FAIRVIEW BIBLE CHURCH
Mike Hopkins
PENTECOSTAL
IUKA GOSPEL CHAPEL
Larry Riley
BURNVILLE TABERNACLE
W. E. Sharp
CHRIST GOSPEL
Richard H. Carter, Jacinto, MS
GRISOM CHAPEL
Melvin Laster
CHRISTIAN FELLOWSHIP

CHURCHES OF CHRIST

MAUD CHURCH OF CHRIST
Jim Wisdom
IUKA CHURCH OF CHRIST
Perry Taylor
BEREA CHURCH OF CHRIST
Jimmy Ferguson
TISHOMINGO
Donald Rhodes
BELMONT SECOND STREET
John Williams
PLEASANT GROVE
Ronald Adams
LIBERTY
Haskell Sparks
MAIN STREET
Wayne Mitchell
BURNVILLE
J. T. Smith

HARVEST TIME DELIVERANCE MINISTRY
Wanda Keele

New Location CHRISTIAN BOOKSTORE

DOWNTOWN BURNVILLE
(ACROSS FROM HEADSTART BUILDING)

Grand Opening

SATURDAY, JANUARY 25 - 9 till 5

Door prizes and Family Bible to be given away. You do not have to be present to win. New Books, Bibles and Gifts for everyone.

COME BY AND SEE LESSEL CALTON AT
THE CHRISTIAN BOOKSTORE

RUSHING REXALL DRUG COMPANY

Presents

THE TISHOMINGO COUNTY HOSPITAL LIST

Lou Ethel Leonard
Justin Alsop
Ruby Aldridge
J.W. Braddock
Curtis Blair III
Virgil Bailey
Julia Bullard
Fay Junior Borden
George Daniel
Marvin Edmondson
Mary Henderson
Cleston Harris
Virgil Hester
Joseph Jones
Nellie Jernigan
Dorothy Jones
John H. Jones
Laura Jones
Jewel Johnson
Joyce Killough
Eva M. Lancaster

Lena Langley
Lydia Lambert
Johnny S. Lambert
Sylvia McMahan
Jewel Marlar
Fred Martin Sr.
Amantha Pruitt
Bessie Prater
James E. Seay
J.C. Spees
Audrey Vanzant
Gracie Walker
Herman Williams
Larry Clark
Ednis Donaldson
Ruth Halvorsen
Quay Brown
Eva Gaiser
Bessie Rutland
Katie Bullard
Sherry Mae Nunley

CUTSHALL FUNERAL HOME

Representing
Corinth Mutual
Burial Association

American Funeral
Assurance Co.

Liberty National
Life & Burial
Insurance Company

SOME BURIAL POLICIES CAN
BE PAID OUT IN 15 YEARS

CUTSHALL FUNERAL HOME

PHONE 423-5222
IUKA, MISSISSIPPI

McNATT FORD SALES PHONE 423-3681 IUKA, MISS.	BROWN INSURANCE AGENCY IUKA, MISS.	CARPETS UNLIMITED & CIRCUS BURGER IUKA, MISS.	RUSHING REXALL DRUGS PHONE 423-3629 IUKA, MS
TOWN & COUNTRY FURNITURE HWY. 25 SOUTH IN IUKA	FIRST AMERICAN NATIONAL BANK Iuka, Golden, Belmont, Burnsville	STATE FARM INSURANCE IUKA	CURTIS BROTHERS DRUGS PHONE 423-3676 IUKA, MS
FARM BUREAU INSURANCE PHONE 423-6151 IUKA, MISS.	CUTSHALL FUNERAL HOME PHONE 423-5222 IUKA, MISS.	MARLIN-MOORE CHEV. INC. 104 HWY. 25 NO. IUKA, MIS 423-3622	IUKA GUARANTY BANK "Straight Ahead Through The Years"



AMONG THOSE attending the December 8, 1985, meeting of the Chief Tishomingo Chapter DAR were from left: Mrs. Dale Tapp, Organizing Regent; Mrs. Thomas Frederick Wicker, Guest Speaker and Mrs. Kenneth M. McNeil, Regent.

December DAR Meeting

The lovely home of Mr. and Mrs. Mike McRee in Iuka, beautifully decorated for the winter season, was the setting for the luncheon-meeting of the Chief Tishomingo Chapter, Mississippi State Society of the National Society, Daughters of the American Revolution, Sunday, December 8, 1985, 1:00 p.m.

Chapter Regent, Mrs. Kenneth M. McNeil, led the group in the opening ritual. The Pledge of Allegiance to the Flag of the United States of America was led by Mrs. Homer Aldridge, Flag Chairman.

Mrs. McNeil read a message written by Mrs. Walter Hughey King, President General, NSDAR. Mrs. King's Christmas greeting: "Glory to God in the highest and peace on earth goodwill towards men" was taken from the "Messiah" by George Frederick Handel.

The National Defense and Treasurer's reports were presented by Mrs. Charles Sweeney, National Defense Chairman and Chapter Treasurer.

Mrs. Thomas Frederick Wicker of Pontotoc, a well-known DAR throughout the state, was introduced as the



Lydia Celebrates 1st Birthday
Lydia Elizabeth McAnally celebrated her 1st birthday, Monday December 30. Lydia is the daughter of Tommy and Angie McAnally of Corinth. Her grandparents are Mrs. Sue Hubbard of Corinth and the late James T. Hubbard, and Mr. and Mrs. Bert

S & S SATELLITE SYSTEMS

SALES & SERVICE

10 Ft. System
Vudon UST2000
Receiver
10" Mesh Dish
85 Degree K Low Noise
Amplifier
Guaranteed
Financing Available

Pro Sat 210
Digital
Positioner
Includes
Installation and Tax.

\$1425

WE SERVICE ALL MAKES & MODELS OF HOME SATELLITE SYSTEMS!
REFRIGERATOR, AIR CONDITIONER & ELECTRICAL REPAIR ALSO!

423-5946 OR 423-2279
HWY. 25 NORTH AT K & R FURNITURE
IUKA, MS
Sonny Scott, Owner

FOR YOUR BENEFIT

Tommy Purvis
Extension County Agent

Machinery Maintenance

After another harvest season, many farmers are now turning their attention to maintenance and repair of equipment before storage.

Before beginning, read the operator's service manual for the equipment. A few general precautions for maintaining and repairing equipment also should be followed.

Don't leave the engine running in the shop without proper ventilation. Carbon monoxide can build up to deadly levels.

Before servicing, disengage the power and stop the machine to prevent accidental power engagement that may entangle you into the machine.

Lower the equipment to the ground and engage safety locks on hydraulic cylinders. Use gloves to handle disc blades, cutter knives and other sharp-edged equipment. Wear steel-toed boots or other protective shoes

Farmweek

The January 27 Farmweek program will feature highlights of the annual Delta Ag Expo in Cleveland. These highlights and other agricultural news can be seen at 7:30 p.m. on the Mississippi Educational Television Network.

House Report

By: Rep. Mack Lloyd Watkins

Committee work, passage of a bill extending sovereign immunity and a holly discussed College Board

proposal to close two state universities were among highlights in the House of Representatives during the second week of the 1986 legislative session.

Governor Bill Allain unveiled his legislative recommendations in a speech to a joint session of the House and Senate. And a resolution was approved to invite Vice President George Bush to address the Legislature February 5 during a visit to the state.

Floor action was limited compared to the opening week which saw speedy House passage of two major education appropriation bills and a proposed constitutional amendment on gubernatorial succession. There was an increase in committee activity, however, as lawmakers began the painstaking job of digging through the massive stack of bills awaiting consideration.

A measure to extend the doctrine of sovereign immunity, protecting governmental units from damage suits, was approved 110-9 by the House. Under the bill, immunity would be retained for three more years instead of one additional year as approved earlier by the state Senate. The House and Senate must resolve differences on the length of the extension before the measure can be sent to the governor.

The legislation follows a state Supreme Court decision in 1983 that sovereign immunity, a concept stemming from old English common law, would have to be removed by 1984 unless extended by the Legislature. An extension of one year was approved in 1984 and another 12-month extension was voted last year. The latest House measure, recommended by the Judiciary "A" Committee, would leave sovereign immunity in effect until 1989.

Backers said this would allow extra time to study the complex issue and try to develop a satisfactory plan for paying legitimate damage judgments without bankrupting city, county and state governments.

The House also approved a number of other bills last week recommended by the Judiciary "A" Committee, including a measure which prosecuting attorneys believe will help combat criminal activities. The bill would allow prosecutors to seek multiple count indictments against a person accused of more than one crime if the offenses are connected or part of a common scheme.

The College Board recommendation to close Mississippi University for Women and Mississippi Valley State University was among the hottest topics around the Capitol in the past week. The Board also recommended closing the Ole Miss School of Dentistry,

the College of Veterinary Medicine at Mississippi State, and the off-campus degree granting programs operated by Ole Miss, Mississippi State and Southern Mississippi.

Legislative reaction to the proposal was mixed. Some lawmakers have indicated they agree with some or all of the recommendations, while others oppose the proposals. Still others want additional information before making a final decision.

In other developments, the House Transportation Committee voted to recommend a mandatory seat belt law that would be enforced by Highway Patrol officers. The bill was awaiting consideration this week by the full House.

TRAVEL SHOP

511 Jackson
HAWAII/WAIKIKI
8 Day/7 Nights Based On Double Occupancy
Includes air fare and hotel
Only \$649 Per Person

CALL US TOLL-FREE UP TO 50 MILES FROM CORINTH, WITHIN MISSISSIPPI
TELEPHONE 1-286-3347 OR 1-287-6101
MAJOR CREDIT CARDS ACCEPTED

SPARKO DOLLAR

WE RESERVE THE RIGHT TO LIMIT QUANTITIES. PRICES GOOD THRU 1-25-86

PRICE BUSTER SPECIALS

PRICES GOOD AT IUKA LOCATION ONLY

Lee JEAN SALE

Mens and Ladies
\$14⁸⁸

Girls 4-6X
Boys 4-7
\$10⁸⁸

Girls 7-14
Boys 8-18
\$12⁸⁸

Velvet Bathroom Tissue

4 Roll Pack

Marcal Facial Tissue

180 Count

Marcal Paper Towels

2 Ply

2/\$1

Your Choice

CANNON Bath Towels

\$1⁸⁸

CANNON Hand Towels

3/\$2

CANNON Wash Cloths

3/\$1

Ladies Cotton Sweaters

Assorted Styles
S-M-L
\$6⁸⁸

Ladies Blouses

Long Sleeved Solids
S-M-L Prints
Stripes
\$5⁰⁰

COMET CLEANSER

14 Oz.
Limit 3
3/\$1

TREND Laundry Detergent

147 Oz.
\$3⁸⁸

Texaco Havoline Supreme Motor Oil

10-W-40
Trooper Tested
Limit 5
79¢ Qt.

ELM SHOPPING CENTER - IUKA MONDAY - SATURDAY 8:30 - 6:00 CLOSED SUNDAY

OUR ADVERTISING POLICY
Our firm intention is to have every advertised item in stock. However, if an advertised item is not available for purchase due to any unforeseen reason, Sparko will issue a Rain Check upon request for the merchandise (one item or reasonable family quantity) to be purchased at the sale price within 30 days or we will offer you a comparable item at a comparable reduction in price.

Lowest Meat Prices in Town



U.S. CHOICE LEAN N' TENDER

CHUCK ROAST

\$1.39
LB.

MARKET STYLE SLICED
SLAB BACON

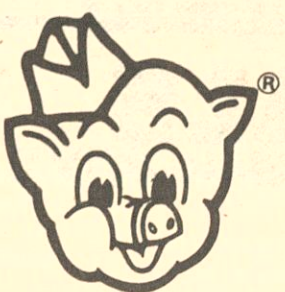
99¢
LB.



LEAN ENDS & PIECES

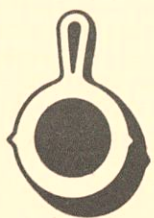
BACON

\$1.59
3-LB. BOX



FRESH CHICKEN
BACKS

29¢
LB.



Country®
Skillet

COUNTRY SKILLET FRYER

WINGS

59¢
LB.



BRYAN SLICED
BOLOGNA

\$1.19
12-OZ. PKG.

GISH BEEF

PATTIES

2-LB. PKG. **\$2.99**

IBP

CHIT'LINS

10-LB. PAIL **\$4.99**

YENDER YEAR BEEF

LIVER

LB. **89¢**

MANCHESTER FARMS DRESSED

QUAIL

4-CT. BOX **\$3.69**

ONCOR CHICKEN

NIBBLERS

LB. **\$2.49**

BRYAN

WIENERS

12-OZ. PKG. **\$1.19**

BRYAN

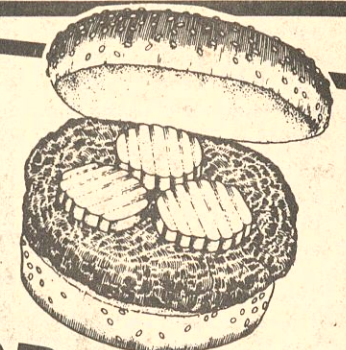
CORN DOGS

18-OZ. PKG. **\$1.89**

LAND O' FROST LUNCH

MEATS

2 2½-OZ. PKGS. **89¢**



GROUND CHUCK

\$1.59
LB.

PIGGY WIGGLY PORK

SAUSAGE

\$1.39
1-LB. ROLL

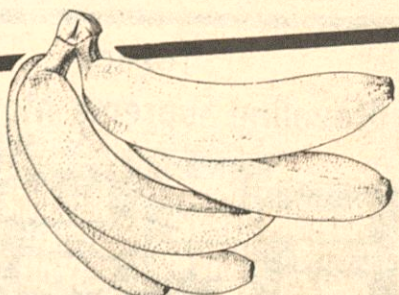


U.S. CHOICE BONELESS SHOULDER

ROAST

\$1.49
LB.

Fresh PRODUCE Daily!



GOLDEN BANANAS

\$1.00
4 LBS.

LARGE FIRM CRISP

ICE BERG LETTUCE

2 HEADS FOR

69¢

MUSHROOMS, CAULIFLOWER OR

BROCCOLI

99¢
ONLY

PINK OR WHITE

GRAPEFRUIT

\$1.29
5-LB BAG

LARGE TEMPLE ORANGES

69¢
6 FOR

WAXED

RUTABAGAS

79¢
3 LBS.



piggly wiggly

QUANTITY RIGHTS RESERVED. NONE SOLD TO DEALERS. PRICES GOOD JAN. 23 THRU JAN. 29, 1986.

SUPER BOWL SAVINGS



COUNTRY STYLE
**WONDER
BREAD**
24-OZ. LOAVES

2 **98¢**
FOR



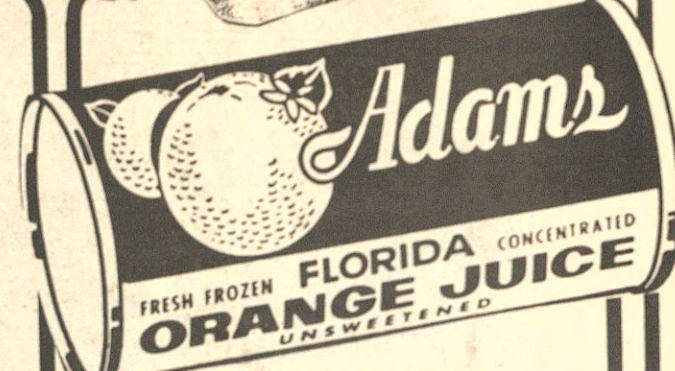
GOLDEN BEST
**CREAMY
SHORTENING**
42-OZ. CAN

98¢



GOLDEN BEST
**CRINKLE CUT
POTATOES**
5-LB. BAG

98¢



ADAM'S 100% PURE
**ORANGE
JUICE**
12-OZ. CAN

38¢

LIMIT ONE WITH \$15 PURCHASE.

RONCO
SPAGHETTI
2 1-LB. PKGS. **98¢**

ALL FLAVORS
DORITOS CHIPS
\$1²⁸
7½ OZ. BAG



PLANTER'S COCKTAIL
PEANUTS
16-OZ. CAN **\$1⁹⁸**

PURE VEGETABLE
CRISCO OIL
48-OZ. BTL. **\$2⁹⁸**

DIET SLICE OR
SLICE
3-LTR. BTL. **\$1⁴⁸**



PIGGLY WIGGLY CORN
CORN
3 17-OZ. CANS **98¢**



PIGGLY WIGGLY TOMATO
SAUCE
4 8-OZ. CANS **98¢**



ORTEGA TACO
SHELLS
10-CT. BOX **88¢**



BREAKFAST CEREAL
CHEERIOS
15-OZ. CAN **\$1⁹⁸**



RICH THICK DEL MONTE
CATSUP
32-OZ. BTL. **98¢**



STAR-KIST CHUNK
TUNA
6½-OZ. CAN **78¢**



EARTH GRAIN THIN
BREAD
REG. \$1.09
LOAF **88¢**

GOLDEN BEST
**MAC &
CHEESE**



4 **98¢**
7¼-OZ. BOXES

PIGGLY WIGGLY
**PEANUT
BUTTER**



\$1¹⁸
18-OZ. JAR

GOLDEN BEST SLICED
PEACHES
29-OZ. CAN

88¢

SAN FRANCISCO FRENCH
BREAD
REG. \$1.19
16-OZ. LOAF

88¢



DIET PEPSI, MT. DEW, PEPSI FREE OR
PEPSI
3-LTR. BTL. **\$1⁴⁸**



ASSORTED KRAFT SALAD
DRESSING
16-OZ. BTL. **\$1⁴⁸**



"Special" Employees Honored

On Monday, January 20, 1986, a luncheon was held honoring six employees of the Tishomingo Shoe Company. These ladies were the first

employees at the luka plant and are celebrating their 30 year anniversary with Genesco. Those enjoying the luncheon are left to right: Greg Quinn, Personal Manager; Estene Reynolds

Comer, Maureen Hall, Ollie Sanderson, Boyd Rigsby, Plant Manager; Lois Ray, Ouida Starkey, Refitting Department Manager; Edith Busby, Alvin Lambert, Bot-

toming Department Manager; Sis Johnson, Harold Terrell, Fitting Department Manager, and E.C. Davis, Packing Department Manager. Not pictured Virginia Gattis.

Genesco's First Employees Honored

On Monday, January 20, 1986, a luncheon was held at the Tishomingo Shoe Company in honor of six "special" employees. These were the first employees at the luka plant to have attained 30 years of service with Genesco.

Still working strong after 30 years, these employees are among the finest in all of Genesco.

Maurine Hall is the oldest employee at Tishomingo Shoe Company. Not oldest in age, she's quick to remind you, but the longest-working Tishomingo Shoe employee. Maurine began employment at Genesco of luka on November 2, 1955.

Also celebrating 30 years employment at Tishomingo Shoe Company is Virginia Gattis (hired 11-3-55), Edith Busby (11-4-55), Estene Reynolds Comer (11-22-55), Sis Johnson (11-23-55), and Lois Ray (11-22-55).

Honored at the special luncheon as well was recent 25 year employee, Ollie Sanderson. All these employees were presented with jewelry pins recognizing their years of dedication to Genesco. Congratulations to these five Tishomingo Shoe Company employees. We wish you many more years of prosperity with the Tishomingo Shoe Company.

Summer Food Service Program

The Department of Education today announces intent to administer the 1986 Summer Food Service Program for Children in Mississippi, through the Child Nutrition Program Division.

The Summer Food Program provides nutritious meals to children in needy areas during extended school vacation periods. In most areas, the program operates during June, July and August. Under the program, meals and snacks are served to children in such places as schools, playgrounds and parks.

Public or private, nonprofit schools and units of local, municipal, county or state governments may qualify as sponsors of the Summer Food Program in areas where at least 50 percent of the children are eligible for free or reduced price school lunches. Residential summer camps whose enrollment includes needy children may also act as program sponsors. Qualified sponsors are reimbursed for program operating and administrative expenses up to the current rates of reimbursement.

Sponsors will earn reimbursement for operating and administrative cost based on the number of meals served, times the reimbursement rates for each meal type or the actual cost of the meals, whichever is less.

To qualify for the Summer Food Service Program, a sponsor must meet certain requirements. The principal eligibility requirements include, but are not limited to the following:

1. Accept final financial and administrative responsibility for the total program operation.
2. Provide a regularly scheduled food service.
3. Serve meals that meet U.S.D.A. nutritional



Auxiliary Deputies Correctly Identified

Incorrect information was given in regard to the identity

of those auxiliary deputies which were pictured in last week's paper (Jan. 16). We regret the error and are happy to make the correction based

on information given by Chief Deputy Mike Kemp. Pictured from left: Wayne Mitchell, Dayton Kay, Mike Kemp, William Lambert, Orville

Grimes, Mark Guice, Sammy South, George Barnes, Floyd Shook, John Barnes, and Jerry Bonds.



Winner Of \$50 Cash Jackpot Cathy Lambert, of luka is the winner of the \$50 Cash Jackpot drawing held weekly

at the Piggly Wiggly Store in luka. Shop at Piggly Wiggly where everyone is a winner. Piggly Wiggly has the most for you! Lowest prices, best

meats, and the freshest produce in town. Presenting Cathy with the winnings is Roy Smith, a Piggly Wiggly employee.

Rural Mobile Health Unit To Visit County

The Rural Mobile Health Unit, sponsored by the Northeast Mississippi Community Action Agency, will be in Tishomingo County from February 3, to February 7, 1986. The areas are as follows: Burnsville Unity Pentecostal Church, February 3, 9:30 a.m. - 3:00 p.m.; Burnsville Feeding Site, February 4, 9:00 a.m. - 2:00 p.m.; Liberty Church of Christ (Dennis), February 5, 9:30 a.m. - 2:30 p.m.; Tishomingo Housing Project, February 6, 9:30 a.m. - 2:30 p.m., and Mineral Springs Feeding Site, February 7, 9:30 a.m. - 2:00 p.m.

The unit provides free screening for diabetes, vision, hearing and hypertension.

Singing At Paradise

The Paradise United Methodist Church will have their regular 4th Friday night singing, January 24, beginning at 7 p.m.

The Monroe's will be the featured singers. Everyone has a special invitation to attend.

Gospel Singing At Palestine

There will be a gospel singing at Palestine Church, January 25, at 7 p.m. Featured singers will be the Bluegrass Gospel-Heirs from Red Bay, Alabama, along with other guest singers.

Everyone is invited to attend.

Benefit Singing

There will be a benefit singing at the luka Church of God, Hwy. 25 South on January 26, 1986, at 7:00 p.m. for Eddie Bray who was injured in a logging accident.

The singers will be "The Revelations" and "Key to Life".

Luke 6:38 "Give and it shall be given unto you." Everyone is welcome.

Notice

The Christian Outreach will sponsor R.C. Scott from Providence Baptist Church Sunday at 2 p.m.

The featured singers will be The Revelations from luka. The public is invited to attend.

Correction

On January 16, 1986, a Notice of Foreclosure was published in the Tishomingo County News instituting a foreclosure on a Deed of Trust executed by JEFFREY DEATHERAGE and WANDA DEATHERAGE. This notice was published in error as the note of Mr. and Mrs. Deatherage was current at the time and all payments had been made when due. Bank of Mississippi apologizes for this error and regrets the publication of this notice.

BANK OF MISSISSIPPI Booneville, Mississippi

State Registration Required For Food Vendors

Food service management companies which plan to act as vendors for USDA's 1986

summer food service program for children in Mississippi must register with state on or before March 15, 1986.

The summer food service program provides nutritious meals to children from areas of economic need at qualified public or private nonprofits, nonresidential institutions or residential camps during the summer months.

Regulations require that companies providing food service for the summer food program must be registered, reputable and able to meet the terms of their contracts. In addition, under USDA's rules, food service management companies must provide states, at the time of registration, with detailed information on their operation for the past two years.

Companies wanting information on the summer food service program or applications for registration in Mississippi should contact: John H. Walker, Director, Division of Child Nutrition, State Department of Education, P.O. Box 771, Jackson, MS 39205, (601) 352-8480.

Mrs. Minnie Lee Cobb

Mrs. Minnie Lee Cobb, 93, died Tuesday, January 21, 1986, at her residence. She was a homemaker and a member of Paden Baptist Church.

Services will be at 11 a.m. today January 23, at Paden Baptist Church with the Rev. Pat Howard officiating. Burial will be in Palestine Cemetery. Deaton Funeral Home of Tishomingo is in charge of the arrangements.

Survivors include one daughter, Dolly Thornton of Memphis, Tenn.; two sons, Walter H. Cobb and Thaddeus Cobb, both of Memphis, Tenn.; seven sisters, Dovie Frederick and Una Stevens, both of Hackleburg, Ala.; Lillie Donaldson, May Casper and Audra Parker, all of Tishomingo; Ednis Donaldson and Allie Green, both of luka; three grandchildren.



Tisha Moore, first row second from left, won several points of recognition for her running

ability at the Indiana Jac-Cen-Del sports banquet held recently. She is a track star participating on the Osgood,

Indiana track team. Tisha is the granddaughter of Virgil Rhodes and Violet Tallman of

luka and the grand niece of Ruthia and Walter M. James of Hartselle, Alabama.

requirements.

4. Maintain adequate supervisory and operational personnel for overall monitoring and management.

Applicants for the Summer Program will be given equal consideration without regard to race, color, sex, creed or national origin.

SPECIAL NOTE: This is not an announcement for employment. This is an announcement for agencies interested in sponsoring the Summer Food Service Program.

For more information, potential sponsors should contact: Mr. John H. Walker, Director, Division of Child Nutrition, Mississippi Department of Education, P.O. Box 771, Jackson, MS 39205, (601) 352-8480.

Matters Of Health

Q. I've read that arthritis can be caused by infections. How does this happen and is the arthritis permanent?

A. Infection, in some instances, may cause swelling and pain in the joints.

Bloodstream-borne bacteria-a sign of disease-usually are the culprit. These bacteremic episodes may lead to septic, or infected, joints when the bacteria crosses from the blood vessels into the fluid bathing the joints. Bacterial arthritis, however, also may be a result of direct infection which can occur after joint surgery, a penetrating wound or an injection into the joint.

A septic joint caused by blood infection usually occurs in someone prone to such an infection. At-risk individuals often have poor infection-fighting immune systems, resulting from some underlying chronic illness, such as cancer and liver disease. Arthritis, joint trauma-including surgery, lupus, gout and pseudogout are other conditions that many predispose to bacterial arthritis.

Bacterial arthritis can strike at any age, however, which bacterial agent infects the joint is fairly age-specific. The elderly and the very young, mostly newborns, who acquire bacterial arthritis often are infected with streptococcal and staphylococcal bacteria. Intravenous drug users, patients with indwelling catheters, and those with prior joint damage more often are infected with unusual bacteria, such as gram-negative bacilli. These infections often are difficult to eradicate. This form of

bacterial arthritis usually involves only one joint. The knee is affected most often, followed by the shoulder, wrist, hip, finger joints, and elbow joints.

Young, healthy adults are those most likely to be infected by the gonorrhea class of bacteria. This form of bacterial arthritis is now one of the most frequently seen in many hospitals. Gonococcal infection often involves two or more joints. In addition, these infections cause skin sores on the arms, legs and trunk.

Direct infection of the joints is another source of bacterial arthritis. Deep penetrating wounds, certain bone-disease complications, intraarticular steroid injections, arthroscopy and prosthetic-joint surgery each may introduce bacteria into the joint space. A low incidence of direct joint infection is attributed to artificial

joint surgery, but the occurrence can rise in cases which involve underlying jointing diseases such as osteoarthritis or rheumatoid arthritis. Further surgery on the replaced joint introduces a high risk for infection and may result in bacterial arthritis.

Treatment for bacterial arthritis includes using antibiotics, draining the swollen joint, and resting the joint. Antibiotic therapy usually is prescribed aggressively and administered intramuscularly or intravenously. Response is rapid in most cases, but total removal of the joint infection may take several weeks. Anti-inflammatory medications also may be necessary in some cases to relieve the pain and swelling in difficult cases. Recovery is complete in most cases of bacterial arthritis caused by gonococcal infection. Residual joint damage, however, is not un-

common in patients afflicted with staphylococcal or streptococcal infection. The outcome depends on a number of factors-the duration of symptoms before treatment, the body's reaction to infection, prior joint disease, the type of bacteria, and the joint or joints involved.

Bacterial arthritis is a serious condition. It should receive immediate medical attention.

This "Matter of Health" was prepared in cooperation with the orthopedic surgeons on staff at University Hospital at the University of Mississippi Medical Center. Readers may suggest future topics by writing to "Matters of Health", the University of Mississippi Medical Center, 2500 North State Street, Jackson, Mississippi 39216-4505.

"Dieting is a system of starving yourself to death so that you can live a little longer." Jan Murray

5/5 WARRANTY
ON ALL 1980 MODEL AND NEWER USED CARS
backed by Chrysler Corp.
5 Months/5,000 Miles included at No Charge

1981 Pontiac Grand Prix-Moon Roof
1982 Buick LeSabre Limited, 2 Door, HT
1982 Oldsmobile Delta Royale, 4 Door
1981 Oldsmobile Cutlass Supreme, 2 Door HT
1982 Oldsmobile Cutlass Supreme, 4 Door
1981 Buick Regal, 2 Door HT
1982 Chevrolet Monte Carlo, 2 Door HT

1982 Chevrolet Caprice, 4 Door
1980 Buick Riviera, Loaded
1982 Buick Regal, 2 Door HT
1981 Pontiac Bonneville, 2 Door
1981 Buick Century, 4 Door

We are the new Chrysler, Plymouth, Dodge Dealer - regardless of where you bought your auto, bring your Chrysler Products to us for the best in warranty and service. We appreciate your business.

JERAL NUNLEY, BILL ROYAL, JIMMY MARLIN, DAN MOORE

MARLIN - MOORE

Chevrolet, Chrysler, Plymouth, Dodge

104 HWY. 25 NORTH

423-3622

IUKA, MS

SATELLITE TELEVISION

AT ITS BEST FROM:

HOLLOWAY TV-SATELLITE
SALES & SERVICE

You can watch over 100 channels tonight. A variety of programs for your family's enjoyment. Come by today and choose the system of your choice.

PHONE 423-2066

HWY. 72 WEST, IUKA, MS



Iuka's Tri-State Bassmasters Classic Winners

From left to right: Gary Hardin finished 3rd with 13

pounds 8 ounces, Charles King took 2nd with 15 pounds 13 ounces, and Eugene Bishop weighed in 1st place

honors with 18 pounds 3 ounces. Note: Plan to attend our club meeting on January 28, see article in this paper.

Iuka's Tri-State Bass Club To Meet

The 1986 season will begin this month with a January 28 meeting. All members should attend this meeting to voice their opinion on this year's tournament rules and to select the first tournament date. The board of director's will have an organization meeting on January 27, and their recommendations will be presented at the club's meeting the next night.

This year club officers are president, Bob Lowery; vice-president, Ricky Coker; secretary, Ronnie Stricklen; treasurer, Dwight Pharr; tournament directors, Del Hayes and Gary Hardin.

J & W Sporting Goods was last year's sponsor and is expected to be the main sponsor again. We hope others will join in.

This year especially this spring should be some great bass fishing on Pickwick Lake. If things continue like last fall, during October and November the lake was producing some very exciting and many limits of Bass. This should get all anglers pumped up to start the year. The club holds 9 tournaments a year with the first being in February or March. Each top three tournament winners wins a few bucks, a trophy and some important qualifying points for the year end classic. The club offers a lot of good clean sportsmanship and a way of learning skills from others and a challenge while competing against other fishermen.

The top ten qualifiers of last year had their fish off classic on November 2nd. Everyone had close to or over 10 lbs. at the final weigh in. The top 3 runners had a good limit of Bass each and had culled all during the day. Eugene Bishop took 1st place honors with 18 lbs 3 ozs. Second and third place went to Charles King with 15 lbs 13 ozs, and Gary Hardin with 13 lbs. 8 ozs.



Do you remember when it so you qualify as an OLD TIMER.

The wooden-wheeled horse drawn farm wagon was the pick-up truck of its day.

Folks took hot water bot-

Contemporary Quotes

The only good luck many great men ever had was being born with the ability and determination to overcome bad luck.



©1982 POSTEL

CURTIS DRUG CO.

Elm Shopping Center 619 Hwy. 25 South Iuka, Miss. 38852

PHONE 423-3676

Monday - Saturday 8 am-6:30 pm Sunday 9 a.m. - 3 p.m.

feather duster to dust cans, bottles and packages and dry-goods, counters and show cases.

Beating the rugs was a regular chore every month or so for young boys.

Nearly every home that harbored a user of tobacco or snuff had a cuspidor or spittoon.

A button hook or we said shoe buttons and a collar button were very necessary.

Women wore long hair and floppy hats that required the use of hat pins.

Most men when wearing a tie had a necktie stick-pen and cuff-links.

Women carried camphor bottles and men carried metal match boxes.

A wrist watch was regarded as a mark of a Sissy.

All men shaved with a straight edged razor.

A mustache cup was found in most homes that the male had bushy mustache or beard.

Every town big or little had a Barber shop, it could be located by a big white post with red circling stripes up and down.

The stereoscope was a parlor favorite.

School basketball games were played out-doors.

Electric street cars ran in

most large cities.

Sears-Roebuck said cars guaranteed to run in mud or sand.

Every town big or little had a butcher-shop.

Most towns had a horse trough and the hitching post was the meter of that day.

Every town had a livery-stable and a blacksmith shop.

Horses were as common as cows and pigs.

Every town had a livery-called it out-house.

Every farmer had at least 1 team of work mules that he used to cultivate his land with and to haul crops to market.

After the invention of cars every automobile was equipped with a hand-pump, a jack and a tire repair kit.

Townfolks, enjoyed their milk and butter from country folks.

Everybody kept chickens and produced their own chickens, and their own eggs.

Country folks went to bed with the chickens and got up with the chickens. Remember?

P.S. If the antiques in the above "Something Old" is not underscored go through and pick out all old antiques write them down then go to an antique shop and hunt for each thing mentioned and ask the

price..or if you have one of Grandmothers...consider its value.

Benefit Game Big Success

We, the players of the Messengers Basketball Team, would like to take this time to thank all the many people who made last Sunday's (January 12, 1986) charity basketball game such a success.

We would like to thank Buddy and Kay Bain and the WTVA 9-Alivers for the effort they made. We appreciate the good fellowship and sportsmanship shown by the whole team. Also, we would like to thank Dr. Stone and the Fellowship of Christian Athletes of Iuka High School who worked so hard to make this game so successful.

Also, thanks to Susan Page who kept the score books during the game. And a special thanks to all the people who came out and supported this worthy cause.

The amount raised for Jennifer was \$729.05. Jennifer is the daughter of Gene and Kathy Huff, of Burnsville, and

is the victim of cancer.

It has certainly been a blessing being able to participate in such a fine event, and if the Lord is willing we would like to continue to try and help others in our community. God Bless you all. The Messengers.

In Service

Airman Victor D. Grubbs, son of Willie E. Grubbs of Cherokee, Ala., and Juanita A. Liner of 1604 Sebring St., Huntsville, Ala., has been

assigned to Sheppard Air Force Base, Texas, after completing Air Force basic training.

During the six weeks at Lackland Air Force Base, Texas, the airman studied the Air Force mission, organization and customs and received special training in human relations.

In addition, airmen who complete basic training earn credits toward an associate degree through the Community College of the Air Force.

BONDS FEED & FARM SUPPLY

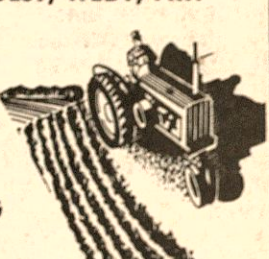
127 EAST EASTPORT STREET - IUKA

OPEN 8 - 5 MON., TUES., WED., FRI.

8 - 12 THURSDAY,

8 - 4 SATURDAY

NOW TAKING LIME ORDERS



SERTA NATIONAL SALE PREMIUM MATTRESS CLOSE-OUT



Save \$150 - \$400 per set on every Serta Model

It's the greatest premium mattress sale event in Serta history! We're closing out current Serta Perfect Sleeper and Sertapedic® models, making room for new premium styles arriving soon. You'll save BIG on every size, every comfort. Hurry while selection is best!

Serta Perfect Sleeper Special Edition®

\$149	FULL, Ea. Pc. Reg. \$349	\$199
	QUEEN, 2 Pc. Set Reg. \$799	\$499
	KING, 3 Pc. Set Reg. \$1100	\$699
	TWIN, Ea. Pc. Reg. \$199	

Serta Pedic Special Edition

\$99	FULL, Ea. Pc. Reg. \$249	\$149
	QUEEN, 2 Pc. Set Reg. \$599	\$399
	KING, 3 Pc. Set Reg. \$899	\$499
	TWIN, Ea. Pc. Reg. \$199	

Reg. \$199

Reg. \$899

Reg. \$199

Reg. \$899

Reg. \$199

Reg. \$899

Reg. \$199

Reg. \$899

Reg. \$199

Reg. \$899

Reg. \$199

Reg. \$899

Reg. \$199

Reg. \$899

Reg. \$199

Reg. \$899

Reg. \$199

Reg. \$899

Reg. \$199

Reg. \$899

Reg. \$199

Reg. \$899

Reg. \$199

Reg. \$899

Reg. \$199

Reg. \$899

Reg. \$199

Reg. \$899

Reg. \$199

Reg. \$899

Reg. \$199

Reg. \$899

Discover why so many people say, "I want my Serta!" Serta Perfect Sleeper goes beyond just being firm, beyond other mattresses, with the extra comfortable Serta surface. Try a Serta. You'll want one, too!

FREE DELIVERY

30, 60, 90 DAYS SAME AS CASH OR EASY TERMS

Queen and king sizes sold in sets only.

TOWN & COUNTRY FURNITURE COMPANY

407 HWY. 25 SOUTH IN IUKA

PHONE 601-423-5660

you want it... you've got it... IN THE CLASSIFIED

CLASSIFIED ADS

\$2.50 per week for 30 words. After the first 30 words, 5¢ extra per word. \$1.00 extra with border
Card of Thanks and In Memorium - 5¢ per word
Classified Ads, Cards of Thanks and In Memoriums must be paid in advance
50¢ service charge will be added to any monthly bill totaling less than \$5.00

PHONE 423-3666

ERRORS

Should be reported immediately as The News can be responsible only for the first incorrect insertion in any advertisement. The News cannot be liable for error in any advertisement to a greater extent than the cost of the space occupied by the items in the advertisement.
All display advertising must be in the News office by 12 o'clock noon on Tuesday.

GOVERNMENT JOBS

\$16,040-\$59,230/yr. Now hiring. Call 805-687-6000 Ext. R-5131 for current federal list. J-9-16-23-30-F-6-pd.

FOR SALE—2200 sq. ft. steel building across from Iuka Industrial Park, formerly Dr. Meade's office, all partitions are moveable, can be used for home, apartments, store, factory, etc. \$45,000 with 10% down and balance at 9% simple interest. Call 601-489-6304 nights. J-9-16-23-pd.

Lost

December 31
1 black and tan with white chest (cur dog), and 1 black and tan treeing walker-tattoo in both ears. Reward offered. Jerry White (601)427-8439. J-16-23-pd.

FOR SALE—1984 Commodore house trailer, color brown and almond, includes some furniture, underpinning. \$500 down and take up payments. Call 423-5379. J-23-pd.

LAND FOR SALE—10 acres with paved road frontage, spring-fed pond. Located ten miles southeast of Corinth. Call before 7 p.m. (601) 223-5832. J-23-30-F-6-13-chg.

HOUSE FOR SALE in Dennis-3 bedroom, brick on 1/2 acre lot. \$25,000 or equity and take up payments. Call 454-7355 or 318-352-8805. J-9-16-23-30-pd.

As of January 23, 1986, all land belonging to R.A. Parsons is now posted against Hunting and Trespassing. R.A. PARSONS J-23-30-F-6-pd.

FOR RENT—3 bedroom, small family, clean-up deposit required. Be vacant in a few days. See Cecil Davis at the store in Dennis. J-9-16-23-30-pd.

EASY ASSEMBLY WORK! \$600.00 per 100. Guaranteed Payment. No Experience/No Sales. Details send self-addressed stamped envelope: ELAN VITAL -5873, 3418 Enterprise Rd, Ft. Pierce, FL 33482. J-9-16-23-30-pd.

FOR SALE—Centennial sweet potatoes, rin dried, \$8.00 bushel. Also, pure honey, with or without comb, \$3.00 qt., \$1.75 pint. C and D Vegetable Patch, Golden, C.G. Patterson. 601-454-7604. J-16-23-30-pd.

FOR RENT—2 bedroom, brick Apartment with nice sun deck, located on 365 South of Burnsville. Call 427-9243. J-16-23-30-pd.

Fat Burner! Gobese Grapefruit Extra Strength Capsules and E-Vap Tablets. Rushing Drugs. J-16-23-pd.

FOR RENT—2 bedroom trailer, carpet, water furnished, behind Mighty Mart \$135.00 per month. Call 423-9309, or 423-5676. J-23-30-pd.

FOR RENT—1 bedroom house, carpet, close to Fifth Street Baptist Church, \$125.00. Call 423-9309, or 423-5676. J-23-30-pd.

FOR SALE—Half Price! Flashed arrow signs \$289!! Lighted, non-arrow \$269. Unlighted \$219. Very few left. Free letters! See locally. J-23-pd.

FOR SALE—New 2 bedroom mobile home, 60 ft., \$8995. Best of all it's at Clayton Homes from the Factory Outlet. Clayton Homes Savannah, TN J-23-pd.

\$88

New Singer zig-zag sewing machine left in lay-away. This machine sews straight, zig-zags, monograms, appliques and makes button holes. Suggested retail \$199.95, you pay only lay-away balance of \$88 or arrange easy monthly payments. The Country Loft, Iuka 423-1339. J-23-30-pd.

OPEN HOUSE
Sunday, February 2nd,
Very nice 3 bedroom, brick house for sale, ceramic brick in Liles Acres Subdivision #2 on Jefferson Street in Cherokee, AL, near High School and Elementary School. For more information contact, John L. Fox, (205) 383-4092 or Century Twenty-One Real Estate Service (205) 767-1734. J-23-30-pd.

PIANO FOR SALE
Wanted: Responsible party to assume small monthly payments on spinet/console piano. Can be seen locally. Write: (include phone number) Credit Manager, P.O. Box 520, Beckemeyer, IL 62219. J-23-pd.

JOB OPPORTUNITY
Mental Health Worker to provide outpatient clinical services in community mental health center. Applicants must have MSW MA in Psychology or BA Degree in a related field with proven experience in mental health counseling. Apply at Timber Hills Mental Health, Old White House Road, Iuka, MS 38852. J-23-pd.

RESPONSIBLE PERSON
Wanted to own and operate candy vending route. Pleasant business with high profit items. Can start part time. Cash investment of \$3996 to \$12,996. Call 1-800-328-0723, Eagle Industries, 26 years of service. J-23-pd.

Card Of Thanks

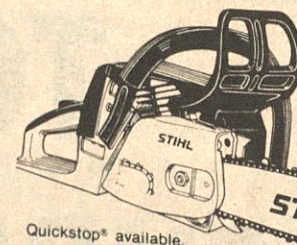
Our thanks go to the friends, family and neighbors who helped us when our house caught fire on December 25. Special thanks to Sammy South and friends who were on the scene first. Also, to Police Chief Floyd Whitaker who came to help. The Burnsville Volunteer Fire Department and the Midway and Tishomingo Fire Departments also responded, to these our most grateful thanks. BOBBY & JUDY WALKER AND CHILDREN

SAND BLASTING
Tri-State Refrigeration
201 E. Eastport St.
Iuka 423-3932
D19-1tn.

FOR SALE—1977 2 bedroom, mobile home, 1 bath, 12x60. Partially furnished, \$5500. Call after-5 p.m. 423-5983. N-21-1tn

MEDICARE SUPPLEMENT--
Are you paying too much for your medicare supplement policy? The Robinson Insurance Agency represents a number of companies that has a best rating of A+. Only 11.6% of all companies have this rating. We have excellent products with excellent rates. Remember we are fully staffed to assist you with your claim. For a no obligation discussion of your needs, call today! 438-7340 or 438-7341 office or 438-7348 residence. Ask for Roger Robinson. D-26-1tn-chg.

Whatever the Job, a STIHL Can Cut It

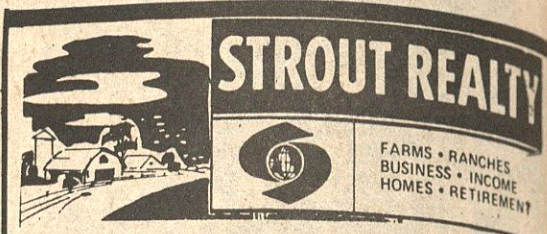


STIHL 024AVEQ

STIHL's mid-size saw is right for homeowners, farmers and professionals. With electronic ignition, anti-vibration and a high performance. Try one today.

NELSON MARINE & HARDWARE
HIGHWAY 25 SOUTH IN IUKA

423-6484



HWY. 25 SOUTH

RACHEL MILLER, BRANCH MANAGER
423-1836

NOTICE: Why waste your money on rent? Lease with the option to buy this cozy two bedroom home at Coleman Park. One bedroom downstairs and one bedroom upstairs with party bar. Wood and electric heat and air conditioning. Sunken living room, spacious kitchen, and sun deck.

WE NEED YOUR LISTINGS!

WILL DO INCOME TAX RETURNS

CALL 423-6374 OR COME BY

807 S. PEARL - IUKA

(BEHIND THE FOOTBALL FIELD)

Mary Dawson, Tax Preparer

MOORE'S BODY SHOP & WRECKER SERVICE

24 Hour Wrecker Service

DAY PHONE 423-5130

NIGHT - WEEKENDS

HOLIDAYS

423-2156 OR 423-2329 24 HOUR WRECKER SERVICE
EXPERT BODY REPAIR

Dailey's Body Shop and Wrecker Service

BURNSVILLE, MISSISSIPPI

PHONE

Day 427-9234

Night 427-8449

Expert Body Work - 24 Hour Service
BURNSVILLE



Need Appliance Parts or repair?

CALL
GANN BROTHERS
Furniture & Appliance
Sales & Service

COME BY OUR SERVICE DEPARTMENT AND

SEE JACKIE BRIDGES FOR FAST EFFICIENT SERVICE.

427-9506 IN BURNSVILLE



1415 Highway 25 South
Iuka, Mississippi 38852
Grace Long, Realtor-GRI-423-6584
Beth Davis, Realtor-GRI-423-9543
Dianne Ables-Realtor Assoc.-423-5282

Delightful older home with 3 bedrooms, spacious living areas, deck, on 20 acres with barns, fencing and pond. \$52,500.00.

Best neighborhood! Custom 3 bedroom brick with 2 baths, 2 living areas, fireplace, deck and pool. \$57,000.00.

Exquisite custom home with impressive foyer and greatroom, 3 bedrooms, gameroom, oversized lot. \$86,000.00.

One of the friendliest homes you'll see-Lovely greatroom with fireplace and insert, 3 bedrooms, 2 baths, private location. \$65,000.00.

Truly a showplace! Two-story cedar with 3 bedrooms, 2 1/2 baths, formal dining, study, large family room with fireplace, sunroom, many other extras. Call for appt. \$89,500.00.

Very attractive country style family home with 3 bedrooms, 2 baths, greatroom with fireplace, sunroom, outside shop, pool, fencing, deck. \$68,000.00.

Country dream home located on 7 fenced acres. 4 bedrooms, 3 baths, greatroom with fireplace and built-ins. Large plush master suite and bath. All this plus a pool for only \$59,900.00. Great buy!

Affordable 3 bedroom frame in the country. Family room w. flue for wood heater, deck, 1/2 acre-off Coleman Park Road. \$28,000.00.

Good buy in great neighborhood-3 bedroom brick, 2 baths, patio, double carport, well landscaped-Martha Lane. \$39,500.00.

Farmers Home approved with immediate occupancy if you qualify-3 bedrooms, 1 1/2 baths, flue, North Crossroads. \$34,000.00.

In town Burnsville-Well-kept 3 bedroom brick with 2 baths, den with fireplace, patio, outside storage. \$24,500.00.

125 acres-House place, farmland, young timber-North of Burnsville.
Fully equipped beauty shop-building and equipment, \$11,500.

APPRAISALS *****LAND

AN OHIO OIL CO. offers high income, plus cash bonuses, benefits to mature person in Iuka area. Regardless of experience, write P.D. Read, American Lubricants Co., Box 426, Dayton, Ohio 45401. J-23-chg.

Serger save over \$200 and 1/2 sewing time on Heavy Duty serger machine. We have used sewing machines starting at \$29 and up. At Carsters Fabrics, 501 E. Church Street, Booneville, MS 38828. J-23-M-13-pd.

Now available shoe, boot repair Quick Clean Cleaners, 110 Eastport Street, Iuka, phone 423-5913. J-23-1tn-chg.

HOSPITAL INSURANCE AT LOW COST

Whether you are self employed, working for someone else or unemployed, we now have low cost group rates on an individual basis. Comprehensive, Major Medical coverage to one million dollars in or out of hospital. Before you buy insurance, you should call and compare. Don't Wait! Call Roger Robinson at Robinson Insurance Agency, Main Street, Tishomingo, Office 438-7340 or 438-7341, residence 438-7348. D-26-1tn.

NEW HEAVY DUTY zig-zag sewing machine, buttonholes, monogram, applique, sews on buttons, regular \$229 now only \$98. We repair machines and vacuum cleaners, 20 years experience. All work guaranteed. Tucker Furniture, Front St., Iuka, MS, 423-2271. J-2-9-16-pd.

Help is available anytime if you have problems with alcohol. Call 438-6982 or 423-2326. J-16-23-30-F-6-pd.

Legal Notice

NOTICE OF PUBLIC HEARING

Notice is hereby given that the Mississippi Commission on Natural Resources will hold a public hearing at 9:15 a.m. on Wednesday, February 27, 1986, in the conference room of the Mississippi Department of Natural Resources, Southport Mall, 1000 Highway 80 West, Jackson, Mississippi. One of the items on the agenda is the application for bond release which has been submitted by the applicant, Falkner Construction Company, Inc., of Tishomingo County, Mississippi. The applicant seeks the release of the final 10% of the performance bond covering the reclamation of 8 acres of land covered by Permit No. P81-037 and located in Sections 34 and 35, Township 5 South, Range 10, East, Tishomingo County, Mississippi. Written comments on this matter may be submitted to the Mississippi Department of Natural Resources, P.O. Box 5348, Jackson, Mississippi 39216, prior to the hearing date. For further information write the Bureau of Geology at the above address or call 601-354-6328.

Legal Notice

NOTICE OF PUBLICATION OF FINAL SETTLEMENT OF CONTRACT

Notice is hereby given that the contract between the State Highway Commission of the State of Mississippi, Jackson, Mississippi, on the one part, and Folk Construction Co., Inc., Memphis, Tennessee, on the other part, dated the 23rd day of July 1985 for the construction of a project designated as State project Number 91-1025-71-103-10 being a Section of Miss. Highway No. 25 between MS Hwy. No. 365 and Tennessee State Line in Tishomingo County, Mississippi, has been fully and completely performed and final settlement thereunder has been made. This Notice is given under Section 91-553, Mississippi Code of 1972 as amended in pursuance of the authority conferred upon me by order of the State Highway Commission in Minute Book 24, page 1460.

Dated this 14th day of January 1986.

STATE HIGHWAY DEPARTMENT OF MISSISSIPPI
BY: W. Gaylon Tullis
Secretary to Commission

Legal Notice

IN THE CHANCERY COURT OF TISHOMINGO COUNTY, MISSISSIPPI

IN THE MATTER OF THE LAST WILL AND TESTAMENT OF CHARLES E. EDMONDSON, DECEASED

CAUSE NO. 9994

NOTICE TO CREDITORS

The undersigned having been appointed the executor of the estate of Charles E. Edmondson, deceased, by the Chancery Court of

Tishomingo County, Mississippi, in Cause No. 9994 on the docket of said Court, on the 7th day of January, 1986, hereby gives notice to all persons having any claim against the said estate to have the same probated and registered by the Clerk of the Chancery Court of Tishomingo County, Mississippi within ninety (90) days, and failure to probate and register for this period will bar the said claim.

FRANK CROSSETT
Richard O. Clark
Attorney At Law
Post Office Box 319
Iuka, Mississippi 38852
(601) 423-5227
J-9-16-23-chg.

Legal Notice

NOTICE TO CREDITORS

IN RE: ESTATE OF ALFRED T. HANNON

Letters Testamentary having been granted on the 31st day of August 1985 by the Chancery Court of Tishomingo County, Mississippi, to the undersigned upon the estate of Alfred T. Hannon deceased, notice is hereby given to all persons having claims against said estate to present the same to the Clerk of the said Court for probate and registration, according to law, within ninety (90) days from the date of first publication or they will be forever barred.

This 3rd day of January 1986.

VIRGIE HANNON
ADMINISTRATRIX
Gifford, Moore & Henry
Solicitors for Administratrix
J-9-16-23-30-chg.

Legal Notice

TRUSTEE'S NOTICE OF SALE

WHEREAS, on the 26th day of April, 1985, James C. Moore and Patricia A.

Williams, executed a Deed of Trust to J. Barry Finch, Trustee, for the benefit of Alford Walters and wife, Mary E. Walters, which said Deed of Trust is now on record in the office of the Chancery Clerk of Tishomingo County, Mississippi, at Iuka, Mississippi, in Trust Deed Book 117, page 777, of the records of Deeds of Trust of said County; and

WHEREAS, the owners and holders of said Note and Deed of Trust believe that the property therein conveyed in endangered as security by remaining in the aforesaid grantors possession and also default having been made in the obligations and conditions undertaken by said grantors, and the holder of the Note and Deed of Trust having requested the undersigned Trustee so to do, I will on the 31st day of January, 1986, offer for sale at public outcry and sell during legal hours, being between the hours of 11 o'clock A.M. and 4 o'clock P.M. at the East Front Door of the Tishomingo County Courthouse in Iuka, Mississippi, for cash to the highest and best bidder the following described property situated in Tishomingo County,

Mississippi, and more particularly described as follows, to-wit:

Part of the SE 1/4 of Section 16, Township 3, Range 10 East, described as follows, to-wit: Beginning at the point on the east side of the Hazard Public Road where the north boundary line of said SE 1/4 section intersects the same and run thence in a southerly direction with the east side of said Hazard Public Road 50 rods, then this is the point of beginning of the land being conveyed by this deed; thence from this beginning point run east parallel to the north line of said quarter section 420 feet; thence run north parallel to the east side of the Hazard Public Road 210 feet; thence run west parallel to the north line of said quarter section 420 feet to the east side of the Hazard Public Road; thence run southerly direction with the east side of said Hazard Public Road 210 feet to the point of beginning, containing 2.00 acres, more or less.

I will convey only such title as is vested in me as Trustee.

WITNESS my signature, this 2nd day of January, 1986.

J. BARRY FINCH
TRUSTEE
J-9-16-23-30-chg.

Legal Notice

FORM 1C
SUMMONS BY PUBLICATION
IN THE CHANCERY COURT OF TISHOMINGO COUNTY, MISSISSIPPI
PLAINTIFF(S)

ADOPTION OF A MINOR
CIVIL ACTION, FILE NO 181
DEFENDANT(S)

SUMMONS
THE STATE OF MISSISSIPPI
TO:
Thomas Glen Bailey, 543 East Church Street, Orlando, Florida.

You have been made a Defendant in the suit filed in this Court by Jimmie May Campbell et al, Plaintiff(s), seeking adoption of a minor.

You are required to mail or hand deliver a written response to the Complaint filed against you in this action to Eugene Gifford, Attorney for Plaintiff(s), whose address is P.O. Box 152, Booneville, MS 38829.

YOUR RESPONSE MUST BE MAILED OR DELIVERED NOT LATER THAN THIRTY DAYS AFTER THE 16 DAY OF JANUARY 1986, WHICH IS THE DATE OF THE FIRST PUBLICATION OF THIS SUMMONS. IF YOUR RESPONSE IS NOT SO MAILED OR DELIVERED, A JUDGMENT BY DEFAULT WILL BE ENTERED AGAINST YOU FOR THE MONEY OR OTHER RELIEF DEMANDED IN THE COMPLAINT.

You must also file the original of your Response with the Clerk of this Court within a reasonable time after.

Issued under my hand and the seal of said Court, this 14 day of January, 1986.

Hayden Ables
Chancery Clerk of Tishomingo County, Mississippi
1008 Hwy. 25 South Iuka, Mississippi 38852
J-16-23-30-F-6-chg.

Legal Notice

IN THE CHANCERY COURT OF TISHOMINGO COUNTY, MISSISSIPPI
PLAINTIFFS

Eva Gene Bringle, ET AL
VS.

Cary Gaines Bringle, Jr.

DEFENDANT

CAUSE NO. 9881

NON-RESIDENT SUMMONS

TO: CARY GAINES BRINGLE, JR.,

an adult non-resident of the State of Mississippi who is

not to be found therein after diligent search and inquiry personally made by Complainants and whose present place of employment is Newberg Pascham Construction Company, 500 W. Madison Street, Chicago, Illinois 60606, and his present place of residence, post office and street address is unknown to Complainants after diligent search and inquiry personally made by Complainants to ascertain such.

You have been made a defendant in the above styled litigation by Eva Gene Bringle, and Lawson Bruce Bringle whose address is 1639 Peabody Avenue, Memphis, Tennessee 38104; Edwina Bringle, 2113 Matheson, Charlotte, North Carolina 28205; and Cynthia Bringle, c/o Cynthia Bringle Pottery Studio, Penland, North Carolina, 28765.

The Complaint filed against you is a civil action in the Chancery Court of Tishomingo County, Mississippi, which civil action alleges that you are indebted to the plaintiffs failure to pay your pro-rata share of dues, taxes, electricity and other services rendered in your behalf.

You are required to mail or hand-deliver a copy of a written Answer either admitting or denying the allegations in the Complaint to Harold S. Jackson, Attorney at Law, Post Office Box 414, Iuka, Mississippi 38852.

Your Answer must be mailed or hand-delivered not later than thirty (30) days after the day of 16th day of January, 1986 which is the date of the last publication of this Summons. If your Answer is not mailed and delivered a judgment by default may be entered against you for the relief demanded in the Complaint.

You must also file the original of your Answer with the Clerk of this Court within a reasonable time after.

DATED, this 10th day of January, 1986.

/s/ Hayden Ables
Chancery Court Clerk
J-16-23-30-chg.

Legal Notice

FORM 1C
SUMMONS BY PUBLICATION
IN THE CHANCERY COURT OF TISHOMINGO COUNTY, MISSISSIPPI
PLAINTIFF(S)

C.J. McCartney
VS.

Eva Gene Bringle, ET AL

CIVIL ACTION, FILE NO 9999

DEFENDANT(S)

SUMMONS

THE STATE OF MISSISSIPPI

TO:

Eva Gene Bringle, 1639 Peabody Ave., Memphis, TN 38104; Cynthia Bringle, Pottery Studio, Penland, N.C. 28765; Edwina Bringle, 2113 Matheson Av., Charlotte, N.C. 28205; Lawson Bruce Bringle, 1639 Peabody Av., Memphis, TN 38104.

You have been made a Defendant in the suit filed in this Court by C.J. McCartney, Plaintiff(s), seeking Partition of Land.

You are required to mail or hand deliver a written response to the Complaint filed against you in this action to J. Barry Finch Attorney for Plaintiff(s), whose address is P.O. Box 299, Iuka, MS 38852.

YOUR RESPONSE MUST BE MAILED OR DELIVERED NOT LATER THAN THIRTY DAYS AFTER THE 16 DAY OF JANUARY, 1986, WHICH IS THE DATE OF THE FIRST PUBLICATION OF THIS SUMMONS. IF YOUR RESPONSE IS NOT SO MAILED OR DELIVERED, A JUDGMENT BY DEFAULT WILL BE ENTERED AGAINST YOU FOR THE MONEY OR OTHER RELIEF DEMANDED IN THE COMPLAINT.

You must also file the original of your Response with the Clerk of this Court within a reasonable time after.

Issued under my hand and the seal of said Court, this 13 day of January, 1986.

Hayden Ables
Chancery Clerk of Tishomingo County, Mississippi
1008 Hwy. 25 South Iuka, Mississippi 38852
J-16-23-30-chg.

Point Of Law

(Prepared by the Mississippi State Bar. Some rights may vary from locality to locality. Always consult an attorney when in doubt about your legal rights.)

Q. We needed to have some work done on a car. To pay for it, we traded the mechanic two old cars that were not running. The mechanic never came to get the two old cars and now three years have

gone by and we have the chance to sell them. Can we?

A. Yes, your agreement to give the mechanic two old cars in exchange for performing repairs to another vehicle constituted an oral contract. In the State of Mississippi a suit to enforce an unwritten contract, expressed or implied, must be commenced within three years after the cause of action accrues. Because the mechanic has allowed three years to pass since your offer to give him the cars in exchange for his services, he has no legal right to the vehicle.

Q. My mother is 92 years old and has owned her 160 acre farm for many years. It is fully paid for and my dad died years ago. Mother wants to sell the farm and has found a buyer. She only went to school through the third grade and cannot write her name. I understand she can give the buyer a deed and sign it with an "X". Is this true, and what does the law require in this regard?

A. Assuming that title to the farm is held solely by your mother and that her mental condition is sound, she can sell the property and sign the deed to the buyer with her mark. The deed should be signed in the presence of two witnesses to her mark and should carry the acknowledgement of a Notary Public or other acknowledging authority that the deed has, in fact, been signed, sealed and delivered by your mother.

Physiology Of A Drowning

Drowning is an especially tragic form of demise because it happens very suddenly and frequently affects the young. One hundred and seven drowning deaths were recorded in 1985 in Mississippi including nine fatalities on the Tennessee-Tombigbee Waterway. In an effort to prevent the needless loss of lives on the Waterway, the Corps of Engineers offers the following summary on the encounters and behavior of a drowning person.

The drowning sequence begins with a brief violent struggle to reach the surface during which time the victim's actions are instinctive—he is panicked and is consumed by the drive to keep his head above water. He cannot see, hear, react to instructions, call for help, or propel himself in any direction. This thrashing state last from 20 to 60 seconds before the victim submerges completely.

The person then falls into a state of calmness and breathlessness, and experiences a relaxed, floating, and reassuring feeling. As he relaxes, he begins exhaling and swallowing water succeeded by vomiting, gasping, respirating, and aspirating. Finally, the victim falls into a coma, convulses, and dies.

Eighty-five percent of the people that drown in the United States each year would not have drowned had they been wearing personal flotation devices. Ninety percent of all drowning deaths occur in unsupervised areas, and fifty-three percent of the victims drown while intoxicated. Nearly all these accidents are preventable through water safety tactics. The Corps of Engineers asks all Tennessee-Tombigbee Waterway Users to help eliminate drowning deaths in 1986 by employing these important tips:

Always have a Coast Guard approved personal flotation device of the correct size for each passenger in the boat and encourage them to WEAR IT.

Always carry a Federally approved fire extinguisher and a well-equipped first aid kit on board.

Check any fuel odors before starting the engine.

Listen to local weather reports before going to the water.

Swim only in supervised areas, know the depth of the water, do not over-estimate your swimming ability, and NEVER SWIM ALONE.

Make sure rescue equipment is available on the boat. Be able to interpret all buoy markers.

Avoid heavy boating traffic. It takes three to six. Use a spotter and rear-view mirror when pulling skier.

Be aware of shallow areas and floating or submerged objects in the water.

Know the SIGNS OF A DROWNING PERSON—head back, mouth open, arms thrashing, torso bobbing.

Finally, do not consume alcohol on or near water. The Corps of Engineers

would like to thank everyone who donated CHRISTMAS TREES to be used as fish at tractors. Anyone interested in volunteering to help place the trees at selected points on the Tenn-Tom should contact the Tennessee Resource Office at 327-8777 or 327-4770.

GOOD NEWS IN THE BAY SPRINGS AREA. The new Resource Management Visitor Center complex will be open early this summer along with the newly completed Holcut Memorial Park.

ATTENTION BEAVER TRAPPERS. The Corps of Engineers in conjunction with Mississippi State University is conducting a Beaver Research Program in the Stinson Creek Cut-Off area off Highway 373 at the Columbus Lake. The beavers have been implanted with radio transmitters and are being monitored by the Wildlife Department of MSU in order to determine the beavers' food habits and movements. For this reason beaver trapping is prohibited in the Stinson Creek Cut-Off area until further notice. The Corps of Engineers and MSU appreciates your cooperation on the project.

Free Trees Given By Foundation

The National Arbor Day Foundation is giving ten free trees to people who become Foundation members during January, 1986.

The free trees are part of the Foundation's effort to promote tree planting throughout America.

A Colorado Blue Spruce, Red Maple, White Flowering Dogwood, Red Oak, European Mountainash, Black Walnut, Silver Maple, Norway Spruce, Green Ash, and Sugar Maple tree will be given to members joining during January.

These trees were selected to provide a wide range of benefits: flowers, shade, berries, nuts, and beautiful fall foliage, according to the Foundation. The six to twelve inch trees will be shipped postage paid with enclosed planting instructions at the right time for planting this spring. The Foundation makes its spring shipments between February 1 and May 31, depending on the local climate and this year's weather.

The National Arbor Day Foundation, a nonprofit organization, is working to improve the quality of life throughout the country by encouraging tree planting. The Foundation will give the ten free trees to members contributing \$10 during January.

To become a member of the Foundation and to receive the free trees, a \$10 membership contribution should be sent to TEN TREES, National Arbor Day Foundation, 100 Arbor Avenue, Nebraska City, NE 68410, by January 31, 1986.

Narcotics News

Donald Butler, Director

Q: I need to know what to do about the people who live across the street I believe are selling marijuana. There is constant traffic in and out of the residence both during the day and at night. Is there something that can be done? (Anonymous)

A. Yes, The Mississippi Bureau of Narcotics appreciates any information the

public provides to aid us in combating the trafficking of drugs in Mississippi. We also welcome anonymous tips.

Our agency is divided into nine districts throughout the state to better serve the public. This enables our agents to excel in their job performance with their attention focused on the counties in their assigned districts. One of the various tasks the agents perform is investigating any information that is received. Therefore if you report anything to us, you can be assured that our agency will investigate the matter.

If you would like to report any suspicious activity, please call toll free 1-800-222-7646 or write to Mississippi Bureau of Narcotics, P.O. Box 6462, Jackson, MS 39212.

tax return, line 28 permits you to donate all or any portion of your tax refund (at least \$1 or more) to the Mississippi Wildlife Heritage Fund. Just indicate how much you want to donate. That's all there is to it.

During the last session of the Legislature, Mississippi became the 33rd state to add the checkoff to its state income tax form.

According to the Department of Wildlife Conservation, monies received from the checkoff will be used solely for nongame and non-consumptive wildlife purposes.

This could include such things as protecting a unique tract of land, valued because it supports a rare type of plant. Or it might mean protecting land because it is the home of an endangered or threatened bird or fish.

New Funds For Nongame Wildlife

Point Of Law

Quick now: Name Mississippi's newest money source for wildlife conservation. Come on, think. Time's up.

Don't feel bad if the term Income Tax Checkoff didn't roll off your tongue. Even though it's not a household word, it's Mississippi's newest bundle of income energy.

But beginning within the next few weeks, Mississippians will be introduced to the newest way to contribute to conserving wildlife.

Billboards, magazines, newspapers and other media will be used by the Department of Wildlife Conservation to tell taxpayers how they can help wildlife, especially nongame animals.

Already Mississippi state income tax forms have been mailed to state taxpayers. On the cover of this year's tax form package are instructions about the new program. It's really very simple.

The income tax checkoff is nothing more than an easy way to let those persons who receive an income tax refund donate a portion of it to nongame wildlife conservation—if they choose to do so.

On the front of your state

Q. I am represented by an attorney and I am not satisfied with the way I am being represented. Is there anything I can do?

A. The best thing to do is to contact your attorney and in a face-to-face meeting tell the attorney you are not satisfied. If you are still not satisfied, you may contact the "bar association" in your community. If your local bar association is not helpful, you can contact the Mississippi State Bar Association at 1-800-682-6423.

Q. I am a hairdresser and as a condition of my employment, I signed a "non-competition" clause in an employment contract. I now wish to open up my own shop in competition with my former employer. Is the non-competition clause enforceable?

A. Non-competition clauses are not favored in the law but can be enforceable if properly worded in terms of time and distance. Before making your decision to compete, you should definitely consult your attorney.

DIRT, GRAVEL OR SLAG DELIVERED

Dozer or Back-Hoe Work

STEVE GRISHAM

DAY 423-3484 OR NIGHT 423-1040

3/4" Plywood.....	\$9.99
1/2" Plywood.....	\$5.49
3/8" Plywood.....	\$5.99
5/8** Plywood.....	\$7.99
2x4x8.....	79¢
4x8 Siding.....	\$6.99
Felt, 15 lb.....	\$3.99
Tub & Shower Combination.....	\$119.95
Windows.....	\$15.00
Door Units.....	\$24.95
Shingles.....	\$13.95 per sq.

BARTON WHOLESALE BUILDING MATERIALS

4 Miles East of Cherokee on Hwy. 72
205-370-7739

1, 2 & 3 BEDROOM APARTMENTS

KITCHEN APPLIANCES FURNISHED

RENTAL ASSISTANCE AVAILABLE



IUKA APARTMENTS

1000 N. PEARL ST., IUKA, MS

423-2057

MONDAY - FRIDAY 9-12 A.M.

2 BEDROOM APARTMENTS

KITCHEN APPLIANCES FURNISHED

RENTAL ASSISTANCE AVAILABLE

HILL TOP APARTMENTS

HARMONY ROAD - BURNSVILLE, MS

MONDAY - FRIDAY 4:00 - 6:00 P.M.



427-9868

WILL BUY
1st AMERICAN
NATIONAL BANK STOCK
UP TO 1000 SHARES AT \$25. PER SHARE

Write: Box 36
Iuka, MS 38852

CLARK
CONSTRUCTION & BACKHOE
IUKA, MS

Check With Me Before You Build or Dig!

24 HOUR SERVICE!

*BACKHOE WORK
*SEPTIC TANK
*GRAVEL HAULING
*STUMPS REMOVED

*BUILDING
*REMODELING
*PLUMBING
*ELECTRICAL

FOR FREE ESTIMATE
CALL 423-9618

OR 423-9234

OUT OF TOWN CALL COLLECT!



Items and prices in this ad effective Jan. 22nd. thru 28th. in:

Quantity rights reserved. None sold to dealers. Copyright 1986. The Kroger Co.

FREE SPREE!

CORNING WARE

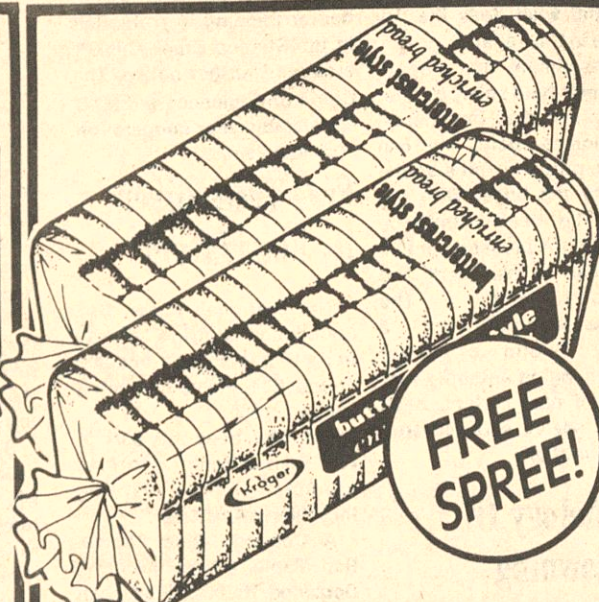
Special Offer!
See your local Kroger store for complete details!



FREE SPREE!

FREE!
COUNTRY CLUB ICE CREAM

Buy one 1/2 gal. at the reg. price of \$1.89 and get one 1/2 gal. Country Club Ice Cream **FREE!**



FREE SPREE!

FREE!
BUTTERCRUST WHITE BREAD

Buy one 20 oz. loaf at the reg. price of 75¢ and get one 20 oz. loaf Kroger Buttercrust White Bread **FREE!**



FREE SPREE!

FREE!
TEXAS STYLE KROGER BISCUITS

Buy one 5 ct. can at the reg. price of 35¢ and get one 5 ct. can of Texas Style Kroger Biscuits **FREE!**



FREE SPREE!

SPECIAL 2-BAR PROMOTIONAL PKG.

FREE!
MONCHEL SOAP

Buy one 4.75 oz. bar at the reg. price of 99¢ and get one 4.75 oz. bar of Monchel Soap **FREE!**

FREE

HEINZ DILL PICKLES

Buy one 32 oz. jar at the reg. price of \$1.69 and get one 32 oz. jar of Heinz Dill Pickles **FREE!**

FREE

TEXIZE PINE MAGIC

Buy one 22 oz. btl. at the reg. price of \$1.79 and get one 22 oz. btl. of Texize Pine Magic **FREE!**

FREE

MR. COFFEE COFFEE FILTERS

Buy one 100 ct. pkg. at the reg. price at \$1.09 and get one 100 ct. pkg. Mr. Coffee Coffee Filters **FREE!**

FREE

MR. TURKEY FRANKS

Buy one pound pkg. at the reg. price of \$1.19 and get one pound pkg. of Mr. Turkey Franks **FREE!**

FREE

NACHO CHIPS

Buy one pound or more of Lite or Hot Dip and get one 12 oz. pkg. of Nacho Chips **FREE!**

FREE

FOX DELUXE PIZZA

Buy one 10 oz. pkg. (All Varieties) at the reg. price at \$1.19 and get one 10 oz. pkg. all varieties Fox Deluxe Pizza **FREE!**

FREE

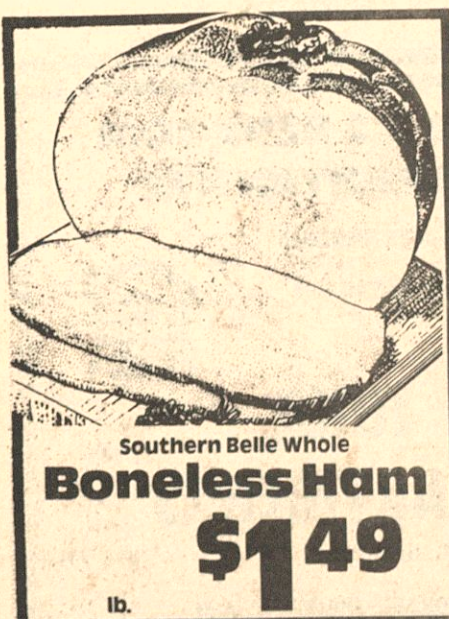
POPS-RITE POPCORN

Buy one pound at the reg. price of 69¢ and get one pound of Pops-Rite Popcorn **FREE!**

FREE

KROGER FAMILY PRIDE ASPIRINS

Buy one 300 ct. btl. at the reg. price of \$1.99 and get one 300 ct. btl. of Kroger Family Pride Aspirins **FREE!**



Southern Belle Whole
Boneless Ham
\$1.49
lb.



U.S.D.A. Grade "A" Holly Farms
Family Pak Mixed Parts
Frying Chicken
39¢
lb.



U.S. No. 1 All Purpose, Round
White Potatoes
99¢
10-lb. bag



Coke & Coke Products
2 Liter Non Ret. Bottles
99¢ Ea.



U.S.D.A. Grade "A" Kroger
Jumbo Eggs
79¢
doz.

Kroger 3 lb. or 5 lb. Chub Pack

Ground Beef

Extra Lean
lb.

98¢

Frito Lay's All Flavors

Doritos

11 oz. pkg.

\$1.79

All Varieties Take 'N Bake
Pizzas

2 \$5.00
For

Cost Cutter
Sliced Bacon

lb.

99¢

Big K 2 Liter Bottles

Soft Drinks

58¢

Boiled or Virginia

Baked Ham

lb.

\$3.99

Deli - Cheese Shop

ADVERTISED ITEM POLICY:

Each of these items is required to be readily available for sale in each Kroger store, except as specifically noted in this ad. If we do run out of an advertised item, we will offer you your choice of a comparable item, when available, reflecting the same savings or a Raincheck which will entitle you to purchase the advertised item at the advertised price within 30 days. Only one vendor coupon will be accepted per item.