

# Tishomingo County News

## The Vidette & Beln

OFFICIAL LEGAL NEWSPAPERS OF TISHOMINGO  
The One Newspaper In The World Most Interested In

AMERICAN BINDERY  
RT. 3, BOX 210  
ALBERTVILLE

AL 35950

ONE HUNDRED AND SIX YEARS

IUKA, TISHOMINGO COUNTY, MISSISSIPPI

THURSDAY, AUGUST 24, 1989 NO. 11

## Run-off Election Saturday For T.C.E.P.A. Board

A run off election will be held Saturday, August 26 for the position of fourth district representative to the Tishomingo County Electric Power Association Board of Directors. Names appearing on Saturday's ballot will be Tim Burton and Gary Taylor.

In last week's election Herman Nunley, Jr. was chosen to serve as Third District representative, in the fifth district Harold Sparks and Area-At-Large Robert "Sport" Harris was elected.

The polling places will be open from 8:00 a.m. until 6:00 p.m. Members may vote at any poll regardless of their place of residence. The polls are as follows: Belmont City Hall, Burnsville City Hall, Tishomingo County Courthouse, Midway School Building and the Tishomingo Annex Building.

Break down of the August 19 voting results are:

	Belmont	Burnsville	Iuka	Midway	Tishomingo
3rd District:					
Rick Grisham	33	3	30	2	11
Herman Nunley, Jr.	252	23	208	37	50
Myra Whitlock	55	5	35	10	34
4th District					
Tim Burton	232	4	34	5	5
W.L. Hamilton	23	5	64	15	54
Gary Taylor	110	16	147	26	42
5th District					
Joe Bostick	230	8	74	19	34
Harold Sparks	162	17	171	27	49
Area-At-Large					
Robert "Sport" Harris	347	9	76	20	37
Dale Tapp	34	17	181	26	42

## Project "Child Find" For Tishomingo Cty. Schools

The Tishomingo County School District is participating in an ongoing statewide effort to identify, locate, and evaluate children through the age of twenty-one who are physically, mentally, communicatively and/or emotionally handicapped. Early identification of children in need of special educational experiences is most important to each child. Furthermore, this information gathered from contacts with parents and other agencies will be used to help determine present and future program needs as progress is made toward the goal of providing a free appropriate public education to all handicapped children.

Information which could identify an individual child will be maintained by this agency and will be provided to other agencies only in accord with the Family Rights and Privacy Act and EHA-B. As a parent, you are guaranteed the right to inspect any such information about your child and to challenge its accuracy. Access to this information is forbidden to any unauthorized person without informed consent. If you have questions regarding the collection, maintenance and use of data about your child, please contact Betty Barnes, Child Find Director for the Tishomingo County School

District by calling 423-6061 or 438-7471, or writing to her at the following address: Superintendent's Office, Tishomingo County Courthouse, Iuka, MS 38852.

The Child Find Director implements child identification, location and evaluation of children, birth through twenty-one who are handicapped, regardless of the severity of their handicaps, and who are in need of special education and/or related services. The Child Find Director works with the local Headstart, Welfare, Health and Mental Health agencies, as well as local children out of school and in school who may be in need of special education services.

Once a referral is made, it is the responsibility of the Child Find Director to insure that the Referral-to-Placement procedures are followed. The director works with Local Survey Committees at each school to implement this procedure. The following activities briefly describe the procedures.

Prior to evaluation, a copy of the Parent Information Pamphlet and Procedural Safeguards are given to parents. District personnel explain the Parent Information Pamphlet to parents and insure that they understand the Procedural Safeguards.

After parental consent for testing is obtained, a non-discriminatory evaluation is conducted. Students are evaluated in all areas related to the suspected disability by qualified personnel.

Parents are notified when a student is ruled eligible for a special education program. An Individual Educational Plan is developed for the student before the student is placed. Parents must sign permission for placement. Parents, teacher and students participate in this process. All students receiving special education services are reassessed at least once a year, and reevaluated at least once every three years.

We now have fourteen special education classes in our district which serve students who have physical, mental, communicative and/or emotional handicaps.

It is the goal of the Tishomingo County School District to provide free appropriate education to all handicapped children through age twenty-one by the year 2000.

### Meeting

There will be an organization meeting for parents of Chapter I Remedial reading and math children on Thursday, August 24, 1989 at 7 p.m. in the Burnsville Elementary Library.

## Booster Club Meeting

Anyone interested in the sports program at Burnsville who would like to help improve it is encouraged to be at the Burnsville Attendance Center at 7 p.m. Friday, August 25.

The Booster Club is for both junior-high and high school programs. We need each parent, uncle, aunt, and/or friend to help. It takes all of us to make it work well.

Officers will be elected and plans finalized for our annual "sports cookout." See you Friday!

## Meet The Bulldogs

Everyone is invited to come and meet the 1989-90 Tishomingo Bulldogs. Thursday night, August 24, 6:30 p.m., at the Tishomingo Cafeteria.

All parents and supporters of the Bulldogs are urged to attend.

There will be free refreshments.

## Benefit Singing

There will be a benefit singing this Saturday night, August 26, at Providence Baptist Church beginning at 7:00 p.m. Featured singers will be the Harmonizers and the Laymen. All proceeds will go to the 7 year old Teresa Lester who has been sick since early spring and has taken treatments most of the summer. Please come out and support this very worthy cause.

## Dove Hunt

North Crossroads Volunteer Fire Department will have a Dove Hunt Saturday, September 2 and Monday, September 4. Prices per person is \$5.00 per day. Children under 12 must be with his or her parent or guardian. Field is just North of the fire department.

Come by and sign up at the Fire Department. Early sign up will be at the Fire Department on Friday, September 1 from 6 p.m. til 10 p.m.

Thank You

## Be A Friend

The Friends of the Iuka Public Library will kick off its first membership drive on Tuesday, September 12 at 12 noon at the Library. Everyone is invited to this free lunch which promises no speeches, only good food.

As a Friend, you are part of a growing group of citizens organized to support the Library in our community.

The Friends of the Iuka Library was organized in October of 1988 and has quickly grown to a membership of 103.

The Library wants to "Make New Friends, But Keep the Old", so attend the annual membership luncheon on the 12th of September, and Bring A Friend.

## Herman L. Nunley Thanks Supporters For TCEPA Position

I would like to take this opportunity to thank you, the people of Tishomingo County for the encouraging support and vote of confidence that you gave me in the August 19th, election for board member of the Tishomingo County Electric Power Association.

Thank You,

Herman L. Nunley

## Dove Shoot

The Tishomingo Athletic Booster Club will sponsor a dove shoot Saturday, September 2 and Monday, September 4, 5 miles East of Tishomingo, on highway 30.

For more information call 438-6869, 438-7453 or 438-6465.

## "Mississippi" To Dock At Bay Springs Today

### Congressman Jamie Whitten Onboard, Public Invited

Mississippi, the working river boat used by the Corps of Engineers personnel, for inspection of the Tenn-Tom, has

made several "Whistle Stops" during its 1989 trip up the Tennessee-Tombigbee Waterway, which began

August 20. Its last stop being at Bay Springs today, Thursday, August 24 at 6:00 p.m. The public is invited aboard

during the stop. Corp officials will be available to answer questions and discuss the waterway. Also Congressman Jamie L. Whitten will be aboard the vessel.

Two public meetings and six "whistle stops" were held during the trip.

The Tennessee-Tombigbee Waterway Development Authority conducted the public meetings. Representatives from the State of Alabama and Mississippi discussed regional strategy for the development of the Tenn-Tom Corridor.

Congressman Tom Bevill, 4th district representative from the State of Alabama participated in the public meeting August 22 at the Bevill Visitors Center Dock and Congressman Jamie L. Whitten, 1st district representative for the State of Mississippi participated in the meeting at Lock C this morning at 10:30 a.m.

The public is urged to attend and participate in the whistle stop today Thursday, August 24, at 6:00 p.m.



MISSISSIPPI TO MAKE "Whistle Stop" At Bay Springs-The Mississippi will dock at Bay Springs today, Thursday, August 24, at 6:00 p.m. The vessel is a working

river boat which has been in service on the Mississippi since 1961. It is designed to push a tow of 15,000 gross tons (up to 24 barges) at a speed of eight knots. The

public is invited to go aboard during the stop. Corps officials will be available to answer questions and discuss the waterway.

## 911 Emergency Number To Be Voted On In General Election

The Tishomingo County Board of Supervisors recently adopted a resolution allowing voters the opportunity to decide on the implementation of a 911 emergency telephone system for the county. This issue will be included on the next general election ballot.

Leadership Tishomingo Team number four selected the 911 system as their project because this service would be beneficial to every resident in the county. Tishomingo County is one of few counties in North Mississippi where the implementation of a 911 System has not begun.

911 is a centralized computer answering service for emergency telephone calls. When a caller dials 911, he will reach a trained dispatcher who will view a computer screen with the dialer's address displayed. All the dispatcher needs to know is the type of assistance needed. The operator will then forward the information to the appropriate emergency response department which might be medical, fire, or law enforcement. The system is so simple that young children can be taught to dial 911 when help is needed.

The recent road numbering system conducted by the Board of Supervisors will greatly enhance the success of quicker response by emergency service personnel.

Jerry Bonds, the county fire coordinator, says, "A better emergency communications system will improve a fire department's

response time thus achieving a more favorable fire rating for the area. A better fire rating will result in lower homeowners' insurance costs."

The Mississippi Legislature enacted House Bill 104 which permits a surcharge to be added to the telephone customer's monthly bill. This surcharge is designed to pay for the implementation and operation of the 911 system. The cost of 911 to Tishomingo County residents will be approximately \$.75 per month.

The Board of Supervisors in further action established a 911 Commission composed of leadership Tishomingo members: Steve Cain, Cornelia Emmons, David Moody, Willie Robinson, and Betty Young; Supervisor, Ricky

Cummings; and Fire Coordinator, Jerry Bonds.

911 eliminates two of the major problems which hinder emergency service. The first problem is placing the call. In an emergency situation, it is sometimes difficult to locate a phone book, then find the appropriate number, and finally to dial the correct seven digit number. After the call is placed, the caller must be composed enough to give the correct address and/or accurate directions. This may be especially difficult if the caller lives in a rural community, is calling from a pay phone where the emergency might exist, is too young to give directions, or is simply disoriented as a result of the emergency. The minutes saved by 911 may make the difference between life or death.

911 eliminates two of the major problems which hinder emergency service. The first problem is placing the call. In an emergency situation, it is sometimes difficult to locate a phone book, then find the appropriate number, and finally to dial the correct seven digit number. After the call is placed, the caller must be composed enough to give the correct address and/or accurate directions. This may be especially difficult if the caller lives in a rural community, is calling from a pay phone where the emergency might exist, is too young to give directions, or is simply disoriented as a result of the emergency. The minutes saved by 911 may make the difference between life or death.



## Wal-Mart Celebrates 10 Years In Iuka

Wal-Mart celebrated its 10th anniversary in Iuka this week. Employees (shown above) celebrated with a "Happy 10th Anniversary Cake" which they shared with customers. Wal-Mart opened its door in Iuka on August 21, 1979.

Wal-Mart would like to take this time to recognize and congratulate our 10 year associates. We would like to extend our appreciation for their continued loyalty and service. These 10 year associates include: Robbie Archer, Mary Ray, Anita Mit-

chell, Becky Thacker, Mary Dick, Noble Hogeland, and Becky Waddell. Wal-Mart would also like to extend our appreciation to our customers for their support for the last 10 years and hope to continue to serve you, our

guest, for the next ten years in the best possible manner. Through our remodeling we hope to bring you a store we all can be proud of. These special thanks are from John Pickle, store manager and all Wal-Mart #274 associates.

## Town Meeting Tonight In Iuka

The Chamber of Commerce will sponsor a town meeting August 24, 1989 at the new Tishomingo County Courthouse. The discussion in the form of a forum will be about the future of the much needed Iuka Hospital, representatives of the North Mississippi Medical Center, county officials, and medical professionals consisting of

doctors and nurses and related medical people will make up the panels.

If you are interested and wish to direct any questions to the panelist you will have the opportunity to do so. The public is cordially invited to this town meeting. Everyone's constructive input will be welcomed. Sponsored by the Iuka Chamber of Commerce.

## Headstart Centers To Open Sept. 11th

Mississippi Action for Progress, Inc. will open its Head Start Centers for children on September 11, 1989, at 8:00 a.m. All prospective headstart parents are asked to verify their child's eligibility for enrollment by bringing to the center a certified copy of the child's birth certificate, the child's Immunization Record, Medicaid number (if on Welfare) and proof of family income. If you have already given this information to the center, you should now visit the center to

review and sign your child's enrollment form and other program documents. The centers have set aside September 6th and 8th between 7:30 a.m. and 2:30 p.m. and September 7th between 7:30 a.m. and 6:00 p.m. for verification of enrollment. Please act now so that your child will receive adequate consideration for early enrollment. For additional information, contact your local Headstart Center at Iuka Head Start (423-5410)/Burnsville Head Start (427-8882).

## Gary Taylor Seeks T.C.E.P.A. Support

I would like to take this opportunity to thank all of the patrons of the Tishomingo County Electric Power Association who took time to vote in Saturday's election. I appreciate your support and I sincerely hope that you will continue your support this coming Saturday by voting in the fourth district run-off

election.

As a native of Tishomingo County I have worked hard to improve living and working conditions in this county. I hope you will give me the opportunity to continue to do so by serving your interests through the TCEPA Board.

Thank you for your support.

Gary L. Taylor





## THIEF

During the last 50 years in Tishomingo County, most of our sloping cropland had been terraced to prevent erosion. But in the last 10 years with the invention of larger equipment, most all of the terraces have been plowed down. Now it is time

for the tables to be turned once again. Why? Conservation Compliance. The big question in the mind of many farmers is "What do I need to do to remain eligible for USDA program benefits under the provision of the 1985 Farm Bill?" In many fields, a

terrace system is the KEY that unlocks the door to conservation compliance. Terraces help reduce gully erosion and conserve moisture. Terrace Systems in combination with other conservation practices are very effective in reducing and controlling erosion. To remain eligible for USDA program benefits, you MUST have a CONSERVATION PLAN developed on all of those cropland fields that are determined to be Highly Erodible. If you have sloping cropland that is washing away and would like more information on conservation compliance and how terraces can help keep in compliance, contact the Soil Conservation Service or your local ASCS Office. We are here to be of service of you. All USDA programs and services are available without regard to race, color, national origin, religion, sex, age, marital status, or handicap.

rolling erosion. To remain eligible for USDA program benefits, you MUST have a CONSERVATION PLAN developed on all of those cropland fields that are determined to be Highly Erodible. If you have sloping cropland that is washing away and would like more information on conservation compliance and how terraces can help keep in compliance, contact the Soil Conservation Service or your local ASCS Office. We are here to be of service of you. All USDA programs and services are available without regard to race, color, national origin, religion, sex, age, marital status, or handicap.

rolling erosion. To remain eligible for USDA program benefits, you MUST have a CONSERVATION PLAN developed on all of those cropland fields that are determined to be Highly Erodible. If you have sloping cropland that is washing away and would like more information on conservation compliance and how terraces can help keep in compliance, contact the Soil Conservation Service or your local ASCS Office. We are here to be of service of you. All USDA programs and services are available without regard to race, color, national origin, religion, sex, age, marital status, or handicap.

## Chatting With Your Home Economist

By: Nellie R. Horton, Extension Home Economist

Would you like to join an Extension Homemakers Club? It may be that you have six or seven friends who would like to join with you - that would be enough to organize a club. An extension Homemakers Club is a good place to learn skills for living and updated Home Economics information. If you have questions or are in-

terested in becoming an Extension Homemakers Club member, please call the Extension Home Economist at 423-3616.

**GUARD YOUR CARDS**  
More than 70% of credit card thefts are from women. This is because purses are in plain view or left unattended in hotel rooms, cars, offices, shopping and grocery carts, restaurants or on store counters. Most thefts occur on weekends and in crowded situations, such as shopping areas and sports events.

Although credit cards are convenient, if they are lost or stolen, they may end up providing conveniences for people you never intended.

Protect your credit cards as if they were money. To guard against theft or loss, exercise these precautions:

1. Check your cards periodically to make sure you have them all.
2. Do not leave credit cards in your automobile.
3. In a safe place, keep a list of all your credit cards, their numbers, and the address and phone number of whom to notify in case of loss.
4. When making credit purchases, be sure your credit card is returned to you after each purchase.
5. If you have a card that operates a bank teller machine, memorize your personal security number. Do not carry it written down in your pocket or purse.
6. If your cards are lost or stolen, immediately telephone all the appropriate card issuers so they can take steps to stop charges on the cards. Follow up the phone calls with letters.

**IT'S TIME TO GET MOVING**  
The average American adult gains 1 pound per year. That doesn't sound like much until you figure that between the age of 25 and 55 that adds up to 30 pounds. The easiest way to deal with this weight gain is to prevent it from the start. But if it has already begun to creep up you can get moving now.

Think "activity". It somehow sounds more enjoyable and less like work than "exercise". If you engage in some kind activity, you burn up calories faster than if you are inactive. Before breakfast when you walk to the end of the driveway to get the morning paper, take a detour and walk around the block before you bend down to pick up the paper. After breakfast, look for ways to add extra activity into the day. Park your car a block away from the post office instead of at the front door. Or better yet, if the distance from your home to the post office is not unreasonable, walk from home. Climb stairs instead of using the elevator. Park your car in the far corner of the parking lot.

Become more efficient in your work habits. If the groceries can easily be brought into the house in two trips, make three. Instead of taking a basket of clean, folded clothes to the appropriate room to be put up, carry small piles and make several trips.

Take a stroll after dinner. A 30 minute walk of about a mile each day will use up 75 to 120 calories. That's enough to prevent that yearly weight gain. Every little bit of activity adds up to make a big difference over the year. It is time to get moving - now!

## The Big One Got Away! Not This Time

E.C. Marlar, of Tishomingo is proud to show his catch for the day. Mr. Marlar, along with the help of his brother B.C., caught this approximately 12 lb., blue channel cat from the waters at

Yellow Creek. Mr. Marlar stated that he and his brother struggled with the fish for more than an hour before they could get it close enough to use the dip net. Fishing with marshmallows and small rods and reels the Marlars were thrilled with their catch.

established by the state Agricultural Stabilization and Conservation (ASC) committee.

-Haying, during the same period, of acreage designated as CU and ACR will not be permitted unless the state ASC committee determines that haying will not have and adverse economic effect in that state.

-In the event of a natural disaster, haying and grazing of land designated as CU and ACR may also be permitted during the prohibited five-month period in those counties which are determined to be adversely affected by disaster conditions and approved by the Commodity Credit Corporation.

-The increase of any crop acreage base (CAB) with a corresponding downward adjustment in other CAB's on the farm generally will not be permitted. However, adjustments in CAB's will be considered when producers need to change cropping practices to carry out conservation compliance requirements on highly erodible land.

-Advance recourse commodity loans will not be made available.

-Advance deficiency payments will be made for wheat, feed grains, upland cotton and rice at 40 percent of the projected deficiency payment rates.

-Advance deficiency payment rates and what percentage, if any, of the advance to be paid in commodity certificates, will be announced later.

-USDA will establish program payment yields based on the average established for a farm during 1981-1985 crop years, excluding the highest and lowest yields. However, if this calculation results in a yield below 90 percent of the farm program payment yield for the 1985 crop year, producers will be compensated to ensure that they receive the same return as if the yield had not been reduced by more than 10 percent.

-The program enrollment period run from January 16 through April 13, 1990.

-Grazing of land designated as conservation use (CU) acreage for payment under the 50/92 and 0/92 program provisions of the upland cotton, rice, wheat and feed grain programs and acreage conservation reserve (ACR) will be permitted, except during a five-consecutive month period between April 1 and October 31, 1990, as

established by the state Agricultural Stabilization and Conservation (ASC) committee.

-Haying, during the same period, of acreage designated as CU and ACR will not be permitted unless the state ASC committee determines that haying will not have and adverse economic effect in that state.

-In the event of a natural disaster, haying and grazing of land designated as CU and ACR may also be permitted during the prohibited five-month period in those counties which are determined to be adversely affected by disaster conditions and approved by the Commodity Credit Corporation.

-The increase of any crop acreage base (CAB) with a corresponding downward adjustment in other CAB's on the farm generally will not be permitted. However, adjustments in CAB's will be considered when producers need to change cropping practices to carry out conservation compliance requirements on highly erodible land.

-Advance recourse commodity loans will not be made available.

-Advance deficiency payments will be made for wheat, feed grains, upland cotton and rice at 40 percent of the projected deficiency payment rates.

-Advance deficiency payment rates and what percentage, if any, of the advance to be paid in commodity certificates, will be announced later.

-USDA will establish program payment yields based on the average established for a farm during 1981-1985 crop years, excluding the highest and lowest yields. However, if this calculation results in a yield below 90 percent of the farm program payment yield for the 1985 crop year, producers will be compensated to ensure that they receive the same return as if the yield had not been reduced by more than 10 percent.

-The program enrollment period run from January 16 through April 13, 1990.

-Grazing of land designated as conservation use (CU) acreage for payment under the 50/92 and 0/92 program provisions of the upland cotton, rice, wheat and feed grain programs and acreage conservation reserve (ACR) will be permitted, except during a five-consecutive month period between April 1 and October 31, 1990, as

established by the state Agricultural Stabilization and Conservation (ASC) committee.

-Haying, during the same period, of acreage designated as CU and ACR will not be permitted unless the state ASC committee determines that haying will not have and adverse economic effect in that state.

-In the event of a natural disaster, haying and grazing of land designated as CU and ACR may also be permitted during the prohibited five-month period in those counties which are determined to be adversely affected by disaster conditions and approved by the Commodity Credit Corporation.

-The increase of any crop acreage base (CAB) with a corresponding downward adjustment in other CAB's on the farm generally will not be permitted. However, adjustments in CAB's will be considered when producers need to change cropping practices to carry out conservation compliance requirements on highly erodible land.

-Advance recourse commodity loans will not be made available.

-Advance deficiency payments will be made for wheat, feed grains, upland cotton and rice at 40 percent of the projected deficiency payment rates.

-Advance deficiency payment rates and what percentage, if any, of the advance to be paid in commodity certificates, will be announced later.

-USDA will establish program payment yields based on the average established for a farm during 1981-1985 crop years, excluding the highest and lowest yields. However, if this calculation results in a yield below 90 percent of the farm program payment yield for the 1985 crop year, producers will be compensated to ensure that they receive the same return as if the yield had not been reduced by more than 10 percent.

-The program enrollment period run from January 16 through April 13, 1990.

-Grazing of land designated as conservation use (CU) acreage for payment under the 50/92 and 0/92 program provisions of the upland cotton, rice, wheat and feed grain programs and acreage conservation reserve (ACR) will be permitted, except during a five-consecutive month period between April 1 and October 31, 1990, as

established by the state Agricultural Stabilization and Conservation (ASC) committee.

-Haying, during the same period, of acreage designated as CU and ACR will not be permitted unless the state ASC committee determines that haying will not have and adverse economic effect in that state.

-In the event of a natural disaster, haying and grazing of land designated as CU and ACR may also be permitted during the prohibited five-month period in those counties which are determined to be adversely affected by disaster conditions and approved by the Commodity Credit Corporation.

-The increase of any crop acreage base (CAB) with a corresponding downward adjustment in other CAB's on the farm generally will not be permitted. However, adjustments in CAB's will be considered when producers need to change cropping practices to carry out conservation compliance requirements on highly erodible land.

-Advance recourse commodity loans will not be made available.

-Advance deficiency payments will be made for wheat, feed grains, upland cotton and rice at 40 percent of the projected deficiency payment rates.

-Advance deficiency payment rates and what percentage, if any, of the advance to be paid in commodity certificates, will be announced later.

-USDA will establish program payment yields based on the average established for a farm during 1981-1985 crop years, excluding the highest and lowest yields. However, if this calculation results in a yield below 90 percent of the farm program payment yield for the 1985 crop year, producers will be compensated to ensure that they receive the same return as if the yield had not been reduced by more than 10 percent.

-The program enrollment period run from January 16 through April 13, 1990.

-Grazing of land designated as conservation use (CU) acreage for payment under the 50/92 and 0/92 program provisions of the upland cotton, rice, wheat and feed grain programs and acreage conservation reserve (ACR) will be permitted, except during a five-consecutive month period between April 1 and October 31, 1990, as

established by the state Agricultural Stabilization and Conservation (ASC) committee.

-Haying, during the same period, of acreage designated as CU and ACR will not be permitted unless the state ASC committee determines that haying will not have and adverse economic effect in that state.

-In the event of a natural disaster, haying and grazing of land designated as CU and ACR may also be permitted during the prohibited five-month period in those counties which are determined to be adversely affected by disaster conditions and approved by the Commodity Credit Corporation.

-The increase of any crop acreage base (CAB) with a corresponding downward adjustment in other CAB's on the farm generally will not be permitted. However, adjustments in CAB's will be considered when producers need to change cropping practices to carry out conservation compliance requirements on highly erodible land.

-Advance recourse commodity loans will not be made available.

-Advance deficiency payments will be made for wheat, feed grains, upland cotton and rice at 40 percent of the projected deficiency payment rates.

-Advance deficiency payment rates and what percentage, if any, of the advance to be paid in commodity certificates, will be announced later.

-USDA will establish program payment yields based on the average established for a farm during 1981-1985 crop years, excluding the highest and lowest yields. However, if this calculation results in a yield below 90 percent of the farm program payment yield for the 1985 crop year, producers will be compensated to ensure that they receive the same return as if the yield had not been reduced by more than 10 percent.

-The program enrollment period run from January 16 through April 13, 1990.

-Grazing of land designated as conservation use (CU) acreage for payment under the 50/92 and 0/92 program provisions of the upland cotton, rice, wheat and feed grain programs and acreage conservation reserve (ACR) will be permitted, except during a five-consecutive month period between April 1 and October 31, 1990, as

established by the state Agricultural Stabilization and Conservation (ASC) committee.

-Haying, during the same period, of acreage designated as CU and ACR will not be permitted unless the state ASC committee determines that haying will not have and adverse economic effect in that state.

-In the event of a natural disaster, haying and grazing of land designated as CU and ACR may also be permitted during the prohibited five-month period in those counties which are determined to be adversely affected by disaster conditions and approved by the Commodity Credit Corporation.

-The increase of any crop acreage base (CAB) with a corresponding downward adjustment in other CAB's on the farm generally will not be permitted. However, adjustments in CAB's will be considered when producers need to change cropping practices to carry out conservation compliance requirements on highly erodible land.

-Advance recourse commodity loans will not be made available.

-Advance deficiency payments will be made for wheat, feed grains, upland cotton and rice at 40 percent of the projected deficiency payment rates.

-Advance deficiency payment rates and what percentage, if any, of the advance to be paid in commodity certificates, will be announced later.

-USDA will establish program payment yields based on the average established for a farm during 1981-1985 crop years, excluding the highest and lowest yields. However, if this calculation results in a yield below 90 percent of the farm program payment yield for the 1985 crop year, producers will be compensated to ensure that they receive the same return as if the yield had not been reduced by more than 10 percent.

-The program enrollment period run from January 16 through April 13, 1990.

-Grazing of land designated as conservation use (CU) acreage for payment under the 50/92 and 0/92 program provisions of the upland cotton, rice, wheat and feed grain programs and acreage conservation reserve (ACR) will be permitted, except during a five-consecutive month period between April 1 and October 31, 1990, as

established by the state Agricultural Stabilization and Conservation (ASC) committee.

-Haying, during the same period, of acreage designated as CU and ACR will not be permitted unless the state ASC committee determines that haying will not have and adverse economic effect in that state.

-In the event of a natural disaster, haying and grazing of land designated as CU and ACR may also be permitted during the prohibited five-month period in those counties which are determined to be adversely affected by disaster conditions and approved by the Commodity Credit Corporation.

-The increase of any crop acreage base (CAB) with a corresponding downward adjustment in other CAB's on the farm generally will not be permitted. However, adjustments in CAB's will be considered when producers need to change cropping practices to carry out conservation compliance requirements on highly erodible land.

-Advance recourse commodity loans will not be made available.

-Advance deficiency payments will be made for wheat, feed grains, upland cotton and rice at 40 percent of the projected deficiency payment rates.

-Advance deficiency payment rates and what percentage, if any, of the advance to be paid in commodity certificates, will be announced later.

-USDA will establish program payment yields based on the average established for a farm during 1981-1985 crop years, excluding the highest and lowest yields. However, if this calculation results in a yield below 90 percent of the farm program payment yield for the 1985 crop year, producers will be compensated to ensure that they receive the same return as if the yield had not been reduced by more than 10 percent.

-The program enrollment period run from January 16 through April 13, 1990.

-Grazing of land designated as conservation use (CU) acreage for payment under the 50/92 and 0/92 program provisions of the upland cotton, rice, wheat and feed grain programs and acreage conservation reserve (ACR) will be permitted, except during a five-consecutive month period between April 1 and October 31, 1990, as

established by the state Agricultural Stabilization and Conservation (ASC) committee.

-Haying, during the same period, of acreage designated as CU and ACR will not be permitted unless the state ASC committee determines that haying will not have and adverse economic effect in that state.

-In the event of a natural disaster, haying and grazing of land designated as CU and ACR may also be permitted during the prohibited five-month period in those counties which are determined to be adversely affected by disaster conditions and approved by the Commodity Credit Corporation.

-The increase of any crop acreage base (CAB) with a corresponding downward adjustment in other CAB's on the farm generally will not be permitted. However, adjustments in CAB's will be considered when producers need to change cropping practices to carry out conservation compliance requirements on highly erodible land.

-Advance recourse commodity loans will not be made available.

-Advance deficiency payments will be made for wheat, feed grains, upland cotton and rice at 40 percent of the projected deficiency payment rates.

-Advance deficiency payment rates and what percentage, if any, of the advance to be paid in commodity certificates, will be announced later.

-USDA will establish program payment yields based on the average established for a farm during 1981-1985 crop years, excluding the highest and lowest yields. However, if this calculation results in a yield below 90 percent of the farm program payment yield for the 1985 crop year, producers will be compensated to ensure that they receive the same return as if the yield had not been reduced by more than 10 percent.

-The program enrollment period run from January 16 through April 13, 1990.

-Grazing of land designated as conservation use (CU) acreage for payment under the 50/92 and 0/92 program provisions of the upland cotton, rice, wheat and feed grain programs and acreage conservation reserve (ACR) will be permitted, except during a five-consecutive month period between April 1 and October 31, 1990, as

established by the state Agricultural Stabilization and Conservation (ASC) committee.

-Haying, during the same period, of acreage designated as CU and ACR will not be permitted unless the state ASC committee determines that haying will not have and adverse economic effect in that state.

-In the event of a natural disaster, haying and grazing of land designated as CU and ACR may also be permitted during the prohibited five-month period in those counties which are determined to be adversely affected by disaster conditions and approved by the Commodity Credit Corporation.

-The increase of any crop acreage base (CAB) with a corresponding downward adjustment in other CAB's on the farm generally will not be permitted. However, adjustments in CAB's will be considered when producers need to change cropping practices to carry out conservation compliance requirements on highly erodible land.

-Advance recourse commodity loans will not be made available.

-Advance deficiency payments will be made for wheat, feed grains, upland cotton and rice at 40 percent of the projected deficiency payment rates.

-Advance deficiency payment rates and what percentage, if any, of the advance to be paid in commodity certificates, will be announced later.

-USDA will establish program payment yields based on the average established for a farm during 1981-1985 crop years, excluding the highest and lowest yields. However, if this calculation results in a yield below 90 percent of the farm program payment yield for the 1985 crop year, producers will be compensated to ensure that they receive the same return as if the yield had not been reduced by more than 10 percent.

-The program enrollment period run from January 16 through April 13, 1990.

-Grazing of land designated as conservation use (CU) acreage for payment under the 50/92 and 0/92 program provisions of the upland cotton, rice, wheat and feed grain programs and acreage conservation reserve (ACR) will be permitted, except during a five-consecutive month period between April 1 and October 31, 1990, as

established by the state Agricultural Stabilization and Conservation (ASC) committee.

-Haying, during the same period, of acreage designated as CU and ACR will not be permitted unless the state ASC committee determines that haying will not have and adverse economic effect in that state.

-In the event of a natural disaster, haying and grazing of land designated as CU and ACR may also be permitted during the prohibited five-month period in those counties which are determined to be adversely affected by disaster conditions and approved by the Commodity Credit Corporation.

-The increase of any crop acreage base (CAB) with a corresponding downward adjustment in other CAB's on the farm generally will not be permitted. However, adjustments in CAB's will be considered when producers need to change cropping practices to carry out conservation compliance requirements on highly erodible land.

-Advance recourse commodity loans will not be made available.

-Advance deficiency payments will be made for wheat, feed grains, upland cotton and rice at 40 percent of the projected deficiency payment rates.

-Advance deficiency payment rates and what percentage, if any, of the advance to be paid in commodity certificates, will be announced later.

-USDA will establish program payment yields based on the average established for a farm during 1981-1985 crop years, excluding the highest and lowest yields. However, if this calculation results in a yield below 90 percent of the farm program payment yield for the 1985 crop year, producers will be compensated to ensure that they receive the same return as if the yield had not been reduced by more than 10 percent.

-The program enrollment period run from January 16 through April 13, 1990.

-Grazing of land designated as conservation use (CU) acreage for payment under the 50/92 and 0/92 program provisions of the upland cotton, rice, wheat and feed grain programs and acreage conservation reserve (ACR) will be permitted, except during a five-consecutive month period between April 1 and October 31, 1990, as

established by the state Agricultural Stabilization and Conservation (ASC) committee.

-Haying, during the same period, of acreage designated as CU and ACR will not be permitted unless the state ASC committee determines that haying will not have and adverse economic effect in that state.

-In the event of a natural disaster, haying and grazing of land designated as CU and ACR may also be permitted during the prohibited five-month period in those counties which are determined to be adversely affected by disaster conditions and approved by the Commodity Credit Corporation.

-The increase of any crop acreage base (CAB) with a corresponding downward adjustment in other CAB's on the farm generally will not be permitted. However, adjustments in CAB's will be considered when producers need to change cropping practices to carry out conservation compliance requirements on highly erodible land.

-Advance recourse commodity loans will not be made available.

-Advance deficiency payments will be made for wheat, feed grains, upland cotton and rice at 40 percent of the projected deficiency payment rates.

-Advance deficiency payment rates and what percentage, if any, of the advance to be paid in commodity certificates, will be announced later.

-USDA will establish program payment yields based on the average established for a farm during 1981-1985 crop years, excluding the highest and lowest yields. However, if this calculation results in a yield below 90 percent of the farm program payment yield for the 1985 crop year, producers will be compensated to ensure that they receive the same return as if the yield had not been reduced by more than 10 percent.

-The program enrollment period run from January 16 through April 13, 1990.

-Grazing of land designated as conservation use (CU) acreage for payment under the 50/92 and 0/92 program provisions of the upland cotton, rice, wheat and feed grain programs and acreage conservation reserve (ACR) will be permitted, except during a five-consecutive month period between April 1 and October 31, 1990, as

established by the state Agricultural Stabilization and Conservation (ASC) committee.

-Haying, during the same period, of acreage designated as CU and ACR will not be permitted unless the state ASC committee determines that haying will not have and adverse economic effect in that state.

-In the event of a natural disaster, haying and grazing of land designated as CU and ACR may also be permitted during the prohibited five-month period in those counties which are determined to be adversely affected by disaster conditions and approved by the Commodity Credit Corporation.

-The increase of any crop acreage base (CAB) with a corresponding downward adjustment in other CAB's on the farm generally will not be permitted. However, adjustments in CAB's will be considered when producers need to change cropping practices to carry out conservation compliance requirements on highly erodible land.

-Advance recourse commodity loans will not be made available.

-Advance deficiency payments will be made for wheat, feed grains, upland cotton and rice at 40 percent of the projected deficiency payment rates.

-Advance deficiency payment rates and what percentage, if any, of the advance to be paid in commodity certificates, will be announced later.

-USDA will establish program payment yields based on the average established for a farm during 1981-1985 crop years, excluding the highest and lowest yields. However, if this calculation results in a yield below 90 percent of the farm program payment yield for the 1985 crop year, producers will be compensated to ensure that they receive the same return as if the yield had not been reduced by more than 10 percent.

-The program enrollment period run from January 16 through April 13, 1990.

-Grazing of land designated as conservation use (CU) acreage for payment under the 50/92 and 0/92 program provisions of the upland cotton, rice, wheat and feed grain programs and acreage conservation reserve (ACR) will be permitted, except during a five-consecutive month period between April 1 and October 31, 1990, as

established by the state Agricultural Stabilization and Conservation (ASC) committee.

-Haying, during the same period, of acreage designated as CU and ACR will not be permitted unless the state ASC committee determines that haying will not have and adverse economic effect in that state.

-In the event of a natural disaster, haying and grazing of land designated as CU and ACR may also be permitted during the prohibited five-month period in those counties which are determined to be adversely affected by disaster conditions and approved by the Commodity Credit Corporation.

-The increase of any crop acreage base (CAB) with a corresponding downward adjustment in other CAB's on the farm generally will not be permitted. However, adjustments in CAB's will be considered when producers need to change cropping practices to carry out conservation compliance requirements on highly erodible land.

-Advance recourse commodity loans will not be made available





#### IHS Class Of '79

On June 3, 1989, the Iuka High School graduating class of 1979 met together at J.P. Coleman State Park for a 10 year class reunion. A great time was had by all with 52 in attendance 32 of them being classmates. Before 7:00 p.m. classmates began arriving and reminiscing with one another. A bulletin board was displayed with pictures, newsletters, graduation tassels, and class memos of yesteryears. At 8:00 p.m. a delicious meal of steak, stuffed baked potato, broccoli with cheese sauce, tossed salad, peach cobbler, tea, and bread was served. After the meal, President Raymond Jourdan welcomed classmates. The roll was called and each classmate present stood and told of their achievements in the past ten years and goals for the future. Awards were presented to the following for: Traveled Farthest - Todd Bates, from Norfolk Virginia, Most Changed Girl - Cindy Patrick Hardwick, Most Changed Boy - Tim Philben, Least Changed Girl - Lori Brown Bowels, Least Changed Boy - Dan Finch, Most Children - Scotty Casabella and Jack Allen Jones, with 3 each. Oldest Children - Scotty Casabella, Youngest Child - Mike Wade, Married Longest - Sandra South Barnes and Cindy Curtis Frederick of 10 years each, In School Longest - Cindy Hussey Smith of 7 1/2 years. 4 door prizes were drawn for and received by: Cindy Dampier Evans, Lyn Parsons, Lori Curtis Wahlstrom, and James Wahlstrom. Also each classmate and spouse/guest received a gold "hug" with "Class of 1979 Reunion" on it. A vote was taken to hold another reunion in 5 years. A great time was enjoyed by all. A special thanks goes to Ernestine Adkins and staff for a delicious meal and good service. First row: Monroe Wright, Todd Bates, Jack Allen Jones. Second row: John Young, Ann Crawford Beals, Lori Curtis Wahlstrom, Kyllie Goss Gonzales, Lori

Brown Bowels, Cindy Hussey Smith, Sandra South Barnes, Cindy Patrick Hardwick, Kaye Coker Stackpole, Flora Walker Hudson, Karen Jones Mabe. Third row: Becky Burton Moss, Raymond Jourdan Dan Finch, Cindy Dampier Evans, Tim Philben, Tim

Milligan, Cindy Curtis Frederick, Jerry Hudson, Lyn Parsons. Fourth row: Teddy Davis, Scotty Casabella, Frank Brinkley, Mike Wade, Robert Johnson, Blane Hodge, Chuck Kay, David Beard. Also present, but not pictured was Jimmy Frederick.

#### Tishomingo County - A Brief History

Tishomingo Countians are heirs to a cultural tradition colored by Indian lore, pioneer adventure, Civil War strife and the romance of gracious southern living.

Lands around the Tennessee, Cumberland and Mississippi Rivers officially was allotted to the Chickasaw Nation as a homeland by the Hopewell Treaty of 1786. In earlier history, the Chickasaws hosted Hernando DeSoto's expedition as they travelled through Tishomingo County to the Tennessee River in 1540.

The land of the Chickasaw was charitable to its inhabitants. The woods were filled with game, fruits, and timber. The water was abundant and clear. The climate healthful. These things are still enjoyed today by all of us living in Tishomingo County, and they were responsible for the area becoming a frontier for western expansion. The Mississippi Territory was organized in 1798. Alabama was severed from the Mississippi Territory in 1817 and Mississippi was admitted into the Union that same year on December 10, 1817.

The Pontotoc Treaty was signed in 1832 surrendering Chickasaw lands east of the Mississippi River to the United States. Land offices were immediately set up and the area divided into ten counties by the Mississippi Legislature in February, 1836. Counties were: Tishomingo, Itawamba, DeSoto, Tunica, Panola, Tippah, Pontotoc, Fayette, Marshall and

sheriff, treasurer, clerk of probate court, circuit clerk, coroner, ranger, surveyor, assessor and tax collector. The site of the county, located in the geographical center of the county, was first called Cincinnati. Later it became known as Jacinto.

The first few years of life for Tishomingo County were dynamic and very prosperous. Nearly every acre of the land had been sold, treasury of the county swelled, and funds were used to build roads and other facilities.

By 1850 Tishomingo county was home to 15,490 settlers. Towns grew quickly and the Memphis and Charleston Railroad was invited to build its tracks through the county in 1852. The last spike was driven in 1857 just outside the town of Iuka and population centers began to shift from Jacinto and the river to towns along the railroads, Iuka and Corinth.

In April of 1870 the free State of Tishomingo was subdivided into three counties, Tishomingo, Prentiss and Alcorn. Tishomingo County was left with a population of 7,440 citizens and was considered to be one of the richest counties in the state.

Preparations for war began in Tishomingo County in 1859, and a special election in 1860 selected delegates to attend the secession convention in Jackson on January 7, 1861. Although the county voted against secession, Tishomingo's delegates voted for the Articles of Secession and added their signatures to its declaration. The county sent its fair share of volunteers into the conflict, but not all supported the southern cause and the resulting problems resulted

in the county being the first county in the state to suspend tax collection.

Two battles were waged in the county, the Battle of Iuka and the battle of Eastport Landing. The Battle of Iuka is recognized to be one of the hardest fought of the Civil War, lasted only two hours and resulted in a Union victory with the loss of 2000 of the 6000 troops committed to battle either dead or wounded.

The reconstruction era presented challenges of tremendous consequence. Roads were in ruin, homes, farms and business was deteriorated, currency was worthless. The task of rebuilding was faced headlong and by 1890 the county had recovered most of its wealth, appeared even more prosperous than before the war.

Today Tishomingo County prepares for a future that rivals its past in challenges toward growth and prosperity. No county in the

state has been the object of more intensive construction and development. The Tennessee-Tombigbee Waterway, Pickwick Lake and Dam, increased industrial development and now the prospect of the NASA Solid Rocket Motor Plant at Yellow Creek. Truly the citizens of Tishomingo County today face problems as in the past, but they face these problems with the faith and determination of their forebears. The future has never been more promising. Tishomingo County will continue to be a great place to live, to work, and to enjoy!

(Article submitted by Team Five of Leadership Tishomingo)



The palm tree gets its name from the type of palm that has blades that fan out, resembling the palm and fingers of a hand.



#### Mary and Jenny Burney

Mary and Jenny Burney, daughters of Mr. and Mrs. Doyce Burney of St. Louis and Granddaughters of Mrs. Raymond Burney of Iuka are among more than 4,000 young people from around the country who have been examining their rights and responsibilities as citizens as they experience the exciting 4-H program this summer at the National 4-H Center, Chevy Chase, Md. Citizenship-Washington

administration and observe government in action, as they learn about the Constitution and the way our government functions.

During educational visits to federal agencies and other organizations, CWF participants met with officials to determine what those agencies' responsibilities are in addressing current issues and how they deal with those issues.

The Missouri delegation met with Rep. Harold Volkmer. Seeing and learning the significance of historic locations and monuments in the metropolitan Washington area, such as the Kennedy Center for the Performing Arts, Mount Vernon, the Washington Cathedral and the Vietnam Veterans Memorial, challenged CWF delegates to define U.S. culture and to determine their role in our culture as responsible citizens.

CWF is one of the largest of the national citizenship education programs. It is planned and conducted by the Cooperative Extension system of the state land-grant universities and the Extension Service, USDA. The program is arranged and supported by National 4-H Council.

the program, which runs each week from June 4 to August 12, helps young people ages 15 to 19 better understand how government functions at all levels and how to effectively use government processes to address issues.

CWF is taking its cue from President Bush's stated intention to "put power in the hands of the people". Young people explore issues of local importance to them, the impact of the new



*Just Arrived*

**Air Blush™**  
Automatic loose powder blush.

Now Available At  
**Curtis Drugs**  
Elm Shopping Center - Iuka

**Attention:**

# Town Meeting!

**Time: 7:00 tonight (Thursday)**

**Place:**  
**Tishomingo County Courthouse**

**Public Invited**

Sponsored by Iuka Chamber of Commerce



**137N**  
**1/4 CARAT**  
**of diamonds**

**136N**  
**onyx & diamonds**

**982N**  
**genuine diamonds**

## Your choice


**\$149!**  
Values to \$249!

**CLASSIQUE - JEWELERS**

Elm Shopping Center - Iuka - Ph. 423-3245

enlarged to show detail. © 1989 S.D.I. weights are approximate

# A Legend Of Yesterday.







### Mr. & Mrs. J. C. Holt To Celebrate Anniversary

The children of J. C. (Sam) and Hazel (Cagle) Holt will honor their parents on Saturday, August 26, with a reception celebrating their 50th Wedding Anniversary. The reception, which will be held at their home on Eastport Road, will be held from 2:00 - 5:00 in the afternoon. All family and friends are invited to attend.



### Happy 52nd Boach! August 26th

Love,  
T, Your Children and Grandchildren



### August 23rd World's Greatest MawMaw & PawPaw Happy 9th Anniversary

I love you,  
H.B.



You and Speckles are quite a pair  
And a son like you is ever so rare.  
We love you very much & we always will  
But no words can ever say how we really

### Happy 5th Birthday Christopher Rast

Love, Mom and



### Happy Birthday Molly! August 25th



Look very closely, or your eyes will deceive.  
Look very closely, or you won't believe  
It's not your eyes that are playing tricks;  
On the 25th of August, "he'll" be thirty-six!



### Never a dull minute! Happy Birthday Sherry!

Kathy and Mike



### SCHOOL DAYS 1951-52 Happy Birthday Janice

August 24th



### August 24th

Well, well the time is near,  
It's your birthday but you're not here.  
You know we love you and miss you too,  
And we can't wait to see you soon.

Happy Birthday  
Mother, Stoney, H.B.,  
Deanna, Harold, Grandma,  
Marie, and Weinie



### Bobby Daniel Reynolds, II

We waited a long time,  
But you have made the wait worth it!

Love,  
Mom

### 4-H Communicates

By: Mary Cox  
Extension 4-H Youth Agent

Tishomingo County 4-H Teen Leaders Attend Conference  
Recently six Tishomingo County 4-H Teen Leaders and two adult leaders attended a 3-day conference on the campus of the University of Mississippi. The conference, entitled "Teens Reaching Youth", was made possible through a grant from Chevron, USA.

The purpose of the conference was to develop a team from each county made up of a team of four 4-H teen leaders and one adult each.

During the week the team

members attended sessions on developmental characteristics, designing learning, coaching skills, team building, marketing techniques, self-esteem building, cooperation, communication/motivation and teaching practice.

The conference sessions were taught by teens to teens.

Nancy South of the Midway 4-H Club, Tammy Bray, of the Rainbow 4-H Club, and Lori Rutledge of the North Crossroads 4-H Club, along with Charla Hopper, 4-H Volunteer and I traveled to Oxford a day before the other delegates arrived. Each person was assigned to a team

that day to learn to teach at least one of the sessions later in the week.

Others attending the Conference from Tishomingo County were Freda Taylor of the North Crossroads 4-H Club, Tammie Laird of the Helping Hands 4-H Club, Julie Skinner of the Busy Bee 4-H Club, and Alma Hopper, 4-H Volunteer. Each team was challenged to return to their county and teach at least a six lesson course. This course may be taught to school classes, other 4-H Clubs or

one of many other groups.

These young people were to return to the county and teach a six lesson curriculum to pre-teens. They will need to use the skills they learned at this conference to present the curriculum, the team chooses.

If you would like more information on opportunities for teens in 4-H call at 423-3616.

### 4-H Teaches Citizenship And Leadership

When strengthened and shared, citizenship and leadership skills enhance the lives and learning experiences of young people and influence them toward greater achievement. All 4-H activities and projects include leadership and citizenship activities, but some youth choose these areas as their main project.

Whether performing a community service, seeking excellence in a variety of projects, giving leadership to younger members or learning about different cultures, 4-H members enhance their skills in these programs. As an essential part of the 4-H experience, these skills help youth grow into well-rounded productive adults who will contribute to their communities, their society, their economy, their nation and the world.

Objectives of these projects

are to practice leadership skills and roles, take part in community affairs and demonstrate citizenship responsibility. Members also explore career, job and productive leisure opportunities and develop skills, knowledge and attitudes for lifelong use.

If you would like more information on these two project areas call the County Extension Office at 423-3616.

### Tenn-Tom Today

"Country Roads"  
by  
Sally Hunter  
Park Ranger

As a person who spent her early years in the country, I especially enjoy the part of my job as a Park Ranger which allows me the opportunity to travel the various roads which lead to access areas on the waterway. Some of the roads are paved, but most are gravel or pretend to be, depending upon the area. They can also be mud, and with the weather this summer, some roads have been muddy most of the time. Of course, muddy roads offer a unique opportunity to view things at a different angle -- sideways. You see things you never noticed before, like the large size of some trees and the depth of numerous ditches. The first few times it happens you suffer some stress but it gets better each time. You pray you won't meet anyone on the worse roads because invariably you both are in the only set of ruts. Ruts are wonderful. They can be the difference between sitting for an hour waiting to get pulled out versus going on to your destination and getting the job done. Then, with the job done, you have to turn around and come back out the same way you went in. Coming back is always easier, after all you have half the road on the underside of your vehicle. So much for the downside of country roads.

It means snakes slithering across the road; a blur of blacks and browns going so fast you can't determine the species. If they are really big, you are glad you are safe inside your truck and don't want to know their brand. You wonder where they are going in such a hurry. Do they have a lunch date, or have they learned that trucks and cars like to squash them?

It means cows lying in the shade of fence line trees with their backsides pushing the barb wire, stretching it each time until it is permanently bowed outward. If you go slowly by, they turn to gaze at you as you stare at them.

It means hundreds of birds singing their songs just for you.

It means coming around a bend in the road to find that the road has moved since the most recent flooding.

It means seeing wild turkey, usually in groups of three or four strutting across the road into the woods or fields.

It means a row of sparrows keeping watch from their power line perch over the road and field below.

It means confronting the occasional deer crossing the road, who startles you as you startle him. In the next second he bolts for cover. Not so for the spotted fawn that stands and stares until the clicking of the camera lens scares them back into the cornfield.

It means stopping to aid an injured Mississippi Kite that had been hit by some vehicle.

It means butterflies attacking you when you stop and get out of your truck to observe a plant or bird.

It means crossing wooden,

around a curve at 30 MPH.

It means snakes slithering across the road; a blur of blacks and browns going so fast you can't determine the species. If they are really big, you are glad you are safe inside your truck and don't want to know their brand. You wonder where they are going in such a hurry. Do they have a lunch date, or have they learned that trucks and cars like to squash them?

It means cows lying in the shade of fence line trees with their backsides pushing the barb wire, stretching it each time until it is permanently bowed outward. If you go slowly by, they turn to gaze at you as you stare at them.

It means hundreds of birds singing their songs just for you.

It means coming around a bend in the road to find that the road has moved since the most recent flooding.

It means seeing wild turkey, usually in groups of three or four strutting across the road into the woods or fields.

It means a row of sparrows keeping watch from their power line perch over the road and field below.

It means confronting the occasional deer crossing the road, who startles you as you startle him. In the next second he bolts for cover. Not so for the spotted fawn that stands and stares until the clicking of the camera lens scares them back into the cornfield.

It means stopping to aid an injured Mississippi Kite that had been hit by some vehicle.

It means butterflies attacking you when you stop and get out of your truck to observe a plant or bird.

It means crossing wooden,

one lane bridges without rails over the many creeks that feed the Waterway.

It means watching the abundant succession of wildflowers and shrubs that bloom along the unattended roadways.

Country roads are all of the above plus many other sights, sounds and smells that someone from the country loves and someone not from the country will learn to love. A ride down a country road is a great way to renew your spirit and refresh your mind.

### Rediscovery!

Construction of the Tennessee-Tombigbee Waterway created an abundance of fishing and boating opportunities in Northeast Mississippi that are well appreciated by local residents. Unfortunately, however, construction of the Tenn-Tom destroyed or severely disrupted a unique assemblage of aquatic habitats and the animal communities that lived there. To date, five species of freshwater mussels have been listed by the state and federal governments as endangered species, and a number of mussel and fish species are considered to be candidates for the endangered and threatened species list.

One of the endangered freshwater mussels, pleurobema curtum, commonly known as the Black Club Shell, has not been found in over 15 years. The only portion of its known habitat that was not inundated by the Waterway is a short two-mile reach of the East Fork Tombigbee River in Itawamba and Monroe Counties, Mississippi.

Both flies and frogs have been known to catch the fly's foot.



Both flies and frogs have been known to catch the fly's foot.

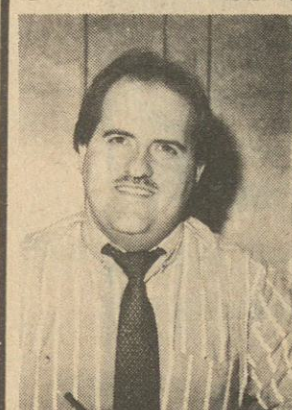
### RÉSUMÉS

- \*Professionally Prepared
- \*Computer Generated on Highest Quality Stationery
- \*Computer Spell-Check for Spelling Accuracy

For more info - in Iuka - LeAnne Harber  
(601)423-2948 after 5 p.m.  
In Corinth - Tina Waldon (601)287-3907

### Curtis Drug Company

Elm Shopping Center - 619 Hwy. 25 South  
Iuka, MS -- 423-3676  
"Good Neighbor Pharmacy"



GARY WALKER  
423-1050

### Need Back to School Expense Money

See us first.

### TALCO LOANS

Elm Shopping Center, Iuka





#### Group Wins National Dance Competition

Shelly Greene, 15 year old daughter of Mr. and Mrs. Jerry D. Greene of Memphis, was part of a tap group who won first place in a national competition in Chicago. The group, along with their teacher, Nadine Vosse Smith, attended a National Dance Olympus Convention held at the Sheraton O'Hare in July.

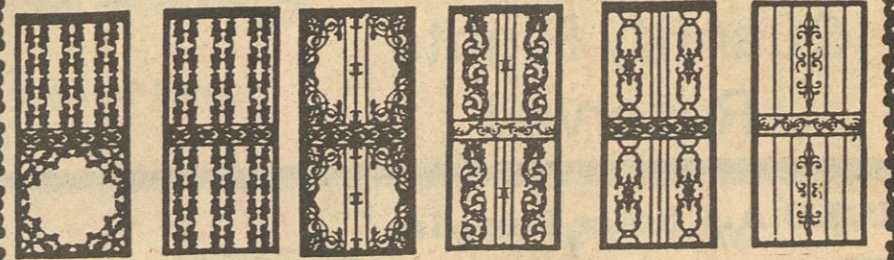
About 300 students from various states were also in attendance. The groups winning number was "Stompin At The Savoy". Pictured with Shelly is one of her students, 5 year old Jamie Bryant. Shelly teaches three classes a week for Mrs. Smith and is a member of the senior dancers. Shelly is the granddaughter of Mr. and Mrs. Bruce Rutledge, Jr. and Mr. and Mrs. W.T. Greene all of Tishomingo.

#### Notice

There will be a meeting at the Rutledge Salem Church

Saturday night, August 26, at 7:30 p.m. The meeting will be on getting someone to mow the cemetery and set a price for the mowing of the cemetery. Everyone that is interested in the cemetery, please come.

## Bonds Ornamental Iron



#### ALL TYPES OF IRON WORK

- Burglar Bars
- Columns & Rails
- Doors & Gates
- Stairways & Platforms
- Bakers Racks
- Plant Stands



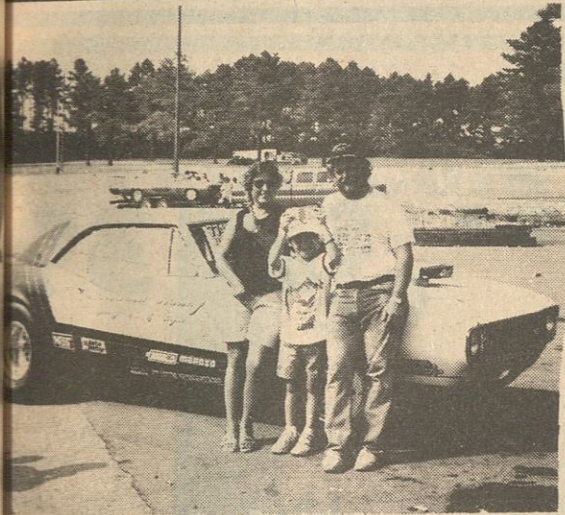
FREE ESTIMATES

Call Aaron Bonds After 5:00 p.m. - 423-6964

Composite photos of the graduating classes of Luka High School have lined the walls of IHS for several years and were recently taken down for cleaning during the asbestos removal. Coach Jerry Harrelson looks thru the photos noting that several of the composites are missing. Many were taken years ago as they were

stored in the basement of the Howard Building. Those who took photos home for safe keeping are urged to return the pictures to be hung with the other classes for the enjoyment of your children and grandchildren. According to school officials, if your class did not have a composite made or if the picture has been lost, you or your class

can have one made and framed for approximately \$120.00. If anyone knows the whereabouts of these missing photos please contact the Luka High School. Missing years include: 1939; 1940; 1941; 1944; 1945; 1946; 1947; 1948; 1949; 1950; 1951; 1953; 1956; 1957; 1958; 1959; 1960; 1962; 1963; 1966; 1969; 1970; 1971; 1972; 1973; 1974.



Robinson Wins Big — Local drag racer, Johnny Robinson, recently took the light at Huntsville, Alabama "Dragstrip" for a \$100,000 prize. Pictured with 1987 Camaro is Johnny

and Pat with their son Bryan holding up the prize money. The Robinson's are the owners of Fisherman's One Stop and Robinson's Fish Market on Coleman Park Road.

#### Revival At Sardis

Sardis Baptist Church will hold revival services Sunday, August 27 through Thursday, August 31. Services will begin 6 p.m. Sunday night at 7:00

p.m. Monday thru Thursday. Bro. Coye Marbutt, pastor of the Friendship Baptist Church in Red Bay, AL, will be the visiting evangelist. Bro. John Stockton and the congregation extends a warm welcome to everyone.



Check Us Out For All Your Great Looking Fall Clothes For School!

**Final Markdown On Summer Items**

**Off The Rack**

2 Blocks E. Mineral Springs Park Old Hwy. 72 East

MasterCard/Visa/Discover 423-2750

#### Daniel Reunion

The Daniel Reunion will be held at Mineral Springs Park, September 16, at 10:00 a.m.

It's that time again for remembering the good ole days and enjoying everyone's company today.

See you there!

#### Shriners

A meeting will be held at the Dennis Restaurant Thursday, August 24, beginning at 7 p.m.

All members are urged to attend.

#### PHOTO CENTER

Now You Have A Choice!

DOUBLE PRINTS 35mm JUMBO 4x6

**\$2.79**

AS LOW AS 12 EXP. ROLL

15 EXP. DISC. \$3.49  
24 EXP. ROLL \$4.99  
36 EXP. ROLL \$7.59

Over 100 styles of standard size prints from 35mm. Disc. 15% or 12% color print film or a single set of 35mm. Jumbo 4x6 color prints (10-40 prints only). HURRY! THIS JUMBO DEAL Ends 8-31-89

CURTIS DRUGS

Luka - 423-3676

# A Leader. Proud. Brave.



## Amy Frazier's Dance Studio & Gymnastics

E. Eastport Street

(Next to Richard Bowens Office)

*announces  
Fall Class  
Registration*

**Saturday,  
August 26**

10:00 a.m. to 2:00 p.m.

--Curriculum--

Tap - Ballet - Jazz - Gymnastics

**Amy Frazier,**  
gymnastics instructor

- 15 years gymnastics experience
- 3 years teaching experience

**423-5904  
(Home)**



**Ronja Eaton,**  
dance instructor

- 16 years dance experience
- 5 years teaching experience
- Member of Fred Astaire Performing Arts Association, Inc.!

**728-8476  
(Home)**

## OUTSTANDING OUTBOARD SPECIALS

	Now	Reg.
Mercury 15E.H.P.	\$1595	\$2295
Mercury 15M.H.P.	\$1498	\$2079
Mercury 20M.H.P.	\$1650	\$2279
Mercury 25E.H.P.	\$1775	\$2454
Mercury 150XRY	\$5995	\$9200

**LAKE HILL MOTORS  
AND MARINE**

Hwy. 72 E. Corinth 601-287-4451



# Nelson's Super market

Quantity Rights  
Reserved

Ad Good August 24 thru August 30

U.S.D.A. Choice Bone-In

**Round  
Steak**



\$ **1<sup>69</sup>**  
Lb.

Gold Kist

**Whole  
Fryers**



Yong-N-Tender

**59**  
Lb.

Lykes

**Hot Dogs**



12 oz.

**99<sup>c</sup>**

Williams

Hot or Mild

**Sausage**



\$ **1<sup>49</sup>**  
Lb.

Lykes Sliced

**Bacon**



Old-fashioned goodness is better!

\$ **1<sup>19</sup>**  
12 oz.

Lykes Sliced

**Bologna**



\$ **1<sup>29</sup>**  
12 oz.

Lykes Sliced

**Turkey  
Bologna**



\$ **1<sup>39</sup>**  
Lb.

Lykes

**Smoked  
Sausage**



\$ **2<sup>49</sup>**  
Lb.

Lykes

**Corn Dogs**



\$ **1<sup>99</sup>**  
Lb.

Lykes Sliced

**Turkey  
Ham**



\$ **2<sup>39</sup>**  
Lb.

Lykes Power Pack

**Sliced  
Bologna**



12 oz.

**79<sup>c</sup>**

Lykes Power Pack

**Franks**

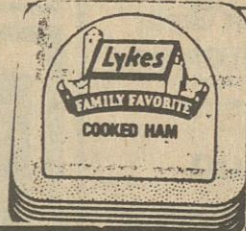


12 oz.

**79<sup>c</sup>**

Lykes Sliced (4x6)

**Sliced  
Ham**



10 oz.

\$ **2<sup>69</sup>**

Lykes

**Jumbo  
Franks**



\$ **1<sup>39</sup>**  
Lb.

Lykes

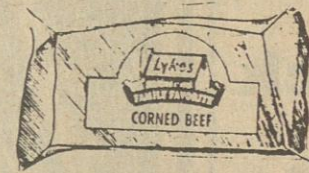
**Turkey  
Franks**



\$ **1<sup>39</sup>**  
Lb.

Lykes

**Corn Beef  
Brisket**

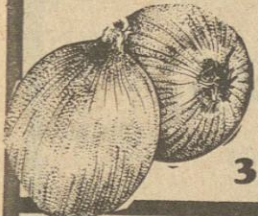


Lb.

\$ **2<sup>49</sup>**

All Purpose

**Yellow  
Onions**



3 Lb. Bag

**99<sup>c</sup>**

Crisp Red

**Radishes**

**4** for \$ **1<sup>00</sup>**

Fresh Crisp

**Celery**



Stalk

**59<sup>c</sup>**

FARM FRESH

**DELICIOUS PRODUCE**

California

Red or White Seedless

**Grapes**



Lb.

**79<sup>c</sup>**

California

**Red  
Plums**



Lb.

**79<sup>c</sup>**

California

**Red  
Grapefruit**

5 Lb. Bag

\$ **1<sup>99</sup>**

Mr. Juicy

**Fruit  
Drinks**

**6** for \$ **1<sup>00</sup>**



# Register For Free Groceries to be drawn for Weekly -

Ann Smith and Marla Cummings won \$25.00 of Free Groceries in our weekly Grocery Drawing.

Del Monte  
**Ketchup**  
32 oz.

**79<sup>c</sup>**



Clorox  
**Laundry Detergent**  
48 oz.  
**\$1<sup>39</sup>**

Soft 'N' Gentle  
**Bath Tissue**  
4 Roll Pkg.



**79<sup>c</sup>**

Del Monte  
**Specialty Vegetables**  
14 oz.

**5/\$2<sup>00</sup>**



Del Monte  
**Pineapple**  
8 oz.

**3/\$1<sup>00</sup>**



Ivory Liquid  
**Dish Detergent**  
22 oz.

**99<sup>c</sup>**

Downy  
**Fabric Softener**  
64 oz.



**\$1.99**

3 Liter (Only)  
**Pepsi Cola**

**\$1<sup>39</sup>**



Maxwell House  
**Master Blend Coffee**  
13 oz. bag



**\$1<sup>69</sup>**

2 Liter  
**Coca Cola**

**99<sup>c</sup>**  
All Related Products



Libby's  
**Vienna Sausage**  
5 oz.

**3/\$1<sup>00</sup>**



Brest 'O' Chicken  
**Tuna**  
6 1/2 oz.

**69<sup>c</sup>**



Nestle's  
**Quick**  
32 oz.  
**\$2.99**

Betty Crocker Asst'd  
**Hamburger Helper**  
**\$1.19**

Libby's  
**Potted Meat**  
3 oz.



**4/\$1<sup>00</sup>**

Kellogg's  
**Corn Flakes**  
18 oz.

**\$1<sup>59</sup>**



Kellogg's  
**Froot Loops**  
15 oz.

**\$2.99**



Lynden Farm Frozen  
**French Fries**  
2 Lb. bag

**79<sup>c</sup>**

Kraft  
**Orange Juice**  
64 oz.

**\$1.69**

Hyde Park  
**Orange Juice**  
12 oz. Frozen

**89<sup>c</sup>**



Ralston  
**Nintendo Cereal**

**\$1<sup>99</sup>**

Bryan  
**Luncheon Meat**  
12 oz.

**\$1<sup>19</sup>**

Kraft Velveeta  
**Cheese Singles**  
Regular & Thick  
12 oz.

**\$1<sup>59</sup>**



Skippy  
**Peanut Butter**  
18 oz.

**\$1<sup>89</sup>**

Kraft  
**Velveeta & Shells**  
12 oz.

**\$1<sup>39</sup>**

Freezer Queen  
**Entrees**  
9 oz.



**99<sup>c</sup>**

Kraft  
**Barbecue Sauce**  
18 oz.



**99<sup>c</sup>**



Pillsbury  
**Biscuits**  
4 Pkg.  
**99<sup>c</sup>**

Hyde Park  
**Sherbert**  
1/2 Gallon



**99<sup>c</sup>**

Kraft Squeeze Parkay  
**Margarine**  
1 Lb.



**99<sup>c</sup>**





#### Teachers Appreciation Luncheon

Shown are just a few of the Teachers enjoying the Teachers Appreciation Luncheon held Friday, August 18. Left to right: Lyndon Cain, Dixie Griffin, Jill Jourdan, and Tana Daniel.

#### Teachers Honored

The Iuka Elementary School P.T.A. Officers honored the elementary school teachers with an Appreciation Luncheon, Friday, August 18, 1989.

The school cafeteria was decorated with grape vine wreath arrangements of apples and candles; yellow mums, school colors, and antique school supplies. The teachers helped themselves to a delicious buffet of turkey and dressing with all the trimmings, green beans, potato salad, rolls, iced tea and dessert. The luncheon was catered by Peggy Wadkins and the Chuck Wagon Restaurant, of Iuka.

Pam Byram, P.T.A. Secretary, welcomed the teachers to a new and exciting 89-90 school year. Mrs. Byram encouraged the teachers to work side by side with the P.T.A., so that our children will be offered the best education possible.

Mrs. Byram introduced a new P.T.A. project, the Iuka Elementary School P.T.A. "Weekly Teacher Spotlight". Each week, the P.T.A. will feature an elementary school

teacher in the Tishomingo County News. At the end of the 89-90 school year, a "Teacher of the Year" will be selected and honored by the P.T.A.

After lunch, the teachers returned to their classrooms to prepare for the first day of school.

#### Homecoming At Mt. Glory

You and your family are invited to attend Homecoming at Mt. Glory Missionary Baptist Church, Sunday, August 27. Sunday morning services will begin at 10:30 with preaching at 11:00. Lunch will be served at the noon hour and there will be singing in the afternoon.

#### Homecoming At Hubbard Salem

Annual Homecoming will be Sunday, August 27. Morning services will be congregation singing along with the Broadway Family and others.

Lunch will be served at the Noon hour.

Special singers for the afternoon will be the Gospel Messengers.

Pastor Allen Osborn and congregation would like to invite everyone to attend. Also revival services will begin Monday night, August 28 thru September 1, at 7:00 nightly. Bro. Del Blackman will be guest speaker for these services.

#### County Schools Lunch Menus

Aug. 28 - Sept. 1

**MONDAY**  
Hot Dog On A Bun  
Cole Slaw  
Baked Beans  
Potato Chips  
Cantaloupe & Milk  
**TUESDAY**  
Chicken Nuggets  
Green Salad  
French Fries  
Buttered French Bread  
Apple Crisp & Milk  
**WEDNESDAY**  
Sloppy Joe  
Cole Slaw  
Hot & Spicy Fries  
Orange Wedges  
Jello & Milk  
**THURSDAY**  
Spaghetti  
Tossed Salad  
Buttered French Bread  
Juice Bar  
Milk  
**FRIDAY**  
Chicken Pattie On A Bun  
Lettuce & Tomato  
Tater Tots  
Raw Cauliflower, Carrot & Celery  
Apple Sauce Cake & Milk

#### Birthday Celebration

All family and friends have a special invitation to join Cletus Holt in celebrating his 79th birthday on Sunday, August 27, in his home Forrest Grove Community. A noon meal has been planned with an afternoon of fellowship to follow. Come if you can.

#### Diabetes Education Classes

Diabetes Education Classes being offered by the Tishomingo Medical Clinic and taught by Melody F. Byram, Family Nurse Practitioner.

On August 24 at 1:30 p.m. the Tishomingo Medical Clinic will be offering a Diabetes Education Class at the Clinic. The class is open to all Diabetics and/or interested persons. There will be no charge to attend the class. The class will include a video which will provide information about diabetes such as how to manage your diabetes, how to meal plan, regulating your insulin, signs of low and high blood sugar levels, and long term side effects of Diabetes.

If you would like to attend, please call to let us know. The clinic is located at 1st Avenue and Natchez, Tishomingo. Call 438-6386 or 438-6387 for confirmation.

#### Revival Services At Temple Baptist

Temple Baptist Church, located 5 miles south of Burdsville on highway 365, will hold revival services beginning Sunday, August 27 and continue through Friday, September 1. Services will begin at 7:30 each evening.

Bro. Thelbert Hill will be the guest evangelist.

Bro. Rick Johnson, and the congregation extends a friendly welcome to everyone.

#### Bonds Family Reunion

The family of John Newton Borden will have their reunion at the Youth Center at Mineral Springs Park the first Saturday in September. This will be September 2, 1989. All relatives have a special invitation.

#### 53rd Helton Reunion

The 53rd Helton reunion will be held again this year, at Rose Trail Park, in Riverton, AL, on Sunday, Sept. 3, 1989.

We encourage all interested persons to make a special effort to attend this year. We will have dinner at 12:00 noon. At 1:30 we will have a short memorial service for Edsel "Pete" Helton, who died on April 30, 1989. Anyone present, who would like to eulogize Ed may do so at that time. After the service, his ashes will be disposed of, as per his wishes.

The children, grandchildren and great-grandchildren of Brownie and Rayma Helton will again be at Tishomingo State Park cabins for the full weekend, (Friday till Monday). Anyone who wishes to join them there is welcome.

## USED CAR SAVINGS

89 Tempo, Ford Exc. Car.	84 Trans-Am, Local
89 Escort, 2 Dr. Save.	84 Escort Wagon, One Owner
89 Festiva, Charcoal.	86 Reliant Wagon, Priced Right
88 E150, 12 Pass, Dual Air.	85 Crown Vic. - White
88 Lincoln, Burgundy.	84 Dodge Mini Van
89 Mustang Convertible, White.	87 Hyundai, Low Price
82 Celebrity, 4 Dr., Auto.	87 Ranger, Auto, Local
	67 Chevy Pickup, Local

**Closeout On All Remaining 89's**  
**2.9% or up to \$1500<sup>00</sup> Cash**

# McNatt Ford

Hwy. 25 South In Iuka

"Your Neighbors & Friends"



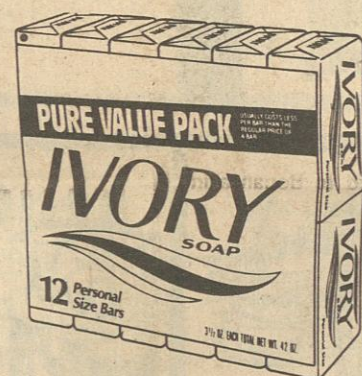
## REPUBLIC BANK

FOR SAVINGS, F.A.

### INTEREST RATES

6 MONTHS	1 YEAR	2 YEARS	MONEY MARKET
8.25	8.50	8.50	6.20

# WAL-MART



### Value Pack Ivory Soap

12 Personal Size bars  
Reg. 3.00

## 2.82



### Pert Plus Shampoo

Normal, Extra Body, Dry Damaged or Oily  
15 Oz. Reg. 2.97

## 2.80



### Colgate Plus Toothbrushes

Package of Three  
Adult or Junior  
Reg. 2.94

## 2.48



### Centrum Vitamins

From A to Zinc  
30 Tablets Free With 100  
Reg. 7.64

## 7.00



### Wal-Mart Bubble Bath

Strawberry, Lilac,  
Milk & Honey

## 1.50



### Heavy Duty Handcleaner

by Goop  
Number 1 Choice by Professional Mechanics  
Nt. Wt. 14031 Reg. 1.37

## 1.22

**HOT! HOT! HOT!**  
**SUMMER SIZZLER**

DESIGNER SERIES SILADIUM<sup>®</sup> CLASS RINGS



**\$54<sup>95</sup>**

REGULAR \$99<sup>95</sup>

**ARTCARVED**  
CLASS RINGS  
Quality is the difference

Diamonds, Cubic Zirconias and Diamond Panels are available for an extra charge.

Moore's Jewelry & Classique Jewelers  
104 B. Front St. - Elm Shopping Center - Iuka

Offer good thru Sept. 5, 1989.

## "Summer Sale"

Come by and meet the New Manager - Jeff Floyd

1985 Cougar, brown.	SOLD.
1987 Cutlass Calais, Red.	SOLD.
1987 Caprice Classic, Blue.	
1983 Pontiac SFE, Brown.	
1987 Cutlass Ciera, Black.	SOLD
1988 Century Limited.	
1985 Cutlass Seirra Wagon (Charcoal).	SOLD.
1987 Pontiac 6000, Very Nice Car!	
1987 Buick Century - Burgundy.	
88 Pontiac Sunbird - White.	
1986 Chevrolet Customized Van, Raised Roof, Loaded, Low Miles.	
1977 Mercury Cougar - Nice.	
1987 Ford Tempo, Blue.	
1987 Celebrity Wagon, Blue.	

#### Trucks Unloading Daily!

Cars and Trucks Going at Wholesale Cost  
See us first or see us last, but be sure you see us before you buy!

# Iuka Auto Mart, Inc.

Hwy. 25 South  
Phone 601-423-9030  
Iuka, MS

Open 9 a.m. - 6 p.m. Mon. - Fri.  
Saturday 9 a.m. - 2 p.m.

Hwy. 25 South in Iuka

Open Monday - Saturday 9 - 9

Sunday 12:30 - 5:30

Ad good August 24 thru August 27

WAL-MART'S ADVERTISED MERCHANDISE POLICY-It is our intention to have every advertised item in stock. However, if due to any unforeseen reason, an advertised item is not available for purchase, Wal-Mart will issue a Rain Check on request, for the merchandise to be purchased at the sale price whenever available, or will sell you a similar item at a comparable reduction in price. We reserve the right to limit quantities. Limitations void in New Mexico.

MasterCard

VISA





## To Our Friends In Iuka,

our Friends in Iuka, my family and I have enjoyed the seven finest years of our lives in Iuka. For this we are so grateful to God and to the citizens of this outstanding town. While living here our third child, Heather, was born. Our two boys, Chris and Grant, have spent their elementary days here. Iuka means so much to them and to us. Their teachers in the Iuka School system have been so delightful with which to work. They've enjoyed scouting and ball playing and all the activities involved in growing up. Iuka has so much to be grateful for and to protect. I hope the small town atmosphere will never be eliminated.

One of our goals through the years has been to have

our children at a christian school when they reach a formative teenage years. We prayed concerning the matter for days and weeks and months. A few months ago now we enrolled our children at MarsHill Bible School in Florence, Alabama where I attended and my folks worked and taught. An opening came up with the Woodlawn Church of Christ on Highway 72 towards Athens. After many more prayers they asked us to come, and we believe that this is the Lord's will for our lives.

I've truly been happy in Iuka preaching the Gospel, visiting the hospital so many times, holding a weekly devotional at the Nursing Home for seven years, preaching on the local radio

**Happy Birthday Kelsey!**  
Kelsey Aline Walker celebrated her first birthday in a dress worn by her grandmother, Martha Smith Deaton, when she was one year old. Kelsey is the daughter of Randy and Leada Walker of Southaven, MS, sister to Adam Walker. Her

grandparents are Harold and Martha Deaton of Southaven, MS, Marvin and Billie Rogstad of S.C., Mr. & Mrs. Arvis Walker. Great-grandparents are Bessie Deaton of Southaven, MS and Aline Smith of Iuka. Great-grandmother, Maude Smith of Iuka.

station weekly, and being involved in community activities. It's been a joy to work with the local American Cancer Society and the American Family Association, which are both needed so badly. The friendship of so many of you has meant a great deal. We'll miss so many individuals and endearing characteristics of Iuka. The Church of Christ here has been so wonderful to us and leaving them is so painful. They are some of the finest people on the face of the earth.

Moving is one of the hardest things for me to do. I think of the many things I left undone and the opportunities that have slipped by. I intended to study the Bible personally with many of you and yet it wasn't done. I still would like to send a personal tract to you in the mail or study with you by correspondence. If you'll contact me at our new address, I would love to send it. (Rt. 7 Box 521 Florence, AL 35630) You can contact me by phone in Florence with 764-2060, or request the tract by calling the church office here, 423-6891. I want more than

anything to see each person in Iuka, in Heaven someday. I ask for your forgiveness if my family or I failed you in any way. Heaven is too wonderful and Hell is too horrible for us to let anything keep us from being right with God.

We love you and will miss you.

Perry, Karen, Chris,  
Grant & Heather Taylor

## Gray's Celebrate 50th

Mr. and Mrs. Huley Gray celebrated their 50th Wedding Anniversary on Saturday, August 19. The Gray's feel fortunate that the Lord has blessed them with three daughters, six grandsons, one great grandson, and one great-granddaughter.

## Eastport Homemakers Club

On August 7th the ladies of the Eastport Homemakers Club traveled to Bonanza in Muscle Shoals, AL for their yearly outing.

Mrs. Dottie Patterson led the ladies in prayer before the meal.

There were nine present and everyone had a good time.

After the meal the ladies enjoyed a little bit of shopping.

Those present were: Lillian Booker, Ellen Robinson, Sue Borden, Jimmie Hampton, Dottie Patterson, Janie Sanders, Margaret Smith, Jo Nunley and Roberta Luttrell.

## Graduates Of MSU

Tishomingo County had two students to graduate from Mississippi State University this summer. Billie Sue Bonds received her PHD in Graduate School and Angela K. Guice received her BA in the College of Arts and Sciences. Both students are from Iuka.

## Bingo

Bingo will be played Friday and Saturday night at 7:00 at the VFW Post 6112 in Belmont.

Everyone is welcome to play Bingo. You have to be over the age of twenty one. evening, hope to see you there. Come out and enjoy the there.

## Sheer Tints Mascara

Natural Look

Available at



REVLON

CURTIS DRUGS

Elm Shopping Center

Iuka

423-3676

Hint of Color

Touch of Curl

Soft Lash Finish



clip'n'save

# coupons

super discount specials

Hwy. 25 South in Iuka

**Shine Free**  
Extra Thickening  
Mascara  
1 Count All Shades

**1.97**

Limit 1  
Sale Price With This Coupon  
Coupon expires Aug. 27, 1989

**Baby Magic**  
Baby Oil  
9 Ounce

**2.23**

Limit 1  
Sale Price With This Coupon  
Coupon expires Aug. 27, 1989

**Clerz 2**  
Lubricating and  
Rewetting  
Eye Drops  
.15 ml

**3.58**

Limit 1  
Sale Price With This Coupon  
Coupon expires Aug. 27, 1989

**Arrid Extra Dry Cream**  
1 Ounce

**1.48**

Limit 1  
Sale Price With This Coupon  
Coupon expires Aug. 27, 1989

**Shower to Shower**  
Body Powder  
8 Ounces  
All formulas

**1.77**

Limit 1  
Sale Price With This Coupon  
Coupon expires Aug. 27, 1989

**Kaopectate**  
Concentrate  
8 Ounces  
Peppermint Flavor

**2.62**

Limit 1  
Sale Price With This Coupon  
Coupon expires Aug. 27, 1989

**Marilyn Ruth**  
Dance Studios

Apply Now For  
Fall Classes

Tap \* Ballet \* Jazz  
Modern \* Baton \* Jazzercise

Vocal Training by Glenda's  
School of Performing Arts

601-287-8711 or 601-287-8655

\*Tennessee Association of Dance  
\*A.B.C. Baton Dealer  
\*Cross City Dancers

**Angie Barnes Biggs**  
has joined DeAnna

at

**DeAnna's Beauty**  
Shop

Angie has just recently graduated from the Booneville Academy of Cosmetology under the supervision of Evelyn White. Angie invites all her friends to come by for a great new style.

Walk-ins Welcome or By Appointment

New Hours: Monday - Saturday 9 a.m. - 5 p.m.

DeAnna Locke Owner & Operator Hwy. 25 South - Iuka Angie Biggs Operator

## Fashions, Too

L. A. Gear Used  
Bugle Boy  
Filippo Totti Jeans

**\$5.00**  
Off



Hwy. 25 North at Merle Norman & Hairport

## A Commitment To Leadership.



For over three quarters of a century, Iuka Guaranty Bank has led the way in the growth and development of our community, sharing the spirit and qualities of leadership shown by the great Indian Chief whose name we bear.

It's this spirit of leadership and dedication that makes a legend. And this legend lives on forever.

**IGB**  
**IUKA**  
**GUARANTY**  
**BANK**

A Legendary  
Commitment To You.

Member FDIC





Toddler Table-The Iuka Church of Christ is making use of a new toddler table to

help the cradle roll class be as great as possible. Classes for all ages encourage paren-

ts to bring all of their children to learn about God.

spends most of the time at home and is afraid to travel by car from the home. Is this something that will pass or do we need to get help now? (Identity withheld by request)

**RESPONSE:**  
Your nephew's symptoms are very similar to those of post traumatic stress disorder. This is a psychological condition, usually following a major stressor that could be interpreted as a threat to one's life, or loss of limb, serious injury to one's physical self. It is a common occurrence during such traumas as war, natural disasters, airplane crashes, etc. It is also a disorder we see with greater frequency in individuals who have sustained injuries in an automobile accident. Usually, the accident is severe but the individual does not have to be hospitalized to experience these symptoms.

My recommendation would be to get help now by contacting your family physician for a thorough medical evaluation. A neurological evaluation might be in order since your nephew may have sustained head injuries, which could be contributing to these episodes. Depending upon the outcome of the evaluation, psychological intervention may well be in order. If this is the case, please know that post traumatic stress disorder is treatable and the prognosis on most individuals is good.

Joe Edward Morris, Ph.D.

Licensed Psychologist

Dr. Morris is a psychologist in private practice in Tupelo, MS. He welcomes letters which should be addressed to him at 1018 N. Gloster, Tupelo, MS 38801.

### Revival At New Salem

Caltus NeSmith will be the visiting evangelist during next week's revival services at New Salem Baptist Church. The revival will begin Monday August 28, at 7:00 p.m. and continue through Friday, September 1, with nightly service at 7:00 p.m. Everyone is invited to attend.

### Homecoming & Revival

Hebron Methodist Church on Sardis Church Road will be having Homecoming Sunday, August 27. Services will begin at 11:00 a.m. with Bro. Bobby Davis bringing the message. Lunch will be served at 12:00. The revival will begin Sunday night, August 27, and continue through Friday night, September 1st. Sunday night service will begin at 6:00 p.m. and Monday and throughout the week at 7:00 p.m. with Bro. G.D. Jones doing the preaching. Everyone is invited.

### Kenaum Reunion

The descendants of Tildon H. Kenaum and Ida Lawson Kenaum will have their 2nd family reunion Saturday, Sept. 2, 12 noon until at the Mineral Springs Park in Iuka. There will be a bountiful feast served. Anyone that is related or who wants to renew old acquaintances is invited to come and enjoy an afternoon of reminiscing.

### Lewis Reunion

The families of the late Mr. and Mrs. Joseph Franklin Lewis are invited Sunday, September 3, to the American Legion Building at 10:00 a.m.

on. All family and relatives are welcome to attend. Bring a covered dish. Lunch will be served at 12:30 p.m. The pastors and wives of the churches the Lewis's attended, Iuka Baptist, Iuka Methodist, Campground, Snowdown, and Pleasant Hill are invited.

### Bethel Baptist Church To Hold Bake Sale

The ladies auxiliary of Bethel Baptist Church will have a bake sale, at Piggly Wiggly Saturday, August 26, beginning at 8:30 a.m.

### Revival At S. Crossroads

South Crossroads Baptist Church will be having revival services beginning Sunday, August 27, through September 1st. Services begin at 7:00 p.m. Brother Ray Bennett of Marietta will be the visiting preacher.

### Work Day

Anyone having family buried at Sardis Baptist Church Cemetery is asked to come Friday September 1 and bring work tools for cleaning. We plan to gather around

1:00 p.m. and we'll appreciate all help.

### Southwood Baptist Church

Hwy. 72 By-Pass Between Pleasant Hill & James B. Brown, Pa.

### SERVICES

Sunday School, 9:45 a.m.  
Church, 11:00 a.m.  
Church Training, 5:00 p.m.  
Church, 6:00 p.m.  
"Serve the Lord with gladness"

J-14-1fn-chg

## IUKA BAPTIST CHURCH

105 West Eastport Street

Dr. Julian West, Pastor

### SUNDAY SERVICES

Sunday School 9:45 a.m.  
Worship Service 10:55 a.m.  
Church Training 6:00 p.m.  
Worship Service 7:00 p.m.

### WEDNESDAY SERVICE

Mid-Week Prayer Meeting 7:00 p.m.

Morning and Evening Broadcast Over WTIB-FM  
104.9 Morning services also on A.M. 1270



## DEATHS

### Annie Hearn

Annie Hearn, 93, died Saturday, August 19, 1989 at the Tishomingo County Hospital. She was the oldest member of the Airport Mission Baptist Church.

Services were at 2 p.m. Sunday at the Cutshall Funeral Home Chapel with the Rev. Perry Murphy officiating. Burial was in the Harris Chapel Cemetery near Cherokee, AL.

Survivors include, two daughters, Frances Hearn of Knoxville, TN and Ruth Daugherty of Iuka; three sons, Edward Hearn of Troy, AL, Ray Hearn of Oxford and James Hearn of Iuka; 15 grandchildren and 23 great-grandchildren.

### Charlie Brents

Charlie Brents, 70, of Decherd, died July 31, at Methodist Hospital of Middle Tennessee in Winchester.

A native of Alabama, he was born May 17, 1919, to Odie Brents and Annie Mae Thrift Brents. He was an engineer, having retired from L & N Railroad. Mr. Brents was a member of the Greenhaw Baptist Church.

Services were held August 2 at Moore-Cortner Chapel with Rev. John Gipson officiating. Interment was at Franklin Memorial Gardens, Winchester.

In addition to his mother, who lives in Chattanooga, Mr. Brents is survived by his wife, Goldie Bachuss Brents; three daughters, Jean Zimmermart of Winchester, Beatrice Henry Seago of Lake Wells, Fla., and Marie Pruitt of Iuka, MS; one son, John Brents of Manchester; one sister, Marviline Hardin of Chattanooga; one brother, Fred Brents of Iuka, MS; several grandchildren and great-grandchildren.

### Special Thanks

We wish to thank each one of our friends and relatives for your visits and gifts at our 50th Wedding Anniversary. May God bless each one of you.

Bud & Stella Pannell

The family of Dayton Bolton



Episcopal  
Morning Prayer

Sunday 10:00 a.m.

131 S. Fulton  
Iuka, MS

423-2701  
423-1989

## RUSHING REXALL DRUG COMPANY

Presents  
THE TISHOMINGO HOSPITAL LIST

Willie Alexander  
Lovie Aldridge  
Lucy Baker  
Clidie Bachuss  
Gladys Bolton  
Mary Cross  
James Dean  
Rex Goss  
Verlon Holland  
Odell Johnson  
Christopher Key  
Edna Mathis  
Annie Mock

Charlotte Marlin  
Junior McAlister  
Mildred Medford  
Willie Powell  
Della May Studdard  
Johnnie Vander-Wiele  
Betty Watson  
William Wiley  
Tracy Waddell  
Nona Rae Yarber  
Maggie Sparks  
Gertrude Bonds  
Letha Aday  
John Lambert



### Stress Line

Dear Dr. Morris:

A nephew of mine recently was shaken up in an automobile accident but not seriously injured. He was treated for minor injuries in the emergency room and released however, he is currently having nightmares, problems sleeping, and says that at times he starts shaking when he is riding in a car. He even says it is hard for him to get his breath and he becomes dizzy. We are quite concerned about him

because he has become depressed because of the things that are happening to him and he is simply not the same person and certainly not doing the kinds of things he used to enjoy doing. He

### St. Mary's Catholic Church

113 Eastport at Fulton Street

Sunday Mass or Eucharistic Service at 12 noon

Fr. John Young  
1-287-1385  
Corinth

Sister Jane Eschweiler  
Administrator  
1-728-7509  
Booneville



### Pre-Planning Provides Peace of Mind & Substantial Savings

Because some day, someone in every family will be faced with making funeral arrangements for a loved one, a Pre-Need Plan offered through Cutshall Funeral Home is designed to take unnecessary hardships out of a death in a family.

One big advantage of planning in advance is that a funeral is planned at today's values. While prices are escalating, your cost remains the same. You have greater flexibility than a pre-need trust or pre-paid funeral.

Example: A person pre-planning a \$3,000 funeral at age 65 would pay \$2,223, saving \$777.00. At age 50 that person would pay \$1,771, saving \$1,229. (These figures are for example and funeral of different price and for persons of different ages would reflect similar savings. This pre-need plan offered through American Funeral Assurance Company is available from age 0 to 100)

Remember the Cutshall Pre-Need Funeral Plan offered through American Funeral Assurance Company guarantees future values at today's prices, regardless of the rate of inflation.

Find out how easy and beneficial a Pre-Need Plan provided through Cutshall Funeral Home can be. Mail this coupon or call for an appointment with one of our professional planners.

(CLIP AND MAIL TO CUTSHALL FUNERAL HOME)

P.O. BOX 99  
IUKA, MS 38852

Yes, I would like to know more about Pre-Planning

NAME \_\_\_\_\_

ADDRESS \_\_\_\_\_

CITY \_\_\_\_\_ TELEPHONE \_\_\_\_\_

## CUTSHALL FUNERAL HOME

Since 1935

Pearl Street 423-5222 Iuka, MS

## Come Worship With Us

### BAPTIST

ST. PETER MISSIONARY  
Rev. Jonathan Temple  
AIRPORT MISSION  
Perry Murphy  
IUKA BAPTIST  
Dr. Julian West  
BELMONT FIRST  
Jack Maroon  
HUBBARD SALEM  
Allen Osborn  
CARTERS BRANCH  
S.W. Shinault  
CALVARY BAPTIST  
Marc Howard  
MT. MORIAH  
James H. Taylor  
GOLDEN CENTRAL BAPTIST

MT. VERNON BAPTIST  
Charles Holcomb  
TISHOMINGO BAPTIST  
Bob Watkins  
BURGESS CREEK  
Allen Jones  
BURNSVILLE FIRST  
Elbert Ray Bennett  
NEW PROSPECT  
Bro. Doug Christy  
OLDHAM  
Charles Wooten  
PADEN  
Pat Howard  
FIRST BAPTIST  
Leonard Charles Keys  
NEW SALEM BAPTIST  
Bro. Gary Carter  
UNITY BAPTIST  
Earl Martin  
RED BUD  
John Stovall  
ROWLAND MILLS  
Joe Hardwick  
HARMONY HILL  
Billy Paul Feltman  
MT. JOY  
Jerry Hopkins  
JACKSON CAMP  
Mavous Phifer  
MAGNOLIA MISSIONARY  
Jerry Stephens  
CALVARY MISSIONARY  
Jim Jones  
SOUTH CROSSROADS  
Harold Holly  
EASTPORT BAPTIST CHURCH  
Bro. Mike Duff  
Interim Paster  
PROVIDENCE BAPTIST

BETHEL MISSIONARY  
Dewey Williams  
MT. GILEAD BAPTIST  
Larry Travis  
TEMPLE  
Rickey Johnson  
MT. ZION BAPTIST  
Sammy Barnett  
FIFTH STREET  
Bill Hobson  
OLD PLEASANT HILL  
Danny Ballard  
NEW LEBANON FREEWILL  
Gene Gilbert  
ANTIOCH FREEWILL  
Glenn Jones

### POPLAR SPRINGS FREEWILL

Malcom Garrett  
HIGHLAND  
Mike Beasley  
BETHLEHEM  
Bro. Phil Dawson  
YELLOW CREEK  
Stanley Magill  
DENNIS FIRST BAPTIST  
Randy Proctor  
FIRST FREEWILL  
Ivan Asbury  
NEW LIBERTY BAPTIST  
Lathon Bray  
SHORT CREEK  
Bro. Leonard Casabella  
WALKER MISSIONARY  
LITTLE FLOCK PRIMITIVE  
Elders Roger Browning & Herman Clark  
SOUTHWOOD BAPTIST  
James B. Brown  
MT. GLORY  
Frankie Smith

### CHURCHES OF CHRIST

MAUD CHURCH OF CHRIST  
Dennis Kimery  
IUKA CHURCH OF CHRIST  
Perry Taylor  
BEREA CHURCH OF CHRIST  
John L. Hardwick  
TISHOMINGO  
Terry Smith  
BELMONT SECOND STREET  
Winston Wilemon  
PLEASANT GROVE  
Ronald Adams  
LIBERTY  
Haskell Sparks  
MAIN STREET, BELMONT  
Wayne Mitchell  
BURNSVILLE  
J.T. Smith

### APOSTOLIC CHURCH OF JESUS CHRIST

Kenneth White



### UNITED METHODIST

PATRICK HARMONY  
BURNSVILLE  
Larry Finger  
IUKA METHODIST  
Frank D. Burton  
MT. EVERGREEN  
CAMPGROUND  
ROCKY SPRINGS  
Bro. Jeff Dalton  
SNOWDOWN  
PLEASANT HILL  
SPRING HILL  
Dale Hathorn  
OLD BETHEL  
Dale Blackman  
GOLDEN CHAPEL  
Dale Blackman  
SALEM  
BOGGS CHAPEL  
PARADISE  
TISHOMINGO  
Earl McAnally  
BELMONT  
DENNIS  
Ronnie Goodwin  
JONES CHAPEL  
Roosevelt Irons  
ALLSBORO UNITED  
MARGERUM UNITED  
Bro. Ted Brison  
RIVERTON UNITED  
Bro. Ted Brison

### REORGANIZED CHURCH OF JESUS CHRIST OF LATTER DAY SAINTS

Justice Manning, Red Bay, AL

### UNITED PENTECOSTAL

BURNSVILLE FIRST  
Jimmy Rich  
IUKA FIRST UNITED  
Frank E. Williamson

### NONDENOMINATIONAL

AMAZING GRACE  
TABERNACLE  
Bro. & Sis. R.G. Rodgers  
MT. ZION  
Bro. Gerald Grisham  
NORTH CROSSROADS  
Travis Shea  
GRACE BIBLE CHURCH  
Danny Lovelace  
FAIRVIEW COMMUNITY  
Donald Hudson

### PENTECOSTAL

IUKA GOSPEL CHAPEL  
Larry Riley  
BURNSVILLE TABERNACLE  
W.E. Sharp  
CHRIST GOSPEL  
Rev. Ricky Bray

### McNATT FORD SALES

PHONE 423-3681  
IUKA, MS

### BROWN INSURANCE AGENCY

IUKA, MS



### RUSHING REXALL DRUGS

PHONE 423-3629  
IUKA, MS

### TOWN & COUNTRY FURNITURE

HWY. 25 SOUTH IN IUKA

### FIRST AMERICAN NATIONAL BANK

PHONE 423-5222 IUKA, MS

### STATE FARM INSURANCE

IUKA, MS

### CURTIS BROTHERS DRUGS

PHONE 423-3676 IUKA, MS

### FARM BUREAU INSURANCE

PHONE 423-6151  
IUKA, MS

### CUTSHALL FUNERAL HOME

### PAGE MOTORS, INC.

104 HWY. 25 NO.  
IUKA, MS  
423-3622

### IUKA GUARANTY BANK

"Straight Ahead  
Through The Years"





new Business To Open  
luka.  
ann Gas Co. of Belmont  
ns to open a new business  
luka around September  
h. A new Texaco System  
0 convenience store will

be located on Hwy. 25 South  
just across from McNatt  
Ford. The facility is being  
constructed by B & G Con-  
struction of luka and will have  
a full line of grocery items;  
Texaco oil, gas and diesel. A

complete hot and cold deli  
will serve for breakfast and  
lunch daily. Mann Gas Co.,  
which is owned by Mr. Jack  
Mann and operated by Ric  
Gann & Ralph Mann, has been  
in continuous business in

Tishomingo Co. since 1943.  
Pictured left to right are luka  
City Alderman, Leroy Dean and  
Scotty Skinner, Jack Mann,  
owner of Mann Gas Co.; luka  
Mayor, David Nichols, and  
Ralph Mann, store operator.

## Year End Gun Shoot

Yellow Creek Gun Club  
held its year end Club Shoot  
Saturday, August 16th.  
Twelve Shooters participated  
in three classes. Shooters  
qualified for the year end  
shoot by registering 1500  
shots during the year. Three  
classes were established by  
the scores that were shot  
during the year. "A" Class  
shooters and averages for the  
year were as follows:  
Hoyle Payne - 97.43; Joey  
Payne - 96.86; Gary Taylor -  
95.4; Barry Wren - 96.03;  
and Matt Smelson - 94.79.  
"B" Class shooters and  
averages: Ray Sitz - 90.75;  
Cliff Daniel - 89.40; Steve Pitts  
- 87.20; Wayborn Bowling -  
85.0; and Rick Belue - 84.2.  
"C" Class Shooters -  
Shelby Daniel - 76.0; Heath  
Morgan - 75.8.  
The high overall average  
and club champion patch  
went to Hoyle Payne. Hoyle  
maintained the highest  
average of all club shooters  
for the year by hitting 97 per-

cent of the targets that he  
shot. Congratulations to  
Hoyle on an excellent year.

The club year end shoot  
results were as follows:

"A" Class - 1st Place - Barry  
Wren - 100; 2nd Place - Gary  
Taylor - 98; 3rd Place - Joey  
Payne - 98; 4th Place - Hoyle  
Payne - 98; and 5th Place -  
Matt Smelson - 93.

"B" Class - 1st Place - Cliff  
Daniel - 97; 2nd Place -  
Wayborn Bowling - 97; 3rd  
Place - Steve Pitts - 96; 4th  
Place - Ray Sitz - 92; 5th Place  
- Rick Belue - 89.

"C" Class - 1st Place -  
Shelby Daniel - 88; 2nd Place -  
Heath Morgan - 84.

Barry Wren was the winner  
of the Remington 11-87  
Shotgun given may by the  
club.

There is still plenty of good  
weather for shooting left and  
everyone who likes to shoot a  
shotgun is welcome at the  
Yellow Creek Shooting  
Range. A turkey shoot is  
planned for Saturday, August  
26th at 9:00 a.m. There will be  
a small bore (410) Shoot on  
Saturday, September 16th at  
Tupelo and Yellow Creek on  
the 23rd. A two man team  
handicap shoot will be held  
on Saturday, September 30th.

## Tishomingo County A Vacation Paradise

Residents of Tishomingo  
County are heirs to a wealth  
of recreational opportunities  
within the county boundaries.  
Pickwick Lake and all the  
beautiful scenery is well  
known and is enjoyed by  
thousands who venture to its  
shores from great distances.  
Bay Springs Lake on the  
southern border of the county  
is a wonderful lake for fishing  
and boating. Both these lakes  
have a number of other  
places of interest located  
either on the lake or nearby.

The Natchez Trace Parkway  
traverses the county from  
east to west and is traveled  
each year by tourists, some  
of those pass through  
Tishomingo County without  
knowing the wonderful  
places of interest here.  
Originally an Indian trail be-  
tween Natchez and Nashville,  
the trace has become a scenic  
route operated by the  
National Park System with  
beautiful stops, easy driving  
and interesting side trips.

The Tennessee-Tombigbee  
Waterway trickles down the

western side of the county  
and in its Divide Cut section  
boasts of a cut through a  
ridge reaching a depth of 175  
feet. This Divide Cut area also  
has the Holcut Memorial Park  
and a beautiful overlook of  
the 175 foot cut that is truly  
one of the outstanding points  
of interest in Tishomingo  
County.

Tishomingo County con-  
tains two Mississippi State  
Parks within its lines and  
both of these parks are  
known to be the prettiest  
parks in the whole state park  
system. Tishomingo State  
park secluded and quiet in a  
wooded setting takes visitors  
back in time to a world of  
nature and peace. A canoe  
trail and walking trails are top  
items of interest there, as  
well as camping, fishing and  
swimming. J.P. Coleman Park  
is well known for its water-  
front location. The park is one  
of the best kept in the system  
and the park has full boating  
facilities. Space for pic-  
nicking is excellent at both  
parks.

Marinas at Aqua Harbor  
Marine and at Bay Springs  
join others on the lakes to  
give boating enjoyment to

## It's A Boy!

Mr. and Mrs. Jeffery Williams  
of Owings Mills, Md., are  
proud to announce the arrival  
of a son, Nicholas Geoffrey,  
born July 27, 1989. He  
weighed 7 lbs. 14 oz. and was  
21 inches long. Grandparents  
are Mrs. Shirley Williams of

luka, Jack and Geri Frost of  
Owings Mills, Md. and Mr.  
and Mrs. John Joesting, Jr. of  
Churchville, Md. Great-  
grandparents are Lucille  
Vandiver and the late George  
Vandiver of luka and Mrs.  
Mamie Price of Dillsboro, Ind.  
and Mrs. Argie Hunt of  
Owings Mills, Md.

thousands in the area. Full  
service for boats and other  
facilities are available.

Team Five of Leadership  
Tishomingo will continue to  
bring points of interests in  
other detailed articles on the  
above items as well as  
historic places in the county.

## NARFE Meets In Corinth

NARFE Jacinto Chapter  
#1879 met in Corinth, MS at  
the Bonanza Party Room at

11:30 A.M. Aug. 17, 1989, with  
28 members and 3 guests  
present. 2 of Mr. and Mrs.  
Leroy Gray's grandchildren  
and Mr. Percy Hodges, V-  
Pres. of the National Bank of  
Commerce who was our  
guest speaker. After lunch  
Ms. Helen Nixon, President  
called the meeting to order.  
Pledge of Allegiance was  
given followed by prayer by  
Mr. Paul White. Mr. Ray Sar-  
ton introduced our guest  
speaker, Mr. Hodges.  
Minutes and financial

reports were read and ap-  
proved. Reports were given  
by committees who were  
present.

Mr. Ray Sarton gave  
legislative report on NARFE  
business.

Mr. Herman E. Wood,  
Membership Chairman gave  
report.

The chapter elected to  
meet in Corinth, MS at  
Bonanza Party Room on 21,

September, 1989 at 11:30 A.M.  
luka, MS was selected for  
Oct. 19, 1989 meeting Ms.  
Joy Curtis in charge. Tippah  
Co. members selected Corin-  
th, MS as place for Jan., 1990  
meeting with Ms. Ollie D.  
Morgan in charge.

There being no further  
business the meeting adjour-  
ned. Mr. White dismissed the  
meeting with prayer.

## Lisa Wildman Dance Studio



Registering for  
Fall Classes

August 26<sup>th</sup>

from 10:00 - 12:00

at 200 Park Street  
in Booneville

Classes Offered in Ballet,  
Tap, Jazz & Tumbling

For More Information Call

728-9889

Call or Come By!

# Attention Renters-- Open House

Sunday, August 27th  
2:00 p.m. - 5:00 p.m.

## Northview Apartments

Jefferson Street  
Burnsville, Mississippi

Available For Immediate Occupancy  
Newly Decorated 2 and 3 Bedroom Models

On-site Management

Playground

On-site Laundry

Appliances Furnished

Section 8 Rental Assistance Available

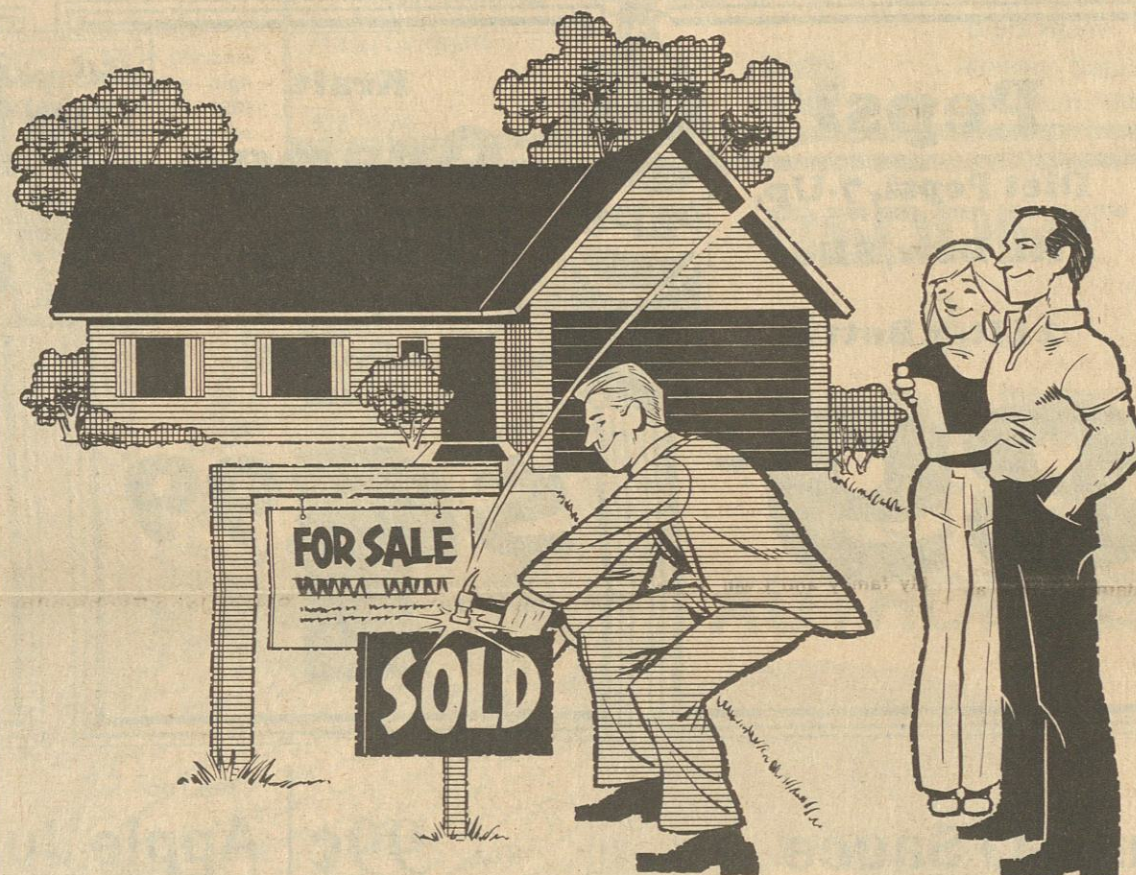
Handicapped Units Available



--Bring The Kids--

Refreshments & Children's Appreciation Gifts

Door Prizes to Qualified Applicants



# Our loans hit home!

Looking for a home? The three  
key factors used to be location,  
location, location. Nowadays, it's  
financing, financing, financing.  
You may have found the perfect  
location, but without the right  
financing, it's like a hammer  
without a nail...

When it comes to purchasing  
your dream home, we can help

nail it down.

Chat with our mortgage specialist,  
David Thorne, about our innovative  
Step Ahead Home Loans.  
We're right on target with your needs.  
And that's why more and more folks  
are discovering our loans hit home!



Call David Today!  
423-3858

**FIRST AMERICAN  
NATIONAL BANK**

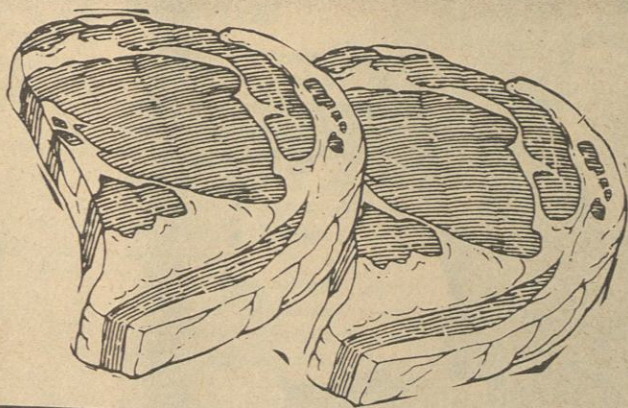


# Sunflower

"Your Better Value Food Store"

Quantity Rights Reserved No Sales to Dealers

Ad good thru August 30, 1989



U.S.D.A.

## Ribeye Steak

\$4<sup>19</sup>

Lb.

Armour  
**Chicken Nuggets** Lb. **\$2.19**

Armour  
**Corn Dogs** Lb. **\$1.69**

No. 1 Sliced  
**Slab Bacon** Lb. 89¢  
Chunk Lb. **79¢**

Armour  
**Sausage** 12 oz. **79¢**

Armour  
**Hot Dogs** 12 oz. **99¢**

Sally's or Armour  
**Bacon** 12 oz. **99¢**

Armour Sliced  
**Cooked Ham** 12 oz. **\$1.99**

Flavorite Sliced Asst. Variety  
**Wafer Meats** 2 1/2 oz. pkg. **49¢**

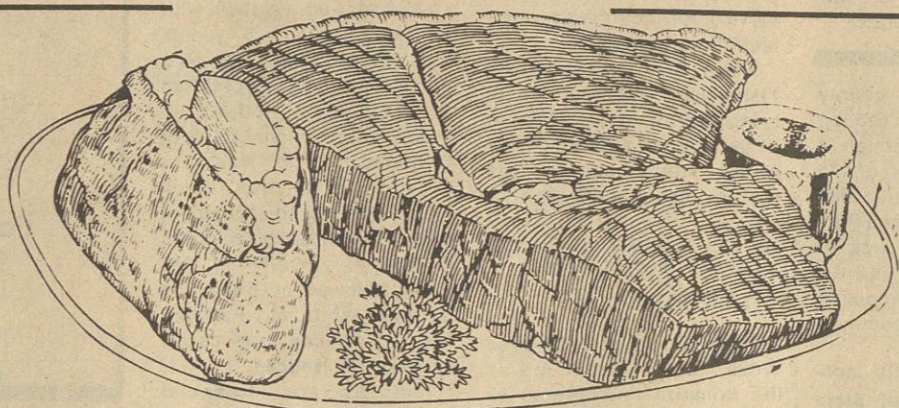
U.S.D.A. Choice  
**Minute Steak** Lb. **\$2.99**

U.S.D.A. Choice  
**Sirloin Tip Steak** Lb. **\$2.99**

Flavorite  
**Sliced Bologna** 12 oz. **99¢**

Armour Boneless Fully Cooked  
**Half Ham** Lb. **\$1.69**

Whole Lb. **\$1.89**



U.S.D.A. Choice

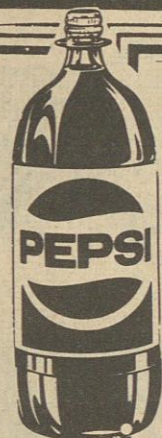
## Round Steak

Lb. **\$1.69**

### Pepsi

Diet Pepsi, 7-Up,  
Mt. Dew, Slice  
2 Liter Bottle

**89¢**



### Kraft Orange Juice

1/2 Gallon Glass

**\$1.99**



### Kellogg's Corn Flakes

18 oz. box

**\$1.49**

### Flavorite Margarine

1 Lb. Quarters

3 **\$1.00**  
for

Kraft  
**Bar-B-Q Sauce** 18 oz. **99¢**

Tree Top  
**Apple Juice** 48 oz. jar **99¢**

Showboat  
**Pork & Beans** 15 oz. cans **2/79¢**

Coronet Sparkle  
**Towels** Jumbo Roll **79¢**

**Tide Detergent** Giant Size 42 oz. Limit One **\$1.89**

**Joy Dish Liquid** 42 oz. Family Size **\$1.99**

Glad Large Kitchen  
**Trash Bags** 15 ct. **\$1.69**

Blue Plate  
**Mayonnaise** Qt. **\$1.79**



### Wesson Oil

**\$2.29**  
48 oz. bottle



### Richtex Shortening

42 oz. can **99¢**

Sunshine Hydrox  
**Cookies** 16 oz. **\$2.29**

Aunt Jemima Self Rising  
**Corn Meal** 5 Lb. Bag **\$1.19**

Chicken of the Sea In Oil  
**Tuna** 6 1/2 oz. can **65¢**

### Guaranteed Fresh Produce

Thompson Seedless White  
**Grapes** Lb. **79¢**

California  
**Red Plums** Lb. **79¢**

California  
**Valencia Oranges** 4 Lb. Bag **\$1.79**

U.S. No. 1  
**Yellow Onions** Lb. **29¢**

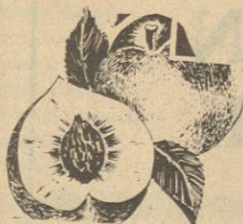
Fresh Canadian  
**Rutabagas** Lb. **39¢**



Jumbo Florida  
**Avodados** Each **69¢**

Vine Ripe  
**Salad Tomatoes** 6 Pk. **89¢**

**Large Michigan Peaches** Lb. **59¢**



Kraft American Singles  
**Cheese** 12 oz. **\$1.89**

Frishies Buffet 6 oz. cans  
**Catfood** 4/\$1.00

Cat Cafe'  
**Catfood** 3 1/2 Lb. Bag **\$1.19**

**Liquid Tide** 64 oz. **\$2.99**

Stayfree Reg.  
**Maxi Pads** 12 ct. **\$1.39**

Heinz Hamburger Dill Chip  
**Pickles** Qt. **\$1.59**

Bryan  
**Viennas** 5 oz. cans **2/89¢**

Reynold's  
**Foil** 18"x25' Roll **\$1.39**



### Sunshine Ration Dog Food

40 Lb. Bag

**\$6.99**





## Barnes - Martin Vows To Be Exchanged September 2nd

Mr. and Mrs. Charles Barnes are proud to announce the engagement and forthcoming marriage of their daughter Miss Debra Lynn Barnes to Mr. Bo Martin, son of Mr. and Mrs. Charles Martin of luka, MS.

The bride-elect is the granddaughter of Mr. and Mrs. R. Barnes of luka, MS and the late Mr. and Mrs. Walter Melka of Chicago, IL.

The groom is the grandson of Mr. and Mrs. Nolan Pruitt, and Mr. Fred Martin and the

late Bernie Martin of luka, MS.

Debra is a 1987 graduate of Burnsville High School. She has also completed two years at Northeast Mississippi Community College. She plans to continue her education at the University of North Alabama, where she will be majoring in Elementary Education. Debra is currently employed at the Chuckwagon Cafe in luka, MS.

Bo is a 1988 graduate of

luka High School. He has also completed one year at Northeast Mississippi Community College. Bo is currently employed at Hoover Stone, Inc.

The couple will exchange wedding vows on Saturday, September 2, 1989, at 6:00 p.m. at Mount Evergreen Methodist Church, in luka, MS.

The couple would like to invite all friends and relatives to attend.

## Tishomingo News

By: Willard Strickland

Visitors of Mrs. Lois Bolton Monday morning were Miss Mae Strickland and Stephanie McNutt.

Mr. and Mrs. Gary McNutt, Stephanie and Jessica, Mrs. Well & Shirley Thom & Mrs. Elaine Crouse visited Miss Mae Strickland Sunday.

The Tishomingo memakers night club met Lucy's Cafe last week with members present. We all had a good time and a good meal. Mrs. Opealine Crouse won the door prize. Members present were Sue Jean Markey, President Johnnie Strickland, Premie Morgan, Elaine Crouse, Shirley Thom, Eva Mae Strickland, Willard Strickland, Betty Whitehead and Kathy Byram. Christy Melvin was

honored with a bridal shower at the Liberty Church of Christ Sunday August 20th. She received many nice gifts.

Mr. Bill Phillips, son of Jimmy Phillips of Montgomery, AL stopped by to visit Hoyt and Mae Phillips last week and many more relatives in Tishomingo.

Little Katie Marie Strickland went to the Grand Ole Opry 2 nights and three days last week with her mama Ann Martain, Donna & Mendy. What a time the little girls had, they stayed at the Opryland Hotel.

John B. & Willard Strickland, and Jerry Ward Epps attended the McMurry Reunion at the Armstrong cabin on Cedar Creek Saturday in the afternoon. They went to Huntsville, AL to visit with an aunt, Mrs. Minnie Kennedy in the Cresswood Hospital. She is improving slowly. While there, they saw Rich & Maxine Tuggle.

Mr. & Mrs. Chris Rockwell spent Sunday afternoon with Mrs. Edna Harris.

Mrs. Edna Harris had a surprise telephone call from her son in Wahunge, Ill. Sunday 1 p.m. She's always a happy mother to hear from her children that's away. Her son Bill Harris has been in Wahunge for a while.

Mr. and Mrs. Frankie Emory of Red Bay, and Mr. & Mrs. G.B. Strickland motored down to Memphis on a visit. They all enjoyed it a lot.

Susan and West Southward the children of Mr. and Mrs. Billy Southward of Booneville spent sometime with their grandparents last week.

Friends of Lorine Kennedy Clark of Tusculumbia, AL regret her passing away last week. Her husband and sisters have the towns sympathy.

Mr. Edward Thom visited with Claude Kennedy in Booneville Sunday.

Mr. & Mrs. Malcom Holley visited with Clara Black last week and was at the Graveside service of Mrs. Lorine Clark.

Mr. and Mrs. Edward Thorn, Shirley Ann, Mrs. Opealean Crouse & Miss Eva Mae Strickland attended church at Paradise Sunday night. Bro. Dale Blackman's conducting their meeting.

Mrs. Opealine Crouse, Miss Linda Zuber and Eva Strickland attended the singing at the High School in luka. They enjoyed it all especially the Gruders.

Virginia Orick of Tupelo was at home with her father this weekend Mr. Clayton Short. They are remodeling

## ! TURKEY SHOOT ! August 26, 1989

Yellow Creek Shooting Range  
luka, MS  
9:00 a.m. until

You Name The Game, We'll Play It  
Shoot Your Shells, Any Load

ard Shoot..... Doubles  
ollow Me..... Stick Bird  
nnie Oakley..... Blue Chip

Special Prizes Donated By Wal-Mart, luka Store  
Special Shoot For Youth-Only Prize  
! Come Shoot With Us!



## Mira Presents Hallie Hendrix of Cherokee, Ala.

Hallie came to pick up her lay-a-way! and found this cute knit skirt and top on our clearance rack. Come see what you can find.

### Girls: Look What I've Got!

Zena Jeans & Matching  
Tapestry vest, Taboo Jean  
Jacket, Shirt to Match in the  
Railroad Strip, Outfits by Pinky

### Ladies: Toni Todd

New Shipment of Petite &  
Regular Sizes

Plus: A few Plus Size Denim Jumpers left,  
Corduroy Jumpers this week.

## Mira's Boutique

"Fine Ladies Apparel"

802 Wilmoth • luka, MS  
601-423-2238



## It's Twin Boys!

Mike and Sharon Wallace of Olive Branch, MS are pleased to announce the arrival of twin boys Michael Dustin, 6lbs. - 20 in. long and Billy Justin 6 lbs. 11 oz. - 20 1/2 inches long on August 9, 1989 at 2:36 and 2:37 a.m. at the Baptist East Memorial Hospital in Memphis.

Proud grandparents are Billy and Virginia Wallace of luka and Doyle and Hazel

Young of Byhalia. Great-grandparents are Mr. and Mrs. L.B. Brown of Fulton and the late V.V. Dulaney and Mrs. Minnie Wallace and the late E.L. Wallace of Fulton, Mrs. Kathryn Ivy Young of West Plains, MO and the late Carl Van Young and Mrs. Pauline Parette of Morrilton, ARK and the late Robert Guy Parette.

They were welcomed by their cousin little Amanda Gail Cutshall.

the home.

The Tishomingo High School class of 1969 had a reunion at the Pickwick Inn with Twenty-eight (28) present. Class members were Shirley Ann Thorn, Pam Bates Bobby Pennington, Jerry Lee Taylor, David Jo Pool, Hal Holt, Rickie Warner, Barbara Jo Massengill, Donnie Warner, Johnny Stanford, Ray Cox, Billy Southward, Sue James, Judy Vaughn, Wanda Little, and Ronald Rowan. The class all enjoyed their food as well as talking of good ole times.

The class also had a

moment of silent prayer for two classmates that were deceased, they were Ronnie Warner and Rebecca Gentry.

Visiting Mr. and Mrs. Hoyt Phillips over the weekend were Mrs. Bonnie Johnson and Ola Travis of Belmont and Carla Nunley and Sue Cain of Tishomingo.

## UNA Releases Dean's List

One hundred and 29 University of North Alabama students had grades high enough for the summer 1989 session to be named to the

Dean's list.

Sue Wilson, the UNA registrar, said the School of Arts and Sciences had 54 honorees; the School of Business, 39; the School of Education, 31; and the School of Nursing, five.

Ms. Wilson said a student, to be considered for the Dean's List, must be fulltime and seeking a degree with no

failing grades during the term and be in the top 10 percent of his or her particular academic school.

The local honorees, their schools and hometowns are: from School Of Arts And Sciences: Brenda Gale Nichols of luka and from School Of Nursing: Teresa Hill Duff of luka.

## Birthday Celebration

All family and friends have a special invitation to join Cletus Holt in celebrating his 79th birthday on Sunday, August 27, in his home Forrest Grove Community. A noon meal has been planned with an afternoon of fellowship to follow. Come if you can.

## 'FINAL MARKDOWN' SUMMER CLEARANCE

**\$9.99**

BACK TO SCHOOL !



**20%-50%**

**OFF**

ALL ATHLETIC SHOES

## The Shoe Tree

713 E. Eastport  
luka, MS  
423-1774

Store Hours  
Monday - Saturday  
10:00 a.m. - 5:00 p.m.



Since 1883  
**Jamison**  
It's **BEDDER** Bedding!



**8  
DAYS  
ONLY!**

**BEDDER™  
&  
BEDDER™  
FACTORY  
AUTHORIZED**

**OFF  
&  
MORE!  
ON  
COMPLETE SETS!**

## "Posture Brace Custom"

Leisurely Firm Sleep Ensemble

Twin Size Complete Set	Regular Price	<del>\$349.95</del>	Now Sale Priced	<b>\$158</b> Set
Full Size Complete Set	Regular Price	<del>\$399.95</del>	Now Sale Priced	<b>\$188</b> Set
Queen Size Complete Set	Regular Price	<del>\$479.95</del>	Now Sale Priced	<b>\$228</b> Set
King Size Complete Set	Regular Price	<del>\$599.95</del>	Now Sale Priced	<b>\$298</b> Set

## Town & Country Furniture Company

407 Bus. Hiway 25, luka, MS

Ph. 423-5660



# Stop Looking-It's All in The WANT ADS

OWN A CAR FOR \$35 per week. Bad credit or no credit. We will carry your note with a small down payment. Crazy Ed McKinney Used Cars, 703 Tate, Corinth, MS 286-6944. J-2-tfn

FLASHING ARROW SIGNS-Sale, rent, lease purchase. Call Booneville collect 601-728-5460 delivered. A-30-tfn-chg.

FOR SALE-4 1/2 acres, secluded wooded lot, 2 minutes from downtown, near 25 & 72 by pass, call 423-5254. M-11-chg-tfn

WANTED TO BUY USED FURNITURE & ANTIQUE FURNITURE. Also, glassware. We buy just about anything. Cleaning your house or attic out, give us a call. Cappelman's Antiques. Phone 423-9962 nights, 423-6836. S-17-tfn-C

For Rent - Lake Cabin - TN - MS State Line at water beside Sportsman's One Stop. Furnished, 2 bedrooms. \$300.00 month. Deposit. 601-287-4860 or 901-689-3505. J-22-TFN-Chg

FOR SALE-109 acres of pasture land, fenced and water. Cairo Community. Also restricted house lots. 6 miles north of Bay Springs Lake on Hwy. 365. Call 462-7612. S-29-tfn

## H & H Antenna & Towers

On Hwy. 25 North is now authorized dealer of Zenith TV's & VCR's. Spring Sale is now in progress on all 13 inch and 19 inch portables and 26 inch consoles. Toshiba TV's and VCR's available also. Open daily from 9:30 - 5:30 Saturday until 1. M-18-TFN

HOUSE FOR SALE-4 bedroom, 3 bath including t.v. lower, antenna, rotary, booster, office building with electricity and water, metal storage building and Ashley wood heater. 2.3 acres, Harmony Road, Iuka \$45,000.00. For information call 901-689-5385. S-15-tfn

For All Your Backhoe & Dozer Work Call Ron Terry 423-6463 anytime. We also do trenching water and gas lines, and licensed to do septic tanks. J-19-TFN

HOUSE FOR SALE - 3 bedrooms, 1 bath, brick, storm windows and doors, 2 acres, 423-6686, 4:30-9:00 p.m. J-13-tfn-chg

FOR RENT--Trailers, Kitchenette Apartments, Trailer Lots, Camper hook up. Casabella Trailer Coleman Park Road. Phone 423-2936. A-3-tfn-Chg.

FOR SALE - 1 house trailer and 1 house, sandwich shop, bait shop and grocery, 1 mile north of Tishomingo on Hwy. 25. Phone 423-7303. A-17-24-31-pd

FOR RENT-furnished house on water near North Crossroads, 2200 sq. ft. F.P., clac, ONR, DW, 2 bath, wet bar, 3 miles from NASA site, call 601-851-3211. A-27-TFN

5% DOWN PAYMENT on all homes on lot NO DOWN PAYMENT to qualified landowners Come by and pick out one of our beautiful single or doublewide homes Today! Located in Corinth, MS at the inter. of Hwy. 72 and Golding Dr., directly behind WXCUI Radio, across from Mall of Corinth. WINDHAM'S MOBILE HOMES, INC. 287-6991 17 Years Continuous Service J-13-thru-A-31-chg

SNACK VENDING -- Hottest machine in years. Retire in 10 years. Unbelievable return, possible 3 to 6 months. No competition. Work 1 day per month. 50 secured locations. \$4,000 to \$20,000 investment. 1-800-888-5614. A-3-10-17-24-31-pd

TRAILER FOR RENT-- and trailer lot for rent, off Coleman Park Road. Call 423-3425.

FOR RENT-3 Bd., 3 baths, full walk-out basement on 2 1/2 acres, 2 block off the highway. Move in now. Reference Cecil Davis at store across from post office in Dennis, MS. A-3-tfn-chg

FOR SALE-Re-conditioned Mobile Homes, \$2,500 to \$8,500. Call 287-5810 after 6:30 on weekends. A-17-24-31-chg

HELP WANTED? If you need assistance getting a job because of limitations due to physical and mental impairment, Vocational Rehabilitation may be able to help. For more information call 287-1462 or 423-5203. J-13-S-28-chg

NEEDED part-time babysitter. If interested call 423-2768. A-17-24-31-chg

TURN KEY BUSINESS Handling Nabisco, Keebler, Frito-Lay and similar food products. No selling involved. Service commercial accounts set up by parent company. National census figures show average gross earnings of \$3,400.00 per month. Requires approx. 8 hrs. per week. \$16,000 cash for equipment. Expansion financing is automatic for those qualified. Call 1-800-476-0369 ask for Ray. Phone staffed 24 hrs a day. Sunday calls accepted. A-10-17-24-31-chg

HELP WANTED-persons to sew disposable garments. Must own commercial serger. Call D & J Sewing Contractors at 454-3348, Belmont, or 370-7158, Cherokee, AL. J-20-TFN-chg

FOR SALE-1 house trailer and 1 house, sandwich shop, bait shop and grocery, 1 mile north of Tishomingo on Hwy. 25. Phone 438-7307. A-10-17-24-pd

FOR SALE-Whirlpool freezer, 19 ft., almond color, approx. 2 years old, still under warranty. Call after 5:30. 286-3220. A-17-24-chg

WANT TO BUY-Used & Antique Furniture, glassware, stoneware. Cleaning out houses, attic and out buildings. Buy most anything. Please call Hill Top Flea Market 423-9153 or night 423-2418. J-20-27-A-3-10-17-24-31-chg

HELP WANTED-Construction Superintendent/Foreman, form carpenters and laborers. Call after 7 p.m. (601)423-3210. A-24-31-pd

CHIMNEYS CLEANED Inserts pulled & serviced \$75.00. Chimney caps installed, all work guaranteed. Atlas Chimney Sweeps. (205)383-4709. A-24-31-S-7-14-chg

FOR SALE-A large selection boys clothes, new and slightly worn, sizes 1 thru 7. Including jeans and fleece, jogging suits. Call 423-6750. A-24-Pd

JOB OPENING--Kaydee Products is now taking applications for employment. Openings include: Mig Welder, Press Operator, Upholster, & Wood Worker. Apply at Kaydee Corporation, Belmont, MS. Equal Opportunity Employer A-24-31-chg

We Will Do housecleaning, Monday - Saturday. Call 423-1437 or 423-3026 ask for Dorothy or Lynn, after 3:30 p.m. A-24-pd

BROOK'S SEWING Unclaimed Lay-Away new Singer Style Free Arm Sewing Machine with drop in bobbin button holes, montograms and more. Reg. \$299.00. Pay off lay-a-way balance of only \$128.00. Come by Brooks Sewing and Vacuum, Hwy. 72 E. Corinth, MS. Phone 287-6270. A-24-TFN-chg

FOR RENT-2 Bd. Mobile home, 2 baths, 2 air conditioners, full length patio in front, carport, full length screened in back porch. Call 427-8244. A-24-31-chg

Will Do Babysitting in my house weekdays, experienced. Ask for Stephanie after 5:00 p.m. 423-5599. A-24-chg

Need someone to do yardwork, Midway...Call 423-6497. A-24-chg

Put #1 to work for you - LIST with

**Century 21**

Judy Parsons Real Estate  
1719 W. Quiltman  
Iuka, MS  
601-423-5001

Each office is independently owned & operated

## Growing Obstetrical Service at Magnolia Hospital, Corinth, MS

has openings for (2) two RN Positions in labor and delivery area. Post partum floor experience preferred. 7 p.m. to 7 a.m. shift. Contact personnel office 601-286-6961.

EEO

A17-24-chg

## Dailey's Body Shop and Wrecker Service

BURNSVILLE, MISSISSIPPI

PHONE

Day 427-9234

Night 427-8449

Expert Body Work - 24 Hour Service BURNSVILLE

It Is True you can buy Jeeps for \$44 through the U.S. government? Get the facts today! Call 1-312-742-1142

Ext. 9107 A-24-S-7-Pd

Notice

I will not be responsible for other than my own. A-10-17-24-pd

## Moore's Jewelry Downtown Iuka DIAMONDS

## Pickwick Circle Apartments

Iuka - 423-5314

Section 8 Rental Assistance Available

Now Leasing Nice One and Two Bedroom Apartments; Central Heat and Air; New Paint Very Clean.

Elderly, Disabled and Handicap Units Available



## MOORE'S BODY SHOP & WRECKER SERVICE

24 HOUR WRECKER SERVICE 24 HR. PHONE 423-5130

Insurance Claims Welcome Expert Glass Replacement

Free Estimate Expert Body

"Day or Nite, We Do It Right" No Hill Too Steep, No Ditch Too Deep You Call, We Haul!

**NEED MONEY**

**JOE'S PAWN SHOP**

CASH-IN-A-FLASH

Cash Loans on Guns - VCRs - Jewelry - Class Rings - TVs - Tools - Gold - Stereos - Anything of Value We Buy Scrap Gold

Located on Hwy. 25 South - Iuka, MS Next Door to McNatt Ford

HOURS: Mon. - Sat. 8:00 a.m. - 5:00 p.m.

**423-2123**

## Paul D. Callens Real Estate

"Pickwick's No. 1 Realtor" 305 W. Eastport - Iuka

423-1912

New Listing - Extra-neat 3 1/2 brick in quiet neighborhood "Silent Flame" heater, fenced yard, fully furnished. \$39,500.00

Investment opportunity - Brick duplex w. 2 Bds. basement each side. Large lot space for additional. Assumable loan. \$60,000.00

Need Offer - Great 2 (or 3) bd. brick w. spacious living in condition, possible owner financing. \$30,000.00

Comfortable one-owner home w. large rooms, excellent living, dining, kitchen, finished basement, garage. \$65,000.00

Gorgeous traditional w. elegant 4-bd. plan including w. FP, formal dining, gourmet kitchen, lovely lot in area. \$130,000.00

RESORT

New Listing - Waterfront 3/2 home w. screened porch maintenance on large level lot w. dock & pier. \$127,000.00

New Listing - Exciting resort home beautifully decorated year-round or week-end comfort. Decks, wooded dscaped lot. \$110,000.00

Make an offer on this great 2-level waterview w. 3 bds. baths, deck. \$38,000.00

Waterfront w. 3 bds, stone FP, decks, pier and dock. \$60,000.00.

Fabulous tri-level waterfront overlooking Bear Creek Bds., 3 baths, decks, lovely landscaped lot w. pier and dock. \$280,000.00

Exceptional wooded waterfront lot in restricted area. \$55,000.00

Beth Davis - Realtor, GRI - 423-9543  
Debbie Brown - Realtor Asso. - 423-6280

**Grace Long REAL ESTATE COMPANY** 423-5555

New Listing - Fantastic 3 level-custom built water front home with spectacular view of lake, 3 BR, 2 1/2 Ba, Hot Tub, extra large garage/boat house with boat rail, much more - \$265,000

New Listing - Extra Nice 3 BR Brick Home w/2 Baths, F.P., pool, shop, paved Rd, 1 1/2 Ac. - \$55,000

New Listing - lovely 3 BR, 2 Ba., waterfront cabin, High living area, F.P., recently refinished boat house 1 1/2 Ac. - \$125,000

New Listing - Impressive 3 BR, 2 Ba. Brick & Siding Home, Formal & Informal living areas, patio, lovely lot, All City Conveniences Moores Mill Rd. - Belmont - \$52,500

New Listing - Country Home with lots of living space, 3 BR, 2 1/2 Ba, Brick, 2 living areas, F.P., Basement approx. 4 1/4 Ac. Belmont - \$61,500

Country Elegance At It's Best! Beautiful 3 BR, 3 Ba home privately located on 5 Ac. tract. 2 large living areas, F.P., pool & many extras - \$150,000

Delightful 3 BR, 2 Ba Brick, charming decor, w/Formal & Informal living areas, F.P., Deck, Casey Springs S.D. - \$72,500

Very Nice 3 BR, 2 Ba Brick & Frame with spacious living areas, 4 Ac. Mt. Evergreen Rd. - \$59,000

Lovely 3 BR Cedar & Stone with large living area, 2 1/2 Ac. Pleasant Hill Rd - \$50,000

Appealing - 3 BR Brick located on large corner lot, Woodall Acres - \$47,900

New Custom Built 2 Story w/3 BR, 2 Ba, lovely decor, many desirable features - \$48,000

Tidy & Secluded Cabin - 5.6 Acres near Coleman Park - \$10,500

Good Looking 3 BR, 2 Ba stone & cedar home located on 30 Ac, paved Rd, near lake & NASA Site - \$80,000

Charming New 2 Story with 3 BR, 2 1/2 Ba, large vaulted Great Rm, Snowdown Rd - \$65,000

Enchanting 3 BR, 2 Ba Brick, 72 1/2 Acres, lots of Rd. frontage, paved Rd - \$100,000

Instantly appealing stone & cedar 3 BR, 2 Ba, spacious living area attractive design, large lot, Pleasant Hill Rd. - \$50,500

Sparkling New Home, 3 BR, 2 Ba, lovely country style decor, Pleasant Hills Village - \$68,500

Recently listed - Attractive 3 BR, 2 Ba Brick, large living area nice corner lot, Hwy. 25 S, Belmont - \$61,500

New Listing - Stone Building, Great Possibilities, very good location, on busy street, partially equipped, owner financing available - \$60,600.00.

Luxurious Country Home, 3 BR, 2 Ba Stone, Large Family Room, Shop, Pool, 2 Acres - \$95,000.00.

Priced to sell - 3 BR, 1 1/2 Ba, Convenient Sub. Div. - \$32,000.00.

Prestigious New 2 Story Home in desirable Independence Square S.D., with 4 BR, 2 Ba, oversized family Rm & Kit., Many extras - \$76,000.00.

Classic 3 BR, 2 Ba Brick & Cedar, Quiet Country Setting, 2 Ac., Leedy - \$59,500.00.

23 Ac. Pleasant Hill Rd.  
15 Ac. off Coleman Park Rd.  
3/4 Ac. lot Old Hwy. 72 W.  
Prime Commercial Property inside City.

OFFICE - 423-5555

Grace Long - Broker - 423-6584

Billy Godwin - 423-6959

Cheryl Clark - 423-6704

Else Durham - 423-6833

Deborah Ham - 423-2061

Wanda Cummings - 423-5833

Many Other Listing Land Rental Appraisals



Tishomingo County News-Vidette-Belmont News

**SALE-New** Serger machine \$299 & up, New Style Zig Zag Sewing machine with drop in bobbin, iron holer, and more only while supply last. Hurry Brooks Sewing & Vacuum, 72 E., Corinth, MS. 287-27-TFN

**HELP WANTED**  
\$100 Per Hundred mailing letters from home! Mail, send self-addressed, stamped envelope. Associates, Box 309-T, Monia, NJ 07067  
10-17-24-31-S-7-14-chg  
1000 WOLFF SUNBEDS  
Toning Tables  
Low monthly payments! Commercial - Home Tanning Beds, Lamps - Lotions - Accessories, Call today FREE for Catalog, 1-800-228-6292 (80017)  
14-31-S-7-14-Pd  
**ONE DAY YARD SALE**  
One day only - 2 miles South of J. & J. Supermarket in Burville, Hwy. 365, at the home of Benny Phifer, 2 families, Tuesday, August 24, 7 a.m. to 1 p.m.  
A-24-chg  
**YARD SALE-Thursday,** day & Saturday at the home of Charles & Bettye Ballard on Eastport Road. 10 a.m. until. Adult & children's clothing & miscellaneous items. 3 families.  
A-24-Pd

**YARD SALE-Friday & Saturday** at the Melvin Clark residence on Hwy. 72 E. Cancel in case of rain.  
A-24-chg

**YARD SALE-2 families,** Jones Subdivision, Hwy. 72 E. Friday & Saturday, August 25 & 26. Rain or shine. A-24-chg

**HOUSE OF LLOYD** now interviewing for Demonstrator. No sales experience necessary. No investment! Free Kit! Work own hours. Call 454-7583.  
A-17-Pd  
**OPEN-Fruit Stand,** 7 days a week with Fresh vegetables and fruits, located on 25 North across from Mighty Mart in Iuka.  
A-17-24-31-S-7-chg

## POSTED

All lands owned by Kenneth A. Nelson are posted against trespassing fishing, hunting, or swimming.  
Mrs. Kenneth A. Nelson  
A-24-31-S-7-PD

## LEGAL

The village of Paden, Mississippi has three streets to be paved. They are approximately 15,000 square feet. Bids are open to any and all bidders at this time. Bids should be submitted by August 31, to the Mayor - since the courthouse is not open daily. The Mayor and Board of Aldermen reserve the right to reject any and all bids.  
Hughie Bates, Mayor  
Route 2 Box 36  
Paden Circle  
Tishomingo, MS 38873  
A-17-24-31-chg

## Legal Notice

IN THE CHANCERY COURT OF TISHOMINGO COUNTY, MISSISSIPPI  
FIRST CITIZEN LOANS, INC., PLAINTIFF  
CAUSE NO. 4902  
VS.  
KENNETH C. ROBINSON DEFENDANT

NON-RESIDENT SUMMONS  
STATE OF MISSISSIPPI  
TO: KENNETH C. ROBINSON  
c/o Marine Transportation Co., Inc.  
P.O. Box 278  
Dyersburg, Tennessee 38025-0278  
Whose Post Office Box and Street Address is unknown after diligent search and inquiry.

You have been made a Defendant in a suit filed in this Court by First Citizen Loans, Inc., for your failure to pay your indebtedness to them. There are no other defendants in this cause, other than yourself.

You are required to mail or hand deliver a written response to the Complaint filed against you in this action to Harold S. Jackson, the Attorney for the Plaintiff, whose address is Post Office Box 414, Iuka, Mississippi 38852.

**YOUR RESPONSE MUST BE MAILED OR DELIVERED NOT LATER THAN THIRTY DAYS AFTER THE 24th OF AUGUST, 1989, WHICH IS THE DATE OF THE FIRST PUBLICATION OF THIS SUMMONS. IF YOUR RESPONSE IS NOT SO MAILED OR DELIVERED, A JUDGMENT BY DEFAULT WILL BE ENTERED AGAINST YOU FOR THE MONEY OR OTHER RELIEF DEMANDED IN THE COMPLAINT.**  
You must also file the original of your Response with the Clerk of this Court within a reasonable time afterward.  
Issued under my hand and seal of said Court, this 21st day of August, 1989.

GERALD PARSONS  
CLERK OF THE CIRCUIT COURT  
TISHOMINGO COUNTY,  
MISSISSIPPI  
GLEN DYLL BOLTON, D.C.  
A-24-31-S-7-chg

## Legal Notice

PUBLIC NOTICE FOR BUDGET HEARING  
TOWN OF TISHOMINGO  
A Public Hearing will be held on August 29, 1989 to provide the General Public with an opportunity to comment on the taxing and spending plan incorporated in the proposed budget of Town of Tishomingo for the fiscal year beginning October 1, 1989 and ending September 30, 1990. The meeting will be held at Tishomingo City Hall at 5:30 p.m. All interested citizens are encouraged to attend and comment.  
A-17-24-chg

## TRUCK DRIVER TRAINEES NEEDED NOW

No Experience Necessary - Must be 21 and over. Good Health, Decent Driving Record and Serious desire to learn.  
Interviews by phone.  
Call 1-800-662-7364  
C. D. I.  
Gulfport, Miss.

Licensed by the Miss. State Dept. of Education, Proprietary School & College Registration. License #445

## Legal Notice

IN THE CHANCERY COURT OF TISHOMINGO COUNTY, MISSISSIPPI  
IN THE MATTER OF THE ESTATE OF ESTELLA HELTON, DECEASED  
NO. 11,063  
NOTICE TO CREDITORS

The undersigned having been appointed Administrator Cum Testamento of the estate of Estella Helton, deceased, by the Chancery Court of Tishomingo County, Mississippi, in Cause No. 11,063 on the docket of said Court, on the 7th day of August, 1989, hereby gives notice to all persons having any claims against the said estate to have the same probated and registered by the Clerk of the Chancery Court of Tishomingo County, Mississippi, within ninety (90) days, and failure to probate and register for this period will bar the said claim.

WITNESS MY HAND AND SIGNATURE, on this the 7th day of August, 1989.

NOONAN HELTON, ADMINISTRATOR  
CUM TESTAMENTO ANNEXO  
RICHARD O. CLARK  
ATTORNEY AT LAW  
POST OFFICE BOX 319  
IUKA, MISSISSIPPI 38852  
(601)423-5227  
A-24-31-S-7-chg

## Legal Notice

The Iuka School District is accepting Bids for the annual Junior Class magazine fund raiser. Bids should include the discount given for sales. Bids open September 1, at 3:30 p.m. at the Superintendents Office.  
Further information may be obtained at the Iuka Superintendents Office, 507 West Quitman Street, Iuka, MS.  
A-24-31-chg

## Legal Notice

ACCEPTING APPLICATIONS  
TOWN OF TISHOMINGO

For Water and Gas Superintendents. Experience with Gas and Water System, experience with Trencher and Backhoe, this does include manual labor. High School Diploma required or equivalent. Salary range negotiable. Must be willing to relocate close to area. If interested, apply at Tishomingo City Hall, Monday thru Friday 8:30 a.m. to 4:00 p.m. Apply in person only. Last day to accept applications Thursday, August 31st.  
A-17-24-31-chg

## Legal Notice

SUBSTITUTE TRUSTEE'S  
NOTICE OF SALE

Whereas, on April 7, 1982, Thomas A. Gentsch and Jan Biggs Gentsch executed a Deed of Trust to Bill Kail, Trustee, for the benefit of Mississippi Delta Mortgage Company, which said Deed of Trust is now of record in the office of the Chancery Clerk of Tishomingo County, Mississippi, at Iuka, Mississippi, in Book 104, pages 805-809, of the records of Deeds of Trust of said County; and

Whereas, Federal National Mortgage Association, as owner and holder of the said Deed of Trust and indebtedness secured thereby, has exercised its option to appoint Barry Finch as Substitute Trustee, in the place and stead of Bill Kail, which instrument of substitution was executed on the 25th day of July, 1989, and is now of record in the aforesaid Chancery Clerk's Office in Gen Sub. of Trustee Book 1, page 232; and

Whereas, default having been made in the payment of the indebtedness secured by said Deed of Trust, and the holder of the Note and Deed of Trust having requested the undersigned Substitute Trustee so to do, I will on the 25th day of August, 1989, offer for sale, at public outcry, and sell, during legal hours, being between the hours of 11:00 a.m. and 4:00 p.m., at the east front door of the County Courthouse of Tishomingo County, at Iuka, Mississippi, for cash to the highest and best bidder, the following described land and property lying and being situated in Tishomingo County, Mississippi, being more particularly described as follows, to-wit:

Part of the NW 1/4 of Section 35, Township 3 South, Range 10 East, described as beginning at the northwest corner of said quarter section and thence run S. 12° 30' E. a distance of 1952.6 feet to the north side of Lakeview Drive and the point of beginning hereof; thence run N.

10° 16' E. a distance of 338.8 feet to the south side of a lake; thence run in an easterly direction along said lake a distance of 174.0 feet; thence run S. 18° 37' W. a distance of 344.0 feet to the south side of Lakeview Drive; thence run in a westerly direction along said road a distance of 148.8 feet to the point of beginning, containing 1.25 acres, more or less.  
Said land is subject to the covenants contained in a Warranty Deed executed by G. H. Craddock to Thomas A. Gentsch, et ux, dated 7/16/81 and recorded in deed Book B-103, page 759.

I will convey only such title as is vested in me as substitute Trustee.  
WITNESS my signature, this 1st day of August, 1989.  
/s/ Barry Finch  
SUBSTITUTE TRUSTEE  
A-3-10-17-24-Chg.

## Legal Notice

SUBSTITUTED TRUSTEE'S  
NOTICE OF SALE

WHEREAS, Gary Wilson, et ux., Leona Wilson, executed a Deed of Trust to Ronald Windsor, Trustee for Linda Gail (Tigner) McLaughy, under date of September 25, 1984, recorded in Trust Deed Book 115, at page 364, et seq. of the records of the Chancery Clerk of Tishomingo County, Mississippi.

WHEREAS, Linda Gail (Tigner) McLaughy the legal holder of said Deed of Trust, substituted Michael D. Cooke, as Trustee therein, by instrument dated August 8, 1989, recorded in Book 1, at page 234 of the records of the Chancery Clerk of Tishomingo County, Mississippi, as authorized by the terms thereof; and

WHEREAS, default having been made in the performance of the conditions and stipulations as set forth by said Deed of Trust, and having been requested so to do by the legal holder of the indebtedness secured and described by said Deed of Trust, notice is hereby given that I, Michael D. Cooke, Substituted Trustee, by virtue of the authority conferred upon me in said Deed of Trust, will offer for sale and will sell at public sale and outcry to the highest and best bidder for cash, between the hours of 11:00 o'clock A.M. and 4:00 o'clock P.M. at the east door of the Courthouse in Tishomingo County, on the 1st day of September, 1989, the following described land and property, being the same land and property described in said Deed of Trust, situated in Tishomingo County, Mississippi, to-wit:

Part of the SW 1/4 of the NE 1/4 of Section 15, Township 2 South, Range 10 East, beginning at the Southeast Corner of said SW 1/4 of the NE; thence North 30 feet to the point of beginning hereof; thence West 275 feet, more or less, to the southeasterly right-of-way of the TVA transmission line easement; thence with said right-of-way North 33 degrees 24 minutes East 503 feet, more or less, to the painted 1/4, 1/4 Sec. line; thence South 42° 22' East, more or less, to the point of beginning. Containing 1.3 (1-3/10) acres, more or less.

Title to said property is believed to be good, convey only such title as is vested in me as Substituted Trustee.  
WITNESS MY SIGNATURE this 8th day of August, 1989.

MICHAEL D. COOKE  
Substituted Trustee  
A-10-17-24-31-chg

## Legal Notice

IN THE CHANCERY COURT OF TISHOMINGO COUNTY, MISSISSIPPI

IN THE MATTER OF THE ESTATE OF WILMA ELIZABETH GILLILAND, DECEASED  
CAUSE NO. 11,031

NOTICE TO CREDITORS

Letters Testamentary having been granted on the 14th day of July, 1989, by the Chancery Court of Tishomingo County, Mississippi, to the undersigned Executrix upon the Estate of Wilma Elizabeth Gilliland, deceased, notice is hereby given to all persons having claims against said estate to present the same to the clerk of this court for probate and registration according to the law within ninety (90) days from the first publication of this notice, or they will be forever barred.  
This the 14th day of July, 1989.

MARY ANNE TOMLINSON  
EXECUTRIX OF THE ESTATE OF WILMA ELIZABETH GILLILAND, DECEASED  
A-10-17-24-chg

## Legal Notice

SALE OF STANDING PINE TIMBER IN THE COUNTY OF TISHOMINGO, MISSISSIPPI

Came in the matter of the sale of standing pine timber belonging to the County of Tishomingo, Mississippi as described below.

WHEREAS, under the law it is necessary for the intention of the Board of Supervisors to advertise substantially in the following form, to-wit:

**NOTICE**  
Sale of standing pine timber located at the Iuka Airport and belonging to Tishomingo County.

The Board of Supervisors of Tishomingo County will on Tuesday, September 5, 1989 at 10:00 A.M. at the office of the Clerk of the Board of Supervisors in the town of Iuka, Mississippi receive bids for the sale of the above mentioned standing pine timber.

The Board reserves the right to reject any and all bids.

This the 15th day of August, 1989.

A-17-24-31-chg  
**Registration Continues At Northeast**

Registration for the fall semester at Northeast Mississippi Community College will continue through Tuesday, September 5, according to J. Connie Drown, Dean of Instruction.

Students who have not registered but wish to do so should report to the Office of Admissions in Estes Hall between the hours of 8:00 a.m. and 3:30 p.m.

To expedite the registration process, students are asked to bring with them transcripts from high school and colleges previously attended as well as ACT scores when required.

The Admissions and Counseling Center staff will be available to assist students with class scheduling and financial aid applications.

The American College Test (ACT) will be given each day Monday through Friday, at 8:00 a.m. for persons enrolling in academic or technical curriculums who have not previously taken the test. A picture identification, preferably a valid driver's license, is required for admission to test. Students should report to Stringer Hall, Room 218, for the ACT. Cost of the test is \$13.

## Southern Asphalt

Asphalt Paving - Repair - and Sealing - Free Estimates

Call 286-8666

## B. & G. CONSTRUCTION

GENERAL CONTRACTOR

P.O. BOX 393  
IUKA, MS. 38852

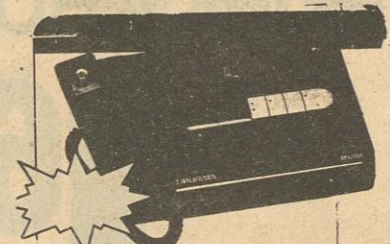
601-423-6041



BILLY GANN  
PRESIDENT

BARNEY HUDSON  
GEN. SUPT.

## FAX SERVICE AVAILABLE



Let us send or receive your fax messages  
For more information, please call:

**B & G Construction, Inc.**  
White House Rd - Ph. 423-6041  
Pick-up & Delivery

## 1, 2 & 3 BEDROOM APARTMENTS

KITCHEN APPLIANCES  
FURNISHED  
RENTAL ASSISTANCE  
AVAILABLE



## IUKA APARTMENTS

1000 N. PEARL ST., IUKA, MS  
MONDAY - FRIDAY 9-12 A.M.

423-2057

## Quality Built Homes

Financing Available  
No Money Down  
No Closing Cost

Total 100% Financing

Phone 423-1336

48 Hrs. Credit Approval

Clark Construction



## Available for Immediate Occupancy Northview Apartments

Burnsville, MS

One, Two and Three Bedroom Apartments  
Newly redecorated, Appliances Furnished  
Water Furnished, Central Heat, On Site Management  
Section 8 Rental Assistance Available

Handicap Units Available



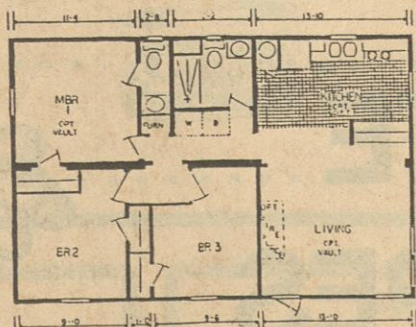
Call Sue at 427-9049 To Become A Part Of A Clean, Quiet Apartment Community

## Southern Housing Says Look No Further

Only  
**\$15,995<sup>00</sup>**  
(On your lot)

Factory Direct Prices

The Best Buy In North Mississippi



Available Now From Southern Housing  
On The Miracle Mile In Tupelo

44 Floor Plans Available

See Southern Housing Today For Your Dream Home

**842-7173**

## Mathis & Sons Printing Co.

Hwy. 25 North - P.O. Box 475  
Iuka, Miss. 38852

"All Types of Commercial Printing"  
Offset - Letterpress - Multi-Color  
Thermographing

**423-2920**

"HOME OWNED, HOME OPERATED"

## Iuka Scrap Metal

Graham Road in Iuka

Paying top money for copper, brass, aluminum, steel, tin, aluminum cans, car bodies, and batteries.

Now Buying Glass - green, brown, blue & clear

**We Buy Aluminum Cans Daily**  
(601)423-9854 or (601)423-5779

Used Auto Parts Only at Eastport Road Location



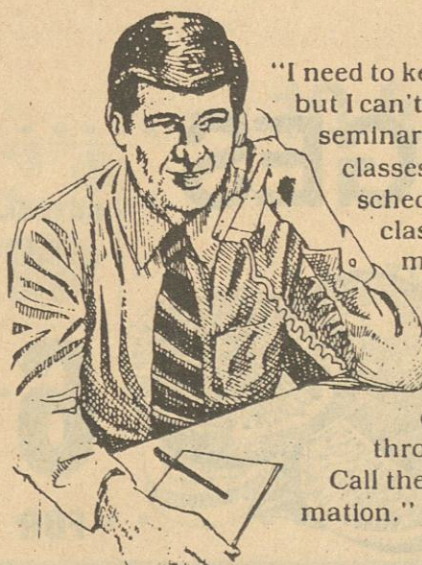
## RONALD'S AUTO & MARINE

## CLEANING SERVICE

Located At All American Car Wash  
Next To Wal-Mart in Iuka  
Specializing In Wash, Wax, Carpet, Upholstery,  
Vinyl Tops, Buffing & Mirror Glazing  
complete Interior Restoration, Seats, Carpet, Etc.

Car Detailing Complete - Cleaning Motor Included  
Hours 7 Days A Week From 8 a.m. - 10 p.m.

Call Ronald Tigner  
Home 423-9865 or Work 423-9908



"I need to keep up with tax changes, but I can't spare the time for all-day seminars or a rigid schedule of classes. H&R Block lets me schedule my income tax classes from a variety of morning, afternoon and evening offerings. With what I learned from the H&R Block Income Tax Course, I've more than doubled the investment through savings at tax time. Call them now for more information."

FOR MORE INFORMATION CALL  
423-9137

**H&R BLOCK**

Hwy. 25 S., Iuka, MS

Classes begin in this area September 12th

7.5 CEU's Awarded

Licensed by the Mississippi State Department of Education, Proprietary School and College Registration.  
License No. 428.



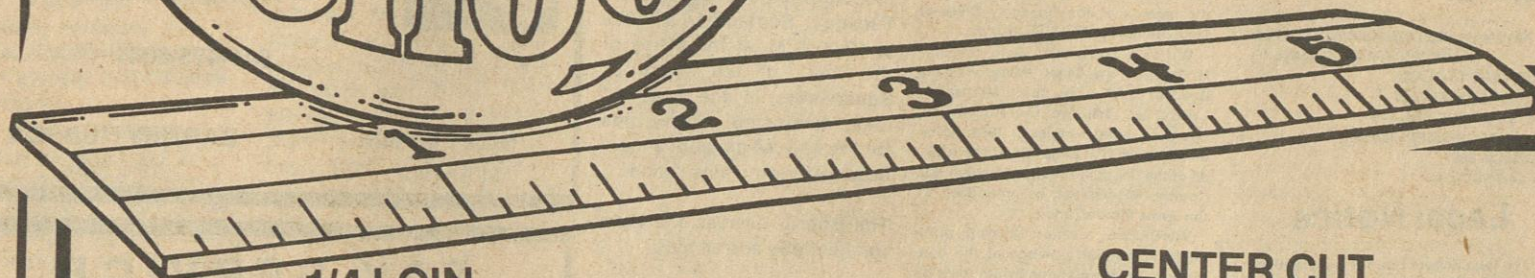


U.S. INSPECTED WHOLE  
**FRYERS**



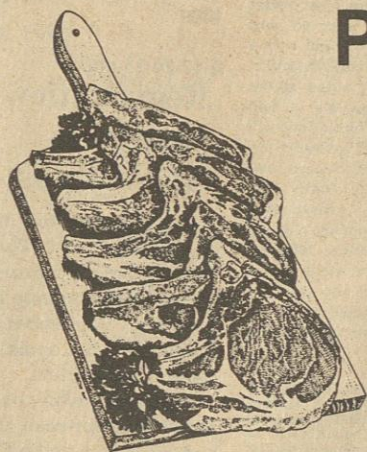
LB.

**69<sup>c</sup>**



1/4 LOIN  
**PORK CHOPS**

**\$1.69**  
LB.

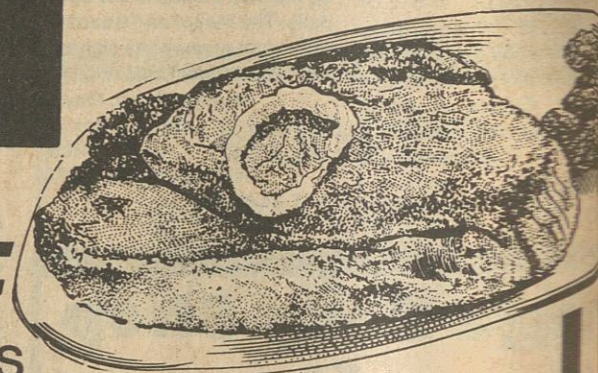


CENTER CUT  
**PORK CHOPS**

**\$1.99**  
LB.

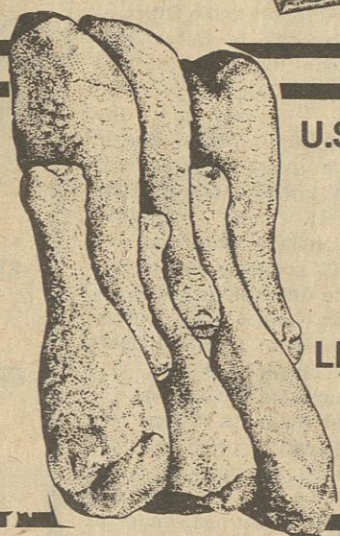
U.S.D.A. CHOICE  
**BONELESS  
ROUND STEAK**

**\$1.89**  
LB.



U.S. INSPECTED FRYER  
**DRUMSTICKS**  
FAMILY PACK

**89<sup>c</sup>**  
LB.



U.S. INSPECTED FRYER  
**THIGHS**  
FAMILY PACK

**99<sup>c</sup>**  
LB.

Quality at Low Prices

U.S.D.A. CHOICE  
**TENDERIZED  
STEAK**

FAMILY PACK LB.

**\$2.59**

BRYAN  
**COOKED HAM  
OR  
HONEY HAM**



10 OZ.

**\$2.19**

BREAKFAST  
**PORK CHOPS**  
LB.

**\$2.19**

KING COTTON  
**WIENERS**

12 OZ.

**89<sup>c</sup>**

ARMOUR CHICKEN FRIED  
**BEEF PATTIES**

LB. **\$1.39**

WHOLEY  
**SHRIMP 'N'  
BASKET**

8 OZ. **\$1.29**

Iuka's Only Weekly Jackpot



Barbara Kay of Tishomingo won  
\$250.00 Plus \$50 in Groceries

U.S.D.A. CHOICE  
**RUMP  
ROAST**

LB. **\$2.99**

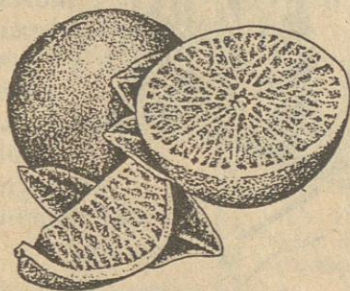


U.S.D.A. CHOICE  
**GROUND  
ROUND**

LB. **\$2.29**

FLORIDA  
**ORANGES**

EACH



**6 \$1.00**  
FOR

CRISP FRESH  
**CELERY**

STALK

**49<sup>c</sup>**



CANADIAN WAXED  
**RUTABAGAS**

LB.

**49<sup>c</sup>**

**PRODUCE**

SEEDLESS

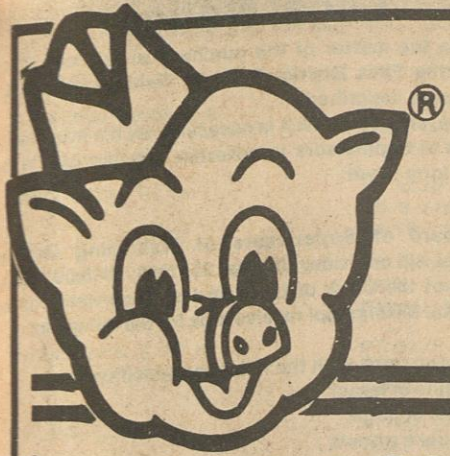
**WHITE  
GRAPES**



LB.

**99<sup>c</sup>**





# piggly wiggly



HIGHWAY 25 SOUTH-IUKA, MISSISSIPPI

QUANTITY & CORRECTION RIGHTS RESERVED. NONE SOLD TO DEALERS.

Ad Good Aug. 24 thru 30

**COCA COLA**  
& RELATED PRODUCTS



2 LITER BTL.

**89<sup>c</sup>**

24 OZ. LOAF



WONDER  
JUMBO  
BREAD

**89<sup>c</sup>**

1 LB. BOX



SUNSHINE  
KRISPY  
CRACKERS

**79<sup>c</sup>**



PIGGLY WIGGLY OLEO  
MARGARINE  
1 LB. PKG.

**\$1<sup>00</sup>**


3 FOR

KRAFT  
**ORANGE JUICE**  
64 OZ. CTN.



**\$1<sup>29</sup>**

FOLGER'S  
**COFFEE**  
13 OZ. BAG



**\$1<sup>99</sup>**

VIP NATURAL CUT  
**POTATOES**  
24 OZ. BAG



**69<sup>c</sup>**

PIGGLY WIGGLY  
ASSORTED  
**PIZZA**  
9 OZ.



**69<sup>c</sup>**

KELLY'S  
**POTTED MEAT** 3 OZ. **4 for \$1.00**



KELLY'S  
**VIENNA SAUSAGE**... 5 OZ. **3 for \$1.00**

KELLY'S  
**HOT DOG SAUCE**..... 10 OZ. **39<sup>c</sup>**

LUZIANNE  
**TEA BAGS**... 24 CT. **\$1.69**



FANTASTIK  
**CLEANER**..... 24 OZ. **\$1.49**



DOWNY  
**FABRIC SOFTENER**... 64 OZ. **\$2.49**



ROYAL  
**OATMEAL CAKES**..... 10 CT. **79<sup>c</sup>**

TRU BLU  
**COOKIES**..... 18 OZ. **\$1.49**

PIGGLY WIGGLY  
**BEANS**

**3 \$1<sup>00</sup>**  
FOR

15 OZ. CAN  
NORTHERN - PINTO - KIDNEY

MAXWELL HOUSE  
INSTANT  
**COFFEE**

**\$3<sup>19</sup>**

8 OZ. JAR

KRAFT PASTA  
**DINNERS**  
6 OZ.

**99<sup>c</sup>**

LUNCH BUCKET  
**DINNERS**  
8.5 OZ. TUB

**99<sup>c</sup>**

EL CHARRITO  
**BURRITOS**..... 4 OZ. **3 for \$1.00**

TROPIC ISLE  
**COCONUT**..... 12 OZ. **89<sup>c</sup>**

CHICKEN OF THE SEA  
**TUNA**..... 6.5 OZ. **69<sup>c</sup>**



GEORGIA GOLD  
**PEACHES**..... 29 OZ. **99<sup>c</sup>**

WYLER'S  
**DRINK MIX**..... 2 QT. **10 for \$1.00**

CHEERIOS  
**CEREAL**..... 7 OZ. **\$1.49**



PRINGLES  
**CORN CRISP**..... 6 OZ. **99<sup>c</sup>**



FRENCH'S  
**MUSTARD**..... 24 OZ. **99<sup>c</sup>**

PIGGLY WIGGLY  
**HOMINY**  
14.5 OZ. CAN



**3 \$1<sup>00</sup>**  
FOR

SUN-MAID  
**CINNAMON ROLLS**  
BUY ONE GET ONE  
**FREE**

PIGGLY WIGGLY  
BUTTERMILK  
**BISCUITS**  
5 CT. CAN



**5 \$1<sup>00</sup>**  
FOR

KRAFT  
SINGLES  
**CHEESE**

**\$2<sup>89</sup>**

16 OZ. PKG.



## LEGAL NOTICE

DIVISION OF STATE AID ROAD CONSTRUCTION  
Mississippi State Highway Department  
Tishomingo County Board of Supervisors  
SECTION 900  
NOTICE TO CONTRACTORS

Sealed bids will be received by the Board of Supervisors of Tishomingo County at Iuka, Mississippi until 10:00 A.M., Thursday, Sept. 7, 1989, and thereafter publicly opened for construction for Hot Mix Overlay on 2.864 miles of county road known as State Aid Project No. SAP-71(47) on the Hardwick Road in Tishomingo County, Mississippi.

Principal items of work as follows:

Mobilization	LumpSum	L.S.
Granular Material (Class 5, Group "C") (LVM)	2,420.0	CuYd
Hot Bituminous Pavement Surface Course	3,948.0	Ton
Maintenance of Traffic	LumpSum	
Additional Construction Signs (Six Dollars and No Cents) (\$6.00)	0.0	SqFt
Traffic Stripe (Skip Yellow) (Code TY or FDTY)	0.965	Mill
Traffic Stripe (Continuous White) (Code TW or FDTW)	5.671	Mill
Traffic Stripe (Continuous Yellow) (Code TY or FDTY)	24,128.0	LinFt
Detail Traffic Stripe	504.0	LinFt
Reflectorized Traffic Warning Sign (Encapsulated Lens)	34.0	Each
Reflectorized Traffic Regulatory Sign (Encapsulated Lens)	6.0	Each
Reflectorized Traffic Hazard Sign (Encapsulated Lens)	16.0	Each
Reflectorized Traffic Warning Sign With Supp. Plate (Encapsulated Lens)	12.0	Each
Reflectorized Project Sign (Encapsulated Lens)	2.0	Each

Contract Time: 60 Working Days.

The award if made will be made to the lowest qualified bidder on the basis of the published quantities.

Plans and Specifications are on file in the office of the Chancery Clerk, Tishomingo County, Iuka, Mississippi, the office of the State Aid Engineer, located at 657 Highway 49 South, Richland, Mississippi and the office of the County Engineer, B.G. Coggin, Jr., 703 Crossover Road, Tupelo, Mississippi. Proposals may be secured from B.G. Coggin, Jr., County Engineer, 703 Crossover Road, P.O. Box 1526, Tupelo, Mississippi, upon payment of \$20.00, which will not be refunded.

Plans may be secured from B.G. Coggin, Jr., County Engineer.

Certified check or bid bond for five percent (5%) of the total bid made payable to Tishomingo County and the State of Mississippi must accompany each proposal.

Bidders are hereby notified that any proposal accompanied by letters qualifying in any manner, the conditions under which the proposal is tendered will be considered an irregular bid, and such proposals will not be considered in making the award.

Deleanor W. McKee, President  
Board of Supervisors of  
Tishomingo County

A-17-24-chg

## County Agent's Notes

**MAFES BEEF AND FORAGE FIELD DAY AT PRAIRIE**  
A beef and Forage Field Day will be held September 16 at the Mississippi Agricultural and Forestry Experiment Station Prairie Research Unit, Prairie, MS.

Beginning at 9 a.m., the theme of the field day will be "How to Manage for

**Maximum Profits."** The program will start with a beef cattle demonstration and evaluation, and tours of beef and forage research programs. Tours will highlight specific presentations on winter feeding management; optimizing fescue forages production; herd health management; and aspects of marketing options. Featured speaker will be Pat Bagley, head of the North Mississippi Research and Extension Centers. There will be educational and commercial exhibits, and

## Legal Notice

## ADVERTISEMENT OF SALE

The Iuka School District, having determined that certain properties owned by the District are no longer needed or used for school purposes, will sell the properties listed below on September 8, 1989, at 3:00 P.M. All bidders shall submit sealed bids to the Superintendent of the Iuka School District on or before the above referenced date. The property will be sold to the highest and best bidder for cash and the Iuka School District Board of Trustees shall have the right to reject any and all bids.

The property may be viewed at the Iuka Elementary School on Monday through Friday between the hours of 8:00 A.M. and 3:00 P.M. The property to be sold is as follows:

SURPLUS EQUIPMENT LOCATED AT IUKA ELEMENTARY SCHOOL 9-26-89  
January 1, 1989 at 12:13 p.m.

BRND NAME	MODEL NO	SERIAL NO	DISTR LOCATION	CONDT VALUE
BECKCASE				
CASSETTE PLAYER	CENTENNIAL	2801		FOUR
CASSETTE PLAYER	PRAG			BROWN
CHAIRS 10 STUD OFFICE				BROWN
CONTROLLED REPER	ED1	145P		FOUR
CONTROLLED REPER	ED1	145P		FOUR
CONTROLLED REPER/STED1		145P		FOUR
COTTER	CANON	NE30		BROWN
COTTER-DITTO	DITTO-HAND	DEFO-21		UNUSAB
COTTER-TREATED FABRIC	BU	47019242		FAIR
DITTO MACHINE-ELECTRICAL	HOWELL	6221		BROWN
ELECTRIC MOTOR	HILD	P22		BROWN
FILM STRIP PROJECTOR/VIEWER				BROWN
FILM VIEWER	SINGER			BROWN
FILMSTRIP PROJ-ELEC SCHOOL MASTER	100	213224		BROWN
FIRE EXTINGUISHER	BABBER	OLD-FOAM		FOUR
FLOOR MAINTENANCE MACHINERY		20-PP		BROWN
LANGUAGE MASTER	BELL & HOWELL	4727		BROWN
LANGUAGE MASTER	BELL & HOWELL	1727		FOUR
LANGUAGE MASTER	BELL & HOWELL	1727		FOUR
OVERHEAD PROJECTOR	APOLLO	3653		BROWN
OVERHEAD PROJECTOR	APOLLO	3653		BROWN
OVERHEAD PROJECTOR	APOLLO	3653		BROWN
OVERHEAD PROJECTOR	RESLER	380FILM		BROWN
PAUSED CHAIR				FAIR
PUMP MOTOR-COTTER	THRUSH	5674304289		BROWN
PUMP MOTOR-COTTER	WARNER	H63AR		BROWN
REC PROGRAM MATERIAL				FOUR
RECORD PLAYER	NEWCOMB	EDT20		BROWN
RECORD PLAYER	NEWCOMB	EDT20		BROWN
RECORD PLAYER	NEWCOMB	EDT20		BROWN
RECORD PLAYER	NEWCOMB	EDT20		BROWN
RECORD PLAYER	NEWCOMB	EDT20		BROWN
RECORD PLAYER	SEARS	29209501		BROWN
RECORD PLAYER	VOICE OF MUSIC	285		FOUR
TV-BLACK & WHITE	MOTOROLA	23T25CHA		BROWN
TV-BLACK & WHITE	MOTOROLA	23T25CHA		BROWN

TOTALS:

Printed 39 of the 45 records.

PRIMARY SORT FIELD: ITEM

SELECTION OF CRITERIA:  
All records

WITNESS MY SIGNATURE This 21st day of August, 1989.

JERRY C. STONE  
SUPERINTENDENT  
IUKA SCHOOL DISTRICT

A-24-31-S-7-chg

a sponsored lunch.

The event will be hosted by the Mississippi Agricultural and Forestry Experiment Station, Mississippi Cooperative Extension Service, Mississippi Cattleman's

Association, and the Mississippi Farm Bureau Federation.

For further information, contact your County Agent's Office at 423-3616.

POTTED PLANTS

Potted plants, whether grown inside or out, generally grow more vigorously in the bright, warm months of summer. This increases their need for water.

A layer of bark, gravel, marble chips or porous material placed over the potting soil surface helps conserve water during the hot summer months.

Potted plant fertilizers rapidly wash away with heavy watering. While most balanced plant foods work fine when used according to label directions, liquid brands need to be replaced more often than solid or granular types.

SOYBEAM PESTS

Many insects can be found in the soybean fields of Tishomingo County. Here are a few of the more common ones:

\*Soybean looper--the larvae display a characteristic looping movement when crawling. They are light green and have thin white lines running the length of their bodies. The body of the looper tapers toward the head.

\*Bean Leaf Beetle--these insects are one-fourth inches long, and have three to four pairs of black spots along the inner wing covers. Color patterns on the wings vary from red to yellow.

\*Stink Bug--these pests are one-half inches long and may be green or brown. They damage the crop by piercing pod hulls and sucking juice from the beans. Young stink bugs, or nymphs, are typically orange and black. They do as much damage as the adults.

Remember to scout soybean fields at least once a week for these pests. Late-planted beans generally have more problems with insects than those planted on time.

## Coleman Park Sunday Special

Chicken Fried Steak w/Gravy  
Purple Hull Peas  
Fried Okra  
Tossed Salad  
Home Baked Rolls  
Or  
Fried Chicken  
Green Beans  
Mashed Potatoes  
Tossed Salad  
Home Baked Rolls  
Dessert and Tea or Coffee  
will be served w/meal \$4.00 plus tax.

## Personal

Mrs. O.A. Walker attended the Jacinto Baptist Church Sunday, August 20, where she was baptized, 67 years ago.

## "Look Around, Mississippi"

The Mississippi Economic Council will kick off a statewide campaign September 25 to begin the process of changing Mississippi's image. It is entitled "Look Around, Mississippi."

Unlike most statewide image campaigns, the MEC plans to involve every community in Mississippi. Also, instead of telling people in other states about the good things in Mississippi, "Look Around, Mississippi" will focus on Mississippi's own residents.

Such a campaign has been needed for a long time, and the MEC is serious about doing the job well.

Local chambers of commerce and other community organizations are being asked to highlight a business, person, an organization, a policy, or a community event that makes life in the community better -- and then to celebrate it.

The education community

is contributing as well. Skillful lesson plans for students in three different grades are being developed that will not only make tomorrow's leaders aware of the good things in Mississippi but will also satisfy certain teacher requirements.

Coca-Cola has agreed to help underwrite the program, and the Governor has applauded the effort.

Why is the program needed?, you ask.

Recently, an employee of a relocating company recalled phoning a local banker in the community to which she was moving to learn about housing, transportation, and so on.

However, the first question asked her by the banker was "Why in the world are you moving to Mississippi?"

That questioning is exactly why this program has been needed.

Mississippians can be proud of our state, and it is time we Mississippians discovered that.

## Legal Notice

Came in the matter of the purchase of one new 2 ton truck for the First District Road of Tishomingo County, Mississippi as described.

Whereas, under the law it is necessary for the intention of the Board of Supervisors to advertise substantially in following form to wit:

## NOTICE

The Board of Supervisors of Tishomingo County, Mississippi will on Friday, August 25, 1989, at 10:00 A.M. the office of the Clerk of the Board of Supervisors in town of Iuka, Mississippi receive bids for the following:

One new 2 ton truck with the following specifications:  
366 V8 engine or larger  
18.5 rear end or larger  
7.5" cast spoke wheels  
1000 x 20 12 ply tires  
5 speed transmission  
9000# front axle minimum  
Reinforced frame  
Straight Air Brakes  
Heavy Duty springs - front and rear  
West Coast Mirrors  
Cab lights and necessary lights for State Code  
7' x 10' dump bed with telescopic hoist and pump with cab protector

For the use and benefit of Tishomingo County, Mississippi.

The Board of Supervisors reserves the right to reject all bids.

This the 8th day August, 1989.

A-10-17-24-chg

# NOTICE

DJW LRMSAL12 082189 0819 TISHOMINGO COUNTY, MISSISSIPPI  
I HORACE E LEDGEMOOD, TAX COLLECTOR OF THE COUNTY OF TISHOMINGO, IN SAID STATE WILL SELL ON THE FOURTH MONDAY OF AUGUST, A.D., 1989, AT THE FRONT DOOR OF THE COURT HOUSE OF SAID COUNTY IN THE CITY OF IUKA, MISSISSIPPI, TO THE HIGHEST BIDDER OR BIDDERS, FOR CASH, IF ANY THERE BE ALL THE FOLLOWING DESCRIBED LANDS, SITUATED IN SAID COUNTY, ON WHICH TAXES REMAIN UNPAID AT THAT DATE, TO-WIT:

Name of Owner	Description of Property	Sect- ion	Town- ship	Range	PPin	Total Tax	
ALEXANDER ROBERT E	PT N1/2 NW1/4 NW 30' CO RD DEED B&PG B119/405/406 Parcel # - 112050822	22	005	010	6144	15.82	
ALLEN BARBARA A	PT SW 1/4 NE 1/4 DEED BK & PG 111/590-591 Parcel # - 11304 17	17	006	010	12900	141.05	
ALLEN THOMAS E ET UX	PT W1/2 SE1/4 S W 30' CO RD DEED BK&PG B111/374 REC 02/84 Parcel # - 11303 08	08	006	010	6586	121.48	
ALLRED TAMMY	PT W 1/2 SE 1/4 SW 1/4 B 121/273 Parcel # - 11308 28	28	006	010	13581	6.91	
ALREY BILLYE B ETAL	PT S 1/2 E 1/2 SE 1/4 NE 1/4 DEED BK&PG 120-728 Parcel # - 11902 04	04	005	011	13771	9.81	
BAILEY A B EST	PT SW1/4 NW1/4 W 30' CO RD DEED BK&PG P11/428 REC 00/00 Parcel # - 11108 28	28	004	010	5384	14.65	
BARRETT VETO	BLAKE MOORE SUB LT 14 DEED BK & PG 35/459 Parcel # - 413071135	35	006	010	8357	96.97	
BATES F T	PT SW 1/4 DEED BK & PG 115/429 Parcel # - 10907 25	25	002	010	13039	35.85	
BEAUCHAMP GARLAND ETUX	PT NW1/4 SW1/4 S E ST HWY 4 DEED BK&PG 118/434 REC 00/00 Parcel # - 11305 16	16	006	010	6742	11.96	
BELL SAMUEL J W ETUX	TISH LAKE SIDE LOT 19 1/2B OF 73 DEED BK&PG B99/59 REC 00/00 Parcel # - 10805 15	15	001	010	1717	276.94	
BELMONT HOMES INC	PT SE1/4 NE1/4 E ST HWY 25 DEED BK&PG B124/537 REC 09/84 Parcel # - 414010911	25	11	007	010	7910	46.42
BELMONT HOMES INC	PT W1/2 NW1/4 W PART DEED BK&PG B124/539-540 Parcel # - 514010812	12	007	010	14155	4339.41	
BERRYMAN JOHN	PT W 1/2 SE 1/4 SW 1/4 B117-185 Parcel # - 11802 10	10	004	011	12970	12.51	
BETHUNE REBBECCA S	PT E1/2 NW1/4 N 30' CO RD DEED BK&PG 102/863 REC 00/00 Parcel # - 11202 04	04	005	010	5584	7.95	
BILL WILLIAM R ETAL	IMPROVEMENTS ONLY Parcel # - 116031506	06	002	011	13447	12.81	
BIVIS MYRTIS	PT S1/2 NE1/4 S SIDE 30' CO RD INSIDE CORP DEED BK&PG 94/761 REC 00/00 Parcel # - 31006 14	14	003	010	3720	15.65	
BLACKBURN CHARLES	PT E1/2 NE1/4 DEED BK&PG 99/518 REC 00/00 Parcel # - 11402 10	10	007	010	8631	16.46	
BORDEN MICHAEL LEE	PT W 1/2 SE 1/4 W 1/4 B 121/274 Parcel # - 11308 28	28	006	010	13580	10.77	
BOWLING BILL	IMPROVEMENTS ONLY Parcel # - 12004 18	18	006	011	11453	48.95	
BRADY LESLIE	PT SE1/4 NE1/4 NE PT DEED BK&PG B121/564 REC 00/00 Parcel # - 108081328	28	001	010	2246	6.88	
BRASSEAU KEVIN ET UX	LT PT 112-96-113 PADEN & GARRAD SUB DEED B&PG B110/729 11/83 Parcel # - 317041019	19	003	011	7930	81.20	
BRIDGES JOHNNY	PT NE1/4 NE1/4 NE COR DEED BK&PG B123/586 REC 00/00 Parcel # - 11405 15	15	007	010	8739	141.68	
BROWN BUDDIE	PT SW NW1/4 E SIDE 80' HI DEED BK&PG B73/485 REC 00/00 Parcel # - 11702 04	04	003	011	9476	99.73	
BROWN MARILYN	PT SW1/4 NW1/4 S US HWY 72 DEED BK&PG B60/342 REC 00/00 Parcel # - 11708 33	33	003	011	10640	117.35	
BUGG JIMMY ET UX	PT N1/2 SW1/4 DEED BK&PG B57/118 REC 00/00 Parcel # - 11703 07	07	003	011	9584	392.06	
BUGG MARY ETVIR	PT NE1/4 SE1/4 DEED BK&PG 91/139 REC 00/00 Parcel # - 11106 23	23	004	010	5221	30.19	
BULLOCK JACKY ETUX	PT SW1/4 SW1/4 BORDERING ON S BDY LINE DEED BK&PG B96/489 REC 00/00 Parcel # - 10402 04	04	004	009	1228	104.63	
BYRAM RAY & KATHLEEN	IMPROVEMENTS ONLY KATHY'S KORNER Parcel # - 11207 26	26	005	010	13822	182.61	
BYRAM RAY ET UX	PT NW1/4 SW1/4 E HWY 25 Parcel # - 11207 26	26	005	010	8276	100.24	
CALTON LESSEL	PT SW1/4 SW1/4 SW COR DEED BK & PG 65/325 Parcel # - 10402 04	04	004	009	13218	31.39	
CARTER AUDIE	PT SE1/4 NE1/4 E IUKA FULTON RD B111/504 Parcel # - 414011302	02	07	10	12576	86.33	
CARTER BILLY	PT S1/2 NE1/4 E 30' CO RD DEED BK&PG B123/368 Parcel # - 117091330	30	003	011	14116	52.39	
CLARK SAMUEL PERRY ET AL	PT NE1/4 NW1/4 N CORINTH COUNCE RR DEED BK&PG B96/745 REC 00/00 Parcel # - 10105 22	22	001	009	11722	21.55	

Continued on next

## List Of Land To Be Sold For Taxes, Town Of Tishomingo

I, Debra Nunley, Tax Assessor and Collector for the Town of Tishomingo, in said County and State will sell on the 4th Monday of August 1989, during legal hours in the lobby of City Hall, to the highest bidder in cash all the following described lands situated in the Town of Tishomingo on which taxes for 1988 remain unpaid. The amount opposite each item is the total taxes only for the year 1988. Interest, cost to be added.

Given under my hand at Tishomingo, Mississippi this the 14 day of August 1989.

Debra Nunley, Tax Assessor & Collector  
Town of Tishomingo, Tishomingo, MS

James E. Cain S/12 Lt. 10 Blk. 33.....	\$28.48
Galen H. Nichols Lot 10 Blk. 14.....	\$44.38
Bobby Strange Pt. SE 1/4 NW 1/4 SE 1/4 W Bdy Hwy. 25.....	\$92.05
Johnny Harber Vacant Lot 3 & 4 Blk. 7.....	\$6.90

A-17-24-chg

## LIST OF LAND TO BE SOLD FOR TAXES, TOWN OF BURNSVILLE, MISSISSIPPI

I, Katherine Skelton, Tax Collector of the City of Burnsville, in said State, will sell on the 28th day of August, 1989 to the highest bidder or bidders, for cash, if any there be, all the following described lands, situated in said City, on which the taxes remain unpaid at that date to-wit:

Grimes, John Henry -- PT N 1/2 NW 1/4 BK & PG 121/215-216 Sec 001 Twn 003 Rng 009.....	26.01
Lambert, Brandon -- Sec 12 Twn 003 Rng 009 Lot Pt 10 BK & PG B113/535.....	10.80
Russo, Richard ETUX --Sec 01 Twn 003 Rng 009 Pt SW 1/4 NE BK & PG B99/648.....	30

Interest and Cost To Be Added

## LIST OF LAND TO BE SOLD FOR TAXES, CITY OF IUKA, MISSISSIPPI

I, Joyce Brumley Tax Collector of the City of Iuka, in said State, will sell on Monday, August 28, A.D., 1989, at the front door of the City Hall of said County, in the City of Iuka, Mississippi, to the highest bidder or bidders, for cash, if any there be, all the following described lands, situated in said County, on which the taxes remain unpaid at that date, to-wit:

Williams, Walter J., Pt NE ¼ SE ¼ NE ¼, 14-3-10, .80 acres.....	43.72
Roberts, Nancy M., Briarwood Lot 8, 14-3-10, .50 acres.....	48.81
Hudson, Robert W., Pine Ridge Lot 2, 24-3-10, .40 acres.....	38.95
Jones, Gwendolynn, Pt N ½ NW ¼ NE ¼ N. Line, 19-3-11, .40 acres.....	30.40
Murphy, John D., Pt S ½ SW ¼ SE ¼ S 50' Co Rd, 19-3-11, 1.80 acres.....	1.93
Murphy John D., Pt S ½ SW ¼ SE ¼, 19-3-11, 9.30 acres.....	1.82
Robinson, Annie B, Pt NE ¼ SW ¼ Cen Pt, 19-3-11, 1.00 acres.....	4.82
Pride, Richard, Pt NE ¼ SW ¼ Cen Pt, 19-3-11, 3.70 acres.....	24.06
Bonds, Athen, Pt SW ¼ Spring Street, 19-3-11, 1.50 acres.....	3.21
Dillworth, Andrew Etal, Pt W ½ SE ¼ SW ¼ Cen Pt, 19-3-11, 2.00 acres.....	34.69
Murphy, John D., Pt NW ¼ NE ¼ NE ¼ NW, 30-3-11, 3.00 acres.....	.58
Dillworth, Willie, Pt NW ¼ NW ¼ N Part, 30-3-13, 1.00 acres.....	5.75



## Tishomingo County News-Vidette-Belmont News

CLEMENT C C EST	PT E SIDE SW 1/4 Parcel # - 11609 32 0030	32 002 011 12798	16.52	GOZA JAMES R ETUX	PT N1/2 SEC N SIDE HI 4 Parcel # - 11304 20 009	20 006 010 6636	99.14
CLEVELAND LINDA SUE	PT S1/2 NE1/4 W 30' CO RD DEED BK&PG 104/294 REC 00/00 Parcel # - 11305 21 005	21 006 010 6699	10.77	GOZA JAMES R ETUX	PT E 1/2 S 1/2 SE 1/4 S 30' CO ROAD DEED BK&PG 8121-139 Parcel # - 12003 05 0040	05 006 011 13755	47.44
COCKER BETTY ET AL	PT N1/2 NW1/4 NW1/4 DB B 114-141 12/84 Parcel # - 11303 05 0030	05 006 010 12220	29.29	GRAIG MILLIE BETH	SE1/4 SE1/4 Parcel # - 10806 23 003	23 001 010 7955	65.13
COCKER KENNETH	PT N1/2 NW1/4 NW1/4 DB B 114-142 12/84 Parcel # - 11303 05 0030	05 006 010 12221	6.88	GRAY JAMES W ET UX	COLEMAN PARK LOT 78-80 8&6 ADD #3 DEED BK&PG 873/31 REC 00/00 Parcel # - 109010201 040	01 002 010 8453	117.65
COCKER KEVIN B ET AL	PT S1/2 SE1/4 S 30' CO RD DEED BK&PG 8114/143 11/84 Parcel # - 11207 36 003	36 005 010 6318	29.56	GRAY ROY ET UX	PT SE1/4 SW1/4 DEED BK&PG 106/15 REC 00/00 Parcel # - 11903 07 0200	07 005 011 11172	149.79
COLLINS LIONEL B	PT SW 1/4 DEED BK & PG 48/616 Parcel # - 117011111 0010	11 003 011 13156	16.64	GREEN ARTHUR	PT W 1/2 SE 1/4 CEN PART DEED BK & PG 119/219 Parcel # - 11007 36 042	36 003 010 12839	64.86
COLLINS MILDRED ET VIR	ROBINSON LOT 9 10 DEED BK&PG 896/204 REC 00/00 Parcel # - 116041618 026	18 002 011 9047	150.47	GREEN BILL	PT E1/2 E1/2 SW1/4 CEN PT Parcel # - 11306 24 0060	24 006 010 6925	5.95
COSBIE TANDY R ETUX	TN OF BURNSVILLE PT SE1/4 NW1/4 S 30' CO RD DEED BK&PG 8123/441 REC 00/00 Parcel # - 503010401 0030	01 003 009 349	57.85	GREGORY HUGH L	PT W 1/2 SW 1/4 DEED BK & PG 117/170 Parcel # - 503010712 0030	12 003 009 12811	8.13
COUTOUMANOS MICHAEL ETUX	PT W 1/2 N 1/2 NW 1/4 NW 1/4 DOGWOOD HILLS LOT 17 DEED BOOK 122/796 Parcel # - 11209 29 015	29 005 010 14046	6.11	GRIMES JOHN HENRY	TN OF BURNSVILLE PT N1/2 NW1/4 DEED BK&PG 121/215-216 Parcel # - 503010401 002	01 003 009 346	137.48
CREDILLE DAYTON ETUX	PT NW1/4 SE1/4 SE1/4 N SIDE 30' CO RD DEED BK&PG 860/298 REC 00/00 Parcel # - 11309 29 005	29 006 010 7696	18.54	HARDWAY FRANK	PT W1/2 SE1/4 SW 30' CO RD DEED BK&PG 8111 P800 REC 03/84 Parcel # - 11303 08 0130	08 006 010 6593	14.65
CRUM CHARLEY	PT SE1/4 SE1/4 SE1/4 CEN PT DEED BK&PG 8122/271 REC 00/00 Parcel # - 108081033 026	33 001 010 2167	155.10	HARMON JOHN ETUX	INDEPENDENCE SQ LOT 24 INSIDE CORP DEED BK & PG 121/366-367 Parcel # - 310061023 0260	23 003 010 13544	124.39
CRUM CHARLEY	PT NE1/4 NE1/4 SE1/4 E NEW ST HWY 25 DEED BK&PG 8120/426 Parcel # - 113050215 0010	15 006 010 6839	140.33	HARRIS PATRICIA DIANE	PT NE1/4 NW1/4 NW COR DEED BK&PG 102/374 REC 00/00 Parcel # - 10607 25 007	25 006 009 1451	8.01
CRUM CHARLEY	PT LT 1 2 BLK 9 10 PT VAC ST PT E1/2 NE1/4 SE1/4 DEED BK&PG 8120/426 Parcel # - 113050215 006	15 006 010 8304	152.55	HENDERSON MRS A L	OWEN SUB LOT 38 DEED BK&PG 872/351 REC 00/00 Parcel # - 108051021 045	21 001 010 1840	57.27
CRUM CHARLEY	PT LT 1 2 BLK 9 10 PT VAC ST PT E1/2 NE1/4 SE1/4 DEED BK & PG 120/426 Parcel # - 113050215 0069	15 006 010 8306	256.80	HOAGLAND GEORGE M	TISH LAKE SIDE 37 1/5 OF 74 Parcel # - 10805 15 006	15 001 010 1700	157.91
CRUM CHARLEY	IMPROVEMENTS ONLY Parcel # - 113050215 0069	15 006 010 13378	393.46	HODGES LARRY ETAL	PT E PT E1/2 E1/2 NE1/4 DEED BK&PG 8118/525 REC 00/00 Parcel # - 11903 08 001	08 005 011 11182	15.99
CRUM VERNON	PT E1/2 SE1/4 W NEW ST HWY 25 DEED BK&PG 8109/59 REC 00/00 Parcel # - 113050215 0070	15 006 010 6844	438.51	HOLLAND LEOLA	PT SW1/4 NE1/4 SE1/4 SW COR DEED BK&PG 95/740 REC 00/00 Parcel # - 10901 01 009	01 002 010 2325	14.44
CRUM VERNON ETAL	PT NE1/4 N SIDE 30' CO RD DEED BK&PG 101/30 REC 00/00 Parcel # - 11304 17 012	17 006 010 6667	17.97	HOLLAND RANDY	Parcel # - 10302 04 0120	04 003 009 766	119.63
CUMMINGS MRS ELTON	PT NW1/4 NE1/4 NE1/4 S 30' CO RD Parcel # - 114010101 006	01 007 010 7718	26.25	HORNE HILDA J	PT NE1/4 SE1/4 NE1/4 E 50' RD INSIDE CORP DEED BK&PG 109/23 REC 00/00 Parcel # - 31006 14 008	14 003 010 3705	62.53
CURTIS B T ETUX	LT 2 BLK 25 DEED BK&PG 8105/330 REC 00/00 Parcel # - 317041019 014	19 003 011 9859	307.22	HORTON BILLY G	PT SE1/4 NW1/4 S PUB RD DEED BK&PG 849/458 REC 00/00 Parcel # - 108080834 018	34 001 010 2081	38.11
DAVIS ROY F ETUX	PT N1/2 SE1/4 N 30' CO RD DEED BK&PG 8122/605 REC 00/00 Parcel # - 11304 20 0080	20 006 010 6634	245.02	HUBBARD MICHAEL P	PT W1/2 NE1/4 SW1/4 E 30' CO RD DEED BK&PG 8107/451 8113/442 7/84 Parcel # - 11003 08 019	08 003 010 3586	8.85
DAVIS SHARON L	PT SW1/4 NE1/4 DEED BK&PG 8108/558 REC 00/00 Parcel # - 109021304 0410	04 002 010 2534	77.51	HUDSON ROBERT W	PINE RIDGE LOT 2 DEED BK&PG 114/ 101 Parcel # - 310060624 031	24 003 010 4310	247.41
DAWSON DAVID WAYNE ETUX	PT NW1/4 NE1/4 NW COR DEED BK&PG 876/328 REC 00/00 Parcel # - 11107 36 008	36 004 010 5306	14.65	HUFFMAN JERRY D ETUX	PT S1/2 NW1/4 SW1/4 DEED BK & PG 8124/285 Parcel # - 10402 04 0270	04 004 009 13962	10.77
DAWSON MAMIE O	PT NE1/4 PT S1/2 NW1/4 N1/2 SW1/4 DEED BK&PG 8118/199 REC 00/00 Parcel # - 11107 36 001	36 004 010 5299	243.89	HUMPTON JAMES T	PT W1/2 W1/2 NW1/4 NE1/4 CEN PT Parcel # - 113050522 0070	22 006 010 6876	17.58
DAWSON WAYNE ETUX	PT N1/2 N1/2 NE1/4 DEED BK&PG 118/181 Parcel # - 11107 36 0010	36 004 010 13741	33.42	INLOW JACKIE LYNN ETUX	PT NE1/4 SW1/4 N HWY 72 101/418 DEED BK & PG 8122/666 Parcel # - 11004 17 012	17 3 10 12354	226.26
DEATHERAGE JEFFERY ETUX	PT W 1/2 & N 1/2 SE 1/4 DEED BK & PG 116/557-558 Parcel # - 11003 08 0140	08 003 010 13029	20.32	IUKA GUARANTY BANK	PT NE1/4 SE1/4 SE COR DEED BK&PG 8115/501 REC 00/00	24 003 009 949	7.91
DILLARD HELTON M ETUX	PT N1/2 W1/2 NE1/4 NW1/4 E OLD HWY 25 DEED BK&PG 842/498 REC 00/00 Parcel # - 11007 35 054	35 003 010 4690	109.08	JACKSON F A MRS	PT N1/2 NW1/4 DEED BK&PG 832/207 REC 00/00 Parcel # - 11405 16 034	16 007 010 8820	13.57
DILWORTH WILLIE	PT NW1/4 NW1/4 N PART INSIDE CORPORATION Parcel # - 117091630 007	30 003 011 10767	25.72	JIM WALTER HOMES INC	PT E 1/2 N 1/2 NE 1/4 DEED BOOK 8122/657 Parcel # - 11902 04 0020	04 002 011 13853	68.28
DUGGAN ANDY	PT SE1/4 NW1/4 SW1/4 CEN PT DEED BK&PG 114/712 REC 00/00 Parcel # - 116031506 036	06 002 011 8952	224.59	JOHNSON ALVIN E	PT NW1/4 SW1/4 W 30' CO RD DEED BK&PG 125/210 REC 00/00 Parcel # - 11208 27 030	27 005 010 6353	10.77
EEMCO FAMILY HOLDINGS CORP	EASTPORT BEACH EST LOT 75 DEED BK & PG 118/752 Parcel # - 116071326 030	26 002 011 9225	130.70	JOHNSON VICTOR P ETAL	PT SE1/4 NE1/4 DEED BK&PG 844/135 REC 00/00 Parcel # - 108081328 044	28 001 010 2247	14.65
EEMCO FAMILY HOLDING CORP	EASTPORT BEACH EST LOT 74 Parcel # - 116071326 032	26 002 011 9227	38.59	KAY THOMAS A ETUX	IMPROVEMENTS ONLY Parcel # - 11007 35 0459	35 003 010 13342	48.34
EPFS EDDY	LOT 31 WOODS HILLS Parcel # - 113061123 011	23 006 010 6975	29.96	KIMBERLY E F	PT S1/2 NE1/4 NE1/4 S HWY 72 INSIDE CORP Parcel # - 310060923 005	23 003 010 4416	111.99
EWING EUGENE	PT W1/2 SW1/4 S B CREEK DEED BK&PG 8116/359 REC 00/00 Parcel # - 12103 05 006	05 007 011 11562	41.96	LAFFERTY DOROTHY L & JAMES	PT E1/2 SE1/4 SW PUB RD DEED BK&PG 94/912 REC 00/00 Parcel # - 10208 28 006	28 002 009 294	179.86
EWING EUGENE	PT NE1/4 E RR DEED BK&PG 8114 P341-342 1/85 Parcel # - 12104 18 006	18 007 011 11651	41.49	LAMBERT JAMES	BART SMITH LOT 4 DEED BK&PG 8110/478 REC 00/00 Parcel # - 110060113 006	13 003 010 3746	31.82
FAULKNER KATHLENE H	LOT 54 BATTLEGROUND HEIGHTS DEED BK&PG 8122/362 Parcel # - 310060524 118	24 003 010 4247	332.68	LANE JOHN L ET UX	PICKWICK LAKE CORP LOT 95 DEED BK&PG 891/411 REC 00/00 Parcel # - 116041618 063	18 002 011 9089	25.71
GANN JIMMY D ETUX	PT W1/2 S1/2 NW1/4 DEED BK & PG 117/205 Parcel # - 11309 32 0160	32 006 010 13216	12.50	LAYTON C W	PT SE 1/4 SE1/4 NE1/4 S PART 837/278 Parcel # - 108081328 048	28 001 010 12911	26.29
GEORGE D H	PT E1/2 NW1/4 E CORINTH COUNCE RR Parcel # - 10808 33 002	33 001 010 1991	5.95	LESLEY GARY ETUX	PT W1/2 NE1/4 NW1/4 S 80' RD DEED BK&PG 122/74-75 REC 00/00 Parcel # - 10905 21 020	21 002 010 2805	36.78
GILLETINE DAVID	COLEMAN PARK #2 LOT 61-64 DEED BK&PG 8126/159 REC 00/00 Parcel # - 109010201 029	01 002 010 8442	48.35	LITTLE BOBBY	LAKE PART EST LOT 2 3 4 5 DEED BK&PG 870/269 REC 00/00 Parcel # - 109021504 029	04 002 010 2600	60.20
GILLETINE DAVID	PT NE1/4 NE1/4 SW1/4 N COOKS LANDING RD DEED BK&PG 8126/159-161 Parcel # - 116031506 053	06 002 011 8969	139.71	LONG C E	PT NE1/4 SE1/4 N SIDE 30' CO RD DEED BK&PG 834/458 REC 00/00 Parcel # - 114020203 004	03 007 010 8674	142.30
GOATS HORACE ETUX	PT S 1/2 W 1/2 SW 1/4 SW1/4 8120/312 Parcel # - 10308 34 0150	34 003 009 13624	18.54	LOWRY JARREL D ETUX	PT N1/2 SW1/4 S 30' CO RD DEED BK&PG 872/86 REC 00/00 Parcel # - 414010301 022	01 007 010 7751	176.12
GORDON CARL J JR	PT E1/2 NE1/4 DB 8114-303 Parcel # - 414010911 0010	11 007 010 12330	16.98	MARSHALL LUTHER C JANE	NORTH IUKA SUB LOT 16 17 Parcel # - 310010712 047	12 003 010 3422	38.27
GOSS RICHARD LEE	PT N1/2 W1/2 SE1/4 DEED BK & PG 120/553 Parcel # - 11002 10 0110	10 003 010 13660	13.09	MARTIN DONALD R	PT SE1/4 NE1/4 DEED BK&PG 106/564 REC 00/00 Parcel # - 11205 21 0020	21 005 010 5780	14.65
GOZA J R	PT N1/2 SEC E W BEAR CRK DEED BK&PG 867/342 REC 00/00 Parcel # - 11307 25 001	25 006 010 7029	331.91	MARTIN LEWIS	PT NW1/4 SW1/4 S B DY DEED BK&PG 103/670 REC 00/00 Parcel # - 11208 27 029	27 005 010 6352	10.77
GOZA J R	PT NW1/4 NE1/4 NW COR DEED BK&PG 102/654 REC 00/00 Parcel # - 11908 33 002	33 005 011 11329	11.59	MARTIN VERA ET AL	PT NE1/4 NE1/4 CEN PT DEED BK&PG 104/7 REC 00/00 Parcel # - 11903 07 010	07 005 011 11160	92.18
GOZA J R	PT SE1/4 SEC 28 CEN PT DEED BK&PG 102/654 REC 00/00 Parcel # - 11908 28 004	28 005 011 11342	75.76	MASSEY BOBBY ET UX	PT S1/2 W1/2 NW1/4 SW1/4 DB 8112-787 7/84 Parcel # - 721031107 0050	07 007 011 12238	261.29
GOZA J R	PT SEC 29 DEED BK&PG 854/166 REC 00/00 Parcel # - 11909 29 012	29 005 011 11391	107.38	MATLOCK L H ETUX	HOLIDAY HILLS LOT 19 W 1/2 OF 18 DEED BK&PG 868/302 REC 00/00 Parcel # - 10805 16 063	16 001 010 1676	360.59
GOZA JAMES DANNY ETAL	PT SE PT SE1/4 S E BEAR CRK DEED BK&PG 886/561 REC 00/00 Parcel # - 11306 24 005	24 006 010 6922	50.88	MCANALLY TALMADGE E	PT W1/2 NW1/4 N 30' CO RD DEED BK&PG 94/967 REC 00/00 Parcel # - 11007 36 0640	36 003 010 4590	84.13

Continued on next p

Continued on next page



MCCALL TREVOR RAE	PT NW1/4 NW1/4 Parcel # - 10701 02 039	02 002 010 2403	9.39	SHEA TRAVIS E ETUX	DEED BK&PG 98/320 REC 00/00 Parcel # - 10308 27 018	27 003 009 1169	6.50
MCDONALD WILLIAM C ETUX	PT SW1/4 SW 1/4 S 30' CO ROAD DEED BOOK 112/730 Parcel # - 414010301 0220	01 007 010 14120	24.54	SHEWBART SCOTT ETUX	PT SW1/4 NE1/4 S 30' CO RD B114-476 DEED BK&PG B123/479 REC 00/00 Parcel # - 113050115 036	15 006 010 6830	50.40
MCKINNEY HELEN FAYE	PT NW1/4 NE1/4 NE COR DEED BK&PG B121/53 REC 00/00 Parcel # - 10706 14 003	14 007 009 1496	95.02	SKINNER JIMMIE C ETUX	PT W1/2 SE1/4 N HARDWICK RD DEED BK&PG B117/389 Parcel # - 10308 33 004	33 003 009 1051	9.90
MCMINNIS JAMES C ETUX	PT NE1/4 SE1/4 S 30' CO RD DEED BK&PG B121/448-449 Parcel # - 10501 01 0080	01 002 010 2324	18.13	SKINNER JIMMIE ETAL	PT W1/2 W1/2 NW1/4 W LINE DEED BK&PG B5/109 REC 00/00 Parcel # - 10308 33 029	33 003 009 1072	24.20
MILLER LARRY ET UX	PT S1/2 SEC 27 S LITTLE FLOCK RD DEED BK&PG B114 P134 11/84 Parcel # - 10308 27 0140	27 003 009 1165	86.92	SMITH CEDRICK F	PT NE1/4 SW1/4 SW COR DEED BK&PG B123/284 REC 00/00 Parcel # - 11008 33 004	33 003 010 4773	113.60
MILLER ROBERT	PICKWICK SUMMITT LOT 33 DEED BK&PG 94/282 REC 00/00 Parcel # - 108040117 027	17 001 010 1561	20.46	SMITH F O	PT SW1/4 NE1/4 N NEW BETHEL RD B40/123 Parcel # - 414011302 121	02 07 10 12624	17.60
MOORE DAVID	LOTS 5 & 7-20 DEED BK&PG B105/352 REC 00/00 Parcel # - 503010812 016	12 003 009 403	32.15	SMITH LINDA L	PT E1/2 NE1/4 DB123/553 Parcel # - 714011302 0210	02 007 010 12910	62.00
MOORE DAVID	ALSO PART OF THE SW1/4 E. OF WASHINGTON ROAD Parcel # - 503010812 021	12 003 009 404	25.52	SMITH OLIVE D ET AL	EASTPORT BEACH EST LOT 72 DEED BK&PG B89/386 REC 00/00 Parcel # - 116071326 037	26 002 011 9233	187.90
MOORE EUGENE	PT W1/2 SW1/4 NW1/4 SW ILL CENT GULF RR DEED BK&PG P26/433 REC 00/00	07 007 011 11619	44.86	SOUTH EULILA SHOOK	PT NW COR NW1/4 S SIDE HI 25 DEED BK&PG 42/441 REC 00/00 Parcel # - 11406 13 018	13 007 010 8844	209.40
MOORE GAIL	PT S1/2 NW1/4 W SIDE NW HI 25 Parcel # - 413071626 013	26 006 010 7488	9.20	SOUTHWARD JAMES A	PT SW1/4 NE1/4 S BODY DEED BK&PG 93/491 REC 00/00 Parcel # - 11902 09 009	09 005 011 11051	6.80
MOORE JAMES E ET UX	COLEMAN PARK LOT 63 ADD #2 DEED BK&PG B91/326 REC 00/00 Parcel # - 109010201 028	01 002 010 8441	25.71	SOUTHWARD KATHERINE	PT NE1/4 NE1/4 E NACHEZ TRACE RD DEED BK&PG B75/226 REC 00/00 Parcel # - 11902 04 002	04 005 011 11098	25.40
MORRIS ALVIN DAVID ETUX	SLEEPY HOLLOW LOT 2 DEED BK&PG B98/540 REC 00/00 Parcel # - 108080834 0290	34 001 010 2093	197.85	SOUTHWARD WM G ET AL	PT W1/2 W1/2 NE1/4 N S BODY DEED BK&PG P25/104 REC 00/00 Parcel # - 11904 17 009	17 005 011 11247	10.80
MOSS ROY B ETUX	PT NW1/4 NW1/4 N 30' CO RD DEED BK&PG 104/104 REC 00/00 Parcel # - 503010401 0110	01 003 009 368	10.77	SPARKS CLYNE R	PT S1/2 NE1/4 W BODY DEED BK&PG B104/729 REC 00/00 Parcel # - 11309 32 0010	32 006 010 7655	14.80
MURPHY JOHN D ETUX	PT S1/2 SW1/4 SE1/4 S 50' CO RD DEED BK&PG B122/636 REC 00/00 Parcel # - 317041019 096	19 003 011 9957	15.12	SPARKS PHILLIP ET UX	PT SE1/4 NE1/4 E 30' CO RD 103/464 Parcel # - 414011302 111	02 07 10 12619	37.10
MURPHY JOHN D ETUX	PT S1/2 SW1/4 SE1/4 DEED BK&PG B116/596 REC 00/00 Parcel # - 317041019 0960	19 003 011 9960	14.60	GODDARD T.C.	PT SE1/4 NE1/4 E HWY 25 DEED BOOK 122/383 Parcel # - 414011302 0289	02 007 010 8404	148.50
MURPHY JOHN D ETUX	PT NW1/4 NW1/4 NE1/4 N W BODY LINE INSIDE CORPORATION DEED BK&PG B116/596 Parcel # - 117091330 022	30 003 011 10760	6.69	STEPHENS WILLIAM OSCAR	OWEN SUB LOT 34 35 DEED BK&PG B95/467 REC 00/00 Parcel # - 108051021 048	21 001 010 1843	10.00
NELSON HAROLD ET UX	EASTPORT BEACH EST LOT 60 61 DEED BK&PG B123/216 REC 00/00 Parcel # - 116071326 031	26 002 011 9226	359.67	STEVENSON ROBIN M ET AL	PT S1/2 N1/2 B110/537 Parcel # - 11701 11 0010	11 03 11 12698	36.20
NEWCOMB CONNIE M	LAKEVIEW LOT 24 DEED BK & PG 118/317 Parcel # - 117041514 021	14 003 011 10479	81.63	STEWART JERRY ETUX	PT N1/2 NW1/4 SE1/4 DEED BK&PG B122/177 Parcel # - 10308 28 0060	28 003 009 13957	10.70
NEWCOMB HOWARD LOUIS	GOLDEN LOT 1 2 23 24 PT VAC ALLEY B123/273 Parcel # - 714010512 048	12 07 10 12527	14.17	STOKES RILEY ETUX	PT SE1/4 SW1/4 S W CORN DEED BK&PG B5/307 REC 00/00 Parcel # - 11308 28 021	28 006 010 7564	27.05
NUNLEY JOHNNY ETUX	PT NW1/4 NE1/4 E BULLARD RD DB B 110-614 11/83 Parcel # - 11101 01 008	01 004 010 4888	71.57	SWINDLE JOHN F	PT N1/2 NE 1/4 N BODY Parcel # - 12104 18 0010	18 007 011 13435	4.55
OLIVE SHARON	PT SE1/4 NE1/4 NE1/4 DEED BK&PG B123/164 Parcel # - 714010512 002	12 007 010 14126	134.91	TAYLOR BILLY T	PT SW1/4 NE1/4 SE1/4 S 30' CO DEED BK&PG B123/226 REC 00/00 Parcel # - 108051021 020	21 001 010 1811	5.90
OWENS D HAROLD	PT NW1/4 SE1/4 W 30' CO RD Parcel # - 11002 04 0030	04 003 010 3538	33.28	TAYLOR MIKE ETUX	PT NW1/4 SE1/4 E BULLARD RD DEED BK&PG B122/205 REC 00/00 Parcel # - 11101 01 016	01 004 010 4898	54.50
OWENS JERRY W	PT S1/2 E1/2 SE1/4 DEED BK&PG B112/561 REC 06/84 Parcel # - 11403 08 0060	08 007 010 8693	8.85	THORNTON LINDELL	PT NE1/4 NE1/4 SE1/4 Parcel # - 108050622 012	22 001 010 13227	5.00
OWENS JUDY A ET AL	PT N1/2 NE1/4 N 30' CO RD DEED BK&PG P34/3 REC 00/00 Parcel # - 11202 09 001	09 005 010 5592	26.99	TRULOVE HERBERT	PT E1/2 SW1/4 N B CREEK DEED BK&PG B72/218 REC 00/00	05 007 011 11561	40.80
PARKER FRANCES M	PT NE1/4 DEED BK & PG 117/707 Parcel # - 109020909 0110	09 002 010 13066	9.83	TULLEY JAMES ETAL	PT SW1/4 SE1/4 NW PT DEED BK&PG 107/184 REC 00/00 Parcel # - 10905 22 0020	22 00P 010 2767	13.00
PARSONS EDDIE ETUX	LT 1 2 BLK 10 PT VAC ALLEY DEED BK&PG B121/345 REC 00/00 Parcel # - 413071035 056	35 006 010 7176	428.87	TYLER RICHARD R ET UX	E1/2 N1/2 SW1/4 DB B 113-478 Parcel # - 102071135 0020	35 002 009 12260	6.11
PATEL PROPERTIES	PT S1/2 NE1/4 NE1/4 S US HWY 72 INSIDE CORP DEED BK&PG B92/111 REC 00/00 Parcel # - 310060923 011	23 003 010 4422	579.60	UNITED STATES OF AMERICA	PT SE1/4 SW1/4 SE COR DEED BK&PG B124/95 REC 00/00 Parcel # - 714010712 0010	12 007 010 7879	738.20
PERRY JERRY ETUX	INDEP SQUARE LOT 35 INSIDE CORP Parcel # - 310061023 0080	23 003 010 4449	40.67	UNKNOWN OWNER	PT SE1/4 SW RR Parcel # - 10308 28 008	28 003 009 1111	12.45
PICKWICK LIMITED	PT NE1/4 SW1/4 N LINE DEED BK&PG B112/470 REC 00/00 Parcel # - 117011111 001	11 003 011 9444	11.74	WALKER ALAN	PT SW1/4 NE1/4 N PUB RD DEED BK&PG B73-463 Parcel # - 10906 24 0070	24 002 010 13933	13.00
PICKWICK LIMITED	PT SE1/4 NW1/4 B112/470 Parcel # - 11701 11 0010	11 03 11 12697	11.74	WALLIN GEORGE	PT SW1/4 NE1/4 DEED BK&PG 97/543 REC 00/00 Parcel # - 11205 21 012	21 005 010 5790	9.90
PRIDE RICHARD	PT NE1/4 SW1/4 CEN PT Parcel # - 317041119 008	19 003 011 9966	154.07	WALTON RONNIE ET UX	PT NE1/4 NW1/4 S 30' CO RD DEED BK&PG 103/600 REC 00/00 Parcel # - 116041618 008	18 002 011 9027	74.10
PRUITT JOHN ETUX	PT NW1/4 SE1/4 E HWY 25 DEED BK&PG B125/199 REC 00/00 Parcel # - 413071035 1540	35 006 010 7297	168.52	WAYNE MARK	FRAC NW1/4 DEED BK&PG B38/297 REC 00/00 Parcel # - 10105 15 006	15 001 009 11714	17.50
REED DEWEY & LESSIE	PT S1/2 NE1/4 S 30' CO RD B42/91 Parcel # - 414011302 044	02 07 10 12569	363.89	WAYNE MARK	FRAC NE1/4 DEED BK&PG B39/375 REC 00/00 Parcel # - 10105 16 001	16 001 009 11715	17.50
REID W A JR ETUX	PT FRAC S1/2 SEC N NACHEZ TRACE RD DEED BK&PG B113 P672 REC 10/84 Parcel # - 11808 34 002	34 004 011 10967	60.14	WAYNE MARK A ETUX	TISHOMINGO LAKESIDE LOT 54 DEED BK&PG B123/188-189 Parcel # - 108050215 009	15 001 010 1757	49.40
ROBERTS JOE ETAL	PT NE1/4 NW1/4 W SHORT RD DEED BK&PG 93/146 REC 00/00 Parcel # - 10906 13 049	13 002 010 2905	17.12	WELLS GLEN ET UX	PT SE1/4 NW1/4 S RED BUD RD DEED BK&PG B66/87 REC 00/00 Parcel # - 11405 15 015	15 007 010 8754	259.30
ROBINSON ANNIE B	PT NE1/4 SW1/4 CEN PT DEED BK&PG B86/422 REC 00/00 Parcel # - 317041119 004	19 003 011 9965	33.24	WELLS GLEN ET UX	PT SE1/4 NW1/4 Parcel # - 11405 15 0159	15 007 010 8755	20.15
RONK CAROLYN METAL	SANDY CRK LOT PT 15 DEED BK&PG B105/219 REC 00/00 Parcel # - 10805 16 055	16 001 010 1668	49.62	WELLS KIM	PT NE1/4 NW1/4 NW COR DEED BK&PG B118/333 REC 00/00 Parcel # - 11402 04 039	04 007 010 8566	3.04
RUSSELL DIMPLE C	PT N1/2 SW1/4 S HWY 25 DEED BK & PG 38852 Parcel # - 11106 14 0170	14 004 010 13734	10.77	WHITEHEAD BONNIE R ETUX	PT S1/2 NW1/4 SW1/4 W 30' RD DEED BK&PG B73/51 REC 00/00 Parcel # - 108061123 014	23 001 010 1917	73.80
RUSSO RICHARD ETUX	PT SW1/4 NE1/4 E 30' CO RD DEED BK&PG B99/648 Parcel # - 503011302 0260	02 003 009 13947	4.55	WIGGINTON JAMES L ETAL	PT SW1/4 SW1/4 NW1/4 W LINE DEED BK&PG B80/23 REC 00/00 Parcel # - 110061223 012	23 003 010 4495	24.30
SANDERS JERRY B JR ETUX	ROBINSONS SUB LOT 8 DEED BK&PG B120/484-485 Parcel # - 116041618 025	18 002 011 9046	213.64	WIGGINTON JAMES R	PT N1/2 PT S 1/2 NW1/4 W PUB RD DEED BK&PG B85/633 REC 00/00 Parcel # - 10909 29 032	29 002 010 3288	29.30
SEAY CHARLIE	IMPROVEMENTS ONLY Parcel # - 317041219 0600	19 003 011 10091	19.71	WILKINS RAYMOND L ETUX	LOT 3 RED SULPHUR COVE LOT 34 DEED BK&PG B109/156 REC 00/00 Parcel # - 10805 15 0420	15 001 010 1737	607.80
SEAY JOHN EST	PT BLK 44 DEED BK&PG P28/312 REC 00/00 Parcel # - 317041219 060	19 003 011 10090	74.12	WILLIAMS WALTER J ETUX	PT NE1/4 SE1/4 NE1/4 INSIDE CORP DEED BK&PG B118/13 Parcel # - 31006 14 004	14 003 010 3698	277.30
SEAY KATHER	PT NW1/4 NE1/4 SW1/4 SW SPRING ST Parcel # - 317041119 037	19 003 011 10002	56.99	WILLIS DEWAYNE ET UX	PT NE1/4 NE1/4 N MOORES HILL RD Parcel # - 11402 04 0029	04 007 010 8510	87.50
SHARP WILLIAM ETUX	COLEMAN BARBECUE BUILDING DEED BOOK 124/50 Parcel # - 310060824 0380	24 003 010 4401	972.41	WILSON CHARLES CLAYTON ET UX	PT NW1/4 NW1/4 NE1/4 N 30' RD DEED BK&PG B93/465 REC 00/00 Parcel # - 10606 24 010	24 006 009 1430	231.10
				WITT PAUL	Parcel # - 113080534 008	34 006 010 7607	15.30
				WOOD ROBERT ET UX	PT NW1/4 NE1/4 W DUNCAN DR DEED BK&PG B112 P47 REC 04/84 Parcel # - 413070935 0070	35 006 010 7093	162.90
				WRIGHT J C ETAL	PT NW1/4 NW1/4 W ST HWY 25 DEED BK&PG 102/82 REC 00/00 Parcel # - 11106 14 030	14 004 010 5209	117.50
				YARBER JACK	PT N PT SW1/4 SW1/4 NW1/4 SW ST HWY 366 DEED BK&PG 117/546 REC 00/00 Parcel # - 414010401 009	01 007 010 7779	22.30