

Tishomingo County News

The Vidette and Belmont

OFFICIAL LEGAL NEWSPAPERS OF TISHOMINGO COUNTY
The One Newspaper In The World Most Interested In This Area

ONE HUNDRED AND NINE YEARS

THURSDAY, JULY 23, 1992 NO. 7

To The Voters Of Legislative District One Of Alcorn & Tishomingo Counties:



person gets, the better possibility there is for him or her to get the upper hand and control of situations that arise in everyday life.

My pledge is to do what can be done to help build a strong economic base in the district. I support better paying jobs and a safe work place for all workers. I have the desire and ability to do this job.

We, the people, have no one to blame but ourselves. We need to return to strong moral and family values. I believe in prayers in our schools.

Health Care cost has gotten out of control. Is it because we demand more or the best? Could it be there are too many regulations that drive up the cost? Voters, something has to be done.

This is an important election because you, the voters will be electing a representative to serve you in Jackson. When you go to the polls on Tuesday, August 4th, vote for a man that will work hard for both counties to create new and better paying jobs, to provide the best education for all our children, to help control the cost of health care and provide the best possible law enforcement. Vote for Richard Dobbs for your State Representative on Tuesday, August 4th.

Ladies and Gentlemen, I need your vote, I need your support but most of all, I need your prayers.

Thank You,
Richard Dobbs

Office Procedures Course Offered

A Clerical Office Procedure course is being offered at the Tishomingo County Vocational Center for entry level skills as clerical office workers. This course will offer functional training that will equip students to meet today's job qualifications. The course will cover office automation, modern typing techniques, telephone and special services, duplicating methods, mailing services, filing, cashing, payroll & an introduction to computers. Instructor, Cindy Nelson - Fee \$25.00. Registration will be held at the center, Monday, August 3rd at 6:00, class will begin at 6:30. Students will meet twice weekly for 6 weeks. Call the Vocational Center at (601)438-6675 or 6689 for more information.

Notice

Anyone interested in playing in the Iuka Men & Women Softball League contact one of the following: Jeff Durham, 423-6833, Jeff Gillis, 423-1766, Benny Walker, 423-6509 or Melvin Patrick at 423-3098.

Gun Shot Fatal To Cherokee Man

A Cherokee man died at an Iuka residence Monday, July 20.

According to Iuka Police Chief Amos Bates, Reginald Fuqua, of Cherokee died of a single gunshot wound to the head. Fuqua was at a residence located on 705 Pike Street in Iuka.

Bates stated at press time that the incident is under investigation.

Friends To Feature Phyllis Harper At Luncheon

The Friends of the Iuka Library are pleased to announce that Phyllis Harper, feature editor of the Northeast Mississippi Daily Journal will be the speaker at the next Lunch Break, Tuesday, July 28 at the library from 12 to 1 p.m.

Mrs. Harper's column is well known in this area, and her writings of bygone days, recipes, and "down home" sayings are a delight to her readers.

For an entertaining hour, plan to be at the Lunch Break July 28; price is still \$2.00.

Youth Crusade At Grace Bible Church

Come join in the fun and excitement as we worship and celebrate the son of God.

The Crusade will begin July 27 and run through July 31, each night from 7 to 8:30 p.m.

Each night will be very special you don't want to miss a single night. We will begin each night with praise and worship.

Monday - Will be skits performed by the Youth of Grace Bible Church. Special singing by Anna Beth Goss. Gary Dawson will be ministering the word to our youth.

Tuesday - Testimonies will be given by "Grace Bible Praise" featuring: Debra Lovelace - Keyboard; Ricky Lovelace - Lead; Wanda Lambert - Vocalist; Steve Proctor - Drums; Tim Grissom - Bass and Ministering by Gary Dawson.

Wednesday - Puppet Show by the very talented youth of New Prospect Baptist Church of Iuka.

Thursday - Skits by the youth of Grace Bible Church. Ministering by Gary Dawson.

We hope to have Judy Vaughn, a professional, Christian Ventriloquist. We know this will be a special treat and a real blessing to our youth.

We will also be having a cook-out.

Friday - Special singing by Anna Beth Goss. Ministering by Gary Dawson and Danny Lovelace.

Refreshments will be served nightly.

Anyone needing a ride please call: 423-2858, 423-9028 or 423-2343.

Please be in prayer for the youth in our area. Our children are very precious.

New Tri-state Partnership At NASA-Yellow Creek

Four Educational Institutions To Offer Classes At School Complex

The University of Mississippi will be joined in offering fall classes at its NASA/Yellow Creek Center by four nearby institutions, forming a new tri-state partnership.

Ole Miss has offered a variety of classes at the NASA-Yellow Creek branch since its inception in 1991. The other schools that will begin offering coursework this fall at the Tishomingo County Education Complex's University Center between Burnsville and Iuka are Mississippi State University, Northeast Mississippi Community College, Memphis State University and the University of North Alabama.

Registration for fall classes is scheduled at the University Center August 19 from 4-6:30 p.m. Advisers

from the Ole Miss Schools of Engineering and Education will be present.

Ole Miss will offer education and engineering classes beginning the last week of August. The engineering classes run for a full semester, ending Dec. 10. The education courses are offered on a seven-week basis, with the first session continuing through the first week of October and the second seven weeks running from late October through early December. Registration for the second seven weeks will be the University Center Oct. 14 from 4-6:30 p.m.

The Mississippi State University College of Engineering off-campus video program will also offer

engineering classes. Freshmen and sophomore coursework will be offered by Northeast Mississippi Community College. Memphis State's extended programs department will offer an education class, and the University of North Alabama will offer a course in business and one in industrial hygiene.

Undergraduate tuition costs for Ole Miss courses are \$83 a credit hour for Mississippi residents and \$165 for non-residents.

Employees of major defense contractors working in Mississippi may be classified as residents. Also, non-resident fees are waived on a maximum of six semester hours each semester for individuals teaching in Mississippi schools.

Absentee Ballots For First Primary Available

Those wishing to vote by absentee ballot for the first primary, August 4, for the state legislators, can do so now through the Tishomingo County Circuit Clerks office.

According to Tishomingo County Circuit Clerk Gerald Parsons, the absentee ballots must be picked up in person at his office and filled out in the office or they can be mailed to those who request them. The mail-out ballots must be returned to the office no later than Monday, August 3 by 5 p.m.

In order to qualify to vote as an absentee, one of the following reasons must apply:

- Being enlisted in the United States Armed Forces or the spouse or a member.
- A member of the Merchant

Marines or the American Red Cross.

- A disabled war veteran in the hospital or the spouse or dependent of a veteran.

- A civilian serving outside the U.S. with any branch of the armed forces or with the Red Cross or Merchant Marines.

- A Mississippi resident residing outside the territorial limits of the U.S. temporarily.

- An employee engaged in interstate transportation.

- A student, teacher or administrator or a spouse or dependent of a student, teacher or administrator.

- An employee engaged in offshore employment or as an employee on a vessel or other watercraft.

- A worker required to be more than

50 miles from home county on election day, or spouse or dependent of such person.

- Having a temporary or permanent physical disorder.

- 65 or older.

- Parent, spouse or dependent of a person with a temporary or permanent disability who is hospitalized more than 50 miles from his county and applicant will be with that person on election day.

- Member of the congressional delegation or spouse or dependent of a member.

For more information call the Tishomingo County Circuit Clerks Office.

Fried Green Tomatoes, Fish, Music and Political Speaking

If you like fried green tomatoes, fried fish, listening to an old fashioned political speaking and good music, then make plans to visit Mineral Springs Park this Saturday, July 25.

The Tishomingo County Sheriff's Department will be sponsoring the political speaking, fish fry, fried green tomatoes and gospel singing. They will use the proceeds to purchase much-needed radio equipment for the Department.

The event will be held from 12 noon until. Candidates vying for seats in the Mississippi House of Representatives or Senate in the election primary to be held August 4, have been invited to speak.

Everyone is encouraged to come out and enjoy good food, good company, good gospel singing, and listen to the candidates views - while at the same time, supporting your County Sheriff's Department.

Physicals Scheduled For TCMHS Athletes

All boys and girls who will participate in athletics at the new magnet high school need to report for their physical examinations at the school's gym Monday, August 3, at 6:00 p.m.

Physicals will be given by Dr. Scott Segars and Dr. Jerry Turner and will be free of charge, courtesy of Segars' Clinic in Iuka.

Dr. Turner is a new physician with Segars' Clinic. He is a former football player of Delta State University where he lettered as a wide receiver from 1979-83 and was an Academic All-American for three years. The young athletes will be able to meet and talk with him during this time.

Benefit Softball Tournament

There will be a benefit softball tournament July 30 - August 1, at the Tishomingo Softball Field in memory of Aaron Lee Hall.

All proceeds will go to his mother, Mrs. Eula Hall. For more information call David Hall at 438-7184 after 5:00 p.m.



Iuka Dixie Youth All Stars In District Tournament

The 11 and 12 year old Iuka Dixie Youth League All Stars are participating in the District Tournament being held in Iuka this week.

Seven teams including Iuka, two West Point teams, two Columbus teams, Baldwin, and Corinth are competing for the title and advancement to the State Tournament to be held in Hurley near Pascagoula.

Iuka defeated West Point 18-6 on Tuesday evening and will play another West Point team tonight (Thursday) at 9:00 p.m.

Team members are, kneeling, left to right, Grant Smith, Robert Brown, Derek Dexter, Brad Cornelison, Brian Robinson, and Chad Daugherty. Back row, standing, Jessie Walker, Adam Gray, Corey Helton, Jeremy Biggs, Lamell Malone, Terrell Carter, Brad Hollon, Jeremiah Smith and Reed Kent. Coaches Lynn Helton, Butch Daugherty - Head Coach, and William Walker.



What's Cooking-The Tishomingo County Junior Auxiliary announces the arrival of their new cook books entitled "Sharing Our Best," which they will be selling for \$7.00 each. The proceeds from the cook book sales will be used to benefit the needy children in Tishomingo County. Included in the volume are many new

recipes, as well as some old favorites.

To purchase a cook book, contact any Auxiliary member. For more information contact Jean Barlow at 423-6419, Beth James at 423-2662 or Dianne McClung at 423-3872. Jean, Beth, and Dianne are shown here with copies of "Sharing Our Best."



The "Read To Win" and "Read-To-Me" Summer Library Programs concluded with a Party sponsored by the 20th Century Club. The children

enjoyed cookies, kool-aid, and ice cream cones. Over 70 children participated in the combined Library Programs. A special thanks goes to

the Friends of the luka Library, the 20th Century Club, Mrs. Bobbie White, Pizza Hut, Sonic Drive-In, and Old Tyme Snow Balls for making the program successful.

Home Economics Tips

By: Barbara F. Guinn
Extension Home Economist

REDUCING HEALTH RISKS FROM PESTICIDES

Individuals are concerned about the quality and safety of the food they feed their families. One of the issues of concern is pesticide residues in the food.

Pesticide is a broad term that includes chemicals used to control insects, diseases, weeds, mold and other pests on plants, vegetables, fruits, and animals. By controlling plant diseases, weeds, insects and other pests, pesticides protect crops and increase yields.

Fruits and vegetables are a vital part of a healthy diet. They can be produced without using pesticides, but the quality and yield may suffer. Which would affect the availability, variety and significantly increase the cost of the produce.

The Environmental Protection Agency regulates the manufacturing, labeling and use of all pesticides. Before a pesticide is approved for use, it requires extensive testing and safety studies to demonstrate that the product works and won't pose unreasonable risks to people or the environment.

EPA sets tolerances for pesticide residues on food. The maximum level allowed is generally 100 to 1,000 times lower than the level at which some adverse effect might occur.

The Food and Drug Administration conducts a study each year called the Total Diet Study. In this study, FDA

analyzes the diets of young children for residues of pesticides. This study continues to show that the pesticide residues in food are consistently below the EPA tolerance level.

If you are still concerned about pesticide residues in your food, there are a variety of steps you can take as a consumer to reduce or minimize your exposure to pesticides in foods even further.

Wash all fresh fruits and vegetables under running water. Most pesticide residues on the outside of the food can be washed off easily with water alone. Do not wash them with soap and water. Some soaps leave a residue on foods that is difficult to remove.

Peel fruit and vegetables when appropriate, and remove outer leaves of vegetables such as lettuce and cabbage. When peeling, keep in mind that you are making a trade off. Some of the vitamins and minerals in fruits and vegetables are found in the peels.

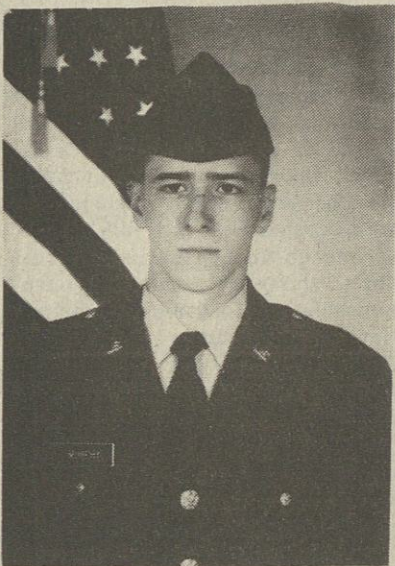
Some pesticides can collect in the fat or meat, poultry and fish. When purchasing these products, choose lean cuts that have little internal fat. Trim and discard any visible fat before cooking or eating the food.

Eat a well-balanced, nutritious diet, including a variety of fruits; vegetables; breads, cereals and pasta; lean meat, poultry or fish; and low fat dairy products. A nutritious diet is an important part of maintaining a healthy body.

Take precautions when buying produce from roadside trucks. EPA has established strict regulations on the use of pesticides, including on which crop they can be used and the number of days between the last ap-

plication and harvest.

Question the roadside vendors to determine if they have followed established guidelines.



In Service

Pvt. Jack L. Murphy

Private Jack L. Murphy, member of the Mississippi National Guard graduated July 17, 1992 from Fort Leonard Wood, Missouri. He graduated with honors and received the dedicated soldier award.

In training he earned the expert marksman badge on the rifle range and expert badge in grenade and demolition. His squadron of which he was squad leader, ECHO 6 10th - 3rd plt., graduated with honors and was also rated number 1.

Pvt. Murphy will take his AIT Training at Fort Lee, Virginia.

His friends and family wish to convey their congratulation and pride to him.

Jack is the son of Melissa Murphy; Brother: Fabian of luka; Grandparents: Lucille and Bud Ramage of luka, Gene Murphy of Van Texas and Curtis McAnally of Holcut.

MSU Releases Fall Semester

The 1992 fall semester at Mississippi State University will begin August 17 with the first day of classes.

Beginning freshmen and transfer students should apply for admission no later than July 27. Registration information for new students who have not previously scheduled classes can



A BOOK MARKER CONTEST was held during the Summer Library Program at the luka Public Library. The theme for this year's program was "Read To Win". The book marker winners emphasized the theme when designing their book marker. The winners were 1st place, Alanson Holiday, 2nd place, DeAnna Rogers, and 3rd place, Valena Gonzales.

be obtained in 112 Allen Hall or by telephoning 325-2662.

Other major student and alumni-related dates for the year include:

•Aug. 9, campus housing open for residency.

•Sept. 7, Labor Day holiday (university closed).

•Oct. 1, Scholars Recognition Day (for top high school seniors).

•Oct. 10, Government Recognition Day (for state and federal officials).

•Oct. 19-20, mid-semester holidays (for students only).

•Oct. 24, combined Homecoming (for alumni and supporters) and "Discovery: MSU" (for prospective students) weekend.

•Nov. 26-27, Thanksgiving holidays (university closed).

•Dec. 9-14, final examinations.

•Dec. 14, last day for beginning freshmen and transfer students to apply for 1993 spring semester admission.

•Dec. 18, fall semester ends.

•Dec. 22-Jan. 1, winter holidays (university closed).

•Jan. 11, spring semester classes begin.

•May 15, commencement.

Singing At Palestine

The regular monthly singing will be held at Palestine Church on Saturday night, July 25, beginning at 7 o'clock. The featured singers will be The Kennedy Family from Wheeler. Everyone is invited.



She's a heartbreaker.

She's taken the plunge out of high school and into a pool of statistics. You're worried sick about her future.

She needs a job, but what can she do without training?

Job Corps can help her get an education, learn job skills, and earn money while she learns. Some centers offer child-care programs too. And the best part? It's all tuition-free!

If your heartbreaker is 16 to 21 and looking for direction, call Job Corps; 1-800-338-7899 or visit your state Employment Service office.



U.S. Department of Labor

Political Announcements

The Tishomingo County News, a legal publication in Tishomingo County, Mississippi, is hereby authorized to publish the announcements of the candidates for the First Primary of the 1992 Special Election to be held August 4. The News urges each elector to give these candidates their conscientious consideration before casting their vote.

Candidates and the offices for which they are vying are as follows:

STATE REPRESENTATIVE DISTRICT I

Richard Dobbs (D)

David Yarbrough (D)

Harvey Benderman (D)

Lamar Skinner (D)

J. R. Long (R)

State Senate District 5

Perry Rather

This is a paid announcement, which is intended as a public service for the voters of Tishomingo County. This listing is not intended to suggest or imply that these are the only candidates for these offices.



A SCAVENGER HUNT was part of the activities the children participated in during the "Read To Win" Summer Library Program at the luka Public Library. The first three children to return all 20 items on their list received a Friends of the Library T-Shirt or Sun Visor. Two of the winners, Alanson Holiday and Carrie Grimes are pictured.

What Can Make ACUVUE Disposable Contact Lenses Even Better?



A Free Trial Pair!

We want to open your eyes to the convenience and comfort of ACUVUE Disposable Contact Lenses.

Come in for an eye exam.

If ACUVUE is right for you, we'll give you a free trial pair.

ACUVUE® The First Disposable Contact Lens

DR. JACK HORA AND ASSOCIATES

711 Hwy. 25 South (next to Piggly Wiggly Laundermat) luka

Call Monday or Thursday For Appointment: 423-3580

or toll free dial 1-286-6171

FIRST STRING

Before you buy just any trimmer, read this: According to a leading consumer magazine, the Stihl FS 36 is the single best trimmer for general cutting and fine trimming.

Now ask yourself, "Do I need a Stihl FS 36?"

Does grass grow?

\$129⁹⁵



FS 36

- 2 line cutting head
- Flow-through primer
- Large easy-access air filter
- Built-in hanger/stand
- Adjustable loop handle

DEWAYNE'S POWER EQUIPMENT

Behind McBride's Meat Market
luka - Ph. 423-2018

STIHL®

For the part of you that promised you'd never compromise

Bishop's Barbecue Pork

Hickory Cooked Down On The Farm



available in all
Supermarkets
throughout
Tishomingo
County

We Ship
Nationwide
U.P.S.

Satisfaction
Guaranteed

Look In Your Supermarket Today For Bishop's Barbecue Pork!

Hickory Cooked On L. O. Bishop's Farm
in Bishop, Alabama

Rt. 2 Box 156 - Cherokee, Ala. ** Phone 205-360-2204

TISHOMINGO COUNTY NEWS VIDETTE and BELMONT NEWS

Phone 423-3666
(USPS 631680)

Charlotte B. McVay, Editor

Published Thursday by The Tishomingo County News, Inc. Serving the people of Tishomingo and adjoining counties for more than 100 years. Publication office 120 West Front Street, P.O. Box 70, luka, MS 38852-0070. Entered at the Post Office as mail matter of the Second Class. Second Class postage paid at luka, Mississippi. Zip Code 38852. Post Master send address changes to The Tishomingo County News, P.O. Box 70, luka, Mississippi 38852.

Mail Rates Tishomingo and Adjoining Counties

\$12.00 per year

Other Areas \$20.00 per year

EMERGENCY PHONE NUMBERS

Sheriff Department.....	423-6185
luka Hospital.....	423-6051
Ambulance Service.....	423-5766
POLICE DEPARTMENTS	
Belmont.....	454-3381
Burnsville.....	427-9526
luka.....	423-6340
Tishomingo.....	438-6302
FIRE DEPARTMENTS	
Burnsville Fire Department.....	423-1862
District 1, Coleman Park.....	423-1862
District 2, N. Crossroads.....	423-1862
District 3, Midway.....	423-1862
District 4, Tishomingo.....	423-1862
District 5, Belmont.....	423-1862
luka.....	423-5011
Miss. Forestry Service, Woodall Tower.....	423-5951
MISSISSIPPI HOT LINE FOR CHILD ABUSE.....	1-800-222-8000
DRUG AND ALCOHOL ABUSE.....	423-3332

INSIGHT INTO EYESIGHT

DR. PHILLIP GRAY
OPTOMETRIST



COLOR VISION EXPLAINED

The sky is blue, the grass is green, the sun a burning yellow, but why? We know that white light is really a composite of the colors orange, yellow, green, blue, indigo and violet. The retina which receives the light, contains three types of color sensors called: red, green and blue cones. The red cones respond to the longer wavelengths of light, the green cones to the middle range, and the blue cones to the short wave-lengths.

The brain has to juggle all of this different wave-length information and funnel it through the retina's 5 million cones before we get a precisely painted picture of what our eyes have seen. This constantly changing stream of images from the world to our mind gives patterns of color at the speed of light.

This amazing visual system works reliably in all but a tiny percent of the American population. When it does not, the result is color blindness.

Dr. Phillip Gray
105 S. Fulton St., luka
Phone 423-3785



Pruitts To Celebrate Golden Anniversaries

Lester and Jerdine (Page) Pruitt and Vester and Mavious (McKee) Pruitt will celebrate their fiftieth wedding anniversaries Sunday, July 26, 1992. Their children will honor them with a reception on Sunday afternoon at the Southern Style Restaurant at Midway between the hours of two and four o'clock.

The two couples were united in marriage on July 27, 1942 in a double wedding ceremony performed by Bro. G. N. Gober in Iuka, Mississippi.

Friends and relatives of the Pruitt families are cordially invited to attend the reception.

must pay cash.

Our Wednesday night Bible study is going great, we are studying from the Book of Romans. Come down and join us. We start at 6 p.m.

New Arrival

James Michael Smith would like to announce the birth of his new brother, Edward Lee Smith, on July 2, 1992 at Magnolia Hospital in Corinth. Parents are James and Lori Smith of Iuka. Edward weighed 7 lbs. 11 oz. and measured 19½ inches long.

Proud grandparents include Roy and Marcell Smith of Iuka and Linda and Larry Apple of Indiana.

Tishomingo News

By: Willard Strickland

Sympathy goes out to the Blunt and Pennington Families in the death of Reba Blunt Pennington. The funeral was Sunday.

Mrs. Tina Parker underwent surgery at the North MS Medical Hospital in Tupelo last week. Reports are that she did well. Hope she will soon be well and out again.

Mr. George Harper was rushed to the Corinth Hospital Sunday from the Iuka Hospital. His condition is serious. His room no. is 237 Magnolia Hospital in Corinth.

Mrs. Mary Dobbs is a patient at North MS. Medical Hospital in Tupelo. We wish for Mrs. Dobbs a very special recovery soon.

Visitors of Mrs. Edna Harris last week were Bobby Nell Harris Hornacek of Lake Forest, Ill. and Mrs. Dorothy Harris Dabak and mother Ollene of Darian, Ill. Bobby & Dorothy grew up in Belmont and attended school in Belmont.

Mrs. Rowland Hyde and Bonnie visited Mrs. Opaline Crouse on Thursday afternoon last week.

Mrs. Birdie George and Benji and

MaMa Edna Harris shopped at Wal-Mart Sunday afternoon.

Visiting Mrs. Lois Bolton Sunday was Eva Mae Strickland. They enjoyed the evening riding around. They settled in the park at Dennis and had Ice Cream.

Miss Eva Mae Strickland surprised Shirley Ann Thorne Saturday with a birthday dinner at her home. Others to help celebrate were Edward, Jewell, and Opaline Crouse, Mr. & Mrs. Gary McNutt, Stephanie and Jessica.

Mr. and Mrs. Sam Reed visited with Mrs. Edna Harris Sunday afternoon.

Mrs. Opaline Crouse and Shirley Ann Thorne attended the singing at Pleasant Hill Methodist Church on Sunday afternoon.

Among the number from the Tishomingo Church of Christ attending Christian Camp at Maywood near Hamilton, AL this week is Mrs. Johnnie Strickland, Counselor; Katie, Chad, John David, Michelle and Michael Strickland.

Supper guest of Mr. and Mrs. Edward Thorne on Sunday night were Bobby Wayne Thorne of Florence, AL. Eva Mae Strickland and Opaline Crouse stopped in later.

Personal

Visiting H.O. Carter this past week were Chuck and Marie Walls of Paradise, CA.

Also visiting were her cousins, Larry McKinly of Los Angeles; Jerry and Randy South of San Jose and Eddy McKinly Jr. of Fresno, CA and Randy South Jr. of Cedar Lake, Ind.

Personals

Visiting with Mary Ann Maxwell was her English friend Edna Wooten of Corinth, MS, her mother Milly Wilson and friend Edith Rhodes from Sunderland Durham England. Both

are here for 8 weeks. Milly will celebrate her 89th birthday August 15th, this is her fourth visit to Corinth last one being 1970. This is Edith's first time to USA, she loves it and is very impressed with Mississippi Hospitality.



The name "geometry" comes from the Greek words for "earth" and "to measure."

SALE

reg. \$72
\$54.99!

Easy
SPRINT

SPECIAL ASSORTMENT OF SHOES
50% OFF!
SUMMER CLEARANCE

SALE ENDS JULY 31

SPORTS PLUS

SHOES & APPAREL

1419 Hwy. 25 So.
Iuka, MS 38852

423-2421
423-1774

Tishomingo Homemakers Enjoy Eating Out

The Tishomingo Homemakers Club met Friday night, July 10, and traveled to Pickwick Dam, Tennessee to the Rib Cage for an evening of good food and fellowship.

After everyone had ordered from the menu, Ms. Shirley Thorne said the blessing.

The climax of the evening meal came when everyone had a slice of Key Lime Pie, of course, with all the calories removed.

Shirley read the thought of the month: "He who blows his stack adds to the world's pollution."

Others to enjoy the special occasion were Mrs. Johnnie Strickland, Mrs. Kathy Byram, Mrs. Kim Smith, Mrs. Willard Strickland, Mrs. Ruth Gatlin, Mrs. Gail Strickland, Mrs. Betty Cain, Ms. Eva Mae Strickland, Mrs. Lucille Jowers, and Mrs. Karen Garner. Of course, our "special little visitor", Brooke Smith, had a good time too. All the members were present but four, and we missed them.

Our club was well represented at the county-wide homemakers club luncheon at the Pickwick Landing Restaurant in Pickwick, Tennessee on Saturday, July 11. The club members and their families from our club to enjoy the occasion were Mrs. Ruth Gatlin, Ms. Shirley Thorne, Mrs. Kim Smith and Brooke, and Mr. and Mrs. Ray (Kathy) Byram.

Our next meeting will be Thursday night, August 13, at 6 p.m. at the home of Mrs. Betty Cain, and we welcome anyone to come meet with us.

Sardis Church News

By: Ova Reno

Attendance at Sardis Sunday was average with three visitors. We thank the Lord for them and want them to come back again.

Bro. John's message Sunday morning was taken from Romans 9:1-3 verse 3. For I could wish that myself were accursed from Christ for my brethren, my Kinsmen according to the flesh.

Sunday night he read from 2nd Timothy 2:1-2 and the things that thou hast heard of me among many witnesses, the same commit thou to faithful men, who shall be able to teach others also.

Everyone has been so busy canning and freezing vegetables that there hasn't been any visiting going on this past week.

I called Lorene Tidwell one day and found out her mother, Mrs. Walls and her sister, Christeen Burcham had improved some. They still need our prayers.

Blanch Woodruff is not doing much good at all. Help us pray for her.

Need help? God's word has an answer for everything. All you have to do is search it out and read it prayerfully. It will tell you how sinful some of the things going on in the world today are and how God hates them.

Have you grieved Jesus? "Oh, I had an awful headache, I had a roast in the pan; or we overslept this morning but I go whenever I can." verse 4 next week.

The best exercise is to bend down to help someone up.

Thought for the day: God's word is able to keep you from being deceived.

Prayer suggestion: Praise the Lord for His greatness.

Weekly prayer: Dear Lord, help our local and world leaders to make decisions on the side of justice and right. Let your will be accomplished everywhere...including right here.

Prejudice means taking a stand against something you don't understand.

Who in Europe was the first to become a Christian? Read Acts 14-15. How many beatitudes did Christ

BILL WHEELER SHARES OUR VALUES...ON



TRANSPORTATION: TRANSPORTATION: Jobs, Businesses, And Economic Development All Depend On A Good Transportation System -

Roads, Rail, And Water.

THE MISSISSIPPI-ALABAMA RAILROAD
AUTHORITY ACT HOUSE BILL 1364

When Norfolk Southern informed our communities that they intended to abandon rail service in Tishomingo County closing a vital transportation link, local community and government leaders contacted Bill Wheeler. Bill made contact with the railroad division of Mississippi Department of Economic and Community Development. Later, Bill Wheeler served on a committee headed up by local government and business leaders working on ways to save the railroad. As progress was made it became clear that legislation could be helpful. In January of 1992, Bill Wheeler introduced H.B. 1364 creating a unique local railroad authority. Over the next several months, Bill guided the legislation through the legislature to its passage in April. Though problems still face the project and most all the credit should go to local government, business, and community leaders, hopefully, H.B. 1364 will help save our railroad and thus save the businesses and jobs as well as the future industries that depend on rail service.

THE 1992 FOUR-LANE HIGHWAY ACT HOUSE BILL 936

In 1987 the legislature enacted a major four-lane highway program - but many areas were left out. Since being in the legislature Bill Wheeler has pushed for the inclusion of Highway 25, one of the heaviest traveled roads in the state. In 1992 Bill Wheeler got 68 fellow legislators to co-sponsor H.B. 936 to add Highway 25 along with 700 miles of four-lane road to the state four-lane program. When more miles are added to the state four-lane system, Bill wants to make sure that Highway 25 is included.

**PRO BUSINESS, PRO JOBS,
PRO ECONOMIC DEVELOPMENT...**

AND HE DELIVERS

VOTE BILL WHEELER REPRESENTATIVE



"Happy Birthday"

July 23rd
To Alexandria, Virginia
From Paden, Mississippi

Happy 19th Birthday! Melanie Hope

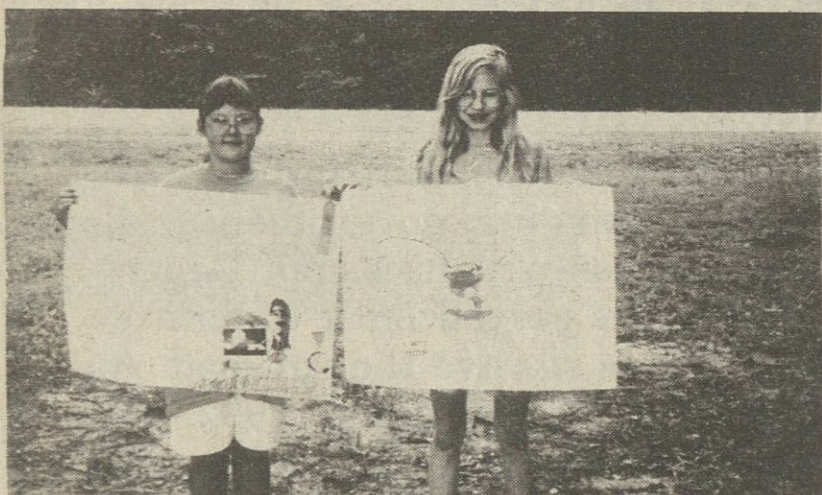
Love,
Auntie

In Loving Memory Of Bill Blythe July 21, 1991

In our sorrow, Lord Jesus, may your comfort take all the bitterness and longing away and give us courage to face our heartache. Each day we pray you will help remove the pain from our heart. A void, an emptiness, will always remain, but help us learn to live with it. Give our heart courage and let it be stronger than our mind. For only in our heart can we fully accept loss and understand grief. Help us accept what we cannot change and to grow in strength and patience.

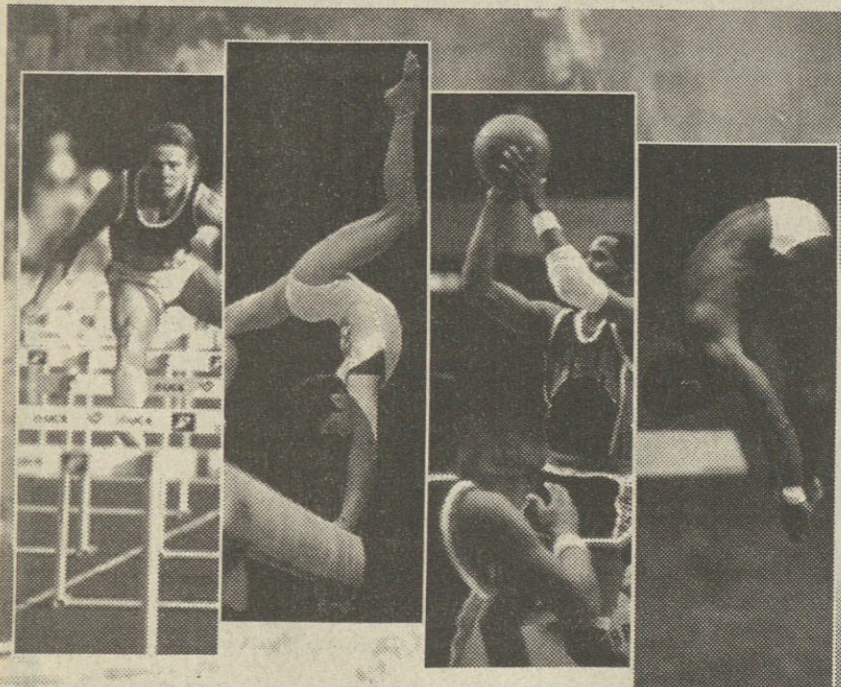
Help us to bear our loneliness with grace and confidence. Through our tears we wash our hearts as our memories and love for you remain as strong as ever.

We Miss You!
Jim, Libby & Sherie



4-H Dairy Poster Contest
Winners--First place winner was
Chantel Ervin from the magnolia 4-H

Club and Natheda Russell placed
second she is a member of the Holcut
4-H Club.



LET THE GAMES BEGIN!

Experience the spectacle as 10,000 athletes from over
170 countries parade into Barcelona's Olympic Stadium,
and the world unites for 16 days on NBC.

FRIDAY AT 7 P.M.



15 WOWL
TV 15 NBC



1942

1992

In honour of the
Fiftieth Wedding Anniversary of
Reverend and Mrs. R. C. Scott, Sr.
their children and grandchildren
request the pleasure of your company
at a Reception
on Sunday, the twenty-sixth of July
Nineteen hundred and ninety-two
from two until four in the afternoon
Airport Mission Baptist Church
Iuka, Mississippi



New Arrival--James Michael Smith
would like to announce the birth of
his new brother, Edward Lee Smith,
on July 2, 1992 at Magnolia Hospital
in Corinth. Parents are James and
Lori Smith of Iuka. Edward weighed 7
lbs. 11 oz. and measured 19 1/2 inches
long. Proud grandparents include
Roy and Marcell Smith of Iuka and
Linda and Larry Apple of Indiana.

Conference To Be Held

Mississippi Protection & Advocacy
System will host its tenth annual
conference August 18, 1992 at the
Ramada Renaissance Hotel in
Jackson. This year's conference is
entitled "Rights of People in
Facilities". Valuable information will
be provided regarding the law and
ethical issues surrounding rights of
persons with developmental
disabilities and those labeled men-
tally ill who reside in facilities.
Michael Perlin, Association Professor
of Law and Director of the Federal
Litigation Clinic at New York Law
School, will be the keynote speaker.
CLE credit will be offered for attor-
neys, and approval for contact hours
has been submitted for other
professionals. For more information,
call 1-800-772-4057 or 981-8207.

Skinner Family Selected As Hosts For YFU International Student

Mr. and Mrs. Lamar Skinner of Bur-
nsville, MS will welcome a new
"daughter" in August 1992 -- Juliane
Brey, a Youth For Understanding
(YFU) International Exchange student
from Germany. Juliane, who will be a
student at Tishomingo County
Magnet High School near Iuka, will
live with the Skinner family for an
Academic Year.

As a member of the Skinner family,
Juliane will participate in all family ac-
tivities, from vacations to household
chores. While sharing the culture of
Germany with her host family and
schoolmates, she will learn about
U.S. culture.

YFU, established in 1951, is one of
the world's oldest and largest non-
profit international exchange
organizations, dedicated to inter-
national understanding and world
peace. About 4,000 U.S. families open
their homes and hearts to YFU inter-
national students each year.

More information about hosting
YFU international students is
available from YFU's volunteer for the
Burnsville area, Harrell Padgett at
601-728-6378 or by calling YFU's
regional office at 1-800-USA-0200.

Tenn-Tom Today

The largest and one of the most
scenic campgrounds on the Tenn-
Tom Waterway is about 85% com-
plete as of mid July. McGinnis
Brothers (the prime contractor out of
Houston, Texas) is making rapid
progress toward a fast-approaching
completion date.

The newest of the U.S. Army Corps
of Engineers' campgrounds is
located approximately 1 1/2 miles west
of Pickensville, Alabama, on the West
Bank of Aliceville Lake in Pickens
County, just off Alabama Highway
#86. It is 1 1/2 miles upstream from the
Tom Bevil Lock and Dam.

Bigbee Valley Campground con-
sists of 176 Class "A" campsites.
Each site includes electrical and
water hook-ups, a table, grill, cam-



Happy 75th Birthday Mom

We love you,
Ansel and Reba



Happy 12th Birthday Jamie Day!

We love you,
Mom, Carrie, & M. K.



Happy Birthday Mamaw & Rhiannon

pire ring, utility table, lantern post,
and 600 square feet of impact area for
the above and for tent accom-
modations. Sites are designed so that
tents will be placed on the impact
areas and not on the grass. Thirty-
four sites have sewage hook-up
capability.

To reduce the cost of operation
and be more environmentally con-
scious, the campground has a cen-
tralized refuse collection system
(trash compactor location) in lieu of
garbage cans at each site. However,
a number of cans are at sites for the
disabled and at other central
locations. Several campsites and
facilities are designed to accom-
modate the physically disabled.

Four shower/restroom facilities,
one group shelter, two multi-use
courts, and four play areas are scat-
tered throughout the campground.
Two fish cleaning stations and five
fishing piers are available for camper
use. The existing two lane boat ramp
with fifty parking spaces has been
absorbed into the campground ex-
clusively for camper use. The general
public has access to a recently
opened two lane ramp adjacent to the
campground.

A unique feature of the park is a
two acre pond stocked with catfish,
bass, and bream and surrounded by
large cypress and tupelo gum trees.
Long footbridges cross the pond at
both ends, and several campsites
border the two long sides of it
beneath the hardwood shade.

The total estimated cost of the

Justin Turns One! Justin turned
one year old on June 9, 1992. Justin
the son of Mark and Pam Emmett.
Grandparents are John and
Robinson and the late Gerald
mons of Iuka, Sue King McBe
Santa Ana, California, and Allan
Jenny McBee of Winchester,
nessee. Great-grandparents are
(Tobuck) and Margaret King of
and Joe B. and Tootsie McBe
Cowan, Tennessee.

Bigbee Valley Campground is in
cess of 4.1 million dollars. The
ticipated opening date is Spr
1993.

ACT Dates Set At NEMCC

Residual ACT's will be given
several dates on the Northern
Mississippi Community College
campus prior to the beginning of
fall semester.

An application for admission
Northeast must be on file in the
school's admission office prior
testing. To be eligible to take
residual ACT, one cannot be cur-
rently enrolled in high school.

A picture identification, such as
a valid driver's license, or a letter
identification is required. Stud-
ents may not repeat residual testing
60 days have passed since the
previous testing.

Tests are scheduled for July 27
August 15, 17, and 19. Testing
begin at 8:00 a.m. in the Coun-
Center located in Estes Hall. A
fee is required at the time of the test.

For additional information, call
NEMCC's Counseling Center at 775-
7751, extension 313.

Miracle-Ear

FREE HEARING TESTS HEARING AID SERVICE CENTER

Tuesday, July 28th
9:00 - 11:00
Iuka Discount Drugs
1411 West Quitman

- Service on all makes and models
- Batteries & Accessories

Bothered by background noise?

Ask us about the Miracle-Ear® Clarifier,™ the hearing
instrument that automatically reduces background
noise? Thanks to Miracle-Ear's exclusive Optisound
Custom-fitting System, many more people can
now wear the Clarifier and other ultra-small
in-the-canal instruments.

Genuine Miracle-Ear hearing systems are found
only at Miracle-Ear Centers. Accept no substitutes.



Miracle-Ear®
America's Better Hearing Centers™

Call for an appointment

800-264-4009

We will be at Iuka Discount
Drugs the 4th Tuesday of
each month.

©1990 Dahlberg, Inc.

COMING SOON

THE S.P.O.T.T. (A SAFE PLACE OPEN TO TEENS)

LOCATED IN THE OLD MIGHTY MART BUILDING ON HWY. 25 NORTH
OPEN TO TEENS, AGE 14-19 YEARS OF AGE
* FRIDAY AND SATURDAY NITES *

To Provide A:

- S.P.O.T.T. TO ESCAPE PEER PRESSURE
- S.P.O.T.T. TO GO INSTEAD OF "CRUISING" ALL NITE
- S.P.O.T.T. IN TIMES OF CRISES
- S.P.O.T.T. FOR TALKING AND LISTENING
- S.P.O.T.T. TO SEE AND BEEN SEEN

Featuring:

- SNACK FOODS AND SODAS
- TABLE AND VIDEO GAMES
- CONTEMPORARY CHRISTIAN MUSIC
- SPECIAL EVENTS
- COMMUNITY PROJECTS

► ADULT SUPERVISION AT ALL TIMES ◀

Support Provided Through Donations
Donations May be Made To:
The S.P.O.T.T.
P.O. Box 753
Iuka, MS 38852
Or Call 423-3030 or 423-2218 For More
Information

THE S.P.O.T.T.
PROVIDING TEENS WITH AN ALTERNATIVE

A MINISTRY OF LOCAL CHURCHES

Mississippi Chautauqua 1992

Portraying Ida B. Wells-Barnett will be Marcia Berry-Diggs of the University of Mississippi. She has written a short article about her character: "My discovery of Ida B. Wells-Barnett has acted as a springboard for a chain of events that will evolve for the rest of my life!"

The first link in the chain was the audition for the Mississippi Chautauqua and the second link was provided by the Ole Miss library. I found only one book with two and a half columns on my subject. This article introduced Wells, a woman of fortitude, passion, and indomitable spirit.

Ida Wells was born a slave in 1862. By the time she reached 30 years of age, long after the Emancipation Proclamation and the 13th and 14th Amendments, she had come to the harsh realization that the Negro race would never be recognized as equal to whites.

Catalyzed into action in 1894, when her best friend, Tom Moss, and two of his business partners were shot to death, Wells began to investigate the charges against the victims. She gathered data for several years and came to the horrifying conclusion that lynching was a cog in the merciless wheel white society rolled over Negroes to crush, intimidate and "keep the nigger down".

Wells was bright, articulate and attractive; and with these endowments gained support in her anti-lynching crusades in the U.S. and Europe. She became part owner and editor of the "Memphis Free Speech", and spearheaded the westward migration of Negroes. She organized a boycott of the newly installed Memphis trolley system in 1894 and traveled worldwide promoting her anti-lynching league. Due to her efforts lynchings in Memphis and the surrounding area ceased.

In addition to her successful anti-lynching crusade, she co-founded the NAACP in 1909, pled the cause of jailed black soldiers of the 24th Infantry rebellion in 1917, obtaining their release. She earned the title "Mother of the Clubs" because she organized numerous women's leagues and civic organizations to aid an encourage African-Americans in Chicago, New York and Memphis.

All this took Ida B. Wells far from her Mississippi roots, where she was born a slave in Holly Springs. As a result of my research, I have become a braver woman. Indeed, my life will never be the same!"

Attention Iuka Class Of '87

IT'S NOT TOO LATE!!! If you have not already sent in your money for the 5th year class reunion and plan to attend, please do so immediately. We need your money as soon as possible in order to make a reservation for you. If you have any questions, please contact Dianne Ledbetter at 423-3161 or Bill Bates at 601-325-5931. Please send your money to Bill Bates at Rt. 1 Box 502, Iuka, MS 38852.

PLACE: McLemore's Restaurant (Corinth, MS)
DATE: Saturday, August 1, 1992
TIME: 5:00 p.m. - 10:45 p.m.
DRESS: Casual

COST: \$17.50 for ages 11 yrs. and above; \$8.75 for ages 6-10 yrs.; \$3.50 for ages 5 yrs. and below.

MENU: Steak and Fish Buffet
We are looking forward to seeing you and your family there.

Homecoming

At Mt. Moriah Baptist Church we will be having our Homecoming, Sunday, July 26. Sunday school will begin at 10:00 a.m. Preaching at 11:00 a.m. Lunch will be served following the service, with singing in the afternoon. Everyone is welcome to come worship with us.

NOTICE: The Saturday evening singing is cancelled due to the homecoming on Sunday. All you singers come on Sunday.

Fish Fry

Iuka Church of God, one mile South on Hwy. 25 will have a fish fry Friday, July 24th from 11:00 a.m. to 7:00 p.m. Eat in or carry out \$4.00 a plate.

All-you-can-eat \$6.00 (no carryouts at this price) Plates include: Fillet catfish strips, slaw, hushpuppies, french fries and cake. Phone 423-5206 for more information.

Homecoming At Campground United

Campground United Methodist Church will celebrate Homecoming at 11:00 a.m. this Sunday, July 26. Rev. Jon Altman, Pastor, will be the preacher at the morning worship service. This service will be followed by dinner on the grounds and a gospel singing, beginning at 1:00 p.m. All singers and song leaders are invited to join your voices with ours in praise of God.

Campground's annual revival will begin at 7:00 p.m. on Sunday, July 26 and continue with services each night at 7:00 through Wednesday, July 29. Rev. Prentiss Gordon, Jr., pastor of Iuka United Methodist Church will be

the preacher for these services.
Contact person: Pastor Jon Altman: 423-5696.

Monthly Singing At Paradise

Paradise Methodist Church will have their fourth Friday night singing this Friday night July 24, beginning at 7:00 o'clock. We invite everyone to come and bring someone with you. Refreshments will be served.

Punkin Center School Reunion

Punkin Center reunion will be Saturday, August 8, 1992 at Turnpike Mountain Road in Burnsville, MS from 10:00 a.m. to 2:00 p.m.

VBS To Be Held At Forrest Grove

Forrest Grove Baptist Church will hold its Vacation Bible School Monday, August 3 through Friday, August 7 from 6:30 to 8:30 each evening. All ages, pre-school and up, are cordially invited to attend.

Singing At Southwood Baptist

Southwood Baptist Church will have a singing Saturday night, July 25, beginning at 7:00 p.m. Special guest singers will be the Revelation Quartet. Everyone is cordially invited to attend.

NEMCC Plans Summer Orientation

Fun and excitement are in the making as Northeast Mississippi Community College prepares for summer orientation July 30-31 and August 3-4, according to Sarah Rhodes, director of Northeast's counseling services.

Northeast's freshman orientation program is designed especially to assist each student into making a smooth transition into college life.

Orientation '92 will offer students at excellent opportunity to explore Northeast and what it has to offer. Students will have a chance to become familiar with the campus, the faculty and staff.

According to Rhodes the agenda

calls for both group and individual meetings with student orientation counselors who will assist freshmen in completing their registration for the fall semester.

Participants will be treated to an evening filled with movies, swimming, tennis, video games, and a skate/dance.

For a more complete scheduled of events or for questions about which session to attend, contact Rhodes at 728-7751, extension 313.



After Charles Lindbergh made history with the first solo flight across the Atlantic, he came home by ship.

1983	1984	1985	1986	1987	1988	1989	1990	1991	1992
<h1>IT'S HERE!</h1>									
<p>*SPECIAL OFFER NO DOWN PAYMENT NO PAYMENT UNTIL 1993 (With Approved Credit)</p>									
<p>In appreciation of the outstanding response to our huge New Super Store we've slashed prices up to 62% storewide!. To make this a true record breaking SALE!</p>									
<h1>IT'S FRIDAY!</h1>									

PRICE ROLLBACKS! BIGGER SELECTION! SPECIAL TERMS!

EXTRA...Salespeople, EXTRA Credit Personnel, EXTRA Office Staff, and EXTRA Delivery People will be here to assist you!

SPECIAL FACTORY PURCHASES! PLUS, ALL CURRENT STOCK AT SALE PRICES!

- BROYHILL
- LA-Z-BOY
- LANE
- SEALY
- BASSETT
- AMERICAN DREW
- SUMTER CASINET
- NORWALK
- TELL CITY
- HICKORY CHAIR
- STANLEY
- PLUS MANY, MANY MORE!

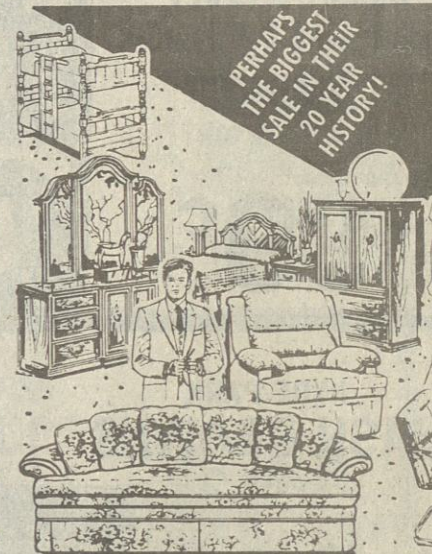
SOME ARE LIMITED QUANTITIES, SOME ARE ONE-OF-A-KIND!

Town & Country Furniture

FRIDAY, 12 NOON UNTIL 12 MIDNIGHT!

RECORD BREAKER

STOREWIDE SAVINGS EVENT FOR '92!
THEY'RE GOING TO SERVE MORE PEOPLE, WITH MORE SAVINGS, ON MORE FINE FURNITURE, THAN EVER BEFORE!



STORE CLOSED: THE STORE WILL CLOSE EARLY TODAY TO REDUCE PRICES ON EVERY ITEM IN STOCK! BE THERE EARLY TOMORROW FOR BEST SELECTION!

12 SENSATIONAL HOURS **12 NOON - 12 MIDNIGHT**
REDUCTIONS WILL BE PLAINLY TAGGED ON EVERYTHING IN STOCK!!!
FRIDAY!

SENSATIONAL! STRAT-O-LOUNGER SWIVEL-ROCKER RECLINER
 Plus Pillow Back, Soft & Comfortable For Years Of Enjoyment.
 Reg. \$549 While Supply Last
ONLY! \$198

WANTED! "LA-Z-REST" BY "LA-Z-BOY" ROCKER-RECLINER
 REG. \$449
\$248

BARGAIN! 4 PC. OAK "BASSETT" BEDROOM SUITE
 Includes: Triple Dresser, Framed Mirror, Five Drawer Chest & Bed.
 Reg. \$1095 While Supply Last
UNHEARD OF PRICE! ONLY! \$498

SPECIAL OFFER! 7 PC MAPLE DINETTE
 Oval Table with Formica Top For Easy Care & Six Sturdy Solid Wood Chairs.
ONLY! \$298

"JAMISON" MATTRESS SETS
 2 PC. TWIN \$98
 2 PC. FULL \$148
 2 PC. QUEEN \$198
 3 PC KING \$298
COMPLETE SETS!

OUTSTANDING "BROYHILL" 8 PC DINING ROOM
 Beautiful Oak Dining Room: Large Double, Trestle Table, 6 Chairs With Upholstered Seats & Back & Elegant Lighted China Cabinet With Mirrored Back.
 Don't Miss This One! Selected From Our Huge Selection Of Sectionals, Lane, La-Z-Boy, Bassett & Stratford!
50% OFF
 NOW ALL 8 PCS. Reg. \$2700
\$1348!

OUTSTANDING SOLID OAK "18th Century" 4-PC. MASTER BEDROOM SUITE
 Includes: Triple Dresser, Trifold Mirror with Beveled Mirrors, High Boy Chest, & Queen Rice Carved Bed.
 Reg. \$3995 (Floor Sample)
1/2 PRICE \$1998

YOU'LL LOVE THIS! "BROYHILL" TRADITIONAL SOFA
 Features Sturdy Hardwood, Double Dowelled & Cornered Backed For Added Strength & Coil Spring Construction For Extra Comfort.
 Less Than \$399
1/2 PRICE \$388
 Reg. \$999

MAGNIFICENT! "BROYHILL" QUEEN SIZE RICE CARVED BED
 Less Than \$799
1/2 PRICE \$388
 King Size Only \$488

INCREDIBLE "BASSETT" QUEEN SIZE SOFA SLEEPER
 Smart Traditional Styling With Deluxe Innerspring Mattress.
 Less Than \$800
1/2 PRICE \$398

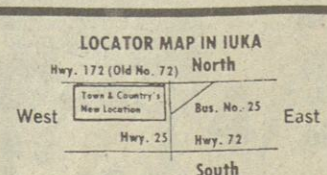
MAGNIFICENT! LAMP TABLES & COCKTAIL TABLES
 By Broyhill, Lane, Stanley, Bassett & Ashley.
SAVE UP TO 56%!
SALE PRICED FROM ONLY \$88

REMARKABLE! "STRADFORD" 3 PC SECTIONAL
 Plush Triple Pillow Back, With Two Full Recliners. Don't Miss This One! Selected From Our Huge Selection Of Sectionals, Lane, La-Z-Boy, Bassett & Stratford!
 Reg. \$1799
ONLY! \$988

HURRY!

SORRY, NO ONE WILL BE ADMITTED UNTIL THE OFFICIAL 12 NOON OPENING ON FRIDAY!

Town & Country Furniture Co.
 New Location: 1709 West Quitman Iuka, Ms. 38852
 Intersection of Hwy. 25 Bypass North & Hwy. 172



DON'T WAIT!
 • OPEN A NEW ACCOUNT!
 • ADD-ON TO YOUR PRESENT ACCOUNT!
 • BANK CARDS WELCOME!

SAVE!

THAT ENTIRE HOUSEFUL...
 ...of fine furniture you need can be yours! Buy 3, 4, 5 or more roomfuls and save hundreds and hundreds of dollars now!

SAVE!

New Opening

July 25th

MORTON PRODUCE

1/4 Mile East Of 25 on 364



Rock Crusher Road
 Midway, MS

CLOROX
LIQUID BLEACH
GALLON

99¢



NELSON
SUPERMARKET

QUANTITY RIGHTS
RESERVED.

THIS AD GOOD
JULY 23RD THRU
JULY 29TH, 1992.

VIVA
PAPER TOWELS
SINGLE ROLL

59¢



HYDE PARK
TUNA
6.5 OZ.

2/99¢



*Take A Walk
Down Our* **AISLE**

SNUGGLE
FABRIC SOFTENER
96 OZ.

\$2.99



ARMOUR TREET
LUNCHEON MEAT
12 OZ.

99¢



KRAFT VELVEETA
CHEESE SINGLES
12 OZ.

\$1.99



HYDE PARK
HAMBURGER DILLS
32 OZ.

99¢



HUNT'S
BARBECUE SAUCE
15 OZ.

69¢



BRIGHT & EARLY
CHILLED DRINK
64 OZ. CARTON

99¢



KRAFT SQUEEZE
PARK
16 OZ.

99¢

MEADOW GOLD
SWEETENED MILK
14 OZ.

99¢



HYDE PARK
POTATO CHIPS
ASSORTED

89¢



HYDE PARK
HASH BROWNS
2 LB.

99¢



HYDE PARK
TATER
2 LB.

\$1.99

THE BUTCHER'S LEAN AND TENDER MEATS

FRESH LEAN WHOLE BOSTON BUTT
PORK ROAST
LB.

\$1.19



GOLD KIST YOUNG & TENDER
SPLIT FRYER BREAST
LB.

99¢



HYDE PARK
HOT DOGS
12 OZ.

79¢



Bryan Wieners	12 Oz.	\$1.19
Bryan Sliced Bologna	12 Oz.	\$1.69
Bryan Sliced Bacon	12 Oz.	\$1.49
Bryan Hot Or Mild Sausage	1 Lb. Pkg.	\$1.99

Bryan Smoked Sausage	1 Lb. Pkg.	\$2.19
Bryan 4X6 Sliced Ham	10 Oz.	\$2.39
Bryan Juicy Jumbos	1 Lb. Pkg.	\$1.99

Bryan Lunch N Munch Bologna	4.5 Oz.	
Bryan 4X6 Sliced Turkey	10 Oz.	
Hyde Park Sliced Bacon	12 Oz.	
Hyde Park Hot or Mild Sausage	1 Lb. Pkg.	

SON'S MARKET

MS

NONE SOLD
TO DEALERS.



we welcome
FOOD STAMP
SHOPPERS



**PEPSI
AND PEPSI
PRODUCTS**
6 PACK CANS

\$1 19

LIMIT 2 CASES
ALL OTHERS \$1.39

& SAVE

THI \$25
GRIVE-
AWERS:
LA \$

PURPLE HULL PEAS OR
**LIMA
BEANS**
20 LB. BOX

save

\$15.99



**COKE
AND COKE
PRODUCTS**
12 PACK CANS

\$2.69

Coke Products 3 Liter \$1.39

DEL MONTE
**SQUEEZE
KETCHUP**
28 OZ.



79¢



GENERAL MILLS
**CHEERIOS
CEREAL**
15 OZ.

\$1.99

GENERAL MILLS
**LUCKY CHARMS
CEREAL**
14 OZ.



\$2.69

HYDE PARK
BISCUITS
4 PACK



89¢



GENERAL MILLS
**BUGLES
SNACKS**
ASSORTED

\$1.19

ARMOUR
**VIENNA
SAUSAGE**
5 OZ.



2/99¢

CATFISH
HUSHPUPPIES
16 OZ.



79¢



SUNSHINE
**CAT
FOOD**
15 OZ. BOX

49¢

409
**SPRAY
CLEANER**
32 OZ. BONUS



\$1.99

SPECIALS

GARDEN FRESH PRODUCE

A CHOICE LIP ON
NYE STEAKS
LB.

\$3.69

**GOLDEN RIPE
BANANAS**



3 99¢
LBS.

CALIFORNIA
NECTARINES
LB.



59¢

CALIFORNIA
**RED
PLUMS**
LB.



59¢

HYDE PARK SLICED
BOLOGNA
12 OZ.



89¢

CALIFORNIA
**VALENICA
ORANGES**
4 LB. BAG



\$1.69

FRESH
**BELL
PEPPERS**
EACH



3/\$1

CRISP
**RED
RADISHES**
6 OZ. PKG.



4/\$1

CALIFORNIA
PEACHES
LB.



59¢



Future Braves--Pictured above are seven to nine year old boys who attended the Tishomingo County Magnet High School Braves Baseball

Camp, where they were taught baseball fundamentals by TCMHS Coaches Long and Davis and Braves team members. The camp was held

Tuesday, June 2, through Friday, June 5, at the Iuka Little League Field.



Braves Baseball Camp--Close to 80 boys participated in the Tishomingo County Magnet High School Braves Baseball Camp, held

Tuesday - Friday, June 2-5, at the Iuka Little League Field. Pictured above are boys, age 10-13, who attended the camp. They were taught baseball

fundamentals and hustle. The camp was taught by Braves Coaches Long and Davis, as well as Braves team players.



Countians Attend Camp--Tishomingo County student athletes attending the annual junior high boys

basketball camp at Northeast Mississippi Community College were (L to R) Carey Riddle, Samuel Hisaw, and Coach Anthony Stone.

4-H Communicates

By: Mary C. Baldwin,
4-H Youth Agent

SALVAGE SUMMER

There's still time. It's not quite over. There are about 750 hours left before it's time for school to begin again.

That's plenty of time to accomplish some very worthwhile things even if you subtract eight hours of sleep each day. You could begin a hobby or perfect an existing one. Maybe it's one of those hobbies that requires several hours strung together without too many interruptions. What better time than summer?

Have you ever had the thought that it would be nice to do something nice for different friends and relatives, but you don't have time to get started much less finish in between chores and homework.

Letter writing could fall into that category. There's real art to interesting letter writing, and it boosts

people's spirits to get a word picture of what's going on with you. Sometimes what you say is not even as important to the person as just knowing that you were thinking of them.

If you have access to a computer with a graphics program, design your own notes or cards for special occasions or for special people. Who knows, one day you might be in competition with some nationally known greeting card manufacturer.

If you don't have access to a computer but have artistic ability, design your own greetings anyway. There's nothing like that persons touch.

What do you know about your roots - not your dental roots but your family heritage? Searching through the branches of your family tree can be exciting since you might never suspect what may be hanging from one of those branches.

If you have elderly relatives to talk with, you have a sound place for beginning. Get their recollections on tape or from notes you take as they

remember. Visit places of public record as you chase down your family story. If you enjoy solving mysteries or puzzles, this could be a most fascinating one, since it's your mystery.

Plan your dream vacation. Plot your course. Study each stop in as much detail as you can without actually being there. Order brochures. Get fares for different means of transportation. Study foods of the region. Learn to cook some of the favorite dishes. Learn about the customs and clothing styles of the country or region. Read about their monetary system and compare it to the United States. Study the language and the main religions. You'll be surprised at how many miles you can cover in your own living room.

Before the summer is all used up, give some thoughts to your goals for next year and five years from next year. Write those down and file them somewhere that you can pull them out from time to time and check your progress. Some of your goals may be always to "live all the days of your (summer) life."

CATCH THE ESSENCE OF SUMMER
Catch an insect. Summer is a great time to start or enlarge your insect collection. When school rolls around and your science teacher announces the deadline for turning in insect collections, you will be happy that you started now.

Insects are everywhere. They're flying around in the air. They're under

rocks and boards. They're on tree trunks and leaves of plants. They're in fields and in gardens.

If your family is growing a vegetable garden, you could earn some extra points with your family by debugging it. As you collect and identify insects from the garden plants, you could keep a record of where you found the bug. This would help your parents in controlling garden pests.

Don't forget that every insect found in the garden may not be a pest. Some are helpful and actually help control the bad ones. The lady beetle is one of the good guys.

Finding and catching insects is the easy part. You may need some help in pinning, displaying and identifying them. We have a good publication available at the county extension office: 4-H Introduction to Entomology can help you get started. Come by today, or call us at 423-7016 for more information.

Tishomingo County Magnet High School Booster Club

There will not be a Booster Club meeting on the Fourth Monday night of July which is the regularly scheduled meeting time. However, everyone is encouraged to attend the meeting on August 24 with their ideas and plans to make an effective booster club this year.

Holcut 4-H Club

The newly formed Holcut 4-H Club has had a busy first year (formed since March 1992).

We have attended several county meetings and have gone to several workshops and been in lots of contest.

We attended the July County Council Meeting and went on a tour of the Pizza Hut and had dinner. The Muffin Mania Contest was held that day, we had two contestants to enter that contest.

Friday, July 10, 1992 we went on a field trip to Alabama Hall of Fame and toured Helen Keller's birthplace.

We had a picnic lunch at the Spring Park in Tuscumbia. Everyone enjoyed the day. Club members attending were: Matthew Russell, President; Natheda Russell, Secretary; Jonathan (Jay) Russell, Treasurer; Scharla Maxwell, Becky Lindsey, Committee Chairman; Carrie Grimes, Reporter; Denise McCoy, Song Leader; Karen McCoy, Parent & Helper; Dwight Lindsey, Parent & Helper; Brenda Sue Lindsey, Parent & Helper; Oreda Russell, Leader (4-H); Shirley Grimes, Assistant & Leader; and also two visitors, Emily Powers and Jennifer Wheeler.

Plans for August Club meeting are underway, we will discuss exhibits for the County Fair.

By: Carrie & Shirley Grimes
Reporters

*The Bride Selects
Various Crystal Items
Chosen By The Bride*



Bride: Risa Wadkins

Groom: Alan Smith

**IUKA
DISCOUNT DRUGS**

1411 W. Quitman
Iuka, MS 38852
Ph. (601)423-9039

Who Looks After Our Senior Citizens?

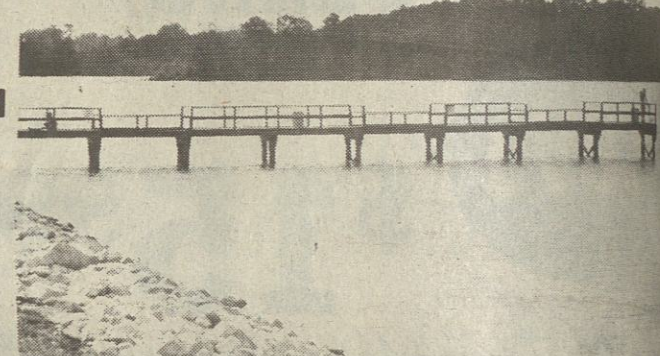


Senator John White

When a group of senior citizens came to

John White and expressed concern for a convenient place to go fishing,

John White went to work and got it.



FISHING PIER AT CROW'S NECK

Sure, John White is out front in the big stuff too. He was a leader in the fight for highways, education, fire insurance premium reduction - the list goes on.

But John White never gets too busy to remember the little things that make life better for his people.

Re-Elect

SENATOR JOHN WHITE

It's The Smart Thing To Do

Commercial-Free Olympics 24 Hours A Day.

If you love boxing, track & field and swimming, you'll love the Red Channel — our single-channel Olympic coverage on Pay Per View.

**64 Hours of Boxing
57 Hours of Track & Field
23 Hours of Swimming**
Plus much more. 15 days, 12 hours live, 12 hours replay per day.
ONLY \$95



It's the Olympics like you've never seen them before.

To order or for more information, call

1-800-457-5351

or
1-800-OLYMPIC



Heritage Cablevision
A TCI COMPANY

406 North 3rd Avenue • Booneville

Local fees, taxes and equipment charges may apply. Due to limited channel capacity, only the Red Channel of the TripleCast™ is available in your area. Olympic TripleCast™ is a service of NBC & Cablevision. Broadcast day begins at 5:00 a.m. Eastern Daylight Time.

TCI - We're Taking Television Into Tomorrow.



**BARGAIN
BLOWOUT**

ALL LADIES
SPRING AND SUMMER

2 PAIR FOR **\$29.90**

HUNDREDS OF PAIRS TO CHOOSE FROM
BRING A FRIEND AND SAVE!

JOE'S SHOES

206 S. Fillmore St.
Ph. 286-8064
Downtown Corinth

A STORE WIDE BONANZA /
SENSATIONALLY LOW, DOCKSIDE, TRAFFIC JAMMER PRICES

TOTAL WALL TO WALL SALE!

SALE STARTS TODAY

©
BROOKER SALES

4 DRAWER CHESTS

Need more drawer space?
Check out this great value!

\$34⁹⁵
ONLY

WITH
EVERY

\$100.00 OR MORE
PURCHASE

FREE!
GOLD GIFT
MYSTERY PACKAGES

DIAMONDS AND WATCHES INCLUDED IN EACH
SHIPMENT WILL BE SOLD FOR \$2.88 OR
GIVEN AWAY WITH \$100.00 PURCHASE
DURING THE SALE.

Other Packages Contain Jewelry,
Perfume and Other
Valuable Gift Items.
Every Mystery Box Contains
Guaranteed Values Well Worth
\$2.88 to \$50.00 or More.
Come In Pick A Package

Only

\$2.88

EA.

BRASS HEADBOARDS

Twin Size - Gleaming Brass Finish
with Porcelain Accents

\$47⁰⁰
NOW

BAR STOOLS

Sturdy Maple Bar Stools
with Swivel Seats
Reduced to just

\$54⁹⁵

All Items Subject to Prior Sale

26"x33" PICTURES

Including Wooden Frame.
Many Subjects To Select From

\$12⁹⁵
LOOK!

SUPER BARGAINS
QUANTITY LIMITED
Hurry for Yours

ENTERTAINMENT CENTER

This oak unit has pull-out T.V. tray-ventilated
V.C.R. compartment - retractable doors and
storage drawer

\$352⁰⁰
NOW ONLY

3 PC. SECTIONAL SOFA

You get a recliner - a corner wedge and a queen
sleeper with a 7" pillow top mattress

\$1275⁰⁰
FOR JUST

4 PC. BEDROOM BARGAIN

A traditional style cherry group includes triple
dresser, mirror, 5 drawer chest and pediment bed.

\$599⁰⁰
VALUE PRICED

DINING ROOM SPECIALS

Queen Anne or French Provincial -
your choice at one low price!
Each includes oval table - 1 arm chair - 5 side chairs
and china.

\$1278⁰⁰
YOUR CHOICE

OAK GUN CABINET

An impressive oak gun cabinet with interior light
and 2 spacious storage drawers with locks.
Holds 8 guns.

\$399⁰⁰
GREAT BUY

RECLINERS - RECLINERS

Outstanding values from Stratolounger and
Action/Lane.

Several styles and
assorted colors
to choose from

\$239⁰⁰
DON'T WAIT!

BEDDING SPECIAL

Twin size mis-matched bedding sets
at a fantastic low price.

\$69⁹⁵
JUST SET

BRASS TABLE LAMPS

Mix or Match. Choose a lamp
and choose your shade color.

\$24⁹⁵
FROM

3 PC. TABLE SET

Contemporary style oak
parquet cocktail table and
2 end tables.

\$111⁰⁰
SUPER BUY

FREE
HERE'S YOUR INVITATION
TO WIN A BEAUTIFUL PRIZE

WANTED

FIFTY OR MORE PEOPLE TO JOIN
GRAND PRIZE CAMPAIGN
CREATED BY OUR
ADVERTISING AGENCY -
JUST TO HELP ADVERTISE
THIS SALE

HERE IS FUN -
FASCINATION - EVERY
CONTESTANT RECEIVES FULL
FAIR OPPORTUNITY TO
WIN
NO PURCHASE NECESSARY

These Beautiful Prizes Given

- 1st. Grandfather Clock
- 2nd. 25" Color T.V. w/remote
- 3rd. V.C.R. w/remote
- 4th. Portable Radio w/CD and Cassette Player
- 5th. Cordless Telephone
- 6th. Dirt Devil Hand Vacuum
- 7th. Food Processor
- 8th. Answering Machine
- 9th. Clock Radio w/Cassette Player
- 10th. Drinkmaster
- 11th. Power Massager
- 12th. Toastmaster Party Snackster

PRIZES TO BE AWARDED
Bring this Coupon to Our Store Today!

Name _____
Address _____
Phone _____

BRASS TOUCH LAMPS

Turn on or off with the
touch of a finger.

\$18⁹⁵
NOW

BRASS & GLASS DINETTE

Glass top table & 4 chairs
with bright brass finish.

\$129⁰⁰
GREAT VALUE

ANNIVERSARY CLOCKS

An exceptional value!
9" High-polished brass

\$24⁹⁵
SPECIAL

SUPER BARGAINS
QUANTITY LIMITED
Hurry for Yours

JAMISON MATTRESS SETS

Quality Bedding At Down To Earth Bargain Basement
Sale Prices! Full-Queen and King Sizes Available

\$199⁰⁰
STARTING AT SET

QUEEN SIZE SOFA SLEEPERS

Get a sofa and a bed at one low price.
Several to select from.

These have quality inner
spring mattresses.
\$319⁰⁰
NOW ONLY

7 PC. OAK DINING SET

Don't miss this super buy!
A round Pedestal Extension Table with 6 great
looking press back chairs.

\$679⁰⁰
HURRY!

NOSTALGIA OAK BEDROOM

You have to see it to believe it!

A large dresser -
5 drawer chest -
mirror and full/queen bed
for the low price of JUST

\$879⁰⁰

SOFA AND CHAIR SETS

Check out all the fantastic bargains now on sale!
Many styles and fabrics to choose from starting at

\$348⁰⁰
ONLY

SUPER BEDROOM BARGAIN

Here is a complete 4 piece bedroom group at an
unbelievable bargain price!
Available in oak finish only.

\$319⁰⁰
ONLY

Every Item In The Store Is On Sale!
Every Item Is Specially Sale Priced!
Absolutely Nothing Is Held Back!

Convenient Budget Terms Are Available
With Approved Credit.
VISA - MASTERCARD - AMERICAN EXPRESS - AND
DISCOVER ACCEPTED.

Many Items Are One Of A Kind!
All Offered On First Come-First Serve Basis!
Shop Early For Best Selections!

CASABELLA
DIRECT FURNITURE
FACTORY DIRECT PRICES EVERYDAY!

Hwy. 72 E. - Corinth, MS - Ph. 286-3127

Store Hours For This Sale:
Monday thru Saturday 9 a.m. til 7 p.m.
Sunday 1 p.m. til 5 p.m.

No Down Payment
No Interest and
No Payment Until Feb. 1993

Obituaries....

Rites Held For Mrs. Dora Thorne

Dora Ann Tigner Thorne, 90, died Friday, July 10, 1992, at Helen Keller Hospital in Sheffield, AL. She was a life long resident of Tishomingo County. As a child she lived where Coleman State Park is now. Her Dad ran a general store at this location and received his supplies for the store by boat on the river. She attended school at Short Creek School and was a member of Campground Methodist Church.

She married the late Sidney Edd Thorne in 1920 and moved to Snowdown Community where she has lived the remainder of her life. She joined the Snowdown United Methodist Church in 1920 and has been a faithful member until her death. She loved her church and was instrumental in raising funds to build the present church building. For a number of years she taught Sunday School in the Children Department.

She had seven brothers and sisters, who have all preceded her in death. She was a stabilizing force in her community and will be greatly missed by all who knew her.

Services were at 1 p.m. Sunday, July 12, 1992, at Cutshall Funeral Home Chapel with the Rev. W.T. Dexter and Rev. Frank Rushing officiating. Burial was in the Snowdown Cemetery.

Survivors include two sons, R.K. Thorne and Jack Thorne of Iuka, one granddaughter, Lynn Cumber and two great-grandsons, Casey Cumber and Chase Cumber of Douglas, GA.

John Feltman Dies At Age 77

John Luther Feltman, 77, died Monday, July 20, 1992 at Tishomingo Manor Nursing Home. He was a Baptist and a retired truck driver.

Services were at 2 p.m. Wednesday at Cutshall Funeral Home. Burial was in Mount Evergreen Cemetery.

Survivors include his wife, Helen Feltman of Iuka; one son, Johnny Feltman of Metairie, La.; one sister, Lena Williams of Corinth; one brother, Dugger Feltman of Iuka; one granddaughter, Nicki Johnson; 2 great grandchildren, Lacie & Doie Johnson of Iuka.

Thank You

The Iuka Black Homecoming Committee would like to thank everyone who helped to make our homecoming program a success. Everyone seemed to have a grand old time, meeting old friends and kindred.

Special thanks to those who stood by and served the emmense crowd and stayed to clean up.

A great big thank you to Mr. Jerry Boyd for the delicious barbecued ribs that were cooked to perfection.

Many thanks to the citizens that made special efforts to clean up the grounds and to fix the steps.

Committee Chairpersons
Mrs. Annie Dilworth
Ms. Annetta Davis
Mrs. Nora Welch

Whitten Center Provides Added Dimension To Interpretive Programs

Construction activities are winding down at the Jamie L. Whitten Historical Center at the Fulton Recreation Area in preparation for the official opening and dedication on August 26, 1992.

The center will feature an historical perspective of the role played by several Federal agencies in the economic development of northeast Mississippi.

"Visitation to the Tenn-Tom's recreation sites and other interpretive facilities has vastly exceeded expectations," said E. Patrick Robbins, Chief, Public Affairs, Mobile District, U.S. Army Corps of Engineers. "We conducted a study in the late 1980's to determine if an additional interpretive center were needed on the waterway, and if it were, where was the best location for it."

The study determined there was a need for the facility and the Fulton

campground location was chosen for several reasons. It is government owned; roads, parking and utilities were already on-site; and the topography of the location is such that they is a commanding view of Pool "C" at its widest point.

"We fully expect the Jamie L. Whitten Historical Center to become one of the most visited of the centers along the waterway," said Robbins. "It is also a facility which can be used by various civic and educational groups in northeast Mississippi."

The new center has multi-purpose, exhibit and administrative areas and office space. Other features of the 9,400 square foot facility include a covered terrace, an overlook terrace and a wooden boardwalk with a gazebo leading to a docking pier in Pool "C".

Construction of the center by AM-CA International Construction Corporation (JESCO) of Fulton, Miss.,

began in December 1990 and will be completed this month. The interpretive displays and interior furnishings will be completed in early August in time for the opening ceremony.

The interpretive display will feature multi-media and static discussions of the roles the Tennessee Valley Authority, the National Aeronautics and Space Administration, the U.S. Forest Service, the Soil Conservation Service, the National Park Service, the Appalachian Regional Commission and the U.S. Army Corps of Engineers have played in the economic development of northeast Mississippi and the services they provide to the region and the nation.

"We believe the center will be an exciting place for visitors to the region and those that live in the area," said Robbins. "Fulton campground has always been a popular spot and with the addition of the cen-

ter we expect it to become even more popular. The view from the overlook terrace is one of the best on the waterway."

Boggs Chapel All Day Singing

There will be an all day singing at

the Boggs Chapel United Methodist Church on Sunday, July 26.

The singing will begin at 10 a.m. lunch will be served at noon, and singing will begin again at 1 p.m.

The pastor, Bro. Rowland H. and the congregation invite everyone to attend, especially all singers and piano players.

Limited Atonement

This is the third article in a series of six on Calvinism. The two previous articles dealt with Total hereditary depravity and Unconditional election. The last two tenets are Irresistible grace and Perseverance of the saints completing the TULIP acronym.

If God makes creatures who are depraved of any good and who He conditionally elects to be saved, then those who are not chosen must be created for destruction in hell. Christ never planned to atone for their sin. One of the problems with Calvinism is that certain passages are misinterpreted to mean just that. The apostle Peter says that the wicked are reserved under punishment for the day of judgment, "...like natural brute beasts made to be caught and destroyed..." (II Pet. 2:9-12)

But previous articles have shown that God does not make creatures depraved of good, and that salvation is conditional on one's response to the gospel. Likewise, God did not make creatures destined for hell before they were ever born. The fact is that Christ's blood will atone for every soul, every soul will respond to the gospel call. Those mentioned by Peter were those who were "LIKE natural brute beasts," that way of their choosing.

Peter says that God is not willing that any should perish, but that they should come to repentance. (II Pet. 3:9) "For God so loved the world that He gave His only begotten Son, that WHOEVER believes in Him should not perish but have everlasting life." (John 3:16) "And He Himself is the propitiation for our sins, and not for ours only but also for the WHOLE WORLD." (I John 2:2).

The idea that Christ died only for the elect is erroneous. Anyone who responds obediently to the gospel can be saved. Anyone. Those who reject the opportunity will be held in contempt (Heb. 10:26-31), not because Christ's atonement is off limits to them, but because they could have been part of the elect, and they balked.

George Hutto, Brookhill Church of Christ, P.O. Box 208, Killen, AL (205)757-1450

Listen to Bible Footnotes weekday afternoons at 5:05 on WJOR, 101.5 fm

Trinity Presbyterian Church

A Presbyterian Church in America Congregation meets at The Church of Our Savior, Eastport Street, Iuka, MS

WORSHIP SERVICE
Sunday Morning 8:15 A.M.

BIBLE STUDY
Thursday Night
7:00 p.m.

Pastor: Phil Reynolds

P. O. Box 1122, Iuka, MS 38852 Telephone: 423-6700
423-9300

"SINCE 1935"

CUTSHALL FUNERAL HOME

Licensed, Professional Staff
To Serve You 24 Hours A Day

DIGNIFIED • THOUGHTFUL
PERSONALIZED SERVICE

AUTHORIZED FUNERAL DIRECTORS FOR:
Corinth Mutual Burial Association
Liberty National Life Ins. Co.
American Funeral Assurance Co.

• CHAPEL AVAILABLE
"INQUIRE ABOUT OUR INSURANCE PROGRAM"

423-5222
IF NO ANSWER DIAL 423-6765

302 PEARL STREET
IUKA, MISSISSIPPI

Services Held For Reba Pennington

Reba Connie Pennington, 81, died Friday, July 17, 1992 at the North Mississippi Medical Center. She was the widow of L.D. Pennington, a homemaker, and a member of the Highland Baptist Church.

Services were at 2 p.m. Sunday at the Highland Baptist Church with the Rev. Gene Tennison and the Rev. Raybon Richardson officiating. Burial was in the Highland Cemetery. Deaton Funeral Home of Tishomingo was in charge of the arrangements.

Survivors include one sister, Earline Riddle of Booneville; four brothers, Vardie Blount, Herman Blount, Leon Blount and J.A. Blount, Jr., all of Tishomingo; and several nieces and nephews.

Pallbearers were Larry Riddle, Bobby Riddle, Phillip Blount, Michael Blount, Jerry Dean Blount and Mark Blount.

RUSHING REXALL DRUG COMPANY

Presents The Iuka Hospital List

Lucy Askew
Brenda Allred
Janice Black
Simon Bobo
Lois Bugg
Katie Bullard
Beshevia Barton
Dewey Caston
Georgia Compton

Thurman Coker
Mary Daniels
Cumi Dexter
Wilma Gortney
Joseph Hardwick
Dorothy Hunt
Harriet Johnson
Tina Little
Jack McBee
Jimmy McGee

Everett Marlar
Martha Moser
Jessie Nunley
Velma Pharr
Margaret Siemowski
Faye Tucker
Ruby Walls
Dillie Wood
Ruby Wright
Donald Arnold

In Loving Memory Of Chester Berryman July 24, 1991

Your gentle face and patient smile
With sadness we recall
You had a kindly word for each
And died beloved by all.
The voice is mute and stilled the heart
That loved us well and true,
Ah, bitter was the trial to part
From one so good as you.
You are not forgotten loved one
Nor will you ever be
As long as life and memory last
We will remember thee.
We miss you now, our hearts are sore,
As time goes by we miss you more,
Your loving smile, your gentle face,
No one can fill your vacant place.
But sleep on beloved,
Sleep and take your rest.
Lay down your head
Upon the Savior's breast.
We loved you well, But Jesus loved you best.

Sadly missed by your Family
Ora Mae, Dale & Susan

St. Mary's Catholic Church

113 Eastport at Fulton Street

Saturday Evening Mass at 6 p.m. in the
Episcopal Church of Our Savior on Eastport St.

Fr. John Young
1-287-1385 Corinth

Sister Kathleen Dede, S.T.
Administrator
1-728-7509 Booneville

IUKA BAPTIST CHURCH

105 West Eastport Street Dr. Julian West, Pastor

SUNDAY SERVICES

Sunday School 9:45 a.m.
Worship Service 10:55 a.m.
Church Training 6:00 p.m.
Worship Service 7:00 p.m.

WEDNESDAY SERVICE

Mid-Week Prayer Meeting 7:00 p.m.

Morning and Evening Broadcast Over WTIB-FM
104.9 Morning services also on A.M. 1270



- CHURCHES -

Baptist

ST. PETER MISSIONARY - Jonathan Temple
AIRPORT MISSION - R.C. Scott
IUKA - Dr. Julian West
BELMONT FIRST - Jack Maroon
HUBBARD SALEM - Allen Osborn
CARTERS BRANCH - S.W. Shinault
CALVARY BAPTIST - Bob Moritz
MT. MORIAH - James H. Taylor
MT. VERNON - Charles Holcomb
TISHOMINGO - Bro. Edward Johnson
BURGESS CREEK - Allen Jones
BURNSVILLE FIRST - Billy Joe Loyd, Jr.
NEW PROSPECT - Doug Christy
OLDHAM - J.A. Blunt
PADEN - Tim Pittman
FIRST BAPTIST - Dennis McCoy
NEW SALEM - Bro. Clayton Littlejohn
UNITY - Harold Holly
RED BUD - John Stovall
ROWLAND MILLS - Edward Stacey
HARMONY HILL - Billy Paul Feltman
MT. JOY - Bill Flippo
JACKSON CAMP - Mavous Phifer
MAGNOLIA - Howard Stanford
CALVARY MISSIONARY - Michael Bright, Sr.
SOUTH CROSSROADS - G.D. Jones
EASPORT - Interim Bro. Joe Weaver
PROVIDENCE - Jimmy Burrell
BETHEL - John McLemore
MT. GILEAD - Larry Travis
TEMPLE - J.T. Prince
MT. ZION - Bro. Earl Martin
FIFTH STREET - Bill Hobson
OLD PLEASANT HILL -
NEW LEBANON FREEWILL - Gene Gilbert
ANTIOCH FREEWILL - Leonard Ball
POPLAR SPRINGS FREEWILL - Malcom Garrett
HIGHLAND - Rayborn Richardson
BETHLEHEM - Phil Dawson
YELLOW CREEK - Stanley Magill
DENNIS FIRST - John Mills
FIRST FREEWILL - Steve Nickols
NEW LIBERTY - Lathon Bray
SHORT CREEK - Bro. Leonard Casabella
WALKER - Roger Browning & Ricky Taylor
LITTLE FLOCK PRIMITIVE - Roger Browning & Ricky Taylor
SOUTHWOOD - Tim Pittman
MT. GLORY - Frankie Smith
SARDIS - John Stockton
GOLDEN CENTRAL -
FORREST GROVE MISSIONARY - Lon Pennington

Methodist

PATRICK, HARMONY, BURNSVILLE - Bob Brant
IUKA - Prentiss Gordon, Jr.
MT. EVERGREEN, CAMPGROUND - Jon Altman
ROCKY SPRINGS - Jon Altman
SNOWDOWN, PLEASANT HILL, SPRING HILL - Frank Rushing
OLD BETHEL - Dale Blackman
GOLDEN CHAPEL - Dale Blackman
SALEM, BOGGS CHAPEL - James A. Roberts
PARADISE, TISHOMINGO - Steve Kennedy
BELMONT, DENNIS - Ronnie Goodwin
JONES CHAPEL CHURCH - Henry Diamond
ALLSBORO UNITED - Steve Redding
MARGERUM - Steve Redding
RIVERTON - Ted Brison
INDEPENDENT METHODIST
CHAPEL HILL - J.G. Babb
HEBRON -

Churches Of Christ

MAUD - Jimmy Wisdom
IUKA - Lance Foster
BEREA - Duane Ellis
TISHOMINGO - Terry Smith
BELMONT SECOND STREET - John West
PLEASANT GROVE - John Hardwick
LIBERTY - Jimmy Gross
MAINTREET, BELMONT - Wayne Mitchell
BURNSVILLE - J.T. Smith
EAST IUKA - Howard Caperton

Presbyterian

ALLSBORO CUMBERLAND - Garth Toble
BETHANY - L.K. Foster
MAUD CUMBERLAND - Gary Cosby
IUKA - Phil Reynolds

Catholic

ST. MARY'S - Kathleen Dede, S.T.

Church Of Jesus Christ Of Latter Day Saints

CORINTH WARD - Curtis Clayton
BOONEVILLE WARD - Arthur Byrd

REORGANIZED
RED BAY, AL - Justice Manning

United Pentecostal

BURNSVILLE FIRST - Jimmy Rich
IUKA FIRST UNITED - Frank E. Williamson

Nondenominational

AMAZING GRACE TABERNACLE - Bro. & Sis R.G. Rodgers
MT. ZION - Bro. Gerald Grisham
NORTH CROSSROADS - Travis Shea
GRACE BIBLE CHURCH - Danny Lovelace
FAIRVIEW COMMUNITY - Donald Hudson
BURNSVILLE TABERNACLE - Edward Thigpen

Pentecostal

IUKA GOSPEL CHAPEL - Larry Riley
CHRIST GOSPEL - Rev. Ricky Bray
GRISSOM CHAPEL - Danny Kenaum
APOSTOLIC FRIENDSHIP CHAPEL CHURCH - Steve Nichols
FULL GOSPEL FELLOWSHIP - Mike Richardson
APOSTOLIC CHURCH OF JESUS CHRIST - Kenneth White

Full Gospel

MISSION LIGHTHOUSE - John Gwatney
FIRST ASSEMBLY OF GOD - Lane Voyles
JAMES CHAPEL -

IUKA CHURCH OF GOD - James Strange

STARLIGHT TABERNACLE - R.C. & Dorothy Wigginton

ASSEMBLY OF CHRIST HOUSE OF PRAYER - LeLon Owens

Church Directory Brought To You
Courtesy Of These Businesses

FARM BUREAU INSURANCE

Phone 423-6151 - Iuka, MS

IUKA GUARANTY BANK

"Straight Ahead Through The Years"

BROWN INSURANCE AGENCY

Iuka, MS

STATE FARM INSURANCE

Iuka, MS

TOWN & COUNTRY FURNITURE

Hwy. 25 South in Iuka

The Peoples Bank
Member FDIC
Ph. 423-1835

CURTIS DRUGS

Phone 423-3676 - Iuka, MS

McNATT FORD SALES

Phone 423-3681 - Iuka, MS

CUTSHALL FUNERAL HOME

Phone 423-5222 - Iuka, MS

PAGE MOTORS, INC.

104 Hwy. 25 North - Iuka, MS - Ph. 423-3622

RUSHING REXALL DRUGS

Phone 423-3629 - Iuka, MS



Paden Class of 1952--(left to right) Yvonne Deaton Starkey, Frances Nixon Phillips, Bill Flanagan, Melinda Gentles McCoy, Janell Medley Burnett, Mara Nell Felker Crowell. Class members not present were: Janice Belue, Carl Ray Stephens, Ruth McDougall Welch.



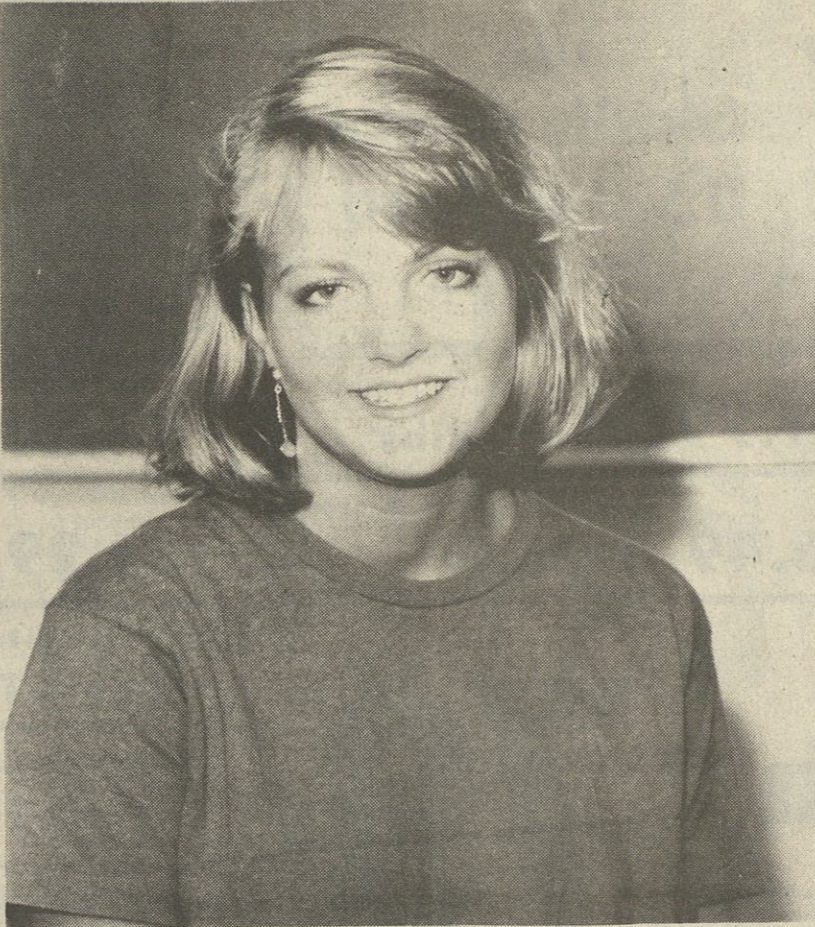
DAR MEMBERS REMEMBERED -- Throughout their lifetime of service in the Daughters of the American Revolution, the members promote loyalty, patriotism, service, and other traditional American values. They give of themselves - their time and talents to foster a greater love of America and its history. After their death, the DAR memorializes its members with a beautiful graveside service. In recent weeks, the Chief Tishomingo Chapter, NSDAR, has been involved in this heartwarming undertaking to commemorate those members. Regent Martha Dobbins, Vice-Regent Mildred Hill, and other members have visited the graves of

deceased members to hold a memorial service - including a prayer and eulogy. At each service, family members also attended to honor their relative. An American flag and permanent DAR emblem was placed at each gravesite. Those members memorialized include Bess Yarber, Belmont; Cleo Owens and Lucille Vickers, Tishomingo; Pansy Reid, luka; and Marie Edwards, Lakewood, Jackson, MS. Shown, left to right, Vice-Regent Mildred Hill, Regent Martha Dobbins, Lessie Newcomb and Brittany Daniel. Brittany is the great-granddaughter of DAR members Pansy Reid.

Paden News

As I was driving through town one day last week I saw three of our dedicated ladies pulling grass and weeds from the flower bed and shrubs that were planted two years ago by the Padinette Club. It is small, but does help to make our town more attractive. We need more cooperation in getting a "Clean-Up" Crusade started. Mayor, Hugh Bates will be doing his part by doing some bushhogging and would like to encourage everyone to make a special effort to "tidy up the town"; you know - the way we

ladies do - our homes before we have company. In just two weeks we will have our homecoming, and Paden will be having company. The Fish Fry Saturday was a tremendous success. The music and singing was enjoyed by all. Having it under the shade trees this time was a great idea. Mr. and Mrs. Scott Stephen's granddaughter, Carla Shepard and children Jay and Alan of Huntsville, AL visited them on Friday and Saturday. Carla is the daughter of Carl Ray and Billie Stephens of Huntsville. Mr. and Mrs. Henry Frederick of



Ole Miss Pace Participant-Kacia Kitchens of luka is completing six hours of college credit and experiencing campus life at The University of Mississippi during the second summer session of project PACE - Promoting Academic and Creative Excellence. Coinciding with the University's first and second summer semesters, each PACE session offers

25 gifted rising high school seniors the unique opportunity to live on campus and enroll in two three-hour college courses. Admission to the program is competitive and based on recommendations from school officials, IQ test scores, achievement test scores, high school transcripts, service activities and a writing sample. The 1992 PACE second summer session is July 7 - August 3.

Salt Lake City, Utah and Mrs. Ruth Stephens of Lubbock, Texas visited relatives and friends for several days last week.

Mr. and Mrs. Warren Ward, Mr. and Mrs. Perry Lambert and Leighanne of Memphis, TN, Jeffrey Ward of Blytheville, Ark., and Lisa Raichenbach of Memphis were weekend guest of Mr. and Mrs. K.D. Lambert. Lisa is originally from Michigan and this was her first trip to Mississippi. She enjoyed sightseeing in our area.

Mrs. Lela McClung underwent surgery Monday at Baptist Memorial Hospital in Booneville. She is doing well and expects to be home soon.

Mr. Skip Pardue was in the North Mississippi Medical Center at Tupelo last week for back surgery. He is recuperating at home at this time.

I would like to correct an error I made last week. Mrs. Frances Nixon Phillips name was omitted from the list of class members at the reunion of the Class of 1952.

Would like to add, there's no better place to live for having good neighbors. When you are unable to have your own garden you seem to find enough left on your front porch to fill your freezer.

5-K Run Results

The Burnsville Waterway Festival 5-K Run was held on Saturday, July 11. Participation was good and the following results have been released: OVERALL MALE: 1. Ricky Smith 16:58; 2. Tom Palguta 17:03; 3. Randy Ryan 17:08.

OVERALL FEMALE: 1. Nancy Smith 22:54; 2. Catherine Smith 22:55; 3. Rhonda Wilbanks 23:19.

MALE 0-14: Aaron Yurchak 25:19; 2. Davey P. Yurchak 27:57; 3. Bradley Daniel Childs 28:08; 4. Eric Rorie 34:31; 5. Brandon H. Jones 35:49; 6. Tommy Schuman 39:15; 7. Josh Lindsey 39:27; 8. Patrick St. Jean 42:38; 9. Benjamin Andrews 45:45; 10. Justin Marlar 52:19.

FEMALE 0-14: 1. Tonya Tyson 42:17; 2. Lelsie Floyd 48:41.

MALE 15-19: 1. Cory Cartwright 20:54; 2. Justin Yurchak 22:42; 3. Will Dalton 22:47; 4. Matthew Andrews 28:22.

MALE 20-29: 1. Jeff Bonds 21:02; 2. Ken Williams 23:40; 3. Don Clark 24:12; 4. Scotty Lentz 28:15; 5. Keith Carson 30:17.

FEMALE 20-29: 1. Jennifer Lovelace 39:30; 2. Camilla Osborn 39:40; 3. Ann Parker 41:35; 4. Tim Malone 46:54.

MALE 30-39: 1. Scott Brown 19:02; 2. Richie Whitten 19:56; 3. Herbert Key

23:32; 2. Sue Box 25:55; 3. Barbara Brasher 27:51; 4. Gloria Hall 30:41; 5. Linda Rosier 36:21.
MALE 50-59: 1. Kenneth Williams 21:58; 2. Ken Hazelwood 22:57; 3. Frank Coburn 23:13; 4. Robert St. Jean 29:48.
FEMALE 50-59: 1. Louise Fowler 47:48.
MALE 60 & OVER: 1. Hal Baker 23:16; 2. Don Nachbar 25:37; 3. Jimmie Brawner 30:38; 4. Joseph Strain 31:18.
The Burnsville Waterway Festival 5K Run was made possible by the following sponsors: Dana; Conalco; Aerojet; Lockheed; Caterpillar; Larry James Olds; Peoples Bank & Trust, luka, MS; B & J Supermarket; Travis Brewer Trucking; D.B. Johnson Construction Co; J.C. Lambert Hardware, Burnsville; Epperson Trucking; Joe's Mini-Mart & Auto Parts; Burnsville Amoco; Adam's Custom Wheels & Tires; Murray's Video; Raceway Mini-Mart.

Attention Shriners

The next meeting of the Tishomingo County Shrine Club will be at the Southern Style Restaurant in Midway Thursday, July 23, 1992 at 7

p.m. All Shriners and their ladies are cordially invited.

2nd ANNUAL DOGGIE BATH & DIP DAY

Saturday, July 25, 9 a.m. - 1 p.m.

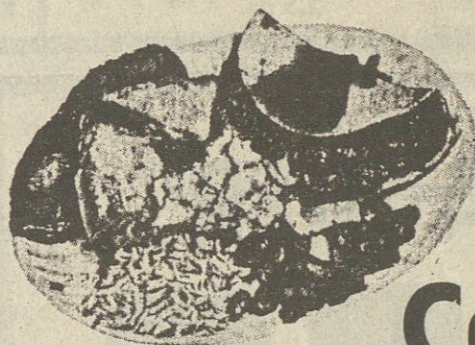
AT
IUKA ANIMAL CLINIC HWY. 25 SOUTH

ALL DOGS MUST BE ON LEASH!
Dip & Bath. \$8.00
Bath. \$5.00

Please Bring Towel

Proceeds benefit of the
Tish. County Humane Society
Dr.'s. Office Will Be Open

EVERYBODY'S TALKING!
about our



All-U-Can-Eat

MEXICAN BUFFET

Thursdays 5 p.m. - 9 p.m.
at

The Restaurant In Dennis

Hwy. 25 - 18 miles south of luka
454-9688 Catering Available

Grisham's Summer Clearance Sale!

RED WING WORK BOOTS

20% OFF

SPORT COATS

UP TO **50% OFF**

SUITS

UP TO **50% OFF**

SHORT SLEEVE DRESS SHIRTS

25% TO 50% OFF

SHORT SLEEVE SPORT SHIRTS

25% TO 50% OFF

ONE GROUP MEN'S TIES

50% OFF

ONE GROUP LEVI DOCKERS

25% OFF

ONE GROUP DRESS PANTS

50% OFF

BRIEF/BOXER SHORT/T-SHIRT

HANES UNDERWEAR 25% OFF

MEN'S SHORTS

UP TO **50% OFF**

OCEAN PACIFIC BEACH SANDALS

50% OFF

OCEAN PACIFIC WATCH & WALLET SET

\$9.95 SET

LAREDO, ACME (INCLUDE PYTHON) DRESS BOOTS

20% OFF

LIMITED QUANTITIES

BLUE COLLAR WORK BOOTS \$29.95 PR.

Grisham's Men's Wear

Uptown luka Shoe Repair Available
121 South Fulton 423-3484

On August 4th
★ ELECT ★
LAMAR SKINNER
STATE REPRESENTATIVE
DISTRICT 1
Your Vote & Influence Appreciated

NEW ORLEANS FAMOUS FRIED CHICKEN
"Quality You Trust and Taste You'll Never Forget"
423-2376 Hwy. 25 S. Limited Time Only!

Keep Your House Cool Let Us Cook For You

1 Lb. Livers **\$1.99**
Liver Snack **\$1.79**
Present this coupon

HAMBURGERS 99c
10 PC. FAMILY PACK
Large Cole Slaw, Large Potato, 5 Buttermilk Biscuits
\$9.39
Present this coupon

FRIES AND MEDIUM DRINK FOR ONLY \$1.00 MORE

No Coupon Necessary - Offer Expires Soon

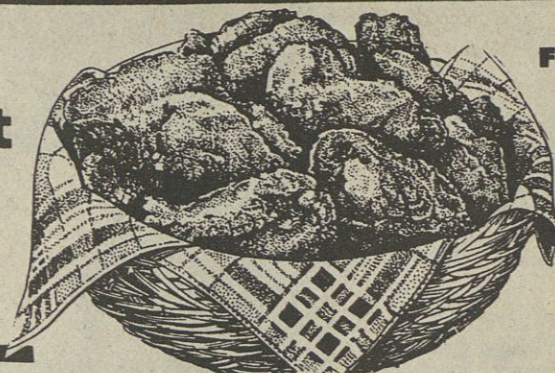
Sunflower

"Your Better Value Food Store"

Ad good thru July 29

QUANTITY RIGHTS RESERVED. NO SALES TO DEALERS

We Gladly Accept
U.S.D.A. Food
Stamps



Farm Fresh U.S.D.A. Grade-A Whole

Fryers

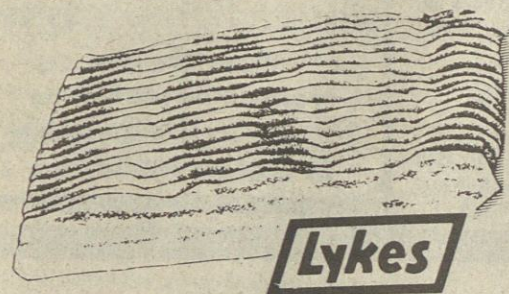
59^c

Corn King Whole
Boneless Ham 5-7 lb. **\$1.79**

Fresh Pork
Spare Ribs Lb. **\$1.09**

Armour
Canned ham 3 lb. can **\$6.49**

Lyke's Reg. or Thick
Bologna 12 oz. **\$1.29**



Lyke's Reg. or Thick

Bacon

12 oz. pk.

79^c

Savory Aged Boneless
Sirloin Tip Roast Lb. **\$2.49**

Savory Aged Boneless
Sirloin Tip Steak Lb. **\$2.59**

Savory Aged
Tenderized Steak Lb. **\$2.99**

Savory Aged
Ribeye Steak Lb. **\$4.59**

Flavorite Assorted Varieties
Lunch Meat 2.5 oz. **59^c**

Lyke's
Wieners 12 oz. **\$1.09**



FLAVORITE SALTINE

CRACKERS

1 LB. BOX

59^c

SHOPPERS VALUE

TEA BAGS

100 CT. BOX

89^c

SHOPPERS VALUE

PORK & BEANS

16 OZ. CANS

\$1.00

4 FOR

Shoppers Value
Bleach Gallon **99^c**

Hunt's
Catsup 24 oz. bottle **89^c**



Shoppers Value Whole Kernel or Cream Style
Corn 15-15½ oz. cans **3/\$1.00**

Shoppers Value Cut or French
Green Beans 14-14½ oz. cans **3/\$1.00**

DIET PEPSI, MT. DEW, SLICE, 7-UP

PEPSI

3 LITER BOTTLE

\$1.09

Palmolive
Dish Liquid 22 oz. bottle **\$1.39**

Glad-Lock Heavy Duty Zipper
Freezer Bags Qt. Size 20 ct. box **\$1.69**

Shoppers Value Sweet
Salad Cubes 22 oz. jar **\$1.59**

Del Monte All Varieties
Pineapple 8 oz. cans **2/\$1.00**

FLAVORITE

TUNA

IN WATER

2 \$1.00

FOR 6½ OZ. CANS

PARKAY

MARGARINE

1 LB. QTRS.

59^c

RINSO

DETERGENT

99^c

10 USE BOX

Celebrate summer with salads a fresh and delicious way to a lower fat, higher fiber diet! National Cancer Institute

CELLO WRAPPED
Lettuce head **69^c**

U.S. NO. 1 Yellow Onions... 3 lbs. **99^c**
NEW CROP CALIFORNIA Bartlett Pears... lb. **99^c**
CALIFORNIA Valencia Oranges... 8/99^c
CALIFORNIA LARGE Black Plums... lb. **79^c**

JUMBO SWEET Honeydews... each **\$1.59**
U.S. NO. 1 Red Potatoes... 5 lb. bag **99^c**
VINE RIPE SALAD Tomatoes... 6 ct. pkg. **99^c**

LARGE CALIFORNIA
Freestone Peaches lb. **49^c**

FRESH GREEN
Broccoli bunch **89^c**

JUMBO YELLOW
Cantaloupes each **99^c**

Flavorite
Ice Cream Sandwiches 12 ct. box **\$1.99**

Flavorite 100% Pure
Orange Juice 1/2 Gallon **\$1.59**

Armour
Viennas 5 oz. cans **2/\$1.00**

FLAVORITE
ICE CREAM

\$3.79

4 QT. BUCKET



ORE IDA
COB CORN

Mini-Gold

99^c

6 CT. PK.

Last Week's \$50.00 Winner
Delilah Walker - Iuka, MS
"Sunflower Jack Pot"

This Week's Jackpot Is
\$50.00

\$50.00 In Free Groceries Given
Away Each Week. If No Winner
\$30.00 Added Each Week
Until Someone Wins

Game Open To Adults Only Complete Details At Store

Aerospace Center Dedicated To Local Physician

Local Physician, Dr. Kelly S. Segars, was honored Saturday, July 18, at a ceremony where the Aerospace Business Center in Iuka was dedicated to him.

The owner of Vanderheyden Construction Company, Herman Vanderheyden, told those gathered at the

event that it was only appropriate to dedicate the building to someone who made the facility a reality. He credited Dr. Segars as being a key force in the location of NASA, Aerojet and Lockheed in Tishomingo County. Vanderheyden, who is also president of American Investment

and Development Corporation, owners of the building, said that his construction company was given the opportunity to build the building largely due to Segars, who convinced the companies associated with the ASRM project to give Iuka a chance.

The aerospace facility, located on Paul Edmondson Drive in the Iuka Industrial Park, is currently leased by Lockheed Missiles and Space Company, Aerojet Solid Propulsion, NASA, U.S.B.I. and the Iuka office of Vanderheyden Construction Company. The buildings presently house over 800 employees.

Vanderheyden said that Dr. Segars reminded him of a pit bull dog. "He grabs hold of something, he clamps down on it and he shakes and growls with tremendous tenacity until his goal is accomplished. He did that on this project and those for progress in Tishomingo County should thank him. For these reasons, I dedicate this building to him."

Chuck Levinsky, president of Aerojet-ASRM Project, explained that when his organization was searching for a building to fit their needs in the area, they ran into problems. They could not find a building suitable, so they began looking farther away from the area. When Segars volunteered to have them a building built by their transition deadline, Levinsky admits that he was skeptical.

"Dr. Segars assured me that it would be ready to move into on time. When I came to the ground breaking ceremony and saw the slab poured and the building closed in, I knew that it would be finished," he said. "We signed up with him. We went forward...It was absolutely through the dedication and efforts of Dr. Segars that we ended up being located in this office and I think it is eminently appropriate that this building be dedicated to him."

U.S. Senator Trent Lott (R-Miss.), special guest speaker at the dedication, explained that now that the ASRM project has begun, he and the other U.S. Congressmen from Mississippi will have to continue to work hard to assure further appropriations. "I am convinced that full funding will be approved," Lott said. "One danger is if space station is scuttled because of congressional demagoguery. That will be a problem for ASRM." He said that the two projects are tied together and that he will be speaking in favor of both during congressional meetings.

Lott praised the accomplishments of Segars and said that too often the efforts of local people are not recognized.

When Dr. Segars took the podium he said that he was very appreciative of this honor, but that it was not a one man project. He went on to thank a long list of people who he considered instrumental to the project.

Segars told the crowd in the way of advice for making progress toward their goals, that it is important to "take a stand!" He said "there is nothing in the middle of the road but a yellow stripe and dead possums."

Mount Gilead Homemakers Club

The annual outing for the Mount Gilead Homemakers Club was held at Bonanza in Corinth July 14, 1992.

It was an evening filled with fun, friendship, and fellowship.

Those in attendance were: Mrs. Tressie Bonds, Mrs. Mattie Faye Woodruff, Mrs. Lessie Newcomb, Mrs. Amy Walker, Mrs. Jean Crane, Mrs. Kathleen Moore and Mrs. Mary Anice Sitton.

Get well wishes are wished for Mrs. Elaine Timbes.

Adult Club To Sponsor Trip

The All-For-Christ Senior Adult Club Iuka Baptist Church, is sponsoring a 14-day trip to the south west, touring points of interest in Texas, New Mexico, Arizona, Old Mexico, California and Oklahoma. A copy of the itinerary, cost of trip and other information may be obtained by calling 423-9395, or 423-5246.



Babe Ruth All-Stars Advance To State Tourney

The Tishomingo County Babe Ruth League 13-year old All-Stars won the First District Tournament held in Corinth Monday night, July 20.

The "Cardiac Kids", as the team is known, kept fans on the edge of their seats as they defeated Corinth. They now advance to the Babe Ruth State Championship to be held at Longbeach, MS July 24-27.

The first game that the Tishomingo County team will participate in will be

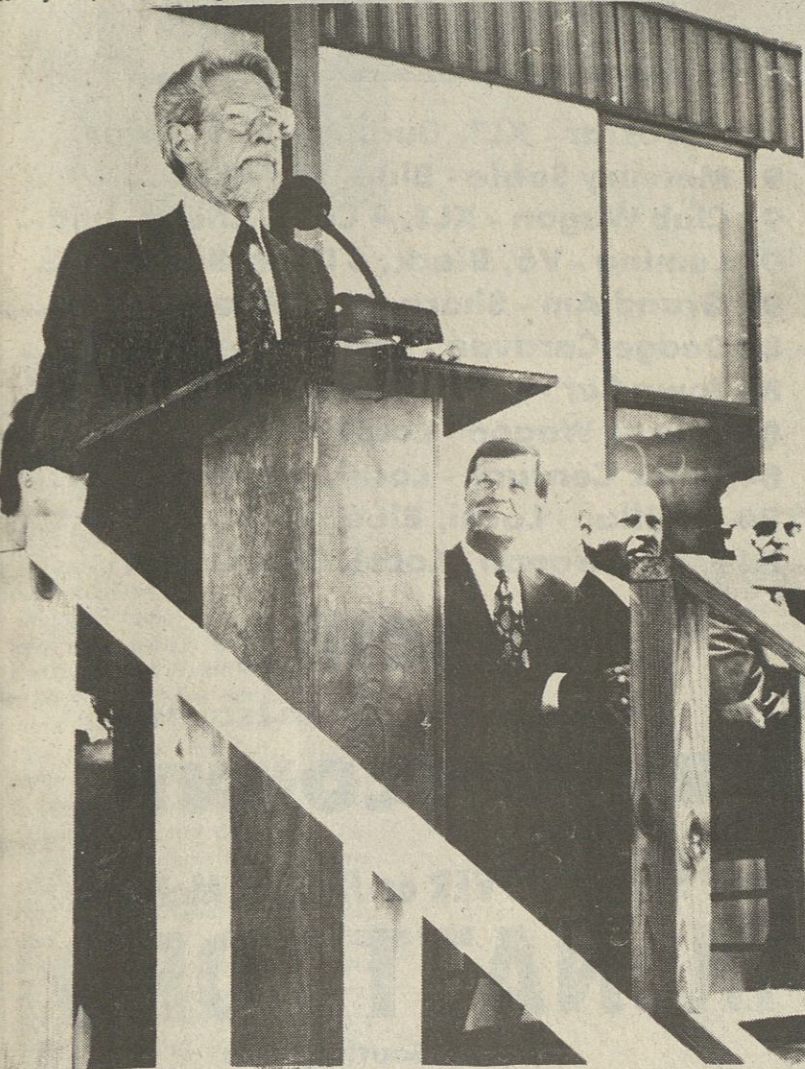
against the District 3 Champions, on Friday afternoon, July 24, at 2:30. If they win, they will play again on Saturday afternoon at 2:30.

Since this is a double elimination tourney, in the event that the team does not win the game Friday, they will play again Saturday morning at 9:30.

Anyone wishing to make monetary donations to help with the teams expenses may contact Larry Chambers at 423-5622.

Members of the "Cardiac Kids" team include: Front, L to R, Casey Kirk, Iuka; Jon-Denver Tapp, Iuka; John Powell, Iuka; Second row, L to R, David Webb, Tishomingo; Ricky Lambert, Iuka; Nathaniel Clark, Iuka; Jeff Boren, Belmont; Back row, L to R, Blake Holly, Iuka; Joshua Patterson, Tishomingo; Bryan Chambers, Iuka; Mario Barnes, Iuka; and Aaron Butler, Iuka.

Coaches Johnny Barnes, Larry Webb and Larry Chambers.



The Aerospace Business Center, located in the Iuka Industrial Park, was dedicated to Dr. Kelly S. Segars on Saturday, July 18. Speaking at the ceremony along with Segars (left) was sitting (L to R) U.S. Senator Trent Lott (R-Miss); John Thomas, L.M.S.C. Vice-President Project Manager - ASRM; and Chuck Levinsky, President of Aerojet-ASRM Project. Also speaking (not pictured) was Herman Vanderheyden, owner of Vanderheyden Construction Company and President of American Investment and Development Corporation. Songs sung by Rosemary Younts and Jan Segall were also a part of the dedication ceremony.

A WEIGHT LOSS BREAKTHROUGH

\$10⁰⁰ OFF SPECIAL

Weight Watchers.

Weight Watchers.

-New Year's Resolutions-

Remember how enthusiastic you were January 1st? Today is the 1st day of the rest of your life! If you want to be thinner JOIN TODAY! We know you can do it and we'll show you how.

We Meet In Your City

For Times and Locations Call
Toll Free in MS 1-800-289-8446
In Jackson 982-5783

Weight Watchers International, Inc. © 1992 Weight Watchers International, Inc.

Must Present Coupon To Receive Offer

YOUR COUPON	A FRIEND'S COUPON
\$10 OFF	\$10 OFF
YOUR REGISTRATION AND FIRST MEETING FEE	YOUR REGISTRATION AND FIRST MEETING FEE
<small>Good in area 113 only Offer valid as a discount and may not be combined with any other discount or special rate. #531 Exp. August 15, 1992</small>	<small>Good in area 113 only Offer valid as a discount and may not be combined with any other discount or special rate. #531 Exp. August 15, 1992</small>

Pier 57 Pizza - Now Open!



Hwy. 57 So.
Pickwick -
Just North of
The Harbour &
The Rib Cage on
The Famous
Pickwick
Curve -

Owners Larry, Marie & Keith Vuncannon
invite you to dine with them -

**Hoagies, Pizzas, Spaghetti
Delicious Gourmet Desserts, Salads & Appetizers
- Indoor and Outdoor Dining -**

10 a.m. - 9:30 p.m. Sun. - Thurs. 10 a.m. - 11 p.m. Fri. & Sat.
689-3922 - Marina Delivery

Smoking Permitted
On The Outside Deck
No Smoking Inside



Homecoming At Chapel Hill

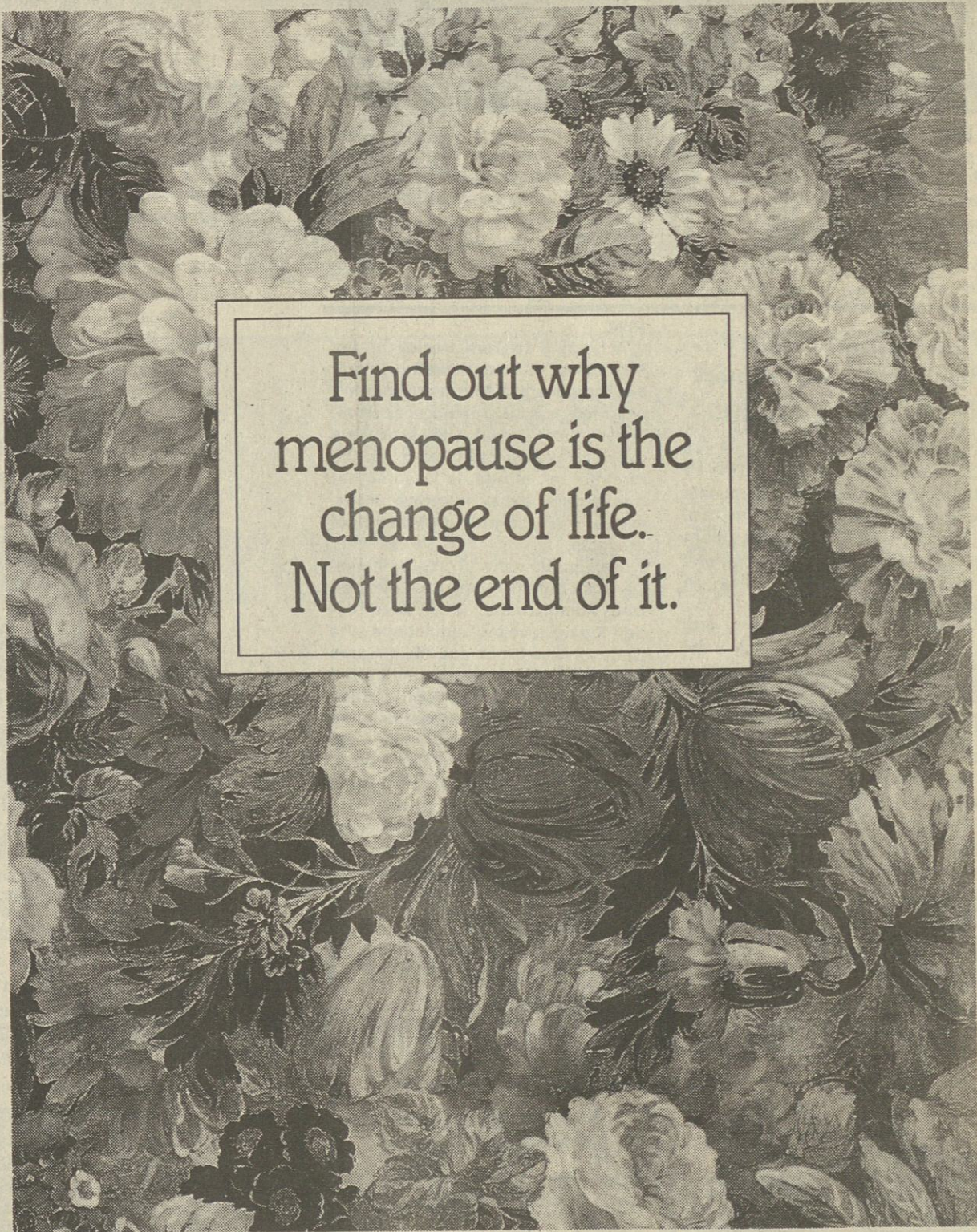
Homecoming at Chapel Hill Methodist Church, located 2 1/2 miles west of Burnsville, on old Hwy. 72 will be Sunday, July 26, with preaching at 11 a.m. lunch at noon, and singing in the afternoon. Special guest singers will be "The Grains of Sand" from Tusculum, AL along with other local singers.

Revival will be July 27 through 29 at 7:30 p.m. nightly with J. G. Babb preaching. Everyone is invited to attend.

Wiley Cameron To Be Guest At Emanuel Baptist Church

Wiley Cameron and the Ensemble Girls from the Lester Ralaff Ministries will be the guest at Emanuel Baptist Church on Tuesday, July 28.

Services will begin at 7:30 p.m. The church is located on Hwy. 25 N. in Belmont. Everyone is invited to attend.



Find out why
menopause is the
change of life.
Not the end of it.

Every woman will experience menopause. But it doesn't have to claim your vitality. Or your femininity. There's

a lot you can do to live through menopause with style and grace.

To learn more, see seminar details below.



**NORTH MISSISSIPPI
MEDICAL CENTER**

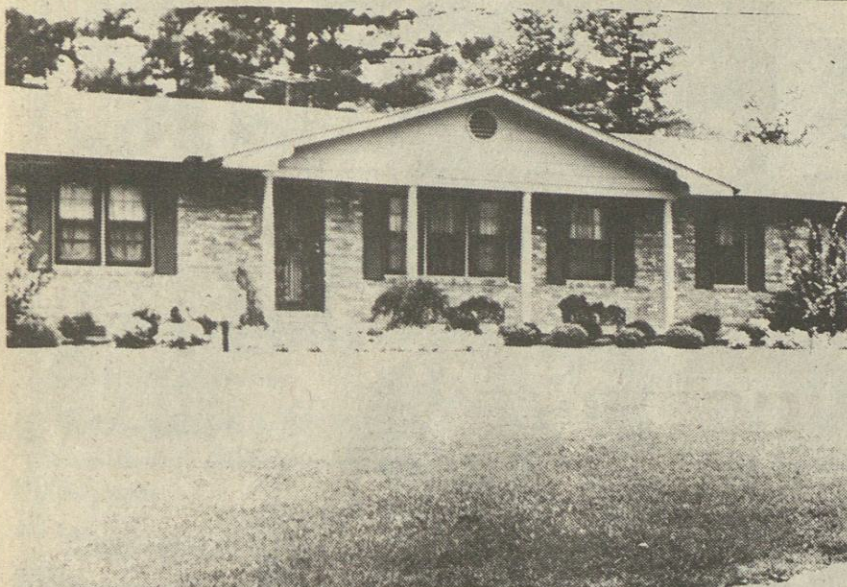
Date: Tuesday, July 28, 1992
Time: 7:00 p.m.
Location: Iuka Public Library

Registration Deadline: 12:00 noon, July 28

To preregister or for more information, call 1-800-THE-DESK (843-3375).

Cosponsored by:

Iuka Hospital • Kenneth Draper, M.D.
Al Flannery, M.D. • Margaret Glynn, M.D.
Ben Kitchens, M.D. • Kelly Segars, M.D.
Scott Segars, M.D. • Jerry Turner, M.D.
Swan Burrus, M.D., NMMC OB/GYN



Yard Of The Month--The Yard of the Month for July is the neatly kept yard of Mr. and Mrs. Bill Stahl on Martha Lane. It features clematis on the mailbox and a colorful display of petunias among the shrubbery. The Stahls were awarded a \$25 gift certificate from McBride's Garden Center.



State 4-H Campaign--Jolene Wilkins recently campaigned for State 4-H Song Leader during State 4-H Congress at Mississippi State University. Jolene did an excellent job getting the 4-H'ers involved in group singing. Jolene is the teen leader for the Cadette 4-H Club.



Blue Ribbon Talent--Alicia Moody of Belmont was one of 10 blue ribbon talent winners selected to perform during State 4-H Congress held recently at Mississippi State University. Alicia competed with more than 75 4-H members in the annual "Share-the-Fun" Contest to win the opportunity to perform for the more than 1,100 4-H members, volunteers and agents in attendance at the three-day event. Alicia, the daughter of J.W. and Janice Moody, sang a country music hit. 4-H is the youth education program of the Mississippi Cooperative Extension Service.

Tishomingo County Beef Producers Support Retail Nutrition Info.

Consumers want to know what's in the food they buy. Efforts by Tishomingo County beef producers and others in the meat industry continue to provide consumers throughout the country with retail nutrition labeling information on fresh meat.

Renewed interest in labeling was brought to light this spring, when the U.S. Department of Agriculture (USDA) announced a one-year postponement of proposed labeling requirements developed in November 1991 that would have gone into effect in May 1993. This means that new labeling regulations for meat and poultry products other than fresh, raw products will take effect in May

1994. According to Tom Healey of the Mississippi Cattle Industry Board, beef producers in Mississippi haven't been idly watching the proceedings. In fact, Healey said, beef producers over the years have been at the forefront of efforts to assure that consumers have nutrition information available when they buy beef products.

Back in the early 1970s, for instance, when the USDA and the Food and Drug Administration (FDA) were first developing labeling regulations, the National Live Stock and Meat Board helped draft a program called Uniform Retail Meat Identity Standards (URMIS), which established consistent terminology for the wide variety of meat cuts on the market. With URMIS, consumers were assured that the products they purchased in Los Angeles were the same products that they purchased in New

York and all points in between.

This advancement was followed in the late 1970s by the USDA's Handbook 8 series, which included new data on beef and other meat products. Tishomingo County beef producers, through their checkoff investments in market development activities, demonstrated their support with funding for construction of the data base and distribution of the information.

In 1985, the meat industry again led the charge in providing consumers with retail fresh meat information by introducing a program called Nutri-Facts. This program featured data and materials for retailers to use in their point-of-purchase and other marketing efforts. The effort, co-sponsored by the Meat Board, the American Meat Institute and the Food Marketing Institute, was recognized by the National Academy of Sciences as a model program for commodity nutrition labeling, and over the last seven years has been adopted by other commodity groups in their own consumer education programs.

Poultry, for example, was added to the Nutri-Facts program in 1987, and seafood came on board in 1988. Updated in 1992, the Nutri-Facts program now provides information on 45 meat and poultry products, 20 seafood items and 40 fresh fruits and vegetables.

Because two agencies are involved in labeling regulations -- the USDA for meat, poultry and eggs and the FDA for all other food products -- the specific rules for the 1994 introduction of mandatory labeling are yet to be determined, Healey said. Final regulations will be available in November 1992.

As a result of their checkoff marketing efforts, beef producers in Mississippi and across the country are ahead of schedule, according to

Eric Hentges, Ph.D., Meat Board director of nutrition research. "Due to their ability to recognize consumer needs, beef producers and others in the meat industry have paved the way by initiating a point-of-purchasing labeling program on their own," Hentges said. "The industry has always been in favor of nutrition labeling, because consumers who have the facts know that beef and other meats are important elements of a healthful, balanced diet."

ASCS Farm News

By: Phillip A. Horn
CORN, SORGHUM LOAN RATES SET
Loan and purchase rates for Tishomingo County's 1992 corn and sorghum crops were recently announced by the Agricultural Stabilization and Conservation Service.

The rates are \$1.80 per bushel for corn and \$2.96 per hundredweight for sorghum.

ASCS official Horn said the loan rates reflect changes in the national average price support rates for the crops, as well as the adjustments for location and transportation costs. "These adjustments were limited to a three percent change, in addition to the change in the price support rate for these crops."

Price support loans provide operating capital to farmers, enabling them to hold their crop off the market and benefit from price increases that often come after harvest.

Copies of the loan and purchase rates may be obtained from the Tishomingo County ASCS office, or by writing to the Cotton, Grain, and Rice Price Support Division, USDA-ASCS, P.O. Box 2415, Washington, D.C. 20013.

Booker Reunion

The Families of Richard Wert and Texanna Booker will have their annual family reunion, Saturday, August 1,

1992 at the Iuka Mineral Springs Park at 4:00 p.m. Everyone come and bring a well filled basket.

USED CARS

- 91 Aerostar - XLT, Dual Air, All Power.....
- 91 Mercury Sable - Blue, V6, Nice.....
- 91 Club Wagon - XLT, 4 Capt. Chairs, bed..
- 91 Lumina - V6, Black, 4 Door, Sharp.....
- 91 Grand Am - Sharp, Low Miles.....
- 88 Dodge Caravan - Local, Nice.....
- 88 Town Car - Local, Clean.....
- 88 Taurus Wagon - Local, V6, Tilt, Cruise..
- 84 Buick Century - Local, V6, Nice.....
- 84 Cadillac - Local, Blue, V8.....
- 84 Escort Wagon - Local, One Owner.....

SPECIAL

2-91 Driver Education Escorts

BIG DISCOUNT!

See SONNY DOVER or JOSEPH McNATT

McNATT FORD

Hwy. 25 South in Iuka

PUBLICATION COPY - COMMERCIAL AND SAVINGS BANKS CONSOLIDATED REPORT OF CONDITION (Including Domestic and Foreign Subsidiaries)

STATE 035 (3/92)

LEGAL TITLE OF BANK				STATE BANK NO.	
First American National Bank				FEDERAL RESERVE DISTRICT NO. 8	
CITY	COUNTY	STATE	ZIP CODE	CLOSE OF BUSINESS DATE	
Iuka	Tishomingo	Mississippi	38852	June 30, 1992	
ASSETS				Dollar Amounts in Thousands	
1. Cash and balances due from depository institutions:				Bil	Mil
a. Noninterest - bearing balances and currency and coin				3675	1.a.
b. Interest - bearing balances				1706	1.b.
2. Securities				30289	2.
3. Federal funds sold & securities purchased under agreements to resell in domestic offices of the bank				1850	3.a.
& of its Edge & Agreement subsidiaries, & in IBFs:				none	3.b.
a. Federal funds sold					
b. Securities purchased under agreements to resell					
4. Loans and lease financing receivables:					
a. Loans and leases, net of unearned income				43	506
b. LESS: Allowance for loan and lease losses				441	4.b.
c. LESS: Allocated transfer risk reserve					4.c.
d. Loans and leases, net of unearned income, allowance, and reserve (item 4.a minus 4.b and 4.c)				43065	4.d.
5. Assets held in trading accounts				none	5.
6. Premises and fixed assets (including capitalized leases)				934	6.
7. Other real estate owned				843	7.
8. Investments in unconsolidated subsidiaries and associated companies				none	8.
9. Customers' liability to this bank on acceptances outstanding				none	9.
10. Intangible assets				1018	10.
11. Other assets				82880	11.
12. a. Total assets (sum of items 1 through 11)				82880	12.a.
b. Loans deferred pursuant to 12 U.S.C. 1823 (j)				none	12.b.
c. Total assets and losses deferred pursuant to 12 U.S.C. 1823(j) (sum of items 12.a and 12.b)				82880	12.c.
LIABILITIES					
13. Deposits:				76522	13.a.
a. In domestic offices:					
(1) Noninterest - bearing				9	975
(2) Interest - bearing				66	547
b. In foreign offices, Edge and Agreement subsidiaries, and IBFs				none	13.b.
(1) Noninterest - bearing				none	13.b.(1)
(2) Interest - bearing				none	13.b.(2)
14. Federal funds purchased and securities sold under agreements to repurchase in domestic offices of the bank				none	14.a.
& of its Edge & Agreement subsidiaries, & in IBFs:				none	14.b.
a. Federal funds purchased				none	15.
b. Securities sold under agreements to repurchase				none	16.
15. Demand notes issued to the U.S. Treasury				none	17.
16. Other borrowed money				none	18.
17. Mortgage indebtedness and obligations under capitalized leases				none	19.
18. Bank's liability on acceptances executed and outstanding				396	20.
19. Subordinated notes and debentures				76918	21.
20. Other liabilities				none	22.
21. Total liabilities (sum of items 13 through 20)				none	23.
22. Limited - life preferred stock and related surplus				666	24.
EQUITY CAPITAL				4325	25.
23. Perpetual preferred stock and related surplus (No. of shares outstanding)				971	26.a.
24. Common stock (No. of shares):				none	26.b.
a. Authorized				162,500	28.a.
b. Outstanding				133,100	28.b.
25. Surplus (exclude all surplus related to preferred stock):				5962	28.c.
26. a. Undivided profits and capital reserves				5962	29.
b. LESS: Net unrealized loss on marketable equity securities				none	1.a.
27. Cumulative foreign currency translation adjustments				55	1.b.
28. a. Total equity capital (sum of items 23 through 27)					
b. Losses deferred pursuant to 12 U.S.C. 1823 (j)					
c. Total equity capital and losses deferred pursuant to 12 U.S.C. 1823 (j) (sum of items 28.a. & 28.b.)					
29. Total liabilities, limited - life preferred stock, equity capital, and losses deferred pursuant to 12 U.S.C. 1823 (j) (sum of items 21, 22, and 28.c.)					
MEMORANDA: Amounts outstanding as of Report of Condition date:					
1. a. Standby letters of credit. Total					
1. b. Amount of Standby letters of credit in memo 1.a. conveyed to others through participations					
NOTE: This report must be signed by an authorized officer(s) and attested by not less than three directors other than the officer(s) signing the report.					
I/We, the undersigned officer(s), do hereby declare that this Report of Condition has been prepared in conformance with official instructions and is true and correct to the best of my (our) knowledge and belief.					
SIGNATURE OF OFFICER(S) AUTHORIZED TO SIGN REPORT				DATE SIGNED	
NAME AND TITLE OF OFFICER(S) AUTHORIZED TO SIGN REPORT				July 17, 1992	
Deborah Bowling, Vice-President & Cashier				AREA CODE/PHONE NO.	
We, the undersigned directors, attest to the correctness of this Report of Condition and declare that it has been examined by us and to the best of our knowledge and belief has been prepared in conformance with official instructions and is true and correct.				601-423-3656	
SIGNATURE OF DIRECTOR		SIGNATURE OF DIRECTOR		SIGNATURE OF DIRECTOR	
State of Mississippi		County of Tishomingo		ss:	
(MAKE MARK FOR NOTARY'S SEAL)		Sworn to and subscribed before me this 17 day of July 19 92		Signature Notary Public	
and I hereby certify that I am not an officer or director of this bank.		My commission expires Sept. 17, 1994			

NEED HELP?

Occasionally you may have a problem or a question which necessitates contacting an agency of either the state or federal government, yet you aren't sure who to contact or how to go about it.

If so, then get in touch with me, I'll help you. This is part of my job and I will make the necessary communication, either by telephone, letter, or by personal contact.

Call me at 728-3446 Booneville (If long distance, call collect). My office number at the capitol in Jackson is 601-359-3425.

Or Write:

John White
105 Highway 45 North
Booneville, Miss. 38829

Senator John White
New Capital Building
Jackson, Miss. 39205



National Award Winner

The United States Achievement Academy announced today that Christina Robbins has been named a United States National Award winner in Science.

This award is a prestigious honor very few students can ever hope to attain. In fact, the Academy recognizes less than 10% of all American high school students.

Christina, who attends Fairview Junior High School was nominated for this National Award by Mrs. Sandra Whitt, a science teacher at the school. Christina's biography will appear in the United States Achievement Academy Official Yearbook, published nationally.

"Recognizing and supporting our youth is more important than ever before in America's history. Certainly United States Achievement Academy award winners should be congratulated and appreciated for their dedication to excellence and achievement," said Dr. George Stevens, Executive Director of the United States Achievement Academy.

The Academy selects USAA winners upon the exclusive recommendations of teachers, coaches, counselors or other school sponsors and upon the Standards of Selection set forth by the Academy. The criteria for selection are a student's academic performance, interest and aptitude, leadership qualities, responsibility, enthusiasm, motivation to learn and improve, citizenship, attitude and cooperative spirit, dependability, and recommendation from a teacher or director.

Christina is the daughter of Clyde and Shelia Robbins. The grandparents are Fannie Stanford and the late C.W. Stanford of Iuka and Dorothy Thursby of Dora, Alabama and Mr. and Mrs. J.R. Robbins of Golden, MS.

New Law Benefiting Minors

July 1 marked the beginning of a new law benefiting teenagers with traffic citations. Under the law, judges are authorized to order minors, up to age 21, to attend a Defensive Driving Course. The traffic ticket is considered dismissed and the ticket does not affect the teenager's driving record.

District 1 state representative, Harvey Benderman, who represents Tishomingo and Alcorn Counties, carried the bill through the state House of Representatives from subcommittee level through the floor vote. He stated, "I personally believe that it's a very worthwhile program. The teenagers will be in a better position to be on the highway after the course."

Representative Benderman continues, "I encourage all judges to use the program to the fullest."

Defensive Driving Courses have been used by some courts under the discretionary powers of the judges. This bill clarifies the judge's authority.

Teenagers participating in the program from this area would attend the class held regularly in Corinth on Saturdays. Defensive Driving Courses are provided statewide by Mississippi Safety Services. For information, call 247-815 or 1-800-228-7815.

The Bride's Choice

China: "Rothschild"
by Noritake

Crystal: "Park Lane"
by Mikasa

Flatware:
"Juilliard" by Oneida



Bride: Carrie Raines

Groom: Kenneth Lambert

The Cozy Corner
Gift Shoppe

at Rushing Drug Co.

Lowest Food Prices In the South.

PLUS ... EVERY DAY DISCOUNTS!

10% Discount on Books and Magazines

20% Off Manufacturers' Suggested Retail on L'EGGS Pantyhose

40% Discount on Greeting Cards



USDA
INSPECTED

Jumbo Pack Fryer Breasts

97¢ lb.



Tender Fresh Greens

YOUR CHOICE:
TURNIPS,
COLLARDS OR
MUSTARDS

2 97¢ bunches

Sack and Save Foods

QUANTITY RIGHTS RESERVED

NONE SOLD TO DEALERS

FOOD STAMP SHOPPERS
WELCOME

OPEN 7 DAYS A WEEK!

MUSCLE SHOALS

1306 WOODWARD AVE., SHOALS PLAZA

PRICES SUBJECT TO CHANGE AFTER JULY 25, 1992.

WESTERN
UNION

THE FASTEST WAY TO SEND MONEY.



Farmers Bid 115,000 Acres To Reserve

Farmers in Mississippi bid 115,000 acres of their cropland to be permanently converted to wetlands during the recent sign-up of the pilot national Wetlands Reserve Program, said Pete Heard, state conservationist for the U.S. Department of Agriculture's Soil Conservation Service in Mississippi.

"This strong interest in the WRP shows the commitment and environmental responsibility of Mississippi's farmers," Heard said.

Louisiana farmers bid the largest acreage of 119,000 acres, with Mississippi following in number of acres bid. Other states included in the \$46.4 million pilot program included California, Iowa, Minnesota, Missouri, New York, North Carolina and Wisconsin. Enrollment is limited to a total of 50,000 acres for 1992.

USDA will pay landowners easement costs for acreage accepted in the program, plus 75 percent of

costs for work approved to restore the land to healthy wetland conditions. Enrolled acreage must be kept permanently as wetlands, under the supervision of USDA's Agricultural Stabilization and Conservation Service.

During the June sign-up, 2,730 landowners in the nine pilot state told their county ASCS offices they are interested in offering 466,000 acres for enrollment.

U.S. Secretary of Agriculture Edward Madigan said USDA will proceed with wetlands enrollment with the \$46.6 million available this year and will seek to restore funding in the Senate for fiscal year 1993. The House, declaring it wanted to assess producer interest in the program, voted June 30 to eliminate wetland funding next year.

"Clearly, this is a popular program with far-reaching environmental benefits," Madigan said. "The whole idea is to help farmers voluntarily restore, by 1995, up to one million acres of land under cultivation back to wetlands to conserve soil and im-

prove water and wildlife habitat."

"Farmers told us they were willing to squirrel away 466,000 acres in just nine states. That's more than nine times the first-year goal of 50,000 acres," he said.

During the next 60 days, technical experts with SCS and the Department of Interior's Fish and Wildlife Service will complete wetland restoration plans for the acreage offered in the sign-up. These plans will serve as the basis for landowners to submit final bids to ASCS for enrollment in the reserve. Bids are due to county ASCS offices before September 25.

Farmers who submit acceptable offers this year will still receive annual payments even if the House action becomes law.

All programs and services of SCS are offered on a nondiscriminatory basis, without regard to race, color, national origin, religion, sex, age, marital status or handicap.

King George II was the last British ruler to lead troops in battle.

Keep Summer's Heat Out And Electric Bills Down

Summer is in full swing. The temperature is up; the house is hotter than ever and the electric bill threatens to push the family's budget into the red. What can be done?

Wishing the temperature would drop probably won't offer much help, but there are some proven methods for staying cool and keeping energy costs within the budget.

Dr. Jack Carroll, coordinator of the Mississippi Cooperative Extension Service's Energy Center at Mississippi State University, offered these suggestions.

Set thermostat controls at the highest level for reasonable comfort. Each degree of higher setting on the thermostat saves about 3 percent of operating cost. For most people 78 degrees F is a comfortable temperature during hot weather.

Ceiling fans circulate the cool air generated by the air conditioning and can lower the indoor temperature by 5 to 6 degrees.

Keep radiant heat from entering

windows by using sunscreens or natural shade producers such as trees and shrubs.

"MCES is having workshops around the state to show people how to construct sunscreens," Carroll said. "Sunscreens are recommended for east and west windows or any window where noticeable heat gain is experienced. Sunscreens can reduce the heat gained through these windows by about 70 percent."

"We've done these workshops for years, and continue to have requests for more," Carroll said. "The annual savings to the homeowner is about \$1 per square foot of glass covered."

Other strategies for keeping cool include turning off lights and unnecessary appliances. Reduce oven use by eating salads, sandwiches or cooking outside. Cool or cold-water showers, rather than hot, can save on water heating and air cooling costs.

Schedule heat-producing chores such as ironing, laundry, dishes and baking for cooler parts of the day. Close the fireplace damper to keep cool air from escaping up the chimney.

Good attic ventilation is a must. There should be ventilation around

the eave of the home, and the vent system near the highest point of the roof.

Carroll said attic ventilation is important throughout the year, not just in the summer months. Closing vents in the winter can result in moisture buildup within the home.

"Homes without air conditioning need good cross ventilation," Carroll said. "Raise windows on opposite sides of the house, particularly north and south windows because you get prevailing breezes at night from a southerly direction."

When planning a new home, Carroll said care should be given to be sure the air conditioning unit is the proper size for the home. Energy efficiency is lost to a too small or too large unit.

"Heat exchange units are gaining popularity in new homes," Carroll said. "These units, which range in cost from about \$300 to \$500, are installed with the air conditioning unit and essentially provide free hot water during the cooling season and improve the efficiency of the air conditioner."

L. T. ROBINSON'S IUKA MOTOR COMPANY

Old Highway 72 West/Iuka, Mississippi 38852

Phone 423-6788 - Nite 423-9170

Across From Country Squire Restaurant



1984 Pontiac Grand Prix - Automatic - Air - V-8 Engine - Buckets - Console - Nice Car

BETTER HURRY . . . TIME IS RUNNING OUT Complete Sell-Out Everything Must Sell Fast Further Reduction On Most Items.

SPRUCE STUDS	They Are Rough	79c
SPRUCE STUDS	Economy	\$1.09
SPRUCE STUDS	Our Best Stud	\$1.39
2x6x8 Economy (Price at Our Cost)		
No picking	Economy	\$1.28
2x6x10		\$1.60
2x6x16	Economy	\$2.56
2x8x12	Economy	\$2.56
2x8x14	Economy	\$2.99
PLYWOOD 5/8"	Sanded Exterior Glue 4x8	\$10.99
PLYWOOD 1/4"	Sanded Shop	\$5.95
CHIPBOARD	Good Decking or Subfloor 4x8	\$5.95
CHIPBOARD	Low Grade Some Damage, While it lasts	\$4.95
HARDBOARD SIDING	4x8 Extra Good	\$8.95
HARDBOARD SIDING	4x8 damaged while it lasts	\$6.95
HARDBOARD SIDING	1x12x16 Wood Texture	\$3.59
HARDBOARD SIDING	1x8x16 Smooth	\$2.39
1/4" PRESS BOARD PANELING	Good Patterns 4x8	\$3.99
1/8" PRESSBOARD PANELING	While it lasts	\$2.99
BATHROOM TILE BOARD	Several Patterns 4x8	\$6.95
NAILS	Plastic Buckets	LB. 18c
NAILS	Box Asst. Sizes	20 lb. \$3.75
FRAMING LEVEL	Wood 4 ft.	\$8.00
SHEETROCK	4x12 Unheard of Price	\$3.99
SHEETROCK	4x8	\$2.99
SHEETROCK	Compound 5 gal.	\$7.99
12" ATTIC TURBINES		\$19.95
CONCRETE BLOCKS	8" All that's left	65c
Q BOND	50 lb. bag, Reg. \$16.00	\$8.00
SHOP TOWELS	Handy Handy Handy Box of 400	\$8.00
SKILSAW BLADES	7 1/4"	Super Buy \$1.99
ELECTRICAL WIRE	12/2 W.G. 250 Roll	\$26.95
SWITCH BOX	200 Amp w/main	\$79.95
SWITCH BOX	100 Amp w/main	\$49.95
LIGHT SWITCHES		49c
RECEPTACLE		49c
PLASTIC WALL BOXES		29c

KITCHEN CABINETS

The Following Items Must Be Picked Up At Smith Cabinet Shop On East Tate St. Monday thru Friday 7 a.m. til 5 p.m.

BASE CABINETS Linear Ft. \$15.00

WALL CABINETS Linear Ft. \$12.00

COUNTER TOP Reg. \$6.95 All Popular Colors \$4.95

LINEN CABINET Reg. \$29.95 \$19.95

MEDICINE CABINETS \$39.95 & 49.95

LAUNDRY ROOM CABINETS 30" Wall \$29.95

BI-FOLD DOOR UNITS 4 Ft. thru 6 ft. \$54.95

BI-FOLD DOOR UNITS 18" thru 36" \$34.95

VANITY TOPS B-Grade / Per Inch \$1.00

ALSO ASK TO SEE DAMAGED CABINETS FOR AS LITTLE AS \$19.95

BRING YOUR TRUCK OR TRAILER • WE DO NOT DELIVER • ALL SALES FINAL
STORE HOURS 7 A.M.-5 P.M. MONDAY THRU FRIDAY SATURDAY 7 TILL NOON
SMITH SALVAGE & BUILDING SUPPLY
Hwy. 72 West 287-4419

Legal Notice

IN THE CHANCERY COURT OF TISHOMINGO COUNTY, MISSISSIPPI
BRADFORD E. RILEY AND WIFE,
MARGARET JUNE RILEY,
HAROLD S. JACKSON, TRUSTEE

COMPLAINANTS

VS. CAUSE NO. 12,202

THE ESTATE OF
HOMA JEAN GRISHAM, SR.
DECEASED, CAROL JEAN GRISHAM

DEFENDANTS

SUMMONS
THE STATE OF MISSISSIPPI
TO: THE ESTATE OF HOMA JEAN GRISHAM, SR. DECEASED, CAROL JEAN GRISHAM, an adult non-resident of the State of Mississippi, whose present street address is Route 1, Box 373, Cherokee, Alabama 35616, but whose post office box address is unknown to the Complainants after diligent search and inquiry personally made by them to ascertain the same.

You have been made a Defendant in the suit filed in this Court by Bradford E. Riley and wife, Margaret June Riley, Harold S. Jackson, Trustee, Complainants, seeking judgement and other relief.

You are required to mail or hand-deliver a written response to the Complaint filed against you in this action to Harold S. Jackson, Attorney for Complainants, whose address is Post Office Box 414, Iuka, Mississippi 38852.

YOUR RESPONSE MUST BE MAILED OR DELIVERED NOT LATER THAN THIRTY (30) DAYS AFTER THE 16TH DAY OF JULY, 1992, WHICH IS THE DATE OF THE FIRST PUBLICATION OF THIS SUMMONS. IF YOUR RESPONSE IS NOT MAILED OR DELIVERED, A JUDGEMENT BY DEFAULT WILL BE ENTERED AGAINST YOU FOR THE MONEY OR OTHER RELIEF DEMANDED IN THE COMPLAINT.

You must also file the original of your response with the Clerk of this Court within a reasonable time afterward.

Issued under my hand and the seal of said Court, this the 8th day of July, 1992.

Hayden Ables, Chancery Clerk
Of Tishomingo County, Mississippi
1008 Highway 25 South
Iuka, Mississippi 38852
Jy-16-23-30-chg

Legal Notice

ANNOUNCEMENT OF
SUBCONTRACTING
OPPORTUNITIES

National Industrial Constructors Inc. (NIC), an affiliate of RUST International of Birmingham, AL, is the Construction Manager (CM) for the NASA ASRM Production Facility at Yellow Creek, Iuka, MS.

One of the work sites for this program is at the NASA East Test Area, located on Redstone Arsenal, Huntsville, Alabama. This work site is known as the "Marshall Job Site."

The following information is provided for those seeking subcontracting opportunities at the Marshall Job Site.

The following bid package is being prepared, and we are soliciting firms who desire to pre-qualify as Prime Bidders.

Description of Work:

Renovation/modification work on two test stands consisting of: (1) Fabrication and installation of two new structural steel (steel and aluminum grating) work platforms, (2) modification and extension of existing work platforms and access ladders, (3) construct two reinforced concrete work pads, (4) miscellaneous modification and new work on existing electrical and mechanical support systems.

Estimated Value: \$300,000 - \$600,000

Interested companies must request "Prequalification Package" not later than July 30, 1992. Request may be made by facsimile (FAX) 205/544-4196 or by mail to the address below.

NIC-ASRM Procurement
ATTN: Peterson - RCM
Marshall Space Flight Center, AL 35812

Telephone: 205/544-4159

NIC is an equal opportunity employer M/F/H/V

Jy-9-16-23-chg

ROADWAY ITEMS:

Mobilization
Clearing & Grubbing
Removal Of Bridge (Sta. 405 + 92)
Unclassified Excavation (F.M.)
Borrow Excavation (AH)(Contractor Furnished) (LVM) (c1. 9)
Haul Of Unclassified Excavation (F.M.)
Granular Material (LVM) (C1. 5, Gp. "c")
Granular Material (LVM) (C1. 9, Gp. "B")
Granular Material (Crushed Limestone)
Mixing, Shaping & Compaction
Hot Bituminous Pavement Surface Course
Cut Back Asphalt For Prime, Or
Emulsified Asphalt For Prime (EA-1), Or
Emulsified Petroleum Resin For Prime Coat (EPR-1)
Asphalt Cement, Grade AC-5
Coarse Aggregate Cover Material, Size 56
Seal Aggregate Cover Material, Size 7
Class "B" Structural Concrete, Minor Structures
24" Reinforced Concrete Pipe, Class III
24" Reinforced Concrete End Section
88" x 54" Concrete Arch Pipe, Class A III
88" x 54" Concrete Arch Headwall Plan No. 263

PIPE ALTERNATE I

15" Reinforced Concrete Pipe, Class III

PIPE ALTERNATE II

15" Bituminous Coated Paved Invert
Corrugated Metal Pipe, 16 Gage,
2 2/3" x 1/2" Corrugation

PIPE ALTERNATE III

15" Vitrified Clay Pipe,
Class Extra Strength

Guardrail, W-Beam, Complete In Place

Guardrail Bridge End Section, Type G,
Complete In Place

Guardrail, Type 2 Cable Anchorage,
Complete In Place

Right Of Way Markers (Type 1)

Maintenance Of Traffic

Additional Construction Signs

Traffic Stripe (Continuous White)
(Code FDTW-1, FDTW-2, or WBTW)

Traffic Stripe (Continuous Yellow)
(Code FDTY-1, FDTY-2, or WBTY)

Detail Traffic Stripe (Yellow)

Detail Traffic Strip (White)

Legend

Refl. Traffic Warning Sign
(Encap. Lens)

Refl. Traffic Regulatory Sign
(Encap. Lens)

Refl. Traffic Hazard Sign
(Encap. Lens)

Refl. Traffic Delineator Sign
(Encap. Lens)

Refl. Project Sign
(Encap. Lens)

EROSION CONTROL ITEMS:

Agricultural Limestone

Commercial Fertilizer (13:13:13)

Ammonium Nitrate

Seeding

Vegetative Material For Mulch

Solid Sodding

Portland Cement Concrete Paved Ditch

Losse Riprap (300 Lb.)

BRIDGE ITEMS:

Test Piles

Loading Tests

10BP42 Steel Piling

Class "A" Bridge Concrete

40' Prestressed Beam

Reinforcement

Concrete Railing

Loose Riprap (300 Lb.)

Contract Time: 180 Working Days.

The award if made will be made to the lowest qualified bidder on the basis of the published quantities.

The attention of bidders is directed to the State and Federal laws governing the selection and employment of labor. Minimum wage rates for this project have been predetermined by the Secretary of the Department of Labor in accordance with the requirements of Federal Aid regulations governing the expenditure of Federal Aid Highway Funds and are set out in the labor regulations contained in the proposal.

The Board of Supervisors, hereby notifies all bidders that it will affirmatively insure that in any contract entered into pursuant to this advertisement, minority business enterprises will be afforded full opportunity to submit bids in response to this invitation and will not be discriminated against on the grounds of race, color, religion, sex, or national origin in consideration for an award.

Plans and specifications are on file in the office of the Chancery Clerk, Tishomingo County, Mississippi, the office of the State Aid Engineer, located at 657 Highway 49 South, Richland, Mississippi and the office of the County Engineer, B.G. Coggin, Jr., 703 Crossover Road, Tupelo, Mississippi. Proposals may be secured from B.G. Coggin, Jr., County Engineer, P.O. Box 1526, Tupelo, Mississippi 38802, upon payment of \$45.00, which will not be refunded.

Plans may be secured from B.G. Coggin, Jr., County Engineer.

Certified check or bid bond for five percent (5%) of the total bid made payable to Tishomingo County and the State of Mississippi must accompany each proposal.

Bidders are hereby notified that any proposal accompanied by letters qualifying in any manner, the conditions under which the proposal is tendered will be considered an irregular bid, and such proposals will not be considered for making the award.

Rickey Cummings, President

Board of Supervisors

Tishomingo County



Climbing Cucumbers--Lucille James, of Iuka, had no idea when she planted a few cucumber seeds next to her house that they would grow so well. The vines have climbed up the rock of Lucille's Airport Road home

Route 2 News

The T.C. Parnell Family and Jimmy Daniel Family have recently spent their vacation in the Smokey Mountains.

Mrs. Vicky Rudolph of Irving, TX has been visiting the Rev. Bob Brant Family.

Open House for Mr. and Mrs. Gary Vanmeter was held on Sunday afternoon, July 12.

The U.M.W. of Harmony Church met with Glenda Johnson on Monday night, July 13. Twelve members were present.

Catherine Caldwell, Anna Brant, Heather Massengill, Courtney Barnes and Jenny Barnes are enjoying this week at Camp Lake Stephens near Oxford.

Mr. and Mrs. Cliff Peterson have been visiting relatives in Glenwood, IN.

Edmond and Linda Puckett returned from a vacation by her sisters, Mrs. Holbert Hill, in Cabot, Ark. Mrs. Hill returned home with them for a visit.

and produced enough cucumbers for her to make one gallon and one quart of pickles and still supply her children, Bobby, Betty Marie, Buddy, Tootie, Janie, Danny and Scotty, with cucumbers. Lucille said that the vines are still bearing.

Mrs. Dudgar Daniel recently visited her daughter and family, the Jerald Wallace Family in Cherokee.

Family Gathering Of The Wilsons & Cobbs

The gathering of this Family was Saturday, July 11, 1992 at the Iuka Mineral Springs Park Youth Center. What a beautiful day it was for this family occasion. Families attending, Rebon Wilson, George and Clara Ridgewell, Ida Wilson, James and Jimmie Eaton, Judy and Marlena Wilson, H.T. Wilson all of Iuka, MS; Wayne, Becky, Simmie and Sandy Phillips, Cecil and Rosetta Phillips, Glen, MS; Jerleen Curtis, Mitzi, Kristen and Lauren Atchison, Southaven, MS; Scott, Phobie and Shelly Sanfer, Janette Hall Tupelo, MS; Joan, Vernon and Jeffery Henderson, Walnut, MS; Angela and Ruthie Wilson, Memphis, TN; Jean McClatchy, Indianola, MS; Lyle and Eliouise Pace, Kenoisha, WI; Harold, Jane and Jonathan Frey, Memphis, TN; J.C. and Catherine Wilson, Pontiac, MI; Friends of family attending and shared the day with us were Marshall and Mamie Adams, Luther Lindsey, Mollie Curtis, J.T. and Audrey Lambert. The Family enjoyed your coming and helping us make this a great and joyful day. We sure missed the ones who could not be with us this year.

We hope and pray that you can be with us next year the same place and same time.

CHOLESTROL SCREENING

Get the complete cholesterol picture...We measure both total cholesterol and HDL - the "good" cholesterol

TOTAL CHOLESTROL.....\$7.00
HDL (the "good" cholesterol).....\$11.00
Total Chol, HDL, & Risk Ratio.....\$16.00

Other tests available: Glucose, Hemoglobin (Triglycerides 12 hour fasting - water - black coffee OK)

Fingerstick method - Accurate KODAK Analyzers - Immediate results

Wednesday, July 29th & Thursday, July 30th
9 a.m. to 1 p.m. & 2 p.m. to 6 p.m.

SPONSORED BY:

WAL-MART - Iuka, MS

ANGELICA UNIFORM GROUP Tishomingo, Mississippi

Is adding to its work force and needs experienced and inexperienced sewing machine operators.

BENEFITS INCLUDE

- *Nine paid holidays
- *Paid vacation
- *Health Insurance plan with company contribution
- *Sickness and Accident Insurance at no cost to the employee
- *Life Insurance with no cost to the employee
- *Deferred Tax Savings Plan with Company Contribution
- *Overtime paid at time and on-half after eight hours worked per day
- *Membership in Credit Union available for Savings & Loan

APPLY AT OFFICE

Highway 25 Tishomingo, Mississippi
Mon-Fri 7:00 - 3:30 Sat. 7:00 - 12:00
601-438-7661

An Equal Opportunity Employer M/F/V/H



"Cardiac Kids"--First American National Bank congratulates the Tishomingo County Babe Ruth All-Stars on their success and is proud to support them in their quest for the

State Championship. A member of the All-Stars, John Tapp, is shown accepting a check from Jack Ramsey of First American National Bank. Good Luck Boys!

Local Students Graduating This Summer At MSU

Nearly 900 Mississippi State University students are candidates for degrees at the conclusion of the 1992 summer semester.

Students who complete requirements for undergraduate degrees with exceptional scholastic averages and with a minimum of half the total hours required for their degrees earned at MSU are graduated with honors.

Candidates for degrees from the Tishomingo County News readership area include: Brian Daniel Barnes, Burnsville, BS in College of Engineering; Sidney Doran Bennett, Tishomingo, BBA in College of Business and Industry; Donald Marty Hall, Belmont, BS in College of Engineering; Karissa Deaton Hall, Mississippi State, BPA in School of Accountancy; Barbara Brown Pardue, Tishomingo, MED in Graduate School; Benita Banks Tigner, Starkville, BS in College of Arts and Sciences; and James Michael Tucker, Starkville, BS in College of Engineering.

Select Quality, Fresh Produce At Farmers' Market

Farmers' markets provide the ideal locations for finding the freshest, in-season produce for summer fruits and vegetables. A careful inspection will insure the highest quality produce for canning, freezing or immediate consumption.

Dr. David Nagel, extension horticulturist at Mississippi State University, said the appearance of the produce is the major factor for selecting quality fruits and vegetables.

"Fresh produce is free of dehydration wrinkles and is the color it is supposed to be," Nagel said. "Avoid produce with signs of disease or discolored spots."

Fruits and vegetables such as tomatoes, bell peppers and squash

before it reaches the market."

If lower prices are a priority (as opposed to quality), Nagel recommended shopping at the end of the day when bargains may be found. In some cases, buyers can negotiate with the farmer to buy in bulk for canning or freezing produce.

Ask questions of the manager or owner of the farmers' market to determine the freshness of the produce available. Extended times in the heat may cause produce to spoil or damage the desirable flavors.

To insure the freshest produce, buy early in the morning and process as soon as possible.

Nagel said snap beans should snap; lima beans should not be limp and consumers should be able to feel the beans in the pods. Purple hull peas should be purple, not have black or lilac-colored hulls.

Yellow squash with warty skin is too old to taste good.

To evaluate sweet corn, pull back the husk and puncture one of the kernels. If a milky juice shoots out, it's ready for processing or consumption.

Watermelons should have a cream or yellow bottom and have a dull thud sound when they are thumped. Nagel said people can't tell if watermelons are overripe until cutting the melon.

Cantaloupes should not have partial stems or signs of tearing on the stem end which are indications the fruit was picked green. If harvested at

the right time, the scar on the stem end will have even edges.

The Bride's Choice China: "Apple"

by Country Crafts



Bride: Risa Wadkins

Groom: Alan Smith

The Cozy Corner Gift Shoppe

at Rushing Drug Co.

REPRESENTATIVE HARVEY BENDERMAN

campaigned one year ago on a platform of bringing state government back to the people. In order to represent District I equally, Representative Benderman scheduled a series of public meetings throughout the district. These meetings were held during the 1992 Legislative session so that the people of District I could have a direct impact on their legislator's vote. These highly successful meetings gave voters an opportunity to ask questions about upcoming legislation, as well as offer suggestions and ideas.

As a direct result of local public concerns about fishing on Pickwick Lake, the Chief of Fisheries, Ron Garavelli, was invited to a recent meeting. Because of the interest displayed, Mississippi and Tennessee have tentatively agreed on a reciprocating fishing license, enabling fishermen to fish Mississippi, Tennessee, and Alabama waters of Pickwick Lake with a Mississippi Residential License.

A VOTE FOR HARVEY BENDERMAN WILL INSURE THAT CITIZENS OF DISTRICT I CONTINUE TO HAVE A VOICE IN JACKSON



WAL-MART

<p>ASSORTED COTTONS AND POLY-COTTON</p> <p>SOLIDS & PRINTS 45" & 60" WIDTH MACHINE WASHABLE & TUMBLE DRY</p> <p>98¢</p>	<p>ONE LARGE TABLE OF 100% COTTON AND COTTON-POLYESTER</p> <p>45" WIDE PRINTS AND 60" WIDE SOLIDS & STRIPES MACHINE WASH - COLD WATER - TUMBLE DRY</p> <p>Reg. \$2.00 \$1.50 Now</p>
<p>SPRING IND. PALENCIA BROADCLOTH PRINTS</p> <p>65% FORTREL POLYESTER - 35% COTTON 44-45" WIDE MACHINE WASH - TUMBLE DRY</p> <p>Reg. \$2.50 Now \$2.00</p>	<p>M M FAB MILANO CHALLIS PRINTS</p> <p>100% RAYON 44-45" WIDE MACHINE WASH - DELICATE CYCLE TUMBLE DRY</p> <p>Reg. \$4.00 \$3.50 Now</p>
<p>M M FAB FINESSA SOLIDS</p> <p>IN RED, FUSHIA, GREEN, BLUE PURPLE, BLACK & WHITE 50% RAYON - 50% POLYESTER 44-45" WIDE MACHINE WASH - DELICATE CYCLE TUMBLE DRY</p> <p>Reg. \$3.00 \$2.50 Now</p>	<p>Shamash & Sons & Dan River DRESS DENIMS & INDIGO CHAMBRAY</p> <p>100% COTTON 60" WIDE MACHINE WASH - TUMBLE DRY</p> <p>Reg. \$4.50 Now \$3.50</p>
<p>SPECTRIX IND. PRINT FABRIC</p> <p>DRESS & PANTS WEIGHT 100% COTTON - 60" WIDE MACHINE WASH - TUMBLE DRY</p> <p>Reg. \$2.64 Now \$2.00</p>	<p>WINKY TEXTILES CO. WINKY PRINTS</p> <p>IN NEON COLORS - PINK, ORANGE, GREEN, & BLUES 100% COTTON 60" WIDE MACHINE WASH COLD - DELICATE CYCLE - TUMBLE DRY</p> <p>Reg. \$3.50 \$3.00 Now</p>

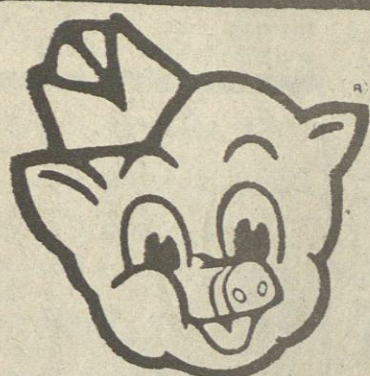
Hwy. 25 South in Iuka

Open Monday - Friday 9:00 - 9:00

Sunday 12:30 - 5:30

Ad good thru July 26

WAL-MART'S ADVERTISED MERCHANDISE POLICY--It is our intention to have every advertised item in stock. However, if due to any unforeseen reason, an advertised item is not available for purchase, Wal-Mart will issue a Rain Check on request, for the merchandise to be purchased at the sale price whenever available, or will sell you a similar item at a comparable reduction in price. We reserve the right to limit quantities. Limitations void in New Mexico.



piggly wiggly

GROCERS PRIDE

TEA BAGS
100 CT. PKG.



59¢

GROCERS PRIDE

PAPER TOWELS
32 OZ. JAR



3/\$1

GROCERS PRIDE

MAC & CHEESE
7.75 OZ. PKG.

4/\$1



DIET COKE, SPRITE, DR. PEPPER OR

COCA COLA
12 PACK - 12 OZ. CANS



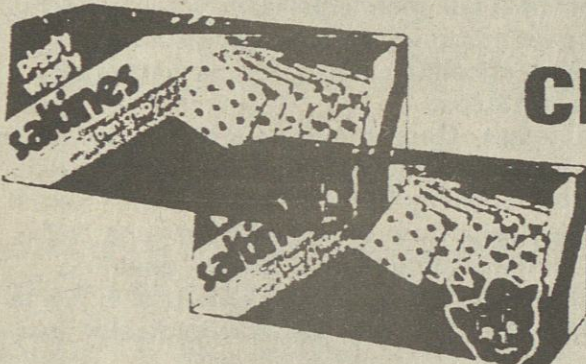
\$2.39

3 LTR. BTL.
\$1.19

PIGGLY WIGGLY SALTINE

CRACKERS
1 LB. BOX

59¢



PIGGLY WIGGLY NATURAL OR BUTTER

MICROWAVE POPCORN
3 CT. PKG.

89¢



GROCERS PRIDE WAFFLE

CREAM COOKIES
9 OZ. PKG.

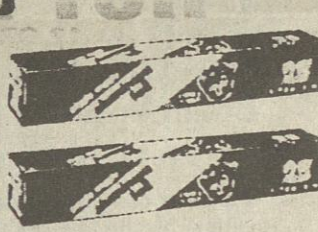
\$1.29



PIGGLY WIGGLY ASSORTED

DOG FOOD
16 OZ. CAN

4/\$1



PIGGLY WIGGLY 12 INCH

ALUMINUM FOIL
25 FT. ROLL

2/\$1

GROCERS PRIDE
BLENDED SHORTENING
42 OZ. CAN

89¢



GROCERS PRIDE
LIQUID BLEACH
GAL. JUG

69¢



PIGGLY WIGGLY
PINTO BEANS
1 LB. BAG

3/89¢

DAIRY DEPARTMENT

PIGGLY WIGGLY

MARGARINE QUARTERS
1 LB. PKG.



3/\$1

PIGGLY WIGGLY BIG FLAKY OR

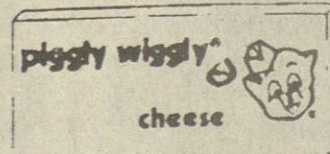
BUTTER-ME-NOT BISCUITS
5 CT. CAN



3/\$1

PIGGLY WIGGLY MILD OR MEDIUM

STICK CHEESE
8 OZ. PKG.



\$1.29

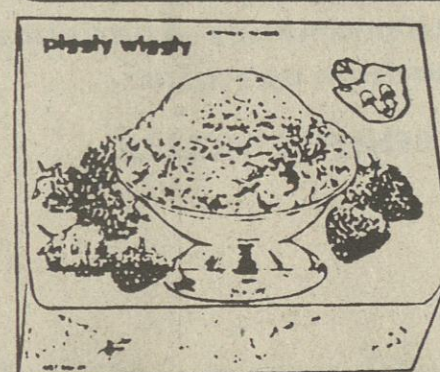
GROCERS PRIDE TACO OR PIZZA

SHREDDED CHEESE
8 OZ. PKG.



99¢

FROZEN FOODS DEPARTMENT



PIGGLY WIGGLY
FRENCH FRIES
5 LB. BAG

\$2.29



WITH EACH
CONSISTS OF DINNER PLATE, AND
CEREAL & SOUP SEPARATELY
LAST TWO WEEKS COMPLETE
SUMMER GARDEN CO.

WE'LL TAKE
the **B**
Of You

•QUANTITY AND CORRECTION RIGHTS RESERVED •NONE SOLD TO DEALERS

IUKA, MS

HWY. 25 SOUTH

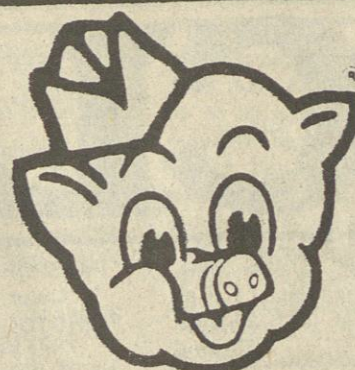
PRICES GOOD JULY 23 THRU JULY 29, 1992

WESTERN UNION

THE FASTEST WAY TO SEND MONEY



We welcome
FOOD STAMP
SHOPPERS



FAMILY PACK FRESH LEAN

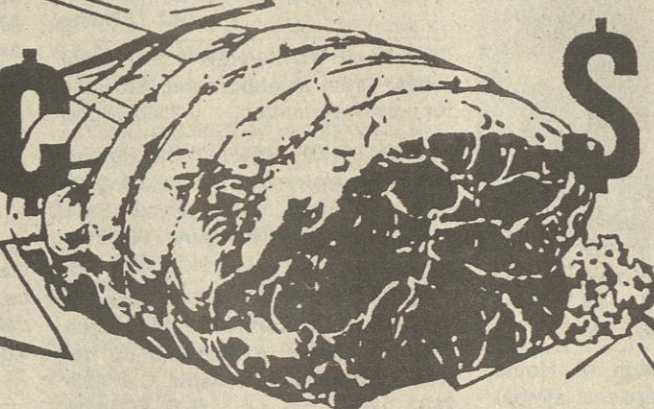
GROUND BEEF
POUND



99¢

USDA CHOICE WHOLE

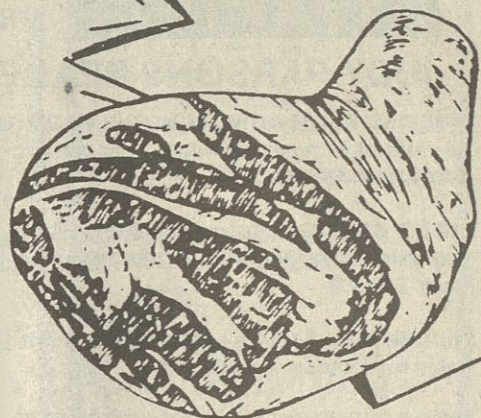
SIRLOIN TIP ROAST
POUND



\$1.99

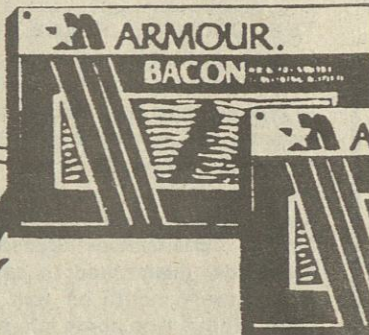
WHOLE SMOKED

PICNIC SHOULDERS
POUND



79¢

ARMOUR.
BACON



ARMOUR SLICED
BACON
12 OZ. PKG.

\$1.09

PIGGLY WIGGLY SLICED
BACON
12 OZ. PKG.



99¢

PIGGLY WIGGLY SLICED
BOLOGNA
12 OZ. PKG.



99¢

MAPLE RIVER JUMBO
FRANKS
16 OZ. PKG.



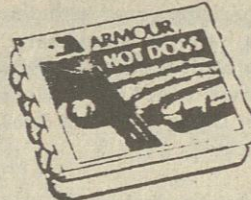
69¢

PIGGLY WIGGLY
HOT DOGS
12 OZ. PKG.



79¢

ARMOUR SLICED
BOLOGNA
12 OZ. PKG.



\$1.09

ARMOUR
HOT DOGS
12 OZ. PKG.

99¢

PIGGLY WIGGLY
TOMATO JUICE
46 OZ. CAN

69¢



PIGGLY WIGGLY
SALAD DRESSING
8 OZ. JAR, ALL FLAVORS

79¢



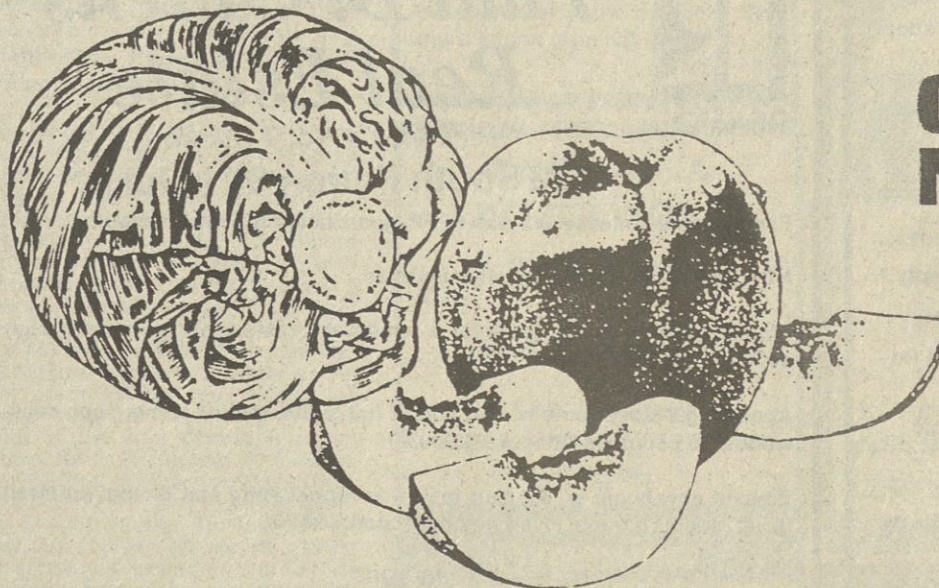
REG. OR LITE
PIGGLY WIGGLY
SYRUP
24 OZ. BTL.

99¢

FARM FRESH PRODUCE SPECIALS

FRESH FIRM
GREEN CABBAGE
HEAD

15¢



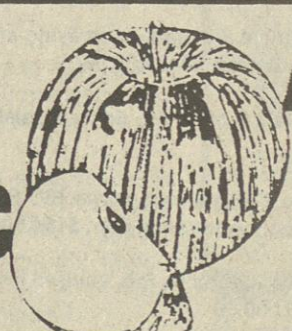
FRESH SWEET JUICY
CALIFORNIA NECTARINES
POUND

69¢

FRESH YELLOW SWEET
CORN EARS



5/99¢



FRESH ROME
APPLES
POUND

69¢



FRESH GREEN
ONIONS
BUNCH

2/85¢

\$ CLASSIFIEDS \$

FLASHING ARROW SIGNS... Sale, Rent, Lease-purchase. Call Booneville collect at (601)728-5460. Deliver. A-30-tfn-C

WANTED TO BUY USED FURNITURE & ANTIQUE FURNITURE

Also, glassware. We buy just about anything. Cleaning your house or attic out, give us a call. CAPPLEMAN'S ANTIQUES. Phone 423-9962 night, 423-6836. S-17-tfn-C

FOR RENT--Kitchenette Apartments, also trailer lots and camper hook-ups. Call 423-2936. N-7-TFN-chg

LIVING ROOM SUITE
Sofa, loveseat & chair, plush high back style, never used, still in plastic. Cost over \$1800. will sell for \$425. cash. Call 454-9856. A-16-TFN

\$157.00 Per Month-- Buys new 16 wide 3 Bd, 2 bath. Valley Housing. Russellville, AL. Phone 205-332-3151. D-5-TFN-chg

WANT TO BUY...Used and Antique Furniture, Glassware, Stoneware. Cleaning out houses, attic and out buildings. Buy most anything. Please call Hill Top Flea Market, 423-9153. F-8-tfn-C

NEED AN INEXPENSIVE PLACE TO LIVE? Buy new mobile home for \$140/mo, rent lot for \$75/mo. Home Sweet Homes, 423-5530. J-25-TFN-chg

PASSPORT I.D. PHOTOGRAPHS
Color, ready in 5 minutes
PHOTOGRAPHY BY CHARLES
107 Front St. - Iuka, MS.
Phone - 423-3359 M-7-tfn-C

For All Your
Backhoe &
Dozer Work
Call Ron Terry
423-6463 anytime. We also do trenching water and gas lines, and licensed to do septic tanks. J-19-TFN-C

HOT MID-WINTER SALE
1992 new doublewide. 28 x 48 Southridge, 3 bedroom, 2 bath, northern insulation, storm windows, stove, frost-free refrigerator. 10 percent down. Only \$233 monthly. Must see to believe. Southern has it all.
SOUTHERN HOUSING
TUPELO, MS 38801
842-7173 or 842-0211

UNBELIEVABLE! New 2 bedroom with glamour bath, sky light over tub, stereo system, beautifully furnished only \$160.00 per month. Free set up delivery and anchoring, limited time so hurry! Windham Mobile Home, Corinth, MS 601-287-6991. M-2-TFN-c

FOR SALE--Marcy Mach III Home Gym - 35 different exercises; almost new; owner had surgery and can't use; 423-2000 M-F, 8 to 5. Jy-16-23-30-A-6-chg

BRASS BEDS
With firm Orthopedic mattress set and frame. New, never used, still in plastic. Cost \$1200.00. Sell \$350.00 cash. Call 454-9856. A-16-TFN

CHANNEL MASTER--antennas, rotors, boosters, poles wire and accessories. We install complete system, 35 years experience. Holder TV 314A Hwy. 72 E. Corinth, MS 286-2102. M-7-TFN-chg

TV SERVICE--in shop. Authorized warranty center. Magnavox, Sylvania, Philco, Crosley. Also service Quasar, and Zenith, DeVry institute graduate, 35 years experience. Holder T.V. 314A Hwy. 72 E. Corinth, MS 286-2102. M-7-TFN-chg

FOR SALE BY OWNER--3 BR Home C/H/A. Great neighborhood, 423-5254 for more information. J-25-TFN-chg

FOR SALE OR RENT--3 BR House, furnished, also motor home, 3 lots, 1 mile from NASA, near Coleman Park entrance. David Gillentine 601-842-6328. N-21-TFN-chg

HOUSE CLEANING--If you want it cleaned, call Karen Green House Cleaning. Rates: \$25.00 and up per week. References available. Call 423-2803. O-17-TFN-chg

THE COUNTRY PLACE: Luxury Homes made affordable by Patrick Home Center with features not found in ordinary manufactured homes like ceramic tile...oak edging...150" door hinges...fiberglass duct work...available in 3, 4, or 5 bedroom and 3 bath models...built to the famous "EnerGmiser" construction standards, guaranteed to save you money every month on your energy costs...If this type home interest you, call for free information thru the mail 1-800-874-7018 (A Factory Direct Outlet) Jy-9-16-23-30-chg

FOR SALE--18 ft. Lowe "Fun and Fish" pontoon boat. Fully loaded: 48 H.P. Evenrude Mtr. AM/FM cst., depth finder, live well, head lights, plus many more extras. 601-423-1758. J-25-TFN-chg

FOR SALE--4 acres, water frontage. All utilities. Septic tank on property. Make offer. (205)360-2622. J-25-thru-Jy-30-Pd TFN-chg

SINGER--2 Singer zig zag sewing machines, make buttonholes, blind hems, edges, and more, pay \$74.00 or payments of \$18.00. Call 287-6270 Brooks Sewing and Vacuum, Hwy. 72, next to Baskin Robbins in Corinth. Jy-9-TFN-chg

SERGES \$125.00--Several trade in sergers available choose from baby lock, Singer, White, and others three and four spool all guaranteed \$125.00 and up call 287-6270. Brooks Sewing and Vacuum, Hwy. 72, next to Baskin Robbins, Corinth. Jy-9-TFN-chg

\$200 - \$500 WEEKLY
Assemble products at home. Easy! No selling. You're paid direct. Fully Guaranteed. FREE 24 Hour Recording Reveals Details 801-379-2900. Copyright #MS107DH. J-25-Jy-2-9-16-23-30-A-6-13-Pd

HELP WANTED--Certified Nursing Assistants--We are looking for mature people willing to work hard that will be loving and courteous to our residents. We will pay you as you train if you are non-certified. If interested apply in person at Tishomingo Manor. No Phone Calls. O-3-TFN-chg

HEAVY DUTY
New Home sergei, cuts and sews in one operation, also does roll hem. Has been advertised in many popular sewing magazines this month. List \$599.99, while supply last only \$299.99. Meeks Sewing Center, 305 S. Cass, Corinth. 287-1497. J-18-tfn-chg

FOR RENT--3 bedroom completely furnished, except utilities, trailer/cabin. 5 min. from NASA site. Ideal for construction workers. \$350 month. \$100 deposit. Call 423-5676. Jy-9-TFN-chg

FOR SALE--Lake House on 1/2 acre lot, water accessible, located near Spring Valley Campground, \$50,000. Also - 1/2 acre vacant house lot available \$15,000. 601-837-7936. Jy-16-23-Pd

Billy & Tyrone's
Lawn Mower Service
423-3239 Jy-16-23-Pd

PARK RANGERS
Game wardens, security, maintenance, etc. No exp. necessary. For info call (219)769-6649 Ext. 8641, 8 a.m. to 8 p.m. 7 days. Jy-9-16-23-30-Pd

GOVERNMENT JOBS NOW HIRING!!
Both skilled and unskilled workers needed in your area. \$16,500.00 to \$72,000.00 plus benefits. For list of current jobs and application to apply from home, Call 1-800-264-2345 Ext. A324. Jy-16-23-30-A-6-Pd

LEMMOND USED MOBILE HOMES--2 bedroom \$1,950.00, 2 bedroom \$3,750.00, 3 bedroom, 2 bath mint condition \$1,299 down, \$146.00 a month. 4 bedroom double wide \$14,900. One mile east of Hwy. 20 and 72 from Tusculumbia. We also have a complete line of mobile home parts. 205-383-0808. Jy-23-TFN-chg

I BELIEVE any state that can afford to pay a lifetime pension to anyone elected to any office can repeal sales tax on groceries, and restore capital gains on timber sales.
Vote For
William McCary
Senator District 5 Jy-23-Pd

FOR RENT--NASA, 8 miles, Tenn/MS State Line. LAKE HOUSE, 3 bedroom, 2 bath, carpeted C/H/A range, dishwasher, carports, unfurnished. Also LAKEVIEW Trailer furnished, dishes, linens, microwave, TV, utilities, cable. HOUSE, 3 bedrooms, drapes, carpeted, unfurnished 901-925-5516. Jy-23-TFN-chg

FOR SALE--2 bedroom house in Paden, make offer below appraisal. Serious inquires only. 728-9562. Jy-23-30-chg

FOR SALE--almost new camper shell fits \$10 pickups, \$125.00. Phone 423-5391. Jy-23-Pd

FOR RENT--2 bedroom trailer, carpets, furnished, and utilities. Ideal for const. workers. \$50.00 wk. per person. Behind old Mighty Mart in Iuka. 423-5676. Jy-23-TFN-chg

NEED SOMEONE to stay with couple in their home from Saturday morning to Monday morning. Housekeeping and companionship. Call 438-6937. Jy-23-30-Pd

WORRIED ABOUT BILLS?
Earn extra money working 2 to 3 evenings a week. Lingerie Home Shows. No delivery, free sample kit and free training, call 728-4603. Jy-16-23-Pd

FOR SALE--Tishomingo County Electric Power Association will sell to the highest bidder (above the minimum bid) the following trucks:

1979 Ford F-100, SWB, auto trans., V-8, min. bid \$800

1985 Ford F-150, SWB, auto trans., V-8, min. bid \$900.

These vehicles may be seen at the Association's warehouse in Iuka during regular business hours. Bids will be accepted at the Association's main office until 4:30 p.m., July 28, 1992. Jy-23-chg

COLLEGE STUDENT NEEDS TRANSPORTATION to and from NEMCC on a daily basis, from Iuka area. Will share expenses. Please call 423-6355. Jy-23-30-A-6-13-Pd

RENT TO OWN--Lease to own, no credit check, Crazy Ed McKinney Used Cars, 703 Tate Street, Corinth, MS 286-6944. Jy-23-TFN-chg

FOR RENT--3 bedroom, 1 1/2 bath unfurnished house across from hospital in Iuka, available August 1st. Call 423-9207. Jy-23-TFN-chg

Wanted To Buy
Hardwood & Pine Timber
Paying Top Prices
Call 423-6310
Jy-23-Jan.-14, 1993-Pd

FOR SALE--John Deere 112 Ride On Lawn Mower. 12 hp., 42" Cut. Call Lance at 423-2129. Jy-23-chg

WHY SHOULD YOU, the hardest working lowest paid workers in the Nation pay \$8.00 a month for John White's office expenses. Veto John White's sales tax white. Vote for William McCary, Senator District 5. Read Proclamation 22-16. Jy-23-chg

HELP WANTED--experienced mechanics, must have own tools. For details and interview call Steve Ward at 423-6530. Jy-23-chg

STEVE'S LAWN SERVICE is expanding to handle a few more lawns. Please call for estimate. Please call Steve Ward at 423-6530. Jy-23-chg

JOHN WHITE introduced the bill to raise sales tax while taking million taxes off the soft drink companies and raised his pension. Veto John White's sales tax white. Elect William McCary Senator 5th District Jy-23-chg

RNs/LPN's
Dedicated Professionals Needed. Join our team in providing quality long term care. Send resume to apply in person at Tishomingo Manor, 230 Kaki St., Iuka, MS 38852. J-25-TFN-chg



423-5001

1719 W. Quitman
P.O. Box 822
Iuka, Mississippi 38852

JUDY PARSONS REAL ESTATE

MINUTES FROM TOWN--MINUTES FROM LAKE--This private brick home has lots of living room, 4 BR, 2 car carport, garage and fenced pasture paved road. \$65,000

LIQUID ASSETS--Relax after a stressful day at the office by this beautiful pool, then have games in the Florida room. A must to see. Secluded but town. \$88,500

HIDDEN VALLEY--Live by the water on this 2.75 acres-lots of wildlife and cabin for a handyman. \$97,500

WHY RENT WHEN YOU CAN INVEST IN THE FUTURE? BUY NOW WHILE INTEREST RATES ARE LOW.

Judy Ryan - Broker/Owner - 423-9165
David Yarbrough - 423-9646
Robert (Sport) Harris 454-7433 or 454-7491

© and TM trademarks of Century 21 Real Estate Corporation. Equal Housing Opportunity. EACH OFFICE IS INDEPENDENTLY OWNED AND OPERATED.

1115
Hwy. 25 South
Iuka, Mississippi

REAL ESTATE
423-2537

Dianne Ables, Realtor/Certified Residential Appraiser
Carroll Borden - Realtor Assoc. - 423-6982
Danette Enlow - Realtor Assoc. - 423-3594
Else Durham, Realtor Associate - 423-6833

A dream come true! Almost new split plan w. huge vaulted family room formal & informal eating, large his/hers bath w. dual vanities & closets. Best area! \$95,000

Tastefully decorated 1 yr. old stone & vinyl in the country, 3 bds, 2 bath large vaulted greatroom w. stone corner F.P., oversized deck - \$79,000

Great family home priced to sell! Spacious living w. bay window, large kitchen-dining, 3 bds., professionally landscaped lot at end of quiet street \$45,000

Private lakefront setting - 3 bd. brick w. 2 living areas, 2 eating areas, large laundry, covered porch, 1.24 acre lot - \$69,000

Shows beautifully! Wonderful floor plan in this 3 bd., 2 bath brick. Wood floor in dining, large vaulted great-room, master bath w. 2 vanities, closets, 1 ac. \$79,000

Completely furnished 2 level waterfront at Goat Island. 2 bds, 1 bath w. large bd. or rec. room & bath down, d. boathouse, patio. Mint condition \$117,000

Curb appeal in this wonderful brick home w. 3 bds, 2 1/2 baths, open & living area, PLUS a pool. 2 tree shaded lots in Independence Square \$87,500

Woodall Lakes - Rustic home w. 2 living areas, 3 bds, 2 baths, F.P., eat-in w. bay window, breezeway, courtyard, only 1 year old. A must see! \$88,000

Cozy cabin or year round home w. professionally landscaped yard, deck, partial basement, 1 acre corner lot just off Indian Creek Road - \$25,000

5 1/2 acres on Hwy. 25 N. \$21,000.00
Wooded building lot Battleground Heights - \$15,000
Wooded building lot at Crow's Neck - Reduced to \$7,800
1 1/2 acre waterfront lot - \$39,000
12 1/2 acres on Turnpike Mountain Rd. - \$16,500
Investment property on U.S. Hwy. 72 East \$12,500 per acre

CALL FOR ALL YOUR APPRAISAL NEEDS
STATE CERTIFIED - 10 YEARS EXPERIENCE

Dianne Ables, Realtor/Certified Residential Appraiser
Carroll Borden - Realtor Assoc. - 423-6982
Danette Enlow - Realtor Assoc. - 423-3594
Else Durham, Realtor Associate - 423-6833

A dream come true! Almost new split plan w. huge vaulted family room formal & informal eating, large his/hers bath w. dual vanities & closets. Best area! \$95,000

Tastefully decorated 1 yr. old stone & vinyl in the country, 3 bds, 2 bath large vaulted greatroom w. stone corner F.P., oversized deck - \$79,000

Great family home priced to sell! Spacious living w. bay window, large kitchen-dining, 3 bds., professionally landscaped lot at end of quiet street \$45,000

Private lakefront setting - 3 bd. brick w. 2 living areas, 2 eating areas, large laundry, covered porch, 1.24 acre lot - \$69,000

Shows beautifully! Wonderful floor plan in this 3 bd., 2 bath brick. Wood floor in dining, large vaulted great-room, master bath w. 2 vanities, closets, 1 ac. \$79,000

Completely furnished 2 level waterfront at Goat Island. 2 bds, 1 bath w. large bd. or rec. room & bath down, d. boathouse, patio. Mint condition \$117,000

Curb appeal in this wonderful brick home w. 3 bds, 2 1/2 baths, open & living area, PLUS a pool. 2 tree shaded lots in Independence Square \$87,500

Woodall Lakes - Rustic home w. 2 living areas, 3 bds, 2 baths, F.P., eat-in w. bay window, breezeway, courtyard, only 1 year old. A must see! \$88,000

Cozy cabin or year round home w. professionally landscaped yard, deck, partial basement, 1 acre corner lot just off Indian Creek Road - \$25,000

5 1/2 acres on Hwy. 25 N. \$21,000.00
Wooded building lot Battleground Heights - \$15,000
Wooded building lot at Crow's Neck - Reduced to \$7,800
1 1/2 acre waterfront lot - \$39,000
12 1/2 acres on Turnpike Mountain Rd. - \$16,500
Investment property on U.S. Hwy. 72 East \$12,500 per acre

CALL FOR ALL YOUR APPRAISAL NEEDS
STATE CERTIFIED - 10 YEARS EXPERIENCE

Dailey's Body Shop and Wrecker Service

BURNSVILLE, MISSISSIPPI

PHONE:

Day 427-9234 or Night 427-8449

Expert Body Work - 24 Hour Service

BURNSVILLE

P.O. BEARD
AGENCY

400 WEST EASTPORT STREET

601-423-5253
Iuka, Mississippi

ONE OF THE FINEST HOMES ON THE LAKE! We invite comparison. 4 bed, 4 1/2 bath, approximately 4,100 sq. ft., formal living room with fireplace, dining room with bar, kitchen with eating area, den with wood heater, game room with slate pool table. All rooms have water view and open onto decks that stairstep down to lake with dock with power boat life, jet ski storage. 228' gradually sloping waterfrontage on Bear Creek at end of Snowdown Road. \$318,000.

Reduced from \$35,000 to \$26,500 - 80 acres cutover timberland on Alcorn-Tishomingo County line. Good, natural growth of young pine. 2 miles West of Grissom Chapel.

Panoramic view of Bear Creek from sloping, 76', deep water, waterfront lot just south of Mill Creek. Included are pier, dock, two decks, 2 BR frame cabin for \$98,000.

B.W. Gibbons/Owner-Registered Forester - Licensed Appraiser
Don Cowell - Salesman
Nancy Beard - Managing Broker

Grace Long
REAL ESTATE
COMPANY
Iuka, MS

1415 Hwy. 25 South
423-5555

New Listing - Conveniently located 2 BR Frame, walking distance of shopping area, city utilities - \$37,500

Delightful 2 BR arranged for Comfort, large eat-in-kit., carport, O.S. Storage, In-Town Location - \$30,000

Don't Miss This Bargain - 3 BR, 2 Ba Brick & Cedar, Livable room arrangement, 2 lots on Private Lake - \$68,000

Spacious 4 BR brick w/3 Ba, 2 living areas, great room arrangement, lovely 1 ac lot, Hollaway Rd. - \$59,500

Terrific Buy - 4 BR, 2 1/2 Ba brick & vinyl, large lot, quiet s.d., Farmington Rd - \$70,000

Appealing New 2 story with 3 Br, 2 1/2 Ba, w/master suite down, 2 BR upstairs, spacious family rm, many amenities, corner lot - \$75,000

Nice 4 BR, 2 Ba Frame Cabin, Convenient location, near lake, shaded 1/2 ac lot - \$42,500

Secluded Location - 3 BR, Frame with 2 living areas, 1 acre lot near Country Club - \$29,000

Reduced Price - Nice Multi-Purpose Building - Approx. 1400 sq. ft. with 2 ba. being used as a Church, could easily be converted for other use, in-town location - \$39,000

New Water View/Access Home Featuring 3 BR, 2 1/2 Ba, Dbl. FP lovely kit., spacious deck, lg wooded lot Roberts Retreat - \$134,500

2 ac. Inside City Limits Burnsville
12.67 Ac. Waterfront Bear Creek
SEE US FOR ALL YOUR APPRAISAL NEEDS - STATE CERTIFIED - 15 YEARS EXPERIENCE - QUALITY SERVICE

Office 423-5555
Billy Godwin R. GRI - 423-6959
Deborah Ham RA - 423-2061
Cheryl Clark RA - 423-6704
Grace Long Broker-Appraiser - 423-6584

3 Ac Inside City Hwy. 25 N.
3.75 Ac. Buchanan Pen.
Fax Number 423-9137
Judy Walker RA - 423-3047
Rachel Miller RA, GRI 423-1483
Barbara Cheatham RA - 728-4873

Paul D. Callens
Real Estate
"Pickwick's No. 1 Realtor"

123 South Fulton St. in Iuka

Family home for lease. 3/2 plan w. FP, good location. \$600 per month.

FOR RENT--office space w. all amenities.

Wonderful older home ideal for a family or business. Large rooms, high ceilings, large in-twon lot. \$40's.

Appealing 2-story home w. four bds., 2 full baths, vaulted living, pool, deck, wonderful country setting. \$101,000.00

Elegant new home w. 3/2 plan featuring formal entry and dining, coffered living, double garage, lovely neighborhood. \$94,500

RESORT

Exciting resort home w. functional 3/2 plan, open living area, 2 FP's, decks, 2-story garage, boat slip. Superb area. \$240,000.00

Waterfront condo w. 2 levels, 3/2.5 plan, FP, deck, furnished. Pavilion, pier and dock. \$135,000.00

Exceptional waterfront w. two living areas, stone FP, three bds., 3 baths, furnished. Flat wooded lot w. concrete ramp, pier. \$164,500.00

Waterview w. lots of glass, large master w. loft, vaulted living, decks, private wooded lot. Water access. \$75,000.00

Waterfront lot at Pride's Landing, AL. \$35,000.00

Beth Davis, GRI, Managing Broker - 423-9543
Jim Lichterman, Sales Associate - 423-2542
Treva Belue, Sales Associate - 423-6467

423-1912

YARD SALE-Friday & Saturday, 24th & 25th at the home of Buck Lovelace, Burnsville, 2 families, clothes, baseball cards and odds and ends. Rain or shine. Jy-23-chg

YARD SALE-July 23 & 24 on Pleasant Hill Road just past The Clothes Cottage, 3 families, lots of good clothing for children and adults, also misc. things. Jy-23-chg

YARD SALE-Friday, July 24, 8:00 a.m. Adults/childrens clothes, toys, glassware, dishes, furniture, lots more. Many items, 25 cents. Hwy. 72, west of Burnsville, left at Meeks Grocery. Watch for signs. Jy-23-chg

CARPET SALE-401 Graham St. Iuka, clothes, nic, knacks, etc. 7 a.m. to 2 p.m., Saturday, July 25. Jy-23-Pd

YARD SALE-on Saturday, July 25, from 9:00 a.m. to 3:00 p.m. at the home of James Melvin on the Tishomingo School Campus. Bargains for everyone! Cancel in case of rain! Jy-23-Pd

YARD SALE-Friday, July 24, turn off Eastport Rd. on the Mill Creek Rd. turn right on county road 257, follow signs. Antique dining room suite, livingroom suite, picture, bowl and stand, lamps and end tables, glassware, antique leather type coffee table, compound bow and all sizes clothes. Jy-23-chg

YARD SALE-at the home of Hilton Dillard on old Hwy. 25 South, Saturday, July 25th from 9:00-5:00. Lots of bargains. Shoes, clothes, household items, lots of crafts, 2nd house from Ludlams Funeral Home or 1 house on the right from Funland Skate Center. Jy-23-Pd

YARD SALE-Saturday, July 25, 8 a.m. until. Lots of great buys. Clothes, toys, furniture, little girls clothes, etc. 3 families. Turn by the Sonic, go out Harmony Road to the 2nd paved road to the right, "after crossing railroad". Follow signs, at the home of T.C. and Deborah Parnell. Jy-23-Pd

BIG YARD SALE
Cathy Presley, 905 S. Main St. Antiques, glassware, household items, clothing, pageant dresses, tools, crafts & lots more. Fri. & Sat., July 24 & 25 from 9:00 to 5:00. Jy-23-chg

NEED AUTO INSURANCE?
Has your Auto Insurance been cancelled because of accidents, DUI or other violations. SR22 filing no charge. Competitive rates. You may pay monthly, quarterly, semi-annually, or annually. Robinson Insurance Agency Main St., Belmont, 454-3304 or Main St., Tishomingo 438-7340. A-17-60w-C

New Houses **Decks** **Renovations**
Additions **Any Type Carpenter Work** **Garages**
Free Estimates

P & S BUILDERS

Phone 601-427-9825
Days & Evenings
25 Years Experience

LARRY C. SKELTON Attorney At Law

Chapter 7 Bankruptcy \$400
No-Fault Divorce \$300

286-9796 Corinth, Mississippi

"The rules of Professional conduct of the Mississippi State Bar require that the above services be performed by this firm for not more than the advertised fee."
"Listing of these previously mentioned area(s) of practice does not indicate any certification of expertise therein."

Hydraulic Hose & Fittings

Open Monday - Saturday

423-9892 / 423-2102

Iuka, MS

You'll Find It At Carquest

CARQUEST
AUTO PARTS STORES

Land Surveys
Gann Construction and Surveying

Iuka, MS 38852 423-2229

1, 2 & 3 Bedroom Apartments

KITCHEN APPLIANCES FURNISHED
RENTAL ASSISTANCE AVAILABLE

IUKA APARTMENTS

000 N. Pearl Street, Iuka, MS 423-2057

Monday - Friday 9:00 - 1:00

HOUSE FOR SALE-4 bedroom, 3 bath including TV tower, antenna, rotary, booster, office building with electricity and water, metal storage building and Ashley wood heater. 2.3 acres, Harmony Road, Iuka, Reduced to \$42,500.00. For information call (901)689-5385. EOW-TFN-chg

Legal Notice

The Board of Supervisors of Tishomingo County, Mississippi will on Friday, August 14, 1992 at 10:00 A.M. at the office of the Clerk of the Board of Supervisors in the town of Iuka, Mississippi receive bids for meals for prisoners at the Tishomingo County Jail. Meals will consist of breakfast and supper per day per prisoner containing the recommended daily requirement of nutrition for an adult. Cost of meals should include delivery to jail on one quote and cost of meals without delivery on another quote.

For the use and benefit of Tishomingo County.
Board of Supervisors reserve the right to reject any and all bids.
This the 21st day of July, 1992.

Jy-23-30-chg

Legal Notice

The Board of Trustees of Tishomingo County Special Municipal Separate School District will receive bids until 10:00 a.m. on August 10, 1992 for certain computer hardware for Integrated Learning Systems Computer Assisted Instructions. Interested bidders may secure specifications from the Office of Superintendent of Education, 507 West Quitman, Iuka, MS; Phone: 423-3206. All bids submitted must comply with state bidding laws.

The Board reserves the right to reject any and all bids.

Dr. Bob Ferguson
Executive Secretary
Jy-23-30-chg

1986 RIVIERA CRUISER-24 ft. Pontoon Boat - w/trailer, 60 HP Evinrude w/power trim - automatic oil injection - aluminum fold down top - 2-12 gal. fuel tanks - AM/FM/Cassette. Boat and trailer excellent condition. Best buy at \$6800. Call 601-454-7639. Jy-23-30-A-6-13-Pd

Channel Catfish Fingerlings

\$60 per 1,000 & up
***Can deliver!**
1-601-840-0307

Jy-23-30-chg

Legal Notice

IN THE CHANCERY COURT OF TISHOMINGO COUNTY, MISSISSIPPI
RE: ADMINISTRATION OF THE ESTATE OF WILLIAM EDGAR CRESAP, DECEASED; NO. 12,197
CHARLOTTE A. MORRIS AND HELEN C. HARRIS, CO-ADMINISTRATRICES
NOTICE TO CREDITORS

Notice is hereby given to all persons having claims against the Estate of William Edgar Cresap, deceased, that Letters of Administration have been on this day granted to the undersigned Administrator of the Estate of William Edgar Cresap, deceased, by the Chancery Court of Tishomingo County, Mississippi, and all persons having claims against said Estate are required to have the same probated and registered, according to law, by the Clerk of said Court within ninety (90) days after the date of the first publication of this Notice, or the same shall be forever barred.

WITNESS MY HAND this 6th day of July, 1992.

S/ Charlotte A. Morris
Co-Administratrices
S/ Helen C. Harris
Co-Administratrices

MICHAEL D. COOKE
ATTORNEY AT LAW
POST OFFICE BOX 625
IUKA, MS 38852
(601)423-2000

Jy-9-16-23-chg

Legal Notice

IN THE CHANCERY COURT OF TISHOMINGO COUNTY, MISSISSIPPI
IN THE MATTER OF THE ESTATE OF RUTH EDNA LINDSEY BROWN, DECEASED CAUSE NO. 12213
BONNIE LUE BROWN MEDLEY, ADMINISTRATRIX,

NOTICE TO CREDITORS

The undersigned having been appointed Administratrix of the estate of Ruth Edna Lindsey Brown, deceased, by the Chancery Court of Tishomingo County, Mississippi, in Cause No. 12213 on the docket of said Court, on the 17th day of July, 1992, hereby gives notice to all persons having any claims against the said estate to have the same probated and registered by the Clerk of the Chancery Court of Tishomingo County, Mississippi, within ninety (90) days, and failure to probate and register for this period will bar the said claim.

WITNESS MY HAND AND SIGNATURE, on the 15th day of July, 1992.

Bonnie Lue Brown Medley
HAROLD S. JACKSON
ATTORNEY AT LAW
POST OFFICE BOX 414
IUKA, MISSISSIPPI 38852
(601)423-5227

Jy-23-30-A-6-chg

Legal Notice

IN THE CHANCERY COURT OF TISHOMINGO COUNTY, MISSISSIPPI

HELEN HARRIS and CHARLOTTE MORRIS PLAINTIFFS VS. NO. 12,216
ANY AND ALL UNKNOWN HEIRS AT LAW OF WILLIE L. HIETT AND ANY AND ALL OTHER KNOWN AND/OR UNKNOWN PERSONS WITH A LEGAL OR EQUITABLE INTEREST IN CERTAIN DESCRIBED REAL PROPERTY DEFENDANTS

SUMMONS
STATE OF MISSISSIPPI
COUNTY OF TISHOMINGO
TO: ANY AND ALL UNKNOWN HEIRS AT LAW OF WILLIE L. HIETT AND ANY AND ALL UNKNOWN PERSONS CLAIMING ANY LEGAL OR EQUITABLE INTEREST IN THE REAL PROPERTY HEREINAFTER DESCRIBED:

You have been made a Defendant in the suit filed in this Court by Helen Harris and Charlotte Morris, Plaintiffs, seeking to remove the cloud from and to quiet and confirm title of the aforesaid Plaintiffs in the following described land situated in Tishomingo County, State of Mississippi, to wit:

Part of the NE 1/4 of Section 20, Township 2, Range 10 East, described as follows: Beginning at the Southwest corner of said Quarter Section, the said corner being marked as follows: North 50 degrees East 6 feet to post Oak tree 6 inches in diameter; North 62 degrees West 5 feet to pine tree 3 inches in diameter; beginning at said corner and running North 5 degrees West 487 feet with West boundary of said Quarter Section to center of the West prong of the road known as Cresap Road; thence running with the center of the said Cresap Road as follows: North 72 degrees 30 minutes East 267 feet; thence running South 5 degrees East 555 feet to South boundary of said Quarter Section; thence South 86 degrees 30 minutes West with said South boundary line 16 rods to point of beginning, containing 3.1 acres, more or less.

You are summoned to appear and defend against the Complaint filed against you in this action on the 4th day of September, 1992, at 9:30 o'clock A.M. at the courthouse in Corinth, Alcorn County, Mississippi, and in case of your failure to appear and defend, a judgment will be entered against you for the relief demanded in said Complaint.

You are not required to file an answer or other pleading, but you may do so if you desire.

Issued under my hand and seal of said Court, this 17th day of July, 1992.

Hayden Ables
Chancery Court Clerk
Tishomingo County, Mississippi
Jy-23-30-A-6-chg

Legal Notice

IN THE CHANCERY COURT OF TISHOMINGO COUNTY, IUKA, MISSISSIPPI 38852
SUE ABLA PLAINTIFF V. CASE NO. 12,207
GARY JIM ABLA DEFENDANT
SUMMONS

(Service by Publication: Residence Unknown)

TO: GARY JIM ABLA, whose last known address was unknown; but whose present residence and address is unknown. You have been made Defendant in the lawsuit filed in Court by Sue Abla, Plaintiff, whose address is Route 5, Box 178G, Iuka, MS 38852.

The Complaint filed against you has initiated a civil action alleging that you are guilty of habitual cruelty and inhuman treatment and seeking a divorce.

You are required to mail or hand deliver a copy of a written Answer: either admitting or denying each allegation in the Complaint to Ronald Windsor, Plaintiff's Attorney, whose address is P.O. Box 172 Corinth, MS 38834.

YOUR ANSWER MUST BE MAILED OR DELIVERED NOT LATER THAN THIRTY DAYS AFTER THE 16th DAY OF JULY, 1992 WHICH IS THE DATE OF THE FIRST PUBLICATION OF THIS SUMMONS. IF YOUR ANSWER IS NOT SO MAILED OR DELIVERED, A JUDGMENT BY DEFAULT MAY BE ENTERED AGAINST YOU FOR THE MONEY OR OTHER RELIEF DEMANDED IN THE COMPLAINT.

You must also file the original of your Answer with the Clerk of this Court within a reasonable time after ward.

Hayden Ables
Clerk of Court
Jy-16-23-30-chg

Legal Notice

IN THE CHANCERY COURT OF TISHOMINGO COUNTY, MISSISSIPPI
IN THE MATTER OF THE LAST WILL AND TESTAMENT OF W.W. PROVINCE, DECEASED NO. 12,198

NOTICE TO CREDITORS

The undersigned having been appointed Executrix of the estate of W.W. Province, deceased, by the Chancery Court of Tishomingo County, Mississippi, in Cause No. 12,198 on the docket of said Court, on the 6th day of July, 1992, hereby gives notice to all persons having any claims against the said estate to have the same probated and registered by the Clerk of the Chancery Court of Tishomingo County, Mississippi, within ninety (90) days, and failure to probate and register for this period will bar the said claim.

WITNESS MY HAND AND SIGNATURE, on this the 6th day of July, 1992.

Betty Sue Cleveland

RICHARD O. CLARK
ATTORNEY AT LAW
POST OFFICE BOX 319
IUKA, MISSISSIPPI 38852
(601)423-5227

Jy-9-16-23-chg

LARRY'S MOBILE HOME SERVICE - roof repair, blocking anchoring, under penning, and mobile home parts. Call 423-3258. F-20-tfn-chg

Problem With Alcohol?

Alcoholics Anonymous
AI-Anon
423-0071

"CAN WE TALK" answering service wake-up service and appointment reminder service now available in your area. Daily, weekly and monthly. Reasonable rates available. 1-800-service and evening hours now available. For more information call 423-0071. N-7-TFN-chg

BACKHOE & DOZER WORK

Free Estimates

Call **B & K RENTAL**

423-2034 Days
Micheal Busby - 423-2568
Nights

OTROY-BILT
TILLER SALE!
NEW OTROY-BILT Tillers in stock at Factory-Direct Savings! Financing available.

GARRETT
OUTDOOR EQUIPMENT

108 W. Linden -> Corinth, MS 38834
Factory Authorized Sales & Service
601-286-5169 -> Glynn Garrett, Owner

Upholstering Center
Wallace E. Anglin - Owner
Quality Fabrics To Choose From
Free Pick-Up & Delivery
All Work Guaranteed
Hwy 25 South - Iuka, MS
Ph. 423-3843

M-21-Tfn-C

Unemployment Program Extended To March 1993

President Bush has signed a bill extending the Emergency Unemployment Compensation (EUC) program to March 6, 1993. The new legislation is effective retroactively to June 14.

Persons already receiving emergency benefits will not be eligible for the new program. Those who qualified for the emergency benefit program before June 13 will continue to draw benefits for either 26 or 33 weeks, according to Charles Ballard, unemployment insurance director for the Mississippi Employment Security Commission.

However, Mississippians who exhausted their regular unem-

ployment insurance entitlement on or after June 14 may qualify to receive up to 20 weeks of additional unemployment benefits.

"On the other hand, individuals who have already exhausted their emergency benefits entitlement (EUC) are not eligible for additional weeks. This is very important for the public to understand," Ballard said.

"MESCC is notifying all claimants who presently have a balance of EUC benefits about their status. Many will only need to continue filing weekly claims. Others may be asked to report to their local unemployment insurance claims center," Ballard said.

Congress passed the emergency benefit extension just before the Independence Day holiday, when the program was set to expire.

QUICK CASH

On Your Car Title

You Keep The Car

No Credit Check

Crazy Ed McKinney Used Cars

703 Tate Street - Corinth, MS - Ph. 286-6944

Even Low Rents...



Can Be Costly.

Every time you pay rent you lose the opportunity to build equity. And in the long run that can waste a lot of hard earned money.

Today's real estate market could be the ideal time to buy. Many sellers are willing to negotiate, and interest rates are down. Plus, our trained Sales Associates can give you details on down payment options and different financing plans.

JUST TELL US WHAT YOU WANT... IT'S AS GOOD AS DONE.™

©1992 Century 21 Real Estate Corporation as trustee for the NAE. ® and ™ trademarks of Century 21 Real Estate Corporation. Equal Housing Opportunity. ☎ EACH OFFICE IS INDEPENDENTLY OWNED AND OPERATED.

Century 21

Judy Parsons Real Estate
1719 W. Quitman, P.O. Box 822
Iuka, Mississippi 38852
Business (601)423-5001
Residence (601)423-9165

Coln's Tire Service

BEST PRICES AROUND

Mohawk, Turbo Tech, and Others



5 Miles E. of Corinth

On Hwy. 72 - Ph. 287-4039

8:00 - 5:00 Monday - Friday & 8:00 - 2:00 Saturday



Glenn & Paula Whitlock
Owners

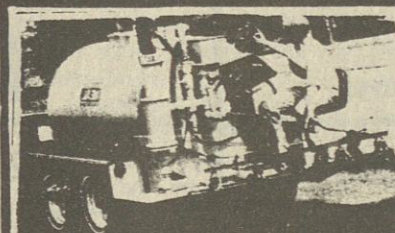


Whitlock Pool & Supply, Inc.

In-Ground And Above-Ground Pools
Spas • Chemicals • Service

Hwy 25, S.
P.O. Box 334
Iuka, MS 38852

(601) 423-3839
Nights (601) 423-6274



Tom's Seal-Rite

Tommy W. Frederick,
Owner

Asphalt Seal Coating, Striping, Crack Sealing

Federally Approved Seal Coating Protects Asphalt
Surfaces From Gasoline, Oil, Sun, Oxidation, and
Water Penetration - Keeps Them Looking New

• Residential • Commercial • Churches • Industrial

FREE ESTIMATES 601-423-5885
CERTIFIED Rt. 1 Box 622 Iuka, MS

ALL WEATHERIZATION

* Vinyl Siding * Insulation

• Sunscreens • Garage Doors
• Storm Doors • Commercial Insulation
• Storm Windows • Comm./Res. Glass
• Seamless Gutters • T.V.A. Approved



CALL 423-1068

Nights 423-3454 or 423-5671

NEW LOCATION

Old Hwy. 72W/Across from Country Squire Restaurant

OPEN AT 8:00
CLOSE AT 6:00
MONDAY THRU
SATURDAY

BURNSVILLE, MISSISSIPPI
PHONE 427-8887

J. A. TUCKER FURNITURE & APPLIANCE

Only 7 Days Left Of Our 90 Day Sale!

Lots of Inventory To Choose From

Shop and Save With Our Low Prices Everyday.

- Thank You For
Shopping With Us

3 Pc. Living Room Suite By Padgett Reg. \$1695.95 Now \$995.95	2 Pc. Living Room Suite By G and R Reg. \$995.95 Now \$795.95 Save \$200.00	2 Pc. Living Room Set Reg. \$1195.95 Now \$995.95 Save \$200.00	3 Pc. Living Room Suite By G and R Reg. \$995.95 Save \$200.00 Now \$795.95
3 Pc. Living Room Suite Reg. \$1095.95 Now \$895.95 Save \$200.00	2 Pc. Living Room Suite By Padgett Reg. \$1295.95 Now \$1095.95	2 Pc. Living Room Suite By Padgett Reg. \$1295.95 Now \$995.95	2 Pc. Early American Living Room Suite By Dabbins Reg. \$995.95 Now \$795.95 Save \$200.00
3 Pc. Queen Ann Living Room Suite Reg. \$1295.95 Now \$895.95	3 Pc. Living Room Suite By Strogblounger Reg. \$1895.95 Now \$1695.95	4 Pc. Living Room Suite By Mayo Reg. \$1995.95 Now \$1495.95	2 Pc. Living Room Suite By Mayo Reg. \$1495.95 Now \$1195.95 Shop and Save
4 Pc. Suite by Mayo Reg. \$1995.95 Now \$1495.95	2 Pc. Living Room Suite By Mayo Reg. \$1495.95 Now \$1195.95	Recliner Chairs Reg. \$289.95 Now \$249.95 Save \$40.00	Lane Recliners Reg. \$499.95 Now \$349.95
Stratolounger Recliner Reg. \$349.95 Save \$50.00 Now \$299.95	Relaxer Cliner Reg. \$349.95 Now \$279.95	Glider Rockers By Town Square Begin at \$239.95	3 Pc. Living Room Suite Reg. \$895.95 Now \$695.95

VISA CARD Shop and Save With Our
MASTERCARD Low Prices!
DISCOVER CARD 30, 60, 90 Days Same As Cash

0 Down
0 Interest For 12 Months
On Approved Credit

Leigh 4 Pc. Bedroom Set Reg. \$699.95 Now \$599⁹⁵	4 Pc. Bedroom Suite By Johnson Tombigbee Reg. \$1395.95 Now \$1095.95	4 Pc. Bedroom Suite By Oakwood Triple Dresser Night Stand High Boy Chest Queen or Double Bed Solid Wood Lite Oak Finish Reg. \$2195.95 Now \$1895.95	Hotpoint Heavy Duty Washers Reg. \$429.95 Now \$399.95	4 Pc. Cherry Bedroom Suite With King Size Bed and Tall Boy Chest Reg. \$1995.95 Now \$1895⁹⁵
Solid Maple Rocker Reg. \$199.95 Now \$139⁹⁵	4 Pc. Maple Bedroom Suite By Johnson Tombigbee Reg. \$1795.95 Now \$1495.95		Whirlpool Washers Reg. \$449.95 Now \$429.95 6 Cycles Heavy Duty Matching Dryer \$329.95	Shop and Save
Coffee Tables Reg. \$1195.95 Now \$89.95	Odd Chest & Beds \$49⁹⁵ 3/3 beds \$119⁹⁵ \$89⁹⁵ 4/6 beds \$119⁹⁵ \$119⁹⁵ 5% beds \$119⁹⁵	7 Pc. Oak Dining Room Sets Reg. \$899.95 Now \$699.95	18 Ft. Roper Refrigerator Reg. \$659.95 Now \$599.95	22 Ft. Side by Side Amana Refrigerator Reg. \$1095.95 Now \$995.95
Lamp Tables Reg. \$119.95 Now \$89.95 Oak and Cherry Finish Save \$30.00 On Tables		Save On Large Screen RCA T.V.	22 Ft. Side by Side Whirlpool Refrigerator Water - Ice in Door Reg. \$1295.95 Now \$1095.95	24 Ft. Hotpoint Refrigerator Reg. \$749.95 Now \$699.95
Save \$340.00 On Maxium 12 H.P. Riding Lawn Mower	Amana Microwave Oven \$259⁹⁵	26" RCA T.V. Reg. \$659.95 Now \$599.95	14 Ft. Kelvinator Now \$499.95	25 Ft. Whirlpool Refrigerator With Ice and Water in Door Reg. \$149.95 Now \$1295.95
Little Garden Hoe Tiller Reg. \$269.95 Now \$249.95	25" RCA T.V. Reg. \$659.95 Now \$599⁹⁵	27" Zenith T.V. Reg. \$699.95 Now Save \$100.00 \$599.95	16 Ft. GE Ref. with Ice \$589.95	
Save \$100.00 On White Tractor Lawn Mowers	Amana 20 Ft. Refrigerator Reg. \$799.95 Now \$699⁹⁵	Lamps \$29⁹⁵ Lamps \$39⁹⁵ Shop Lamps \$49⁹⁵ and Lamps \$89⁹⁵ Save Floor Lamps \$49⁹⁵ On Sale	18 Ft. GE Ref. - White \$599.95	5 Ft. Kelvinator Freezer Now \$319.95
Landscape Boxes For Tractors 66 in. \$265.00 5 ft. Cutters \$465.00 Save On Tractor Disk Lawn Mowers \$179.95 With Baggers Close Out On Lawn Mowers	Tankless Gas Water Heaters Cut Energy Usage By As Much As 50% Van Guard Gas Heaters Now In Stock For Your Winter Needs	Bedding Sale 2 For 1 Low Price Serta Bedding American Best Bedding Easy Rest Bedding Capital Bedding ALL ON SALE	20 Ft. Roper Refrigerator Reg. \$729.95 Now \$639⁹⁵	GE Washers Heavy Duty Reg. \$459.95 Now \$429.95 GE Dish Washers \$329⁹⁵ Whirlpool Dish Washers Quite Wash Reg. \$499.95 Now \$459.95
30" GE Range Reg. \$389.95 Now \$369.95	Whirlpool 30" Range Contineous Clean Reg. \$599.95 Now \$459.95	GE Drop-in Range Black Door Reg. \$599.95 Now \$499⁹⁵ Vesta 30" Range Self Cleaning Reg. \$499.95 Now \$419⁹⁵ Glenwood Range Reg. \$399.95 Now \$339⁹⁵	20 Ft. Kelvinator Freezer Now \$469.95 15 Ft. Whirlpool Freezer Almond Now \$429.95 10 Ft. Kelvinator Freezer Now \$359.95 15 Ft. Kelvinator Freezer Now \$389.95	CLOVER BRAN FEE Triple 13 Fertilize 688 Fertilizer Ammonia Fertiliz
30" Kelvinator Range Reg. \$399.95 Now \$379.95			BAILER TWINE BOBWIRE	
30" Glenwood Range Reg. \$399.95 Now \$339.95			ANTENNNAS 40 Ft. Mask 50 Ft. Mask	