

# Tishomingo County News

## The Vidette and Belmont News

OFFICIAL LEGAL NEWSPAPERS OF TISHOMINGO COUNTY  
The One Newspaper In The World Most Interested In This Area

ONE HUNDRED AND NINE YEARS

THURSDAY, JANUARY 28, 1993 NO. 34

## State Increases Amount of Bonds For Buffer Zone Acquisition

The Mississippi House Ways and Means Committee approved a bill Monday, Jan. 25, that would increase the amount of bonds the state of Mississippi will issue to buy land for a buffer zone around the NASA Advanced Rocket Motor plant at Yellow Creek by \$2 million.

The bill will have to be voted on and approved by the full House and then the Senate, according to First District Representative Harvey Benderman.

The original bond to purchase land for the buffer zone was for \$5 million and was issued by the 1990 Legislature through the Major Economic Impact Authority. The additional bonds would bring the total to \$7 million if passed.

"There doesn't look as if there will be any problems that would hinder the bill's passage," Benderman stated.

Approximately 85 percent of the property needed for the one-mile buffer zone around the facility has already been purchased, reports have indicated. It will be used by NASA for future expansion and for related spin-off industries.

### ASRM Update

•NASA's Advanced Solid Rocket Motor design is now 75 percent completed, according to a recently released progress report.

•The design of the new ASRM production facilities at Yellow Creek is now complete with construction being over half finished. Nearly all plant equipment is on order and all major facility construction contracts have been awarded.

•Facilities are expected to be completed and production should begin on the first ASRM development test motor in September of 1995 under the current schedule.

### ASRM Cost Benefit

•ASRM Flight set costs one-third less to produce than RSRM flight set (\$31 M vs. \$46 M)

•ASRM can fly 30 percent more payload than RSRM (fewer Shuttle Flights required at estimated \$100 M each).

•ASRM eliminates need to invest \$100M in RSRM to remove asbestos.

## AT&T Announces Largest-ever Miss. Price Cut

Increased telecommunications competition is helping Mississippi consumers. AT&T announced today it is reducing its in-state prices on long-distance calls about 21 percent in two phases. The first set of price cuts was effective Jan. 18. The final cuts will take effect Feb. 1. Price cuts affect both business and residential customers. These reductions combined will be AT&T's largest price decrease since 1984.

AT&T's Chet Hollomon, state government affairs director, said, "AT&T's price cuts are a direct result of a recent watershed Mississippi Public Service Commission decision to allow increased competition in the state, more customer choice and, of course, lower prices." The commission issued an order effective Jan. 15 allowing competing long-distance companies to handle calls previously handled only by local telephone companies.

Mississippi Public Service Commission Chairman Bo Robinson said, "Today's AT&T announcement is the first fruit of our decision to let the competitive market work for consumers. It's one of what we hope will be many great days for Mississippi consumers' pocketbooks."

After these price cuts, an AT&T 10-minute direct-dialed weekend call from Jackson to Biloxi will cost \$1.50 instead of \$1.90, offering more than 21 percent savings.

For a call between Jackson and

Meridian, a call previously handled only by the local telephone company, a customer may now dial five-digit access codes to reach AT&T and other long distance carriers. To use AT&T to dial this call, for instance, a customer would dial the access code 10-ATT and a 1 or zero, depending on whether the call is direct-dialed or a zero-plus call.

The 21-percent price cut announced today also affects most AT&T residence and business services and optional-calling-plan prices. The first-hour price for AT&T's residential discount calling plan Reach Out Mississippi has been reduced 12 percent from \$10.50 to \$9.25.

Under the Reach Out Mississippi 24-hour plan subscribers receive one hour of in-state, direct-dialed night/weekend calls for \$9.25 per month. Additional minutes are prorated at 15 cents per minute. Subscribers also receive a 5-percent discount on all day calls made between 8 a.m. and 5 p.m. and a 15 percent discount on all evening calls made between 5 p.m. and 10 p.m. Sunday through Friday. For more information about this and other residential calling plans, call AT&T toll free at 1-800-222-0300.

On the business side AT&T 800 READYLINE Service prices have been cut 20 percent. Overall, AT&T direct-dialed Mississippi prices have been reduced more than 40 percent since 1984.

## Womenless Beauty Review To Be Held

Tishomingo County is having a beauty pageant that will top all others ever held in modern times. This letter is both an invitation and a challenge to all good sports throughout the whole county.

A hunt is on for contestants to represent every community to take part in a "Womenless Beauty Review". This event is being sponsored by the "Tishomingo County Chapter of the American Cancer Society".

The contest is to be held at the Tishomingo County High School on Feb. 13, 1993 at 7 p.m.

The winning contestant will be crowned "Tishomingo County's favorite valentine".

At the contest there will be some great prizes given away to some lucky ticket holders. \$200.00 worth of groceries, \$100.00 gas and other gifts being donated from all over the county.

There will be entertainment by way of singing, dancing and good comedy. This is definitely going

to be a fun kind of thing. For this to be a huge success, the whole county is asked to take part. At least 2 or more participants from each community is needed.

This is being put together for two very good reasons. First and foremost "all of the proceeds are going to the Cancer Society". Secondly, we can all come together and have a real good time.

Get started!!! Pick your people, join the party, accept the challenge, and at the same time feel real good knowing you are doing your part in helping to combat Cancer.

Call Charles Emmons at 423-3484, Judy Walker at 423-3047,

Toney Mobley at 423-6338 or Linda Murrah at 423-3672 for more information and to register your very "Special" Valentine.

### Chicken Frizz At Fire Department

The Eastport-Millcreek Volunteer Fire Department will have a Chicken Frizz on Saturday, January 30 at the fire station on Eastport Road. Good food and music will begin at 1:00 in the afternoon. There will also be a cakewalk.

The menu will consist of chicken, slaw, french fries, bread, drink and dessert. All you can eat plates will be \$6.00 with carry out plates \$5.00 each. Kids under 12 can eat for \$3.00 a plate.

Come on out and enjoy the fun. All proceeds will go to the Eastport-Millcreek Volunteer Fire Department.

### Prewitt/Shea Scholarship Fund

On Saturday, February 6th from 5 p.m. to 7 p.m. The New Salem Baptist Church will sponsor a spaghetti supper in memory of Brett Prewitt and Darrell Shea. The money raised will go to the Prewitt/Shea Scholarship fund to help send someone to college.

Everyone is invited. Lets all come out and support this project.

### Revival At Iuka Church Of God

Iuka Church of God, one mile South on Hwy. 25, will begin Revival services Sunday, January 31, 1993 through February 5, 1993.

Evangelist will be Bro. Ronald Bear. Time: Sunday, 6:00 p.m. Monday - Friday 7:00 p.m.

Everyone is cordially invited to attend.

### FCE Club To Organize In Burnsville

Are you interested in joining an FCE Club (Homemakers Club) in the Burnsville area, if so come to the Burnsville Elderly Center at 6:00 p.m. on Thursday, January 28, 1993. Come and bring your friends. This club is for everyone in the area.

### TCMHS Basketball

The Tishomingo County Magnet High School Braves Basketball team will play the following games in the next week. Jan. 29 - Hernando. . . . . There Feb. 2 - Belmont. . . . . There

## 269 New Jobs For Tishomingo County In 1992

According to a news release by North Mississippi Industrial Development Association, 44 new plants and 40 industries announced expansion plans in the 29 county NMIDA service area. This was slightly down from 1991, but was better than we expected considering the nationwide recession stated NMIDA President Wayne Hollowell.

The new or expanding plants in Tishomingo County listed were:

|                          |            |                    |     |
|--------------------------|------------|--------------------|-----|
| Best Way, Inc.           | Golden     | Chemical Sales     | 10  |
| Cordor Enterprises, Inc. | Burnsville | Percussion Drums   | 24  |
| Perry's Mfg. & Wholesale | Belmont    | Upholstered Furn.  | 20  |
| Belmont Homes, Inc.      | Belmont    | Manufactured Homes | 100 |
| Golden Mfg. Company      | Golden     | Apparel            | 40  |
| Kaydee Context           | Belmont    | Medal Furniture    | 50  |
| Schnadig Corp.           | Belmont    | Furniture          | 25  |

This created a total of 269 new jobs in Tishomingo County. According to the economic development experts, approximately 80% of all new jobs created nationwide are from expansion of existing plants. The 269 new jobs in Tishomingo County did not include jobs associated with NASA according to Mack L. Wadkins of the Tishomingo County Development Foundation.

## Three-Vehicle Crash Leaves One Dead

A Tishomingo man died and two others were injured Saturday, January 23, 1993 as the result of a three-vehicle accident.

According to reports by Mississippi Highway Patrolman Leslie Blaylock, William Dean Clark, 56, of Route 1, Box 12, Tishomingo, was killed when the Ford tractor he was driving west-bound on Hwy. 30 east, approximately 1.7 miles east of Hwy. 25, was hit from behind by a 1981 Chevrolet, driven by Fairrah O. Shumpert of Tishomingo.

The trailer Clark's tractor was pulling, which was filled with firewood, apparently did not have any lights on at the time. The accident occurred at approximately 6 p.m.

After being hit by Shumpert, Clark's vehicle turned over in a ditch, reports stated. Shumpert's vehicle was knocked into the eastbound lane where it struck a 1977 Toyota driven by Alva C. Fredrick of Russellville, Ala.

Shumpert and Fredrick sustained cuts and bruises. They

were taken to the Iuka Hospital where they were treated and released.

### William Dean Clark

William Dean Clark, 56, died Saturday, January 23, 1993 at the Tishomingo County Hospital as the result of an automobile accident. He was a truck driver and a member of the Golden Chapel Methodist Church.

Services were at 2 p.m. Monday, January 25 at the Deaton Funeral Home Chapel in Tishomingo with the Rev. Del Blackman and the Rev. Lon Pennington officiating. Burial was in the Lindsey Cemetery.

Survivors include his wife, Jo Ann Clark of Tishomingo; one daughter, Susan Long of Tishomingo; two sons, Steve Clark of Cairo and Jeff Clark of Tishomingo; his mother, Jeffie Dean Clark of Tishomingo; one sister, Sue Poole of Belmont; and five grandchildren.

Pallbearers were James Thorn, James Taylor, Gene Cook, Lawrence Dillard, W.B. Hall and Kelly Tidwell.

## Campus Country Tonight At TCHS

The Tishomingo County Arts Council will present Campus Country on January 28, 1993, in the auditorium at the Tishomingo County Magnet High School at 7:00 p.m. Several Tishomingo County students will perform with the group, which will feature country music hits in a special program.

The Campus Country group began about 10 years ago and has flourished. Students of Northeast Mississippi Community College perform all over the country featuring their special brand of country music. This year's group features a new banjo picker from Corinth and includes over twenty vocalists.

Campus Country has also been featured as show openers for famous shows by Ricky Skaggs, Mel McDaniel, Carly McClain, Travis Tritt and Marty Stuart. Just recently they were featured at the special shown in Tupelo which featured a well known Elvis impersonator.

Don your favorite jeans, a

western shirt and join us for an evening of relaxation and good music! If your calendar prevents you from joining us for this night of fun, please give your tickets to someone who can come and enjoy this special program.

Intermission will feature entertainment by the Miss-Ala Dulcimer group from Golden, MS, and light refreshments furnished by Coca Cola Bottling Company.

### Pilot Club To Sponsor Barbeque Supper

The Pilot Club of Iuka will sponsor a Barbeque supper on February 12th at the Tishomingo County High School Cafeteria from 5:00 - 7:00 p.m. Adult plates will be \$5.00 and children \$3.00. This date will be the final basketball game for the season.

Tickets can be purchased from any Pilot Club member, at Ables Real Estate or First American National Bank in Iuka and Belmont.

## Summer Day-care Available For Area Children

If you will be in need of summer care for your children (through the third grade) during the summer vacation, please contact Mrs. Sylvia Ferguson, Director of MATCDC at 423-2356. The MATCDC needs to line up help for the summer for the number and ages of children enrolled. MATCDC takes children of residents of Tishomingo County as well as employees who work in Tishomingo County.



### Fire Damages Duplex Apartment

An early morning fire Wednesday, January 20, gutted the apartment of Mary Duff, located on the corner of Second and Oak Streets in Iuka.

Iuka Fire Chief Travis South said that his department received

a call from a neighbor at approximately 7:30 a.m. saying that the residence was engulfed in flames.

"We responded to the call and had the fire out in just a few minutes," South said. "We were able to save the adjoining apartment; it only received some water damage."

Duff was away from the residence at the time of the fire, South stated.

Judging from the damage, the firefighters determined that the fire originated from a wall heater.

The duplex apartments, which are located behind the Baptist Day Care Center, are owned by Milt Burton of Iuka.



On December 17th the Rescue Squads had a drawing for three Wal-Mart gift certificates totaling \$150.00 in appreciation for those who come out to play

bingo. We have bingo on Tuesday and Thursday night. This is how we raise most of our funds. Sheila Price of Wal-Mart drew out the winning ticket.



On December 19th the Tishomingo County Rescue Squad had their drawing for a

\$200.00 Wal-Mart gift certificate. The winner of this drawing was Betty Johnson of Iuka.

### Tishomingo County Rescue Squad Announcements

Between the months of August and November the Tishomingo County Rescue Squad took food and clothing to the hurricane victims in Florida and Louisiana, also to the tornado victims in lower Mississippi. The estimated value of all that was passed out was in the thousands of dollars. We at the Rescue Squad would like to thank all the merchants and individuals in the area that donated to this cause, we would also like to thank those who donated cash to help finance the

trips to these areas.

On December 22nd the Rescue Squad passed out twenty-one (21) food and toy baskets to those in need within our county. To the members that helped do this, Thank-You.

A special thanks to those restaurants that furnished dinner to the Rescue Squad members patrolling the park at Christmas time. Also a special thanks to those members who volunteered their time to do the patrolling.

### Singing At Mt. Glory

Mt. Glory Baptist Church will have its 5th Sunday singing this Sunday, January 31st at 6:00 p.m. Everyone is invited.

## County Agents Notes

By: Danny Owen

### STATE CORN GROWERS MEETING

In response to several grower requests along with a request from the National Corn Growers Association, a meeting has been scheduled for Wednesday, February 3, 1993, at the Bost Extension Building at Mississippi State University. The purpose is to cover some educational topics plus organize the Mississippi Corn Growers Association. Corn production has increased in Tishomingo County and the entire state. It is the largest crop grown in the U.S. in both acres and dollars. A bushel of corn fed to livestock produces 5.6 pounds of retail beef, 13 pounds of pork, and 19.6 pounds of chicken. Corn has 53% of the sweetener market in America. Every major non-diet soft drink uses corn syrup as a sweetener. Today the National Corn Growers Association has 25,000 members with staff in St. Louis and Washington, D.C. We need representation in this association. If you are interested in attending, please let me know.

### ANNOUNCEMENTS

There will be a Pesticide Applicators Certification Training held Thursday night, January 28, 1993 at 6:00 p.m. in the conference room of the courthouse. This training is for private applicators who need to be able to purchase Restricted Use Pesticides for their personal use. Please call our office at 423-7016 if you plan to attend.

A 2-day Forestry shortcourse will be held January 27th and 28th at the Bost Extension Center on the campus of Mississippi State University. The cost will be \$160 and will include materials, breaks, and 2 lunches.

The next Area Feeder Pig Sale will be held on Thursday, February 4, 1993 at Amory. Pigs will be received from 7:00 a.m. until 11:30 a.m. on the 4th. The sale starts at 1:00 p.m. All pigs must be inspected and a copy of the inspection slip must accompany the pigs to the sale. All pigs must be from a pseudorabies monitored herd and have a negative test. A copy of the certificate from the veterinarian testing the herd must be brought to the sale or a copy must be on file with the Monroe County Extension Office. All pigs must be free of internal and external parasites. Tails must be docked, males castrated, and both healed. All pigs must be transported on clean bedding. Please let me know if you plan to bring pigs to the sale (423-7016).

### 4-H Communicates

By: Mary Baldwin  
FIRST IMPRESSIONS

The old saying, "first impressions are lasting impressions," is not just a saying, it is true. Like it or not, you are judged by some people solely on your appearance.

Your appearance or the way you are dressed is an important form of non-verbal communication.

Grooming, clothing and posture are the three most important factors when thinking about appearance. A person is well groomed when they are clean. This means daily bathing and hair care.

For girls this also includes make-up. Make-up should be natural looking, not harsh and over done. Teeth should be brushed and flossed at least twice a day. And don't forget your hands. Nails should be clean and cuticles pushed back. Applying lotion before going to bed helps to keep hands smooth and free of hangnails.

The clothes you wear should be neat, clean, well-fitted, and complimentary of your figure type. Clothes that are soiled, in need of repair, or wrinkled send out the message that you are careless and do not pay attention to detail. Clothes that are too big make you appear sloppy. Clothes that are too tight many times accent figure flaws more readily.

Learn to choose clothing styles and colors that accent your good points and minimize the not so good.

Developing good posture habits is important to the way you look and to your health. Stand up straight when you walk. Don't slouch over at the shoulders. Take normal size steps when walking instead of looking like a horse galloping at a race.

When sitting, sit tall and erect, avoid slumping in a chair. Cross your legs and place your hands in your lap when appropriate.

Take a few moments to analyze your appearance. What is it saying about you? Learn to make that first impression a good one.

The 4-H Personal Development project and the 4-H Clothing Selection project can help you learn to make a good first impression. For more information call the County Extension office at 423-7016.

### SOIL TEST 4-H GARDENS -- NOW

Dreaming of your spring garden, but Mother Nature won't let you get started? Soil testing is one gardening chore that can be done during the closing winter months. 4-H members planning to plan and care for a garden need to soil test now.

A soil test is the only way to determine the lime and nutrient status of the soil. All plants, whether they are tomato, flower

or cotton, need proper nutrition.

Gardeners commonly apply too much fertilizer to lawns and gardens and do more harm than good. In addition, many apply the wrong kinds of fertilizers.

A soil test will provide information on the soil regarding soil acidity and alkalinity, lime requirements, and the level of phosphorus, potassium, calcium, magnesium, zinc and soluble salts. The tests are specific in recommending how much and what kinds of materials to use and when and how to apply them.

Come by the Tishomingo County Extension Service office for soil boxes and information sheets.

### ASCS Farm News

#### FARM PROGRAM SIGNUP ANNOUNCED

The Agricultural Stabilization and Conservation Service will open signup for the 1993 Wheat, Feed Grain, Cotton and Rice farm programs on March 1st. The signup period closes April 30th.

To qualify for target price protection and price support loans, participants must reduce their acreage bases by at least 10 percent for corn, and 1 percent for grain sorghum. There is zero acreage reduction for wheat, oats, and barley, and a preliminary 7.5 percent acreage reduction for upland cotton. The acreage reduction percentages for Extra Long Staple cotton and rice will be announced later.

Target prices protect producers' income if market prices fall below the established levels. Farmers also need money to operate and, through the price support loan program, they can obtain interim financing while waiting for a better market.

Farmers who participate in the 1993 Wheat, Feed Grain, Rice and Upland cotton program may request 50 percent of their estimated deficiency payments during signup.

Details of the 1993 farm programs soon will be available to producers through the county ASCS office.

### Home Economics Tips

By: Barbara F. Guinn,  
Extension Home Economist  
GREAT FURNITURE FINDS

Often, there are places around that offer great opportunities to obtain furniture you need at affordable prices. By checking prices at various locations, you can even find furniture that some consider junk at dirt-cheap prices one place, and the same items could be considered treasures in another place at much higher prices.

As you begin looking, consider these sources:

Antique Shops. They do not always just sell expensive items. Antique dealers often buy entire households of furniture to get desirable pieces and then sell the unwanted items at lower prices.

Flea Markets. There are three categories of flea markets: permanent, transient and special. Permanent markets are usually indoors with regular booths. Transients are usually outdoor markets, sometimes adjacent to

permanent markets. Get early to go ahead of the crowd getting the best bargain. Special markets are simply transient markets have been well advertised.

Estate Sales. A professional auctioneer will usually sell on the premises when the contents of a house are to be sold. The time buyers will have chance to inspect items prior to the sale.

Wrecking companies. The demolition of a public building such as a hotel or theater, provides an opportunity for individuals to buy from a sale. Items such as fireplace mantels, paneling, bathroom fixtures, sinks, doors, hardware and architectural fittings. Some are thrown out and available as any scavenger.

Moving and Storage Companies. Many times, bargain hunters can come up with some finds when companies offload once-a-year sale of unwanted goods.

Other sources for furniture finds are classified ads, bulletin boards, junk shops, garage and city streets. By stretching your options for places to look for furniture, you increase possibilities for finding bargains. But beware, hunting for bargains can result in a waste of time and space.

### Former Iuka Woman Attends Presidential Inauguration

Wanda Cox, her husband Verlon Cox and son, Joey Cox, well of Bolivar, Tenn., Friday, Jan. 15 for Washington, D.C. to attend the Presidential Inauguration.

They stopped off in Virginia and visited Verlon's son, Verlon Cox Jr., who is in the Navy. He went with them.

They returned home January 22nd.

Wanda called her mother-in-law afternoon and reported a grand and wonderful time. She the former Wanda Bates daughter of Rivers Bates and late Charles Bates of Iuka, MS.

Kathleen, Christopher, and Diana, in marriage, on January 19, 1993, United States, Shreveport, Louisiana, Reverend Grayson, double ceremony, with Christm with re and gold. The Dr. and Kamm, Louisiana, laughter, and the ward of Mr. Mississ of Mr. Jaudon pi. He Mrs. B. Mississ Stanley wood, Mr. W. Colum Song

of 5t during and of V. Tres did f

of 5t during and of V. Tres did f

of 5t during and of V. Tres did f

of 5t during and of V. Tres did f

of 5t during and of V. Tres did f

of 5t during and of V. Tres did f

of 5t during and of V. Tres did f

of 5t during and of V. Tres did f

of 5t during and of V. Tres did f

of 5t during and of V. Tres did f

of 5t during and of V. Tres did f

of 5t during and of V. Tres did f

of 5t during and of V. Tres did f

of 5t during and of V. Tres did f

of 5t during and of V. Tres did f

of 5t during and of V. Tres did f

of 5t during and of V. Tres did f

of 5t during and of V. Tres did f

of 5t during and of V. Tres did f

of 5t during and of V. Tres did f

of 5t during and of V. Tres did f

of 5t during and of V. Tres did f

of 5t during and of V. Tres did f

of 5t during and of V. Tres did f

of 5t during and of V. Tres did f

of 5t during and of V. Tres did f

of 5t during and of V. Tres did f

of 5t during and of V. Tres did f

of 5t during and of V. Tres did f

of 5t during and of V. Tres did f

of 5t during and of V. Tres did f

of 5t during and of V. Tres did f

of 5t during and of V. Tres did f

of 5t during and of V. Tres did f

of 5t during and of V. Tres did f

of 5t during and of V. Tres did f

of 5t during and of V. Tres did f

of 5t during and of V. Tres did f

of 5t during and of V. Tres did f

of 5t during and of V. Tres did f

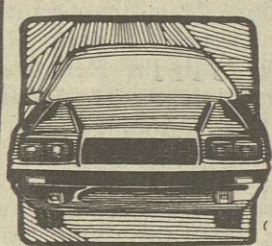
of 5t during and of V. Tres did f

of 5t during and of V. Tres did f

of 5t during and of V. Tres did f

of 5t during and of V. Tres did f

of 5t during and of V. Tres did f



## ROCKY ROAD WINDSHIELD DOCTOR 423-2545

- Repair or Replacement
- Deductible Waived On Repair
- Insurance Claims Welcomed
- Guarantee All Work
- We Will Come To You!

## Bishop's Barbecue Pork

Hickory Cooked Down On The Farm



U.S. INSPECTED AND PASSED BY DEPARTMENT OF AGRICULTURE EST. 17285

Bishop's BARBECUE PORK

Look In Your Supermarket Today For Bishop's Barbecue Pork!

Hickory Cooked On L. O. Bishop's Farm in Bishop, Alabama

Rt. 2 Box 156 - Cherokee, Ala. \*\* Phone 205-360-2204

## TISHOMINGO COUNTY NEWS VIDETTE and BELMONT NEWS Phone 423-3666 (USPS 631680)

Charlotte B. McVay, Editor

Published Thursday by The Tishomingo County News, Inc. Serving the people of Tishomingo and adjoining counties for more than 100 years. Publication office 120 West Front Street, P.O. Box 70, Iuka, MS 38852-0070. Entered at the Post Office as mail matter of the Second Class. Second Class postage paid at Iuka, Mississippi. Zip Code 38852. Post Master send address changes to The Tishomingo County News, P.O. Box 70, Iuka, Mississippi 38852.

Mail Rates Tishomingo and Adjoining Counties

\$12.00 per year

Other Areas \$20.00 per year

## INSIGHT INTO EYESIGHT

DR. PHILLIP GRAY, OPTOMETRIST



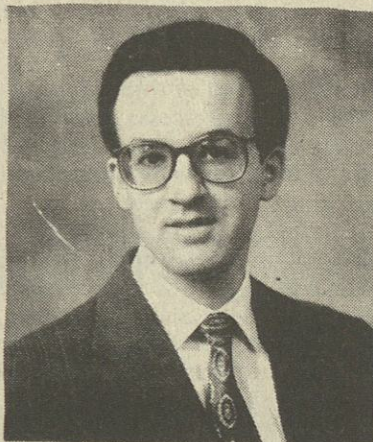
### THE BEST VISION CORRECTION

When you have a vision problem that requires a change in glasses or contact lenses, you may not know it but you help make the decision on how best the problem can be solved. Your eye doctor has some of the finest equipment ever invented for measuring vision problems. One is the phorometer, and another is the retinoscope. A phorometer contains hundreds of lenses that can be used alone or in combination in diagnosing vision correction.

As you look into the phorometer, your eye doctor will change the combinations as you look at the eye chart. You will tell the doctor which combination of lenses makes it possible for you to read the smallest letters. That's how you help make the decision.

Your eye doctor uses the retinoscope to check the accuracy of your decision. This is a hand-held instrument that shines a beam of light through your dilated pupils, making it possible for your eye doctor to obtain an almost exact measurement of your vision problem.

Dr. Phillip Gray  
105 S. Fulton St., Iuka  
Phone 423-3785



### Greg Woodruff Now With Cutshall's

Greg Woodruff of Iuka is now affiliated with Cutshall Funeral Home to handle all insurance needs. Greg is a fully licensed agent and is currently training in all aspects of funeral planning, pre-need funeral expenses, and regular burial insurance. Greg is the son of Joe and Shirley Woodruff, and the grandson of Mr. and Mrs. J.C. Woodruff and Mr. and Mrs. Thelon Hendrix, and is married to the former Pam Cleveland of Iuka. Greg will represent American Funeral Assurance Company, whose home offices are in Amory, Miss. American Funeral was rated recently by AARP as one of the best pre-need insurance providers in the country.

Cutshall Funeral Home has been in business since 1935 with four generations of the same family serving the people of Iuka and surrounding area. Please feel free to contact Greg or Cutshall Funeral Home for any insurance or pre-need inquiries you might have. He can be reached at 423-5222 or 423-1864.

J-7-14-21-28-chg



### ANN PARRISH, FIC FIELD REPRESENTATIVE

WOODMEN OF THE WORLD  
LIFE INSURANCE SOCIETY  
OMAHA, NEBRASKA

Rt. 1 Box 72  
Dennis, Mississippi  
(601)454-7251

## FREE HEARING TEST

If You Hear, But Don't Understand

See Craig Thompson

Licensed Hearing Aid Specialist of the Tupelo Hearing Aid Center

1st Wednesday of Each Month at

## CURTIS DRUG STORE

From 1:00 p.m. to 4:00 p.m. Wednesday, Feb. 3rd

Batteries and Service for All Makes and Models

"To avoid waiting, call for an appointment" 1-800-826-0488

## Noel Memorial United Methodist Church Scene Of Kamm - Jaudon Nuptials



Kathryn Sue Kamm, of Greenville, Mississippi, and Christopher Rain Jaudon, of Indianola, Mississippi, were united in marriage on Saturday, December 19, 1992 at Noel Memorial United Methodist Church in Shreveport, Louisiana. The Reverends Steve Kelly and Grayson Watson performed the double ring candlelight wedding ceremony at seven o'clock in the sanctuary beautifully decorated with red poinsettias, the Christmas tree, evergreen garland with red velvet bows, and white and gold pew bows.

The bride is the daughter of Dr. and Mrs. Richard Conrad Kamm, of Shreveport, Louisiana. She is the granddaughter of Mr. and Mrs. Roger Kamm, of Earle, Arkansas, and the late Mr. and Mrs. Edward Gilliland, of Burnsville, Mississippi. The groom is the son of Mr. and Mrs. William Paul Jaudon, of Indianola, Mississippi. He is the grandson of Mr. and Mrs. Barry Wood, of Indianola, Mississippi; Mr. and Mrs. Stanley Marszalek, of Greenwood, Mississippi; and the late Mr. William Thomas Jaudon, of Columbus, Mississippi.

Song selections played by

Becky Gerardy, organist and Lori Gerardy, flautist, both of Shreveport, Louisiana, during the seating of guests were The Wedding Song (flute and piano); Morning Has Broken; The Dance; Canon in D; and Everything I Do, I Do For You (flute and piano). During the seating of the grandmothers, the groom played the guitar and soloist Michael Carley sang Here, There, and Everywhere. The beautiful song, Pie Jesu, was sung by Robin Cate, of Shreveport, Louisiana, and Lori Gerardy while the mothers were being ushered in their seats. Both mothers carried a single lit taper and placed them on either side of the unity candle.

For the bridesmaids processional, Jesu, Joy of Man's Desiring, was performed by the organist. The Trumpet Voluntary announced the entry of the bride and her father. During the actual ceremony, The Lord's Prayer was sung by soloist Michael Carley. The wedding party exited the sanctuary to Trumpet Tune played by the organist.

Kathryn, given in marriage by her father, was lovely in a designer gown by Bill Joy, fashioned of candlelight satin and alencon lace with a beautiful

modified Sabrina neckline of lace encrusted with pearls and iridescent sequins that made a beautiful starburst design. The full puff sleeves tapered to a slim bridal point trimmed with beaded lace inserts that repeated the starburst design and the full skirt was also trimmed with beaded lace inserts with a large starburst design on the front panel and three smaller ones on the back of the dress and chapel length train. The waist length veil of illusion, dotted with iridescent pearls, was trimmed with seed pearls and attached to an alencon lace crown beaded and trimmed with sequins and seed pearls.

The bride's tradition of something old, something borrowed, and something blue was carried out by using a garter that had belonged to her maternal great aunt, her mother, and her aunt. The something new was her dress and she wore a real sixpence in her shoe for goodluck. Her wedding ring belonged to her paternal great-grandmother and her paternal grandmother.

The bridal bouquet was a long flowing cascade fashioned with silk flowers of calla lilies, candlelight poinsettias, sweetheart roses of ivory and red, english ivy, and miniature red poinsettias. Added to the bouquet was antique lace, gold accents, candlelight and red tulle, and long looping strings of pearls.

The bridesmaids were lovely in full length gowns of iridescent emerald green taffeta with a modified sweetheart neckline. The elbow-length sleeves and back of the dress were scalloped. Each attendant wore a comb in their hair made of miniature poinsettias, emerald green ribbon and candlelight lace. They each carried a heart-shaped bouquet of silk flowers accenting the bridal bouquet. The junior bridesmaid and flower girl wore headbands of emerald ribbon, strings of gold beads, and miniature red poinsettias. The flower girl carried a basket of dried rose petals. The basket was used by the bride when she was a flower girl in her uncle's wedding.

The groom and best men wore formal black tailcoats with white pick ties and vests. The groomsmen and ushers wore matching tuxedos with stroller jackets and black and white diamond pattern ties and vests. They all wore silk boutonnieres of white roses accented with miniature red poinsettias and english ivy leaves.

For her daughter's wedding, Mrs. Kamm wore an ensemble with a burgundy floral brocade jacket over a burgundy silk crepe ballerina length skirt. Mrs. Jaudon wore a full-length silk shantung turquoise suit with a portrait collar and a slim sheath skirt.

Theresa Burns, of Clemson, South Carolina, was Maid of Honor and Lesley Harville, of Benton, Louisiana, was Matron of Honor. Bridesmaids were Sandra Coffman, of Monroe, Louisiana; Amy Kamm, cousin of the bride, of Memphis, Tennessee; Carrie Tomlinson, cousin of the bride, of Meridian, Mississippi; Claire Jaudon, sister of the groom, of Indianola, Mississippi; and Junior Bridesmaid was Marcia Wheeler, cousin of the groom, of Cleveland, Mississippi. Flower girl was Rachel Wheeler, cousin of the groom, of Cleveland, Mississippi.

Best Men were Paul Jaudon, father of the groom, of Indianola, Mississippi, and Van

Colotta, of Monroe, Louisiana. Groomsmen were Michael Carley, and Bradley Black of Indianola, Mississippi; Richard Kamm, Jr., brother of the bride, of Shreveport, Louisiana; Drew Dickman, of Yazoo City, Mississippi; and Junior Groomsmen was Brandon Kamm, cousin of the bride, of Memphis, Tennessee. Ushers were Jason Beck, cousin of the groom, of Ridgeland, Mississippi, and Joseph Kamm, brother of the bride, of Shreveport, Louisiana. Ring Bearer was Chip Beck, cousin of the groom, of Ridgeland, Mississippi.

Following the wedding, the bride's parents hosted a reception at Jodie's Place in downtown Shreveport with live entertainment by The Boomers. As guests entered, they were greeted by Miss Jennifer Heroman of Baton Rouge, Louisiana. The guest book was placed on a table beside an heirloom bride doll made for the bride by her paternal grandmother. Next to the table was a portrait of the bride photographed by David Hague of Shreveport, Louisiana.

Miss Cindy Drake of Shreveport, Louisiana, assisted by Miss Amy May of Indianola, Mississippi, served guests from the three-tier bridal cake accented with poinsettias between tiers. The cake topper was two doves accented with red ribbons used by the bride's parents on their twenty-fifth wedding anniversary cake this past summer. The cake was red velvet with cream cheese icing decorated like lace. There were five satellite cakes surrounding the main cake, each with small arrangement of poinsettias on the top. Also special charms attached to ivory ribbons were hidden in the cake for the bridesmaids. Mrs. Sybil Kilpatrick of The Cake House in Shreveport, Louisiana, catered the reception.

The bride and groom toasted each other with two decorated silver goblets given to them by the bride's paternal grandparents. They were given to her grandparents on their twenty-fifth wedding anniversary.

Presiding at the groom's table was Leigh Ann Carley of Indianola, Mississippi, who served the guitar-shaped chocolate cake which was decorated to resemble the groom's own 1970 Gibson hummingbird guitar. Punch was served from a silver punch bowl by Christy Posey of Monroe, Louisiana. Carol Massey of Shreveport, Louisiana, served coffee from a silver coffee urn.

Miss Morgan Wheeler of Cleveland, Mississippi, and Miss Jacquelyn Heroman of Baton Rouge, Louisiana, distributed potpourri bags and keepsake bookmarks imprinted with I Corinthians 13 prior to the departure of the newlyweds in their luxury stretch white limousine. Kathryn wore a red street-length dress accented with white ribbon soutache on the bodice and Rain wore a double-breasted navy jacket and military khaki dress pants as they said goodbye to their guests. After staying at the luxury Remington Suites Hotel in Shreveport, they will reside in Greenville, Mississippi.

A bridesmaid's brunch was hosted by Mrs. Diane Worley, of Shreveport, in her home on the

morning of the wedding.

On the eve of the wedding, Mr. and Mrs. William Paul Jaudon of Indianola, Mississippi, entertained members of the wedding party and out-of-town guests with a seated rehearsal dinner in the Pavilion Room at the Holiday Inn in downtown Shreveport.

A Christmas Decorations Shower was hosted by Mrs. Juan Watkins, Mrs. Robert Tucker, Mrs. Eugene Bryson, and Mrs. Andrew Mullen in the home of Dr. and Mrs. Juan Watkins of Shreveport. A quilted tree skirt was given to the bride as a hostess gift.

A Luncheon/Potpourri Bag Party was hosted by Mrs. Dell Harville of Benton, Louisiana, and Mrs. Tommy Ferguson of Kingwood, Texas, in a private dining room in the Sheraton Inn, Bossier City, Louisiana.

A Bath and Linen Shower was given by Mrs. F. Thomas Siskron III, Mrs. Sam Maxey, Dr. Susan Williams, Mrs. G. Kenneth Harrison, and Mrs. Louis Sardenga at the Pierremont Oaks Tennis Club. Two beautiful needlepoint Christmas stockings was given to the bride as a hostess gift.

An Around-The-Clock Shower was given by Mrs. Don Barkley, Mrs. James Goins, Mrs. Warren Grafton, Ms. Sandra Hastings, Mrs. Hugo Holland, Mrs. Gene Land, Mrs. James Montgomery, Mrs. Wayne Stoddard, Mrs. Atton Wallace, and Mrs. Grayson Watson at the home of Reverend and Mrs. Grayson Watson. Their hostess gift was a large basket filled with silk ivy with a crystal clock hidden inside.

A Meet-The-Happy-Couple Party was hosted by Dr. and Mrs. Stephen Wooten, Mr. and Mrs. William Harold Manning, Mr. and Mrs. Duncan Baird, and Mr. and Mrs. Harry Dickman at the home of Dr. and Mrs. Wooten in Indianola, Mississippi. Their gift was a large blue McCarty platter and a display stand.

Mrs. Nott Wheeler III, Mrs. David Walt, Mrs. Libber McGregor, and Mrs. Barry Wood hosted a luncheon at The Sweet Olive in Boyle, Mississippi. A gilded angel enclosed in a clear globe which contained a liquid and glitter sitting on top of a music box which played Hark the

Herald Angels Sing was given to the bride. Corsages in the shape of angels were made from Battenburg linen napkins by Mrs. Barry Wood, grandmother of the groom.

### Happy Belated Birthday Melissa Gail Brown

We All Love You Very Much. Mrs. Hudson, Louise & Becky, Ashlie, Clint, Teresa, Judy & Me, Mo-Mo Moore - also Allen, Odell, Aron, James Ray, Verlon, Opal and Mary

### Personal

Jeff and Myrtle Helton of Huntsville, Alabama will celebrate their 63rd wedding anniversary on February 1.

Our lives are sad due to the recent death of our loved one Nadeen Helton Allen on January 5. We would like to thank our family and friends from Mississippi that came to be with us during our time of sorrow.



LOVE IS IN THE AIR  
VALENTINE'S DAY IS  
Sunday, Feb. 14!

Ambassador



**CURTIS DRUGS**  
ELM SHOPPING CENTER IUKA

Gartfield © 1978 United Feature Syndicate  
© 1992 Ambassador Cards, a division of Hallmark Cards, Inc.

### Thank You From The Boyd Families

Perhaps you sent a lovely card

Or sat quietly in a chair.

Perhaps you sent a funeral spray

If so we saw it there.

Perhaps you spoke the kindest words

That any friend could say.

Perhaps you were not there at all

Just thought of us that day.

Whatever you did to console our hearts,

We thank you so much, whatever the part.

Thanks to all our friends, co-workers and others who shared our sorrow during our tragic loss. Your kindness, gifts and your concern will remain in our hearts forever.

Thank You,

Jerry, Phyllis and Chenée Boyd

## Weight Watchers®

Eat Better...  
Look Better...  
Feel Better...

For meeting info in Jackson 982-5783

Toll Free in Mississippi 1-800-289-8446

© 1991 Weight Watchers Int. Inc. owner of Registered Trademark All rights reserved

### Thank You

Thanks to Brother Bill Hobson and wife and all members of 5th Street Baptist Church for their visits and gifts during my illness and surgery while in Magnolia Hospital and to all employees at Iuka Guaranty Bank, members of V.F.W. Post 3962 and a special thanks to our children Tressie Davis, Martha Lambert and Beth McNutt for all they did for me.

Mrs. Vernon L. Pate

## Now Open "Images"

Hwy. 25 N. Across from the Quick Clean Dry Cleaners



Full Service Beauty Salon  
including waxing and facials

Open 6 Days  
A Week  
From 8:00 a.m.  
Until

Opening  
Specials

PERMS \$25.00

Unlimited  
Tanning/Month \$35.00

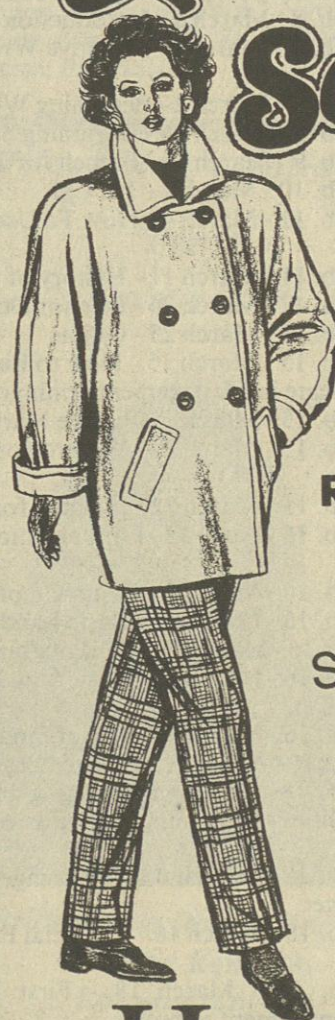
Suntana Wolf Tanning Bed & Electrolysis Clinic

Full Line of  
Nexus  
Products

Call  
Belinda Pruitt or Deborah Parnell

at 423-2758

## SAVE January Clearance! SALE! SAVE



ALL WINTER  
MERCHANDISE

75% OFF

REDUCED  
UP TO

Sweaters  
Jewelry

Pants  
Dresses

Shorts  
Skirts  
All Coats Included

Spring Merchandise Arriving  
Use Our Lay-A-Way

## House of Fashions

Downtown Iuka



Joe & Pat Hussey - Owners



1943

1993

In honour of the  
Fiftieth Wedding Anniversary of  
Mr. and Mrs. Hassell Holder  
their children and grandchildren  
request the pleasure of your company  
at an Open House  
on Saturday, the thirtieth of January  
Nineteen hundred and ninety-three  
from twelve until four o'clock in the afternoon  
Odom Hill Senior Citizen Center  
Cairo Community



## Happy 18th Birthday To My Best Friend



## Local Radio Station To Feature Bluegrass Countdown

Bluegrass music now boasts its very first radio countdown over a nationally syndicated radio program, "The Jim Walter Bluegrass Hour with Judy Masters", which is heard on local radio station WFXO fm 102.9, Sunday mornings at 10:00.

The one-hour program, sponsored by Jim Walter Homes, airs weekly. The countdown, which is featured on the first broadcast each month, is tabulated by votes from the fans.

Ms. Masters, host of the program, has been named Bluegrass D.J. of the year - nationwide - for 5 years consecutively from 1986 thru 1990 by SPBGMA, the Society for the Preservation of Bluegrass Music of America. In 1991 she received the prestigious Master's Gold Medal of Merit in Nashville for her achievements in broadcasting.

Bluegrass music is a relatively new art-form, having been in existence for just over 50 years. The major difference between bluegrass and country music is that the main focus in bluegrass is on acoustic instruments. Some bluegrass stars include Bill Monroe, Alison Krauss, the

Osborne Brothers, Jim & Jesse, Earl Scruggs and the late Lester Flatt. Some stars who have their roots in bluegrass are Ricky Skaggs, Emmylou Harris, Charlie Daniels, Barbara Mandrell, Glen Campbell, Kathy Mattea and the late Keith Whitley.

Any bluegrass fan wishing to cast his vote for the countdown may call (614)574-2498.



From days of making shoes  
To days of making news  
Pictured with her special Glenn  
Are you really 29 again!!  
Happy Birthday Daisy!  
Love,  
Charlotte & Hayley

## Taxpayers Coalition To Meet Jan. 30th

The North Mississippi Taxpayers Coalition will meet on January 30 at 2:00 p.m. at the Booneville Western Sizzlin. Senator Travis Little will be the guest speaker and will give an update on the actions of our state legislature. The meeting is open to the public. For more information, call 728-0095.



## Milton & Madrid Richardson To Be Honored On Anniversary

You are cordially invited to the 45th Wedding Anniversary for Milton and Madrid Richardson to be given by their children and grandchildren on Sunday, January 31, 1993 from 2:00 to 4:00 in the afternoon. The celebration will be held in the fellowship hall of New Lebanon Freewill Baptist Church.

## Sardis Church News

By: Ova Reno

Early Sunday morning we had rain, wind, thunder and lightning, but the clouds rolled away and we had a beautiful day.

The subject of Bro. John's message Sunday morning was: Power of Faith - Luke 17: 11-19, verse 19. And He said unto him, arise, go thy way: thy faith has made thee whole. Read it all for a better understanding.

His subject Sunday night was: Galatians 5:15-21. Bitterness of Sin verse 16. This I say then, walk in the spirit, and ye shall not fulfil the lust of the flesh. It is important to read the rest as it tells you what not to do.

I can't say enough good things about our fellowship supper, Saturday afternoon, honoring Bro. John on his birthday. We had about 20 there, several were visitors. I think everyone enjoyed it very much.

We still have sickness in our church. Please help us pray for the following. Bro. Milton and Corrine Phifer, Bro. John's wife, Burton, and his mother Phelma. We ask God to restore their health, providing it is His will.

Drink nothing without seeing it, sign nothing without reading it

(Spanish proverb)

He who sings frightens away his ills. My singing frightens away everyone.

Weekly prayer: Thanks, God, for specially remembered friends.

Our Sunday school lessons are an How to Worship God. I have really learned something from them. Our Wednesday night Bible study is moving slowly on, because we take each verse and discuss it thoroughly. Come down, you are always welcome at our church.

Our sympathy this week goes to the loved ones of Mrs. Zella Parsons. She was a lovely person and a friend to all. May God bless you, her family in your sorrow.

Can you name this song? Look away beyond the blue. Answer next week.

## Revival

Iuka Church of God, one mile South on Hwy. 25, will begin Revival services Sunday, January 31, 1993 through February 5, 1993.

Evangelist will be Bro. Ronald Bear. Time: Sunday, 6:00 p.m. Monday - Friday 7:00 p.m.

Everyone is cordially invited to attend.

## Continuing Education Classes Offered At U.N.A.

The following Continuing Education classes are being offered at the University of North Alabama beginning in February:

February 4-25 - Introduction To Macintosh 6-9 p.m. - \$95  
February 6-20 - Using MS/PC DOS (Beginning) 8 a.m. - noon-\$129  
February 6-20 - Using MicroSoft Windows 3.0 8 a.m.-noon - \$95  
Feb. 8 - March 8 - Introduction to Lotus 1-2-3 5:30-9 p.m. - \$185  
Feb. 9 - March 9 - Creative Writing Workshop; Poetry or Fiction - Anita Garner - 6:30-8:30 p.m. - \$47  
Feb. 9 - March 2 - Beginning WordPerfect 5.1 6-9 p.m. - \$185  
Feb. 9 - March 16 - Beginning Spanish I 6:30-8:30 p.m. - \$47  
Feb. 9 - March 16 - French for Travelers 6:30-8:30 p.m. - \$49  
Feb. 10 - March 7 - Tai Chi 7-8:30 p.m. - \$47  
Feb. 11 - March 4 - How To Use PCs and Their Software 5:30-9 p.m. - \$159

Feb. 11 - March 11 - History of the Shoals (Part II) 6-8 p.m. - \$42  
Feb. 17 - March 24 - Interior Decorating I 6-8 p.m. - \$47  
Feb. 11 - March 25 - Guitar 6:30-8 p.m. - \$62  
Feb. 15 - March 15 - How to Build High Performance Teams - Certificate in Management seminar 6-9 p.m. - \$185  
Feb. 15 - March 1 - Picture Matting and Framing 6-8 p.m. - \$54  
Feb. 15 - March 22 - Watercolor Painting Workshop 6:30-8:30 p.m. - \$47

Feb. 15 - March 22 - German for Travelers 6:30-8:30 p.m. - \$49  
Feb. 15 - April 12 - Fundamentals of Jazz Harmony 7:30-9 p.m. - \$47

Feb. 16 - March 2 - Cajun Creole Cooking 6:30-8:30 p.m. - \$49  
Feb. 16 - March 16 - Basic Landscape Design 5:30-8:30 p.m. - \$59  
Feb. 16 - March 16 - Managing and Resolving Conflict 6-9 p.m. - \$185  
Feb. 16 - March 23 - Basic Sign Language and Deaf Awareness 6-7:30 p.m. - \$39

Feb. 16 - March 23 - Joy of Singing 7-8:30 p.m. - \$42  
Feb. 16 - April 13 - Advanced Beginning Class Piano 6-7:15 p.m. - \$74  
Feb. 18 - Alabama Planning Institute: Powers, Duties & Responsibilities of Planning Commissions and Boards of Adjustment 5:30-9:30 p.m. - \$36

Feb. 18 - March 4 - The Image Maker: Developing That Winning Edge 6-8 p.m. - \$39  
Feb. 18 - March 18 - Financial Planning for the Uncertain 90s 6:30-8:30 p.m. - \$42

Feb. 18 - March 18 - First Line Supervision - Certificate of Management seminar 6-9 p.m., \$185  
Feb. 23 - Art of Business Protocol Luncheon seminar 11:30 a.m. - 1:30 p.m. - \$25

Feb. 23 - March 25 - Flying Ground School: Private Pilot - \$195  
Feb. 24 - Telephone Techniques and Customer Courtesy seminar 1-4:45 p.m. - \$59

For information on any of these classes, call the office of continuing education in advance at (205)760-4UNA.



## Happy 1st Birthday Lydia Ashton Wilemon January 25th

Love, Mom and Dad



## Happy Birthday 2 Years Old

Love,  
Mommies, Daddy,  
Nana, PawPaw,  
RineRine, Larry,  
Sissy, Bobby



## Derek Is Two

Derek Jameson Dill, son of Kirk and Rhonda Dill, was two Friday, November 27, celebrated with a trip to the home of his grandparents and Betty Jones.

Those present to help celebrate were his big brother Thomas, his parents, Granddaddy, Granny, Mama Wynn, Daddy, Chris, Glenda and Priscilla, Uncle Kelly and Elizabeth Jones, Farrah Fraz Tammy and Kelly Rone, Monica and Justin Jones, Hayley and Sterling Hodges, Lacy and Jake Ramey, Robert, and Amanda, Greg, Pat, Max, Tony, Benjamin, Christine Stacy.

Derek's guest were served Cream Santa cake.

Derek wishes to thank everyone for the many nice gifts.



Don't buy potatoes that are green, due to exposure to natural or artificial light. The greening may have penetrated the flesh of the potato.

92 Town Car - Factory Repurchase.....  
92 Taurus - Maroon, \$12,900 Factory Car.....  
92 Toyota Tercel - \$0 Down.....  
91 Club Wagon - 4 Capt. Chairs, XLT.....  
88 Aerostar - Local, Clean.....  
88 F150 - XLT, V8.....  
89 Ranger - One Owner, Automatic, XLT.....  
89 Ranger 4x4 - Local Trade.....  
80 Buick Century - One Owner, \$995.00.....

## New Car Clearance Sale

91 Escort - Reduced Over \$2600°.....  
92 Flarside - Reduced Over \$2000°.....  
91 Tempo - Low Payments \$0 Down.....

See SONNY DOVER or JOSEPH McNATT

# McNATT FORD

Hwy. 25 South in Iuka



MDOT Law Enforcement Graduates

New Mississippi Department of Transportation (MDOT) scale enforcement officers recently graduated from the Mississippi Law Enforcement Officers Training Academy. In addition

to the nine-week Basic Law Enforcement Officer Training Course, the 11 officers completed a one-week MDOT in-service training course also held at the Training Academy. Major Willie Richardson and Lieutenant Sylvester Ford welcomed the new graduates aboard.

Pictured from left are: Front row, Major Willie Richardson; Joe W. Bonslater Jr., of Pearl;

Gregory D. Rowland, of Potts Camp; Darryl G. Gipson, of Poplarville; Jeffery M. Walley, of Richton; Schumphant M. McIntosh, of Meridian; and Lieutenant Sylvester Ford. Back row, Dale A. Reeves, of Pass Christian; Anthony T. Raines, of Corinth; John D. Daugherty, of Iuka; Dan H. Alexander, of Natchez; Don Evans, of Newton; and Kenneth Dunlap, of Clinton.

Paden News

After a month of vacation it really is good to be back home. It's wonderful to spend time with your children and grandchildren, but there's no place like home - Paden!

We traveled by bus to Waco, Texas on December 18 and returned home January 18. We went through Little Rock, Ark., (President Clinton's hometown). Also his birthplace, Hope, Ark. Back in the 1950's and 60's. We traveled that way every summer to vacation here at home. I remember at that time Hope, Ark. was noted for raising the largest watermelons in the country.

As we entered Mt. Pleasant, Texas a greeting sign read "a continuing care community". That was very impressive to me. A motto every community should adopt.

While in Waco we visited the Dr. Pepper Museum in the same building where Dr. Pepper was invented in 1885. It was invented by a Pharmacist at Morrison's Old Corner Drug Store. When first invented it was called a Waco. Customers would come to the fountain and tell the

"Soda Jurk" to "Shoot Me A Waco". This was related to us by a town guide. The museum contains an operating antique soda fountain, a gift shop, a class room, meeting room, and about 300 square feet of exhibits. There is an artesian well that has been preserved inside the building. It was the Artesian Manufacturing and bottling Co. formed in 1891 to bottle a line of beverages under the "Circle A" label - and Dr. Pepper. It is the only surviving home for a major soft drink co. in the country. It is listed in the National Register for Historic Places. At this time the museum is about 50% restored. It was very interesting.

Waco also has the Texas Ranger Hall of Fame and Museum. We didn't get to see that. Will save that for a future trip. There was an article in the Daily Paper stating Dan Rather was visiting Waco over the holidays, touring the Texas Ranger Hall of Fame and Museum. He said he had heard so much about the buffalo hairball on display that he had to see it for himself. Asked if he was recognized at the Rangers Hall of Fame and Museum? Yes, that's the nature of my work. I was recognized because I'm on T.V.

Pat's Magic Mirror welcomes

Christie Harris - Stylist

Beginning Tuesday - February 2nd



Tanning Special 25 Visits For \$40.00 Good thru February 14th

Surprise Your Valentine With A Gift Certificate From Pat's Magic Mirror

P. O. Box 433, Hwy. 25 North in Dennis, MS Phone: (601) 454-7120

every night, not because I'm Dan Rather. He is a native Texan.

I haven't been home long enough to gather a lot of News. There are several in the community, who are sick at this time: Mrs. Lettress Ward went to Tupelo for a series of test as an outpatient this past week.

Mr. Skip Pardue was a patient in UAB Hospital in Birmingham for a week. He is now at home.

Mrs. Mary Lou Clifton is a patient at the Iuka Hospital at this time. She is in room 3.

Chasity Glasgow, daughter of Brendix and Vickie Glasgow, has been a patient in Iuka Hospital for several days. She was released Monday morning.

Mr. and Mrs. Lyle Martin of Jacksonville, Florida are visited for a few days with Mr. and Mrs. Desmond Deaton and Mrs. Ilene Bailey.

Our deepest sympathy is extended to Joann Clark and children, also Mrs. Jeffie Dean Clark in their time of sorrow, at the death of Dean Clark. Husband, Father, and Son. He will be greatly missed.

A reminder - 911 signs are still being made. Everyone hasn't ordered. Please contact 438-6451 if you haven't.

Sunday, January 31 is 5th Sunday singing with dinner at Paden Baptist Church. Everyone is invited.

I must say after reading newspapers in other places, I still think "The Vidette" is tops. Have had fun catching up on the ones that accumulated. Please call 438-6654 to report our news.

In Service

Army Reserve Pvt. Jeffrey W. Stephens has completed a light wheel vehicle mechanic course at Fort Jackson in Columbia, S.C.

During the course, students were trained to perform maintenance and assist in the repair of automotive vehicles and associated equipment.

He is the son of Jerry W. and Thelma A. Stephens of Rural Route 1, Tishomingo.

The private is a 1989 graduate of Tishomingo High School.

Tishomingo FCE Club Plans New Year....

"Kindness is like snow...it makes beautiful everything it covers." This was the thought of the month read by Mrs. Johnnie Strickland, president of the Tishomingo (Homemakers) Family and Community Education Club, when the club met Thursday night, January 14, at the Tishomingo Library.

Ms Eva Mae Strickland gave a good devotion using as her scripture I Corinthians 13:4-13 and reading two poems, "The Little Things" and "But Didn't". Ms. Shirley Thorne led in prayer.

Johnnie read the club's Council Collect.

Shirley did the roll call and read the minutes of the previous meeting. Mrs. Betty Cain gave the financial report.

Mrs. Kay Jerden installed the new officers for 1993. They are president, Mrs. Johnnie Strickland, vice president, Mrs. Kathy Byram; secretary, Ms. Shirley Thorne; treasurer, Mrs. Betty Cain; and parliamentarian, Mrs. Willard Strickland.

Our club was not only well represented, but received several certificates of achievement, at the 1992 Awards Program on January 7 at the Southern Style Restaurant. Those present from our club were Ms Shirley Thorne, Ms Eva Mae Strickland, Mrs. Betty Cain, Mrs. Willard Strickland, Mrs. Kathy Byram, and Mrs. Kay Jerden. Our club was honored to receive first place on the 1992 Secretary's Record and also to receive a certificate on our club's scrapbook. Shirley was a 100% member last year, and receiving certificates for perfect attendance last year were Shirley, Eva Mae, and Willard.

The club members discussed projects for this year.

Plans were made for a bake sale on February 13 at the Tishomingo Library with all proceeds going to the library.

Tentative plans were made for a Womanless Beauty Revue on March 19 in the old Tishomingo Gym with proceeds going to the Tishomingo Fourth District Volunteer Fire Department to help buy a Jaws of Life and also to the Tishomingo Church of Christ Lads and Leaderettes to help with their expenses when they go to the National Convention in Nashville in April.

The hostesses, Eva Mae and Shirley, served refreshments to everyone.

Others present, not already mentioned, were Mrs. Gail Strickland and Ms. Michelle Strickland.

Our next meeting will be at Mrs. Willard Strickland's house on Thursday night, February 11, at 6 p.m. We invite anyone to come meet with us. We are always happy to have visitors and even happier when they become club members.

25th Infantry Division Assoc. Reunion

The 25th Infantry Division Association is announcing the 44th Annual Reunion - Convention, August 5-8, 1993, in Louisville, KY, for Veterans who served in the division during WWII, Occupation of Japan, Korea, Viet-Nam, Operation Desert Storm, and in Peacetime. For more information on the reunion and association, contact Andy Ansell, R.D. #1 Box 336, Acme, PA 15610.

Don't Pay All Your Bills Next Month Just Pay One!



ANNA PARKER, Branch Manager

Ask for a BILL CONSOLIDATION LOAN and don't make a payment for 45 days.

913 Hwy. 25 S. P. O. Box 565 Iuka, Mississippi 38852



Phone: 423-1342

"The Affordable Borrowing Company"

The Bride's Choice

"Pear"

by Country Crafts



Bride: Carla Patrice Booker Groom: Kenneth Lowell Branson

The Cozy Corner Gift Shoppe at Rushing Drug Co.

**Western Auto**

**69<sup>99</sup>**

**Tough One 1000 Plus**

85 month warranty\*. Up to 1000 cranking amps at 32°F. 875 cold cranking amps at 0°F. Exchange. 65-1000-2

**54<sup>99</sup>** Exch. Special Application 60 month warranty\*. Up to 725 CA's. 580 CCA's. Exch. 65-7540 ser.

**49<sup>99</sup>** Exch. Tough One 675 75 month warranty\*. Up to 840 CA's. 525 CCA's. Exch. 65-7226 ser.

**39<sup>99</sup>** Exch. Tough One 65 65 month warranty\*. Up to 580 CA's. 470 CCA's. Exch. 65-6526 ser.

**FEATURING NAME BRANDS**

**INTRODUCING... DUNLOP**

The "Axiom" Offers Long Wear, Ride Comfort and All-Weather Traction!

**All-Season Steel Belted 60,000 MILE\* 48<sup>99</sup>**

|            |       |
|------------|-------|
| P175/80R13 | 53.99 |
| P185/75R14 | 59.99 |
| P195/75R14 | 61.99 |
| P205/75R14 | 63.99 |
| P205/75R15 | 67.99 |
| P215/70R14 | 66.99 |
| P215/75R15 | 69.99 |
| P215/70R15 | 70.99 |
| P225/75R15 | 73.99 |
| P235/75R15 | 75.99 |
| P205/65R15 | 68.99 |
| P215/65R15 | 70.99 |
| P205/70R14 | 63.99 |

17-8088 ser.

**OUR BEST ALL-SEASON RADIALS**

|   |   |   |
|---|---|---|
| <b>American Spirit LXR 60,000 MILE* 39<sup>99</sup></b><br>P165/80SR13 47.99<br>P175/80SR13 48.99<br>P185/80SR13 51.99<br>P185/75SR14 52.99<br>P195/75SR14 54.99<br>P205/75SR14 57.99<br>P215/75SR14 59.99<br>P205/75SR15 58.99<br>P215/75SR15 59.99<br>P225/75SR15 60.99<br>P235/75SR15 61.99<br>16-9150 ser.<br>FREE Road Hazard Warranty | <b>All-Season Radial 65,000 MILE* 45<sup>99</sup></b><br>P165/80SR13 53.99<br>P175/80SR13 54.99<br>P185/80SR13 57.99<br>P185/75SR14 58.99<br>P195/75SR14 60.99<br>P205/75SR14 63.99<br>P215/75SR14 65.99<br>P205/75SR15 64.99<br>P215/75SR15 65.99<br>P225/75SR15 66.99<br>P235/75SR15 67.99<br>16-9100 ser.<br>FREE Road Hazard Warranty | <b>Ultra 770 Radial 70,000 MILE* 54<sup>99</sup></b><br>P165/70SR13 61.99<br>P185/70SR13 68.99<br>P175/70SR14B 68.99<br>P185/70SR14B 65.99<br>P185/70SR14 69.99<br>P195/70SR14B 67.99<br>P195/70SR14 70.99<br>P205/70SR14B 69.99<br>P205/70SR14 72.99<br>P215/70SR14 73.99<br>16-9204 ser.<br>FREE Road Hazard Warranty |
|---|---|---|

**35,000-45,000 MILE A/S RADIALS**

|  |  |   |
|--|--|---|
| <b>All-Season Radial 35,000 MILE* 21<sup>99</sup></b><br>P165/80R13 29.99<br>P175/80R13 30.99<br>P185/80R13 33.99<br>P185/75R14 34.99<br>P195/75R14 36.99<br>P205/75R14 39.99<br>P205/75R15 40.99<br>P215/75R15 41.99<br>P225/75R15 42.99<br>P235/75R15 43.99<br>16-8600 ser.<br>Road Hazard Warranty Optional | <b>Deluxe Classic LX 45,000 MILE* 29<sup>99</sup></b><br>P165/80R13 37.99<br>P175/80R13 38.99<br>P185/80R13 41.99<br>P185/75R14 42.99<br>P195/75R14 44.99<br>P205/75R14 47.99<br>P205/75R15 48.99<br>P215/75R15 49.99<br>P225/75R15 50.99<br>P235/75R15 51.99<br>16-8800 ser.<br>FREE Road Hazard Warranty | <b>Classic A/S Radial 50,000 MILE* 32<sup>99</sup></b><br>P165/80R13 39.99<br>P175/80R13 40.99<br>P185/80R13 43.99<br>P185/75R14 44.99<br>P195/75R14 46.99<br>P205/75R14 49.99<br>P215/75R14 51.99<br>P205/75R15 50.99<br>P215/75R15 51.99<br>P225/75R15 52.99<br>P235/75R15 54.99<br>P235/75R15LX 57.99<br>16-8950 ser.<br>FREE Road Hazard Warranty |
|--|--|---|

**SPORT & PERFORMANCE**

|   |  |   |
|---|--|---|
| <b>Ultra Sport Radial 50,000 MILE* 34<sup>99</sup></b><br>155/SR13 40.99<br>165/SR13 44.99<br>175/SR14 47.99<br>185/SR14 52.99<br>165/SR15 47.99<br>175/70TR13 46.99<br>185/70TR13 48.99<br>185/70TR14 51.99<br>195/70TR14 53.99<br>205/70TR14 55.99<br>16-9700 ser.<br>FREE Road Hazard Warranty | <b>Ultra Supreme 60,000 MILE* 40<sup>99</sup></b><br>155/SR12 46.99<br>165/SR13 50.99<br>175/SR14 53.99<br>185/SR14 58.99<br>165/SR15 53.99<br>175/70TR13 52.99<br>185/70TR13 54.99<br>185/70TR14 57.99<br>195/70TR14 59.99<br>205/70TR14 62.99<br>16-9750 ser.<br>FREE Road Hazard Warranty | <b>Performance GTH 35,000 MILE* 54<sup>99</sup></b><br>P215/65HR15 76.99<br>P185/60HR14 66.99<br>P195/60HR14 68.99<br>P215/60HR14 70.99<br>P195/60HR15 71.99<br>P205/60HR15 72.99<br>P215/60HR15 73.99<br>16-9300 ser.<br>FREE Road Hazard Warranty |
|---|--|---|

623 Hwy. 25 So. Iuka, MS 38852 (601)423-6338

Good Jan. 28 - Feb. 3rd

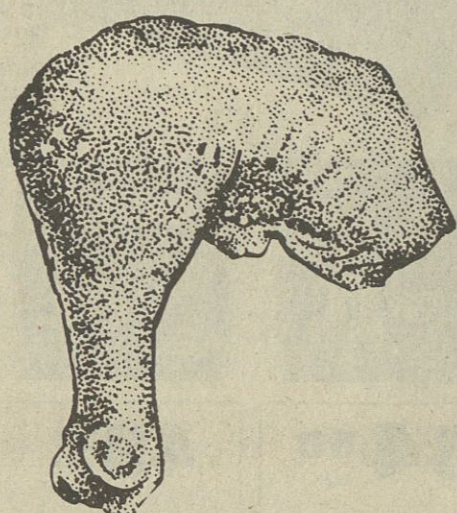
\*Limited Tire and Battery Warranties are for Miles or Months Specified.

THE OFFICIAL AUTO PARTS & SERVICE STORE OF... **NASCAR**

# SUPER BOWL SPECIALS

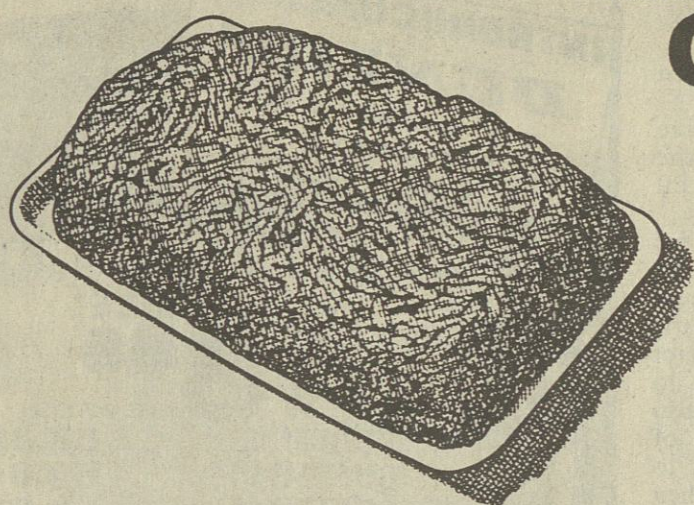
## BUTCHER FRESH MEAT SPECIALS

### USDA INSPECTED LEG QUARTERS



LB.

**25¢**



### FAMILY PACK FRESH LEAN GROUND BEEF

LB.

**\$1.18**



### FAMILY PACK SLICED SLAB BACON

LB.

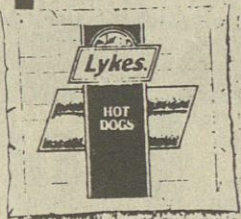
**79¢**



### LYKES SLICED BACON

12 OZ.

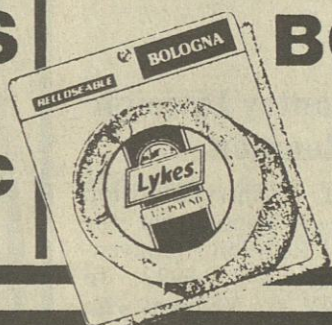
**87¢**



### LYKES HOT DOGS

12 OZ.

**87¢**



### LYKES SLICED BOLOGNA

12 OZ.

**99¢**

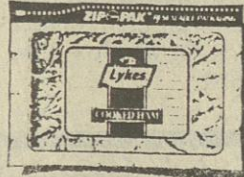


### LYKES TURKEY HAM CHUBS

LB.

**\$1.67**

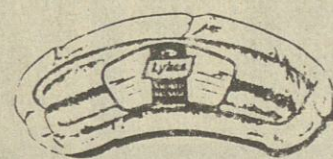
SLICED FREE



### LYKES SLICED 4X6 COOKED HAM

10 OZ.

**\$1.99**



### LYKES SMOKED SAUSAGE

16 OZ.

**\$1.89**



### LYKES HOT OR MILD WHOLE HOG SAUSAGE

1 LB.

**\$1.48**

**NELSON'S  
HAS YOUR  
SUPERBOWL PARTY  
SPECIALS!**

**LET US FIX  
YOUR  
MEAT & CHEESE  
PARTY TRAYS!**

Fresh Twin Pack Pizzas .....44 Oz. **\$4.98**

Joey Fresh Oysters .10 Oz. Cup **\$2.59**

Bryan Cocktail Smokies .....16 Oz. **\$2.79**

Fresh Baked Loaf French Bread 16 Oz. **99¢**

# NELSON'S SUPERBOWL PARTY

We Welcome  
FOOD STAMP  
SHOPPERS.

THIS AD GOOD JAN. 28 - FEB. 1, 1993

## HYDE PARK MAYONNAISE

32 OZ.



**96¢**

## SUNFLOUR FLOUR

5 LB. BAG



**99¢**

LIMIT 2 OR \$1.19

## COKE & COKE PRODUCTS

12 PACK



**\$2.79**

## FRESH PRODUCE

### U.S.#1 RUSSET POTATOES

10 LB. BAG



**\$1.39**



### CANADIAN RUTABAGAS

3 LBS. **99¢**



### MISSISSIPPI #1 SWEET POTATOES

5 LBS. **\$1**

# ON'S MARKET JMS.

AN. RU FEB. 3RD, 1993.

Quantity Rights reserved.  
None sold to dealers.

**COTTONELLE  
BATH TISSUE**  
4 ROLL



**87¢**

**COAL**



**9¢**

R \$1.29

**DAIRYLAND  
MILK**  
GALLON



**\$1.99**

**SIE  
CRIS**



**9¢**

**ARMOUR  
CHILI  
W/BEANS**  
15 OZ. CAN



**69¢**

**DE SPECIALS** ❄️

**OPES**



**39**

**FRESH TENDER  
BROCCOLI**  
BUNCH



**99¢**

**FLORIDA  
RED GRAPEFRUIT**  
EACH



**4/\$1**

**ES**

**1**



**FRESH WHOLE  
MUSHROOMS**  
8 OZ. PKG.

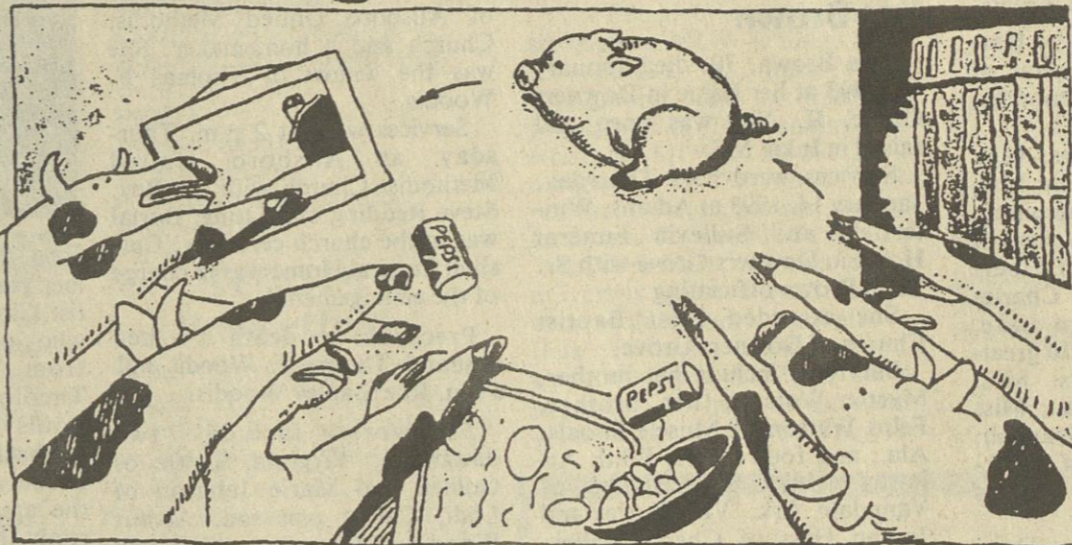
**99¢**

**\$25 GROCERY GIVEAWAY WINNERS!**

**PAM HOBBS**

**GROCERY SPECIALS**

**STOCK UP!** Gotta Have Plenty to Party.



Had Curly not run out of Pepsi for the big Game, he might not have become the halftime entertainment.

**PEPSI & PEPSI PRODUCTS .....2 LITER 79¢**

**VIVA  
PAPER  
TOWELS**  
SINGLE ROLL



**59¢**

**RONCO  
MACARONI  
& CHEESE**  
7.25 OZ.



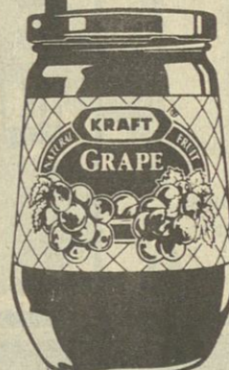
**4/\$1**

**HYDE PARK  
POTATO  
CHIPS**  
ASST. SIZES



**79¢**  
Starkist Tuna .....6.2 OZ. **49¢**

**KRAFT  
GRAPE  
JELLY**  
2 LB. JAR



**98¢**

**KRAFT PARKAY  
MARGARINE  
QUARTERS**  
1 LB. QUARTERS



**39¢**

**Kraft Velveeta Cheese  
Singles .....12 Oz. \$1.69**

**Kraft French  
Onion Dip .....14 Oz. 99¢**

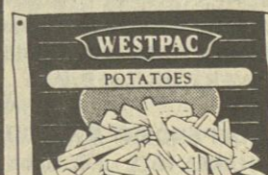
**Pillsbury  
Biscuits .....4 Pack 79¢**

**KRAFT VELVEETA  
CHEESE SPREAD**  
2 LB.



**\$3.99**

**WESTPAC  
RAWHIDE FRIES**  
2 LB.



**69¢**

**HYDE PARK  
ORANGE  
JUICE**  
64 OZ.



**97¢**

**RED BARON  
PIZZA**



**\$2.99**

# Obituaries....

## Rites Held For Mrs. Lucille Tucker

Lucille Broadway Tucker was born on February 28, 1922 in Hardin County, the daughter of the late Walter Broadway and Maggie Bullard Broadway. On December 28, 1940 she was united in marriage to Kenzie Tucker, who preceded her in death on March 12, 1981. She was a life-long resident of south Hardin County and worked as a homemaker.

Mrs. Tucker departed this life on January 19, 1993 at the Hardin County General Hospital, at the age of 70 years, 10 months, and 21 days.

She leaves 3 daughters: Mrs. Patricia Scott of Savannah; Mrs. Louella Dawson of Tishomingo, Miss.; Mrs. Mamie Welch of Savannah; 2 sons: Delbert Tucker of Counce and Charles (Sonny) Tucker of Horn Lake, Miss.; 18 grandchildren, 10 great-grandchildren; 3 sisters: Mrs. Katie Rast of Iuka, Miss.; Miss Grace Broadway of Savannah; Mrs. Rachel Jenkins of Rockwood, TN; a brother, Charles Broadway of Iuka, Miss.

Services were held on Thursday, January 21, at 3 p.m., at the Shackelford Chapel in Savannah, with James Covington and Evan Miller officiating. Burial in Fairview Cemetery.

## Mrs. Opal Evans Dies January 16, 1993

Opal Earlene Mathis Evans was born on March 7, 1914 in Clifton, TN, the daughter of the late James Harrison Mathis and Pearl Butler Mathis. On June 29, 1935 she was united in marriage to James A. Evans, who preceded her in death on January 14, 1968. She was a member of the Gospel Assembly Church in Iuka, MS, worked as a homemaker, and had resided in Apex, N.C. for the past two years, being a former resident of Iuka.

Mrs. Evans departed this life on January 16, 1993 in Apex, N.C. at the age of 78 years, 10 months, and 9 days.

She leaves a daughter, Mrs. Patricia Evans Crist of Apex, N.C.; 3 grandchildren: Howard Leroy Crist, Jr., Evan Coleman

Crist and Catherine Ellen Adell Crist; 2 sisters, Mrs. Grace Hardin of Florence, Mrs. Lura Brown of Stuart, Fla. and a brother, Hubert Mathis of Savannah.

Services were held on Wednesday, January 20, at 11 AM, at the Gospel Assembly Church in Iuka, MS, with Zolon Zeh officiating. Burial in Greenvue Memorial Gardens, Florence, Ala.

## Rites Held For Ada Brown

Ada Brown, 70, died January 11, 1993 at her home in Downers Grove, IL. She was born and raised in Iuka, MS.

Services were held Thursday, January 14, 1993 at Adams, Winterfield and Sullivan Funeral Home in Downers Grove with Sr. Petra Brown officiating.

She attended First Baptist Church of Downers Grove.

Survivors include her mother, Myrtle Watson; her brother, Felps Watson of Muscle Shoals, Ala.; and four sisters, Edith Ataway of Iuka, Billie Hinchey of Vanndale, Ark., Vida Turley and JoAnn Hess of Cherry Valley, Ark.; three grandchildren, 2 step-grandchildren.

## Mrs. Alma Henderson Dies At Age 86...

Mrs. Alma (Work) Henderson, 86, of Birmingham, AL died January 14, 1993. She was a born again Christian and a member of Fultondale United Pentecostal Church.

Burial was Sunday, January 17 at Palestine near Paden, Miss. Her pastor Bro. Phillips officiated.

Alma was the oldest daughter of the late Willie and Beulah Bryant of Paden.

Alma lived her younger years in and around Paden. She moved to Alabama in middle 40's with her late husband Alfred Work and family. Alfred passed away in 1950. She later married the late Charlie Henderson.

Survivors include 2 sons, Estion L. Work of Cedar Lake, Ind. and Jack Work of Vandiver, Ala. daughters, Miss Helen Work and Mrs. Betty Sue Hollis both of Birmingham, Mrs. Lillie Banham of Jasper, Ala. and Mrs. Billie

Joyce Crawford of Cullman, Ala. and 1 sister, Mrs. Ila Roberts of Lepscomb, Ala; 21 grandchildren, several great-grandchildren and several great-great-grandchildren and lot of nieces and nephews that loved her very much.

Family wants to thank all the friends for all the flowers, prayers and sympathy during the loss of their loved one.

## Services Held For Mrs. Dora Woodis

Dora Woodis, 93, died Tuesday, January 19, 1993 at the Iuka Hospital. She was a member of Allsboro United Methodist Church and a homemaker. She was the widow of Thomas F. Woodis.

Services were at 2 p.m. Thursday at Allsboro United Methodist Church with the Rev. Steve Redding officiating. Burial was in the church cemetery. Cutshall Funeral Home was in charge of the arrangements.

Preceded in death by her husband, Thomas F. Woodis and a son, Roe Stanley Woodis.

Survivors include two daughters, Virginia Smith of Golden and Marie Johnson of Lodi, Calif.; one son, Arthur Woodis of Cherokee, Ala.; two sisters, Agnes Sanders and Grace Branson, both of Iuka; 11 grandchildren, 15 great-grandchildren, one great-great-grandchild.

Pallbearers were Larry Bonds, Ray Woodis, Pat Waldrep, Charles Bishop, Aubrey Bolding and Marvin Dover.

Honorary pallbearers were Larry Woodis, Norman Woodis, Thomas Woodis, David Woodis, Mike Swift and Harold Qualls.

## Thank You

Thanks to the Friends of Tishomingo for the flowers given to me during the passing of my brother.

Polly Sartain



Bro. Michael O. Duff, former pastor of the Eastport Baptist Church was one of the 206 who graduated December 18, from The Southern Baptist Theological Seminary in Louisville, Kentucky. Bro. Michael received his Master's of Divinity degree with honors in the area of Evangelism. In his study he worked in preparing material for Evangelist Billy Graham and Evangelist John Guess which would be used in crusades all over the world. While attending Southern Seminary he was nominated for the Clyde T. Francisco Preaching Award in 1992 which is a distinguished award given to students who excel in preaching abilities. Bro. Michael has accepted the pastoral position at the North Springfield Baptist church in Springfield, Tennessee. Bro.

Michael and his wife Terri with their two children live at 307 South Pawnee Drive, Springfield, Tennessee 37172. His home phone number is 615-384-0835.

ning at 1 o'clock. The pastor, Bro. Roy Hyde, and the congregation invite everyone to attend, especially all singers and piano players.

## Gospel Singing At Mt. Hebron

Gospel Singing at Mt. Hebron Church on Saturday night, January 30, at 7 o'clock.

The church is located on new Hwy. 72 between Iuka and Burnsville close to the new high school, turn south on barn road 269 go one block, white block church on left.

The Sloan Family will be the featured singers.

## Fifth Sunday Singing

Mt. Vernon Baptist Church located on Rutledge Salem will have their regular fifth day singing on January 31st. Services will begin at 5:30 p.m. Bro. Charles Holcomb and congregation invite everyone to attend these services of song and praise.

## Gospel Singing At South Crossroads

South Crossroads Baptist Church will host a gospel singing on Sunday, January 31, at 6:00 p.m.

Bro. D.D. Jones and congregation invite everyone to attend with a special invitation to all singers and piano players.

## Singing At Boggs Chapel

There will be a Fifth Sunday afternoon singing at the Boggs Chapel United Methodist Church on Sunday, January 31, beginning at 1 o'clock.

## Trinity Presbyterian Church

A Presbyterian Church in America Congregation meets at Shiloh Falls Office Bldg., Pickwick

### WORSHIP SERVICE

Sunday Morning 11:00

Sunday School 9:45

Nursery Available

Pastor Phil Reynolds/Phil Weiland

P. O. Box 1122, Iuka, MS 38852

Telephone: 423-6700

423-9300



## Pre-Need Saves You More.

Because some day, someone in every family will be faced with making funeral arrangements for a loved one, the Pre-Need Plan is designed to take unnecessary hardships out of a death in the family. Perhaps, one of the most noble things anyone can do for his family is to make arrangements in advance. The big advantage of planning in advance is that a funeral is planned at today's values. While prices are escalating, your cost remains the same.

Consider a person age 65, whose funeral selection will cost \$3,750. Through a Pre-Need Plan, the cost is \$2,778.75, saving \$971.25.

This plan is also available on a 3-year and 5-year plan.

(These figures are examples. The American Funeral Assurance Pre-Need Plan is available from age 18 and may be for more or less than the amount used in this example. Younger ages reflect greater savings than this example.)

☐ Yes, I would like more information about Pre-Planning.

NAME

ADDRESS

CITY

STATE

ZIP

PHONE

CLIP & MAIL TO:

CUTSHALL FUNERAL HOME

P. O. Box 99

IUKA, MS 38852

## St. Mary's Catholic Church

113 Eastport at Fulton Street

Saturday Evening Mass at 6:15 p.m. in the Episcopal Church of Our Savior on Eastport St.

Fr. John Young  
1-287-1385 Corinth

Sister Kathleen Dede, S.T.  
Administrator  
1-728-7509 Booneville

## IUKA BAPTIST CHURCH

105 West Eastport Street Dr. Julian West, Pastor



### SUNDAY SERVICES

Sunday School 9:45 a.m.

Worship Service 10:55 a.m.

Church Training 6:00 p.m.

Worship Service 7:00 p.m.

### WEDNESDAY SERVICE

Mid-Week Prayer Meeting 7:00 p.m.

Morning and Evening Broadcast Over WTIB-FM  
104.9 Morning services also on A.M. 1270

## RUSHING REXALL DRUG COMPANY

Presents The Iuka Hospital List

Gladys Bolton  
Grace Branson  
Minnie Bullard  
Bertha Burney  
Eula Carr  
Wilburn Cox  
Eva Curtis  
Stephen Dean  
Debbie Flanagan  
Robin Flores  
Tammy Glover

Anison Gray  
Christine Hamm  
Isabel Hill  
Milton Hudson  
Charles Jacobs  
Edith Jourdan  
Sherry Knight  
Nora Malone  
Elva Marlar  
Robert Moore  
Willie Moss

Sylvia Orrick  
Anita Parker  
John Pharr  
Linda Pruitt  
Pauline Seward  
Margaret Siemowski  
Eva Ward  
Shelby Whitehurst  
Freda Wilemon  
Ora Williams  
Jewell Yancy

# - CHURCHES -

### Baptist

ST. PETER MISSIONARY - Jonathan Temple  
AIRPORT MISSION - R.C. Scott  
IUKA - Dr. Julian West  
BELMONT FIRST - Jack Maroon  
HUBBARD SALEM - Allen Osborn  
CARTERS BRANCH - S.W. Shinault  
CALVARY BAPTIST - Bob Moritz  
MT. MORIAH - James H. Taylor  
MT. VERNON - Charles Holcomb  
TISHOMINGO - Bro. Edward Johnson  
BURGESS CREEK - Allen Jones  
BURNSVILLE FIRST - Billy Joe Loyd, Jr.  
NEW PROSPECT - Doug Christy  
OLDHAM - J.A. Blunt  
PADEN - Ellis Floyd  
FIRST BAPTIST - Dennis McCoy  
NEW SALEM - Bro. Clayton Littlejohn  
UNITY - Harold Holly  
RED BUD - John Stovall  
ROWLAND MILLS - Edward Stacey  
HARMONY HILL - Billy Paul Feltman  
MT. JOY - Bill Filippo  
JACKSON CAMP - Mavous Phifer  
MAGNOLIA - Howard Stanford  
CALVARY MISSIONARY - Michael Bright, Sr.  
SOUTH CROSSROADS - G.D. Jones  
EASPORT - Bro. Phil Dawson  
PROVIDENCE - Jimmy Burrell  
BETHEL - John McLemore  
MT. GILEAD -  
TEMPLE - Frankie Smith  
MT. ZION - Bro. Earl Martin  
FIFTH STREET - Bill Hobson  
OLD PLEASANT HILL - Bro. Robert Lewis Hutson  
NEW LEBANON FREEWILL - Gene Gilbert  
ANTIOCH FREEWILL -  
POPLAR SPRINGS FREEWILL - Malcom Garrett  
HIGHLAND - Rayborn Richardson  
BETHLEHEM - I.E.P. Baldwin  
YELLOW CREEK - Stanley Magill  
DENNIS FIRST - John Mills  
FIRST FREEWILL - Steve Nichols  
NEW LIBERTY - Lathon Bray  
SHORT CREEK - Bro. Leonard Casabella  
WALKER - Roger Browning & Ricky Taylor  
LITTLE FLOCK PRIMITIVE - Roger Browning & Ricky Taylor  
SOUTHWOOD - Tim Pittman  
MT. GLORY -  
SARDIS - John Stockton  
GOLDEN CENTRAL -  
FORREST GROVE MISSIONARY - Lon Pennington

### Methodist

PATRICK, HARMONY, BURNSVILLE - Bob Brant  
IUKA - Prentiss Gordon, Jr.  
MT. EVERGREEN, CAMPGROUND - Jon Altman  
ROCKY SPRINGS - Jon Altman  
SNOWDOWN, PLEASANT HILL, SPRING HILL - Frank Rushing  
OLD BETHEL - Dale Blackman  
GOLDEN CHAPEL - Dale Blackman  
SALEM, BOGGS CHAPEL - Rowland Hyde  
PARADISE, TISHOMINGO - Steve Kennedy  
BELMONT, DENNIS - Ronnie Goodwin  
JONES CHAPEL CHURCH - Henry Diamond  
ALLSBOBO UNITED - Steve Redding  
MARGERUM - Steve Redding  
RIVERTON - Ted Brison

### INDEPENDENT METHODIST

INDEPENDENT METHODIST  
CHAPEL HILL - J.G. Babb  
HEBRON -

### Churches Of Christ

MAUD - Jimmy Wisdom  
IUKA - Lance Foster  
BEREA - Duane Ellis  
TISHOMINGO - Terry Smith  
BELMONT SECOND STREET - John West  
PLEASANT GROVE - John Hardwick  
LIBERTY - Jimmy Gross  
MAIN STREET, BELMONT - Wayne Mitchell  
BURNSVILLE - J.T. Smith  
EAST IUKA - Howard Caperton

### Presbyterian

ALLSBOBO CUMBERLAND - Garth Tobler  
BETHANY - L.K. Foster  
MAUD CUMBERLAND - Gary Cosby  
IUKA - Phil Reynolds

### Catholic

ST. MARY'S - Kathleen Dede, S.T.

### Church Of Jesus Christ Of Latter Day Saints

CORINTH WARD - Curtis Clayton  
BOONEVILLE WARD - Arthur Byrd

### REORGANIZED

RED BAY, AL - Justice Manning

### United Pentecostal

BURNSVILLE FIRST - Jimmy Rich  
IUKA FIRST UNITED - Frank E. Williamson

### Nondenominational

AMAZING GRACE TABERNACLE - Bro. & Sis R.G. Rodgers  
MT. ZION - Bro. Gerald Grisham  
NORTH CROSSROADS - Travis Shea  
GRACE BIBLE CHURCH - Danny Lovelace  
FAIRVIEW COMMUNITY - Donald Hudson  
BURNSVILLE TABERNACLE -

### Pentecostal

IUKA GOSPEL CHAPEL - Larry Riley  
CHRIST GOSPEL - Rev. Ricky Bray  
GRISSOM CHAPEL - Danny Kenaum  
APOSTOLIC FRIENDSHIP CHAPEL CHURCH - Steve Nichean  
FULL GOSPEL FELLOWSHIP - Mike Richardson  
APOSTOLIC CHURCH OF JESUS CHRIST - Kenneth White

### Full Gospel

MISSION LIGHTHOUSE - John Gwatney  
MT. HEBRON - Annette Scott  
JAMES CHAPEL -  
IUKA CHURCH OF GOD - James Strange  
STARLIGHT TABERNACLE - R.C. & Dorothy Wigginton  
ASSEMBLY OF CHRIST HOUSE OF PRAYER - Lelon Owens

Church Directory Brought To You  
Courtesy Of These Businesses

FARM BUREAU INSURANCE  
Phone 423-6151 - Iuka, MS

IUKA GUARANTY BANK  
"Straight Ahead Through The Years"

BROWN INSURANCE AGENCY  
Iuka, MS

STATE FARM INSURANCE  
Iuka, MS

TOWN & COUNTRY FURNITURE  
Hwy. 25 South in Iuka

The Peoples Bank  
Member FDIC -  
Ph. 423-1835

CURTIS DRUGS  
Phone 423-3676 - Iuka, MS

McNATT FORD SALES  
Phone 423-3681 - Iuka, MS

CUTSHALL FUNERAL HOME  
Phone 423-5222 - Iuka, MS

PAGE MOTORS, INC.  
104 Hwy. 25 North - Iuka, MS - Ph. 423-3622

RUSHING REXALL DRUGS  
Phone 423-3629 - Iuka, MS



**T.C.H.S. CLASS FAVORITES** - Chosen as some of the most liked people in their classes at Tishomingo County Magnet High School this year were Class Favorites from left: Twelfth Grade - Cindy Lynch and Heath Ham; Eleventh Grade - Jolene Wilkins and Zack DePoyster; Tenth Grade - Molly Lomenick and Shane Wright; and Ninth Grade - Stephanie Wilson and Casey James.



CMHS now has a teepee for basketball games! A big thank you from the basketball cheerleaders to Mr. George Gresham for all of the time and energy that was spent getting the teepee ready. This will be a permanent run-through sign for the players at home ballgames. There are five regularly scheduled

ballgames left in the season, so come out and see the Braves play! Pictured are T.C.M.H.S. Basketball cheerleaders (back row, from left) Kristi Pannell, Courtney Compton, Jenny Stolsworth, Deedra Bailey, Stormy Petty, Tracy Lambert; (front row, from left) Angela Gresham, Ashley Bonds, Jessica Deaton, and Amber Forsythe.

### Tishomingo News

By: Willard Strickland  
Our deepest sympathy goes out to the Denny Clark Family. In that he lost his life in an accident Saturday night. We are so sorry when things like this happens. We pray that God will heal Joann's pains of this tragedy and his mother Jeffie Dean Clark that had surgery in Tupelo on Friday. May God help to heal her and bless her thru this tragedy.

Bro. Ralph Cup was carried to Tupelo Saturday night with heart conditions. We hope he is soon better.

Tishomingo community was struck with so much bad news and sickness this past weekend. Mrs. Lucian Yarber a patient at Tupelo and Mrs. Lida Kemp a patient at Tupelo and her condition was serious. We hope all these patients are soon better.

In Iuka a number of people from Tishomingo area are in the hospital. Mrs. Gladis Bolton, Mrs. Dora Cagle, Mrs. Eula Carr and Mrs. Christine McAlister. We send get well wishes to all of them.

Mrs. Ishbell Hill is a patient at Iuka Hospital and Mr. Ronnie Cox is undergoing test at the hospital in Iuka. This is Mrs. Willa Dean Cox's mother and son we send get well wishes their way too.

Mr. George Harper is home but was very sick the last of the week. Proud he's some better.

Mr. and Mrs. Tommy Cornelious of Nashville spent the weekend with Mrs. Babe Cornelious.

Mr. Eddie Shifflett of Nashville visited his mother Judy and Beth Shifflett over the weekend.

Mr. and Mrs. Tommy Cornelious and Mrs. Irene "Babe" Cornelious attended the beautiful wedding of Rickey and Jill Long in Iuka Saturday afternoon.

Tommy and Edna Cornelious and Babe visited with Christine McAlister Saturday afternoon at the hospital in Iuka.

Miss Shirley Ann Thorn and Mrs. Opaline Crouse attended the wedding of Jill Paden and Rickey Long at the Iuka Methodist Church on Saturday afternoon.

Cherri Southward, Pam McDuffy Wilson and Deborah Wright went to Memphis, TN to spend a few days with Sam and Linda Dixon. While there they got to go on the set of the movie "The Firm" which is being filmed in Memphis. While on the set they got to talk to some of the producers and also spoke briefly to the star of the movie himself, Tom Cruise.

### North Crossroads FCE Meets

The North Crossroads family and community education club met January 14, 1993 for their monthly meeting. New officers were installed for the year. Dorothy McDuffy, president, opened the meeting with the Pledge of Allegiance to the Flag. Clara Yarber read the council collect and Ruth McDuffy led the devotional.

The December meeting moments were read, and plans for the New Year were made. Hostesses were selected for the year. We hope as a new club to have a very rewarding 1993. We want to invite anyone who would like to attend. No discrimination will be made regardless of race, sex, age, color or origin. Our next meeting will be on February 11, at 10:30 a.m. at the North Crossroad Fire Department Building.

### County Schools Lunch Menu

**MONDAY**  
Lasagna, tossed salad  
buttered rolls  
cherries w/topping, milk  
**TUESDAY**  
Hot Dog  
chili or sweet relish  
french fries, baked beans  
rice krispie treat, milk  
**WEDNESDAY**  
Vegetable Soup  
choice of Sandwich  
crackers, applesauce  
peanut butter cookie, milk  
**THURSDAY**  
Taco Salad/cheese  
shredded lettuce/tomato  
tator tots, whole kernel corn  
spice cake, milk  
**FRIDAY**  
Breaded Beef Fingers  
creamed potatoes/gravy  
green peas, buttered rolls  
fruit jello, milk

### TCMHS Basketball

The Tishomingo County Magnet High School Braves Basketball team will play the following games in the next week.  
Jan. 29 - Hernando. . . . . There  
Feb. 2 - Belmont. . . . . There

### Honor Roll At MUW

Sherrie L. Moore of Iuka is among 398 scholars listed on the 1992 fall semester honor roll at Mississippi University for Women.

She was named to the President's list.

MUW's honor roll is composed of the President's List, which represents students who earned a straight "A" average for the semester and the Dean's List, which features students showing an overall average of "A" for the fall semester.

The President's List for the fall semester at MUW is made up of 75 seniors, 35 juniors, 21 sophomores, and 11 freshmen, for a total of 142 straight "A" students. MUW's Dean List is composed of 93 seniors, 64 juniors, 56 sophomores, and 43 freshmen, for a total of 256.

"On behalf of the entire university community, I wish to congratulate these students for their academic achievements," said Dr. Clyda S. Rent, MUW president. "These are students who set the standard. They are

the models for other students to follow. We are proud of them and wish them continued success in their studies here at MUW."

### Letter To The Editor

Tishomingo Co. Rescue Squad  
P.O. Box 511  
Iuka, MS 38852

Dear Ladies and Gentlemen,  
I was working in Brandon as a volunteer with the Salvation Army on the weekend after Thanksgiving when members of the Tishomingo County Rescue Squad arrived with two large trailers full of clothes and bedding for the victims of the recent tornado here in Rankin County.

On behalf of the people of Rankin County, I want to thank you and the people of Tishomingo County for the outpouring of care, love and prayers. Your generosity was thoroughly appreciated.

Sincerely,  
Charlene M. Lehtola

### Baseball Card Show

You are invited to a baseball card show on Saturday, February 13, at Days Inn in Iuka. The show hours is 9 a.m. til 6 p.m. Tables can be set up for \$25 each. Everyone is welcome and admission is free.

For more information call Heath Lovelace at 427-8281 or 423-6374.

### USM President's, Dean's List Released

The University of Southern Mississippi President's and Dean's Lists have been released for the 1992 fall semester.

The President's List includes only those fulltime scholars who earned a 4.0 grade-point average (all As). Dean's List scholars include those with at least a 3.25 grade-point average, but less than a 4.0.

Listed students from the local area include: President's List - Linda Michele Carley of Tishomingo.

*The children, grandchildren,  
and great grandchildren of  
Mrs. Grace Kent Phifer  
cordially invite you,  
her friends and relatives,  
to a reception at  
The Key West Inn of Iuka,  
on January 31, 1993  
between the hours  
of 2:00 and 4:00 p.m.  
to celebrate the occasion  
of Grace's 78th birthday*

# "SUE 'EM."

That's what too many people are too quick to do - sue over frivolous injuries and for huge amounts of money. And, if you think this is hurting Mississippi, a new poll shows you are not alone.

This poll, conducted by Dr. Verne Kennedy of Market Research Institute, shows that many of your fellow Mississippians believe that frivolous lawsuits are hurting Mississippi.

Here is what Mississippians think... 68% believe we will be better off with tort reform.

#### JUNK LAWSUITS:

- Cost jobs by causing businesses to leave Mississippi or go out of business.....70% believe
- Lead to higher taxes .....71% believe
- Increase the cost of medical care .....87% believe
- the cost is passed on through higher prices.....89% believe

Because so many Mississippians feel this way, some of them have gotten together to fight these junk lawsuits. So you aren't alone.

Want to learn more? Call 1-800-766-7606 or send in the coupon. You'll receive complete results of the poll - and a free action kit. Find out how you can help make the system fairer and protect yourself.

Stop junk lawsuits. They're costing you plenty.

**STOP JUNK LAWSUITS. CALL 1-800-766-7606**

Paid for by M-FAIR

MISSISSIPPIANS FOR  
A FAIR LEGAL SYSTEM  
P.O. Box 13509, Jackson, MS 39236-3509

Please send me the complete results of the poll and your free action kit. I want to learn how to make the system fairer.

Name \_\_\_\_\_  
Title \_\_\_\_\_  
Organization/Business \_\_\_\_\_  
Address \_\_\_\_\_  
City \_\_\_\_\_  
State \_\_\_\_\_ Zip \_\_\_\_\_

New Salon Opening In Iuka  
Monday, February 1st

**SASSY  
SCISSORS**



Stylist/Owner Debbie Wingo

Stylist - Amy Gray

Snowdown Road - Iuka

Paul Mitchell Products

Start Your New Year With A New Stylist!

Hours: Monday - Saturday 9:00 - 5:00

Appointments/Walk-ins Phone 423-2848

# WILL'S

Roast Beef - Hamburgers

Fresh **1/4 LB.  
HAMBURGER  
\$1.29**  
ONLY

**CUSTOM DRESS IT AT OUR GIANT SALAD BAR  
OR ORDER IT THROUGH OUR CONVENIENT  
CARRY OUT WINDOW**

**Offer Good For Limited Time Only So Get In  
On It While You Can**

**NOT GOOD WITH OTHER DISCOUNTS OR SPECIALS  
NO COUPON NECESSARY**

Call in orders welcomed - 423-1321

# Sunflower

"Your Better Value Food Store"

Ad good thru Feb. 3, 1993

Zeigler Hot or Mild  
**Sausage** 12 oz. roll **\$1.69**

Sugar Hill  
**Chicken Franks** 12 oz. **79¢**

Gobbler  
**Turkey Franks** 12 oz. **79¢**

Sugar Hill  
**Chicken Bologna** 12 oz. **79¢**

Flavorite Thin Wafer Assorted Varieties  
**Sliced Meat** 2 1/2 oz. pk. **59¢**

Armour  
**Chicken Nuggets** lb. **\$2.09**



King Cotton  
**Corn Dogs**  
6 pk.  
**\$1.39**

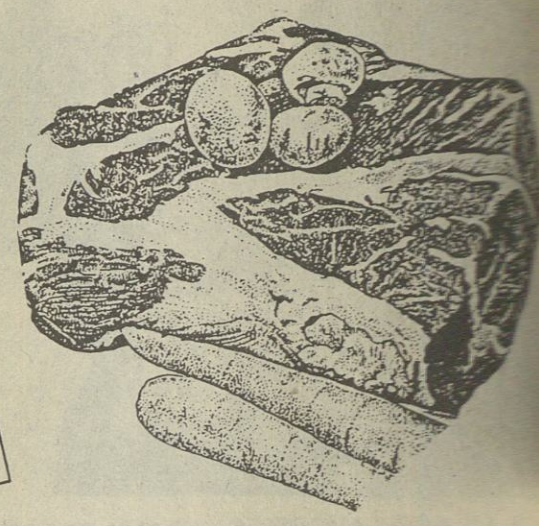


Bryan Boneless Whole  
Hickory Crest  
**Ham**  
5-7 lb. avg.  
lb. **\$2.09**

## SUPER SAVINGS FOR THE SUPER BOWL WEEKEND



- Check List For Your Super Bowl Party!
- ☐ ASSORTED BEVERAGES
  - ☐ CHIPS, CRACKERS, SNACKS, NUTS
  - ☐ DIPS, TOPPING, ETC.
  - ☐ CHEESE, CREAM CHEESE
  - ☐ FRUITS, VEGETABLES
  - ☐ KETCHUP, MUSTARD, ETC.
  - ☐ HOT DOGS, HAMBURGER, ETC.
  - ☐ PAPER NAPKINS & TOWELS
  - ☐ BREAD, BUNS, ETC.
  - ☐ CUPS, PLATES, FORKS

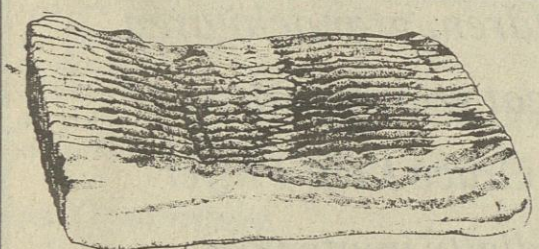


Savory Aged Boneless  
**Chuck Roast**

**\$1.89**  
lb.

Savory Aged Boneless  
**Chuck Steak** lb. **\$1.99**

Savory Aged  
**Swiss Steak** lb. **\$2.00**



Chick-A-Saw  
**Bacon**  
12 oz.

**79¢**



DIET PEPSI,  
MT. DEW, SLICE, 7-UP  
2 LITER BOTTLE

**PEPSI**  
**69¢**



ARMOUR LUNCHEON MEAT

**TREET**  
**\$1.09**  
12 OZ. CAN



FOX DELUXE ASSORTED VARIETY

**PIZZAS**  
**69¢**  
7 OZ.

Betty Crocker Scalloped or Au Gratin  
**Potatoes** 5-5 1/4 oz. box **89¢**

Chateau  
**Foil** 12"x25' roll **69¢**

Blackburn Apple or Grape  
**Jelly** 16 oz. mug **\$1.29**

Bounty  
**Towels**  
Roll **79¢**



SWEET SUE  
**CHICKEN & DUMPLINGS**  
15 OZ. CAN **89¢**



BRYAN  
**VIENNAS**  
5 OZ. CANS

**2/89¢**

ULTRA DETERGENT  
**AJAX**  
**\$1.99**  
42 OZ.



Bruce's  
**Mashed Yams** 14 1/2 oz. cans **3/\$1.00**

Glad Large  
**Kitchen Bags** 15 ct. box **99¢**

Glad  
**Trash Bags** 10 ct. box **\$1.29**

Glad  
**Sandwich Bags** 150 ct. box **99¢**

Glad Lock Zipper  
**Sandwich Bags** 50 ct. box **99¢**

Rainbow Hamburger Dill Chip  
**Pickles** 46 oz. jar **\$1.99**

Sunshine  
**Puppy Food** 4 lb. bag **\$1.29**

Cat Cafe Ocean Fish Flavor  
**Cat Food** 3 1/2 lb. bag **\$1.19**

BLUE BONNET  
**MARGARINE**  
2 / \$1  
1 LB. QTRS.

Sealtest  
**Sour Cream** 16 oz. cup **99¢**

Minute Maid 64 oz. carton  
**Orange Juice** **\$1.69**

McKenzie Chopped  
**Broccoli** 10 oz. boxes **2/\$1.00**

Tony's Assorted Varieties  
**Pizzas** 15.5-17.5 oz. **2/\$4.50**

Picksweet Baby  
**Lima Beans** 16 oz. **99¢**

### GARDEN FRESH PRODUCE

Peeled Baby  
**Carrots** 1 lb. bag **99¢**

Thompson Seedless  
**White Grapes** lb. **\$1.09**

FRESH CRISP  
**Lettuce**  
LARGE HEAD  
**69¢**



Fresh  
**Green Broccoli** Bunch **99¢**

Jumbo Crisp  
**Bell Peppers** **3/\$1.00**

Fresh Crisp  
**Cucumbers** **3/\$1.00**

U.S. No. 1 Russet  
**White Potatoes** 5 lb. bag **89¢**

U.S. No. 1  
**Red Potatoes** 5 lb. bag **89¢**

Last Week's \$140.00 Jackpot Winner  
Theresa Cutshall - Iuka  
"Sunflower Jack Pot"

This Week's Jackpot is  
**\$80.00**

\$50.00 in Free Groceries Given  
Away Each Week, If No Winner  
\$30.00 Added Each Week  
Until Someone Wins  
Game Open To Adults Only Complete Details At Store





Aline Jackson and Olma Carter enjoyed the carolers as they sang some of their old Christmas favorites.

### ASRM Carolers Visit Homes

ASRM Christmas Carolers spread some cheer this year visiting some special ladies at their homes in Iuka. The 10 carolers and their santa/accordion player Tim Mullins made their way through the town, finally arriving at the "Christmas in the Park" activities in Mineral Springs Park. This was the carolers second year to perform.

Photos by Jan Stegall



The ASRM Christmas carolers made a stop at the home of Dorothy Jones as they made their rounds.



One of the homes visited by the ASRM Christmas carolers was that of Mamie Clark Culver and Gertrude Carstens.

### Senate Sentiments

By: Senator John White  
As the clock struck midnight on Monday (January 18), the Senate met the deadline for introduction of general bills and constitutional amendments. 966 bills and 34 concurrent resolutions are being considered by the Senate committees to determine which will be presented to the full Senate for debate and floor action.

This year's session is developing into by far the most interesting legislative session in which I have served during my tenure in the Mississippi State Senate. As most of you know, the longer a Senator stays, the more responsibility he is given thus, increasing his influence in state government. The current year is no exception.

The most controversial issue being decided is that of whether a state lottery should be put in place in order to raise additional state revenue. A three-fifths majority is required to pass any measure dealing with money. The lottery does not have that majority at this writing.

Although I voted consistently to allow the people to vote their wishes on the lottery referendum, I intend to oppose the measure if and when it comes to the floor of the Senate. All four of the counties I represent voted last fall in opposition by a fairly substantial margin.

Since my job is to represent the will of the majority of my many constituents, I feel that I would be breaking faith with my people if I voted otherwise.

Several other important issues have been introduced for consideration by the legislative body. Three bills address the reduction of car tags. At least four bills deal with pay raises for both state employees and educators. Two bills are designed to reduce the size of the Legislature.

Nearly one hundred gubernatorial appointments to state

boards and commissions are now before the Senate for confirmation hearings. As was the tone for the third week of the 1993 session, committee activity will remain the primary emphasis as the Senate workload continuously increases.

It is always good to hear from you regarding legislation about which you are interested. I can be reached by telephone at 359-3770 or by mail at P.O. Box 1018, Jackson, MS. 39215.

### St. Jude Radiothon To Begin Feb. 13th

St. Jude Children's Research Hospital announced today that radio station THE FOX will join their national network of country music stations WFXO to present the Country Cares Radiothon beginning on 02/13/93.

Randy Owen, of country music's Alabama, is chairman of Country Cares for St. Jude Kids and will lead the way for this year's group of performers who have committed their efforts to this event. Joining Randy are country music favorites Reba McEntire, Vince Gill, Alan Jackson, and many others.

St. Jude Children's Research Hospital is America's leading childhood cancer research center, founded by the late entertainer, Danny Thomas. Since opening its doors in 1962, St. Jude Hospital has treated more than 12,000 patients from across the United States and 43 foreign countries. St. Jude Hospital pays for all cost of medical treatment above that which is reimbursed by insurance.

THE FOX is proud to support St. Jude Children's Research Hospital by presenting Country Cares for St. Jude Kids to its listening audience and urges everyone to tune in to enjoy the best of country music and help this great institution in the battle against childhood cancer and other catastrophic diseases.

### Local Man Receives OYMA Award...

The Board of Advisors for the Outstanding Young Men of America awards program announced recently that the men named on the enclosed list have been selected for inclusion in the 1992 edition of Outstanding Young Men of America.

Now in its 27th year, the OYMA program is designed to honor and encourage exceptional young men between the ages of 21 and 40 who have distinguished themselves in many fields of endeavor, such as service to community, professional leadership, academic achievement, business advancement, cultural accomplishments, and civic and political participation. Achievements in these areas are the result of dedication, responsibility and a drive for excellence - qualities which deserve to be recognized and remembered.

The men listed, along with fellow Outstanding Young Men throughout North America, were selected after 65,000 nominations were received from political leaders, University and College officials, clergymen, business leaders, as well as from various civic groups and community organizations. Each young man will be represented by his biographical entry in this prestigious annual awards publication.

Our Board and Advisors and Editors salute all those honored as Outstanding Young Men of America. We take great pride in bringing their accomplishments to the attention of the American public.

Chosen from Tishomingo County was Joseph T. McNatt, P.O. Box 11, Tishomingo.

### Mississippi House Notes

from Rep. Harvey Benderman  
Economic development, sovereign immunity for state and local governments and education are among the many important issues that were examined in the House of Representatives during the week as committee action moves into high gear.

More than 40 committee and subcommittee meetings were on tap Tuesday, Jan. 26, in a concerted effort to deal with the mountain of bills and resolutions introduced since the start of the 1993 legislative session.

Only one week remains before next Tuesday's deadline for House and Senate Committees to act on all general bills and constitutional amendments originating in their own chamber. The cutoff does not apply to appropriations, revenue bills, or general bills coming from the opposite chamber. The ways and means committee gave its approval Monday to a bill that would make several revisions in economic development laws, including an increase in the amount of bonds which could be issued under the Mississippi Business Investment Act from \$145 million to \$175 million. The legislation, recommended by the Department of Economic and

Community Development, also would establish a new source of loan funds to cities and counties for small infrastructure projects related to new or expanded industry.

The Judiciary "A" committee held a hearing Monday on the issue of sovereign immunity for state and local governments. Sovereign immunity is the doctrine that historically has provided protection to governmental bodies from costly damage suits.

The committee has been working for several weeks on ways to deal more effectively with the complex matter. The panel is looking at a bill that among other things, would create a new tort claims board in the state, set up a procedure for handling claims against government agencies and restrict the amount of liability to \$60,000 during the next fiscal year for claims arising out of a single occurrence. The ceiling would be raised the following year to \$100,000 a person and \$300,000 per occurrence.

The House Education Committee agreed Monday to recommend establishment of a teacher center within the Department of Education to work on recruiting teachers for Mississippi and other matters. The committee also received a briefing on the Governor's educational proposals, including a plan to set up a so-called "Career Ladder" program to reward outstanding teachers.

Floor action in the House included approval of a bill that would require homeowners to fill out a disclosure statement listing any hidden defects, structural damage or other problems prior to selling a residence.

A similar bill was passed by the House last year but died in the Senate. The House also approved a bill to grant immunity from civil damages to a person for providing information to a licensed real estate appraiser regarding the terms and conditions of a property sale.

The House declined to reconsider a bill approved last week to allow prosecution of a person on charges of sexual battery of a spouse. The bill now goes to the Senate.

### Retreat Scheduled

Mississippi Arts Commissioners will participate in a two day retreat scheduled for Thursday, February 18, from 8:30 a.m. until 4:30 p.m., and Friday, February 19, from 8:30 a.m. until noon, at the University of Southern Mississippi, Gulfport campus, Long Beach. The meeting will be held in room 302, Hardy Hall. A regular business meeting will be held on Thursday from 8:30 a.m. until 10:30 a.m. This meeting is open to the public.

The Mississippi Arts Commission, established in 1968 by the Mississippi State Legislature, is the official grantsmaking and service agency to the arts in Mississippi. Funding for the Commission and its program is provided by the State of Mississippi and the National Endowment for the Arts, a federal agency.



Chosen As 1992 Realtor Associate and Realtor of the Year, respectively, are local Real

Estate Agents (from left) Dianne Enlow and Dianne Ables. The annual award is given by the Corinth Board of Realtors.

### Local Realtors Receive Awards

Two Iuka Realtors were chosen recently to receive the most distinguished awards given by the Corinth Board of Realtors.

Dianne Ables, local real estate broker and owner of Ables Real Estate in Iuka was chosen as Realtor of the Year, 1992, by the Corinth Board of Realtors.

Dannette Enlow, a real estate salesperson affiliated with Ables Real Estate, was selected by the Corinth Board of Realtors as Realtor Associate of the Year, 1992.

Some of the qualities displayed by the Realtors that yielded them this prestigious award included hard work, a professional attitude and continuing their education and assisting others in the industry, according to Mississippi's First Congressional District Real Estate Commissioner Brian W. Pray.

"It is truly a distinction to be selected by your peers for this coveted award," Pray stated. "It is heartwarming to hear of the accomplishments of Brokers and Licensees like these who set the standards for others to follow."

Dianne received her pre-license requirements through the Mississippi Realtor's Institute. She received her salesperson's license in 1979 and joined the Corinth Board of Realtors as a Realtor Associate.

In 1987, Dianne received her Broker's license and became a Realtor with the Corinth Board of Realtors and in 1988 opened the Ables Real Estate office. In 1991, she served as president for the Corinth Board of Realtors and is presently serving on its Board of Directors.

Dianne holds a GRI Designation (Graduate-Realtors Institute) and also holds a residential Real Estate Appraiser's Certification.

Dannette received salesperson's license in 1990 after completing pre-license requirements through the Mississippi Realtors Institute. After she began working with Ables Real Estate,

Dannette joined the Corinth Board of Realtors as a Realtor Associate. She served as secretary for the Corinth Board of Realtors for 1991-1992.

The Corinth Board of Realtors serves Corinth, Tishomingo, Prentiss and Tippah counties in north Mississippi. Real estate professionals who hold membership with the local board may hold membership in the Mississippi Association of Realtors and the National Association of Realtors.

Realtors and Realtor Associates volunteer their commitment to the code of ethics of the National Association of Realtors which ensures clients and customers outstanding professional service.

### "Exposure" Concert Set

"Exposure," North Mississippi Community College pop/rock ensemble will be featured in concert Saturday, January 30, at 7:00 p.m. in Pounds Auditorium.

A wide variety of popular music as well as "classics" from the past will be performed.

"The concert will be something for everyone," said Dr. Bob Taylor, "Exposure" director.

Included in the show are such hits as Michael Bolton's "Love is a Wonderful Thing," "Someday" by Mariah Carey and Amy Grant's "I Remember You."

Admission is \$5.00.

### For Sale

ENGLISH BULLDOG PUPPIES for Valentine's Day - Champion Top Quality, AKC Registered. 601-423-5620 or 423-9233. J-28

FOR SALE-3 bedroom, 2 1/2 greatroom w/fireplace oak kitchen cabinets, double garage, large deck inside city for details call 5616 days 423-6789 or 423-6789 nights. J-28-F4

### NOTICE OF PUBLIC HEARINGS

Announcement is hereby given that the Tennessee Valley Regional Housing Authority will hold ten (10) Public Hearings (one in each of the ten counties in which the Authority operates) to discuss the expenditure of funds being awarded to the Housing Authority under the Department of Housing and Urban development Comprehensive Grant Program. Although these Hearings are open to the public, residents of TVRHA housing and local government officials are especially invited to attend. The dates and locations of the Hearings are:

| COUNTY     | DATE/TIME                | LOCATION  |
|------------|--------------------------|---|
| Alcorn     | Feb. 9, 1993; 4:00 p.m.  | John Street Neighborhood Facility<br>1102 John St. Corinth, MS              |
| Chickasaw  | Feb. 9, 1993; 4:00 p.m.  | Okolona Vocational Technical Center<br>Okolona, MS                          |
| Itawamba   | Feb. 9, 1993; 4:00 p.m.  | Lakewood S/D House #8<br>Fulton, MS   |
| Lee        | Feb. 11, 1993; 4:00 p.m. | Verona City Hall<br>Verona, MS  |
| Monroe     | Feb. 11, 1993; 4:00 p.m. | Quinn Mattox S/D House #2<br>Darracott Road - Aberdeen, MS                  |
| Pontotoc   | Feb. 9, 1993; 4:00 p.m.  | Sher-Phil S/D House #10-B<br>479 Westwood Dr. - Pontotoc, MS                |
| Prentiss   | Feb. 11, 1993; 4:00 p.m. | Community Center<br>West Side City Park - Booneville, MS                    |
| Tippah     | Feb. 9, 1993; 4:00 p.m.  | Tippah County Courthouse<br>Supervisors Board Room - Ripley, MS             |
| Tishomingo | Feb. 11, 1993; 4:00 p.m. | Westwood S/D House #1<br>924 Westwood Circle - Iuka, MS                     |
| Union      | Feb. 11, 1993; 4:00 p.m. | Fairgrounds S/D<br>Housing Authority Office<br>Reed Avenue - New Albany, MS |

The purpose of said Public Hearing is to afford ample opportunity for residents, local government officials, and other interested parties, to express their concerns about the Housing Authority's plans for the expenditure of Comprehensive Grant funds. All comments and suggestions will be considered before the Authority submits required plans to the Department of Housing and Urban Development.

Copies of the proposed plans will be available for examination at the location of the Hearings.

Tennessee Valley Regional Housing Authority  
Thomas M. Coleman, Executive Director  
P. O. Box 1329  
Corinth, MS 38834  
Phone: (601) 287-1617 or 286-8437/869-5751 (TDD)



### MS GEMS Class Studies Medieval Ages

The Iuka Middle School GEMS class has recently studied about the Medieval Ages. Some of the things the class studied about are the feudal system, the weapons and tools of the knights, the armor used by the knights, the ways of communicating during that time, etc. Each student sealed a letter with sealing wax, and each wrote a charter of rights and used a technique to make the document look aged. In a cooperative learning activity, the students made a hennin, which is a tall, cone-shaped hat worn by the noblewomen during the Medieval Ages. They also made a crusader's helmet. They each designed their own heraldic shield. In another cooperative learning activity, the students designed and built castles.

Teacher of the GEMS class is Cindy Pharr. Students of the GEMS class are: Adam Archer, April Bostick, Bridgett Deaton, Carol Anne Emmons, Ashlea Enlow, Patrick Enlow, Rebecca Freeman, Amy Hopewell, Kelli King, Miranda McGaughy, Keith McNeely, Melissa McQueen,

Chris Meyer, Sara Strickland, Salome Whitlock, Tag Gentsch, Jamie Grisham, Lamella Malone, Kristy O'Neal, Deresa Patrick, Jonathan Pharr, Amanda Presley, Alan Young, Brad Cornelison, Justin Alsop, Joey Beck, Emilie Cooke, Beth Darwin, Heather Edmondson, Chantel Ervin, Brooke Gentsch, Valena Gonzales, Jeremy Lambert, Matthew Lambert, Jessica Long, Kara McPherson, Lavonia Morris, Jarrad Robinson, Lee Scruggs, Leah Bates, Trenika Mitchell, Anna Brant, Tiffany Cutshall, Sarah Donnelly, Grant Smith, Cheryl Grosso and Blake Holly.



### MS GEMS Class Builds Castles

During their study of the Medieval Ages, the Iuka Middle School GEMS class recently designed and built castles. The castles shown are Briaridge Castle built by Emilie Cooke and Beth Darwin, Windsor Castle built by Chantel Ervin and Jessica Long, and Excalibur Castle built by Kara McPherson

and Lavonia Morris. Students pictured with the castles are

Kristy O'Neal, Deresa Patrick, Lavonia Morris, Sarah Donnelly, and Miranda McGaughy.

### Mississippi Soybeans have "Best Ever" Year

"Best ever" years don't just happen, and they don't happen often, but Mississippi's diligent soybean farmers finally had a year worth bragging about as they posted record yields in 1992. The average yield was 32

bushels per acre, which was three bushels more than the previous record set in 1979. The estimated farm production value of the state's 1992 soybeans crop was \$322 million, an increase of \$48 million over 1991.

"1992 was one of those years when just about everything went right: below normal temperatures, above normal rainfall, and relatively few insect or disease problems," said Alan Blaine, extension soybean specialist at Mississippi State University. "Hurricane Andrew was the only notable problem and that only flattened some of the crop south of (U.S. Highway) 82, and most of that crop recovered."

Blaine said rotating soybeans and corn also helped the crop. Continued rotations will have a big impact on future crops,

especially in the Delta.

Dr. Joe Fox, area extension plant pathologist in Decatur, said rotating disease resistant varieties of soybeans is also important for controlling diseases from year to year.

"Selecting varieties that are resistant to some of Mississippi's more common problems -- stem canker and soybean cyst nematode -- combined with cooperating weather conditions helped produce high soybean yields," Fox said. "The state's most notable problem was from sudden death syndrome, which is common in the Midwest but a rarity in Mississippi."

Fox said despite the cases of sudden death in soybeans, the disease had little affect on yields.

"Farmers in 1993 need to invest their time and effort in variety selection, soil knowledge and field preparation to improve their odds for a successful crop," Fox said.

Noxubee County farmer Philip Good increases his odds by growing cotton, corn, soybeans, and wheat. By double-cropping soybeans and wheat and rotating all crops, Good posted an exceptional year in 1992 -- with "best ever" crops in all four.

"Multiple crops help spread out your risks. 1992 was a very unusual year to have all bumper crops," Good said.

Blaine said another way to "spread out your risks" is to plant some of your acreage in early maturing soybean varieties -- such as Group IVs.

"Soybeans production is very exact. The plants need water at a specific time in their growth," Blaine said. "It's a win or bust situation; if you get the rain when you need it, like we did in 1992, you win; if you don't get the rain, you bust."

Blaine said only 7 to 10 percent of Mississippi's crop is an early maturing variety. That percentage may double in 1993.

### Prospective Students Have Two Special February Dates

Prospective students from throughout the region will be at Mississippi State University in mid-February for two special spring semester programs.

To be held on Fridays a week apart, they are the Feb. 12 Minority Student Achievement Recognition Day and the Feb. 19 "Discovery: MSU."

The Minority Student Achievement Program on the 12th recognizes high school seniors with exceptional American College Test scores and academic achievements.

The achievements recognition activities will begin with registration at 9:30 a.m. at the Bost Extension Center. Throughout the day, participants will tour campus and meet with currently enrolled students, as well as with administrators, faculty and staff members.

"Discovery: MSU," which also is held each fall semester, invites to campus all high school and community college students considering study at Mississippi State.

Registration on the 19th will be held from 8-9:30 a.m. in the Colvard Union second floor lobby. During this time, students will be provided information on a variety of topics, among them admissions, housing, and financial aid and scholarships.

An opening assembly will

follow in Lee Hall Auditorium, after which the prospective students will visit with representatives from their intended field of study.

For additional information on both programs, contact the Office of College and School Relations, Box NN, Mississippi State, MS 39762-5958, or telephone (601)325-3076.

### Arts Commission: "Have Speakers, Will Travel"

Has your club heard every speaker in town? Do you dread the upcoming slide show? Do you need a new face for your monthly program?

The Mississippi Arts Commission is launching a public awareness campaign that will provide speakers to community groups free of charge. Speakers discuss the benefits of the arts for children, the challenges to arts education in Mississippi, and some practical solutions. Parent-teacher associations, clubs, churches and other organizations can take advantage of this service by calling the Commission at (601)369-6030.

A recent study by the Commission concludes that high-quality arts education programs can dramatically improve graduation rates, grades, school attendance and student achievement.

Arts in schools can also help

boost the economy. According to Commission Executive Director Jane Crater Hiatt, "The arts encourage children to use their imaginations to solve real-world problems. They learn how to work with others and to express their ideas. And equally important, they learn pride in their work, something that is sorely needed in the American workplace."

About 20 speakers have volunteered for this statewide project, including educators, businessmen and artists. According to Hiatt, many are parents who have seen the difference the arts make in their children's lives.

The Mississippi Arts Commission was established by the legislature in 1968 as the state grantsmaking and service agency to the arts. The Commission and its programs are funded by the National Endowment for the Arts, the Mississippi legislature and private sources.

The Battle of King's Mountain has been called the turning point of the Revolutionary War in the South. A Tory militia force led by Major Patrick Ferguson traveled into the southern Appalachian mountains to secure the area for Cornwallis. There on October 7, 1780, Colonel William Campbell, Colonel Isaac Shelby and about 900 frontiersmen surrounded the loyalist encampment and in a surprise attack defeated them.

## MID-WINTER USED CAR SALE!

- 91 Nissan Stanza XE, White.....
- 90 Cavalier Z-24, White.....
- 90 Olds Ciera LS, Maroon.....
- 89 Bonneville SE, Black.....
- 89 S-10 Blazer 4x4 Tahoe 4.3 V6 Auto.....
- 89 Ford F-150 LWB, Red.....
- 91 S-10 LWB, Auto, A/C, 4.3, Red.....
- 91 S-10 SWB, Red/White, V-6, 5 Sp.....
- 89 Buick Park Avenue, Blue.....
- 88 Honda Accord LXI, 4 Dr., Auto, Sunroof, Black.....
- 84 Ford F-150 LWB, V-8, Auto, Red/Silver.....
- 70 GMC Body Mounted on 1985 Chev. 4x4 Chasis 4x4 SWB, Auto, V-8.....
- 83 Chevy S-10, Blazer 4x4, Red/Silver.....
- 88 Ford Aerostar Van, 8 Passenger, V-6, Auto, Red.....
- 84 Ford LTDII, V6, Auto.....
- 84 GMC Jimmy, 2 WD, Black, V-6, Auto.....
- 82 VW Rabbit, 4 Sp., Gas, 4 Dr., Red.....
- 82 Olds Cutlass, 2 Dr., V-6, Auto, Blue.....
- 76 Chev. 1/2 Ton SWB Stepside, Black, V-8, Auto.....

**Warranties Available Up To 36 Months or 36,000 Miles.... Financing Available**

**Body Shop --- Mechanic Shop**  
**Tires Wholesale Prices To Public With 6 Months To Pay Interest Free**  
**Give Us A Call At Rocket City Auto**  
**We're Ready To Deal**

**If Your Car Is Sick We Can Fix It!**  
**423-1234**  
**The Only Number You Need To Remember For Your Car**

## ROCKET CITY AUTO

Located In Blue Building Across From Wal-Mart  
 Iuka, MS 601-423-1234

## LeAnne Harber

**INCOME TAX RETURNS**  
**BOOKKEEPING**  
**RESUMES**  
**TYPING**  
**601/423-5042**

## WE BELIEVE IN POSITIVE ADVERTISING.

We're positive we offer competitive prices.  
 We're positive we'll always be on time with your job.  
 We're positive we have high quality printing.  
 We're positive we have creative advertising ideas for your business.

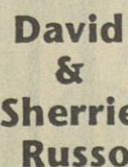
We're positive no job is too big or too small for us to handle.

We're positive we want to be your printer.

We're positive you'll keep coming back.

In fact, we're even positive about our competition.

(positive we're better than they are)



**ALPHA ADVERTISING AND OFFICE PRODUCTS**  
 David Russo • (601) 423-2755 • Iuka, MS

(601) 423-2755

119 South Fulton Street

"We Don't Just Sell Office Supplies - We Promote Your Business..."

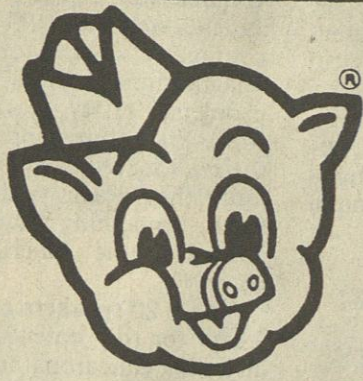


Hwy. 25 North Tishomingo, MS

**The Heil Co., Tishomingo, MS has one Draftsperson position open. Two (2) year drafting degree required. Fulltime position. Excellent benefits. If you wish to apply, please send resume only to:**

**The Heil Co.**  
**P. O. Box 49**  
**Tishomingo, MS 38873**  
**ATTN: Personnel Dept.**

Equal Opportunity Employer  
 M/F/V/D



# piggly wiggly



PIGGLY WIGGLY 2% OR  
**WHOLE MILK**  
GAL. JUG  
**\$1.89**



GROCERS PRIDE  
**TEA BAGS**  
100 CT. PKG.  
**59¢**

RELATED PRODUCTS OF  
**REFRESHING COCA COLA**  
2 LTR. BTL.  
**79¢**



SELF RISING  
**MARTHA WHITE CORN MEAL**  
5 LB. BAG  
**99¢**



LIMIT FOUR WITH ADDITIONAL PURCHASE OR 99¢ EACH

PIGGLY WIGGLY  
**CORN FLAKES**  
18 OZ. PKG.  
**99¢**

ROSDALE  
**PEELED TOMATOES**  
16 OZ. CAN  
**3/99¢**

NABISCO  
**GRAHAM CRACKERS**  
16 OZ. PKG.  
**\$1.99**

REGULAR, HONEY OR CINNAMON

NABISCO  
**OREOS**  
20 OZ. PKG.  
**\$2.29**

REGULAR OR DOUBLE STUFF

NABISCO ASSORTED  
**SNACK CRACKERS**  
7-10 OZ. PKG.  
**\$1.69**

PIGGLY WIGGLY  
**VEGETABLE OIL**  
48 OZ. BTL.  
**\$1.39**



BUSH CHILI OR  
**KIDNEY BEANS**  
16 OZ. CAN  
**3/\$1**



OLD EL PASO  
**TACO SAUCE**  
8 OZ. JAR  
**99¢**





**'TAPES**

EARN CASH FOR YOUR CASH. EVER REG. YOUR LOCAL PARTINGLY CASH TO YOUR SCAS YOUR MANY

IT'S A... SEND... HELP YOUR SCOLE TAPESLY

**EVERYDW**

BOUNTY  
**PAPER TOWELS**  
ROLL  
**89¢**

PIGGLY WIGGLY  
**CHUNK TUNA**  
6.2 OZ. CAN  
**59¢**

**DAIRY DEPARTMENT**

FLEISCHMANN'S REGULAR OR LIGHT  
**MARGARINE QUARTERS**  
1 LB. PKG.  
**89¢**



HARVEST MOON  
**CHEDDAR CHEESE**  
8 OZ. PKG.  
**\$1.39**

MILD, MEDIUM SHARP OR NEW YORK SHARP



VARIETIES  
**PILLSBURY BISCUITS**  
4 PACK - 10 CT. CANS  
**89¢**



**FROZEN FOODS**

REGULAR OR CRINKLE CUT  
**ORE IDA POTATOES**  
2 LB. PKG.  
**\$1.19**



PIGGLY WIGGLY REG. OR LIGHT  
**WHIPPED TOPPING**  
8 OZ. BOWL  
**2/99¢**



•QUANTITY AND CORRECTION RIGHTS RESERVED •NONE SOLD TO DEALERS

WE OWNED  
&  
OPERATED

IUKA, MS

HWY. 25 SOUTH

PRICES GOOD JAN 28 THRU FEB 3, 1993



hog Day

ndhog's  
ay Values

PER CASH"  
OR YOU BY COLLECTING TAPES  
EVERY REGISTER TAPE FROM  
PIGGLY WIGGLY IS WORTH  
OUR CASH MAY BE USED BY  
OUR ANYTHING.

2,3  
SERIALS  
COLLECTING REGISTER  
PIGGLY WIGGLY

YDW PRICES

SAVE ON  
**KELLY'S CHILI**  
16 OZ. CAN  
**79¢**  
CREAMY  
**SAUERS MAYONNAISE**  
32 OZ. JAR  
**\$1.25**

DEPARTMENT

PIGGLY WIGGLY  
**ORANGE JUICE**  
12 OZ. CANS  
**79¢**

PIGGLY WIGGLY  
**CHOPPED BROCCOLI**  
10 OZ. PKG.  
**99¢**

HILLCREST BONELESS  
**SMOKED PORK CHOPS**  
POUND  
LIMIT TWO WHILE SUPPLIES LAST  
**99¢**

MEAT & CHEESE TRAYS AVAILABLE!

PIGGLY WIGGLY  
**YOUNG TURKEY**  
10-12 LB. AVG.  
**69¢**

WATER ADDED BONE IN  
**WHOLE HAM**  
POUND  
**99¢**

STATE FAIR  
**CORN DOGS**  
16 OZ. PKG.  
**89¢**

THORN APPLE VALLEY  
**SLICED BACON**  
12 OZ. PKG.  
**99¢**

THORN APPLE VALLEY  
**MEAT FRANKS**  
12 OZ. PKG.  
**75¢**

THORN APPLE VALLEY  
**JUMBO FRANKS**  
16 OZ. PKG.  
**99¢**

THORN APPLE VALLEY POLISH OR  
**SMOKED SAUSAGE**  
16 OZ. PKG.  
**99¢**

ULTRA RINSO  
**LAUNDRY DETERGENT**  
10 USE - 16 OZ. BOX  
**79¢**

ALPINE REG. OR LOW CAL.  
**SPICED CIDER**  
10 CT. PKG.  
**\$1.59**

ASSORTED 9 LIVES  
**CAT FOOD**  
5.5 OZ. CAN  
**4/\$1**

**FARM FRESH PRODUCE SPECIALS**

FRESH TENDER  
**BROCCOLI**  
BUNCH  
**99¢**

FRESH WHITE  
**CAULIFLOWER**  
HEAD  
**99¢**

FRESH CHERRY  
**TOMATOES**  
PINT  
**99¢**

FRESH ROME  
**APPLES**  
POUND  
**49¢**

FRESH GREEN  
**ONIONS**  
BUNCH  
**2/79¢**

# \$ CLASSIFIEDS

**FLASHING ARROW SIGNS...** Sale, Rent, Lease-purchase. Call Booneville collect at (601)728-5460. Deliver. A-30-tfn-c

**WANTED TO BUY USED FURNITURE & ANTIQUE FURNITURE**  
Also, glassware. We buy just about anything. Cleaning your house or attic out, give us a call. CAPPLEMAN'S ANTIQUES. Phone 423-9962 night, 423-6836. S-17-tfn-c

**LIVING ROOM SUITE**  
Sofa, loveseat & chair, plush high back style, never used, still in plastic. Cost over \$1800. will sell for \$425. cash. Call 454-9856. A-16-TFN

**PROBLEM WITH ALCOHOL?**  
Alcoholics Anonymous  
Al-Anon  
423-2586

**ADMINISTRATOR IN TRAINING...**  
Position available in the luka/Corinth area, College Degree required. Must be willing to relocate. Send resume or apply in person at Tishomingo Manor Nursing Home, luka, MS. N-19-TFN-ch

**FOR RENT-apartment and office space.** See Ruben Grisham. 423-5088. J-14-TFN-chg

**PASSPORT I.D. PHOTOGRAPHS**  
Color, ready in 5 minutes  
PHOTOGRAPHY BY CHARLES  
107 Front St. - luka, MS.  
Phone - 423-3359 M-7-tfn-c

**FOR RENT-3 bedroom brick house** near downtown luka. Serious inquiries only. Phone 423-9065. S-17-TFN-chg

**HOT MID-WINTER SALE**  
1992 new doublewide. 28 x 48 Southridge, 3 bedroom, 2 bath, northern insulation, storm windows, stove, frost-free refrigerator. 10 percent down. Only \$233 monthly. Must see to believe. Southern has it all.  
**SOUTHERN HOUSING**  
TUPELO, MS 38801  
842-7173 or 841-0211

**WANT TO BUY...Used and Antique Furniture, Glassware, Stoneware.** Cleaning out houses, attic and out buildings. Buy most anything. Please call Hill Top Flea Market, 423-9153. F-8-tfn-c

**RENT TO OWN-Lease to own, no credit check, Crazy Ed McKinney** Used Cars, 703 Tate Street, Corinth, MS 286-6944. Jy-23-TFN-chg

**UNCLAIMED-Save big on these Christmas layaways.** Singer Serger that seams, edges, flatlocks & more. M.S.L.P. \$499.00. Balance due \$260.00 or this free arm machine that makes button holes, monograms and more. M.S.L.P. \$299.95, balance due \$168.00. Cash or terms. Call 287-6270 Brooks Sewing & Vacuum, Hwy. 72 next to Baskin Robbins, Corinth. D-31-TFN-chg

**FOR SALE-2 BR 10X52 - \$3500.00; 3 12X60's \$5995.00 each; '85 model 14X65 3 bedroom, 2 bath \$7995.00; 3 bed, 2 bath 14X70 \$7995.00; 5 nice used double wides from \$11,800.00. These and many more to choose from.**  
Lemmond Mobile Homes  
Hwy. 20 East  
Tuscumbia, AL 35674  
Phone 205-383-0808 O-1-TFN-chg

**EARN \$1,000's MONTHLY as a Cajun Country Candy Dealer.** New MLM/mailorder opportunity. Write for profitable details: Send this ad with #10 S.A.S.E. to CCC #2870 502 Evangeline Drive, P.O. Box 53549 Lafayette, LA 70505-3549. Just mail post cards we do the rest. J-7-14-21-28-Pd

**BRASS BEDS**  
With firm Orthopedic mattress set and frame. New, never used, still in plastic. Cost \$1200.00. Sell \$350.00 cash. Call 454-9856. A-16-TFN

**RESTAURANT FRANCHISE available,** Huddle House, Inc. 1-800-868-5700. Sandra Law. J-14-21-28-F-4-chg

**RAINBOW VAC--We have 2 pre-owned Rainbow vacuums that run and cleans like new.** \$300.00 each or arrange \$35.00 monthly payments. Guaranteed. Call 287-6270 Brooks Sewing and Vacuum, Hwy. 72 next to Baskin-Robbins. J-14-tfn-chg

**LIMITED TIME ONLY**  
New 1993 Doublewide only 211.00 per month. Filled with extras plus free storm window pkg. you pick out colors and options. Financing available. Sale ends February 10, 1993. Call for free information. Columbus 434-6331/Tupelo 842-7173 or 841-0211.  
Southern Housing, Inc.  
Columbus and Tupelo  
"Remember Southern Has It All"  
D-14-21-28-chg

**HEAVY DUTY**  
New Home serger, cuts and sews in one operation, also does roll hem. Has been advertised in many popular sewing magazines this month. List \$599.99, while supply last only \$299.99. Meeks Sewing Center, 305 S. Cass, Corinth. 287-1497. J-18-tfn-chg

**WOLFF TANNING BEDS**  
New Commercial-Home Units  
From \$199.00  
Lamps-Lotions-Accessories  
Monthly payments low as \$18.00  
Call Today FREE NEW Color Catalog  
1-800-462-9197  
J-28-F-4-11-Pd

**MATERIAL SALE-Saturday, January 30 only at Ann Smith home on Mount Evergreen road at 7:30 or 8:00.** Robert Alsip J-28-Pd

**HELP WANTED - Bail Bond Agent** wanted. Must be at least 21 years old, have vehicle, live in Mississippi for at least one year, have phone in your name and live within 10 minutes of the Tishomingo County Jail. Excellent Commission potential for the right person. Training, Leadership and Materials provided. Call Al Williams Bonding Company, 429-8877 from 8:30 a.m. til 5 p.m. Monday - Friday. J-21-28-chg

**AUTO LOANS**  
Dealer will arrange low cost financing, no rejects. We finance bankrupt, bad credit, no credit. Call Susan at T & G Auto Sales, Florence, Ala., 1-800-239-5277 or 757-8844. J-21-28-Pd

**HELP WANTED-Certified Nursing Assistants--We are looking for** mature people willing to work hard that will be loving and courteous to our residents. We will pay you as you train if you are non-certified. If interested apply in person at Tishomingo Manor. No Phone Calls. O-3-TFN-chg

**Century 21**  
JUDY PARSONS REAL ESTATE

**COMMERCIAL BUILDING** ready for use. Past use was banking and office space; vault space, 1200 sq. ft.; four offices, paved frontage. \$35,000

**JUST LISTED--in town 3/2 plan brick, corner lot, outside storage, beautiful new carpet in lr, hardwood floor in entrance area.** A must to see. \$44,900

**WEEKEND OR FULL TIME LIVING--minutes from lake - 3/1 plan vinyl siding home on 1.5 ac. - Call today - \$19,500**

**ESTABLISHED BRICK on 1 ac. 3/1.5 w/eat in kit., shaded w/beautiful oaks, TV cable, paved road and carport.** \$29,900

**REFURBISHED BRICK--new carpet, new paint, 3/1.5 plan, great starter home.** Only \$32,500.

Judy Ryan - Broker/Owner - 423-9165  
David Yarbrough - 423-9646  
Robert (Sport) Harris 454-7433 or 454-7491

\* and \*\* trademarks of Century 21 Real Estate Corporation. Equal Housing Opportunity. Each office is independently owned and operated.

**1987 DOUBLE WIDE - 24 X 52, 3 bd, 2 bath, with fireplace, \$17,900; 1988 DOUBLEWIDE - 24 X 48, 3 bd, 2 bath, with fireplace \$16,900; 1983 14 X 70 - 3 bd, 2 bath \$8,788; 1983 12 X 52 - 2 bd \$5,495. Your used Mobile Home Dealer.**

**LEMMOND MOBILE HOMES**  
Hwy. 20 East  
Tuscumbia, AL 35674  
Phone: (205)383-0808

**IUKA MINI STORAGE** now open, located adjacent to Subway. Call 423-5022 or 423-6419, Joe Barlow, D.D.S. J-21-TFN

**FOR RENT--2 bedroom furnished trailer, 1 bath, across from Sonic, utilities included. \$75 per week, \$100 deposit.** 423-5676. TFN-chg

**MAKE \$200.00 A WEEK - If you have a serger and need work, I have all you want. Disposable hoods and boots. No turning, folding or labels. Sew whole or parts. \$11.00 per box. Call 427-9328. J-21-28-Pd**

**SAVE \$1000's. Just arrived 1991 16x80 Repo, 1989 14x70 Repo, 1974 Fixer-upper. Easy Financing. Call 842-7173 or 841-0211. Remember: Southern has it all.** J-28-chg

**INSTANT CASH!**  
for a downpayment on a new home for you and your family. FREE Tax returns to qualified buyers. Windham Mobile Homes, Corinth, MS 287-6991 J-28-F-4-11-chg

**LIMITED EDITION**  
New Doublewide with Glamour bath, stereo and much more only...  
**\$213.40/month**  
Windham Mobile Homes  
Corinth, MS 287-6991 J-28-F-4-11-chg

**LIVESTOCK FOR SALE--Pigs, hogs, cows and calves. Also two mules, bird dogs and beagles. After 4 p.m. and on the weekends call Aaron at (901)239-3382. J-28-Pd**

**"SPECIAL WINTER PURCHASE"--4 bedroom, 2 bath, den model with LIFETIME vinyl, over 1700 sq. ft. \$29,995 or 3 b.r., 2 bath w/entertainment center and vinyl, sale priced \$25,995...Plus 8' X 16' treated wood deck w/leather home to first 15 homebuyers...5% down payment to qualified buyers...Call Patrick Home Center toll free 1-800-874-7018. J-21-TFN-chg**

**WOLFF TANNING BEDS**  
New Commercial-Home Units  
From \$199.00  
Lamps-Lotions-Accessories  
Monthly payments low as \$18.00  
Call Today FREE NEW Color Catalog  
1-800-462-9197  
J-28-F-4-11-Pd

**MATERIAL SALE-Saturday, January 30 only at Ann Smith home on Mount Evergreen road at 7:30 or 8:00.** Robert Alsip J-28-Pd

**Upholstering Center**  
Wallace E. Anglin - Owner  
Quality Fabrics To Choose From  
Free Pick-Up & Delivery  
All Work Guaranteed  
Hwy. 25 South - luka, MS  
Ph. 423-3843  
M-21-TFN-chg

**CUSTOM MADE HIGH PRESSURE HYDRAULIC HOSE!**  
The Right Place To Buy Auto Parts  
**HODGE PARTS HOUSE**  
423-9892/423-2102

**423-5001**  
1719 W. Quitman  
P.O. Box 822  
luka, Mississippi 38852

**JUDY PARSONS REAL ESTATE**

**COMMERCIAL BUILDING** ready for use. Past use was banking and office space; vault space, 1200 sq. ft.; four offices, paved frontage. \$35,000

**JUST LISTED--in town 3/2 plan brick, corner lot, outside storage, beautiful new carpet in lr, hardwood floor in entrance area.** A must to see. \$44,900

**WEEKEND OR FULL TIME LIVING--minutes from lake - 3/1 plan vinyl siding home on 1.5 ac. - Call today - \$19,500**

**ESTABLISHED BRICK on 1 ac. 3/1.5 w/eat in kit., shaded w/beautiful oaks, TV cable, paved road and carport.** \$29,900

**REFURBISHED BRICK--new carpet, new paint, 3/1.5 plan, great starter home.** Only \$32,500.

Judy Ryan - Broker/Owner - 423-9165  
David Yarbrough - 423-9646  
Robert (Sport) Harris 454-7433 or 454-7491

\* and \*\* trademarks of Century 21 Real Estate Corporation. Equal Housing Opportunity. Each office is independently owned and operated.

**FOR RENT--3 bedroom, 1 bath, trailer/cabin furnished close NASA \$275.00 mo. \$100.00 deposit.** 423-5676. J-28-TFN

**FOR SALE-1988 Cutlass Ceria** Charcoal gray interior, V6 extra clean. Call 423-2409 after 5:00 p.m. J-28-chg

**FOR SALE--Approximately 6 acres on** blacktop road frontage has water and power. Call 427-8858. J-28-Pd

**FOR SALE OR RENT--Trailer, off** Coleman Park Road. Call after 4:30. 423-3425. J-7-14-21-28-Pd

**HOUSE FOR RENT-9 mile north of** luka on Hwy. 25. Call 423-3905 or 205-766-4315. J-28-Pd

**TRAILER FOR RENT--Inside City** limits, all utilities furnished. Call after 5 p.m. 423-2338. J-28-Pd

**FOR RENT--2 bedroom duplex,** walking distance of Burnsville School. Very roomy. References required, \$175 deposit, \$175 monthly rent. Call 423-1222 days or 427-8213 nights. J-28-chg

**FOR RENT--2 bedroom country style** house with gas heat, also available 2 bedroom apartment privately located on 365 south in Burnsville. Call 427-9243. J-28-TFN-chg

**INTRODUCTORY STAINED GLASS** CLASSES begin 2-2-93, 4 weeks, 6:30-8:30 PM, 2 small projects, \$75 complete OR in-depth beginners' class, 6 weeks, 2-4-93. Call or stop by for details. Southern Arts, 1716 Hwy. 72 East, Corinth, 287-4152. J-28-Pd

**FOR SALE--German Shepherd Puppies,** black with silver, and sable. AKC registered, \$100. 423-2263. J-28-Pd

**DIG & PICK at Belmont - now at new** location, Main St. between Ace Hardware and Belmont Hotel. Opening new bale Saturday. J-28-Pd

**WANT TO BUY--20 inch bicycle** wheels. Phone - 423-5691. J-28-Pd

**MOBILE HOMES FOR RENT--3** bedroom Mobile home located near Pickwick golf course. \$125.00 month, deposit and references required. Phone (901) 239-9825 after 6:00 p.m. J-28-Pd

**FAX - FAX - FAX**  
Send & receive your Fax copies for \$1.00 per sheet. Call 423-1231 for details. J-28-TFN-chg

**FOR SALE BY OWNER**  
1/2 acre corner lot; 3 bedroom, 2 bath; CHA; security/burglar alarm; private patio w/jacuzzi; newly remodeled; wooded hills subdivision; call 454-3061, by appointment only.  
J-21-28-F-4-11-18-25-Pd

## Legal Notice

TITLE V AND VI OF THE CIVIL RIGHTS ACT

NONDISCRIMINATION POLICY

It is the policy of Tishomingo Manor of luka, MS to admit and

all patients without regard to color, or national origin. The

requirements for admission are applied to all, and patients are

within the home without regard to race, color or national origin.

no distinction in eligibility for the manner of providing, and

service provided by the facility, others in or outside of the facility.

facilities of Tishomingo Manor of luka, MS are available without

ction and rules of conduct uniformly applied to all regardless

race, color, or national origin. Privileges of attending patients

Tishomingo Manor of luka, MS granted to physicians and

health professionals without regard to race, color or national

persons and organizations on occasion either to refer patients

admission or to recommend Tishomingo Manor of luka, MS

do so without regard to the race, color or national origin.

Tishomingo Manor of luka, MS Equal Opportunity Employer

manages employment without regard to race, color and national

origin.

Tishomingo Manor of luka, MS

J-21-28-F-4-chg

ADVERTISEMENT FOR Bids

The Tishomingo County School Board

Municipal Separate School District

will accept sealed bids on the

items of furniture and equipment

equip a Child Development Center

located on the Tishomingo County

High School campus in

Mississippi, until 10 a.m. on

9, 1993. Occupancy is expected

1, 1993.

Specifications are available

Office of the Superintendent

West Quitman, luka, Mississippi

Specification information can be

tained from the Director of the

Development Center at 601-423-2263

Dr. Bob Fennell

Executive Secretary

Tishomingo County

Municipal Separate

J-21-28-chg

BACKHOE & DOZER WORK

Free Estimates

Call

B & K RENTAL

423-2034 Days

Michael Busby - 423-2034

Nights

**GIBBONS & CO.**  
**REALTOR**  
400 WEST EASTPORT STREET  
601-423-5253  
luka, Mississippi

Tired of a long hour + to NASA Site? We have an Executive home for sale or long term lease only SIX MINUTES from the site. 3 BR, 2 BA, all the amenities. Located on Private Lake. Give your family another 450 hrs of your time each year and save wear and tear on your car. Call for details.

Four BR, 2 BA on Hwy. 25 near state line - \$42,500.

Nice wooded lot with 2 BR, mobile home, located near TN state line. ONLY \$15,000.

Four BR, 2 BA mobile home conversion with an extra lot complete with septic tank and water meter - \$37,500.

Well maintained brick home. 3 BR, 1 1/2 BA. Inside luka City Limits - \$45,000.

3 BR, 1 1/2 BA, large kitchen, dining and living area - good home for family oriented living - \$55,000.

155 acre tree farm with merchantable timber and young plantations. Excellent investment possibilities - Call for details.

**RESORT PROPERTY**  
New Home with 3 BR, 1 1/2 BA, large living area, overlooking Bear Creek with easy blacktop access to water. Boat Docking Privileges - \$130,000.

Very nice waterfront lot with custom manufactured home, excellent beach, Bear Creek Area - \$80,000.

Over 2,000 S/F of living area plus 40 ft. long porch overlooking Bear Creek from 2 floor. Boat house and pier. Offered at \$195,000.

Spacious custom built log home with over 2700 S/F heated living area. Tremendous view and perfect lot. This kind of property is hard to find - \$220,000.

B.W. Gibbons/Broker-Registered Forester-Licensed Appraiser  
Don Cowell-Realtor Assoc. 423-9349  
Nancy Beard-Broker-Sales Assoc. 423-5251  
Scotty Skinner, Realtor Assoc. - 423-5676

**Grace Long**  
**REAL ESTATE COMPANY**  
luka, MS  
1415 Hwy. 25 South  
**423-5555**

Privately located country estate, 2 story brick & frame with 4 BR, 2 Ba, large shop, paved Rd., comm. water, 8 ac. - \$79,500

Well located 3 level with finished basement & vinyl exterior, 4 BR, 2 ba, deck, d. gar. with attached work rm., above gr. pool, 3 ac. - \$97,000

Refreshing Country Setting - Beautiful 2 story home with 4 BR, 2 Ba, spacious living area, 1 1/2 acre lot - \$96,000

Near luka - Two level brick & stone with approx. 2600 sq. ft. living space 4 BR, 3 Ba, FP w/insert, O/S storage Bld & tea house (gazebo), 12.6 Ac. - \$75,000

Impressive 2 BR, 2 Ba Brick with 2 living areas, large basmt., spacious deck, nice 1 ac. lot, comm. water, paved rd. - \$58,500

New Listing - Liveable 3 BR Home located in nice residential neighborhood, near school, city utilities, Belmont - \$23,000

Quality 2 story frame w/appealing country features - 3 BR, 2 1/2 bath, spacious family room, convenient location - \$60,000

96 Ac. Rolling Land just outside city, older frame house, ideal subdivision property or for handy man who wants acreage, fronts 2 paved rds - \$86,000

Excellent Buy - 3 BR Frame cabin, partially furnished, large living area w/vaulted ceiling, great view of lake, waterfront, Eastport - \$85,000

3.75 Ac. Buchanan Pen. 4 Lots Hale Dr.  
29 Ac. South of Town 2 Lots Pine Lane  
80 Ac. McDougal Landing 3 Ac. inside city Hwy. 25 N.

SEE US FOR ALL YOUR APPRAISAL NEEDS - STATE CERTIFIED - 15 YEARS EXPERIENCE - QUALITY SERVICE

Office 423-5555 Fax Number 423-9137

Grace Long GRI Broker-Appraiser 423-6584  
Billy Godwin R, GRI 423-6959 Judy Walker RA 423-3047  
Deborah Ham RA 423-2061 Rachel Miller RA, GRI 423-1483  
Cheryl Clark RA 423-6704 Barbara Cheatham RA 728-4873  
Barbara Horner SA 454-7972

**Ables**  
**REAL ESTATE**  
423-2537

Dianne Ables, Realtor/Certified Residential Appraiser  
Carroll Borden - Realtor Assoc. - 423-6982  
Danette Enlow - Realtor Assoc. - 423-3594  
Elise Durham, Realtor Associate - 423-6833

**NEW LISTING - Expect to be impressed in this fantastic executive home** most prestigious neighborhood. Large rooms, gourmet kitchen, rec. room, partial basement. A must see! Belmont

**NEW LISTING - Cozy country home in walking distance of NASA Site** Park on Fox Run Rd. 3 Br. 2 full Ba. all neutral colors, outside storage area. \$53,000

**NEW LISTING - Delightful and cozy 3 BR, 2 Ba. Brick, almost new** shop, 1 ac. lot - just off Hwy. 365 South - Burnsville \$48,000

**Super Nice Brand New Home at an affordable price. Large Brs, 2 ba.** lot in quite sub. \$58,000

**A Real Charmer! Anxious Owner says sell! Almost New 3 Br. 2 Ba.** home close to the water, huge deck. \$69,500

**Custom Built one owner home with lots of eye appeal. Formal** spacious family room, 3 br., large master bath, 1 ac. lot - Hwy. 25 S. \$69,500

Legal Notice

STATE OF MISSISSIPPI  
COUNTY OF TISHOMINGO  
NOTICE OF TRUSTEE'S SALE  
WHEREAS, Michael Pruitt executed his Deed of Trust to Richard D. Bowen, Trustee for Vernon Keith and wife, Lo Eva Keith, beneficiaries, dated July 18, 1991, and such being recorded in Land Deed of Trust Book 62, commencing upon page 442, in the Office of the Chancery Clerk of Tishomingo County, Mississippi, and;  
WHEREAS, the said Deed of Trust and Promissory Note secured thereby provided for the payment of said indebtedness in installments of principal and interest and further provided that in the event of default of the payment of any installments of principal and interest, the owners and holders of said indebtedness might at its option declare the entire indebtedness due and payable, and;  
WHEREAS, default has been made in the payment of said indebtedness,  
NOW, THEREFORE, I, Richard D. Bowen, Trustee in said Deed of Trust, will within legal hours (being between the hours of 11:00 a.m. and 4:00 p.m.) on the 5th day of February, 1993, at the main front door of the County Courthouse of Tishomingo County, Mississippi, located in Iuka, Mississippi, offer for sale and will sell at public auction and outcry to the highest and best bidder for cash, the following described property situated in Tishomingo County, Mississippi, to-wit:  
Part of the SW 1/4 of Section 34, Township 1, Range 10, described as follows: begins at T.V.A. Marker Number 68, thence West along T.V.A. line 183 feet; thence North along West line 541 feet to steel stake, the point of beginning; thence North along same line 105 feet to steel stake; thence East 176 feet to center of road; thence Southwest along center of road to steel stake; thence West 182 feet to the point of beginning, Containing 1/2 acre, more or less. The above land is restricted against mobile homes, structures without wells and/or restroom facilities or smaller in size than 500 square feet, with a foot right-of-way, 12 feet each way from the center of the road. If re-sold, these restrictions will be passed on to future owners.  
The undersigned Trustee believes that his title as Trustee is good, but he will convey only such title as is vested in him by the Deed of Trust aforesaid.  
Witness my signature on this 11th day of January, 1993.  
RICHARD D. BOWEN, TRUSTEE  
J-14-21-28-F-4-chg

Legal Notice

SUMMONS BY PUBLICATION  
IN THE CHANCERY COURT OF  
TISHOMINGO COUNTY, MISSISSIPPI  
Lucky Elder  
VS.  
CIVIL ACTION,  
FILE NO. 12,364  
DARLA E. ELDER  
DEFENDANT  
SUMMONS  
THE STATE OF MISSISSIPPI  
TO: Darla E. Elder, whose last known address and whereabouts are unknown.  
You have been made a Defendant in the suit filed in this Court by Lucky Elder, Plaintiff, seeking a divorce.  
You are required to mail or hand deliver a written response to the Complaint filed against you in this action to Leroy Henderson, Jr., Attorney for Plaintiff, whose address is P.O. Box 1362, Tupelo, MS 38802.  
Your response must be mailed or delivered not later than thirty days after the 21st day of January 1993, which is the date of the first publication of this summons. If your response is not so mailed or delivered, a judgment by default will be entered against you for the money or other relief demanded in the complaint.  
You must also file the original of your Response with the Clerk of this Court within a reasonable time after-ward.  
Issued under my hand and the seal of said Court, this 14th day of January, 1993.  
Hayden Ables  
Chancery Clerk Of  
Tishomingo  
1008 Hwy. 25 South  
Iuka, MS 38852  
J-21-28-F-4-chg

highest and best bidder, the following described land and property, situated in Tishomingo County, Mississippi, to-wit:  
Part of the Northeast Quarter of S 17, T 6 S, R 10 E, described as beginning at the Southwest corner of said quarter section and run thence North with the West line of said quarter section 208.7 feet to an iron pipe at the Northwest corner of the Era M. Smith 8 acres more or less, tract of land; thence run East along the North line of said Era M. Smith tract of land 1279 feet; thence run North 20 feet to the P.O.B. of this conveyance; thence continue North 290 feet; thence run East 75 feet; thence run South 290 feet to the North side of a gravel road; thence run West along the North side of said gravel road 75 feet to the P.O.B., and containing 1/2 acre, more or less. Also a 20 foot easement for ingress and egress as described in Warranty Deed dated April 10, 1979 and recorded in Deed B-96, at pages 541-542, in the office of the Chancery Clerk of Tishomingo County, Mississippi.  
I will convey only such title as is vested in me as Trustee.  
WITNESS MY SIGNATURE, this, the 13th day of January, 1993.  
W. STEWART ROBISON, TRUSTEE  
J-21-28-F-4-11-chg

Legal Notice

NON-RESIDENCE  
FORM 1C - SUMMONS BY  
PUBLICATION  
IN THE CHANCERY COURT OF  
TISHOMINGO COUNTY, MISSISSIPPI  
PLAINTIFF  
DAVID BLACKARD,  
VS.  
NO. 12,376  
LINDA HATHCOCK DAVIS BLACKARD  
DEFENDANT  
NON-RESIDENCE SUMMONS  
THE STATE OF MISSISSIPPI  
TO: LINDA HATHCOCK DAVIS BLACKARD, A NON-resident of the State of Mississippi, and is not to be found therein after diligent search and inquiry personally made by the Plaintiff, and whose present place of residence, street address and post office box are unknown to the plaintiff after diligent search and inquiry personally made by the plaintiff to ascertain the same.  
You have been made a Defendant in the suit filed in this Court by David Blackard, Plaintiff, seeking a divorce for the cause of habitual cruel and inhuman treatment or in the alternative irreconcilable differences.  
You are required to mail or hand deliver a written response to the Complaint filed against you in this action to Mark T. Segars, Attorney for Plaintiff, whose address is Post Office Box 1106, Iuka, Mississippi 38852.  
YOUR RESPONSE MUST BE MAILED OR DELIVERED NOT LATER THAN THIRTY DAYS AFTER THE 28 DAY OF JANUARY, 1993, WHICH IS THE DATE OF THE FIRST PUBLICATION OF THIS SUMMONS. IF YOUR RESPONSE IS NOT SO MAILED OR DELIVERED, A JUDGMENT BY DEFAULT WILL BE ENTERED AGAINST YOU FOR THE

MONEY OR OTHER RELIEF  
DEMANDED IN THE COMPLAINT.  
You must also file the original of your Response with the Clerk of this Court within a reasonable time after-ward.  
Issued under my hand and the seal of said Court, this the 20 day of January, 1993.  
Hayden Ables  
Chancery Clerk of  
Tishomingo County  
1008 Highway 25 South  
Iuka, Mississippi 38852  
J-28-F-4-11-chg

In Service

Pvt. 1st Class Roy J. Parson has been decorated with the Army Achievement Medal which is awarded to soldiers for meritorious service, acts of courage, or other outstanding accomplishments.  
Parson, an armor crewmember, is the son of Peggy and Tommy Parson of Rural Route 6, Hanceville, Ala.  
His wife, Litisha, is the daughter of Loyl Keele of Rural Route 4, Iuka, Miss., and Linda F. Crumbly of Rural Route 9, Cullman, Ala.  
The private is a 1985 graduate of Hanceville High School.

HAS YOUR MOBILE HOME INSURANCE been cancelled or nonrenewed, or is your rate just too high? We have comprehensive coverage with a + company. "Excellent Rates". Contact Robinson Insurance Agency, Main St. Tishomingo 438-7340 or Main St., Belmont 454-3304. A-17-eow-chg

Legal Notice

TRUSTEE'S NOTICE OF SALE  
WHEREAS, on September 6, 1990, Michael Bruce Morgan and wife, Valerie Morgan, executed and delivered a Deed of Trust to Jimmy B. Fisher, Trustee for the use and benefit of Bank of Mississippi which Deed of Trust is recorded in Trust Book 154, pages 276-279, in the records of Tishomingo County, Mississippi, reference to which is hereby made; and  
WHEREAS, default has been made in the payment of the indebtedness secured by said Deeds of Trust, and said Bank of Mississippi being the owner and holder of the indebtedness secured thereby, having requested the undersigned Trustee to do, I will on January 29, 1993, offer for sale and will sell, during legal hours (11:00 a.m. - 4:00 p.m.) at the main door of the Courthouse in Tishomingo County, Iuka, Mississippi, the highest bidder for cash at public outcry, the following described property:  
Part of the Southwest Quarter of Section 34, Township 1 South, Range 10 East, described as beginning at the Southwest corner of said quarter section and run thence North 0 degrees 18 minutes East along the western boundary of said quarter section 1603 feet to US-TVA Monument No. 69; thence run South 89 degrees 50 minutes East along a painted line 932 ft. to an iron pin; thence run North 13 degrees 00 minutes West along a fence line 420 feet to an iron pin and the point of beginning hereof; thence run South 89 degrees 50 minutes East 210 feet to an iron pin; thence run North 13 degrees 00 minutes West along a painted line 105 feet to an iron pin; thence run North 89 degrees 50 minutes West 210 feet to an iron pin; thence run South 13 degrees 00 minutes East 105 feet to the point of beginning, containing 0.50 acres, more or less.  
I will convey only such title as is vested in me as Trustee.  
SIGNED AND POSTED this 7th day of January, 1993.  
JIMMY B. FISHER,  
TRUSTEE  
J-7-14-21-28-chg  
ADVERTISEMENT FOR BID  
The Board of Trustees of the Tishomingo County Special Municipal Separate School District will receive bids at the Office of the Superintendent until 3:00 p.m. on February 9, 1993, for lighting of the football field at Belmont High School. Interested bidders may secure specifications from the Office of the Superintendent, 507 West Quitman, Iuka, Mississippi 38852, Phone (601) 423-3206.  
Dr. Bob Ferguson  
Executive Secretary  
Tishomingo County Special  
Municipal Separate School  
District  
J-21-28-chg

Legal Notice

TRUSTEE'S NOTICE  
OF SALE  
WHEREAS, on March 7, 1992, Sharon K. Wood, a single person, executed a Deed of Trust to W. Stewart Robison, Trustee for the benefit of Mid State Trust II and Jim Walter Homes, Inc., which Deed of Trust is recorded in Book 171 at Page 701-702, in the office of the Chancery Clerk of Tishomingo County, Mississippi;  
AND WHEREAS, this Deed of Trust was assigned by Jim Walter Homes, Inc. to Mid State Trust II by instrument recorded in Book B151, at Page 585, in the office of the Chancery Clerk aforesaid;  
AND WHEREAS, this Deed of Trust was assigned by Mid State Trust II to Southeast Bank, N.A., as Trustee, by instrument recorded in Book B151, at Page 586-587, in the office of the Chancery Clerk aforesaid;  
AND WHEREAS, this Deed of Trust was assigned by Southeast Bank, N.A., as Trustee, to Mid State Trust II by instrument recorded in Book B156, at page 318, in the office of the Chancery Clerk aforesaid;  
AND WHEREAS, default having been made in payment of the indebtedness secured by said Deed of Trust, and the holder of the note and Deed of Trust having requested the undersigned Trustee so to do, I will on the 16th day of February, 1993, offer for sale at public outcry and sell during legal hours between the hours of 11:00 A.M. and 4:00 P.M., at the main front door of the County Courthouse of Tishomingo County, at Iuka, Mississippi, for cash to the

Legal Notice

REQUEST FOR PROPOSALS TO  
PROVIDE ENGINEERING SERVICES  
The Town of Burnsville seeks engineering services for a 1992 Community Development Block Grant awarded to Burnsville by the Mississippi Department of Economic and Community Development.  
Professional engineers are invited to submit a proposal in accordance with this request, to be received not later than 2:00 p.m. on February 25, 1993, to the Board of Alderman at the Burnsville Town Hall.  
The project includes the following activities: The Construction of a 350 GPM well to allow Burnsville to continually meet peak demands and provide a dependable supply of water.  
SCOPE OF SERVICES: The contractor shall perform all necessary engineering services to properly carry out the activities in the project. These services must be in accordance with state and federal prescribed rules, regulations, and laws. Services shall include, but not necessarily be limited to, preparing plans and specifications, obtaining and evaluating bids, and inspecting contracted work in progress. The contract will be on a lump sum basis.  
CRITERIA FOR EVALUATION: Those desiring consideration should submit proposals by the time and date stated above and must include the following:  
1. Qualifications of each staff member to be assigned to the project;  
2. Experience in providing engineering services for State and Federal assisted projects, including:  
a. Types of State/Federal programs, and  
b. Types of projects undertaken;  
3. Capacity of Performance which identifies the number and title of each staff member available to provide services; and  
4. Schedule of Time to complete project, taking in consideration current and planned workload.  
Contract negotiations shall be initiated with the responsible offerer whose proposal is determined to be most advantageous to the Town of Burnsville, based on the above selection criteria. In addition to reaching a fair and reasonable price for the required work, the objective of negotiations shall be to reach an agreement on the provisions of the proposed contract, including scope and extent of work and other essential requirements.  
The Town of Burnsville reserves the right to negotiate with more than one offerer and also to cancel all proceedings and begin a new process of soliciting proposals.  
If additional information is needed or if there are questions regarding the above, contact:  
Bobby H. Johnson, Mayor  
Town of Burnsville  
P.O. Box 308  
Burnsville, MS 38833 J-28-F-4-chg

NOTICE

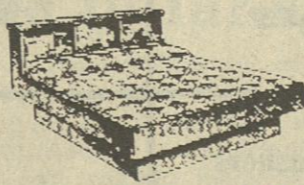
FENCING OF ALL KINDS, including Chain Link, Wood and Privacy Fencing. Residential, Commercial and Industrial. 32 years experience. Call area code 205-381-8400. D-24-TFN-chg

1, 2 & 3

Bedroom Apartments  
Kitchen Appliances Furnished  
Rental Assistance Available  
IUKA  
APARTMENTS  
1000 N. Pearl Street  
Iuka, MS  
Ph. 423-2057  
Monday - Friday 9:00 - 1:00

B & S WATERBEDS

"35 Styles On Display"



Full Service Waterbed Store!  
Financing Available  
Visa & MasterCard Accepted  
Woodward Ave. - Muscle Shoals  
(South of Jim Bishop)  
205-386-0097

LUTTRELL & SON CO.

Specializing In Vinyl Siding  
Seamless Gutters  
Remodeling  
Shutters  
Carpentry  
Tommy Luttrell  
Owner  
CALL  
(601) 423-1476  
Days or  
Nights

ALL WEATHERIZATION

\* Vinyl Siding \* Insulation  
• Sunscreens  
• Storm Doors  
• Storm Windows  
• Seamless Gutters  
• Garage Doors  
• Commercial Insulation  
• Comm./Res. Glass  
• T.V.A. Approved  
CALL 423-1068  
Nights 423-3454 or 423-5671  
NEW LOCATION  
Old Hwy. 72W/Across from Country Squire Restaurant

Coln's Tire Service

BEST PRICES AROUND  
Mohawk, Turbo Tech, and Others  
5 Miles E. of Corinth  
On Hwy. 72 - Ph. 287-4039  
8:00 - 5:00 Monday - Friday & 8:00 - 2:00 Saturday

LARRY C. SKELTON Attorney At Law

Chapter 7 Bankruptcy \$400  
No-Fault Divorce \$300  
286-9796 Corinth, Mississippi  
"The rules of Professional conduct of the Mississippi State Bar require that the above services be performed by this firm for not more than the advertised fee."  
"Listing of these previously mentioned area(s) of practice does not indicate any certification of expertise therein."

Why wait for  
your federal  
income tax refund?



receive your refund anticipation loan within a matter of days  
available whether we prepare your return or not

H&R BLOCK

1415 Hwy. 25 South - Iuka, MS  
423-9137  
GRACE LONG - OWNER

TIMBES TIRE & EXHAUST

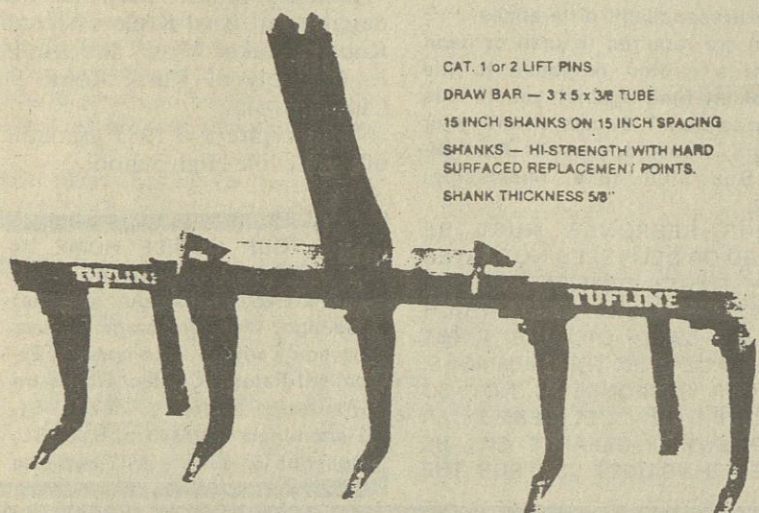
Highway 72 East  
Burnsville, MS 38833  
Phone: (601) 427-8408

Truckload Tire Sale  
4-Wheel Drive Tires  
Passenger Truck & Car Tires  
Mississippi Inspection  
We Pickup and Deliver  
With Fast Courteous Service  
24 HOUR WRECKER SERVICE  
DAY: 427-8408 NIGHT: 427-8703



Friends of the Iuka Library are fortunate in having the Brown Insurance Agency as a 1993 sponsor. Shown above presenting the 1993 award to Bob O. Brown is Jeanette Miner, Treasurer of the Friends of the Iuka Library.

PASTURE - RENOVATOR



New Conservation Practices Available

There are two relatively new conservation practices that are available for cost-share assistance under the Agriculture Conservation Program administered by the ASCS. There are two real good conservation practices, and we encourage landowners to take advantage of them. The following is a brief description of the practices.

SP-25 Chiseling and Subsoiling - This practice can be applied to existing pastureland in poor to fair condition or land to be sown to such cover in the next growing season. There must be a presence of a restrictive soil layer. Shattering this layer by chiseling will retard runoff and improve water penetration, thus improving the pastureland. Cost-sharing is limited to once on the same acreage, must be performed as nearly as possible on the con-

tour. The practice is recommended to shatter the artificial plow pans formed as a result of compaction from heavy equipment, disking or livestock trampling.

SL-6 Grazing Land Protection - This practice is applied to locations that provide water where its installation will achieve erosion control through better distribution of grazing and will also result in water quality improvement. Cost-sharing is author-requirements are: 1) must own 40 acres or more. 2) can not exceed 1500 cubic yards of earth moving. 3) must already have livestock. 4) must have an existing water supply on the tract.

This practice could be widely used by cattle farmers and other livestock owners to install ponds to improve grazing and water quality.

For more information, contact the Soil Conservation Service or the Agricultural Stabilization and Conservation Service.

Beef Producers Fund Steak Pizza Promotion

Beef producers in Tishomingo County and across the United States are partnering with Pizza Hut in a national promotion that will give pizza-loving consumers a new choice when ordering one of the most popular foods of the 1990s -- pizza. This new menu item, named the Steak Lover's (TM) Pizza, is being introduced nationwide this month.

More than 1.5 million consumers will receive a direct-mail piece emphasizing the Steak Lover's Pizza as a totally satisfying meal. The letter will feature the "Beef. It's What's For Dinner" theme, along with redeemable coupons.

Beef producers are helping fund this direct-mail effort that will target males who have a high propensity for ordering delivered food. The 12-inch medium Steak Lover's Pizza will sell for \$9.99 to encourage trial and repeat pur-

chases.

"The beef industry's role in the direct mail portion of the program is essential in helping this new product gain favorable consumer acceptance," says Mississippi Cattle Industry Board Field Director Tom Healey. "Pizza Hut, with the support of the beef industry, plans to make the Steak Lover's Pizza a best seller."

Pizza Hut is promoting the new steak pizza with an \$11 million television advertising campaign. Another \$1 million is being spent in print advertising. The Steak Lover's Pizza is also being promoted through point-of-sale materials that include banners, pole signs, window clings, crew buttons, a salad bar sign and table tents.

Pizza Hut, owned by PepsiCo Inc., is the largest pizza chain in the world, with 8,837 units. According to data for Consumer Research on Eating Share Trends, Pizza Hut restaurants enjoy a 13.7 percent share of consumer

traffic, second only to hamburger restaurants. Pizza is the third fastest-growing food item as measured by consumer studies. More than 144.2 million pizzas are sold each year and approximately 58.7 million people eat pizza an average of 2.46 times every two weeks.

The beef industry is working with casual and quick-service restaurants to help bring consumers more great-tasting beef meals. Quick-service restaurants represent 52 percent of foodservice industry dollars and 69 percent of customer traffic. The real

growth in the foodservice industry has been in meals and snacks consumed off-premise -- pointing to an increasing consumer desire for convenience. The new Steak Lover's Pizza meets these new consumer demands, as it can be delivered, picked up or eaten in the restaurant.

**UNA Releases Fall '92 Dean's List**

Dr. Joseph C. Thomas, the vice president of academic affairs and provost, announced today that 411 University of North

Alabama students qualified for inclusion on the 1992 fall semester dean's list.

UNA registrar Sue Wilson said that for a student to be considered for the dean's list, that person must be seeking a degree, be full-time and have no grade of "F,I, WP or WF" during the semester. No more than 10 percent of the fulltime students in each school may be eligible for the dean's list and no student with a scholastic ratio of less than 3.50 (on a 4.0 scale) on all work will be included.

The dean's list honorees, their schools and hometowns are as follows:

School Of Arts & Sciences  
Iuka, MS: Laura E. Borden and Jason E. Brown  
Tishomingo, MS: Sonya Burcham.

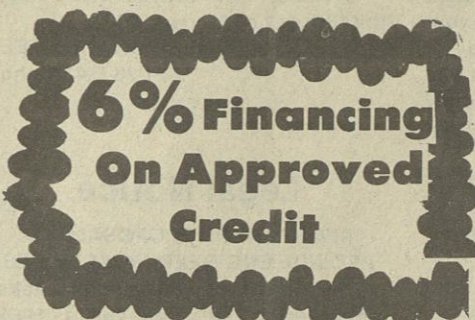
School Of Business  
Iuka, MS: Melinda Lee and Serena Fay Jones.

School Of Education  
Iuka, MS: Lynn Adele Jones

School Of Nursing  
Iuka, MS: Lisa Joy Latch.

J. A. TUCKER FURNITURE & APPLIANCE

Burnsville, MS Ph. 427-8887



Inventory Reduction Sale

Shop and Save! Open at 8 Close at 6

|  |   |   |
|--|---|---|
| <b>2 Pc. Living Room Set</b><br>Reg. \$995.95<br>Now <b>\$795.95</b><br>Save \$200.00              | <b>Bench Craft Recliner</b><br>Reg. \$319.95<br>Now <b>\$259.95</b>                 | <b>2 Pc. Living Room Suite</b><br>Reg. \$1495.95<br>Now <b>\$895.95</b>                                   |
| <b>Lane Recliner Sale</b><br>Reg. \$329.95<br>Now <b>\$299.95</b><br>Save \$30.00                  | <b>4 Pc. Bedroom Suite</b><br>Reg. \$699.95<br>Now <b>\$599.95</b><br>Save \$100.00 | <b>Town Square Gliders</b><br>Reg. \$239.95<br>Now <b>\$179.95</b>  |
| <b>3 Pc. Lexington Living Room Suite</b><br>Reg. \$1295.95<br>Now <b>\$895.95</b><br>Save \$400.00 | <b>Cherry Sofa Table</b><br>Reg. \$229.95<br>Now <b>\$169.96</b>                    | <b>7 Pc. Dining Room Suite</b><br>Reg. \$599.95<br>Now <b>\$499.95</b>                                    |
| <b>7 Pc. Dining Room Suite</b><br>Reg. \$599.95<br>Now <b>\$499.95</b>                             | <b>Love Seat and Chair</b><br>Reg. \$599.95<br>Now <b>\$399.95</b>                  | <b>VAN GUARD GAS HEATERS</b><br>GAS WATER HEATER  |
| <b>SHOP AND SAVE STORE WIDE</b>  | <b>Maple Wood Rockers</b><br>Reg. \$199.95 Now <b>\$139.95</b><br>Save \$60.00      | <b>4 Pc. Oak Bedroom Suite</b><br>Reg. \$1329.95<br>Now <b>\$995.95</b><br>Save \$334.95                  |
| <b>14" ODD CHEST</b><br><b>\$49.95</b>   | <b>Hotpoint Refrigerator with Ice Maker</b><br><b>\$495.95</b>                      | <b>40" Electric Ranges</b><br>Reg. \$649.95<br>Now <b>\$599.95</b>  |
| <b>ODD LAMPS</b><br>Reg. \$49.95 Now <b>\$29.95</b>  | <b>Hot Point Heavy Duty Washers</b><br>Reg. <b>\$399.95</b>                         | <b>4 Pc. Oak Bedroom Suite</b><br>Reg. \$1295.95<br>Now <b>\$1195.95</b><br>Dress, Chest Bed, Night Stand |
| <b>ODD BEDS</b><br><b>\$119.95</b>   | <b>GE WASHERS</b><br>Reg. \$429.95<br>Now <b>\$399.95</b>                           | <b>GE Washers</b><br>5 Cycle, Two Speed<br><b>\$399.95</b>  |
| <b>MATCHING WHIRLPOOL DRYERS</b><br><b>\$329.95</b>  | <b>Whirlpool Washers</b><br>2 Speed 5 Cycles Heavy Duty<br><b>\$389.95</b>          | <b>14 Ft. Kelvinator Refrigerator</b><br><b>\$499.95</b>  |
| <b>Visa Master Card Discover Card Shop and Save</b>  | <b>RCA 46" Screen</b><br>Reg. \$1995.95 Now <b>\$1795.95</b>                        | <b>30" Hotpoint Range</b><br>Reg. \$369.95<br>Now <b>\$339.95</b>   |
|  | <b>26" RCA T.V.</b><br>Reg. \$599.95<br>Now <b>\$569.96</b>                         | <b>20 Ft. Kelvinator Refrigerator with ice maker</b><br><b>\$699.95</b>                                   |
|  |   | <b>26" Zenith T.V.</b><br>Reg. \$749.95 Now <b>\$699.95</b>   |
| <b>30, 60, 90 Days Same as Cash on Approved Credit</b>   |   |   |

L. T. ROBINSON'S



**IUKA MOTOR COMPANY**  
Old Highway 72 West/Iuka, Mississippi 38852

Phone 423-6788 - Nite 423-9170  
Across From Country Squire Restaurant



**1988 Toyota Pickup - 4 Speed**  
**Air - Red - Good Truck**  
**305 & 350 Chev. Engines - Low Mileage**