

\*\*\*\*\*SCH 3-DIGIT 355  
0591499 H063 Tray-28  
ARCHIVES BINDERY  
10360 AL HIGHWAY 227  
GUNTERSVILLE, AL 35976-8290

# Tishomingo County News

The Vidette and Belmont News  
OFFICIAL LEGAL NEWSPAPER OF TISHOMINGO COUNTY  
The One Newspaper in the World Most Interested in This Area

THE HUNDRED AND THIRTY-TWO YEARS

THURSDAY, JUNE 30, 2016 NO. 49

## Six Months In: Daugherty Sheriff Department Cracking Down on Drugs

by Pamela McRae

One call at a time.

That's how Sheriff John Dennis Daugherty modestly describes his department's method for racking up what seems to be an impressive number of drug arrests since taking office in January of this year. Now, six months into a four-year term, Daugherty, his investigators, his captains and several deputies have hit their stride with several arrests a week being released to all local media outlets – and the public getting a heads up on a regular basis.

It's impossible not to notice that most of the arrests are drug-related, and Daugherty says that he's not placing special emphasis on cracking down on drugs, but that most of the calls they receive end up being drug-related.

Department administrative assistant Judy Robinson reported that there are currently 48 open felony drug arrest cases, and agreed that the number of arrests might not necessarily be more than normal, but it does seem like "everything has just gone crazy!" She referred to the constant number of busts and arrests that are being processed through her office.

For example, one officer said he can do three or four traffic stops every day, find drugs (usually methamphetamine) and make an arrest – and it never is

the same people – not repeat offenders, necessarily.

There have been some unusual cases during his first 6 months – a standoff that resulted in two deaths, one a state narcotics officer; busting two whiskey manufacturing operations – but it's the everyday work that has the community talking most of the time.

The community and a working relationship with other agencies is what Daugherty gives credit for the apparent increase in drug-related arrests. People see drug use, see increased traffic on their road or at a residence, and they call the law to let them know, said Daugherty in an interview Tuesday.

"We can ride around all day and all we will see are pretty houses," he said. "But if the community lets us know what they suspect is going on, we can do something about it."

Additionally, the department has continued a good relationship with other law enforcement agencies operating in the county. Working together is always better than working in competition with each other, Daugherty said.

Daugherty reorganized the sheriff department when he took over in January, assigning captains to the two shifts. Either Captain Joseph Marlar or Captain Ryan Glover are always on duty, so there's always a man-

aging officer, for each rotation, who can help with backup or command additional manpower to a situation.

Chief Investigator Greg Mitchell is heading up one of the most significant aspects of the department: media relations. Nearly every felony arrest is written up and sent out to all area media as a press release. It's not a political move on Daugherty's part, he says.

It allows the public to know what is going on, makes them feel like someone is doing something about the drug crisis in this county that affects so many families, explained the sheriff.

"If they feel like something will be done about it, people will help us do our job by reporting illegal activity so we can take action," he said.

It's too early for the slowly turning wheels of justice to show whether the many drug arrests will result in perpetrators actually paying a penalty. For some cases, the grand jury has handed down indictments, but court appearances, plea days, convictions, and sentencing have not happened yet. It will be up to the District Attorney's office to get convictions that will show the public that there is a significant price to pay for breaking the law in Tishomingo County.



photo P. McRae

making a difference - Chief Investigator Greg Mitchell, Sheriff John Daugherty and Captain Joseph Marlar are just some of the officers making a difference in law enforcement in 2016.

## Effort Encourages Boating Safety

Kimberly Shelton  
KIMWICK – In preparation for Independence Day week, officers from the Mississippi Department of Wildlife, Fisheries and Parks (MDWFP) recently spent the weekend of Friday, June 24-Sunday, June 26, observing and enforcing Operation Dry Water 2016.

A nationally coordinated effort to reduce the number of accidents and fatalities resulting from BUI (Boating Under the Influence), agencies from all 56 states, trusts and territories are participating in both Operation Dry Water and its enforcement weekend (Friday, June 24-Sunday, June 26).

Since its inception in 2009, enforcement officers have removed 2,153 BUI operators from the nation's waterways and made contact with over 729,000 boaters during the annual three-weekend. The campaign continues to make a significant impact on boater safety, spreading the message of the dangers of BUI.

Coordinated by the National Association of State Boat- ing and Law Administrators (NASBLA) in partnership with the U.S. Coast Guard as well as state and federal enforcement agencies, the aim of Operation Dry Water is not only to raise awareness, but also to educate boaters on the primary contributing factor in recreational boater deaths – alcohol.

"Operating a boat with a blood alcohol content (BAC) of .08 or higher is against federal law as well as Mississippi

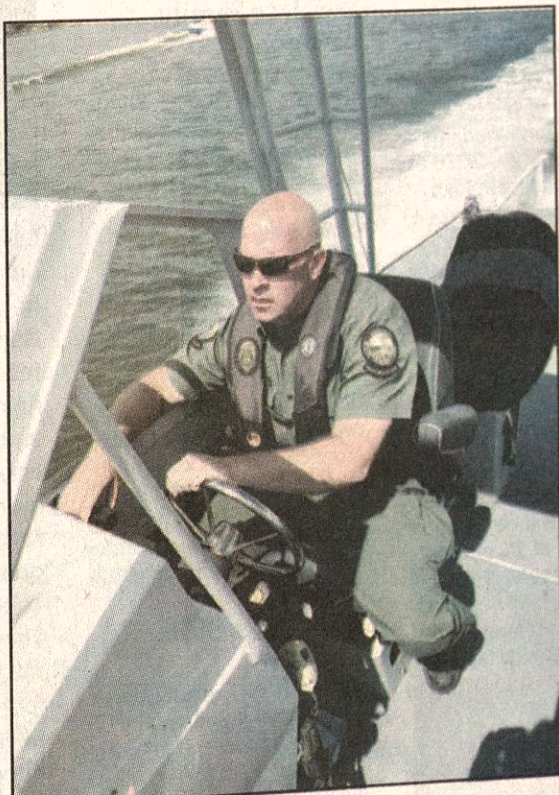
and Tennessee law," said North Region Boating Supervisor Lt. Ricky Barry of the Law Enforcement Bureau. "Consuming alcohol can impair a boater's judgment, balance, vision and reaction time."

According to Barry, sun, wind, noise, vibration, and motion are all common 'stressors' to the boating environment and can intensify the side effects of alcohol, drugs and some medications.

"Impairment can be even more dangerous for boaters than for drivers, since most boaters have less experience and confidence operating a boat than they do driving a car," he said. "We want boaters to have fun and enjoy their time on our lakes and other waterways, but we also want them to be alert and follow regulations while doing so."

Boating facts and statistics:  
• 84 percent of people who drowned in a recreational boating accident were not wearing a life jacket. Always wear a life jacket.

• It is Mississippi law that all children 12 and younger wear a



Master Sgt. Michael Voyles on patrol.

life jacket when the boat is underway.

• 80 percent of fatalities occurred on boats where the operator had not received any boating safety instruction.

In Mississippi, anyone born after June 30, 1980 must have a boater education class to operate a boat.

Boat operator instruction is a significant factor in avoiding and surviving accidents. In accidents where the operator's instruction was known, 77% of fatalities occurred on boats where the operator had not received any boating safety instruction.

• In 2014, there were 11,804,002 recreational vessels registered in the United States.



## Tishomingo Street Dance & Fireworks Saturday

Celebrations all weekend throughout county

If you are after a good, old-fashioned, small town Independence Day celebration, Tishomingo is the place to be Saturday night!

Tishomingo School Alumni of every age will meet beginning about 4 p.m. at the Tishomingo School for the annual Tishomingo Alumni Dinner.

Then the Tishomingo Chamber of Commerce presents the annual Tishomingo Street Dance starting about 8 p.m. Saturday night, at the intersection of Natchez Street and Main Street (Highway 25).

Hannah Knight, Katelin Wallace, Michaela Harper and Erica Webb are some of the fantastic locally-based former Campus Country singers from Northeast Mississippi Community College who will be singing onstage for the (free!) enjoyment of everyone. Also on site will be great refreshments and concessions provided by the Tishomingo Bulldog Boosters.

At 11 p.m. at the Tishomingo Middle School ball field, the Tishomingo Volunteer Fire Department will present its annual fireworks show as a grand finale

to the celebration at Tishomingo.

**Grand Harbor**

Saturday, July 2<sup>nd</sup> at 9:30pm Grand Harbor will present the 2016 Sizzle on the River Fireworks Extravaganza! The best viewing area will be from the tennis court hill, the Lodge patio and at the Ship Store. Parking is very limited so get there early. The fireworks will be shot off of a barge locating directly in front of the marina. By boat on the river is the best place to see them. Tune in to ROCK 100 to watch the show set to music!

**Mill Creek Fireworks**

There will be fireworks Saturday night at Mill Creek at dark, usually around 9 p.m. In case of rain, they will do it Sunday night, same time.

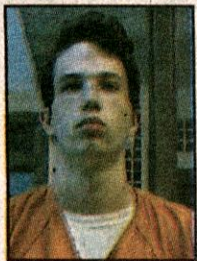
**Sunday Iuka Fireworks Show**

Sunday night will be the big Iuka Fireworks Show at 9:30 p.m. The show will be across from Lamberts' Hardware on Battleground Drive. Thanks to several contributors who always make this a great show and something right in Iuka.



## Recent Drug Arrests in Tishomingo County

Monday, June 27th Tishomingo Sheriff Deputies responded to a disturbance at a residence just north of Tishomingo on Highway 25. While at the residence, one of the occupants became belligerent, causing a disturbance in



Austin Pryce-Jones

front of the deputy. South Half Constable Donald Thomas assisted Deputy Shane Wood, in arresting the occupant, Austin Pryce-Jones, an 18-year-old white male. During the course of a "pat-down" for weapons, some alleged methamphetamine, along with some paraphernalia, was found on the suspect. Pryce-Jones was then transported to the Tishomingo County Jail and in the process, damaged one of the patrol units.

Austin Pryce-Jones of 1580 Highway 25 Tishomingo, was charged with possession of a controlled substance (methamphetamine), possession of paraphernalia, and resisting arrest. Bond was set on Pryce-Jones in the amount of \$25,000.

On June 27 and 28, a deputy stopped a vehicle pertaining to an ongoing drug investigation. During the course of the traffic stop, the driver attempted to hide his alleged methamphetamine from the officers. The alleged narcotic was recovered and the driver was transported to the Tishomingo County Jail. The driver, Christopher Wilcox, 42-year-old white male, of 12 Whitfield

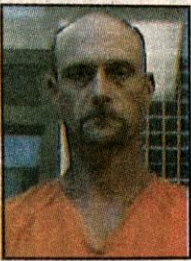
Drive, Iuka, was charged with possession of a controlled substance (methamphetamine), with intent to sell.

Already on probation for a previous conviction, Wilcox remains in custody at the Tishomingo County Jail.

In a separate drug arrest, the Tishomingo Sheriff's Department arrested Courtney Barrett, 34-year-old white female, 586 County Road 989 #3 Iuka.

Barrett was charged with sale of a controlled substance (meth). Barrett remains in custody at the Tishomingo County Jail awaiting bond to be set.

The ongoing drug investigation led to the arrest of Kenneth Moore, a 53-year-old white male, of 18 County Road 234, Iuka. Moore was arrested during a traffic stop, when deputies found alleged narcotics. Moore was then transported to the Tishomingo County Jail where he was charged with possession of a controlled substance



Christopher Wilcox



Courtney Barrett

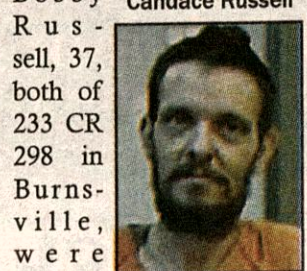


Kenneth Moore

(methamphetamine), with intent to sell.

Two suspects face drug charges after they were acting strangely at a Burnsville business last Thursday.

Apparently Candace Russell, 27, and Bobby Russell, 37, both of 233 CR 298 in Burnsville, were under the influence of some narcotic at a business in Burnsville June 23rd, according to a report from the Tishomingo County Sheriff's Department. Both subjects were found to have drug paraphernalia on their persons, and a search of their residents yielded some methamphetamine and paraphernalia used to inject meth into the body.



Candace Russell

Bobby Russell was charged with possession of a controlled substance (methamphetamine), public intoxication and possession of paraphernalia. Bobby Russell was charged with possession of paraphernalia and public intoxication.

Friday, deputies stopped a vehicle on County Road 944 in Burnsville for a traffic violation. While stepping out of his vehicle as requested, the driver was asked if he had "anything on him," and he surrendered some alleged methamphetamine.

Bradley Mincy, 37, of 6 County Road 944 in Glen, was charged with possession of a controlled substance (methamphetamine).



Brad Mincy

### \$2,800 of Meth Recovered

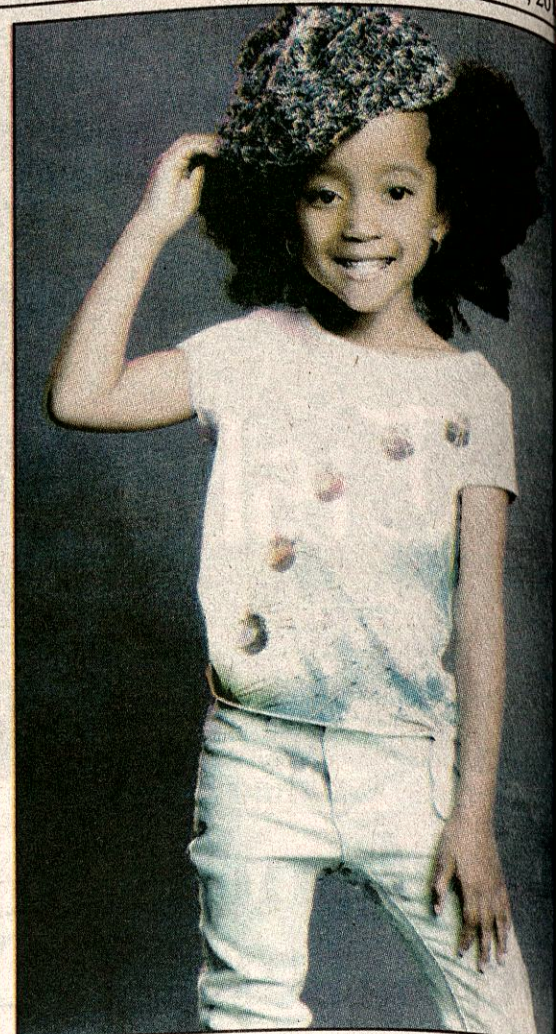
Sunday, June 26th, two people were charged after a deputy pulled them over on Highway 72 for improper equipment on the vehicle. A license check showed that the driver's license was suspended. Lindsey Childers, 40, of Walnut was charged with traffic violations and possession of paraphernalia, after a check of the vehicle.

When asked to exit the vehicle, one of the occupants, Michael Lawton, 42, of Corinth, attempted to hide a bag containing a large amount of methamphetamine, as well as other drug paraphernalia used to inject methamphetamine. The street value of the methamphetamine was \$2,800.

**Lawton was charged** with possession of a controlled substance (methamphetamine), with intent to sell. He was already on probation with the Mississippi Department of Corrections.



Lindsey Childers



## Many Thanks and Gratitude from Adryanne Pearl Henley

Adryanne Henley, of Iuka, was personally invited to attend the 2016 Dallas Model and Talent Expo in Dallas, Texas June 22-26th, 2016.

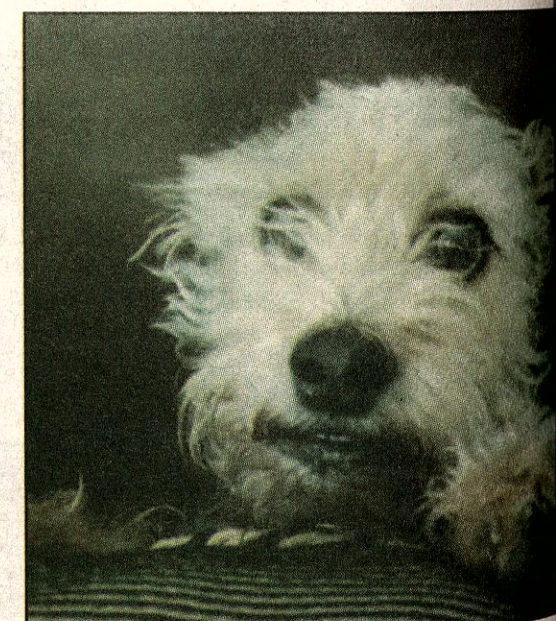
In her Division, children ages 4-7 years, Adryanne won First Place in the Two-Person Scene, Second Place in Runway, and she also received a participation medallion. She was selected for the Expo Exclusive Fashion Show, and also received several call-backs from

agents and scouts within the industry.

Adryanne is the youngest daughter of neisha and Joe Henley. Iuka, the granddaughter of Dell and the late A. P. Hargrove of Iuka, the granddaughter of Ron M. Braxton of Tishomingo.

Adryanne and her family would like to thank all those who sponsored her and provided donations to help fund her successful trip and experience.

## Pet of the Week



CONGRATULATIONS to Eunice Johnston! This sweet dog was our Pet Of The Week at Iuka Animal Clinic. This is what her owners have to say about her: "Eunice belongs to Nancy and Dean Johnston. She is 9 years old and was rescued in Hardin County from HorseCreek Wildlife Animal Rescue. She is a sweet cuddle bug that loves snuggling down in the bed pillows."

Have you ever heard of 'dry drowning'? Dogs love swimming & many will jump in the pool for some fun. By instinct, dogs tend to approach the side of the pool to exit, only to find themselves unable to climb. They have to be taught how to find and use the steps. They can inhale water while struggling to keep their muzzle above the water and that can act as an irritant to their lungs. As fluid builds up inside their lungs, the ability to breathe becomes hampered. If this situation happens with your dog, you should see your vet to be safe and keep a very, very close eye on them in the hours after the accident. Keep your dog safe around the pool.

These high summer temps can be tough on outside pets. Make sure they have plenty of clean water & shade. Call Iuka Animal Clinic (Dr. Jim Perkins & staff) @ 662-423-3470 for all your pet needs (such as boarding, grooming, dentals, spaying and neutering, and pet products) where "Pets Are Family, Too". Check us out on Facebook. Have a happy & safe 4th!

## Happenings

**Area Happenings** are printed as a free service to our readers. They are printed on a space-available basis. If you need to guarantee your event will be printed, we encourage you to place an advertisement.

### Courthouse Closing

The offices in the Tishomingo County Courthouse will be closed Monday in honor of the 4th of July.

### News Office Closing

The Tishomingo County News office will be closed Monday in observance of the 4th of July. Please submit your ads and articles on Friday or no later than 2:00 on Tuesday.

### River Ministry

Come join us for worship at the River Ministry! Make this a part of your Independence Day celebration! Eastport

Baptist Church.

### American Legion & Auxiliary Meet

American Legion Post 15, will meet Thursday, 21 July at 1900 (7 P.M.) at the Legion Building on Spring Street. Refreshments will be served. The Auxiliary will meet Tuesday, 26 July at 1830 (6:30 P.M.) at the Legion Building. Refreshments will be served.

### Iuka Class of 1971

The IHS Class of 1971 will have a reunion Saturday, July 16th at Vicari in Corinth (514 Cruise St.). Meet and greet 6 pm, meal at 7 (your responsibility). For more information call 279-1590. No invitations being sent out - check Facebook!

### Riverton Rose Trail

Volunteer Fire Department Fundraiser

A Fish and Chicken Supper and Silent Auction benefiting the fire department will be held on Saturday, July 9th. Hours for the event are 4:30 p.m. - 7 p.m. at the Colbert County Park Pavilion located 9.5 miles off Hwy. 72 in Alabama. Follow signs from the highway. Eat In or Carry-out Plates are \$9 each and includes a drink and dessert.

### Wadkins Reunion

The family reunion of the descendants of George (Pete) and Emma Wadkins will be held July 3rd, 2016 at the V.F.W. Building in Iuka, MS. The doors will be open from 10 a.m. until 7 p.m. We invite you to come and bring a dessert. The meal will be furnished. We look forward to seeing you there.

### Homecoming At Snowdown

Snowdown Methodist Church will be having Homecoming service on July 3rd-16th. Bro. Donnie Riley will be bringing the message at 11 o'clock. Lunch will be served at 12 noon. Singing will begin at 11 o'clock, all piano players and singers are invited to come and join us for a day of worship.

### H.I. Wilson Family Reunion

The families of H.I. Wilson and Sophia Cobb Wilson will meet for our 47th family reunion on Saturday, July 9th, 2016, at Iuka Mineral Springs Park Youth Center from 9 a.m. until 5 p.m. A potluck lunch will be served at noon. Make plans now to attend.

\*Attention TCHS Senior

### Parents\*

Deadline for your Seniors Announcement Ad in the 2016/2017 Football Program is August 1st, 2016! You can download the application on our Facebook page and mail it or you may contact Beth at Janitorial Supply for form or call her at 423-8971.

### Lovelace Family Reunion

The reunion has been changed from the 2nd Sunday in August to the 3rd Saturday in July, which this year is July 16th. We will continue to have it at the Paden Community Center. We will try to eat around noon. Everyone come and bring a covered dish or drinks. All other things will be provided.

### Gloria's Line Dancers

Gloria's Line Dancers meet every Monday night at the American Legion building in Iuka. Classes start at 5:30 p.m. Cost is \$5 per person and \$8 per couple. For more info., contact Gloria at (662) 279-3054.

### Asphalt Rock Baptist Church

Asphalt Rock Baptist Church will be having Sunday morning services at 10 a.m. "Purpose" from Russellville, Ala will be singing. Come and join us, everyone is welcome.

### Community Bible Study EVERY Monday

There will be a Community Bible Study held at First Free Will Baptist Church (1589 Pleasant Hill Rd., Iuka) EVERY Monday night at 7 p.m. All denominations are welcome.



## Sanchez Chiropractic Center

2009 Constitution Dr. - Iuka, MS

662-423-9315

www.sanchezchiroctr.com

## The Tishomingo County News

### The Vidette

OFFICIAL NEWSPAPER OF TISHOMINGO COUNTY

Serving the people of Tishomingo County, Mississippi and adjoining counties for more than 125 years.

Published Thursday each week.

Deadline for ads and submissions NOON ON TUESDAY.

Charlotte B. McVay, Editor & Publisher

JOHN H. BIGGS, OWNER

Pamela McRae - Writer-photographer, composing

Susan Thompson - Advertising Sales, Billing

Nancy Hughes - Bookkeeping

Carol Berryman - Circulation, Reception

Hayley Franks - Obituaries, typesetting

tcnews@bellsouth.net 662.423.2211

FAX: 662.423.2211

Publication Office: Tishomingo County News

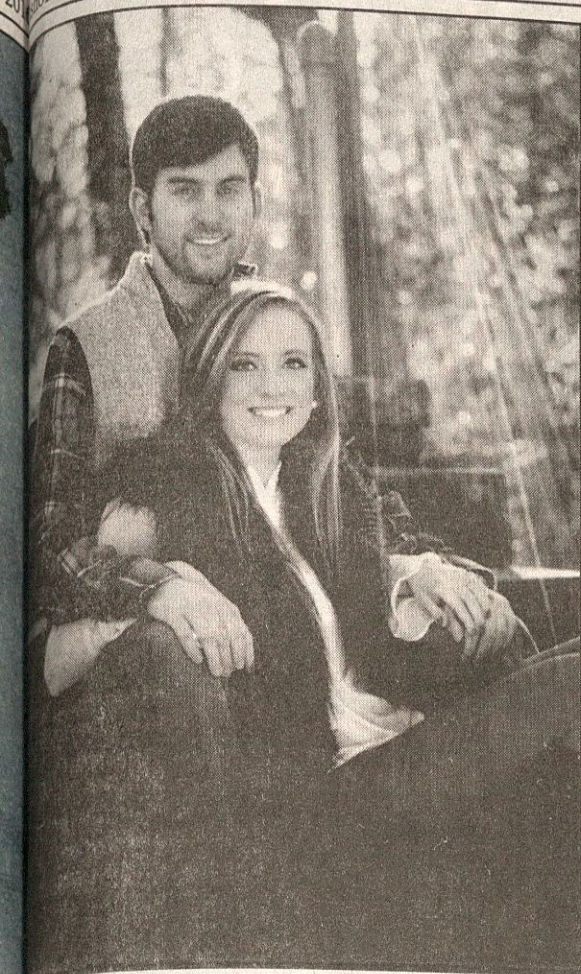
120 Front Street, P.O. Box 70, Iuka, MS 38852

USPS 631680

Entered at Post Office as mail matter of the Periodical Postage. Periodical postage paid at Iuka, MS 38852. Postmaster, send address changes to The Tishomingo County News, P.O. Box 70, Iuka, MS 38852

Tishomingo and adjoining counties: \$25 per year  
Other areas: \$30 per year





## Stanfield & Maroon to Exchange Vows on July 2nd, 2016

Mr. and Mrs. Wayne and Camille Stanfield of Belmont, MS are pleased to announce the engagement and upcoming marriage of their daughter Caitlin Brooke Stanfield to John Mark Maroon, son of Mr. and Mrs. Jack and Lynn Maroon of Belmont, Mississippi.

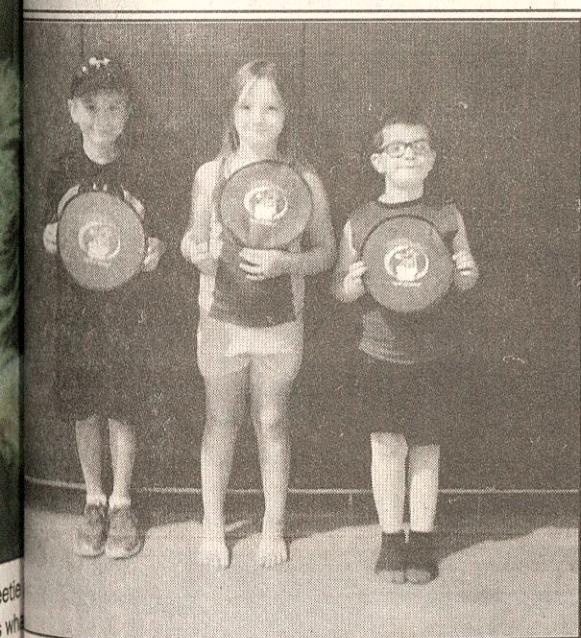
The bride elect is the granddaughter of Mr. and Mrs. Charles and Amelia Higginbottom of Dennis, and Mrs. Linda Stanfield of Dennis.

The prospective groom is the grandson of Mr. and Mrs. Jack and Fae Maroon of Belmont, the late Lourie of Belmont, MS, and the late Mr. and Mrs. Talmadge R. and Erlene Moore of Belmont, Mississippi.

Miss Stanfield is a 2011 graduate of Belmont High School. She earned a Bachelor of Science degree in Communicative Sciences and Disorders from the University of Mississippi in 2015.

Mr. Maroon is a 2010 graduate of Belmont High School. He earned a Bachelor of Arts degree in Criminology from Mississippi State University. He is currently employed at Tiffin Motorhomes Inc. of Belmont, Mississippi.

The couple will exchange vows on Saturday, July 2, 6:30 PM at Calvary Baptist Church in Belmont, Mississippi with the reception to follow. All friends and family are invited to attend.



## Locals Attend RAT Camp

The Iuka Boys and Girls Club, Kindergarten, 1st and 2nd grades, recently participated in RAT (Reject All Tobacco) Camp which was sponsored by the Mississippi Tobacco Free Coalition of Prentiss and Tishomingo counties. Campers learned about the dangers of tobacco. Pictured above are the 1st place winners of the RAT Frisbee throw contest, (l-r) Austin Ray, Mille Thompson and Bryant Parker. The Mississippi Tobacco Free Coalition of Prentiss and Tishomingo Counties is funded by a grant from the Mississippi State Department of Health.

## Registration Set for Summer II at NEMCC

BOONEVILLE, Miss.- Offices at North Mississippi Community College will be closed Friday, July 2 and Monday, July 4 in observance of the Independence Day national holiday.

Registration of Summer II classes (second term) at Northeast opens Tuesday, July 5 and continues through Friday, July 8.

Summer II classes (second term) begin Monday, July 11 in Booneville, Corinth and New Albany.

Book-

store is now located in Cartwright Hall (formerly Stringer Hall) and opens from 8 a.m. until 4 p.m. Monday through Friday.

Students not already enrolled at Northeast should report to the Office of Admissions in Ramsey Hall to begin the registration process. To expedite the registration process, students are asked to bring with them transcripts from high school and colleges previously attended, as well as ACT score. Students who have not taken the ACT should visit the



## Miss Asia Nikole Anderson to Participate in the National American Miss Mississippi Pageant

Miss Asia Nikole Anderson, age 11, daughter of Carly Scott and Frank Anderson has been chosen as a State Finalist in the National American Miss Mississippi Pageant to be held July 7-9 at the beautiful Crowne Plaza in Baton Rouge, LA. The National American Miss pageants are held for girls ages 4-18, and have five different age divisions. Asia will be participating in the pre-teen age division, along with other outstanding young ladies from across the great state of Mississippi.

The winner of the Pageant will receive a \$1,000 cash award, the official crown and banner, a bouquet of roses, and air transportation to compete in the National Pageant in California where she will receive an exciting complimentary tour of Hollywood and the V.I.P. tickets to Disneyland.

The National American Miss Pageants are dedicated to celebrating America's future leaders and equipping them with life-long skills. Each year the pageant nationally awards more than 1.5 million dollars in cash, scholarships, and other prizes, which includes a New Ford Mustang Convertible.

Miss Anderson's activities include dancing, singing, running club and also reading, listening to music and singing.

## What's happening in 4-H?

The Robotics meetings will be held every Monday in July from 3:30-5:00 PM at the Fairgrounds.

There will be a cooking class on Wednesday, July 6 at 3 PM at the Extension Office.

The State Shooting Sports Invitational will be July 8-9 in Meridian.

There will be a service project on Monday, July 11 and Tuesday, July 12 at the Extension Office, beginning at 9 AM both days. We will be making quilts for veterans.

There will be a cake decorating workshop on Monday, July 18 at 9 AM at the Extension Office.

The Leadership Cooperative Conference will be held July 18-21 at Mississippi State University.

There will be a Cloverbud Camp for 4-H'ers ages 5-7 on July 25-27, beginning at 9 AM every day.

For more information about any of these

events or to sign up, please contact our office.

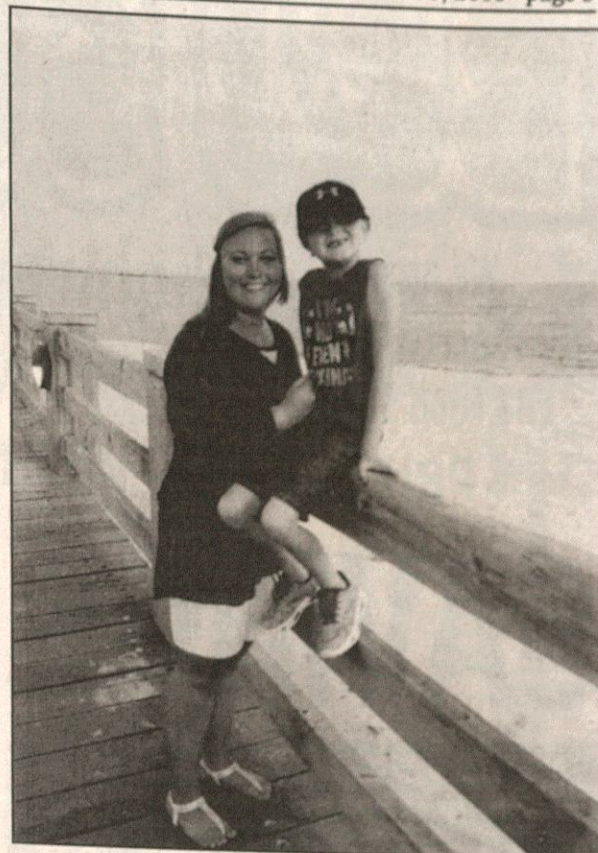
Each month our monthly newsletter will be posted on the Tishomingo County 4-H webpage. The link is <http://extension.msstate.edu/content/4-h-newsletter-tishomingo-county>.

If you wish to stay updated on current events via Facebook, please like our page at [www.facebook.com/tishomingocounty4h](http://www.facebook.com/tishomingocounty4h).

4-H offers endless opportunities to youth ages 5-18 and is open to everyone. Anyone who might be interested in joining 4-H may contact us at the Extension Office at 423-7016.

Emily Cox, FCS/4-H Extension Agent

Zach Yow, ANR/4-H Extension Agent



Every time we blink our eyes,  
you get older.  
You grew up way too fast,  
but we are proud of  
The person you are growing into!  
You are beautiful inside and out.  
Happy 19th Birthday July 4th  
to the best big sister ever!  
We love you Makayla  
Dad, Mom, & Eli

## Iuka High School Class of 1981

There will be a 35th Class Reunion planning meeting on Friday, July 1, at 6:30 p.m. The meeting will be held at Tishomingo County High School. Anyone interested in helping with the planning, please attend this meeting.

## PUBLIC HEARING NOTICE FOR INITIAL HEARING

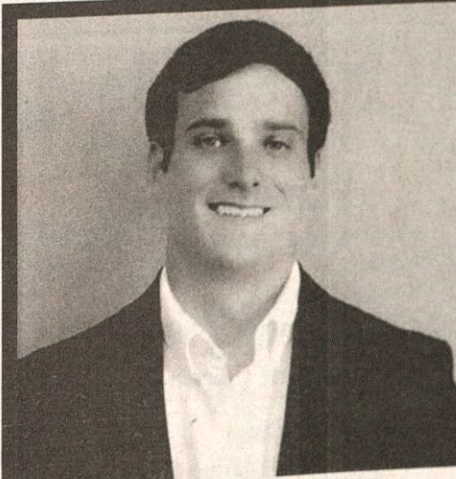
Tishomingo County is considering applying to Mississippi Home Corporation (MHC) for funding through the HOME Investment Partnerships Program Homeowner Rehabilitation/Reconstruction Program. The State of Mississippi has allocated approximately \$3.4 million that will be made available to cities/towns/counties on a competitive basis to undertake homeowner rehabilitation/reconstruction activities.

The activities for which these funds may be used are in the areas of affordable housing for low and very low-income persons. More specific details regarding eligible activities, program requirements, and the rating system will be provided at a public hearing which will be held at the Tishomingo County Boardroom, 1008 Battleground Dr., Iuka, MS on Monday, July 18, 2016 at 1:30 PM.

The purpose of this hearing will be to obtain citizen input into the development of the application. The location for this hearing is an accessible facility. All comments are welcome and must be submitted in writing. If a translator is needed for non-English speaking persons, please contact Peyton Cummings at 662-423-7010 at least five days prior to the meeting in an effort to accommodate this request. Persons with disabilities requiring special accommodations should contact Peyton Cummings at 662-423-7010.

Tishomingo County is pledged to the letter and spirit of U.S. policy for the achievement of equal housing opportunity throughout the Nation and we do not discriminate on the basis of disability in the admissions or access to or treatment or employment in its programs or activities. We encourage and support an affirmative advertising and marketing program in which there are no barriers to obtaining housing because of race, color, religion, sex, national origin, familial status, age or handicap (disability).

Greg Collier, President



Nathan Woodruff

**FARM  
BUREAU  
MISSISSIPPI**

662-423-6151

## Tishomingo County Farm Bureau would like to welcome its newest insurance agent, Nathan Woodruff.

He joins the local staff in providing professional insurance services. Among these services are home, auto, and life, annuities, financial/ estate planning, long term care, and Farm Bureau Banking.

Nathan's roots are planted here in his hometown of Iuka. He has recently moved back, after graduating from the College of Business at Mississippi State University, with a concentration in marketing. He is the son of Johnny and Melynda Woodruff.



# B&J SUPERMARKET

We Accept  
Mastercard, Visa and  
EBT Food Stamps

Highway 365 South • Burnsville, MS

1%

OPEN 7 DAYS A WEEK

Sun.-Thurs. 8:00 am to 8:30 pm  
Friday & Saturday 8:00 am to 9:00 pm

To Your Church

PRICES GOOD WEDNESDAY, JUNE 29 THRU TUESDAY, JULY 5, 2016.

## SAVINGS FOR YOUR JULY 4TH



Family Pack  
**Fresh Ground Beef**  
**\$1.99**  
lb  
(Patties.....\$2.69 lb)



Twin Pack  
**Whole Boston Butt Pork Roast**  
**\$1.39**  
lb  
(Single Butts....\$1.59 lb)

USDA Select, Whole  
**Boneless Rib Eye Loins**  
**\$7.49**  
lb  
Steaks **\$8.49** lb




Sanderson Farms Natural  
**Fryer Thighs or Drumsticks**  
**89¢**  
lb

14-16 Oz., Oscar Mayer Meat  
**Smoked Sausage Hot Dogs**  
**4 for \$5**



3-Lb. Bag, Best Choice  
**Boneless Breast or Tenderloins**  
**\$5.49**



USDA Choice  
**Split Beef Back Ribs**.....lb **\$2.59**  
USDA Choice  
**Whole Beef Brisket**.....lb **\$2.49**  
Great On The Grill!  
**Baby Back Loin Ribs**.....lb **\$2.99**  
Great On The Grill!  
**Medium Pork Spare Ribs**.....lb **\$1.99**

USDA Inspected  
**Pork Steaks or Western Style Ribs**.....lb **\$1.89**  
2-Lb., 26-30 Size  
**Singleton Breaded Shrimp**.....lb **\$8.99**  
14 Oz. Pkg.  
**Nathan Jumbo Beef Franks**.....lb **\$3.99**  
24 Oz., Restaurant Quality  
**Holten Beef Patties**.....lb **\$3.99**  
12 Oz. Pkg.  
**Bar S Sliced Bologna**.....lb **5 for \$5**

16 Oz., Oscar Mayer  
**Cold Cuts Ham & Turkey**.....lb **2 for \$5**  
16 Oz. Pkg.  
**Pride Of The Pond Hushpuppies**.....lb **\$2.99**  
14 Oz., 4 Varieties  
**King Cotton Sausage Sausage**.....lb **2 for \$5**  
40 Oz. Family Pack  
**King Cotton Corn Dogs**.....lb **\$3.99**



16 Oz., Oscar Mayer  
**Sliced Meat Bologna or Salami**  
**4 for \$5**



2.5 Lb. Bag  
**King Cotton Sliced Slab Bacon**  
**\$8.99**



12 Oz. Pkg.  
**King Cotton Hot Dogs**  
**5 for \$5**



**Dole Classic Coleslaw**

**Dole Cole Slaw**  
**59¢**  
14 oz. bag

## Fresh Produce

14 Oz.  
**Marzetti Cole Slaw Dressing**.....lb **\$1.99**  
In Husk!  
**Yellow Sweet Corn**.....3 for **\$1**  
Arizona Grown  
**Sweet Vine Ripe Cantaloupes**.....2 for **\$5**  
Sweet And Juicy  
**Southern Peaches**.....lb **99¢**  
Fresh  
**Jumbo Yellow Vidalia Sweet Yellow Onions**.....lb **79¢**  
.87 Oz. Pack  
**Concord Foods Cole Slaw Mix**.....lb **79¢**



**Sweet Red Ripe Seedless Watermelons**  
**\$3.99**  
each



Regular or Diet, 1/2 Liter Bot.

**12-Pack Dr Pepper, Sprite or Coke**

**3 for \$9**

8 Ct., Best Choice

**Hamburger or Hot Dog Buns**

**79¢ ea**

Assorted Varieties

**Duncan Hines Cake Mixes**

15.25-16.5 oz. box

**99¢**

Non Returnable

**12-Pack Dr. Pepper, Sprite or Coke**

**3 for \$9**

14-16 Oz., Selected Varieties

**Duncan Hines Ready Spread Frosting**

**2 for \$3**

16 Oz. Bottle

**Kraft Salad Dressings**

**\$1.79**

Assorted Flavors

**12 Oz. Bottle**

**79¢**

8.25-8.5 Oz., Reg. \$3.49 or \$4.29

**Lay's Family Size Potato Chips or Cheetos**

**2 for \$4**

10 Oz., All Varieties

**A.1. Steak Sauce**

**\$2.99**

1 Liter Bottles

**12-Pack**

**Best Choice Water**

**2 for \$5**

Makes 8 Quarts

**Kool-Aid Sugar Sweet or Country Time**

**2 for \$4**

12-14 Oz., Kraft

**Deluxe Mac & Cheese or Shells Dinners**

**\$2.25**

8.8 Lb. Bag

**Best Choice**

**Charcoal**

**\$3.99**

22-28 Oz. Bush's

**Grillin' or Baked Beans**

**2 for \$3**

12-18 Oz. Box

**Kellogg's Cereals**

**\$1.99 ea**

24-50 Ct.

**Hefty Trays or Plates**

**2 for \$3**

8 Oz. or 1/2 Liter

**Nestle Pure Life Water**

24-Pack

**2 for \$5**

10 Oz., All Varieties

**Kraft Crocker**

**Instant Salads**

**5 for \$5**

7.5-9 Oz.

**Nabisco Snack Crackers**

**2 for \$4**

13 Oz. Bottle, All Purpose

**Country Bob's Steak Sauce**

**2 for \$4**

Assorted Flavors

**12 Oz. Bottle**

**Mountain Dew**

**2 for \$4**

37.5 Ft. Roll

**Best Choice**

**18 Inch Aluminum Foil**

**\$1.59**

20 Oz. Bottle

**Best Choice Squeeze Mustard**

**59¢**

14 Oz., Nabisco

**Crackers or Bits Cheese**

**2 for \$5**

18 Oz. Bottle

**Kraft BBQ Sauce**

**99¢**

20 Count

**Best Choice Party Cups**

**5 for \$5**

10 Oz. Squeeze

**Mt. Olive**

**Sweet Relish**

**5 for \$5**

24 Ct., Family Size

**Lipton Tea Bags**

**2 for \$4**

18 Oz. Bottle

**Kraft BBQ Sauce**

**99¢**

24 Oz. Squeeze

**Best Choice Ketchup**

**79¢**

Best Choice

**Hamburger Dill Pickles**

32 oz. jar

**\$1.19**

22 Oz. Squeeze or 30 Oz. Jar

**Kraft Mayonnaise or Miracle Whip**

**\$2.99 ea**

Large 25.8 Lb., Twin Pak

**Kingsford Charcoal**

**\$9.99**

5.96 Oz., All Varieties

**Pringles Potato Chips**

**5 for \$5**

Best Choice

**SUGAR**

NET WT 4.18 (64 OZ) 1.18kg

4-Lb. Bag

**Best Choice Sugar**

**\$1.79**

21-24 Oz., Selected Varieties

**Red Baron Pizzas**

**3 for \$10**

**Frozen And Dairy**

Best Choice Sliced

**Deluxe Cheese**

5-lb. pkg.

**\$9.99**

7-8 Oz., Kraft

**Shredded, Chunk or Cracker Cut Cheese**

**\$1.79**

Edward's

**Cream or Pecan Pies**

23-35 oz. each

**\$4.99**

40 Ct. Box

**Northstar Variety Pack Ice Cream**

**\$11.99**

22.5 Oz.

**New York 2-Pack Texas Toast**

**\$3.99**

45 Oz. Tub

**Shedd's Country Crock Margarine**

**\$2.99**

8 Oz.

**Kraft Philadelphia Cream Cheese**

**2 for \$3**

12 Oz. Pkg.

**Kraft American Cheese Singles**

**2 for \$4**

7.5 Oz., 4 Varieties

**Totino's Pizza Rolls**

**5 for \$5**

8 Ear Pkg.

**Best Choice Cob Corn**

**4 for \$5**

Original or Smooth

**Sunny Delight Punch**

half gallon

**5 for \$5**



# Charlotte's Attic



## 1954 Junior Fire Marshalls in Iuka

This photo appeared in the October 7, 1954 edition of The Vidette. It shows Iuka Elementary students from the 4<sup>th</sup> and 5<sup>th</sup> grades visiting the Iuka Fire Department and posing in front of the fire truck. Fire Marshall Chunky Chambers, who later became the Chief of Police in Iuka, is shown at left on the photo with Mrs. H. L. Shook, 4<sup>th</sup> grade teacher. Assistant Fire Marshall, John Laird is shown at right with Mrs. Louise Johnston, 5<sup>th</sup> grade teacher.

Fourth grade students are: Glen Harwell, Harold Branson, Duane Hamm, Jerry Dexter, Travis Enlow, Lloyd Lee Davis, Carolyn Nickleson, Gary Bullard, Carolyn Edmondson, Larry Jenkins, Eddie Carson, Louis Shoffner, Jerry Faye Johnson, Kenneth Dexter, James Thomas Hendrix, Reva Gene Gist, Judy Gross, Martha Carol Kitchens, Alice Ludlam, Varnell Ledbetter, Alfred Comer, Bobby Glenn, Terry Tuckier, Tommy Choate, Barbara Sue Curtis, Joyce West, Marie Dell Bullard, and Norma Faye Broadway. Fifth grade students are: Jimmy Ramsey, Junior Rhodes, Danny Vess, Linda Gross, Frank Rice, Joan Shelton, Linda Shoffner, Sonny Dexter, Glenda Laxson, Richard Savell, Bill Hamilton, Ray Thomas, Edwin Rast, Mae Newby, Stanton Clark, Turner Gene Williams, Sue Welch, Jimmy Marlar, Charles Tucker, Patricia Barnett, David Curtis, and Emory Jones.

## Tishomingo Elementary School 4<sup>th</sup> Nine Weeks Honor Roll 2015-2016

### Kindergarten

All A's: Jacqueline Brock, Greenlee Buchanan, Ava Colley, Anna Crosby, London Gattis, Kylen Hastings, Ann-Bell Johnson, Tonisha Johnson, Eli Keller, J. J. Lambert, Brooklyn Lambert, Clara Lambert, Lori Jo Lowrey, James Moody, Hayden Moss, Jayden Mullins, Jackson Nunley, Emily Rodgers, Kayce Stanford, Kae-gan Stout, Jayden Switcher, Annsley Ware.

All A's and B's: Ayden Bridges, Cheyenne Dawson, Aliza Lawhorn, Caden Skaggs, Brayden Southward.

All B's: Marshall Thompson

### First Grade

All A's: Brooklyn Calley, Madison Daily, Jayden Goss, Kaden Graves, Tanner Hopson, Nathan Johnson, Adleigh Lambert, Brooklyn Posey, Elly Reno, LaMaya Southward, Lilly Swann, Cela-Cathryn Taylor, Kaylon Upton.

All A's and B's: Luke Edwards, Hannah Hamm, Spirit Hill, Brady Keith, Logan McQueen, Abbi Rivers, Calisha Sandifer, Clayton Stewart

All B's: Kaleb Murphy, Gavin Pollard, Ethan Bled-soe

### Second Grade

All A's: Hailey Carouthers, Robbie Gaas, Chloe Keller, Colton McVay, Ava Page, Aiden Pounders, Kassie Sparks, LillAna White

All A's and B's: Addy Abner, Kaison Allen, Miley Browning, Hailey Dawson, Maylie Holt, Brooks Keith, Bryan Martinez, Elexis Massengill, Tregan Moss, Annabell Roberts, Jolie Walton

All B's: Rayden McQueen, Jesse Reddell, Kohsuke Shin

### Third Grade

All A's: Danica Calley, Rosa Frith, Hannah Law-son, Lydia Wimbish

All A's and B's: Thomas Barnes, Cayden Blair, Des-tini Simmons, Aiden Sparks, Austin Sparks, Ashleigh Wilson

All B's: Bindi Brown, Madelyn Jones, Jayden Sparks, Peyton Stanton

### Fourth Grade

All A's: Reily Gray, Kaley Latch, Molly Luttrell, Ri-ley Phifer

All A's and B's: Chase Abner, Keiara Bennett, Mollie Colley, Drew Edmondson, Eli Edwards, Bailee Gattis, Emma Gray, Heather Hall, Marlee Hill, Katy Johnson, Ryan Patterson, Avery Poole, Andrué Ryan, Katelyn Stanford, Triston Stanford, Paden Strickland, Lily Ware

### Fifth Grade

All A's: Eliza Cavness, Landon Sappington, Mela-nie Wilson, Mackenzie Young

All A's and B's: Alex Applegate, Rachel Bobo,

Chandler Browning, Levi Dawson, Madsion Grimes, Lashawn Hemphill, Olivia Hill, Sadie Holt, Ethan Ken-nedy, Samuel Massey, Ashton McDonald, Dyan Mil-er, Chase Phifer, Devin Phifer, Ashton Randolph, El Reno, Madison Reno, Gracie Sweeney, Katelyn Turner, Jason Wimbish, Colin Young

### Sixth Grade

All A's: Madison Bennett, Maddyx McNatt, Dan-elle South, Gracie Storment, Claire-Mann Taylor

All A's and B's: Gracie Brown, Haley Grimes, Aver Jerden, Anthony Schalkle, Paris Shepherd

### Seventh Grade

All A's: Chloe Hollingsworth, Andre Hunt

All A's and B's: Countney Byrd, Maliyah Myrick, Lily Phifer, Gracee Ryan

### Eighth Grade

All A's: Isabel Bone, Heather Davis, Abigail Pool, Savannah Southward

All A's and B's: Hunter Borgstrom, Jessica Brock-ett, Courtney Day, Ebony Johnson, Jazmyn McQueen, Sara Mooney, Victoria Pittman, Grayson Stone

## Crossword - 1930s

### ACROSS

1. Designer \_\_\_\_ Mizrahi
6. Urge Spot to attack
9. Nanjing nanny
13. \*The Divorcee Oscar winner Shearer
14. "Much \_\_\_\_ About Nothing"
15. Grease and \_\_\_\_
16. Weak-\_\_\_\_, or scared
17. Read-only memory
18. Downy duck
19. \*Salt March leader
21. \*1936 Olympics location
23. Bond movie "Live and Let \_\_\_\_"
24. Musical finale
25. Like sashimi
28. Cocoyam
30. Trying experience
35. Dutch cheese
37. Burst of wind
39. \*King of the \_\_\_\_ Blues," Robert Johnson
40. In neutral
41. Piece of writing
43. Very dark black
44. Check-out person
46. Chalupa alternative
47. Follows ding
48. From \_\_\_\_ , or from this point
50. Pal
52. Lilliputian
53. Candle top
55. Roman road
57. \*Mr. Porsche's creation
60. \* \_\_\_\_ is the Night" by Fitzgerald
63. Boatload
64. Put down
66. Dostoyevsky's novel, with "The \_\_\_\_"
68. Cupid's ammo
69. Swimmer's distance
70. Bundle of axons
71. "M\*A\*S\*H" \_\_\_\_ hall
72. Exclamation of surprise
73. \*Johnny \_\_\_\_ and His

### Orchestra

### DOWN

1. Pen juice
2. \*Over the Rainbow" or "Stormy Weather"
3. Square footage
4. To change, as in U.S. Constitution
5. Tiger's attendant
6. Delhi draping dress
7. Bachelor's last words
8. Hamburger and fries
9. Pomegranate seed
10. Calf-length skirt
11. End of grace
12. H in British HMS
15. Actor Depardieu

20. Trimable fence
22. a.k.a. Tokyo
24. Tsarist Russia's elite cavalryman
25. \*The Third one
26. Discombobulate
27. Australian horse
29. \* \_\_\_\_ Bowl
31. Proof of home ownership
32. Tennis-affected joint
33. Be sorry for one's wickedness
34. \*Great Depression photographer
36. Insignificant
38. RPM indicator
42. AOL's " \_\_\_\_ Got Mail"
45. Genuflect in submission

49. Zippo
51. Ore extracting
54. Yo-Yo's instrument
56. Venomous slitherer
57. Like Old Mother Hubbard's cupboard
58. Makes mistakes
59. They're large on prima donnas
60. Blundre, e.g.
61. \*De Valera's name for Ireland
62. Republican Karl
63. Tucker of "Modern Family"
65. Pleasurable interjection
67. One less than jack

## Sudoku

9		8						2
	7	4	2	6				3
	5							
	2		8	9		1		
		6		3				
		1		7	2			5
								4
5				4	7	6	8	
6						2		1

© StatePoint Media

Fill in the blank squares in the grid, making sure that every row, column and 3-by-3 box includes all digits 1 through 9.

BRG	OH	SS	MESS
REN	AV	W	MORRY
IDI	AV	O	ORRY
ENN	LE	EE	EE
VIA	K	IM	
M	WH	NO	REER
O	OV	L	KRETO
B	E	SS	ED
TE	B	IS	OWDE
ED	IS	OW	DE
ED	IS	OW	DE
ED	IS	OW	DE
ED	IS	OW	DE
ED	IS	OW	DE
ED	IS	OW	DE
ED	IS	OW	DE

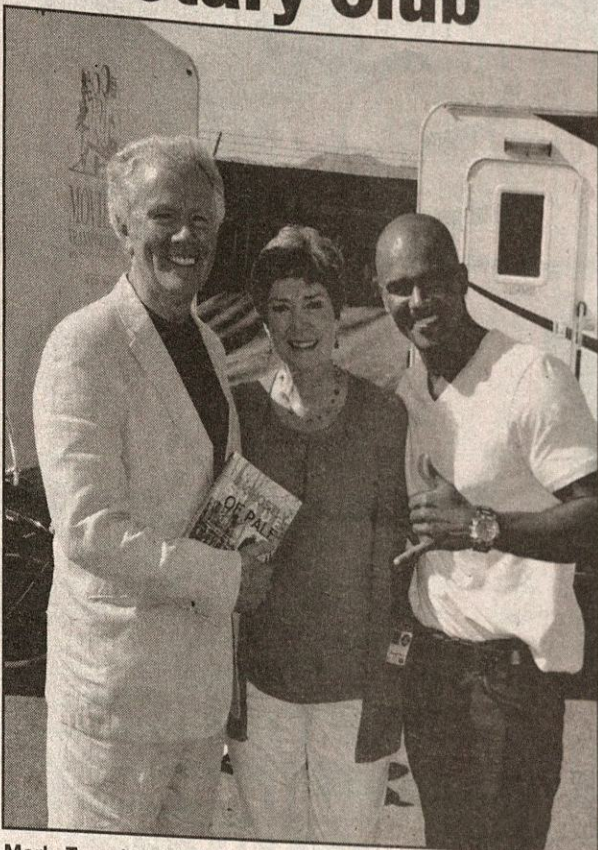
1	2	3	4	5	6	7	8	9
6	8	9	7	4	3	2	1	5
5	4	3	2	1	6	7	8	9
8	9	6	2	7	1	9	5	3
7	2	1	9	5	6	8	7	4
9	3	1	5	6	8	7	2	4
7	1	8	4	3	6	9	5	2
3	6	9	5	6	8	7	2	4
2	9	7	1	9	7	8	3	6

1	2	3	4	5	6	7	8	9	10	11	12
13						14					
16						17				18	
	19				20		21	22			
			23			24					
25	26	27		28		29		30		31	32
35			36		37		38		39		
40					41			42		43	
44				45		46				47	
48					49	50			51		52
			53		54			55		56	
	57	58	59					60			61
63										62	
68						64	65			66	
						69				70	
71						72					73



# Author, Merle Temple, Visits Iuka Rotary Club

Author Merle Temple, a native of Tupelo, MS, spoke to the Iuka Rotary Club on Wednesday. He is the author of *A Ghostly Shade of Pale*, *A Redeemed World*, and *The Redeemed*. All were written as fiction but drawn from his life as an agent in the first drug wars, a corporate manager, and an operative in high-level politics. Criminal Minds producer-writer Jim Clemente invited him to Hollywood to sign books for the cast of *Criminal Minds*, meet with producers, and appear TV in Beverly Hills and on KKLA, the largest Christian radio station in America. Temple speaks to schools, libraries, churches, prisons, shelters, book clubs, and civic clubs around the country. One college made his first book required reading, and high schools and middle schools are using his books in English classes. He offers class sets to schools at cost and commits to visit those schools to speak to the students reading his books. His descriptive books



Merle Temple, Judy Temple, and Shemar Moore, on the set of *Criminal Minds* in Hollywood.

are reminiscent of the novels students read sixty years ago, and contain no profanity. Atlanta's Southern Reader Magazine said, "Merle Temple is to writing what Rembrandt was to art. He creates written masterpieces." Memphis' Southern Writers Magazine called

him, "The next superstar author...(books) should be sent around the world for all who want a second chance, to rise from the ashes." Signed books can be purchased at [www.merletemple.com](http://www.merletemple.com).



# Five Generation Family

Eunice Quinn is shown with her daughter, Janette Carr, granddaughter, Regina Carr Adams, great-grandson, Zachery Adams, and Great-great-grandson, Declan Adams.

"Proverbs 31:28. Her children arise up, and call her blessed!"

# New Orleans Jazz and Memphis Blues to Reverberate over Shiloh Battlefield

**SHILOH, Tennessee** - On Saturday evening, July 2, Shiloh National Military Park will present its third of five Concerts-in-the-Park in commemoration of the National Park Service's 100th anniversary. The five part concert series celebrates the various genres of music that encompass the American catalog, with one concert per month from May to September. The July 2 show is a free concert on the front lawn of the park's Visitor Center and will feature New Orleans Jazz and Memphis Blues Music. "Our concerts in the park have featured outstanding entertainers, and we are pleased to continue that with this event," said Superintendent Dale Wilkerson. "The 4th of July weekend is a time when we all will celebrate the founding of our great country, and what better way to do that than to listen to the music that was invented in America and spread throughout the world: Jazz and Blues. Shiloh National Military Park is delighted to present this free event to our visitors."



could there be a National Park for jazz music, and the National Park Service Jazz Band is the official house band for the park. The Park provides a setting for sharing the cultural history of the people and places that helped to shape the development and progression of jazz in New Orleans, and National Park Service staff present information and resources associated with the origins and early development of jazz through interpretive techniques designed to educate and entertain. The group will perform a variety of styles of music that showcase jazz and its history. The NPS Centennial Band will be sure to "let the good times roll" when they perform at Shiloh National Military Park. Headlining the evening will be Ms. Ruby Wilson and her band. Ruby Wilson, who has come to be known as the "Queen

of Beale Street," was born in Texas. She moved to Memphis, Tennessee, and started her professional singing career when she was sixteen years old. Fellow musician B.B. King is her godfather, and Wilson has been one of the house staples at B.B. King's Blues Club in Memphis. She has been honored with the Memphis sound Award for Best Entertainer, the Authentic Beale Street Musician Award, and a Supporter's Award from the St. Jude Children's Hospital. Wilson has also been inducted into the African American Hall of Fame and is a member of the Memphis-Shelby County Film & Tape Commission. The concert is free of charge and the public is invited to bring lawn chairs, blankets, and picnic baskets. A Junior Park Ranger booth will be set up for kids of all ages starting at noon. The "Friends of Shiloh" organization will also be on hand selling bottled water, sports drinks, and snacks to raise money for the Friends projects at Shiloh. Ranger led programs and tours will be offered during the day. For more information on this and other events at Shiloh, go to [www.nps.gov/shil](http://www.nps.gov/shil) or call the Visitor Center at 731 689-5696.

# NMMC-Iuka Receives 2016 QUEST® Award for High-value Healthcare from Premier Inc.

IUKA, Miss—North Mississippi Medical Center-Iuka has been recognized with the 2016 QUEST® Award for High-value Healthcare from Premier Inc., a leading healthcare improvement company, for providing outstanding patient care. Only 14 hospitals received finalist recognition for achieving top performance in any five of the six areas measured in Premier's QUEST collaborative, including cost and efficiency, inpatient and outpatient evidence-based care, mortality, safety, patient experience and appropriate hospital use. Honored during Premier's annual Breakthroughs Conference and Exhibition on June 21, NMMC-Iuka was the only hospital in Mississippi to receive the award. "NMMC-Iuka's achievements in QUEST reinforces our commitment to reliably deliver the best care experience to the communities we serve," said hospital administrator Fred Truesdale. "We're proud to be the only hospital in Mississippi to receive the QUEST Award as we continue down our path of improving patient outcomes and community health."

Specifically, NMMC-Iuka is being recognized for: Obtaining a mortality rate at least 15 percent less than expected; Reducing the average cost of care to at least less than \$6,870 per discharge (depending on size of the facility); Reliably delivering inpatient and outpatient evidence-based care measures in the areas of heart attack, heart failure, pneumonia and surgical care at least 96 percent of the time; Improving the hospital experience so that patients and families favorably rate their stay and would recommend the facility to others at least 76 percent of the time; Reducing preventable harm events; and Obtaining a readmissions rate at least 11 percent less than expected. All QUEST hospitals participating in QUEST from October 2014-September 2015 were eligible for the QUEST Award. "QUEST hospitals have set high standards in clinical excellence nationwide," said Susan DeVore, president and CEO, Premier. "Together, they have worked to outperform in health care. Premier congratulates NMMC-Iuka for their fantastic achievements."

A recipient of The Joint Commission and National Quality Forum's 2015 John M. Eisenberg Patient Safety and Quality Award, QUEST was launched in 2008 to help health systems reliably deliver the most efficient, effective and caring experience for every patient, every single time. Approximately 350 health systems volunteered to transparently share data and define a common framework with consistent measures that would continually set a top performance goal for both participants and the nation. QUEST participants have prevented more than 176,000 deaths, reduced healthcare spending by more than \$15 billion and improved readmission rates by 32 percent. Top performance thresholds were established at the top quartile of performance from a baseline period in all measures except cost of care, which was based top tercile of performance. Top performance methodology for each dimension varied depending on the unique measure calculation and methodology. **About Premier Inc.** Premier Inc. is a leading healthcare improvement company, uniting an alliance of approximately 3,600 U.S. hospitals and 120,000 other providers to transform healthcare. With integrated data and analytics, collaboratives, supply chain solutions, and advisory and other services, Premier enables better care and outcomes at a lower cost. Premier, a Malcolm Baldrige National Quality Award recipient, plays a critical role in the rapidly evolving healthcare industry, collaborating with members to co-develop long-term innovations that reinvent and improve the way care is delivered to patients nationwide. Headquartered in Charlotte, N.C., Premier is passionate about transforming American healthcare. Please visit Premier's news and investor sites on [www.premierinc.com](http://www.premierinc.com); as well as Twitter, Facebook, LinkedIn, YouTube, Instagram, Foursquare and Premier's blog for more information about the company.

# Poker Run to Benefit Chris Lewis Family

There will be a "Riding with Re-Run" Poker Run motorcycle ride this Saturday to help pay expenses for a beloved member of the local cycling community. Chris Lewis, brother of Tom Lewis, of Iuka, died recently, without provisions for funeral and burial expenses. Proceeds from Saturday's Poker

Run will go toward Chris Lewis' funeral expenses. Music from Mississippi Queen, whom you may have heard on Beale Street, as well as Carol Plunk and Kirk Smithhart will provide music at the event, which will be at Bumpus Harley Davidson in Jackson, Tennessee. Registration starts at 8 a.m., and "kickstands up"

is at 10:30 a.m. Last bike in at 1 p.m. There will be door prizes, a silent auction, and great food, and of course fellowship. The Lewis family greatly appreciates everyone's support throughout this difficult time. For more information, contact Corrie Linton at 731-610-8415.



# Tishomingo Library Welcomes Debora Waz and Friends

Debora Waz (at right) with the Mississippi Museum of Natural Science, made a visit to the Tishomingo Public Library Monday, June 20th. Debora brought her gator and turtles to show and she talked about animal survival. Kids from the area (above) enjoyed the informative talk and petting the animals.





# TENT SALE



**DURABLEND RECLINER**  
**BUY ONE • GET ONE!**  
**\$499 FOR 2**



**LIFT CHAIRS!**  
**STARTING AT**  
**\$579**

**RECLINING ITALIAN**  
**LEATHER SOFA OR LOVESEAT!**  
**\$999**

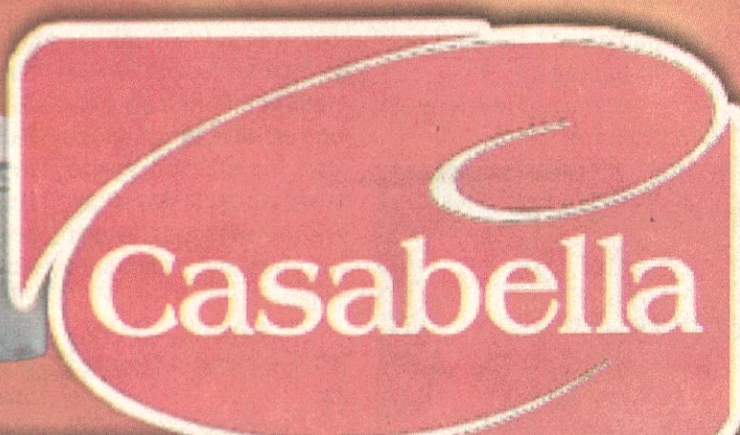
**SEALY MATTRESS SET**  
**FULL OR QUEEN SIZE!**  
**\$299**

**WE OFFER UP TO 48 MO.**  
**INTEREST FREE FINANCING**  
**SAC/WAC!**



**ASHLEY SOFA WITH**  
**MATCHING LOVESEAT!**  
**\$599 FOR BOTH**

**WE HAVE NEW**  
**STEARNS AND FOSTER**  
**MATTRESSES!**



**FURNITURE**

2401 S. HARPER RD. • CORINTH, MS 38834  
OPEN MON - SAT 10:00 - 7:00 • SUN 1:00 - 6:00  
CALL US TODAY! 1 (662) 286-3127



LOCATED BEHIND THE  
WALMART SUPERCENTER  
IN CORINTH!



## Great deals - All the way around!



**Sectional**

Double Motion Sofa w/ Table & Lights /  
Double Motion Loveseat with USB Port  
**\$1,999**

**BUY**  
**TODAY,**  
**GET**  
**TODAY!**

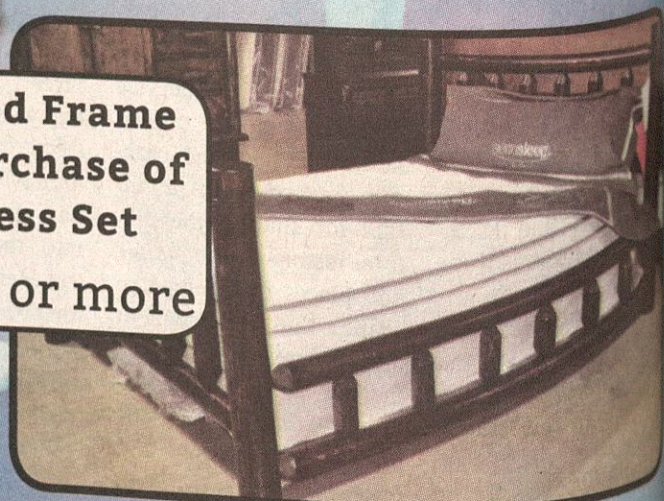


**BOGO**  
**Recliners**  
**2 for \$499**



Full or Queen  
Sleigh Bed, Chest  
& Nightstand  
All for **\$499**

**FREE Bed Frame**  
**with Purchase of**  
**Mattress Set**  
**\$399 or more**



# CASABELLA

## CORINTH CLEARANCE CENTER

UP TO 24 MO.  
INTEREST FREE  
FINANCING  
W.A.C.!

2403 SOUTH HARPER ROAD  
CORINTH, MS • (662) 665-9965







## Counties Will Unite in Genealogy

Historical and genealogical societies for Alcorn County, Prentiss County, and Tishomingo County will gather for the 2016 Old Tishomingo County Genealogy Fair. The fair will be held August 19-20, 2016, in Booneville, Miss. Frances Robb from Huntsville, Ala., will present two sessions on Dating Photographs by Technology and by Clothing. Dr. Sarah Liljegren from the University of Mississippi will present a program on Understanding DNA Results and Family Heritage, and Joyce Dixon-Lawson from the Mississippi Department of Archives and History will present a program on African American Resources and Heritage. During lunch, attendees will be entertained by local historians portraying prominent past citizens of Booneville. Registration is free courtesy of the Mississippi Humanities Council. Lunch will be \$10 and can be paid at the door. Please register by calling 662-413-3741 or via e-mail at dgarvin@bellsouth.net. Additional details will be available on the Facebook pages of the three genealogy societies.



Congratulations Adryanne

"Bit Bit" Henley

Love you always,  
Mom, Dad, Grandaddy,  
Granny Sharon, and Family  
God Bless You!

## Local Quilt Wins "Best in Show"

Seated above is Joyce Borden with her block quilt that won "Best in Show" at State Culture Arts Contest in May. Joyce is a member of the Mission Quilters of MHV that makes quilts for people in the community. The Mission Quilt fabrics are donated by the community. If you have any fabrics you want to donate call Joyce at 423-6982.

## Midway Homemaker Volunteers Met

The Midway Homemaker Volunteers met Thursday, June 16<sup>th</sup> at 10:00 a.m. at the Midway School Museum. There were seven members and one agent present.

Freida Bishop, president called the meeting to order. Emily Cox, FCS presented the leadership program entitled Healthy Home Solutions featuring Mold and Mildew Treatment in the Home Environment. This was very informative and useful information.

The business meeting began at 11:00 a.m. Barbara Pardue gave the devotion entitled "Women of the Bible."

Cindy Nelson was guest speaker today. She gave an overview of procedures for School Museum as written previously. She reviewed maintenance and rental procedures for the museum. Through the results of this meeting the paper work procedures were revised for gathering the necessary statistics required by the Museum Board and National Historic Organization. The group voted to increase the building fee to \$100/rental beginning July 1, 2016. This will help cover expenses of maintaining clean building and grounds. Sybil Hodge will continue as contact person for rental.

The Quilt Guild meets weekly at the museum

during the summer. Freida will get an application for the museum to become a member of the Quilt Guild.

The Culture Arts exhibits that we sent to Mississippi State Council Arts Contest all received blue or red ribbons. Tishomingo County entered 13 exhibits. The winners were: Best of Show, Block Quilt - Joyce Borden. Blue ribbon winners were: Barbara Pardue 4 ribbons, Betty Hickey 4 ribbons, Shirley Haygood 1 ribbon, Joan Hardinger 1 ribbon. Red Ribbon winners were: Barbara Pardue 1, and Betty Hickey 1. Midway Homemakers have talent among our members. Congratulations!

The Annual Dairy Food Contest was held at the School Museum on Tuesday night, June 14 at 6:00 p.m. The 4-H Club members joined with us with many delicious dishes. After judging and winners announced a delicious meal followed the contest.

The MHV annual picnic is scheduled for Friday, July 15 at 11:00 a.m. at Homestead Restaurant.

Mission Quilts will meet Tuesday, June 28 at 10:00 a.m. at the Museum. With no further business the meeting adjourned. Barbara Pardue served delicious refreshments.

## Iuka High School

### Class of 71 Reunion

The Iuka High School Class of 1971 will have its 45 year reunion on Saturday, July 16<sup>th</sup>, at Vicari's Restaurant (514 Cruise St.) in Corinth. We will meet and greet at 6:00 to catch up. Meal at 7:00 and is the responsibility of each guest. For more information, call Terrie: 279-9718; Dianne: 832-6422; or Corinne: 279-1590.

# Timbes

## TIRE STORE

BURNSVILLE, MISSISSIPPI

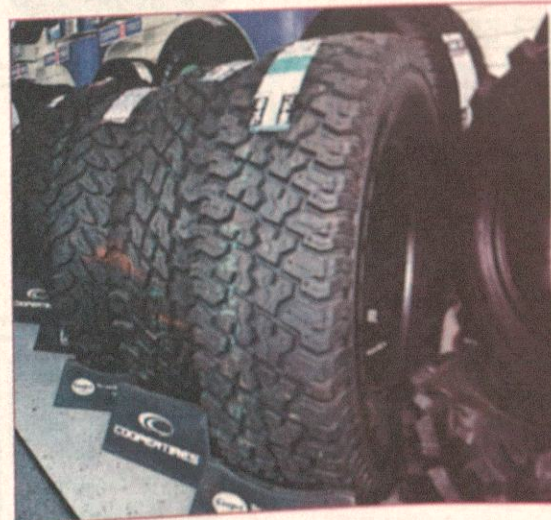
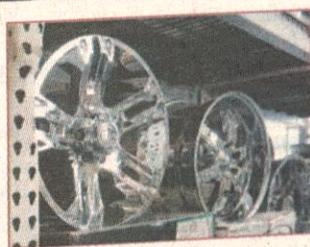


## 25th Annual 4th of July & Customer Appreciation Sale

**June 25th through July 2nd**  
**Customer Appreciation!**

**DRAWINGS DAILY FOR TIRES, GIFT CARDS, AND T-SHIRTS.**

Free Hotdogs, Cokes and Popcorn



- COMPLETE A/C REPAIR
- COMPUTER DIAGNOSTICS
- TIRES
- TOOL BOXES
- BED LINERS
- STEP BARS
- TRAILER HITCHES
- RAINGUARDS
- COMPUTER 4-WHEEL ALIGNMENT
- COMPLETE BRAKE SERVICE
- CUSTOM EXHAUST
- SHOCKS & STRUTS
- & MUCH, MUCH MORE!

## FREEDOM FIREWORKS

The BIGGEST little Fireworks Store in NE-MS!  
Hwy. 25 South—3 Miles South of Iuka

Tubes  
Assortments  
Chasers  
Aerials  
Flyers  
Rockets!  
Roman Candles  
Missiles

4th of July Specials  
The Biggest BANG for your buck!  
The Biggest Selection  
The Best Prices  
**Buy 1, Get 1 Free Item**

Don't Forget To Register For  
**FIREWORKS**  
Assortment Give-away!

Thank you for making us a part of your celebrations!  
We are now accepting debit/credit cards!

Fountains  
Fire Crackers  
Sparklers!  
Heavy Weights 500 Gram  
Artillery!  
Novelties

COOPERTIRES

GET UP TO A

**\$70**

VISA PREPAID CARD  
WHEN YOU BUY A NEW SET OF 4 QUALIFYING TIRES

**DURING OUR DESTINATION SUMMER DRIVE EVENT**  
**JUNE 1ST THOROUGH JULY 15TH 2016**

662.427.8408 U.S. Highway 72, Burnsville [www.timbesautoandwrecker.com](http://www.timbesautoandwrecker.com)



# A Glimpse Into Heaven (part XIII)

I have called this series of articles "a glimpse into heaven", because we are seeing heaven's view of what will take place on earth during the tribulation, moreover, Jesus will pour out His judgments on earth from His position in heaven. We have seen the opening of six of the seven seals of the seven sealed book that is mentioned in Revelation chapter five. In looking at the events that take place when the sixth seal is opened, it looks like the end of the tribulation, but it actually is not, for there is yet a seventh seal to be opened (Revelation 8:1), and there are seven trumpets to be blown by angels, the narrative of

## Pastor's Tidbits

by J. Briggs King,  
Evangelist,  
Rainsville, Alabama  
(678) 451-0921



which extends to Revelation 11:15-19. Then there will be a section of Revelation that is like an parenthetical interlude to explain things in more detail, before we see the series of judgments characterized as seven vials (bowls) of judgment that are poured out in Revelation chapter 16.

Revelation chapters 17 and 18 show the one-world church and the one-world government, after which Revelation

chapter 19 shows the marriage of the church to Christ, plus the battle of Armageddon. Revelation chapter 20 shows the thousand year reign of Christ and the great white throne judgment for the wicked dead, who are raised and judged and cast into the lake of fire. Then Revelation chapters 21 and 22 show the eternal state of things, with new heavens and a new earth.

I thought it might

help some readers to see a bird's eye view of the scheme of things in Revelation, before we get back to the opening of the sixth seal of the seven sealed book. So we will pick up now with Revelation 6:15-17: "And the kings of the earth, and the great men, and the rich men, and the chief captains, and the mighty men, and every bondman, and every free man, hid themselves in the dens and in the rocks of the mountains: And said to the mountains and rocks, Fall on us, and hide us from the face of Him that sitteth on the throne, and from the wrath of the Lamb: For the great day of His wrath is come; and who

shall be able to stand?" This scene looks quite a bit different than the political, financial, social and working world of our day. I do thank God for all who are children of God and have places of leadership in our nation, or elsewhere, but I have a fear that many of those in leadership are in for a rude awakening in the future, because they do not regard God or His Word as being relevant to today's world. In the tribulation the tune will change, for kings, great men, rich men, chief leaders, mighty men, poor men and all others who do not know God will recognize that Jesus Christ is judging the earth and its inhabit-

ants. There will be a from people of all claes for a covering from the presence of God's wrath. Notice that the will recognize that sits on the throne as that the wrath of the Lamb (Jesus) has stirred up and poured out on earth! Those who are unsaved will know that the day Christ's wrath has come to earth, thus there will be no more question about Who Jesus is about the fact that He is angry with sinners who never repent! The little philosophy that even some preachers are propagating in our day which says God accepts everybody as they are will have been abandoned!

# Church Directory

"Hear, my son, your father's instruction and do not forsake your mother's teaching."

- Proverbs 18

**CORNERSTONE**  
INSURANCE & FINANCIAL, INC.  
BETH DICKERSON, CIC  
beth.dickerson@fmbcornerstone.com  
107 S. Fulton St. Iuka, MS 38852  
Ph. 662-423-5902

**Iuka Animal Clinic**  
Dr. Jim Perkins  
662-423-3470

**BURNSVILLE DISCOUNT CARPETS**  
Hwy. 72 E. - 427-8809  
Burnsville, MS Tim Nash, Owner  
Free Estimates - Expert Installation

**Cutshall Funeral Home**  
"Since 1935"  
423-5222 or 423-7093  
302 North Pearl St.—Iuka, MS  
and Glen, MS

**GRACE LONG APPRAISAL SERVICES**  
State Certified General Appraiser  
License No. GA 328  
1415 Battleground Rd.  
Iuka, MS  
423-5555

**SOUTHERN AIR COMFORT, INC.**  
Heating - Air Conditioning  
& Electrical  
1873 W. Quitman (Old Hwy. 72)  
Iuka, MS 38852 Ph. 662-423-1516

**Dailey's Body Shop & Towing**  
24 Hour Light & Heavy Duty Towing  
Quality Work - Fast Service  
Yellow Creek Ave. 427-9234 Burnsville, MS

**Timbes Tire & Alignment**  
Burnsville (662)427-8408

**Tishomingo Manor**  
230 Kaki Street- Iuka, Mississippi 38852  
Telephone (662) 423-9112  
www.tishomingomanor.com

**BAPTIST**  
Airport Mission Baptist - Jacky Pittman  
Antioch Freewill Baptist - Bro. Mike Edwards  
Asphalt Rock Baptist - Pastor John Bray  
Belmont First - Ray Burks  
Bethel Missionary Baptist - Bro. Scott Webber  
New Bethel - Bro. Glenn Bridgemon  
Bethlehem - Bro. Bobby Ivey  
Burgess Creek Freewill - Jackie Nix - Interim  
Burnsville First - Doyle (Bud) Ferrell, Interim  
Calvary Baptist - Chris Herrington  
Carters Branch - Rev. Anthony Welch

Dennis First - Jerry George.  
Eastport - Donovan Cain  
Emmanuel - Bro. David Harrell  
Fifth Street - Dr. Tony Curtis  
First Missionary - Rev. Jon Taylor  
First Freewill - Bro. Nick Stewart  
Forrest Grove - Andy Elliott  
Freedom - Bobby Elliott  
Golden Central Baptist - Rev. Ronald Cantrell  
Harmony Hill Baptist - Mark Jones  
Highland - Mark Daily  
Hubbard Salem - Allen Osborn  
Iuka Baptist Church - Bro. Johnny Hancock  
Jackson Camp - Bro. Tim Ryan  
Landmark Baptist - Hal Holt  
Little Flock Primitive - Jonathan Wise

Lane Springs Baptist - Tim Griffin  
Shady Grove - Magnolia - Keith Curtis  
Mt. Gilead - Ken Gamer  
Mt. Glory - Neil Edmondson  
Mt. Joy - Sammy Barnett  
Mt. Moriah - Phillip Logan  
Mt. Vernon - Bro. Mike Haynes  
Mt. Zion - New Lebanon Freewill - Jack Whitley, Jr.

New Liberty - Edwin Kennedy  
New Prospect - Benjamin Gray  
New Salem - Ron Norvell  
Old Pleasant Hill Church Freewill  
Oldham - Old Union - Jerry Ginn  
Paden - Bro. Kevin Rogers  
Poplar Springs Freewill - Russell Clouse  
Providence - Phil Dawson  
Red Bud - Rowland Mills - Franky Smith  
Sardis - Bro. Tony Lambert  
Shady Grove, Tishomingo - Mike Smith

Short Creek - Tim Storment  
South Crossroads - Mike Neighbors  
St. Peter Missionary Temple - Bro. Tommy Leatherwood  
Tishomingo - Rev. Robbie Crane  
Trinity Independent Baptist - Bro. Nathan Davidson  
Unity - Bro. Scott Brady Walker  
Yellow Creek - Stanley Magill  
Southwest Baptist - Chuck Clement

**OTHER**  
Burnsville Tabernacle - Bro. Sheldon Lambert  
Fairview Community - Dewey Smith  
Mt. Zion - Bro. Billy & Sis. Faith Powers  
North Crossroads - Bro. Bobby Christian  
New Beginning Fellowship - Jimmy Daniel  
Palestine Community - Bro. Danny Young  
Provision Ministry - Denvil and Wanda Keele  
Sun Shine Ranch Cowboy Church - Pastor Ricky Rogers  
**FULL GOSPEL**  
Mission Lighthouse - John Gwatney  
**LUTHERAN**  
Prince of Peace - Dan Elkin, Corinth

**CHURCH OF CHRIST**  
Belmont Second Street - Adam Cozort  
Berea - Chad Bowen  
Burnsville - Rick Jones  
East Iuka - Iuka - Lance Foster  
Liberty - David Conley  
Maude - Jordan Gray  
Pleasant Grove - Craig Chandler  
Tishomingo - David Lambert  
**CATHOLIC**  
St. Marys - Sheila Przesmicki  
**ASSEMBLIES OF GOD**  
Harvest Assembly Of God - Bro. Gary Cleveland

**METHODIST**  
Cherokee United - Belmont - Neville Vanderburg  
Boggs Chapel - Charles McGill  
Burnsville - Larry Dollar  
Campground - Tim Hankins  
Chapel Hill - Scotty McCay  
Dennis - Nathan Hodum  
Golden Chapel - Nathan Hodum

Harmony - Larry "Doc" Dollar  
Iuka First United - Kerry Powell  
Jones Chapel - Felix Hayes, Sr.  
Mt. Evergreen - Tim Hankins

Old Bethel - Wayne Napier  
Paradise - Charles McGill  
Patrick - Larry Dollar  
Pleasant Hill - Aubrey Boren  
Riverton - Rocky Springs - Tim Hankins  
Salem - Snowdown - Rev. Ben Luttrell  
Spring Hill - J. B. Burns, Jr.  
Rutledge Salem - Bro. Ben Luttrell  
Tishomingo - Stephen Kennedy  
**CHURCH OF JESUS CHRIST OF**

**LATTER DAY SAINTS**  
Booneville Ward - Don Cole  
Corinth Ward - Kent Bath  
**GOSPEL**

Assembly Of Christ House of Prayer - Lelon Owens  
Iuka Church Of God - Rodney Windham  
James Gospel Chapel - Anitha F. Keith

**NON-DENOMINATIONAL**  
Church on Fire Dream Center - Pastor Michael Roberts  
Way of Life Worship Center - Scotty Young

Harvest Church House of Worship - Roger & Sue Reece  
Margerum Community Church - Rod Stansky  
New Life Church - Darrell Stafford  
Gate Ministries - **PRESBYTERIAN**

Allsboro Cumberland - Dr. Don Thomas  
Bethany - L. K. Foster  
Maud Cumberland - Int. George Lee

**EPISCOPAL**  
Church Of Our Savior (Iuka)  
St. Paul's Church (Corinth)

**PENTECOSTAL**  
Apostolic Church Of Jesus Christ - Kenneth White  
Apostolic Friendship Chapel - Steve Nicholson

Burnsville First United - Jimmy Rich  
Christ Gospel - Benney Long  
Full Gospel Fellowship - Mike Richardson

Iuka First United - William Lambert  
Iuka Gospel Chapel - Gospel Lighthouse - W.H. Burcham

Grissom Chapel Holiness - Larry Marshall  
Jesus Name Apostolic - Jacky Bullock

**B & J SUPERMARKET**  
Sunday thru Thursday 8:30 - 8:30 p.m.  
Friday & Saturday 8:30 - 9 p.m.  
Hwy. 365 S. Burnsville, MS

**ROSE TRAIL TIRE**  
(256)360-2411  
Mon.-Fri. 8:30 to 5:00  
2250 Riverton Rose Trail Cherokee  
Robert Dixon, Owner

**State Farm**

**HAROLD LOMENICK**  
662-423-1231  
harold.lomenick.b2qa@statefarm.com

**CRASH BUSINESS**  
Professional Computer Repair  
"CONFIDENTIAL SERVICE"  
We Fix It FAST!  
We Fix It RIGHT!  
"Since 2008"  
662.423.9955  
24 Hour Repairs In Most Cases

**Southern Magnolia Estates**  
Retirement & Life Care Community  
"Assisted Living"  
1308 N. Pearl St. - Iuka  
Phone 424-0023

**Walmart**

Save money. Live better

**TIMBES Wrecker Service**  
(662)427-8408 or 423-2929

**J. C. JOURDAN Lumber Company**  
Iuka, MS

**SONIC America's Drive-In.**  
423-9100  
660 West Quitman Iuka, MS

**CARQUEST AUTO PARTS**  
**HARWELL PARTS AND SUPPLY**  
1102 W. Quitman St. Ph. (662) 423-2303 Iuka, MS 38852

**American Auction Co.**  
Thinking of doing an auction, call us  
**KEITH MOORE**  
Cell 731-610-1458 or 662-427-9448





## Mary Bobo

Mary Bobo, 76, of Burnsville, passed away Tuesday, June 21st, 2016, at North Mississippi Medical Center in Tupelo. Mrs. Bobo was very active in her church, Our Lady of the Lake Catholic Church in Counce, TN. She enjoyed attending the Corinth Wellness Center water aerobics, cooking, and taking care of her family. A memorial service was held at 3 PM on Friday, June 24th, 2016, at Our Lady of the Lake in Counce, Tennessee. Cutshall Funeral Home of Glen was in charge of the arrangements.

Survivors include two sons, Patrick Bobo of Holts Springs, MS and Steven Bobo and wife, Gina of Fort Mill, SC; one daughter, Sally Ballard and husband, Scott of Springfield, MO; two sisters, Betty Haras and husband, Charles of Ft. Lauderdale, FL and Rita Stipe of Buffalo Grove, IL; six grandchildren, Tyler Scott Bobo, Gabe Alexander Bobo, Eli Thomas Ballard, J. Tillman Bobo, Clayton Michelle Ballard, and Grey Wilder Bobo.

She was preceded in death by her parents, her husband, Jerry H. Bobo; and her sister, Dorothy Barnes. An online guestbook can be accessed at [www.cutshallfuneralhome.com](http://www.cutshallfuneralhome.com).

## Judith Hammond

Judith Melody (Judy) Hammond was born May 12, 1941 in Long Branch, NJ the daughter of the late William Alfred and Lillie Mae Dennis Hammond.

Miss Hammond was a wonderful, caring, and loving Mamaw to all her grandchildren. Two of her grandchildren, Kristi and Melani, were blessed to live close to their Mamaw and Pop. She enjoyed caring for her flowers, watching Mother Nature's animals, and feeding the Cardinals and hummingbirds.

Miss Hammond departed this life on June 24, 2016 at Jackson, Tennessee at the age of 75 Years, 1 Month, 12 Days. She is survived by her life partner, Bob Puckett of Bethel Springs, TN; two sons, Tom Davidson of Iuka, MS, Vince Davidson of Savannah, TN; a daughter, Lisa Finchum of Bethel Springs, TN; eight grandchildren, Renee Harris and husband Chris, Justin Givens, Kristi Finchum, Melani Finchum, Liz Davidson Bain, Patrick Walden, Shane Steele, and Ashley Steele Cayson; two great grandchildren, Brantly Murphy, and Miller; three brothers, Robert Hammond and wife Lois of Leonardo, NJ, Billy Hammond of Highlands, NJ, Marty Hammond and wife Sandy of Highlands, NJ; a sister, Penny Petach of Highlands, NJ; special neighbors, Martha and Wilbur Lowrance.

Services were held on June 27, 2016 at 1:00 PM at Mackelford Funeral Directors in Selmer, Tennessee, with Randy Smith officiating. Burial followed in the Bethesda Cemetery at Selmer, Tennessee.

## Martha Wells

BELMONT, MS. —Martha Marvalene Wells finished her race on Wednesday, June 22, 2016 and won the prize she had been striving for in this life. She was born in Hodges, AL and was a homemaker. She was a beloved wife and partner to her husband, Dwayne Wells for fifty-six years. Together they pastored several churches and served in many revivals. In addition to the churches they served, she was a member of Fairview Holy Church of Christ and had attended Old Path Missionary Baptist Church in recent years. She was a loving grandmother to their son, Kim and his wife, Karon, and his wife, Chelsea, Kollin and his wife, Tracy and Lynn and her husband, Andy. She enjoyed her great-grandson, Bryce, immensely.

She leaves several nieces and nephews who loved her dearly and a sister-in-law, Jessie Fowler. She was a shining light wherever she went.

Her going away celebration was Friday, June 24, at 11 a.m. at Old Path Missionary Baptist Church, Belmont, Ms. with Bro. Waymon Ashley and Bro. Michael Smith officiating. Burial was in Old Path Cemetery, Belmont, Ms. Deaton Funeral Home, Belmont, Ms. is in charge of arrangements.

She was preceded in death by her parents, Charles and Sarah Fowler, one brother, Leamon Fowler and two sisters, Glynnis Humphres and Zeldia Fowler. Pallbearers were Kalim Wells, Kollin Wells, Andy Brown, Wayne Garner, Gary Credille and Gilbert Armstrong.

Our Staff will provide Personal Care for you and Your loved ones during your time of need.

## Ludlam Funeral Home

Woodall Mountain Road (Past Fairgrounds)  
Iuka, Mississippi 38852  
Phone (662) 423-5800

Serving families for over 25 years

## Elmer L. Marlar

Elmer Lee Marlar, 92, of Iuka, MS, died Saturday, June 25, 2016 at Tishomingo Manor Nursing Home in Iuka. Mr. Marlar worked as a farmer and logger, and retired from Gateway Corp. in Corinth. He enjoyed walking and sitting on the Corinth Court House Square and talking to everyone who came by.

Funeral services were at 2:00 p.m., Monday, June 27, 2016, at Cutshall Funeral Home Chapel in Glen. Interment followed in Shady Grove Cemetery. Pallbearers include Tanner Marlar, Brett Marlar, Josh Marlar, Tim Marlar, Michael Marlar, and Brad Marlar. Cutshall Funeral Home of Glen, MS was entrusted with arrangements.

He is survived by four sons, Leroy and wife Ouida Marlar, Jerry and wife Becky Marlar, Jessie and wife Debra Marlar, and Danny and wife Sheila Marlar; 8 grandchildren, Brett Marlar, Tabitha Lauderdale, Chris Marlar, Josh Marlar, Tim Marlar, Jessica Null, Michael Marlar, and Brad Marlar; and 14 great grandchildren.

He was preceded in death by his parents, Lewis E. Marlar and Michel Brown Marlar; eight brothers and sisters, Stella Hudson, Vostie Grissom, Grace Hester, Bantie Milligan, Mattie Gray, Henderson "Pete" Marlar, Sid Marlar, Clifton Marlar, and two infants. Memorials may be made to Shady Grove Cemetery Fund in Burnsville. An online guestbook can be accessed at [www.cutshallfuneralhome.com](http://www.cutshallfuneralhome.com).

## Rubel Clifton Patrick

Rubel Clifton Patrick, 77, of Iuka, passed away on Thursday, June 23rd, 2016, at Baptist Memorial Hospital East in Memphis, Tennessee. Mr. Patrick enjoyed fishing, hunting, making, knives, and gardening. He also served in the Mississippi National Guard.

Services were held at 2 p.m. on Sunday, June 26th, at Cutshall Funeral Home Chapel in Iuka with Bro. Jimmy Daniel and Bro. Chuck Clark officiating. Burial was in New Salem Cemetery. Cutshall Funeral Home was in charge of the arrangements.

Pallbearers were Dale Aldridge, Marvin South, Eddie Goss, James Davis, Moe McGee, and Brady Patrick.

Honorary pallbearers were Darryl Nunley, Herman Nunley, Steve Hudson, John Nunley, and Tommy Johnson.

Survivors include his wife, Marie Patrick of Iuka; three daughters, Marlene Clark and husband, Chuck of Iuka; Mildred Gasaway of Corinth; Marcie Tigner of Iuka; two sons, Albert Patrick and wife, Merri of Iuka, Chester Patrick and wife, Janice of Iuka; nine grandchildren; nine step-grandchildren; one special grandchild, Lacy Clark and husband, Justin of Iuka; and two special great-grandchildren, Maddison and Nolee.

He was preceded in death by two sisters, Shirley Potts and Gracie Patrick; and two brothers, Jimmy Patrick and Floyd Patrick.

An online guestbook can be accessed at [www.cutshallfuneralhome.com](http://www.cutshallfuneralhome.com).

## Thank You

Mt. Vernon Baptist Church wishes to thank everyone who supported their recent fundraiser. May God bless each of you for kindness and generosity.

## Homecoming At Snowdown

Snowdown Methodist Church will be having Homecoming service on July 3<sup>rd</sup>-16<sup>th</sup>. Bro. Donnie Riley will be bringing the message at 11 o'clock. Lunch will be served at 12 noon. Singing will begin at 11 o'clock, all piano players and singers are invited to come and join us for a day of worship.

### Community Bible Study EVERY Monday

There will be a Community Bible Study held at First Free Will Baptist Church (1589 Pleasant Hill Rd., Iuka) EVERY Monday night at 7 p.m. All denominations are welcome.



## Eastport Baptist Church

### Sunday Service Times

9 a.m.—10 a.m. Early Service  
10 a.m. to 11 a.m. Sunday School  
11 a.m. to 12 Regular Service  
Wednesday—Bible Study 6 p.m.

A soft answer turns away wrath, but a harsh word stirs up anger. Proverbs 15:1

## Cutshall Funeral Home

302 North Pearl St.—Iuka, MS  
Hwy. 72—Glen, MS  
662-423-5222

Like you, we appreciate good neighbors. That's why we do our best to be good neighbors too. For over 75 years, we've provided area families with sound advice and caring service.

We invite your comparison. Is the quality suitable for the price? Are you provided with several options and choices?

Your peace of mind is important to us.

"Now serving you for four generations."

"Proud Of Our Past, Committed To Our Future"

## Terry Lee Stephens

Terry Lee Stephens, 64, of Iuka, Mississippi, died Sunday, June 26, 2016, at Magnolia Regional Health Center in Corinth. He was a member of New Salem Baptist Church, and was retired from Kimberly Clark after 31 years. He was a car enthusiast, and a very skilled guitarist.

Terry was very active in his church where he served as a Sunday School Director and was currently involved in Men's Bible Study. Terry enjoyed spending time with his family, studying his Bible, and was adamant about the Lord.

Funeral services are scheduled for 11 AM on Thursday, June 30, 2016 at New Salem Baptist Church, officiated by Bro. Ron Norvell, Bro. Ted Vafeas, and Bro. Ed Kennedy. Interment will follow in New Salem Cemetery. Pallbearers include James Lowell Barnes, Dusty Puckett, Greg McGee, Roger Lambert, Seth Kennedy, Eli Puckett, and PeJoe Arnold. Honorary bearers will be Jeff Lovelace and Brandon Ruple. Visitation is scheduled for 5 until 8 PM on Wednesday, June 29 at New Salem Baptist Church. Cutshall Funeral Home of Iuka, MS is entrusted with arrangements.

He is survived his wife, Sherree Stephens of Iuka; his mother, Joyce Stephens of Spartanburg, SC; 1 son — Derek Stephens and wife Carrie of Oxford, MS; 1 daughter — Dr. Leigh Anne Stephens of Franklin, TN; 2 brothers — Nicky Stephens and wife Myra of Roebuck, SC and Chris Stephens and wife Sharon of Gordonsville, VA; 1 sister — Bronwyn Vintroux and husband Bill of Melbourne, FL and 1 grandchild — Harper Lee Stephens. He was preceded in death by his father, Clinton Stephens; and his brother, Tony Stephens. Memorial contributions may be made to the New Salem Baptist Church Building Fund. An online guestbook can be accessed at [www.cutshallfuneralhome.com](http://www.cutshallfuneralhome.com).



## Winnie O'Neill

Winnie "Wendy" Louise O'Neill, 71, of Iuka, MS, died Tuesday, June 28, 2016, at her residence. She was a member of Old Pleasant Hill Church. She enjoyed spending time with her children and grandchildren, quilting, sewing, and reading. Visitation is scheduled for 5 until 9 PM on Wednesday, June 29 at Cutshall Funeral Home in Glen. Funeral services are scheduled for 3 PM on Thursday, June 30, 2016, at Cutshall Funeral Home Chapel in Glen, officiated by Bro. Terry Garrett, Bro. Roy "Bubba" Childress, and Sister Wanda Keele. Interment will follow in Old Pleasant Hill Cemetery. Pallbearers include Louis Ferguson, Jr., Louis Ferguson, III, Jonathan Mink, Zach Glover, Terry Garrett, and Trevor Garrett. Cutshall Funeral Home of Glen, MS is entrusted with arrangements.

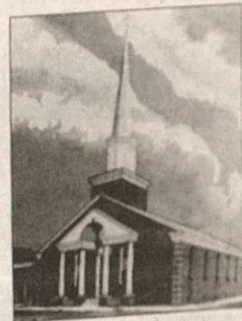
She is survived by 3 daughters — Lynnette Ferguson and husband Louis; Angela Sparks; and Dana Lazo and husband Francisco; 1 son — Joseph "Joe" O'Neill, Jr. and wife Sondra; 2 brothers — Dave Childress and wife Marlene and James Childress and wife Nan; 1 sister — Edna Lewis and husband Gene; 8 grandchildren — Wendy Mink, Louis Ferguson, III, Michael O'Neill, Christy Prince, Timothy Carpenter, Eric Fultz, David Martin, and Joshua Martin; and 4 great grandchildren. She was preceded in death by her husband, Joseph "Joe" O'Neill; her parents; two sisters; and four brothers. An online guestbook can be accessed at [www.cutshallfuneralhome.com](http://www.cutshallfuneralhome.com).

## Iuka Baptist Church

105 W. Eastport St.  
(662) 423-5246

### Sunday Service Times

Sunday School 9:45 a.m.  
Worship Services 8:30 a.m.  
and 2nd service 11:00 a.m.  
Discipleship Training 5:30  
Evening Worship 6:30 p.m.  
Wednesday Service  
Prayer Meeting 6:30 p.m.  
Youth Bible Study





## FREE CLOTHES-

Iuka Baptist Church, 105 W. Eastport St., Iuka, has clothes give-away EVERY Monday-10am-noon AND Thursday 2-4pm.

**Metal Cargo Containers** – 20 and 40 ft., great for storage. Call for pricing and delivery – 731-689-5616.  
J-21-TFN-chg

**REDUCED** - House is \$71,500.00, completely remodeled inside, open floor plan, 3 bd, in city limits of Iuka. Call 662-279-7650.  
m-5-tfn-chg

**Rentals available** – 1 and 2 bedroom homes, kitchen appliances furnished. 662-279-3679. m-26-tfn-chg

**Job Opening** – For nurse's aide and dietary position available. Apply in person at Southern Magnolia.  
j-2-9-16-23-30-chg

**For Rent** – 2-3 bedroom trailer, partly furnished. Call 423-3425 after 5 p.m.  
j-23-30-pd

**Licensed CNA's** willing to private sit and more 5 and 7 years experience in long term care facilities/home healthcare. For more information, call 662-279-2188 or 662-660-6386.  
j-23-30-pd

**Home For Sale** – On 3 acres of land, unique setting many shade trees, great closets, sun room, screened porch, large living quar-

ters, 3-4 bedrooms, 3 baths, tile and wood floors, custom cabinets, island in kitchen, (man cave), too much to tell, MUST SEE! 662-424-0032.  
j-30-ffn-chg

**Mobile home for Rent:** 14x60. 2 bedroom, 1 bath; bonus sunroom has huge walk-in closet! Sunroom opens up to large deck overlooking beautiful wooded yard with fresh running spring! Like new condition; \$450/month with lease! 80 County Road 261, Iuka. No Pets! Call 662-279-3459 for appointment. J-30-chg

**Want to Keep Books** – Experience freelance book-keeper looking for small to medium size books to keep. Reasonable rates call or text. 901-827-1791. J-30-J-7-chg

**WANTED** – To replace the perfect wife (mate) that died 2 years ago. We had the perfect marriage. It leaves me not knowing what action to take. I have a 3 story mansion on seven acres on Pickwick Lake, a Mercedes sport car 5 weeks old, a Tracker like new, all these necessities bought and paid for. House totally furnished almost new and ready to use. We will keep the nurse and housekeeper and pickup living a perfect life. We were Christians and still want that for the good life. We need to meet and discuss likes and dislikes. Meeting my first and only wife, went to perfection. Shall we try? Ed Gregory, P. O. Box 721, Iuka, MS 38852. 423-6138. J-30-pd

**HUGE 4 FAMILY YARD SALE** – Thurs, June 30<sup>th</sup>, 8:00 a.m. until: Fri., July 1<sup>st</sup>, 8:00 a.m. until; 399 CR 169 Iuka. 1<sup>st</sup> house on the right just past Mt. Gilead Baptist Church. Lots of clothes for children, adults and babies, name brand. Lots of household items, table saw, microwave, highchairs, furniture and lots of misc. stuff. J-30-pd

**YARD SALE- #51 Millcreek Road**, pictures, misc. items, men, women, boys and girls clothing. 700 a.m. until. J-30-chg

**YARD SALE** – Saturday, July 2<sup>nd</sup> from 8-12, 77 CR 178 Iuka, Woodall Estates. Furniture, tools, household items, books, misc.

## IN THE CHANCERY COURT OF TISHOMINGO COUNTY, MISSISSIPPI

ESTATE OF ORIEN NASH STARKEY, JR., DECEASED NO. CV 2016-00217-71  
NOTICE TO CREDITORS  
Letters Testamentary having been granted on the 22<sup>nd</sup> day of June, 2016, by the Chancery Court of Tishomingo County, Mississippi, to the undersigned Executrix of the Estate of Orien Nash Starkey, Jr., deceased, notice is hereby given to all persons having claims against said estate to present the same to the Clerk of this Court for probate and registration according to law, within ninety (90) days from the first publication of this notice, or they will be forever barred. THIS the 22<sup>nd</sup> day of June, 2016.

Donna Starkey  
Donna Starkey, Executrix of the Estate of Orien Nash Starkey, Jr., Deceased  
Nicholas B. Phillips  
Phillips and Phillips, PA  
131 South Fulton Street  
P. O. Box 566  
Iuka, Mississippi 38852  
Telephone: (662) 423-1989  
Facsimile: (662) 423-0089  
MS State Bar # 4167  
J-30-jy-7-14-chg

## LEGAL NOTICE IN THE CHANCERY COURT OF TISHOMINGO COUNTY, MISSISSIPPI

IN RE: THE MATTER OF THE ESTATE OF JOHN EDWARD BLACKBURN, DECEASED CAUSE NO. CV2016-000207-71  
NOTICE TO CREDITORS  
Letters of Administration having been granted on the 20<sup>th</sup> day of June, 2016, by the Chancery Court of Tishomingo County, Mississippi to the undersigned Administratrix of the Estate of JOHN EDWARD BLACKBURN, Deceased, notice is hereby given to all persons having claims against said estate to present the same to the Clerk of this Court for probate and registration according to law, within ninety (90) days from the first publication of this notice, or they will be forever barred. THIS the 16<sup>th</sup> day of June, 2016.

PITZU YANG BLACKBURN  
Administratrix of the Estate of JOHN EDWARD BLACKBURN  
TOMMY D. CADLE  
CADLE & FLOYD  
MSB # 7674  
101 South Main Street  
Booneville, MS 38829  
Telephone No. 662/728-2131  
Telephone No. 662/728-1906  
J-30-J-7-14-chg

## STORAGE UNITS FOR RENT

Burnsville Mini Storage  
16 Municipal Park Road  
Burnsville, MS  
38833  
Contact: Lamar Skinner, Owner  
662-427-9391  
n-15-tfn-chg

## John's Garage & J & S Auto Sales

John Boothe, Owner  
Serving the area since 1985  
482 S. Hwy. 365  
Burnsville, MS 38833  
Phone (662) 427-8298  
After Hours (662) 808-3249  
www.johnsgarageinc.net

## LOCAL REALTORS

For property information, visit the websites below or [www.realtor.com](http://www.realtor.com)



[www.ablesrealestate.com](http://www.ablesrealestate.com)  
662.423.2564

[www.gracelongrealestate.com](http://www.gracelongrealestate.com)  
662.423.5555

[www.ryanproperties-ms.com](http://www.ryanproperties-ms.com)  
662.423.5001 or 662.279.2189

## Daily's Body Shop and Wrecker Service

BURNSVILLE, MISSISSIPPI  
CALL DAY 427-9234  
or NIGHT 427-8449  
Expert Body Work - 24 Hour Service

## Your New Kitchen

We combine beauty, value and convenience to create the kitchen of your dreams.

Featuring... Flat Panel Oak Cabinets!  
Oak, Maple, White & Black Painted & Maple Veneer available also!



7 COLORS OF  
PREFORMED  
COUNTERTOPS  
\$7.99 per ft.

## Smith CABINET SHOP

1505 Fulton Drive  
Corinth, MS 38834 • 662-287-2151  
[www.smithcabinetshop.net](http://www.smithcabinetshop.net)



GO SEE **Joseph McNatt**  
AT LONG LEWIS FORD/LINCOLN

## LONG LEWIS CORINTH

FIND YOUR BEST FORD PRICE AT  
[LONGLEWISCORINTH.COM](http://LONGLEWISCORINTH.COM)

## NOBODY SELLS FORDS FOR LESS!



NEW 2016  
FORD F150 XLT  
CREWCAB 4x4

WITH UP TO  
\$11,750\* OFF  
AFTER SPECIAL ADDED DISCOUNTS:  
• ON 4 WHEEL DRIVE MODELS!

NEW 2017 FORD  
ESCAPES

\$2,000  
OFF!



PLUS TAX TITLE AND ADMINISTRATION FEE.

Long Lewis Ford in Corinth has several in stock to choose from!

PLUS TAX TITLE AND ADMINISTRATION FEE.  
PLUS MANY MORE MODELS TO CHOOSE FROM!

## PRE-OWNED SUPER SALE TRADES OF THE WEEK

2013 Honda Civic S



#6FS210A **\$12,900**

2011 Ford F150 XLT  
111K miles!



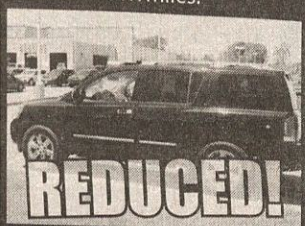
#6F310B **\$7,999**

2007 Chevrolet Tahoe LT  
One owner! Extremely nice!



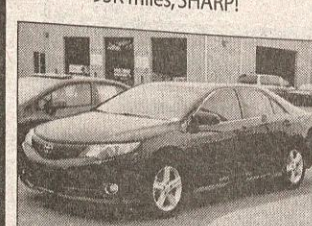
#6EG55A **\$19,963**

2012 Nissan Armada  
Platinum  
61K miles!



#6ER22A **\$27,900**

2012 Toyota Camry SE  
95K miles, SHARP!



#6FS329A **\$11,963**

2015 Ford Lariat  
Hard-loaded, 13K miles!  
Certified Pre-Owned!



#6F278A **\$47,980**

LONG-LEWIS FORD LINCOLN 1500 SO. HARPER RD. CORINTH, MS 662-287-3184 800-844-0184



# Legal Notice

## THE CHANCERY COURT OF TISHOMINGO COUNTY, MISSISSIPPI

IN THE MATTER OF THE LAST WILL AND TESTAMENT OF BETTY JOYCE LINTON BARKLEY, DECEASED

CAUSE NO. CV2016-000188-71

### NOTICE TO CREDITORS

The undersigned having been appointed Executor of the Estate of Betty Joyce Linton Barkley, deceased, by the Chancery Court of Tishomingo County, Mississippi, in Cause NO. 2016000188-71 on the 7th day of June, 2016, hereby gives notice to all persons having any claims against the said estate to the same probated and registered by the Clerk of the Chancery Court of Tishomingo County, Mississippi, within ninety (90) days, and failure to probate and register for this period will bar the claim.

WITNESS MY SIGNATURE, on this the 7th day of June, 2016.  
BARTON BARKLEY

CLARK LAW FIRM, SOLICITORS

FOR PETITIONER

125 SOUTH FULTON STREET

POST OFFICE BOX 319

LUKA, MISSISSIPPI 38852

(662) 423-5227

j-16-23-30-chg

## IN THE CHANCERY COURT OF TISHOMINGO COUNTY, MISSISSIPPI

IN THE MATTER OF THE ESTATE OF REGGY SUE GLIDEWELL, DECEASED

NO. CV2016-000191-17

NOTICE is hereby given that Letters of Administration were on the 10th day of June, 2016, issued to the undersigned by the Chancery Court of Tishomingo County, Mississippi, on the Estate of REGGY SUE GLIDEWELL, Deceased, and all persons having claims against the said estate are hereby notified to present the same to the Clerk of said court for probate and registration according to law within ninety (90) days from the first publication or they will be forever barred.

THIS the 10th day of June, 2016.

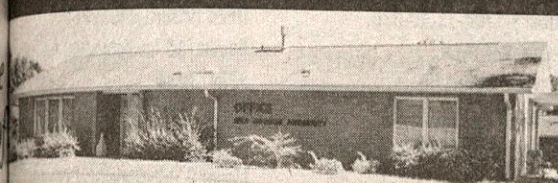
Barbara Gail Dobbins, Administratrix

j-16-23-30-chg

## luka Housing Authority

1629 Whitehouse Rd., luka, MS 38852

(662) 423-9232



**NOW ACCEPTING APPLICATIONS**  
HUD Public Housing-Rent Based On Income  
Single Level Units With Easy Access, Kitchen  
Appliances, Central Heat & Air, Free Lawn  
Service and Pest Control While Providing  
Decent, Safe and Sanitary Housing

Office Hours

Mon-Fri 8am-5pm

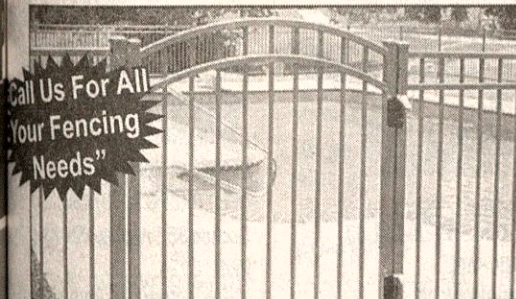
Closed 12 noon-1pm



lukaHousingAuthority.com

# FENCING

WOOD - VINYL - ALUMINUM - CHAIN LINK  
POOLS - FARMS - YARDS  
RESIDENTIAL • COMMERCIAL



Call Us For All  
Your Fencing  
Needs

Also Hardwood Flooring,  
Custom Plantation Shutters, Antiques

Stop by our office in Adamsville on Main Street

**SEE US ON FACEBOOK!**

**WEST TENNESSEE LUMBER & FENCE**  
**731-632-1688**

LICENSED & BONDED

DIRT CHEAP

## ED'S MAINTENANCE SERVICE

Electric & Plumbing  
Mowing & Weed Eating

423-6561

Home

279-5291

Cell

# END YOUR WORRY!

Stop the Harassment & Keep your Property

QUICK - EASY - LOW COST

# BANKRUPTCY

Affordable flexible payment plans

**ZERO** down payment gets you a fresh start with

## COMER LAW FIRM

THOMAS H. COMER JR.

OVER 35 YEARS EXPERIENCE

We Care For You! We Will Help You!

**662-728-8101**

# LEGAL NOTICES

## Legal Notice

### Invitation to Bid

The Tishomingo County Soil & Water Conservation District is offering up for sealed bid the following item:

Chandler Lime Spreader

This Chandler Lime Spreader has a stainless steel hopper, PTO hydraulic driven, and 18-inch belt over chain. This piece of equipment does need some repair. This equipment may be viewed during daylight hours at the Tishomingo County Agricultural Service Building 240 Kaki Street luka, Mississippi.

Sealed Bids will be accepted until the close of business 4:00 pm Friday July 15, 2016 at the Tishomingo County Soil & Water Conservation District located in the Tishomingo County Agricultural Service Building at 240 Kaki Street luka, Mississippi 38852. The Board of Commissioners will open bids at 10:00 am on Monday 18, 2016 at the above stated address. **The SWCD reserves the right to reject any or all bids.**  
**J-2-15 AND July 5-chg**

## IN THE CHANCERY COURT OF TISHOMINGO COUNTY, MISSISSIPPI

IN THE MATTER OF THE ESTATE OF WILLIE B. GLIDEWELL,

CODE 2016-000192-71

### NOTICE TO CREDITORS

Notice is hereby given that Letters of Administration were on the 10th day of June, 2016, issued to the undersigned by the Chancery Court of Tishomingo County, Mississippi, on the Estate of WILLIE B. GLIDEWELL, Deceased, and all persons having claims against the said estate are hereby notified to present the same to the Clerk of said Court for probate and registration according to law within ninety (90) days after the first publication or they will be forever barred.

THIS the 10th day of June, 2016.

Barbara Gail Dobbins, Administratrix

j-16-23-30-chg

## SUBSTITUTED TRUSTEE'S NOTICE OF SALE

WHEREAS, on the 11th day of October, 2005, Jeannie A. Taylor and Larry D. Taylor, wife and husband, executed a certain Deed of Trust to Angie Dellinger, Trustee for the benefit of Regions Bank, successor by merger to AmSouth Bank, which Deed of Trust was recorded in the office of the Chancery Clerk of Tishomingo County, Mississippi, and recorded in Deed of Trust Book 348 at Page 621 of the land records; and,

WHEREAS, T. Frank Collins has been substituted in the place and stead of Angie Dellinger, Trustee for Regions Bank, successor by merger to AmSouth Bank, said Appointment of Substitute Trustee being recorded as Instrument No. 2011002303 of the records of the Chancery Clerk of said County; and,

WHEREAS, fee simple title is vested in Larry D. Taylor and wife, Jeannie A. Taylor; and,

WHEREAS, default having been made in the terms and conditions of said Deed of Trust and the entire debt secured thereby having been declared to be due and payable in accordance with the terms of said Deed of Trust, the legal holder of said indebtedness, Regions Bank, successor by merger to AmSouth Bank, having requested the undersigned Substituted Trustee to execute the trust and sell said land and property in accordance with the terms of said Deed of Trust and for the purpose of raising the sums due thereunder, together with attorney's fees, trustee's fees and expense of sale.

NOW, THEREFORE, I, T. Frank Collins, Substituted Trustee in said Deed of Trust, will on the 11th day of July, 2016, offer for sale at public outcry and sell within legal hours (being between the hours of 11:00 a.m. and 4:00 p.m.), at the Main Front Door of the Tishomingo County Courthouse, 1008 Battleground Drive, luka, Mississippi to the highest and best bidder for cash the following described property situated in Tishomingo County, State of Mississippi, to-wit:

PART OF THE NORTHEAST QUARTER OF SECTION 11, TOWNSHIP 7 SOUTH, RANGE 10 EAST, TISHOMINGO COUNTY, MISSISSIPPI, DESCRIBED AS BEGINNING AT THE SOUTHWEST CORNER OF SAID QUARTER SECTION AND THENCE RUN NORTH 0 DEGREES 12 MINUTES WEST FOR 298.0 FEET TO THE POINT OF BEGINNING HEREOF; THENCE RUN NORTH 83 DEGREES 39 MINUTES EAST FOR 415.0 FEET; THENCE RUN NORTH FOR 315.0 FEET; THENCE RUN SOUTH 83 DEGREES 24 MINUTES WEST FOR 412.85 FEET; THENCE RUN SOUTH 0 DEGREES 25 MINUTES WEST FOR 313.45 FEET TO THE POINT OF BEGINNING, CONTAINING 3.0 ACRES, MORE OR LESS.

ALSO: A 20 FOOT RIGHT-OF-WAY EASEMENT FOR PURPOSE OF INGRESS AND EGRESS TO AND FROM GRANTEE'S PROPERTY.

I WILL CONVEY only such title as is vested in me as Substituted Trustee.

WITNESS MY SIGNATURE, this the 9th day of June, 2016.

/s/ T. Frank Collins

T. Frank Collins, Substituted Trustee

Prepared By:

T. Frank Collins, Esq.

Collins & Associates, PLLC

100 Webster Circle, Suite 2

Madison, Mississippi 39110

Telephone: (601) 853-4400

j-16-23-30-jy-7-chg

## IN THE YOUTH COURT OF TISHOMINGO COUNTY, MISSISSIPPI

IN THE INTEREST OF

CAUSE NO.: 71-YC-2016-P-135-1(322993)

B.P.C., A MINOR;

YC2016-000072

### SUMMONS

THE STATE OF MISSISSIPPI

TO: JON PAUL CARNATHAN

You have been made a Defendant in the suit filed in this Court by Tishomingo County, State of Mississippi, Plaintiff, seeking adjudication of educational neglect or other relief demanded. Defendants other than you in this action are Paula Inman. Jon Paul Carnathan is not to be found herein after diligent search and inquiry, and the post office address of said Defendant is not known, and whose last known address is within the State of Mississippi.

You Jon Paul Carnathan are commanded to appear personally before the Youth Court of Tishomingo County at the Courthouse in luka, Mississippi, at 9:00 o'clock a.m. on Tuesday, the 12th day of July, 2016, for an educational neglect hearing for the purpose set forth in the petition. You have a right to be represented by an attorney. You are requested to immediately notify the youth court of the name of your attorney. You have a right to subpoena witnesses on your behalf.

GIVEN under hand and seal of court, at Tishomingo, Mississippi, this the 14th day of July, 2016.

Peyton Cummings, Clerk

Courtney Page, D.C.

A PARENT, GUARDIAN, OR CUSTODIAN OF A CHILD SHALL BE A PARTY TO THIS CASE PURSUANT TO THE MISSISSIPPI YOUTH COURT LAW. A PERSON MADE A PARTY TO THIS CASE MAY BE REQUIRED: TO PAY FOR THE SUPPORT OF THE CHILD PLACED IN CUSTODY OF ANY PERSON OR AGENCY INCLUDING ANY NECESSARY MEDICAL TREATMENT PURSUANT TO SECTION 43-21-615 OF THE MISSISSIPPI CODE; TO PAY FOR COURT ORDERED MEDICAL AND OTHER EXAMINATIONS AND TREATMENT OF A CHILD, FOR REASONABLE ATTORNEY'S FEES AND COURT COSTS, AND FOR OTHER EXPENSES FOUND NECESSARY OR APPROPRIATE IN THE BEST INTEREST OF THE CHILD PURSUANT TO SECTION 43-21-619 OF THE MISSISSIPPI CODE; TO PAY DAMAGES OR RESTITUTION AND TO PARTICIPATE IN A COUNSELING PROGRAM PURSUANT TO SECTION 43-21-619 OF THE MISSISSIPPI CODE; TO RECEIVE COUNSELING AND PARENTING CLASSES PURSUANT TO SECTION 43-21-605 OF THE MISSISSIPPI CODE; TO DO OR OMIT TO DO ANY ACT DEEMED REASONABLE AND NECESSARY FOR THE WELFARE OF THE CHILD PURSUANT TO SECTION 43-21-617 OF THE MISSISSIPPI CODE.

j-16-23-30-J-7-chg

## SUBSTITUTED TRUSTEE'S

### NOTICE OF SALE

WHEREAS, on August 24, 2011, Stacey Steele and Jessica L. Steele, Husband and wife executed a certain deed of trust to Mathew C. Clarke, Trustee for the benefit of Mortgage Electronic Registration Systems, Inc. as nominee for Churchill Mortgage Corporation, its successors and assigns which deed of trust is of record in the office of the Chancery Clerk of Tishomingo County, State of Mississippi in Instrument No. 2011002879; and

WHEREAS, said Deed of Trust was subsequently assigned to Wells Fargo Bank, N.A. by instrument dated July 11, 2014 and recorded in Instrument No. 2014002131 of the aforesaid Chancery Clerk's office; and

WHEREAS, Wells Fargo Bank, NA has heretofore substituted Shapiro & Massey, LLC as Trustee by instrument dated March 18, 2015 and recorded in the aforesaid Chancery Clerk's Office in Instrument No. 2015000760; and

WHEREAS, default having been made in the terms and conditions of said deed of trust and the entire debt secured thereby having been declared to be due and payable in accordance with the terms of said deed of trust, Wells Fargo Bank, NA, the legal holder of said indebtedness, having requested the undersigned Substituted Trustee to execute the trust and sell said land and property in accordance with the terms of said deed of trust and for the purpose of raising the sums due thereunder, together with attorney's fees, trustee's fees and expense of sale.

NOW, THEREFORE, I, Shapiro & Massey, LLC, Substituted Trustee in said deed of trust, will on July 21, 2016 offer for sale at public outcry and sell within legal hours (being between the hours of 11:00 a.m. and 4:00 p.m.), at the East Door of the County Courthouse of Tishomingo County, located at luka, Mississippi, to the highest and best bidder for cash the following described property situated in Tishomingo County, State of Mississippi, to-wit:

The following described property, to-wit:

Part of the NW 1/4 of Section 15, Township 7, Range 10 East, described as beginning at the Southeast corner of said quarter and run thence North on the East boundary thereof, 954 feet to the South side of the Red Bud Road; thence West with the South side of said road 500 feet to the point of beginning; thence continue west with the South side of said road 200 feet to a stake; thence South 400 feet to a stake; thence Easterly parallel with said road 200 feet to a stake; thence North 400 feet to the point of beginning, containing 1 1/2 acres, more or less.

The improvements thereon being commonly known as 570 County Road 864, Golden, Mississippi 38847.

Being the same lot or parcel of ground which by Deed dated September 7, 1998 and recorded among the Land Records of Tishomingo County in Deed Book B-128, page 449 was granted and conveyed by Willie Glenn Wells unto Daris Glenn Wells and Lisa Gaye Wells.

Being the same lot or parcel of ground which by Deed of even date and recorded or intended to be recorded immediately prior hereto among the Land Records of Tishomingo County, State of Mississippi, was granted and conveyed by and between Daris Glenn and Lisa Gaye Wells unto Stacey Steele.

I WILL CONVEY only such title as vested in me as Substituted Trustee.

WITNESS MY SIGNATURE on this 22nd day of June, 2016.

Shapiro & Massey, LLC

SUBSTITUTED TRUSTEE

Shapiro & Massey, LLC

1080 River Oaks Drive

Suite B-202

Flowood, MS 39232

(601) 981-9299

570 County Road 864

Golden, MS 38847

15-011834AH

Publication Dates: June 30, 2016 and July 7 and 14, 2016

## IN THE CHANCERY COURT OF TISHOMINGO COUNTY, MISSISSIPPI

IN THE MATTER OF THE LAST WILL AND TESTAMENT OF ZENOBIA G. OAKS, DECEASED

CAUSE NO. CV2016-000189-71

### NOTICE TO CREDITORS

The undersigned having been appointed Executor of the Estate of Zenobia G. Oaks, deceased, by the Chancery Court of Tishomingo County, Mississippi, in Cause No CV2016-000189-71 on the docket of said Court, on the 7th day of June, 2016, hereby gives notice to all persons having any claims against the said estate to have the same probated and registered by the Clerk of the Chancery Court of Tishomingo County, Mississippi, within ninety (90) days, and failure to probate and register for this period will bar the said claim.

WITNESS MY SIGNATURE, on this the 7th day of June, 2016.

JAMES FRANKLIN OAKS, III

Executor

CLARK LAW FIRM, SOLICITORS

FOR PETITIONER

125 SOUTH FULTON STREET

POST OFFICE BOX 319

luka, Mississippi 38852

(662) 423-5227

j-16-23-30-chg

## IN THE CHANCERY COURT OF TISHOMINGO COUNTY, MISSISSIPPI

IN THE MATTER OF THE LAST WILL AND TESTAMENT OF VIRGINIA

ANGLIN, DECEASED,

CAUSE NO. CV2016-000211-71

### NOTICE TO CREDITORS

The undersigned having been appointed Executor of the estate of Virginia Anglin, deceased, by the Chancery Court of Tishomingo County, Mississippi, in Cause No. CV2016-000211-71 on the docket of said Court, on the 20th day of June, 2016, hereby gives notice to all persons having any claims against the said estate to have the same probated and registered by the Clerk of the Chancery Court of Tishomingo County, Mississippi, within ninety (90) days, and failure to probate and register for this period will bar the said claim.

WITNESS MY HAND AND SIGNATURE, on this the 20th day of June, 2016.

DAVID NICHOLS,  
EXECUTOR

HAROLD S. JACKSON

ATTORNEY FOR PETITIONER

301 W. EASTPORT STREET

POST OFFICE BOX 414

LUKA, MISSISSIPPI 38852

(662) 423-6880

MISSISSIPPI BAR NO. 2962

J-23-30-J7-CHG

## IN THE CHANCERY COURT OF TISHOMINGO COUNTY, MISSISSIPPI

IN THE MATTER OF THE ESTATE OF NANCY FULMER, DECEASED

CAUSE NO. CV2016-0000043-71-MM

### NOTICE TO CREDITORS

Letters Testamentary having been granted on the 8th day of June, 2016, by the Chancery Court of Tishomingo County, Mississippi, to the undersigned Executrix of the Estate of Nancy Fulmer, Deceased, notice is hereby given to all persons having claims against said estate to present the same to the Clerk of this Court for probate and registration according to law, within ninety (90) days from the first publication of this notice or they will be forever barred.

This the 8th day of June, 2016.

Mary Ellen Fulmer, Executrix of the

Estate of Nancy Fulmer, deceased

J-23-30-J-7-chg



## PUBLIC NOTICE FOR 2013 TAXES

**YOU WILL TAKE NOTICE THAT IF THESE 2013 TAXES ARE NOT REDEEMED BY 8/25/2016 BY 5:00 P.M. TITLE WILL BECOME ABSOLUTE IN SAID PURCHASERS' NAME.**

Parcel 1-1005- -22-024.02  
ANDERSON MARGARET A  
34 COUNTY ROAD 233  
IUKA, MS 38852  
MARLAR CONEY (MARGARET A ANDERSON)  
PO BOX 243  
BURNSVILLE MS 38833  
PT W1/2 S1/2 S1/2 SW1/4 SW1/4  
DEED BK/PG B177/532 12/95  
Section 22 Township 003 Range 010  
PPIN 16344

Parcel 3-1006-02-13-141.  
ARNOLD WENDEL L/E  
HWY 25 NORTH  
IUKA, MS 38852  
PT BLOCK 25  
DEED BK&PG B187/727 5-5-97  
Section 13 Township 003 Range 010  
PPIN 3956

Parcel 5-0301-12-11-015.01  
B & S MEDICAL PROPERTIES LLC  
1519 W QUITMAN STREET  
IUKA, MS 38852  
DEED BK/PG B135/501 6-90  
DB 209/688 04-19-2000  
DB 212/127 08-11-2000  
Section 11 Township 003 Range 009  
PPIN 17032  
Lienor 1 RENASANT BANK  
Lienor 2 FIRST AMERICAN NATIONAL BANK

Parcel 1-0902-13-04-041.  
BECHT KATHY  
5023 ELUCIA DRIVE  
CAVE CREEK AZ 85331  
BECHT KATHY  
4451 E. SPUR DRIVE  
CAVE CREEK, AZ 85331  
PT SW1/4 NE1/4 E HWY 25  
DEED BK&PG B114/500-01  
Section 04 Township 002 Range 010  
PPIN 2532 1

Parcel 1-0807- -36-013.  
BONDS GORMOAN ETUX  
1379 OPAL CT  
DELTONA FL 32738  
SW1/4 SE1/4 SW COR  
9-08-2009 407-718-9276 PHONE#  
DEED BK&PG B62/603 REC 00/00  
Section 36 Township 001 Range 010  
PPIN 1944

Parcel 1-1106- -23-010.  
BUGG MARY ETVIR  
57 COUNTY ROAD 155  
IUKA MS 38852  
SEWELL JO ALLISON  
57 COUNTY ROAD 155  
IUKA MS 38852  
PT NE1/4 SE1/4  
DEED BK&PG 91/139 REC 00/00  
Section 23 Township 004 Range 010  
PPIN 5221

Parcel 5-0301-04-01-001.04  
BYRD GEORGE F ETUX  
P O BOX 232  
BURNSVILLE MS 38833  
PT W1/2 N1/2 NW1/4 E 30' CO RD  
DEED BK & PG B171/103  
Section 01 Township 003 Range 009  
PPIN 345  
Lienor 1 TOMMY AND LAVERNE EP-PERSON  
Lienor 2 RPD PLANNING GROUP

Parcel 1-0308- -33-021.  
CARDEN RHONDA  
360 HWY 365  
BURNSVILLE MS 38833  
PT E1/2 S1/2 SW1/4 N 80' CO RD  
DEED BK&PG B180/102 4-8-96  
Section 33 Township 003 Range 009  
PPIN 1063  
Lienor 1 GRAY, PHILLIP

Parcel 4-1307-10-35-096.02  
CLARK JOSEPH  
84 TH AND 3RD CLEVELAND ST  
BELMONT MS 38827  
WHITEHEAD AMBER M ETVIR  
P O BOX 792  
BELMONT MS 38827  
DIAZ, ALREREDO ROJAS  
13 CLEVELAND STREET  
BELMONT, MS 38827  
LOT 5 & S1/2 OF LOT 6  
BLK 19 FOURTH ADDITION  
Section 35 Township 006 Range 010  
PPIN 22208  
Lienor 1 DARREL AND M. RUTH HARP

Parcel 1-1305-01-15-033.  
CLINGAN PEGGY  
91 CR 23  
DENNIS MS 38838

13 CR 195  
IUKA MS 38852  
JONES DAVID-PRYCE  
1580 HWY 25  
TISHOMINGO MS 38873  
IMPROVEMENTS ONLY  
Section 18 Township 003 Range 011  
PPIN 13411

Parcel 1-1706- -23-008.  
COWELL MELISA  
8 COUNTY ROAD 245  
IUKA MS 38852  
PT NW/14 SW1/4 SW COR  
DEED BK&PG B186/33-34 2-4-97  
Section 23 Township 003 Range 011  
PPIN 10449  
Lienor 1 RENASANT BANK  
Lienor 2 MDES  
Lienor 3 EASY FINANCE

Parcel 1-1309- -29-005.  
CREDILLE DAYTON ETUX  
C/O MRS ALLISON  
38455 N SHERIDAN RD 785  
BEACH PARK IL 60087  
PT NW1/4 SE1/4 SE1/4 N SIDE  
30' CO RD  
DEED BK&PG B60/298 REC 00/00  
Section 29 Township 006 Range 010  
PPIN 7696  
Lienor 1 RPD PLANNING GROUP  
Lienor 2 JOHNSON, 1A

Parcel 1-0808-08-34-015.  
CUTCHENS MARGRETTE M  
6577 N.SHILOH ROAD  
CORINTH MS 38834  
CUTCHENS MARGRETTE M  
6573 NORTH SHILOH ROAD  
CORINTH MS 38834  
PT SE1/4 NW1/4  
DEED BK&PG B171/423  
Section 34 Township 001 Range 010  
PPIN 2076  
Lienor 1 AMERICAN GENERAL FINANCIAL SERVICES  
Lienor 2 SMALL LOANS, INC  
Lienor 3 LONG LAND INVESTMENTS  
Lienor 4 JOHNSON CAROLYN

Parcel 1-0207- -35-016.04  
DAVIS WILLIAM W ETUX  
455 CR 313  
IUKA MS 38852  
PT W1/2 S1/2 NW1/4  
Section 35 Township 002 Range 009  
PPIN 23518  
Lienor 1 SPRINGLEAF FINANCIAL SERVICES

Parcel 1-1603-15-06-049.01  
DEXTER R E  
C/O JUDY DEXTER  
503 SOUTH 2ND  
MEMPHIS TN 38103  
PT SW1//  
DEED BK&PG P33/103  
Section 06 Township 002 Range 011  
PPIN 14220

Parcel 1-1706-15-14-025.  
DOTSON MELANIE  
C/O WAYLON MCANALLY  
PO BOX 46  
GLEN MS 38846  
LAKEVIEW LOT 13 14  
DEED BK & PG 152/495 7-92  
PHONE:662-212-3968-----2011  
GREG MCANALLY/MELANIES SON  
Section 14 Township 003 Range 011  
LAKE VIEW ESTATE 17-06-15  
PPIN 10483  
Lienor 1 THIRD UNION

Parcel 3-1006-02-13-171.  
DP-J ENTERPRISES LLC  
MISSISSIPPI LIMITED LIABILITY CO  
1580 HWY 25  
TISHOMINGO MS 38873  
PT NW1/2 NW1/4 SE1/4 E 30' CO RD  
DEED BK&PG B139/119  
Section 13 Township 003 Range 010  
PPIN 3993  
Lienor 1 FARMERS AND MERCHANTS BANK  
Lienor 2 MISSISSIPPI DEPARTMENT OF REVENUE

Parcel 6-1205-05-22-062.  
DURHAM DURWARD ETUX  
P O BOX 152  
TISHOMINGO MS 38873  
TN OF TISH LOT 14  
BK 33  
DEED BK&PG B171/641  
Section 33 Township 005 Range 010  
PPIN 5934  
Lienor 1 MISSISSIPPI STATE TAX COMMISSION  
Lienor 2 IRS (INTERNAL REVENUE SERVICE)

Parcel 1-0805- -16-019.  
EDWARDS DORIS  
4 CR 18  
COUNCE TN 38326  
STATE LINE CABIN SITE  
LOT 22 1/19 OF 17  
DEED BK&PG B123/142  
Section 16 Township 001 Range 010  
STATE LINE SUBD 08-05

PT E1/2 S1/2 NE1/4  
Section 02 Township 003 Range 009  
PPIN 23173  
Lienor 1 HAROLD LOMENICK

Parcel 3-1704-15-18-037.  
HEAVENER LANCE ETAL  
195 CR 255  
IUKA MS 38852  
AMANDA HEAVENER  
PO BOX 80  
IUKA MS 38852  
PICKWICK PLACE PT LOT 12 BLK 1  
DEED BK&PG B135//549 REC 00/00  
Section 18 Township 003 Range 011  
PICKWICK PLACE 17-04-15  
PPIN 10224  
Lienor 1 RENASANT BANK

Parcel 1-1308- -27-027.06  
HIGGINSBOTTOM LARRY  
%CANTRELL TIM  
424 CR 16  
BELMONT MS 38827  
PT S1/2 E1/2 SW1/4 SE1/4  
Section 27 Township 006 Range 010  
PPIN 17297  
Lienor 1 RPD PLANNING GROUP

Parcel 1-1205- -21-013.  
JOHNSON ENIS JR  
P O BOX 281  
TISHOMINGO MS 38873  
PT W1/2 NE1/4  
DEED BK&PG B157/92  
B173/325  
Section 21 Township 005 Range 010  
PPIN 5791  
Lienor 1 FIDELITY NATIONAL LOANS

Parcel 1-1205- -21-014.  
JOHNSON ENIS JR  
P O BOX 281  
TISHOMINGO MS 38873  
PT C PT NW1/4 NE1/4  
DEED BK&PG B167/356  
Section 21 Township 005 Range 010  
PPIN 5792  
Lienor 1 FIDELITY NATIONAL LOANS

Parcel 1-1205- -21-015.  
JOHNSON ENIS JR  
62 COUNTY ROAD 116  
TISHOMINGO MS 38873  
PT N PT NW1/4 NE1/4  
DEED BK&PG B157/91  
Section 21 Township 005 Range 010  
PPIN 5793  
Lienor 1 FIDELITY NATIONAL LOANS

Parcel 6-1205-08-22-015.  
JOHNSON ENIS JR ETAL  
P O BOX 281  
TISHOMINGO MS 38873  
TN OF TISH PT W1/2 W1/2 NE1/4  
NW1/4 CEN PT  
DEED BK/PG B57/98  
Section 22 Township 005 Range 010  
PPIN 6146  
Lienor 1 FIDELITY NATIONAL LOANS

Parcel 1-0208- -33-012.03  
JOHNSON JODY C SR ETUX  
C/O BRENDA VERMOCH  
117 CR 944  
GLEN MS 38846  
PT S1/2 E1/2 SE1/4 SE1/4  
Section 33 Township 002 Range 009  
PPIN 17342

Parcel 1-1205-08-22-011.  
JOHNSON JOYCE  
%JOHNSON ENIS  
P O BOX 281  
TISHOMINGO MS 38873  
JOHNSON ENIS  
P O BOX 281  
TISHOMINGO MS 38873  
PT SW1/4 NW1/4 N W COR  
DEED BK&PG B126/45  
Section 22 Township 005 Range 010  
PPIN 6142  
Lienor 1 FIDELITY NATIONAL LOANS

Parcel 3-1704-12-19-065.  
JOHNSON ODELL ETUX  
703 EAST PIKE STREET  
IUKA MS 38852  
PT BLK 42 PT VAC ALLEY  
DEED BK & PG 121/467  
Section 19 Township 003 Range 011  
PPIN 10097

Parcel 1-1308- -34-005.01  
JONES PHILLIP A  
8 HENRY STREET  
BELMONT MS 38827  
CRUM BENJAMIN  
8 HENRY DR  
BELMONT MS 38827  
PT E1/2 SW1/4  
DEED BOOK B140/667  
Section 34 Township 006 Range 010  
PPIN 12111

Parcel 1-0306-16-14-009.05  
LAMBERT DONNA  
9 CR 212  
BURNSVILLE MS 38833  
PT S1/2 S1/2 SW1/4 NW1/4  
PT CEN PT  
B88/373  
Section 14 Township 003 Range 009

ROLLING HILLS 09-06  
PPIN 19071 1  
Lienor 1 EASY FINANCE  
Parcel 3-1704-11-19-037.  
LONG CURTIS  
250 PRIDE STREET  
IUKA MS 38852  
PT NW1/4 NE1/4 SW1/4 SW SPRING ST  
Section 19 Township 003 Range 011  
PPIN 10002

Parcel 5-0301-04-01-005.  
MARLAR CONEY  
278 EASTPORT ST  
BURNSVILLE MS 38833  
TN OF BURNSVILLE  
PT S1/2 NW1/4  
CEN PT  
N 30' CO RD  
DEED BK&PG B148/172 REC 00/00  
Section 01 Township 003 Range 009  
PPIN 353

Parcel 1-1103- -07-002.03  
MARLAR CONEY LEASE  
PO BOX 243  
BURNSVILLE MS 38833  
PT S1/2 S1/2 E1/2 E1/2 SE1/4 SE1/4  
Section 07 Township 004 Range 010  
PPIN 23608  
Lienor 1 JAMES P RICH

Parcel 5-0301-09-11-070.  
MARLAR H M  
9 CHURCH ST  
BURNSVILLE MS 38833  
TN OF BURNSVILLE LOTS 33 34 35  
BLK 7  
DEED BK&PG B125/156 REC 00/00  
Section 11 Township 003 Range 009  
PPIN 494

Parcel 5-0301-09-11-073.  
MARLAR H M  
9 CHURCH ST  
BURNSVILLE MS 38833  
TN OF BURNSVILLE LOT 9  
BLK 7  
DEED BK&PG P32/235 REC 00/00  
Section 11 Township 003 Range 009  
PPIN 497

Parcel 5-0301-09-11-075.  
MARLAR H M  
9 CHURCH ST  
BURNSVILLE MS 38833  
TN OF BURNSVILLE  
LOTS 6 7  
BLK 7  
DEED BK&PG B86/528 REC 00/00  
Section 11 Township 003 Range 009  
PPIN 502

Parcel 1-0907- -25-012.07  
MARTIN L R  
PO BOX 295  
SOMERVILLE AL 35670  
PT W1/2 SW1/4 SE1/4  
DEED BOOK DB&PG 209/425 04-06-2000  
Section 25 Township 002 Range 010  
PPIN 18018

Parcel 4-1307-10-35-086.02  
MASSEY TONY ETUX  
C/O PATRICIA WITT  
62 WITT RD  
BELMONT MS 38827  
W 1/2 LOT 5 BLK 17  
PB1 PG 14  
DEED BOOK B181/12 5-17-96  
Section 35 Township 006 Range 010  
PPIN 14071

Lienor 1 WELLS FARGO FINANCIAL NEVADA 2 INC.  
Lienor 2 WARREN JOHNSON

Parcel 1-0308- -28-037.02  
MAYNARD LORETTA  
C/O BILLY PAUL FELTMAN  
31 CR 944

GLEN MS 38846  
MAYNARD LORETTA  
125 CANNONADE STREET  
APT 5G  
KOSCIUSKO MS 39090  
PT E 1/2 NW 1/4 N LEEDY ROAD  
B133/58  
Section 28 Township 003 Range 009  
PPIN 12792  
Lienor 1 PAUL NELIUS

Parcel 1-0907- -36-030.01  
MCCARTY CHARLES H  
87 COUNTY ROAD 989  
IUKA MS 38852  
PT S1/2 NW1/4 NW1/4 W 80' CO RD  
DEED BK & PG 121/114  
Section 36 Township 002 Range 010  
PPIN 3059

Parcel 1-1304- -20-001.03  
MERINO LINDA  
5 HOLLY STREET  
TISHOMINGO MS 38873  
PT E1/2 N1/2 NE1/4 NE1/4 S HWY 4  
DEED BK/PG B186/501 3-6-97  
Section 20 Township 006 Range 010

85-B COUNTY ROAD 147  
TISHOMINGO MS 38873  
PT NE 1/4 NW1/4  
E 30' CO ROAD  
662-423-9057 TOMMY PARSONS  
Section 21 Township 004 Range 011  
PPIN 10932  
Lienor 1 JEFF WILEMON

Parcel 3-1006-09-23-016.  
PATTERSON BILLY  
1969 MARIA LANE  
IUKA MS 38852  
PT E1/2 NW1/4 SW1/4 NE1/4 S 30' CO RD  
INSIDE CORP  
DEED BK&PG B88/2 REC 00/00  
Section 23 Township 003 Range 010  
PPIN 4427 1  
Lienor 1 MDES  
Lienor 2 MISSISSIPPI DEPARTMENT OF REVENUE  
Lienor 3 FIDELITY NATIONAL LOANS

Parcel 3-1006-09-23-016.  
PATTERSON BILLY  
1969 MARIA LANE  
IUKA MS 38852  
PT E1/2 NW1/4 SW1/4 NE1/4 S 30' CO RD  
INSIDE CORP  
DEED BK&PG B88/2 REC 00/00  
Section 23 Township 003 Range 010  
PPIN 4427 3  
Lienor 1 MDES  
Lienor 2 MISSISSIPPI DEPARTMENT OF REVENUE  
Lienor 3 FIDELITY NATIONAL LOANS

Parcel 3-1704-11-19-035.  
PHILCO PARTNER  
258 BRAE BURN DR  
JACKSON MS 39211  
PT SW1/4 NE1/4 SW1/4 W SPRING ST  
DEED BK&PG 103/117 REC 00/00  
Section 19 Township 003 Range 011  
PPIN 10000  
Lienor 1 SCHAROLETT MONROE  
Lienor 2 DAVID NICHOLS

Parcel 3-1704-11-19-026.  
PHILCO PARTNERS  
258 BRAE BURN DR  
JACKSON MS 39211  
PT E1/2 SE1/4 SW1/4 CEN PT  
DEED BK&PG B30/575 REC 00/00  
Section 19 Township 003 Range 011  
PPIN 9989  
Lienor 1 SHARON BRAY

Parcel 3-1704-12-19-063.  
PHILCO PARTNERS  
258 BRAE BURN DR  
JACKSON MS 39211  
PT BLK 45 PT VAC ALLEY  
DEED BK & PG 121/467  
Section 19 Township 003 Range 011  
PPIN 10095  
Lienor 1 CONNER JOHNSON  
Lienor 2 COKER, DONALD

Parcel 1-0902-09-09-011.03  
PLUNK MICHAEL  
3835 D HIGHWAY 25  
IUKA MS 38852  
MARTIN STEPHEN SHANE ETUX  
270 TERRY ROAD  
SOMERVILLE TN 38068  
PT N1/2 W1/2 NE1/3  
DEED BK & PG 120/86-87  
Section 09 Township 002 Range 010  
PPIN 13652  
Lienor 1 RENASANT BANK

Parcel 1-1301- -01-003.  
POUNDERS GREGORY L/E ETAL  
116 CR 75  
DENNIS MS 38838  
PT NE1/4 SE1/4 N 30' CO RD  
DEED BK&PG B142/703  
Section 01 Township 006 Range 010  
PPIN 6476 1

Parcel 5-0301-14-02-008.  
POWERS JEFF ETUX  
295 EASTPORT STREET  
BURNSVILLE MS 38833  
TN OF BURNSVILLE  
LOT 8 BLK 1  
DEED BK&PG 122/560 REC 00/00  
Section 02 Township 003 Range 009  
PPIN 629  
Lienor 1 COUNTRYWIDE HOME LOANS

Parcel 3-1006-08-24-004.05  
PREFERRED CARE REHAB INC  
502 BATTLEGROUND DR  
IUKA MS 38852  
PT E1/2 NE1/4 NW1/4 W ST HWY 25  
CARPET STORE  
Section 24 Township 003 Range 010  
PPIN 20950  
Lienor 1 RENASANT BANK  
Lienor 2 MDES

Parcel 1-0907- -35-012.  
PRYCE-JONES DAVID  
1580 HWY 25  
TISHOMINGO MS 38873  
PT NW1/4 SE1/4 SE COR  
DEED BK&PG B126/780 REC 00/00  
Section 35 Township 002 Range 010

Parcel 3-1006-02-13-103.  
PRYCE-JONES DAVID  
1580 HWY 25  
TISHOMINGO MS 38873  
PT BLOCK 4  
DEED BK&PG B43/8 REC 00/00  
Section 13 Township 003 Range 010  
PPIN 3919  
Lienor 1 FARMERS AND MERCHANTS BANK  
Lienor 2 FEDERAL TAX LIEN  
Lienor 3 IRS (INTERNAL REVENUE SERVICE)  
Lienor 4 TISHOMINGO COUNTY YOUTH COURT

Parcel 3-1006-02-13-103.01  
PRYCE-JONES DAVID  
1580 HWY 25  
TISHOMINGO MS 38873  
PT BLOCK 4  
DEED BK&PG B58/539 REC 00/00  
Section 13 Township 003 Range 010  
PPIN 3920  
Lienor 1 FARMERS AND MERCHANTS BANK  
Lienor 2 FIRST AMERICAN NATIONAL BANK  
Lienor 3 TISHOMINGO COUNTY YOUTH COURT  
Lienor 4 FEDERAL TAX LIEN  
Lienor 5 IRS (INTERNAL REVENUE SERVICE)

Parcel 3-1006-02-13-116.  
PRYCE-JONES DAVID  
1580 HWY 25  
TISHOMINGO MS 38873  
PT BLOCK 32  
DEED BK&PG B155/367  
Section 13 Township 003 Range 010  
PPIN 3934  
Lienor 1 FARMERS AND MERCHANTS BANK  
Lienor 2 TISHOMINGO COUNTY YOUTH COURT  
Lienor 3 IRS (INTERNAL REVENUE SERVICE)  
Lienor 4 FEDERAL TAX LIEN

Parcel 3-1006-04-13-048.  
PRYCE-JONES DAVID  
1580 HWY 25  
TISHOMINGO MS 38873  
PT NW1/4 CORN PT W HWY 25  
DEED BK&PG B191/150 10-30-97  
Section 13 Township 003 Range 010  
PPIN 4108  
Lienor 1 FARMERS AND MERCHANTS BANK  
Lienor 2 FEDERAL TAX LIEN  
Lienor 3 TISHOMINGO COUNTY YOUTH COURT  
Lienor 4 IRS (INTERNAL REVENUE SERVICE)

Parcel 1-1107- -35-021.  
PRYCE-JONES DAVID  
1580 HWY 25  
TISHOMINGO MS 38873  
PT NW1/4 NW1/4 E BDY  
DEED BK&PG B173/496  
Section 35 Township 004 Range 010  
PPIN 8224  
Lienor 1 FARMERS AND MERCHANTS BANK  
Lienor 2 FEDERAL TAX LIEN  
Lienor 3 TISHOMINGO COUNTY YOUTH COURT  
Lienor 4 IRS (INTERNAL REVENUE SERVICE)

Parcel 1-1107- -35-021.  
PRYCE-JONES DAVID  
1580 HWY 25  
TISHOMINGO MS 38873  
PT NW1/4 NW1/4 E BDY  
DEED BK&PG B173/496  
Section 35 Township 004 Range 010  
PPIN 8224  
Lienor 1 FARMERS AND MERCHANTS BANK  
Lienor 2 FEDERAL TAX LIEN  
Lienor 3 TISHOMINGO COUNTY YOUTH COURT  
Lienor 4 IRS (INTERNAL REVENUE SERVICE)

Parcel 3-1704-10-19-093.  
PRYCE-JONES DAVID  
1580 HWY 25  
TISHOMINGO MS 38873  
LT 15 PINWOOD SUB  
DEED BK&PG B179/618 3-28-96  
Section 19 Township 003 Range 011  
PINWOOD SUBDIVISION -17-04-10  
PPIN 9954  
Lienor 1 FARMERS AND MERCHANTS BANK  
Lienor 2 TISHOMINGO COUNTY YOUTH COURT  
Lienor 3 FEDERAL TAX LIEN  
Lienor 4 IRS (INTERNAL REVENUE SERVICE)

Parcel 1-1705- -21-020.03  
PRYCE-JONES DAVID  
1580 HIGHWAY 25  
TISHOMINGO MS 38873  
PT W1/2 NW1/4 SW1/4 E 30' CO RD  
DEED BK&PG B174/452  
Section 21 Township 003 Range 011  
PPIN 10364  
Lienor 1 FARMERS AND MERCHANTS BANK  
Lienor 2 TISHOMINGO COUNTY YOUTH COURT  
Lienor 3 FEDERAL TAX LIEN  
Lienor 4 IRS (INTERNAL REVENUE SERVICE)

Parcel 1-1001- -02-006.01  
PRYCE-JONES DAVID  
1580 HWY 25  
TISHOMINGO MS 38873  
PT N1/2 E1/2 NE1/4 NE1/4  
Section 02 Township 003 Range 010  
PPIN 20967



**IN THE CHANCERY COURT OF TISHOMINGO COUNTY, MISSISSIPPI**  
**POLLY J. HAMMETT, PLAINTIFF**  
**DAVID HUFFMAN AND**  
**DEPARTMENT OF HUMAN SERVICES,**  
**STATE OF MISSISSIPPI**  
**DEFENDANTS**  
**CAUSE NO. CV2007-000017-71-M**  
**SUMMONS**  
**THE STATE OF MISSISSIPPI**  
**TO: DAVID HUFFMAN**

You have been made a Defendant in the suit filed in this Court by Polly J. Hammett, Plaintiff, seeking child support or other relief demanded. Defendants other than you in this action are Department of Human Services, State of Mississippi. David Huffman is not to be found herein after diligent search and inquiry, and the post office address of said Defendant is not known, and whose last known address is 15 Witt Road, Belmont, Mississippi.

You are required to mail or hand-deliver a copy of a written response

to the Petition filed against you in this action to Lisa A. Koon, the attorney for the Plaintiff, whose post office address is Post Office Drawer 1109, Iuka, Mississippi 38852, and whose street address is 1231 First American Drive, Iuka, Mississippi 38852.

YOUR RESPONSE MUST BE MAILED OR DELIVERED NOT LATER THAN THIRTY DAYS AFTER THE 23<sup>rd</sup> DAY OF JUNE, 2016, WHICH IS THE DATE OF THE FIRST PUBLICATION OF THIS SUMMONS. IF YOUR RESPONSE IS NOT SO MAILED OR DELIVERED, A JUDGMENT BY DEFAULT WILL BE ENTERED AGAINST YOU FOR THE RELIEF DEMANDED IN THE COMPLAINT.

You must also file the original of your Response with the Clerk of this Court within a reasonable time afterward.

Issued under my hand and the seal of said Court, this the 16<sup>th</sup> day of June, 2016.

Peyton Cummings, Chancery Court Clerk  
Tishomingo County, Mississippi  
J-23-30-J-7-chg

**IN THE CHANCERY COURT OF TISHOMINGO COUNTY, MISSISSIPPI**  
**POLLY J. HAMMETT, PLAINTIFF V.**  
**DAVID HUFFMAN AND**  
**DEPARTMENT OF HUMAN SERVICES,**  
**STATE OF MISSISSIPPI**  
**DEFENDANTS**  
**CAUSE NO. CV2007-000017-71-MRULE 81**  
**SUMMONS BY PUBLICATION**  
**THE STATE OF MISSISSIPPI**  
**TO: David Huffman**

You have been made a Defendant in the suit filed in this Court by Polly J. Hammett, Plaintiff, seeking child support. Defendants other than you in this action are Department of Human Services, State of Mississippi.

You are summoned to appear and defend against said Complaint at 9:00 a.m. on the 17<sup>th</sup> day of August, 2016, the courtroom of the Tishomingo County Courthouse at Iuka, Mississippi, and in case of your failure to appear and defend a judgment will be entered against you for the money or other things demanded in the Complaint.

You are not required to file an Answer or other pleading but you may do so if you desire.

Issued under my hand and the seal of said Court, this the 16<sup>th</sup> day of June, 2016.

Peyton Cummings  
Tishomingo County Chancery Clerk  
J-23-30-J-7-chg

**PUBLIC NOTICE FOR 2013 TAXES, continued from page 14**

**YOU WILL TAKE NOTICE THAT IF THESE 2013 TAXES ARE NOT REDEEMED BY 8/25/2016 BY 5:00 P.M. TITLE WILL BECOME ABSOLUTE IN SAID PURCHASERS' NAME.**

Parcel 1-1705- -15-020.  
WINTER TONY  
1239 COUNTY ROAD 257  
IUKA MS 38852  
PT SW1/4 NW1/4 W SIDE 30' CO  
DEED BK&PG B170/177  
Section 15 Township 003 Range 011  
PPIN 10315  
Lienor 1 RICKY DUNN  
Lienor 2 GRAY, ADAM

Parcel 1-0902-12-09-015.  
ROBERTS CHARLES ARLO  
39 COUNTY ROAD 306  
IUKA MS 38852  
PT SW1/4 NW1/4 SW COR  
DEED BK&PG 101/94 REC 00/00  
Section 09 Township 002 Range 010  
PPIN 2480

Parcel 1-1305-01-15-032.  
ROGERS CRAIG ETUX  
22 LINE RD  
GOLDEN MS 38847  
PT W1/2 NE1/4 W 30' CO RD  
DEED BK&PG B169/111  
Section 15 Township 006 Range 010  
PPIN 6820

Parcel 1-1007- -35-038.03  
RYAN KEITH ETUX  
16 CR 152  
IUKA MS 38852  
PT NW1/4 NW1/4 W PT  
Section 35 Township 003 Range 010  
WOODALL ESTATE 1007 & 1008  
PPIN 4674

Parcel 3-1006-08-24-007.03  
SETH S L  
1554 WEST PEACE  
CANTON MS 39046  
PT NE1/4 NE1/4 NW1/4 E ST HWY  
25  
NEW ORLEANS FAMOUS FRIED CHICK-  
EN  
1104/620  
Section 24 Township 003 Range 010  
PPIN 4368  
Lienor 1 BNA BANK

Parcel 3-1006-05-24-128.  
SETH S L ETUX  
1554 WEST PEACE  
CANTON MS 39046  
PT NW1/4 NE1/4 S US HWY 72  
Section 24 Township 003 Range 010  
PPIN 4260  
Lienor 1 BNA BANK

Parcel 5-0301-16-02-002.  
SKELTON PHILLIS ETUX  
PO BOX 223  
BURNSVILLE MS 38833  
IN OF BURNSVILLE  
PT SE1/4 NE1/4 NW1/4  
DEED BK&PG B108/635 REC 00/00  
Section 02 Township 003 Range 009  
PPIN 710

Parcel 1-1305- -22-003.  
SMITH DANNY W ETUX  
PO BOX 281  
DENNIS MS 38838  
FARMERS AND MERCHANTS BANK  
PO BOX 278  
BALDWIN MS 38824  
PT SE1/4 NW1/4 S BDY  
DEED BK&PG 92/736 REC 00/00  
Section 22 Township 006 Range 010  
PPIN 6777

Parcel 1-1305-02-15-001.05  
SPARKS SHARON ETAL  
1283 CR 17  
DENNIS MS 38838  
EVELINA GOFF  
13 STACY CIRCLE  
BELMONT MS 38827  
PT W1/2 N1/2 E1/2 E1/2 SW1/4  
1382-425-7437 VERNON CRUM  
Section 15 Township 006 Range 010  
PPIN 20281

Parcel 1-1607- -35-001.02  
STEVENS JOHN A JR  
104 CANTERBURY

PT S 1/2 S 1/2 SEC 24  
W BEAR CREEK  
Section 24 Township 006 Range 010  
PPIN 6924

Parcel 1-1406- -14-012.  
STUTTS THOMAS  
5905 HWY 14 N  
YELLVILLE AR 72687  
PT NE1/4 NW1/4 NE COR  
DEED BK&PG P32/292 REC 00/00  
Section 14 Township 007 Range 010  
PPIN 8860

Parcel 1-1903- -08-003.02  
STUTTS THOMAS R  
5905 HWY 14N  
YELLVILLE AR 72687  
PT N1/2 E1/2 NE1/4 NE1/4  
DEED BK&PG B131/598  
Section 08 Township 005 Range 011  
PPIN 14701

Parcel 5-1401-09-11-015.04  
TAYLOR LARRY D ETUX  
47 JOHNSON DR  
BELMONT MS 38827 7745  
PT W1/2 S1/2 SW1/4 SW1/4 NE1/4  
DEED BOOK B166/169  
Section 11 Township 007 Range 010  
PPIN 16178  
Lienor 1 TREASURER LOANS, INC.  
Lienor 2 REGIONS BANK  
Lienor 3 AMSOUTH BANK

Parcel 1-1009- -32-005.01  
TAYLOR MICHAEL S  
308 PICKWICK CIR 704  
IUKA MS 38852  
TAYLOR, SHELBY  
43B CR 329  
CORINTH MS 38834  
PT SE 1/4 SE 1/4 SE CORNER  
BK B169/133  
Section 32 Township 003 Range 010  
PPIN 13177  
Lienor 1 JOSIANNA JOHNSON  
Lienor 2 MDES

Parcel 1-0804- -19-521.  
THE TALL GRASS GROUP LLC  
920 CEDAR LAKE ROAD  
BILOXI MS 39532  
LOT 521 MOUNTAIN VIEW@ PICKWICK  
PHASE V111  
Section 19 Township 001 Range 010  
PICKWICK PINES RESORT 08-04  
PPIN 21122  
Lienor 1 THE HARDIN COUNTY BANK  
Lienor 2 HARDIN COUNTY

Parcel 1-1208- -27-038.03  
THORN SHANE ETUX  
37 CR 107  
TISHOMINGO MS 38873  
PT W1/2 W1/2 S1/2 SW1/4 N1/4  
Section 27 Township 005 Range 010  
PPIN 21110  
Lienor 1 COMMUNITY SPIRIT BANK

Parcel 1-0302- -04-025.  
THORNE GENE IRVIN ETAL  
33 COUNTY ROAD 225  
GLEN MS 38846  
SPENCER RYAN THORNE  
33 CR 225  
GLEN MS 37746  
MALORIE LAYNE THORNE  
33 CR 225  
GLEN MS 37746  
TP W1/2 W1/2 NW1/4 SE1/4 N  
30' RD  
DEED BK&PG B122/252 REC 00/00  
Section 04 Township 003 Range 009  
PPIN 792

Parcel 5-0301-09-11-037.01  
TIMBES ELAINE  
1308 N PEARL #1  
IUKA MS 38852  
BILL TIMBES  
PO BOX 131  
BURNSVILLE MS 38833  
PT OF LT 6 BLK 7  
DEED BK/PG B120/508  
Section 11 Township 003 Range 009  
PPIN 13006  
Lienor 1 JOHNSON, DAVIS C

PPIN 701  
Lienor 1 C & L SUPPLY INC  
Lienor 2 ADAM THRASH

Parcel 1-0207- -26-009.  
TUCKER J A ETUX  
C/O PAM MCMILLAN  
PO BOX 444  
BURNSVILLE MS 38833  
MCMILLAN PAMELA LEE  
P O BOX 444  
BURNSVILLE MS 38833  
PT E1/2 SW1/4 & N1/2 NW1/4  
DEED BK&PG B83/431 REC 00/00  
Section 26 Township 002 Range 009  
PPIN 195  
Lienor 1 C & L SUPPLY INC  
Lienor 2 ADAM THRASH

Parcel 4-1401-13-02-047.  
WADDLE CHARLES  
24 MAIN ST  
BELMONT MS 38827  
CHARLES WADDLE  
C/O REGINA GRAY  
PO BOX 366  
DENNIS MS 38838  
PT CEN PT NE1/4 N 30' RD  
DEED BOOK B127/212  
Section 02 Township 07 Range 10  
PPIN 12572

Parcel 1-1002- -03-008.03  
WALLACE MICHAEL ETAL  
23 CR 237  
IUKA MS 38852  
PT S1/2 E1/2 SE1/4 NW1/4  
N 100' CO RD  
Section 03 Township 003 Range 010  
PPIN 17061  
Lienor 1 MISSISSIPPI STATE TAX COM-  
MISSION  
Lienor 2 MISSISSIPPI DEPARTMENT  
OF REVENUE

Parcel 3-1006-09-23-007.  
WEAVER ANNETTE  
1240 WEST MARIA LANE  
IUKA MS 38852  
PT E1/2 SE1/4 NE1/4 W NEW US  
72 HWY  
INSIDE CORP  
DEED BK&PG B96/577 REC 00/00  
THIS IS HWY DEED  
Section 23 Township 003 Range 010  
PPIN 4418

Parcel 1-1704-13-18-002.01  
WELLS FARGO BANK NA  
8480 STAGE COACH CIRCLE  
FREDERICK MD 21701  
PRYCE-JONES DAVID  
1580 HWY 25  
TISHOMINGO MS 38773  
PT S1/2 N1/2 E1/2 NE 1/4  
DEED BOOK B213/543  
Section 18 Township 003 Range 011  
PPIN 18192  
Lienor 1 FARMERS AND MERCHANTS  
BANK  
Lienor 2 FEDERAL TAX LIEN  
Lienor 3 TISHOMINGO COUNTY YOUTH  
COURT  
Lienor 4 IRS (INTERNAL REVENUE  
SERVICE)

Parcel 1-0402- -03-012.  
WELLS JOHN M JR  
99 CR 205  
BURNSVILLE MS 38833  
PT SE1/4 NE1/4 W PUB RD  
DEED BK&PG B50/599 REC 00/00  
Section 03 Township 004 Range 009  
PPIN 1243  
Lienor 1 RODNEY & BEVERLY GRISH-  
AM

Parcel 1-1008- -33-009.02  
WHITE JAMES R  
389 CR 176  
IUKA MS 38852  
PT W1/2 W1/2 NW1/4 SW1/4  
Section 33 Township 003 Range 010  
PPIN 19867  
Lienor 1 FRANKLIN COLLECTION

Parcel 1-0607- -36-003.  
WILLIAMS ROBERT ALAN ETAL

Parcel 1-0202- -09-013.  
WINTERS LARRY JOE ETUX ETAL  
371 CR 298  
BURNSVILLE MS 38833  
MICHAEL AND SANDRA TEIKENL  
30 CR 253  
GLEN, MS 38846  
GLEN, MS 38846  
PT SE1/4 SW1/4  
35 CR 944  
DEED BK&PG B145/120  
Section 09 Township 002 Range 009  
PPIN 81  
Lienor 1 ALLIANCE COLLECTION SE

Parcel 1-1108- -34-006.  
WREN BARRY ETUX  
145 COUNTY ROAD 147  
TISHOMINGO MS 38873  
WREN DEBRA  
145 COUNTY ROAD 147  
TISHOMINGO MS 38873  
PT SW1/4 NE1/4 PT W1/2 W1/2 SE  
1/4 SW COR  
DEED BK&PG B169/632  
Section 34 Township 004 Range 010  
PPIN 5391  
Lienor 1 MISSISSIPPI DEPARTMENT  
OF REVENUE  
Lienor 2 BANCORPSOUTH BANK

Parcel 1-1007- -26-008.01  
WREN DEBRA  
145 COUNTY ROAD 147  
IUKA MS 38852  
CEN PT W1/2 SE1/4 E 100' ST  
HWY 25  
DEED BK&PG B178/227 1-10-96  
Section 26 Township 003 Range 010  
PPIN 4601  
Lienor 1 BANCORPSOUTH BANK  
Lienor 2 RENASANT BANK  
Lienor 3 MISSISSIPPI STATE TAX COM-  
MISSION  
Lienor 4 MISSISSIPPI DEPARTMENT  
OF REVENUE

Parcel 1-1108- -34-004.  
WREN DEBRA  
145 CR 147  
TISHOMINGO MS 38873  
PT SW1/4 NE1/4 N BOGGS CHAPEL  
RD  
DEED BK&PG B145/485  
Section 34 Township 004 Range 010  
PPIN 5389  
Lienor 1 MISSISSIPPI STATE TAX COM-  
MISSION  
Lienor 2 MISSISSIPPI DEPARTMENT  
OF REVENUE  
Lienor 3 BANCORPSOUTH BANK

Parcel 1-1108- -34-013.  
WREN DEBRA  
145 CR 147  
IUKA MS 38852  
PT E1/2 SW1/4  
DEED BK&PG B169/427  
Section 34 Township 004 Range 010  
PPIN 5398  
Lienor 1 MISSISSIPPI STATE TAX COM-  
MISSION  
Lienor 2 MISSISSIPPI DEPARTMENT  
OF REVENUE  
Lienor 3 BANCORPSOUTH BANK

Parcel 1-1108- -34-006.01  
WREN DEBRA  
145 CR 147  
IUKA MS 38852  
PT S1/2 SW1/4 SW1/4  
E 30' CO RD  
DEED BK/PG B145/483  
Section 34 Township 004 Range 010  
PPIN 15324  
Lienor 1 MISSISSIPPI STATE TAX COM-  
MISSION  
Lienor 2 MISSISSIPPI DEPARTMENT  
OF REVENUE  
Lienor 3 BANCORPSOUTH BANK

Parcel 1-1108- -34-014.01  
WREN EDNA  
PO BOX 162  
FULTON MS 38843  
PT E1/2 SW1/4  
Section 34 Township 004 Range 010

**RESOLUTION OF THE TISHOMINGO COUNTY, MISSISSIPPI BOARD OF SUPERVISORS**

Came this matter on to be heard on the petition of Danny Parsons for the abandonment and closing of a certain portion of County Road 961 pursuant to Section 65-7-121 of the Mississippi Code of 1972, as annotated and amended, and the Board finds the motion is well taken and is hereby sustained. Therefore, the Board does hereby find, order and resolves as follows:

That the Petitioner Danny Parsons is an adult resident citizen of 2<sup>nd</sup> District of Tishomingo County, Mississippi and has presented a petition to close a portion of County Road 961 and the Board having considered said petition finds that the land serviced by the portion of County Road 961 is wholly owned by the Petitioner and does not provide primary access to occupied properties; and The Board further finds and resolves that the traffic on said section of road has been intermittent and of such low volume for a period of the last ten years that no substantial public purpose is being served by the section of road remaining a public road; and The Board further finds and resolves that for a period of at least the previous five years that County has not maintained such section of County Road 961 as part of the county road system; therefore The Board does finds that there shall be a public hearing on the question of whether or not to abandon said section of County Road 961 and that notice of said public hearing shall be published in the county paper for at least two consecutive weeks prior to said hearing; and

The Board does hereby set the public hearing to determine this issue for the 5<sup>th</sup> day of July, 2016 at the Tishomingo County Courthouse at the Boardroom of the Chancery Clerk's office at 1008 Battleground Drive, Iuka, Mississippi at 10:00 a.m. or as soon thereafter as may be heard.

So found, ordered and resolved this the 20<sup>th</sup> day of June, 2016.

Greg Collier, Chairman  
Tishomingo Co. Board of Supervisors  
Peyton Cummings, Clerk  
J-23-30-chg

**SUMMONS BY PUBLICATION THE STATE OF MISSISSIPPI**  
**IN THE CHANCERY COURT OF TISHOMINGO COUNTY, MISSISSIPPI**  
**DALMER BLACKMAN and**  
**JOAN J. BLACKMAN, PLAINTIFFS**  
**VS. CAUSE NO: CV2016-000202MM**  
**EASTPORT MARINA & RESORT, LLC,**  
**AND KIM & EDDIE SHAW; AND ANY**  
**UNKNOWN DEFENDANTS CLAIMING**  
**AN INTEREST IN OR TO THE REAL**  
**PROPERTY DESCRIBED HEREIN,**  
**DEFENDANTS**

TO: Any Unknown Parties who claim any interest in or to the following described real property.

You have been made a Defendant in the suit filed in this Court by Dalmer Blackman and Joan J. Blackman, seeking to quiet title, confirm and remove cloud from their title to certain real property in Tishomingo County, Mississippi, described as follows:

A tract of land situated in Section 26, Township 2 South, Range 11 East, on the north shore of Eastport Branch Inlet of the Bear Creek Embayment of Pickwick Landing Lake, more particularly described as follows: Beginning at TVA Marker No. 48, located in said section, and run thence S. 86 degrees 52' W. 65 feet to the point of beginning; thence run S. 21 degrees 28' E. 261.86 feet to the north side of Eastport Road; thence run S. 69 degrees 23' W. 193 feet along the north side of said road; thence run N. 21 degrees 28' W. 323 feet to a TVA line; thence run N. 86 degrees 52' E. 205.28 feet to the point of beginning, containing 1.3 acres.

ALSO: A tract of land located in Section 26, Township 2, Range 11, Tishomingo County, Mississippi on the north shore of Eastport Branch Inlet of Bear Creek Embayment of Pickwick Landing Lake more particularly described as follows: Beginning at TVA Marker #49 located in said section; thence run S. 48 degrees 08' W. 158 feet to a point on the south side of Eastport Road; thence run S. 69 degrees 14' W. 675.14 feet along south side of said road to the point of beginning; thence run S. 69 degrees 14' W. along south side of said road 35 feet; thence run S. 22 degrees 02' E. 46.86 feet to the 418 foot contour line of Pickwick Lake; thence run easterly along the meanderings of said 418 foot contour line to a point S. 22 degrees 02' E. 55 feet from the point of beginning; thence run N. 22 degrees 02' W. 55 feet to the





WE RESERVE THE RIGHT TO CORRECT  
TYPOGRAPHICAL OR  
PICTORIAL ERRORS.

VISIT OUR WEBSITE  
[www.hometownpigglywiggly.net](http://www.hometownpigglywiggly.net)

QUANTITY RIGHTS RESERVED. NONE SOLD TO DEALERS.

**luka. Ms Piggly Wiggly** NOW OPEN SUNDAY 12-PM TILL 9-PM

STORE HOURS MON-SAT. 7-AM TILL 9-PM .....NOW OPEN ON SUNDAYS 12-PM TILL 9-PM  
PHONE 423-3651 WE ACCEPT VISA, MASTERCARD FOR YOUR CONVENIENCE, THE FOLLOWING ARE AVAILABLE AT  
PIGGLY WIGGLY: POSTAGE STAMPS, WESTERN UNION MONEY TRANSFER, AND MONEY ORDERS.

WE INVITE OUR CUSTOMERS TO VISIT OUR FACEBOOK PAGE AND SUGGEST YOUR FAVORITE ITEMS TO BE INCLUDED IN OUR UPCOMING ADS! [www.facebook.com/iukapigglywiggly](http://www.facebook.com/iukapigglywiggly)

**PRICES GOOD JUNE 30 THRU JULY 6, 2016**

# INDEPENDENCE DAY SALE

ALL PRODUCTS OF  
**PEPSI COLA**

12-PACK CANS



**3/\$9**

ALL PRODUCTS OF  
**PEPSI**

.5-LTR BTLs. 6-PACK



**4/\$10**

AQUAFINA  
**WATER**

.5-LTR 24-PACK



**\$3.99**

PIGGLY WIGGLY  
ASSORTED FLAVORED  
**DRINKS**

2-LTR BTLs.



**79¢**

PIGGLY WIGGLY  
HOT DOG OR HAMBURGER  
**BUNS**

8-CT PKG



**79¢**

PRINGLES  
POTATO  
**CRISPS**

5.68 OZ



**2/\$3**

GOLDEN FLAKE  
POTATO  
**CHIPS**

5 OZ BAG



**4/\$5**

## FRESH MEAT SAVINGS

FRESH  
MEATY PORK  
**SPARERIBS**

**\$1.89**



REG OR BUN LENGTH  
OSCAR MAYER  
**WIENERS**

1-LB PKG



**99¢**

PIGGLY WIGGLY PURE  
PRIME GROUND  
**BEEF**

POUND



**\$2.29**

JOHNSONVILLE  
**SMOKED  
BRATS**

**2/\$6**

SEABEST EZ  
**PEEL  
SHRIMP**

**\$6.49**

KINSEY'S  
**POTATO  
SALAD**

24 OZ.

**\$1.99**

KING COTTON  
**SMOKED  
SAUSAGE**

**2/\$4**

FRESH WHOLE  
BONELESS  
**PORK LOINS**

**\$1.69**



FRESH WHOLE  
LEAN  
**BOSTON BUTTS**

2 PER PKG..PER LB  
**\$1.49**



WRIGHT'S  
SLICED  
**BACON**

1.5-LB PKG  
**\$6.98**



BRYAN  
SLICED  
**BOLOGNA**

12 OZ PKG  
**2/\$3**



GREAT ON THE GRILL  
BRYAN  
**HOT DOGS**

12 OZ PKG  
**2/\$3**



ASSORTED  
RED DIAMOND  
**TEA**

GALLON  
**\$1.99**



COUNTRY CROCK  
SPREAD  
**MARGARINE**

45 OZ TUB  
**2/\$6**



BORDEN'S  
AMERICAN  
**SINGLES**

12 OZ PKG  
**2/\$4**



MAYFIELD  
SELECTS  
**ICE CREAM**

48 OZ  
**\$2.69**



ASSORTED FLAVORS  
OLD FASHIONED  
**ICE CREAM**

GALLON  
**\$4.49**



DAISY  
**SOUR CREAM** .....16 OZ **2/\$4**  
DEAN'S ASSORTED  
**CHIP DIPS** .....16 OZ **2/\$3**  
PIGGLY WIGGLY WHIPPING  
**CREAM** .....8 OZ **\$1.00**

MINUTE MAID FROZEN CONCENTRATE  
**LEMONADE** .....12 OZ **2/\$3**  
ORE-IDA CRINKLE CUT  
**POTATOES** .....5-LB BAG. **\$4.99**  
EDWARDS PECAN OR  
**CREAM PIES** .....23-34 OZ **\$5.99**

GOLDEN FLAKE PARTY  
SIZE POTATO  
**CHIPS**

16 OZ  
**2/\$6**



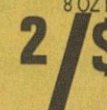
LAY'S  
POTATO  
**CHIPS**

9-10 OZ BAGS  
**2/\$4**



CHEETOS  
CHEESE  
**CURLS**

8 OZ BAG  
**2/\$4**



GENERAL MILLS  
**CEREALS**

•COCOA PUFFS •COOKIE CRISP •GOLDEN GRAHAMS  
•REESE'S PEANUT BUTTER PUFFS  
•TRIX 11-13 OZ  
**2/\$4**

A-1 STEAK SAUCE OR  
HEINZ 57 STEAK  
**SAUCE**

10 OZ BTL  
**2/\$6**



GATORADE  
THIRST QUENCHER  
**DRINKS**

20 OZ 8-PACK  
**\$4.99**



HUNT'S  
THICK & RICH  
**KETCHUP**

24 OZ BTL.  
**88¢**



JELL-O GELATIN OR  
INSTANT PUDDING  
**MIXES**

3-3 OZ PKG  
**4/\$3**



PREMIUM  
DOMINO  
**SUGAR**

4-LB BAG  
**\$1.79**



KRAFT DELUXE MAC OR  
VELVEETA & SHELLS & CHEESE  
**DINNERS**

10-14 OZ  
**2/\$5**



KRAFT  
BAR-B-QUE  
**SAUCE**

18 OZ BTL.  
**4/\$5**



HEINZ  
HOT DOG  
**RELISH**

10 OZ JAR  
**\$1.19**



PIGGLY WIGGLY  
HAMBURGER  
**DILL CHIPS**

32 OZ  
**\$1.29**



MATCHLIGHT OR  
KINGSFORD  
**CHARCOAL**

11-15-LB BAGS  
**\$7.99**



KRAFT  
SALAD  
**DRESSING**

16 OZ BTL.  
**2/\$4**



SAVE ON  
KRAFT  
**MAYO**

30 OZ JAR  
**\$2.99**



BUSH'S BAKED OR  
GRILLIN  
**BEANS**

22-28 OZ CANS  
**3/\$5**



OCEANSpray CRANBERRY  
**DRINKS** .....64 OZ. **2/\$4**  
HAWAIIAN  
**PUNCH** .....GAL **2/\$4**  
KOOL-AID UNSWEETENED  
**DRINK MIX** .....2-QTS **6/\$1**  
RITZ SNACK  
**CRACKERS** .....13 OZ **2/\$5**

MAXWELL HOUSE  
**COFFEE** .....28-30 OZ. **\$5.99**  
LIPTON QUART SIZE  
**TEA BAGS** .....24-CT **\$1.88**  
EAGLE BRAND SWEETENED CONDENSED  
**MILK** .....14 OZ. **2/\$4**  
MORTON ICE CREAM  
**SALT** .....4-LBS. **2/\$3**

JIF PEANUT  
**BUTTER** .....28 OZ. **\$3.69**  
CREST  
**TOOTH PASTE** .....6.4 OZ **\$1.99**  
PIGGLY WIGGLY PLASTIC  
**CUTLERY** .....24-CT. **2/\$1**  
PARTIME  
**PLASTIC CUPS** .....16-CT. **\$1.00**

VALUE STAR FOAM COMPARTMENT TRAYS..20-CT 2/\$3

## FRESH PRODUCE



FRESH  
**EXPRESS  
SLAW**

10-14 OZ PKG  
**\$1.00**



FRESH EXPRESS  
SHREDDED LETTUCE OR  
ICEBERG GARDEN  
**SALAD**

8 OZ PKG  
**\$1.29**

ALABAMA  
**PEACHES**

JUMBO SWEET VIDALIA  
**ONIONS**

FRESH  
SWEET COB  
**CORN**

3/\$1.00



**\$1.00**

**79¢**

FRESH  
RED RIPE  
**WATERMELONS**

EACH  
**\$4.99**

PIGGLY WIGGLY IS HOME OF  
THE REAL DELI BAKERY

RESER'S  
**SALADS**

•ORIGINAL OR MUSTARD  
POTATO SALAD •MACARONI  
•SLAW 3-LB PKG  
**\$4.99**

16 OZ CUP \$1.99



STRAWBERRY  
**SHORT  
CAKE**

1-LAYER  
**\$5.99**